



The National Horseshoe Pitcher's Association



NEWSLINE

VOL. 4 NO. 6

NOVEMBER / DECEMBER 1992



*Four Wisconsin
State Champions*

ORDER CHRISTMAS FOR YOUR HORSESHOE PITCHER TODAY

RETAIL PRICE LIST SHIPPING & TAXES ADDITIONAL

HORSESHOES PER PAIR

Reno	2-7, 2-8, 2-9	Cast or DF	39.95
Lattore	2-2, 2-5	Cast	45.95
Dixon Victory	2-8	Cast	39.95
Greeott Grabber	2-8	Cast	45.95
American	2-8	DF	21.00
Gordon	2-8	DF	35.00
Gordon Gold	2-8	DF	40.00
Ohio "O"	2-8	DF	41.00
Ohio "Pro"	2-8	DF	41.00
Henton V-Lok	2-8	DF	39.00
Henton Supremes	2-8	DF	45.00
Imperial	2-8, 2-9, 2-10	DF	45.00
Imperial Plus	2-8, 2-9, 2-10	DF	41.00
Diamond Tournament	2-8	DF	28.75
Star Stainless	2-8	Cast	85.00
Elmer Hohl	2-8, 2-9, 2-10	DF	48.50
M & M Special	M, H	Cast	43.00
Clydesdale	L, M	Cast	42.00
Clydesdale	M	DF	47.00
Deadeye Regular	M	Cast	42.00
EZ Grip	M	DF	47.00
Deadeye NT	M, H	Cast	42.00
Cal-Flip	2-9	DF	48.00
Cal-Flip Stainless	2-9	DF	68.00
D & B No Calk	2-0	DF	38.00
Six Hix	2-8	Cast	37.00
Durham Lock On	2-8	DF	56.00
Durham Lock On II	2-8	DF	56.00

HORSESHOES PACKED TWO PAIRS PER BOX

American	2-8	DF	42.00
Diamond Super Ringers	2-8	DF	28.00
Diamond Double Ringers	2-8	DF	24.50
Diamond Super Outfit	2-8, Includes 2 Pegs	DF	40.00

CLOTHES

Athletic Shoes (male or female) w/NHPA Logo			39.95
Sport Shirts w/Logo	S, M, L, XL, XXL	White	17.50
T-Shirts (men) w/Logo	S, M, L, XL	White	7.50
T-Shirts (men) w/Logo	XXL, XXXL, XXXXL	White	9.00
T-Shirts (youth)			
w/Logo	S, M, L, XL	White	7.00
Sweatshirts	S, M, L, XL	White	22.50
Sweatshirts	XXL, XXXL	White	27.50
Caps (men) w/Logo	One Size Fits All	Red, Blue, RWB	6.00
NHPA Emblem	2" x 3"		1.50
NHPA Emblem	3" x 5"		2.00
Windbreakers w/Logo	S, M, L, XL	White (lined)	30.00
Shirt Lettering	2" Block	Any Color	Cost Per Letter .25

STAKES OR PEGS

Diamond Stake & Holder (2 stakes)			48.00
Diamond 27" Stake		Each	14.00
Gordon 36" Stake		Each	12.00
Wood Blocks (treated) 8" x 8" x 24"			25.00
Metal Plates w/Lag Screws for Mounting Peg to Block (1 pair)			12.00
Device to Check for Legal Shoes			20.00

BOOKS

The Story Of Horseshoes (hardback)			5.95
Pitching Championship Horseshoes 2nd Edition (hardback)			8.95
Pitching Championship Horseshoes 2nd Edition (paperback)			5.95
The American Directory Of Horseshoe Pitching (hardback)			25.00
All You Have To Do Is Come Close (hardback)			9.95
Horseshoe Films, Facts, & Fun (paperback)			9.95
The Official NHPA History Of World Tournaments (hardback)			12.95
Official NHPA Manual (paperback)			5.95



GIFTS

NHPA Mug w/Logo		4.00
Drink Insulator w/Logo		4.00
Stadium Cushion w/Logo		6.00
Playing Cards w/Logo		5.00
Horseshoe Cards (done like baseball cards) 10 per set		1.00
Automobile Plates w/Logo		3.00
Automobile Plate Frames w/Logo		3.00
NHPA Logo Stamps (lick & stick on mail) 48 per sheet		1.00
NHPA Logo Christmas Stamps (lick & stick on mail) 48 per sheet		1.00
Decals Showing Logo (inside or outside)		1.00
Decal 6" x 11"		5.00
Bumper Sticker "I Love Horseshoe"		1.00
Bumper Sticker "Our Shoes Fit Everyone"		1.00

VIDEO TAPES

Legends Of Horseshoe #1 (85 minutes)		34.95
Legends Of Horseshoe #2 (85 minutes)		34.95
Horseshoe Highlights & Interesting Footage 1948-1984		29.95
Horseshoe Highlights & Interesting Footage 1984-1990		29.95
1979 World Championships		29.95
1980 World Championships		29.95
1981 World Championships		29.95
1982 World Championships		29.95
1983 World Championships		29.95
1984 World Championships		29.95
1985 World Championships		29.95
1986 World Championships		29.95
1987 World Championships		29.95
1988 World Championships		29.95
1989 World Championships		29.95
1990 World Championships		29.95
1991 World Championships		29.95
1992 World Championships		29.95

Any 3 Per Tape (PM Magazine 1979, Kids World, You Asked For It, Challenge Of The Sexes, The White House Party, Walter Ray Williams, CBS Weekend News)		29.95
Walter Ray Williams, Jr. 1972-1990 (2 hours)		29.95
How To Pitch More Ringers (VHS)		27.95

JEWELRY

Tie Tac Old Style (Stake & 2 Shoes)		1.50
Tie Tac New Style (Logo & NHPA on it)		2.00
Lapel/Stick Pin (Logo & NHPA on it)		2.00
Belt Buckle		7.00
Ornamental Replica Mini Horseshoe (brass)		2.00

PITCHER'S EQUIPMENT

Wood Carrying Case (holds 2 pairs plus supplies)		27.50
Cloth Carrying Case (leather lined)		14.95
Towel w/Logo & Hook		3.50
Judging Tool w/6" Measure & Calipers		5.50
Horseshoe Pitcher's Companion (Measuring Tool w/File)		9.00
Davis Measuring Tool w/File		12.50
Leather Case for Companion		4.50
Horseshoe Hook (pick up horseshoes without bending)		14.00
Horseshoe Hooker		12.50

TOURNAMENT SUPPLIES

Scoresheets (pad of 100)		2.00
TriPLICATE Scoresheets (3 part NCR, pack of 200)		15.00
Deluxe Percentage Book		3.00
Small Percentage Book		1.50
Pocket Percentage Book		1.00
Round Robin Cards (per 100)		5.50
Master Summary Charts		Each .11
Bracket Book (double & single elimination to 64 players or teams)		10.00

We take Visa & MasterCard.

Every sale we make puts profits in the NHPA Treasury. If you buy from the manufacturer or from a trunk salesman, they get all the profit, our sport gets nothing!

BUY NHPA!!

BUY PRO SHOP!!

HORSESHOE PRO SHOP

AN OFFICIAL NHPA DISTRIBUTOR

1240 S. 17th Street • Columbus, Ohio 43206

614-444-2127 (24 hours)

NHPA NATIONAL OFFICERS

PRESIDENT: DAVE LOUCKS, 13656 Thoroughbred Loop, Grass Valley, CA 95949 916-477-7060

1ST VICE PRESIDENT: EARL WINSTON, Route 2, LaMonte, MO 65337 816-563-3536

2ND VICE PRESIDENT: BARRY CHAPPELLE, 2815 S.E. 68th, Portland, OR 97206 503-775-7876

3RD VICE PRESIDENT: BEVERLY BORN, RR 2, Box 198-A, Shattuck, OK 73858 405-938-2406

4TH VICE PRESIDENT: BONNIE SEIBOLD, 1043 Grayston Ave., Huntington, IN 46750 219-356-3489

5TH VICE PRESIDENT: GARY MINNICK, 2600 E. 7th Ave., #44, Flagstaff, AZ 86004 602-526-8077

SECRETARY/TREASURER: DONNIE ROBERTS, P.O. Box 7927, Columbus, OH 43207-7927 614-444-8510

PROGRAM & COMMITTEE DIRECTORS

GAME RELATED SALES: ED DOMEY, P.O. Box 298, Sutton, MA 01590 508-865-9477

JUNIOR PROMOTION: BOB DUNN, 6417 Georgia Ave. No. Brooklyn Park, MN 55428 612-535-3884

PUBLICITY: BOB CHAMPION, 5505 Valmont #176, Boulder, CO 80301 303-449-8395

HISTORIAN: GARY KLINE, 82 Nimitz, Dayton, OH 45431 513-258-0852

VIDEO SALES: SOL BERMAN, (Nov.-May) PGA National 1 Wycliff Rd., Palm Beach Gardens, FL 33418 407-626-8507. (May-Nov.) Clearbrook 319A Persica Plaza, Cranbury, NJ 08512 609-655-3471

CONSTITUTION & BY-LAWS: 4th VP, BONNIE SEIBOLD

GRIEVANCE: 4th VP, BONNIE SEIBOLD

INSURANCE: 4th VP, BONNIE SEIBOLD

HALL OF FAME: 1st VP, EARL WINSTON

REGIONAL DIRECTORS: 5th VP, GARY MINNICK

RULES: 2nd VP, BARRY CHAPPELLE

SANCTIONED CLUB/LEAGUE: 3rd VP, BEVERLY BORN

NHPA NEWSLINE

PUBLISHER / EDITOR: DAVE LOUCKS

TYPESETTING / LAYOUT: KIM ROGERS, KIM ART

PUBLISHER'S POLICY: NHPA *Newsline* is the official magazine of the National Horseshoe Pitchers Association. The contents may not be reproduced in any manner without prior permission of the Editor. Six issues are published annually on a bimonthly basis with an occasional special issue. The annual subscription price is \$12.00 in the United States which includes postage via discounted third-class, commonly called Bulk Rate Mail. Canadian subscriptions are \$20.00. All new subscriptions, renewals, payment and changes of address must be sent directly to:

NHPA Secy/Treas.
Box 7927, Columbus, OH 43207-7927.
Phone (614) 444-8510

Back issues or additional copies of *Newsline*, subject to availability, are \$2.00 each and sent third-class mail. Requests with payment for back issues should be sent directly to the NHPA *Newsline* Publisher:
13656 Thoroughbred Loop, Grass Valley, CA 95949.

ADVERTISING POLICY: The publisher reserves the right to refuse any ad. All ads accepted must be paid for in advance and meet specific format and mechanical requirements. The publication of any ad is not necessarily an endorsement of the advertiser nor the featured product or service. Rate inquiries, ad copy and fee should be sent to: NHPA *Newsline*
13656 Thoroughbred Loop, Grass Valley, CA 95949.
Phone (916) 477-7060.

LETTERS POLICY: *Newsline* welcomes communication and articles from the membership. Submissions should be typed, double spaced and include the writer's name, address and phone number. The editor reserves the right to accept or reject any letter or advertising material. All submissions are subject to editing, available space, and must be received by the first day of the month preceding the date of issue.



C O N T E N T S

President's Message	4
Letters To The Editor	5
The Junior Window	7
Regional Tournaments Will Lead To National Championship by <i>Dave Loucks</i>	9
NatStat Center Update by <i>Dave Loucks</i>	10
Here and There <i>Dave Loucks reports happenings around the NHPA</i>	11
Charter Chatter by <i>Bob Champion</i>	12
Sanctioned Club/League News by <i>Bev Born</i>	15
Regional Directors Report by <i>Gary C. Minnick</i>	16
Guidelines for Regional Directors and Assistant Regional Directors by <i>Gary C. Minnick</i>	17
Special Events Calendar	18
Tournament Travel Contacts	19
Spearfish Motel and Campground Listing.....	20
The Toll of Time	21
1992 State Championship Results	22

PAID ADVERTISEMENTS

Horseshoe Pro Shop.....	Inside Front Cover
Horseshoe Pitchers' Companion	5
Clay 'n Sand.....	8
Gordon Horseshoes	9
Imperial "Plus" Horseshoes	10
Francis E. White.....	11
Durham Horseshoes	14
Team World 1993	14
Ted Allen Horseshoes	15
Quartzsite Main Event Tournament	16
Star Horseshoes	18
St. Pierre	Back Cover

ON OUR COVER

Four Wisconsin State Champions
See Dave's Court Report on page 4 for story.

President's Message

I visited Syracuse, New York during 4 days in September. Syracuse will be the site of our 1994 World Tournament, to be held on the New York State Fairgrounds starting July 25, 1994. They are very enthusiastic about our event and a gigantic electronic reader board, viewable from the highway, welcomed me to the fairgrounds.

The Pioneer Horseshoe Club is host club and they have 12 indoor courts located on the fairgrounds. These will serve as practice courts during the tournament. The fairgrounds are quite large and will be able to accommodate all our needs. The NHPA portable courts will be set up in the Center of Progress Building, which is a facility some 500' long with 60,000 sq. ft. of floor space. It is larger than the building that housed the tournament in Columbus.

The Center of Progress building is not air conditioned. However, average mean temperatures for July / August in Syracuse are 78-79° and the humidity is mild. Barring any extreme weather pattern, I believe most pitchers will be comfortable in Syracuse. Attached to the Center of Progress Building is a nice two level restaurant complete with full liquor and ice cream bars. The decor is based on heroes and legends and finished in bright colors. It will be a very popular gathering place. Just outside is a covered eating area and less than 200' away is a full square block of grass, shade trees and picnic tables.

The fairgrounds have space for about 200 RVs, most with water and electric, a few with full hook-ups. Electric connections are on poles, four spaces to a pole, so you may have to run some cord to reach power. Most spaces provide grass

alongside paved road, but shade trees are few.

The Art & Home Center Building is next door to the Center of Progress Building. While we have not yet committed to arrangements, this building contains meeting rooms and the Empire Room, a very nice facility capable of handling our awards banquet with full restaurant and bar services.

No motels are in the immediate area of the fairgrounds. Two large chains, Holiday and Comfort, have inns just off the fairgrounds highway about five minutes drive. The bulk of the motels and restaurants are in the North area on the opposite side of Onondaga Lake from the fairgrounds. However, Syracuse doesn't seem to have any major traffic problems and the commute time to the fairgrounds from the North area motels, even during rush hours was only 10-12 minutes.

The contract for the 1994 World was signed with the Syracuse Sports Corporation, a board set up by the Syracuse Convention and Visitors Bureau to bring sports activities to the city. I met with both the Board President Bill Motto, and Director Andy Jugan. These two gentlemen are very professional and well respected for their work in behalf of the City of Syracuse. Andy spent a great deal of time and energy showing me around so I would have a good feel for what they can offer. I was impressed, not only by their commitment and hospitality but by the city, its people, lakes, countryside and roadways. With all that, plus more than 40 golf courses within an hour drive and the Baseball Hall of Fame in Cooperstown, just 2 hours drive, 1994 should be a very good year.

Dave's Court Report

■ The Goldendale Horseshoe Club of Germantown, WI set a performance record in the 1992 State Tournament that will stand for many years. It is possible that it has never been equalled anywhere. 4 of the 5 recently crowned Wisconsin State Horseshoe Champions hail from one club—Goldendale. Don Kangas, Men's champion; Ralph Maylahn, Seniors champion; Lorraine Sternberg, Women's champion and Heidi Sternberg (daughter to Lorraine) Junior Girls' Champions. For the record; the 5th title, Junior Boys, went to Mark Mauthe of Platteville.

■ Glen "Red" Henton has been known to attract a crowd when piling the ringers on, but he and others were a bit dumbfounded when their June 13th clinic and tournament in Davenport, Iowa, attracted an elephant. Confused? Well, so was the elephant that wandered over to the courts from a nearby stadium that had a circus underway. After a few minutes delay, the elephant, probably disappointed to see that "Red" has white hair, found its way back to its trainer, who is now busy teaching the elephant to toss horseshoes.

■ Spearfish will play host to the 1993 World Tournament starting July 19. The town also has other activities underway just prior to and during the tournament. Make your

reservations early. Motel details are in this issue.

■ Less than 2 years ago, Pocatello, Idaho, had no pitching facilities large enough to host an NHPA sanctioned tournament. Idaho member Jerry Williams set out to change that. With a plan and determination, Jerry called on the Pocatello Parks & Recreation Director, asking for about ½ acre of Ross Park. It was unavailable, being part of an expansion plan, but the director offered another possible site. It was 13 acres of grass that now is home to a 34 horseshoe court complex. A lot of people donated to the project and Pocatello is now a hotbed of pitching activity with 322 active pitchers involved in league play. Sanctioned League we hope.

■ The NHPA has given approval to another new horseshoe. The "Breckenridge Ringer," manufactured by the Russell Breckenridge Company of Mt. Clemens, Michigan.

■ World Champion, Kevin Cone will travel to Japan in the latter part of October as a guest of the Japanese, to take part in the "International Sport For All Fair" in Tokyo. Kevin will put on pitching demonstrations much as Walter Ray Williams did in 1990 and Donnie Roberts in 1991.

Letters to the Editor

To The Editor

I read the article about Sol Berman and his idea of true cancellation, where opponents close shoes within 6 inches will cancel one another regardless of who is closer to the stake.

What is wrong with the way we have always measured close shoes? "Only close points count in Horse-shoes," tells it all.

The lower classes of pitchers fight for that point and enjoy getting that point.

Why try to change it? Because someone lost a game or two because of points? Stop that cry-baby attitude, and maybe the next time you will be able to beat your opponent with that extra hard-earned point or two.

My friends and I are firmly against any rule of this type. Thank You.

Robert Snider, Ft. Thomas, KY

To The Editor,

My reason for writing this letter is two fold. First, I would like to tell you about a real ringer, Milton Vinson. Milton recently joined our organization and has taken it by storm.

Fifty-six years ago, Milton won the Georgia Horseshoe Pitcher's Association's state doubles tournament. He was a 40 foot pitcher who threw a beautiful 3 quarter turn whose natural state was flat around the stake.

Now, fifty-six years later, Milton has again won the Georgia State doubles tournament with partner Bud Kurtz. The only difference (other than a few years) is that Milton is a 30' pitcher with the same smooth, natural 3 quarter turn delivery.

In the years between his state doubles champ crowns, Milton did not pitch. So naturally, he began pitching from 40 feet when he joined our organization. The distance was a struggle and Milton was averaging approximately 18%. He was told that at age 70 he could move up to 30'. A wonderful surprise and delight was awaiting him at 30'. Milton found he could pitch like a kid again. Those few years in between did not have as much effect as he found himself pitching like he did from 40'.

Since that time, Milton's average has been on a steady climb. He even took the World Tournament by storm when he won his class pitching 51%.

This brings me to the second reason

I am writing this letter. A lot of 70 year olds attach an astigmatism to moving up to 30'. Just look at Milton, however, and all the fun he and you would miss without this consideration. Your pride in your accomplishments and your enjoyment of the sport is what is important. Not where you plant your feet. Where is the satisfaction in struggling. More people should step up to 30' when 40' gets too rough. As we grow older, we have to make allowances for the things that get a little harder. Some of us get glasses, some get slower, and some of us pitch horseshoes from 30'. It is such a minor adjustment for the ringer in us all.

Keep on pitching.

Iris Sandham, Georgia

Dear Dave,

I have read, heard, and experienced some of the frustration that exists between 30 and 40 foot pitchers when they compete against each other. It seems to me the 30 foot

rules were adopted to compensate for physical strength mandated by sex or age. Physical strength may not have much to do with accuracy. The 30 foot pitcher also has a 25% advantage in accuracy.

You can do some geometry and discover a simple ratio of shoe openings will make the accuracy of pitching from 30 feet the same as pitching from 40 feet. A simple solution is to adopt a 30 foot shoe with an opening of 2.6 inches. The 40 foot shoe has an opening of 3.5 inches. This would equalize the accuracy factor. If the 30 foot shoe was made with a 2.6 inch opening then any could pitch 30 feet if they have the correct shoes.

I believe the 2.6 inch opening for the 30 foot shoe has enough merit to be researched and would open up some very interesting and challenging aspects to the game of horseshoes.

**Wayne Schorzman
Idaho Falls, ID**

THE HORSESHOE

PITCHERS' COMPANION

FEATURES:

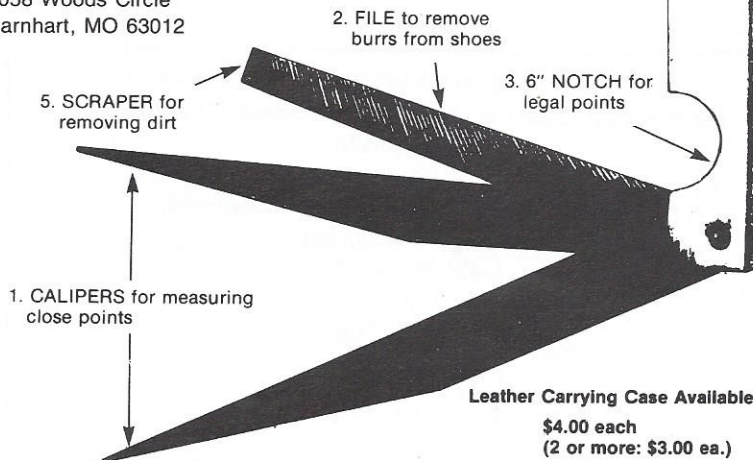
PAT. NO. 4,399,614

\$8.95

1. Calipers for measuring close points.
2. File to remove burrs from shoes.
3. A 6" notch for measuring legal points.
4. Straight edge for measuring ringers.
5. Scraper for removing dirt, mud, etc.
6. Just the right size for back pockets.
7. **NHPA** approved.

(2 or more: \$8.00 ea.)
(Add \$1.50 for postage and handling)

Send to: **Horseshoe Pitchers' Companion**
2058 Woods Circle
Barnhart, MO 63012

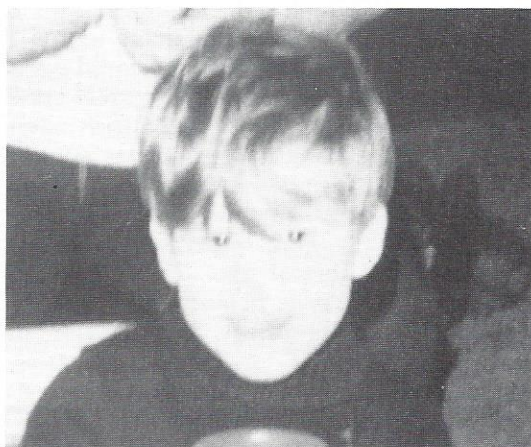


Leather Carrying Case Available.

\$4.00 each
(2 or more: \$3.00 ea.)



2101 Wilson Blvd. • Suite 550 • Arlington, VA 22201
703/235-3900
TDD: 1-800-826-7653



Chad Jeremy Burke Grandstaff

Date Missing: 06/10/89	Missing From: Oklahoma City, OK
Date of Birth: 03/17/87	Age at Disappearance: 2 years old
Sex: Male	Race: White
Height: 2 ft. 11	Weight: 40 lbs.
Hair: Brown	Eyes: Blue
Identifying Information: None available.	
Circumstances: Child was abducted by his non-custodial mother, Anna Marie Baez.	

**ANYONE HAVING INFORMATION SHOULD CONTACT
The National Center for Missing and Exploited Children**

1-800-843-5678

OR

Oklahoma City Police Department (Oklahoma)

Missing Persons Unit

1-405-297-1297

OR

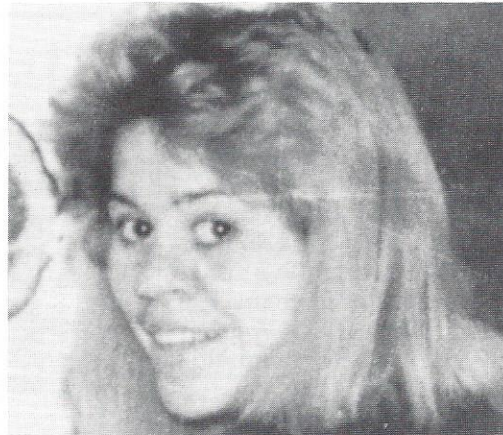
Your Local FBI Office

CHAD JEREMY BURKE GRANDSTAFF

Family Abduction

Abducted by

Anna Maria Baez



Anna Maria Baez

Date of Birth: 02/03/69	Identifiers: 3-inch scar on chin
Sex: Female	Race: White
Height: 5 ft. 1 in.	Weight: 110 lbs.
Hair: Blonde	Eyes: Brown
Alias: Anna Grandstaff; Anna Duffield.	
Circumstances: FBI Unlawful Flight to Avoid Prosecution Warrant issued 01/17/91. NCIC #W620567339	

Summer School

by Bob Dunn

Junior promotion efforts are becoming more and more widespread. Many individuals are devoting considerable time and effort to conduct Junior leagues, clinics and other events. This *Junior Window* spotlights two summer programs that are excelling and prove, if individuals have time and wish to devote the involvement, tremendous results will occur.

In its second year, the "Learn to Pitch Horseshoes" Clinic at the Dormont Horseshoe Club in Pittsburgh has grown beyond expectations.

By adding horseshoe pitching to the summer activities of the Boys and Girls Clubs of Western Pennsylvania, 73 boys and girls, age 8 to 16, enrolled in the first session after school let out for the summer. Another 24 children came to the second session held in mid-summer.

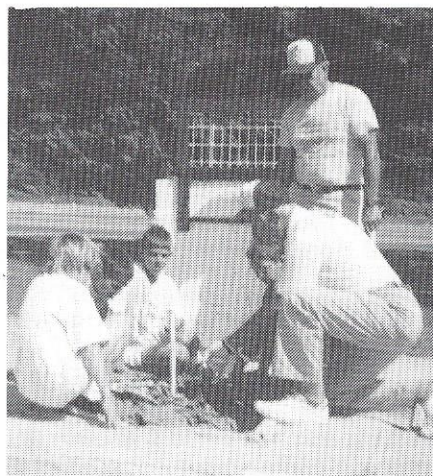
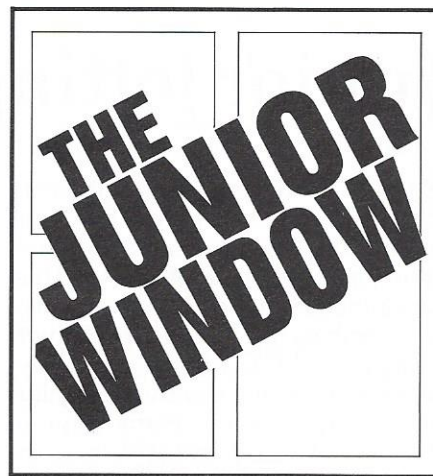
A third session will be held this fall for 16 Boy Scouts of the Allegheny Trails Council of Pittsburgh. This will be a first for the Boy Scouts in this area.

In addition to the program director, Judge John G. Brosky, the instructors

from the Dormont Horseshoe Club are; Joe Pagnanelli, George Bercini, Harry Clement, John Raffa, Joe Kichty, Robert Horton, Vaughn Grady, Dick James, and Ron Weiss, WHPA President.

After being given the basic rules of safety on the courts, the teaching of "Learning How To Pitch" is structured to pitch at various distances according to age and ability. The emphasis is on holding the shoe and pitching with accuracy. A tournament at the close of the clinic is not the traditional horseshoe game, but a competition of getting ringers and close points in twenty pitches. It is hoped that next year, regular horseshoe pitching games will be added to the program.

Editor's Note: The Honorable Judge John G. Brosky has been a member of the Dormont Horseshoe Club since 1989. More notable, Judge Brosky sits on the Superior Court of Pennsylvania, is listed in Who's Who in American Law, International Who's Who of Intellectuals, and Board Chairman of the Boys and Girls Clubs of Western Pennsylvania.



Jane Smith, Balsam Lake, Wisconsin, is the director of the Unity School summer program on horseshoe pitching. The program is now in its third year and many students have taken the class each year it has been offered. The summer school classes are offered to 3rd through 8th graders—most students ranging in age from 9 to 12 years old. This season's enrollment was 75 students.

of local pitchers at various tournaments. Records are kept of each pitcher and at the end of the school session, students are rewarded certificates of participation with trophies going to the top 3 or 4 pitchers in each class based on their winning percentage. The goal is to reward at least 25% of the students in the program. Sportsmanship trophies are also given to each class with students

choosing this person. Students compete against all pitchers for the top three awards; best ringer average, lowest handicap and most points in one game. Only one trophy is allowed a student, which allows for more winning students. The trophies are used awards donated by members of the Close Doesn't Count Club, Eau Claire Club, and Boyceville Horseshoe Club. A special thanks is due all these members who share their memories with our pitchers of the future.

Editor's Note: Jane Smith, director of this program has been a Home Economics teacher for 22 years. Jane also has been Wisconsin State Champion five times. For her years of promotion and significant pitching accomplishments, Jane Smith is a 1992 inductee to the WHPA Hall of Fame.

Perhaps others will share their programs with us and eventually we will be able to involve more schools and community education programs in promoting a very healthy sport.

Junior Jottings

by Bob Dunn

■ David Anderson, Moline, Illinois, Ponyshoe Junior League Director, reports the 2nd annual 1992 Ponyshoe Classic was held August 1. This sanctioned event had 12 participants, all members of the Moline Junior League. In 1993, a home and away series will be held with the Junior league established by Frank Yohn in Priceton, Illinois. That new league, in its first year, has 17 members.

This year's Moline champion is 8 year old Matthew Miller, who was undefeated. He scored a major victory in edging past defending champion, Justin Anderson in the final match. Erica Anderson and Nathan Miller finished 2nd and 3rd respectively. Nathan Miller and Aurora Boyd earned Sportsmanship Awards.

■ The 2nd annual sanctioned Junior Only Open with Jessica Dunn as Director, was held at the West St. Paul (Minnesota) sheltered courts. Thirty three Junior pitchers participated with two starter groups (less than 20' pitchers). Starter group A was won by Carla Steber—8.6%, and the Starter Group B champion was Beth Fish—6.6%. The Starter Groups were 6 pitcher classes, with trophies presented to the top three finishers and "Participation Awards" given to the other pitchers.

The Class A champion was Mike Casalenda, 9-1 and 27%. Class B was dominated by the Tuhy family; 1st place—Clinton Tuhy 6-1, 13.8%; 2nd place—Michael Tuhy 6-1, 10%; and 3rd place—Joshua Tuhy 6-1, 9.6%. Jim Buechner won Class C, 6-1, 10.7%.

Monogrammed souvenir pitching towels were provided to each entry. The West St. Paul Junior Horseshoe League had 44 members this year, and 10 more have already been signed up for the 1993 season.

■ Ted Van Pelt (JPD Eastern Pennsylvania) reports the charter's first Junior member, Neil Barnes. Neil joined the York County Doubles League after pitching with his father and friends and got hooked on the competition. He hopes to help recruit more Junior pitchers. Barnes should be an influential force, as he was named the 1992 York County Wrestler of the Year, with a 33-2

record and a third place finish in the state wrestling tournament.

■ As our feature article covered two summer clinic programs directed by NHPA members, there is evidence of other programs being established. School systems are setting up their own clinics as part of physical education programs. Our organization and available brochures are listed in various publications. When received, copies of requests will be forwarded to JPDs in hope that arrangements can be made for NHPA members in the local area to provide demonstrations or volunteer time for coaching etc. These instances are prime time for the establishing of new Junior leagues, expanding existing clubs and recruiting Junior members.

Schools recently requesting information on our sport: Hager Family School (Hamilin, West Virginia), Hope Smith (Red Lodge, Montana), Del Rosa Elementary School (San Bernardino, California), Monticello

Occupational Education Center (Monticello, Arizona).

■ Vi and Woody Wilson (Iowa) got the urge to contribute to Junior promotion. They purchased a gift subscription of *Newsline* for Joseph Smith, the 1992 Iowa Junior State Champion. In his first year of pitching he accomplished a state championship and a 45% average. Congratulations to Joseph and a thank you to the Wilsons.

■ Welcome new Junior Program Directors: **Paul Stewart** (North Carolina), **Ron Vogal** (New Jersey), and **Barb Taylor** (South Carolina).

Check Your Mailing Label

for your expiration date of your *Newsline* subscription. If it is less than 90 days away, fill out the renewal form and send it now with your check to the NHPA, Box 7927, Columbus, OH 43207.

Try The First Shoe Designed for Horseshoe Pitching



- 100% super soft garment leather for excellent comfort and control.
- Shockproof, with soft midsole and wedge.
- Durable rubber outsole for strength and long wear.
- Heel support for greater strength.
- Terry cloth inside collar padded, with urethane foam.
- Removable, replaceable Texon insole.

ALSO MAKES A GREAT WALKING SHOE!

LET CLAY 'N SAND IMPROVE YOUR GAME

Order Your Clay 'N Sand Pitching Shoes Today

Men's 8 9 10 11 12
8-1/2 9-1/2 10-1/2 11-1/2 12-1/2

Women's 6 7 8 9
6-1/2 7-1/2 8-1/2 9-1/2
(Please Print Clearly)

Name _____

Address _____

City _____ State _____ Zip _____

Send check of \$40.00 plus \$5.00 shipping and handling to:

CLAY 'N SAND, Inc. 414/654-6404
6901 Sheridan Rd.
Kenosha, WI 53143

Wisconsin Residents add 5% Sales Tax

Regional Tournaments Will Lead To National Championship

by Dave Loucks

The NHPA has revised the Regional Tournament Contract and once again seeks interested sites to bid for a Regional Tournament. The ultimate goal of the program is to bring Regional winners together to play for the National Championship. For this to happen, the Regional concept must be supported at the Charter level with each zone hosting the required two Regional events. Following is a reprint of the actual contract details. Copies of the contract can be obtained from Dave Loucks or Donnie Roberts.

Bidder Information

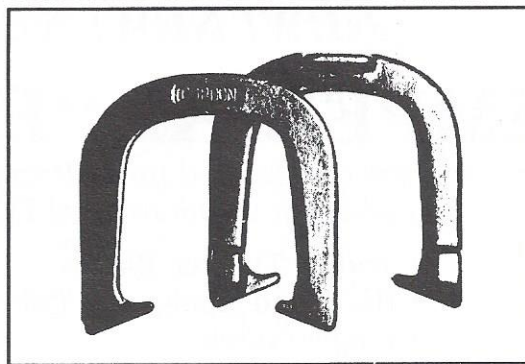
1. There will be four regions in the United States, each bound by the 4 normal time zones, Eastern, Central, Mountain and Pacific.
2. Each zone can have two annual Regional Tournaments. The northern most selected site in each zone will be called the North-(zone) Regional while the southern site will be the South-(zone) Regional.
3. Any site with twelve (12) or more NHPA sanctioned courts can bid for a Regional. This can be a new tournament or an established event which the tournament directors allow to be called a Regional.
4. There is no minimum dollar bid amount imposed for bidding purposes. The total cash bid is important but not a selection guarantee. No more than \$25.00 can be charged for entry and at least 80% of entry fees must be returned as cash prizes *in addition to any added purse*.
5. Regionals shall include the same age divisions of play as specified in the NHPA Revised Bylaws, Article X except that Junior and Senior Women play is optional. Juniors, if scheduled, shall mix boys with girls into one Junior Division. The Junior and Elder age divisions shall be the only ones to allow mixed play.
6. Division winners automatically qualify for the National Championship which will be scheduled in the following year. For Divisions having less than six winners represented, the NHPA reserves the right to exclude that Division from the National Tournament.
7. Bids must be presented in writing to the NHPA Secretary. They should be presented with as much advance notice as possible, normally in the Fall of the year prior to the year of expected play.
8. All Regionals are to be Preregister and must be played by the end of the calendar year prior to the scheduled tournament where the Regional Division winners will later meet for the National Championships.
9. Bid information must include the dates of play, site location, number of courts, scheduled divisions, entry fee, any added purse, tournament director and some details about the site and event that will aid the NHPA Executive Council in the selection process.
10. Bidders will normally be notified by year end if they have been selected. In the event two sites per zone have not bid or been selected by year end, the NHPA Executive Council has the authority to waive these conditions and award at any time, a Regional to any site deemed suitable.

Rules of Entry and Play

1. Regionals are open to any NHPA member holding a valid

card of a U.S. Charter in accord with Article III, Section 7 of the Revised Bylaws.

2. A player may enter any number of Regionals until they win a Division, at which time they can enter no more Regionals in that calendar year.
3. All entrants must have pitched in at least 4 sanctioned tournaments in the 12 months prior to submitting their Regional entry form. Entering average shall be in accord with the NHPA Bylaws.
4. All Division finals games shall be 40 point cancellation. Any class or division prelim play shall be 40 shoe cancellation or count-all.
5. Each Division winner in a Regional tournament qualifies to become one of the finalists in the National Championships which will be held the following year at an NHPA determined site.
6. All Regional Division winners must advise the NHPA no later than 90 days prior to the National Tournament of their intention to play or not to play in the National Championships.
7. In the event that a Regional Division winner elects not to pitch in the National Championship, the 2nd place finisher will be invited, then the 3rd and so on until a division representative is confirmed. If less than six representatives are confirmed for a division, the NHPA reserves the right to exclude that Division from the National Tournament.



G
GORDON
HORSESHOES

**To purchase shoes, contact
NHPA Game Related Sales.**

Gordon Horseshoes c/o Queen City Forging
233 Tennyson St., Cincinnati, Ohio 45226

NatStat Center Update

by Dave Loucks

In the last issue I announced the plan of the NHPA to set up a central statistical base where pitching averages on all members would be kept. We have purchased the equipment and are now in the final stages of program design. By the first of the year, we expect to have a good deal of past tournament data in storage. This information, along with new tournament results will give us a basic, but not complete, check point on most 1993 World Tournament entrants.

Unfortunately, communication in the NHPA is not as good as we would like to see. It will therefore take some time before all the various and changing tournament directors get the word that *they must promptly report all sanctioned tournament results to the NatStat Center*. Since only one member in five subscribes to *Newsline*, it is fair to assume that only 20% of our pitchers have any idea of this data keeping plan. We will be sending

letters to all the Charters and Regional Directors by year end. They will be asked to put out the word to all members and, in particular, to the tournament directors or statisticians who have the responsibility of reporting tournament results.

Every member reading this article is asked to take part in spreading the word. The reason is that you and your fellow pitchers could be adversely affected if the tournaments you pitch in are not reported. How could you be hurt you might ask? I stated in the last issue that the NatStat data base information will be used fully by 1994 to determine entrance eligibility and pitching average for the World Tournament. When we get your registration form, the data in NatStats will tell us if you have pitched in the required minimum four tournaments and it will tell us your average. If your tournaments are not reported, we may not have complete data on you

and entry could be denied.

Another benefit of NatStats is that we will be able to compile data on all your tournaments, not just those that you pitch in the home state. Snowbirds or other traveling pitchers who pitch in other states will have this information reported and overall, much more accurate data should be available on all our pitching members.

For this to happen, tournament information is going to have to be reported in a different and more complete manner than it is now. Each report of sanctioned tournament results will have to include at least the following tournament and pitcher information.

Tournament...Sanction Number
Date
Location
Contact person...
name, address and
phone number

Pitcher...NHPA card #
Name, first and last
Home Charter (list only
if not from host charter)
Category designation...
none=40' man pitcher
30=30' man pitcher
W=Lady pitcher
B=Junior Boy
G=Junior Girl
R...Total ringers pitched
SP...Total shoes pitched

The above information can be listed across the page in a format familiar to most all tournament directors. After the header info, sanction #, date and location, one line for each pitcher starting with NHPA Card #, Name, Charter (if no host), Category, R, SP. At the bottom or top of the report, wherever you prefer, list the contact person information.

No results should be sent to *Newsline*, Dave Loucks or Donnie Roberts. They should all go direct to: NatStat Center, Oliver Smith, Director 2031 Ridgewood Road Alamo, CA 94507 Telephone 510-935-2643

Eventually, Oliver would like to hear from each charter as to whether they use a computer and might want to transmit tournament data on a disk.

NEW! NEW! NEW!

IMPERIAL "PLUS"

"A new horseshoe designed for still higher performance"
in addition to the original IMPERIAL

- Wider, Thicker Blades
- Hardened Hooks and Points
- Finger Notch
- Redesigned Arrow Type Points
- High Performance Dead Soft
- One Year Guarantee

USA PRICE LIST PER PAIR

	Plus	Original
1 to 5 pair (postpaid)	\$40	\$43
6 pair and over (frt collected)	\$32	\$35

Clyde Martz

412-733-2031

5056 Northlawn Drive, Murrysville, PA 15668

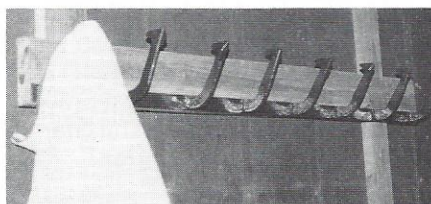
ORDER DIRECT OR FROM YOUR NHPA REPRESENTATIVE

Here and There

Dave Loucks reports happenings around the NHPA

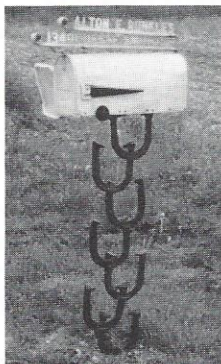


KANSAS There is no question that the Washburn family of Alton, Kansas enjoys horseshoe pitching. Harvey and Letta and sons travel to a lot of tournaments and are quickly recognized when they are seen carrying the "Washburn bucket." As long time NHPA members, the Washburns want to be remembered as supporters of the game and our association. With that in mind, Harvey and Letta have already prepared the stone that will one day mark their passage to "Horseshoe Heaven."

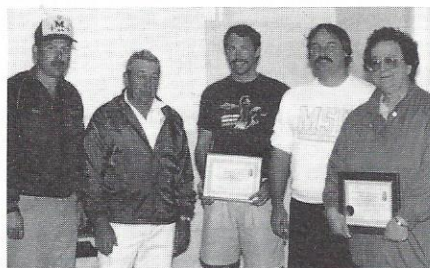


MARYLAND

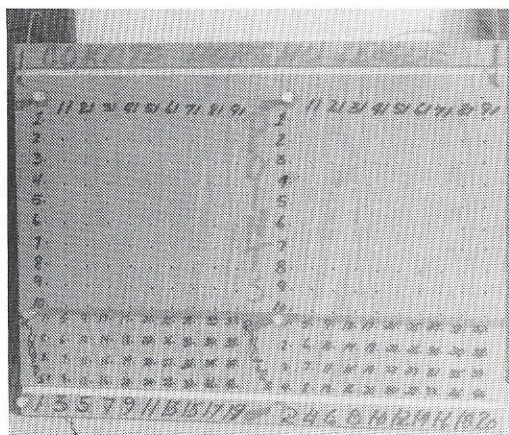
Two members have found a good use for old pitching shoes. Pete Shomette of Ijamsville took broken horseshoes and welded them to a steel bar, which became a coat rack in the building that houses two indoor courts on Pete's property. Alton Runkles of Mt. Airy took old "Deadeye" horseshoes and made a support for his mail box.



MICHIGAN From Regional Director John Decker comes word that the Auburn Horseshoe Club dedicated 12 new courts on May 23, 1992. The Bay Area Community Foundation provided a grant for the courts and Wickes Corp. of Auburn donated materials and a storage building for the courts.

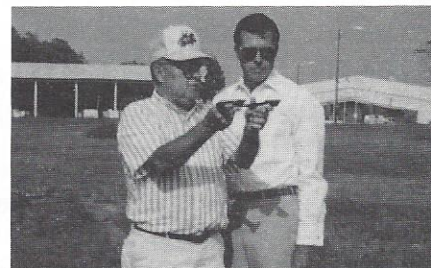


The dedication was attended by several Michigan state officers, some 60 pitchers from around the state and representatives of the city and Wickes Corp. Pictured left to right are ARD Ron Kohn, RD John Decker, Kurt Rudolff of the Wickes Corp., WSHPA President Fred Smith Jr. and Auburn City Clerk Lucy Weisenauer.



MINNESOTA The Cokato Horseshoe Club plays a lot of doubles. Members were seemingly always having their games interrupted by questions as to the score, shoes remaining, etc., and the inability of accurately keeping individual ringers since scorekeepers to keep written records were tough to find. The problem was solved by the design of a special scoring board which uses golf tees to record each pitcher's points, ringers and shoes pitched. Now, paper is needed only at the end to record the final scores for league officials.

TENNESSEE August marked the anniversary date for the 2nd annual "Horseshoe Pitch for Epilepsy" held in conjunction with the Tennessee Walking Horse National Celebration in Shelbyville. Last year at the 1st Annual event, the Tennessee HPA



held a fund raiser during the nine day run of the pitch. Participants paid \$2.00 as a donation to the foundation to pitch four shoes, competing for points and prizes donated by various local businesses. T-shirts were sold and several elected officials from the area appeared daily to pitch and help promote the event. When it was over, \$1400 was raised for the Epilepsy Foundation. Several businesses and organizations made donations or took ads for the horseshoe event program. St. Pierre Manufacturing Corp., maker of the "American" horseshoe was one who made contributions. Perhaps the biggest contributor was NHPA member Marvin Bastian who supplied the court, tools and many days of dedicated labor. For his effort, a plaque was presented reading *The Epilepsy Foundation of Middle Tennessee hereby recognizes the outstanding contributions of Marvin Bastian for exceptional service in advancing opportunities for persons with epilepsy.*

CHECK OR MONEY ORDER
MUST ACCOMPANY ALL ORDERS
ALL PRICES INCLUDE DELIVERY
CONTINENTAL U.S. ONLY



DIAMOND TOURNAMENT DS

1 PAIR \$27.
2 PAIRS \$53.
4 PAIRS \$103.
6 PAIRS \$139.

GORDON PAIR \$33.
DS. med. hard 2 PAIRS \$65.
GORDON GOLD
HORSESHOES PAIR \$40.
2 PAIRS \$75.

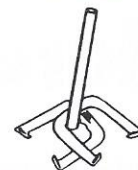
AMERICAN HORSESHOES 2 PR. \$39.
SUPER RINGER SET 2 PR. \$29.

FRANCIS E. WHITE
714 Nevada Drive, Erie, PA 16505
Phone 814-455-2685
PA RES. ADD 6% TAX



Bob Champion's

Charter Chatter



If you are wondering why your charter is not represented in *Charter Chatter*, only one answer reaches the mind. In this case no news is bad news.

It doesn't take a fancy newsletter to get news in this column. Just a letter with a news note will do the trick, just like a visit to the newspaper will get your charter, your club and your tournament some local news coverage.

The publicity committee prepares scrapbooks each year with clippings received from pitchers all over the United States. Of the 1700 releases sent out to all World participants each year, only a few proof of publications has been sent to me. A copy will do.

Send to Bob Champion, 5505 Valmont #176, Boulder, Colorado 80301.

CALIFORNIA

The Southern Association has produced a newsletter published by Tom Tiedeman from Escondido. It all started in October 1991 and Tom just wanted to get information to anyone interested in horseshoe pitching. The newsletter is called *Shoe Talk*.

He started out by asking for information from clubs, individuals, etc. and sent a copy to each pitching location asking them to make copies and send them out.

This is one way to start your newsletter. It is hoped that more charters will publish horseshoe news in the future. Only about half of them have a publication—as far as I know.

COLORADO

Since 1979 only two names were on top as the Colorado Class A Champions—Paul LaCrosse and Rich Pintor—until 1992.

Colorado has a new Champion. He is Jerry Comstock from Pueblo, who bested the 7-man field for the first time. Jerry has been knocking on the door for several years, and finally made the grade.

Elected to the Hall of Fame for 1992 was Pintor, 3-time state champion, and Orville Lauer, nephew of the Legend Ted Allen, who won the State title in 1941. H.R. Phillips from Fort Collins was inducted for Service to Horseshoe Pitching in the State. Phillips was the driving force behind the 16-court facility in Edora Park, Fort Collins at an estimated cost of \$80,000.

IDAHO

The official Idaho HIGH FIVE percentage pitchers as of August 1 are as follows: Dean Curry, Lewiston—60.28; Jim Taylor, Caldwell—55.15; Les Myers, Post Falls—52.94; Norman Watson, Kellogg—52.47; and Jess Lyda, Orofino—52.29.

The brand new Brick Thompson Horseshoe Complex was the scene for the second annual doubles tournament in Pocatello.

Like many charters, Idaho has decided to use a computer to register percentages.

ILLINOIS

Entrant and spectators at the Danville tournament in August had a rare treat, a chance to see five-time champion Walter Williams in action, so rare that Danville Horseshoe Club secretary Leo Bratland added a day to the tournament so Williams could compete. He added some of the better players in the area to put on the show.

The local newspaper sent a writer and photographer out and they had a lot of the top bowlers in the area come out to watch Williams perform in his usual manner.

The step-ladder finals for bowling's Summer Pro Tour allows Williams to compete in area horseshoe tournaments nearly every weekend. "Deadeye" bowls to make a living and pitches his favorite sport for relaxation and fun.

IOWA

Chatter wishes to personally congratulate George West from Honey Creek for his World victory in Class Q at Columbus. George and Champ were involved in a 4 a.m. playoff to decide position in the finals. George is 75 and his opponent "Champ," is 74. The winner was heard to say, "What are we doing out here a 4 in the morning." He was pitching and *Chatter* was walking from stake to stake. Another "Old Timer," Earl Winston, NHPA VP was the scorekeeper.

The state now has 10 regional districts, a historian, and a NHPA sanctioned league promotion director. Tom Smock, a member of the NHPA publicity committee, is the charter president. Cliff Kenney is the secretary-treasurer.

MARYLAND

The Frederick Horseshoe Association sponsored a benefit tournament to help raise money to buy T-shirts for the participants in the Cardiac Fitness program. Membership chairman Bill Mabry of the Frederick Club suffered a heart attack last year and participated in the Cardiac Fitness program.

Dean Jacks, exercise physiologist agreed that pitching horseshoes was a wonderful sport to increase muscles and is an overall good passive exercise, was very therapeutic, increasing mobility and flexibility. A good solid exercise...and what's more...it's fun.

MICHIGAN

Over a third of the Wolverine state's membership competed at the World Tournament in Columbus in 1992. Maybe a lot of them will travel I-90 to get to Spearfish in 1993. There will be pitching in Spearfish, gambling in Deadwood and sightseeing at Mt. Rushmore and other places.

Michigan ranked 22nd in membership among all states with 284. This was a 31% increase over the 1990 figure.

MINNESOTA

MGSHPA President Jack Loeffen and wife Judy were inducted into the Minnesota Hall of Fame as promoters. Jack says "It really is an honor and we hope to enjoy many more years promoting the sport. Loeffen also won the

1992 Appreciation Award.

1992 Recognition Awards went to Dean Heng (Newsletter); Bob Chavie, Bob Dunn (Brooklyn Park), Bud Helman (Roseville) and Roy Reed (Cokato) for junior league promotion; Dan Dowling (Spring Lake) sanctioned league and tournament; Dick David (Montgomery) promotion; Herb Swanson (Little Falls) MGSHPA State Tournament promotion; and Harry Fillafer (Moorhead) promotion dating back to 1967 World Tournament held in Fargo.

MISSOURI

An exciting game to watch at the Marshall Tournament was the 110 shoe game by Vicki Winston and Alan Francis. Vicki was the winner, 42-37.

Missouri state president Wayne Henderson recently had a few choice words for horseshoe pitchers. "With all the pitching I try to do, I'm learning to lose more and more gracefully. Now I know, every game has to have a winner and a loser, so therefore the losing side is just as important as the winning. For without the losers we would not have winners, so my game plays an important part for those winners, and makes me feel I have contributed. Therefore, when pitchers receive that first place trophy, I know I have done my part for your success."

NEW JERSEY

George Egel is the 41st pitcher in state history to have a complete tournament over 60%. He had a 63% event, and is tied for 24th. Topping the list is Bill MacIntyre with 82.8 in 1989.

Ed Quigley, from Pompton Plains is the new member of the NHPA speaker's bureau. If anyone can really tell it like it is, it is Ed. He is currently an assistant RD, director of a sanctioned club, and a member of the publicity committee.

The late Art Scolari was the subject of the *Jersey Jargon's* recent Hall of Fame inductees. Art entered the "Hall" in 1975, was the 1936 junior champion, won State "B" in 1937, and was the 1942 state champion with a 70.4%. Art once defeated Ted Allen with a 94% game.

Honored in the most recent copy of the *Jargon* is Hall of Famer Jack Giddes, who was inducted in 1974. He was the five-time state champion. For a time, Jack held the record of high game of 94.4%.

Jack did a great deal of work on the installation of the 24 courts at Middlesex. He has made the championship class at the World Tournament twice, in 1965 and 1971.

NEW MEXICO

President David Valdez and members have resurrected six courts and added four in Albuquerque with the assistance of the city council, parks and recreation.

Charles Knotts, with assistance from members from Tucumcari, built 12 courts at the Quay County Fairgrounds just west of the city. They held their first sanctioned tournament in June.

Membership in the state is up 11% over 1991 and entries in tournaments has increased an average of 20% with the addition of members from Socorro, Raton, Moriarty and Rosewell.

Hal Mineer reports they have TV, radio and newspaper coverage, and has been visiting groups in the state and helping them to start leagues.

OREGON

Like some charters who sponsor bowling tournaments in the Spring, the Oregon group sponsored a golf tournament at the Gresham Golf Course. Ex-champ Lauren Hill won with a nice 83, and Ben Goodling won handicap honors with a neat 72.

Ben Weidrich defeated George McCleod for the Class A title at the annual Old Timers Open in Oregon City. He closed with a high game of 77.5.

Bob West is an Oregon Legend, much like Ted Allen is in Colorado and the NHPA. Bob is 69 now, a lean spare man. He never won a World title, but has been the Oregon Champion 15 times in 23 attempts. During the period between 1957 and 1979, Bob finished third once and fourth twice in the World Championships.

PENNSYLVANIA

For the first time in the history of the Eastern National tournament, Erie pitchers won the men's Class A, women's Class A, Junior Class A, the women's Class B and Junior's Class B titles.

Steve Kichcinski took the men's crown with 7-1, 78.6%; Aileen Drayer was the women's "A" winner, 6-1, 53.9; Paul Butcher took Junior "A," 4-1, 44.4; Maria Siegal was the Women's "B" titleholder, 6-1, 41.5; and Marc DiFiori won Junior Class B.

Drayer has lost only one game in two years as the champion, and Butcher has lost only one game in three years as junior champion.

TEXAS

As of September the top five men pitchers in Texas are headed by Ed Arionus with 67%, followed by Charlie Posey 65.3, Coke Bowker 64.9, Bob Graham 64.6 and Will Wade 62.8.

Top five in women's circles finds Mary Ann Kramr on top with 74.4, followed by Diana Polak 62.3, Jeanne Stewart 60.3, Dot Crane 55.7, and Brenda Engelhardt 55.3.

As expected Celeste Polak, the World Champion, tops the juniors with 64.2, Rusty Badillo rates second with 54.9, followed by Damien Moore 54.5, Doug Macha 53.5 and Jeff Henderson 46.8.

UTAH

Bruce Crane of South Jordan won his second straight State title beating J.J. Steffen of Monticello in a playoff. Shirley Steffen won her third straight title.

John Bracken of St. George won the men's senior crown. Bracken had the highest percentage for all classes—62.7. Gabe Ohms of Cedar City won the boys' title winning all 8 games and tossing 41.1%. Stacey Glendon, Washington, won the girls' title.

The State doubles championship went to Clint Gentry, St. George and Glen McAllister of Gunlock.

To date Lorinn Condie has the high percentage with 64.5, John Bracken is second with 63.0 and Lee Jones follows with 62.4. Stan Simpson is the most improved with a 8.4 increase.

WASHINGTON

How's this for generosity? All members who pitched in the 1991 Winetrout Tournaments had their 1992 State and National dues paid by Winnie Winetrout. Many charters should have someone like Winnie, who likes

Charter Chatter *continued...*

horseshoes and people who pitch horseshoes.

The Pacific Northwest Open was established in 1946 through the efforts of John Monasmith, Gene Patrick and Cletus Chapelle, in conjunction with the Yakima, WA Fair Board. John and Gene lived in the area and Cletus, father of ten-time World Champion Vicki Winston and Barry Chapelle, was there to represent Oregon.

Although the site has changed, this annual tournament is one of the oldest annual events on the NHPA calendar.

By the way, Cletus was the opponent of Ted Allen, when the "Legend" pitched 72 straight ringers at the 1955 World Tournament.

WEST VIRGINIA

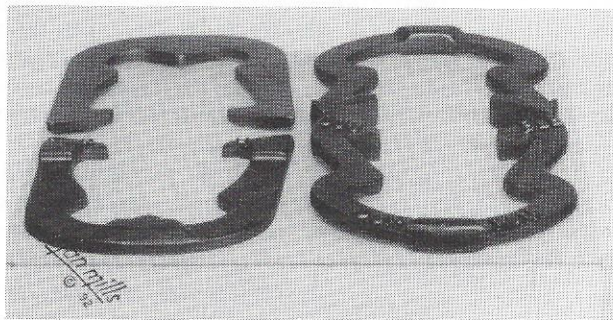
As usual, Charles Bunner of Fairmont has been very busy. Many readers know that Bunner succeeded in getting an NHPA Hall of Fame bill passed by the state Legislature and signed by the governor. This bill, if funds can be found, enable Fairmont to construct the Hall of Fame Building and a separate structure that will accommodate 18 courts under roof. The NHPA has not committed to this location pending inquiries from other locations and the lack of funding in West Virginia.

Bunner was given an Achievement Award by NHPA for his continued support, promotion and dedication to horseshoes.

Chatter had the pleasure to meet and talk with Bunner in Columbus, and still receives more clippings from him than all the other charters combined. He talks to the media.

PITCH Durham Lock-On Horseshoes

The 75 made for the 3/4 turn. Lock-On Camel Hoof Shoe made for Flippers. Both pairs made of stainless steel or carbonated steel. Grip coated - 2 yr. guarantee. Price includes everything; your choice per pair \$61.50. Made to save ringers. Order through N.H.P.A. Representative or direct:



TOM DURHAM HORSESHOES

104½ E. 1st St. • P.O. Box 42 • Madison, NE 68748
Ph: 402/454-2632 • N.H.P.A. Sanction

1992 Columbus W.T. Trivia

Of the total entrants, did you know that...

- ☐ The 1¼ turn was pitched by 44% men, 23% women, 50% boys and 25% girls
- ☐ The 1¾ turn was pitched by 19% men and 11% boys
- ☐ The ¾ turn by 17% men, 7% women and 11% girls
- ☐ The flip by 16% men, 59% women, 30% boys and 50% girls.
- ☐ 4% of the men, 11 % of the women, 8% of the boys and 14% of the girls reported using other turns such as the reverse ¾, reverse 1¼, reverse 1¾, 1 turn, 2 turn and 3¼ turn.
- ☐ The Henton Supreme was pitched by the Men's Champion (1¼)
- ☐ The Cal-Flip by the Women's Champion, (flip)
- ☐ The Imperial by the Elder 40' (1¾) and Jr. Boys Champion (1¼)
- ☐ The Allen by the Senior Men Champion (1¾)
- ☐ The Deadeye by the Senior Women (¾ flip) Junior Girls (1¼), Elder 30' Men (1¼) and Intermediate (1¾) Champions
- ☐ The most widely used horseshoe at the World was the Deadeye at 39% followed by the Imperial 13%, Allen 12%, Diamond 7%, Ohio 5%, Gordon 5%, Henton 4%, American and Cal-Flip 3% each. All the other brands combined made up the remaining 9%.

Start Planning For TEAM WORLD 1993

April 30, May 1-2
Beloit, Wisconsin

COMPLETE DETAILS NEXT ISSUE

Tom Roanhouse
1-800-558-5986

Sanctioned Club/League News

by Bev Born

In the last *Newsline* issue, I mentioned that a new Final Stat form had been developed that would assist in the keeping of good league records. Some of these have already been turned in and I'm happy to see the idea is apparently working. In addition, these new forms make it possible for me to transmit sanctioned club and league pitching results directly on to the new NHPA NatStat Center where averages on all members are being compiled.

With the new requirement for World Tournament entry to have 4 tournaments completed in the previous twelve months, one of which can be sanctioned club/league play of 400 or more shoes, it is important that all your play is reported accurately and promptly.

I feel that league averages, obtained over a long period of weekly play, are a very true indication of one's ability. It's not easy to sandbag each week with most clubs using a handicap. A good player must pitch extra well in order to win their games over a high handicap opponent and likewise for the lower average pitcher. Not all pitchers who thrive on pressure conditions are able to do their best in club or league play due to the sometimes very relaxed, carefree and social atmosphere. On the other hand, there are those who find circumstances of league play leading to better pitching because the stress is removed. Whatever way it effects you, sanctioned club/league play is an opportunity to support your club, state charter and the NHPA. Now, as full NHPA members, in addition to the many club/league awards available, you can have this program count 400 or more shoes, as a sanctioned tournament pitched. Who knows, it may be your best pitching of the year and if so, it will now be recognized.

On the lighter side, Floyd and I will be going to Maui, Hawaii for Christmas. To visit his son who works over there for Rockwell International, before he is transferred to somewhere else. A motive to this is it will also save us an enormous amount of money, being able to stay

with him and not pay those outrageous hotel fees. We are sure looking forward to pitching with the members of the Maui Charter and will be returning just in time to pitch with all our friends at the Vegas event.

I may not fully succeed, but will try hard to have all Top Ten, Jr. Scholarships and Continuous Sanction plaques, at least figured and ordered before we depart on Dec. 19th so I can get them in the mail as soon as we return around mid January. You can all help with this by getting all the required paper work for these to me ASAP, please and thank you.

This year will mark the 15th anniversary of this program, which also means the first year for 15 year Continuous Sanction Plaques for all Charter (1978) clubs. This is something we can all brag about and be proud of and you are the ones that have made it all possible with your support and dedication. I, for one, am extremely proud of each and every one of you, who have stuck with the program through thick and thin and all of the transitions made in the program throughout the years.

Please, be sure that your club's annual membership report and any other reports that are required for any of these recognitions have been sent

in before their respective deadlines.

Here's wishing all a very happy holiday season and prosperous, healthy new year.

Your Friend for Horseshoes!

Hoof-Note: As you may know, the office of NHPA 3rd Vice President and National Sanctioned CL/LG Director, will be up for election at the 1993 Convention in Spearfish, South Dakota. I do plan to keep my name in the hat for these positions, as I do VERY MUCH wish to continue working both with and for the NHPA, all of the members and our great CL/LG program. Even though my formal announcement will be made in a later issue, I would appreciate you beginning now to consider me for reelection.

Please, inform your fellow Charter members and Delegates of your wishes, whether they be pro or con. My deep desire to continue serving you is still very dependent on your desires to have me do so. As each and every one of you are the NHPA and whether reelected or not, I sincerely want it to be what YOU want and will respect your decision. Just be sincere, serious and honest. Thanks for support already given.

Ted Allen Horseshoes

Since 1938



Get the Allen Advantage

Designed and pitched by the
Ten Time World Champion

Available: Dead Soft, Medium Soft, Medium Hard
in various weights and colors

Most orders shipped within 48 hours.
Two Year Limited Warranty.

\$53.50 per pair (we pay normal shipping
within the 48 contiguous states)
Volume Discounts beginning at 6 pair.

Write or call: **TED ALLEN HORSESHOES, INC.**
1045 Linden Ave., Boulder, CO 80304
(303) 442-1436

Regional Director's Report

by Gary Minnick

Jim Shilling, RD from **Indiana** reports that there are several heated indoor courts in Indiana. Harrison County Ringers have 10 indoor courts in Corydon. The Johnson County Indoor Horseshoe Club near Edinburg and the 18 courts at Camp Atterbury are well lighted and indoor. The Marion Horseshoe Club has 2 courts, Frankfort has 2 privately owned. Near Spencerville, IN Jim Shilling has 6 courts which are also the home of the Classic City Indoor Horseshoe Club. The pitching palace in Stroh has 4 courts, and in the Northwest corner of Indiana, the Whiting Horseshoe Club has 4 courts. Membership runs as high as 100 people pitching in sanction leagues and/or tournaments.

John Decker, RD from **Michigan** reports that the Auburn Horseshoe

Club dedicated their courts on May 23, 1992. The Wickes Corp. of Auburn donated materials and a storage building.

George St. Pierre, RD from **Massachusetts** reports that from May to October, all states have tournaments except Rhode Island, which doesn't have a charter. Ben Vasques of VT and Bob Gratton of MA each have a good Junior program going with each having approximately 25 juniors.

Marie Wetzel, RD from **Pennsylvania** reports that ARD, Alvin Long reported that the Dallas Club added 2 new courts last year and they now have 6 outdoors and 2 indoors. The State Championships were held over labor day and Glen Burris won the men's championship, Grace Rugg, the women's, Tony Dawson, the junior's and George Blehi the senior's.

Clint Bryson, RD from **South Dakota** reports that there is much work there to interest juniors. They hope to see some results soon.

Jerry Shifflet, RD from **Virginia** reports they are having a good year. They have had some news coverage. Earl Waggy, ARD for VA reports that D.W. Strickler of Churchville, VA was inducted into the VAHPA Hall of Fame for his dedication to sanctioned clubs.

Jack Adams, RD from **Canada** reports that the 1992 Canadian Championships were held at Manitou Beach, Saskatchewan from August 5-8 with 221 entries. Winners were: Men's—Andre LeClerc; Women's—Myrna Kissick; Junior Boys—Richard Hayes; and Junior Girls—Crystal Curtis.

Canada had 82 entries in the 1992 World Tournament.

2nd Annual Quartzsite Main Event Tournament

Quartzsite, Arizona

January 21-24, 1993

ENTRIES CLOSE JANUARY 7, 1993

Entry Fee \$20.00 Additional Fee for A-E

All entry fees returned as prize money PLUS an Additional \$2,000

NHPA or Canadian Card Required • All groups will be 12 man classes - pitch 2 days • 30' pitchers mixed
Classes A-F pitch Sat. & Sun. • Classes G-L pitch Thurs. & Fri.

Pits are located at the Main Event Grounds, Quartzsite, AZ

(Interstate 10, Mile Post 17)

Motels are located in Quartzsite, AZ and Blythe, CA • Free dry camping available near the pits.

SEND YOUR ENTRY FEE TO:

Virginia Chalberg, 13118 E. 47th Dr., Yuma, AZ 85365 (602) 342-0426

MAKE CHECKS PAYABLE TO Y.A.H.P.A.

Also send your 3 highest tournaments in the last year and your pitching distance.

GUIDELINES FOR Regional Directors and Assistant Regional Directors

EFFECTIVE JANUARY 1, 1993.

Regional and Assistant Regional Directors shall be elected by the State/Charter Association which they represent, with the approval of the 5th Vice President. RD and ARDs shall be elected for a (2) year term, said election to be held on even numbered years. State/Charter Associations shall report all RD and ARD balloting to the 5th Vice President by December 1st of said election year. The State/Charter Association Officers shall sign and validate the results of the election of RD and ARDs within their charter only. The 5th VP shall compile and tabulate election results in multi-charter regions, for an accumulative result within each region. In the event in which none or only a partial count of State/Charters report election results to the 5th VP, the 5th VP shall appoint and RD/ARD for the region and/or deem a partial State/Charter election result as final. There is no limit on the number of years one may serve.

A Regional Director/Assistant Regional Director shall be directly responsible to the 5th Vice President and shall perform those activities requested by the 5th Vice President as well as those duties spelled out in this document.

A Regional Director and/or Assistant Regional Director shall be responsible for the distribution of NHPA patches to the winners of all sanctioned tournaments according to procedures established by the 5th VP and approved by the NHPA Executive Committee.

A Regional Director shall assign the sanction certificate numbers. A supply of sanction certificates will be mailed to each along with NHPA patches. As requested the RD will fill in the appropriate numbers, etc., and either deliver or mail to the tournament directors in time for the certificate to be displayed at the event. The numbers you have issued certify that National Rules will be followed, legal shoes will be used, and all participants are members of the NHPA and a Charter.

A Regional Director is appointed to

cover a specific region. Each region is numbered. A numbering system has been developed to identify tournaments in your region. These numbers should be in chronological order to facilitate the NHPA Stat Center. The first number denotes your region, the second two digits denote the year, and the third three digits denote the numbering sequence for that year. Example: Region 1 would be: 01-93-001 for the first one and 01-93-002 for the second, etc. 999 certificates could be issued in a given calendar year. As soon as possible, a copy of the register will be mailed to the 5th VP, NHPA Stat Center and your State/Charter Secretary. Additional numbers issued during the year are mailed on an updated basis as the situation dictates.

A Regional Director shall have the Tournament Director submit the tournament results to *Newsline*/NHPA Stat Center making sure they are in proper format. Results are to be typed in double space. First and last names, NHPA Card #, State, Wins, Losses, Ringers, Shoes Pitched and Ringer Percentage. Also, whether they were Men, Women, Juniors or 30' Elders. Some may not have a typewriter. In that case, print the results legibly following the same format. Remember, always include the sanction number.

A Regional Director shall be responsible for certifying that any courts that are to be sanctioned meet the NHPA Sanctioning Certificate requirements and will sign same before the 5th Vice President will issue a certificate. RDs shall make every effort possible to see that construction of new courts by local clubs meets the NHPA specifications for sanctioning.

Regional Directors/Assistant Regional Directors shall report at least semi-annually to the 5th Vice President summarizing regional activities and submit at least two *Newsline* articles each year. Copies of these reports shall also be mailed to the Charter Secretaries in their regions.

A Regional Director shall attempt to bring together all officers of the Charters in their regions, along with

their Assistant Regional Directors, at least once a year to discuss subjects of general interest. Subject matter covered and conclusions reached should be documented for publication to members within their region and the 5th Vice President will forward such items to *Newsline* for publication.

A Regional Director shall make every attempt to attend the World Tournament, or name in writing, to the 5th VP, one of the Assistant Regional Directors to attend the Annual Meeting.

A Regional Director shall have a commitment to every State/Charter Association in his/her region, not just the State/Charter of his/her residence.

A Regional Director will act as an advisor in interpreting the ByLaws and Rules of the NHPA.

Regional Directors/Assistant Regional Directors shall maintain a schedule of all tournaments and other activities within their respective area, keeping each other, as well as the 5th Vice President, informed.

Regional Directors/Assistant Regional Directors shall encourage the Charters within their region to pay their dues, promote *Newsline* subscriptions and membership in the NHPA. As representatives of the NHPA, they should push for NHPA sanctioning of all tournaments.

Regional Directors/Assistant Regional Directors shall attend as many tournaments in their region as possible and attempt to honor specific requests by their charters for their presence either at tournaments or ceremonies.

Regional Directors/Assistant Regional Directors shall work together within their regions to eliminate conflicting dates (tournaments, etc.) to effect maximum participation by the pitchers. They shall seek out and attempt to enroll active clubs and pitchers not presently affiliated with the NHPA, assist clubs and tournament directors in finding ways to publicize their activities, and shall work with and keep all tournament directors in their areas informed

(continued page 16)

Special Events Calendar

JANUARY 1993

- 10-14 Las Vegas Hacienda Funfest** — Mixed handicap, no Juniors. Everyone pitches at least 2 days. Cocktail party plus Awards Banquet (added cost). Entry fee \$60-\$85 thru 12-15-92 depending upon where you stay. Add \$15 for signup after 12-15-92. Contact Donnie Roberts 614-444-8510 or Don Weaver 702-736-7348.
- 21-24 2nd Annual Quartzsite Main Event** — Quartzsite, AZ, pre-register by January 7. NHPA or Canadian card required. 12 person groups pitch 2 days, 30' pitchers mixed. Purse expected to exceed \$4,000. Entry fee \$20 payable to YAHPA. Mail to Virginia Chalberg, 13118 E. 47th Dr., Yuma, AZ 85365 (602) 342-0426.

FEBRUARY 1993

- 8-14 Valley of The Sun Classic** — Mesa, AZ, pre-register required, entries close January 19th. \$10 fee payable to Arizona HPA. Additional entry for some classes. Entry, fees and contact to Esther Williams, 7570 E. Speedway #529, Tucson, AZ 85710 (602) 290-0352.

DON'T PROCRASTINATE

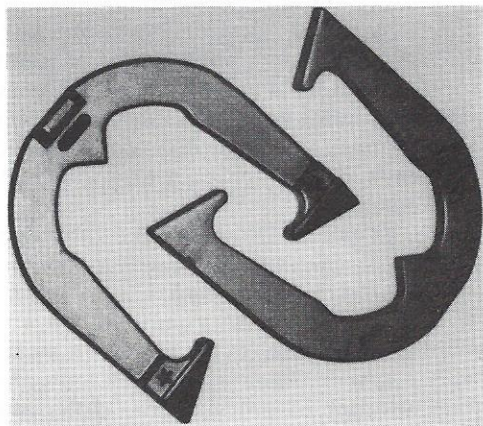
Those that put off until tomorrow what could be done today may end up missing an issue of *Newsline*. Renew your subscription NOW!

Our direction is toward horseshoe
perfection.

STAR

Stainless  Horseshoes

NHPA Approved



\$79.00 per pair postpaid

**ALL STARS ARE DEAD AND SOFT
AND THEY WEIGHT 2 LBS. 8 OZ.**

When you're pitching against the pros, the difference between winning or losing can be just a few thousandths of an inch.

If consistent pitching accuracy is what you're looking for, you'll only find it in a STAR. No one else measures up. Precision-crafted to afford you the competitive edge.

* When pitching ~~our~~ high quality stainless steel horseshoe, you will find there is less warping out of shape and less burring.

* The original STAR horseshoe was hand-crafted to achieve a center balance allowing each player to pitch a flatter, more open shoe. ie: Higher ringer averages.

* If the World Tournament officials ground your current shoe down last year because it was too wide, too long, or too heavy, pitch precision-made STARS this year.

**(ALSO AVAILABLE THROUGH
YOUR N.H.P.A. DEALER)**

Send check or
Money Order to:
Alfred R. Boudreau Jr.
301-A Old Ipswich Rd.
Rindge, N.H. 03461

Guidelines for RD/ARDs *continued...*

of current and future events.

Regional Directors shall compile a list (names, addresses, and telephone numbers) of their State/Charter Officers immediately following their State/Charter elections and forward it to the 5th Vice President. Any changes in their officers will be forwarded as they occur during the year.

Regional Directors/Asst. Regional Directors who wish to have NHPA items available to sell to members, must buy their supplies from an NHPA distributor and sell them at no profit.

Regional Directors/Asst. Regional Directors shall be subscribers to *Newsline*.

NHPA Regional Directors shall annually receive \$50.00 plus 20 cents per member per year within their region, based on the year-end membership report of the NHPA Secretary/Treasurer. The full-year must be completed to receive this compensation. Exceptions will be approved by the NHPA President and 5th Vice President. In addition, each Regional Director may be reimbursed for telephone calls and miscellaneous expenses with approval of the 5th Vice President. Any large expense MUST have prior approval of the Executive Council.

Regional Directors/Asst. Regional Directors shall be responsible for weighing and measuring all shoes pitched at the World Tournament.

Regional Directors/Asst. Regional Directors shall also have the responsibility of working with the NHPA council to oversee the tournament activities, including adherence to the Dress Code, Playing Rules, Tobacco and Alcohol Rules by all Contestants, Scorekeepers, and Judges.

The Regional Director of the region in which the World Tournament is held shall have the responsibility of SANCTIONING the World Tournament for that year.

AMENDMENTS

These Guidelines may be amended by a majority vote of the Regional Directors/Assistant Regional Directors present at the Annual Meeting during the World Tournament, with the approval of the Executive Council.

Respectively Submitted,
GARY K. MINNICK
5th Vice President and Chairman of
the Regional Directors

Tournament Travel Contacts

The following is a list of all NHPA Regional Directors and the states or territory they cover. Those of you who travel and want to get out-of-area tournament information, are encouraged to contact the appropriate Regional Director. Each RD maintains a full list of all NHPA sanctioned tournaments in their area. If your travel plans call for stops in several states and you need multiple state information, you might want to write the NHPA 5th Vice President who is in charge of all RDs. He should have copies of all the state schedules. The address for the 5th VP can be found on page 3 of this publication.

REGION REGIONAL DIRECTOR

1. Washington **Rick Rebman**
Rt. 5, Box 5257
Hemiston, OR 97838
(503) 567-8560
2. Oregon
3. Idaho
3. Northern California **Leo Wanner**
6815 Gardner Ave.
Sacramento, CA 95828
(916) 383-5644
4. Southern California **Bruce 'Mt. Man' Webb**
33932 Engineers Road
Julian, CA 92036
(619) 765-1396
5. Eastern Sierra, CA
6. Hawaii **Rodney Nahina**
85-237C, Ala Akau St.
Waianae, HI 96792
(808) 696-8284
7. Nevada **Don Weaver**
2206 Sunnyslope
Las Vegas, NV 89119
(702) 736-7348
9. Utah **Bud Schardine**
354 Brookside Drive
Springville, UT 84647
(801) 489-6351
10. Arizona **Sue Johnson**
4509 W. Pyracantha
Tucson, AZ 85741
(602) 744-9488
11. Montana **Rich Paul**
2223 3rd Ave. N.
Great Falls, MT 59403
(406) 452-7246
12. Wyoming **Harold Koch**
801 Metz Road
Gillette, WY 82716
(307) 682-8688
13. Colorado **Keith Thompson**
P.O. Box 295
Strasburg, CO 80136
(303) 622-4451
14. New Mexico **Hal Mineer**
P.O. Box 462
Sandia Park, NM 87047
(505) 281-9794

15. N. Dakota
16. S. Dakota
17. Nebraska **Clint Bryson**
901 Custer St.
Belle Fourche, SD 57717
(605) 892-2195
18. Kansas **Don Koso**
803 E. 12th Street
Falls City, NE 68355
(402) 245-3540
19. Missouri **Robert Booe**
1303 Westridge Drive
Atchinson, KS 66002
(913) 367-3309
20. Oklahoma **Elwyn Cooper**
6920 N.W. 78th Street
Kansas City, MO 64152
(816) 741-0043
21. Arkansas **Chuck Arnold**
10018 Birkenhead Ct.
Yukon, OK 73099
(405) 324-7176
22. Texas **Shorty Fry**
601 Faro, #1902
Austin, TX 78741
(512) 385-5409
23. Minnesota **Len Lipovsky**
8339 12th Ave., South
Bloomington, MN 55425
(612) 854-2476
24. Iowa **Bob C. Walters**
1401 Edgington
Eldora, IA 50627
(515) 858-3861
25. Mississippi **Bill Calhoun**
1307 Clearmont St.
Opelika, AL 36801
(205) 745-2356
26. Alabama
27. Louisiana **John Wilson**
1725 Celtic Drive
Marrero, LA 70772
(504) 347-0001
28. Wisconsin **Jim Haupt**
5075 N. Elkhart Ave.
Milwaukee, WI 53217
(414) 964-2735
29. Illinois **Dave Shreve**
2127 Lynn Street
Cahokia, IL 62206
(618) 332-2599
30. Michigan **John Decker**
5018 W. Rotterdam
Holt, MI 48842
(517) 699-2938
31. Indiana **Jim Shilling**
5044A CR 64
Spencerville, IN 46788
(219) 238-4879
32. Kentucky **Omar Blacketer**
7912 3rd Street
Louisville, KY 40214
(512) 363-4657

33. Tennessee **Dexter Stallings**
Rt. 6, Reed Drive
Powell, TN 37849
(615) 947-7865
34. Georgia **Al Sandham**
3985 Cotswold Drive
Lilburn, GA 30247
(404) 921-5332
35. Florida **Richard Senger**
1190 12th St., Box 335
Eagle Lake, FL 33839
(813) 294-8612
36. Ohio **Earl VanSant**
244 Deer Drive
Charden, OH 44024
(216) 285-2552
37. West Virginia **Herb Murray**
1303 Clyde Street
Parkersburg, WV 26101
(304) 428-5646
38. Virginia **Jerry Shifflett**
502 Dakar Drive
Sandston, VA 23150
(804) 737-6981
39. Pennsylvania **Marie Wetzel**
150 E. Wetzel Dr., Bx 206
Marion Center, PA 15759
(412) 397-2054
40. N. Carolina **Bryan Fuller**
575 Riceville Road
Asheville, NC 28805
(704) 298-1340
41. S. Carolina
42. Maryland **Ray Matlock**
202 Wellesley Ct.
Walkersville, MD 21793
(301) 845-2314
43. Delaware
44. New York **Helen Ouellette**
50 Westminster Rd.
Brooklyn, NY 11218
(718) 462-0604
45. Maine **George St. Pierre**
26 Beacon St., Unit 38B
Burlington, MA 01803
(617) 273-4007
46. Vermont
47. New Hampshire
48. Massachusetts
49. Connecticut
50. Rhode Island
51. New Jersey **Phil Zozzaro**
176 Main St., Apt. D
Little Falls, NJ 07424
(201) 256-8996
52. Alaska **Norman S. Rousey**
Box 140
Palmer, AK 99645
(907) 745-3618
53. CANADA **Jack Adams**
35 O'Neil Crescent
Saskatoon, Saskatchewan,
CANADA S7N 1W7
(306) 373-5184

Spearfish Motel and Campground Listing

Spearfish, South Dakota, site of the 1993 World Tournament, is a pleasant town in the middle of the Black Hills. There is much to do and see in the area. Make your reservations early.

Most motels are within a couple of miles of the city campground and park where the tournament will be played starting July 19th.

LODGING	UNITS	RATE	LODGING	UNITS	RATE	CAMPGROUNDS	UNITS	RATE
All Star Travelers Inn 517 W. Jackson 605-642-5753	44	\$49-89	Kelly Inn P.O. Box 989, I-90 Exit 12 605-642-7795	50	\$50-\$70	Chris' Campground I-90 Exit 14, ½ mile south on Christensen Dr. 605-642-2239	140	\$12.84- 16.05 up to 4 people
Best Western Downtown Spearfish 346 W. Kansas St. Box 526 605-642-4676	31	\$38-100	Kozy Motel 427 Main St. 605-642-4846	10	\$37-54	KOA Camp 1/8 mile off I-90 605-642-4633	140	\$14.25- 18.25
Sherwood Lodge 231 W. Jackson 605-642-4688	22	\$42-58	Spearfish Creek Inn 430 W. Kansas 605-642-9941	26	\$44-64	Mountain View Campground I-90 Exit 14, ½ mile south on Christensen Dr. 605-642-2170	76	\$12-15
Days Inn 240 Ryan Road 605-642-7101	50	\$50-65	Super 8 Lodge I-90 Exit 14 605-642-4721	61	\$65-75	City Campground 6 Blks. Downtown 605-642-3744	160	\$7.50- 13.50
Hilltop Motel 211 Main St., 605-642-7105	11	\$36-47	Capp Motel 333 W. Jackson 605-642-3611	14	\$40-50			
Holiday Inn P.O. Box 399, I-90 Exit 14 605-642-4683	160	\$68-82						

NHPA Income and Expenditures July and August 1992

INCOME

NHPA Membership	\$27,076.00
Newsline Subscriptions	797.00
Horseshoe Sanctioning Fees	100.00
1992 World Registration Fees	380.00
1992 World Finals Fees	3,890.00
1992 Hall of Fame Banquet Tickets	3,400.00
World Video, Patch and Misc. Sales	239.00
1992 World Bid Payments	18,735.00
1993 World Bid Payment	6,000.00
World CDs transferred to checking	23,035.00
Charter Dues and Overpayments	7.00
Checking and CD Account Interest	868.00
Total 2 month Income	\$84,527.00

NOTE: These figures, rounded off to the nearest dollar, are from the books of the NHPA Secretary/Treasurer and do not include monies handled by other NHPA personnel.

EXPENDITURES:

Newsline Production, Printing and Mailing	\$9,109.00
Newsline Editor Allowance	560.00
Sanctioned League Office, Supplies & Phone	565.00
Regional Directors Phone, Postage, Supplies	472.00
NHPA Office, Printing and Supplies	3,119.00
NHPA Postage	1,822.00
Equipment Purchases, Rental and Repairs	3,552.00
Officers' Telephone	495.00
Officers' Travel	5,048.00
Secretary/Treasurer Allowance	2,800.00
President's Allowance	840.00
Publicity and Promotion	1,013.00
World Tournament Patches, Cash & Awards	124,240.00
World Tournament Administrative Costs	4,928.00
World Hall of Fame Banquet	4,219.00
Professional Service Fees	1,208.00
Misc. Bank Charges, Refunds, Fees	1,396.00
Total 2 month Expense	\$165,386.00

The Toll of Time

LOUIS O. BAYER

The Northern California members were saddened to hear of the 4/21/92 passing of Lou Bayer, long time promoter of the sport and member of the Stockton club for many years. Lou in recent years, traveled extensively with the Air Stream RV club where he continued to enjoy and teach the game. Born in Hooper, Nebraska, Lou was 86 years of age when he died.

JIM DUNKERLY

Jim Dunkerly, 72, of Lancaster Ohio, died May 27, 1992 after a short illness.

He was a member of the NHPA for 29 years and the Lancaster Horseshoe Club for 24 years.

Jim was always there to help at local tournaments and pitched in numerous other tournaments over the years, mainly in the central Ohio area.

He will be greatly missed by all who knew him. He is survived by his wife, daughter and son-in-law and 5 children.

The Ohio Buckeye Horseshoe Pitchers Association extends their sympathy to the family.

WALT FOREMAN

Walt Foreman was a very popular member of the San Jose Club and Northern California Association. Born in 1914, Walt died June 22, 1992 after a long fight with cancer. For many years, Walt was considered one of the better pitchers in the area. He always attended as many events as possible and made many friends along the way. Walt was motivated, competitive and attentive. He won many tournaments but the welfare of fellow members was primary with Walt. He will be missed.

RICHARD B. HASTINGS, SR.

Known to everyone as "Bones," Richard Hastings of Orange, Massachusetts died suddenly June 27, 1992 at the age of 57. A long time NHPA member, Bones was always promoting the sport. For several recent years he was a worker in the World Tournament NHPA publicity booth. Just this year he was elected to the Massachusetts Horseshoe Pitchers Hall of Fame as an organizer. He received many other awards for his tireless

work on behalf of the game, among them, the 1992 plaque for outstanding contributions as publicity director for the New England HPA.

Bones, who was a self-employed painter, leaves his wife Beverly, son Richard Jr. and numerous other family members. Like all dedicated workers in the NHPA, his contributions and presence will be hard to replace.

J.R. MONTROSS

Nebraska pitchers were sorry to hear of the 2/25/92 death of J.R. Montross, who was a charter member of the Platte Valley Horseshoe Club. Born in Kearney, J.R. was 73 years old. He farmed in the North Platte area before retiring in 1975. He was an active leader in 4-H clubs for twelve years and the past director of the Lincoln County Fair Board.

GEORGE HENRY PALMER

George Palmer was instrumental in the formation of the Stockton, CA horseshoe club, for many years the site of the California State Championships. A native of Eyota, MN, George passed away March 2, 1992 at the age of 79.

OTIS SIDNEY PLOTT

Louisiana member Otis Plott passed away March 28, 1992 at the age of 85. He was married for 62 years to Leona, who died in 1990. Otis was a retired train dispatcher for the Kansas City Southern, where he worked for some 40 years. As a long time NHPA member, he attended about 30 World Tournaments, the last being in Biloxi in 1991, where he visited old friends. His last W.T. pitching was in Lafayette in 1985 where he won Class C, 30' Elders. In 1959, Otis won the World Class B championship. He was a member of the Louisiana Horseshoe Pitchers Hall of Fame.

ANDREW STOLARIK

The Ohio association and members were saddened by the recent passing Andy Stolarik, age 82 of Alliance. For years, Andy was an active pitcher and promoter in the sport. He was past president of the Canton Horseshoe

Club, Ohio charter treasurer in 1942 and inducted into the Ohio Hall of Fame in 1987. In 1946, Andy finished 12th in the Championship division of the World Tournament.

LEO WASER

Leo Waser, age 66, a long time resident of St. Louis, MO, passed away on July 19, 1992 after suffering a heart attack while competing in the World Tournament at Columbus, Ohio.

Leo had been an active member of the NHPA and the Greater St. Louis Horseshoe Club for the last ten years. He participated in leagues and tournaments sponsored by his club, as well as serving on committees and helping with many activities pertaining to the support of his club. He was always willing to give of himself to those who requested his assistance. Leo also participated in several State and World Tournaments, in addition to many in the local area.

He enjoyed square dancing and outdoor activities, such as float trips. He was an active volunteer in several Senior Citizen programs in his area.

Leo is survived by his wife Dolores, three daughters, three grandchildren and many friends.

BARAK CHARLES WRIGHT

California native Barak Wright, age 85, died on July 30, 1992 of a heart attack, while doing what he loved most, pitching horseshoes on the courts in Ukiah, a club he founded in 1981. Barak was still a 50% pitcher at his age, due in part to the NHPA sanctioned "D & B" no caulk horseshoe, which he developed. Cut from steel plate, this lighter horseshoe greatly assisted Barak and other older pitchers who preferred to stay at 40 feet instead of moving up. Barak was also the promoter behind a very popular Ukiah Invitational tournament which he ran for several years. Age and distance did not seem to slow Barak down, as he was always traveling to attend and pitch in horseshoe tournaments throughout the West. His pleasant manner will be greatly missed by all his friends. The Northern California association extends heartfelt condolences to his wife Irene, who was always with him.

1992 State Championship Results

ALABAMA

Sept. 20, 1992 Sanc. #26-92-021

CLASS A

	W-L	%
Jack Henderson	7-0	66.8
Walker Shaneyfelt	6-1	71.7
Jim Harris	5-2	53.7
Bobby Tidwell	4-3	60.1
Tyrone Lowry	2-5	50.6
Bill Coggin	2-5	41.2
John Nichols	1-6	52.1
Bob Stowe	1-6	45.8

CLASS B

Bobby Holland	5-0	49.6
Orville McElroy	3-2	45.5
Mickey Connally	3-2	39.7
David Mangum	3-2	35.1
Carl Baker	1-4	29.3
Fred Betterton	0-5	31.1

CLASS C

Jackie Gary	5-1	39.0
Henry Mathis	4-2	33.3
Ken Gipson	3-2	31.8
Bobby Newman	2-3	28.2
Ed Short	1-4	32.7
Mike Watkins	1-4	28.2

CLASS D

Kenneth Tidwell	5-0	32.4
Wayne Peden	3-2	29.4
Ottie Reno	3-2	29.2
Tony Hudgins	2-3	29.5
Ron Kindrick	2-3	26.2
Mark Stevens	0-5	20.8

CLASS E

Sammy Vickers	5-1	28.4
Michael Byram	5-2	26.8
O.A. Lindsey	4-2	18.9
Michael McGhar	2-3	25.8
J.D. Kidd	1-4	17.9

WOMENS CLASS

Debbie Tidwell	55.4
----------------	------

40 Ft. Elder Men

Ed Short	32.7
O.A. Lindsey	18.9

JUNIOR BOYS

Wesley Lowry	5-0	46.3
Brent Vandiver	4-1	27.0
Jeff Jones	3-2	29.8
Sean Holland	2-3	18.1
Clint Vandiver	1-4	17.2
Scott Atchley	0-5	7.5

ARKANSAS

Sept. 5-7, 1992 Sanc. #21-92-016

MENS CHAMPIONSHIP

	%
Gene Reno	9-0 69.5
Bill McKay	6-3 55.5
Orval Nichols	6-3 54.4
Ira Scott	6-3 51.8
Robert Williams	6-3 51.4
James Melson	5-4 54.9
Jerry Kahle	3-6 46.7
Paul Davis	2-7 46.3
Archie Matheny	1-8 42.3
Thurman Eccleston	1-7 34.6

WOMENS CHAMPIONSHIP

Opal Reno	6-0 78.6
Beth Hill	5-1 45.2
Audrey Steele	4-2 50.0
Della Matheny	2-4 38.9
Meba Watts	2-4 33.2
Phyllis Archer	2-4 29.9
Shirley Smith	0-6 23.1

JUNIOR GIRLS CHAMPIONSHIP

Dorothy Reno	2-0 48.1
Nicole Whitten	0-2 13.0

JUNIOR BOYS CHAMPIONSHIP

Donnie Hill, Jr.	5-0 54.8
Jake Hill	4-1 31.9
Matt Hill	3-2 29.1
Mike Kiddy	2-3 12.5
Kevin Bryan	1-4 15.3
Nick Hill	0-5 6.9

MENS CLASS A

Ray Bailey	7-1 42.4
James Hill	6-2 45.6
Ray Crittenden	5-3 37.1
Perry Stephenson	5-3 34.4
Jerry Tucker	4-4 38.4
Bud Lovitt	4-4 38.2
Charles Veazey	2-6 35.2
Dwayne Moody	2-6 34.6
Allan Clark	1-7 34.6

MENS CLASS B

Junior Hill	6-2 43.2
Ellis Kiddy	6-2 40.1
Rease Burden	6-2 34.7
Danny Bryan	5-3 33.6
James Smith	4-4 31.2
Jay Crittenden	3-5 33.8
Jimmy Hill	3-5 32.8
Donnie Hill, Sr.	2-6 20.2
Dick Gabbert	1-7 26.8

MENS CLASS C

Ken Oxford	7-1 33.5
Leslie Dixon	5-3 32.7
Dr. Claud Bray	5-3 26.7
Richard Archer	5-3 24.7
Joe Plum	4-4 27.2
TK Gibson	4-4 23.3
Fred Hash	3-5 21.4
Willie Booth	2-6 23.4
JW Gibson	1-7 20.3

MENS CLASS D

Richard Jeanes	5-1 26.1
Frank Rippetto	4-2 19.6
Michael Dossett	4-2 18.8
Chris Moody	3-3 20.2
Lawrence Crain	2-4 22.0
Benny Culpepper	2-4 16.1
Robert Foran	1-5 17.1

CALIFORNIA

Sept. 7, 1992 Sanc. #03-92-089

MENS CHAMPIONSHIP

	%
Walter Ray Williams Jr.	10-1 78.3
Steve Wyrill	9-2 68.0
Gus Martin	8-3 68.3
Jonathan Williams	8-3 68.2
Jesse Gonzales	6-5 65.3
Dave Koch	6-5 62.0
Allen Ovieda	4-7 60.1
Chuck Seal	4-7 58.1
Don Gregson	3-8 65.6
Jeff Williams	3-8 56.0
W. Spud Napier	3-8 51.7
Dave Loucks	2-9 58.7

MENS B

Jim Eozzo	9-3 57.9
Chuck Farrell	8-4 48.7
Joe DeLeon	7-4 59.7
Jack Sorg	7-4 55.6
Earl Rapp	6-5 56.3
Leonard Rood	6-5 56.1
Juke Basham	5-6 52.0
Don Williams	5-6 51.3

Emmett Schroeder

5-6	46.1
Joe Gamble	3-8 51.3
Tom Tiedeman	3-8 50.0
Jack Fravel	3-8 48.6

MENS C

Dave Shelton	11-0 57.9
Dan Cervantes	8-3 43.6
Nick Ihli	7-4 52.9
Paul Hopkins	7-4 50.9
Jim Atwell	6-5 43.8
Jay Richmond	5-6 49.7
Fred Briand	5-6 48.4
Mel Roberts	5-6 44.5
Lee Tyrrell	5-6 43.8
Pete Manitone	4-7 46.1
Cy Hobliitt	3-8 42.5
Darrell LaMoureaux	0-11 36.5

MENS D

Don Kies	9-3 52.9
Lyonal Clodfelder	9-4 43.8
Don Beasley	8-4 47.0
Lester Jones	7-4 47.5
Noel Guy	6-5 45.6
George Gillett	6-5 42.9
Gerald Foss	5-6 48.4
Jim Benner	5-6 45.9
Thor Jensen	5-6 41.8
Pat Brady	3-8 42.7
Jim Mudra Sr.	3-8 35.9
Paul "Mo" McNally	2-9 40.2

MENS E

Steve Kynard	9-3 42.2
Vic Day	9-4 38.7
Tom Mayne	8-4 39.3
Wesley Neifert	7-4 40.0
Verdan Zelmar	7-4 38.1
William Raye	6-5 40.9
John Sylvester	6-5 36.1
Jerry Keys	5-6 35.2
Floyd Brown	5-6 34.5
Earl Kynard	4-7 37.0
Ron Kecskes	2-9 20.8

MENS F

Uel Stever	10-3 45.0
Al Adams	8-4 45.0
Jim Ornelas	8-4 45.2
Bud Grisaffi	7-4 43.8
Frank Rodriguez	6-5 44.0
Ken Woolery	6-5 43.8
Thermon Watkins	6-5 43.4
Allen Youngblood	6-5 41.8
Jim Saunders	4-7 35.4
Don Bailey	4-7 35.0
Del Stockstill	2-9 36.5
Rod Neifert	1-10 36.5

MENS G

Dave Lane	8-2 43.6
Don Purdum	7-3 39.4
Les Burroughs	6-3 40.4
Jack Deardorff	5-4 46.0
Joe White	5-4 40.4
Dave Neifert	5-4 39.1
Bill Virgin	4-5 35.3
Wayne McGhee	4-5 30.0
Roger Bouscal	1-8 32.8
Bob Brozovich	1-8 26.8

MENS H

Jim Howell	10-1 47.0
Hank Henke	8-3 30.4
Randy Acosta	7-4 38.6
John James	7-4 35.0
Jim Ogden	7-4 31.8
Bill Dise	6-5 36.8

Carl Wall	6-5 36.1
Jim Eskelson	4-7 37.5
Bill Terry	4-7 33.8
Steve Oglesby	4-7 30.6
Larry Torres	3-8 30.4

MENS I

Gary Adams	10-1 45.2
Delfino Duran	9-2 39.0
Casey Sluys	8-3 32.0
Len Ramirez	7-4 37.9
Donald Henry	6-5 36.3
Roberto Duran	5-6 32.9
Daniel Espino	4-7 37.2
Jim Cook	4-7 34.3
Hugh Gilland	4-7 29.5
Gerry Saunders Sr.	4-7 24.7
Mike Martinez	3-8 32.9
Bill Neal	2-9 23.1

MENS J

Robert Gillett Sr.	8-1 35.7
Ralph Stegner	6-3 36.2
Al Hoelscher	6-3 31.7
Wes Lambert	5-4 36.8
Delmas Whittier	5-4 36.4
Mike Ayala	5-4 34.4
Marvin Sanders	4-5 31.3
Dave Rodriguez	4-5 24.6
Fred Ovieda	2-7 31.1

MENS K

Efrem Bravo	8-1 37.5
Vince Eisma	6-3 37.7
Carl Roberts	5-4 35.7
Hank Burton	5-4 33.3
Ralph Mineau	5-4 30.4
Gordon Brown	5-4 29.3
Clancy Steinhoff	5-4 28.4
Jake Steerman	3-6 33.1
John Ortega	2-7 23.7
Vern Gosney	1-8 26.4

MENS L

Larry Chapple	9-2 36.8
Jerry Garland	7-4 33.4
Ron Blagden	7-4 31.3
Bill McKeever	7-4 29.3
Ken Weir	7-4 29.3
Marvin Wallingford	6-5 37.5
John Green	5-6 29.7
Jim Vining	5-6 29.0
Roy Deffner	5-6 26.8
Edward Riggs	4-7 26.8
Gerald Patterson	3-8 32.2
Derald Rasmussen	1-10 22.9

MENS M

Lee Oliver	9-2 39.5
Russ Peterich	8-3 31.8
Steve Ornelas	8-3 30.4
John Stockstill	7-4 36.5
Mike Oberlander	7-4 33.8
Lance Hahaj	6-5 34.0
Roger Keller	6-5 26.8
Jim Keyes	4-7 28.4
Don Thomas	4-7 27.2
Ron Thomas	4-7 25.4
Clell O'Neal	3-8 24.7
Roberto Bustos	0-11 18.6

MENS N

Ray Lara	9-2 29.0
Rick Collins	7-4 27.2
Lou Hook	7-4 27.0
Mike Story	7-4 26.1
Leon Marshall	6-5 27.2
Jim Kyker	6-5 25.6
Earl Stixrud	6-5 24.3

Tournament Results

2

Chuck Zabel 6-5 20.6
Vic LaMoureaux 5-6 24.5
Richard Robbins 4-7 20.4
Ray Silva 3-8 23.8

MENS O

Fred Wittman 9-2 31.1
John Kincheloe 8-3 28.4
Frank Benitez 8-3 35.4
Larry Thorsen 8-3 23.4
Rich Thomas 7-4 27.9
Dave Black 7-4 25.2
Pete Wojtyszyn 5-6 27.2
Don Annett 4-7 25.0
Ray Sherbino 4-7 22.7
Joe Roman 3-8 21.3
Jim Hays 1-9 20.6
Lee Henninger 1-10 17.2

MENS P

Robert Flanagan 10-1 28.1
Victor Nicoli 8-3 23.8
Bud Thomas 8-3 22.9
Clay McDonald 7-4 22.0
Bob Fletcher 6-5 20.2
Bob Kane 6-5 20.2
Doug Sattler 5-6 24.0
Bill Botelli 5-6 21.5
James Gorth 4-7 21.3
Jerry Beach 4-7 17.9
Randy Lokey 3-8 21.8
Chet Carter 0-11 11.1

MENS Q

R.J. Thomas 10-1 30.0
Mel Bradsteen 8-3 25.2
Bill Carroll 8-3 24.7
Bud Aduddell 7-4 24.0
Milt Seeke 6-5 25.2
Joe Schultz 6-5 15.7
Leo Wanner 5-6 16.7
Oliver Smith 5-6 12.9
Les Hewston 4-7 24.0
Dick Shreve 3-8 11.5
Charles Rapp 1-10 17.2
Ed Gallegos 3-8 25.0

MENS R

Mike Moreno 8-1 24.6
Leroy Bailey 7-2 16.4
Lee Hardy 7-2 13.7
Scott Hatcher 7-2 20.2
Cliff Chrisman 5-4 20.0
Alan Dalton 4-5 14.4
Paul Kell 2-7 12.4
Al Gonzales 2-7 10.8
Glenn Jamieson 2-7 10.8

MENS S

Ernie Lugo 9-0 18.2
Joseph Guevara 6-3 15.3
Bill Kelly 6-3 10.6
Steve Shortridge 5-4 8.4
Max Armijo 5-4 5.5
Roy Heyden 4-5 6.2
Jim Brantley 4-5 9.3
Keith Remillong 3-6 8.4
Larry Beaman 2-7 4.4
Milo Hovland 1-8 2.4

WOMENS CHAMPIONSHIP

Diane Silva 11-1 75.0
Carolyn Webb 10-2 63.4
Paige Pennington 8-3 63.4
Sharon Paddock 8-3 70.6
Gail Sluys 7-4 62.4
Billie Sue Pennington 5-6 62.8
Mary Fumia 5-6 56.2

Delia Alarcon 5-6 56.8
Carol Casados 4-7 52.7
Lee Engers 2-9 57.0

WOMENS B

Diane Shortridge 11-1 49.1
Andrea Adams 10-2 52.9
Helen Vigil 8-3 51.8
Teddy Guillotte 8-3 50.2
Linda Rodriguez 7-4 48.1
Marilyn Brown 5-6 48.8
Donna Lokey 5-6 40.0
Char Sorg 5-6 37.2
Loretta Grisaffi 4-7 34.7
Cathie Loucks 2-9 30.0
Pam Bradsteen 1-10 25.5

WOMENS C

Georgia Armijo 9-2 38.6
Gloria Benitez 8-3 40.0
Wanda Helsby 8-3 34.7
Nancy LaMoureaux 7-4 32.7
Sharon Patterson 6-5 32.0
Foa Remillong 6-5 31.3
Bonnie Marshall 6-5 28.4
Loretta Chaney 5-6 28.6
Linda Hoelscher 5-6 28.1
Joann Wanner 4-7 26.8
Renee Cook 2-9 22.5
Jean Robinson 0-11 10.6

WOMENS D

Dorothy Rasmussen 8-1 20.6
Jean Ornelas 6-3 32.2
Gayle Oglesby 6-3 22.2
Betty Schield 6-3 18.6
Sally Shipley 5-4 22.0
Sally Woolery 5-4 20.6
Camille Bruster 4-5 14.0
Carolyn Otis 3-6 16.4
Darlene Fearon 2-7 16.6

WOMENS E

Toni Hovland 8-1 21.1
Sharon Saunders 7-2 13.3
Tawnya Garland 6-3 19.7
Vicky Oglesby 6-3 17.3
Shirley Jamieson 6-3 13.5
Sandy Hernandez 5-4 13.7
Debbie Carter 3-6 13.7
Mandy Robbins 3-6 11.1
Diane Williams 1-8 7.5

SENIOR MEN CHAMPIONSHIP

Walt Robinson 10-0 58.6
Lou Fontaine 8-2 58.1
Bob Thompson 5-5 51.5
Mate McBride 5-5 44.8
Bruce Webb 1-9 36.0
Charlie Valsecchi 1-9 34.6

SENIOR MEN B

James Douglas 10-0 42.2
Savio Leardini 6-4 29.7
Wally Shipley 5-5 29.2
Leldon Day 4-6 33.5
Glenn Kelly 4-6 30.0
Thiel Lippincott 1-9 23.7

SENIOR MEN C

Ralph Carter 9-2 26.1
Bob Black 8-3 24.0
Kermit Pardue 5-5 23.5
Russell Minor 5-5 22.2
Elmer Landis 4-6 22.5
Bill Moore 0-10 18.0

ELDER MEN 30' CHAMPIONSHIP

Jack Stewart 6-1 61.4
Charlie McMullen 5-2 58.4
Tony Moreno 4-2 59.7
Mike Fill Sr. 3-3 56.1
Herb Rushing 2-4 51.0
Holland Payne 1-5 57.4
Sal Ybarra 1-5 45.1

ELDER MEN 30'B

Ray Evans 7.2 31.9
Myron Nichols 7.3 29.0
Fred Helsby 7.3 27.0
Harold Redding 6.3 26.6
Ray Beardall 4.4 27.1
Charles Dubs 3.5 25.9
Fred Craven 3.5 22.1
Elmer Wilson 2.6 17.8
Howard Bruster 0.8 12.5

SR. LADIES CHAMPIONSHIP

Yvonne Mauzey 6.0 65.7
Ruby Thompson 4.2 31.4
Eileen Dubs 1.5 22.1
Genevieve Lavett 1.5 10.0

JUNIOR BOYS CHAMPIONSHIP

Kevin Kecskes 11-1 50.3
Robert Gillett 9-3 45.9
Nelson Ireson 9-3 42.5
Mike Lara 7-5 36.4
Raymond Lopez 3-9 29.1
Daniel Espino 2-10 23.8
Donny Williams 1-11 28.3

JUNIOR BOYS B

Herman Gooding 10-0 15.2
Jeff Gooding 7-3 12.5
Matt Nikkel 5-5 11.5
Ryan Reilly 5-5 9.2
Nathan Casados 2-8 1.5
Tom Basye 1-9 7.0

JUNIOR GIRLS CHAMPIONSHIP

Sara Story 7-1 19.1
Charisse Velazquez 6-2 14.7
Tricia Blagden 5-3 10.6
Chrissy Adams 2-6 4.2
Bonnie Robbins 0-8 2.4

COLORADO

Sept. 7, 1992 Sanc. #13-92-038

MEN CLASS A

	W-L	%
Jerry Comstock	6-1	66.0
Paul LaCrosse	5-2	72.7
Dan Martinez	5-2	59.3
Rich Pintor	4-3	56.6
Carl Carlton	3-4	52.6
Russ Bartle	2-5	51.4
Bob Engel	2-5	48.8
Jim Tulk	1-6	47.9

CLASS B

Dale Boss	7-0	53.7
Allan Withrow	5-2	51.6
Orvan Bennett	4-3	51.1
Lloyd Laughlin	4-3	49.4
Ray Heim	4-3	46.3
Gordon Kashner	2-5	52.2
Dave O'Dell	2-5	44.8
Don Sewell	0-7	35.3

CLASS C

Bob Hunt	6-1	53.7
Arch Wood	5-2	46.3
Mel Yockstick	5-2	43.9
Dean Lauer	3-4	46.4
Floyd Holmes	3-4	42.8
Bill Ostrom	3-4	42.3
Deme Pineda	3-4	40.8
John Atencio	0-7	34.8

CLASS D

Bob Gray	7-0	47.7
Bill Bryan	5-2	34.9
Snead Everett	4-3	39.1
Keith Thompson	4-3	36.3
Steve Ruddock	3-4	34.8
Don Hogsett	3-4	33.7
Jim Wyss	2-5	31.2

CLASS E

Fred Beresel	6-2	38.7
Ray McGrady	5-3	38.5

Bob Champion 4-3 41.1
Carl Thorson 4-3 37.3
Ray Morgan 4-3 36.0
Norbert Boes 4-3 34.3
Stan Bonnes 2-5 30.1

CLASS F

Dave Shirley 7-2 35.1
Clarence Garner 6-3 38.4
Ivan Maestas 6-3 36.6
Duane Daire 5-4 33.2
Harold Wilcox 5-4 32.0
Bill Cook 5-4 31.8
Ed Lewis 4-5 30.1
Chauncy Younger 4-5 27.7
Bill Westfall 3-6 24.4

CLASS G

Wayne Jensen 7-2 25.9
Dick Leffler 5-3 33.2
Dan Bauer 5-3 27.3
Rich Schmidt 4-3 30.7
Skip Fankhauser 3-4 28.6
Gene Sandoval 3-4 27.0
Hal Sheppard 3-4 25.8
Ray D. McGrady 0-7 18.3

CLASS H

Bob Beisemeier 7-0 33.3
Allen Baptist 6-1 30.1
Norm Neumon 4-3 30.4
Tom Peterson 4-3 25.3
Rick Quilico 4-3 23.6
Dick Palm 2-5 22.5
Ted Highland 1-6 20.6

CLASS I

Don Conklin 7-0 36.2
Marcos Munoz 6-1 35.9
Leo Complement 3-4 32.8
Larry Rafaell 3-4 27.3
Ken Morrell 3-4 27.3
Jack Danielson 3-4 26.0
Lee Stevenson 2-5 28.3
Monty Rains 1-6 23.6

CLASS J

Gasper Romero 6-1 35.1
Jim Pittman 5-2 31.2
Joe Stencil 5-2 30.4
Ernie Coulter 5-2 27.8
Jerry Johnson 3-4 25.1
Bob Berry 2-5 23.1
Rich Jensen 1-6 21.9
Mel Keller 1-6 21.5

CLASS K

George Hergert 6-1 26.6
Marty Wittig 5-2 31.3
Rich Broavo 5-2 24.1
Jack Browning 4-3 27.6
Jerry Burgess 4-3 26.3
Keith Bartle 2-5 23.0
Peter Thompson 2-5 23.0

CLASS L

Jamie Boticariro 6-1 24.0
Don Cook 5-2 27.3
Benny Thelen 4-3 23.0
Geno Sandoval 4-3 22.6
Danny Boyce 3-4 26.5
Arnie Holman 3-4 24.7
Rick Stein 2-5 20.5
Dennis Farson 1-6 14.1

CLASS M

Ken McKenzie 7-1 17.0
Ben Stencil 6-2 17.6
Steve McDonough 5-2 23.0
Ray Danielson 5-2 19.7
Virgil Fairchild 3-4 13.0

CLASS N

Dan Malefyt 7-1 21.1
Gordon Fairchild 6-2 17.1
Fred Rudman 5-2 22.9

Tournament Results

Tom Salzman	4-3	24.8
Tony Paiz	3-4	16.4
Gerald Trujillo	3-4	14.4
Bob Flori	1-6	15.2

CLASS O

Lenny Scovel	7-1	17.7
Craig Sommers	6-2	8.3
Jerry Svoboda	5-2	10.3
Clint Michael	5-2	9.0
Rick Eilch	3-4	12.8
Kevin Knoll	2-5	6.7
Ray Jackson	1-6	5.2

CLASS 30' A

Bob Jacobson	3-0	73.2
Les Grosenbach	0-3	61.0

CLASS 30' D

Art Henke	5-2	54.5
-----------	-----	------

CLASS 30' K

Charlie Leinberger	6-1	26.3
--------------------	-----	------

WOMEN A

Virginia Sandoval	5-1	58.5
Karen Salzman	4-2	49.3
Milley Harvey	3-2	46.1
Janie Thompson	2-3	46.4
Alice Laswell	2-3	43.0
Julie Romero	0-5	28.2

WOMEN CLASS B

Terry Lilak	5-0	38.2
Karen Burgess	3-2	44.7
Nancy Jones	3-2	43.0
Vicki Lisco	2-3	34.4
Lolly Pittman	2-3	32.4
Fran Roth	0-5	31.1

WOMEN CLASS C

Peggy Pudman	5-1	40.3
Pam Cook	4-2	34.2
Roxy Sommers	3-2	32.1
Paige Stiltner	3-2	29.4
Darlene Shirley	1-4	17.9
Pauline Fiori	0-5	25.7

WOMEN CLASS D

Theresa Coslett	7-0	19.4
Larmont Leslie	6-1	21.3
Anita Torrez	5-2	18.3
Diana Danielson	4-3	16.4
Annette Wittig	3-4	11.4
Joleene Elich	2-5	7.0
Shirley Johnson	1-6	4.7

JUNIOR CLASS A

Walt O'Dell	4-0	40.6
Wayne Atencio	0-4	17.3

JUNIOR CLASS B

Ricky Bravo	4-0	27.2
Greg Johnson	0-4	15.3

JUNIOR CLASS C

Jamie Ruddock	7-0	19.7
Jeremy Hinojosa	5-2	6.9
Tracy Wilcox	5-2	4.6
Shannon O'Dell	4-3	1.6
Jenny Bartle	3-4	4.9
John McKenzie	3-4	3.9
Emily Salzman	1-6	2.3

GEORGIA

Sept. 5-6, 1992 Sanc. #34-92-014

CHAMPIONSHIP MEN W-L %

Larry Morton	5-2	63.1
Richard Williams	5-2	64.2
Glen Portt	5-2	59.8
Ted Whitlock	5-2	59.4
Walter Brake	3-4	61.7

Jim Waters	2-5	55.5
Elbert Allen	2-5	55.1
James Black	1-6	51.9

SENIOR MEN

Milton Vinson	2-0	48.0
Jim Wood	0-2	44.1

CHAMPIONSHIP WOMEN

Betty Steinfeldt	2-0	62.7
Iris Sandham	0-2	52.7

JUNIOR BOYS

Johnny Sisson	5-0	52.8
Lee Presley	4-1	33.0
Jamie Sisson	3-2	28.1
Andy McDonald	2-3	28.4
Tommy Brake	4-1	14.5
Eddie Booth	0-5	8.9

CLASS A

Oliver McClarty	6-1	57.5
Ricky Presley	5-2	54.5
Brian Streetman	5-2	54.2
Jim Haley	4-3	57.4
John Luttrell	4-3	48.6
A.W. Wetherford	2-5	44.5
Clayton Kurtz	1-6	46.9
Sterling King	1-6	44.6

CLASS B

Ray Rudgins	4-1	42.1
Don Hoover	3-2	42.3
Jr. Brown	2-3	44.8
Henry Turner	2-3	44.6
George Bradfield	2-3	42.6
Larry Cheek	2-3	42.5

CLASS C

Wayne Irwin	6-1	39.7
James Spencer	5-2	47.1
Jim Hudgins	5-2	46.9
Larry Collett	5-2	40.2
Marvin Fortenberry	3-4	37.5
Lester Talton	2-5	38.7
Howard Lubben	1-6	35.5
Benny Adams	1-6	30.3

CLASS D

Darrell Humphries	6-1	36.4
Bob Sensinger	6-1	33.9
Larry Sutton	5-2	33.1
Danny Martin	3-4	30.0
Rex Collett	2-5	30.0
John Pederson	2-5	26.5
Paul Cragg	2-5	26.2
Doug Hamling	2-5	23.4

CLASS E

Gene Nichols	7-0	38.0
Bobby Powers	6-1	29.9
Roy Whitlock	4-3	26.5
Don Jones	4-3	26.1
Adny Pejko	3-4	23.2
Jim Nave	2-5	17.0
Don Crawford	1-6	20.1
Don Coleman	1-6	17.8

CLASS F

Jimmy Spencer	5-0	28.6
Bud Ivester	3-2	20.0
Ron Bunch	3-2	17.8
J.E. Brooks	2-3	23.3
Richard Anderson	2-3	17.3
Ward Burts	0-5	11.4

HAWAII

Sept. 5-7, 1992 Sanc. #06-92-022

CHAMPIONSHIP CLASS %

Jack Frias	8-0	44.2
Palani Gomes	8-1	51.3
Kimo David	6-2	40.0
Ed Shaw	6-3	42.5
Rita Amaral	4-5	29.2
Al Edsman	3-5	33.3
Manuel Kawaha	3-6	32.8

Reggie Gomes	2-6	29.7
Mitch Sabagala	2-7	27.5
Chris Koanui	1-8	28.9

CLASS A

Palani Gomes	10-0	54.5
Kimo David	6-3	35.3
Jack Frias	5-5	40.5
Ed Shaw	4-6	34.5
Mitch Sabagala	4-6	32.0
Jason Paaaina	0-9	25.3

CLASS B

Chris Koanui	9-1	40.5
Manuel Kawaha	8-2	38.5
Reggie Gomes	6-4	35.3
Rita Amral	6-4	30.3
Ray Kinore	5-5	28.0
Joesph Amaral	3-7	30.8
Richard Stoltzfus	2-8	30.0
Al Edsman	1-9	30.5

CLASS C

Kelly Somildam	9-1	31.0
Rodney Rodrigues	8-2	28.8
Donald Sabagala	5-5	28.5
Rodney Nahina	4-6	24.5
Al Hatori	2-8	23.8
Albert Chock	2-8	21.8

CLASS D

Duane Giles	7-1	30.9
Leo Lagadon	6-2	28.6
Donald Kennel	4-4	21.4
Ed Miller	3-5	18.3
Fesaui Ropati	0-8	0

CLASS E

Ronald Paaaina	7-1	26.0
Jerry Forsstrom	5-3	21.5
Persing Mizuta	4-4	18.8
Tony Hildago	2-5	14.0
Eddie Ko	1-6	14.0

CLASS F

Wendell Kalua	10-0	32.5
Gergory Topley	7-3	11.3
Emmett Kaulili	6-4	15.3
Troy Cabral	5-5	8.7
Kalani Kalima	2-8	5.6

WOMEN'S CLASS

Linda Ferreira	6-0	50.0
Ann Mizuta	2-4	11.0
J-Dean Oya	1-5	23.2

SENIOR MEN

John Fragas	8-0	40.0
Buster Makini	6-2	45.6
John Kahalewai	2-6	28.4
David Calles	2-6	19.7
John McCormack	2-6	18.8

IDAHO

Aug. 29-30, '92 Sanc. #08-92-016

CLASS A W-L %

Dean Curry	51.8
Jesse Lyda	55.5
Wayne Durnil	51.8
Sam Williams	49.8
Gary Kollman	52.1
Clyde Marquez	48.7
Cecil McIndoo	47.3
Clancy Webb	45.9
Louie Piva	42.8
Harry Chapin	43.8
Ray Grossaint	38.0
Lyle Anderson	36.5

CLASS B

Joe Campbell	44.1
Bob Mitchell	44.0
George Sasz	38.3
Larry Silver	39.2
Wayne Schorzman	37.1
Nick Piva	33.7

Don Moser	36.7
Warren Stutzman	36.0
Sony Abad	32.3
Jerry Martin	30.9
Bill Travis	30.4

CLASS C

Chester Whitworth	40.7
Berle Riese	37.8
Kent Whirworth	42.9
Glenn Stutzman	34.1
Dean Blake	26.4
Buck Walker	29.8
John Warren	28.8
James McCue	28.5
Allen Lee	26.7
Ed Deeds	26.6
Henry Reid	28.1
Jack Beebe	20.2

CLASS D

Gene Shields	37.6
Jim Coba	27.8
Vern Tieszen	31.0
Harold Saylor	25.4
Vince Tracy	30.7
Bill Moore	25.4
Bob Matthews	26.3
Jim Saner	23.4
Gary Johnston	21.6
Ed Poppleton	24.9
Ron Smith	21.6
Jake Houston	22.5

CLASS E

Randy Hansen	28.4
Ron Lloyd	22.6
Carlos Marquez	20.7
Reed Holverson	23.2
Jerry Williams	21.8
Bob Peterson	13.3
Cordell Van Gorder	15.5
Don Heidt	15.2
Lou Logosz	14.6

SENIORS

Bob Thackeray	56.4
Bill Brown	50.9
Barney Brownlee	41.6
Russell Randall	38.5
Kent Kirk	35.5

WOMENS A

Linda Martin	53.4
Ruth Anderson	44.4
Loretta Kirk	42.8

WOMENS B

Dona Van Gorder	36.1
Betty Lyda	20.8

JUNIOR BOYS

Wayne Abad	52.5
Jay Anderson	30.2
Richard Lloyd	20.9

JUNIOR GIRLS

Joy Anderson	15.8
--------------	------

IOWA

Aug. 23-30, '92 Sanc. #24-92-053

CHAMPIONSHIP CLASS %

Kevin Cone	11-0	68.4
Lee Wiges	9-2	56.8
Jan Flemming	8-3	53.4
Wil Foelske	6-5	52.4
Red Henton	6-5	52.3
Marv Woollums	6-5	48.9
Keith Baker	5-6	52.5
Jerry Sease	4-7	46.8
Bill Vandegriff	4-7	44.8
Marv Engstler	3-8	47.8
Jerry Holt	3-8	42.7
Chet Foster	1-10	35.8

Tournament Results

A-1

Harlan Hass	5-0	51.9
Brian Flemming	4-1	47.6
Harold Garner	3-2	42.2
Leo Buell	2-3	45.5
Russ Martin	1-4	37.9
Larry Purcell	0-5	37.9

A-2

Woody Willson	5-1	44.2
Bob McKee	4-2	39.4
Herb Hansen	3-2	41.9
Jim Jackson	2-3	34.9
Gene Burlingame	1-4	41.7
Pat Casey	1-4	31.6

A-3

Ray Kamper	5-1	42.2
Rick Voshell	4-2	39.4
Bob Walters	2-3	42.7
Paul Beaman	2-3	35.2
John Brown	2-3	33.9
Birgil Williams	1-4	34.4

A-4

Slim Allen	5-1	44.0
Randy Ruff	4-2	38.4
Ralph Palmer	3-2	31.9
Ron Utley	2-3	36.3
Bill Goodman	1-4	31.5
Frank Koehler	1-4	30.0

A-5

George West	5-0	40.4
LeRoy Law	4-1	37.0
Dick Carlson	3-2	35.3
Art Brown	2-3	30.2
Don Wilson	1-4	30.3
CHuck Alfman	0-5	25.8

A-6

Vern Kollasch	5-1	35.5
Glen Stover	4-2	28.4
Muriel Maurer	3-2	36.8
Morris Lepley	2-3	28.1
Roger Gaulke	1-4	34.9
Gene McNamar	1-4	28.8

B-1

Tim Reece	4-1	32.6
Dean Carter	3-2	34.6
Claire Gifford	3-2	27.8
Dick Homan	2-3	39.6
Harold Miller	2-3	25.9
Neale Ruff	1-4	24.4

B-2

Kirk Vannausdle	5-1	33.4
Don VanWyk	4-2	30.5
Fay Kramer	2-3	26.3
Darwin Mott	2-3	26.0
Bill Hunter	2-3	21.1
Brad Jackson	1-4	15.4

B-3

Harold Barker	5-1	31.5
Bob Dugger	4-2	33.9
Al Cook	3-2	35.6
Jim Kempkes	3-2	30.7
Tom Smock	1-4	30.7
Lee Drewelow	0-5	23.1

B-4

Bill Harder	5-2	28.7
Bob Block	4-3	28.6
Dick Walker	3-3	33.2
Gene Rittman	3-3	21.7
Carroll Cone	2-3	29.5
Leonard Larson	1-4	22.9

B-5

John Reynolds	4-1	27.3
Maurice Skinner	3-2	31.5
Steve Hatch	3-2	25.0
Kevin Bailey	2-3	26.9
Joe Lepley	2-3	26.6
Gordon Eklund	1-4	25.1

B-6

Clyde Rains	5-0	31.1
Clair Strohn	4-1	28.2
Danny Sease	2-3	29.3
Cliff Kenney	2-3	22.2
Ted Winters	1-4	24.2
Marv Dirks	1-4	22.6

C-1

Chuck McFadden	5-0	31.8
Eric Ohnemus	3-2	27.2
Barry Jackson	3-2	24.6
Dean Fortune	2-3	27.6
Fred Baker	2-3	18.4
Marv Stracke	0-5	9.2

C-2

Leroy Schnathorst	4-1	26.3
Lowell Fox	3-2	23.2
Dave Sidles	3-2	20.1
Cal Ellis	2-3	21.1
Dean LeClere	2-3	20.5
Howard Leonard	1-4	17.5

C-3

Rick Boll	5-0	21.6
Lloyd Olson	4-1	21.0
Dave Kernes	3-2	16.7
John Fraaken	2-3	17.6
Francis Diller	1-4	12.5
Jim Werts	0-5	10.0

C-4

Jim Albright	4-1	25.5
Craig Edwards	3-2	19.1
Russ Bricker	3-2	13.7
Gary Schumann	2-3	15.9
Mac McKay	2-3	14.9
Steve Canaday	1-4	13.9

C-5

Grady Yackle	5-0	16.2
Bob Bown	3-2	12.0
Tracy Winters	3-2	6.5
Dennis Smith	2-3	13.9
Denny Long	1-4	7.4
Dick Huitt	1-4	6.7

CHAMPIONSHIP WOMEN

Cathy Carter	5-0	72.7
Pam Jackson	3-2	49.5
Mic Wilson	3-2	46.8
Phyllis Von Thun	3-2	44.0
Marianne Colony	1-4	38.9
Kristy Klejch	0-5	35.6

WOMEN A

Virginia Reysack	6-0	23.7
Phyllis Olson	3-3	5.4
Sharon Eberly	2-4	5.4
Gloria Baker	1-5	5.4

CHAMPIONSHIP BOYS

Joseph Smith	5-0	45.0
Richie Boll	4-1	37.0
Brian Woollums	3-2	28.7
Andy Foxen	2-3	31.6
Andy Smith	1-4	20.3
Jacob Bedard	0-5	12.2

BOYS A

Jerry Sease, Jr.	6-2	15.0
Raymond Rains	5-2	8.5
Ben Jackson	2-4	7.9
Brian Glick	0-6	3.7

CHAMPIONSHIP GIRLS

Jenny Hatch	4-0	14.3
Jerica Jackson	2-2	5.6
Heather Ray	0-4	3.1

KANSAS

Sanc. #18-92-019

CLASS A

	W-L	%
Danny Erbe	11-0	71.0
Duane Goodrich	9-2	63.4
Roger Potts	8-3	65.0
Merlin Potts	8-3	65.0
Bob Outt	6-5	57.3
Bob Booe	6-5	48.8
Ron Martin	5-6	56.6
Marvin Reheis	5-6	50.2
Jesse Hobbs	3-8	52.7
Alden Allbaugh	3-8	44.7
Phen Ven	1-10	44.8
Ralph Funk	1-10	39.7

CLASS B

Doug McConnell	10-1	48.0
Vernard Bell	9-2	43.7
Delbert Peters	7-4	44.7
Bud Green	6-5	36.4
Charles Gann	6-5	34.7
Guy Tinder Jr.	5-6	41.4
Howard Cochran	5-6	40.2
Jeff Harris	5-6	39.6
Norman Hammeke	5-6	37.8
Buzz Jones	4-7	38.5
Melvin Bray	4-7	34.2

CLASS C

Bernie VanLerberg	10-1	46.2
Tim West	8-3	39.8
Bill Whitley	7-4	35.1
Ed Jaimez	7-4	34.9
Chuck Kaniper	6-5	35.9
Charles Pringle	6-5	33.3
Orville Pfortmiller	5-6	34.8
Owen Ewell	4-7	38.6
Clifford Pierce	4-7	34.1
Robert Washburn	4-7	33.2
Gene Brock	3-8	31.9
Vic Locke	2-9	33.1

CLASS D

Bill Chandler	11-1	40.0
Jim Hale	10-2	36.9
Don Fugate	6-5	33.6
Richard Potter	6-5	31.8
Paul Sturges	6-5	31.0
Pete Waldschmidt	6-5	29.0
Al Kuch	6-5	28.7
Carl Folsom	5-6	27.3
Glen Smith	4-7	27.3
Paul Voelker, Jr.	4-7	21.5
Howard Morris	3-8	29.2
Tip McFadden	0-11	13.6

CLASS E

Arnold Carpenter	9-3	35.9
Dick Carpenter	8-4	33.9
Walter Morton	8-3	32.3
Monte Erbe	7-4	33.9
Lester Bartels	7-4	30.3
Terry Talley	6-5	27.1
Leonard Holladay	5-6	28.7
Bob Kinder	5-6	28.2
Dick Dixon	5-6	24.6
Marvin Karst	4-7	25.5
Gene Fleek	2-9	19.6
Buzz Dickson	0-11	20.1

CLASS F

Gregg Turner	10-1	41.4
Allan Hillman	8-3	30.9
Ken Martin	8-3	28.5
Harvey Washburn	7-4	30.5
Frank Schulte	6-5	27.9
John Nicodemus	6-5	25.3
Ron Underwood	5-6	28.8
John Butler	4-7	32.8
Bob Jackson	4-7	23.7
Randy Chumbley	3-8	27.4

Clarence Loyd	3-8	26.8
Rick Talley	2-9	20.3

CLASS G

Alvin Dumler	10-2	28.4
Harley Tucker	9-3	25.8
Les Falls	8-3	37.2
Barney Bell	8-3	26.3
Dick Rotach	7-4	30.8
Fred Harmon	6-5	25.7
Joe Newman	5-6	24.8
Gene Talley	4-7	24.5
Mike McClaskey	4-7	20.2
Doyle Derrick	3-8	19.2
John Beat	2-9	16.1
Joe McReynolds	1-10	23.0

CLASS H

Jerry Kopf	10-1	22.9
Darrell Keil	7-4	28.8
Eddie Clark	7-4	28.2
Marvey Washburn	7-4	25.0
Ron Burnell	7-4	23.9
Ray Carpenter	6-5	24.1
Dan Langley	6-5	22.9
Dean Prichard	6-5	21.8
Bill Chester	5-6	23.6
Erric Schuetz	3-8	18.6
Loren Coffey	2-9	19.2
Mike Eggers	0-11	14.9

CLASS I

Al Kostelac	10-2	20.9
Leroy Tralle	9-3	25.1
Steve Fox	8-3	24.4
Ken Jones	6-5	21.4
Wayne Zimmerman Sr.	6-5	20.0
Delbert Williams	6-5	20.0
Carroll Desbien	6-5	19.6
James Mortinger	5-6	21.2
Don Lickteig	5-6	19.6
Glen Plaisted	5-6	15.0
Harold Gray	1-10	11.8

CLASS J

Wayne Zimmerman Jr.	4-0	13.3
Gary Case	3-1	18.0
Cliff Beecham	3-1	18.0
Tom Feikert	2-2	18.6
Sam Adame	2-2	13.5
Willie Harmon	2-2	3.3
Clyde Merrill	0-4	7.0

CLASS K

Pat Feikert	4-0	19.5
Mike Cummings	3-1	12.7
Loren Smith	3-1	9.8
Dan Landis	2-2	11.8
Joe Mortinger	2-2	8.0
Bill Cotton Sr.	1-3	10.0
Jim Mortinger	1-3	8.8
James Eichman	0-4	6.5

70 + 30' CLASS A

Milt Everhart	9-0	55.3
Roy Smith	8-1	55.0
Roy Lowmaster	7-2	46.5
Wayne Shelinbarger	5-4	35.0
Bill Reh	4-5	42.5

70 + 30' CLASS B

Harold Keener	5-4	41.9
Russ Rendell	4-5	40.6
Howard Wallace	2-7	33.1
W.W. Webb	1-8	29.4

LADIES A

Mary Ann Peninger	8-1	50.3
Janet Walrod	6-2	51.5
Vonnie Jones	6-2	42.3
Lou McConnell	4-3	31.5
Deanie Reheis	3-4	30.4
Helen Merrill	2-5	22.6
Theresa Stevens	1-6	16.1
Chris Talley	0-7	15.6

Tournament Results

JUNIOR BOYS A

Vorn Ven	5-0	83.0
Levi Williams	3-2	35.9
Charley Ven	3-2	35.5
Donal Beddo	3-2	29.6
Jason Peters	1-4	22.2

JUNIOR BOYS B

P.J. Waldschmidt	4-1	11.2
Mike Gaul	3-2	18.5
James Underwood	2-3	13.8
Chris Gaul	1-4	8.8

JUNIOR GIRLS A

Tesa Turner	3-2	7.2
Kara Chaney	2-3	7.2

MASSACHUSETTS

Aug. 1-2, 1992 Sanc. #48-92-007

CLASS A MEN

W-L	%
John Kapnis	7-0 78.8
Robert Domey	5-2 70.8
Robert Kleynew	4-3 64.4
Charles Richardson	4-3 60.9
Richard Howe	3-4 58.0
Charles Bonani	3-4 57.3
Ed Domey	2-5 56.4
Steven Barnes	0-7 48.7

CLASS A WOMEN

Deborah Michaud	6-0	76.4
Bertha Baillargeon	4-2	73.3
Barbara Hanson	2-4	60.3
Mary Ryan	0-6	60.9

CLASS B MEN

Angelo Cieslak	5-2	50.0
Kirk Deluca	5-2	50.4
Allen Buxton	5-2	53.5
Bruce Rowland	5-2	51.3
Harold Reynolds	4-3	46.9
Bob Copley	3-4	46.6
John Duffy	1-6	42.8

CLASS B WOMEN

Lisa Maille	10-0	46.1
Becky Peck	6-4	43.2
Darlene Sisson	6-4	37.5
Sandra Copley	4-6	39.2
Sandra Matis	4-6	36.2

CLASS C MEN

Edward Beaulier	6-1	43.1
David Martin	5-2	46.6
Richard Shepard	4-3	44.1
John Shaw	4-3	42.3
Jimmy Hanson Jr.	3-4	37.1
John Grenon	2-5	34.9
Roy Robertson	2-5	32.4
Charles Erickson	2-5	28.7

CLASS C WOMEN

Annette Knapp	7-0	38.8
Ellen Maille	6-1	29.1
Judith Austin	4-3	24.2
Patricia Welch	4-3	17.2
Claudio Marsden	3-4	23.5
Margaret Tyrie	2-5	21.6
Donna Leahy	2-5	14.5

CLASS D MEN

Bernard Lapierre	6-1	46.0
Paul Cormier	5-2	42.4
William Progen	4-3	31.2
Walter Gardner	3-4	35.8
Guy Sibley	3-4	35.2
Edward Boehnke	3-4	34.8
Joseph Pepi	3-4	31.9
Robert Leblanc	1-6	29.3

CLASS E MEN

Robert Swain	9-0	38.9
Matt Hendrickson	6-3	39.8
Rene Caron	6-3	35.7
David Bowers	6-3	29.5
John Mundell	5-4	31.6
Peter Pereira	4-5	25.8
Roland Doucette	3-6	35.1
George St. Pierre	3-6	30.7
David Taylor	3-6	27.2

CLASS F MEN

Ernest Baillargeon	7-2	31.6
Kenneth Terrio Jr.	6-3	30.4
Don Guillemette	6-3	29.4
Red Cote	5-4	33.1
John Cragen	5-4	31.1
Paul Dumont	5-4	30.4
Richard Trask	4-5	28.4
Harry Schricker	4-5	26.8
Gary Gothing	3-6	21.9

CLASS G MEN

Edward Racicot	5-2	33.9
John Leahy Jr.	5-2	30.7
Bill Lawson	4-3	33.5
Donald Lindberg	4-3	30.4
Thomas Matis Sr.	4-3	29.0
William Galligan	3-4	27.4
Thomas Costello	2-5	31.1
Robert McNeill	1-6	31.8

CLASS H MEN

Kenneth Terrio Sr.	8-1	36.5
William English	7-2	29.8
Gilman Pratt	6-3	32.5
Jim Digiacomo	6-3	31.9
David Coderre	5-4	29.9
Charles McNeill Jr.	4-5	34.7
William Pratt	4-5	28.8
Arthur Hebert Jr.	3-6	25.8
Richard Pratt	2-7	27.6

CLASS I MEN

Paul Kelly	6-1	24.8
Jim Hanson Sr.	5-2	29.0
John Newbury	4-3	30.5
Frank Trabucco	4-3	28.0
Jack Marsden	4-3	25.3
Richard Camilleri	3-4	27.5
Russell Gibbs III	2-5	27.3
Henry Johnson	0-7	18.3

CLASS J MEN

David Timple	6-1	31.4
Al Cardinale	6-1	27.2
Ronald Hetu	6-1	30.0
Don Giguere	3-4	28.0
John Emery	3-4	24.1
James Tyrie	2-5	24.5
Archon Vatroussis	1-6	20.4
Donald Richardson	1-6	19.7

CLASS K MEN

Owen Harriman	7-7	26.7
Walter Pingree	6-6	20.8
Bob McQuade	5-3	26.0
Frank Zygarowski	5-5	24.9
Frank Ryan	4-4	27.9
Ken Peck	4-4	27.4
Al Fondacaro	4-4	23.5
George Davenport	1-7	17.0

CLASS L MEN

Howard Austin	7-0	25.2
Bob Winter	5-2	25.0
Lombard Sargent	4-3	26.1
Don Merritt II	4-3	21.9
James Tyner	4-3	19.4
Arthur Pratt	2-5	17.2
Earl Fredetter	1-6	16.8
Paul Wagner	1-6	12.5

CLASS M MEN

Louis Daigle	4-1	23.9
--------------	-----	------

Brian Clarke	4-1	20.1
Warren Clarke	4-1	20.2
Ray Normandeau	5-0	11.0
Brian Bailey	2-3	12.5
Leo Michaud	1-4	15.7

CLASS N MEN

Fred Giesin III	4-0	17.0
Brian Davenport	2-2	17.0
David Belle	0-4	8.7

JUNIOR BOYS

Robbie Laptewicz	26.8
------------------	------

MINNESOTA

Sept. 4-7, 1992 Sanc. #23-92-008

MENS CLASS A

W-L	%
Dale Lipovsky	6-1 67.9
Mark J. Baumann	5-2 61.9
Jack O'Connor	4-3 65.8
Dave Hughes	4-3 61.4
Gerald Stangland	3-4 63.8
Len Lipovsky	2-5 65.1
Danny Carlson	2-5 57.5
Wilfred Korpela	2-5 56.8

MEN'S CLASS B

Bill V. Larson	6-1	54.5
Ray Volkers	5-2	55.1
Jim Aleckson	4-3	60.2
Raymond F. Lust	4-3	55.7
Norm Morrison	4-3	48.8
Jerry Hokkala	3-4	53.4
Lionel McMahan	1-6	49.7
Don Jakel	1-6	47.4

MEN'S CLASS C

Joe Anzaldi	6-1	58.2
Rolland Swenson	5-2	52.5
David Borscheid	4-3	52.5
Fred Krentz	4-3	50.8
Martin Birkholz	3-4	49.4
Art Moran	3-4	47.7
Harley Anderson	2-5	46.5
Gordon Schmidt	1-6	43.4

MEN'S CLASS D

Pete O'Connor	6-1	59.7
Terry L. White	5-2	53.1
Norman McCann	4-3	48.0
Charlie Wells	4-3	46.2
Bob Bayerl	3-4	39.1
Shane Paulsen	2-5	43.4
Elmer Knockel	2-5	42.0
Ron Wilkinson	2-5	40.0

MEN'S CLASS E

Gene Comero	6-1	48.5
Bill Grillo	5-2	52.2
Mike Dowling	5-2	49.7
Jim Beyer	5-2	48.0
Carl Larson	3-4	40.5
Lloyd Wolf	2-5	43.7
Bernie Caron	1-6	47.7
Bud Helman	1-6	40.2

MEN'S CLASS F

Dale Ackman	6-1	48.2
Ronald J. Fadden	6-1	43.1
Jim Holland	4-3	42.0
Al Otterness	3-4	39.1
Donald A. Spinler	3-4	36.8
Walter Busse	2-5	40.0
Mark Aleckson	2-5	39.4
Larry Nelson	2-5	30.2

MEN'S CLASS G

Dick Dvorak	7-0	49.4
Roy Reed	5-2	51.7
Roger Isenberg	5-2	45.7
Hutch McMahan	4-3	48.5
Marvin Meyer	3-4	42.5
John Staniger	2-5	41.4
Ray Furey	2-5	39.4
William Marschel	0-7	40.0

MEN'S CLASS H

Eric Sandquist	7-0	59.1
Jerry Larson	6-1	48.2
Russ Hoppe	4-3	48.5
Mike Kloster	4-3	38.5
Dave Pederson	3-4	39.1
Mike Granquest	3-4	34.8
Ed Tio	1-6	30.8
Dean Heng	0-7	13.1

MEN'S CLASS I

Byron Bonk	6-1	46.8
Earl Tiegs	5-2	48.8
Cliff Presler	4-3	40.2
Ron Negaard	3-4	39.4
Cal Weber	3-4	38.2
Dave Edenloff	3-4	34.8
Reynold Grothe	2-5	40.5
Dennis Buendorf	2-5	36.0

MEN'S CLASS J

Myron Flann	6-1	49.7
Bob Stewart	5-2	47.4
Tiom Bayerl	5-2	44.2
Norm Gage	4-3	41.7
Jacob J. David	4-3	38.5
Harold Bishcel	2-5	38.0
Terry Tellers	2-5	34.8
Mickey Mueller	0-7	

MEN'S CLASS K

Dave Beyer	6-1	41.7
Glen Sandquist	5-2	42.2
Glen Johnson	5-2	35.4
Bill Ringenberg	3-4	38.7
Dick Moen	3-4	36.0
Bob Horn	2-5	38.8
Len Parrish	2-5	38.0
Gilbert Starr	2-5	32.0

MEN'S CLASS L

Richard Beyer	6-1	49.1
Ward Lutz	4-3	42.8
Roger Tripp	4-3	40.0
Greg Benson	4-3	35.4
Jerald Hagen	3-4	39.4
Bob Dunn	3-4	36.2
Al Gunderson	3-4	34.2
Vern Osterhues	1-6	30.2

MEN'S CLASS M

Jerry DSylla	7-0	44.5
Pete Hovda	5-2	35.7
Dan Dowling	4-3	32.5
Brad Bergerson	3-4	32.5
Gary Swanson	3-4	29.4
Don Johnson	2-5	26.8
Gary Mattison	2-5	26.5
Jack Thayer	2-5	24.8

MEN'S CLASS N

Les Holland	7-0	40.2
Chuck Murray	4-3	37.7
Gary McKenzie	4-3	37.1
George Anderson	4-3	28.8
Douglas Czeck	3-4	32.2
Harvey Denzin	2-5	31.4
Bud Nelson	2-5	30.5
Don Sieben	2-5	27.7

MEN'S CLASS O

David Haugen	6-1	35.1
Mark Schaefer	5-2	40.0
Chris Hirman	5-2	32.0
Mike Elfman	4-3	28.8
Henry Greenwaldt	3-4	32.5
Terry Gleason	3-4	27.1
Lon Droneck	1-6	27.7
Jim Loxton	1-6	27.1

MEN'S CLASS P

Byron Eckholm	6-1	43.1
Harold Schrader	6-1	41.7
Dennis Carlson	5-2	35.1
Rick Wright	3-4	28.2

Tournament Results

Jeff Waataja 3-4 26.8
Merlin Cropp 3-4 22.2
Fred Luoma 1-6 26.8
William Sargent 1-6 22.0

MENS CLASS Q

Richard David 6-1 33.4
Howard Dalzell 6-1 33.1
Arthur Vierkant 5-2 31.7
Steve Matuke 4-3 33.1
Ralph Yost 3-4 30.2
Erwin Tescher 2-5 31.4
Dennis Keogh 1-6 23.4
Rick O'Connor 1-6 22.8

MENS CLASS R

Barry Hanson 6-1 38.8
Gerald Nelson 5-2 36.0
Harry Fillafer 5-2 35.1
Emery Mecshke 5-2 31.7
Bill Nelson 3-4 22.5
Glenn Kruse 2-5 23.7
Jerry Zastrow 2-5 21.4
Stuart Luoma 0-7 15.1

MENS CLASS S

Lonnie Frank 7-0 34.5
Jerry Schandorff 6-1 29.1
Gary Conzet 4-3 25.7
Chuck Greive 4-3 25.1
Dean Hedlund 3-4 29.1
Art Halverson 2-5 22.2
Darrell Hirman 2-5 15.4
Dick Hall 0-7 18.8

MENS CLASS T

Steve Hemish 7-0 26.8
Larry Brabec 6-1 24.0
Robert Jones 5-2 26.0
Scott Anderson 3-4 27.4
Troy Alickson 3-4 12.5
Lowell Johnson 2-5 23.7
Dave Senger 2-5 15.1
William Morrill 0-7 0

MENS CLASS U

Jack Loeffen 6-1 33.1
Herman Hovda 6-1 26.8
Ray Politano 4-3 22.2
David Feldt 3-4 21.1
Bob Midthun 3-4 21.1
Patrick Virnig 3-4 20.2
Len Splett 2-5 21.4
Billy Fitzgerald 1-6 19.7

MENS CLASS V

Bert Nelson 6-1 28.0
Earl Flynn 5-2 24.8
Bob Knudson 4-3 24.2
Robert Vonbehren 4-3 22.2
Ron Ellanson 3-4 23.1
Kenneth Anderson 3-4 25.7
Harry Jensen 2-5 19.4
Joel Stenhaus 1-6 0

MENS CLASS W

Dick Ask 6-1 26.5
Bill Orman 6-1 24.8
Ron Erickson 5-2 23.7
Ken Howe 4-3 19.4
Steve Blake 3-4 24.5
Ed Brown 2-5 17.7
Ernest Anderson 2-5 15.7
Cal Sam 0-7 10.8

MEN'S CLASS X

Connie Reinhardt 6-1 29.4
Tom Jones 5-2 24.0
Glen Berglund 5-2 20.2
Millard Olson 5-2 15.4

Leonard Tanner 3-4 10.5
Tim Milo Knudson 2-5 17.7
Ted Myren 2-5 17.7
Ben Lacoursiere 0-7 0

MENS CLASS Y

Dave Schubert 6-1 29.4
Roger Jahns 6-1 24.0
Mark Tellijohn 4-3 20.2
Norman Greenwaldt 4-3 15.4
Steven Johnson 4-3 10.5
Dave Boxell 3-4 17.7
Dale Hedlund 1-6 17.7
Mike Elle 0-7 0

MENS CLASS Z

John Stanford 6-1 24.5
Al Luthens 6-1 9.7
Roy Albrecht 5-2 21.1
Scott Murphy 4-3 17.1
Leroy Johnson 3-4 20.5
Larry Larson 2-5 19.7
Jeff Virnig 1-6 15.4
Clark Bickford 1-6 12.5

MENS CLASS Z-1

Ken Meyer 6-1 20.5
David Morgon 4-3 21.7
Gene Hill 4-3 20.8
Scott Kenney 4-3 16.2
Tim Reinke 4-3 15.4
Chuck Elmer 3-4 20.5
Timm Marvin 2-5 14.8
Field Milton 1-6 14.2

MENS CLASS Z-2

Steve Jefferson 6-1 10.2
Don Ehrhardt 5-2 12.8
Tom Keppel 5-2 7.4
Jerry Hagel 5-2 6.5
Steve Ahles 4-3 7.1
Darryl Howard 2-5 5.4
Jerry Roemhildt 1-6 6.2

WOMENS CLASS A

Bev Nathe 5-0 80.9
Lu Cave 4-1 66.6
Phyllis Negaard 3-2 74.2
Edi Holland 2-3 66.3
Christine Gage 1-4 57.7
Pat Stumpf 0-5 57.2

WOMENS CLASS B

Bonnie Holland 4-1 54.0
Ginger O'Brien 3-2 54.8
Mary Denzin 3-2 51.6
Karen Thayer 3-2 49.2
Carol Hoppe 2-3 47.2
Dorothy Eaton 0-5 38.8

WOMENS CLASS C

Barbara Hirman 6-1 51.1
Christie Cave 5-2 50.0
Renee Horn 4-3 52.2
Gail Paulson 4-3 43.1
Linda Pick 3-4 41.1
Marlys Timm 3-4 34.2
Nancy Zimmerman 2-5 34.8
Sue Edenloff 1-6 34.2

WOMENS CLASS D

Barbara Stowers 7-0 39.7
Marlene Peterson 5-2 30.2
Rose Osterhues 5-2 29.4
Mary Matuke 4-3 29.7
Cindy Paul 3-4 26.8
Lynn Kruse 3-4 25.1
Margaret Johnson 1-6 28.8
Sue Sam 0-7 0

WOMENS CLASS E

Carolyn Dowling 5-0 22.8
Renea Lipovsky 4-1 27.2
Mary Schoen 3-2 19.2
Wanda Kezar 2-3 6.8
Lyndal Rieger 1-4 19.2

Cathy Bergquist 0-5 9.6

WOMENS CLASS F

Gloria Anderson 5-0 26.8
Val Hollingsworth 4-1 20.4
Milie Greive 3-2 18.4
Sharon Rasmussen 2-3 13.2
Heather Gage 1-4 14.4
Shirley Hill 0-5 10.4

BOYS CLASS A

Vance Harren 5-0 83.1
Chris Harren 4-1 65.5
Chris Thorstenson 3-2 44.8
Jeff Rosival 2-3 29.1
Joshua Hirman 1-4 28.2
Cory Thorstenson 0-5 5.8

BOYS CLASS B

Czeck Bobbie 4-1 33.2
Justin Ricketts 4-1 29.6
Shane Vonbehren 4-1 25.6
Randy Albrecht 2-3 14.8
Evan Bickford 1-4 18.8
Curtis Clippard 0-5 14.8

BOYS CLASS C

Chad Peterson 7-0 20.5
Clinton Tuhy 4-3 16.5
BJ Thorstenson 4-3 15.7
Chet Czek 4-3 15.1
Seth Abate 4-3 8.8
Michael Tuhy 4-3 7.7
Patrick Crosby 0-0 0

GIRLS CLASS A

Paula Maahs 5-0 48.7
Tiffany Gage 4-1 45.7
Jessica Dunn 3-2 40.2
Missa Rosival 2-3 32.6
Jeanna Rocha 1-4 27.3
Melissa Tuhy 0-5 25.0

GIRLS CLASS B

Sarina Edenloff 4-1 28.8
Molly Rusiniko 4-1 18.0
Kristine Haugen 4-1 18.0
Joni Czek 2-3 12.4
Gina Barbeau 1-4 2.4
Sarah Keefe 0-5 0

SR. MENS 30' A

Oliver Roesler 7-0 52.6
Bubs Gedatus 6-1 53.1
Hjalmer Johnson 5-2 57.0
Don Larson 4-3 47.3
Arnold Erickson 2-5 33.5
Harold Hibbing 2-5 32.9
Orville Young 1-6 35.9
Clarence Lundeen 1-6 30.9

SR. MENS 30' B

Edward Ackman 5-0 41.6
Robert Cooper 4-1 24.8
Ray Harris 2-3 23.2
Bill Fields 2-3 22.8
Fred Manke 1-4 16.4
Lucky Bjugan 1-4 15.2

SR. MENS 40' A

Clayton Peterson 5-1 46.5
Elwood Johnson 4-2 50.8
Ray Tiili 3-2 48.7
Ralph Marcks 2-3 43.1
Earl Dean 2-3 26.7
Othar Peterson 0-5 21.7

SR. MENS 40' B

Walter Hill 5-0 40.8
Clint Swartz 4-1 27.2
Al Rupkalvis 3-2 26.8
Robert Mickelson 2-3 21.6
Emmett Langston 1-4 14.0
Marlin Houfer 0-5 11.2

MISSOURI

Sept. 4-7, 1992 Sanc. #19-92-026

MENS CHAMPIONSHIP

	%
Alan Francis	15-0 78.3
Kenneth Pogue	13-2 70.5
Sam Carter	12-3 70.7
Elwyn Cooper	11-4 63.2
Charles Killgore	10-5 65.9
Ron Hassler	10-5 59.3
Stan Griggs	8-7 62.7
Jerry Francis	8-7 57.1
Kelly Hill	7-8 57.1
Tim Henderson	6-9 57.0
M.O. Turner	5-10 59.1
Tom Ebers	5-10 54.5
Steve Schuck	4-11 48.4
Dave Dattilo	4-11 46.5
Bob Hughes	2-13 43.4
Ron Deno	0-15 35.7

CLASS AA

Bob Barnes	7-1 55.7
Charles Kertz	6-2 65.0
Carl Reddick	5-2 56.4
Don Enke	4-3 53.5
Tim Burkemper	3-4 51.9
Mick Gillette	2-5 52.2
Earl Winston	2-5 47.4
Cal Eikel	07 47.4

CLASS A

Larry Francis	5-0 59.9
Oley Burnett	3-2 61.0
Bill Masterson	3-2 52.8
Bill Waisner	2-3 54.1
Rick Stockamp	2-3 52.0
Bob Diekamp	0-5 43.2

CLASS BB

Steve Pearia	6-0 56.6
Chuck Martin	5-1 54.2
D. Leon Thompson	4-2 48.8
Cliff Gauden Jr.	2-4 43.0
Kent Houston	2-4 37.4
Dale Parrott	2-4 34.5
G. Bob Johnson	0-6 36.6

CLASS B

Wayne Henderson	7-1 49.2
Jim Gregory	6-2 42.9
Pat Beilsmith	4-3 43.0
Bob Beaver	4-3 39.5
Herb Sisco	3-4 44.7
Ron Watkins	3-4 38.4
Orland Young	2-5 44.3
Frank Miles	0-7 30.5

CLASS CC

Larry Volo	6-1 40.7
Ron Craven	5-2 44.8
Dave Berliner	5-2 41.9
Jim Blumenthal	4-3 42.4
Ray Owens	4-3 39.4
John Orf	2-5 33.8
Charles Rogers	1-6 39.4
Oliver Krueger	1-6 39.0

CLASS C

Matt Fields	5-2 48.1
Lewis Kent	4-3 48.3
Frank Hudson	4-3 42.3
Oden Sullivan	4-3 41.5
Doug Dickbernd	4-3 40.4
Bob Alcox	3-4 40.7
Bob Reininger	2-5 33.7
Ray Schilf	2-5 33.1

CLASS DD

Roy Evans	7-1 46.3
Butch Kelley	6-2 41.6
Toby Carmichael	5-2 41.4
Carl Rittner	4-3 41.4
Norman Robinson	4-3 40.3
Bob Blumenhein	1-6 31.8

Tournament Results

Reese Warden 1-6 30.4
John Bax 1-6 23.8

CLASS D

Patrick Buehrle 7-0 43.9
Marty Sweazea 5-2 38.0
Leo Basler 4-3 32.1
Jim Klump 3-4 34.2
Leonard Lentz 3-4 34.0
Jim Larkin 3-4 33.9
Howard Lane 3-4 33.5
Steve Penberthy 0-7 29.8

CLASS EE

Donald Ell 6-1 39.4
Richard Altis 52 45.8
Dave Sage 5-2 39.7
Harry Johanning 5-2 38.3
Jim Claxton 3-4 38.0
Joe Faron Sr. 2-5 35.8
Jerry Griggs 2-5 33.5
Frank Marquart 0-7 17.0

CLASS E

Hurley Mahan 5-1 42.9
Don Clemens 4-2 42.3
Gale Dickherber 4-2 40.4
Bill Courtwright 4-2 33.9
Richard Schmidt 3-3 31.5
John Graham 1-5 29.5
Leroy Welch 0-6 26.1

CLASS FF

Don Winston 7-0 39.0
Bill Molitor 5-2 36.3
Jim Adcox 5-2 32.5
Larry Langewisch 3-4 28.4
Waller Huffman 3-4 20.4
Jack Carnes 2-5 27.2
Terry Barnes 2-5 24.5
Dennis Bauer 1-6 22.5

CLASS F

Bob Cutright Sr. 6-1 35.8
Jerry Huffman 5-2 37.8
Carl Wolff 5-2 34.2
Dean Francis 3-4 38.0
Bill Wade III 3-4 30.6
Dan Ryan 3-4 26.9
Lloyd Humphrey 2-5 24.8
Francis Griesbauer 1-6 23.7

CLASS GG

Gregg Craven 6-1 37.8
Bill Epple 5-2 34.9
Ed Brown 5-2 33.1
Dave Alcamo 4-3 33.4
Charles Turner 3-4 35.4
Ernie Brakensiek 3-4 31.0
David Redhage 2-5 31.1
Kent Armstrong 0-7 21.7

CLASS G

Roy Carroll Jr. 7-0 35.0
Bryan Potter 5-2 33.7
Don Hagemann 4-3 31.6
Jackie Cargile 3-4 28.8
Harvey Wobbe 3-4 26.7
Ken Pfadenhauer 3-4 26.1
Frank McKay 2-5 25.0
Bob Kandlbinder 1-6 26.3

CLASS HH

Mark Myers 7-0 40.9
Herman Campbell 5-2 33.2
Irv Sapp 4-3 29.6
William Brown 4-3 28.1
Mike Leake 3-4 25.9
Ray Nadler 3-4 23.2
Sam Kidd 2-5 28.8

Russell Maher 0-7 17.6
CLASS H
Dee Hathaway 7-0 28.0
Clarence Eggert 6-1 32.3
Jeff Bauer 4-3 27.0
Don Claas 4-3 23.8
Roger Schnur 3-4 26.7
Ken Sykora 2-5 20.7
Ron McKinnery 2-5 19.3
Donald Phillips 0-7 16.3

CLASS II

Ken Pratt 7-1 35.2
Bill Garner 6-2 28.0
Jerry Henry 3-4 31.0
Jerry Wyrick 3-4 29.1
Fred Smith 3-4 28.8
John Hargrove 3-4 26.5
Gary Buehler 2-5 30.5
Irv King 2-5 19.9

CLASS I

Joe Gaulden 7-0 34.5
Paul Dattilo 5-2 32.8
Jim Tate 5-2 31.4
Ray Pearia 4-3 26.8
Monty Ragar 3-4 26.7
Joe Rothermich 2-5 29.8
Steve Flood 1-6 27.1
Tim Wolff 1-6 17.2

CLASS JJ

Gene Willis 7-0 32.4
Chuck Rose 6-1 32.2
Ben Kirkpatrick 5-2 27.5
Dave Iden 4-3 24.2
Jerry Castillon 3-4 22.5
George Budde III 1-6 22.5
Harless Kampe 1-6 21.7
Dannie McDaniel 1-6 17.2

CLASS J

Earl DOn Feters 7-0 34.4
Brady Craven 6-1 29.2
Larry Roark 5-2 28.0
Doug Emge 3-4 22.2
Lee Huddleston 2-5 23.8
Bob Fulkerson 2-5 22.9
Don Roberts 2-5 20.3
Mike Wolff 1-6 18.0

CLASS KK

Larry Brown 7-0 29.1
Bob Tignor 5-2 25.0
Ernie Ellerman Jr. 5-2 24.4
Jim Willenbrink 4-3 21.3
Harvey Coffee 3-4 25.1
Tim Engle 2-5 15.0
Larry Anderson 1-6 16.2
Mike Giratos Jr. 1-6 12.7

CLASS K

Andrew Foulds 6-1 34.9
Dale Homan 5-2 26.7
Randy Watson 4-3 23.6
Rick McCain 4-3 19.2
David Reimers 3-4 22.9
Mike Iden 3-4 22.6
Charles Tuttle 2-5 15.5
Greg Benoist 1-6 23.2

CLASS LL

Steve Conrow 7-0 34.1
Harold Fricke 6-1 21.8
Tim Warden 3-4 26.3
Dwain Rains 3-4 19.5
Craig Dieckman 3-4 16.9
Joseph Kaufman 2-5 16.7
Wayne Cutright 2-5 16.2
Joe Faron Jr. 2-5 13.4

CLASS L

Johnny Egeland 6-1 22.5
Tom Toben 5-2 20.8
Jim Collins 4-2 17.3

Dennis Sherman 4-2 14.3
Robert Breig 1-5 18.5
Chris Oswald 1-5 16.1
John Myers 1-5 13.8
CLASS MM
Rich Greco 6-0 18.3
Ron Hammond 5-1 18.1
Gene Loyd 3-3 16.7
Robert Henry 3-3 16.2
Robert Vollmer 3-3 15.3
Richard Haug 1-5 9.0
Terry Toben 0-6 7.6

WOMEN CHAMPIONSHIP

Vicki Winston 5-0 78.6
Pam Henderson 4-1 71.3
Mary Ann Ell 2-3 54.0
Nancy Pallardy 2-3 52.2
Judy Waisner 1-4 39.8
Loree Meier 1-4 31.4

WOMEN A

Sue Cutright 6-0 42.7
Mary Beeson 5-1 40.0
Jeanette Claas 3-3 35.8
Sharon Armstrong 3-3 35.2
Tracy Sherman 2-4 36.0
Betty Strasbourg 2-4 34.9
Rita Killgore 0-6 20.5

WOMEN B

Marcia Kelley 8-1 44.8
Kathy Lemons 6-2 41.4
Sharon Frank 6-2 34.3
Hiroko Birdsall 4-3 30.9
Daphne Happy 3-4 24.8
Susan Block 2-5 23.8
Fran Lottmann 1-6 22.2
Jodie Estes 0-7 17.3

WOMEN C

Elaine Bote 7-0 32.0
Rose Thompson 5-2 32.9
Pam Dobbins 4-3 31.0
Mae Barnes 4-3 23.9
Doris Gaulden 3-4 25.1
Dora Hudlemeyer 2-5 23.3
Jo Ann Wall 2-5 14.4
Judy Geisler 1-6 12.3

WOMEN D

Sophia Bax 5-2 23.5
Tarra Henry 4-3 23.4
Peggy McCain 4-3 19.5
Mary Duke 4-3 18.2
Debra Johnson 4-3 15.6
Jan Kreienkamp 3-4 27.8
Regina Ward 2-5 14.4
Meta Vollmer 2-5 13.1

SR. CHAMPIONSHIP

Wm. "Lou" Rector 5-0 61.1
Steve Hrabovsky 4-1 47.6
Dick Cotter 3-2 49.0
Al Ratley 2-3 35.5
Pete Harris 1-4 37.5
Darwin Compton 0-5 36.6

SENIOR A

Jack Roach 5-0 35.9
Cal Jaeger 4-1 31.9
Johnny McCarron 3-2 28.5
John Fischer 2-3 24.3
John Nahlik 1-4 19.6
Landon Koelling 0-5 5.6

70 + 30' CHAMPIONSHIP

Don Harris 6-0 55.4
Glen Hardin 4-2 41.7
Woody Juncker 3-3 48.8
L.C. Kelly 3-3 46.3
Art Schroeder 3-3 44.4
William Paul 2-4 36.0
Woodrow Shepard 0-6 26.8

70 + 30' CLASS A

John Bauer 5-0 39.5
Marcell Kruse 3-2 29.5
Elmer Boman 3-2 27.5
Adrian Dillon 3-2 26.4
Lou Frazee 1-4 16.3
Harold Bock 0-5 14.2

JR. CHAMPIONSHIP

Brett Francis 5-0 64.2
Aaron Willis 3-2 53.8
Jason Rains 3-2 51.2
Todd Elfrink 2-3 50.0
Buddy Huddleston 2-3 48.1
Jim Burnett 0-5 44.8

JUNIOR A

Troy Dickbernd 7-2 19.1
Steve Burt 6-3 14.0
Matt Wolff 6-3 18.5
Matt Kandlbinder 5-4 19.8
Heather Tignor 3-4 18.3
John Ellerman 2-5 18.6
Jerry Bote 2-5 13.1
Mike Turner 1-6 12.1

NEW HAMPSHIRE

Aug. 1, 1992 Sanc. #47-92-004

CLASS A MEN

W-L	%
Bill Harrington	7-0 55.2
Steve Squires	5-2 60.1
George Donovan	5-2 57.3
Dave Wilson	3-4 54.1
Phil Bergeron	3-4 52.6
Bob Davis	2-5 46.7
Sam Raymond	2-5 39.6
Dave Wescott	1-6 48.9

CLASS B MEN

W-L	%
Dean Squires	7-0 47.3
Tim Comeau	5-2 43.7
David Moore	4-3 42.4
Henry Turcott	3-4 39.6
Tom Booth	3-4 37.9
Paul Sarette	3-4 35.5
Warren Hall	2-5 35.4
Rick Fife	1-6 35.0

CLASS C MEN

W-L	%
Larry Croteau	7-0 47.3
Norm Ricard	5-2 40.0
Ron Bowler	4-3 29.1
Ken Castor	3-4 38.0
David Holmes	3-4 37.3
Bob Lee	3-4 36.8
Dick Belanger	2-5 38.2
Roger Pelton	1-6 28.8

CLASS D MEN

W-L	%
Bob Ladd Sr.	7-0 45.0
Bob Zeman	6-1 33.3
Rodney Eldenridge	5-2 29.8
Howard Murphy	3-4 26.9
Don Lachance	2-5 25.6
Ray Towle	2-5 22.6
Lincoln Burnham	2-5 21.9
Al Cyr III	1-6 24.5

CLASS E MEN

W-L	%
Roger Simpson	6-1 34.5
Mike Harrington	5-2 35.4
Mike Trudelle	4-3 28.0
Jack Baker	4-3 26.1
Mike Mead	4-3 25.7
Al Cyr Jr.	2-5 25.6
Brad Miller	2-5 24.5
Jerry Randall	1-6 21.3

CLASS F MEN

W-L	%
Al Brochu	7-1 27.7
Don McIlvene	6-2 23.7
Wally Miller	5-2 25.2
George Leonard	4-3 22.7
Jamie Trudel	3-4 18.0

Tournament Results

8

Dick Doble, Jr. 2-5 18.5
Guyu Shannon 1-6 20.8
Brian Hall 1-6 14.4

CLASS G MEN

Don Lafond 7-0 22.2
John Wardner 5-2 22.6
Reg Landman 5-2 15.9
Ron DesRoberts 4-3 19.9
Paul LaCombe 4-3 19.7
Reno Putnam 2-5 12.0
Harold Townsend 1-6 10.4

CLASS H MEN

Cliff Hibbard 5-1 11.3
Lann Caldwell 4-2 11.9
Steve Croteau 2-3 16.8
Chris Bell 2-3 10.1
Mal Georgina 2-3 9.7
Ed Pratt 1-4 6.8

CLASS A LADIES

Jean Carey 4-1 62.5
Debbie Alexander 3-2 60.7
Cindy DesRoberts 0-4 35.2

CLASS B LADIES

Darlene Wescott 5-1 32.2
Judy Bergeron 5-2 29.5
Sue Davis 4-2 30.6
Judy Powers 3-2 25.8

CLASS JR. BOYS

Jonathan Paul 5-0 21.9

SENIOR MEN

Dorell Gamache 3-0 29.3
George Sawyer 0-3 9.5

NEW JERSEY

Sept. 6, 1992 Sanc. #92-51-033

CHAMPIONSHIP

W-L	%
Louis Durando 7-0	71.7
Jack Giddes 5-2	54.2
Dennis Joslin 4-3	60.2
George Egel 4-3	57.8
Tom Manzoni 3-4	58.1
Bob Manzoni 3-4	54.1
Charles Davis 2-5	50.5
Lou Testa 0-7	50.6

CLASS A

Ray Shober 30' 5-1 50.9
Bob Brown 5-2 48.0
Bill MacIntyre 4-3 47.8
John Basile 4-3 47.5
Phil Zozzaro 3-4 48.0
Tom Skinner 3-4 46.8
Jim Reed 2-5 45.4
Bill Kolb 1-6 40.0

CLASS B

Gil Franke 8-0 55.1
Ron Ballinger 6-2 49.0
Jack Fritzges 4-4 47.6
B. Urban 4-4 44.6
Dixon Deranek 4-4 43.7
Larry Thomason 3-5 46.0
Don Schmidt 3-5 34.7
Wayne Harrison 2-6 40.3
M Cailleteau 2-6 37.4

CLASS C

Bill Gurgurich 6-1 41.9
Leo Hutton 5-2 44.9
Gary Diacik 5-2 38.4
John Thomas 4-3 38.3
George Ripley 4-3 36.3
Edward Emery 2-5 32.8
Ron Vogel 1-6 33.2
Bob Salmon Sr. 1-6 28.3

CLASS D

Vinnie Soriero 5-2 40.1
Barry LaFebre 4-3 41.8
John Hughson 4-3 36.4
DFan Briggs 4-3 34.2
Jody Fleming 3-4 33.2
William Miller 3-4 32.8
Mel Elmer 3-4 31.3
Tom Walker 2-5 33.1

CLASS E

John Crane 6-1 37.7
Norman Smith 5-2 35.8
A. Waisempacher 5-2 32.5
Frank Paris 4-3 36.7
B. Conord 3-4 32.9
Joe Fritts 3-4 28.7
Donn Grady 1-6 34.5
Louis Wasser 1-6 29.2

CLASS F

G. Dare 4-0 31.3
Don Gotts 3-1 29.9
Cookie Elmer 2-2 28.4
Joe Shipula 1-3 20.2
Jerry Brode 0-4 25.2

CLASS G

Charles Oakes 7-2 29.1
Gene Lupo 5-3 33.0
Ted Doktor 5-3 25.6
L. Murphy 4-3 27.5
Bob Lobell 3-4 23.8
Bob Wright 3-4 22.3
M. Blake 3-4 19.9

CLASS H

Gene Castner 6-1 22.6
Roy Kester 5-2 24.7
C. Hansen 4-3 21.7
Jaimie Thomason 4-3 20.9
Buddy Short 3-4 27.7
Ray Smith 3-4 17.6
Tony Silvia 2-5 18.0
Art Hall 1-6 18.1

CLASS I

Jay Miller 7-0 24.3
John Dykstra 5-2 28.4
Harry Dircks 4-3 23.7
C. Smolenski 4-3 15.8
Joe Dodgson 4-3 15.3
M. Deranek 3-4 15.3
Jay Whilden 1-6 13.1
Al Johnson 0-7 5.9

NEW YORK

Sept. 4-6, 1992 Sanc. #44-92-019

MENS CHAMPIONSHIP

	%
Art Tyson 6-1	77.1
John Bogardus 6-1	75.9
Mike DiMartino 5-2	77.5
Joe Schultz 4-3	69.9
Jack Stenberg 3-4	68.7
Robert Jones 3-4	67.4
John Merrill 1-6	62.1
Bob Hayes 0-7	64.5

MEN CLASS A

Ed Risley 5-2 60.7
George Lovell 5-2 54.7
Glenn Brown 5-2 57.1
Dave Rundell 4-3 59.8
Clair Rigby 4-3 59.1
Lance Hinman 4-3 58.5
David Scott 1-6 50.3
Harry Dunbar 0-7 43.1

MEN CLASS B

John Kozik 5-2 56.3
Roy Emrich 5-2 54.6
Dave Lancot 4-3 50.0
Frank Wood 4-3 51.6

Glenn Addicott 3-4 51.6
Larry Straub 3-4 46.6
Lee Coon 3-4 43.6
Jack Carney 1-6 39.2

MEN CLASS C

Richard Sposato 6-1 49.6
Gladly Jackson 5-2 48.0
Lenn Davis 4-3 52.5
Steve Mayer 4-3 51.6
Jeff Johnson 4-3 43.8
Ron Bowerman 3-4 47.5
Pete Newey 2-5 47.2
Tony Cusimano 0-7 29.8

MEN CLASS D

Tom Roush 6-1 42.1
Gerald Marsh 4-3 52.2
Gerald Patchen 4-3 49.6
Fred Bailey 4-3 45.3
Lyle Wiedrick 4-3 42.4
Frank Coombs 3-4 42.4
Dick Pike 3-4 40.9
Randy Ball 0-7 29.6

MEN CLASS E

Everett Lavanona 6-1 46.2
Willis Pert 4-3 42.4
Albert Hilsinger 4-3 40.9
Marc Otero 4-3 37.5
Dennis Pritchard 4-3 35.1
Al Buckland 3-4 45.7
Ken Campbell 3-4 43.6
Harland McFann 0-7 20.0

MEN CLASS F

Bob Yeomans 6-1 43.0
Roger Botting 5-2 43.8
Lance Twyman 4-3 36.6
Gordon Carpenter 3-4 44.8
Fred Wright 3-4 40.9
Fred Medick 3-4 39.2
Dick Kinney 3-4 34.9
Richard Burton 1-6 24.2

MEN CLASS G

Tim Stafford 6-1 48.7
Bob Hitchcock 5-2 41.6
Stan Towne 4-3 46.4
Hubie Curtis 4-3 43.6
Doug Heckathorn 4-3 41.7
Ted Hinzy 3-4 42.7
Robert T. Wilsch 1-6 40.1
Rod Pratt 1-6 23.7

MEN CLASS H

Louie Valentino 5-2 41.9
Ken Nixon 5-2 35.8
George McCracken 5-2 30.1
John Romaine 4-3 39.7
Peter Holmberg 4-3 36.8
Park Rauch 3-4 28.6
Joe Miller 2-5 31.8
Ed Burrell 0-7 26.7

MEN CLASS I

Richard Pulver 6-1 46.2
Dave Reynolds 6-1 49.6
Doc Grell 5-2 44.6
Vernon Issac 4-3 50.0
Ed Otero 3-4 35.5
John Martin Jr. 3-4 33.5
Dean Rogers 1-6 31.6
Jim Czerwinski 0-7 27.0

MEN CLASS J

Carl Alcott 5-2 34.2
Jerry Moss 4-3 36.2
Doug McCann 4-3 31.0
Stan Hayes 4-3 29.9
Ray Hall 4-3 27.8
Wayne Hamilton 3-4 35.7
Gary Fisher 3-4 28.3
Dave Wilkinson 1-6 25.6

MEN CLASS K

Mike Surprise 7-0 47.8
Richard King 5-2 41.9
Ed Fox 4-3 38.4
Jim Thompson 4-3 36.3
Dennis Martindale 3-4 32.7
Pat Vishneski 2-5 38.7
Carroll Cervoni 2-5 34.9
Jim Gee 1-6 28.3

MEN CLASS L

Bill Schanbacher 6-1 41.7
Robert M. Wilsch 5-2 41.0
Paul Panchio 4-3 36.5
Glenn Chamberlain 4-3 33.9
Bill Johnston 4-3 33.3
Jim Scott 3-4 29.6
Rowland Rupp 2-5 28.4
Bob Ingersoll 0-7 17.1

MEN CLASS M

Bill Tassone 6-1 31.6
Ed Donaghue 5-2 35.2
Ed Uhlig 5-2 33.2
Harry Austin 5-2 32.6
Bill Hammond 3-4 26.8
Michael Anna 3-4 23.2
Larry Benkelmann 1-6 22.2
Lee Youngblood 0-7 21.6

MEN CLASS N

Everett Wartars 5-2 37.7
Mike Bassani 4-3 32.5
Harold Watts 4-3 32.4
Bill Walker 3-4 33.9
Richard Cooper 3-4 31.3
Vic Davis 3-4 26.3
Joe Robbins 3-4 24.1
Dave Kois 3-4 24.0

MEN CLASS O

Harry Lukosavich 7-0 49.6
Stan Reader 5-2 36.4
Ed Reader 5-2 31.1
Joe Viger 4-3 31.8
Jim Spunangle 2-5 33.3
Charlie Reigles 2-5 32.9
Ed Cowley 2-5 22.6
Hoppy Hopkins 1-6 22.1

MEN CLASS P

Sam Bobier 5-2 31.8
Glenn Grossmann 5-2 28.9
Jack Royallminns 5-2 27.4
Bruce Douglas Sr. 4-3 32.3
Ernie Stagaman 3-4 28.7
Richard Reynolds 3-4 27.2
Michael Brown 2-5 24.6
Smitty Jennings 1-6 15.9

MEN CLASS Q

Bob Labrum 5-0 35.0
Craig Schadler 4-3 29.8
Gordon Decker 4-3 22.6
Ernie Chittenden 3-4 21.9
Harky Wilkinson 1-4 20.4
Gerry MacGibbon 1-4 18.9

MEN CLASS R

Dave Csejety 5-2 22.9
Walt Lewis 5-2 20.1
Jim Johnston 5-2 19.2
Roger Chase 5-2 19.1
Lincoln Hall 3-4 18.4
Ron Tweedie 2-5 19.6
Ed Gorski 2-5 10.9
Francis Troxel 1-6 14.6

MEN CLASS S

Bruce Douglas Jr. 5-1 20.6
Dave Wells 3-2 21.9
Sonny Gordon 3-2 19.4
Otto Janke 2-3 21.0
Larry Sahwa 2-3 19.4
Donald Buckley 1-4 15.1

Tournament Results

MENS CLASS T

Pat Murphy	4-1	20.1
Tony Jimp	3-2	19.5
Kevin Green	3-2	18.0
Gerry MacGibbon	3-2	15.1
Jim Reader	2-3	7.2
Lee Waldron	0-6	7.7

MEN CLASS A SR. 40'

John Buckley	6-0	45.9
Chief Kallin	4-2	37.3
Lyman Simonds	4-2	36.7
John Imhof	3-3	37.5
Rufe Jacobs	3-3	34.1
John Hladun	1-5	25.2
Don Wilcox	1-5	22.5

MEN CLASS B 40'

Ernie Blanchet	5-0	27.9
Jim Sharkey	4-1	29.2
Dick Ellis	3-2	30.8
Ivan Tweedie	2-3	17.5
Joe Pixley	1-4	18.8
Ken McElwain	0-5	6.9

JR. CHAMPIONSHIP

Mike Moss	4-0	57.9
Tim Thurber	2-2	48.1
Steve Wilkinson	2-2	45.5
Josh Goodale	1-3	42.6
Gary Vancauwenberge	1-3	42.6

JR. CLASS B

Keith Wilkinson	4-2	30.7
Shawn Relyea	4-2	35.2
Andy Dunbar	4-2	27.5
Mary Moss	0-6	3.8

WOMEN CHAMPIONSHIP

Sue Twyman	7-0	68.0
Charlotte Reigles	6-1	65.4
Traci Hastings	5-2	62.8
Ruth Hangen	3-4	51.2
Carrie Carpenter	2-5	55.9
Francis Curtis	2-5	47.3
Lorraine Valentino	2-5	40.9
Marian Gee	1-6	42.4

WOMEN CLASS B

Pat Moss	3-2	36.5
Bernie Moss	3-2	43.5
Dawn Warters	3-2	37.5
Judy McChesney	2-3	43.5
Margaret Wilkinson	2-3	32.8
Rose Wright	2-3	28.2

WOMENS CLASS C

Carol Lisa	6-1	35.5
Madelene Decker	6-1	35.8
Esther Coombs	5-2	39.7
Melody Braun	4-3	30.3
Lori Jump	4-3	25.4
Eileen Fox	2-5	16.5
Joyce Kinney	1-6	15.1
Anna Mae Cobb	0-7	15.5

NORTH CAROLINA

Sanc. #40-92-018

QUALIFYING A

B.J. Thomas	5-0	72.0
N.A. Moore	4-1	69.0
Jack Huff	3-2	64.5
Troy Messer	2-3	47.5
Allen Fox	1-4	50.0
Donald Douglas	0-5	46.0

QUALIFYING B

Joe Young	5-0	59.5
Ricky Bolick	4-1	60.0
James Coggins	3-2	53.5

John Carpenter	2-3	50.5
John Patzsch	1-4	42.0
Troy Brittain	0-5	44.0

QUALIFYING C

Tammy Gann	5-0	66.5
Buck Prewette	3-2	55.5
Ken King	3-2	51.0
J.B. Fuller	3-2	53.5
Roy Littrell	2-3	46.0
Pete Willard	0-5	43.0

QUALIFYING D

Clyde Southern	5-0	73.0
Paul Stewart	4-1	69.0
Bill Thore	3-2	60.5
Doug Shear	2-3	52.5
Teddy Vernon	1-4	48.5
Clifton Jones	0-5	51.0

CHAMPIONSHIP

B.J. Thomas	5-2	71.2
Paul Stewar	5-2	67.5
Clyde Southern	5-2	67.2
Joe Young	4-3	65.4
Tommy Gann	3-4	66.1
Jake Huff	3-4	65.2
N.A. Moore	2-5	65.1
Bill Thore	1-6	54.7

CLASS A

J.B. Fuller	6-1	58.4
James Coggins	5-2	65.3
Buck Prewette	5-2	57.8
Ricky Bolick	4-3	58.0
John Carpenter	3-4	51.9
Ken King	2-5	59.0
Doug Shear	2-5	50.8
Clifton Jones	1-6	43.5

CLASS B

Allen Fox	7-0	60.9
Pete Willard	6-1	52.8
Roy Littrell	4-3	51.9
Teddy Vernon	3-4	43.1
Troy Messer	3-4	43.0
Troy Brittain	3-4	36.2
John Patzsch	2-5	37.3
Donald Douglas	0-7	0

CLASS C

Jim Gentry	7-0	47.5
Tom Eaton	5-2	36.8
George Gentry	4-3	33.3
Tom Harris	3-4	39.4
David Mitchell	3-4	35.5
T. Hinshaw	3-4	30.0
David Lloyd	2-5	48.2
David Pickett	1-6	28.8

CLASS D

Randy Jones	5-0	42.4
Ed Pilson	3-2	30.4
Bill Walker	3-2	28.6
Warren Henderson	2-3	26.0
Paul Barlow	2-3	21.7
John Boone	0-5	21.0

CLASS E

Tim Stephens	5-0	38.9
John Davis	4-1	35.7
Todd Brittain	2-3	27.1
Rodger Gilmore	2-3	25.0
Jerry Brittain	2-3	19.9
Julius Bartell	0-5	18.9

JUNIORS

Jeremy Gregson	2-0	44.4
Ricky Bolick	0-2	19.0

WOMEN

Ruth Letvinchik	5-0	46.5
Rivers Prewette	4-1	56.4
Martha Gilmore	3-2	48.6
Becky Kemp	2-3	48.2
Sheila Bolick	1-4	33.9
Hilda Messer	0-5	26.4

OHIO

Sept. 4-7, 1992 Sanc. #36-92-013

CLASS A LADIES

W-L	%
Ami Brown	11-0 11-0
Carolyn Rice	9-2 9-2
Linda Vonstein	9-2 9-2
Helen Eakins	8-3 8-3
Marlene Cooper	6-5 6-5
Debra Bower	5-6 5-6
Sue Crawford	4-7 4-7
Helena Morgan	4-7 4-7
Linda Shaw	4-7 4-7
Jenny Walters	3-8 3-8
Donna Dodson	2-9 2-9
June Holbrook	1-10 1-10

CLASS B LADIES

Ronna Parker	7-0 7-0
Rita Sarbaugh	6-1 6-1
Diana Guill	5-2 5-2
Helen Kalb	3-4 3-4
Susan Guill	3-4 3-4
Avanelle Brown	2-5 2-5
Joan Sanders	2-5 2-5
Toni Kucharski	0-7 0-7

CLASS C LADIES

Leona Ault	4-1 32.7
Marie Jensen	4-1 28.1
Wanda Lyons	3-2 29.1
Beth Smith	3-2 22.3

CLASS D LADIES

Mary Fleenor	3-0 15.0
Judy Guill	2-1 13.5
Tammy Fisher	1-2 13.2

JUNIOR GIRLS A

Julie Walters	3-0 45.7
Luiaga Sanders	2-1 11.7

JUNIOR GIRLS B

Stacey Sanders	0-3 8.9
----------------	---------

JUNIOR BOYS

Jimmy Walters	3-0 74.3
Todd Hardesty	2-1 28.9

BOYS B

Brian Farmer	1-2 17.5
--------------	----------

BOYS C

Mun Larimer	1-2 8.3
-------------	---------

MEN CLASS A

Elden Sarbaugh	9-2 73.1
Loran Coy	8-3 68.7
John Martin	7-4 71.1
Jack Baldwin	7-4 68.0
Doug Crawford	6-5 67.2
Lawrence Miller	6-5 65.9
Gary Roberts	6-5 65.9
Jim Knisley	5-6 63.8
Don Needles	5-6 62.9
John Walters	3-8 64.2
Wally Gray	3-8 64.0
Wayne Baker	1-10 58.8

CLASS B

Dick Whiteman	10-1 66.4
John Brown	9-2 67.6
Roy Hunt	8-3 64.0
Marvin Lingerfelt	8-3 62.8
Larry Justice	6-5 59.7
John Schmidbauer	5-6 63.6
Ralph Fleckenstein	5-6 62.7
Mark Bussey	5-6 60.4
Lester Rose	3-8 55.9
Dick Smith	3-8 49.8
Dick Curtis	2-9 54.1
Ed Miller	2-9 50.5

CLASS C

Gordon Dennis	9-2 62.1
Darrell Bowers	7-4 61.3
John Knapp Sr.	6-5 53.6
Frank Morgan	6-5 53.5
Levi Miller	6-5 53.0

Ken Farley	6-5 51.9
Steve Powers	5-6 56.8
Max Roseberry	5-6 52.7
Ken Walters	5-6 50.9
Dave Hummel	4-7 52.5
Tom Guill	4-7 49.4
Tom Bestul	3-8 50.5

CLASS D

Donnie Roberts	9-2 57.1
George Thome	8-3 53.3
Larry Shaw	7-4 50.3
Melvin Kalb	6-5 53.9
Larry Woolace	6-5 50.4
Jim Cooper	6-5 48.4
M. Frazier Jr.	6-5 46.7
Arthur K. Smith	6-5 46.0
Tom King	5-6 55.5
Rudy Vondach	4-7 45.3
Frank Hiendelmayer	3-8 43.3
Lonnie Mason	0-11 29.9

CLASS E

Don Honigford	9-2 57.0
Bob Garrett	8-3 48.3
J. Fred Brown	8-3 48.6
Paul Rohrs	7-4 51.0
Zack Campbell	7-4 50.0
Ron Welsh	7-4 47.9
Jerry Wyscarver	6-5 48.2
Joe Ewing	6-5 39.1
Phillip Karnes	2-9 46.8
Frank Hale	2-9 44.9
Jack Vondach	0-11 33.0
Dave Kiefer	0-11 F

CLASS F

Dave Rose	10-1 53.8
Al Hennes	10-1 47.8
Dwight Daniels	7-4 47.7
Joe Pillion	7-4 46.7
Jim Mossholder	6-5 43.4
Earl Noe	5-6 45.3
Melvin Miller	5-6 49.8
Wm. Robinette	4-7 35.9
Jr. Campbell	3-8 43.9
Terry Lively	3-8 37.2
Stan Sobleski	3-8 36.3
Don Denniston	3-8 33.6

CLASS G

Ron Crafcraft	9-2 5.0
Tom Mathews	9-2 47.2
Dick Guill	8-3 48.5
Bob Schmidt	7-4 45.9
Jeff Garver	6-5 49.0
Wm. Voelker	6-5 45.9
Roy Lyons	6-5 45.9
Ralph Broderick	5-6 44.2
Tom Congrove	4-7 42.7
Mederith Kahrig	3-8 41.3
Tom Kirk	3-8 35.6
Gary Kline	0-11 43.6

CLASS H

Harry Denlinger	11-0 49.1
Larry Mangan	9-2 50.6
Michael Kalb	9-2 44.9
Bob Ludwig	8-3 41.5
Bill McClain	6-5 40.3
Lou Stevens	6-5 38.5
John Austin	5-6 39.8
Ed T. Miller	4-7 37.3
Tom Baudendistel	3-8 32.3
Fred White	2-9 27.9
Ev Buehner	0-11 31.1

CLASS I

Elmer Looser	5-2 42.3
Lenard Martini	5-2 41.6
Art Halley	5-2 35.3
Hershal McCollister	4-3 40.6
Jim Palmer	3-4 43.6
John Lalley	3-4 38.9
Ron Parker	3-4 36.1

Tournament Results

10

MEN CLASS J

Bob Dowler	6-1	47.8
James Yocum	6-1	39.2
Bob Wyscarber	5-2	40.3
Eugene Wagonfield	3-4	41.3
Ed Kunkler	3-4	39.4
Len Schaffner	3-4	29.8
Mose Miller	2-5	38.5

CLASS K

Clarence Dalton	6-1	34.4
Levi Miller Jr.	5-2	32.9
Marion Feters	4-3	33.7
Ken Waggoner	4-3	26.5
Tom Dewhurst	4-3	30.2
Don Long	3-4	29.0
David Kirk	1-6	31.6
Dan Sanders	1-6	31.5

CLASS L

Pat Park	5-2	34.4
Ken McNeilan	5-2	32.9
Bob Wolfe	4-3	33.7
M. Frazier Sr.	4-3	36.5
Tony Coe	3-4	30.2
Steve Flowers	3-4	29.0
Carl Searls	2-5	31.6
Gary Arledge	2-5	31.5

CLASS M

Dallas Myers	7-0	42.3
Walt Holbrook	5-2	33.3
Jack Vondach	5-2	28.7
Buck CUNningham	4-3	31.6
Jack Gallaugher	3-4	35.1
Buck Cooper	2-5	28.1
Gene Cathcart	2-5	20.8
Michael Pack	0-7	28.8

CLASS N

Ralph Bruns	5-2	36.7
John Nibert	5-2	35.2
Ed Bowden	5-2	31.6
Rich Guill	4-3	28.8
Ed Kucharski	4-3	28.2
Ova Johnston	3-4	30.5
Bob Hoffman	2-5	24.2

CLASS O

Stan Dodson	7-0	37.4
Steve Rindler	5-2	31.9
Larry Hall	4-3	28.5
Dan Guthrie	3-4	30.7
Jerry Elick	3-4	26.7
Wilfred Kahrig	3-4	21.5
Ed Ehemann	2-5	26.6
Terry Unger	1-6	28.3

CLASS P

David Hicks	4-1	36.9
Pat Kilbarger	4-1	32.9
Mark Kohn	3-2	34.8
Doyg Vonstein	3-2	30.0
Randy Liette	1-4	25.5
Roger Lung	0-5	13.9

CLASS Q

Carl Casto	6-1	41.2
Larry Quigley	6-1	34.0
Joe Lizak	5-2	33.1
Carey Maddux	4-3	35.2
R. Sigwardt	3-4	23.9
Harlan Nibert	3-4	23.9
Jerry Quigley	1-6	27.3

CLASS R

Stan Miller	7-0	38.5
John Hiles	6-1	36.8
Dick Wheeler	4-3	28.5
Dick Parker	3-4	27.1

George Hoover	3-4	24.5
Russel Eads	2-5	25.0
Neil Bower	2-5	22.3
Bill Beckman	1-6	29.3

CLASS S

Brian Fisher	5-0	35.5
L. Fitzgerald	4-1	23.3
Leo Stevens	2-3	23.8
Henry Allen	2-3	19.1
James Brown	2-3	16.9
Fritz Worner	0-5	11.1

CLASS T

Larry Glass	5-0	39.3
Doug McClary	3-2	30.6
Steve Heavner	1-4	24.3
Jim Schotten	2-3	25.3
Bob Gentry	3-2	27.3
Ralph Long Sr.	1-4	19.6

CLASS U

Al Wheeler	7-0	19.1
Wayne Godwin	5-2	21.0
Russel Mairs	5-2	16.5
Steve Johnson	4-3	22.8
David Garin	3-4	15.7
Mike COyle	2-5	19.3
Bill Allrad	2-5	17.7

CLASS V

Frank Karacia	5-0	19.0
Bob Scurlock	4-1	16.7
John Teevan	3-2	11.5
Clayton Bushman	2-3	10.1
J.D. Quigley	1-4	11.1
Jim Kalb	0-5	10.3

CLASS W

Gary Lung	7-0	17.9
Brian Miller	5-2	15.3
Joel Loy	5-2	9.5
Jerry Williams	4-3	8.5
Lamar Bower	3-4	11.6
Greg Fouch	3-4	8.8

OKLAHOMA

Sept. 5-6, 1992 Sanc. #20-92-001

GROUP CH-M	W-L	%
Chuck Arnold	6-1	60.1
Tom Goff	5-2	54.0
Ronnie Frederick	5-2	50.3
Glenn King	4-3	48.6
Kenneth Guy	3-4	49.2
Jim Mihura	3-4	48.4
Jim Crockett	1-6	46.3
Jim Moody, Sr.	1-6	43.7

GROUP A-M

Homer Cain	6-1	38.0
Kenneth Priddy	5-2	36.2
Phillip Morris	5-2	32.4
Claude Worley	4-3	33.2
Bob Reese	3-4	28.2
Wade Brewer	2-5	30.1
Louis Mouse	2-5	28.0
Willie Loucks	1-6	22.0

GROUP B-M

J.C. Bowen	5-2	30.2
Willard Brakhage	4-3	32.4
Lex Barnes	4-3	28.9
John Wright	4-3	25.8
Roy Privott	4-3	25.3
David Davis	3-4	23.6
Sherman Johnson	2-5	23.5
Larry Fordyce	2-5	22.3

GROUP C-M

Clyde Matthews	7-1	31.9
Bob Beldon	6-2	25.9
James Hudson	5-2	27.1
Ronnie Fields	3-4	23.9
Phil Brumbaugh	3-4	19.6
Gerald Wallace	3-4	18.9

Fred Nelson	2-5	15.7
Allen Christy	0-7	14.6

GROUP D-M

Bill Fordyce	4-1	27.0
Darrell Frisbie	3-2	21.5
Benny Brown	3-2	17.5
Billy Walters	2-3	18.0
David Montgomery	2-3	18.0
Robert Horton	1-4	16.5

GROUP E-M

Archie Stone	5-1	15.0
Bruce Matteson	4-2	11.3
Roy Clay	3-2	11.0
Allan Miller	2-3	10.5
Floyd Born	2-3	9.5

GROUP JR. MIX

John Burk	5-0	13.5
Rachael King	4-1	3.0
Joshua Matthews	3-2	9.5
Craig Frederick	2-3	8.5
Jacob Burk	1-4	5.0
Becky King	0-5	5.0

GROUP CH-W

Wanda Morris	7-1	57.6
Imogene Shields	6-2	55.7
Lynda Frederick	5-2	53.5
Barbara Goff	3-4	48.0
Ginger Cain	3-4	40.4
Katherine Johnson	3-4	39.0
Bev Born	1-6	38.8
Lucinda Frisbie	1-6	37.5

GROUP A-WO

Lucinda Frisbie	6-1	39.5
Katherine Johnson	5-2	38.5
Virginia Anderson	5-2	35.2
Sue Tune	5-2	29.1
Nancy Montgomery	4-3	31.0
Linda Shaw	2-5	16.4

GROUP BWO

Elaine Arnold	7-0	22.5
Carol Afinowicz	6-1	17.1
Ardith King	5-2	23.8
Christine McCeary	4-3	11.3
Charlotte Bowen	3-4	10.0
Tania Stone	2-5	10.0

JR. GIRL

Pamala Morris	3-4	31.4
---------------	-----	------

30' MEN

Scotty Lisk	5-2	37.4
Allen Shields	4-3	19.6

OREGON

Sept. 5-7, 1992 Sanc. #02-92-021

CLASS A	W-L	%
Ben Wiedrich	7-0	69.9
Ridge Leggett	6-1	63.6
Lowell Davis	4-3	62.0
Bill Graham	3-4	57.2
Jerry Gorton	3-4	55.9
Phil Hendry	3-4	54.1
Rick Rebman	1-6	48.2
David Brown	1-6	55.2

CLASS B

Marvin Tatchio	6-1	50.9
John Mikota	5-2	49.7
Barry Chapelle	4-3	61.4
Bernard Martell	4-3	50.7
Tuff Moles	4-3	48.5
Richard Augustson	3-4	40.3
Vern Howard	2-5	40.0
Warner Kirlin	0-7	39.4

CLASS C

Ray Meyer	7-0	49.3
Roger Christianson	6-1	43.8
Al Holland	4-3	43.4
Esthel Benner	3-4	41.6

Lee Wallace	3-4	37.2
Art Gee	2-5	35.6
Len Christensen	2-5	29.2
Chet Sergeant	1-6	36.6

CLASS D

Jim Robertson	5-2	35.8
Everett Oxford	4-3	34.5
Murray Baker	4-3	36.5
John Hult	4-3	33.8
Rob Hendry	3-4	36.5
Dick Garvin	3-4	35.6
Harold Sapp	3-4	28.6
Larry Willard	2-5	33.6

CLASS E

Earl Quick	5-1	33.7
Dick Griffith	4-2	30.8
Ron Heckman	3-2	31.1
Larry Flanary	2-3	22.9
Vern Wanless	2-3	24.0

CLASS F

Barney Root	5-0	36.5
Arbie Gillaspie	4-1	29.2
Lloyd Kilgore	2-3	29.3
O.D. Loy	2-3	24.8
Walt Sargeant	2-3	22.2
Tim Willard	0-5	14.3

CLASS G

Chuck Wenger	5-1	21.2
Norm Martin	4-2	20.2
Ralph Woodring	4-2	19.6
Randy Carr	3-3	20.7
Joe Grube	3-3	22.0
Bill Stoner	2-4	11.3
Rick Umbarger	0-6	12.1

CLASS H

Tim McKnight	7-0	20.3
Dick Speer	5-2	14.3
Chet Cooper	4-3	15.5
Frank Moan	3-4	11.6
Bill Johnson	1-6	12.7
Ron Ping	1-6	12.0
Al Kent	1-6	10.2

WOMEN A

Joanne Loy	5-1	66.1
Patty Sapp	4-2	55.8
Connie Dearborn	3-3	56.7
LaVerne Ewing	3-3	49.6
Jean Baker	3-3	44.4
Donna Graham	2-4	52.1
Betty Tatchio	1-5	42.6

WOMEN B

Sam Rasmussen	5-0	42.2
Sally Kent	4-1	35.3
Daureen Willard	3-2	40.8
Ruth Heckman	2-3	25.6
Bonnie Roswell	1-4	28.2

JUNIORS

Tony Umbarger	5-0	22.6
Kevin Brown	4-1	19.1
Bob Miller	3-2	18.0
Ben Brown	1-4	13.0
Angela Brown	1-4	4.8
Christi Dearborn	1-4	4.2

SOUTH DAKOTA

Sept. 6, 1992 Sanc. #16-92-028

MEN CLASS A	W-L	%
Doug FastHorse	7-0	50.5
Monte Herberman	6-1	49.4
Ted Wright	4-3	57.7
Robert Biegler	4-3	46.5
Ted Traversie	4-3	38.5
Rod Hancock	2-5	46.0
Robert Yanzick	1-6	35.7
John Beaird	0-7	27.4

Tournament Results

11

MEN CLASS B

Ernest Tarrell	6-1	38.2
Royal Adamson	6-1	33.7
Gary Priest	5-2	34.5
Clair Harris	3-4	37.7
John Drafahl	3-4	33.4
Lloyd Fletcher	3-4	26.8
Kent Robinson	2-5	26.8
Gene Ficek	0-7	23.4

MEN CLASS C

Dave Risse	6-1	30.0
Clarence Petoske	5-2	30.9
Carl Chambers	4-3	29.7
Cliff Ziehl	4-3	28.8
Jay Heigh	4-3	23.4
John Monson	3-4	27.4
Oscar Dokken	2-5	21.4
Herman Falk	0-7	25.1

MEN CLASS D

Ronald Waddell	6-1	26.5
Larry Backhaus	5-2	26.2
Clint Bryson	5-2	21.4
Eldon Olson	4-3	26.8
Mike Allgier	3-4	19.1
Tom Koti	3-4	16.5
Dane Wendland	1-6	16.0
Jerry Jeffery	1-6	15.1

MEN CLASS E

Ed Arp	5-2	22.5
Ed Gebhart	5-2	24.0
Warren Clark	5-2	21.1
Oliver Hansen	4-3	25.1
Jim Newton	4-3	16.8
Marvin Sandell	2-5	24.8
Rayford Anderson	2-5	21.1
Richard Stangle	1-6	18.5

MEN CLASS F

Gerald Guenin	5-2	16.9
Duane Traversie	5-2	20.9
Ed Risse	4-3	20.9
Bob Hlavka	4-3	18.6
Wayne Pool	4-3	13.7
Darrell Siers	3-4	19.7
Bob Bowkers	2-5	17.7
Gwyn Jewett	2-5	16.0

MEN CLASS G

Jim Corean	7-0	24.6
Larry Chambers	6-1	18.6
Scott Brech	4-3	19.0
Larry Capp	4-3	15.3
Bob Pickarts	3-4	13.0
David Jeitz	2-5	14.3
John Siers	2-5	8.6

MEN CLASS H

Henry Jeitz	4-1	10.4
Gene Ewing	4-1	7.2
Wes Wilsey	3-2	11.6
Rick Farley	3-2	11.2
Charlie Hawks	1-4	4.0
Dave Bertch	0-5	3.2

LADIES CLASS A

Carlene Donnelly	6-0	64.3
Bonnie Lauay	4-2	47.3
Yvonne Ficek	2-4	39.0
Mickey Lodge	0-6	30.3

LADIES CLASS B

Kimberly Stover	6-0	15.3
Sherrie DeMarrias	3-3	5.7
Jeri Clark	2-4	9.3
Dee Robinson	1-5	4.7

BOYS CLASS A

Michael Newton	5-0	59.0
----------------	-----	------

Josh Farley	4-1	49.5
Ryan Ferdinand	3-2	42.0
Reynold Ferdinand	2-3	28.0
Andy Ziehl	1-4	33.0

BOYS CLASS B

Lance Bertch	5-0	31.0
Dusty Schmidt	4-1	24.0
Curtis Allgier	3-2	20.0
Tom FastHorse	2-3	19.0
Casey Stangle	1-4	14.5

BOYS CLASS C

Joe Rodriguez	5-1	8.0
Clayton Donnelly	5-1	15.2
Desmond Siera	3-2	1.6
Chris Stunes	2-3	7.2
Lanny Culbertson	1-4	3.2
Ronnie Cazer	1-4	8.0

BOYS CLASS D

John Stover	5-0	11.0
Terry Cazer	4-1	3.0
Jared Farley	3-2	3.0
Adam Brech	2-3	1.0
Justin Mitchell	1-4	4.5

GIRLS CLASS A

Michelle Newton	2-0	28.0
Melissa Allgier	0-2	1.0

GIRLS CLASS B

Emily Allgier	7-0	8.7
Adreann Brech	5-2	6.0
Darcy Schmidt	5-2	2.7
Tara Mitchell	4-3	2.7
Andrea Clark	4-3	2.0
Krystal Cazer	2-5	0

TENNESSEE

Sept. 12, 1992 Sanc. #33-92-022

PRELIMS A-1

	W-L	%
Roger Norwood		74.0
Tom Price		63.2
Stan Smith		54.4
Marvin Bastian		53.6
Jack Conner		49.6

PRELIMS A-2

	W-L	%
Don Ward		75.2
Van Fox		68.0
Shannon Banks		66.0
Jack Freeman		59.6

CHAMPIONSHIP A

	W-L	%
Don Ward	5-0	78.4
Tom Price	4-1	64.4
Van Fox	2-3	60.3
Shannon Banks	2-3	58.3
Roger Norwood	1-4	62.5
Jack Freeman	1-4	60.7

CLASS B

	W-L	%
Frank Jones	6-1	58.4
Hank Irwin	6-1	51.9
Lloyd Wyatt	4-3	53.4
E.T. Hensley	4-3	50.3
George Lewis	4-3	48.8
Jerry Holmes	2-5	52.1
Dexter Stallings	2-5	41.4

CLASS C

	W-L	%
Pat Richardson	4-1	52.2
Floyd Maxwell	4-1	53.2
Bobby Patrick	4-1	50.8
Melvin Cooper	2-3	43.8
Ray Ward	1-4	39.8
James Conner	0-5	35.3

CLASS D

	W-L	%
Bob Bilyev	3-1	41.6
Mack Buchanan	3-1	39.7
Cecil Cutshall	2-2	36.5
Walter Sexton	1-3	33.9
Jim Adkerson	1-3	33.3

CLASS E

	W-L	%
Henry Hensley	2-1	40.5
Ray Duncan	2-1	40.6
Walt Edmonds	2-1	38.4
Hugh Hinkle	0-3	30.1

CLASS F

	W-L	%
Ronald Yaste	5-0	35.3
Marty Hensley	4-1	29.6
Bobby Cook	3-2	34.3
Bob Durham	2-3	20.5
Frank Chaney	1-4	25.2

CLASS G

	W-L	%
Abbott Kemp	4-1	29.1
Bill Hunsicker	4-1	33.6
Waymon Edmonds	3-2	18.5
Reece Tramel	2-3	18.1
Dave Robinson	2-3	11.5
Darrell Day	0-5	21.5

WOMEN CHAMPIONSHIP A

	W-L	%
Marlene Ray	3-0	47.1
Maxine Griffith	0-3	37.0

WOMEN CLASS B & JR. BOY

	W-L	%
Jean Hinkle	3-0	31.4
Joyce McCarter	2-1	32.9
Paula Hunsicker	0-3	14.9
Shea Lebow	1-2	18.5

UTAH

Aug. 14, 1992 Sanc. #09-92-020

MEN CLASS A

	W-L	%
Bruce Crane	9-1	51.9
J.J. Steffen	8-2	43.5
Gary Wood	6-3	48.0
George Sarkis	5-4	43.7
Dennis Ohms	5-4	42.0
Clyde Mockli	4-5	44.8
Jesse Johnson	3-6	38.9
Phil Jensen	3-6	37.3
Bill Shelton	2-7	34.6
Jerry Teela	1-8	35.0

CLASS B

	W-L	%
Cal Sorensen	8-1	49.5
Wendel Bundy	7-2	39.9
Robert Morley	5-4	40.9
Kent Pendleton	5-4	37.9
Del Feltenbarger	5-4	37.7
Robert Tibbs	4-5	37.2
Frank Annerl	4-5	36.5
Lynn Palmer	4-5	34.5
Joe Cwik	3-6	32.6
Evan Irvine	0-9	19.0

CLASS C

	W-L	%
Rodger Chambers	8-2	37.5
Gib Mitchell	7-3	32.5
Leo Flick	6-3	32.8
Bruce Eyre	6-3	28.5
Keith Hovey	5-4	32.5
George Allgood	5-4	30.2
Leo Irvine	3-6	26.1
Mariner Munk	3-6	24.6
Rod Purser	3-6	23.6
George Laswell	0-9	16.4

CLASS D

	W-L	%
Jim Woolman	12-0	17.5
Claude Payne	8-4	16.2
Hod Gale	8-4	13.9
Brian Coulter	6-6	8.5
George Demmons	4-8	9.7
Danny Lister	3-9	2.7
Don Hunter	1-11	2.5

SENIOR CLASS A

	W-L	%
John Bracken	10-2	62.7
Richard Buchanan	6-6	58.4
A. Lee Jones	6-6	53.0
L.D. Alldredge	2-10	43.2

SENIOR CLASS B

	W-L	%
Clint Gentry	8-2	45.9

	W-L	%
Bud Schardine	7-3	39.6
Dan Thacke	5-5	35.5
Glen McAllister	5-5	35.9
Doug Liston	4-6	28.9
George Hunt	1-4	35.2

WOMEN CLASS A

	W-L	%
Shirley Steffen	11-1	54.4
Barbara Purser	7-5	47.4
Sherlyn Feltenbarger	6-6	50.5

WOMEN CLASS B

	W-L	%
Gwen Munk	9-2	51.8
Tola Peterson	8-3	26.3
Lucille Laswell	6-4	24.8
Jeannie Annerl	6-4	22.8
Chris Olsen	2-8	22.9
Charleen Irvine	0-10	14.9

WOMEN CLASS C

	W-L	%
Maureen Sarkis	9-1	18.5
Suzi Padgett	7-3	23.2
Marjorie Chambers	6-4	18.0
LeeAnn Payne	4-6	15.2
Steffanie Chambers	4-6	13.0
Shan Irvine	0-10	1.2

JUNIORS CLASS A

	W-L	%
Gabe Ohms	8-0	41.1
Jeffrey Coulter	6-2	30.0

JUNIOR CLASS B

	W-L	%
Stacey Glendon	4-4	16.8
Seth Ohms	2-6	16.8
Danica Irvine	0-8	2.5

VERMONT

Aug. 15-16, '92 Sanc. #46-92-005

CLASS A

	W-L	%
Ray Charbonneau	6-1	63.6
Kevin Hollister	5-2	66.0
Gale Greene	5-2	63.1
Leon O'Dell	4-3	60.8
Dick Greene	3-4	55.7
David Bell	3-4	49.7
Don Taylor	2-5	52.4
Bob Dean	1-6	52.

CLASS B

	W-L	%
Andre Bergeron Sr.	6-1	44.1
Reid Brewster	5-2	43.2
Don Pratt	5-2	38.6
Frank Lengyel	4-3	39.2
Archie Jones	4-3	30.3
Ken Downer	3-4	40.6
Tom Rogues	1-6	29.6
Henry Cooper	0-7	26.4

CLASS C

	W-L	%
Alan Curler	6-1	41.7
Stan Bigelow	5-2	34.7
Randy Allen	5-2	34.2
Glen Norris	3-4	33.2
Peter Glennon	3-4	32.5
Joe Cota	3-4	32.4
Mike Brown	2-5	26.9
Tom Myers	1-6	24.0

CLASS D

	W-L	%
Robin Minor	7-0	39.0
Roger Forgues Jr.	5-2	36.2
Bill Alexander	4-3	32.7
Elmer Moore	4-3	25.0
Joe Bougor Sr.	3-4	31.5
Phil Sumner	2-5	30.1
Ray Begins Jr.	2-5	23.0
Robert Bergeron	2-5	29.4

CLASS E

	W-L	%
Pat Rideout Sr.	5-1	36.5
Bob Begins	4-2	31.1
Tom Millette	3-3	29.4
John Coffey	3-3	28.5
Art Emmons	3-3	27.5
Andre Bergeron Jr.	2-4	23.0
Don Conger	1-5	24.4

Tournament Results

12

CLASS F

Duane Peacock	4-1	22.6
Don Gibb Greene	4-1	14.7
Roger Forgues Sr.	3-2	15.1
Don Hurlburt	2-3	18.7
Bill Bearor	2-3	11.3

CLASS G

Tom Whittaker	6-1	16.3
Steve Latulippe	5-2	18.2
Myron Selleck	5-2	13.7
Dan Everts	5-2	10.6
Paul Pouliot	3-4	6.8
Jim Costello	2-5	8.5
Dave Rideout Sr.	1-6	11.6
Doug Richardson	1-6	8.0

CLASS A/B WOMEN

Debra Brown	6-1	63.3
Bev Forgues	6-1	64.9
Liz Downer	5-2	61.9
Connie Selleck	5-2	50.3
Shirley Hurlburt	3-4	44.2
Bev Conger	2-5	40.1
Bonnie Gaudette	1-6	39.9
Cathy Begins	0-7	33.2

CLASS C/D WOMEN

Lea Rideout	6-1	29.5
Gloria Charbonneau	6-2	27.4
Angie Maple	5-2	25.3
Elise Forgues	4-3	20.5
Rae Anne Begins	3-4	17.7
Jeanette Bedard	3-4	14.7
Ruth Forgues	1-6	13.2
Marcie Smith	0-7	5.5

CLASS A JUNIORS

Robert Bergeron	2-5	29.4
-----------------	-----	------

CLASS B

Karrie Rideout	4-0	9.5
Nicole Bearor	1-3	3.0
Scott Selleck	1-3	2.0

VIRGINIA

Sept. 5, 1992 Sanc. #38-92-012

CLASS A

	W-L	%
Alvin Perry	8-1	69.6
Roger Foley	8-1	63.9
Greg Roach	7-2	67.1
Billy Breeden	7-2	59.3
Charlie Price	4-5	63.4
Nathan Davis	3-6	63.4
Mack Stout	2-7	61.9
Noah Roach	2-7	59.8
Lenwood Conner, Sr.	2-7	59.7
Ken Shiflett	2-7	56.2

CLASS B

John Shaw	6-1	65.6
Charles Collier	5-2	53.0
Gary Morris	4-3	54.4
Ronnie Williams	4-3	53.5
Jim Barr	4-3	49.5
Milton Morris	3-4	57.6
Kenny Lam	2-5	49.4
Ronald Powers	0-7	34.4

CLASS C

Darrell Brock	7-0	61.0
Chris Conley	5-2	48.6
Marty Breeden	4-3	51.5
Marvin May	3-4	49.4
David Dean	3-4	46.7
Vale James	2-5	44.3
Ron Trobaugh	2-5	43.8
Pat Roach	2-5	43.5

CLASS D

Garland Peck, Jr.	6-1	44.3
Chris Foster	6-1	51.0
Ike McFarland	5-2	42.4
Floyd Hix	4-3	41.7
Troy Eppard	4-3	36.9
George Holley	2-5	41.0
CHuck West	1-6	35.6

CLASS E

Gene Mullinax	6-1	45.3
Bill Holland	5-2	40.4
Howard Carmichael	5-2	38.2
Doug Tharp	4-3	37.4
Jeff Massey	4-3	34.3
Dave Moser	3-4	31.2
Eugene Hix	1-6	26.2

CLASS F

Dennie Pangle	5-2	30.0
Cletus Conley	5-2	34.1
Wayne Sturtz	4-3	32.4
Sonny Clark	4-3	32.0
Earl Waggy	4-3	28.7
Paul Roadcap	3-4	31.7
Richard Sakiewicz	2-5	27.0
Kenny Breeden	1-6	30.0

CLASS G

Buck Herring	6-1	32.0
Danny Lawhorne	6-1	34.5
W.L. Doss	5-2	33.0
Kenny Hall	4-3	33.7
Thomas House	3-4	37.0
Kenneth Sorrells	3-4	23.8
David Conley	1-6	21.2
Bobby Hensley	0-7	20.1

CLASS H

Gene Brooks	5-2	26.2
Charles Gurtler	4-3	29.1
Garret Thomas	4-3	24.0
Buck Gentry	4-3	22.8
Charles Edmonds	3-4	25.6
Robert Collins	3-4	25.6
Bruce Patton	3-4	20.0
Donnie Supinger	2-5	21.2

CLASS I

Gordon Dodson	7-0	26.5
Paul Sites	6-1	21.8
Jimmy Mahoney Sr.	4-3	21.1
Michael Cupp	4-3	12.7
Kirk Adams	3-4	23.0
Ivan Samuels	3-4	21.5
Jerry Shiflett, Sr.	1-6	11.1
Donald Parkes	0-7	7.0

CLASS J

Gene Airhart	4-1	20.0
Forrest Reynolds	4-1	18.7
Mark Strickler	4-1	16.0
Robert Doss	2-3	15.2
John Carper, Jr.	1-4	15.6

SENIORS A

William Bowyer	5-1	49.6
Bob Hill	4-2	51.6
D.W. Strickler	3-3	40.0

SENIORS B

Ben Robinson	5-1	43.1
Jesse Grim	5-1	38.1
Leonard Howerly	2-4	30.9

HANDICAP CLASS

Hensel Eppard	2-0	50.0
Carl Staton	0-2	25.0

LADIES A

Renee Cowan	3-0	69.0
Donna Keefer	0-3	16.7

LADIES B

Debbie Barbour	4-1	33.0
Roxy Richards	4-1	32.8
Elener McFarland	4-1	31.5

Anita Gregory	2-3	23.2
Sonya McDowell	1-4	23.7

JUNIOR BOYS

Lenwood Conner, Jr.	5-0	74.1
Brad Eppard	4-1	50.0
Matt Dean	3-2	25.6
Karl Hix	2-3	30.6
Thomas Hix	1-4	18.1

JUNIOR GIRLS

Kara Hix	Undeclared	
----------	------------	--

WASHINGTON

Sept. 5, 1992 Sanc. #01-92-029

JUNIOR BOYS CHAMPIONSHIP

Mark Rupprecht	5-1	41.5
Ben Wood	3-3	39.9
Levi Wood	2-4	34.4
Lucas Ives	2-4	30.7

DOUBLE ROUND ROBIN

JUNIOR BOYS CLASS A

Jeremy Kramer	4-0	10.8
Logan Phillips	2-2	9.5
Brandon Dowell	0-4	10.3

JUNIOR BOYS CLASS A

Brandon Dowell	3-1	10.0
Logan Phillips	2-2	8.5
Jeremy Kramer	1-3	5.5

COMBINED MEN CHAMPIONSHIP

Henry Knauff	12-2	70.2
Art Sperber	10-4	68.7
Herb Criss	10-4	68.2
Peter Clark	10-4	65.6
Gerry Staley	6-8	58.3
Bob Wallin	4-10	53.5
Bob Hoerner	2-12	49.5
Cecil Channing	2-12	48.6

COMBINED MEN CLASS A

Jed Pexton	8-1	56.0
Ken Carvo	7-2	51.7
John Richardson	6-3	52.8
John Perucca	6-3	44.3
Bob Pederson	5-4	48.6
Verl Webb	5-4	43.3
Duane Moller	4-5	48.2
Frank Woods	2-7	35.5
Dick Lee	2-7	31.6
Jim Malvern	0-9	25.6

COMBINED MEN CLASS B

Skip Schilperoot	7-1	44.3
Earl Joe Hardie	6-2	42.4
Raymond Sexton	5-3	52.7
John Henson	5-3	44.1
Vey Allen	4-4	45.2
Robert Ives	4-4	44.3
Charlie Tank	3-5	43.1
Terry Wood	2-7	37.5
Barney Heller	0-8	24.8

COMBINED MEN CLASS C

Casey McKay	8-2	46.2
Mike Rupprecht	7-3	39.3
Eugene Kuiken	6-3	43.9
Wayne Koletzky	6-3	38.8
Pat Quinn	5-4	38.8
Earl Kuper	5-4	37.0
Ron Ferguson	4-5	39.4
Pat Patterson	4-5	37.4
George Fagala	1-8	30.0
Larry Lowitz	0-9	24.0

COMBINED MEN CLASS D

Mel Page	7-1	47.2
Eugene Stephenson	6-2	40.6
Cyril Kitchen	6-2	39.4
George Stiman	5-3	39.4
John Kronholm	3-5	37.1
Stanley Garrett	3-5	34.5
Jim Kosterman	3-5	32.6

Lyle S. Calkins	2-6	32.9
Ken Kuper	1-7	24.2

COMBINED MEN CLASS E

Sam Wingfield	9-0	41.9
Bill Hendricks	7-2	38.3
Don Fagerness	6-3	32.1
Jack Bennett	6-3	29.2
Joe Wolf	6-3	28.7
Glen Titchenal	3-6	28.8
Dean Perry	3-6	25.6
Lyle Meuret	2-7	29.0
El Day	2-7	23.1
Bill Edgecomb	1-8	19.3

COMBINED MEN CLASS F

Don Foreman	9-1	37.1
Darwin Platz	8-2	33.4
Gene Wertman	7-2	33.5
Orrin Underwood	6-3	29.5
Larry Covey	4-5	27.6
Jim Link	3-6	26.4
James Quist	3-6	24.5
David Murray	3-6	21.5
Chuck Holden	3-6	21.3

COMBINED MEN CLASS G

Terry Dowell	9-2	30.0
Hollis Morris	8-3	27.4
Ken O'Hair	7-3	31.7
Wendell Roberts	6-4	20.0
Leonard Foreman	5-5	28.6
Frank MacArthur	5-5	27.3
Jo Jensen	4-6	21.7
Edward Childs	4-6	19.6
Ted Ogilvie	3-7	18.3
Ross Watson	3-7	16.8
Milt Johnson	2-8	17.5

COMB. WOMEN CHAMPIONSHIP

Michelle Ives	8-0	66.2
Jean Smith	6-2	41.4
Becky Wood	4-4	40.8
Carol Sperber	2-6	39.0
Phyllis Quist	0-8	30.1

COMBINED WOMEN CLASS A

Tahwannah Worrell	6-2	38.2
Alice Rehard	5-3	36.7
Evelyn Underwood	5-3	30.6
Carol Dammarell	4-4	34.4
Kathy Wertman	0-8	17.9

WISCONSIN

Spt.19-20, 1992 Sanc. #28-92-092

MEN'S CHAMPIONSHIP

	%
Don Kangas	70.7
Larry Barber	65.9
John Udelhofen	67.4
Randy Rein	60.4
Rich Pichler	58.7
Mark Stevens	58.9
Gus Schram	58.4
Buck Huffman	60.2

WOMEN'S CHAMPIONSHIP

Lorraine Sternberg	65.0
Jane Smith	62.6
Edi McKinney	59.1
Cy Srenaski	55.5
Sylvia Kaiser	52.2
Joan Guetzke	51.1
Jane Meier	43.9
Ev Goshaw	40.6

SENIORS CHAMPIONSHIP

Ralph Maylahn	72.5
Harold Bestul	66.1
LaVern Richard	43.6
C.L. Ollerman	37.9
Sid Anderson	33.6
Felix Kubly	38.6
Vic Paulson	23.9
Bob Anderson	18.9

Tournament Results

13

CHAMPIONSHIP BOYS

Mark Mauthe	64.5
Rick Poppe	59.0
Jason Goldsmith	49.2
Cary Sabish	29.1

CHAMPIONSHIP GIRLS

Heidi Sternberg	59.1
Penny Steinke	52.1
Heather Steinberg	48.4

MEN CLASS A

Roger Comero	61.0
Emmett Whiting	60.3
Wally Srenaski	53.4
John Koepf	52.9
Dan Blooms	56.9
Cliff Troullier	52.9
John Barden	46.6
Clayton Gage	38.9

MEN CLASS B

Gerald Weikert	49.4
Norm Mauthe	56.0
Don Hostrup	58.0
Ken Jaeger	40.0
Rick Pritzlaff	46.3
Curt Behrends	39.1
Tony Scrima	42.9
Roger Poutanen	41.1

MEN CLASS C

Rich Brower	54.4
Bernard Carley	46.8
Jeff Secord	42.8
Jim Haupt	41.2
Richard Hansen	40.4
Greg Bottlemey	38.0

MEN CLASS D

Jerry Schroeder	45.7
Chris Kitt	42.6
Wayne Vanderhei	44.9
William Floryance	39.4
Terry Lokken	37.1
Dennis Ambuehl	34.0
G Bogenschneider	41.7
Jeff Mauthe	20.3

MEN CLASS E

Bert Logadon	49.1
Dave Klippstein	45.4
Lowell Kent	38.9
Wes Taylor	40.6
Harvey Bilz	42.3
Ken Olsen	32.3
Rob Sabish Jr.	31.4
Chet Hermanson	28.3

MEN CLASS F

Gerald Gromowski	46.0
Ron Yttri	47.4
Milt Larson	35.1
Curt Bestul	34.0
Len Mauthe	40.0
LeRoy Wipperfurth	37.4
Warren Knippel	35.7
Ted Rohde	32.3

MEN CLASS G

Carl Gilbertson	40.0
John Secord	46.0
Bill Spahn	38.0
Den Davison	33.1
Terry Sternberg	30.0
Russ Burns	26.9
Harold Laws	24.6
Rob Struebing	28.6

MEN CLASS H

Ron Thompson	38.6
--------------	------

Jerry Udelhofen	34.3
Dennis Kelsner	30.9
Bob Kalstrom	33.7
Robert Anderson	30.6
Dave Aho	32.6
Tom Cutts	25.4
Rich Conrad	28.0

MEN CLASS I

John Reuter	32.0
Tom Steinke	30.9
Dan Jaglowski	30.3
Larry McCutcheon	28.9
Don Burmeister	25.4
John Crook	22.9
Ron Ramquist	22.0
Ron Sabish Sr.	16.0

MEN CLASS J

Steve Stevens	45.1
Norm Beckius	30.3
Kevin Brekke	29.4
Harold Muma	28.9
Ron Kmeiciak	26.6
Earl Paulson	29.7
Gary Bloedorn	24.3

MEN CLASS K

Howard Selle	26.6
Duane Woodward	34.9
Norm Capener	26.3
Leo Zamzow	26.0
Bill Matey	23.1
Oscar Pynnonen	24.3
Jerome Weis	22.6
LaVerne Noltmeyer	22.0

MEN CLASS L

Jim Larson	40.3
Hank Zeisse	31.1
John Reuter III	33.1
Frank Look	28.0
Bruce McLinn	31.7
Ken Beebe	32.6
Chuck Herman	26.3

MEN CLASS M

Art Waller	31.7
Dale Lokken	27.1
Dan David	26.9
Ken Lovaas	30.9
Mel Cook	27.7
David Miller	22.6
Bob Novinski	19.4
LeRoy Meyer	18.3

MEN CLASS N

Lyle Kent	31.7
Chuck Moravec	30.9
Frank Dohrwardt	30.0
Ken Kosky	26.0
Wayne Franzen	19.7
Ron Zepplin	21.7
John Jashinsky	18.6
James Lovald	16.3

MEN CLASS O

Bud Hammer	21.7
Rick Horn	16.3
Keith Elliot	23.7
Ralph Zeisse	13.1
Weldon Gaulin	18.3
Ken Hannula	14.6
Staan Luety	17.1
Craig Novinski	14.6

MEN CLASS P

Trevor Malicki	15.1
George Kuffer	17.7
Al Schliem	14.6
Ray Schmidt	18.6
Curt Novinski	9.7
Alen Puestow	11.4
Kip Gusner	8.0

WOMEN CLASS A

Debby Bestul	54.3
Ann Opsteen	58.9
Pam Steinke	54.9
Elaine Troullier	49.1
Ida Hostrup	43.1
Darlene Sabish	39.4
Carla McFarlane	30.0
Karen Hoff	42.9

WOMEN CLASS B

Sylvia David	48.6
Kathy Hanson	43.4
Michelle Gustafson	42.0
Gloria Smith	30.9
Mary Capener	30.9
Claretta Hansen	29.7
Georgia Beebe	35.1

WOMEN CLASS C

Teresa Donar	36.0
Shari Davison	43.4
Marie Donar	35.1
Sonia Cook	32.3
Lois Gaulin	29.7
Cathy Horn	28.0
Renee Sternberg	24.6
Kathy Kelly	22.8

WOMEN CLASS D

Judy Harder	19.2
Barb Behling	24.0
Sally Kubash	16.8
Ann VanTassel	25.6
Cecelia Trossen	18.4
Bernice Lokken	13.2

BOYS CLASS A

Cary Sabish	35.0
Brad Lokken	30.0
Cory Sabish	26.0
Chris Sabish	12.0

BOYS CLASS B

Cory Sabish	22.0
Lee McFarlane	18.3
Paul Fricano	6.0

WYOMING

Sept. 4-5, 1992 Sanc. #12-92-014

MENS A

	W-L	%
Harold Koch	10-2	46.5
Darppw Stemple	9-3	43.4
Ray Johnston	8-3	49.3
Dick Wilson	8-3	43.8
Jim Duncan	7-4	46.5
George Dowdy	6-5	44.4
Harl Geer	5-6	35.1
Ken Raymond	4-7	37.3
Don Laurin	4-7	36.0
Grant Yentling	3-8	38.5
Dick Gunderson	3-8	36.5
Rick Hytrek, Jr.	0-11	30.1

MENS B

Tony Demshar	8-3	34.1
Morgan Evans	7-4	35.5
Gary Rickard	7-4	32.5
Eldon Conilogue	7-4	30.7
Irvin Sieg	6-5	37.0
Gary Weeks	6-5	33.1
Frank Maes	6-5	31.1
Darrell Perkins	5-6	35.6
Don Jones	5-6	32.7
Phil Plotke	4-7	32.7
Rick Hytrek Sr.	3-8	28.5
Don Clausen	2-9	28.1

MENS C

Raymond Crane	10-2	37.9
Don Pope	9-3	29.5
Greg Ventling	7-4	33.2
Glen Wilkey	7-4	31.8
George Preis	6-5	27.2

Bob Douglas	6-5	24.2
Stewart Shepherd	5-6	28.4
Rick Vandersloot	5-6	27.1
Dick Eversull	5-6	25.2
Terry Kelly	3-8	27.6
George Willey	3-8	22.8
Frank Willoughby	1-10	21.9

MENS D

Melvin Forney	10-1	30.0
Ray Sharp	9-2	25.7
Bob Jeanneret	8-3	25.9
Kevin Banks	8-3	25.6
Jerry Geer	7-4	28.6
Bob Mudge	7-4	23.6
Bill Jones	5-6	20.8
Alan Crackenberger	4-7	25.6
Pat McCabe	3-8	19.4
Keith Jones	3-8	17.9
Ralph Sjoström	2-9	20.2
R.D. Key	0-11	17.9

MENS E

Mel Banks	11-1	27.7
Roger Fevold	10-2	24.6
Gail Wright	9-2	18.9
Gerry Musgrave	7-4	22.6
Smith Warren	6-5	20.1
Bob Schutterle	6-5	15.3
Gary Withrow	5-6	15.9
Lee Groshart	4-7	14.3
Alvino Maestas	3-8	18.5
Joe Murphy	3-8	13.8
Ed North	3-8	11.7
Tom Rush	0-11	11.4

MENS F

John Brady	7-0	14.6
Ed Musgrave	5-2	10.5
Larry Abney	5-2	7.7
Joe Stalinski	4-3	7.1
Don Riddle	3-4	6.8
Sid Davis	2-5	8.0
Brent Pope	2-5	5.1

MENS 70 +

George Sajwaj	19.6
---------------	------

WOMENS A

Diana Abney	10-2	39.1
Alice Stewart	7-5	36.5
Nadine Sieg	7-5	34.0
Chris Rush	0-12	24.6

WOMENS B

Nene McCabe	9-1	30.3
Jean Geer	6-4	17.8
Lisa Maestas	5-5	21.7
Pat Johnston	5-5	21.5
Ruth Raymond	3-7	13.5
Marge McCormack	2-8	14.6

WOMENS C

Tina Wallace	6-2	11.0
Judy Brady	4-4	9.5
Gladys Sajwaj	4-4	7.5
Shelley Schutterle	3-5	11.0
Dee Sharp	3-5	7.8

JUNIORS

Kirk Ventling	6-2	10.0
Angie Rush	3-5	9.2
Jeremy Pyle	3-5	8.5



— NHPA GAME RELATED SALES DISTRIBUTORS —

EDWARD A. DOMEY/National Buyer
 P.O. Box 298
 Sutton, Massachusetts 01590
 (508) 865-9477

HORSESHOE PRO SHOP
 1240 S. 17th St.
 Columbus, Ohio 43206
 (614) 444-2127

CURLY SEIBOLD
 1043 Grayston Avenue
 Huntington, Indiana 46750
 (219) 356-3489

DENNIS OHMS
 777 W. Midvalley Road
 Cedar City, Utah 84720
 (801) 586-9352

WILLIAM SMITH
 1175 Stewart Drive
 Dunedin, Florida 34698
 (813) 736-5556

WALLY SHIPLEY
 2646 Basswood Street
 Newport Beach, California 92660
 (714) 760-3658

Contact a Distributor near you for the products shown in this ad and many other Game Related Items available from NHPA Game Related Sales.

Support your National Horseshoe Pitchers Association

NATIONAL HORSESHOE PITCHERS ASSN.
Box 7927, Columbus, OH 43207-7927

ADDRESS CORRECTION REQUESTED
FORWARDING/RETURN POSTAGE
GUARANTEED

04/01/95
CASEY G SLUYS+
1721 SAN RAMON WAY
SANTA ROSA CA 95409

BULK RATE
U.S. POSTAGE
PAID
PERMIT NO. 80
GRASS VALLEY, CA

The American **TOURNAMENT SHOE**

LOCKS IN RINGERS!

- Scientifically designed ringer breaker helps rotate shoe to lock in ringers.
- Finger positioner for throwing comfort.
- Heel caulks with more forged steel for better balance.
- Longer hooks to grab the stake better.
- **EXCLUSIVE** new high-tech powder coat finish for better resistance to chipping, abrasion, corrosion and weathering.
- Classic gold and silver in full outfits (four shoes and two solid-steel stakes) or four shoes only.
- **Call or write today! (508) 853-8010**

*World's Largest Producer of Drop-Forged,
Steel Pitching Horseshoes.*

 **St. Pierre**
MANUFACTURING CORPORATION

317 East Mountain Street
Worcester, MA 01606



NHPA
APPROVED