



The National Horseshoe Pitcher's Association



NEWSLINE

VOL. 2 NO. 9

NOVEMBER 1990



Look
for
the new
white
shoes!



Advanced Design

TOURNAMENT PITCHING HORSESHOES



Both backyard pitchers and pros catch and hold the stake better with DIAMOND's new advanced design "Tournament" Shoe. It features a grip positioner, hardened tips, an increased radius, a dead soft center, and a wider, deeper calk. Same drop-forged solid steel construction as DIAMOND's popular Double Ringer and Super Ringer Regulation Shoes. All American made.

Contact your nearest NHPA club or sporting goods store for DIAMOND pitching horseshoes.

For the latest pitching horseshoe catalog write:



DIAMOND PITCHING SHOES

The Triangle Tool Group, Inc.
Subsidiary of The Triangle Corporation
Cameron Road, Orangeburg, SC 29115
DISTRIBUTOR ORDER PLACEMENT
Call toll-free: 800-346-0740
For all inquiries call: 803-534-7010

"DIAMOND Pitching Horseshoes are Recognized as Official in Tournaments
Sanctioned by the National Horseshoe Pitchers Association"



NHPA NATIONAL OFFICERS

PRESIDENT: DAVE LOUCKS, 13656 Thoroughbred Loop, Grass Valley, CA 95949 916-477-7060

1ST VICE PRESIDENT: EARL WINSTON, Route 2, LaMonte, MO 65337 816-563-3536

2ND VICE PRESIDENT: BARRY CHAPELLE, 2815 S.E. 68th, Portland, OR 97206 503-775-7876

3RD VICE PRESIDENT: BEVERLY BORN, RR 2, Box 198-A, Shattuck, OK 73858 405-938-2406

4TH VICE PRESIDENT: BONNIE SEIBOLD, 1043 Grayston Ave., Huntington, IN 46750 219-356-3489

5TH VICE PRESIDENT: GARY MINNICK, 2600 E. 7th Ave., #44, Flagstaff, AZ 86004 602-526-8077

SECRETARY/TREASURER: DONNIE ROBERTS, P.O. Box 278, Munroe Falls, OH 44262 216-923-9949

PROGRAM & COMMITTEE DIRECTORS

GAME RELATED SALES: ED DOMEY, P.O. Box 298, Sutton, MA 01590 508-865-9477

PUBLICITY: BOB CHAMPION, 5505 Valmont #176, Boulder, CO 80301 303-449-8395

HISTORIAN: GARY KLINE, 82 Nimitz, Dayton, OH 45431 513-258-0852

VIDEO SALES: SOL BERMAN, (Nov.-May) PGA National 1 Wycliff Rd., Palm Beach Gardens, FL 33418 407-626-8507; (May-Nov.) Clearbrook 319A Persica Plaza, Cranbury, NJ 08512 609-655-3471

CONSTITUTION & BY-LAWS: 4th VP, BONNIE SEIBOLD

GRIEVANCE: 4th VP, BONNIE SEIBOLD

HALL OF FAME: 1st VP, EARL WINSTON

REGIONAL DIRECTORS: 5th VP, GARY MINNICK

RULES: 2nd VP, BARRY CHAPELLE

SANCTIONED CLUB/LEAGUE: 3rd VP, BEVERLY BORN

NHPA NEWSLINE

PUBLISHER / EDITOR: DAVE LOUCKS

TYPESETTING / LAYOUT: KIM ROGERS, KIM ART

PUBLISHER'S POLICY: NHPA *Newsline* is the official magazine of the National Horseshoe Pitchers Association. The contents may not be reproduced in any manner without prior permission of the Editor. Ten issues are published annually on a monthly basis except January/February and July/August, which are combined. The annual subscription price is \$12.00 in the United States which includes postage via discounted third-class, commonly called Bulk Rate Mail. Canadian subscriptions are \$20.00. All new subscriptions, renewals, payment and changes of address must be sent directly to:

NHPA Secy/Treas.
P.O. Box 278, Munroe Falls, OH 44262.
Phone (216) 923-9949

Back issues or additional copies of *Newsline*, subject to availability, are \$2.00 each and sent third-class mail. Requests with payment for back issues should be sent directly to the NHPA *Newsline* Publisher:
13656 Thoroughbred Loop, Grass Valley, CA 95949.

ADVERTISING POLICY: The publisher reserves the right to refuse any ad. All ads accepted must be paid for in advance and meet specific format and mechanical requirements. The publication of any ad is not necessarily an endorsement of the advertiser nor the featured product or service. Rate inquiries, ad copy and fee should be sent to: NHPA *Newsline*

13656 Thoroughbred Loop, Grass Valley, CA 95949.
Phone (916) 477-7060.

LETTERS POLICY: *Newsline* welcomes communication and articles from the membership. Submissions should be typed, double spaced and include the writer's name, address and phone number. The editor reserves the right to accept or reject any letter or advertising material. All submissions are subject to editing, available space, and must be received by the first day of the month preceding the date of issue.



C O N T E N T S

President's Message	4
Reader Forum	5
Letters to the Editor	6
Regional Director's Report	9
To Ride the River With <i>feature article by Glen Portt</i>	10
Here and There <i>Reports of happenings around the NHPA</i>	12
The Junior Window	14
Sanctioned Club/League News <i>Horseshoes in the Phillipines by Ray Williams</i>	18
News Releases	19
Classified Ads	19
State Championship Tournament Results	21

PAID ADVERTISERS

Diamond Horseshoes	Inside Front Cover
Horseshoe Pro Shop	6
Gordon Horseshoes	7
Deadeye Horseshoes	8
Imperial Horseshoes	9
Ted Allen Horseshoes	11
Clay 'n Sand Shoes	12
Francis E. White	15
Horseshoe Pro Shop	15
Horseshoe Pitchers Companion	20
Steinfeldt Sta-On Horseshoes	20
St. Pierre	Back Cover

ON OUR COVER

1990 World Tournament Junior Pitchers. Top three finishers, boys and girls. Top left to right: Doug Moon, Ohio, 2nd; Jim Walters, Ohio, 1st; Vorn Ven, Kansas, 3rd. Bottom left to right: Renee Sternberg, Wisconsin, 2nd; Celeste Polak, Texas, 1st; Julie Walters, Ohio, 3rd.

President's Message

One of the most important decisions made by the delegates at the 1990 W.T. Convention has seemingly gone unnoticed by much of the membership. With very little voiced opposition, and a vote of 210-108, the delegates approved a uniform method to standardize how pitching averages for all NHPA members are established across the country. It is, **"all NHPA members' averages will be based on his/her three highest NHPA sanctioned tournaments pitched during the 12 months preceding the tournament date."**

Since returning home, some members have said, "oh, I thought that was meant for World Tournament play only." Well, that's not the case and it was quite clear if one read the reason the proposal was submitted. "To standardize averages." The 3 highest tournament average was already being used for W.T. entry and there was no need for a constitution proposal for just that specific event.

Like many other proposals, this one was not supported by everyone. But like all the others that were approved, this one goes into the 1991 NHPA Constitution & By-Laws. It becomes one of the written laws which our association and all charters are expected to uphold. The NHPA Executive Council has a responsibility to carry out and uphold, to the best of its ability, the laws and rules of play prescribed by the members. This obligation is also incumbent upon

every NHPA Charter, its officers and state membership. Remember, while charters can be governed by the provisions of their own state constitution, such provisions cannot be contrary to any of those that are part of the NHPA Constitution, By-Laws, Rules or Regulations.

Some charters are already using a computerized form of maintaining averages based on the three or four highest in the last 12 months. For them, change and compliance will not be a problem. For those Charters who maintain pitching averages by some other method, change will not be as easy. Some will balk at this change and come up with all sorts of excuses why it won't work or why they don't want to change. But that is all they will be, "excuses" to delay or prevent compliance with an NHPA law they don't personally like. There is little question that change is sometimes difficult. But, the effort to make and accept change often brings improvement and enhances the ability to adapt and grow, as a person and an organization.

I urge all NHPA Charters, officers and fellow pitchers to give this new requirement a chance. It will greatly reduce the "sandbaggers" ploy of getting into a lower class and better define a pitchers' potential. By working together to standardize averages, all NHPA members will be able to enter any sanctioned tournament, anywhere, and know that everyone's placement is determined by the same standard.

Dave's Court Report

by Dave Loucks

■ Bob Dunn, of Minnesota, has been appointed NHPA Junior Promotion Director. This is a new position established to recruit youth and promote both the sport and our junior pitchers. It is an area needing a lot of work and cooperation by NHPA members. Bob will be contacting every NHPA charter with ideas and a program to increase junior awareness and recognition. I ask for the cooperation and involvement of all charters in this worthwhile program. *Newsline* will do its best to carry the word through a new column, "The Junior Window" which premieres in this issue.

■ This and the December issue of *Newsline* will carry the results of only State Championships Singles. It has become our policy to devote the last two yearly issues to these specific results. As of October 10th, only 28 State Championships had been reported to *Newsline* even though near 45 had been completed by Labor Day weekend. Results are supposed to be sent within 30 days of play. All those received by October 31st and not included in this publication will be in the December issue.

■ 1991 marks a change for *Newsline*. We will be printing six regular issues on a bimonthly schedule. There will be some tournament results to fill space but most results will be included only in the one or two special "Results Only" issues that will be printed as needed. We hope to carry more articles and feature stories in regular *Newsline* issues.

You can help by submitting newsworthy and interesting contributions.

■ Look for some changes in class play to be introduced at the 1991 W.T. Despite some thinking to the contrary, the NHPA Executive Council does listen and consider ideas and comments from players and player reps. We do make changes where we feel improvement to the overall benefit of the majority can be made. However, we are not obliged to meet every request and tend to deny those where we feel a minority gain will be made at the expense of the majority.

■ The NHPA is investigating costs and the feasibility of having NHPA owned portable courts and scoring machines for use at all World Tournaments and special events that might not have in ground courts. A rental fee would be imposed but it would probably offer a significant cost and labor reduction to the host, plus bring court standardization into play.

■ On October 6-7 Walter Ray Williams Jr. represented the NHPA at the formal opening ceremonies of horseshoe courts at the Shouwa Memorial Park in Tachikawa City, Japan. Walter, who had a planned arrival of October 8 for the "Japan Cup" Bowling Tournament in Tokyo, worked with me and the PBA to adjust plans for an earlier arrival so a horseshoe pitching clinic and demonstrations could be made part of the Shouwa Park program.

Reader Forum

Dear Dave,

CONTROVERSY — 30 FT. / 40 FT.

WHY is this such a big controversy??

Is it really a 30/40 foot controversy or is it the old "Men vs. Women" controversy? Most all 40 foot pitchers are men and the majority of 30 foot pitchers are women. Is this the real problem?

When I joined the NHPA and Northern California Association 3 years ago, the spread in the women's group was so large I knew, starting at 13% I would never win a game. Sure I could go pitch but I was not much competition. People were saying "we need more women to make the group equitable." How did we intend to recruit more women? We sure could not do it by asking them to pitch in this group, it would only discourage them. This year No. Calif. is playing most of the tournaments in the mixed group format and except for a few unhappy people at the beginning of the year I believe it has been for the best.

Doesn't it make sense to mix the players by percentage regardless of pitching distance or sex? We all have a percentage established at the distance we pitch from, so why does this have to be a problem? I have read all of the articles that tell me because I pitch from 30 feet I have a better chance to pitch way above my average. I have tried to believe that, but the best I've done is 20% over — in the same tournament I have pitched 15% below my average, and amazing as it seems, when I pitch 20% over the 40 foot pitcher does too!

We all want good things for our sport, especially growth and recognition. This will NOT happen with remarks as were printed in the July/August *Newsline*: "Many 40 foot pitchers don't like mixing and won't do it," "some have even dropped the game because of it," "five years ago we had very little mixed pitching and five years ago we had no loud controversy." These remarks will not encourage people to remain in or join our sport.

Let's get back to playing the game of horseshoes. By concentrating on improving your own percentage instead of am I pitching against a woman, you will not only make your game more enjoyable but will help to improve and

promote the sport. Remember, not only are more people out there watching us, they are also listening.

Gail Sluys
NCHPA Secretary/Treasurer
Santa Rosa, CA

Dear Dave,

I keep reading the controversy about the 30-40 foot pitchers. It's really too bad seeing as the biggest percentage of 30 footers IS WOMAN. That seems to be where the biggest problem lies!!! I may seem dumb here, but it seems to me that a 30 foot 45% pitcher and a 40 foot 45% pitcher are equal regardless of distance...We are pitching percentages here RIGHT???

I have pitched against 40-42 percenters, their being 40 footers, and lost cuz they pitched over their entering percent like 50%, and I pitched my 45%. So it seems they are better than the stats show or were just having a good day.

I have heard men comment that they would quit rather than move up. If for health reasons, or just the plain old fact they can't do it from 40 feet anymore, why not move up to where it is comfortable for them??? We need more pitchers, not less. If we have people quit — then what happens to our sport?

I would like you guys to know I tried pitching from the 40 foot pad, now I consider myself a fairly strong person, but all I could manage was a bit over the foul line. Now that is depression material, especially as I really enjoy the sport of horseshoes. Now if I may, my opinion on a couple of comments made in some of the back issues:

First, the comment about us women being able to throw a 14-16 lb. bowling ball. There is a lot of difference in putting a little lift on a ball, than throwing a horseshoe 30-40 feet. I personally roll my ball, rather than throw or pitch it.

Second, the comment Bob West made about the 70 year old woman stating that she could no longer pitch from 30 feet, and would need to move up. I believe that we women would admit it is time to hang up our shoes at this time and move on to

something just a little easier for us, the weaker sex. Like racquetball, tennis, softball. We may not be fast or good, but never say DIE.

So Guys and Gals, let's get on with just enjoying our sport of horseshoes. Let's promote our sport of horseshoes rather than cause hard feelings. We gals want nothing more than to enjoy the sport along with you guys. So let's get on with it...PITCH LOTZA RINGERS!!!!

Last, but not least, "It's really a rush to beat you guys." From any distance in any sport — cuz YOU GUYS are GOOD!!!

Phyllis Morten, Corona, CA

Dear Dave,

In the past two years, if I've read one article I've read fifty about 30 ft. pitchers versus 40 ft. pitchers. The big issue seems to be, is it fair for a 40 ft. pitcher to compete against a 30 ft. pitcher. I'm sure we could all throw more ringers at 30 ft. versus 40 ft. Maybe the fair thing to do would be to move juniors, seniors and women to 35 ft.

The point that I would like to make is that five years ago in Oklahoma, we had approximately 11 women pitchers and 90 men pitchers. We recognized that we did not have a good balance of women versus men, and the reason for that was we weren't giving the 11 women pitchers a place to pitch. By giving the women an opportunity to pitch *competitively* with the men, we now have 45 women out of a total of 146 members. The ratio is still not quite like we want, but I believe we are getting there. I know that if you don't make a place for women to pitch, you will not have an increase of women pitchers.

This question is for the men. Let's say that the ratio was just the opposite, more women than men pitchers. How many of us would spend hours on top of hours practicing in the back yard, when the only tournaments we could pitch in would be the state and world tournaments. That sure doesn't sound too appealing to your membership ratio for the last five years.

Chuck Arnold
Oklahoma City, OK

Letters to the Editor

Dear Editor,

I started taking 16 mm movies of horseshoe pitching in 1948 at the First Rosselet Memorial Tournament. "Pop" Woodfield, NHPA Pres. attended. John Rosselet was an NHPA Vice Pres. prior to the War. He lost his life in World War II while still in his early 20's.

In 1950 I took movies of the World Championship. Over the years I accumulated several thousand feet of film. The film was edited in 1978, a soundtrack was added. A 20 min. film became available (at an expense of about \$4,000). The film was turned over to a film presentation firm for rental. By 1979 there was a long waiting list for rentals of the two copies.

Ed McFarland of Texas then wrote to me and said he thought the film was a very important contribution to the NHPA. He suggested that I produce a film called, "Legends of Horseshoes." I sent a copy of his letter to the NHPA thinking they could produce it. The Council voted it down, stating that the NHPA could not afford the cost of producing it. (Estimated \$3,000.)

By the early 1980s, videotapes and cameras were available. Glen Portt, Pres. of the NHPA at the time, recognized the importance of having the pitching and voices of our legends and arranged with the Huntsville, Alabama people to have a court set aside at the 1984 World Tournament.

We videotaped Elmer Hohl, Carl Steinfeldt, Paul Focht, Frank Stinson, Dale Lipovsky; also Ruth Hangen, Vickie Winston, Lorraine Thomas, Phyllis Negaard and Debbie Michaud.

Footage of other legends was added to the original coverage, including Danny Kuchcinski and Sue Gillespie in "You Asked For It" with Rich Little, W.R. Williams, Jr., CBS Week-end News (bowling and pitching) and Carolyn Schultz Decker (1930-1931 World Champion).

Over 100 copies have been sold to people in over 30 states, including Alaska and Hawaii, plus S. Africa, Canada, Israel and Australia.

Glen Portt arranged with the Georgia people to set aside a court at this year's World Championship Tournament to video "Legends II". With Ottie Reno and Debbie Michaud narrating, we taped the following: Walter Ray Williams, Jr., Jim Knisley, Mark Seibold, Al Zadroga, Ralph Maddox, Merlin Potts, Tari Powell, Opal Reno, Debbie Michaud, Alan Francis, Sandy McLachlin, Diane Cantin, Sue Snyder, Lois Webster and Art Tyson.

We have been trying since 1984 to get NHPA members to cooperate. We have asked them to videotape interviews with legends who no longer attend the World Championships. Bob Champion tried for several years to interview Ted Allen on videotape without success. Mr. Thor Jensen of Hayward, California did send me a videotape of Don Titcomb. W.R. Williams interviewed Fernando Isaías but the background noise ruined the tape.

Many movie shorts were made over the years of Ted Allen, Guy Zimmerman, Fernando Isaías, Jimmy Risk, Putt Mossman, etc. Copies of these would make a great addition to our library as would a copy of the King of the Hill T.V. series out of Chicago in the 1960s.

We would appreciate any help we can get from the membership in tracking down or locating movie film of our legends. Preserving the past will help insure the future!

Legends II is now available at \$30.00, postage included. Profits from sale of tapes goes to the NHPA. Please send checks or money orders to:

**Sol Berman, MD: 1 Wycliff Rd.
Palm Beach Gardens, FL 33418.**

Dear Mr. Loucks,

In recent issues of *Newsline* you have pictured the men's and women's champion pitchers for 1989 on the front cover. We would very much like to see the Jr. boy and girl World Champions featured on the front cover of the *Newsline* in the near future. They deserve the recognition also.

We feel they will be the pitchers of tomorrow. Thank you,

Mr. & Mrs. Ray Walters, Troy, Ohio

Editor's comment: This issue marks the introduction of a new column in *Newsline*, "The Junior Window." This section will be devoted entirely to articles on our junior pitchers and NHPA promotion activities in their behalf. We have pictured the top three boy and girl finishers of the 1990 W.T. on the front cover of this issue. Articles on some of them will be forthcoming but we need the help of members who will research and write interesting stories on our up and coming junior pitchers. Both adults and juniors are encouraged to submit articles for this new column.

Dear Dave,

John Markham of Hersman, Western Australia, while touring California in the summer of 1989, had the good fortune to stop for lunch at Cloverdale, California's Recreation Park — better luck yet, his family picnic table was located right beside the horseshoe courts used by pitchers in the July/August 1989 *Newsline* story "Nine Old Men Toss Iron by the Ton."

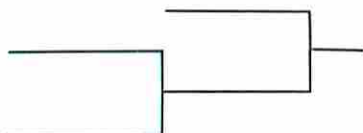
John became so interested in our horseshoe sport that he forthwith subscribed to *Newsline*, and to further his knowledge, I sent him rules and regulations to cover court design and functions of the game.

A letter from John states, "You can tell Dave, *Newsline* arrives in good order." Additional information is, "I haven't started my horseshoe pitching club in western Australia as yet, and will wait until I retire."

Incidentally, for his trip home to Australia, John purchased a twin engine Piper Chieftain in Kansas and flew by way of Iceland, Saudi Arabia & India over which he lost an engine, but ultimately reached Perth safely.

Stewart Snyder, Cloverdale, CA

OFFICIAL BRACKET BOOK Of Elimination Schedules



Contains Winner-Loser Brackets
From 3-64 Teams Or Individuals.

Perfect For Singles Or Doubles

Ideal For Tournament Directors

ONLY ... \$9.99 — Postage Paid

HORSESHOE PRO SHOP

2275 Winter Parkway
Suite 189
Cuyahoga Falls, Ohio 44221



Letters to the Editor

To the Editor,

Some of the horseshoe pitchers that have been around my horseshoe pitching for very long know that I have had a terrible TIMING problem. I always want to step out before my forward arm swing, which causes me quite often to be pulling back when I release the shoe. Another BAD habit I have is to bend my elbow and actually wind up behind my back on the backswing and end up throwing the shoe instead of swinging it out.

2 or 3 weeks ago it finally dawned on me that I was doing exactly what I had spent 25 years training myself to do — move the foot into position before committing any body action; and trying to “deliver” the shoe from the waist like 95% of the hand techniques come from. I’m talking of my 25 years in the Martial Arts (Karate, etc.), where I was a real “stickler” on basic techniques when teaching others.

Now I know the reasons — I just have to find the time to practice trying to undo what I worked so hard to accomplish.

Why this story? Because maybe some of you have a similar problem with something that seems to be so simple but you just can’t figure out a solution.

Tom Smock
Dunkerton, Iowa

Dear Dave,

As a member of the NHPA I pitched in the W.T. at Atlanta this year and had a real good time. The camping was great and also everything about the park. The courts at the arena, to me, were very good. The only thing that was bad and left a foul memory, not only to me, but most of the people I talked with, was the rule we found out about after the games.

They went by % on the last pitcher to go into the championship games, regardless of how many games were won or lost. I’ve always been a competitor and try to win more than the next guy. To win is why we compete and play the game, not percentage. We all paid good money to pitch in the W.T. and all trying to get in the championship, but some are denied the right by some *silly* rule that some committee made up. All places from

the top to bottom should be on won and lost records and then only in case of a tie should the ringer percentage come in effect.

They made points for close shoes. That’s how a lot of games are won, not just percentage.

I myself would not have gotten in the championship game, although I had a respectable 8-3 record. There were others who had the same record, only better percentages and that’s where the percentage should come in. Also, a member tied for first in his section and then had a play off (lost) and was completely out of everything. He had an 8-3 record. To top it all off they selected a pitcher with a 5-6 record for the championship game. Fair?

I’m hoping this letter will be published in the *Newsline* as to get more input from the readers to change this obnoxious rule.

Sincerely,
Clayton Bushman
Fayetteville, Ohio

Editor’s Reply: You don’t say whether this is your first World Tournament but your comments lead me to believe it may have been. It was unfortunate that the method of selecting the final 10 pitchers for the men’s classes was not posted until the third day. The statement in the pitching program was wrong and we overlooked posting the correct procedure for a few days. Many methods of selecting the class finalists have been tried over the years. None has met with the approval of all and nothing will ever reach that point. We have tried all wins-losses, all percentage, play ties, don’t play ties and combinations thereof. Every year some pitchers complain. I guess that’s human nature.

The silly rule you don’t like, made up by some committee you don’t know, was the decision of the NHPA Executive Council who has years of experience behind them trying to please the wishes of the biggest majority. It was bad that we posted it late but in my 6 years on the committee, this year’s rule was the fairest and brought the fewest complaints I can remember. The winner of each section plus the next 4 best W-L records

and then the 3 best percentages remaining. This method gives pitchers two chances to make the finals.

You say winning is foremost to you and that is why you complete. I complete against myself for the best percentage I can pitch. Winning is secondary for if I don’t pitch my best, I don’t deserve to win. Each of our opinions are shared by others. How would you feel if the fellow who beat you out on W-L had 2 automatic wins because of pacers in his group? When you have 2 or more sections competing for the finals, it is only fair to go on W-L when all play the same competitors the same # of games. I don’t believe the rule was “obnoxious” but I thank you for your comments and this opportunity to respond. The committee always looks for ways to improve. However, we will continue to make move-up rules based on what we feel is the fairest for the majority.



**Write for details
on the
Gordon Challenge**

**To purchase shoes,
contact the NHPA Game
Related Sales .**

Gordon Horseshoes
c/o Queen City Forging
233 Tennyson St.
Cincinnati, Ohio 45226

9TH ANNUAL FUNFEST and TOURNAMENT
DECEMBER 9-14, 1990



ALL CLASSES: Mixed Handicap — No Juniors — All Entrants Play at least 11 Games — 2 DAYS

BANQUET PACKAGE: \$25.00 PER PERSON INCLUDES:

Sunday 7:00 p.m. — 1 Hour Complimentary Cocktail Party with Hot and Cold Hors D'oeuvres

Friday 7:00 p.m. — 1 Hour Complimentary Cocktails prior to Awards Banquet

Sit Down Banquet - Full Course (Your choice Roast Strip Sirloin of Beef or Chicken Kiev)

FOR FURTHER INFORMATION

DONNIE ROBERTS: CO-DIRECTOR — 2275 Winter Pkwy, Suite 189, Cuyahoga Falls, OH 44221 (216) 928-8560

DON L. WEAVER: CO-DIRECTOR — Director, Special Events, Hacienda Hotel

P.O. Box 98506, Las Vegas NV 89193 (702) 739-8911 • 1 (800) 634-6655

DO NOT SEND ENTRIES TO THE HACIENDA

Make check or money order (no credit cards) payable and mail to:

Las Vegas Open Horseshoe Tournament - 5025 S. Eastern, No. 16, Box 250, Las Vegas, NV 89119

• **TOURNAMENT ENTRY: \$60.00 CLOSES 5 P.M. DEC. 9, 1990 \$75.00 AFTER NOV. 30, 1990** •

We need your name, address, phone, 1990 NHPA card no. and 3 highest 1990 tournament averages verified in writing by State, Club or National Officer. No exceptions.

DEADEYE
HORSESHOES

	Price Per Pr.-up to 12 Pairs	Price Per Pr.-12 prs. & Over
CLYDESDALES	\$35.00	\$28.00
N.T.	\$35.00	\$28.00
REGULAR	\$35.00	\$28.00
E-Z GRIP	\$40.00	\$33.00
"NEW" CLYDESDALE DF	\$40.00	\$33.00

ALL "DEADEYES"
IN VARIOUS WEIGHTS OF
LIGHT - MEDIUM - HEAVY

(Each pair matched to equal weight)

UPS shipping included in new prices—

Continental U.S. ONLY

C.O.D.s add \$3.30

ORDER DIRECT OR FROM AUTHORIZED
NHPA DISTRIBUTOR

NO SHOES WILL BE SENT ON CONSIGNMENT

Missouri residents add 5.725% sales tax.

All "DEADEYES" are now available in
medium hard & dead soft (curved part only)

All "DEADEYES" are guaranteed
against breakage for 2 years
from date of Original Purchase
(NOT REPLACEMENT DATE)

Contact Bill Courtwright (ONLY) for special prices on
rejects and returned shoes (NO GUARANTEE)

DEADEYE Caps Available — \$5.00 postpaid

W. Courtwright
2250 North Lark Dr., Fenton, MO 63026
Ph: (314) 376-5222 or (314) 677-2200 (8-5)

Walter Ray Williams, Jr.
c/o Esther Williams
4300 N. Lason Lane, Tucson, AZ 85749
Ph: (602) 749-8965 or (602) 749-8931

For nearest local NHPA sales outlet, contact:

NHPA NATIONAL BUYER

Edward A. Domey

P.O. Box 298, Sutton, MA 01590
(508) 865-9477

Regional Director's Report

by Gary K. Minnick

Norman Rousey, Regional Director from **Alaska** reports that horseshoes are really taking hold there. Anchorage has 10 pits at Jade Park, 10 pits at the Mountain View Lions Park, 4 at Delaney Park and 12 at the Eagle River Lions Park. There are also 12 at the State Fairgrounds. But these horseshoe fans don't wait for Summer to enjoy the game. Each Winter, the Mat Shuus Horseshoe Club in Palmer stages an annual "Ice Classic" on a lake behind the Silver Fox Inn in Wasilla, setting of the courts with bales of hay, which doesn't keep the shoes from skidding off the ice. *I'd like to see some of the NHPA better pitchers compete in that.*

Art Felgenhauer, Regional Director from **Illinois** wrote that in 1989 he sanctioned 30 tournaments. In 1990, only up until August, he has already sanctioned 46 and expects more. There is a very nice writeup about Art in the Suburban Life Newspaper on August 11, 1990. Nice going Art.

John Decker, Regional Director from **Michigan** writes that on May 26 and 27, 1990, there was a sanctioned Wolverine Tournament held at the Lincoln Park Community Center to raise money for the Wayne County Easter Seals Society. \$5,347.85 was raised. Harold Persinger raised the most pledge money and was the recipient of a large TV and VCR. Many other prizes were given away in raffle form. These prizes included a dinner party with Sparky Anderson valued at \$150.00. Several other dinner certificates were given away from other fine restaurants in the area. Numerous pairs of horseshoes, wind-breaker jackets and sweatshirts were also given away. In attendance for an autograph signing appearance, was Tiger baseball pitching great, Denny McClain. Denny also challenged Margo Kohn to a game of horseshoes. According to a conversation with Denny, she nipped him right at the end. Final score 21-6. Margo also finished 2nd in the tournament. Her prize for this was free use of a car cellular telephone for 1 year. The big prize winner for the tournament was Dick Pelton. He won a trip for two to the Bahamas.

Dexter Stallings, Regional Director from **Tennessee** writes that Lofollote has 12 new horseshoe courts complete and ready to play on. Newport is in the process of building 12 also. Norwood has 12 covered courts with good clay and lighting. Cleveland has built a new facility with bath and kitchen facilities, with a wing on each side for viewing tournaments. They also have a place for storing Hall of Fame, etc.

Clint Bryson, Regional Director for **North and South Dakota** reports that Dickinson, ND had their first ever sanctioned tournament. Phillip, SD has a new club. Also Clint and his wife were recipients of the South Dakota Hall of Fame for 1989. Congratulations.

Bud Schardine, Regional Director from **Utah** reports that their going to hold the State and Utah Summer Games in Cedar City. They will also hold the World Senior Games in St.

George, UT. He says a "Hot News" will be announced shortly. We will be patiently waiting.

I want all the Regional Directors with questions about our insurance to sit down and write the specific details to me. I'll get the answers.

Also, any Regional Directors with no telephone numbers on their Assistant, please send them to me. For AZ, I need it on Gary Chalberg, MN, I need it on Glen Sandquist, IL, I need it on Dale Ferguson and Dave and Paulette Shreve, WV, I need it on Alex Jenkins. Please send these to me at once. Thanks.

We still have quite a few Regional Directors not sending in their reports quarterly. If this persists, I'll write to the Charters Officers of each state concerned and ask about activities and assessments on the Regional Director for their areas. Let's start communicating and get the NHPA activities in your areas on track.

FOR THOSE WHO DESIRE THE VERY BEST

IMPERIAL

- Record Breaking Performance
- Hardened Hooks & Points
- Maximum Ringer Stability
- One Year Guarantee

USA PRICE LIST / PAIR POSTPAID

1 Pair ----- \$43
2-5 Pair ----- \$41

FREIGHT COLLECT

6 Pair & over ----- \$35

Clyde Martz
(412) 733-2031

5056 Northlawn Drive
Murrysville, PA 15668

To Ride the River With

by Glen Portt

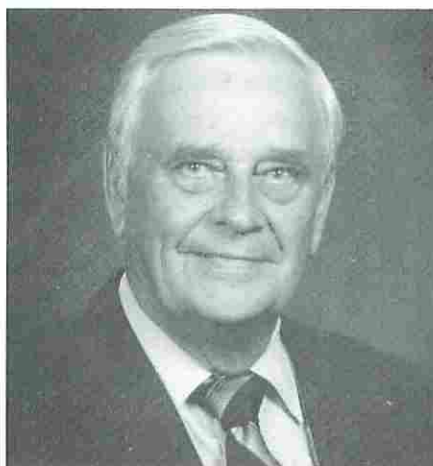
The Monongahela River, affectionately known as the 'Mon', is formed by the union of the West Fork and Tygart Rivers in West Virginia, runs north into Pennsylvania and unites with the Allegheny at Pittsburgh. It is only 150 miles long yet this river played an important part in the life of one of our 'legends' of horseshoes.. **Al Zadroga**.

Although Al was not a Tom Sawyer or Huckleberry Finn rolled into one, he probably came close. He loved the area. He grew up there...the river was his home...and he'll never leave it. He's been there for 75 years.

Born near Elizabeth, PA, Al started pitching when he was about 13, during the depression years, when a cup of coffee was a nickel and a re-fill cost you nothing. There was little work to be had. If there was, the standard rate was a dollar a day, and men were glad to get it. Hundreds were out of work with little to do. A neighborhood gas station owner built two claybox horseshoe courts with lights and it was there the men gathered. An open shoe was practically unheard of, although rumors about it were going around. Young Al experimented and found by holding the shoe on the side he could get it to land open. Ringers seemed to come naturally and it was not long before other pitchers abandoned wrapping their forefinger around the heel caulk, a practice common in those days.

Al entered his first tournament at age 15. Smartly dressed in whites, wearing a striped red tie and a 'beanie' made from an old felt hat, he was the epitome of the teenage rage at that time. (The 'beanie' is just a little bit of nostalgia for you old folks. Do you remember?) In September '31, the Pittsburgh Press described his horseshoe pitching as sensational, but also in Sept. '31, he entered high school as a freshman and his budding horseshoe career came to an abrupt halt. There was just no time.

Through high school, business college, and for years afterward, Al played in almost every sport known, and excelled in all of them. His first job was with Hillsman Transportation Company. *A job that lasted 50 years.* He started at the bottom and



Al Zadroga

worked his way to Vice-President. In 1978 when Hillsman was acquired by Mon River Towing, Al went along as VP in charge of the six million tons per year of coal traffic.

Because of his interest in sports and his business career, *he pitched no shoes for a 22 year period.* In 1953 he decided to again take up the sport. He entered the Eastern National for his first tournament. His return was not what one would call spectacular. He ran into pitchers with names like Carl Steinfeldt, Harold Reno, Elmer Hohl, and Paul Focht. Al says, "I won *one* game. That should be enough for me to quit horseshoes for good but I didn't." (Records show he won the Eastern in '67 and again in '76, this time with an 84.4%, defeating 6 time World defending champion Elmer Hohl along the way.)

In a 22 year period from 1962 thru 1983, Al pitched in 17 W.T.s averaging 77.4%, winning 374, losing 168 *yet he never won a World Tournament!* He came close. The one tournament he could have won but didn't? Here is how he told it to me...

"I've pitched against the greatest in my time and managed to come out on top at least once with most of them. But the one game which stands out in my memory was not with one of the greatest, but with a very fine pitcher. It was at the 1977 W.T., Greenville, Ohio with Charles Killgore. The tournament is down to the last 5-6 games and I'm tied for first with Elmer Hohl and Glen 'Red' Henton. I'm pitching good—over 80%. Here comes Charles, pitching like a world champ. His

shoes are all going on. Right, left, high or short, they all hook. I don't remember all the figures but it was a very long game. I lost, pitching 85%; Charles had 87. I ended the tournament one game behind Hohl and Henton who tied. *That* was the one W.T. I could have won. I pitched 83% — my best W.T. average. I still kid Charles about it. We're the best of friends."

Although Al Zadroga did not win a World Tournament, he won so many others, setting record after record, it can be truly said, "His cup runneth over!" For 30 consecutive years he pitched in the Pennsylvania State Tournament, winning it 8 times, setting the high mark of 82.8% which still stands today, for others to shoot at.

New Castle, PA, a city of about 40,000 in 1976, is probably better known for the saying, "That's like taking coal to New Castle" than it is known for horseshoes. Old timers, however, will tell you that a bit of horseshoe history was made there. During the state's annual "Spring Fling" tournament, generally considered a warmup for the summer season, the top pitchers gathered. Fellows like Buck Engle, Clyde Martz, Curt Over, and Jim Solomon — all tough men on a horseshoe court. There *was* one other. A man named Zadroga who rang up consecutive games of 86.4, 86.8, 87.0, 88.8, 87.0, 92.1, and 92.7% for an incredible 89.0% average — a record which may never be broken.

Sometimes we get so involved in our own little horseshoe world that we miss knowing about some real fine tournaments that are held year after year which attract our top pitchers. One of these is the Raymond L. Frye Memorial held annually in Winchester, Virginia, the second week of September. This is a 16 game round robin event and if you expect to win you'd better plan to pitch 80% or better. The winners throughout its 22 years of existence read like the W.T. list of champions. Danny Kichcinski, Elmer Hohl, Carl Steinfeldt, Walter Ray Williams, and Jim Knisley. And there's that "one other" again — Zadroga! He won it 8 times out of 18 tries, averaging 79.6% for 108 games.

People in the old time West judged a man in many ways, and if he passed, the greatest compliment they could give him was "He's a man to ride the river with." This seems to fit Al Zadroga, one of our all time greats, or, as the old Scotsman expressed it — "What a mon!"

Al, in your time you've pitched against the best. I know it is a tough decision, but who would you pick as the greatest of them all?

It is a tough one but here goes. I hope I don't offend anyone but I'll have to nominate Curt Day. Once he got lined up it was all ringers. Some said he lost too many with his $\frac{3}{4}$ reverse but he never lost enough to suit me. He may have lost a few more than those with other turns, but if he did, he sure made up for it in the end. Curt was always the gentleman, on or off the courts, a fine man.

This may be embarrassing to answer but was there any one person who seemed to have your number like in baseball where a pitcher owns a hitter, or vice versa?

Wish you hadn't asked that one. The answer is 'yes.' Paul Focht. All I had to do was step on the court with Paul and he'd pitch 90% against me. No matter how good I pitched he'd pitch better. One game I had 87 out of my first 100 and I still lost. However, I finally managed to get to Paul a few times in the latter part of his career. Like Curt, he was a credit to our game, a real gentleman.

About the shoes you use, any preference?

I pitch a $1\frac{1}{4}$ turn and I've tried a lot of different shoes but I've stuck to Allen's most of my career. I last saw Ted at Ainsworth and ordered two pair at that time. I received them in February. Ted was a great man, always kept his word. We'll miss him.

You've told us about Charles Killgore, Curt Day, and Paul Focht. Is there any other pitcher about whom you'd like to comment?

Yes. I'd like to tell you about my good friend Jim Solomon from Uniontown, PA. In the '60s and '70s Jim was one of Pennsylvania's top pitchers. He won the State title 4 times and was a pitcher to be reckoned with no matter where he went. He had many 80% tournaments. My first encounter with Jim was in the early '60s at the PA State in Erie. I'd never heard of or

seen him before. Here was a guy stepping out on the wrong foot, shoe flopping all over on the way to the stake, some landing flat, some standing up. All very irregular. I got to wondering, who is this guy? Where'd he come from? What's he doing here? I soon found out. I couldn't believe what I was seeing. His shoes were going on all ways — left side, right side, crawling down from the top of the stake and even some standing upright so the next shoe had to put it on. I was flabbergasted by such pitching, but that was his style. No, I am *not* going to tell you who won. I'm just going to say I don't remember!

Jim and I pitched in many local tournaments and usually ended up tied for top spot with one game to go. Before starting, we had a little byplay which both of us looked forward to. Jim would say, "I hate you." My standard reply was, "I hate you, too." On the courts we were enemies; off the courts, the best of friends. Always have and always will be. That's the way it should be with all horseshoe pitchers.

Al, I've pretty well covered your career except for the last few years. Starting in 1984 thru '89 your pitching went downhill, if averaging 68% can

be called that. I know about your illnesses but I suspect few Newsline readers do. Would you like to comment?

I have never believed in making excuses so I will only say my health problems started in '83 and since then I have had three operations. I should not have pitched during the last 5 years but I loved the game so much I just couldn't give it up. Just stubborn, I guess. Somewhere along life's way we all have to learn the hard way. I did.

Any last comments?

Yes. I'd like to say that the game of horseshoes has been good to me. The game came natural. I wish to thank my wife, Emma, for her support throughout the years of basketball, football, baseball, bowling, and thousands of games of horseshoes. She was always there. I couldn't have done it without her. We have traveled all over the country, north to south and east to west. We have met many wonderful people in horseshoes. They are really the salt of the earth — friendly, hard working and God fearing. I can never thank them enough for electing me to the Hall of Fame, the highlight of my career.

Ted Allen Horseshoes

Established 1938

The Professional Shoe



Designed and pitched by
Ten Time World Champion
Ted Allen.

Three hardnesses: Dead Soft,
Medium Soft and Medium Hard.
All have hard points.

\$53.50 Shipping and handling included
(Continental U.S.A.)

Write or call: Jack or Lee Stevenson

1045 Linden, Boulder, CO 80304
(303) 442-1436

Here and There

Reports of happenings around the NHPA



"With this ring...er...I thee wed"

NEVADA Reno couple marries at horseshoe tournament. Jim Jones, a Reno fireman and Claudia Myers exchanged vows at the 11th annual Pig 'n Pitch horseshoe tournament at Lake Lahontan on June 22, 1990. Pitchers from 58 doubles teams were witness to the ceremony which took place around the stake in the Nevada sand. The couple, both NHPA members, honeymooned the following week at the first annual Rogue River, Oregon tournament. Claudia pitched very well, tying for 1st in her class. She reports that Jim also performed very well!!!



Eddie and Esther Heckart

ILLINOIS participants in the 1990 Illinois State Championship want to extend their thanks to Eddie and Esther Heckart who were the tournament hosts and got the 21 courts in order and then maintained them during play. Held in Hecker, Illinois over Labor Day Weekend, this husband and wife team did a great job.

OHIO At the 1990 Ohio State Fair tournament, some 300 pitchers took part. They played 40 shoe count-all with total point deciding the winners of each 8 person class. All participants were asked to fill out a questionnaire. The questions and answers were interesting. I wonder if the same ratios would hold up if the entire NHPA responded.

Try The First Shoe Designed for Horseshoe Pitching



- 100% super soft garment leather for excellent comfort and control.
- Shockproof, with soft midsole and wedge.
- Durable rubber outsole for strength and long wear.
- Heel support for greater strength.
- Terry cloth inside collar padded with urethane foam.
- Removable, replaceable Texon insole.

ALSO MAKES A GREAT WALKING SHOE!

LET CLAY 'N SAND IMPROVE YOUR GAME

Order Your Clay 'N Sand Pitching Shoes Today

Men's 8 9 10 11 12
8-1/2 9-1/2 10-1/2 11-1/2 12-1/2

Women's 6 7 8 9
6-1/2 7-1/2 8-1/2 9-1/2
(Please Print Clearly)

Name _____

Address _____

City _____ State _____ Zip _____

Send check of \$40.00 plus \$5.00 shipping and handling to:

CLAY 'N SAND, Inc. 414/654-6404
6901 Sheridan Rd.
Kenosha, WI 53140

Wisconsin Residents add 5% Sales Tax

- Q. Do you like 40-shoe count all?
A. 80.2% Yes 19.7% No
Q. Do you like total points scored to determine a winner?
A. 72.4% Yes 26.4% No
Q. Would you like wins, losses to determine winner, rather than total points?
A. 36.0% Yes 63.9% No
Q. Do you like position round after the complete round robin?
A. 67.4% Yes 32.5% No
Q. Would you rather play with winner getting bonus points for a win?
A. 28.4% Yes 70.4% No
Q. Would you play, if we allowed, a 30 ft. pitcher to compete with a 40 ft. pitcher? (men's division)
A. 42.8% Yes 49.3% No

UP and DOWN HILL

Do some pitchers say one end of your court is higher than the other, or are you planning to build a horseshoe court in your backyard? If you do not have a surveyor's transit or have access to one, here is a simple and inexpensive way to check the level of one stake to the other. You

(continued next page)

His First Shoe Was A Ringer

by Donnie Roberts

As you probably know, Mr. Gorbachev visited the United States in June of 1990 for a Summit with George Bush. During that Summit much time was spent at Camp David, the Presidential Retreat in Maryland. Again, as you probably know, two official horseshoe courts were constructed at Camp David shortly after Bush was elected. The courts have synthetic clay and are very well built to NHPA specifications.

Mr. Bush and Mr. Gorbachev pitched some horseshoes as all visitors to the White House and Camp David seem to do. Mr. Gorbachev promptly stepped up in front of the stake and threw a ringer with the first shoe. Mr. Bush was heard on several news programs the next few days lamenting the good fortune of Mr. Gorbachev. It was all good natured, certainly.

Should you happen to see Francis Asher of Ohio, he will want to show you a very nice picture sent to him by George Bush. The picture shows the two heads of state pitching at Camp David. Francis will likely place this picture in the Ohio Horseshoe Hall of Fame after he shows it to the world. Nice going, Francis!



New Twenty Shoe Game Is A Hit

by Bob Dunn

Early this year, our MGSHPA Ringer Digest reprinted a new twenty shoe count-all game designed by Walter Ray Williams Jr. The Minneapolis Horseshoe Club Wednesday No-Handicap League used a form of this new concept for the season ending class tournament. The game's name was changed, score sheets printed, and a 12 player round robin was set up for the eleven game tournament. Called "Progressive Scoring," it is just what the game consists of. For the first eight shoes, ringers count 5 points and close shoes are 1 point. For the second 8 shoes, ringers count 10 points and close shoes 2 points. Then comes crunch time, for the last four shoes, ringers score 20 points and close shoes score 4 points. This is a count-all scoring game with alternate pitching. A poll of the players, following the tournament, found a unanimous approval of the game for enjoyment and variety to our season long league play. Although there was a 12 player round robin, a first and second division was established, so the top positions were awarded trophies.

The game of Progressive Scoring is unique for ringers are not always the same value and even though behind in the scoring, a pitcher is never really out of the game, up to the last shoes. We did add a tie breaker should any game end up tied. The scoring reverts back to the 5 & 1 point value and the contestants pitch four shoes until the tie is broken. Progressive Scoring may never unseed the traditional league games of 40 or 50 shoes, but it does provide an option for various events, and the pitchers will enjoy the variety.

PROGRESSIVE SCORING

20 Shoe Count-All Alternate Pitch

Pitcher 1 **MORAN** Class B Court 4 Game 5 **GLEASON** Pitcher 2
(CIRCLE POINTS SCORED)

RINGERS	POINTS	SCORE	TOTAL	RINGERS	POINTS	SCORE	TOTAL
5 5	1 1	10	10	5 5	1 1	2	2
5 5	1 1	10	20	5 5	1 1	1	3
5 5	1 1	5	25	5 5	1 1	5	8
5 5	1 1	10	35	5 5	1 1	6	14
10 10	2 2	10	45	10 10	2 2	2	16
10 10	2 2	4	49	10 10	2 2	10	26
10 10	2 2	12	61	10 10	2 2	10	36
10 10	2 2	10	71	10 10	2 2	10	46
20 20	4 4	8	79	20 20	4 4	40	86
20 20	4 4	24	103	20 20	4 4	24	110

Total Ringers for Game: **11** Total Score: **103**

Total Ringers for Game: **8** Total Score: **110**

This score sheet illustrates the different flavor that the game injects to our sport. Art Moran had a fine 55.0% game only to lose to Terry Gleason's 40.0%, for Terry hit three 20 point ringers in the finals.



THE PRESIDENT

June 19, 1990

Dear Mr. Asher,

Thanks for that most thoughtful letter of May 22. I thought you might enjoy the enclosed photograph.

With best wishes,

Sincerely,

UP and DOWN HILL *continued...*

will need two identical 5 gallon buckets and a 50 ft. garden hose. Start with the buckets close together. Fill each bucket $\frac{1}{2}$ - $\frac{2}{3}$ full of water. Fill the garden hose completely and submerge one end in each bucket. Lay a brick on each hose end to hold them in the bottom of the buckets. To eliminate the remaining air in the hose, raise one bucket 4 or 5 feet above the other until the levels change noticeably. If they do not, you will have to run more water in the hose and try again. You have now established a siphon. Now simply place the buckets on a walkway at each stake or on the ground for a future court and wait 5 minutes for the levels to equalize. Drive a rod in the ground next to each bucket and place a piece of tape on the rods at the level of the water. If your court is level this tape will be the same distance above your walks at both ends of the court.

THE JUNIOR WINDOW

Junior Promotion Program

by Bob Dunn

Junior Promotion Director

Great News! The NHPA is going to enter into an active promotion program in recruiting JUNIOR pitchers. I am pleased to accept the Director position and to be involved in this exciting venture.

The purpose of this program is no different than the overall purpose of the NHPA, other than to ensure and formalize our recruiting and promotion efforts to the youth, throughout the nation. To best facilitate this, each charter is requested to establish a position of "Junior Program Director," to oversee the charter efforts in expanding JUNIOR involvement. To support a national and charter by charter promotion, each individual club should consider establishing a Junior Coordinator position to head each club's effort to recruit and welcome new JUNIOR pitchers. These two fundamental steps will pave the way to a successful promotion program. I will be communicating with each charter president and assist in providing basic responsibility guidelines and suggested objectives in initiating our youth promotions. Charter Junior Program Directors will have the opportunity to communicate with each other, as quickly as a roster can be completed and distributed.

Why do we want to increase our JUNIOR membership? Probably most important is for the future of our association and our sport. There are more immediate benefits also. JUNIOR pitchers bring new perspec-



The NHPA honors Heather Kiefat with the Certificate of Honor Scholar award and Reed Filley a \$200 scholarship. They are shown here with West Fargo Middle School Principal Steve Kent and Gwen Eckhoff, secretary of the Red River Valley Horseshoe League.

Filley, Kiefat honored by NHPA

Reed Filley, son of Archie and Connie Filley, has been awarded a \$200 scholarship award and plaque from the national Horseshoe Pitchers Association, for his achievements in the sport of horseshoes and maintaining a 4.0 grade point average for the 1988-89 school year.

Heather Kiefat, daughter of Gene and Donna Kiefat, has received a

patch and Certificate of Honor Scholar from the NHPA for placing second in the girls division for the National Scholarship award.

Reed and Heather are very actively involved with horseshoes, along with their parents. They have both been junior pitchers in the Red River Valley Horseshoe League for the past two years.

Dear NHPA,

I would like to thank you for the scholarship I received for the 1988-89 school year. I was glad to find out that the NHPA had set up a scholarship program that rewards students/horseshoe pitchers for their participation in horseshoe and the maintaining of good grades.

You wouldn't believe how happy I was to find that I had been chosen as the boy's scholarship winner. Surprisingly enough, I wasn't the most excited person about the scholarship. My mom was. She was so proud for me, that my 4.0 GPA was already paying off.

I would like to thank you again, very much, for helping to further my education with a college scholarship.

*Cordially,
Reed Filley*

tives, fresh ideas, and add another dimension of fun to our sport. There is tremendous satisfaction for adult members to recruit new JUNIOR pitchers and watch as they progress in skills and competition. JUNIOR

pitchers can refresh our leagues, our charter activities, and can ensure the future of our sport. Let's all join in and bring more youth and junior pitchers into our leagues, our tournaments, and our sport.

April,
Heather,
Norm,
Chris,
and
Tiffany
Gage.



Member Profile

The Gage Family

Three Generations of Horseshoe Pitchers

One of the most active families of horseshoe pitchers in Minnesota is the Norm Gage family of St. Paul. Norm first pitched as the only Junior in the adult St. Paul Ramsey Club in 1962. But the family tradition actually began back in 1932 with Norm's father, Clayton Gage. Clayton is now retired, living and pitching league horseshoes in Milltown, Wisconsin. As with so many Minnesota pitchers, Clayton credits the most influential pitcher in his career to NHPA Hall of Famer Frank Stinson, and received much support from his wife, Dorothy. Clayton's most enjoyable aspect of the sport is the competition and the opportunity to WIN. Win he did, with many 60% tournaments.

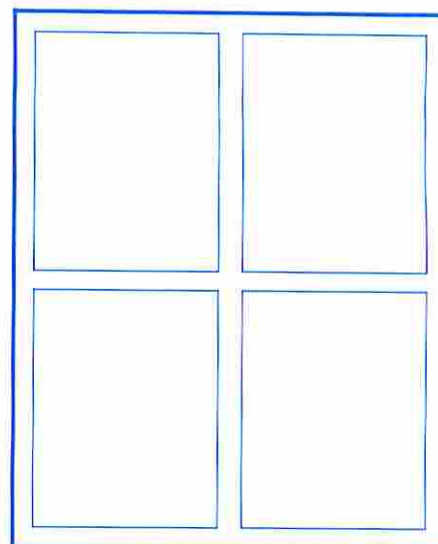
For the past two years Norm Gage has served as the MGSHA Junior Activity Coordinator. Norm has given a constant effort in promoting and recruiting Junior leagues for all of the 54 clubs in Minnesota. While providing leadership service to our association, the effort began right within his own family. His goal was to see each of his three daughters pitch in the MGSHA State Tournament. That goal was certainly achieved, with other distinctions. April Gage, now 21 years old, earned a Silver Medal in the 1989 Star of the North State Games. Tiffany, still a Junior pitcher at age 14, was the 1989 Junior Girls Class A World Champion at Spearfish, South Dakota, won a Gold Medal in the 1990 Star of the North State Games, and finished 6th in the Girls Championship at the 1990 World Tournament.

Norm's efforts within the family may not have been alone, for his wife, Chris, is a highly competitive pitcher, with a State Women's Class B Championship (1988, 64%) to her credit. It is the family involvement that Chris enjoys most about our sport.

While Norm was most influential in starting his daughters in the sport and developing skills, he must have done it well, for all three plan to continue in the sport in the adult division. April, Heather, and Tiffany all express enjoyment in pitching horseshoes, for the nice people involved, the opportunity for achievement and are grateful for the family support and involvement.

Norm's efforts have extended beyond his family, by initiating a Junior League as part of the Bloomington Horseshoe Club. This year there are 8 Junior members and most are also participating in competition of sanctioned tournaments. Norm has attended many spring meetings of the metro area clubs to encourage clubs to establish league Junior coordinators to recruit and establish Junior programs. Minnesota leads all other states in Junior participation in 1989 state tournaments. While Minnesota has many members working hard to increase the Junior involvement, Norm's leadership and his family's involvement serve as a role model and for years to come will support and recruit youth to our sport.

Editor's Note: There are many family stories in our NHPA to be told and shared with our members. Write them up and send them to the Editor.



CHECK OR MONEY ORDER
MUST ACCOMPANY ALL ORDERS
ALL PRICES INCLUDE DELIVERY
CONTINENTAL U.S. ONLY



DIAMOND TOURNAMENT DS

1 PAIR \$27.
2 PAIRS \$53.
4 PAIRS \$103.
6 PAIRS \$139.

GORDON PAIR \$28.
DS. med. hard 2 PAIRS \$55.

DEADEYE HORSESHOES
EZ GRIP OR D.F.C. PAIR \$40.
CAST DEADEYES PAIR \$35.

AMERICAN HORSESHOES 2 PR. \$39
SUPER RINGER SET 2 PR. \$29.

FRANCIS E. WHITE

714 Nevada Drive, Erie, PA 16505
Phone 814-455-2685
PA RES. ADD 6% TAX

1987 World Tournament
Eau Claire, Wisconsin

VIDEO TAPE

LIMITED QUANTITY AVAILABLE!

40 Minutes

Of All The

"87" Champions In Action

V.H.S. Format Only

Reserve Your Copy Now
For The Greatly Reduced Price Of

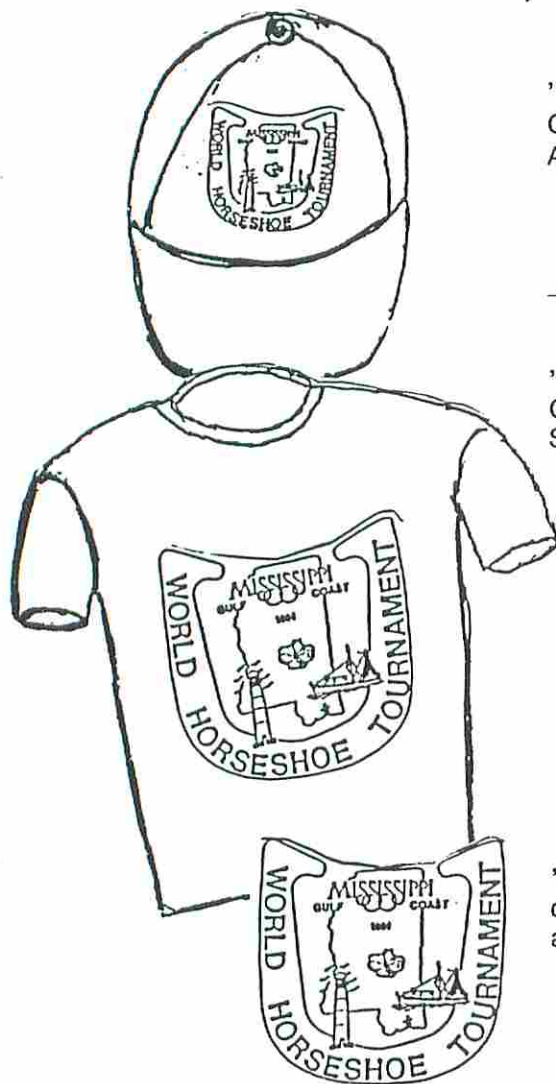
ONLY \$19.95 — Postage Paid!!

HORSESHOE PRO SHOP
2275 Winter Parkway
Suite 189
Cuyahoga Falls, Ohio 44221



'91 WORLD LOGO T's, CAPS, & PINS

MISSISSIPPI HORSESHOE PITCHERS ASSOCIATION
P.O. Box 206, Ocean Springs, MS 39564



'91 LOGO CAPS \$5.00 Caps are adjustable, one size fits all.
Colors: Red, Navy Blue, White, Maroon, Yellow and Kelly Green.
Add \$1.50 for postage and handling.

Quantity	Color	Amount	P&H	Total Cost
_____	_____	_____	_____	_____

'91 LOGO T-SHIRTS \$10.00 Shirts are 50% cotton and polyester.
Colors: Silver, Peach, White, Light Blue and Mint Green.
Sizes come in S, M, L, and XL. Add \$1.50 for postage & handling.

Color	Qty.	Size	Cost
_____	_____	_____	_____
_____	_____	_____	_____
_____	_____	_____	_____

P&H _____

Total Cost _____

'91 LOGO PINS \$3.00 Pins are 1 inch, red, white and blue
colored metal. Add \$.50 for postage and handling for one pin
and \$1.00 for 2 or more pins.

Quantity	Amount	P&H	Total Cost
_____	_____	_____	_____

ORDER FORM

SHIP TO:

Name: _____ Telephone: () _____

Street Address _____

City/State/Zip _____

Make checks and money orders payable to: **MISSISSIPPI HORSESHOE PITCHERS ASSOC. (MHPA)**
Allow 2-4 weeks for delivery.

1991 NHPA WORLD TOURNAMENT

JULY 15-28, 1990

BILOXI, MISSISSIPPI

ACCOMMODATIONS GUIDE

Official NHPA discounts. Please state your NHPA affiliation and call hotels direct for reservations.

BILOXI BEACH RESORT MOTOR INN

2736 Beach Blvd., Biloxi, MS 39531

CT, L, R, S, LR, B, P

Out of MS (800) 345-1570 • In MS (800) 654-1483

Local (601) 388-3310 \$53 flat

BILOXI INN

Gulfshores Hotel Management Co.

2416 Beach Blvd., Biloxi, MS 39531

CT, S, B

(601) 388-1000 \$65 flat

BROADWATER BEACH HOTEL

2110 Beach Blvd., Biloxi, MS 39531

CT, L, R, S, B, LR

Out of MS (800) 647-3964 • In MS (800) 221-2816 • Local (601) 388-2211

\$77 Double • \$72 Single • \$6 / add. adult

HOLIDAY INN BEACHFRONT COLISEUM

Gulfshores Hotel Management Co.

2400 Beach Blvd., Biloxi, MS 39531

CT, L, R, S, B, P

(601) 388-3551

\$65 flat

HOWARD JOHNSON COLISEUM RESORT

2428 Beach Blvd., Biloxi, MS 39531

CT, L, R, S, LR, B

Out of MS (800) 323-9164

Local (601) 385-5555

\$35 flat



For additional information on hotels and RV parks call the Tourism Hot Line at 1-800-237-9493

RV PARKING COLISEUM



Enjoy the benefit and convenience of on-sight, tournament RV parking. Our RV site is equipped with water lines, dump stations, electricity (30 amp) and asphalt surface.

Only \$10/night! Reserve your spot now.

Call the Coliseum at (601) 388-8010

91 WORLD TOURNAMENT 'PROGRAM SPECIAL'

Business Card Size Ad...ONLY \$45.00

Local/state club endorsements, personal endorsements.

Support the Official 91 World Tournament Program. Send your ad copy to:

MS Horseshoe Pitchers Assoc., P.O. Box 206, Ocean Springs, MS 39654

KEY:

Number indicated map location.

Flat: 1 to 4 persons

CT — cable TV

L — lounge

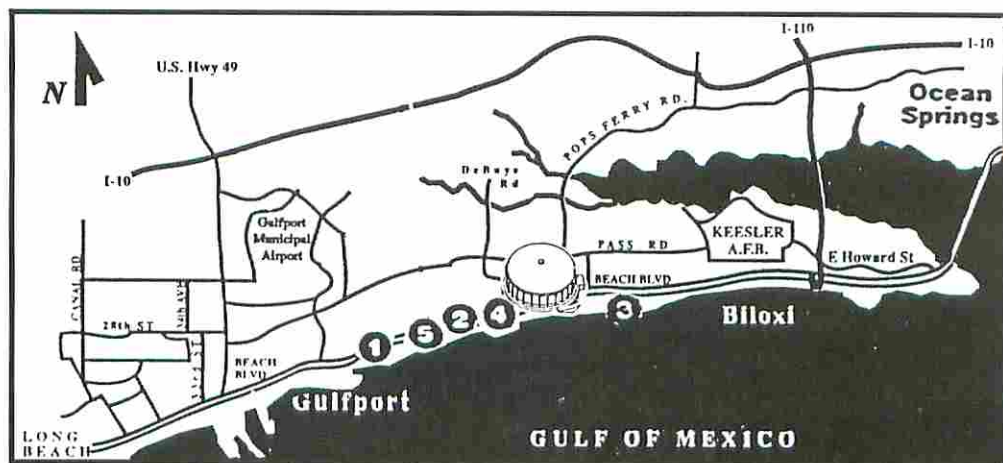
LR — laundry

S — swimming pool

B — beachfront

R — restaurant

P — practice pits



Horseshoes in the Philippines

by Ray Williams

At 10 o'clock, Sunday morning on November 6, 1989, a group made up of mostly American Military people stationed at the giant installation on Clark Air Base, launched the first NHPA sanctioned Horseshoe league in the Philippines.

The "Horseshoe International Pitchers Association of Luzon (HIPAL), as it is now known, got its start back in the early 70s when, for a brief period, two 'watering holes' in Angeles City, the town located adjacent to Clark, put together a couple of teams that played for beers, the loser buying, of course. I was on one of those teams and don't recall ever having to buy.

The games were played Sunday afternoons, on pits I'm sure were far from regulation, and without a clear understanding of rules. After a few months, players began leaving for the states and eventually these teams dwindled away. Aside from the occasional tournament sponsored by the base, play was relegated to so called "Picnic" horseshoes.

I did hear of a group of Horseshoe pitchers that gather outside the Naval Station at Subic Bay Philippines, but I have no knowledge as to their organization.

In late 1988 myself and a couple of other "old timers" left over from those earlier attempts at organized pitching, established a league using the guidelines found in the NHPA "Red Book." Serious pitching had begun. We chose the count-all system with handicap because it was fair for all, regardless of ability. We established a maximum score of 100 with handicaps set at 80%. Up until this time, Picnic Horseshoes was the extent of our knowledge, we had no idea of how to start a league or what play was possible.

Convinced there was more to this game I wrote to the NHPA and was immediately put in touch with Beverly Born, now Third VP and NHPA Sanctioned League Director. The quick response of the NHPA was the key to our formation and subsequent success. I also found Ottie W. Reno's "Pitching Championship Horseshoes," to be extremely informative and have

added the second edition to my personal library.

On October 30, 1988, a group of us pitchers met to form a league, elect necessary officials, name our group, and design a logo. HIPAL was born.

To determine interest in the game we organized a "How Goes It" league. Twenty-four players showed up so we formed five teams. Six regulation courts were constructed using sand. Sand was chosen over clay because it comprises most of the soil composition in this area. Clay is available but hard to find. Two courts were at my residence, two at the American Legion Post #123 and one each at a local beer bar and private residence.

Our first league was scheduled to last 10 weeks and went exceptionally smooth. As I mentioned earlier, the majority of members are military people, but we do have members from Germany, Austria, Australia, and of course the host country Philippines. It is because of this multi-national flavor we chose to include "International" in our league name.

Most of the players comprising this first league had thrown a horseshoe at some time in their life but many had never seen or heard of the sport. The average handicap at league's end was about 45. Three players were in the 30s and I had an 18.

Living in the tropics as we do, pitching goes on year-round. The monsoon season causes problems June through October, but most of the time we just wait for the rain to stop or reschedule for another day. We take a week or two lay-off between leagues.

Our scheduled matches are four singles and three doubles. When only one court is available we pitch two single matches at a time. This may seem odd but it works just fine and helps to speed up playing time. This is especially appreciated when "Big Red", as they call the sun out here, is burning down on you. As suggested in the NHPA "Red Book", we have kept stats on all players from the very first match. One of our members developed a computer program tailored to our needs and also supplies the necessary information for NHPA

sanction and awards.

From its inception, through NHPA sanctioning on November 7, 1989, to the present time our membership has grown to 127. From all indications we will be growing larger in the future. The HIPAL membership would like to express our deepest gratitude to Beverly Born for her guidance and quick reaction to our needs. Although far from home, we have become part of the great American sport of Horseshoe Pitching, due largely to the efforts of some fine folks.

When President George Bush took office and news of his horseshoe pitching hit the papers, we sent him a T-shirt bearing our logo. In return we received a nice card of thanks which is now part of our league's history.

About the Author

Although I have spent the majority of my adult life overseas, I call Sacramento my stateside home. Born in San Diego, I enlisted in the U.S. Air Force in December 1951, retiring 23 years later in March 1974. During my career I spent tours in Germany, England, Thailand, Philippines and two stateside bases. Since my retirement I have lived permanently in the Philippines and work as a transportation officer for the Air Force at Clark. I am married to the former Lagrimas Rodriguez, a Filipina from the Spanish community of Manila.

My introduction to horseshoe pitching came in the summer of 1958 while assigned to RAF Alconbury in England. On lunch break I was talked into a game by a fellow worker. On my first attempt I threw a natural flip and to this date I haven't changed my style. "Picnic" shoes had been my only experience until serious league play formed here in the Philippines. My ringer average is 43.8%, with a high game average of 60%. After reading % averages in the *Newsline* I feel I'm a beginner. I pitch the Cal-Flip, stainless steel horseshoe and am currently serving as President of our league.

My future in this country is questionable due to the present unrest and instability of the government. However, I have been through a revolution, several coup attempts, communist assassinations, strikes and typhoons, none of which has deterred me from continuing to promote the sport of Horseshoe Pitching.

News Releases

NEW HORSESHOE CLUB #90-C-05 SPRINGFIELD, ILLINOIS

The new horseshoe club was organized last winter and established two sanctioned leagues in 1990. One before World and one after. They are both 100% handicapped.

Charter members recently received recognition for the summer league held at Lincoln Park in Springfield. Two from Mechanicsburg, Mike Green League Champ with a high game of 66% and average of 43.6%, and Bill Marvin took fourth. Gary Nation, Cantrall, was sixth and received the "outstanding sportmanship award." Alan Jones, league director, from Rochester was seventh. The following of Springfield were, Bon Baily was second in league and first in Class B of the club tourn., Joe Beneky took third in lg. second in tourn. and won the prestigious "most improved award." Ed Evans eighth, Ross Hendrickson ninth, and "Rookie of the Year," Lee Watkins tenth finishing first in Class C, Al Peterman was eleventh in league but ended the season with the highest average and was first in Class A of the tourn. Art Standage coming in twelfth was awarded the coveted "Low Shoe" award. King George, although fifth in league, received the "Biggest Sandbagger" award.

Of the twelve charter members, ten attended World. Five of the ten qualified for the finals. Two tied for first in Class J which resulted in a play-off game, decided on the fortieth shoe. All in all our club received one first, one second, two fourths and an eighth place. We are proud! If you would like to join in our fun/club, please contact Alan Jones, #34 Merlin Dr., Rochester, IL 62563, 217-489-9254.

MOLINE HORSESHOE CLUB SANCTION #90-C-17

The Moline Horseshoe Club has just finished it's first league season and it has been a good one. And what an experience for me! Organizing and keeping organized a SUCCESSFUL league is a big job! It has

taken commitment and a toll on my game, yet it has been well worth it!

The NHPA has grown 400% in this Quad Cities metro area as a result of the organizing of the Moline Horseshoe Club (that's 21 new sanctioned pitchers)! Having a part in new friends at healthy competition in this great game is very rewarding and fun!

I challenge those who have considered organizing a league and are hesitating to GET TO WORK! This is a great way to grow friendships, this old game and themselves! They wouldn't regret it!

Thank you, Bev, for you're work. I imagine you've become quite the juggler of names and numbers. Good job!!! — *David K. Anderson*

VIRGINIA HORSESHOE PITCHERS ASSOCIATION

H.C. Eppard became interested in pitching sanctioned play horseshoes in 1983, pitching in a winter league on 2 sets of courts in Elkton, VA. As the interest grew in 1984, he was voted in President of the Twin Valley Horseshoe Club in Waynesboro, Virginia, heading up a roster of 19

pitching enthusiast.

In 1986 Mr. Eppard suffered a mild stroke and the horseshoes were left hanging in the smokehouse for a brief period of time. Through hard work and determination he fought back, wiped the cobwebs off the horseshoes and started pitching in some doubles tournaments throughout the state.

Mr. Eppard, (or "EPP" as he is known by his fellow horseshoe friends), has been promoting the game of horseshoes since 1983 and in the latter part of 1987 was instrumental in organizing the Shenandoah Valley Horseshoe Club from the ground up, located in Grottoes, VA. Since the placement of 12 lighted courts at the Grand Caverns Regional Park, a project headed up and directed by Mr. Eppard, the club has a roster of 30 pitchers and Mr. Eppard is the President of the club.

Mr. Eppard has shown hard work, dedication, and commitment in promoting the game of horseshoes throughout the years, bringing a lot of new pitchers into the sport. He was inducted into the Virginia Hall of Fame September 1, 1990.

CLASSIFIED ADS

\$10.00 for 25 words or less; 50 cents per each additional word. Ad acceptance at discretion of *Newsline* publisher.

Mail copy with payment to:

NHPA Newsline

13656 Thoroughbred Loop, Grass Valley, CA 95949

HORSESHOE GIFT ITEMS

Handcrafted walnut desk nameplates, paperweights, floormats, pins, etc. Send stamped self-addressed envelope for complete brochure. Gary Erickson, P.O. Box 532, Mayville, ND 58257

NHPA VIDEOS

New tape, Legends of Horseshoes II. World Championships 1979-1989, many individual games and special program shorts. Contact Sol Berman, PGA National, 1 Wycliff Rd., Palm Beach Gardens, FL 33418

THE HORSESHOE

PITCHERS' COMPANION

FEATURES:

PAT. NO. 4,399,614

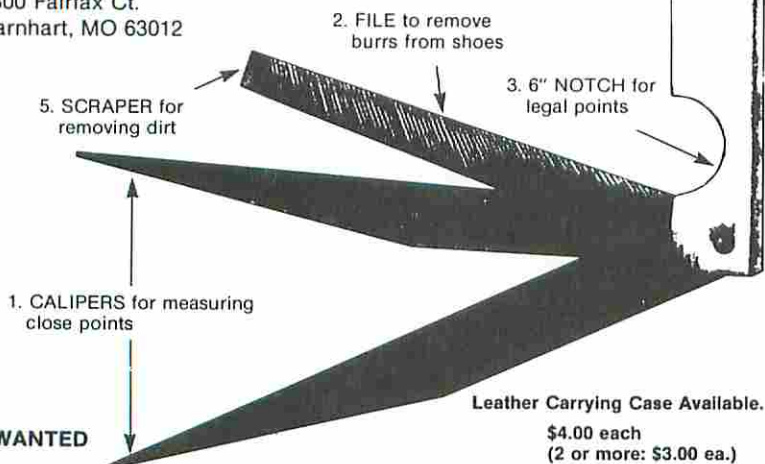
\$8.95

1. Calipers for measuring close points.
2. File to remove burrs from shoes.
3. A 6" notch for measuring legal points.
4. Straight edge for measuring ringers.
5. Scraper for removing dirt, mud, etc.
6. Just the right size for back pockets.
7. NHPA approved.

(2 or more: \$8.00 ea.)
(Add \$1.50 for postage and handling)

4. STRAIGHT EDGE for measuring ringers

Send to: **Horseshoe Pitchers' Companion**
7300 Fairfax Ct.
Barnhart, MO 63012



*AGENTS WANTED

Leather Carrying Case Available.
\$4.00 each
(2 or more: \$3.00 ea.)

NHPA Newline Renewal Form

Name _____

Address _____

City _____

State _____

Zip _____

☐ New Subscriber ☐ Renewal

Current NHPA Card # _____

Card #s of other adults in your household

Subscription price \$12.00 for non-member.
Deduct \$1.00 for each Adult NHPA member in household. Make checks payable to NHPA, mail to Box 278, Munroe Falls, OH 44262.

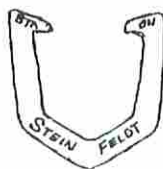
TRY THE ALL NEW STEINFELDT STA-ON HORSESHOE

designed by Joe Holland
pitched by Carl Steinfeldt

\$35/pr in single pairs

\$28/pr in lots of 12 pairs

(Above prices postage paid in Continental U.S.)



ORDER DIRECT FROM:

BILL COURTWRIGHT
2250 N. Lark, Fenton, MO 63026
314-376-5222

CARL STEINFELDT
1100 S. Belcher Rd., #359 Largo, FLA 34641
813-535-3136

or from NHPA Representative

GUARANTEED AGAINST BREAKAGE FOR ONE (1) YEAR

EXCELLENT BLUE CLAY FOR HORSESHOE PITCHING

Shipped in cartons for easy handling containing approximately 65 lbs. of clay per carton. Can be shipped by UPS, Parcel Post or Truck Line. One carton contains approximately 3/4 cu. ft. of clay. Amount of clay needed for one horseshoe court with pits 3 ft square and clay 4" deep is 9 cartons. Cost per carton is \$8.00 each f.o.b. Fenton, MO.

ORDER FROM

Hi Temp Refractories Co., Inc.
2250 N. Lark, Fenton, MO 63026
314-376-5222



WRITE
FOR
PRICES

GREEOTT GRABBER

★ The Ultimate Ringer Keeper

- Deep Double Ringer Breakers
- Dead Soft
- Weight 2 Lb. 8 Oz.
- 1 Year Guarantee
- NHPA Approved

"Professionally Designed
Thru Experience"

HORSESHOE PRO SHOP
2275 Winter Parkway
Suite 189
Cuyahoga Falls, Ohio 44221



Available Thru Any NHPA Distributor

CHECK YOUR MAILING LABEL

for the expiration date of your Newline subscription. If it is less than 90 days away, fill out the renewal form and send it now with your check to the NHPA, Box 278, Munroe Falls, OR 44262.

State Championship Tournament Results

ALABAMA

Huntsville

Aug. 25, 1990 Sanc. #26-90-010

CLASS A	W-L	%
W. Shaneyfelt	7-0	69.8
J. Henderson	6-1	68.2
J. Harris	5-2	60.9
B. Tidwell	4-3	59.6
T. Lowry	3-4	53.0
D. Mangum	2-5	47.8
J. Nichols	1-6	55.1
F. Betterton	0-7	46.2

CLASS B	W-L	%
M. Henderson	5-0	56.1
B. Coggin	3-2	52.2
O. McElroy	3-2	45.6
L. Nickelson	2-3	45.0
J. Conaway	1-4	43.0
C. Baker	1-4	39.3

CLASS C	W-L	%
E. Dixon	4-1	42.8
B. Holland	4-1	32.3
J. Moore	3-2	36.5
O. Reno	2-3	33.1
C. Thompson	2-3	30.8
J. Johnson	0-5	27.7

CLASS D	W-L	%
B. Stowe	4-1	42.6
K. Gipson	3-2	40.8
B. Calhoun	3-2	29.4
M. Watkins	2-3	30.4
J. Lowry	2-3	30.3
L. Watts	1-4	26.1

CLASS E	W-L	%
D. Crowden	5-0	32.5
J.D. Kidd	4-1	15.2
G. Hall	3-2	19.3
P. Vandiver	2-3	15.7
T. Godwin	2-3	14.2
P. Gibson	0-5	9.0

JR. BOYS	W-L	%
S. Segler	5-1	41.0
S. Holland	0-6	8.1

WOMEN	W-L	%
D. Tidwell	5-1	39.7

ELDER MEN 30 FT.	W-L	%
O.A. Lindsey	2-4	30.6

ALASKA

Eagle River

Aug. 12, 1990 Sanc. #52-90-002

MEN'S CLASS A	W-L	%
Norm Rousey	12-1	56.8
Larry Hettrick	11-2	47.5
Pete Imhof	7-5	35.8
Gary Madsen	5-7	38.3
Bob Mann	3-9	32.3
Jack Pennick	3-9	30.1
Tom Bowers	2-10	30.6

MEN'S CLASS B	W-L	%
Louis Kaminski	9-2	35.3
Burt Sullivan	9-3	31.5
Leonard Deitelhoff	8-3	31.8
Lane Drury	7-3	27.8
Bernie Yescavage	5-5	26.3
Gailan Johnson	4-6	30.0
Steve Groho	4-6	26.8
San Gabaldon	4-6	26.5
Roger Stigel	3-7	24.5
Cal Blackmore	2-8	22.8
Sam Hill	2-8	20.5

MEN'S CLASS C

Kim Custer	7-0	20.4
Gary White	5-2	15.4
Bob Mitter	5-2	11.1
Cal. L. Blackmore	4-3	16.8
Gary Lane	4-3	10.4
Vic Carroccia	2-5	5.4
Matt Lewis	1-6	5.8
Steve Matilla	0-7	4.6

WOMEN'S CLASS A

Karen Drury	8-0	55.3
Donna Magnussen	5-3	47.6
Fina Mills	4-4	44.2
Alice Madsen	3-5	37.2
Violet Carroccia	0-8	17.7

WOMEN'S CLASS B

Gail Gravley	6-1	27.9
Terri Grohol	5-2	30.0
Sandy Blackmore	5-2	27.5
Jeri Plaster	4-3	28.6
Corrine Barnell	3-4	15.9
Dorothy Lane	3-4	10.7
Teri Tess	1-6	16.3
Carol Lane	1-6	11.3

WOMEN'S CLASS C

Shannon Storrs	5-2	16.1
Ercie Olsen	4-3	7.8
Barbara Nickles	2-4	7.8
Maggie Lewis	2-4	5.6

CALIFORNIA

Sept. 1-3, 1990 Sanc. #05-90-046

STEP LADDER MEN'S A	W-L	%
Walter Ray Williams, Jr.	1-0	66.6
Steve Wyrill	2-1	62.0
Jesse Gaonzales	0-1	54.5
Don Titcomb	1-1	52.7
Joe Gamble	0-1	46.2

PRELIM. RD. MEN'S A	W-L	%
Walter Ray Williams, Jr.	7-0	84.0
Jesse Gonzales	6-1	73.3
Steve Wyrill	5-2	62.0
Don Titcomb	4-3	67.1
Joe Gamble	3-4	59.2
Jonathan Williams	2-5	58.2
Tom Webb	1-6	53.5
Walt Robinson	0-7	45.9

STEP LADDER MEN'S B	W-L	%
Dave Koch	4-0	64.4
Jim Eozzo	0-1	40.0
Allen Ovieda	0-1	60.0
Nick Ihli	0-1	57.5
Norm Cone	0-1	67.5

PRELIM. RD. MEN'S B	W-L	%
Jim Eozzo	6-1	51.7
Allen Ovieda	5-2	57.8
Nick Ihli	5-2	46.4
Dave Koch	4-3	46.0
Norm Cone	4-3	45.7
Emett Schroeder	3-4	42.8
Juke Basham	1-6	40.7

STEP LADDER MEN'S C	W-L	%
Joe Sadowski	2-0	53.8
Otis Hubbard	0-1	45.0
Holland Payne	3-1	44.4
Manuel Garcia	0-1	47.5
Willard Spinks	0-1	42.5
Don Beasley	0-1	37.5

PRELIM RD. MEN'S C-1	W-L	%
Otis Hubbard	6-1	52.1
Willard Spinks	6-1	42.8
Everett Seaman	5-2	41.7

Eddie Garcia	4-3	36.7
Tom Tiedeman	3-4	39.6
Paul McNally	2-5	43.5
Bruce Stuart	2-5	36.0
Noel Guy	0-7	29.2

PRELIM RD. MEN'S C-2

Jod Sadowski	6-1	45.0
Manuel Garcia	5-2	44.6
Holland Payne	4-3	46.4
Don Beasley	4-3	45.0
William Hines	4-3	44.2
Les White	3-4	42.8
Darrell La Moureaux	2-5	41.4
Leonard Ramirez	0-7	39.2

STEP LADDER MEN'S D

Bob Morris	2-0	47.5
Gary Dillon	0-1	30.0
William Raye	1-1	42.5
Earl Rapp	2-1	45.8
Thor Jensen	0-1	45.0
Tom McQueen	0-1	37.5

PRELIM RD. MEN'S D-1

Gary Dillon	6-1	45.7
Thor Jensen	5-2	41.0
Earl Rapp	4-3	47.1
Jesse Martinez	4-3	43.5
Uel Stever	3-4	42.1
James Madera, Sr.	3-4	39.6
Bub Grisaffi	3-4	36.0

PRELIM RD. MEN'S D-2

Bob Morris	6-1	40.3
William Raye	5-2	46.0
Steve Kynard	4-3	38.9
Fred Briand	3-4	40.7
Earl Knyard	3-4	36.7
Dennis Samples	3-4	31.4
Tom McQueen	2-5	44.6
Walter Krowel	2-5	32.8

STEP LADDER MEN'S E

Jerry Foss	1-0	50.0
Doyle Brawley	1-1	31.3
Patrick Trussell	2-1	30.8
Oscar Gonzales	0-1	30.0
Dan Cervantes	1-1	28.8
Andy Anderson	0-1	35.0

PRELIM RD. MEN'S E-1

Doyle Brawley	6-1	41.0
Patrick Trussell	5-2	37.8
Dan Vervantes	4-3	37.5
Les McConnohie	4-3	32.5
Ron Kecskes	4-3	32.5
Dale Bowers	3-4	33.2
Floyd Brown	1-6	27.1
Les Burroughs	1-6	26.7

PRELIM RD. MEN'S E-2

Gerald Foss	6-1	42.8
Oscar Gonzales	6-1	37.1
Andy Anderson	4-3	37.5
Les Hutchins	3-4	35.7
James Ruddy	3-4	31.4
Rom Buck	3-4	31.4
Stanley Dobson	2-5	27.5
Lester Jones	1-6	30.7

STEP LADDER MEN'S F

Richard Pritchard	1-0	45.0
Jim Mudra, Jr.	2-1	40.8
Bruce Webb	0-1	27.5
Mike Gensler	1-1	43.8
Don Bailey	0-1	35.0

PRELIM RD. MEN'S F-1

Bruce Webb	7-1	37.5
Jim Mudra, Jr.	6-2	36.5

Eugene McCaleb	5-3	30.9
Ken Weir	4-4	30.3
Alan Youngblood	4-4	27.8
Loris Hauck	4-4	26.5
Orville Lawing	2-6	22.5
Mike Martinez	2-6	20.6
Rick Veloria	2-6	19.3

PRELIM RD. MEN'S F-2

Richard Pritchard	8-0	40.0
Mike Gensler	5-3	39.3
Greg White	5-3	36.2
Lou Mojarro	5-3	30.3
Donald Bailey	4-4	37.1
Bob Kittle	4-4	29.3
Dave Rodriguez	3-5	30.9
Bill Terry	2-6	29.3

STEP LADDER MEN'S G

Larry King	3-0	41.7
Albert Brown	0-1	22.5
Carl Wall	0-1	37.5
Ken Mohn	2-1	39.2
Gerald Patterson	0-1	32.5
Raymond Lara	0-1	35.0

PRELIM RD. MEN'S G-1

Carl Wall	6-1	38.5
Gerald Patterson	5-2	35.7
Hank Henke	4-3	28.5
Casey Sluys	4-3	27.1
Raymond Lara	3-4	33.2
Ray Keohen	3-4	25.3
Joe Wilkerson	3-4	17.1

PRELIM RD. MEN'S G-2

Albert Brown	7-0	41.4
Larry King	6-1	31.4
Ken Mohn	4-3	28.5
A.J. Hendrix	3-4	26.0
George Jeff	3-4	24.6
Kirby Elton	2-5	27.5
Rick Collins	2-5	26.0
Harold Camp	1-6	23.2

STEP LADDER MEN'S H

Alan Steele	1-0	25.0
John Green	1-1	18.8
Rick Bravo	3-1	22.5
Jack Deardorff	0-1	27.5
George Gigli	0-1	22.5
Dan Espino	0-1	22.5

PRELIM RD. MEN'S H-1

Alan Steele	6-1	35.3
George Gigli	4-3	27.1
Jim Kyker	4-3	25.0
Bert Charley	4-3	24.6
Wilbur Gochanover	4-3	24.2
Ralph Carter	2-5	23.2
Jim Howell	2-5	21.7
Fred Fearon	2-5	19.2

PRELIM RD. MEN'S H-2

John Green	5-2	28.9
Jack Deardorff	5-2	27.5
Efrem Bravo	5-2	23.9
Rick Bravo	4-3	26.4
Daniel Espino	4-3	25.0
David Neifert	3-4	21.7
Bill Ireson	2-5	22.1

STEP LADDER MEN'S I

Roy Henry	2-0	26.3
Del Hellerud	0-1	17.5
Louis Hook	2-1	32.5
Bob Elgas	0-1	22.5
Ray Silva	1-1	26.3
Jerry Garland	0-1	25.0

Tournament Results

PRELIM RD. MEN-S I-1

Roy Henry	5-2	27.1
Bob Elgas	5-2	26.7
Victor LaMoureaux	5-2	22.8
Ray Silva	4-3	27.8
Dennis Layton	4-3	21.7
Gene Bolsinger	3-4	16.7
Robert Griswold	1-6	18.5
Jhon Hanneman	1-6	16.0

PRELIM RD. MEN'S I-2

Del Hellerud	6-1	21.4
Louis Hook	4-3	26.4
Jerry Garland	4-3	24.6
Mike Lopez	4-3	24.6
Gordon Brown	4-3	20.3
Bill Perry	3-4	23.9
Ron Brown	2-5	18.9
George Stinson	1-6	20.0

STEP LADDER MEN'S J

Ray Jordan	4-0	29.4
Steve Oglesby	0-1	35.0
Harris Riggins, Sr.	0-1	10.0
Frank Rodriguez	0-1	22.5
Hugh Gilland	1-1	23.8
Mark Lopez	0-1	20.0

PRELIM RD. MEN'S J-1

Harris Riggins, Sr.	6-1	36.0
Frank Rodriguez	5-2	29.2
Mark Lopez	5-2	29.2
Hugh Gilland	3-4	29.6
Chuck Brennan	3-4	24.6
Harold Redding	3-4	20.7
Bob Fithian	2-5	20.7
Bud Billings	2-5	15.7

PRELIM RD. MEN'S J-2

Steve Oglesby	7-0	31.4
Ray Jordan	5-2	25.7
Leon Marshall	5-2	24.2
Larry Thorsen	3-4	26.7
Mike Story	3-4	20.7
Vern Hettinger	3-4	19.2
David La Moureaux	1-6	17.5
Darell COuslon	1-6	17.1

STEP LADDER MEN'S K

Wally Shipley	1-0	20.0
Jack Herbstreit	1-1	25.0
William Carroll	1-1	17.5
Fred Ovieda	1-1	18.8
Mike Ayala	1-1	16.3
Charles Zabel	0-1	17.5

PRELIM RD. MEN'S K-1

Wally Shipley	6-1	25.3
Fred Ovieda	5-2	24.6
Dick Cahoon	5-2	24.6
Alton Taylor	3-4	22.5
Richard Robbins	3-4	17.5
Frank Monson	3-4	16.7
Ed Agner	2-5	12.8
Don Standard	1-6	14.6

PRELIM RD. MEN'S K-2

Jack Herbstreit	6-1	24.6
William Carroll	4-3	28.5
Charles Zabel	4-3	27.5
Mike Ayala	4-3	26.0
Charles Rapp	3-4	21.0
John Brawley	3-4	17.1
Hartley Beeks	2-5	21.4
Bud Aduddell	2-5	16.0

STEP LADDER MEN'S L

Larry Leduc	1-0	37.5
Fred Wittman	1-1	22.5
Lance Ha Haj	2-1	25.0

Steve Everhart	0-1	17.5
Steve Ornelas	1-1	25.0
Doug Brown	0-1	25.0

PRELIM RD. MEN'S L-1

Larry Leduc	7-0	24.6
Lance Ha Haj	5-2	21.4
Jim Lopez	4-3	19.2
Paul Venable	4-3	17.8
George Brotherton	3-4	16.4
Steve London	2-5	17.8
Oliver Smith	2-5	15.0
Al Fumia	1-6	16.0

PRELIM RD. MEN'S L-2

Fred Wittman	6-1	31.0
Steve Everhart	5-2	25.3
Steve Ornelas	4-3	23.9
James Groth	4-3	20.0
Red Taylor	3-4	16.4
Doug Brown	2-5	23.9
Ralph Palsrok	2-5	23.2
Tim Herbstreit	2-5	15.7

STEP LADDER MEN'S M

Don Rossano	1-0	7.5
Bob Moss	1-1	16.3
Tony Valencia	1-1	16.3
Jim Bolenbaugh	1-1	7.5
James Churchill	0-1	7.5

PRELIM RD. MEN'S M-1

Don Rossano	5-0	20.0
Jim Boelnbaugh	3-2	11.0
Lennie Ha Haj	3-2	9.5
LeRoy Bailey	2-3	9.5
Bill Burns	1-4	11.0
Pedro Delgado	1-4	6.5

PRELIM RD. MEN'S M-2

Bob Moss	5-0	14.3
Tony Valencia	4-1	17.5
James Churchill	3-2	11.2
Nick Yeager	2-3	8.1
Bill Kelly	1-4	6.2

STEP LADDER SR. MEN'S A

Jerry Schneider	1-0	56.2
Carl Munz	1-1	32.6
Elmer Ezell	1-1	31.0
Glen Kelly	1-1	27.2
Louis Mahlstedt	0-1	21.1

PRELIM RD. SR. MEN'S A

Jerry Schneider	4-0	53.7
Carl Munz	2-2	38.7
Elmer Ezell	2-2	31.8
Glen Kelly	1-3	30.0
Louis Mahlstedt	1-3	28.7

STEP LADDER SR. MEN'S B

Elmer Landis	3-0	28.3
Thiel Lippincott	0-1	35.0
Robert Black	0-1	17.5
Leonard Wall	1-1	23.8
Phil Mautz	0-1	17.5

PRELIM RD. SR. MEN'S B

Thiel Lippincott	4-1	33.0
Robert Black	4-1	32.0
Elmer Landis	3-2	21.5
Phil Mautz	2-3	24.5
Leonard Wall	2-3	22.5

STEP LADDER SR. MEN C

Russell Minor	2-0	25.0
Derald Rasmussen	0-1	20.0
Loren Buck	2-1	25.8
Vaughn Black	0-1	7.5
William Moore	0-1	20.0

PRELIM RD. SR. MEN'S C

Derald Rasmussen	5-0	29.0
Russell Minor	3-2	20.0
Vaughn Black	2-3	22.0
Loren Buck	2-3	16.0
William Moore	1-4	12.5
Tom Nation	1-4	8.0

STEP LADDER SR. MEN'S 70 + A

Herb Rushing	1-0	65.6
Bob Fosnaugh	3-1	47.7
Orval Madden	0-1	30.4
Joe Zoglman	0-1	42.1
Bill Katuls	0-1	43.1

PRELIM RD. SR. MEN'S 70 + A

Herb Rushing	5-0	60.0
Orval Madden	4-1	55.0
Joe Zoglman	2-3	52.0
Bill Katuls	2-3	44.0
Bob Fosnaugh	1-4	45.0
Fred Lavett	1-4	40.5

STEP LADDER SR. MEN'S 70 + B

Larry Ford	1-0	42.5
Bob Lloyd	3-1	34.4
Bert Gehrt	0-1	35.0
Leonard Sharp	0-1	35.0
Myron Nichols	0-1	10.0

PRELIM RD. SR. MEN'S 70 + B

Larry Ford	5-0	35.5
Bert Gehrt	4-1	38.5
Leonard Sharp	3-2	35.0
Myron Nichols	2-3	27.0
Bob Lloyd	1-4	28.5
Howard Bruster	0-5	11.0

STEP LADDER JR. BOYS A

Jim Ornelas	2-0	64.4
Daniel Jeff	0-1	50.0
Kevin Kecskes	1-1	57.4
Charles Valdepena	1-1	50.0
Nelson Ireson	0-1	37.5

PRELIM RD. JR. BOYS A

Daniel Jeff	5-0	55.6
Jim Ornelas	4-1	56.1
Kevin Kecskes	3-2	58.2
Charles Valdepena	2-3	43.1
Nelson Ireson	1-4	38.5
Sean McNally	0-5	25.2

STEP LADDER JR. BOYS B

Jess Contreras	1-0	45.0
Daniel Espino	2-1	37.5
Frank Rodriguez II	0-1	30.0
Shawn Stinson	1-1	27.5
Kenneth Riggins	0-1	27.5

PRELIM RD. JR. BOYS B

Jess Contreras	6-0	52.5
Jrank Rodriguez II	5-1	26.6
Daniel Espino	4-2	32.5
Shawn Stinson	3-3	27.9
Ricky Bravo, Jr.	2-4	22.9
Jim Johnston	1-5	14.1
Kenneth Riggins	0-6	23.3

STEP LADDER WOMEN'S A

Diane Lopez	1-0	84.3
Carolyn Webb	3-1	61.2
Billie Sue Pennington	0-1	58.6
Mary Fumia	0-1	46.4
Helen Vigil	0-1	58.0

PRELIM RD. WOMEN'S A

Diane Lopez	6-1	74.6
Billie Sue Pennington	6-1	64.5
Mary Fumia	5-2	61.7
Carolyn Webb	4-3	60.5
Helen Vigil	3-4	52.0
Lupe Henry	2-5	47.2
Carol Casado	2-5	45.9
Paige Pennington	0-7	36.4

STEP LADDER WOMEN'S B

Chrissy Gori	1-0	50.0
Izetta Churchill	3-1	51.9
Gail Sluys	0-1	37.5
Sallie Cline	0-1	37.5
Marilyn Brown	0-1	42.5

PRELIM RD. WOMEN'S B

Chrissy Gori	7-0	46.4
Gail Sluys	5-2	47.1
Sallie Cline	5-2	46.0

Izetta Churchill	4-3	41.7
Marilyn Brown	3-4	43.2
Fuey Herring	3-4	43.2
Phyllis Morton	1-6	38.5

STEP LADDER WOMEN'S C

True Everhart	2-0	42.5
Betty McQueen	0-1	37.5
Mary Stinson	1-1	41.3
Nancy Camp	1-1	46.3
Sandy Johnson	0-1	35.0

PRELIM RD. WOMEN'S C

Betty McQueen	5-2	44.6
True Everhart	4-3	44.2
Mary Stinson	4-3	42.8
Nancy Camp	4-3	37.1
Sandy Johnson	3-4	44.2
Alice Garcia	3-4	38.2
Georgia Armijo	3-4	36.0
Nancy La Moureaux	2-5	33.2

STEP LADDER WOMEN'S D

Lee Engers	3-0	35.8
Loretta Chaney	0-1	37.5
Linda Rodriguez	0-1	30.0
Sylvia Gonzales	1-1	37.5
Becky Manuelito	0-1	22.5

PRELIM RD. WOMEN'S D

Loretta Chaney	8-0	35.3
Linda Rodriguez	6-2	35.9
Lee Engers	6-2	35.0
Sylvia Gonzales	5-3	33.7
Becky Manuelito	4-4	22.5
Jean Robinson	4-4	16.2
Jean Ornelas	2-6	19.3
Carol Beeks	1-7	21.2

STEP LADDER WOMEN'S E

Sandy Hernandez	4-0	24.4
Gloria Benitz	0-1	25.0
Sally Shipley	0-1	15.0
Deon Brennan	0-1	10.0
Gayle Oglesby	0-1	12.5

PRELIM RD. WOMEN'S E

Gloria Benitz	6-2	22.1
Sally Shipley	6-2	19.6
Deon Brennan	6-2	17.5
Sandy Hernandez	5-3	19.0
Vicky Oglesby	5-3	17.1
Gayle Oglesby	4-4	20.0
Star Steele	3-5	13.1
Deborah Carter	1-7	8.7

STEP LADDER WOMEN'S F

Lisa Palsrok	1-0	20.0
Dorothy Smith	1-1	23.8
Jolene Gustie	2-1	16.7
Babe Brown	0-1	7.5
Cookie Billings	0-1	17.5

PRELIM RD. WOMEN'S F

Lisa Palsrok	6-1	23.9
Dorothy Smith	6-1	21.4
Babe Brown	5-2	11.0
Cookie Billings	4-3	13.5
Jolene Gustie	3-4	13.5
Carolyn Otis	3-4	12.8
Diane Williams	1-6	7.1
Sandy La Moureaux	0-7	3.9

STEP LADDER SR. WOMEN'S A

Yvonne Mauzey	2-0	62.5
Josephine Charley	0-1	37.5
Genevieve Lavett	2-1	34.2
Edith Zoglman	0-1	25.0
Camille Bruster	0-1	22.4

PRELIM RD. SR. WOMEN'S A

Josephine Charley	5-0	43.5
Yvonne Mauzey	4-1	58.5
Edith Zoglman	3-2	31.0
Genevieve Lavett	2-3	26.0
Camille Bruster	1-4	21.5
Edyth Soward	0-5	1.0

JR. GIRL A

Sara Story	2-0	6.6
Deena Hernandez	0-2	4.6

Tournament Results

COLORADO Fort Collins

Sept. 1-2, 1990 Sanc. #19-90-010

CLASS A	W-L	%
Richard Pintor	7-0	66.5
Paul LaCrosse	6-1	69.4
Jerry Comstock	5-2	63.5
Allan Withrow	4-3	52.9
Floyd Holmes	3-4	49.6
Jim Tulk	1-6	51.0
Robert Engel	1-6	49.7
Arch Wood	1-6	40.6
CLASS B	W-L	%
Ray Heim	7-2	50.2
Don Sewell	5-3	50.6
Dan Martinez	5-3	49.2
Dale Boss	3-4	52.0
Rich Wetherbee	3-4	43.4
Dave O'Dell	3-4	40.9
Dick Wetherbee	2-5	42.8
Russ Bartle	2-5	39.3
CLASS C	W-L	%
Orvan Bennett	6-1	51.1
Carl Carlton	5-2	50.3
Lloyd Laughlin	4-3	50.0
Steve Ruddock	4-3	40.8
Deme Pineda	3-4	41.4
Gordon Kashner	2-5	44.9
Mel Yockstick	2-5	36.0
Stan Bonnes	2-5	35.5
CLASS D	W-L	%
Everett Snead	6-2	38.5
Bob Olsheski	5-3	44.1
Dixon Finley	4-3	42.5
Don Wild	4-3	42.0
Jim Amack	4-3	40.9
Harold Wilcox	3-4	36.6
Bob Champion	2-5	35.3
Keith Thompson	1-6	31.6
CLASS E	W-L	%
Dean Lauer	7-2	39.4
Gene Sandoval	6-3	39.9
George Abrams	5-3	35.5
Gary Hughes	5-3	32.8
Bob Hunt	4-3	41.7
Bill Ostrom	2-5	34.5
Don Saputa	1-6	31.2
George Stahl	1-6	25.2
CLASS F	W-L	%
Ivan Maestas	6-1	39.6
Greg Husky	5-2	29.1
Dick Morse	4-3	27.4
Fred Barasel	4-3	33.0
Ed Knaub	3-4	31.6
Tom Clarke	2-5	32.7
Jamie Boticario	2-5	28.2
Marvin Lauer	2-5	17.5
CLASS G	W-L	%
Chuck Nobles	7-1	36.6
Tom Cash	6-2	37.8
Ray McGrady	4-3	37.5
Ray Morgan	4-3	29.6
Bill Westfall	3-4	28.6
Cortie Tafoya	2-5	27.8
Ernie Coulter	2-5	27.7
Rick Quilico	1-6	25.5
CLASS H	W-L	%
Bill Bryan	6-1	38.7
Bob McCaffrey	4-3	35.9
Ken McKenzie	4-3	34.5
Jerry Burgess	4-3	32.1

Domingo Rodriguez	4-3	30.3
Skip Fankhauser	3-4	27.8
Dennis Farson	2-5	27.4
Ernie Flaggeole	1-6	25.4
CLASS I	W-L	%
Duane Daire	7-1	40.9
Tom Peterson	6-2	30.5
Bob Beisemeier	4-3	32.5
Rich Schmidt	4-3	31.8
Jack Browning	3-4	26.2
Fred Robinson	2-5	25.5
Rusty Hamill	2-5	26.2
Frank Lauer	1-6	26.2
CLASS J	W-L	%
Monty Rains	6-2	30.3
Norman Neumon	5-3	30.3
Joe Stencil	4-3	32.6
Leo Compliment	4-3	30.0
LaVerne Dieken	4-3	29.1
Wally Wallace	3-4	32.8
Mike Cochran	3-4	27.8
Jim Lisco	0-7	20.1
CLASS K	W-L	%
Bill Sale	7-0	32.7
Jeff Thomas	4-3	30.8
Hal Shepard	4-3	27.5
Larry Raffaeli	4-3	25.1
Walt Ames	3-4	25.9
Bill Snyder	2-5	25.8
Tom Salzman	2-5	22.0
Gasper Romero	2-5	19.0
CLASS L	W-L	%
Glen Robeck	7-1	33.1
Marty Wittig	6-2	31.3
Bob Socolofsky	4-3	28.9
George Hergert	4-3	27.2
Arthur Romero	4-3	25.1
Dan Bauer	3-4	23.4
Lee Mansfield	1-6	19.6
Dan Peterson	0-7	20.0
CLASS M	W-L	%
Marcos Munoz	7-2	23.8
Steve McDonough	5-3	30.7
Rich Jensen	5-3	22.8
Geno Sandoval	4-3	25.1
John Hill	4-3	17.7
Al Holmen	2-5	18.6
Ben Stencil	2-5	15.6
Keith Whitemore	1-6	17.4
CLASS N	W-L	%
Virgil Fairchild	6-1	19.6
Dan Brunt	5-2	20.9
Allen Baptist	5-2	15.8
Bob Berry	4-3	22.4
Don Hendricks	4-3	21.5
Gordon Fairchild	3-4	11.8
Ken Ramsay	1-6	15.2
CLASS O	W-L	%
Jack Danielson	7-0	29.8
Dan Malefy	6-1	14.4
Bob Gilbert	5-2	14.8
Ralph Edwards	4-3	10.3
Jerry Svoboda	3-4	10.3
Ken Morrell	2-5	17.9
Keith Bartle	1-6	9.0
SENIORS 30-FT.	W-L	%
Les Grosenbach	4-2	70.9
Bob Jacobson	2-4	66.8
WOMEN A	W-L	%
Virginia Sandoval	5-0	65.7
Karen Burgess	4-1	44.4
Julie Romero	3-2	51.4
Janie Thompson	2-3	51.7
Karen Salzman	1-4	50.4
Bev Lauer	0-5	27.8

WOMEN B	W-L	%
Nancy Wright	7-0	31.6
Phyllis Fox	6-1	21.0
Margaret Pineda	4-3	16.5
Sam Patterson	4-3	15.9
Theresa Coslett	3-4	15.5
Ruth Uhrich	3-4	14.8
JUNIOR A	W-L	%
Jim Bauer	5-0	53.6
Joey Meier	4-1	47.0
Steve Olson	2-3	31.1
Seth Lauer	2-3	28.6
Tony Lawrence	2-3	26.2
JUNIOR B	W-L	%
Steve Ruddock, Jr.	5-0	30.8
Jeremy Bauer	4-1	25.4
Walter O'Dell	3-2	20.5
Wayne Atencio	2-3	22.8
John Tehse	1-4	12.2
Jamie Ruddock	0-5	4.2
CONNECTICUT	W-L	%
Aug. 12, 1990 Sanc. #59-90-006		
CLASS A	W-L	%
Norm Rioux	9-0	64.7
Al Latouche	7-2	56.8
Bob McOrmond	6-3	50.4
Don Maine	5-4	52.4
Nello Stortini	4-5	56.2
Willie Paradis	4-5	52.3
Pete Bochesse	4-5	46.4
Dennis Hansen	2-7	46.5
George Trabucchi	1-8	43.6
Bob Eaton	1-8	40.8
CLASS B	W-L	%
Matt Leonka	6-2	44.0
Joe Peschko	6-2	47.1
Whit Larkin	5-3	44.5
Rich Handel	5-3	42.9
Paul Parrow	4-4	38.1
Roger Henson	3-5	45.2
Bill Choser	3-5	38.8
Dick Allspaugh	2-6	38.2
Al Wiland	2-6	36.3
CLASS C	W-L	%
Ben Mroz	7-1	44.3
Greg Crocker	6-2	40.2
Ted Wilk	5-3	38.1
Ken Outlaw	5-3	36.6
Bill Ryan	4-4	31.6
Pat Kelly	3-5	31.9
Kevin Weik	3-5	31.0
Ken Noble	3-5	30.7
Joe Rennie	0-8	26.5
CLASS D	W-L	%
Al Alba	5-2	36.4
Fran Rittlinger	5-2	35.9
Jon Walton	5-2	35.6
Ed Mancini	4-3	33.2
Ken LaRochelle	4-3	31.4
Art Solhem	2-5	31.5
Gene Paris	2-5	27.5
Armand Calabro	1-6	28.1
CLASS E	W-L	%
Ken Erickson	5-2	27.1
Tim McLeod	5-2	26.7
Ed Allen	4-3	36.0
Bruce Moquin	4-3	31.3
Ed Peckham	3-4	32.8
Rob Corte	3-4	23.5
Don Neito	2-5	25.7
Walt Fleming	2-5	22.8
CLASS F	W-L	%
Dom Colandene	7-0	30.3
Bill Crudo	6-1	26.4
Chris Supernant	3-4	24.8
Shawn Castleberry	3-4	23.8

John Despres	3-4	21.4
Mike Corte	2-5	23.7
Mike Stickney	2-5	22.2
George Moquin	2-5	19.4
CLASS G	W-L	%
Bob Leone	6-1	26.0
Ronnie Corte	5-2	28.8
Con Slekis	4-3	27.6
Jim Farrey	4-3	27.3
Jerry Hines	4-3	23.3
Bob Wayman	4-3	22.8
Tom Niland	1-6	12.5
Bruce Hayden	0-7	11.3
CLASS H	W-L	%
Dick Espitee	6-1	24.8
Art Jones	5-2	19.6
Brad Dziomba	5-2	19.4
Jack Rust	4-3	22.2
Paul Duff	4-3	18.6
Bob Millette	2-5	14.8
Joe Calabro	2-5	14.6
Ken Crosley	0-7	14.2
GEORGIA	W-L	%
Sept. 22, 1990 Sanc. #34-90-016		
MEN'S CHAMPIONSHIP	W-L	%
Larry Morton	7-0	58.3
Richard Williams	5-2	58.0
Glen Portt	5-2	54.8
Jim Haley	3-4	55.0
Elbert Allen	3-4	52.9
James Black	3-4	50.8
Jim Waters	2-5	57.5
Walter Brake	0-7	44.5
CLASS A	W-L	%
Brian Streetman	5-2	52.0
W.L. Gore	4-3	50.8
Bud Kurtz	4-3	46.0
Oliver McClarty	3-4	47.1
Ricky Presley	3-4	46.1
Ted Whitlock	3-4	43.9
David Everitt	3-4	41.3
A.W. Wetherford	3-4	39.1
CLASS B	W-L	%
Sterling King	6-1	40.6
Curt Dyvig	6-1	47.9
George Bradfield	5-2	43.1
Jr. Brown	4-3	44.1
Claude Fender	2-5	41.8
Lewis Tullis	1-6	37.6
Dwight Carter	0-7	38.4
Wayne Irwin	Forfeit	
CLASS C	W-L	%
Hank Thomas	6-1	44.4
Marvin Fortenberry	6-1	33.0
Don Hoover	4-3	33.4
James Spencer	4-3	28.7
Jim Nave	3-4	32.8
Larry Sutton	3-4	29.9
Rob Sensinger	2-5	30.6
Jerry Lummus	0-7	32.0
CLASS D	W-L	%
John Luttrell	7-0	35.2
Gene Nichols	5-2	35.0
Roy Whitlock	5-2	34.1
Darell Humphries	4-3	24.1
Lester Talton	3-4	39.0
Andy Cope	3-4	30.9
Gary Cook	1-6	26.9
Herb Johnson	0-7	19.5
CLASS E	W-L	%
Don Anderson	6-1	31.7
Howard Lubben	6-1	28.1
Andy Pejko	5-2	31.4
Lee Bates	3-4	26.4
Samson Marchman	3-4	24.6
Larry Smith	2-5	27.9

Tournament Results

Lawrence Robbins 2-5 21.0
Charles Peterson 1-6 20.7

CLASS F

Tony Kussmaul 6-1 30.3
Jeff Smelser 6-1 31.7
Ray Hudgins 5-2 33.0
Larry Cheek 5-2 26.0
Sal Bosco 3-4 19.3
Troy Cousineau 2-5 17.6
Paul Charette 1-6 19.3
J.E. Brooks 0-7 12.8

CLASS G

John Pedersen 7-0 30.5
Jimmy Spencer 5-2 19.6
Bud Ivester 4-3 22.6
Glen Moulder 4-3 21.3
G.L. Albertson 3-4 17.0
Ward Burtis 3-4 16.6
Al Sandham 2-5 15.0
Milton Vinson 0-7 6.6

JUNIOR BOYS

Rusty Morgan 5-1 65.1
Johnny Sisson 4-2 57.4
Eric Rayburn 3-3 55.0
Chris Dyvig 0-6 26.9

JUNIOR GIRLS

Erica Morton 9.1

SENIOR MEN'S 30 FT.

Jim Wood 45.7

WOMEN'S CHAMPIONSHIP

Betty Steinfeldt 8-0 71.2
Iris Sandham 6-2 60.0
Mildred Ivester 3-5 33.8
Maxine Albertson 3-5 28.4
Samya Giannetta 0-8 17.1

HAWAII

Sept. 1-3, 1990 Sanc. #06-90-065

CLASS A

Ed Shaw 9-2 47.1
Chad Kawaha 8-3 46.8
Russell Callahan 8-3 46.6
James Kimo David 8-3 44.5
Jesso Colon 7-4 46.6
Ioane Frias 7-4 42.9
John Jack Frias 7-4 42.5
Ben Palani Gomes 6-5 41.0
Teddy Mitch Sabagala 2-9 35.8
Reggie Gomes 2-9 33.0
Fidel Balag 1-10 24.8
Alvin Keohoochina 1-10 23.0

CLASS B

Jeff Antolin 10-1 48.4
Eric Abordo 9-2 38.7
John Alo 7-4 40.0
Manuel Kawaha 7-4 34.9
Chris Koanui 6-5 37.1
Frank Afa 5-6 38.9
Jeff Crunkilton 5-6 38.1
Joseph Amaral 5-6 37.9
David Kaupe 5-6 34.1
Mafi Via 4-7 28.5
Mitch Kaupe 2-9 31.0
Kawika Ahina 1-10 26.0

CLASS C

Jason Paaaina 8-1 37.2
Ray Kinoros 7-2 33.3
Keith Frias 6-3 30.2
John Colon Jr. 6-3 28.7
Albert Edsman 5-4 30.5
Rita Amaral 4-5 29.2
Albert Hatori 3-6 27.2

Eddie Ko 3-6 24.3
Eddie Apolo 2-7 25.1
Paul Sadosky 1-8 19.7

CLASS D

Edward Acosta 8-1 41.4
Emma Kealoha 7-1 34.6
Dean Wilhelm 6-2 26.4
Wendell Kalua 4-5 28.3
Steve Soares 4-5 25.7
Fitu Afa 4-5 22.4
Leonard Nehl 4-5 20.8
Kalani Fernandez 4-5 20.4
Nelson Leiwalu 2-6 24.4
John Dana 0-9 14.9

CLASS E

Walsworth Somildam 8-0 30.3
Walter Kahala 6-2 32.2
John Custodio 6-2 29.7
Eddie Miller 4-4 29.1
Brad Koanui 4-4 24.1
John Kahalewai Jr. 4-4 19.5
Pilialoha Kekahuna 3-5 21.8
John Meletia 1-7 13.6
Sol Alani 0-8 12.5

CLASS F

Michael Kahaleua 6-2 19.4
Leoncio Lagadon 6-2 26.7
Thomas Kam 6-2 19.6
Anthony Hidalgo 5-3 14.5
Louis McCabe 4-4 19.7
Rodney Nahina 3-5 20.4
Fesauai Ropati 2-6 17.2
Wayne Kamakea 2-6 14.7
Hyl Pop Ching 2-6 10.6

IDAHO

Kellogg

Aug. 25-26, 1990 Sanc. #08-90-080

CLASS A

Jess Morrison 8-1 53.8
Warren Stutzman 6-3 51.4
Dean Curry 6-3 49.7
Sam Williams 5-4 47.1
Norman Watson 5-4 45.6
Lyle Anderson 5-4 45.5
Gary Kollman 4-5 51.3
Jess Lyda 4-5 44.0
Charlie Ault 1-8 40.9
Clyde Marquez 1-8 40.5

CLASS B

Louie Piva 8-2 47.2
Tony Apodaca 7-3 39.9
Owen Randall 6-3 45.2
Kraig Allen 6-3 45.0
Del Schmeling 5-4 37.3
Ken Riersgard 4-5 40.3
Bob Mitchell 4-5 34.2
Elmer Currie 3-6 36.2
Henry Reid 3-6 35.4
Louis Brock 0-9 28.1

CLASS C

Nick Piva 7-0 46.7
Berle Riese 4-3 40.2
Reed Lowe 4-3 37.8
Ed Absec 4-3 36.0
Otto Brennecke 3-4 35.5
Lynn Johnson 3-4 32.8
Myron Buchert 2-5 31.0
Jerry Mutch 1-6 28.7

CLASS D

Dean Blake 7-2 30.4
Glenn Stutzman 6-3 34.9
Al Lee 6-3 31.9
Sonny Abad 5-4 32.9
Wayne Durnil 5-4 31.5
Jerry Bengston 5-4 30.1
Ed Lunceford 4-5 31.6

Don Long 4-5 24.1
Jim McCue 3-6 24.6

CLASS E

Lester Agee 8-1 27.7
Joe Purjue 7-2 27.2
Bill Stutzman 7-2 23.4
Dean Martin 6-3 31.5
Terry Burnham 6-3 25.1
Kent Kirk 5-4 19.9
Merlin Miller 3-6 15.4
Dudley Lemon 2-7 16.2
Dan Bair 1-8 11.5
Don Heidt 0-9 11.3

LADIES A

Linda Martin 6-0 56.8
Loretta Kirk 3-3 39.1
Vicki McEnany 2-4 39.2
Willa Lunceford 1-5 33.8

LADIES B

Betty Lyda 4-2 27.2
JoAnn Allen 3-3 27.1
Leona Riese 3-3 21.2
Rose Johnson 2-4 23.0

JUNIOR BOYS A

Kevin Watson 6-0 52.5
Jay Anderson 2-4 33.5
Wayne Abad 1-5 31.1

JUNIOR BOYS B

Jesse Rose 4-2 15.6
Rich Atha 2-4 12.9

JUNIOR GIRLS A

Joy Anderson 3-3 11.3

ILLINOIS

Hecker

Aug. 31 - Sept. 3, 1990

Sanc. #29-90-032

CLASS A

Cliff Baker 17-0 82.0
Donald Peters 15-2 70.2
Charlie Webb 14-3 72.0
Robert Hatten 13-4 68.6
Lloyd Ward 13-4 67.2
Michael Knop 11-6 65.4
Raymond Phillips 9-8 63.0
Harold Lange 9-8 61.5
George Manker 8-9 59.3
Larry Knop 8-9 59.3
Eddie Eckart 6-11 61.0
Al Heidenfelder 6-11 54.8
Hirma Nelson 5-12 55.9
Charles Erickson 5-12 54.5
Steven Denault 4-13 60.9
Lloyd Ingersoll 4-13 59.7
Bud Eisel 3-14 53.7
Jerome Dumstorff 2-15 50.5

CLASS B

Dennis Griesbaum 7-0 63.9
James Pruitt 6-1 57.2
Glen Bryant 5-2 55.2
Leon Johnson 3-4 48.9
Franklin Johnson 3-4 48.9
W. Fred Wicker 2-5 53.1
Alvin Forsyth 1-6 43.6
Tony Jarvis 0-7 46.5

CLASS C

Thomas Reid 6-1 49.7
Lester Dumstorff 5-2 58.8
Brad Koons 5-2 53.4
James Rehmer 4-3 52.3
Melvin Ruch 3-4 52.0
James Wilson 3-4 44.1
Dennis Simler 1-6 44.2
Glen Meyer 1-6 42.5

CLASS D

Jack Sutton 6-1 56.3

Louis Gschwendtner 5-2 47.9
Robert Hinkle, Jr. 4-3 51.1
Darrell Wade 4-3 48.9
Vernon Muench 4-3 46.2
Al Fesser 3-4 49.7
Dennis Davis 2-5 45.9
Joe Douchant 0-7 34.3

CLASS E

Michael Green 7-0 57.9
James Spidle 6-1 53.1
Wayne Hamby 4-3 49.3
John Wright 4-3 46.5
Bay Price 4-3 46.4
Jesse Starwalt 3-4 51.6
Loren Gillespie 1-6 29.2

CLASS F

Wendell Savage 7-0 52.4
James Carey 5-2 47.8
Robert Scott 4-3 49.1
Norm Hartwell 4-3 41.2
Kenneth Reid 3-4 42.9
Frank K. Wright 2-5 43.1
Thomas Phillips 2-5 39.8
Joe Waterman 1-6 33.3

CLASS G

William Marvin 7-0 46.9
Robert Barker 6-1 49.5
Davis Prestidge 5-2 43.4
Marvin Ellerman 4-3 41.0
Donald Bailey 3-4 41.8
Chuck Carter 3-4 38.4
Dave Shreve 1-6 30.2
James McDaniel 0-7 43.6

CLASS H

Dale Ferguson 7-0 47.6
Henry Jessen 6-1 43.8
Harley Eaves 4-3 41.3
Donald Boyer 4-3 39.0
Edwards Evans 3-4 42.9
Robert Switzer 3-4 38.7
Jesse Compton 1-6 37.4
Frank Pastrovich 1-6 44.1

CLASS I

Nick Viola 6-1 37.6
Charles Cook 6-1 34.7
Steve Stefanowycz 5-2 43.4
Dean Anderson 4-3 39.5
Richard Ragan 3-4 36.7
Eldon Brede 3-4 33.9
James Wright 3-4 34.1
Alan Jones 0-7 23.7

CLASS J

Lloyd Bain 7-0 39.0
Tom White 5-2 42.4
Kenneth Erb 5-2 39.3
Winfred Willard 4-3 37.0
Michael Stotler 3-4 41.0
Roger Myers 3-4 37.4
Albert Kline 2-5 31.7
Larry Freeland 1-6 32.6

CLASS K

Jerry Christian 7-0 42.0
Wes Holdman 6-1 41.9
Frank Dimaano 4-3 31.4
Ronald "Pete" Rankin 4-3 31.1
Roy Siddens 3-4 31.2
Floyd Tennill 2-5 31.3
Lloyd Bowen 1-6 30.9
Kenneth Jones 1-6 30.5

CLASS L

Ronnie Attebery 7-0 41.9
Gene Moore 5-2 39.8
Charles Smith 5-2 35.6
Hasting Moroney 4-3 33.9
Leslie Mullen 3-4 42.1
Lester Bodeker 3-4 35.2
Joseph Beneky 2-5 30.4
James Wolfe 1-6 26.4

Tournament Results

CLASS M

James Moore	6-1	37.1
Charles Marit	5-2	30.7
Robert Downard	4-3	38.4
Harold Bull	4-3	32.8
Mike O'Conner	3-4	41.7
George Bauchman	3-4	29.3
Joe Jones	3-4	26.3
Kenneth Bornert	0-7	17.9

CLASS N

Lynn Rimbey	7-0	42.1
Larry Lotter	6-1	49.7
Edward Jatcko	4-3	36.5
Randy Pulver	3-4	38.6
Paul Abert	3-4	31.3
Earl Erickson	2-5	34.0
George King	2-5	31.0
Gary Nation	1-6	25.3

CLASS O

Kenneth Weiss	7-0	35.6
Jim Toenjes	6-1	45.7
Gary Huston	5-2	43.4
Jerry Anderson, Sr.	3-4	33.4
Roger Reinebach	3-4	31.2
Larry Abert	3-4	30.4
LeRoy Watkins	2-5	32.1
Jud Hawk	0-7	12.4

CLASS P

Robert Pluckebaum	6-1	36.4
James Homa	6-0	34.1
Bill Strang	5-2	28.9
Edward Bell, Jr.	4-3	36.3
Donald Lockhart	4-3	32.4
Donald Simpson	3-4	29.1
Harold Gill	2-5	29.3
James McAnelly	1-6	28.6

CLASS Q

Richard Gilomen	6-1	27.4
Frank Lewis	5-2	31.1
Arthur Standage	5-2	26.5
Tony Isom	4-3	22.1
Arnold Morris	3-4	23.7
Kevin McCormick	2-5	22.5
Earl Simler	2-5	20.9
Russell Dockstader	1-6	18.6

CLASS R

Keith Doonan	6-1	26.0
Reid Bingham	5-2	33.1
Robert Gretak, Sr.	4-3	26.0
James Crouch	3-4	26.6
Edmund Eckart	3-4	19.7
Rubin Moore	3-4	18.9
Al Meadows	2-5	24.3
Frank Crouch	2-5	32.9

CLASS S

Art Heizler	7-0	28.3
Richard Andrysiak	6-1	31.3
Dennis Walker	3-4	26.6
Walt Wojciechowski	3-4	19.4
Dwayne Johnson	3-4	21.7
James Korte	3-4	18.9
Jerrold Nation, Sr.	2-5	24.0
Robert Fenton	2-5	22.6

CLASS T

William Klekamp	7-0	31.4
Joseph Kukowski	5-2	18.3
Jim Spidle, Jr.	5-2	23.7
Robert Wegman	4-3	24.9
Robert Hill	3-4	23.4
John DeVault	2-5	19.1
Michael Sauerhage	1-6	21.1
Ross Hendrickson	1-6	18.9

CLASS U

Ronald Hopman	9-0	30.3
Jerome "Ted" Hawk	8-1	18.1
William Smith	6-3	19.4
William Cummings, Jr.	6-3	16.9
Fred Santel	4-5	18.4
Richard Wetstein	4-5	14.7
John Press	3-6	13.1
Joe McElligott	3-6	8.8
Jim Schneider	1-8	8.8
William Thompson	0-9	6.6

ELDER MEN CLASS A

Roland Stobaugh	7-0	58.9
Howard Albert	6-1	39.0
Harvey Kohlenberger	5-2	44.6
William Eckart	4-3	39.5
LeRoy Paule	3-4	29.9
Lester Jackson	3-4	21.5
Ross Sornberger	1-0	14.5

JUNIOR BOYS CLASS A

Matt Lockhart	7-0	50.4
Brandon Stephens	6-1	43.6
Jonathan Carey	5-2	29.3
Johnny Farmer	4-3	37.5
William Cummings III	3-4	24.7
Joe McElligott III	2-5	22.5
David Shreve	1-6	25.4
Eric Farmer	0-7	15.3

JUNIOR BOY CLASS B

Matt Clevenger	5-0	37.0
Jonathan Nation, Jr.	4-1	30.5
Jeremy Johnson	3-2	22.5
Michael Jones	2-3	12.0
Robert Meadows, Jr.	1-4	14.5
Jerrold Nation, Jr.	0-5	13.0

JUNIOR GIRLS CLASS A

Mira Ferguson	5-1	23.1
Kellie McElligott	5-1	11.5
Hope Nation	2-4	6.3

WOMEN CLASS A

Tari Powell	7-0	72.8
Paulette Shreve	6-1	57.3
Ellen Ronk	4-3	49.4
Nellie Fleming	3-4	55.0
Vida Marit	3-4	50.3
Kathleen Hasty	3-4	47.3
Carol Toenjes	1-6	48.3
Patricia Lightfoot	1-6	41.9

WOMEN CLASS B

Carol Kelley	6-1	40.8
Charlotte Renick	5-2	42.9
Shari Hamilton	4-3	46.6
Cathy Mottl	4-3	37.6
C. Gummersheimer	4-3	28.9
Elsie Stacy	3-4	37.3
Mu Cha Hill	2-5	30.4

WOMEN CLASS C

Michelle Thornton	4-1	32.8
Beverly Dunning	3-2	29.4
Viola Reinebach	3-2	28.1
Deborah Bratland	3-2	25.4
Eva Lee Eaves	1-4	31.4
Marsha Smith	1-4	23.5

WOMEN CLASS D

Ruth Feltmeyer	5-1	31.7
Lorraine Lange	5-1	25.7
Debbie Herderhorst	4-2	24.7
Emma Ellerman	2-3	11.6
Linda Wright	1-4	6.7
Peggy Messner	0-5	6.3

WOMEN DOUBLES - CLASS A

C. Toenjes - C. Kelley	6-1	
P. Lightfoot - S. Hamilton	5-2	
V. Marit - E. Stacy	5-2	
P. Shreve - M. Hill	5-2	
K. Hasty - M. Spidle	3-4	
E. Ronk - C. Renick	3-4	

N. Fleming-C. Gummersheimer1-6

WOMEN DOUBLES - CLASS B

E. Eaves - L. Lange	5-0	
B. DUNning - L. Presley	4-1	
R. Feltmeyer - D. Herderhorst	3-2	
S. Thornton - P. Messner	2-3	
V. Reinebach - P. Hamilton	1-4	
M. Smith - A. Ellerman	0-5	

MEN DOUBLES - CLASS A

C. Baker - A. Forsyth	7-0	
C. Webb - D. Griesbaum	6-1	
R. Hatten - F. Wicker	4-3	
G. Manker - A. Heidenfelder	4-3	
H. Lange - B. Pruitt	4-3	
E. Eckart - H. Nelson	1-6	
S. Denault - G. Bryant	1-6	
R. Phillips - T. Jarvis	1-6	

MEN DOUBLES - CLASS B

M. Ruch - M. Green	6-1	
F. Johnson - J. Spidle	6-1	
V. Muench - R. Hinkle, Jr.	5-2	
D. Simler - J. Starwalt	3-4	
B. Koons - W. Darrell	3-4	
A. Fesser - J. Douchant	2-5	
E. Hamilton - J. Wright	2-5	
G. Meyer - D. Davis	1-6	

MEN DOUBLES - CLASS C

W. Hamby - J. Eaves	6-1	
L. Gillespie - B. Marvin	5-2	
R. Scott - C. Carter	4-3	
T. Phillips - R. Barker	4-3	
B. Price - J. Compton	4-3	
F. Wright - D. Shreve	3-4	
T. White - M. Ellerman	2-5	
J. Waterman - J. McDaniel	0-7	

MEN DOUBLES - CLASS D

E. Evans - R. Rankin	5-2	
R. Siddens - R. Switzer	5-2	
E. Brede - L. Freeland	4-3	
D. Anderson - A. Kline	4-3	
N. Viola - R. Myers	3-4	
F. Pastrovich - W. Holdman	3-4	
S. Stefanowycz - R. Bain	3-4	
J. Wright - K. Jones	1-6	

MEN DOUBLES - CLASS E

L. Muller - E. Jatcko	6-1	
G. Moore - R. Pulver	4-3	
F. Demaano - L. Lotter	4-3	
C. Marit - R. Downard	4-3	
C. Smith - G. Bauchman	3-4	
J. Wolfe - K. Bornert	3-4	
R. Attebery - H. Bull	2-5	
H. Moroney - M. O'Conner	2-5	

MEN DOUBLES - CLASS F

K. Weiss - R. Pluckebaum	6-1	
R. Reinebach - E. Bell	5-2	
L. Watkins - H. Gill	5-2	
P. Abert - R. Gilomen	4-3	
L. Rimbey - D. Simpson	4-3	
L. Abert - J. Anderson	2-5	
J. Hawk - B. Strang	1-6	
G. Huston - R. McAnelly	0-7	

MEN DOUBLES - CLASS G

A. Morris - D. Walker	6-1	
R. Gretak - R. Moore	6-1	
F. Lewis - D. Johnson	4-3	
R. Bingham - K. Doonan	4-3	
K. McCormic - J. Korte	2-5	
T. Isom - W. Wojciechowski	2-5	
R. Dockstader - R. Fenton	2-5	
E. Simler - Al Meadows	2-5	

MEN DOUBLES - CLASS H

R. Hendrickson - R. Hopman	7-0	
J. Kokowski - W. Cummings	5-2	
R. Hill - M. Sauerhage	4-3	
W. Klekamp - J. McElligott	4-3	
R. Andrysiak - J. Press	2-5	

A. Heizler - W. Thompson	2-5
J. Spidle, Jr. - R. Maza	2-5
J. DeVault - F. Santel	2-5

IOWA

St. Frgrnds., Des Moines

Aug.19-26,1990Sanc.#24-90-048

CHAMPIONSHIP CLASS

	%
Kevin Cone	7-0 70.8
Keith Baker	6-1 58.7
Jerry Holt	5-2 61.6
Harlan Hass	4-3 51.5
Jan Flemming	3-4 60.0
Pat Simon	2-5 52.5
Glen Henton	1-6 35.6
Lee Wiges	0-7 52.5

CLASS A-1

:Harold Darnold	5-0 54.0
Marv Engstler	4-1 56.2
Woody Wilson	3-2 46.9
Jerry Roussel	2-3 46.0
Leo Buell	1-4 37.3
Ronnie Burgess	0-5 31.5

CLASS A-2

Marv Woolums	7-0 45.9
Brian Flemming	6-1 46.2
Lyle Jackson	5-2 40.6
Bob Neipert	4-3 38.2
Marv Gray	3-4 33.9
Herb Hansen	1-6 34.1
Arnold Hanson	1-6 35.3
Chet Foster	0-7 42.6

CLASS A-3

Bob Walters	5-1 39.1
Marls Goodrich	5-1 36.6
Russ Martin	4-2 35.1
Ray Kamper	3-3 36.2
Virgil Williams	2-4 37.3
Dale Witmer	2-4 33.5
Genen Burlingame	0-6 26.1

CLASS A-4

John Brown	5-2 31.1
Larry Purcell	5-2 36.7
Ron Utley	4-3 38.2
Bob Dugger	4-3 37.0
Al Cook	4-3 35.1
Jim Jackson	2-5 32.8
Frank Koehler	2-5 30.3
Rick Voshell	2-5 30.2

CLASS B-1

Ed Elliott	6-1 42.4
Ralph Palmer	5-2 40.1
Claire Gifford	5-2 35.1
Bob McKee	4-3 39.2
Geo. West	3-4 40.7
Tom Smock	2-5 32.9
Dean Carter	2-5 30.9
Wayne Ballhagen	1-6 28.4

CLASS B-2

Muriel Maurer	7-0 37.2
Me Letcher	4-3 37.9
Neale Ruff	4-3 35.0
Harold Garner	4-3 30.6
Carroll Cone	3-4 35.9
Dean LeClere	3-4 32.5
Dick Carlson	3-4 30.9
Glen Stover	0-7 29.0

CLASS B-3

Chuck Alfman	6-1 37.1
Farrell Foster	5-2 36.9
Gene McNamar	4-3 33.8
Bill Goodman	4-3 29.3
Al Fisher	3-4 34.4
Randy Ruff	3-4 32.2
Don Smith	2-5 32.2
Bill Hunter	1-6 26.0

Tournament Results

CLASS B-4

Leroy Law	7-0	36.2
Roger Gaulke	6-1	37.5
Morris Lepley	5-2	31.3
Clyde Rains	3-4	28.3
Art Holthaus	2-5	29.5
Joe Lepley	2-5	28.5
Bob Block	2-5	38.3
Clint Turner	1-6	22.0

CLASS C-1

Harold Miller	7-0	31.8
Bill Harder	5-2	26.9
Danny Sease	4-3	25.3
Ken Cakerice	4-3	22.4
Joe Lepley	3-4	26.7
Ken Cook	3-4	24.7
Lwell Fox	2-5	28.5
Ron McCombs	0-7	18.0

CLASS C-2

Chris Fisher	6-1	37.2
Vern Kollasch	6-1	35.0
Paul Reedholm	4-3	27.4
Cliff Rowe	4-3	25.9
Rollie VonThun	3-4	27.2
Mel Harms	3-4	23.0
Joe Arnold	2-5	26.1
Don Wilson	0-7	20.8

CLASS C-3

Lloyd Olson	6-1	33.0
Rick Boll	5-2	26.5
Marv Dirks	4-3	26.0
Jim Kempkes	4-3	24.7
Kevin Bailey	3-4	28.7
Gordon Eklund	2-5	27.4
Leonard Larson	2-4	25.3
Gary Aswegan	2-5	20.4

CLASS C-4

Mike Connor	7-0	29.8
Cal Ellis	5-2	30.2
Fred Grienke	5-2	25.8
Murl Lewis	4-3	18.3
Jim Albright	4-3	17.5
Cliff Kenney	2-5	21.9
Lee Drewelo	1-6	14.1
Bud Hottle	0-7	11.9

CLASS D-1

Harold Barker	5-0	20.7
Walt Ross	3-2	15.0
Russ Bricker	2-3	17.1
Gary Schumann	2-3	12.9
Cleo Schroeder	2-3	12.5
Jim Werts	1-4	15.3

CHAMPIONSHIP WOMEN

Cathy Carter	6-0	65.4
Phyllis VonThun	3-3	44.0
Marianne Colony	2-4	44.5
Betty McGregor	1-5	39.8

CLASS A WOMEN

Kristy Klejch	3-1	32.7
Mic Wilson	3-1	29.2
Bev Smock	3-1	34.2
Opal Harms	1-3	27.9
Linda Canaday	0-4	14.3

CHAMPIONSHIP JR. BOYS

P.J. Simon	6-0	27.9
Brian Woollums	4-2	17.9
Bryan McCombs	2-4	5.8
Tim Grienke	0-6	4.1

CLASS A JR. BOYS

Jacob Bedard	4-0	9.3
Josh Simon	2-2	4.3
Joe Hedman	0-4	1.2

CHAMPIONSHIP JR. GIRLS

Paul Sease	3-0	8.3
Kristin Simon	0-3	6.6

KANSAS

Sept. 1-3, 1990 Sanc. #18-90-021

CLASS A	W-L	%
Roger Potts	10-1	65.8
Merlin Potts	10-1	73.0
Ron Martin	8-3	64.9
Danny Erbe	8-3	61.5
Duane Goodrich	7-4	59.1
Marvin Reheis	6-5	60.0
Jesse Hobbs	5-6	60.7
Alden Allbaugh	5-6	56.3
Bob Booe	3-8	53.1
Vernard Bell	2-9	54.0
Delbert Peters	2-9	52.4
Ralph Funk	0-11	46.5

CLASS B

Guy Tinder, Jr.	10-1	44.1
Ron Kimberling	8-3	48.4
Dean Prichard	8-3	47.1
Bob Outt	7-4	47.0
Chuck Kaniper	7-4	40.9
Norman Hammeke	7-4	40.9
Bill Whitley	5-6	39.1
Phen Ven	4-7	40.0
Howard Wallace	4-7	35.1
Wayne Shelinbarger	3-8	36.6
Gene Fleek	2-9	32.3
Bud Green	1-4	31.6

CLASS C

Owen Ewell	9-2	40.1
Rick Yeubanks	9-2	47.5
Pete Waldschmidt	9-2	39.3
Don Albers	8-3	40.7
Richard Potter	7-4	39.7
Buzz Dickson	5-6	32.9
Delbert Williams	5-6	30.6
Terry Talley	5-6	30.5
James Hale	4-7	34.6
Monte Erbe	3-8	31.1
Marvin Karst	2-9	31.5
Paul Dietz	0-11	24.5

CLASS D

Ed Jaimez	9-2	36.9
Arnold Carpenter	9-2	40.2
Melvin Bray	7-4	37.0
Charles Pringle	7-4	30.3
Vic Locke	6-5	38.6
Howard Cochran	6-5	31.6
Bob Kinder	5-6	34.7
Pete Rethman	5-6	33.3
Terry Cron	4-7	31.4
Jeff Harris	4-7	30.6
Harvey Washburn	3-8	28.9
Paul Voelker	1-10	27.1

CLASS E

Bill Chandler	9-2	35.5
Pat Morris	8-3	38.8
Paul Sturges	8-3	36.3
Tim West	7-4	33.8
Ed Haupt	6-5	32.3
Shorty Sluder	6-5	29.8
Al Kuch	6-5	28.0
Bill Chester	5-6	32.2
Marvey Washburn	4-7	24.8
Doyle Derrick	3-8	31.4
Clarence Loyd	2-9	27.5
John Butler	2-9	25.7

CLASS F

Mike Lundeen	9-2	44.3
Gene Brock	8-3	33.3
John Nicodemus	7-4	36.7
Walter Morton	7-4	34.3
Alvin Dumlér	7-4	32.7
W.C. Scott	7-4	30.6

Harley Tucker	7-4	29.1
Joe Shobney	6-5	31.4
Robert Washburn	3-8	27.3
Sam Adame	2-9	22.9
Les Falls	2-9	21.0
Gene Talley	1-10	26.0

CLASS G

Fred Feek	10-1	33.2
Charles Gann	9-2	39.2
Orville Pfortmiller	9-2	35.5
Clifford Pierce	9-2	32.8
John Rethman, Jr.	6-5	32.7
Ken Martin	6-5	30.0
David Aue	5-6	37.3
Pappy Cavaner	4-7	25.6
Eric Schuetz	3-8	21.1
Paul Lowry	2-9	18.3
Larry Aue	2-9	18.0
Don Licktegi	1-10	11.1

CLASS H

Ron Underwood	10-1	33.2
Leonard Holladay	9-2	31.2
George Bray	8-3	35.1
Mike McClaskey	7-4	25.2
Gregg Turner	7-4	25.1
Wayne Zimmerman, Sr.	7-4	23.1
Tip McFadden	5-6	25.5
James Mortinger	4-7	20.2
Loren Coffey	4-7	20.2
Glen Plaisted	3-8	16.6
Dick Dixon	1-10	20.1

CLASS I

Al Kostelac	10-1	24.8
Howard Morris	9-2	28.4
Rick Talley	9-2	26.7
Cliff Beecham	8-3	26.5
Lee Bates	8-3	22.8
Wayne Zimmerman, Jr.	6-5	24.5
Darrell Keil	5-6	22.0
Carroll Desbien	5-6	19.0
Joe Mortinger	3-8	9.8
Melvin Williams	2-9	14.7
A.J. Mortinger	2-9	12.0

CLASS 70 + 30 FT.

Russ Rendell	7-0	45.7
Roy Smith	6-1	54.7
Milt Everhart	5-2	48.9
W.W. Webb	4-3	36.9
Edwin Doll	3-4	36.1
Harold Keener	2-5	31.0
Harold Gray	1-6	24.6
Dick Kinney	0-7	26.1

LADIES

Janet Walrod	5-0	56.7
Mary Ann Peninger	4-1	59.1
Deanie Reheis	2-3	37.6
Rita Maupin	2-3	37.5
Pat Prichard	2-3	30.4

JUNIORS A

Vorn Ven	5-0	64.1
Jason Talley	4-1	27.6
Jared Worley	3-2	28.8
Tom Williams	2-3	14.4
Levi Williams	1-4	5.6

JUNIORS B

Jason Peters	7-0	18.2
Terry Williams	5-2	22.1
James Underwood	5-2	13.1
Chris Bates	3-4	12.5
Roland Sneed	3-4	6.2
Mike Gaul	2-5	10.1
Wes Pierce	2-5	9.3
Chris Gaul	1-6	7.2

MARYLAND

Sept. 1, 1990 Sanc. #42-90-206

CLASS A	W-L	%
Philip Fleshman	7-0	70.5
Elbert Shiffelt	5-2	70.3
Grant Powers	5-2	64.8
Charlie Atwigg	4-3	58.6
Eddie Ellis	3-4	57.1
Eric Zimmerman	2-5	64.1
Fred Beeman, Sr.	1-6	57.5
John Buckmaster	1-6	54.2

CLASS B

Ken Kershaen	7-0	53.2
John Clow	5-2	47.6
Richard Bevan	4-3	41.8
Curtis Dodson	3-4	41.1
George Hopkins	3-4	40.6
Ken Holden	3-4	39.9
Ted Simmons	3-4	37.8
Curt Fleshman	0-7	30.7

CLASS C

Don Wiley	7-0	45.5
Ernest Atkinson Jr.	5-2	43.7
Holton Kennedy	5-2	30.0
Don Woods	3-4	34.3
Bill Dotson	3-4	31.7
Alton Atkins	2-5	30.0
Stanley Abell	2-5	27.9
Joe Justin	1-6	35.0

CLASS D

Pete Shomette	7-1	36.2
Carl Michael Johnson	6-2	30.8
Ernest Alkinson Sr.	6-2	30.6
Kevin Seals	6-2	28.6
Stacy Wiitala	4-4	28.3
Dick Besece	4-4	26.3
Ed Cavey	2-6	19.0

CLASS E

Mike Tasker	7-2	29.2
Eugene Baugh	6-3	33.7
Gilbert Pritchett	5-4	26.1
Dave Albert	5-3	26.1
Chuck Kavanaugh	4-4	27.3
Gary Leconte	4-4	20.3
Mike Lester	2-6	21.9
Louis Walls	2-6	18.1
Fred Baublitz	2-6	16.9

CLASS F

Sonny Holste	7-0	24.3
Terry Rogers	5-2	26.7
William Bowie	5-2	26.2
Bill Wilson	4-3	23.6
Bob Webb	3-4	22.2
Chuck Kavanaugh Sr.	2-5	18.8
Charles Cherrix Sr.	2-5	17.5
Jim Shoemaker	0-7	12.3

CLASS G

Rich Malmauski	7-1	23.8
Gary Snyder	6-2	16.6
Tom Cavey	5-2	14.5
Ken Norris Sr.	4-3	13.0
Brian Baublitz	3-4	9.1
Carl Bond	2-5	7.6
Ken Norris Jr.	1-6	9.0

WOMEN CLASS A

Hazel Fleshman	4-0	42.3
Pat Clow	3-1	41.3
Eleanor Pritchett	2-2	24.9
Susan Shomette	1-3	26.0
Elsie Atkinson	0-4	7.6

MASSACHUSETTS

Aug. 26, 1990 Sanc. #48-90-003

CLASS A WOMEN	W-L	%
Bertha Baillargeon	4-1	75.9
Debbie Michaud	3-2	69.5
Mary Ryan	0-4	51.8

Tournament Results

CLASS B WOMEN

Barbara Hanson	5-1	48.8
Sandy Matis	4-2	41.3
Sandy Copley	2-4	37.8
Nancy Cannon	1-5	26.4

CLASS A MEN

John Kapnis	5-0	76.2
Ed Domey	4-1	58.9
Charlie Bonant	3-2	62.4
Rick Howe	2-3	56.4
John Passmore	1-4	61.5
Charlie Richardson	0-5	49.1

CLASS B MEN

Wally Teto	5-0	56.8
John Gelinas	3-2	49.5
Bob Leynen	3-2	47.2
Roy Robertson	2-3	42.6
Dave Martin	1-4	43.1

CLASS C MEN

Ernie Baillargeon	4-0	40.2
Bob Grattan	2-2	38.2
Ken Lelievre	0-4	31.1

CLASS D MEN

Bill Progen	7-1	38.0
Kirk DeLuca	6-2	40.4
Ken Terrio Sr.	4-2	35.7
Joe Pepi	3-4	27.1
Charles McNeill	3-4	26.2
Harry Schricker	2-4	27.3
Dick Bois	2-5	28.7
John Shaw	1-6	27.0

CLASS E MEN

Monk Calder	6-2	33.2
Dave Sunderland	6-3	31.2
Bill Galligan	5-3	30.8
Bill Lawson	3-4	32.3
Jack Cragen	3-4	30.2
Dennis Kimball	3-4	26.3
Geo. St. Pierre	3-4	23.6
Dick Galinas	1-6	25.0

CLASS F MEN

Rene Caron	7-1	39.8
Jim DiGiacomo	6-2	28.6
Tom Costello	5-2	31.6
Dick Pratt	3-4	34.0
Chris Gregorio	3-4	26.6
Bruce Chase	3-4	25.6
Gil Pratt	2-5	25.4

CLASS G MEN

John Leahy, Jr.	6-1	31.1
Bill Holland	4-3	31.7
Bob Bennett	4-3	28.9
Bill English	4-3	28.6
Jim Leahy	4-3	28.1
Don Guillemette	3-4	27.6
Earle Fredette	3-4	26.2
Bernard St. Clair	0-7	20.3

CLASS H MEN

Ken Terrio, Jr.	7-2	30.3
Sonny Pratt	6-3	24.3
Tom Matis	5-3	28.0
Art Blaisdell	5-3	21.6
Mike Muscarella	3-4	22.4
Russ Gibbs	3-4	21.5
Don Merritt	2-5	19.4
Chas. Danehy	0-7	14.5

CLASS I MEN

Jim Hanson, Sr.	6-1	22.9
John Grenon	5-2	19.7
Bart Sargent	4-3	22.3
Jim Tyner	3-4	20.4
Geo. Davenport	3-4	19.6

Frank Trabucco	3-4	17.5
Al Little	2-5	16.1
Ray Normandeau	2-5	14.6

CLASS J MEN

Jim Hanson	7-1	19.1
Skip Merritt	6-2	18.2
Brian Bailey	5-2	13.7
Owen Harriman	4-3	10.2
Frank Ryan	3-4	13.1
John Marsden	3-4	11.2

JUNIOR BOYS

Scott Lelievre	7-0	21.1
----------------	-----	------

MINNESOTA Little Falls

Aug. 31 thru Sept. 3, 1990
Sanc. #23-90-006

WOMEN CLASS A

	W-L	%
Bev Nathe	5-0	77.9
Phyllis Negaard	4-1	80.6
Lu Cave	3-2	68.1
Sandy Karash	2-3	71.5
Edi Holland	1-4	69.7
Ginger O'Brien	0-5	50.9

WOMEN CLASS B

Rosie Leyk	3-2	50.8
Christine Cage	3-2	50.0
Lynne Hughes	3-2	49.6
Pat Stumpf	3-2	48.4
Elsie Erickson	2-3	49.6
Renae Horn	1-4	48.4

WOMEN CLASS C

LuAnn Koskiniemi	6-1	47.1
Mary Denzin	5-2	48.0
Bonnie Nelson	5-2	45.4
Jeannine Nordin	4-3	52.0
Joan Malone	3-4	44.2
Sylvia Burggraff	3-4	38.5
Judy Karsjens	2-5	38.0
Dorothy Eaton	0-7	29.7

WOMEN CLASS D

Doris Tomala	6-1	54.0
Linda Pick	5-2	44.8
Pearl Aadland	4-3	42.8
Sally Limanen	4-3	41.7
LeAnn Maahs	4-3	36.5
Barbara Hirman	3-4	36.5
Rosy Tischer	2-5	34.5
Carol Hoppe	0-7	39.4

WOMEN CLASS E

Gail Paulson	5-2	42.5
Sandy Thole	5-2	41.4
Marlys Timm	4-3	41.7
Judy Honer	4-3	39.1
Jodi Kelly	4-3	38.5
Sue Sam	3-4	36.0
Ann Bullert	3-4	28.0
Cindy Casillas	0-7	28.0

WOMEN CLASS F

Sue Edenloff	7-0	35.7
Linda Hood	6-1	36.5
Cheri Engler	4-3	30.0
Kathy Weber	4-3	26.0
Illene Regan	3-4	28.0
Myrna Gisich	3-4	26.8
Joyce Bombarger	1-6	28.8
Nancy Waller	0-7	26.0

WOMEN CLASS G

Carol Bunes	7-0	35.4
Dee Schwartz	5-2	25.1
Renae Kircher	4-3	22.0
Nancy Zimmermann	3-4	34.0
Kim Bray	3-4	28.0
Judy Sanders	3-4	21.1
Joyce Ahles	3-4	20.5
Cheryle Andrea	0-7	18.5

WOMEN CLASS H

Laurie Kelley	6-1	38.0
Marlene Peterson	5-2	29.7
Sharon Paulson	5-2	28.8
Denise Eul	4-3	30.5
Margaret Johnson	3-4	25.7
Carolyn Nelson	2-5	20.0
Renea Lipovsky	2-5	18.8
Deborah Czeck	1-7	16.2

WOMEN CLASS I

Kerri Stangland	6-1	23.4
Ladene Skov	6-1	21.4
Judy Hammer	5-2	24.0
Cathy Bergquist	4-3	14.0
Millie Greive	3-4	17.1
Pat Tomala	2-5	18.0
Heather Gage	2-5	14.8
Vickie Thompson	0-7	4.8

WOMEN CLASS J

Lynn Kruse	4-1	24.5
Michelle Guptill	4-1	18.0
Pat Senger	3-2	17.0
Mary Langer	3-2	11.5
Lenore Nelson	1-4	7.0

SENIOR MEN 40 FT. CLASS A

Clayton Peterson	5-0	61.2
Ralph Marcks	3-2	41.6
Alf Olsen	2-3	41.6
Othar Peterson	2-3	38.8
Arvid Huotari	2-3	32.0
Maury Palmershiem	1-4	33.2

SENIOR MEN 40 FT. CLASS B

Arnold Duevel	5-0	45.0
Carl Lehrke	3-2	38.0
Earl Dean	3-2	37.5
Herman Hovda	3-2	30.5
Oiva Waara	1-4	31.0

SENIOR MEN 30 FT. CLASS A

Don Larson	6-1	54.6
Herman Anderson	6-1	47.3
Clarence Lundeen	5-2	43.6
Art Favre	4-3	36.3
Ervin Smith	3-4	40.6
Leo Brezinka	2-5	32.6
Arnold Carlberg	2-5	30.6

SENIOR MEN 30 FT. CLASS B

Wilfred Blenkush	5-1	36.5
Norm Kroening	5-1	34.5
Bob Walker	3-2	42.5
John Sundby	3-2	39.5
Orville Young	1-4	26.5

JUNIOR GIRLS CLASS A

Missa Rosival	5-0	44.4
Christie Cave	3-2	46.0
Paula Maahs	3-2	43.6
Becky Koskiniemi	2-3	39.6
Tiffany Gage	2-3	34.8
Chenoa VonRuden	0-5	30.0

JUNIOR GIRLS CLASS B

Denise Koskiniemi	5-0	20.0
Jessica Dunn	4-1	16.4
Stacy Selander	2-3	21.6
Jamie Keefe	2-3	14.0
Kristine Haugen	1-4	9.6
Heather Crancer	1-4	9.6

JUNIOR GIRLS CLASS C

Val Hollingsworth	7-0	12.8
Jeanna Rocha	5-2	5.1
Tammy Thompson	4-3	6.8
Naomi Sam	3-4	2.8
Sara Otto	3-4	2.5
Lori Otto	3-4	2.2
Christy Thompson	2-5	3.4
Sarah Keefe	1-6	1.1

JUNIOR BOYS CLASS A

Vance Harren	5-0	72.4
--------------	-----	------

Chris Harren	4-1	66.8
Lionel McMahan	2-3	56.4
Matt Stangland	2-3	52.0
Jay Karasch	2-3	46.4
Scott Kinnetz	0-5	33.2

JUNIOR BOYS CLASS B

Bobbie Czeck	7-0	42.2
Cory Thorstenson	6-1	39.4
Chris Thorstenson	5-2	43.7
David Crancer	4-3	26.8
Chris Hirman	3-4	31.4
Matthew Houle	2-5	21.1
Kurt Burgstaler	1-6	20.2
Nick Fadden	0-7	12.0

JUNIOR BOYS CLASS C

Tim Kerkvliet	6-1	30.8
Joshua Hirman	5-2	26.5
Jeff Rosival	5-2	25.1
Shane VonBehren	5-2	22.5
Sean Geisler	4-3	18.8
Chet Czeck	2-5	16.8
Brad Medek	1-6	12.8
Eric Marshik	0-7	6.8

JUNIOR BOYS CLASS D

Curtis Clippard	8-0	20.0
Jason Marshik	6-2	16.0
John Kerkvliet	6-2	2.0
B.J. Thorstenson	3-5	3.0
Robby VonBehren	1-7	1.3

MEN CLASS A

Dale Lipovsky	7-0	78.8
Dave Hughes	4-3	74.2
Len Lipovsky	4-3	67.9
Gordon Schmidt	4-3	67.0
ARlo Lampton	4-3	65.8
Jack O'Connor	3-4	64.9
Wilfred Korpela	2-5	67.8
Jim Aleckson	0-7	64.4

MEN CLASS B

Gerald Stangland	6-1	66.5
Martin Birkholz	4-3	62.5
Norm Morrison	4-3	60.8
Roland Swenson	4-3	58.0
Danny Carlson	4-3	56.2
Charlie Wells	3-4	58.0
William Larson	2-5	54.0
Glenn Sogge	1-6	57.7

MEN CLASS C

Joe Anzaldi	7-0	63.7
Mark Baumann	6-1	66.5
Raymond Lust	4-3	56.5
Dale Sheehan	3-4	57.4
Dave Evenson	3-4	48.5
Fred Larson	3-4	48.5
Nick Audette	1-6	47.1
Mike Dowling	1-6	39.7

MEN CLASS D

Elwood Johnson	5-2	56.5
David Borscheid	5-2	56.0
Ronald Koskiniemi	5-2	54.5
Roy Reed	4-3	53.7
Roger Isenberg	4-3	53.1
Pete O'Connor	3-4	51.4
Mark Goodwin	2-5	49.7
Bob Bayerl	0-7	39.1

MEN CLASS E

Jerry Hokkala	7-0	61.4
Ray Tiili	5-2	54.5
Harley Anderson	5-2	49.7
Bernie Caron	4-3	49.4
Bud Helman	3-4	48.0
Bill Bunting	2-5	46.0
Lloyd Wolf	2-5	42.0
Stan Eaton	0-7	28.8

MEN CLASS F

Dick Goplin	5-2	51.4
Darrell Kolden	5-2	47.4

Tournament Results

Del Karsjens	5-2	45.7
Dean Heng	4-3	48.8
Bubs Gedatus	4-3	44.8
Ronald Fadden	2-5	42.5
Norm McCann	2-5	38.2
Jim Beyer	1-6	35.4

MEN CLASS G

Earl Tiegs	5-2	45.7
Bill Grillo	5-2	44.2
Dave Edenloff	4-3	49.1
Donald Spinler	4-3	45.4
Bob Jost	4-3	40.5
Ray Furey	3-4	37.4
Ron Wilkinson	2-5	38.8
Mike Bellcour	1-6	42.0

MEN CLASS H

Jerry Larson	6-1	45.4
Myron Flann	5-2	46.2
Carl Larson	5-2	45.1
Rusty Henrikson	5-2	42.2
Harold Bischel	3-4	39.4
Hank Hippe	2-5	38.8
Jim Holland	1-6	35.7
Edward Erickson	1-6	32.5

MEN CLASS I

Terry White	6-1	46.8
Walter Busse	6-2	47.7
Bob Horn	6-2	40.8
Frank Bellcour	4-3	34.8
William Sullivan	3-4	40.2
Tim Ahles	3-4	20.2
Dick Dvorak	2-5	31.4
Chuck Greive	0-7	12.0

MEN CLASS J

Edward (Sam) Seelen	7-0	48.5
Dale Ljunggren	5-2	40.5
Hutch McMahan	4-3	46.5
Glen Johnson	4-3	39.1
Russ Hoppe	3-4	33.1
Mike Granquist	2-5	33.7
Erwin Tischer	2-5	27.1
Jerald Hagen	1-6	35.1

MEN CLASS K

Mickey Mueller	7-0	45.7
Darwin Pettis	6-1	49.7
Dave Pedersen	4-3	40.0
Bill Ringenberg	3-4	38.8
Norm Loidolt	3-4	38.5
Dan Dolwing	3-4	33.4
Tom Nelson	2-5	36.2
Tom Waring	0-7	27.7

MEN CLASS L

Don Sieben	6-1	32.8
Glen Sandquist	5-2	37.7
George Gregorich	5-2	37.1
Ray Watkins	3-4	38.0
Jacob David	3-4	35.1
Eugene Ljunggren	3-4	31.1
Douglas Czeck	2-5	33.1
Don Audette	1-6	32.0

MEN CLASS M

Richard Beyer	5-2	41.7
Roman Born	4-3	41.7
Frank Gisch	4-3	40.2
Cliff Presler	4-3	39.7
LeRoy Johnson	4-3	33.1
Jay Schneider	3-4	37.1
David R. Johnson	3-4	30.2
Norm Gage	1-6	28.2

MEN CLASS N

Rick O'Connor	5-2	36.0
Fred Extrand	5-2	35.1

Roger Tripp	5-2	33.7
Dennis Buendorf	4-3	37.4
Barry Hanson	3-4	38.0
Ernie Johnson	3-4	35.4
Matt VonRuden	2-5	23.1
Glen Peterick	1-6	20.5

MEN CLASS O

Bob Dunn	6-1	36.0
Terry Gleason	5-2	38.2
Henry Greenwaldt	4-3	35.7
Tim Bayerl	4-3	35.4
Ed Limanen	4-3	33.4
Cy Narlock	2-5	28.8
Byron Eckholm	2-5	24.0
Morris Curtis	1-6	25.1

MEN CLASS P

Vern Osterhues	5-2	38.8
Al Gunderson	5-2	33.7
Bud Nelson	4-3	35.7
Richard David	4-3	35.4
Harvey Arola	4-3	34.8
Ivan Baumgartner	3-4	29.7
Art Halverson	2-5	35.1
Donald Stangland	1-6	22.8

MEN CLASS Q

Wayde Stangland	5-2	37.1
Ward Llut	5-2	35.7
Mike Elfman	5-2	35.4
Ralph Yost	5-2	35.1
Mike Kloster	4-3	30.2
Frank Kohoutek, Jr.	3-4	30.0
Darrell Hirman	1-6	22.5
Glenn Kruse	0-7	20.5

MEN CLASS R

Byron Greenwaldt	6-1	38.0
Tom Crancer	5-2	32.5
Ronald Popp	4-3	36.2
LeRoy Langner	3-4	30.2
Jeff Waataja	3-4	26.2
Cal Sam	3-4	26.0
Michael Littell	2-5	33.1
Herb Swanson	2-5	26.2

MEN CLASS S

Kenneth Anderson	5-2	34.2
Larry Nelson	5-2	29.4
Dennis Carlson	4-3	32.0
Paul Zimmerman	4-3	30.5
Millard Olson	4-3	29.7
Donald Koskiniemi	4-3	29.7
Jim Loxton	2-5	26.0
Vern Johnson	0-7	21.7

MEN CLASS T

Dave Beyer	6-1	39.4
Fred Yeager	5-2	35.7
Ted Buendorf	5-2	34.5
Lee Kapsner	5-2	31.7
Robert Jones	3-4	32.2
Bob Winterhalter	2-5	26.5
Shane Paulson	1-6	24.8
Joel Stenhaus	1-6	24.2

MEN CLASS U

Rick Hotakainen	6-1	34.2
Steven Johnson	5-2	31.4
Bob Bialke	4-3	30.2
Jack Loeffen	4-3	26.8
Roy Poland	3-4	27.4
Tim Stachowski	2-5	26.0
Jeffrey Hood	2-5	24.8
Joe Furey	2-5	18.8

MEN CLASS V

Jim Koetter	7-0	38.2
Connie Reinhardt	5-2	38.0
Greg Benson	4-3	38.8
Jean Lounsbury	4-3	31.4
Mike Gupitill	4-3	30.2
Larry Brabec	2-5	25.4
Harry Jensen	1-6	30.5

Ron Stangland	1-6	26.8
MEN CLASS W		
Leon Erickson	7-0	37.4
Norman Greenwaldt	5-2	28.0
Wilfred Zahnow	4-3	23.4
Roger Affeldt	3-4	21.7
Daniel Hammer	3-4	19.1
Ernest Anderson	2-5	23.1
Dennis Sanders	2-5	20.5
George Wittenberg	2-5	17.1

MEN CLASS X

Lowell Johnson	5-2	29.4
Fred Luoma	5-2	26.2
Gene Booker	5-2	24.8
David Feldt	4-3	27.7
Bill Orman	4-3	24.5
Don Sangren	4-3	22.0
Dale Hedlund	1-7	23.1
Quentin Gmach	0-7	19.1

MEN CLASS Y

Larry Paulson	5-2	32.5
Mark Schaefer	5-2	31.7
Pete Aadland	5-2	24.0
Lloyd Barthel	4-3	34.5
Jerry Marshik	3-4	25.4
Jerry Koetter	3-4	22.2
Berg Nelson	3-4	22.2
Gary Conzet	0-7	22.0

MEN CLASS Z

Dick Hall	5-2	36.6
Ted Myren	5-2	29.6
David Haugen	5-2	28.6
Lonnie Frank	4-3	28.0
Robert Von Behren	3-4	24.0
Ben LaCoursiere	3-4	19.0
David Hilmo	3-4	18.0

MEN CLASS Z-1

Gilbert Starr	7-0	28.0
Dean Hedlund	4-3	23.1
William Hennagir	4-3	18.8
Wayne Kalla	3-4	20.8
Herbert Paulsen	3-4	20.0
Steve Matuke	3-4	18.5
Al Luthens	2-5	14.2
Steve Showalter	2-5	13.7

CLASS Z-2

Gary Mattison	7-0	39.1
Jim Maloy	6-1	28.0
Dwight Engler	4-3	22.0
Blaine Formo	4-3	21.4
Jerry Zastrow	3-4	22.5
Frenchy Plante	2-5	18.5
Billy Fitzgerald	2-5	17.1
Dean Krug	0-7	19.7

MEN CLASS Z-3

Jim Houle	7-0	29.7
Mike Elle	5-2	19.4
LeRoy Messer	4-3	20.0
William Sargent	3-4	26.5
Gary Schultz	3-4	25.1
Allen Pearson	3-4	22.2
Wade Meyers	2-5	16.2
Henry Klegsted	1-6	17.4

MEN CLASS Z-4

Glen Berglund	6-1	15.4
Craig Hennagir	5-2	21.4
Scott Guillemette	5-2	21.1
Ira Hollingsworth	5-2	17.7
Dave Senger	3-4	12.2
Jeff Virnig	2-5	9.7
William Peterson	1-6	15.7
Steve Crandall	1-6	12.0

MEN CLASS Z-5

Ed Fischer	5-2	22.6
Glenn Weismann	5-2	19.0
Richard Heys	5-2	14.0
Larry Engle	4-3	20.3

Clem Pilarski	4-3	19.6
Fred Kloss	4-3	17.0
James Taroldson	1-6	5.0

MEN CLASS Z-6

Chuck Elmer	6-1	15.2
Marvin Timm	6-1	15.2
Don Schwarzl	5-2	23.6
Al Zuleger	5-2	14.8
Doug Bollman	3-4	10.8
Darryl Howard	2-5	5.2

MISSOURI

New Melle

Aug. 31 thru Sept. 3

Sanct. #19-90-011

CHAMPIONSHIP MEN

		%
Alan Francis	15-0	75.6
Sam Carter	14-1	67.8
Kenneth Pogue	13-2	63.9
Stan Griggs	10-5	63.5
Elwyn Cooper	10-5	60.5
M.O. Turner	10-5	59.8
Tom Eberts	9-6	60.7
Ron Frakes	7-8	60.0
Kelly Hill	7-8	54.0
Tim Henderson	5-10	54.4
Randy Grady	5-10	53.5
Charles Killgore	4-11	49.1
Michael (Tom) Henson	3-12	51.4
Steve Barnes	3-12	50.3
Ron Hassler	3-12	47.4
Robert Barnes	2-13	47.6

CLASS AA

Kent Houston	7-0	56.1
Gerald Jansen	6-1	57.2
Cliff Gaulden, Jr.	4-3	50.6
William Rector	4-3	49.7
Don Enke	3-4	57.1
Bill Waisner	2-5	53.4
Earl Winston	2-5	49.1
Dave Datillo	0-7	43.1

CLASS A

Stephen Pearia	6-1	55.4
Charlie Kertz	4-3	55.8
Mick Gillette	4-3	50.9
George (Bob) Johnson	4-3	46.9
Eddie Narup	3-4	49.0
Robert Diekamp	3-4	48.7
Hadley Rser	2-5	48.4
Carl Reddick	2-5	46.4

CLASS BB

Bob Renfro	7-1	49.5
Dale Parrott	6-2	50.3
Tom Genz	4-3	50.3
Steven Schuck	4-3	48.5
Bill Masterson	3-4	48.8
Floyd Green	3-4	45.8
Val Eikel	2-5	47.5
Jeff Miller	0-7	32.4

CLASS B

Ernie Holzum	6-1	51.2
Chuck Martin	5-2	53.2
Bob Hughes	5-2	48.5
Robert Smith	3-4	44.5
Dick Cotter	3-4	43.0
Tim Burkemper	2-5	46.2
Frank Hudson	2-5	45.3
Oley Burnett	2-5	41.3

CLASS CC

Ron Deno	6-1	42.5
Woody Juncker	4-3	43.2
Jeff Mudd	4-3	41.4
Robert Thompson	4-3	40.8
Gerald Francis	4-3	38.4
Ray Owens	3-4	40.1
Mike Bryan	2-5	32.2
James Schnur	1-6	27.8

Tournament Results

CLASS C

Gordon McDaniel	7-0	44.1
Wayne Henderson	6-1	42.6
Leo Basler	4-3	45.8
Bob Kandlbinder	4-3	38.6
Lloyd Humphrey	3-4	35.4
Marlin Meyer	2-5	37.4
Jim Claxton	2-5	29.5
Ken Conway	0-7	26.3

CLASS DD

Pat Beilsmith	7-0	50.4
Bob Winston	5-2	37.9
Herbert Fernandez	5-2	36.2
Charles Leonard	4-3	36.3
Lee Stevenson	3-4	30.6
Oliver Krueger	2-5	38.3
Harry Johanning	2-5	34.3

CLASS D

Brian Turner	7-0	41.3
Ronald Craven	5-2	34.3
Steve Conrow	3-4	34.6
Joe Faron Sr.	3-4	29.3
Charlie Lawrence	3-4	28.4
Jerry Griggs	3-4	27.6
Ken (Toby) Carmichael	2-5	32.7
Russell Sherman	2-5	32.2

CLASS EE

Alan Schnettgoecke	6-1	33.9
Matthew Fields	5-2	32.0
John Orf	4-3	29.7
Tony Rohe	3-4	34.5
James Bray	3-4	28.1
Marvin Bierbaum	3-4	26.0
Carl Wolff	2-5	26.3
Roy Carroll Jr.	2-5	21.3

CLASS E

Woodrow Shepard	7-1	39.9
Charlie Rogers	6-2	39.3
Raymond Schilf	5-2	40.5
Butch Kelley	4-3	33.9
Leroy Dominique	3-4	30.8
Lewis Kent	2-5	35.5
Eugene Young	1-6	35.6
Dee Hathaway	1-6	29.1

CLASS FF

Jerry Jears	7-1	40.4
Rick Gwinn	6-2	44.4
Jim Gregory	5-2	43.5
Richard Winsor	4-3	39.2
Martin Orf	3-4	36.6
Stan Gwin	2-5	32.4
C.H. Berg	2-5	32.2
Mike Burger	0-7	26.5

CLASS F

Howard Brandt	7-1	38.6
Joseph Weeks	6-2	34.8
John Schroeder	5-2	42.0
Frank Miles	4-3	41.1
Rick Stockamp	3-4	39.8
Calvin Schaper	3-4	30.5
Randy Senciboy	1-6	22.0
Robert Reininger	0-7	12.0

CLASS GG

Greg Bunk	7-1	32.0
Tim Spruell	6-2	34.5
John Bax	5-2	36.3
Bob Cutright Sr.	4-3	30.9
Fred Bahr	4-3	28.9
Gregg Craven	2-5	16.7
Mike Wolff	1-6	11.2

CLASS G

Herbert Sisco	7-0	41.4
---------------	-----	------

Douglas Dickbernd

Jack Roach	5-2	37.5
Joe Moses	5-2	28.7
Phillip Daugard	4-3	33.8
Alvin Gwinn	4-3	31.4
Dave Sage	1-6	29.8
Jim Larkin	1-6	29.4
	1-6	28.6

CLASS HH

Dave Berliner	6-1	39.7
Sonny Roehrig	5-2	41.1
Ernie Brakensiek	5-2	33.1
Bennie Kirkpatrick	4-3	34.2
Jim Schwalbert	4-3	34.2
Elmer Breuer	3-4	39.5
Bill Bouyea	3-4	27.9
	2-5	27.1

CLASS H

Fred Smith	7-0	33.4
Don Winston	6-1	34.8
Dan Ryan	4-3	26.0
Steve Nebel	3-4	26.5
Paul Jones	3-4	23.0
Jeff Blaskie	2-5	27.9
Conrad Molitor	2-5	26.3
Vincent Rehma Sr.	1-6	26.2

CLASS II

Ken Benton	5-1	25.6
Steve Kinahan	4-2	27.6
Donald Claas	3-2	31.8
Ken Sykora	2-3	33.8
Eugene Carter	2-3	26.7
Larry Langewisch	0-5	18.4

CLASS I

Ronald Watkins	6-2	39.6
Donald Ell	6-3	34.5
Dean Homan	5-3	38.0
Bob Blumenhein	4-3	29.2
Calvin Jaeger	4-3	23.2
Morris Johnson	3-4	25.0
Ken Pfadenhauer	2-5	20.7
Richard Molitor	0-7	15.0

CLASS JJ

Carl Rittner	7-0	39.0
Gary Block	6-1	36.6
Dennis Bauer	5-2	36.2
Dan Simon	4-3	25.4
Jason Bridges	3-4	31.2
Harvey Wobbe	2-5	27.6
Michael Molitor	1-6	20.8
Dave Renick	0-7	23.9

CLASS J

Roger Frank	6-1	31.1
Joe Stearns	5-2	27.9
Terry Barnes	4-3	27.2
Donald Garrett	4-3	25.4
Danny Williams	4-3	21.5
David McManus	3-4	24.1
Alfred Brune	2-5	26.9
Jerry Henry	0-7	25.7

CLASS KK

Joe McCoy	6-1	39.6
Bill Molitor	5-2	32.0
Clyde Black	5-2	28.8
Lee Huddleston	3-4	33.3
Bob Stevener	3-4	29.6
Jackie Cargile	3-4	26.6
Raymond Maxeiner	2-5	28.2
Bob Fulkerson	1-6	21.1

CLASS K

Wes Brakensiek	7-1	33.9
Harold Nickens Jr.	6-2	30.3
Al West	4-3	26.1
Arthur Schroeder	4-3	24.7
Paul Frisch	3-4	27.2
Bill Raps	3-4	19.8
William Brown	1-6	22.4
Tim Almeling	1-6	19.5

CLASS LL

Bob Beaver	6-2	39.3
Ray Nadler	5-3	30.1
Herbert Thiel	4-3	34.3
Butch Dickherber	4-3	31.0
Bryan Potter	4-3	25.0
Charles Firestine	3-4	30.8
John Diener	2-5	29.2
Marcell (Del) Kruse	1-6	23.6

CLASS L

Norman Robinson	7-0	37.1
Ronald Hall	5-2	34.3
Bob Alcox	5-2	31.4
Terry Roehrig	5-2	29.8
Steve Penberthy	2-5	27.2
Billy Garner	2-5	19.4
Harold Terbrock	1-6	25.3
Brady Craven	1-6	16.5

CLASS MM

William Paul	6-1	33.2
Robert Abernathy	5-2	22.3
David Redhage	4-3	32.0
Joe Gaulden	4-3	30.0
Joe Rothermich	3-4	32.3
Kenneth Novel	3-4	22.3
Jerry Castillon	2-5	21.6
Walter Fox	1-6	24.7

CLASS M

Roy Evans	6-2	34.8
Ken Pratt	7-3	28.9
Dick Birdsall	5-3	26.1
Norman Doskal	5-3	25.0
Donald Phillips	4-3	26.9
Clay Buxton	2-5	25.4
Don Hageman	1-6	20.0
Michael Stroer	1-6	15.7

CLASS NN

Herman Pirch	7-0	35.1
Leonard Lentz	5-2	31.0
Clarence Eggert	4-3	31.9
Kurtis (Skip) Uhlig	3-4	28.3
Phillip Dolde	3-4	23.8
Dannie McDaniel	3-4	23.6
Bob Kaelin	2-5	14.8
Roger Schnur	1-6	24.7

CLASS N

Robert Arnold	6-1	25.2
Wayne Cutright	5-2	28.3
Mike Giratos Jr.	4-3	28.5
Greg Faron	4-3	21.8
Irv King	3-4	24.5
Mark Bernardi	3-4	23.4
Harless Kampe	2-5	18.3
David Iden	1-6	19.3

CLASS OO

Roger Timmermeier	7-0	31.6
Larry Roark	5-2	26.2
Henry Deuser	4-3	21.8
Jim Tate	4-3	18.0
Ed Hostein	4-3	15.0
Ernie Ellermann	2-5	22.0
Darrell Payette	2-5	20.4

CLASS O

Gene Willis	7-2	22.6
Reese Warden	5-3	21.5
Charles Tuttle	5-3	18.3
Jerry Kohler	3-4	21.5
Ralph McAllister	3-4	15.8
Tim Warden	3-4	14.9
Larry Brown	2-5	23.4
Robert Deuser	2-5	18.8

CLASS PP

Irv Sapp	7-1	27.5
Robert Orf	6-2	27.6
John Ingersoll	4-3	22.8
Arlie Reinwold Sr.	4-3	22.2
John H. Smith	3-4	23.4

Steve Schmitt	2-5	20.2
Farrell Meyer	2-5	17.4
Don Roberts	1-6	19.1

CLASS P

Jim Willenbrink	7-2	19.8
Rip Dawkins	5-3	23.4
Howard Lane	5-3	20.6
Jim Summers	4-3	21.4
Steve Eisenmeyer	4-3	21.2
Don Cwiklowski Jr.	2-5	19.5
William Hauser	2-5	16.5
Curtis Fulkerson	1-6	16.7

CLASS QQ

Edward Dickens	7-0	28.9
Dale Homan	6-1	26.3
Al Ruether	5-2	27.0
Karl Koenig	4-3	21.1
Richard Kersting	3-4	23.1
Wallace Fulkerson	2-5	15.4
Robert Henry	1-6	18.3
Charles Hamilton	0-7	15.7

CLASS Q

Larry Volo	7-0	33.6
John E. Smith	5-2	23.5
Kevin Arnold	4-3	21.6
Joseph Kaufman	4-3	17.3
Mitchell Pallardy	4-3	13.0
Dayne Jinson	3-4	19.9
Bill Schiermeier	1-6	11.6
Ed Marek	0-7	11.0

CLASS RR

James Collins	6-2	19.5
Tom Toben	5-3	12.0
Rodney Mallinckrodt	4-3	17.3
Joe Faron III	4-3	16.8
Terry Schneider	4-3	12.0
Landon Koelling	3-4	12.0
Leo Waser	3-4	9.0

CLASS R

Rick McCain	6-1	22.5
Michael Iden	5-2	21.2
Don Cozad	5-2	20.8
Harvey Coffee	5-2	15.7
Brian Galyean	3-4	16.5
Craig Dieckman	2-5	14.7
Eugene Loyd	1-6	9.3
Charles Mueller	1-6	7.0

CLASS SS

Ron Hammond	7-0	14.2
Harold Fricke	6-1	10.9
Richard Haug	4-3	10.6
George Budde III	4-3	6.2
Wayne Emmons	3-4	8.9
Kenneth Leach	2-5	8.2
Mark Hopkins	1-6	6.6
Bob Dobbins	1-6	5.4

CHAMPIONSHIP SENIORS

Steve Hrabovskiy	5-0	50.4
Donald Harris	3-2	46.0
Al Ratley	2-3	41.1
Pete Harris	2-3	38.8
Bill Courtwright	2-3	38.0
Johnny McCarron	1-4	24.8

SENIOR A

Darwin Compton	6-1	35.5
Waller Huffman	5-2	29.2
Robert G. Brown	5-2	28.6
Ed Friederich	5-2	23.4
Larry Gilchrist	4-3	22.4
Ed Brophy	2-5	19.8
Harold Bock	1-6	16.6
Kenneth Bauer	0-7	15.3

CHAMPIONSHIP WOMEN

Vicki Winston	7-0	69.6
Pam Henderson	6-1	52.2
Loree Meier	4-3	49.0
Judy Waisner	4-3	47.5

Tournament Results

Nancy Pallardy	3-4	44.5
Leeann Jansen	3-4	37.2
Mary Ann Ell	1-6	39.7
Cindy Senciboy	0-7	31.0

WOMEN A

Judy Tate	7-0	44.2
Sue Cutright	5-2	44.8
Marcia Kelley	5-2	39.3
Audra Craven	4-3	37.4
Hiroko Birdsall	4-3	34.3
Mary Beeson	2-5	33.8
Frances Dominique	1-6	23.5

WOMEN B

Tina Huddleston	7-1	31.7
Rita Killgore	6-2	34.1
Susan Latham	5-2	31.3
Jeanette Claas	3-4	27.4
Ann Struss	3-4	27.1
Sharon Frank	3-4	24.7
Pam Dobbins	2-5	22.6
Sharon Evrard	0-7	9.6

WOMEN C

Fran Lottman	7-0	29.0
Linda Payette	5-2	22.2
Dawn Emmons	4-3	24.4
Elaine Bote	4-3	19.9
Marti Maxeiner	3-4	23.0
Linda Collins	3-4	14.6
Cheryl Braden	2-5	20.1
Tarra Henry	0-7	9.7

WOMEN D

Jeanette Rothermich	7-1	20.8
Peggy McCain	6-2	13.0
Mary Jackson	5-2	10.7
Karen Henry	5-2	7.3
Tracy Sherman	3-4	10.0
Ellen Beaver	2-5	3.6
Marie Massey	0-7	4.9

CHAMPIONSHIP JUNIORS

Wesley Bowling	5-0	55.4
Brett Francis	4-1	45.0
Jason Rains	3-2	46.3
Todd Elfrink	2-3	40.3
Derek Jansen	1-4	30.5
Aaron Willis	0-5	29.8

JUNIOR A

Jim Burnett	7-0	40.9
Travis Estes	6-1	41.6
Curt Rohe	5-2	32.1
Jerry Bruns	4-3	21.9
Brian Bahr	3-4	24.2
Tim Wolff	2-5	21.3
Richard Molitor Jr.	1-6	10.8
Larry Molitor	0-7	9.0

JUNIOR B

Eddie Garrett	5-0	21.2
Jon Senn	4-1	15.6
Scott Hemby	2-3	15.0
Mike Sweeten	2-3	12.8
Matt Wolff	2-3	7.3
Chad Hemby	0-5	6.0

JUNIOR C

Buddy Huddleston	7-0	14.1
Steve Burt	6-1	10.6
Shaun Pallardy	5-2	7.3
Van Dominique	4-3	5.9
Terry Bruns	3-4	6.8
Danny Myers	2-5	2.9
Gary Pezold	1-6	2.1
Jamie Pilla	0-7	1.4

Videotaping The 1990 World Tournament

by Terry and Mickey Lovaas of Video Chronicles, Inc.

What's New This Year...

The 1990 Highlights Video will be longer. We estimate it to be about 90:00 to 120:00 minutes. There will be more commentary / narration, more interviews and more pitchin'.

About Last Year...

As you may know, there was a problem with delivering the videotapes on time. That occurred due to a variety of circumstances—none of which were the fault of the NHPA or VIDEO CHRONICLES, INC. Those circumstances will not be a factor this year!

Unforgettable Memories...

I honestly believe that having your own copy of the 1990 NHPA World Tournament is the best way to remember all the fun and excitement that this event offers. You'll get a chance to see some friends, some club members — and perhaps even yourself. You'll also get a chance to see some of the best pitching in the world!

If you missed the World Tournament, then this video is the next best thing to being there.

Here's the basic information for the order form:

Price.....	\$19.95
S & H.....	\$ 3.00
Total.....	\$22.95

(MN residents must add \$1.20 sales tax)

Our address is:

VIDEO CHRONICLES, INC.

P.O. Box 290185, Brooklyn Center, MN 55429

YES! Please send me a copy of the 1990 NHPA Highlights Video!

I have enclosed _____ for _____ (qty.) Videotapes.

Name _____ Phone _____

Address _____

City/State/Zip _____

VISA / MC _____ Exp. Date _____

Check one: ☐ VHS ☐ BETA

(allow 8-10 weeks after end of Tournament for delivery)

Make checks payable to: VIDEO CHRONICLES, INC.

Edward A. Domey/National Buyer

NHPA Game Related Sales

P.O. Box 298 • Sutton, MA 01590 • (508) 865-9477

"NEW in 1990" **Video Horseshoe Tape**

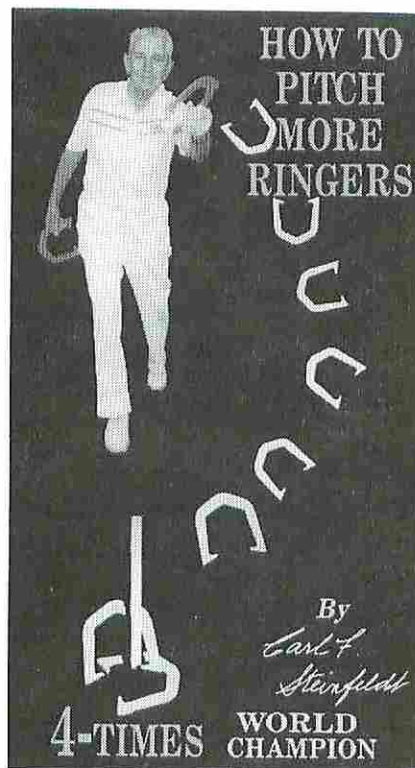
A FIRST EVER on
Instructional Teaching by
America's Pitching Legend

"HOW TO PITCH MORE RINGERS"

with Carl Steinfeldt —
4 TIMES World Champion

YOU WILL IMPROVE YOUR
GAME AND RINGER %

"The best thing that's happened to
horseshoe pitching."



Premier showing at Stone Mt. GA was a huge success and **sold out** of 3 printings. Every NHPA distributor is now carrying this tape along with a complete line of game related items.

ONE TIP IS WORTH YOUR
TOTAL INVESTMENT —
ORDER TODAY

\$24.95 per tape

3.00 postage & handling

\$27.95

NHPA GAME RELATED SALES DISTRIBUTORS

WILLIAM SMITH

1175 Stewart Drive
Dunedin, Florida 34698
(813) 736-5556

HORSESHOE PRO SHOP

2275 Winter Parkway
Studio City - Suite 189
Cuyahoga Falls, Ohio 44221
(216) 923-9949

DENNIS OHMS

777 W. Midvalley Road
Cedar City, Utah 84720
(801) 586-9352

ROBERT REID

34 North Beechwood Avenue
Scottsburg, Indiana 47170
(812) 752-2195

WALLY SHIPLEY

2646 Basswood Street
Newport Beach, California 92660
(714) 760-3658

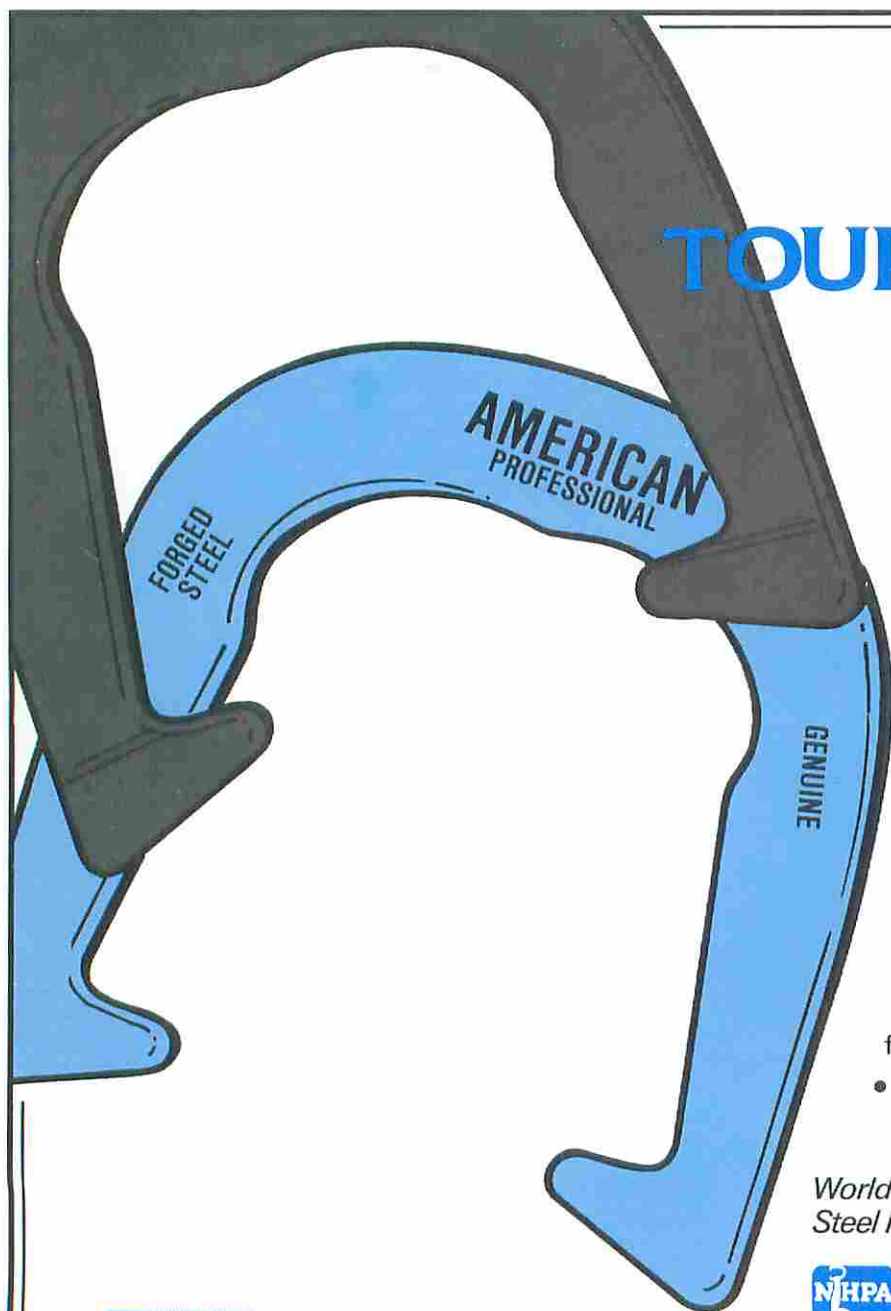
Contact a Distributor near you for the products shown in
this ad and many other Game Related Items available
from NHPA Game Related Sales.

Support Your NHPA

NATIONAL HORSESHOE PITCHERS ASSN.
Box 278, Munroe Falls, OH 44262

ADDRESS CORRECTION REQUESTED
FORWARDING/RETURN POSTAGE
GUARANTEED

BULK RATE
U.S. POSTAGE
PAID
PERMIT NO. 80
GRASS VALLEY, CA



The American **TOURNAMENT SHOE**

LOCKS IN RINGERS!

- Scientifically designed ringer breaker helps rotate shoe to lock in ringers.
- Finger positioner for throwing comfort.
- Heel caulks with more forged steel for better balance.
- Longer hooks to grab the stake better.
- EXCLUSIVE new high-tech powder coat finish for better resistance to chipping, abrasion, corrosion and weathering.
- Classic gold and silver in full outfits (four shoes and two solid-steel stakes) or four shoes only.
- Call or write today! (508) 853-8010

*World's Largest Producer of Drop-Forged,
Steel Pitching Horseshoes.*

 **St. Pierre**
MANUFACTURING CORPORATION

317 East Mountain Street
Worcester, MA 01606



NHPA
APPROVED

OFFICIAL SPONSOR
1990 World Horseshoe
Tournament

Stone Mountain
Georgia