



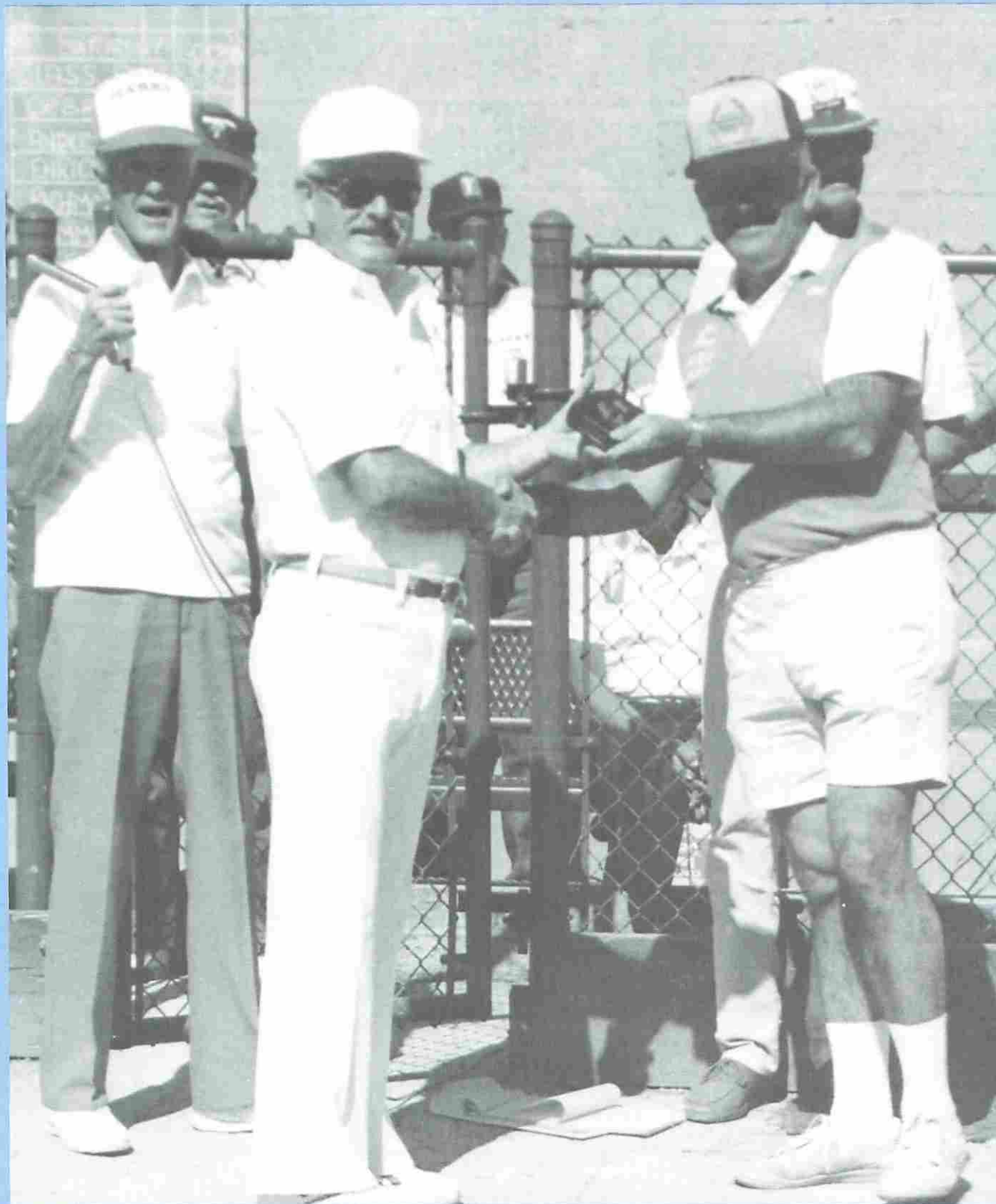
The National Horseshoe Pitcher's Association



# NEWSLINE

Vol. 1, No. 3

April 1989



Look  
for  
the new  
white  
shoes!



Advanced Design  
**TOURNAMENT  
PITCHING HORSESHOES**



Both backyard pitchers and pros catch and hold the stake better with DIAMOND's new advanced design "Tournament" Shoe. It features a grip positioner, hardened tips, an increased radius, a dead soft center, and a wider, deeper calk. Same drop-forged solid steel construction as DIAMOND's popular Double Ringer and Super Ringer Regulation Shoes. All American made.

Contact your nearest NHPA club or sporting goods store for DIAMOND pitching horseshoes.



*For the latest pitching horseshoe catalog write:*

**DIAMOND PITCHING SHOES**

**The Triangle Tool Group, Inc.**  
Subsidiary of The Triangle Corporation  
Cameron Road, Orangeburg, SC 29115  
DISTRIBUTOR ORDER PLACEMENT  
Call toll-free: 800-346-0740  
For all inquiries call: 803-534-7010

"DIAMOND Pitching Horseshoes are Recognized as Official in Tournaments  
Sanctioned by the National Horseshoe Pitchers Association"





## NHPA NEWSLINE

### PUBLISHER / EDITOR

Dave Loucks

### CONTRIBUTING WRITERS

Bev Born  
Bob Champion  
Dave Loucks  
Glen Portt  
Donnie Roberts  
Stu Snyder

### TYPESETTING / LAYOUT

Kim Rogers - KIM ART

### PUBLISHER'S POLICY

NHPA Newsline is the official magazine of the National Horseshoe Pitchers Association. The contents may not be reproduced in any manner without prior permission. Ten issues are published annually and mailed at bulk postal rates. The annual subscription price is \$12.00. Add \$8.00 additional for Canadian or foreign postage. Back issues or additional copies, subject to availability, are \$2.00 each. Inquiries, subscriptions, renewals, or changes of address should be mailed to:  
NHPA Secy/Treas.,  
P.O. Box 278, Munroe Falls,  
OH 44262.  
Phone (216) 650-2234.

### ADVERTISING POLICY

The publisher reserves the right to refuse any ad. All ads accepted must be paid for in advance and meet specific format and mechanical requirements. The publication of any ad is not necessarily an endorsement of the advertiser nor the featured product or service. Rate inquiries, ad copy and fee should be sent to:  
NHPA Newsline,  
13656 Thoroughbred Loop,  
Grass Valley, CA 95949.  
Phone (916) 477-7060.

### LETTERS POLICY

Newsline welcomes communication and articles from the membership. Submissions should be typed, double spaced and include the writer's name, address and phone number. The editor reserves the right to accept or reject any letter or advertising material. All submissions are subject to editing, available space, and must be received by the first day of the month preceding the date of issue.

## NHPA The National Horseshoe Pitcher's Association NEWSLINE

## C O N T E N T S

President's Message .....	4
Dave's Court Report .....	4
Kids Are People, Too.....	5
<i>a feature article by Donnie Roberts</i>	
Secretary/Treasurer's Report .....	5
Spearfish Update .....	6
Committee Report "Rules" .....	8
Profile: John Yernberg.....	8
Profile: St. Pierre .....	9
<i>a feature article by Dave Loucks</i>	
Team World Tournament .....	10-12
<i>a feature article by Jim Haupt.</i>	
Committee Report "Hall of Fame" .....	12
Regional Director's Report .....	13
Charter Chatter .....	14-15
Valley of the Sun .....	16-17
<i>a feature article by Bob Champion</i>	
Sanctioned Club/League News.....	18-20
<i>includes 1988 Top Ten National Division</i>	
The Toll of Time .....	21
A Special Thank You .....	21
<i>from Dave Loucks</i>	
More Hopeful Candidates .....	22
Tournament Travel Calendar .....	23
Tournament Results .....	24-30

### Paid Advertisers

Diamond Pitching Shoes.....	2
World Horseshoe Tournament.....	7
Pitching Pavilion .....	8
Francis E. White .....	12
Ted Allen Horseshoes .....	13
Owens Valley Cabinet Co. ....	17
Deadeye Horseshoes .....	24
St. Pierre .....	32

### Cover Photo

NHPA President Dave Loucks presenting Gary Minnick award for induction into Arizona State Horseshoe Pitchers Hall of Fame at the Valley of the Sun Tournament, Mesa, Arizona.

### NATIONAL OFFICERS

#### PRESIDENT

Dave Loucks  
13656 Thoroughbred Loop  
Grass Valley, CA 95949  
916-477-7060

#### 1st VICE PRESIDENT

Earl Winston  
Route 2  
LaMonte, MO 65337  
816-563-3536

#### 2nd VICE PRESIDENT

Barry Chapelle  
2716 S.E. 61st Ave.  
Portland, OR 97206  
503-775-7876

#### 3rd VICE PRESIDENT

Vincent Yannetti  
322 Longwood Ave.  
Bound Brook, NJ 08805

#### 4th VICE PRESIDENT

Bonnie Seibold  
1043 Grayston Ave.  
Huntington, IN 46750  
219-356-3489

#### 5th VICE PRESIDENT

Mary Van Sant  
P. O. Box 270  
Sun City, CA 92381  
714-679-2578

### SECRETARY/TREASURER

Donnie Roberts  
P. O. Box 278  
Munroe Falls, OH 44262  
216-650-2234

### PROGRAM DIRECTORS

#### GAME RELATED SALES

Ed Domey  
P. O. Box 298  
Wilkinsonville, MA 01590  
508-865-9477

### SANCTIONED CLUB/LEAGUE

Beverly Born  
RR 2 Box 198-A  
Shattuck, OK 73858  
405-938-2406 (home)

### PUBLICITY/HISTORIAN

Bob Champion  
5505 Valmont #176  
Boulder, CO 80301  
303-449-8395

### PROMOTION/VIDEO SALES

Sol Berman  
(November to May)  
PGA National 1 Wycliff Rd.  
Palm Beach Gardens, FL 33418  
305-626-8507  
(May to November)  
Clearbrook 319A Persica Plaza  
Cranbury, NJ 08512  
609-655-3471

### REGIONAL DIRECTORS

5th VP, Mary Van Sant

### COMMITTEE CHAIRPERSON

#### GRIEVANCE

Glen Henton  
513 West Platt St.  
Maquoketa, IA 52060  
319-652-4250

#### HALL OF FAME

1st VP, Earl Winston

#### RULES

2nd VP, Barry Chapelle

### CONSTITUTION & BYLAWS

4th VP, Bonnie Seibold



# President's Message

The first quarter of this year has been an extremely busy one for your NHPA President and Secretary-Treasurer. We have both been bombarded with press, radio and TV inquiries, interviews, calls from sporting goods companies, promoters, magazines, potential sponsors and the general public, all of whom have questions about horseshoe pitching, due in part to President Bush's interest in the game.

In addition, there have been visits to horseshoe manufacturers, the NHPA cruise, a trip to Las Vegas to discuss possible new arrangements for the big annual tournament there, a stop in Mesa for the dedication of the new courts at the "Valley of the Sun" and of course, the normal day to day activities of running the NHPA and getting this magazine up and running.

Last Fall, I wrote letters to some 35-40 large corporations for the sole purpose of introducing the NHPA, the organized area of competitive horseshoe pitching and to see if any interest existed in some sort of sponsorship or promotional activity. I realize that this had been done before by previous NHPA administrations and frankly, my efforts met with the same apparent reply...no

thanks; horseshoe pitching does not evoke sufficient interest to invest any promotional dollars. But what was true six months ago may be changing now. At least one of the companies I wrote to is now studying a possible horseshoe related promotion that, if instituted, could assist in bringing National awareness to our sport and the NHPA.

I'm sure most of you realize by now that President Bush has had official horseshoe courts, complete with synthetic clay, installed at the White House and Camp David. In mid-March, I received a personal phone call from President Bush inviting me, Donnie Roberts and a few others to Washington, D.C. The purpose of the proposed April 1st visit is to attend an informal White House party and dedication of the President's new horseshoe court. Naturally, we will be attending and shall report the event in a later issue of *Newsline*.

Also, you might want to stay up late or set your VCR to the evening Pat Sajak Show on April 12th. I have been asked to make a guest appearance to talk about our sport and maybe even pitch a few shoes. If I ever needed to throw a ringer!!!!

---

## Dave's Court Report

by Dave Loucks

In an average year, we are hard pressed to find even one candidate to run for an NHPA office. Maybe it's because people don't want to run against an incumbent, but for whatever reason, this year is going to be different. We are going to have a good old fashioned election, at least for two of the offices. Three candidates are running for the 3rd VP spot and another three for the 5th position. While no one other than the incumbents have yet announced interest in the 1st VP or President offices, there is still time, until the publication of the May issue of *Newsline*, to do so.

It has been reported to us that the White House mail is being overwhelmed with requests from horseshoe pitchers for the President to attend a special local tournament, sign pictures or otherwise assist in some local promotion. I must ask the entire NHPA membership to show some restraint and respect for the office. Just because President Bush enjoys our sport, is not reason to think that he has the time for every little horseshoe whim. Please back off and let the President's schedule dictate what boost he might give our sport.

Tournament Directors have the option of submitting their results direct to *Newsline* or through their Regional Director. Avoid delays as they must be received within 30 days of the event to be published. Provide the tournament date, name, location and sanction number. List the class, participants, W-L and percentage ONLY. All submissions are to be typed with double space and NOT

INCLUDE any additional information. If you think your tournament is worthy of some special text mention, send this to Bob Champion for possible insertion in his "Charter Chatter" column. Any deviation from this format will result in the non-publication of your results.

Don't miss a single issue of *Newsline*. Check the expiration date on your mailing label and renew your subscription direct with the NHPA at least 45 days early. If you delay or fail to notify us of any change in address, and miss a copy or two, it will cost you an additional \$2.00 for each back copy.

---

### NHPA Newsline Subscription/Renewal Form

Name \_\_\_\_\_

Address \_\_\_\_\_

City/State/Zip \_\_\_\_\_

☐ New Subscriber ☐ Renewal

Current NHPA Card # \_\_\_\_\_

Card #'s of other Adults in your household \_\_\_\_\_

---

Subscription price \$12.00 for non-member. Deduct \$1.00 for each Adult NHPA member in household. Make checks payable to NHPA, mail to Box 278, Munroe Falls, OH 44262.



# " KIDS "

## ARE PEOPLE TOO

by Donnie Roberts

Prior to my trip to the 1988 Las Vegas Horseshoe Tournament, I received copies of material describing a television series on ESPN. An initial call was made to the executive producer of that series and after my return from Las Vegas, another call was made to the producer of the actual programs. The reason I had called these people is that the ESPN series appeared to be using young people from all types of sports and horseshoe, to me, certainly fit the concept of the show.

Sunkist Growers embarked upon its first solo sponsorship of a television program, with *The SUNKIST K.I.D.S.*, a new series which premiered Saturday, November 5 at 10:30 a.m. (ET) on ESPN.

The half-hour series was intended as counter-programming to the networks' traditional Saturday morning cartoon lineup. The 26 episodes feature a large number of the nation's hottest young athletes, demonstrating their skills in a wide range of sports — from archery to wrestling. In addition to the young sports stars taking part in the series, there is at least one adult expert on each show.

*The SUNKIST K.I.D.S.* is hosted by Michael Young, a veteran of many television series, notably "Kids Are People, Too." Ron Miziker is the executive producer.

When I called Ken Marengell, the producer, and told him about my feeling that our young horseshoe pitchers would fit in on the program, he wholeheartedly agreed. The only problem was that time was running out and he already had more young people than he could use. Fortunately, Ken liked the idea and decided promptly that horseshoe would be included on the program. He told me that we had to have someone available in Southern California within a week. I telephone Mary Van Sant who put me on to Kevin Kescskes, the 1988 California State Boys' Champion. With this news, ESPN made contact with Kevin and planned the taping of the program at the Fontana, California courts December 10, 1988. The taping was done and as a result Kevin will appear on ESPN on Saturday, April 15 at 10:30 a.m. Eastern time. Others will have to check local listings for times in your area. There is just one pitfall to watch for and that is that occasionally shows are preempted by significant events. Should this happen it would back up Kevin's appearance by a week. So, watch carefully in case that should happen.

Donnie Roberts reports

February 1989

### NHPA Receipts and Expenditures

#### February 1989 NHPA Receipts:

NHPA Newsline Subscriptions.....	\$ 3315.00
NHPA Memberships.....	5127.00
1989 Insurance Premiums.....	1488.00
Newsline Ad Sales.....	340.00
1987 World Video Sales.....	37.45
Sanctioned League Dues.....	411.00
Sanctioned League Insurance Premiums...	274.00
Interest On Checking.....	37.18
Berman Video Sales.....	25.00

**Total February 1989 Receipts \$11054.63**

#### February 1989 NHPA Expenditures:

Newsline Printing, Supplies and Mailing...	\$ 3832.20
Newsline Publication, Editing and	
Miscellaneous.....	124.82
Sanctioned League Postage and Printing..	26.31
Sanctioned League Office, Supplies	
and Telephone.....	30.79
NHPA Hall of Fame.....	60.42
Regional Director Postage, Telephone,	
Supplies and Printing.....	106.35
Equipment Purchases, Rental, Repairs....	201.04
Printing, Paper and Office Supplies.....	234.14
Postage.....	444.04
Officers Telephones.....	332.66
Officers Travel.....	168.60
Secretary-Treasurer Allowance.....	900.00
Publicity, Promotion, Advertising.....	219.97
Professional Fees.....	50.00
Bank Charges.....	17.63

**Total February 1989 Expenditures \$6748.97**

NOTE: These figures are from the books of the NHPA Secretary-Treasurer. NHPA monies handled by other NHPA persons are not part of this report.

**DONNIE ROBERTS**

NHPA Secretary-Treasurer

**216-650-2234**

Box 278, Munroe Falls, Ohio 44262

#### HOURS YOU CAN CALL

8:00 a.m. to 4:00 p.m.

Monday through Friday

Lunch time is 12:00 noon to 1:00 p.m.



# SPEARFISH UPDATE

## Spearfish's Place In History

by Glen Portt

**I**t is extremely doubtful if even one member of the NHPA would think of thanking Napoleon Bonaparte for the World Horseshoe Tournament being held in Spearfish, South Dakota...but, looking back at our history, we can say, "Thanks, Napoleon!"

In early 1803, Thomas Jefferson urged Congress to purchase the territory at the mouth of the Mississippi from France in order that the Mississippi River might be the boundary between the two nations...the United States being everything east of the river. France, owning the vast Louisiana Territory (comprising an area which now constitutes 13 states) would be everything west of the river. When the United States emissary made the proposal to Napoleon, he was greeted with a flat no. As the crestfallen representative turned away, Napoleon said, "You'll have to take all or none!" So, for a cost of \$27.5 million, the United States acquired

1.172 million square miles for 3.6¢ per acre...considered by many, at that time, to be an outrageous price. The purchase included the Dakota Territory, named after the Dakota Indian tribe. This portion was later divided into North and South Dakota...with the latter being nine times the size of Massachusetts.

South Dakota can almost be looked upon as two different halves...with the Missouri River making the division. The part "East of the River" is rich prairie land...a land of prosperous farms...the wheat belt of America. The land "West of the River" is a portion of the Great Plains...an area of great ranches and the Black Hills country...which, hopefully, 2000 NHPA members will explore...all, of course, by the courtesy of Napoleon...for without his decision to sell the Louisiana Territory, this area would be French.

Spearfish, South Dakota! Gold! Gunfighters! Deadwood Dick! Wild Bill Hickok!...and the Bad Lands! You'll learn all about them...because its part of the history of this region. Gold was first discovered at French Creek...then later at Lead...made famous by the great Homestake Mine. Wild Bill met his demise with a bullet in his back...while playing poker in a Deadwood saloon...holding aces and eights...now referred to throughout the world as *a dead man's hand*. (This is equivalent to being on the short end of a 0-39 score.)

In July, Spearfish will take its place in history as *being the first city in South Dakota* to hold a World Horseshoe Tournament. So, if you want to re-live and savor a part of the old west, see beautiful scenery, and be a part of the 1989 W.T. *get your entry in early*. Horace Greeley once said, "Go west, NHPA'ers, go west! He *did* say that, didn't he?

## Spearfish World Tournament Lodging Information

**ANTLER MOTEL**, 517 West Jackson, 642-5753. (Rates for multiple days). 2 queen beds — \$48.00. 1 queen bed — \$38.00. Three bed units in cabins — \$52.00.

**BELLS MOTOR LODGE**, 230 Main St. 642-3812. Out-of-state only. 1-800-642-232-7744. 1-2 people — 1 bed — \$30.00. 2 people — 2 beds — \$36.00. 3-4 people — \$38.00. A cash discount of \$2.00 per day for guests staying more than one day and for guests paying cash. Pool.

**CANYON GATEWAY MOTEL**, 642-3402. Rates \$24/2 people, \$29/4 people. Only 12 units available. Walk to courts one mile away..

**CAPP MOTEL**, 333 West Jackson, 642-3611. Rates, \$35.00-50.00 + tax. All units have air conditioning, color-cable TV. We are located 4 blocks from the Spearfish City Park.

**HOLIDAY INN**, I-90 Exit 14, 642-4683. Single: \$58.00 plus 7% tax. Double: \$58.00 plus 7% tax. Triple: \$58.00 plus 7% tax. Quad: \$58.00 plus 7% tax. Deadline for room reservations—May 31, 1989. Pool.

**HOLIDAY MOTEL**, 405 Main St., 642-5745. 1 bed — \$30.00. 2 people — 2 beds — \$36.00. 3-4 people — 2 beds — \$38.00.

**KELLY INN**, I-90, Exit 12, 642-7795. \$44.00—1 person. \$49.00—2 people.

**KOZY MOTEL**, 427 Main St., 642-4846. \$30.00-\$42.00.

**LUXURY LODGE**, 30 East Illinois, 642-2728. Singles — \$30.00. 4 people — 2 beds — \$57.00. Room to accommodate 6-8 people — \$65.00

**QUEENS MOTEL**, 305 Main St., 642-2631. Queen Size Beds, \$36.00. 2 beds — 2 people — \$40.00 (\$4.00 for each additional person).

**ROYAL REST MOTEL**, 444 Main St., 642-3842. \$33.00-\$50.00.

**SHADY PINES CABINS**, 514 Mason, 642-9909. \$30.00-\$50.00.

**BUDGET HOST SHERWOOD LODGE**, 231 W. Jackson, 642-4688, \$42.00-\$52.00. Reservations only — 1-800-234-2032.

**SPEARFISH CANYON LODGE**, Hwy 14-A, 584-3027. Small cabins—2 people—\$30.00 (\$27.00 per night for 4 nights or more). Larger cabins w/kitchens—\$36.00 for 4 nights or more. (17 miles from town)

**SPEARFISH CREEK INN**, 430 W. Kansas, 642-9941. (Write for rates).

**SUPER 8 MOTEL**, I-90, Exit 14, 642-4721. 2 persons \$46.88 plus tax—\$3.00 more per person.

**ALL SEASONS MOTEL** — 801 Upper Main St., Deadwood, S.D. 57732. 578-2393. \$30-\$45.00.

**CHRIS CAMPGROUND**, \$10.00—no hookup. \$12.00 — partial hookup. \$13.00—full hookup.

**KOA CAMPGROUND**, Base camp fee—2 people—\$14.25. Extra people 5 yrs.-17 yrs.—\$2.00 each. Extra people 18 and over—\$2.50 each. Electric/water—\$3.00. Sewer — \$1.00. A/C—N/C. Electric heat—N/C.

**MOUNTAIN VIEW CAMPGROUND**. Rates for 1988 season. No guarantee that rates will remain the same next summer. Full hookup—\$13.00. Water & electricity—\$12.00. No hookup—\$10.00. Air conditioning—\$1.50 extra.

**CITY CAMPGROUND**—1988 rates: No hookup—2 persons — \$9.00. 3-4 persons — \$10.00. \$1.00 for each extra person. \$25.00 deposit required for 3 days or longer.





# NOW YOU CAN OWN A PIECE OF **SOUTH DAKOTA**

"Home of the 1989 World Horseshoe Tournament"

NOW OFFERS YOU

"Limited Editions of Original Designs"

## Black Hills Gold Jewelry

Created by F.L. Thorpe

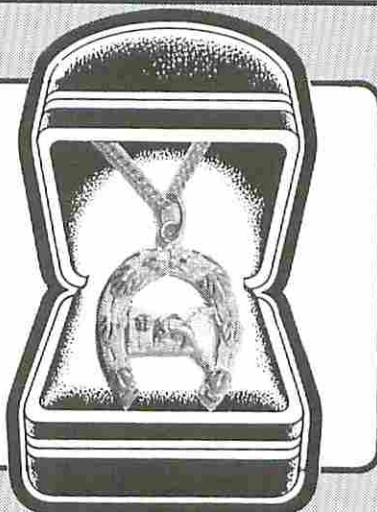
Black Hills Gold Tie Tac . . . . . Price **\$99<sup>00</sup>**

Black Hills Gold Pendant . . . . . Price **\$104<sup>00</sup>**

*Other original designs by request*

**Black Hills Gold Money Clip\*, Belt Buckles\***

*\*Made to order. Plus \$2.50 per Gold order*



## Black Hills Silver

Created by Langers of Spearfish

Black Hills Silver Tie Tac . . . . . Price **\$15.00**

Black Hills Silver Pendant . . . . . Price **\$15.00**

Black Hills Silver Earrings . . . . . Price **\$25.00**

Black Hills Silver Belt Buckle . . . . . Price **\$50.00**

Black Hills Silver Money Clip . . . . . Price **\$27.50**

*\*Please add \$2.50 shipping & handling per silver order*

Original Design Created for the  
**1989 World Horseshoe Tournament**

**Order Now - Limited Editions**

Check or Money Order

### SEND YOUR ORDERS TO:

1989 World Horseshoe Tournament  
825 East Grant  
Spearfish, South Dakota 57783

**\*Jewelry actual size. 642-4542**





## COMMITTEE REPORT

# RULES

by Barry Chapelle

I am pleased to be working with such a dedicated group of people. We have a challenging task to perform and we might well come up with some decisions that won't please everyone, but we will strive to do what is best for both the current and future welfare of the NHPA.

Issues we are now working on include:

1. Section G on page one of the playing rules. It has been brought to our attention that some charters, or clubs within charters, are not in compliance with the existing rule. This rule deals with settling ties.

2. Rule 6 Sec. D which deals with stepping over the foul line. Some pitchers have a delivery which causes their trailing foot to come down to the ground across the foul line. At present this is legal because the shoe has already been released before the trailing foot hits the ground. A proposed change would make it illegal to cross the foul line in any manner until both shoes have landed and come to rest.

3. Rule 4 Sec. E - the new rule about not working on and fixing up the court once the game is started. It's obvious that this rule should not be enforced on sand and dirt courts because the hole around the peg becomes too large as the material is displaced. Some people are questioning the validity of, or reason for, the rule at all.

4. Mixed pitching in sanctioned tournaments, which involves allowing juniors, women and 70+ 30 foot men to pitch (with their established %) in the comparative % class with the 40 foot men when there are not enough of them to form their own classes. At present, some charters advertise in advance which tournaments will be played under this format (this is the presently accepted procedure), some charters already permit it for all tournaments and some charters don't permit it at all. The arguments in favor of mixed pitching are basically concerned with participation for everyone who wants to play, while the arguments against mixed pitching are basically selfish and chauvinistic. This is rather blunt, but true. This will be a tough one to make a decision on, but we will do it.

Those are the major decisions we are working on right now. One other thing must also be mentioned. If we do make decisions that will bring about changes, we will also have to decide when these changes will go into effect. Some could be immediate while others might not go until 1990. We will correspond with charter officers on any immediate changes that are made, and all decisions will be published in the *Newsline*.

We welcome any suggestions or input you might have.

## PITCHING PAVILION. 2289 BARTON ST. E. UNIT #8 Hamilton, Ontario Canada L8E 2W8

April 15, 16 Bob Fanjoy International Ringer  
Classic Singles

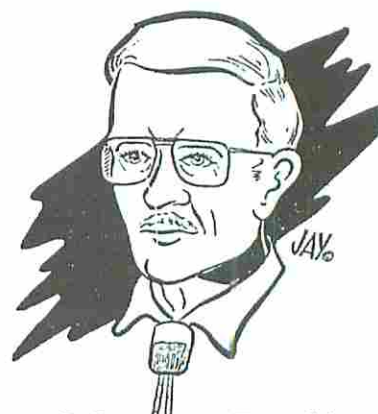
**Standing Trophy**

May 6, 7 Frank Weaver Int. Open Singles

June 3, 4 Leo Arsenault Int. Open Singles

Oct. 27-29 **ELMER HOHL** Third Memorial Open Singles

**To Enter: Call Bob Fanjoy 416-561-4344**



### Member Profile

## John Yernberg

A lot of talent abounds in the NHPA and in the cartoon and caricature field, John Yernberg may be at the top. Readers of horseshoe books and publications have long enjoyed the work of John who is a retired off-set printer. At the age of 75, John carries a 35% ringer average in the summer Duluth, Minnesota Horseshoe Club. During the winter months John enjoys the warm climate of Mesa, Arizona.

Pitching highlights in John's career include a Minnesota State Championship in 1958, induction to the MGSHPA Hall of Fame in 1977 and the St. Paul City League championships in 1960, 61 and 62 while averaging about 65%. Before retirement, John was an active leader in horseshoe pitching, holding numerous league and state offices. John still enjoys the exercise and sociability of our sport but painting and cartooning are now his main recreational interests.

*Newsline* is very happy to include John's work for our readers with the introduction of "Clay Cort".

### CLAY CORT

JAYernberg



"IT'S SOMETHING THAT OCCURS EVERY SPRING."





# ST. PIERRE

## *A Manufacturer's Profile*

by Dave Loucks

**T**he device we use as the instrument of our sport is quite often taken for granted. The good old horseshoe or new as the case may be, is the tool that propels us to the 80% game or the demon that keeps our percentage from improving. Some change horseshoes as frequently as we attend tournaments while others hang on to that "favorite pair" until they are just unable to take another weld. In either case, our relationship with the pitching horseshoe and the growing awareness of our sport spells "good times" for some of the horseshoe manufacturers.

Among the familiar names of horseshoe manufacturers is St. Pierre Manufacturing Corporation of Worcester, MA. St. Pierre has been producing drop-forged, solid steel pitching horseshoes for over 50 years. Today, they are the world's largest manufacturer of pitching horseshoes with the "American" being a top scale NHPA approved model that can be found in use at just about any sanctioned tournament.

St. Pierre Manufacturing Corporation can trace its history back to 1920 when it was founded as the St. Pierre Chain Corp. by Henry St. Pierre. While the company began as a tire chain making facility, it was only a few years later in 1928, when St. Pierre purchased a plant with drop forging capability and pitching horseshoes were added to the pro-

duct line. Its first professional pitching shoe was called the "Octagon" and it was the type that former President Truman used when pitching on the White House lawn. Our current President Bush has been known to break out the St. Pierre "Americans" when guests gather for a serious game of horseshoes.

During the years of World War II, St. Pierre, like many other manufacturing plants, turned their facilities to the war effort and production concentrated on aircraft parts and anchor chains. Once the war was over, St. Pierre returned to full scale production of its previous product line and began to emphasize our favorite product, the pitching horseshoe. Over the years, the product line has broadened to where St. Pierre now manufactures, in addition to horseshoes, fire escape ladders, industrial chain, slings, hoists and tire chains.

Upon the death of their father in 1966, sons Henry and Edward formed St. Pierre Manufacturing Corporation to carry on the family tradition. Another brother, Richard, and their sister Nanette, later joined the business in management capacities. Henry St. Pierre is the company president, Edward is treasurer, Richard is in industrial sales and Nanette is marketing director. They all work together in a close-knit environment that has helped them become the largest producer of pitching horseshoes and overcome unexpected adversity.

Last year, a plant fire caused millions of dollars in damage to the facility and forge. Production was halted for more than a month but the St. Pierre family hardly slowed down. Today they are ready for a move into a new building that will enable them to maintain their leadership in pitching horseshoe production and be ready for the real emergence and recognition of our sport.

Just as we have competition on the courts, St. Pierre has competitors, foreign and domestic in the horseshoe manufacturing business. While some horseshoes are made of hard rubber and some of cast iron, St. Pierre is proud of their drop-forged solid steel product. The pride of product comes from knowing that a modern day smithy puts a red-hot bar of steel into the jaws of an 87,000 pound forge. A huge die comes crashing down with thousands of pounds of pressure, shaping the steel into a rough approximation of a horseshoe which then has to be trimmed, weighed, measured and painted before the finished product emerges.

The next time you pick up your pair of pitching horseshoes, don't take them for granted. Give a little thought to all the work and care that went into their making and be thankful to the manufacturers of quality horseshoes, especially St. Pierre who has become a major sponsor of the 1989 World Tournament and an advertiser in *Newsline*.



# Split State Team Wins Team World Title

by Jim Haupt

**S**ue Snyder of Indiana, Dale Henry, also Indiana, plus Ron Powell and Lois Webster, both of Kentucky teamed up to win the Pitchin' Palace Team World Tourney. They are listed in the results as "Indy #3" with a combined percentage of 69.78. It took two matches but they finally pushed Missouri off the top.

This was just little old Sturtevant, Wisconsin. But the middle of February means Team World Tournament time and horseshoe pitching of the highest caliber. Teams from eight surrounding states and two Canadian provinces gathered again to form the largest ever, eighteen team tournament here. Some teams came a full day early to warm up. Some arrived a day and one-half later and had to catch up. Ralph Dykes came with the first and left with the last. A job is not done until the paper work is done.

The twelve courts at the Pitchin' Palace were filled and refilled as the teams marched through fifty-one preliminary games. Beginning Friday evening at 5:30 p.m. and concluding 1:30 p.m. Sunday, they pitched for a position on the five team ladder playoff. Forty shoe limit games and a "starter" Len Meistad, kept the affair pretty much on schedule.

Competition from all angles made it impossible for any one person to go unbeaten; although Charley Webb, percentage leader, 79.71, came closest winning sixteen for seventeen games.

Teams were expected to drop a few games on their way to the ladder playoff. Of a possible sixty-eight, Illinois, last year's winner managed forty-three wins for an all-important fourth seed tie. Indiana #1 came on strong Sunday to also figure in the tie. The first playoff game between these two teams resulted in another, two-two tie. Officials collected score sheets and made a ringer count. It was Indiana by one ringer. Up the ladder...

Minnesota had five more prelim wins but Indiana #1 moved them into a final fourth spot advancing themselves to the third step with a four and zero performance. Next opponent, Indiana #3.

The Indy #3 team (half Kentucky) ranked second, put an end to Indiana's run by three to one. Up the ladder to meet Missouri in the finals...evenly matched, these two teams found themselves tied 2 games each with the championship still undecided. Tournament rules called for a replay. The Indy #3 team earned a three to one edge to become the 1989 Team World Champion.

Missouri's only winner in that last match, Alan Francis, pitched the high ringer game of the entire tournament; only two misses in forty shoes gave him the mark of 95%.

When Ron Powell, Kentucky, accepted the first place money from Tom Roanhouse at the Team World finale, it was with some reluctance. Roanhouse stated that Powell thought some of the competition was angry that he, being from Kentucky was allowed to pitch with an Indiana team. Roanhouse told him, "No, you were approved, we knew you were coming." He went on to explain that one pitcher from another state is encouraged in hopes that he will return the next year with a team from his home state. "But we did not know until the team walked in the door that the Kentucky ladies' champ was coming," Roanhouse said, adding that he knew a last minute substitution was necessary, but he (Roanhouse) thought the sub would naturally be from Indiana. At that time the tournament was already in progress. The committee had to live with the situation and hope others would understand. "We do and we learn. It's our creed," Roanhouse stated.

An array of strange license plates in the lot attested to the stature and the allure of the Team World Tournament. Most belonged to the seventy-

two tournament pitchers but at least two shoe buffs drove down from Minnesota just to spectate and be part of the big event.

Bev Nathe, Minnesota State Champ, escorted by her husband wintering in Arizona, flew in for the tournament. Eight from Saskatchewan pitched. Hope they were also flying.

Some competitors (not in the money) indicated their dedication to the Team World in their glowing comments..."It's my favorite tournament." or "I like the way everyone stays around to talk it over." and "God willing, you bet we'll be back next year."

Whether it's the team concept or just plain cabin fever that attracts the February crew to return each year in larger numbers is still a question, but come they do. The only question remaining is — how do you put a limit on such avid participation?

## Team World Tournament February 10-12, 1989 Pitchin' Palace Sturtevant, Wisconsin

PLACE TEAM	WINS	%
Prize \$700.00		
1st Indiana #3	50	69.78
Sue Snyder	14	64.56
Dale Henry	11	63.97
Lois Webster	15	75.59
Ron Powell	10	75.00
Prize \$500.00		
2nd Missouri	51	70.44
Sam Carter	14	70.74
Charley Killgore	14	73.53
Alan Francis	12	78.24
Lou Bensinger	11	59.26
Prize \$300.00		
3rd Indiana #1	43	68.24
Clarence Bellman	12	73.68
Mark Seibold	14	77.79
Bonnie Seibold	8	64.41
Curley Seibold/L. Rowe	9	57.06

(continued on page 12)







## COMMITTEE REPORT

# HALL OF FAME

by Earl Winston

The year 1989 will see changes in the NHPA Hall of Fame Committee. First the committee lost two important members by death in January of this year; namely Frank Stinson and Jim Weeks. Secondly, during the Executive Council meeting in Las Vegas, it was decided to make some changes in the NHPA administration of various duties. **Barry Chapelle**, the Hall of Fame Chairman for the past two years, was appointed to chair the new Rules Committee and I was asked to assume responsibility as the new Hall of Fame Committee chairman.

As my first official duty, I have surveyed the remaining thirteen members of the committee to see if for various reasons they would or would not like to continue serving in

their positions. Two members have asked to be relieved of their responsibilities as soon as replacements can be found.

After consulting with the past chairman of this committee and obtaining favorable responses from several qualified persons, I recommended to NHPA President, Dave Loucks, that four new appointments be made to keep the Hall of Fame Committee at the previous level of fifteen. The newly appointed committee members are as follows: **Will Gullickson, Mn.; Gary Kline, Oh.; Marion Lange, Ia., Ottie Reno, Oh.** As the new chairman, I look forward to my association with all committee members, both old and new.

You may wonder how to go about nominating someone for the Hall of Fame. There are three categories; player, organizer or promoter and the combination of player-organizer. You must send a resume of your nominees qualifications and achievements to Earl Winston, RR #2, Box 178, LaMonte, Mo. 65337. The resume must be neat and in form ready for photo copying and distribution to committee members. To be considered for voting in 1989, nominations must be received by April 15.

Anyone elected to the Hall of Fame in 1989 will be installed during ceremonies in Spearfish, S.D. at the annual NHPA Awards Banquet. This is one of the highlights of the World Tournament each year and I hope many of you will plan to attend.

## Memorable Quotes

Donnie Roberts was once heard to say, "Being addicted to horseshoe is a common malady treatable only by 4 hours of daily practice, 2 league nights a week and a tournament every weekend."

cont. from page 10

### Prize \$200.00

4th Minnesota	48	67.50
Phyllis Negaard	15	74.71
Dave Hughes	10	69.41
Len Lipovsky	11	64.26
Bev Nathe	12	61.62

### Prize \$100.00

5th Illinois #1	43	69.01
Charley Webb	16	79.71
Cliff Baker	12	78.82
Bunny Ward	10	63.24
Jerry Dumstorff	5	54.26

### 6th Wisconsin #1

Jane Smith	41	64.23
Don Kangas	11	62.50
John Udelhoffen	9	66.03
Ralph Maylahn	10	63.09
	11	65.29

### 7th Ontario

Sandy McLachlin	40	62.21
Steve Hohl	15	77.50
Tom Stroh	10	62.21
Kevin McLachlin	7	53.38
	8	55.74

### 8th Illinois #2

Mike Knop	40	60.92
Don Peters	12	66.32
Booty Lange	10	66.76
Larry Knop	9	54.56
	9	56.03

### 9th Iowa #1

Glen Henton	39	62.57
Will Foelske	11	65.59
Bill Vandegriff	14	66.47
Loris Grant	7	60.88
	7	57.35

### 10th Sask. #1

H. Weitzel	32	59.23
Al Ross	13	67.65
Marv Ellison	6	56.32
Irvan Finnie	8	62.50
	5	50.44

### 11th Ohio

Elden Sarbaugh	30	58.40
Loran Miller	10	66.68
Oscar Manns	6	55.29
Clayton Bonham	10	63.24
	4	48.38

### 12th Indiana #2

Mike Blankenship	26	56.65
Greg Rathburn	5	61.62
Ron Parrish	5	48.38
Darrel Tahlbee	10	60.74
	6	55.88

### 13th Iowa #2

Harlan Hass	25	53.71
Ron Burgess	8	56.91
William Wilson	6	56.47
Harold Darnold	0	36.18
	11	65.29

### 14th Sask #2

D. Spilchen	23	52.02
Terry Spilchen	4	52.50
C. Finnie	6	50.59
Lyle Mroske	9	58.82
	4	46.18

### 15th Pitchin' Palace

Dick Hansen	22	49.52
Geri Meistad	5	47.35
Lloyd Johnson	3	44.12
Grant Hintz	8	54.70
	6	51.91

### 16th Wisconsin #2

Edith McKinney	21	51.07
Debby Bestul	7	52.35
Dan Bloom	8	55.29
Jim Haupt	4	53.68
	2	42.94

### 17th Iowa #3

Jerry Roussel	21	46.21
Richard Holdridge	6	52.65
Dorrance Pitz	4	41.32
Richard Hefel	4	46.32
	7	44.56

### 18th Iowa #4

Betty McGregor	17	47.39
R. Martin	7	45.29
Tony Scrima	1	39.85
Rich Brower	1	46.32
	8	58.09

## CHECK OR MONEY ORDER

MUST ACCOMPANY ALL ORDERS

ALL PRICES INCLUDE DELIVERY

CONTINENTAL U.S. ONLY

DIAMOND TOURNAMENT DS

\$24 PER PAIR

2 PAIRS \$47

6 PAIRS \$120

**GORDON**

DS. med. hard

2 PAIRS \$51

4 PAIRS \$99

## DEADEYE HORSESHOES

EZ GRIP OR

DF CLYDESDALE

\$35 PAIR

REGULAR, N.T. MODEL

REG. CLYDESDALE \$30 PAIR

MIX OR MATCH 12 PAIRS OR MORE SAVE \$7 A PAIR

AMERICAN HORSESHOES 2 PR. \$35

SUPER RINGER SET, 2 PR. \$27

D.A. BAKER

HARDWOOD

CASES PINE \$17

\$23

**FRANCIS E. WHITE**

714 NEVADA DRIVE

ERIE, PA 16505

PHONE 814-455-2685

PA. RES. ADD 6% TAX



# Regional Director's Report

by Mary Van Sant

**Bud Schardine**, Regional Director for Utah reports that he attended the kickoff dinner for the Utah Summer Games. It will be held in four regions this year to qualify for the championships. None of the towns hosting the Games have pits and two of the areas are without any known sanction pitchers. Bud is working with them to install courts and do what is necessary to make the games a success. The hosting of the Games for Logan and Richfield, Utah will expose this area to organized horseshoe pitching for the first time. There is a winter league in Price and the Onion Days league in Payson, Utah that Bud is involved in. He is also installing two pits at Kellys Grove as part of his involvement as project chairman of the Springville Kiwanis.

**John Wilson**, Regional Director for Louisiana states, they have held a very successful tournament for "Jerry's Kids", raising \$1,425.00 this year bringing their total for four years to \$5,700.00. Many problems were experienced while trying to hold the 1988 Louisiana State Championships. They had to be postponed for five hours because of rain. This, of course, put them behind and some games had to be held in Jack's Back Yard, and some on into the night. Thanks to everyone, they managed to crown their state champion, **Don Holland** for the second time. His record was 8-1 with 52.9% for the day. Their ladies champion is **Debbie Bott**, 5-0, 40.2%, their Junior boys champion is **Yogi Fromenthal**, 6-0, 43.9% and their Junior girls champion is **Grace Parks**, 2-0, 20%. The most exciting news that John reports is that the Mississippi charter is very actively seeking city financing and support from Biloxi to bid for the 1991 World Tournament to be held in the Gulf South Auditorium. This would be a major coup for the Gulf South and a chance for every

LSHPA member to attend a World Tournament. Louisiana will be hosting more sanctioned tournaments this year so pitchers can get their three sanctioned tournaments in to qualify for the World Tournament in Spearfish.

**Len Lipovsky**, Minnesota Regional Director, had the pleasure of pitching in the Team World event at the Pitchin' Palace near Milwaukee. Their team did well, I'm sure the results will appear from some other source. Len would like to comment on a young team from Saskatchewan, all teenagers, one fellow was 15 and pitched 30 ft. They were all very good pitchers and, very important, good sportsmen on

and off the courts. We wished them well and hopefully will see them in Spearfish at the World Tournament.

Now that there is so much good publicity with our newly elected President George Bush pitching horseshoes, it would be a good time for many of us Horseshoe Pitchers to write to the Postal Dept. for a commemorative Postage Stamp honoring our sport. Len has written several times—if there is enough interest he's sure they will comply. Here's the address —

United States Postal Service  
Customer Services Dept.  
475 L'Enfant Plaza, SW  
Washington DC 20260-6300

## Ted Allen Horseshoes

*"Still in Business"*

MUST SERVE IN THE TURN ORDER IS RECEIVED.



If wanting an explanation  
write for it.

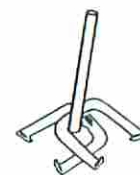
*Ted Allen*  
**1045 Linden  
Boulder, CO 80301  
(303) 442-1436**





Bob Champion's

# Charter Chatter



In each publication of the NHPA Newsline, excerpts will be taken from newsletters, news releases, clippings, letters and notes sent to me by your publicity chairman and/or officers. If you have not been represented with news items in the *Newsline*, check your officers for action. All charters are urged to send news clippings to be pasted in scrapbooks by the Publicity Committee. Send your news to Bob Champion, 5505 Valmont #176, Boulder, Colorado 80301. Home phone (303) 449-8395 after 2 p.m.

## ARIZONA

When the 1990 Valley of the Sun Tournament in Mesa rolls around, NHPA Past President Wally Shipley from California and current horseshoe related items representative for several areas in the Southwest and Alaska, will have attended his 25th tournament in Mesa. He started selling related items in 1983.

190 pitchers participated in the 1989 "Valley" event. Arizona topped the entries due to all the "Snowbirds" in the area with 42 entries. Minnesota sent 26 and California 25. Canada and Washington each sent 13.

## COLORADO

The 10 by 40 foot mobile home has been located at the entrance of the San Lazaro Mobile Home Park in Boulder. Members of the Colorado Association will soon gather to remodel the facility and begin to place memorabilia in the structure.

Ed Shepard of Denver rolled a 300 game December 5 at Brunswick Sierra Lanes in Wheatridge. His previous high was 266 rolled in 1961. He is a 180 average bowler.

Hall of Famer Harry Russell was inducted into the Colorado Aviation Hall of Fame. His wife Hazel won the Women's World Title in 1956, and also is a member of the Colorado Hall of Fame.

## ILLINOIS

Art Felgenhauer is the NHPA Regional Director. Art is in direct contact with the NHPA and has specific duties, as do all Regional Directors, to perform on their behalf. The Regional Director issues sanction numbers, certificates and patches for sanctioned tournaments upon request. The RD is also responsible for monitoring sanctioned tournament results which are to be published in the *NHPA Newsline*.

When requesting a sanction, Tournament Directors are requested to furnish the following for each tournament: Name, address and phone number of director, date and place of the tournament; number and type of courts — clay, sand, portable; estimated size of classes, whether 30 or 40 feet; indicate if first sanctioned tournament on courts, if it is first conducted by listed tour-

nament director, and if a complimentary card is needed. (Only 1 card to club or director per season.)

## MICHIGAN

The Wolverine Horseshoe Pitchers Association held their annual fund raiser for St. Jude's Childrens Hospital. A total of \$1,249 was raised which brings the Michigan total to \$5,002 over the past three years. John Decker was the winner of the St. Jude Windbreaker jacket as he raised \$293.

## MISSOURI

Like many State Tournaments, Missouri will hold theirs over the Labor Day Weekend in Independence Missouri, home of Harry Truman...a democrat. However, Missouri has invited Horseshoe pitcher President George Bush to throw out the first shoe. By the way...Truman was also a horseshoe pitcher. He used to sneak out and relax at the courts. The State will be held on 17 courts blessed with the famous blue clay.

Eleven sanctioned tournaments have been scheduled for the state starting May 6-7 and ending September 24. Earl and Vicki Winston begin to work on a Hall of Fame Album containing information and photos of inductees up to the present time.

## NEW ENGLAND

A scoresheet sent to me by Publicity Committee member Richard "Bones" Hasting of Orange, Massachusetts, reveals that Linda "Pat" Pateneau and Debby Michaud pitched eleven consecutive four-deads during a New England Tournament at Lewiston, Maine, September 6, 1981. Linda was in front 47-3 at the time the two women began their string. The final was 50-3. Pateneau closed with a 91.1 percent to Debby's 80 in the 90 shoe contest. This may be a World record. The World Tournament record is the same number of four-deads pitched by Vicki Winston and Fran Carnahan in the World at Lafayette, Indiana.

Perfect games in the Massachusetts Twin County League are as follows: Melvin Merritt, Orange, July 1968, 14 shoes; Paul Drowne, Gardner, July 1978, 12 shoes; Ed Jepson, Shelburne Falls, July 1978, 16 shoes; Richard Howe, Orange, August 1978, 16 shoes.

## NORTH CAROLINA

Doug Shear of Carthage is the State President. The Vice President is Gurney York from Harmont and the Secretary-Treasurer is Jack Springer.

Springer is the editor of the North Carolina Newsletter and has been the force behind their organization for many years. Springer was the guiding light behind the World Tournaments held at Statesville.

The 1989 N.C. Singles Tournament will be held at Statesville September 16.



## OHIO

World Champion Jim Knisley has pitched 42 straight ringers in World competition, and 56 straight in other competition.

The Ohio Horseshoe Newsletter has a classified section for pitchers to sell used shoes, etc. The newsletter is printed four times each year. Contact Donnie Roberts.

Many individuals and clubs have donated to the Ohio Horseshoe Hall of Fame. Individuals have donated \$795.45, clubs \$975. The room is finished and the Association is ready to place items in the Garth Museum in Greenville, Ohio, home of many World Tournaments.

## TEXAS

The Texas State Men's Champion has been from the Arlington Ironbenders for the last decade. Charles Posey won in 1978 and 1979; Coke Bowker won in 1980, 1981, 1983, 1984, 1985, 1986 and 1987. Roger Vogel won it in 1988. The club is trying to find out who won in 1982.

The officers of the Tumbleweed, Lubbock Club are Kent Hedgoth, president; J.D. Devine, vice president, Louis Parker, secretary-treasurer; Kelly Hedgoth, Sergeant at Arms; and Theresa Smith, public relations.

Officers of the Houston Club are Ron Maroon, president; Joe Sullins, 1st vice president; Wilton Bayer, 2nd vice president; Nancy Maroon, secretary; Frank Polak, treasurer; Clyde Hetrick and Anthony Lyons, tournament directors.

## UTAH

The top ten in the Southern Utah Horseshoe Pitchers Association are as follows: Dennis Ohms 47.3, Shirley Steffen 44.9, J.J. Steffen 44.5, John Bracken 43.6, Rose Johnny 43.2, Ron Hunt 43.3, Nate Barney 41.2, Elise Bracken, 40.4, Cal Sorensen 39.5 and Phil Jensen 38.6.

The top five juniors are: Gabe Ohms 36.8, David Andelin 32.8, Cameron Humphreys 31.5, Jenny Ohms 15.9, and Jack Ashcraft 14.8.

The most improved in percentage are Paul Rudy 7.3, Joe Cwik 7.1, Shirley Steffen 6.1, Lorin Condie 5.9 and Phil Jensen 5.7. Most improved for the juniors are Jenny Ohms 6.9, Clifton Johnny 3.8, Penny Bundy 3.6, Gabe Ohms 3.0 and Seth Ohms 2.1.

## VIRGINIA

President of the Virginia Horseshoe Pitchers Association is John Shaw of Virginia Beach. Other officers are Jim Foltz, 1st vice president of Chesapeake; Walter Foster, 2 vice president of Stephens City; Dennis Davis, 3rd vice president of Buena Vista; Les Singhass, secretary-treasurer of Winchester; and Floyd Hix, Regional Director of Ruther Glen.

## WASHINGTON

Thirty-seven hardy souls slip-slided their way to the Everett horseshoe courts on January 8 to open the 1989 Winter Winetrout horseshoe extravaganza. Barney Heller spent all night prior to the tournament snow-shoeing back and forth between the courts to keep the trail open for the pitchers.

Forty-four pitchers competed in the Bluebird Spring

Day. "Mr. Horseshoe", Winnie Winetrout was with the group and laboriously calculated everyone's ringer totals, plus age to determine the special money awards in each class.

34 tournaments are scheduled for 1989, only three unsanctioned. The schedule started March 4, ends November 4.

Winners of Winetrout II were Art Sperber in A; Barney Heller, B; Bob Lee, C; John Byfield, D; Mike Miller, E; and Jerry Pederson, F.

Tacoma club officers are: Joni Wright, President; Bob Hoerner, 1st VP; Joe Wright, 2nd VP, Cyril Kitchen, 3rd VP, Milt Johnson, Treasurer; Millie Kuhne, Secretary; Cy Kitchen is the Executive Board Representative.

## WISCONSIN

Indoor courts in Green Bay will be the winter home of the Green Bay Club. Tim Brunette, the proprietor, is very sports minded handling over 270 volleyball teams in his summer and winter leagues.

It was through the efforts of Wally Srenaski and a few other members who first approached Tim about outdoor courts a year and a half ago, and soon had plans for 5 courts above the bar. Local pitchers are urged to see the set-up to appreciate how nice they are.

## WYOMING

Appointed as Regional Director in Wyoming by NHPA 5th Vice President Mary Van Sant is Wanda Archer of Buffalo. Assistant RD's from Wyoming are Don Jones of Powell and Harold Wolfe of Casper. Archer's address is H.C. Box 13, Buffalo, Wyoming 82834. Her husband, Ed, is secretary-treasurer of the Wyoming Horseshoe Pitching Association.

---

## Good Pitching To You

*Pitching a few 'shoes' is a lot of fun.*

*Good fellowship, exercise and enjoyin' the sun.*

*Ring a few, miss a few, a handshake is laid.*

*A thank you, a good luck wish, a friend is made.*

*Horseshoe pitching is a link to us all.*

*It matters not to win or lose...what matters most is*

*"Hi-Y'all"!*

*For to share a smile and handshake,*

*the real meaning of horseshoe pitching we should make.*

*Life is too short for fusses and frowns.*

*Lift up your head, smile, and enjoy the sounds.*

*Share a good time and earn a good name.*

*Make a friend...then you have won the game!*

**George F. Bradfield**

**Atlanta, GA**



# Valley of the Sun

by Bob Champion

Oregon's reigning State Champion and Northwest Regional Champion Ben Wiedrich successfully met the challenge of defending champion Don Gregson, California, young Nathan Williams from Tucson and Colorado's State Champion Rich Rintor to win the 31st Annual Valley of the Sun tournament February 15-19, 1989 in Mesa, Arizona.

Wiedrich closed with a 12-2 record after going 7-0 the first day in the double round-robin tournament, topping all percentages with 72.52.

Gregson (11-3) and Rintor (10-4) lost two games on Saturday which put them behind the eightball for the final seven games. Gregson's final percentage was 70.49. Williams (10-4) closed with 68.13, Rintor fell to 66.21.

Canada's Myrna Kissick pitched 72.06 to win the two-person Class A Women's crown, winning 6, losing 1 against Minnesota's Bev Nathe. Ed Aronius, California gained a one game victory over Nebraska's Duane Brechbill to win Class B. His 11-3 record and 67.61 percentage was tops for the class.

Norm Cone of California easily won the Class C title with a 10-2 record, two games in front of Arizona's Jeff Williams. Jeff's 56.14 topped the field.

Other class winners are as follows: D - Rolland Swenson, Minnesota; E - Fred Lavett, California; F - Clayton Gage, Wisconsin; G - Bruce Stuart, California; K - Skip Schileroort, Washington; L - Marvin Karet, Kansas; M - Larry Robbins, Illinois; N - Richard Lee, Arizona; O - Ted Anthony, Arizona; P - Mike Urban, Canada; Q - Eivand Eggen, Canada; R - Dale Higgins, Minnesota; S - Gerald Foss, California; T - Ed Moilan, Arizona; U - Tom Francis, Arizona; 70-Plus Men - Floyd Voyce, Arizona; Women's B (Handicap) - Grace Wenger, Oregon; Women's C - Genevieve Lavett, California.

The tournament was played on the newly constructed 12-court facility in Pioneer Park which was newly reno-



vated after last year's tournament. The project was done by the Mesa Parks and Recreation Department with the aid of the Community Block Development Government grant, projects which fit into low income requirements. It included brick paving, steel lined boxes, concrete pitching platforms, new five-foot fence and lined areas for 30-foot pitchers. The area was completed by the city with the aid of the local club, who furnished specifications for the courts.

All cities have these funds available. Individual clubs could urge their parks and recreation departments to use available funds for court improvement and development. It is estimated that the cost of the project was in the neighborhood of \$200,000. The Arizona Horseshoe Pitchers Association hopes to host an NHPA Regional Tournament in the near future.

The 1989 Valley of the Sun Tournament drew 190 pitchers. The largest turnout was two years ago when they hosted 240. This year's prize fund totalled \$2300.

## CLASS A

Name and State	W-L	%
Ben Wiedrich, OR	12-2	72.52
Don Gregson, CA	11-3	70.49
Nathan Williams, AZ	10-4	68.13
Richard Rintor, CO	10-4	66.21
Spud Napier, CA	6-8	65.98
Dave Loucks, CA	4-10	56.98
Gary Minnick, AZ	3-11	61.04
Tad Besemer, AZ - Forfeit		

## CLASS B

Ed Aronius, CA	11-3	67.61
Duane Brechbill, NE	10-4	56.54
Elwood Johnson, MN	9-5	58.92
Marvin Reheis, KS	7-7	55.02
Don Schneck, CO	6-8	55.30
G. Whittemore, CA	6-8	51.34
Pay Doyle, CAN	3-11	44.56
Byron Hafner, IA - Forfeit		

## CLASS C

Norm Cone, CA	10-2	55.87
Jeff Williams, AZ	8-4	56.14
Stan Ulku, MN	6-6	50.15
Jerry Kahle, OK	6-6	49.83
Jim Eozzo, CA	6-6	47.47
Vik Gedatus, MN	3-9	46.81
Tom Schara, NM	3-9	41.60
Newell Flann, CA - Forfeit		

## CLASS D

Rolland Swenson, MN	12-2	55.12
Earl Pearce, AZ	12-2	53.06
Bud Knudson, CAN	8-6	49.71
Don Allen, MN	7-7	48.57
Tom Didmon, CA	6-8	47.36



John Niemitato, ND	5-9	48.19
Terry Lievrouw, AZ	4-10	43.75
Doc Thackeray, ID	2-12	44.52

#### CLASS E

Fred Lavett, CA	6-1	50.85
Dick Mountain, CAN	5-2	46.28
Frank Farley, AZ	4-3	49.71
Slim Allen, IA	4-3	47.14
Ed David, WA	4-3	46.00
Wilf Donald, CAN	2-5	51.71
Fred Canfield, MN	2-5	38.00
Bill Sullivan, MN	1-6	36.28

#### CLASS F

Clayton Gage, WI	4-1	36.80
Les Grosenback, CO	3-2	42.00
Les Burroughs, CA	3-2	32.00
Rusty Hendrickson MN	2-3	40.00
Jack Raymond, UT	2-3	38.80
Frank Woods, WA	1-4	36.40
Andy VanDyken, MI - Forfeit		

#### CLASS G

Bruce Stuart, CA	7-0	48.85
Ray Furey, MN	4-3	42.85
George Steele, AZ	4-3	38.85
Jim LaPlant, MN	3-4	32.00
George Wilfon, NV	3-4	39.71
Jim Wagner, MN	3-4	33.42
Ike Davis, MN	2-5	40.00
Bill Whitley, KS	2-5	34.57

#### CLASS H

Harley Anderson, MN	6-1	43.42
Howard Ruby, AZ	5-2	42.85
Howard McKillip, AZ	4-3	45.42
Henry Waltz, ND	4-3	40.28
Warren Stutzman, ID	3-4	42.85
Don Dean, AZ	3-4	37.71
Myron Flann, MN	2-5	35.14
Bud Schliske, AZ	1-6	30.00

#### CLASS I

C. Pleggenkuhle, IA	5-2	41.42
Rudy Beracy, MI	5-2	39.14
Bill DeFrane, CAN	4-3	43.14
Roy Crossaint, WA	4-3	39.42
Bill Courtwright, MO	4-3	34.00
Tony Apodaca, ID	3-4	38.28
Leo Samuelson, WI	3-4	36.28
Cliff Caron, MN	0-7	31.71

#### CLASS J

Gerry Kloepper, CA	5-2	43.14
Phil Jensen, UT	4-3	45.14
Floyd Brown, CA	4-3	40.00
Tom Buck, CA	4-3	36.57
Bob Champion, CO	3-4	39.71
Hand Engquist, WA	3-4	39.14
Bill Bryan, CO	3-4	36.00
Ray Mohre, WA	2-5	33.71

#### CLASS K

Skip Schileroort, WA	7-0	37.14
Al Hiller, MN	5-2	33.42
Max McKissack, AZ	5-2	30.28
Walt Kjellberg, MN	4-3	34.00
Floyd Lewis, CAN	3-4	32.28
Vern Johnson, MN	3-4	30.00
Orel Elhard, AZ	1-6	14.85
Bill Reh, KS - Forfeit		

#### CLASS L

Marvin Karst, KS	6-1	45.14
Chalmer McClain, IL	5-2	42.85
Roy Jones, CAN	5-2	42.00
Clair Harris, SD	4-3	39.42
Randy Butts, AZ	3-4	40.85
Frank Koehler, IA	3-4	34.85
Jack McKinney, NE	1-6	37.42
Dave Eshelman, IN	1-6	28.00

#### CLASS M

Larry Robbins, IL	5-1	36.66
Carl Wall, CA	5-1	33.00
Armand Perrault, CAN	4-2	31.33
Tom Cutts, WI	3-3	34.00
Frank Perkins, ID	3-3	24.00
Cy Narlock, MN	1-5	23.66
Floyd Edwards, CA	0-6	14.00
Art Hart, WA - Forfeit		

#### CLASS N

Richard Lee, AZ	6-1	32.57
Earl Parsons, WY	6-1	28.57
John Greider, AZ	5-2	35.71
Ernie Lamb, IL	4-3	31.14
Earl Fickess, IA	3-4	24.85
Francis Grenier, AZ	2-5	31.14
Louis Mahlstedi, CA	2-5	23.42
D.T. Reynolds, KY	0-7	20.85

#### CLASS O

Ted Anthony, AZ	5-1	37.08
Forrest Bellows, MN	4-2	35.83
C. Dobberstine, NE	3-3	34.16
Ken Coen, AZ	3-3	31.25
Russ Dunning, MN	3-3	26.25
Art Rinas, ND	2-4	27.91
George Townsend, AZ	1-5	23.75

#### CLASS P

Mike Urban, CAN	5-1	24.66
Al Ehrich, IL	4-2	30.00
George Richmond, IA	3-3	33.00
Elmer Vines, MN	3-3	23.66
Cliff Anderson, IL	2-4	21.00
Charles Greenwood, IA	2-4	19.33
Lyle Meuret, WA	2-4	15.66
Clarence Hammann, IA - Forfeit		

#### CLASS Q

Eivand Eggen, CAN	6-1	31.42
Ed Arp, SD	6-1	27.14
Gene Medzyk, CA	4-3	29.20
Clare Willey, AZ	4-3	27.85
John Kronholm, WA	4-3	27.85
Henry Wilson, NJ	2-5	23.57
Jim Getty, AZ	1-6	21.42
Boyd Boyer, CO	1-6	17.50

#### CLASS R

Dale Higgins, MN	5-2	22.85
Chuck Wenger, OR	4-3	28.92
Pete Nicastro, AZ	4-3	27.85
Jim Smith, AZ	4-3	25.00
Roger Pepper, AZ	4-3	18.92
Ben Goodling, OR	3-4	25.35
Bob Manning, AZ	2-5	23.92
Andy Cappello, NV	2-5	23.92

#### CLASS S

Gerald Foss, CA	7-0	21.07
Dave Harrington, WA	5-2	20.71
Gene Rittman, IA	4-3	25.00
Harrold Fessenden, AZ	4-3	21.07
Paul Cuicci, MI	4-3	15.00
R.G. Bradford, AZ	2-5	17.14
Darrel Steward, WY	2-5	15.71
Charlie Parker, MI	0-7	7.10

#### CLASS T

Ed Moilan, AZ	5-0	20.80
Bob Hotz, IA	3-2	18.00
Wendell Roberts, WA	3-2	16.80
Gene Dixon, KS	2-3	19.20
Wally Shipley, CA	2-3	16.80
Ernie Knorp, CA	0-5	8.00
Jim Dertz - Forfeit		

#### CLASS U

Tom Francis, AZ	7-0	18.57
Bud Wagstaff, CAN	6-1	18.57
Leo Propp, WI	5-2	8.50
Floyd Homuth, AZ	4-3	15.71
Richard Jones, AZ	3-4	11.78
Mike Barrett, AZ	2-5	10.00
Richard Wood, AZ	1-6	6.40
Paul Gonzalez, AZ	0-7	4.20

#### 70-PLUS MEN

Floyd Voyce, AZ	5-1	56.33
Curt Dunlap, MI	5-1	33.00
Gordon Colburn, MN	4-2	44.33
Ben Bajari, MN	3-3	38.66
John Selle, ND	3-3	34.66
Leo Peterson, ID	1-5	42.66
Harry Hegarty, IA	0-6	26.00

#### WOMEN'S CLASS A

Myrna Kissick, CAN	6-1	72.06
Beverly Nathe, MN	1-6	65.25

#### WOMEN'S CLASS B (Hdcp)

Grace Wenger, OR	5-0	44.00
Judy Whisenant, AZ	4-1	46.00
Alice Stewart, WY	3-2	35.60
Emalene Pearce, AZ	2-3	36.40
Irene Wiedrich, OR	1-4	25.20
Camille Bruster, CA	0-5	17.20

#### WOMEN'S CLASS C (Hdcp)

Genevieve Lavett, CA	5-1	33.33
Delores Pepper, AZ	4-2	26.33
Louise Manning, AZ	4-2	25.66
Darlene Wagstaff, CAN	4-2	19.33
Jean Lewis, CAN	2-4	30.33
Sally Shipley, CA	1-5	17.53
Julie Barrett, AZ	1-5	13.33

## OWENS VALLEY CABINET CO.

"Serving the Eastern Sierra Since 1968"

In the area? Call me for information.

William R. Perry  
Cabinet & Millwork Contractor  
License #418489

(619) 387-2252  
Rt. 2, 106 Mesa Vista Dr.  
Bishop, CA 93514



# TOP

## NHPA SANCTIONED CLUB/LEAGUE 1988 TOP TEN NATIONAL DIVISION MIXED MEN & WOMEN

# TEN

### National—High Points Over Average:

Pos	Name	Club/State	%
1.	Ivan Davis	E. Sierra, CA	+ 62
2.	Tom McQueen	E. Sierra, CA	+ 56
3.	Chuck Hood	Dwight RG/LNS, IL	+ 49
4.	Arnold Fankhauser	Chadron, NE	+ 43
5.	Marge Spaller	Painesville, OH	+ 42
6.	Julia Clark	Painesville, OH	+ 42
7.	Robert Socdlofsky	Woodw. Gov., CO	+ 40.4
8.	Loretta Chaney	Bur. Jos., CA	+ 40
9.	Judy Harris	San Luis Ob., CA	+ 40
10.	Dennis Keogh	Montgomery, MN	+ 39.5

### National—High Point Game:

1.	Oscar Manns	Painesville, OH	142
2.	Ron Frakes	Independence, MO	136
3.	Glen Portt	Albany, GA	132
4.	Wayne Luoma	N.E.OH.Trav., OH	132
5.	Bill Coleman	Pioneer, NY	132
6.	Rosie Leyk	Tri-City, MN	131
7.	Wilbert Foelske	Waterloo Mtr., IA	131
8.	Joe Ray	Mountaineer, WV	130
9.	Ansil Copeland	N.E.OH.Trav., OH	130
10.	Floyd Plumb	Toledo Area, OH	130

### National—High Point Average:

1.	Oscar Manns	N.E.OH.Trav., OH	125
2.	Glen Portt	Albany, GA	118
3.	Joe Ray	Mountaineer, WV	116
4.	Ansil Copeland	N.E.OH.Trav., OH	115
5.	Floyd Plumb	Toledo Area, OH	115
6.	Loree Meier	Independence, MO	113
7.	Allen Withrow	Mountaineer, WV	113
8.	Rosie Leyk	Tri-City, MN	112
9.	Wilbert Foelske	Waterloo Mtr., IA	112
10.	Elwyn Cooper	Heart of Amer., MO	110

### National—High Ringer Average:

1.	Oscar Manns	N.E.OH.Trav., OH	77.9%
2.	Glen Portt	Albany, GA	69.8%
3.	Joe Ray	Mountaineer, WV	69.5%
4.	Dale Lipovsky	Minneapolis, MN	68.6%
5.	Ansil Copeland	N.E.OH.Trav., OH	68.5%
6.	Rosie Leyk	Tri-City, MN	67.4%
7.	Lee Wiges	Waterloo Mtr., IA	67.1%
8.	Allen Withrow	Mountaineer, WV	66.6%
9.	David Loucks	Gold Country, CA	66.54
10.	Loree Meier	Independence, MO	66.53

## MEN'S DIVISION

### Men's—High Ringer Game:

1.	Nickel Sibley	Twin-City., MASS	92.8%
2.	Dale Lipovsky	Minneapolis, MN	92.0%
3.	Oscar Manns	Painesville, OH	90.0%
4.	Jim Brodak	Tri-City., WV	90.0%
5.	Ron Frakes	Independence, MO	88.0%
6.	Tom Sheerin	Twin-City., MASS	87.5%
7.	Wayne Luoma, Sr.	N.E.OH.Trav., OH	86.0%
8.	Glen Portt	Albany, GA	84.0%
9.	Wilbert Foelske	Waterloo Mtr., IA	84.0%
10.	Bill Coleman	Pioneer, NY	84.0%

### Men's—High Ringer Average:

1.	Oscar Manns	N.E.OH.Trav., OH	77.9%
2.	Glen Portt	Albany, GA	69.8%
3.	Joe Ray	Mountaineer, WV	69.5%
4.	Dale Lipovsky	Minneapolis, MN	68.6%
5.	Ansil Copeland	N.E.OH.Trav., OH	68.5%
6.	Lee Wiges	Waterloo Mtr., IA	67.1%
7.	Allen Withrow	Mountaineer, WV	66.6%
8.	Dave Loucks	Gold Country, CA	66.5%
9.	Wilbert Foelske	Waterloo Mtr., IA	66.1%
10.	Elwyn Cooper	Heart of Amer., MO	66.0%

## WOMEN'S DIVISION

### Women's—High Ringer Game:

1.	Deborah Michaud	Raynham, MASS	100.0%
2.	Phyllis Negaard	Minneapolis, MN	90.0%
3.	Rosie Leyk	Tri-City., MN	84.0%
4.	Bev Nathe	Minneapolis, MN	82.0%
5.	Loree Meier	Independence, MO	80.0%
6.	Lorraine Sternberg	Goldendale, WI	80.0%
7.	Lynda Frederick	Woodward Cty., OK	80.0%
8.	Debbie Brown	Sodbusters, VT	78.0%
9.	Edie McKinney	Close Ds't. Ct., WI	77.5%
10.	Diana Polak	Riverside, TX	76.0%

### Women's—High Ringer Average:

1.	Phyllis Negaard	Minneapolis, MN	71.9%
2.	Rosie Leyk	Tri-City., MN	67.4%
3.	Loree Meier	Independence, MO	66.5%
4.	Bev Nathe	Minneapolis, MN	66.4%
5.	Deborah Michaud	Raynham, MASS	61.6%
6.	Lorraine Sternberg	Goldendale, WI	60.5%
7.	Lynda Frederick	Woodward Cty., OK	60.5%
8.	Jane Smith	Clos Ds't. Ct., WI	60.0%
9.	Lois Webster	Scott City, KY	59.9%
10.	Sandy Karasch	Tri-City., MN	59.3%

## NATIONAL JUNIOR DIVISION

### Mixed Boys & Girls—High Points Over Avg.

1.	Mike Bryant	Sheyenne, ND	+ 40.9
2.	Bryan DuCharm	Grt. Houston, TX	+ 38.2
3.	Brian Massey	Independence, MO	+ 34
4.	Tim Rosival	Montgomery, MN	+ 34
5.	Gregory David	Kilkenny, MN	+ 31.4
6.	Shawn Micki	Goldendale Jr., WI	+ 28.6
7.	Jon Canja	Half Moon Bay, CA	+ 28.4
8.	Brian Prochaska	Montgomery, MN	+ 28.4
9.	Rick David	Montgomery, MN	+ 27.9
10.	Brian Saxberg	Sheyenne, ND	+ 24.8

### Junior—National—High Point Game:

1.	Steve Barnes	Independence, MO	135
2.	Michael Davidson	Woodward Cty., OK	112
3.	Brian Massey	Independence, MO	112
4.	Mike Bryant	Sheyenne, ND	112
5.	Tim Rosival	Montgomery, MN	104
6.	Bryan DuCharm	Grt. Houston, TX	98
7.	Jon Canja	Half Moon Bay, CA	91
8.	Justin Terry	Half Moon Bay, CA	80
9.	Gregory David	Kilkenny, MN	74
10.	Rick David	Montgomery, MN	73

### Junior—National—High Point Average:

1.	Steve Barnes	Independence, MO	114.5
2.	Michael Davidson	Woodward Cty., OK	92
3.	Brian Massey	Independence, MO	78.2
4.	Mike Bryant	Sheyenne, ND	71.1
5.	Tim Rosival	Kilkenny, MN	70.4
6.	Jon Canja	Half Moon Bay, CA	62.6
7.	Bryan DuCharm	Grt. Houston, TX	61.5
8.	Justin Terry	Half Moon Bay, CA	60.3
9.	Pamela Morris	VICI HPA, OK	54.4
10.	Brandon Maroon	Grt. Houston, TX	47.1

### National—High Ringer Average:

1.	Steve Barnes	Independence, MO	70.7%
2.	Michael Davidson	Woodward Cty., OK	51.0%
3.	Debbie Bestul	Eau Claire, WI	42.7%
4.	Brian Massey	Independence, MO	42.0%
5.	Tim Rosival	Montgomery, MN	34.1%
6.	Mike Bryant	Sheyenne, ND	33.0%
7.	Jon Canja	Half Moon Bay, CA	29.3%
8.	Bryan DuCharm	Grt. Houston, TX	28.5%
9.	Justin Terry	Half Moon Bay, CA	27.5%
10.	Renee Sternberg	Goldendale Jr., WI	25.8%



# Sanctioned Club/League News

By Bev Born

## JUNIOR—BOYS DIVISION

### Boys—High Ringer Over Average:

1. Jesse Knish	Kilkenny Jr., MN	+ 52.4
2. Justin Terry	Half Moon Bay, CA	+ 48.1
3. Dennis Schultz	Twin-Cty., MN	+ 36.1
4. Bobbie Louis	Twin-Cty., MN	+ 33.2
5. Mike Bryant	Sheyenne, ND	+ 31.0
6. Brian Massey	Independence, MO	+ 28.0
7. Silvio Modena	Half Moon Bay, CA	+ 27.9
8. Bryan DuCharm	Grt. Houston, TX	+ 27.6
9. Jon Rickets	Kilkenny Jr., MN	+ 26.9
10. Tim Rosival	Montgomery, MN	+ 25.9

### Boys—High Ringer Game:

1. Steve Barnes	Independence, MO	88.0
2. Justin Terry	Half Moon Bay, CA	75.0
3. Brian Massey	Independence, MO	70.0
4. Michael Davidson	Woodward Cty., OK	68.0
5. Jesse Knish	Kilkenny Jr., MN	65.0
6. Mike Bryant	Sheyenne, ND	64.0
7. Dennis Schultz	Twin-Cty., MASS	61.1
8. Tim Rosival	Montgomery, MN	60.0
9. Bobbie Louis	Twin-Cty., MASS	58.3
10. Jason Villwock	Kilkenny Jr., MN	55.0

### Boys—High Ringer Average:

1. Steve Barnes	Independence, MO	70.7
2. Michael Davidson	Woodward Cty., OK	51.0
3. Brian Massey	Independence, MO	42.0
4. Tim Rosival	Montgomery, MN	34.1
5. Mike Bryant	Sheyenne, ND	33.0
6. Jon Canja	Half Moon Bay, CA	29.3
7. Bryan DuCharm	Grt. Houston, TX	28.5
8. Justin Terry	Half Moon Bay, CA	27.5
9. Bobbie Louis	Twin-Cty., MASS	25.1
10. Dennis Schultz	Twin-Cty., MASS	25.0

## JUNIOR—GIRLS DIVISION

### Girls—High Ringer Over Average:

1. Debby Bestul	Eau Claire, WI	+ 23.3
2. Chris Knish	Kilkenny Jr., MN	+ 22.8
3. Brenda Westrom	Close Ds't. Ct., WI	+ 21.9
4. M. Fankhauser	Chadron Jr., NE	+ 17.0
5. Carrie Pittman	Kilkenny Jr., MN	+ 15.9
6. Jessica English	Nashua, NH	+ 14.3
7. Emily Ricketts	Kilkenny Jr., MN	+ 13.4
8. Missy Mutch	Painesville, OH	+ 13.1
9. Jessica Hansen	Close Ds't. Ct., WI	+ 12.3
10. Beth Hruska	Kilkenny Jr., MN	+ 11.9

### Girls—High Ringer Game:

1. Debby Bestul	Eau Claire, WI	66.0
2. M. Fankhauser	Chadron Jr., NE	50.0
3. Brenda Wistrom	Close Ds't. Ct., WI	47.5
4. Renee Sternberg	Goldendale Jr., WI	37.5
5. Chris Knish	Kilkenny Jr., MN	35.0
6. Pamela Morris	Vici, OK	28.0
7. Jessica English	Nashua, NH	26.0
8. Jessica Hansen	Close Ds't. Ct., WI	25.0
9. Lori Pruitt	Woodward Cty., OK	24.0
10. Marlana Davidson	Woodward Cty., OK	22.0

### Girls—High Ringer Average:

1. Debby Bestul	Eau Claire, WI	42.7
2. M. Fankhauser	Chadron Jr., NE	33.0
3. Renee Sternberg	Goldendale Jr., WI	25.8
4. Brenda Wistrom	Close Ds't. Ct., WI	25.6
5. Pamela Morris	Vici, OK	19.3
6. Lori Pruitt	Woodward Cty., OK	14.0
7. Jessica Hansen	Close Ds't. Ct., WI	12.7
8. Chris Knish	Kilkenny Jr., MN	12.2
9. Jessica English	Nashua, NH	11.7
10. Heather Pittman	Kilkenny Jr., MN	11.0

By now everyone should be getting a good case of spring fever — at least ones like me, that are not fortunate enough to have indoor courts or balmy winters. As it is every spring, I wonder if I can even pitch a shoe, but can hardly wait to try.

The following question was sent in to the editor and on to me although it is covered in the red CL/LG Guide Book, on page 4, Article IV, paragraph C. I will answer it here.

**Question:** How much will it cost and how does a person change from a CL/LG Only membership to a "full" NHPA membership.

**Answer:** Any person that has a current CL/LG membership card and later decides they want a "Full" NHPA membership must send their CL/LG card and \$4.00, (difference in the cost of the two cards) plus their state dues to their state/charter secretary. The secretary would then send this person their "Full" NHPA/State card.

**Example:** \$3.00 sanction dues + \$2.00 insurance fee = \$5.00 (the cost of an adult CL/LG Only card) "Full" NHPA: \$7.00 dues + \$2.00 insurance fee = \$9.00 (\$9.00 minus \$5.00 = \$4.00 difference + your state dues)

To aid state secretaries in this transition — the canary copy of the 3-part membership form furnished to all sanctioned clubs by this office, should be sent to your state/charter secretary. This gives them a record of who has paid what and shows that anyone wishing to change cards has paid \$3.00 toward the NHPA dues and the \$2.00 for insurance. No one is to pay the insurance twice in any given year. The state secretary would then report the change on their report to Donnie Roberts, sending only \$4.00 to him, instead of the usual \$9.00.

The above question points out some confusion and is a good opening for a poll that I would like all to respond to. Your opinions are wanted and will be considered in making the final decision.

Having already heard from some that are in favor, a change is being

discussed as possible to go into effect for 1990. It would be: to do away with the CL/LG membership card completely and have only one card -which would be a "Full" NHPA card for all sanctioned club members at the normal fees of \$9.00, which would include insurance. It seems that there has always been considerable confusion with the two card system and what the CL/LG card was good for. If approved, this change would do away with all such confusion and every member would be able to participate in any NHPA sanctioned or open event, anywhere, or just continue to pitch in sanctioned club/league events only if they so desired. The sanction program would still be run from this office, but all dues/ins. fees would be paid to and membership cards purchased from your state charter secretary. An annual membership report and all other required forms would still be sent to me and all sanction CL/LG awards still come from here.

I will look forward to receiving comments on this matter. *Let me hear from you.*

**NHPA Sanctioned Club  
National Director  
Beverly "Bev" Born  
RR 2 Box 198-A  
Shattuck, Oklahoma 73858  
Home (405) 938-2406**

*I'll be glad when it's Spring  
so I can get in the swing  
of pitching horseshoes once again.  
Though I'm getting long  
in the tooth,  
to tell you the truth,  
wanting ringers each pitch is no sin.  
So I hope that next summer  
will not be a bummer,  
and I'll make lots of ringers  
....and grin.*

**Harvey Robertson  
Des Moines, IA**



# News Releases

## INDEPENDENCE H.S. CLUB MISSOURI #83-C-108

We joined the sanctioned club/league program in May of 1983, being the first in Missouri. Starting with a membership of 48, in 1988 we had grown to 94, all of whom were "Full" NHPA members. We hold two leagues per week from May to Sept. playing 50 Shoe Countall. Awards were given to:

League Champs: **Bob Johnson, Ken Holmes, David Henderson and Lonnie Massey.** Individual Champs: **Al Gwinn and Bob Johnson.** Sportsmanship: **Pam Henderson and Ted Young.** Rookie: **Ken Holmes and Grant Allen.** High over Avg.: **Pam Henderson & Marvin Johnson.** High Game & High Avg.: **Lorie Meier and Ron Frakes.** Most Improved: **Lonna Louderback and Estell Clevenger.**

Looking forward to another good year, we invite all in this area to come join us. Contact **Alvin Gwinn**, 916 S. Logan, or **Wayne Henderson**, (816) 796-4360, Independence, Missouri, 64050.

## TRI-COUNTY #82-C-116 WEST VIRGINIA

The YWCA, of Marion County, is co-sponsoring NHPA sanctioned league play, along with the Tri-County Club. In addition to weekly league play, monthly tournaments are scheduled on their indoor courts. Anyone interested in either/or both of these should contact the club director, **Charles Bunner** at 366-7986, or drop by the multi-purpose YWCA building, on Pleasant Valley Road, on Thursday evenings. Spectators are always welcome. Having membership in the NHPA sanctioned club/league program provides an opportunity for each member to compete for NHPA awards and national recognition.

One cannot find a less expensive recreational activity, one that does not require the use of paid umpires or referees and yet a sport for the entire family that encourages playing together and requires mild exercise.

Rewritten from an article by Charles Bunner and published in the Times-West Virginia 12/29/88

## CENTRAL IOWA TRAVELING LEAGUE #80-146

Pitching from May to August with 9 teams of 4, at various sites in our surrounding area, we have great times in our "have fun" league. Four new rookies joined us in 1988 and we are planning on a "Pitch For-Fun Day and pot luck supper this year to celebrate our 10 years of continuous sanction, by inviting all past, present and hopefully more new members for one great day of pitch-in' and fun. If interested in becoming a part of this great sport, please contact — **Jack Draper** (515) 285-2717.

## Royal Canadian Legion #84c16 ONTARIO, CANADA

Our Handicap League played at Woodlawn, Ontario and a banquet was served at the Royal Canadian Legion, Branch 616. The Legion President was on hand to present the League Champ, **Jack Cain** with a plaque and NHPA awards were given out by **Mrs. Betty Watters, Mike Kelly** and **Patrick O'Toole.**

High Avg. and High Game: **Steve Tompson.** High over Avg: **Patrick O'Toole.** Sportsmanship: **Wiggy Runtz.** Rookie: **Alfred Marquardt.** Most Improved: **Mike Kelly.**

Patrick would like to invite more of our Canadian friends to join this summer time league. Call him after the 1st of June at (613) 832-3443.

## KITSAP COUNTY H.S. CLUB #88-C-10 WASHINGTON

We had a very good first year in the sanctioned club/league program and hope to encourage more people into our club in 1989. Our three leagues ran from April to Sept. with 33 members. Awards were: Lg. Champs: **Art Sperber, Al Ginder and Bob Clark.** High Game Scratch: **Bob Clark, John Norris and Burl Matteson.** High Game w/Hdcp: **Leon Kastusak, Lambert Narlock and Dick Dillenburg.** Most Improved: **Carol Sperber, Harvey Benson and Robbie Robinson.** Sportsmanship: **Dick Dillenburg, Harold Adkisson and Bonnie Lewis.**

Anyone wishing to join us for the '89 season, please contact **Bonnie Lewis** (206) 373-6032.

## HALF MOON BAY CALIFORNIA #87C-266

Results of 1988 Spring League Singles and Fall Doubles, sponsored by the NHPA and American Legion, Post 474.

Singles: **Bill Terry.** Doubles: **Ted Ashley, Gary Johnson and Steve Sunsert.** High Avg: **Jack Sorg and Bill Terry.** High Game: **Jack Sorg and Justin Terry.** High over Avg: **Jon Canja and Justin Terry.** Most Improved: **Jon Canja, Bob Becker, Maggie Marsh and Foa Remillong.** Rookie of Year: **Jim Hess and Ted Ashley.** Sportsmanship: **John Becker and Foa Remillong.**

Other top awards won by club members in 1988:

1st World, Boys Class B: **B.J. Terry.** 1st Calif. State Champ, Class H: **Bill Terry.** 1st N. Calif., State Champ. - Class P: **George Brotherton.** 1st N. Calif., Boys Class D: **Justin Terry.** 1st N. Calif. - Boys Class E: **Silvio Modena.**

## RAYNHAM HORSESHOE CLUB #85-C-63 MASSACHUSETTS

The Raynham Horseshoe Club is small and only has 4 horseshoe courts but after its fourth year, it is showing more strength and cohesiveness than ever before. Small groups have an advantage in that everyone is visible and more seem to help out. The 1989 season promises to be the most active with new president **Joe Duarte** and new treasurer **Ernie Correia** leading the way.

The 1988 co-champions were **Roy Robertson** and **Ernie Correia** who won lined jackets for their winning efforts. They defeated runners-up **Jane Dutra** and **Debby Michaud** by one point in the final game of the season to break a tie. **Roy** also received the High Average award for the league with a 30.1% while **Ernie** easily earned the Most Improved award. Rookie of the year was a new NHPA member, **Bob Ouellette** and the Sportsmanship award went to **Debby Michaud.**

All awards were presented at a banquet held on October 15, 1988.



# The Toll of Time

## James P. Styles

With deepest sorrow, the members of the Merrimack Horseshoe Club report the passing of James P. Styles, at the age of 66, on February 17, 1989, following a brief illness due to cancer. Jim was proud to have served as a World War II Marine who fought in the Battle of Okinawa.

In 1980, the NHPA accorded national recognition to Jim when he received the Sanctioned Club Program's Sportsmanship Award. An avid pitcher and supporter of the NHPA, Jim had converted his former auto-body shop into two indoor courts. During the past decade, as frequently as four nights a week and Sunday afternoons, many pitchers from the NH-Mass. area have been fortunate to pitch on a regular basis during the inclement winter months.

Jim served as both President and Treasurer of the NHHPA. For many years the Merrimack, NH and Nashua, NH leagues benefited from Jim's unstinting devotion as treasurer and statistician. He was also their Tournament Director. Jim's

countless craftsmanship contributions to both leagues, including 12 additional Nashua courts will perpetuate his memory.

Jim gave freely of his skill and interest in fostering our sport, and he will be long-remembered and much-missed by his many friends and associates. To his sons James, Timothy, and Philip, and to his daughter Patricia, the NHPA and the NHHPA extend their sympathy and deepest condolences.

## Mabel Nelson

Minnesota Horseshoe Pitchers were saddened to hear of the sudden passing of Mabel Nelson, who passed away January 19, 1989 at the

age of 57 years, during an Angiogram test in a hospital. Mabel was one of the earlier Lady Pitchers who pitched both in the Minneapolis and Bloomington leagues. Her 1st World Tourney was in Iowa in 1978 and she pitched in Huntsville, AL twice and was Minnesota Secretary and Treasurer at the World Tournament in Genola in 1981. Also on the Friends of Horseshoes Committee, she pitched in the Minnesota Farmfest in 1976 and had the pleasure of practicing with Ruth Hangen, the Ladies Tournament winner.

The heartfelt sympathy of the NHPA and the MGSHPA is extended to her loving husband, Dwaine, and many bereaved loved ones.

## A Special Thank You

from Dave Loucks, *Newsline* Editor and Publisher

Many of you have taken the time to write me a few lines of thanks about *Newsline*. Since many hours and miles per month have been added to my busy schedule, as NHPA President, I sincerely appreciate hearing that my efforts to upgrade our magazine are meeting with your approval. While I imagine some may still prefer the old format, all letters received so far have been complimentary. Let me share a few comments with you.

"The *Newsline* is great. Thank you from all horseshoe pitchers..."

—George Bradfield, Atlanta, GA.

"Love it!!! Great job..."

—John Wilson, Marrero, LA

"*Newsline* is going to be a classy magazine..."

—Cliff Kenny, Collins, IA

"Just received *Newsline*, it's fantastic"

—Glenn & Louetta Stutzman, Gibbonsville, ID

"A beautiful magazine, another one of your jobs well done..."

—Leo & Helen Ouellette, Brooklyn, NY

"Very informative and pleasing to the eye. If I were to be critical at all, it would be for the printing of such old tournament results"

—Billie Sue Pennington, Stockton, CA

"Impressive, a publication subscribers will look forward to receiving."

—Don Muenchow, Mosswood Horseshoe Club, Oakland, CA

"It's great. Every member should receive it. Why not use some NHPA funds to accomplish this?"

—J.B., Columbus, OH

"*Newsline* is great. We now have a publication worthy of our sport..."

—Bill Perry, Bishop, CA

"I am impressed. Good luck and success in your endeavors as NHPA President and Editor of *Newsline*..."

—Rick Voshell, Prole, IA

"Just super, hope you get more subscribers. *Newsline* is really worth it..."

—Ernie Kim, Richmond, CA

"Enclosed is \$20 money order to renew subscription. Just received first copy of *Newsline* and it was great. Can't wait for next issue."

—Audrey & Bob Brownridge, Hamilton, Ont., Canada

"100% improvement - much more interesting - subscription renewal enclosed."

—Gary Mathison, Spring Valley, MN

"Please renew my subscription - I was going to drop the Digest, but I'm impressed by *Newsline*."

—Charles (Chick) Denk, Johnstown, PA

## N.E. OHIO TRAVELING LEAGUE #83L4

This league consists of 8 clubs with a combined membership of 80 members, making up 8 ten man teams, playing 50 Shoe Ct. — all from May to August, rotating play to the various club sites, located in Wooster, Stow, Solon, Chesterland, Painesville, Champion, Newton Falls and Burton. Not bad for a district that is seldom in the news. Oscar Manns leads the group with a 126 point average, high game of 140 pts. and high ringer of 90%. The Wooster Club ended up first after a play-off with the Solon Club. Most improved went to Bill Smith, Stow, High Game over Avg: Charlie Stiles, Newton Falls.

Anyone wanting to join our great group should contact: Wayne Luoma, Sr. at (216) 834-4238.



# More Hopeful Candidates

## Candidates for Fifth Vice President

### Gary K. Minnick Sr.

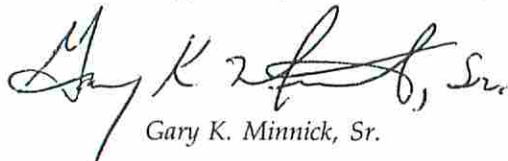
It is with great pleasure that I announce my candidacy for the position of NHPA 5th Vice President.

I have pitched horseshoes for many years and been actively involved with the NHPA and Arizona State horseshoe business for the last ten. In 1981, I was tasked with writing the Constitution and By-Laws for our State Association and in 1983, established the Arizona Horseshoe Pitchers Hall of Fame. I am a past president and current vice president of the Arizona HPA and have been State Champion 7 times. I enjoy the sport and meeting "Horseshoe People" immensely.

Along with the late Bud Fenimore, I organized the Tucson Horseshoe Club, rebuilt their courts and organized a Summer League Program. Two years ago after moving to Flagstaff, I got the county government to install six courts at the Fairgrounds and established a Summer League there as well as some good tournaments. Over the years, I have been involved with the "Valley of the Sun" tournament in Mesa and seen it grow to 200 participants and 6 days of pitching with yet bigger and better things planned for this event in the future.

The NHPA has taken great strides to solidify all Charters into one organization doing things the same way. I feel there is still room for improvement and would like to help with it. With 15 years of administrative and clerical background as a member of the Arizona Army National Guard, I feel my experience in communication, meetings, organizing and problem solving would serve me well if elected.

The 5th Vice President position is a most important task and I pledge to you, my support and efforts to accomplish the goals of the NHPA. I'd appreciate your vote in Spearfish.



Gary K. Minnick, Sr.

### Dick Hansen

I wish to announce that I will be a candidate for the office of 5th Vice President of the NHPA.

I am currently the President of the Wisconsin Horseshoe Pitchers Association and have been active in the sport both as a player and promoter for the past 20 years. I have been running 4 or more tournaments a year for the past 5 years and now our Wisconsin State Tournament for the third time.

As 5th Vice President, I believe that I can work well with the Regional Directors and relate back to the NHPA board their needs and ideas. The R.D.'s are the NHPA's best outlet to get information back to all local horseshoe pitchers. I have the desire to be a part in the promotion of our sport. The best way for me to do this is as 5th Vice President and Director of all Regional Directors.



Dick Hansen

### Gene Ficek

At this time I am announcing my candidacy for the 5th Vice President of the NHPA.

I firmly believe that hard work and determination will always create positive results. I also feel qualified for this position and will do my best to constantly improve our sport.

My qualifications include:

- 1989 World Horseshoe Tournament Coordinator and promoter
- Organizer and promoter of the Spearfish sanctioned league and sanctioned tournaments in western S. D.
- Director of the 1983 State Tournament
- Instrumental in many S.D. State constitutional changes
- Previous work experience with regional directors
- Past officer of local and state associations
- College graduate
- U.S. Navy Seabees and Vietnam Veteran
- Horseshoe pitcher in organized play for the past 15 years.
- Self-employed businessman for the past 17 years

Yvonne and I have been married for 21 years and have 2 daughters, Suzanne and Lisa, who are in college.

I have worked in all aspects relating to the sport of horseshoes including court construction, promotion and mountains of paperwork. I am a strong supporter of NHPA and ask for your vote in Spearfish so I can continue to help NHPA in its constant promotion and progress.

Thank you,



Gene Ficek



# Tournament Travel Calendar

The following is a chronological list of weekend or major events scheduled during the next two months. It is to assist those of you who travel out of area. *Newsline* will update this list each publication with known and reported NHPA-sanctioned events, subject to space limitations. Complete state schedules should be obtained from the individual charter.

Prepared by Dave Loucks

## APRIL

- 1: Knaub Arena, CO, April Fool's Open, Don Schneck 303-980-5781
- 1: Huntsville, AL, M. Connally Open, Paul Gibson 205-582-4926
- 1: Ukiah, CA, Ernie Hall Mem. "B" Open, Jack Fravel 707-462-3775
- 1-2: Reedley, CA, % Mix Open each day, Chuck Seal 209-638-5206
- 1-2: Hamilton, Ont., Canada Easter Doubles, Bob Fanjoy 416-561-4344
- 2: Ukiah, CA, Mildred Hall Memorial Open % mix, Jack Fravel 707-462-3775
- 2: Seaside, CA, Open W, Genevieve Lavett 408-899-3246
- 2: San Bernardino, CA, A&K Gregson Open, J. Schneider 714-826-0684
- 8-9: Bakersfield, CA, Open each day, J. Schneider 714-826-0684
- 8: Santa Rosa, CA, Y. Mauzey Open w % mix, Eldon Bryhan 707-546-5444
- 8: Turlock, CA, "C" Men's Open, Carol Casados 209-723-8465
- 8: Sarasota, FL, M. Gillispie Memorial Open, Paul Scheub 812-924-4430
- 8: Beverly Hills, FL, Center of World Open, Ralph Cullum 904-726-1396
- 8: Homewood, AL, Festival Tour, O.A. Lindsey 205-871-2071
- 8-9: Portsmouth, VA, John Shaw Open, Al Foley 804-485-1069
- 9: Ukiah, CA, "B" Open WJ % mix, Jack Fravel 707-462-3775
- 9: Sacramento, CA, L. Wanner Men's Open, Leo Wanner 916-383-5644
- 15-16: Yolo, CA, Hawley Open, Elmer Wilson 916-756-1980
- 15-16: Santa Barbara, CA, Open, J. Schneider 714-826-0684
- 15-16: San Antonio, TX, State Doubles, Geri Macha 409-335-4228
- 15-16: Hamilton Ont., Canada International Classic, Bob Fanjoy 416-561-4344
- 15: Moulton, AL, Moulton Open, Darrin Melson 205-974-5656
- 15: Bradenton, FL, Pat O'Toole Open, Pat O' Toole 813-755-9359
- 16: Knaub Arena, CO, IRS Open, Dale Boss 303-776-7977
- 16: San Jose, CA, Don Titcomb Open, Sy Sauer 408-266-9981
- 22: Statesville, NC, Dogwood Festival, PR with J. Springer 704-872-5659
- 22: Riverside, CA, D. Brawley Open, J. Schneider 714-826-0684
- 22: Huntsville, AL, Paul Gibson Open, P. Gibson 205-582-4926
- 22: Orlando, FL, Florida State Closed, M. Grubb 407-269-4138
- 22-23: Sturtevant, WI, Jr. Scholarship, PR with R. Hansen 414-835-1321
- 22-23: Stockton, CA, Palmer Open each day, M. Schultz 209-465-0156
- 22-23: Uniontown, PA, J. Tarayko Memorial, PR with J. Iacconi 412-785-8056
- 29: Clearwater, FL, Charley's Open Hdcp., Ed Senger 813-726-6616
- 29: Oakland, CA, Admiral Nimitz "C" Men, Ernie Kim 415-232-9225
- 29-30: Petersburg, VA, Circle K Spring Open, George Wall 804-733-5099
- 29-30: Sacramento, CA, Western States Men Open, L. Wanner 916-383-5644
- 29-30: Boron, CA, LaMoureaux Open \$, PR with D. LaMoureaux 619-762-5754
- 29-30: Austin, TX, Bill Twoomey Classic, Geri Macha 409-335-4228
- 30: Knaub Arena, CO, Spring Open, Paul LaCrosse 303-741-2358

## MAY

- 6: Woodward, OK, Mazio's Pizza, Lynda Frederick 405-921-3227
- 6: Scottsboro, AL, Jim's Courts Open, Jim Harris 205-582-6239
- 6-7: Bastrop, TX, Lost Pines Classic, Geri Macha 409-335-4228
- 6-7: Hamilton, OH, Hamilton Open, PR w/Jay Pozz 513-844-6694
- 6-7: Hamilton, Ont., Canada F. Weaver Open, Bob Fanjoy 416-561-4344
- 6-7: Stockton, CA, Open % Mix each day, M. Schultz 209-465-0156
- 7: Waterloo, IA, No. Central IA Regional, Wil Foelske 319-987-2530
- 7: Seaside, CA, Open W, Genevieve Lavett 408-899-3246
- 13: Colusa, CA, Open Men, Joe Roberts 916-458-2627
- 13: Oregon City, OR, Old Timers Open, Irene Wiedrich 503-655-3138
- 13: Santa Rosa, CA, Hagerman Open % Mix, Eldon Bryhan 707-546-5444
- 13: Huntsville, AL, Shaneyfelt Open, Paul Gibson 205-582-4926
- 13: Ocean Springs, MS, Mixed Doubles, J. Walton 601-872-1209
- 13: Eau Claire, WI, Earlybird Open, PR w/C. Bestul 715-832-3603
- 13: Erie, PA, Cliff Walter Memorial, Jeff Wolford 814-796-3598
- 13-14: Winchester, VA, Apple Capitol Open, D. Merriner 703-662-5406
- 14: Oregon City, OR, Mixed Doubles, Irene Wiedrich 503-655-3138
- 20: San Francisco, CA, Golden Gate Classic, Bill Terry 415-726-5859
- 20: Enid, OK, Clarence Leavengood, Gary Maixner 405-493-2495
- 20: Manchester, IA, Spring Fling, Muriel Maurer 319-927-3256
- 20: Huntsville, AL, First Money Open, Paul Gibson 205-582-4926
- 20: Torrance, CA, L. Lifton Open \$, J. Schneider 714-995-1334
- 20: Marion Center, PA, Hilltop Open, Dwight Wetzel 412-397-2054
- 20: Bishop, CA, Mixed Handicap, Bill Perry 619-387-2252
- 20-21: St. Louisville, OH, Open, PR w/J. Mossholder 614-397-4405
- 20-21: Salisbury, MD, Wicomico Cty Open, J. Taylor 301-749-7527
- 20-21: Palermo, CA, Feather River Open WJ, T. Sylvester 916-589-4705
- 20-21: Berkley, MI, 6th Annual Invtnl, PR w/P. Wishon 313-288-6358
- 20-21: Grottoes, VA, Spring Open, Claude Gibson 703-249-4595
- 21: Boone, IA, Open Mixed, Virg Williams 515-432-5343
- 21: Burlington, IA, Cabin Fever Shootout, Dean Wehrle 319-752-2905
- 21: Vallejo, CA, Mayor Intintola Open, Vern Gosney 707-554-1519
- 21: Fontana, CA, Jerry Schneider Open, J. Schneider 714-995-1334
- 26-29: Fairmont WV, Fairmont Open, C. Bunner 304-366-7986
- 27: San Diego, CA, J. Snyder Dbls \$, J. Schneider 714-995-1334
- 27: West Union, IA, Mem Day Classic, Ray Kamper 319-633-2565
- 27: Des Moines, IA, W. Des Moines Mem, Rick Voshell 515-981-0326
- 27: Yuba City, CA, Benn Capp Mem. Open, Otis Hubbard 916-673-7552
- 27: Corvallis, OR, Joyner Mem. Open, Hazel Chaput 503-753-7982
- 27: Scottsbluff, NE, Tri-State Open, Dick Hanshaw 308-635-1904
- 27-28: Gillette, WY, Gillette Open, Alvina Zentner 307-682-1168
- 27-28: Lubbock, TX, Buffalo Open, Geri Macha 409-335-4228
- 27-28: OH, Harold Wolfe Mem., PR w/K. Waggoner 513-372-1550
- 27-28: Bishop, CA Mule Days, PR w/Vicky Oglesby 619-873-6666
- 27-28: New Holland, PA, Spring Open, PR w/H. Becker 717-665-5363
- 27-28: Beaver, PA, Beaver Open, Bob Lapping 412-846-0029
- 27-28: Wellesley, Ont., Elmer Hohl Classic, PR w/J. Markle 519-656-2271
- 28: Pleasanton, CA, Bill Brown Open % Mix, Lil Lloyd 415-793-0356
- 28: Ottumwa, IA, John Paxton Open, Charlie Foxx 515-684-6792
- 28: San Diego, CA, H. Harper Open, J. Schneider 714-995-1334
- 29: Pleasanton, CA, 5th Anl. Women's Tourn., Lil Lloyd 415-793-0356



# DEADEYE HORSESHOES

## NOW IN FOUR MODELS

	Price Per Pr. - Up to 12 Pairs	Price Per Pr. - 12 prs. & Over
CLYDESDALES	\$30.00	\$23.00 Pr.
N.T.	\$30.00 Pr.	\$23.00 Pr.
REGULAR	\$30.00 Pr.	\$23.00 Pr.
E-Z GRIP	\$35.00 Pr.	\$28.00 Pr.
"NEW" CLYDESDALE DF	\$35.00 Pr.	\$28.00 Pr.

### ALL "DEADEYES" IN VARIOUS WEIGHTS

UPS shipping included in new prices —  
excluding CODs  
add \$2.75 Continental U.S. ONLY.

### NO SHOES WILL BE SENT ON CONSIGNMENT

Missouri residents add 5.725% sales tax.

All "DEADEYES" are dead soft (curved part only)

All "DEADEYES" are guaranteed against breakage  
for 2 years from date of Original Purchase  
(NOT REPLACEMENT DATE)

Contact Bill Courtwright (ONLY) for special prices on rejects  
and returned shoes (NO GUARANTEE)

### DEADEYE Caps Available — \$5.00 postpaid

W. Courtwright 2250 North Lark Dr. Fenton, MO 63026 Ph: (314) 376-5222 (314) 677-2200 (8-5)	Walter Ray Williams, Jr. c/o Esther Williams 4300 N. Lason Lane Tucson, AZ 85749 Ph: (602) 749-8965 or (602) 749-8931
---	--

For nearest local NHPA sales outlet, contact:

#### NHPA NATIONAL BUYER

Edward A. Domey  
P.O. Box 298  
Sutton, MA 01590  
(508) 865-9477

ORDER DIRECT OR FROM AUTHORIZED NHPA DISTRIBUTOR

# Tournament Results

## -NORTHERN CALIFORNIA- Class Championships

### San Jose

Oct. 15, 1988 Sanc. #26-88-090

GROUP E-3-L	%
Jim Long	5-1 35.0
Wesley Neifert	5-1 33.6
Gordon Brown	5-1 32.3
Norm Hagey	2-4 27.3
Bob Chambers	2-4 23.6
Ceres Perry	2-4 22.0
Sam Watt	0-6 16.3

### GROUP F-1

George Brotherton	4-1 17.6
Steve Ornelas	4-1 16.0
Vince Eisma	3-2 22.8
Daniel Espino	2-3 12.8
Randy Daniel	1-4 17.6
Henry Clark	1-4 9.6

### GROUP F-2

Frank Westbrook	5-0 20.4
Chet Carter	4-1 18.8
Carl Dalcolletto	3-2 16.8
Glenn Jamieson	2-3 15.2
Ernie Kim	1-4 8.4
Orville Saffle	0-5 6.8

### Oct. 16, 1988

#### GROUP A

Walter Ray Williams	6-0 82.7
Don Titcomb	2-4 67.8
Richard McCutcheon	1-5 62.1

#### GROUP B

Jack Sorg	8-1 64.1
Walt Robinson	7-2 64.2
Mel Roberts	6-2 60.9
Dave Shelton	5-3 55.8
Verdan Zelmar	4-4 53.2
Fred Lavett	3-5 53.1
Emmett Schroeder	3-5 52.7
Ken Brown	1-7 44.8
Al Crabtree	0-8 35.3

#### GROUP C

Juke Basham	7-1 54.1
Joe White	6-2 54.2
Holland Payne	5-2 52.5
Carl Newsom	3-4 49.7
Marty Dunn	3-4 41.4
Jack Fravel	2-5 50.7
Walt Foreman	2-5 46.3
Noel Guy	1-6 44.1

#### GROUP D

Don Muenchow	7-0 45.2
Thor Jensen	5-2 44.2
Bill Chandler	5-2 40.9
Vern Gosney	4-3 36.3
Uel Stever	3-4 42.3
Vince Mauricio	2-5 38.6
Ben Curtis	2-5 31.1
Oscar Skanderup	0-7 29.3

#### GROUP E

Fred Jones	5-2 33.8
Larry Torres	4-3 35.4
Ron Tothomas	4-3 32.5
Gordon Brown	4-3 32.1
Roy Thomas	4-3 27.3
Jim Long	3-4 25.9
Wesley Neifert	2-5 30.8
Jim Kyker	2-5 25.8

#### GROUP F

Chet Carter	7-0 23.0
Frank Westbrook	6-1 17.1
George Brotherton	4-3 16.5
Vince Eisma	3-4 23.3
Steve Ornelas	3-4 17.0
Randy Daniel	3-4 12.4
Carl Dalcolletto	2-5 13.2
Glenn Jamieson	0-7 12.3

## B Open W J % Mix Yuba Sutter

Sept. 25, 1988 Sanc. #26-88-084

### GROUP B-1

Paul "Mo" McNally	5-1 56.6
Don Williams	4-2 52.6
Holland Payne	4-2 46.0
Juke Basham	3-3 44.6
Leonard Rood	2-4 50.6
Walt Foreman	2-4 48.0
Carl Newsom	1-5 44.0

### GROUP B-2

Joe Colt	5-1 53.3
Marilyn Brown	4-2 51.3
Lee Van Dalsen	4-2 46.9
Doyle Palmer	3-3 48.6
Joe White	2-4 49.0
Emmett Schroeder	2-4 47.3
Joseph Roberts	1-5 36.4

### GROUP B-3

Bud Grisaffi	5-1 48.0
Harry Slentz	4-2 42.6
Yosiko Palmer	4-2 41.6
Terry Wood	3-3 39.0
Mike Martinez	2-4 35.0
Gary Dillon	2-4 31.0
John Barney, Sr.	1-5 25.3

### GROUP B-4

Jay Bush	6-0 39.0
Grace Wenger	5-1 47.3
Lee Engers	4-2 31.6
Lillian Lloyd	2-4 29.0
Sylvan Stratton	2-4 27.3
Charles McDonald	2-4 26.0
Randy Jones	0-6 28.0

### GROUP B-5

Bill Dise	5-1 41.3
Ernie Harries	4-2 34.0
Jim Long	4-2 34.0
Marlin Goodyear	3-3 34.3
RJ Thomas	3-3 26.6
Gordon Brown	2-4 30.0
Sean McNally	0-6 22.3

### GROUP B-6

Fred Jones	6-2 26.1
Wesley Neifert	4-3 31.2
Bob Chambers	4-3 28.4
Jim Kyker	3-3 31.0
Susie Rains	3-3 25.3
Chick White	2-4 24.6

### Lyonal Clodfelder

1-5	26.0
-----	------

### GROUP B-7

Jim Garrett	5-1 35.6
Victor Nicoli	4-2 24.6
Ed Starsiak	4-2 21.3
Leo Wanner	3-3 19.6
Chuck Wenger	3-3 19.0
Dave Neifert	2-4 20.6
Randy Daniel	0-6 18.6

### GROUP B-8

Donny Williams	5-0 21.2
Michelle White	4-1 22.8
Glen Rains	3-2 11.2
Levi Wood	2-3 12.8
Paul Phares	1-4 12.4
Marion Hawley	0-5 10.0

## Dave Storck Open W J Yolo

Oct. 1, 1988 Sanc. #26-88-085

### GROUP A-1

Fred Lavett	6-1 58.0
Emmett Schroeder	5-2 54.2
Jack Sorg	5-2 53.1
Dave Storck	4-3 54.5
Mel Roberts	3-4 52.0



Cruz Sagasta Open W J			
Yolo		Sanc. #26-88-086	
Oct. 2, 1988	GROUP A-1	Emmett Schroeder	8-1 63.3
	Don Williams	7-2 62.2	
	Carl Gamma	4-4 46.7	
	Yvonne Mauzey	3-5 53.5	
	Leonard Rood	3-5 51.5	
	Mate McBride	3-5 51.5	
	Al Crabtree	3-5 50.0	
	Carl Newsom	3-5 48.2	
	Marilyn Brown	3-5 47.7	
	GROUP A-2		
	Mike Martinez	7-1 46.5	
	Don Purdum	6-2 37.2	
	Harry Slentz	5-3 42.0	
	Grace Wenger	5-3 40.9	
	Lee Engers	4-4 40.7	
	John Kincheloe	4-4 36.0	
	Gerald Hollman	3-5 31.1	
	Jay Bush	1-7 34.7	
	Janeen Curtis	1-7 27.5	
	GROUP A-3		
	Jim Garrett	6-1 41.1	
	Charles McDonald	5-2 34.8	
	Larry Torres	4-3 32.5	
	Mel Long Sr.	4-3 29.4	
	Jim Long	3-4 30.8	
	Greg White	3-4 28.0	
	RJ Thomas	2-5 29.1	
	Newton Graves	1-6 21.7	
	GROUP A-4		
	Marlin Goodyear	8-1 32.2	
	Mike Yandel	7-2 29.3	
	Mike Moreno	5-3 22.7	
	Gordon Brown	4-4 26.2	
	Pat Bryant	4-4 26.2	
	Bob Chambers	3-5 26.5	
	Cruz Sagasta	3-5 24.2	
	Ron Thomas	2-6 18.0	
	Dwain Hettinger	1-7 19.2	
	GROUP A-5		
	Ceres Perry	6-1 25.1	
	Bill Botelli	5-2 20.5	
	Chuck Wenger	3-4 22.6	
	Howard Bryant	3-3 22.3	
	June Kincheloe	3-3 18.3	
	Oliver Smith	2-4 19.3	
	Elmer Wilson	0-6 17.0	
	GROUP A-6		
	George Brotherton	5-0 22.4	
	Alex Yandel	4-1 26.4	
	Jack Strong	3-2 10.0	
	Roger Curtis	2-3 6.4	
	Bob Kincheloe	1-4 12.4	
	Rich Reeser	0-5 13.6	
	GROUP JUNIOR		
	Donny Williams	4-0 17.5	
	Howard Bryant III	2-2 12.5	
	Aaron Thomas	0-4 4.5	
	Deadeye Invitational		
	San Jose		
Oct. 1, 1988	GROUP A	W-L %	Sanc. #26-88-099
	Walter R. Williams, Jr.	14-2 80.0	
	Sharon Paddock	8-8 79.0	
	Don Titcomb	9-7 72.8	
	Diane Lopez	9-7 72.1	
	Billie Sue Pennington	9-7 71.2	
	Jesse Gonzales	7-8 70.0	
	Dave Loucks	7-8 64.0	
	Oct. 2, 1988		
	GROUP A		
	Walter R. Williams, Jr.	7-1 81.8	
	Sharon Paddock	6-1 79.0	
	Diane Lopez	5-2 77.7	
	Jesse Gonzalez	5-3 74.8	
	Dave Loucks	4-4 65.6	
	Don Titcomb	2-6 61.2	
	Billie Sue Pennington	1-6 64.3	

[illegible]



# Tournament Results

## -KANSAS CITY, MISSOURI-

### 1988 American Royal Horseshoe Classic

Oct. 7, 8, 1988 Sanc. #15-88-115

#### CLASS A

	W-L	%
Alan Francis	7-0	82.6
Jerry Holt, OK	6-1	69.7
Charles Killgore	4-3	69.1
Elwyn Cooper	3-4	65.4
Kenneth Pogue	3-4	63.8
Ron Frakes	2-5	61.1
M.O. Turner	2-5	60.1
Rex Robison Jr., NE	1-6	55.7

#### CLASS B

	W-L	%
Robert Barnes	6-1	68.4
Emery Brandt, NE	6-1	62.1
Ralph Funk, KS	5-2	54.3
Stan Griggs	4-3	58.2
Jim Mihura, OK	3-4	58.0
Jim Renfro	3-4	55.6
Jerry Kahle, OK	1-6	47.0

Barnes won playoff 41/44

#### CLASS C

	W-L	%
Hadley Reser	6-1	59.5
Gene Mosley	5-2	56.0
Earl Winston	4-3	59.1
Vernon Brooks, KS	4-3	52.8
Al Constance	4-3	50.6
Robert Outt, KS	4-3	48.5
Len Trowbridge, AK	1-6	43.7

#### CLASS D

	W-L	%
Wayne Trautwein	5-2	46.5
Donald Craig	5-2	51.3
Gene Fleek, KS	5-2	46.1
Bill Waisner	4-3	51.1
Steve Hrabovsky	4-3	48.5
Paul Wollenburg, NE	3-4	48.5
Guy Spittler, IA	2-5	46.0
Dean Renfro	0-7	33.6

Trautwein defeated Fleek and then defeated Craig.

#### CLASS E

	W-L	%
Floyd Green	6-1	55.2
Bob Renfro	6-1	44.4
C.W. Gutshall	5-2	47.2
Marvin Edson, NE	3-4	42.5
Jim Claxton	3-4	41.4
Clare West, NE	3-4	40.9
Terry Talley, KS	2-5	39.3

Green won payoff 42/10

#### CLASS F

	W-L	%
Jerry McCarter	5-2	43.8
G. Nichols Jr., AK	4-3	41.1
Edward Owen	4-3	40.7
Guy Tindler Jr., KS	4-3	37.8
Richard Pistole	4-3	36.3
Jim Gregory	3-4	36.3
Slim Allen, IA	2-5	41.2
Bill Reh, KS	2-5	36.7

#### CLASS F

	W-L	%
Kent Houston	6-1	45.3
Matt Fields	6-1	40.4
LeRoy Clevenger	5-2	43.1
Brian Turner	4-3	42.1
Leroy Dominique	3-4	34.8
John Eggleston	2-5	32.8
Buzz Dickson, KS	1-6	36.2
Jerry Griggs	1-6	26.4

Houston won a 40 shoe playoff 31/22

#### CLASS H

	W-L	%
Lloyd Constance	7-0	38.1
Jeff Harris, KS	5-2	36.9
Kent Armstrong	4-3	35.0
Russ Grooms, NE	3-4	35.3
George Weldon	3-4	34.3
Dwaine Warren	2-5	34.7
Bob Kinder, KS	2-5	32.6
Jack McKinney, NE	2-5	29.7

#### CLASS I

	W-L	%
Don Hanes	5-2	41.3

Eugene Newkirk	5-2	38.4
Ralph Monteil, KS	4-3	36.9
John Myers	4-3	36.0
Bill Chandler, KS	3-4	38.1
Ervin Peterson, NE	3-4	36.2
Dannie McDaniel	2-5	32.3
Don McTaggart, KS	2-5	32.0

Hanes won a 40 shoe playoff 37/16

#### CLASS J

	W-L	%
R. Burden, AK	6-1	39.7
Glenn Keeler	6-1	37.6
Leo Basler	5-2	40.9
James Hudson, IA	5-2	38.6
Frank Tinius, NE	3-4	31.2
Elmer Kirby	2-5	30.1
Al Holding, KS	1-6	14.7

Burden won playoff 43/34

#### CLASS K

	W-L	%
Paul Voelker Jr., KS	6-1	35.2
Frank Koehler, IA	5-2	36.3
Russell Rendell, KS	5-2	33.9
Bill Johnson	4-3	34.0
Joe Beem	4-3	32.5
Perry Mullen	3-4	26.8
Eugene Carter	2-5	29.5
Otha Ellerman	0-7	15.3

#### CLASS L

	W-L	%
Lenvil N. Elliott	6-1	37.0
Clarence Loyd, KS	5-2	35.2
Marvin Johnson	4-3	35.3
John Butler, KS	4-3	32.8
Don Van Wyk, IA	4-3	32.1
Walter Rethman, KS	3-4	30.5
Fred Guenther, NE	1-6	29.9
Ted Cates	1-6	27.9

#### CLASS M

	W-L	%
Don Clemens	6-1	36.7
Robert Hopkins, NE	5-2	32.5
Al Gwinn	5-2	25.9
Wilber Hodgson	4-3	28.6
Frank McKay	3-4	27.7
Delbert Pritchett	2-5	29.4
Ken Pfadenhauer	2-5	29.2
Danny Sease, IA	1-6	25.8

#### CLASS N

	W-L	%
Dale Talbert	6-1	37.9
Billy Garner	5-2	31.0
Adolph Hendricks	5-2	30.6
Gerald Schulte	4-3	34.5
Ken Hale	3-4	32.4
Robert McGregor, IA	3-4	24.9
Gary Block	2-5	19.6

#### CLASS O

	W-L	%
Charles Beeson, NE	6-1	36.7
Fred Nelson, OK	5-2	26.9
Herman Pirch	5-2	24.4
Ray Carpenter, KS	5-2	20.7
Leslie Hottle, IA	3-4	17.9
Allen Barker	2-5	21.3
Virgil Packard, NE	2-5	16.7

#### CLASS P

	W-L	%
Lyle Samuelson	5-0	30.1
Russell Box	3-2	18.5
George Self, AK	2-3	23.8
Charles Cross, IA	2-3	22.0
Irv King	2-3	19.6
Don Roberts	1-4	17.4

#### CLASS Q

	W-L	%
Charles Tuttle	7-0	24.2
Sam Kidd	6-1	25.4
Larry Lowery	4-3	21.3
Gene Dixon, KS	4-3	18.2
Tim Warden	3-4	17.9
Reese Warden	3-4	14.2
Arthur Miller	1-6	15.3

#### CLASS R

	W-L	%
Donald Lickteig, KS	5-0	23.5
Stanley Gwin	4-1	20.6
Raymond Phelps	3-2	16.1
Johnny Daniel	2-3	14.9
Bob Blumenhein	1-4	10.5
R.W. Johnson	0-5	3.9

## JUNIORS

	W-L	%
Brett Francis	3-0	47.4
Dewayne Easter	2-1	8.3
Scott Babcock	1-2	3.1
Chris Easter	0-3	5.1

## WOMEN A

	W-L	%
Vicki Winston	5-0	76.6
Loree Meier	4-1	62.6
Betty McGregor, IA	3-2	53.3
Joyce Francis	2-3	53.3
Sally Grooms, NE	1-4	47.4
Pam Henderson	0-5	43.1

## WOMEN B

	W-L	%
Sharon Armstrong	6-1	37.6
Jane Barnes	5-2	35.4
Brenda Mahnken	4-3	31.4
Iris Harris, AK	4-3	28.2
Judy Waisner	3-4	29.7
Shirley Keeler	3-4	27.6
Susan Latham	2-5	27.7
Francis Dominique	1-6	24.7

## -LINCOLN, NEBRASKA-

### Jack McKinney's Old Style Invitational

Sept. 10, 11, 1988

Sanc. #14-88-081

#### CHAMPIONSHIP

	W-L	%
Dale Seybert	7-0	64.3
Emery Brandt	6-1	59.3
Don McCance	4-3	59.4
Sterling Helvey	4-3	40.0
Rex Robison	3-4	49.3
Clare West	3-4	43.3
Fay Kapke	1-6	45.3

#### CLASS A

	W-L	%
Larry Holmes	7-0	41.3
John Ingram	5-2	42.7
Marvin Edson	5-2	40.3
Pat Allen	4-3	40.3
Dan Brandt	3-4	32.0
Don Abernathy	2-5	36.3
Arlon Bartels	2-5	35.0

Leonard Werner - forfeit

#### CLASS B

	W-L	%
Ervin Petersen	6-1	33.4
Merle Cottle	4-3	35.4
Kent McCance	4-3	35.1
Ned Jewett	4-3	29.4
Chuck Brandt	3-4	26.6
Charles Couch	3-4	24.6
Dennis Rusho	2-5	26.9
Bob Dietze	2-5	25.1

#### CLASS C

	W-L	%
Terry Martin	6-1	29.0
Loren Katt	5-2	16.0
Virgil Packard	4-3	23.0
Fred Beeson	4-3	21.7
Jerry Henrichs	4-3	18.3
Lee Bussard	3-4	17.0
Art McKinney	2-5	16.7

#### DOUBLES

	W-L	%
Abernathy-Werner	13-2	43
Holmes-Rusho	11-4	100
McCance-McKinney	11-4	87
West-Dietze	11-4	70
Edson-Martin	10-5	92
Helvey-D. Brandt	9-6	135
K. McCance-Bartels	8-7	168
Ingram-C. Brandt	8-7	156
Cottle-Petersen	7-8	195
Seybert-Katt	6-9	225
E. Brandt-Bussard	6-9	181
Robison-Henrichs	5-10	229
Allen-Jewett	5-10	207
Kapke-Beeson	5-10	194
Rosenbohm-Packard	5-10	171

## MISSISSIPPI

### 1988 Championships

Sanc. #31-88-026

#### WOMEN'S CLASS A

	W-L	%
Ann Williams	6-1	50.0
Jo Tisbury	3-4	44.5
Robbie Fowler	5-2	43.0
Joyce Carvalho	4-3	41.1
Pat Lutz	4-3	39.3
Velma Tatar	3-4	34.5
Henri Jones	2-5	28.5

#### CLASS B

	W-L	%
Mary Turner	5-0	43.2
Sharon Garner	3-2	27.1
Pat Miller	2-3	23.9
Paula Clark	2-3	20.0
Phyllis Schroeder	3-2	19.1

#### CLASS C

	W-L	%
Sheri Fayard	4-1	28.1
Fern Weekly	3-2	27.6
Darlene Roll	4-1	24.6
Lil Bayley	1-4	18.0
Diana Hill	0-5	17.9

#### MEN'S CLASS A

	W-L	%
Charles Albert	7-0	56.6
Cotton Bosarge	6-1	38.9
Mickey Kramer	3-4	34.6
Gene Stork	2-5	33.6
Richard Tatar	1-6	27.9
Joe Lutz	2-5	26.5
Ted King	2-5	26.5

#### CLASS B

	W-L	%
Ralph Webb Jr.	4-1	39.4
Jody Entekin	5-2	37.8
Doyle Pauley	3-2	25.0
Dick Miller	3-2	22.7
Ken Walker	1-4	15.6
Carl Clark	2-3	20.5

#### CLASS C

	W-L	%
Don Eaton	3-2	22.0
Basil Huffman	3-2	20.5
Dennis Stotler	3-2	20.0
Mike Uher	3-2	19.2
Wally Page	3-2	17.2

#### CLASS D

	W-L	%
Leonard Wolfe	6-1	30.9
Rodney Fayard	4-3	22.6
Speck Horner	6-1	22.0
Paul Douglas	5-2	14.4
David Clauer	3-4	14.4
Hal Schott	3-4	10.4
Ralph Sherman	5-0	21.3
Mike Clark	3-2	11.3
John Bradley	3-2	8.4
Dan Schroeder	3-2	7.6



## —NORTH CAROLINA—

### Statesville Autumn Open

Sept. 24, 1988 Sanc.#29-88-006

Championship Class	W-L	%
B.J. Thomas	8-1	76.5
Dick Martino, TN	7-2	71.6
Van Fox, TN	7-2	66.9
J.B. Fuller	5-4	70.7
Paul Stewart	5-4	70.7
Roger Norwood, TN	5-4	67.8
Joe Young	3-6	66.6
Norman Kelly, SC	3-6	63.9
A.J. Nave, SC	2-7	67.2
Cager Lawson	0-9	62.5

CLASS A	W-L	%
Lenwood Conner, VA*	5-2	62.7
James Coggins*	5-2	60.2
Clyde Southern*	5-2	59.2
Moody Altizer, VA	4-3	56.8
Billy Thore	3-4	52.8
O.D. Lebow, TN	3-4	54.7
Donald Douglas	2-5	52.2
Teddy Vernon	1-6	42.3

\*Three way pitch off

CLASS B	W-L	%
James Sumlin	6-1	57.2
Calvin Motsinger	6-1	61.5
Arnold Griffith, W.VA	5-2	56.1
Douglas Shear	3-4	54.7
Roy Littrell	3-4	52.4
Buck Prewette	3-4	51.1
Charles Jarnigan, TN	2-5	49.7
David Solesbee, SC	0-7	38.9
Sumlin won pitch off game		

CLASS C	W-L	%
Ricky Bolick	6-0	56.7
Robert Toney, VA	5-1	52.9
Pete Crews	4-2	48.6
Gilbert Moore	3-3	39.0
John Carpenter	2-4	40.2
Bill Westbrook, SC	1-5	32.9
Theiron Hinshaw	0-6	27.3

CLASS D	W-L	%
Gary Cholberg, VA	5-1	41.9
Frank Brewer	5-1	38.4
John Boone	4-2	34.5
Gerald Ramey	3-3	37.1
Carl Moore	2-4	33.8
David Lloyd	1-5	31.7
Hugh Cranor	1-5	27.3
Cholberg won pitch off game		

CLASS E	W-L	%
Harry Mills, W.VA	4-0	43.2
Leon Burton	4-1	32.9
Bill Arms	3-1	40.1
Oren Solesbee, SC	3-2	36.3
Larry Sparks	2-2	37.5
Tommy Gann	1-3	27.2
T. Burchett, VA	1-4	32.9
Peter Gravley, VA	0-5	27.0

CLASS F	W-L	%
Buck Mann, W.VA	5-0	30.8
Thomas Eaves, VA	3-2	23.5
James Davis, TN	3-2	23.1
C. Worsham, VA	2-3	20.8
Ronald Eaves, VA	1-4	27.8
Willie Allen	1-4	20.5
Rain caused some games not to be completed.		

Junior Boy's Class	W-L	%
Lenwood Conner, VA	4-0	47.6
Brandon, Mills W.VA	2-2	33.9
Shea Lebow, TN	0-4	5.8

WOMEN'S CLASS	W-L	%
V. Cholberg, VA	5-0	58.8
Rebecca Chapman	4-1	50.4
Carla Fortner, W. VA	3-2	50.8
Sheila Bolic	2-3	44.0
Maxine Mann, W.VA	1-4	50.7
Ruby Mills, W.VA	0-5	22.6

## —OHIO—

### The Piqua Horseshoe Club "Special" Open

Sept. 24, 25, 1988 Sanc.#21-88-025

CLASS A	W-L	%
Robert Gray	6-0	51.5
William Voelker	3-2	50.4
Bob Meyer	3-2	48.9
Ken Walters	2-3	48.0
Stuart Webb	2-3	44.5
Dick Mays	0-5	28.1

CLASS B	W-L	%
Dick Honigford	4-1	51.3
Ed Andrus	4-1	45.7
Isaac Combs	4-1	50.8
Bucky Walters	2-3	41.7
Wm. Robinette	1-4	42.0
Wm. Hughes	0-5	32.0

CLASS C	W-L	%
Herb Gladman	6-1	31.0
Wayne Ferguson	5-2	29.7
Dick Mays	5-2	29.7
Joe Hart	4-3	23.1
Wes Welbaum	3-4	24.3
Gary Welbaum	3-4	19.6
Nelson Snider	2-5	21.2
N. Henderson (pacer)		4.6

CLASS D	W-L	%
Dave Huff	6-1	20.8
Greg Robertson	5-2	22.1
Bill Larger	5-2	18.8
Ollie Larger	4-3	25.7
Wayne Godwin	3-4	20.7
Ed Landwehr	3-4	10.4
Ed Ehem	2-5	7.6
Nick Henderson	0-7	6.5

JUNIOR CLASS	W-L	%
John Walters	5-0	75.9
Jim Walters	4-1	61.1
Jenny Walters	3-2	31.6
Julia Walters	2-3	31.7
Eric Higgins	1-4	15.6
Jenny Mays	0-5	2.8

### Sam Goodlander Cincinnati

Nov. 12-13, 1988 Sanc.#21-88-045

MEN'S A	W-L	%
Gordon Meece	6-1	64.8
Ric Tebelman	6-1	66.0
Bill Henn, KY	5-2	61.0
Ken Kugler	4-3	53.9
Wally Gray	3-4	59.3
Denny Malone, KY	2-5	56.5
John Hughes	1-6	53.0
Fran Rogg, KY	1-6	44.2

MEN'S B	W-L	%
Steve Powers	6-1	47.2
Cliff Henn, KY	4-3	52.3
Bill Boetticher, IND	4-3	50.9
Wayne Halcomb	4-3	49.4
Walter Stroud	4-3	40.6
Ken Farley	3-4	45.4
Harry McCann	2-5	43.3
Lonnie Mason	1-7	40.1

MEN'S C	W-L	%
Ed Henn, KY	5-2	42.0
Ed Mason, KY	5-2	38.7
Nick Martini	4-3	44.7
Wiley Brown	4-3	42.9
Paul Kurlman	4-3	36.7
Norm Fraley, KY	3-4	37.5
Len Voelker	3-4	36.1
Warren Tarvin, KY	0-7	30.4

MEN'S D	W-L	%
Ron Jefferson, KY	7-0	44.3
Art Centers	5-2	40.5
Ken Knight	5-2	38.2
Bill Kenton, KY	4-3	32.1
Monty Roberts, KY	3-4	35.0
Hank Hayes	2-5	31.0
Dave Faehr, KY	2-5	25.1

Jerry Feldman	0-7	30.0
MEN'S E		
Jim Anderson	6-1	39.6
Walt Holbrook	5-2	31.9
Jim Bauer	5-2	29.8
Byron Sowder, KY	4-3	27.0
Matt Guy, KY	3-4	31.3
Jim Palmer, KY	2-5	35.9
Jerry Keck	2-5	25.4
	1-6	23.2

MEN'S F		
Don Long	6-1	32.5
Mike Dawn, KY	6-1	30.6
John Ruark	5-2	26.5
Dave Blackwell	4-3	30.7
Jerry Burke	3-4	26.2
Tom Rogg, KY	2-5	29.2
Gary Moore, KY	2-5	23.2
Art Guy, KY	0-7	17.4

MEN'S G		
Bob Snyder, KY	6-1	27.0
Tex Strickland	5-2	27.3
Russell Eads	4-3	29.8
Mike Martini	3-4	21.0
Russell Miars	3-4	20.0
Bob Simmons	3-4	15.0
Len Hartman	2-5	19.2
Clarence Souder	1-6	15.0

LADIES A		
Donna McDaniel	4-2	40.1
Mary Ann Kemplin	4-2	24.5
Karen Rimer, KY	3-3	34.8
Joyce Beckman	3-3	32.5
Agnes Snyder, KY	3-3	30.5
Jackie Brewer, KY	2-4	32.4
Mary Martini	2-4	26.9

### Pop Johnson Memorial

Jan. 14, 1989 Sanc.#21-89-002

MEN'S A	W-L	%
Bill Henn, KY	6-1	63.4
Wally Gray	5-2	61.8
Gordon Meece	5-2	57.0
Ken Kugler	4-3	60.1
Lawrence Miller	4-3	58.8
Dave Keifer	3-4	53.2
Stan Lovelace, KY	1-6	48.3
John Hughes	0-7	51.8

MEN'S B		
Fran Rogg, KY	7-0	56.9
Cliff Henn, KY	6-1	58.2
Bill Boetticher, IND	3-4	49.4
Tony Hankins, KY	3-4	48.7
Lonnie Mason	3-4	47.0
J.C. Phipps, Jr.	3-4	40.1
Steve Powers	2-5	40.2
John Hankins, KY	1-6	41.6

MEN'S C		
Chick Henn, KY	7-0	46.0
Vince Stoner	5-2	47.2
Wayne Halcomb	4-3	43.0
Len Voelker	3-4	40.4
Bill Zoller	3-4	38.5
Len Martini	2-5	37.1
Paul Kurlman	2-5	36.7
Nick Martini	2-5	36.5

MEN'S D		
Mitch Duncan, KY	7-1	41.4
Ken Knight	5-2	47.5
Terry Market	5-2	38.7
Wiley Brown	3-4	44.7
Jim McBeth	3-4	42.8
Jim Anderson	3-4	42.0
Walter Stroud	3-4	38.6
Walt Holbrook	0-7	31.0

MEN'S E		
Monty Roberts, KY	4-1	35.7
Jim Elkins	4-1	34.6
Art Centers	3-2	26.6
Matt Guy, KY	3-2	25.2
Byron Sowder, KY	2-3	26.3
Bill Kenton, KY	0-5	20.7

MEN'S F		
Bill Beckman	7-0	39.1

Don Long	6-1	34.3
Jerry Keck, IND	5-2	37.1
Jim Bauer	4-3	23.7
Mike Dawn, KY	2-5	27.7
Ed Plank, KY	2-5	20.9
Art Guy, KY	1-6	25.7
Bob Simmons	1-6	16.5

MEN'S G		
John Ruark	6-1	30.2
Dave Blackwell	6-1	27.3
Russ Miars	5-2	26.5
Ed Bowden	4-3	31.4
Al Scheele	4-3	22.0
Mike Martini	2-5	18.2
Russ Eads	1-6	9.8
Jerry Feldman	0-7	14.4

MEN'S H		
Tom Rogg, KY	5-0	27.6
Len Hartman	3-2	16.4
Lonnie Turner, KY	3-2	9.7
Dave Hines	2-3	17.6
Larry Harris	1-4	16.3
Clarence Souder	1-4	16.2

LADIES' A		
Donna McDaniel	5-1	36.0
Jackie Brewer, KY	4-2	33.5
Karen Rimer, KY	3-3	32.8
Joyce Beckman	0-6	30.0

LADIES' B		
Barb Brookbank, KY	5-0	26.8
Dianne Pemberton, KY	4-1	19.0
Mary Jane Moose, KY	3-2	20.0
Cindy Kisse, KY	1-4	5.9
Cindy Hogg, KY	1-4	3.0
Theresa Schlemmer	1-4	2.5

YOUTH CLASS A		
Curt Meece	5-0	14.0
Bobby Martini	4-1	26.0
Michelle Beckman	3-2	3.0
Jimmy Beckman	2-3	3.0
Ken Cummings	1-4	2.0

## —ENID, OKLAHOMA—

### Enid Open

Sept. 24, 1988 Sanc.#15-88-211

CLASS A	W-L	%
Ronnie Frederick	4-1	65.0
Jerry Holt	4-4	68.0
Marvin Dowers	3-3	56.0
Tom Goff	3-2	55.5
Jim Crockett	1-4	48.0
Glen King	0-5	43.0

CLASS B	W-L	%
J.C. Bowen	4-1	46.5
Willard Brackhage	3-2	51.5
Charles Buchholz	3-2	40.5
J.C. Diedrich	3-2	38.0
Seth Maixner	2-3	36.5
Dean Campbell	0-5	27.5

CLASS C	W-L	%
Clyde Matthews	5-0	36.9
Harold Watkins	3-2	31.8
Jesse Afinowicz	3-2	28.7
Homer Cain	2-3	28.8
Vic Holmberg	2-3	23.8

CLASS D	W-L	%
Roy Privott	4-1	25.0
Gaylord Redermer	4-1	29.0
Zan Nelson	3-2	22.5
Don Blair	3-2	16.5
David Montgomery	1-4	12.5
Bob Shaw	0-5	11.0

CLASS E	W-L	%
Dale Curtis	5-0	13.0
Allen Christy	4-1	19.5
Ronnie Fields	3-2	12.5
David Montgomery	2-3	19.0
Don Bowles	1-4	7.5
Roy Reemts	0-5	5.5

WOMEN'S CLASS	W-L	%
Nancy Montgomery		10.7
Linda Shaw		5.7
Carol Afinowicz		5.3



# Tournament Results

JUNIOR GIRLS		
Rhonda Shaw	W-L	%
Brandy Afinowicz	15.0	3.2
JUNIOR BOYS		
Phillip Evans	W-L	%
Steven Montgomery	19.6	9.3
Brent Afinowicz	3.2	
PEE-WEE CLASS		
Chris Redermer	W-L	%
	15.0	

## SALEM, OREGON Salem Open Money Tournament

Sept. 10, 11, 1988 Sanc.#04-88-028

CLASS A		
Jerry Gorton	W-L	%
Marge McLeod	5-0	65.3
Eugene Sorenson	4-1	62.0
Lee Wallace	3-2	45.3
Larry Flanary	2-3	44.7
Phil Tyler	1-4	42.6
	0-5	37.3

CLASS B		
David Gorton	W-L	%
Ray Meyer	6-1	43.7
John Mikota	5-2	45.8
Len Christensen	4-2	43.0
Marvin Tatchio	3-3	43.0
Betty Tatchio	2-4	40.2
David Brown	1-5	39.1
	1-5	38.1

CLASS C		
Mary Mickle	W-L	%
R.E. Click	7-0	42.0
Jim Williams	5-2	39.6
Gilbert Morgan	4-3	33.8
Lloyd Kilgore	4-3	35.5
Marvin Berg	3-4	37.6
Esthel Benner	3-4	30.2
Kent Smith	1-6	28.4
	1-6	27.6

CLASS D		
Carl Hiatt	W-L	%
Dick Helm	7-0	42.2
Buck Sinyard	5-2	33.1
John Marcum	4-3	39.4
Dick Miller	4-3	34.1
Dave Sturdevant	3-4	32.4
Ben Goodling	2-5	27.9
Vern Wanless	2-5	27.8
	0-7	23.1

CLASS E		
Otis Huskey	W-L	%
Howard Barrett	6-0	31.1
George McLeod	2-4	29.7
Robert Wendling	2-4	24.2
	2-4	19.5

## PENNSYLVANIA Camp Hill Fall Open

Aug. 27, 28, 1988 Sanc.#17-88-030

CLASS A		
Art Tyson	W-L	%
Glenn Rubendall	7-0	72.9
Dan Beshore	6-1	65.2
Joe Schultz	5-2	59.4
Glenn Brown	4-3	55.6
Ed Bowersox	3-4	55.5
Dick Wilson	2-5	49.7
James M. Clippinger	1-6	50.6
	0-7	39.7

CLASS B		
Tom Decker	W-L	%
Don Dietz	6-1	54.6
Dean McCurdy	5-2	49.5
Al Long	4-3	55.5
Jack Swyers	4-3	48.5
Jack Myers	3-4	49.2
Guy Esh	3-4	45.2
S. Frankhouser	2-5	42.9
	1-6	43.5

CLASS C		
Al Yednock	W-L	%
Gerald Smith	5-2	44.9
Dennis Sieber	5-2	39.1
Ted Postupack	5-2	44.1
Dennis Lloyd	4-3	38.4
Jim Diehl	3-4	36.6
Wayne Brown	3-4	33.9
Dave Preston	2-5	28.6
	1-6	21.6

CLASS D		
Susan Preston	W-L	%
John Rothrock	7-1	41.8
Bruce Corl	6-2	42.2
Marlin Zimmerman	6-2	34.7
Mildred Boyer	4-4	33.3
Jean Long	3-5	31.8
Paul Crisamore	3-5	31.5
Jack Wallace	3-5	31.1
Harold Becker	2-6	30.1
	2-6	29.6

CLASS E		
Susan Preston	W-L	%
Lynn Carlin	6-1	45.8
Gene Oleski	5-2	36.0
John Zimmerman	4-3	40.2
Columbus Woods	4-3	38.4
Terry Haverstock	4-3	36.1
Robert Loncar	2-5	30.6
Wally Brown	2-5	28.9
	1-6	26.2

CLASS F		
Tony Carlin	W-L	%
Ron Rhoades	7-0	39.9
Rich Griffith	6-1	31.8
Robert Sheriff	5-2	29.3
David King	3-4	27.9
Ted Van Pelt	3-4	26.2
Ned Kinard	2-5	26.4
Ralph Weigel	2-5	16.9
	0-7	19.6

CLASS G		
Mike Fenton	W-L	%
Tom Baker	6-1	27.6
John Kehler	6-1	25.8
Norma McCurdy	6-1	24.0
Gerard Harris	4-3	28.3
Walter Burner	3-4	17.0
John Hoffmann	2-5	13.0
Wanda Simpson	1-6	15.1
	0-7	6.4

## TENNESSEE Autumn Classic Cookeville

Sept. 10, 1988 Sanc.#23-88-013

CLASS A		
R. Norwood	W-L	%
R. Price	5-0	71.8
L. Wyatt	3-2	63.4
H. Irwin	4-1	57.5
G. Bush	2-3	51.3
M. Bush	1-4	50.8
	0-5	46.7

CLASS B		
Jack Conner	W-L	%
S. Banks	4-1	49.2
G. Lewis	3-2	52.2
M. Bastain	3-2	48.8
R. Ward	2-3	48.0
O.D. Lebow	2-3	42.9
	1-4	41.6

CLASS C		
C. Jarnigan	W-L	%
P. Richardson	4-1	44.5
James Conner	3-2	47.2
J. Holmes	3-2	45.8
J. Freeman M.D.	3-2	38.3
M. Cooper	2-3	46.6
	0-5	31.4

CLASS D		
F. Templeton	W-L	%
F. Gaw	5-0	37.2
P. Hensley	4-1	37.8
F. Scott	2-3	30.5
W. Hesson	2-3	25.6
J. Thomas	1-4	24.6
	1-4	23.4

CLASS E		
H. Hensley	W-L	%
J. A. Holmes	4-0	32.9
C. Carroll	3-1	30.8
	2-2	23.7

T. Harmon	1-3	15.8
W. Farley	0-4	10.4
CLASS F		
T. Williams	W-L	%
Dana Ward	3-0	33.0
J. Davis	2-1	23.1
D. Henry	1-2	25.3
	0-3	11.1

## T.R. Little Tournament 1st Day

CLASS A		
W. Shaneyfelt	W-L	%
R. Norwood	5-0	69.3
D. Ward	4-1	73.7
R. Pruitt	3-2	63.7
J. Black	2-3	67.3
S. Smith	1-4	52.1
	0-5	50.5

CLASS B		
H. Irwin	W-L	%
G. Bush	4-2	54.7
L. Wyatt	4-2	51.6
J. Haire	4-2	45.0
G. Lebow	3-3	44.8
D. Roberts	3-3	40.0
J. Waters	2-4	46.4
	1-5	38.2

CLASS C		
M. Bastian	W-L	%
G. Whaley	5-0	54.8
J. Freeman	4-1	51.1
M. Bush	2-3	38.5
D. Barnes	2-3	38.3
G. Lewis	2-3	36.7
	0-5	30.3

CLASS D		
C. Jarnigan	W-L	%
B. Arms	4-1	51.0
J. Holmes	4-1	42.4
M. Cooper	3-2	41.9
D. Isaacs	2-3	43.4
C. Bennett	2-3	39.0
	0-5	22.4

CLASS E		
R. Bennett	W-L	%
H. Lones	5-1	32.9
N. Nave	5-1	30.6
J. Davis	4-2	35.2
J. Andies	4-2	27.4
T. Dishner	2-4	22.8
B. Dishner	1-5	18.1
	0-6	15.0

2nd Day		
CLASS A		
R. Pruitt	W-L	%
R. Norwood	4-1	72.4
W. Shaneyfelt	4-1	70.4
M. Bastian	3-2	67.9
H. Irvin	2-3	55.1
J. Black	1-4	58.1
	1-4	55.9

CLASS B		
O.D. Lebow	W-L	%
G. Bush	4-1	58.1
L. Wyatt	3-2	55.8
G. Whaley	3-2	54.0
J. Haire	2-3	54.7
C. Jarnigan	2-3	52.9
	2-3	51.8

CLASS C		
J. Freeman	W-L	%
D. Isaacs	5-0	49.2
J. Holmes	3-2	44.6
J. Adkerson	3-2	45.2
G. Lebow	2-3	46.4
M. Cooper	2-3	42.3
	0-5	41.2

CLASS D		
M. Bush	W-L	%
J. Waters	5-0	58.4
J. Ware	3-2	51.3
D. Barnes	3-2	45.7
H. Lones	3-2	42.8
R. Bennett	1-4	32.9
	0-5	28.7

CLASS E		
G. Lervis	W-L	%
D. Dishner	4-0	53.6
J. Davis	2-2	24.4
C. Bennett	2-2	20.7
T. Dishner	1-3	23.8
	1-3	21.0

## Elizabethton

Oct. 1, 1988 Sanc. #23-88-015

CLASS A		
D. Martino	W-L	%
R. Norwood	4-1	75.8
D. Ward	4-1	65.9
V. Fox	3-2	65.6
M. Bush	3-2	60.8
S. Smith	1-4	53.0
	0-5	55.4

CLASS B		
R. Bolick	W-L	%
H. Irwin	4-1	57.5
J. Haire	4-1	53.6
M. Bastian	4-1	52.1
G. Bush	2-3	47.7
M. Altizer - forfeit	1-4	52.6

CLASS C		
J. Conners	W-L	%
G. Whaley	3-2	54.1
G. Lewis	3-2	52.3
R. Livingston	3-2	51.1
J. Freeman	2-3	48.6
D. Isaacs	2-3	48.4
	1-4	48.5

CLASS D		
O.D. Lebow	W-L	%
R. Ward	5-0	57.2
M. Cooper	3-2	38.3
C. Jarnigan	3-2	37.1
D. Self	2-3	42.8
S. Foster	2-3	38.6
	0-5	29.5

CLASS E		
R. Hardin	W-L	%
B. Arms	4-1	39.8
C. Green	4-1	34.7
C. Cutshaw	3-2	37.5
N. Nave	2-3	36.3
C. Bennett	2-3	36.0
	0-5	24.1

CLASS F		
J. Davis	W-L	%
B. Ward	3-1	28.5
H. Lones	1-2	28.3
	1-2	23.7

## TEXAS

### E. Bernard

#### Riverside Classic

Sept. 24 Sanc. #01-88-007

MEN'S A		
A. Geyer	W-L	%
W. Wade	7-0	52.2
M. Fahrenthold	5-2	53.7
K. Jones	5-2	42.0
B. McCharen	4-3	49.7
B. Seeker	3-4	48.9
T. Valenta	2-5	42.0
G. Meyer	1-6	43.1
	1-6	36.9

MEN'S B		
A. McCreery	W-L	%
F. Zehentner	7-1	42.6
K. Mathis	6-2	44.9
D. Engelhardt	5-2	46.3
J. Zigrang	4-3	45.3
D. Lazrine	3-4	37.3
R. Engelholm	2-5	39.0
	2-5	33.7

MEN'S C		
D. Monro	W-L	%
P. McCreery	7-1	35.4
J. Herron	6-2	41.1
M. Krumrey	5-2	34.0
R. Polak	4-3	33.7
J. Polak	3-4	27.6
C. Schmidt	2-5	19.3
	1-6	26.9

MEN'S D		
C. Zarnicki	6-1	35.0
G. Zander	5-2	38.7
W. Flanakin	4-3	35.3
F. Engelhardt	4-3	30.0
D. Polak	3-4	31.0
M. Nevins	3-4	30.7
D. Emmons	3-4	27.3



D. Macha	5-2	26.7	K. Preisler	4-3	15.7
C. Jenschke	4-3	31.3	R. McCharen	4-3	9.7
L. Arevalo	3-4	29.3	R. Bundick	3-4	10.0
C. Jones	3-4	27.3	D. Schild	1-6	5.8
R. Polak	2-5	21.7			

#### MEN'S F

J. Babb	5-0	30.0
C. Hetrick	4-1	27.2
D. Schild	3-2	29.1
L. DeMoss	2-3	26.8
H. Cantrell	1-4	20.0
J. Couch	0-5	20.4

#### MEN'S G

H. Leonard	7-1	27.4
D. Dague	7-2	27.5
B. Affolter	6-2	23.7
G. Bartosh	4-3	20.3
R. Bundick	3-4	19.0
C. Meyer	2-5	22.7
C. Cassels	1-6	16.3

#### MEN'S H

T. Kramer	7-0	29.4
J. Mica	6-1	21.7
D. Karasek	5-2	16.6
R. Duhon	3-4	14.9
J. Kubena	3-4	13.4
S. Bolfig	2-5	14.3
S. Kramr	2-5	12.3
T. Albright	0-7	6.3

#### WOMEN'S A

M. Engelhardt	8-1	56.1
D. Polak	6-2	60.6
D. Crane	6-2	58.1
J. Stewart	3-4	54.6
B. Gilbert	3-4	50.0
M. Polak	2-5	46.0
M. Kramr	1-6	43.2
M. Zander	1-6	41.8

#### WOMEN'S B

P. Flanakin	6-2	45.3
D. Zigrang	5-3	45.0
K. Luedeke	4-3	44.6
T. Jenschke	4-3	41.4
B. Engelhardt	3-4	43.3
L. Leonard	3-4	38.9
J. Babb	3-4	34.6
B. Kramer	2-5	31.8

#### WOMEN'S C

C. Boehnemann	7-0	33.9
N. Couch	5-2	34.0
J. Bartosh	5-2	29.3
B. Zahradnik	4-3	26.8
P. Polak	3-4	29.2
J. McCreery	3-4	28.9
D. Emmons	1-6	18.9
L. Smaistrla	0-7	10.7

#### WOMEN'S D

L. Dague	7-1	25.4
D. Lindhardt	6-2	21.8
C. Schild	5-2	30.0
G. Otto	4-3	14.6
S. Kubena	3-4	17.5
B. Karasek	2-5	13.3
L. Albright	2-5	12.9

#### JUNIOR A

D. Macha	6-0	61.7
J. Chumchal	3-3	46.0
T. Kubena	2-4	51.7
C. Polak	1-5	42.0

#### JUNIOR B

B. Engelhardt	7-0	35.7
J. Karasek	6-1	35.0
J. Polak	5-2	35.4
R. Beseda	4-3	25.7
C. Cavness	2-5	20.7
J. Zahradnik	2-5	17.9
C. Otto	2-5	13.6
B. Polak	0-7	13.2

#### JUNIOR C

J. Polak	7-1	24.6
D. Boehnemann	6-2	19.6
S. Karasek	4-3	18.7

### HOUSTON

#### Joe Sullins Tourney

Sat., Oct. 1 Sanc.#01-88-008

#### MEN'S A

	W-L	%
A. Geyer	6-1	53.1
K. Jones	5-2	59.7
B. McCharen	4-3	51.7
B. Seeker	4-3	50.9
F. Zehentner	3-4	52.3
W. Wade	3-4	49.7
R. Buttery	2-5	51.1
B. Tedrick	1-6	49.1

#### MEN'S B

	W-L	%
K. Mathis	7-0	57.0
J. Zigrang	6-1	39.3
D. Monro	4-3	38.0
A. McCreery	3-4	38.7
F. Polak	3-4	35.7
R. Polak	3-4	33.7
M. Krumray	2-5	31.7

#### MEN'S D

	W-L	%
P. McCreery	7-0	47.1
R. Maroon	5-2	39.7
S. Chandler	4-3	38.0
M. Nevins	4-3	36.0
P. Ybanez	3-4	32.9
D. Polak	2-5	31.7
T. Jones	2-5	30.0
D. Thompson	1-6	28.9

#### MEN'S E

	W-L	%
B. Smith	4-1	31.5
D. Schild	3-2	27.0
D. Peschel	3-2	26.5
D. Dague	3-2	26.5
M. Ellis	2-3	22.0

#### MEN'S F

	W-L	%
W. Bayer	5-2	26.3
P. Ducharme	4-3	27.3
B. Affolter	4-3	25.7
H. Ybanez	4-3	23.7
L. Christian	4-3	19.7
M. Arsenault	4-3	17.3
A. Lyons	3-4	21.7

#### MEN'S G

	W-L	%
L. Leyendecker	7-0	28.0
R. Dunnam	5-2	21.7
R. Bundick	5-2	17.2
S. Harrington	5-2	10.4
E. Hetrick	3-4	7.5
S. Kramr	2-5	12.0
R. Morton	1-6	2.3

#### WOMEN'S A

	W-L	%
D. Zigrang	7-0	55.0
B. Schroeder	5-2	52.7
M. Zander	4-3	53.3
M. Kramr	4-3	36.0
T. Jenschke	3-4	45.0
P. Marburger	3-4	38.0
B. Polak	2-5	39.3

#### WOMEN'S B

	W-L	%
L. Dague	5-1	27.7
M. Hamblin	4-2	33.7
P. Polak	3-3	26.7
N. Croft	0-6	19.3

#### WOMEN'S C

	W-L	%
W. Milton	5-0	19.5
C. Schild	4-1	28.0
M. Damon	3-2	21.5
L. Albright	2-3	18.0
N. Maroon	1-4	11.0

#### JUNIOR'S A

	W-L	%
B. Maroon	5-0	38.5
B. Ducharme	4-1	35.0
R. McCharen	3-2	12.0
R. Bundick	2-3	6.5
D. Schild	1-4	4.0

### UTAH

#### St. George—Dixie Open

Nov. 5, 1988 Sanc. #26-88-129

#### CLASS A

	W-L	%
Glen McAllister	5-0	46.0
L.D. Alldredge	3-2	43.0
Joe Cwik	3-2	37.0
Dale Sorenson	2-3	38.5
Garth Bundy	2-3	31.5

#### CLASS B

	W-L	%
Paul Rudy	4-1	38.5
Ed Tomko	3-2	35.5
Tuff Moles	3-2	35.0
Robert Langston	2-3	30.5
Larrane Brown	2-3	22.0
Neldon Christiansen	1-4	15.0

#### CLASS C

	W-L	%
Gene Brown	5-0	23.0
Doug Barnier	4-1	16.0
Doug Liston	3-2	16.5
Jerry Brown	2-3	13.5
Jane Churchfield	1-4	10.5
Huck Churchfield	0-5	8.0

#### St. George Open

Nov. 26, 1988 Sanc. #26-88-130

#### CLASS A

	W-L	%
J.J. Steffen	4-1	54.0
Shirley Steffen	3-2	44.5
Nate Barney	2-2	37.5
Glen McAllister	1-3	41.3
Dennis Ohms	1-3	28.0

#### CLASS B

	W-L	%
Lorin Condie	4-1	39.0
L.D. Alldredge	3-2	42.5
Phil Jensen	3-2	41.0
Dale Sorensen	3-2	38.0
Tony Appadoca	2-3	37.5
Verl Leavitt	1-4	30.0

#### CLASS C

	W-L	%
Paul Rudy	4-1	41.5
Henry Reid	3-2	32.0
Garth Bundy	2-2	33.1
Tuff Moles	1-3	25.0
Doug Barnier	1-3	20.0

### VERMONT

#### Sodbuster Fall Round Up

Sept. 10-11 Sanc. #27-88-035

#### CLASS A

	W-L	%
Bertha Baillargeon	7-0	71.8
Liz Downer	6-1	66.3
Leon O'Dell	4-3	52.3
Bev Fargues	4-3	52.0
Deb Brown	3-4	55.6
Ray Charonneau	3-4	50.4
Bud Leavitt	1-6	43.9
Reid Brewster	0-7	36.3

#### CLASS B

	W-L	%
Andre Bergeron, Sr.	6-1	45.3
Bones Hastings	5-2	36.5
Ray Benson	5-2	34.7
Elmer Moore	3-4	37.3
Archie Jones	3-4	32.6
Lee Paquette	3-4	28.8
George St. Pierre	2-5	36.6
Ernie Baillargeon	1-6	30.4

#### CLASS C

	W-L	%
Connie Selleck	6-1	35.8
Marlene Parquette	5-2	35.4
Don Taylor	4-3	33.6
Henry Cooper	4-3	30.5
Mike Brown	4-3	29.5
Paul Superneau	2-5	25.7
Rod Superneau	2-5	24.2
Andre Bergeron, Jr.	1-6	19.1

#### CLASS D

	W-L	%
Glen Norris	6-1	3.04
Kay Brewster	5-2	30.2
Doug Bausch	4-3	18.8
Bill Alexander	3-4	27.9
Roger Fargues	3-4	23.6
Bob Marshall	3-4	22.4

Kevin Stratton	2-5	24.3
Phil Sumner	2-5	19.6

#### CLASS E

	W-L	%
Harold Wrisley	7-0	31.3
Bob Gordon	5-2	26.6
John Stannard	4-3	25.5
Ray Begins, Sr.	4-3	25.4
Art Emmons	4-3	25.1
Charlie Newton	3-4	20.3
Ray Begins, Jr.		22.1
Myron Selleck	0-7	5.9

#### CLASS F

	W-L	%
Cathy Begins	6-1	20.6
Paul Pouliot	5-2	17.0
Gary Lipka	5-2	16.4
Norm Desso	3-4	17.5
Jay Parizo	3-4	15.2
Don Fales	3-4	10.2
Rick Begins	2-5	10.5
Deb Mallott	1-6	6.9

#### JUNIOR'S CLASS A

	W-L	%
Matt Greene	4-0	18.1
Rae Anne Begins	3-1	11.2
Derek McDonald	2-2	9.3
Stacy Superneau	1-3	7.2
D.J. Peacock	0-4	4.7

### VIRGINIA

#### Claude Painter Open

Oct. 8, 1988 Sanc. #30-88-011

#### CLASS A

	W-L	%
Denny Davis	4-1	62.0
Earl Linkous	4-1	63.4
Lenwood Conners	4-1	62.4
Claude Gibson	2-3	59.6
Roger Dean	1-4	47.8
Chuck Cascio	0-4	46.1

3-way tie for 1st — Denny Davis won playoff, followed by Earl Linkous

#### CLASS B

	W-L	%
Steve Hall	5-2	46.6
Doug Glass	5-2	44.8
Perry Hall	5-2	44.8
Earl Waggy	4-3	42.7
Kenneth Lam	4-3	35.7
Carl Staton	3-4	35.2
Butch Martin	2-5	27.7

Steve Hall won 1st after playoff

#### CLASS C

	W-L	%
William Hartless	3-0	29.6
Pete Coravely	2-1	27.0
Ron Trobaugh	1-2	28.5
Buck Mann	0-3	21.8

#### CLASS D

	W-L	%
Jimmy Mahoney	2-1	31.3
Hensel Eppard	2-1	14.6
Gene Arehart	2-1	15.2
Jerry Shifflett	0-3	8.0

#### Neptune Festival Open

##### Portsmouth

Sanc. #30-88-015

#### CLASS A

John Shaw	6-1	54.2
Ken Shiflett	6-1	64.1
Jim Barker	4-3	54.3
Clair Burkhouse	4-3	51.2
Ellis Wilmoth	3-4	47.8
Jim Skeens	3-4	44.7
Al Foley	1-6	41.2
Jim Foltz	1-6	33.7



Shorty Young	3-2	26.7
Jim Goodwin	2-3	14.4
Murray Arndt	1-4	22.0
George Holley	1-4	20.7

### Tidewater Fall Classic Sanc. #30-88-016

CLASS A	W-L	%
Earl Linkous	7-0	67.7
Jack Melton	6-1	69.9
Lenwood Conners	4-3	64.2
Charles Walker	4-3	60.6
John Shaw	3-4	56.3
Jim Barker	3-4	56.0
Ken Henson	1-6	47.9
Clair Burkhouse	0-7	40.9

CLASS B	W-L	%
Jim Foltz	5-1	46.5
Al Foley	4-2	47.3
Ed Stormes	3-2	43.6
John Hughson	3-2	39.9
Gus Bland	1-4	34.9
Charles Wilkins	0-5	24.2

CLASS C	W-L	%
Dave Moser	5-2	32.2
Buck Holley	4-3	33.7
Shorty Young	4-3	32.6
Laton Horton	4-3	31.3
Tom Gray	4-3	29.4
Gene Brooks	3-4	30.8
Pete Gravley	2-5	31.0
Curly Martin	2-5	29.5

CLASS D	W-L	%
John Bunn	7-0	32.2
George Holley	4-3	26.1
Bob Leighton	4-3	20.2
Murray Arndt	3-4	22.4
Thomas Eaves	3-4	22.2
Jimmy Cawthon	3-4	20.6
Duke Johnson	3-4	18.4
Jim Goodwin	1-6	16.8

## WASHINGTON

### Bellingham International Aug. 20-21, 1988 Sanc. #04-88-049

MEN'S CLASS A	W-L	%
Henry Knauff	7-1	72.3
Art Sperber	6-2	73.8
Herb Criss	5-2	73.9
Ron Dixon	4-3	66.4
Ed Fishel	3-4	63.8
Barry Chapelle	3-4	62.6
Pete Clark	1-6	64.4
Ken Elvig	0-8	51.0

WOMEN'S CLASS A	W-L	%
Marge McLeod	6-2	65.5
Margaret Byfield	7-3	63.5
Gerrie Bigham	6-3	65.0
Michelle Ives	6-3	62.7
Elaine Weisdepp	5-4	59.4
Kerry Jackson	2-5	55.4
Cass Johnson	1-6	38.2
Betty Tatchio	0-7	31.6

MEN'S CLASS B	W-L	%
Dennis Mustchin	6-2	56.7
Mike Thorniley	5-3	56.2
Mo McNally	4-3	55.0
Len Weisdepp	4-3	53.4
Dick Lee	4-3	52.4
Robert Clark	3-4	56.2
Jerry Staley	2-5	49.5
Brad Pederson	1-6	49.2

CLASS C	W-L	%
Ray Sexton	6-1	55.4
Walt Weik	5-2	46.1
Jack Bush	4-3	49.4
Don Jones	4-3	43.5
Dan Leary	3-4	45.1
Cecil Channing	3-4	44.9
Verl Webb	2-5	42.6
Earl Kuper	1-6	37.7

CLASS D	W-L	%
Lloyd Reyklin	6-1	53.2
Les Montaney	5-2	53.1
Joe Hardie	5-2	42.5
Ray Gill	5-2	51.9
Bob Hoerner	2-5	44.6
Frank Woods	2-5	44.3
Gordon Helsman	2-5	42.0
Barney Heller	1-6	45.1

CLASS E	W-L	%
Pat Mackie	6-1	46.1
John Henson	5-2	45.5
Lewis Lake	5-2	43.7
Bernie Lepper	3-4	44.0
Bob Sletten	3-4	42.7
John Byfield	2-5	43.3
Ken Kuper	2-5	39.3
Art Hart	2-5	36.5

CLASS F	W-L	%
Dayton Martindale	7-2	44.6
Bob Timothy	5-3	53.4
Bill Owens	5-3	47.9
Stan Garrett	4-3	39.6
Les Lingel	3-4	48.8
Lyle Meuret	2-5	43.4
Marvin Tatchio	2-5	42.5
Bob Lee	2-5	40.3

CLASS G	W-L	%
Bart Barber	6-1	44.7
Bob Pederson	4-3	44.6
Les Spilseth	4-3	43.1
Bob Slaker	4-3	36.9
George Richards	4-3	33.4
Bill Stephenson	3-4	35.3
Robert Ives	2-5	38.5
Cyril Kitchen	1-6	28.3

CLASS H	W-L	%
Ken Carvo	7-0	45.0
Vince Hopkins	5-2	37.7
Gene Beach	4-3	38.6
Rick Rebman	3-4	37.1
Sig Pederson	3-4	35.3
George Rachel	3-4	34.3
George Fagala	3-4	34.2
Bill Van Egdom	0-7	28.3

CLASS I	W-L	%
Orlean Clinton	7-1	44.9
John Johnson	6-2	38.4
Don McDugle	5-2	40.3
Cleve Woods	4-3	38.2
Jim Kosterman	2-5	37.1
George Oliver	2-5	37.1
Pat Quinn	2-5	31.8
Don Fagerness	1-6	30.7

CLASS J	W-L	%
Bill Butts	7-0	35.5
Kelvin Kitkowski	5-2	38.2
Mike Miller	5-2	30.4
Kurt Solland	3-4	29.5
Mike Ordos	3-4	27.3
Dick Hopkins	2-5	30.3
Ted Bostwick	2-5	24.1
Howard Oberton	1-6	27.1

CLASS K	W-L	%
Elaine Rush	7-0	40.3
Marcia Reynolds	6-1	29.3
Verna Hisey	5-2	31.9
Lorraine Brown	4-3	27.2
Christine Cunningham	2-5	26.0
Gladys Valcourt	2-5	23.6
Carol Sperber	1-6	19.8
Renee Waldron	1-6	14.5

CLASS L	W-L	%
Wilson Isbister	7-0	33.3
Don Naas	5-2	34.3
Don Isaacson	5-2	30.1
Sam Olson	4-3	29.6
John L. Kronholm	3-4	25.8
Herb Grasser	1-6	24.5
Jim Quist	0-7	18.1

CLASS M	W-L	%
Russ Kinnon	6-1	29.4
El Day	5-2	26.2
Jim Cunningham	4-3	31.9
Jim Frame	4-3	23.5
George McLeod	3-4	26.6
Glen Titchenal	3-4	26.0
Ken Hawkins	3-4	25.4
Jerry Pederson	0-7	20.7

CLASS N	W-L	%
Ed Mackie	7-2	19.5
Leo Valcourt	6-3	18.9
Sharon Kennedy	6-3	20.0
Harry Dean	5-4	21.4
Dennis Hardie	3-4	20.2
Lenny Richards	3-4	13.1
Shirley Hopkins	2-5	8.7
Steve White	0-7	9.8

CLASS O	W-L	%
Fred Yoast	7-0	24.8
Jerry Brown	6-1	17.6
Tahwannah Worrell	4-3	10.5
Don Billings	4-3	6.0
Stan Thorpe	2-5	5.3
Dee Dee Thorpe	2-5	7.6
Maurice Finnigan	2-5	6.9
Joe Solypo	0-7	5.24

### 43rd Annual Pacific Northwest Open Tournament - Yakima

Sept. 18-19 #04-88-052

CLASS A	W-L	%
Ben Wiedrich, OR	11-1	73.4
Dean Curry, ID	10-2	68.8
Art Sperber	9-2	69.7
Ridge Leggett, OR	7-4	66.8
Ed Fishel	7-4	64.9
Henry Knauff	6-5	67.7
Peter Clark	6-5	64.5
Barry Chapelle, OR	3-8	60.7
Jerry Gorton, OR	3-8	56.6
Gerald Staley	3-8	55.5
Vernon Miller	1-10	52.4
Leonard Weisdepp	1-10	45.3

CLASS B	W-L	%
Mike Thorniley	10-2	51.4
Blackie Harms, CA	9-3	57.4
John Henson	8-3	52.1
Ray Sexton	7-4	54.3
Mo McNally	6-5	51.0
Bernard Martell, OR	5-6	46.6
Robert Clark	5-6	43.1
Lee Wallace, OR	5-6	41.3
Walt Weik	4-7	47.2
Phil Hendry	3-8	50.5
Ron Ferguson	3-8	47.3
Dick Lee	2-9	41.0

CLASS C	W-L	%
Earl Hardie	7-0	48.4
Larry Flanary, OR	6-1	47.7
Ray Looper	4-3	41.4
Jack Bush	3-4	38.5
Ken Kuper	3-4	31.5
Barney Heller	2-5	39.8
Len Christensen, OR	2-5	37.6
Earl Kuper	1-6	38.1

CLASS D	W-L	%
Ken Carvo	6-1	48.5
Casey McKay	5-2	39.9
Orlean Clinton	4-3	43.9
Kraig Allen, ID	4-3	42.0
Elern Schilperoort	3-4	38.7
Marvin Tatchio, OR	3-4	38.0
Larry Lowitz	2-5	31.9
Donald Ferguson	1-6	30.0

CLASS E	W-L	%
Robert Ives	7-2	37.0
Dick Culbertson, OR	5-3	34.7

Arnold Lunnum	5-3	35.9
Stanley Garret	4-3	31.5
Robert Lee	3-4	33.4
Lyle Meuret	3-4	33.1
Howard Brightman	2-5	33.0
Cyril Kitchen	1-6	25.5

CLASS F	W-L	%
Gene Beach	7-3	31.3
Doc Cresci	5-4	36.1
R.E. Click, OR	5-4	27.4
George Rachel	4-4	30.0
Pat Quinn	4-4	28.9
Alton Nelson	4-4	28.8
Del Crandall	3-4	32.7
Rick Rebman, OR	1-6	19.4

CLASS G	W-L	%
Jack Bennett	5-2	27.2
Al Reusser	4-3	32.5
Don Fagerness	4-3	30.6
Robbie Robinson	4-3	27.2
Chuck Holden	4-3	27.1
Ben Goodling, OR	4-3	25.3
Sam Wingfield	2-5	23.8
Jim Kosterman	1-6	24.1

CLASS H	W-L	%
Ed Pritchard	6-1	28.8
Mel Dearborn, OR	5-2	30.2
Mike Miller	5-2	26.0
Dick Griffith, OR	4-3	27.1
Donald Naas	3-4	27.5
Orrin Underwood	3-4	20.9
Ted Bostwick	2-5	20.3
John Kronholm	0-7	13.9

CLASS I	W-L	%
Darwin Platz	6-1	28.7
Virgil Brayette	5-2	29.6
Norm Herring, CA	4-2	30.3
Don Isaacson	3-3	25.6
Ken O'Hair	2-4	27.7
Wendell Roberts	2-4	20.4
George McLeod, OR	0-6	21.7

CLASS J	W-L	%
Paul Markham	6-1	31.5
Jerry Bengtson, ID	5-2	25.7
Leonard Bartel, OR	4-2	18.7
Tom Tyrell	3-3	21.6
Glen Titchenal	2-4	21.8
Larry Covey	1-5	17.8
Monte Gregg	1-5	15.0

CLASS K	W-L	%
Steve Hughes	7-0	24.3
Dennis Hardie	6-1	19.6
Jim Hackett	5-2	18.7
Bill Edgecomb	3-4	15.7
Jerry Brown, NV	3-4	14.4
Don Allen, ID	2-5	13.1
Mike Lee	1-6	11.2
Rich Carrol	1-6	4.7

WOMEN'S CLASS A & JUNIOR BOY	W-L	%
Marge McLeod, OR	7-0	61.9
Michelle Ives	6-1	56.1
Hannah Foley	5-2	49.6
Fuey Herring, CA	3-4	38.8
Jason Knauff	3-4	31.8
Carolyn Ferguson	2-5	33.4
Betty Tatchio, OR	1-6	35.1
Connie Dearborn - Forfeit		

WOMEN'S CLASS B & JUNIOR BOYS	W-L	%
Irene Wiedrich, OR	7-0	35.9
Alice Rehard	6-1	35.8
Lorraine Brown, NV	5-2	26.8
Evelyn Underwood	4-3	23.6
JoAnn Allen, ID	3-4	22.2
Carol Sperber	2-5	18.8
Aaron Bengtson, ID	1-6	9.2
Peter Ives	0-7	8.8



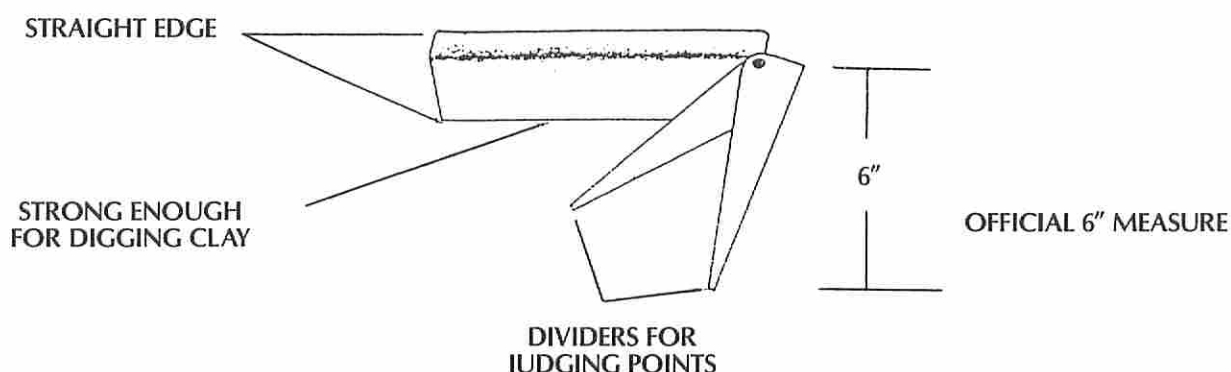
## **Edward A. Domey / National Buyer**

*NHPA Game Related Sales*

P.O. Box 298  
Sutton, MA 01590  
(508) 865-9477

### **Stainless Steel Judging Tool**

The Official Judging Tool, made of stainless steel with two straight edges, official 6-inch dividers for judging points, and strong enough for digging clay. It is the official Judging Tool used at all NHPA Tournaments including the World Tournament. Available from all NHPA Game Related Sales Distributors.



#### **NHPA GAME RELATED SALES DISTRIBUTORS**

##### **DENNIS OHMS**

777 W. Midvalley Road  
Cedar City, Utah 84720  
(801) 586-9352

##### **HORSESHOE PRO SHOP**

2275 Winter Parkway  
Studio City - Suite 189  
Cuyahoga Falls, Ohio 44221  
(216) 688-6522

##### **ROBERT REID**

34 North Beechwood Avenue  
Scottsburg, Indiana 47170  
(812) 752-2195

##### **WALLY SHIPLEY**

2646 Basswood Street  
Newport Beach, California 92660  
(714) 760-3658

##### **WILLIAM SMITH**

1175 Stewart Drive  
Dunedin, Florida 34698  
(813) 736-5556

Contact a Distributor near you for the Official Judging Tool and many other Game Related Items available from the National Horseshoe Pitchers Association Game Related Sales.

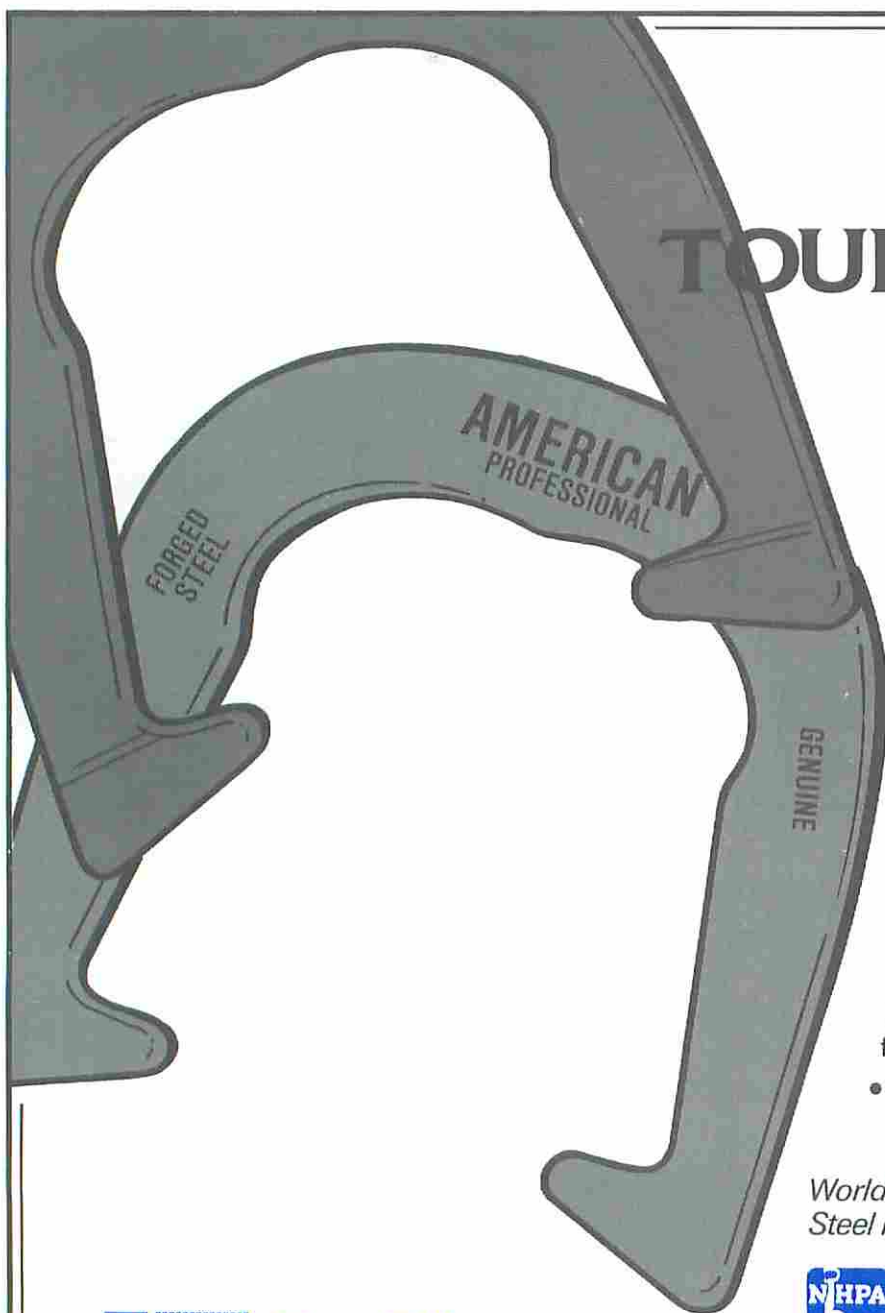
**Support Your NHPA**



NATIONAL HORSESHOE PITCHERS ASSN.  
Box 278, Munroe Falls, OH 44262

ADDRESS CORRECTION REQUESTED  
FORWARDING/RETURN POSTAGE  
GUARANTEED

BULK RATE  
U.S. POSTAGE  
PAID  
PERMIT NO. 80  
GRASS VALLEY, CA



## *The American* **TOURNAMENT SHOE**

### **LOCKS IN RINGERS!**

- Scientifically designed ringer breaker helps rotate shoe to lock in ringers.
- Finger positioner for throwing comfort.
- Heel caulks with more forged steel for better balance.
- Longer hooks to grab the stake better.
- EXCLUSIVE new high-tech powder coat finish for better resistance to chipping, abrasion, corrosion and weathering.
- Classic gold and silver in full outfits (four shoes and two solid-steel stakes) or four shoes only.
- Call or write today! (508) 853-8010

*World's Largest Producer of Drop-Forged,  
Steel Pitching Horseshoes.*

 **St. Pierre**  
MANUFACTURING CORPORATION

317 East Mountain Street  
Worcester, MA 01606



**OFFICIAL SPONSOR**  
**1989 World Horseshoe**  
**Tournament**  
Spearfish, SD