



the  
national horseshoe pitchers

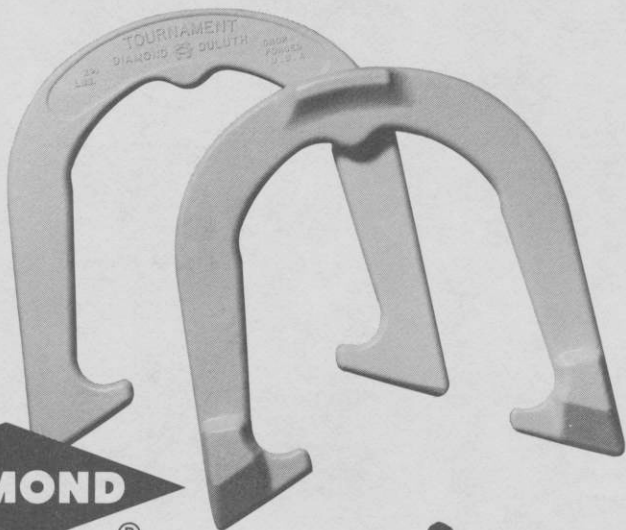
# NEWS DIGEST



NOVEMBER, 1987

*Official Publication of*  
**THE NATIONAL HORSESHOE PITCHER'S ASSOCIATION  
OF AMERICA**

Look  
for  
the new  
white  
shoes!



**DIAMOND**

®

Advanced Design

# TOURNAMENT PITCHING HORSESHOES



Both backyard pitchers and pros catch and hold the stake better with DIAMOND's new advanced design "Tournament" Shoe. It features a grip positioner, hardened tips, an increased radius, a dead soft center, and a wider, deeper calk. Same drop-forged solid steel construction as DIAMOND's popular Double Ringer and Super Ringer Regulation Shoes. All American made.

Contact your nearest NHPA club or sporting goods store for DIAMOND pitching horseshoes.

For the latest pitching horseshoe catalog write:



**DIAMOND TOOL** *and Horseshoe Co.*

**The Triangle Tool Group, Inc.**  
Subsidiary of The Triangle Corporation  
Cameron Road, Orangeburg, SC 29115  
DISTRIBUTOR ORDER PLACEMENT  
Call toll-free: 800-346-0740  
For all inquiries call: 803-534-7010



"DIAMOND Pitching Horseshoes are Recognized as Official in Tournaments  
Sanctioned by the National Horseshoe Pitchers Association"

**THE HORSESHOE PITCHER'S NEWS DIGEST** is published on the 5th of each month at Aurora, Illinois, U.S.A. by the National Horseshoe Pitcher's Association of America. Editorial office, P.O. Box 1606, Aurora, Illinois 60507. Phone: 312-898-3974. Subscription rates—1st Class \$12.00 per year in advance. NHPA membership cards are available through each state secretary for \$7.00 plus any state association dues. Forms close on the 10th day of each month preceding date of issue. Advertising rates on request. F. Ellis Cobb, Editor.

#### NATIONAL OFFICERS

Dave Loucks, 13656 Thoroughbred Loop, Grass Valley, CA 95949 (916) 477-7060 .....	President
Earl Winston, Rte. 2, Lamonte, MO 65337 (816) 563-3536 .....	1st Vice-President
Barry Chapelle, 2716 S.E. 61st Ave., Portland, OR 97206 (503) 775-7876 .....	2nd Vice-President
Vincent Yannetti, 322 Longwood Ave., Bound Brook, NJ 08805 (201) 356-3862 .....	3rd Vice-President
Bonnie Seibold, 1043 Grayson Ave., Huntington, IN 46750 (219) 356-3489 .....	4th Vice-President
Gene VanSant, P.O. Box 270, Sun City, CA 92381 (714) 679-2578 .....	5th Vice-President
Donnie Roberts, Box 278, Munroe Falls, OH 44262 (216) 688-6522 .....	Sec./Treas.

Volume 31

November, 1987

No. 11

## FROM YOUR PRESIDENT . . . DAVE LOUCKS

In the last month's *News Digest*, I wrote about Liability Insurance and my efforts to secure a blanket policy for all NHPA Charters and members. After a year of frustrating contacts and answers like, "sorry but we're not interested," I finally found a company that was interested and gave us a quote on secondary coverage for a Spectator Liability policy.

Well, insurance companies must be like many other things in life; if one expresses interest, others are sure to follow. Since my announcement at the Eau Claire convention, two other insurance companies have contacted me to get details on our organization and what we are trying to provide for the members. One of these two other companies has given me a phone quote while the other is still in a non-committal stage. The second quote is in the same cost range of \$2.00+ per member but with some differences that appear to be interesting. The possibility exists that the Sanctioned Club/League members may also be covered as well as their weekly play and Sanctioned tournaments. I hesitate to say for sure at this time because the written proposal has not yet been received.

We are also discussing the chances of obtaining "Primary Liability" coverage which would be under a Comprehensive General Liability Pool Policy. In all cases, certain conditions appear to remain constant from one company to another. They are that all members must subscribe; all Charters and Clubs within Charters will have to be identified beforehand; premiums will be based on membership, not tournaments played and, coverage is for spectators. Participants or those officials within the confines of the pitching area will not be covered if they accidentally get hit or are otherwise injured. We must keep in mind, however, that our prime concern and the concern of the local city fathers is for spectator coverage where they/we are co-insured.

All three of the companies have been given a November 10th deadline to provide firm proposals. These will be evaluated by the NHPA Council and a decision made. At this time, it is my belief that we will have some sort of Liability coverage in 1988. It will be December before written details can be sent to all Charters. In the meantime, discuss the issue with fellow members and prepare to see either a dues increase or Charter assessment of \$2.00+ per member. The coverage we purchase will help our sport and membership grow by opening doors that in recent years have been closed to organized horseshoe play.

## ED DOMEY ELECTED TO NHPA HALL OF FAME

Ed was one of two player-organizers elected this year. He started playing horseshoes as a youngster in his back yard with his brothers and with the firemen at the local station. He always pitched 40 feet so this explains his unusual backswing—it took a lot of effort for a young fellow to throw a pitch at 40 feet. In the early 1950's while in high school, he pitched in tournaments in Mass. and Conn. His opponents at that time included Bernard Herfurth and Jim O'Shea.

Ed got away from the game for awhile, but in the mid-1960's, after watching the World Tournament in

## In Memoriam

1919 ELMER HOHL 1987

Elmer Hohl of Rte 1, Wellesley, Ont., Canada M0B 2T0, and his wife Hilda were at the 1987 World Tournament at Eau Claire, Wisconsin, and appeared to be in good spirits and quite well. He enjoyed visiting with his many friends. When he and Curt Day were called inside the courts to be greeted, it meant a great deal to him.

After returning home he developed pneumonia and with his other problem he just could not fight it and passed away on September 4 in the Kitchener-Waterloo hospital.

The doctors could not believe that he had deteriorated so fast. It was a blessing that he did not suffer for a very long time.

He is missed so very much by his loving wife Hilda and family, but life must go on. The American people meant so much to Elmer.

The sympathy of the National Horseshoe Pitchers Association is extended to his family in their hour of sadness.

## DOMERY—(Continued)

Keene, New Hampshire, he returned to our sport and has been active ever since. He was an avid league player and had two courts in his own yard. During the winter months, Ed and his friends would find a club or building where they could put two portable courts. After a while, this became a problem, and it started in Ed's mind the idea of building a permanent indoor horseshoe facility. Ed went to visit some existing indoor facilities for ideas for what could and couldn't be done and the result was the famous Heritage Recreation center.

Heritage opened its doors in May of 1972. Ruth Hangen was guest of honor at the opening ceremonies. In the beginning, Ed had four clay courts and four sand courts. Soon, the sand gave way to clay, then two more courts were built and, finally, four more courts were added to make fourteen clay courts in all. In addition, there were twelve outdoor courts. For ten years, Heritage was a beehive of horseshoe activity. A typical week would have sanctioned league play on Monday, Tuesday, and Wednesday, and all comers round-robin on Friday and junior pitching and coaching on Saturday. From October-May, tournaments were held two weekends a month. During those ten years, the Center hosted World Warm-Up, State, and New England Championships. Also, Ed had an anniversary tournament each year which featured a nationally prominent pitcher, all expenses paid. Over the years, Ruth Hangen, Walter Ray Williams Jr., Carl Steinfeldt, Glen Henton, Al Zadroga, Mark Seibold, Debbie Michaud, and Elmer Hohl were featured guests. In addition, Ed took juniors from his Saturday league to other New England tournaments. He had sponsored a Class A player at a World Tournament and has donated horseshoes and other items to various groups and organizations for raffles and prizes.

Ed sold Heritage in 1983, but that in no way diminished his contributions to our sport. Since then, he has been in charge of the NHPA Game Related Items program. Ed has reorganized the complete set-up, brought in new items and made a new flyer to advertise our products, put ads in national magazines, and established proper business procedures which have increased profits for the NHPA. He has established regional distributorships, and with the cooperation of these people, our merchandise is now available nationwide. In addition, Ed sets up a Game Related Items booth at each World Tournament and is always there from start to finish.

Much has been said about Ed's promoting and organizing, but we shouldn't neglect his pitching. The records show that Ed was a consistent 60-70% pitcher with a few 80's as well. His peak years were 1975 and 1976, when almost all of his tournaments were in the 74-81% bracket. In both those years he had World Tournament records of 22-13 and finished 13th both times. He has attended every World Tournament since 1973 and has won many state and regional titles. He will tell you that the longer Heritage went, the worse he got as a pitcher. With all the activities he conducted, he simply didn't have time to practice and keep his game as sharp as it once was.

Ed's faithful wife, Ann, was with him during the entire World Tournament at Eau Claire and he was surprised, and thrilled, to have his three children arrive for his induction into the Hall of Fame at the awards banquet. We congratulate Ed for his fine career in our sport and for his being elected to its highest honor.



## REPORT OF THE NHPA REGIONAL DIRECTOR

By GENE VAN SANT, DIR.

First of all let me compliment Earl Van Sant for the fine job he did at the annual Regional Director's and assistant Regional Director's meeting at the World Tournament at Eau Claire, Wisconsin. He did an outstanding job and my thanks to those RD's and ARD's who supported him in attending that meeting. Enclosed you will find a copy of the minutes of that meeting. There are just a few comments I would like to add.

Secondly, thanks to all of you and the membership for electing me as 5th Vice President for the next two years. I only hope my health will let me do the kind of job this position deserves.

You will see by the enclosed minutes that the RD's and ARD's at the meeting unanimously voted to remove the year from the Tournament, Class, Doubles Champion and Doubles Class patches, but leave it on the State Champion, State Class Champion and State Doubles patches. This recommendation was put to your council for a vote and the council vote as follows: Dave, Earl, Donnie and Gene voted to drop the year, Barry and Bonnie voted to leave the year on. At the time of this writing I have not heard from Vince. The patches were ordered without a year. You RD's and ARD's may get some static about this but it was suggested in order to cut down the wasted thousands of dollars, if a receiver of these patches wants the year on the patch, he/she can have it put on at a small cost, there will be room on the patches. Let's try this for this year and see what happens.

If you as an RD or ARD wish to have horseshoes available to sell to members, as a representative of the NHPA you must buy your supplies from a NHPA distributor and sell them at no profit to you. The NHPA gets a small amount of profit from the sale of gam related items and this money is used for the NHPA programs and the good of the membership. You take this money away and you are hurting yourselves.

Be sure to have the sanction number on the tournament results you send in to the Digest. If the sanction number is not on the results, they will not get printed. The Digest does not print results of league tournaments. It was brought out that you as representatives of the NHPA should push for more sanctioned tournaments. Many states have strong league programs and the NHPA is supporting this program at a loss.

Many of you have good programs in your area to promote horseshoes. Earl Van Sant suggested that if you will send him your ideas he will compile a list and send copies of that list to all of you to help you with your promotion of horseshoes. The promotion of horseshoes is your most important function as a representative of the NHPA. We all need new ideas and this is an opportunity for you to share your ideas with all of us.

Good luck to all of you in the new year of horseshoes. May our sport grow and get the national exposure we deserve.

### MINUTES OF REGIONAL DIRECTOR'S MEETING

RD/ARD meeting held on August 3, 1987 in the Plaza Room at the Civic Center, Eau Claire, Wisconsin. Meeting opened at 7:10 P.M. by Earl Vansant in gene's absence due to illness.

President Loucks reported that Gene is back in the hospital with bacterial infection in liver or bile duct; his length of stay is unknown at present. His wife, Mary, contacted Pres. Loucks and felt that Gene should not run for his office at this time because of his present illness and that it would be all right to select a replacement.

Discussion on whether to respect Mary's wishes to not continue Gene in office. Thoughts from the floor were:

1. Name temporary interim leader.
2. R.D.'s all help Gene and keep him in office.
3. thoughts that perhaps Gene would be relieved to know that his job was taken care of.
4. Vote for Gene tomorrow.

A motion was made by Don Titcomb and seconded by Rick Gyorkos that Gene's name be kept on the ballot, vote him in, the President can appoint or elect an interim director if and when needed. Motion carried.

*Question of Patches:* Gene reported by letter that the following number of unused patches have been returned:

1970 thru 1981:	4,000	+
1982	3,105	
1983	1,278	
1984	1,252	
1985	955	
1986	1,232	

## REPORT—(Continued)

These figures have resulted in a considerable unneeded expense. What can be done about it?

Questions from floor: Can the extra patches be reworked with appropriate year? Cost would be too great to make it worthwhile.

Why can't patches be ordered without a year on them? Then those receiving one can have the year put on it if they wish.

It is nearly impossible to guesstimate how many patches will be needed per year for sanctioned tournaments. Leave off year is a solution. Don Titcomb motioned that the year be left off the patches when ordering. Jim Korte seconded. Passed.

Discussion held on RD's and ARD's selling game related accessories.

1. Should have at least one distributor in each state to order from.

2. When this started each distributor had to put up \$1,000; it would not be fair now to have others doing the same who do not have to put up money.

3. RD order from distributor at beginning of each year and, in turn, sell them to clubs at no profit.

4. If you are making a profit out of your trunk you cannot represent the NHPA.

5. Make merchandise available to distributors at a price they can live with.

The sanctioned certificate program is working beautifully.

It was asked why does it take so long to get sanctioned tournaments in the Digest. President asked "Who does the Digest belong to?" Ellis basically prints what he wants to. Is 77 and will probably be thinking about retiring.

All information to Ellis for the Digest *must be double spaced*, preferably typewritten.

Someone did not have list of RD and ARD's. All should have received one from their R.D. Earl will see that he gets one.

Discussion held on programs they would like to see next year. One club runs notice in paper for an amateur tournament and they came. Don't try to change them too soon to NHPA cards, etc. They will come around. What are other clubs doing to promote horseshoes? Would like to hear from others. If ideas are sent to Earl he will compile list and mail out.

Gene Anderson, Minn.: Started a Saturday night open tournament; pay \$5.00 entry fee; have 50¢ beer, free corn on the cob, have a real fun time.

Should tie Digest in with dues. Per D. Loucks, many are willing to pay \$3.00/year but not willing to put up another \$4.00 for a sanctioned tournament.

All those coming to National Tournament should have certain requirements.

From Michigan: Something needs to be done about women or juniors pitching 30' in same tournament with men pitching 40' when money is involved. Answer: Each local has to set up rules *prior* to tournament. Must have mixed tournament or open tournament. By-Laws state we will not award a Jr. any amount of cash.

N.Y. asked how to advise people who ask them about the Sports Palladium. Answer: We are not investment counsellors and cannot advise.

Motion to adjourn at 9:00 P.M.

---

## HORSESHOE CHAMP VISITS CORRECTIONAL FACILITY

Rochester resident Mike Di Martini, N.Y.S. Singles Horseshoe Champ, recently brought his extraordinary horseshoe pitching talent to Collins Correctional Facility, at Helmuth, N.Y.

Inmates at this medium security prison were treated to a pitching clinic as well as an outstanding horseshoe pitching display.

---

## 1988 WORLD HORSESHOE TOURNAMENT INFORMATION

By VERDAN ZELMAR, W.T. Chairman

Plans for the August 1988 World Tournament at Pleasanton, California are on schedule. Motel and hotel accommodations are being finalized with prices ranging from \$26.00 to \$60.00. Complete details will be published in the Digest at a later date. We also plan to send a complete package of information to all NHPA Charters before the end of the year.

Our Recreational Vehicle (RV) Committee has finalized details for RV accommodations and will make space assignments upon receipt of an application and \$20.00 deposit. This deposit will be refunded if reservations are cancelled seven (7) days in advance. Reservations will be on a first come, first serve basis

## TOURNAMENT INFORMATION —(Continued)

and we will make every effort to honor your request within the limitations of our facility. The following accommodations are available at the Alameda County Fairground tournament site in downtown Pleasanton:

1.	50 spaces	.....water/sewer/elec	\$10.00 per day
2.	28 spaces	.....water/elec	8.00 per day
3.	66 spaces	.....water/sewer	8.00 per day
4.	Unlimited	.....self-contained	5.00 per day

Three (3) dump stations are available at the fairgrounds. Showers and restrooms are located in close proximity to the parking spaces.

Please make checks or money orders payable to: **WORLD TOURNAMENT FUND**. Mail check/money order and application to **MARTHE DUNN**, 3262 Vineyard Ave., #122, Pleasanton, CA 94566. For general information call Bill Brown (415) 462-2459 or Marthe (415) 462-4283.

## RV APPLICATION FORM

NAME \_\_\_\_\_ PHONE \_\_\_\_\_

ADDRESS \_\_\_\_\_  
(City, State, Zip Code)

RV TYPE \_\_\_\_\_ LENGTH \_\_\_\_\_

ACCOMMODATIONS PREFERRED \_\_\_\_\_ SECOND CHOICE \_\_\_\_\_

ARRIVAL DATE \_\_\_\_\_ APPROX DEPARTURE DATE \_\_\_\_\_

We will be prepared to receive RV's starting Saturday, July 30th, 1988.

## NHPA PROMOTION COMMITTEE

By **SOL BERMAN, CHR.**

*The Championship Elders 70+ Men 40 ft.*

This section attracted 59 entries, including Abe Austin, the 1972 Intermediate Champion, and Frank Stinson, a Hall of Famer. He competed in the Men's Championship flight in 1927 and 1951, also 13 times from 1963 thru 1975. He won the Senior Championship in 1976.

Harvey Elmerston, Wisc., and Frank Stinson, Minn., both completed in Section 3 of the Championship Elders.

Harvey Elmerston won the Wisconsin State Championship nine times. His first was in 1926 when he was 22 years old. In 1927 he finished 14th in the World Championship. The next year, 1928 he finished 4th ahead of Frank Jackson, Jimmy Risk, Harold Falor and Putt Mossman. In 1929 he finished 7th.

Ted Allen won the 1935 Championship, Harvey finished second ahead of C.C. Davis, Guy Zimmerman, Frank Jackson, Casey Jones and Jimmy Risk.

Harvey's last appearance in the World Championship was in 1940 when he finished 13th.

At age 83 Harvey was the second oldest pitcher in the 1987 tournament. Frank Hiendlmayr, Ohio, at 86 was the oldest. He finished in 3rd place.

## WALTER RAY WILLIAMS, JR.

The Sept.-Oct. issue of the Bowler's Digest carried an article listing the most consistent players in PBA history. Among those listed was Walter Ray Williams, Jr. He being one of the three listed.

Since converting the majority of his energies from horseshoe pitching to bowling, Williams has been one of the top competitors on the PBA tour. His 106.7 rating is very deceptive, as the stat has been lowered significantly during the adjustment period he underwent during the first few years on the tour. Williams credits his success with learning to roll the ball straighter while maintaining good striking power. He is rated in the top 20 as the 1987 PBM tour starts.

## SPERBER CAPTURES BELLINGHAM INTERNATIONAL CROWN AUG. 22-23—BELLINGHAM, WA.—SANCTION 4-87-049

**CLASS A**—Art Sperber, Bremerton, WA, 6-1-74.0; Herb Criss, Bremerton, WA, 5-2-72.3; Barry Chappelle, Portland, OR, 5-2-68.7; Ed Fishel, Neilton, WA, 4-3-72.7; Henry Knauff, Spokane, WA, 4-3-69.7; Gerry Staley, Vancouver, WA, 3-4-65.2; Ron Dixon, Ferndale, WA, 1-6-59.5; Ken Elvig, Bellingham, WA, 0-7-56.9.

**WOMEN'S A**—Margaret Byfield, Mt. Vernon, WA, 6-1-60.4; Shirley Vaugeois, Victoria, BC, 5-2-50.6; Alice Garcia, Carlsbad, CA, 5-2-47.2; Geri Bigham, Langley, BC, 4-3-55.3; Linda Prentis, Victoria, BC, 3-4-45.7; Kerry Jackson, Vancouver, BC, 2-5-49.2; Elaine Weisdepp, Lacey, WA, 2-5-45.4; Carolyn Ferguson, Vancouver, WA, 1-6-36.5.

**CLASS B**—Les Montaney, Veradale, WA, 6-1-53.4; Vern Miller, Selah, WA, 5-2-59.5; Ray Sexton, Hoquiam, WA, 5-2-56.7; Ron Ferguson, Vancouver, WA, 3-4-54.2; Mike Thorniley, Olympia, WA, 3-4-52.2; Leo Rollick, Seattle, WA 3-4-49.0; Gordon Butts, Victoria, BC, 2-5-52.9; Bob Hughes, Burley, WA, 1-6-46.4.

**CLASS C**—Eddie Garcia, Carlsbad, CA, 7-0-53.2; John Henson, Anacortes, WA, 6-1-50.9; Dick Lee, Bellevue, WA, 5-2-53.0; Earl Hardie, Spanaway, WA, 3-4-45.1; Sam Barton, Cloverdale, BC, 3-4-38.7; Barney Heller, Everett, WA, 2-5-43.7; Bob Clark, Port Orchard, WA, 1-6-43.9; Jim Malvern, Jr., Seattle, WA, 1-6-43.0.

**CLASS D**—Mike Thompson, Victoria, BC, 7-0-62.8; Jack Bush, Marysville, WA, 6-1-48.3; Lloyd Reyklin, New Westminster, 4-3-50.5; Cecil Channing, Bonney Lake, WA 3-4-45.8; Bob Hoerner, Tacoma, WA 3-4-43.8; Les Spilseth, Olympia, WA, 2-5-43.6; Ray Simmonds, Olympia, WA, 2-5-38.7; Gordon Helsman, Cloverdale, Canada, 1-6-30.4.

**CLASS E**—Don Ferguson, Vancouver, WA, 7-0-47.0; Dennis Mustchin, Surrey, Canada, 6-1-47.7; John Hilberg, Clinton, WA, 4-3-41.7; Bart Barber, Anacortes, WA, 4-3-41.5; Ken Kohler, Spokane, WA, 3-4-41.2; Roger Vangeois, Victoria, BC, 2-5-43.5; Dan Leary, Steilacoom, WA, 1-6-35.9; Skip Schilperoort, Sunny-side, WA, 1-6-30.6.

**CLASS F**—Earl Kuper, Puyallup, WA, 6-1-49.0; Dayton Martindale, Wenatchee, WA, 5-2-49.3; Charlie Tank, Puyallup, WA, 4-3-43.2; Les Lingel, Marysville, WA, 3-4-40.2; Larry Westman, Victoria, BC, 3-4-38.3; Walt Weik, Spanaway, WA, 3-4-37.9; Arnold Lunnum, Edmonds, WA, 3-4-37.5; Brian Pelland, Edmonds, WA, 1-6-31.1.

**CLASS G**—Bernie Lepper, Richmond, Canada, 7-1-48.2; Frank Rogers, Bellingham, WA, 6-2-39.4; Verl Webb, Olympia, WA, 5-2-39.6; Art Hart, Gig Harbor, WA, 4-3-37.3; George Richards, Edmonds, WA, 3-4-38.9; Lyle Meuret, Everett, WA, 2-5-34.3; Bill Owens, Mt. Vernon, WA, 2-5-34.2; Don Naas, Oak Harbor, WA, 1-6-35.9.

**CLASS H**—Pat Mackie, Chillawack, Canada, 7-2-45.2; Lewis Lake, Cloverdale, Canada, 6-3-40.9; John Byfield, Mt. Vernon, WA, 6-3-42.4; Gene Beach, Marysville, WA, 5-4-42.3; Bill Barton, Canada, 4-3-40.0; Orlean Clinton, Seattle, WA, 2-5-31.5; Bob Slaker, Hemet, CA 1-6-35.2; Louis Gibbons, Thousand Trails, 1-6-34.3.

**CLASS I**—Mel Sherbert, Battleground, WA, 6-2-33.3; Collin Butts, Victoria, BC, 5-3-36.4; Stewie Battie, Canada, 4-3-34.8; Stan Garrett, Omak, WA, 4-3-34.6; Don McDugle, Anacortes, WA, 4-3-33.4; Larry Lowitz, Seattle, WA, 2-5-33.2; Don Fagerness, La Center, WA, 2-5-30.9; Mike Ordos, Sumas, WA, 2-5-28.5.

**CLASS J**—Bert Jameson, Victoria, BC, 7-0-42.3; Joe Wright, Tacoma, WA, 6-1-41.0; George Rachel, Everett, WA, 4-3-35.4; Pat Patterson, Snohomish, WA, 4-3-31.8; Cyril Kitchen, Tacoma, WA, 3-4-33.1; Ken Kuper, Spanaway, WA, 2-5-28.4; Ted Bostwick, Sequim, WA, 2-5-20.5; Lloyd Milton, Canada, 0-7-29.8.

**MEN K**—Bill Van Edgom, Lynden, WA, 5-2-31.5; Cleve Woods, Wauna, WA, 4-3-35.5; John Johnson, Victoria, BC, 4-3-34.2; Harold Lemons, Spokane, WA, 4-3-33.8; Rick Rebman, Hermiston, OR, 4-3-28.7; Wendell Roberts, Port Orchard, WA, 3-4-26.6; George Oliver, Canada, 2-5-24.7; Jim Hutchings, Grapeview, WA, 2-5-20.6.

**CLASS L (WOMEN'S B)**—Dorothy Butts, Victoria, BC, 7-0-48.9; Vera Westman, Victoria, BC, 5-2-34.8; Gladys Valcort, Cloverdale, Canada, 5-2-32.0; Elaine Rush, Victoria, BC, 3-4-33.5; Betty Reyklin, New Westminster, 3-4-32.5; Edna Butts, Victoria, BC, 3-4-30.3; Noreen Leard, Victoria, BC, 2-5-24.5; Renee Waldron, Canada, 1-6-22.7.

**CLASS M**—Don Isaacson, Seattle, WA, 5-2-29.2; Dave Barnes, Waterville, WA, 4-3-35.2; Roger Harrison, Seattle, WA, 4-3-33.5; Bill Butts, Victoria, BC, 4-3-32.7; Jake Neudorf, Victoria, BC, 4-3-29.6; Mike Miller, Seattle, WA, 4-3-27.2; John Kronholm, Burlington, WA, 3-4-32.3; Jim Quist, Ferndale, WA, 1-6-21.1.

**CLASS N**—Stan Page, Victoria, BC, 6-1-28.6; Bob Hayes, Thousand trails, 5-2-38.0; Richard Mueller, Burlington, WA, 4-3-25.4; E. L. Day, Blaine, WA, 4-3-24.3; Glen Titchenal, Seattle, WA, 4-3-22.6; Sam Olson, Lynden, WA, 3-4-28.2; Barney Rossum, Canada, 2-5-22.1; Harold Summers, Anacortes, WA, 0-7-12.8.

**CLASS O**—Barry Montgomery, Canada 6-1-17.6; John Alexander, Bothell, WA, 5-2-22.6; Les Randall, Canada, 4-3-20.5; Ed Mackie, Chillawack, Canada, 4-3-20.2; Roger Cork, Burlington, WA, 4-3-19.4; Frank Woodbury, Brier, WA, 2-5-13.5; June Thompson, Canada 2-5-11.6; Dennis Hardie, Spanaway, WA, 0-7-12.7.

## ERICKSON TOPS GILES INVITATIONAL:—UTAH—SANC.

**CLASS A**—Keith Erickson, Herriman, 6-0-54.1; Lamont Gardner, Salt Lake, 5-1-46.3; Richard Buchanan, Draper, 3-3-50.6; Frank Minster, Ogden, 3-3-48.1; Gary Hughes, Taylorsville, 2-4-44.6; Tito Archuleta, Sandy, 2-4-40.6; Jerry Teela, Springville, 0-6-33.8.

**CLASS B**—Que Christensen, Salt Lake, 5-1-40.9; Rudy Lobato, Murray, 5-1-35.4; Russ Horan, Orem, 4-2-33.2; Phil Jensen, American Fork, 3-3-37.7; Bruce Eyre, Salt Lake, 2-4-32.7; Bud Schardine, Springville, 2-4-31.2; Lynn Palmer, American Fork, 0-6-24.6.

**CLASS C**—Verdun Nicholas, West Valley City, 5-1-32.2; Carl Hills, Salt Lake, 4-2-30.4; Cleo Snarr, Midvale, 4-2-27.5; Steve Minster, Ogden, 3-3-29.0; Gary Wood, Salem, 2-4-26.6; Ray Fivas, Murray, 2-4-24.6; Bob Aoki, Salt Lake, 1-5-21.6.

**CLASS D**—Jim Shaw, Salt Lake, 4-1-29.0; Arvil Jennings, Tooele, 4-1-26.4; Dale Nielsen, Midvale, 3-2-27.7; Jerry Bird, Lehi, 2-3-27.5; Herbert Zafft, Murray, 1-4-22.3; Wayne Bennett, Sandy, 1-4-21.5.

**CLASS E**—Delbert Feltenbarger, Salt Lake, 5-1-27.9; Bob Griffin, West Valley City, 4-2-20.3; Rex Buchanan, draper, 4-2-19.5; Ken Jennings, Salt Lake, 3-2-22.1; Kay Thompson, Lehi, 3-3-17.3; Mike Gonzales, Kearns, 2-4-20.6; Jack Snyder, So. Jordan, 0-6-13.5.

**CLASS F**—Ruben Salazar, West Valley City, 5-1-18.7; Brad Harrison, sandy, 4-2-11.8; Gene Schmidt, Midvale, 3-3-15.6; Bob Stroud, Sandy, 0-6-8.4.

**CLASS G**—Keith Dickinson, Sandy, 3-1-7.5; Ted Shaw, West Valley City, 3-1-6.0; Henry Richards, Meadow, 0-4-5.5.

**LADIES CLASS**—Debbie Vaughn, 4-2-24.5; Shirley Feltenberger, 4-2-22.7; Linda Hills, 4-2-19.6; Betty Shaw, 3-3-9.7; Helen Rufi, 1-5-14.2; Karen Archuleta, 0-6-6.3.

**JUNIORS**—Brad Simmons, 5-1-33.7.

---

## NEWBURG, ORE. OPEN WON BY GRAHAM—SANC. 4087-019

**CLASS A-1**—Bill Graham, 6-1-61.4; Barry Chapelle, 5-2-73.5; Lowell Davis, 4-3-56.8; Jerry Gorton, 3-4-56.3.

**CLASS A-2**—Pete Zumaran, 4-3-51.8; Marge McLeod, 2-5-54.6; Ron Ferguson, 2-5-54.4; Lee Wallace, 2-5-47.7.

**CLASS B**—Charles Seal, 6-1-51.0; Buck Davis, 4-3-47.7; Charels Weddling, 4-3-45.4; Larry Flanary, 4-3-43.7; Mernard Martell, 3-4-49.1; Roger Christianson, 3-4-44.9; Everett Clark, 2-5-43.4; Len Christensen, 2-5-42.1.

**CLASS C**—Carolyn Ferguson, 7-2-40.0; Marvin Tatchio, 6-3-39.9; Esthel Benner, 6-3-38.7; Don Ferguson, 5-4-38.6; Betty Tatchio, 4-3-44.9; Willard Hufschmid, 2-5-38.5; Donna Graham, 1-6-31.1; Ron Giebenhain, 1-6-26.9.

**CLASS D**—R. E. Click, 6-1-42.8; George Kaufer, 5-2-43.4; dave Sturdevant, 4-3-36.3; Eugene Sorenson, 3-4-41.5; Floyd Gray, 3-4-37.5; Don Fagerness, 3-4-33.7; Art Norlin, 2-5-40.0; Lloyd Kilgore, 2-5-35.3.

**CLASS E**—Jerry Wolfe, 5-1-47.5; Fred Woods, 5-1-46.9; Janes Wear, 4-2-37.3; Joe Hanes, 3-3-33.0; Dick Helm, 2-432.5; Vern Wanless, 1-5-30.3; Bob Wilkins, 1-5-27.4.

**CLASS F**—Russ Johnson, 7-2-33.8; Lowell Graves, 7-3-28.3; Jim Wear, 6-3-30.6; George McLeod, 5-3-19.3; Bob Wendling, 4-4-20.8; Jerry Coleman, 3-5-23.8; Larry Rickert, 3-5-20.3; Marion Sturdevant, 3-5-11.2; Frank Dvorshak, 0-8-5.8.

---

## WIEDRICH WINS ORE. SANDBAGGERS OPEN—SAN. 4-87-020

**CLASS A-1**—Ben Wiedrich, 7-0-75.9; Barry Chapelle, 6-1-73.6; Lowell Davis, 4-3-62.9; Jerry Gorton, 4-3-61.4.

**CLASS A-2**—Bill Graham, 3-4-60.5; Gerry Staley, 2-5-58.4; Marge McLeod, 1-6-59.2; Ron Ferguson, 1-6-56.6.

**CLASS B**—Lee Wallace, 5-2-50.6; Bernard Martell, 4-3-52.9; Larry Flanary, 4-3-41.9; Pete Zumaran, 4-3-50.3; Roger Christianson, 4-3-45.5; Mo McNally, 3-4-47.3; Charles Wendling, 3-4-46.1; Len Christensen, 1-6-42.4.

**CLASS C**—Carolyn Ferguson, 6-1-41.2; R.E. Click, 5-2-40.3; Betty Tatchio, 4-3-40.5; George Kaufer, 4-3-34.9; Esthel Benner, 3-4-36.7; Art Lund, 3-4-34.7; Marvin Tatchio, 2-5-36.2; Skip Schilperoort, 1-6-23.4.

**CLASS D**—David Gorton, 6-2-39.9; Mick Mathers, 5-3-39.1; Bob Sletten, 4-3-39.4; Bill Dolan, 4-3-37.9; Willard Hufschmid, 4-3-37.2; O.D. McMillan, 3-4-32.2; Gil Morgan, 2-5-33.3; Art Norlin, 1-6-32.1.

**CLASS E**—Irene Wiedrich, 6-2-32.0; Janes Wear, 5-3-30.3; Mel Sherbert, 4-3-31.9; Don Fagerness, 4-

**WIEDRICH—(Continued)**

3-31.5; Dave Sturdevant, 3-4-34.3; Frank Moan, 3-4-28.9; Ben Goodling, 2-5-26.7; Jim Kosterman, 2-5-19.4.

**CLASS F**—Art Taylor, 6-2-33.8; Ed Pritchard, 6-3-29.3; Dick Helm, 5-3-29.8; Jack Stryker, 4-3-30.4; Dick Miller, 4-3-28.8; Noel Ness, 3-4-31.4; Marvin Berg, 2-5-26.8; Dale Dufur, 0-7-19.0.

**CLASS G**—Dewey Duewiger, 5-2-36.3; Jim Wear, 4-3-32.2; Warner Kirlin, 4-3-28.4; Geno Burton, 4-3-31.2; Kent Smith, 3-4-29.8; Lowell Graves, 3-4-25.0; Vern Wanless, 3-4-23.9; George McLeod, 2-5-24.8.

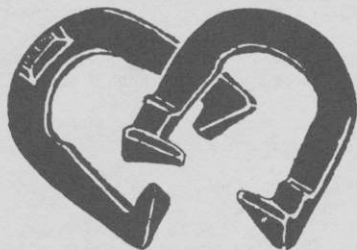
**CLASS H**—Ron Giebenhain, 6-1-26.5; Mike Felsman, 4-3-22.6; Ron Miller, 4-3-27.3; Leonard Bartel, 4-3-24.1; Doug Spillu, 4-3-20.9; Charles Anderson, 3-4-16.7; Carl Shoberg, 3-4-16.4; Frank Dvorshak, 0-7-4.3.

**JUNIORS**—Sam Meier, 6-0-19.7; Ricky Bienapfl, 4-2-11.0; Bobby Miller, 2-4-7.5; Billy Miller, 0-6-3.7.

**SPEARFISH, S.D. LEAGUE CLOSSES SEASON—SANC. 87C242**

The Spearfish, S.D. League closed its 1987 summer league season with the following winners: first place team, Diane Helmlinger, Leona Kowalke, Bernard Kowalke, 2nd place team, Larry Backhaus, Orville Hirschert, Leroy Pawlowski, 3rd place team, Gene Ficek, Craig Anderson, Foster Biyd.

Rookie of the Year: Foster Boyd; Sportsmanship Award: Lisa Ficek; Most Improved Pitcher, Men: Craig Anderson, 10%; Most Improved Pitcher, Women: Yvonne Ficek, 7.5%; High Average, Craig Anderson, 108.5 pts/game; High Game Over Average, Eldon Tech, 28 pts; High Game With Handicap, Craig Anderson, 136 pts; High Game Scratch, Dick Wilson, 98 pts.

**NHPA APPROVED**

Guaranteed one year  
from date of purchase  
on STAINLESS STEEL ONLY

**THE FIRST NEW DESIGN  
of the  
PROFESSIONAL PITCHING  
HORSESHOE**

The horseshoe with calkers on the reversed side of the toeplate. The FLIP-STYLE pitcher will now have the two calkers in a down position landing in pit.

**HIGH GRADE STEEL CASTING**

2.8 and 2.9 oz. only — \$27.00 pr., plus \$3.00 UPS

STAINLESS STEEL — \$54.50 pr., plus \$3.00 UPS

2 lb. 8 and 2 lb. 9 oz. only

Send checks or money orders to:

PETE DONOHO  
704 STATE STREET  
REDDING, CA 96001  
Ph. 916-243-5761

**CAL-FLIP**

Allow ample time for delivery

Made in U.S.A.—Richmond, Calif.



## IDAHO ASSOCIATION TOURNAMENTS

**MOUNTAIN HOME OPEN—AUG. 8-9—SANC. 4-87-044—CLASS A**—Warren Stutzman, Rupert, 5-1-50.3; Leo Petersen, Twin Falls, 4-2-44.1; Sam Williams, Driggs, 4-2-43.7; Jim Taylor, Caldwell, 3-3-43.5; Dan Tucker, Hailey, 3-3-39.6; Jim Coba, Caldwell, 1-5-41.0; Tony Apodaca, Jerome, 1-5-40.0.

**CLASS B**—Doug Palmer, Chubbuck, 5-0-36.6; Henry Reid, Jerome, 3-2-37.5; Olon Crandall, Mountain Home, 3-2-32.3; Glen Stutzman, Gibbonsville, 3-2-32.2; Virgil Johnson, Mountain Home, 1-4-32.9; Berle Riese, Fairfield, 0-5-29.8.

**CLASS C**—Clyde Marquez, Idaho Falls, 5-0-34.5; Jay Anderson, Idaho Falls, 4-1-34.1; Jack Beebe, Mountain Home, 2-3-25.6; Ralph Morgan, Mountain Home, 2-3-22.5; Lyle Anderson, Idaho Falls, 2-3-22.0; Harold Whitlig, Idaho, 0-5-16.5.

**CLASS D**—Stan Kirtland, Hagerman, 5-1-26.1; Lester Agee, Eden, 4-2-26.0; Ralph Warthen, Caldwell, 4-2-24.3; Ruth Anderson, Idaho Falls, 4-2-24.3; Lou Sovis, Idaho, 2-4-16.3; Bill Stutzman, Inkom, 1-5-13.6; Jake Huston, Idaho, 1-5-12.1.

**FESTIVAL OF PRICE—JEROME—JULY 25-26—SANC. 4-87-029—CLASS A**—Bob Thackeray, Jerome, 7-1-47.2; Warren Stutzman, Rupert, 6-2-44.6; Dan Tucker, Hailey, 5-2-42.8; Leo Petersen, Twin Falls, 3-4-40.3; Sam Williams, Driggs, 2-5-41.2; Lee Edwards, Gooding, 2-5-40.1; Roger Andrews, Jerome, 2-5-35.6; Tony Apodaca, Jerome, 2-5-31.8.

**CLASS B**—Lee Payton, Jerome, 6-1-36.7; Doug Palmer, Chubbuck, 4-3-38.8; Helen Payton, Jerome, 4-3-36.3; Glenn Stutzman, Gibbonsville, 3-4-32.4; Ted Gardner, Jerome, 3-4-31.4; Berle Riese, Fairfield, 3-4-28.6; Henry Reid, Jerome, 3-4-25.4; Evan Pickett, Pocatello, 2-5-29.9.

**CLASS C**—Jim Coba, Caldwell, 6-1-42.1; Olon Crandall, Mountain Home, 5-2-37.8; Clyde Marquez, Idaho Falls, 5-2-33.2; Jerry Ostler, Jerome, 4-3-31.7; Jack Beebe, Mountain Home, 3-4-32.5; Bob Mitchell, Shelley, 2-5-31.4; Jay Anderson, Idaho Falls, 2-5-22.1; Harry Chapin, Twin Falls, 1-6-27.1.

**CLASS D**—Ruth Anderson, Idaho Falls, 6-1-26.7; Milton Ulrich, Filer, 5-2-25.3; Lyle Anderson, Idaho Falls, 4-3-28.4; Jim Saner, Parma, 4-3-22.1; Hillary Butcher, Jerome, 3-4-23.6; Lester Agee, Eden, 2-5-18.9; Faye Fuqua, Wendell, 2-5-17.1; Cleve Harlow, Caldwell, 2-5-17.8.

**CLASS E**—Lynn Fuqua, Wendell, 5-0-18.5; Elvin Bolich, Jerome, 4-1-17.5; Scott Colson, Mackay, 3-2-13.5; Bob Walton, Jerome, 2-3-9.0; Merlin Miller, Twin Falls, 1-4-5.0; Jay Saner, Parma, 0-5-2.0.

**TWIN SPIN—TWIN FALLS—AUG. 15-16—SANC. 4-87-45—CLASS A**—Bob Thackeray, Jerome, 8-1-46.8; Leo Petersen, Twin Falls, 6-3-43.4; Sam Williams, Driggs, 6-3-42.0; Warren Stutzman, Rupert, 5-4-45.6; Dan Tucker, Hailey, 5-4-40.4; George Hightower, Twin Falls, 4-5-41.0; Jim Taylor, Caldwell, 4-5-39.3; Helen Payton, Jerome, 3-6-38.1; Tony Apodaca, Jerome, 2-7-34.7; Henry Reid, Jerome, 1-8-33.1.

**CLASS B**—Lee Payton, Jerome, 6-1-38.5; Doug Palmer, Chubbuck, 4-3-40.4; Berle Riese, Fairfield, 4-3-38.7; Olon Crandall, Mountain Home, 4-3-32.1; Roger Andrews, Jerome, 3-4-36.1; Nick Piva, Challis, 3-4-30.4; Glen Stutzman, Gibbonsville, 2-5-34.9; Evan Pickett, Shelley, 2-5-26.2.

**CLASS C**—Jerry Ostler, Jerome, 6-1-37.5; Otto Kubal, St. Anthony, 5-2-40.7; Jay Anderson, Idaho Falls, 5-2-37.0; Virgil Johnson, Mountain Home, 5-2-33.0; Leona Riese, Fairfield, 3-4-19.9; Ralph Morgan, Mountain, 2-5-25.7; Don Scarrow, Jerome, 2-5-25.1; Clyde Marquez, Idaho Falls, 0-7-28.2.

**CLASS D**—Stan Kirtland, Hagerman, 6-1-28.7; Reed Lowe, Grace, 5-2-27.0; Milton Ulrich, Filer, 5-2-25.9; Lester Agee, Eden, 4-3-22.8; Sandra Ulrich, Twin Falls, 3-4-29.9; Rose Kubal, St. Anthony, 3-4-24.5; Hillary Butcher, Jerome, 1-6-23.9; Lyle Anderson, Idaho Falls, 1-6-21.2.

**CLASS E**—Ed Pettit, Jerome, 5-1-20.0; Bob Koren, Kimberly, 4-2-18.3; Ray Ulrich, Twin Falls, 3-3-18.7; Merlin Miller, Twin Falls, 0-6-5.0.

## 1989 WORLD TOURNAMENT—SPEARFISH, SOUTH DAKOTA

### JULY 19 through AUGUST 1

#### CAL-FLIP GUARANTEE CHANGE

People take advantage of people, it has been said. As of November 1, 1987, the CAL-FLIP regular high grade steel shoe will not be guaranteed as of one (1) year from date of purchase.

The STAINLESS STEEL HORSESHOE will still hold their guarantee as usual.

## SOUTHERN CALIFORNIA ASSOCIATION ACTIVITY

**BORON OPEN—AUG. 29—SANC. 25-87-066—GROUP 1**—Diane Lopez, Santa Barbara, 5-1-77.0; Don Gregson, Crestline, 4-2-69.6; Ed Arionus, Westminster, 3-3-67.4; Lupe Henry, Cathedral City, Forfeit.

**GROUP 2**—Jim Eozzo, Los Angeles, 5-1-62.5; Darrell Lamoureux, Boron, 4-2-52.1; Kevin Kecskes, Fontana, 3-3-51.3; Norman Cone, Huntington Beach, 3-3-51.0; Dohn Dewar, Boron, 3-3-45.3; Jo Vickery, Riverside, 2-4-44.3; Fred Briand, No. Edwards, 1-5-46.6.

**GROUP 3**—Angelo Suppa, Nevada, 7-0-47.4; Bonnie Marshall, No. Edwards, 5-2-39.1; Darrell Caillier, Boron, 5-2-38.3; Tom Jacobson, Fontana, 4-3-36.7; Steve Memback, Palmdale, 3-4-37.7; Stan Hilton, Burbank, 3-4-35.1; Don Weaver, Nevada, 1-6-22.6; Terry Mundy, Barstow, Forfeit.

**GROUP 4**—Pete Lopez Jr., Boron, 6-1-37.3; Allen Youngblood, Boron, 5-2-34.6; Dave Rodriguez, Santa Barbara, 4-3-40.0; Shannon Youngblood, Boron, 4-3-33.1; Roy Henry, Cathedral City, 3-4-34.0; Ed Agner, Beaumont, 3-4-26.9; Gegis Dunlap, Fontana, 2-5-33.7; Smokey Anderson, Burbank, 1-6-29.7.

**GROUP 5**—Mike Fill, Fontana, 7-2-32.2; Fred Craven, Bellflower, 6-3-37.8; Norm Firk, 4-4-28.8; Ray Silva, Santa Barbara, 3-5-26.4; Jack Hicks, Tecachapi, 1-7-19.3.

**GROUP 6**—Pat Connelly, Lancaster, 6-2-25.0; Victor Lamoureux, Boron, 5-3-29.9; George Barker, Bloomington, 5-3-23.4; Larry King, Bakersfield, 4-4-34.3; Rick Youngblood, Boron, 4-4-28.1; Doug Soward, Lake Isabella, 4-4-25.6; Wilbur Gochanour, Fontana, 3-5-26.2; David Lamoureux, Boron, 3-5-26.2; John Patton, Tecachapi, 2-6-15.7.

**GROUP 7**—Bob Burgess, Boron, 6-1-29.2; Sherri Marshall, No. Edwards, 4-3-33.3; John Green, Boron, 4-3-30.4; Dottie Suppa, Nevada, 4-3-29.5; Loretta Chaney, Altadena, 4-3-23.5; Linda Rodriguez, Santa Barbara, 3-4-30.0; Bob Baum, Boron, 2-5-29.2; Dennis Lamoureux, Bakersfield, 1-6-21.5.

**GROUP 8**—Jeff Eason, Barstow, 6-1-15.9; Jerry Fleming, Boron, 5-2-26.1; Rita Eozzo, Los Angeles, 5-2-20.0; John Ely, Lancaster, 4-3-18.5; Bud Adudell, Boron, 4-3-17.4; Beverley Agner, Beaumont, 2-5-11.0; Henry Cordova, Barstow, 1-6-17.8; Joe Pena, Tecachapi, 1-6-14.8.

**GROUP 9**—Nancy Lamoureux, Boron, 7-0-30.5; Bruce Pruyne, Lancaster, 5-2-17.6; Paul Waller, No. Edwards, 5-2-16.1; Leon Marshall, No. Edwards, 3-4-17.1; Tom Marshall, No. Edwards, 3-4-15.7; Art Binkley, Barstow, 3-4-12.9; Mitch Kelland, Tecachapi, 2-5-13.1; Edyth Soward, Lake Isabella, 0-7-7.9.

**BORON OPEN HCP—AUG. 30—SANC. 25-87-066—GROUP 1**—Diane Lopez, Santa Barbara, 5-2-79.0; Jonathan Williams, Fontana, 4-3-65.9; Ed Arionus, Westminster, 3-3-69.3; Don Gregson, Crestline, 1-5-67.4.

**GROUP 2**—Angelo Suppa, Nevada, 7-1-46.6; Fred Briand, No. Edwards, 6-2-46.6; Darrell Lamoureux, Boron, 6-2-54.4; Jim Eozzo, Los Angeles, 5-3-55.0; Darrell Caillier, Boron, 4-4-41.4; Don Weaver, Nevada, 3-5-37.8; Norm Kirk, 2-6-25.6; Dave Rodriguez, Santa Barbara, 2-6-31.9; Smokey Anderson, Burbank, 1-7-31.3.

**GROUP 3**—Sherri Marshall, No. Edwards, 7-0-34.6; Nancy Lamoureux, Boron, 5-2-31.4; Bob Burgess, Boron, 5-2-25.0; George Farrell, Apple Valley, 4-3-39.2; Linda Rodriguez, Santa Barbara, 3-4-25.0; Loretta Chaney, Altadena, 2-5-21.7; John Green, Boron, 2-5-16.4; Victor Lamoureux, Boron, 0-7-20.7.

**GROUP 4**—Dottie Suppa, Nevada, 6-0-35.0; Rita Eozzo, Los Angeles, 5-1-13.7; Art Binkley, Barstow, 4-2-18.7; Leon Marshall, No. Edwards, 3-3-20.4; Jerry Fleming, Boron, 1-5-12.9; Ray Streuber, No. Edwards, 1-5-10.8; Lura Burgess, Boron, 1-5-7.5.

**A & K GREGSON DYMHCP—RIVERSIDE—AUG. 22—SANC. 25-87-065—GROUP 1**—Don Gregson, Crestline, 7-0-73.9; Jim Eozzo, Los Angeles, 4-3-55.1; Darrell Lamoureux, Boron, 4-3-54.6; Jim Atwell, Los Angeles, 3-4-54.2; Orville Likkem, Yobba Linda, 3-4-59.9; George Whittemore, Rosemead, 3-4-58.2; Jerry Schneider, Anaheim, 2-5-65.4; Ronnie Simmons, Homeland, 2-5-70.4.

**GROUP 2**—Lois Clark, Riverside, 6-1-49.3; Stan Hilton, Burbank, 5-2-44.6; Howard Larson, Lakewood, 4-3-46.8; Bob Thompson, Orange, 4-3-49.6; Les Burroughs, Perris, 3-4-43.4; Bob Jacobs, Tustin, 2-5-37.3; Les Stewart, Hemet, 2-5-33.9; Greg Simmons, Homeland, 2-5-35.4.

**GROUP 3**—Ronald Pudwell, Hemet, 6-1-36.8; Don Bailey, San Bernardino, 5-2-32.7; Jim Mudra Sr., Huntington Beach, 4-3-35.4; Smokey Anderson, Burbank, 4-3-36.3; Bob Alborn, Bloomington, 3-4-39.1; Joe Haag, Moreno Valley, 3-4-35.9; Pete Cathalinat, Crest Park, 2-5-32.5; Ed Agner, Beaumont, 1-6-27.5.

**GROUP 4**—Rick Collins, San Bernardino, 5-2-28.9; Jim Mudra Jr., Whittier, 5-2-28.2; Mike Weichel, Garden Grove, 5-2-26.8; George Barker, Bloomington, 4-3-23.9; Wilbur Gochanour, Fontana, 4-3-23.6; Ed Alborn, Fontana, 3-4-25.0; Joe Baxter, Riverside, 2-5-20.7.

**GROUP 5**—Nancy Lamoureux, Boron, 7-0-20.5; Rita Eozzo, Los Angeles, 6-1-19.3; John Brawley, Riverside, 5-2-26.7; Dale Wilczynski, Riverside, 3-4-21.8; Harold Finnern, Sun City, 3-4-21.8; Beverley Agner, Beaumont, 2-5-14.6; Don Vaughn, Sunnymead, 2-5-15.4; Leroy Bailey, San Bernardino, 0-7-7.6.

## WYOMING ASSOCIATION TOURNAMENT NEWS

Beginning with the Casper Open in June it was Ken Raymond on top with an 8-3-45.2 record. A. Stewart claimed the Ladies title with 7-1-37.9. Sanction 3-87-002.

B. Turechek was the winner in the Cheyenne Open with a clean slate of 7 in a row and a 68.5 percentage. J. Thompson topped the Ladies division. Sanction 3-87-003.

The Jacklope Open title went to G. Patton who registered an 8-2-52.3 record. Sanction 3-87-004.

In the Buffalo Open, it was D. Wislon all the way with 10 wins and a percentage to 51.3. H. Showers won the Ladies crown with 8-2-36.9. Sanction 3-87-005.

The Cowboy Open held in July was taken in tow by R. Pintor who posted a 8-2-59.1 record. A. Stewart was again in the winners circle as she won the Ladies title with 10 wins and a percentage of 44.3. Sanction 3-87-005.

Another July event was the Rock Springs Open showing G. Ventling on top with 9-2-45.9 to win the title. G. Willoughby claimed the Ladies crown with 14 straight wins and averaging 43.3 percent. Sanction 3-87-006.

In the Laramie Open, B. Turechek again came up the winner with 9-3-64.2. A. Stewart picked up her third title winning the ladies championship with 9-1-38.9. Sanc. 3-87-007.

D. Clausen topped Class A in the Ranchester Open in August with 12-3-48.4. H. Showers was in the winner's circle again with an 8-1-34.8 record. Sanction 3-87-008.

The Powell Open saw D. Clausen win the coveted title with 7 straight wins and a percentage of 44.5. G. Willoughby won another title taking home the Ladies title. In the Junior division B. Willoughby had six straight to win the Junior crown. Sanction 3-87-009.

## NORTHERN CALIFORNIA ASSOCIATION TOURNAMENTS

**JIM ADAMS "D" OPEN—Turlock—Sanc. 26-87-066—GROUP D-1—**Ken Brown, 6-0-34.3; Vern Gosney, 5-1-31.6; Bill Arnold, 4-2-26.6; Luke Braun, 3-3-28.0; Bo Thomas 1-5-23.6; John Ortega, 1-5-18.3; Ward Floodman, 1-5-14.3.

**GROUP D-2—**Perry Ceres, 6-1-24.5; Winn Obie, 5-2-23.4; Mel Falcon, 4-2-26.0; Lee Henninger, 4-2-22.0; Chester Anderson, 2-4-8.6; Bob Malley, 1-5-17.6; Vince Eisma, 0-6-15.3.

**GROUP D-3—**Charles DeRose, 8-0-23.4; Scott Wass, 6-2-18.7; Ernie Kim, 4-4-10.6; Marion Hawley, 1-7-6.5; Nathan Brown, 1-7-4.0.

**PACIFIC COAST OPEN W/J—SAN JOSE—AUG. 23—SANCTION 26-87-070—GROUP A-1—**Don Titcomb, 3-0-78.8; Jeff Williams, 0-3-67.6.

**GROUP A—**Jack Sorg, 5-2-56.5; Jim Saunders, 5-3-53.0; Jim Mihura, 4-3-53.1; Verdan Zelmar, 3-3-55.6; Walt Robinson, 2-4-54.0; Bill Brown, 2-4-52.0; Mel Roberts, 2-4-51.3.

**GROUP A-3—**Marty Dunn, 6-1-48.0; Thor Jensen, 5-2-43.7; Bill Penix, 4-3-43.7; Dick King, 4-3-40.5; Don Muenchow, 4-3-37.4; Elton Cowles, 3-4-44.5; Bill Chandler, 2-5-39.4; Ken Steen, 0-7-20.0.

**GROUP A-4—**Jerry Keys, 7-0-41.7; Fred Wood, 4-3-38.5; Jay Richmond, 4-3-32.8; Mel Reeser, 4-3-32.2; Bill Hail, 4-3-32.0; John Delgado, 3-4-34.2; Al Alviso, 2-5-30.8; Robert Macke, 0-7-28.0.

**GROUP A-5—**Ron Mann, 6-1-33.1; John Lupinetti, 5-2-31.7; Ron Percy, 5-2-30.5; Noel Guy, 4-3-25.4; John Ortega, 3-4-24.8; Luke Braun, 3-4-21.4; Gene Martin, 2-5-28.8; Jim Cosgrove, 0-7-19.7.

**GROUP A-6—**Mel Falcon, 7-0-23.7; Joe Nakamoto, 5-2-20.8; George O'Brien, 5-2-20.8; Joe Kovach, 4-3-17.7; Art Kay, 3-4-17.7; Joe Novakovich, 2-5-20.0; Steve Ornelas, 2-5-17.1; Ira Abbey, 0-7-11.7.

**GROUP A-7—**Leon Moore, 6-0-51.3; Ron Cook, 5-1-34.0; Ray Bojorques, 4-2-33.0; Earl Heinrich, 3-3-27.0; Richard Robbins, 2-4-19.0; Bill Terry, 1-5-25.6; Lee Henninger, 0-6-18.3.

**GROUP A-8—**Ron Thomas, 6-0-26.0; Dave Nakamoto, 4-2-27.3; Lee Brinkman, 3-3-26.0; Steve Fleischli, 3-3-24.3; Jim Morrow, 3-3-23.6; Ceres Perry, 1-5-22.0; Obie Winn, 1-5-14.3.

**GROUP A-9—**Red Taylor, 6-1-18.8; Scott Wass, 5-2-22.5; Leonard Wall, 4-3-18.8; Steven Nakamoto, 4-3-17.4; Allen Kolberg, 3-4-19.1; Monte Williams, 3-4-17.4; Ernie Kim, 2-5-11.4; Carl Dalcolletto, 1-6-9.4.

**GROUP A-JUNIOR—**James Ornelas, 5-0-36.0; Chuck Southern, 4-1-28.8; B. J. Terry, 4-1-22.4; Bruce Morrow, 2-3-6.0; Justin Terry, 1-4-14.8; George Brotherton, 1-4-5.6; Kenton Wick, 0-5-3.2.

**GROUP W-1—**Marisella Mauricio, 3-0-62.6; Carol Casados, 2-1-63.3; Marthe Dunn, 1-2-47.3; Vera Floyd, 0-3-39.3.

**GROUP W-2—**Jean Ornelas, 4-1-32.8; Sandy Kolberg, 3-2-29.6; Char Sorb, 1-4-8.0; Elsie Reeser, 1-4-8.0.

**GROUP W-3—**Kathy Williams, 4-1-12.4.

**"C" OPEN—COLUSA—AUG. 28—SANCTION 26-87-069—GROUP C-1—**Leonard Rood, 7-0-56.0; Barak Wright, 4-3-43.7; Lee Van Dalsen, 4-3-42.8; Gerald Hollman, 3-4-47.1; Jack Fravel, 3-4-44.0; Don Purdum, 3-4-43.1; Thermon Watkins, 3-4-40.8; Lee Oliver, 1-6-38.8.

**GROUP C-2—**Mike Martinez, 7-1-48.0; Bud Grisaffi, 6-2-51.7; Joseph Roberts, 5-2-40.0; Gary Dillon, 5-2-39.4; Jim Long, 3-4-42.0; John Kincheloe, 2-5-30.0; John Sylvester, 1-6-34.8; Terry Wood, 0-7-22.5.

## NORTHERN CALIFORNIA—(Continued)

**GROUP C-3**—Tom Burns, 7-1-37.7; Marv Werner, 6-2-33.7; Bill Dise, 4-3-40.0; Vern Gosney, 4-3-33.7; Charles McDonald, 3-4-33.1; Jim Kyker, 2-5-27.7; Chick White, 2-5-26.5; Bob Thomas, 1-6-28.8.

**GROUP C-4**—Victor Nicoli, 5-1-23.0; Jerry Beach, 4-2-30.6; Bill Arnold, 4-2-28.3; Buck Gendron, 4-2-23.6; Lee Hardy, 3-3-23.0; Randy Daniel, 1-5-19.3; Howard Bryant, 0-6-14.6.

**MONTY JONES INVITATIONAL FINALS—GOLD COUNTRY—SANCTION 26-87-127**—Don Titcomb, 10-1-75.5; Vada Dunn, 7-4-53.9; Dave Shelton, 7-4-52.2; Vince Mauricio, 6-5-44.6; Dick Hucke, 6-5-47.7; Jack Sorg, 6-5-50.0; Don Muenchow, 6-5-39.7; Marilyn Brown, 5-6-43.4; Leonard Rood, 5-6-46.3; Otis Hubbard, 4-7-40.9; Yvonne Mauzey, 2-9-44.3; Bill Hines, 2-9-39.2.

**NCHPA FUND OPEN W/J—MIXED—GOLD COUNTRY—SANCTION 26-87-068—GROUP A-1**—Walt Robinson, 5-1-58.3; Holland Payne, 4-2-56.3; Herb Rushing, 3-3-58.0; Jim Mihura, 3-3-51.6; Don Williams, 2-4-58.0; Walt Foreman, 2-4-50.0; Doyle Palmer, 2-4-44.0.

**GROUP A-2**—Thor Jensen, 6-1-45.4; Augie Fragale, 5-2-46.0; Andy Anderson, 5-2-44.8; Gary Dillon, 4-3-37.1; Mike Martinez, 3-4-38.2; Karen Alling, 3-4-34.2; Yosiko Palmer, 1-6-32.8; Bert Charley, 1-6-32.2.

**GROUP A-3**—Robert Rosa, 6-0-46.6; Jim Long, 5-1-41.0; Laurel Fisher, 4-2-31.0; John Sylvester, 3-3-28.0; John Kincheloe, 2-4-22.3; Larry Taylor, 1-5-25.6; Lillian Lloyd, 0-6-19.3.

**GROUP A-4**—Frank Palmer, 5-1-31.6; Jay Bush, 3-3-29.0; Bob Thomas, 3-3-28.0; Gail Cook, 3-3-27.6; Reese Cathey, 3-3-25.6; Chris Stewart, 2-4-30.3; John Rilea, 2-4-25.0.

**GROUP A-5**—Bill Arnold, 7-2-32.5; Ralph Morrison, 6-3-26.3; Sylvan Stratton, 5-3-34.6; Susie Rains, 5-3-28.4; Jerry Smith, 4-4-29.3; Dwain Hettinger, 4-4-24.0; Ernie Harries, 2-6-29.3; Bob Lloyd, 2-6-25.6; Buck Gendron, 2-6-23.4.

**GROUP A-6**—Denny Rafferty, 5-1-30.6; Mike Moreno, 4-2-25.0; Les Hewston, 4-2-22.3; Gordon brown, 2-4-21.3; Joyce Merrill, 2-4-20.6; Enid Belsito, 2-4-18.3; Glen Rains, 2-4-18.0.

**NCHPA FUND W/J MIX—MAKE-UP—YUBA-SUTTER—SANCTION 26-87-007—GROUP A-1**—Dave Loucks, 6-1-60.8; Juke Basham, 5-2-53.7; Don Williams, 3-3-57.3; Joe Colt, 3-3-54.6; Emmett Schroeder, 3-3-53.6; Herb Rushing, 1-5-55.0; Bob Proctor, 1-5-53.3.

**GROUP A-2**—Leonard Rood, 6-0-57.0; Jack Fravel, 5-1-49.6; Lee Van Dalsen, 3-3-43.6; Bert Charley, 3-3-40.0; Otis Hubbard, 2-4-48.6; Bud Grisaffi, 1-5-50.0; Barak Wright, 1-5-43.0.

**GROUP A-3**—Marilyn Brown, 6-0-47.0; Gary Dillon, 4-2-46.3; Mike Martinez, 4-2-41.3; Lois Edwards, 3-3-40.3; Jim Long, 2-4-38.6; Jay Bush, 1-5-30.3; Jimmy Staley, 1-5-28.3.

**GROUP A-4**—Charles McDonald, 5-1-35.0; Rodney Mullen, 4-2-33.6; Bob Thomas, 3-3-32.0; Roy Thomas, 3-3-28.0; Bill Dise, 2-4-28.6; Marv Werner, 2-4-25.6; Paul Phares, 2-4-22.3.

**GROUP A-5**—Josephine Charley, 6-0-35.0; Sylvan Stratton, 4-2-30.6; Ernie Harries, 4-2-28.3; Jerry Smith, 3-3-29.3; Jerry Beach, 2-4-28.3; Charlene Mullen, 1-5-27.3; Susie Rains, 1-5-19.3.

**GROUP A-6**—Marian Hilpert, 6-1-35.4; Denny Rafferty, 5-2-29.7; Gordon Brown, 4-2-28.3; Leigh Graves, 3-3-24.6; Harvey Merino, 2-4-25.3; Bill Botelli, 2-4-20.6; Pat Bryant, 0-6-19.3.

**GROUP A-7**—Cathie Loucks, 5-1-22.3; Geroge Barth, 4-2-19.6; Elmer Wilson, 4-2-15.0; Mike Moreno 3-3-22.0; Howard Bryant 2-4-17.6; Barry Evans, 2-4-14.3; Glen Rains, 1-5-12.6.

**GROUP A-8**—Norma Melton, 6-1-15.1; Bill Padgett, 6-2-15.0; Alvis Kirby, 5-2-12.2; Levi Wood, 3-3-6.0; Merle Wheeler, 2-4-6.6; Howard Bryant III, 1-5-2.0; Benjamin Wood, 0-6-6.3.

GORDON  
D.S. MED. HARD



\$23.  
PR.

AMERICAN  
MEDIUM ONLY



2 PR.  
\$34  
\$18  
PAIR

DF (E-Z GRIP)  
DS only  
DEADEYE



\$33.  
PR

NEW DIAMOND  
TOURNAMENT  
HORSESHOES

\$23.  
PR.

DEADEYE REGULAR.  
NEW N.T. MODEL,  
FLIP GRIP,  
CLYDESDALE  
DEADEYE

\$28.  
PAIR

CHECK OR MONEY ORDER MUST ACCOMPANY ALL ORDERS  
ALL PRICES INCLUDE DELIVERY

D.A. BAKER  
HORSESHOE  
CARRYING CASE

PLAIN PINE \$15.95  
HARD  
WOOD \$19.95

F. E. White, Distributor  
714 Nevada Drive  
Erie, PA 16505  
Phone (814) 455-2685  
PA Res. 6% Tax

## BONNIE SEIBOLD WINS HUNTINGTON SPECIAL AT HUNTINGTON, IND. SANCTION 12-87-027

**CLASS A**—Bonnie Seibold, 6-1-74.5; Bob Sheppard, 5-2-65.2; John Lemond, 5-2-61.3; Mike Blankenship, 4-3-63.8; Eugene Bussard, 4-3-59.8; Ed Kowatch, 3-4-60.6; Darrel Taulbee, 1-6-55.4; Bob Davis, 0-7-52.4.

**CLASS B**—Wayne Hege, 5-2-55.4; Walter House, 5-2-48.0; Estel Bills, 4-3-57.0; Lee Antonides, 4-3-51.8; Ed Howdeshell, 4-3-48.2; Dale Kirtley, 3-4-52.2; Don Minich, 3-4-47.0; Claudes Estelle, 0-7-40.5.

**CLASS C, Sat**—Ken Jeffers, 6-1-48.7; Jim Shilling, 5-2-50.9; Tammi Cunningham, 5-2-49.4; Ed Pauley, 3-4-48.4; Stan Loy, 3-4-42.4; J.W. Cox, 2-3-36.7; Jay Hoyer, 2-5-37.9; Junior Smalling, 1-6-38.7.

**CLASS C, Sun**—Greg Rathburn, 6-1-52.9; Bob Stewart, 5-2-47.3; Stan McCoy, 4-3-51.7; George Dickson, 4-3-45.1; Pete Hobbs, 4-3-44.9; Fred Calvert, 2-5-44.3; Dan Wiggins, 2-5-41.0; Steve Rathburn, 1-6-38.4.

**CLASS D**—Bob Wolfinger, 6-1-46.5; Ken Summers, 5-2-47.3; Al Wray, 4-3-40.5; Archie Sexton, 4-3-40.1; Lowell Swick, 3-4-42.3; Virgin Jackson, 2-5-37.0; Dean Skinner, 2-5-29.8; Everett Bowyer, 2-5-27.1.

**CLASS E**—Chuck Parker, 5-2-45.1; Don Opdycke, 5-2-44.5; Joe Hamilton, 5-2-35.2; Bob Ross, 5-2-27.1; Bob Sharp, 4-3-37.3; Don Bollock, 3-4-36.3; Tom Schrock, 1-6-31.8; Jim Griffith, 1-6-25.7.

**CLASS F**—Deb Taulbee, 6-1-42.5; Glenda Wiggins, 5-2-40.5; Don Herendeen, 5-2-35.6; Ted Paver, 4-3-40.4; Rosemary Rathburn, 4-3-32.4; Carey Crago, 3-4-36.0; Jeff Bowyer, 1-6-32.3; Clarence Sage, 0-7-24.7.

**CLASS G**—Pete Harris, 7-0-39.0; Virgin Jackson, 5-2-31.0; Gary Brown, 4-3-33.9; Beth Combs, 3-4-33.6; Dan Harris, 3-4-33.1; Jim Dunham, 3-4-29.1; Mel Bussert, 2-5-26.9; Dan Poulson, 1-6-25.0.

**CLASS H**—Glenn Zollman, 7-0-38.2; Jack Currens, 6-1-34.2; Sam Huffman, 4-3-30.4; Rick Lemish, 3-4-32.2; John Barrows, 3-4-28.7; Dale Hyndman, 2-5-28.7; Bob Cunningham, 2-5-28.3; Eugene Brown, 1-6-24.3.

**CLASS I**—Rex Kerr, 4-1-29.6; Elvin Stewart, 3-2-29.5; Lawrence Williams, 3-2-28.6; Gerald Klotz, 2-3-28.4; Glen Donaldson, 2-3-21.4; Buck Bowman, 1-4-26.1.

**CLASS J**—Bill Ledgewood, 6-1-30.1; Max Bowers, Jr., 5-2-34.2; Dailey Fogle, 4-3-33.2; Charles Mull, 4-3-29.6; Dick Sheean, 4-3-28.9; Russ Sanson, 4-3-28.7; Dick Lemish, 1-6-22.4; Arnold Bryan, 0-7-22.3.

**CLASS K**—Sylvester Hahn, 7-0-28.6; Charles Hatt, 5-2-25.6; Tracy Neese, 4-3-29.5; Harold Hill, 4-3-21.0; Lousie Sheean, 3-4-18.7; Fred Armentrout, 3-4-14.8; Jack Mettert, 1-6-19.9; Chris Greve, 0-7-11.0.

**CLASS L**—Mike Rathburn, 7-0-37.8; Ed Burgett, 6-1-27.7; Dick Sanders, 5-2-31.4; Lawrence Wooster, 4-3-26.0; Lee Howard, 3-4-26.3; Mendy Madden, 2-5-16.3; Larry LeFever, 1-6-18.4; John Sisco, 0-7-19.1.

**CLASS M**—Mike Rathburn, 7-0-32.3; Mike Ogle, 5-2-18.9; Ed Saylor, 4-3-14.3; Mark Weiland, 4-3-14.0; Tom Crago, 4-3-11.0; Jerry Barnett, 3-4-4.6; Chris Kerr, 1-6-6.6; Tom Murphy, 0-7-6.3.

**JUNIORS**—Shawn Evans, 58.9; Tom Crago, 39.9; Mark Williams, 33.3; Scott Dunham, 26.1; Dana Taulbee, 3.6.

## JOHN LEMOND WINS AT PAUL CUNNINGHAM MEMORIAL MARION, IND.

### SANCTION 12-87-026

**CLASS A**—John Lemond, 6-1-72.1; Bonnie Seibold, 5-2-68.5; Eugene Bussard, 5-2-64.9; Bob Sheppard, 4-3-63.7; Dottie Pittman, 4-3-62.8; Ed Krull, 3-4-62.9; Ron Parish, 1-6-51.9.

**CLASS B**—Ed Kowatch, 6-1-61.4; Bill Wicker, 6-1-60.9; Carl Staley, 4-3-53.7; Bob Davis, 3-4-50.7; Toby Young, 3-4-49.3; Don Newell, 3-4-48.6; Darrell Taulbee, 2-5-52.3; Clayton Andrick, 1-6-35.0.

**CLASS C**—Estel Bills, 7-0-57.2; Lee Antonides, 6-1-53.4; Wayne Hege, 4-3-56.4; Bill Hatt, 3-4-50.0; Ed Howdeshell, 3-4-46.5; Pete Hobbs, 3-4-40.1; Don Minich, 1-6-39.2; J. W. Cox, 1-6-32.8.

**CLASS D**—Walter House, 7-0-56.7; Joe Holloway, 6-1-53.7; Ed Howdeshell, 4-3-48.5; Stan McCoy, 3-4-47.1; Stan Loy, 3-4-45.6; Gerandl Cummings, 3-4-43.3; Bob Moit, 1-6-41.7; Pete Hobbs, 1-6-41.4.

**CLASS E**—Jim Hyatt, 7-0-49.7; Jim Shilling, 6-1-52.0; Tammi Cunningham, 4-3-39.6; George Dickson, 3-4-40.1; Jay Hoyer, 3-4-38.7; Earl Richardson, 2-5-38.3; Dean Skinner, 2-5-32.5; Dan Bussard, 1-6-27.8.

**CLASS F**—Bob Dwiggins, 5-2-44.9; Wink Weinberg, 5-2-38.3; Bob McBride, 4-3-41.5; Bob Hoover, 4-3-37.2; Archie Sexton, 4-3-35.5; Chuck Moles, 4-3-34.6; Jackie Clayborn, 2-5-39.9; Wayne Linkmeyer, 1-6-33.6.

**CLASS G**—Junior Smalling, 6-1-40.7; Don Bollock, 4-3-36.6; Jim Griffith, 4-3-35.0; Beth Combs, 4-3-



**LEMOND—(Continued)**

34.3; Sonny Franks, 4-3-30.8; Mel Bussert, 3-4-30.6; Clarence Sage, 3-4-28.1; Ron Levensky, 0-7-27.6.

**CLASS H**—Deb Taulbee, 6-1-40.0; Gib Campbell, 5-2-36.9; Ken Summers, 4-3-42.7; Ted Paver, 4-3-37.1; Mike Brown, 3-4-35.1; Joe Hamilton, 3-4-34.6; Virgin Jackson, 2-5-30.5; Jeff Bowyer, 1-6-35.2.

**CLASS I**—Eugene Powell, 6-1-39.1; Gary Brown, 5-2-35.8; Ed Dunlap, 4-3-36.6; Bob Ross, 4-3-35.5; Jim Dunham, 3-4-32.4; Dan Poulson, 3-4-29.7; Dan Harris, 2-5-33.1; Arnold Bryan, 1-6-22.4.

**CLASS J**—Don Herendeen, 7-0-37.5; Glenn Zollman, 6-1-32.7; Jack Currens, 4-3-27.8; Dick Sanders, 4-3-27.1; Marjorie Campbell, 3-4-26.4; Jack Baker, 2-5-23.2; Buck Bowman, 1-6-21.8; Terry Dauberman, 1-6-17.1.

**CLASS K**—Bob Wolfinger, 6-1-45.3; Bob Cunningham, 6-1-31.1; Gene Shambaugh, 5-2-35.7; Everett Beason, 4-3-32.8; Dailey Fogle, 3-4-27.6; Karen Franks, 2-5-27.1; Carl Mitchell, 1-6-25.5; Jack Mettert, 1-6-23.3.

**CLASS L**—Dale Hyndman, 5-2-31.0; Ed Burgett, 5-2-27.3; Rick Lemish, 4-3-32.9; Sam Huffman, 4-3-32.5; Gordon Sams, 4-3-29.6; Lawrence Williams, 3-4-24.1; Jon McBride, 2-5-25.2; Tom Schrock, 1-6-25.0.

**CLASS M**—Peck Leitch, 6-1-33.5; Gerald Klotz, 5-2-31.8; Charles Mull, 5-2-29.7; Rob Cardwell, 4-3-31.8; Dick Lemish, 4-3-23.7; Luther Chandler, 2-5-25.8; Sylvester Hahn, 2-5-23.0.

**CLASS N**—Elvin Stewart, 6-1-35.2; Russ Sanson, 6-1-33.1; Dick Sheean, 5-2-27.3; Tracy Neese, 4-3-25.5; Charles Hatt, 2-5-23.9; Red Slaughterback, 2-5-20.6; Charles Carwell, 2-5-18.7.

**CLASS O**—Glen Donaldson, 7-0-32.4; Rex Kerr, 5-2-25.2; Doc Zarse, 5-2-24.3; Bill Separs, 4-3-20.1; Lee Howard, 3-4-17.3; John Sisco, 2-5-19.7; Lawrence Wooster, 2-5-18.8.

**CLASS P**—Louise Sheean, 6-1-16.8; Bob Ranck, 5-2-16.0; Pat Dowden, 5-2-13.9; Jon Reed, 4-3-12.1; Tom Crago, 3-4-15.1; John Nelson, 3-4-12.9; Ton Timmons, 2-5-11.3.

**CLASS Q**—Mildred Hyatt, 6-0-14.4; Ron Newell, 4-2-22.6; Chris Kerr, 2-4-15.8; Butch Hahn, 0-67-7.4.

**JUNIORS**—Chad Hyatt, 69.7; Scott Dunham, 14.9; Bobby Take, 9.0; Dana Taulbee, 4.1; Hope Hooen, 0.6.

## EUGENE BUSSARD WINS AT FUNS DAYS, PERRYVILLE IND. SANCTION 13-87-25

**CLASS A**—Eugene Bussard, 5-0-56.1; Steve Dunning, 3-2-53.0; Hunter Dorman, 3-2-52.4; Dennis Ferree, 2-3-52.6; Martin Drummond, 1-4-41.2; Fred Calvert, 1-4-36.9.

**CLASS B**—Harry Groce, 6-1-50.0; George Dickson, 6-1-45.5; Same Groce, 4-3-45.4; Marvin Maxwell, 4-3-41.6; Chet Burnett, 3-4-43.9; Tom Norman, 3-4-40.5; Bob Dwigans, 2-5-37.1.

**CLASS C**—Bob Steimel, 6-1-45.0; Jerry Miller, 5-2-43.8; Al Wray, 4-3-39.0; Bob McBride, 3-4-39.1; Junior Smalling, 3-4-36.1; Jim Hyatt, 3-4-33.1; John Gillospy, 3-4-32.2; Dan Harris, 1-6-24.4.

**CLASS D**—Alois Clementz, IL, 6-1-36.0; Bob Prohaska, 5-2-35.9; Jim Turpin, 5-2-32.3; Luther Chandler, 5-2-30.7; Gene Poyner, IL, 4-3-32.2; Larry Tackett, 2-5-31.0; Red Slaughterback, 1-6-24.4.

**CLASS E**—Ken Summers, 4-1-33.7; Jeff Clem, IL, 4-1-31.9; Lawrence Williams, 3-2-29.8; Jon McBride, 2-3-27.0; Glen Donaldson, 2-3-22.3; Mike Drummond, 0-5-8.5.

**CLASS F**—Jim Hackerd, 4-1-19.5; Bob Anderson, 3-2-27.4; Guy DeBord, 3-2-26.8; Mildred Hyatt, 3-2-19.6; Tracy Neese, 1-4-21.3; John Nelson, 1-4-15.3.

**JUNIORS**—Herb Piker, 33.5; Mark Williams, 28.8; Steve Dunning, 1-4-20.2.

## ED KOATCH WINS AT MICHIANA SPECIAL AT ELKHART IND. SANCTION 12-87-023

**CLASS A**—Ed Kowatch, 5-2-59.4; Carl Staley, 5-2-58.5; Clayton Bonham, MI, 5-2-58.2; Darrell Taulbee, 5-2-57.4; Roger Rahfeldt, 3-4-52.7; Leroy Rowe, 3-4-51.3; Don Newell, 1-6-51.8; Eugene Bussard, 1-6-50.0.

**CLASS B**—Don Minich, 6-1-47.5; Eugene Peters, 5-2-45.9; Joe Rinehart, 4-3-45.1; Bob Stewart, 4-3-41.5; Lee Antonides, 3-4-48.5; Glenn Sanders, 3-4-39.1; Ed Pauley, 3-4-38.4.

**CLASS C**—Ed Howdeshell, 6-1-50.7; Stan Loy, 5-2-47.6; Archie Sexton, 4-3-36.5; Paul Richardson, 4-3-36.2; Bob McBride, 3-4-37.6; Junior Guthrie, 3-4-31.5; Ed Pauley, 2-5-41.5; Ed Dunlap, 1-6-221.3.

**CLASS C, Sun**—Gerald Kindig, 6-1-54.1; Al Falls, 5-2-47.9; Jay Hoyer, 5-2-43.9; Ken Jeffers, 4-3-38.8; Gus Kuk, 3-4-35.8; Chuck Moles, 3-4-34.5; Don Opdycke, 1-6-31.4; Bill Ledgewood, 1-6-28.5.

**CLASS D**—Cliff Marsh, 6-1-37.3; Dan Poulson, 6-1-34.0; Bob Ross, 5-2-32.9; Deb Taulbee, 3-4-31.4;



**KOWATCH—(Continued)**

Dan Harris, 2-5-31.4; Dennis Rahfeldt, 2-5-30.8; Bob Prohaska, 2-5-30.5; Elvin Stewart, 2-5-21.1.

**CLASS E**—Bob Wolfinger, 7-0-40.5; Don Herendeen, 5-2-30.5; Tom Schrock, 5-2-27.9; Gene Shambaugh, 5-2-26.2; Ron Henson, 3-4-22.1; Carl Cooper, 2-5-19.9; Harold Hill, 1-6-18.4.

**CLASS F**—Tracy Neese, 6-1-24.0; Gerald Klot, 5-2-25.8; Charles Mull, 5-2-25.5; Jon McBride, 5-2-23.0; Charles Hatt, 4-3-22.6; Jon Reed, 2-5-15.1; Bill Floyd, 1-6-12.8; Dave McCarthy, 0-7-14.3.

**CLASS G**—Rex Keer, 6-1-26.8; Bob Anderson, 5-2-28.3; Larry Cain, 5-2-23.0; Lee Howard, 4-3-22.8; Ron Newell, 3-4-17.7; Barbara Cain, 3-4-8.6; Curt Ramsey, 1-6-12.9; Chris Kerr, 1-6-11.3.

**JUNIORS**—Tony Patton, FL, 74.5; Tim Schweitzer, 3.9; Hope Hoove, 2.1; Dana Taulbee, 2.1.

## V. TUCKER PLAYOFF WINNER IN 3RD ANNUAL HARAHAN, LOUISIANA OPEN—SANCTION 01-87-002

**MEN'S CLASS A—PLAYOFF.** 1. Veachel Tucke, Harvey 4-3-45.2; 2. Frank Noto, Kenner, 4-3-43.7; 3. Robbie Stauder, Slidell, 4-3-45.1; 4. Bobby Irby, Minden, 4-3-44.4; 4. Dick Kula, Harahan, 4-3-43.3; 4. Emanuel Wilson, New Orleans, 4-3-38.6; 7. Bill Smith, St. Rose 3-4-35.8; 8. Jack Atchley, Harahan, 1-6-37.0.

**MEN'S CLASS B—PLAYOFF.** 1. Ron Latiolais, Gonzales, 6-1-37.2; 2. Mike Bott, Scott, 6-1-46.5; 3. Hunter Willett, Gonzales, 5-2-30.3; 4. Skip Greco, Harahan, 4-3-34.7; 5. Bob Rotach, Minden, 3-4-33.2; 6. Elmo Sonnier, Scott, 3-4-29.9; 7. Emile Landry, Bridge City, 1-6-34.0; 8. Paul Dupre, Harahan, 0-7-20.0.

**MEN'S CLASS C**—1. Jay Deshotel, Ville Plate, 6-1-30.7; 2. Luke Vidrine, Ville Platte, 5-2-28.4; 3. Clem Gomez, Marrero, 4-3-33.2; 4. Tom Morvant, Kenner, 4-3-30.7; 5. Roy Hoffman, Metairie, 4-3-27.4; 6. Joey Sanford, Harahan, 3-4-28.5; 7. Gene Freeze, Metairie, 2-5-28.2; 8. B. L. Yates, Gonzales, 0-7-14.0.

**MEN'S CLASS D**—1. John Wilson, Marrero, 6-1-28.8; 2. Allen Pisciotto, Harahan, 5-2-19.1; 3. Gilbert Deshotel, Ville Platte, 5-2-18.2; 4. Frank Attardo, Marrero, 4-3-23.3; 5. Jerry Maddox, Harahan, 4-3-1.2; 6. Charles Bradley, Gretna, 3-4-14.7; 7. Ed Butler, Waggaman, 1-6-6.3.

**MEN'S CLASS E—PLAYOFF.** 1. Landry Camardelle, Waggaman, 4-1-21.8; 2. Wayne Martinez, Waggaman, 4-1-20.6; 3. Gary Celino, Arabi, 4-1-18.4; 4. Travis Luke, Waggaman, 2-3-10.8; 5. John Dorsa, Kenner, 1-4-11.5.

**MEN'S CLASS F**—Barry Whittaker, Harahan, 6-1-10.0; 2. Dan Guillotte, LaPlace, 5-2-15.3; 3. Duane Grossman, Metairie, 5-2-11.7; 4. Larry Morvant, Kenner, 4-3-17.7; 5. Frank Romano, Marrero, 4-3-9.0; 6. Raymond Fitch, Metairie, 3-4-8.0; 7. Todd Leveron, Gonzales, 1-6-4.7.

**WOMEN'S CLASS A**—1. Bonnie Luke, Waggaman, 3-0-31.9; 2. Julie Trahan, Metairie, 2-1-32.6; 3. Debra Bott, Scott, 1-2-18.4.

**WOMEN'S CLASS B**—1. Marilyn Solera, Metairie, 5-1-30.8; 2. Mickey Fricke, Metairie, 4-2-20.0; 3. Lurline Sonnier, Scott, 3-3-12.5.

**WOMEN'S CLASS C—PLAYOFF.** 1. Jean Lugo, Harahan, 4-1-15.8; 2. Kathleen Ferrara, Metairie, 4-1-4.2; 3. Linda Barris, Luling, 3-2-3.3; 4. Evelyn Strain, Harahan, 2-3-5.8; 5. Wanda Ducote, Kenner, 2-3-1.7.

## NHPA NEWS DIGEST SUBSCRIPTION FORM

Name \_\_\_\_\_

Address \_\_\_\_\_

City \_\_\_\_\_ State \_\_\_\_\_ Zip \_\_\_\_\_

Subscription prices effective January 1, 1987. \$12.00 for a non-NHPA member. Subtract \$1.00 for each adult NHPA in your household.

Your 1987 NHPA card number \_\_\_\_\_

NHPA card numbers of other adults in your household \_\_\_\_\_

Make checks payable to: NHPA and mail to NHPA, Box 278, Munroe Falls, OH 44262.

## KEITH BAKER TOP MAN IN FRANK JACKSON OPEN AT KELLERTON, IOWA—SANCTION 14-87-033

The Frank Jackson Open tournament named in honor of Kellerton, Iowa's favorite son who brought fame to that city as World Champion about a half century ago, was won by Keith Baker. Tournament was played on the 12 clay courts built and dedicated to Frank Jackson in 1980 and directed by Barry and Pam Jackson.

Sixty-eight players took part of which 64 were NHPA members. The four non-members competed in an open class. Bill Vandegriff was the defending champion and had to relinquish the travelling trophy (which must be won 2 consecutive years to keep) to Keith Baker. Present among the crowd of spectators was Ivan and Betty Brillhart. Betty is a granddaughter of Frank Jackson. She and her husband have attended all but one of the tournaments since its inception.

Prize money totalling \$1,408.00 together with the entry fee of \$6.00 was awarded the various classes. Area businessmen from surrounding towns as well as Kellerton added to the success of the tournament.

Three area radio stations and three newspapers publicized the annual event.

**CLASS A**—Keith Baker, 5-0-60.1; Bill Vandegriff, 4-1-55.3; Virgil Williams, 2-3-55.5; Chet Foster, 2-3-48.8; Ray Owens, 1-4-49.6; Richard Proctor, 1-4-49.2.

**CLASS B**—Harold Adamson, 5-0-49.5; Steve Oglesbee, 4-1-50.0; Maurice Skinner, 3-2-37.6; Don Protsman, 2-3-37.7; Floyd Gerholdt, 1-4-37.7; Art Brown, 0-5-35.0.

**CLASS C**—Wilbur Rasmussen, 4-1-58.1; Herb Hansen, 3-2-43.0; Pam Jackson, 3-2-36.9; Dale Owens, 2-3-39.7; Farrell Foster, 2-3-37.9; Dick Hawkins, 1-4-37.4.

**CLASS D**—Estel Hunsicker, 4-1-33.4; Ed Owen, 3-2-49.3; Delbert Watkins, 3-2-36.0; Dick Homan, 3-2-35.5; Danny Sease, 1-4-30.5; Verle Foote, 1-4-29.2.

**CLASS E**—Larry Purcell, 5-0-37.0; Barry Jackson, 4-1-33.9; Lowell Fox, 3-2-34.5; Don Smith, 2-3-25.7; Earl Kaikkonen, 1-4-20.3; Bill Goodman, 0-5-16.8.

**CLASS F**—Harold Garner, 4-1-41.8; Ken Cakerice, 4-1-40.0; Jerry Baker, 3-2-34.5; Tade Knapp, 2-3-35.3; Hank Rains, 1-4-33.1; Paul Reedholm, 1-4-28.3.

**CLASS G**—Al Hansen, 4-1-32.0; Rick Voshell, 3-2-31.5; Don Gonseth, 2-3-36.4; Dennis Buckner, 2-3-30.0; Jim Kempkes, 2-3-25.9; Harold Miller, 1-4-23.7.

**CLASS H**—Clint Turner, 3-2-29.0; Gary Owens, 3-2-28.9; Cliff Kenney, 3-2-27.4; C. D. Gibson, 3-2-22.4; Don Torgerson, 2-3-25.6; Joe Lepley, 1-4-26.7.

**CLASS I**—Marion Lange, 5-0-27.3; Frank Gray, 3-2-25.0; Russ Bricker, 2-3-25.0; Chuck Foster, 2-3-24.7; Bert Stegman, 2-3-24.3; Gordon Eklund, 1-4-24.6.

**CLASS J**—Grant McCollum, 4-1-25.0; Evert Brooks, 4-1-17.8; Bob Brown, 3-2-18.8; Debbie Jennings, 2-3-17.8; Cleo Schroeder, 2-3-11.8; Joby Knapp, 0-5-13.2.

**CLASS K**—Gary Schumann, 4-2-15.1; Ed Jennings, 3-3-12.9; Pert Irelan, 3-3-9.1; Art Stevens, 2-4-10.1.

**OPEN CLASS**—Wyatt Grimm, 4-2-28.5; Chris Buckner, 3-3-14.6; Cliff Riley, 3-3-14.3; Bob Brumfield, 2-4-15.2.

## BROWN CITY, MICHIGAN HOSTS ST. JUDE TOURNAMENT SEPT. 19-20—SANCTION 13-87-014

Brown City, Michigan hosted the 1987 St. Jude Tournament. Although the skies were cloudy in the morning, the weather man cooperated and the sun came out for a beautiful day of horseshoe pitching. The Michigan horseshoe pitchers raised over \$800 dollars for to work that St. Jude does for medical research and their children. Listed below are the results of the Tournament.

**Saturday, 9-19—CLASS A**—1st Trudy Wells, 4-1-56.8, 2nd Bob Wells, 4-1-59.3; 3rd Dorothy Falk, 3-2-54.2. High Game was Trudy Wells with 68.3%.

**CLASS B**—1st Bill Bender, 5-0-51.1; 2nd Pete Birkenhauser, 4-1-41; 3rd Lloyd Bartley, 3-2-35.5; High Game Bill Bender 58.3%.

**CLASS C**—1st Phil Robinson, 5-0-19.3; 2nd Jack Alexander, 3-2-24; 3rd Ted Templer, 3-2-18.9; High Game Jack Alexander, 50%.

**Sunday, 9-20—CLASS A**—1st Bob Wells, 5-2-58.8; 2nd Ed Schultz, 4-3-61.8; 3rd Bill Bender, 4-3-58.1; 4th Dorothy Falk, 4-3-56.6. High Game Ed Schultz, 73.8%.

**CLASS B**—1st Tem Bender, 4-1-30.7; 2nd Marv Kangas, 4-2-35.4; 3rd Phil Robinson, 3-2-30.4. High Game Marv Falk, 48%.

**HANKINS SWEEPS JESSAMINE CITY FAIR TOURN. KY.****WEBSTER WINS LADIES—COLLINS, JRS—SAN. 22-87-011**

**CLASS A MEN**—Tony Hankins, 7-0-68.0; Ronnie Powell, 5-2-74.3; Ed Curran, 4-3-68.9; Ed Henry, 4-3-66.8; Tib Turner, 3-4-61.5; Harold Copher, 2-5-60.5; Randy Hankins, 2-5-52.9; Denny Malone, 1-6-57.1.

**CLASS B MEN**—John Hankins, 6-0-57.8; Harold Holland, 5-1-52.7; Gene Webster, 4-2-53.8; Ricky Curran, 3-3-45.8; Ralph Sharp, 2-4-39.2; Gene Clevenger, 1-5-50.6; Ben Burrows, 0-6-25.6.

**CLASS C MEN**—Bob Simpson, 6-2-52.5; Willard Howard, 6-2-50.8; Gary Jackson, 6-2-44.2; Don Nockerts, 5-3-51.1; Jake Jacobs, 5-3-41.2; Chas. Fleckenstein, 3-5-43.3; Bill Garrett, 3-5-44.6; Ralph Sharp, 2-6-38.1; Norman Fraley, 0-8-33.8.

**CLASS D MEN**—Frank Chaney, 5-2-45.9; Ricky Curran, 5-2-45.4; Archie Adams, 5-2-39.5; Ray Webb, 4-3-41.2; Gilbert Strode, 4-3-36.6; Lloyd Evans, 3-4-30.2; Sam Dehner, 1-6-32.1; Dwight Cook, 0-7-24.5.

**CLASS E MEN**—Paul Lee, 5-2-41.1; Bryan Winkler, 5-2-36.7; Ollie Covington, 5-2-30.2; Sam Lowery, 4-3-31.8; Buford Doane, 3-4-32.6; Mark Craig, 3-4-29.9; Sammy McCombs, 2-5-27.7; O. T. Reynolds, 1-6-27.1.

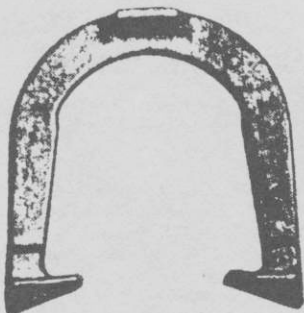
**CLASS F MEN**—Wayne Neal, 6-0-32.8; Jim Peavley, 4-2-29.6; Ben Burrows, 4-2-28.9; Ronnie Thomas, 3-3-25.7; Jerry Brown, 3-3-17.4; Jimmy Waller, 1-5-15.2; Simon Kelley, 0-6-6.8.

**CLASS G MEN**—Jim Hill, 5-1-21.2; Steve Arnold, 4-2-22.9; Mike Williams, 4-2-22.6; Tracy Estes, 4-2-21.7; Randy Bullock, 2-4-22.7; Chidley Dunlap, 2-4-8.6; Richard Riggs, 0-6-16.7.

**CLASS A WOMEN**—Lois Webster, 7-0-67.4; Norma Johnson, 6-1-54.8; Trina Wallace, 4-3-52.5; Kathy Nockerts, 4-3-46.4; Karlyn Kelley, 3-4-45.1; Sandra Clevenger, 2-5-48.8; Charlotte Knable, 2-5-41.9; Shelby Cook, 0-7-34.9.

**CLASS B WOMEN**—Rita Reis, 2-1-38.3; Carol Doane, 2-1-28.2; Bea Bottom, 2-1-26.7; Mammie Clark-son, 0-3-23.1.

**CLASS A BOYS**—Brian Collins, 2-0-37.5; Sammy McCombs Jr., 1-1-23.2; Chris Webb, 0-2-23.3.

**TED ALLEN HORSESHOES**

An original professional shoe. Still the very best professional shoe — Designed by a Champion — Used by many Champions — Not all users will become champions, but by throwing ALLEN's, you know that you've performed your best.

The designed features were invented by TED ALLEN, a 10 time world champion. He has made world records over and over with them. The design was a leader. After years it came to be a trend as a guideline in shoe equipment.

You can't go wrong in using them.

**1045 LINDEN AVENUE**

**BOULDER, COLORADO 80302**

## R. NORWOOD & R. PRUITT WINNERS IN T. R. LITTLE MONEY TOURN.—TENNESSEE—SANCTION 23-87-012

The annual two day T. R. Little money and prize tournament Cleveland, Tenn. was won by Roger Norwood and Randy Pruitt. A total of \$1,100.00 was distributed together with prizes to 43 pitchers among whom were 15 players from Georgia.

**CLASS A**—R. Norwood, 6-0-67.3; R. Pruitt, 4-2-69.4; L. Morton, 3-3-63.4; J. Black, 3-3-59.1; J. Waters, 2-4-56.9; G. Bradfield, 2-4-51.1; H. Irwin, 0-6-48.0.

**CLASS B**—G. Whaley, 4-1-45.0; M. Bastian, 3-2-53.3; C. Fender, 3-2-48.7; J. Conner, 3-2-47.9; D. Stallings, 2-3-53.2; T. Lawson, 0-5-42.2.

**CLASS C**—J. Dover, 4-1-43.3; E. Allen, 4-1-44.8; J. Adkerson, 3-2-42.0; I. Sandham, 2-3-41.7; L. Wyatt, 2-3-39.4; Jr. Haire, 0-5-31.2.

**CLASS D**—Jr. Brown, 4-1-40.0; W. Gee, 4-1-31.5; O. D. Lebow, 3-2-26.9; D. Self, 2-3-30.6; G. Lewis, 1-4-38.9; J. Shelton, 0-5-20.2.

**CLASS E**—C. Bennett, 4-1-37.2; D. Caylor, 4-1-31.5; J. Shipp, 3-2-32.9; B. Sensinger, 2-3-32.0; S. Cornette, 1-4-22.8; C. Coward, 1-4-27.0.

**CLASS F**—J. Ware, 5-0-44.7; M. Cooper, 4-1-31.2; F. Gaw, 2-3-22.8; H. Lones, 2-3-16.4; J. Bennett, 1-4-18.1; B. Dishner, 1-4-13.5.

**CLASS G**—T. Doner, 5-0-24.7; C. Green, 4-1-26.9; R. Haire, 3-2-19.7; R. Bennett, 2-3-15.5; J. Davis, 0-5-2.5; J. Williams, forfeit.

**JUNIORS**—S. Vig, 1-0; J. Stallings, 0-1.

**CLASS A—Second day**—R. Pruitt, 5-0-72.1; L. Morton, 3-2-67.1; J. Black, 3-2-60.4; M. Bastian, 2-3-57.1; D. Stallings, 2-3-52.9; J. Waters, 0-5-55.4.

**CLASS B**—H. Irwin, 4-1-57.7; G. Whaley, 4-1-56.1; G. Bradfield, 3-2-55.3; O. D. Lebow, 2-3-46.0; C. Fender, 1-4-42.4; J. Ware, 1-4-33.9.

**CLASS C**—T. Lawson, 3-1-49.3; J. Adkerson, 3-1-47.8; I. Sandham, 2-2-50.0; J. Dover, 2-2-34.2; L. Wyatt, 0-4-38.2.

**CLASS D**—Jr. Haire, 4-1-48.2; R. Sensinger, 3-2-45.8; W. Gee, 3-2-43.1; T. Doner, 3-2-38.7; M. Cooper, 2-3-27.9; S. Cornette, 0-5-28.9.

**CLASS E**—C. Bennett, 5-0-43.2; H. Lones, 4-1-28.8; C. Coward, 3-2-32.0; J. Bennett, 2-3-23.0; B. Dishner, 2-3-20.8; R. Bennett, 0-5-17.3.

**CLASS F**—J. Davis, 3-0-13.4; R. Haire, 2-1-22.3; S. Vig, 1-2-15.7; A. Sandham, 0-3-7.4.

## COOPER WINS FALL OPEN AT INDEPENDENCE, MO.—VICKI WINSTON TOPS LADIES—BARNES, JRS—SAN. 15-87-035

Elwyn Cooper won the annual Fall Open tournament held at the McCoy courts in Independence, Mo. Sept. 12-13. Vicki Winston posted a 4-0-75.7 record to win the Ladies title. Steve Barnes topped the Jr. Class with a 77.9 percent.

**CLASS A**—Elwyn Coper, 6-1-68.4; Ron Frakes, 5-2-66.2; Charles Killgore, 4-3-64.4; Kelly Hill, 4-3-63.2; Jim Renfro, 3-4-60.7; Marion Turner, 2-5-63.8; Earl Winston, 2-5-60.2; Gene Mosley, 2-5-54.8.

**CLASS B**—Stan Griggs, 8-1-60.5; Bob Booe, 7-2-54.1; Bob Barnes, 6-3-59.1; Wayne Trautwein, 6-3-54.2; Bob Johnson, 5-4-51.9; Bob Renfro, 48.3; Lynn Elmore, 53.4; Don Craig, 3-6-46.4; Dave Kincaid, 3-6-43.5.

**CLASS C**—Sam Harlan, 9-0-55.5; Burford Joseph, 6-3-50.8; Cotton Gutshall, 6-3-47.7; Jim Bray, 5-4-43.3; Gene Towne, 5-4-43.1; Lloyd Constance, 5-4-42.9; Jerry Griggs, 5-4-42.3; Red Combs, 3-6-37.7; Dean Renfro, 1-8-28.7.

**CLASS D**—Don Hanes, 5-2-44.2; Jerry McCarter, 5-2-44.7; Joe Evans, 4-3-38.3; Ron Craven, 4-3-37.2; Floyd Green, 4-3-35.8; Leroy Clevenger, 3-4-37.9; Richard Pistole, 3-4-37.2.

**CLASS E**—Matt Fields, 5-2-34.2; Brian Turner, 5-2-34.2; Toby Carmichael, 5-2-38.8; Kent Armstrong, 4-3-28.5; Fred Smith, 3-4-31.3; Bill Johnson, 2-5-35.4; Woodrow Shepard, 2-5-32.5; Joe Beem, 2-5-24.1.

**CLASS F**—Dorsey Durfee, 7-0-36.4; Ken Hale, 5-2-30.4; Alvin Gwinn, 5-2-26.9; Rick Gwinn, 3-4-30.7; Greg Craven, 3-4-27.3; James Breeden, 3-4-21.9; Corbett Martin, 2-5-20.8.

**CLASS G**—Estil Clevenger, 5-2-30.4; Gordon Williams, 5-2-33.3; Mike Clayton, 4-3-36.3; Leonard Yates, 4-3-32.4; Adolph Hendricks, 4-3-27.8; Hale Whiting, 3-4-30.0; Lenvil Elliott, 2-5-22.6; Bill Moss, 1-6-25.0.

**CLASS H**—Ted Cates, 5-2-31.0; Tony Bootka, 4-3-30.2; Bill Hayes, 4-3-29.4; Mel Goodman, 4-3-26.3;

**COOPER—(Continued)**

Ron Gwinn, 3-4-29.9; Rob Jones, 3-4-28.0; James Kiper, 3-4-19.6; Frank McKay, 2-5-24.3.

**CLASS I**—Wilbur Hodgson, 7-0-18.2; Sam Kidd, 5-2-26.3; Don Roberts, 5-2-23.5; Howard Taylor, 4-3-18.8; Ernie Ellerman, 3-4-22.0; Dave Comer, 3-4-20.9; Darrell Yates, 1-6-14.9; John Hargrove 0-7-17.5.

**CLASS J**—Larry Lowery, 4-1-25.2; Irving King, 4-1-22.5; Charlie Hamilton, 3-2-17.2; Russell Box, 2-3-16.3; Charlie Tuttle, 1-4-19.6; Leonard Lentz, 1-4-12.8.

**CLASS K**—Darrell Koll, 5-0-29.5; Scott Armstrong, 4-1-12.9; Ray Phelps, 3-2-14.4; Bob Blumenhein, 2-3-9.1; Harless Kampe, 1-4-15.5.

**WOMEN CLASS A**—Vicki Winston, 4-0-75.7; Loree Meier, 3-1-56.0; Pam Henderson, 2-2-43.4; Darlene Blood, 1-3-37.3.

**WOMEN CLASS B**—Rita Killgore, 5-1-22.8; Roxanne Wenger, 5-1-14.6; Nancy Haley, 4-2-29.7; Sharon Armstrong, 4-2-25.4; Lonna Louderback, 2-5-17.5; Toni Blood, 1-5-16.0.

**JUNIORS**—Steve Barnes, 77.9; Jason Flores, 24.8.

**WEBB CLASSIC—KY.—WON BY SALINGS—SAN. 22-87-010**

**CLASS A MEN**—Len Salings, 6-2-54.8; Gorden Meece, 6-2-59.1; Tony Hankins, 6-2-57.3; Ed Henry, 5-3-56.8; Bill Henn, 5-3-54.0; Denny Malone, 3-5-51.1; Ed Curran, 2-6-53.3; Stan Lovelace, 2-6-49.7; Jeff Henn, 1-7-51.4.

**CLASS B MEN**—Harold Copher, 7-0-56.2; John Hankins, 5-2-56.1; JHim Easton, 5-2-46.9; Richard Barrett, 3-4-41.8; Jim Noble, 3-4-38.8; Harold Holland, 2-5-45.5; Bob Moore, 2-5-37.4; Marvin Lingerfelt, 1-6-40.9.

**CLASS C MEN**—Gene Webster, 5-2-52.9; Gary Jackson, 5-2-50.3; Gene Clevenger, 4-3-49.4; Boop Rogg, 4-3-44.9; Bill Litteral, 4-3-41.2; Omar Blacketer, 3-4-40.8; Cliff Henn, 2-5-46.1.

**CLASS D MEN**—Bob Simpson, 5-1-44.3; Chick Henn, 4-2-46.9; Don Nockerts, 4-2-39.7; Len Martini, 3-3-45.8; Forrest Cooper, 3-3-42.3; R. Abbon, 2-4-25.5; Micky Utz, 0-6-14.4.

**CLASS E MEN**—Paul Coleman, 5-1-45.2; Odis Lainheart, 5-1-40.5; Nick Martini, 3-3-46.2; Monty Roberts, 3-3-38.6; Brad Coleman, 3-3-34.1; Mitch Duncan, 2-4-31.8; Dwight Cook, 0-6-30.6.

**CLASS G MEN**—David Gould, 5-1-42.6; Ed Plank, 5-2-41.4; Monty Roberts, 3-3-43.8; Dwight Cook, 3-3-34.9; Ray Webb, 3-3-32.4; Lee Works, 2-4-35.3; Tony Webb, 0-6-21.4.

**CLASS H MEN**—Gene Hankins, 6-0-31.3; Bill Kenton, 5-1-32.5; B. Doane, 3-3-27.4; Jay Morrison, 3-3-26.9; Miles Cooper, 2-4-23.6; Ben Burows, 2-4-22.0; J. Deckard, 0-6-19.4.

**CLASS I MEN**—Jerry Wright, 4-2-34.3; Wayne Neal, 4-2-28.3; Jr. Adler, 3-3-27.4; Ronnie Thomas, 3-3-25.8; Joe Wartman, 3-3-19.2; Dan Webb, 2-4-25.3; Howard Buckley, 2-4-24.0.

**CLASS J MEN**—Mike Williams, 7-0-29.5; Lee Portwood, 6-1-25.6; Roger Gilliam, 4-3-20.2; Bob Snider, 4-3-18.0; Richard Riggs, 4-3-21.1; Carlos Webb, 2-5-13.0; T. Gilliam, 2-5-17.6; Bob Boon, 0-7-5.8.

**CLASS A WOMEN**—Kathy Nockerts, 5-0-57.2; Lois Webster, 4-1-50.5; C. Knabel, 2-3-51.7; Shelby cook, 2-3-46.6; Sandra Clevenger, 2-3-40.0; Pattie Moher, 0-5-36.4.

**CLASS B WOMEN**—Karen Rimer, 6-1-36.1; Pam Boon, 5-2-28.3; Mary Martini, 4-3-29.9; Bell Raider, 4-3-25.9; J. Stern, 3-4-34.1; Taylor, 2-5-20.9; Carol Doane, 2-5-20.4; Agnus Snider, 2-5-18.1.

**KENTUCKY METRO LEAGUE SEASON—SANC. 82C100**

The Metro Horseshoe Club of Louisville Kentucky played a twelve week schedule of 48 games, 50 shoe games count all scoring. Three pitchers on a court, one keeping score on a rotating basis. Tony Hankins, the 1986 Jr. World Champion was the League Winner. He also had high game and average.

A picnic was held at the end of the season with a Doubles Tournament, Donnie Nockerts, and James Henderson were th winners. Eleven trophies were awarded for different categories.

**ST. ANNE, IL. LEGION LEAGUE REPORT—SANC. 87L249**

The Aroma Park Legion League of St. Anne, Ill. concluded its season on Sept. 2. It was our first year as a sanctioned league. We had an awards day on Sept. 20th. We played a 14 week schedule with 13 teams playing a round robin schedule. We had an exciting year, but it was too hard to keep percentages so we decided to limit our awards to: Leagues Champions, Most Improved Pitcher, and Sportsmanship. Steve Forbes won the Most Improved Pitcher award.

## CEDAR RAPIDS, IOWA CLASSIC—SANC. 14-87-021

**CLASS A**—Will Foelske, 6-1-68.1; Red Henton, 5-2-65.9; Ronnie Burgess, 4-2-64.4; William Wilson, 2-3-58.1; Leo Buell, 1-4-50.4; Marv Englsiter, 0-5-53.6.

**CLASS B**—Ray Kamper, 5-0-55.0; Virgil Williams, 3-2-50.9; Lyle Jackson, 3-2-48.7; Don Prottzman, 2-3-51.3; Dick Holdridge, 1-4-48.5; John O'Shea, 1-4-46.3.

**CLASS C**—Dick Foley, 4-1-47.5; Ralph Palmer, 3-2-46.5; Claire Gifford, 3-2-44.7; Ernie Benda, 3-2-41.5; Russ Martin, 2-3-37.8; Jim Jackson, 0-5-33.9.

**CLASS D**—Betty McGregor, 5-9-047.8; Ed Marx, 3-2-32.2; Dale Bevill, 2-3-37.0; Don Dicky, 2-3-33.9; Bill Harder, 2-3-32.2; Bob Reed, 1-4-32.2.

**CLASS E**—Ray Roley, 4-1-35.9; Dale Feye, 3-2-35.7; Allen Cook, 3-2-35.4; Larry Purcell, 3-2-34.9; Rollie VonThun, 2-3-35.4; Vern McGrath, 1-4-31.9.

**CLASS F**—Paul Reedholm, 4-1-26.4; Ernie Soland, 3-2-36.0; Elmer Leonard, 3-2-35.6; Randy Ruff, 3-2-29.6; Harold Hughes, 1-4-26.4; Robert Burgess, 1-4-21.6.

**CLASS G**—Gary Christensen, 4-1-36.4; Dave Burkey, 4-1-26.8; Rick Voshell, 3-2-33.6; Morris Lepley, 3-2-30.4; Charles Ellis, 1-4-28.8; John Purk, 0-5-29.2.

**CLASS H**—Bob McGregor, 5-0-30.4; Mike Murphy, 3-2-35.2; Joe Lepley, 3-2-26.4; Mildred Hottle, 3-2-24.8; Cliff Kenny, 1-4-20.0; Bud Hottle, 0-5-21.6.

**CLASS I**—Gilbert Hynek, 5-0-23.2; David Jasper, 4-1-25.6; Wesley Keil, 2-3-16.0; John Rammelsburg, 2-3-15.6; Arbe Bareis, 1-4-24.0; Harold Davis, 1-4-14.0.

**CLASS J**—Brad Jackson, 4-1-19.6; Ken Cook, 4-1-18.8; Louis Martinez, 4-1-12.8; Steve Foley, 2-3-14.0; Chuck Strain, 1-4-12.8; Pat Hardy, 0-5-6.8.

## FERGUS FALLS, MN. CLUB CLOSES SEASON—SANC. 83C79

The Fergus Falls, Minn. League completed its 1987 season with Don Larson being the top man averaging 83 points per game. Maynard Walvatne had the High Ringer percentage of 42.6 for the year. High Game went to Don Larson with 108 points and 32 ringers out of 64 shoes. Elder Engebretson had the High Game Over Average with 28.8 points for one game. Don Roggenkamp was the Most Improved Pitcher.

Walvatne Auto Repair, 32.5-9.5; Fergus Motors, 27-15; K&K Tire, 26-16; Minn. Motors, 20-22; F.F. Monument, 18-24; Nat'l Bushing, 16-26; VFW, 14.5-27.5; Eagles, 14-28.

## CORDELL TWOMEY WINS BILL TWOMEY CLASSIC—AUSTIN, TEX.

### DOT CRANE TOPS IN LADIES—SANC. 01-87-005

**CLASS A**—C. Twomey, TX, 9-1-48.4; G. Raemsch, TX, 7-3-49.6; B. Vogel, TX, 7-3-48.7; P. Garcia, TX, 5-5-44.3; F. Zementner, TX, 2-8-39.8.

**CLASS B**—W. Wade, TX, 6-1-41.7; T. Wilkinson, TX, 5-2-43.0; J. Zigrang, TX, 5-2-39.6; K. Umscheid, TX, 4-3-41.6; B. Tedrick, TX, 3-4-43.6; R. Buttery, TX, 3-4-36.3; D. Twomey, TX, 2-5-35.6.

**CLASS C**—O. Davis, TX, 6-2-42.5; G. Bellamy, TX, 5-3-46.7; D. Henry, TX, 4-3-44.8; G. Meyer, TX, 4-3-42.0; T. Lockwood, TX, 3-4-39.7; J. Zahraonik, TX, 3-4-39.7; T. Valenta, TX, 3-4-37.7; F. Polak, TX, 1-6-37.1.

**CLASS D**—R. Dougherty, TX, 5-2-37.0; W. Martin, TX, 3-3-31.3; L. Arvelo, TX, 3-3-27.0; C. Allen, TX, 1-5-25.6.

**CLASS E**—W. Eskew, TX, 6-2-34.0; N. Stewart, TX, 4-3-29.4; M. Ellis, TX, 5-3-28.0; S. Crane, TX, 4-3-27.7; M. Hanson, TX, 3-4-26.5; C. McBrearty, TX, 3-4-26.2; H. Leonard, TX, 3-4-22.0; M. Trammer, TX, 1-6-21.9.

**CLASS F**—C. Twomey, TX, 7-0-22.5; C. Meyer, TX, 5-2-22.8; D. Munro, TX, 5-2-20.0; B. Broesche, TX, 3-4-20.0; B. Niese, TX, 3-4-15.1; J. Holder, TX, 3-4-13.4; C. Perdue, TX, 2-5-14.2; G. Meriwether, TX, 0-7-14.5.

**LADIES CLASS A**—D. Crane, TX, 7-1-47.5; D. Zigrang, TX, 6-2-42.8; P. Allen, TX, 5-2-43.3; L. Lednard, TX, 4-3-43.0; B. Broesche, TX, 4-3-32.0; S. Fry, TX, 2-5-27.9; B. Polak, TX, 1-6-31.6.

**LADIES CLASS B**—M. Holder, TX, 5-0-40.5; S. Holliday, TX, 4-1-43.2; R. Boring, TX, 3-2-29.5; B. Cooper, TX, 2-3-21.0; R. Holliday, TX, 1-4-27.4.

**LADIES CLASS C**—S. Williams, TX, 6-1-29.1; B. Zahradnik, 5-2-24.5; C. Steinre, TX, 2-4-15.0.

**JUNIORS**—J. Zahradnik, TX, 3-1-27.5; C. Polak, TX, 1-3-13.1.



## TYSON UNDEFEATED IN CARL VON DER LANCKEN OPEN NEW ROCHELLE, N.Y. SANC. 18-87-002

**CLASS A**—A. Tyson, NY, 5-0-73.2; D. Nemschick, NY, 3-2-52.5; T. Turk, NY, 3-2-49.5; J. Nemschick, NY, 2-3-50.7; S. Durando, NJ, 1-4-48.4; A. Ravencraft, NJ, 1-4-45.2.

**CLASS B**—B. Deen, NY, 4-1-49.1; J. Hickey, NJ, 3-2-41.9; T. Early, NY, 3-2-41.1; R. Tyson, NY, 2-3-42.8; J. Sharkey, NY, 2-3-41.9; R. Ballinger, NJ, 1-4-35.3.

**CLASS C**—R. Ballinger, NJ, 5-2-41.1; G. Connor, NY, 5-2-32.8; B. Manzoni, NJ, 4-3-40.0; J. Marietta, NJ, 4-3-37.1; A. Alba, CT, 4-3-33.7; K. Erickson, CT, 3-4-31.7; J. Loughery, NY, 2-5-32.5; L. Ouellette, NY, 1-6-23.1.

**CLASS D**—R. Allspaugh, CT, 7-0-29.1; J. Moroso, NY, 6-1-26.5; B. Schneider, NJ, 5-2-34.2; J. Dykstra, NJ, 3-4-24.5; F. Troxell, NY, 3-4-23.4; J. Cobb, NY, 2-20.5; R. Ritter, NY, 2-5-18.8; C. Szymanski, NY, 0-7-23.4.

## EASTERN PENNSYLVANIA TOURNAMENTS

**CLASS A**—Glenn Rubendall, 9-0-73.5; Art Tyson, 8-1-78.6; Glenn Buris, 5-2-70.9; Ray Rugg, 5-4-66.9; Joe Schultz, 5-4-62.9; Elbert Shifflett, 4-5-66.2; Casey Danner, 4-5-63.5; Glenn Brown, 3-6-58.4; Dan Beshore, 2-7-64.7; Chas. Twigg, 0-9-53.2.

**CLASS B**—Homer Snyder, 9-0-75.4; Ed Bowersox, 6-3-57.7; Dean McCurdy, 6-3-56.6; Ray Bechtel, 5-4-56.6; Charles Cooper, 5-4-56.3; Allen Gipe, 5-4-52.2; Pete McCollu, 4-5-45.3; Jack Swyers, 2-7-51.4; Don Dietz, 2-7-46.4; Bill Bruaw, 1-8-44.8.

**CLASS C**—Mark Clippinger, 7-0-62.3; Al Long, 4-3-50.3; Jerry Hoy, 4-3-50.2; Earl Lartz, 4-3-46.0; Darle Esh, 3-4-46.1; Dick Dart, 2-5-45.7; Guy Esh, 2-5-44.5; Jack Griffith, 2-5-39.2.

**CLASS D**—Dick Wilson, 7-2-51.8 (Playoff); John Baugher, 7-2-48.6; Harold Clippinger, 6-3-50.4; Wayne McCloskey, 5-4-48.7; Frank Miller, 5-4-47.2; Joe Belcavitch, 5-4-45.7; John Clippinger, 5-4-45.5; Joel Medvidovich, 4-5-47.4; Dennis Lloyd, 1-8-36.8; Blaine Aley, 0-9-35.9.

**CLASS E**—Les Putt, 7-0-54.6; Dave Preston, 4-3-42.2; Jack Myers, 4-3-41.5; Jim Richards, 4-3-40.0; Ray McConnel, 3-4-39.8; Robert Gable, 2-5-38.7; Dick Scott, 2-5-34.4; Don Wagner, 2-5-33.8.

**CLASS F**—Jim Swope, 6-1-46.4; Richard Gearhart, 5-2-41.7; Harold Becker, 5-2-34.4; John Zimmerman, 4-3-36.2; Al Yednock, 4-3-35.1; Cheste Owens, 2-5-31.9; Joe Shurmaitis, 2-5-28.5; Ned Kinard, 0-7-28.0.

**CLASS G**—Paul Crisamore, 6-1-36.5; Homer Erb, 5-2-35.0; Wally Brown, 5-2-33.2; Rich Hoover, 4-3-32.1; Gene Oleski, 4-3-30.5; Marlin Zimmerman, 3-4-30.9; Gerard Harris, 1-6-19.8; Dave Blouch, 0-7-21.2.

**CLASS H**—Don Sheibley, 7-0-44.6; Ted Postupack, 6-1-35.6; Robert Loncar, 5-2-32.1; Bruce Corl, 4-3-33.1; Joe Shughart, 3-4-21.8; Mike Bonner, 2-5-25.2; Donald Bubb, 1-6-20.6; Ron Baker, 0-7-14.4.

**CLASS I**—Terry Haverstock, 6-1-29.4; John Kehler, 5-2-26.0; Tony Carlin, 5-2-25.9; Tom Baker, 4-2-25.1; Jack Wallace, 3-4-29.3; Joe Calderelli, 3-4-19.9; Ken Clippinger, 2-5-14.4; Jeff Hoy, 0-7-11.0.

**LADIES**—Charlotte Onion, 5-0-43.7; Kim Johnson, 3-2-39.6; Carol Baker, 2-3-32.8; Jean Long, 2-3-30.8; Susan Preston, 2-3-27.3; Lynn Carlin, 1-4-23.7.

**CLASS A**—Glenn Brown, 7-0-67.0; Glenn Rubendall, 6-1-64.8; Ed Bowersox, 4-3-53.3; Jack Swyers, 4-3-50.0; Dick Dart, 3-4-51.8; Dean McCurdy, 2-5-46.9; Al Long, 1-6-47.1; Don Dietz, 1-6-39.1.

**CLASS B**—Wayne McCloskey, 5-0-45.8; Harold Clippinger, 4-1-42.1; Dick Wilson, 3-2-48.0; Dennis Lloyd, 2-3-43.2; Joe Belcavitch, 1-4-37.8; Paul Caudill, Jr., 0-5-39.1.

**CLASS C**—Gene Oleski, 6-1-36.3; Al Yednock, 6-1-34.6; Robert Hyde, 5-2-38.8; Robert White, 4-3-34.1; Joe Shurmaitis, 4-3-30.6; Bernie Snyder, 1-6-24.6; Bernie Wierbowski, 1-6-16.9; Gerard Harris, 1-6-16.6.

**CLASS D**—Wayne Brown, 4-1-40.7; Robert White, 3-2-37.1; Ted Postupack, 3-2-35.8; Ralph Weigle, 3-2-32.3; Wally Brown, 1-4-35.0; Terry Haverstock, 1-4-34.7.

**CLASS E**—Ted Postupack, 5-0-42.0; Bruce Corl, 4-1-42.4; Jim Diem, 3-2-25.6; Rick Stinson, 2-3-23.4; Tom Baker, 1-4-22.0; Donald Troupe, Forfeit.

**LADIES**—Jean Long, 4-0-34.6; Sandy Maciejczak, 2-2-16.8; Crystal Lloyd, 0-4-6.8; Cindy May, Forfeit.  
**ANNUAL YOUTH FAIR TOURN.—REEDSVILLE, PA.—SANC. 17-87-026—CLASS A**—Glenn Burris, 7-0-73.0; Glenn Rubendall, 6-1-71.7; Homer Snyder, 5-2-66.0; Dan Beshore, 4-3-65.5; Glenn Brown, 2-5-61.1; Ray Rugg, 2-5-60.2; Ed Bowersox, 2-5-56.9; Jack Swyers, 0-7-52.2.

**CLASS B**—Mark Slippinger, 5-2-56.0 (Playoff); Guy Esh, 5-2-54.5; Martin Bubb, 4-3-49.4; Donald Dietz, 4-3-47.5; Darle Esh, 3-4-52.5; Dean McCurdy, 3-4-47.9; John Clippinger, 2-5-45.8; Dick Dart, 2-5-43.7.

**CLASS C**—Allen Gipe, 7-0-49.7; Tom Becker, 6-1-49.3; S. Frankhouser, 5-2-43.0; Jim Sibley, 3-4-42.3; Ed Sell, 3-4-37.0; Wayne McCloskey, 2-5-44.7; Paul Caudill, Jr., 1-6-35.5; Blaine Aley, 1-6-33.3.

## EASTERN PENNSYLVANIA—(Continued)

**CLASS D**—Harold Clippinger, 6-1-45.1; John Baugher, 5-2-40.6; Clyde Onvage, 5-2-40.4; Jim Swope, 4-3-39.5; Dennis Lloyd, 3-4-33.9; John Rothrock, 2-5-36.9; Jim Richards, 2-5-32.7; Rich Gearhart, 1-6-35.9.

**CLASS E**—Wayne Brown, 5-1-32.6; Ralph Weigle, 4-2-32.0; Gene Oleski, 4-2-30.3; Wally Brown, 4-2-28.0; Bruce Corl, 2-4-33.0; Bernie Snyder, 2-4-27.3; Gerard Harris, 0-6-15.0.

**CLASS F**—David Preston, 6-0-37.6; Jack Wallace, 5-2-22.6; Jim Diem, 3-3-21.6; Donald Bubb, 3-3-20.3; Alan Hamilton, 3-3-15.6; Tom Baker, 1-5-16.3; Walter Rowles, 0-6-12.0.

**EAST CAMP HILL, PA. OPEN—SANC. 17-87-028—CLASS A**—Art Tyson, 9-0-72.1; Glenn Rubendall, 8-1-66.6; Dan Beshore, 7-2-63.7; Glenn Brown, 6-3-58.5; Joe Schultz, 4-5-62.7; Ed Bowersox, 4-5-52.7; Dick Wilson, 3-6-45.1; Jack Swyers, 2-7-49.0; Jerry Hoy, 1-8-44.4; Pete McCollum, 1-8-38.5.

**CLASS B**—Dean McCurdy, 6-1-57.5; Ray Benedict, 5-2-56.8; Bill Bruaw, 5-2-53.7; Tom Decker, 4-3-55.3; Al Long, 4-3-53.4; Darle Esh, 2-5-48.7; Guy Esh, 2-5-45.6; Don Dietz, 0-7-39.5.

**CLASS C**—Joel Medvidovich, 7-0-50.0; Les Putt, 6-1-52.8; Dennis Lloyd, 4-3-42.6; Wayne McCloskey, 4-3-41.0; Roy Teets, 4-3-40.3; Harold Clippinger, 2-5-39.0; John Baugher, 1-6-34.4; Rich Gearhart, 0-7-29.5.

**CLASS E**—Ted Postupack, 6-1-37.3; Harold Becker, 5-2-35.2; Robert Loncar, 5-2-38.2; Wally Brown, 4-3-30.0; Ron Rhoads, 3-4-22.8; Bruce Corl, 2-26.7; John Kehler, 2-5-20.8; Tom Baker, 1-6-20.3.

**LADIES CLASS A**—Jean Long, 5-0-30.4; Lois Hoy, 3-2-25.8; Lynn Carlin, 3-2-23.4; Carol Baker, 3-2-19.6; Susan Preston, 1-4-18.9; Crystal Lloyd, 0-5-3.1.

## DECEMBER ISSUE WILL BE STATE TOURNAMENT ISSUE

**CLAY N' SAND** has the perfect Pitching Shoe  
versatile enough to wear **EVERYDAY!**



Comfortable and lightweight breathability  
insures exceptional balance needed  
to WIN GAMES and reach GOALS,  
versatile enough to wear  
**EVERYDAY!**



**\$59<sup>95</sup>**

Mens 8 - 12½  
Womens 6 - 9½

—MAKES AN EXCELLENT GIFT—  
ORDER TODAY!

Send check or money order for \$59<sup>95</sup> plus \$3<sup>00</sup> shipping and handling,  
plus your **SIZE, NAME and ADDRESS** to:

6901 Sheridan Rd.  
Kenosha, WI 53140  
414-654-6404  
WI residents add 5%

**CLAY N' SAND**  
**MADE IN THE USA**

19 Ridge Road  
Burlington, CT 06013  
1-800-243-3158

## TYSON WINS BILL MacLEOD OPEN—NEW ROCHELLE, N.Y. SANCTION 18-87-009

**CLASS A**—A. Tyson, NY, 5-0-77.2; J. Schultz, NY, 3-2-72.6; W. Deuster, NY, 3-2-67.1; J. Nemschick, NY, 3-2-65.8; D. Nemschick, NY, 1-5-68.4; L. Stines, NY, 0-5-55.5.

**CLASS B**—B. Deen, NY, 4-2-56.3; M. Zichella, NY, 4-2-50.4; L. Zimmerman, NY, 3-3-54.1; J. Hickey, NJ, 44.3.

**CLASS C**—W. Hooley, NY, 6-1-38.1; D. Allspaugh, CT, 5-2-39.4; J. Moroso, NY, 4-3-36.7; K. Erickson, CT, 4-3-34.3; J. Marietta, NJ, 3-4-33.1; H. Leonard, CT, 3-4-32.3; D. Espitee, CT, 3-4-31.2; J. Loughery, NY, 0-7-29.9.

**CLASS D**—C. Szymanski, NY, 5-1-25.4; R. Ritter, NY, 4-2-23.6; B. Esposito, NY, 4-2-20.5; T. McSpedon, NY, 4-2-18.2; J. Cobb, NY, 3-3-17.8; A. Johnson, NJ, 1-5-15.3; B. Sharkey, NY, 0-6-10.4.

## J. KNISLEY UNDEFEATED IN LEVI GARRETH OPEN—AT WINSTON-SALEM, N.C.—SANC. 29-87-010

**CHAMPIONSHIP CLASS**—Jim Knisley, Bremen, OH, 11-0-81.5; J. B. Fuller, Asheville, NC, 9-2-73.5; B. J. Thomas, Troy, NC, 8-3-73.0; Clyde Southern, Winston-Salem, NC, 6-5-67.4; Richard Martino, Greenville, TN, 6-5-64.6; Joe Young, Winston-Salem, NC, 6-5-63.2; Jones Burrow, Kernersville, NC, 5-6-62.4; Roger Norwood, Knoxville, TN, 5-6-60.1; Paul Stewart, Statesville, NC, 4-7-62.8; Eugene Bandy, Amonate, VA, 3-8-57.6; Earl Linkous, Dublin, VA, 2-9-61.0; Cager Lawson, Mt. Ziry, NC, 1-10-57.4.

**CLASS A**—Johnny Mears, Mt. Ziry, NC, 4-1-63.8; James Cogins, Asheboro, NC, 3-2-57.1; Van Fox, New Port, TN, 3-2-57.0; Douglas Cook, Bluefield, WV, 3-2-55.9; Moddy Altizer, Cedar Bluff, VA, 1-4-50.8; Donald Douglas, Statesville, NC, 1-4-36.2; Norman Kelly, Greenville, SC, 0-0-0; Willie Stephens, Stimpsonville, SC, 0-0-0.

**CLASS B**—Franklin Pearson, Roanoke Rapids, NC, 6-1-55.7; Roy Littrell, Marshall, NC, 5-2-55.6; Billy Thore, Mt. Ziry, NC, 5-2-51.0; Lenwood Conner, South Hill, VA, 3-4-54.7; Calvin Motsinger, Tobaccoville, NC, 3-4-52.6; Leland Brown, Carthage, NC, 3-4-51.5; Wayne Ratliff, Kernersville, NC, 2-5-48.9; Everett Frost, Bluefield, VA, 1-6-47.0.

**CLASS C**—James Sulin, Nebo, NC, 4-3-56.5; Roy Horsley, Pinnacle, NC, 4-3-55.5; James Bullion, Evington, VA, 4-3-54.7; David Wall, Danville, VA, 4-3-52.9; Gurney York, Harmony, NC, 4-3-51.0; B. J. Brown, Harmony, NC, 3-4-55.5; Charlie Carter, Callaway, VA, 3-4-51.7; Nathan Davis, Danville, VA, 2-5-43.9.

**CLASS D**—Robert Toney, Madison Heights, VA, 6-1-56.4; Douglas Shear, Carthage, NC, 5-2-52.1; Ricky Bolick, Lenoir, NC, 5-2-47.3; Buck Prewette, Ruffin, NC, 4-3-48.8; Gilbert Moore, Burlington, NC, 3-4-48.0; George Lewis, Knoxville, TN, 2-5-49.7; Coy Bennett, Jonesborough, TN, 2-5-39.3; John Shelton, Knoxville, TN, 1-6-41.3.

**CLASS G**—Bud Poteet, Bluefield, VA, 7-0-39.2; Warren Henderson, Raleigh, NC, 5-2-35.1; Norman Mills, Lashmeet, WV, 4-3-36.2; A. J. Brooks, Princeton, WV, 4-3-31.3; Dennis Shelton, Stokesdale, NC, 3-4-31.6; Pete Gravley, Pulaski, VA, 3-4-30.1; Gerald Ramey, Butner, NC, 2-5-28.4; Mike Sheets, Laural Springs, NC, 0-7-14.7.

**CLASS H**—Tommy Gann, Stoneville, NC, 6-1-29.0; D. W. Leonard, Dry Fork, VA, 5-2-28.7; Herman Lones, Jonesborough, TN, 5-2-24.1; Willie Allen, Tobaccoville, NC, 4-3-28.7; Bob Leighton, Radford, VA, 4-3-22.3; Russell Bennett, Jonesborough, TN, 3-4-21.3; Leo Workman, Dublin, VA, 1-6-18.7; Albert Jones, Winston-Salem, NC, 0-7-16.4.

**WOMENS**—Jean Brown, Carthage, NC, 5-0-55.6; Becky Chapman, Ruffin, NC, 4-1-50.9; Ruth Letuin-chik, Raleigh, NC, 3-2-28.8; Peggy McCran, Summerfield, NC, 2-3-37.4; Shela Bolick, Lenoir, NC, 1-4-24.2; JoAnne Burrow, Kernersville, NC, 0-5-26.5.

**JUNIOR CLASS**—Lenwood Conner, South Hill, VA, 6-0-64.2; John Moose, Taylorsville, NC, 4-2-55.6; Shane Lloyd, Carrboro, NC, 2-4-44.7; Chad Brown, Carthage, NC, 0-6-23.7.

## 1989 WORLD TOURNAMENT—SPEARFISH, SOUTH DAKOTA JULY 19 through AUGUST 1

## TOURNAMENT ACTION IN MAINE

**CAPITAL CITY OPEN, AUGUSTA—SANC. 27-87-019—CLASS A**—Dave Wilson, 9-0-66.8; Dave James, 6-3-51.5; Carl York, 6-3-50.5; Albert Allen, 6-3-47.5; Albert Roux, 5-4-50.8; Leland Davis, 5-4-46.3; Cyp Johnson, 4-5-35.8; Dave Gallant, 2-7-42.5; Sam Raymond, 2-7-36.6; Dick Clement, 0-9-31.8.

**CLASS B**—Al Emerson, 6-1-39.8; Clyde Hewett, 6-1-43.0; Harold Brown, 4-3-43.3; Larry Guimond, 4-3-40.4; Pat Gallant, 3-4-44.7; Stan Bisbee, 3-4-43.5; Teddy Jaes, 2-5-37.7; Charles Lytle Sr., 0-7-24.8.

**CLASS C**—Helen Hubbard, 6-1-46.2; Wilmer Cummings, 5-2-38.4; Joseph Ramsdell Jr., 4-3-35.4; Don Holyoke, 4-3-32.8; Robert Harriman, 4-3-30.2; Foster Gray, 3-4-41.0; Carl Gaudett, 2-5-36.8; William Files, 0-7-26.1.

**CLASS D**—Larry Sirois, 6-1-39.0; Ray Luce, 6-1-34.5; John Hall, 4-3-27.9; Hilda Thornton, 3-4-29.8; Roger Nevells, 3-4-24.2; Mike Pushard, 2-5-24.0; Dawn Knox, 2-5-22.8; Dick Clement, 2-5-22.6.

**CLASS E**—Karl Poole, 6-1-28.7; Mike Davis, 5-2-26.3; John Lasso, 4-3-28.9; Bucky Knox, 4-3-26.1; John Muslawski, 3-4-25.2; Dave Luce, 2-5-23.2; Eugene Taylor, 2-5-22.0; Keith Bisbee, 2-5-20.4.

**CLASS F**—Karl Greenman, 6-1-18.7; Cyrus Thyng, 5-2-26.2; Ken Warman, 5-2-17.0; Roger Williams, 2nd, 5-2-14.7; Victor Guimond, 3-4-15.0; Rick Hume, 3-4-10.2; Charles Lytle Jr., 1-6-5.7.

**CLASS A JUNIOR BOYS**—John Doucette 3rd, 5-1-13.0; Corey Johnson, 4-2-9.7; Ryan Clement, 3-3-4.4.

**CLASS A**—Al Pichette, 7-1-50.9; Phil Bergeron, 6-2-50.4; Carl York, 4-3-48.8; Mary Ryan, 4-3-46.0; Leland Davis, 4-3-42.0; Albert Allen, 2-5-38.2; Sam Raymond, 2-5-35.3.

**CLASS B**—Pat Gallant, 6-2-40.1; Clyde Hewett, 5-3-32.8; Jim Davenport, 4-3-37.0; Stan Bisbee, 4-3-36.7; Harold Brown, 4-3-33.7; Helen Hubbard, 4-3-29.5; Floyd Raven (EZ), 1-6-28.9; Nick Roun, 1-6-25.0.

**CLASS C**—Larry Sirois, 6-2-37.6; Carl Gaudett, 5-3-38.0; Roger Bulduc, 4-3-34.7; Mary Clark, 4-3-34.3; Ray Luce, 4-3-32.0; Harry Smith, 3-4-31.2; Bob Burns, 3-4-28.8; Hilda Thornton, 0-7-23.0.

**CLASS D**—Mike Davis, 6-1-33.5; Karl Poole, 5-2-27.7; Cyrus Thyng, 4-3-22.3; John Hall, 4-3-22.0; John Muslawski, 4-3-21.5; Dave Luce, 3-4-25.0; Roger Nevells, 2-5-18.5; Eugene Taylor, 0-7-14.4.

**CLASS E**—Ray Healey, 5-0-31.8; Victor Guimond, 4-1-27.0; Ron Shaw, 2-3-16.1; Bryan Clark, 2-3-15.7; Frank Ryan, 1-4-16.1; John Doucette Jr., 1-4-16.0.

**CLASS F**—Ken Warman, 5-0-18.1; Roger Williams 2nd, 3-2-22.1; Karl Greenman, 3-2-16.9; Charles Harding, 2-3-15.4; Roger Williams Sr., 1-4-11.3; Rick Hume, 1-4-8.4.

**CLASS A JUNIOR BOYS**—Corey Johnson, 6-0-11.0; John Doucette 3rd, 4-2-15.3; Robbie Buzzell, 1-5-3.5; Butch Hilton, 1-5-3.4.

**MAINE MONEY OPEN—AUGUSTA—SANC. 27-87-021—CLASS A**—Phil Bergeron, 9-1-58.7; Larry Guimond, 8-2-51.8; Carl York, 7-3-56.9; Dave James, 3-7-46.5; Sam Raymond, 2-8-42.2; Harold Harding, 1-9-42.9.

**CLASS B**—Helen Hubbard, 7-0-57.7; Gary Liberty, 5-2-44.1; Pat Gallant, 4-3-50.0; Roger Raven, 4-3-45.7; Stan Bisbee, 2-5-46.3; Clyde Hewett, 2-5-40.6; Dave Gallant, 2-5-40.1; Herb Cox, 2-5-34.6.

**CLASS C**—Larry Sirois, 5-2-41.0; George Dame, 5-2-45.4; Harlen Parson, 4-3-45.5; Carl Gaudett, 4-3-41.8; Richard Cox, 4-3-39.1; Harold Brown, 3-4-38.5; Lionel Rodrigue, 2-5-37.2; Victor Guimond, 1-6-25.6.

**CLASS D**—E.Z. (Floyd) Raven, 6-1-44.7; Phil Johnson, 6-1-43.3; Mary Clark, 4-3-36.1; Joseph Ramsdell Jr., 3-4-33.1; Lionel Rodrigue, 3-4-31.2; Wilmer Cummings, 3-4-31.0; George Blais, 2-5-31.9; Bob Burns, 1-6-33.3.

**CLASS E**—Winston Clark, 6-1-41.4; Ray Luce, 6-1-41.3; Hilda Thornton, 6-1-33.1; Robert Harriman, 4-3-33.0; Stan Voter, 2-5-32.5; Dave Luce, 2-5-29.8; Mike Davis, 2-5-29.4; Sheldon Hubbard, 0-7-4.8.

**CLASS F**—John Hall, 6-1-28.7; Karl Poole, 6-1-35.5; Roger Nevells, 6-1-32.7; Victor Guimond, 4-3-23.1; John Muslawski, 3-4-23.2; Kenneth Warman, 2-5-22.2; Cyrus Thyng, 1-6-22.9; Reggie Cummings, 0-7-18.8.

**CLASS G**—Rick Hume, 5-1-12.7; Eugene Taylor, 4-2-19.0; Robert Hall, 3-3-14.8; Karl Greenman, 0-6-4.9.

## NEW ROCHELLE, N.Y. OPEN—SANCTION 18-87-007

**CLASS A**—W. Deuster, NY, 5-0-64.6; J. Nemschick, NY, 4-2-63.0; D. Nemschick, NY, 3-3-57.3; J. Schultz, NY, 2-4-56.0; L. Stines, NY, 2-4-53.3; B. MacIntyre, NJ, 1-5-56.0.

**CLASS B**—L. Zimmerman, NY, 3-1-45.0; R. Ballinger, NJ, 3-3-41.5; J. Hickey, NJ, 2-2-43.5; T. Early, NY, 2-2-39.5; J. Sharkey, NY, 0-4-33.0.

**CLASS C (HANDICAP)**—J. Cobb, NY, 7-1-21.5; F. Troxell, NY, 5-3-31.5; J. Moroso, NY, 5-3-27.5; T. Reitz, NY, 4-4-30.3; R. Ritter, NY, 4-4-18.7; L. Oullette, NY, 4-4-17.8; T. McSpedon, NY, 4-4-10.0; J. Marietta, NJ, 2-6-33.1; A. Johnson, NJ, 1-7-10.9.

## PETERSBURG, VA. CIRCLE K OPEN TITLE WON BY DENNY DAVIS—SANCTION 30-87-006

**CLASS A**—Denny Davis, 7-0-59.1; John Shaw, 5-2-61.9; Jim Barker, 5-2-59.4; Jo Ann Wall, 4-3-56.7; Nathan Davis, Jr., 3-4-47.7; Lenwood Conner, 2-5-54.2; Gene Tidwell, 1-6-44.4; Charlie Carter, 1-6-39.8.

**CLASS B**—Dannie Simmons, 5-1-47.9; Al Foley, 5-1-48.8; Jim Foltz, 3-3-45.0; George Holley, 3-3-39.8; Stan Ballenger, 2-4-32.5; Buck Holley, 2-4-35.0; William Ostein, 0-6-26.1.

**CLASS C**—Eddie Wilmoth, 6-1-38.4; Roy Weaver, 5-2-40.0; Pete Foster, 5-2-35.7; Marty Marttila, 4-3-34.4; Shawn Rowsey, 3-4-25.4; Howard Walker, 2-5-32.2; Orville Napier, 2-5-25.1; Dave Moser, 1-6-22.4.

**CLASS D**—Johnny Guthrie, 5-1-28.6; Gus Peterson, 4-2-27.2; Donald Leonard, 3-3-16.4; Shorty Young, 1-6-17.3.

**JUNIOR BOYS**—Lenwood Conner, Jr., 4-0-58.5; Dwayne Davis, 2-2-42.0; Elgin Davis, 0-4-19.4.

**CLASS E**—Bob Gordon, 5-0-36.1; Ron Skelton, 3-2-27.5; Mastin Kitchen, 3-2-23.4; Mike Reese, 2-3-24.1; Forrest Simpkins, 1-4-26.0; Rob Crafton, 0-5-10.4.

**CLASS F**—Ralph Cardwell, 7-2-30.2; Gene Brooks, 7-2-23.7; Ray Gibson, 6-3-28; Pugger Wilkins, 6-3-25.5; Speedy Cawthorn, 5-4-24.4; G. C. Rowland, 5-4-22.0; Bill Reese, 4-5-21.0; Pete Preston, 3-6-18.4; Johnny Lankford, 1-8-20.1; James Hall, 0-9-12.7.

## NEW CASTLE, PA. FALL ROUNDUP CHAMPIONSHIP WON BY COPELAND OF OHIO—SANCTION 17-87-016

**CLASS A**—Ansil Copeland, 7-0-68.2; Francis White, 6-1-65.4; Kurt VonKleist, 4-3-62.2; Bob McKnight, 4-3-61.4; Robert White, Sr., 3-4-56.9; John Mathys, 2-5-52.0; Ed Blum, 1-6-59.4; Ed Horneman, 1-6-51.5.

**CLASS B**—Homer Browne, 7-0-49.4; Vince Sedlasek, 6-1-54.7; Tom Piscolith, 5-2-51.8; Joe Morris, 4-3-39.1; Paul Gemza, 2-5-43.4; Robert E. White, 2-5-39.3; Elgie Rumbaugh, 1-6-40.1; Adam Matscherz, 1-6-35.9.

**CLASS C**—John Carnahan, 6-1-39.8; Fred Connell, 5-2-44.1; Bob Lapping, 5-2-40.9; Blair Weigel, 4-3-40.7; Ken Bowser, 3-4-40.3; Dick James, 3-4-34.5; Clark Carnahan, 1-6-33.4; Vaughn Dotts, 1-6-32.0.

**CLASS D**—Lance Rihn, 7-0-49.6; Verne Schrecongost, 6-1-36.5; Rudy Kwait, 5-2-39.9; Bill Meador, 4-3-23.7; Taylor Carnahan, 3-4-29.7; John Tedrow, 2-5-11.3; Butch Stover, 1-6-10.3; Wilbert Dawson, 0-7-22.4.

**CLASS A WOMEN**—Betty Lapping, 7-1-44.5; Marty Wood, 6-2-34.2; Eleanor Weston, 4-3-35.0; Cherise Cunningham, 4-3-33.5; Jean Reefer, 4-3-31.9; Kelli Weston, 3-4-31.5; Ruth Carnahan, 1-6-14.1.

## LLOYD-BROWN-KNISLEY TITLISTS IN STATESVILLE, NC AUTUMN CLASSIC—SEPT. 19—SANC. 29-87-011

**JUNIOR BOYS**—Shane Lloyd, 2-0-47.1; Chad Brown, 0-2-21.4.

**WOMEN'S CHAMPIONSHIP CLASS**—Jean Brown, 3-0-52.5; Maxine Mann, 2-1-43.7; Rosoline Tucker, 1-2-32.8; Sheila Bolick, 0-3-35.2.

**MEN'S CHAMPIONSHIP CLASS**—Jim Knisley, 8-0-77.7; J. B. Fuller, 6-2-68.5; Joe Young, 6-2-68.0; Roger Norwood, 5-3-67.2; Norman Kelly, 4-4-66.8; Cager Lawson, 4-4-64.9; A. J. Nave, 4-4-58.9; Clyde Southern, 3-5-69.3; Johnny Mears, 3-5-67.3; Paul Stewart, 2-6-60.4.

**MEN'S CLASS A**—Willie Stephens, 5-1-56.8; Roy Horsley, 4-2-54.1; Gurney York, 4-2-52.5; Calvin Motsinger, 3-3-53.1; Dexter Stallings, 3-3-51.4; Billy Thore, 2-4-51.6; Donald Douglas, 0-6-43.0.

**MEN'S CLASS B**—James Sumlin, 5-55.1; Leland Brown, 5-2-56.6; Ricky Bolick, 4-3-56.1; Nathan Davis, 4-3-50.7; Douglas Shear, 4-3-47.4; Tommy Lawson, 3-4-51.3; Robert Toney, 3-4-48.5; Roy Littrell, 0-7-37.7.

**MEN'S CLASS C**—Carl Moore, 6-0-43.4; William Lucas, 4-2-46.7; Gilbert Moore, 3-3-39.4; Will Westbrook, 3-3-32.2; Allen Fox, 2-4-39.5; Stan Ballenger, 2-4-35.1; Bobby Webb, 1-5-30.2.

**MEN'S CLASS D**—Bill Arms, 6-1-38.3; Hugh Cranor, 5-2-44.4; Nick Nave, 5-2-39.6; Dave Lloyd, 4-3-39.6; James Finley, 4-3-39.2; Warren Henderson, 2-5-33.9; Gerald Ramey, 2-5-31.5; Donald Leonard, 0-7-23.3.

**MEN'S CLASS E**—Gerald Hammack, 3-0-47.4; Tommy Mann, 4-0-36.4; Joe Watts, 2-1-34.4; Rene Rodrique, 2-2-31.9; Leon Burton, 3-3-28.3; Buck Mann, 1-2-28.2; Willie Allen, 1-3-25.8; Richard West, 0-4-23.5; Mike Sheets, 0-3-14.8.

**MEN'S CLASS F**—Bruce Tucker, 2-0-23.1; Charles Worsham, 1-1-19.4; Rev. Marvin Boggs, 0-2-9.6.



## FERN TRINQUE ST. MORITZ, MASS. CLUB CHAMPION SANCTION 78C59C

The St. Moritz Monday/Tuesday night League started their season in April and finished on September 1. Stan Fielding received the Sportsman of the Year award due to his dedication to the Club and fine play and good attendance. Charley Bonani was our best player with a final ringer percentage of 62.4. The Monday night team of Jim DiGiacomo and Dave Vincent defeated the team of Chuck Jokinen and Dave Thompson to become the Monday night team champion.

The Club tournament took four weeks to complete. Class B and C were interrupted by rain and had to finish the following week. The cookout was rained out two Sundays but was finally held on September 27th. The results are as follows:

**CLASS A**—Fern Trinke, 5-0-51.4; Mario Campanelli, 3-2-32.8; Tony Dziuba, 2-3-34.6; Stan Fielding, 2-3-33.5; Dave Vincent, 2-3-32.7; Bob Halloran, 1-4-21.6.

**CLASS B**—Bob Grattan, 5-0-39.3; Bill Galligan, 3-2-32.6; John DiCalogero, 3-2-29.5; John Shaw, 2-3-31.4; Gordon McConarty, 1-4-21.4; Harvey Singer, 1-4-15.9.

**CLASS C**—Tony Grassia, 4-1-25.7; Jack Casey, 3-2-30.1; Nick Vafides, 3-2-23.4; Jim Leahy, 2-3-26.1; George Nash, 2-3-22.1; Janet DiCalogero, 1-4-25.7.

**CLASS D**—Jim Tyrie, 4-1-25.5; Dave Thompson, 4-1-24.4; Bart Sargent, 2-3-20.7; Chuck Jokinen, 2-3-18.9; Vinnie Burdulis, 2-3-10.9; Jim DiGiacomo, 1-4-22.2. Jim Tyrie beat Dave Thompson in a playoff game.

**CLASS E**—Mike Priscella, 4-1-19.1; Wayne Henderson, 3-2-16.5; Tony Prezioso, 3-2-12.9; Pete Elliott, 2-3-15.6; Tom O'Connor, 2-3-14.5; Bill Cantilli, 1-4-16.2.

**CLASS F**—Milo Palmeiri, 3-0-15.5; Matt Murphy, 0-3-4.2.

## "GREEOTT GRABBER"

the ultimate ringer keeper



Soft temper 2lb. 8oz. 2lb. 9 oz.

Not JUST another horseshoe. The ultimate shock-absorbing, ringer saving design. Helps prevent loss of solidly hit ringers by rebounding.

Guaranteed against breakage for 1 year from date of purchase. Both shoes must be returned in original box.

\$28.00 pr. plus \$3.00 shipping, handling, to the 48 adjoining states. California residents add 6% tax. High grade steel casting. NOT cast iron. Send checks or money orders to:

"GREEOTT GRABBER" HORSESHOES  
c/o Steve Kynard 1380 Eagle Rock  
Woodland, CA 95695

Or from NHPA representatives





## SHANEYFELT WINS COTTON PICKEN OPEN HUNTSVILLE, ALA.—SANC. 31-87-011

**CLASS A**—W. Shaneyfelt, 6-1-66.5; J. Harris, 6-1-61.7; J. Henderson, 5-2-57.4; C. Baker, 4-3-49.2; B. Tidwell, 2-5-49.7; J. Johnson, 2-5-45.3; J. Mullican, 2-5-41.0; D. Mangum, 0-6-41.0.

**CLASS B**—D. Mangum, 5-0-41.0; R. Scott, 3-2-44.8; D. Tidwell, 3-2-38.3; M. Watkins, 3-2-30.4; P. Gibson, 1-4-18.3; F. King, 0-5-15.2.

## STAR OF THE NORTH

By GLEN PORTT

I guess I was fortunate to have had an 8th grade Geography teacher who believed in never letting any of her students say the name of a city without also stating the state our country . . . such as Detroit, *Michigan* . . . San Antonio, *Texas*, etc. She was also pretty adamant that we learn each state's motto . . . and throughout the years some of those have stuck with me . . . such as *The Tree Planters' State* for Nebraska . . . *The Wolverine State* for Michigan . . . and *Star of the North* for Minnesota. (Also called *The North Star State*.)

I can also remember her telling us about Minnesota . . . that the best wheat in the world came from the Red River Valley . . . that we should remember two famous lakes . . . Lake of the Woods . . . and Lake Minnetonka . . . that the Mesabi and Vermilion mountain ranges near the head of Lake Superior held the largest deposits of iron ore in the world . . . and that the only important deposits in America of red pipestone, which the Indians used for centuries in making peace pipes and pottery, was found in the southwest corner.

But one thing she didn't tell me was that Minnesota truly does have a "Star of the North." I guess I can forgive her for that . . . because Dale Lipovsky wasn't even born at that time. What do we really know about 32 year old Dale . . . the Minnesotan who has brought acclaim to that state . . . who has won the State Horseshoe Championship 10 times . . . and the World Title 3 times? We know him as a horseshoe pitcher. Others know him as a star bowler with two 299 games and several 700 series to his credit. Others, as a hard throwing *right hander* (that's right . . . a *right hander*) who played with the Boston Red Sox organization for two years . . . whose career was cut short in 1980 by a torn rotator cuff in his right shoulder.

So, in 1981, it was back to pitching horseshoes . . . even though he admits he wasn't too serious about it and was still thinking baseball . . . his first love. But in 1982, he decided to give horseshoes his all. He practiced incessantly, entered the W.T. in Huntsville, Alabama, finished in a 3 way tie for first, won the playoff . . . and the World Championship.

Who was this relatively unknown in world tournament play? Was his win a fluke? Luck? Many thought so . . . but the facts are that *no one* wins the World Championship on luck . . . unless you can call an 81.0% ringer average by that name. In 1983, Dale dispelled all doubts as to his ability to compete with and win against the best in the world. He won his *second* World Title.

But no one is great all the time . . . no matter in what sport he is competing. '84 and '85 were bad years by Dale's standards . . . and he blames no one but himself. He admits experimenting with new shoes and taking things easy (in other words . . . being lazy) and not practicing as he should have. He missed the '86 event at Ainsworth due to a previous promise to pitch in a special promotion. He kept that commitment.

1987. Dale returned to rigorous practice sessions . . . to ALLEN shoes . . . and won the *World Championship again* . . . thus joining an elite group of only 8 men who have won the World Title 3 times or more.

Yes, Minnesotans and the horseshoe pitching world have a champion of whom they can be justly proud . . . Dale Lipovsky . . . "Star of the North."

## S. SMITH WINS TENN. OPEN—OCT. 3—SANC. 23-87-014

**CLASS A**—S. Smith, 5-0-66.1; V. Fox, 3-2-63.6; D. Stallings, 3-2-59.6; G. Bradfield, 2-3-55.0; J. Black, 1-4-54.6; S. Banks, 1-4-50.0.

**CLASS B**—T. Lawson, 4-1-51.5; G. Lewis, 3-2-52.2; M. Bastian, 3-2-51.8; R. Pressley, 3-2-46.7; L. Wyatt, 2-3-43.5; B. Sensinger, 0-5-36.8.

**CLASS C**—N. Nave, 5-0-49.2; E. Allen, 3-2-47.8; J. Ware, 3-2-39.4; F. Jones, 2-3-47.2; W. Gee, 2-3-36.5; Jr. Brown, 0-5-28.2.

**CLASS D**—Jr. Haire, 5-0-51.3; C. Green, 4-1-42.9; J. Cunyningham, 2-3-36.1; B. Spencer, 2-3-35.9; M. Cooper, 2-3-32.5; G. Nichols, 0-5-29.3.

**CLASS E**—T. Harmon, 3-1-22.9; W. Farley, 2-2-27.3; D. Ward, 2-2-23.0; R. Haire, 2-2-22.3; J. Davis, 1-3-17.9.




---

## “From Out Of The Mail Bag”

---

Editor, Horseshoe Pitchers Digest  
National Horseshoe Pitchers Association  
P.O. Box 1606  
Aurora, IL 60507

Dear Mr. Cobb,

There are several questions which I have been unable to answer with authority. My latest reference is the 1985 Edition of the Constitution and By-Laws of the NHPA and the Official Rules.

Article VI Rule 2 Section b states the pitching stakes for women and juniors shall be 30 feet, with a foul line three feet in front of the stake. How far back from the foul line may a woman or junior pitch their shoes? Can they pitch from 35 feet, or 38 feet, or 45 feet if they desire, or are they restricted to a six foot box like the men's pitching area? Are men restricted to the six foot pitching box, or can they pitch from any distance in back of the 37 foot foul line?

Article VI Rule 5 states that the top of each stake shall extend not less than 14" nor more than 15" above the level of the pitchers' platforms one each side of the stake with a 3" incline toward each other. Does each stake incline 3" or 1½"? I have seen players hollow out the area around the stakes like a dish sometimes 2" to 3" deep. In effect this makes the stake from 16" to 18" high. Is this legal?

Rule 22 Section b states that a referee appointed by the committee shall decide points when contestants are in doubt. It also states that all foul shoes shall be called by the referee. Since it is impossible for a referee to call foul shoes on several courts during a tournament, is it permissible for the scorekeeper to call foul shoes?

The only reference I can find about men 70 years and older pitching from the distance marked for women and juniors is Article VI section 2 of the Constitution which refers only to World Tournament play. There is nothing in the Official Rules concerning men 70 years and older. Has the 27 foot foul line been specified in the Official Rules?

Is it permissible for a person to change the horseshoes he is competing with in the middle of a game if they are not broken during play?

Some horseshoe courts are constructed with a six foot box on each end with the connecting sidewalk swaged down to 36" to 42" wide. The women's and junior's foul line is the marked on the swaged down portion of the sidewalk. Is this legal?

I hope the answers to these questions will be a help to all horseshoe pitchers. The Official Rules do need to be clarified.

Yours truly,

JAMES R. MCBETH  
104 East North Street  
Elida, Ohio 45807

---

## RESULTS OF MICHIGAN TOURNAMENTS

**ADRIAN OPEN SANCTION 13-87-005—CLASS A LADIES**—1st Norma Hansen, 2nd Sandra Smith, 3rd Dorothy Falk, 4th Jean Swarhout. High Game Dorothy Falk, 84.0%.

**CLASS A MEN**—1st Ed Schultz, 2nd Charles Laramie, 3rd Floyd Bartley, 4th Duane Gillin, 5th Stan Swarhout, 6th Clayton Bonham. High Game Ed Schultz 63.4%.

**CLASS B MEN**—1st Walt Krieger, 2nd Dick Stehno, 3rd Dewey Howard, 4th Dick Pelton, 5th George Stifel, 6th Bernie Degroat. High Game Walt Krieger 59.5%.

**CLASS C MEN**—1st Mike Daniels, 2nd Jim Campbell, 3rd Ed Hadden, 4th Oscar Hope, 5th Mike

## MICHIGAN—(Continued)

Supina, 6th Harold Persinger. High Game Jim Campbell 52.9%.

**CLASS D MEN**—1st Dave Burton, 2nd Darrin Howard, 3rd Claude Gillin, 4th Bill Lajoy, 5th Marv Falk, 6th Roger Chandler. High Game Bill Lajoy 40.6%.

**CLASS E MEN**—1st James Norville, 2nd Dave Double, 3rd Al Moon, 4th Vern Howard, 5th Lloyd Bartley, 6th Dave Loop. High Game James Norville 52.7%.

**CLASS F MEN**—1st Bill Hansen, 2nd Dennis Rath, 3rd Bob Eichenburg, 4th Dan Bush, 5th Gus Gezelman. High Game Dennis Rath 39.0%.

**LAKE ORION OPEN: SANCTION 13-87-009—CLASS A MEN**—1st Stan Swarthout 4-1-52.7; 2nd Joe Childers, 4-1-56.2; 3rd Bob Wells, 3-2-61.9. High Game Bob Wells 70%.

**CLASS B MEN**—1st Andy Matthews, 5-0-56.4; 2nd Bob Voss, -1-45.0; 3rd Dewey Howard, 3-2-39.5. High Game Andy Matthews 59.5%.

**CLASS C MEN**—1st Henry Wozniak, 5-0-46.2; 2nd Keith Briggs, 3-2-43.4; 3rd Paul Wishon, 2-3-41.9. High Game Paul Wishon 54.3%.

**CLASS D MEN**—1st Ralph Klauka, 6-0-35.9; 2nd Mark Johnson, 5-1-39.7; 3rd Morris Gibson, 4-2; 4th Moses Smith, 3-3-32.4. High Game Mark Johnson 56.2%.

**CLASS E MEN**—1st Dave Burton, 5-1-35.1; 2nd Fred Boller, 5-1-33.9; 3rd Bob Quелlette, 3-3-27.6; 4th Benny Sexton, 3-3-27.2. High Game Dave Burton 40.0%.

**CLASS F MEN**—1st Tom Davis, 5-1-36.6; 2nd Darrin Howard, 4-2-30.8; 3rd Gilbert Dennis, 4-2-29.8; 4th Marvin Falk, 3-3-29.3. High Game Tom Davis 41.0%.

**CLASS A JUNIORS**—1st Shawn Ollerich, 4-0-4.5; 2nd Chris Ollerich, 1-3-1.0; 3rd C. Crawford, 1-3-7.5. High Game C. Crawford 10%.

**CLASS A WOMEN**—1st Ellen Schumberg, 4-2-32; 2nd Dorothy Falk, 3-3-48.7. High Game Jean Swarthout, 58.0%.

**LAKE ORION (2nd DAY) CLASS A LADIES**—1st Margo Kohn, 5-1-44.3; 2nd Dorothy Falk, 4-2-51.0. High Game Dorothy Falk 62.0%.

**CLASS A JUNIORS**—1st Derek Misuraca, 5-1-26.0; Shawn Ollerich, 4-2-22.0. High Game Derek Misuraca, 40.0%.

**CLASS A MEN**—1st Carl Dziepak, 3-2-45.4; 2nd Dave Grambow, 3-2-50.5; 3rd Willard Wilbur, 3-2-46.6; 4th Ron Kohn, 3-2-45.3. High Game Carl Dziepak 58.8%.

**CLASS B MEN**—1st Paul Wishon, 5-0-46.5; 2nd Bill Dalby, 4-1-45.7; 3rd Lee Jacobs, 3-2-35.8. High Game Bill Dalby 61.9%.

**CLASS C MEN**—1st Morris Gibson, 5-2-25.9; 2nd Moses Smith, 5-2-29.3; 3rd Ralph Klauka, 5-2; 4th Dominick Misuraca, 5-2-31.5. High Game Harold Morris 43.8%.

**CLASS D MEN**—1st Roy Colby, 5-1-29.7; 2nd Jr. Tompkins, 4-2-28.8; 3rd Marvin Falk, 3-3-28.6; 4th Marv Mayer, 3-3-21.2. High game Roy Colby 50.0%.

**CLASS E MEN**—1st Richard Melchert, 4-1-24.7; 2nd Ted Temple, 3-2-23.3; 3rd REX Wood, 3-2-15.3.

**CAPITOL CITY OPEN—SANCTION 13-87-003—CLASS A MEN**—Ozzie Williams, 7-0-69.5, 2nd Clarence Bellman, 5-2-69.2; Gary Gardner, 5-2-64.0; 4th Jim Wiltse, 4-3-61.6; Ed Schultz, 4-3-54.7. High Game Ozzie Williams 77.5%.

**CLASS B MEN**—1st Jack Arentz, 7-0-61.1; 2nd Larry Hinton, 6-1-57.4; 3rd Ron Haines, 5-2-52.5; 4th Tom Williams, 4-3-49.3; 5th Stan Swarthout, 4-3-44.8. High game Jack Arentz 88.5%.

**CLASS C MEN**—1st James Norville, 5-2; 2nd Wally Frank, 5-2; John Decker, 5-2. High Game Al Thompson 66.7%.

**CLASS D MEN**—Dennis Soldan, 5-2, 2nd Doyle Larner, 5-2; 3rd Ben Shutt, 4-3; 4th Walt Ransom, 4-3; 5th Al Moon, 4-3. High Game Dennis Soldan 58.3%.

**CLASS E MEN**—1st Fred Antez, 7-0; 2nd Claude Gillin, 6-1; 3rd Morris Gibson, 4-3; 4th Dick Pratt, 4-3. High Game Claude Gillin 53.1%.

**CLASS F MEN**—1st Oscar Hope, 9-0; 2nd B. Ingle, 7-2, 3rd Bill Lajoy, 6-3; 4th L. Swinhart, 6-3. High Game Oscar Hope 58.8%.

**CLASS G MEN**—1st Rex Pijaw, 6-1; 2nd Rod Antes, 5-2; 3rd Irv Pasch, 4-3; 4th Paul Crucci, 4-3; 5th Pat Smith, 4-3. High Game Rod Antes 46.4%.

**BERKLEY INVENTIONAL—SANCTION 13-87-002—CLASS A**—1st Sandy McLachlin, 7-0-77.9; 2nd Jim Knisley, 6-1-73.7; 3rd Ozzie Williams, 5-2-63.9.

**CLASS B**—1st Dorothy Falk, 7-0-60.1; 2nd Rick Gyorkos, 5-2-61.2; 3rd Leo Fitzpatrick, 4-3-59.8.

**CLASS C**—Al Thompson, 6-1-49.5; 2nd Jack Artez, 6-1-55; 3rd Kevin McLachlin, 5-2-51.1.

**CLASS D**—Walt Franks, 6-1-48.9; 2nd Bill Bender, 5-2-41.8; 3rd Bob Seaman, 4-3-39.6.

**CLASS E**—1st Henry Wozniak, 6-1-42.9; 2nd Darin Howard, 5-2-30.3; 3rd Claude Gillin, 4-3-38.3.

**CLASS F**—1st James Norville, 5-2-39.7; 2nd Benny Sexton, 4-3-33.1; 3rd Dave Burton, 4-3-33.0.

**CLASS G**—1st Bill Ingle, 6-1-29.4; 2nd John Bukari, 5-2-22; 3rd Dennis Rath, 5-2-21.6.

## LOCKPORT, N.Y. MEN'S LEAGUE CLOSES—SANC., 81L73

The Lockport Men's Horseshoe League of Lockport, NY finished its sixth consecutive year of sanctioned league play on August 27.

1987 League Champions are the Crows Nest. Norm Wehrung, Jack Imhof, Don Hagelstein, Jan Wittlinger, Ed Sudic, and Frank Lawlor were members of the winning team.

Our Awards Banquet was held on September 12 and awards were presented to the following members.

*Crows Nest*—League team Champions.

*High Average*—Jan Wittlinger.

*High Game with Handicap*—Jame Cline; also 50% Patch.

*High Game Over Average*—Greg Wurl.

*Most Improved Player*—Hank Orzulak.

*Sportsmanship award*—Dave Kois.

*Rookie of the Year*—Jerry Kraska.

Tournament Awards were also presented to Class A Singles Champion Frank Lawlor.

Handicap Singles Champion Norm Wehrung who tied with Gary Randolph and won the playoff.


Doubles Handicap Tournament was won by Frank Lawlor and Norm Wehrung after four teams tied. The tie breaker then pitted Norm Wehrung and Frank Lawlor against Gary Randolph and Scott Huntington with Norm and Frank winning.

The members of the Lockport Men's Horseshoe League would like to thank all of the Officers of the NHPA and The Horseshoe Pitcher's News Digest for a monumental and wonderful job they have been doing.

## DECEMBER ISSUE WILL BE STATE TOURNAMENT ISSUE

The shoe for the 1980's

# STAR

Stainless  Horseshoes

WHEN YOU SPEND HUNDREDS OF HOURS PRACTICING TO BE THE BEST HORSEHOE PITCHER YOU CAN BE, DOESN'T IT MAKE SENSE TO PITCH THE ONLY PRECISION MADE HORSESHOE? YOU CAN BE SURE THAT EACH SHOE PITCHED IS LIKE ITS MATE.

IT PAYS TO PITCH THE ORIGINAL PRECISION STAINLESS HORSESHOE TO HELP YOU REACH YOUR ULTIMATE GOALS AND INSURE THAT COMPETITIVE EDGE NEEDED TO BE A WINNER.

**ALL STAR'S ARE DEAD SOFT  
AND THEY WEIGH 2 LBS. 8 OZ.**

Send Check or  
Money Order to:

Alfred R. Boudreau Jr.  
301-A Old Ipswich Rd.  
Rindge, N.H. 03461

NHPA  
APPROVED



**\$74 per pair  
postpaid**

(ALSO AVAILABLE THROUGH YOUR N.H.P.A. DEALER)

## KLINE WINS W. LIBERTY, OH. MEET—SANC. 21-87-036

**CLASS A**—Gary Kline, 5-0-60.2; Dale Dombrowsky, 3-2-59.6; Gary Gardner, 3-2-55.2; Doug Crawford, 3-2-54.5; Dave Ackley, 1-4-47.0; Dale Pringle, 0-5-42.8.

**CLASS B**—Ken Walters, 5-2-50.0; Marty McGill, 5-2-52.9; Don Brown, 4-3-50.3; Bucky Walters, 4-3-49.3; Fran Salyers, 4-3-46.9; Don Epps, 3-4-50.0; Rudy Lapp, 3-4-46.0.

## TOURNAMENT ACTIVITY IN NEW JERSEY ASSOCIATION

Sonny wins his first tournament by beating Phil 35-6, 65% to 47.5%, in the Class A playoff. In the round robin, Phil beat Sonny 36-32, 55.7% to 59.6%, and George beat Phil in the final round 37-31, 51.6% to 45%.

John Forti won the Class B playoff over Gil 35-20, 42.8% to 30.9%. In the round robin, John beat Gil 35-20 (same as the playoff), 52.6% to 44.7%, and Bob Manzoni beat John in the last round 36-32, 45.6% to 43.4%.

John Dykstra eased by George Marker in the Class C playoff 36-8, 46.8% to 21.8%.

**MIDDLESEX CLUB OPEN—SANC. 6-87-033—CLASS A**—Sonny Durando, Lyndhurst, 5-1-59.2; Phillip Zozzaro, Little Falls, 5-1-58.4; George Egel, North Plainfield, 4-2-48.5; William Kolb, Toms River, 2-4-51.9; Alvin Ravencraft, Newark, 2-4-51.5; Jack Fritzges, Long Valley, 2-4-49.6; Wayne Harrison, High Bridge, 1-5-49.2.

**CLASS B**—John Forti, Freehold, 5-1-48.7; Gilbert Franke, Ringoes, 5-1-42.4; Robert Manzoni, West Milford, 4-2-48.0; Ronald Ballinger, Ridgefield Park, 3-3-39.8; Bryan Schneider, Long Valley, 2-4-40.7; Ronald Vogel, Middlesex, 1-5-36.4; George Patrick, Phillipsburg, 1-5-29.4.

**CLASS C**—John Dykstra, Englewood, 5-1-39.1; George Marker, Clark, 5-1-36.4; John Hughson, Somerville, 4-2-29.3; Andrew Waisempacher, Flemington, 4-2-28.1; Joseph Aceria, Tinton Falls, 2-4-23.8; Robert Lewis, Westfield, 1-5-16.9; Allan Johnson, Clifton, 0-6-10.7.

**AL WARD MEMORIAL—CLIFTON, N.J.—SANC. 6-87-034**—East vs. West (Orange): Tom Skinner won the battle over Joe, 42-35, 60% to 56%, but lost the war as Joe won Class A. New highs: R. Manzoni 50.4%, R. Lewis 17.6%, and A. Johnson 18.0%. Bob Manzoni won the Class B playoff, beating Dix 35-18, 50% to 33.3%. In the regular round robin, Tom Manzoni beat Dix 35-23, 45.2% to 35.7% and Dix beat Bob Manzoni 36-9, 58.8% to 38.2%.

John Hughson won Class C, only losing to Ed Dalton, 18-36, 34% to 40.9% respectively. Dykstra won the Class D playoff over Jim 35-12, 36.1% to 16.6%.

**CLASS A**—Joseph McCrink Jr., West Orange, 4-1-58.6; Thomas Skinner, East Orange, 3-2-52.9; Phillip Zozzaro, Little Falls, 3-2-50.0; Sonny Durando, Lyndhurst, 2-3-53.5; Alvin Ravencraft, Newark, 2-3-51.1; William Kolb, Toms River, 1-4-44.1.

**CLASS B**—Robert Manzoni, West Milford, 5-1-50.4; Dixon Deranek, Rahway, 5-1-52.1; John Forti, Freehold, 3-3-46.8; Wayne Harrison, High Bridge, 3-3-43.1; Thomas Manzoni, Stanhope, 3-3-42.0; Bryan Schneider, Long Valley, 1-5-36.9; Ronald Ballinger, Ridgefield Park, 1-5-36.5.

**CLASS C**—John Hughson, Somerville, 4-1-34.8; Ed Dalton, Cranford, 3-2-36.4; Edward Quigley, Pompton Plains, 3-2-35.8; Larry Thomason, Woodbury, 2-3-31.1; Albert Alexander, Newark, 2-3-28.3; Gilbert Ciresa, Budd Lake, 1-4-23.7.

**CLASS D**—John Dykstra, Englewood, 4-1-37.3; Jim Marietta, Newark, 4-1-30.8; Vincent Yannetti, Bound Brook, 3-2-38.5; Doc Peters, Clifton, 2-3-21.6; Robert Lewis, Westfield, 2-3-17.6; Allan Johnson, Clifton, 0-5-18.0.

**SPRING WARMUP—VINELAND, N.J.—SANC. 6-87-013—CLASS A**—John Thomas, Ship Bottom, 6-0-54.2; Larry Thomason, Woodbury, 5-1-41.1; Craig Moore, Millville, 3-3-38.5; Ed Severs, Vineland, 3-3-38.1; William Miller, Millville, 3-3-37.1; Charles Barnholt, Woodbury, 1-5-35.3; Bryan Schneider, Long Valley, Forfeit.

**CLASS B**—Raymond Nuneviller, West Deptford, 5-1-37.1; Richard Sadler, Woodbury, 5-1-24.6; Melvin Elmer, Millville, 5-1-30.7; Steven Griffith, Thorofare, 3-3-17.4; Clarence Hoffman, Millville, 2-4-24.4; Jay Whilden, Vineland, 1-5-10.4; Raymond Nelli, Paulsboro, 0-6-2.8.

**WOODBURY OPEN—VINELAND, N.J.—SANC. 6-87-036—CLASS A**—John Forti, Freehold, 5-1-52.5; William Kolb, Toms River, 4-2-52.3; Bryan Schneider, Long Valley, 2-4-35.8; Ed Severs, Vineland, 1-5-37.7.

**CLASS B**—Raymond Nuneviller, West Deptford, 5-1-37.4; Bill Loy, Glassboro, 3-3-31.1; Raymond Shober, Newfield, 2-4-32.7; Craig Moore, Millville, 2-4-28.3.

**CLASS C**—Melvin Elmer, Millville, 5-1-25.6; Howard Ramer, Paulsboro, 4-2-21.7; Richard Sadler, Woodbury, 3-3-23.3; Jay Whilden, Vineland, 0-6-10.6.



## DEEN AND HICKEY TOP D.P. SHARKEY OPEN NEW ROCHELLE, N.Y. SANC. 18-87-011

Brian Deen and Joe Hickey tied for 1st place after the round robin rounds. Rain prevented a playoff and both were declared co-winners of Class A.

**CLASS A**—B. Deen, NY, 4-1-50.5; J. Hickey, NJ, 4-1-48.0; M. Zichella, NY, 3-2-49.0; J. Marietta, NJ, 2-3-35.1; L. Zimmerman, NY, 1-4-48.0; T. Early, NY, 0-5-24.6.

**CLASS B**—G. Connor, NY, 6-1-35.3; J. Moroso, NY, 6-1-5.0; W. Hooley, NY, 5-2-36.4; J. Marietta, NJ, 3-4-28.5; J. Dykstra, NJ, 3-4-24.6; J. Loughery Sr., NY, 2-5-34.2; L. Oullette, NY, 2-5-22.5; J. Loughery Jr., NY, 1-6-28.2.

**CLASS C**—A. Cosgrove, NY, 5-0-20.0; D. Espitee, CT, 3-2-22.0; R. Ritter, NY, 3-2-18.4; C. Szymanski, NY, 2-3-14.4; A. Johnson, NJ, 1-4-15.6.

## RESULTS OF PARKERSBURG MEMORIAL—SANCTIONED

**CLASS A**—Rex Uhrig, 61.8; Elden Sarbaugh, 69.9; Kenneth Smith 61.9; Lawrence Miller, 61.5; Dick Holmes, 61.8; Hoy casto, 61.1; John Martin, 56.2; Brooks Ramsey, 54.1; Frank Morgan, 52.2; James Boggess, 49.2.

**CLASS B**—Steve Powers, 55.3; John Akers, 55.6; Herb Murray, 53.5; Rick Holmes, 52.4; Dave Holmes, 48.9; Lynn Reed, 46.6; William Lucas, 48.1; Carl Searles, 46.4; Davis Woodward, 36.1.

**CLASS C**—Harry Bailey, 49.3; Daniel Jacques, 47.5; Lester Grosklos, 48.5; Rick Felter, 37.2; Larry Spencer, 36.8; Robert Burford, 41.6; Kenneth Williams, 35.7; Ezekiel Mills, 29.6.

**CLASS D**—Kenneth Wilkins, 54.7; Charles Stanley, 37.0; Bud Elliott, 34.3; Leonard Holstein, 42.6; Dave Lawrence, 37.8; Harry Smith, 29.1; Bobbie Lee, 22.2.

**CLASS E**—Bryan Ferguson, 36.9; Ron Ferguson, 36.7; Don Shaw, 38.6; Guy Casey, 32.5; Clyde Furr, 25.6; Eli Tingle, 22.6.

**CLASS F**—Dave Nicholas, 33.7; Earl Ritchie, 22.8; Junior Lisk, 28.1; Mike Sheppard, 24.1.

**CLASS G**—Harry Falls, 28.9; Dale Akers, 26.7; Bobby Falls, 19.3; Charles Casey, 21.7; Royce Wass, 20.1; Alex Jenkins, 19.6; Don Edwards, 19.3.

**WOMEN'S A CLASS**—Betty Bell, 62.5; Mary Boggess, 46.0; Carol Martin, 42.5; Brenda McLaughlin, 43.2; Debbie Spencer, 42.4; Avanelle Brown, 37.3.

**WOMEN'S B CLASS**—Opal Murray, 28.9; Lucille Ramsey, 20.0; Rita Edwards, 15.5.

## LEROY HILL MEM.—MARYSVILLE, OH—SAN. 21-87-025

**CLASS A**—Eldon Sarbaugh, 5-2-73.5; Lawrence Miller, 4-1-74.1; Max Roseberry, 3-2-64.4; John Martin, 2-3-68.2; Jean Myers, 1-4-59.8; Leo Rose, 0-5-56.1.

**CLASS B**—Rex Uhrig, 6-1-57.4; Rudy Vondach, 5-2-49.7; Dave Rose, 4-3-54.3; Carl Costo, 4-3-53.1; Tom Bestul, 4-3-50.8; Jim Cooper, 2-5-49.7; Harry Rutherford, 2-5-48.4; Ron Welch, 1-6-47.9.

**CLASS C**—Rex Uhrig, 4-1-57.5; Bill Johns, 3-2-55.5; David Achley, 3-2-53.7; Shade Watkins, 3-2-51.8; David Plowman, 2-3-33.3; Ed Horn, 0-5-33.8.

**CLASS D**—Norm Snyder, 5-0-51.9; Glenn Mitchell, 4-1-48.1; Paul Jones, 3-2-35.4; Glenn Hoddy, 2-3-39.1; Francis Asher, 1-4-33.3.

**CLASS E**—Tony Coe, 5-0-47.7; Charlie Myers, 3-2-40.9; Dick Kale, 3-2-40.4; Ralph Simpson, 2-3-42.7; Charlie Jones, 1-4-41.9; Larry Roseberry, 1-4-27.5.

**CLASS F**—Terry Lively, 4-1-44.1; Earl Noe, 4-1-36.5; Lil Butterbaugh, 3-2-37.0; Dick Smith, 2-3-33.6; Joe Ewing, 1-4-35.5; Ed Pratt, 1-4-25.8.

**CLASS G**—Dick Hollebach, 5-0-31.4; Sharon Jones, 4-1-28.4; Wilson Burggaf, 3-2-29.9; Jim Schotten, 2-3-24.8; Jim Katzenback, 1-4-23.2; Rusty Latimer, 0-5-24.3.

**CLASS H**—Jack VonDach, 4-1-27.1; Larry Ferguson, 4-1-24.4; Don Holmes, 4-1-18.0; Dave Hauff, 2-3-11.5.

PITCHIN' PALACE TEAM TOURNAMENT  
SET FOR FEB. 12-13-14, 1988  
MORE DETAILS IN DEC. DIGEST



## IDAHO FALLS JUBILEE—SANC. 4-87-041

**CLASS A**—John Bishoff, St. Anthony, 6-2-43.8; Hank Tencate, Wendell, 4-3-49.0; Warren Stutzman, Ruyper, 4-3-42.4; Leo Petersen, Twin Falls, 3-3-45.7; Helen Payton, Jerome, 3-3-40.1; Henry Reid, Jerome, 2-4-32.5; Lee Payton, Jerome, 1-5-37.4.

**CLASS B**—Sam Williams, Driggs, 5-2-43.7; Doug Palmer, Chubbuck, 4-3-35.1; Glenn Stutzman, Gibbonsville, 3-3-39.9; Otto Kubal, St. Anthony, 3-3-35.4; Bob Mitchell, Shelley, 3-3-34.8; Evan Pickett, Pocatello, 2-4-27.1; Clyde Marquez, Idaho Falls, 2-4-26.0.

**CLASS C**—Jay Anderson, Idaho Falls, 6-1-34.2; Bert Stoddard, Idaho Falls, 5-2-26.4; Hillary Butcher, Jerome, 5-2-25.7; Andy Elliott, Idaho, 4-3-23.5; Dean Blake, Sun Valley, 4-3-21.0; Rose Kubal, St. Anthony, 3-4-23.5; Lyle Anderson, Idaho Falls, 1-6-22.8; Lou Gusten, Idaho Falls, 0-7-8.2.

## NORTH IDAHO OPEN—COEUR D'ALENE—SAN. 4-87-040

**CLASS A**—Dean Gurry, Lewiston, 7-0-63.9; Ruth Welsch, Washington, 5-2-58.3; George Sala, Washington 4-3-54.2; Ken Riersgard, Moscow, 4-3-49.1; Charlie Ault, Sagle, 4-3-45.8; Norman Watson, Kellogg, 2-5-45.7; Mo McNailey, Washington 1-6-44.7; Helen Watson, Washington 1-6-36.8.

**CLASS B**—Roy Looper, Washington, 6-1-39.7; Ed Welsch, Washington, 5-2-40.6; Del Schmeling, Post Falls, 5-2-36.3; Todd Schonewald, Idaho, 4-3-41.0; Warren Burke, Coeur d'Alene, 3-4-30.0; Jake Campbell, Coeur d'Alene, 2-5-34.9; Shirley O'Brien, Washington 2-5-32.7; Elmer Currie, Coeur d'Alene, 1-6-20.1.

**CLASS C**—Sonny Abad, Kellogg, 6-1-30.1; Jesse Lyda, Orofino, 5-2-35.5; Walt Franke, 4-3-34.7; Myron Buchert, Orofino, 4-3-31.8; Virgil Brayette, Washington 4-3-27.3; Larry Covey, Washington, 3-4-25.8; Chuck Holden, Washington, 1-6-23.9; Darwin Platz, Washington, 1-6-21.4.

**CLASS D**—Wayne Abad, Kellogg, 5-1-29.0; Leonard Resner, 4-2-29.5; Sonnie Storlie, Post Falls, 4-2-23.4; Ross Watson, Washington 4-2-16.2; Barney Brownlee, Post Falls, 2-4-16.2; Tim McEnany, Pinehurst, 1-5-18.0; Kevin Watson, Kellogg, 1-5-15.6.



FORGED QUALITY I  
approved by NHPA

27 & 36 inch long  
stakes available

GORDON

Since  
1931

HORSESHOES

Gordon Standard  
AISI C1035 Steel

3 Tempers: Hard,  
Medium, Dead Soft

Gordon Gold  
AISI 4140 Alloy

Medium Temper Only

THE QUEEN CITY  
FORGING CO.

233 Tennyson St.  
Cincinnati, OH 45226  
(write for price list)

So. CA Representative  
JERRY SCHNEIDER

3144 W. Paso Robles  
Anaheim, CA 92804  
(714) 826-0684

**MARTINO TOPS TENN. AUTUMN CLASSIC—SAN. 23-87-013**

**CLASS A**—D. Martino, 4-1-68.3; E. Bandy, 4-1-64.4; V. Fox, 3-2-59.6; R. Norwood, 2-3-63.7; N. Kelly, 2-3-63.4; D. Cook, 1-45-63.3.

**CLASS B**—S. Smith, 5-0-65.8; A. J. Nave, 4-1-62.7; G. Whaley, 3-2-56.4; D. Stallings, 2-3-53.7; W. Stephens, 1-4-58.3; M. Altizer, 0-5-52.8.

**CLASS C**—R. Bolick, 5-0-59.0; E. Linkaus, 4-1-58.3; E. Frost, 3-2-55.1; R. Ward, 2-3-5.8; C. Bennett, 1-4-34.9; S. Callahan, 0-5-31.5.

**CLASS D**—G. Lewis, 4-1-47.7; B. Poteet, 4-1-44.0; D. Mitchell, 3-2-34.5; N. Nave, 2-3-45.0; T. Mann, 1-4-31.5; A. J. Brooks, 1-4-28.3.

**CLASS E**—R. Livingston, 4-1-47.0; D. Isaacs, 4-1-43.3; D. Self, 3-2-40.0; R. Hardin, 2-3-39.0; S. Cornett, 2-3-31.0; H. Lones, 0-5-21.3.

**CLASS F**—R. Finney, 3-1-31.9; J. Cable, 3-3-23.0; E. Murphy, 2-2-30.1; B. Leighton, 2-2-28.6; R. Bennett, 0-4-23.1.

**CLASS G**—B. Ward, 4-0-25.2; J. Davis, 2-2-17.2; D. Ward, 0-4-11.2.

**JUNIORS**—J. Cable, 4-0-10.7; S. Ward, 3-1-5.8; B. Gobble, 2-2-4.4; J. Stallings, 1-3-6.2; M. Gobble, 0-4-6.8.

**G. ROBERTS WINS AN OHIO TOURN.—SANC. 21-87-028**

**CLASS A**—John Martin, 6-1-61.6; Gary Roberts, 6-1-72.9; Laurence Miller, 4-3-66.9; Larry Justice, 4-3-59.2; Glenn Santee, 3-4-59.3; Rex Uhrig, 3-4-55.2; Jim King, 0-7-47.9; Tom King, 2-5-52.1.

**CLASS B**—Maurice Wipert, 1-4-36.2; Carl Casto, 3-2-46.7; Carl searls, 4-1-53.1; Wayne Oney, 2-3-43.8; Hershel McCollister, 3-2-43.6; Francis Asher, 2-3-41.1.

**CLASS C**—Al Henness, 3-2-31.6; Curley Tackett, 4-1-33.8; Earnest Judd, 3-2-25.9; Glenn Congrove, 1-4-14.2; Chuck Sims, 4-1-22.8.

**LADIES**—Carol Martin, 1-0-45.6; Avanelle Brown, 0-1-43.6.

DESIGNED FOR MAXIMUM PERFORMANCE

# IMPERIAL

## CAST MODEL

**WIDER, THICKER BLADES**

U.S.A. PRICES  
(Postpaid)

1 Pair .....	\$26.00
2 to 5 Pair .....	\$25.00
6 Pr. & Over .....	\$20.00
Freight Collect	

## FORGED MODEL

**HARDENED HOOKS AND  
POINTS**

U.S.A. PRICES  
(postpaid)

1 Pair .....	\$39.00
2-5 Pair .....	\$37.00
Freight Collect	
6 Pair & Over .....	\$31.00

# CLYDE MARTZ

3726 Henley Dr.

Pittsburgh, Pa. 15235

PHONE: 412-731-4662

## SIoux PARK OPEN, RAPID CITY, SD, SANC. 08-87-002

Ted Traversie, Eagle Butte, SD, emerged as tournament champion in the first NHPA sanctioned horse-shoe tournament in Rapid City, SD. Traversie, winner of the Sioux Park Open, was also winner of the men's Class D title at the 1986 World Horseshoe Tournament in Ainsworth, Nebraska.

**CLASS A**—Ted Traversie, Eagle Butte, 7-0-65.1; Thurmon McKinney, Box Elder, 4-3-51.7; Ted Wright, Rapid City, 4-3-48.3; Douglas Fast Horse, Rapid City, 4-3-42.6; Monte Herremann, Rapid City, 4-3-40.3; Charles Fast Horse, Rapid City, 3-4-43.0; Lloyd Fletcher, Sturgis, 1-6-36.9; John Siers, Rapid City, 1-6-33.4.

**CLASS B**—Ken Maakestad, Sturgis, 4-1-32.4; Nels Frizzell, Sturgis, 4-1-29.1; Gene Ficek, Spearfish, 3-2-33.1; Carl Baehler, Chadron, NE, 3-2-30.0; Yvonne Ficek, Spearfish, 1-4-31.2; Harry Laundreaux, Rapid City, 0-5-25.6.

**CLASS C**—Jim Bauer, Rapid City, 4-0-28.5; Danny Budd, Rapid City, 3-1-30.5; Pete Fischer, Eagle Butte, 2-2-30.5; Frank Tomsik, Rapid City, 1-3-28.5; David Rodriguez, Rapid City, 0-4-27.5.

**CLASS D**—Dean Clark, Rapid City, 5-0-27.6; John Rousseau, Eagle Butte, 3-2-23.6; Ted Schamber, Rapid City, 3-2-26.8; Duane Traversie, Eagle Butte, 2-3-20.0; Mickey Osborne, Nisland, 2-3-13.6; Jerry Jeffery, Spearfish, 1-4-8.4.

**CLASS E**—Larry Backhaus, Spearfish, 6-0-23.3; Willie Schamber, Rapid City, 5-1-13.0; Clint Bryson, Belle Fourche, 4-2-15.3; Rick Farley, Spearfish, 3-3-7.8; Terry Budd, Rapid City, 1-5-9.0; Patrick Budd, Rapid City, 1-5-5.8; Jim Schamber, Rapid City, 1-5-4.3.

## NEW JERSEY SINGLES CHAMPIONSHIPS—SANC. 6-87-035

**CLASS D**—Donn Grady, Flemington, 8-1-45.3; John Crane, Blairstown, 7-2-39.5; Franklin Rozzo, Flemington, 7-2-38.0; Alex Dobzanski, Gibbstown, 5-4-34.0; Henry Batson, Stanhope, 5-4-33.8; John Hughson, Somerville, 3-6-35.4; William Fox, Washington, 3-6-33.7; John Danko, Whitehouse Station, 3-6-33.5; William Gurgurich, Trenton, 3-6-32.7; George Marker, Clark, 1-8-30.5.

**CLASS E**—Raymond Nuneviller, West Deptford, 9-0-45.6; Charles Barnholt, Woodbury, 6-3-37.3; Edward Quigley, Pompton Plains, 6-3-30.9; Vincent Soriero, Flemington, 5-4-37.0; Joseph Fritts, Washington, 5-4-33.0; Melvin Elmer, Millville, 5-4-27.8; Gene Lupo, Flemington, 3-6-27.2; Henry Dykstra, Englewood, 2-7-25.8; Gilbert Ciresa, Budd Lake, 2-7-25.0; Vincent Yannetti, Bound Brook, 2-7-24.2.

**CLASS F**—Donald Gotts, Linden, 6-1-39.6; Louis Wasser, Washington, 5-2-34.6; Andrew Waisepacher, Flemington, 5-2-28.4; Robert Salmon Sr., Hampton, 4-3-27.7; Richard Sadler, Woodbury, 3-4-29.2; Donald Winkler, Glen Gardner, 3-4-27.2; George Ripley, National Park, 1-6-26.5; Robert Lobell, Pittstown, 1-6-21.9.

**CLASS G**—David M. Everitt, Washington, 7-0-31.2; Chet Smolenski, Oxford, 5-2-21.8; Gene Castner, Washington, 5-2-17.8; James Walker, Howell, 3-4-21.2; Arthur Hall, Flemington, 3-4-17.7; Robert Lewis, Westfield, 3-4-11.8; Robert Harrison, High Bridge, 2-5-15.1; Allan Johnson, Clifton, 0-7-14.7.

## NEW JERSEY DOUBLES CHAMPIONSHIPS—SANC. 6-87-035

**CLASS A**—Louis Durando, Lyndhurst—Martin Waisepacher, Flemington, 8-1-52.9; Gilbert Franke Jr., Ringoes—Robert Hall, Flemington, 6-3-45.7; Dennis Joslin, Vineland—William Kolb, Toms River, 5-4-51.7; Wayne Harrison, High Bridge—Phillip Zozzaro, Little Falls, 5-4-46.8; James Burd, Clifton—James Reed, Oldwick, 5-4-44.5; Henry Batson, Stanhope—Jack Fritzges, Long Valley, 5-4-42.2; John Forti, Freehold—John Thomas, Ship Bottom, 4-5-48.8; Robert Manzoni, West Milford—Thomas Manzoni, Stanhope, 4-5-44.8; George Carr, Woodbury—Woodrow Smith, Monroeville, 3-6-43.3; Jack Gides, Dunellen—Ronald Vogel, Middlesex, 0-9-36.0.

**CLASS B**—Arthur Bangs, Vienna—John Crane, Blairstown, 8-1-43.8; Gilbert Ciresa, Budd Lake—Charles Davis, Hackettstown, 7-2-38.6; John Hughson, Somerville—Thomas Walker, Somerville, 6-3-35.8; Gene Lupo, Flemington—Louis Testa, Lambertville, 5-4-33.5; Donald Knapp, Thorofare—Larry Thomason, Woodbury, 4-5-36.6; John Danko, Whitehouse Station—Bryan Schneider, Long Valley, 4-5-34.6; David J. Everitt, Washington—David M. Everitt, Washington, 4-5-31.7; Alex Dobzanski, Gibbstown—Donald Winkler, Glen Gardner, 3-6-25.8; William Fox, Washington—Joseph Fritts, Washington, 2-7-33.9; William Gurgurich, Trenton—Vincent Soriero, Flemington, 2-7-26.6.

**CLASS C**—Charles Barnholt, Woodbury—Steven Griffith, Thorofare, 6-1-28.6; Melvin Elmer, Millville—Raymond Nuneviller, West Deptford, 5-2-30.0; Franklin Rozzo, Flemington—Andrew Waisepacher, Flemington, 5-2-28.6; Ronald Griffith, Clarksboro—Richard Sadler, Woodbury, 5-2-26.6; Chet Smolenski, Oxford—Louis Wasser, Washington, 4-3-21.9; Robert Salmon Sr., Hampton—Vincent Yannetti, Bound Brook, 2-5-18.3; John O'Neill, Thorofare—George Ripley, National Park, 1-6-23.1; Gene Castner, Washington—Robert Lobell, Pittstown, 0-7-18.9.

# DEADEYE HORSESHOES

## NOW IN

## FIVE MODELS

### CLYDESDALES NOW IN LIGHTER WEIGHTS

	Price Per Pr.—Up to 12 Pairs	Price Per Pr.—12 Prs. & Over
CLYDESDALES	\$27.00/Pr.	\$20.00/Pr.
N.T.	\$27.00/Pr.	\$20.00/Pr.
REGULAR	\$27.00/Pr.	\$20.00/Pr.
E-Z GRIP	\$32.00/Pr.	\$25.00/Pr.

### ALL "DEADEYES" IN VARIOUS WEIGHTS

*Prices on all "DEADEYE" f.o.b. point of shipment.  
Missouri residents add 5.225% sales tax.*

All "DEADEYES" are dead soft (curved only).

All "DEADEYE" are guaranteed against breakage for 2 years  
from Date of Original Purchase (NOT RE-PLACEMENT DATE)

Contact (Bill Courtwright ONLY) for special prices on  
rejects and returned shoes (NO GUARANTEE)

DEADEYE Caps Available — \$5.00 postpaid

W. Courtwright  
P.O. Box 742  
Fenton, MO 63026  
Phone: (314) 376-5222  
(314) 677-2200 (8-5)

Walter Ray Williams, Jr.  
c/o Esther Williams  
2550 North Vine  
Tucson, AZ 85719  
Phone: (602) 323-7445  
(602) 795-1389 after 6 p.m.

For Local NHPA Representative Contact:  
Game Related National Buyer  
Edward A. Domey, P.O. Box 298, Wilkinsonville, Ma 01590  
(617) 865-4619

**ORDER DIRECT or from NHPA REPRESENTATIVE**



## COMING EVENTS

### ARIZONA ASSOCIATION SCHEDULE Pioneer Park • Mesa, Arizona

Nov. 13, 14, 15—Bonanza Restaurant Open. Entries close Nov. 3.  
Dec. 11, 12, 13—Holiday Open. Entries close Dec. 1.  
Jan. 22, 23, 24—Valley of the Sun Warm-up. Sanctioned. State and National cards requested. Entries close Jan. 12.  
Feb. 8 thru 14—Valley of the Sun. State and National cards required. Sanctioned. Entries close Jan. 23.  
Mar. 4, 5, 6—Bye, Bye Snowbirds. Entries close Feb. 24.

Apr. 9—Annual Arizona State tournament. Sanctioned. State and National cards required. Entries close Mar. 31.

Entry fee, \$5.00 except as follows: Valley of the Sun, \$10.00; plus \$15.00 Class A; Classes B, C, and D, \$10.00 extra; Ladies Class A, \$10.00 extra; Ladies Class B, \$5.00 extra. Make checks payable to AHPA and mail to Paul Free, Secretary, P.O. Box 6068, Mesa, Arizona 85206. Ph: 602-984-0192. Include card numbers and current percentage.

### ARIZONA ASSOCIATION SCHEDULE Reid Park • Tucson, Arizona

Nov. 7—Reid Park Classic. Sanctioned. State and National cards required. Entries close Oct. 29.  
Nov. 28—Tucson Open. Entries close Nov. 18.  
Jan. 9—Pima County Classic. Sanctioned. State and National cards required. Entries close Dec. 31.  
Feb. 6—Old Pueblo Special. Sanctioned. State and National cards required. Entries close Jan. 28.

Mar. 12—Association President's Open. Entries Close Mar. 2.

Entry fee, \$5.00. Make checks payable to: Tucson Horseshoe Pitchers Club and mail to: Sue Johnson, 5050 North La Cholla, #54, Tucson, Arizona 85705. Ph: 298-6088 or 888-4667. Include card numbers and current percentage.

### NORTH CAROLINA ASSOCIATION

April 16—Annual Carolina Dogwood Festival Open. One day only. Rain date April 17th. Jack Springer Courts, Statesville, North Carolina.

### NORTHEASTERN OHIO INDOOR COURTS Hickory Lane Inn • 14592 Stone Rd., Newbury, OH 44065

Our tournaments will be 8 players, round-robin, cancellation games. Trophies or equivalent will be awarded for 1st and 2nd places.

Entry fee of \$10.00 should accompany your entry 10 days prior to the tournament date. Pitchers will pay \$.50 per game to scorekeeper. You will be classed according to your reported ringer percentage. (Tournament director reserves the right to make any necessary changes.) Pitchers are required to sign-in 30 minutes before your scheduled time to pitch. All tournaments will be N.H.P.A. sanctioned. Entry deadline: 10 days prior to scheduled tournament date. Include phone number and ringer percentage.

Nov. 13, 14, 15—Sanction 21-87-041; Contact Marvin Donaldson, 1437 Westwood, N.W., Warren, OH 44485. Ph: 216-898-3340.

Dec. 11, 12, 13—Sanction 21-87-042. Contact Dick Zielenski, 7880 Shady Lane, Northfield, OH 44067. Ph: 216-467-4584.

Jan. 8, 9, 10—Ida Urbanowicz Memorial. Sanction 21-87-043. Contact Bud Loftus, Sr., 12177 Claridon-Troy Rd., Chardon, OH 44024. Ph: 216-635-5961.

Feb. 12, 13, 14—Sanction 21-87-044. Contact Spiesman, 765 Skinner Ave., Painesville, OH 44077. Ph: 216-352-0913.

Mar. 11, 12, 13—Roland M. Cicirelli Memorial. Sanction 21-87-045. Contact Walt Pierce, 13114 Old State Rd., Huntsgburg, OH 44046. Ph: 216-635-0196.

### PITCHIN' PALACE SCHEDULE 14000 Leetsbir Rd., Sturtevant, Wisc. 53177

Nov. 7-8—Hall of Fame Tournament. Deadline, Friday, Oct. 30. Ceremony for Hall of Fame inductees on Sunday afternoon.

Nov. 28—Homer Tournament. Deadline, 12:30 p.m. same day.

Dec. 5-6—Ringers Only Tournament. Deadline Friday, Nov. 27.

Dec. 19—Homer Tournament. Deadline 12:30 p.m. same day.

Jan. 2-3—Ringers Only Tournament. Deadline Dec. 28.

Jan. 19—Homer Tournament. Deadline 12:30 p.m. same day.

Jan. 31—Super Bowl Sunday. A gala football-horseshoe party. Details later.

Feb. 12, 13, 14—Pitchin' Palace Team World Tournament (formerly Can-Am) Teams from U.S. and Canada will compete for thousands of dollars in prize money. Top pitchers of World will pitch.

Mar. 5-6—Ringers Only Tournament. Deadline Feb. 26.

Apr. 9—Wisconsin Team Tournament. Clubs bring their top pitchers for a day-long shoot-out.

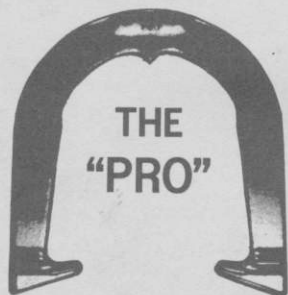
Apr. 16—Homer Tournament. Deadline 12:30 p.m. same day.

May 7-8—The Junior Scholarship benefit Tournament Tournament. Part of entry fee donated to this special fund. 8-man round robin play.

Send all entries for all the above tournaments to: Richard Hanson, 3085 So. 76th St., Franklin, WI 53126. Ph: 414-835-1321.



## THE ORIGINAL DROP-FORGED PITCHING SHOE



Two tournament tested models, forged from S.A.E. specified steel, are available. Both have hardened hooks and points, and may be ordered in your choice of medium, soft, or dead soft tempers.



AS THE FIRST MANUFACTURER OF THE DROP-FORGED PITCHING SHOE, THE OHIO HORSESHOE COMPANY IS RECOGNIZED WORLD-WIDE FOR ITS HIGH QUALITY PITCHING SHOES.

For price information and to order, contact:

# OHIO HORSESHOE COMPANY

P.O. Box 21371  
Columbus, Ohio 43221

614-457-4335