



the  
national horseshoe pitchers

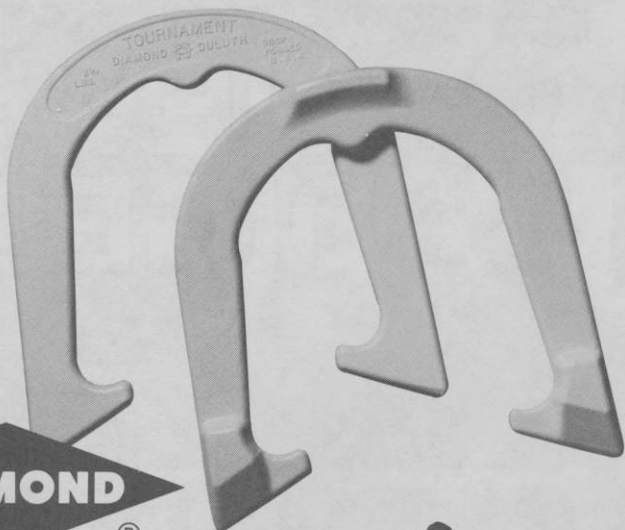
# NEWS DIGEST



**AUGUST, 1986**

*Official Publication of*  
**THE NATIONAL HORSESHOE PITCHER'S ASSOCIATION  
OF AMERICA**

Look  
for  
the new  
white  
shoes!



Advanced Design

# TOURNAMENT PITCHING HORSESHOES



Both backyard pitchers and pros catch and hold the stake better with DIAMOND's new advanced design "Tournament" Shoe. It features a grip positioner, hardened tips, an increased radius, a dead soft center, and a wider, deeper calk. Same drop-forged solid steel construction as DIAMOND's popular Double Ringer and Super Ringer Regulation Shoes. All American made.

Contact your nearest NHPA club or sporting goods store for DIAMOND pitching horseshoes.

*For the latest pitching horseshoe catalog write:*



**DIAMOND TOOL** *and Horseshoe Co.*  
The Triangle Corporation, The Tool Group  
Cameron Road, Orangeburg, SC 29115

DISTRIBUTOR ORDER PLACEMENT  
Call toll-free: 800-346-0740  
For all inquiries call: 803-534-7010

"DIAMOND Pitching Horseshoes are Recognized as Official in Tournaments  
Sanctioned by the National Horseshoe Pitchers Association"



THE HORSESHOE PITCHER'S NEWS DIGEST is published on the 5th of each month at Aurora, Illinois, U.S.A. by the National Horseshoe Pitcher's Association of America. Editorial office, P.O. Box 1806, Aurora, Illinois 60507. Phone: 312-898-3974. Subscription rates — 1st Class \$9.00; 3rd Class \$8.00 per year in advance. NHPA membership cards are available through each state secretary for \$7.00 plus any state association dues. Forms close on the 10th day of each month preceding date of issue. Advertising rates on request. F. Ellis Cobb, Editor.

NATIONAL OFFICERS

Dave Loucks, 13856 Thoroughbred Loop, Grass Valley, Ca 95949 (916) 477-7060 ..... President  
Earl Winston, Rte. 2, Lamonte, Mo. 65337 (816-583-3536) ..... 1st Vice-President  
Barry Chapelle, 2716 S.E. 61st Ave., Portland, OR 97206 (503-775-7876) ..... 2nd Vice-President  
Vincent Yannetti, 322 Longwood Ave., Bound Brook, N.J. 08805 (201-356-3862) ..... 3rd Vice-President  
Bonnie Seibold, 1043 Grayson Ave., Huntington, Ind. 46750 (219-356-3489) ..... 4th Vice-President  
Gene VanSant, P.O. Box 270, Sun City, Ca. 92381 ..... 5th Vice-President  
Donnie Roberts, Box 278, Munroe Falls, Oh. 44262 (216-688-6522) ..... Sec./Treas.

Volume 30

August, 1986

No. 8

FROM YOUR PRESIDENT . . . DAVE LOUCKS

This issue marks the anniversary of my first year as President of the NHPA. It has been a very busy learning experience for me but, one that I believe has brought some noticeable improvement to our organization. If the delegates at Ainsworth agree with the direction and change I propose, we may make even greater strides for the improvement of our sport and the benefit of our members.

As you read this, the Ainsworth World Tournament is history. While the entries were a bit lower than expected, near 800, those that did attend were part of a group that vied for the largest cash prize ever offered in a horseshoe tournament. Ove \$32,000 in cash was awarded with every class of men and women pitching for money. It was the start to recognize all levels of pitching and should only grow bigger and better in the years to follow. Grow with us by taking an active part in the promotion of our sport at the local level. Help your club and State Charter wherever you can and make a sincere effort to bring one new member into the NHPA each year.

DAVE'S COURT REPORT

Some states have not been sanctioning their State Championship tournament because many pitchers don't belong to the NHPA. Your Council has agreed to do our utmost to see that every state holds a sanctioned State Championship. When the NHPA issues a state a Charter, one of the inferred responsibilities of that Charter is to Sanction their State Championships. In the future, states failing to do so will run the risk of having their Charter revoked. . . Welcome Missississippi, our newest charter. While only joining the NHPA in April, they have already reported 75 members and growing. Under the leadership of Mississipp State President Jerry Walton, they are beginning to bring pitchers and the NHPA together. Jerry has a very dedicated group of workers who are to be thanked for all their efforts. . . If you know a fellow member who doesn't get the Digest, why don't you share your copy with them. They may become a subscriber. Remember, communication is the key to our growth.

\*\*\*\*\*

COVER PICTURE . . . Featured this month are the top eight Junior pitchers of the Riverside, Junior League for 1985. Courts are located at East Bernard, Texas about 30 miles east of Houston. Front row left to right: Benji Polak, Chris Polak, Doug Macha; Back row left to right: Louis Engelhardt, coach, Jeff Chumchal, Trey Kubena, Lisa Smalstria, Joey Polak, Chris Cavness.

\*\*\*\*\*



JOE FRANK HARRIS  
GOVERNOR

July 3, 1986

Mr. Glen Portt  
Georgia Horseshoe  
Pitchers Association  
Post Office Box 38442  
Atlanta, Georgia 30334

Dear Mr. Portt:

It was a special pleasure to have you and other members of your group here for the "Horseshoe Pitching Weekend" Proclamation.

I was delighted to see each of you and thank you for the framed Certificate of Appreciation from the National Horseshoe Pitchers Association. I am quite pleased to have it and ask that you express my appreciation to the entire group.

With warm regards and best wishes, I remain

Sincerely,

A handwritten signature in dark ink, appearing to read "Joe Frank Harris".

Joe Frank Harris

JFH:pew

## REGION #11, R.D. LORI OBERBILLIG REPORTS

"September, 1985. Paul Gibson is retiring as RD for the state of Illinois! Hmmm — sounds like a good chance for me to ask for the position. Can't be that difficult. I attend lots of tournaments and I can promote horseshoes and try to increase membership in the NHPA. Handing out patches should be a breeze! Boy, I got the job! Paul recommended me, the Illinois State Officers approved and Gene Van Sant and the NHPA Council made the appointment official."

"It is five months later and I realize my "breeze" has turned into a "hurricane" of responsibilities; questions, phone calls, letters to write, patches to order, leagues to organize, etc, etc.! May I say that anyone interested in becoming a regional director or assistant should be aware of the many responsibilities. If done properly these positions can be a "million dollar link" between membership and the NHPA."

"The state of Illinois, region #11 will be experimenting with a program of appointing several assistant regional directors to give better representation, economy, less travel distance, and better familiarity with areas. Our Illinois state meeting in March of 1986 included such highlights as a new award in memory of Henry Franke, long time member of Illinois and the NHPA, a handicap persons class at the state tournament and a new format for mens class A play."

"We are scheduling new tournaments in geographic areas where NHPA membership is light and there is little knowledge of the organization. One such tournament was held at Mt.

## REGIONAL REPORT — (Continued)

Carroll, Illinois in conjunction with the Mayfest Celebration. The celebration recreates all the old arts and crafts and they wanted a horseshoe tournament since horseshoes is one of the oldest sports in the world. Earl and Dennis Simler furnished the portable courts and scoreboards. These were designed by the Simlers for indoor winter play using tires, carpet, stakes and plumbing plastic pipe. Yes, you guessed it. The Simlers are plumbers. The courts were well accepted and fair to all. The Mayfest Committee wants to make this an annual event, with sponsors and prizes. We received front page news coverage, pictures and all.

"Our NHPA president, Dave Loucks, has appointed me Chairperson for judges at the 1986 World Tournament in Ainsworth, Neb. I have been working on a professional guideline pamphlet for judges. This will be submitted to the executive council for approval when I have it complete. By the time you read this report those of you that attended the WT will have had a chance to observe the program in full swing and I would hope that it will be an added PLUS to the World Tournament."

"My position as a relatively new RD along with Chairperson for judges has made me realize how much underlying work is done by your Executive Council and all regional directors, assistants, and committee members. I for one humbly thank them all for caring about us as members. Their devotion and guidance continues to make horseshoes the great sport that it is today.

"New ideas are in the making in Illinois! As they develop, you will be hearing from us."

## DONNIE ROBERTS REPORTS FROM SPORTS ENTERPRISES

For the past several months all of us have been reading and hearing about Sports Enterprises, Inc. and Horseshoe Palladium. My phone calls and letters started asking me about Horseshoe Palladium so often that I had to get information to give answers. I telephoned John Davis and made an appointment to visit his office. During my visit we had long discussions, I met all the people in the office, and I took a look at the building which will house the first Horseshoe Palladium. During my visit I found John Davis to be a highly trusted and respected man in his community. I found seven people in a fine office working full time on just the Horseshoe Palladium project.

Before I went to Munroe Falls, I just didn't know what was happening and was skeptical of the project. After viewing the corporate office, the proposed building, and meeting the people involved with Sports Enterprises, Inc., I have every confidence in the project. John Davis and the people with Sports Enterprises, Inc. are sincere, honest horseshoe people.

I am so confident in these people that I have joined the company as National Operations Director. It is my opinion that through the efforts of Sports Enterprises, Inc. horseshoe will take its proper position in the world of sports. The Ohio Association, the NHPA, and horseshoes in general will grow and prosper as a result of Horseshoe Palladium projects.

My position with Sports Enterprises, Inc. will permit me to continue my duties as NHPA Secretary-Treasurer. Actually, I will be better able to perform these duties with access to a nice office and much better equipment and resources.

## PEORIA, ILLINOIS FALL CLASSIC (SANC. 86-286)

The Peoria Horseshoe Club will host its Fall Classic Open on Saturday, September 13 at Bradley Park in Peoria, Illinois. Pitchers should sign up by 9 a.m. and play will start at 10 a.m. Six person classes are scheduled although one eight person class may be scheduled each shift if enough pitchers sign up. Entry fee \$8.00. Trophies 1st & 2nd for six person class, add 3rd place for eight person class. Will mix 30 and 40 footers according to ringer percentage. Contact Bob Roling, 133 E. Cherry Ridge Rd., Peoria, IL 61614. 309-693-1187. Rain date Sunday, September 13, 1986.

## NHPA SECRETARY-TREAS. REPORT FOR MAY AND JUNE

### May 1986 Receipts:

86 World Tournament Entry Fees .....	\$15944.00
Digest Subscription & Ads .....	3787.75
NHPA Memberships .....	9214.50
State Dues .....	41.00
Interest .....	92.82
Postage refund from Post Office .....	102.02
<b>Total May Receipts .....</b>	<b>\$29182.12</b>

### May 1986 Expenditures:

Digest Publication (2 Issues) .....	\$ 6590.93
Postage .....	1196.79
Telephone .....	54.06
Supplies .....	1917.33
State Dues Refunds .....	21.00
Junior World Scholarships .....	200.00
World Entry Fee Refund .....	25.00
League Program .....	110.00
Officer Allowance .....	833.33
Officer Travel .....	319.09
<b>Total May Expenditures .....</b>	<b>\$11267.53</b>

### June 1986 Receipts:

NHPA Digest Subscriptions .....	\$ 867.00
NHPA Memberships .....	4115.75
86 World Entry Fees .....	125.00
Envelope Sales .....	30.32
Interest .....	1446.22
<b>Total June Receipts .....</b>	<b>\$6584.29</b>

### June 1986 Expenditures:

Telephone .....	\$ 458.58
Postage .....	1296.87
Officer Allowance .....	915.33
World Entry Refunds .....	100.00
State Dues Refunds .....	20.00
Supplies .....	263.45
NHPA Trademark (Logo Registration) .....	175.00
86 World Tournament .....	788.74
Travel .....	81.00
NHPA News Digest .....	3019.02
League Program .....	110.00
Stoke's Award Winner Patches .....	103.74
<b>Total June Expenditures .....</b>	<b>\$7331.73</b>

NOTE: The above figures reflect only the books of the NHPA Secretary-Treasurer. NHPA monies handled by other NHPA persons are not shown.

## EXPRESSION OF THANKS

Mr. and Mrs. Ralph Dykes of Lombard, Illinois wish to express their sincere thanks to all the wonderful friends in the NHPA that sent them cards of congratulations on their Golden Wedding Anniversary held May 10. Words cannot express the feeling of having so many friends throughout the realm of the NHPA.

## INTERESTING SIDELIGHTS

By SOL BERMAN

**DID YOU KNOW THAT** — Walter Ray Williams, current World Horseshoe Champion, was the leading money winner in the PBA Tour at the conclusion of the Winter Tour with \$91,825. Marshall Holman was second with \$81,410.

The geranium (*Petargonium hortorum*) also known as horseshoe, fish, bedding and zonal geranium is a favorite houseplant.

One of Robert Trent's favorite golf holes, all of which he built or re-designed, is the 16th hole at the Golden Golf Course in Williamsburg, Virginia.

## WEBB HORSESHOES N.H.P.A. APPROVED

1-4 pair .....	\$27.00
5-9 pair .....	\$25.50
10 pair or more .....	\$24.00

Add \$2.50 per pair shipping cost (USA)

**WEBB HORSESHOES & EQUIPMENT**  
1319 LICKING PIKE • WILDER, KY 41076  
Phone (606) 781-0589



# SUPPORT YOUR NHPA AND IT WILL WORK FOR YOU

## GAME RELATED SALES DISTRIBUTERS

NATIONAL BUYER  
EDWARD DOMEY  
P.O. BOX 298  
WILKINSONVILLE, MA 01590  
(617) 865-4619

DENNIS OHMS  
777 WEST MIDVALLEY RD  
CEDAR CITY, UT 84720  
(801) 586-9352

PIKE COUNTY  
P.O. BOX 810  
CIRCLEVILLE, OH 43113  
(614) 474-7727

WALLY SHIPLEY  
2646 BASSWOOD ST.  
NEWPORT BEACH, CA 92660  
(714) 760-3658

ROBERT REID  
34 N. BEECHWOOD AVE  
SCOTTSBURG, IN 47170  
(812) 752-2195

WILLIAM SMITH  
1175 STEWARD DRIVE  
DUNEDIN, FL 33528  
(813) 736-5556

## SUB-DISTRIBUTERS

RICHARD DOBLE  
8 NEWMAN STREET  
KEENE, NH 03431  
(603) 352-3788

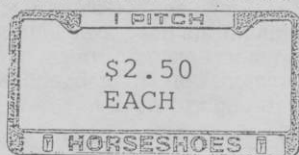
GLEN ROBECK  
2317 SO. PATTON COURT  
DENVER, CO 80219  
(303) 934-0632

VINCENT YANNETTI SR  
322 LONGWOOD AVENUE  
BOUND BROOK, NJ 08805  
(201) 356-3862

\*\*\*\*\*

SPECIAL JULY AND AUGUST

AUTO PLATE FRAME



\*\*\*\*\*

## GAME RELATED SALES POLICY

The National Horseshoe Pitchers Associations policy is to make Game Related Items available to everyone. Through our National Network of Distributors and Sub-Distributors we aim to give everyone service. If you are in an area that is not covered properly we ask that you call it to our attention. It should be mentioned that if you purchase any Game Related Items from anyone other than a listed Distributor or Sub-Distributor the NHPA receives no benefits at all.

WHEN YOU SUPPORT YOUR NATIONAL ORGANIZATION  
YOU HELP YOURSELF

## DAVE LOUCKS ON TOP IN GEORGE PALMER OPEN (CALIF.)

**CLASS A-1** — Dave Loucks, 7-0-68.0; Pete Manitone, 6-1-59.7; Herb Rushing, 5-2-55.1; Emmett Schroeder, 3-4-56.9; Joe Zogelman, 3-4-48.4; Walt Robinson, 2-5-50.8; Walt Foreman, 1-6-53.5; Al Crabtree, 1-6-51.2.

**CLASS A-2** — Marty Dunn, 6-1-49; Newton Graves, 5-2-44.4; Bert Charley, 4-3-45.1; Bill Hines, 3-4-48.8; Mel Roberts, 3-4-47.4; Vince Mauricio, 3-4-42.9; Steve Kynard, 2-5-48; Marshall Johnson, 2-5-39.5.

**CLASS A-3** — Earl Kynard, 6-1-42.7; Dick Hucke, 5-2-44.5; Don Purdum, 3-4-40.3; Don Muenchow, 3-4-37.6; Mike Martinez, 2-5-40.7; Carl Newsom, 2-5-38; Brian Carlson, 2-5-36.8; Error 3rd place Jay Richmond 5-2-38.

**CLASS A-4** — New Ribbon! Fred Wood, 7-1-40.8; Harold Holbrook, 6-2-40; Dewayne Schmidt, 5-2-38.3; Jim Smith, 3-4-33.9; Jim Long, 3-4-33.2; Gordon Loveall, 3-4-21.6; John Kincheloe, 2-5-31.1; Bob Lloyd, 0-7-32.2.

**CLASS A-5** — Joe Ferrau, 6-1-27.3; Joe Long, Sr., 5-2-28.7; Ceres Perry, 5-2-24.5; Al Alviso, 4-3-27.9; Obie Winn, 4-3-24.7; Steve Drnelas, 3-4-22.5; Bob Regalado, 1-6-20.7.

**CLASS A-6** — Bob Fread, 7-0-20.8; Lee Henninger, 5-2-20.7; Glen Rains, 5-2-17.8; Mel Falcon, 5-2-17.7; Ernie Kim, 3-4-10.4; Marion Hawley, 2-5-14.9; Chris Tahija, 1-6-11.1.

**CLASS JR-1** — Joe Long, 4-0-41.1; Chris Bowers, 0-4-31.1.

**CLASS W-1** — Marthe Dunn, 5-0-54.2; Vada Dunn, 4-1-59.4; Billie Sue Pennington, 2-3-56; Genevieve Lavett, 2-3-41.2; Jean Ornelas, 1-4-36.4; Paige Pennington, 1-4-32.9.

**CLASS W-2** — Susie Rains, 5-1-27.3; Sandy Kolberg, 4-2-23.3; Edith Zogelman, 2-4-28.4; Cathie Loucks, 1-5-12.4.

## JESSE GONZALES CAPTURES CALIF. GOLDEN GATE TITLE

### SHARON PADDOCK WINS LADIES TITLE

San Francisco's Golden Gate Classic Open on May 17 represented horseshoe pitching at its best; excellent clay, superb weather, outstanding competition. State Champion, Jesse Gonzales, had a real struggle tie breaker series with former World Champion, Don Titcomb, and newcomer, Ed Floyd. Jesse's top game of 86% pulled him through to victory.

**CLASS A-1** — Jesse Gonzales, 7-1-74.5; Ed Floyd, 7-2-67.3; Don Titcomb, 6-2-71.5; Verdan Zelmar, 3-4-56.8; Tom Webb, 2-5-53.1; Walt Foreman, 2-5-49.1; Juke Basham, 2-5-48; Bill Brown, 1-6-47.1.

**CLASS A-2** — Marty Dunn, 6-1-54.5; Bill Hines, 5-2-46.8; Harold Holbrook, 4-3-48.5; Chuck Rodrigues, 4-3-47.4; Bert Charley, 3-4-45.7; Elton Cowles, 2-5-35; George Greeott, 1-6-40.2. High game Marty Dunn 62%.

**CLASS A-3** — Don Muenchow, 7-1-36.7; Floyd Edwards, 6-2-37.2; Brian Carlson, 5-2-34.5; Jim Long, 4-3-32.8; Thor Jensen, 3-4-32.2; Dewayne Schmidt, 2-5-32; Frank Putman, 2-5-30.5; Greg Diaz, 0-7-30. High game Floyd Edwards 50%.

**CLASS A-4** — Jim Smith, 6-1-38.2; Bob Lloyd, 6-0-40; Joe Ferrau, 5-2-37.1; Tom Pennington, 4-3-33.7; John Delgaco, 3-4-30.6; Mike Holbrook, 2-5-29.7; Irwin Malik, 2-5-24.2; Stu Snyder, 0-7-24.5. High game Lloyd 52%.

**CLASS A-5** — Leo Wanner, 7-0-19.4; Doug McQuinn, 5-2-27.4; Terry Wood, 5-2-27.1; Eldon Bryhan, 4-3-19.1; Kevin Fitzpatrick, 3-4-26.5; Bob Fread, 2-5-20.8; Lee Henninger, 1-6-19.7; Dennis McClellan, 1-6-13.4. High game Terry Wood 44%.



**GONZALES — (Continued)**

**CLASS A-6** — John Hagerman, 6-1-19.1; Phillip Nesbit, 5-2-18.8; Roy Heyden, 5-2-14.8; Tony Twiddy, 4-3-19.1; Sam Watt, 4-3-14.8; Wally Stevens, 2-5-13.1; Marlon Hawley, 1-6-12.5; Ernie Kim, 1-6-8.5. High game Nesbit 30%.

**WOMEN CLASS W-1** — Sharon Paddock, 5-0-72; Billie Sue Pennington, 3-2-58; Yvonne Mauzey, 3-2-54.5; Marthe Dunn, 3-2-53.5; Will Paddock, 1-4-36.5; High game Sharon Paddock 76%.

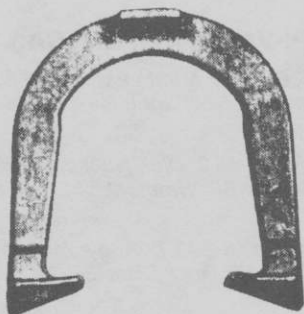
**WOMEN CLASS W-2** — Josephine Charley, 7-0-37.7; Lillian Lloyd, 6-1-42; Char Sorg, 4-3-30; Twila Zelmar, 4-3-23.7; Sandy Kolberg, 3-4-25.7; Joann Wanner, 2-5-27.7; Becky Wood, 1-6-27.1; Gwen Brightman, 1-6-22.8; High Game Lillian Lloyd 48%.

**DON TITCOMB WINS WESTERN STATES TOURNAMENT (CALIF.)**

California's Western States tournament held in Sacramento, April 30, drew the usual large crowd to compete in this favorite once-a-year meet. Don Titcomb, former World Champion, posted a 6-2-70.3 record to take home the title. Martha Dunn was undefeated with a 7-0-51.0 record.

**CLASS A-1** — Don Titcomb, 6-2-70.2; Monte Latino, 5-3-63.5; Dave Loucks, 4-3-66.5; Ed Floyd, 4-3-62.5; Emmett Schroeder, 3-4-64.8; Bob Mauzey, 3-4-56.8; Pete Manitone, 2-5-56.2; Walt Foreman, 2-5-53.7; High Game: Don Titcomb 80%.

**CLASS A-2** — Mate McBride, 5-2-49.1; Tom Webb, 4-3-55.7; Verdan Zelmar, 4-3-53.1; Marty Dunn, 4-3-50; Juke Basham, 3-4-54.8; Joe Colt, 3-4-50.5; Mel Roberts, 3-4-44.8; Bill Brown, 2-5-42. High Game: Zelmar 66%, Webb 66%, Basham 64%, Colt & McBride 62%.

**TED ALLEN HORSESHOES**

An original professional shoe. Still the very best professional shoe — Designed by a Champion — Used by many Champions — Not all users will become champions, but by throwing ALLEN's, you know that you've performed your best.

The designed features were invented by TED ALLEN, a 10 time world champion. He has made world records over and over with them. The design was a leader. After years it came to be a trend as a guideline in shoe equipment.

You can't go wrong in using them.

**1045 LINDEN AVENUE**

**BOULDER, COLORADO 80302**

## DON TITCOMB — (Continued)

**CLASS A-3** — Newt Graves, 6-1-43.7; Pete Donoho, 5-2-45.1; Ben Yost, 4-3-47.7; Vern Gosney, 4-3-50; Bill Hines, 3-4-45.4; Dick Hucke, 3-4-45.4; Bert Charley, 3-4-42.8; Lee Van Dalsen, 0-7-34.8; High Game Pete Donoho and Newt Graves 58%, Ben Yost 56%.

**CLASS A-4** — Glenn Kelly, 6-1-47.7; Mike Martinez, 5-2-47.4; Don Mienchow, 5-2-45.7; Jay Richmond, 4-3-40.8; Earl Kynard, 3-4-40.8; Don Purdum, 3-4-40.8; De-wayne Schmidt, 2-5-34.2; Brian Carlson, 0-7-27.4. High Game Don Purdum 64%, Don Nuenchow 62%, Mike Martinez 60%.

**CLASS A-5** — Harold Holbrook, 7-0-50.3; Doyle Palmer, 5-2-35.6; John Kincheloe, 5-2-32; Bob Lloyd, 3-4-37.3; Jim Long, 3-4-33.6; Roy Parker, 3-4-30; Leonard Edwards, 2-5-27.6; High Game Harold Holbrook 56%.

**CLASS A-6** Ralph Morrison, 6-1-32.2; Gerald Hollman, 5-2-28.2; Sylvan Stratton, 5-2-24.5; Joe Ferrau, 3-4-24.5; Gordon Loveall, 3-4-23.1; Jim Cosgrove, 2-5-24.9; Joe Novakovich, 2-5-24.5; Bill Terry, 2-5-21.5; High Game Joe Novakovich 40%, Ralph Morrison 40%.

**CLASS A-7** — Lee Henninger, 6-2-28.7; John Barney, Sr., 6-3-26.6; Chick White, 5-3-22.2; Kirby Elton, 4-3-23.1; Irwin Malik, 3-4-24; Bob Fread, 3-4-22.8; George Barth, 2-5-17.7; Elcon Bryhan, 1-6-17.4; High Game Henninger 48%.

**CLASS A-8** — Bob Thomas 6-2-22.7; Bob Bendorf, 5-3-20.5; Mike Carlsen, 4-3-18.2; Marion Hawley, 4-3-18.2; George Larson, 4-3-15.1; John Hagerman, 3-4-11.1; Glen Rains, 2-5-16.5; Sam Watt, 1-6-16.5; High Game Thomas 32%, Bendorf 32%.

**CLASS A-9** — Mel Savery, 6-1-19; Roy Heyden, 5-2-17.6; Gordon Brown, 5-2-15.6; Chet Carter, 4-3-17.6; Bill Padgett, 4-3-5.6; Ernie Kim, 3-4-14; Vern Brightman, 2-5-8.3. High Game Savery 30%, Carter 28%, Heyden 26%.

**CLASS W-1** — Marthe Dunn, 7-0-51; Yvonne Mauzey, 6-1-63.3; Josephine Charley, 5-2-29; Gail Cook, 4-3-28.6; Susie Rains, 3-4-25; Marilyn Brown, 2-5-11.6; Cathie Loucks, 1-6-17.3. High Game Yvonne Mauzey 72%.

## TITCOMB IN HOT FINISH — WINS TRI-VALLEY OPEN (CA.)

**CLASS A-1** — Don Titcomb, 6-1-79.0; Dave Loucks, 6-1-68.3; Monte Latino, 5-2-60.7; Ed Floyd, 4-3-63.9; Fred Lavett, 3-4-52.1; Walt Foreman, 2-5-50; John Garcia, 2-5-46; Bill Brown, 0-7-40.3.

**CLASS A-2** — Walt Robinson, 6-1-59; Bert Charley, 6-1-48.2; Dick Hucke, 5-2-53.2; Jack Sorg, 3-4-47.8; Marty Dunn, 49; Ben Yost, 2-5-42.1; Bill Hines, 2-5-39.2; Vince Mauricio, 1-6-41.7.

**CLASS A-3** — Dow Purdum, 5-2-46.6; Elton Cowles, 5-2-43.7; Andy Anderson, 5-2-40.8; Floyd Edwards, 4-3-32.9; Dale Koistinen, 3-4-37; Grey Diza, 3-4-34.1; De-wayne Schmidt, 3-4-31.6.

**CLASS A-4** — Gerry Saunders, 6-1-41.4; John Delgado, 5-2-36.4; Tom Pennington, 4-3-38.2; Lou Bayer, 4-3-34.2; Boyd Walker, 4-3-31.4; Ray Bojorques, 3-4-24.2; Thor Jensen, 1-6-30; Bob Lloyd, 1-6-23.5.

**CLASS A-5** — Joe Ferrau, 6-1-29.6; Ceres Perry, 4-3-22.1; Lee Henninger, 4-3-24.6; Lee Brinkman, 4-3-23.9; Ron Mann, 3-4-24.2; Bob Schnur, 3-4-28.3; Ross Akers, 2-5-24.6; Barney Barnett, 2-5-21.4.

**CLASS A-7** — John Hagerman, 4-1-16.8; Phillip Nesbit, 4-1-17.6; Joe Kovach, 3-2-14; Roy Heyden, 2-3-10; Marion Hawley, 1-4-16.4; Sam Watt, 1-4-13.2.

**CLASS A-8** — James Churchill, 4-1-15.6; Ernie Kim, 3-2-14; Tony Twiddy, 2-3-16.4; Chet Carter, 2-3-16; Red Taylor, 2-3-9.6; Wally Stevens, 2-3-9.2.

**TRI-VALLEY — (Continued)**

**WOMEN CLASS W-1** — Virginia Sturla, 5-0-64; Vada Dunn, 4-1-58; Yvonne Mauzey, 3-2-55.5; Marthe Dunn, 2-3-53; Billie Sue Pennington, 1-4-52.5.

**WOMEN CLASS W-2** — Josephine Charley, 5-0-45.5; Genevieve Lavett, 4-1-38; Paige Pennington, 3-2-36; Izetta Churchill, 2-3-25.5.

**JUNIOR CLASS** — P. Pennington, 22%; J. Charley 10%; G. Lavett 8%; I. Churchill 2%.

**WILLIAMS RETURNS TO CA. — WINS MAY 25th TRI-VALLEY**

**TRI VALLEY OPEN** — May 25, Pleasanton, California was honored by the presence of World Champ, Walter Ray Williams — Bowling Champ, Horseshoe Champ — and what else? No one in Northern California could hold him as he pitched 46, 47, 48 ringers out of fifty shoes; even when he slipped to 43 ringers, others were left behind.

**CLASS A-1** — Walter Ray Williams, 5-0-90.8; Jesse Gonzales, 3-2-78.4; Dave Loucks, 3-2-71.2; Don Titcomb, 2-3-73.2; Ed Floyd, 2-3-64; Fred Lavett, 0-5-52.

**CLASS A-2** — Dick Hucke, 7-0-52; Bill Brown, 4-3-49.7; Ken Woolery, 4-3-48.5; Marty Dunn, 4-3-48.2; Eddie Garcia, 3-4-48.3; Bill Hines, 3-4-42.5; Bert Charley, 2-5-44.

**CLASS A-3** — Fred Wood, 6-1-48; Don Muenchow, 6-1-45; John Delgado, 5-2-35.7; Gerry Saunders, 4-3-38.9; Thor Jensen, 3-4-34.3; Bob Lloyd, 3-4-30; Gene Martin, 1-6-26.3; Joe Ferrau, 0-7-21.7.

**CLASS A-4** — Ceres Perry, 7-0-27.4; Lee Henninger, 6-1-28.6; Bill Terry, 5-2-30.3; Barney Barnett, 4-3-21.7; Bob Fread, 3-4-24.9; Bob Regaland, 2-5-29.4; Chris Jacobson, 1-6-18.9; Lee Brinkman, 0-7-19.7.

**CLASS A-5** — Allen Kolberg, 5-0-16.4; Chet Carter, 3-2-16.0; Joe Kovach, 3-2-10; Roy Heyden, 2-3-10.4; Wally Stevens, 1-4-11.2.

**WOMEN CLASS W-1** — Billie Sue Pennington, 5-0-58.5; Marthe Dunn, 3-2-57; Char Sorg, 3-2-54; Gen Lavett, 2-3-33.8; Lillian Lloyd, 1-4-37.7.

**WOMEN CLASS W-2** — Joe Charley, 5-0-36.5; Paige Pennington, 4-1-40; Alice Garcia, 3-2-25; Sherry Vale, 2-3-26.5; Sandy Kolberg, 1-4-24.

**EASTERN NATIONAL WARMUP — OHIO — PYLE, PA. — SANC. 86-58**

**CLASS A** — Raymond Rugg, 6-1-62.2; Bob McKnight, 5-2-64.4; Casey Danner, 5-2-63.9; Bob Straitiff, 4-3-59.6; E.D. Blum, 3-4-57.8; Joey Morris, 3-4-49.0; Joseph Paganelli, 2-5-51.9; Bill Hofecker, 0-7-48.4.

**CLASS B** — Joe Leech, 7-0-60.6; James Brodak, 6-1-56.1; Jim Solomon, 5-2-59.6; Joe Roebuck, 4-3-49.2; Steve Mikan, 3-4-43.1; Ken Widdowson, 1-6-40.8; William Hixon, 0-7-44.8; Frank Yokopovich, Forfeit.

**CLASS C** — Steve Durkey, 7-0-48.6; Wilbert Rugg, 5-2-44.6; Benny Fink, 4-3-46.8; E.D. Sell, 4-3-43.9; Ron Bunyak, 3-4-45.5; Pet Sowa, 3-4-45.0; Gary Fulton, 2-5-41.1; Bob Lapping, 0-7-30.7.

**CLASS D** — Lawrence Meeks, 7-0-48.5; William Stahl, 6-1-45.5; Mike Stenach, 5-2-44.7; Ron Weiss, 5-2-42.8; Larry McBride, 2-5-38.8; Vergil Nicholson, 1-6-35.5; Jim Schneider, 2-5-30.4; Clark Carnahan, 0-7-19.4.

**CLASS E** — James Michlena, 4-1-26.0; John Basinger, 4-1-37.9; Vaughn Dotts, 3-2-35.8; Michale Hank, 3-2-34.4; Joe Orsini, 1-4-25.0; Taylor Carnahan, 0-5-14.7.

**CLASS F** — Ken Turnbull, 6-0-29.4; Ross Query, 5-1-34.7; Ralph Brandt, 4-2-20.5; Dan Digrittolo, 2-4-23.7; Brad Gindlesburger, 2-4-21.8; Robert Jefferys, 2-4-18.9; Leonard Fulgraph, 0-6-14.0.

**LADIES CLASS** — Grace Rugg, 6-1-48.1; Marty Woods, 6-1-39.0; Jean Reefer, 4-3-38.3; Ruth Carnahan, 4-3-36.1; Betty Lapping, 3-4-37.9; Elenor Weston, 2-5-38.1; Kelli Weston, 2-5-36.0; Sandy Carnahan, 1-6-33.3.

## EASTERN SIERRA CALIFORNIA ACTIVITY

**SAFEWAY OPEN — Bishop — May 24 — Sanc. — GROUP A —** Ed Arionus, Westminster, 7-0-61.8; Jonathan Williams, Chino, 5-2-66.4; Blackie Harms, Shoshone, 5-2-60.9; Jim Eozzo, Los Angeles, 4-3-53.6; Norm Cone, Huntington Beach, 3-4-55.5; Pat Silva, Santa Barbara, 2-5-54.9; Byron Cork, Shoshone, 1-6-53.4; Doug Frank, Riverside, 1-6-43.2.

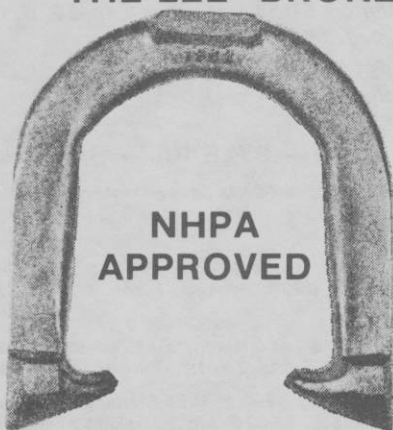
**GROUP B —** Bill Cork, Shoshone, 6-1-56.9; Joe Wilkerson, Bishop, 5-2-51.6; Tom McQueen, Bishop, 5-2-45.3; Sallie Cline, Bishop, 4-3-44.7; Les Burroughs, Perris, 4-3-44.3; Bob Austin, Escondido, 3-4-35.5; Alan Steele, Crowley Lake, 1-6-34.2; Ron Parsley, Bishop, 0-7-25.9.

**GROUP C —** Mickey Mundy, Barstow, 7-0-41.0; Bob Morris, Bishop, 5-2-45.6; Don Beasley, Holtville, 3-4-32.5; George Jeff, Bishop, 3-4-32.3; Mick Everhart, Bishop, 3-4-28.9; Ivan Davis, Bishop, 3-4-28.3; Ray Hailey, Bishop, 2-5-26.7; Bill Turner, Bishop, 2-5-25.1.

**GROUP D —** Don Weaver, Nev., 6-1-42.3; Bert Gehrt, Bishop, 5-2-36.4; True Everhart, Bishop, 4-3-33.7; Les McConnohie, Bishop, 4-3-33.2; Bob Kittle, Crowley Lake, 4-3-30.2; Ed Agner, Beaumont, 3-4-35.4; Dave Davis, Bishop, 2-5-24.4; Wally Shipley, Newport Beach, 0-7-20.1.

**GROUP E —** Gary Emerick, Bishop, 6-1-33.1; Bill Perry, Bishop, 5-2-34.8; Dave Rodriguez, Santa Barbara, 5-2-34.0; Dorothy Yeager, Bishop, 5-2-25.1; Ralph Carter, Rialto, 2-5-22.2; Betty McQueen, Bishop, 2-5-21.1; Elmer Landis, Bakersfield, 1-6-19.7; Gene Vansant, Sun City, 1-6-18.2.

## BACK BY POPULAR DEMAND THE LEE "BRONZE" HORSESHOE



**NHPA  
APPROVED**

**Cast of a new, modern  
metal alloy that is**

**"deader" than dead soft,  
yet tough as steel.**

**Batters No Quicker  
Than Dead Soft Steel**

**Requires Little  
or No Filing**

**Does Not Rust**

**PRICE - \$26.00 PER PAIR PLUS POSTAGE**

**LEE HORSESHOE COMPANY**

**2631 Middletown - Eaton Rd. • Middletown, OH 45042  
(513) 422-5695**

## EASTERN SIERRA — (Continued)

**GROUP F** — Dolly Manuelito, Riverside, 7-0-32.0; Harris Riggins, Bishop, 6-1-21.7; Pat Cardova, Barstow, 5-2-22.2; Dan Gerard, Bishop, 4-3-19.1; Henry Cardova, Barstow, 2-5-16.8; Steve McQueen, Bishop, 2-5-14.2; Ken Griffin, Burbank, 1-6-17.4; Al Greenburg, Bishop, 1-6-16.2.

**GROUP G** — Frank Monsen, Bakersfield, 6-1-18.5; Vicky Oglesby, Bishop, 5-2-18.5; Steve Johnston, Bishop, 5-2-15.1; Steve Oglesby, Bishop, 3-4-15.7; Brigit Cline, Bishop, 3-4-14.0; Jerry Swift, Bishop, 3-4-13.7; Steve Gehrt, Bishop, 2-5-10.0; Allan Winkles, Bishop, 0-7-8.5.

**GROUP H** — Linda Rodriguez, Santa Barbara, 6-1-13.5; Sandy Hernandez, Bishop, 5-2-14.2; Gayle Oglesby, Bishop, 5-2-12.1; Anton Ozanich, Bakersfield, 5-2-11.4; Rita Eozzo, Los Angeles, 3-4-7.1; Keith Doughtie, Bishop, 2-5-11.7; Ron Willett, Bishop, 1-6-6.4; Jim Bolenbaugh, Bishop, 1-6-3.2.

**SAFEWAY OPEN — Bishop — Sunday, May 25 — Sanc. GROUP A** — Jonathan Williams, Chino, 7-1-66.3; Ed Arionus, Westminster, 6-2-63.0; Blackie Harms, Shoshone, 5-2-58.2; Pat Silva, Santa Barbara, 4-3-58.4; Byron Cork, Shoshone, 2-5-52.6; Jeff Williams, Chino, 2-5-50.5; Nathan Williams, Chino, 2-5-47.6; Jim Eozzo, Los Angeles, 1-6-49.4.

**GROUP B** — Bill Cork, Shoshone, 7-1-51.0; Norm Cone, Huntington Beach, 6-2-48.7; Bill Yeager, Bishop, 5-2-38.3; Les Burroughs, Perris, 4-3-47.1; Tom McQueen, Bishop, 4-3-42.0; Doug Frank, Riverside, 2-5-38.6; Glen Riley, Big Pine, 1-6-32.2; Bob Austin, Escondido, 0-7-35.4.

**GROUP C** — Joe Wilkerson, Bishop, 7-1-43.7; Sallie Cline, Bishop, 7-2-43.7; Bob Morris, Bishop, 6-2-41.5; Ivan Oavis, Bishop, 4-3-34.2; Alan Steele, Crowley Lake, 2-5-30.5; Mick Everhart, Bishop, 2-5-25.7; Don Beasley, Holtville, 1-6-34.8; Don Weaver, Nev., 1-6-31.7.

**GROUP D** — Bert Gehrt, Bishop, 6-1-32.0; Bob Kittle, Bishop, 5-2-30.5; Gary Emerick, Bishop, 4-3-36.5; Les McConnohie, Bishop, 4-3-32.0; Ed Agner, Beaumont, 4-3-26.0; Bill Perry, Bishop, 3-4-26.8; Dave Rodriguez, Santa Barbara, 1-6-28.0; Mike Story, Bishop, 1-6-23.4.

**GROUP E** — Harris Riggins, Bishop, 7-1-23.1; Betty McQueen, Bishop, 6-2-17.8; Dorothy Yeager, Bishop, 5-2-23.9; Pat Cardova, Barstow, 4-3-30.3; Chuck Everhart, Ridgecrest, 4-3-19.6; Gene Vansant, Sun City, 2-5-17.5; Elmer Landis, Bakersfield, 2-5-16.0; R. Pruitt, Bishop, 0-7-13.9.

**GROUP F** — Vicky Oglesby, Bishop, 6-2-17.8; Henry Cardova, Barstow, 5-3-14.3; Steve Johnston, Bishop, 4-3-14.2; Steve Oglesby, Bishop, 4-3-13.5; Chuck Lippoldt, Bishop, 4-3-11.7; Steve McQueen, Bishop, 3-4-13.2; Al Greenburg, Bishop, 3-4-12.8; Sally Shipley, Newport Beach, 0-7-7.1.

**GROUP G** — Linda Rodriguez, Santa Barbara, 6-1-12.5; Rita Eozzo, Los Angeles, 5-2-12.8; Sandy Hernandez, Bishop, 4-3-13.2; Gayle Oglesby, Bishop, 4-3-12.5; Anton Ozanich, Bakersfield, 4-3-11.0; Frank Monsen, Bakersfield, 3-4-15.7; Mike Griffin, Burbank, 1-6-5.3; Kathy Griffin, Burbank, 1-6-2.5.

---

## — 1986 DOUBLE RINGER SPECIAL —

**\$10.00 FOR 8 EDITIONS FEATURING WORLD TOURNAMENT**

**SPECIAL BOOKLET** — *On My Way Back* describes my return to the game as a Pitcher-Writer following heart surgery. Available now with special World Tournament stats, history, pictures.

Send \$5.00 to: Will Gullickson  
2850 26th St. S, Moorhead, Minnesota 56560

---

**ED FLOYD WINS WESTBROOK OPEN — CALIF. — MAY 18**

**CLASS A-1** — Ed Floyd, 7-1-61.0; Don Titcomb, 6-2-70.0; Dave Loucks, 5-2-67.1; Pet Manitone, 4-3-60.2; Emmett Schroeder, 4-3-57.7; Dave Storck, 2-5-54.2; Lou Fontaine, 1-6-55.1; Walt Foreman, 1-6-42.5.

**CLASS A-2** — Harold Holbrook, 6-2-51.5; Bert Charley, 5-3-46.2; Mate McBride, 4-3-53.1; Mel Roberts, 4-3-44.2; Juke Basham, 4-3-47.4; Marty Dunn, 3-4-44.8; Tom Webb, 2-5-46.8; Ken Wollery, 1-6-41.7.

**CLASS A-3** — Joe Zoglman, 6-1-51.1; Fred Wood, 5-2-41.7; Vern Gosney, 4-4-48; Bill Hines, 4-3-47.1; Lee Van Dalsen, 4-3-42.2; George Greeott, 3-4-40; Don Purdau, 2-5-40.2; Jay Richmon, 0-7-36.5.

**CLASS A-4** — Floyd Edwards, 7-0-38.2; Greg Diaz, 5-2-34.8; Jim Long, 4-3-34; Dwayne Schmidt, 3-4-36; Bob Lloyd, 3-4-35.4; Don Weaver, 3-4-32; George Gigli, 2-5-29.1; Smoke Daily, 1-6-35.7.

**CLASS A-5** — Gordon Pirchard, 5-2-36; Leonard Edwards, 5-2-33.4; Lee Thornhill, 4-3-28.8; Kenneth Reid, 4-3-28; Obie Winn, 4-3-24.8; Ray Bojorques, 3-4-30.8; Mel Long, 3-4-30.5; Orville Saffle, 0-7-13.7.

**CLASS A-6** — Bob Schnur, 7-1-27.1; Bob Fread, 6-2-23.7; Frank Westbrook, 5-2-24; Eldon Bryhan, 5-2-18; Lee Henninger, 2-5-24.3; Ceres Perry, 2-5-21; Bob Regalado, 2-5-18.

**CLASS A-7** — Art Rector, 7-1-28; Bill Botelli, 6-2-19.4; Glenn Jamieson, 5-2-16.3; Phillip Nesbit, 4-3-20; Chet Carter, 3-4-14.3; Elmer Wilson, 2-5-13.6; Ernie Kim, 1-6-8.6.

**WOMEN CLASS W-1** — Sharon Paddock, 5-0-74; Yvonne Mauzey, 4-1-66; Vada Dunn, 3-2-59; Marthe Dunn, 2-3-53.7; Billie Sue Pennington, 1-4-58.

**WOMEN CLASS W-2** — Josephine Charley, 5-1-41.2; Lillian Lloyd, 4-2-34.4; Edith Zoglman, 3-2-31; Sherry Vale, 3-2-29.5; Sandy Kolberg, 1-4-23.

**WIEDRICH TOPS IN ROSEBURG, ORE. OPEN — SANC. 86-205**

**CLASS A-1** — Ben Wiedrich, 7-0-77.0; Barry Chapelle, 5-2-72.2; Ridge Leggett, 5-2-69.2.

**CLASS A-2** — Lee Wallace, 5-2-55.1; Len Christensen, 2-5-52.5; Chuck Ricketts, 2-5-43.7; Larry Flanary, 1-6-48.3; Bill Graham, 1-6-47.9.

**CLASS B** — Darlene Williams, 6-0-55.0; Phil Hendry, 5-1-50.0; Betty Tatchio, 4-2-43.5; Roger Christianson, 3-3-43.2; Gene Sorenson, 2-4-38.0; O.D. McMillan, 1-5-31.8; Rick Rebman, 0-6-25.6.

**CLASS C** — Gil Morgan, 7-0-40.9; Art Lund, 4-3-41.0; Tom Williams, 4-3-42.7; Ken Leatherman, 4-3-37.9; Noel Ness, 4-3-34.6; Marvin Tatchio, 3-4-36.6; Barney Root, 2-5-33.7; Wayne Maag, 0-7-29.4.

**CLASS D** — Mo McNally, 5-1-47.6; Al Holland, 5-2-30.4; Al Moen, 4-2-30.2; Ray Podojil, 2-3-21.1; Frank Moan, 1-4-23.4; Chuck Wenger, 0-5-15.1.

**CLASS E** — Wally Mason, 6-1-29.2; Jim Johnson, 5-2-20.9; Leo Beery, 5-2-30.8; Eddie Howe, 4-3-23.8; George Hughes, 3-4-22.9; Grace Wenger, 2-4-20.1; Elmer Otnes, 2-4-19.5; Bob Fisher, 1-6-19.5.

**CLASS F** — John Williams, 7-0-22.4; Rob Bishop, 6-1-22.6; John Beery, 4-3-19.8; Gary Essig, 4-3-13.0; Mel Dearborn, 3-4-12.5; Bonnie Roswell, 2-5-12.0; Mike Easton, 2-5-11.2; Andy Anderson, 0-7-5.58.

**WIEDRICH WINS PORTLAND, OR. ROSE OPEN — SAN. 86-203**

**CLASS A-1** — Ben Wiedrich, 7-0-80.8; Bob West, 6-1-70.9; Lowell Davis, 5-2-71.7; Barry Chapelle, 3-4-63.7; Ridge Leggett, 3-4-68.84.

**CLASS A-2** — Jerry Gorton, 3-4-57.8; Gerry Staley, 1-6-56.2; Bill Graham, 0-7-53.9.



## WIEDRICH WINS — (Continued)

**CLASS B** — Chuck Seal, 6-1-52.6; Bernard Martell, 5-2-54.1; Phil Hendry, 5-2-51.6; Lee Wallace, 4-3-50.0; Don Ferguson, 4-3-45.9; Pet Zumaran, 2-5-48.3; Bob Johnson, 2-5-44.8; Ron Ferguson, 0-7-45.5.

**CLASS C C** — Len Christensen, 6-0-58.1; Larry Flanary, 5-1-54.6; Carolyn Ferguson, 3-3-41.5; Lauren Hill, 3-3-40.9; Betty Tatchio, 3-3-38.1; Buck Davis, 1-5-38.4; Willard Hufschmid, 0-6-34.3.

**CLASS D** — Art Lund, 5-2-39.2; Esthel Benner, 4-3-41.9; Marvin Tatchio, 4-3-38.6; Howard McDonald, 4-3-36.1; R.E. Click, 4-3-35.5; Dick Culbertson, 4-3-34.5; Vic Hyder, 3-4-36.9; Bob Beesley, 0-7-25.3.

**CLASS E** — Tom Schramm, 8-0-43.6; Donna Graham, 6-2-33.1; Chuck Ball, 5-3-30.0; Lloyd Kilgore, 5-3-29.6; Dick Evans, 3-5-30.8; Floyd Flemmer, 3-5-30.2; Vern Wanless, 3-5-30.1; Gene Buzini, 3-5-29.6; Bill Dolan, 0-8-27.2.

**CLASS F** — Jack Salter, 6-1-37.4; George Kaufer, 5-2-34.4; Bud LeDoux, 4-3-29.6; Ed Dachtler, 4-3-29.1; Dave Sturdevant, 4-3-27.0; Jim Kosterman, 4-3-26.8; Dick Helm, 1-6-20.5; Don Fagerness, 0-7-25.3.

**CLASS G** — Dewey Duewiger, 7-1-32.3; Chuck Wenger, 6-2-25.5; Grace Wenter, 5-2-24.6; Otis Huskey, 4-3-22.0; Glen Johnson, 4-3-21.9; Kent Smith, 2-5-15.6; Elmer Otnes, 1-6-16.8; Frank Dvorshak, 0-7-9.9.

## JEROME SPRING OPEN — #86-308

Jerome, Idaho 83338

May 18, 1986

**CLASS A** — Thackaray, Bob, 6-1-58.3; Stutzman, Warren, 5-2-48.0; Apodaca, Tony, 5-2-45.8; Payton, Lee, 5-2-42.5; Tencate, Hank, 3-4-38.6; Edwards, Lee, 2-5-36.2; Peterson, Leo, 2-5-34.7; Reid, Henry, 0-7-27.0.

**CLASS B** — Piva, Louie, 8-1-42.7; Palmer, Coug, 7-2-37.8; Holloway, Earl, 6-3-34.9; Johnson, Virgil, 6-3-32.8; Gardner, Ted, 5-4-37.8; Ostler, Ted, 5-4-37.8; Riese, Berle, 3-6-31.9; Stutzman, Glenn, 3-6-26.0; Morgan, Ralph, 2-7-29.7; Piva, Nick, 0-9-12.2.

**CLASS C** — Beebe, Jack, 9-1-26.1; Kirtland, Stan, 8-2-27.6; Butcher, Hillary, 7-2-26.6; Chapin, Harry, 6-3-28.5; Wenger, Chuck, 4-5-27.8; Blake, Dean, 4-5-26.5; Johnson, Lynn, 3-6-24.8; Pettitt, Ed, 3-6-18.6; Fuqua, Fay, 2-7-20.9.

## SEYBERT ON TOP IN CRETE, NEB. OPEN — SANC. 86-234

**CLASS A** — Dale Seybert, 5-0-61.8; Jack Govaerts, 4-1-59.2; Loren Mills, 2-3-50.0; Clare West, 2-3-49.6; Pat Allen, 1-4-48.2; Tom Dukes, 1-4-44.7.

**CLASS B** — Glen Grotrian, 3-2-51.2; Al Rosenbohm, 3-2-43.3; Paul Wollenburg, 3-2-45.8; John Ingram, 2-3-45.5; Earl Anderson, 2-3-43.6; Emery Brandt, 2-3-43.3.

**CLASS C** — Fay Kapke, 6-1-48.9; Marvin Edson, 5-2-46.9; John Spradley, 5-2-41.9; Leonard Werner, 4-3-43.1; Don Abernathy, 4-3-39.3; Elmer Vogt, 3-4-32.8; Charles Trojan, 1-6-32.0.

**CLASS D** — Terry Boss, 5-0-46.2; Arlon Bartels, 3-2-34.1; Larry Holmes, 2-3-35.7; Dan Brandt, 2-3-33.0; Hilbert Anderson, 2-3-30.4; Rick Gragg, 1-4-29.0.

**CLASS E** — Ray Livengood, 4-1-37.1; John Seevers, 3-2-47.8; Roy Fern, 3-2-36.5; Dennis Rusho, 2-3-33.2; Dick Vavrick, 2-3-30.6; Lee Bussard, 1-4-29.2.

**CLASS EE** — Ken Krogh, 4-1-36.7; DickSchell, Ia., 4-1-39.2; Merle Cottle, 3-2-31.9; Milo Houser, 1-4-23.6; Irwin Stone, Ia., 0-5-22.0.

**CLASS F** — Laurence Massey, 5-2-33.0; George West, Ia., 4-3-36.8; Bob Erickson, 4-3-31.7; Ervin Peterson, 4-3-26.8; Leonard Strobel, 4-3-26.4; Dave Martin, 3-4-29.8; Wayne Carriker, 2-5-27.9; Ron Scott, 2-5-23.9.

**CLASS G** — Murph Tinius, 4-1-22.5; Gary Sindelar, 3-2-27.0; L. E. "Shady" Heist, 3-2-20.1; Bob Dietze, 2-3-24.0; Louis Tomek, 2-3-18.5; Keith Fish, 1-4-19.1.

## SEYBERT ON TOP — (Continued)

**CLASS H** — Art McKinney, 5-2-26.8; Chuck Brandt, 5-2-25.4; Charles Couch, 4-3-26.4; Don Grotrian, 4-3-21.4; Mike Conner, Ia., 3-4-21.1; Pat Nicely, 3-4-18.9; Alvin Strasil, 2-5-18.9; Charles Fred Beeson, 2-5-17.1.

**CLASS I** — Milt Harmon, 5-0-20.5; Jerad Bruening, 4-1-12.0; Virgil Packard, 3-2-14.5; Loren Katt, 2-3-14.5; Jack Fry, 1-4-5.0.

**CLASS J** — Roger Krambeck, 5-0-29.0; Gene Heinzman, 3-2-22.5; Mike Allen, 3-2-20.0; Norm Johnson, 2-3-19.5; Mike Sindelar, 1-4-22.0; Bret Filkins, 1-4-15.5.

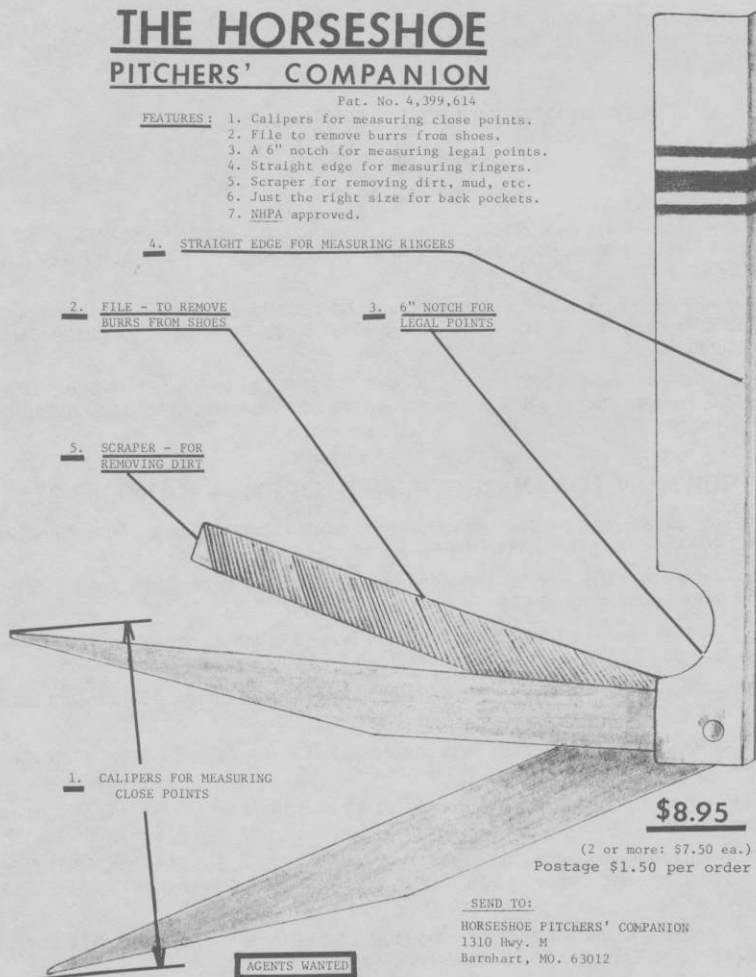
**WOMENS CLASS** — Carol Holmes, 3-0-21.3; Vonda Kapke, 2-1-19.3; Clarice Martin, 1-2-7.0; Mavis Carriker, 0-3-18.6.

**JUNIORS** — Jason Brandt, 3-0-31.0; Jason Katt, 2-0-22.0; Jamie Cragg, 1-2-7.0.

## THE HORSESHOE PITCHERS' COMPANION

Pat. No. 4,399,614

- FEATURES:**
1. Calipers for measuring close points.
  2. File to remove burrs from shoes.
  3. A 6" notch for measuring legal points.
  4. Straight edge for measuring ringers.
  5. Scraper for removing dirt, mud, etc.
  6. Just the right size for back pockets.
  7. NHPA approved.



**\$8.95**

(2 or more: \$7.50 ea.)  
Postage \$1.50 per order

SEND TO:

HORSESHOE PITCHERS' COMPANION  
1310 Hwy. M  
Barnhart, MO. 63012

AGENTS WANTED

## PHOENIX, ORE. SPORTS FESTIVAL WON BY CHAPELLE

**CLASS A-1** — Barry Chapelle, 8-1-64.7; Ben Wlefrich, 6-2-74.3; Ridge Leggett, 6-2-66.5.

**CLASS A-2** — Lee Wallace, 4-3-50.6; Bill Graham, 3-4-48.7; Francis Hampton, 2-5-50.0; Len Christensen, 1-6-40.3; Roger Christlanson, 0-7-37.8.

**CLASS B** — Betty T<sup>h</sup>chio, 7-0-42.0; Marvin Tatchio, 5-2-33.1; O.M. Rajola, 4-3-36.9; Barney Root, 3-4-34.1; Wayne Maag, 3-4-32.4; Ken Leatherman, 3-4-31.2; Rick Rebman, 2-5-30.3; Betty Beale, 1-6-30.3.

**CLASS C** — Mo McNally, 6-0-42.2; John Milota, 4-2-25.9; Judy Free, 4-2-32.3; Jim Westensee, 2-4-30.3; Paul Free, 2-4-28.7; Ken Garrison, 2-4-24.4; Harold Camp, 1-5-16.7.

**CLASS D** — Terry Rombach, 4-1-31.6; Ed Fogel, 3-2-35.1; Jim Williams, 3-2-30.8; Frank Moan, 2-3-24.6; Art Camarena, 2-3-24.3; Bill Stoner, 1-4-20.8.

**CLASS E** — Nancy Camp, 5-0-28.6; James Wear, 4-1-22.7; John Williams, 3-2-18.9; Elmer Otnes, 2-3-16.7; Maurice Madau, 1-4-13.3; Jim Wear, 0-5-10.8.

## SOUTHERN CALIFORNIA TOURNAMENT ACTIVITY

**LARRY GEER "E" OPEN — ORANGE — JUNE 8 — SANC. 86-149** — Jim Mudra, Jr., Whittier, 8-0-37.5; Smokey Anderson, Burbank, 6-2-32.3; Jim Mudra, Sr., Long Beach, 6-2-26.7; Phil Posos, Buena Park, 5-3-27.5; Harold Reeding, Burbank, 4-4-27.0; Robert Nernes, Jr., Norwalk, 3-5-20.3; Michael Weichel, North Dakota, 2-6-23.9; Harold Finner, Long Beach, 1-7-18.8; Larry Connell, Norwalk, 1-7-17.0.

**RIVERSIDE CLASS "D" OPEN — SANC. 86-149 — GROUP 1** — Bruce Stuart, Torrance, 7-1-51.5; Ed St. Pierre, Lake Isabella, 6-2-47.8; Richard Dillon, Gardena, 5-2-40.4; Raul Garcia, Colton, 5-2-39.0; Ron Kecskes, Fontana, 3-4-41.3; Jose Estrada, Perris, 2-5-31.3; Louis Mahlstedt, Lake Isabella, 1-6-27.4; Art Nugent, Fullerton, 0-7-23.2.

**GROUP 2** — Kevin Kecskes, Fontana, 6-0-48.7; Roy Henry, Cathedral City, 4-2-33.2; Tom Buck, Sun City, 3-3-39.5; Fred Craven, Bellflower, 3-3-35.5; Wally Shipley, Newport Beach, 3-3-33.7; Gary Alborn, Fontana, 2-4-33.7; Ed Agner, Beaumont, 0-6-28.0.

**GROUP 3** — Lupe Henry, Cathedral City, 6-0-46.3; Ralph Carter, Rialto, 5-1-31.3; Lee Haag, Sunnymead, 4-2-30.0; Doug Soward, Lake Isabella, 3-3-28.7; Al Wisser, Riverside, 2-4-26.7; George Barker, Bloomington, 1-5-19.0; Jim Dow, Capistrano, 0-6-18.7.

**GROUP 4** — Regis Dunlap, Fontana, 6-1-34.9; Smokey Anderson, burbank, 5-2-33.7; Joe Moreno, Barstow, 4-2-28.3; Joe Baxter, Riverside, 3-3-26.0; Mel Geske, Sun City, 2-4-22.3; Earl Hogan, San Bernardino, 1-5-20.0; Tom Lawyre, San Bernardino, 1-5-19.7.

**GROUP 5** — Tom Mattson, Fontana, 5-1-29.8; Wilbur Gochanour, ontana, 4-2-27.0; Kent Kelley, Riverside, 4-2-25.6; Graden Sells, Glendora, 4-2-27.0; Arla Pentecost, Lake Elsinore, 3-3-16.3; Bruce Gonter, Cucamonga, 1-5-16.0; Max Peace, Fontana, 0-6-14.0.

**JONAS SNYDER OPEN — SAN DIEGO — JUNE 7 — SANC. 86-151 — GROUP 1** — Byron Cork, Shoshone, 7-0-50.0; Robert Hudson, La Jolla, 5-2-54.8; Don Gregson, Crestline, 4-3-51.2; Nick Ihli, Oxnard, 4-3-47.7; Joe Gamble, San Diego, 3-4-44.2; Jim Eozzo, Los Angeles, 2-5-48.9; Norm Cone, Huntington Beach, 2-5-35.0; Don Tucker, San Diego, 1-6-38.9.

**GROUP 2** — Howard Larson, Lakewood, 6-1-50.6; Stan Dobson, La Mesa, 5-2-51.5; Pat Brady, Torrance, 5-2-46.1; Bob Austin, Escondido, 5-2-44.5; Steve Wyrill, Descanso, 4-3-48.7; Bob Wells, Lakeside, 2-5-32.3; Sid Lawson, Escondido, 1-6-35.4; Jack Sommers, La Jolla, 0-7-42.7.

**GROUP 3** — Dave Koch, Santee, 7-1-47.2; Bruce Webb, Lake Cuyamaca, 6-2-40.7; Frank O'Brien, Escondido, 5-2-38.9; Larry Ford, San Diego, 4-3-31.3; Bill Ponder, San Diego, 3-4-41.2; Paul Bellah, San Diego, 2-5-32.4; Don Taylor, El Cajon, 2-5-31.2; Craig Laughlin, San Diego, 0-7-26.7.

**GROUP 4** — Everett Seaman, San Diego, 6-0-29.7; Peter Trejo, Vista, 5-1-29.3; Jack Butler, San Diego, 3-3-24.0; Leonard Lifton, Torrance, 2-4-26.7; Carolyn Webb, Lake Cuyamaca, 2-4-17.0; Ralph Alvine, Chula Vista, 2-4-11.0; Jody Gamble, San Diego, 1-5-4.0.

**HENRY HARPER OPEN — SAN DIEGO — JUNE 8 — SANC. 151 — GROUP 1** — Nick Ihli, Oxnard, 6-0-57.8; Tad Besemer, San Diego, 5-1-60.1; Howard Larson, Lakewood, 4-2-48.7; Joe Gamble, San Diego, 3-3-51.7; Robert Hudson, La Jolla, 2-4-51.9; Byron Cork, Shoshone, 1-5-50.6; Barbara Dow, Capistrano, 0-6-43.5.

**SOUTHERN CALIF. — (Continued)**

**GROUP 2** — Bill Ponder, San Diego, 6-1-40.5; Bruce Stuart, Torrance, 4-2-42.4; Bob Austin, Escondido, 4-2-39.2; Larry Ford, San Diego, 1-4-33.7; Frank O'Brien, Escondido, 1-4-29.7; Peter Trejo, Vista, 1-4-25.3.

**GROUP 3** — Jack Butler, San Diego, 5-0-25.2; Everett Seaman, San Diego, 4-1-24.8; Ralph Alvine, Chula Vista, 3-2-12.4; Sally Shipley, Newport Beach, 3-2-10.4; Ernie Hayes, Chula Vista, 1-4-14.8; Craig Laughlin, San Diego, 0-5-21.2.

**NEBRASKA CITY OPEN TITLE TO SEYBERT — JUNE 15**

**CLASS A** — Dale Seybert, 5-0-66.8; Emery Brandt, 3-2-56.3; Glen Grotrian, 2-3-55.0; Al Rosenbohm, 2-3-51.8; John Ingram, 2-3-50.8; Jack Govaerts, 1-4-50.0.

**CLASS B** — Willis Sims, 6-1-43.4; Fay Kapke, 5-2-49.3; Marvin Edson, 5-2-39.9; Elmer Vogt, 4-3-45.4; Leonard Werner, 3-4-44.0; Don Abernathy, 3-4-42.3; Pat Allen, 2-5-39.8.

**CLASS C** — Hilbert Anderson, 6-1-37.3; Merle Cottle, 5-2-36.2; Roy Fern, 5-2-31.5; Doyle Derrick, 4-3-33.7; Dan Brandt, 3-4-27.2; Arlon Bartels, 3-4-26.9; Ken Krogh, 2-5-34.1.

**CLASS D** — Dennis Rusho, 6-1-33.0; Ervin Peterson, 6-1-37.9; Bob Erickson, 5-2-32.5; Marvin Aden, 4-3-27.1; Charles Beeson, 3-4-20.4; Shady Heist, 3-4-18.8; Lee Bussard, 1-6-16.7.

**CLASS E** — Dave Martin, 7-0-32.4; Gary Sindlar, 6-1-30.1; Art McKinney, 4-3-24.5; Earl Barker, 3-4-21.6; Lloyd Mortensen, 3-4-19.8; Pat Knisley, 2-5-23.0; Bob Brown, 2-5-20.9; Murph Tinnius, 1-6-22.9.

**CLASS F** — Alvin Strasil, 4-1-17.5; Leland Schlender, 4-1-27.6; Wilbur Hodgson, 3-2-22.5; Milt Harmon, 2-3-16.5; Virgil Packard, 2-3-15.5; Mike Allen, 1-4-16.0.

**CLASS G** — Bret Filkins, 3-2-12.3; Marvin Mount, 3-2-16.5; Jerry Bruening, 3-2-12.4; Tim Boerner, 3-2-14.5; Jay Beach, 2-3-11.0; James Major, 1-4-9.5.

**NHPA APPROVED**

Guaranteed one year  
from date of purchase

**THE FIRST NEW DESIGN**  
of the  
**PROFESSIONAL PITCHING**  
**HORSESHOE**

The horseshoe with calkers on the reversed side of the toeplate. The FLIP-STYLE pitcher will now have the two calkers in a down position landing in pit.

**HIGH GRADE STEEL**  
**CASTING**

2 lb. 9 oz. only — \$27.00 pr., plus \$3.00 UPS

Send checks or money orders to:

**PETE DONOHO**  
704 STATE STREET  
REDDING, CA 96001  
Ph. 916-243-5761

**CAL-FLIP**



Allow ample time for delivery  
Made in U.S.A. - Richmond, Calif.

**CENTRAL OR. OPEN ALSO WON BY WIEDRICH — SANC. 86-202**

**CLASS A-1** — Ben Wiedrich, 7-0-77.9; Lowell Davis, 5-2-65.1; Barry Chapelle, 4-3-63.4; Ridge Leggett, 3-4-63.3.

**CLASS A-2** — Jerry Gorton, 5-3-58.3; Fred Lavett, 4-4-57.1; Dave Gutcher, 1-6-51.9; Bill Graham, 0-7-50.0.

**CLASS B** — Bob Johnson, 7-2-54.2; Ron Ferguson, 6-3-47.2; Lee Wallace, 6-3-46.1; Don Ferguson, 5-4-43.9; Charles Wendling, 3-4-47.1; Esther Ott, 3-4-47.0; Roger Christianson, 1-6-44.9; Len Christensen, 1-6-37.9.

**CLASS C** — Francis Hampton, 6-0-48.7; Larry Flanary, 4-2-38.7; Betty Tatchio, 3-3-33.2; Vic Hyder, 3-3-37.1; Esthel Benner, 2-4-36.4; Bob Beesley, 2-4-29.8; Rick Rebman, 1-5-30.8.

**CLASS D** — Genevieve Lavett, 5-1-44.2; Dan Hansen, 4-2-45.6; Sigrid Jones, 3-3-37.9; Marvin Tatchio, 3-3-39.6; Dick Culbertson, 2-4-33.8; Donna Graham, 2-4-29.8; Phyllis Centell, 2-4-28.5.

**CLASS E** — Phil Hendry, 7-0-53.3; Carolyn Ferguson, 5-2-44.1; Lloyd Kilgore, 4-3-39.2; Mo McNally, 3-4-38.4; Al Holland, 3-4-30.7; Homer Elkin, 3-4-30.2; Tom Ritter, 2-5-31.1; Dick Miller, 1-6-26.9.

**CLASS F** — Frank Moan, 7-1-31.3; Leo Beery, 5-3-26.0; Jack Stryker, 5-3-25.8; Jim Williams, 4-4-26.6; Bob Fisher, 4-4-23.6; Chuck Wenger, 4-4-22.4; Bill Johnson, 3-5-25.9; Ray Podojil, 2-6-27.6; Elmer Otnes, 2-6-23.9.

**CLASS G** — Kirby Elton, 7-2-29.4; Rob Bishop, 6-3-19.2; F.A. Hendry, 5-3-24.7; Wayne Jones, 5-3-19.3; Carl Shoberg, 4-4-23.9; Grace Wenger, 4-4-21.3; John Beery, 3-5-19.7; Mel Dearborn, 3-5-17.8; Andy Anderson, 0-8-9.1.

**ORE. STRAWBERRY OPEN TAKEN BY WIEDRICH — SANC. 86-201**

**CLASS A-1** — Ben Wiedrich, 7-0-81.1; Bob West, 5-2-70.6; Lowell Davis, 4-3-65.9; Barry Chapelle, 3-4-67.8.

**CLASS A-2** — Jerry Gorton, 5-2-62.5; Bill Graham, 2-5-58.5; Bob Johnson, 1-6-51.7; Dave Gutcher, 1-6-46.4.

**CLASS B** — Charles Wendling, 7-2-50.2; Lee Wallace, 6-3-52.9; Ron Ferguson, 6-3-47.3; Don Ferguson, 5-4-47.4; Bob Showers, 2-5-45.9; Betty Tatchio, 2-5-44.7; Esther Ott, 2-5-42.4; Len Christensen, 2-5-42.0.

**CLASS C** — Larry Flanary, 5-2-38.4; Art Lund, 5-2-42.1; Buck Davis, 4-3-39.1; O.D. McMillan, 3-4-39.9; R.E. Click, 3-4-37.0; Marvin Tatchio, 1-6-35.4; Wayne Maag, 1-6-29.1.

**CLASS D** — Ken Southern, 6-1-39.7; Gil Morgan, 5-2-42.0; Orlean Clinton, 5-2-37.1; Vern Wanless, 3-4-34.2; Dick Culbertson, 3-4-32.1; Al Holland, 3-4-31.1; Barney Root, 2-5-30.7; Noel Ness, 1-6-34.8.

**CLASS E** — Floyd Flemmer, 6-1-37.9; Carolyn Ferguson, 5-2-38.3; Gene Buzzini, 5-2-35.1; Mo McNally, 3-4-34.1; Lloyd Kilgore, 3-4-33.7; Dave Sturdevant, 3-4-31.6; Don Isaacson, 2-5-29.4; Lloyd Likens, 1-6-24.8.

**CLASS F** — Jim Kosterman, 6-2-34.9; Dick Miller, 4-3-35.8; Ben Goodling, 4-3-27.7; Dick Helm, 3-3-25.0; Frank Moan, 3-3-23.9; Bill Luehring, 2-4-24.8; Tom Ritter, 1-5-25.5.

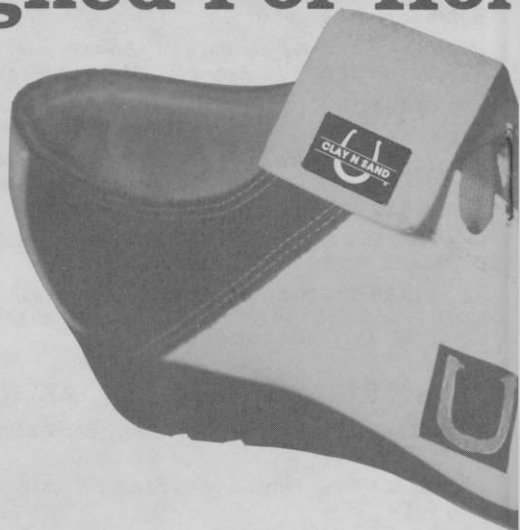
**CLASS G** — Jack Stryker, 5-1-28.9; Bill Isaacson, 4-2-31.0; Dale Dufur, 4-2-28.3; Otis Huskey, 4-2-22.5; Art Taylor, 3-2-21.1; Kathy Taylor, 1-5-12.6; Joe Grube, 0-6-12.2.

**CLASS H** — Glenn Chaput, 6-0-22.7; George Hughes, 4-2-18.0; Fred Enos, 3-3-13.6; Kent Smith, 3-3-16.7; John Williams, 3-3-16.7; Darrel Ireland, 2-4-7.5; Elmer Otnes, 0-6-17.3.

**TOURNAMENT ACTION IN NORTHERN CALIFORNIA**

Redding, California, June 7 & 8, was host to one of NCHPA's largest and finest tournaments—all lower groups had their day: C Open; Seniors; Juniors on Saturday the 7th and on the 8th, women performed in the Shasta XIII Open, sharing courts with A-Class men.

# Introducing The Designed For Hor



**Clay 'N Sand is the first sports shoe  
for horseshoe pitching as well as an  
excellent casual walking shoe.**

The soft leather composition means great give and breathability, and it's comfortable and light weight. Clay 'N Sands provide the stability and exceptional balance you need to win games and reach goals. You can confidently wear the black, gold and white Clay 'N Sands on your favorite pitching surface.

Don't delay. Order your revolutionary Clay 'N Sand Shoes today!

**CLAY 'N SAND® IS MADE IN THE U.S.A.**



# First Sports Shoe Horseshoe Pitching



**Order Your Clay 'N Sand Shoes today**

**Check Size**

Men's 8\_\_ 8½\_\_ 9\_\_ 9½\_\_ 10\_\_ 10½\_\_ 11\_\_ 11½\_\_ 12\_\_ 12½\_\_

Women's 6\_\_ 6½\_\_ 7\_\_ 7½\_\_ 8\_\_ 8½\_\_ 9\_\_ 9½\_\_

(Both shoes come medium width only.)

**PLEASE PRINT**

Name \_\_\_\_\_

Address \_\_\_\_\_

City \_\_\_\_\_ State \_\_\_\_\_ Zip \_\_\_\_\_

*Send check or money order for \$59.95 plus \$3.00 shipping and handling to:*

Clay 'N Sand, Inc.  
6901 Sheridan Rd.  
Kenosha, WI 53140  
414/654-6404

**OR**

Clay 'N Sand, Inc.  
19 Ridge Road  
Burlington, Conn. 06013  
1-800/243-3158  
8:00 a.m. - 5:00 p.m. EDT

Wisconsin residents add 5%.

**NORTHERN CALIF. — (Continued)**

**MEN CLASS C-1** — Lee Van Dolson, 6-1-45.7; Holland Payne, 5-2-46; Earl Kynard, 5-2-41.7; Leonard Rood, 5-2-41.6; Bert Charley, 3-4-39.7; Don Purdum, 2-5-35; George Gillett, 2-5-34.3.

**CLASS C-2** — A four-way tie was finally settled with Dary Dillon 7-2-33.8; Floyd Edwards, 6-3-38.5; Bob Lloyd 5-3-40; Doyle Palmer 5-3-34.6; Bud Grasaffi, 4-3-33.7; Jim Kyker 2-5-27.3; Charles McDonald 2-5-23.3.

**CLASS C-3** — Kev Reid 5-0-32.8; Joe Ferran, 3-2-28.8; Melvin Stapp 2-3-28; Leigh Graves 2-3-23.2; Obie Winn 2-3-13.6; Scott Machado 1-4-20.8.

**CLASS C-4** — Tad Donoho 7-0-31; Lee Henninger 5-2-22.3; Roy Moss 4-3-22.7; Lee Hardy 4-3-15.7; Tom Stewart 3-4-12; Bill Padgett 3-4-11; Steve Williams 2-5-17.3.

**SR. MEN CLASS 1** — Willie Bradford 5-0-58.4; Emmett Schroeder 4-1-57.2; Dick Hucce 3-2-46.8; Ruben Lee 2-3-60.4; Monte Latino 1-4-61.5; Lou Fontaine 0-5-53.6.

**CLASS 2** — Jack Eastwood 5-0-27; Bev Chlapputl 4-1-34; John Rilea 3-2-23.6; Leonard Edwards 2-3-3.8; Dwain Hettinger 1-4-21; Pete Donoho 0-5-33.2.

**CLASS 3** — Chick White 5-1-35; Buck Gendron 5-2-24.6; Art Yount 4-2-22; Eldon Bryhan 2-3-13.6; Geo. Larson 1-4-16.4; Marlon Hawley 0-5-12.4.

**MEN CLASS A-1** — Monte Lation 4-1-50.8; Chuck Seal 3-2-52; Don Williams 3-2-50; Lou Fontaine 2-3-52.8; Emmett Schroeder 2-3-42; Bob Proctor 1-4-50.8.

**CLASS A-2** — Harold Holbrook 5-0-50; Holland Payne 4-1-55.6; Dave Shelton 2-3-41.2; Tom Webb 2-3-40.8; Marty Dunn 1-4-39.6; Dick Hucce 1-4-38.2.

**CLASS A-3** — Leonard Rood 4-1-40; Joe White 3-2-43.2; Bert Charley 3-2-40.8; Earl Kynard 2-3-41.6; Ben Yost 2-3-40; Dave Schmidt 1-4-39.6.

**CLASS A-4** — Doyle Palmer 5-0-40; Gary Dillon 4-1-37.2; Bob Lloyd 2-3-38.4; Brian Carlson 2-3-29.2; Bud Grisaffi 1-4-29.2; Floyd Edwards 1-4-27.6.

**CLASS A-5** — Jack Eastwood 5-2-29.5; Joe Ferrau, 5-2-24.3; Marvin Stapp 5-3-28.7; Leigh Graves 5-3-24.3; MikHolbrook 4-3-32; Kenneth Erid 3-4-30; Scott Machado 1-6-17.3.

**CLASS A-6** — Chick White 7-0-27.7; Mark Rilea 6-1-34.3; Laurel Fisher 5-2-32.3; Obie Winn 3-4-21; Dwain Hettinger 3-4-18.7; John Rilea 2-5-19.3; Frank Westbrook 2-5-17.3.

**CLASS A-7** — Buck Gendron 7-0-32.3; George Larson 5-2-17; Glenn Raines 4-3-23; Lee Henninger 4-3-22; Bill Padgett 4-3-14.7; Lee Hardy 2-5-14.3; Henry Clark 2-5-10.3.

**WOMEN CLASS W-1** — Marthe Dunn 6-1-51.7; Vada Dunn 5-2-56.3; Sandy Hardy 2-4-37.3; Annette Williams 0-6-34.7.

**WOMEN CLASS W-2** — Lillian Lloyd 5-0-36; Bonnie White 4-1-37.3; Theora Wilson 2-3-23; Susie Rains 2-3-22.5; June Jordan 1-4-11.5.

**JR. GIRLS CLASS** — Travis Seal 3-0-26; Cathy Palmer 0-3-7.4.

**ANNUAL WOMEN'S TOURNAMENT — SAN JOSE — CLASS W-1** — Yvonne Mauzey 5-1-61.7; Billie Sue Pennington 4-2-57; Marthe Dunn 0-6-49.6.

**CLASS W-2** — Char Sorg 6-1-32.9; Lillian Lloyd 5-2-33; Josephine Charley 1-5-29; Paige Pennington 1-5-28.

**CLASS W-3** — Sandy Kolberg 4-2-31.7; Paula Carns 3-3-24; Alice Garcia 3-3-23.7; Sherry Vale 2-4-27.

**TURLOCK, CALIF. "C" OPEN W-J — MEN CLASS C-1** — Marty Dunn 7-1-53.7; Jack Sorg 6-2-47.5; Holland Payne 6-2-47.2; Don Muenchow 4-4-47.2; Bert Charley 4-4-42.8; Joe Zoglman 3-5-51.9; Fred Wood 3-5-45.6; Andy Anderson 2-6-41.9; Ben Yost 2-6-34.1.

**MEN CLASS C-2** — Jin Garrett 8-1-35; Lou Bayer 7-2-32.8; Obie Winn 7-2-28.4; Steve Ornelas 5-4-28.4; Art Rector 5-4-23.4; Gene Martin 4-5-25; Ceres Perry 4-5-22.8; Frank Westbrook 3-6-19.7; Chris Jacobson 2-7-22.8.

**MEN CLASS C-3** — Bob Thomas 8-1-25.9; Mel Valoon 8-1-30.3; Lee Henninger, 7-2-29.1; Ernie Kim 7-2-12.2; Roy Heyden 5-4-11.6; Ben Curtis 4-5-16.3; Marlon Hawley 3-6-14.9; Allen Kolberg 2-7-8.0; James Ornelas 0-9-14.7.

# NORTHERN CALIF. — (Continued)

**WOMEN CLASS W-1** — Virginia Sturla 6-1-65.4; Marthe Dunn 5-2-58; Carol Casados 2-4-48.3.

**WOMEN CLASS W-2** — Char Sorg 6-0-46; Sandy Kolberg 3-3-33.6; Josephine Charley 2-4-31; Edith Zoglman 1-5-23.

**H.O. HANSEN OPEN — JUNE 1 — SEASIDE — CLASS A-1** — Walter Ray Williams 8-0-85.0; Jesse Gonzales 5-3-79.3; Don Titcomb 4-4-74.5; Ed Floyd 68.3; Fred Lavett 1-7-58.3.

**CLASS A-2** — Marty Dunn 7-1-42.5; Jim Saunders 6-2-50.3; Walt Robinson 5-2-52; Glenn Kelly 4-3-35.4; Jack Sorg 3-4-36; Bob Lloyd 3-4-33.1; Joe Derrau 1-6-21.4; Tom Pennington 0-7-26.3.

**CLASS A-3** — Mel Falcon 5-0-24.4; Pete Duvall 3-2-22.8; Obie Winn 3-2-22.4; Ron Mann 2-3-25.6; Rob Regalado 2-3-23.6; Lee Henninger 0-5-15.6.

**CLASS A-4** — Len Cosky 5-0-22.8; Wally Stevens 4-1-12.0; Red Taylor 3-2-10; Dennis Sanlon 2-3-11.6; Chet Carter 1-4-18; Marlon Hawley 0-5-7.5.

**WOMEN CLASS W-1** — Martha Dunn 5-0-53.2; Billie Sue Pennington 4-1-58.8; Char Sorg 3-2-40.8; Lillian Lloyd 2-3-32.8; Paige Pennington 1-4-20.8; Shelley Scanlon 0-5-13.2.

**INDIAN VALLEY OPEN — MAY 31 — CLASS A-1** — Emmett Schroeder 5-0-60; Bob Proctor 4-1-56; Blackie Harms 3-1-59.6; Richard McCutcheon 2-3-54; Eddie Garcia 1-4-47.2; Walt Foreman 0-5-39.6.

**CLASS A-2** — Tolbert Stout 5-0-54.4; Lee Van Dalsen 4-1-46.8; Joe White 3-2-48; Dick Huckle 2-3-45.6; Ralph Morrison 1-5-25.2; Jim Long 0-5-25.2.

**CLASS A-3** — Bud Grisaffi 5-0-41.6; Roy Deffner 3-2-30; Leonard Edwards 3-2-28.4; Jim Kyker 3-2-25.6; Jim Cosgrove 1-4-20.4; Denny Rafferty 0-5-14.8.

**CLASS A-4** — Leigh Graves 5-1-32.3; John Riler 4-2-26.7; Laurel Fisher 2-3-24.8; Dwain Hettinger 2-3-22.4; Art Yount 2-3-20; Joe Novakovich 1-4-12.4.

**CLASS A-5** — Buck Gendron 5-0-35.2; Glen Rains 3-2-19.6; Leo Wanner 3-2-16; Rodney Mullen 2-3-24.4; Bob Decker 2-3-19.6; Lee Hardy 0-5-16.

**CLASS A-6** — Marvin Cunningham 5-0-24.4; Bob Alling 4-1-15.6; Alvis Kirby 2-3-9.2; Barry Evans 2-3-8.8; Daniel Washoe 1-4-11.2; Derrin Dronoff 1-4-5.2.

**WOMEN CLASS A-1** — Karen Alling 7-0-42.7; Sandy Hardy 5-2-41.3; Theora Wilson 5-2-31.7; Gall Cook 4-3-29.3; Susie Rains 3-4-23.3; Alice Garcia 3-4-16.7; Joann Wanner 1-6-19.7.

**WOMEN CLASS A-2** — Charlene Mullen 7-1-23.7; Norma Melton 6-2-14.3; Marian Hilpert 4-3-19.; Toni Hilpert 4-3-14.3; June Jordan 4-3-11.3; Judy Garcia 3-4-14.7; Tom Alling 1-6-4.3.

**CLASS A-1** — Blackie Harms 5-0-58; Richard McCutcheon 4-1-56.4; Tolbert Stout 2-3-56; Dick Huckle 2-3-48.8; Don Williams 1-4-49.2; Walt Foreman 1-4-45.2.

**CLASS A-2** — Lee Van Dalsen 5-1-47.6; Joe White 4-2-44.3; Jim Long 3-2-40.8; Ralph Morrison 2-3-37.2; Doyle Palmer 1-4-41.2; Dewayne Schmidt 1-4-36.

**CLASS A-3** — Don Gore 5-1-31.3; Bud Grisaffi 4-2-39.7; Roy Deffner 3-2-28.8; Leonard Edwards 2-3-30.8; Jim Kyker 2-3-28; Jim Cosgrove 0-5-21.2.

**CLASS A-4** — Mark Rilea 5-1-34.7; John Rilea 4-2-36; Leigh Graves 3-2-28.4; John Barney 2-3-29.6; Dwaine Hettinger 2-3-24.4; Harvey Merino 0-5-24.

**CLASS A-5** — Buck Gendron 5-0-36; Laurel Fisher 4-1-26; Art Yount 3-2-22; Rodney Mullen 2-3-21; Leo Wanner 1-4-18.

**CLASS A-6** — Marvin Cunningham 5-0-30.8; Glen Rains 3-2-24.4; Bob Alling 2-3-17.2; Daniel Washoe 2-3-16.8; Fred Osborn 2-3-14.4; Les Hewston 1-4-12.8.

**WOMEN CLASS W-1** — Karen Alling 7-0-42; Theora Wilson 6-1-41.3; Annette Williams 5-2-38.7; Gall Cook 4-3-30; Susie Rains 2-5-21.3; Joann Wanner 2-5-18.7; June Jordan 2-5-15.7.

**WOMEN CLASS W-2** — Charlene Mullen 5-0-20.5; Marian Hilpert 4-1-17.5; Toni Hilpert 2-3-18; Judy Garcia 2-3-14; Norma Melton 3-10.

**JUNIORS CLASS J-1** — Cathy Palmer 4-0-6.5; Robbie Osborn 2-2-8; Tom Alling 0-4-1.

# DEADEYE HORSESHOES

## NOW IN

## FIVE MODELS

CLYDESDALES NOW IN LIGHTER WEIGHTS

	Price Per Pr.—Up to 12 Pairs	Price Per Pr.—12 Prs. & Over
CLYDESDALES 2# 10 oz., 2# 9 oz., 2# 8 oz., & 2# 7 oz.	\$27.00/Pr.	\$20.00/Pr.
N.T. 2# 10, 9, 8, 7 oz.	\$27.00/Pr.	\$20.00/Pr.
REGULAR 2# 8, 7, 6 oz.	\$27.00/Pr.	\$20.00/Pr.
E-Z GRIP 2# 10, 9, 8, 7 & 6 oz.	\$32.00/Pr.	\$25.00/Pr.

*Prices on all "DEADEYE" f.o.b. point of shipment.  
Missouri residents add 4.725% sales tax.*

All "DEADEYES" are dead soft (curved only).

All "DEADEYE" are guaranteed against breakage for 2 years  
from Date of Original Purchase (NOT RE-PLACEMENT DATE)

Contact (Bill Courtwright ONLY) for special prices on  
rejects and returned shoes (NO GUARANTEE)

DEADEYE Caps Available — \$5.00 postpaid

W. Courtwright

P.O. Box 742

Fenton, MO 63026

Phone: (314) 376-5222

(314) 677-2200 (8-5)

Walter Ray Williams, Jr.

c/o Esther Williams

2550 North Vine

Tucson, AZ 85719

Phone: (602) 323-7445

(602) 795-1389 after 6 p.m.

For Local NHPA Representative Contact:

Game Related National Buyer

Edward A. Domey,, P.O. Box 298, Wilkinsonville, Ma 01590

(617) 865-4619

**ORDER DIRECT or from NHPA REPRESENTATIVE**

## RAY HILL NEW CHAMP OF EAU CLAIRE, WISC. OPEN

**MENS CLASS A** — Ray Hill, 11-0-73.8; Len Lipovsky, 9-2-65.0; Kevin Cone, 8-3-72.0; Jack O'Connor, 8-3-68.9; Elwood Johnson, 7-4-65.0; Dave Hughes, 6-5-68.5; Roger Poutanen, 6-5-67.6; Fred Larson, 5-6-60.5; Donald Hostrup, 3-8-56.1; Curtis Bestul, 2-9-48.5; Donald Jakel, 1-10-47.4; Dale Lipovsky, Forfeit.

**MENS CLASS B** — Roger Comerio, 6-1-58.8; Donald Allen, 6-1-56.5; Vince Jakel, 4-3-53.4; Bub Gedatus, 4-3-53.1; Brian Repinski, 4-3-50.0; Norman Mauthe, 3-4-53.1; Ray Tilli, 1-6-44.5; Al Lonnig, 0-7-48.2.

**MENS CLASS C** — Clayton Gage, 6-1-55.7; Jim Holland, 5-2-52.8; Steve Backhaus, 5-2-51.1; Ted Laursen, 5-2-50.0; Gary Mattison, 3-4-43.7; Jeffery Secord, 2-5-39.7; Tom Johnstone, 1-6-35.1; R. Dunn, 1-6-32.8.

**MENS CLASS D** — Randy Rein, 7-0-57.7; Donald Marx, 5-2-44.7; Gib Gingras, 5-2-44.5; Raymond Furey, 4-3-49.1; Paul Maahs, 4-3-48.2; Leo Samuelson, 2-5-43.4; Abraham Austin, 1-6-32.0; Al Ayers, 0-7-38.2.

**MENS CLASS E** — Ernie Ulku, 6-1-40.2; Dale Nicewanger, 4-3-49.4; Donald Hendricks, 4-3-42.5; John Secord, 3-4-43.7; Larry Barber, 3-4-40.2; Wally Topper, 3-4-39.7; Walter Busse, 3-4-32.2; Art Eglund, 2-5-38.8.

**MENS CLASS F** — Mark Goodwin, 6-1-44.0; Delbert Karsjens, 5-2-44.5; Isaac Davis, 5-2-43.7; Alf M. Olsen, 4-3-41.1; Bill Hanneman, 3-4-42.8; Ralph Gullingsrud, 3-4-32.0; Ted Rohde, 2-5-31.7; Merrill Semington, 0-7-36.2.

**MENS CLASS G** — Owen Simmons, 6-1-51.1; Bob Simpson, 6-1-40.3; David Johnson, 5-2-44.2; Leonard Mauthe, 4-3-42.0; Sidney Hough, 4-3-32.5; Norman Gage, 2-5-37.1; Jerry Griggs, 1-6-32.2; Dick Greenfield, Forfeit.

**MENS CLASS H** — Ken Jevne, 5-2-43.4; Gene Anderson, 5-2-37.4; Wayne Ballhagen, 4-3-38.8; Bob Lindberg, 4-3-37.7; Alan Fisher, 4-3-35.4; Bud Kuhnert, 3-4-34.2; Kenneth Greenlee, 2-5-30.2; Fred Smith, 1-6-24.0.

**MENS CLASS I** — Rudy Larson, 6-1-45.4; Leonard Lazar, 5-2-48.5; Bill Schaaf, 5-2-39.7; Sam Satonica, 3-4-30.0; Jim Hoff, 3-4-28.8; Bill Strand, 3-4-26.8; John Crook, 2-5-33.1; Les Holland, 1-6-26.2.

**MENS CLASS J** — Dan Paff, 7-0-40.5; Roberg Gregorich, 5-2-36.0; Dale Bloom, 4-3-32.2; Bill Burton, 3-4-28.8; Ralph Dykes, 3-4-28.2; Bob Amderson, 3-4-25.4; Ron Rogalski, 3-4-25.4; Tilmur Rustad, Forfeit.

**MENS CLASS K** — Rolly Topper, 6-1-36.0; Al Johnson, 6-1-34.2; Chris Christians, 5-2-35.4; Martin Firkus, 4-3-30.8; Henry Stromgren, 3-4-28.8; Eldon Eaton, 3-4-24.2; Delmar Hanson, 1-6-27.1; Wilbur Gay, Forfeit.

**MENS CLASS L** — Gary Bloedorn, 7-0-34.4; Bill McNaughto, 4-3-38.2; Charley Flaskrud, 4-3-32.8; Gerald Chesmore, 4-3-31.7; Roger Schultz, 3-4-36.2; Robert Jackson, 3-4-35.4; Del Backhaus, 2-5-24.5; Lyle Gast, 1-6-28.5.

**MENS CLASS M** — Dewayne Hazen, 7-0-38.0; Laurence Suda, 5-2-29.4; Gary Brandt, 4-3-27.7; David Lendosky, 4-3-24.8; Bill Hildebrand, 3-4-28.5; Jerry Briggs, 3-4-24.8; Ivan Ruzic, 2-5-23.1; Joe Crook, 0-7-24.0.

**MENS CLASS N** — Richard Engmann, 7-0-37.4; Bill Nichols, 5-2-36.2; Pat Backhaus, 4-3-28.0; Jim Newland, 4-3-24.8; Andy Brezina, 3-4-20.2; Augie Bell, 2-5-20.5; Avery Burton, 2-5-19.4; LenLuedtke, 1-6-19.1.

**MENS CLASS O** — Norman Crook, 7-0-19.7; Lowell Topper, 4-3-19.4; John Brezina, 4-3-19.3; Harvey Bell, 4-3-15.7; Wayne Satonica, 3-4-24.8; Albert L. Brouillett, 3-4-21.0; Art DeRusha, 3-4-20.2; Steve Bluem, 0-7-8.8.

**MEN'S CLASS P** — Marvin Topper, 4-1-23.2; Garth Topper, 3-2-18.0; Eli Lucas, 3-2-11.6; Robert Mattson, 2-3-21.6; Ronald Zipplin, 2-3-12.4; Walter Teslaw, 1-4-5.6.

**LADIES A** — Jackie Hughes, 7-0-61.3; Jane Smith, 6-1-63.3; Pat Eaton, 5-2-59.0; Lynne Hughes, 4-3-48.0; Edl Holland, 3-4-54.6; Chris Gage, 3-4-48.6; Edith McKinny, 1-6-49.7; Shary Klopp, Forfeit.

**LADIES B** — Sarah Ross, 7-0-50.8; Ev Goshaw, 6-1-49.4; Renee Volgren, 4-3-38.2; Gloria Smith, 3-4-35.1; Myrna Moyer, 3-4-30.1; Faith Jackson, 2-5-32.2; LeAnn Maahs, 2-5-31.1; Nina Vold, 1-6-26.8.

## EAU CLAIRE OPEN — (Continued)

**LADIES C** — Linda Bluem, 7-0-30.0; Judy Karsjens, 5-2-31.1; Ida Hostrup, 4-3-32.5; Caryl Sass, 4-3-25.7; Debby Thompson, 3-4-24.0; Elly McCarn, 3-4-18.0; Anna Harms, 2-5-27.7; Joyce Hazen, 0-7-16.5.

**LADIES D** — Beaty Bestul, 5-1-17.0; Sue Rein, 4-2-17.3; Audrey Nichols, 2-4-5.3; Diane Luedtke, 1-5-4.6.

**JUNIORS CLASS A** — Debby Bestul, 6-0-45.3; April Gage, 3-3-38.0; Jeff Mauthe, 2-4-36.6; Travis Maahs, 1-5-32.3.

**JUNIORS CLASS B** — Stacy Backhaus, 4-0-33.5; Craig Novinski, 3-1-33.5; Curt Schmirler, 2-2-20.0; Len Luedtke Jr., 1-3-8.0; Laurie Luedtke, 0-0-2.5.

## WEBB TOPS TREMONT, ILL. TURKEY FESTIVAL OPEN — SANC.

A day of new challenges, new players, good turkey, good weather and lots of friends. Largest registration ever and gaining in interest every year. Charlie Webb defended his Championship position with a new high average of 77.7% ringers and a high game of 86.9%. As tournament director I wish to thank all participants and scorekeepers and helpers, especially Joe Hightower. — Loren Gillespie, Promoter

**CLASS A** — C. Webb, 7-0-77.7; L. Ingersoll, 6-1-68.1; Don Peters, 4-3-65.4; Ray Phillips, 4-3-62.9; E. Damarin, 3-4-56.4; D. Boren, 2-5-60.0; H. Nelson, 2-5-53.5; M. Knop, 0-7-5.5.

**CLASS B** — Bob Erickson, 5-2-59.9; Larry Knop, 5-2-56.3; Buck Neville, 5-2-53.9; D. Swank, 5-2-53.9; G. Manker, 5-2-56.4; C. Nott, 2-5-42.0; Lori Oberbillig, 1-6-45.9; W. Willard, 0-7-27.2.

**CLASS C** — D. Ellinger, 6-1-51.7; Al Peterman, 5-2-50.3; D. Simler, 5-2-46.1; P. Dohrmann, 3-4-51.4; Bob Switzer, 3-4-40.9; Don Bailey, 3-4-35.7; Luke Carey, 2-5-38.9; Larry Brooks, 1-6-35.5.

**CLASS D** — Arol Castros, 6-1-37.2; Art Ulrich, 4-3-35.1; W. Massey, 4-3-32.1; J. Gerrard, 4-3-35.4; Rex Seeds, 4-3-36.9; Ken Reid, 3-4-37.6; Geo. King, 3-4-30.6; Dich Clark, 0-7-12.1..

**CLASS E** — Jim Miller, 7-0-37.5; Chas. Marit, 5-2-33.0; Ed. Broker, 5-2-36.8; E. Simler, 5-2-39.9; B. Stevenson, 3-4-28.3; D. Harlin, 1-6-24.1; A. Jones, 1-6-23.7; C. Daniels, 1-6-19.6.

**CLASS F** — J. Sanderson, 6-1-35.5; Al Kaisershot, 6-1-29.5; Mick Stotler, 6-1-37.8; Joe Beneky, 3-4-23.3; Noel Boatz, 3-4-20.2; Bob Nelson, 3-4-22.2; Steve Nott, 2-5-15.2; D. Bartnich, 0-7-14.2.

## OMAHA, NEBRASKA SANCTIONED TOURNAMENT — JUNE 29

**CLASS A** — Dale Seybert, 4-1-54.0; Emery Brandt, 3-2-54.1; Clare West, 3-2-51.4; Lorin Mills, 3-2-48.8; John Ingrams, 2-3-46.5; Pat Allen, 0-5-34.3.

**CLASS B** — Frank Daubert, 4-1-49.0; Charles Trojan, 3-2-46.8; Marvin Edson, 3-2-41.9; Ray Daugherty, 3-2-39.4; Bob Galas, 1-4-36.8; Don Abernathy, 1-4-30.0.

**CLASS C** — Dick Vavrick, 4-1-35.6; Merle Alswager, 3-2-41.9; Merle Cottle, 3-2-35.6; Dick Schell, 3-2-34.4; Larry Holmes, 2-3-32.0.

**CLASS D** — Hank Wnuk, 4-1-38.0; Jerry Callahan, 4-1-29.3; Bob Dietze, 3-2-31.2; George West, 2-3-29.3; Gary Sindelar, 1-4-31.1; Harold Voskamp, 1-4-22.0.

**CLASS E** — Gene Heinzeman, 4-1-29.3; Wade Huff, 4-1-27.6; George Miller, 3-2-34.7; Roger Krambeck, 2-3-27.1; Irwin Stone, 2-3-24.5; Ron West, 0-5-21.7.

**CLASS F** — Tom Durham, 4-1-30.2; Jerry Davison, 4-1-29.2; Chuck Brandt, 2-3-28.7; Erwin Anderson, 2-3-25.7; Mike Sindelar, 2-3-23.3; Rick Boll, 1-4-21.8.

**CLASS G** — Bob Hanna, 4-1-24.8; Merle Louis, 4-1-24.5; Jim Albright, 3-2-17.6; Elgin Jenny, 2-3-14.2; Loren Katt, 2-3-12.1; John Reimers, 0-5-15.3.

**CLASS H** — Alan Seybert, 5-0-17.2; Mike Allen, 4-1-25.9; John Tackett, 3-2-7.8; Tom Boerner, 2-3-10.4; Kevin Jenny, 1-4-6.0; Gus Moore, 0-5-1.6.

**JUNIORS** — Jason Brandt, 3-0-34.7; Jason Katt, 0-3-9.0.



## DARNOLD ON TOP IN IOWA CITY, IA. MEET — SAN. 86-86

**CLASS A** — Harold Darnold, 4-1-69.9; Art Hampton, 4-1-65.9; Wilbert Foelske, 2-3-66.2; Ron Burgess, 2-3-58.8; Keith Baker, 2-3-58.6; Glen Henton, 1-4-59.4.

**CLASS B** — Byron Hafner, 4-1-56.1; Leo Buell, 4-1-54.0; J. Roussel, 3-2-52.1; William Wilson, 3-2-48.7; D. Holdridge, 1-4-39.6; Don Marx, 0-5-41.2.

**CLASS C** — Kevin Trowbridge, 4-1-38.2; Lester Bell, 4-1-37.1; Marvin Boyd, 3-2-34.3; James Jackson, 2-3-35.2; Delbert Jackson, 1-4-34.3; Dannie Sease, 1-4-31.1.

**CLASS D** — Dean Wehrle, 5-0-46.8; Bob Walters, 3-2-46.0; Don Prottsman, 3-2-40.0; Dale Feye, 2-3-38.4; Allen Cook, 1-4-39.6; Walter Bantz, 1-4-32.4.

**CLASS E** — Alan Fisher, 5-0-41.2; Leo Lamparek, 3-2-40.0; Dan Dickey, 3-2-38.4; Vern McGrath, 3-2-35.6; Don Anderson, 1-4-28.4; Marion Lange, 0-5-22.8.

**CLASS F** — Tom Berggen, 4-1-30.0; Ron McComb, 4-1-26.0; Gene Long, 3-2-29.6; Tom Smock, 2-3-29.2; Bud Hottle, 2-3-24.4; Roland Von Thun, 0-5-22.8.

**CLASS G** — Mike Murphy, 6-1-23.6; Bob St. George, 6-1-17.3; Jerry Lampe, 6-1-31.0; John Rammesburg, 2-5-23.6; Arbe Barels, 2-5-16.3; Tom Mueller, 3-4-12.6; Ken Cook, 3-4-13.6.

**WOMEN** — Marianne Colony, 3-0-38.0; Betty McGregor, 2-1-26.6; Mildred Hottle, 1-2-18.6; J. Bergram, 0-3-11.3.

## H. WILLIAMS NEW CHAMP OF MICH. WATER WONDERLAND OPEN — JAMIE MILLER JR. CHAMP — JUNE 7-8

**CLASS A** — Harry Williams, 9-2-56.6; Ozzie Williams, 9-2-61.0; Jus Perticone, 8-3-57.6; Gary Gardner, 6-5-60.1; Charlie Laramie, 6-5-58.2; Dick Frakes, 6-5-56.1; Rick Gyorkas, 5-6-55.8; Duane Gillin, 5-6-53.2; Stan Swarthout, 3-8-54.2; Dick Pelton, 3-8-52.9; Ed Schultz, 3-8-52.4; Clayton Bonham, 2-9-53.6.

**CLASS A WOMEN** — Jean Swarthout, 3-0-58.1; Ann Wedel, 0-3-49.2.

**CLASS B** — Dale Dombrowsky, 9-2-53.8; George Stifel, 8-3-43.6; Glen Lehrke, 7-4-59.3; Tom Williams, 7-4-51.1; Jim Wiltse, 7-4-50.9; Dick Stehno, 6-5-42.4; Ken Miller, 6-5-42.4; Dewey Howard, 5-6-45.0; Roy Haines, 4-7-32.7; Ben Shutt, 3-8-41.5; Roy Colby, 3-8-28.1.

**CLASS C** — Fred Smith, 9-2-49.1; John Fitzpatrick, 8-3-40.5; M. Farrand, 8-3-38.9; Keith Briggs, 7-4-46.8; Dick Warner, 6-5-41.0; Charlie Bowen, 6-5-37.6; Walt Ransom, 5-6-37.4; Bill La Joy, 5-6-29.4; Al Grammatico, 4-7-34.7; Mike Supina, 3-8-36.6; Sandy Baker, 3-8-30.0; Boyd Stonerock, 2-9-34.5.

**CLASS D** — Walt Wedel, 9-2-38.9; Milt Greenman, 9-2-36.6; Harold Persinger, 8-3-35.5; Chuck Lemons, 7-4-39.5; Jack Stover, 7-4-38.7; Al Morris, 7-4-33.7; Frank Barnes, 5-6-30.7; Roy Peterson, 5-6-29.7; Claude Gillin, 4-7-30.2; Joe Spittler, 2-9-24.6; Marv Falk, 2-9-23.6.

**CLASS E** — Leonard Krause, 5-0-19.9; Bill Ingle, 4-1-28.9; Don Mattingly, 3-2-26.9; Rex Ryan, 2-3-23.2; Ed Temple, 1-4-16.9; Dennis Miller, 0-5-20.1.

**CLASS F** — Todd Cottrell, 3-1-15.5; Tom Frizzell, 3-1-33.1; Curt Dunlap, 3-1-26.0; Clarence Boyer, 1-3-11.1; Garth Walters, 0-4-14.2.

**CLASS A — JUNIOR BOYS** — Jamie Miller, 4-0-33.8; John Harrell, 3-1-31.0; Ben Dennis, 2-2-27.5; Jason Warner, 1-3-17.4; Matt Warner, 0-4-5.1.

## MIDWEST INVITATIONAL — SEPT. 20-21 — CAMP ATTABURY, IND.

The Midwest Invitational tournament, sponsored by the ILLINOIS-INDIANA-MICHIGAN Associations will be held at the Johnson County Park at Attabury, Ind. There are 18 indoor courts. Tournament is sanctioned and is open to all pitchers. Entry fee is \$20.00 per player and the deadline for all entries is two (2) weeks prior to tournament date. NHPA card is required. All entries should be sent to Robert Reid, P.O. Box 241, Scottsburg, Indiana 47170. Pitchers will be notified as to time they will play.

## FRAKES WINS INDEPENDENCE, MO. SPRING SANC. OPEN

Our regular spring tournament scheduled May 17-18 had to be rescheduled May 24-25 due to heavy rains. When we did get to play, Ron Frakes walked away with the Men's A Class with a 7-0-70.6%, Loree Meier won the Women's A Class with a 7-0-60.6 and Alan Francis topped all juniors with a 6-0-82.1 average.

**CLASS A** — R. Frakes, 7-0-70.6; C. Killgore, 5-2-65.9; L. Francis, 4-3-56.6; P. Toole, 4-3-50.8; W. Trautwein, 3-4-51.9; M. Turner, 2-5-57.9; B. Barnes, 2-5-51.7; G. Fleek, 1-6-47.2.

**CLASS B** — B. Outt, 6-1-61.2; J. Bray, 6-1-58.7; T. Francis, 5-2-46.8; L. Elmore, 4-3-50.3; B. Long, 3-4-50.3; G. Johnson, 3-4-45.3; D. Kincald, 1-6-40.0.

**CLASS C** — J. Schmotz, 5-2-42.0; L. Clevenger, 5-2-37.4; B. Johnson, 5-2-38.4; M. Lundeen, 4-3-41.0; G. Towne, 4-3-39.9; G. Rathburn, 2-5-32.4; R. Richardson, 2-5-30.5; T. Talley, 1-6-30.2.

**CLASS D** — J. Beem, 6-1-35.2; D. Hanes, 5-2-37.0; M. Johnson, 4-3-40.9; G. Plute, 4-3-38.0; A. McCorkendale, 4-3-28.3; O. Ellerman, 3-4-33.3; L. Rice, 2-5-29.7.

**CLASS E** — B. Turner, 6-0-34.0; E. Kirby, 4-2-33.1; G. Poe, 2-4-29.6; K. Hale, 0-6-27.8.

**CLASS F** — M. Blood, 6-1-31.1; R. Gwinn, 5-2-25.3; M. Cline, 5-2-22.5; C. Bruner, 4-3-26.2; K. Whitworth, 3-4-27.1; B. Hayes, 3-4-18.4; M. Goodman, 2-5-17.6; A. Gwinn, 0-7-13.1.

**CLASS G** — K. Armstrong, 9-0-33.2; M. Clayton, 7-2-23.8; R. Jones, 7-2-23.8; T. Bootka, 6-3-26.5; D. Comer, 4-5-21.6; R. McDaniel, 4-5-18.4; S. Boswell, 4-5-16.9; I. King, 3-6-18.0; C. Carter, 1-8-3.0.

**CLASS H** — E. Clevenger, 5-0-26.7; C. Tuttle, 4-1-17.6; J. Allen, 3-2-18.1; S. Kidd, 1-4-17.9; E. Stapleton, 1-4-15.7; L. Lowery, 1-4-15.1.

**WOMEN'S CLASS A** — L. Meier, 7-0-60.6; J. Francis, 6-1-30.0; D. Blood, 5-2-41.5; N. Bray, 4-3-26.0; R. Killgore, 2-5-27.7; S. Armstrong, 2-5-26.0; B. Nichols, 2-5-22.4.

**WOMEN'S CLASS B** — K. Poe, 5-0-30.1; B. Wetzel, 4-1-21.4; N. Haley, 3-2-17.5; M. Holt, 1-4-7.3; L. Kline, 1-4-6.0; P. Zinner, 1-4-5.4.

**JUNIOR CLASS A** — A. Francis, 6-0-82.1; J. Hart, 4-2-58.9; S. Barnes, 2-4-50.5.

**JUNIOR CLASS B** — M. Bell, 3-0-40.0; P. Johnson, 2-1-28.3; J. Bell, 2-1-12.5; B. Francis, 0-3-5.0.

## NORWOOD EDGES WARD FOR TENN. DAVENPORT MEMORIAL TITLE — ELIZABETHTON, TENN. — SANC. 86187

**CLASS A** — R. Norwood, 4-1-73.4; D. Ward, 3-2-77.4; R. Martino, 3-2-70.9; R. Pruitt, 2-3-70.8; W. Stephens, 2-3-65.1; A.J. Nave, 1-4-62.6.

**CLASS B** — V. Fox, 3-2-51.6; N. Kelly, 3-2-50.8; G. Whaley, 3-2-51.2; S. Smith, 2-3-55.3; H. Irwin, 2-3-53.0; D. Stallings, 2-3-51.7.

**CLASS C** — J. Whaley, 3-2-48.0; G. Lewis, 3-2-45.4; J. Shelton, 3-2-45.2; R. Ward, 2-3-52.1; M. Altizer, 2-3-45.1; R. Livingston, 2-3-44.7.

**CLASS D** — T. Johnson, 5-0-44.2; C. Bennett, 4-1-43.4; S. Callahan, 2-3-38.5; D. Mitchell, 2-3-37.9; D. Self, 1-4-35.6; H. Foster, 1-4-34.2.

**CLASS E** — C. Harmon, 4-1-41.8; W. White, 4-1-37.3; J. Sproles, 4-1-30.6; C. Cutshaw, 2-3-31.0; J. Davis, 1-4-19.0; H. Lones, 0-5-23.0.

**CLASS F** — J. Bennett, 3-0-25.5; B. Grindstaff, 1-2-20.8; J. Cable, 1-2-19.4; R. Finney, 1-2-16.6.

## BLOOM OVER NELSON FOR BELOIT, WISC. SINGLE TITLE

**CLASS A** — Dan Bloom, 7-1-62.0; Hiram Nelson, 6-2-62.0; Carl Turman, 5-2-57.0; Mark Bratley, 4-3-58.0; Don Goldsmith, 3-4-50.0; Bun Carley, 3-4-48.0; Bob Runaas, 1-6-44.0; Buck Huffman, 0-7-40.0.

**CLASS B** — Ken Lovaas, 6-2-38.0; Red Ferguson, 5-3-36.0; Ron Yttri, 4-3-43.0; Sid Anderson, 4-3-41.0; Jerry Nordlee, 3-4-35.0; Earl Paulson, 3-4-36.0; Myron Paulson, 3-4-30.0; Bud Renley, 1-6-29.0.

**BLOOM OVER NELSON — (Continued)**

**CLASS C** — Dale Lokken, 7-0-30.0; Terry Lokken, 5-3-27.0; Bill Nehls, 5-4-20.0; Stan Nelson, 4-4-22.0; Nate Johnston, 3-4-22.0; Bill Oakley, 3-4-19.0; Daryl Hagen, 2-5-16.0; Fred Zellstra, 1-6-20.0.

**CLASS D** — Bob Geeser, 7-0-20.0; Ken Austin, 6-2-19.0; Tom Bird, 5-3-22.0; Charlie Potter, 4-3-16.0; Al Schilem, 3-4-15.0; Norm Beckius, 3-4-13.0; Alden Scott, 1-6-9.0;

**CLASS E** — Duane Woodward, 7-0-13.0; Dale Drake, 5-2-7.0; Wayne Fry, 4-3-11.0; Ray Schenck, 4-3-4.0; Bob Strauss, 3-4-2.0; Ken Jacobson, 2-5-7.0; Jerry Coonrod, 2-5-5.0; Vic Paulson, 1-6-3.0.

**PRE-W.T. RESULTS — AINSWORTH, NEB. — JUNE 7-8 — SAN. 82-285**

**CLASS A MEN** — Leland Fecht, 8-2-58.0; Keven Cone, 7-3-56.5; Don McCance, 6-4-55.5; Rex Robinson, 6-4-51.9; Arnie Frankhouser, 3-7-46.9; Kenny Tousan, 0-10-46.4.

**CLASS B MEN** — M. Ryan, 11-3-38.2; Gorder, 11-3-35.5; Harvey, 8-6-35.1; Russell Grooms, 7-7-33.3; C. Cone, 7-7-32.8; Harlan Jensen, 7-7-29.6; Cecil Savage, 5-9-34.3; Harold Updike, 1-13-25.5.

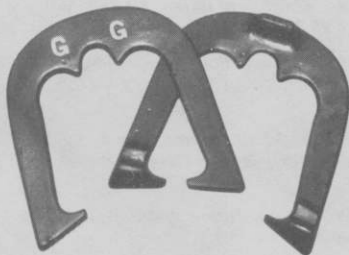
**CLASS C MEN** — Lance Larabee, 16-2-38.4; C. Gregory, 13-5-35.2; Merle Alswagger, 13-5-31.6; Fred Weckmester, 12-6-36.9; Chuck Grooms, 7-11-33.5; Allen Harlen, 12-6-31.5; Roger Slisson, 7-11-26.6; Marty Craig, 5-13-23.9.

**CLASS D MEN** — Jim Sybrant, 16-0-30.4; Jr. Montross, 12-4-21.0; L. Kime, 9-7-21.0; Vern Jamison, 9-7-18.5; Roger Wentworth, 8-8-19.8; Terry Martin, 8-8-18.0; Kermit Pearson, 6-10-14.9; Jim Hopkins, 3-13-12.1; Lance Cole, 3-13-15.

**CLASS E MEN** — Paul Goodwin, 5-1-18.16; Link Poore, 4-2-14; Al Hodgge, 3-3-15.16; John Samuelson, 0-6-8.5.

**"GREEOTT GRABBER"**

the ultimate ringer keeper



Soft temper 2lb. 8oz. 2lb. 9 oz.

Not JUST another horseshoe. The ultimate shock-absorbing, ringer saving design. Helps prevent loss of solidly hit ringers by rebounding.

Guaranteed against breakage for 1 year from date of purchase. Both pairs must be returned in original box.

\$28.00 pr. plus \$3.00 shipping, handling, to the 48 adjoining states. California residents add 6% tax. High grade steel casting. NOT cast iron. Send checks or money orders to:

"GREEOTT GRABBER" HORSESHOES  
c/o Steve Kynard 1380 Eagle Rock  
Woodland, CA 95695

Or from NHPA representatives



## PRE-W.T. RESULTS — (Continued)

**CLASS F MEN** — A. Frankhouser, 10-0-12.8; Dick Walt, 6-4-8.4; Earl Terry, 4-6-3.8; Sue Percival, 2-8-6.0.

**CLASS A WOMEN** — Sally Grooms, 10-2-44.5; Glenda Amsberry, 10-2-48.9; Pam Peterson, 2-10-28.6; Tammy Grooms, 3-9-31.1.

**CLASS B WOMEN** — Wilma Peters, 9-3-27.3; Anita Grooms, 6-6-24.0; M. Fox, 6-6-23.7; B. Flala, 3-9-22.3.

**CLASS A JRS.** — Lance Larabee, 9-3-52.4; Scott Steele, 8-4-37.2; Jeff Frankhouser, 7-5-45.3; K. D. Tousey Jr., 0-12-19.8.

**CLASS B JRS** — Glen Hodge, 9-1-17.2; C. Chizek, 8-2-17.9; Michele Frankhouse, 5-5-15.5; Wade Luther, 5-5-13.2; Joe Cole, 4-6-13.6.

**CLASS C JRS.** — Danny Jamison, 10-0-11; John Steele, 7-3-7; Scott Painter, 7-3-5.8; Cody Luther, 3-7-5.1; Rachel Swanson, 3-7-1.6.

## DEBBIE PICKERING TOPS KEENE, N.H. WARMUP — SANC.

**CLASS A** — Debbie Pickering, 6-0-85.0; John Kapnis, 5-1-81.2; Kevin Hollister, 4-2-76.3; Bernard Davis Sr., 3-3-72.2; Gale Greene, 3-3-61.2; David Wilson, 2-4-62.5; Dick Greene, 1-5-59.1; Liz Downer, 0-6-62.8.

**CLASS B** — C. Richardson, 5-2-59.4; B. Davis, Jr., 5-2-54.0; D. Sawyer, 5-2-50.4; B. Leavitt, 4-3-53.8; L. Croteau, 4-3-50.4; A. Hogan, 3-4-46.6; R. Traquair, 2-5-41.7. Bye.

**CLASS BB** — Edward Bodinski, 6-0-48.2; Richard plourde, 5-1-48.0; David Wescott, 3-3-42.5; Howard Murphy, 3-3-38.4; Robert Ladd, Jr., 2-4-41.3; Sam Raymond, 2-4-37.5; David Martin, 2-4-33.5; Ken Downer, 1-5-28.0.

**CLASS C** — G. Loring, 6-1-37.6; T. Wiggins, 5-2-37.7; W. Burnham, 4-3-35.3; D. Belanger, 3-4-36.0; F. Tompkins, 3-4-35.9; R. Grenier, 3-4-32.9; T. Booth, 3-4-29.1; B. McMahon, 1-6-27.5.

**CLASS CC** — L. Bishop, 6-1-32.9; G. St. Pierre, 6-1-27.8; N. Ricard, 5-2-30.9; E. Moore, 3-4-33.1; H. Labine, 3-4-24.7; H. Schricker, 3-4-24.1; W. Robinson, 2-5-22.8; P. Hatch, 0-7-18.0.

**CLASS D** — William Martin, 5-1-36.7; Warren Hall, 4-2-42.0; Garry Burke, 4-2-34.8; William Smith Jr., 3-3-33.3; Don Lachance, 2-4-34.2; Ray Benson, 2-4-28.8; Richard Espletree, 1-5-29.7.

**CLASS DD** — Barney Pratt, 7-0-32.1; Raymond Fife, 6-1-33.0; Ricky Fife, 4-3-32.9; Bill Progen, 4-3-25.0; Ernie Baillargeon, 3-4-28.0; Wade Wiggins, 2-5-27.2; Ken Lacaille, 1-6-24.2; John Page, 1-6-16.0.

**CLASS E** — Alan Shepard, 7-0-41.7; Wayne Robinson, 6-1-28.3; Rene Caron, 5-2-32.6; Archie Jones, 3-4-28.4; Bob Gesick, 3-4-19.0; Donald Greene, 2-5-25.8; Gerald Carey, 1-6-21.0; Paul Hatch Jr., 0-7-13.4.

**CLASS EE** — Tom Mitstifer, 4-1-35.2; Richard Cox, 4-1-26.1; Bruce Wellington, 3-2-29.3; Brad Miller, 2-3-19.7; J. Edward Terrell, 1-4-20.5; Dave Cleveland, 1-4-14.7.

**CLASS F** — Forest Rollins, 6-0-32.8; Don McIlvene, 4-2-23.7; Richard Gauthier, 3-3-22.8; Gary Milosh, 3-3-19.3; Dennis Aiken, 3-3-19.1; Percy Howe, 2-4-22.8; Anthony Naciewicz, 0-6-17.2.

**CLASS FF** — Armando Deluca, 6-1-20.1; Richard Wilson, 6-1-19.3; Bruce Carey, 4-3-19.9; Wayne Anderson, 3-4-18.6; Todd Dunham, 3-4-18.5; Mal Georgina, 3-4-15.2; Ceon Jensen, 2-5-18.2; Bart Sargent, 1-6-16.8.

**CLASS G** — Peter Smith, 6-1-19.1; Jerry Randall, 5-2-21.9; Robert Shuffat, 4-3-18.5; Ed Giroir, 4-3-18.1; Wally Miller, 4-3-13.0; Reno Putnam, 2-5-11.3; Ronald Parrott, 1-6-14.7; Ronald Bergeron, 1-6-13.0.

**CLASS A WOMEN** — KATY DYER, 5-0-44.6; Debbie Alexander, 3-2-44.8; Colleen Boudreau, 3-2-37.2; Linda Dennis, 2-3-29.9; Ginny Croteau, 1-4-36.0; Trish Metivier, 1-4-35.5.

**CLASS B WOMEN** — Linda Laslie, 5-0-29.5; Patricia Langley, 4-1-35.5; Tonya Kelchner, 3-2-25.9; Darlene Wescott, 2-3-22.8; Ruth Wassong, 1-4-18.6; Dot Gesick, 0-5-21.5.

## In Memoriam

Tony Beltran of Cedar Rapids, Iowa passed away on June 6. He will be missed by many of his friends and associates. He was an easy friend to make on the horseshoe circuit. He was a true sportsman on and off the courts. Tony pitched a very good game of horseshoes and would give anyone good competition. When a game was over, you could seldom tell if he had won or lost. He truly loved people and the friendship of this sport. To him it was how you played the game, not necessarily whether you won or lost.

To his bereaved family the sympathy of the Iowa Association and the NHPA is extended in their hour of sadness.

\* \* \* \* \*

From Florida comes word of the passing of Mrs. Frances Buskey, wife of George Nuskey, on June 6. She and her husband are formerly from Greene, N.H. and have been residents of Clearwater, Florida for many years living at 603 Southgate Park, Clearwater, Florida 33546.

Mr. Buskey pitched in many N.H. tournaments before moving to Florida and in several World tournaments.

The sincere sympathy of the Florida State Association is extended to him.

\* \* \* \* \*

The Kansas Horseshoe Pitchers Association was saddened to report the passing of Mr. W. P. Shepard of Ottawa, Kansas on June 8, after suffering a severe heart attack. W.P. was an active member and had won his class at the 1985 State Tournament.

### SHANEYFELT OPEN — HUNTSVILLE, ALA. — SANC. 86-124

Jack Henderson was the top winner in the Walker Shaneyfelt Open held in Huntsville, Alabama on June 14. He posted a 6-1-63.3 record.

**CLASS A** — J. Henderson, 6-1-63.3; W. Shaneyfelt, 6-1-61.7; J. Harris, 5-2-59.2; M. Bastian, 4-3-48.3; J. Johnson, 3-4-56.5; C. Baker, 2-5-47.9; B. Tidwell, 2-5-47.0; F. Betterton, 0-7.

**CLASS B** — M. Connally, 4-1-40.5; R. Scott, 3-2-43.5; J. Moore, 3-2-41.2; L. Eubanks, 3-2-34.0; R. Moore, 2-3-33.5.

### ANNUAL DALLAS, PA. OPEN WON BY RUBENDALL — SANC. 86-224

The 8th annual Dallas, Pa. Open tournament was won by Glenn Rubendall at the Back Mt. Recreation Grounds on Saturday and Sunday, June 7-8. Charlotte Reigles was the winner in the Ladies class.

**CLASS A** — Glenn Rubendall, 6-1-69.8; Glenn Brown, 5-2-65.8; Dan Beshore, 4-3-65.7; Glenn Burris, 4-3-62.1; Dick Dart, 3-4-56.3; Don Dietz, 2-5-55.1; Ed Bowersox, 2-5-54.9; Dean McCurdy, 2-5-51.3.

**CLASS B** — Dick Wilson, 6-1-47.4; Joe Templeton, 6-1-47.4; John Clippinger, 5-2-42.5; Joe Belcavitch, 4-3-45.1; Wayne McCloskey, 3-4-41.3; Roy Teets, 3-4-38.5; Bernie Snyder, 1-6-32.1; Rod Wilkinson, 0-7-26.4.

**CLASS C** — Dennis Lloyd, 5-1-40.8; Jim Brennan, 5-1-41.1; Bill Roseberry, 3-2-32.0; Joe Shurmatis, 2-3-34.3; Gerard Harris, 2-3-29.2; Charles Reigles, 0-5-24.5.

**CLASS D** — Jim McAfee, 4-0-31.6; Steve Swisher, 2-2-31.9; Bernie Wierbowski, 2-2-27.9; John Kehler, 2-2-16.7; George Miller, 0-4-5.0.

**LADIES CLASS** — Charlotte Reigles, 3-0-37.9; Jean Long, 2-1-32.3; Norma Curdy, 1-2-17.3; Dawn Lloyd, 0-3-16.1.

YOU ARE INVITED TO  
**THE 17th ANNUAL STATESVILLE, NC**  
**AUTUMN OPEN HORSESHOE TOURNAMENT**  
**THE DATE HAS BEEN CHANGED TO A ONE DAY EVENT**  
**SATURDAY, SEPTEMBER 20, 1986**

Advanced registration ONLY! \$10 registration fee and ringer percentage must be mailed NO LATER THAN FRIDAY, SEPTEMBER 12, 1986 to: Jack Springer, Tournament Director, 925 Henkel Road, Statesville, NC 28677.

The tournament, sponsored by the Statesville Recreation and Parks Department, John Bullard, Director, will mail out to each entry, the class and time you will pitch on Saturday, September 20, 1986. NO REFUNDS. BUT, if any pitchers show up on Saturday morning, entry fee will be \$15 and if time permits, a special class or two will be added for late entries, with trophies for 1st and 2nd. Only 12 pitchers in mens Class A! (6 games and 5 games, all on Saturday).

**CASH PRIZES** — Men's Class A: 1st — \$400; 2nd — \$200; 3rd — \$75  
 4th — \$50; 5th — \$25

Men's B and Women's Class A: 1st — \$100; 2nd — \$50; 3rd — \$25\*\*

\*\*PLUS \$20 to each other class winner (except Jrs.)

**TROPHIES** — Top 5 in Men's A and Women's A . . . and Top 2 in Men's B, C, D, E, F, G, H, I, J, K, L, M, etc., and Women's B (if held) and Boy's and Girl's Classes.

**EXTRA CLASS FEE** — paid when checking and signing in — Class A men \$6, Men's B and Women's A \$5.

**SCOREKEEPERS — CONCESSION STAND — REST ROOMS — PICNIC TABLES — OFFICIALS TENT — BLEACHERS — FREE PARKING FOR CAMPERS AT COURT!!!**

**Past Men, Women's Class "A" Winners:** 1970 — Walt King, N.C.; 1971 — Cecil Monday, VA/Cindy Dean, Va; 1972 — Donnie Roberts, Ohio/Helen Roberts, Ohio; 1973 — Donnie Roberts, Ohio/Cindy Dean, VA; 1974 — Roger Norwood, Tenn./Ruth Kirk, Ohio; 1975 — Roger Norwood, Tenn./Katherine Harrison, Ohio; 1976 — O.D. Lebow, Tenn./Ruth Kirk, Ohio; 1977 — John Rademacher, Fla./Jackie McCombs, Ohio; 1978 — Roger Norwood, Tenn./Ruth Kirk, Ohio; 1979 — Roger Norwood, Tenn./Lorraine Thomas, N.Y.; 1980 — J.B. Fuller, N.C./Jennie Summers, N.C.; 1981 — A.J. Nave, S.C./Jennie Summers, N.C.; 1982 — Bud Presnell, N.C./Fran Carnahan, Pa.; 1983 — Bud Presnell, N.C./Jo-Anne Burrow, N.C.; 1984 — Don Kuchcinski, Pa./Jacqueline Brown, N.C.; 1985 — Mark Dyson, N.C./Fran Carnahan, Pa. 1986 — ????

Name \_\_\_\_\_ Address \_\_\_\_\_

City \_\_\_\_\_ State \_\_\_\_\_ Zip \_\_\_\_\_

Ringer Pct. \_\_\_\_\_. Make check or money order payable to: Statesville Recreation and Parks Dept. and mail to: Jack Springer, 925 Henkel Rd., Statesville, N.C. 28677. Players will be notified of class and check-in time. Entry DEADLINE September 12. Rain date, Sunday, September 21.



## WOMEN BRING SUMMER IN WITH A BANG IN CONNECTICUT

It was the first day of summer, 1986, in Morris, Ct., a beautiful day in a beautiful community full of horseshoe pitching enthusiasts. On this June 21, the Weik-Towne Horseshoe Club and Coors Beer sponsored the "first-ever in Connecticut" Women's Professional Invitational Horseshoe Tournament. Invitees were the top six finishers in the 1985 World Horseshoe Pitching Championships. 250 spectators came to see a pitching show and they were not disappointed. Sanction 86-324.

With a \$4,000.00 expense and prize fund at stake it was a nervous start for all six competitors but then they got on track and really started to roll. Spectators were disappointed at every miss and, to prevent that disappointment, ringer %'s climbed with each game. First high game was 76%, then 82.6%, then 89% and then 92.2% by Debby Michaud in the fourth game, which won the high game award for the tournament. After the five game round robin, ladder play began involving the top 3 finishers. Third place Diane Cantin and second place Vicki Winston squared off first. Vicki, improving with every game and experienced in pressure situations, came through with a sparkling 90% game to win 41-20. Then the final, a marathon, 122 shoe game between Vicki and Debby Michaud. The lead changed hands often during the game but Debby came from being behind 33-24 to win 40-33, pitching 88% to Vicki's 86%.

After the presentation of a beautiful, hand-carved wooden trophy, the checks, and gifts of a pewter necklace to each contestant, the organizers and participants capped a great horseshoe day with dinner together at a fine local restaurant, complete with the full moon shining over the lake outside.

The six women were awed by the generosity and hard work of the Weik-Towne Horseshoe Club, and very happy about the condition of the courts and the sponsorship by Coors Beer. It was a day not soon to be forgotten.

*Debby Michaud, Ma., includes ladder play, 6-0-486-409-84.2; Vicki Winston, Mo., includes ladder play, 4-3-562-473-84.2; Diane Cantin, Can., includes ladder play, 3-3-404-319-78.9; Fran Carnahan, Pa., 2-3-366-288-78.7; Debbie Pickering, N.H., 1-4-284-212-74.6; Ruth Hangen, N.Y., 1-4-302-219-72.5.*

## STEINFELDT & F. CARNAHAN RETAIN THEIR EASTERN NATIONAL TITLES — ERIE, PENNSYLVANIA

**CLASS A** — Carl Steinfeldt, 7-0-78.3; Kevin Hollister, 6-1-73.8; Art Tyson, 4-3-66.6; Al Zadroga, 3-4-64.1; Oscar Manns, 2-5-65.4; Wayne Luoma, 2-5-62.8; Ron Kuchcinski, 2-5-60.6; Dick Carnahan, 1-6-59.7.

**CLASS B** — Harold Darnold, 6-1-66.4; Clyde Martz, 6-1-64.0; Henry Hostetler, 5-2-63.3; Joe Pagnanelli, 3-4-58.6; Kurt Von Kleist, 3-4-55.6; Bob McKnight, 2-5-56.7; Francis White, 2-5-56.1; Steve Kuchcinski, 1-6-56.3.

**CLASS C** — Joe Schultz, 7-0-60.0; Ed Dennison, 6-1-55.1; Ray Rugg, 5-2-62.9; Bob White, 3-4-57.9; Ed Blum, 3-4-55.2; Curt Over, 3-4-54.3; Joey Morris, 1-6-47.8; Wm. Hofecker, 0-7-42.0.

**CLASS D** — Bob Hayes, 6-1-55.2; Al Conklin, 5-2-58.6; Earl Van Sant, 5-2-58.5; Dave Magyar, 5-2-54.4; Frank Kilinsky, 3-4-48.1; Glen Sebring, 2-5-41.2; John Kovach, 1-6-37.4; Robert E. White, 1-6-35.3.

**CLASS E** — Ed Risley, 7-0-60.8; Chas. Dunlap, 6-1-53.1; Ed Sell, 4-3-48.8; Paul Gemza, 3-4-51.3; Homer Browne, 3-4-48.4; Ray Greene, 3-4-46.2; Wm. Hixon, 1-6-46.2; Tim Gould, 1-6-45.3.

**CLASS F** — Guy Wills, 7-1-50.3; Geo. Hale, 6-2-46.1; Harold Eyth, 5-2-53.7; Jim Trayer, 5-2-50.7; Loyal White, 3-4-44.9; Joe Markiewicz, 2-5-40.3; Geo. Churley, 1-6-33.9.

**CLASS G** — Robert Brown, 6-1-54.0; Joe Gecl, 5-2-47.3; Wayne McCloskey, 4-3-49.7; John Lalley, 4-3-45.8; Dick Mudgett, 4-3-39.2; Chas. Brotzman, 2-5-40.3; Chas. Dickenson, 2-5-38.3; Harry Thomas, 1-6-35.3.

**CLASS H** — Bob Anderson, 7-1-51.1; Gordon Miller, 6-2-51.0; Wes Kuchcinski, 4-3-47.3; Jim Thompson, 4-3-39.7; Ed Senger, 4-3-35.4; Ken Widdowson, 3-4-39.9; Dick Spaller, 2-5-19.1; Bye.

## ERIE PENNSYLVANIA — (Continued)

**CLASS I** — Bob Burnett, 7-0-48.6; Geo. Rhea, 4-3-52.4; Joe Abbott, 4-3-42.5; Bill Williams, 4-3-42.0; Chet Ratkowski, 3-4-40.0; Pat Cunningham, 3-4-35.3; Don Wilcox, 2-5-38.4; Tom Cancilla, 1-6-36.2.

**CLASS J** — Al Zadroga, Jr., 6-1-44.4; Ken Hopkins, 5-2-42.0; Herman Taylor, 5-2-39.7; Ray Cherubini, 4-3-38.3; Steve Evanczik, 3-4-31.9; Joe Raico, 2-5-36.8; Frank Graham, 2-5-29.6; Harvey Hayes, 1-6-31.1.

**CLASS I** — Elzie Rumbaugh, 6-1-40.5; Chuck Olson, 5-2-40.0; Don Green, 5-2-36.0; Tony Cusimano, 4-3-39.7; Bill McAdoo, 3-4-36.3; Bill Mackey, 3-4-27.9; Marvin Krauss, 2-5-27.1. Bye.

**CLASS L** — Jim Gee, 7-2-36.5; Dick King, 5-3-37.6; Paul Beer, 5-3-27.0; Hoppy Hopkins, 4-3-31.9; Frank Ells, 4-3-31.5; Bob Chadwick, 3-4-28.8; Tim Hopkins, 2-5-29.1; Dean Zindler, 0-7-22.3.

**CLASS M** — Glenn Carnahan, 7-2-32.3; Don Wittenburg, 5-3-37.4; Gordy Carpenter, 5-3-37.3; Phil Cook, 4-3-29.9; Andy Shurilla, 4-3-29.3; Taylor Carnahan, 2-5-28.7; Geo. Connor, 2-5-24.5; Dan Connolly, 1-6-27.2.

**CLASS N** — Larry Vitoris, 6-1-34.6; Harold Uncapher, 5-2-43.2; Charlie Greene, 5-2-40.4; Steve Planty, 4-3-34.0; Ed Blelek, 3-4-33.2; Ellsworth Warner, 3-4-23.4; Eugene Forish, 1-6-26.7; Ed Gorski, 1-6-21.1.

**CLASS O** — Jay Schultz, 7-2-32.0; Dave Kols, 5-3-38.8; Jim Johnston, 5-3-31.8; Mark Harasimowicz, 4-3-31.6; Parks Rauch, 4-3-29.2; Ernie Buterbaugh, 3-4-26.9; Frank Bodnar, 2-5-24.9; Bob Marshall, 0-7-22.7.

**CLASS P** — Joe Miller, 7-0-31.3; Bob Luce, 6-1-32.4; Bill Meador, 5-2-24.3; Randy Hopkins, 3-4-23.1; Leo Luszcak, 3-4-18.6; Walt Chevalier, 2-5-23.4; Geo. Schiller, 2-5-19.9. Bye.

**CLASS R** — Buck Trott, 7-0-28.7; Fred Powell, Jr., 5-2-28.6; Don Hillyard, 5-2-20.1; Darrell Kribbs, 4-3-20.8; Barry Reddinger, 4-3-17.8; Ted Worham, 2-5-15.3; Fred Powell, 2-5-15.3; Ken McElwain, Forfeit.

**CLASS S** — Dan Reddinger, 7-0-23.4; Wayne Hunzinger, 5-2-13.8; Mike Slupski, 4-3-16.5; Howard Kelley, 4-3-15.5; Dave Evanczik, 3-4-14.0; Tim Maisner, 2-5-13.9; Norm Painter, 2-5-12.6; Ed Przybellinski, 1-6-13.5.

**CLASS A WOMEN** — Fran Carnahan, 7-1-75.0; Ruth Hangen, 6-2-71.1; Jeannie Spaller, 6-2-68.3; Betty Dunlap, 4-3-53.0; Marge Spaller, 3-4-48.4; Shirley Spiesman, 2-5-44.2; Cindy Reddinger, 1-6-31.6; Betty Steinfeldt, Forfeit.

**CLASS B WOMEN** — Linda Dolby, 7-1-38.0; Barb White, 6-2-35.8; Sandy Powell, 4-3-27.0; Eleanor Carroll, 4-3-16.3; Lois Luhta, 3-4-22.4; Connie Blumber, 2-5-22.9; Mary Greene, 2-5-21.8; Joann Sopko, 1-6-2.1.

## KNISLEY EASY WINNER OF CURLEY-BAKER OPEN — JUNE 28 JERMAIN PARK — TOLEDO, OHIO

**CLASS A** — Jim Knisley, 7-0-80.0; Gary Gardner, 5-2-62.7; Dale Dombrowsky, 5-2-61.3; Max Roseberry, 3-4-56.7; Donnie Roberts, 3-4-50.8; Andy Woosilek, 2-5-56.5; Bob Wells, 2-5-50.9; Rick Gyarkas, 1-6-50.5.

**CLASS B** — Bob Allen, 6-1-59.9; Merle Koeppe, 5-2-58.2; Larry Woolace, 5-2-54.9; Doug Crawford, 4-3-53.0; Walt Detter, 3-4-48.7; Dale Pringle, 3-4-45.9; Walt Krieger, 2-5-44.2.

**CLASS C** — Bob Gray, 6-1-53.0; Hank Kahle, 6-1-51.0; Jim Ruffer, 5-2-47.1; Bert Szombati, 4-3-46.0; Phil Allen, 3-4-46.2; Dick Warner, 3-4-36.7; George Stifel, 2-5-42.7; Paul Rossman, 0-7-36.4..

**CLASS D** — Glenn Wheeler, 5-0-35.4; Ralph Jensen, 4-1-35.0; Guy Decker, 3-3-28.2; Ted Lovejoy, 2-3-23.6; Dick Wheeler, 1-4-21.0; Neil Bower, 0-5-19.6.

**LADIES CLASS A** — Leona Ault, 4-2-48.0; Trudy Wells, 4-4-47.2; Dorothy Slocum, 3-3-44.0; Rose Curley, 1-5-39.0.

**SENIORS** — Floyd Plumb, 4-1-56.9; Nial Beck, 3-2-53.6; Lee Jacobs, 0-4-27.2.

## KNISLEY WINS OHIO SILVER DOLLAR OPEN — SANC. 86-39

Jim Knisley of Breman, Ohio won the annual Silver Dollar Open held June 7 & 8 at Lancaster, Ohio. Knisley had a 7-0 record with an outstanding average of 83.6.

George Moon of Greenfield was runner-up with a 72.5 average. World Senior champion, Lawrence Miller of Chillicothe took third with a 68.1 average.

Lillian Butterbaugh was the women's champion with a high game of 66.7. Carol Martin was runner-up.

The tournament was dedicated in memory of the Lancaster club's founder, the late Jess Huffman.

**CLASS A** — Jim Knisley, 7-0-83.6; George Moon, 5-2-72.5; Lawrence Miller, 5-2-68.1; Gary Roberts, 4-3-68.5; Ansil Copeland, 2-5-66.3; John Martin, 2-5-64.3; Max Roseberry, 2-5-63.3; Clyde Martz, 1-6-60.4.

**CLASS B** — Bob Johnson, 5-2-62.2; Elden Sarbaugh, 5-2-65.6; Tom Bestul, 5-2-62.3; Levi Miller, 4-3-64.5; Jack Baldwin, 3-4-56.8; Jerry Boesch, 2-5-49.6; Loman Tumlin, 2-5-48.8.

**CLASS C** — Glen Santee, 8-0-60.3; Steve Powers, 6-2-56.0; Bob Garrett, 6-2-46.8; Maurice Wipert, 4-4-46.6; Maurice Flaige, 3-5-49.5; Harry Rutherford, 3-5-48.1; Norm Snider, 3-5-42.4; Earl Noe, 2-6-48.5; Don Jones, 1-7-40.1.

**CLASS D** — Jim Cooper, 6-1-53.0; Ed Miller, 5-2-44.1; Rudy Von Dach, 4-3-46.4; Carl Searls, 3-4-47.7; Ken Hawk, 3-4-43.0; Howard Angel, 3-4-41.4; Ed Pratt, 2-5-41.1; Dennis Farley, 2-5-34.0.

**CLASS E** — Carl Casto, 6-1-42.8; George Thome, 5-2-43.9; Lester Hite, 5-2-36.4; Charles Myers, 4-3-37.7; Ray Morse, 3-4-26.9; Jim McBeth, 2-5-38.2; James Shipley, 2-5-35.3; Claude Bostic, 1-6-24.1.

## The shoe for the 1980's

# STAR



WHEN YOU SPEND HUNDREDS OF HOURS PRACTICING TO BE THE BEST HORSEHOE PITCHER YOU CAN BE, DOESN'T IT MAKE SENSE TO PITCH THE ONLY PRECISION MADE HORSESHOE?. YOU CAN BE SURE THAT EACH SHOE PITCHED IS LIKE ITS MATE.

IT PAYS TO PITCH THE ORIGINAL PRECISION STAINLESS HORSESHOE TO HELP YOU REACH YOUR ULTIMATE GOALS AND INSURE THAT COMPETITIVE EDGE NEEDED TO BE A WINNER.

**ALL STAR'S ARE DEAD SOFT  
AND THEY WEIGH 2 LBS. 8 OZ.**

**Send Check or  
Money Order to:**

**Alfred R. Boudreau Jr.**  
301-A Old Ipswich Rd.  
Rindge, N.H. 03461

**NHPA  
APPROVED**



(ALSO AVAILABLE THROUGH YOUR N.H.P.A. DEALER)

## KNISLEY WINS — (Continued)

**CLASS F** — Harry Bailey, 6-1-39.2; Bernard Davis, 6-1-37.3; Bill Coakley, 4-3-31.3; John Boring, 4-3-28.4; Roger Kinnaman, 3-4-26.8; Wilson Burggraf, 3-4-25.1; Larry Shea, 2-5-26.4; Don Boring, 0-7-3.7.

**CLASS G** — Dwaine Ringler, 7-0-35.8; Jerry Crago, 6-1-30.0; Bob Dittoe, 5-2-26.1; Colin Camp, 4-3-21.2; Rob Fellure, 3-4-16.7; Jack Von Dach, 2-5-15.3; Monte Ashby, 1-6-9.8; Donnie Kinkead, 0-7-8.4..

**WOMENS CLASS** — Lillian Butterbaugh, 4-2-44.8; Carol Martin, 2-4-35.4.

## HOLLISTER UNDEFEATED IN FATHER'S DAY OPEN — VERMONT

**CLASS A** — Kevin Hollister, 7-0-73.2; Liz Downer, 6-1-62.0; Debbie Brown, 5-2-54.5; Dick Greene, 4-3-57.8; Jean Bean, 3-4-50.0; Bud Leavitt, 2-5-42.4; Bev Forgues, 1-6-40.8; Reid Brewster, 0-7-35.0.

**CLASS B** — Don Choinere, 8-0-46.8; Joe Forgues, 6-2-48.1; Blakley Bigelow, 5-3-45.3; Lee Paquette, 5-3-31.8; Connie Selleck, 4-4-39.5; Kay Brewster, 4-4-32.6; Don Taylor, 2-6-30.0; Bob Many, 1-7-42.8; Ray Benson, 1-7-28.6.

**CLASS C** — Elmer Moore, Playoff Winner, 5-2-34.8; John Coffey, 5-2-34.2; Norman Boynton, 4-3-34.7; Gibb Greene, 4-3-29.2; Rodney Bronson, 3-4-33.2; John Bronson, 3-4-22.6; Mickey Bedard, 2-5-28.3; Roger Forgues, 2-5-20.4; Robert Marshall, Withdrew.

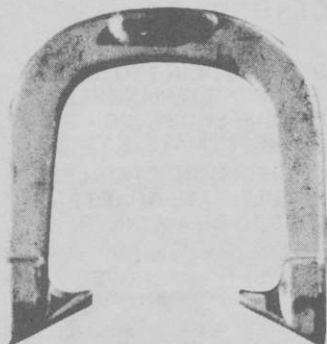
**CLASS D** — Charles Newton, 7-0-28.5; Mike Brown, 5-2-26.6; Jeanette Lavallee, 4-3-25.7; Marlene Paquette, 4-3-24.8; Harold Wrisley, 4-3-21.0; Rudy Gomez, 3-4-20.9; Ray Gomez, Sr., 1-6-17.4; Alton Nichols, 0-8-18.1.

**CLASS E** — Rick Lamphere, 7-0-24.9; Jeanette Bedard, 6-1-21.0; Lisa Lamphere, 4-3-19.5; Bernie Hebert, 4-3-18.2; David Blaisdell, 3-4-12.7; Peter Glennon, 2-5-16.0; Michael LaVigne, 1-6-13.3; Todd Dunham, 1-6-12.9.

Since 1931

# GORDON

# "Spin-On"



— 3 TEMPERS —

Medium With Hardened Calks

Dead Soft

Hard

Southern California Representative

**JERRY SCHNEIDER**

3144 W. Paso Robles Drive

ANAHEIM, CALIFORNIA 92804

714-826-0684

APPROVED BY NHPA

OFFICIAL STAKES ALSO AVAILABLE

## THE QUEEN CITY FORGING CO.

233 TENNYSON STREET

CINCINNATI, OHIO 45226



# **FREE!**

## **1986 CATALOG OF**

# **Trophies & Awards**

**Yours *FREE* for the asking**  
**Over 450 Awards — Including Trophies,**  
**Plaques, Pins, Medallions, Giftware and more.**

**CALL TOLL-FREE**  
**1-800-628-9657**  
**in MA 1-800-282-7789**

**DINN BROS., the Trophy People**  
 P.O. Box 111, 68 Winter Street, Holyoke, MA 01041

### **HOLLISTER — (Continued)**

**CLASS E —** Irv Stiefel, Playoff Winner, 3-1-10.9; Russell Alger, 3-1-13.6; Sarah Hollister, 2-2-14.0; Betty Blaisdell, 2-2-10.9; Myron Selleck, 0-4-10.1.

**JUNIORS W/HDCP. —** Mike Gomez, 4-0-32.0; Dana Bedard, 2-2-17.5; Tana Glennon, 2-2-3.5; Billy Glennon, 1-3-5.5; Brian Maroney, 1-3-5.5.

### **DRACUT, MASS. OPEN WON BY KAPNIS — SANC. 86-328**

**CLASS A —** John Kapnis, 5-0-75.7; Debbie Pickering, 4-1-75.0; Bertha Balllargeon, 3-2-64.2; Mary Ryan, 1-4-52.7; John Duffy, 1-4-45.6; Phil Bergeron, 1-4-43.6.

**CLASS B —** Sam Raymond, 5-2-45.2; Paul Dumont, 5-2-46.8; Dennis Vargelitis, 5-2-43.3; Dick Ploude, 4-3-43.6; Dick Belanger, 3-4-39.5; Bill Lawson, 2-5-38.1; George St. Pierre, 2-5-37.7; Tim Wiggins, 2-5-36.3.

**CLASS C —** Rene Caron, 6-1-38.4; Bill Campbell, 5-2-42.4; Don Cleveland, 5-2-35.2; Ernie Balllargeon, 4-3-30.2; Charlie Tracchia, 4-3-27.9; Paul Dupuis, 3-4-28.7; Tom Henley, 1-6-27.2; Claude Gellins, 0-7-20.5.

**CLASS D —** Bill Progen, 6-1-32.1; Tom Matls, 6-1-25.5; Norman Ricard, 5-2-33.9; Frank Lima, 5-2-30.1; Charlie Denehy, 2-5-21.7; Dick Campbell, 2-5-19.4; Howard Stewart, 1-6-18.3; Ernie Tracchia, 1-6-16.9.

**CLASS E —** Joe Tanguay, 6-1-22.0; John Duran, 5-2-32.4; Irv Hunter, 5-2-20.2; Dick Gauthier, 5-2-17.6; Ray Bratton, 4-3-23.5; Jim McRobbie, 2-5-22.6; Tony Nacewicz, 1-6-17.8.

**CLASS F —** Bill Eckhardt, 6-1-22.1; Don Balllargeon, 5-2-23.4; Bart Sargent, 4-3-20.6; Pauline Mailloux, 4-3-19.2; Beverly Eckhardt, 4-3-13.4; Clay French, 3-4-22.3; Sandy Matls, 2-5-15.2.

**CLASS G —** Jack Cummings, 5-2-20.0; Dick McCarron, 5-2-21.4; Dave Tremblay, 5-2-20.3; Jim Greeley, 4-3-18.9; Rick Dupuis, 3-4-15.7; Frank Ryan, 3-4-15.5; Rudy Gauthier, 2-5-11.1; Linda DiGiorgio, 1-6-10.1.

**SANDHAM WINS ROME, GA. INVITATIONAL — SANC. 86-214**

Iris Sandham of Lilburn, Georgia was the winner of the Rome Invitational tournament held at the Tolbert Park courts in Rome, Georgia on June 7. Tournament was hosted by the Rome Horseshoe Club in conjunction with the Floyd County Recreation Department.

**CLASS A** — Iris Sandham, Lilburn, 4-1-55.7; Richard Williams, Rockmart, 4-1-61.1; Tommy Lawson, 3-2-53.6; Cotton Black, Ringold, 2-3-57.1; Jim Waters, Ringold, 2-3-51.6; Ted Whitlock, Jefferson, 0-5-49.2.

**CLASS B** — Walter Brake, Athens, 5-0-51.5; Geo. Bradfield, Dallas, 3-2-50.8; Lamar Fowler, Rome, 3-2-49.7; Dwight Carter, Cedartown, 3-2-47.8; Oliver McClarity, Rockmart, 1-4-43.8; Ricky Presley, Rockmart, 0-5-46.3.

**CLASS C** — Elbert Allen, Carolton, 4-1-46.3; A.W. Weatherford, Braselton, 4-1-37.1; Jim Fowler, Rome, 2-3-39.6; Jim Wood, Jefferson, 2-3-37.1; Jack Shipp, Dallas, 2-3-36.3; Steve Crumley, Rockmart, 1-5-38.1.

**CLASS D** — Jason Shipp, Dallas, 5-0-40.4; James Spencer, Aragon, 4-1-36.6; Roy Whitlock, Jefferson, 3-2-26.3; Rick Hamrick, Winston, 2-3-12.2; Diane Edwards, Douglasville, 1-4-9.5.

**THOMPSON OPEN TITLE GOES TO NICHOLS — SELMA, ALA.**

John Nichols from Selma, Alabama was the winner of the Cliff Thompson Open held in Homewood, Alabama on May 24. Sanction 86-129.

**CLASS A** — J. Nichols, 4-1-52.3; J. Mullican, 4-1-62.6; J. Harris, 4-1-53.5; F. Betterton, 2-3-45.6; M. Connally, 1-4-49.6; R. Moore, 0-5-30.5.

**CLASS B** — R. Moore, 4-1-41.7; R. Scott, 4-1-37.5; C. Thompson, 3-2-39.3; N. Lynn, 3-2-33.6; O.A. Lindsey, 1-4-23.7.

DESIGNED FOR MAXIMUM PERFORMANCE

**IMPERIAL****CAST MODEL****WIDER, THICKER BLADES**U S A PRICES  
(Postpaid)

1 Pair	\$26.00
2 to 5 Pair	\$25.00
6 Pr. & Over	\$20.00
Freight Collect	

**FORGED MODEL****HARDENED HOOKS AND  
POINTS**U.S.A. PRICES  
(postpaid)

1 Pair	\$39.00
2-5 Pair	\$37.00
Freight Collect	
6 Pair & Over	\$31.00

**CLYDE MARTZ**

3726 Henley Dr.

Pittsburgh, Pa. 15235

PHONE: 412-731-4662



## TUTTLE MEMORIAL OPEN WON BY CASEY DANNER — SANC.

Casey Danner posted 7-2-65.7 to win the Harold Tuttle Memorial Tournament held at New Castle, Pa. on June 7-8. Eleanor Winston captured the ladies title.

**CLASS A** — Casey Danner, Pa., 7-2-65.7; Ron Kuchcinski, Pa., 6-3-67.2; Bob McKnight, 6-3-63.1; Steve Kuchcinski, 4-3-62.1; Ray Rugg, 4-3-61.8; William Hofecker, 3-4-69.8; Ed Blum, 2-5-59.4; Francis White, 2-5-54.7.

**CLASS B** — Joe Morris, 6-1-51.1; Pet Vlachos, 5-2-53.1; Robert White Sr., 4-3-56.5; Joe Pagnanelli, 4-3-54.7; Vince Sedlacek, 3-4-55.5; Jack Rainbow, 3-4-51.1; Ed Horneman, 2-5-48.5; Robert E. White, 2-5-48.5.

**CLASS C-1** Clarence Dixon, 6-1-51.5; Homer Browne, 5-2-48.5; Paul Gemza, 4-3-45.8; Wilbert Rugg, 4-3-42.4; Harold Eyth, 3-4-44.4; Loyal White, 2-5-43.1; Kuchcinski Ed., 2-5-34.6; Robert D. White Jr., 2-5-33.6.

**CLASS D** — August Landesberger, 6-6-49.1; Ed Sell, 5-2-51.2; Jack Bruney, 5-2-50.8; Glenn Sebring, 3-4-46.5; Ken Widdowson, 3-4-38.8; Herman Boyer, 3-4-35.7; Jim Thompson, 2-5-40.5; Joe Geci, 1-6-36.7.

**CLASS E** — Frank Graham, 6-1-41.5; Blair Weigel, 5-2-35.8; Clark Carnahan, 4-3-35.9; John Antesberger, 3-4-42.6; Ron Weiss, 3-4-38.7; Rich Maroni, 3-4-32.6; Bob Hartzell, 2-5-32.9; Bob Lapping, 2-5-30.9.

**CLASS F** — Pat Cunningham, 7-0-49.0; Francis Benedict, 6-1-44.8; Frank Kallay, 5-2-36.2; Fred Connell, 4-3-36.9; John Carnahan, 2-5-28.4; John Tedrow, 2-5-28.3; Bud Kerns, 1-6-26.8; Clair Beardsley, 1-6-24.2.

**CLASS G** — Frank Bodnar, 7-1-26.4; Rudy Kwiat, 6-2-29.2; Dwight Wetzel, 5-2-25.6; Paul Smith, 4-3-28.1; Ellsworth Warner, 3-4-24.8; John Miller, 1-6-19.5; Wilber Stover, 1-6-18.1; Robert Stover, 1-6-13.5.

**CLASS A WOMEN** — Eleanor Winston, 7-2-36.9; Sandy Carnahan, 5-3-37.2; Martha Wood, 5-3-30.2; Ruth Carnahan, 4-3-27.4; Kelli Weston, 3-4-35.2; Jean Reefer, 3-4-22.6; Betty Lapping, 3-4-22.3; Sherri Dagan, Ohio, 0-7-16.1.

## COMING EVENTS

### ARIZONA SCHEDULE

#### Pioneer Park — Mesa

Oct. 24-25 — Art Kamman Open. Entries close Oct. 14.  
Nov. 14-15-16 — Bonanza Restaurant Open. Entries close Nov. 4.

Dec. 12-13-14 — Holiday Open. Entries close Dec. 2.

Jan. 15-16-17 — Lost Dutchman Open. Rock Shadows Resort. Apache Junction, Arizona. Entries close Jan. 5. Send entry fee of \$10.00 to Roy Sneller, Box 729, Sp. 636, Apache Jct., Ariz. 85217-0729. Ph: 982-7997.

Jan. 23-24-25 — Valley of the Sun Warmup. Sanctioned. NHPA and State cards required. Entries close Jan. 13.

Feb. 9-10-11-12-13-14-15 — Valley of the Sun Sanctioned. NHPA and State cards required. Entries close Jan. 24.

Mar. 6-7-8 — Bye, Bye Snowbird Open. Entries close Feb. 25. Entry fee \$5.00 EXCEPT as follows:

(1) Lost Dutchman — \$10.00;

(2) Valley of the Sun — \$10.00

PLUS \$10.00 — Class A

PLUS \$ 5.00 — Classes B, C, D

PLUS \$ 5.00 — Ladies Class A

PLUS \$ 5.00 — Ladies Class B

Mail entries to: (1) NHPA, P.O. Box 6086, Mesa,

Arizona 85206 for all Pioneer Park tournaments. (2) Roy Sneller, Box 729, Sp. 636, Apache Jct., Arizona 85217-0729 (for Lost Dutchman only). Phone 982-7997.

INCLUDE CARD Nos. (If sanctioned & current percentage).

### ARIZONA STATE SCHEDULE

#### Reid Park — Tucson

Oct. 4 — Don Ehlenberg Memorial. Entries close Sept. 24.

Nov. 1 — Reid Park Classic. Sanctioned. NHPA and State cards required. Entries close Oct. 23.

Nov. 29 — Tucson Open. Entries close Nov. 19.

Jan. 3 — Pima County Classic. Sanctioned NHPA and State cards required. Entries close Dec. 24.

Feb. 7 — Old Pueblo Special. Sanctioned. NHPA and State cards required. Entries close Jan. 28.

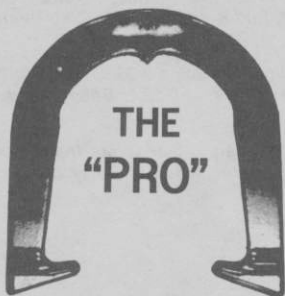
Mar. 28 — Association Presidents' Open. Entries close March 19.

April 11-12 — Arizona State tournament. Sanctioned. NHPA and State card required. Entries close April 1.

Mail entry fee of \$5.00 and entry to: M.H. Fenimore, 8152 East Hayne St., Tucson, Arizona 85710. Ph: 296-5087. Please include card nos. (If sanctioned) and current ringer percentage.



## THE ORIGINAL DROP-FORGED PITCHING SHOE



Two tournament tested models, forged from S.A.E. specified steel, are available. Both have hardened hooks and points, and may be ordered in your choice of medium, soft, or dead soft tempers.



AS THE FIRST MANUFACTURER OF THE DROP-FORGED PITCHING SHOE, THE OHIO HORSESHOE COMPANY IS RECOGNIZED WORLD-WIDE FOR ITS HIGH QUALITY PITCHING SHOES.

For price information and to order, contact:

# OHIO HORSESHOE COMPANY

P.O. Box 21371  
Columbus, Ohio 43221

614-457-4335