



the
national horseshoe pitchers

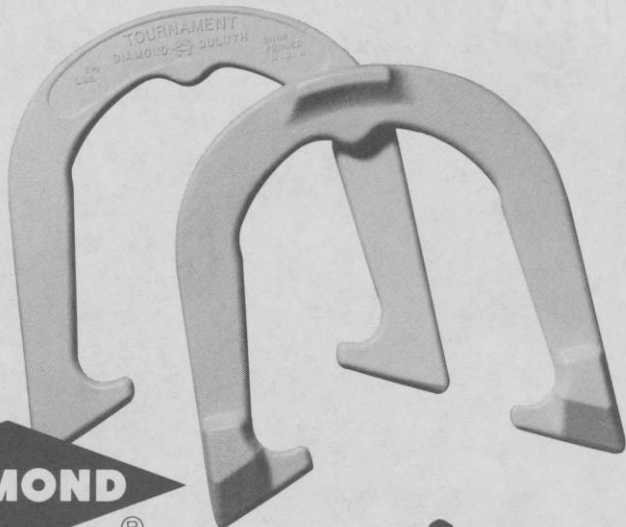
NEWS DIGEST



APRIL, 1985

Official Publication of
**THE NATIONAL HORSESHOE PITCHER'S ASSOCIATION
OF AMERICA**

Look
for
the new
white
shoes!



Advanced Design

TOURNAMENT PITCHING HORSESHOES



Both backyard pitchers and pros catch and hold the stake better with DIAMOND's new advanced design "Tournament" Shoe. It features a grip positioner, hardened tips, an increased radius, a dead soft center, and a wider, deeper calk. Same drop-forged solid steel construction as DIAMOND's popular Double Ringer and Super Ringer Regulation Shoes. All American made.

Contact your nearest NHPA club or sporting goods store for DIAMOND pitching horseshoes.



For the latest pitching horseshoe catalog write:

DIAMOND TOOL and Horseshoe Co.

Subsidiary of The Triangle Corporation

P. O. BOX 6246, DULUTH, MINNESOTA 55806

"DIAMOND Pitching Horseshoes are Recognized as Official in Tournaments
Sanctioned by the National Horseshoe Pitchers Association"



THE HORSESHOE PITCHER'S NEWS DIGEST is published on the 5th of each month at Aurora, Illinois, U.S.A. by the National Horseshoe Pitcher's Association of America. Editorial office, P.O. Box 1606, Aurora, Illinois 60507. Phone: 312-898-3974. Subscription rates—1st Class \$9.00; 3rd Class \$8.00 per year in advance. NHPA membership cards are available through each state secretary for \$7.00 plus any state association dues. Forms close on the 10th day of each month preceding date of issue. Advertising rates on request. F. Ellis Cobb, Editor.

NATIONAL OFFICERS

Glen Portt, 2803 Newcomb Rd. Albany, Ga. 31705 (912-432-0067) President
 Earl Winston, Rte 2, Lamonte, Mo. 65337 (816-563-3536) 1st Vice-President
 Barry Chapelle, 2716 S.E. 61st Ave., Portland, OR 97206 (503-775-7876) 2nd Vice-President
 Vincent Yannetti, 322 Longwood Ave., Bound Brook, N.J. 08805 (201-356-3862) 3rd Vice-President
 Bonnie Seibold, 1043 Grayson Ave., Huntington, Ind. 46750 (219-356-3489) 4th Vice-President
 Donnie Roberts, Box 810, Circleville, Oh. 43113 (614-474-7727) Sec./Treas.
 Claude White, Jr., 940 Knollwood Ct., Plainfield, NJ 07062 (201-753-2298) Chr. Reg. Dir.

Volume 29

April, 1985

No. 4

From Your President . . . Glen A. Portt

The guessing game is on . . . Hamilton, Ontario? . . . Eau Claire, Wisconsin? . . . Keene, N. Hampshire? . . . Lafayette, Indiana? . . . Cedar Rapids, Iowa? . . . Sturtevant, Wisconsin? . . . Huntsville, Alabama?

Each of these cities has expressed an interest in hosting the 1985 World Tournament. Whether each will submit a bid is not known at the time this is written (March 3). However, while you are reading this, your Executive Council should be in the process of reviewing all bids submitted and will be making a decision by April 10th. The decision will be printed in the May Digest which will still give everyone 2½ months lead time. Those whose bids are rejected should consider submitting them for the 1987 event or for one of the Big 3 . . . the U.S. Open, the U.S. Western or the U.S. Eastern Open, if applicable.

In order to give still more time to those planning to participate, each state secretary is requested to obtain the information by phone from any Council member on April 11th and disseminate to all clubs as quickly as possible.

The 60th Anniversary of the 1925 World Tournament was celebrated 23 February with great success by the Lake Worth, Florida Horseshoe Club. It was my privilege to be invited and to take part in this nostalgic event. After learning the stakes at that time were only 8 inches high, that Putt Mossman pitched with just plain ordinary horseshoes which still had nail holes in them, I came away convinced that his 67.6% ringer average was just short of being a miracle. And, if the wind was blowing in '25 as it was in '85, it was a miracle.

The NHPA's 84 year old patriarch, Henry Franke, who was a spectator at the '25 event, made the trip to Lake Worth and participated in the '85 tournament which was won by Carl Steinfeldt. As everyone knows, 67 year old Carl has been pitching for 81 years. 81? (Carl worked for GM . . . was a union man . . . gets credit for time and a half).

For those who don't already know, Lake Worth has the honor of making a not too small a contribution to our NHPA history. Up to 1925, only professionals were permitted to pitch in the World Tournament. Beginning in 1925, for the first time ever, amateur classes for men, women and boys were held.

So to Herman Wieser, tournament director, and to the entire Lake Worth Club, thanks for everything—especially for my 39th birthday party.

NHPA PUBLICITY COMMITTEE REPORT

By BERNARD HERFURTH

NHPA Publicity requests that all members submit a news release to their local newspapers. It should include a list of horseshoe pitching activities in their local areas, such as, league information, court locations and tournament dates and locations. The name and address of the NHPA organizer should also be given for further information.

Also include the release, the NHPA address, State also that the NHPA has a 12-page flyer concerning organized horseshoe pitching that will be sent to anyone that will send a self-addressed stamped, business size envelope to NHPA, Box 810, Circleville, Ohio 43113. Donnie Roberts will then send the flyer by return mail which contains the names and addresses of the state secretaries for further information on state level activities, also the nearest NHPA Game Related distributor of game related items. We know that there are thousands of unorganized players who desire information on our organized sport.

Tournament directors that send in results to the Digest are asked to include items of interest to go along with the results, it makes for better reading and more interesting.

Again members are asked to contact local park and recreation directors and suggest to them that they add horseshoe courts to their facilities. Also, any member is asked to send any ideas or suggestions for the advancement of the sport to Bernard Herfurth, 17 Fort Street, Northampton, Mass. 01060. Due credit will be given to any suggestion accepted.

REQUEST LETTER FOR A "COMMEMORATIVE STAMP"

This makes the fifth year that our membership is asked to write a request to the United States Postmaster-General to issue a Commemorative Stamp honoring our sport. We know that we are on the agenda for consideration. The committee meets in May. Send your letters to: Postmaster-General, Postal Service Headquarters, Washington, D.C. 20280. The more requests that they receive, the more consideration will be given our requests.

PUBLICITY REPORT — (Continued)

Plan to write each year and invite your friends and relatives to do the same also have your school children ask their teachers to write a letter.

Include in your letters: It is a family sport for men, women and boys and girls. Also that over 30,000,000 people in organized leagues, tournaments in park and recreation areas along with those in backyards of homes. Indicate that doctors stress the health benefits for all ages such as walking, bending, and stretching, that the sport has been enjoyed from the time of our forefathers to the present day, etc.

All members are asked to cooperate immediately by writing a request and then send a xerox copy to the NHPA Publicity Director, Bernard Herfurth, 17 Fort St., Northampton, Mass. 01060.

SOL BERMAN CANDIDATE FOR NHPA 3RD VICE-PRESIDENT

I have been a member of the NHPA for 44 years, and have been attending the annual convention since 1950.

In 1965 I was named Chairman of the Qualifying Committee. In 1973 Chairman of the Change for Progress Committee, and in 1974, Chairman of the Publicity and Promotion Committee up to the present time. In 1982 I was the recipient of the Arch Stokes Award.

During the past five years I have video-taped all of the World Championships and secured video-tapes from TV channels. In 1984 five tapes were made including Legends of Horseshoes (20 copies have been sent out). My book "Film Facts and Fun" was released in 1984.

I met with Mr. P.J. Johnson, V.P. of International Management Group concerning the promotion of horseshoes and arranged a meeting with Glen Portt, NHPA President.

I initiated the Wheaties Contest program that raised \$2355.00 for the NHPA.

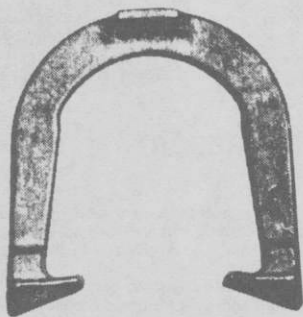
I am active in the Lake Worth, Florida Club that has 166 members of which 60 are NHPA members.

I supplied the material for a nation-wide article, "Doctors Endorsement Ring Out on Benefits of Horseshoe Pitching."

Compare my credentials with those of all the other candidates before voting. Let's not make this election a popularity contest, choose the candidate who really works for the NHPA.

President Glen Portt is not seeking re-election, thus, if elected I would be the only representative on the Council from California to Florida, the entire southern half of the country. — Sol Berman, M.D., Chairman of NHPA Promotion Committee.

TED ALLEN HORSESHOES



An original professional shoe. Still the very best professional shoe — Designed by a Champion — Used by many Champions — Not all users will become champions, but by throwing ALLEN's, you know that you've performed your best.

The designed features were invented by TED ALLEN, a 10 time world champion. He has made world records over and over with them. The design was a leader. After years it came to be a trend as a guideline in shoe equipment.

You can't go wrong in using them.

1045 LINDEN AVENUE

BOULDER, COLORADO 80302

EFFECTIVE IMMEDIATELY — DUE TO THE THIRTY PERCENT RISE IN THE COST OF THIRD CLASS RETURNS (THOSE SUBSCRIBERS WHO FAIL TO SEND IN THEIR NEW ADDRESSES) NO DIGESTS WILL BE FORWARDED OR RE-MAILED. THEREFORE, IF YOU FAIL TO LET THE EDITOR KNOW OF YOUR NEW ADDRESS, YOUR DIGEST STOPS. TO PREVENT MISSING AN ISSUE, DROP A POSTCARD TO THE EDITOR, AT LEAST 30 DAYS IN ADVANCE OF YOUR MOVING.

1984 WORLD CHAMPIONSHIP VIDEOTAPES

By SOL BERMAN

The Videotapes of the 1984 World Tournament Championships has been reviewed. I have between 6-7 hours of tapes.

Viewing the tapes was almost as interesting as watching the actual matches. Donnie Roberts did an excellent job as commentator. The action can be easily followed as Donnie explains everything that is going on.

The following observations were made while viewing the tapes: Peter Clark and Kevin Cone have excellent deliveries, beautiful pendulum swings, including large backswings; DeMartino, Tyson and Vogel have very nice deliveries, except very short backswings. Tyson's delivery is much improved since the late 1970s and early 1980s. Bean of Ohio steps to the left instead of towards the stake as suggested by Carl Steinfeldt. Alan Francis looks better each year, while his brother Tom's form was better in 1983. Hank Schwartz has a nice delivery except for a very short backswing.

TITCOMB TO HALL OF FAME COMMITTEE

President Glen Portt announced the appointment of Don Titcomb as a member of the Hall of Fame Committee. Don, one of the best known members of the NHPA, brings a wealth of experience plus a personal knowledge of many who have been active for some time and who could possibly be recommended for the Hall of Fame.

Don won the World Championship in 1960 with an 84.9%... after being 2nd, 3rd, or 4th in the 5 previous years with 80.7, 84.0, 86.1, 84.0, and 82.7%. He is a member of both the National and California Halls of Fame, has won innumerable championships, and is one of the outstanding showmen in our organization today.

Don has not limited his talents to strictly the *pitching* of horseshoes. He has been continually involved in the administrative end of the game, having held such positions as President, San Jose Club, 4th VP of the N. California HPA, and Publicity Director for the Western States. Each year he holds many clinics and gives demonstrations on the 'how' of pitching. His annual event at the San Jose Fair introduces the sport of horseshoes to thousands.

His appointment adds one more member to Ruth Hagen's elite Hall of Fame Committee which has the responsibility to insure that only those most worthy to belong to the NHPA Hall of Fame are elected.

SPOTLIGHT ON THE LADIES!

By Bonnie Seibold, NHPA 4th Vice Pres.

Our spotlight is on 10 time World Champion, Vicki (Chapelle) Winston, daughter of Cletus (now deceased) and Daisy Chapelle of Portland, Oregon, and sister of Barry Chapelle. Vicki's first horseshoe pitching competition ever was in the women's division at the 1953 World Tournament at Murray, Utah. She competed at the age of 14



using a 3/4 turn. Sometime during the mid 50's she changed to the 1 1/4 turn, which she's used ever since. Vicki won her first World Championship in 1956 and has won 9 more since then. It has been her pleasure to have participated in 29 World Tournaments, making the championship class every year but two. She has been Missouri State Women's Champion since 1976.

During her early career she served a term as an NHPA Vice President. In 1970 Vicki was thrilled to be the first woman elected to the NHPA Hall of Fame. Her father joined her as a member of this elite group in 1981, making them the only father-daughter combination to be so honored. Thus far her horseshoe pitching career has allowed her to travel through nearly every state and she has been privileged to have pitched in tournaments or exhibitions in 19 of those states. What a great way to see the USA.

During the years the World Tournament was held in Murray, Utah, Vicki met Earl Winston, of Missouri, and they were married on June 10, 1960. One of her fondest memories is of the ladies calling her over to a circle of chairs one evening during the 1960 World Tournament at Muncie, Ind. They had planned a surprise shower and gave

SPOTLIGHT ON THE LADIES! — (Continued)

her a waffle iron as a wedding gift from those present at the tournament. They still have it!

Vicki was a city girl suddenly transplanted into farm life, but it didn't take long to adapt. Her tractor instruction consisted of, "Here's how you start it, here's how you stop it and this lever raises and lowers the disk." The next step was to cover 30 acres in one day with an 8 ft. disk, which she did, but it was a long day! Since then she's operated nearly all of the equipment they use. Many a hay bale and heavy sack has she lifted. Her back gives her an almost daily reminder of that. Now that their sons Keith and Carl, ages 16 and 13, are old enough to help, Vicki finds herself anxiously awaiting the arrival of the school bus on those spring afternoons when field work has begun. Then mom can head for the house when a relief driver shows up. Oh, they do have a slightly larger disk now!

Vicki's other summer activities include gardening, yardwork, serving as Vice President of the Missouri Horseshoe Pitcher's Ass'n., running horseshoe tournaments and even doing a little horseshoe pitching now and then.

Earl and Vicki are members of a small United Methodist Church in their community. She holds an office in the women's group, teaches Sunday School occasionally, sings a special now and then and when there is absolutely no one else, she fills in as church pianist. She also serves as assistant community leader for their 4-H club.

Fall and winter finds Vicki's horseshoes back in the box and her bowling ball out of the closet. She only bowls in one league and maintains an average a few pins either side of 170. She has been the singles and doubles champion in past years in their Sedalia City Tournament. Vicki enjoys her second sport, but each spring finds her waiting for the ground to thaw around the horseshoe pegs.

DAVE'S COURT REPORT — By Dave Loucka

Due to popular demand (at least 2 people) I recently accepted the job of NHPA Statistician and Historian. Initially, I will endeavor to bring up to date World Tournament records and chronologize significant events of play

or changes to our association that may have Historical interest. Obviously, I cannot research, compile and report all happenings within the NHPA related to statistics or historical events without a great deal of help from you, the members. To that task, it is my plan to write this column monthly as space permits, as a means of keeping the membership advised of stats, records, history or related topics that I feel will be informative and interesting.

How many perfect games have been pitched in sanctioned play? Does anyone know or has any attempt been made to record all perfect games? Gary Kline's great book "Official NHPA History of the World Tournament 1909-1980" documents two perfect games pitched in W.T. play, one by Guy Zimmerman in 1948 and the other by Elmer Hohl in 1968. Mark Seibold is reported to have thrown a 100% game last year at the Midwest Tournament of Champions and it's said that Walter Ray Williams had a perfect game several years ago in Hermiston, OR. Some of you out there have the details on these two games and may know of others or even pitched a perfect game.

Let me hear from you. "Stake Your Claim" if you have pitched a perfect game or know of someone who has in sanctioned play. Write to me at 368 NEVAR CT., RANCHO MURIETA, CA 95683. List the details of the perfect game: date, shoes, pitched, opponent, tournament, and above all, some types of verifiable proof such as the scoresheet, news article or written statement witnessed by 2 or more people. The details of information received will be published in a future "COURT REPORT."

OKLAHOMA'S FIRST EVER MOONLITE MADNESS TOURNEY

Eighteen brave pitchers appeared on October 6 to pitch in the Moonlite Madness tournament, the first of its kind ever held in Oklahoma. They were divided into two groups of nine with each player pitching nine 40-shoe games. A 90 percent handicap was figured for each player before the pitching started. The end result was a play-off with a husband and wife on opposing teams which provided much heckling and other fun as the game proceeded. Everyone received a trophy chosen from black cats of ceramics and jack-o-lanterns and spooks. Special thanks to Norma Hoyer for keeping track of statistics.

1st PLACE TEAM, 45-36 — Dorothy Hummingbird, 6-3-31.9; Gary Maixner, 5-4-9.4; Bud Hamilton, 6-3-56.1; Seth Maixner, 8-1-36.4; John Cox, 4-5-4.2; Walter Watkins, 3-6-15.3; Kenneth Reed, 3-6-10.3; Ginger Cain, 5-4-29.2; Bill Thompson, 4-5-26.4.

2nd PLACE TEAM — Ed Hummingbird, 9-0-35.6; Fred Nelson, 5-4-13.9; Homer Cain, 4-5-36.9; Tina Rash, 7-2-33.6; Melanie Maixner, 3-6-2.8; Teresa Burk, 3-6-8.1; Missy Hoyer, 1-8-8.6; Larry Fordyce, 4-5-53.9; Louise Abercrombie, 0-9-39.4.

COVER PICTURE... Pictured this month is a most unusual shirt design. The man shown was born in Fair Play, Wisconsin, which was a lead mining town. His name is LaVern Richard and he is 68 years old. LaVern's son's wife did the stitching and all who have seen it have been quite amused. LaVern has acquired 64 trophies during his pitching career and figures that Fair Play and the sport of horseshoes go together. Of course the "Old age and Trickery will win over youth and stamina" is a debatable question.

Thanks for attending the 1979 & 1983 World in Statesville, North Carolina!!
We would like to have you back this April for the

17th Annual Carolina Dogwood Festival Horseshoe Tournament

NHPA Sanctioned for Men, Women, Boys & Girls!

April 19-20-21, 1985 — Statesville, NC — Where I-40 and I-77 Cross

24 Lighted Courts — Lakewood Park — 6 Practice Courts

**SPONSORED BY THE STATESVILLE RECREATION & PARKS DEPARTMENT
IN COOPERATION WITH N.C. - N.H.P.A.**

• PRIZE MONEY INCREASED •

MENS CLASS A: 1st — \$400; 2nd — \$200, 3rd — \$75, 4th — \$50, 5th — \$25. MENS CLASS B AND WOMENS CLASS A: 1st — \$100, 2nd — \$50, 3rd — \$25. **PLUS \$20 TO EACH MEN'S CLASS WINNER!

• TROPHIES •

Top 5 in MENS A and WOMENS A and top 2 in MENS B, C, D, E, F, G, H, I, J, K, etc., and WOMENS B (if held) and BOYS and GIRLS classes. Also MENS SENIOR CLASS, 66 and up.

CARL STEINFELDT'S 5 FOOT MENS CLASS A trophy and "DEADEYE" WILLIAM'S MENS CLASS A runner up trophy remains in Statesville with new winners names being engraved on trophy.

• PRE-REGISTRATION CHEAPER • YOU MAY

1. Pre-register by sending in your 1984 State or World Tournament best percentage and \$8.00 registration fee by no later than April 13, 1985 and not qualify.
 2. Bring your percentage and pay a \$10.00 fee at court site and not qualify by 11 a.m. on Saturday, April 20, 1985.
 3. Pay \$10.00 and qualify 50 shoes April 18, 19 and up to 11 a.m. on April 20, 1985.
- Round-Robin Tournament by Classes** starts at 12 noon on Saturday, April 20.

• EXTRA CLASS FEE •

Paid when schedule handed out — Mens Class A, \$6.00. Men's Class B and Womens Class A, \$5.00 (for class awards).

**Scorekeepers — Concession Stand — Rest Rooms
Official Tent — Bleachers — Free Parking for Campers at Courts!**

Past Men and Women Class A Winners: 1969 Woody Thomas, NC; 1970 Gurney York, NC; 1971 John Rademacher, FL; Ruth Hammond, FL; 1972 James Burns, TN; Cindy Dean, VA; 1973 John Rademacher, FL; Helen Robert, OH; 1974 Roger Norwood, TN; Opal Reno, OH; 1975 Wilbur Kabel, OH; Opal Reno, OH; 1976 A.J. Nave, SC; Helen Roberts, OH; 1977 John Rademacher, FL; Ruth Hangen, NY; 1978 Carl Steinfeldt, NY; Opal Reno, OH; 1979 Carl Steinfeldt, NY; Ruth Hangen, NY; 1980 Carl Steinfeldt, FL; Ruth Hangen, NY; 1981 Carl Steinfeldt, FL; Opal Reno, OH; 1982 Jack Fahey, FL; Jean Myers, OH; 1983 Rained out!!; 1984 Don Ward, Tenn., Renee Hix, Va.; 1985???

For more information on new modern motels and eating places, etc., contact **Jack Springer, Tournament Director, 925 Henkel Road, Statesville, NC 28677, 1-704-872-5659** or **John Bullard, Director, Recreation and Parks Department, P.O. Box 1111, Statesville, NC 28677, 1-704-872-2841 or 1-704-872-5701.**

MINNICK TOPS YUMA, ARIZ. OPEN—NOV. 10—SANC. 84-553

CLASS A— Gary Minnick 5-0; Spud Napier 4-1; Clarence Giles 3-2; Sam Finrock 2-3; Bill Hanneman 1-4; Dale Arionus 0-5.

CLASS B— Bert Meeks 4-1; Bud Price 3-2; Donna Taylor 3-2; Rex Lee 2-3; Harry Keinath 2-3; Ralph Roether 1-4.

CLASS C— Russell Barr 4-1; Kenneth Snarr 4-1; Lester Young 3-2; Pat Patterson 1-4; Irene Casteel 1-4.

CLASS D— Duane Buck 4-1; John Mauck 4-1; Herbert Jersey 3-2; Charlotte Atkinson 3-2; Lyle Cherry 1-4.

CLASS E— Leo Benson 4-1; Maurice Casteel 3-2; Roy Brown 3-2; Robert Howe 3-2; Larry Taylor 2-3.

SO. UTAH CHAMPIONSHIP WON BY SHELLEY—SANC. 84-251

CLASS A— Vernille Shelley 5-0-41.3; Gary Gilbert 4-1-35.7; Dennis Ohms 2-3-45.3; Earl Davenport 2-3-22.0; Elwin Marquardson 1-4-28.6; Denis Andelin 1-4-27.3.

CLASS B— George Sarkis 4-1-40.7; Joe Didier 3-2-32.7; Craig Zufelt 3-2-32.4; Wilford Andelin 2-3-35.3; Louise Johnson 2-3-30.7; Barry Johnson 1-4-27.3.

CLASS C— Robert Tibbs 5-1-24.4; Don Howell 4-2-20.0; Geo. Hunt 3-2-17.3; Allen Heaton 2-3-10.7; Pat Sheehan 1-4-11.3; Al Hatch 1-4-8.7.

JUNIOR CLASS A— Jared Johnson 5-0-34.0; James Hafen 3-2-29.3; David Andelin 3-2-21.3; Denis Andelin, Jr. 3-2-20.7; Gabe Ohms 1-4-14.0; Amy Ohms 0-5-3.3.

JUNIOR CLASS B— Wade Johnson 7-1-4.8; Paery Ray 6-2-1.9; Jenny Ohms 5-2-6.1; Darin Hatch 3-4-2.2; Tory Gilbert 3-4-2.2; Sandra Howell 3-4-1.7; Dawn Howell 2-5-1.7.

BOWKER EDGES VOGEL FOR 1984 TEXAS STATE CROWN

MEN'S CLASS A— Coke Bowker 7-0-69.0; Roger Vogel 6-1-70.3; Stan Smith 4-3-57.1; Bob McCharen 3-4-59.9; Ken Fraser 3-4-55.9; Bob Harvey 3-4-51.2; George Luketic 1-6-48.5; Jesse Brown 1-6-47.7.

MEN'S CLASS B— Cordell Twomey 5-1-46.5; Scott McBrearty 4-2-52.6; Art Geyer 4-2-52.0; Ramon Kniepkamp 4-2-46.6; Dale Henry 3-3-41.3; Gayle Fuller 1-5-44.3; Ken Mathis 1-5-40.1.

MEN'S CLASS C— Gilbert Raemsch 7-1-49.3; Bret Vogel 6-2-50.0; Harold Mineer 4-3-38.8; Steve Oefinger 3-4-43.6; Jerry Zigrang 3-4-41.6; Walter Lawrence 3-4-41.2; Pat Garcia 2-5-40.6; William Scott 1-6-35.3.

MEN'S CLASS D— Terrell Wilkinson 6-0-42.3; Ernie Groff 4-2-41.4; Ken Willette 3-3-37.5; Scotty Roberds 3-3-37.0; Dwayne Twomey 3-3-34.0; Joe Patusek 1-5-37.7; Charlie Rodgers 1-5-24.7.

MEN'S CLASS E— Glen Lackey 6-0-38.7; Jim Burrow 5-1-37.3; Ronnie Simmons 4-2-41.7; Charles Tomerlin 2-4-35.0; Lee Frump 2-4-27.7; Ron Maroon 1-5-30.7; Johnnie Polak 1-5-29.0.

MEN'S CLASS F— Leroy Harris 7-1-30.6; Robert Emerson 6-1-24.6; Joey Bolner 6-2-28.3; Frank Polak 5-2-32.7; Marvin Burgess 3-4-27.5; Raymond Polak 3-4-27.1; Herb Koke 2-4-21.7; Gene Holliday, Jr. 2-5-22.9.

MEN'S CLASS G— Tom Lockwood 7-0-38.9; Bill Twomey 5-2-40.3; Keith Umscheid 5-2-32.3; Paul Knight, Jr. 3-4-25.1; Warren Maybin 3-4-23.1; Sonny Crane 3-4-22.0; Doug Hetrick 2-5-27.7; Dwayne Polak 0-7-23.4.

MEN'S CLASS H— Robby Fletcher 5-1-25.0; Gary Mays 4-2-32.9; Jerome Zahradnik 3-3-26.7; Jack Babb 3-3-20.4; Howard Cantrell 2-4-22.9; Terry Shepperd 2-4-20.0; Don Shepperd 2-4-15.8.

MEN'S CLASS I— Bryan Carr 7-0-28.2; C.A. McBrearty 4-3-25.7; Ray Hetrick 4-3-23.2; Archie Stone 4-3-21.8; Ken Maupin 4-3-21.4; Louis Engelhardt 2-5-25.7; Gordon Clark 2-5-19.6; Bubba Broesche 1-6-17.1.

MEN'S CLASS J— Wally Weiler 7-2-28.1; Don Hinderliter 6-3-20.3; Ken Niccum 5-3-22.8; Elgin Weinheimer 5-3-20.9; Gary Crane 4-4-20.4; Bob Alexander 4-4-19.7; Jim Holder 3-5-16.7; Rex Graham 2-6-10.0; Clay Twomey 1-7-14.7.

MEN'S CLASS K— Clyde Hetrick 7-1-31.6; Richard Speece 6-2-24.4; Mike Yeager 5-2-17.5; Ray Vaughn 4-3-11.1; Rocky Chesnut 3-4-13.6; Leo Leyendecker 2-5-13.6; Pat Emerson 2-5-12.1; David Coppedge 0-7-7.1.

MEN'S CLASS L— Marvin Two Crow 6-0-16.3; Harold Leonard 4-2-4.6; Tony Endlicher 3-3-10.8; Ted Alexander 3-3-7.9; Gary Watson 2-4-7.5; Joe E. Sullins 2-4-6.7.

TEXAS STATE (CONTINUED)

JUNIOR CLASS A— Danny Polak 4-0-57.3; Steven Hatton 3-1-52.7; Jeffery Chumchal 2-2-42.9; Darryl Kramr 1-3-22.5; Jeff Burrow 0-4-34.4.

JUNIOR CLASS B— Doug Macha 5-0-46.4; Chrisk Polak 4-1-34.4; Shayne McBrearty 2-3-19.6; Jenny Brown 2-3-15.2; Tray Kubena 1-4-26.4; Paul Swaboda 1-4-17.2.

JUNIOR CLASS C— Roxanne Holliday 5-0-13.7; Benji Polak 3-2-21.9; Jay Harris 3-2-15.6; Shay Bolner 3-2-11.9; Travis Hennecke 1-4-8.3.

JUNIOR CLASS D— Kristin McCharen 6-1-5.4; Steve Alexander 4-2-5.8; Nate Vogel 4-2-1.7; Travis McDavid 2-3-3.0; Bill Rodgers 1-4-4.0; Brandon Maroon 0-5-4.5.

WOMEN'S CLASS A— Jerry Babb 5-0-53.9; Diana Polak 4-1-44.7; Carrie Chesnut 3-2-42.9; Delores Zigrang 1-4-46.1; Dot Crane 1-4-36.0; Shorty Fry 1-4-33.7.

WOMEN'S CLASS B— Katie Clark 6-0-44.0; Edna Jones 4-2-43.9; Rebecca Boring 4-2-40.6; Lucy Leonard 3-3-40.0; Paula Allen 2-4-38.2; Mary Holder 2-4-28.1; Bonnie Broesche 0-6-28.0.

WOMEN'S CLASS C— Phyllis Polak 6-1-32.5; Mary Ann Polak 5-2-39.6; Nell Croft 4-3-30.0; Frances Groff 3-4-30.7; Betty Zahradnik 3-4-26.8; Pixie Twomey 3-4-26.1; Dot Willette 2-5-25.4; Mary Brown 2-5-19.0.

WOMEN'S CLASS D— Sue Ann Holliday 6-0-29.6; Betty Engelhardt 5-1-20.8; Janet Bartosh 3-3-22.5; Laura Latham 3-3-17.9; Betty Polak 2-4-20.0; Lori Beseda 2-4-12.5; Marci Yeager 0-6-14.2.

WOMEN'S CLASS E— Karen Hetrick 8-0-17.8; Toni Keating 7-1-25.6; Betty Umscheid 5-3-14.5; Dorothy Hetrick 5-3-12.2; Carol Stienke 4-4-17.2; Nancy Maroon 4-4-13.6; Bonnie Hinderliter 2-6-9.1; Shirley Smith 1-7-7.8; Bev Hester 0-8-6.6.

NHPA APPROVED



THE FIRST NEW DESIGN of the PROFESSIONAL PITCHING HORSESHOE

The horseshoe with calkers on the reversed side of the toeplate. The FLIP-STYLE pitcher will now have the two calkers in a down position landing in pit.

HIGH GRADE STEEL CASTING

2 lb. 9 oz. only — \$24.50 pr., plus \$2.50 shipping



Send checks or money orders to:

CAL-FLIP

PETE DONOHO
704 STATE STREET
REDDING, CA 96001
Ph. 916-243-5761

Allow ample time for delivery
Made in U.S.A.-Berkeley, Calif.

TOLEDO, OH. SANC. LEAGUE CONCLUDES SEASON

The winners in the Toledo, Ohio Tuesday Night Sanctioned League recently concluded were; Most Improved Player, Nial Beck; High League Average, Floyd Plumb; High Actual Game, Floyd Plumb; High Game Over Average, George Stifel; League Champions, Gene Rice and Floyd Plumb.

The winners in the Thursday Morning Sanctioned League were: Most Improved Player, Phil Allen; High League Average, Floyd Plumb; High Actual Game, Floyd Plumb; High Game Over Average, Phil Allen; League Champion, Bob Allen; Most Consecutive Ringers, Floyd Plumb, 24.

STORCK RETURNS TO RINGER WARS—WINS CALIF. YOLO OPEN

After an absence of seven weeks from horseshoe activity brought on after suffering severe burns to both legs and feet, Dave Storck returned to the courts to win the Yolo Open tournament held at Davis, Calif. on October 20, 1984—Sanction 84-296. Bonnie White won the Junior title.

CLASS A-1— Dave Storck 6-2-51.4; Mate McBride 5-3-49.1; Don Williams 4-3-52.3; Pete Manitone 4-3-47.3; Vern Gosney 3-4-46.7; Walt Foreman 4-3-40.7; Chuck Seal 3-4-43.0; Storck Defeated McBride 46-28.

CLASS A-2— Jim Long 7-0-37.7; Mel Roberts 5-2-33.7; Ray Bright 4-3-29.7; Earl Kynard 4-3-28.3; George Greeott 3-4-24.7; Lee Oliver 2-5-26.0; Pete Donoho 2-5-27.7.

CLASS A-3— Lee Van Dalsen 6-1-34.0; Pat Malinaro 5-2-37.0; Larry Standridge 5-2-31.7; Ray Deffner 4-3-29.7; Ceres Perry 3-4-28.0; Don Purdum 3-4-21.0; Jim Keys 2-5-19.0.

CLASS A-4— Bob Bendorf 5-0-22.0; Thermond Walkins 3-2-28.0; Ed Novak 3-2-14.4; Chick White 2-3-21.2; Bill Botelli 2-3-15.6; John Hagerman 1-4-13.6.

CLASS A-5— Glen Jamison 5-1-32.0; Randy Daniel 4-2-25.7; Bob Fread 3-2-18.8; Eldon Bryhan 2-3-10.8; Marion Hawley 1-4-10.8; Elmer Wilson 1-4-8.8.

JUNIORS— Bonnie White 3-1-20.5; Chris Bowers 3-1-18.5; Travis Seal 0-1-1.0.

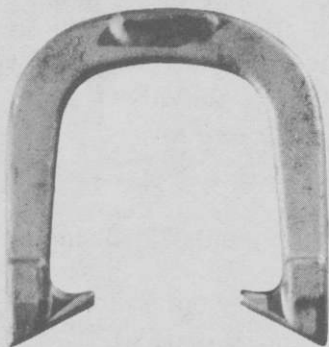
Since 1931

GORDON

"Spin-On"

— 3 TEMPERS —

Medium With Hardened Calks
Dead Soft Hard



Southern California Representative

JERRY SCHNEIDER

3144 W. Paso Robles Drive

ANAHEIM, CALIFORNIA 92804

714-826-0684

APPROVED BY NHPA

OFFICIAL STAKES ALSO AVAILABLE

THE QUEEN CITY FORGING CO.

233 TENNYSON STREET

CINCINNATI, OHIO 45226

KUGLER SWEEPS GOODLANDER OPEN—OHIO*KENTUCKY AT CINCINNATI, OHIO—NOV. 10-11—SANC. 84-51

CLASS A— K. Kugler 7-0-76.9; B. Henn 4-3-61.3; D. Malone 4-3-60.3; J. Henn 3-4-60.3; G. Meece 3-4-57.4; M. Roseberry 3-4-56.0; B. Duffy 3-4-51.8; E. Hinshaw 1-6-54.8.

CLASS B— W. Tarvin 5-2-47.6; T. Turner 4-3-51.3; B. Simpson 4-3-50.8; H. Holland 4-3-48.0; Chick Henn 4-3-45.5; J. Steele 3-4-48.1; Cliff Henn 2-5-44.9; B. Oaks 2-5-38.6.

CLASS C— E. Noe 5-2-48.6; E. Pratt 5-2-42.6; P. Coleman 5-2-42.4; D. Sanders 4-3-38.9; R. McFarland, Sr., 3-4-36.9; J. Hankins 2-5-39.5; J. Boesch 2-5-38.1; B. Davis 2-5-29.2.

CLASS D— L. Martini 6-1-43.0; L. Voelker 4-3-40.4; F. Rogg 4-3-39.2; M. Duncan 3-4-41.4; D. Humphrey 3-4-36.6; W. Canupt 3-4-36.3; B. Johns 3-4-36.1; A. Adams 2-5-36.3.

CLASS E— R. Hankins 6-1-51.2; B. Kenton 6-17-39.0; B. Moore 4-3-44.8; R. McFarland, Jr., 4-3-42.1; B. Beckman 4-3-38.8; W. Brown 2-5-37.9; L. Glass 2-5-33.6; B. Cummings 0-7-24.3.

CLASS F— G. James 6-1-37.3; J. Anderson, 5-2-36.4; B. Snider, 5-2-29.8; M. Simpkins, 4-3-35.9; F. Hebel, 3-4-33.6; E. Canupt, 2-5-31.3; J. Morrison, 2-5-30.3; D. Webb, 1-7-25.5.

E. MARQUARDSON TOPS ST. GEORGE, UTAH OPEN—SANC. 84-252

CLASS A— Elwin Marquardson 5-0-35.6; Geo. Sarkis 3-2-39.4; Grant Seegmiller 3-2-30.6; Lew Brown 2-3-28.8; Lorin Condie 1-4-28.1.

CLASS B— Nober Zuniga 5-0-41.1; Doc Hilderbrandt 3-2-37.0; Wilford Andelin 3-2-33.5; Clark Fawcett 2-3-28.5; Earl Davenport 2-3-25.0; Tuff Moles 0-5-13.0.

CLASS C— Afton Fawcett 4-1-19.0; Carol Ohms 4-1-17.5; Carole Marquardson 3-2-16.0; Geo. Hunt 2-3-9.5; Viola Fawcett 2-3-8.5; L.D. Alldredge 1-4-10.5.

CLASS D— Jeff Hatch 5-0-16.0; Al Hatch 4-1-11.0; Dave Wilkey 3-2-9.5; Bob Landis 2-3-6.5; Verl Alldredge 1-4-5.5.

JUNIOR CLASS— Gabe Ohms 3-0-12.2; David Levine 2-1-8.9; Billy Wilkey 1-2; Seth Ohms 0-3.

DON KUCHCINSKI WINS BABY PIERCE OPEN—NEWBERRY, O. J. SPALLER & B. SCHIRA CLASS CHAMPS—SANC. 85-45

This tournament was affectionately named the "Baby Pierce Open" in honor of the birth of the tournament director's first child born on November 25, 1984. Beth Ann Pierce. The proud parents are Walt and Karen Pierce.

Don Kuchcinski of Erie, Pa. won the playoff over Greg Bean for the title. He recorded a high game of 80.6. In the Ladies division, Jeannie Spaller continued her winning ways with a 3-0-57.9 record. In the Junior class Bryan Schira had 4-0-20.2 to win that title.

CLASS A— Don Kuchcinski 6-1-66.1; Greg Bean 6-1-63.9; Oscar Manns 5-2-68.6; Tom Wennerstrom 4-3-64.2; Clyde Rayn 3-4-53.9; Chuck Dunlap 2-5-53.4; Doc Sargent 2-5-52.1; Ray Greene 0-7-34.3.

CLASS B— Frank Yokopovich 7-0-58.1; Joe Markiewicz 6-1-59.2; Charlie Brotzman 4-3-49.6; Armond Frabotta 4-3-47.3; Guy Wills 3-4-45.7; Dick Spaller 2-5-42.9; Wayne Luoma 2-5-42.6; John Lalley 0-7-38.1.

CLASS C— Frank Hiendlmayr 6-1-44.2; Dick Spaller 6-1-41.6; John Kovach 5-2-38.5; Bob Allen 4-3-39.0; Dick Zielenski 4-3-30.9; Larry Luoma 2-5-33.2; Dave Kuchcinski 1-6-31.2.

CLASS D— Travis Redford 8-1-40.1; John Revack 7-2-41.6; Ford Christian 6-3-48.3; Joe Raico 6-3-38.6; Ray Greene 5-4-37.9; Dick Johnson 5-4-32.8; Gordon Miller 4-5-38.0; Earl Severson 2-7-32.4; Bill Beckett 2-7-24.8.

CLASS E— Chuck Goss 7-2-29.7; Mike Grubich 7-2-35.6; Lonnie Taylor 7-2-35.8; Tom Johnson 7-2-33.4; Harry Genske 5-4-26.9; Thurman Conley 4-5-31.9; Hugh Locke 4-5-28.8; Wayne Redford 3-6-25.4; John Fuduric 1-8-18.6.

CLASS A WOMEN— Jeannie Spaller 3-1-57.9; Shirley Spiesman 2-2-51.5; Betty Dunlap 1-3-55.5.

CLASS B WOMEN— Mary Greene 4-2-10.7; Lois Luhta 4-2-18.6; Eileen Genske 3-3-33.3; Vernie Cicirelli 1-5-32.0.

CLASS A JUNIORS— Bryan Schira 4-0-20.2; Mike Grubich 3-1-26.1; Charlie Greene 2-2-15.3; Tony Fuduric 1-3-15.0; Beth Ann McIntosh 0-4-7.6.

TRI-COUNTY LEAGUE—FAIRMONT, W. VA. ENDS SEASON

Davis Woodward was the top pitcher in the Tri-County sanctioned league of Fairmont, W.Va. for 1984. He captured the League Championship, and was named the most improved player and took the Class A title also. Tom Husty won the High Game Scratch Award and the High Game Over Average Award also. Charles Bunner ended the year with the High Game Average Patch. The Sportsmanship Award went to Tony Brunett. Club trophies were awarded to winners of during each half of season play. Eighteen men made up three classes playing 50-point cancellation games. Two ladies were also competed in the Class B.

1984 EAST COAST TOURNAMENT OF CHAMPIONS WON DON KUCHCINSKI—FRAN CARNAHAN WINS LADIES CROWN—SANC.

STEVE FLESHMAN TOPS IN JUNIOR CLASS

One hundred and twenty pitchers took to the courts in the Esterly Park in Frederick, Maryland last fall to compete for portions of the \$3,000 prize money put up by the Coors Brewing Co. Don Kuchcinski of Erie, Pa. had 13 wins and two losses to take home the top prize of \$500. Fran Carnahan had a perfect record of 8 straight wins to win the \$200 for first place in the Women's division. This tournament had all the "ear marks" of a mini World Tournament with many World Tournament players entered including Jim Knisley, the 1984 World Champion.

CLASS A— Don Kuchcinski 13-2-77.0; Mike Dimartino 12-3-79.1; Alvin Perry 12-3-79.0; Charles Price 11-4-74.4; Jim Knisley 11-4-73.5; Clyde Martz 11-4-70.9; Arthur Tyson 10-5-72.8; Bill Macintyre 9-6-73.9; Steve Kuchcinski 7-8-68.5; Raymond Rugg 6-9-66.5; C.A. Danner Jr. 6-9-64.9; Mark Dyson 5-10-65.2; Joe Roebuck 3-12-63.2; Joe Kuchcinski 3-12-51.7; Al Gyorkos 1-14-41.8.

CLASS B— Curt Over 7-0-68.5; Allen Perry 5-2-49.3; Dick Carnahan 4-3-57.6; Tim Price 4-3-54.1; Bob Dean 3-4-48.0; Jack Melton 2-5-44.6; James Kuchcinski 2-5-43.7; Charles Twigg 1-6-54.1.

CLASS C— John Shaw 6-1-62.7; Clarence Dixon 5-2-57.5; Bobby Brown 4-3-57.8; Phil Parsell 4-3-53.3; Moody Altizer 3-4-53.3; Henry Markland 2-5-48.9; Fred Beaman 2-5-48.3; Tom Chance 2-5-42.8.

CLASS D— Elbert Shifflet 7-0-56.2; Charles Walker 5-2-50.0; Charlie Cooper 5-2-47.4; Elmer Schwartz 4-3-42.8; Ted Lewis 3-4-44.3; Richard Sites 2-5-45.4; William Miller 2-5-38.7; Dale Carlson 0-7-32.1.

CLASS E— Eric Zimmerman 6-1-56.0; John Passmore 5-2-49.4; Ken Stormer 4-3-43.1; John Simpson 4-3-40.3; John Clow 3-4-46.6; Clayton Henson 3-4-39.5; Mikan 2-5-36.5; Phil Fleshman 1-6-39.1.

CLASS F— Buddy Crosten 7-0-52.2; Donald Swaim 5-2-51.2; Charles Beachley 5-2-45.5; Walter Fogle 4-3-44.7; Ed Sell 3-4-35.1; Donald Fleshman 2-5-33.3; Dick Hurley 2-5-29.1; Dennis Unter 0-7-28.3.

CLASS G— Dick Jenkins 6-1-49.7; Cliff Clites 5-2-40.3; Joe Morton 4-3-41.3; Raymond Shober 4-3-38.4; John Clow 4-3-35.8; John Baugher 3-4-35.8; Steve Winfield 2-5-29.2.

CLASS H— Andrew J. Liptak 6-1-40.4; Jackie Chambers 5-2-38.7; Kennard Holden 5-2-35.4; Guy Esh 3-4-38.2; Wm. Simmons Jr. 3-4-33.9; Don Gregory 2-5-32.7; Roy Deiker 2-5-32.6; Jackie Blades 2-5-31.7.

CLASS I— James Trail 7-0-30.2; Pierre Twigg 5-2-32.2; Guy Combs 4-3-32.7; Ed Walsh Jr. 4-3-25.4; Larry Thomason 4-3-21.6; Don Winfield 3-4-26.1; Bye, Bye.

CLASS J— Gene Johnson 6-1-32.8; Frank Lawson 6-1-33.8; Doug Nail 5-2-31.4; Donald Diehl 5-2-27.9; Gene Epley 3-4-20.6; Robert Turner 2-5-21.0; Bye, Bye.

CLASS K— Walter Metts 5-2-25.0; Phil Clow 5-2-28.2; Robert Draper 4-3-25.6; Wayne Sturtz 4-3-23.7; Harold Hargett 3-4-25.9; James Ward Sr. 3-4-25.0; Bill Gordon 3-4-21.2; Hal Ronning 1-6-21.1.

CLASS L— Ronnie Dunn 4-1-29.8; Bill Colegrove 4-1-32.9; Marvin Harden 2-3-31.0; Ike Nicodemus 2-3-26.1; Dennis Haywood 2-3-18.2; Ulysses McCoy 1-4-21.8.

WOMENS CLASS— Fran Carnahan 8-0-74.1; Ruth Hangen 7-1-75.0; Connie Still 6-2-70.7; Renee Hix 5-3-64.3; Hazel Fleshman 4-4-51.9; Grace Rugg 3-5-46.0; Ann Anderson 2-6-43.7; Diane Davis 1-7-32.8; Lorraine Clow 0-8-26.8.

JUNIORS CLASS— Steve Fleshman 7-0-52.0; Steve Nehring 6-1-53.8; Shannon Perry 5-2-42.3; Curtis Fleshman 3-4-36.8; Tim Metts 3-4-30.6; Eugene Hix 3-4-27.9; Andrew K. Liptak 1-6-21.2; James Trail 0-7-28.2.

DENNIS OHMS OF UTAH LOOKING FOR OLD HORSESHOES

Wanted... Lee Horseshoes... Dixon Horseshoes. Contact Dennis Ohms, 777 West Midvalley Rd., Cedar City, Utah. List condition and price wanted.

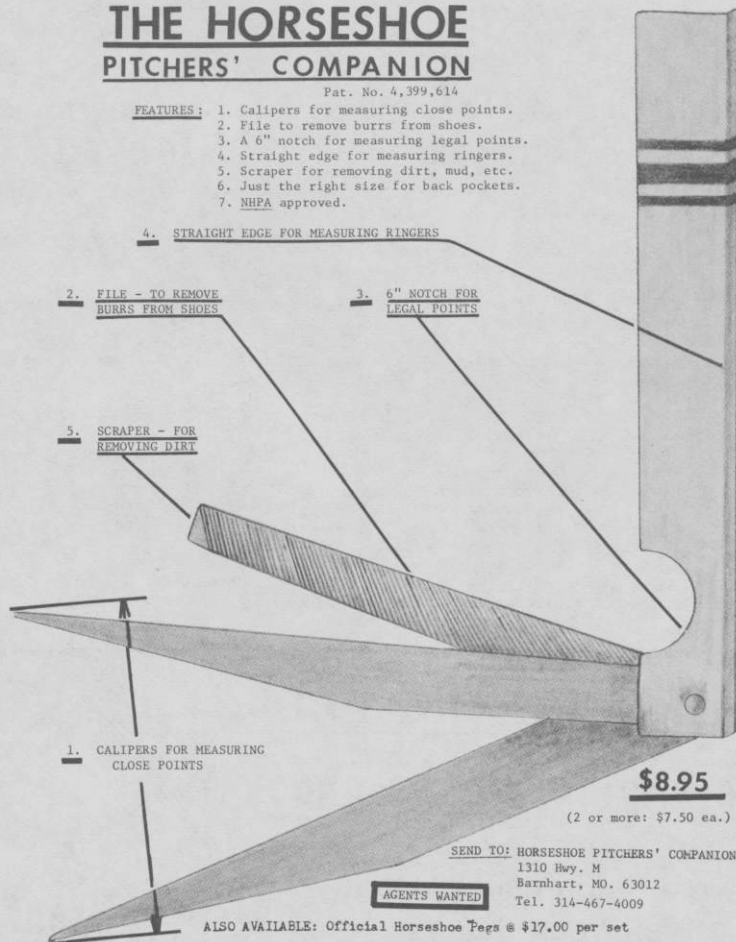
NOTICE TO ALL DIGEST CONTRIBUTORS

PLEASE DO NOT WRITE ON BOTH SIDES OF THE PAPER OR IT WILL BE RETURNED to the sender. ALSO IF POSSIBLE IT SHOULD BE TYPED OR CLEARLY LEGIBLE and DOUBLE-SPACED. ALL XEROX COPIES SHOULD BE CLEAR. HAND-WRITTEN LONG-HAND MATERIAL SHOULD BE CLEAR AND DISTINCT. REMEMBER USE ONLY ONE SIDE OF THE PAPER.

THE HORSESHOE PITCHERS' COMPANION

Pat. No. 4,399,614

- FEATURES:
1. Calipers for measuring close points.
 2. File to remove burrs from shoes.
 3. A 6" notch for measuring legal points.
 4. Straight edge for measuring ringers.
 5. Scraper for removing dirt, mud, etc.
 6. Just the right size for back pockets.
 7. NHPA approved.



\$8.95

(2 or more: \$7.50 ea.)

SEND TO: HORSESHOE PITCHERS' COMPANION
1310 Hwy. M
Barnhart, MO. 63012
Tel. 314-467-4009

AGENTS WANTED

ALSO AVAILABLE: Official Horseshoe Pegs @ \$17.00 per set

CARL YOUNG TOPS LAKE WORTH, FLA. OPEN—SANC. 85-10

Carl Young formerly of Ohio went undefeated to win the second annual Lake Worth, Florida Open on December 29 with a record of 7-0-51.6. Meet was held at the Bryant Park courts adjacent to the inter-coastal waterway. Thirty pitchers took part including one lady and one junior pitcher. Rose Gibson, the only lady won Class C with a 6-0-34.4 record. Windy conditions caused the ringer averages to drop.

CLASS A— Carl Young 7-0-51.6; Bob Powell 5-2-46.0; Arlo Harris 4-3-38.6; Willard Wilbur 4-3-45.1; Mertz Koski 4-3-36.7; Bill Wicker 3-4-43.6; Gil Bancroft 2-5-38.5; Joe West 0-7-31.5.

CLASS B— Dana Smith 5-1-43.7; Bob Hughes 5-1-38.1; Gene Fisher 4-2-37.3; Mike Leondoski 3-3-30.5; Harold Cheffer 2-4-29.2; Rene Rodrigue 0-6-25.0.

CLASS C— Rose Gibson 6-0-34.4; Bob Alles 4-2-27.0; Don Bridges 3-3-25.7; Herman Beebe 3-3-27.8; Don Johnson 2-4-19.1; Joe Edel 2-4-24.1; Dick Warren 1-5-23.4.

CLASS D— Robert McDonald 7-0-31.9; Will Cummins 6-1-21.5; Osmo Ahonen 5-2-15.2; Fred Kozlof 4-3-15.8; Phil Thielen 2-5-8.3; Andrew Spadaro 2-5-5.7; David Millington 1-6-8.6; Bob Sommer 1-6-11.8.

KUGLER SWEEPS GOODLANDER OPEN—OHIO*KENTUCKY AT CINCINNATI, OHIO—NOV. 10-11—SANC. 84-51

CLASS A— K. Kugler 7-0-76.9; B. Henn 4-3-61.3; D. Malone 4-3-60.3; J. Henn 3-4-60.3; G. Meece 3-4-57.4; M. Roseberry 3-4-56.0; B. Duffy 3-4-51.8; E. Hinshaw 1-6-54.8.

CLASS B— W. Tarvin 5-2-47.6; T. Turner 4-3-51.3; B. Simpson 4-3-50.8; H. Holland 4-3-48.0; Chick Henn 4-3-45.5; J. Steele 3-4-48.1; Cliff Henn 2-5-44.9; B. Oaks 2-5-38.6.

CLASS C— E. Noe 5-2-48.6; E. Pratt 5-2-42.6; P. Coleman 5-2-42.4; D. Sanders 4-3-38.9; R. McFarland, Sr., 3-4-36.9; J. Hankins 2-5-39.5; J. Boesch 2-5-38.1; B. Davis 2-5-29.2.

CLASS D— L. Martini 6-1-43.0; L. Voelker 4-3-40.4; F. Rogg 4-3-39.2; M. Duncan 3-4-41.4; D. Humphrey 3-4-36.6; W. Canupt 3-4-36.3; B. Johns 3-4-36.1; A. Adams 2-5-36.3.

CLASS E— R. Hankins 6-1-51.2; B. Kenton 6-17-39.0; B. Moore 4-3-44.8; R. McFarland, Jr., 4-3-42.1; B. Beckman 4-3-38.8; W. Brown 2-5-37.9; L. Glass 2-5-33.6; B. Cummings 0-7-24.3.

CLASS F— G. James 6-1-37.3; J. Anderson, 5-2-36.4; B. Snider, 5-2-29.8; M. Simpkins, 4-3-35.9; F. Hebel, 3-4-33.6; E. Canupt, 2-5-31.3; J. Morrison, 2-5-30.3; D. Webb, 1-7-25.5.

CLASS G— B. Burrows 6-1-25.4; L. Hartman 5-2-31.5; B. Moher 5-2-28.3; C. Webb 4-3-26.2; I. McClurg 3-4-29.1; J. Leopold 3-4-25.0; H. Bohr 1-6-23.8; A. Centers 1-6-23.7.

LADIES CLASS— D. Henn 6-1-29.9; M. McFarland 5-2-31.5; M. Tarvin 4-3-18.0; P. Nudds 4-3-16.3; A. Snider 4-3-11.8; M. Glass 3-4-19.7; J. Beckman 2-5-18.4; M. Martini 0-7-9.8.

Let PITCHER'S PAL

help pick up the shoes

- Save your back
- Avoid fingernail damage
- Protect your hands

Send \$5⁹⁵ to:



post paid

Pitcher's Pal P.O. Box 583 West Middlesex Pa. 16159



COLORFUL BUMPER STICKER

\$1.95 Postpaid

OGLE-ART DESIGNS, Dept B

P.O. Box 49605

Austin TX 78765

DANNER CHAMP IN NEWBERRY, OH. SANC. INDOOR MEET JEANNIE SPALLER WINS LADIES TITLE SANC. 85-44

Casey Danner posted a 7-0-71.1 record and a high game of 91.3 to win the sanctioned indoor tournament held at the Hickory Lake courts in Newberry, Ohio Nov. 9-10-11. Jeanne Spaller topped the ladies Class A with a 6-0-62.3 record.

CLASS A— Casey Danner 7-0-71.1; Oscar Manns 6-1-74.2; Don Kuchcinski 5-2-73.0; Joe Roebuck 4-3-59.1; Bob Straitiff 3-4-63.6; Jim Solomon 1-6-60.6; Joe Kuchcinski 1-6-50.9; Phil Spiesman 1-6-50.3.

CLASS B— Clyde Ryan 8-1-57.0; Chuck Dunlap 7-2-57.1; Joe Markiewicz 6-3-52.0; Bob Lauthenschlegler 6-3-52.0; Armond Frabotta 6-3-42.0; Roger Hackney 3-6-48.3; Earl VanSant 3-6-47.0; Joe Mazzurco 3-6-43.0; John Lalley 3-6-42.0; Rich Spaller 0-9-38.5.

CLASS C— Jim Kuchcinski 5-2-57.1; Dan LaForce 5-2-51.4; Charlie Brotzman 4-3-51.2; Harvey Hayes 4-3-44.8; Clarence Butcher 3-4-48.8; Guy Wills 3-4-47.7; Bob Allen 3-4-40.4; Dave Kuchcinski 1-6-30.1.

CLASS D— John Kovach 6-1-46.0; Ford Christian 6-1-42.0; Dick Zielski 5-2-47.5; Dick Spaller 5-2-43.5; Larry Luoma 3-4-33.9; Joe Raico 2-5-29.8; Ray Slocum 1-6-23.1; Pacer 0-7-.

CLASS E— Gordon Miller 4-1-40.0; Travis Redford 3-2-46.0; Ray Greene 3-2-38.0; Rudy Kobe 3-2-36.0; Earl Kilchenman 2-3-37.0; Bud Loftus, Sr. 0-5-32.8.

CLASS F— Earl Severson 7-0-42.1; Lonnie Taylor 5-2-35.5; Chuck Goss 5-2-31.5; Dick Johnson 4-3-27.0; Dave Haurin 3-4-35.1; Mike Grubich 3-4-23.3; Steve Palsa 1-6-10.0; Pacer 0-7-.

CLASS A WOMEN— Jeannie Spaller 6-0-62.3; Betty Dunlap 4-2-59.7; Shirley Spiesman 2-4-51.3; Marge Spaller 0-6-43.0.

CLASS B WOMEN— Lois Luhta 6-0-20.6; Virginia Cotter 4-2-31.3; Margie Palsa 2-4-21.3; Mary Greene 0-6-4.3.

MARVIN GRUBB IS WINNER OF BEE RIDGE OPEN SARASOTA, FL. SANC. 84-5

CLASS A— Marvin Grubb, Titusville 6-1-60.0; Chet Reel, Clearwater, 5-2-61.8; Paul Scheub, Sarasota 5-2-66.1; Joe Holland, Clearwater 4-3-61.5; Jack Fahey, Bradenton 4-3-67.8; Levi Miller, Sarasota 3-4-66.1; Bob Dean, Clearwater, 1-6-54.6; Ralph Cullum, Inverness 0-7-56.0.

CLASS B— Len Robinson, 4-2-53.6; Ed Hintz 4-2-48.3; Dwight Thatcher 3-3-53.9; Phil Law 3-3-51.8; Dick Ferguson 3-3-47.0; Mickey Broughton 2-4-47.2; Bob Widdersheim 2-4-44.5.

CLASS C— Gil Bancroft 7-0-52.0; Jack Edwards 5-2-46.1; Norm Houchin 5-2-48.9; Guy Nightingale 4-4-38.5; Howard Lea 3-4-41.6; Henry Mullet 2-5-41.9; Dick Senger 2-5-32.5; Joe West 0-7-25.0.

CLASS D— Harold Cheffer 4-2-34.5; Bob Foster 4-2-37.2; Bill Bauman 4-2-34.0; Geo. Buskey 3-3-35.1; Wallace Smith 3-3-37.0; Ed Clark 2-4-35.7; Greg Croft 1-5-27.2.

CLASS E— Robert Theriault 5-1-45.6; Pat O'Toole 5-1-37.2; Vaughn Davis 4-2-36.0; Geo. Welland 3-3-31.9; Gene Jacobus 2-4-31.9; Frank Gyrokos 2-4-31.6; George Craig 0-6-27.5.

CLASS F— Don Bridges 5-0-34.8; John Manning 3-2-25.2; Fred Northern 3-2-29.0; Haywood Rowles 2-3-28.2; Don Johnson 1-4-21.2; Dick Warren 1-4-20.9.

CLASS G— Willard King 5-0-30.6; Earle Johnson 4-1-22.6; Marion Collins 2-3-12.2; Ed Carlin 2-3-22.2; George Kokajko 1-4-7.5; Oscar Price 1-4-22.1.

DEADEYE HORSESHOES

NOW IN FOUR MODELS

CLYDESDALES NOW IN LIGHTER WEIGHTS

	Price Per Pr.—Up to 12 Pairs	Price Per Pr.—12 Prs. & Over
CLYDESDALES 2# 10 oz., 2# 9 oz., 2# 8 oz., & 2# 7 oz.	\$23.00/Pr.	\$17.50/Pr.
N.T. 2# 10, 9, 8, 7 oz.	\$23.00/Pr.	\$17.50/Pr.
REGULAR 2# 9, 8, 7, 6, 5 & 4 oz.	\$23.00/Pr.	\$17.50/Pr.
E-Z GRIP 2# 10, 9, 8, 7 & 6 oz.	\$28.00/Pr.	\$22.50/Pr.

*Prices on all "DEADEYES" f.o.b. point of shipment.
Missouri residents add 4-5/8% sales tax and California
residents add on 6% tax.*

All "DEADEYES" are dead soft (curved only).

All "DEADEYES" are guaranteed against breakage for 2 years.

**All "DEADEYES" guaranteed for 2 years from date
of purchase (NOT RE-PLACEMENT DATE)**

**Contact (Bill Courtwright ONLY) for special prices on
rejects and returned shoes (NO GUARANTEE)**

DEADEYE Caps Available — \$5.00 postpaid

W. Courtwright
P.O. Box 742
Fenton, MO 63026
Phone: (314) 376-5222 (8-5)
(314) 677-2200
(314) 842-5188

Carl Steinfeldt
44 Ridgcrest Road
Rochester, NY 14626 (summer)
Phone: (716) 225-4191

Walter Ray Williams, Jr.
6140 Grant St.
Chino, CA 91710
Phone: (714) 628-6053

Carl Steinfeldt
407 Shady Lane Mobil Park
15400 Roosevelt Blvd.
Clearwater, FL 33520
(winter address)
Phone: (813) 535-3136

ORDER DIRECT or from NHPA REPRESENTATIVE

1985 GREENVILLE, OH. SNOWBALL OPEN WON BY LORAN COY

Loan Coy, Englewood, Ohio, survived a back straining accident and a three-way pitch-off to become the 1985 Snowball Open Champion in Greenville, Ohio. Loran needed to out-ringer Dick Carpenter in the initial pitch-off round and finally Kenny Waggoner to claim the Championship. Sanction No. 85-27 standings by classes were:

CLASS A — Earl Waggoner, 3-2-64.1; Loran Coy, 3-2-60.5; Dick Carpenter, 3-2-56; Dale Dombrosky, 2-3-61.6; Jim Rhymer, 2-3-55.2; Bus Schamp, 2-3-54.2.

CLASS B — Ed Hinshaw, 5-0-52.8; Darrel Bowers, 3-2-50.3; Bill Ison, 3-2-48.5; Bill McClain, 3-2-47.8; Ken Waggoner, 1-4-45; Joe Pillion, 0-5-42.8.

CLASS C — Dale Kirtley, 3-0-61.9; Herb Miller, 2-1-46.7; Bob Detrick, 1-2-36.4; Waldo Green, 0-3-33.1.

CLASS D — Lloyd Anthony, 6-0-46.5; George Neff, 4-2-37.3; Dale Miller, 3-3-37.6; Leonard Schaffner, 3-3-32.7; Rollin Futrell, 2-4-36.8; Waldo Green, 2-4-32.1; Paul Rossman, 1-5-32.9.

CLASS E — Charles Jones, 5-1-34; Richard Honigford, 5-1-33.9; Jim Blaker, 4-2-35.1; Marvin Kinder, 3-3-28.2; Gene Loy, 2-4-33.5; Dwayne Riddell, 2-4-27.5; Dallas Myers, 0-6-26.6.

CLASS F — Rusty Latimer, 4-0-30.4; George Liette, 3-1-22.6; Larry Harmon, 2-2-28.4; Jim Snyder, 1-4-24.1; Richard Stevens, 0-4-16.1.

CLASS G — Ed Sroka, 4-1-26.7; Doug McClain, 4-1-19.7; Leslie Geeslin, 3-2-20.1; Fritz Worner, 2-3-17.8; Bruce Fawcett, 2-3-12.3; Ed Ehemann, 0-5-9.2.

STEINFELDT TOPS LAKE WORTH, FL. 60TH ANNIV. MEET

On Saturday, February 23 the Lake Worth Club sponsored a tournament known as the 60th Anniversary of the 1925 World Tournament. Sanction 85-10. Tournament was held at the Bryant Park courts in Lake Worth, Florida.

Carl Steinfeldt, a former World Champion, now living in Clearwater, Florida bucked the high winds that prevailed along with the other pitchers and came off with the championship. He posted a high game of 78.9 and a final score of 68.1 and 6 wins and one loss. Steinfeldt overwhelmed all of his opponents except Henry Franke of Centralia, Illinois who pitched at 30 feet. Franke and Steinfeldt both pitched 70 percent but Franke won the match 35-34 in 50 shoes. Franke is 84 years old.

CLASS A — Carl Steinfeldt, Fla., 6-1-68.1; Larry Morton, Ga., 5-2-49.4; Carl Young, Fla., 5-2-51.0; Arlo Harris, Fla., 4-3-46.6; Glen Portt, 3-4-52.6; Henry Franke, Ill., 3-4-42.4; Jack Edwards, Fla., 1-6-38.9; Bill Wicker, Fla., 1-6-39.7.

CLASS B — Willard Wilbur, Fla., 7-0-51.6; Bob Powell, Fla., 5-2-41.8; Roy Broadwater, Fla., 4-3-39.6; Dana Smith, Fla., 4-3-35.9; Gene Fisher, Fla., 3-4-34.7; Mertz Koski, Fla., 2-5-32.8; Clyde Robinson, Fl., 2-5-28.7; Ed Severs, N.J., 1-6-22.2.

CLASS C — Don Biesendorfer, Fla., 6-1-35.4; Bob Alles, Fl., 6-1-28.2; Joe West, Fl., 5-2-36.0; Herman Van Zanten, Fl., 4-3-26.0; Robert McDonald, Fl., 4-3-29.2; Jim Steele, Fl., 1-6-19.1; Pat O'Toole, Fl., 1-6-21.7; Jack Lyons, Fl., 1-6-17.5.


CLASS D — Leonard Murray, Min., 6-1-15.8; Herman Beebe, Fl., 5-2-19.1; Norm Gaseau, Fl., 5-2-16.0; Dick Warren, Fl., 4-3-16.3; Percy Wells, Fl., 4-3-15.7; Bill Ruhnke, Fl., 3-4-15.4; Howard Cowgill, N.J., 1-6-10.3; Walter Simering, Fl., 0-7-6.2.

THE AWARD CENTER ATOMIC TROPHIES, INC.

P.O. BOX 1351
816 U.S. HWY #1
EDISON, NJ 08818
CALL 1-201-287-0616



FACTORY DIRECT, FREE ENGRAVING, FREE SHIPPING



NEW!
"GREEOTT GRABBER"

Not JUST another horseshoe.
 The ultimate shock-absorbing, ringer saving design. Helps prevent loss of solidly hit ringers by rebounding.

Soft temper
 2 lb. 8 oz.

\$28.00 pr. plus \$2.50 shipping, handling,
 to the 48 adjoining states. California residents
 add 6% tax. High grade steel casting, NOT cast iron.

Send checks or money orders to:
Greeott Grabber Horseshoes, c/o Steve Kynard,
1380 Eagle Rock Pl., Woodland, Ca. 95695
Ph. 916-666-9164. 7:00 to 9:00 P.M. Pac. time
Or from NHPA representatives
Allow ample time for delivery

**Made in
 U.S.A.**

Approved by NHPA

APPLE CAPITOL OPEN, WINCHESTER, VA, MAY 18-19

The annual Apple Capitol Open tournament will be held at the Raymond L. Frye courts in Winchester, Virginia on Saturday and Sunday, May 18-19. \$800 in awards and prize money is offered. First prize money in the Men's Class A will be at least \$100.00. Entry fee for men and women will be \$10.00 each. Entry fee for Juniors will be \$3.00. There will be an extra fee for the Men's Classes A and B. (Sanction No. 85-316.) For further information contact Debbie Merriner, 1268 Circle St., Winchester, Va. 22601.

ANNUAL MEMORIAL DAY WEEKEND OPEN — FAIRMONT, W. VA.

The fourth annual Memorial Day Weekend Hillbillie Open will be held at the East Marion Recreational Complex in Fairmont, West Virginia on May 24 thru May 27. This tournament also for to help the St. Jude organization, to help deserving children. The Fairmont Letter Carrier's Union, Branch 910, has donated \$100 to the total of \$500 that has been provided for cash prizes. Sanction applied for.

Adults must pre-pay a minimum entry fee of \$10.00 to Charles Bunner, a tournament director, by May 20th. An extra fee will be charged for both Class A men and Class A women of \$6.00; Class B men and women, \$5.00; Class C and D \$4.00 and \$3.00 respectively. All other adult classes, only the initial fee. No entry fee for Juniors.

Tournament is limited to a total of 192 players over the three day period. Each player will be notified as to date and time he will pitch. No refunds except due to injury or cancellation of Class of play, before half of each is completed. Method of play will be 50 point cancellation, with play starting at 9 a.m. daily.

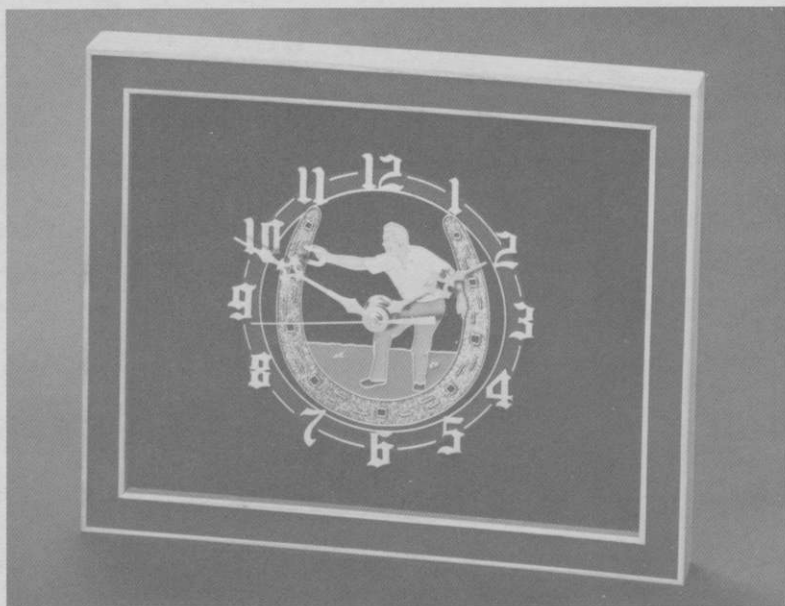
Appropriate dress required. No drinking of alcoholic beverages allowed. Tournament is restricted to 12 Junior Girls and 12 Junior Boys, 16 adult Women and 152 adult men on a first registration basis. First prize in Class A men and women will be \$100.

Send your entry fee with highest ringer percentage to: Charles Bunner, 508 Ohio Ave., CR14, Fairmont, W.Va. 26554. Phone: 304-366-7986. The St. Jude Area Representative is Kathy Maze, 805 Thomas Ave., CR22, Monongah, W. Va. 26554. Ph. 534-5430. Be sure you send correct address and your phone number complete with area code and mailing zip code.

RESUME OF GREATER HOUSTON, TEXAS LEAGUE ACTIVITY

The Greater Houston Horseshoe Pitchers Association, Inc. in 1984 conducted a total of eight sanctioned leagues with 158 pitchers. Leagues ran from six to eight weeks. 90% and 100% handicap was used. We found that the 100% handicap made the good pitchers pitch better. Our 100 pt. club included, Art Geyer, Ken Mathis, Bob McCharen, Frank Polak, Zeke Zehler, and Jerry Zigrang. Sanctioned leagues are the backbone of our club.

ATOMIC TROPHIES PRESENTS



HORSESHOE PITCHER CLOCK

ACCURATE QUARTZ MOVEMENT

11½" x 9½" REAL WOOD FRAME WITH

INLAID BLACK MICA HIGHLIGHTED BY A BLACK

VELVET BACKGROUND

TAKES ONE AA BATTERY (not included)

ONLY \$29.95

PLUS \$3.00 POSTAGE & HANDLING

(NJ RESIDENTS PLEASE ADD 6% SALES TAX)

SEND TO: ATOMIC TROPHIES, INC.

P.O. Box 1351 • 816 U.S. HIGHWAY #1

EDISON, NJ 08818

1-(201)-287-0616

Name _____

Address _____

City _____ State _____ Zip _____

Amount enclosed \$ _____ Check one of the following: VISA _____ MasterCard _____

Personal check or money order _____ Credit Card No. _____

Signature _____ Exp. Date _____

In Memoriam

Word has been received of the passing of John R. Ludwig of East Liverpool, Ohio on February 27. He was an NHPA member for many years and was a promoter of horseshoes in the East Liverpool area. His friendly smile and fellowship will be missed by all who associated with him through the years. The sympathy of the North Eastern Ohio group and that of the NHPA is extended to his bereaved family.

LEVI MILLER TOPS MANATEE OPEN AT BRADENTON, FLA.

With the temperature hovering around 45 degrees all day long, Levi Miller had a 4-2-61.2 record to take the title in the Manatee Open held at Bradenton, Florida. High game honors went to Leo Fitzgerald with a 66.9 ringer percentage. Three ladies pitched with the men. Twelve classes with 78 participants made up the tournament. Sanction No. 85-12. Class D was cancelled because of darkness.

CLASS A — L. Miller, 4-2-61.2; M. Grubb, 4-2-60.2; J. Fahey, 3-3-58.1; E. Schultz, 3-3-59.4; P. Scheub, 3-3-54.0; F. Bartley, 2-4-59.0; H. Hostetler, 2-4-56.0.

CLASS B — L. Fitzpatrick, 5-1-66.9; M. Richmond, 5-1-62.0; B. Wells, 3-3-58.0; J. Hurst, 3-3-56.0; L. Wilcox, 2-4-47.0; B. Dean, 2-4-48.0; E. Hamilton, 1-5-45.0.

CLASS C — B. Wicker, 6-0-56; E. Swartz, 5-1-55; G. Bancroft, 4-2-49.0; N. Houchin, 3-3-52.0; Philip Law, 2-4-44.0; B. Widdersheim, 1-5-50.0; R. Wucke, 0-6-42.0.

CLASS E — C. Dunlap, 4-2-48.0; R. Swinson, 4-2-47.3; G. Buskey, 4-2-46.6; J. Edwards, 4-2-46.2; Dotslocum, 2-4-44.5; D. Senger, 2-4-42.9; H. Mullett, 1-5-43.7.

CLASS F — W. Roach, 5-1-48.9; M. Anleitner, 4-2-45.6; T. White, 4-2-46.4; C. Anderson, 3-3-40.9; A. Eakins, 2-4-36.6; J. Irey, 2-4-37.3; Wally Smith, 1-5-38.8.

CLASS G — W. Bauman, 5-1-38.2; E. Senger, 5-1-34.8; R. Lobuzzetta, 4-2-37.8; K. Peer, 3-3-37.1; I. West, 2-4-29.3; E. Angel, 1-5-25.4; Helen Eakins, 1-5-29.3.

CLASS H — M. Ringger, 3-2-36.4; Betty Dunlap, 3-2-34.5; J. Morgan, 3-2-30.8; M. Rodocker, 2-3-32.4; G. Beckmeyer, 2-3-30.5; G. Bennett, 2-3-29.7.

CLASS I — G. Stifel, 5-0-45.4; C. Richards, 3-2-35.9; C. Bowland, 3-2-43.2; F. Toal, 2-3-36.0; W. Wedel, 1-4-31.9; P. Milnes, 1-4-28.8.

CLASS J — W. Krieger, 4-1-34.1; P. O'Toole, 3-2-35.9; L. Long, 3-2-35.7; J. King, 2-3-24.6; M. Lange, 2-3-26.9; J. Jacobus, 1-4-25.8.

CLASS K — E. Croft, 4-1-40.8; J. Fitzpatrick, 4-1-26.9; G. Toth, 4-1-32.9; H. Bennett, 2-3-23.3; C. Miller, 1-4-23.9; L. Judd, 0-5-21.2.

CLASS L — D. Warren, 4-1-30.8; J. Piper, 4-1-29.0; E. Colgan, 3-2-35.1; W. Cummings, 2-3-25.4; J. Manning, 2-3-25.4; G. Utzman, 0-5-16.2.

CLASS M — Wm. Staudacher, 5-0-28.8; G. Engleman, 4-1-21.9; P. Wells, 2-3-19.5; M. Collins, 2-3-24.3; J. Dey, 1-4-16.8; R. Rollins, 0-5-3.

Subscribe now to Will Gullickson's Double Ringer Roundup. Eight issues starting in May with features on the 1985 NHPA World Tournament at Springfield, Mo. Pictures, direct reports and results from the tournament site. Send \$10 to Will Gullickson, 2850 26th St. S., Moorhead, MN. 56560.

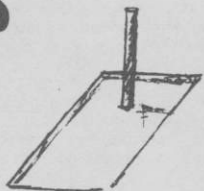


Mt. Washington Tavern

Open

\$1500⁰⁰ Cash Prizes

June 1 & 2, 1985



Rain dates — Following Weekend

Tentative Schedule

B & C Division — Saturday

A Division — Sunday

Limit 48 entries

Limit 48 entries

\$20 entry fee

\$2 scorekeeping fee

Entry form must be received by May 10th

Entry Form

Name _____

Address _____

Ringer % _____

Phone # _____

Send check or money orders payable to:
Mt. Washington Tavern
6892 Clough
Cincinnati, Ohio 45244

SYRACUSE, N.Y. SANCTIONED LEAGUE SUMMARY

By David Harnden

The Pioneer Horseshoe Club of Syracuse, New York 1984 pitching season marked the second season as an organized Club with activity taking place at the N.Y. Fairgrounds. Last season was our first as a sanctioned league member, and therefore, a very busy one, learning how to coordinate all league activities including statistics! Bear with us in our beginning year! The Club wishes to take this opportunity to extend its thanks to the NHPA and all responsible for being accepted as a sanctioned member of the NHPA. We would especially like to "take our hats off" to NHPA League Coordinator, "Doc" Dougherty, for his continual help in bringing us along as a new member!

Our Pioneer Club, which has a membership of over eighty, had nearly sixty men pitching during a six month period from April 25 to October 31. We divided our fifty-eight men into three evenly matched divisions of varying ability and set-up a split season of two eight-week summer sessions. Each man played two games a night or sixteen in all, during each eight-week session. We played fifty shoe-count-all games based on the ninety per cent hcp. system.

Fifty-two men, finally, participated in the first eight-week session with Lance Hinman winning Div. I, John French winning Div. II, and Bill Coleman capturing Div. III in a playoff with Sam Barbuto. Fifty-seven men took part in the second eight-week session with Chic Coleman, seventy-five years young, winning the Div. I Championship for the 2nd half! Bob Grzelka won Div. II in grand style, going all the way from 17th in the 1st half to No. 1 position in the 2nd half! Bill Coleman made a clean sweep of Div. III, going unbeaten in the 2nd half with an awesome display of ringers!

The over-all champions of Div. I and II were determined when the 1st and 2nd half winners met in playoffs. Lance Hinman, completing a brilliant year of pitching, won the Div. I championship, defeating the veteran, Chic Coleman. Bob Grzelka continued his winning ways, defeating John French for the Div. II over-all title.

Thirty-six men finished out the pitching season by participating in the fall league from September 12th to October 31st. We again played fifty-shoe count-all games with the ninety per cent hcp. system. However, instead of the divisional format, we decided to divide the players into four classes of equal ability. This proved to be more popular than division play as some matches actually ended up being played "scratch." Hinman continued his hot streak by winning Class A, almost uncontested! Carl Meyer edged Grzelka for Class B, after a double-tie play-off! Mike Vanelli, a seasoned vet, took Class C, and Dave Nipper, a promising newcomer, captured Class D.

John Ruston, our own Pioneer Club President, pitched the High Ringer Game in 1984 — forty-one! His over-all percentage was sixty-seven per cent. John was awarded the NHPA's Top Ten Pitchers patch with his high game of 132. Close behind was Bill Coleman with his sixty-six per cent over-all average and high game of 130, certainly a force to be reckoned with in upcoming seasons. Lance Hinman, Carmen Fall, Harry Dunbar, Gus Krause, Tony Sauro, Cas Osinski, Sam Barbuto, and Al Larock are all other fine pitchers who averaged close to or over fifty per cent for the entire year! Although these men are all tough competitors, we have several more up and coming players who are pushing them to get into that select circle!

WHITNEY/BUCK DUO TOPS DOBENS DOUBLES—TORRANCE, CA.

When a doubles contest is between evenly matched teams, anything can happen and a play-off is no surprise. Add to that a bone-chilling 25 mile wind and what do you have? Of course, you have the Dick Dobens Doubles Tournament that was held at the Wilson Park courts in Torrance, Calif. on March 2. Twenty players pitched 50 shoes to qualify. Pairings were teaming the highest with the lowest, etc. Meet was sanctioned.

The final outcome showed the Whitney/Buck team tied with Yoshida/Sylvia, with Whitney's last ringer of the play-off game winning the title for his team.

Joshua Whitney/Jim Buck, 7-2; Chuck Yoshida/Ernie Sylvia, 7-2; Norm Bailey/Don Adams, 6-3; Dan Noriega/Benji Whitney, 6-3; Bruce Stuart/Ed Ayer, 5-4; Frank Batts/Paul Watson, 5-4; Rick Dillon/Rene Boivin, 3-6; Leonard Lifton/Mark Polan, 3-6; Fred Koch/Pat Ayer, 2-7; Ken Chartier/Ed Brown, 1-8.

PAUL LACROSSE VICTOR IN VALLEY OF THE SUN OPEN

YVONNE MAUZEY WINS LADIES TITLE — SANC. 85-55

The annual Valley of the Sun Horseshoe Tournament was held the 12th thru 17th of Feb., 1985 at Pioneer Park, Mesa, Az. This was the 27th renewal of this event and it has become one of the largest, if not the largest, horseshoe events west of the Mississippi River. We had 228 participants, the biggest so far.

Paul LaCrosse of Colorado took the tournament championship on the men's side. Pitching a steady 72.4%, he lost only one game in pitching to his first Valley of the Sun victory. On the ladies side, Yvonne Mauzey lost only two games in a six man double round robin pitched over two days. Yvonne, from Calif. won this tournament in '81 with a 56.6. This year she threw 58.8.

During the noon break the AHPA inducted two of its own into the AHPA Hall of Fame; Bill Kamm and John Vitton, two outstanding men in horseshoes. Both game time and effort in helping to organize clubs and teaching others to improve their game.

We greeted many old friends and made many new ones. Speaking of "old friends" this was Wally Shipley's 20th consecutive year that he has competed in this tournament.

Weather conditions were ideal; the temperature hovering in the low 80s. Heard no complaints about that. Everyone had a good time and expressed hopes of returning next Feb. The AHPA wishes to thank all who competed and those who came along to watch and enjoy themselves.

VALLEY OF THE SUN — (Continued)

CLASS A — P. LaCrosse, Co., 9-1-72.4; D. Titcomb, Ca., 8-2-67.7; G. Minnick, Az., 8-2-66.6; D. Hughes, Mn., 7-3-68.6
J. Gonzales, Ca., 5-5-66.4; E. Johnson, Mn., 5-5-62.7; V. Valdois, Ks., 4-6-60.9; L. Lipovsky, Mn., 3-7-62.0; N. Flann, Ca., 3-7-55.3; A. Sperber, Wa., 2-8-62.1; C. Gilles, Ut., 1-9-58.9; J. Holt, Ok., For.

CLASS B — R. Lee, Ca., 9-2-58.8; C. VandreLinden, Cn., 9-2-63.7; R. Mauzey, Ca., 9-2-56.7; L. Fontaine, Ca., 8-3-51.1; H. Robbins, Ca., 6-5-52.3; R. Swenson, Mn., 5-6-50.0; B. Knudson, Cn., 4-7-50.8; D. Ohms, Ut., 4-7-47.9; H. Rushing, Ca., 3-8-51.4; G. Buche, Ks., 3-8-46.6; J. Raymond, Ut., 3-8-46.6; M. Reheis, Ks., 3-8-45.5.

CLASS C — L. Gillespie, Il., 9-2-57.1; C. Gage, Wi., 7-4-52.3; G. Whittemore, Ca., 6-5-52.3; J. Spencer, Co., 6-5-50.4; V. K. Gedatus, Mn., 6-5-50.0; E. Graves, Co., 6-5-49.6; R. Lipinski, Az., 6-5-49.3; E. Wilkinson, Il., 5-6-48.2; J. Garcia, Ca., 5-6-46.9; C. Rhoades, Il., 4-7-50.2; R. Buchanan, Ut., 3-8-41.7; R. Rebman, Or., 3-8-40.7.

CLASS D — S. Ulku, Mn., 8-3-49.6; R. Proctor, Ca., 8-3-44.3; W. Andrews, Ia., 8-3-43.7; W. Foreman, Ca., 7-4-49.6; B. Gardner, Az., 7-4-48.9; D. Huckle, Nv., 7-4-44.9; M. Dunn, Ca., 6-5-45.9; H. Payne, Ca., 6-5-43.6; R. Funk, Ks., 5-6-46.1; A. Workin, N.D., 2-9-32.6; M. Flann, Mn., 1-10-38.8; C. Ball, Or., 1-10-33.7.

CLASS E — F. Voyce, Ia., 6-1-49.1; E. Pearce, Ks., 4-3-50.9; L. Burroughs, Ca., 4-3-45.9; B. Landrum, NM, 4-3-45.1; R. Thackeray, Id., 4-3-44.2; B. Sullivan, Mn., 2-5-40.3; J. Eozzo, Ca., 2-5-39.9; V. Thoring, Cn., 2-5-32.8.

CLASS F — A. Schliske, Wy., 6-1-49.7; N. Cone, Ca., 5-2-49.4; L. Grosenbach, Co., 5-2-43.7; M. Larkins Sr., NM, 5-2-41.7; F. Stinson, Mn., 3-4-44.6; D. Tarket, Co., 3-4-37.3; H. Wisness, ND, 1-6-36.4; E. Ulku, Mn., 0-7-38.3.

CLASS G — G. Sorenson, Ca., 4-3-46.2; B. Price, Cn., 4-3-45.1; L. Weisdepp, Wa., 4-3-42.1; E. Schilperoord, Wa., 4-3-41.3; J. LaPlant, Mn., 3-4-44.2; G. Fagala, Wa., 3-4-43.1; B. Bissell, Az., 3-4-42.8; J. Niemitalo, ND, 3-4-41.7.

CLASS H — H. Harlow, Mn., 6-1-39.6; I. Davis, Mn., 5-2-43.6; G. Colburn, Mn., 5-2-40.0; B. Whitley, Ks., 4-3-43.6; R. Christianson, Or., 3-4-40.9; C. Cone, Ia., 3-4-38.7; D. Blandin, Ks., 1-6-35.3; C. Grabow, Ca., 1-6-28.5.

CLASS I — D. Beyer, Mn., 7-0-39.4; S. Wyrill, Ca., 5-2-39.5; D. Arionus, Az., 4-3-35.1; S. Allen, Ia., 4-3-33.9; E. Knorp, Ca., 3-4-39.9; A. Erickson, Mn., 3-4-36.2; H. Anderson, Mn., 1-6-29.8; P. Branine, Ks., 1-6-27.1.

CLASS J — J. Wittinger, NY, 6-0-40.3; M. McKissack, Az., 4-2-35.2; B. Charley, Ca., 4-2-32.9; R. Jones, Cn., 3-3-34.7; J. Mitchell, Id., 2-4-31.2; G. Dixon, Ks., 2-4-30.1; H. McKillip, Az., 0-6-25.6; T. Apodaca, Id., For.

CLASS K — L. Gardner, Ut., 6-1-40.4; D. Tucker, Id., 5-2-37.8; J. Hoaglin, Ca., 5-2-35.3; B. Magnuson, Ca., 4-3-38.3; L. Bryan, Co., 3-4-36.1; L. Ferrin, Az., 2-5-35.4; L. Ford, Ca., 2-5-28.4; E. Conilogue, Wy., 1-6-32.9.

CLASS L — H. Ruby, Az., 6-1-43.3; W. Edmondson, Az., 6-1-42.6; H. Hoar, Ca., 4-3-37.6; P. Klein, Mn., 4-3-32.8; J. McKinney, Ne., 3-4-36.8; B. Courtwright, Mo., 2-5-36.9; D. Utter, Ks., 2-5-31.0; L. Robbins, Il., 1-6-27.4.

CLASS M — A. McGladrie, Cn., 6-1-30.2; D. Weaver, Nv., 5-2-32.5; V. Johnson, Mn., 5-2-26.9; J. Bush, Ca., 4-3-30.4; E. Parsons, Wy., 3-4-31.3; A. Henke, Co., 3-4-28.6; M. Larkins Jr., Az., 1-6-23.0; W. Shipley, Ca., 1-6-21.5.

CLASS N — W. Kjellberg, Mn., 5-1-43.3; M. Mimbach, Az., 4-2-28.0; A. Hoffman, Cn., 4-2-34.3; S. Snyder, Ca., 4-2-26.5; B. Bayerl, Mn., 2-4-26.9; F. Craven, Ca., 1-5-31.0; L. VanDalson, Ca., 1-5-23.3; F. Canfield, Nv., For.

CLASS O — A. Oster, Mt., 5-0-45.2; I. Lemieux, Vt., 4-1-45.0; B. Bajarl, Az., 3-2-36.1; W. Burggraf, Oh., 2-3-29.2; O. Clavelot, Mt., 1-4-32.2; T. Pascoe, Ca., 0-5-21.7; O. Larson, Ia., For.; J. Greider, Az., For.

CLASS P — D. Taylor, Wa., 6-1-32.4; P. Free, Or., 5-2-33.8; E. Vines, Mn., 5-2-31.2; C. Wood, Or., 4-3-26.7; G. McDonald, Az., 3-4-32.2; J. Selle, Az., 3-4-25.5; B. Ponder, Ca., 2-5-29.9; F. Mulinix, Az., 0-7-18.4.

CLASS Q — E. Holland, Ca., 5-1-35.6; F. Bellows, Mn., 4-2-23.7; P. Morancy, Me., 3-3-27.8; R. Carter, Az., 3-3-26.3; L. Bayer, Az., 2-4-28.0; G. Anderson, Az., 2-4-23.3; D. Higgins, Mn., 2-4-16.7; C. Snarr, Ut., For.

CLASS R — H. Swanson, Mn., 5-1-28.2; G. Sneller, Mi., 4-2-29.3; F. Grenier, Az., 4-2-20.2; B. Watson, Mn., 3-3-26.0; O. Thomas, Wa., 3-3-22.3; F. Bruns, Az., 1-5-16.2; C. Narlock, Mn., 1-5-16.2; J. Berrall, Fl., For.

CLASS S — O. Kubal, Id., 7-0-35.6; M. Orban, Cn., 6-1-23.8; M. Feller, Mn., 5-2-25.9; R. Lloyd, Ca., 3-4-25.6; V. Dickey, Ca., 3-4-21.0; J. Holder, Ca., 2-5-24.0; D. Carter, Mi., 2-5-18.7; R. Koerner, Ks., 0-7-17.8.

CLASS T — E. Oxley, Az., 7-0-24.9; A. Perreault, Cn., 5-2-28.0; T. Cutts, Wi., 5-2-26.9; V. Bolduc, Mn., 3-4-17.8; R. Sneller, Mi., 3-4-15.9; C. White, Ca., 2-5-20.2; C. Parker, Mi., 2-5-15.9; H. Hegarty, Ia., 1-6-19.8.

CLASS U — W. Minnick, Az., 5-1-34.9; B. Billiard, In., 4-2-27.0; C. Garrett, Mn., 4-2-26.3; L. Collier, Az., 2-4-23.6; K. Bayless, In., 2-4-23.0; M. Carlson, Wi., 2-4-23.0; W. Roberts, Wa., 2-4-22.1; M. Jones, Ca., For.

CLASS V — S. Taylor, Az., 6-1-22.8; W. DeFrane, Az., 5-2-24.7; R. Lee, Az., 4-3-24.9; R. Robbins, Az., 4-3-21.9; G. Landes, Mt., 3-4-22.0; G. Aswegan, Ia., 3-4-22.0; R. Norberg, Co., 2-5-18.0; J. Kronholm, Wa., 1-6-14.2.

VALLEY OF THE SUN — (Continued)

CLASS W — M. Glennie, Cn., 6-1-24.7; G. Schnick, Cn., 5-2-18.3; E. Brynhan, Ca., 5-2-16.1; R. Homuth, Mn., 4-3-18.6; E.J. Nelson, Az., 3-4-21.0; C. Dunlap, Mi., 3-4-19.0; J. Hutchings, Cn., 2-5-18.0; R. Rossmar, Ne., 0-7-15.0.

CLASS X — L. Bower, ND., 3-1-18.2; B. Padgett, Ca., 3-1-15.5; B. Ellis, Az., 2-2-21.0; M. Hawley, Ca., 1-3-15.2; O. Lee, ND, 1-3-14.5; P. Cuicci, Az., For.

LADIES (DOUBLE ROUND ROBIN) — LADIES CLASS A — Y. Mauzey, Ca., 8-2-58.8; M. Tarket, Co., 7-3-59.6; E. Weisdepp, Wa., 5-5-52.9; J. Hughes, Mn., 5-5-52.4; H. Erickson, Mn., 4-6-48.3; E. Pearce, Ks., 1-9-40.9.

LADIES CLASS B — J. Kilstrom, 7-0-40.1; M. Dunn, Ca., 5-2-37.3; D. Taylor, Az., 4-3-36.3; D. Reheis, Ks., 4-3-30.1; D. Stablyk, Cn., 3-4-37.9; D. Hutchings, Cn., 3-4-28.1; L. Lloyd, Ca., 1-6-22.1; J. Charley, Ca., 1-6-22.0.

LADIES CLASS C — A. Schnick, Cn., 7-0-36.0; B. White, Ca., 5-2-25.3; V. Stumm, Ks., 5-2-22.2; C. Larkins, Az., 4-3-18.2; L. Price, Cn., 3-4-16.8; R. Kubal, Id., 2-5-20.5; J. Bush, Ca., 1-6-13.1; S. Shipley, Ca., 1-6-8.0.

NEGAARD AND STEINFELDT WIN FLORIDA MATCHES

Pitching for a \$1000. purse, Phyllis Negaard out-scored Debbie Michaud to take a ladies' match held at the Florida State Fair, Tampa, on Feb. 14. Sponsored by "OLD STYLE BEER" and hosted by the Clearwater Horseshoe Club, the match consisted of six 50-shoe games with ringers only counting 1 point. Phyllis accumulated 238 points for the 6 games with a ringer average of 79.3% while Debbie accumulated 238 points for an average of 75.7% ringer average. Both ladies had high games of 84%. Having recently changed to a 1 1/4 turn, Debbie will soon be a threat to all top lady pitchers with her new delivery. The match took place under cover on portable clay courts.

Following the ladies' match, Carl Steinfeldt out-pointed Mark Seibold to take the men's match. Also pitching for a \$1000. purse, Carl accumulated 257 points for six games with a ringer average of 85.6 to Mark's 220 points and 73.3% average. Carl had a high game of 92% with 40 consecutive ringers. Mark's high game was 78%.

DESIGNED FOR MAXIMUM PERFORMANCE

IMPERIAL

- CAST FROM ENERGY ABSORBING METAL
- WIDER, THICKER BLADES
- MADE FROM FORGED STEEL
- HARDENED HOOKS AND POINTS
- WON MEN'S AND WOMEN'S WORLD TITLES IN 1984

U.S.A. PRICES (Postpaid)

1 Pair	\$26.00
2 to 5 Pair	\$25.00
6 Pr. & Over	\$20.00
Freight Collect	

U.S.A. PRICES (postpaid)

1 Pair	\$47.00
2-5 Pair	\$45.00
6 Pair & Over	\$39.00

CLYDE MARTZ

3726 Henley Dr.

Pittsburgh, Pa. 15235

PHONE: 412-731-4662

JIM DOW DOUBLES — SO. CALIF. — SANC. 85-118

George Whittemore, Willard Harper, 9-1; Jack Holloway, Ernie Pearce, 8-2; Jim Eozzo, John Ricketts, 8-2; Newell Flann, Franklin McCutcheon, 7-3; Chuck Yoshida, Smokey Anderson, 6-3; Bruce Stuart, Mark Poulin, 6-3; Jim Atwell, John Green, 6-3; Loris Hauck, Leon Marshall, 5-4; Roger Hornback, Larry Connell, 5-4; Arnie Mortenson, Janice Atwell, 5-4; Ward Harman, John Lendway, 4-5; Phyllis Morten, Rita Eozzo, 4-5; Gene Bolsinger, Kee Blackrock, 4-5; George Farrell, Richard Dillon, 4-5; Pat Brady, Pete Lopez, 3-6; Jim Dow, Fred Briand, 3-6; Harold Redding, Larry King, 3-6; Barbara Dow, Don Adams, 2-7.

BOHUN IS CHAMP IN FLORIDA STATE FAIR TOURNAMENT

Frank Bohun of Erie, Pa., caught the attention of the Florida State Fair spectators with a high game of 93.7% ringers. He had 5 wins and no losses to capture the Fair tournament title. Opposing Frank were two Michigan State Champs, Ann Wedel and Floyd Bartley. Sponsored by "OLD STYLE BEER", the tournament was held in conjunction with the Negaard-Michaud and Steinfeldt-Seibold matches. The tournament was limited to 108 entries with all players receiving "Old Style Bucks."

GROUP 1 — Frank Bohun, Pa., 5-0-75.2; Floyd Bartley, Mich., 1-5-65.2; Levi Miller, Sarasota, 3-2-55.5; Ann Wedel, Mich., 2-3-61.4; Leo Fitzpatrick, Mich., 1-5-61.2; Gene Rademacher, Plant City, 0-5-54.0.

GROUP 2 — Henry Hostetler, Sarasota, 4-1-54.4; Paul Scheub, Sarasota, 4-1-52.1; Chet Reel, Holia, 53.4; Ralph Cullum, Inverness, 3-2-59.3; Ed Schultz, Sarasota, 1-4-56.1; Marvin Grubb, Titusville, 0-5-49.1.

GROUP 3 — Bob Widdersheim, Clw., 3-2-52.8; Elmer Swartz, Va., 3-2-52.8; Len Robinson, Ruskin, 3-2-44.6; Marls Goodrich, Bradenton, 3-2-48.7; Lynn Hughes, Minn., 2-3-42.8; Bob Dean, Gulfport, 1-4-45.9.

GROUP 4 — Chas. Dunlap, Ohio, 5-0-57.7; Betty Dunlap, Ohio, 3-2-49.1; Marvin Broughton, Tampa, 3-2-46.4; Norman Houchin, Clw., 47.8; Lee Wilcox, Lakeland, 2-3-43.2; Ed. Hoedeshell, Haines City, 0-5-38.3.

GROUP 5 — Walt Pickard, Zephyrhills, 5-0-59.4; Phil Law, Titusville, 3-2-46.9; Chester Albertson, St. Cloud, 3-2-57.8; Omar Blacketer, Bradenton, 2-3-53.9; Angelo Cieslak, Mass., 2-3-43.4; Ron Prue, New Port Richey, 0-5-41.7.

GROUP 6 — Geo. Buskey, Clw., 5-0-44.2; Fred Raisbeck, Bradenton, 3-2-44.6; Robert Bjorkgren, Bradenton, 3-2-39.8; Sparky Hall, Hernando, 2-3-41.4; Royce Wucke, Bradenton, 1-4-30.4; Ray Arthur, Seminole, 1-4-32.1.

GROUP 7 — Bill Roach, Clw., 4-1-43.9; Paul Dumont, Mass., 3-2-45.2; Ed. Domey, Mass., 3-2-48.6; Pat Gallant, St. Cloud, 2-3-35.2; Guy Nightingale, Clw., 2-3-41.5; Lee Antonides, Zephyrhills, 1-4-38.0.

GROUP 8 — Carroll Brown, Winter Haven, 4-1-47.3; Jack Edwards, Sarasota, 4-1-50.0; Clyde Robinson, Lady Lake, 3-2-39.0; Wally Smith, Ruskin, 3-2-41.5; Chas. Bennett, Clw., 1-4-31.5; Everett Shippee, Titusville, 0-5-29.2.

GROUP 9 — Carl Searls, Sebring, 4-1-42.3; Tom Randolph, Ohio, 4-1-41.7; Lester Rose, Sebring, 3-2-39.9; Jay Hoyer, Zephyrhills, 3-2-38.4; Chet Anderson, Bradenton, 1-4-29.5; E. L. Hill, Tampa, 0-5-25.2.

GROUP 10 — Dick Senger, Eagle Lake, 4-1-45.4; Robert Dove, New Smyrna, 4-1-35.3; Carlton Mullinix, Clw., 3-2-40.0; Henry Mullet, Sarasota, 3-2-39.5; Russ Lobuzzetta, Sarasota, 1-4-37.1; Cindy Dean, Gulfport, 0-5-18.5.

GROUP 11 — Bob Foster, Dunedin, 4-1-42.7; Lavelle Hoban, Lakeland, 3-2-41.9; Walter Wedel, Mich., 2-3-40.8; Joe Morgan, Bradenton, 2-3-35.9; Mel Ringger, Ruskin, 2-3-33.9; Jack McGing, Port Richey, 2-3-27.9.

GROUP 12 — Greg Croft, St. Pete, 5-0-42.7; Frank Toal, Tarpon Springs, 4-1-39.2; Orval Tansy, Clw., 2-3-24.3; Gib Beckmeyer, Ill., 2-3-31.0; Joe West, Haines City, 31.6; Ed. Senger, Clw., 1-4-32.9.

GROUP 13 — Marvin Glass, Clw., 5-0-35.3; Rowland Conrad, Clw., 3-2-27.9; Maurice Rodocker, Ohio, 3-2-26.7; Andy Doshna, Clw., 3-2-23.8; Geo. Weiland, Zephyrhills, 1-4-20.4; Gene Bennett, Tarpon Springs, 0-5-14.5.

GROUP 14 — Jack Lyons, New Port Richey, 4-1-27.5; Les Long, Bradenton, 4-1-26.9; Howard Schultz, St. Cloud, 3-2-43.7; Bill Smith, Clw., 3-2-19.4; Emmett Fleagle, Kissimmee, 1-4-15.0; Marion Collins, Dunedin, 0-5-11.1.

GROUP 15 — Paul Ashman, St. Cloud, 4-1-27.7; Wm. Staudacher, Largo, 4-1-35.5; Taylor Carnahan, St. Cloud, 3-2-21.2; Fred Lindell, Brooksville, 3-2-29.4; Harold Barnes, Seminole, 1-4-18.8; Dick Warren, Naples, 0-5-20.0.

GROUP 16 — Ken McElwain, Venice, 4-1-24.2; Bill Pence, Tampa, 4-1-15.7; Floyd Groesbeck, Tampa, 4-1-12.0; Frank Spray, New Port Richey, 2-3-8.6; Ken Bolster, Clw., 1-4-12.0; Jim Day, Ruskin, 0-5-8.0.

GROUP 17 — Calvin Kaercher, Beverly Hills, 4-1-20.1; Rex Ryan, Mich., 3-2-19.6; Victor Gray, St. Pete, 3-2-24.0; Percy Wells, Clw., 2-3-15.2; Ralph Ziesse, Wis., 2-3-13.6; Jerry Roza, Clw., 1-4-14.4.

GROUP 18 — Robert Marshall, Avon Park, 5-0-32.7; Wilmer Cummings, Lake Worth, 4-1-30.0; Sherman Gray, Crystal River, 3-2-26.8; Clinton Dickinson, Beverly Hills, 2-3-20.8; Grant Chance, Inglis, 1-4-21.1; Marge Spray, 0-5-13.0.

1 9 8 5
GREENVILLE, OHIO
Silver Anniversary
FOURTH OF JULY RINGER CLASSIC

July 4-5-6-7



Enjoy pitching on the new Court Facility
 in Beautiful Greenville City Park
MORE THAN \$5,000 IN PRIZE MONIES



An advance entry Tournament - Send your latest Tournament
 or League ringer percentage

NHPA Sanctioned Tournament #85-39

\$10.00 for all Adults
No entry fee for Junior pitchers.

Deadline for receiving entries
Thursday, June 20

The top 36 men will pitch a 6 man round-robin preliminary round, Saturday morning to determine the A-B and C classes.

These Classes will pitch 12 man round-robin competition Saturday evening and Sunday the 6th and 7th.

Junior Classes and Women's Classes will pitch on Friday afternoon and evening.

July 4th round robin pitching will begin in the morning and continue through early evening.

Men's Champion will receive \$750

Women's Champion \$250

6-person Adult Class winners \$25

At least 2 trophies in all Classes

**Pitchers will be advised by letter of Class,
 date and time competition.**

Motel and Campground accommodations are available as indicated below. Advance reservations are recommended.

MOTELS/HOTELS

PHONE

CAMPGROUND CAMPER SPACE

Parkway 548-5835
 Stardust 548-4154
 Towne House 548-4171
 Treaty 548-4174
 Versailles Motel 526-5252

Wildcat Woods 548-7921 - 7 mi. out
 Arrowhead Lake 996-6203 - 11 mi. out
 Stillwater Beach 448-2382 - 12 mi. out
 Darke County Fairground - 3 mi. out

Send entry to: Fritz Worner, 150 Ridgeview Dr., Greenville, O. 45331

Enter me in the 1985 RINGER CLASSIC

Mens () Womens () Division
 Boys () Girls ()

Name _____ Ringer Percentage _____

Address _____ Phone No. _____

City _____ State _____ Zip _____

(\$10 entry fee must accompany all Adult entries)

All entries must be received by June 20.

ARIZ. BUDWEISER OPEN TITLE WON BY R. LEE—SANC.

CLASS A — Ruben Lee, 5-0; Clarence Giles, 4-1; Dale Arionus, 3-2; Bill Barth, 2-3; Joe James, 1-4; Sam Costello, Bye.

CLASS B — Donna Taylor, 4-1; Ralph Wilson, 4-1; Sam Finrock, 3-2; Bert Meeks, 3-2; Pete Maciborsky, 1-4; Larry Calzada, Bye.

CLASS C — Bud Price, 5-0; Art Lund, 4-1; Bill Hannaman, 3-2; Tony Apodaca, 2-3; Jessie Johnson, 1-4; Aaron Clark, 0-5.

CLASS D — Rex E. Lee, 4-1; Ralph Roethler, 4-1; Glenn Huff, 3-2; Ken Snarr, 3-2; Bill Ioeberger, 1-4; Hap Keinath, 0-5.

CLASS E — Russell Barr, 4-1; Lee VanDalsen, 3-2; Elmer Thibodeau, 3-2; Noah Helfer, 3-2; John Nickum, 1-4; Salvin Engle, 1-4.

CLASS F — Charline Murr, 5-0; Gordon Adams, 4-1; Bryan Kerr, 3-2; Ted Gardner, 2-3; Pat Patterson, 1-4; Leo Benson, 0-5.

CLASS G — Cliff Royce, 4-1; Rosemary James, 3-2; Duane Buck, 3-2; Herbert Jersey, 2-3; Florence Hamel, 2-3; Hilary Butcher, 1-4.

CLASS H — Bob Cockwell, 5-0; Lyle Cherry, 4-1; Hugh Smith, 2-3; Maurice Casteel, 2-3; Roy Brown, 1-4; John Mauck, 1-4.

CLASS I — Lil Price, 5-0; Alvin Schneider, 3-2; Ralph Domer, 2-3; Irene Casteel, 3-2; Chuck Spolek, 2-3; Miles Buterbaugh, 0-5.

CLASS J — Leo Johnson, 5-0; Bob Fuller, 3-2; Bill Player, 3-2; Steve Shtuka, 3-2; Larry Taylor, 1-4; Bob Howe, Bye.

CLASS K — Robert Reed, 5-0; Bill Shipley, 3-2; Phillip Wells, 3-2; Warren Holzhauser, 2-3; Wayne Wilson, 1-4.

QUEEN CITY (OHIO) OPEN CROWN WON BY K. KUGLER

The Queen City Open tournament sponsored by the Ohio/Kentucky Horseshoe Club and held at the club courts in Cincinnati on January 11, 12 and 13 was won by Ken Kugler with a 6-1-67.5 record. The Ladies title went to M. McDaniels who posted an 8-0-28.6 record. In the Boys class T. Rogg led the way to his title with an 8-2-38.3 record. This was conducted under Sanction No. 85-22.

CLASS A — K. Kugler, 6-1-67.5; D. Malone, 6-1-57.4; M. Roseberry, 4-3-56.0; B. Henn, 3-4-62.5; J. Henn, 3-4-54.6; E. Henry, 3-4-51.9; D. Rose, 2-5-53.5; J. Martin, 1-6-50.0.

CLASS B — T. Turker, 6-1-52.5; B. Simpson, 5-2-51.4; J. Hughes, 5-2-50.6; E. Hinshaw, 4-3-49.7; W. Tarvin, 3-4-46.3; V. Stoner, 3-4-43.7; Cliff Henn, 1-6-44.4; J. Witschger, 1-6-43.4.

CLASS C — B. McClain, 6-1-52.5; D. Kirtley, 5-2-45.7; A. Tomlin, 4-3-52.5; O. Reno, 4-3-49.1; Chick Henn, 4-3-46.9; L. Martini, 4-3-46.3; L. Voelker, 1-6-45.5; M. Duncan, 0-7-34.6.

CLASS D — D. Humphry, 7-0-51.4; J. Reilly, 5-2-35.9; A. Adams, 5-2-34.3; B. Beckman, 3-4-33.4; D. Riddell, 3-4-33.1; W. Canupp, 2-5-36.7; F. Brinkman, 2-5-34.2; G. Webster, 1-6-30.1.

CLASS E — B. Kenton, 6-1-45.1; L. Glass, 6-1-40.6; J. Anderson, 5-2-38.9; M. Simpkins, 4-3-36.6; W. Brown, 3-4-26.0; P. Sanders, 2-5-34.1; G. McKinney, 2-5-32.3; D. Meyer, 1-7-26.8.

CLASS F — D. Webb, 7-0-34.6; J. Turner, 5-2-39.2; J. Morrison, 5-2-34.1; B. Moore, 4-3-32.3; L. Hartman, 2-5-30.6; K. Witschger, 2-5-29.0; B. Burrows, 2-5-26.9; F. Hebel, 1-6-22.3.

CLASS G — J. Burke, 7-0-31.8; B. Snider, 6-1-27.5; A. Centers, 5-2-26.0; I. McClurg, Jr., 4-2-23.7; D. Poe, 2-7-22.6; J. Leopold, 2-5-22.1; A. Bloom, 2-5-18.3.

CLASS H — T. Fortner, 6-1-17.6; C. Webb, 5-2-23.3; T. Thompson, 5-2-22.6; B. Beckmann, Jr., 4-3-14.2; D. McClain, 3-4-15.6; T. Cross, 2-5-14.4; G. Busch, 2-5-08.7; B. Kaiser, 1-6-09.3.

CLASS I — J. Wilson, 7-0-17.7; J. Harrington, 5-2-05.1; H. Hall, Jr., 4-3-05.0; R. Wurtzelbacker, 4-3-04.9; R. McAllister, 2-5-04.6; B. Metzner, 2-5-04.1; M. Gray, 2-5-02.7; D. Smith, 2-5-02.4.

LADIES CLASS A — M. McDaniels, 8-0-28.6; A. Snider, 6-2-24.8; D. Henn, 5-3-31.1; J. Beckman, 5-3-19.0; M. Tarvin, 4-4-17.6; A. Humphry, 4-4-15.7; M. Glass, 3-5-25.6; M. Martini, 1-7-10.0; P. Nudds, 0-8-09.0.

BOYS CLASS A — T. Rogg, 8-2-38.3; M. Canupp, 8-2-27.8; K. Henn, 6-4-17.4; C. Sanders, 6-4-14.1; G. McDaniels, II, 2-8-04.3.

The shoe for the 1980's

STAR

STAINLESS HORSESHOES

IF YOUR GAME COULD STAND IMPROVEMENT
TRY PRECISION-MADE STAR HORSESHOES
FOR THAT COMPETITIVE EDGE.

WORLD CLASS HORSESHOE PITCHER
DEBBIE PICKERING
HAD A TRULY GREAT 1984 SEASON
USING STAR STAINLESS HORSESHOES

Maine Open 2nd Place 74.7%
Keene Open 2nd Place 79.9%
Ladies N.H. State Champion 70.2%
Ladies New England Champion 77.9%

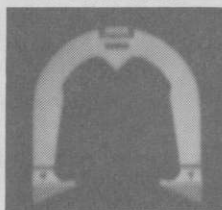
WATCH FOR DEBBIE AND STAR HORSESHOES
AT THE 1985 WORLD TOURNAMENT

ALL STAR'S ARE DEAD SOFT
AND THEY WEIGH 2 LBS. 8 OZ.

Send Check or
Money Order to:

Alfred R. Boudreau Jr.
301-A Old Ipswich Rd.
Rindge, N.H. 03461

NHPA
APPROVED



\$69.00 per pair
postpaid

FREE!

Trophy & Awards Catalog



Call Toll-Free
1-800-628-9657
 In Mass. 1-800-282-7789

DINN BROS. *The Trophy People*

P.O. Box 111 • 68 Winter St. • Holyoke, MA 01041

COMING EVENTS

INDIANA SCHEDULE

PARTIAL SCHEDULE (Corrected Schedule)

All entries to be sent to state secretary, Robert L. Reid, P.O. Box 241, Scottsburg, IN 47170.

- May 4-5 — Spring Special (indoor), Johnson Co. Park, Edinburg, #85-72
- May 11-12 — K.W. Winger Special (indoor), Johnson Co. Park, Edinburg, #85-73
- May 18-19 — Clayton Smith Memorial, Clear Creek Park, Hwy. U.S. 40, Richmond #85-74
- May 18-19 — Wolcott Special, Roger Wolcott City Park, Hwy. U.S. 24, Wolcott #85-75
- May 25-26 — Spirit of Vincennes Rendezvous, Gregg Park, Washington St., Vincennes #85-76
- May 25-26 — North Western, City Park, Park St., LaPorte #85-77
- June 1-2 — Ill.-Ind.-Ohio, 13th. and Geneva St., Marion #85-78
- June 8-9 — Art Moore Special, West Hill St., Wabash #85-79
- June 8-9 — Pioneer Days, County Fairgrounds, Cayuga, #85-80
- June 15-16 — Midwest Ringer, Riverfront Park, Canal St., Lafayette #85-83
- June 22-23 — Owensville Special, Downtown S.R. 65, Owensville #85-81

PARTIAL SCHEDULE

WASHINGTON SCHEDULE

- Apr. 13 — Daffodil Open, Wright Park, Tacoma. Sanc. 85-366
- Apr 28 — Skagit County Open, Owens Courts, Mount Vernon, Sanc. 85-367
- May 4 — Gilbo Open, Wright Park, Tacoma. Sanc. 85-368
- May 11-12 — Southwestern Open, Marshall Center, Vancouver, Sanc. 85-369
- May 18 — Lilac City Open, Franklin Park, Spokane Sanc. 85-370

TENNESSEE SCHEDULE

- April 6 — Dogwood Open, Cleveland, Tenn. Sanc. 85-332.
- April 27 — Soddy Open, Soddy, Tenn. Sanc. 333.
- May 4 — Burns Memorial Open, Cleveland, Tenn. Sanc. 85-334.
- May 11 — Ward Memorial Open, Cookeville, Tenn. Sanc. 85-335.

SOUTH CAROLINA SCHEDULE

- April 6 — Peach Blossom Special. Sanc. No. 85-164.
- May 4 — May Flowers Meet. Sanc. No. 85-165.
- June 1 — June Fun Open. Sanc. No. 85-166.
- July 6 — July Sun Open. Sanc. No. 85-167.
- Aug. 10 — Pic Nick Event Open. Sanc. No. 85-168.

Coming Events—Continued

PARTIAL SCHEDULE

EASTERN PA. SCHEDULE

- May 25-26 — Strasburg Spring Open, Strasburg, Pa.
Contact Richard L. Wilson, Rte. 1, Box 1401,
Stewartstown, Pa. 17363. Ph. 717-993-6584.
- June 1-2 — Dallas Open, Dallas, Pa. Contact John
Urbanc, Rte. 2, Hunlock, Pa., 18021. Ph.
717-477-5629.
- June 14-15 — Reedsville Fireman's Festival Open.
Reedsville, Pa. Contact Jack Z. Swyers, Rte. 2,
Box 145, Belleville, Pa. 17004. Ph. 717-935-5337.
- June 29-30 — New Freedom Open, New Freedom, Pa.
Contact Glenn Brown, Rte. 3, Box 100, Felton, Pa.
17322. Ph. 717-927-6997.

OREGON SCHEDULE

- April 27 — Sagebrush Open, Weber Field, Hermiston,
OR.
- May 18 — Old Timers (60 and over), Clackamette
Park, Oregon City, Ore.
- May 19 — Mixed Doubles. Clackamette Park, Oregon
City, Ore.
- May 25-26 — Joyner Memorial Open. Avery Park,
Corvallis, Ore.
- June 1-2 — Strawberry Fair Open. River Park,
Lebanon, Ore.
- June 8-9 — Rose Festival Open, Laurelhurst Park,
Portland, Ore.
- June 15-16 — Father's Day Open. Bush Pasture
Park, Salem, Ore.
- June 22-23 — Oregon Open. Weber Field. Hermiston,
Ore.

SOUTHERN CALIF. SCHEDULE

ALL PRE-REGISTERED TOURN. \$10.00 FEE

- Apr. 21 — Doyle Brawley C Open, Riverside
- Apr. 27 — Archie Gregson Doubles, Orange
- Apr. 28 — Norm Smith Open, South Gate
- May 4 — Jo Vickery Doubles, Riverside
- May 5 — Fernando Isais Open, San Bernardino
- May 18-19 — Mid Year Open, Pre-register, Barstow
- June 1 — Haigh Day Doubles, San Bernardino
- June 2 — Ned Shaver Open, Riverside

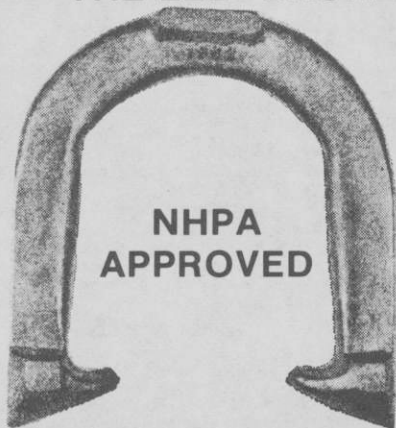
COLORADO SCHEDULE

- June 8-9 — Loveland, Ohio, North Shore Park, Love-
land, Colo. Contact Jack Spencer, 1311 Elm Ave.,
Loveland, Colo. 80537. Ph. 303-663-1412.
- June 15-16 — Cheyenne Open, Holiday Park, Chey-
enne, Wyo. Contact Don Laurin, 320 Avenue C4,
Cheyenne, Wyo. 82001. Ph. 307-634-4671.
- June 22-23 — Fort Collins Open, Edora Park, Fort
Collins, Colo. Contact Dale Boss, 50-19th Ave., #2,
Longmont, Colo. 80501. Ph. 303-776-7977.
- June 29-30 — Denver Open, Rocky Mountain Park,
Denver, Color. Contact Glen Robeck, 2317 So. Pat-
ton Ct., Denver, Colo. 80219. Ph. 303-934-0632.

SHELDON, ILL. SCHEDULE

- May 26 — Memorial Day Tournament, Sheldon, Ill.
Sanc. 85-391.
- Sept. 7 — Fun Days Open Tournament, Sheldon, Ill.,
Sanc. No. 85-392.

BACK BY POPULAR DEMAND THE LEE "BRONZE" HORSESHOE



*Cast of a new, modern
metal alloy that is*

*"deader" than dead soft,
yet tough as steel.*

**Batters No Quicker
Than Dead Soft Steel**

**Requires Little
or No Filing**

Does Not Rust

PRICE - \$26.00 PER PAIR PLUS POSTAGE

LEE HORSESHOE COMPANY

**2631 Middletown - Eaton Rd. • Middletown, OH 45042
(513) 422-5695**

<u>1985</u>	<u>AMOUNT</u>	<u>WINNERS</u>
JANUARY	\$1,000.00 (10 x \$100.00)	
FEBRUARY	\$2,000.00 (10 x \$200.00)	Frank Stinson \$200.00
MARCH	\$3,000.00 (10 x \$300.00)	
APRIL	\$4,000.00 (10 x \$400.00)	
MAY	\$5,000.00 (10 x \$500.00)	

THIS IS OPEN TO ANYONE THAT CAN ADD TO OR TAKE AWAY FROM THE SCHUMMER SYSTEM TO IMPROVE OUR SPORT.

— *Plus* —

**WE OPENLY CHALLENGE
ANY OTHER SPORT**

\$10,000.00 WILL BE PUT ON THE LINE IN A DEBATE THAT OUR SPORT HAS MORE TO OFFER FOR ALL MANKIND FOR A LIFETIME THAN ANY OTHER SPORT. N.H.P.A. CAN PROFIT BY \$1,000.00 IF THEY CAN FIND A CHALLENGER, PLUS \$5,000.00 FROM WINNER.

**FAMILIES WORLDWIDE NEED MORE TO DO
TOGETHER - OUR SPORT CAN BE
POPULARIZED TO SUPPLY THAT NEED!**

NEED YOUR HELP. WRITE OR PHONE:

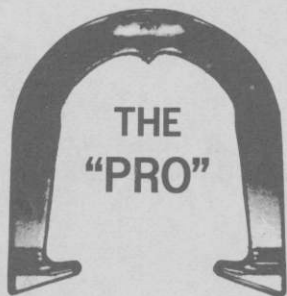
GLEN "RED" HENTON

513 W. PLATT STREET, MAQUOKETA, IOWA 52060

PHONE (319) 652-4250



THE ORIGINAL DROP - FORGED PITCHING SHOE



THE
"PRO"

Two tournament tested models, forged from S.A.E. specified steel, are available. Both have hardened hooks and points, and may be ordered in your choice of medium, soft, or dead soft tempers.



THE
"O"

AS THE FIRST MANUFACTURER OF THE DROP-FORGED PITCHING SHOE, THE OHIO HORSESHOE COMPANY IS RECOGNIZED WORLD-WIDE FOR ITS HIGH QUALITY PITCHING SHOES.

For price information and to order, contact:

OHIO HORSESHOE COMPANY

P.O. Box 21371
Columbus, Ohio 43221

614-457-4335