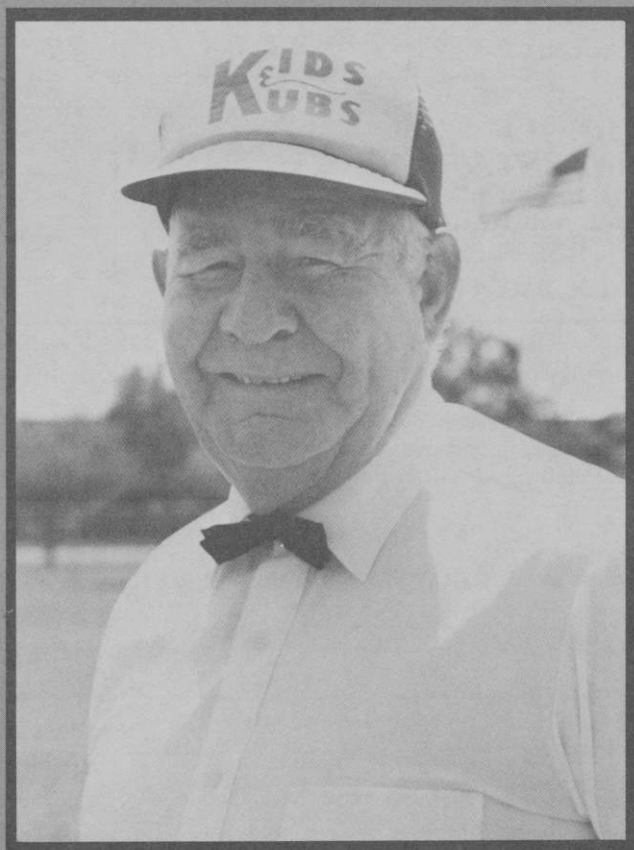


the
national horseshoe pitchers

NEWS DIGEST



OCTOBER, 1983

Official Publication of
**THE NATIONAL HORSESHOE PITCHER'S ASSOCIATION
OF AMERICA**

1983 Las Vegas/Hacienda Pro/Am Celebrity Horseshoe Tournament

December 11-15, 1983 at the Hacienda Hotel

1 DOUBLE OCCUPANCY 2 Persons in Room, Both Entering Tournament \$290⁰⁰ *A-B-C-D-E-F	2 SINGLE OCCUPANCY One person in Room Who Will Enter Tournament \$205⁰⁰ *A-B-C-D-E-F	3 DOUBLE OCCUPANCY (2 Persons in Room) Only one Entering Tournament \$240⁰⁰ *A-C-D-E-F B is for One-All — The Rest For Two
4 SINGLE CONTESTANT Not Registered At Hacienda Hotel \$75⁰⁰ *B-C-D-E-F	5 NON- CONTESTANT Person Not Registered At Hacienda Hotel \$30⁰⁰ *C-D-E-F	6 MINORS (UNDER 18) Who Attend Awards Dinner \$12⁵⁰

NOTE: * All packages apply to 5 nites (Dec. 11-15). Rates per single or double occupancy prior or after above dates are \$32¹⁰ (includes tax) per night.

* (A) All Rooms with 2 double-size beds.

(B) Tournament Registration Entry Fee

(C) Welcome Cocktail Party

(D) Awards Dinner

(E) Nightly Champagne Cocktail Party

(F) Free Casino Fun Book

■■■■■■■ REGISTRATION & ENTRY FORM ■■■■■■■■

Name _____

NHPA CARD NUMBER _____

Address _____ Phone _____

ZIP _____

Please enter me under package No. 1 — No. 2 — No. 3 — No. 4 — No. 5

— No. 6 — Please circle package(s) selected.

Enclosed is my Reservation Check in the Amount of: _____
(Male) (Female)

Please Make Check Payable To: HORSESHOE TOURNAMENT and mail
care of The HACIENDA HOTEL, P.O. Box 15566, Las Vegas, Nevada,
89114. Att: HORSESHOE TOURNAMENT. DEADLINE: Oct. 30, 1983

Any entrees Received After Oct. 30th Subject To Availabilities.

THE HORSESHOE PITCHER'S NEWS DIGEST is published on the 5th of each month at Aurora, Illinois, U.S.A. by the National Horseshoe Pitcher's Association of America. Editorial office, P.O. Box 1606, Aurora, Illinois 60507. Phone: 312-898-3974. Subscription rates—1st Class \$9.00; 3rd Class \$8.00 per year in advance. NHPA membership cards are available through each state secretary for \$6.00 plus any state association dues. Forms close on the 10th day of each month preceeding date of issue. Advertising rates on request. F. Ellis Cobb, Editor.

NATIONAL OFFICERS

Wally Shipley, 2646 Basswood St., Newport Beach, Calif. 92660.....President
 Leo McGrath, 1937 Lawn Ave., Cincinnati, Ohio 45237.....1st Vice-President
 Norman Gaseau, 1908 Nuggett Dr., Clearwater, Fla. 33515.....2nd Vice-President
 Earl Winston, Route 2, LaMonte, Mo. 65337.....3rd Vice-President
 Bonnie Seibold, 1043 Grayson Ave., Huntington, Ind. 46750.....4th Vice-President
 Donnie Roberts, 9439 Camp Creek Rd., Lucasville, Oh. 45648(614) 289-4101.....Sec./Treas.
 Claude White, Jr., 940 Knollwood Ct., Plainfield, NJ 07062.....Chr. Reg. Dir.

Volume 26

October, 1983

No. 10

FROM YOUR PRESIDENT...Glen A. Portt

A Farewell to Lee Davis

Lee Davis is dead...dead of a heart attack on August 9th...two days after receiving the coveted Stokes Award...the final honor the NHPA could bestow.

Through more than 50 years of service, Lee walked tall. He contributed his time and effort for the betterment of the organization he loved so well. He received every honor possible. Among them, his election to the National Horseshoe Pitcher's Hall of Fame...to New Jersey's...and to Florida's.

Lee Davis is gone.

So say goodbye...say goodbye to one of the finest men who ever walked across the horseshoe courts of America. Say goodbye to the thousands of hours he so freely gave you. The song is done. The music has stopped. Lee Davis gave you of his heart.

A Report to the Membership

My program for the NHPA was outlined in the April issue of the Digest. In order to accomplish the various parts, specific responsibilities have been assigned the Council and Committees.

Priority #1 is to aggressively seek out sponsors for the W.T. as a whole or for specific Divisions. No one has said that this is going to be easy. The Council will need your help. Action will start approximately 1 October when the booklet *This the NHPA* is available.

This is the NHPA is an attempt to change our image. It will show that horseshoe pitchers are 'across the board' Americans...that they come from all walks of life and from all professions...that they are doctors, lawyers, corporation VIPs, music teachers, farmers, nurses, housewives, factory workers, hydrologists, watchmakers, accountants, architects, etc....and that the NHPA welcomes members of any sex, race, or creed.

I promised a National Handicap Tournament via mail. The computer program is ready. Russ Gadoury is drafting the rules. Wouldn't you like to win \$5,000? It's possible! Stay tuned.

SPECIAL NOTICE TO MEMBERS AND SUBSCRIBERS

Following are some new rules for publishing articles and tournament results in future issues of the News Digest as set forth by the NHPA President and the NHPA Executive Council.

1. All tournament results must be sent to the Digest *WITHIN* two weeks after the date of the tournament otherwise they will not be published.
2. All tournament results must have the date tournament was played and the city where it took place.
3. Also *ONLY* the first, second and third place finishers in each class will be published.
4. Executive Council also voted that *ONLY SANCTIONED* tournaments will be published in the future.

It is hoped that by adhering to the above limitations that more space will be available for special articles of interest and other items pertinent to the horseshoe sport.

OCTOBER NHPA PUBLICITY

By BERNARD HERFURTH

WANTED: STATE NHPA PUBLICITY HELPERS

After working on NHPA Publicity for the past ten years, I have been asked by our newly elected president, Glen Portt, to stay on the job. I have agreed to hold out for another year, depending on how much progress has been made during that time.

Our new president has a very ambitious program to offer for the promotion of our sport. He will need the support of the membership to carry out his program. He is a retired Air Force colonel and a graduate of Harvard School of Business. He will make a sincere hard working president. Plan to work with him to promote our sport and organization. I suggest that the membership send him a letter or card of congratulations and support. His address is: Col. Glen Portt, 2803 Newcomb Road, Albany, Georgia 31705.

The president is agreeable to NHPA Publicity's plan to have an NHPA Publicity Helper appointed by each state association president. The statehelper would coordinate the NHPA Publicity plans in their respective states. NHPA Publicity plans would be given in monthly issues of the Digest.

The first NHPA plan is to get an NHPA flyer and national and state application for membership inserted into all horseshoe boxes that are on sale in sporting goods stores throughout the country. Each state helper will be asked to appoint helpers in local clubs and members in all areas of the state. Give someone a new job.

I have talked with store owners and managers and in all my visits they have been very cooperative and thought it was a good idea to promote our sport in this manner. When the publicity worker visits a store he or she should offer to insert the flyer and membership applications into the boxes. It will then be assured that they are in each box. If a store does not have shoes for sale, suggest the names of horseshoe manufacturers.

All new franchises of our sports game related items will be required to insert the flyer and applications in every package that is sold. This is a demand of the NHPA Publicity. We have been assured by the distributors that it will be done.

All state presidents are requested to appoint a state helper immediately. I will have a report to our president with the names.

To receive flyers, membership applications, send in the names of new helpers to: Bernard Herfurth, 17 Fort Street, Northampton, Mass. 01060.

November plans for publicity is to have each state put out a state directory including the dates of state tournament, leagues, location and direction to all major court sites, names of tournament directors. Excerpts from NHPA flyer, state association information, list of state champions, etc. It is hoped that all progressive states will have such a directory issued by January 1, 1984. Your Publicity Director got this idea from Joe Minnich of Kentucky who has put out such a directory.

In Memoriam

Word has come in that John Paxton of 818 Wabash, Ottumwa, Iowa passed away in the Ottumwa Hospital on August 5.

He was a contender for top honors in any tournament that he took part in. He participated in many World Tournaments and particularly in the Senior World Championship he emerged as champion in five Senior World Championships.

He was inducted into the NHPA Hall of Fame and also into the Iowa Hawkeye State Association Hall of Fame.

He is survived by his loving wife, Mary and two daughters, Eva Sipe and JoAnn Collier, and four sons, Wilbur, Gilbert, John Jr., and Harold, and several grandchildren and great grandchildren.

The sympathy of the Iowa State Association and that of the NHPA is extended to his bereaved family in their hour of bereavement.

The Western Pennsylvania Association was saddened by the passing of Charles J. Roball on June 12. Chuck as he was affectionately known was very active in pitching horseshoes. He participated in several World Tournaments and had pitched in all tournaments conducted by the association.

To his bereaved family the sympathy of the Western Pennsylvania Association is extended.

MONONGAHELA, W. VA. SANCTIONED LEAGUE ENDS SEASON

The Monongahela Valley Horseshoe Pitchers' Association located in Fairmont, West Virginia completed another National Horseshoe Pitchers Association Sanction League Play at their twelve court facility.

They capped their season with a weiner roast for the players and their immediate family members at the East Marion Park, where the courts are located.

During the end of the year business meeting, the appropriate trophies from the club dues were awarded to the first and second place winners of each Class along with the National Horseshoe Pitchers Association Certificates to all players, and other individual awards.

Tom Husty won the league, and also the most improved player male player award which is the Belt Buckle from the NHPA. Kitty King received the most improved lady pitcher award and that is the pin from the NHPA. Charlie Bunner received the high ringer percent patch while Russell Wade received the high game over scratch patch which is furnished by the NHPA. Tony Brunett received the Sportsmanship Award, which his fellow players voted on during the business meeting.

NHPA MEMORIAL CONTRIBUTION

Hi Donnie:

Please accept this check for \$25.00 from Bernard and Violet Herfurth in memory of our dear deceased friend, Lee Davis of Florida who passed away on his way home from the World Tournament at Statesville, North Carolina.

Lee was a fine gentleman and a tireless worker for our sport. He will be dearly missed by all who knew him.

The check is to be deposited in the NHPA Memorial Contribution Fund at the First National Bank of Waverly, Ohio (Account No. 0164764).

Lee was an ardent booster of the Memorial Fund.

Bernard and Violet Herfurth

SHIPLEY EXTENDS CONGRATULATIONS TO GLEN PORTT

Hi Glen: Congratulations on your successful election as NHPA President at Statesville, N.C. I wish for you and your administration complete success in promoting the sport of horseshoes and the NHPA. — Wally Shipley.

HUMAN INTEREST STORIES NEEDED!

Following is an excerpt of an article written by Joe E. Bacon which appeared in the *Feb. 1950* issue of "The Horseshoe Pitcher" (forerunner to NHPA News Digest).

"... All of us like to read how the big tournaments come out, to see if Isais is still tops and how close Ted Allen and Casey Jones and Guy Zimmerman came to the champion, but I think most of us would also enjoy just how other good pitchers pitch.

About three years ago, I sent Roy Smith four bits for his "Science at the Stake" and I have just about worn it out reading and re-reading it. I am sold on what he says about the 1-1/4 and 1-3/4 turns, the pendulum swing, coordination, etc., but as the old saying has it, there's more than one way to skin a cat, and, speaking for myself, I'd like to see items about the fairly good pitchers that violate most of the suggestions laid down in Roy Smith's book; because there are no doubt many able pitchers who flop the shoe or even put their forefinger around a heel calk and throw a 2-3/4 turn, as in the horse-and-buggy days. Many of these have tried to pitch scientifically and when they find that somehow they can't, they lose interest in the game and quit; whereas if they read about good pitchers who were still old-fashioned in their method of pitching it would encourage them to pitch for the fun of playing the game, with its exercise and good fellowship, instead of being too ringer-conscious.

It is, of course, necessary to print articles about the Association's Constitution, but if this game is ever to be popularized in print, we will require more human interest stories — one thing that has made the Sporting News the great magazine it is, is the emphasis on human interest stories — and interesting articles in every issue on how ordinary pitchers pitch horseshoes, orthodox or unorthodox."

What Joe Bacon said in 1950 is still true. We ask that you readers take a few minutes of your time and send us an article about yourself or another player that needs to be told. It can be a story of your own experience or things you have seen in your career. It can be in your own handwriting and don't worry about the spelling or format. Send it to our 2nd VP Norman Gaseau, 1908 Nugget Dr., Clearwater, FL 33515. He will edit your article, correct spelling, etc. and send it on to our News Digest Editor for publication. Share your story with our readers!

HOME of the 1985 WORLD HORSESHOE TOURNAMENT

By LEE ELBE

We have just completed the largest Missouri State Tournament with a record of 203 entries. The State will return to Springfield in 1984, over labor day weekend. Due to the tremendous increase in membership to 421, over last years 235, we will have to add one more day to the tournament for 1984.

Last year, our membership was 235, an increase of 186 adult sanction cards, Springfield added 105 new members. Based on last year, this would make Missouri number one in the nation, and we have just begun.

My personal thanks to all the participants and guests along with James Acock, our State Secretary — Charlie Kilgore, President — Vicki Winston, Vice President, and Earl Winston, N.H.P.A. 1st Vice President for their co-operation in making this Missouri State Tournament a success. I will be back next month. My topic will be, LET'S START NOW!!

Lillard Pinnion was unable to defend his 1982 Class "A" State Championship due to the serious illness of his wife. Lets bow our heads for just a moment of prayer, and may the Good Lord make it a quick recovery for her. If you would like to drop a note, their address is, 3608 N. 5th Terrace, St. Joseph, Missouri, 64505. Every little bit helps.

FAMOUS SCHULTZ SISTERS MEET AFTER 19 YEARS

Caroline (Schultz) Decker was pleasantly surprised on July 13 when her sister Charlotte (Schultz) Goughnour flew in from Anaheim, Calif. for a visit after an absence of 19 years due to illness.

While visiting her sister, a crew from WLW-TV station from Cincinnati taped an interview with the two famous sisters which was aired that evening on the 6 o'clock news. Included in the interview were remarks telling of the many trick shots that they performed during their pitching days.

EXPRESSION OF THANKS FROM MRS. VIOLET HERFURTH

I wish to thank all my many friends who were so kind to send cards and messages wishing me a speedy recovery from my illness. Bernard and I are sorry that we were unable to greet you at Statesville and are looking forward to seeing you at Huntsville, Alabama in 1984.

HALLOWEEN OPEN-PREIMESBERGER ARENA-OCT. 29-30

The sixth annual Halloween Open will be held at the Indoor Preimesberger Arena at Pierz, Minnesota on October 29th and 30th. There will be 8-man classes playing 50 shoe games. Entry fee \$415.00. Cash or trophies will be awarded. This is a SANCTIONED tournament. State and national cards required. (Minnesota 1984) Recorded averages will be used. New entries must send their current high percentage. DEADLINE—October 19th. Scorekeepers will be paid 50 cents per game. Admission fee \$2.00. Send entries to Henry Preimesberger, Rte. 2, Pierz, Minnesota 56364. Phones: 612-468-2345 and 612-468-6638 home.



TROPHIES YOU CAN USE

	Qty.	Price
\$4.75 each	1st Place	\$
	2nd Place	
2-3 weeks delivery	3rd Place	
	4th Place	
P&H .50¢ per mug (Min. \$2.00)		
California residents add 6% tax		
Addit. info in gold script05¢ per ltr.		
Send your sketch . . . we'll do it.	Total\$	
Name		
Address		

GOLDLINE CERAMICS — 3024 Gayle St., Orange, CA 92665



We are saddened by the loss of Lee Davis who died on Aug. 8 of a heart attack in Monroe, N.C. at age 76. During the World Tournament closing ceremonies, Aug. 6, Lee was honored by receiving the "Stokes Memorial Award" for 1983 — a most cherished NHPA award. This was but one of the many recognitions Lee earned during his horseshoe career. He was a 3-time "Hall of Famer" having been inducted into the New Jersey State, Florida State and NHPA Hall of Fame. Lee was President of N.J. State Assn., N.J. State Champion, NHPA Regional Director of Florida for many years and the "Outstanding Member" of Florida State Assn. for 1983.

All who knew Lee were aware of his devotion to our sport. He leaves a great void in the "horseshoe world." One of his recent moments of joy was being selected as a player on St. Petersburg's renown Kids & Kubs Softball Team — all of whom must be at least 75 years young.

The sincere sympathy of the Florida Horseshoe Pitchers Assn. and NHPA is extended to his surviving wife "Peggie," 2 daughters, 3 brothers and 3 sisters.

The Beaver County Horseshoe Pitchers Assn. suffered a great loss on Sunday June 19, 1983 in the passing of its President Edward Paul Donawitz. Ed was admired and loved by all who know him.

He continually came forward with ideas for improving and advancing the sport and he worked very hard on any project undertaken by the association.

He was president of the Beaver County Horseshoe Club and also member of the NHPA. He was a member of the First Presbyterian Church of Rochester, Pa. and also of the Pennsylvania Auto Truck Salvage Association.

He is survived by his wife Gertrude, two sons Douglas and Danny and two daughters, Mrs. Richard (Elaine) Hildebrand and Mrs. Michael (Kathy) Hanne and seven grandchildren.

The sincere sympathy of the Beaver Club and the NHPA is extended.

It is with sadness that we report the passing of Ellis Brown of Waverly, Ohio on August 16. He suffered with cancer for sometime.

He was an NHPA Member since 1960 and together with his wife Avanelle were very active in leagues and tournament play and club leadership in the Pike County Ohio Club for twenty years.

He was an employee of the Klinker Lumber Supplies and also a school bus driver. He was known for his hard work and always in good humor.

To his loving wife, Avanelle the sincere sympathy of the Ohio Buckeye Association and the NHPA is extended in this sad hour of bereavement.

Let PITCHER'S PAL

help pick up the shoes

- Save your back
- Avoid fingernail damage
- Protect your hands

Send \$5⁹⁵ to:



post paid

Pitcher's Pal, P.O. Box 583 West Middlesex Pa. 16159

LOOKING BACK OVER THE 1983 TOURNAMENT SEASON

During the 1983 season, many tournament results have come into the News Digest for publication. Some were sanctioned tournaments and some were not. In order to cover as many of those tournaments it is necessary that a summary of them is made which follows.

In the annual Tennessee Ringer Round-Up, it was Roger Norwood winning with 5-0-74.1 record... In Southern California, Jerry Schneider topped the annual Semana Nautia Open at Santa Barbara with 6-2-63.1... In the East Liverpool, Ohio-New Castle, Pa. Invitational, Bob McKnight was the winner with a clean slate of 4-0-65.1... In Vermont Liz Downer won the honors in the Father's Day Open, other Vermont action seen Dick Greene win play-off in the Turkey Round-Up followed by the Southern Vermont Open. Dick Greene was undefeated with 7-0-65.3... In Northern Calif. action Jim Long topped the Yuba-Stter Class D... Don Titcomb came through the Gold Country Open undefeated with 7-0-70.6... Ed Floyd racked up 7 in a row to win the Don Palmer Open at Stockton. Vera Floyd won the Ladies with 5-0-46.5. The Turlock Open crown now sits on Don Titcomb's head after a 7-0-81.4 record. Virginia Sturla came through with a 7-0-56.9 for the day... again it was Don Titcomb in the Bill Fraser Open closing out with 7-0-78.3 and Yvonne Mauzey topping the Ladies Class with 7-1-56.3... In the Ukiah, Calif. Open Walt Foreman was the winner... In the Golden Gate Classic, Don Titcomb was supreme with 9-1-75.6 while Yvonne Mauzey swept through the Women's class with 7-0-64.0, Mel Long, Jr. won the Junior title... Monte Latino led the way in Stockton Parks Class A with a 7-1-67.1 record followed by Virginia Sturla taking charge in the Ladies with 5-0-61.6. Mel Long, Jr. had a good day in the Junior division with 6-0-59.0. Titcomb was again in the limelight in the Stockton Mixed tourney wrapping up first place with 7 straight wins and 75.7 percent... Rich Forgues topped the Northern Vermont Open with 4-0-59.3 with Liz Downer winning the Ladies title with a 5-0-65.9 record, Jeanette Lavelle won the Jr. Girls while Rick Bedell, Jr. won the Junior Boys crown... in the Moundsville, W.Va. Open Al Zadroga dethroned Kim Knisley to win the title, Ralph Maddox was runner-up while in the Ladies division Virginia Thompson was the winner, Bobby Blake took the Junior title... Up Connecticut way, Norm Rioux proved the winner in the annual Sam Bertram Open as he edged Joe Festa for the title with a 5-2-61.9 record... John Ludwig of Ohio topped the Beaver County, Penna. Invitational held July 27 at Beaver, Pa... Ed Blum topped another Penna. Invitational at Beaver, Pa. in early August posting 4-1-58.2... Clair Bruce had a clean slate as he won the New Castle County, Pa. tournament with 7-0-70.6... Cecil Monday of Virginia topped the Money Tournament held at Salisbury, Maryland with 14 straight wins and 65.9... further action in Northern California it was Pete Manitone winning the Palermo Feather River Open with 7-0-60.0... in another Feather River Open John Sylvester was the winner held in June... another June tournament held at Seaside, Calif. found Don Titcomb on top with a record of 7-0-78.6. Betty Forbes won the Ladies contest with 7-1-44.0 while Kendall Perry won the Junior class. This was the annual Ole Hanson Open... the Sacramento "C" Open went to Dick Hucce of Reno, Nevada posting a 7-0-46.3 record. In the Woodbury Open staged at Vineland, NJ on the last weekend in July, Ed Severs put 7 straight wins together with a 55.8 percentage to top that tournament on the day following, Joe Schultz came down from New York to win the Flemington County, N.J. Open with a 5-0-61.9 record.

ZOZZARO TOPS HUNTERDON COUNTY, N.J. CLASSIC

CLASS A — Phil Zozzaro, Little Falls, NJ, 5-2-60.2; Dennis Joslin, Vineland, NJ, 5-2-57.1; Bill Klob, Toms River, NJ, 5-2-51.8.

CLASS B — Dave Everitt, Washington, NJ, 5-2-44.8; Owen Farmer, E. Brunswick, NJ, 5-2-50.6; Tom Skinner, East Orange, NJ, 4-3-53.0.

CLASS C — Ted Lewis, Millville, NJ, 6-1-46.3; Herman Weiser, Somerset, NJ, 6-1-43.3; Jim Nardiello, Roselle Park, NJ, 5-2-41.2.

CLASS D — Bill Gurgurich, Trenton, NJ, 6-1-36.4; George Morio, Staten Island, NJ, 5-2-28.1; Don Gotts, Linden, NJ, 5-2-27.8.

CLASS E — Bob Lobell, Lebanon, NJ, 8-0-22.9; Bob Harrison, Califon, NJ, 7-1-21.6; Andy Waisempacher, Flemington, NJ, 4-4-19.3.

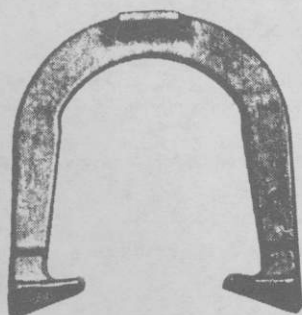
CUMBERLAND COUNTY, NJ OPEN TITLE TO TOM CHANCE

CLASS A — Tom Chance, Wilmington, Del, 6-1-51.7; Jack Giddes, Warren, NJ, 5-2-50.7; Stan McCarty, Toms River, NJ, 5-2-49.6.

CLASS B — Ray Shober, Newfield, NJ, 7-0-48.7; Jim Nardiello, Roselle Park, NJ, 6-1-43.5; Ron Wolfe, Bridgeton, NJ, 5-2-39.9.

CLASS C — Larry Thomason, Woodbury, NJ, 5-0-28.1; Bob Manzoni, West Milford, NJ, 3-2-29.1; Wes Cook, Toms River, NJ, 3-2-23.2.

TED ALLEN HORSESHOES



An original professional shoe. Still the very best professional shoe — Designed by a Champion — Used by many Champions — Not all users will become champions, but by throwing ALLEN's, you know that you've performed your best.

The designed features were invented by TED ALLEN, a 10 time world champion. He has made world records over and over with them. The design was a leader. After years it came to be a trend as a guideline in shoe equipment.

You can't go wrong in using them.

1045 LINDEN AVENUE

BOULDER, COLORADO 80302

REEDSVILLE, PA. SANCTIONED TOURNEY WON BY BURRIS

The second annual 14-H Reedsville, Pa. Fair tournament was won by Glenn Burris of Belfonte, Pa. held during the August fair. This was a sanctioned tournament. Burris was in top form winning 5 straight gas and averaging 78.0.

CLASS A — Glenn Burris, 5-0-78.2; Dan Beshore, 4-1-70.2; Glenn Brown, 3-2-67.9; Glenn Rubendall, 2-3-60.6; Dick Dart, 1-4-48.5; Dean McCurdy, 0-5-40.7.

CLASS B — Jack Swyers, 5-0-56.3; Martin Bubb, 4-1-53.5; Jerry Halderman, 3-2-57.4; Larry Gisewhite, 2-3-54.5; Joe Sadowski, 2-3-54.5; Dick Wilson, 0-5-45.5.

CLASS C — Martin Bubb, 5-0-57.4; Jim Sibley, 4-1-55.4; Frank Smigiel, 2-3-50.6; John Baugher, 2-3-45.2; Earl Brown, 1-4-41.6; Sherwood Frankhouser, 1-4-37.4.

CLASS D — Al Long, 4-1-51.2; Blaine Aley, 3-2-42.4; Gerard Harris, 3-2-37.9; Chas. Denk, 2-3-41.0; Ira Stine, 2-3-35.6; Wm. Rossman, 1-4-37.3.

CLASS E — Pete McCollum, 5-0-45.8; Wayne McCloskey, 3-2-42.2; Frank Goss, 3-2-40.4; Guy Esh, 2-3-39.4; Joe Belcavitch, 1-4-38.6; John King, 1-4-35.8.

CLASS F — Ed Bowersox, 5-0-47.0; Darle Esh, 4-1-36.6; Bernie Wierbowski, 2-3-25.3; Ned Kinard, 2-3-23.8; Glenn Eppley, 1-4-27.7; John Burbanc, 1-4-26.6.

CLASS G — Don Ferentz, 6-1-30.2; Jack Boward, 5-2-28.1; John Zimmerman, 4-3-30.1; Don Bubb, 3-4-30.0; Rich Arnold, 3-4-26.8; Marlin Zimmerman, 3-4-25.9; Jim Hannon, 2-5-21.9; Dennis Lloyd, 2-5-19.0.

LEWIS WINS S. NEW BERLIN, N.Y. SANCTIONED TOURNAMENT

MENS CLASS A — Jim Lewis, 7-0-57.1; John Bogardus, 6-1-58.3; Ed Risley, 5-2-58.5; Bob L. Moss, 3-4-46.5; Earl Brooks, 3-4-44.1; Walt Shackelton, 3-4-41.0; Bill Walker, 1-5-38.0; Jim Kozik, 0-7-32.3.

MENS CLASS B — Frank Bogardus, 6-1-40.8; Howard Coy, 5-2-41.5; Bob L. Moss, 5-2-38.3; Bob Yeomans, 4-3-38.6; Ivan Tweedie, 3-4-38.4; Harry Kinner, 3-4-34.6; John Meehan, 2-5-33.4; Dick Tatar, 0-7-30.9.

MENS CLASS C — Carl Tillock, 5-2-41.4; Lee Coon, 5-2-42.0; Ivan Maine, 5-2-40.3; R. Barbarossa, 4-3-42.9; Alec LaRock, 3-4-42.2; Larry Hunter, 3-4-36.2; Lenn Davis, 2-5-36.9; E. Graham, 1-6-27.3.

MENS CLASS D — Pete Newey, 6-1-46.7; Dick Ellis, 5-2-43.8; Gordon Bennett, 5-2-43.7; Gene Baker, 5-2-41.1; Bill Johnson, 3-4-34.0; Sonny Gordon, 2-5-34.0; Bill Tassone, 1-6-26.8; O. Misner, 1-6-19.6.

MENS CLASS E — Linc Hall, 7-0-35.8; Sonny Gordon, 6-1-41.3; Ernie Graham, 4-3-31.4; Jack Hahn, 3-4-33.9; John Hladun, 3-4-33.2; Stan Hayes, 2-5-29.9; Vic Davis, 2-5-26.9; Fred Pope, 21.5.

MENS CLASS F — Bucky Aylesworth, 5-2-31.6; Dave Rundell, 5-2-34.7; Rany Bennett, 5-2-25.2; Dale Lund, 4-3-34.6; Howard Backus, 4-3-23.9; Bob White, 2-5-30.2; Terry Lewis, 2-5-22.6; C.J. Hunter, 1-6-22.6.

MENS CLASS G — Jerry French, 5-2-28.6; Hubert Curtis, 5-2-22.8; Roy Franklin, 5-2-28.0; Frank Wojdla, 4-3-26.4; Bob Chessman, 3-4-21.0; Mike Sweeney, 3-4-13.7; Ray Sullivan, 2-5-21.2; Paul Townsend, 1-5-24.5.

MENS CLASS H — Phil Worman, 6-1-23.8; Jake Rocker, 6-1-23.4; Lenny Webb, 4-3-19.6; Ken McElwain, 3-4-20.5; Joe Matt, 3-4-12.1; Paul Jones, 2-5-31.5; Tim Metott, 2-5-18.1; Bill Hoag, 2-5-16.2.

MENS CLASS I — Roy Emrich, 4-0-19.3; Roger White, 3-1-18.4; Roger Chase, 1-3-16.5; Len Raquett, 1-3-12.4; Paul Marquet, 1-3-2.0.

DIMARTINO WINS CAMDEN, N.Y. 1ST SANCTIONED OPEN

MENS CLASS A — M. Dimartino, 7-0-70.5; S. Fenicchia, 6-1-61.6; J. Bogardus, 4-3-63.1; E. Risley, 4-3-56.8; J. Lewis, 3-4-61.5; J. Ruston, 2-5-58.2; G. Krause, 2-5-57.4; R. Sutton, 0-7-47.0.

MENS CLASS B — C. Rigby, 6-1-62.9; E. Brooks, 6-1-59.3; W. Coleman, 5-2-53.2; G. Jackson, 3-4-46.3; W. Virkler, 3-4-44.4; W. Walker, 2-5-41.5. R. L. Moss, 2-5-41.1; J. Kozik, 1-6-33.0.

MENS CLASS C — B. Morton, 7-0-52.2; B. Lewis, 6-1-51.0; G. Hyder, 4-3-41.8; G. Marsh, 4-3-40.3; H. McFann, 3-4-42.8; Paul Wilson, 2-5-43.9; L. Seymour, 1-6-38.9; R. Tatar, 1-6-34.9.

MENS CLASS D — B. Morton, 7-0-51.8; G. Bennett, 4-3-42.3; R. Ellis, 4-3-39.5; J. Sutton, 4-3-35.6; G. Graham, 3-4-37.6; R.W. Moss, 3-4-35.3; J. Meehan, 2-5-32.1; R. Tatar, 1-6-28.9.

CAMDEN OPEN — (Continued)

WOMENS CLASS A — Ruth Hangen, 5-0-72.2; J. Dahlberg, 4-1-57.8; W. Shackelton, 3-2-53.3; H. Meehan, 2-3-49.2; J. Scott, 1-4-43.0.

WOMENS CLASS B — M. Ray, 4-1-49.1; M. Shackelton, 3-2-45.5; C. Carpenter, 3-2-44.9; B. Kellogg, 3-2-42.2; v. Tatar, 2-3-47.4; C. Guppy, 0-5-35.4.

WOMENS CLASS C — D. Graham, 7-0-26.2; B. Racquet, 5-2-24.8; P. Rocker, 5-2-21.0; R. Bennett, 3-4-14.3; B. Strickland, 2-5-15.7; M. Miller, 2-5-15.7; K. Furneaux, 2-5-11.4; C. Douglas, 2-5-9.5.

JUNIOR CLASS A — R. Pike, 6-0-72.6; R. Scott, 3-3-66.3; T. Wartens, 3-3-63.5; P. Johnson, 0-6-42.6. This class pitched around twice.

JUNIOR CLASS B — C. Jackson, 5-0-46.0; Steve Graham, 4-1-33.3; G. Hatzinger, 3-2-23.3; S. Graham, 1-4-24.0; T. Wartens, 1-4-20.7; W. Reed, Jr., 1-4-11.3.

JUNIOR CLASS C — C. Armstrong, 4-1-16.7; M. Simpson, 3-2-19.3; C. Reed, 3-2-18.7; D. Simpson, 3-2-18.0; R. Scott, 2-3-16.0; E. Flagg, 0-5-6.7.

JUNIOR CLASS D — J. Hatzinger, 5-0-11.3; T. Bristol, 3-2-10.7; E. Graham, Jr., 3-2-9.3; M. Scott, 3-2-4.0; R. Bristol, 1-4-4.7; J. Seymour, 0-5-2.0.

MENS CLASS E — E. Skinner, 6-1-40.7; P. Ducato, 6-1-39.1; I. Tweedle, 5-2-40.5; T. Marsh, 4-3-43.4; P. Newey, 2-5-34.9; O. Misner, 2-5-33.1; G. Mason, 2-5-31.2; R. Miller, 1-6-33.3.

MENS CLASS F — C. Osinski, 5-2-44.4; K. Nixon, 4-3-48.0; A. LaRock, 4-3-41.5; C. Tillock, 4-3-40.9; G. Baker, 4-3-39.0; R. Sinsabaugh, 4-3-38.7; C. Morse, 3-4-36.4; T. Mayville, 0-7-25.6.

MENS CLASS G — S. McPherson, 6-1-38.7; P. Dahlberg, 5-2-33.2; G. Mason, 5-2-32.6; M. Gafancesco, 4-3-32.2; I. Maine, 3-4-36.4; R. Miller, 2-5-33.6; R. Carpenter, 2-5-33.5; C. Mayer, 2-5-25.5.

MENS CLASS H — N. Whitman, 6-1-42.2; S. Barbutto, 6-1-49.2; W. Johnston, 5-2-39.1; L. Thayer, 4-3-32.2; J. Hladun, 3-4-36.7; E. Graham, 2-5-33.4; T. Mayville, 2-5-31.9; K. Strickland, 0-7-19.7.

MENS CLASS I — L. Lacell, 5-2-29.7; B. Aylesworth, 5-2-31.0; L. Hall, 4-3-33.1; J. Hahn, 4-3-32.4; S. Gordon, 3-4-28.9; J. Virkler, 3-4-27.6; W. Tassone, 3-4-26.8; L. Egan, 1-6-25.2.

MENS CLASS J — R. Rhoades, 7-0-30.4; H. Backus, 5-2-25.5; E. Wartens, 3-4-27.3; R. White, 3-4-24.0; R. Bennett, 3-4-23.1; R. Clark, 3-4-22.2; D. VanSchoick, 2-5-25.0; J. Mondo, 2-5-19.5.

MENS CLASS K — H. Curtis, 6-1-32.8; T. Lewis, 4-3-37.1; A. Stowell, 4-3-32.3; J. Ernisse, 4-3-31.1; W. Calhoun, 4-3-22.0; D. Rundell, 3-4-27.7; J. Rocker, 2-5-27.1; J. Goodspeed, 1-6-22.0.

MENS CLASS L — O. Brown, 5-2-21.9; M. Sweeney, 5-2-19.3; M. Shepard, 4-3-23.4; R. Chessman, 4-3-22.0; W. Risley, 4-3-18.0; K. McElwain, 3-4-20.1; R. Hruby, 2-5-13.7; J. Skutnik, 1-6-12.6.

MENS CLASS M — R. Mowers, 4-1-18.4; F. Wojdla, 3-2-22.4; r. White, 3-2-20.0; L. Webb, 2-3-21.2; W. Bristol, 2-3-15.2; F. Pope, 1-4-20.8.

MENS CLASS N — L. Stowell, 7-0-27.3; T. Metott, 6-1-21.3; W. Hoag, 4-3-18.3; P. Jones, 3-4-18.3; W. Hollibough, 3-4-14.0; J. Matt, 3-4-10.7; J. French, 2-5-12.3.

MENS CLASS O — S. McElwain, 5-0-17.5; R. Turner, 4-1-24.5; G. Duell, 3-2-12.5; R. Skutnik, 2-3-14.0; B. Douglas, 1-4-12.0.

BURRIS EDGES SCHULTZ FOR PENNSYLVANIA OPEN TITLE

Glenn Burris of Bellfonte, Pa. edged out Joe Schultz of New York to win the sanctioned Pennsylvania Open held at the New Cumberland Boro park courts in New Cumberland, Pa. Charlotte Olson was undefeated in the Ladies class posting a 5-0-53.5 record. Burris had 7-0-69.2 for the day.

CLASS A — Glenn Burris, 7-0-69.2; Joe Schultz, 6-1-68.1; Dan Beshore, 4-3-68.0; Glenn Rubendall, 4-3-65.5; Walt Duester, 2-5-59.1; Casey Danner, 2-5-58.4; Glenn Brown, 2-5-58.3; Dean McCurdy, 1-6-49.4.

CLASS B — Ray Bechtel, 7-0-53.9; Fritz Lutter, 5-2-57.1; Dick Wilson, 4-3-48.9; Ed Gohn, 4-3-46.0; Larry Gisewhite, 3-4-44.5; Dick Dart, 2-5-43.5; Pete Miller, 2-5-43.3; Joe Sadowski, 1-6-39.2.

PENN. OPEN — (Continued)

CLASS C — Jack Swyers, 5-2-48.8; Bill Bruaw, 5-2-46.7; John Clippinger, 4-3-45.3; Jack Griffith, 4-3-42.2; Jim Sibley, 3-4-46.9; Guy Esh, 3-4-45.1; Al Long, 3-4-43.0; Sherwood Frankhouser, 1-6-33.6. Jack Swyers Playoff Winner.

CLASS D — Pete McCollum, 7-0-47.3; Clark Walker, 4-3-49.2; John Baugher, 4-3-46.7; Dick Ruff, 4-3-41.6; Fred Lutter, 3-4-42.6; Chas. Koons, 3-4-42.2; Earl Brown, 2-5-36.2; Gerard Harris, 1-6-33.4.

CLASS E — Earl Lartz, 5-2-41.2; Al Sweeney, 5-2-41.3; Bob Gable, 4-3-43.2; Chester Owens, 4-3-38.3; Joe Templeton, 3-4-45.4; Rod Wilkinson, 3-4-38.6; Ed Bowersox, 3-4-36.7; Chas. Denk, 1-6-30.0. Earl Lartz Playoff Winner.

CLASS F — Frank Smigiel, 5-2-40.1; Pete McCollum, 5-2-47.9; Wayne McCloskey, 5-2-43.6; Elaine Aley, 5-2-37.0; Ira Stine, 3-4-43.8; Joe Belcavitch, 2-5-36.7; Robert Heftner, 2-5-31.5; Ivan Horton, 1-6-35.1; Frank Smigiel, Playoff Winner.

CLASS G — John Urbanc, 6-1-34.8; Don Wagner, 5-2-39.3; Mike Bonner, 5-2-38.2; Glenn Eppley, 4-3-31.7; John Zimmerman, 3-4-32.0; Bernie Wierbowski, 3-4-26.2; Jim Henry, 2-5-27.6; Ned Kinard, 0-7-29.0.

CLASS H — Dennis Lloyd, 7-0-28.7; Rich Arnold, 5-2-24.6; Marlin Zimmerman, 3-4-28.3; Don Bubb, 3-4-27.4; Don Ferentz, 3-4-23.5; Joe Shughart, 3-4-22.3; Jim Hannon, 3-4-20.0; Jack Boward, 1-6-19.4.

WOMENS CLASS — Charlotte Onion, 5-0-53.5; Viola Harris, 4-1-26.4; Kim Wilson, 3-2-17.8; Dot Pittman, 2-3-20.4; Jean Long, 1-4-12.5; Lois Neilsen, 0-5-4.0.

BOB McKNIGHT VICTOR IN DORMONT, PA. OPEN

With perfect weather prevailing, the annual Dormont, Pa. Open tournament was won by Bob McKnight of Newcastle, Pa. with a 6-1-63.0 record. Vince Sedlacek was the runner-up. High single game honors went to Casey Danner who hit a cool 80.0 percent. Frank Kilinsky won Class B posting 7 straight wins and 54.0 percent. He also had the high game of the class with a 75.0 effort. Class C honors went to John Stadler in a three-way playoff with Carl Herbe and Clark Carnahan. Bud Kerns had high game of 70.5. Bill Stahl won Class D with a record of 6-1-34.0; All in all the tournament was a great success.

S. KUCHCINSKI WINS KINZUA COUNTRY CLASSIC (PENNA.)

CLASS A — Steve Kuchcinski, 6-1-68.2; Dick Mudgett, 5-2-62.3; Pete Vlachos, 4-3-58.7; Clair Bruce, 4-3-55.6; Dick Carnahan, 3-4-57.8; Vince Sedlacek, 3-4-57.5; Russ Welton, 2-5-55.6; Ed Blum, 1-6-51.1.

CLASS B — Len Berggren, 6-1-50.9; Francis White, 6-1-50.9; Al Conklin, 4-3-45.7; Kurt VonKleist, 4-3-44.6.

CLASS C — George Rhea, 6-1-45.4; George Hale, 6-1-45.4; Dave Maxwell, 4-3-49.7; Bill Williams, 4-3-45.8.

CLASS C — Bob White, Sr., 7-0-49.7; Robert Hayes, 5-2-43.7; Chuck Dickinson, 5-2-43.4; Wayne Wood, 4-3-35.7.

CLASS E — Ken Hopkins, 5-2-40.9; Clarence Butcher, 5-2-47.1; Donald Harris, 5-2-43.4; Chet Dennison, 4-3-38.9.

CLASS F — Harvey Hayes, 5-2-32.5; Bob White, Jr., 5-2-37.7; Bob Golden, 4-3-36.6; Joe Mancini, 4-3-34.7.

CLASS G — John Lott, 6-1-42.3; Don Wilcox, 5-2-40.0; Bud White, 4-3-35.6; Gayle Meley, 4-3-32.0.

CLASS H — Tom Butcher, 6-1-42.6; James Gibson, 5-2-28.9; Gordon Carpenter, 4-3-37.8; Jerry Peck, 4-3-31.0.

CLASS I — Ray Cherubini, 6-1-33.7; Paul Thomas, 5-2-28.7; Roy Brinkley, 4-3-26.6; John Carnahan, 3-4-29.1.

CLASS J — Joe Zeitler, 7-0-22.4; John Carnahan, 6-1-27.4; Ben Biss, 4-3-29.6; Malcolm Todd, 4-3-19.7.

CLASS K — Barry McQuillan, 6-1-26.1; Mike Allen, 6-1-32.3; Elsworth Warner, 5-2-27.2; Frank Ellis, 4-3-29.1.

CLASS L — Mickey Ludwick, 4-1-29.7; Perk Mills, 4-1-23.9; Roger McMahon, 3-2-27.2; Rob Kuchcinski, 2-3-24.5.

CLASS M — Dani Smith, 7-0-28.6; Barry Crist, 6-1-20.9; Ray Gruber, 5-2-16.7; Ken Turnbull, 4-3-13.9.

KINZUA COUNTRY — (Continued)

CLASS N — Cliff Genchur, 6-1-18.2; Avid Gruber, 6-1-10.0; Tom Marusa, 6-1-13.5; Richard Zeitler, 4-3-11.7.

WOMENS CLASS A — Lorraine Thomas, 4-1-63.2; Fran Carnahan, 3-2-77.6; Dot Carnahan, 3-2-36.9; Sandy Carnahan, 3-2-30.8; Joyce Spicer, 2-3-30.4; Maxine Wade, 0-5-26.5.

CLASS B — Jerry Frye, 5-0-15.0; Anna Mae Marusa, 4-1-14.0; Lois Marshall, 3-2-18.0; Marsha Carnahan, 2-3-20.0; Bev St. Clair, 1-4-24.0.

NORTHERN CALIFORNIA TOURNAMENT ACTIVITY

WALTER KROWEL WINS FEATHER RIVER OPEN, PALERMO, CA. — CLASS A-I — Walter Krowel, 5-2-54.3; Willie Bradford, 4-3-52.0; Herb Rushing, 4-3-51.1.

CLASS A-II — Glenn Peck, 6-1-48.3; Harold Hoar, 5-2-44.3; Jim Long, 5-2-39.4.

CLASS A-III — Bert Charley, 6-1-36.3; Jay Bush, 5-2-32.6; Joe Dihel, 5-2-29.1.

CLASS A-IV — Jim Keyes, Sr., 7-0-29.0; Randy Daniel, 6-1-17.0; Thermond Watkins, 5-2-16.3.

WOMEN — Sandy Hardy, 7-0-56.6; Annette Williams, 6-1-38.0; Lois Edwards, 4-3-34.3.

JUNIORS — Mel Long, Jr., 6-1-56.6; Mike DeSanto, 5-2-52.0; Nick Wanner, 2-4-23.7.

SANDY HARDY FORDS FEATHER RIVER #31 AT PALERMO, CA — CLASS A-I — Sandy Hardy, 6-2-53.0; John R. McCutcheon, 5-3-47.3; Walter Krowel, 4-3-50.0; Herb Rushing, 4-3-45.7.

CLASS A-II — Carl Newsom, 7-1-44.5; John Sylvester, 7-2-44.4; Robert Gillett, 5-3-38.5; Leonard Rood, 4-3-34.9.

CLASS A-III — Jim Keyes, Sr., 6-1-26.6; Al Bowser, 5-2-16.0; Roy Heyden, 4-3-15.7.

TITCOMB AGAIN IN PETE QUINTANA OPEN — VALLEJO, CA. — CLASS A-I — Don Titcomb, 7-0-73.7; Dave Loucks, 5-2-65.1; Tom Webb, 5-2-64.3.

CLASS A-II — Jack Sorg, 7-0-59.7; Verdian Zelmar, 5-2-51.7; Herman Schneider, 5-2-50.3.

CLASS A-III — Marty Dunn, 6-1-58.9; Joe Zoglman, 5-2-49.1; Walt Foreman, 5-2-44.9.

CLASS A-IV — Steve Kynard, 7-0-49.7; Earl Kynard, 4-3-37.1; Jim Long, 4-3-36.9.

CLASS A-V — Bert Charley, 7-0-40.3; Earl Anderson, 6-1-32.3; John Kincheloe, 4-3-32.9.

CLASS A-VI — Marion Hawley, 6-1-26.6; Ceres Perry, 5-2-27.4; Doug Sterley, 5-2-23.7.

CLASS A-VII — Eldon Bryhan, 5-0-12.8; Leo Wanner, 4-1-11.6; Chick White, 3-2-12.8.

WOMEN — CLASS I — Yvonne Mauzey, 7-0-61.4; Virginia Sturla, 6-1-55.4; Marilyn Webb, 5-2-46.9.

WOMEN — CLASS II — Josephine Charley, 5-0-27.2; Vada Dunn, 4-1-27.6; Jean Bush, 2-3-13.2.

JUNIORS — Mel Long, Jr., 6-0-58.7; Kendall Perry, 3-3-21.7; Joe Long, 2-4-19.0; Nick Wanner, 1-5-21.3.

MANNS TRIUMPHS IN WARREN, OH. SANCTIONED FAIR OPEN

CLASS A Sanctioned called after 4 games due to rain — 1. Oscar Manns, 4-0-62.2, Painesville, O. 2. Clair Bruce, 3-1-53.2, New Castle, Pa. 3. Wayne Luoma, 2-2-58.5, Burton, O. 4. Henry Hostetler, 2-2-56.3, Williamsfield, O. 5. Bob McKnight, 1-3-53.9, New Castle, Pa. 6. Pete Vlachos, 0-4-44.2, Beaver, Pa.

CLASS B Sanctioned — 1. Charlie Dunlap, 5-1-53.8, Kirkland, O. 2. Earl VanSant, 4-2-49.6, Burton, O. 3. Greg Bean, 3-2-51.2; Burton, O. 3. Greg Bean, 3-2-51.2, Burton, O. 4. Bill Zieske, 3-2-49.5, Solon, O. 5. Roger Hackney, 1-4-48.7, Warren, O. 6. Dan Laforce, 0-5-39.5, Burton, O.

CLASS C Sanctioned — 1. Paul Carr, 6-1-45.6, Fowler, O. 2. Joe Markiewicz, 5-2-45.9, Solon, O. 3. Guy Wills, 5-2-41.8, Cleveland, O. 4. Charlie Brotzman, 4-3-39, Painesville, O. 5. Bob Allen, 3-4-41.7, Niles, O. 6. Paul Buchanan, 3-4-40.2, Champion, O. 7. Jack Kezele, 2-5-32.3, Newton Falls, O.

WARREN, OHIO OPEN — (Continued)

CLASS D Sanctioned — 1. Dick Spaller, 5-0-36.7, Painesville, O. 2. Fred Huyghe, 3-2-28.4, Vienna, O. 3. John Guiler, 2-3-32.2, Akron, O. 4. George Sheffar, 2-3-31.5, Warren, O. 5. Bud White, 2-3-31.4, Vandergrift, Pa. 6. Walt Pierce, 1-4-32.4, Burton, O.

CLASS E Sanctioned — 1. George Dengler, 5-0-40.3, Warren, O. 2. Jess Fenton, 3-2-30.1, Warren, O. 3. Ken Fenton, 3-2-28.5, Fowler, O. 4. Gary Krauss, 2-3-28.3, W. Farmington, O. 5. Bob White, 2-3-26.3, Vandergrift, Pa.

CLASS F Sanctioned Called after 4 games due to rain. 1. Lee Thompson, 4-0-31.6, Champion, O. 2. Frank Travers, 2-2-27.8, Bristolville, O. 3. John Beharry, 2-2-26.9, Chesterland, O. 4. Bud Lottus, Jr., 2-2-25.9, Burton, O. 5. John Revack, 1-3-26, Solon, O. 6. Darrell Peyatt, 1-3-25.4, Champion, O.

WARD TOP MAN IN TENNESSEE TOURNAMENT OF CHAMPIONS

Don Ward and Roger Norwood were featured in a special 3 out of 5 game series at the annual Tennessee Tournament of Champions conducted at Elizabethton, Tenn. the latter part of July and one loss.

Don won the match with 3 wins with a ringer average of 79.0 percent, while Norwood won one game and posting a 77.0 percent for his four games. There were only 6 ringers different between players each tossing 296 shoes with Ward getting 234 ringers and Norwood having 228 ringers. It was a terrific show for the spectators to watch.

CLASS B — W. Grant, 5-0-56.0; G. Whaley, 4-1-62.6; J. Vines, 2-3-52.5.

CLASS C — R. Pruitt, 5-0-57.7; R. Ward, 4-1-51.5; W. Bennett, 3-2-44.6.

Honors in Class D went to H. Irwin with 5-0-51.7. Class E was won by R. Finney and Class F was won by M. Bouton.

JOE RAY WINS LYNCHBURG, VA. HILL CITY OPEN

CLASS A — Joe Ray, 5-2-57.0; Jack Melton, 5-2-49.0; Bobby Dean, 5-2-53.3.

CLASS B — John Shaw, 6-1-48.0; Arnold Griffin, 5-2-54.6; Bob Baker, 5-2-48.0.

CLASS C — Curtis Ball, 7-0-44.1; Earl Kelley, 5-2-46.1; Gene Tidwell, 5-2-39.5.

CLASS D — John Guthrie, 7-0-40.8; Billy Breeden, 6-1-38.0; Wayne King, 5-2-40.7.

CLASS E — John Cobb, 5-0-41.7; Jerry Wolfe, 4-1-34.7; Pete Foster, 3-2-35.9.

JUNIORS — Dale Shifflett, 2-0-34.0; Daryl Smith, 1-1-16.3; David Wiseman, 0-2-14.2.

INDIANA STATE ASSOCIATION TOURNAMENT ACTIVITY

WABASH VALLEY SPECIAL, LAFAYETTE, INDIANA — **CLASS A** — Clarence Bellman, 7-0-75.4; Mark Seibold, 5-2-73.4; Leroy Rowe, 4-3-66.9; Peck Anderson, 4-3-65.3.

CLASS B — John Shuck, 7-0-57.9; Ed Kowatch, 5-2-56.1; Ed Howdeshell, 4-3-55.9; Gary Poindexter, 3-4-50.6.

CLASS C — J. W. Cox, 7-0-48.5; Tim Poindexter, 5-2-48.8; Paul Caudill, 5-2-41.4; Ed Pauley, 3-4-37.9.

CLASS D — Earl Richardson, 6-1-43.7; Mel Bussert, 6-1-40.0; Joe Rinehart, 4-3-43.2; Fred Draper, 4-3-42.3.

CLASS E — Jim Turpin, 6-1-40.5; Sylvester Hahn, Sr., 5-2-36.2; Jeff Young, 5-2-35.4; Joe Holloway, 4-3-34.5.

CLASS F — Don Bollock, 7-0-36.0; Pete Luster, 5-2-36.7; Roy Lamb, 5-2-35.3; Jim Bennett, 4-3-37.3.

CLASS G — George Watkins, 6-1-35.0; Gerald Cummings, 5-2-32.2; Marvin Jackson, 4-3-30.3; Jeff Bower, 3-4-33.1.

CLASS H — Tom Norman, 7-2-36.7; Everett Bowyer, 7-2-35.9; Harold Bice, 7-2-35.3; Jim Kuss, 7-2-33.4.

CLASS I — Don Draper, 6-1-35.6; Bob Hoover, 5-2-30.7; Luther Chandler, 4-3-34.1; George Dickson, 4-3-31.6.

INDIANA STATE — (Continued)

CLASS J — Wayne Cummings, 6-1-33.6; Byron Jervis, 6-1-30.1; Fred Saylor, 5-2-30.0; Pete Hobbs, 4-3-27.5.

CLASS K — David Butler, 5-2-25.7; Stan Holderly, 5-2-24.8; Don Stivers, 5-2-18.5; Paul Deck, 4-3-24.3.

CLASS L — Jim Gosnell, 7-0-28.0; Joe Robinson, 5-2-25.0; Lowell Cummings, 4-3-22.6; John Chandler, 4-3-22.0.

CLASS M — Jim Buell, 5-2-21.2; Bob Hovis, 5-2-18.6; Larry Ward, 5-2-16.8; Rick Wayne, 4-3-18.7.

CLASS N — Chester Sutphin, 6-1-23.5; Doc Zarse, 6-1-14.3; Steve Zarse, 5-2-16.0; Kenny Hughes, 4-3-9.0.

WOMEN CLASS A — Teresa Powell, III., 4-0-75.5; Amy Herring, 2-2-58.6; Bonnie Seibold, 2-2-47.1; Phyllis Anderson, 1-3-42.0; Lorena Poindexter, 1-3-36.8.

CLASS B WOMEN — Mona Cummings, 5-1-35.6; Chris Buell, 5-1-32.9; Ileta Davis, 1-5-25.6; Charline McKinley, 1-5-22.1.

CLASS C WOMEN — Hazel Shuck, 3-1-8.0; Susie Hamlin, 1-3-6.0.

JUNIOR CLASS A — Kristi Farris, 3-0-43.7; Paul Caudill, Jr., 0-3-27.8.

JR. CLASS B — Tony Cummings, 6-0-24.3; Carrie Cummings, 4-2-17.7; Del Tibbetts, 2-4-12.0; Bradley Hahn, 0-6-4.3.

JUNIOR CLASS C — Julie Dunham, 6-0-13.7; Scott Caudill, 3-3-11.7; Jon Phillips, 3-3-10.3; Scott Dunham, 0-6-2.

JUNIOR CLASS D — Charley Bower, 6-0-21.7; David Cummings, 4-2-8.3; Billy Douglas, 2-4-3.7; Doug Mikesell, 0-6-4.3.

JOHNSON COUNTY SPECIAL, EDINBURG, INDIANA — CLASS A — John LeMond, 5-2-74.1; George Sales, 5-2-73.8; Peck Anderson, 5-2-70.3; Chuck Grothe, 5-2-70.1; Bill Ungetheim, 4-3-68.3.

CLASS B — Will McNeece, 6-1-65.6; Bob Henderson, 5-2-58.7; Dickey Stevens, 4-3-55.1; Burl Taylor, 3-4-60.6.

CLASS C — Ron Lewis, 7-0-64.6; Curly Gladding, 5-2-52.7; Dennis Ferree, 5-2-51.1; Bob Molt, 4-3-47.7.

CLASS D — Joe Bombe, 7-0-48.6; Sylvester Hahn, 5-2-45.2; Don Newell, 4-3-44.0; Wayne Waggoner, 4-3-41.2.

CLASS E — Bob Sharp, 4-1-41.7; Offord Burkhart, 3-2-44.6; Gib Campbell, 3-2-40.1; Ed Clark, 2-3-40.

CLASS F — Wayne Waltz, 6-1-36.6; Oran Hollandbeck, 5-2-40.5; Harold Tatman, 3-4-34.7; Art Cornelius, 3-4-33.6.

CLASS G — Joe Morgan, 4-1-37.9; Jim Turpin, 3-2-34.1; Vince Cavanaugh, 3-2-34; Daily Fogle, 3-2-26.7.

CLASS H — Jack Mead, 6-1-38.1; Elmer Branson, 6-1-37.5; Olie Hubbard, 5-2-37.6; Arnold Bryan, 4-3-28.7.

CLASS I — Richard Lemish, 4-1-27.5; Dale Wehmeyer, 4-1-32.8; Larry LaFever, 3-2-18.1; Larry Robinson, 2-3-28.2.

CLASS J — Jim Gosnell, 5-2-29.8; Smokey Wolfe, 5-2-26.6; Lowell Vandeventer, 5-2-18.2; Fred Armentrout, 4-3-20.4.

WOMEN CLASS A — Phyllis Anderson, 6-0-57.4; Mona Cummings, 3-3-39.2; Suzanne Stevens, 3-3-28.9; Susie Hamlin, 0-6-6.5.

JUNIOR CLASS A-B — Steve Ungetheim, 5-0-58.0; Aaron Hubbard, 3-2-22.8; Bradley Hahn, 3-2-16.8; Carrie Cummings, 1-4-16.8; Robert Robinson, 0-5-16.8.

NOTICE—All members are requested to respect our sport and refrain from smoking while on the courts. NHPA Publicity & Public Relations Committee.

★ ★ ★ ESTHER JAMES, RAY MILLER, BYRON JASKULEH



ESTHER JAMES



EMMA FOCHT

ESTHER JAMES — Pitcher

ESTHER JAMES of Michigan was one of the best women pitchers during the 1930 era. In 1935 she established a world record in qualifying when she threw 86 ringers out of 100 shoes pitched. In so doing she pitched 14 consecutive double ringers. This outstanding record held for 45 years.

In that same year (1935) she had the steady nerves and stamina to win the Women's World Championship. All this was accomplished with very unsophisticated shoes.

She truly is deserving to be enshrined in the National Horseshoe Pitchers Hall of Fame. Although Mrs. James was unable to attend the 1983 World Tournament her plaque will be presented to her by a member of the Michigan Association.

* * * * *

EMMA FOCHT — Organizer & Statistician

EMMA FOCHT of Ohio one of the most outstanding horseshoe sports personalities in Ohio and perhaps in the entire realm of the National Horseshoe Pitchers Association began her career in horseshoe pitching activity in 1946 when she and her husband Paul (also member of the NHPA Hall of Fame) attended their first state tournament and since that time they have attended everyone since.

In the three years following, 1947-48-49, she was the assistant state statistician and in 1950 through 1970 was the Official State Statistician. Aside from her statistics job she served on the Board of Controls as secretary for 18 years. Whenever the state secretary was unable to do so she handled all the mail, also ordering all trophies for state, counties, district and open tournaments. She set up and kept the records from major tournaments which included the Eastern National when held in Ohio, Mid-West Ringer Round-Up, Lakeside Open, Greenville Ringer Classic which still is the largest in the midwest and many others.

She was a key figure in the horseshoe program at the Ohio State Fair from 1950-1970. She was the first one to use a calculator in a tournament in Ohio and run the calculator for the National Tournament for intermittent years from 1960 to 1969. She helped write the Ohio State Constitution and By-Laws. She also made the first all plastic percentage book which many pitchers still carry. Also another one for the professional starting with 20 shoes to 130 shoes 50% and up. She is also responsible for making a percentage book starting with 20 shoes up to 800 shoes. A book that started with 25 percent when no calculators were available.

She was presented her NHPA Hall of Fame Plaque by her husband Paul, to whom she has been married since 1936.

C, EMMA FOCHT 1983 HALL OF FAME INDUCTEES ★ ★ ★



BYRON JASKULEK



RAY MILLER

BYRON JASKULEK — Organizer

BYRON JASKULEK of New York was one of New York state's most enthusiastic horseshoe pitching promoters. He will be particularly remembered for filling the gap nationally when a journal was needed after the old Horseshoe World Magazine ceased operations. In 1948 he started editing and publishing "The Horseshoe Pitcher." Articles and news events including local scores were included from all over the United States. The magazine was run on a non-profit basis. He was inducted into the NHPA Hall of Fame in 1983 at Statesville, N.C.

Byron, known to many as "Jake" began to take an interest in horseshoes in 1940 when he retired from government service. He was a member of the Inwood Club of New York City and became active in several posts with both the state and national associations. At many national tournaments he arranged playing schedules and score-keeping procedures. Byron was one of the first to seek sponsorship of horseshoe pitching matches by corporations, such as the Cigar Institute, etc. Perhaps the first TV exhibition ever held was arranged by Byron Jaskulek featuring Vito Filiccia.

Byron Jaskulek will long be remembered for his outstanding service to the sport of horseshoe pitching.

* * * * *

RAY MILLER — Organizer & Pitcher

RAY MILLER of Ohio is a very honored and respected gentleman. He is not only an outstanding pitcher but also a good organizer.

Since 1948 Ray has pitched in most Ohio tournaments and many World Tournaments. His greatest claim to fame in winning the Senior World Championship in 1972 at Greenville, Ohio. He repeated this performance the following year at the Eureka, California World Tournament.

Ray with his loving wife Ada have travelled many miles to pitch in numerous tournaments, several of which he won. Some of these were held in West Virginia, Indiana, Pennsylvania, California, New Jersey, Kentucky, Michigan and New Hampshire.

In all of these, Ray assisted in keeping score and keeping the courts in good shape. In Ohio Ray has helped conduct the Women's and Boys and Girls tournaments.

Ray has also appeared on Ohio TV sports programs and in 1981 was inducted into the Ohio Buckeye Association Hall of Fame. Culminating his horseshoe career that of being inducted into the NHPA Hall of Fame at Statesville, N.C. in 1983.

DEADEYE HORSESHOES

NOW IN

FOUR MODELS

	Price Per Pr.—Up to 9 Pairs	Price Per Pr.—9 Prs. & Over
CLYDESDALES 2# 10 oz. & 2#9 oz.	\$23.00/Pr.	\$17.50/Pr.
N.T. 2# 10, 9, 8, 7 oz.	\$23.00/Pr.	\$17.50/Pr.
REGULAR 2# 9, 8, 7, 6, 5 & 4 oz.	\$23.00/Pr.	\$17.50/Pr.
E-Z GRIP 2# 10, 9, 8 & 7 oz.	\$28.00/Pr.	\$22.50/Pr.

***Prices on all "DEADEYES" f.o.b. point of shipment.
Missouri residents add 3-5/8% sales tax and California
residents add on 6% tax.***

All "DEADEYES" are dead soft.

**All "DEADEYES" are guaranteed against breakage for 2 years.
(Subject to change). Please specify desired weight when
ordering from:**

W. Courtwright
P.O. Box 742
Fenton, MO 63026
Phone: (314) 376-5222 (8-5)
(314) 677-2200
(314) 842-5188

Carl Steinfeldt
44 Ridgcrest Road
Rochester, NY 14626 (summer)
Phone: (716) 225-4191

Walter Ray Williams, Jr.
6140 Grant St.
Chino, CA 91710
Phone: (714) 628-6053

Carl Steinfeldt
407 Shady Lane Mobil Park
15400 Roosevelt Blvd.
Clearwater, FL 33520
(winter address)
Phone: (813) 535-3136

LAS VEGAS 1st ANNUAL PRO-AM CELEBRITY TOURNAMENT
DECEMBER 11 THROUGH DECEMBER 15
HACIENDA HOTEL — LAS VEGAS, NEVADA
\$15,000.00 IN CASH PRIZES GUARANTEED

Everybody will play. Format will be the same as used at the 1983 World Tournament. Your performance will depend on how you play.

CHAMPIONSHIP MEN'S AND WOMEN'S CASH PRIZES AS FOLLOWS:

First Place	\$1,000.00	Third Place	\$500.00
Second Place	750.00	Fourth Place	250.00

ALL CLASSES UNDER CHAMPIONSHIP CLASSES WILL RECEIVE PRIZES

First Place	\$200.00	Third Place	\$100.00
Second Place	150.00	Fourth Place	50.00

The number of other classes will depend on the number of entries.

REPEAT CHAMP — DALE LIPOVSKY

Available October 15. Read about 1982-83 World Champion From Minnesota. Send \$5.00 to Will Gullickson, 2850-26th Street, South, Moorehead, Minnesota 56560.

Tips for the Horseshoe Pitcher and Bowler

FIND OUT:

- How to avoid the balancing act.
- About a horseshoe pitchers or bowlers version of the way baseball pitchers learn to put the ball where they want it.

\$3.00 POSTPAID

VERNON KINSER

KINSER PUBLISHING, INC.

JENKINS, MISSOURI 65677

A FANTASTIC NEW BOOK

A FANTASTIC NEW BOOK

KERTZ SHOE CHECK

PAT. PEND.

FIVE TOOLS IN ONE

PERFECT FOR ALL HORSESHOE PITCHERS

JUST THE RIGHT SIZE FOR BACK POCKETS

8" x 1" x 1/4"

SEND \$8.45; 2 OR MORE \$16.75 EA.

POSTAGE INCLUDED

SCRAPER

FILE FOR
BURRSCALIPERS
FOR CLOSE POINTS

6" NOTCH FOR LEGAL POINTS

STRAIGHT EDGE

KERTZ SHOE CHECK

P.O. BOX 483

ARNOLD, MO. 63010

PLEASE INCLUDE
ZIP CODE

NHPA APPROVED

2

STEINFELDT REGAINS EASTERN NATIONAL CHAMPIONSHIP RUTH HANGEN OF N.Y. WINS LADIES TITLE UNDEFEATED

Carl Steinfeldt former World Champion and many times Eastern National Champion recaptured the Eastern National Championship in Erie, Penna. on June 25th and 26th compiling a 12 won and 1 loss record, he averaged 78.6 percentage. His only loss coming at the hands of Erie's Don Kuchcinski who won 11 lost 2, and threw the high tournament percentage of 79.2 percent for 13 games. In the first game Carl lost to Don Kuchcinski by 42 to 36 — in this game Carl averaged 86.4, Don averaged 89.4 they had 23 four deads.

Erie's Steve Kuchcinski won Class B with a 74.2 percent which would have placed him in 4th place in Class A percentage wise. Due to the high averages and entry of 166 players Steve's average put him in the B group.

Ruth Hanger won the Ladies Class A with a 7 won and 0 loss record, Ruth averaged 74.3 percent ringer average. Although Fran Carnahan had the identical ringer percent. Dot Carnahan won the Class B crown with a 6 won 1 loss record.

Class A — Carl Steinfeldt, NY, 12-1-78.6; Don Kuchcinski, PA, 11-2-79.2; Glen Burris, PA, 10-3-73.9; Al Zadroga, PA, 9-4-73.5; Mike DiMartino, NY, 9-4-69.8; Danny Kuchcinski, IND., 8-5-66.6; Elmer Hohl, CAN., 6-7-69.9; Clyde Martz, PA, 5-8-66.4; Ralph Maddox, W. Va., 5-8-72.4; Frank Bohum, PA, 4-9-66.3; Oscar Manns, OH, 4-9-63.3; Steve Hohl, CAN, 4-9-60.8; Ansil Copeland, OH, 3-10-60.1; Clair Bruce, PA, 1-12-62.7.

CLASS B — Steve Kuchcinski, PA, 6-1-74.2; Ray Rugg, PA, 5-2-67.7; Bob McKnight, PA, 5-2-63.1; Curt Over, PA, 4-3-64.0; Jack Rainbow, PA, 3-4-62.8; Dick Mudget, NY, 2-5-61.0; Joe Kuchcinski, PA, 2-5-57.1; Steve Feneccchio, NY, 1-6-61.4.

CLASS C — Verne Butcher, CAN, 6-1-63.9; Henry Hostetler, OH, 5-2-58.4; Roger Hackney, OH, 4-3-55.2; Jim Kuchcinski, PA, 4-3-52.5; Pete Vlanchos, PA, 3-4-54.0; Russ Welton, PA, 2-5-47.6; Joe Pagnanelli, PA, 2-5-47.3; Ed Blum, PA, 2-5-45.3.

CLASS D — W. E. Carnahan, PA, 6-1-65.7; Ed Risley, NY, 4-3-58.6; Rocky Collins, PA, 4-3-54.3; Carl Maier, PA, 3-4-56.7; Lenny Bergren, NY, 3-4-55.6; Clair Rigby, NY, 3-4-55.2; Joe Geci, PA, 3-4-54.6; Francis White, PA, 2-5-53.7.

EASTERN NATL. — (Continued)

CLASS E — Ron Kuchcinski, PA, 7-0-64.7; George Hale, NY, 4-3-54.8; Dave Meckevic, PA, 3-4-54.3; Wes Kuchcinski, PA, 3-4-50.0; John Ludwig, OH, 3-4-49.7; Matt Woloszyn, PA, 3-4-45.9; Kurt VonKilest, PA, 3-4-45.0; Ed Sell, PA, 2-5-49.7.

CLASS F — Charles Dunlap, OH, 7-0-60.9; Ed Horneman, PA, 5-2-53.8; George Rhea, PA, 4-3-54.3; Glen Sebring, PA, 3-4-54.3; Frank Giampa, PA, 3-4-52.0; Don Smith, PA, 3-4-50.0; Tom Butcher, PA, 2-5-47.2; Jim Hall, PA, 1-6-45.8.

CLASS G — Dan LaForce, OH, 5-2-47.2; Frank Kilinsky, PA, 52-50.3; Ray Brandon, OH, 4-3-44.9; Ron Carr, PA, 3-4-48.0; Earl VanSant, OH, 3-4-45.4; Dave Maxwell, PA, 3-4-45.0; Herman Boyer, PA, 3-4-42.5; H. J. Farnan, PA, 2-5-45.1.

CLASS H — Will Rugg, PA, 5-2-42.6; Charles Brotzman, OH, 5-2-44.0; Bob White, PA, 4-3-45.0; Dick James, PA, 4-3-40.1; Tom Pisculish, PA, 4-3-37.6; Joseph Raico, OH, 3-4-35.4; Jack Griffith, PA, 2-5-30.0; Bob Allen, OH, 1-6-35.7.

CLASS I — Blain Aley, PA, 5-2-40.4; Frank Graham, PA, 5-2-39.5; Bud Sampson, PA, 5-2-42.8; Joey Norris, PA, 4-3-40.1; John Marusa, PA, 4-3-36.8; Jim Danner, PA, 3-4-39.8; Joe Markiewicz, OH, 1-6-42.2; Clark Carnahan, PA, 1-6-36.4.

CLASS J — Chuck Dickinson, NY, 6-1-41.8; Don Harris, NY, 6-1-46.4; Chet Dennison, NY, 4-3-38.0; Paul Beer, PA, 4-3-35.7; Dick Spaller, OH, 3-4-38.9; Harold Tuttle, OH, 3-4-29.7; Bob White Jr., PA, 2-5-35.3; Paul Rudy, NY, 0-7-29.3.

CLASS K — Carl Herbe, PA, 5-2-35.7; Tony Cusimano, NY, 5-2-41.5; Harry Clement, PA, 4-3-34.8; Paul Decker, PA, 4-3-31.4; Ken Hopkins, NY, 3-4-37.2; Stanley Vincent, NY, 3-4-34.0; Joe Mancini, PA, 3-4-29.3; Wendell Carnahan, PA, 1-6-25.3.

CLASS L — Don White, NY, 6-1-41.2; John Kovach, OH, 5-2-38.8; Al Stoddard, PA, 4-3-38.6; Jack Chambers, PA, 4-3-36.2; Bob Golden, NY, 3-4-36.9; Dick Ruhl, PA, 3-4-32.1; John Chambers, PA, 2-5-35.3; Joe Orsini, PA, 1-6-34.9.

CLASS M — Wayne Wood, PA, 6-1-38.5; Robert E. White, PA, 5-2-31.3; Loyal White, PA, 4-3-36.5; Ron Weiss, PA, 4-3-26.8; Dick Tunney, PA, 3-4-32.5; Bill Stahl, PA, 3-4-28.5; Don Carnahan, PA, 2-5-24.7; Gene Fenton, OH, 1-6-21.6.

CLASS N — Hoppy Hopkins, NY, 5-2-33.6; Hershel Loftus, OH, 5-2-30.3; Chet Mock Sr., PA, 4-3-33.2; Elsworth Warner, PA, 4-3-32.1; Ray Cherubini, PA, 4-3-28.9; Bill Meador, OH, 3-4-27.6; Walter Beech, OH, 3-4-22.8; Jerry Peck, PA, 0-7-24.7.

CLASS O — Marvin Falk, MI, 7-0-32.9; Frank Bodner, PA, 5-2-30.3; Al Rumbaugh, NY, 5-2-29.3; Gordy Carpenter, NY, 4-3-33.2; Jim Schneider, PA, 3-4-30.8; Skip Carnahan, PA, 3-4-29.2; Ray Laskowski, PA, 1-6-25.7; Butch Stover, PA, 0-7-19.9.

CLASS R — Harve Tressler, PA, 7-0-25.7; Darrell Peyatt, OH, 5-2-32.5; Tom St. Clair, PA, 5-2-23.5; Dan Connolly, PA, 4-3-22.0; Frank Ellis, NY, 3-4-23.1; Clair Beardsley, PA, 2-5-23.2; Dick Carnahan, PA, 2-5-19.9; Merle Alexander, PA, 0-2-10.2.

CLASS S — Dave Kuchcinski, PA, 6-1-40.4; Andy Shurilla, NY, 6-1-31.1; Bill Mackey, PA, 5-2-33.3; Joe Stanton, PA, 5-2-33.0; Dave Haurin, OH, 3-4-27.6; Robbie Kuchcinski, PA, 2-5-24.8; Andy Sharie, PA, 1-6-20.6; Duane Johnson, NY, 0-7-15.8.

CLASS T — Tim Hopkins, NY, 7-0-22.2; Randy Mock, PA, 5-2-18.2; Tom Marusa, PA, 5-2-16.6; Don Witt, PA, 4-3-16.0; Bill Frye, PA, 3-4-17.3; James Johnston, NY, 2-5-17.4; Chet Mock Jr., PA, 2-5-15.2; Jeff Mock, PA, 0-7-12.7.

LADIES' CLASS A — Ruth Hangen, NY, 7-0-74.3; Fran Carnahan, PA, 4-3-74.3; Lorraine Thomas, NY, 4-3-64.9; Jeanie Spaller, OH, 4-3-62.6; Betty Dunlap, OH, 2-5-55.7; Dorothy Falk, MI, 3-4-44.9; Sherrie Dagan, OH, 2-5-44.6; Grace Rugg, PA, 2-5-32.9.

LADIES CLASS B — Dot Carnahan, PA, 6-1-40.6; Sandy Carnahan, PA, 4-3-33.7; Bev St. Clair, PA, 4-3-33.4; Lula Peyatt, OH, 5-2-27.4; Shirley Porter, PA, 4-3-24.6; Debbie Butcher, PA, 1-6-23.4; Martha Wood, PA, 2-5-18.3; Ruth Carnahan, PA, 2-5-13.4.

SEIBOLD ON TOP IN MIDWEST RINGER ROUNDUP — INDIANA

CLASS AA — Mark Seibold, 6-1-71.2; Leroy Rowe, 5-2-67.9; Peck Anderson, 4-3-67.3; Clarence Bellman, 3-4-68.4.

CLASS A — Cliff Baker, 6-1-73.0; Bill Ungetheim, 6-1-71.3; Estel Bills, 4-3-63.4; Will McNeece, 4-3-61.9.

CLASS B — Play-off Danny Henry, 5-2-63.9; Ron Lewis, 5-2-63.2; Jim Shilling, 4-3-59.6; Ed Hinshaw, 3-4-61.7.

CLASS C — Play-off Bill Query, 6-1-60.5; Ed Weyer, 6-1-61.5; Lloyd Keller, 3-4-56.7; Curly Gladding, 3-4-54.7.

CLASS D — Play-off Carl Knight, 5-2-51.7; Bob Molt, 5-2-52.2; Steve Doty, 5-2-48.0; Junior Guthrie, 5-2-45.9.

CLASS E — Offord Burkhart, 6-1-47.1; Leonard Conner, 5-2-41.0; Jim Turpin, 4-3-43.6; Bob Sharp, 4-3-41.0.

RINGER ROUNDUP — (Continued)

CLASS F — A. G. Roy, 5-2-49.7; Sylvester Hahn, 5-2-45.1; Everett Bowyer, 4-3-42.3.

CLASS G — Gerald Cummings, 7-0-39.2; Jack Mead, 5-2-36.2; Luther Chandler, 4-3-34.5; Vince Cavanaugh, 4-3-34.2.

CLASS H — Pete Hobbs, 7-0-32.2; Fred Armentrout, 5-2-31.0; Bob Hoover, 4-3-28.0; Lowell Cummings, 4-3-25.0.

CLASS I — Olie Hubbard, 6-1-38.5; Larry Robinson, 5-2-31.4; Smokey Wolfe, 5-2-25.7; Butch Hahn, 4-3-22.9.

WOMEN CLASS A — Tari Powell, III., 6-0-74.8; Bonnie Seibold, 4-2-51.5; Amy Herring, 2-4-48.9; Phyllis Anderson, 0-6-36.2. **CLASS B WOMEN** — Mona Cummings, 3-1-35.8; **CLASS C WOMEN** — Hazel Shuck, 4-0-18.6.

JUNIOR CLASS A — Steve Ungetheim, 3-0-65.9; **JUNIOR CLASS B** — Tony Cummings, 5-1-19.7; **JUNIOR CLASS C** — Robert Robinson, 6-1-22.0.

SOUTHERN CALIF.-LOKKEN WINS GATEWOOD "B" HCP. OPEN

Orville Lokken, San Bernardino, 6-0-66.2; Jim Eozzo, Los Angeles, 4-2-50.4; Norm Cone, Huntington Beach, 4-2-51.8.

GROUP TWO — Harold Slagg, Ontario, 6-1-39.1; Doyle Brawley, Riverside, 5-2-38.4; Jim Dow, Glendale, 4-2-29.6.

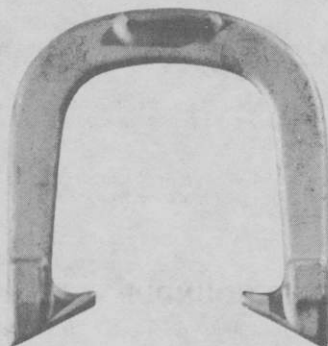
GROUP THREE — Ralph Carter, Rialto, 6-0-34.1; Bruce Fries, Barstow, 5-1-29.4; Charlie Everhart, San Bernardino, 4-2-32.3.

BURBANK OPEN — Newell Flann, Westminster, 4-1-62.5; Ronnie Simmons, Bellflower, 3-2-63.0; Heman Standard, Orange, 3-2-60.9.

Since 1931

GORDON

"Spin-On"



— 3 TEMPERS —

Medium With Hardened Calks
Dead Soft Hard

Southern California Representative

JERRY SCHNEIDER

3144 W. Paso Robles Drive

ANAHEIM, CALIFORNIA 92804

714-826-0684

APPROVED BY NHPA

OFFICIAL STAKES ALSO AVAILABLE

THE QUEEN CITY FORGING CO.

233 TENNYSON STREET

CINCINNATI, OHIO 45226

LOKKEN — (Continued)

GROUP TWO — Eston Brown, Anaheim, 4-1-55.6; George Whittemore, Rosemead, 4-1-52.3; Al Nichols, Carson, 3-2-55.6.

GROUP THREE — Barbara Dow, Glendale, 4-1-44.0; Jack Halloway, Thousand Oaks, 4-1-40.4; Ray Silva, Santa Barbara, 3-2-35.6.

GROUP FOUR — Doyle Brawley, Riverside, 4-1-42.0; Les Stewart, Hesperia, 4-1-34.0; Phyllis Morten, Whittier, 2-3-38.4.

GROUP FIVE — Stewart Snyder, No. Calif., 4-1-40.0; Leo Raymond, Newport Beach, 3-2-38.0; Don Weaver, Nevada, 3-2-31.6.

GROUP SIX — Marlin Jay, Lakewood, 5-0-26.0; Jim Ertman, Ventura, 4-1-28.8; Randy Jones, Orange, 3-2-14.8.

DERANEK EASY WINNER IN ROOSEVELT MEMORIAL IN N.J.

CLASS A — Dixon Deranek, Rahway, NJ, 4-1-62.7; Jim Nardiello, Roselle Park, NJ, 3-2-47.0; Joe McCrink, Jr., West Orange, NJ, 2-3-55.7.

CLASS C — John Forti, Freehold, NJ, 4-1-40.1; Vince DeMicco, Cranford, NJ, 3-2-35.9; George Morio, Staten Island, NY, 3-2-33.1.

CLASS D — J. Parisi, Staten Island, NY, 4-2-20.6; Alfred Sibilia, Cranford, NJ, 4-2-21.4; M. Arnold, Fanwood, NJ, 3-3-19.3.

WINGATE, INDIANA SPECIAL TOPPED BY JIM GAYLOR

CLASS A — Jim Gaylor, 5-0-62.8; John Shuck, 3-2-57.3; Bob Vall, 3-2-54.7; Roy Billingsley, 3-2-53.1; Ed Howdeshell, 1-4-52.0; Don Claypool, 0-5-43.3.

CLASS B — Fred Draper, 4-1-44.0; Vern Holland, 3-2-44.3; Bob Prohaska, 2-3-48.4; Wayne Draper, 2-3-42.2; Joe Rinehart, 2-3-41.3; Martin Drummond, 2-3-39.4.

CLASS C — Pat Reeves, 5-0-27.3; Tom Norman, 4-1-32.7; Jim Bennett, 3-2-34.3; Walter Seymour, 2-3-31.4; Roy Lamb, 1-4-30.2; Vern Wagoner, 0-5-14.1.

CLASS D — Everett Bowyer, 5-0-42.6; Glenn Donaldson, 3-2-38.2; Jim Clark, 2-3-36.9; Charles Jarred, 2-3-27.6; Ed Pearson, 2-3-24.0; Don Stivers, 1-4-30.3.

CLASS E Bill Tibbets, 4-1-29.0; Jim Mikesell, 3-2-26.0; Bob Henry, 2-3-33.2; Mark Price, 2-3-27.9; Gene Tiser, 2-3-23.8; Paul Deck, 2-3-23.2.

CLASS F — Jim Buell, 5-1-23.3; Bob Hovis, 4-2-15.0; Rick Wayne, 4-2-13.9; Gerald Dreyer, 3-3-15.7; Randy McKinniss, 3-3-11.7; Chester Sutphin, 2-4-13.5.

WOMEN CLASS A — Chris Buell, 3-0-19.6; Hazel Shuck, 0-3-14.9.

JUNIORS CLASS A-B — Del Tibbets, 3-2-15.5; Jon Phillips, 2-2-7.5; Billy Douglas, 1-3-6.

HENDERSON FRONT RUNNER IN VINCENNES, IND. FESTIVAL

CLASS A — Bob Henderson, 6-1-68.0; Bill Holland, 5-2-69.2; Will McNeece, 5-2-68.0; Bill Ungetheim, 4-3-68.6.

CLASS A — Bob Henderson, 6-1-68.0; Bill Holland, 5-2-69.2; Will McNeece, 5-2-68.0; Bill Ungetheim, 4-3-68.6.

CLASS B — Jim Lane, 6-1-54.1; Doyle Maikranz, 6-1-55.0; Granny Palmer, 5-2-50.0; Leo Dellinger, 4-3-50.4.

CLASS C — Charles Selby, 7-0-52.0; Robert Hudnall, Ky., 5-2-47.4; H.D. Hudnall, Ky., 4-3-46.5; Meril Anleitner, 4-3-46.5.

CLASS D — Frank McIntyre, 6-1-53.9; C. B. Batts, 6-1-51.1; Ray Dillon, 4-3-38.0; Bob Steimel, 3-4-38.3.

CLASS E — Charles Ungetheim, 6-1-35.5; Bob Heuby, 6-1-33.6; Ron Wade, 5-2-33.5; John Miller, 4-3-32.2.

VINCENNES — (Continued)

CLASS F — Norman Keepes, III., 4-1-35.5; Joe Beem, Mo., 3-2-37.3; Smokey Wolfe, 3-2-34.2; Chester Evans, III., 2-3-33.8.

WOMENS CLASS — Phyllis Anderson, 3-2-43.5; Helen Keepes, 2-3-41.5.

JUNIOR CLASS A — Steve Ungetheim, 3-0-65.7; Rick Henry, 0-3-63.4.

BEAVER COUNTY, PA. OPEN WON BY CLAIR BRUCE

CLASS A — Clair Bruce, 6-1-57.0; Bob McKnight, 5-2-57.3; Jack Rainbow, 5-2-56.4; John Ludwig, Ohio, 5-2-47.0.

CLASS B — George Fichter, 6-1-48.8; Frank Benedict, 6-1-46.3; Bud Boley, 6-1-47.4; Dave Baker, 4-3-47.7.

CLASS C — Ed Dennison, 7-0-48.0; Dick James, 6-1-45.6; Elmer Williams, N.Y., 5-2-39.0; Jim Schneider, Sr., 4-3-36.5.

CLASS D — Harry Clement, 6-1-36.4; Jim Zdral, 5-2-33.8; Ron Weiss, 4-3-36.3; Harold Boyer, 4-3-31.9.

CLASS E — Bill Stahl, 6-1-28.7; Glen Dennison, 6-1-35.7; Skip Carnahan, 5-2-31.4; Jim Alloway, 4-3-31.4.

CLASS F — Tom St. Clair, 7-0-26.0; Ray Martinez, 6-1-28.5; Gary Dambauger, 5-2-12.6; Larry Lapping, 3-4-13.9.

CLASS A WOMEN — Sherry Dagan, Ohio, 4-2-41.6; Alicia Williams, 5-1-20.5; Donna Boley, Ohio, 5-1-12.3; Beve St. Clair, 3-3-23.2.

CLASS A JR. — Joe Morris, 3-0-44.6; Bob Stover, 2-1-12.8; M. Carnahan, 1-2-2.5; Keith Edwards, 0-3-7.0.

FREE!

Trophy & Awards Catalog



Call Toll-Free
1-800-628-9657
In Mass. 1-800-282-7789

DINN BROS. The Trophy People

P.O. Box 111 • 68 Winter St. • Holyoke, MA 01041

SCHULTZ OF N.Y. TOPS KEENE, N.H. OPEN JULY 9

CLASS A — Joe Schultz, NY, 6-1-69.1; Kevin Hollister, VT, 5-2-70.3; Art Tyson, NY, 4-3-67.3.

CLASS B — Brian Smith, NH, 6-1-66.1; Joe Festa, CT, 5-2-59.6; Ricky Howe, MA, 4-3-59.9.

CLASS C — Pete Bochesse, CT, 5-2-47.7; Paul Dumont, MA, 5-2-45.3; Phil Bergeron, NH, 4-3-49.7.

CLASS D — Herb Cox, NH, 6-1-50.9; Fred Hill, 5-2-47.0; Gerry Moore, CT, 5-2-46.4.

CLASS E — Paul Morresette, MA, 7-0-42.5; Bill McMahon, MA, 6-1-38.8; Tom Henley, MA, 4-3-37.7.

CLASS F — Warren Hall, NH, 5-2-43.2; Richard Plourde, NH, 5-2-38.8; Real Bergeron, VT, 4-3-37.6.

CLASS G — Al Doucette, MA, 6-1-39.1; Dave Flynn, MA, 5-2-31.5; Brad Miller, NH, 5-2-30.3.

CLASS H — David Ladd, NH, 4-3-38.1; Gary Collins, NH, 4-3-38.0; Maurice Scioletti, CT, 4-3-35.4.

CLASS I — Mike Tebo, NH, 6-1-23.4; Bruce Wellington, NH, 5-2-18.6; George Harris, ME, 4-3-24.3.

CLASS J — Robert Minnerly, ME, 7-0-24.3; Bill Quinn, MA, 5-2-23.0; Larry Bernard, NH, 5-2-21.6.

CLASS A — WOMEN — Debby Michaud, MA, 5-1-75.2; Liz Downer, VT, 4-2-72.4; Betha Baillargeon, MA, 3-3-66.3.

CLASS B — WOMEN — Mary Ryan, MA, 7-0-53.7; Colleen Boudreau, NH, 5-2-40.6; Ginny Croteau, NH, 4-3-35.5.

CLASS C — WOMEN — Nancy Minnerly, ME, 6-1-41.3; Jeanette Bergeron, NH, 6-1-37.9; Kay Brewster, VT, 5-2-31.8.

JR. BOYS — John Gokey, VT, 4-1-50.5; Glen Matheson, VT, 4-1-65.4; Scott Daneault, NH, 3-2-53.8.

JR. GIRLS — Tonya Kelchner, NH, 5-0-11.0; Jeanette Lavalley, VT, 3-2-20.0; Betsy Dyer, NH, 3-2-8.8.

KNISLEY WINNER IN MICHIGAN WATER WONDERLAND OPEN

CLASS A — (Playoff) Jim Knisley, 9-2-72.8; Floyd Bartley, 9-2-73.6; Doc Maison, 8-3-70.1; Leo Fitzpatrick, 8-3-66.9; Dick Pelton, 8-3-64.1; Chal Torrey, 6-5-63.1; LeRoy Rowe, 5-6-62.9; Phil Carra, 4-7-55.0; Fred Brown, 3-8-57.2; Howard Hahn, 3-8-56.0; Bob Williams, 2-9-53.5; Rick Gyorkes, 1-10-49.5.

CLASS B — Glen Lehrke, 9-2-50.2; Stan Swartout, 8-3-50.9; Bob Wells, 8-3-45.9.

CLASS C — Casey Moubay, 6-1-41.3; George Stifel, 5-2-43.5; Robert Seaman, 4-3-42.5.

CLASS D — Paul Howard, 6-1-37.7; Max Paquette, 6-1-36.8; Dick Warner, 5-2-35.4.

CLASS E — Roy Teets, 6-1-43.5; Sam Lewis, 5-2-43.8; Walt Wedel, 5-2-37.4.

ELMER HOHL HORSESHOE AVAILABLE DESIGNED AND PITCHED BY ELMER HOHL

(6 Times World Champion)

Order from:

DON KOSO

803 East 12th Street
Falls City, Nebraska 68355

HERB PINCH

592 Hull Street
Sharon, Pennsylvania 16146

WRITE FOR PRICES



NHPA Approved

WONDERLAND OPEN — (Continued)

CLASS F — David Farrand, 5-2-29.3; Merle Farrand, 5-2-34.9; Larry Phipps, 5-2-328.

CLASS G — Bob Horton, 6-1-36.9; Burr Rice, 5-2-29.3; Marve Falk, 4-3-25.7.

CLASS H — Eric Thomas, 6-1-27.5; John Trukey, 5-2-24.2; Ron Tucker, 4-3-23.2.

CLASS I — Jerry Bortele, 4-0-20.1; Ralph Wolfson, 3-1-15.4; Ken Baxter, 2-2-14.1.

CLASS A WOMEN — Ann Wedel, 5-1-62.2; Jean Swartout, 4-2-55.9; Dorothy Falk, 3-3-50.0; Chris Smith, 0-6-35.0.

CLASS B WOMEN — Sue Williams, 5-0-45.3; Mary Perkins, 4-1-33.0; Miltie Tucker, 4-1-25.7; Charlene James, 2-3-21.9; Mildred Hahn, 1-4-12.1; Charlotte Pelton, 0-5-11.5.

CLASS A JUNIORS — Dean LeClair, 6-0; Charlie Perkins, 3-3; Don Brown, 2-4; Clayton Bonham, 2-4.

CLASS B JUNIORS — Kelly Ryan, 3-0; Steve Loop, 1-2; Jerry Ryan, 1-2; Mark Sammier, 1-2.

CLASS C JUNIORS — Fred Shoemaker, 3-1; Greg Carra, 2-2; Corey Greenwald, 2-2; Chad McCrea, 1-3.

HUGHES WINNER IN EAU CLAIRE, WIS. OPEN (JUNE)

MENS CLASS A — Dale Hughes, Blumington, MN, 10-1-78.1; Dale Lipovsky, Bloomington, MN, 9-2-75.6; Kevin Cone, Storm Lake, IA, 8-3-72.5.

MENS CLASS B — Lloyd Henrikson, Coon Rapid, MN, 8-3-59.6; Roger Poutanen, Wausau, WI, 8-3-57.8; Fred Larson, Lino Lakes, MN, 8-3-57.8.

MENS CLASS C — Frank Stinson, Mpls, MN, 5-2-53.4; Tom Bestul, Rosholt, WI, 5-2-50.0; Don Spinler, Owatonna, MN, 4-3-47.5.

MENS CLASS D — Vince Jakel, Spencer, WI, 6-1-48.2; Jim Holland, Anoka, MN, 5-2-53.1; Ernie Ulku, Minnetonka, MN, 5-2-46.8.

MENS CLASS E — Joe Udelhofen, Potosi, WI, 6-1-39.7; Todd Schultz, Marshfield, WI, 4-3-44.0; Al Ayers, Eau Claire, WI, 4-3-35.4.

MENS CLASS F — Terry Hoepner, Eau Claire, WI, 6-1-39.6; Owen Simmons, Nashua, IA, 5-2-38.6; Ralph Gullingsrud, Eau Claire, WI, 5-2-33.3.

MENS CLASS G — Carroll Cone, Storm Lake, IA, 7-0-47.7; Al Hiller, Maple Grove, MN, 6-1-43.4; Dave Johnson, Marine-St. Croix, MN, 5-2-47.1.

MENS CLASS H — Don Jakel, Spencer, WI, 7-0-48.5; Dick Greenfield, Roberts, WI, 6-1-34.8; Ken Greenlee, Fridley, MN, 4-3-37.1.

MEN — CLASS I — Bud Kuhnert, Fall Creek, WI, 6-1-41.4; Don Behning, Dulluth, MN, 6-1-30.2; James Rextraw, Osseo, MN, 5-2-31.1.

MENS CLASS J — Delbert Karsjens, Clark Gr., MN, 6-1-40.2; Tom Modl, Eau Claire, WI, 6-1-37.1; Henry Stromgren, Cedar, MN, 5-2-32.0.

MENS CLASS K — Gus Bell, Eau Claire, WI, 4-3-34.0; Paul Wilson, Janesville, WI, 4-3-32.2; John Rieger, Rochester, MN, 4-3-31.1.

MENS CLASS L — Sid Hough, Stratford, WI, 7-0-37.4; Al Johnson, Eau Claire, WI, 4-3-27.1; Eldon Eaton, Eau Claire, WI, 4-3-25.7.

MENS CLASS M — Jerry Briggs, Elva, WI, 6-1-26.5; James Hoff, Eau Claire, 5-2-27.4; Roger Schultz, Marshfield, WI, 5-2-24.2.

MENS CLASS N — Pat Udelhofen, Platteville, WI, 6-1-22.0; Paul Rieger, Rochester, MN, 6-1-20.5; Wayne Satonica, Owen, WI, 5-2-21.1.

WOMEN — CLASS A — Phyllis Negaard, St. Joseph, MN, 7-0-75.1; Pat Eaton, Eau Claire, WI, 6-1-57.4; Shary Klopp, Eau Claire, WI, 4-3-61.7.

EAU CLAIRE, WIS. OPEN — (Continued)

WOMEN — CLASS B — *Edi Holland, Dayton, MN, 4-1-50.0; Patsy Johnson, Eau Claire, WI, 4-1-44.0; Brooks Henrikson, Coon Rapids, MN, 2-3-40.4.*

WOMEN — CLASS C — *Debby Bestul, Eau Claire, WI, 5-0-41.2; Ev Goshaw, Eau Claire, WI, 4-1-41.6; Velma Hegarty, Stanwood, IA, 3-2-39.2.*

WOMEN — CLASS D — *Becky Brezina, Boyceville, WI, 4-1-27.2; April Gage, St. Paul, MN, 4-1-26.0; Margaret Hesselting, Dickeyville, WI, 3-2-20.4.*

JUNIOR BOYS — *Chris White, Maplewood, MN, 7-0-68.8; Bret Pritzlaff, Germantown, WI, 6-1-75.7; Jeff Secord, Fond du Lac, WI, 5-2-54.0.*

SOUTH CAROLINA ACTIVITY AT SIMPSONVILLE

J.B. Fuller of North Carolina topped the Simpsonville Open with 5-1-70.5. Johnny Solsbee was runner-up. In Class B Oren Solesbee was undefeated having 5 straight wins and 50.0 percent ringer average. Class C went to Wayne McCurry. In the Ladies Class Mary Sanders was undefeated with 4 wins and 32.2 percent.

TOURNAMENT ACTIVITY IN NEW MEXICO

ED MANN OPEN, Aztec, NM — CLASS A — *Mel Larkins, 3-1-39.2; Violet Piccoli, 2-2-37.5; Ray Shoemaker, 1-3-36.0.*

CLASS B — *Joe Huff, 5-0-32.0; Dean Roquemore, 4-1-21.0; Harold Sherlock, 2-3-23.2.*

CLASS C — *Paul Schrock, 4-1-18.2; Harvey Rials, 3-2-16.0; Bob Hazen, 3-2-15.0.*

CLASS A WOMEN — *Irene Perino, 2-0-27.5; Cindy Larkins, 0-2-25..*

JUNIOR CLASS A — *Wesley Hall, 3-1-15.5; William Binham, 2-2-13.5; Randy Beeson, 1-2-10.6.*

AZTEC WEST, NM — CLASS A — *Mel Larkins, 2-0-49.0; Joe Huff, 1-1-27.0; Harold Larvingo, 0-2-35.0.*

CLASS B — *Ken Kreuger, 3-1-28.0; Dean Roquemore, 3-1-26.0; Geo. Johnson, 3-1-23.0.*

CLASS C — *Jay Cisco, 4-1-21.0; Bob Hazen, 4-1-15.0; Curtis Beeson, 3-2-20.0.*

CLASS A WOMEN — *Joann Lester, 2-0-50.0; Cindy Larkins, 0-2-26.0.*

JR. CLASS — *William Bingham, 3-0-11.0; Randy Beeson, 2-1-12.0; Dan Sayles, 1-2-8.0.*

SCHUMMER HORSESHOE SYSTEM

NHPA Approved

FOR WHAT? — FOR EVERYTHING

"3 CHEERS" Brochure — Yours for the asking

GLEN "Red" HENTON

513 West Platt St., Maquoketa, Ia. 52060

Phone: 319-652-4250

State Team Matches Coming Up — Watch for
Progress Report

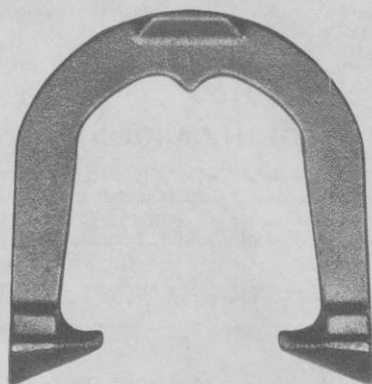
THE NEW IMPROVED

IMPERIAL

- BETTER ENERGY ABSORPTION
- LARGER RINGER BREAK
- WIDER BLADES
- REDUCED PRICES

U.S.A. PRICES
(Postpaid)

1 Pair	\$26.00
2 to 5 Pair	\$25.00
6 Pr. & Over	\$20.00
Freight Collect	

**CLYDE MARTZ**

3726 Henley Dr.
PHONE: 412-731-4662

Pittsburgh, Pa. 15235

ROCK RIVER VALLEY (ILL.) OPEN WON BY H. DARNOLD

The Rock River Valley Open tournament held at Sterling, Ill. in late July was won by Harold Darnold of Burlington, Iowa with 5 straight victories and a 71.5 ringer average. Harvey Johnson of Rockford, Ill. was the winner in Class B.

CLASS A — Harold Darnold, 5-0-71.5; Wayne Hooper, 4-1-60.9; Ray Phillips, 3-2-67.6.

CLASS B — Harvey Johnson, 5-0-47.3; Vince Stangeland, 3-2-46.5; Ken Schaver, 3-2-50.0.

CLASS C — Bob Schaver, 5-0-56.0; Harold Schumacker, 4-1-39.7; Wilbert Gentz, 2-3-43.3.

CLASS D — Ray Orloski, 4-1-38.8; Dale Brooks, 4-1-42.3; Tom Phillips, 2-3-42.5.

CLASS E — Bob Andrews, 5-0-53.7; Duane Hohler, 3-2-33.3; Jack Gerard, 3-2-30.8.

CLASS F — Maynard Peterson, 4-1-28.0; Cliff Anderson, 3-2-25.0; John Thyne, 3-2-27.6.

CLASS G — Bob Babbitt, 5-0-26.1; James Schaver, 3-2-14.8; Miles Raab, 2-3-21.1.

LADIES CLASS — Barbara Andresen, 4-0-26.4; Audrey Babbitt, 2-2-18.8; Ann Darnold, 0-4-6.9.

RESULTS OF MICHIGAN-ONTARIO FRIENDSHIP TOURNAMENT

MICHIGAN — MEN — 80 — Dick Pelton, 9-3-65.2; Floyd Bartley, 8-4-62.1; Leo Fitzpatrick, 8-4-60.9; Chuck Fraxier, 8-4-57.9; Doc Maison, 7-5-62.1; Stan Swartout, 7-5-57.4; Chal Torrey, 6-6-60.8; Don Mohny, 6-6-59.2; Ed Schultz, 6-6-55.5; Rick Gyorkos, 6-6-52.8; Bob Darnold, 4-2-56.3; Dick Frakes, 4-3-54.8; Ben Shutt, 1-3-52.9; Chuck Perkins, 0-2-42.2; Justin Perticone, 0-5-53.0.

MICHIGAN — LADIES — 33 — Ann Wedel, 11-1-64.8; Jean Swartout, 9-3-59.8; Dorothy Falk, 5-7-50.1; Mark Perkins, 4-8-36.8; Marla Jennings, 4-8-34.1.

FRIENDSHIP TOURNEY — (Continued)

ONTARIO — MEN — 64 — Elmer Hohl, 11-1-77.0; Vern Butcher, 10-2-67.8; Steve Hohl, 10-2-65.5; Ron Jenkinson, 10-2-65.5; Bill Vandenberg, 5-7-55.5; Larry Merkle, 4-8-58.4; Frank Weaver, 4-8-47.6; Tom Stroh, 4-8-47.1; Tom Gallina, 2-10-52.1; Willi Prange, 2-10-43.5; Brace Hohl, 1-6-54.4; Bruno Toneguzzo, 1-11-44.8; Charlie Hastings, 0-1-42.5; Roger Christle, 0-4-37.5.

ONTARIO — LADIES — 35 — Sheila McGrath, 10-2-42.6; Mary Archer, 9-3-57.7; Mary McVey, 7-5-46.5; Mary Logan, 6-6-45.8; Shirley Hurd, 2-6-39.9; Elaine McGrath, 1-11-23.2.

WIEDRICH TOPS ANNUAL ROSE FESTIVAL OPEN (JUNE)

CLASS A — Ben Wiedrich, Oregon City, 9-0-76.1; Herb Criss, Bremerton, Wa., 8-1-76.4; Ed Fishel, Neilton, Wa., 5-4-67.2.

CLASS B — Gerry Staley, Vancouver, Wa., 9-1-59.5; Kelly Laraway, Bremerton, Wa., 8-2-53.8; Jerry Gorton, Pleasant Hill, 7-3-51.3.

CLASS C — Bob Showers, Salem, 5-1-45.6; Francis Nelson, Portland, 4-2-42.1; Esthel Benner, Salem, 4-2-40.8.

CLASS D — Jim Gregory, Portland, 6-0-37.0; Lee Wallace, Terrebonne, 5-1-39.1; R. E. Click, Warrenton, 4-3-35.0.

CLASS E — Chuck Seal, Bend, 6-1-37.3; Lloyd Kilgore, Eugene, 4-3-35.1; Dave Sturdevant, Newberg, 4-3-34.6.

CLASS F — Floyd Flemmer, Hillsboro, 6-1-35.0; Lloyd Likens, Portland, 5-2-36.3; Otis Wilcox, Hermiston, 4-3-39.4.

CLASS G — Denny Samples, Redmond, 7-0-30.6; Bill Johnson, Springfield, 5-2-33.3; Clarence Wood, Seaside, 4-3-31.4.

CLASS H — Marvin Tatchio, Salem, 6-2-27.2; Les McFarland, Seaside, 5-3-28.1; Ray Whittington, Salem, 4-3-26.4.

CLASS I — Keith Devenberg, Salem, 6-0-28.4; Dick Helm, West Linn, 5-1-25.3; Manuel Santos, Oregon City, 4-2-18.8.

CLASS A — WOMEN — Esther Ott, Oregon City, 6-0-43.6; Esthel Davis, Creswell, 4-2-38.8; Irene Wiedrich, Oregon City, 1-5-32.2.

CLASS B — WOMEN — Corrine Buzzini, Vanc. Wa., 8-1-25.6; Betty Tatchio, Salem, 7-1-19.4; Carolyn Ferguson, Vanc. Wa., 4-4-16.8.

WINNERS IN FATHER'S DAY OPEN — CLASS A — Jim Burke, 8-1-70.7; Barry Chapelle, 7-2-67.4; Ron Ferguson, 6-2-59.7; **CLASS B** — Everett Clark, 6-2-50.0; C.O. McMillen, 5-3-44.5; Len Christensen, 4-3-45.3; **CLASS C** — Dave Gutscher, 7-1-47.6; Jim Malvern, 5-3-41.4; Jim Kosterman, 5-3-38.5; **CLASS D** — Larry Flanary, 8-1-31.5; Floyd Kilgore, 7-2-33.7; Lee Wallace, 7-2-36.6.

CLASS E — Bill Johnson, 7-1-30.0; Lenna Maaskell, 6-2-27.1; Phyllis Centell, 5-2-26.0.

CLASS F — Marvin Tatchio, 6-0-22.0; Keith Dvenberg, 5-1-20.9; Betty Tatchio, 4-2-21.0.

GEORGIA JR. CHAMP WINS PECAN FESTIVAL HCP OPEN

Three groups of six played with the winner of each group plus the best second place player going to the finals. Group 1 winner was Alex Simpson with a win-loss record of 4-1-84. pt. aver. Group 2, David Revell, 4-1, 62 pt. aver., group 3, Ken Kurtz, 5-0, 90 pt. aver. and the fourth finalist was Ralph Cullum, 4-1, 101 Pt. Aver. Ken Kurtz won the finals in a play off with Ralph Cullum and David Revell, as they all ended up with 3-1 records.

DONNIE ROBERTS CANDIDATE FOR NHPA SECRETARY

Donnie Roberts has announced that he will be a candidate for NHPA Secretary-Treasurer at the 1984 World Horseshoe Tournament in Huntsville, Alabama.

"From Out Of The Mail Bag"

F. Ellis Cobb, Editor
The Horseshoe Pitcher's News Digest
P.O. Box 1606
Aurora, Illinois 60507

10 Township Road
Pittsburgh, PA 15229
August 3, 1983

Dear Sir:

I participated in the National Horseshoe Tournament at Statesville in the 75 and older class and was surprised to see some of the contestants pitching 30 feet. I do feel that combining 30 foot and 40 foot pitchers in the same class presents problems, and puts the 40 foot pitcher at a disadvantage.

Horseshoe pitching like every other sport is a game of concentration. When your opponent picks up his shoes at the stake, walks up 10 ft. pitches his shoes, then walks back in front of you, your concentration is broken. In my opinion, this loss of concentration gives your opponent an unfair advantage. In the spirit of fairness to all pitchers, I feel that if pitchers are allowed to pitch at 30 feet, then there should be a separate class for those who wish to pitch 40 feet.

Along another line, because of scheduling problems, our class began pitching several hours later and didn't finish until 2:30 a.m. The only people watching were the pitchers wives and a few stray owls.

Yours truly,
Frank Kilinsky

COMING EVENTS

ARIZONA STATE SCHEDULE Pioneer Park

Oct. 22 — Annual Arizona State Tournament. Sanctioned. State & NHPA card required. 100 shoe qualification. Entries close Oct. 13.
Nov. 25-26 — Bonanza Restaurant Open. Entries close Nov. 16.
Dec. 16-17 — Mesa Parks Open. Entries close Dec. 7.
Jan. 20-21 — Valley of the Sun Warm-Up. Sanctioned. State and NHPA card required. Entries close Jan. 11.
Jan. 27-28-29 — Lost Dutchman Open. (check for exact location). Entry fee of \$7.00 with current ringer percentage should be sent to Roy Sneller, Space 636 or Wayne Jones, Space 743, Rock Shadows Trailer Resort, 600 South Idaho Road, Apache Junction, Arizona 85220. Phone: 602-982-7997.

Feb. 14-15-16-17-18-19 — Annual Valley of the Sun Open. Sanctioned. State and NHPA card required. Entries close Jan. 30.

Mar. 16-17 — Bye-Bye Snowbird Open. Entries close Mar. 7.

Entry fees: \$5.00 except Valley of the Sun and the Lost Dutchman Open. Entry fees for the Valley of the Sun: \$10.00 each. \$10.00 additional for Men's Class A. \$5.00 additional for Women's Class A and for Men's Class B, C & D. Send all entries and proper fee (except Lost Dutchman) and NHPA card number and current ringer percentage to: M.H. Fenimore, 8152 East Hayne St., Tucson, Arizona 85710. Phone 602-296-5087.

TUCSON, ARIZ. SCHEDULE REID PARK—TUCSON

Oct. 8 — Arizona State Warm-Up Tournament, Reid Park courts. 100-shoe qualifying. Entries close Sept. 29.

Nov. 12 — Reid Park Classic. Reid Park courts. Sanctioned. State & NHPA card required. Entries close Nov. 3.

Dec. 10 — Tucson Open Tournament. Reid Park courts. Entries close Dec. 1.

Jan. 7 — Pima County Classic. Reid Park Courts. Sanctioned State & NHPA card required. Entries close Dec. 30.

Jan. 27-28-29 — Lost Dutchman Open (check for exact location). Entry fee of \$7.00 with current ringer percentage should be sent to Roy Sneller, Space 636 or Wayne Jones, Space 743, Rock Shadows Trailer Resort, 600 South Idaho Road, Apache Junction, Arizona 85220. Phone: 602-982-7997.

Feb. 4 — Old Pueblo Special. Reid Park courts. Sanctioned State & NHPA card required. Entries close Jan. 28.

Mar. 3 — The Wind-Up tournament. Reid Park courts. Entries close Feb. 23.

Entry fees for all above tournaments is \$5.00 except Lost Dutchman. Send all entries (except Lost Dutchman) and proper fee with NHPA card number and current ringer percentage to: M.H. Fenimore, 8152 East Hayne St., Tucson, Arizona 85710. Ph: 622-296-5087.

COMING EVENTS — (Continued)

FLORIDA SCHEDULE

Entry fee is \$7.00. Pre-registration required. Send entry fee to proper contact 7 days prior to tournament. Scorekeeper fee 25¢ per game. Tournaments are sanctioned. NHPA and State card required. All games cancellation. 40 oints of 50 shoes, whichever comes first. Mixed tournaments unless otherwise indicated. In 2-day meets players with percentage under 40% will pitch 1st day. Dropouts after deadline forfeit entry fee unless tournament is cancelled. Starting time 9:00 a.m.

Oct. 15 — Bee Ridge Open. Sarasota. Limited to 1st 56 pitchers who pitch 40 ft. ONLY. Contact Paul Scheub, 2139 Piazza Dr., Sarasota, FL 33583. Ph. 813-966-5462.

Oct. 22 — Osceola Open. St. Cloud. Limited to 1st 42 pitchers who pitch 40 ft. ONLY. Contact Andy Anderson, 1100 Indiana Ave., St. Cloud, FL 32769. Ph. 305-892-2051.

Oct. 29 — Bullington Enterprise Open. Winter Haven. Contact Joe West, 6250 Halabrin Rd., Haines City, FL 33844. Ph. 813-422-2053.

Nov. 5 — Clearwater Open. Clearwater. Contact Norm Gaseau, 1908 Nugget Dr., Clearwater, FL 33515. Ph. 813-443-2892.

Nov. 12 — Veterans Open. Titusville. Contact Joe Stafford, 1320 Sharon Dr., Titusville, FL 32780. Ph. 305-269-3557.

Nov. 15 — Sunshine Open. Orlando. Contact Jim Peterson, 220 Maynard Dr., Orlando, FL. Ph. 305-894-3379.

Nov. 26 — White Aluminum Open. Apopka. Contact Norm Davey, 305-886-8168. Rte. 1, Apopka, FL 32703.

Dec. 3 — Steinfeldt Open. Clearwater. Contact Norm Gaseau, 1908 Nugget Dr., Clearwater, FL 33515. Ph. 813-443-2892.

Dec. 10 — Brooksville Open. Brooksville. Contact DWight Thatcher, 18443 Shadyside Dr., Brooksville, FL 33512. Ph. 904-796-8922.

Dec. 17 — Snowbird Open. Sebring. Contact Jim Fourman, 2932 Bolin Lane, Sebring, FL. 33870. Ph. 813-385-7372.

Dec. 28 — Lake Worth Open. Bryant Park, S. 2nd Ave. & Golfview Dr., Lake Worth. Contact Herman Wieser, 1502 So. Lakeside Dr., Apt. 309N, Lake Worth, FL 33460. Ph. 305-582-2938.

Jan. 7 — Tamiami New Year Open, Tamiami Park, 10901 S.W. 24th St., Miami. Contact Thomas Holmes, Jr., 9835 S.W. 70th St., Miami, FL 33173. Ph. 305-271-6864.

Jan. 12 — Highland County Open, Sebring. Contact Jim Fourman, 2832 Bolin Lane, Sebring, FL 33870. Ph. 813-385-7372.

Jan. 14 — Plant City Open, Plant City. Contact John Rademacher, 408 Pevery Dr., Plant City, FL 32566. Ph. 813-752-1226.

Jan. 20-21 — Manatee Open, Bradenton. Contact Jim Pelkey, Box 80, Lincoln Arms, 5030 - 14th St., W., Bradenton, FL 33507. Ph. 813-756-3992.

Jan. 21 — Yogi Bear Open. Apopka. Contact Norm Davey, Rte. 1, Box 2000, Apopka, FL 32703. Ph. 305-886-8168.

Jan. 28 — Orlando Open. Orlando. Contact Jim Peterson, 220 Maynard Ave., Orlando, FL 32803. Ph. 305-894-3379.

BALANCE OF FLORIDA SCHEDULE WILL BE IN NOVEMBER ISSUE.

JIM KNISLEY'S INDOOR COURTS
415 North Columbus St.,
Lancaster, Ohio 43130

Oct. 22-23 — Harold Reno Open
Nov. 19-20 — Paul Focht Open
Dec. 10-11 — Wilbur Kabel Open
Jan. 14-15 — Stan Manker Open
Feb. 4-5 — Harold Anthony Open
Mar. 17-18 — Glen Riffle Open
Apr. 14-15 — Pop Johnson Open. Lady pitchers welcome.

Entry fee \$9.00. 8-man classes. 40 point games. Trophies for 1st and 2nd place. Deadline 10 days prior to date. Jim Knisley Classic Billiards, 415 North Columbus St., Lancaster, Ohio 43130. Ph. 614-653-0545.

OPDYCKE INDOOR COURTS
N. Wayne St., Angola, Ind.
Behind MacDonalds

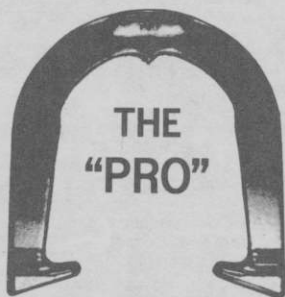
October 22-23	January 7-8
November 19-20	February 4-5
December 10-11	March 24-25
	April 14-15

\$8.00 entry fee. 35 point games. Pay scorekeeper 25 cents per game. All ties decided by ringer percentage for that day. Deadline Sunday by telephone. Mail deadline 20 days before to Don Opducke, Box 56, Pleasant Lake, Indiana 46779. Phone 219-475-5215.

November Issue Will Have State Meet Results
Don't Miss It! — Send Yours In NOW!



THE ORIGINAL DROP-FORGED PITCHING SHOE



THE
"PRO"

Two tournament tested models, forged from S.A.E. specified steel, are available. Both have hardened hooks and points, and may be ordered in your choice of medium, soft, or dead soft tempers.



THE
"O"

AS THE FIRST MANUFACTURER OF THE DROP-FORGED PITCHING SHOE, THE OHIO HORSESHOE COMPANY IS RECOGNIZED WORLD-WIDE FOR ITS HIGH QUALITY PITCHING SHOES.

For price information and to order, contact:

OHIO HORSESHOE COMPANY

P.O. Box 21371
Columbus, Ohio 43221

614-457-4335