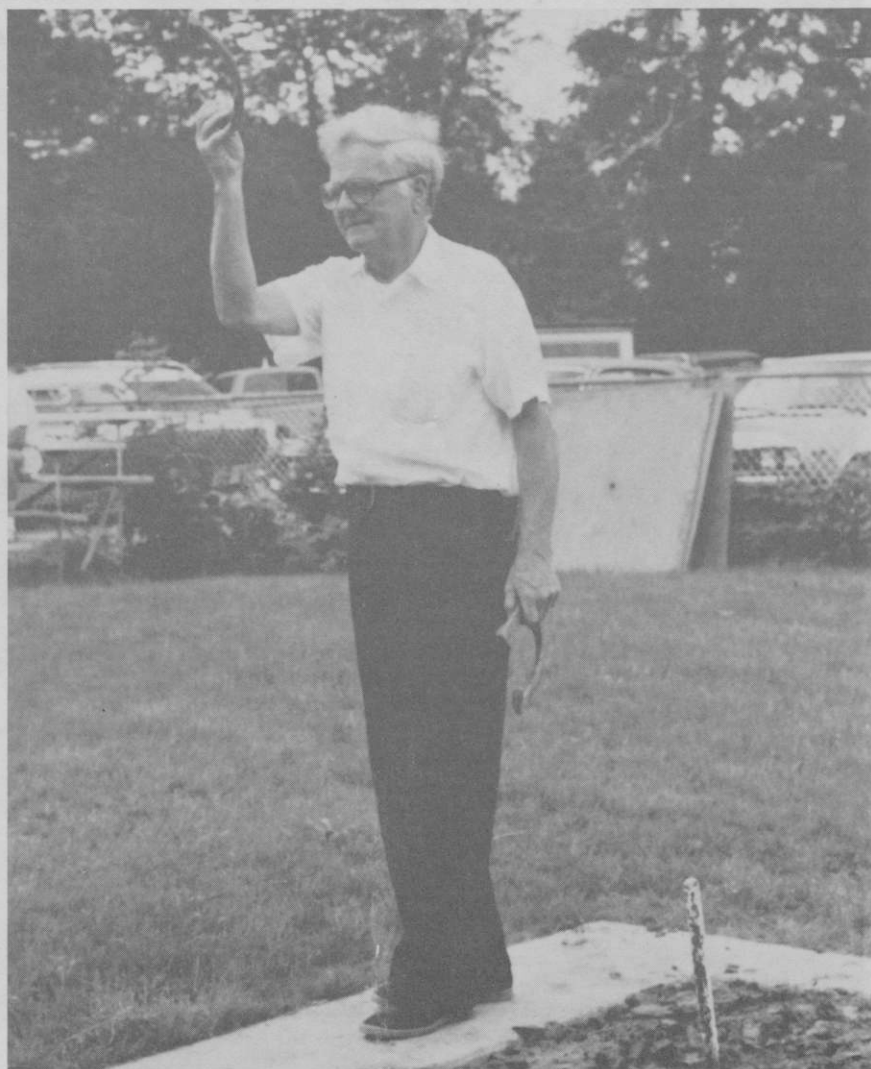


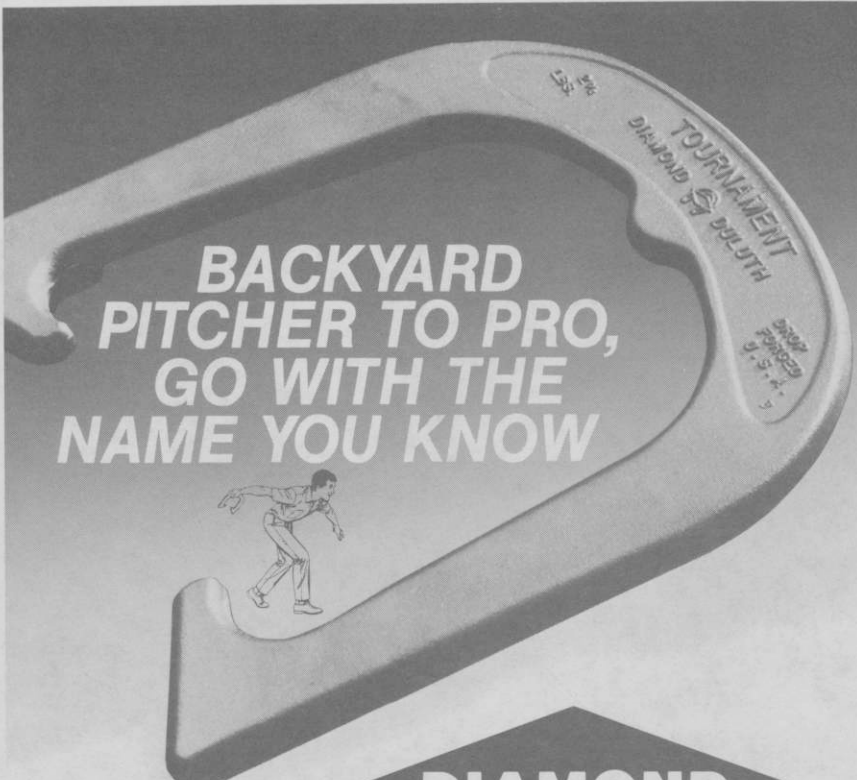
The Horseshoe Pitcher's



NEWS DIGEST

AUGUST, 1981





BACKYARD PITCHER TO PRO, GO WITH THE NAME YOU KNOW



DIAMOND®

Three pitching shoe models. All recognized as official by the National Horseshoe Pitchers Association. DIAMOND Tournament Shoes feature hard points and dead soft centers so shoe catches and holds the stake. All models solid steel drop forged for durability.

Go with the name you know. Contact your nearest NHPA club or sporting goods store. For latest pitching horseshoe catalog write: DIAMOND TOOL and Horseshoe Co., P.O. Box 6246, Duluth, Minnesota 55806.

*The Great
American Shoe
For All
American Hands.*



DIAMOND TOOL
and Horseshoe Co.



"DIAMOND Pitching Horseshoes are Recognized as Official in Tournaments
Sanctioned by the National Horseshoe Pitchers Association"

THE HORSESHOE PITCHER'S NEWS DIGEST is published on the 5th of each month at Aurora, Illinois, U.S.A. by the National Horseshoe Pitcher's Association of America. Editorial office, P. O. Box 1606, Aurora, Illinois 60507. Phone: 312 - 898-3974. Subscription rate is \$7.00 per year in advance. NHPA membership cards are available through each state secretary for \$6.00 plus any state association dues. Forms close on the 10th day of each month preceding date of issue. Advertising rates on request. F. Ellis Cobb, Editor.

NATIONAL OFFICERS

Wally Shipley, 2646 Basswood St., Newport Beach, Calif. 92660	President
Leo McGrath, 1937 Lawn Ave., Cincinnati, Ohio 45237	1st Vice-President
John Rademacher, 408 No. Pevetty Dr., Plant City, Fla. 33566	2nd Vice-President
Earl Winston, Route 2, LaMonte, Mo. 65337	3rd Vice-President
Bonnie Siebold, 1043 Grayson Ave., Huntington, Ind. 46750	4th Vice-President
Donnie Roberts, 9439 Camp Creek Rd., Lucasville, O. 45648 - 614-289-4101 ..	Secy-Treas.
Claude White, Jr., 940 Knollwood Ct., Plainfield, N. J. 07062	Chr. Reg. Dir.

Volume 24

August, 1981

No. 8

NHPA PRESIDENTS MESSAGE

By Wally Shipley

MY HAT'S OFF — to AL HODGE, Director of the Ainsworth, Nebraska Horseshoe Club, The Ainsworth City Schools and their youth.

Sometime ago, Al Hodge requested certificates for a proposed youth horseshoe tournament within the Ainsworth City Schools. Ainsworth has a population of 2500.

When I sent the signed certificates, I asked Al to send me pictures and results on his success. Thanks Al and Ainsworth City Schools for an outstanding job.

The following are his, the school's Activities Director's and a youth spokesman's (for the 190 youth who participated in the program tournament) comments.

Dear Mr. Shipley:

We, the Horseshoe people of Ainsworth, Nebraska, wish to thank you and the National Association for the achievement certificates you sent us to use for the junior program that we sponsored at Ainsworth this spring.

Judging from the results of our efforts, if more clubs would work with their schools, we would have a lot more interest among our young people in horseshoe.

The results are gratifying.

We realize *all* juniors cannot participate in the regular sports of the school, so this gives each individual a chance to reach the top of his class in horseshoe, if he wishes.

We need to emphasize this program as here lies our future in horseshoe pitching.

Hope to meet you in Minnesota.

With Gratitude,

Al Hodge
Director

Dear Mr. Shipley,

I want to thank you and all horseshoe pitchers for the certificates for our students.

The following is an insight to our program at Ainsworth. Our three classes have a total of 190 students who competed in a tournament. It was doubles play and single elimination. Because of class time, scheduling, 15 points was game. The finalists played to 25 points.

Mr. Al Hodge and members of the Ainsworth Club were present at all classes for two weeks. Their words of encouragement and help made it all possible. A special thanks goes to each of them from us all.

Mr. Hodge presented patches, memberships to the three winning teams. Our Sporting Goods dealer presented trophies to winners. He has also sold a few Gordons since we finished the unit.

The response to this activity was well received. Last night the regular practice was loaded with juniors. I am sure that we want to have our junior pitchers ready for the State meet held here in August.

As an educator, I feel that we must use our resources around the community. Al contacted me last year, but we had finished with the unit. Early this spring plans were made, then put into

NHPA PRESIDENT'S MESSAGE — (Continued)

action. The school had a few shoes, but Al put out a call — shoes of all kinds appeared for the class.

Al, will be sending you pictures on the class and winners. I hope it can be used in your national book.

I would like to state from a famous man for all the members who helped with the class. "Some of us will do our jobs well and some will not, but we will be judged by only one thing — the results." Mr. Shipley, these people fit the part—a job well done and with results.

Thank you,

John O. Lucero
Activities Director
Ainsworth City Schools

TO AINSWORTH ASSOCIATION AND NHPA:

For about a week the horseshoe pitching for juniors at AHS has been a success. With the help of physical education faculty and Al Hodge, the Director of the Horseshoe Association in our area as well as the students and members, we were able to get more people interested in our Junior Division.



190 possible future horseshoe pitchers in Ainsworth, Nebraska. They participated in the Ainsworth City Schools youth program tournament. Thanks to Al Hodge, Director of the Ainsworth Horseshoe Club and to the Ainsworth City Schools Activities Director, John Lucero.

During the week we have been going out in P.E. Class and playing a couple of games. We are now in the tournament play with our class. There are about 200 students we have been working with. At the end of the tournament there will be certificates of appreciation awarded to all students who participated and trophies to the top player of each class.

So from this point the horseshoe pitching for the students at AHS has been a success. I would also like to thank all of the people who have let us borrow their shoes.

Jeannie Fiala

Junior Spokesman

Your council has approved Ottie Reno's new sanctioned horseshoe. Good luck, Ottie!
Sorry — plans have changed. The Clydesdale Horses will not be at Genola; but, will be at the St. Benedict College outside of St. Cloud.

NHPA PRESIDENT'S MESSAGE — (Continued)

Thanks! I have been very honored in being your president and leader for the past eight years. I have appreciated your confidence (knowing no one person could please everyone all the time).

For this past year of efforts and cooperation, I thank the entire NHPA staff, all state officers, league officials and club officers for an outstanding job well done.

With all of your continued efforts and support, our sport and the NHPA will continue to progress.

NHPA PUBLICITY ACTIVITY

By Bernard Herfurth

NHPA VOLUNTEER PUBLICITY WORKER PLAN — Volunteer publicity workers give news releases to their newspapers monthly. These news releases are suggested by the Publicity Director in the Digest issues. A canvas will be made to get scores of new volunteers signed up at the Genola World Tournament.

COMMEMORATIVE STAMP PROJECT — This year NHPA publicity decided to follow through with a request to the U.S. Postal Service to honor our sport by issuing a commemorative stamp. The membership was requested and replied by sending in their personal request for such a stamp to the Postmaster-General. All requests were answered by the Government. As we expected the Citizens Advisory Stamp Committee turned down our official first request. We will re-submit a request in 1982. Ambassador Robert Ryan, and Former Assistant Secretary-General to the United Nations will assist NHPA publicity in guidance to the proper procedure towards receiving a stamp in the future. One of Mr. Ryan's duties in the United Nations was to acquire a commemorative stamp for the U.N. It took him six years to receive it.

INTERNATIONAL HORSESHOE PITCHING DIPLOMACY — Like Ping-Pong grass roots diplomacy between China and the United States, NHPA publicity is embarking on an International Horseshoe Pitching Diplomacy plan. It would be along the lines of the recent "Horseshoes for Togo" plan. This plan sent twelve (12) pairs of American shoes courtesy of St. Pierre Mfg. Co. and the NHPA to the newly formed 6 team league in Lome, Togo in West Africa. Our lady Ambassador, Miriam Johnson, and her aides will present the shoes at a special ceremony with Togo Government Officials and players in attendance. Again Mr. Ryan will assist NHPA publicity by making the proper request to our State Department for their blessings. The Government has an agency that helps promote such grass roots diplomacy between ours and other countries. This could result in introducing our sport in many foreign lands.

PITCH HORSESHOES FOR HEALTH MONTH (JULY) — It was decided to hold a "Pitch Horseshoes For Health" Month instead of a week. It is hoped that volunteer publicity workers and other members will offer press releases to newspapers in all areas. It is hoped that clubs will hold novice tournaments in an attempt to get new members. Perhaps some areas would rather have another month set aside, August or September; it isn't important what month it is, only that a month is observed.

WORLD TOURNAMENT PUBLICITY — Again this year the newspapers of all World Tournament entries will be notified that they have a participant in the 1981 World Tournament. We request that newspapers contact or that contestants give a news release on World Tournament activity on returning home. Also NHPA publicity will notify the winners of all awards in all classes and the winners of all special awards.

NATIONAL FLYER — The NHPA publicity hopes to issue a National Flyer in the not too distant future. Such a flyer is long overdue. The distribution can be at Tournaments and League play, to prospective new members, recreation facilities, organizations, YMCA's, school sports program, places of employment and business, and bulletin boards.

STATE FLYER — Massachusetts has published recently what is believed to be the first six (6) page flyer giving information concerning horseshoe pitching activity at the State level. It is a low key publicity flyer written with simplicity and consistency. It is being offered as a guide state flyer to all states hoping that each will soon publish their respective state flyer.

PUBLICITY — (Continued)

As publicity director, I am asking that the NHPA subsidize a portion of the cost of a State flyer.

HORSESHOES FOR TOGO PROJECT — Upon a request from our distinguished friend Mr. Ryan, grass roots horseshoe diplomacy has been established between the six team league in Lome, Togo in West Africa and the NHPA Twelve (12) pairs of American shoes were presented by Government of both countries to the Togolese Players. The shoes were a donation by the St. Pierre Co. and the NHPA.

NHPA STICKER PLAN — An attractive sticker (4"×4") is planned to obtain prospective new members. It would have the address of a member to write to receive "Horseshoe Information" and in return a form letter, a National Flyer, and an NHPA Sanctioned League Brochure will be returned. The small sticker can be placed on cars, side-windows, rear-windows (opposite driver), and bumpers. It could be placed on bulletin boards of places of employment, business, stores, banks and post offices. It would be the first time nation-wide that anyone could write to from a public ad.

NHPA BUTTONS — I had NHPA buttons and key-ring buttons made with the NHPA logo. The button can go on the front of a pitching cap or shirt. The key-ring button makes it more difficult to loose your car keys. They sell for \$1.00. Any profit going toward NHPA publicity. They will be on sale at the game-related booth at the World Meet or write to the NHPA publicity director, enclosing \$1.00 plus postage.

MEMBERSHIP DRIVE PLAN — NHPA publicity has offered to help with a proposed membership plan for the coming year. Our sport will not grow until it has more numbers. A sport grows with organization. It would be better to have 50,000 members pay \$2.00 dues than 6,000 members pay \$6.00 dues. The membership will be asked to cooperate in making a membership plan successful. Grow roots publicity does much to help publicity for our great sport.

MISCELLANEOUS — All members should be on the look-out for any possible chance to give our sport publicity to help get new members. Offer to teach beginners. Be a guest or call in to a talk show, giving information, or asking questions, offer to be a guest speaker at a club or lodge. Give dates and results of all tournaments, give out human interest stories. Get to know your Sports Editor, take him out to lunch. It all helps. Try to get sports instructors interested in horseshoes as a secondary sport in our schools.

A FORM "THANK YOU" LETTER TO NEWS MEDIA — A form letter would be written. It would thank the news media, newspapers, radio or T.V. for their cooperation in giving publicity to our sport. It would be sent out by NHPA publicity only upon request of a member. (Good public relations.)

FOOTNOTE: Almost all of these publicity items are not in the talking stages but are being put into action. NHPA would like to hold an informal meeting at the World Tournament to exchange publicity ideas.

DARKE COUNTY OHIO FAIR OPEN SET FOR AUGUST 22-23

The Darke County Fair Open Tournament is being added to the list of outstanding events sponsored by the Darke County Horseshoe Club for 1981.

The Fair Open will be held in conjunction with the 8 day 125th Great Darke County Fair on Saturday and Sunday, August 22 and 23, at the 9 court layout on the Fairgrounds. The Fair Board has increased the premium money for horseshoe events to enable the Club to post a Championship purse of \$100.00 for the Men's Division and \$40.00 for the Women's.

Due to the limited time available for pitching, advance entries will be required. Entries will be limited to 76 men and 12 women. The entry fee of \$5.00 and your latest tournament pitching average should be received by DCHC Secretary Fritz Worner by Saturday, August 15. Entrants will be advised by mail of day and time of pitching.

Pitching will commence Saturday at 10 a.m. with Women's Classes starting at 5 p.m. Saturday. Sunday's schedule will commence at 9:30 a.m. with the Championship class starting at 1 p.m. Entries should be mailed to Fritz Worner, 150 Ridgeview Dr., Greenville, OH 45331.

 COVER PICTURE... Shown this month is Clayton Henson, fifteen times Virginia State Champion. Mr. Henson is now seventy years young and has been pitching since 1924. He has won far too many titles to mention here including the tournament recently held at the new courts in Frederick, Virginia.

NHPA HALL OF FAME REPORT

By Bernard Herfurth

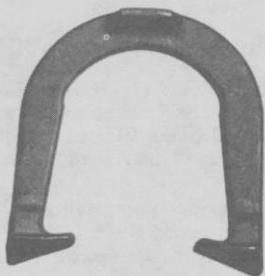
It has been my pleasure to be chairman of the NHPA Hall of Fame for the past ten years. Most of the committee has served for the same amount of time. Committee attendance at annual meetings at world tournaments has averaged from eight to thirteen, (fourteen total members). A chairman could not have had more cooperative members on a committee. I thank the committee and membership for their interest and cooperation.

During the time I was chairman, forty (40) members were inducted. We were fortunate in having a Hall of Fame book organized. Lloyd Frederickson will be long remembered for his excellent work in organizing the book. A miniature Hall of Fame book was also issued and offered for sale to the membership. A home for the Hall of Fame was found. It is at the Preimesberger Arena in Genola, Minnesota.

Ruth Hangen, a long-time member of the committee has consented to take the chair after the 1981 induction. This will mark the first time that the NHPA will have the pleasure of having a lady member head a committee. Ruth Hangen is most capable of handling the position.

In conclusion, I want to thank our president, Wally Shipley for attending the Hall of Fame meetings for eight consecutive years.

TED ALLEN HORSESHOES



A steady long back-log of orders for 4 - 5 years came to an end in August, 1979.

Allow a week for orders to be mailed out.

A Top Pro Favorite since 1938

1045 LINDEN AVENUE

BOULDER, COLORADO 80302

DON KUCHCINSKI WINS NEW CASTLE, PA. SPRING FLING SHERIDAN DAGAN WINS LADIES' TITLE

CLASS A — Don Kuchcinski, Erie, PA, 7-1-65.0; Ansil Copeland, Akron, OH, 6-2-64.7; W. Louma, Burton, OH, 5-2-61.0; J. Rainbow, Monaca, PA, 4-3-61.7; C. Danner Jr., Newell, PA, 3-4-58.9; Ron Kuchcinski, Erie, PA, 2-5-64.8; R. Rugg, Mill Run, PA 1-6-52.8; R. Maroni, Arnold, PA, 1-6-45.9.

CLASS B — C. Bruce, New Castle, PA, 7-7-66.9; B. McKnight, New Castle, PA, 6-2-70.1; P. Vlachos, Bridgewater, PA, 5-2-58.5; Joe Kuchcinski, New Castle, PA, 2-5-60.1; H. Boyer, Beaver, PA, 2-5-45.8; P. Spiesman, Burton, OH, 0-7-52.0.

CLASS C — R. Welton, St. Marys, PA, 7-2-58.3; Ed Blum, Darlington, PA, 6-3-56.2; S. Kuchcinski, Erie, PA, 5-3-55.4; C. Roball, Pittsburgh, PA, 5-3-52.4; B. Straitiff, Uniontown, PA, 3-4-49.5; Ed. Kuchcinski, Erie, PA, 2-5-49.3; G. Fitcher, Pittsburgh, PA, 2-5-47.9; Frank Giampa, Pittsburgh, PA, 1-6-40.1.

CLASS D — V. Sedlacek, New Kensington, PA, 7-0-59.0; F. Kilinski, Pittsburgh, PA, 5-2-53.0; F. White, Erie, PA, 3-4-54.7; B. Morris, New Castle, PA, 3-4-54.7; E. Van Sant, Burton, OH, 3-4-52.1; C. Elder, New Castle, PA, 3-4-47.8; D. Meckevic, Pittsburgh, PA, 2-5-53.8; J. Roebuck, Uniontown, PA, 2-5-44.8.

CLASS E — G. Gean Burton, OH, 7-0-57.3; M. Brightshue, New Castle, PA, 6-1-54.3; Ed Molitoris, Fredericktown, PA, 5-2-51.2; Ed Horneman, Arnold, PA, 3-4-50.0; J. Pagnanelli, Bethel Park, PA, 3-4-46.2; J. Geci, St. Marys, PA, 2-5-51.2; D. Baker, New Castle, PA, 2-5-42.6; W. Pierce, Burton, OH, 0-7-30.6.

CLASS F — K. Von Kleist, Russell, PA, 6-1-48.9; Harold Boyer, Monaca, PA, 52-42.5; H. Tuttle, Youngstown, OH, 5-2-42.0; J. Ludwig, East Liverpool, OH, 3-4-39.1; H. Clement, Pittsburgh, PA, 3-4-37.0; H. Frampton, Garland, PA, 3-4-32.2; E. Winsper, Youngstown, OH, 2-5-40.5; R. Wellman, Titusville, PA, 1-6-36.1.

CLASS G — D. James, Wilkensburg, PA, 7-1-42.6; P. Decker, Beaver Falls, PA, 6-2-38.7; J. Bruny, Beaver Falls, PA, 3-4-37.7; H. Hayes, Erie, PA, 3-4-36.9; C. Butcher, Erie, PA, 3-4-37.7; B. Lapping, Beaver Falls, PA, 3-4-32.6; C. Denk, Johnstown, PA, 2-5-33.1; E. Warner, Titusville, PA, 1-6-31.2.

CLASS H — Ed Donawitz, New Brighton, PA, 6-1-36.5; B. Williams, Uniontown, PA, 5-2-35.7; B. Meader, Youngstown, OH, 4-3-34.7; R. Allen, Niles, OH, 4-3-31.5; K. Widdowson, Indiana, PA, 4-3-30.4; D. Tunney, Swickley, PA, 2-5-31.5; J. Danner, Vandergrift, PA, 2-5-26.5; J. Orsini, Brownsville, PA, 1-6-29.9.

CLASS I — J. Wilson, Sharon, PA, 7-0-42.4; Roger Hackney, Warren, OH, 5-2-38.2; Al Stoddard, Warren, PA, 5-2-33.1; Orie Pudder, Sugar Grove, PA, 4-3-32.6; T. Carnahan, Shelocta, PA, 3-4-29.5; Ron Weiss, Pittsburgh, PA, 3-4-28.8; Ken Ream, Niles, OH, 1-6-26.7; Ray Williamson, Sugar Grove, PA, 0-7-26.1.

CLASS J — J. Marusa, Marion Center, PA, 7-0-28.8; J. Fenton, Warren, OH, 6-1-32.4; A. Held, North Apollo, PA, 3-4-21.2; R. Blystone, Shelocta, PA, 2-5-19.9; J. Tedrow, New Brighton, PA, 1-6-14.2; J. Maloney, Franklin, PA, 1-6-12.7.

CLASS K — B. Stover, Monaca, PA, 7-0-19.7; B. Frye, Marion Center, PA, 5-2-16.1; D. Wetzell, Marion Center, PA, 5-2-16.0; M. Van Ord, Russell, PA, 4-3-14.4; W. Maloney, Franklin, PA, 3-4-9.3; G. Phillips, Beaver Falls, PA, 3-4-7.0; C. Held, North Apollo, PA, 1-6-2.9; R. Byers, Marion Center, PA, 0-7-2.8.

WOMEN'S CLASS A — Sheradin Dagan, East Liverpool, OH, 6-0-35.2; Shirley Porter, Russell, PA, 4-2-20.0; Sue Porter, Russell, PA, 2-4-9.3; Robert Stover, Monaca, PA, 0-6-4.3.

LITTLE OVER WARD FOR BURNS MEMORIAL TITLE—TENN.

Our first annual Burns Memorial tournament was won by T.R. Little from Cleveland, Tenn. at the Cleveland courts on Saturday, May 16. At the end of regular play Little was tied with Don Ward for first place. In the playoff that followed Little defeated Ward with 61 ringers in 80 shoes for a cool 76.2 percent while Ward was hitting 57 ringers in 80 shoes for 71.2 percent.

In Class B it was George Lewis battling for top spot. Montgomery was leading 46-225 when Lewis came on strong hitting 36 ringers in 40 shoes to win the game 50-46.

A.J. Nave of Greenville, S.C. won the high single game trophy of 36 ringers in 42 shoes for 85.7 percent against Dexter Stallings, of Powell, Tenn.

CLASS A — T. R. Little, 4-2-68.0; Don Ward, 4-22-73.2; A.J. Nave, 3-3-72.8; Willie Stephens, 3-3-63.8; Dexter Stallings, 3-3-60.4; Jim Waters, 3-3-58.3; O.D. Lebow, 2-4-66.5.

CLASS B — George Lewis, 6-0-65.6; Carl Montgomery, 5-1-65.0; Stanley Jackson, 4-2-67.1; Lonnie Sunderland, 2-4-56.0; James Black, 2-4-54.7; Jim Adkerson, 1-5-56.0; Hubert Jackson, 1-5-51.6.

CLASS C — Carl Green, 5-0-53.4; Willis Grant, 4-1-53.5; Bill ARms, 3-2-43.9; John Shelton, 2-3-42.9; Marion Rich, 1-4-45.1; Leon Wilson, 0-5-40.5.

CLASS D — Junior Haire, 5-0-49.5; Guy Bush, 4-1-32.4; John Lewis, 3-2-28.4; Lonnie Byrd, 2-3-22.0; James Davqs, 1-4-8.3; Dennis Elmore, 0-5-37..

STEINFELDT IN PERFECT RECORD FOR EASTERN NATIONAL CHAMPIONSHIP—RUTH HANGEN UNDEFEATED IN LADIES

Carl Steinfeldt, now a resident of Florida, and Ruth Hangen of Getzville, New York, captured the Class A titles in their respective divisions in the annual Eastern National tournament held at the Outwater courts in Lockport, New York, June 20. Steinfeldt was undefeated with a 9-0-82.4 record. Hangen copped the Women's crown with a 3-0-71.2 record. A feature game was that between Steinfeldt and Elmer Hohl of Wellsley, Ontario. This game went to 112 shoes with Steinfeldt hitting 93 ringers for 83.0 percent and Hohl 89 ringers for 79.5 percent. Steinfeldt won Men's Classes pitched 40 point games. Hangen defeated Lorraine Thomas of Lockport in an 88 shoe game 52-42 hitting 68 ringers for 77.3 percent while Thomas hit 64 ringers for 72.7 percent. Steinfeldt had high single game of 96.4 in game with Clair Bruce.

MEN'S CLASS A — 1. Carl Steinfeldt, Clearwater, FL, 9-0-82.4; 2. Elmer Hohl, Wellsley, Ontario, 8-1-78.9; 3. Al Zadroga, Elizabeth, PA, 6-3-72.1; 4. Clyde Martz, Pittsburgh, PA, 6-3-70.4; 5. Steve Fenicchia, Rochester, NY, 6-3-69.3; 6. Steve Hohl, Wellsley, Ontario, 4-5-68.1; 7. Don Kuchcinski, Erie, PA, 3-6-62.4; 8. Ron Kuchcinski, Erie, PA, 2-7-60.7; 9. Clair Bruce, New Castle, PA, 1-8-66.1; 10. Anthony Natale, Rochester, NY 0-9-56.3.

MEN'S CLASS B — 1. Dick Carnahan, Shipperville, PA, 7-0-62.1; 2. Bob McKnight, New Castle, PA, 6-1-63.2; 3. Joe Kuchcinski, Erie, PA, 5-23-61.2; 4. Steve Kuchcinski, Erie, PA, 3-4-59.2; 5. Eugene Smalt, Bath, 3-4-54.2; 6. Peter Vlachos, Bridgewater, PA, 3-4-49.7; 7. Glen Sebring, Erie, PA, 1-6-43.4; 8. Rocky Collins, Sugar Grove, PA, 0-7-43.6.

MEN'S CLASS C — 1. Clair Rigby, Webster, NY, 7-0-57.7; 2. Dick Mudgett, Carraraugus, NY, 5-2-55.4; 3. Ron Carr, Warren, PA, 4-3-51.3; 4. Robert Hayes, Franklinville, 3-4-46.3; 5. George Hale, Jamestown, 3-4-43.9; 6. Kurt Von Kleist, Warren, PA, 3-4-43.5; 7. Edward Risley, Interlaken, NY, 2-5-45-6; 8. Ed Kuchcinski, Erie, PA, 1-6-41.7.

MEN'S CLASS D — 1. Tom Stroh, Kitchner, Ontario, 7-0-38.2; 2. Elmer Williams, Lockport, 6-1-37.3; 3. George Rhea, Erie, PA, 4-3-36.6; 4. Ralph Rose, Wellseyville, NY, 4-3-32.6; 5. Mark Sylvester, Lockport, 3-4-33.1; 6. Harry Clement, Pittsburg, PA, 2-5-34.9; 7. Roy Wellman, Titusville, PA, 1-6-29.4; 8. Dan Kemp, Castile, NY, 1-6-27.6.

MEN'S CLASS E — 1. Marvin Krauss, Batavia, NY, 6-1-39.0; 2. Don Harris, Little Valley, NY, 5-2-37.8; 3. Joe Gagliardi, Lockport, 4-3-37.6; 4. Don Wilcox, Olean, NY, 4-3-33.6; 5. Stan Vincent, Gasport, 4-3-32.5; 6. Okie Riffle, Lockport, 3-4-35.9; 7. Marvin Falk, Roseville, MI, 1-6-29.9; 8. John Meehan, Ft. Edward, NY, 1-6-26.1.

MEN'S CLASS F — 1. Paul Rudy, Niagara Falls, NY, 7-1-38.5; 2. Richard King, Chaffee, NY, 6-2-37.9; 3. Ken Nixon, Niagara Falls, NY, 5-2-35.9; 4. Ellsworth Warner, Titusville, PA, 4-3-30.9; 5. Clarence Butcher, Erie, PA, 3-4-33.4; 6. Lloyd Neeb, Kitchner, Ontario, 3-4-30.4; 7. Tom Butcher, Erie, PA, 1-6-27.4; 8. Robert Doty, Olean, NY, 0-7-20.9.

MEN'S CLASS G — 1. Jack Brookhouse, Freeville, NY, 7-1-30.6; 2. Bob Mayo, North Tonawanda, 6-2-37.1; 3. Joseph Miller, Machias, NY, 5-2-38.1; 4. Roger Osborne, Delevan NY, 4-3-31.3; 5. Richard Burton, Delevan, NY, 3-4-28.8; 6. Harold Halstead, Attica, NY, 2-5-17.5; 7. Lawrence McCoy, Burt, 1-6-25.7; 8. Thomas Courtney, Haverhill, MA, 1-6-22.4.

MEN'S CLASS H — 1. Ken Strickland, Candor, NY, 5-0-31.5; 2. John Goodspeed, Macedon, NY, 4-1-24.7; 3. Dale Strickland, Candor, NY, 2-3-20.7; 4. Bill Calhoun, Niagara Falls, NY, 2-3-19.0; 5. Walter McElhaney, Arcade, NY, 2-3-18.6; 6. Norman Terwilliger, Freeville, NY, 0-5-12.8.

WOMEN'S CLASS A — 1. Ruth Hangen, Getzville, 3-0-71.2; 2. Lorraine Thomas, Lockport, 2-1-68.9; 3. Fran Carnahan, Shipperville, PA, 1-2-54.5; 4. Debbie Kemp, Castile, NY, 0-3-44.9.

WOMEN'S CLASS B — 1. Dorothy Falk, Roseville, MI, 3-0-41.1; 2. Shirley Powley, Lockport, 2-1-29.2; 3. Helen Meehan, Ft. Edward, NY, 1-2-30.0; 4. Debbie Mickleson, Warren, PA, 0-3-26.1.

GENE ANDERSON, REGIONAL DIR. REPORTS FROM MINNESOTA

Horseshoe in Minnesota is really going strong. Many new leagues are being formed. There is much interest in the sanctioned league program. Bloomington, Minnesota had over 20 entries at their tournament on twenty-four new beautiful courts. Forty-nine women were entered; they are really improving their averages.

I also have a report from Archie Anderson who is Ass't. Reg. Dir. of S.W. Minnesota. He has been active in horseshoe for many years. He also was editor of our state horseshoe publication. The following is Archie's report:

The S.W. Minnesota Horseshoe Leagues was organized in 1953. Seven towns joined the first year namely Bingham Lake, Windom, Redwood Falls, Springfield, Worthington, Revere and Westbrook.

GENE ANDERSON — (Continued)

As time went on the league grew quite rapidly and at one time totalled 44 teams. The teams were divided into five leagues.

The league has been called the World's largest horseshoe league possibly due to the fact that at one time two of the teams were 225 miles apart. In 1980 we had four leagues and they were divided according to location and to some extent according to pitching ability.

For the last several years the number of teams in the league has remained quite constant at 34 clubs.

The past year three of the four leagues used the handicap system. This year (1981) all four leagues will use a 1½ point handicap for each ringer percentage difference in the two opponents ringer percentage. A pitcher with a 50% ringer average spots a 30% pitcher 30 points. The West League has used the point and a half for several years and have had four different winners in as many seasons.

This year all four leagues will be using the same scoring system. The four-man teams will score a total of 16 points in a night's play. If each of the four men on each club wins 2 and loses 2, the score for the night would end up at 8 points for each club. The point total is carried forward after each game and credit received. In the case of the playoff, of course the tie would be broken but not in regular season play. The winning team reports to the weekly bulletin and in case of a tie game the home team reports the score.

After the regular schedule has been completed a playoff takes place and the point and a half handicap also is used at that time. The playoffs are held at Westbrook a mid-point in the leagues circle.

The players are kept informed of what is going on in the league by a bulletin that is mailed out each week during the summer months and each team captain supplied with enough bulletins for his club. In this way everyone knows just what is taking place each week and a close tab can be kept track of in the team standings and the ringers that every pitcher has thrown the previous week. This has a tendency to make the league more interesting. Horseshoe tournaments are also listed in the bulletins so that pitchers can be informed.

After the season is over, each pitcher in the league is mailed a year book that shows the total shoes pitched by each thrower, ringers, doubles and final average.

Ladies too, are getting interested in the league and we now have about 10 that participate in league play.

The S.W. Leagues voted to insert a full page ad in the World Book that is to be published in accordance with our World Tournament at Genola this summer.

In 1981 I asked that my name not appear on the ballot for president as I have served in that capacity for the 28 years of the league and Keith Carey of Westbrook will fill that position.

STOCKTON TO HOST CALIFORNIA STATE CHAMPIONSHIPS SEPTEMBER 5-6

The Northern California Association will host the 1981 California State Championships in Stockton at the Louis Park Complex. The tourney is jointly sponsored by the Stockton Parks and Recreation Department and the Stockton Horseshoe Club.

This year's tournament will be no-qualifying and entrants will be placed in all categories by ringer percentage. Another unique feature is that Class D entrants (and below) will receive cash for the top four finishers plus two trophies. Also, to be eligible for the event, a pitcher must be an NHPA and California State member, and have pitched in at least *three* (3) sanctioned tournaments during the year. Deadline for eligibility is Friday, August 7th. Entrants must send their current percentage and a registration fee of \$10.00 (no fee for juniors) to Holland Payne, NCHPA Sec., Treas., 4985 Helen Way, Sacramento, CA 94566.

After all entries have been received, entrants will be notified as to approximate playing times of each group. Proposed are 12-man groups and 50-point games for men's classes A, B, and C, and 8-man groups and 50-shoe games for Class D and below. Women's, Seniors, and Junior groups will be determined by the number of registrants. A total of at least \$2600 in cash prizes plus trophies will be awarded.

JOE SCHULTZ TOP MAN IN WALTER BARKER MEMORIAL OPEN

Joe Schultz of Brentwood, New York went undefeated to win the Walter Barker Memorial Open tournament held at the Sharkey park courts in New Rochelle, New York on May 16. Art Tyson was the runner-up followed by Vivian Deuster in third spot.

The tournament was saddened by the report that Walter Barker, in whose name the tournament is held every year by the New Rochelle Club had passed away one week prior to the tournament. He was 84 years of age.

CLASS A — Joe Schultz, Brentwood, NY, 7-0-71.6 (83.3) (\$30.00); Art Tyson, Mt. Vernon, NY, 6-1-73.9 (83.2) (\$20.00); Vivian Deuster, Hampton Bays, NY, 5-2-68.8 (80.5) (\$15.00); Charlie Rugg, Bloomfield, NJ, 5-2-58.8 (71.3); Bob Sutton, Mineola, NY, 3-4-59.1 (80.8); Lou Stines, Queens, NY, 3-4-56.1 (63.5); Tom Turk, Newburgh, NY, 2-5-47.3 (56.2); Joe Hickey, Nutley, NJ, 2-5-47.0 (58.3); Terry Early, New Rochelle, NY, 2-5-43.2 (58.3); Dave Nemschick, Medford, NY, 0-7-40.7 (54.7). High single game and prize money indicated in parentheses.

CLASS B — Al Beebe, Millville, NY, 7-1-43.5 (62.5) (\$30.00); Len Zimmerman, Bronx, NY, 5-3-34.7 (54.1) (\$20.00); Jerry Nemschick, Patchogue, NY, 5-3-34.4 (53.3) (\$15.00); Jim Sharkey, N. Somers, NY, 5-3-33.8 (53.8); Ted Lewis, Millville, NJ, 4-4-37.9 (53.5); Walt Hooley, Montrose, NY, 3-5-35.4 (47.5); Owen Farmer, Bronx, NY, 3-5-24.8 (37.5); Walt Deuster, Hampton Bays, NY, 3-5-24.0 (35.2); F. Tyson, Mt. Vernon, NY, 1-7-24.3 (35.2). High single game and prize money indicated in parentheses.

CLASS C — Chet Bosiak, Belleville, NJ, 7-0-39.4 (48.0) (\$25.00); Tom Reitz, Brooklyn, NY, 6-1-36.2 (42.0) (\$15.00); Harry Schmidt, Jersey City, NJ, 4-3-23.1 (32.0) (\$12.00); Art Cosgrove, Yonkers, NY, 4-3-20.0 (28.0); Paul Meyerhoff, Bronx, NY, 3-4-30.2 (40.0); Jesse Cobb, New Rochelle, NY, 2-5-11.4 (20.0); Rich Barr, Bloomfield, NJ, 1-6-20.4 (32.0); Andy Lettus, New Rochelle, NY, 1-6-11.7 (20.0). High single game and prize money indicated in parentheses.

SCHULTZ CONTINUES WINNING WAYS —

COPS D. P. SHARKEY MEMORIAL —

NEW ROCHELLE, NEW YORK — JUNE 6

CLASS A — Joe Schultz, Brentwood, NY, 7-0-79.7 (89.3) (\$24.00); Art Tyson, Mt. Vernon, NY, 6-1-70.1 (76.5) (\$14.00); Bill MacIntyre, Middlesex, NJ, 4-3-69.5 (81.5) (\$10.00); Vivian Deuster, Hampton Bays, NY, 4-3-66.5 (84.6); Bob Sutton, Mineola, NY, 4-3-64.1 (74.1); Bernie Mullady, Belleville, NJ, 2-5-54.3 (63.5); Charlie Rugg, Bloomfield, NJ, 1-6-56.3 (76.5); Joe Hickey, Nutley, NJ, 0-7-44.7 (51.6). High single game and prize money indicated in parentheses.

CLASS B — Walt Bagley, New Haven, CT, 6-1-49. (53.5) (\$24.00); Terry Early, New Rochelle, NY, 5-2-51. (71.0) (\$14.00); Walt Deuster, Hampton Bays, NY, 5-2-50.3 (64.2) (\$10.00); Len Zimmerman, Bronx, NY, 4-3-43.5 (52.6); Joe Hardwick, New Rochelle, NY, 3-4-46. (55.2); Owen Farmer, Jr., East Brunswick, NJ, 3-4-37.3 (50.0); Jim Sharkey, N. Somers, NY, 1-6-37.8 (44.0); Owen Farmer, Sr., Bronx, NY, 1-6-35.3 (56.0). High single game and prize money indicated in parentheses.

CLASS C — (Handicap affair - 2 Points Win - 1 Point Tie). Walt Hooley, Montrose, NY, 10 Points-31.4 (40.0) (\$24.00); Harry Schmidt, Jersey City, NJ, 10 Points-27.4 (36.0) (\$14.00); Art Cosgrove, Yonkers, NY, 7 Points-24.9 (34.0) (\$10.00); Leo Ouellette, Brooklyn, NY, 7 Points-22.9 (34.0); Chet Bosiak, Belleville, NJ, 6 Points-38.6 (54.0); Marie Zichella, Bronx, NY, 6 Points-34.3 (42.0); Rich Barr, Bloomfield, NJ, 6 Points-18. (26.0); Paul Meyerhoff, Yonkers, NY, 4 Points-28. (34.0). High single game and prize money indicated in parentheses.

HELEN OUELLETTE OPEN CROWN NOW WORN BY J. SCHULTZ

CLASS A — Joe Schultz, NY, 6-1-73.2 (\$50.00); Joe Festa, CT, 6-1-70.0 (\$40.00); Art Tyson, NY, 5-2-70.3 (\$30.00); Charlie Rugg, NJ, 3-4-63.8 (\$20.00); Bob Sutton, NY, 3-4-62.9; Bernie Mullady, NJ, 3-4-53.9; Bill MacIntyre, NJ, 2-5-62.9; Lou Stines, NY, 0-7-57.2.

CLASS B — Walter Deuster, NY, 6-1-54.7 (\$40.00); Don Grady, NJ, 4-3-49.5 (\$30.00); Roger Hensen, CT, 4-3-48.7 (\$20.00); Gerry Moore, CT, 4-3-44.5; Terry Early, NY, 3-4-48.7; Tom Turk, NY, 3-4-48.4; Len Zimmerman, NY, 2-5-45.9; Joe Hickey, NJ, 2-5-41.6.

CLASS C — Horr Lee, NY, 3-2-48.0 (\$30.00); Owen Farmer, Jr., NJ, 3-2-38.7 (\$20.00); Jim Sharkey, NY, 3-2-37.3 (\$15.00); Tom Reitz, NY, 3-2-34.0; Chet Bosiak, NJ, 2-3-29.0; Marie Zichella, NY, 1-4-31.5.

NEW ROCHELLE, NEW YORK OPEN TITLE TAGGED BY J. SCHULTZ FOR HIS FOURTH STRAIGHT TOURNAMENT VICTORY

CLASS A — Joe Schultz, NY, 6-1-71.8 (\$27.00); Jerry Nemschick, NY, 4-3-62.6 (\$23.00); Bill MacIntyre, NJ, 4-3-62.4 (\$18.00); Bob Sutton, NY, 4-3-58.2 (\$12.00); Vivian Deuster, NY, 3-4-62.7; Bernie Mullady, NJ, 3-4-59.4; Lou Stines, NY, 3-4-59.0; Walter Deuster, NY, 0-7-47.2.

NEW YORK OPEN — (Continued)

CLASS B — Joe Siwek, CT, 7-1-56.9 (\$27.00); Joe Hickey, NJ, 6-2-55.9 (\$23.00); Terry Early, NY, 6-2-55.1 (\$18.00); Walt Bagley, CT, 5-3-45.8 (\$12.00); Gerry Bagley, CT, 4-4-47.8 (\$10.00); Jim Sharkey, NY, 4-4-42.8; John Loughery, NY, 2-6-46.7; Len Zimmerman, NY, 2-6-43.2; Owen Farmer, Sr., NY, *Forfeit*.

CLASS C — Chet Bosiak, NJ, 9-0-35.0 (\$27.00); J. Keeshan, NY, 7-2-25.8 (\$23.00); V. Pinelli, NY, 7-2-20.5 (\$18.00); Art Cosgrove, NY, 5-4-18.8 (\$12.00); Jesse Cobb, NY, 5-4-12.2 (\$10.00); Marie Quелlette, NY, 4-5-14.4; Farguhar, NY, 4-5-10.5; Bill Stockslager, NY, 3-6-11.3; Hugh MacLeod, NY, 1-8-10.8; J. Grimaldi, NY, 0-9-5.0.

MacINTYRE VICTOR OVER SCHULTZ AT NEW FREEDOM, PA

The 5th Annual New Freedom Open was held at New Freedom, Pennsylvania, June 27th and 28th. Pitchers from 4 states competed as Bill MacIntyre-New Jersey defeated Joe Schultz-New York in a Playoff for Class A - 52-45. In Class C Fred Lutter defeated Clark Walker both from New Freedom in a Playoff - 54-43. Dean McCurdy won Class B; he is from York, PA. Class D was won by Al Long from Dallas, PA. Class E was won by Hazel Fleshman from Maryland. While Class F was won by another York, PA pitcher-Dick Ruff.

CLASS A — Bill MacIntyre 6-1-69.3%; Joe Schultz 6-1-74.2%, Fritz Lutter 4-3-66.3%; Dale Carson 4-3-63.1%; Grant Powers 3-4-67.2%; Chuck Eyler 3-4-66.7%; Ray Bechtel 2-5-56.1%; Glen Rubendall 0-7-52.1%.

CLASS B — Dean McCurdy 7-0-56.5%; Jene Durham 5-2-51.9%; Ed Gohn 4-3-56.8%; Dick Wilson 4-3-48.1%; Frank Bechtel 3-4-49.2%; Glenn Eppley 3-4-46.9%; Bill Bruaw 1-6-45.9%; Byran Wilson 1-6-44.1%.

CLASS C — Fred Lutter 6-1-50.4%; Clark Walker 6-1-55.3%; Paul Kamont 5-2-50.2%; Earl Brown 3-4-46.2%; Jack Griffith 3-4-45.1%; Earl Lertz 3-4-41.0%; John Baugher 2-5-47.7%; Dave Ure 0-7-26.5%.

CLASS D — Alvin Long 6-1-39.4%; John Clippinger 5-2-43.3%; Bob Anderson 5-2-40.3%; Charles Koons 4-3-39.9%; John Lertz 3-4-41.2%; Lou Shields 2-5-36.3%; Gerard Harris 2-5-26.2%; Ivan Horton 1-6-22.6%.

CLASS E — Hazel Fleshman 5-0-45.0%; Donald Fleshman 3-2-36.9%; Donald Fleshman 3-2-36.0%; Tom Steinfelt 2-3-31.4%; Jim Harris 2-3-25.0%; Edgar Wiles 0-5-19.8%.

CLASS F — Dick Ruff 5-0-38.2%; Richard Arnold 4-1-28.7%; Ned Kinard 3-2-23.7%; Bob Heffner 2-3-32.1%; Darryl Eberly 1-4-24.5%; Wayne DeHart 0-5-16.3%.

WIEDRICH REPEATS IN SALEM-DALLAS, OREGON OPEN

The rain forced cancellation of all classes on Sunday except Class A. They journeyed to Wren and played on covered courts. Ben Wiedrich proceeded to break the records for 1981. His 77.39% tournament, 90.74% game and 12 consecutive doubles are all new records for the year. The other pitchers returned on Monday, but the threat of more rain kept some of them away. However, it turned out to be a beautiful day. Gene Sorenson came within 1.35% of winning himself \$50.00. He entered the tournament with 32.60% and pitched a 56.25% game. It was close and shows it can be done. Tournament was held at Salem, Oregon, May 24-25.

CLASS A — Ben Wiedrich, O.C., 7-0-77.3; Ridge Leggett, Roseburg, 5-2-65.2; Lowell Davis, Creswell, 5-2-70.8; Jim Burke, Albany, 4-3-64.9; Bob West, Scappoose, 3-4-62.7; Phil Tyler, Springfield, 2-5-53.2; Cletus Chapelle, Portland, 1-6-58.0; Vic Joyner, Philomath, 1-6-48.1.

CLASS B — Charles Wendling, Scio, 7-1-46.6; Oren McMillan, Eugene, 5-2-49.0; Rick Rebman, Hermiston, 5-2-50.2; Jerry Gorton, Pl. Hill, 3-3-34.7; Ron Hegefeld, Albany, 2-4-39.7; Esthel Benner, Salem, 1-5-34.2; Elmer Otnes, Oregon City, 0-6-26.7.

CLASS C — Jack Stryker, Portland, 4-1-30.7; Wayne Maag, Portland, 3-2-42.2; Vic Hyder, Madras, 2-3-36.0; Lloyd Kilgore, Dexter, 2-3-30.9; Al Moen, Eugene, 2-3-29.6; Irene Wiedrich, O.C., 2-3-25.0.

CLASS D — Gene Sorenson, Eugene, 5-0-39.8; Art Lund, Eugene, 4-1-30.1; Russ Ball, Portland 3-2-24.5; Glen Chaput, Corvallis, 1-4-18.8; Carl Shoberg, Lebanon, 1-4-18.6; Leo Connolly, Eugene, 1-4-9.6.

CORVALLIS, OREGON OPEN TITLE TAKEN IN TOW BY DAVIS

Lowell Davis of Cromwell, Oregon swept through Class A without a loss, posting a 77.3 ringer average. Ridge Leggett was second. The tournament was held in Corvallis, Oregon on May 30-31. Of special interest was Ken Southern as he won \$50.00 and topped Class F, pitching a 55.0 percent game which was more than the 25 percent needed to win the money.

OREGON OPEN — (Continued)

CLASS A — Lowell Davis, Creswell, 7-0-77.3; Ridge Leggett, Roseburg, 5-2-72.6; Jim Burke, Albany, 5-2-69.7; Ben Wiedrich, Ore. City, 4-3-74.5; Barry Chapelle, Portland, 3-4-69.4; Cletus Chapelle, Portland, 2-5-62.9; Phil Tyler, Springfield, 2-5-60.9; Jack Salter, Wash., 0-7-50.0.

CLASS B — Ray Meyer, Salem, 7-1-42.8; Charles Wendling, Scio, 6-2-46.4; Jim Kosterman, Wash., 5-3-44.5; Len Christensen, Harris., 5-3-39.6; Rick Rebman, Hermiston, 4-4-43.3; Oren McMillan, Eugene, 4-4-42.9; Irv Farron, Portland, 3-5-42.4; Esthel Benner, Salem, 1-7-36.2; Ethel Davis, Creswell, 1-7-31.9.

CLASS C — Jerry Gorton, Pl. Hill, 6-3-45.1; Ron Ferguson, Wash., 6-4-44.2; Wayne Maag, Portland, 5-4-43.4; Vern Wanless, McMinnville, 4-4-44.1; Alvin Goetz, Gardiner, 4-4-43.4; Ray Schiedler, Silverton, 4-4-41.6; Darrell Buell, Eugene, 4-4-40.4; Irene Wiedrich, Ore. City, 3-5-32.7; Don Ferguson, Wash., 2-6-38.2.

CLASS D — Ray Hobson, Amity, 6-1-42.2; Gene Sorenson, Eugene, 5-2-40.2; Ron Hegefeld, Albany, 4-3-42.2; Tom McAdam, Lebanon, 4-3-40.0; Norm Christensen, Eugene, 3-4-38.0; Jerry Wolfe, Corvallis, 3-4-37.1; Elmer Otnes, Oregon City, 2-5-34.1; Lloyd Kilgore, Dexter, 1-6-33.9.

CLASS F — Ed Dachtler, DePoe Bay, 5-0-30.1; Carl Shoberg, Lebanon, 4-1-26.3; Freeman Williams, Roseburg, 3-2-24.8; Tim Wolfe, Albany, 1-4-21.7; Bud Harkens, Springfield, 1-4-18.4; Henry McGrew, Albany, 1-4-18.1.

CLASS F — Ken Southern, Corvallis, 5-0-30.4; Don Snethen, Eugene, 3-2-22.7; Glenn Chaput, Corvallis, 3-2-20.3; Jess Shoemaker, Jefferson, 3-2-18.5; Leo Connolly, Eugene, 1-4 10.0; John Snethen, Eugene, 0-5-14.8.

ANNUAL ST. LOUIS, MISSOURI FALL OPEN — SEPTEMBER 12-13

The Annual St. Louis Fall Open tournament will be held Saturday, September 12 and Sunday, September 13 at the Carondelet Park courts in St. Louis, Missouri. Starting times for Classes A, B and C will be 1:30 P.M. on September 13. Classes D, E and F start at 9:00 A.M. September 13. All other classes will pitch Saturday, September 12. Trophies awarded 1st - 3rd in each class plus \$25.00 prize money to first place only in each class. \$10.00 entry fee and 100 shoe ringer percentage must be received by September 1. In the event of rain, tournament will be held the following Saturday and Sunday, September 19 and 20.

Those who drop out after deadline will forfeit their entry fee. All contestants will receive starting time and date by postcard. Checks should be made out to the Greater St. Louis Horseshoe Club and sent to Dave Dattilo, 6200 Scanlon, St. Louis, MO 63139 or call 647-9433. There will be food and refreshments available at courtside.

DOUBLE RINGER PUBLICATION AVAILABLE

Will Gullickson's Double Ringer publication — a series of 8 with emphasis on the World Tournament — are available for \$5 by writing Will Gullickson, 2850 26th St. S., Moorhead, MN 56560. The publication advertisement appeared in the July edition of the News Digest.

ALLARD OPEN SLATED AUGUST 15-16 AT MOORHEAD, MINNESOTA

The 13th annual Moorhead, Minnesota, Allard Open tournament will be held August 15 and 16 at the Moorhead American Legion-Park Board courts. Deadline for entries is August 8.

Allard Trophy Co., Valley City, N.D., is again offering \$200 in prize money. The Moorhead men's and women's horseshoe leagues are sponsoring the tourney and will present trophies to the top three pitchers in each division.

The tourney is one of the largest in the upper Midwest. Defending champions are Gust Magnuson of Hawley, MN, men's; and Jo Monson of Cooperstown, N.D., women's.

Pitchers are asked to send \$8.00 and league average and ringer percentage based on 450 or more shoes thrown during league play to Larry E. Redstad, 304 4th St. S., Moorhead, MN 56560. His telephone number is 218-236-7966.

Presidents of the Moorhead leagues are Lyle Romuld, men's; and Linda Mont, women's.

The 12-court Moorhead court complex is near downtown Moorhead and located at 200 8th St., N.

HENTON WINNER OF GALESBURG, ILLINOIS INVITATIONAL

Glen Henton of Maquoketa, Iowa won the 21st Invitational Tournament held at LINCOLN PARK, Galesburg, Illinois on July 4th. Ray Phillips of Magnolia, Illinois, the defending champion, was 2nd losing only by Henton.

Arnold Lester of Galesburg won Class B. Loren Gillespie, of Tremont, was second. Vern Stangeland of Peoria won Class C. Earl Johnson of Kewanee won Class E.

M. Haun of Kewanee won Class D.

CLASS A — Glen Henton, Maquoketa, IA, 5-0; Ray Phillips, Magnolia, IL, 4-1; Woody Martin, Pekin, IL, 2-3; Clint van Dusen, Galesburg, 2-3; John Law, Gladstone, IL, 1-4; Eldin Damarin, Peoria, IL, 1-4.

CLASS B — Arnold Lester, Galesburg, 5-0; Loren Gillespie, Tremont, IL, 4-1; Dale Swank, Toulon, IL, 3-2; Ross Sornberger, Galesburg, 2-3; Dewey Taylor, Galesburg, 1-4; Bob Switzer, Peoria, IL, 0-5.

CLASS C — Vern Stangeland, Peoria, 5-0; Earl Colgan, Toulon, IL, 3-2; Harry Anderson, Galesburg, 3-2; Earl Rosene, New Windsor, 3-2; Don Comingore, Galesburg, 1-4; Earl Reedy, Galesburg, 0-5.

CLASS D — M. Haun, Kewanee, 5-0; L. Robbins, Kewanee, 4-1; J. Sims, Galesburg, 3-2; Jake Davis, Columbus Jct., IA, 2-3; Bob St. George, Monmouth, 1-4; G. Rasmussen, Galesburg, 0-5.

CLASS E — E. Johnson, Kewanee, 5-0; Rick Gustafson, Galesburg, 3-2; R. Haun, Kewanee, 3-2; Archie Carter, Bradenton, FL, 2-3; Jack Bowles, Galesburg, 2-3; Larry Sims, Galesburg, 0-5.

NEW DISTRIBUTOR FOR OHIO HORSESHOES

After almost fifty years as a distributor for Ohio Horseshoes I have decided, for personal reasons, to turn this business over to Donnie Roberts, 9439 Camp Creek Road, Lucasville, Ohio, 45648. I am sure that Donnie will give you the kind of service that I have tried to give you over these many years.

I also want to take this opportunity to thank you, my customers for the fine business relationship we have had.

FOR THOSE WHO DESIRE THE VERY BEST

IMPERIAL

1980 U.S.A. PRICE LIST

(EFFECTIVE JUNE 1)

Postpaid

1 Pair.....\$25.00

2 to 5 Pair.....\$24.00

Freight Collect

6 Pr. & Over.....\$21.00

Available in Dead Soft and

Medium Soft with

Hardened Hooks

and Points

CLYDE MARTZ

- We now accept
MASTER CARD and
VISA.

- Note change of address.

- For quick service, phone
in your order after 6
p.m. Its cheap and easy.
Call (412) 731-4662

3726 Henley Dr.

Pittsburgh, PA 15235

DIETERICH, ILLINOIS CLUB TO CONDUCT OPEN TOURNAMENT

On August 15th the PABST Open tournament will get underway at the Dieterich Horseshoe Club's courts in Dieterich, Illinois. Send 50-shoe score with \$8.00 entry fee to John Waldhoff, Dieterich, Illinois, 62424 by August 9th. Telephone inquiry 217-925-5167. Trophies and prize money for each class. Post card with class and starting time will be mailed before August 15th. Rain date, August 16th. Total prize money will be \$300.

TO HOLD ROBINSON, ILLINOIS OPEN AUGUST 8

The Crawford County Horseshoe Club will conduct an Open tournament at the City Park courts in Robinson, Illinois on Saturday, August 8. The first 48 entries will be accepted. Deadline for entries is August 1st. Entry fee of \$6.00 must accompany all entries with a 100-shoe score. Send to Carl H. Smith, 510 East Main St., Oblong, Illinois, 62449. Tournament will start at 9 A.M. with afternoon session starting at 1 P.M. Players should be on courts one-half hour before. All entrants unable to be present on day of tournament should notify tournament director 24 hours in advance, Phone 618-592-4384.

OHIO STATE CHAMPIONSHIP — SEPT. 3-4-5-6-7 — GREENVILLE

The annual Ohio State Championships will start at the City park courts in Greenville Ohio, September 3, 4, 5, 6th and 7th. Qualifying will begin on Thursday, Sept. 3 from 6 p.m. till 10 p.m. On Friday, Sept. 4 from 2 p.m. till 11 p.m. Saturday, Sept. 5th, 8 a.m. till 12 noon. There will be NO RE-QUALIFYING. Each entrant will pitch 100 shoes for qualifying (men and women).

Entry fee is \$6.00 plus an NHPA card. Boys and Girls are free and signed in by noon on Saturday. Men and Women signed in by noon Saturday and qualified by 12:30 p.m. Saturday. Convention will convene immediately after qualifying.

Tournament play starts right after close of the convention. Boys and Girls and lower classes first. Class A Ladies will pitch at 7 p.m. Saturday. Scorekeepers must be paid before start of each game. Water and shovels will be at courtside. Playoffs in Class A only. Let's make this the best tournament ever.

JIM KNISLEY EASY WINNER IN XENIA, OHIO OPEN

C. STILL WINS LADIES TITLE HANDILY

CLASS A — J. Knisley, 7-0-79; G. Moon, 5-2-61.7; K. Kugler, 4-3-66.4; J. Pillion, 4-3-64.4; L. Miller, 3-4-60.6; P. Focht, 3-4-56.2; W. Luoma, 2-5-59.5; Z. Campbell, 0-7-46.2.

CLASS B — G. Meece, 5-0-64.6; J. Rhymer, 4-1-60.2; B. Sollar, 2-3-53.0; K. Wagonfield, 2-3-49.4; S. Powers, 1-4-50.3; E. Waggoner, 1-4-48.2.

CLASS C — T. Pierce, 4-1-58.0; G. Thorne, 4-1-52.1; L. Stephenson, 3-2-46.5; B. Walters, 2-3-46.9; F. Asher, 2-3-43.1; B. Schuler, 0-5-41.7.

CLASS D — D. Ullery, 4-1-47.5; E. Noe, 3-2-48.2; G. Pierson, 3-2-45.4; R. Morse, 3-2-41.6; E. Pratt, 1-4-46.2; A. Davis, 1-4-37.4.

CLASS E — G. Hackett, 5-1-37.2; W. Robinette, 4-2-34.4; M. Frazier, 3-3-38.2; L. Hite, 3-3-33.5; W. Still, 3-3-28.7; S. Huff, 2-4-31.4; L. Bair, 1-5-30.1.

CLASS F — G. Bean, 5-0-47.2; D. Razook, 4-1-41.0; W. Pierce, 2-3-36.5; D. Wheeler, 2-3-33.8; B. Woodson, 1-4-39.0; G. Peterson, 1-4-34.6.

CLASS G — R. Miller, 4-0-37.3; M. Flaig, 3-1-27.2; W. Mayes, 2-2-24.1; D. Saddler, 1-3-17.9; R. Knock, 0-4-20.1.

CLASS H — E. Ehemenn, 5-0-42.0; B. Pierson, 4-1-30.5; B. Ryan, 3-2-24.3; H. Allen, 1-4-25.4; B. Gentry, 1-4-25.1; W. Godwin, 1-4-22.8.

CLASS I — J. Fourman, 5-1-25.3; D. Waggoner, 5-1-23.5; J. Teevan, 2-4-18.5; M. Waggoner, 0-6-17.9.

WOMEN'S CLASS — C. Still, 4-2-67.3; J. Hymer, 3-3-27.0; J. Ryan, 3-3-22.6; A. Cecere, 2-4-41.3.

TARRI POWELL PLAYOFF VICTOR AT CHAMPAIGN, ILLINOIS

Tarrie Powell, former Ladies' champion of Illinois, playing in the Class A division competing with the men, was the winner of the Champaign-Urbana Open tournament held at the Centennial park courts in Champaign, Illinois on Sunday, June 14.

She was tied with Lloyd Ingersoll and Grant Hintz for first place at the end of regular play. In the playoff, Ingersoll defeated Hintz and Powell defeated Ingersoll for the title. H. Rusk topped Class B with 7 straight wins. B. Oakley won Class C while J. Boyer was the winner in Class D.

CLASS A — T. Powell, 4-1; L. Ingersoll, 4-1; G. Hintz, 4-1; W. Hooper, 2-3; L. Gillespie, 1-4; R. Young, 0-5.

CLASS B — H. Rusk, 7-0; N. Tisdale, 5-2; P. Dohrmann, 4-3; J. McKnight, 4-3; N. Boatz, 3-4; H. Rutan, 3-4; F. Stites, 1-6; B. Johnson, Forfeit.

CLASS C — B. Oakley, 6-1; L. Carey, 5-2; K. Cessna, 5-2; R. Stobaugh, 5-2; D. Connor, 4-3; A. Graves, 2-5; O. Clementz, 1-6; S. Dillman, 0-7.

CLASS D — J. Boyer, 4-1; A. Kaisershot, 4-1; K. Walters, 4-1; D. Wort, 2-3; B. Atterbarry, 1-4; B. Arnold, 0-5.

GREENFIELD, ILLINOIS OPEN TOURNAMENT — AUGUST 22

The Greenfield, Illinois Horseshoe League is sponsoring an open tournament to be held on Saturday, August 22 in that city. They have 12 new courts. Qualifying scores should be in not later than 11:30 A.M. on the tournament day. Play will start promptly at 1:30 P.M. Entry fee is \$7.00. Trophies will be awarded to the top three places in each class. Gale Dixon is the promoter and can be contacted by calling 217-368-2713, for further information.

★ ★ SPECIAL OFFER!!! ★ ★

SPECIAL GROUP DISCOUNT: 1 carton (52) hardcovers: \$230.00 or
1 carton (52) paperbacks: \$130.00

You save \$235.40 on hard & \$127.40 on paper... Great Value

SPECIAL SALE For limited time ONLY, Ottie Reno's Pitching Championship Horseshoes which sells for \$4.95 (paperback) and \$8.95 (hardcover) plus postage... You pay ONLY... \$3.00 (paperback) and \$6.00 (hardcover) and NO POSTAGE REQUIRED.

SPECIAL SALE If you buy 5 books, Ringer World will send you ONE book absolutely FREE! You will receive 6 paperbacks for ONLY \$15.00 for 6 hardcovers for ONLY \$30.00. If you buy 10 books, Ringer World will send you THREE books absolutely FREE! You will receive 13 paperbacks for ONLY \$30.00 or 13 hardcovers for ONLY \$60.00

SURPRISE your Tournament Winners with this Great Horseshoe Pitching Book
instead of the usual trophies

PITCHING CHAMPIONSHIP HORSESHOES

(Second Edition, Revised) by Ottie W. Reno

PITCHING CHAMPIONSHIP HORSESHOES is clearly written, well-illustrated by a state champion... it is crammed with rules, records, instructions for laying out your own backyard or tournament-style court, photographs of top players in action and these players' own pitching tips.

ACT NOW... Inventory is going FAST!!!

Just send your name, address and zip code with your check or money order to:



Ringer World Emporium, Inc.
60 East 42nd Street • Suite 411
New York, NY 10165

POWERS OF MARYLAND WINS DALLAS, PA AREA OPEN

By John Urbanc

The third annual Dallas Open tournament was held at the Back Mt. Recreation grounds on Saturday and Sunday, June 6-7, with good weather prevailing.

Pitchers from eastern Pennsylvania and Maryland made a steady round of ringers for the two days. Grant Powers, Maryland State Champion, was the winner posting a record of 6 wins and one loss and averaging 67.7 percent. Dan Beshore of New Cumberland, Pennsylvania was the runner-up with 5 wins and 2 losses, and recording a cool 72.7 ringer percentage. G. Brown was third and Carson fourth.

Class B honors went to Dean McCurdy of York after a play-off win over Joe Dadowski. Clark Walker topped Class C. Alvin "Peanuts" Long was undefeated in Class D.

CLASS A — G. Powers, 6-1-65.6; D. Beshore, 5-2-72.7; G. Brown, 5-2-65.2; D. Carson, 5-2-59.9; E. Gohn, 3-4-57.6; R. Bechtel, 3-4-54.5; Rubbendale, 1-6-54.0; F. Lutter, 0-7-53.3.

CLASS B — D. McCurdy, 6-1-52.7; J. Sadowski, 6-1-54.5; W. Ness, 4-3-41.7; P. Kamont, 3-4-47.3; D. Dart, 3-4-45.2; G. Durham, 3-4-45.9; G. Eppley, 3-4-45.4; B. Doster, 0-7-22.2.

CLASS C — C. Walker, 7-0-46.3; J. Swyers, 5-2-47.8; J. Sibley, 5-2-47.6; C. Ball, 4-3-43.1; F. Lutter, Jr., 3-4-41.4; E. Brown, 2-5-39.0; Clsewhite, 1-6-37.7; L. Shields, 1-6-32.3.

CLASS D — A. Long, 7-0-36.6; J. Clippenger, 5-2-35.1; J. King, 5-2-33.9; G. Harris, 4-3-31.8; Wilkenson, 3-4-32.2; C. Ashton, 2-5-29.5; J. Urbanc, 1-6-30.4; D. Ruff, 1-6-26.4.

DON WARD TOPS IN J. MIFF NAVE OPEN—ELIZABETHTON, TN

The first annual J. Miff Nave open tournament was held in Elizabethton, Tennessee, and was won by Don Ward with a perfect record of 5 straight victories held together with a 76.8 ringer percentage. In his game against Willie Stephens he pitched the high single game of 84.1 percent. Pitchers from Kentucky, North Carolina, South Carolina and Tennessee took part in the event. Beautiful weather favored the pitchers.

CLASS A — Don Ward, 5-0-76.8; A. J. Nave, 3-2-65.4; Jim Collins, 2-3-66.3; Stanley Jackson, 2-3-64.43; O. D. Lebow, 2-3-64.41; Willie Stephens, 1-4-60.8.

CLASS B — Grady Wholey, 5-0-60.9; Roger Norwood, 4-1-67.4; Gil Lebow, 2-3-59.0; Dexter Stallings, 2-3-55.1; George Lewis, 1-4-56.8; Jim Adkerson, 1-4-54.2.

CLASS C — Clifford Brown, 5-0-59.0; Jack Hammitt, 4-1-48.0; Steve Cornette, 2-3-43.2; Dan Isaacs, 2-3-40.3; James Wholey, 1-4-38.8; Richard Hardin, 1-4-30.0.

CLASS D — Willard White, 3-0-38.3; Ray Ward, 2-1-40.3; W. K. Sampson, 1-2-24.6; James Davis, 0-3-8.9.

TITCOMB WINS STOCKTON PARKS & REC. OPEN N. CALIFORNIA

Don Titcomb added the Stockton Parks and Recreation Open title as his fourth season tournament accomplishment. In his 5 straight wins was an 80 percent game and another of 84 percent. Dave Loucks finished in second place. Virginia Sturla, pitching in Class A against 5 men opponents, never looked back to take the measure of those bewildered gentlemen in the "ladies included" tourney. Lou Gayet topped Class B; Bob Hibbard, Class C; Earley Harris, Class D, and Lyle Bartels, Class E.

CLASS AA — Don Titcomb, 5-0-74.0; Dave Loucks, 4-1-64.0; Monte Latino, 2-3-62.0; Pete Manitone, 2-3-59.2; Mate McBride, 1-4-54.0; Marty Dunn, 1-4-47.6.

CLASS A — Virginia Sturla, 5-0-52.4; Vince Mauricio, 4-1-49.6; Verdan Zelman, 3-2-50.0; Juke Basham, 2-3-49.6; Vern Monegan, 1-4-33.6; Leonard Rood, 0-5-28.4.

CLASS B — Lou Gayet, 3-1-40.5; Don Forbes, 2-2-45.0; Joe Zogelman, 1-2-40.7; John Hintzman, 1-2-34.7.

CLASS C — Bob Hibbard, 5-1-38.0; Betty Forbes, 4-2-30.0; Marion Hawley, 3-2-30.4; George Palmer, 2-3-33.2; Edith Zogelman, 2-3-28.4; Lou Bayer, 0-5-22.8.

CLASS D — Harley Harris, 4-2-36.0; Bob Schnur, 4-3-25.7; Jim Adams, 3-3-29.7; Marthe Dunn, 2-3-30.0; Leo Harr, 2-3-29.2; John Hagerman, 2-3-24.8.

CLASS E — Lyle Bartels, 5-0-32.8; Eldon Bryhan, 4-1-22.4; Reese Cathy, 2-3-20.4; Donald Lee, 2-3-18.8; Wally Wahwoetten, 1-4-15.2; Donald Lee, Jr., 1-4-9.6.

FAHEY PLAYOFF WINNER IN TOLLESBORO (KENTUCKY) OPEN

S. MOORE WINNER IN LADIES CLASS

CLASS A — J. Fahey, 4-1-70.9; S. Lovelace, 4-1-70.3; R. Blevins, 3-2-60.7p C. Neikirk, 2-3-55.6; D. Walters, 1-4-61.9; B. Henn, 1-4-58.0.

CLASS B — B. Williams, 4-1-51.6; E. Mason, 4-1-49.0; T. Truesdell, 3-2-52.7; L. Moore, 3-2-47.6; Chick Henn, 1-4-46.4; P. Coleman, 0-5-36.0.

CLASS C — C. Neikirk, 4-1-51.8; G. Preston, 3-2-44.3; T. Truesdell, 3-2-43.9; E. Mason, 3-2-34.5; E. Bottom, 1-4-36.8; J. Walker, 1-4-35.9.

CLASS D — J. Minnich, 3-1-39.0; L. Moore, 3-1-42.9; J. Brown, 3-1-39.5; R. Spence, 1-3-38.0; C. Singleton, 0-4-34.7.

CLASS F — B. Moore, 5-0-38.4; Donohew, 3-2-33.8; Singleton, 3-2-33.6; S. Grayson, 2-3-22.9; D. Shelley, 1-4-22.0; G. Strode, 1-4-15.7.

CLASS G — R. Moore, 4-0-37.0; S. Grayson, 3-2-25.1; R. Wine, 2-2-15.8; G. Strode, 1-3-16.2; D. Kegley, 0-4-10.3.

WOMEN — S. Moore, 6-1-38.5; W. Wine, 6-1-31.3; C. Johnson, 6-1-33.5; B. Bottom, 4-3-31.4; L. Minnich, 3-4-23.6; M. Clarkson, 2-5-26.3; L. Walker, 1-6-14.2; P. Robinson, 0-7-6.9.

BLEVINS DROPS ONE, WINS CULVERTOWN, KENTUCKY OPEN

C. JOHNSON UNDEFEATED IN LADIES CLASS

CLASS A — R. Blevins, 7-1-60.4; E. Henry, 5-3-61.1; J. Stevenson, 5-3-58.9; L. Salings, 4-4-64.7; O. Blacketer, 4-4-57.1; D. Walters, 4-4-55.6; S. Lovelace, 3-5-59.9; J. Noble, 3-5-54.2; B. Henn, 1-7-49.5.

CLASS B — W. Bowling, 7-0-57.3; H. Copher, 4-3-51.2; E. Bottom, 4-3-47.3; Chick Henn, 3-4-42.2; B. Williams, 3-4-40.7; S. Reynolds, 3-4-39.5; B. Sanders, 2-5-45.3; P. Coleman, 2-5-45.3.

CLASS C — T. Truesdell, 6-1-52.0; E. Mason, 6-1-44.4; R. Barrett, 5-2-51.7; F. Nalley, 4-3-48.0; G. Preston, 3-4-52.0; L. Moore, 1-6-46.4; Cliff Henn, 1-6-39.1; J. Henderson, 1-6-36.3.

WOMEN — C. Johnson, 6-0-29.5; S. Moore, 5-1-26.7; L. Minnich, 2-4-21.5; P. Robinson, 0-6-5.6.

SCHULTZ OF NEW YORK SWEEPS CONNECTICUT OPEN

CLASS A — J. Schultz, 7-0-71.7; N. Rieux, 5-2-70.2; A. Tyson, 5-2-68.7; D. Weik, 4-3-64.2; R. Sutton, 3-4-60.8; E. Demey, 2-5-55.6; J. Festa, 2-5-54.6; G. Trabucchi, 0-7-55.3.

CLASS AA — D. Majewski, 7-0-56.6; W. Paradis, 5-2-54.6; R. Hensen, 5-2-48.5; R. Rodrigue, 3-4-44.5; J. Siwek, 3-4-43.4; G. Moore, 3-4-42.5; P. Bechese, 2-5-41.5; K. Middlebrook, 0-7-35.8.

CLASS B — A. Lateuche, 5-2-39.0; T. Monigan, 5-2-44.3; E. Salmon, 5-2-39.3; V. Williams, 4-3-36.0; R. De Grenier, 3-4-37.0; R. Dingus, 2-5-36.0; C. Gates, 2-5-35.3; W. Dickinsen, 2-5-33.6.

CLASS BB — J. Balne, 7-0-36.1; D. Bias, 6-1-33.6; F. Wagner, 4-3-28.1; D. Perkins, 3-4-33.6; K. Ericksen, 2-5-31.4; R. Hayden, 2-5-28.7; F. Tysen, 2-5-27.9; P. Bittner, 2-5-27.9.

CLASS C — M. Bias, 6-1-24.0; B. Sjevall, 5-2-18.8; J. Zygmunt, 4-3-26.5; W. Ryan, 4-3-18.8; D. Merrison, 3-4-27.4; R. Gesick, 3-4-20.8; L. Rhodes, 2-5-18.8; F. Conrod, 1-6-10.5.

A M E R I C A N

NHPA APPROVED

DESIGNED AND PITCHED BY CARL STEINFELDT

Additional Charge:

1- 500 miles, add \$1.00 per pr.
500-1000 miles, add \$1.50 per pr.
1000-2000 miles, add \$1.75 per pr.
2000 mi. or over, add \$2.00 per pr.

1 to 5 pairs — \$11.50

6 or more — \$11.00

Plus Postage

Port of Shipment

ROCHESTER, NEW YORK

ORDER DIRECT or from NHPA REPRESENTATIVE

CARL STEINFELDT, 44 Ridgecrest Road, Rochester, N. Y. 14626

GOHN TOP PLACE WINNER IN MARYLAND WICOMICO COUNTY INVITATIONAL OPEN—BLADES & FLESHMAN DOUBLES

Eddie Gohn of Pennsylvania posted an 8-1-47.6 record to win the Wicomico County Invitational Open held May 16-17 at the Picnic Island courts in Salisbury, Maryland. Meet was sponsored by the Wicomico County Recreation and Parks Dept. Clayton Henson of Virginia was the runner-up in Class A. Jack Blades and Hazel Fleshman combined their efforts to win the Class A title in the Doubles competition.

CLASS A — Eddie Gohn, PA, 8-1-47.6; Clayton, Henson, VA, 7-2-49.1; Fred Beeman, MD, 5-4-43.9; Alvin Vinsant, VA, 5-4-42.8; Wayne Willey, MD, 5-4-40.4; Jack Blades, MD, 4-5-43.1; Willard Sammons, DE, 4-5-39.1; Doc Bevan, MD, 3-6-41.6; Gary Calloway, MD, 3-6-37.6; John Shaw, VA, 1-8-39.7.

CLASS B — Glenn Eppley, PA, 7-0-36.3; Kennard Holden, MD, 6-1-39.1; Stanley Abell, MD, 6-1-39.1; Stanley Abell, MD, 4-3-33.1; Gary Rust, DE, 4-3-32.5; Al Nelson, MD, 3-4-31.8; Mike Doukas, MD, 2-5-25.4; Louis Walls, MD, 1-6-28.1; Hal Ronning, VA, 1-6-23.0.

CLASS C — Hazel Fleshman, MD, 7-0-39.5; Danny O'Neal, DE, 5-2-33.1; Thomas Chance, DE, 5-2-30.6; George Layton, MD, 4-3-22.4; Don Ransom, MD, 3-4-25.1; Dave Moser, MD, 2-5-26.0; William C. Taylor, VA, 2-5-22.1; Don Fleshman, Sr., MD, 1-2-Forfeit.

CLASS D — Charles Cherrex, Sr., MD, 6-1-29.3; Clark Townsend, MD, 5-2-28.7; Don Fleshman, Jr., MD, 5-2-24.7; Ed Cavey, MD, 5-2-24.0; Charlie Stapleton, MD, 4-3-21.0; Bill Taylor, MD, 2-5-14.0; Bill Besece, MD, 1-6-18.3; James McKenzie, MD, 0-2-Forfeit.

CLASS E — Robert Bunn, MD, 4-1-10.5; Gary Fleshman, MD, 3-2-13.0; Lance Wheatley, MD, 3-2-8.0; Jim Wooters, MD, 1-3-11.0; Lester Carroll, MD, 0-4-5.5.

MROZAK WINNER IN GUIDO GIORGETTI TOURNEY IN CONN.

CLASS A — W. Mrozak, 4-1-50.0; J. Festa, 4-1-53.7; Den Hansen, 3-2-45.5; W. Paradis, 2-3-47.3; P. Techese, 1-4-46.6; D. Majewski, 1-4-37.2.

CLASS B — G. Moore, 6-1-48.2; T. Monigan, 5-2-46.9; V. Williams, 5-2-43.5; C. Gates, 4-3-43.5; A. Latouche, 3-4-39.4; D. Bias, 3-4-38.1; M. Bradley, 2-5-39.3; D. Perkins, 0-7-24.8.

CLASS C — J. Benton, 6-1-30.8; M. Bias, 5-2-27.4; W. Ryan, 5-2-23.7; R. Gesick, 4-3-29.9; D. Colandene, 4-3-25.7; B. Sjoval, 3-4-19.7; F. Conrod, 1-6-10.6; R. Aronson, 0-7-13.7.

CARTHAGE, ILLINOIS FALL OPEN SET FOR SEPTEMBER 19

The Annual Fall Tournament of the Carthage Horseshoe Club will be held at the Jaycee Park on September 19. *This is a change from an earlier announcement.*

Classes D, E, F and Ladies are to pitch in the morning, beginning at 9:30. Classes A, B and C will begin as soon as possible after noon.

Entry fee is \$7.00. Trophies will be awarded to the top three pitchers in each class. Ladies will be awarded cash.

Advance registrations may be made with Chalmer McClain, 717 Wabash, Carthage, IL 62321. Phone 217—357-3427.

DAVIS TOPS SMITH FOR KEENE, N.H. WARM-UP TITLE MARY ROBERTS, LADIES—SCOTT DANEALT, BOYS

The Keene, New Hampshire annual Warm-Up tournament drew a wonderful turnout among which were many new faces. Tournament was limited to New Hampshire residents only. In the play-off the championship it was Bernard Davis taking the measure of Brian Smith in a tight contest, 39-34, with Davis hitting 59.2 percent and Smith 53.7 percent. Mary Roberts had a 4-1-33.0 record to win the ladies title, while Scott Daneault had an untarnished record of 6-0-30.0 to sweep the Junior class.

CLASS A — Bernard Davis, Boscowan, 6-1-55.0; Brien Smith, Keene, 6-1-56.5; Steve Squires, Jr., Derry, 4-3-53.7; Mike Donovan, Manchester, 4-3-48.4; Skip Tyraquair, Keene, 2-5-42.2; Steve Squires, Sr., Derry, 2-5-42.2; Bob Traquair, Keene, 2-5-42.2; Kick Belanger, Bedford, 2-5-41.3.

CLASS B — Norm Ricard, Hudson, 5-2-39.5; Richard Doble, Keene, 5-23-38.8; Merrill Smith, New Ipswich,

DAVIS TOPS — (Continued)

4-3-42.9; Ron Desrosier, New Ipswich, 4-3-41.1; Ray Fife, Sr., Penacook, 4-3-35.7; Doug Gagnon, Raymond, 3-4-36.3; Sam Raymond, Pelham, 2-5-31.5; Mike Kibbie, Penacook, 1-6-32.5.

CLASS C — Warren Hall, Nashua, 6-1-45.0; Robert Ladd, Bow, 5-2-37.0; Dave Wescott, Concord, 4-3-37.6; Herbert Cox, Milton, 4-3-33.2; Larry Croteau, Keene, 4-3-32.4; George Quinn, Wilton, 2-5-23.4; Lynn Fullam, Charlestown, 2-5-20.9; Ricky Fife, Renacook 1-6-20.9.

CLASS D — Steve Lowell, Webster, 6-1-37.7; Norman Davey, Nashua, 5-2-44.5; Gary Waters, Penacook, 5-2-38.0; Don LeChance, Manchester, 5-2-33.8; Andre Daneault, Suncook, 3-4-26.1; Robert Brovillard, Nashua, 3-4-22.9; Ken Thebodeau, Nashua, 1-6-17.5; Jim Styles, Merrimack, 0-7-12.9.

CLASS E — John Miner, Nashua, 7-0-25.7; Ray Towle, Litchfield, 6-1-30.6; Dave Bailargeon, Newmarket, 4-3-29.8; Cliff Whipple, Keene, 4-3-27.2; Richard Smith, Sr., Keene, 4-3-23.0; Jerry Gagne, Newmarket, 2-5-20.9; Harry Griffin, Keene, 1-6-10.7; Mal Georgina, Keene, 0-7-12.9.

CLASS F — Richard Plourde, Suncook, 7-0-34.0; Stan Bigelow, Bedford, 5-2-23.0; Don McIlvene, Keene, 5-2-19.8; Randy Lake, Keene, 5-2-17.2; Victor Sirois, Union, 3-4-18.2; Phil Bernard, Newmarket, 2-5-10.1; Roland Henner, Union, 1-6-11.2; J. Keenam, Nashua, 0-7-12.4.

WOMEN — Mary Roberts, Jaffrey, 3-1-33.0; Colleen Boudreau, Rinoge, 2-2-28.0; Lucille DesRosieres, New Ipswich, 1-3-29.0.

JUNIORS — Scott Daneault, Suncook, 6-0-30.0; Bill Traquair, Keene, 4-2-32.0; Jim Daneault, Suncook, 1-5-13.0; Kerry Plourde, Suncook, 1-5-12.0.

SOUTHERN CALIFORNIA ASSOCIATION

FERNAND ISAIS OPEN — Ronnie Simmons, Bellflower, 7-0-75.1; Heman Standard, Orange, 6-1-70.3; Byron Cork, Shoshone, 5-2-52.3; Earl Kerr, Anaheim, 4-3-50.4; Les Burroughs, Perris, 3-4-43.7; Doyle Brawley, Riverside, 1-6-47.2; Bill Cork, Shoshone, 1-6-43.2; Orville Lokken, San Bernardino, 1-6-40.5.

GROUP II — Charlie Parsons, Lucerne Valley, 7-0-39.6; George Whittemore, Rosemead, 6-1-34.9; Bill Robb, Burbank, 4-2-46.2; Jim Dow, Glendale, 4-2-33.8; Thomas Buch, Sun City, 4-2-34.7; Gene Van Sant, Sun City, 4-2-33.7; Jack Chesshir, Apple Valley, 3-3-36.2; Milt Gibbs, San Bernardino, 3-3-35.5; Charlie Everhart, San Bernardino, 3-3-32.5; Ken Vickery, Riverside, 2-4-38.3; Gil Salazar, Pasadena, 1-5-31.2; Joe Holder, Calimesa, 1-5-26.4; Earl Hogan, San Bernardino, 0-6-25.3; Ralph Carter, Rialto, 0-6-16.0.

WOMEN HANDICAP — Dorothy McAllister, Sun City, 3-1-52.1; Barbara Dow, Glendale, 2-2-44.7; Mary Van Sant, Sun City, 1-2-48.6; Jo Vickery, Riverside, 1-2-52.2.

JO VICKERY DOUBLES — Barbara Dow, Bill Robb, 8-3; Jim Weeks, Lloyd Porter, 7-4; Mary Van Sant, Frank Hernandez, 7-4; Jo Vickery, Kay Brawley, 6-5; Doyle Brawley, George Whittemore, 6-5; Joe Raykowski, Jim Dow, 6-5; Harry Morse, Ron Kennel, 5-6; Gene Van Sant, Chuck Yoshida, 5-6; Al Nichols, Gerry Kloefer, 4-7; Les Burroughs, Ken Anderson, 4-7; Ken Vickery, Wally Shipley, 4-7; Stan Hilton, Joe Kollar, 4-7.

RON SIMMONS WINS "DOUBLE YOUR MONEY" TOURNEY AT RIVERSIDE, CALIFORNIA — ROBB, B, KENNEL, C

When it comes to money, Ronnie Simmons of Bellflower, California put 7 straight wins combined with a 70.1 ringer percentage on the board to win the first "Double Your Money" tournament held at the Riverside, California courts. Doyle Brawley is to complemented for his fine efforts in making the courts possible. Runner-up in the Class A section was Mary Van Sant who had 5 wins and two losses and a ringer average of 52.1. Bill Robb won Class B and Ron Kennel Class C.

GROUP A — Ron Simmons, Bellflower, 7-0-70.12; Mary Van Sant, Sun City, 5-2-52.1; Heman Standard, Orange, 4-3-61.8; Earl Kerr, Anaheim, 3-4-40.9; Harold Slagg, Ontario, 3-4-35.0; Doyle Brawley, Riverside, 3-4-36.8; Stan Hilton, Burbank, 2-5-45.3; Milt Gibbs, San Bernardino, 1-6-38.0.

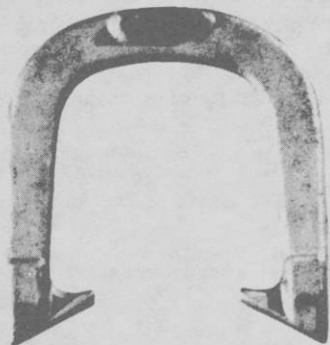
GROUP B — Bill Robb, Burbank, 7-0-43.9; Gene Van Sant, Sun City, 5-2-38.8; Joe Raykowski, Rialto, 5-2-32.3; Gerry Kloefer, Yucaipa, 3-4-30.2; Jim Dow, Glendale, 3-4-30.0; Ken Vickery, Riverside, 3-4-35.0; Bill Hubbs, San Ysidro, 2-5-30.5; Charlie Parsons, Lucerne Valley, 0-7-30.1.

GROUP C — Ron Kennel, Riverside, 5-2-24.5; Wally Shipley, Newport Beach, 5-2-29.6; Lee Hubbs, Pomona, 4-3-26.3; George Whittemore, Rosemead, 4-3-35.4; Jeff Jonucz, Chula Vista, 4-3-25.9; George Farrell, Corona Del Mar, 3-4-23.5; Paul Bellah, Spring Valley, 3-4-26.3; Ralph Alvine, Chula Vista, 0-7-9.0.

HAIGH DAY DOUBLES — Barbara Dow, Ken Vickery, 5-2; Jo Vickery, Virgil Dickey, 5-2; Orville Lokken, Earl Hogan, 5-2; Jim Eozzo, Charlie Everhart, 4-3; Harold Slagg, Jim Dow, 4-3; Milt Gibbs, Gerry Kloefer, 4-3; Jim Weeks, George Whittemore, 1-6.

Since 1931

GORDON "Spin-On"



— 3 TEMPER —

Medium With Hardened Calks
Dead Soft Hard

Southern California Representative
JERRY SCHNEIDER
3144 W. Paso Robles Drive
ANAHEIM, CALIFORNIA 92804
714-826-0684

APPROVED BY NNPA

OFFICIAL STAKES ALSO AVAILABLE

THE QUEEN CITY FORGING CO.

233 TENNYSON STREET

CINCINNATI, OHIO 45226

ARLINGTON, TEXAS OPEN TITLE TAKEN BY COKE BOWKER JANET WALROD OF OKLAHOMA WINS LADIES—GERDSEN, JRS.

The Arlington Iron Benders Horseshoe Club hosted the Arlington Open in Arlington, Texas on June 6. Present state champion Coke Bowker overcame two close games to go undefeated in winning this tournament. Lloyd Viles won the second place trophy and shared high game honors with Bowker with games of 74%. Out of state entrant, Janet Walrod from Yukon, Oklahoma averaged 60.6% to win women's Class A without a loss. In men's Class B, Charles Tomerlin had his best tournament in winning with a 7-0 record and a high game of 68.0%.

CLASS A — Coke Bowker, 6-0-66.9; Lloyd Viles, 4-3-60.7; Archie Roach, 4-3-54.6; Stan Smith, 4-3-52.8; Don Walrod, 3-4-52.3; Charlie Posey, 2-5-57.4; Jeff Gaston, 2-5-51.7; Rod Hatton, 2-5-48.3.

CLASS B — Charles Tomerlin, 7-0-53.4; Glen Morris, 5-2-43.4; Jim Burrow, 5-2-38.3; Bill Babb, 4-3-41.4; Bill Joseph, 3-4-38.0; Perry Craigmyle, 2-5-35.1; Bobby Williams, 2-5-30.1; Nolan Morris, 0-7-34.9.

CLASS C — Don Lloyd, 6-1-36.3; Dean Campbell, 5-2-40.0; Dave Penwell, 4-3-36.6; Ken Rice, 4-3-33.7; George Meyer, 4-3-33.1; Ken Berend, 4-3-28.0; Cliff Jenschke, 1-6-30.9; Charles Anderle, 0-7-25.7.

CLASS D — Clyde Gerdson, 8-0-34.8; Steve Oefinger, 6-2-32.5; Rusty Jones, 5-3-31.0; Joe Bordinaro, 5-3-29.5; Scott McBrearty, 4-4-30.5; Bob Emerson, 4-4-25.3; Ron Thomas, 3-5-27.8; Randy Jones, 1-7-18.5; Jack Brefczynski, 0-8-22.3.

CLASS E — Allan Bond, 5-0-17.2; Lee Brown, 4-1-16.8; C. A. McBrearty, 3-2-17.2; Jack Babb, 2-3-11.2; Pat Emerson, 1-4-9.6; Bill Townsend, 0-5-6.0.

CLASS F — Fred Cross, 4-0-10.0; Sammy Helmers, 2-2-6.5; Bill Williams, 0-4-5.0.

WOMEN A — Janet Walrod, 4-0-60.6; Jerry Babb, 3-1-47.5; Sharon Crane, 1-3-34.5; Margie Viles, 1-3-29.4; Leah Posey, 1-3-25.6.

WOMEN B — Jean Helmers, 3-0-25.3; Katie McBrearty, 2-1-9.3; Jackie Joseph, 1-2-4.0; Verna Cross, 0-3-6.0.

JUNIORS — Mike Gerdson, 4-0-45.0; Terri Jenschke, 2-2-29.4; Shane McBrearty, 0-4-5.0.

GRAHAM COMES FROM BEHIND—WINS GRAPELAND, TX OPEN SHARON CRANE WINS 7 FOR LADIES CROWN

Bob Graham overcame being behind 24-42 in his game with Charlie Posey to go undefeated to win the Grapeland Open on June 20. Posey was awarded the trophy with a higher percentage than Lloyd Viles for second place, Glen Morrid regained his former style to win Class B. In Class C there was a three way tie for first place and Terrell Wilkinson won the playoff over Ron Thomas and Mason Watkins. Class D also had a playoff over Ron Thomas and Mason Watkins, Class D also had a playoff for first with Randy Jones winning over Michael Goble. Fred Cross remained undefeated for the year in tournament play by winning Class E. Sharon Crane, getting her game back after a maternity leave, was undefeated in winning the women's class.

CLASS A — Bob Graham, 6-0-60.2; Charlie Posey, 4-2-59.1; Lloyd Viles, 4-2-56.0; Jeff Gaston, 3-3-55.0; Stan Smith, 3-3-52.1; Hal Mineer, 1-5-44.2; Bob McCharen, 0-6-41.3.

CLASS B — Glen Morris, 4-1-44.7; Jesse Brown, 3-2-45.4; Dean Campbell, 3-2-42.3; Dave Penwell, 3-2-39.1; Nolan Morris, 2-3-34.0; Bill Joseph, 0-5-25.4.

CLASS C — Terrell Wilkinson, 8-1-35.3; Ron Thomas, 6-2-38.4; Mason Watkins, 6-2-34.2; Rusty Jones, 4-3-35.2; George Meyer, 2-5-25.4; Scott McBrearty, 2-5-23.3; Al Ward, 1-6-25.3; Ross Richardson, 1-6-22.9.

CLASS D — Randy Jones, 6-1-23.5; Michael Goble, 5-2-25.1; Robert Goble, 4-2-25.6; C. A. McBrearty, 3-3-24.4; Robert Smith, 2-4-25.6; Charlie Moore, 2-4-24.4; Allan Bond, 0-6-17.1.

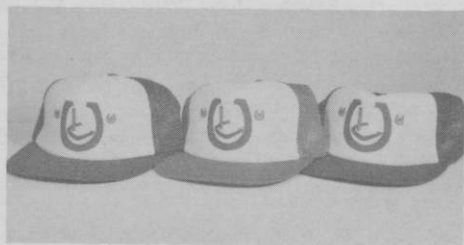
CLASS E — Fred Cross, 6-0-13.9; Mike Skidmore, 4-2-12.0; Vernon Crane, 4-2-7.4; Jim Watson, 4-2-7.3; Tracy Provenzano, 2-4-7.4; Bill Williams, 1-5-3.5; Lance Davis, 0-6-3.2.

WOMEN — Sharon Crane, 7-0-34.0; Fran Duhon, 6-1-24.8; Margie Viles, 4-3-25.7; Leah Posey, 4-3-25.3; Jo Juan Watson, 3-4-17.3; Jean Helmers, 3-4-10.5; Verna Cross, 1-6-4.3; Janice Williams, 0-7-3.5.

INTRODUCING . . .

The brand new Horseshoe Pitcher's Ringer Caps!

These great caps are made of cotton with 4 nylon mesh panels and are fully adjustable. Comes in bright colors of either Red and White or Blue and White.



The colorful horseshoe and peg design lets everyone know . . .

YOUR A HORSESHOE PITCHER!!!

To order your cap(s) NOW . .

Just send \$5 plus \$1 for postage & handling with your name, address and zip code to:

(Don't forget to specify the color you want.)



Ringer World Emporium, Inc.
60 East 42nd Street • Suite 411
New York, NY 10165

ELMER HOHL HORSESHOE AVAILABLE DESIGNED AND PITCHED BY ELMER HOHL

(6 Times World Champion)

Order from:

DON KOSO

803 East 12th Street
Falls City, Nebraska 68355

HERB PINCH

592 Hull Street
Sharon, Pennsylvania 16146

WRITE FOR PRICES



NHPA Approved

KNISLEY WINS SILVER DOLLAR OPEN (OHIO)

CLASS A — Jim Knisley, 6-1-69.6; Gary Roberts, 6-1-76.5; Clyde Martz, 4-3-70.5; Don Kuchcinski, 4-3-63.8; Frank Coursen, 3-4-66.8; Levi Miller, 2-5-53.2; Ansil Copland, 2-5-52.5; Carl Young, 1-6-56.4.

CLASS B — Laurence Miller, 5-2-58.6; Harold Wipert, 5-2-62.1; John Brown, 5-2-55.1; George Moon, 4-3-61.4; Jim Rhipner, 4-3-54.4; Knute Wagonfield, 2-5-49.7; Dave Rose, 2-5-48.7; Dick Whiteman, 1-6-44.

CLASS C — Glenn Santee, 7-0-57.6; Ed Pratt, 5-2-40.8; Norwood Ramey, 4-3-46.5; Lester Stephenson, 4-3-44.3; Vic Hitchcock, 3-4-42.4; Earl Nol, 3-4-39.4; Tom Wilkins, 1-6-39.4; Les Rose, 1-6-37.3.

CLASS D — Fred White, 7-0-51.2; Gerry Thome, 5-2-46.0; Ronald Roberts, 4-3-44.5; Tom King, 4-3-43.5; Jerry Kerns, 3-4-40.3; Bob Johnson, 2-5-42.2; Francis Asher, 2-5-39.0; Walbert Stewart, 1-6-35.5.

CLASS E WAS RAINED OUT

CLASS F — Eunice Rollins, 7-0-56.8; Glenn Mitchell, 5-2-37.7; Bill Bauman, 5-2-37.6; Jesse Huffman, 4-3-29.0; Lester Hate, 3-4-36.0; Herb McCoskey, 2-5-27.1; Bill McManes, 1-6-29.1; Jerome Boesch, 1-6-21.2.

CLASS G — Edwin E. Ehemann, 6-1-41.4; Raymond Harmon, 5-2-33.2; Claude Bastic, 5-2-33.1; Junior Lisk, 4-3-35.9; Dave Martens, Jr., 4-3-33.8; Tom Young, 2-5-22.0; Gus Peterson, 2-5-20.8; Steve Larey, 0-7-16.1.

CLASS H — Charles Myers, 6-1-29.4; Eugene Boch, 6-1-26.1; Paul Finnefrock, 5-2-29.4; Earl Ritchie, 5-2-29.0; Paul Mack, 3-4-21.3; Denney Waggoner, 2-5-20.0; Eric Brown, 1-6-9.1; Robert Householder, 0-7-7.0.

SOUTHERN CALIFORNIA ASSOCIATION

HARPER "E" HANDICAP — George Whittemore Rosemead, 7-0-44.1; Jim Hudson, Burbank, 5-2-39.2; Bill Jones, Burbank, 6-1-32.0; Fred Craven, Bellflower, 4-3-29.1; Wally Shipley, Newport Beach, 4-2-29.7; Gil Salazar, Pasadena, 4-2-30.5; Erwin Klessig, Lynwood, 3-3-21.5; Boyce Miller, San Clemente, 3-3-29.1; Gene Winkler, Burbank, 2-4-21.5; John Cummiskey, Burbank, 2-4-25.1; Hank Romines, Long Beach, 1-5-22.5; Harold Baughman, Burbank, 1-5-25.0; Jim Dow, Glendale, 1-5-28.8; Herman Vollmer, Santa Monica, 1-5-20.2.

32% & UNDER HANDICAP — Ken Ziemer, Barstow, 6-3-36.0; Don Myers, Burbank, 6-3-32.6; Wally Shipley, Newport Beach, 6-3-35.9; Hank Romines, Long Beach, 5-4-26.1; Kee Blackrock, Maywood, 5-4-32.0; Harold Redding, Burbank, 4-5-30.7; Gil Salazar, Pasadena, 3-6-32.6; Gene Winkler, Burbank, 2-7-21.3; Fred Craven, Bellflower, 2-7-25.2.

ELMER BELLER OPEN — Ronnie Simmons, Bellflower, 8-0-78.4; Eston Brown, Anaheim, 6-2-60.8; Stan Hilton, Burbank, 6-2-55.1; Jim Eozzo, Los Angeles, 5-3-47.5; Art Amador, Los Alamitos, 4-4-42.3; Stan Dobson, La Mesa, 2-6-45.2; Louis Mahlstedt, Lake Isabella, 2-6-44.3; Doyle Brawley, Riverside, 2-6-43.9; Ray Silva, Santa Barbara, 1-7-34.1.

BELLER CLASS B — Jack Schoonover, Orange, 7-1-40.0; Frank Morales, Santa Barbara, 6-2-40.7; Harold Siagg, Ontario, 5-3-42.4; Ken Vickery, Riverside, 4-4-34.9; Charlie Parsons, Lucerne Valley, 4-4-33.8; Gene Van Sant, Sun City, 3-5-38.1; Bill Robb, Burbank, 3-5-37.7; George Whittemore, Rosemead, 3-5-34.4; Jim Dow, Glendale, 1-7-29.8.

BELLER C — Wally Shipley, Newport Beach, 7-0-37.5; Hans Peterson, Pico Rivera, 5-2-39.6; Bill Neal, Anaheim, 4-3-32.7; Mike Silva, Santa Barbara, 3-4-37.8; Larry Ford, San Diego, 3-4-28.9; Kee Blackrock, Maywood, 2-5-27.8; George Farrell, Corona Del Mar, 2-5-25.2; Erwin Klessig, Lynwood, 2-5-23.6.

BELLER - WOMEN — Mary Van Sant, Sun City, 3-0-57.9; Jo Vickerey, Riverside, 2-1-51.1; Barbara Dow, Glendale, 1-2-42.7; Kay Brawley, Riverside, 0-3-13.9.

W. WILLIAMS WINS NEW MEXICO ANNUAL SPITTOON OPEN

Players and spectators alike, were amazed when Walter Ray Williams, Jr. pitched a perfect 100% game in 24 shoes, and had no problems in going un-defeated to be the new winner in the Spittoon Tour.

The 8th annual Spittoon Open, was held at Los Altos Park, in Albuquerque, New Mexico on May 30-31, with the Hanes' family as directors and Lou Franken as co-director.

Every entrant received a spittoon in this NHPA sanctioned event. There were several "Firsts". First time a current World Champion entered an Albuquerque Tournament, First time to have 5 states represented, First time to have Class and Individual pictures taken. In all but Men's Class "F" the class champion was un-defeated.

MEN'S CLASS A — Walter Ray Williams, Calif. 7-0-86.7; T. Towne, Albuquerque, 6-1-68.7; S. Hanes, Albuquerque, 4-3-56.4; B. Landrum, Albuquerque, 4-3-52.9; H. Bentz, Albuquerque, 3-4-52.4; J. Otterbach, Albuquerque, 3-4-40.4; F. Romero, Albuquerque, 1-6-38.4; D. Hanes, Albuquerque, 1-6-33.6.

CLASS B — C. Wilcox, Albuquerque, 7-0-46.0; O. Henson, Albuquerque, 6-1-42.4; D. Pasono, Albuquerque, 5-2-44.8; M. Larkins, Sr., Farmington, 4-3-44.5; G. Abrams, Colorado, 2-5-39.9; E. Pulliam, Santa Fe, 2-5-34.2; K. Bishop, Farmington, 1-6-32.7; J. Heff, Farmington, 1-6-31.1.

CLASS C — C. Bodley, Milan, 8-0-33.0; R. Priddy, Jemez Springs, 7-1-40.8; N. Pasono, Albuquerque, 5-3-28.7; R. Handley, Albuquerque, 5-3-27.7; W. Tyler, Albuquerque, 3-5-33.5; B. Schuch, Albuquerque, 3-5-29.7; J. Stockton, Albuquerque, 3-5-26.3; M. Cahill, Albuquerque, 1-7-26.8; J. Bishop, Lindrith, 1-7-18.2; G. Lucero, Raton, forfeit.

CLASS D — D. Valdez, Raton, 6-0-35.9; M. J. Martin, Albuquerque, 3-2-33.4; M. Larkin, Arizona, 31.4; P. Sheets, Farmington, 2-3-28.4; B. Curz, Raton, 2-3-23.3; B. McGregor, Albuquerque, 0-5-15.7.

CLASS E — J. Mascarenas, Albuquerque, 4-0-21.6; S. Ezell, Edgewood, 2-2-24.5; R. Salazar, Albuquerque, 2-2-24.4; M. Trimble, Albuquerque, 2-2-21.6; L. Bartel, Oregon, 0-4-7.0; D. Hayworth, Albuquerque, forfeit.

CLASS F — G. Newfield, Albuquerque, 2-1-12.8; G. Jones, Albuquerque, 2-1-16.1; J. Fisher, Albuquerque, 1-2-9.1; W. Hanes, Albuquerque, 1-2-6.3.

LADIES A — N. Rowe, Albuquerque, 7-0-55.5; G. Adkins, Albuquerque, 6-1-40.6; L. Wood, Jemez Springs, 5-2-36.6; S. Bartel, Oregon, 4-3-41.8; S. Cahill, Albuquerque, 2-5-32.5; C. Larkins, Arizona, 2-5-30.3; M. Hanes, Albuquerque, 1-6-31.9; A. Abrams, Colorado, 1-6-25.2.

LADIES CLASS B — P. Henson, Albuquerque, 4-0-26.7; T. Pasono, Albuquerque, 3-1-32.6; T. Martin, Albuquerque, 2-2-25.7; K. Bishop, Farmington, 1-3-32.6; M. Ezell, Edgewood, 0-4-13.5; V. Mauldin, Albuquerque, forfeit.

JUNIORS — N. Garcia, Albuquerque, 3-0-16.3; M. Hanes, Albuquerque, 0-3-6.7.

KNAUF OF WASHINGTON VICTOR IN LEWISTON, IDAHO OPEN

Henry Knauf of Spokane, Washington paid a visit to the Lewiston, Idaho Open tournament held in that city and proceeded to take full charge of Class A winning with seven straight and posting a cool 73.4 ringer percentage. John Cothorn of Buhl, Idaho was the runner-up. In the ladies class it was Alice Rehard also of Spokane with a 4-2-40.3 record to win the ladies title. Duane Shove of Hayden Lake, Idaho had no problem in the Junior class with 6 wins and a 35.3 percentage. The tournament was held on the College Hill courts.

MEN'S CLASS A — Henry Knauf, Spokane, WA, 7-0-73.4; John Cothorn, Buhl, ID, 5-2-54.7; George Sala, Spokane, WA, 5-2-53.2; Dean Curry, Lewiston, ID, 4-3-52.5; Clarence Cummins, Saint Maries, ID, 4-3-50.0; Dayton Martindale, Royal City, WA, 2-5-50.0; Howard Abbott, LaGrande, OR, 1-6-43.1; Jim Jones, LaGrande, OR, 0-7-32.7.

MEN'S CLASS B — Howard Seaman, Fernwood, ID, 7-1-34.4; Tom J. Worthington, Spokane, WA, 6-2-38.7; Ray Looper, Spokane, WA, 4-3-33.7; Cleo Rouse, Sandpoint, ID, 4-3-28.9; Elmer Currie, Coeur d'Alene, ID, 3-4-36.7; Cort Mathewson, Kellogg, ID, 3-4-33.6; Len Lukens, Hermiston, OR, 2-5-30.8; Les Robinson, Kellogg, ID, 0-7-21.7.

MEN'S CLASS C — Tom Strite, Sandpoint, ID, 5-0-30.2; Don Shove, Hayden Lake, ID, 3-2-24.1; Walt McGarvey, Lewiston, ID, 3-2-23.5; Brian Watson, Osborn, ID, 3-2-16.0; Bill Cothorn, Buhl, ID, 1-4-16.5; Tom W. Worthington, Spokane, WA, forfeit.

MEN'S CLASS D — Kraig Allen, Lewiston, ID, 5-1-24.6; Tom Brownlee, Spokane, WA, 4-2-21.3; Morris Martin, Spokane, WA, 3-2-14.6; Don Allen, Orofino, ID, 2-3-12.6; Mike Thomas, Spokane, WA, 2-3-09.0; Rick Malcom, Lewiston, ID, 0-5-03.0.

LADIES — Alice Rehard, Spokane, WA, 4-2-40.3; Carlene Shove, Hayden Lake, ID, 2-4-16.3.

JUNIORS — Duane Shove, Hayden Lake, ID, 6-0-35.3; Lorena Shove, Hayden Lake, ID, 0-6-07.3.

DEADEYE HORSESHOES

The Shoes of a Champion



Walter Ray Williams, Jr.

1978 World Champion 84.2% Average

1980 World Champion, 85.7% Average

1980 California State Champion 87.8 Average

"DEADEYE" Clydesdale model available in 2# 10 oz. and 2# 9 oz.

"DEADEYE" Regular model available in 2# 8 oz. down to 2# 3 oz. in 1 oz. increments.

"DEADEYE" N.T. Model (No point in back) available in 2# 9 oz.; 2# 8 oz., and 2# 7 oz.

Please specify weight desires when ordering

PROMPT SHIPMENT FROM:

Walter Ray Williams, Jr.

6140 Grant Street

Chino, California 91710

W.A. Courtwright

2250 North Lark Drive

Fenton, Missouri 63026

Phone: 314-376-5222

Carl Steinfeldt

44 Ridgecrest Road

Rochester, NY 14626

(Summer Address)

Carl Steinfeldt

418 Shady Lane Mobile Park

15400 Roosevelt Blvd.

Clearwater, Florida 33520

(Winter Address)

**PITCHED & ENDORSED
BY**

Walter Ray Williams

TEMPERED DEAD SOFT—

NHPA APPROVED

\$23⁰⁰ Per Pair

TWO YEAR

GUARANTEE AGAINST

BREAKAGE

VALID THROUGH 1981

Write W. Courtwright

or

Walter Ray Williams

for

SPECIAL CLUB PRICES

Effective November 1, 1980 — ADD ON FOR POSTAGE

1-500 Miles: Add \$1.00 per pair

500-1000 Miles: Add \$1.50 per pair

1000-2000 Miles: Add \$1.75 per pair

2000 Miles or Over: Add \$2.00 per pair

MONDAY IN "BLAZER" TO RETAIN TITLE IN ANNUAL APPLE VALLEY VIRGINIA OPEN — H. FLESHMAN WINS LADIES

Cecil Monday opened up all the stops as he set a "hot" pace to win the annual Apple Valley Open tournament and retaining his title with a 10 and 1 record and sporting an 81.1 ringer percentage to finish the task. His only loss was to Alvin Perry who ran second. Hazel Fleshman from Maryland was undefeated in the Ladies class, winning over Renee Hix in the final game. Renee is a very promising young pitcher.

MENS CLASS A — Cecil Monday, Virginia, 10-1-81.2; Alvin Perry, Virginia, 9-2-74.6; Clyde Martz, Penn., 9-2-72.1; Dan Beshore, Penn., 8-3-74.4; Allen Perry, Virginia, 7-4-71.8; Charles Price, Vir., 5-6-67.2; C.M. Eyler, PA, 5-6-63.1; Curt Over, PA, 4-7-65.2; Casey Danner, PA, 4-7-61.9; Robert Toney, VA, 4-7-60.0; Carl Maier, PA, 1-10-51.0; Clayton Henson, VA, 1-10-51.0.

LADIES CLASS A — Hazel Fleshman, MD, 3-0-37.9; Renee Hix, VA, 2-1-41.6; Debby Merriner, VA, 1-2-15.5; Cindy Merriner, VA, 0-3-18.0.

MENS CLASS B — Floyd Hix, Jr., VA, 6-1-57.2; Ralph Hinkle, WVA, 5-2-51.1; Ed Sell, PA, 4-3-53.4; Paul Miller, VA, 4-3-47.6; Ralph Landis, WVA, 4-3-46.0; Dennis Unger, WVA, 2-5-45.9; Claude Painter, VA, 2-5-39.6; John Baugher, PA, 1-6-42.9.

MENS CLASS C — Joe Roebuck, PA, 5-0-39.8; Phil Law, VA, 4-1-51.8; Willard Sammons, DE, 3-2-41.1; Ronald Vogel, NJ, 2-3-41.0; George Sinclair, VA, 1-4-43.1; Jack Griffith, PA, 0-5-33.4.

MENS CLASS D — Eddie Orndorff, VA, 4-1-43.0; Herman Torrence, VA, 4-1-37.4; Bill Williams, PA, 4-1-37.6; Millard Young, VA, 2-3-30.9; Donald Miller, WVA, 1-4-34.3; Joe Orsini, PA, 0-5-23.4.

MENS CLASS E — Glenn Eppley, PA, 4-1-36.8; Chuck West, VA, 4-1-40.3; Charles Worsham, VA, 3-2-34.1; Jim Danner, PA, 2-3-31.6; Donnie Fleshman, MD, 2-3-28.5; George Wertz, PA, 0-5-27.8.

MENS CLASS F — Darrell Caldwell, MD, 5-0-34.4; Junion Weigle, WVA, 3-2-31.3; Howard Walker, VA, 2-3-25.1; Don Fleshman, Sr., MD, 2-3-23.4; Lynn Millot, MD, 2-3-22.9; Hal Ronning, VA, 1-4-18.3.

MENS CLASS G — Phill Lewis, VA, 3-1-21.5; Elroy Mathias, VA, 2-2-20.4; Philip Fleshman, MD, 2-2-18.5; Toby Whetzel, VA, 2-2-18.8; Jesse Grimm, VA, 1-3-18.1.

MENS CLASS H — Buddy Merriner, VA, 2-0-17.5; Gary Fleshman, MD, 1-1-15.3; Paul Chisne, MD, 0-2-7.1; Thomas Easton, MD, WD.

PIONEER DAYS — ILLINOIS/INDIANA SPECIAL TOURNEY TITLE WON BY VAN SANT AT CAYUGA, INDIANA JUNE 6-7

Despite losing to Bill Holland in a nip and tuck battle that went to a 110 shoes with Bill winning 36 to 34 and hanging on 89 ringers while Karl was hooking on 88 with each having 4 ringers on the stake 29 times. VanSant won the title with a 6-1-78.4 record. In the Ladies Division, Tari Powell of Rankin, IL wrapped up the title easily with an undefeated record of 5 wins and 58.3 ringer percentage. Eric Kingma was the easy winner in the Junior class with 4 straight wins and 56.7 percent.

CLASS A — Karl VanSant, Cayuga, 6-1-78.4; Cliff Baker, Sheldon, IL, 5-2-74.3; Bill Holland, Stilesville, 5-2-70.8; Burl Taylor, Greencastle, 4-3-66.8; Bill Neilson, Dugger, 4-3-63.0; Peck Anderson, Martinsville, 3-4-60.1; Roy Billingsley, Crawfordsville, 1-6-55.9; Vic Pfaff, Huntingburg, 0-7-51.5.

CLASS B — (playoff) Hunter Dorman, Jasonville, 6-1-61.8; Dale Henry, Owensville, 6-1-59.9; Will McNeece, Patoka, 4-3-63.5; G.H. Palmer, Vincennes, 4-3-55.5; Don Claypool, Mellott, 3-4-57.1; Arthur Burch, Scottsburg, 3-4-54.4; Jim Pierson, Mooresville, 1-6-43.9; Ted Stoltz, Oblong, IL, 1-6-42.7.

CLASS C — John Shuck, Sharpsville, 6-1-61.8; Lora Pearman, Newport, 6-1-54.8; Bob Vail, Linden, 5-2-52.9; Gary Poindexter, Wolcott, 4-3-44.0; Leo Dellinger, Bicknell, 3-4-43.4; Schenck Brooks, Paris, IL 2-5-45.9; Glenn O'Neal, Milford, 2-5-37.5; Harold Cadwallader, Lafayette, 0-7-35.7.

CLASS DD — (playoff) Henry Franke, Centralia, 5-2-39.8; Harry Groce, Veedersburg, 5-2-45.1; Jim McIntosh, Owensville, 4-3-46.5; Paul Joslen, Franklin, 4-3-36.9; John Kolaiser, Bloomingdale, 3-4-47.0; Gene Croce, Hillsboro, 3-4-42.0; Dick Judd, Hammond, 2-5-33.8; Art Cornelius, Linton, 2-5-31.6.

CLASS D — Martin Drummond, Perryville, 6-1-50.0; Fred Draper, Delphi, 5-2-47.7; Everett Bowyer, Peru, 5-2-40.9; Bob Steimel, Bicknell, 5-2-36.8; Denny Zawierucha, Lafayette, 4-3-36.1; Jeff Bowyer, Frankfort, 2-5-42.2; Luther Chandler, Indianapolis, 1-6-30.7; Larry Hipsher, Kingman, 0-7-13.6.

PIONEER DAYS — (Continued)

CLASS E — (playoff) Olie Hubbard, Henryville, 5-2-37.0; Max Kelch, Kingman, 5-2-42.2; Junior Guthrie, South Bend, 5-2-34.7; Tom Norman, Newport, 4-3-30.5; Rick Smith, Annapolis, IL 3-4-34.1; John Hammons, Crawfordsville, 3-4-32.7; Chester Evans, Bridgeport, IL, 3-4-32.2.

CLASS F — Bob Prohaska, Porter, 6-1-37.9; Charles Jarred, Perryville, 5-2-29.3; George Hancock, Veedersburg, 4-3-32.2; Harold Green, Lafayette, 4-3-28.9; Gerald Wolfe, Dugger, 4-3-27.4; Bob Henry, Crawfordsville, 2-5-30.2; Lowell Cummings, Indianapolis, 2-5-24.8; Bob Hovis, Hammond, 1-6-18.2.

CLASS G — (playoff) Luther Chandler, Indianapolis, 4-1-20.1; Larry Ward, Crawfordsville, 4-1-23.3; Roy Franke, Centralia, 3-2-22.3; Chester Supthin, Hammond, 2-3-22.0; Bob Young, Champaign, 2-3-16.7; Randy McKinnis, Lafayette, 0-5-19.4.

CLASS H — (playoff) Bob Hovis, Hammond, 3-2-15.8; Mike Conger, Cayuga, 3-2-18.0; Jim Hawn, Cayuga, 3-2-16.7; Mike Guthrie, South Bend, 1-4-13.5.

WOMENS CLASS A — Tari Powell, Rankin, 5-0-58.3; Phyllis Anderson, Martinsville, 4-1-37.6; Lorena Poindexter, Wolcott, 3-2-38.5; Joy Young, Champaign, 2-3-37.5; Carol Rahfeldt, Portage, 1-4-24.3; Charline McKinley, West Newton, 0-5-24.6.

JUNIOR CLASS A — Eric Kingma, Lafayette, 4-0-56.7; Rick Henry, Owensville, 2-2-39.4; Mike Pfaff, 0-4-19.7.

CLASS B — Robert Davis, Cayuga, 2-0-6.0; Carolyn Green, Lafayette, 0-2-1.0.

VERSAILLES, ILL. ANNUAL OPEN — SEPTEMBER 19

Under the guidance of Sid Logsdon, the annual Versailles Open tournament will get underway on Saturday, September 19th at Versailles, Illinois. There will be six classes with trophies for top three places. All entries and fee of \$7.00 must be in by 11:30 on the day of the tournament. All classes will play at the same time. An extra fee of \$2.00 will be charged for Class A and B pitchers. Send 50-shoe score and fee of \$7.00 to **Sid Logsdon, P.O. Box 78, Versailles, IL 62378. Phone: (217) 225-3331**, or bring in on day of tournament.

BELLMAN WINNER IN WABASH VALLEY SPECIAL (INDIANA)

CLASS A — Clarence Bellman, Bremen, 6-1-66.8; Peck Anderson, Martinsville, 5-2-59.1; Bill Neilson, Dugger, 5-2-56.9; Ed Kowatch, Culver, 3-4-50.7; Lloyd Clerget, Monticello, 3-4-49.3; Dick Burnworth, Upland, 2-5-50.9; Glenn Hoppes, Summitville, 2-5-49.7; Roe Claussen, Hebron, 2-5-44.6.

CLASS B — Jim Pierson, Mooresville, 7-0-54.9; John Shuck, Sharpsville, 6-1-51.0; Gary Poindexter, Wolcott, 4-3-47.1; Larry Hill, Indianapolis, 4-3-46.0; Bob Molt, Indianapolis, 3-4-48.5; Ed Howdeshell, Rochester, 2-5-44.6; Lora Pearman, Newport, 2-5-41.6; Jim Crone, New Lison, 0-7-39.8.

CLASS C — Harold Cadwallader, Lafayette, 6-1-44.7; Wayne McClintock, Anderson, 5-2-45.4; Bob Pence, Lafayette, 5-2-43.3; Glenn O'Neal, Milford, IL, 4-3-38.7; Fred Draper, Delphi, 4-3-37.4; Tim Poindexter, Wolcott, 35.2; Vern Wagoner, Pine Village, 2-5-35.5.

CLASS D — (playoff) Jim Shilling, Spencerville, 6-1-38.3; Martin Drummond, Perryville, 6-1-40.2; Wayne Draper, Brookston, 5-2-43.6; Glenn Whiteaker, Lafayette, 3-4-38.2; Don Draper, Monticello, 3-4-34.5; Jeff Bowyer, Frankfort, 3-4-32.2; Don Spray, Frankfort, 35.4; Jeff Bowyer, Frankfort, 3-4-32.2; Don Spray, Frankfort, 35.4; Joe Rinehart, Battleground, 0-7-27.7.

CLASS E — Everett Bowyer, Peru, 6-1-34.4; Junior Guthrie, South Bend, 5-2-31.8; Denny Zawierucha, Lafayette, 5-2-30.2; Jim Mikesell, Economy, 3-4-31.0; Harold Green, Lafayette, 3-4-25.7; Max Gunyon, Frankfort, 3-4-25.7; John Hammons, Crawfordsville, 2-5-30.2; Kyle Kingma, Lafayette, 1-6-22.8.

CLASS F — Earl Richardson, Lafayette, 7-0-32.6; Bill Everett, Lafayette, 6-1-37.2; Everett Ford, Otterbein, 5-2-27.8; Bob Henry, Crawfordsville, 3-4-27.7; Dave Herring, Marion, 3-4-25.2; Elmer Branson, Gaston, 2-5-30.6; Bob Reid, Scottsburg, 2-5-24.5; Bob Prohaska, Porter, 0-7-16.3.

CLASS G — Harold Holle, Lafayette, 6-1-37.1; George DeHart, Lafayette, 5-2-30.1; Harold Bice, Lafayette, 5-2-27.9; Grant Davis, Otterbein, 4-3-27.8; Russ Sanson, N. Manchester, 4-3-26.4; Harold Green, Lafayette, 2-5-25.6; Jim DeLashmet, Lafayette, 1-6-19.9; Ed Pearson, Lafayette, 1-6-16.6.

CLASS H — (Playoff) Lowell Cummings, Indianapolis, 6-1-26.5; Ron Kukral, Chesterton, 6-1-27.6; Don Stivers, Lafayette, 5-2-22.1; Mark Price, Wolcott, 4-3-18.0; Jim Griffith, Jonesboro, 3-4-17.1; Charles Hobbs, Marion, 2-5-16.2; John Walls, Attica, 1-6-16.4; Gerry Dreyer, Crawfordsville, 1-6-12.7.

WABASH VALLEY SPECIAL — (Continued)

CLASS I — Luther Chandler, Indianapolis, 6-1-27.3; Larry Ward, Crawfordsville, 5-2-20.5; Jim Gosnell, Seymour, 5-2-17.5; Randy McKinnis, Lafayette, 4-3-21.8; Fred Armentrout, Speedway, 4-3-18.6; Sylvester Hahn, Jr., Elwood, 3-4-15.9; Mike Guthrie, South Bend, 1-6-7.7.

WOMEN CLASS A — Bonnie Seibold, Huntington, 5-0-67.2; Tari Powell, Rankin, 4-1-59.1; Betty Branson, Gaston, 3-2-40.7; Lorena Poindexter, Wolcott, 2-3-37.6; Jackie Fisher, Elwood, 1-4-25.6; Phyllis Anderson, Martinsville, 0-5-22.0.

WOMENS CLASS B — Ileta Davis, Otterbein, 4-0-41.9; Beth Herring, Marion, 1-3-29.7; Charline McKinley, West Newton, 1-3-26.5.

JUNIORS CLASS B — Don Spray, Frankfort, 3-0-16.0; Jody Burnworth, Upland, 2-1-12.5; Kevin Roberts, Frankfort, 1-2-2.0; Carolyn Green, Lafayette, 0-3-2.0.

BESHORE TITLIST IN SHELOCTA, PA KEYSTONE SPECIAL FRAN CARNAHAN UNDEFEATED LADIES' CHAMP

CLASS A — Dan Bashore, 7-0-68.7; Curt Over, 5-2-59.9; Cassey Danner, 3-4-58.8; Rich Maroni, 4-3-51.1; Peter Vlachos, 2-5-54.1; Bob McKnight, 3-4-56.9; Ramond Rogg, 1-6-48.9; Ed Blum, 3-4-50.7.

CLASS B — Herman Boyer, 2-5-48.0; Russle Welton, 5-2-49.4; Chuck Roball, 3-4-50.5; Dick Carnahan, 7-0-63.1; Vince Sedlacek, 5-2-56.2; Joe Roebuck, 1-6-42.3; Joe Geci, 4-3-47.8; Wilbert Rugg, 1-6-45.3.

CLASS C — Bill Geci, 2-5-32.8; Paul Decker, 2-5-34.5; Glenn Williams, 5-2-38.5; Bob Lapping, 2-5-31.8; Ed Donawitz, 1-6-23.9; Clarence Dixon, 6-1-48.8; Edward Horneman, 6-1-49.2; Clark Carnahan, 5-2-41.2.

CLASS D — Charles Denk, 3-3-28.2; Don Harper, 1-5-32.4; Bob Lapping, 2-4-30.6; Harr Clement, 4-2-42.1; Marv Savers, 6-0-45.7; Tom Piscolich, 4-2-42.3; John Williams, Jr., 2-4-27.2.

CLASS E — Bill Williams, 3-4-31.6; Richard Carnahan, 2-5-29.3; James Danner, 4-3-34.0; Joe Mancini, 5-2-37.1; Ron Gaydos, 2-5-35.5; H. D. Farnen, 6-1-46.1; Bob Scekeres, 5-2-36.2; Joe Orsini, 1-6-27.9.

CLASS F — Paul Grey, 2-5-26.1; Wendell Carnahan, 4-3-26.5; Tom Weston, 4-3-27.6; Calvin Bittner, 1-6-18.4; Ron Weiss, 5-2-27.0; Don Gaston, 2-5-23.2; Ken Widdowson, 3-4-27.5; John Marusa, 7-0-29.4.

CLASS G — Glenn Carnahan, 6-1-21.0; Ben Biss, 4-3-24.5; James Dunmire, 3-4-19.6; Frank Bodnar, 3-4-22.5; Ramond Penrose, 3-4-24.4; Darl Orr, 6-1-30.1; Don Pierce, 0-7-10.0; Bob Rinehart, 3-4-23.5.

CLASS H — Paul Gemza, 4-3-18.5; Paul Weston, 2-5-17.3; Allan Held, 6-1-26.5; Don Carnahan, 3-4-19.2; William Frye, 2-5-18.0; Chester Mock, 5-2-23.4; Ernest Wilson, 3-4-22.6; Butch Stover, 3-4-17.2.

CLASS I — John Carnahan, 2-5-12.0; Carol Rinehart, 4-3-17.0; Scott Williams, 2-5-20.2; Dwight Wetzell, 3-4-20.6; Vaughn Dotts, 4-3-15.5; David Carnahan, 2-5-10.2; Run Blystone, 5-2-20.5; Charles Weston, 7-0-23.0.

CLASS J — Butch McCullough, 5-1-20.0; Maurice Tossi, 5-1-18.1; Harve Tressler, 2-4-12.5; Gary Blystone, 1-5-13.0; Chuck Vansickle, 3-3-12.0; Don Carnahan, 5-1-19.5; Ken Blystone, 6-0-10.5.

CLASS K — Jim Carnahan, 2-3-10.0; Fred McMullen, 3-2-11.2; Charles Held, 0-5-4.5; Bill Nastase, 1-4-3.0; Ken Turnbull, 5-0-12.5; Jim Wood, 4-1-14.4.

LADIES CLASS A — Fran Carnahan, 5-0-53.0; Margaret Orr, 0-5-3.1; Shirley Porter, 4-1-22.0; Kay Bittner, 3-2-19.6; Carol Rinehart, 2-3-11.5; Grace Rugg, 1-4-3.1.

LADIES CLASS B — Jerry Frye, 4-2-4.3; Dot Carnahan, 4-2-5.3; Carol Weston, 4-2-4.0; Betty Lapping, 2-2-2.7; Marie Wetzell, 1-5-2.3; Marsha Carnahan, 6-0-13.6; Shirley Stover, 0-5-1.7.

LADIES CLASS C — Sandy Carnahan, 5-1-14.0; Eleanor Weston, 4-2-13.6; Gladys Dunmire, 3-3-5.0; Jean Blakney, 2-4-4.3; Anna M. Marusa, 1-4-3.0; Bev Carnahan, 5-1-18.0; Marie Penrose, 2-5-2.5.

FIRST TRI-STATE OPEN TITLE WON BY DON SCHNECK

Don Schneck of Colorado Springs bucked winds up to 60 miles an hour in his drive to win the first TRI-STATE Open tournament held at Scottsbluff, Nebraska May 23-24. He won the title with 7 wins and 3 losses which included a playoff victory over Jim Tulk of LaSalle, Colorado. Players turned out from Colorado, Wyoming, and Western Nebraska.

CLASS A — Don Schneck, CO, 7-3-46.8; Jim Tulk, CO, 6-4-50.9; Bill Tourcheck, NE, 5-4-48.3; Bob Engle, CO, 5-4-47.4; Hugo Lenz, WY, 5-4-47.3; Ken Raymond, WY, 5-4-44.7; Paul Anderson, NE, 4-5-42.1; Dick Weatherbee, CO, 3-6-44.2; Earl Graves, CO, 3-6-43.3; Les Grosenbach, CO, 3-6-38.8.

TRI STATE OPEN — (Continued)

CLASS B — Darrell Stempel, WY, 9-0-47.6; Dick Hanshaw, CO, 6-3-44.9; Gordon Ashner, CO, 6-3-42.0; Bud Schliske, WY, 5-4-42.6; Dale Boss, CO, 5-4-41.8; George Schmidt, NE, 4-5-38.3; Glen Bales, NE, 3-6-41.1; George Abrams, CO, 3-6-35.7; Swayne Tarket, CO, 3-6-35.7; George Sterwert, CO, 1-8-35.5.

CLASS C — Mart Bakken, NE, 8-1-39.3; Don Randall, NE, 6-3-38.4; Hank Guettlar, CO, 6-3-34.5; Don Laurin, WY, 4-5-36.5; Taber Brandt, NE, 4-5-30.3; Gary Rickard, WY, 4-5-30.1; Don Frass, NE, 4-5-29.7; Harve Bauer, NE, 4-5-32.8; Mark Calve, CO, 3-6-30.5; Ken Peck, 2-7-34.3.

CLASS D — Russell Grooms, NE, 9-0-41.2; Mike Brauer, NE, 8-1-36.6; Keith Thompson, CO, 6-3-30.5; Bob Rupp, NE, 5-4-33.9; John Fiala, NE, 5-4-29.7; Steve Ruddock, CO, 4-5-31.7; Virgil King, NE, 3-6-23.1; J. F. Anderson, NE, 3-6-22.0; Ray Jessen, NE, 2-7-29.0; Gary Munger, NE, 1-8-20.6.

CLASS E — Charlie Dobberstino, NE, 8-1-28.9; John Guettler, NE, 7-2-28.0; John Huntzinger, CO, 6-3-23.9; W. Rogers, NE, 5-4-24.5; Fred Rein, NE, 5-4-21.1; Wayne Smith, WY, 4-5-25.3; Ted Westphelan, NE, 4-5-21.5; John Andreas, NE, 2-7-24.9; Howard Schroyer, WY, 2-7-20.1; Jim Fitts, NE, 2-7-18.2.

CLASS F — Jim Hilzer, NE, 5-2-18.5; Ron Hanshaw, NE, 5-2-17.0; John Maser, NE, 4-3-19.1; Dean Freeborg, WY, 4-3-17.9; Jim Parnell, NE, 4-3-16.7; Henry Bolties, NE, 3-4-16.6; Lloyd Bauer, CO, 2-5-12.3; Gresy Walker, NE, 1-6-15.7.

CLASS G — H. Krause, NE, 7-0-15.2; Randall Wills, NE, 4-3-12.5; Steve Lease, NE, 4-3-10.5; Jed Cotton, NE, 4-3-8.1; H. Schmich, NE, 3-4-9.2; E. Caps, NE, 3-4-8.5; Kevin Soule, NE, 3-4-7.2; Nick Stauffer, NE, 0-7-8.7.

CLASS A WOMEN — E. Smith, WY; H. Abrams, CO.

CLASS B WOMEN — E. Sterwert, CO; J. Thompson, CO; J. Hanshaw, NE.

JUNIOR CLASS — K. Rein, NE; Jeff Measer, NE; John Measer, NE; S. Stonay, NE.

OREGON ROSE FESTIVAL OPEN TITLE WON BY DAVIS KELLY O'BRIEN WINS LADIES CHAMPIONSHIP

The annual Rose Festival Tournament was held in Portland on June 13-14. A few showers were encountered on Saturday; Sunday was beautiful. Lowell Davis came out on top, defeating Herb Criss and Barry Chapelle in the 3-way playoff. Gerry Staley came out on top in a 3-way playoff in Class B. Washington was well represented and finished with four firsts and five seconds.

CLASS A — Lowell Davis, Creswell, 8-2-71.0; Herb Criss, Bremerton, WA, 6-3-74.1; Barry Chapelle, Portland, 6-3-67.1; Jim Burke, Albany, 5-3-71.0; Ben Wiedrich, Oregon City, 5-3-73.4; Ed Fishel, Neilton, WA, 3-5-68.2; Bob West, Scappoose, 3-5-66.5; Art Sperber, Bremerton, WA, 2-6-63.5; Bernie Martell, Portland, 0-8-54.7.

CLASS B — Gerry Staley, Vancouver, WA, 9-2-56.3; Kelly Laraway, Bremerton, WA, 7-3-56.7; Bob Sletten, Vancouver, WA, 7-3-48.0; Chuck Ball, Portland, 6-3-46.2; Pete Zumaran, Portland, 5-4-54.2; Ron Miller, Hubbard, 4-5-51.3; Harry Lang, Springfield, 4-5-45.4; Randy Burke, Albany, 3-6-44.5; Jack Salter, Kelso, WA, 2-7-42.8; Les Andrews, Battleground, 0-9-39.7.

CLASS C — Rich Rebman, Hermiston, 7-1-47.8; Jim Kosterman, Vancouver, WA, 6-2-46.2; Esthel Benner, Salem, 5-2-39.6; Bill Hulshof, Portland, 3-4-40.1; George Harteloo, Staton, 3-4-38.4; Jack Bush, Marysville, WA, 3-4-36.7; Irv Farron, Portland, 2-5-30.8; Lyle Meuret, Everett, WA, 0-7-30.5.

CLASS D — Ron Ferguson, Vancouver, WA, 7-0-39.8; Wayne Maag, Portland, 5-2-42.2; Cliff Parr, Portland, 5-2-35.7; Jim Malvern, Marysville, WA, 4-3-41.3; Jerry Gorton, Eugene, 3-4-39.0; R. E. Click, Warrenton, 2-5-29.6; Ray Schiedler, Silverton, 1-6-35.0; Don Ferguson, Vancouver, WA, 1-6-31.5.

CLASS E — Ray Hobson, Amity, 6-1-36.2; Charlie Tapper, Kent, WA, 5-2-34.4; Elmer Otnes, Oregon City, 4-3-32.4; Lloyd Kilgore, Eugene, 4-3-35.2; Bill Dolan, Gladstone, 4-3-34.3; Willard Hufschmid, Portland, 3-4-33.2; Ed Pritchard, The Dalles, 1-6-32.4; Jack Stryker, Portland, 1-6-29.7.

CLASS F — Gene Buzzini, Vancouver, WA, 6-0-47.8; Slim Maloney, Vancouver, WA, 4-2-31.9; Dick Speer, Portland, 4-2-29.5; Art Lund, Eugene, 4-2-27.9; Lyle Andrews, Vancouver, WA, 2-4-25.9; Frank Dvorshak, Portland, 1-5-27.9; Bob Ott, Oregon City, 0-6-25.8.

CLASS G — Freeman Williams, Roseburg, 6-1-27.2; Gale Smith, Portland, 5-2-29.9; Dick Helm, West Linn, 4-2-27.2; Don Chambers, Portland, 4-2-24.3; Bill Frison, Portland, 2-4-24.0; Henry McGrew, Albany, 1-5-25.0; Rick Bienapfl, Beaver Creek, 0-6-17.5.

CLASS H — Dave Sturdevant, Newberg, 5-0-25.8; Glenn Chaput, Corvallis, 4-1-22.9; Jay Gouge, Vancouver, WA, 3-2-21.8; Leo Connolly, Eugene, 2-3-12.4; Joe Kurth, Ridgefield, WA, 1-4-13.8; Lance Koch, Oregon City, 0-5-7.1.

WOMEN — Kelly O'Brien, Keister, Vanc., 4-0-61.1; Esther Ott, Oregon City, 3-1-38.7; Irene Wiedrich, Oregon City, 2-2-29.3; Karen Miller, Hubbard, 1-3-7.2; Rhonda Miller, Hubbard, 0-4-2.6.

WIEDRICH TOPS FATHERS'DAY OPEN AT SALEM, OR

A smaller than usual turnout showed up at Bush Pasture Park in Salem for the annual Father's Day Open but the competition was as tough as ever. Ben Wiedrich went undefeated to capture top honors. Ron Miller won a playoff for Class B honors and Charles Wendling did the same in Class C. Wayne Maag and Jerry Wolfe won Oregon plaques in Classes D and E and Walt Bernhardt and Carl Shoberg gained top honors in Classes F and G. Salem Club officers Esthel Benner and George Harteloo were well organized and the two-day event ran smoothly.

CLASS A — Ben Wiedrich, Oregon City, 6-0-76.7; Lowell Davis, Creswell, 4-2-73.9; Bob West, Scappoose, 4-2-69.2; Jim Burke, Albany, 3-3-74.5; Barry Chapelle, Portland, 3-3-69.7; Phil Tyler, Springfield, 1-5-59.1; Howard Peterson, Portland, 0-6-66.5.

CLASS B — Ron Miller, Hubbard, 5-2-47.9; Len Christensen, Harrisburg, 4-3-41.2; Chuck Ball, Portland, 4-2-40.6; Jim Kosterman, Vancouver, 3-3-44.0; O. D. McMillan, Eugene, 3-3-43.7; Abe Ediger, Dallas, 3-3-41.6; Irv Farron, Portland, 0-6-28.1.

CLASS C — Charles Wendling, Scio, 6-1-44.3; Jerry Gorton, Eugene, 5-2-44.7; Esthel Benner, Salem, 4-2-40.4; George Harteloo, Staton, 2-4-42.2; Darrell Buell, Eugene, 2-4-40.8; Bob Beesley, Culver, 2-4-38.8; Ray Meyer, Salem, 1-5-38.4.

CLASS D — Wayne Maag, Portland, 6-1-42.9; Ron Hegefeld, Albany, 5-2-47.3; Don Ferguson, Vancouver, 4-3-44.2; Vern Wanless, McMinnville, 4-3-41.2; Ron Ferguson, Vancouver, 3-4-38.0; Ken Leatherman, Portland, 2-5-38.9; Ray Schiedler, Silverton, 2-5-34.3; Ray Hobson, Amity, 2-5-33.7.

CLASS E — Jerry Wolfe, Corvallis, 5-0-37.8; Floyd Gray, Corvallis, 3-2-37.9; Lloyd Kilgore, Eugene, 3-2-32.0; Willard Hufschmidt, Portland, 2-3-38.0; Jack Stryker, Portland, 2-3-29.8; Gene Buzzini, Vancouver, 0-5-24.5.

CLASS F — Walt Bernhardt, Lebanon, 5-1-31.9; Art Lund, Eugene, 4-2-33.0; Wilbur Haskins, Merrill, 3-2-34.3; Gale Smith, Portland, 2-3-28.4; Dale Dufur, Lebanon, 1-4-25.1; Freeman Williams, Roseburg, 1-4-19.1.

CLASS G — Carl Shoberg, Lebanon, 5-0-30.5; Henry McGrew, Albany, 4-1-23.0; Roland Ferguson, Portland, 3-2-20.3; Glenn Chaput, Corvallis, 2-3-17.0; Leo Connolly, Eugene, 1-4-11.2; Ed Lawrence, Salem, 0-5-5.2.

DUNKER 10-TIME WINNER OF NO.DAK ENGBRETSON OPEN

CLASS A — Leigh Dunker, Warner, SD, 6-1-68.2; Eugene Lykken, Kindred, 5-2-65.0; Mark Baumann, Hillsboro, ND, 4-3-58.0; Wally Rislov, Cooperstown, ND, 3-4-58.5; Harvey Peterson, Havana, ND, 3-4-52.8; Jerry Black, Fargo, 2-5-58.4; Gust Magnuson, Hawley, MN, 1-6-51.5.

CLASS B — Cliff Swayze, Wilmet, SD, 6-1-59.8; Al Ehresman, Fargo, 5-2-55.3; Wally Arndt, Sr., Fargo, 4-3-49.1; Norman Potter, Valley City, ND, 4-3-49.5; Don Larson, Evansville, MN, 2-5-53.1; Will Gullickson, Moorhead, 2-5-46.6; Floyd Preston, Tower City, ND, 1-6-48.3.

CLASS C — John Engbrecht, West Fargo, 6-1-45.2; Gene Ehresman, Aberdeen, SD, 4-3-39.1; Don Pederson, Grand Forks, ND, 4-3-38.7; Doug Gronneberg, Hannaford, 4-3-35.5; Ray Gunsch, Jamestown, ND, 3-4-44.0; Reidar Haakenson, Sanborn, ND, 3-4-33.5; Erling Erickson, Moorhead, 2-5-34.1; Julian Larson, Moorhead, 2-5-34.1.

CLASS D — Russ Schmelchel, Jamestown, 5-2-43.8; Gerald Rheault, Fargo, 5-2-42.3; Bud Hill, Valley City, ND, 5-2-42.1; Henry Wisness, Fargo, 5-2-40.3; Gary Erickson, Mayville, ND, 3-4-37.9; Larry Miller, Fargo, 2-5-36.0; John Holt, Fargo, 2-5-32.7; Norm Luidahl, Davenport, ND, 1-6-35.2.

CLASS E — Gordon Schiltz, Rosholt, SD, 6-1-37.5; Larry Rekstad, Moorhead, 6-1-35.4; Jerry McCambridge, Kent, MN, 5-2-39.3; Cliff Williams, Lidgerwood, ND, 5-2-37.3; Clarence Bernier, West Fargo, 3-4-33.9; Clarence Ryba, Minot, ND, 2-5-34.7; Ed Bulk, Moorhead, 1-6-26.7; Darrell Brosseau, Mandan, ND, 0-7-31.2.

CLASS F — Jerry Johnson, Fargo, 5-2-33.6; Harry Fillafer, Moorhead, 4-3-35.0; Archie Filley, West Fargo, 4-3-33.3; David Backen, Fargo, 4-3-32.3; Ken Bernier, Kent, MN, 3-4-31.1; Wayne Rice, W.Fargo, 3-4-30.6; Jim Rextraw, Osseo, MN, 3-4-30.5; Lloyd Aderman, Gwinner, ND, 2-5-28.1.

CLASS G — Calvin Boyd, Hazen, ND, 7-0-38.1; Dan Bjerke, Moorhead, 6-1-33.3; Jerald Hagen, Cooperstown, ND, 3-4-27.9; Marvin Filfet, Hannaford, ND, 3-4-24.4; Sy Trottier, Fargo, 3-4-21.3; Richard Lykken, Waseca, MN, 3-4-18.4; Charles Alley, Casselton, ND, 2-5-21.2; Marty Martin, Forman, ND, 1-6-12.7.

CLASS H — Lavern Nordby, Moorhead, 7-1-27.3; Roger Brakke, Moorhead, 4-3-25.6; Jake Jacobson, Hannaford, ND, 4-3-22.8; Joe Trottier, Horace, ND, 4-3-19.9; Lyle Romuld, Moorhead, 3-4-23.2; Mel Moreland, West Fargo, 3-4-19.4; Arnold Saxberg, Cooperstown, 2-5-20.9; Burl Olson, Fargo, 1-6-19.3.

CLASS I — Clayton Felchie, Bismark, ND, 6-1-27.1; Rueben Medenwald, Lidgerwood, 6-1-24.2; Wally Arndt, Jr., Fargo, 5-2-23.1; Eugene Kiefat, Riverside, ND, 4-3-20.2; Burl Ingebretson, Sabin, MN, 4-3-19.2; Larry Beardsley, Moorhead, 2-5-15.5; Leo Gronneberg, Hannaford, ND, 1-6-9.0.

ENGBRETSON OPEN — (Continued)

CLASS J — Roger Felchie, Bismarck, ND, 6-1-21.3; Art Wenner, Moorhead, 6-1-20.4; Mark Stemieski, Lidgerwood, 4-3-19.2; Shawn Bernier, West Fargo, 3-4-15.7; Leroy Miller, Fargo, 4-3-15.1; Tom Helle, Buxton, ND, 2-5-12.6; Danny Bernier, Kent, ND, 2-5-14.6; James Siemieski, Wahpeton, 1-6-11.1.

CLASS K — Brad Bennett, Fargo, 8-1-18.1; Jim Treichel, Moorhead, 8-1-13.9; Mike Selland, Riverside, ND, 7-2-10.2; Scott Haux, Mayville, ND, 6-3-16.6; Willard Olson, West Fargo, 6-3-12.5; Lloyd Pittenger, Fargo, 4-5-4.7; Chuck Krieg, Fargo, 3-6-12.9; Woody Miller, Blanchard, ND, 2-6-4.6; Frank Treichel, Moorhead, 1-8-4.0.

JUNIORS — Bobby Bernier, West Fargo, 9-0-41.9; Tom Bernier, Kent, MN, 8-1-20.5; Chad Filley, West Fargo, 6-3-18.4; Shane Erickson, Mayville, ND, 6-3-16.6; Renee Bernier, Kent, MN, 4-5-16.9; Wade Erickson, Mayville, ND, 4-5-15.1; Mary McCambridge, Kent, MN, 3-6-8.8; Tina McCambridge, Kent, MN, 3-6-7.6; Chad Bernier, West Fargo, 2-7-10.3; Laura McCambridge, Kent, 0-9-3.7.

CLASS A WOMEN — Mary Wright, Luverne, ND, 6-1-40.1; Patty Bernier, Kent, 6-1-32.8; Sandra Carlson, Moorhead, 5-2-36.0; Diane Bernier, West Fargo, 4-3-32.8; Leona Tande, Bindford, ND, 3-4-31.0; Jean Johnson, Fargo, 3-4-28.8; Helene Treichel, Moorhead, 1-6-25.4; Ruth Anderson, Fargo, 0-7-14.8.

CLASS B WOMEN — Pauline Preston, Moorhead, 7-0-27.4; Donna Kiefert, Riverside, ND, 4-3-18.1; Marge Stack, Moorhead, 4-3-17.9; Vivian Tang, Moorhead, 4-3-16.5; Gladys Fillet, Hannaford, ND, 4-3-12.3; Leah Clemens, Hannaford, ND, 2-5-19.5; Darlene Olson, Binford, 2-5-12.2; Donna Symanietz, Moorhead, 1-5-9.9.

CLASS C WOMEN — Linda VanRaden, Moorhead, 6-1-14.1; Linda Mont., Fargo, 5-2-19.8; Donna Martin, Forman, ND, 5-2-13.0; Eileen Johnson, Moorhead, 5-2-4.9; Bonnie Erickson, Mayville, ND, 3-4-15.6; Sylvia Lien, Moorhead, 3-4-15.6; Sylvia Lien, Moorhead, 3-4-9.8; Shirley Olson, Moorhead, 6-1-14.1; Toni Brakke, Moorhead, 9-7-7.7.

CLASS D WOMEN — Connie Filley, West Fargo, 7-0-21.3; Pam Cunningham, Fargo, 6-1-11.9; Judy Sellden, Riverside, ND, 5-2-10.6; Ilene McCambridge, Kent, MN, 4-3-11.5; Susan Hagen, Cooperstown, ND, 2-5-7.1; Kathy Hagen, Fargo, 2-5-5.2; Fran Rickers, Moorhead, 2-5-3.5.

GLENN HENTON DEVELOPS NEW HORSESHOE

Fellow Horseshoe Players:

It is with a great deal of pride and pleasure that we announce the forthcoming new Red Henton V-LOK Horseshoe.

The new shoe will be DROP-FORGED from the finest steel, and on the market about the middle of March in time for the 1981 season.

As many of you realize, it takes a lot of planning — involves a great deal of expense, etc. to place any product on the market nationwide. Our new horseshoe was no exception.

It was agreed by all the folks involved in the production of this shoe that the selling price would be within reach of beginners, novices and professionals alike. This has been accomplished and is reflected in the price of the shoe.

In my visits with many talented horseshoe players over the past 20 years, they expressed to me what they would like to see in a pitching shoe. We have incorporated these many features into the V-LOK shoe. The rear calk of the shoe is one of the major highlights and is a patent pending feature.

I gave a great deal of consideration to contour, thickness, width and the V-LOK feature. In this respect, it was my desire to produce a shoe that would enable a player to throw all the conventional turns equally as well. The V-LOK Shoe has exceeded all my expectations in this respect. Several good players have tossed the model shoes and tell me the shoe turns great and feels perfect to them. I might add, the "Flip-Flop" players are having a ball with the rear calk V-LOK feature.

I take this opportunity to thank all of the many people, both players, and all who are interested in the game for their encouragement, assistance and help in producing this horseshoe.

My special thanks to the Arnold Tool & Die Works of Council Bluffs, Iowa, and to Mr. Jim Hackett, affiliated with this fine company, for their many long hours of work involved in the production of this pitching shoe.

I extend my very best to all of you for a great year of fellowship in horseshoes, and hope we can get together along the way in 1981.

Sincerely,
Glen "Red" Henton

SHASTA OPEN VIII

By Stewart Snyder
Cloverdale, California

Redding, located in the north end of California's immense Sacramento Valley was the host city; the occasion, a two-day Shasta Open VIII tournament; the time, June 13 and 14; the purpose, to test pitching skills of some 70 men, women and juniors; the procedurs, Larry Karlen and his dedicated helpers. One-hundred-eight signed to pitch (some were duplicates) in this, the eighth and largest turnout to date of the Shasta Open tournaments.

While the caliber of pitchers was not to be demeaned, the call of 4-dead was not too often heard; A malevolent, gusty north wind blew down from snow-crowned Mt. Shasta and saw to that — floating birds against the gale; well, not really that bad. The only consolation was that one's opponent encountered the same vagaries of the impartial wind. Women and juniors fared better than men, it seemed, because of pitching a shorter distance.



LARRY KARLEN

the 25¢ scorekeeper's fee." Presuming to answer his grieved outcry, another person nearby countered in jest, "Don't worry, old fellow, we'll see about getting food stamps for you on Monday."

"We try to do something a bit extra for pitchers who come all the way to Redding," Larry Karlen added; and this was their surprise: The PRESSURE-PITCH RINGER DERBY, with three parts. CONSECUTIVE RINGERS: A lone pitcher throws four shoes for warmup then the first double starts the string — the first miss ends it. (Many found out they weren't so hot afterall). BEAT YOUR AVERAGE: A long pitcher throws four shoes for warmup then pitches 20 shoes against his established NCHPA average. The pitcher who exceeds his average by the greatest margin is the winner. Pitching 20 shoes makes the math easy, as each ringer is worth 5%. (try as many did, there were more flops than successes).

FIVE OR BUST: A countall game that is a delightful and quick combination of skill, strategy and blind luck. Pitch an opponent and win on 5 points. If one got over 5 points he dropped back to zero and kept pitching his turn. (A few could keep it going to a reasonable showdown).

The entry fee for each event was 50¢. The club added \$10 to each event and all the money was returned to the top three places in each group.

Regarding trophies for the main tournament, Larry said, "We try to present an award that is different, useful and will be allowed in the house." Trophies this year were battery clocks set in appropriate homemade (and skillfully done) wooden frames.

Seven years ago the Redding Horseshoe Club was organized off the end of the floundering

SHASTA OPEN — (Continued)

Parks & Recreation program. Under the new Club's perseverance, 16 fine clay courts were constructed and Shasta tournaments were born.

It has been said before that good tournaments do not just happen, someone must furnish the motivation. In Redding that person is Larry Karlen, although he modestly denies this fact; "I have a lot of good helpers," he was quick to point out.

Larry is not a newcomer to horseshoes. He started pitching in South Dakota, "When I got big enough to throw 40 feet," he gestered symbolically. He now pitches in the "middle" somewhere.

League pitching has taken a firm hold in Redding. During the next seven weeks eight 4-man teams will play round robin games with 100% handicap. Following these Thursday evening sessions, a doubles handicap league tournament will conclude the year's pitching program.

A great deal of credit is due the Redding Horseshoe Club for stimulating so much activity in this relatively small-city community of 42,000 population. No one will deny that the secret of the Club's popularity and performance is due primarily to Larry Karlen's dedication to horseshoe pitching that stimulates inspiration in Club members, among them, his knowledgeable wife, Donna, who takes charge in his absence.

Upon conclusion of the Shasta Open VIII, pitchers, departing for their homes in diverse parts of northern California and Nevada, could not but have had the conviction that there is a close parallel between the handling of this tournament and the skill and confidence with which Larry pilots Pan Am's Boeing 747s to exotic lands across the vast Pacific.

ANNUAL MINN. HOT DAZE OPEN TITLE TAKEN BY ARMITAGE

Sig Armitage was able to put it altogether to win the 4th Annual Hot Daze Open held in Canby, Minn., Mike Armitage, Kevin Brands, Tim Eilers and Kaye Eilers all competed with the men.

CLASS A — Sig Armitage, Canby, MN, 6-1-59.4; Eru Benck, Canby, 5-2-54.8; Gus Magnuson, Hawley, 4-3-57.4; Will Gullickson, Moorhead, 4-3-44.8; Terry Berg, North Redwood, 4-3-40.2; Astor Johnson, Tracy, 3-4-42.5; Gerald Armitage, Canby, 2-5-43.4; Walt Busse, Appleton, 1-6-39.1.

CLASS B — Lyle Romuld, Moorhead, 6-1-29.1; Mike Armitage, Canby, 5-2-36.0; Lawrence Craigmile, Canby, 5-2-34.8; Gil Larson, Clarkfield, 4-3-32.5; Gordy Timm, Marshall, 3-4-30.2; Myron Anderson, Coon Rapids, 3-4-24.5; Charles Pies, Milbank, 2-5-27.0; Bud Ernst, Twin Brooks, 0-7-20.0.

CLASS C — Kurt Oellien, Canby, 5-0-34.4; Tim Eilers, Canby, 4-1-40.0; Kaye Eilers, Canby, 3-2-20.8; Kevin Brands, Marshall, 2-3-29.2; Gary Hanna, Canby, 1-4-16.8; Luverne Hofhenke, Big Stone City, SD, 0-5-3.2.

BLACK, ROGGENKAMP WIN IN MOORHEAD, MN. LEGION OPEN

Jerry Black of Fargo, North Dakota and Dori Roggenkamp won the men's and women's Class A titles in the fifth annual, Minnesota American Legion Open tournament held at the American Legion courts in Moorhead, Minn. Both winners were undefeated. This was the largest Legion Open tournament held.

MENS CLASS A — Jerry Black, 7-0-61.4; Mark Bauman, 4-3-60.0; Gust Magnuson, 4-3-57.4; Garnett Rudie, 4-3-55.4; Ron Beem, 3-4-53.1; Dick Joyce, 3-4-51.4; Will Gullickson, 2-5-48.0; Lee Sharff, 1-6-49.4.

MENS CLASS B — Don Bennett, 6-1-50.8; Norman Potter, 6-1-42.2; Cliff Swayze, 5-2-45.7; Bert Bertelson, 4-3-34.8; Wally Arndt, 2-5-38.0; Reidar Haakenson, 2-5-36.2; Walt Aspeland, 2-5-33.1; Bud Hill, 1-6-31.4.

MENS CLASS C — Russ Schmeichel, 7-0-45.1; Parker Kvebak, 6-1-40.0; Earl Turner, 5-2-40.8; Harry Fillafer, 4-3-32.5; Jerry McCambridge, 2-5-35.7; Dan Bjerke, 2-5-30.0; Clarence Bernier, 2-5-27.1; Larry Rekstad, 1-6-28.8.

MENS CLASS D — Marty Martin, 5-2-28.8; Lyle Romuld, 5-2-24.2; Joe Trottier, 4-3-24.8; Earl Hodson, 4-3-24.0; Eugene Kiefat, 3-4-23.1; Byron Eckholm, 3-4-22.0; Larry Beardsley, 2-5-21.4; Lynn Wold, 2-5-16.5.

MENS CLASS E — Brad Bennett, 7-0-15.2; Herbert Geisler, 3-4-8.8; Dana Ronning, 4-3-9.6; Gary Naasz, 4-3-9.2; Kevin Bernier, 3-4-8.8; Mike Sellden, 3-4-8.0.

AMERICAN LEGION OPEN — (Continued)

WOMENS CLASS A — Dorie Roggenkamp, 10-0-35.0; Diane Bernier, 6-4-25.7; Jean Johnson, 6-4-25.2; Sandy Carlson, 6-4-24.5; Jan Fuller, 2-8-18.0.

WOMENS CLASS B — Donna Kiefert, 4-1-18.4; Ruth Anderson, 4-1-17.1; Marie Wagner, 4-1-16.8; Linda Mont, 2-3-8.0; Donna Symanietz, 1-4-9.2; Shirley Olson, 0-5-3.2.

WOMENS CLASS C — Mae Koester, 5-0-13.2; Pam Cunningham, 3-2-7.2; Eileen Johnson, 3-2-6.4; Judy Sellden, 2-3-8.0; Ilene McCambridge, 2-3-7.2.

1981 MOUNTAIN, WISCONSIN OPEN SET FOR AUGUST 15-16

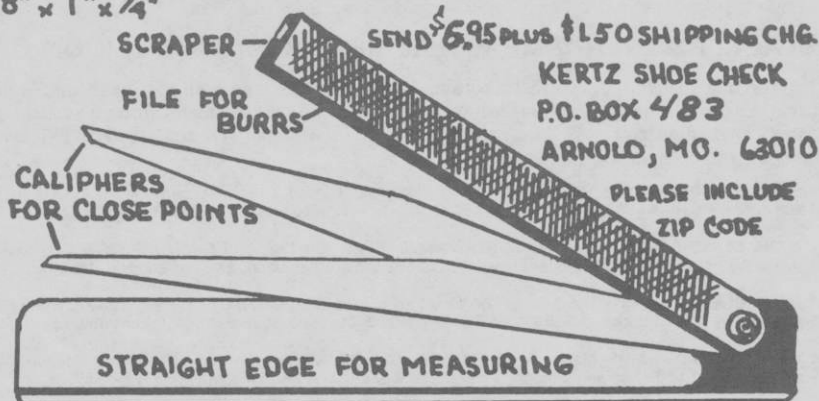
The annual Mountain Open tournament is scheduled to get underway in Mountain, Wisconsin Saturday and Sunday, August 15 and 16. Courts are located at the Mountain Community Building on Highway 32-64. Mountain, Wisconsin. There will be classes for Men, Women, Junior Boys and Junior Girls. Entry fees are as follows: Class A, men, \$15.00; Class B, men, \$12.00. All other classes \$10.00. The entry fee for Juniors will be \$3.00. Deadline for all entries is July 4. Send entry and fee to Roger Bartnik, Box 8, Mountain, Wisconsin 54149. Phone 715-276-7550.

14th ANNUAL NORTH LOUP, NEBR. POP CORN DAYS OPEN
SEPT. 1-2 - 10 A.M. - CASH PRIZES - NO ENTRY FEE
CONTACT RUSS HILL, NORTH LOUP, NEB, PH. 496-7531

GEM SUBURBAN FALL OPEN-ROCKFORD, ILL. SEPT. 5th
FEE \$7.00 - CONTACT CARL TURMAN, 4552 PALMERSTONE
ROCKFORD, IL. 61102-PH 815-962-1150-STATRS 10 A.M.

KERTZ SHOE CHECK PAT. PEND.

FOUR TOOLS IN ONE
PERFECT FOR ALL HORSESHOE PITCHERS
JUST THE RIGHT SIZE FOR BACK POCKETS
8" x 1" x 1/4"



COMING EVENTS

NORTHERN CALIF. SCHEDULE

- Aug. 1 — Open tournament, Colusa.
- Aug. 2 — C Open, Nevada City.
- Aug. 2 — Sonoma County Fair Open \$—Women included, Sonoma Co.
- Aug. 8 — B Women & Jrs. included, Rio Dell, Scotia.
- Aug. — Open tournament, Rio Dell, Scotia.
- Aug. 15 — C Open, Tri Valley.
- Aug. 16 — D & E Open, Sacramento.
- Aug. 16 — Pacific Coast Open, San Jose.
- Aug. 22 — C Women & Jrs included, Hollister.
- Aug. 23 — Open tournament, Hollister.
- Aug. 23 — B Open, Colusa.
- Aug. 29 — C Open, Turlock.
- Aug. 30 — Don Titcomb Open, Women & Jrs. included, State funds, San Jose.
- Sept. 4-5-6 — State Championships, Stockton.
- Sept. 12 — D Open, Women & Juniors included, Tri Valley.
- Sept. 13 — Mayor ?urtola Open, Women & Juniors included, Vallejo.
- Sept. 19 — C Open, Yolo.
- Sept. 20 — Senior Championships, pre register, Sonoma Co.
- Sept. 26 — C Open, Women & Juniors included, Golden Gate.
- Oct. 3 — C Open, Women & Juniors included, \$—Harvest Fair, Sonoma, Co.
- Oct. 4 — Open \$— Sonoma Co.
- Oct. 10-11 — NCHPA Class Championships, Pre-Register, 2 weeks, Vallejo.
- Oct. 17 — Mixed Doubles, Seaside.
- Oct. 18 — Flash Lavette Open, \$. Women included, Seaside.
- Oct. 24 — B Open, Women & Juniors included Stockton.
- Oct. 25 — Invitational, T.O.C. Pre-register, San Jose.
- Oct. 31 — Class C, Women & Juniors included, Mt. Aukum, Two day tourney, see Nov. 1.
- Nov. 1 — Open, Mt. Aukum.
- Nov. 7 — Business meeting and dinner, Golden Gate.
- Nov. 8 — Turkey Shoot, Golden gate.

NOTE: NCHPA CLASS CHAMPIONSHIPS are pre-register, 2 weeks, closing date for Class Championship tournament. Eligibility is the California State Championship.

NEW YORK SCHEDULE

- Aug. 15-16 — Camden Open, Camden, NY. Contact Gerald Graham, 5 North St., Camden, NY 13316. Ph. 315-245-0240.
- Sept. 4-5-6-7 — New York State Tournament, Floyd, NY Contact Bill Johnston, Rte. 4, Box 471, Rickmyer Rd., Rome, NY 13440. Ph. 315-336-2018.
- Sept. 19-20 — Moreau Open tournament, South Glenn Falls, NY. Contact Ernie Hilpertshauser, Rte. 2, Fort Edward, NY 12828. Ph. 518-793-8216.

TENNESSEE SCHEDULE

- Aug. 22 — Annual Tennessee State tourney, Cleveland
- Sept. 5 — Annual Tourney of State Champions, Elizabethton
- Sept. 26-27 — Volunteer Open tourney, Cleveland
- Oct. 3 — Autumn Classic Open, Jefferson City
- Oct. 10 — Annual Tennessee State Doubles tourney, Knoxville.

NEW JERSEY SCHEDULE

- Aug. 15 — New Jersey State Open, Middlesex, 6:30 p.m. (All) Contact Vince Yannetti, Ph. 201-356-3862.
- Aug. 23 — Union County Open Tournament, Elizabeth (Warinanco) 10:00 a.m. and 2:30 p.m. Contact Bill Herrmann. Ph. 201-381-4838.
- Sept. 1 — New Jersey State Singles. Time to be announced. Flemington. Contact Vince Yannetti. Ph. 201-356-3862.
- Sept. 6 — New Jersey State Tournament. Fair. Time to be announced. Contact Vince Yannetti. Ph. 201-356-3862.
- Sept. 13 — Middlesex Club Open Tournament, Middlesex. 1:00 p.m. (All) Contact Ralph Coleman. Ph. 201-356-4691.
- Sept. 27 — Essex County Anniversary Open Tournament, Newark, NJ. 10:00 a.m. and 2:00 p.m. Contact Bill Kolb. Ph. 201-751-7408.
- Oct. 4 — New Jersey State Doubles Tournament, Newark, NJ. 10:00 p.m. (All) Contact Vince Yannetti. Ph. 201-356-3862.

NEW ROCHELLE, NY SCHEDULE

- Aug. 15 — Bill MacLeod Open
 - Aug. 29 — Joe Zichella Open
 - Sept. 12 — Leo Ouellette Open
 - Sept. 26 — Sal, Pete, John, Vito Open
- All tournaments will be held at Dominick P. Sharkey Park, New Rochelle, NY. All tournaments are mixed (senior men, women & juniors). Under 40% sign-in time 9:30 a.m. — 4:00 and over 1:30 p.m. Rain Date: Following day. Entry fee for all classes: \$10.00. All entry fees will be returned as prize money. Scorekeeper Fee: \$.50 per game per player.
- Send entries for tournaments No. 4 and No. 9 to: Leo Ouellette, 50 Westminster Road, Brooklyn, NY 11218. Telephone: 212-462-0604.
- Send entries for other tournaments to: John Loughery, 806 Dean Ave., Bronx, NY 10465. Telephone: 212-892-1017.
- Entries for all tournaments must be received one week prior to tournament date.

EASTERN PENNA. SCHEDULE

- Aug. 15-16 — Pennsylvania Open Tournament—New Cumberland, PA 17070. \$8.00 Entry Fee and percentage to: Robert K. Miller, 29 N. 8th Street, Lemoyne, PA 17043. Phone 717-737-7138. Deadline 10 days prior to tournament.
- Aug. 29-30 — Stewartstown Harvest Open, Stewartstown, PA 17363. \$8. entry fee and percentage to: Richard Wilson, RD 1, Box 100, Stewartstown, PA 17363. Phone 717-993-6584. Deadline 10 days prior to tournament.

WASHINGTON SCHEDULE

- Aug. 8-9 — The Snohomish Co. Open, Forest Pk., Everett
- Aug. 15-16 — The Bell-Inter. Open, Cornwall, Pk., Bell.
- Aug. 23 — The Greater Sea. Closed, Woodland Park.
- Sept. 5-6-7 — The Washington State Tournament, Tacoma.
- Sept. 19-20 — The Pacific N.W. Championship, Elks Park, Yakima.
- Oct — *The Brumfield Halloween Open, Everett
- Nov. 7 — The Tacoma Turkey Shoot, Wright Park, Tacoma.
- Nov. 22 — The Seattle Turkey Shoot, Woodland Park

Coming Events—Continued

WISCONSIN SCHEDULE

- Aug. 14-15-16 — Sheboygan Open, Jerry Uurk, 2523 S. 15th St., Sheboygan, WI 53081, 414-458-4147.
 Aug. 15-16 — Mountain Open, Roger Bartnik, Rt. 1, Mountain, WI 54149. 715-276-7550.
 Aug. 29-30 — Swens Open, Wally Srenaski, 1212 Chantel St., Green Bay, WI 54304. 414-494-4224.
 Sept. 5-6-7 — Wisconsin State Tournament, Pat Eaton, 3027 Saturn Ave., Eau Claire, WI 54701. 715-834-8027.
 Sept. 11-12-13 — Marshfield Open, George MacKinnon 406 North Apple Ave., Marshfield, WI 54449. 715-384-2912.
 Sept. 12-13 — Boyceville Open, John Brezina, Box 244 Boyceville, WI 54725. 715-643-2732.
 Janesville Moose Tournament, Dan Bloom, 1518 St. George Lane, 608-756-1753.

WESTERN MARYLAND SCHEDULE

- August 1 — Frederick Open, Frederick, MD.
 August 8 — Brunswick Open, Brunswick, MD.
 August 15 — Union Bridge Open, Union Bridge, MD.
 August 22 — Thurmont Club Championship (Closed)
 September 5 — Union Bridge Open, Union Bridge, MD.
 October 3 — Frederick Club Championship (Closed)
 October 10 — Thurmont Colorfest Open, Thurmont MD
 Frederick — Contact Newell Esterly, 6 James St., Frederick, MD. Ph. 662-5797.
 Thurmont — Contact Joe Harbaugh, 36 Frederick Rd., Thurmont, MD. Ph. 271-7739.
 Union Bridge — Contact Ray Matlock, Rte. #1, Union Bridge, MD. Ph. 775-2933.

All open tournaments are open to the public. All closed tournaments are for Club members only.

KANSAS SCHEDULE

- Aug. 15 — Air Capital Open, Wichita, Contact E.
 Aug. 16 — Buffalo Bill Open, Leavenworth, Contact D.
 Aug. 22 — Finney County Fair Open, Garden City, Contact G.
 August 23 — Topeka 7-County Tournament. Held at Gage Park in Topeka. Starting time is 9 a.m. Entry fee is \$5.00. Open to pitchers in Shawnee and the six surrounding counties — Pottawatomie, Jackson, Douglas, Osage, Waubesa, and Jefferson. Send percentage to: Wayne Shelinbarger,

1233 Pinecrest Dr., Topeka, KA 66605. Phone 1-913-266-8941.

- Aug. 30 — Holton Open, Holton, Contact C.
 Sept. 4-5 — KANSAS STATE TOURNAMENT, NHPA SANCTIONED, Topeka, Contact I.
 Sept. 20 — Atchison Open, Leavenworth, Contact B.
 Sept. 26 — Wichita Open, Wichita, Contact E.
 Sept. 27 — Ottawa Open, Ottawa, Contact F.
 October 4 — Ottawa, Kansas. Contact Chuck Kaniper. Phone 1-913-566-3777.

TOURNAMENT DIRECTORS

- A—Sam Adame, 2021 Emerald Drive, Lawrence 66044; 913-843-5628.
 B—Robert Booe, Westridge Drive, Atchison, 66002; 913-367-3309
 C—Lloyd Cattrell, 316 Vermont, Holton, 66436; 913-364-3021
 D—Bill Chester, 805 Middle, Leavenworth, 66048; 913-651-2906
 E—Paul Branine, 709 Westview, Mulvane, 67110; 316-777-4237
 F—Charles Kaniper, P.O. Box 272, Pomona, 66076; 913-566-3777
 G—Earl Pearce, 1107 Hamline, Garden City 67846; 316-275-4581
 H—Delbert Peters, RR3, Box 103, Hillsboro, 67063; 316-367-8256
 I—Deanie Reheis, 2173 Wallace, Wichita, 67218; 316-684-1003
 J—Wayne Shelinbarger, 1233 Pinecrest Dr., Topeka, 66605; 913-266-8941.

OHIO STATE SCHEDULE

- Sept. 3-4-5-6-7—Annual Ohio State Tournament, City park courts, Greenville, OH. NHPA Sanctioned. Entry fee \$6.00, trophies and cash prizes. Qualifying at courts. NO RE-QUALIFYING. Qualifying begins Thursday, September 3, 6 p.m. to 10 p.m. Friday, Sept. 4, 2 p.m. to 11 p.m. and Saturday, Sept. 5th, 8 a.m. to 12 noon. All players MUST be signed in by 12 noon on Saturday and qualified by 12:30 pm. All boys and girls signed in by 12 noon on Saturday. Scorekeepers MUST be paid 25 cents per game before start of each game. Convention meeting immediately after qualifying is done. Tournament play will start following the meeting.
 Sept. 12-13—Chillicothe Open. Classes A,B,C,D (Sanctioned). Deadline Sept. 6. Entry fee of \$8 and pct. to Tom King, 63 Page Rd., Chillicothe, OH 45601. Ph. 614-733-1993.
 Sept. 19 — Champion of Champions tournament. Union, OH. NHPA sanctioned. To be eligible you must pitch in the State Tournament. For further information, contact Gary Kline, 108 Calmont Farms Circle, Union, OH 45322. Phone: 1-513-836-8163.

MARYLAND SCHEDULE

- Qualifying at 9 to 10:30 a.m. Play starts at 11 a.m. sharp. Qualifying on Sunday at 1 p.m. to 2 p.m. play starts at 2 p.m. sharp.
 Aug. 15-16 — South Atlantic, Peninsula Bank Open, Picnic Island courts, Salisbury, MD.
 Sept. 5-6 — Annual Maryland State tournament R.C. Cola Sponsors. (closed). Picnic Island courts, Salisbury, MD.
 Sept. 26-27 — Chicken Box Open, Picnic Island Courts, Salisbury, MD.

TEXAS SCHEDULE

- Aug. 15-16 — Lakeside Open, San Antonio, TX.
 Sept. 5-6 — Amistad Open, Del Rio, Texas.
 Sept. 19 — B.E. Sipple Open, Arlington, TX
 Oct. 3-4 — Tri State Open, Denton, TX.
 Oct. 17-18 — TEXAS STATE TOURNAMENT, Del Rio.
 Oct. 31 — Ballinger Senior's Open, Ballinger, TX
 Nov. 7 — Harvest Open, San Antonio, TX.

VIRGINIA SCHEDULE

- August 8-9 — Dublin Open, Dublin, Virginia.
 September 5-6 — State Singles, Lynchburg, Virginia.
 September 12-13 — Raymond Frye Open, Winchester, Virginia.

Coming Events—Continued

COLORADO SCHEDULE

- Aug. 2 — Denver Doubles Tournament, Denver, CO
Send entry to Mel Yockstick, 6625 Pierce, Arvada,
CO 80003. Phone: 421-6433.
- Aug. 8-9 — Open Date
- Aug. 15-16 — Western Nebraska Open, Scottsbluff,
NB. Send entry to J.F. Anderson, 3013 Dineen,
Scottsbluff, NB 69361. Phone: 308-635-2063.
- Aug. 22-23 — Winter Park Open, Winter Park, CO.
Send entry to Sara Pelpier, 607-10th, Apt. 108,
Golden, CO 80401. Phone: 279-8593.
- Aug. 29-30 — Pikes Peak Open, Colorado Springs.
Send entry to Ben Fields, 905 Delst Drive, Col-
orado Springs, CO 80907. Phone: 598-7255.
- Sept. 5-6 — Annual Colorado State Tournament, Wind-
sor, CO. Send entry to Bob Engle, 57876 Weld Co.
Road, Nunn, CO 80648. Phone: 897-2223.

No tournament for Fruita or Crested Butte at this
time. Colorado State and National card — \$8.50. All
tournaments sanctioned except two.

Officers: Bob Engel, Pres., Phone 897-2223; Jim
Tulk, V.P., Phone: 284-5276; Dale Boss, Sec., Phone:
494-3724. Fran Roth, Tres. Phone: 794-5324.

WESTERN PENNSYLVANIA SCHEDULE

- Aug. 8-9 — Shelocta, Pine Tree Open, 40 points.
Contact C.
- Aug. 15-16 — All /County Tournament
- Aug. 22-23 — Ohiopyle, Maple Summit Round Up
50 points. Contact E.
- Aug. 29-30 — Beaver, Bradys Run Open, 40 points
Contact A.
- Sept. 5-6-7 — Erie, Pennsylvania State Tournament.
Contact H.
- Sept. 19-20 — New Castle Fall Round-Up. 50 points.
Contact B.

Entry fee of \$8.00 and your highest percentage must
accompany your entry 10 days prior to tournament
date. There will be no refund of entry fee if you are
unable to attend. All tournament will be sanctioned so
all participants must be a member of the National
HPA in good standing. Western PA Sec. Treas. Joseph
J. Mancini, 1025 Dewey Ave., New Castle, PA 16101.

All tournaments held by the Western PA, HPA will
be non-mixed.

TOURNAMENT DIRECTORS

- A — Herman Boyer, 6195 Tuscarawas Rd., Beaver,
PA 15009. (412-495-7598).
- B — Joseph Mancini, 1025 Dewey Ave., New Castle,
PA. 16101 (412-652-0258).
- C — Taylor Carnahan, Box 75, Shelocta, PA 15774.
(716-434-1154)
- E — John Williams Jr., Box 37, Ohiopyle, PA 15407.
(412-329-5618)
- F — Clyde Martz, 3726 Henley Drive, Pittsburgh, PA
15235 (412-731-4662).
- G — Craig Allen, R.D. 1, Pittsfield, PA 16340
(814-489-3668).
- H — Glen Sebring, 3304 Harvard Rd, Erie, PA 16508.
(814-868-3941). Jack Potter, 4040 Zimmerman Rd.,
Erie, PA. 16510 (814-825-5497).

WYOMING SCHEDULE

- Sept. 5-6 — Wyoming State Tournament, Washington
Park courts, Laramie, WY. Entry fee: \$10.00.
Deadline Aug. 31. Starting time: 9 a.m. Sanctioned.
Juniors free. Send entry fee to A.E. Schliske,
819 Evergreen, Cheyenne, WY 82001. Phone:
1-307-634-9455.

MISSOURI TOURNAMENTS

- Sept. 4-5-6 — Missouri State Tournament, St. Joseph,
Missouri. Send entries to Ray Cavin, 1824
Holman, St. Joseph, Missouri 64507. Phone:
816-233-3243.
- Sept. 27 — Midland Open tournament. St. Joseph,
Missouri. Send entries to Ray Cavin, 1824
Holman, St. Joseph, Missouri 64507. Phone:
816-233-3243. Deadline for entries, Sept. 25.

IOWA HAWKEYE SCHEDULE PARTIAL

- August 1 — Delhi Fun Day, City Park, Delhi, IA on
Route 38. Contact: John Michels, Box 5, Delhi, IA
52223 (319) 922-2592. Register by 9:30 a.m. Play at
10:00 a.m. Entry fees \$6.50-men, \$4.50-women,
\$3.50-Jrs.
- August 1 — Southern Iowa Fair, Oskaloosa, IA at
fairgrounds. Contact: Paul Floden, 807 S. 12th,
Oskaloosa, IA 50237 (515) 673-3942. Register by
9:30 a.m. Play at 10:00 a.m. Entry fees \$5-men &
women, \$3-Jrs.
- August 2 — Fairfield. Jefferson County Junior Ag.
Show at Showgrounds west edge of Fairfield on
Hwy. 34. Contact: Bill Vandegriff, 1006 Liberty Dr.
Fairfield, IA 52556 (515) 472-5839. Register by
10:00 a.m. Play at 11:00 a.m. Entry fees \$6-men &
women, \$4-Jrs.
- August 2 — Hancock Old Settlers Centennial, Town
Park, Hancock. Contact: Jan Flemming, Box 128
RR, Minden, IA 51553 (712) 483-2029. Register by
10:00 a.m. Play at 10:30 a.m. Entry fees \$5-men &
women.
- August 2 — Winterset. Madison County Fair at
Fairgrounds. Contact: Russell Bricker, Box 82,
Earlham, IA 50072 (515) 758-2159 or Marion
DeVault, RR 1, Earlham, IA 50072 (515) 758-2163.
Register by 9:30 a.m. Play at 10:30 a.m. Entry fees
\$4.50 men & women, Jrs.-none.
- August 2 thru 5 — Plymouth County Fair, LeMars, IA.
Contact: Jim Paulin, Box 323, Merrill, IA 51038
(712) 938-2362 or Maris Goodrich, RR 2, Merrill, IA
51038 (712) 568-2817.
- August 8 — Buchanan County Fair, Independence
IA. Contact: Walter Bantz, 719 3rd Ave. NE, In-
dependence, IA 50644, (319) 334-2230 or Henry
Hinders, 611 6th Ave NW, Independence, IA 50644
(319) 334-2219. Register by 9:30 a.m. Play at 10:00
- August 13 thru 23 — Iowa State Fair Horsemen's
Tournament. Registration deadline for Men's
Championship and Team Championship is August
3, 1981.

WEST. MONTANA SCHEDULE

- Aug. 15 — Manhattan, contact Phil Townsend, Box
86, Manhattan, MT 59741.
- Aug. 16 — Butte, contact Dave Mueller, 1115 1/2
Lewistown, Butte, Montana 59701.
- Aug. 22-23 — Helena, contact Jim White, 1831
Cannon, Helena, MT 59601.
- Sept. 6-7 — Annual Montana State Championships
Laurel, MT.
- All Montana Tournaments will start at 8:00 a.m.
unless otherwise noted.

KENTUCKY SCHEDULE

- Aug. 1-2 — Junction City
- Aug. 22-23 — Oldham County
- Sept. 5-6 — State Tournament (Georgetown)
- Sept. 19-20 — Christine Kelley Memorial (Avon)
- Oct. ? — Renfro Valley Lassis Festival.

Coming Events—Continued

IOWA HAWKEYE — (Continued)

August 15 — Northeast Iowa Regional, Dubuque County Fair (5 miles west of Dubuque off Hwy. 20) Contact: Joe Dolter, 577 West Locust, Dubuque, IA 52001 (319) 582-4944. Register by 10:00 a.m. Play by 10:30 a.m. Entry fees \$6.50-men, women, Jrs.

August 16 — Dubuque County Fairgrounds. "Legend of Horseshoes" Invitational. Starting time 1:00 p.m. \$500 first place prize. 24 midwest players to be invited.

August 30 — Southern Iowa Open, Osceola, IA 1 mile east on Hwy. 34. Contact: Maurice Clark, RR 2, Osceola, IA 50213 (515) 342-3547. Register by 9:00 a.m. Play at 9:30 a.m. Entry fee \$5-men, \$2-women, Jrs.

August 30 — Corn Belt Open, Burlington, IA at Crapo Park, 2 miles south on Main St. Contact: Harold Darnold, 1503 Mt. Pleasant, Burlington, IA 52601 (319) 752-5187. Register by 10:00 a.m. CDST. Play at 10:30 a.m. CDST Entry fee \$7-men, \$4-women, \$2-jrs.

September 6 — Ottumwa, at courts across from Holiday Inn. Register by 9:30. Play at 10:00 a.m. Entry fees \$6.25-men, women and Jrs. Contact: Charlie Foxx, 127 S. Ash, Ottumwa, IA 52501 (515) 684-6792.

September 7 — Annual Anita Labor Day Open, at City Park. Contact: Vince Ehrman, 906 Maple St., Anita, IA 50020 (712) 762-3837. Register by 9:00 a.m. Play at 9:30 a.m. Entry fee \$5-men.

September 7 — Nora Springs Buffalo Day (Labor Day) Courts located east of school in NE part of Nora Springs. 10 miles east of Mason City. Contact: Jim Meyer, 933 17th NE, Mason City, IA 50401 (515) 424-4553. Register by 9:00 a.m. Play at 9:30 a.m. Entry fees \$5-men, \$4-women, \$2-jrs.

September 5 thru 12 — Clay County Fair, Spencer, IA. Contact: George Englemann, RR 1, Storm Lake, IA 50588 (712) 732-4162. September 5 & 6 Open Singles. Entry Fee \$5. Send fee and percentage to George by Sept. 1.

September 7 — Cedar Rapids Labor Day Open, at Ellis Park Courts. Contact: Matt Marx, Box 20 Linn Dr. Palo, IA 52324 (319) 851-3991. Register by 9:00

September 12 — Manchester Open Horseshoe Tournament at Delaware County Fairgrounds. North part of Manchester on East Acres. Contact: Muriel Maurer, 832 New St., Manchester, IA 52057 (319) 927-3256. Register by 9:30 a.m. Play at 10:00 a.m. Entry fee \$6-men & women, \$3-Jrs.

September 12 — What Cheer "Old Time Days". Courts at fairgrounds. Contact: Jay Storm, RR 2, What Cheer, IA 50268 (515) 634-2294 or Roy Foxx, RR, Kenswick, IA 50136 (515) 634-2592. Register by 9:30 a.m. Play at 10:00 a.m. Entry fee \$5-men & women, \$3-Jrs.

September 13 — Polk County Open, Birdland Park, Des Moines, IA. Contact: Danny Sease, 1229 SW Evans, Des Moines, IA 50315 (515) 285-0131. Register by 9:30 a.m. Play at 10:00 a.m. Entry fees \$6.25-men & women, \$3.25-Jrs.

September 20 — Fairfield Open, at Chautauqua Park east of Fairfield on Hwy. 34. Contact: Bill Vandegriff, 1006 Liberty Dr., Fairfield, IA 52556 (515) 472-5839. Register by 10:00 a.m. Play at 11:00 a.m. Entry fees \$6 men and women, \$4-Jrs.

September 20 — Boone Open at Memorial Park Courts, 20th and Boone St. Contact: Harold Davidson, 515-3rd St., Boone, IA 50036 (515) 432-4596. Register by 10:00 a.m. Play at 10:30 a.m. Entry fees \$5-men, \$2-women, \$1-Jrs.

September 27 — 3rd Annual Cedar Falls Open. Birdsall Park Courts, West 12th St. Contact: Pat Simon, 1641 West 2nd St., Waterloo, IA 50701 (319) 234-0552. Register by SEPT. 14. Send percentage, entry fee and return address. Entry Fee \$6.25-men and women and Jrs.

October 4 — Ottumwa Open at downtown mall. Details later.

October 11 — Winterset Covered Bridge Festival at Fairgrounds. Contact: Russell Bricker, Box 82, Earlham, IA 50072 (515) 758-2159. Register by 9:30

MICHIGAN SCHEDULE

Aug. 1-2 — Lapeer.
Aug. 8-9 — Jackson.
Aug. 15-16 — M-46 Handicap tournament, Lansing.
Aug. 22-23 — Two tournaments, Berkley and Nashville.
Aug. 29-30 — Lapeer.
Sept. 12-13 — Kalamazoo.
Sept. 19-20 — Jackson.

UTAH SCHEDULE

Aug. 11 — Moesinger Memorial Tournament. Lester Park Courts. Classes A and B play at 4:00 p.m. Classes C, D, E play at 7:00 p.m.
Aug. 8 — Open Tournament. Murray Park Courts. Murray, UT. NHPA Sanctioned. Special Awards, 7:00 p.m.
Aug. 15 — Deweyville Days Open tournament, Deweyville, UT. Deweyville Park Courts. 5:00 p.m.
Aug. 29 — Open tournament, Murray Park Courts, Murray, UT. NHPA Sanctioned. Special Awards 7:00 p.m.
Sept. 3 — Open Tournament. Riverton Park Courts, Riverton, UT. NHPA Sanctioned. Special Awards 5:00 p.m.

GEORGIA SCHEDULE

Sept. 5 — Fitzgerald Annual Georgia State Tournament, Legion Park courts, Contact: Lester Anthony, 423-2907.
Sept. 19-20 — The Albany Pecan Festival Open Tournament, Albany, Georgia. Tift Park Courts. Contact: Glen Portt, 423-0067.
Oct. 3 — Alaphretta Doubles tournament, Alaphretta, Georgia. Contact: James Brooks, 475-9320.
Oct. 17 — Ringgold, Land Field Park courts, contact: Jim Waters, 935-2963.

Sept. 12 — State Singles Finals, Classes E, F, D, C at 4:00 p.m. Class A and B at 7:00 p.m. NHPA Sanctioned. Special awards. Murray Park Courts, Murray, UT.

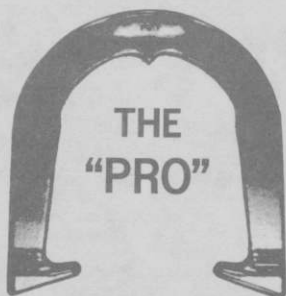
Sept. 18 — Salt Lake Open Tournament, Liberty Park Courts, Salt Lake City, UT. Class C and under start at 5:00 p.m. NHPA Sanctioned Special Awards.

Sept. 19 — Salt Lake Open tournament. Liberty Park Courts, Salt Lake City, UT. Class A and B start at 5:00 p.m. NHPA Sanctioned. Special Awards.

For all tournaments send ringer percentage with \$5.00 entry fee at least 5 days prior to tournament to: Charles E. Bugger, 4098 West 5500 South, Kearns, UT 84118. No exceptions — No refunds.



THE ORIGINAL DROP - FORGED PITCHING SHOE



Two tournament tested models, forged from S.A.E. specified steel, are available. Both have hardened hooks and points, and may be ordered in your choice of medium, soft, or dead soft tempers.



AS THE FIRST MANUFACTURER OF THE DROP-FORGED PITCHING SHOE, THE OHIO HORSESHOE COMPANY IS RECOGNIZED WORLD-WIDE FOR ITS HIGH QUALITY PITCHING SHOES.

For price information and to order, contact:

OHIO HORSESHOE COMPANY

P.O. Box 5801
Columbus, Ohio 43221

or
STANLEY MANKER
P.O. Box 214
Lynchburg, Ohio 45142