

The Horseshoe Pitcher's

News Digest

Official Publication of
**THE NATIONAL HORSESHOE PITCHER'S ASSOCIATION
OF AMERICA**

SEPTEMBER, 1964



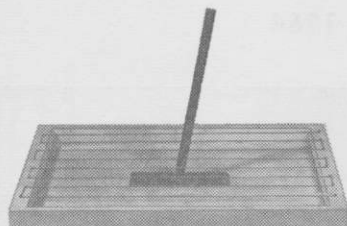
DIXON PORTABLE HORSESHOE COURTS

2616 49th Street
Des Moines, Iowa

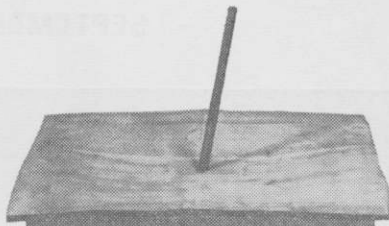
Dixon Portable Horseshoe Courts (Patent Pending) are now available. I have received many inquiries on these courts, but have not been able to present them at a price I felt would be attractive. I have been able to purchase the rubber pads in large quantities and can pass the savings on to you. The new nylon suspension system has eliminated some cost and improves the efficiency of the rubber pad greatly. The life of these pads should be at least ten years and are guaranteed for two years.

I have eliminated painting to keep the price down, so you will have to paint them to suit your own taste.

Each end of the court is boxed separately and weighs approximately 38 pounds - 76 pounds for the complete court. They are available in 2" and 4" heights, and a conversion that can be used to set over your present clay court. The same pad is used on all styles and is interchangeable, which means that it can be used on clay and boxed in the portable for mobility.



Court Without Rubber Pad



Complete Court Ready For Use

The 4" portable will give you maximum performance and can be converted to any desired height by ripping off the top side.

The 2" is not as effective in holding close shoes, but will hold the ringers about the same.

The convertible will be as effective as the 2" portable, but the rigid stake will not hold the ringers nearly as well.

Either of the portables are easily stored in the trunk of your car, and can be set up ready to go in 5 minutes in your yard, on your drive, at the park, on the beach, at the lake while you are waiting for the fish to bite, in your basement (if you have enough room), in the barn (if you are on the farm), in gymnasiums at school, or anyplace where there is enough room.

I qualified on these courts at the state tournament at the Iowa State Fair and threw 84 ringers in 100 shoes and never lost a ringer. Practically every pitcher in the tournament tried them and admitted they were better than clay courts.

I hope these courts will make you a better horseshoe pitcher and I will guarantee the ringers you throw will stay there. Every shoe will feel the same every time you pitch it. No mud - no dirt - no maintenance - no more, "barnyard golf."

Dale E. Dixon

PRICE

4" and 2" portables - \$39.50, f.o.b. Des Moines, Iowa

Convertibles - \$22.50, f.o.b. Des Moines, Iowa

THE HORSESHOE PITCHERS' NEWS DIGEST published on the 15th of each month at Aurora, Illinois, U. S. A. by the National Horseshoe Pitchers' Association of America. Editorial office, 1307 Solfisberg Avenue, Aurora, Illinois. Membership and subscription price \$3.50 per year in advance. Forms close on the first day of each month. Advertising rates on request. F. Ellis Cobb, Editor.

NATIONAL OFFICERS

| | |
|--|---------------------|
| Harold Craig, 809 Carson Street, Muncie, Indiana..... | President |
| Elmer O. Beller, 15316-B Cabell Avenue, Bellflower, Calif..... | 1st Vice-President |
| Glen Sebring, 1431 West 42nd Street, Erie, Pennsylvania..... | 2nd Vice-President |
| Lester Georgiana, Chesterfield, New Hampshire..... | 3rd Vice-President |
| Lucille Hopkins, 912 East 2nd Street, Ottumwa, Iowa..... | 4th Vice-President |
| Robert Pence, 341 Polk Street, Gary, Indiana..... | Secretary-Treasurer |

Volume 8

SEPTEMBER

Number 9

HAROLD RENO WINS 1964 CROWN

The Greatest World Tournament of All Time

Championship Summary

| | Qual. | W | L | R | SP | % |
|---|-------|----|----|-----------|------|--------|
| 1. Harold Reno, Sabina, O. | 533 | 32 | 3 | 2371 | 2820 | 84.1 |
| 2. Carl Steinfeldt, Rochester, N.Y. | 558 | 30 | 5 | 2767 | 3316 | 83.3 |
| 3. Glen Henton, Maquoketa, Ia. | 538 | 29 | 6 | 2481 | 2956 | 83.930 |
| 4. E. Hohl, Wellesley, Ont., Can. | 534 | 29 | 6 | 2538 | 3024 | 83.928 |
| 5. Curt Day, Frankfort, Ind. | 555 | 28 | 7 | 2594 | 3074 | 84.4 |
| 6. Ray Martin, Philo, Ill. | 538 | 28 | 7 | 2634 | 3178 | 82.9 |
| 7. Floyd Toole, Pine Bluff, Ark. | 514 | 28 | 7 | 2531 | 3086 | 82.0 |
| 8. Al Zadroga, Elizabeth, Pa. | 511 | 26 | 9 | 2397 | 2958 | 81.0 |
| 9. Ralph Maddox, Poca, W. Va. | 533 | 25 | 10 | 2903 | 3476 | 83.5 |
| 10. P. Lattray, Webster Grove, Mo. | 528 | 25 | 10 | 2484 | 3064 | 81.1 |
| 11. John Monasmith, Yakima, Wash. | 539 | 24 | 11 | 2374 | 2968 | 80.0 |
| 12. Ted Allen, Boulder, Colo. | 539 | 23 | 12 | 2410 | 2980 | 80.9 |
| 13. Henry Knauff, Spokane, Wash. | 529 | 23 | 12 | 2470 | 3072 | 80.4 |
| 14. Ed Fishel, Neilton, Wash. | 524 | 22 | 13 | 2224 | 2824 | 78.8 |
| 15. Glenn Riffle, Dayton, O. | 526 | 21 | 14 | 2156 | 2854 | 75.5 |
| 16. Marines Tamboer, Wichita, Kan. | 520 | 20 | 15 | 2332 | 2944 | 79.2 |
| 17. C. Wahlin, Salt Lake City, Utah | 512 | 20 | 15 | 2166 | 2846 | 76.1 |
| 18. Wilbur Kabel, New Madison, O. | 519 | 18 | 17 | 2308 | 2934 | 78.7 |
| 19. Herb Pinch, Sharon, Pa. | 509 | 17 | 18 | 2024 | 2742 | 73.8 |
| 20. Jimmy Solomon, Uniontown, Pa. | 524 | 16 | 19 | 2311 | 2948 | 78.4 |
| 21. Marvin Craig, Parker, Ind. | 522 | 15 | 20 | 2224 | 2946 | 75.5 |
| 22. Floyd Fowler, Greencastle, Ind. | 505 | 15 | 20 | 2169 | 2900 | 74.8 |
| 23. Bob May, Glenwood, Ind. | 531 | 14 | 21 | 2193 | 2924 | 75.0 |
| 24. Lee Bennett, Middletown, O. | 520 | 13 | 22 | 1850 | 2564 | 72.2 |
| 25. Don Owens, Summitville, Ind. | 523 | 13 | 22 | 1825 | 2530 | 72.1 |
| 26. Joseph Carmack, Lecom, Mo. | 508 | 11 | 24 | 2172 | 2930 | 74.1 |
| 27. Dick Carpenter, Union City, Ind. | 507 | 11 | 24 | 1999 | 2730 | 73.2 |
| 28. C. Fortenberry, Knoxville, Tenn. | 520 | 10 | 25 | 1922 | 2666 | 72.1 |
| 29. Jim Johnson, Cincinnati, O. | 519 | 9 | 26 | 1943 | 2716 | 71.5 |
| 30. F. Stinson, Minneapolis, Minn. .. | 508 | 9 | 26 | 1868 | 2648 | 70.5 |
| 31. Dale Dixon, Des Moines, Ia. | 531 | 8 | 27 | 1845 | 2602 | 70.9 |
| 32. H. Moefield, Long Beach, Calif. | 508 | 6 | 29 | 1551 | 2326 | 66.6 |
| 33. W. Taylor, Grand River, Ia. | 511 | 5 | 30 | 1660 | 2440 | 68.0 |
| 34. A. Lindquist, Morgantown, W.Va. | 508 | 5 | 30 | 1652 | 2434 | 67.8 |
| 35. Nelson Vogel, Manito, Ill. | 506 | 2 | 33 | 1392 | 2174 | 64.0 |
| 36. Art Dugle, Chicago, Ill. | 523 | 0 | 35 | forfeited | | |

ATTENTION STATE SECRETARIES — Send in State Tournament Results for Annual State Tournament Issue. — SPECIAL NOTE — All Material not now appearing will be in double Oct. - Nov. Issue.

Ottie Reno Awarded Stokes Memorial Trophy

Mrs. Mary Stokes, the "Grand Old Lady of Horseshoes" from Salt Lake City, Utah, presented the Arch Stokes Memorial Trophy for 1964 to Ottie W. Reno of Lucasville, Ohio.

The award is given by the Stokes family annually to the person who has contributed the most to the game during the past year and is in memory of the late Arch Stokes of Utah who served as NHPA President for many years.

Mrs. Stokes, who is 81, was accompanied by her daughter Mrs. Maurine Cook, Secretary of the Utah State chapter and her grandson Arvin Cook of Washington, D. C.

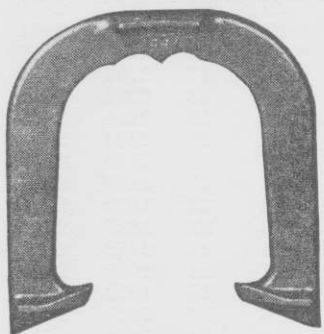
Ottie Reno is perhaps best known for being the author of the book entitled "The Story of Horseshoes" a 160 page hardback book which has been placed on the shelves of many public libraries.

Ottie is also the organizer and guiding spirit of the outstanding Pike County, Ohio Association which has a large Ladies' league, Junior group and a large indoor program in addition to the traditional men's play and outdoor courts.

Ottie also serves as the NHPA legal adviser and has assisted the officers in many details including an extremely important promotion concerning which a special announcement will be made shortly.

This past spring Ottie organized the new Alabama State NHPA Chapter and conducted the first state tournament there.

**Congratulations to Mr. Harold Reno, winner of
World's Championship with Ohio Shoes, and
all the other players who participated in such
a wonderful tournament**



by the original producers
of a steel drop-forged
pitching shoe.

* * *

**Furnished in
Soft and
Medium
Hardness**

The OHIO SHOE with its stake holding qualities PLUS its perfect balance gives the control needed for those extra ringers that would have otherwise spun off.

Write TODAY for prices

OHIO HORSESHOE COMPANY

P. O. BOX 5801

COLUMBUS 21, OHIO

OR STAN MANKER, RTE, 2, MARTINSVILLE, OHIO

Sue Gillespie Dominates Ladies' Division

Sue Gillespie, 17 years old from Portland, Indiana, reigns supreme as the queen of the Ladies' division, the same crown she wore so gracefully in 1962.

She defeated defending champ, Vicki Winston of Lamonte, Missouri, 51-23 in the final and payoff game. Her opponents accumulated only 99 points in seven games.



Sue Gillespie

Sue established all time records with her 30 consecutive ringers and a 93.3 percent single game when she tossed 56 ringers in 60 shoes. Her 81.1 mark for all games is the 2nd highest in history, Caroline Schultz having posted 81.3 in 1934 against much easier opposition. Sue's 100 shoe qualifying record of 83 ringers and 259 points is subject to debate, Esther James of Michigan having posted 86 and 266 in 1935, but this was from a best of two attempts, her overall average being lower than Sue's.

The entire championship field was the best in history, the lowest ringer percentage being 55.5, good enough to win most Ladies' World tourney's of the past.

Margaret Cassady of Waverly, Ohio edged 17 year old Cindy Amyx of Connersville, Indiana for the Class "B" title and Betty Davis of Granville, Ohio, took Class "C" honors.

CLASS A

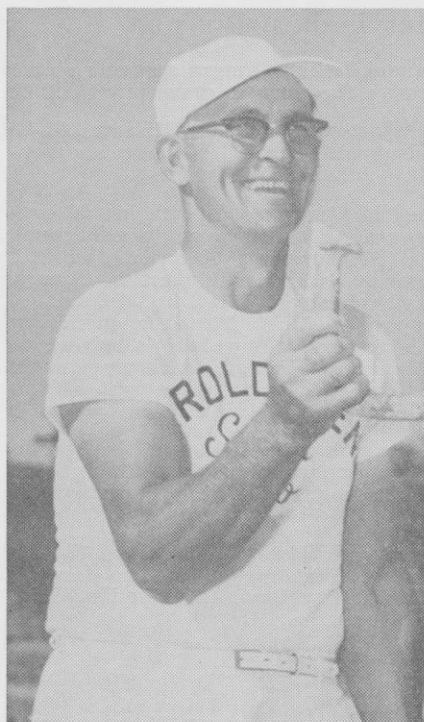
| | W | L | R | SP | % |
|---|---|---|-----|-----|------|
| Sue Gillespie, Portland, Ind. | 7 | 0 | 344 | 424 | 81.1 |
| Vicki Winston, Lamonte, Mo. | 6 | 1 | 315 | 492 | 64.0 |
| Ruth Bennett, Middletown, O. | 4 | 3 | 262 | 420 | 62.4 |
| Wanda Ditmer, Winchester, Ind. | 3 | 4 | 275 | 474 | 58.0 |
| Mary Steinhauer, Louisville, Ky. | 3 | 4 | 263 | 474 | 55.5 |
| Bonnie Siebold, Huntington, Ind. | 2 | 5 | 275 | 490 | 56.1 |
| Lorraine Thomas, Lockport, N. Y. | 2 | 5 | 256 | 460 | 55.7 |
| Anna Lindquist, Morgantown, W. Va. | 1 | 6 | 280 | 502 | 55.8 |

CLASS B

| | W | L | R | SP | % |
|--------------------------------------|---|---|-----|-----|------|
| Margaret Cassady, Waverly, O. | 5 | 0 | 128 | 270 | 47.4 |
| Cindy Amyx, Connersville, Ind. | 4 | 1 | 108 | 264 | 40.9 |
| Dixie Crawley, Muncie, Ind. | 3 | 2 | 112 | 272 | 41.2 |
| Shirley Powley, Lockport, N. Y. | 2 | 3 | 92 | 304 | 30.3 |
| Opal Corbett, Newcastle, Pa. | 1 | 4 | 97 | 330 | 29.4 |
| Avanelle Brown, Waverly, O. | 0 | 5 | 66 | 302 | 21.8 |

CLASS "C" — Won by Betty Davis, Granville, O., 30.3%; 2nd Dora Vance, Waverly, O., 26.6%; 3rd Betty Steinfeldt, Rochester, N. Y., 18.4% 4th Helen Jacobs, Belleville, Mich., 10.2%.

COVER PICTURE Ronnie Burgess, son of Al Burgess of Marshalltown, Iowa, is shown being presented with the Class B trophy in the Junior division of the 1964 World tournament, by Miss Sue Gillespie of Portland, Indiana and the 1964 Women's World champion. Ronnie averaged 45.1 percent. He is Iowa's outstanding junior pitcher and pitches the full 40 feet.



Harold Reno
1964 World Champion

Trophies! Trophies!

**Largest Selection!
Lowest Cost!**
SPECIAL DISCOUNTS TO CLUBS!

**SEND FOR FREE
CATALOG!**

*Rush orders shipped same day, when
necessary. Engraving skillfully done.*

NORTON TROPHY CO.
4350 North Pulaski • Chicago, Ill.
Phone: PE 6-2500

Landry Takes Class "B" Title East

Big Ed Landry of Fall River, Massachusetts, posted a big 78.4 ringer average to take the Class "B" title back to New England. The finals and the group play were closely contested and many of the players would have made excellent records in the championship division.

Landry tied for 2nd in his group and defeated Abe Austin of Illinois and Hugh Rogers of Iowa for the right to advance to the finals. Harold Walker of Indiana edged Al Bourgeois of Rhode Island 50-48 in another group playoff while 17 year old Danny Marcum of Ohio downed John Rademacher of Florida in still another playoff for a spot in the finals.

Clarence Bellman of Indiana nosed out Andy Deem of West Virginia for 2nd place and Jim Weeks of California took 4th to round out winners of the Miller High-Life-NHPA trophies.

FINALS

| | W | L | R | SP | % |
|-------------------------------------|---|---|-----|-----|------|
| Ed Landry, Fall River, Mass. | 6 | 1 | 461 | 588 | 78.4 |
| Clarence Bellman, Bremen, Ind. | 5 | 2 | 451 | 592 | 76.2 |
| Andy Deem, Parkersburg, W. Va. | 5 | 2 | 461 | 606 | 76.1 |
| Jim Weeks, Norwalk, Calif. | 4 | 3 | 370 | 502 | 73.7 |
| Carl Van Sant, Cayuga, Ind. | 3 | 4 | 446 | 616 | 72.4 |
| Dale Carson, Baltimore, Md. | 3 | 4 | 397 | 552 | 72.0 |
| Harold Walker, Pennville, Ind. | 1 | 6 | 375 | 536 | 69.9 |
| Danny Marcum, Cincinnati, O. | 1 | 6 | 332 | 504 | 65.9 |

Landry Takes Class B — (Continued)**GROUP 1**

| | W | L | R | SP | % |
|---|---|---|-----|-----|------|
| Clarence Bellman, Bremen, Ind. | 7 | 0 | 391 | 514 | 76.1 |
| Ed Landry, Fall River, Mass. | 5 | 2 | 355 | 512 | 69.3 |
| Hugh Rogers, Cedar Falls, Ia. | 5 | 2 | 382 | 544 | 70.2 |
| Abe Austin, Hinsdale, Ill. | 5 | 2 | 307 | 478 | 64.2 |
| John Nicholl, Grove City, O. | 3 | 4 | 277 | 458 | 60.5 |
| Howard Bryant, Washington Courthouse, O. | 1 | 6 | 286 | 464 | 61.6 |
| Otis Clay, DeGraff, O. | 1 | 6 | 265 | 442 | 60.0 |
| O. S. Plott, Shreveport, Ia. | 1 | 6 | 315 | 530 | 59.6 |

GROUP 2

| | W | L | R | SP | % |
|--|---|---|-----|-----|------|
| Carl Van Sant, Cayuga, Ind. | 6 | 1 | 301 | 402 | 74.9 |
| Harold Walker, Pennville, Ind. | 5 | 2 | 323 | 486 | 66.5 |
| Al Bourgeois, West Barrington, R. I. | 5 | 2 | 377 | 570 | 66.3 |
| Jim Knisley, Bremen, O. | 4 | 3 | 346 | 518 | 68.7 |
| Paul Hoover, Modoc, Ind. | 4 | 3 | 305 | 504 | 60.5 |
| Ken Jensen, St. Joseph, Mich. | 3 | 4 | 302 | 470 | 68.1 |
| Ken Dawes, Good Hope, O. | 1 | 6 | 256 | 428 | 52.8 |
| Howard Robinson, Nebraska City, Nebr. | 0 | 7 | 143 | 316 | 45.5 |

GROUP 3

| | W | L | R | SP | % |
|--|---|---|-----|-----|------|
| Dale Carson, Baltimore, Md. | 6 | 1 | 286 | 432 | 66.7 |
| Jim Weeks, Norwalk, Calif. | 5 | 2 | 346 | 484 | 71.5 |
| Andy Paglarini, Hibbing, Minn. | 4 | 3 | 319 | 486 | 65.6 |
| Howard Shriver, Wadestown, W. Va. | 4 | 3 | 255 | 406 | 62.8 |
| Irwin Carlberg, Grand Rapids, Mich. | 4 | 3 | 210 | 360 | 58.4 |
| Melvin Kalb, Bucyrus, O. | 3 | 4 | 302 | 496 | 60.9 |
| Gerald Mendenhall, Union City, Ind. | 2 | 5 | 190 | 364 | 52.2 |
| Harold Craig, Muncie, Ind. | 0 | 7 | 175 | 400 | 43.8 |

GROUP 4

| | W | L | R | SP | % |
|--|---|---|-----|-----|------|
| Andy Deem, Parkersburg, W. Va. | 7 | 0 | 308 | 434 | 71.0 |
| Danny Marcum, Hamilton, O. | 5 | 2 | 321 | 482 | 66.6 |
| John Rademacher, Plant City, Fla. | 5 | 2 | 270 | 414 | 65.2 |
| Carl Atwell, Flora, Ind. | 4 | 3 | 297 | 488 | 60.9 |
| Lloyd Hunt, Arcanum, O. | 4 | 3 | 257 | 432 | 59.5 |
| Harold Anthony, Arcanum, O. | 2 | 5 | 253 | 434 | 58.3 |
| Stan Manker, Martinsville, O. | 1 | 6 | 245 | 458 | 53.5 |
| Blair Shever, Butler, Pa. | 0 | 7 | 233 | 442 | 52.5 |

"THE STORY OF HORSESHOES"

180 pages including current supplement.

Everything a beginner or new club needs.

Ideal for Tournament Prizes.

COSTS LESS THAN A PAIR OF HORSESHOES

Price \$3.95 — Post paid

OTTIE W. RENO

Route 5

LUCASVILLE, OHIO

Tuttle Wins National Senior Title

| CLASS A | W | L | R | SP | % |
|---------------------------------------|---|---|-----|-----|------|
| Harold Tuttle, Youngstown, O. | 6 | 1 | 296 | 456 | 64.9 |
| Walter Horner, Farmersburg, Ind. | 5 | 2 | 286 | 432 | 66.2 |
| John Paxton, Ottumwa, Ia. | 5 | 2 | 268 | 412 | 65.1 |
| Ray Miller, Springfield, O. | 4 | 3 | 245 | 434 | 56.5 |
| John Clingan, Apopka, Fla. | 4 | 3 | 238 | 424 | 56.2 |
| Joe Wilkinson, Akron, O. | 3 | 4 | 232 | 444 | 52.3 |
| John Davis, Bradenton, Fla. | 1 | 6 | 244 | 482 | 50.6 |
| Frank Sumpter, Martinsville, O. | 0 | 7 | 160 | 376 | 42.6 |

| CLASS B | W | L | R | SP | % |
|--|---|---|-----|-----|------|
| Virgil Huffman, Poneto, Ind. | 5 | 0 | 190 | 340 | 55.9 |
| Joe Foster, Omaha, Nebr. | 4 | 1 | 168 | 294 | 57.2 |
| John Ellis, Bradenton, Fla. | 3 | 2 | 155 | 320 | 48.5 |
| Joe Kelly, Bradenton, Fla. | 1 | 4 | 158 | 332 | 47.6 |
| Lora Overholser, South Bend, Ind. | 1 | 4 | 130 | 306 | 42.5 |
| Joe Dubie, Toccoa, Ga. | 1 | 4 | 96 | 266 | 36.5 |

| CLASS C | W | L | R | SP | % |
|--|---|---|-----|-----|------|
| Henry Franke, Centralia, Ill. | 7 | 0 | 219 | 438 | 50.0 |
| Charlie Hopkins, Ottumwa, Ia. | 6 | 1 | 231 | 440 | 52.5 |
| Walt Stearns, Mesa, Ariz. | 4 | 3 | 217 | 448 | 48.8 |
| Lester Peary, Bradenton, Fla. | 4 | 3 | 214 | 440 | 48.6 |
| Clem Birkenbach, Baldwin Park, Calif. | 3 | 4 | 206 | 444 | 46.4 |
| Leonard Glass, Xenia, O. | 3 | 4 | 142 | 428 | 33.2 |
| Roy McClure, Van Wert, O. | 1 | 6 | 190 | 458 | 41.3 |
| Otis Saeter, Detroit, Mich. | 0 | 7 | 65 | 314 | 20.7 |

GORDON — "Spin-On"



BALANCED MATCHED

Favorite of Champions

MANUFACTURERS

THE QUEEN CITY FORGING CO.

235 TENNYSON STREET

CINCINNATI 26, OHIO

1. Harold Reno, Sabina, O. — Qualifying Score 533

| Opponent | Score | R | SP | % |
|-------------------|----------------|-----|-----|------|
| Carpenter | 51-16 | 47 | 56 | 83.9 |
| Lindquist | 50- 8 | 38 | 44 | 86.3 |
| Moefield | 51-21 | 51 | 64 | 79.6 |
| Zadroga | 45-51 | 84 | 104 | 80.8 |
| Wahlin | 50-26 | 79 | 92 | 85.8 |
| Kabel | 51-36 | 56 | 74 | 75.6 |
| Tamboer | 52-26 | 66 | 80 | 82.5 |
| Bennett | 51- 9 | 40 | 48 | 83.3 |
| Owens | 51-23 | 55 | 66 | 83.3 |
| Solomon | 54-21 | 66 | 76 | 86.8 |
| Riffle | 51-23 | 78 | 86 | 90.6 |
| Knauff | 52-13 | 104 | 114 | 91.2 |
| Dixon | 52-23 | 57 | 72 | 79.1 |
| Hohl | 51-19 | 71 | 78 | 91.0 |
| Martin | 52-43 | 144 | 162 | 88.9 |
| Day | 51-43 | 109 | 124 | 87.9 |
| Steinfeldt | 52-15 | 62 | 68 | 91.1 |
| Vogel | 50-21 | 44 | 58 | 75.8 |
| Carmack | 51-16 | 57 | 68 | 83.8 |
| Stinson | 52-19 | 66 | 74 | 89.1 |
| Pinch | 50- 4 | 47 | 52 | 90.3 |
| Taylor | 50-36 | 61 | 78 | 78.2 |
| Toole | 50-28 | 72 | 84 | 85.7 |
| Johnson | 52-40 | 70 | 84 | 83.3 |
| Fortenberry | 50-18 | 81 | 94 | 86.1 |
| Craig | 50-38 | 86 | 106 | 81.1 |
| Dugle | won by forfeit | | | |
| Fishel | 28-50 | 74 | 96 | 77.0 |
| Latray | 54-24 | 87 | 96 | 90.6 |
| May | 50-16 | 64 | 74 | 86.4 |
| Maddox | 31-52 | 80 | 104 | 76.9 |
| Henton | 50-39 | 67 | 84 | 79.7 |
| Allen | 52-17 | 82 | 102 | 80.4 |
| Monasmith | 50-49 | 86 | 112 | 76.8 |
| Fowler | 52-11 | 40 | 46 | 86.9 |

Won 32 — Lost 3

2371

2820

84.1

2. Carl Steinfeldt, Rochester, N.Y. — Qualifying Score 558

| Opponent | Score | R | SP | % |
|-------------------|----------------|-----|-----|------|
| Vogel | 52-15 | 43 | 52 | 82.6 |
| Carmack | 52-45 | 88 | 110 | 80.0 |
| Stinson | 50-43 | 77 | 96 | 80.2 |
| Pinch | 51-38 | 83 | 100 | 83.0 |
| Taylor | 51- 0 | 49 | 50 | 98.0 |
| Toole | 52-30 | 96 | 118 | 81.3 |
| Johnson | 47-50 | 116 | 146 | 79.5 |
| Fortenberry | 50-37 | 77 | 100 | 77.0 |
| Craig | 52-19 | 95 | 104 | 91.3 |
| Dugle | won by forfeit | | | |
| Fishel | 51-31 | 91 | 108 | 84.3 |
| Latray | 51-44 | 91 | 108 | 84.3 |
| May | 52-17 | 51 | 68 | 75.9 |
| Maddox | 53-44 | 96 | 114 | 84.2 |
| Henton | 52-11 | 88 | 94 | 93.6 |
| Allen | 55-35 | 74 | 88 | 84.0 |
| Reno | 15-52 | 50 | 68 | 73.5 |
| Fowler | 47-51 | 90 | 112 | 80.4 |
| Carpenter | 52-28 | 59 | 78 | 75.7 |
| Lindquist | 51-21 | 75 | 88 | 85.2 |
| Moefield | 53-21 | 69 | 78 | 88.4 |
| Zadroga | 52-45 | 92 | 110 | 83.6 |
| Wahlin | 51-31 | 76 | 94 | 80.8 |
| Kabel | 53-31 | 66 | 82 | 80.4 |
| Tamboer | 51-10 | 82 | 88 | 93.2 |
| Bennett | 50-37 | 67 | 84 | 79.8 |
| Owens | 52-18 | 71 | 82 | 86.5 |
| Solomon | 52-40 | 92 | 114 | 80.7 |
| Riffle | 43-56 | 77 | 100 | 77.0 |
| Knauff | 50-45 | 131 | 150 | 87.3 |
| Dixon | 50- 6 | 37 | 44 | 84.0 |
| Hohl | 53-37 | 150 | 170 | 88.2 |
| Martin | 27-52 | 86 | 108 | 79.6 |
| Day | 50-36 | 89 | 106 | 85.6 |
| Monasmith | 50-22 | 93 | 104 | 89.4 |

Won 30 — Lost 5

2767

3316

83.3

3. Glen Henton, Maquoketa, Ia. — Qualifying Score 538

| Opponent | Score | R | SP | % |
|-------------------|----------------|-----|-----|------|
| Moefield | 52-15 | 43 | 54 | 79.6 |
| Zadroga | 52-39 | 63 | 80 | 78.7 |
| Wahlin | 50-21 | 93 | 104 | 89.4 |
| Kabel | 50-26 | 57 | 70 | 81.4 |
| Tamboer | 52-30 | 100 | 116 | 86.2 |
| Bennett | 50- 6 | 41 | 46 | 89.1 |
| Owens | 50-21 | 39 | 52 | 75.0 |
| Solomon | 50-15 | 61 | 68 | 89.7 |
| Riffle | 49-50 | 75 | 98 | 76.5 |
| Knauff | 50-22 | 69 | 82 | 84.1 |
| Dixon | 51- 1 | 50 | 54 | 92.5 |
| Hohl | 38-50 | 80 | 100 | 80.0 |
| Martin | 52-24 | 58 | 68 | 85.3 |
| Day | 50-36 | 71 | 88 | 80.6 |
| Steinfeldt | 11-52 | 73 | 94 | 77.6 |
| Vogel | 51-16 | 43 | 52 | 82.6 |
| Carmack | 54-31 | 70 | 84 | 83.3 |
| Stinson | 50-20 | 65 | 76 | 85.5 |
| Pinch | 51-38 | 84 | 104 | 80.8 |
| Taylor | 51- 9 | 46 | 52 | 88.4 |
| Toole | 50-33 | 94 | 112 | 83.9 |
| Johnson | 51-17 | 66 | 74 | 89.1 |
| Fortenberry | 43-52 | 95 | 118 | 80.5 |
| Craig | 51-13 | 93 | 98 | 94.8 |
| Dugle | won by forfeit | | | |
| Fishel | 52-40 | 98 | 116 | 84.5 |
| Lattray | 51-40 | 130 | 144 | 90.3 |
| May | 51-40 | 72 | 96 | 75.0 |
| Maddox | 51-46 | 106 | 126 | 84.1 |
| Monasmith | 27-51 | 89 | 110 | 80.9 |
| Allen | 51-42 | 117 | 136 | 86.0 |
| Reno | 39-50 | 64 | 84 | 76.1 |
| Fowler | 52- 4 | 67 | 70 | 95.8 |
| Carpenter | 52-13 | 54 | 64 | 84.3 |
| Lindquist | 52-20 | 55 | 66 | 83.3 |

Won 29 — Lost 6

2481 2956 83.930

4. Elmer Hohl, Wellesley, Ont., Canada — Qual. score 534

| Opponent | Score | R | SP | % |
|-------------------|----------------|-----|-----|------|
| Pinch | 51-29 | 78 | 92 | 84.7 |
| Taylor | 51-15 | 49 | 58 | 84.4 |
| Toole | 52-27 | 76 | 88 | 86.3 |
| Johnson | 51- 3 | 47 | 54 | 87.0 |
| Fortenberry | 50-20 | 55 | 68 | 80.8 |
| Craig | 52-19 | 62 | 72 | 86.1 |
| Dugle | won by forfeit | | | |
| Fishel | 51-23 | 65 | 76 | 85.5 |
| Lattray | 39-51 | 82 | 106 | 77.4 |
| May | 51-36 | 91 | 110 | 82.7 |
| Maddox | 51-29 | 104 | 114 | 91.2 |
| Henton | 50-38 | 84 | 100 | 84.0 |
| Allen | 42-50 | 100 | 128 | 78.1 |
| Reno | 19-51 | 59 | 78 | 75.7 |
| Fowler | 52-28 | 70 | 88 | 79.5 |
| Carpenter | 52-35 | 65 | 82 | 79.2 |
| Lindquist | 51-36 | 59 | 80 | 73.7 |
| Moefield | 50- 3 | 27 | 32 | 84.3 |
| Zadroga | 51-40 | 73 | 92 | 79.3 |
| Wahlin | 52-22 | 63 | 72 | 87.5 |
| Kabel | 50-46 | 114 | 136 | 83.8 |
| Tamboer | 50-49 | 62 | 86 | 72.9 |
| Bennett | 54-18 | 67 | 76 | 88.1 |
| Owens | 50-21 | 60 | 70 | 85.9 |
| Solomon | 52- 9 | 93 | 98 | 94.8 |
| Riffle | 52-36 | 97 | 112 | 86.6 |
| Knauff | 52-23 | 98 | 110 | 89.1 |
| Dixon | 50- 6 | 45 | 50 | 90.0 |
| Monasmith | 52-30 | 85 | 96 | 88.5 |
| Martin | 29-50 | 66 | 86 | 76.7 |
| Day | 35-52 | 115 | 138 | 83.3 |
| Steinfeldt | 37-53 | 145 | 170 | 85.3 |
| Vogel | 52-27 | 64 | 78 | 82.0 |
| Carmack | 54-16 | 58 | 64 | 90.6 |
| Stinson | 51- 8 | 60 | 64 | 93.7 |

Won 29 — Lost 6

2538 3024 83.928

5. Curt Day, Frankfort, Ind. — Qualifying Score 555

| Opponent | Score | R | SP | % |
|-------------------|----------------|-----|-----|------|
| Carmack | 51-20 | 59 | 68 | 86.7 |
| Stinson | 52-12 | 71 | 76 | 93.4 |
| Pinch | 50-12 | 76 | 88 | 86.3 |
| Taylor | 54-18 | 52 | 66 | 78.8 |
| Toole | 48-51 | 82 | 104 | 78.8 |
| Johnson | 52- 9 | 83 | 88 | 94.3 |
| Fortenberry | 54-37 | 57 | 70 | 81.4 |
| Craig | 52- 7 | 80 | 90 | 88.8 |
| Dugle | won by forfeit | | | |
| Fishel | 52-46 | 97 | 120 | 80.8 |
| Lattray | 51-36 | 46 | 64 | 71.8 |
| May | 50-23 | 74 | 86 | 86.0 |
| Maddox | 52-43 | 107 | 126 | 84.9 |
| Henton | 36-50 | 66 | 88 | 75.0 |
| Allen | 50-37 | 110 | 126 | 87.3 |
| Reno | 43-51 | 106 | 124 | 85.5 |
| Fowler | 41-52 | 67 | 88 | 76.1 |
| Carpenter | 52-30 | 73 | 86 | 84.8 |
| Lindquist | 52-12 | 52 | 60 | 86.6 |
| Moefield | 51-30 | 70 | 84 | 83.3 |
| Zadroga | 51-18 | 72 | 78 | 92.4 |
| Wahlin | 51-17 | 58 | 66 | 87.8 |
| Kabel | 51-47 | 97 | 120 | 80.8 |
| Tamboer | 48-51 | 99 | 122 | 81.1 |
| Bennett | 51-13 | 43 | 50 | 86.0 |
| Owens | 50-24 | 61 | 72 | 84.7 |
| Solomon | 50-26 | 79 | 92 | 85.8 |
| Riffle | 52-24 | 77 | 88 | 87.5 |
| Knauff | 52-22 | 79 | 90 | 87.7 |
| Dixon | 51-18 | 56 | 68 | 82.3 |
| Hohl | 52-35 | 120 | 138 | 87.0 |
| Martin | 46-52 | 130 | 150 | 86.7 |
| Monasmith | 53-28 | 68 | 80 | 85.0 |
| Steinfeldt | 36-50 | 84 | 106 | 79.2 |
| Vogel | 51-14 | 43 | 52 | 82.6 |

Won 28 — Lost 7

2594

3074

84.4

6. Ray Martin, Philo, Ill. — Qualifying Score 538

| Opponent | Score | R | SP | % |
|-------------------|----------------|-----|-----|------|
| Stinson | 51- 8 | 63 | 70 | 90.0 |
| Pinch | 50- 6 | 59 | 64 | 92.1 |
| Taylor | 51-14 | 42 | 52 | 80.7 |
| Toole | 51-48 | 97 | 114 | 85.1 |
| Johnson | 51-36 | 65 | 84 | 77.3 |
| Fortenberry | 50-13 | 81 | 88 | 92.0 |
| Craig | 52-33 | 92 | 112 | 82.1 |
| Dugle | won by forfeit | | | |
| Fishel | 52-40 | 86 | 106 | 81.1 |
| Lattray | 51-25 | 57 | 68 | 83.8 |
| May | 50-41 | 90 | 114 | 78.9 |
| Maddox | 48-52 | 149 | 176 | 84.7 |
| Henton | 24-52 | 49 | 68 | 72.0 |
| Allen | 52-25 | 65 | 78 | 83.3 |
| Reno | 43-52 | 141 | 162 | 87.0 |
| Fowler | 45-50 | 66 | 90 | 73.3 |
| Carpenter | 52-25 | 52 | 68 | 76.4 |
| Lindquist | 51- 8 | 61 | 72 | 84.7 |
| Moefield | 50-12 | 59 | 70 | 84.2 |
| Zadroga | 54-43 | 88 | 106 | 83.0 |
| Wahlin | 50-19 | 65 | 76 | 85.5 |
| Kabel | 46-50 | 97 | 118 | 82.2 |
| Tamboer | 24-51 | 52 | 76 | 68.4 |
| Bennett | 51-45 | 101 | 124 | 81.5 |
| Owens | 50-13 | 43 | 50 | 86.0 |
| Solomon | 51-49 | 100 | 120 | 83.3 |
| Riffle | 51-23 | 73 | 86 | 84.8 |
| Knauff | 41-52 | 84 | 106 | 79.2 |
| Dixon | 50- 8 | 63 | 70 | 90.0 |
| Hohl | 50-29 | 73 | 86 | 84.8 |
| Monasmith | 51-19 | 61 | 70 | 87.1 |
| Day | 52-46 | 132 | 150 | 88.0 |
| Steinfeldt | 52-27 | 95 | 108 | 88.0 |
| Vogel | 51-39 | 57 | 76 | 75.0 |
| Carmack | 50-43 | 76 | 100 | 76.0 |

Won 28 — Lost 7

2634

3178

82.9

7. Floyd Toole, Pine Bluff, Ark. — Qualifying Score 514

| Opponent | Score | R | SP | % |
|-------------------|----------------|-----|-----|------|
| Knauff | 41-51 | 70 | 94 | 74.4 |
| Dixon | 51-20 | 50 | 60 | 83.3 |
| Hohl | 27-52 | 68 | 88 | 77.2 |
| Martin | 48-51 | 96 | 114 | 84.2 |
| Day | 51-48 | 83 | 104 | 79.8 |
| Steinfeldt | 30-52 | 91 | 118 | 77.1 |
| Vogel | 50- 9 | 55 | 60 | 91.6 |
| Carmack | 52-37 | 75 | 92 | 81.5 |
| Stinson | 50-25 | 46 | 58 | 79.3 |
| Pinch | 50-29 | 74 | 94 | 78.7 |
| Taylor | 50-22 | 55 | 70 | 78.5 |
| Monasmith | 51-41 | 82 | 100 | 82.0 |
| Johnson | 52-26 | 67 | 84 | 79.7 |
| Fortenberry | 52-30 | 73 | 88 | 82.9 |
| Craig | 52-30 | 71 | 88 | 80.6 |
| Dugle | won by forfeit | | | |
| Fishel | 50-28 | 57 | 72 | 79.1 |
| Lattray | 50-44 | 76 | 96 | 79.1 |
| May | 50-39 | 77 | 94 | 82.0 |
| Maddox | 52-48 | 104 | 128 | 81.3 |
| Henton | 33-50 | 91 | 112 | 81.3 |
| Allen | 51-27 | 66 | 80 | 82.5 |
| Reno | 28-50 | 65 | 84 | 77.4 |
| Fowler | 52-44 | 97 | 118 | 82.2 |
| Carpenter | 50-28 | 69 | 86 | 80.2 |
| Lindquist | 51-20 | 55 | 64 | 85.9 |
| Moefield | 55-16 | 62 | 74 | 83.7 |
| Zadroga | 19-52 | 47 | 70 | 67.1 |
| Wahlin | 51-45 | 82 | 100 | 82.0 |
| Kabel | 52-27 | 82 | 96 | 85.3 |
| Tamboer | 50-14 | 56 | 64 | 87.5 |
| Bennett | 51-22 | 84 | 96 | 87.4 |
| Owens | 51-19 | 71 | 78 | 91.0 |
| Solomon | 52-25 | 146 | 158 | 92.4 |
| Riffle | 50-37 | 88 | 104 | 84.6 |

Won 28 — Lost 7

2531

3086

82.0

8. Al Zadroga, Elizabeth, Pa. — Qualifying Score 511

| Opponent | Score | R | SP | % |
|-------------------|----------------|-----|-----|------|
| Maddox | 51-39 | 122 | 138 | 88.4 |
| Henton | 39-52 | 59 | 80 | 73.7 |
| Allen | 14-50 | 63 | 84 | 75.0 |
| Reno | 51-45 | 87 | 104 | 83.7 |
| Fowler | 52-12 | 54 | 64 | 84.3 |
| Carpenter | 50-32 | 65 | 80 | 81.2 |
| Lindquist | 51-11 | 57 | 64 | 89.0 |
| Moefield | 52-14 | 70 | 80 | 87.5 |
| Monasmith | 52-25 | 60 | 72 | 83.3 |
| Wahlin | 43-54 | 78 | 104 | 75.0 |
| Kabel | 52-40 | 91 | 114 | 79.8 |
| Tamboer | 52-29 | 63 | 78 | 80.7 |
| Bennett | 50-35 | 61 | 78 | 78.2 |
| Owens | 51-26 | 52 | 68 | 76.4 |
| Solomon | 51-27 | 71 | 82 | 86.5 |
| Riffle | 52-49 | 103 | 126 | 81.7 |
| Knauff | 52-35 | 65 | 80 | 81.2 |
| Dixon | 50- 9 | 42 | 48 | 87.5 |
| Hohl | 40-51 | 68 | 92 | 73.9 |
| Martin | 43-54 | 84 | 106 | 79.2 |
| Day | 18-51 | 61 | 78 | 78.2 |
| Steinfeldt | 45-52 | 90 | 110 | 81.8 |
| Vogel | 51-20 | 54 | 66 | 81.8 |
| Carmack | 53-29 | 71 | 86 | 82.5 |
| Stinson | 51-43 | 77 | 92 | 83.6 |
| Pinch | 51-28 | 48 | 66 | 72.7 |
| Taylor | 42-50 | 75 | 98 | 75.0 |
| Toole | 52-19 | 59 | 70 | 84.2 |
| Johnson | 50-35 | 83 | 98 | 84.6 |
| Fortenberry | 52-29 | 67 | 80 | 83.7 |
| Craig | 52-42 | 65 | 84 | 77.3 |
| Dugle | won by forfeit | | | |
| Fishel | 49-54 | 92 | 120 | 76.7 |
| Lattray | 53-27 | 60 | 74 | 81.1 |
| May | 51-23 | 80 | 94 | 85.1 |

Won 26 — Lost 9

2397

2958

81.0

9. Ralph Maddox, Poca, W. Va. — Qualifying Score 533

| Opponent | Score | R | SP | % |
|-------------------|----------------|-----|-----|------|
| Zadroga | 39-51 | 119 | 138 | 86.2 |
| Wahlin | 51-39 | 83 | 104 | 79.8 |
| Kabel | 52-25 | 96 | 114 | 85.1 |
| Tamboer | 52-18 | 80 | 90 | 88.8 |
| Bennett | 46-52 | 95 | 118 | 80.5 |
| Owens | 52-30 | 73 | 90 | 81.1 |
| Solomon | 50-27 | 95 | 108 | 88.0 |
| Riffle | 52-19 | 64 | 74 | 86.4 |
| Knauff | 48-50 | 126 | 154 | 81.8 |
| Dixon | 51-42 | 88 | 106 | 83.0 |
| Hohl | 29-51 | 95 | 114 | 83.3 |
| Martin | 52-48 | 151 | 176 | 85.8 |
| Day | 43-52 | 104 | 126 | 82.5 |
| Steinfeldt | 44-53 | 92 | 114 | 80.7 |
| Vogel | 51- 3 | 31 | 32 | 96.8 |
| Carmack | 52-18 | 60 | 76 | 78.9 |
| Stinson | 50-31 | 52 | 68 | 76.4 |
| Pinch | 52-19 | 73 | 88 | 82.9 |
| Taylor | 50-40 | 83 | 106 | 78.3 |
| Toole | 42-52 | 104 | 128 | 81.3 |
| Johnson | 52-26 | 61 | 74 | 82.4 |
| Fortenberry | 51-28 | 69 | 82 | 84.1 |
| Craig | 51-49 | 84 | 106 | 79.2 |
| Dugle | won by forfeit | | | |
| Fishel | 43-52 | 97 | 116 | 83.6 |
| Lattray | 50-15 | 89 | 96 | 92.7 |
| May | 51-32 | 114 | 132 | 86.4 |
| Monasmith | 52-28 | 88 | 100 | 88.0 |
| Henton | 46-51 | 105 | 126 | 83.3 |
| Allen | 49-51 | 94 | 114 | 82.5 |
| Reno | 52-31 | 87 | 104 | 83.7 |
| Fowler | 51-41 | 95 | 110 | 86.4 |
| Carpenter | 51-38 | 66 | 86 | 76.7 |
| Lindquist | 50- 8 | 40 | 48 | 83.3 |
| Moefield | 52-17 | 50 | 58 | 86.2 |

Won 25 — Lost 10

2903

3476

83.5

10. Paul Lattray, Webster Groves, Mo. — Qual. Score 528

| Opponent | Score | R | SP | % |
|-------------------|----------------|-----|-----|------|
| Kabel | 51-32 | 70 | 88 | 79.5 |
| Tamboer | 51-47 | 113 | 130 | 86.9 |
| Bennett | 51-17 | 64 | 76 | 84.2 |
| Owens | 51-28 | 54 | 70 | 77.1 |
| Solomon | 51-36 | 106 | 124 | 85.5 |
| Riffle | 50-13 | 68 | 76 | 89.4 |
| Knauff | 52-37 | 79 | 94 | 84.0 |
| Dixon | 52-33 | 77 | 90 | 85.5 |
| Hohl | 51-39 | 86 | 106 | 81.1 |
| Martin | 25-51 | 47 | 68 | 67.1 |
| Day | 36-51 | 42 | 64 | 65.6 |
| Steinfeldt | 44-51 | 88 | 108 | 81.5 |
| Vogel | 51-31 | 46 | 66 | 69.6 |
| Carmack | 50-32 | 87 | 110 | 79.1 |
| Stinson | 52-26 | 66 | 78 | 84.6 |
| Pinch | 47-53 | 96 | 124 | 77.3 |
| Taylor | 50-36 | 64 | 86 | 74.4 |
| Toole | 44-50 | 74 | 96 | 77.0 |
| Johnson | 52-23 | 63 | 76 | 82.8 |
| Fortenberry | 50-18 | 60 | 72 | 83.3 |
| Craig | 50-25 | 96 | 108 | 88.9 |
| Dugle | won by forfeit | | | |
| Fishel | 52-16 | 76 | 88 | 86.3 |
| Monasmith | 26-50 | 43 | 64 | 67.1 |
| May | 52-13 | 54 | 66 | 81.8 |
| Maddox | 15-50 | 78 | 96 | 81.2 |
| Henton | 40-51 | 126 | 144 | 87.5 |
| Allen | 52-37 | 105 | 124 | 84.7 |
| Reno | 24-54 | 77 | 96 | 80.2 |
| Fowler | 53-26 | 83 | 98 | 84.6 |
| Carpenter | 50-29 | 53 | 72 | 73.6 |
| Lindquist | 50-19 | 58 | 70 | 82.8 |
| Moefield | 52-23 | 39 | 50 | 78.0 |
| Zadroga | 27-53 | 51 | 74 | 68.9 |
| Wahlin | 51-35 | 95 | 112 | 84.8 |

Won 25 — Lost 10

2484

3064

81.1

11. John Monasmith, Yakima, Wash. — Defending Champ.

| Opponent | Score | R | SP | % |
|-------------------|----------------|----|-----|------|
| Fowler | 53-30 | 48 | 64 | 75.0 |
| Vogel | 52- 9 | 55 | 64 | 85.9 |
| Carpenter | 52-33 | 78 | 92 | 84.7 |
| Carmack | 38-52 | 66 | 90 | 73.3 |
| Lindquist | 50-38 | 74 | 94 | 80.4 |
| Stinson | 50-49 | 87 | 110 | 79.1 |
| Moefield | 38-50 | 70 | 92 | 76.0 |
| Pinch | 50-42 | 72 | 96 | 75.0 |
| Zadroga | 25-52 | 50 | 72 | 69.4 |
| Taylor | 52-37 | 57 | 76 | 75.0 |
| Wahlin | 51-44 | 73 | 96 | 76.0 |
| Toole | 41-51 | 81 | 100 | 81.0 |
| Kabel | 31-50 | 88 | 108 | 81.5 |
| Johnson | 51-20 | 64 | 78 | 82.0 |
| Tamboer | 50-37 | 82 | 104 | 78.8 |
| Fortenberry | 50-31 | 58 | 72 | 80.5 |
| Bennett | 51-13 | 50 | 60 | 83.3 |
| Craig | 50-36 | 68 | 88 | 77.2 |
| Owens | 50-19 | 50 | 60 | 83.3 |
| Dugle | won by forfeit | | | |
| Solomon | 51-12 | 57 | 62 | 91.9 |
| Fishel | 51-23 | 52 | 64 | 81.2 |
| Riffle | 51-43 | 89 | 110 | 80.9 |
| Latray | 50-26 | 51 | 64 | 79.6 |
| Knauff | 52-36 | 71 | 86 | 82.5 |
| May | 52-36 | 76 | 94 | 80.8 |
| Dixon | 51-23 | 84 | 94 | 89.3 |
| Maddox | 28-52 | 80 | 100 | 80.0 |
| Hohl | 30-50 | 78 | 96 | 81.2 |
| Henton | 51-27 | 98 | 110 | 89.1 |
| Martin | 19-51 | 51 | 70 | 72.9 |
| Allen | 52-38 | 87 | 106 | 82.1 |
| Day | 28-53 | 60 | 80 | 75.0 |
| Reno | 49-52 | 85 | 112 | 75.9 |
| Steinfeldt | 22-50 | 84 | 104 | 80.8 |

Won 24 — Lost 11

2374

2968

80.0

12. Ted Allen, Boulder, Colo. — Qualifying Score 539

| Opponent | Score | R | SP | % |
|-------------------|----------------|-----|-----|------|
| Lindquist | 50-11 | 55 | 66 | 83.3 |
| Moefield | 50-17 | 60 | 72 | 83.3 |
| Zadroga | 50-14 | 75 | 84 | 89.2 |
| Wahlin | 47-50 | 67 | 92 | 72.8 |
| Kabel | 55-36 | 70 | 88 | 79.5 |
| Tamboer | 50-17 | 67 | 76 | 88.1 |
| Bennett | 52-21 | 68 | 76 | 89.4 |
| Owens | 51-30 | 74 | 86 | 86.0 |
| Solomon | 55-45 | 74 | 96 | 77.0 |
| Riffle | 52-31 | 74 | 92 | 80.4 |
| Knauff | 52-28 | 65 | 76 | 85.5 |
| Dixon | 52-38 | 65 | 82 | 79.2 |
| Hohl | 50-42 | 102 | 128 | 81.0 |
| Martin | 25-55 | 57 | 78 | 73.1 |
| Day | 37-50 | 106 | 126 | 84.1 |
| Steinfeldt | 35-55 | 67 | 88 | 76.1 |
| Vogel | 51-14 | 46 | 60 | 76.6 |
| Carmack | 50-28 | 86 | 100 | 86.0 |
| Stinson | 41-52 | 72 | 98 | 73.4 |
| Pinch | 51- 9 | 49 | 54 | 90.7 |
| Taylor | 52-21 | 60 | 70 | 85.9 |
| Toole | 27-51 | 61 | 80 | 76.2 |
| Johnson | 50-12 | 48 | 56 | 85.7 |
| Fortenberry | 52-13 | 52 | 64 | 81.2 |
| Craig | 50-25 | 75 | 90 | 83.3 |
| Dugle | won by forfeit | | | |
| Fishel | 35-50 | 80 | 100 | 80.0 |
| Latray | 37-52 | 101 | 124 | 81.5 |
| May | 51-23 | 63 | 76 | 82.8 |
| Maddox | 51-49 | 94 | 114 | 82.5 |
| Henton | 42-51 | 114 | 136 | 83.8 |
| Monasmith | 38-52 | 83 | 106 | 78.3 |
| Reno | 17-52 | 73 | 102 | 71.6 |
| Fowler | 40-51 | 65 | 92 | 70.6 |
| Carpenter | 50-15 | 42 | 52 | 80.7 |

Won 23 — Lost 12

2410

2980

80.9

13. Henry Knauff, Spokane, Wash. — Qualifying Score 529

| Opponent | Score | R | SP | % |
|-------------------|----------------|-----|-----|------|
| Toole | 51-41 | 74 | 94 | 74.4 |
| Johnson | 53-35 | 84 | 100 | 84.0 |
| Fortenberry | 51-38 | 57 | 76 | 75.0 |
| Craig | 50-30 | 90 | 104 | 86.5 |
| Dugle | won by forfeit | | | |
| Fishel | 24-50 | 50 | 70 | 71.4 |
| Lattray | 37-52 | 74 | 94 | 78.7 |
| May | 38-51 | 70 | 94 | 74.4 |
| Maddox | 50-48 | 127 | 154 | 83.6 |
| Henton | 22-50 | 59 | 82 | 71.9 |
| Allen | 28-52 | 57 | 76 | 75.0 |
| Reno | 13-52 | 92 | 114 | 80.7 |
| Fowler | 51-31 | 56 | 76 | 73.6 |
| Carpenter | 50-34 | 72 | 88 | 81.8 |
| Lindquist | 50-14 | 69 | 78 | 88.4 |
| Moefield | 52-20 | 45 | 54 | 83.3 |
| Zadroga | 35-52 | 59 | 80 | 73.7 |
| Wahlin | 37-52 | 78 | 106 | 73.6 |
| Kabel | 52-27 | 71 | 84 | 84.5 |
| Tamboer | 50-38 | 93 | 112 | 83.0 |
| Bennett | 52-17 | 60 | 68 | 88.2 |
| Owens | 50- 7 | 54 | 60 | 90.0 |
| Solomon | 51-25 | 74 | 88 | 84.0 |
| Riffle | 50-24 | 70 | 86 | 81.3 |
| Monasmith | 36-52 | 65 | 86 | 75.5 |
| Dixon | 52-17 | 59 | 68 | 86.0 |
| Hohl | 23-52 | 88 | 110 | 80.0 |
| Martin | 52-41 | 87 | 106 | 82.1 |
| Day | 22-52 | 68 | 90 | 75.5 |
| Steinfeldt | 45-50 | 129 | 150 | 86.0 |
| Vogel | 50-15 | 66 | 78 | 84.6 |
| Carmack | 55-38 | 74 | 90 | 82.2 |
| Stinson | 54-30 | 71 | 92 | 77.1 |
| Pinch | 51-36 | 60 | 78 | 76.9 |
| Taylor | 52-41 | 68 | 86 | 79.0 |

Won 23 — Lost 12

2470

3072

80.4

14. Ed Fishel, Neilton, Wash. — Qualifying Score 524

| Opponent | Score | R | SP | % |
|-------------------|----------------|-----|-----|------|
| Tamboer | 29-50 | 55 | 78 | 70.5 |
| Bennett | 50- 8 | 45 | 52 | 86.5 |
| Owens | 51-48 | 66 | 88 | 75.0 |
| Solomon | 55-18 | 58 | 68 | 85.2 |
| Riffle | 44-50 | 70 | 96 | 72.9 |
| Knauff | 50-24 | 58 | 70 | 82.8 |
| Dixon | 51-31 | 49 | 62 | 79.0 |
| Hohl | 23-51 | 55 | 76 | 72.3 |
| Martin | 40-52 | 83 | 106 | 78.3 |
| Day | 46-52 | 95 | 120 | 79.2 |
| Steinfeldt | 31-51 | 84 | 108 | 77.8 |
| Vogel | 52- 3 | 38 | 44 | 86.3 |
| Carmack | 40-50 | 75 | 96 | 78.1 |
| Stinson | 52-38 | 79 | 100 | 79.0 |
| Pinch | 48-50 | 83 | 108 | 76.9 |
| Taylor | 52-35 | 50 | 64 | 78.1 |
| Toole | 28-50 | 48 | 72 | 66.7 |
| Johnson | 51-16 | 44 | 58 | 75.8 |
| Fortenberry | 50-14 | 44 | 52 | 82.6 |
| Craig | 50-20 | 54 | 72 | 75.0 |
| Dugle | won by forfeit | | | |
| Monasmith | 23-51 | 42 | 64 | 65.6 |
| Lattray | 16-52 | 65 | 88 | 73.8 |
| May | 52-33 | 75 | 92 | 81.5 |
| Maddox | 52-43 | 100 | 116 | 86.2 |
| Henton | 40-52 | 95 | 116 | 81.9 |
| Allen | 50-35 | 84 | 100 | 84.0 |
| Reno | 50-28 | 80 | 96 | 83.3 |
| Fowler | 55-27 | 85 | 98 | 86.7 |
| Carpenter | 52-23 | 49 | 62 | 79.0 |
| Lindquist | 54-16 | 46 | 56 | 82.1 |
| Moefield | 50-23 | 39 | 50 | 78.0 |
| Zadroga | 54-49 | 95 | 120 | 79.2 |
| Wahlin | 30-51 | 64 | 84 | 76.1 |
| Kabel | 55-38 | 72 | 92 | 78.2 |

Won 22 — Lost 13

2224

2824

78.8

15. Glenn Riffle, Dayton, O. — Qualifying Score 526

| Opponent | Score | R | SP | % |
|-------------------|----------------|-----|-----|------|
| Johnson | 51-37 | 65 | 88 | 73.8 |
| Fortenberry | 51-47 | 51 | 76 | 67.1 |
| Craig | 54-34 | 36 | 56 | 64.3 |
| Dugle | won by forfeit | | | |
| Fishel | 50-44 | 72 | 96 | 75.0 |
| Lattray | 13-50 | 56 | 76 | 73.6 |
| May | 39-52 | 51 | 72 | 70.8 |
| Maddox | 19-52 | 52 | 74 | 70.2 |
| Henton | 52-49 | 74 | 98 | 75.4 |
| Allen | 31-52 | 67 | 92 | 72.8 |
| Reno | 23-51 | 68 | 86 | 79.0 |
| Fowler | 52-29 | 54 | 70 | 77.1 |
| Carpenter | 52-24 | 62 | 80 | 77.5 |
| Lindquist | 55-36 | 65 | 80 | 81.2 |
| Moefield | 50-34 | 57 | 78 | 73.1 |
| Zadroga | 49-52 | 100 | 126 | 79.4 |
| Wahlin | 54-43 | 83 | 106 | 78.3 |
| Kabel | 30-50 | 57 | 80 | 71.2 |
| Tamboer | 52-44 | 86 | 106 | 81.1 |
| Bennett | 51-27 | 45 | 62 | 72.5 |
| Owens | 50-20 | 38 | 50 | 76.0 |
| Solomon | 55-32 | 69 | 90 | 76.6 |
| Monasmith | 43-51 | 86 | 110 | 78.2 |
| Knauff | 24-50 | 63 | 86 | 73.2 |
| Dixon | 51-27 | 58 | 74 | 78.3 |
| Hohl | 36-52 | 91 | 112 | 81.3 |
| Martin | 23-51 | 62 | 86 | 72.9 |
| Day | 24-52 | 67 | 88 | 76.1 |
| Steinfeldt | 50-43 | 79 | 100 | 79.0 |
| Vogel | 50-23 | 45 | 56 | 80.3 |
| Carmack | 50-19 | 43 | 58 | 74.7 |
| Stinson | 52-47 | 73 | 98 | 74.4 |
| Pinch | 40-50 | 55 | 82 | 67.0 |
| Taylor | 50-31 | 42 | 58 | 72.4 |
| Toole | 37-50 | 84 | 104 | 80.8 |

Won 21 — Lost 14

2156 2854 75.5

16. M. Tamboer, Wichita, Kan. — Qualifying Score 520

| Opponent | Score | R | SP | % |
|-------------------|----------------|-----|-----|------|
| Fishel | 50-29 | 61 | 78 | 78.2 |
| Lattray | 47-51 | 111 | 130 | 85.4 |
| May | 50-13 | 70 | 80 | 87.5 |
| Maddox | 18-52 | 69 | 90 | 76.6 |
| Henton | 30-52 | 92 | 116 | 79.3 |
| Allen | 17-50 | 55 | 76 | 72.3 |
| Reno | 26-52 | 57 | 80 | 71.2 |
| Fowler | 50-23 | 72 | 88 | 81.8 |
| Carpenter | 51-35 | 60 | 76 | 78.9 |
| Lindquist | 52-30 | 45 | 58 | 77.5 |
| Moefield | 50-27 | 63 | 76 | 82.8 |
| Zadroga | 29-52 | 54 | 78 | 69.2 |
| Wahlin | 45-50 | 77 | 96 | 80.2 |
| Kabel | 25-51 | 61 | 84 | 72.6 |
| Monasmith | 37-50 | 77 | 104 | 74.0 |
| Bennett | 52-47 | 77 | 100 | 77.0 |
| Owens | 52-42 | 96 | 118 | 81.4 |
| Solomon | 50-41 | 88 | 106 | 83.0 |
| Riffle | 44-52 | 85 | 106 | 80.2 |
| Knauff | 38-50 | 90 | 112 | 80.4 |
| Dixon | 51-14 | 80 | 86 | 93.0 |
| Hohl | 49-50 | 60 | 86 | 69.7 |
| Martin | 51-24 | 62 | 76 | 81.5 |
| Day | 51-48 | 100 | 122 | 82.0 |
| Steinfeldt | 10-51 | 68 | 88 | 77.2 |
| Vogel | 50-12 | 45 | 54 | 83.3 |
| Carmack | 50-20 | 64 | 78 | 82.0 |
| Stinson | 51-16 | 38 | 44 | 86.3 |
| Pinch | 53-35 | 78 | 96 | 81.2 |
| Taylor | 51- 6 | 45 | 52 | 86.5 |
| Toole | 14-50 | 44 | 64 | 68.7 |
| Johnson | 52-28 | 67 | 84 | 79.7 |
| Fortenberry | 55-37 | 73 | 90 | 81.1 |
| Craig | 22-52 | 48 | 72 | 66.7 |
| Dugle | won by forfeit | | | |

Won 20 — Lost 15

2332 2944 79.2

17. Clive Wahlin, Salt Lake City, Utah — Qual. Score 512.

| Opponent | Score | R | SP | % |
|-------------------|----------------|----|-----|------|
| May | 19-52 | 49 | 74 | 66.2 |
| Maddox | 39-51 | 79 | 104 | 76.0 |
| Henton | 21-50 | 83 | 104 | 79.8 |
| Allen | 50-47 | 68 | 92 | 73.9 |
| Reno | 26-50 | 71 | 92 | 77.1 |
| Fowler | 52-32 | 65 | 82 | 79.2 |
| Carpenter | 54-46 | 79 | 104 | 76.0 |
| Lindquist | 51-24 | 61 | 80 | 76.2 |
| Moefield | 51-38 | 61 | 80 | 76.2 |
| Zadroga | 54-43 | 81 | 104 | 77.9 |
| Monasmith | 44-51 | 70 | 96 | 72.9 |
| Kabel | 51-42 | 75 | 96 | 78.1 |
| Tamboer | 50-45 | 79 | 96 | 82.3 |
| Bennett | 52-27 | 59 | 76 | 77.6 |
| Owens | 35-50 | 49 | 72 | 68.0 |
| Solomon | 22-51 | 52 | 72 | 72.2 |
| Riffle | 43-54 | 78 | 106 | 73.6 |
| Knauft | 52-37 | 82 | 106 | 77.4 |
| Dixon | 53-26 | 42 | 62 | 67.7 |
| Hohl | 22-52 | 53 | 72 | 73.6 |
| Martin | 19-50 | 54 | 76 | 71.0 |
| Day | 17-51 | 46 | 66 | 69.6 |
| Steinfeldt | 31-51 | 71 | 94 | 75.5 |
| Vogel | 51-27 | 52 | 70 | 74.2 |
| Carmack | 52-46 | 76 | 98 | 77.5 |
| Stinson | 50-10 | 36 | 46 | 78.2 |
| Pinch | 24-52 | 44 | 70 | 62.8 |
| Taylor | 54-13 | 52 | 60 | 86.6 |
| Toole | 45-51 | 79 | 100 | 79.0 |
| Johnson | 50- 7 | 46 | 52 | 88.4 |
| Fortenberry | 50-28 | 53 | 74 | 71.6 |
| Craig | 52-30 | 61 | 74 | 82.4 |
| Dugle | won by forfeit | | | |
| Fishel | 51-30 | 70 | 84 | 83.3 |
| Lattray | 35-51 | 90 | 112 | 80.4 |

Won 20 — Lost 15

2166

2846

76.1

18. Wilbur Kabel, New Madison, O. — Qualifying Score 519.

| Opponent | Score | R | SP | % |
|-------------------|----------------|-----|-----|------|
| Lattray | 32-51 | 63 | 88 | 71.6 |
| May | 51-20 | 71 | 88 | 80.6 |
| Maddox | 28-52 | 87 | 100 | 77.7 |
| Henton | 26-50 | 49 | 70 | 70.0 |
| Allen | 36-55 | 62 | 88 | 70.4 |
| Reno | 36-51 | 52 | 74 | 70.2 |
| Fowler | 31-50 | 62 | 86 | 72.9 |
| Carpenter | 45-50 | 68 | 90 | 75.5 |
| Lindquist | 52-22 | 66 | 82 | 80.4 |
| Moefield | 50- 7 | 52 | 58 | 89.6 |
| Zadroga | 40-52 | 86 | 114 | 75.5 |
| Wahlin | 42-51 | 71 | 96 | 73.9 |
| Monasmith | 50-31 | 93 | 108 | 86.1 |
| Tamboer | 51-25 | 68 | 84 | 80.9 |
| Bennett | 50-22 | 52 | 64 | 81.2 |
| Owens | 52-20 | 51 | 66 | 77.2 |
| Solomon | 25-52 | 81 | 102 | 79.4 |
| Riffle | 50-30 | 64 | 80 | 80.0 |
| Knauft | 27-52 | 64 | 84 | 76.1 |
| Dixon | 50-21 | 65 | 78 | 83.3 |
| Hohl | 46-50 | 115 | 136 | 84.6 |
| Martin | 50-46 | 98 | 118 | 83.1 |
| Day | 47-51 | 97 | 120 | 80.8 |
| Steinfeldt | 31-53 | 58 | 82 | 70.7 |
| Vogel | 52-20 | 44 | 54 | 81.4 |
| Carmack | 51-39 | 74 | 92 | 80.4 |
| Stinson | 55-15 | 59 | 68 | 86.7 |
| Pinch | 52-11 | 51 | 60 | 85.0 |
| Taylor | 52- 5 | 45 | 50 | 90.0 |
| Toole | 27-52 | 72 | 96 | 75.0 |
| Johnson | 53-29 | 53 | 70 | 75.7 |
| Fortenberry | 52-47 | 83 | 106 | 78.3 |
| Craig | 24-51 | 65 | 90 | 72.2 |
| Dugle | won by forfeit | | | |
| Fishel | 38-55 | 67 | 92 | 72.8 |

Won 18 — Lost 17

2308

2934

78.7

19. Herb Pinch, Sharon, Pa. — Qualifying Score 509.

| Opponent | Score | R | SP | % |
|-------------------|----------------|----|-----|------|
| Hohl | 29-51 | 69 | 92 | 73.4 |
| Martin | 6-50 | 45 | 64 | 70.3 |
| Day | 12-50 | 64 | 88 | 72.7 |
| Steinfeldt | 38-51 | 79 | 100 | 79.0 |
| Vogel | 50-37 | 46 | 64 | 71.8 |
| Carmack | 52-25 | 61 | 72 | 84.7 |
| Stinson | 41-51 | 58 | 80 | 72.5 |
| Monasmith | 42-50 | 70 | 96 | 72.9 |
| Taylor | 51-43 | 59 | 80 | 73.7 |
| Toole | 29-50 | 67 | 94 | 71.2 |
| Johnson | 50-15 | 60 | 68 | 88.2 |
| Fortenberry | 51-40 | 59 | 82 | 71.9 |
| Craig | 47-52 | 70 | 102 | 68.2 |
| Dugle | won by forfeit | | | |
| Fishel | 50-48 | 84 | 108 | 77.8 |
| Lattray | 53-47 | 98 | 124 | 79.0 |
| May | 50-48 | 77 | 104 | 74.0 |
| Maddox | 19-52 | 64 | 88 | 72.7 |
| Henton | 38-51 | 80 | 104 | 76.9 |
| Allen | 6-51 | 35 | 54 | 64.8 |
| Reno | 4-50 | 32 | 52 | 61.5 |
| Fowler | 50-27 | 54 | 66 | 81.8 |
| Carpenter | 51-38 | 53 | 72 | 73.6 |
| Lindquist | 50-19 | 41 | 52 | 78.8 |
| Moefield | 50-30 | 52 | 68 | 76.4 |
| Zadroga | 28-51 | 42 | 66 | 63.6 |
| Wahlin | 52-24 | 54 | 70 | 77.1 |
| Kabel | 11-52 | 37 | 60 | 61.6 |
| Tamboer | 35-53 | 73 | 96 | 76.0 |
| Bennett | 14-50 | 46 | 70 | 65.7 |
| Owens | 52-35 | 70 | 88 | 79.5 |
| Solomon | 19-52 | 39 | 62 | 62.9 |
| Riffle | 50-40 | 59 | 82 | 70.7 |
| Knauff | 36-54 | 55 | 78 | 70.5 |
| Dixon | 52-41 | 72 | 96 | 75.0 |

Won 17 — Lost 18

2024

2742

73.8

20. Jimmy Solomon, Uniontown, Pa. — Qual. Score 524.

| Opponent | Score | R | SP | % |
|-------------------|----------------|-----|-----|------|
| Fortenberry | 43-52 | 65 | 88 | 73.8 |
| Craig | 51-31 | 64 | 78 | 82.0 |
| Dugle | won by forfeit | | | |
| Fishel | 18-55 | 45 | 68 | 66.1 |
| Lattray | 36-51 | 103 | 124 | 83.1 |
| May | 47-52 | 86 | 114 | 75.4 |
| Maddox | 27-50 | 88 | 108 | 81.5 |
| Henton | 15-50 | 50 | 68 | 73.5 |
| Allen | 45-55 | 71 | 96 | 73.9 |
| Reno | 21-54 | 54 | 76 | 71.0 |
| Fowler | 52-37 | 76 | 94 | 78.7 |
| Carpenter | 50-32 | 83 | 102 | 81.4 |
| Lindquist | 52-19 | 53 | 62 | 85.4 |
| Moefield | 52-30 | 47 | 70 | 67.1 |
| Zadroga | 27-51 | 63 | 82 | 76.8 |
| Wahlin | 51-22 | 60 | 72 | 81.1 |
| Kabel | 52-25 | 89 | 102 | 87.3 |
| Tamboer | 41-50 | 85 | 106 | 80.2 |
| Bennett | 50-32 | 49 | 66 | 74.2 |
| Owens | 39-51 | 62 | 86 | 72.9 |
| Monasmith | 12-51 | 45 | 62 | 72.5 |
| Riffle | 32-55 | 59 | 90 | 65.5 |
| Knauff | 25-51 | 66 | 88 | 75.0 |
| Dixon | 52-20 | 59 | 74 | 79.7 |
| Hohl | 9-52 | 79 | 98 | 80.6 |
| Martin | 49-51 | 100 | 120 | 83.3 |
| Day | 26-50 | 71 | 92 | 77.1 |
| Steinfeldt | 40-52 | 88 | 114 | 77.2 |
| Vogel | 50-19 | 46 | 62 | 74.1 |
| Carmack | 50-39 | 71 | 82 | 86.5 |
| Stinson | 51-13 | 46 | 52 | 88.4 |
| Pinch | 52-19 | 49 | 62 | 79.0 |
| Taylor | 50-20 | 51 | 64 | 79.6 |
| Toole | 25-52 | 137 | 158 | 87.8 |
| Johnson | 51-23 | 51 | 68 | 75.9 |

Won 16 — Lost 19

2311

2948

78.4

21. Marvin Craig, Parker, Ind. — Qualifying Score 522.

| Opponent | Score | R | SP | % |
|-------------------|----------------|-----|-----|------|
| Owens | 50-20 | 61 | 78 | 78.2 |
| Solomon | 31-51 | 56 | 78 | 71.7 |
| Riffle | 34-54 | 30 | 56 | 53.6 |
| Knauft | 30-50 | 83 | 104 | 79.8 |
| Dixon | 35-52 | 78 | 100 | 78.0 |
| Hohl | 19-52 | 51 | 72 | 70.8 |
| Martin | 33-52 | 85 | 112 | 75.9 |
| Day | 7-52 | 66 | 90 | 70.0 |
| Steinfeldt | 19-52 | 84 | 104 | 80.8 |
| Vogel | 51-37 | 63 | 82 | 76.8 |
| Carmack | 51-49 | 66 | 90 | 71.7 |
| Stinson | 53-38 | 53 | 74 | 71.6 |
| Pinch | 52-47 | 71 | 102 | 69.6 |
| Taylor | 51-18 | 41 | 58 | 70.6 |
| Toole | 30-50 | 65 | 88 | 73.8 |
| Johnson | 50-15 | 54 | 64 | 84.3 |
| Fortenberry | 44-50 | 61 | 88 | 69.3 |
| Monasmith | 36-50 | 62 | 88 | 70.4 |
| Dugle | won by forfeit | | | |
| Fishel | 28-50 | 47 | 72 | 65.2 |
| Lattray | 25-50 | 88 | 108 | 81.5 |
| May | 52-32 | 67 | 84 | 79.7 |
| Maddox | 49-51 | 83 | 106 | 78.3 |
| Henton | 13-51 | 80 | 98 | 81.6 |
| Allen | 25-50 | 66 | 90 | 73.3 |
| Reno | 38-50 | 83 | 106 | 78.3 |
| Fowler | 54-47 | 105 | 128 | 82.0 |
| Carpenter | 50-30 | 56 | 68 | 80.8 |
| Lindquist | 50-31 | 58 | 78 | 74.5 |
| Moefield | 51-30 | 49 | 72 | 68.0 |
| Zadroga | 42-50 | 62 | 84 | 73.8 |
| Wahlin | 30-52 | 53 | 74 | 71.6 |
| Kabel | 51-24 | 75 | 90 | 83.3 |
| Tamboer | 52-22 | 58 | 72 | 80.5 |
| Bennett | 44-50 | 64 | 88 | 72.7 |

Won 15 — Lost 20

2224

2946

75.5

22. Floyd Fowler, Greencastle, Ind. — Qual. Score 505.

| Opponent | Score | R | SP | % |
|-------------------|----------------|-----|-----|------|
| Monasmith | 30-50 | 40 | 64 | 62.5 |
| Carpenter | 45-51 | 62 | 88 | 70.4 |
| Lindquist | 50- 6 | 35 | 40 | 87.5 |
| Moefield | 52-40 | 62 | 86 | 72.9 |
| Zadroga | 12-52 | 42 | 64 | 65.6 |
| Wahlin | 32-52 | 57 | 82 | 69.5 |
| Kabel | 50-31 | 69 | 86 | 80.2 |
| Tamboer | 23-50 | 64 | 88 | 72.7 |
| Bennett | 52-28 | 64 | 78 | 82.0 |
| Owens | 51-34 | 77 | 92 | 83.6 |
| Solomon | 37-52 | 70 | 94 | 75.5 |
| Riffle | 29-52 | 47 | 70 | 67.1 |
| Knauft | 31-51 | 51 | 76 | 67.1 |
| Dixon | 53-29 | 58 | 76 | 76.3 |
| Hohl | 28-52 | 62 | 88 | 70.4 |
| Martin | 50-45 | 67 | 90 | 74.4 |
| Day | 52-41 | 71 | 88 | 80.6 |
| Steinfeldt | 51-47 | 91 | 112 | 81.3 |
| Vogel | 52-28 | 58 | 72 | 80.5 |
| Carmack | 30-52 | 50 | 74 | 67.5 |
| Stinson | 45-52 | 65 | 92 | 70.6 |
| Pinch | 27-50 | 47 | 66 | 79.2 |
| Taylor | 50-46 | 59 | 78 | 75.7 |
| Toole | 44-52 | 95 | 118 | 80.5 |
| Johnson | 46-51 | 96 | 126 | 76.2 |
| Fortenberry | 50-47 | 63 | 86 | 73.5 |
| Craig | 47-54 | 102 | 128 | 79.7 |
| Dugle | won by forfeit | | | |
| Fishel | 27-55 | 75 | 98 | 76.5 |
| Lattray | 26-53 | 73 | 98 | 74.4 |
| May | 51-37 | 60 | 84 | 71.4 |
| Maddox | 41-51 | 91 | 110 | 82.7 |
| Henton | 4-52 | 51 | 70 | 72.8 |
| Allen | 51-40 | 69 | 92 | 75.0 |
| Reno | 11-52 | 26 | 46 | 56.5 |

Won 15 — Lost 20

2169

2900

74.8

23. Bob May, Glenwood, Ind. — Qualifying Score 531.

| Opponent | Score | R | SP | % |
|-------------------|----------------|-----|-----|------|
| Wahlin | 52-19 | 56 | 74 | 75.6 |
| Kabel | 20-52 | 61 | 88 | 67.7 |
| Tamboer | 13-50 | 57 | 80 | 71.2 |
| Bennett | 38-53 | 63 | 86 | 73.2 |
| Owens | 52-28 | 60 | 74 | 81.1 |
| Solomon | 52-47 | 88 | 114 | 77.2 |
| Riffle | 52-39 | 54 | 72 | 75.0 |
| Knauft | 51-38 | 75 | 94 | 79.7 |
| Dixon | 50-30 | 78 | 94 | 82.7 |
| Hohl | 36-51 | 86 | 110 | 78.2 |
| Martin | 41-50 | 88 | 114 | 77.2 |
| Day | 23-50 | 65 | 86 | 75.5 |
| Steinfeldt | 17-52 | 39 | 68 | 55.7 |
| Vogel | 52-22 | 49 | 64 | 76.5 |
| Carmack | 55-45 | 74 | 104 | 71.2 |
| Stinson | 52-11 | 56 | 66 | 84.8 |
| Pinch | 48-50 | 76 | 104 | 73.1 |
| Taylor | 50-26 | 66 | 78 | 84.6 |
| Toole | 39-50 | 73 | 94 | 77.6 |
| Johnson | 43-50 | 59 | 84 | 70.2 |
| Fortenberry | 51-34 | 60 | 78 | 76.9 |
| Craig | 32-52 | 60 | 84 | 71.4 |
| Dugle | won by forfeit | | | |
| Fishel | 33-52 | 69 | 92 | 75.0 |
| Lattray | 13-52 | 43 | 66 | 65.1 |
| Monasmith | 36-52 | 71 | 94 | 75.5 |
| Maddox | 32-51 | 108 | 132 | 81.8 |
| Henton | 40-51 | 69 | 96 | 71.8 |
| Allen | 23-51 | 54 | 76 | 71.0 |
| Reno | 16-50 | 53 | 74 | 71.6 |
| Fowler | 37-51 | 56 | 84 | 66.7 |
| Carpenter | 23-52 | 49 | 70 | 70.0 |
| Lindquist | 50-27 | 60 | 76 | 78.9 |
| Moefield | 51-17 | 48 | 60 | 80.0 |
| Zadroga | 23-51 | 70 | 94 | 74.4 |

Won 14 — Lost 21

2193

2924

75.0

24. Lee Bennett, Middletown, O. — Qualifying Score 520.

| Opponent | Score | R | SP | % |
|-------------------|----------------|----|-----|------|
| Dugle | won by forfeit | | | |
| Fishel | 8-50 | 31 | 52 | 59.6 |
| Lattray | 17-51 | 53 | 76 | 69.7 |
| May | 53-38 | 68 | 86 | 79.0 |
| Maddox | 52-46 | 97 | 118 | 82.2 |
| Henton | 6-50 | 27 | 46 | 58.7 |
| Allen | 21-52 | 58 | 76 | 76.3 |
| Reno | 9-51 | 25 | 48 | 52.0 |
| Fowler | 28-52 | 57 | 78 | 72.0 |
| Carpenter | 38-50 | 79 | 104 | 76.0 |
| Lindquist | 50-40 | 53 | 74 | 68.9 |
| Moefield | 52-26 | 59 | 74 | 79.7 |
| Zadroga | 35-50 | 56 | 78 | 71.7 |
| Wahlin | 27-52 | 51 | 76 | 67.1 |
| Kabel | 22-50 | 42 | 64 | 65.6 |
| Tamboer | 47-52 | 72 | 100 | 72.0 |
| Monasmith | 13-51 | 38 | 60 | 63.3 |
| Owens | 33-50 | 50 | 78 | 64.1 |
| Solomon | 32-50 | 42 | 66 | 63.6 |
| Riffle | 27-51 | 38 | 62 | 61.2 |
| Knauft | 17-52 | 48 | 68 | 70.5 |
| Dixon | 51-45 | 78 | 102 | 76.5 |
| Hohl | 18-54 | 55 | 76 | 72.3 |
| Martin | 45-51 | 98 | 124 | 79.0 |
| Day | 13-51 | 29 | 50 | 58.0 |
| Steinfeldt | 37-50 | 62 | 84 | 73.8 |
| Vogel | 50-14 | 33 | 44 | 75.0 |
| Carmack | 52-43 | 67 | 90 | 74.4 |
| Stinson | 50-14 | 43 | 54 | 79.6 |
| Pinch | 50-14 | 57 | 70 | 81.4 |
| Taylor | 51-48 | 54 | 78 | 69.2 |
| Toole | 22-51 | 75 | 96 | 78.1 |
| Johnson | 50-14 | 38 | 50 | 76.0 |
| Fortenberry | 47-50 | 52 | 74 | 70.2 |
| Craig | 50-44 | 65 | 88 | 73.8 |

Won 13 — Lost 22

1850

2564

72.2

25. Don Owens, Summitville, Ind. — Qualifying Score 523.

| Opponent | Score | R | SP | % |
|-------------------|----------------|----|-----|------|
| Craig | 20-50 | 53 | 78 | 67.2 |
| Dugle | won by forfeit | | | |
| Fishel | 48-51 | 66 | 88 | 75.0 |
| Lattray | 28-51 | 47 | 70 | 67.1 |
| May | 28-52 | 51 | 74 | 68.9 |
| Maddox | 30-52 | 65 | 90 | 72.2 |
| Henton | 21-51 | 29 | 52 | 55.8 |
| Allen | 30-50 | 66 | 86 | 76.7 |
| Reno | 23-51 | 44 | 66 | 66.7 |
| Fowler | 34-51 | 71 | 92 | 77.1 |
| Carpenter | 52-36 | 84 | 100 | 84.0 |
| Lindquist | 52-29 | 47 | 64 | 73.4 |
| Moefield | 51-17 | 37 | 52 | 71.1 |
| Zadroga | 26-51 | 43 | 68 | 63.2 |
| Wahlin | 50-35 | 53 | 72 | 73.6 |
| Kabel | 20-52 | 41 | 66 | 62.1 |
| Tamboer | 42-52 | 90 | 118 | 76.3 |
| Bennett | 50-23 | 55 | 78 | 70.5 |
| Monasmith | 19-50 | 40 | 60 | 66.7 |
| Solomon | 51-39 | 66 | 86 | 76.7 |
| Riffle | 20-50 | 28 | 50 | 56.0 |
| Knauft | 7-50 | 40 | 60 | 66.7 |
| Dixon | 55-34 | 45 | 68 | 64.7 |
| Hohl | 21-50 | 51 | 70 | 72.8 |
| Martin | 13-50 | 31 | 50 | 62.0 |
| Day | 24-50 | 53 | 72 | 73.6 |
| Steinfeldt | 18-52 | 59 | 82 | 71.9 |
| Vogel | 50- 9 | 37 | 46 | 80.4 |
| Carmack | 32-52 | 82 | 110 | 74.5 |
| Stinson | 50-11 | 53 | 62 | 85.4 |
| Pinch | 25-52 | 61 | 88 | 69.3 |
| Taylor | 50-22 | 34 | 46 | 73.9 |
| Toole | 17-51 | 59 | 78 | 75.7 |
| Johnson | 51-35 | 80 | 108 | 74.1 |
| Fortenberry | 50-28 | 64 | 80 | 80.0 |

Won 13 — Lost 22

1825

2530

72.1

26. Joseph Carmack, Lecom, Mo. — Qualifying Score 508.

| Opponent | Score | R | SP | % |
|-------------------|----------------|----|-----|------|
| Day | 20-51 | 48 | 68 | 70.5 |
| Steinfeldt | 45-52 | 86 | 110 | 78.2 |
| Vogel | 50-29 | 54 | 70 | 77.1 |
| Monasmith | 52-38 | 70 | 90 | 77.7 |
| Stinson | 51-40 | 72 | 94 | 76.5 |
| Pinch | 25-52 | 52 | 72 | 72.2 |
| Taylor | 51-47 | 49 | 70 | 70.0 |
| Toole | 37-52 | 69 | 92 | 75.0 |
| Johnson | 51-15 | 52 | 64 | 81.2 |
| Fortenberry | 51-29 | 58 | 82 | 70.7 |
| Craig | 49-51 | 67 | 90 | 74.4 |
| Dugle | won by forfeit | | | |
| Fishel | 50-40 | 77 | 96 | 80.2 |
| Lattray | 32-50 | 81 | 110 | 73.6 |
| May | 45-55 | 72 | 104 | 69.2 |
| Maddox | 18-52 | 48 | 76 | 63.1 |
| Henton | 31-54 | 61 | 84 | 72.6 |
| Allen | 28-50 | 79 | 100 | 79.0 |
| Reno | 16-51 | 45 | 68 | 66.1 |
| Fowler | 52-30 | 57 | 74 | 77.0 |
| Carpenter | 44-51 | 96 | 114 | 78.9 |
| Lindquist | 37-52 | 65 | 88 | 73.8 |
| Moefield | 52-19 | 44 | 60 | 73.3 |
| Zadroga | 29-53 | 63 | 86 | 73.2 |
| Wahlin | 46-52 | 73 | 98 | 74.4 |
| Kabel | 39-51 | 70 | 92 | 76.0 |
| Tamboer | 20-50 | 55 | 78 | 70.5 |
| Bennett | 43-52 | 64 | 90 | 71.1 |
| Owens | 52-32 | 87 | 110 | 79.1 |
| Solomon | 39-50 | 59 | 82 | 71.9 |
| Riffle | 19-50 | 35 | 58 | 60.3 |
| Knauft | 38-55 | 68 | 90 | 75.5 |
| Dixon | 36-51 | 76 | 106 | 71.7 |
| Hohl | 16-54 | 46 | 64 | 71.8 |
| Martin | 43-50 | 74 | 100 | 74.0 |

Won 11 — Lost 24

2172

2930

74.1

27. Dick Carpenter, Union City, Ind. — Qual. Score 507.

| Opponent | Score | R | SP | % |
|-------------------|----------------|----|-----|------|
| Reno | 16-51 | 34 | 56 | 60.7 |
| Fowler | 51-45 | 67 | 88 | 76.1 |
| Monasmith | 33-52 | 72 | 92 | 78.2 |
| Lindquist | 50-23 | 56 | 72 | 77.7 |
| Moefield | 44-52 | 56 | 84 | 66.7 |
| Reno | 32-50 | 59 | 80 | 73.7 |
| Wahlin | 46-54 | 77 | 104 | 74.0 |
| Kabel | 50-45 | 70 | 90 | 77.7 |
| Tamboer | 35-51 | 55 | 76 | 72.3 |
| Bennett | 50-38 | 82 | 104 | 78.3 |
| Owens | 36-52 | 78 | 100 | 78.0 |
| Solomon | 32-50 | 79 | 102 | 77.5 |
| Riffle | 24-52 | 53 | 80 | 66.2 |
| Knauff | 34-50 | 66 | 88 | 75.0 |
| Dixon | 15-53 | 27 | 48 | 56.3 |
| Hohl | 35-52 | 60 | 82 | 73.1 |
| Martin | 25-52 | 44 | 68 | 64.7 |
| Day | 30-52 | 65 | 86 | 75.5 |
| Steinfeldt | 28-52 | 52 | 78 | 66.7 |
| Vogel | 51-12 | 40 | 50 | 80.0 |
| Carmack | 51-44 | 91 | 114 | 79.8 |
| Stinson | 34-52 | 77 | 100 | 74.0 |
| Pinch | 38-51 | 49 | 72 | 68.0 |
| Taylor | 50-33 | 80 | 100 | 80.0 |
| Toole | 28-50 | 62 | 86 | 72.9 |
| Johnson | 50-47 | 67 | 86 | 77.9 |
| Fortenberry | 50-35 | 55 | 70 | 78.5 |
| Craig | 30-50 | 50 | 68 | 73.5 |
| Dugle | won by forfeit | | | |
| Fishel | 23-52 | 38 | 62 | 61.3 |
| Lattray | 29-50 | 45 | 72 | 62.5 |
| May | 52-23 | 59 | 70 | 84.2 |
| Maddox | 38-51 | 61 | 86 | 70.9 |
| Henton | 13-52 | 43 | 64 | 67.1 |
| Allen | 15-50 | 30 | 52 | 57.7 |

Won 11 — Lost 24

1999

2730

73.2

28. C. Fortenberry, Knoxville, Tenn. — Qual. Score 520.

| Opponent | Score | R | SP | % |
|------------------|----------------|----|-----|------|
| Solomon | 52-43 | 68 | 88 | 77.2 |
| Riffle | 47-51 | 50 | 76 | 65.7 |
| Knauff | 38-51 | 54 | 76 | 71.0 |
| Dixon | 51-30 | 51 | 70 | 72.8 |
| Hohl | 20-50 | 46 | 68 | 67.6 |
| Martin | 13-50 | 69 | 88 | 78.4 |
| Day | 37-54 | 51 | 70 | 72.8 |
| Steinfeldt | 37-50 | 72 | 100 | 72.0 |
| Vogel | 51-28 | 48 | 68 | 70.5 |
| Carmack | 29-51 | 52 | 82 | 63.4 |
| Stinson | 50-11 | 43 | 52 | 82.6 |
| Pinch | 40-51 | 53 | 82 | 64.6 |
| Taylor | 50-38 | 50 | 70 | 71.4 |
| Toole | 30-52 | 65 | 88 | 73.8 |
| Johnson | 47-50 | 75 | 100 | 75.0 |
| Monasmith | 31-50 | 52 | 72 | 72.2 |
| Craig | 50-44 | 64 | 88 | 72.7 |
| Dugle | won by forfeit | | | |
| Fishel | 14-50 | 32 | 52 | 61.5 |
| Lattray | 18-50 | 49 | 72 | 68.1 |
| May | 34-51 | 54 | 78 | 69.2 |
| Maddox | 28-51 | 60 | 82 | 73.1 |
| Henton | 52-43 | 99 | 118 | 83.9 |
| Allen | 13-52 | 39 | 64 | 60.9 |
| Reno | 18-50 | 72 | 94 | 76.5 |
| Fowler | 47-50 | 63 | 86 | 73.3 |
| Carpenter | 35-50 | 50 | 70 | 71.4 |
| Lindquist | 33-51 | 49 | 74 | 66.2 |
| Moefield | 53- 4 | 28 | 34 | 82.4 |
| Zadroga | 29-52 | 59 | 80 | 73.7 |
| Wahlin | 28-50 | 46 | 74 | 62.1 |
| Kabel | 47-52 | 82 | 106 | 77.4 |
| Tamboer | 37-55 | 68 | 90 | 75.5 |
| Bennett | 50-47 | 54 | 74 | 72.9 |
| Owens | 28-50 | 55 | 80 | 68.7 |

Won 10 — Lost 25

1922

2666

72.1

29. Jim "Pop" Johnson, Cincinnati, O. — Qual. Score 519.

| Opponent | Score | R | SP | % |
|-------------------|----------------|-----|-----|------|
| Riffle | 37-51 | 61 | 88 | 69.3 |
| Knauff | 35-53 | 78 | 100 | 78.0 |
| Dixon | 50-35 | 72 | 90 | 80.0 |
| Hohl | 3-51 | 32 | 54 | 59.3 |
| Martin | 36-51 | 62 | 84 | 73.8 |
| Day | 9-52 | 68 | 88 | 77.2 |
| Steinfeldt | 50-47 | 118 | 146 | 80.8 |
| Vogel | 51-39 | 54 | 78 | 69.2 |
| Carmack | 15-51 | 40 | 64 | 62.5 |
| Stinson | 29-50 | 62 | 84 | 73.8 |
| Pinch | 15-50 | 49 | 68 | 72.0 |
| Taylor | 34-52 | 31 | 62 | 50.0 |
| Toole | 26-52 | 58 | 84 | 69.0 |
| Monasmith | 20-51 | 54 | 78 | 69.2 |
| Fortenberry | 50-47 | 76 | 100 | 76.0 |
| Craig | 15-50 | 42 | 64 | 65.6 |
| Dugle | won by forfeit | | | |
| Fishel | 16-51 | 34 | 58 | 59.6 |
| Lattray | 23-52 | 54 | 76 | 71.0 |
| May | 50-43 | 62 | 84 | 73.8 |
| Maddox | 26-52 | 51 | 74 | 68.9 |
| Henton | 17-51 | 54 | 74 | 72.9 |
| Allen | 12-50 | 36 | 56 | 64.2 |
| Reno | 40-52 | 65 | 84 | 77.3 |
| Fowler | 51-46 | 98 | 126 | 77.8 |
| Carpenter | 47-50 | 66 | 86 | 76.7 |
| Lindquist | 52-35 | 66 | 84 | 78.5 |
| Moefield | 54-10 | 39 | 52 | 75.0 |
| Zadroga | 35-50 | 78 | 98 | 79.5 |
| Wahlin | 7-50 | 31 | 52 | 59.6 |
| Kabel | 29-53 | 46 | 70 | 65.7 |
| Tamboer | 28-52 | 59 | 84 | 70.2 |
| Bennett | 14-50 | 27 | 50 | 54.0 |
| Owens | 35-51 | 77 | 108 | 71.3 |
| Solomon | 23-51 | 43 | 68 | 63.2 |

Won 9 — Lost 26

1943

2716

71.5

30. Frank Stinson, Minneapolis, Minn. Qual. Score 508.

| Opponent | Score | R | SP | % |
|-------------------|----------------|----|-----|------|
| Martin | 8-51 | 49 | 70 | 70.0 |
| Allen | 12-52 | 58 | 76 | 76.3 |
| Steinfeldt | 43-50 | 75 | 96 | 78.1 |
| Vogel | 53-41 | 53 | 76 | 69.7 |
| Carmack | 40-51 | 67 | 94 | 70.2 |
| Monasmith | 49-50 | 86 | 110 | 78.2 |
| Pinch | 51-41 | 62 | 80 | 77.5 |
| Taylor | 51-39 | 43 | 62 | 69.3 |
| Toole | 25-50 | 38 | 58 | 65.5 |
| Johnson | 50-29 | 69 | 84 | 82.1 |
| Fortenberry | 11-50 | 30 | 52 | 57.8 |
| Craig | 38-53 | 47 | 74 | 63.5 |
| Dugle | won by forfeit | | | |
| Fishel | 38-52 | 71 | 100 | 71.0 |
| Lattray | 26-52 | 57 | 78 | 72.0 |
| May | 11-52 | 43 | 66 | 65.1 |
| Maddox | 31-50 | 44 | 68 | 64.7 |
| Henton | 20-50 | 55 | 76 | 72.3 |
| Allen | 52-41 | 76 | 98 | 77.5 |
| Reno | 19-52 | 56 | 74 | 75.6 |
| Fowler | 52-45 | 67 | 92 | 72.8 |
| Carpenter | 52-34 | 78 | 100 | 78.0 |
| Lindquist | 47-52 | 52 | 80 | 65.0 |
| Moefield | 42-52 | 54 | 82 | 65.8 |
| Zadroga | 43-51 | 64 | 92 | 69.2 |
| Wahlin | 10-50 | 25 | 46 | 54.3 |
| Kabel | 15-55 | 45 | 66 | 66.1 |
| Tamboer | 16-51 | 27 | 44 | 61.4 |
| Bennett | 14-50 | 30 | 54 | 55.6 |
| Owens | 11-50 | 39 | 62 | 62.9 |
| Solomon | 13-51 | 33 | 52 | 63.4 |
| Riffle | 47-52 | 71 | 98 | 72.4 |
| Knauff | 30-54 | 66 | 92 | 71.7 |
| Dixon | 51-18 | 51 | 68 | 75.9 |
| Hohl | 8-51 | 45 | 64 | 70.3 |

Won 9 — Lost 26

1868

2648

70.5

31. Dale Dixon, Des Moines, Ia. — Qualifying Score 531.

| Opponent | Score | R | SP | % |
|-------------------|----------------|----|-----|------|
| Taylor | 52-45 | 78 | 102 | 76.5 |
| Toole | 20-51 | 39 | 60 | 65.0 |
| Johnson | 35-50 | 68 | 90 | 75.5 |
| Fortenberry | 30-51 | 45 | 70 | 64.2 |
| Craig | 52-35 | 83 | 100 | 83.0 |
| Dugle | won by forfeit | | | |
| Fishel | 31-51 | 42 | 62 | 67.7 |
| Lattray | 23-52 | 68 | 90 | 75.5 |
| May | 30-50 | 70 | 94 | 74.4 |
| Maddox | 42-51 | 84 | 106 | 79.2 |
| Henton | 1-51 | 35 | 54 | 65.0 |
| Allen | 38-52 | 60 | 82 | 73.1 |
| Reno | 23-52 | 48 | 72 | 66.7 |
| Fowler | 29-53 | 53 | 76 | 69.7 |
| Carpenter | 53-15 | 38 | 48 | 79.1 |
| Lindquist | 52-38 | 57 | 76 | 75.0 |
| Moefield | 50-36 | 56 | 78 | 71.7 |
| Zadroga | 9-50 | 29 | 48 | 60.4 |
| Wahlin | 26-53 | 35 | 62 | 56.4 |
| Kabel | 21-50 | 54 | 78 | 69.2 |
| Tamboer | 14-51 | 67 | 86 | 77.9 |
| Bennett | 45-51 | 77 | 102 | 75.5 |
| Owens | 34-55 | 37 | 68 | 54.4 |
| Solomon | 20-52 | 50 | 74 | 67.5 |
| Riffle | 27-51 | 50 | 74 | 67.5 |
| Knauft | 17-52 | 47 | 68 | 69.1 |
| Monasmith | 23-51 | 74 | 94 | 78.7 |
| Hohl | 6-50 | 31 | 50 | 62.0 |
| Martin | 8-50 | 49 | 70 | 70.0 |
| Day | 18-51 | 45 | 68 | 66.1 |
| Steinfeldt | 6-50 | 23 | 44 | 52.3 |
| Vogel | 51-37 | 62 | 86 | 72.9 |
| Carmack | 51-36 | 82 | 106 | 77.4 |
| Stinson | 18-51 | 41 | 68 | 60.0 |
| Pinch | 41-52 | 68 | 96 | 70.8 |

Won 8 — Lost 27

1845 2602 70.9

32. Homer Moefield, Long Beach, Calif. — Qual. Score 508.

| Opponent | Score | R | SP | % |
|-------------------|----------------|----|----|------|
| Henton | 15-52 | 32 | 54 | 59.3 |
| Allen | 17-50 | 47 | 72 | 65.2 |
| Reno | 21-51 | 41 | 64 | 64.0 |
| Fowler | 40-52 | 60 | 86 | 69.7 |
| Carpenter | 52-44 | 59 | 84 | 70.2 |
| Lindquist | 51-20 | 60 | 76 | 78.9 |
| Monasmith | 50-38 | 77 | 92 | 83.7 |
| Zadroga | 14-52 | 58 | 80 | 72.7 |
| Wahlin | 38-51 | 57 | 80 | 71.2 |
| Kabel | 7-50 | 38 | 58 | 65.5 |
| Tamboer | 27-50 | 57 | 76 | 75.0 |
| Bennett | 26-52 | 51 | 74 | 68.9 |
| Owens | 17-51 | 27 | 52 | 51.9 |
| Solomon | 30-52 | 41 | 68 | 58.5 |
| Riffle | 34-50 | 51 | 78 | 65.3 |
| Knauft | 20-52 | 34 | 54 | 62.9 |
| Dixon | 36-50 | 53 | 78 | 68.0 |
| Hohl | 3-50 | 13 | 32 | 40.6 |
| Martin | 12-50 | 47 | 70 | 67.1 |
| Day | 30-51 | 63 | 84 | 75.0 |
| Steinfeldt | 21-53 | 59 | 78 | 75.7 |
| Vogel | 52-49 | 66 | 94 | 70.2 |
| Carmack | 19-52 | 33 | 60 | 55.0 |
| Stinson | 52-42 | 58 | 82 | 70.7 |
| Pinch | 30-50 | 47 | 68 | 71.2 |
| Taylor | 32-50 | 57 | 82 | 69.5 |
| Toole | 16-55 | 50 | 74 | 67.5 |
| Johnson | 10-54 | 25 | 52 | 48.0 |
| Fortenberry | 4-53 | 13 | 34 | 38.2 |
| Craig | 30-51 | 43 | 72 | 59.7 |
| Dugle | won by forfeit | | | |
| Fishel | 23-50 | 30 | 50 | 60.0 |
| Lattray | 25-52 | 29 | 50 | 58.0 |
| May | 17-51 | 37 | 60 | 61.6 |
| Maddox | 17-52 | 38 | 58 | 65.5 |

Won 6 — Lost 29

1551 2326 66.6

33. Wellington Taylor, Grand River, Ia. — Qual. Score 511.

| Opponent | Score | R | SP | % |
|-------------------|----------------|----|-----|------|
| Dixon | 45-52 | 75 | 102 | 73.5 |
| Hohl | 15-51 | 38 | 58 | 65.5 |
| Martin | 14-51 | 30 | 52 | 57.8 |
| Day | 18-54 | 52 | 66 | 78.8 |
| Steinfeldt | 0-51 | 32 | 50 | 64.0 |
| Vogel | 32-52 | 39 | 70 | 55.7 |
| Carmack | 47-51 | 47 | 70 | 67.1 |
| Stinson | 39-51 | 39 | 62 | 62.9 |
| Pinch | 43-51 | 56 | 80 | 70.8 |
| Monasmith | 37-52 | 53 | 76 | 69.7 |
| Toole | 22-50 | 45 | 70 | 64.2 |
| Johnson | 52-34 | 37 | 62 | 59.6 |
| Fortenberry | 38-50 | 46 | 70 | 65.7 |
| Craig | 18-51 | 30 | 58 | 51.7 |
| Dugle | won by forfeit | | | |
| Solomon | 25-52 | 40 | 64 | 54.0 |
| Riffle | 36-50 | 58 | 86 | 67.4 |
| May | 26-50 | 58 | 78 | 74.4 |
| Maddox | 40-50 | 81 | 106 | 76.4 |
| Henton | 9-51 | 32 | 52 | 61.5 |
| Allen | 21-52 | 49 | 70 | 70.0 |
| Reno | 36-50 | 56 | 78 | 71.7 |
| Fowler | 46-50 | 58 | 78 | 74.5 |
| Carpenter | 33-50 | 75 | 100 | 75.0 |
| Lindquist | 50-46 | 79 | 108 | 73.1 |
| Moefield | 50-32 | 62 | 82 | 75.6 |
| Zadroga | 50-42 | 78 | 98 | 84.6 |
| Wahlin | 13-54 | 36 | 60 | 60.0 |
| Kabel | 5-52 | 29 | 50 | 58.0 |
| Tamboer | 6-51 | 31 | 52 | 59.6 |
| Bennett | 48-51 | 54 | 78 | 69.2 |
| Owens | 22-50 | 24 | 46 | 52.2 |
| Solomon | 20-50 | 42 | 64 | 65.6 |
| Riffle | 31-50 | 35 | 58 | 60.3 |
| Knauft | 41-50 | 64 | 86 | 74.4 |

Won 5 — Lost 30

1660

2440

68.0

34. A. Lindquist, Morgantown, W. Va. — Qual. Score 508.

| Opponent | Score | R | SP | % |
|-------------------|----------------|----|-----|------|
| Allen | 11-50 | 43 | 66 | 65.1 |
| Reno | 8-50 | 24 | 44 | 54.5 |
| Fowler | 6-50 | 21 | 40 | 52.5 |
| Carpenter | 23-50 | 46 | 72 | 63.8 |
| Monasmith | 33-50 | 68 | 94 | 72.3 |
| Moefield | 20-51 | 50 | 76 | 65.8 |
| Zadroga | 11-51 | 43 | 64 | 67.1 |
| Wahlin | 34-51 | 56 | 80 | 70.8 |
| Kabel | 22-52 | 54 | 82 | 65.8 |
| Tamboer | 30-52 | 38 | 58 | 65.5 |
| Bennett | 40-50 | 51 | 74 | 70.2 |
| Owens | 29-52 | 40 | 64 | 62.5 |
| Solomon | 19-52 | 42 | 62 | 67.7 |
| Riffle | 36-55 | 58 | 80 | 72.5 |
| Knauft | 14-50 | 58 | 78 | 74.5 |
| Dixon | 38-52 | 51 | 76 | 67.1 |
| Hohl | 36-51 | 53 | 80 | 66.2 |
| Martin | 8-51 | 47 | 72 | 65.2 |
| Day | 12-55 | 38 | 60 | 63.3 |
| Steinfeldt | 21-51 | 65 | 88 | 73.8 |
| Vogel | 51-23 | 63 | 80 | 78.7 |
| Carmack | 52-37 | 69 | 88 | 78.4 |
| Stinson | 52-47 | 56 | 80 | 70.0 |
| Pinch | 19-50 | 30 | 52 | 57.8 |
| Taylor | 46-50 | 77 | 108 | 61.3 |
| Toole | 20-51 | 43 | 64 | 67.1 |
| Johnson | 35-52 | 61 | 84 | 72.6 |
| Fortenberry | 51-33 | 53 | 74 | 71.6 |
| Craig | 31-50 | 54 | 78 | 69.2 |
| Dugle | won by forfeit | | | |
| Fishel | 15-54 | 32 | 56 | 57.1 |
| Lattray | 19-50 | 47 | 70 | 67.1 |
| May | 27-50 | 51 | 76 | 67.1 |
| Maddox | 8-50 | 26 | 48 | 54.2 |
| Henton | 20-52 | 44 | 66 | 66.7 |

Won 5 — Lost 30

1652

2434

67.8

35. Nelson Vogel, Manito, Ill. — Qualifying Score 506.

| Opponent | Score | R | SP | % |
|-------------------|----------------|----|----|------|
| Steinfeldt | 15-52 | 32 | 52 | 61.5 |
| Monasmith | 9-52 | 43 | 64 | 67.2 |
| Carmack | 29-50 | 46 | 70 | 65.7 |
| Stinson | 41-50 | 49 | 76 | 64.4 |
| Pinch | 37-50 | 42 | 64 | 65.6 |
| Taylor | 52-32 | 48 | 70 | 68.5 |
| Toole | 9-50 | 42 | 60 | 70.0 |
| Johnson | 39-51 | 51 | 78 | 65.3 |
| Fortenberry | 28-51 | 39 | 68 | 57.3 |
| Craig | 37-51 | 59 | 82 | 72.0 |
| Dugle | won by forfeit | | | |
| Fishel | 3-52 | 21 | 40 | 52.5 |
| Lattray | 31-51 | 41 | 66 | 62.1 |
| May | 22-52 | 40 | 64 | 62.5 |
| Maddox | 3-51 | 16 | 32 | 50.0 |
| Henton | 16-51 | 32 | 52 | 63.4 |
| Allen | 14-51 | 35 | 60 | 58.3 |
| Reno | 21-50 | 33 | 58 | 56.8 |
| Fowler | 28-52 | 49 | 72 | 68.0 |
| Carpenter | 12-51 | 29 | 50 | 54.0 |
| Lindquist | 23-51 | 56 | 80 | 70.8 |
| Moefield | 49-52 | 65 | 94 | 69.1 |
| Zadroga | 20-51 | 44 | 66 | 66.7 |
| Wahlin | 27-51 | 45 | 70 | 64.2 |
| Kabel | 20-52 | 33 | 54 | 61.1 |
| Tamboer | 12-50 | 34 | 54 | 62.9 |
| Bennett | 14-50 | 22 | 44 | 50.0 |
| Owens | 9-50 | 23 | 46 | 50.0 |
| Solomon | 19-50 | 36 | 62 | 58.0 |
| Riffle | 23-50 | 35 | 56 | 62.5 |
| Knauft | 15-50 | 55 | 78 | 70.5 |
| Dixon | 37-51 | 58 | 86 | 67.4 |
| Hohl | 27-52 | 55 | 78 | 70.5 |
| Martin | 39-51 | 52 | 76 | 68.4 |
| Day | 14-51 | 32 | 52 | 57.6 |

Won 2 — Lost 33

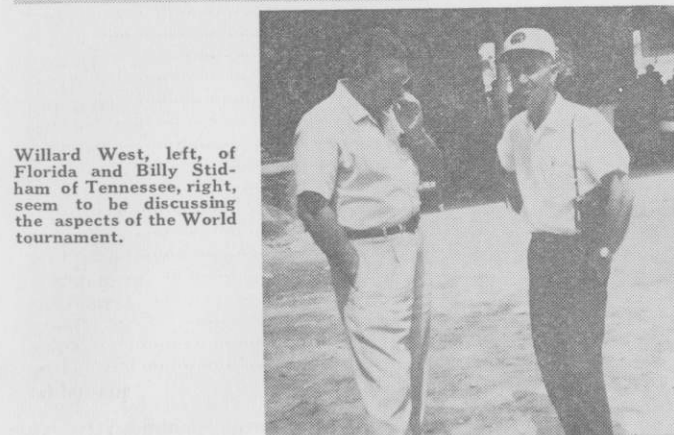
1392

2174

64.0



Among the many visitors to the World tournament were Mrs. Mary Stokes, left, of Salt Lake City, Utah and her daughter, Mrs. Maurine Cook, right, also of Salt Lake City.



Willard West, left, of Florida and Billy Stidham of Tennessee, right, seem to be discussing the aspects of the World tournament.

— The Tournament Story —

Harold Reno, the reverse turn artist from Sabina, Ohio, won the 1964 World title at Greenville, Ohio and takes home another Miller High Life - N. H.P.A. championship trophy to go with the one he won at Muncie, Indiana in 1961.

Reno compiled a 33-2 record with an 84.1 ringer percentage. He lost a game on opening night to southpaw Al Zadroga of Pennsylvania. He then won 23 straight games before dropping one to Ed Fishel of Washington. He lost the first game on the final night to Ralph Maddox of West Virginia, but clinched the title in the 35th round with a 50-49 win over defending champion John Monasmith.

The champion jumped into the lead the third night with successive wins over Elmer Hohl, Ray Martin, Curt Day and Carl Steinfeldt. It was a chilly night and Reno's slow deliberate style of pumping before delivery worked perfectly while some of the others had trouble with the weatherman. The Martin and Day games were nip and tuck with the Hoosier having key ringers bounce off the stake.

The 2nd and 3rd places went to lefthanders, Carl Steinfeldt of N.Y. and Glen Henton of Iowa. Henton barely nosed out the Canadian champ, Elmer Hohl by ringer percentage, Hohl taking 4th.

Curt Day of Indiana amassed the highest ringer percentage of all, 84.4, but lost seven games to place 5th. The remainder of the top ten were Ray Martin of Illinois, Floyd Toole of Arkansas, Al Zadroga, Ralph Maddox of West Virginia and Paul Latray of Missouri.

Defending champ John Monasmith lost 11 games and finished 11th while Ted Allen, ten times a World Champion, took 12th. Henry Knauff of Spokane averaged better than 80 percent ringer but could only place 13th.

Paul Latray of Missouri with a 25-10 mark and an 81.1 ringer average won the trophy going to the outstanding first year entrant.

Glenn Riffle of Dayton, O. won the award for the most improved player. After four straight years of Class "B" Glenn finished 15th with 21 wins and 75.5% ringers.

The Sportsmanship Award given by the Ohio Horseshoe Co. went to John Monasmith of Washington and Floyd Fowler, Greencastle, Indiana who tied in the voting.

Dick Carpenter, Union City, Indiana was awarded the Neatest Dressed trophy.

Only five players, Elmer Hohl, Ray Martin, Glen Henton, Carl Steinfeldt and Paul Latray were undefeated at the end of the first night. Reno, Day, Allen, Monasmith, Riffle and Knauff had each dropped one.

The 2nd night saw all of the undefeated fall by the wayside at least once with Ray Martin the last to go down in the 12th round. The night ended with Reno, Steinfeldt, Hohl, Day, Martin and Allen deadlocked with one loss each.

The 3rd night saw Reno take the lead with only one defeat while Steinfeldt, Henton and Hohl were deadlocked with three losses each.

Floyd Fowler of Indiana occupied the role of "giant killer" when he upset front running Martin, Day and Steinfeldt in successive games and later downed Ted Allen. Jim Johnson's victory over Steinfeldt also ranked as a big upset. Others were Taylor over Zadroga, Moefield over Monasmith, Stinson over Allen, Fortenberry over Henton and Bennett over Maddox.

Little Moefield of California deserves an award for the most courageous. He suffered severe cramps during qualifying which required doctor's attention, and then during the games sustained a painful dislocation in his back, but finished the schedule encased in tape.

Other hard luck players were Howard Robinson of Nebraska in Class "B" who finally had to withdraw to have a badly infected finger on his pitching hand lanced; Harold Craig, NHPA President who played in Class "B" with a deeply cut finger and Walt Fender and Frank Coursen both of whom withdrew from Class "B" because of illness.

The one unfortunate incident was the necessity to bar one player from the remainder of the tournament for unsportsmanlike conduct.

Norwood of Dixie Wins Class "C"

Roger Norwood of Knoxville, Tennessee, took the Class "C" title south to Dixie with a fine 74.4% ringer average in the finals and a clean sweep of all games, including a 75.5 average in the group play.

Losing out in a special playoff for the right to advance to the finals was Bob Colville of Arcanum, Ohio.

FINALS

| | W | L | R | SP | % |
|---|---|---|-----|-----|------|
| Roger Norwood, Knoxville, Tenn. | 7 | 0 | 390 | 526 | 74.4 |
| Wes Kuchcinski, Erie, Pa. | 5 | 2 | 372 | 512 | 72.7 |
| Henry Durr, Los Angeles, Calif. | 5 | 2 | 332 | 470 | 70.6 |
| Roger Parsons, Midvale, Utah | 4 | 3 | 288 | 470 | 61.2 |
| Earl Winston, Lamonte, Mo. | 2 | 5 | 293 | 464 | 63.2 |
| Gene Mendenhall, Noblesville, Ind. | 2 | 5 | 271 | 450 | 60.2 |
| Pat Marino, Phoenix, Ariz. | 2 | 5 | 255 | 434 | 58.6 |
| Francis Winetrout, Bellingham, Wash. | 1 | 6 | 273 | 466 | 58.6 |

GROUP 1

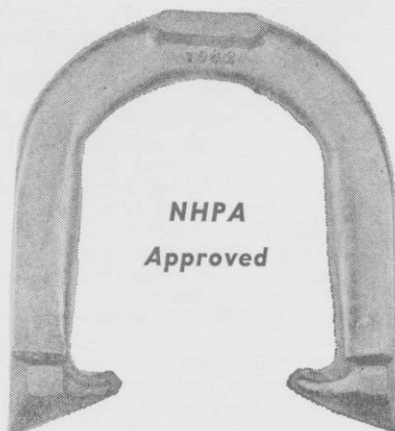
| | W | L | R | SP | % |
|--|---|---|-----|-----|------|
| Roger Norwood, Knoxville, Tenn. | 7 | 0 | 278 | 370 | 75.1 |
| Pat Marino, Phoenix, Ariz. | 5 | 2 | 255 | 396 | 64.4 |
| Harold Wolfe, Cedarville, O. | 4 | 3 | 281 | 466 | 60.3 |
| Paul Smith, Beaver Falls, Pa. | 4 | 3 | 250 | 416 | 60.1 |
| Harry Holland, Indianapolis, Ind. | 3 | 4 | 235 | 434 | 53.6 |
| Bob Thornburgh, Union City, Ind. | 2 | 5 | 281 | 472 | 59.7 |
| Fred Lavett, Seaside, Calif. | 2 | 5 | 229 | 420 | 54.5 |
| Donnie Roberts, Lucasville, O. | 0 | 7 | 257 | 450 | 57.1 |

THE LEE HORSESHOE

DROP FORGED STEEL SHOE

Medium Soft —
Dead Soft

1 to 5 pair —
\$5.50 per pair,
postpaid.



BRONZE SHOE

When ordering,
state square
or contoured

1 to 5 pair —
\$7.00 per pair,
postpaid.

WEST OF THE MISSISSIPPI — 1 pair, add \$1.00
2 pair, add \$1.75 3-4-5 pair, add \$2.50

For larger quantities write for price list

LEE BENNETT

Rte. 2, 4920 Eck Road

Middletown, Ohio

CLASS C — (Continued)**GROUP 2**

| | W | L | R | SP | % |
|---|---|---|-----|-----|------|
| Wes Kuchcinski, Erie, Pa. | 7 | 0 | 317 | 430 | 73.7 |
| Gene Mendenhall, Noblesville, Ind. | 6 | 1 | 285 | 444 | 64.2 |
| Jim Ostrander, Lansing, Mich. | 5 | 2 | 298 | 462 | 64.5 |
| Lon Mullins, Muncie, Ind. | 3 | 4 | 275 | 456 | 60.3 |
| Lloyd Olfert, St. Paul, Minn. | 3 | 4 | 226 | 464 | 48.8 |
| Lloyd Neal, Logansport, Ind. | 2 | 5 | 188 | 392 | 48.0 |
| Clyde Falk, Pittsburgh, Pa. | 1 | 6 | 243 | 438 | 55.5 |
| Merle Bannister, Thornville, O. | 1 | 6 | 213 | 424 | 50.2 |

GROUP 3

| | W | L | R | SP | % |
|---------------------------------------|---|---|-----|-----|------|
| Henry Durr, Los Angeles, Calif. | 7 | 0 | 259 | 386 | 67.1 |
| Rogers Parsons, Midvale, Utah | 6 | 1 | 275 | 440 | 62.5 |
| Merle Tirey, Shelbyville, Ill. | 4 | 3 | 243 | 398 | 61.1 |
| Ray Pitcher, Connorsville, Ind. | 4 | 3 | 197 | 412 | 47.8 |
| Joe Pillion, Casstown, O. | 3 | 4 | 251 | 462 | 54.3 |
| Fred Collins, Trotwood, O. | 1 | 6 | 237 | 452 | 52.4 |
| Clark Johnson, Lyndon, O. | 1 | 6 | 229 | 450 | 50.9 |
| Clair Bruce, New Wilmington, Pa. | 1 | 6 | 206 | 420 | 49.0 |

GROUP 4

| | W | L | R | SP | % |
|---|---|---|-----|-----|------|
| Earl Winston, Lamonte, Mo. | 5 | 2 | 307 | 498 | 61.6 |
| Francis Winetrout, Bellingham, Wash. | 5 | 2 | 303 | 500 | 60.6 |
| Bob Colville, Arcanum, O. | 5 | 2 | 279 | 506 | 55.1 |
| Ulyssis Rose, Dayton, O. | 3 | 4 | 267 | 464 | 57.5 |
| Harold McPhearson, Covington, Ky. | 3 | 4 | 265 | 468 | 56.7 |
| Paul Helton, Dayton, O. | 3 | 4 | 225 | 414 | 54.3 |
| Earl Green, Indianapolis, Ind. | 2 | 5 | 278 | 496 | 57.7 |
| Bob Boyer, Muncie, Ind. | 2 | 5 | 284 | 498 | 57.2 |

Gary Roberts Wins Another Junior Title

Gary Roberts of Lucasville, Ohio, won the National Junior crown again, but only after a hard struggle.

Gary averaged 67.6 for a new Junior record and compiled a 6-1 record. His only loss was 50-41 at the hands of little 12 year old Dennis Riffle of Dayton, Ohio, who placed 3rd with a sensational 5-2 and 63.2 performance.

Andy Deem Jr. of Parkersburg, West Virginia, took 2nd and overall hit 66.9. Southpaw Dan Kuchcinski of Erie, Pennsylvania, with 61.3 placed 4th. Riffle, Deem and Kuchcinski all had 5-2 won and lost records. Ross Stevenson, Canadian Junior champ averaged 62.4 but could only win three games.

All except the champion and Gary Craig of Indiana who placed 8th will be back next year for a crack at the title.

Little Ronnie Burgess of Marshalltown, Iowa, who pitched the full 40 feet won Class "B" in play-off game 51-41. Lefthanded Joe Kuchcinski of Erie, Pennsylvania, took Class "C", also throwing 40 feet and eight year old Paris Seibold of Huntington, Indiana, annexed Class "D" to round out the greatest Junior tournament in history.

CLASS A

| | W | L | R | SP | % |
|--|---|---|-----|-----|------|
| Gary Roberts, Lucasville, O. | 6 | 1 | 276 | 408 | 67.6 |
| Andy Deem, Parkersburg, W. Va. | 5 | 2 | 301 | 450 | 66.9 |
| Dennis Riffle, Dayton, O. | 5 | 2 | 312 | 494 | 63.2 |
| Dan Kuchcinski, Erie, Pa. | 5 | 2 | 299 | 488 | 61.3 |
| Ross Stevenson, Baden, Ont., Can. | 3 | 4 | 282 | 452 | 62.4 |
| Billy LaBrosse, Hibbing, Minn. | 2 | 5 | 210 | 420 | 50.0 |
| Delbert Lykins, Muncie, Ind. | 2 | 5 | 202 | 454 | 44.5 |
| Gary Craig, Parker, Ind. | 0 | 7 | 140 | 350 | 40.0 |

JUNIOR TITLE — (Continued)**CLASS B**

| | W | L | R | SP | % |
|--|---|---|-----|-----|------|
| Ronnie Burgess, Marshalltown, Ia. | 5 | 1 | 157 | 348 | 45.1 |
| Jackie Campbell, Lebanon, O. | 5 | 1 | 171 | 406 | 42.1 |
| Dan Eutsler, Anderson, Ind. | 4 | 2 | 168 | 412 | 33.1 |
| Mike Kalb, Bucyrus, O. | 2 | 4 | 154 | 388 | 39.7 |
| Jack Elliott, Muncie, Ind. | 2 | 4 | 143 | 374 | 38.3 |
| Eddie Gibbons, Xenia, O. | 2 | 4 | 142 | 398 | 35.7 |
| Jimmy Rhymer, Stoutsville, O. | 1 | 5 | 118 | 358 | 33.0 |

CLASS C

| | W | L | R | SP | % |
|--|---|---|-----|-----|------|
| Joe Kuchcinski, Erie Pa. | 6 | 0 | 131 | 310 | 42.3 |
| Mark Seibold, Huntington, Ind. | 4 | 2 | 130 | 350 | 37.2 |
| Larry Carpenter, Union City, Ind. | 4 | 2 | 117 | 374 | 31.3 |
| Harry Holland, Indianapolis, Ind. | 3 | 3 | 127 | 408 | 31.1 |
| George Hughey, Baldwin Park, Calif. | 2 | 4 | 120 | 400 | 30.0 |
| Steve McGriff, Greenville, O. | 1 | 5 | 70 | 342 | 20.5 |
| Dorian Quire, Muncie, Ind. | 1 | 5 | 77 | 382 | 20.2 |

CLASS D

| | W | L | R | SP | % |
|--|---|---|-----|-----|------|
| Paris Seibold, Huntington, Ind. | 6 | 0 | 116 | 308 | 37.9 |
| Steve Fenicchia, Rochester, N. Y. | 5 | 1 | 114 | 344 | 33.1 |
| Jim Steinhauser, Louisville, Ky. | 3 | 3 | 85 | 386 | 22.0 |
| Dick Kuchcinski, Erie, Pa. | 3 | 3 | 75 | 452 | 16.6 |
| Steve Harris, Muncie, Ind. | 2 | 4 | 51 | 460 | 11.1 |
| Tom McGriff, Greenville, O. | 1 | 5 | 55 | 452 | 12.3 |
| Gary Gibbons, Xenia, O. | 0 | 6 | 30 | 460 | 6.5 |

JUST OUT — A FIRST OF ITS KIND

This space will display the most attractive carrying case the game has had.

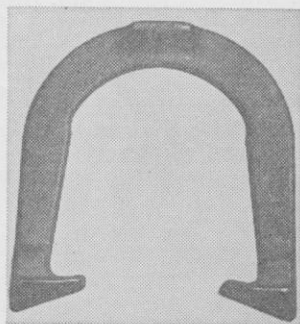
Again TED ALLEN produces the best in equipment.

Made of strong, light-weight, two-toned metal. Sides will be of a hard-to-get

Lynle covered metal. Color — Gun-metal, edged in a light color.

Case has a costly look, but priced reasonably. Strong, beautiful and well-constructed.

Gives the sport a better appearance.

**TED ALLEN HORSESHOES**

Many letters say that this is the best shoe that they have ever used. It must be true, according to their records. At the least, there has never been a better shoe.

Made in four tempers.

«»

NO ONE CAN BE WRONG IN TRYING A PAIR

1045 LINDEN AVENUE

BOULDER, COLORADO 80302

TOURNAMENT HIGHLIGHTS

This was the greatest horseshoe story ever told, because in every respect, from start to finish, from top to bottom, through every division, Men, Ladies, Juniors and Seniors, no other World Tournament can compare with the 1964 Tournament.

There was a total of 246 qualifiers, the largest ever. They came from 33 states and Canada, with Rhode Island, Georgia and Nevada represented for the first time. Four other states were represented by players and NHPA members who did not enter competition.

Final qualifying results showed 39 players over the 500 mark, an all time high.

Carl Steinfeldt, N. Y. led with 558 points. Sue Gillespie threw 259 in 100 shoes to head the Ladies' list. John Paxton of Iowa headed the Seniors with 255 points in his 100 shoes while Andy Deem, Jr. of West Virginia hit 117 in 50 shoes to top the Juniors.

The 36 championship division players averaged 77.1 percent ringers, an all time high, 76,740 ringers, 99,564 shoes.

Thirteen players averaged over 80% ringers. In the entire history of the World Tournament, since 1909, only eight other players have averaged 80% ringers in an entire tournament.

90% ringer games occurred 37 times — an all time record.

Carl Steinfeldt and Elmer Hohl tossed 15 consecutive "four deads" to set a new record. The old record of 12 set by Ted Allen and Stan DeLeary had stood since 1947.

Ralph Maddox of West Virginia set three official World Tournament records for a complete tournament; 2903 ringers and 1173 double ringers to break two Ted Allen marks set in 1961 and 3476 shoes pitched to better Fernando Isias' record of last year. The old records were 2478 ringers, 1073 doubles and 3070 shoes, far below the Maddox marks of this year.

Floyd Toole of Arkansas tossed 62 consecutive ringers against Jim Solomon of Pennsylvania for a tournament high and the second best mark ever. Allen's 72 straight in 1951 being the record.

The Martin-Maddox game went 176 shoes, only two short of the 1961 record established by Focht and Toole. This game was played in the middle of a violent thunder and lightning storm at the end of the second night of play and marked Martin's first loss. He was the only undefeated player at the time.

Jimmy Solomon threw 137 ringers in 158 shoes against Floyd Toole for 87.8% and lost 52-25, the high mark for a losing player. Only Curt Day's 89% against Ted Allen in 1957 stands higher in the records.

Both Steinfeldt and Maddox came within one shoe of pitching perfect games; Steinfeldt hitting 49 of 50 and Maddox 31 of 32. Steinfeldt's 98%, being the single game high this year.

NHPA officers Bob Pence and Harold Craig had excellent help and cooperation in handling the big tourney which went off very smoothly.

"Cricket" Coppock of the Greenville club was their right hand man along with Clyde Green of Indiana.

Rev. Walter B. Stearns of Mesa, Ariz., NHPA member and tournament entrant, delivered the Invocation during the opening ceremonies.

Official referees and judges were Joe Comeau of Mass., Earl Winston of Missouri and Elmer Beller of California. Joe Comeau, New England States champion, could not compete because of an arm injury.

Larry Lewandowski of Minnesota was on hand for the 17th straight year as the scorekeeper on court 9.

Other regular scorekeepers were; Jack Ellis and Joe Davis, Fla.; Bill Hyland, N.Y.; Jim Brubaker, Harold Wolfe and Ray Miller, Ohio; Henry Durr and Fred Lavett, Calif; Clyde Falk, Pa.; Waldo Hagy, Nev; Earl Wilmore, Carl Atwell and Walt Wilhoite, Ind.

Helping in the office were Sam Goodlander and Tibey Woods, Ohio; Judy and Lois Pence, Ind.; Betty Steinfeldt, N.Y.

DIAMOND

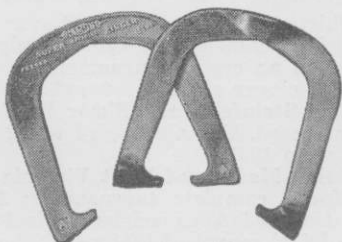
Pitching Shoes for every player

Pitching Shoes include sets or outfits for every player, from beginner to long established professional. Also stakes, stake holders, or ready-made courts shipped knocked-down, complete and ready to bolt together and install.

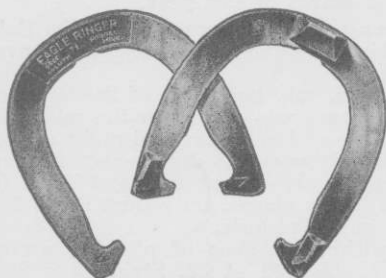
For the Man Who Plays a Lot of Horseshoes and wants the highest ringer percentage possible.

DIAMOND SUPER RINGER

The finest shoe ever made. Drop forged from special carbon steel, carefully heat treated to preserve dead falling qualities, without chipping or breaking.



Diamond Super Ringer

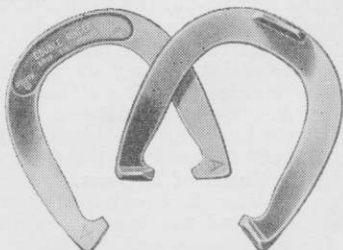


Diamond Eagle Ringer

←
For the Average Player

DIAMOND EAGLE RINGER

High quality, designed to catch stake with least possibility of bouncing or sliding off. Perfectly balanced for easy control.



Diamond Double Ringer

→
Economy Model

DIAMOND DOUBLE RINGER

An inexpensive pattern for those who like to play with a well balanced shoe.

Ask your Sporting Goods Dealer about Diamond Pitching Shoes and Accessories.

Write for free booklet "How to Organize a Horseshoe Club", to



DIAMOND TOOL and Horseshoe Co.
DULUTH - MINNESOTA Established 1908 TORONTO - ONTARIO

