



the
national horseshoe pitchers

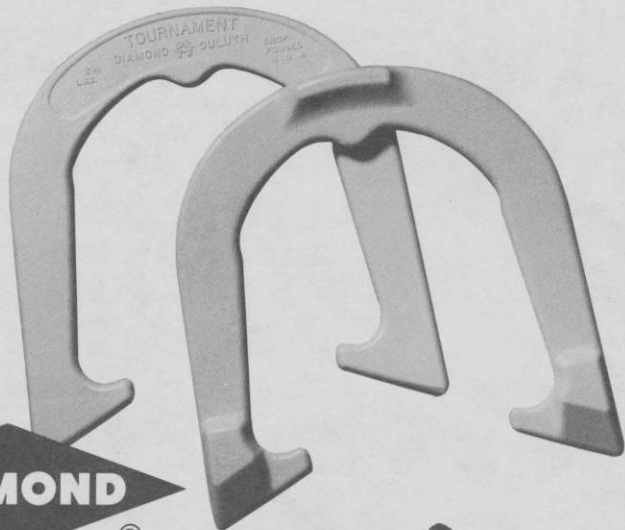
NEWS DIGEST



OCTOBER, 1988

Official Publication of
**THE NATIONAL HORSESHOE PITCHER'S ASSOCIATION
OF AMERICA**

Look
for
the new
white
shoes!



Advanced Design

TOURNAMENT PITCHING HORSESHOES



Both backyard pitchers and pros catch and hold the stake better with DIAMOND's new advanced design "Tournament" Shoe. It features a grip positioner, hardened tips, an increased radius, a dead soft center, and a wider, deeper calk. Same drop-forged solid steel construction as DIAMOND's popular Double Ringer and Super Ringer Regulation Shoes. All American made.

Contact your nearest NHPA club or sporting goods store for DIAMOND pitching horseshoes.

For the latest pitching horseshoe catalog write:



DIAMOND PITCHING SHOES

The Triangle Tool Group, Inc.
Subsidiary of The Triangle Corporation
Cameron Road, Orangeburg, SC 29115
DISTRIBUTOR ORDER PLACEMENT
Call toll-free: 800-346-0740
For all inquiries call: 803-534-7010

"DIAMOND Pitching Horseshoes are Recognized as Official in Tournaments
Sanctioned by the National Horseshoe Pitchers Association"



THE HORSESHOE PITCHER'S NEWS DIGEST is published on the 5th of each month at Aurora, Illinois, U.S.A. by the National Horseshoe Pitcher's Association of America. Editorial office, P.O. Box 1606, Aurora, Illinois 60507. Phone: 312-898-3974. Subscription rates—1st Class \$12.00 per year in advance. NHPA membership cards are available through each state secretary for \$7.00 plus any state association dues. Forms close on the 10th day of each month preceding date of issue. Advertising rates on request. F. Ellis Cobb, Editor.

NATIONAL OFFICERS

Dave Loucks, 13656 Thoroughbred Loop, Grass Valley, CA 95949 (916) 477-7060 President
Earl Winston, Rte. 2, Lamonte, MO 65337 (816) 563-3536 1st Vice-President
Barry Chapelle, 2716 S.E. 61st Ave., Portland, OR 97206 (503) 775-7876 2nd Vice-President
Vincent Yannetti, 322 Longwood Ave., Bound Brook, NJ 08805 (201) 356-3862 3rd Vice-President
Bonnie Seibold, 1043 Grayson Ave., Huntington, IN 46750 (219) 356-3489 4th Vice-President
Mary VanSant, P.O. Box 270, Sun City, CA 92381 (714) 679-2578 5th Vice-President
Donnie Roberts, Box 278, Munroe Falls, OH 44262 (216) 688-6522 Sec./Treas.

Volume 32

October, 1988

No. 10

FROM YOUR PRESIDENT . . . DAVE LOUCKS

The 1988 Convention of Delegates in Pleasanton approved some very significant changes to our Constitution and By-Laws. It will be some time before the long range effect is felt for all but, on the surface, it appears that some good decisions were made. Let's talk about a few that most directly affect the pitchers.

1. It was approved by a vote of 187-115 that "all participants registered for an adult class in the World Tournament must have completed a minimum of 3 NHPA sanctioned tournaments in the time span starting with the prior June 1st and ending with the mailing of their registration form."

2. By a vote of 240-62, it was decided to remove all the playing rules from the Constitution and Bylaws and put them under the direction of a "Rules Committee" which shall be appointed by the NHPA President. This committee of 12-15 pitchers will have the power to add or delete items to the rules in a much quicker and more effective manner than now allowed by the Constitution.

3. By a vote of 176-125 it was approved that a new rule be added that prevents the material around the stake from being shoveled or stepped upon during a game unless approved by a judge or to repair damage done by the measuring of a shoe.

4. It was approved by a vote of 238-64 that all 30 foot class pitchers remain three feet behind their opponent on the opposite side when the opponent is pitching. There is no need to walk to the far rear of the court if both players are 30 foot pitchers.

5. By an overwhelming vote of 288-14, it was decided to change the score call method of "two ringers each, no score," to FOUR DEAD.

A couple of the 37 proposals that were voted on were approved or rejected by very close margins. However, one in particular bears mentioning not only because some two-thirds of the delegates were in favor of it but, because of how it failed.

The subject was proposal #36, how to measure a ringer. It had been proposed to change the rule that, "a ringer is declared when a shoe encircles the stake far enough to allow the touching of both heel caulks simultaneously with a straight edge even if the edge also touches the stake." This proposal would have had just the required 204 votes to pass but the Charter of Northern New Mexico who attended the morning session failed to return for the afternoon voting and their ballot which had been turned in, had to be rejected. The reason is that the NHPA Constitution says a State with no appointed delegate in convention will have no vote. However, it is possible that the new Rules Committee may take this proposal under reconsideration since it was apparent that the two-thirds majority favored it.

Printed elsewhere in this Digest are the complete State by State voting results on all the issues. You will have to refer back to the *May 1988 Digest* to review the wording of the proposals.

All incumbent NHPA officers up for reelection were returned to their office for another 2 year term.

DAVE'S COURT REPORT

Cooler than normal temperatures prevailed during the second week of pitching in Pleasanton bringing a lot of words of thanks from the Eastern and Mid-West pitchers who were reluctant to go home to their HOT, HOT conditions. . . . For the second year in a row, not a single stake was broken in the W.T. Looks like the portable mounting method started in Eau Claire is a winner. . . . 18 hours after the last shoe was pitched, there was not a sign of a horseshoe court or World Tournament ever being held in Pleasanton. All 36 courts had been removed along with 30 tons of concrete walkways. Talk about turning the clay when you're through pitching, wow, the 1988 W.T. work crew did an amazing job. . . . Shortly after Pleasanton, I was in Spearfish, South Dakota, visiting with Gene and Yvonne Ficek who are directing activities for next year's event. Met with the press, radio and community leaders who all seem excited about the 1989 W.T. Thirty-six

MESSAGE—(Continued)

courts are in with new lighting just about ready for installation. The park, campground, river and surrounding areas will really be enjoyed by the tournament go'ers. Make your plans early and don't forget, you need 3 NHPA sanctioned tournaments to register. . . . Had the opportunity to visit with many of the members of the Minnesota State HPA and attend their annual state meeting and banquet. Gave an overview of the NHPA Liability Insurance and how State and National membership need, and are supported by, one another. While some were seeking change, when the meeting votes were counted, the membership had overwhelmingly voiced their support of the National and more NHPA sanctioned events.

1988—NHPA CONVENTION RESULTS

INSURANCE: After a discussion and a question & answer period, the delegates were asked to vote on whether or not the NHPA should continue the insurance program for 1989.

Forty-two (42) Charters and Canada were represented with a total of three hundred and six (306) votes.

All votes were cast in favor of continuing the insurance program. 1989 NHPA cards will show insurance as an addition and no cards will be sold without it. The Charters will forward the amount to the NHPA Sec/Treas. along with the regular NHPA dues.

1990 WORLD TOURNAMENT: Bids were submitted by Iowa and Georgia. Georgia won the bid with a vote of 180 to 126. (306 total votes)

CONSTITUTION & BY-LAW CHANGES & ADDITIONS: Forty-one Charters & Canada were represented for a total vote of three-hundred and two (302).

A change required a two-thirds majority vote (202).

An addition required a simple majority vote (152).

The May, 1988 issue of the NHPA News Digest listed all proposals as numbers 1 thru 37. The delegates voted on these numbers and the results are as shown on the chart.

Numbers 2, 6, 10, 26, 27, 29, 34 & 36 FAILED. The balance PASSED and will go into effect on January 1, 1989. Numbers 7, 32 & 33 were amended slightly on the floor and passed AS AMENDED.

WALTER RAY WILLIAMS JR. ELECTED TO HALL OF FAME

The achievements of this amazing young athlete are already legendary—there is no doubt why he was elected at such an early age.

Walt won the NHPA Junior boys crown three times—1971, 1972 and 1975 with averages of 63.89, 89.2 and 86.6, and did not lose a game in any of those three years. In 1976 he was defeated by his brother Jeff. They played three games during the tournament (one in the round robin and two in the playoff) and for the three games (50 points) they averaged 154 shoes a game. Only 8 single points were counted for the entire three games. Walt was already pitching 40 feet at this time.

Walter pitched his first adult World Tournament in 1977 and it didn't take him long to reach the top. He won the event in 1978 and again in 1980, 1981 and 1985 with averages of 84.1, 85.7, 88.1 and 84.9. The 88.1% in Genola, Minn. was the second highest World Tournament average ever by an adult male. Although he finished third in Pleasanton this year (one game behind Jim Knisley and Mark Seibold) he was the only man to average over 80%.

Walter has several other noteworthy achievements. Through 1986, Walter had already won the California State Championship seven times. He has pitched several perfect games, including the longest one on record, 56 shoes, which he pitched at the Oregon Open in 1977. He also has a 50 shoe perfect game. He has also pitched several 90% tournaments, including a 13 game event at the Heritage Open in 1982 in which he averaged 91.0%.

Besides being an outstanding pitcher, Walter has done a lot for our game in the promotional field. His outstanding success in bowling (he was *Bowler of the Year* in 1986) has brought him a great deal of TV exposure and the sport of horseshoes always gets favorable mention when he's on. He has pitched numerous exhibitions, including one in Japan, and has been featured in several leading newspapers across the nation and also in the *Bowlers Digest*, *Bowlers Journal* and *Sports Illustrated*. He has also worked in organizing and promoting several special tournaments including the current big one at the Ohio State Fair.

Also, we'd like to mention Walter's contributions behind the scene at the last two World Tournaments. Walter has devised a computer program to do (and print) the statistics for a horseshoe tournament and he has been designated as the official statistician at our last two events. The results at Pleasanton were the quickest in several years because of the success of his program. Finally, it is noted that Walter has the official title of NHPA Statistician.

With credentials like these that are mentioned in this article, there is no doubt that Walter has earned his award. We congratulate him on his election to the NHPA Hall of Fame.

Denotes 1 Delegate Abstention (see #'s 1, 20 & 22)

CHARTER	VOTES		3.		4.		5.		6.		7.		8.		9.		
	YES	NO	YES	NO	YES	NO	YES	NO	YES	NO	YES	NO	YES	NO	YES	NO	
AZ-Tucson	5	0	0	5	5	0	5	0	5	0	5	0	5	0	5	0	
AZ-Yuma	3	0	3	0	3	0	3	0	3	0	3	0	3	0	3	0	
CA-E. Sierra	2	0	0	2	2	0	2	0	2	0	2	0	2	0	2	0	
CA-Northern	14	14	0	1-13	14	0	14	0	1-13	1-13	14	0	14	0	1-13	0	
CA-Southern	11	11	0	0-11	11	0	11	0	0-11	0-11	9	2	11	0	0-11	0	
Colorado	7	2	5	1-6	7	0	7	0	7	0	6	1	7	0	7	0	
Florida	10	0	10	0-10	10	0	10	0	10	0	8	2	10	0	10	0	
Georgia	3	0	3	0-3	3	0	3	0	3	0	3	0	3	0	3	0	
Hawaii	1	1	0	1-0	1	0	1	0	1	0	1	0	1	0	1	0	
Idaho	5	0	5	0	5	0	5	0	5	0	5	0	5	0	5	0	
Illinois	15	15	0	15	0	15	0	15	0	15	0	15	0	15	0	15	
Indiana	12	6	6	12	0	12	0	12	0	12	0	12	0	12	0	12	
Iowa	11	11	0	11	0	11	0	11	0	11	0	11	0	11	0	11	
Kansas	8	0	8	0	8	0	8	0	8	0	8	0	8	0	8	0	
Kentucky	8	4	4	8	0	8	0	8	0	8	0	8	0	8	0	8	
Massachusetts	4	*1	2	0-4	4	0	4	0	4	0	3	1	0	4	0	4	
Michigan	8	0	8	0-8	8	0	8	0	8	0	8	0	8	0	8	0	
Minnesota	11	11	0	11	0	11	0	11	0	11	0	11	0	11	0	11	
Mississippi	3	3	0	0-3	3	0	3	0	3	0	3	0	3	0	3	0	
Missouri	11	11	0	11	0	11	0	11	0	11	0	11	0	11	0	11	
Montana-West	7	7	0	7	0	7	0	7	0	7	0	7	0	7	0	7	
Nebraska-East	9	9	0	9	0	9	0	9	0	9	0	9	0	9	0	9	
Nebraska-West	4	4	0	0-4	4	0	4	0	4	0	4	0	4	0	4	0	
Nevada	2	2	0	2	0	2	0	2	0	2	0	2	0	2	0	2	
New Jersey	4	0	4	4	0	4	0	4	0	4	0	4	0	4	0	4	
New Mexico-No.	4	0	4	0	4	0	4	0	4	0	4	0	4	0	4	0	
New York	13	13	0	13	0	13	0	13	0	13	0	13	0	13	0	13	
Ohio	3	3	0	3	0	3	0	3	0	3	0	3	0	3	0	3	
Oklahoma	16	0	16	0-16	16	0	16	0	16	0	16	0	16	0	16	0	
Oregon	5	1	4	5	0	5	0	5	0	5	0	5	0	5	0	5	
Pennsyl.	7	6	1	7	0	7	0	7	0	7	0	7	0	7	0	7	
Pennsyl. East	6	6	0	6	0	6	0	6	0	6	0	6	0	6	0	6	
Pennsyl. West	11	11	0	7-4	11	0	11	0	11	0	11	0	11	0	11	0	
So. Dakota	5	5	0	0-5	5	0	5	0	5	0	5	0	5	0	5	0	
Texas	10	10	0	10	0	10	0	10	0	10	0	10	0	10	0	10	
Utah-North	4	3	1	0-4	4	0	4	0	4	0	3	1	4	0	3	1	
Utah-South	3	3	0	0-3	3	0	3	0	3	0	3	0	3	0	3	0	
Vermont	3	0	3	0-3	3	0	3	0	3	0	3	0	3	0	3	0	
Virginia	8	0	8	0-8	8	0	8	0	8	0	8	0	8	0	8	0	
Washington	9	0	9	9	0	9	0	9	0	9	0	9	0	9	0	9	
Wisconsin	12	0	12	0-12	12	0	12	0	12	0	12	0	12	0	12	0	
Wyoming	8	8	0	0-8	8	0	8	0	8	0	8	0	8	0	8	0	
Canada	1	1	0	1	0	1	0	1	0	1	0	1	0	1	0	1	
TOTALS	302	194	-107	153	-149	299	-3	302	-2	223	-79	82	-220	187	-115	302	-0

(No delegates in attendance to vote on Constitution & By-Laws)

CHARTER	VOTES	34.	35.	36.	37.	1990 W.T.	
		YES-NO	YES-NO	YES-NO	YES-NO	IA	GA
AZ-Tucson	5	0- 5	5- 0	5- 0	5- 0	5	0
AZ-Yuma	3	0- 3	3- 0	3- 0	3- 0	0	3
CA-E.Sierra	2	0- 2	0- 2	0- 2	2- 0	0	2
CA-Northern	14	0-14	12- 2	10- 4	14- 0	2	12
CA-Southern	11	0-11	1-10	1-10	11- 0	3	8
Colorado	7	7- 0	7- 0	7- 0	7- 0	2	5
Florida	10	10- 0	0-10	1- 9	8- 2	1	9
Georgia	3	0- 3	3- 0	1- 2	2- 1	0	3
Hawaii	1	1- 0	1- 0	1- 0	1- 0	1	0
Idaho	5	3- 2	5- 0	5- 0	5- 0	5	0
Illinois	15	12- 3	15- 0	15- 0	15- 0	15	0
Indiana	12	12- 0	10- 2	12- 0	12- 0	0	12
Iowa	11	11- 0	11- 0	11- 0	11- 0	11	0
Kansas	8	0- 8	8- 0	0- 8	8- 0	8	0
Kentucky	8	6- 2	8- 0	5- 3	8- 0	0	8
Massachusetts	4	2- 2	3- 1	0- 4	3- 1	0	4
Michigan	8	0- 8	8- 0	8- 0	8- 0	0	8
Minnesota	11	0-11	0-11	11- 0	11- 0	11	0
Mississippi	3	3- 0	3- 0	3- 0	3- 0	0	3
Missouri	11	0-11	11- 0	8- 3	11- 0	4	7
Montana-West	7	0- 7	7- 0	7- 0	7- 0	7	0
Nebraska-East	9	9- 0	9- 0	0- 9	9- 0	9	0
Nebraska-West	4	4- 0	4- 0	0- 4	4- 0	4	0
Nevada	2	0- 2	2- 0	1- 1	1- 1	0	2
New Jersey	4	3- 1	1- 3	4- 0	4- 0	1	3
New Mexico-No	(4)					4	0
New York	13	13- 0	13- 0	13- 0	13- 0	0	13
N. Carolina	3	0- 3	3- 0	0- 3	2- 1	0	3
Ohio	16	0-16	0-16	3-13	16- 0	0	16
Oklahoma	5	0- 5	5- 0	5- 0	4- 1	0	5
Oregon	7	0- 7	0- 7	0- 7	7- 0	1	6
Pennsylv. East	6	0- 6	6- 0	6- 0	6- 0	0	6
Pennsylv. West	11	8- 3	8- 3	4- 7	11- 0	6	5
So. Dakota	5	0- 5	5- 0	5- 0	5- 0	5	0
Texas	10	10- 0	10- 0	10- 0	10- 0	0	10
Utah-North	4	4- 0	4- 0	4- 0	3- 1	2	2
Utah-South	3	1- 2	3- 0	3- 0	0- 3	1	2
Vermont	3	3- 0	3- 0	0- 3	0- 3	0	3
Virginia	8	0- 8	0- 8	8- 0	8- 0	0	8
Washington	9	0- 9	9- 0	-- 0- 9	9- 0	9	0
Wisconsin	12	0-12	12- 0	12- 0	12- 0	0	12
Wyoming	8	0- 8	8- 0	8- 0	8- 0	8	0
Canada	1	1- 0	1- 0	0- 1	1- 0	1	0
TOTALS	302	123-179	227-75	200-102	288-14	126	180

COVER PHOTO . . . This story is not about the greatest horseshoe game ever pitched. It is not about 85% or 90% games, the most thrilling game, or the longest game ever pitched. This letter is about guts, courage and the attitude that you can do anything if you try hard enough.

The hero in this story is 72 years young. In February, 1982, our hero had his right leg amputated below the knee. In November, 1982, our hero had open heart surgery. In May of 1983 he began pitching horseshoes again, as he had previously, but this time on one good leg and an artificial one. In October, 1986 our hero had his left leg amputated below the knee. As in the previous case, he went through rehabilitation at a local rehab center. In June of 1987, a special hand rail support was put together by the members of his doubles league. During that summer, our hero pitched at least twice a week in this league.

This story was featured by a local television station in Pittsburgh. The name of our hero is Mr. Frank Bellan, 1608 Chartiers Avenue, McKees Rocks, PA, 15136, and the league is the Kennedy Township Horseshoe League, Kennedy Township, Pennsylvania.

THE 1988 W. T. CONVENTION

by GLENN PORTT

Not a lot to say . . . overall it ran fairly smooth in contrast to some during the past 15 years or so. President Dave did a good job even tho' there were a few comments that "he beat the insurance problem to death." However, in defense, and to be fair, the delegates *needed* a detailed explanation of this important step the NHPA has taken . . . as the answers given to the many questions proved.

The Convention opened on an *admittance of failure* . . . which was to me the headlight of the entire assembly. Dave Loucks' first words were . . . "I am apologizing right now to the Junior Boys and Girls. I dropped the ball in not appointing junior representatives. *I alone am to blame.* I take full responsibility." Later, Mary Van Sant said . . . "I dropped the ball on the patches for the W.T. *I alone am to blame.* I apologize for the inconvenience I have caused." How many times in your life have you heard people admit to their own mistakes? How many times have you heard . . . "I didn't do it. I didn't do it. I am in no way responsible . . . etc., etc.?" So, when people come along like these two NHPA officers, they deserve to be recognized.

There were 37 changes proposed to our Constitution and By-Laws . . . 29 passed. The representatives of one charter failed to return to vote after the break. Why? Their 4 votes could have made a difference. Did these delegates represent their state fairly? It shouldn't have happened!

Iowa lost its bid for the 1990 W.T. to Georgia. Its representative, Leo Buell, deserves to be mentioned. Leo, a gentleman of the first water, graciously congratulated the Georgia delegation led by Al Sandham, the chief engineer in getting the W.T. for Georgia . . . which just proves the nice things in life have not all passed us by. They are still with us.

WEBB TOPS SHELDON, IL. RINGERS OPEN—SAN. 11-88-05

By RAY MAYHEW

The Sheldon, Ill., Ringers first tournament of the season was a resounding success with champions from three states competing in class A. They were Karl Van Sant, previous Indiana champion; Ron Powell, Kentucky State Champion; Charlie Webb, 1987 Illinois champion; 1985 & 86 Ill. champ Cliff Baker; and Tari Powell, previous Ladies World Champion and presently the Ladies Illinois Champion, a title she has held for several years.

Class A provided a lot of entertainment for spectators and we were proud to have these champions participate in our tournament. After a 8 man round robin we had a three way tie with Van Sant, Baker & Charlie Webb having all won 5 games and losing 2. The resulting play-off found Charlie Webb placing first with Baker and Van Sant taking second and third place respectively.

CLASS A—Charles Webb, Mascoutah, IL, 5-2-80.3; Cliff Baker, Sheldon, IL, 5-2-81.4; Karl Van Sant, Cayuga, IN, 5-2-79.1; Ron Powell, Reid, KY, 4-3-72.8; Don Peters, Chenoa, IL, 4-3-70.0; Mike Knop, Verona, IL, 3-4-63.7; Tari Powell, Rankin, IL, 2-5-67.4; Larry Knop, Verona, IL, 0-7-43.7.

CLASS B—Booty Lange, Elgin, IL, 6-1-53.4; Grant Hintz, Batavia, IL, 5-2-52.0; Will Bruens, Hoopes-ton, IL, 4-3-54.0; Eldon Bryant, Chenoa, IL, 4-3-48.9; Don Natschke, Milford, IL, 2-4-41.1; Harold Pierson, Whiting, IN, 2-5-42.9; Loren Gillespie, Tremont, IL, 2-5-42.6; Ron Stoubaugh, Rantoul, IL, 2-5-37.1.

CLASS C—Don West, Martinton, IL, 7-0-52.6; Jerome Christensen, Kankakee, IL, 5-2-49.1; Burl Taylor, Greencastle, IN, 4-3-33.1; Gordon Belanger, Kankakee, IL, 3-4-46.6; Larry Farris, Whiting, IN,

WEBB—(Continued)

3-4-42.0; Biff Ames, Manteno, IL, 3-4-37.4; Jr. Simoneau, Martinton, IL, 2-5-40.3; Tom Reid, Whiting, IN, 1-6-23.4.

CLASS D—Bob Anderson, Rensselaer, IN, 7-0-40.7; Louis Gschwendtner, Gardner, IL, 5-2-44.0; Jack Newberry, Momence, IL, 4-3-40.3; Clifford Marsh, Shelby, IN, 4-3-37.7; Ollie Clementz, Potomac, IL, 4-3-32.8; Larry Kleinert, St. Anne, IL, 2-5-32.9; Ray Mayhew, Sheldon, IL, 4-6-27.7; Gene Poyner, Collison, IL, 1-6-24.0.

CLASS E—Harry Rosenberger, Lexington, IL, 7-0-27.3; Gary Howe, Kentland, IN, 5-2-27.3; Dan LaFond, St. Anne, IL, 5-2-25.3; Harold Risley, Kentland, IN, 4-3-26.0; Jackie Ames, Manteno, IL, 4-3-17.0; Scott Carlson, Shelby, IN, 4-3-16.6; Delmar Lindahl, DeMotte, IN, 1-6-12.0.

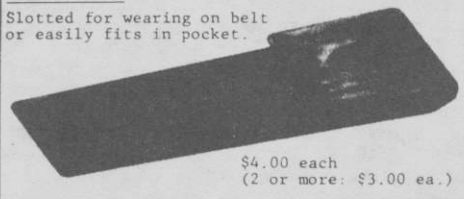
THE HORSESHOE PITCHERS' COMPANION

Pat. No. 4,399,614

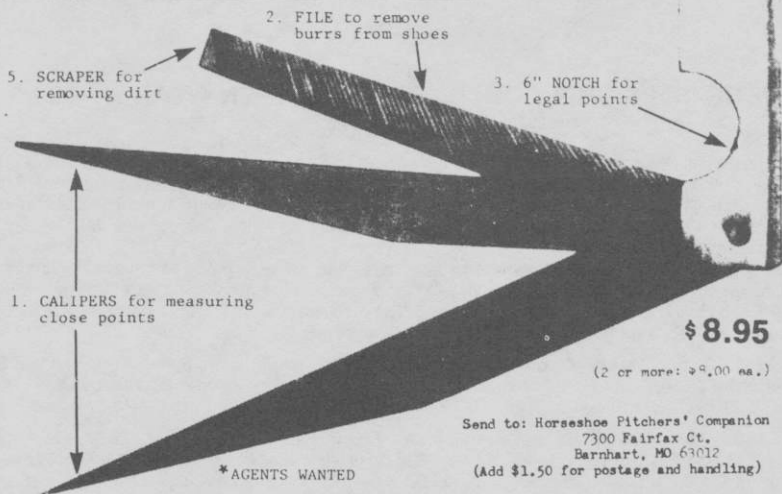
- FEATURES:**
1. Calipers for measuring close points.
 2. File to remove burrs from shoes.
 3. A 6" notch for measuring legal points.
 4. Straight edge for measuring ringers.
 5. Scraper for removing dirt, mud, etc.
 6. Just the right size for back pockets.
 7. NHPA approved.

Leather Case

Slotted for wearing on belt or easily fits in pocket.



\$4.00 each
(2 or more: \$3.00 ea.)



ELDERS 40 FT. CLASS C FINALS

	W	L	R	SP	%
Robert McDonald, FL	5	1	87	240	36.3
Fred Jones, CA	4	2	84	240	35.0
Arthur Yount, CA	3	2	57	200	28.5
Ralph Clark, CA	2	3	52	200	26.0
Luke Braun, CA	2	3	45	200	22.5
Reuben Zeller, ND	0	5	31	200	15.5

1. ROBERT McDONALD—FL

Opponent	Score	R	SP	%
Ralph Clark	28-13	13	40	32.5
Luke Braun	49-17	21	40	52.5
Arthur Yount	17-26	8	40	20.0
Fred Jones	27-22	16	40	40.0
Reuben Zeller	33-21	15	40	37.5
Fred Jones	27-19	14	40	35.0

WINS-5 LOSSES-1 87 240 36.3

2. FRED JONES—CA

Opponent	Score	R	SP	%
Reuben Zeller	44-10	16	40	40.0
Arthur Yount	25-19	13	40	32.5
Ralph Clark	25-23	12	40	30.0
Robert McDonald	22-27	14	40	35.0
Luke Braun	41-6	17	40	42.5
Robert McDonald	19-27	12	40	30.0

WINS-4 LOSSES-2 84 240 35.0

3. ARTHUR YOUNT—CA

Opponent	Score	R	SP	%
Luke Braun	15-30	10	40	25.0
Fred Jones	19-25	13	40	32.5
Robert McDonald	26-17	10	40	25.0
Reuben Zeller	28-10	9	40	22.5
Ralph Clark	29-18	15	40	37.5

WINS-3 LOSSES-2 57 200 28.5

4. RALPH CLARK—CA

Opponent	Score	R	SP	%
Robert McDonald	13-28	9	40	22.5
Reuben Zeller	36-20	9	40	22.5
Fred Jones	23-25	12	40	30.0
Luke Braun	24-23	11	40	27.5
Arthur Yount	18-29	11	40	27.5

WINS-2 LOSSES-3 52 200 26.0

5. LUKE BRAUN—CA

Opponent	Score	R	SP	%
Arthur Yount	30-15	12	40	30.0
Robert McDonald	17-49	9	40	22.5
Reuben Zeller	24-12	7	40	17.5
Ralph Clark	23-24	10	40	25.0
Fred Jones	6-41	7	40	17.5

WINS-2 LOSSES-3 45 200 22.5

6. REUBEN ZELLER—ND

Opponent	Score	R	SP	%
Fred Jones	10-44	6	40	15.0
Ralph Clark	20-36	4	40	10.0
Luke Braun	12-24	5	40	12.5
Arthur Yount	10-28	5	40	12.5
Robert McDonald	21-33	11	40	27.5

WINS-0 LOSSES-5 31 200 15.5

ELDERS 40 FT. A1

	W	L	R	SP	%
Boyd Walker, CA	7	2	206	360	57.2
Joe Colt, CA	7	2	171	360	47.5
Mate McBride, CA	6½	2½	187	360	51.9
Sol Berman, FL	5½	3½	208	360	57.8
Maris Goodrich, OH	5½	3½	190	360	52.8
Hank Guettler, NE	4	5	163	360	45.3
Everett Buehner, OH	4	5	156	360	43.3
Glenn Riffle, CA	2½	6½	155	360	43.1
Frank Hiendlmayr, OH	2	7	150	360	41.7
Al Crabtree	1	8	167	360	46.4

1. BOYD WALKER—CA

Opponent	Score	R	SP	%
Al Crabtree	26-23	23	40	57.5
Hank Guettler	44-18	25	40	62.5
Joe Colt	50-17	26	40	65.0
Everett Buehner	19-40	15	40	37.5
Mate McBride	10-34	16	40	40.0
Glenn Riffle	46-11	24	40	60.0
Sol Berman	29-20	28	40	70.0
Frank Hiendlmayr	24-18	22	40	55.0
Maris Goodrich	46-19	27	40	67.5

WINS-7 LOSSES-2 206 360 57.2

2. JOE COLT—CA

Opponent	Score	R	SP	%
Sol Berman	13-35	17	40	42.5
Frank Hiendlmayr	24-22	17	40	42.5
Boyd Walker	17-50	16	40	40.0
Maris Goodrich	33-32	17	40	42.5
Al Crabtree	39-25	23	40	57.5
Hank Guettler	34-18	20	40	50.0
Glenn Riffle	36-21	20	40	50.0
Everett Buehner	37-20	17	40	42.5
Mate McBride	34-24	24	40	60.0

WINS-7 LOSSES-2 171 360 47.5

ELDERS—(Continued)

3. MATE McBRIDE—CA

Opponent	Score	R	SP	%
Marls Goodrich	26-26	20	40	50.0
Everett Buehner	31-26	23	40	57.5
Glenn Riffle	30-11	19	40	47.5
Frank Hiendlmayr	37-18	19	40	47.5
Boyd Walker	34-10	23	40	57.5
Sol Berman	14-35	16	40	50.0
Al Crabtree	37-17	25	40	62.5
Hank Guettler	44-31	22	40	55.0
Joe Colt	24-34	20	40	50.0
WINS-6½	LOSSES-2½	187	360	51.9

5. MARLS GOODRICH—OH

Opponent	Score	R	SP	%
Mate McBride	26-26	20	40	50.0
Glenn Riffle	39-4	24	40	60.0
Everett Buehner	26-29	19	40	47.5
Joe Colt	32-33	18	40	45.0
Hank Guettler	37-24	18	40	45.0
Al Crabtree	44-17	26	40	65.0
Frank Hiendlmayr	44-18	21	40	52.5
Sol Berman	38-19	25	40	62.5
Boyd Walker	19-46	19	40	47.5
WINS-5½	LOSSES-3½	190	360	52.8

7. EVERETT BUEHNER—OH

Opponent	Score	R	SP	%
Glenn Riffle	36-12	19	40	47.5
Mate McBride	26-31	21	40	52.5
Marls Goodrich	29-26	18	40	45.0
Boyd Walker	40-19	21	40	52.5
Sol Berman	23-33	20	40	50.0
Frank Hiendlmayr	19-33	13	40	32.5
Hank Guettler	12-51	13	40	32.5
Joe Colt	20-37	13	40	32.5
Al Crabtree	31-28	18	40	45.0
WINS-4	LOSSES-5	156	360	43.3

9. FRANK HIENDELMAYR—OH

Opponent	Score	R	SP	%
Hank Guettler	23-29	16	40	40.0
Joe Colt	22-24	17	40	42.5
Al Crabtree	23-14	21	40	52.5
Mate McBride	18-37	13	40	32.5
Glenn Riffle	32-42	21	40	52.5
Everett Buehner	33-19	16	40	40.0
Marls Goodrich	18-44	13	40	32.5
Boyd Walker	18-24	19	40	47.5
Sol Berman	14-55	14	40	35.0
WINS-2	LOSSES-7	150	360	41.7

4. SOL BERMAN—FL

Opponent	Score	R	SP	%
Joe Colt	35-13	25	40	62.5
Al Crabtree	38-22	22	40	55.0
Hank Guettler	17-25	20	40	50.0
Glenn Riffle	23-23	22	40	55.0
Everett Buehner	33-23	23	40	57.5
Mate McBride	35-14	23	40	57.5
Boyd Walker	20-29	25	40	62.5
Marls Goodrich	29-38	20	40	50.0
Frank Hiendlmayr	55-14	28	40	70.0
WINS-5½	LOSSES-3½	208	360	57.8

6. HANK GUETTLER—NE

Opponent	Score	R	SP	%
Frank Hiendlmayr	29-23	18	40	45.0
Boyd Walker	18-44	16	40	40.0
Sol Berman	25-17	21	40	52.5
Al Crabtree	23-24	16	40	40.0
Marls Goodrich	24-37	15	40	37.5
Joe Colt	18-34	15	40	37.5
Everett Buehner	51-12	24	40	60.0
Mate McBride	31-44	17	40	42.5
Glenn Riffle	30-21	21	40	52.5
WINS-4	LOSSES-5	163	360	45.3

8. GLENN RIFFLE—CA

Opponent	Score	R	SP	%
Everett Buehner	12-36	13	40	32.5
Marls Goodrich	4-39	12	40	30.0
Mate McBride	11-30	15	40	37.5
Sol Berman	23-23	23	40	57.5
Frank Hiendlmayr	42-32	24	40	60.0
Boyd Walker	11-46	13	40	32.5
Joe Colt	21-36	17	40	42.5
Al Crabtree	30-26	19	40	47.5
Hank Guettler	21-30	19	40	47.5
WINS-2½	LOSSES-6½	155	360	43.1

10. AL CRABTREE—CA

Opponent	Score	R	SP	%
Boyd Walker	23-26	22	40	55.0
Sol Berman	22-38	19	40	47.5
Frank Hiendlmayr	14-23	20	40	50.0
Hank Guettler	24-23	17	40	42.5
Joe Colt	25-39	19	40	47.5
Marls Goodrich	17-44	18	40	45.0
Mate McBride	17-37	18	40	45.0
Glenn Riffle	26-30	17	40	42.5
Everett Buehner	28-31	17	40	42.5
WINS-1	LOSSES-8	167	360	46.4

ELDERS 40 FT. A2

	W	L	R	SP	%
Bob Proctor, CA	8	1	197	360	54.7
Newell Flann, CA	8	1	188	360	52.2
Norm Cone, CA	7	2	202	360	56.1
Charles Wendling, OR	4	5	184	360	51.1
Harvey Robbins, CN	4	5	160	360	44.4
Bob Hughes, WA	4	5	154	360	42.8
Verdun Nicholas, UT	3	6	161	360	44.7
Leonard Christensen, OR	2½	6½	152	360	42.2
Verl Webb, WA	2½	6½	145	360	40.3
George Abrams, CO	2	7	157	360	43.6

1. BOB PROCTOR—CA

Opponent	Score	R	SP	%
Bob Hughes	49-16	25	40	62.5
Verl Webb	36-32	20	40	50.0
Leonard Christensen	40-23	22	40	55.0
Charles Wendling	24-12	23	40	57.5
Harvey Robbins	29-26	24	40	60.0
George Abrams	38-13	23	40	57.5
Verdun Nicholas	28-14	23	40	57.5
Norm Cone	32-25	20	40	50.0
Newell Flann	12-35	17	40	42.5

WINS-8 LOSSES-1 197 360 54.7

3. NORM CONE—CA

Opponent	Score	R	SP	%
Charles Wendling	20-13	28	40	70.0
George Abrams	36-27	21	40	52.5
Harvey Robbins	29-31	20	40	50.0
Verl Webb	34-28	20	40	50.0
Leonard Christensen	47-19	25	40	62.5
Bob Hughes	27-18	21	40	52.5
Newell Flann	43-6	29	40	72.5
Bob Proctor	25-32	17	40	42.5
Verdun Nicholas	36-33	21	40	52.5

WINS-7 LOSSES-2 202 360 56.1

5. HARVEY ROBBINS—CN

Opponent	Score	R	SP	%
Verdun Nicholas	22-45	12	40	30.0
Newell Flann	9-45	17	40	42.5
Norm Cone	31-29	18	40	45.0
George Abrams	32-12	24	40	60.0
Bob Proctor	26-29	23	40	57.5
Charles Wendling	23-35	14	40	35.0
Leonard Christensen	31-26	20	40	50.0
Bob Hughes	19-31	14	40	35.0
Verl Webb	34-21	18	40	45.0

WINS-4 LOSSES-5 160 360 44.4

7. VERDUN NICHOLAS—UT

Opponent	Score	R	SP	%
Harvey Robbins	45-22	20	40	50.0
Charles Wendling	35-33	21	40	52.5
George Abrams	13-32	15	40	37.5
Bob Hughes	17-38	16	40	40.0
Verl Webb	23-37	12	40	30.0
Leonard Christensen	29-15	19	40	47.5
Bob Proctor	14-28	19	40	47.5
Newell Flann	25-27	18	40	45.0
Norm Cone	33-36	21	40	52.5

WINS-3 LOSSES-6 161 360 44.7

2. NEWELL FLANN—CA

Opponent	Score	R	SP	%
George Abrams	43-8	25	40	62.5
Harvey Robbins	45-9	27	40	67.5
Charles Wendling	31-29	22	40	55.0
Leonard Christensen	31-16	19	40	47.5
Bob Hughes	24-17	20	40	50.0
Verl Webb	34-25	18	40	45.0
Norm Cone	6-43	17	40	42.5
Verdun Nicholas	27-25	16	40	40.0
Bob Proctor	35-12	24	40	60.0

WINS-8 LOSSES-1 188 360 52.2

4. CHARLES WENDLING—OR

Opponent	Score	R	SP	%
Norm Cone	13-20	25	40	62.5
Verdun Nicholas	33-35	19	40	47.5
Newell Flann	29-31	21	40	52.5
Bob Proctor	12-24	19	40	47.5
George Abrams	30-31	20	40	50.0
Harvey Robbins	35-23	18	40	45.0
Verl Webb	39-14	20	40	50.0
Leonard Christensen	26-17	24	40	60.0
Bob Hughes	33-30	18	40	45.0

WINS-4 LOSSES-5 184 360 51.1

6. BOB HUGHES—WA

Opponent	Score	R	SP	%
Bob Proctor	16-49	16	40	40.0
Leonard Christensen	25-36	13	40	32.5
Verl Webb	35-27	18	40	45.0
Verdun Nicholas	38-17	23	40	57.5
Newell Flann	17-24	17	40	42.5
Norm Cone	18-27	19	40	47.5
George Abrams	34-25	14	40	35.0
Harvey Robbins	31-19	17	40	42.5
Charles Wendling	30-33	17	40	42.5

WINS-4 LOSSES-5 154 360 42.8

8. LEONARD CHRISTENSEN—OR

Opponent	Score	R	SP	%
Verl Webb	22-22	18	40	45.0
Bob Hughes	36-25	15	40	37.5
Bob Proctor	23-40	17	40	42.5
Newell Flann	16-31	15	40	37.5
Norm Cone	19-47	15	40	37.5
Verdun Nicholas	15-29	16	40	40.0
Harvey Robbins	16-31	15	40	37.5
Charles Wendling	17-26	20	40	50.0
George Abrams	22-17	21	40	52.5

WINS-2½ LOSSES-6½ 152 360 42.2

ELDERS—(Continued)

9. VERL WEBB—WA

Opponent	Score	R	SP	%
Leonard Christensen	22-22	17	40	42.5
Bob Proctor	32-36	18	40	45.0
Bob Hughes	27-35	14	40	35.0
Norm Cone	28-34	16	40	40.0
Verdun Nicholas	37-23	17	40	42.5
Newell Flann	25-34	16	40	40.0
Charles Wendling	14-39	11	40	27.5
George Abrams	30-19	21	40	52.5
Harvey Robbins	21-34	15	40	37.5
WINS-2½	LOSSES-6½	145	360	40.3

10. GEORGE ABRAMS—CO

Opponent	Score	R	SP	%
Newell Flann	8-43	15	40	37.5
Norm Cone	27-36	18	40	45.0
Verdun Nicholas	32-13	20	40	50.0
Harvey Robbins	12-32	18	40	45.0
Charles Wendling	31-30	20	40	50.0
Bob Proctor	13-38	16	40	40.0
Bob Hughes	25-34	13	40	32.5
Verl Webb	19-30	16	40	40.0
Leonard Christensen	17-22	21	40	52.5
WINS-2	LOSSES-7	157	360	43.6

ELDERS 30 FT. CHAMPIONSHIP

	W	L	R	SP	%
Herb Rushing, CA	5	0	141	228	61.8
Joe Zoglman, CA	4	1	140	252	55.6
Leo Peterson, ID	3	2	127	244	52.0
Joe Morgan, FL	2	3	133	266	50.0
Walter House, FL	1	4	100	224	44.6
Herman Wieser, FL	0	5	99	242	40.9

1. HERB RUSHING—CA

Opponent	Score	R	SP	%
Herman Wieser	-4	24	40	60.0
Joe Morgan	40-27	36	60	60.0
Leo Peterson	40-25	27	46	58.7
Walter House	40-6	17	22	77.3
Joe Zoglman	40-26	37	60	61.7
WINS-5	LOSSES-0	141	228	61.8

2. JOE ZOGLMAN—CA

Opponent	Score	R	SP	%
Joe Morgan	42-37	24	50	48.0
Walter House	44-15	27	44	61.4
Herman Wieser	40-25	22	38	57.9
Leo Peterson	42-38	33	60	55.0
Herb Rushing	26-40	34	60	56.7
WINS-4	LOSSES-1	140	252	55.6

3. LEO PETERSON—ID

Opponent	Score	R	SP	%
Walter House	40-26	25	46	54.3
Herman Wieser	41-28	22	50	44.0
Herb Rushing	25-40	23	46	50.0
Joe Zoglman	38-42	31	60	51.7
Joe Morgan	45-23	26	42	61.9
WINS-3	LOSSES-2	127	244	52.0

4. JOE MORGAN—FL

Opponent	Score	R	SP	%
Joe Zoglman	37-42	23	50	46.0
Herb Rushing	27-40	31	60	51.7
Walter House	42-28	30	56	53.6
Herman Wieser	41-28	30	58	51.7
Leo Peterson	23-45	19	42	45.2
WINS-2	LOSSES-3	133	266	50.0

5. WALTER HOUSE—FL

Opponent	Score	R	SP	%
Leo Peterson	26-40	20	46	43.5
Joe Zoglman	15-44	18	44	40.9
Joe Morgan	28-42	27	56	48.2
Herb Rushing	6-40	6	22	27.3
Herman Wieser	40-23	59	56	51.8
WINS-1	LOSSES-4	100	224	44.6

6. HERMAN WIESER—FL

Opponent	Score	R	SP	%
Herb Rushing	4-40	15	40	37.5
Leo Peterson	28-41	16	50	32.0
Joe Zoglman	25-40	17	38	44.7
Joe Morgan	28-41	27	58	46.6
Walter House	23-40	24	56	42.9
WINS-0	LOSSES-5	99	242	40.9

ELDERS 30 FT. CHAMPIONSHIP

	W	L	R	SP	%
Don Titcomb, CA	11	0	374	488	76.6
Gerald Schneider, CA	9	2	370	536	69.0
Edward Risley, NY	9	2	343	566	60.6
Leonard Lipovsky, MN	6	5	360	578	62.3
Winfield Carnahan, PA	6	5	334	550	60.7
Sparky Hall, FL	6	5	287	544	52.8
Elwood Johnson, MN	5	6	363	582	62.4
Curley Seibold, IN	4	7	298	556	53.6
Juke Basham, CA	4	7	257	510	50.4
Harold Hoffman, OR	2	9	292	544	53.7
Leonard Rood, CA	2	9	286	552	51.8
Lawrence Garman, CA	2	9	259	542	47.8

1. DON TITCOMB—CA

Opponent	Score	R	SP	%
Leonard Rood	40-9	26	34	76.5
Juke Basham	42-3	23	28	82.1
Curley Seibold	40-11	34	42	81.0
Sparky Hall	44-13	37	50	74.0
Harold Hoffman	41-15	32	42	76.2
Lawrence Garman	40-15	33	46	71.7
Winfield Carnahan	40-26	31	42	73.8
Edward Risley	45-6	28	36	77.8
Gerald Schneider	41-19	40	54	74.1
Leonard Lipovsky	40-31	46	66	69.7
Elwood Johnson	41-3	44	48	91.7

WINS-11 LOSSES-0 374 488 76.6

2. GERALD SCHNEIDER—CA

Opponent	Score	R	SP	%
Juke Basham	42-9	22	28	78.6
Curley Seibold	44-24	36	60	60.0
Sparky Hall	40-5	26	34	76.5
Harold Hoffman	40-36	43	64	67.2
Lawrence Garman	41-11	25	34	73.5
Leonard Rood	42-15	29	42	69.0
Leonard Lipovsky	44-33	41	56	73.2
Winfield Carnahan	41-28	34	50	68.0
Don Titcomb	19-41	32	54	59.3
Elwood Johnson	34-43	43	66	65.2
Edward Risley	42-14	39	48	81.3

WINS-9 LOSSES-2 370 536 69.0

3. EDWARD RISLEY—NYE

Opponent	Score	R	SP	%
Harold Hoffman	40-29	26	48	54.2
Lawrence Garman	42-28	30	54	55.6
Leonard Rood	40-25	38	56	67.9
Juke Basham	42-30	32	54	59.3
Curley Seibold	43-13	36	50	72.0
Sparky Hall	44-17	35	46	76.1
Elwood Johnson	40-24	32	52	61.5
Don Titcomb	6-45	16	36	44.4
Leonard Lipovsky	40-33	30	56	53.6
Winfield Carnahan	40-31	40	66	60.6
Gerald Schneider	14-42	28	48	58.3

WINS-9 LOSSES-2 343 566 60.6

4. LEONARD LIPOVSKY—MN

Opponent	Score	R	SP	%
Sparky Hall	45-4	26	34	76.5
Harold Hoffman	44-35	39	66	59.1
Lawrence Garman	41-1	24	32	7.0
Leonard Rood	41-22	31	48	64.6
Juke Basham	42-31	26	46	56.5
Curley Seibold	21-42	30	56	53.6
Gerald Schneider	33-44	37	56	66.1
Elwood Johnson	41-30	52	72	72.2
Edward Risley	33-40	27	56	48.2
Don Titcomb	31-40	44	66	66.7
Winfield Carnahan	20-41	24	46	52.2

WINS-6 LOSSES-5 360 578 62.3

5. WINFIELD CARNAHAN—PA

Opponent	Score	R	SP	%
Curley Seibold	40-27	35	52	67.3
Sparky Hall	13-40	28	60	46.7
Harold Hoffman	41-15	19	30	63.3
Lawrence Garman	27-41	28	52	53.8
Leonard Rood	41-27	32	52	61.5
Juke Basham	43-16	30	46	65.2
Don Titcomb	26-40	26	42	61.9
Gerald Schneider	28-41	30	50	60.0
Elwood Johnson	42-28	37	54	68.5
Edward Risley	31-40	37	66	56.1
Leonard Lipovsky	41-20	32	46	69.6

WINS-6 LOSSES-5 334 550 60.7

6. SPARKY HALL—FL

Opponent	Score	R	SP	%
Leonard Lipovsky	4-45	13	34	38.2
Winfield Carnahan	40-13	36	60	60.0
Gerald Schneider	5-40	14	34	41.2
Don Titcomb	13-44	27	50	54.0
Elwood Johnson	40-31	31	50	62.0
Edward Risley	17-44	26	46	56.5
Juke Basham	44-37	36	72	50.0
Lawrence Garman	40-35	28	52	53.8
Curley Seibold	41-22	23	38	60.5
Leonard Rood	19-44	21	50	42.0
Harold Hoffman	41-37	32	58	55.2

WINS-6 LOSSES-5 287 544 52.8

ELDERS—(Continued)

7. ELWOOD JOHNSON—MN

Opponent	Score	R	SP	%
Lawrence Garman	43-33	39	62	62.9
Leonard Road	25-43	20	42	47.6
Juke Basham	40-25	30	46	65.2
Curley Seibold	42-38	35	56	62.5
Sparky Hall	31-40	27	50	54.0
Harold Hoffman	40-9	23	34	67.6
Edward Risley	24-40	29	52	55.8
Leonard Lipovsky	30-41	49	72	68.1
Winfield Carnahan	28-42	32	54	59.3
Gerald Schneider	43-34	47	66	71.2
Don Titcomb	3-41	32	48	66.7
WINS-5 LOSSES-6		363	582	62.4

9. JUKE BASHAM—CA

Opponent	Score	R	SP	%
Gerald Schneider	9-42	12	28	42.9
Don Titcomb	3-42	11	28	39.3
Elwood Johnson	25-40	26	46	56.5
Edward Risley	30-42	29	54	53.7
Leonard Lipovsky	31-42	24	46	52.2
Winfield Carnahan	16-43	21	46	45.7
Sparky Hall	37-44	36	72	50.0
Curley Seibold	41-20	26	48	54.2
Harold Hoffman	41-27	25	44	56.8
Lawrence Garman	41-17	20	36	55.6
Leonard Road	42-38	27	62	43.5
WINS-4 LOSSES-7		257	510	50.4

11. LEONARD ROOD—CA

Opponent	Score	R	SP	%
Don Titcomb	9-40	17	34	50.0
Elwood Johnson	43-25	25	42	59.5
Edward Risley	25-40	35	56	62.5
Leonard Lipovsky	22-41	26	48	54.2
Winfield Carnahan	27-41	29	52	55.8
Gerald Schneider	15-42	20	42	47.6
Curley Seibold	32-44	29	58	50.0
Harold Hoffman	7-41	20	44	45.5
Lawrence Garman	31-40	32	64	50.0
Sparky Hall	44-19	28	50	56.0
Juke Basham	38-42	25	62	40.3
WINS-2 LOSSES-9		286	552	51.8

8. CURLEY SEIBOLD—IN

Opponent	Score	R	SP	%
Winfield Carnahan	27-40	31	52	59.6
Gerald Schneider	24-44	27	60	45.0
Don Titcomb	11-40	24	42	57.1
Elwood Johnson	38-42	33	56	58.9
Edward Risley	13-43	27	50	54.0
Leonard Lipovsky	42-21	36	56	64.3
Leonard Road	44-32	32	58	55.2
Juke Basham	20-41	19	48	39.6
Sparky Hall	22-41	16	38	42.1
Harold Hoffman	41-19	30	50	60.0
Lawrence Garman	42-23	23	46	50.0
WINS-4 LOSSES-7		298	556	53.6

10. HAROLD HOFFMAN—OR

Opponent	Score	R	SP	%
Edward Risley	29-40	24	48	50.0
Leonard Lipovsky	35-44	37	66	56.1
Winfield Carnahan	15-41	11	30	36.7
Gerald Schneider	36-40	42	64	65.6
Don Titcomb	15-41	24	42	57.1
Elwood Johnson	9-40	13	34	38.2
Lawrence Garman	45-29	39	64	60.9
Leonard Road	41-7	29	44	65.9
Juke Basham	27-41	20	44	45.5
Curley Seibold	19-41	22	50	44.0
Sparky Hall	37-41	31	58	53.4
WINS-2 LOSSES-9		292	544	53.7

12. LAWRENCE GARMAN—CA

Opponent	Score	R	SP	%
Elwood Johnson	33-43	35	62	56.5
Edward Risley	28-42	26	54	48.1
Leonard Lipovsky	1-41	11	32	34.4
Winfield Carnahan	41-27	31	52	59.6
Gerald Schneider	11-41	15	34	44.1
Don Titcomb	15-40	25	46	54.3
Harold Hoffman	29-45	33	64	51.6
Sparky Hall	35-40	25	52	48.1
Leonard Road	40-31	33	64	51.6
Juke Basham	17-41	10	36	27.8
Curley Seibold	23-42	15	46	32.6
WINS-2 LOSSES-9		259	542	47.8

GORDON
D S MED HARD



\$23.
PR

AMERICAN
MEDIUM ONLY



2 PR.
\$34
\$18
PAIR

DF (E-Z GRIP)
DS only
DEADEYE



\$35.
PR

SUPER BINGER



SET
3
PR.
\$27.

NEW DIAMOND
TOURNAMENT
HORSESHOES

\$24.
PR.

DEADEYE REGULAR.
NEW N.T. MODEL,
FLIP GRIP,
CLYDESDALE
DEADEYE

\$30
PAIR

CON'T CHECK OR MONEY ORDER MUST ACCOMPANY ALL ORDERS
USA* ALL PRICES INCLUDE DELIVERY

D.A. BAKER PLAIN PINE \$17.00
HORSESHOE HARD
CARRYING CASE WOOD \$ **\$22.**

HEXTON
V-LOK
\$32.00

F. E. White, Distributor
714 Nevada Drive
Erie, PA 16505
Phone (814) 455-2685
PA Res. 6% Tax

ELDERS 30 FT. A FINALS

	W	L	R	SP	%
Herman Anderson, MN	4	1	85	200	42.5
Ray Beardall, CA	4	1	75	200	37.5
August Ackerman, NE	3	2	74	200	37.0
Amos Wood, CA	2	3	84	200	42.0
Lee Jacobs, MI	1	4	58	200	29.0
Mat Youngblood, NM	1	4	53	200	26.5

1. HERMAN ANDERSON—MN

Opponent	Score	R	SP	%
Ray Beardall	21-29	15	40	37.5
Mt Youngblood	42-17	15	40	37.5
August Ackerman	34-22	19	40	47.5
Amos Wood	30-19	18	40	45.0
Lee Jacobs	37-29	18	40	45.0
WINS-4 LOSSES-1		85	200	42.5

3. AUGUST ACKERMAN—NE

Opponent	Score	R	SP	%
Mat Youngblood	24-21	13	40	32.5
Lee Jacobs	32-23	17	40	42.5
Herman Anderson	22-34	15	40	37.5
Ray Beardall	21-26	13	40	32.5
Amos Wood	21-20	16	40	40.0
WINS-3 LOSSES-2		74	200	37.0

5. LEE JACOBS—MI

Opponent	Score	R	SP	%
Amos Wood	22-40		40	27.5
August Ackerman	23-32	14	40	35.0
Ray Beardall	14-31	8	40	20.0
Mat Youngblood	30-21	13	40	32.5
Herman Anderson	29-37	12	40	30.0
WINS-1 LOSSES-4		58	200	29.0

2. RAY BEARDALL—CA

Opponent	Score	R	SP	%
Herman Anderson	29-21	17	40	42.5
Amos Wood	39-26	20	40	50.0
Lee Jacobs	31-14	13	40	32.5
August Ackerman	26-21	14	40	35.0
Mat Youngblood	17-31	11	40	27.5
WINS-4 LOSSES-1		75	200	37.5

4. AMOS WOOD—CA

Opponent	Score	R	SP	%
Lee Jacobs	40-22	18	40	45.0
Ray Beardall	26-39	16	40	40.0
Mat Youngblood	25-16	19	40	47.5
Herman Anderson	19-30	15	40	37.5
August Ackerman	20-21	16	40	40.0
WINS-2 LOSSES-3		84	200	42.0

6. MATY YOUNGBLOOD—NM

Opponent	Score	R	SP	%
August Ackerman	21-24	9	40	22.5
Herman Anderson	17-42	7	40	17.5
Amos Wood	16-25	14	40	35.0
Lee Jacobs	21-30	10	40	25.0
Ray Beardall	231-17	13	40	32.5
WINS-1 LOSSES-4		53	200	26.5

WHAT A GAME THEY PITCHED

BY JERRY HOLT, NHPA CHAPLAIN

BOOKLET OF INTERVIEWS AND TIPS

SPECIAL SECTIONS ON OKLAHOMA PITCHERS
 BACKGROUNDS AND WORDS FROM MANY TOP WORLD
 CLASS PITCHERS

PRICE \$7.50

ORDER FROM

JERRY HOLT, P. O. BOX 27, MEDFORD, OK 73759

INTERMEDIATE CHAMPIONSHIP

	W	L	R	SP	%
Ben Fields, HI	4	1	93	200	46.5
J. J. Steffen, UT	3	2	101	200	50.5
Harry Perry, OR	3	2	83	200	41.5
Mel Reeser, CA	2½	2½	91	200	45.5
Lee Wallace, OR	1½	3½	89	200	44.5
Harry Denlinger, OH	1	4	82	200	41.0

INTERMEDIATE CLASS A FINALS

1. BEN FIELDS—HI

Opponent	Score	R	SP	%
Harry Denlinger	26-19	18	40	45.0
Mel Reeser	34-25	20	40	50.0
Lee Wallace	31-24	19	40	47.5
Harry Perry	29-20	17	40	42.5
J. J. Steffen	20-24	19	40	47.5
WINS-4 LOSSES-1		93	200	46.5

3. HARRY PERRY—OR

Opponent	Score	R	SP	%
Lee Wallace	29-18	19	40	47.5
J. J. Steffen	29-36	18	40	45.0
Mel Reeser	31-29	15	40	37.5
Ben Fields	20-29	14	40	35.0
Harry Denlinger	29-24	17	40	42.5
WINS-3 LOSSES-2		83	200	41.5

5. LEE WALLACE—OR

Opponent	Score	R	SP	%
Harry Perry	18-29	16	40	40.0
Harry Denlinger	15-34	15	40	37.5
Ben Fields	24-31	18	40	45.0
J. J. Steffen	25-21	22	40	55.0
Mel Reeser	22-22	18	40	45.0
WINS-1½ LOSSES-3½		89	200	44.5

2. J. J. STEFFEN—UT

Opponent	Score	R	SP	%
Mel Reeser	22-39	17	40	42.5
Harry Perry	36-29	22	40	55.0
Harry Denlinger	22-12	21	40	52.5
Lee Wallace	21-25	21	40	52.5
Ben Fields	24-20	20	40	50.0
WINS-3 LOSSES-2		101	200	50.5

4. MEL REESER—CA

Opponent	Score	R	SP	%
J. J. Steffens	39-22	22	40	55.0
Ben Fields	25-34	17	40	42.5
Harry Perry	29-31	14	40	35.0
Harry Denlinger	37-15	19	40	47.5
Lee Wallace	22-22	19	40	47.5
WINS-2½ LOSSES-2½		91	200	45.5

6. HARRY DENLINGER—OH

Opponent	Score	R	SP	%
Ben Fields	19-26	14	40	35.0
Lee Wallace	34-15	19	40	47.5
J. J. Steffen	12-22	18	40	45.0
Mel Reeser	15-37	14	40	35.0
Harry Perry	24-29	17	40	42.5
WINS-1 LOSSES-4		82	200	41.0

INTERMEDIATE CLASS B FINALS

	W	L	R	SP	%
Mel Roberts, CA	4	1	95	200	47.5
Bruce Stuart, CA	3	2	95	200	47.5
Maurice Casteel, AZ	3	2	72	200	36.0
Roland Johnson, NE	2	3	70	200	35.0
Jim Kosterman, WA	2	3	58	200	29.0
Richard Espitee, CT	1	4	63	200	31.5

1. MEL ROBERTS—CA

Opponent	Score	R	SP	%
Jim Kosterman	23-18	15	40	37.5
Richard Espitee	42-18	21	40	52.5
Maurice Casteel	41-8	22	40	55.0
Roland Johnson	36-12	20	40	50.0
Bruce Stuart	26-30	17	40	42.5
WINS-4 LOSSES-1		95	200	47.5

2. BRUCE STUART—CA

Opponent	Score	R	SP	%
Richard Espitee	47-7	25	40	62.5
Roland Johnson	33-29	14	40	35.0
Jim Kosterman	24-31	19	40	47.5
Maurice Casteel	28-29	19	40	47.5
Mel Roberts	30-26	18	40	45.0
WINS-3 LOSSES-2		95	200	47.5

INTERMEDIATE—(Continued)

3. MAURICE CASTEEL—AZ

Opponent	Score	R	SP	%
Roland Johnson	32-31	19	40	47.5
Jim Kosterman	22-25	10	40	25.0
Mel Roberts	8-41	12	40	30.0
Bruce Stuart	29-28	19	40	47.5
Richard Espitee	29-19	12	40	30.0
WINS-3 LOSSES-2		72	200	36.0

4. ROLAND JOHNSON—NE

Opponent	Score	R	SP	%
Maurice Casteel	31-32	17	40	42.5
Bruce Stuart	29-33	12	40	30.0
Richard Espitee	29-27	14	40	35.0
Mel Roberts	12-36	12	40	30.0
Jim Kosterman	45-15	15	40	37.5
WINS-2 LOSSES-3		70	200	35.0

5. JIM KOSTERMAN—WA

Opponent	Score	R	SP	%
Mel Roberts	18-23	15	40	37.5
Maurice Casteel	25-22	8	40	20.0
Bruce Stuart	31-24	20	40	50.0
Richard Espitee	18-33	9	40	22.5
Roland Johnson	15-45	6	40	15.0
WINS-2 LOSSES-3		58	200	29.0

6. RICHARD ESPITEE—CT

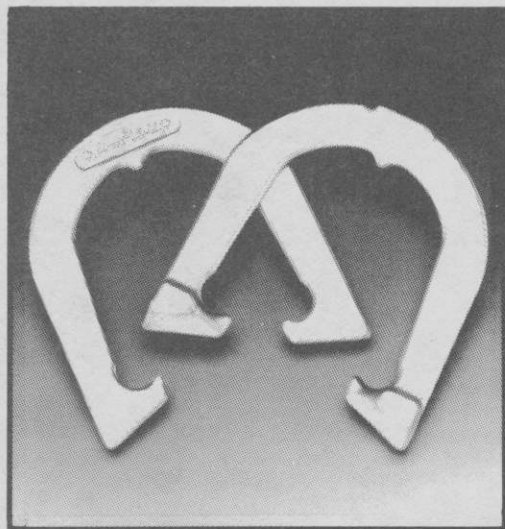
Opponent	Score	R	SP	%
Bruce Stuart	7-47	13	40	32.5
Mel Roberts	18-42	14	40	35.0
Roland Johnson	27-29	12	40	30.0
Jim Kosterman	33-18	15	40	37.5
Maurice Casteel	19-29	9	40	22.5
WINS-1 LOSSES-4		63	200	31.5

THE *Elmer Hohl*™ PITCHING HORSESHOE



Designed by the best, to improve your game

6 TIME WORLD CHAMPION • 15 TIME CANADIAN CHAMPION



Available exclusively in the U.S.A. through N.H.P.A. distributors or write:

N.H.P.A.
P.O. Box 298, Wilkinsonville,
Mass. 01590

Canadian Sales and Dealer
inquiries, contact:

**HOHL HORSESHOE
COMPANY**

P.O. Box 23, Petersburg,
Ontario, Canada N0B 2H0
(519) 634-5404

- N.H.P.A. approved -

INTERMEDIATE CLASS A-1

	W	L	R	SP	%
Curley Seibold, IN	5	2	165	280	58.9
Ben Fields, HI	5	2	146	280	52.1
J. J. Steffen, UT	5	2	144	280	51.4
Mel Reeser, CA	4	3	133	280	47.5
Curt Bestul, WI	3 $\frac{1}{2}$	3 $\frac{1}{2}$	115	280	41.1
William Barth, MT	2 $\frac{1}{2}$	4 $\frac{1}{2}$	121	280	43.2
Harry Denlinger, OH	2	5	129	280	46.1
Fred Canfield, NV	1	6	125	280	44.6

1. CURLEY SEIBOLD—IN

Opponent	Score	R	SP	%
Fred Canfield	40-20	23	40	57.5
William Barth	30-18	25	40	62.5
Harry Denlinger	51-14	28	40	70.0
Curt Bestul	47-6	26	40	65.0
Ben Fields	23-25	23	40	57.5
Mel Reeser	30-29	18	40	45.0
J. J. Steffen	21-34	22	40	55.0
WINS-5 LOSSES-2		165	280	58.9

2. BEN FIELDS—HI

Opponent	Score	R	SP	%
Harry Denlinger	26-23	22	40	55.0
Curt Bestul	22-39	14	40	35.0
William Barth	44-24	21	40	52.5
Fred Canfield	42-27		40	
Curley Seibold	25-23	23	40	57.5
J. J. Steffen	36-35	21	40	52.5
Mel Reeser	22-33	20	40	50.0
WINS-5 LOSSES-2		146	280	52.1

3. J. J. STEFFEN—UT

Opponent	Score	R	SP	%
Curt Bestul	46-20	20	40	50.0
Harry Denlinger	18-28	15	40	37.5
Fred Canfield	31-17	20	40	50.0
William Barth	34-16	20	40	50.0
Mel Reeser	37-18	22	40	55.0
Ben Fields	35-36	21	40	52.5
Curley Seibold	34-21	26	40	65.0
WINS-5 LOSSES-2		144	280	51.4

4. MEL REESER—CA

Opponent	Score	R	SP	%
William Barth	50-7	21	40	52.5
Fred Canfield	33-23	18	40	45.0
Curt Bestul	12-30	11	40	27.5
Harry Denlinger	35-15	23	40	57.5
J. J. Steffen	18-37	17	40	42.5
Curley Seibold	29-31	19	40	47.5
Ben Fields	33-22	24	40	60.0
WINS-4 LOSSES-3		133	280	47.5

5. CURT BESTUL—WI

Opponent	Score	R	SP	%
J. J. Steffen	20-46	13	40	32.5
Ben Fields	39-22	20	40	50.0
Mel Reeser	30-12	16	40	40.0
Curley Seibold	6-47C	13	40	32.5
William Barth	24-24	18	40	45.0
Harry Denlinger	27-20	20	40	50.0
Fred Canfield	16-39	15	40	37.5
WINS-3$\frac{1}{2}$ LOSSES-3$\frac{1}{2}$		115	280	41.1

6. WILLIAM BARTH—MT

Opponent	Score	R	SP	%
Mel Reeser	7-50	10	40	25.0
Curley Seibold	18-30	21	40	52.5
Ben Fields	24-44	14	40	35.0
J. J. Steffen	16-34	17	40	42.5
Curt Bestul	24-24	17	40	42.5
Fred Canfield	38-22	20	40	50.0
Harry Denlinger	31-25	22	40	55.0
WINS-2$\frac{1}{2}$ LOSSES-4$\frac{1}{2}$		121	280	43.2

7. HARRY DENLINGER—OH

Opponent	Score	R	SP	%
Ben Fields	23-26	19	40	47.5
J. J. Steffen	28-18	18	40	45.0
Curley Seibold	14-51	16	40	40.0
Mel Reeser	15-35	15	40	37.5
Fred Canfield	31-12	24	40	60.0
Curt Bestul	20-27	16	40	40.0
William Barth	25-31	21	40	52.5
WINS-2 LOSSES-5		129	280	46.1

8. FRED CANFIELD—NV

Opponent	Score	R	SP	%
Curley Seibold	20-40	16	40	40.0
Mel Reeser	23-33	16	40	40.0
J. J. Steffen	17-31	16	40	40.0
Ben Fields	27-42	20	40	50.0
Harry Denlinger	12-31	19	40	47.5
William Barth	22-38	15	40	37.5
Curt Bestul	39-16	23	40	57.5
WINS-1 LOSSES-6		125	280	44.6

INTERMEDIATE CLASS A-2

	W	L	R	SP	%
Lawrence Gorman, CA	7	0	146	280	52.1
Lee Wallace, OR	4	3	143	280	51.1
Harry Perry, OR	4	3	135	280	48.2
William Cork, NV	4	3	108	280	38.6
Daniel Leary, WA	3	4	125	280	44.6
Marvin Tatchio, OR	3	4	115	280	41.1
George Wilfon, NV	2	5	118	280	42.1
Roy Brown, AZ	1	6	85	280	30.4

1. LAWRENCE GORMAN—CA

Opponent	Score	R	SP	%
Lee Wallace	24-22	18	40	45.0
George Wilfon	40-13	25	40	62.5
Roy Brown	26-12	17	40	42.5
Daniel Leary	34-20	23	40	57.5
Harry Perry	30-22	20	40	50.0
Marvin Tatchio	32-18	22	40	55.0
William Cork	38-11	21	40	52.5
WINS-7 LOSSES-0		146	280	52.1

2. LEE WALLACE—OR

Opponent	Score	R	SP	%
Lawrence Gorman	22-24	18	40	45.0
Marvin Tatchio	50-14	19	40	47.5
Harry Perry	23-32	22	40	55.0
William Cork	28-29	17	40	42.5
Daniel Leary	35-27	23	40	57.5
George Wilfon	28-21	21	40	52.5
Roy Brown	47-18	23	40	57.5
WINS-4 LOSSES-3		143	280	51.1

3. HARRY PERRY—OR

Opponent	Score	R	SP	%
Daniel Leary	24-19	18	40	45.0
Roy Brown	36-24	20	40	50.0
Lee Wallace	32-23	24	40	60.0
George Wilfon	26-21	19	40	47.5
Lawrence Gorman	22-30	19	40	47.5
William Cork	30-35	17	40	42.5
Marvin Tatchio	13-32	18	40	45.0
WINS-4 LOSSES-3		135	280	48.2

4. WILLIAM CORK—NV

Opponent	Score	R	SP	%
Roy Brown	23-30	11	40	27.5
Daniel Leary	15-27	13	40	32.5
George Wilfon	31-20	16	40	40.0
Lee Wallace	29-28	15	40	37.5
Marvin Tatchio	30-18	22	40	55.0
Harry Perry	35-30	18	40	45.0
Lawrence Gorman	11-38	13	40	32.5
WINS-4 LOSSES-3		108	280	38.6

5. DANIEL LEARY—WA

Opponent	Score	R	SP	%
Harry Perry	19-24	17	40	42.5
William Cork	27-15	17	40	42.5
Marvin Tatchio	16-29	15	40	37.5
Lawrence Gorman	20-34	20	40	50.0
Lee Wallace	27-35	20	40	50.0
Roy Brown	26-22	11	40	27.5
George Wilfon	39-14	25	40	62.5
WINS-3 LOSSES-4		125	280	44.6

6. MARVIN TATCHIO—OR

Opponent	Score	R	SP	%
George Wilfon	34-38	16	40	40.0
Lee Wallace	14-50	6	40	15.0
Daniel Leary	29-16	20	40	50.0
Roy Brown	26-16	13	40	32.5
William Cork	18-30	19	40	47.5
Lawrence Gorman	18-32	18	40	45.0
Harry Perry	32-13	23	40	57.5
WINS-3 LOSSES-4		115	280	41.1

7. GEORGE WILFON—NV

Opponent	Score	R	SP	%
Marvin Tatchio	38-34	18	40	45.0
Lawrence Gorman	13-40	17	40	42.5
William Cork	20-31	15	40	37.5
Harry Perry	21-26	16	40	40.0
Roy Brown	40-17	18	40	45.0
Lee Wallace	21-28	18	40	45.0
Daniel Leary	14-39	16	40	40.0
WINS-2 LOSSES-5		118	280	42.1

8. ROY BROWN—AZ

Opponent	Score	R	SP	%
William Cork	30-23	15	40	37.5
Harry Perry	24-36	14	40	35.0
Lawrence Gorman	12-26	14	40	35.0
Marvin Tatchio	16-26	11	40	27.5
George Wilfon	17-40	10	40	25.0
Daniel Leary	22-26	9	40	22.5
Lee Wallace	18-47	12	40	30.0
WINS-1 LOSSES-6		85	280	30.4

DEADEYE HORSESHOES NOW IN FIVE MODELS

CLYDESDALES NOW IN LIGHTER WEIGHTS

	Price Per Pr.—Up to 12 Pairs	Price Per Pr.—12 Prs. & Over
CLYDESDALES	\$30.00	\$23.00 Pr.
N.T.	\$30.00 Pr.	\$23.00 Pr.
REGULAR	\$30.00 Pr.	\$23.00 Pr.
E-Z GRIP	\$35.00 Pr.	\$28.00 Pr.
"NEW" CLYDESDALE DF	\$35.00 Pr.	\$28.00 Pr.

ALL "DEADEYES" IN VARIOUS WEIGHTS

*UPS shipping included in new prices—Excluding C.O.D.s.
add \$2.20. Continental U.S. ONLY.*

NO SHOES WILL BE SENT ON CONSIGNMENT

Missouri residents add 5.225% sales tax

All "DEADEYES" are dead soft (curved only).

All "DEADEYE" are guaranteed against breakage for 2 years
from Date of Original Purchase (NOT RE-PLACEMENT DATE)

Contact (Bill Courtwright ONLY) for special prices on
rejects and returned shoes (NO GUARANTEE)

DEADEYE Caps Available — \$5.00 postpaid

W. Courtwright
P.O. Box 742
Fenton, MO 63026
Phone: (314) 376-5222
(314) 677-2200 (8-5)

Walter Ray Williams, Jr.
c/o Esther Williams
2550 North Vine
Tucson, AZ 85719
Phone: (602) 323-7445
(602) 795-1389 after 6 p.m.

For Local NHPA Representative Contact:
Game Related National Buyer
Edward A. Domey., P.O. Box 298, Wilkinsonville, Ma 01590
(617) 865-4619

ORDER DIRECT or from NHPA REPRESENTATIVE

INTERMEDIATE CLASS B-1

	W	L	R	SP	%
Maurice Casteel, AZ	7	0	117	280	41.8
Roland Johnson, NE	6	1	108	280	38.6
Larry Taylor, AZ	4	3	97	280	34.6
Ben Goodling, OR	3	4	74	280	26.4
Lombard Sargent, MA	3	4	67	280	23.9
Wally Shipley, CA	3	4	61	280	21.8
Don Fagerness, WA	2	5	76	280	27.1
Pacer	0	7	0	280	0.0

1. MAURICE CASTEEL—AZ

Opponent	Score	R	SP	%
Wally Shipley	22-20	12	40	30.0
Don Fagerness	49-17	17	40	42.5
Lombard Sargent	49-17	23	40	57.5
Pacer	17-0	19	40	47.5
Ben Goodling	35-17	14	40	35.0
Larry Taylor	33-12	15	40	37.5
Roland Johnson	25-20	17	40	42.5

WINS-7 LOSSES-0 117 280 41.8

2. ROLAND JOHNSON—NE

Opponent	Score	R	SP	%
Pacer	33-0	20	40	50.0
Lombard Sargent	48-13	16	40	40.0
Wally Shipley	51-8	17	40	42.5
Don Fagerness	32-11	16	40	40.0
Larry Taylor	29-24	14	40	35.0
Ben Goodling	32-23	11	40	27.5
Maurice Casteel	20-25	14	40	35.0

WINS-6 LOSSES-1 108 280 38.6

3. LARRY TAYLOR—AZ

Opponent	Score	R	SP	%
Don Fagerness	37-11	18	40	45.0
Wally Shipley	36-20	15	40	37.5
Pacer	22-0	14	40	35.0
Lombard Sargent	33-22	13	40	32.5
Roland Johnson	24-29	17	40	42.5
Maurice Casteel	12-33	11	40	27.5
Ben Goodling	27-28	9	40	22.5

WINS-4 LOSSES-3 97 280 34.6

4. BEN GOODLING—OR

Opponent	Score	R	SP	%
Lombard Sargent	36-20	10	40	25.0
Pacer	9-0	15	40	37.5
Don Fagerness	20-22	11	40	27.5
Wally Shipley	24-25	12	40	30.0
Maurice Casteel	17-35	8	40	20.0
Roland Johnson	23-32	10	40	25.0
Larry Taylor	28-27	8	40	20.0

WINS-3 LOSSES-4 74 280 26.4

5. LOMBARD SARGENT—MA

Opponent	Score	R	SP	%
Ben Goodling	20-36	5	40	12.5
Roland Johnson	13-48	6	40	15.0
Maurice Casteel	17-49	12	40	30.0
Larry Taylor	22-33	10	40	25.0
Wally Shipley	35-22	14	40	35.0
Pacer	7-0	9	40	22.5
Don Fagerness	25-21	11	40	27.5

WINS-3 LOSSES-4 67 280 23.9

6. WALLY SHIPLEY—CA

Opponent	Score	R	SP	%
Maurice Casteel	20-22	8	40	20.0
Larry Taylor	20-36	7	40	17.5
Roland Johnson	8-51	5	40	12.5
Ben Goodling	25-24	10	40	25.0
Lombard Sargent	22-35	7	40	17.5
Don Fagerness	25-24	10	40	25.0
Pacer	4-0	14	40	35.0

WINS-3 LOSSES-4 61 280 21.8

7. DON FAGERNESS—WA

Opponent	Score	R	SP	%
Larry Taylor	11-37	11	40	27.5
Maurice Casteel	17-41	10	40	25.0
Ben Goodling	22-20	12	40	30.0
Roland Johnson	11-32	11	40	27.5
Pacer	7-0	9	40	22.5
Wally Shipley	24-25	11	40	27.5
Lombard Sargent	21-25	12	40	30.0

WINS-2 LOSSES-5 76 280 27.1

8. PACER

Opponent	Score	R	SP	%
Roland Johnson	0-33	0	40	0.0
Ben Goodling	0-9	0	40	0.0
Larry Taylor	0-22	0	40	0.0
Maurice Casteel	0-17	0	40	0.0
Don Fagerness	0-7	0	40	0.0
Lombard Sargent	0-7	0	40	0.0
Wally Shipley	0-4	0	40	0.0

WINS-0 LOSSES-7 0 280 0.0

INTERMEDIATE CLASS B-2

	W	L	R	SP	%
Bruce Stuart, CA	6½	0½	136	280	48.6
Mel Roberts, CA	6	1	137	280	48.9
Richard Espitee, CT	5½	1½	107	280	38.2
Jim Kosterman, WA	4	3	101	280	36.1
Bill Stoner, OR	3	4	73	280	26.1
Allan Bond, TX	2	5	71	280	25.4
Pacer	0½	6½	0	280	0.0
Pacer	0½	6½	0	280	0.0

1. BRUCE STUART—CA

Opponent	Score	R	SP	%
Pacer	17-0	19	40	47.5
Jim Kosterman	30-29	16	40	40.0
Pacer	25-0	17	40	42.5
Bill Stoner	55-6	26	40	65.0
Richard Espitee	21-21	21	40	52.5
Allan Bond	48-11	18	40	45.0
Mel Roberts	36-25	19	40	47.5
WINS-6½	LOSSES-0½	136	280	48.6

2. MEL ROBERTS—CA

Opponent	Score	R	SP	%
Pacer	40-0	18	40	45.0
Bill Stoner	58-4	22	40	55.0
Jim Kosterman	31-11	19	40	47.5
Pacer	19-0	22	40	55.0
Allan Bond	40-17	22	40	55.0
Richard Espitee	30-22	20	40	50.0
Bruce Stuart	25-36	14	40	35.0
WINS-6	LOSSES-1	137	280	48.9

3. RICHARD ESPITEE—CT

Opponent	Score	R	SP	%
Bill Stoner	42-18	17	40	42.5
Pacer	37-9	14	40	35.0
Pacer	9-0	12	40	30.0
Jim Kosterman	23-22	13	40	32.5
Bruce Stuart	21-21	20	40	50.0
Mel Roberts	22-30	17	40	42.5
Allan Bond	36-31	14	40	35.0
WINS-5½	LOSSES-1½	107	280	38.2

4. JIM KOSTERMAN—WA

Opponent	Score	R	SP	%
Allan Bond	35-12	18	40	45.0
Bruce Stuart	29-30	16	40	40.0
Mel Roberts	11-31	14	40	35.0
Richard Espitee	22-23	12	40	30.0
Pacer	31-0	15	40	37.5
Pacer	24-0	13	40	32.5
Bill Stoner	31-22	13	40	32.5
WINS-4	LOSSES-3	101	280	36.1

5. BILL STONER—OR

Opponent	Score	R	SP	%
Richard Espitee	18-42	9	40	22.5
Mel Roberts	4-58	6	40	15.0
Allan Bond	28-27	12	40	30.0
Bruce Stuart	6-55	12	40	30.0
Pacer	12-0	11	40	27.5
Pacer	23-0	12	40	30.0
Jim Kosterman	22-31	11	40	27.5
WINS-3	LOSSES-4	73	280	26.1

6. ALLAN BOND—TX

Opponent	Score	R	SP	%
Ji, Kosterman	12-35	10	40	25.0
Pacer	7-0	9	40	22.5
Bill Stoner	27-28	11	40	27.5
Pacer	16-0	7	40	17.5
Mel Roberts	17-40	14	40	35.0
Bruce Stuart	11-48	7	40	17.5
Richard Espitee	31-36	13	40	32.5
WINS-2	LOSSES-5	71	280	25.4

7. PACER

Opponent	Score	R	SP	%
Mel Roberts	0-40	0	40	0.0
Richard Espitee	0-37	0	40	0.0
Bruce Stuart	0-25	0	40	0.0
Allan Bond	0-16	0	40	0.0
Jim Kosterman	0-31	0	40	0.0
Bill Stoner	0-23	0	40	0.0
Pacer	1-1	0	40	0.0
WINS-0½	LOSSES-6½	0	280	0.0

8. PACER

Opponent	Score	R	SP	%
Bruce Stuart	0-17	0	40	0.0
Allan Bond	0-7	0	40	0.0
Richard Espitee	0-9	0	40	0.0
Mel Roberts	0-19	0	40	0.0
Bill Stoner	0-12	0	40	0.0
Jim Kosterman	0-24	0	40	0.0
Pacer	1-1	0	40	0.0
WINS-0½	LOSSES-6½	0	280	0.0

SENIORS CHAMPIONSHIP—(Continued)

3. GLENN PORT—GA

Opponent	Score	R	SP	%
Russ Grooms	42-12	24	38	63.2
Cliff Boyer	40-20	27	44	61.4
Lou Fontaine	41-37	37	54	68.5
Orville Lokken	42-10	26	36	72.2
Theodore Wright	45-9	23	32	71.9
John Mikota	41-16	24	48	50.0
Stephen Powers	40-15	26	38	68.4
Walt Robinson	40-32	35	58	60.3
Carl Steinfeldt	12-41	20	36	55.6
Raymond Hill	7-42	17	38	44.7
Bob Thompson	45-31	27	48	56.3

WINS-9 LOSSES-2 286 470 60.9

4. WALT ROBINSON—CA

Opponent	Score	R	SP	%
Cliff Boyer	31-41	23	48	47.9
Lou Fontaine	41-8	33	46	71.7
Orville Lokken	40-17	37	48	77.1
Theodore Wright	40-19	32	54	59.3
John Mikota	40-22	29	44	65.9
Russ Grooms	40-7	24	32	75.0
Carl Steinfeldt	30-40	43	64	67.2
Glenn Port	32-40	32	58	55.2
Raymond Hill	26-42	51	72	70.8
Bob Thompson	40-9	24	32	75.0
Stephen Powers	40-16	30	42	71.4

WINS-7 LOSSES-4 358 540 66.3

5. ORVILLE LOKKEN—CA

Opponent	Score	R	SP	%
Bob Thompson	40-39	30	66	45.5
Stephen Powers	41-37	33	56	58.9
Walt Robinson	17-40	29	48	60.4
Glenn Port	10-42	17	36	47.2
Carl Steinfeldt	10-42	25	48	52.1
Raymond Hill	35-40	41	64	64.1
Theodore Wright	41-38	36	66	54.5
John Mikota	42-29	23	46	50.0
Russ Grooms	42-17	29	46	63.0
Cliff Boyer	38-41	27	56	48.2
Lou Fontaine	17-40	16	38	42.1

WINS-5 LOSSES-6 306 570 53.7

6. THEODORE WRIGHT—SD

Opponent	Score	R	SP	%
Raymond Hill	33-40	33	60	55.0
Bob Thompson	41-16	21	46	45.7
Stephen Powers	24-40	20	46	43.5
Walt Robinson	19-40	23	54	42.6
Glenn Port	9-45	11	32	34.4
Carl Steinfeldt	4-40	15	34	44.1
Orville Lokken	38-41	36	66	54.5
Lou Fontaine	40-20	34	50	68.0
John Mikota	40-10	29	40	72.5
Russ Grooms	40-25	21	46	45.7
Cliff Boyer	41-18	24	50	48.0

WINS-5 LOSSES-6 267 524 51.0

7. STEPHEN POWERS—OH

Opponent	Score	R	SP	%
Lou Fontaine	28-41	36	60	60.0
Orville Lokken	37-41	32	56	57.1
Theodore Wright	40-24	25	46	54.3
John Mikota	30-44	24	46	52.2
Russ Grooms	42-13	25	40	62.5
Cliff Boyer	41-19	19	36	52.8
Glenn Port	15-40	19	38	50.0
Raymond Hill	7-42	13	30	43.3
Bob Thompson	40-7	20	32	62.5
Carl Steinfeldt	17-42	24	44	54.5
Walt Robinson	16-40	23	42	54.8

WINS-4 LOSSES-7 260 470 55.3

8. LOU FONTAINE—CA

Opponent	Score	R	SP	%
Stephen Powers	41-28	40	60	66.7
Walt Robinson	8-41	22	46	47.8
Glenn Port	37-41	35	54	64.8
Carl Steinfeldt	10-41	11	28	39.3
Raymond Hill	14-40	24	42	57.1
Bob Thompson	35-42	24	48	50.0
Russ Grooms	40-24	22	40	55.0
Theodore Wright	20-40	26	50	52.0
Cliff Boyer	40-39	27	54	50.0
John Mikota	39-42	24	48	50.0
Orville Lokken	40-17	23	38	60.5

WINS-4 LOSSES-7 278 508 54.7

9. JOHN MIKOTA—OR

Opponent	Score	R	SP	%
Carl Steinfeldt	12-42	26	46	56.5
Raymond Hill	8-42	15	34	44.1
Bob Thompson	40-22	25	44	56.8
Stephen Powers	44-30	27	56	58.7
Walt Robinson	22-40	24	44	54.5
Glenn Port	16-41	18	48	37.5
Cliff Boyer	19-41	13	38	34.2
Orville Lokken	29-42	18	46	39.1
Theodore Wright	10-40	20	40	50.0
Lou Fontaine	42-39	25	48	52.1
Russ Grooms	18-43	17	44	38.6

WINS-3 LOSSES-8 228 478 47.7

10. CLIFF BOYER—CA

Opponent	Score	R	SP	%
Walt Robinson	41-31	24	48	50.0
Glenn Port	20-40	21	44	47.7
Carl Steinfeldt	9-43	17	40	42.5
Raymond Hill	20-41	17	36	47.2
Bob Thompson	30-42	23	58	39.7
Stephen Powers	19-41	11	36	30.6
John Mikota	41-19	20	38	52.6
Russ Grooms	20-42	16	42	38.1
Lou Fontaine	39-40	28	54	51.9
Orville Lokken	41-38	30	56	53.6
Theodore Wright	18-41	19	50	38.0

WINS-3 LOSSES-8 226 502 45.0

SENIORS CHAMPIONSHIP—(Continued)

11. BOB THOMPSON—CA

Opponent	Score	R	SP	%
Orville Lokken	39-40	29	66	43.9
Theodore Wright	16-41	16	46	34.8
John Mikota	22-40	19	44	43.2
Russ Grooms	43-27	21	48	43.8
Cliff Boyer	42-30	27	58	46.6
Lou Fontaine	42-35	26	48	54.2
Raymond Hill	4-41	16	38	42.1
Carl Steinfeldt	5-41	11	28	39.3
Stephen Powers	7-40	10	32	31.3
Walt Robinson	9-40	13	32	40.6
Glenn Port	31-45	23	48	47.9

WINS-3 LOSSES-8 211 488 43.2

12. RUSS GROOMS—NE

Opponent	Score	R	SP	%
Glenn Port	12-42	14	38	36.8
Carl Steinfeldt	15-41	19	38	50.0
Raymond Hill	6-40	13	34	38.2
Bob Thompson	27-43	17	48	35.4
Stephen Powers	13-42	16	40	40.0
Walt Robinson	7-40	13	32	40.6
Lou Fontaine	24-40	17	40	42.5
Cliff Boyer	42-20	22	42	52.4
Orville Lokken	17-42	22	46	47.8
Theodore Wright	25-40	18	46	39.1
John Mikota	43-18	24	44	54.5

WINS-2 LOSSES-9 195 448 43.5

NOTICE TO ALL DIGEST CONTRIBUTORS

PLEASE DO NOT WRITE ON BOTH SIDES OF THE PAPER OR IT WILL BE RETURNED to the sender. ALSO IF POSSIBLE IT SHOULD BE TYPED OR CLEARLY LEGIBLE and DOUBLE-SPACED. ALL XEROX COPIES SHOULD BE CLEAR. HANDWRITTEN LONG-HAND MATERIAL SHOULD BE CLEAR AND DISTINCT. REMEMBER USE ONLY ONE SIDE OF THE PAPER.

FOR THOSE WHO DESIRE THE VERY BEST

IMPERIAL

FORGED SHOE
U.S.A. PRICE LIST

Postpaid

1 Pair\$39.00

2 to 5 Pair\$37.00

Freight Collect

6 Pr. & Over\$31.00

Available in Dead Soft and

Medium Soft with

Hardened Hooks

and Points

CLYDE MARTZ

- WE ACCEPT . . .
MASTER CARD
AND VISA.
- NOTE CHANGE OF
ADDRESS
- FOR QUICK SERVICE,
PHONE IN YOUR
ORDER, IT'S CHEAP
AND EASY.
- CALL (412) 733-2031

19 SHANGRI LA CIRCLE
PITTSBURGH, PA 15239

LAS  VEGAS
HACIENDA
 RESORT HOTEL & CASINO

NAME _____ SHARING _____

ADDRESS _____

PHONE _____

HACIENDA HORSESHOE PITCHERS TOURNAMENT
 November 28 - December 2, 1988

Tournament Registration(s)

_____ persons @ \$50.00 each (staying at the Hacienda) \$ _____

_____ persons @ \$60.00 each (not staying at the Hacienda) \$ _____

_____ members of S.N.H.P.A. @ \$ 50.00 each \$ _____

Banquet Payment(s)

_____ persons @ \$15.00 each \$ _____

Room Deposit Arrive _____ Depart _____

One night @ \$30.00 per night plus 7% tax \$ _____

November 25 and 26 @ \$40.00 per night plus 7% tax \$ _____

All rooms 1 to 4 persons - No Rollaways

Room or Camperland

deposit must be received by November 1.

Credit cards and Bankcards may be used to guarantee room accommodations only. Bankcards require additional fee of \$5.75

NAME OF CARD _____ CARD # _____ EXP. _____

Camperland Deposit Arrive _____ Depart _____

One night @ \$10.00 per night including tax \$ _____

TOTAL ENCLOSED \$ _____

Send check or money order payable to HACIENDA HOTEL.

P.O. Box 98506

Las Vegas, NV 89193-8506

NHPA SANCTION
No. 26-88-100

LAS  VEGAS
HACIENDA
RESORT HOTEL & CASINO

HACIENDA HORSESHOE PITCHERS TOURNAMENT

Nov. 28 (Mon) - Dec. 2 (Fri) 1988

6th ANNUAL FUNFEST AND TOURNAMENT

ON

18 INDOOR - MODIFIED PORTO'COURTS

AND

PALLADIUM TURF (NEW PITCHING SURFACE)

\$2360.00 - PRIZE MONEY - EACH CLASS

1st \$500.00	4th \$200.00	7th \$130.00
2nd \$350.00	5th \$170.00	8th \$110.00
3rd \$250.00	6th \$150.00	9-18 \$ 50.00

**Tournament Entry Fee: \$50.00 - All to prize money plus HACIENDA Added Purse

FORMAT OF PLAY:

Handicap - No Juniors - All games 50 shoe cancellation - All Classes - 36 players per class. Three 12 player groups per class - 12 player RR. Winner of each group plus 5 highest percentages from the class advance to 8 player class Championship Ladder. (Percentages to break tie) ALL Entrants play at least 2 days.

*Not staying at Hacienda - \$60.00 (Members of S.N.H.P.A. \$50.00)

**Those 8 advancing to Championship Ladders, will be assessed an additional \$25.00 Entry Fee.

30 Foot Groups May Be Mixed.

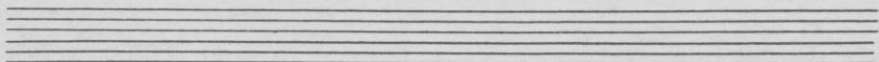
Tournament Officials Reserve The Right To Change The Format

SCHEDULE:

Monday, November 28	12:00 Noon - 5 P.M.	Entrants check in (Matador Arena) Courts open for practice entries <u>CLOSE</u> 5 P.M.
	7 P.M.	No Host Cocktails (Matador Arena) Rules - Format - Classes Playing Schedule
Tuesday, Wednesday, Thursday	7 A.M.	Competition
Friday, December 2	7 A.M. - 2 P.M. 7 P.M.	Finals Awards Banquet

HOST COORDINATOR - CO-DIRECTOR: DON WEAVER

CO-DIRECTORS: DAVE LOUCKS
DONNIE ROBERTS



LAS  VEGAS
HACIENDA
 RESORT HOTEL & CASINO

ALL RINGER PERCENTAGES MUST BE CERTIFIED CORRECT BY A STATE OR CLUB OFFICER. ELIGIBLE MALES WHO PITCH 30 FEET MUST SUBMIT A CERTIFIED 30 FOOT PERCENTAGE.

** CERTIFICATION **

I HEREBY VERIFY THAT THE CURRENT RINGER PERCENTAGE FOR

_____ IS _____ %.

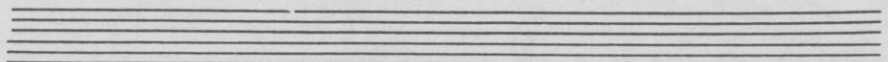
signed

title

date

Ringer percentage _____

N.H.P.A. CARD # _____



SENIORS CLASS A FINALS

	W	L	R	SP	%
Floyd Voyce, AZ	6	1	138	280	49.3
Gene Fleek, KS	5	2	114	280	40.7
George Rachel, WA	4	3	131	280	46.8
Les Burroughs, CA	3	4	127	280	45.4
Jack Adams, CN	3	4	122	280	43.6
Merle Koeppe, OH	3	4	115	280	41.1
Roy Deffner, CA	3	4	99	280	35.4
Raymond Craig, IL	1	6	90	280	32.1

1. FLOYD VOYCE—AZ

Opponent	Score	R	SP	%
George Rachel	23-20	19	40	47.5
Les Burroughs	29-22	22	40	55.0
Roy Deffner	34-20	19	40	47.5
Raymond Craig	34-15	19	40	47.5
Merle Koeppe	37-30	19	40	47.5
Jack Adams	45-12	26	40	65.0
Gene Fleek	26-29	14	40	35.0
WINS-6 LOSSES-1		138	280	49.3

2. GENE FLEEK—KS

Opponent	Score	R	SP	%
Raymond Craig	31-24	15	40	37.5
Roy Deffner	16-38	11	40	27.5
George Rachel	26-15	20	40	50.0
Les Burroughs	28-27	20	40	50.0
Jack Adams	33-19	19	40	47.5
Merle Koeppe	22-50	13	40	32.5
Floyd Voyce	29-26	16	40	40.0
WINS-5 LOSSES-2		114	280	40.7

3. GEORGE RACHEL—WA

Opponent	Score	R	SP	%
Floyd Voyce	20-23	18	40	45.0
Jack Adams	26-16	19	40	47.5
Gene Fleek	15-26	17	40	42.5
Merle Koeppe	31-17	23	40	57.5
Roy Deffner	39-14	15	40	37.5
Less Burroughs	15-25	17	40	42.5
Raymond Craig	46-7	22	40	55.0
WINS-4 LOSSES-3		131	280	46.8

4. LES BURROUGHS—CA

Opponent	Score	R	SP	%
Jack Adams	13-35	12	40	30.0
Floyd Voyce	22-29	20	40	50.0
Merle Koeppe	23-24	16	40	40.0
Gene Fleek	27-28	20	40	50.0
Raymond Craig	36-11	21	40	52.5
George Rachel	25-15	20	40	50.0
Roy Deffner	41-20	18	40	45.0
WINS-3 LOSSES-4		127	280	45.4

5. JACK ADAMS—CN

Opponent	Score	R	SP	%
Les Burroughs	35-13	18	40	45.0
George Rachel	16-26	14	40	35.0
Raymond Craig	34-12	18	40	45.0
Roy Deffner	23-26	23	40	57.5
Gene Fleek	19-33	16	40	40.0
Floyd Voyce	12-45	15	40	37.5
Merle Koeppe	34-29	18	40	45.0
WINS-3 LOSSES-4		122	280	43.6

6. MERLE KOEPE—OH

Opponent	Score	R	SP	%
Roy Deffner	17-38	10	40	25.0
Raymond Craig	42-19	17	40	42.5
Les Burroughs	24-23	16	40	40.0
George Rachel	17-31	19	40	47.5
Floyd Voyce	30-37	17	40	42.5
Gene Fleek	50-22	21	40	52.5
Jack Adams	29-34	15	40	37.5
WINS-3 LOSSES-4		115	280	41.1

7. ROY DEFFNER—CA

Opponent	Score	R	SP	%
Merle Koeppe	38-17	17	40	42.5
Gene Fleek	38-16	17	40	42.5
Floyd Voyce	20-34	14	40	35.0
Jack Adams	26-23	23	40	57.5
George Rachel	14-39	5	40	12.5
Raymond Craig	23-26	13	40	32.5
Les Burroughs	20-41	10	40	25.0
WINS-3 LOSSES-4		99	280	35.4

8. RAYMOND CRAIG—IL

Opponent	Score	R	SP	%
Gene Fleek	24-31	14	40	35.0
Merle Koeppe	19-42	10	40	25.0
Jack Adams	12-34	12	40	30.0
Floyd Voyce	15-34	15	40	37.5
Les Burroughs	11-36	13	40	32.5
Roy Deffner	26-23	15	40	37.5
George Rachel	7-46	11	40	27.5
WINS-1 LOSSES-6		90	280	32.1

SENIORS CLASS B FINALS

	W	L	R	SP	%
Charles Norrie, CN	6	1	112	380	40.0
Roy Deffner, CA	5	2	89	280	31.8
George Rachel, WA	4	3	102	280	36.4
Elmer Bruer, MO	4	3	93	280	33.2
J. R. Montrose, NE	3	4	98	280	35.0
John Beharry, OH	2	5	88	280	31.4
Bud Schardine, UT	2	3	74	280	26.4
Paul Mathias, OH	2	3	74	280	26.4

1. CHARLES NORRIE—CN

Opponent	Score	R	SP	%
Bud Schardine	30-18	11	40	27.5
George Rachel	26-24	18	40	45.0
Paul Mathias	32-16	16	40	40.0
Roy Deffner	26-37	13	40	32.5
Elmer Bruer	51-15	20	40	50.0
J. R. Montrose	34-17	17	40	42.5
John Beharry	32-10	17	40	42.5
WINS-6 LOSSES-1		112	280	40.0

2. ROY DEFFNER—CA

Opponent	Score	R	SP	%
Elmer Bruer	22-21	11	40	27.5
John Beharry	29-36	13	40	32.5
J. R. Montrose	28-22	14	40	35.0
Charles Norrie	37-26	16	40	40.0
Bud Schardine	27-33	8	40	20.0
Paul Mathias	34-17	11	40	27.5
George Rachel	35-17	16	40	40.0
WINS-5 LOSSES-2		89	280	31.8

3. GEORGE RACHEL—WA

Opponent	Score	R	SP	%
J. R. Montrose	23-19	16	40	40.0
Charles Norrie	24-26	18	40	45.0
John Beharry	28-24	14	40	35.0
Elmer Bruer	14-24	9	40	22.5
Paul Mathias	38-20	16	40	40.0
Bud Schardine	38-19	18	40	45.0
Roy Deffner	17-35	11	40	27.5
WINS-4 LOSSES-3		102	280	36.4

4. ELMER BREUER—MO

Opponent	Score	R	SP	%
Roy Deffner	21-22	11	40	27.5
Paul Mathias	26-22	15	40	37.5
Bud Schardine	45-21	18	40	45.0
George Rachel	24-14	10	40	25.0
Charles Norrie	15-51	9	40	22.5
John Beharry	30-29	18	40	45.0
J. R. Montrose	21-41	12	40	30.0
WINS-4 LOSSES-3		93	280	33.2

5. J. R. MONTROSE—NE

Opponent	Score	R	SP	%
George Rachel	19-23	14	40	35.0
Bud Schardine	44-28	18	40	45.0
Roy Deffner	22-38	11	40	27.5
Paul Mathias	19-24	13	40	32.5
John Beharry	32-27	13	40	32.5
Charles Norrie	17-34	12	40	30.0
Elmer Bruer	41-21	17	40	42.5
WINS-3 LOSSES-4		98	280	35.0

6. JOHN BEHARRY—OH

Opponent	Score	R	SP	%
Paul Mathias	23-36	8	40	20.0
Roy Deffner	36-29	15	40	37.5
George Rachel	24-28	13	40	32.5
Bud Schardine	35-30	11	40	27.5
J. R. Montrose	27-32	13	40	32.5
Elmer Bruer	29-30	17	40	42.5
Charles Norrie	10-32	11	40	27.5
WINS-2 LOSSES-5		88	280	31.4

7. BUD SCHARDINE—UT

Opponent	Score	R	SP	%
Charles Norrie	18-30	8	40	20.0
J.R. Montrose	28-44	14	40	35.0
Elmer Bruer	21-45	10	40	25.0
John Beharry	30-35	8	40	20.0
Roy Deffner	33-27	13	40	32.5
George Rachel	19-38	12	40	30.0
Paul Mathias	26-25	9	40	22.5
WINS-2 LOSSES-5		74	280	26.4

8. PAUL MATHIAS—OH

Opponent	Score	R	SP	%
John Beharry	36-23	14	40	35.0
Elmer Bruer	22-26	13	40	32.5
Charles Norrie	16-32	9	40	22.5
J. R. Montrose	24-19	13	40	32.5
George Rachel	20-38	11	40	27.5
Roy Deffner	17-34	6	40	15.0
Bud Schardine	25-26	8	40	20.0
WINS-2 LOSSES-5		74	280	26.4

WOMEN'S CHAMPIONSHIP

	W	L	R	SP	%
Diane Lopez, CA	14	1	817	980	83.4
Sandy McLachlin, CN	13	2	891	1048	85.0
Sharon Paddock, CA	11	4	866	1060	81.7
Diane Cantin, CN	11	4	812	1012	80.2
Vicki Winston, MO	10	5	760	978	77.7
Sue Snyder, IN	8	7	861	1112	77.4
Myrna Kissick, CN	8	7	678	926	73.2
Billie Sue Pennington, CA	7	8	724	990	73.1
Lois Webster, KY	7	8	673	928	72.5
Ruth Hangen, NY	7	8	711	990	71.8
Phyllis Negaard, MN	6	9	731	986	74.1
Renee Cowan, VA	5	10	682	548	71.9
Frances Carnahan, PA	5	10	634	890	71.2
Deborah Michaud, MA	5	10	634	920	68.9
Bonnie Seibold, IN	3	12	515	780	66.0
Connie Still, OH	0	15	456	740	61.6

1. DIANE LOPEZ—CA

Opponent	Score	R	SP	%
Renee Cowan	41-21	37	52	71.2
Ruth Hangen	40-7	54	60	90.0
Frances Carnahan	40-18	50	60	83.3
Deborah Michaud	44-31	58	74	78.4
Billie Sue Pennington	40-32	52	66	78.8
Connie Still	42-6	33	42	78.6
Bonnie Seibold	43-10	32	42	76.2
Lois Webster	43-7	41	46	89.1
Sandy McLachlin	42-32	73	86	84.9
Vicki Winston	26-42	86	104	82.7
Myrna Kissick	40-18	44	52	84.6
Sue Snyder	43-17	67	78	85.9
Phyllis Negaard	45-19	59	68	86.8
Sharon Paddock	42-31	70	82	85.4
Diane Cantin	40-15	61	68	89.7

WINS-14 LOSSES-1 817 980 83.4

2. SANDY McLACHLIN—CN

Opponent	Score	R	SP	%
Connie Still	42-17	35	44	79.5
Bonnie Seibold	42-3	44	50	88.0
Lois Webster	44-16	51	60	85.0
Billie Sue Pennington	42-5	49	52	94.2
Ruth Hangen	35-42	64	84	76.2
Frances Carnahan	40-13	46	52	88.5
Deborah Michaud	44-9	48	54	88.9
Renee Cowan	42-17	64	72	88.9
Diane Lopez	32-42	69	86	80.2
Sharon Paddock	43-34	64	78	82.1
Diane Cantin	41-19	85	96	88.5
Phyllis Negaard	40-31	91	104	87.5
Myrna Kissick	42-11	49	58	84.5
Vicki Winston	40-20	45	54	83.3
Sue Snyder	43-28	87	104	83.7

WINS-13 LOSSES-2 891 1048 85.0

3. SHARON PADDOCK—CA

Opponent	Score	R	SP	%
Frances Carnahan	40-28	59	74	79.7
Deborah Michaud	39-41	66	84	78.6
Renee Cowan	40-19	46	54	85.2
Ruth Hangen	42-37	70	90	77.8
Bonnie Seibold	40-24	41	54	75.9
Lois Webster	42-31	61	76	80.3
Billie Sue Pennington	40-22	61	70	87.1
Connie Still	42-13	39	44	88.6
Vicki Winston	41-24	55	68	80.9
Sandy McLachlin	34-43	61	78	78.2
Sue Snyder	45-35	83	104	79.8
Myrna Kissick	40-8	43	48	89.6
Diane Cantin	36-40	72	86	83.7
Diane Lopez	31-42	66	82	80.5
Phyllis Negaard	41-5	43	48	89.6

WINS-11 LOSSES-4 866 1060 81.7

4. DIANE CANTIN—CN

Opponent	Score	R	SP	%
Deborah Michaud	40-6	27	30	90.0
Renee Cowan	41-21	56	66	84.8
Ruth Hangen	40-24	41	52	78.8
Frances Carnahan	40-22	51	60	85.0
Lois Webster	45-13	48	56	85.7
Billie Sue Pennington	31-44	49	72	68.1
Connie Still	42-19	36	44	81.8
Bonnie Seibold	40-13	39	46	84.8
Sue Snyder	42-24	74	90	82.2
Myrna Kissick	42-30	49	64	76.6
Sandy McLachlin	19-41	78	96	81.3
Vicki Winston	39-40	68	92	73.9
Sharon Paddock	40-36	73	86	84.8
Phyllis Negaard	43-38	70	90	77.8
Diane Lopez	15-40	53	68	77.9

WINS-11 LOSSES-4 812 1012 80.2

WOMEN'S CHAMPIONSHIP—(Continued)

5. VICKI WINSTON—MO

Opponent	Score	R	SP	%
Lois Webster	41-12	32	36	84.2
Billie Sue Pennington	9-42	36	56	64.3
Connie Still	40-36	66	82	80.5
Bonnie Seibold	38-41	44	62	71.0
Deborah Michaud	42-20	39	52	75.0
Renee Cowan	30-42	48	66	72.7
Ruth Hangen	41-26	41	56	73.2
Frances Carnahan	42-15	38	44	86.4
Sharon Paddock	24-41	51	68	75.0
Diane Lopez	42-26	91	104	87.5
Phyllis Negaard	42-14	43	52	82.7
Diane Cantin	40-39	70	92	76.1
Sue Snyder	42-39	76	94	80.9
Sandy McLachlin	20-40	38	54	70.4
Myrna Kissick	45-22	47	58	81.0

WINS-10 LOSSES-5 760 978 77.7

6. SUE SNYDER—IN

Opponent	Score	R	SP	%
Bonnie Seibold	40-25	37	50	74.0
Lois Webster	39-42	77	94	81.9
Billie Sue Pennington	41-26	50	64	78.1
Connie Still	40-19	44	56	78.6
Frances Carnahan	41-15	36	46	78.3
Deborah Michaud	40-26	35	52	67.3
Renee Cowan	31-40	63	82	76.8
Ruth Hangen	42-35	49	66	74.2
Diane Cantin	24-42	67	90	74.4
Phyllis Negaard	42-15	50	60	83.3
Sharon Paddock	35-45	79	104	76.0
Diane Lopez	17-43	59	78	75.6
Vicki Winston	39-42	75	94	79.8
Myrna Kissick	40-31	57	72	79.2
Sandy McLachlin	28-43	83	104	79.8

WINS-8 LOSSES-7 861 1112 77.4

W. T. DATES FOR 1989—JULY 17 thru JULY 30

NHPA APPROVED



Guaranteed one year
from date of purchase
on STAINLESS STEEL ONLY

THE FIRST NEW DESIGN
of the
PROFESSIONAL PITCHING
HORSESHOE

The horseshoe with calkers on
the reversed side of the toeplate.
The FLIP-STYLE pitcher will now
have the two calkers in a down
position landing in pit.

HIGH GRADE STEEL CASTING

2.9 oz. only — \$27.00 pr., plus \$3.00 UPS

STAINLESS STEEL — \$54.50 pr., plus \$3.00 UPS

2 lb. 8 and 2 lb. 9 oz. only

Send checks or money orders to:

PETE DONOHO
704 STATE STREET
REDDING, CA 96001
Ph. 916-243-5761



CAL-FLIP

Allow ample time for delivery Made in U.S.A.—Richmond, Calif.

WOMEN'S CHAMPIONSHIP—(Continued)

7. MYRNA KISSICK—CN

Opponent	Score	R	SP	%
Billie Sue Pennington	42-36	61	86	70.9
Connie Still	45-36	52	70	74.3
Bonnie Seibold	40-15	45	56	80.4
Lois Webster	44-18	64	80	80.0
Renee Cowan	40-8	29	38	76.3
Ruth Hangen	6-42	27	46	58.7
Frances Carnahan	41-36	56	78	71.8
Deborah Michaud	41-23	42	54	77.8
Phyllis Negaard	42-20	55	66	83.3
Diane Cantin	30-42	46	64	71.9
Diane Lopez	18-40	37	52	71.2
Sharon Paddock	8-40	32	48	66.7
Sandy McLachlin	11-42	39	58	67.2
Sue Snyder	31-40	53	72	73.6
Vicki Winston	22-45	40	58	69.0

WINS-8 LOSSES-7 678 926 73.2

8. BILLIE SUE PENNINGTON—CA

Opponent	Score	R	SP	%
Myrna Kissick	36-42	59	86	68.6
Vicki Winston	42-9	47	56	83.9
Sue Snyder	26-41	45	64	70.3
Sandy McLachlin	5-42	36	52	69.2
Diane Lopez	32-40	49	66	74.2
Diane Cantin	44-31	55	72	76.4
Sharon Paddock	22-40	55	70	78.6
Phyllis Negaard	26-40	49	68	72.1
Ruth Hangen	40-37	52	78	66.7
Deborah Michaud	42-35	54	74	73.0
Frances Carnahan	23-41	53	70	75.7
Renee Cowan	42-29	68	84	81.0
Connie Still	41-3	20	26	76.9
Bonnie Seibold	42-35	40	58	69.0
Lois Webster	26-41	42	66	63.6

WINS-7 LOSSES-8 724 990 73.1

9. LOIS WEBSTER—KY

Opponent	Score	R	SP	%
Vicki Winston	12-41	23	38	60.5
Sue Snyder	42-39	77	94	81.9
Sandy McLachlin	16-44	42	60	70.0
Myrna Kissick	18-44	56	80	70.0
Diane Cantin	13-45	38	56	67.9
Sharon Paddock	31-42	58	76	76.3
Phyllis Negaard	42-32	61	78	78.2
Diane Lopez	7-43	29	46	63.0
Frances Carnahan	31-42	37	56	66.1
Renee Cowan	45-30	29	44	65.9
Deborah Michaud	30-40	47	70	67.1
Ruth Hangen	41-17	42	52	80.8
Bonnie Seibold	44-18	53	64	82.8
Connie Still	41-20	36	48	75.0
Billie Sue Pennington	41-26	45	66	68.2

WINS-7 LOSSES-8 673 928 72.5

10. RUTH HANGEN—NY

Opponent	Score	R	SP	%
Phyllis Negaard	43-32	61	82	74.4
Diane Lopez	7-40	43	60	71.7
Diane Cantin	24-40	35	52	67.3
Sharon Paddock	37-42	68	90	75.6
Sandy McLachlin	42-35	66	84	78.6
Myrna Kissick	42-6	37	46	80.4
Vicki Winston	26-41	37	56	66.1
Sue Snyder	35-42	47	66	71.2
Billie Sue Pennington	37-40	52	78	66.7
Bonnie Seibold	42-24	43	58	74.1
Connie Still	40-17	36	48	75.0
Lois Webster	17-41	34	52	65.4
Renee Cowan	42-31	51	70	72.9
Deborah Michaud	28-42	46	72	63.9
Frances Carnahan	42-37	55	76	72.4

WINS-7 LOSSES-8 711 990 71.8

11. PHYLLIS NEGAARD—MN

Opponent	Score	R	SP	%
Ruth Hangen	32-43	59	82	72.0
Frances Carnahan	40-28	41	54	75.9
Deborah Michaud	40-18	45	58	77.6
Renee Cowan	40-34	53	74	71.6
Connie Still	42-9	30	38	78.9
Bonnie Seibold	41-22	36	46	78.3
Lois Webster	32-42	57	78	73.1
Billie Sue Pennington	40-26	53	68	77.9
Myrna Kissick	20-42	48	66	72.7
Sue Snyder	15-42	41	60	68.3
Vicki Winston	14-42	34	52	65.4
Sandy McLachlin	31-40	88	104	84.6
Diane Lopez	19-45	49	68	72.1
Diane Cantin	38-43	66	90	73.3
Sharon Paddock	5-41	31	48	64.6

WINS-6 LOSSES-9 731 986 74.1

12. RENEE COWAN—VA

Opponent	Score	R	SP	%
Diane Lopez	21-41	32	52	61.5
Diane Cantin	21-41	50	66	75.8
Sharon Paddock	19-40	39	54	72.2
Phyllis Negaard	34-40	51	74	68.9
Myrna Kissick	8-40	19	38	50.0
Vicki Winston	42-30	53	66	80.3
Sue Snyder	40-31	67	82	81.7
Sandy McLachlin	17-42	55	72	76.4
Connie Still	40-26	48	62	77.4
Lois Webster	30-45	25	44	56.8
Bonnie Seibold	41-25	38	54	70.4
Billie Sue Pennington	29-41	64	84	76.2
Ruth Hangen	31-42	48	70	68.6
Frances Carnahan	37-42	44	64	68.8
Deborah Michaud	42-32	49	66	74.2

WINS-5 LOSSES-10 682 948 71.9

WOMEN'S CHAMPIONSHIP—(Continued)

13. FRANCES CARNAHAN—PA

Opponent	Score	R	SP	%
Sharon Paddock	28-40	54	74	73.0
Phyllis Negaard	28-40	37	54	68.5
Diane Lopez	18-40	42	60	70.0
Diane Cantin	22-40	45	60	75.0
Sue Snyder	15-41	27	46	58.7
Sandy McLachlin	13-40	37	52	71.2
Myrna Kissick	36-41	52	78	66.7
Vicki Winston	15-42	29	44	65.9
Lois Webster	42-31	40	56	71.4
Connie Still	41-18	31	46	67.4
Billie Sue Pennington	41-23	59	70	84.3
Bonnie Seibold	40-12	25	30	83.3
Deborah Michaud	38-40	59	80	73.8
Renee Cowan	42-37	44	64	68.8
Ruth Hangen	37-42	53	76	69.7

WINS-5 LOSSES-10 634 890 71.2

15. BONNIE SEIBOLD—IN

Opponent	Score	R	SP	%
Sue Snyder	25-40	33	50	66.0
Sandy McLachlin	3-42	32	50	64.0
Myrna Kissick	15-40	38	56	67.9
Vicki Winston	41-38	45	62	72.6
Sharon Paddock	24-40	37	54	68.5
Phyllis Negaard	22-41	30	46	65.2
Diane Lopez	10-43	22	42	52.4
Diane Cantin	13-40	30	46	65.2
Deborah Michaud	41-26	46	60	76.7
Ruth Hangen	24-42	39	58	67.2
Renee Cowan	25-41	33	54	61.1
Frances Carnahan	12-40	16	30	53.3
Lois Webster	18-44	44	64	68.8
Billie Sue Pennington	35-42	35	58	60.3
Connie Still	40-21	35	50	70.0

WINS-3 LOSSES-12 515 780 66.0

14. DEBORAH MICHAUD—MA

Opponent	Score	R	SP	%
Diane Cantin	6-40	16	30	53.3
Sharon Paddock	41-39	65	84	77.4
Phyllis Negaard	18-40	38	58	65.5
Diane Lopez	31-44	53	74	71.6
Vicki Winston	20-42	31	52	59.6
Sue Snyder	26-40	31	52	59.6
Sandy McLachlin	9-44	37	54	68.5
Myrna Kissick	23-41	36	54	66.7
Bonnie Seibold	26-41	41	60	68.3
Billie Sue Pennington	35-42	50	74	67.6
Lois Webster	40-30	49	70	70.0
Connie Still	45-7	31	40	77.5
Frances Carnahan	40-38	61	80	76.3
Ruth Hangen	42-28	50	72	69.4
Renee Cowan	32-42	45	66	68.2

WINS-5 LOSSES-10 634 920 68.9

16. CONNIE STILL—OH

Opponent	Score	R	SP	%
Sandy McLachlin	17-42	26	44	59.1
Myrna Kissick	36-45	49	70	70.0
Vicki Winston	36-40	64	82	78.0
Sue Snyder	19-40	38	56	67.9
Phyllis Negaard	9-42	20	38	52.6
Diane Lopez	6-42	22	42	52.4
Diane Cantin	19-42	28	44	63.6
Sharon Paddock	13-42	29	44	65.9
Renee Cowan	26-40	42	62	67.7
Frances Carnahan	18-41	25	46	54.3
Ruth Hangen	17-40	29	48	60.4
Deborah Michaud	7-45	20	40	50.0
Billie Sue Pennington	3-41	8	26	30.8
Lois Webster	20-41	29	48	60.4
Bonnie Seibold	21-40	27	50	54.0

WINS-0 LOSSES-15 456 740 61.6

WOMEN'S CLASS A FINALS

	W	L	R	SP	%
Edi Holland, MN	5	0	136	200	68.0
Marge Spray, FL	4	1	121	200	60.5
Margaret Byfield, WA	2	3	125	200	62.5
Diana Polak, TX	2	3	123	200	61.5
Marisela Mauricio, CA	2	3	101	200	50.5
Loree Meier, MO	0	5	109	200	54.5

1. EDI HOLLAND—MN

Opponent	Score	R	SP	%
Loree Meier	25-24	26	40	65.0
Margaret Byfield	40-22	28	40	70.0
Marisela Mauricio	37-19	28	40	70.0
Diana Polak	20-17	28	40	70.0
Marge Spray	31-19	26	40	65.0

WINS-5 LOSSES-0 136 200 68.0

2. MARGE SPRAY—FL

Opponent	Score	R	SP	%
Marisela Mauricio	31-22	20	40	50.0
Diana Polak	32-18	28	40	70.0
Margaret Byfield	22-16	27	40	67.5
Loree Meier	35-24	25	40	62.5
Edi Holland	19-31	21	40	52.5

WINS-4 LOSSES-1 121 200 60.5

3. MARGARET BYFIELD—WA

Opponent	Score	R	SP	%
Diana Polak	16-30	25	40	62.5
Edi Holland	22-40	22	40	55.0
Marge Spray	16-22	24	40	60.0
Marisela Mauricio	45-12	27	40	67.5
Loree Meier	35-21	27	40	67.5

WINS-2 LOSSES-3 125 200 62.5

4. DIANA POLAK—TX

Opponent	Score	R	SP	%
Margaret Byfield	30-16	29	40	72.5
Marge Spray	18-32	23	40	57.5
Loree Meier	28-23	24	40	60.0
Edi Holland	17-20	27	40	67.5
Marisela Mauricio	18-24	20	40	50.0

WINS-2 LOSSES-3 123 200 61.5

WOMEN'S FINALS—(Continued)

5. MARISELA MAURICIO—CA

Opponent	Score	R	SP	%
Marge Spray	22-31	17	40	42.5
Loree Meier	26-22	20	40	50.0
Edi Holland	19-37	23	40	57.5
Margaret Byfield	12-45	18	40	45.0
Diana Polak	24-18	23	40	57.5
WINS-2 LOSSES-3		101	200	50.5

6. LOREE MEIER—MO

Opponent	Score	R	SP	%
Edi Holland	24-25	25	40	62.5
Marisela Mauricio	22-26	20	40	50.0
Diana Polak	23-28	21	40	52.5
Marge Spray	24-35	21	40	52.5
Margaret Byfield	21-35	22	40	55.0
WINS-0 LOSSES-5		109	200	54.5

WOMEN'S CLASS B FINALS

	W	L	R	SP	%
Carol Casados, CA	4	1	108	200	54.0
Diana Polak, TX	3	2	128	200	64.0
Marisela Mauricio, CA	3	2	123	200	61.5
Fran Roth, CO	2	3	106	200	53.0
Sally Grooms, NE	2	3	104	200	52.0
Theora Schroeder, CA	1	4	99	200	49.5

1. CAROL CASADOS—CA

Opponent	Score	R	SP	%
Diana Polak	27-24	24	40	60.0
Marisela Mauricio	30-19	24	40	60.0
Fran Roth	26-22	21	40	52.5
Sally Grooms	27-28	20	40	50.0
Theora Schroeder	26-22	19	40	47.5
WINS-4 LOSSES-1		108	200	54.0

2. DIANA POLAK—TX

Opponent	Score	R	SP	%
Carol Casados	24-27	22	40	55.0
Fran Roth	35-12	28	40	70.0
Sally Grooms	32-11	26	40	65.0
Theora Schroeder	32-16	25	40	62.5
Marisela Mauricio	20-26	27	40	67.5
WINS-3 LOSSES-2		128	200	64.0



FORGED QUALITY I
approved by NHPA

27 & 36 inch long
stakes available

THE QUEEN CITY
FORGING CO.
233 Tennyson St.
Cincinnati, OH 45226
(write for price list)

GORDON *Since 1931*
HORSESHOES

Gordon Standard
AISI C1035 Steel

3 Tempers: Hard,
Medium, Dead Soft

Gordon Gold
AISI 4140 Alloy
Medium Temper Only

So. CA Representative
JERRY SCHNEIDER
3144 W. Paso Robles
Anaheim, CA 92804
(714) 826-0684

WOMEN'S FINALS—(Continued)

3. MARISELA MAURICIO—CA

Opponent	Score	R	SP	%
Sally Grooms	25-39	16	40	40.0
Caro Casados	19-30	20	40	50.0
Theora Schroeder	45-12	26	40	65.0
Fran Roth	35-11	32	40	80.0
Diana Polak	26-20	29	40	72.5
WINS-3 LOSSES-2		123	200	61.5

4. FRAN ROTH—CO

Opponent	Score	R	SP	%
Theora Schroeder	24-22	21	40	52.5
Diana Polak	12-35	20	40	50.0
Caro Casados	22-26	20	40	50.0
Manseila Mauricio	11-35	24	40	60.0
Sally Grooms	28-23	21	40	52.5
WINS-2 LOSSES-3		106	200	53.0

5. SALLY GROOMS—NE

Opponent	Score	R	SP	%
Manseila Mauricio	39-25	21	40	52.5
Theora Schroeder	28-36	20	40	50.0
Diana Polak	11-32	20	40	50.0
Caro Casados	28-27	22	40	55.0
Fran Roth	23-28	21	40	52.5
WINS-2 LOSSES-3		104	200	52.0

6. THEORA SCHROEDER—CA

Opponent	Score	R	SP	%
Fran Roth	22-24	20	40	50.0
Sally Grooms	36-28	22	40	55.0
Manseila Mauricio	12-45	16	40	40.0
Diana Polak	16-32	21	40	52.5
Caro Casados	22-26	20	40	50.0
WINS-1 LOSSES-4		99	200	49.5

WOMEN'S CLASS C FINALS

	W	L	R	SP	%
Phyllis Morten, CA	5	0	128	200	64.0
Mary Fumia, CA	3	2	115	200	57.5
Janie Thompson, CO	3	2	103	200	51.5
Betty Forbes, CA	2	3	101	200	50.5
Shirley Steffen, UT	1	4	92	200	48.0
Jo Tisbury, MS	1	4	89	200	44.5

1. PHYLLIS MORTEN—CA

Opponent	Score	R	SP	%
Janie Thompson	37-4	29	40	72.5
Betty Forbes	26-22	25	40	62.5
Mary Fumia	34-18	26	40	65.0
Jo Tisbury	47-18	22	40	55.0
Shirley Steffen	36-17	26	40	65.0
WINS-5 LOSSES-0		128	200	64.0

2. MARY FUMIA—CA

Opponent	Score	R	SP	%
Betty Forbes	37-18	23	40	57.5
Shirley Steffen	48-19	27	40	67.5
Phyllis Morten	18-34	22	40	55.0
Janie Thompson	19-35	21	40	52.5
Jo Tisbury	25-20	22	40	55.0
WINS-3 LOSSES-2		115	200	57.5

3. JANIE THOMPSON—CO

Opponent	Score	R	SP	%
Phyllis Morten	4-37	19	40	47.5
Jo Tisbury	31-23	22	40	55.0
Shirley Steffen	36-25	20	40	50.0
Mary Fumia	35-19	25	40	62.5
Betty Forbes	17-36	17	40	42.5
WINS-3 LOSSES-2		103	200	51.5

4. BETTY FORBES—CA

Opponent	Score	R	SP	%
Mary Fumia	18-37	17	40	42.5
Phyllis Morten	22-26	23	40	57.5
Jo Tisbury	36-23	20	40	50.0
Shirley Steffen	22-3	17	40	42.5
Janie Thompson	36-17	24	40	60.0
WINS-2 LOSSES-3		101	200	50.5

5. SHIRLEY STEFFEN—UT

Opponent	Score	R	SP	%
Jo Tisbury	18-39	16	40	40.0
Mary Fumia	19-48	18	40	45.0
Janie Thompson	25-36	17	40	42.5
Betty Forbes	33-22	21	40	52.5
Phyllis Morten	17-36	20	40	50.0
WINS-1 LOSSES-4		92	200	46.0

6. JO TISBURY—MS

Opponent	Score	R	SP	%
Shirley Steffen	39-18	23	40	57.5
Janie Thompson	23-31	19	40	47.5
Betty Forbes	23-36	16	40	40.0
Phyllis Morten	18-47	13	40	32.5
Mary Fumia	20-25	18	40	45.0
WINS-1 LOSSES-4		89	200	44.5

WOMEN'S CLASS D FINALS

	W	L	R	SP	%
Ruth Letvinchik, NC	4½	0½	90	200	45.0
Karen Alling, CA	3	2	97	200	48.5
Carol Holmes, NE	3	2	95	200	47.5
Nancy Camp, CA	2½	2½	89	200	44.5
Bonnie White, CA	2	3	70	200	35.0
Edith Zoglman, CA	0	5	77	200	38.5

1. RUTH LETVINCHIK—NC

Opponent	Score	R	SP	%
Carol Holmes	30-27	18	40	45.0
Karen Alling	32-20	18	40	45.0
Edith Zoglman	31-16	19	40	47.5
Bonnie White	26-18	17	40	42.5
Nancy Camp	28-28	18	40	45.0
WINS-4½ LOSSES-0½		90	200	45.0

2. KAREN ALLING—CA

Opponent	Score	R	SP	%
Bonnie White	41-12	23	40	57.5
Ruth Letvinchik	20-32	14	40	35.0
Carol Holmes	18-34	18	40	45.0
Nancy Camp	31-23	23	40	57.5
Edith Zoglman	27-18	19	40	47.5
WINS-3 LOSSES-2		97	200	48.5

3. CAROL HOLMES—NE

Opponent	Score	R	SP	%
Ruth Letvinchik	27-30	18	40	45.0
Nancy Camp	43-25	21	40	52.5
Karen Alling	34-18	22	40	55.0
Edith Zoglman	38-12	20	40	50.0
Bonnie White	18-29	14	40	35.0
WINS-3 LOSSES-2		95	200	47.5

4. NANCY CAMP—CA

Opponent	Score	R	SP	%
Edith Zoglman	27-23	18	40	45.0
Carol Holmes	25-43	17	40	42.5
Bonnie White	40-14	16	40	40.0
Karen Alling	23-31	19	40	47.5
Ruth Letvinchik	28-28	19	40	47.5
WINS-2½ LOSSES-2½		89	200	44.5

5. BONNIE WHITE—CA

Opponent	Score	R	SP	%
Karen Alling	12-41	14	40	35.0
Edith Zoglman	29-26	17	40	42.5
Nancy Camp	14-40	8	40	20.0
Ruth Letvinchik	18-26	14	40	35.0
Carol Holmes	29-18	17	40	42.5
WINS-2 LOSSES-3		70	200	35.0

6. EDITH ZOGLMAN—CA

Opponent	Score	R	SP	%
Nancy Camp	23-27	15	40	37.5
Bonnie White	26-29	16	40	40.0
Ruth Letvinchik	16-31	16	40	40.0
Carol Holmes	12-38	13	40	32.5
Karen Alling	18-27	17	40	42.5
WINS-0 LOSSES-5		77	200	38.5

WOMEN'S CLASS E FINALS

	W	L	R	SP	%
Nancy Lamoureux, CA	4	1	84	200	42.0
Linda Rodriguez, CA	4	1	82	200	41.0
Ginger Cain, OK	3	2	76	200	38.0
Sandy Gilstrap, CA	3	2	76	200	38.0
Pat Bryant, CA	1	4	64	200	32.0
Gayle Oglesby, CA	0	5	48	200	24.0

1. NANCY LAMOUREAUX—CA

Opponent	Score	R	SP	%
Linda Rodriguez	45-9	22	40	55.0
Ginger Cain	38-14	19	40	47.5
Pat Bryant	31-20	12	40	30.0
Gayle Oglesby	29-15	15	40	37.5
Sandy Gilstrap	21-32	16	40	40.0
WINS-4 LOSSES-1		84	200	42.0

2. LINDA RODRIGUEZ—CA

Opponent	Score	R	SP	%
Nancy Lamoureux	9-45	11	40	27.5
Pat Bryant	33-20	18	40	45.0
Gayle Oblesby	38-6	18	40	45.0
Sandy Gilstrap	31-28	17	40	42.5
Ginger Cain	34-16	18	40	45.0
WINS-4 LOSSES-1		82	200	41.0

WOMEN'S FINALS—(Continued)

3. GINGER CAIN—OK

Opponent	Score	R	SP	%
Gayle Oglesby	42-10	17	40	42.5
Nancy Lamoureux	14-38	12	40	30.0
Sandy Gilstrap	40-14	18	40	45.0
Pat Bryant	30-28	18	40	45.0
Linda Rodriguez	16-34	11	40	27.5
WINS-3 LOSSES-2		76	299	38.0

5. PAT BRYANT—CA

Opponent	Score	R	SP	%
Sandy Gilstrap	24-30	11	40	27.5
Linda Rodriguez	20-33	13	40	32.5
Nancy Lamoureux	20-31	9	40	22.5
Ginger Cain	28-30	18	40	45.0
Gayle Oglesby	35-16	13	40	32.5
WINS-1 LOSSES-4		64	200	32.0

4. SANDY GILSTRAP—CA

Opponent	Score	R	SP	%
Pat Bryant	30-24	15	40	37.5
Gayle Oglesby	37-13	19	40	47.5
Ginger Cain	14-40	9	40	22.5
Linda Rodriguez	28-31	15	40	37.5
Nancy Lamoureux	32-21	18	40	45.0
WINS-3 LOSSES-2		76	200	38.0

6. GAYLE OBLESBY—CA

Opponent	Score	R	SP	%
Ginger Cain	10-42	9	40	22.5
Sandy Gilstrap	13-37	13	40	32.5
Linda Rodriguez	6-38	7	40	17.5
Nancy Lamoureux	15-29	10	40	25.0
Pat Bryant	16-35	9	40	22.5
WINS-0 LOSSES-5		48	200	24.0

WOMEN'S CLASS F FINALS

	W	L	R	SP	%
Donna Eisma, CA	5	0	86	200	43.0
Camille Bruster, CA	4	1	83	200	41.5
Marylyn Clark, CA	2	3	65	200	32.5
Letta Washburn, KS	2	3	50	200	25.0
Cathie Loucks, CA	1	4	54	200	27.0
Ruth Hix, VA	1	4	54	200	27.0

1. DONNA EISMA—CA

Opponent	Score	R	SP	%
Letta Washburn	36-9	11	40	27.5
Cathie Loucks	58-12	21	40	52.5
Ruth Hix	44-22	18	40	45.0
Camille Bruster	27-23	18	40	45.0
Marylyn Clark	35-11	18	40	45.0
WINS-5 LOSSES-0		86	200	43.0

2. CAMILLE BRUSTER—CA

Opponent	Score	R	SP	%
Cathie Loucks	33-26	16	40	40.0
Ruth Hix	26-16	17	40	42.5
Marylyn Clark	27-16	18	40	45.0
Donna Eisma	23-27	16	40	40.0
Letta Washburn	45-7	16	40	40.0
WINS-4 LOSSES-1		83	200	41.5

3. MARYLYN CLARK—CA

Opponent	Score	R	SP	%
Ruth Hix	38-19	14	40	35.0
Letta Washburn	21-32	14	40	35.0
Camille Bruster	16-27	13	40	32.5
Cathie Loucks	40-29	15	40	37.5
Donna Eisma	11-35	9	40	22.5
WINS-2 LOSSES-3		65	200	32.5

4. LETTA WASHBURN—KS

Opponent	Score	R	SP	%
Donna Eisma	9-36	4	40	10.0
Marylyn Clark	32-21	17	40	42.5
Cathie Loucks	17-38	10	40	25.0
Ruth Hix	32-23	12	40	30.0
Camille Bruster	7-45	7	40	17.5
WINS-2 LOSSES-3		50	200	25.0

5. CATHIE LOUCKS—CA

Opponent	Score	R	SP	%
Camille Bruster	26-33	15	40	37.5
Donna Eisma	12-58	5	40	12.5
Letta Washburn	38-17	16	40	40.0
Marylyn Clark	29-40	9	40	22.5
Ruth Hix	27-30	9	40	22.5
WINS-1 LOSSES-4		54	200	27.0

6. RUTH HIX—VA

Opponent	Score	R	SP	%
Marylyn Clark	19-38	11	40	27.5
Camille Bruster	16-26	14	40	35.0
Donna Eisma	22-44	11	40	27.5
Letta Washburn	23-32	10	40	25.0
Cathie Loucks	30-27	8	40	20.0
WINS-1 LOSSES-4		54	200	27.0

DALLAS, GEORGIA SPECIAL—28-88-008

CLASS B—Larry Morton, Columbus, 4-1-74.3; Glen Portt, Albany, 4-1-64.9; Ted Whitlock, Jefferson, 4-1-63.6; Iris Sandham, Lilburn, 2-3-48.5; Cotton Black, Tunnel Hill, 1-4-50.9; Wayne Brooks, Alpharetta, 0-5-52.0.

CLASS B—Oliver McClarty, Rockmart, 4-1-57.03; Bd Kurtz, Marietta, 3-2-57.3; Jim Waters, Ringgold, 3-2-53.2; Tommy Lawson, Acworth, 2-3-50.7; George Bradfield, Dallas, 2-3-44.4; A. W. Weatherford, Braselton, 1-4-44.9.

CLASS C—Richard Williams, Rockmart, 5-0-52.5; Merle Shipp, Dallas, 4-1-43.8; Jim Haley, Stone Mountain, 2-3-44.1. Bill McCoury, White, 2-3-39.4; Sterling King, Conyers, 2-3-37.8; Jack Shipp, Dallas, 0-5-35.4.

CLASS D—Don Hoover, Conyers, 5-0-40.5; Rusty Morgan, Aragon, 3-2-34.5; J. R. Frady, Cedartown, 3-2-30.1; Jim Wood, Jefferson, 3-2-29.2; James Spencer, Aragon, 1-4-23.4; Keith Shipp, Dallas, 0-5-23.4.

CLASS E—J. E. Brooks, Alpharetta, 5-0-31.5; Al Simpson, Catula, 3-2-39.2; Rojer Stamper, Douglasville, 3-2-33.5; Roy Whitlock, Jefferson, 2-3-28.8; Samson Marchman, Dallas, 1-4-28.0; Charles McGinness, Dallas, 1-4-25.1.

CLASS F—Dave Hylton, Alpharetta., 4-1-27.3; Sal Bosco, Rome, 4-1-19.1; Johnny Sisson, Aragon, 3-2-20.6; Samya Vig, Lilburn, 3-2-17.6; J. W. Brumbelow, Cartersville, 1-4-21.4; Al Sandham, Lilburn, 0-5-8.97.

VT. MOTHER'S DAY OPEN TO HOLLISTER—SAN. 27-88-026

CLASS A—Kevin Hollister, 7-0-79.2; Liz Downer, 6-1-70.7; Leon O'Dell, 5-2-50.6; Gale Greene, 4-3-59.3; Dick Greene, 3-4-51.3; Bud Leavitt, 2-5-44.8; Jean Choiniere, 1-6-52.4; Don Choiniere, 0-7-42.8.

CLASS B—Sam Raymond, 7-0-45.6; Reid Brewster, 4-3-47.1; Bev Forgues, 4-3-43.8; Blakley Bigelow, 4-3-41.2; Barney Pratt, 4-3-41.1; Ray Barker, 3-4-35.9; Richard Grenier, 1-6-34.7; Bob Snide, 1-6-28.4.

CLASS C—Don Taylor, 7-0-38.4; Norman Boynton, 4-3-32.6; Elmer Moore, 4-3-31.7; Bill Boutwell, 4-3-28.7; Archie Jones, 3-4-34.7; John Coffey, 3-4-33.8; Cliff Richards, 2-5-28.4; Alton Nichols, 0-7-24.4.

CLASS D—Bill Boutwell, 5-0-29.4; Glen Norris, 3-2-28.4; Roger Forgues, 3-2-23.8; Ruth Wassong, 2-3-24.8; Bill Alexander, 2-3-23.9; Ray DeBarge, 0-5-17.9.

CLASS E—Connie Selleck, 7-0-25.1; Doug Bausch, 4-3-28.7; Kevin Straton, 4-3-27.4; Charlie Newton, 4-3-25.5; Harold Wrisley, 4-3-19.2; Phil Summer, 4-3-19.1; Art Emmons, 1-6-16.6; Stan Bigelow, 0-7-14.1.

CLASS F—Bob Marshall, 6-0-26.9; Jerry Randall, 4-2-23.9; Ben Basquez, 4-2-23.0; Ray Begins Sr., 4-2-19.3; Duane Peacock, 2-4-20.9; Jay Parizo, 1-5-12.5; Don Fales, 0-6-7.7.

CLASS G—Ray Begins Jr., 5-0-25.4; Cathy Begins, 4-1-16.9; Norm Desso, 2-3-16.4; Harold Townsend, 2-3-11.5; Myron Selleck, 2-3-9.5; Debbie Mallott, 0-5-5.7.

CLASS H—Rick Begins, 4-0-14.7; Lester Townsend, 3-1-9.2; Rae Ann Begins, 2-2-5.5; Gary Pierson, 1-3-7.6; Ed Pratt, 0-4-4.0.

DALLAS, PA. OPEN CROWN TO RUBENDALL—SAN. 17-88-021

CLASS A—Glen Rubendall, 9-0-69.2; Glenn Burris, 8-1-71.2; Dan Beshore, 7-2-64.1; Ed Bowersox, 5-4-50.5; Glenn Brown, 4-5-60.7; Dick Wilson, 4-5-52.9; Dean McCurdy, 3-6-50.0; Jack Swyers, 3-6-49.5; Keith Clark, 2-7-45.0; Al Long, 0-9-39.3.

CLASS B—George Lovell, 7-0-62.4; Jim Brenner, 6-1-50.3; Dennis Lloyd, 5-2-52.8; Wayne McCloskey, 4-3-41.9; Roy Teets, 2-5-40.2; Joe Belcavitch, 2-5-34.7; Dave Preston, 1-6-34.5; Ted Postupack, 1-6-31.6.

CLASS C—Al Yednock, 9-0-38.0; Wayne Brown, 7-2-33.9; Gene Oleski, 6-3-31.2; Wally Brown, 5-4-32.4; Bruce Corl, 4-5-31.6; Joe Shurmias, 3-6-27.1; Harold Becker, 3-6-27.0; Bernie Snyder, 3-6-26.7; Gerard Harris, 3-6-23.5; Bernie Wierbowski,, 2-7-19.1.

CLASS D—Dick Kenney, 7-0-31.7; John Kehler, 6-1-26.9; Tom Baker, 5-2-28.0; Charles Reigles, 3-4-22.9; Bill Hanyon, 3-4-19.9; Don Wesley, 2-5-18.8; Ira Lichtman, 2-5-14.1; Steve Remetz, 0-7-6.2.

LADIES CLASS A—Charlotte Reigles, 5-0-60.2; Jean Long, 4-1-30.7; Susan Preston, 3-2-22.5; Sandy Maciejczak, 2-3-18.1; Norma McCurdy, 1-4-17.8.

NORWICH, CT. WARMUP OPEN—SAN. 27-88-019

CLASS A—N. Rioux, 7-1-62.5; A. Latouche, 7-1-55.8; W. Larkin, 5-3-55.2; P. Bergeron, 5-3-55.1; J. Festa, 4-4-55.0; C. Costello, 3-5-45.8; R. Worby, 2-6-45.0; G. Trabucchi, 2-6-52.2; T. Monigan, 1-7-48.3.

CLASS B—J. Hagan, 6-1-52.0; J. Moore, 4-3-44.5; W. Ryan, 4-3-42.0; E. Mancini, 3-4-44.9; K. Outlaw, 3-4-40.6; J. Rennie, 3-4-36.9; D. Maine, 3-4-31.9; A. Wayne, 2-5-34.4.

CLASS C—D. Colandene, 6-1-28.6; P. Kelly, 5-2-30.7; D. Nieto, 4-3-27.1; B. Crudo, 4-3-26.4; W. Fleming, 3-4-30.3; S. Wardwell, 3-4-21.8; M. Rix, 2-5-21.8; A. Jones, 1-6-17.2.

CLASS D—I. Stone, 7-0-31.4; D. Mercier, 5-2-29.7; I. Wardwell, 4-3-24.8; C. Suprenant, 4-3-21.2; P. Duff, 4-3-20.0; M. Scioletti, 2-5-20.1; K. Crosley, 1-6-24.1; S. Castleberry, 1-6-14.7.

GIRLS' CHAMPIONSHIP

	W	L	R	SP	%
Debby Bestul, WI	4	1	131	226	58.0
Alana Johnston, CN	4	1	118	262	45.0
Julie Walters, OH	3	2	116	234	49.6
Jennie Walters, OH	2	3	117	262	44.7
Celeste Polak, TX	2	3	108	252	42.9
Rebecca Manuelito, CA	0	5	92	240	38.3

1. DEBBY BESTUL—WI

Opponent	Score	R	SP	%
Rebecca Manuelito	41-25	27	40	67.5
Jennie Walters	40-18	30	46	65.2
Celeste Polak	42-10	24	40	60.0
Julie Walters	28-42	24	46	52.2
Alana Johnston	40-29	26	54	48.1

WINS-4 LOSSES-1 131 226 58.0

2. ALANA JOHNSTON—CN

Opponent	Score	R	SP	%
Jennie Walters	40-31	23	48	47.9
Julie Walters	40-39	23	62	37.1
Rebecca Manuelito	40-24	22	52	42.3
Celeste Polak	43-26	26	46	56.5
Debby Bestul	29-40	24	54	44.4

WINS-4 LOSSES-1 118 262 45.0

"GREEOTT GRABBER"

the ultimate ringer keeper



Soft temper 2lb. 8oz. 2lb. 9 oz.

Not JUST another horseshoe. The ultimate shock-absorbing, ringer saving design. Helps prevent loss of solidly hit ringers by rebounding.

Guaranteed against breakage for 1 year from date of purchase. Both shoes must be returned in original box.

\$28.00 pr. plus \$3.00 shipping, handling, to the 48 adjoining states. California residents add 6% tax. High grade steel casting. NOT cast iron. Send checks or money orders to:

"GREEOTT GRABBER" HORSESHOES
c/o Steve Kynard, 1453 Spring Creek Dr.
Woodland, CA 95695

Or from NHPA representatives



GIRLS' CHAMPIONSHIP—(Continued)

3. JULIE WALTERS—OH

Opponent	Score	R	SP	%
Celeste Polak	42-18	27	44	62.4
Alana Johnston	39-40	22	62	35.5
Jennie Walters	32-40	19	54	35.2
Debby Bestul	42-28	28	46	60.9
Rebecca Manuelito	42-4	20	28	71.4

WINS-3 LOSSES-2 116 234 49.6

5. CELESTE POLAK—TX

Opponent	Score	R	SP	%
Julie Walters	18-42	19	44	43.2
Rebecca Manuelito	42-32	25	64	39.1
Debby Bestul	10-42	13	40	32.5
Alana Johnston	26-43	20	46	43.5
Jennie Walters	42-34	31	58	53.4

WINS-2 LOSSES-3 108 252 42.9

4. JENNIE WALTERS—OH

Opponent	Score	R	SP	%
Alana Johnston	31-40	20	48	41.7
Debby Bestul	18-40	25	46	54.3
Julie Walters	40-32	22	54	40.7
Rebecca Manuelito	43-31	22	56	39.3
Celeste Polak	34-42	28	58	48.3

WINS-2 LOSSES-3 117 262 44.7

6. REBECCA MANUELITO—CA

Opponent	Score	R	SP	%
Debby Bestul	25-41	22	40	55.0
Celeste Polak	32-42	24	64	37.5
Alana Johnston	24-40	18	52	34.6
Jennie Walters	31-43	20	56	35.7
Julie Walters	4-42	8	28	28.6

WINS-0 LOSSES-5 92 240 38.3

GIRLS' CLASS A FINALS

	W	L	R	SP	%
Julie Walters, OH	7	0	127	280	45.4
Rebecca Manuelito, CA	5	2	94	280	33.6
Sonya Hix, VA	5	2	78	280	27.9
Michelle White, CA	4½	2½	79	280	28.2
Nicole Saunders, CA	3	4	56	280	20.0
Tonya Hix, VA	2½	4½	47	280	16.8
Jaime Polak, TX	1	6	22	280	7.9
Kara Hix, VA	0	7	9	280	3.2

1. JULIE WALTERS—OH

Opponent	Score	R	SP	%
Kara Hix	59-1	17	40	42.5
Jaime Polak	64-6	24	40	60.0
Tonya Hix	58-11	18	40	45.0
Nicole Saunders	37-16	17	40	42.5
Sonya Hix	30-17	15	40	37.5
Michelle White	26-19	14	40	35.0
Rebecca Manuelito	40-19	22	40	55.0

WINS-7 LOSSES-0 127 280 45.4

2. REBECCA MANUELITO—CA

Opponent	Score	R	SP	%
Tonya Hix	38-10	12	40	30.0
Nicole Saunders	27-14	14	40	35.0
Jaime Polak	51-14	15	40	37.5
Kara Hix	47-8	12	40	30.0
Michelle White	25-30	15	40	37.5
Sonya Hix	28-26	9	40	22.5
Julie Walters	19-40	17	40	42.5

WINS-5 LOSSES-2 94 280 33.6

3. SONYA HIX—VA

Opponent	Score	R	SP	%
Nicole Saunders	36-11	12	40	30.0
Tonya Hix	29-20	9	40	22.5
Kara Hix	50-3	14	40	35.0
Jaime Polak	42-5	13	40	32.5
Julie Walters	17-30	12	40	30.0
Rebecca Manuelito	26-28	8	40	20.0
Michelle White	22-19	10	40	25.0

WINS-5 LOSSES-2 78 280 27.9

4. MICHELLE WHITE—CA

Opponent	Score	R	SP	%
Jaime Polak	40-6	14	40	35.0
Kara Hix	42-3	9	40	22.5
Nicole Saunders	35-9	8	40	20.0
Tonya Hix	27-27	10	40	25.0
Rebecca Manuelito	30-25	16	40	40.0
Julie Walters	19-26	12	40	30.0
Sonya Hix	19-22	10	40	25.0

WINS-4½ LOSSES-2½ 79 280 28.2

5. NICOLE SAUNDERS—CA

Opponent	Score	R	SP	%
Sonya Hix	11-36	6	40	15.0
Rebecca Manuelito	14-27	11	40	27.5
Michelle White	9-35	2	40	5.0
Julie Walters	16-37	11	40	27.5
Kara Hix	34-5	7	40	17.5
Tonya Hix	31-8	10	40	25.0
Jaime Polak	30-9	9	40	22.5

WINS-3 LOSSES-4 56 280 20.0

6. TONYA HIX—VA

Opponent	Score	R	SP	%
Rebecca Manuelito	10-38	4	40	10.0
Sonya Hix	20-29	7	40	17.5
Julie Walters	11-56	5	40	12.5
Michelle White	27-27	10	40	25.0
Jaime Polak	38-12	11	40	27.5
Nicole Saunders	8-31	3	40	7.5
Kara Hix	26-16	7	40	17.5

WINS-2½ LOSSES-4½ 47 280 16.8

GIRLS' CLASS A FINALS—(Continued)

7. JAIME POLAK—TX

Opponent	Score	R	SP	%
Michelle White	6-40	3	40	7.5
Julie Walters	6-64	5	40	12.5
Rebecca Manuelito	14-51	5	40	12.5
Sonya Hix	5-42	1	40	2.5
Tonya Hix	12-38	1	40	2.5
Kara Hix	22-16	4	40	10.0
Nicole Saunders	9-30	3	40	7.5
WINS-1 LOSSES-6		22	280	7.9

8. KARA HIX—VA

Opponent	Score	R	SP	%
Julie Walters	1-59	1	40	2.5
Michelle White	3-42	1	40	2.5
Sonya Hix	3-50	1	40	2.5
Rebecca Manuelito	8-47	1	40	2.5
Nicole Saunders	5-34	0	40	0.0
Jaime Polak	16-22	2	40	5.0
Tonya Hix	16-36	3	40	7.5
WINS-0 LOSSES-7		9	280	3.2

BOYS' CHAMPIONSHIP

	W	L	R	SP	%
Edward Neeb, CN	11	0	410	508	80.7
Steven Barnes, MO	8	3	463	620	74.7
Jim Walters, OH	8	3	421	572	73.6
Doug Macha, TX	8	3	416	574	72.5
Glenn Winthers, IA	7	4	415	598	69.4
Seth Maixner, OK	5	6	404	610	66.2
John Walters, OH	4	7	375	594	63.1
Kevin Kecskes, CA	4	7	355	588	60.4
Michael Davidson, OK	4	7	290	504	57.5
Brett Francis, MO	4	7	290	504	57.5
Tony Patton, FL	3	8	335	558	60.0
Alan Caldwell, MI	0	11	191	458	41.7

1. EDWARD NEEB—CN

Opponent	Score	R	SP	%
Glenn Winthers	43-13	34	42	81.0
Brett Francis	42-8	21	26	80.8
Tony Patton	42-11	38	46	82.6
John Walters	42-14	35	42	83.3
Alan Caldwell	41-1	27	32	84.4
Michael Davidson	40-11	36	48	75.0
Seth Maixner	40-31	51	64	79.7
Doug Macha	41-11	39	46	84.8
Steven Barnes	40-28	61	74	82.4
Jim Walters	40-16	41	52	78.8
Kevin Kecskes	41-9	27	36	75.0
WINS-11 LOSSES-0		410	508	80.7

2. STEVEN BARNES—MO

Opponent	Score	R	SP	%
Michael Davidson	41-17	36	46	78.3
Glenn Winthers	28-41	28	46	60.9
Brett Francis	45-18	30	42	71.4
Tony Patton	40-3	22	26	84.6
John Walters	42-33	39	56	69.6
Alan Caldwell	40-16	29	46	63.0
Doug Macha	42-31	96	110	87.3
Kevin Kecskes	41-16	39	50	78.0
Edward Neeb	28-40	57	74	77.0
Seth Maixner	39-40	39	58	67.2
Jim Walters	42-36	48	66	72.7
WINS-8 LOSSES-3		463	620	74.7

3. JIM WALTERS—OH

Opponent	Score	R	SP	%
Alan Caldwell	42-22	28	42	66.7
Michael Davidson	41-7	25	34	73.5
Glenn Winthers	41-18	52	62	83.9
Brett Francis	40-4	24	28	85.7
Tony Patton	41-32	45	66	68.2
John Walters	40-20	47	60	78.3
Kevin Kecskes	42-4	40	42	95.2
Seth Maixner	44-38	58	78	74.4
Doug Macha	8-40	22	42	52.4
Edward Neeb	16-40	34	52	65.4
Steven Barnes	36-42	46	66	69.7
WINS-8 LOSSES-3		421	572	73.6

4. DOUG MACHA—TX

Opponent	Score	R	SP	%
Brett Francis	40-19	35	52	67.3
Tony Patton	32-41	27	46	58.7
John Walters	40-13	27	34	79.4
Alan Caldwell	41-20	22	38	57.9
Michael Davidson	44-0	30	32	93.8
Glenn Winthers	40-18	42	50	84.0
Steven Barnes	31-42	91	110	82.7
Edward Neeb	11-41	29	46	63.0
Jim Walters	40-8	32	42	76.2
Kevin Kecskes	40-35	44	68	64.7
Seth Maixner	40-35	37	56	66.1
WINS-8 LOSSES-3		416	574	72.5

DOUGLAS COUNTY OPEN—ROSEBURG, OR.—SANC. 4-88-020

CLASS A—Ben Wiedrich, 7-1-74.6; Ridge Leggett, 6-2772.6; Lowell Davis, 5-2-68.8; Jerry Gorton, 4-3-59.4; Marge McLeod, 3-4-59.3; Barry Chapelle, 2-5-63.6; Phil Hendry, 1-6-56.6; Lee Wallace, 1-6-42.8.

CLASS B—Harold Hoffman, 5-1-48.2; Ray Meyer, 4-2-48.2; Connie Dearborn, 4-2-42.5; Len Christensen, 3-3-43.1; Marvin Tatchio, 2-4-39.1; Larry Flanary, 2-4-37.1; Roger Christianson, 1-5-37.7.

CLASS C—Denny Samples, 6-1-50.3; John Mikota, 5-2-44.7; Tom Williams, 4-2-42.9; Betty Tatchio, 3-3-47.2; Bob Fisher, 2-4-32.3; Grace Wenger, 1-5-33.7; Chuck Wenger, 1-5-27.4.

CLASS D—Lloyd Kilgore, 5-1-34.9; Harry Perry, 4-2-38.0; Carl Hiatt, 4-2-33.8; Janes Wear, 4-2-32.1; Irene Wiedrich, 2-4-32.7; O. D. McMillan, 2-4-32.4; Frank Moan, 0-6-22.8.

CLASS E—Rob Hendry, 8-1-29.7; Mary Mickle, 6-2-34.8; Barney Root, 6-2-30.4; Buck Sinyard, 4-3-34.3; Jim Wear, 3-4-28.0; Jean Hendry, 2-5-11.9; Bill Stoner, 1-6-18.9; Joe Grub, 0-7-13.4.

CLASS F—George McLeod, 5-2-25.0; Ed Ohman, 5-3-23.7; Rob Bishop, 4-3-18.9; Tim Sakraida, 3-3-24.8; F.A. Hendry, 3-3-18.8; Bill Johnson, 2-4-23.0; Charles Anderson, 1-5-18.5.

BOYS' CHAMPIONSHIP—(Continued)

5. GLENN WINTHERS—IA

Opponent	Score	R	SP	%
Edward Neeb	13-43	24	42	57.1
Steven Barnes	41-28	32	46	69.6
Jim Walters	18-41	44	62	71.0
Kevin Kecskes	40-15	32	46	69.6
Seth Maixner	41-35	43	64	67.2
Doug Macha	18-40	35	50	70.0
Tony Patton	42-27	37	54	68.5
Brett Francis	41-29	55	72	76.4
John Walters	42-36	42	62	67.7
Alan Caldwell	41-6	21	28	75.0
Michael Davidson	36-40	50	72	69.4

WINS-7 LOSSES-4 415 598 69.4

7. JOHN WALTERS—OH

Opponent	Score	R	SP	%
Kevin Kecskes	41-32	45	66	68.2
Seth Maixner	22-42	31	54	57.4
Doug Macha	13-40	18	34	52.9
Edward Neeb	14-42	25	42	59.5
Steven Barnes	33-42	37	56	66.1
Jim Walters	20-40	39	60	65.0
Alan Caldwell	42-25	28	48	58.3
Michael Davidson	41-33	31	52	59.6
Glenn Winthers	36-42	41	62	66.1
Brett Francis	33-40	38	60	63.3
Tony Patton	42-24	42	60	70.0

WINS-4 LOSSES-7 375 594 63.1

9. MICHAEL DAVIDSON—OK

Opponent	Score	R	SP	%
Steven Barnes	17-41	28	46	60.9
Jim Walters	7-41	14	34	41.2
Kevin Kecskes	39-41	42	68	61.8
Seth Maixner	40-28	36	54	66.7
Doug Macha	0-44	16	32	50.0
Edward Neeb	11-40	26	48	54.2
Brett Francis	16-40	28	48	58.3
John Walters	33-41	28	52	53.8
Alan Caldwell	43-23	38	62	61.3
Tony Patton	40-24	40	56	71.4
Glenn Winthers	40-36	49	72	68.1

WINS-4 LOSSES-7 345 572 60.3

6. SETH MAIXNER—OK

Opponent	Score	R	SP	%
Tony Patton	42-26	34	50	68.0
John Walters	42-22	38	54	70.4
Alan Caldwell	41-27	20	38	52.6
Michael Davidson	28-40	32	54	59.3
Glenn Winthers	35-41	40	64	62.5
Brett Francis	45-4	22	30	73.3
Edward Neeb	31-40	48	64	75.0
Jim Walters	38-44	56	78	71.8
Kevin Kecskes	26-41	40	64	62.5
Steven Barnes	40-39	38	58	65.5
Doug Macha	35-40	36	56	64.3

WINS-5 LOSSES-6 404 610 66.2

8. KEVIN KECSKES—CA

Opponent	Score	R	SP	%
John Walters	32-41	43	66	65.2
Alan Caldwell	41-24	19	40	47.5
Michael Davidson	41-39	43	68	63.2
Glenn Winthers	15-40	25	46	54.3
Brett Francis	41-28	32	50	64.0
Tony Patton	34-40	31	58	53.4
Jim Walters	4-42	27	42	64.3
Steven Barnes	16-41	30	50	60.0
Seth Maixner	41-26	45	64	70.3
Doug Macha	35-40	43	68	63.2
Edward Neeb	9-41	17	36	47.2

WINS-4 LOSSES-7 355 588 60.4

10. BRETT FRANCIS—MO

Opponent	Score	R	SP	%
Doug Macha	19-40	29	52	55.8
Edward Neeb	8-42	9	26	34.6
Steven Barnes	18-45	21	42	50.0
Jim Walters	4-40	12	28	42.9
Kevin Kecskes	28-41	27	50	54.0
Seth Maixner	4-45	9	30	30.0
Michael Davidson	40-16	35	48	72.9
Glenn Winthers	29-41	51	72	70.8
Tony Patton	40-30	40	54	74.1
John Walters	40-33	39	60	65.0
Alan Caldwell	40-23	18	42	42.9

WINS-4 LOSSES-7 290 504 57.5

BOYS' CHAMPIONSHIP—(Continued)**11. TONY PATTON—FL**

Opponent	Score	R	SP	%
Seth Maixner	26-42	28	50	56.0
Doug Macha	41-32	30	46	65.2
Edward Neeb	11-42	28	46	60.9
Steven Barnes	3-40	10	26	38.5
Jim Walters	32-41	41	66	62.1
Kevin Kecskes	40-34	33	58	56.9
Glenn Withers	27-42	32	54	59.3
Alan Caldwell	41-19	26	42	61.9
Brett Francis	30-40	36	54	66.7
Michael Davidson	24-40	35	56	62.5
John Walters	24-42	36	60	60.0

WINS-3 LOSSES-8 335 558 60.0

12. ALAN CALDWELL—MI

Opponent	Score	R	SP	%
Jim Walters	22-42	22	42	52.4
Kevin Kecskes	24-41	12	40	30.0
Seth Maixner	27-41	16	38	42.1
Doug Macha	20-41	15	38	39.5
Edward Neeb	1-41	14	32	43.8
Steven Barnes	16-40	19	46	41.3
John Walters	25-42	23	48	47.9
Tony Patton	19-41	18	42	42.9
Michael Davidson	23-43	31	62	50.0
Glenn Withers	6-41	10	28	35.7
Brett Francis	23-40	11	42	26.2

WINS-0 LOSSES-11 191 458 41.7

BOYS' CLASS A FINALS

	W	L	R	SP	%
James Ornelas, CA	4	1	109	200	54.5
Brad Simmons, UT	3	2	102	200	51.0
Tom Hansen, WI	3	2	93	200	46.5
Dave Cervantes, CA	2	3	92	200	46.0
Travis Seal, CA	2	3	91	200	45.5
Jose Osborn, TX	1	4	71	200	35.5

1. JAMES ORNELAS—CA

Opponent	Score	R	SP	%
Tom Hansen	50-12	19	40	47.5
Brad Simmons	28-21	23	40	57.5
Dave Cervantes	22-28	22	40	55.0
Travis Seal	45-3	25	40	62.5
Jose Osborn	32-17	20	40	50.0

WINS-4 LOSSES-1 109 200 54.5

2. BRAD SIMMONS—UT

Opponent	Score	R	SP	%
Travis Seal	20-43	16	40	40.0
James Ornelas	21-28	21	40	52.5
Jose Osborn	44-10	21	40	52.5
Dave Cervantes	37-27	22	40	55.0
Tom Hansen	33-20	22	40	55.0

WINS-3 LOSSES-2 102 200 51.0

3. TOM HANSEN—WI

Opponent	Score	R	SP	%
James Ornelas	12-50	10	40	25.0
Dave Cervantes	29-27	18	40	45.0
Travis Seal	39-20	26	40	65.0
Jose Osborn	32-20	21	40	52.5
Brad Simmons	20-33	18	40	45.0

WINS-3 LOSSES-2 93 200 46.5

4. DAVE CERVANTES—CA

Opponent	Score	R	SP	%
Jose Osborn	41-9	22	40	55.0
Tom Hansen	27-29	17	40	42.5
James Ornelas	28-22	24	40	60.0
Brad Simmons	27-37	19	40	47.5
Travis Seal	17-33	10	40	25.0

WINS-2 LOSSES-3 92 200 46.0

5. TRAVIS SEAL—CA

Opponent	Score	R	SP	%
Brad Simmons	43-20	24	40	60.0
Jose Osborn	27-28	17	40	42.5
Tom Hansen	20-39	20	40	50.0
James Ornelas	3-45	13	40	32.5
Dave Cervantes	33-17	17	40	42.5

WINS-2 LOSSES-3 91 200 45.5

6. JOSE OSBORN—TX

Opponent	Score	R	SP	%
Dave Cervantes	9-41	12	40	30.0
Travis Seal	28-27	17	40	42.5
Brad Simmons	10-44	10	40	25.0
Tom Hansen	20-32	16	40	40.0
James Ornelas	17-32	16	40	40.0

WINS-1 LOSSES-4 71 200 35.5

BOYS' CLASS B FINALS

	W	L	R	SP	%
B. J. Terry, CA	4	1	59	200	29.5
Karl Hix, VA	3	2	58	200	29.0
Silvio Modena, CA	3	2	46	200	23.0
Stuart Bennett, WI	3	2	46	200	23.0
Paul Kovach, CA	2	3	51	200	25.5
Howard Bryant, CA	0	5	36	200	18.0

BOYS' FINALS—(Continued)

1. B. J. TERRY—CA

Opponent	Score	R	SP	%
Karl Hix	25-30	11	40	27.5
Paul Kovach	30-23	13	40	32.5
Stuart Bennett	31-21	13	40	32.5
Silvio Modena	28-19	11	40	27.5
Howard Bryant	26-25	11	40	27.5
WINS-4 LOSSES-1		59	200	29.5

3. SILVIO MODENA—CA

Opponent	Score	R	SP	%
Howard Bryant	18-16	7	40	17.5
Karl Hix	23-20	9	40	22.5
Paul Kovach	41-20	16	40	40.0
B. J. Terry	19-28	8	40	20.0
Stuart Bennett	15-24	6	40	15.0
WINS-3 LOSSES-2		46	200	23.0

5. PAUL KOVACH—CA

Opponent	Score	R	SP	%
Stuart Bennett	19-27	10	40	25.0
B. J. Terry	23-30	9	40	22.5
Silvio Modena	20-41	9	40	22.5
Howard Bryant	36-15	9	40	22.5
Karl Hix	29-15	14	40	35.0
WINS-2 LOSSES-3		51	200	25.5

2. KARL HIX—VA

Opponent	Score	R	SP	%
B. J. Terry	30-25	13	40	32.5
Silvio Modena	20-23	7	40	17.5
Howard Bryant	31-11	13	40	32.5
Stuart Bennett	44-8	15	40	37.5
Paul Kovach	15-29	10	40	25.0
WINS-3 LOSSES-2		58	200	29.0

4. STUART BERNETT—WI

Opponent	Score	R	SP	%
Paul Kovach	27-19	13	40	32.5
Howard Bryant	18-16	8	40	20.0
B. J. Terry	21-31	9	40	22.5
Karl Hix	8-44	6	40	15.0
Silvio Modena	24-15	10	40	25.0
WINS-3 LOSSES-2		46	200	23.0

6. HOWARD BRYANT—CA

Opponent	Score	R	SP	%
Silvio Modena	16-18	5	40	12.5
Stuart Bennett	16-18	7	40	17.5
Karl Hix	11-31	9	40	22.5
Paul Kovach	15-36	5	40	12.5
B. J. Terry	25-26	10	40	25.0
WINS-0 LOSSES-5		36	200	18.0

SOUTHERN CALIFORNIA ASSOCIATION TOURNAMENTS

RON SIMMONS "C"—ORANGE—SANCTION 25-88-031—GROUP A—Jack Edwards, San Diego, 5-0-52.0; Bob Thompson, Orange, 4-1-58.4; Jim Eozzo, Los Angeles, 2-3-52.4; Howard Larson, Lakewood, 2-3-47.6; Chuck Dunning, Corona, 2-3-43.2; Art Amador, Los Alamitos, 0-5-29.6.

G. KLOEPPER OPEN—FONTANA—SANCTION 25-88-032—GROUP 1—Don Gregson, Crestline, 7-1-67.8; Jim Atwell, Los Angeles, 6-2-60.0; Ed Arionus, Westminster, 5-2-60.8; Norm Cone, Huntington Beach, 3-4-50.4; Dean Zollinger, Hemet, 3-4-47.2; Lupe Henry, Cathedral City, 2-5-45.0; Jack Edwards, San Diego, 2-5-36.4; Jo Vickery, Riverside, 1-6-33.9.

GROUP 2—Tom Buck, Sun City, 6-1-45.7; Gerry Kloepper, Yucaipa, 5-2-40.3; Dave Cervantes, Lake Mathews, 4-3-43.6; Lois Clark, Riverside, 4-3-42.5; Angelo Suppa, Canoga Park, 4-3-33.9; Jum Mudra Sr., Westminster, 2-5-42.9; Buck Lawing, Yucaipa, 3-4-33.3; Dan Cervantes, Lake Mathews, 0-7-30.4.

GROUP 3—Doc Hildebrand, Utah, 6-1-27.5; Loris Hauck, Simi Valley, 4-3-32.2; Mike Fill, Fontana, 4-3-30.6; Bill Costello, Fontana, 4-3-29.3; Loretta Chaney, Monrovia, 4-3-28.9; Smokie Anderson, Burbank, 3-4-38.2; Bear Dunlap, Fontana, 3-4-33.7; Harold Finnern, Long Beach 0-7-19.3.

GROUP 4—Ed Holden, Twenty Nine Palms, 7-0-32.1; Larry Ford, San Diego, 5-2-33.5; Dottie Suppa, Canoga Park, 4-3-31.7; Joe Holder, Yucaipa, 4-3-26.7; Ralph Clark, Riverside (30 ft.), 3-4-28.5; Bob Barela, Barstow, 3-4-28.6; Leo Mijares, Duarte, 2-5-21.5; Gene Bolsinger, Simi Valley, 0-7-18.2.

GROUP 5—Bud Billing, Palm Springs, 4-1-20.0; Chris Cervantes, Lake Mathews, 3-2-22.7; Art Binkley, Barstow, 3-2-20.0; Louis Arellano, Barstow, 3-2-18.0; Earl Hogan, San Bernardino, 2-3-12.3; Tom Nation, Hemet, 0-5-8.0.

JESSE GONZALES OPEN—SAN LUIS OBISPO—SANCTION 25-88-033—GROUP 1—Don Gregson, Crestline, 6-1-69.1; Jeff Williams, San Jose, 5-2-76.6; Walter R. Williams, Stockton, 4-2-72.8; Jesse Gonzales, Los Osos, 3-3-67.0; Billie S. Pennington, San Jose, 2-4-65.7; Jonathan Williams, Fontana, 1-5-61.5; Diane Lopez, Lompoc, 1-5-61.1.

GROUP 2—Walt Robinson, NCHPA, 8-1-47.2; Fred Lavett, Seaside, 7-2-59.4; Walt Foreman, NCHPA, 5-3-47.2; Helen Vigil, Santa Maria, 5-3-45.3; Orval Madden, Santa Maria, 4-4-45.6; Sal Ybarra, Santa Barbara, 4-4-40.6; Mary Fumia, Santa Maria, 2-6-42.8; Bill Harris, San Luis Obispo, 1-7-35.3; Pat Brady, Torrance, 1-7-32.2.

SOUTHERN CALIFORNIA—(Continued)

GROUP 3—Larry Garman, Lemoore, 6-0-39.4; Don Weaver, Nevada, 4-2-37.2; Kent Klardie, Bakersfield, 4-2-29.1; Spencer Tidd, Santa Barbara, 3-3-37.6; Jim Ornelas, NCHPA, 3-3-33.2; Doc Hildebrand, Utah, 1-5-29.3; Al Brown, Bakersfield, 0-6-28.3.

GROUP 4—Floyd Escobar, Santa Barbara, 7-1-27.8; Jean Ornelas, NCHPA, 5-3-34.1; Jean Robinson, NCHPA, 5-3-28.8; Les Stewart, Hemet, 5-3-25.6; Linda Rodriguez, Santa Barbara, 4-4-31.9; Ernie Calzada, Santa Barbara, 3-5-26.3; Art Hernandez, Santa Barbara, 3-5-25.3; Doug Soward, Lake Isabella, 2-6-27.5; Ron Brown, Bakersfield, 2-6-23.4.

GROUP 5—George Kolach, Paso Robles, 6-0-30.7; Bill Carroll, Bakersfield, 4-2-30.3; Harold Redding, Burbank, 4-2-28.0; Fred Robles, Santa Barbara, 4-2-22.0; Steve Ornelas, NCHPA, 2-4-18.3; Ray Keohen, San Luis Obispo, 1-5-16.0; Jerry Wilson, Bakersfield, 0-6-13.0.

GROUP 6—Camille Bruster, Wofford Heights, 5-1-33.7; Pat Nulton, San Luis Obispo, 4-2-21.0; Ernie Knorp, Goleta, 3-3-20.7; Gene Medzyk, San Luis Obispo, 3-3-20.0; Elmer Landis, Bakersfield, 3-3-18.3; Al Fumia, Santa Maria, 2-4-14.7; Edith Soward, Lake Isabella, 1-5-11.3.

S.L.O. OPEN—S.L.O.—SANCTION 25-08-034—GROUP 1—Walter R. Williams, Stockton, 6-0-84.3; Diane Lopez, Lompoc, 5-1-75.7; Jesse Gonzales, Los Osos, 4-2-79.2; Don Gregson, Crestline, 3-3-66.8; Jeff Williams, San Jose, 2-4-72.0; Jonathan Williams, Fontana, 1-5-54.5; Billie S. Pennington, San Jose, 0-6-64.1.

GROUP 2—Norm Cone, Huntington Beach, 6-0-60.1; Walt Robinson, NCHPA, 3-3-50.0; Helen Vigil, Santa Maria, 3-3-46.2; Mary Fumia, Santa Maria, 3-3-43.8; Pat Brady, Torrance, 3-3-40.7; Orval Madden, Santa Maria, 2-4-43.6; Walt Foreman, NCHPA, 1-5-39.5.

GROUP 3—Jim Ornelas, NCHPA, 6-1-39.1; Larry Garman, Lemoore, 5-2-40.9; Bill Harris, San Luis Obispo, 5-2-36.6; Kent Klardie, Bakersfield, 4-3-37.7; Ralph Stegner, San Luis Obispo, 3-4-35.1; Don Weaver, Nevada, 2-5-36.3; Doc Hildebrand, Utah, 2-5-28.9; Joe Sadowski, 1-6-35.7.

GROUP 4—Floyd Brown, Exeter, 5-1-34.7; Art Hernandez, Santa Barbara, 4-2-30.7; Jean Ornelas, NCHPA, 3-2-32.0; Mike Gensler, Goleta, 3-2-26.4; Ernie Calzada, Santa Barbara, 1-4-22.4; Shana O'Conner, Visalia, 0-5-26.4.

GROUP 5—Linda Rodriguez, Santa Barbara, 5-0-37.2; Bill Carroll, Bakersfield, 4-1-29.2; Harold Redding, Burbank, 3-2-23.2; Steve Ornelas, NCHPA, 2-3-16.8; Jerry Wilson, Bakersfield, 1-4-14.8; Ray Keohen, San Luis Obispo, 0-5-18.0.

GROUP 6—Elmer Landis, Bakersfield, 4-1-17.2; Fred Robles, Santa Barbara, 3-2-21.2; Pat Nulton, San Luis Obispo, 3-2-20.4; Al Fumia, Santa Maria, 3-2-13.2; Ernie Knorp, Goleta, 2-3-25.2; Gene Medzyk, San Luis Obispo, 0-5-16.0.

TOURNAMENT ACTION IN NORTHERN CALIFORNIA

JOHN HAGERMAN OPEN W % MIX—SONOMA COUNTY—SANC. 26-88-027—GROUP A—Verdan Zelmar, 7-1-50.5; Yvonne Mauzey, 6-2-58.0; Marthe Dunn, 4-3-52.0; Mate McBride, 4-3-50.5; Earl Kynard, 4-3-47.1; Jack Fravel, 2-5-48.5; Chuck Farrell, 1-67-45.1; Marty Dunn, 1-6-39.7.

GROUP A-2—Ken Woolery, 6-1-40.8; Vern Gosney, 4-3-41.4; Pat Harmon, 4-3-41.4; Barak Wright, 4-3-37.7; George Greeott, 3-4-33.4; Jo Carver, 3-4-33.1; Floyd Edwards, 2-5-28.5; Gail Sluys, 2-5-26.2.

GROUP A-3—Harry Martinelli, 7-0-37.4; Norm Hagey, 5-2-36.0; John Morgan, 4-3-24.8; Wes Seidner, 3-4-30.5; Ray Beardall, 3-4-27.4; Marv Werner, 3-4-26.0; Irwin Malik, 3-4-20.5; John Saxby, 0-7-15.7.

GROUP A-4—John Hagerman, 5-0-31.2; Roger McKeay, 4-1-27.6; Ceres Perry, 3-2-21.6; Casey Sluys, 1-4-18.8; Bill Fulwider, 1-4-17.2; Gene Ferche, 1-4-15.6.

GROUP A-5—Tony Twiddy, 4-0-15.5; Roy Heyden, 3-1-9.5; Floyd Hull, 1-3-11.0; Eldon Bryhan, 1-3-7.5; Terri Brady, 1-3-5.0.

OPEN W/J—INDIAN VALLEY—SANC. 28-88-045—GROUP A-1—Don Williams, 6-1-60.2; Richard McCutcheon, 5-2-55.1; Jack Sorg, 4-3-54.8; Foster Kenton, 4-3-54.2; Juke Basham, 4-3-50.0; Dick Hucke, 2-5-48.5; Otis Hubbard, 2-5-42.0; Lee Van Dalsen, 1-6-44.8.

GROUP A-2—George Gillett, 5-1-44.6; Joe White, 4-2-37.3; Bud Grisaffi, 3-3-44.0; Don Gore, 3-3-35.0; Don Purdum, 2-4-39.3; Jay Bush, 2-4-36.6; Fred Siemucha, 2-4-36.3.

GROUP A-3—Bill Arnold, 5-1-34.6; Cas Bower, 4-2-34.0; Harry Slentz, 4-3-33.3; Jerry Smith, 2-4-35.3; Theron Watkins, 2-4-33.6; Jim Long, 2-4-31.3; Roy Parker, 2-4-26.6.

NORTHERN CALIFORNIA—(Continued)

GROUP A-4—R. J. Thomas, 7-0-38.5; Roy Deffner, 6-1-38.5; Gordon Brown, 5-2-28.5; Earl Wood, 3-4-24.2; Lee Henninger, 3-4-20.5; Leo Wanner, 2-5-20.0; Norm Herring, 1-6-18.5; Bob Lloyd, 1-6-17.7.

GROUP A-5—Elmer Wilson, 6-0-15.3; Ray Moss, 4-2-20.0; Alex Yandel, 4-2-19.3; Alvis Kirby, 4-2-11.3; Glen Rains, 2-4-15.0; Barry Evans, 1-5-16.3; Roger Curtis, 0-6-6.3.

GROUP W-1—Fuey Herring, 5-2-44.2; Marilyn Brown, 4-3-46.8; Annette Williams, 3-3-35.6; Lillian Lloyd, 1-5-36.3.

GROUP W-2—Janeen Curtis, 5-2-31.4; Susie Rains, 4-3-27.1; Charlene Mullen, 3-3-26.3; Delanne Moss, 1-5-26.3.

GROUP W-3—Judy Cook, 7-2-19.1; Char Sorg, 6-3-11.1; Toni Hilpert, 4-4-14.6; Joann Wanner, 2-6-17.1; Mary Yandel, 2-6-14.3.

OPEN W/J—INDIAN VALLEY—TOURN. #2—SANC. 28-88-045—GROUP A-1—Juke Basham, 7-1-57.7; Carl Newsom, 6-2-57.2; Dick Hucke, 4-3-54.5; Richard McCutcheon, 3-4-57.1; Otis Hubbard, 3-4-46.0; Don Purdum, 3-4-42.2; Jack Sorg, 2-5-48.0; Bud Grisaffi, 1-6-46.5.

GROUP A-2—Doyle Palmer, 7-0-47.7; George Gillett, 6-1-40.8; Harry Slentz, 3-4-38.0; Robert Gillett, 3-4-38.0; Don Gore, 3-4-34.0; Joe White, 2-5-38.8; Fred Siemucha, 2-5-33.7; Jay Bush, 2-5-30.2.

GROUP A-3—Thermon Watkins, 7-0-37.7; R. J. Thomas, 5-2-31.7; Jim Long, 5-2-28.2; Bill Arnold, 4-3-36.0; Roy Deffner, 3-4-31.4; Bill Dise, 2-5-30.2; Roy Parker, 1-6-28.8; Laurel Fisher, 1-6-21.1.

GROUP A-4—Lee Henninger, 7-0-29.7; John Rilea, 6-1-30.5; Fred Jones, 4-3-24.0; Lee Hardy, 3-4-22.8; Earl Wood, 2-5-25.7; Gordon Brown, 2-5-24.2; Mark Rilea, 2-5-22.2; Norm Herring, 2-5-20.5.

GROUP A-5—Elmer Wilson, 5-1-18.3; Leo Wanner, 4-2-19.3; Bob Lloyd, 3-3-21.6; Paul Phares, 3-3-18.3; Alex Yandel, 3-3-15.3; Glen Rains, 2-4-10.3; Roger Curtis, 1-5-9.0.

GROUP W-1—Marilyn Brown, 6-1-46.8; Fuey Herring, 5-2-39.7; Susie Rains, 2-4-26.3; Janeen Curtis, 0-6-25.0.

GROUP W-2—Mary Yandel, 6-2-13.7; Judy Cook, 5-3-16.2; Char Sorg, 5-3-10.0; Toni Hovland, 4-4-13.4; Sandy Wilson, 0-8-3.1.

HENN CAPP MEMORIAL OPEN—W/J % MIX—YUBA SUTTER—SANC. 28-88-038—GROUP A-1—Pete Manitone, 6-0-68.3; Emmett Schroeder, 4-2-51.3; Leonard Rood, 3-3-58.3; Herb Rushing, 3-3-52.3; Monte Latino, 3-3-51.6; Joe Colt, 1-5-48.6; Don Williams, 1-5-48.3.

GROUP A-2—Gerald Hollman, 5-1-51.0; Carl Newsom, 4-2-52.0; Otis Hubbard, 3-3-46.0; Juke Basham, 3-3-45.6; Mike Martinez, 3-3-36.6; Jack Fravel, 2-4-45.0; Gary Dillin, 1-5-40.0.

GROUP A-3—Owen Davis, 6-1-44.2; Don Purdum, 5-2-43.1; Bud Grisaffi, 4-2-40.3; Annette Williams, 3-3-38.0; Barak Wright, 2-4-38.0; John Sylvester, 2-4-35.6; Rosalie Tucker, 0-6-31.6.

GROUP A-4—Gail Cook, 5-1-31.3; Terry Wood, 4-2-34.6; Jim Long, 4-2-28.0; Lee Oliver, 3-3-33.3; R. J. Thomas, 3-3-31.0; Charles McDonald, 2-4-30.3; Becky Wod, 0-6-26.0.

GROUP A-5—Fred Jones, 6-2-32.1; Bill Dise, 6-3-29.7; Chick White, 5-3-23.4; Larry King, 4-3-32.5; Mel Long Sr., 4-3-30.8; Bruce Tucker, 2-5-28.0; Ralph Morrison, 2-5-18.5; Mike Yandel, 1-6-22.8.

GROUP A-6—Alma Davis, 6-1-25.7; Alex Yandel, 5-2-21.7; Paul Phares, 5-2-16.0; Dave Neifert, 4-3-14.2; Larry Thorsen, 3-4-19.7; Les Hewston, 3-4-14.5; Jim Kyker, 1-6-9.4; Phyllis Seelye, 1-6-8.2.

GROUP A-7—Enid Fisher, 6-2-20.5; Levi Wood, 6-3-14.8; Bill Botelli, 5-3-17.8; Lou Gayet, 4-3-20.5; Leigh Graves, 3-4-20.2; Delmer Seelye, 3-4-14.5; Donny Williams, 2-5-10.2; George Barth, 1-6-8.0.

4TH ANNUAL WOMEN'S TOURNAMENT—TRI-VALLEY—SANC. 28-88-039—GROUP W-1—Marisela Mauricio, 5-0-61.2; Billie Sue Pennington, 4-1-68.0; Marthe Dunn, 3-2-50.0; Paige Pennington, 2-3-41.2; Marilyn Brown, 1-4-48.4; Betty Forbes, 0-5-44.4.

GROUP W-2—Genevieve Lavett, 5-1-43.0; Jo Carver, 5-2-38.8; Lillian Lloyd, 4-2-32.3; Josephine Charley, 2-3-38.4; Elsie Reeser, 1-4-33.6; Sandy Kolberg, 0-5-15.6.

GROUP W-3—Marilyn Clark, 5-0-21.6; Char Sorg, 4-1-18.0; Debbie Wilton, 2-3-18.0; Cathie Loucks, 2-3-17.6; Joann Wanner, 1-4-17.6; Shirley Jamieson, 1-4-12.8.

"C" OPEN—SENIOR HANDICAP—SHASTA—SANC. 28-88-040—GROUP C-1—Chuck Seal, 5-1-45.0; Bud Grisaffi, 4-2-41.6; George Gillett, 4-2-41.3; Otis Hubbard, 3-3-42.3; Gerald Hollman, 3-3-38.3; Gary Dillon, 2-4-40.6; Sandy Allen, 0-6-25.3.

NORTHERN CALIFORNIA—(Continued)

GROUP C-2—Bill Arnold, 5-0-38.4; Jim Long, 4-1-37.6; John Sylvester, 3-2-33.6; Bill Terry, 2-3-37.6; Jerry Smith, 1-4-30.8; Bob Green, 0-5-27.2.

GROUP C-3—John Rilea, 5-0-32.8; R. J. Thomas, 4-1-24.8; Bill Dise, 3-2-37.2; Reese Cathey, 2-3-24.4; Marv Stapp, 1-4-25.2; Bob Chambers, 0-5-18.8.

GROUP C-4—Mel Solberg, 5-0-25.6; Lee Henninger, 4-1-20.8; Henry Clark, 3-2-12.8; Lee Hardy, 2-3-14.8; Tim Hettinger, 1-4-14.8; Walt Thomas, 0-5-4.0.

GROUP SRS-1—Leonard Rood, 5-1-56.3; Lou Fontaine, 4-2-51.3; Emmett Schroeder, 2-3-54.8; Jack Sorg, 2-3-53.6; Max Vice, 2-3-34.8; Willie Bradford, 1-4-41.6.

GROUP SRS-2—Chick White, 5-0-34.0; Fred Jones, 3-2-30.0; Stan Haught, 2-3-33.2; Roy Thomas, 2-3-28.4; Jim Keys, 2-3-45.5; Art Yount, 1-4-24.4.

GROUP SRS-3—Dwain Hettinger, 5-0-30.4; Ed Starsiak, 4-1-28.8; Phil Fisher, 3-2-14.8; George Larson, 2-3-12.0; Bob Lloyd, 1-4-26.0; Bill Padgett, 0-5-3.2.

WASHINGTON STATE ASSOCIATION TOURN. ACTION

CLASS A—Ron Dixon, Ferndale, 6-1-62.5; Leonard Weisdepp, Lacey, 5-2-56.3; Dick Lee, Seattle, 4-3-57.2; Elaine Weisdepp, Lacey, 4-3-55.2; Ray Sexton, Hoquiam, 4-3-54.7; Leo Rollick, Seattle, 3-4-51.2; Bob Clark, Port Orchard, 2-5-49.7; Joe Hardie, Spanaway, 0-7-42.5.

CLASS B—Barney Heller, Everett, 6-1-49.7; Frank Easterly, Olympia, 5-2-59.3; Bob Hughes, Burley, 4-3-48.0; Jack Bush, Marysville, 3-4-49.8; Cecil Channing, Bonney Lake, 3-4-46.0; Lloyd Reyklin, New Westminster, BC, 3-4-45.5; Les Lingel, Marysville, 2-5-45.3; Ken Kuper, Spanaway, 2-5-40.4.

CLASS C—Frank Rogers, Bellingham, 6-1-41.4; Bart Barber, Anacortes, 5-2-42.2; Bob Slaker, Hemet, CA, 5-2-39.6; Les Buchert, Seattle, 3-4-38.4; Larry Lowitz, Seattle, 3-4-33.3; George Richards, Edmonds, 2-5-37.1; Cyril Kitchen, Tacoma, 2-5-36.4; Arnold Lunnum, Edmonds, 2-5-32.8.

CLASS D—Bob Hoerner, Tacoma, 7-0-50.6; Walt Weik, Spanaway, 6-1-55.1; Stanley Garrett, Omak, 5-2-43.9; Norman Hansen, Seattle, 4-3-47.0; Mac Huson, Seattle, 3-4-32.5; George Rachel, Everett, 2-5-37.7; Ray Mohre, Edmonds, 1-6-30.0; Bill Van Egdorn, Lynden, 0-7-23.2.

CLASS E—Gene Beach, Marysville, 7-1-38.8; Orlean Clinton, Seattle, 6-2-36.7; Ted Bostwick, Sequim, 5-2-32.7; Don Naas, Mt. Vernon, 4-3-26.9; El Day, Blaine, 3-4-25.8; Betty Reyklin, New Westminster, BC, 2-5-26.9; Howard Oberton, Renton, 1-6-26.1; Wendell Roberts, Port Orchard, 1-6-24.0.

CLASS F—John Kronholm, Burlington, 7-0-32.0; Len Huson, Seattle, 6-1-29.6; Dick Oldfield, Mt. Vernon, 4-3-25.0; Glen Titchenal, Seattle, 3-4-20.1; CA Pappy Radfoed, Silverdale, 3-4-17.9; Dennis Hardie, Spanaway, 2-5-18.3; Lenny Richards, Spanaway, 2-5-17.6; Tom Roberts, California, 1-6-11.5.

HURRICANE RIDGE OPEN—PORT ANGELES—SAN. 4-88-039—CLASS A—Art Sperber, Bremerton, 6-1-70.2; Elaine Weisdepp, Lacey, 5-2-58.3; Gordon Butts, Victoria, B.C., 4-3-58.6; Mike Thorniley, Olympia, 4-3-57.0; Jan Reeves, Victoria, B.C., 3-4-54.6; Ray Sexton, Hoquiam, 2-5-49.7; Len Weisdepp, Lacey, 2-5-46.9; Don Leary, Steilacoom, 2-65-44.1.

CLASS B—Terry Collins, Port Angeles, 6-1-49.4; Jack Bush, Marysville, 5-2-53.5; Barney Heller, Everett, 5-2-45.5; Bob Hughes, Burley, 4-3-42.7; Wayne Salmon, Victoria, B.C., 4-3-41.1; Art Hart, Gig Harbor, 2-5-31.2; Cyril Kitchen, Tacoma, 1-6-33.2; Bob Pederson, Seattle, 1-6-33.0.

CLASS C—Ted Bostwick, Sequim, 5-2-27.0; John Kronholm, Burlington, 5-2-31.1; Orlean Clinton, Seattle, 4-3-29.6; Howard Oberton, Renton, 3-28.9; Wendell Roberts, Port Orchard, 4-3-25.9; El Day, Blaine, 3-4-23.9; Glen Titchenal, Seattle, 2-5-19.0; Ralph Carter, San Bernardino, CA, 1-6-21.3.

CLASS D—Janie Eldridge, Port Angeles, 6-0-30.2; Tom Roberts, California, 5-1-17.0; Pappy Radford, Silverdale, 4-2-16.9; Larry Lewis, Bremerton, 3-3-18.7; Carol Sperber, Bremerton, 2-4-13.9; Frank Minibelli, Port Angeles, 1-5-4.7; David Meyers, Port Angeles, 0-6-8.4.

BLUE MOUNTAIN OPEN—WALLA WALLA, WA.—SANC. 4-88-041—CLASS A—Dean Curry, Lewiston, ID, 7-1-58.4; Howard Abbott, Pendleton, OR, 6-2-48.3; Mel Page, Walla Walla, 5-2-47.3; Mo McNally, Richland, 4-3-42.1; Ruth Welsch, Spokane, 3-4-42.1; Bill Rust, Walla Walla, 2-5-38.3; Vey Allen, Benton City, 2-5-36.5; Howard Brightman, Kennewick, 0-7-36.2.

CLASS B—Gene Kopta, Milton-Freewater, OR, 6-2-36.2; Leonard Mayfield, Walla Walla, 5-3-39.3; Helen Watson, Spokane, 4-3-37.8; Bob Ives, Kennewick, 4-3-35.5; Skip Schilperoort, Sunnyside, 3-4-

WASHINGTON—(Continued)

36.4; Ed Welsch, Spokane, 3-4-32.7; Hannay Foley, Nine Mile Falls, 2-5-37.5; Doc Cresci, Walla Walla, 2-5-35.5.

CLASS C—Ken Carvo, Yakima, 6-1-39.9; Glen Quinley, Richland, 5-2-41.9; Rick Rebman, Hermiston, OR, 5-2-39.5; Ed Lovejoy, Milton-Freewater, OR, 4-3-31.6; Mel Sherbert, Battleground, 2-5-36.1; Ed Ludwig Jr., Spokane, 2-5-35.5; Gene Mitchell, Hermiston, OR, 2-5-32.4; Shirley O'Brien, Spokane, 2-5-23.7.

CLASS D—Michelle Ives, Kennewick, 7-0-39.7; Cal O'Dell, Walla Walla, 5-2-31.7; A. J. Eichorn, Walla Walla, 4-3-31.0; Chuck O'Brien, Spokane, 3-4-31.6; Myron Buchert, Deer Creek, ID, 3-4-27.2; Patsy McNally, Richland, 3-4-25.9; Pat Quinn, Kennewick, 3-4-24.8; Ira Brickley, Kennewick, 0-7-23.2.

CLASS E—Virgil Brayette, Clarkston, 6-1-25.6; Darwin Platz, Spokane, 5-2-25.7; Bob Rebman, Hermiston, OR, 4-3-28.4; Chuck Holden, Spokane, 4-3-26.3; Leonard Sexton, Kennewick, 3-4-25.9; Bardel Van Donge, Walla Walla, 3-4-24.1; Monty Gregg, Pasco, 3-4-19.9; Larry Covey, Richland, 0-7-17.8.

CLASS F—Mike Widner, Walla Walla, 4-1-21.3; Ed Ludwig Sr., Pasco, 3-2-27.2; Ken O'Hair, Kennewick, 3-2-25.6; Dave Oman, Walla Walla, 3-2-22.5; Ross Watson, Spokane, 1-4-13.5; Don Newhall, Bickleton, 1-4-13.3.

E. SIERRA CALIF.—BISHOP OPEN, #1—SANC. 25-88-072

A-1 DIVISION—Tom McQueen, Bishop, 7-1-56.9; Darryl Lamoureux, Boron, 6-2-51.6; Sallie Cline, Bishop, 4-3-43.2; Dorothy Yeager, Bishop, 1-6-33.9.

A-2 DIVISION—Bob Morris, Bishop, 5-2-45.5; Gary Emerick, Bishop, 3-4-36.5; Les McConnohie, Hemet, 2-5-38.8; Alan Steele, Crowley Lake, 1-6-30.0.

B DIVISION—Bill Yeager, Bishop, 6-1-34.6; Bill Perry, Bishop, 5-2-34.0; Becky Manuelito, Bishop, 4-2-35.0; George Jeff, Bishop, 4-2-29.8; Harris Riggins, Sr., Bishop, 1-5-28.0; Victor Lamoureux, Boron, 1-5-26.9; Daniel Jeff, Bishop, 1-5-21.3.

C DIVISION—Nancy Lamoureux, Boron, 5-1-22.3; Betty McQueen, Bishop, 4-2-34.0; Gayle Oglesby, Bishop, 4-2-28.6; John Green, Boron, 4-2-21.0; David Lamoureux, Boron, 2-4-17.0; Jolene Gustie, Bishop, 1-5-19.0; Ray Hailey, Bishop, 1-5-18.3.

D DIVISION—Dennis Lamoureux, Bakersfield, 5-1-28.7; Mike Story, Bishop, 4-2-23.3; Bob Moss, Bishop, 3-3-16.2; Greg Davenport, Bishop, 0-6-12.5.

E DIVISION—Steve Johnston, Bishop, 6-0-18.7; Wilma Butterbredt, Bishop, 4-2-14.1; Bruce Butterbredt, Bishop, 1-5-7.5; Steve Garcia, Bishop, 1-5-5.4.

BAKERSFIELD, CA. PITCHERS HAPPY OVER NEW FACILITY

By FRANK FRABBI

The 15-court, state-of-the-art horseshoe pitching facility at Beach Park figures to be a real boon to the 38-man Bakersfield Shoe Crew. Before the City of Bakersfield built the \$35,000 facility mainly for the Police Olympics, horseshoe players could practice their skills only at Beale Park or Jastro Park.

It's like a bowler who suddenly has a 36-lane, fully automated bowling house to play in instead of the six-lane house with pin boys he'd grown accustomed to.

"Yeah, that's about right," said President Bill Carroll, 63, standing tall within the fenced-in confines of the facility. He wore his new powder blue team shirt. On the back was his name and Bakersfield Shoe Crew in bold letters.

"It's got everything, and it's all official with clay. It's the best you can get. We haven't had a chance to play on it too much, but yes, we feel a little spoiled."

The Beach Park facility encompasses an area of about 12,000 square feet (7,500 in the 10-court yard and 4,500 in the adjacent five-court yard) and is complete with lights. The courts, which are open to the public, were constructed under strict National Horseshoe Pitcher's Association guidelines so that Bakersfield can host national and international competitions.

Yes, there are such tournaments for horseshoe pitchers. The 1988 World Horseshoe Pitching Championships was recently concluded at Pleasanton, California, on August 13. Local pitchers, Landis Carroll, Larry King and Jessie Martinez were there.

The Shoe Crew, whose players range in age from 25 to 79, meets every Wednesday at 7 p.m. and Sunday at 1 p.m. for informal tournaments. Some members travel just about every weekend for sanctioned tournaments.

MULE DAYS OPEN—BISHOP, CA.—SANC. 25-88-071

A DIVISION—Norm Cone, Huntington Beach, 4-1; Jonathan Williams, Chino, 3-2; Sallie Cline, Bishop, 3-2; Jim Eozzo, Los Angeles, 2-3; Darryl LaMoureaux, Boron, 3-3; Tom McQueen, Bishop, 1-4; Bill Cork forfeit.

B DIVISION—Micky Mundy, Barstow, 6-1; Bob Morris, Bishop, 5-2; Ivan Davis, Bishop, 5-2; Dorothy Yeager, Bishop, 4-3; Bert Gehrt, Bishop, 4-3; Bob Sams, Nevada, 3-4; Dave Rodriguez, Santa Barbara, Santa Barbara, forfeit; Don Beasley, forfeit.

C DIVISION—Les McConnohie, Hemet, 6-1; Bill Yeager, Bishop, 5-2; Bob Kittle, Bishop, 5-2; Harris Riggins Sr., Bishop, 5-2; Bill Perry, Bishop, 3-4; Art Hernandez, Santa Barbara, 2-5; Gary Emerick, Bishop, 2-5; Alan Steele, Bishop, 0-7.

D DIVISION—Nancy LaMoureaux, Boron, 6-1; Gerald Patterson, Bakersfield, 5-2; Carl Munz, Bakersfield, 4-3; Bob Baer, Bishop, 4-3; Ernie Calzada, Santa Barbara, 4-3; Mike Gensler, Santa Barbara, 4-3; Ray Hailey, Bishop, 1-6; Herb Barnhouse, Bishop, forfeit.

E DIVISION—Linda Rodriguez, Santa Barbara, 6-1-28.0; Betty McQueen, Bishop, 5-2-22.0; Fred Robles, Santa Barbara, 5-2-20.0; David LaMoureaux, Boron, 4-3-20.0; Steve Oglesby, Bishop, 4-3-18.0; Mick Everhart, Bishop, 3-4-15.0; Gayle Oblesby, Bishop, 1-6-11.0; Ed Agner, forfeit.

F DIVISION—Jonele Gustie, Bishop, 4-0-23.0; Mike Story, Bishop, 3-1-23.0; Jack Bonser, Bishop, 2-2-16.0; Dennis LaMoureaux, Bakersfield, 1-3-20.0; Sally Shipley, Newport Beach, 0-4-12.0.

G DIVISION—Carole Beeks, Palmdale, 5-2-17.0; Cathryn Beeks, Palmdale, 5-2-12.0; Hart Beeks, Palmdale, 4-3-15.0; Rita Eozzo, Los Angeles, 4-3-14.0; Vicky Oblesby, Bishop, 4-3-14.0; Cindy Gregory, Barstow, 4-3-13.0; Jim Bolenbaugh, Bishop, 2-5-10.0.

H DIVISION—Bob Moss, Bishop, 5-1-9.0; Steve Johnston, Bishop, 4-2-11.0; Wilma Butterbredt, Bishop, 2-4-10.0; Steve Garcia, Bishop, 1-5-4.0.

GROUP G-1

	W	L	R	SP	%
Debby Bestul, WI	5	0	133	200	66.5
Julie Walters, OH	4	1	80	200	40.0
Jenny Walters, OH	3	2	83	200	41.5
Michelle White, CA	2	3	55	200	27.5
Nicole Saunders, CA	1	4	32	200	16.0
Tonya Hix, VA	0	5	20	200	10.0

1. DEBBY BESTUL—WI

Opponent	Score	R	SP	%
Nicole Saunders	73-4	25	40	62.5
Michelle White	56-4	29	40	72.5
Julie Walters	45-8	30	40	75.0
Tonya Hix	73-0	27	40	67.5
Jenny Walters	29-23	22	40	55.0
WINS-5 LOSSES-0		133	200	66.5

2. JULIE WALTERS—OH

Opponent	Score	R	SP	%
Tonya Hix	44-10	13	40	32.5
Nicole Saunders	41-6	16	40	40.0
Debby Bestul	8-45	17	40	42.5
Jenny Walters	24-14	19	40	47.5
Michelle White	47-15	15	40	37.5
WINS-4 LOSSES-1		80	200	40.0

3. JENNY WALTERS—OH

Opponent	Score	R	SP	%
Michelle White	37-19	18	40	45.0
Tonya Hix	45-10	14	40	35.0
Nicole Saunders	35-15	14	40	35.0
Julie Walters	14-24	16	40	40.0
Debby Bestul	23-29	21	40	52.5
WINS-3 LOSSES-2		83	200	41.5

4. MICHELLE WHITE—CA

Opponent	Score	R	SP	%
Jenny Walters	19-37	14	40	35.0
Debby Bestul	4-56	13	40	32.5
Tonya Hix	38-17	10	40	25.0
Nicole Saunders	33-16	11	40	27.5
Julie Walters	15-47	7	40	17.5
WINS-2 LOSSES-3		55	200	27.5

5. NICOLE SAUNDERS—CA

Opponent	Score	R	SP	%
Debby Bestul	4-73	4	40	10.0
Julie Walters	6-41	7	40	17.5
Jenny Walters	15-35	8	40	20.0
Michelle White	16-33	6	40	15.0
Tonya Hix	27-16	7	40	17.5
WINS-1 LOSSES-4		32	200	16.0

6. TONYA HIX—VA

Opponent	Score	R	SP	%
Julie Walters	10-44	4	40	10.0
Jenny Walters	10-45	2	40	5.0
Michelle White	17-38	4	40	10.0
Debby Bestul	0-73	5	40	12.5
Nicole Saunders	16-27	5	40	12.5
WINS-0 LOSSES-5		20	200	10.0

GROUP G-2

	W	L	R	SP	%
Alana Johnston, CN	5	0	116	200	58.0
Celeste Polak, TX	4	1	113	200	56.5
Rebecca Manuelito, CA	3	2	57	200	28.5
Sonya Hix, VA	2	3	40	200	20.0
Jaime Pokak, TX	1	4	21	200	10.5
Kara Hix, VA	0	5	10	200	5.0

1. ALANA JOHNSTON—CN

Opponent	Score	R	SP	%
Kara Hix	888-0	27	40	67.5
Jaime Polak	71-1	21	40	52.5
Rebecca Manuelito	50-7	21	40	52.5
Sonya Hix	54-3	23	40	57.5
Celeste Polak	23-22	24	40	60.0
WINS-5	LOSSES-0	116	200	58.0

2. CELESTE POLAK—TX

Opponent	Score	R	SP	%
Jaime Pokak	69-5	22	40	55.0
Sonya Hix	75-3	27	40	67.5
Kara Hix	75-3	21	40	52.5
Rebecca Manuelito	44-23	19	40	47.5
Alana Johnston	22-23	24	40	60.0
WINS-4	LOSSES-1	113	200	56.5

3. REBECCA MANUELITO—CA

Opponent	Score	R	SP	%
Sonya Hix	36-20	17	40	42.5
Kara Hix	28-15	6	40	15.0
Alana Johnston	7-50	8	40	20.0
Celeste Polak	23-44	13	40	32.5
Jaime Polak	37-15	13	40	32.5
WINS-3	LOSSES-2	57	200	28.5

4. SONYA HIX—VA

Opponent	Score	R	SP	%
Rebecca Manuelito	20-36	13	40	32.5
Celeste Polak	3-75	6	40	15.0
Jaime Polak	21-20	6	40	15.0
Alana Johnston	3-54	9	40	22.5
Kara Hix	22-14	6	40	15.0
WINS-2	LOSSES-3	40	200	20.0

5. JAIME POLAK—TX

Opponent	Score	R	SP	%
Celeste Polak	5-69	3	40	7.5
Alana Johnston	1-71	0	40	0.0
Sonya Hix	20-21	5	40	12.5
Kara Hix	21-13	6	40	15.0
Rebecca Manuelito	15-37	7	40	17.5
WINS-1	LOSSES-4	21	200	10.5

6. KARA HIX—VA

Opponent	Score	R	SP	%
Alana Johnston	0-88	0	40	0.0
Rebecca Manuelito	15-28	4	40	10.0
Celeste Polak	3-75	*	40	2.5
Jaime Polak	13-21	4	40	10.0
Sonya Hix	14-22	*	40	2.5
WINS-0	LOSSES-5	10	200	5.0

BAKER WINS PIONEER DAYS—CAYUGA, IN.—SAN. 12-88-010

CLASS A—Cliff Baker, IL, 7-0-83.6; Karl VanSant, 6-1-82.3; Dale Henry, 5-2-76.4; Ron Powell, KY, 4-3-79.2; Tari Powell, IL, 3-4-73.3; Don Peters, IL, 2-5-72.2; Ralph Maylahn, WI, 1-6-66.9; Martin Drummond, 0-7-50.8.

CLASS B (Sat.)—Doyle Maikranz, 9-1-47.3; Carl Welfer, 7-3-52.4; Harold Holle, 6-4-50.3; Harry Groce, 6-4-42.1; Harley Parks, 2-8-24.9.

CLASS B (Sun.)—Dennis Ferree, 7-0-68.4; Jerry Miller, 6-1-52.4; Steve Dunning, 4-3-55.1; Cecil Lunsford, 4-3-52.5; Claude Estelle, 4-3-45.8; Gary Poindexter, 1-6-48.4; Martin Drummond, 1-6-46.0; Bob Prohaska, 1-6-36.5.

CLASS C (Sat.)—Bernard French, 6-1-54.9; Burl Taylor, 4-3-43.4; Chet Burnett, 3-4-44.0; Sylvester Hahn, 3-4-43.5; Charles Cooke, IL, 3-4-41.5; Ray Meyers, IL, 3-4-40.4; Jim Clark, 3-4-40.9; Bob Prohaska, 3-4-37.3.

CLASS C (Sun.)—Eric Kingma, 4-1-44.9; Elden Bryant, IL, 4-1-44.1; Dale Ferguson, 3-2-39.6; Ken Summers, 2-3-43.2; Ken Tally, 2-3-39.9; Al Wray, 0-5-32.8.

CLASS D—Bob Steimel, 6-1-42.3; Jeff Clem, IL, 5-2-47.5; Cliff Marsh, 5-2-39.4; Joyce Summers, 4-3-45.3; Art Cornelius, 3-4-39.8; Bob Anderson, 3-4-38.9; Bob Sanders, 2-5-31.0; Jin Hackard, 0-7-13.4.

CLASS E—Marvin Maxwell, 4-1-30.3; Roy Franke, IL, 3-2-28.2; Charles Jarred, 3-2-28.1; Ed Atchisson, IL, 2-3-29.9; Bob Henry, 2-3-28.0; Luther Chandler, 1-4-21.8.

BAKER WINS—(Continued)

CLASS F—Guy DeBord, 7-0-26.0; Steve Sutherlin, 6-1-26.2; Glen Donaldson, 4-3-25.6; Georgia Tall, 4-3-23.3; Forrest Norman, 3-4-22.9; Allen Winkles, 3-4-20.6; Alan Lunsford, 2-5-16.5; Max Gunyon, 0-7-10.1.

JUNIORS—Georgia Henry, 6-0-38.4; Chris Estelle, 4-2-22.1; Mira Ferguson, IL, 2-4-4.9.

TENNESSEE ROUND-UP TOPPED BY D. WARD—SAN. 23-88-006

CLASS A—Don Ward, 5-0-71.1; Dick Martino, 4-1-65.5; Randy Pruitt, 3-2-66.2; Stan Smith, 2-3-55.5; Tony Norwood, 2-3-56.0; Marvin Bastion, 0-5-55.4

CLASS B—Roger Norwood, 5-0-71.3; Grady Wahley, 3-2-58.0; James Black, 2-3-52.8; O. D. Lebow, 2-3-50.0; Tom Price, 2-3-50.0; Hank Irwin, 1-4-50.9.

CLASS C—Jim Waters, 4-1-51.7; Charles Perkins, 4-1-51.0; Lloyd Wyatt, 4-1-46.9; Plummer, Hensley, 2-3-41.8; Jack Freeman, 1-4-41.1; Jack Connors, 0-5-40.1.

CLASS D—George Lewis, 5-0-50.4; Doug Self, 4-1-42.1; Jim Adkerson, 3-2-43.0; Melvin Cooper, 2-3-30.5; Sam Callahan, 1-4-31.0; Freeman Garv, 0-5-23.9.

CLASS E—Charles Coward, 4-1-32.5; Cecil Cutshaw, 4-1-28.0; Roger Toler, 4-1-26.3; James Davis, 2-3-24.5; Coy Bennett, 1-4-18.1; Dale Seibers, 0-5-20.0

CLASS F—Russell Bennett, 4-1-25.3; Frank Scott, 3-2-27.9; Herman Lones, 3-2-18.4; Dana Ward, 2-3-20.1; Tom Williams, 2-3-16.6; Arthur Gilliam, 1-4-15.6.

OH. SILVER DOLLAR OPEN TO KNISLEY—SAN. 21-88-013

CLASS A—Jim Knisley, Bremen, 6-1-76.0; George Moon, Greenfield, 6-1-72.1; Elden Sarbaugh, Adamsville, 5-2-74.5; Gary Roberts, Lucasville, 4-3-67.0; Lawrence Miller, Chillicothe, 3-4-63.7; Loren Coy, Brookville, 2-5-62.4; Max Roseberry, Marion, 1-6-58.8; Levi Miller, Plain City, 0-7-57.4.

CLASS B—Tom Guill, Shelby, 6-1-61.5; Jack Baldwin, Hollard, 5-2-58.7; John Martin, Circleville, 4-3-57.9; Hoy Hasto, Ripley, 3-4-57.0; Ansil Copeland, Akron, 3-4-52.8; Ken Smith, Wellsville, 3-4-52.7; Dick Curtis, Xenia, 3-4-50.2; Tom Bestul, Westerville, 1-6-49.4.

CLASS C—Loman Tumlin, Parkersburg, 6-1-54.9; Maurice Flaig, Lebanon, 5-2-54; Steve Powers, Xenia, 4-3-50.3; Zack Campbell, Lebanon, 4-3-49.4; Les Rose, Columbus, 3-4-46.8; Fred Brown, Defiance, 3-4-45.7; Harry Rutherford, London, 2-5-47.4; Tom King, Chillicothe, 1-6-40.9.

CLASS D—John Ackers, Ravenswood, 6-1-43.6; Dave Rose, Columbus, 5-2-42.3; Carl Casto, Pomeroy, 4-3-50.6; Harry Denlinger, Brookville, 4-3-44.3; Jim Cooper, Columbus, 4-3-38.2; Bob Garrett, Zanesville, 2-5-38.3; Jim Mossholder, Mt. Vernon, 2-5-31.0; Ed Andrus, Springfield, 1-6-29.4.

CLASS E—Carl Searls, Middleport, 6-1-52.3; Gerry Wyscarver, Westerville, 5-2-48.6; Charlie Jones, West Liberty, 5-2-43.8; Dick Smith, Lancaster, 4-3-45.6; George Thome, Oxford, 3-4-40.0; Les Grosklos, Marietta, 2-5-36.9; Harry Baily, Pomeroy, 2-5-31.0; Lonnie Mason, Lynx, 1-6-32.1.

CLASS F—Terry Lively, Hillard, 7-0-42.8; Wayne Baker, Whitehouse, 5-2-39.4; Bernard Davis, Columbus, 4-3-38.3; Ray Boyd, Lancaster, 4-3-35.9; Charlie Myers, Columbus, 4-3-29.2; Roger Kinnamon, Frankfort, 2-5-28.9; Fred Keiger, Lancaster, 1-6-27.8; Jr. Lisk, Marietta, 1-6-26.6.

CLASS G—Russ Beeman, Mt. Vernon, 7-0-33.5; Joe Ewing, Westerville, 5-2-30.5; Wilson Burggraf, Cardington, 4-3-25.1; Larry Ferguson, West Jefferson, 3-4-24; Jack Von Dach, Westerville, 3-4-22.8; Lewis May, North Canton, 3-4-21.5; Bill Lawson, Athens, 2-5-22.8; Don Long, Cincinnati, 1-6-21.5.

WOMEN'S CLASS A—Jean Myers, Columbus, 7-0-54.3; Carol Martin, Circleville, 6-1-37.1; Sharon Jones, West Liberty, 5-2-33.3; Ava Brown, Waverly, 4-3-31.1; Gin May, North Canton, 2-5-19.5; Susan Guill, Shelby, 2-5-16.9; Beth Smith, Lancaster, 2-5-14.9; Lois Cooper, Columbus, 0-7-14.2.

NORDLAND FEST OPEN, S.D.—SANC. 8-88-004

CHAMPIONSHIP—Laverne W: Pf, 7-0-48.0; Lamoyne Helgeson, 4-3-39.7; Bob Nelson, 4-3-37.7; Dennis Kjose, 4-3-32.8; Robert Ketterer, 3-4-40.5; Gaylord Johnson, 3-4-39.7; Bob Frager, 2-5-39.1; Bruce Rollag, 1-6-37.1.

CLASS A—Lori Shiffer, 7-0-46.5; Ron Frager, 5-2-42.2; Bert Bertelson, 5-2-37.4; Milt Renville, 3-4-33.1; Alvin Hanson, 3-4-32.0; Gary Numsen, 2-5-34.5; Henry Pater, 2-5-31.1; Harry Everhart, 1-6-28.8.

NORLAND—(Continued)

CLASS B—Rick Symens, 5-2-34; Robert Jensen, 5-2-32.8; Vincent Marks, 4-3-30.0; Ben Thompson, 4-3-28.5; Lynn Kalvig, 3-4-28.8; Clint Neilson, 3-4-25.7; Jim Paulin, 3-4-2.7; Jan Hansen, 1-6-25.1.

CLASS C—Des Johnson, 7-0-28.3; Lloyd Field, 5-2-25.3; Marv Parkinson, 5-2-24.6; Ed Gebhart, 4-3-28.3; Cliff Ziehl, 3-4-21.3; John Symens, 2-5-27.0; Darrin Pater, 2-4-18.3.

CLASS D—Tom Dunham, 6-1-31.0; Robert Stiland, 5-2-26.6; Arnold Staum, 5-2-23.3; Marlow Neuberger, 4-3-26.3; Jim Jelden, 3-4-20.6; Charles Pies, 3-4-18.6; Gib Cadotte, 2-5-16.3.

CLASS E—Kevin Ketterer, 5-0-19.2; Andrew Ziehl, 4-1-13.2; Ken Winterton, 3-2-15.2; Randy Kjose, 2-3-11.6; Jack Sievers, 1-4-9.2; Rick Rath, 0-5-2.0.

CAMP HILL, PA. OPEN WON BY TYSON—SANC. 17-88-022

CLASS A—Art Tyson (NY), 8-1-72.7; Joe Schultz (NY), 7-2-64.3; Glenn Rubendall, 6-3-65.0; Dan Beshore, 6-3-61.9; Glenn Brown, 5-4-57.5; Les Putt, 4-5-54.2; Ed Bowersox, 3-6-54.2; Dean McCurdy, 3-6-52.0; Tom Decker, 3-6-50.2; Jack Swyers, 0-9-46.0.

CLASS B—Darle Esh, 9-0-51.6; Jerry Hoy, 7-1-48.1; Frank Miller, 5-3-47.4; Don Dietz, 5-3-42.2; Paul Caudill, Jr., 4-4-45.5; Dennis Lloyd, 2-6-40.4; Joe Belcavitch, 2-6-40.2; Al Long, 2-6-39.8; Guy Esh, 1-7-37.1.

CLASS C—Jack Myers, 7-1-47.7; Dennis Sieber, 6-2-48.4; Jack Griffith, 6-2-36.3; Gerry Smith, 5-3-32.8; Dave Preston, 4-4-35.4; Pete McCollum, 4-4-38.2; Roy Teets, 3-5-37.9; Ted Postupack, 1-7-27.2; Richard Scott, 0-8-22.7.

CLASS D—John Zimmerman, 6-1-31.6; Wayne Brown, 5-2-32.7; Al Yednock, 4-3-30.0; Paul Crisamore, 4-3-29.7; Marlin Zimmerman, 3-4-26.8; Wally Brown, 2-5-29.1; Joe Shurmaitis, 2-5-26.3; Bruce Corl, 2-5-25.9.

CLASS E—Terry Haverstock, 6-1-34.2; Homer Erb, 5-2-31.1; Rick Stinson, 5-2-25.5; Tony Carlin, 4-3-28.4; Gene Oleski, 3-4-31.3; Robert Loncar, 3-4-28.3; John Schimelfenig, 2-5-24.8; Ralph Weigle, 0-7-18.1.

CLASS F—Ron Rhoades, 7-0-25.3; Tom Baker, 6-1-29.9; Ned Kinard, 4-3-25.1; Ted Van Pelt, 4-3-23.6; Gerard Harris, 4-3-20.6; Ron Baker, 1-6-16.9; Walter Burtner, 1-6-16.3; Mike Fenton, 1-6-16.2.

LADIES A—Lynn Carlin, 5-0-41.1; Jean Long, 4-1-34.5; Susan Preston, 2-3-41.2; Carol Baker, 2-3-26.2; Lois Hoy, 1-4-25.2; Norma McCurdy, 1-4-20.5.

WESTERN PENNSYLVANIA TOURNAMENT ACTIVITY

LISLE WESTON MEMORIAL—Shelocta—San. 17-88-006—CLASS A—D. Beshore, 6-1-62.8; G. Burris, 6-1-70.3; R. Rugg, 5-2-61.7; E. Blum, 4-3-51.4; J. Paganelli, 3-4-50.0; J. Roebuck, 2-5-51.7; McKnight, 1-6-49.3; F. Morgan, 1-6-45.8.

CLASS B—J. Mathys, 7-0-58.7; Don Smith, 5-2-51.6; P. Gemza, 4-3-50.5; C. Dixson, 3-4-55.4; R. L. Brown, 3-4-53.0; E. Horneman, 3-4-49.1; L. White, 3-4-46.5; P. Barkley, 0-7-40.6.

CLASS C—H. Browne, 6-1-45.4; D. Harper, 5-2-46.0; J. Marusa, 4-3-46.4; J. Trayer, 4-3-46.3; T. Piscalish, 3-4-38.3; A. Liptak Sr., 2-5-44.0; V. Owens, 2-5-40.0; R. Brinkley, 1-6-39.7.

CLASS D—B. Fink, 7-0-41.3; B. Rugg, 5-2-39.6; V. Nicholson, 4-3-38.6; A. Punturi, 3-4-36.2; J. Antsberger, 3-4-36.1; R. Weiss, 3-4-41.5; F. Connell, 2-5-34.8; G. Fulton, 1-6-39.3.

CLASS E—A. Matscherz, 5-2-41.7; C. Schech, 5-2-42.9; B. Korzon, 5-2-39.1; H. Taylor, 4-3-38.2; G. Blechi, 4-3-37.7; R. Bunyak, 2-5-38.4; J. Carnahan, 2-5-37.2; H. J. Liese, 1-6-30.5.

CLASS F—R. Roush, 7-0-43.7; V. Dotts, 5-2-41.2; F. Kallay, 4-3-36.5; D. Larkins, 3-4-33.6; G. Dennison, 3-4-36.6; G. Zayac, 2-5-34.8; T. Ronan, 2-5-34.0; V. Schrengost, 2-5-28.4.

CLASS G—D. Keth, 6-1-36.7; H. Hixson, 5-2-38.7; R. Kaliber, 4-3-37.1; C. Denki, 4-3-29.8; W. Wood, 3-4-34.1; K. Turnbull, 3-4-32.6; G. Bercini, 3-4-30.7; B. Roadman, 0-7-12.2.

CLASS H—T. Zayac, 7-0-33.9; E. Fingerhoo, 5-2-30.7; B. Blashford, 3-4-25.7; T. Hamack, 3-4-25.6; T. Carnahan, 3-4-22.0; J. Rossi, 3-4-19.1; J. Miller, 2-5-18.7; C. Mock Sr., 2-5-17.3.

WESTERN PA.—(Continued)

CLASS I—J. Zdrale, 6-1-20.3; Jr. Dawson, 5-2-23.5; S. Keener, 4-3-21.9; B. Reddinger, 4-3-20.1; D. Snavely, 4-3-17.0; K. Harman, 3-4-13.5; P. Zdrale, 1-6-12.8; G. Syktich, 0-7-15.6.

CLASS J—E. Forish, 7-0-29.1; M. Shaffer, 6-1-23.2; B. McCool, 5-2-24.0; N. Painter, 4-3-22.9; B. Pierce, 3-4-14.1; Dick Kahle, 2-5-8.1; Kev Kahle, 1-6-10.6; P. Hillen, 0-7-7.5.

LADIES A—B. White, 6-1-45.7; E. Weston, 5-2-41.8; G. Rugg, 4-3-51.1; C. Reddinger, 4-3-42.5; M. Wood, 3-4-40.8; J. Reefer, 3-4-34.0; S. Carnahan, 3-4-33.3.

LADIES B—M. Keth, 6-1-37.5; H. Morgan, 5-2-37.5; K. Wolff, 5-2-32.4; V. Kahle, 30.9; T. Keener, 4-3-34.9; R. Carnahan, 2-5-19.4; D. Dawson, 1-6-23.9; A. M. Marusa, 1-4-22.0.

JUNIORS—D. Reddinger, 6-1-31.6; R. Jeffreys Jr., 3-3-26.1; B. McCool, 2-4-2.6; D. Jeffreys, 1-5-4.7.

SPRING FLING—NEWCASTLE—San. 17-88-005—CLASS A—S. Kuchcinski, 7-0-74.6; J. Mathys, 4-3-60.8; W. W. Carnahan, 4-3-58.3; F. White, 4-3-56.9; B. McKnight, 4-3-55.8; B. Hofecker, 3-4-55.9; R. F. White, 1-6-58.6; E. Blum, 1-6-53.2.

CLASS B—V. Sedlacek, 7-1-51.2; H. Browne, 6-2-49.7; G. Rhae, 5-2-51.2; C. Dixon, 4-3-51.9; E. Horneman, 4-3-49.7; L. White, 3-4-40.4; R. Welton, 1-6-41.1; H. Hays, 0-7-31.9.

CLASS C—F. Connell, 5-2-45.0; A. Landsberger, 4-3-47.9; J. Antesberger, 4-3-41.9; R. Weiss, 4-3-41.8; J. Carnahan, 4-3-40.4; R. Kwiat, 3-4-34.9; G. Sebring, 2-5-39.4; K. Bowser, 2-5-32.8.

CLASS D—C. Scheck, 6-1-36.3; G. Dremsek, 5-2-35.7; V. Dotts, 5-2-31.1; Ken Boyles, 5-2-23.8; H. Boyer, 4-3-22.9; R. E. White, 2-5-26.9; W. Stover, 1-6-9.6.

LADIES—E. Carnahan, 7-0-79.9; B. White, 5-2-41.1; E. Weston, 5-2-39.3; M. Wood, 4-3-34.0; S. Dagan, 3-4-35.2; J. Reefer, 2-5-34.5; S. Carnahan, 2-5-34.2; D. Dawson, 0-7-22.4.

COMING EVENTS**FLORIDA SCHEDULE**

FORMAT: Entry fee \$10.00 per tournament. Entry fee includes score keeping fee. Send entry fee to proper contact to arrive at least 7 days before tournament date. NHPA and State card required. Mixed tournaments unless otherwise stated. Dropouts or no shows will forfeit entry fee unless tournament is cancelled. Starting time is 9:00 am.

- | | |
|--|--|
| Oct. 1—Orlando Rec. Bureau Open, Orlando. Contact 12 | Nov. 26—Geo. Atkinson Mem. Open, Winter Haven. Contact 10 |
| Oct. 8—Clearwater Mem. Open Hdcp., Clearwater. Contact 2 | Dec. 2-3—Steinfeldt Hdcp. Open, Clearwater. Contact 2 |
| Oct. 15—Columbus Day Open, Beverly Hills. Contact 4 | Dec. 9-10—Crossland Saving Bank Open, Bradenton. Contact 7 |
| Oct. 22—Joe Irey Memorial Open, Winter Haven. Contact 10 | Dec. 10—Palm Beach Open, Lake Worth. Contact 8 |
| Oct. 29—Frank Stites Mem. Open, Bradenton. Contact 14 | Dec. 15—Sebring Open, Sebring. Contact 11 |
| Nov. 5—Clearwater Open, Clearwater. Contact 2 | Dec. 17—John Wortel Mem. Open, Bradenton. Contact 14 |
| Nov. 5—Osceola Open, St. Cloud. Contact 6 | Dec. 17—Orange Blossom Open, Orange Blossom. Contact 4 |
| Nov. 12—Bee Ridge Open, Sarasota. Contact 5 | Jan. 7—Windy Open, Brooksville. Contact 1 |
| Nov. 12—Hernando Open, Brooksville. Contact 1 | Jan. 12—Sebring Open II, Sebring. Contact 11 |
| Nov. 19—Naples Open, Naples. Contact 9 | Jan. 14—G. T. Bray Mem. Open, Bradenton. Contact 14 |
| Nov. 19—American Pioneer Open, Orlando. Contact 12 | |

**HORSESHOE PRO SHOP
STUDIO CITY SUITE 189
2275 WINTER PARKWAY
CUYAHOGA FALLS OHIO 44221**



216 - 923 - 9949



COMING EVENTS—(Continued)

- Jan. 20-21—The Manatee Open, Bradenton. Contact 7
 Jan. 21—Beverly Hills Open, Beverly Hills. Contact 4
 Jan. 28—Yogi Bear Open, Apopka. Contact 3
 Feb. 4—Sarasota Open, Sarasota. Contact 5
 Feb. 4—Orange Blossom Open II, Orange Blossom. Contact 4
 Feb. 11—Bradenton GTB Open, Bradenton. Contact 14
 Feb. 10-11—Orlando Open, Orlando. Contact 12
 Feb. 13—Monday's Open, Winter Haven. Contact 10
 Feb. 14—Tuesday's Open, Winter Haven. Contact 10
 Feb. 15—Wednesday's Open, Winter Haven. Contact 10
 Feb. 16—Thursday's Open, Winter Haven. Contact 10
 Feb. 17—Friday's Open, Winter Haven. Contact 10
 Feb. 17-18—Sun Coast Open, Bradenton. Contact 7
 Feb. 18—Lake Worth Open, Lake Worth. Contact 8
 Feb. 18—Saturday's Open, Winter Haven. Contact 10
 Feb. 23—Jim Fourman Memorial Open, Sebring. Contact 11
 Feb. 25—Ranger Smith Open, Apopka. Contact 3

FLORIDA SCHEDULE—(Continued)

- Mar. 4—C. Lentz Mem. Open, Bradenton. Contact 14
 Mar. 4—Sun Bank of Osceola Open, St. Cloud. Contact 6
 Mar. 11—Hernando Open, Brooksville. Contact 1
 Mar. 11—Cambier Open, Naples. Contact 9
 Mar. 16—Lee Palmer Open, Sebring. Contact 11
 Mar. 18—Apopka Open, Apopka. Contact 3
 Mar. 17-18—Florida State Hdcp. Open, Clearwater. Contact 2
 Mar. 24-25—The De Soto Open, Bradenton. Contact 7
 Mar. 30—Central Fla. Ridge Open, Winter Haven. Contact 10
 Mar. 31-Apr. 1—April Fool's Hdcp. Open, Clearwater. Contact 2
 Apr. 8—Morris Gillispie Mem. Open, Sarasota. Contact 5
 Apr. 8—Center of World Open, Beverly Hills. Contact 4
 Apr. 15—Pat O'Toole Open, Bradenton. Contact 14
 Apr. 22—Florida State Closed, Orlando. Contact 13
 Apr. 29—Chief Charley's Open Hdcp., Clearwater. Contact 2

TOURNAMENT DIRECTORS AND CONTACT NUMBERS

- | | |
|---|---|
| 1. E. P. Kirk, 15549 Cortez Blvd., Brooksville, FL 33573. 904-799-7116 | 8. Robert McDonald, PO Box 1181, Boynton Beach, FL 33425. 305-732-6569 |
| 2. Ed Senger, 1204 San Domingo Court, Clearwater, FL 34619. 813-726-6616 | 9. Richard Warren, 1848 Crayton Rd., Naples, FL 33940. 813-261-5197 |
| 3. Norman Davey, 3000 S. Clarcona Rd., Apopka, FL 32703. 407-886;8168 | 10. Joseph R. West, 6250 Halabrin Rd., Haines City, FL 33844. 813-422-2053; Alt. 813-299-6308 |
| 4. Ralph Cullum, 1006 S. Bunting Way, Inverness, FL 32650. 904-637-3283; Alt. 904-726-1396 | 11. Dale Miller, 117 Leisure Acres, Sebring, FL 33870. 813-382-4289 |
| 5. Paul Scheub, 2139 Piazza Dr., Sarasota, FL 34238. 813-966-5462; Alt. 812-924-4430 | 12. James Pete Peterson, 14224 Wing Foot Rd., Orlando, FL 32826. 407-275-8222 |
| 6. Harry Clement, 325 Rosedale Ave #9, St. Cloud, FL 32769. 407-892-2749; Alt. 407-892-2051 | 13. Marvin E. Grubb, 4540 Osceola Rd., Titusville, FL 32780. 407-269-4138 |
| 7. Gene Wyant, 2919 17 St. W., Bradenton, FL 34205. 813-746-2087; Alt. 813-756-4793 | 14. Pat O' Toole, 3613 34th Ave. Dr. W., Bradenton, FL 33505. 813-755-9359 |

FAYETTE COUNTY PA. SCHEDULE

233 So. Mt. Vernon Ave.
 Uniontown, PA 15401

Our tournaments will be a Round Robin, with all games being 40 points caccellation, and 1 point each for four dead, up to 30 points. Trophies or equivalent will be awarded for 1st and 2nd place.

Entry fee of \$10.00, payable to F.C.H.P.A. should accompany your entry 10 days prior to tournament date. You will be classed according to your state's percentage. April and May tournaments will be N.H.P.A. sanctioned.

Telephone entries will be accepted if they are called in 6 days prior to tournament start. Any telephone entries must be paid for or you will be barred from any further participation in N.H.P.A. sanctioned tournaments, until you have paid.

Oct. 28-29-30—Halloween Special. Contact Bob Roadman, 524 Ract St., Connellsville, PA 15425. Phone: 412-628-4069 or Paul Hillen, 524 Englishman Hill Rd., Connellsville, PA 15425. Ph: 412-628-2408.

Nov. 18-19-20—Ed Donawitz Memorial. Contact Bob Straitiff, Box 263, Uledi, PA 15484. Ph: 412-437-6374, or Pete Metts, Box 64-A, Rte 1, Lemont Furnace, PA 15458. Ph: 412-438-6253.

Dec. 16-17-18—Christmas Open. Contact Joe Roebuck, 603 Braddock Ave., Uniontown, PA 15401. Ph: 412-438-5670, or Joe Gibbs, Rte 1, Box AB, Vanderbilt, PA 15486. Ph: 412-529-2331.

Jan. 27-28-29—Chuck Roball Memorial. Contact Joe Leech, Rte 3, Box 234, Smithfield, PA 15478. Ph: 412-569-2830, or Casey Danner, Box 288, Newell, PA 15466. Ph: 412-938-2397.

Feb. 24-25-26—Valentine Open. Contact Andy Liptak, Sr. or Andy Liptak, Jr., 2 Jamison St., Uniontown, PA 15401. Ph: 412-439-3224.

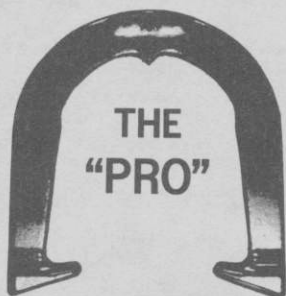
Mar. 17-18-19—J. B. Duchek Memorial. Contact Jerry or Lori Troycheck, Rte 1, Box 152, Adah, PA 15410. Ph: 412-737-5384.

Apr. 21-22-23—Joe Tarayko Memorial. Contact Joe Lacconi, 325 Catherine Ave., Brownsville, PA 15417. Ph: 412-785-8056, or Paul lacconi, 606 7th St., West Brownsville, PA 15417. Ph: 412-785-4437, or Tony lacconi, 232 Clover St., Brownsville, PA 15417. Ph. 412-785-4841.

May 19-20-21—Jim Danner Memorial. Contact Jim Solomon, 104 Industry Lane, Uniontown, PA 15401. Ph: 412-437-4392. Or Glenn Williams, Rte 4, Box 248, Uniontown, PA 15401. Ph: 412-437-7733.



THE ORIGINAL DROP-FORGED PITCHING SHOE



Two tournament tested models, forged from S.A.E. specified steel, are available. Both have hardened hooks and points, and may be ordered in your choice of medium, soft, or dead soft tempers.



AS THE FIRST MANUFACTURER OF THE DROP-FORGED PITCHING SHOE, THE OHIO HORSESHOE COMPANY IS RECOGNIZED WORLD-WIDE FOR ITS HIGH QUALITY PITCHING SHOES.

For price information and to order, contact:

OHIO HORSESHOE COMPANY

P.O. Box 21371
Columbus, Ohio 43221

614-457-4335