



the  
national horseshoe pitchers

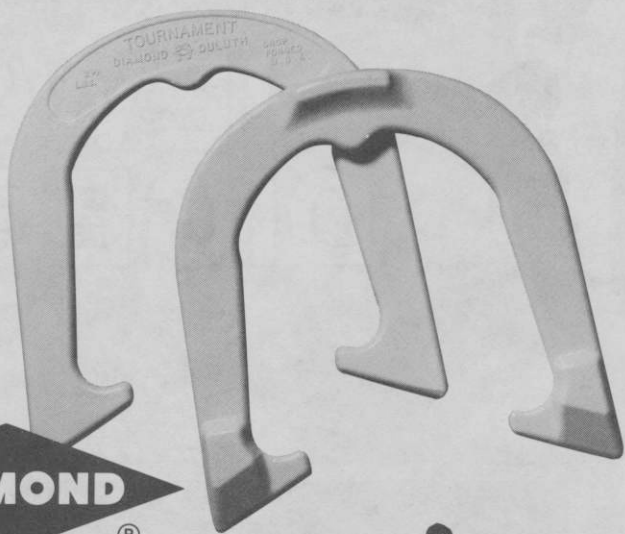
# NEWS DIGEST



JULY, 1986

*Official Publication of*  
**THE NATIONAL HORSESHOE PITCHER'S ASSOCIATION  
OF AMERICA**

Look  
for  
the new  
white  
shoes!



Advanced Design

# TOURNAMENT PITCHING HORSESHOES



Both backyard pitchers and pros catch and hold the stake better with DIAMOND's new advanced design "Tournament" Shoe. It features a grip positioner, hardened tips, an increased radius, a dead soft center, and a wider, deeper calk. Same drop-forged solid steel construction as DIAMOND's popular Double Ringer and Super Ringer Regulation Shoes. All American made.

Contact your nearest NHPA club or sporting goods store for DIAMOND pitching horseshoes.

For the latest pitching horseshoe catalog write:



**DIAMOND TOOL** and *Horseshoe Co.*

The Triangle Corporation, The Tool Group  
Cameron Road, Orangeburg, SC 29115

DISTRIBUTOR ORDER PLACEMENT  
Call toll-free: 800-346-0740  
For all inquiries call: 803-534-7010

"DIAMOND Pitching Horseshoes are Recognized as Official in Tournaments  
Sanctioned by the National Horseshoe Pitchers Association"



THE HORSESHOE PITCHER'S NEWS DIGEST is published on the 5th of each month at Aurora, Illinois, U.S.A. by the National Horseshoe Pitcher's Association of America. Editorial office, P.O. Box 1606, Aurora, Illinois 60507. Phone: 312-898-3974. Subscription rates — 1st Class \$9.00; 3rd Class \$8.00 per year in advance. NHPA membership cards are available through each state secretary for \$7.00 plus any state association dues. Forms close on the 10th day of each month preceding date of issue. Advertising rates on request. F. Ellis Cobb, Editor.

NATIONAL OFFICERS

Dave Loucks, 13656 Thoroughbred Loop, Grass Valley, Ca 95949 (916) 477-7060 .....	President
Earl Winston, Rte. 2, Lamonte, Mo. 65337 (816-563-3536) .....	1st Vice-President
Barry Chapelle, 2716 S.E. 61st Ave., Portland, OR 97206 (503-775-7876) .....	2nd Vice-President
Vincent Yannetti, 322 Longwood Ave., Bound Brook, N.J. 08805 (201-356-3862) .....	3rd Vice-President
Bonnie Selbold, 1043 Grayson Ave., Huntington, Ind. 46750 (219-356-3489) .....	4th Vice-President
Gene VanSant, P.O. Box 270, Sun City, Ca. 92381 .....	5th Vice-President
Donnie Roberts, Box 810, Circleville, Oh. 43113 (614-474-7727) .....	Sec./Treas.

Volume 30

July, 1986

No. 7

FROM YOUR PRESIDENT . . . DAVE LOUCKS

Congratulations to Henry Knauff of Spokane, WA; John Rademacher of Plant City, FL; Sol Berman of Cranbury, NJ and, Donnie Roberts of Circleville, Ohio. These four gentlemen are to be the 1986 inductees into the NHPA Hall of Fame. Formal recognition and presentations will be made at the NHPA Banquet and Awards Dinner during the Ainsworth W.T. . .

Also to be honored at the Banquet will be the 1986 Stokes Award winner. The final selection has not yet been made but we have seven very fine candidates all of whom have made great contributions to our sport and the NHPA. The candidates are: Bob Champion of Colorado, Ed Domey of Massachusetts, George Engelmann of Iowa, Al Hodge of Nebraska, Rex Lee of Arizona, Walter Ray Williams Jr. of California and, John Wilson of Louisiana. While the selection of the 1986 winner will be tough to make, it will be the individual the seven member committee ultimately feels has done the most during the preceding three to five years to promote, foster and build the sport of horseshoes.

DAVE'S COURT REPORT

Thanks to Ellis for implementing some recent suggested Digest improvements; larger type, more interesting articles and combining news and results into National, East, Central and West sections. . . Was in Reno recently for their annual Open, 26 new clay courts adjoining the University. While the entire state of Nevada has about 100 NHPA members, the Reno club regularly hosts 200-300 pitchers for their weeknight get-togethers. Many appear reluctant to join NHPA due to the "No beer or smoking on the courts" ban many charters are pushing. This is also a problem in some other states where many pub leagues thrive. Perhaps we should reconsider our position on this subject. . . Saw Don Weaver recently and had the chance to pitch on his new portable court surface. It's a great improvement over the hard rubber used at past Las Vegas/Hacienda tournaments. Plan to attend this years event in November, it's a fun time. . . Current World Champion Walter Ray Williams is tuning up to defend his title. At a recent tournament in Pleasanton, he averaged 91%. The top class pitched 50 shoe Count-All, a first for a Northern Calif. sanctioned tournament. . . Donnie Roberts, NHPA Secy/Treas., recently joined the staff of Sports Enterprises in Munroe Falls, Ohio as a consultant. This is the company behind the Horseshoe Palladium program. Donnie's experience will no doubt be of great value. . . The Mid-Hudson HPA in Orange County, NY is once again hosting a 48 hour Pitch-A-Thon to raise money for the Muscular Dystrophy Association. Last year they raised \$5,000 and have set a goal of \$10,000 this year. This is a very worthwhile endeavor that could lead to an opportunity by two members to appear on the Jerry Lewis Labor Day Telethon. To the Mid-Hudson club members and area pitchers, the NHPA salutes you.

---

## INDUCTEES FOR NHPA HALL OF FAME

By RUTH HANGEN, Chr.

HENRY KNAUFT, Washington—Player; DONNIE ROBERTS, Ohio—Organizer  
SOL BERMAN, New Jersey—Player—Organizer; JOHN RADEMACHER, Florida—Player

---

## WORLD TOURNAMENT JUDGING INFORMATION

In just a few days we'll all be hearing "music to our ears" — the clanging of the shoe on the stake — well, almost on the stake — "Judge - Judge!"

That's what we're looking for, persons interested in Judging at the World Tournament.

To avoid last minute confusion we are trying to assign as many sessions as possible before the World Tournament commences. There will also be a sign-up sheet at the W.T. office.

If you agree to Judge, you will be accepting many responsibilities besides judging shoes.

You will be asked to check in with Judge Chairperson, 45 minutes before scheduled session. If you need to cancel, it will be your responsibility to notify Judging Chairperson, one hour before session scheduled.

If you have never judged at a World Tournament you will be asked to observe a Judge so that you may become familiar with your responsibilities.

You should familiarize yourself with the NHPA Tournament Playing Rules

The rest of your responsibilities will be explained at the World. So that our judging program has a more professional appearance, like other professional sports, we are asking that you wear either black or white slacks or walking shorts. (No short shorts)

The NHPA will be furnishing black and white stripe shirts and vest plus judging tools.

Ladies and gentlemen, if you are interested in a challenge, hard work and helping the NHPA, please write me stating times and dates available for judging. I will be leaving by July 18 for the World so DEADLINE for contacting me will be July 16. Good luck to all World Pitchers, the Ainsworth Club and Community.

World Tournament Judge Chairperson, Lori Oberbillig, Box 69, Chadwick, IL 61014.

---

## NHPA PUBLICITY COMMITTEE

By BOB CHAMPION, Chr.

The newspaper "USA TODAY" is interested in news about horseshoe pitching for their special page "Across the USA in Sports" appearing daily in their popular publication. This special page includes top sports news from every state in the nation with concise, interesting news from the World of Sports.

Particularly they are interested in the winners of the major horseshoe tournaments and especially the results of every class winner in the NHPA World Tournament. Also any unusual horseshoe pitching news like perfect games, new records will be accepted, but will not include results of regularly scheduled weekend tournaments.

All it takes is a toll-free phone call to Julie Ward at the following number: 1-800-368-3024, extension 6525. It is very important that the call be made the next morning following the tournament. Have your complete data at hand before you call and be brief in your reporting.

Now is the time to make contact with your local media and let them know that horseshoe pitching is alive and kicking in your community. Know who to contact and keep the number available to your club and tournament officers. Be sure to appoint a publicity chairperson for your group.

---

COVER PICTURE. . . Shown this month is Mr. Steve Dumire, manager of the Fairmount, W. Va. Coca-Cola, as he presents a check for \$1,000 to Mr. Charles Bunner, Tournament Director for the Tri-County Horseshoe Club's "Head-of-the-Mon-River First Coca-Cola Classic" held in Fairmount, W. Va. over the Memorial Day weekend.

## LOUCKS OVER MANITONE FOR CALIF. COLUSA OPEN TITLE

**CLASS A-1** — Dave Loucks won a tie breaker with Pete Manitone, 7-1-65.9; Pete Manitone, 6-2-54.1; Sandy Hardy, 4-3-58.6; Emmett Schroeder, 4-3-56.4; Chuck Seal, 4-3-55; Lou Fontaine, 3-4-55; Don Williams, 1-6-45.7; Dave Stork, 0-7-49.9.

**CLASS A-2** — Joe Colt, 7-0-51.4; Ben Yost, 6-1-36.9; Pete Donoho, 5-2-47.9; Max Vice, 4-3-42.5; Leonard Bood, 2-5-43.6; Vern Gosney, 2-5-42.1; Jack Fravel, 2-5-35; Lee Oliver, 0-7-36.4.

**CLASS A-3** — Don Purdum, 5-2-41.8; Jim Long, 4-3-36.9; Fred Siemucht, 4-3-35.7; Smoke Daily, 4-3-32.1; Bud Grisaffi, 4-3-31.1; Duane Schmit, 3-4-31.1; Gary Dillon, 2-5-32.9.

**CLASS A-4** — Roy Thomas, 6-2-29.4; Charles McDonald, 5-3-33.1; Ben Chapputti, 4-3-34.3; Bob Jaco, 4-3-33.2; Gerald Hollman, 4-3-31.4; Jim Kyker, 4-3-30.4; Tom Stewart, 2-5-21.4; Leigh Graves, 0-7-22.1.

**CLASS A-5** — Chick White, 6-2-27.1; Ken Reid, 5-3-29.6; Dwain Hettinger, 4-3-27.5; John Barney, 4-3-26.7; Lee Thornhill, 4-3-25.8; Mike Denson, 3-4-21.7; Buck Gendron, 3-4-21.7.

**CLASS A-6** — Dave Alexander, 7-1-24.3; Leo Wanner, 6-2-18.2; George Barth, 5-2-20; Jim Denton, 4-3-16.3; Bill Padgett, 3-4-12.5; Bob Thomas, 2-5-20.4; Lee Hardy, 2-5-15.8.

## RINGERS REMEMBERED

By KEVIN CONE

The only man to ever pitch three consecutive 90% games twice in the same World Tournament is Elmer Hohl in the 1968 World Tournament in Keene, New Hampshire. In games 14, 15, 16 Elmer had 100%, 90.9% and 92.8% respectfully. Thus, he joined Floyd Toole and Curt Day as the only men to pitch three consecutive 90% games but Hohl broke that record in the 21st, 22nd, and 23rd games pitching 91.7%, 93.4%, and 92.5% respectfully. Elmer set or tied four World Tournament records. High qualifying score of 572 in 200 shoes (93%), highest average for men's division complet tournament 88.1578%, a perfect game of 30 shoes, and he tied Casey Jones with 13.90% games. Hohl's record of 35 wins and 0 losses is unbelievable considering the following facts: Nine men averaged over 80%, only in 1965 when ten and 1964 when 13 did were better. Twenty-six men averaged over 75%. 40 games were over 90%, 114 more were over 85%, and a record setting 268 other games over 80%. Thirty-five of the 36 men had at least one 80% game, 28 at least one over 85%, and 14 at least one over 90%. The combined 36 men averaged the best in World Tournament History.

Elmer Hohl's accomplishment stands as the greatest single year performance in World Tournament history, especially to the many that consider him the greatest pitcher of all time.

On a personal note, here are a few ideas I have concerning the betterment of horseshoe.

It's great to have long games and lots of ringers and I as a pitcher would like nothing better to pitch against a top notch player in a 40 point 120 shoe cancellation game but if we are to ever receive TV exposure and due recognition to our game, then we are going to have to definitely shorten it for the purpose of catering to our vital

## RINGERS REMEMBERED — (Continued)

spectator. They want to watch people score points not cancel them. Horseshoe is the only sport that doesn't have some sort of a time limit. The team sports play so many minutes or innings, golf so many holes, bowling so many frames. Since we are so close to really take off exposure wise, now is the time to get a set format that is simple to follow. A 40 shoe countall game would take roughly 20 minutes to play, the same as a bowling match. As I said before, as a pitcher I wouldn't favor this but as a pitcher that wants to see this sport grow and become what it should be (a TV sport playing for big money), I would learn to favor it.

In a 40 shoe count all game you will have higher overall averages, higher game averages and final score of say 102-99 which is much more appealing than 18-16. A 75% game would be around 100 points. The spectator that doesn't know much about our sport can follow this very easily. 120 points possible (with electronic scoreboards like the ones in the Pitchin' Palace Opp 1 41 Opp 2 39 18 shoes pitched format) 3 points for a ringer and 1 point for a shoe within 6inches makes it very easy to understand. In a cancellation game they find it hard to comprehend someone putting ringers on and after 30 minutes of play the score only being 24-21-WHY?

Whether a game is count all or cancellation the person who pitches the most ringers is going to win 98% of the time. What ever happened to close counting in horseshoes. In the higher classes, close does not count enough the way it is.

With our Sports Enterprise friends working so hard, this would be an ideal format for them. A person could pitch 11 qualifying games a day during the week then have the top 24 qualifiers play 12 games on Friday and 11 games on Saturday then with the top five playing a ladder tournament on Sunday.

Trivia Question: Who is the youngest woman to ever win the Women's World Title?

If anyone has anything interesting about the past or present history or statistics on horseshoes please feel free to send me a copy. It would be most appreciated.

## WHAT A GAME THEY PITCHED

## A NEW HORSESHOE BOOKLET

By **JERRY HOLT**

**OKLAHOMA CHAPLAIN**

**AND 1985 STATE CHAMPION**

This is a one hundred page booklet resulting from three years work. It contains the Oklahoma horseshoe pitching story. In addition it contains several sketches of top World Class pitchers. Hear how they got started, their great thrills, and tips. \$7.50 per booklet. Order from: Jerry Holt, Box 27, Medford, Oklahoma, 73759 or telephone (405) 395-2997 or 395-2663.



---

## In Memoriam

Word has been received of the passing of C.R. "Doc" Haworth, a long-time member of the Darke County (Ohio) Club on May 24 at his home.

His familiar face will be missing when horseshoe pitchers gather for the annual Greenville Ringer Classic. "Doc" will be remembered as a member and officer of the Darke County Club who worked many hours at tournaments at Greenville City Park and at the Darke County fairgrounds.

He is survived by his wife, Mildred, two daughters and four grand-children. The sympathy of the Darke County Club and that of the NHPA is extended to his loved ones.

---

## CHAMPIONSHIP HORSESHOES ON TV

By GLEN PORTT

Well, it happened! Did you see the show from Chicago? For those who didn't, let me tell you about it. RCA Corporation was the sponsor and signed with NBC for a 13 week series to be shown every Wednesday night at 10 p.m.

Because RCA wanted to spotlight 'colors' in order to show how clear its television sets brought 'color' into the home, the courts were constructed in various hues. The backstop was curved, cushioned, and colored gray with two large red horseshoes that crossed over each other painted on it.

The stakes were a brilliant yellow, the potter's clay orange, the pitching platforms a bright blue, and the area between the stakes green. The players were dressed in gray slacks with bright striped shirts and pitched white horseshoes with black and yellow stripes on them. The winner of each match received a gold plated horseshoe, cash money, and stayed on the program until he was defeated.

Ellis Cobb, Illinois... Truman Standard... Curt Day, Indiana... Don Titcomb, California... Milton Tate, Illinois and many others took part. How did the series do? At the end of 13 weeks, the program placed second on the Nielsen ratings for viewing at that time of the evening. The program was extended for an additional 5 weeks at which time it appeared on the "Tonight Show" on NBC, coast to coast.

Question: How come the likes of Walter Ray Williams, Dale Lipovsky, Mark Seibold, Alvin Perry, Jim Knisley, or Kevin Cone didn't appear on this series? And how about the women? Why wasn't Debbie Michaud, Phyllis Negaard, Tari Powell, or Debbie Pickering chosen?

Sorry folks, *they just couldn't qualify*. Some of them weren't even born. You see, I forgot to tell you that this all happened in 1957!

---

## TOP 6 NHPA WOMEN IN MORRIS, CT. TOURNAMENT

On June 21, a horseshoe tournament will be held in Morris, Connecticut, with only six competitors — the top six finishers in the women's division of the 1985 World Horseshoe Tournament. Don Weik of Lakeside, Ct., a top New England competitor for many years, and his local horseshoe club are planning and organizing this tournament which will combine some doubles competition with local Connecticut pitchers and some round robin competition for the women. It will end with ladder play to determine the winner. The Morris, Ct. group is raising money now for this tournament which they have been hoping to have for several years. This year, with a renovated horseshoe area, is the year. The women hope to see you there!

## NORTHERN CALIF. ASSN. — SETTING AN UPWARD TREND

By STEWART SNYDER

Horseshoe pitching in Northern California is, today, running at a new high pitch led by the innovative enthusiasm of its president, Verdan Zelmar. Evidence of increasing enthusiasm is exemplified by NCHPA having had the largest membership of all charters for the last three years. Five-hundred members make up nineteen clubs which offer as many as ninety tournaments yearly (up from 63 in 1980), on clay courts well distributed from Rio Dell-Scotia in the north to Seaside in the south.

A vital influence that introduces the game to prospective players is the Pitching Clinic held annually at the Santa Clara County Fair, initiated, supervised and well demonstrated by Northern California's leading pitcher, 1960 World Champion Don Titcomb; a champion when he was but a comparative youngster himself, he responds meaningfully to young pitchers who literally flock to throw a few shoes during his clinic.

Don understands well the latent desires of young people to engage in a self-satisfying sport that's fun to do; something inexpensive that gives an outlet for pent-up energies, and finally, the ultimate reward—a feeling of worthwhile achievement as skill increases. This clinic has proven to be a real success, for it brings to NCHPA a couple dozen new pitchers annually, mostly juniors.

Young players are receiving real encouragement from old veterans of the game; some oldsters give useful and informative paraphernalia as gifts (horseshoe related items) to stimulate new pitchers with the feeling that someone cares.

Perhaps as important as any gift is advice when given by one who can demonstrate his qualifications for giving it.

New pitchers are encouraged to join the State and National associations and to subscribe to the News Digest.

California, a long, narrow state (1000 miles by 250) originally consisted of one California charter, but as population increased so did horseshoe pitching, and for better, closer control of widely separated areas, the state was split into Northern and Southern associations.

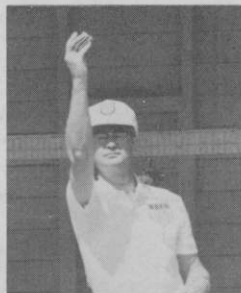
Now, the spread of horseshoe pitching population brought need for yet a third charter; Eastern Sierra, established in 1985, created to favor pitchers east of the Sierra Nevada mountain range. This charter, of their own, gives control of specific location needs, administrative and travelwise.

All three associations have annual tournaments to determine class championships while overall California champions emerge from one grand, joint tournament alternating its location annually between the three associations.

NCHPA is a leader, not only in membership, but through the initiation of progressive enabling features as: A computer stat program, started in 1985, keeps Northern Cal continually plugging for improvement in the game's record keeping system—the naming of five area directors—New-member packets—appointment of a Social Secretary (annual picnics are a great favorite among pitching families)—a Digest correspondent—abolished qualifying for State Tournament play—perhaps the most valuable new feature was incorporation as a non-profit organization to protect State officers from personal liability, an essential factor in this provocative sue-happy era.

Verdan Zelmar, Northern California's president par excellence, now in his fourth term, feels that introduction of the above mentioned features are essential to round-out Northern Cal's work ethics for betterment of the game.

By performing thusly, as the game's energetic driving force, President Zelmar leads the association in a manner consistent with National aims; to bring horseshoe pitching forward as a sport for all ages.







# “From Out Of The Mail Bag”

Horseshoe Digest  
P.O. Box 1606  
Aurora, Ill. 60507

Dear Mr. Cobb:

I have only participated in this great Sport of Horseshoe Pitching less than two years, but in this period of time I have steadily improved because of practice but the main reason being the many helpful suggestions from other more experienced players. I am constantly amazed with players who have been pitching all of their lives and will still gladly take time out to help me and others in order to help improve our game. During the last few years I have mainly pitched against players in my horseshoe club, so I was greatly anticipating my first tournament May 25, in Peoria, Ill. To say the least I was greatly disappointed, not because of the highly organized manner in which the tournament was conducted or the caliber of players that participated. . . but because of mixing 30 and 40 foot players. Instead of smiling faces I saw frowns, instead of encouraging words I heard dissatisfaction, the friendliness that I have been accustomed to and expected was discarded. I do not know a solution to this problem but I do feel this situation of mixing Women at 30 feet and Men at 40 feet must be resolved and quickly by all members and officers of the Executive Council. In years to come when I think back to my first tournament I will not remember what place I finished or how many games I won but sadly I'll remember the bickering and descension among NHPA members.

Sincerely,  
Joe Beneky  
Springfield, Ill.

\* \* \* \* \*

Horseshoe Digest  
P.O. Box 1606  
Aurora, Ill. 60507

June 6, 1986

Dear Mr. Cobb,

I read Mr. Sidney S. Logsdon Box 78 Versailles, IL letter in my June Horseshoe News Digest and I agree with him 100 percent.

I, and many of my fellow pitchers over 70 agree we would not pitch 30 feet against men pitching 40 feet even if the rules say we could.

Willard E. Eschenburg  
54230 North Avenue  
Mt. Clemens, MI 48045

## WANTED — ARNOLD TOOL & DIE PORTABLE COURTS

Don Weaver of 2206 Sunnyslope, Las Vegas, Nevada 89119 is searching for three more of the Portable Courts that used to be made in Iowa by Jim Hackett at the Arnold Tool and Die Co. They no longer make them, but there are many of them out there somewhere. Don would appreciate any help that may be offered.

## REGIONAL DIRECTOR'S REPORT

By GENE VAN SANT

"One of the primary functions of the NHPA Regional Directors and their Assistants is the promotion of the sport of horseshoes and the NHPA. In a continuing effort to inform the membership of what their regional directors are doing, this month's article hi-lites two RD's and their efforts."

Dateline Kentucky, region 22, Omar "Blackie" Blacketer. "I am sending you a schedule of our tournaments compiled by our State Secretary, John Hankins. It is in book form and an outstanding publication. It has been mailed to all members in the State. We have increased our tournaments from 11 to 19 this year. 18 are sanctioned.

Joe Minnick, our past State Secretary, John Hankins, and myself put on a tournament in conjunction with DERBY WEEK for the City of Louisville. A new attraction this year for Derby Week. We were told this would be a trial to determine if it would be worthwhile to have a Derby Week Tournament each year in conjunction with the Derby. It exceeded our wildest expectations due to the short time we had to prepare for it. The Derby Committee was well pleased and are exploring the possibility of having a BIG money tournament as one of the Derby Week attractions next year."

Dateline Kentucky region 22 Omar "Blackie" Blacketer. "We hit the jackpot! Bob Damonie, host for the sports program on W.A.V.E. TV channel 3, Louisville called and wanted to set up a date for some publicity. A date was set and our City Champs, John Stevenson, Kathy Norkuts, and myself pitched shoes on camera along with an interview. It was shown on Wednesday night and Thursday night. What a response! I am still getting phone calls! The publicity we received from the Derby Tournament was the key. W.H.A.S. channel 11 had shown a short clip of the tournament activities on a Sat. night after the Derby Tournament. This interest by the Derby Committee and the subsequent media coverage may be the break we need here in the Louisville area."

Dateline San Jose, Calif. region #26 in Don Titcomb. "Publicity activities our ARD's are working on. Terry & Becky Wood are working with the Marysville fire dept. on a horseshoe program. They are also working with the recreation Dept., asking that meeting dates of the horseshoe club in Marysville be included in the parks & recreation brochure. Name & addresses of contacts for information to be included.

Ernie and Earl Blanton are working with the Oakland Parks & recreation. The Oakland Sports festival is a three day affair and attracts thousands of people. Last year a horseshoe clinic and exhibition was put on by Don Titcomb and many members were signed up for the club and the NHPA.

Earl and Steve Kynard are working with their recreational dept. to develop a horseshoe program. A meeting has been planned. Likewise, Marion Hawley is working with his recreational dept. assisting them with any horseshoe program.

Salinas, Calif. rodeo. I will be directing an Amateur Tournament. We expect over 100 entries in the Doubles Tournament. There will be trophies and money prizes. I will also give exhibitions and clinics. There will be news coverage by local papers and it is hoped local TV coverage. The Salinas rodeo is California's largest. Fred & Genevieve Lavett will be helping with the program since any new members will be within their club boundaries of the Seaside Club.

I will be assisting and putting on a demonstration and clinic at the Rotary Club Benefit. This is held at the San Jose Historical Museum."

"Thank you Blackie and Don for your promotional programs underway in your regions. If the NHPA is to continue to grow it can only be accomplished at the grass roots level and promotions such as yours make it happen."

**LET'S PULL TO-GETHER  
and  
PUT OUR SPORT  
WHERE IT BELONGS!**

**— See —**

**“PAR HORSESHOE”  
VIDEO**

(PRO-AM-RATED)

**— AT WORLD TOURNAMENT SITE —**



**— Play —**

**“THE SEVEN WONDERS”**

(BE A WONDER WINNER)

\*\*\*\*\*

OUR SPORT CAN BE MADE INTO ONE  
TO BENEFIT HUMANITY AT ALL LEVELS  
WORLD WIDE FOR ALL GENERATIONS TO  
COME FAR MORE THAN ANY OTHER SPORT

***What More Could We Wish For?***

## C. TWIGG VICTOR IN FREDERICK, MARYLAND OPENER

The Frederick Horseshoe Pitchers Association opened its season for Maryland on April 26 with more than 46 pitchers coming out from a long winter.

Charlie Twigg walked away with top honors in Class "A" with a playoff win over Elbert Shifflett.

**CLASS A** — C. Twigg 50.5; E. Shifflett, 56.3; S. Fleshman, 53.5; C. Cooper, 49.7; H. Markland, 47.4; C. Beachley, 46.4; P. Fleshman, 48.5; H. Fleshman, 44.2.

**CLASS B** — A. Gipe, 42.0; J. Swope, 37.0; D. Hurley, 40.2; R. Matlock, 36.0; J. Smith, 35.6; D. Jenkins, 30.1; C. Fleshman, 24.0.

**CLASS C** — B. Mentzer, 38.1; G. Keilholtz, 34.4; E. Varner, 37.8; H. Hargett, 33.2; P. Twigg, 26.4; E. Clobus, 32.4; D. Wallick, 28.5; D. Bolling, 26.6.

**CLASS D** — A. Runkles, 25.2; G. Hagen, 28.7; C. Metz, Jr., 25.5; Paul May, 19.3; D. Winfield, 21.4; D. Porter, 23.0; B. Ramsburg, 21.0; G. Johnson, 19.2.

**CLASS E** — G. Swaiko, 23.9; M. Harder, 21.7; W. Mowdy, 19.7; D. Kelly, 21.2; A. Wetzel, Sr., 18.8; I. Nicodemus, 18.8; C. Metz, Sr., 13.6; W. Holmes, 11.5.

**CLASS F** — R. Moxley, 18.1; L. Porter, 13.7; E. Depew, 18.7; K. Sweeney, 13.1; D. Wallick, Jr., 3.7.

## McCRINK UNDEFEATED IN N.J. STATE WARMUP OPEN

### NEWARK, N.J. — MAY 4 — SANC. 86-265

**CLASS A** — Joe McCrink, West Orange, 5-0-73.3-78.5; Bill Kolb, Toms River, 4-1-58.6-67.5; Art Tyson, Mt. Vernon, 3-2-59.8-68.1; Al Ravencraft, Newark, 2-3-45.7-48.4; Jack Giddes, Warren, 1-4-45.0-54.7; Joe Hickey, Belleville, 0-5-36.7-47.2.

**CLASS B** — Phil Zozzaro, Little Falls, 3-1-38.1-43.7; Jim Reed, Oldwick, 2-2-44.6-58.3; Wayne Harrison, High Bridge, 2-2-42.2-50.0; Jim Burd, Califon, 2-2-41.9-48.6; Ron Vogel, Middlesex, 1-3-30.5-33.3.

**CLASS C** — Larry Thomason, Woodbury, 5-0-35.8-44.8; Ed Dalton, Cranford, 3-2-34.4-45.2; Tom Manzoni, Pequannock, 3-2-31.7-50.0; Henry Batson, Stanhope, 2-3-32.5-43.1; Charles Davis, Hackettstown, 2-3-25.7-33.8; Bob Manzoni, West Milford, 0-5-26.0-29.3.

**CLASS D** — John Hughson, Somerville, 5-0-39.6-61.7; John Crane, Blairstown, 4-1-42.2-66.6; Don Gotts, Linden, 3-2-30.4-35.7; Ray Nuneviller, Thorofare, 2-3-28.3-35.4; John Dykstra, Englewood, 1-4-24.1-33.3; Vince Yannetti, Bound Brook, 0-5-20.9-37.0.

**CLASS E** — Lu Harlan, Wharton, 6-0-29.8-43.7; Gil Ciresa, Budd Lake, 4-2-26.5-34.0; Bryan Schneider, Edison, 3-3-27.2-45.8; Sonny Durando, Lindhurst, 3-3-19.8-28.0; Bill Fox, Washington, 2-4-25.0-36.6; Gary Pierson, Mine Hill, 2-4-19.8-28.9; Chet Smolenski, Oxford, 1-5-20.9-30.0.

## SPRING WARMUP — VINELAND, N.J. — SANC. 86-264

**CLASS A** — Ed Severs, Vineland, 6-0-49.1-58.3; Bill Kolb, Toms River, 4-2-41.8-50.0; John Thomas, Ship Bottom, 3-3-43.5-50.0; Ron Vogel, Middlesex, 3-3-42.7-50.0; Ray Shoher, Newfield, 3-3-40.3-46.6; Larry Thomason, Woodbury, 2-4-38.0-46.0; Don Knapp, Thorofare, 0-6-32.4-48.2.

**CLASS B** — Ray Nuneviller, Thorofare, 6-0-40.1-52.7; Vince Yannetti, Bound Brook, 5-1-26.7-33.3; Mel Elmer, Millville, 4-2-25.0-29.5; Arnold Mead, 3-3-10.2-22.7; Butch Orlando, 2-4-17.3-21.0; Don Carter, 1-5-18.3-30.9; Jay Whilden, 0-6-6.9-14.5.

**BUSH WINS JOHNSON OPEN — HUNTSVILLE, ALA. SANC. 86-124**

M. Bush went 6-0 and coasted to an easy victory in the 1st Ala. tournament held at beautiful Braham Springs Park on 4-19-86.

**CLASS A** — M. Bush, 7-0-63.9; A. Copeland, 6-1-61.9; J. Henderson, 5-2-59.4; W. Shaneyfelt, 4-3-60.2; J. Mullican, 2-5-61.7; J. Harris, 2-5-53.2; M. Bastin, 2-5-49.7; M. Henderson, 1-6-43.9.

**CLASS B** — Johnson, 6-0-56.0; Baker, 5-1-45.6; Betterton, 3-5-50.0; Banks, 3-3-45.4; Morris, 2-4-43.2; Connally, 1-5-39.0; Gipson, 1-5-35.1.

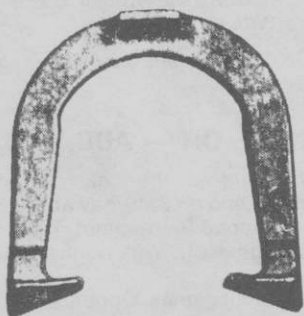
**CLASS C** — Moore, 7-0-37.1; Scott, 6-1-29.5; Magnum, 5-2-30.7; Keele, 3-4-21.3; Lindsey, 2-5-24.5; Bouton, 2-5-21.4; Dahlgren, 0-6-19.2.

**WOMEN'S CLASS** — Wigginton, 2-1; R. Lynn, 2-1; M. Scott, 0-2.

**HOMEWOOD, ALA. DOGWOOD FESTIVAL — SANC. 86-127**

**CLASS A** — J. Harris, 5-0-56.5; F. Betterton, 3-2-53.8; J. Mullican, 3-2-53.5; H. Irwin, 2-3-42.6; J. Nichols, 2-3-44.7; J. Johnson, 0-5.

**CLASS B** — M. Connally, 5-0-42.2; B. Calhoun, 3-2-34.6; R. Scott, 2-3-29.0; N. Lynn, 2-3-29.2; O.A. Lindsey, 1-3-28.9; B. Fogleman, 1-3-20.5.

**TED ALLEN HORSESHOES**

An original professional shoe. Still the very best professional shoe — Designed by a Champion — Used by many Champions — Not all users will become champions, but by throwing ALLEN's, you know that you've performed your best.

The designed features were invented by TED ALLEN, a 10 time world champion. He has made world records over and over with them. The design was a leader. After years it came to be a trend as a guideline in shoe equipment.

You can't go wrong in using them.

1045 LINDEN AVENUE

BOULDER, COLORADO 80302

## MARIETTA OPEN — JUNE 1 — SANC. 86-218

Glen Portt of Albany, Ga. won top honors in the Marietta Open tournament held at the Cobb County Recreation Courts in Marietta on Sunday, June 1.

A marathon 'B' class was finished under the lights after taking nearly 8 hours of pitching to decide the winner. Iris Sandham of Lindburn, Ga. was 'B' class champion and Henry Turner of Canton, Ga. took a 'C' class victory.

**CLASS A** — Glen Portt, Albany, 7-0-71.1; Larry Morton, Columbus, 5-2-64.1; Richard Williams, Rockmart, 5-2-61.1; Tommy Lawson, Acworth, 4-3-57.5; Cotton Black, Ringold, 4-3-63.6; Jim Waters, 2-5-53.6; Roy Whitlock, 1-6-52.0; Geo. Bradfield, 0-7-47.0.

**CLASS B** — Iris Sandham, Lilburn, 7-2-50.2; Ricky Presley, Rockmart, 7-2-46.0; Oliver McClarity, Rockmart, 7-2-48.9; Walter Brake, Athens, 6-3-49.5; Junior Brown, Cornelia, 6-3-45.7; Elbert Allen, Carolton, 4-5-38.8; Bud Kurtz, Marietta, 3-6-39.7; Bettie Kurtz, Marietta, 2-7-36.0; Rojer Stamper, 2-7-34.5; Bill Calhoun, Opelika, Ala., 1-8-37.

**CLASS C** — Henry Turner, Canton, 8-1-45.7; A.W. Weatherford, Braselton, 7-2-40.2; Bob Sensinger, Cornelia, 7-2-40.1; Jim Wood, Jefferson, 7-2-38.2; Keith Shipp, Dallas, 5-4-41.4; Jack Shipp, Dallas, 4-5-36.7; Gene Nichols, Jefferson, 2-7-27.7; Mike Simmons, 2-7-21.7; Samson Marchman, Rockmart, 0-9-20.3.

## BROOKS BONANZA HELD IN ALPHARETTA, GA. — SANC. 86-217

The Georgia Association held its third tournament of the 1986 season at the J.E. Brooks courts in Alpharetta, Georgia. Sanctioned play began in 1961 on the original 10-courts, and are still in excellent condition. Every Wednesday evening there is usually a waiting line of pitchers wanting to play. This year Ottie Reno, author of horseshoe pitching books, paid a visit. Mr. Brooks extends a cordial invitation to all pitchers to come and participate in his tournaments. This was a handicap tournament with J.E. Brooks the overall winner.

**CLASS A** — Iris Sandham, 4-1-43.6; Kathy Green, 3-2-42.0; Wayne Brooks, 3-2-39.2; Ottie Reno, 2-3-46.8; Tommy Lawson, 2-3-46.4; Richard Williams, 1-4-42.0.

**CLASS B** — R. Presley, 4-1-40.4; Jack Shipp, 3-2-36.0; H. Turner, 3-2-38.8; Jason Shipp, 2-3-32.8; Jim Haley, 2-3-33.2; Keith Shipp, 1-4-24.4.

## 1986 NEWS-HERALD OPEN — PAINESVILLE, OH — AUG. 9-10

The 1986 News-Herald Open tournament will be held at the Lake County Fairgrounds, Mentor Ave. Fairgrounds Rd., in Painesville, Ohio on Saturday and Sunday, August 9-10. Entry fee will be \$8.00, it will be a sanctioned tournament. Tournament director is Mr. Walter Sargent, 38039 West Spaulding St., Willoughby, Ohio 44094. Phone: 216-942-4900.

Method of play will be 6-man round robin, 50-shoe count-all games. Opponents will alternate first pitch. In the event of tie games, 4 extra shoes will be pitched.

## FULLER PLAYOFF VICTOR IN S.C. OPEN — SANC. 86-70

**CLASS A-1** — J.B. Fuller, 4-1-78.5; W. E. Stephens, 4-1-64.8; James Sumlin, 3-2-61.4; A.J. Nave, 3-2-58.5; Jim Harris, 1-4-47.6; Ted Whitlock, 0-4-44.9.

**CLASS A-2** — B.J. Brown, 4-1-57.6; Norman Kelley, 4-1-58.0; Roy Littrell, 3-2-58.8; Paul Stewart, 2-3-49.5; Wayne McCyrry, 1-4-39.8; Jim Broome, 1-4-39.7.

**CLASS B** — Oren Solebee, 4-1-44.0; James Cook, 4-1-43.0; Jim Wood, 3-2-29.2; Steve Kelley, 2-3-28.4; Ray Whitlock, 2-3-26.6; Mike Simmons, 0-5-28.8.



**S.E. INVITATIONAL WON BY PORTT — MAY 17 — SANC. 86-188**

The Georgia Horseshoe Pitchers Association hosted the Southeastern Invitational Tournament at the Paulding County Courts in Dallas, Ga. on May 17. Sanction 86-188.

Pitchers from four surrounding states (South Carolina, Tenn., Fla. and Alabama) and Georgia participated in this tournament which had the largest prize fund of any of the tournaments held so far this year.

A total purse of \$675.00 was made available thru entry fees and sponsor donations.

**CLASS A FINALS** — *Glen Portt, Albany, Ga., 9-9-66.7; Larry Morton, Columbus, Ga., 7-2-65; W. Stephens, Simpsonville, S.C., 7-2-57; R. Williams, Rockmart, Ga., 4-5-52.8.*

**CLASS A** — *Glen Portt, 9-0-66.7; L. Morton, 7-2-65.0; W. Stevens, 7-2-57.0; R. Williams, 4-5-52.8; A.J. Nave, 3-6; J. Harris, 3-6; J. Conaway, 3-6; D. Stallings, 3-6; J. Waters, 3-6; C. Fender, 3-6.*

**CLASS B** — *R. Williams, 6-1-55.03; T. Lawson, 5-2-50.3; W. Brake, 4-3-50.5; W. Grant, 4-3-49.7; O. McClarity, 4-3-45.9; Iris Sandham, 3-4-49.7; G. Bradfield, 2-5-45.7; E. Allen, 0-7-31.2.*

**CLASS C** — *Lamar Fowler, 7-0-47.03; B. Kurtz, 5-2-38.6; Kathy Green, 4-3-40.9; J. Haley, 4-3-38.8; H. Turner, 3-4-42.2; Jason Shipp, 2-5-34.4; J. Fowler, 2-5-34.2; Jack Shipp, 2-5-31.3.*

**CLASS D** — *K. Shipp, 5-1-29.6; James Spencer, 5-2-30.2; G. Cook, 4-2-27.6; H. Ash, 4-2-20.6; L. Robbins, 2-4-23.9; J.E. Brooks, 2-4-16.1; Jim Spencer, 0-6-14.0.*

**CLASS E** — *J. Davis, 4-1-18.4; C. Osborn, 4-1-14.8; R. Hambrick, 3-2-18.0; C. Brown, 2-3-10.4; D. Edwards, 1-4-9.6; J. Adcock, 1-4-6.8.*

**JACK GIDDES WINS AT VINELAND, N.J. — 86-264**

**CLASS A** — *Jack Giddes, Warren, 8-0-51.4; Bill Kolb, Toms River, 7-1-52.4; Phil Zozaro, Little Falls, 5-3-42.3; Al Ravencraft, Newark, 4-4-45.7; Stan McCarty, Lakehurst, 4-4-42.9; John Thomas, Ship Bottom, 3-5-41.4; Ray Shoher, Newfield, 3-5-39.7; Ed Severs, Vineland, 2-6-47.4; John Basile, Minotola, 0-8-35.9.*

**CLASS B** — *Don Knapp, Thorofare, 7-1-40.2; Sonny Durando, Lindhurst, 7-1-26.7; Butch Orlana, Vineland, 5-3-29.9; Ray Nuneviller, Thorofare, 5-3-26.0; Alex Dobzanski, Gibbstown, 4-4-27.6; Mel Elmer, Millville, 4-4-26.6; Don Carter, Vineland, 3-5-17.9; Arnold Mead, Vineland, 1-7-11.2; Jay Whilden, Millville, 0-8-2.3.*

**WEBB HORSESHOES  
N.H.P.A. APPROVED**

1-4 pair .....	\$27.00
5-9 pair .....	\$25.50
10 pair or more .....	\$24.00

Add \$2.50 per pair shipping cost (USA)

**WEBB HORSESHOES & EQUIPMENT**  
1319 LICKING PIKE • WILDER, KY 41076  
Phone (606) 781-0589

**WASEMPACHER TOPS WASHINGTON, N.J. OPEN—SANC. 86-266**

**CLASS A** — Marty Waisempacher, Flemington, 3-1-48.4; Wayne Harrison, High Bridge, 3-1-44.6; Dave Everitt, Washington, 2-2-49.0; Tom Skinner, East Orange, 1-3-42.9; Jack Giddes, Warren, 1-3-39.7.

**CLASS B** — Dixon Deranek, Rahway, 4-0-49.4; Art Bangs, Vienna, 3-1-43.5; Jim Burd, Califon, 2-2-44.5; Joe Fritts, Washington, 1-3-28.3; George Patrick, Phillipsburg, 0-4-28.5.

**CLASS C** — Larry Thompson, Woodbury, 6-1-40.0; Henry Batson, Stanhope, 6-1-35.5; Charles Davis, Hackettstown, 4-3-36.3; Gil Ciresa, Budd Lake, 3-4-32.3; Ed Dalton, Cranford, 3-4-32.0; Bob Manzoni, West Milford, 2-5-37.5; Frank Rozzo, Flemington, 2-5-36.8; Don Gotts, Linden, 2-5-25.3.

**CLASS D** — Lu Harlan, Wharton, 6-1-30.1; Ray Nuneviller, Thorofare, 6-1-29.7; Andy Waisempacher, Flemington, 5-2-26.2; Gary Pierson, Mine Hill, 4-3-22.8; Bill Fox, Washington, 3-4-25.7; Bob Draine, Bedminster, 2-5-22.6; Art Hall, Milford, 1-6-20.3; Bob Harrison, High Bridge, 1-6-18.1.

**HOLLISTER WINNER IN VT. MOTHERS DAY OPEN — SANC.**

**CLASS A** — Kevin Hollister, 6-0-74.3; Dick Greene, 4-2-59.2; Debbie Brown, 4-2-47.4; Bud Leavitt, 3-3-47.5; Bev Forgues, 2-4-45.0; Bob Dean, 1-5-44.2; Jean Bean, 1-5-41.5.

**CLASS B** — Wendall Burnham, 6-1-38.6; Blakley Bigelow, 6-1-38.2; Don Choinere, 5-2-39.0; Connie Selleck, 4-2-36.7; John Coffey, 2-4-32.3; Don Taylor, 2-5-25.8; Elmer Moore, 0-6-21.5; Earl Booska, Forfeit.

**CLASS C** — Norman Boynton, 6-0-29.2; Robert Marshall, 4-2-25.9; Gibb Greene, 4-2-23.4; John Bronson, 3-3-19.0; Mike White, 2-3-19.5; David Blaisdell, 1-5-14.4; Tad Manila, Forfeit.

**CLASS D** — Bob Batton, 5-1-23.1; Charles Newton, 4-2-21.1; Peter Glennon, 4-2-17.5; Rick Lamphere, 3-3-19.2; Ron Stevens, 3-3-18.6; Gerry Randall, 3-3-16.6; Russel Alger, 0-6-6.6.

**CLASS E** — Bernie Hebert, 5-1-16.9; Sara Hollister, 5-1-10.2; Myron Selleck, 3-3-13.8; Ruth Wassong, 3-3-12.1; Ron Shackett, 3-3-10.6; Irv Stiefel, 2-4-6.3; Willie Francis, 0-6-3.6.

**JUNIOR CLASS (HANDICAP)** — Travis White, 4-2-8.6; Dana Bedard, 4-2-17.0; Jason White, 2-4-5.6; Shilo White, 2-4-5.0.

**NEW ROME, OH CLUB CLOSES 25th YEAR OF INDOOR PLAY**

The New Rome, Ohio Horseshoe Club concluded its 25th consecutive year of indoor league play on May 3rd completing a 30 week schedule.

The 80 members tossed 324,000 shoes on the 3 court layout. Twelve teams competed in a handicap league. Two members, Lawrence Miller of Chillicothe and John Martin of Circleville, averaged over 110 count-all points per shoe game and received no handicap.

The Lawrence Miller Chillicothe group was the league champion winning 2 of 3 rounds. Besides Miller and Martin this team's roster included Tom King, Gene McCutcheon, Ken, David and John Hawk.

Lawrence Miller pitched 164 games and the current NHPA Senior Champ averaged 116 points and 71% ringers. His top game was 45 ringers in 50 shoes with 139 points. Eight club members averaged over 100 points per game, Miller 116, Martin 111, Ruth Kirk 108, Tom Pearce 108, Max Roseberry 106, Rudy Von Dach 102, Joe Pillion 102, Jerry Boesch 100. Phyllis Nihart had the top game with handicap 146 points.

### NEW ROME — (Continued)

Harry Chadwick served as president and Dan Sanders, treasurer. Lillian Butterbaugh was building custodian, Clinton Hodges schedule arranger and Dave Rose maintenance man.

The Club members again enjoyed the fellowship of the Oattie Reno team which traveled nearly 200 miles weekly to keep their pitching date. Oattie, the author, pitcher and retired Pike Co. (Ohio) judge is one of a kind. His sister Ruth Kirk has pitched with the New Rome Club for 12 seasons averaging 113.7 points per game in 1979 her best season. Avanelle Brown is one of the few Ohioans boasting a home with a built-in horseshoe court.

### MICHAUD TOPS IN BENNINGTON, VT. INVITATIONAL

**CLASS A** — Debbie Michaud, 5-0-75.6; Gale Greene, 4-1-60.9; Dick Greene, 3-2-54.4; Leon Odell, 2-3-57.5; Arlie Greene, 1-4-46.7.

**CLASS B** — Francis Carriere, 8-1-4.1; Henry Cooper, 7-2-33.2; Gibb Greene, 6-3-31.7; Lydia Hart, 6-3-21.9; Tony Hart, 6-3-19.9; Keith Bruso, 6-3-14.5; Richard Krawczyk, 4-5-21.6; Bill Sweet, 2-7-9.6.

**CLASS C** — Ken Lorette, 7-0-17.9; Rick Lamphere, 6-1-20; Ruth Wassong, 5-2-15.6; Jerry Randall, 4-3-22.4; Rusty Alger, 3-4-12; Tim Dunham, 2-5-9.7.

**JUNIORS** — Glenn Matheson, 6-0-59.9; Denny Young, 4-2-36.8; Jesse King, 2-4-12.8; Ron Carson, 0-6-10.7.

The shoe for the 1980's

# STAR

Stainless  Horseshoes

WHEN YOU SPEND HUNDREDS OF HOURS PRACTICING TO BE THE BEST HORSEHOE PITCHER YOU CAN BE, DOESN'T IT MAKE SENSE TO PITCH THE ONLY PRECISION MADE HORSESHOE?. YOU CAN BE SURE THAT EACH SHOE PITCHED IS LIKE ITS MATE.

IT PAYS TO PITCH THE ORIGINAL PRECISION STAINLESS HORSESHOE TO HELP YOU REACH YOUR ULTIMATE GOALS AND INSURE THAT COMPETITIVE EDGE NEEDED TO BE A WINNER.

**ALL STAR'S ARE DEAD SOFT AND THEY WEIGH 2 LBS. 8 OZ.**

NHPA APPROVED



\$69.00 per pair postpaid

Send Check or Money Order to:

Alfred R. Boudreau Jr.  
301-A Old Ipswich Rd.  
Rindge, N.H. 03461

(ALSO AVAILABLE THROUGH YOUR N.H.P.A. DEALER)

**TOM BOARD SPECIAL (PA.) WON BY DENNISON — SANC. 86-55**

**CLASS A** — Ed Dennison, 5-2-58.4; Bill Hofecker, 4-3-58.2; Ray Rugg, 4-3-57.2; Joey Morris, 4-3-55.9; Bob McKnight, 4-3-55.8; Casey Danner, 3-4-57.2; Ed Blum, 3-4-55.9; Jack Rainbow, 1-6-48.6.

**CLASS B** — Tom Piscalish, 6-1-41.8; Frank Morgan, 5-2-45.8; Clarence Dixon, 5-2-43.8; Charles Schech, 5-2-42.9; Ed Herneman, 4-3-39.8; Jack Bruny, 2-5-31.8; Ron Bunyak, 1-6-25.7; Frank Kilinsky, 0-7-Forfeit.

**CLASS C** — Bill Stahl, 6-1-42.7; Henry Hansen, 5-2-43.1; Ed Sell, 5-2-36.8; J. Antesberger, 4-3-40.1; Frank Graham, 3-4-40.1; Homer Browne, 3-4-36.9; Bob Lapping, 2-5-34.0; Geo. Zayac, 0-7-24.2.

**CLASS D** — Andy Fecik, 6-1-40.7; Herman Boyer, 5-2-23.0; Clair Jones, 4-3-33.9; George Bercini, 4-3-28.9; Clark Carnahan, 4-3-28.4; Don Green, 3-4-28.6; Ray Martinez, 2-5-25.3; John Tedrow, 1-6-20.0.

**CLASS E** — Vaughn Dutis, 5-1-31.7; Bud Kerns, 4-2-25.9; Ken Trumbull, 3-3-26.3; Gene Forish, 3-3-23.9; Lee Zeh, 2-4-26.9; John Forish, 2-4-23.9; Ellsworth Warner, 2-4-15.6.

**CLASS F** — Ray Martinez, 7-0-31.5; Geo. Blehi, 5-2-25.0; Robin Jones, 4-3-23.8; Gene Swagger, 4-3-23.2; Al Watt, 3-4-18.7; Bob Campbell, 3-4-18.0; Butch Stover, 2-5-11.1; Geo. Wardo, 0-7-14.0.

**WOMEN** — Grace Rugg, 6-1-40.3; Betty Lapping, 6-1-24.5; Sandy Carnahan, 5-2-32.8; Helena Morgan, 4-3-34.3; Sheri Dagan, 3-4-27.0; Ruth Carnahan, 2-5-23.0; Jean Reefer, 2-5-21.6; Rita Tedrow, 0-7-18.1.

**McCRINK FRONT RUNNER IN WEASEL BROOK OPEN — MAY 25  
CLIFTON, NEW JERSEY — SANCTION 86-267**

**CLASS A** — Joe McCrink, 10-0-75.4; Art Tyson, 9-1-67.7; Bill Kolb, 7-3-54.0; Al Ravencraft, 6-4-52.6; Marty Waisempacher, 6-4-50.9; Phil Zozzaro, 5-5-46.4; Wayne Harrison, 4-6-50.0; Tom Skinner, 4-6-48.1; Jack Giddes, 3-7-42.8; Gil Franke, 1-9-42.1; John Forti, 0-10-36.2.

**CLASS B** — Bob Manzoni, 6-1-35.5; Larry Thomason, 5-2-40.5; Hank Leonard, 5-2-35.2; John Hughson, 5-2-34.6; Ed Dalton, 3-4-32.0; Ray Nuneviller, 2-5-21.9; Wes Cook, 1-6-27.6; Pat Marafiotte, 1-6-23.5.

**CLASS C** — Vince Yannetti, 5-1-38.2; Bill Fox, 5-1-30.5; Sonny Durando, 4-2-38.0; Ed Quigley, 4-2-32.6; John Dykstra, 2-4-25.6; Bryan Schneider, 1-5-18.4; Al Johnson, 0-6-8.4.

**3RD ANNUAL STRASBURG, PA. SPRING OPEN TITLE WON BY  
D. BESHORE — PAT CLOW LADIES TITLIST — SANC. 86-223**

The 3rd Annual Strasburg Spring Open Tournament was held May 24-25 at the famous Strasburg Inn.

**CLASS A** — Dan Beshore, 7-0-71.9; Glenn Rubendall, 5-2-7; Grant Powers, 5-2-65.3; Glenn Brown, 4-3-57.0; Dean McCurdy, 3-4-54.8; Bill Bruaw, 2-5-48.0; Don Dietz, 1-6-55.4; Les Hiebler, 1-6-46.0.

**CLASS B** — Guy Esh, 5-2-42.5; Wayne McCloskey, 4-3-45.5; Darle Esh, 4-3-44.3; Dick Wilson, 4-3-41.6; Earl Lartz, 3-4-49.1; Al Long, 3-4-48.4; Paul Caudill, Sr., 3-4-46.0; John Baugher, 2-5-36.2.

**STRASBURG OPEN — (Continued)**

**CLASS C** — John Clow, 6-1-51.9; Jim Mason, 6-1-46.1; Joel Medvidovich, 5-2-46; Paul Caudill, Jr., 5-2-4; Don Wagner, 3-4-42.9; Robert Gable, 3-4-37.2; Bill Johnson, 1-6-28.8; Bill Bonner, 0-7-12.5.

**CLASS D** — Robert Heffner, 4-1-35.6; Ned Kinard, 4-1-33.2; David Blouch, 3-2-33.3; Phil Clow, 2-3-35.5; Joe Shurmatis, 2-3-31.6; Bernie Snyder, 0-5-28.5.

**CLASS E** — Dennis Lloyd, 5-0-41.3; Harold Becker, 4-1-30.8; Gerard Harris, 3-2-40.6; Henry Pigg, 2-3-26.3; Glenn Eppley, 1-4-21.8; Mike Amdes, 0-5-11.2.

**LADIES** — Pat Clow, 5-0-44.5; Charlotte Onion, 4-1-48.7; Kim Johnson, 3-2-41.2; Lorraine Clow, 2-3-32.2; Jean Long, 1-4-23.9; Dawn Lloyd, 0-5-15.2.

**WHITE WINS MARYVILLE, CA. CLASS C TOURNAMENT**

Not all tournaments in California call for top pitchers to perform. Maryville, Ca. put on the Ben Capp Memorial Open on May 25 for C Class pitchers and below. Joe White took top spot with 6-1-52.0.

**CLASS C-1** — Joe White, 6-1-52.0; Juke Basham, 5-2-49.1; Don Pudum, 4-3-38.9; Earl Kynard, 4-3-36.6; Newton Graves, 4-3-36; Max Vice, 2-5-44; Lee VanDalsen, 2-5-35.

**CLASS C-2** — Doyle Palmer, 5-2-39.4; Carl Newsom, 4-3-41.4; Gary Dillon, 4-3-41.1; Fred Slemcha, 4-3-38.9; Jim Long, 4-3-35; John Sulvester, 3-4-40.9; Otis Hubbard, 3-4-35; Ralph Morrison, 1-6-32.6.

**CLASS C-3** — John Barney, 6-2-56; Leigh Graves, 5-3-29.2; Bud Grisaffi, 4-3-38; Sylvan Stratton, 4-3-32.6; Jim Keyes, 4-3-29.1; George Giglu, 4-3-26; Charles McDonald, 1-6-22.9; Scott Machado, 1-6-20.

**CLASS C-4** — Terry Wood, 4-1-26.1; Dwain Hettinger, 3-2-22.8; Bob Thomas, 3-2-18.4; Chick White, 2-3-21.6; Tom Stewart, 2-3-14.4.

**CLASS C-5** — Bob Bendorf, 5-0-23.2; George Barth, 4-1-22.8; Bil Botelli, 3-2-22; Victor Nicoli, 2-3-20; Norman Sander, 1-4-17.2; Marion Hawley, 0-5-17.6.

**CLASS C-6** — Bob Alling, 5-1-19.6; Bill Padgett, 5-2-11.6; Elmer Wilson, 4-2-14.3; Bob Gilreath, 2-3-13; Steve Williams, 1-4-11.

**GO AHEAD—BRAG A LITTLE!**

\$6.25 as shown

\$.25 if one name

.15- per ltr for anything additional

P&H included in price

3 weeks delivery

California residents add 6% tax

Name on mug \_\_\_\_\_ (Print)

1985 avg. \_\_\_\_\_ Other \_\_\_\_\_

Your name \_\_\_\_\_

Address \_\_\_\_\_

**GOLDLINE CERAMICS, 3024 Gayle St., Orange, CA 92665**

# Introducing The Designed For Hor



**Clay 'N Sand is the first sports shoe  
for horseshoe pitching as well as an  
excellent casual walking shoe.**

The soft leather composition means great give and breathability, and it's comfortable and light weight. Clay 'N Sands provide the stability and exceptional balance you need to win games and reach goals. You can confidently wear the black, gold and white Clay 'N Sands on your favorite pitching surface.

Don't delay. Order your revolutionary Clay 'N Sand Shoes today!

**CLAY 'N SAND® IS MADE IN THE U.S.A.**



# First Sports Shoe Horseshoe Pitching



**Order Your Clay 'N Sand Shoes today**

Check Size

Men's 8\_\_ 8½\_\_ 9\_\_ 9½\_\_ 10\_\_ 10½\_\_ 11\_\_ 11½\_\_ 12\_\_ 12½\_\_

Women's 6\_\_ 6½\_\_ 7\_\_ 7½\_\_ 8\_\_ 8½\_\_ 9\_\_ 9½\_\_

(Both shoes come medium width only.)

PLEASE PRINT

Name \_\_\_\_\_

Address \_\_\_\_\_

City \_\_\_\_\_ State \_\_\_\_\_ Zip \_\_\_\_\_

Send check or money order for \$59.95 plus \$3.00 shipping and handling to:

Clay 'N Sand, Inc.  
6901 Sheridan Rd.  
Kenosha, WI 53140

**OR**

Clay 'N Sand, Inc.  
19 Ridge Road  
Burlington, Conn. 06013

414/654-6404

1-800/243-3158

Wisconsin residents add 5%.

8:00 a.m. - 5:00 p.m. EDT

## SARASOTA-BRADENTON, FLA. HANDICAP LEAGUE FINALS WINTER OF 1985-86 — SANCTION 84-17

The League completed fourteen nights of pitching at Bee Ridge Park in Sarasota with only one night of unpleasant weather 'Rain.' Henry Hostetler from Ohio and Sarasota finished in first place with a total of 81 points and an average of 105.4 points. Levi Miller also from Ohio and Sarasota took second place with 74 points and averaged 105.3 points. Jack Edwards, last year's winner, finished in third place. Walter House was fourth with Lester Rose coming in fifth. Jim Hurst won sixth and DHarold Stoehrer came seventh. Omar Blacketer Louisville, Kentucky, made eighth with Russ Lobuzzetta in ninth. Paul Scheub collared tenth place with League Director Pat O'Toole coming in eleventh. Bert Tranvick finished in twelfth place with Ed Schultz was bottom money man in 13th place. Henry Hostetler took the Crossland Savings Trophy top prize money and the N.H.P.A. Champion award.

Jim Hurst won the High Game and High Ringer award. Earl Hartman won Rookie of the Year and High Game Over Average award. George Bishop from Michigan won Most Improved Player award and a pair of Deadeye Horseshoes. Jack Edwards won the Sportsmanship award on a vote of the players.

## J. KNISLEY RETAINS FAIRMONT, W. VA. 1st COCA-COLA CLASSIC TITLE — FRAN CARNAHAN WINS LADIES — SANC.

Jim Knisley of Bremen, Ohio, former World Champion, retained his title in the Head-of-the-Mon-River First Coca-Cola Classic Memorial Day Open held in Fairmont, W. Va. over the Memorial Day weekend. His high game was 94.4. Fran Carnahan of Shipperville, Pa. won the Ladies title with a 5-0-77.8 record among which was a high game of 89.3. Total prize money was \$3200. (See cover picture of Mr. Steve Dumire presenting check for \$1,000 to Mr. Charles Bunner.)

**CLASS A** — Knisley, 14-1-80.7; Zadroga, 12-3-72.6; Manns, 11-4-72.8; Maddox, 10-5-65.2; Wykle, 9-6-63.5; Withrow, 8-7-69.1; Carnahan, 8-7-64.7; Kuchcinski, 8-7-63.4; Martz, 7-8-61.7; Miller, 6-9-69.0; Rugg, 6-9-63.5; Sarbaugh, 6-9-62.6; Danner, 5-10-61.9; Johnson, 5-10-60.3; Roseberry, 4-11-56.6; Rice, 2-13-58.1.

**CLASS B** — Straitiff, 5-2-56.8; Leech, 5-2-58.6; Plevich, 4-3-50.3; Solomon, 4-3-50.0; Blum, 3-4-52.6; Roebuck, 3-4-49.0; Sedlack, 2-5-49.1; Morris, 2-5-44.4.

**CLASS C** — Pagnanelli, 7-0-61.5; Brodak, 6-1-57.2; Parsell, 4-3-61.9; Meckeovic, 4-3-56.2; Stout, 3-4-53.6; Griffith, 3-4-52.8; Shawver, 1-6-43.4; R. White, 0-7-37.1.

**CLASS D** — Melton, 6-1-51.9; Wilkins, 5-2-53.8; Woodward, 5-2-49.4; Gemza, 4-3-44.6; Reno, 4-3-41.1; L. White, 3-4-47.2; Murray, 1-6-41.9; Gower, 0-7-34.3.

**CLASS E** — Flowers, 5-2-47.3; D. Holmes, 5-2-49.2; R. Holmes, 4-3-52.3; Hixson, 4-3-44.5; Searles, 4-3-44.3; Bailey, 3-4-40.8; E. Greene, 2-5-38.4; R. Mills, 1-6-32.1.

**CLASS F** — H. Castro, 6-1-53.1; J. Akers, 5-2-45.8; C. Castro, 5-2-45.7; Denlinger, 5-2-42.9; Bercini, 3-4-36.5; N. Mills, 2-5-37.4; Weiss, 1-6-32.5; Doman, 1-6-28.2.

**CLASS G** — Troycheck, 4-1-37.2; R. Jackson, 3-2-41.2; Robinson, 3-2-39.4; C. Greene, 2-3-33.8; Lynch, 2-3-33.3; Rittenhouse, 1-4-30.7.

**CLASS H** — H. Mills, 4-1-31.1; Lockharat, 4-1-24.3; L. Setliff, 3-2-22.6; Wolfe, 2-3-23.1; D. Setliff, 2-3-22.1; Clark, 0-5-12.9.

**WOMEN CLASS A** — Carnahan, 5-0-77.8; Spaller, 4-1-61.9; Kirk, 3-2-61.3; Fortner, 2-3-48.7; Spencer, 1-4-42.3; B. Setliff, 0-5-38.9.

**WOMEN CLASS B** — Maze, 4-1-39.0; Brown, 4-1-47.8; F. Jackson, 4-1-39.2; Coburn, 2-3-31.9; B. White, 2-3-29.3; M. Greene, 0-5-17.1.

## BILL MacINTYRE WINS N.J. STATE MEMORIAL — JUNE 1 MIDDLESEX, NEW JERSEY — SANCTION 86-268

**CLASS A** — Bill MacIntyre, 8-0-63.5; Joe McCrink, 6-2-65.7; Dennis Joslin, 6-2-56.9; Bill Kolb, 6-2-56.9; Bill Kolb, 5-3-55.1; Jim Reed, 4-4-46.1; Al Cherry, 3-5-41.7; Woody Smith, 2-5-46.4; Ed Severs, 1-7-48.1; Al Ravencraft, 1-7-46.4.

**CLASS B** — Jack Giddes, 7-0-52.0; John Thomas, 5-2-45.2; Tom Manzoni, 4-3-41.72; John Basile, 4-3-41.71; Phil Zozzaro, 3-4-46.7; Dixon Deranek, 2-5-45.3; Ray Shober, 2-5-37.5; Gil Franke, 1-6-36.2.

**CLASS C** — Herman Wieser, 6-1-41.9; Bob Salmon, Sr., 5-2-36.3; Ron Vogel, 4-3-37.4; Larry Thomason, 3-4-39.2; Don Knapp, 3-4-38.6; Bob Manzoni, 3-4-33.4; George Marker, 3-4-31.8; John Hughson, 1-6-28.4.

**CLASS D** — Charles Davis, 6-1-37.1; Sunny Durando, 6-1-32.4; Gil Ciresa, 5-2-27.3; Frank Rozzo, 4-3-25.1; Vince Yannetti, 3-4-24.0; Bill Fournier, 2-5-20.6; Leo Grady, 1-6-19.7; Ray Nuneviller, 1-6-18.7.

**CLASS E** — John Danko, 8-0-25.0; Mel Elmer, 6-2-32.6; Andy Waisempacher, 6-2-23.9; Bill Fox, 4-4-23.6; Bryan Schneider, 4-4-22.8; Bob Lobell, 4-4-21.8; Bob Draine, 2-6-19.4; Oscar Marshall, 2-6-8.6; Pat Moy, 0-8-10.6.

**CLASS F** — Chet Smolenski, 5-1-18.9; John O'Neill, 4-2-16.4; Arnold Meade, 2-4-19.8; Louis Wasser, 1-5-14.4.

## KUGLER WINS WOLFE MEMORIAL OPEN— OH—SAN. 86-37

**CLASS A** — K. Kugler, 6-1-65.6; L. Coy, 5-2-61.4; L. Miller, 4-3-64.7; E. Waggoner, 3-4-64.4; John Martain, 3-4-61.5; J. Pillion, 3-4-59.0; R. Brunner, 2-5-61.9; F. Smith, 2-5-55.4.

**CLASS B** — G. Meece, 6-1-59.5; R. Curtis, 2-5-57.4; M. Flaig, 5-2-56.5; J. Baldwin, 4-3-50.8; J. Hurst, 3-4-57.1; J. Hawk, 3-4-54.1; M. Wipert, 2-5-44.7.

**CLASS C** — Joe Boesch, 6-1-56.7; T. Kling, 5-2-55.7; J. Hughes, 5-2-55.7; B. McClain, 4-3-51.2; J. Hiles, 3-4-49.4; S. Powers, 2-5-48.0; L. Rose, 2-5-36.7; L. Martini, 1-6-47.7.

**CLASS D** — E. Pratt, 7-0-44.4; K. Wagonfield, 6-1-49.7; K. Hawk, 4-3-43.5; J. Cooper, 3-4-42.9; B. Meyer, 3-4-40.5; D. Farley, 2-5-41.8; P. Jones, 2-5-41.2; D. Sanders, 1-6-35.7.

## DON WARD IN CONTROL OF TENN. SUMMER CLASSIC MORRISTOWN, TENN. — MAY 31 — SANC. 86-185

**CLASS A** — D. Ward, 5-0-76.9; R. Norwood, 4-1-69.7; D. Martino, 3-2-65.4; R. Williams, 2-3-57.2; M. Bastian, 1-4-55.2; T. Lawson, 0-5-49.1.

**CLASS B** — H. Irwin, 4-1-52.6; G. Bradfield, 4-1-51.8; L. Wyatt, 3-2-56.6; D. Stallings, 3-2-54.0; W. Grant, 1-4-45.6; J. Adkerson, 0-5-35.4.

**CLASS C** — C. Montgomery, 5-0-44.9; C. Bennett, 4-1-40.2; D. Davis, 3-2-34.1; J. Frizzell, 2-3-37.6; Jr. Haire, 1-4-37.7; J. Lewis, 0-5-21.4.

**CLASS D** — J. Davis, 4-1-28.9; C. Goode, 4-1-27.9; Dana Ward, 3-2-28.0; A. Gilliam, 2-3-25.8; H. Lones, 2-3-25.6; T. Harmon, 0-5-17.6.

**WOMEN** — V. Frizzell, 3-1-42.6; W. Henson, 1-3-40.0.

**JUNIORIS** — D. Wilkey, 4-0; N. Hineman, 3-1; C. Schwenk, 2-2; D. Foster, 1-3; J. L'Heureux, 0-4.

# DEADEYE HORSESHOES

## NOW IN

### FOUR MODELS

CLYDESDALES NOW IN LIGHTER WEIGHTS

	Price Per Pr.—Up to 12 Pairs	Price Per Pr.—12 Prs. & Over
CLYDESDALES 2# 10 oz., 2# 9 oz., 2# 8 oz., & 2# 7 oz.	\$27.00/Pr.	\$20.00/Pr.
N.T. 2# 10, 9, 8, 7 oz.	\$27.00/Pr.	\$20.00/Pr.
REGULAR 2# 8, 7, 6 oz.	\$27.00/Pr.	\$20.00/Pr.
E-Z GRIP 2# 10, 9, 8, 7 & 6 oz.	\$32.00/Pr.	\$25.00/Pr.

*Prices on all "DEADEYE" f.o.b. point of shipment.  
Missouri residents add 4.725% sales tax.*

All "DEADEYES" are dead soft (curved only).

All "DEADEYE" are guaranteed against breakage for 2 years  
from Date of Original Purchase (NOT RE-PLACEMENT DATE)

Contact (Bill Courtwright ONLY) for special prices on  
rejects and returned shoes (NO GUARANTEE)

DEADEYE Caps Available — \$5.00 postpaid

W. Courtwright  
P.O. Box 74  
Fenton, MO 63026  
Phone: (314) 376-5222 (8-5)  
(314) 677-2200

Walter Ray Williams, Jr.  
c/o Esther Williams  
2550 North Vine  
Tucson, AZ 85719  
Phone: (602) 323-7445  
(602) 795-1389 after 6 p.m.

For Local NHPA Representative Contact:  
Game Related National Buyer  
Edward A. Domey,, P.O. Box 298, Wilkinsonville, Ma 01590  
(617) 865-4619

**ORDER DIRECT or from NHPA REPRESENTATIVE**

**NEW "DEADEYE"  
FLIP-GRIP HORSESHOE  
DESIGNED FOR FLIP PITCHERS  
FEATURING:**

Caulks on both sides of shoe;  
dead soft around curved part of shoe only,  
2 year guarantee against breakage.

Price: \$27.00 per single pair and  
\$20.00 per pair in lots of 12 pairs.

Buy from regular "DEADEYE" outlets.

**BILL HENN KENTUCKY INDOOR STATE CHAMP — SHELBY COOK  
WINS LADIES TITLE — KEVIN HENN TOPS IN JUNIORS**

The 2nd Annual Kentucky Indoor State Horseshoe Pitching Championship was held April 19th & 20th at the O.K. Horseshoe Club, Cincinnati, Ohio. Bill Henn of Bellevue once again captured the Men's Division. Shelby Cook of Williamstown won the Ladies division with high percentage in a 3 way tie, and Kevin Henn won the Junior division with high percentage in a two way tie. Sanction 86-246.

**CLASS A** — Bill Henn, Bellevue, 7-0-62.8; Stan Lovelace, Covington, 5-2-57.8; Tib Turner, Nicholasville, 4-3-54.8; Omar Blacketer, Louisville, 3-4-51.8; Austin Tomlin, Williamstown, 3-4-48.0; Jimmy Noble, Louisville, 3-4-46.4; Harold Holland, Nicholasville, 3-4-45.6; Robert Hudnall, Quality, 0-7-52.6.

**CLASS B** — Robert Moore, Burlington, 7-0-56.0; Cliff Henn, Highland Hgts., 5-2-52.8; Ronnie Dennis, Elizabethtown, 5-2-48.2; Russ Dunnigan, Vanceburg, 5-2-46.3; Robert Simpson, Nicholasville, 2-5-46.6; Louis Pottinger, Elizabethtown, 2-5-43.8; Gene Clevenger, Maysville, 1-6-42.4; John Hankins, Goshen, 1-6-38.4.

**CLASS C** — "Boop" Rogg, Dayton, 7-0-54.0; Russ Dunnigan, Vanceburg, 6-1-47.1; Chick Henn, Covington, 4-3-44.5; Archie Adams, Versailles, 4-3-39.7; Bill Litteral, South Shore, 3-4-37.4; Gene Webster, Stamping Ground, 3-4-32.8; Danny Webb, Alexandria, 1-6-21.87; Pacer, 0-7.

**CLASS D** — Don Schneider, Cold Spring, 7-0-39.7; Mitch Duncan, Florence, 5-2-38.7; Gary Jackson, Owingsville, 4-3-38.7; Charles Peters, Elizabethtown, 4-3-38.4; David Ward, Elizabethtown, 4-3-36.1; Ed Henn, Elsmere, 2-5-35.2; Wm. Lloyd Evans, Versailles, 1-6-36.5; Mike Fraley, Quincey, 1-6-30.1.

**CLASS E** — Ed Mason, Garrison, 6-1-37.2; Bill Kenton, Highland Hgts., 5-2-36.9; Norman Fraley, Quincey, 4-3-38.8; Don Norton, New Castle, 4-3-36.1; Tony Webb, Alexandria, 3-4-31.2; Odis Lainhart, Petersburg, 3-4-30.9; Ike McClurg, Silver Grove, 2-5-29.5; Gilbert Strode, Tollesboro, 1-6-28.8.

**CLASS F** — Bob Williams, Dayton, 6-1-40.4; Steve Wilmoth, Tollesboro, 5-2-33.0; Duane McClurg, Silver Grove, 5-2-32.4; Gene Cochran, Villa Hills, 4-3-36.2; Les Simpson, Union, 3-4-23.4; Maurice Norton, Eminence, 2-5-27.2; Byron Sowder, Flat Woods, 2-5-25.3; Howard Buckley, Elsmere, 1-6-22.9.

**KENTUCKY INDOOR — (Continued)**

**CLASS G** — Miles Cooper, Garrison, 6-1-31.7; Monte Roberts, Warsaw, 6-1-29.9; Jim Leopold, Melbourne, 6-1-28.6; Carlos Webb, Wilder, 4-3-19.2; Ben Burrows, Midway, 3-4-13.8; Bill Caraway, Newport, 2-5-9.6; Lee Portwood, Burlington, 1-6-13.9; James Harrington, Daytona, 0-7-8.2.

**LADIES CLASS A** — Shelby Cook, Williamstown, 3-1-42.0; Lois Webster, Stamping Ground, 3-1-41.8; Sandy Clevenger, Maysville, 3-1-39.7; Donna Henn, Covington, 1-3-27.7; Helen Blacketer, Louisville, 0-4-16.6.

**LADIES CLASS B** — Patti Moher, Melbourne, 6-0-48.7; Karen Rimer, Newport, 3-3-25.8; June Stern, Newport, 2-4-25.9; Rita Reis, Vanceburg, 1-5-23.8.

**JUNIOR CLASS** — Kevin Henn, Covington, 5-1-47.5; Tom Rogg, Dayton, 5-1-42.3; Mike Williams, Dayton, 2-4-17.0; Scott Henn, Covington, 0-6-7.8.

**TENNESSEE ASSOCIATION TOURNAMENT ACTION**

**ANNUAL BURNS OPEN — CLEVELAND, TENN. — SANC. 86-184** — The annual Burns Open was held at Cleveland, Tenn. on May 3. High winds kept the ringer averages down. Roger Norwood topped Class A while Vivian Grizzell won the Ladies title. R. Ward, Jr. won the Junior crown.

**CLASS A** — R. Norwood, 4-1-69.1; R. Pruitt, 4-1-62.0; J. Waters, 4-1-59.4; G. Whaley, 2-3-56.6; M. Bastian, 2-3-50.0; W. Grant, 1-4-49.5.

**CLASS B** — J. Shelton, 4-1-50.7; D. Stallings, 3-2-55.5; L. Wyatt, 3-2-35.3; C. Green, 2-3-38.8; H. Irwin, 2-3-35.2; J. Frizzell, 1-4-34.6.

**CLASS C** — T. Price, 5-0-57.8; G. Lewis, 3-2-47.5; J. Haire, 3-2-44.4; R. Ward, 2-3-46.7; C. Montgomery, 1-4-38.8; W. Gee, 1-4-38.4.

**CLASS D** — D. Davis, 3-0-42.6; D. Ward, 1-2-28.0; M. Hatmaker, 1-2-25.0; T. Harmon, 1-2-23.7.

**CLASS E** — S. Cornette, 2-1-25.0; A. Gilliam, 2-1-24.4; J. Davis, 2-1-19.6; J. Lewis, 0-3-0.0.

**WOMEN** — V. Frizzell, 2-0-45.6; W. Henson, 1-1-38.7; D. Harmon, 0-2-31.2.

**JUNIORS** — R. Ward, Jr., 4-0-52.6; D. Wilkey, 3-1-15.6; N. Hineman, 1-3-8.6; B. Byrd, 1-3-7.4; D. Foster, 1-3-6.7.

**WARD MEMORIAL OPEN — May 10 — Cookeville, Tn. — Sanc. 86-186** — Don Ward won the Class A title posting a 5-0-72.6 record. M. Perkins won the Women's class while C. Perkins topped the Junior division.

**CLASS A** — Don Ward, 5-0-72.6; D. Martino, 3-2-63.6; R. Norwood, 3-2-63.0; J. Conners, 2-3-57.7; S. Smith, 1-4-57.2; R. Pruitt, 1-4-61.2.

**CLASS B** — M. Bastian, 5-0-58.6; D. Stallings, 3-2-50.4; W. Grant, 3-2-48.7; V. Fox, 2-3-50.3; C. Perkins, 2-3-47.0; T. Price, 0-5-39.1.

**CLASS C** — S. Banks, 4-1-47.6; L. Wyatt, 3-2-47.4; H. Irwin, 3-2-43.3; G. Lewis, 2-3-38.7; D. Davis, 1-4-32.9; J. Lewis, 1-4-32.2.

**CLASS D** — D. Self, 5-0-30.4; B. Dishner, 4-1-24.6; C. Bennett, 3-2-21.4; A. Gilliam, 1-4-17.9; Dana Ward, 1-4-21.0; W. Farley, 1-4-14.6.

**CLASS E** — F. Gaw, 4-1-22.4; J. Bennett, 3-2-25.3; T. Harmon, 3-2-23.5; J. Davis, 3-2-19.6; H. Lones, 2-3-19.7; T. Dickens, 0-6-2.6.

**WOMEN** — M. Perkins, 2-0-26.3; D. Harmon, 0-2-16.3.

**JUNIORS** — C. Perkins, 2-0-37.8; B. Byrd, 0-2-17.0.



**TENNESSEE — (Continued)**

**J. MIFF NAVE MEMORIAL — Elizabethton, Tn. — May 24 — Sanc. 86-187 — CLASS A** — D. Ward, 6-0-74.5; J.B. Fuller, 4-2-71.6; R. Martino, 4-2-66.6; J. Ray, 3-3-58.4; R. Norwood, 2-4-66.4; W. Stephens, 2-4-65.7; E. Linkous, 0-6-59.7.

**CLASS B** — R. Pruitt, 5-1-67.5; A.J. Nave, 4-2-65.7; G. Whaley, 4-2-62.5; N. Kelly, 3-3-58.6; M. Bastian, 3-3-57.0; R. Littrell, 2-4-56.9; W. Grant, 0-6-51.9.

**CLASS C** — L. Wyatt, 3-2-51.9; D. Stallings, 3-2-50.3; J. Adkerson, 3-2-49.2; V. Fox, 2-3-53.4; T. Price, 2-3-48.8; R. Livingston, 2-3-45.2.

**CLASS D** — R. Ward, 5-0-50.0; H. Irvin, 3-2-48.6; J. Whaley, 3-2-47.1; S. Callahan, 1-4-37.6; D. Self, 3-2-38.4; W. White, 0-6-31.4.

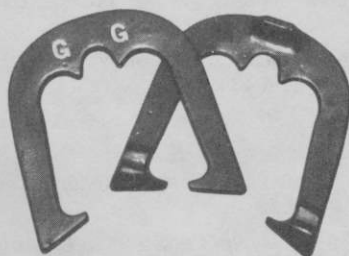
**CLASS E** — T. Johnson, 5-0-35.4; C. Harmon, 4-1-35.7; B. Leighton, 3-2-26.4; J. Bennett, 2-3-24.8; S. Cornette, 1-4-21.4; S. Kelly, 0-5-22.7.

**CLASS F** — B. Dishner, 3-2-40.0; C. Bennett, 3-2-36.8; C. Cutshaw, 2-3-25.8; A. Gilliam, 1-4-21.1; B. Grindstoff, 1-4-16.8; D. Mitchell, Forfeit.

**CLASS G** — H. Lones, 4-0-27.4; C. Good, 3-1-24.7; J. Davis, 2-2-18.9; R. Finney, 2-2-22.7; J. Cable, 0-4-19.8.

**1986 W.T. DATES — JULY 21 THRU AUGUST 2****"GREEOTT GRABBER"**

the ultimate ringer keeper



Soft temper 2lb. 8oz. 2lb. 9 oz.

Not JUST another horseshoe. The ultimate shock-absorbing, ringer saving design. Helps prevent loss of solidly hit ringers by rebounding.

Guaranteed against breakage for 1 year from date of purchase. Both pairs must be returned in original box.

\$28.00 pr. plus \$3.00 shipping, handling, to the 48 adjoining states. California residents add 6% tax. High grade steel casting. NOT cast iron. Send checks or money orders to:

"GREEOTT GRABBER" HORSESHOES  
c/o Steve Kynard 1380 Eagle Rock  
Woodland, CA 95695

Or from NHPA representatives



**BAKER WINS SHELDON, IL. MEM. DAY OPEN — SANC. 86-198**

State Champ, Cliff Baker, had some tough competition but was still able to pull through with 7-0-79.1. There were 34 players making up 4 evenly matched classes with everyone having a good time.

**CLASS A** — C. Baker, 7-0-79.1; K. Van Sant, 5-2-73.7; L. Rowe, 5-2-66.4; C. Bellman, 5-2-69.6; D. Peters, 3-4-58.4; G. Bryant, 2-5-59.6; D. Natschke, 1-6-44.7; B. Taylor, 0-7-43.9.

**CLASS B** — J. Miller, 6-1-44.1; J. Christensen, 5-2-37.9; F. Jones, 5-2-48; F. Jones, 5-2-48; J. Newberry, 3-4-38.2; E. Bryant, 3-4-41.1; D. Roe, 3-4-40.3; J. Gillespie, 2-5-38.3; B. Bell, 1-6-28.7.

**CLASS C** — R. Mayhew, 6-1-40.4; J. Simoneau, 5-2-36.6; G. O'Neal, 4-3-39.9; B. Stevenson, 4-3-26.7; L. Farris, 3-4-35.5; R. Fields, 3-4-33.4; D. LaFond, 2-5-30; L. Kleinert, 1-6-26.5.

**CLASS D** — M. Hough, 9-0-40.8; T. Williamson, 6-3-24; G. Howe, 6-3-18.3; T. Savoie, 5-4-26; B. West, 4-5-19.3; P. Webb, 4-5-20; S. Lanoue, 4-5-20.6; E. Lanoue, 4-5-17.7; J. Nicholson, 2-7-13.6; D. Kleinert, 1-8-9.2.

**PEORIA, IL ANNUAL CLASSIC — SANC. 86-286**

The top spot in this annual Memorial Day Weekend tournament was won by Ray Phillips, Magnolia, Il. Ray won all seven games averaging 66.6% for the day. Other pitchers undefeated for the day were Buck Neville, Tremont, Il in Class C, George King, Springfield, Il in Class G and Lori Simler, Forreston, Il in Class H.

**CLASS A** — R. Phillips, 7-0-66.6; H. Darnold, 5-2-66.8; E. Damarin, 4-3-61.4; H. Nelson, 3-4-61.6; D. Boren, 3-4-60.4; L. Ingersoll, 3-4-59.5; M. Knop, 2-5-58.5; S. Jackson, 0-7-53.5.

**CLASS B** — C. Erickson, 4-1-60.6; L. Knop, 3-2-48.6; H. Moroney, 2-3-50.5; L. Gillespie, 2-3-49.6; T. Phillips, 2-3-47.8; L. Oberbillig, 2-3-43.2.

**CLASS C** — B. Neville, 5-0-57.7; C. Nott, 3-2-46.3; D. Swank, 3-2-49.5; D. Simler, 2-3-41.9; D. Wade, 1-4-35.0; R. Ellinger, 1-4-30.7.

**CLASS D** — N. Tisdale, 4-1-35.5; P. Dohrmann, 3-2-41.2; D. Bailey, 3-2-38.5; L. Carey, 2-3-40.7; A. Peterman, 2-3-39.1; B. Courtwright, 1-4-37.5.

**CLASS E** — G. King, 5-0-41.7; A. Ulrich, 3-2-30.2; M. Spidle, 3-2-25.9; L. Brooks, 2-3-38.9; J. Jackson, 2-3-24.0.

**CLASS F** — J. Gerrard, 4-1-38.1; A. Castros, 3-2-32.7; C. Gardner, 3-2-40.6; W. Massey, 3-2-36.8; H. Bozard, 2-3-33.1; D. Jackson, 0-6-25.0.

**CLASS G** — J. Spidle, 4-1-40.5; W. Green, 4-1-43.2; E. Colgan, 2-3-39.5; R. Seeds, 2-3-36.1; K. Reid, 2-3-32.2; J. Wolfe, 1-4-30.1.

**CLASS H** — L. Simler, 5-0-40.2; W. Willard, 3-2-29.1; C. Grigsby, 2-3-26.9; E. Simler, 2-3-27.6; J. Davis, 2-3-35.1; C. Daniels, 1-4-20.0.

**CLASS I** — A. Jones, 4-1-34.3; J. Sanderson, 3-2-26.6; C. Marit, 3-2-32.8; J. Beneky, 3-2-27.0; R. Parisatta, 2-3-22.0.

**CLASS J** — G. Partridge, 6-1-28.5; L. Belknap, 6-1-25.3; R. Roling, 5-2-27.6; S. Nott, 3-4-16.8; N. Boatz, 3-4-18.6; D. Bartnik, 2-5-15.6; H. Slusarek, 2-5-19.4; B. Daniels, 1-6-9.1.

**SCHROEDER ON TOP IN DON PALMER OPEN — CALIF.**

**CLASS A-1** — Emmett Schroeder, 7-1-58.2; Ed Floyd, 6-2-62.2; Herb Rushing, 5-2-52; Joe Zoglman, 4-3-48.7; Walt Foreman, 3-4-53.7; Mate McBride, 2-5-51.5; Walt Robinson, 2-5-50.9; Boyd Walker, 0-7-35.4.

**CLASS A-2** — Ben Yost, 6-1-43.4; Marty Dunn, 5-2-48.5; Bert Charley, 4-3-44.6; Dick Hucke, 4-3-44; Vern Gosney, 4-3-43.1; Chuck Rodriguez, 2-5-42.5; Lee Oliver, 1-6-40.3.

**CLASS A-3** — Fred Wood, 6-1-40.4; Don Purdum, 5-2-39.9; Jay Richmond, 5-2-37.6; Bill Dise, 4-3-31; Brian Carlson, 3-4-38.2; Roy Parker, 3-4-36.3; John Delgado, 2-5-33.5.

**CLASS A-4** — Bob Lloyd, 5-0-33.2; Tom Burns, 4-1-33.6; Jim Long, 3-2-35.2; Gary Dillon, 2-3-31.4; Otis Hubbard, 1-4-31.4; Leonard Edwards, 0-5-29.

**CLASS A-5** — Gerald Hollman, 4-1-29; Irwin Malik, 3-2-25.4; Lee Thornhill, 3-2-26; Jim Cosgrove, 2-3-26.3; Kirby Elton, 2-3-20.6; Joe Novakovick, 1-4-26.7.

**CLASS A-6** — Al Alviso, 4-1-27.8; Ceres Perry, 4-1-24.4; Eldon Bryhan, 3-2-21.4; George Barth, 2-3-21.1; Obie Winn, 1-4-24.6; Glenn Jamieson, 1-4-19.4.

**CLASS A-7** — Mel Falcon, 5-1-19.7; Leo Wanner, 4-2-17.8; Bob Fread, 3-2-20.7; Ben Curtis, 2-3-19; Lee Henninger, 0-5-20.6.

**CLASS A-6** — John Hagerman, 5-1-17.6; Roy Heyden, 3-3-15.8; Gordon Brown, 3-3-14.6; Marion Hawley, 1-5-15.5.

**WOMEN CLASS W-1** — Marthe Dunn, 7-0-53.8; Virginia Sturla, 6-1-61.1; Carol Casados, 5-2-44.1; Billie Sue Pennington, 4-3-57; Genevieve Lavett, 3-4-40.9; Paige Pennington, 2-5-32.1; Lillian Lloyd, 1-6-33.7.

**WOMEN CLASS W-2** — Susie Rains, 7-0-26.5; Josephine Carley, 5-2-27.2; Gail Cook, 4-3-18.5; Marilyn Brown, 4-3-14.1; Sandy Kolberg, 3-4-23.1; Shirley Jamieson, 3-4-7.4; Jean Robinson, 2-5-18.3.

**DELGADO UNDEFEATED IN TURLOCK, CA. OPEN — MAY 10**

**CLASS B-1** — Delgado, 7-1-51.4; Joe Zoglman, 6-1-46.8; Marty Dunn, 5-2-47.7; Don Muenchow, 4-2-42.3; Walt Robinson, 3-4-44; Jim Garrett, 2-5-37.7; Bert Charley, 1-6-37.1; John Delgado, 0-7-30.8.

**CLASS B-2** — Barney Barnett, 6-1-30.6; Bob Lloyd, 5-2-28; Ross Akers, 5-2-26; Joe Ferrau, 4-3-29.7; Ceres Perry, 4-3-28.6; Lee Henninger, 3-4-25.4; Joe Schultz, 1-6-20.6; Bob Fread, 0-7-20.

**CLASS B-3** — Art Rector, 5-1-20.8; Mel Falcon, 4-2-23.2; Chet Carter, 3-2-21; Ernie Kim, 2-3-12.5; Jim Churchill, 2-3-10.

**CLASS W-1** — Billie Sue Pennington, 5-2-60.6; Virginia Sturla, 4-2-60; Marthe Dunn, 2-4-52.3; Carol Casados, 2-4-50.3; They doubled up here, played each other two times!

**CLASS W-2** — Josephine Charley, 6-0-30.3; Edith Zoglman, 3-3-27; Izetta Churchill, 3-3-18; Sandy Kolberg, 0-6-17.3; Doubled up here too!

---

**— 1986 DOUBLE RINGER SPECIAL —  
\$10.00 FOR 8 EDITIONS FEATURING WORLD TOURNAMENT**

**SPECIAL BOOKLET** — *On My Way Back* describes my return to the game as a Pitcher-Writer following heart surgery. Available now with special World Tournament stats, history, pictures.

Send \$5.00 to: Will Gullickson  
2850 26th St. S, Moorhead, Minnesota 56560

---

## SPECIAL NOTICE OF ADVERTISEMENT CORRECTION

IMPORTANT TO WILL GULLICKSON'S DOUBLE RINGER DIGEST SUBSCRIBERS! The advertisement carried in recent editions has been in error while listing the address to receive Will Gullickson's eight editions of Double Ringer Digest. Because of this error, anyone who has sent requests and checks for the editions are asked to write to Will Gullickson to make sure he or she is going to receive the editions. Sorry for the mixup. Correct address: WILL GULLICKSON, 2850 26th ST. S., MOORHEAD, MN. 56560.

## EXHIBITION & DEMONSTRATION MEET HELD AT SEQUIM, WA. SPONSORED BY LIONS CLUB

An exhibition and demonstration horseshoe tourney was conducted in Sequim's Carrie Blake Park on Sunday, May 14th. This unsanctioned tourney was held to introduce east Clallam county to the parks four new courts.

The eight invited players played two four man round robins in which the players were seeded by ringer percentage.

After the first round the two lowest pitchers in the first section played the second round in the second section. The two highest players in the second section then played the second round in the first section.

There were no designated winners and each player received a certificate of appreciation from the local Lions Club. The Sequim Valley Lions Club were the sponsors of the exhibition and had provided most of the money and all of the labor in the building of these four regulation courts.

The following percentages were achieved in regular play.

Herb Criss, Bremerton, Wa., 81.4; Clayton English, Victoria, B.C., 69.0; Art Sperber, Bremerton, Wa., 64.4; Mike Thompson, Victoria, Wa., 54.8; Terry Collins, Port Angeles, Wa., 43.0; Munj Manhas, Victoria, B.C., 42.2; Mike Thorniley, Olympia, Wa., 39.5; Harold Landry, Port Angeles, Wa., 34.9.

## THACKERAY WINS JEROME, ID. SPRING OPEN — SANC. 86-308

**CLASS A** — *Bob Thackeray, Jerome, 6-1-58.3; Warren Stutzman, Rupert, 5-2-48.0; Tony Apodaca, Jerome, 5-2-45.8; Lee Payton, Jerome, 5-2-42.5; Hank Tencate, Wendell, 3-4-38.6; Lee Edwards, Gooding, 2-5-36.2; Leo Peterson, Twin Falls, 2-5-34.7; Henry Reid, Jerome, 0-7-27.0.*

**CLASS B** — *Louie Piva, Challis, 8-1-42.7; Coug Palmer, Chubback, 7-2-37.8; Earl Holloway, Washington, 6-3-34.9; Virgil Johnson, Mountain Home, 6-3-32.8; Ted Gardner, Jerome, 5-4-37.8; Jerry Ostler, Jerome, 5-4-35.5; Berle Riese, Fairfield, 3-6-31.9; Glenn Stutzman, Gibbonsville, 3-6-26.0; Ralph Morgan, Mountain Home, 2-7-29.7; Nick Piva, Challis, 0-9-12.2.*

**CLASS C** — *Jack Beebe, Mountain Home, 9-1-26.1; Stan Kirtland, Hagerman, 8-2-27.6; Hillary, Butcher, Jerome, 7-2-26.6; Harry Chapin, Twin Falls, 6-3-28.5; Chuck Wenger, Oregon, 4-5-27.8; Dean Blake, Sun Valley, 4-5-26.5; Lynn Johnson, Challis, 3-6-24.8; Ed Pettitt, Jerome, 3-6-18.6; Fay Fuqua, Wendell, 2-7-20.9.*

## JACK RAYMOND WINS NORTH. UTAH SEASON OPENER

Jack Raymond of Sandy, Utah went undefeated to win the opening tournament of the Northern Utah Association held at the Murray, Utah courts on May 3. Greg Peterson won the Junior crown with 4 straight wins.

**CLASS A** — *Jack Raymond, Sandy, 5-0; LaMont Gardner, Salt Lake, 4-1; Bruce Crane, So. Jordan, 3-2; Frank Minster, Ogden, 1-4; Keith Erickson, Herriman, 1-4; Richard Buchanan, Draper, 1-4.*

**NORTH. UTAH — (Continued)**

**CLASS B** — *Tito Archuleta, Sandy, 4-1; Bruce Eyre, Salt Lake, 4-1; Ken Percy, Roy, 3-2; Willard Lindsay, Salt Lake, 2-3; Doyle Peterson, Ogden, 2-3; Bud Schardine, Springville, 0-5.*

**CLASS C** — *Jim Shaw, Salt Lake, 4-1; Steve Minster, Ogden, 4-1; Cleo Snarr, Midvale, 3-2; Marlow Peterson, Ogden, 2-3; Joy Noyce, Salt Lake, 1-4; Richard Wayman, Salt Lake, 1-4.*

**CLASS D** — *Jerry Bird, Lehi, 4-1; Hans Siebold, Sandy, 4-1; Herbert Zafft, Murray, 3-2; Jack Simmons, Midvale, 2-3; Ron Peterson, Ogden, 2-3; Gary Wood, Salem, 0-5.*

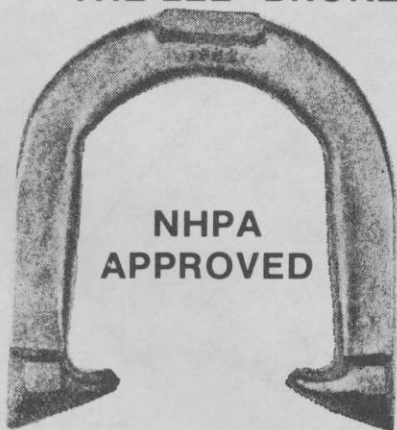
**CLASS E** — *Dale Nielsen, Midvale, 4-1; Gary Oxburrow, Lehi, 4-1; Floyd Holley, Springville, 4-1; Ted Shaw, Wset Valley, 2-3; Don Hunter, American Fork, 1-4; Bob Stroud, Sandy, 0-5.*

**CLASS F** — *Carl Hills, Salt Lake, 3-0; Dixie Colby, Salt Lake, 2-1; Vern Madsen, Salt Lake, 1-3; Todd Danvers, Salt Lake, 0-3.*

**CLASS G** — *Roger Holtan, Salt Lake, 3-0; Mark Colby, Salt Lake, 2-1; Cliff Wood, Lehi, 1-2; Shirley Madsen, Salt Lake, 0-3.*

**JUNIORS** — *Greg Peterson, Ogden, 4-0; Jay Palmer, American Fork, 1-3; Jason Peterson, Ogden, 1-3.*

**BACK BY POPULAR DEMAND  
THE LEE "BRONZE" HORSESHOE**



**Cast of a new, modern  
metal alloy that is**

**"deader" than dead soft,  
yet tough as steel.**

**Batters No Quicker  
Than Dead Soft Steel**

**Requires Little  
or No Filing**

**Does Not Rust**

**PRICE - \$26.00 PER PAIR PLUS POSTAGE**

**LEE HORSESHOE COMPANY**

**2631 Middletown - Eaton Rd. • Middletown, OH 45042  
(513) 422-5695**

## SOUTHERN CALIFORNIA ASSOCIATION TOURNAMENTS

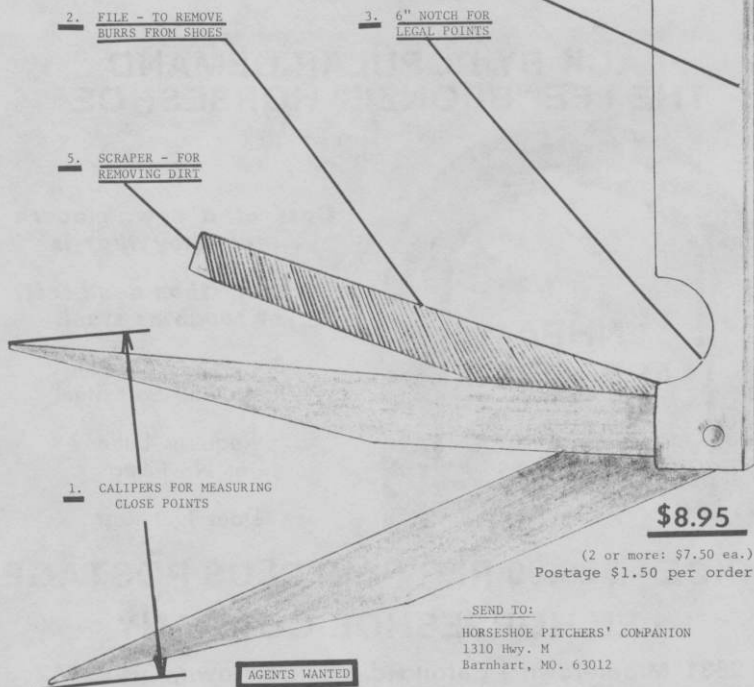
**JO VICKERY DOUBLES** — *Riverside* — *April 26* — *Sanc. 86-152* — **CHAMPIONSHIP** Jose Estrada-Don Weaver, 8-0; George Whittemore-Arlan Pentecost, 5-3; Lois Clark-Wilbur Gochanour, 6-2; Roy Henry-Ed Gilliam, 5-3; Joe Gamble-Rita Eozzo, 4-3; Gerry Kloepfer-George Barker, 4-3; George Farrell-Lee Haag, 4-3; Walley Shipley-Bob Lowell, 3-4; Ralph Clark-Kent Kelley, 3-4; Jo Vickery-Bruce Gonter, 3-4; Les Burroughs-Ron Burrowbridge, 3-4; Ed Agner-Jim Dow, 3-4; Lupe Henry-Regis Dunlap, 2-5; Richard Dillon-Harold Redding, 2-5; Jim Eozzo-Ralph Alvine, 1-6; Tom Buck-Joe Baxter, 1-6.

## THE HORSESHOE PITCHERS' COMPANION

Pat. No. 4,399,614

- FEATURES:**
1. Calipers for measuring close points.
  2. File to remove burrs from shoes.
  3. A 6" notch for measuring legal points.
  4. Straight edge for measuring ringers.
  5. Scraper for removing dirt, mud, etc.
  6. Just the right size for back pockets.
  7. NHPA approved.

### 4. STRAIGHT EDGE FOR MEASURING RINGERS



**\$8.95**

(2 or more: \$7.50 ea.)  
Postage \$1.50 per order

**SEND TO:**

HORSESHOE PITCHERS' COMPANION  
1310 Hwy. M  
Barnhart, MO. 63012

AGENTS WANTED



**SOUTHERN CALIFORNIA — (Continued)**

**JERRY SCHNEIDER OPEN — Riverside — April 27 — Sanc. 86-152 — GROUP 1 —** Diane Lopez, Santa Barbara, 6-0-73.0; Ben Logg, Barstow, 5-1-58.8; Ed Arionus, Westminster, 4-2-57.8; George Whittemore, Rosemead, 2-4-54.1; Orville Lokken, Yorba Linda, 2-4-52.9; Norm Cone, Huntington Beach, 2-4-49.7; Joe Gamble, San Diego, 0-6-44.3.

**GROUP 2 —** Bob Austin, Escondido, 5-1-47.0; Les Burroughs, Perris, 4-2-49.3; Clyde Herren, Bloomington, 4-2-41.1; Carl Grabow, Chula Vista, 3-3-41.1; Lois Clark, Riverside, 3-3-40.5; Ken Lamb, Norwalk, 2-4-41.6; Bruce Stuart, Torrance, 0-6-34.5.

**GROUP 3 —** Ron Kecskes, Fontana, 7-2-37.1; Frank O'Brien, Escondido, 5-3-37.5; Doyle Brawley, Riverside, 5-3-37.8; Chuck Dunning, Corona, 4-3-40.3; Don Weaver, Nevada, 4-3-28.3; Wally Shipley, Newport Beach, 3-4-32.0; Leo Raymond, Newport Beach, 3-4-31.4; Ralph Clark, Riverside, 0-7.

**GROUP 4 —** Richard Dillon, Gardena, 6-0-36.3; Tom Buck, Sun City, 5-1-34.0; Jose Estrada, Perris, 3-3-35.0; Roy Henry, Cathedral City, 3-3-30.3; Lupe Henry, Cathedral City, 2-4-33.3; Kevin Kecskes, Fontana, 2-4-31.7; Jack Schoonover, Orange, 1-5-28.3.

**GROUP 5 —** Charlie Everhart, San Berdu, 5-1-29.7; Ed Agner, Beaumont, 4-2-32.0; Regis Dunlap, Fontana, 3-3-30.3; Ralph Carter, Rialto, 3-3-30.0; Bob Lowell, Palm Springs, 2-4-25.3; Lee Haag, Sunnymead, 2-4-23.3; Roy Scott, Cudahy, 2-4-22.0.

**GROUP 6 —** Kent Kelley, Riverside, 5-1-27.5; Dave Cervantes, Perris, 4-2-30.8; Smokey Anderson, Burbank, 3-3-22.9; Joe Baxter, Riverside, 3-3-20.8; Phil Posos, Buena Park, 3-3-17.9; Graden Sells, Glendora, 2-4-16.7; Kee Blackrock, Maywood, 1-5-14.2.

**GROUP 7 —** Dan Cervantez, Perris, 5-0-22.4; Ron Burrowbridge, Chino, 4-1-21.2; John Brawley I, Riverside, 3-2-16.4; Larry Connell, Norwalk, 1-4-14.8; Phil Dunning, Corona, 1-4-14.0; Bruce Gonter, Cucamonga, 1-4-12.8.

**NOW TRY ORLANDO'S COURTS**

*"Greatest Horseshoe Layout In The United States"*

—Carl Steinfeldt Says

12 new clay courts with lights for night pitching and covered stands.

In City's Beardall Park at Orange Avenue and Gore close to I-4, US 441 and 17-92, Fla. Highway 50.

Over 25 local pitchers in all classes  
20% to 50% ringer averages to give you a match any day — 3 State tournaments

October 4

November 22

February 6-7

**ORLANDO HORSESHOE CLUB**  
P.O. Box 1802 • Orlando, Fl. 32801



**SOUTHERN CALIFORNIA — (Continued)**

**GROUP 8** — Robert Kernes, Jr., Norwalk, 5-1-16.0; Tom Nation, Hemet, 4-2-15.0; Ralph Krueger, Rialto, 3-2-14.5; Ralph Alvine, Chula Vista, 3-2-11.0; John Brawley II, Riverside, 1-4-6.0; Robert Kernes Sr., Norwalk, 0-5-Forfeit.

**MID-YEAR OPEN — Barstow — April 3 — Sanc. 86-153 — GROUP A** — Diane Lopez, Santa Barbara, 7-0-73.5; Pat Silva, Santa Barbara, 6-1-59.6; Jonathan Williams, Chino, 5-2-62.8; Ben Logg, Barstow, 3-4-54.5; Newell Flann, Westminster, 3-4-53.8; Orville Lokken, Yorba Lina, 2-5-48.7; George Whittemore, Rosemead, 1-6-49.4; Don Gregson, Crestline, 1-6-46.1.

**GROUP B** — Bill Cork, Shoshone, 7-1-45.6; Jim Eozzo, Los Angeles, 6-2-41.5; Blackie Harms, Shoshone, 5-2-49.7; Norm Cone, Huntington Beach, 4-3-40.5; Tom McQueen, Bishop, 3-4-39.8; Byron Cork, Shoshone, 2-5-43.4; Barbara Dow, Capistrano, 1-6-37.5; Darrell Lamoureux, Boron, 1-6-36.7.

**GROUP C** — Joe Wilkerson, Bishop, 7-0-39.6; Jack Chesshir, Apple Valley, 5-2-33.8; Bob Morris, Bishop, 4-3-30.2; Mike Passmore, Ft. Irwin, 3-4-31.5; Bill Sundstrom, Barstow, 3-4-30.6; Don McClafferty, Barstow, 3-4-30.5; Ken Ziemer, Barstow, 2-5-30.4; Charles Stanton, Ft. Irwin, 1-6-20.2.

**GROUP D** — Triidad Vigil, Barstow, 6-0-39.9; Terry Mundy, Barstow, 5-1-39.2; John Shaver, Hesperia, 4-2-30.7; Dave Rodriquez, Santa Barbara, 3-3-24.4; George Farrell, Apple Valley, 2-4-23.9; Craig Whitman, Lake Hughes, 1-5-23.6; Ray Silva, Santa Barbara, 0-6-19.4.

**GROUP E** — Clinton Broyles, Apple Valley, 6-0-28.8; Steve Nemback, Palmdale, 4-2-27.6; Doc Hildebrand, Utah, 3-3-29.5; John Green, Boron, 2-4-27.8; Jim Dow, Capistrano, 2-4-24.1; Jack Schoonover, Orange, 2-4-22.8; Gene Van Sant, Sun City, 2-4-21.7.

**GROUP F** — Dorothy Yeager, Bishop, 6-0-35.8; Pat Cordova, Barstow, 3-3-26.2; Charles Stanton, Ft. Irwin, 3-3-22.9; Ralph Carter, Rialto, 3-3-22.5; Betty McQueen, Bishop, 3-3-22.5; Joe Moreno, Barstow, 2-4-19.2; Luis Arellano, Barstow, 1-5-21.2.

**GROUP G** — Steve Johnston, Bishop, 5-1-16.3; Ralph Krueger, Rialto, 4-2-18.3; Tom Nation, Hemet, 4-2-17.5; Leroy Brinson, Barstow, 4-2-13.0; Jerry Owen, 1-5-17.1; Clinton Broyles III, Apple Valley, 2-4-14.6; Ron Broyles, Apple Valley, 1-5-11.7.

**LAKE ISABELLA OPEN — Lake Isabella — April 17 — Sanc. 86-154 — GROUP 1** — Jeff Williams, Chino, 5-1-64.5; Pat Silva, Santa Barbara, 4-2-58.1; Norm Cone, Huntington Beach, 4-2-54.1; Jim Atwell, Los Angeles, 4-2-54.0; Jim Eozzo, Los Angeles, 3-3-48.7; Bob Austin, Escondido, 1-5-41.8; Nathan Williams, Chino, 0-6-41.7.

**GROUP 2** — Tom McQueen, Bishop, 5-1-51.7; Jack Holloway, Thousand Oaks, 4-2-47.9; Louis Strauss, Lake Isabella, 3-3-41.7; Ed St Pierre, Lake Isabella, 3-3-39.6; Bruce Stuart, Torrance, 2-4-45.8; Sallie Cline, Bishop, 2-4-40.8; Pat Brady, Torrance, 2-4-37.9.

**GROUP 3** — Jean Ornelas, Clovis, 5-1-40.0; Bonnie Marshall, No. Edwards, 4-2-36.7; Tom Buck, Sun City, 4-2-31.3; Andy Bensen, Lake Isabella, 3-3-25.8; Ernie Knorp, Goleta, 2-4-29.6; George Farrell, Apple Valley, 2-4-24.6; Wally Shipley, Newport Beach, 1-5-31.3.

**GROUP 4** — Dave Rodriquez, Santa Barbara, 6-0-32.9; Doug Soward, Lake Isabella, 5-1-27.9; Paul Thomson, Bonsall, 4-2-23.3; Victor Lamoureux, Boron, 2-4-27.5; Smokey Anderson, Burbank, 2-4-24.0; Dennis Lamoureux, Bakersfield, 1-5-20.8; Betty McQueen, Bishop, 1-5-19.6.

**GROUP 5** — John Green, Boron, 6-1-35.0; Bill Perry, Bishop, 5-2-25.4; Larry King, Bakersfield, 4-2-25.0; David Lamoreaux, Boron, 3-3-26.3; Steve Ornelas, Clovis, 2-4-19.6; Carl Meyers, Newbury Park, 2-4-14.2; Elmer Landis, Bakersfield, 0-6-14.2.

**SOUTHERN CALIF. — (Continued)**

**GROUP 6** — Jim Mudra, Sr., Long Beach, 6-1-30.7; Smokey Moore, Wasco, 5-2-23.2; Gene Van Sant, Sun City, 4-2-22.1; Jim Mudra, Jr., Whittier, 4-2-25.0; Janice Atwell, Los Angeles, 2-4-19.6; Leon Marshall, No. Edwards, 1-5-19.6; Steve Burgess, Boron, 0-6-8.3.

**GROUP 7** — Mel Kamp, Lyle Creek, 6-0-22.5; Camille Bruster, Wofford Hts., 4-2-10.8; Steve McQueen, Bishop, 3-3-17.9; Jim Witzig, Lake Isabella, 3-3-17.1; Bob Burgess, Boron, 2-4-19.6; Jerry Fleming, Boron, 2-4-15.8; Butch McIntosh, Boron, 1-5-10.8.

**GROUP 8** — Bridgit Cline, Bishop, 6-2-8.0; Bill Stinson, Northridge, 5-3-12.8; Rod McQueen, Bakersfield, 4-3-13.6; Dot Warden, Lake Isabella, 4-3-11.4; Sandra Hernandez, Bishop, 3-3-10.0; Pete Lopez, Boron, 2-4-10.4; Edyth Soward, Lake Isabella, 1-5-7.9.

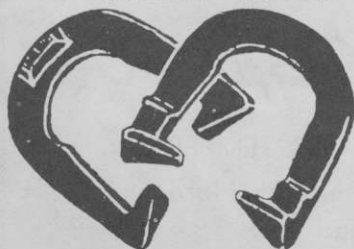
**GROUP 9** — Rita Eozzo, Los Angeles, 3-0-8.3; Don Eddy, Woodland Hills, 2-1-7.5; Linda Rodriguez, Santa Barbara, 1-2-6.6; Emily Weeks, Norwalk, 0-3-6.6.

**LAKE ISABELLA OPEN — Lake Isabella — April 18 — Sanc. 86-154 — GROUP 1** — Pat Silva, Santa Barbara, 6-0-64.7; Jim Eozzo, Los Angeles, 4-2-53.3; Norm Cone, Huntington Beach, 4-2-51.7; Bob Austin, Escondido, 3-3-36.7; Nathan Williams, Chino, 2-4-49.3; Jeff Williams, Chino, 2-4-44.0; Barbara Dow, Capistrano, 0-6-39.0.

**GROUP 2** — Jack Holloway, Thousand Oaks, 5-1-46.0; Tom McQueen, Bishop, 4-2-40.7; Jean Ornelas, Clovis, 4-2-40.3; Carl Grabow, Chula Vista, 3-3-40.7; Sallie Cline, Bishop, 3-3-36.0; Ed St Pierre, Lake Isabella, 2-4-34.0; Tom Buck, Sun City, 0-6-28.7.

**GROUP 3** — Fred Briand, No. Edwards, 6-1-40.0; Smokey Anderson, Burbank, 5-2-20.9; Harold Redding, Burbank, 3-3-29.3; Bonnie Marshall, No. Edwards, 3-3-29.3;

NHPA APPROVED



Guaranteed one year  
from date of purchase

THE FIRST NEW DESIGN  
of the  
PROFESSIONAL PITCHING  
HORSESHOE

The horseshoe with calkers on  
the reversed side of the toeplate.  
The FLIP-STYLE pitcher will now  
have the two calkers in a down  
position landing in pit.

HIGH GRADE STEEL  
CASTING

2 lb. 9 oz. only — \$27.00 pr., plus \$3.00 UPS

Send checks or money orders to:

PETE DONOHO  
704 STATE STREET  
REDDING, CA 96001  
Ph. 916-243-5761



**CAL-FLIP**

Allow ample time for delivery  
Made in U.S.A. Richmond, Calif.

**SOUTHERN CALIFORNIA — (Continued)**

Doug Soward, Lake Isabella, 3-3-26.3; Ernie Knorp, Goleta, 2-4-26.3; John Ely, Lancaster, 0-6-17.0.

**GROUP 4** — Dave Rodriquez, Santa Barbara, 6-0-34.7; Smokey Anderson, Burbank, 5-1-27.7; Larry King, Bakersfield, 3-3-23.7; Betty McQueen, Bishop, 3-3-21.0; John Green, Boron, 2-4-29.0; Bill Perry, Bishop, 1-5-19.0; Bud Aduddell, Boron, 1-5-17.0.

**GROUP 5** — Jim Mudra Sr., Long Beach, 6-0-25.7; Jim Mudra Jr., Whittier, 5-1-30.4; Steve Ornelas, Clovis, 4-2-22.7; Leon Marshall, No. Edwards, 2-4-18.7; Gene Van Sant, Sun City, 2-4-18.3; Larry Fleming, Boron, 1-5-11.7; Sally Shipley, Newport Beach, 1-5-10.0.

**DAVE LOUCKS TOP MAN IN NEVADA STATE OPEN — MAY 17**

After a short speech opening the Nevada State Open tournament, Dave Loucks, NHPA President, proceeded to win the Class A title posting a record of 7-0-61.0.

**CLASS A** — Dave Loucks, Rancho, Mirage, Calif., 7-0-61.0; Monte Latino, Sacramento, Calif., 5-2-49.0; Kenton Foster, Schurz, 5-2-37.0.

**CLASS B** — Don Gore, Reno, playoff winner, 5-2-34.0; Fred Siemucha, Reno, 5-2-34.0; Doyle Palmer, Carson City, 4-3-35.0.

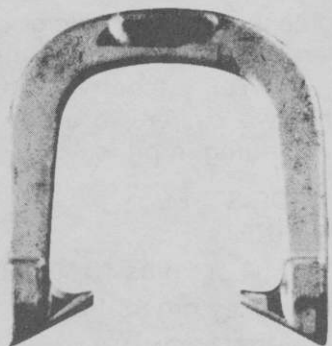
**CLASS C** — Jerry Headman, Reno, playoff winner, 6-1-22.0; Eddie Dunn, Sparks, 6-1-22.0; Willy Schweitzer, Reno, 6-1-22.0.

**LADIES CLASS** — Erma Moore, playoff winner, 5-1-35.0; Yoshi Palmer, Carson City, 5-1-35.0; Corrine Dentonof, Reno, 2-4-21.0.

Since 1931

**GORDON**

*"Spin-On"*



— 3 TEMPERS —

Medium With Hardened Calks  
Dead Soft                      Hard

Southern California Representative

**JERRY SCHNEIDER**

3144 W. Paso Robles Drive  
ANAHEIM, CALIFORNIA 92804  
714-826-0684

APPROVED BY NHPA

**OFFICIAL STAKES ALSO AVAILABLE**

**THE QUEEN CITY FORGING CO.**

**233 TENNYSON STREET**

**CINCINNATI, OHIO 45226**



# **FREE!**

## **1986 CATALOG OF**

# **Trophies & Awards**

**Yours FREE for the asking**  
 Over 450 Awards — Including Trophies,  
 Plaques, Pins, Medallions, Giftware and more.

**CALL TOLL-FREE**  
**1-800-628-9657**  
 in MA 1-800-282-7789

**DINN BROS., the Trophy People**  
 P.O. Box 111, 68 Winter Street, Holyoke, MA 01041

### **BEN WIEDRICH IN GRAND SLAM FOR TITLE IN JOYNER MEMORIAL OPEN — CORVALLIS, ORE. — MAY 24 — SANC. 86-200**

**CLASS A-1** — Ben Wiedrich, 7-0-81.0; Barry Chapelle, 6-1-71.5; Bob West, 5-2-75.1; Ridge Leggett, 4-3-68.9; Lowell Davis, 3-4-67.9.

**CLASS A-2** — Jerry Gorton, 2-5-49.1; Bill Graham, 1-6-51.3; Dave Gutcher, 0-7-43.9.

**CLASS B** — Bob Johnson, 6-1-52.4; Ron Ferguson, 4-3-49.7; Bernard Martell, 4-3-54.4; Charles Wendling, 4-3-51.2; Phil Tyler, 4-3-48.7; Lee Wallace, 4-3-48.5; Everett Clark, 2-5-49.5; Roger Christianson, 0-7-46.1.

**CLASS C** — Buck Davis, 6-1-45.1; Larry Flanary, 5-2-43.5; Len Christensen, 5-2-47.5; Jerry Wolfe, 4-3-43.8; O.D. McMillan, 3-4-44.2; Esthel Benner, 3-4-41.8; Eugene Sorenson, 2-5-40.9; Betty Tatchio, 0-7-31.4.

**CLASS D** — Francis Hampton, 7-1-47.9; Floyd Gray, 6-2-39.6; Art Lund, 5-2-42.2; Noel Ness, 4-3-31.7; Gilbert Morgan, 3-4-36.8; Marvin Tatchio, 3-4-31.0; Al Holland, 1-6-32.9; Harold Camp, 0-7-23.8.

**CLASS E** — Ken Southern, 6-1-40.9; Lloyd Kilgore, 5-2-35.5; Mo McNally, 4-2-37.9; Carolyn Ferguson, 2-4-32.2; Ben Goodling, 2-4-30.8; Dave Sturdevant, 2-4-26.3; Bill Stoner, 1-5-32.4.

**CLASS F** — Frank Moan, 6-1-28.9; Jim Williams, 5-2-26.7; Nancy Camp, 4-2-23.1; David Gorton, 3-3-22.7; Frank Dvorshak, 2-4-16.5; Elmer Otnes, 1-5-20.2; Glenn Chaput, 1-5-15.4.

**OREGON CITY, ORE. OPEN — MAY 31 — SANCTION 86-207**

**CLASS A-1** — Bob West, 8-1-70.5; Ben Wiedrich, 6-2-76.3; Lowell Davis, 6-2-67.9; Barry Chapelle, 3-4-60.7.

**CLASS A-2** — Jerry Gorton, 3-4-58.8; Jerry Staley, 2-5-60.5; Bill Graham, 1-6-48.8; Bob Johnson, 1-6-56.7.

**CLASS B** — Lee Wallace, 6-1-52.3; Ron Ferguson, 5-2-56.3; Pete Zumaran, 5-2-54.8; Len Christensen, 3-4-46.1; Roger Christianson, 3-4-42.6; Betty Tatchio, 3-4-40.8; Don Ferguson, 2-5-36.2; Esther Ott, 1-6-39.2.

**CLASS C** — Esthel Benner, 5-1-38.5; Art Lund, 4-2-40.2; Bob Sletten, 4-2-38.9; Willard Hufschmid, 4-2-33.9; R.E. Click, 2-4-28.5; Bob Beesley, 1-5-23.5; Marvin Tatchio, 1-5-23.1.

**CLASS D** — Wayne Maag, 7-0-43.0; Gene Buzzini, 5-2-31.1; Dick Evans, 4-3-32.9; Les Andrews, 4-3-27.0; Lloyd Kilgore, 2-5-25.0; Donna Graham, 2-5-21.2; Bill Dolan, 3-4-29.2; Chuck Ball, Withdrew.

**CLASS E** — Floyd Flemmer, 6-1-36.0; Jim Kosterman, 5-2-32.6; Dave Sturdevant, 4-3-32.0; Tom Ritter, 4-3-31.2; Carolyn Ferguson, 4-3-29.3; Bud LeDoux, 2-5-26.9; Ben Goodling, 2-5-22.7; Ed Dachtler, 1-6-23.7.

**CLASS F** — Mel Sherbert, 5-1-34.4; Ed Pritchard, 4-2-28.9; George Kaufer, 4-2-30.2; Don Fagerness, 4-2-31.2; Art Taylor, 2-4-24.2; Kathy Taylor, 2-4-21.8; Dick Helm, 0-6-21.5.

**CLASS G** — Otis Husky, 5-0-25.4; Glenn Johnson, 4-1-21.1; Elmer Otnes, 3-2-19.9; Doug Spillman, 2-3-17.2; Glenn Chaput, 1-4-15.5; Frank Dvorshak, 0-5-12.1.

DESIGNED FOR MAXIMUM PERFORMANCE

**IMPERIAL**CAST MODEL

WIDER, THICKER BLADES

U S A PRICES  
(Postpaid)

1 Pair	\$26.00
2 to 5 Pair	\$25.00
6 Pr. & Over	\$20.00
	Freight Collect

FORGED MODELHARDENED HOOKS AND  
POINTSU.S.A. PRICES  
(postpaid)

1 Pair	\$39.00
2-5 Pair	\$37.00
	Freight Collect
6 Pair & Over	\$31.00

**CLYDE MARTZ**

3726 Henley Dr.

Pittsburgh, Pa. 15235

PHONE: 412-731-4662



## COMING EVENTS

## SPECIAL NOTICE FOR EASTERN SIERRA, CALIFORNIA ASSOC.

The **ENTRY FEE** for the **BUDWEISER \$1,500.00 ADDED** Open Sanctioned tournament to be played on August 16-17 will be \$10.00 per entry. This is the State Tune-up tournament. See schedule in May issue for further tournament dates.

## YUMA, ARIZONA SCHEDULE

## Kennedy Park

- July 12 — Sidewinders Open. 6:30 p.m. Entries close July 9.
- Aug. 16 — Rex E. Lee Open, 6:30 p.m. Entries close Aug. 13.
- Sept. 13 — Roadrunners Warm-Up Open. 6:30 p.m. Entries close Sept. 10.
- Sept. 27 — Roadrunners Open. Sanctioned. NHPA card and State card required. Entries close Sept. 24.
- Oct. 11 — Blaine Bingham Memorial. Warm-Up. 8:30 p.m. Entries close Oct. 8.
- Oct. 19 — Blaine Bingham Memorial Sanc. State & NHPA card required. Entries close Oct. 15.
- Nov. 8 — Fourth Annual Warm-Up Open. 8:30 a.m. Entries close Nov. 5.
- Nov. 23 — Fourth Annual Open. State & NHPA card required. 8:30 a.m. Entries close Nov. 19.
- Dec. 6 — Welcome Snowbirds Warm-Up Open. 8:30 a.m. Entries close Dec. 3.
- Dec. 21 — Welcome Snowbirds. 8:30 a.m. Sanc.

State & NHPA card required. Entries close Dec. 17.

Jan. 10 — Budweiser Warm-Up Open. 8:30 a.m. Entries close Jan. 7.

Jan. 18 — Budweiser Fourth Annual Open. Sanc. State & NHPA card required. Entries close Jan. 14.

Feb. 7 — Del Simmons Warm-Up Open. 8:30 a.m. Entries close Feb. 4.

Feb. 22 — Del Simmons Memorial Open. 8:30 a.m. Sanc. State & NHPA card required. Entries close Feb. 18.

Mar. 14 — St. Patrick's Warm-Up Open. 8:30 a.m. Entries close Mar. 11.

Mar. 22 — St. Patrick's Open. Sanc. 8:30 a.m. State & NHPA card required. Entries close Mar. 18.

April 5 — Farewell Snowbirds Open. 8:30 a.m. Entries close April 1.

April 11 — Annual Arizona State Tournament. Reid Park Courts, Tucson. 8:30 a.m. Sanc. State & NHPA card required. Entries close April 1.

Send all entries with proper fee and ringer percentages to: Yuma Arizona Horseshoe Pitchers Association, P.O. Box 6222, Yuma, Arizona 85364.

Entry fee: All tournaments \$3.00, members. \$5.00 non-members. All sanctioned tournaments: \$3.00 for all. For other information phone 602-342-3340.

## KANSAS SCHEDULE

- July 4 — Chautauqua Open, Sanctioned. Forest Park, Ottawa.
- July 13 — Sunflower Open, Sanctioned. Gage Park, Topeka.
- July 19 — Wichita Singles, Linwood Park, Wichita.
- July 20 — Wichita Doubles, Linwood Park, Wichita.
- July 26 — Hays Open, Sanctioned. Main & 183 By-Pass, Hays.
- August 2 — Coffeyville Open, Sanctioned. Walter Johnson Park, Coffeyville.
- August 3 — Buffalo Bill Open, Sanctioned. Hawthorne Park, Leavenworth.
- August 9-10 — Tom Allen Open, Sanctioned. Linwood Park, Wichita.
- August 17 — Fred English Open, Gage Park, Topeka.
- August 24 — Holton Open, Linscott Park, Holton.
- August 30-31-1 — Kansas State Tournament, Sanc. Forest Park, Ottawa.
- Sept. 13 — Members Only Singles, Linwood Park, Wichita.
- Sept. 21 — Horton Open, Sanctioned. City Courts, Horton.
- Oct. 11-12 — Porter Paint Grand Opening, Frontier Fun Center, Wichita.
- Oct. 19 — Maple Leaf Tournament. Baldwin.
- Nov. 22-23 — First Turkey's Open, Sanctioned. Frontier Fun Center, Wichita.
- Dec. 13-14 — Stocking Stuffers Open, Sanc. Frontier Fun Center, Wichita.

## VIRGINIA SCHEDULE

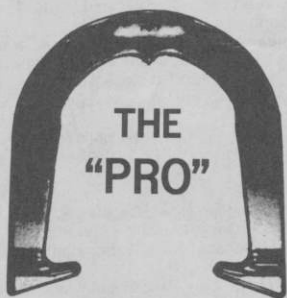
- June 28-29 — Va. State Doubles, Lynchburg, Va.
- July 19-20 — Crozet Open, Crozet, Va.
- August 2-3 — Martinsville Open, Martinsville, Va.
- Aug. 9-10 — Circle K Open, Petersburg, Va.
- Aug. 16-17 — Waynesboro Open Singles, Waynesboro
- Aug. 30-31 — Va. State Singles, Winchester, Va.
- Sept. 6-7 — Fall Open, Dublin, Va.
- Sept. 13-14 — Raymond Frye, Winchester, Va.
- Oct. 4-5 — Fall Foliage Doubles, Waynesboro, Va.

## ONTARIO CANADA SCHEDULE

- July 5-6 — Dryden Horseshoe Club, Dryden Golf Club.
- July 5-6 — Dynes Tavern Open, Hamilton.
- July 12 — Langton, Belgium Fair Tourn.
- July 11-13 — Michigan-Ontario Open, KW Khaki Cl.
- July 21-Aug. 2 — Worlds Tournament, Ainsworth, NE
- July 18-20 — Ont. Singles Championship, London
- July 26 — Wlarton Blue Water Park Doubles
- Aug. 2 — Blenheim Doubles
- Aug. 3-4 — St. George Horseshoe Club Doubles
- Aug. 8-10 — Canadian Championships - Burnaby, B.C.
- Aug. 9-10 — Guelph Legion Royal City Ringer Cl.
- Aug. 9 — Granton Lions Club "Fun Day Doub."
- Aug. 16-17 — Dynes Tavern Doubles — Hamilton
- Aug. 23-24 — Annual Shedden Fair Tourn.
- Aug. 23 — Zurich Bean Festival
- Aug. 31-Sept. 1 — Dowling Singles
- Aug. 31 — Mitchell Fall Fair
- Aug. 30 — Sept. 1 — Barrie Annual Labatts
- Sept. 6-7 — Ontario Doubles Champ. — Hamilton
- Sept. 13-14 — Ontario & Quebec Confrontation
- Sept. 20 — New Hamburg Fall Fair
- Sept. 27 — Wellesly Apple Butter & Cheese Fest.
- Oct. 11-12 — Thanksgiving Tournament at the Kitchener - Waterloo Khaki Club



## THE ORIGINAL DROP-FORGED PITCHING SHOE



THE  
"PRO"

Two tournament tested models, forged from S.A.E. specified steel, are available. Both have hardened hooks and points, and may be ordered in your choice of medium, soft, or dead soft tempers.



THE  
"O"

AS THE FIRST MANUFACTURER OF THE DROP-FORGED PITCHING SHOE, THE OHIO HORSESHOE COMPANY IS RECOGNIZED WORLD-WIDE FOR ITS HIGH QUALITY PITCHING SHOES.

For price information and to order, contact:

# OHIO HORSESHOE COMPANY

P.O. Box 21371  
Columbus, Ohio 43221

614-457-4335