



the
national horseshoe pitchers

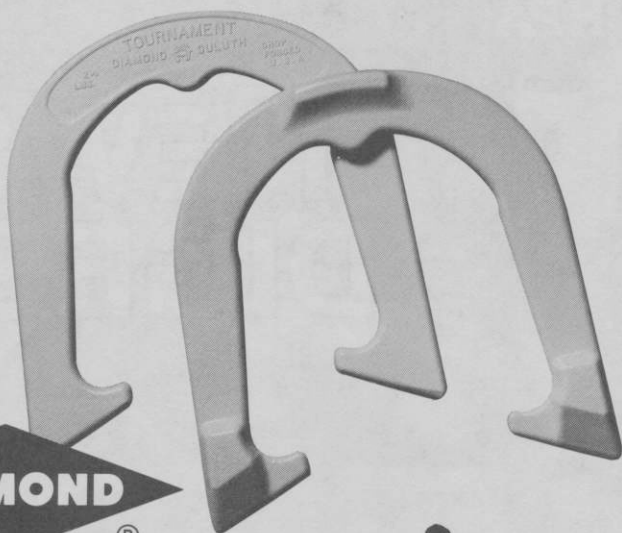
NEWS DIGEST



APRIL, 1986

Official Publication of
**THE NATIONAL HORSESHOE PITCHER'S ASSOCIATION
OF AMERICA**

Look
for
the new
white
shoes!



Advanced Design

TOURNAMENT PITCHING HORSESHOES



Both backyard pitchers and pros catch and hold the stake better with DIAMOND's new advanced design "Tournament" Shoe. It features a grip positioner, hardened tips, an increased radius, a dead soft center, and a wider, deeper calk. Same drop-forged solid steel construction as DIAMOND's popular Double Ringer and Super Ringer Regulation Shoes. All American made.

Contact your nearest NHPA club or sporting goods store for DIAMOND pitching horseshoes.

For the latest pitching horseshoe catalog write:



DIAMOND TOOL *and Horseshoe Co.*

The Triangle Corporation, The Tool Group
Cameron Road, Orangeburg, SC 29115

DISTRIBUTOR ORDER PLACEMENT
Call toll-free: 800-346-0740
For all inquiries call: 803-534-7010

"DIAMOND Pitching Horseshoes are Recognized as Official in Tournaments
Sanctioned by the National Horseshoe Pitchers Association"



THE HORSESHOE PITCHER'S NEWS DIGEST is published on the 5th of each month at Aurora, Illinois, U.S.A. by the National Horseshoe Pitcher's Association of America. Editorial office, P.O. Box 1606, Aurora, Illinois 60507. Phone: 312-898-3974. Subscription rates — 1st Class \$9.00; 3rd Class \$8.00 per year in advance. NHPA membership cards are available through each state secretary for \$7.00 plus any state association dues. Forms close on the 10th day of each month preceding date of issue. Advertising rates on request. F. Ellis Cobb, Editor.

NATIONAL OFFICERS

Dave Loucks, 368 Nevar Ct., Rancho Murieta, Ca. 95683	President
Earl Winston, Rte. 2, Lamonte, Mo. 65337 (816-563-3536)	1st Vice-President
Barry Chapelle, 2716 S.E. 61st Ave., Portland, OR 97206 (503-775-7876)	2nd Vice-President
Vincent Yannetti, 322 Longwood Ave., Bound Brook, N.J. 08805 (201-356-3862)	3rd Vice-President
Bonnie Seibold, 1043 Grayson Ave., Huntington, Ind. 46750 (219-356-3489)	4th Vice-President
Gene VanSant, P.O. Box 270, Sun City, Ca. 92381	5th Vice-President
Donnie Roberts, Box 810, Circleville, Oh. 43113 (614-474-7727)	Sec./Treas.

Volume 30

April, 1986

No. 4

FROM YOUR PRESIDENT . . . Dave Loucks

In the January News Digest, I spoke about some goals I wanted to realize during my term in office. There were several but two of the most important were items long overdue if we are to unify and grow within our sport and within ourselves. They were the Proxy vote or recognition of all NHPA members and, increased awareness of our sport by rotating the World Tournament on a regional basis. I'm happy to report that the first hurdles to that end have been cleared.

The Constitution and By-Laws Committee has approved to come before the delegates for vote, seven proposed ammendments as drafted by me. I shall list them here with my comments. They will be made part of each delegate package in greater detail. In each of the following, the article and section referred to are the numbers in the recently revised and printed 1968 Constitution and By-Laws of the NHPA.

1. Article II, Section 3 (Delegates) . . . adds the statement that delegates "must be a current subscriber to the NHPA News Digest." My reason for this proposal is that the Digest is our prime source of communication and delegates must be informed if they are to make decisions in the best interests of all members. Too many delegates now come to the Convention and open their information packets for the first time. If these delegates are not Digest subscribers, they have little or no knowledge of the NHPA goals, problems or otherwise and many end up voting what they think is best for them.

2. Article II, Section 4 (Delegates) . . . Changes all after the words, its allotted delegation to read: "the deficiency may be made up by proxy members up to the maximum delegates allowed that state. Such proxy votes shall be controlled or voiced by the spokesperson of the State Delegation." This proposal would allow those states who cannot have all their entitled delegates in convention to at least, have a voice and vote in proportion to their dues paying membership.

3. Article II, Section 7 (Delegates) . . . Change entire section to read, "Voting shall be by ballot, secret ballot, rising hand vote, ayes and nays or State roll call according to the discretion of the Chairman. Voting by mail will not be allowed, nor shall substitution of a delegate/spokesperson representing a State as a sole individual be allowed. Each State is entitled

MESSAGE — (Continued)

to vote its maximum delegates based on the previous ending year membership. States with no appointed delegates in convention, will have no vote."

4. Article VII, Section 16 (Tournaments)....Change to read: "The assembly of delegates in Convention shall award, by majority vote, the privilege of conducting a World Tournament 2 years in advance. For bidding purposes, the USA and Canada are separated into three sections determined by standard time zones; Eastern, Central and the combination of Mountain and Pacific. Each section will have the opportunity of presenting regular bids every third year thus resulting in a rotating World Tournament.

However, any section can submit a "Special Bid" in an unscheduled year. A Special Bid, to be eligible for delegate vote, must offer cash prizes exceeding the highest regular bid of that year by 25%. In the event no bid is received in Convention, the Executive Council will solicit written bids from every section and award the World Tournament, for that year, by majority vote of the Council."

My reasons for this amendment change should be obvious. We must establish some sort of program that will ensure all parts of our membership base to be given an opportunity to hold a World Tournament. This proposal gives potential sites 3 years to plan and coordinate their efforts with other charters within their section. It also allows any site to bid in any year and ensures that such bids are special enough to be worthy of delegate consideration.

5. Article VII, Section 17 (Tournaments)....Change to read; "A city or organization desiring to sponsor and hold a World Tournament shall place its sealed bid in the hands of the NHPA Secretary at the first session of the delegates in Convention. No sealed bid will be considered by the assembly of delegates unless all of the following minimum conditions are clearly met:

1. The facilities available for conducting the tournament are stated.
2. At least \$36,000 is offered to a cash prize list.
3. At least \$4,000 additional is offered toward trophy cost.
4. The miscellaneous advantages are stated."

This proposal is a big step toward ensuring cash bids sufficient to bring media coverage and recognition of our sport. Given 3 years, the dollar amount should not be that hard to raise. If from no other source than our members, a contribution of one cent per day per member would raise \$40,000 annually.

6. Article IX, Section 6 (Compensation Allowances).... Change to read; "The president shall receive a travel/expense allowance to cover his/her actual expenses incurred in attending the World Tournament, subject to Council approval. All NHPA Vice Presidents shall be allowed \$400.00 toward expenses for attending the World Tournament. The Secretary/Treasurer will be allowed Transportation costs in accord with NHPA Standard Operating Procedures. The Fifth V.P. or alternate charged with the direction of the Regional Directors Program, shall receive an annual allowance of \$400.00. The NHPA President shall receive a monthly allowance of \$100.00."

All NHPA officers are expected to attend a World Tournament where many meetings and much of our yearly business is conducted. They should not have to bear this expense out of their own pockets. The 5th VP, head of the Regional Directors who has a very large, full time administrative job

MESSAGE — (Continued)

right now, gets nothing, while we pay those RD's under his control, \$3,000 annually as a group. Your President must give some 1200-1500 hours per year to run the NHPA. He/she should receive some sort of reasonable compensation for this time.

7. Article IX, Section 7 (Publications) . . . Change to read; "The regular annual cost for a twelve month subscription to the Horseshoe Pitchers News Digest, sent 1st class mail, is \$12.00. However, you may deduct \$1.00 from the subscription rate for each adult NHPA member with the same mailing address in your household. Subscriptions and renewals must be mailed to the NHPA Secy/Treas." This change is necessary to stop the approximate loss of \$6,000 a year we now have with the Digest. The actual increase to members will average only \$1-2.00, depending upon members in your family.

These are my proposals. I believe them to be reasonable and worthwhile for the growth and prosperity of our sport and association. I sincerely hope that you will give them a YES vote at the Ainsworth Convention.

PBA TOUR — WALTER RAY WILLIAMS, JR.

by Sol Berman

Walter Ray qualified 4th and appeared on T.V. Sat., Feb. 7 in the Miller Lite Classic on the Don Carter Lanes in Miami, Fla.

He finished fifth and won \$6,000. He also finished fifth in January in a California Tournament.

TIPS FROM THE TOP (FOR BEGINNERS)

Ruth Hangen — I would advise any beginner to develop a comfortable style and then practice, practice, practice! Also, I have found that by keeping my eye on the stake, I have improved my accuracy. Concentration, too, is of vital importance. To sum up briefly, a beginner who concentrates, practices and has determination will find things falling into place. Great improvement will most assuredly occur.

WALTER RAY WILLIAMS WINS HIS FIRST PBA TITLE

Using the same ease and accuracy that he uses on the horseshoe courts and strong under terrific pressure from his opponents, Walter Ray Williams, current World Horseshoe Pitching Champion, swept through top-seeded Steve, winner of the BBAA U.S. Open title last month in the final match on the nationally televised PBA bowling program held in Peoria, Illinois on Saturday, March 8, 215-167 to win the title and \$27,000 and trophy.

Walter Ray opened the final series defeating Swedish bowler, Mats Karlson, 246-224. He continued his power run against Hugh Miller in the second game subduing him with another 246 game with Miller rolling a 234 game. In the third game, Walter Ray topped John Gant, 257-199.

On his way to the title, he belted the pins for 33 strikes. By winning the title, Walter Ray moved to second on the money list with \$53,175 on this PBA tour. He is now eligible for the coveted trip to the Firestone Tournament of Champions to be held in Akron, Ohio next month.

COVER PHOTO . . .This month we feature Jesse Gonzales of San Luis Obispo, California. He is a master of the "flip-flop" delivery. He finished in 9th place in the 1985 World Tournament using this unique delivery, with a 75.8 ringer percentage. He is a member of the So. Calif. Hall of Fame. He is the current California State Champion. His son, Jesse, Jr. also won the California State Junior Boys Class B title.

WHAT ABOUT JUNIORS?

by Terrence Dougherty

As a member of the NHPA, you now have an answer for that question. The NHPA, through the Sanctioned Club & League Program, now has programs aimed directly at and for the youth of our nation.

NHPA Sanctioned Junior Leagues, separate sanctions, patches and awards, help and information on promotion and funding of these youth leagues, pitching formats and distances adaptable to the kids physical abilities.

Junior members within the Sanctioned Club Program now have their own National Top Ten Program, separate from the adult Top Ten, with Junior awards. In 1986, the Juniors will have a Sanctioned Junior League National Top Ten, plus the National Top Ten.

What does the NHPA see for our Juniors? We are looking at Official NHPA sized down horseshoes, courts that can be set for the juniors participating, regulations for total junior activities within the NHPA.

As NHPA members, your help is a must if we expect our junior membership to grow. In 1986, it is required that ages be indicated, so the NHPA knows the average age of the youth participating, you as a club, league or individual, must promote youth involvement, advertise what the programs within the NHPA can offer kids, and most of all, let us know your ideas for the improvement of these programs. Let's work together to have a junior membership in the thousands, to have programs they want to be involved in. Let's push for youth in 1986.

WEBB HORSESHOES N.H.P.A. APPROVED

1-4 pair	\$25.00
5-9 pair	\$23.50
10 pair or more	\$22.00

Add \$2.50 per pair shipping cost (USA)

WEBB HORSESHOE & EQUIPMENT
1319 LICKING PIKE • WILDER, KY 41076
Phone (606) 781-0589

RINGERS REMEMBERED

by Kevin Cone

Harold Falor (Winter 1923) and George May (Summer 1923) are the two men to win back to back World Championships from the same home town, Akron, Ohio. Falor was May's protege and is the youngest Men's World Champion ever. He was 15 years old when he won his title in 1923 and he received a 500 dollar bag of gold, a diamond studded World Championship gold medal and a cartload of merchandise from the "Sunshine City" business houses for winning. Not a bad take in 1923. At the insistence of his parents, who believed horseshoe pitching would interfere with his education, he did not pitch in a World Tournament for the next five years. Who knows, he might of joined Danny Kuchcinski, Putt Mossman, and Walter Ray Williams Jr. as the only men to win two World Titles before the age of 21.

One more perfect game to report. Tom Francis of Blythedale, Missouri, pitched a 16 shoe perfect game against Donnie Moss in the junior division of the May 1985 Independence, MO, Open. Congratulations Tom.

Walter Ray Williams Jr., doing very well on the Pro Bowlers Tour, dominated the 1985 Men's World Tournament. In 31 games only two pitchers scored over 25 points. Al Zadroga scored 38 and Alvin Perry 36. Both making to King's Row but coming up short. Five men scored from 20-25 points and 24 scoring less than 20. Walter Ray became the 17th Champion to go undefeated in championship play. Only since 1972 has it happened once before and that was in 1980 when Williams went 31-0 and Don Titcomb, who lost 50-41, was the only person to reach 40 points. Steve Hohl scored 34 and no one else scored over 26 points in the 50 point games. This is the most dominating title ever won. Walter Ray had only three games under 80% with his low at 76% and 7 90% games. In the last 27 games his low was 79.5 and high of 91.6%. On the final day he had 339 ringers out of 387 shoes for a phenomenal 89.7%. From the last eleven games in 1979 to the first ten in 1981 Walter Ray won 52 straight contests losing only to Ben Weidrich 50-49 in 160 shoes. Both had 139 ringers for an 86.9 average. In winning the 1981 Title going 22-1 his low game was 81.1 high 94.6 with nine games in the nineties while averaging 88.08% secondonly to Elmer Hohl's 88.16% in 1968.

As stated Williams won 52 straight games but that's not the longest. Who holds the longest winning streak in World Tournament history?

NHPA SECRETARY-TREASURER REPORT FOR FEBRUARY, 1986

February 1986 Receipts:

News Digest	\$3901.00
NHPA Memberships	5803.50
Interest	75.32
Envelope Sales	58.27
86 World Entries	50.00
February Totals	\$9888.09

February 1986 Expenditures:

Printing & Supplies	\$1815.76
Sanctioned Club Program	538.78
Officer Travel	7.60
Secretary-Treasurer Bond	80.00
Telephone	168.63
Postage	728.75
News Digest	3107.83
Officer Allowance	2576.33
Junior Scholarships Won in World events	600.00
Bank Service Charge	2.20
February Totals	\$9625.88

NOTE: These figures represent only the books of the NHPA Secretary-Treasurer.

1986 GREENVILLE, OHIO RINGER CLASSIC PLANS SET

The 1986 Fourth of July Ringer Classic will be a **Qualifying** Tournament pitched over the three day weekend of July 4-5-6 at the Greenville City Park 18 Court facility.

For the 26th consecutive year this event is being jointly sponsored by the Darke County Horseshoe Club and the Greenville City Park Commission.

The Courts will be open for qualifying commencing Wednesday, July 2. Deadline for Sign-in will be 11:30 a.m., July fourth and qualifying deadline hour will be 12:00 noon the fourth.

Entry fee for adults will be \$10.00 with no entry fee for Junior division pitchers. Competitive pitching will commence at 1:00 p.m. on the fourth.

The defending World and Ringer Classic Champions are exempt from qualifying.

Additional details on the Ringer Classic and accommodations will be appearing in the next issue of the DIGEST.

NEBRASKA! . . . By Glen Portt

Nebraska...land of the Plains Indians...the Sioux, the Comanches, the Cheyenne, the Arapahoe...and the Pawnee (the most powerful of all the tribes)...land of the cowboys, cattle, and large ranches...and, also, site of the 1986 World Horseshoe Pitching Championships...Ainsworth.

So, pardner, put on your 10 gallon hat, slip on your blue jeans, western shirt, and boots...feed that Pinto or Colt (or any other horses you may have)...turn your nose toward the Sandhills...and count on having a good time.

As you travel through the state, close your eyes and imagine you're exploring with Coronado in 1541...or mapping the area with Marquette in 1673...because you'll see just about the same things they did. The Sandhills country, a great cattle raising place, hasn't changed much from that long ago time. And there is a nice bonus...you don't have to worry about being scalped by Indians. About 1877, General Al Hodge and Lt. Jean Bramer combined forces, removed the Sioux from the state, and put the Pawnees and other tribes on reservations.

The Sandhills with miles of gently rolling prairie grasslands also have some pretty good size hills and canyons along the northern edge. Here the Niobrara River flows eastward and this area is considered one of the most picturesque in the state. Near Valentine there are many beautiful waterfalls. So...plan on Ainsworth in July. Get away from it all. Try living again. Westerners are noted for their hospitality so why not sample some? Be a cowboy...or a cowgirl...or a Coronado or a Marquette. Let your thoughts run free.

NASHUA, N.H. HAD SUCCESSFUL SEASON IN 1985

By Walter Sweren

The Nashua Horseshoe Club had a very successful season in 1985. Since the expansion to 24 courts, we are now able to hold many more events, such as Club, City, State, and possibly, a New England tournament in the near future.

A very successful State tournament was held at Greeley Park, home of the Nashua Horseshoe Club. Many fine players participated in this tournament. The women's Class "A" event was one of the highlights of this tournament, with Debbie Pickering achieving a perfect game with an 18 for 18 ringer performance.

Plans are now being made to improve our parking facilities, a possible club house and other minor improvements with the help of the City of Nashua Parks and Recreation Commission.

KNOW YOUR FELLOW MEMBER

By Glen Portt

Alan Francis! The name alone conjures up such thoughts as... Junior World champion... 80% pitcher... tough competitor! But what does the average NHPA member really KNOW about this young man? Like most, I found I knew very little. I decided to find out.

As a Junior horseshoe pitcher (the best in the world), Alan won 6 consecutive Missouri State Championships from age 10 through 15, 4 consecutive World Championships beginning at age 12 (with averages of 84.1, 79.5, 84.2, and 88.8%)... and will be going after a **fifth** consecutive world title this year at Ainsworth... something no other junior has ever accomplished. Can he do it?

Alan has no easy road ahead. Hank Swartz, Wisconsin, with an 82.1% ringer average in the '85 classic... Chad Hyatt, Indiana, 76.5... Robert Pike, N.Y. 76.2... Michael Henderson, Alabama 75.8... and Edward Neeb, Canada 74.0 are all road blocks if they are still **age** eligible to pitch in the '86 event. Alan was born December 10, 1969. As of Dec. 10, 1986, he will be 17 and no longer eligible to compete in the Juniors. So... 1986 is **the** year. Will the record book be re-written? Records are made to be broken. Don't bet the present one won't be!

But what about Alan's life outside of 'horseshoes'? What are his interests? Just what kind of a young man is he? I discovered that he is a sophomore at North Harrison High in Eagleville, Mo., that he is a class officer, was recently inducted into the National Honor Society, is a member of Future Farmers of America, is a member of the Mt. Pleasant Baptist Church where he is involved in its Youth Activities, and that he plans to enter college after graduation from high school.

Although his first love is the sport of horseshoes, Alan likes to hunt, bowl, swim, and fish. He has played Little League and Senior League baseball since he was seven and as a pitcher (he also plays shortstop), he made the County All-Star team in both '82 and '85. In High School, he plays first base on the softball team and is a forward on the varsity basketball five.

What kind of a boy is Alan? Just an All-American boy... of whom every NHPA member can be justly proud... and one all of us would like to have more of in America.

And to his mother and father, Joyce and Larry, well done!

ANNUAL APPLE CAPITOL OPEN—MAY 17-18 — WINCHESTER, VA

The 21st Annual Apple Capitol Open tournament will get underway on Saturday and Sunday, May 17-18 at the Raymond Frye courts in Winchester, Virginia.

Entry fee will be \$10.00 for Men and Women and \$3.00 for Juniors. Extra fee of \$6.00 for Class A Men; Class B Men, \$4.00; Class C men, \$2.00. DEADLINE for entries is 11:00 a.m. Saturday, May 17. Absolutely no one will be added after that time.

All classes will pitch 40 point games, round robin method. Tournament will start at 12:30 p.m. Cash awards will be given. This will be a two-day tournament. No refunds will be given if you drop-out.

Send entry and proper fee to: Debbie Merriner, 1268 Circle St., Winchester, Virginia 22601. Make your check payable to: Winchester Horseshoe Pitchers Assoc.

FELLOW HORSESHOE PITCHERS AND FRIENDS

For those of you who were not at our awards banquet/dance last December when Mr. Bernier announced it—YES, there will be a 4th Annual Hacienda Horseshoe Pitchers Extravaganza!! Dates will be November 9 through November 13 or 14, 1986.

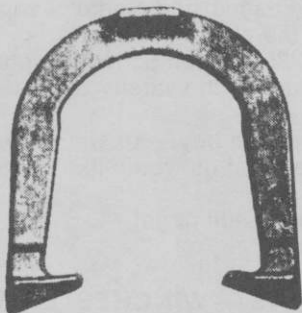
The same hard-working and capable 1985 committee have agreed to assist me in putting together the tournament (which is underway), and in running it; **however, in-put from any of you would be welcomed.** Committee members are: Dave Loucks, President, and wife, Cathy; Gene Van Sant, 5th V.P. and wife, Mary; Donnie Roberts, Sec./Treas. and wife, Janie; Wally and Sally Shipley; Doyle and Kay Brawley; Carey and Marilyn Weaver.

Please don't waste your time suggesting clay. We cannot use clay (in its present form) in our beautiful Matador Arena. All other suggestions will be appreciated and considered.

If any of you did not receive complete results of our 1985 tournament, please drop me a note or give a call, and I will be happy to send them.

Thank you one and all for your continued support in our efforts to publicize and promote the great sport of "pitching horseshoes for fun, health, and someday (we hope) money." Why not plan now to come to the Hacienda November 9 and enjoy a vacation pitching horseshoes and socializing in a warm, pleasant atmosphere. Hope to see many of you at Ainsworth and again here. Don L. Weaver, Director, Special Events, Hacienda Resort Hotel & Casino, P.O. Box 15566, Las Vegas, Nevada 89119. 1-800-634-6655.

TED ALLEN HORSESHOES



An original professional shoe. Still the very best professional shoe — Designed by a Champion — Used by many Champions — Not all users will become champions, but by throwing ALLEN's, you know that you've performed your best.

The designed features were invented by TED ALLEN, a 10 time world champion. He has made world records over and over with them. The design was a leader. After years it came to be a trend as a guideline in shoe equipment.

You can't go wrong in using them.

1045 LINDEN AVENUE

BOULDER, COLORADO 80302

JESSE GONZALES — ONE OF A KIND

By Stewart Snyder

Jesse Gonzales, California's FLIP-SHOE pitching artist is for sure—one of a kind—for he is the first pitcher ever to throw the flip shoe in men's Class "A" World Tournament competition; pitching in eight world tournaments between 1970 and 1985, he came through with a remarkable 75.8 average ringer percentage in winning seventy percent of his games, and earning a respectable ninth-place finish in the 1985 games.

Jesse the flipper, a seeming will-o'-the-wisp to lesser pitchers, but not at all a mere delusion to his worthy opponents who know that his driving performance is for real; try as they might, their best pitching effort oftentimes fails to meet his challenge.

His 9th place finish against 31 worthy opponents in the '85 World Tournament should lend encouragement to other flip-shoe pitchers who strive to reach higher goals.

Jesse, a member of the San Luis Obispo Club, and California's 1985 State Champion, started pitching in 1962 and has had no reason to change his shoe grip and turn; his average pitching record of 75.8 in World Tournament play attests to the skill he has achieved with his one-flip shoe.

In recognition of Jesse's pitching ability and his ever present courtesy and gentlemanly conduct on courts, he has been inducted into the Southern California Horseshoe Pitchers' Association Hall of Fame and given their Sportsmanship award.

LIKE FATHER — LIKE SON — Never mind the threadbare phrase; it has special meaning here. How unusual in the history of horseshoe pitching that a father and a son, Jesse and Jesse Jr. Gonzales, in the same tournament, each won State Championships in his respective class (men's "A" and Junior Boys "B"), both pitching their famous one-flip shoe.

This was a remarkable occurrence at the recent California State Tournament in Stockton, the annual affair in which pitchers from all over the thousand-mile-long state met head-on in eager competition that belied the friendly comradeship so apparent off-court.

TOMMY BROWNELL OPEN — SAN JOSE, CALIF. — MAR. 1

By Stewart Snyder

Northern California's first tournament of the year, the Tom Brownell Open (W & J), held in San Jose on March 1 had encouraging turnout. Old time champions continue to win — new players gain encouraging proficiency.

CLASS A — Don Titcomb, 7-0-74.5; Ed Floyd, 5-2-60.8; Lou Fontaine, 5-2-55.7.

CLASS B — Walt Robinson, 7-0-56.2; Steve Kynard, 5-2-55.7; Bill Hines, 4-3-53.1.

CLASS C — Mike Martinez, 8-2-51.3; Earl Kynard, 8-3-45.6; Bert Charley, 7-3-45.5.

CLASS D — Ben Yost, 7-0-35.4; John Delgado, 5-2-38.2; Thor Jensen, 5-2-33.7.

CLASS E — Dwayn Schmidt, 7-0-31.4; Bob Lloyd, 5-2-34.8; Erwin Malkk, 5-2-33.4.

CLASS F — Terry Wood, 6-1-25.4; Glenn Jamieson, 5-2-22.0; Robert Regalado, 4-3-18.5.

CLASS G — Bob Duarte, 7-0-23.1; Roy Heydon, 6-1-19.1; Phillip Nesbitt, 5-2-19.7.

WOMEN CLASS A — Martha Dunn, 6-1-55.4; Billie Sue Pennington, 4-2-56.3; Vera Floyd, 4-2-50.0.

WOMEN CLASS B — Paula Carns, 5-0-22.5; Becky Wood, 4-1-25.0; Sandy Kolberg, 3-2-22.0.



“From Out Of The Mail Bag”

Mr. Ellis Cobb, Editor
The Horseshoe Pitchers News Digest
P.O. Box 1606
Aurora, IL 60507

Dear Editor:

I am becoming very concerned over this Deep Pockets initiative and the way it is affecting our way of life. Parks here in Calif. are beginning to ask for one million insurance and closing down the parks rather than they be held responsible. I would like to suggest our members from each state, take pen in hand and write their representatives, both national and local to enact laws to stop this kind of nonsense with multimillion dollar settlements and the deep pocket initiative.

If even half of the members would write congress and local papers. We can carry a lot of clout, and maybe get horseshoes better known, throughout the states. With this push, from our corner of the world, that the whole nation is waiting for.

Sincerely,

Yvonne Mauzey NCHPA
Northern Calif. Horseshoe
Pitchers Assn.

HORSESHOES ON TELEVISION

By Sol Berman

Most of us would like to see a regular horseshoe pitching program on T.V. One perhaps similar to Professional Bowling.

The PBA experimented with several formats before coming up with the present ladder finish.

In order for horseshoes to launch a successful T.V. show, we need a short game that will hold the spectators interest. A scoring system that makes a perfect game possible, but not too easy to get.

Several years ago we were successful in getting Carl Steinfeldt and Kelly O'Brien on the "Challenge of the Sexes" program. The program director changed our scoring system to meet their needs. The game was a 50 pt. count-all game. It lasted 18 shoes. Carl had 17 ringers. The final score was 51-32. If we insisted on the cancellation scoring, the final score would have been 21-1. That would have been embarrassing for Kelly, while the 51-32 score wasn't too bad. (94.4% ringers vs. 55.5%)

The following was designed for T.V. It's also good for league and handicap play. 30 shoe games, ringers counting ten points, shoes within 6 inches one point, count-all. A game 189-213 means, 18 ringers & nine close shoes vs. 21 ringers and 3 close shoes. 60% ringers vs. 70% ringer.

We found the above scoring system held the spectators interest and was easy to follow. Perfect games are possible but not easy. The game is short enough to meet TV producers needs.

PENNA. MT. OLIVER MUSTANGS RECEIVE SANCTION AWARD

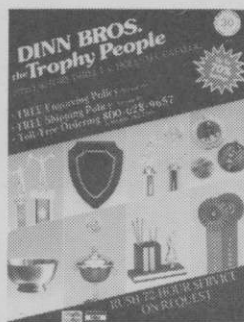
By Ron Weiss, Dir.

The officers and members of the Mt. Oliver Mustangs Horseshoe Club of Pittsburgh, Pennsylvania, would like to extend their thanks to the NHPA officers and to Mr. Terrance Dougherty, NHPA League Program Director the plaque the club received for 5 years of continuous league sanctioning.



Our club has only 16 players but you do not have to be big to receive awards in this program, that is the beauty of the program. To all the other leagues out there in the NHPA who have not signed in the program, we say come on down. The program is a fine way to get your club and members some form of recognition for what they do.

Our club may be small but this award has put us on top as far as we are concerned. We may not land a pitcher in the top 10 in the National, but this award is our No. 1. We say thanks to all who had anything to do with our club receiving this award.



FREE!

1986 CATALOG OF

Trophies & Awards

Yours **FREE** for the asking

Over 450 Awards — Including Trophies,
Plaques, Pins, Medallions, Giftware and more.

CALL TOLL-FREE
1-800-628-9657
in MA 1-800-282-7789

DINN BROS., *the Trophy People*
P.O. Box 111, 68 Winter Street, Holyoke, MA 01041

SOUTHEASTERN INVITATIONAL — MAY 17-18 — DALLAS, GA.

The Southeastern Invitational sponsored by the Georgia State Association will be held on May 17 and 18 if necessary at the Dallas, Georgia Recreation Center. Tournament will be limited to the first 64 pre-registered entrants received. DEADLINE is May 3. Entry fees for men and women is \$15.00. Juniors, \$10.00. Round Robin method of play. 40 point cancellation all classes. Entries will be notified by May 10. Sanction 86-188. NHPA card required.

Camper hook-ups and motels are convenient to Dallas. A limited number of free camper parking (no hook-ups) available at the courts. Please indicate on your entry if you desire one.

Court location — from courthouse in Dallas, go ½ mile east on U.S. 278, left onto State Route 381, go 1 mile to mile post #1, take right to the park.

Please include the following for proper entry: Entry fee with check made payable to Georgia State Horseshoe Pitchers Association: Your last 4 sanctioned tournament percentages; and your name, address and phone number. Mail your entry with proper fee to: George N. Bradfield, P.O. Box 38442, Atlanta, Georgia 30334. Ph: 404-445-3025. Remember the deadline — May 3. Only 1st 64 entries will be entered.

1986 W.T. DATES — JULY 21 THRU AUGUST 2 ENTRY DEADLINE — JUNE 1

"GREEOTT GRABBER"

the ultimate ringer keeper



Soft temper 2lb. 8oz. 2lb. 9 oz.

Not JUST another horseshoe. The ultimate shock-absorbing, ringer saving design. Helps prevent loss of solidly hit ringers by rebounding.

Guaranteed against breakage for 1 year from date of purchase. Both pairs must be returned in original box.

\$28.00 pr. plus \$3.00 shipping, handling, to the 48 adjoining states. California residents add 6% tax. High grade steel casting. NOT cast iron. Send checks or money orders to:

"GREEOTT GRABBER" HORSESHOES
c/o Steve Kynard 1380 Eagle Rock
Woodland, CA 95695

Or from NHPA representatives



GRUBB OVER YOUNG FOR PALM BEACH CITY, FLA. OPEN

Marvin Grubb of Titusville defeated Carl Young in the final match of the first Palm Beach Open tournament to win the title. Tournament was held on the Bryant Park courts in Lake Worth, Florida, March 1. 39 pitchers took part. Tournament was hosted by the Lake Worth Club. Sanction 86-14.

Due to the 30 mile wind that prevailed, ringer percentages plummeted along with a relatively low temperature unusual for Florida. Even pre-dawn rain failed to halt the activities which started at 9:30 a.m.

Young, who was tied with Grubb at five wins and two losses, had the highest single game average of 58.8 percent. Wally Frank posted a fine 58.3 single game high.

CLASS A — Marvin E. Grubb, 5-2-38.2; Carl Young, 5-2-40.4; Bill Wicker, 4-3-35.7; Willard Wilbur, 4-3-40.1; Paul Dumont, 4-3-34.4; Wally Frank, 3-4-34.4; Arlo Harris, 3-4-36.2; Bob Powell, 0-7-24.3.

CLASS B — Homer Powell, 6-1-35.5; Roy Broadwater, 5-2-38.7; Herman Wieser, 5-2-37.0; Robert E. McDonald, 4-3-35.2; Bert Szombati, 2-5-27.2; Rene Rodriguqe, 2-5-28.2; Dana Smith, 2-5-25.6; Gene Fisher, 2-5-27.2.

CLASS C — Wilmer Cummings, 6-1-28.5; Harry Bailey, 6-1-30.1; Don Biesendorfer, 4-3-30.5; Joe West, 4-3-20.7; Pat O'Toole, 3-4-19.7; Ken Hagen, 2-5-16.5; Jerry King, 2-5-17.1; Vic Gray, 1-6-16.9.

CLASS D — Tony Kalisiak, 5-1-22.0; Osmo Ahonen, 4-2-20.3; Bill Ruhnke, 4-2-19.0; Paul Haefner, 4-2-18.2; Joe Edel, 3-3-23.8; Bob Sommer, 1-5-9.8; Frank Littlefield, 0-6-6.6.

CLASS E — Walt Simering, 6-0-15.6; Andrew Spadaro, 5-1-10.2; Floyd Peterson, 3-3-10.5.

JUNIORS — Dave Millington, 4-2-9.8; Don Parente, 2-4-2.0; Tony Gentry, 1-5-4.2; Ken Young, 0-6-3.5.

In order to facilitate and expedite matters, Class E and Juniors pitched in one group of seven. All the pitchers in Class E were over 70 years of age and preferred the 30' distance; youths also pitched from behind the 30' mark.



GO AHEAD—BRAG A LITTLE!

\$6.25 as shown
 5.25 if one name
 .15- per ltr for anything additional
 P&H included in price
 3 weeks delivery
 California residents add 6% tax

Name on mug _____ (Print)

1985 avg. _____ Other _____

Your name _____

Address _____

GOLDLINE CERAMICS, 3024 Gayle St., Orange, CA 92665

HORSESHOE PITCHING MAKING TRANSITION

From Akron Beacon Journal

Horseshoe pitching is making the transition from an outdoor casual game to an indoor, professional sport. To this end John Davis, president of Sports Enterprises Inc., reports, "We will have ideal conditions in our new facility."

The facility, Horseshoe Palladium, will be a large indoor complex with 60 courts, restaurant, meeting rooms, pro shop, media pod, electric scoring and child care facilities.

As well as offering pleasing surroundings, the Horseshoe Palladium will offer professional opportunities with weekly, monthly and annual tournaments offering prize money comparable to professional bowling and golf.

These opportunities will exist for everyone who is interested in the sport. Davis pointed out that more and more women are attracted to the sport, and as the sport becomes more professional, they will have the same opportunity as men for competition and prize earnings.

Age and physical condition will not be as critical a factor in horseshoe pitching as in more fast-paced games such as tennis or racquetball. Because pitching is a physically moderate sport many who have been competitive in other sports will find that they can continue to be competitive for many years with horseshoe pitching.

The public reaction to Horseshoe Palladium has been very positive. Davis said, "After people hear about us, they all ask, 'How soon can I start playing?' There are 30 million pitchers in the country and 25,000 in our local area. Horseshoe pitching is one of the largest untapped markets any business has ever ventured into."

Horseshoe Palladium will not be limited to one facility. This project of Sports Enterprises Inc., a stock company, will be developed state-wide as well as nationwide. For more information about this unique sports opportunity, call 688-0882 or 688-0883.

DICK CARPENTER TOSSES A SNOWBALL WINNER

For the first time in over 10 years a Darke County Horseshoe Club member captured the Club sponsored Snowball Open Tournament when Dick Carpenter of Union City, Indiana blew through the Class A field undefeated to become 1986 Champion.

CLASS A — Dick Carpenter, 5-0-69.9; Ralph Fleckenstein, 3-2-63.7; Earl Waggoner, 3-2-58.9; Bob Garber, 2-3-54.3; Ed Hinshaw, 1-4-50.9; Bill McClain, 1-4-43.6.

CLASS B — Ottie Reno, 4-1-44.6; Bob Meyer, 4-1-43.6; Lloyd Anthony, 3-2-50.6; Paul Dunlap, 3-2-48; Harry Denlinger, 1-4-42.3; Duane Riddell, 0-5-33.9.

CLASS C — B. Ison, 4-1-44; J. Taylor, 4-1-42.3; F. Salyers, 3-2-42.7; D. Farley, 2-3-41.9; W. Detter, 1-4-37.1; W. Green, 1-4-30.6.

CLASS D — R. Walters, 6-0-50.8; H. Miller, 5-1-45.4; R. Honigford, 4-2-37.6; J. Blaker, 3-3-41.3; L. Schaffner, 2-4-43.1; R. Whitesel, 1-5-30.2; C. Jones, 0-6-31.5.

CLASS E — D. Ackley, 4-1-40.5; K. Walters, 4-1-40.1; G. Loy, 3-2-34.2; B. Snyder, 2-3-35; C. Vore, 2-3-33.2; J. McBeth, 0-5-33.6.

CLASS F — D. Denniston, 5-1-38.9; D. Brown, 5-1-34.1; D. Carlson, 4-2-39.2; E. Glass, 4-2-36.1; M. Bair, 2-4-32.6; R. Futrell, 1-5-23; S. Harshbarger, 0-6-29.7.

CLASS G — R. Johnson, 4-1-32.5; L. Harmon, 4-1-27.6; B. Cunningham, 3-2-25; L. Flora, 2-3-24; R. Jensen, 0-5-22.1; E. Kucharski, 2-3-23.4.

CLASS H — E. Steinke, 4-1-38.4; J. Snyder, 4-1-27.4; B. Wolfe, 3-2-26.7; T. Helmstetter, 2-3-27.6; D. Miller, 2-3-22; B. Allread, 0-5-21.3.

CLASS I — E. Ehemann, 5-0-21.6; R. Schindler, 4-1-17.7; M. Miller, 3-2-19.1; D. Knisley, 1-4-16.7; C. Johnson, 1-4-10.7; N. Bower, 1-4-9.8.

20th ANNUAL EAU CLAIRE, WIS. OPEN — JUNE 14-15

The 20th annual Eau Claire Open will be held on Saturday and Sunday, June 14 and 15 at the Hobbs Ice Center Courts, 915 Menomonie St., Eau Claire, WI.

QUALIFYING — send last year's league or tournament average to the nearest hundredth. If no average, qualifying sheet of 100 shoes. All entrants will be notified of class and pitching time.

Entry fee will be \$12.00 for Class A men, 12 men class. An additional fee of \$3.00 will be paid at courts. All other classes will be 8 persons. If 6 men classes are needed to fill out the schedule they will receive a \$2.00 refund. All classes will pitch 50 shoe games. Junior classes are free.

Deadline for entries is May 31, 1986. Tournament will be limited to first 200 entries so enter early. All those who drop out after the deadline will forfeit their entry fee.

Cash prizes or trophies will be awarded to first four places in Class A men; Ladies Class A first three places. All other classes first three places. Juniors will receive trophies.

Send entry fee and percentage to: Pat Eaton, 3027 Saturn Ave., Eau Claire, WI 54703. Ph: 715-834-8027.

The shoe for the 1980's

STAR

Stainless  Horseshoes

WHEN YOU SPEND HUNDREDS OF HOURS PRACTICING TO BE THE BEST HORSEHOE PITCHER YOU CAN BE, DOESN'T IT MAKE SENSE TO PITCH THE ONLY PRECISION MADE HORSESHOE?. YOU CAN BE SURE THAT EACH SHOE PITCHED IS LIKE ITS MATE.

IT PAYS TO PITCH THE ORIGINAL PRECISION STAINLESS HORSESHOE TO HELP YOU REACH YOUR ULTIMATE GOALS AND INSURE THAT COMPETITIVE EDGE NEEDED TO BE A WINNER.

**ALL STAR'S ARE DEAD SOFT
AND THEY WEIGH 2 LBS. 8 OZ.**

NHPA
APPROVED



\$69.00 per pair
postpaid

Send Check or
Money Order to:

Alfred R. Boudreau Jr.
301-A Old Ipswich Rd.
Rindge, N.H. 03461

(ALSO AVAILABLE THROUGH YOUR N.H.P.A. DEALER)

GEORGIA ASSOC. LOOKING FORWARD TO GREAT SEASON

By Loron Lindsey, Reg. Dir.

This year should be the best ever for the N.H.P.A. in Georgia. Our league participation has increased adding yet another league in Marietta for the 1986 season. This brings our league total to 4. Two years ago we only had one active league.

The Paulding County Club has 95% completed their new complex with 12 lighted courts, concession area and even a swimming beside it to cool off in. This will be the site of our 1986 State Tourn.

PITTSFIELD, ILLINOIS SCHEDULE

The Pittsfield, Illinois Horseshoe Club will host the Illinois State tournament at its sanctioned courts in Kings Park in Pittsfield, Illinois over the Labor Day weekend. Total prize money offered is \$2500.00.

The Pittsfield Club tournament schedule is as follows: Tournaments will be held every two weeks. Entry fee will be \$7.00 and entries close at 11 o'clock promptly on day of the tournament. Tournament play starts at 12 o'clock promptly. Dates are as follows:

APRIL 12 and APRIL 26

MAY 10 and MAY 24

JUNE 14 and JUNE 28

OCTOBER 11

JULY 12 and JULY 26

AUGUST 9 and AUGUST 23

SEPT 13 and SEPT 27

MANN WINS NEWBURY, OHIO INDOOR SANC. MEET

Oscar Manns of Painesville, Ohio, posted a 7-0 (71.2%) record to win the Class A sanctioned indoor meet held on February 7, 8 & 9 at the Hickory Lake Inn courts located in Newbury, Ohio. The Burton Horseshoe Club hosted this tournament. Mary Greene of Streetsboro, Ohio, posted an 8-1 (23.0%) record to win the Class A Ladies, Handicapped, Division. The high ringer percentage game of the tournament was pitched by Jeannie Spaller of Painesville, Ohio, with an 88.5%. Dana Krause, of Chesterland, Ohio, posted a 5-1 (28.8%) record to win the Junior Division.

CLASS A MEN — Oscar Manns, 7-0-71.2; Tom Guill, 6-1-66.3; Greg Bean, 4-3-57.7; Wayne Luoma, 3-4-65.9; Richard Weiser, 3-4-61.7; Joe Mazzurco, 3-4-56.3; Tom Wennerstrom, 2-5-54.2; Doc Sargent, 0-7-44.9.

CLASS B MEN — Armond Frabotta, 4-1-49.2; Bob Lautenschleger, 3-2-55.8; Bill Zieske, 3-2-52.5; Tim Gould, 3-2-47.1; Guy Wills, 2-3-49.2; Ray Greene, 0-5-39.9.

CLASS C MEN — Charlie Brotzman, 6-1-51.0; Gary Weiser, 5-2-45.3; John Lalley, 4-3-47.4; Dick Zielenski, 4-3-44.2; Ford Christian, 4-3-41.1; Joe Raico, 3-4-43.7; Frank Hiendimayr, 2-5-36.1; Bob Allen, 0-7-35.1.

CLASS D MEN — Bud Loftus, Sr., 8-1-42.1; Jess Fenton, 7-2-38.6; Thurman Conley, 6-3-41.3; Neil Lynch, 6-3-36.3; Dick Spaller, 5-4-42.0; Rich Wolfe, 5-4-35.9; Earl Severson, 3-6-35.2; John Beharry, 3-6-29.3; Jim C. Krouse, 2-7-30.9.

CLASS E MEN — Mike Grubich, 7-0-35.6; Charlie Greene, 6-1-28.0; Dick Johnson, 5-2-31.7; Dwaine Ringler, 4-3-32.8; John Fuduric, 3-4-22.1; Gene Fenton, 2-5-25.4; Russ Ryan, 1-6-19.8; Bob McKinney, 0-7-16.3.

CLASS F MEN — Art Gahagan, 4-2-23.2; Jeff Lattner, 4-2-28.0; Dan Palmer, 3-3-15.1; Ward Larkin, 1-5-17.0.

WOMEN — CLASS A — Mary Greene, 8-1-23.0; Jeannie Spaller, 7½-1½-68.7; Marge Sapiller, 5-4-50.0; Vernie Cicirelli, 5-4-32.6; Marlene Lynch, 5-4-12.3; Lula Peyatt, 4½-4½-32.6; Margie Palsa, 4-5-18.2; Virginia Cotter, 3-6-38.4; Lois Luhta, 3-6-19.2.

JUNIOR — CLASS A — Dana Krause, 5-1-28.8; Rory Krause, 4-2-24.6; Sean Krause, 3-3-26.7.

DEADEYE HORSESHOES

NOW IN

FOUR MODELS

CLYDESDALES NOW IN LIGHTER WEIGHTS

	Price Per Pr.—Up to 12 Pairs	Price Per Pr.—12 Prs. & Over
CLYDESDALES 2# 10 oz., 2# 9 oz., 2# 8 oz., & 2# 7 oz.	\$27.00/Pr.	\$20.00/Pr.
N.T. 2# 10, 9, 8, 7 oz.	\$27.00/Pr.	\$20.00/Pr.
REGULAR 2# 8, 7, 6 oz.	\$27.00/Pr.	\$20.00/Pr.
E-Z GRIP 2# 10, 9, 8, 7 & 6 oz.	\$32.00/Pr.	\$25.00/Pr.

*Prices on all "DEADEYES" f.o.b. point of shipment.
Missouri residents add 4-5/8% sales tax and California
residents add on 6% tax.*

All "DEADEYES" are dead soft (curved only).

All "DEADEYES" are guaranteed against breakage for 2 years.

All "DEADEYES" guaranteed for 2 years from date
of purchase (NOT RE-PLACEMENT DATE)

Contact (Bill Courtwright ONLY) for special prices on
rejects and returned shoes (NO GUARANTEE)

DEADEYE Caps Available — \$5.00 postpaid

W. Courtwright
P.O. Box 742
Fenton, MO 63026
Phone: (314) 376-5222 (8-5)
(314) 677-2200
(314) 842-5188

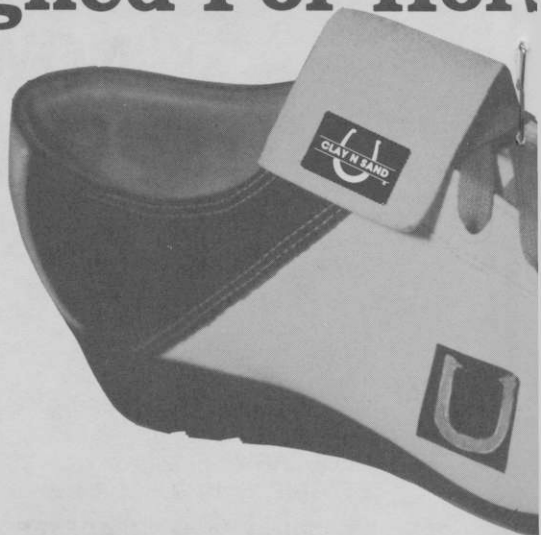
Carl Steinfeldt
44 Ridgcrest Road
Rochester, NY 14626 (summer)
Phone: (716) 225-4191

Walter Ray Williams, Jr.
6140 Grant St.
Chino, CA 91710
Phone: (714) 628-6053

Carl Steinfeldt
407 Shady Lane Mobil Park
15400 Roosevelt Blvd.
Clearwater, FL 33520
(winter address)
Phone: (813) 535-3136

ORDER DIRECT or from NHPA REPRESENTATIVE

Introducing The F Designed For Hor.



Clay 'N Sand® is the first sports shoe designed for horseshoe pitching enthusiasts.

The soft leather composition means great give and breathability, and it's comfortable and light weight. Clay 'N Sands® provide the stability and exceptional balance you need to win games and reach goals. You can confidently wear the black, gold and white Clay 'N Sands® on your favorite pitching surface.

Don't delay. Order your revolutionary Clay 'N Sand® Shoes today!

CLAY 'N SAND® IS MADE IN THE U.S.A.

First Sports Shoe Horseshoe Pitching



Order Your Clay 'N Sand® Shoes today.

Check Size

Men's 9 9½ 10 10½ 11 11½ 12 12½

Women's 6 6½ 7 7½ 8 8½ 9 9½ 10 10½

(Both shoes come medium width only.)

PLEASE PRINT

Name _____

Address _____

City _____ State _____ Zip _____

Send check or money order for \$59.95 plus \$3.00 shipping and handling to:

Clay 'N Sand, Inc.
6901 Sheridan Rd.
Kenosha, WI 53140
414/654-6404

OR

Clay 'N Sand, Inc.
19 Ridge Road
Burlington, Conn. 06013
1-800/243-3158

Wisconsin residents add 5%.

8:00 a.m. - 5:00 p.m. EDT

HUGHES TOPS IN WEBB MEMORIAL AT OHIO-KY. INDOOR

The 1986 Elmer Webb Memorial Open held at the Ohio-Ky. Indoor Courts in Cincinnati, Ohio was won by John Hughes. Patti Moher won th Ladies while Mike Canupp won th eJunior class. All of the winners were winners for the first time. Tourney was sanctioned. Sanc. 86-22.

CLASS A — John Hughes, 5-2-59.8; Ken Kugler, 4-3-61.1; J. Henn, 4-3-59.7; D. Malone, 4-3-59.2; D. Kiefer, 5-3-54.9; R. Moore, 3-4-56.2; B. Henn, 3-4-53.6; B. Gibbons, 1-6-47.7.

CLASS B — Cliff Henn, 6-1-53.5; B. Boetticher, 6-1-49.0; R. Tebelman, 4-3-51.2; Chick Henn, 4-3-44.2; L. Martini, 3-4-48.0; P. Coleman, 3-4-48.0; M. Duncan, 2-5-43.1.

CLASS A — John Hughes, 5-2-59.8; Ken Kugler, 4-3-61.1; J. Henn, 4-3-59.7; D. Malone, 4-3-59.2; D. Kiefer, 4-3-54.9; R. Moore, 3-4-56.2; B. Henn, 3-4-53.6; B. Gibbons, 1-6-47.7.

CLASS B — Cliff Henn, 6-1-53.5; B. Boetticher, 6-1-49.0; R. Tebelman, 4-3-51.2; Chick Henn, 4-3-44.2; L. Martini, 3-4-48.0; P. Coleman, 3-4-48.0; M. Duncan, 2-5-43.1.

CLASS C — Fran Rogg, 6-1-47.0; J. Turner, 6-1-44.0; F. Brinkman, 5-2-39.4; D. Schneider, 3-4-39.9; O. Conlin, 3-4-37.0; S. Reynolds, 3-4-33.8; B. Littrel, 2-5-32.5.

CLASS D — D. Claxton, 6-1-49.7; W. Canupp, 5-2-47.6; V. Stoner, 5-2-46.6; J. Gerros, 4-3-48.0; E. Harrison, 3-4-36.6; N. Fraley, 2-5-43.1; J. Shepherd, 2-5-38.0; N. Martin, 1-6-34.7.

DESIGNED FOR MAXIMUM PERFORMANCE

IMPERIAL

CAST MODEL

WIDER, THICKER BLADES

U S A PRICES
(Postpaid)

1 Pair	\$26.00
2 to 5 Pair	\$25.00
6 Pr. & Over	\$20.00
	Freight Collect

FORGED MODEL

HARDENED HOOKS AND
POINTS

U.S.A. PRICES
(postpaid)

1 Pair	\$39.00
2-5 Pair	\$37.00
	Freight Collect
6 Pair & Over	\$31.00

CLYDE MARTZ

3726 Henley Dr.

Pittsburgh, Pa. 15235

PHONE: 412-731-4662

HUGHES TOPS — (Continued)

CLASS E — J. Morrison, 6-1-39.7; A. Adams, 5-2-38.0; E. Mason, 4-3-34.9; G. Webster, 4-3-32.3; B. Cummings, 3-4-31.9; B. Kenton, 3-4-31.7; W. Brown, 2-5-33.2; S. Simpkins, 2-5-78.8.

CLASS F — L. Glass, 7-0-30.8; J. Anderson, 5-2-37.0; D. Webb, 4-3-38.5; T. Webb, 4-3-33.3; G. James, 3-4-28.6; S. Wilmoth, 2-5-28.2; I. McClurg, 2-5-28.2; G. McKinney, 1-6-28.5.

CLASS G — K. Knight, 6-1-29.9; B. Selett, 5-2-30.8; B. Sowder, 5-2-30.2; D. McClurg; M. Cooper, 4-3-22.4; M. Roberts, 3-4-5.5; A. Centers, 1-6-21.7; P. Zornes, 0-7-19.3.

CLASS H — G. Lang, 6-1-24.4; R. Fischesser, 5-2-22.7; D. Blackwell, 4-3-26.5; M. Fraley, 4-3-26.2; M. Dawn, 3-4-21.6; L. Hartman, 3-4-21.1; E. Schlemmer, 2-5-24.4; K. Lyons, 1-6-15.8.

CLASS I — T. Fortner, 7-0-23.3; C. Webb, 6-1-20.7; H. Hall, Jr., 4-3-15.7; D. Yates, 4-3-11.8; B. Beckman, Jr., 3-4-13.1; B. Caraway, 3-4-6.3; B. Kaiser, 1-6-3.0; J. Wilson, 0-7-7.0.

CLASS J — R. Toelke, 7-0-11.7; J. Harrington, 6-1-10.2; R. Wurtlebacher, 5-2-0.6; T. Lassandro, 4-3-2.3; B. Price, 3-4-2.1; M. Gray, 2-5-1.6; C. Betsch, 1-6-3.0; T. Betsch, 0-7-3.8.

WOMEN CLASS A — P. Moher, 5-0-30.4; J. Beckman, 4-1-27.5; M. Glass, 2-3-27.5; R. Reis, 2-3-25.0; K. Rimer, 2-3-23.4; M. Cummings, 0-5-12.6.

WOMEN CLASS B — J. Stern, 6-1-25.0; P. Nudds, 6-1-19.6; J. Taylor, 5-2-27.8; M. Martini, 5-2-20.9; M. Gusset, 3-4-13.2; D. McDaniel, 2-5-14.2; B. Raider, 1-6-4.0.

BOYS CLASS — M. Canupp, 6-0-60.3; R. Stagill, 3-3-50.0; K. Henn, 2-3-28.3; S. Henn, 0-5-8.7.

AVF — BERWYN, ILL. HORSESHOE PITCHERS ASSOC.

1986 membership and league registration meeting, 9 a.m. Sunday, April 6th, Proksa Park Courts: 29th Pl. & Home Av. (2900½ S. & 7000-W.) or Park Office: 3001 S. Wisconsin Av. (7100-W.); Berwyn, IL. Membership and league deadline: Sunday, May 25th; 9 a.m. at Park Courts. For tournament information or complete copy of program schedule, contact: Arthur V. Felgenhauer, Mgr., 3030 S. Wesley Ave., Berwyn, IL 60402. Phone (312) 484-0549.

Berwyn Park District — 17th Annual Horseshoe Tournament — Sat. & Sun., Aug. 9th & 10th. Rain outs same time following weekend. Proksa Park Courts: 29th Pl. & Home Av., Berwyn, IL. (2900½-S. & 7000-W). Trophies. Assigned class/time. Upper classes pitch Sunday. Out of Dist. residents \$4.00. Pk. Dist. residents \$2.00. Berwyn HPA members \$1.00. All entries must submit their ringer % and 50 shoe point average with application. Entry deadline: Sun., July 27th. Applications are available. Contact: Arthur V. Felgenhauer, 3030 S. Wesley Av., Berwyn, IL 60402. Phone: (312) 484-0549.

Cermak Rd. Business Assn. Houby Fest — 14th Annual Horseshoe Tournament. Sat. & Sun., Sept. 27th & 28th. Rain-outs same time following weekend. Proksa Park Courts: 29th Pl. & Home Av.; Berwyn, IL (2900½-S. & 7000-W). Trophies. Assigned class/time. Upper classes pitch Sunday. All entries must submit their ringer % and 50 shoe point average with application. \$8.00 entry fee. Entry deadline: Sun., Sept. 14th. Applications are available. Contact: Arthur V. Felgenhauer, 3030 S. Wesley Ave., Berwyn, IL 60402. Phone: (312) 484-0549.

**ENTRY BLANK FOR 1986 W.T. — AINSWORTH, NEBRASKA
JULY 21 THROUGH AUGUST 2, 1986**

NAME _____ NHPA CARD # _____

ADDRESS _____

ZIP _____

Social Security Number _____ Date of Birth _____

Occupation (if retired, retired from what?) _____

The deadline to enter this event is June 1, 1986. Any entry received that is post marked after June 1 will be returned. This year we will *not* put late entries in place of drop outs. If you don't enter by June 1, 1986 you will *not* play. **NO PHONE ENTRIES.**

WE NEED YOUR RECORD OF PERFORMANCE: Please be accurate. We reserve the right to change your percentage if records indicate that you have not been accurate on this form. Please provide as much of this information as possible:

1985 W.T. Percentage _____ 1985 State Tourn. Percentage _____

1985 League Averages _____

Last Three Sanctioned Tourneys _____

Highest 1985 Tournament _____ Highest 1986 Tournament _____

Last Three Events _____

ENTRY FEE MUST BE ENCLOSED!! Juniors are free. All adults regardless of division must send \$25.00.

It is very important that you enter the correct division. Any male regardless of age may enter the Men's division. Any female regardless of age may enter the Women's division. Juniors who enter the adult divisions must pitch the adult distance and will forfeit their junior standing. If you are 17 years old or younger on or after January 1, 1986 you may enter the Junior divisions. You may enter the Intermediate division if you are between 59 and 66 years of age by July 20, 1986. That is you must be 60, 61, 62, 63, 64, or 65 years old as of July 20, 1986 to enter the Intermediates. To enter the Senior division you must be 66 years old or older by July 20, 1986. If you become 66 during the tournament you will be allowed to finish the competition in the Intermediates and may not enter the Seniors until 1987. To enter the 70 and older division you must be 70 years of age by July 20, 1986. The 70 and older division may pitch any distance from 30 feet on back. Please *Circle* the division you are entering. Enter only *one*!

MEN ___ WOMEN ___ BOYS ___ GIRLS ___ 70&OLDER ___ SENIORS ___

INTERMEDIATES ___ There are no Seniors, Intermediates, 70 & Older for females. Mail entries to NHPA, Box 810, Circleville, OH 43113. A complete schedule will be mailed to you by July 1, 1986.

SOUTHERN CALIFORNIA TOURNAMENT ACTIVITY

HOLLINGSWORTH OPEN — SO. GATE — 2-23 — SANC. 86-145 — GROUP 1 — Pat Silva, Santa Barbara, 6-1-67.4; Jeff Williams, Chino, 5-2-62.3; Jonathan Williams, Chino, 4-2-67.7; Newell Flann, Westminster, 3-3-61.2; Orville Lokken, Yorba Linda, 2-4-64.8; Ed Arionus, Westminster, 2-4-58.4; Nathan Williams, Chino, 0-6-53.1.

GROUP 2 — Al Nichol, Carson, 6-0-59.8; Norman Cone, Huntington Beach, 4-2-53.8; Chuck Seal, N.C.H.P.A., 3-3-54.5; Jim Eozzo, Los Angeles, 3-3-54.1; Nick Ihli, Ventura, 3-3-52.6; Don Gregson, Crestline, 2-4-43.6; Bruce Stuart, Torrance, 0-6-35.1.

GROUP 3 — Jim Atwell, Los Angeles, 6-0-52.6; Barbara Dow, Capistrano, 5-1-47.0; Ken Lamb, Norwalk, 3-3-45.5; Dan Noriega, Lakewood, 3-3-40.2; Pat Brady, Torrance, 2-4-42.9; Don Hendrick, Wisconsin, 2-4-38.6; Earl Kerr, Laguna Hills, 0-6-31.3.

GROUP 4 — Bob Jacobs, Tustin, 7-1-44.9; Jim Buck, Lakewood, 5-2-44.3; Jim Kerr, Redondo Beach, 5-2-42.3; Chuck Yoshida, Carson, 4-2-38.8; Ray Silva, Santa Barbara, 2-4-36.0; Steve Silva, Santa Barbara, 1-4-37.5; Fred Craven, Bellflower, 0-6-20.4.

GROUP 5 — Art Amador, Los Alamitos, 5-1-39.3; Wally Shipley, Newport Beach, 4-2-34.4; Dave Rodriguez, Santa Barbara, 4-2-31.4; Harold Redding, Burbank, 4-2-28.5; Jim Dow, Capistrano, 2-4-28.5; Chuck Wenger, Yuma, Ariz., 1-4-21.2; Larry Connell, Norwalk, 1-5-16.9.

GROUP 6 — Harry Crain, No. Hollywood, 7-0-22.1; Janice Atwell, Los Angeles, 6-1-19.6; Jim Mudra Jr., Whittier, 5-2-24.0; Smokey Anderson, Burbank, 4-3-26.0; Jim Mudra Sr., Long Beach, 3-4-22.3; Fred Manley, Norwalk, 2-5-4.0; Robert Kernes Sr., Norwalk, Forfeit; Willard Harper, Bell Gardens, Forfeit.

HAL SLAGG "D" OPEN — BURBANK — SANC. 86-144 — GROUP 1 — Ray Silva, Santa Barbara, 6-1-40.5; Ed Agner, Beaumont, 5-2-31.4; Jim Atwell, Los Angeles, 4-2-46.1; Phyllis Morten, Whittier, 3-3-35.0; Loris Hauck, Simi Valley, 3-3-29.0; John Bower, Santa Barbara, 1-5-28.7; Dan Epele, Orange, 0-6-22.2.

GROUP 2 — Bob Jacobs, Tustin, 6-0-42.6; Fred Briand, No. Edwards, 5-1-35.8; Doug Soward, Lake Isabella, 3-3-34.6; Dave Rodriguez, Santa Barbara, 3-3-33.2; Jack Schoonover, Orange, 2-4-32.0; Steve Nemback, Palmdale, 2-4-26.5; Jim Dow, Capistrano, 0-6-23.0.

GROUP 3 — Harold Redding, Burbank, 5-2-25.7; Elizabeth Standard, Orange, 5-2-31.4; Gene Mayfield, Castic, 5-2-17.5; Harry Crain, No. Hollywood, 5-2-17.5; Janice Atwell, Los Angeles, 4-3-20.4; Edyth Soward, Lake Isabella, 2-5-12.1; Gene Bolsinger, Simi Valley, 1-6-21.1; Bruce Pruyne, W. Lancaster, 1-6-15.4.

TORRANCE DOUBLES — SANC. 86-146 — GROUP 1 — Peter Trejo - John Lendway, 7-0; Ken Lamb, Larry Connell, 6-1; Nathan Williams, Jim Mudra Jr., 5-2; Jeff Williams - Byrne, 4-3; Chuck Yoshida - Jim Mudra Sr., 3-4; Bruce Stuart - Ed Lusk, 2-5; Leonard Lifton - Harold Redding, 1-6; Al Nichols - Franklin McCutcheon, 0-7.

49 PERCENT AND UNDER — SOUTH GATE — SANC. 86-145 — GROUP 1 — Bob Thompson, Orange, 7-2-50.9; Bob Austin, Escondido, 5-3-48.0; Pat Brady, Torrance, 5-2-44.0; Barbara Dow, Capistrano, 4-3-45.9; Jim Atwell, Los Angeles, 3-4-43.4; Earl Kerr, Laguna Hills, 3-4-42.8; Bruce Stuart, Torrance, 2-5-44.7, Ken Lamb, Norwalk, 1-6-41.7.

GROUP 2 — Bob Jacobs, Tustin, 8-0-39.0; Dan Noriega, Lakewood, 5-3-39.0; Bob Alborn, Bloomington, 4-4-38.6; Fred Craven, Bellflower, 4-4-37.4; Jim Buck, Lakewood, 4-3-36.6; Kevin Kecskes, Fontana, 4-3-35.8; Loris Hauck, Simi Valley, 4-4-33.1; Phyllis Morten, Whittier, 2-6-34.4; Ron Kecskes, Fontana, 1-7-31.9.

GROUP 3 — Jack Schoonover, Orange, 7-0-34.8; Peter Trejo, Vista, 6-1-31.5; Jim Dow, Capistrano, 3-4-31.1; George Farrell, Apple Valley, 3-4-28.2; Fred McFarland, Long Beach, 3-4-25.7; Al Wisser, Riverside, 3-4-24.3; John Lendway, Downey, 2-5-21.4; Dan Epele, Orange, 1-6-23.9.

SOUTHERN CALIF. — (Continued)

GROUP 4 — Art Amador, Los Alamitos, 6-0-37.8; Harold Redding, Burbank, 4-2-31.8; Roy Scott, Cudahy, 3-3-31.6; Fred Koch, Long Beach, 3-3-25.4; Regis Dunlop, Fontana, 3-3-24.5; Larry Connell, Norwalk, 1-5-24.1; Phil Posos, Buena Park, 1-5-21.2.

GROUP 5 — Jim Mudra, Long Beach, 6-1-21.1; Janice Atwell, Los Angeles, 5-2-23.9; George Barker, Bloomington, 5-2-21.7; Brian Chandler, Yucca Valley, 5-2-20.7; Jim Mudra, Jr., Whittier, 4-3-13.6; Bob Kernes, Sr., Norwalk, 1-6-16.8; Gene Mayfield, Castic, 1-6-15.8; Erwin Klessig, Lynwood, 1-6-5.4.

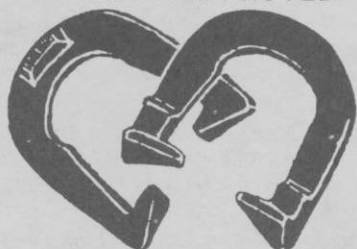
TIPS FROM THE TOP

CARL STEINFELDT — The best piece of advice I can give a beginner is this. Buy a good pair of shoes. By that, I mean a pair that is approved by the NHPA. By so doing, you will assure yourself of a well balanced shoe.

It is much easier to throw ringers when the shoes you are using have perfect balance. Once you have obtained such a pair, ask a good pitcher to show you how to throw an open shoe.

An open shoe is one that lands with the opening of the shoe facing the stake. A beginner should try the 1¼ or 1¾ turn to begin with.

After he has reasonable success with this shoe he should concentrate on height and distance. Relaxing while pitching is a must. Don't tighten up! Just relax and do your best.

NHPA APPROVED

Guaranteed one year
from date of purchase

**THE FIRST NEW DESIGN
of the
PROFESSIONAL PITCHING
HORSESHOE**

The horseshoe with calkers on the reversed side of the toeplate. The FLIP-STYLE pitcher will now have the two calkers in a down position landing in pit.

**HIGH GRADE STEEL
CASTING**

2 lb. 9 oz. only — \$27.00 pr., plus \$3.00 UPS

Send checks or money orders to:

PETE DONOHO
704 STATE STREET
REDDING, CA 96001
Ph. 916-243-5761



CAL-FLIP

Allow ample time for delivery
Made in U.S.A.-Richmond, Calif.

HOSTETLER CAPTURES SARASOTA, FLA. OPEN — SANC. 86-7

Rain was the big winner at the Sarasota Open, February 8. Only three classes (F, G & H) completed the four rounds necessary to name class champions and award prizes. However, Class A was played on February 10 and persistence was rewarded as Henry Hostetler won the tournament.

CLASS A — *H. Hostetler, 6-1-63.8; F. Bartley, 5-2-57.9; L. Miller, 5-2-63.6; M. Roseberry, 3-4-50.0; J. Hurst, 3-4-53.9; P. Scheub, 3-4-49.4; J. Pillion, 2-5-49.1; W. Gore, 1-6-47.8.*

CLASS B-C-D-E — *Rained out.*

CLASS F — *J. Morgan, 4-0-27.3; P. O'Toole, 2-2-30.7; A. Burg, 2-2-38.1; D. Boyer, 2-2-30.6; L. Murray, 2-2-27.1; E. Colgan, 2-2-25.8; E. Miller, 2-2-25.0.*

CLASS G — *B. King, 3-1-27.9; G. Beckemeyer, 3-1-29.7; W. Burgraf, 3-1-20.0; J. West, 2-2-30.4; E. Johnson, 2-2-26.8; D. Slocum, 2-2-22.9; G. Engleman, 1-3-22.8.*

CLASS H — *D. Johnson, 4-0-27.3; H. Serena, 4-0-25.9; E. Hartman, 3-1-15.0; L. Judd, 2-2-25.3; J. Rodgers, 1-3-19.8; J. Pelky, 1-3-19.6; R. Warren, 1-3-12.9.*

STEINFELDT TOPS AT FLORIDA STATE FAIR

Pitching on portable clay courts in the newly erected and spacious Arena at the Florida State Fairgrounds in Tampa, Carl Steinfeldt emerged Tournament Champion in a field of 96 players. The Feb. 12 and 13 event hosted for the 4th year by the Clear-water Horseshoe Club provided players and spouses a 2-day free outing at the Fair. Details of play follow. All games 50 shoe or 40 pts. whichever came first.

PRELIMINARIES — GROUP 1 — *Andy Doshna, Clw., 4-1-31.6; Marge Spray, New Port Richey, 4-1-35.2; Paul Ashman, St. Cloud, 4-1-31.4; Gib Beckemeyer, Ill., 1-4-25.0; Maurice Rodocker, Ohio, 1-4-25.4; Wm. Staudacher, Large, 1-4-23.1.*

GROUP 2 — *Glen Flintoff, Thonotosassa, 5-0-37.9; Mike Roza, Large, 3-2-29.1; Bernard Southwell, Floral City, 3-2-30.0; Orval Tansy, Clw., 3-2-23.7; Jim Pelkey, Bradenton, 1-4-18.1; Harland Bennett, Mich., 27.8.*

GROUP 3 — *John Fitzpatrick, Mic., 5-0-39.3; Wilmer Cummings, Lake Worth, 4-1-28.9; Joe Morgan, Bradenton, 3-2-27.9; Burl Sharrow, Dunedin, 2-3-32.2; Pat O'Toole, Ontario, 1-4-30.1; Jack Lyons, New Port Richey, 0-5-14.2.*

GROUP 4 — *Geo. Atkinson, Mulberry, 4-2-32.4; Robert Marshall, Wildwood, 4-1-33.3; Sherman Gray, Crystal River, 3-2-33.2; Joe West, Haines City, 2-3-27.9; Bill Smith, Dunedin, 2-3-21.4; Nikki Pechin, St. Pete, 0-5-23.3.*

GROUP 5 — *Henry Ziesse, Wis., 5-0-21.0; Rex Ryan, Lakeland, 4-1-23.6; Bill Pence, Tampa, 3-2-214.4; Robert Higley, Clw., 1-4-14.8; Ralph Ziesse, Wis., 1-4-14.5; Cliff Mengel, Leavittown, Pa., 1-4-13.1.*

GROUP 6 — *Dick Senger, Eagle Lake, 4-1-43.2; John McCarron, Mo., 4-1-38.4; Leonard Murray, Mn., 3-2-36.8; Walt Wedel, Mich., 2-3-34.0; Herman Wieser, Lake Worth, 1-4-33.8; Les Long, Ill., 1-4-33.1.*

GROUP 7 — *Carl Steinfeldt, Clw., 5-0-81.8; Ed. Schultz, Mi., 56.0; Fred Raisbeck, Oh., 3-2-47.5; Angelo Cieslak, Ma., 59.8; Iris Sandham, Ga., 1-4-37.5; Henry Mullet, Sarasota, 0-5-43.3.*

GROUP 8 — *Karl Van Sant, Ind., 5-0-78.3; Elmer Swartz, Clw., 3-2-47.8; Bob Dean, Gulfport, 3-2-50.9; Ray Arthur, St. Pete, 2-3-47.0; Lavelle Hoban, Lakeland, 2-3-44.1; Clyde Robinson, NH, 0-5-32.8.*

STEINFELDT TOPS — (Continued)

GROUP 9 — Chet Reel, Holiday, 5-0-61.7; Walter House, Sarasota, 4-1-55.3; Lee Antonides, Zephyrhills, 3-2-44.7; Bill Wicker, Moorehaven, 2-3-47.0; Carl Searls, Sarasota, 1-4-34.0; Walter Frank, Lake Worth, 0-5-42.5.

GROUP 10 Floyd Bartley, Mi., 5-0-66.8; Betty Dunlamp, OH, 4-1-65.5; Tommy Lawson, Ga., 3-2-46.7; Norm Hahn, Dunedin, 2-3-46.1; Ed. Senger, Clw., 1-4-46.5; Robert Bjorkgren, Bradenton, 0-5-38.9.

GROUP 11 Leo Fitzpatrick, Mi., 5-0-60.4; Paul Scheub, Sarasota, 3-2-53.8; Chas. Dunlap, Oh., 3-2-48.5; Lester Rose, Sarasota, 2-3-45.8; Ralph Cullum, Inverness, 2-3-45.3; Gene McCutcheon, Oh., 0-5-23.0.

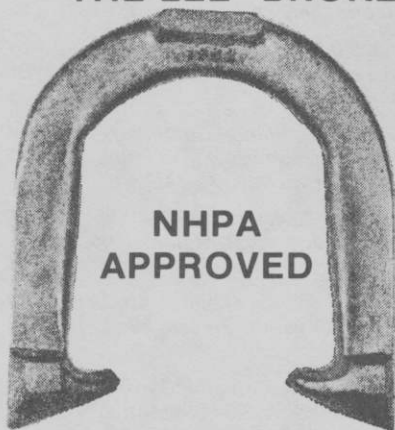
GROUP 12 — Joe Pagnanelli, Pa., 4-1-50.5; Jack Edwards, Sarasota, 4-1-51.7; Marls Goodrich, Bradenton, 3-2-52.5; Chester Anderson, Bradenton, 2-3-50.0; Wm. Hofecker, Pa., 2-3-54.5; Sparky Hall, Hernando, 0-5-43.4.

GROUP 13 — Frank Bohun, Pa., 5-0-66.8; Marvin Grubb, Titusville, 3-2-52.9; Ed. Howdeshell, In., 3-2-54.4; Carroll Brown, Orlando, 3-2-43.4; Norm Houchin, Clw., 1-4-32.3; Bob Widdersheim, Clw., 0-5-35.0.

GROUP 14 — Walter Pickard, Zephyrhills, 5-0-57.1; Henry Hostetler, Sarasota, 4-1-59.3; Lee Wilcox, Lakeland, 2-3-50.5; Chet Albertson, St. Cloud, 2-3-53.0; Donald Opdycke, Bonita Springs, 1-4-44.7; Harry Clement, St. Cloud, 1-4-33.5.

GROUP 15 — Jim Hurst, Sarasota, 5-0-55.5; Levi Miller, Sarasota, Omar Blacketer, Bradenton, 2-3-50.5; Geo. Bush, Hernando, 2-3-40.2; Guy Nightingale, Clw., 2-3-39.2; Wally Smith, Ruskin, 1-4-41.7.

BACK BY POPULAR DEMAND THE LEE "BRONZE" HORSESHOE



**NHPA
APPROVED**

Cast of a new, modern
metal alloy that is

"deader" than dead soft,
yet tough as steel.

Batters No Quicker
Than Dead Soft Steel

Requires Little
or No Filing

Does Not Rust

PRICE - \$26.00 PER PAIR PLUS POSTAGE

LEE HORSESHOE COMPANY

2631 Middletown - Eaton Rd. • Middletown, OH 45042
(513) 422-5695

STEINFELDT TOPS — (Continued)

GROUP 16 — Victor Gray, St. Pet, 5-0-25.0; Rowland Conrad, Clw., 3-2-23.8; Geo. Connor, Kissimmee, 2-3-30.5; Carl Popeck, St. Cloud, 2-3-25.9; Jerry Roza, Clw., 2-3-20.8; Percy Wells, Clw., 1-4-25.6.

SEMI FINALS — GROUP 1 — Carl Steinfeldt, 5-0-73.6; Bob Dean, 3-2-58.1; Walt Pickard, 3-2-51.9; Ed. Schultz, 2-3-54.3; Joe Pagnanelli, 2-3-53.9; Lee Antonides, 0-5-31.5.

GROUP 2 — Karl Van Sant, 5-0-74.7; Henry Hostetler, 4-1-60.3; Jim Hurst, 3-2-64.0; Lee Wilcox, 2-3-48.6; Tommy Lawson, 1-4-45.0; Jack Edwards, 0-5-40.0.

GROUP 3 — Frank Bohun, 5-0-63.6; Angelo Cieslak, 4-1-52.8; Walter House, 2-3-58.3; Chas. Dunlap, 2-3-50.4; Omar Blacketer, 2-3-47.8; Marls Goodrich, 1-4-46.7.

GROUP 4 — Leo Fitzpatrick, 5-0-64.8; Wm. Hofecker, 3-2-53.4; Marvin Grubb, 2-3-54.6; Floyd Bartley, 2-3-53.0; Fred Raisbeck, 2-3-49.1; Guy Nightingale, 1-4-41.5.

GROUP 5 — Betty Dunlap, 4-1-62.7; Chet Reel, 3-2-61.06; Paul Scheub, 3-2-57.3; Levi Miller, 3-2-54.4; Elmer Swartz, 2-3-39.2; Ed. Howdeshell, 0-5-45.8.

LADDER FINALS — Leo Fitzpatrick (68.0) defeated Betty Dunlap (66.0) 32-25; Frank Bohun (58.0) defeated Leo Fitzpatrick (56.0) 28-22; Frank Bohun (76.0) defeated Karl Van Sant (64.0) 34-14; Carl Steinfeldt (78.0) defeated Frank Bohun (72.0) 39-36.

1986 W.T. DATES — JULY 21 THRU AUGUST 2
ENTRY DEADLINE — JUNE 1

THE ORIGINAL

D.A. BAKER HORSESHOE CARRYING CASE



These handcrafted cases, made from select hardwoods with mitered and glued corners for extra strength and beautiful appearance are now available from RINGER ENTERPRISES.

Inside there is room for several pairs of shoes, measuring tool, file, and pencils -- a fine gift for the "class" horseshoe pitcher. You can count on top quality with the "Bake" Baker line -- "Bake" wouldn't have it any other way -- that's why his name is stamped on each one.

Send check or money order for \$24.95 to:

RINGER ENTERPRISES
2895 E. Shadylane Drive
New Castle, PA 16101
(PA residents add 6% sales tax)

STEINFELDT DOMINATES ORLANDO, FL. OPEN — SANC. 86-9

Bradenton pitchers dominated Class B, taking 1st, 2nd, 3rd places. Orlando's crew scored heavily in the under 40% class taking both 1st and 3rd in Class E, 1st and 2nd in Class F, 1st in Class G, and all three trophies in Class H.

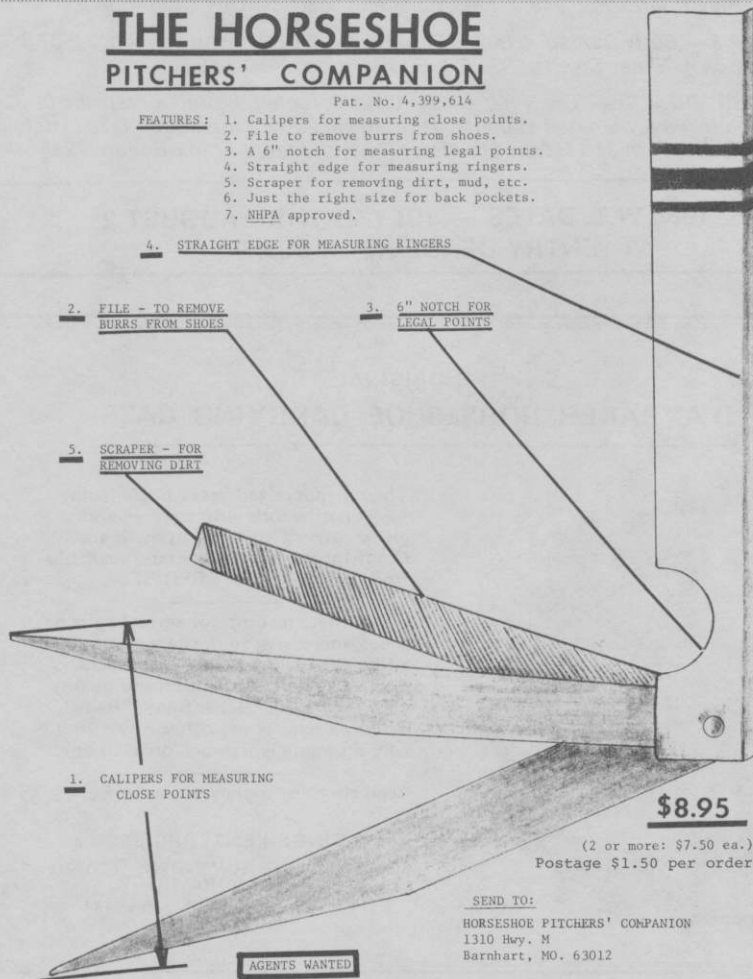
Highlight of the tournament for the Orlandoans however, was the graceful and unsolicited testimonial from Clearwater's two-time World Champion, Carl Steinfeldt, who in an interview which went over the whole Central Florida area from TV Channel 2, WESH, said, "You have here in Orlando the finest horseshoe facilities I have seen anywhere in the United States or Canada."

Carl took first in Class A over a strong field including four pitchers showing over 60% ringer averages. Karl Van Sant of Indiana pushed Steinfeldt hardest with 41 ringers and an 82% game which our Florida Carl barely topped with 42 ringers and an 84% average!

THE HORSESHOE PITCHERS' COMPANION

Pat. No. 4,399,614

- FEATURES:**
1. Calipers for measuring close points.
 2. File to remove burrs from shoes.
 3. A 6" notch for measuring legal points.
 4. Straight edge for measuring ringers.
 5. Scraper for removing dirt, mud, etc.
 6. Just the right size for back pockets.
 7. NHPA approved.



\$8.95

(2 or more: \$7.50 ea.)
Postage \$1.50 per order

SEND TO:

HORSESHOE PITCHERS' COMPANION
1310 Hwy. M
Barnhart, MO. 63012

AGENTS WANTED

ORLANDO, FL. — (Continued)

CLASS A — Steinfeldt, Clearwater, 6-0-77.9; Van Sant, Indiana, 5-1-73.7; G. Rademacher, Plant City, 3-3-60.3; Miller, Sarasota, 3-3-61.5; Deuster, Orlando, 2-4-57.8; Bartley, Bradenton, 1-5-52.8; Edwards, Sarasota, 1-5-44.9.

CLASS B — Roseberry, Bradenton, 6-0-57.8; Schultz, Bradenton, 4-2-59.0; Schwartz, Bradenton, 4-2-53.7; Dunlop, Ohio, 3-3-54.7; Cullum, Beverly Hills, 2-4-45.7; Grubb, Titusville, 1-5-50.0; Wicker, 1-5-47.5.

CLASS C — Paganelli, Pennsylvania, 5-1-59.3; House, Clearwater, 4-2-49.1; Blacketer, Bradenton, 3-3-46.1; Baldwin, St. Cloud, 3-3-52.9; Clements, Winter Haven, 2-4-44.8; C. Heflin, 2-4-43.6; C. Dunlop, Ohio, 2-4-43.3.

CLASS D — Roberts, Apopka, 5-1-33.4; Senger, Clearwater, 5-1-46.4; Jacques, Titusville, 3-3-44.7; Krieger, Bradenton, 3-3-48.1; Steifel, Bradenton, 3-3-43.8; Royce, Bradenton, 2-4-31.6; Gambrel, Apopka, 0-6-24.4.

CLASS E — Koenig, Orlando, 5-1-40.8; Ballhagen, Sebring, 4-2-36.4; McKenna, Orlando, 3-3-37.6; West, Winter Haven, 3-3-32.8; Supina, 3-3-32.6; Barker, Apopka, 2-4-34.3; Marshall, Wildwood, 1-5-30.4.

CLASS F — Kuhn, Orlando, 6-0-31.8; Kinat, Orlando, 5-1-33.9; Ellenberger, Wtr. Hvn., 4-2-35.3; Perry, Orlando, 3-3-34.4; Maurer, 2-4-27.2; Davey, Apopka, 1-5-26.4; Langhart, Orlando, 0-6-21.1.

CLASS G — Olson, Orlando, 4-2-25.5; Rahfeldt, Tavares, 4-2-28.2; Reynolds, Orlando, 3-3-26.0; Beare, Apopka, 3-3-24.4; Eschenberg, 3-3-24.0; Manley, Orlando, 2-4-27.5; Mallot, Orlando, 1-5-23.2.

CLASS H — Watkins, Orlando, 5-0-32.2; Berrall, Orlando, 4-1-24.4; Walters, Orlando, 3-2-24.1; Riddle, Apopka, 2-3-20.9; Clausen, Orlando, 1-4-23.2; Backstrom, Orlando, 0-5-17.6.

SOUTHERN UTAH ICE BREAKER OPEN — SANC. 86-135

The first horseshoe tournament of the Southern Utah HPA for 1986 season was played in St. George, Utah, Feb. 22. The '86 Ice-Breaker Open. Jack Raymond of Sandy City walked away with top honors by downing all players for first place. Junior champion went to Lloyd Blake of Monticello his first championship, although he had a tough time with first time player Bill Cox of Panaca, Nev. as they both tied for first and Blake won the playoff game. Other Class play winners were: Class Grant Seegmiller, Cedar City. Class C. Wilford Andelin, Leeds; Class D Robert Langston, Hurricane; Class E. Art Woodard, Cedar City; Class F. Kevin Alldredge, St. George; and Juniors Class B Penny Bundy, St. George.

CLASS A — Jack Raymond, Sandy City, 5-0-49.2; John Bracken, Santa Clara, 3-2-40.3; Orrian Rich, St. George, 3-2-38.0; Dennis Ohms, 2-3-43.2; J.J. Steffen, Monticello, 1-5-32.1; Bart Williams, St. George, 1-5-30.5; Class high ringer game Dennis Ohms 54.8.

CLASS B — Grant Seegmiller, Cedar City, 5-1-35.0; Rex Brown, Kanab, 4-2-37.1; Nober Zuniga, Enoch, 4-2-34.0; Lorin Condie, Cedar City, 4-2-29.3; Shirley Steffen, Monticello, 2-4-26.4; Rose Johnny, Panaca, 1-5-25.3; Garth Bundy, St. George, 1-5-23.4; Class high ringer game Rex Brown 44.0.

CLASS C — Wilford Andelin, Leeds, 4-1-44.0; Doc Hildebrand, St. George, 3-2-37.0; Elwin Marquardson, Cedar City, 3-2-31.9; Don Weaver, 2-3-33.9; Duane Archabald, St. George, 2-3-25.0; Bud Schardine, Sprinville, 1-4-30.9; Tournament high game Wilford Andelin, 61.8.

ICE BREAKER — (Continued)

CLASS D — Robert Langston, Hurricane, 6-0-27.9; Norm Kirk, Las Vegas, 4-2-28.8; Carole Marquardson, Cedar City, 4-2-22.9; Merton Jensen, St. George, 3-3-27.5; Neldon Christensen, Hurricane, 2-4-24.2; Biff Williams, St. George, 1-5-24.2; Lew Brown, St. George, 1-5-21.7; Class high ringer game Neldon Christensen, 42.5.

CLASS E — Art Woodard, Cedar City, 5-2-31.4; Earl Davenport, Cedar City, 5-3-30.3; Doyle Swallow, Kanab, 4-3-27.1; Russell Johnny, Panaca, 3-3-21.3; Don Howell, Mt. Pleasant, 3-3-21.3; Reed Lowe, St. George, 2-4-24.2; L.D. Alldredge, St. George, 1-5-12.5; Class high game ringer Doyle Swallow 42.5.

CLASS F — Kevin Alldredge, St. George, 4-0-16.9; Viola Fawcett, Hurricane, 3-1-19.4; Afton Fawcett, Hurricane, 2-2-15.0; Kent Fawcett, Hurricane, 1-3-10.6; Kent Walker, St. George, 0-4-3.1; Class high ringer game Viola Fawcett 25.0.

JUNIOR CLASS A — Lloyd Blake, Monticello, 6-1-26.7; Bill Cox, Panaca, 5-2-25.2; Cameron Humphreys, Monticello, 4-2-27.8; Gabe Ohms, Cedar City, 3-3-18.3; Boyd Stuckey, Monticello, 2-4-15.0; Jenny Ohms, Cedar City, 2-4-7.2; Sandra Howell, Mt. Pleasant, 0-6-5.0; Juniors tournament high ringer percentage game Cameron Humphreys 40.0.

JUNIOR CLASS B — Penny Bundy, St. George, 5-1-4.5; Dawn Howell, Mt. Pleasant, 4-2-2.8; Clifton Johnny, Panaca, 4-2-1.7; Corey Baumgartner, Cedar City, 3-3-1.1; Seth Ohms, Cedar City, 2-4-3.9; Lili Ann Johnny, Panaca, 2-4-1.7; Sarah Ohms, Cedar City, 1-5-5. Class high ringer game Seth Ohms 10.0.

FLA. SUNCOAST OPEN WON BY K. VAN SANT — SANC. 86-12

CLASS A — Karl VanSant, 4-1-74.4; Floyd Bartley, 4-1-62.6; H. Hostetler, 3-2-63.6; Levi Miller, 2-3-59.3; Jim Hurst, 2-3-56.6; Gary Gardener, 0-5-57.3.

CLASS B — Ed Schultz, 4-1-57.6; Elmer Swartz, 3-2-47.3; Jack Edwards, 2-3-50.4; Bob Dean, 2-3-48.4; M. Roseberry, 2-3-48.0; L. Robinson, 2-3-46.0.

CLASS C — Walter House, 5-1-52.6; Lester Rose, 5-1-53.2; C. Blacketer, 4-2-52.3; M. Goodrich, 3-3-51.9; D. Maikranz, 2-4-42.7; Dave Rose, 2-4-52.2.

CLASS D — Tommy Lawson, 5-0-50.0; Helen Eakins, 3-2-41.4; C. McClain, 3-2-38.4; Howard Hahn, 2-3-37.0; F. Raisbeck, 1-4-34.9; M. Anleitner, 1-4-41.0.

CLASS E — Bob Baker, 4-1-42.0; Rex Swinson, 4-1-41.2; Bert Szombati, 3-2-44.9; Iris Sandham, 3-2-38.3; Joe Minnick, 1-4-37.9; B. Bjorkgren, 0-5-31.1.

CLASS F — Royce Wrucke, 6-0-47.7; Carl Searls, 4-2-44.7; C. Anderson, 4-2-44.8; Joe Irey, 3-3-40.0; George Stifel, 3-3-41.7; M. Rodocker, 1-5-33.7; Bob Babcock, 0-6-32.5.

CLASS G — Earl Colgan, 5-0-40.9; W. Cummings, 3-2-42.5; Les Long, 3-2-36.2; Erv Stanton, 2-3-26.6; Joe Morgan, 2-3-28.1; Bonnie Wyant, 0-5-29.6.

CLASS H — Earle Johnson, 5-0-38.7; Wilson Burggraf, 3-2-32.8; Richard Wallace, 2-3-31.7; Gib Beckemeyer, 2-3-36.0; Howard Serena, 2-3-27.1; Jim Pelkey, 1-4-24.0.

CLASS I — Don Blakeman, 5-1-28.0; Hank Zeisse, 4-2-21.5; H. Blacketer, 4-2-21.5; Larry Judd, 4-2-20.5; Agnes Snyder, 3-3-16.3; Bob Snyder, 1-5-17.5; John Manning, 1-5-17.5.

CLASS J — Rex Ryan, 5-0-36.6; John King, 4-1-33.2; G. Engelman, 3-2-25.3; Earl Hartman, 2-3-18.4; Ralph Zeisse, 1-4-13.8; Edd Rippey, 0-5-16.5.

CHENOA 4TH OF JULY

TOURNAMENT SCHEDULE

LIMIT 56 HIGHEST RINGER %
 40'-0" PITCHERS. LIMIT 8 HIGHEST
 RINGER % 30'-0" PITCHERS (WOMEN, JR
 & SR.). CLASSES C, D, F @ 9:15 AM. CHECK-
 IN 8:00 AM. CLASSES A, B, E @ 30'-0" 1:30 PM
 CHECK-IN 12:00 NOON. ENTRANTS FEE
 \$10.00, WITH UPPER CLASSES ADDITIONAL AT
 CHECK-IN

OPEN

HORSESHOE TOURNAMENT

CLASS A 1ST - \$150.00 PLUS SPECIAL TROPHY
 CLASS B 1ST - \$100.00 PLUS TROPHY. TROPHIES &
 PRIZE MONEY FOR THE FIRST THREE PLACES IN EACH
 CLASS. PLUS \$1.00 PER GAME WON.

ALL DAY FUN FOR THE ENTIRE FAMILY
 GAMES, ACTIVITIES, REFRESHMENTS, LARGE FLEE
 MARKET, PARADE, PORK DINNER & FIREWORKS.

JULY 4TH 1986 CENTRAL PARK
 CHENOA ILL. RAIN DATE JULY 5TH

SPONSORED BY CHENOA HORSESHOE CLUB NATIONAL BANK OF PONTIAC TRIPLE ODS SCHENCK FIRESTONE FUNKS
 UNION ROOFING BANK OF PONTIAC TRIPLE ODS SCHENCK FIRESTONE FUNKS
 DR. P. W. SCHLEBER
 COAL. CHENOA 4TH OF JULY COMM.
 BANK OF CHENOA
 MIDDY CO-OP
 McLEAN COUNTY ASPHALT CO. GRAYMOUT CO-OP ASSOC. ORVILLE FEARHER FORD
 JIM JONES ELECTRIC. TAPPY TULL
 F5

YOU WILL BE NOTIFIED OF CLASS & CHECK-IN TIME. ENTRY DEADLINE JUNE 14

NAME: _____ MAIL TO:
 ADDRESS: _____ RICK FIELDS
 CITY: _____ STATE: _____ ZIP: _____ 906 FLORENCE
 CHENOA ILL 61726
 PHONE NO.: _____ RINGER %: _____ PHONE NO.
 (815) 945-7486

CHECKS PAYABLE TO: CHENOA HORSESHOE CLUB.

GADWA PLAY-OFF WINNER OF SIMMONS MEMORIAL — YUMA, AZ.

CLASS A — T. Gadwa, 4-1-48.7; R. Ferguson, 4-1-46.1; H. Payne, 3-2-41.0; C. Giles, 2-3-43.1; R. Buchanan, 2-3-38.0; J. James, Withdrew.

CLASS B — B. Hanneman, 4-1-43.6; J. Smith, 3-2-47.3; J. Raymond, 3-2-45.6; R. Christianson, 2-3-41.5; B. Price, 2-3-36.2; D. Taylor, 1-4-38.8.

CLASS C — J. Whisenant, 4-1-50.0; C. Chesnovar, 4-1-30.6; S. Finrock, 3-2-43.0; D. Wilcox, 3-2-37.5; J. Anderson, 1-4-20.0; P. Centell, Withdrew.

CLASS D — C. Murr, 5-1-39; J. Johnson, 4-2-38; B. Reh, 4-2-37; B. Cockwell, 3-3-34; L. Calzada, 2-4-35.1; A. Hamilton, 2-4-33.2; D. Arionus, 1-5-32.9.

CLASS E — C. Atkinson, 4-1-37.0; E. Wilson, 4-1-29.9; A. Lund, 2-3-35.8; S. Roth, 2-3-35.1; C. Ferguson, 2-3-34.3; L. Benson, 1-4-25.7.

CLASS F — L. Taylor, 3-1-38.4; B. Reed, 3-1-35.6; P. Patterson, 2-2-35.8; F. Nelson, 2-2-30.3; E. Thibodeau, 0-4-23.8.

CLASS G — G. Foreman, 5-0-37.0; R. Lee, 3-2-31.9; L. Cherry, 3-2-31.4; B. Blow, 3-2-29.5; M. Casteel, 1-4-26.0; B. Ioerger, 0-5-24.8.

CLASS H — M. Olson, 5-0-33.5; B. Kerr, 4-1-35.3; L. Price, 3-2-26.0; J. Thiele, 2-3-25.5; T. Foley, 1-4-15.7; D. Barr, 0-5-21.5.

CLASS I — A. Carlberg, 4-1-31.5; D. Buck, 4-1-28.9; I. Casteel, 3-2-28.6; C. Wenger, 2-3-23.1; L. Graves, 2-3-22.6; H. Butcher, 0-5-23.3.

CLASS J — T. Russell, 5-0-31.8; C. Norrie, 4-1-25.3; R. Brown, 3-2-27.4; M. Hagen, 2-3-23.8; R. Barr, 1-4-19.6; G. Adams, 0-5-10.8.

CLASS K — F. Lauer, 5-0-30.6; E. Hayes, 3-2-20.3; M. Buterbaugh, 2-3-21.1; B. Shipley, 2-3-21.1; B. Shipley, 2-3-17.7; V. Doescher, 2-3-12.9; L. Johnson, 1-4-18.9.

CLASS L — L. Mork, 5-0-25.3; E. Lunceford, 4-1-27.0; C. Steinberg, 3-2-28.6; J. Liebaert, 2-3-16.0; E. Jeglum, 0-5-Withdrew.

CLASS M — G. Anderson, 4-0-26.8; J. Mauck, 2-2-22.2; G. Johnson, 2-2-16.2; B. Spooner, 1-3-14.5; C. Cooper, 1-3-11.6.

CLASS N — O. Schick, 4-0-23.2; B. Howe, 3-1-17.1; L. Christianson, 2-2-2.0; S. Shtuka, 1-3-6.0; V. Spooner, Withdrew.

MICHIGAN WATERWONDERLAND TOURNAMENT — JUNE 7-8

The annual Michigan Waterwonderland tournament will be held on Saturday and Sunday, June 7 and 8 at the Best Field courts, 1301 Mitchell Street, Jackson, Michigan. The Jackson County Horseshoe Club will host this pre-registered tournament. It is a NHPA sanctioned tournament requiring an NHPA card.

The entry deadline is May 31 by mail and June 1 by phone. Entry fee is \$12.00. Class A pay added \$5.00 and Class B pay added \$2.00 at tournament. Out of state entries must furnish 1985 average with entry. Michigan pitchers will use the final 1985 average. Wherever possible 12 man groups will be formed so to play on both Saturday and Sunday.

All games will be 35 point games. Any class of pitchers below 20% will pitch 50 shoe games. Juniors will play 50 shoe countall handicap unless entries dictate otherwise.

Call in for pitching time, June 5th and 6th. Phone: 517-782-7267 after 5:00 p.m. Mail entries to: Justin Perticone, 2437 Smiley Way, Jackson, Michigan 49203.

MOTELS & CAMPING FACILITIES AT AINSWORTH NEBR. FOR 1986 WORLD TOURNAMENT

- Four Star Motel, West Highway 20, Ainsworth, NE 69210, (402) 387-1670.
 Basset Lodge, 205 Clark, Basset, NE 68714 (402) 684-3376.
 Ballard Motel, 227 South Hall, Valentine, NE 69201 (402) 376-2922.
 Capri Motel, 1020 Douglas, O'Neill, NE 68762 (402) 336-2762.
 Hotel Prendergast, 381 North Main, Ainsworth, NE 69210 (402) 387-9982.
 Ranchland Inn, Junction 183 & Highway 20, Bassett, NE 68714 (402) 684-3340.
 Dunes Motel, East Highway 20 & 83, Valentine, NE 69201 (402) 336-3131.
 Elkhorn Motel, 510 South 4th, O'Neill, NE 68763 (402) 336-2882.
 Lazy "A" Motel, East Highway 20, Ainsworth, NE 69210 (402) 387-2600.
 Sandhill Motel, East Highway 20, Bassett, NE 68714 (402) 684-3791.
 Ft. Niobrara Hotel, 112 North Main, Valentine, NE 69201 (402) 336-1440.
 Elms Motel, East Highway 20, O'Neill, NE 68763 (402) 336-3800.
 Remington Arms Motel, East Highway 20, Ainsworth, NE 69210 (402) 387-2220.
 Hidden Paradise Resort, Long Pine, NE 69217 (402) 273-4144 Summer Phone (402) 336-2388
 Fountain Inn Motel, 237 South Cherry Street, Valentine, NE 69201 (402) 336-2300.
 Golden Family Hotel, 406 East Douglas, O'Neill, NE 68763 (402) 336-1714.
 Skinner's Motor Court, 215 Main, Ainsworth, NE 69210 (402) 387-2021.
 The Pines, Long Pine, NE 69217 (402) 273-4483 Summer Phone (512) 933-8141 Winter Phone.
 Motel Raine, West Highway 20, Valentine, NE 69201 (402) 336-2030.
 Sunset Motel, 929 East Douglas, O'Neill, NE 68763 (402) 336-3403.
 Super 8 Motel, East Highway 20, Ainsworth, NE 69210 (402) 387-0700.
 Trade Winds Lodge, East Highway 20, Valentine, NE 69201 (402) 336-1600.
 Nicks Motel, 217 South Cherry Street, Valentine, NE 69201 (402) 336-1283.
 Town House Inn, 725 East Douglas, O'Neill, NE 68763 (402) 336-1640.
 Wheel-Inn Motel, 304 West Highway 20, Atkinson, NE 68713 (402) 925-9911.
 Valentine Motel, East Highway 20, Valentine, NE 69201 (402) 336-2450.
 Super 8, Valentine, NE (800) 843-1991.

CAMPGROUNDS

- EAST CITY PARK, Ainsworth, NE.
 LAZY A MOTEL, East Highway 20, Ainsworth, Nebr., Ph. 402-387-2600.
 REMINGTON ARMS MOTEL, East Highway 20, Ainsworth, Nebr. Ph. 402-387-2220.
 WILLOW LAKE RESORT, 34 Miles S.W. of Ainsworth, Nebr.
 BASSETT PARK, Bassett, Nebraska.
 ATKINSON LAKE, 1 mile west on Highway 20, Ainsworth, Nebr.
 LONG LAKE, 20 miles S.W. Johnstown, Nebr.
 LONG PINE STATE PARK, 1 mile North Long Pine Hwy. 20, Long Pine, Nebr.
 THE PINES, Long Pine, Nebr.
 CARNEY PARK STATE PARK, 1 mile North Long Pine Hwy. 20, Long Pine, Nebr.
 THE PINES, Long Pine, Nebr.
 CARNEY PARK CAMPGROUND, 1 mile south of O'Neill, Nebr.
 CITY PARK, Valentine, Nebr.
 MERRITT TRADING POST, 27 miles S.E. of Valentine, Nebr.
 SNAKE FALLS VACATION CENTER, Merrill Dam Road, Valentine, Nebr.
 VALENTINE KOA, 3 miles S.E. of Valentine, Nebr. on Hwy. 20.
 VALENTINE MOTEL, East Highway 20, Valentine, Nebr. Ph. 402-336-2450.
 Anyone desiring private housing or camping, should contact the Ainsworth Chamber of Commerce, 208 East 6th St., Ainsworth, Nebr. 69210.

— 1986 DOUBLE RINGER SPECIAL — \$10.00 FOR 8 EDITIONS FEATURING WORLD TOURNAMENT

SPECIAL BOOKLET — *On My Way Back* describes my return to the game as a Pitcher-Writer following heart surgery. Available now with special World Tournament stats, history, pictures.

Send \$5.00 to: Will Gullickson
 26 South Circle, Moorhead, Minnesota 56560

PRIVATE HOUSING AND CAMPING FOR 1986 W.T.

The private housing and camping committee want to welcome each of you to Ainsworth. We hope you have been able to make motel reservations for your stay but in the event you cannot we will arrange for you to stay in a private home. In the case of campers we will help you find accommodations that best meet your needs.

In order for us to help you during your stay we do need to have as much information as possible. Please answer the questions below as they apply to you and your family, then clip this out and return to us as soon as possible. The more information you can give us the better we will be able to serve you so please add whatever you think is applicable.

IF YOU NEED PRIVATE HOUSING OR A MOTEL OUT OF TOWN PLEASE ANSWER THE FOLLOWING QUESTIONS.

Private housing: Yes No Motel out of town: Yes No

When will you arrive _____ Date of departure _____

How many adults _____ How many children (under 13) _____ No. boys _____ No. girls _____

Would you consider a cabin along the creek 10 miles from Ainsworth? Yes No

If you are planning on camping please answer the following questions.

Type of camper: 5th wheel Need electricity

Self contained motor home Need electricity

Pop up camper Need electricity

NEED ALL FACILITIES (electricity, sewer, water)

Tent

Carol Sears, Housing Chr., P.O. Box 132, Ainsworth, Nebr. 69210. Ph. 402-387-1720 home; 402-387-2883 office or Bernie Fiala, 907 East First, Ainsworth, Nebr. 69210. 402-387-2737.

1986 WORLD TOURNAMENT AINSWORTH, NEBR. COMMITTEES

Please feel free to contact any of these people if you have any questions or need help.

HOUSING & CAMPING — Carol Sears, P.O. Box 132, Ainsworth, NE 69210, 402-387-1720 home, 402-387-2883 office or Bernice Fiala, 907 E. First, Ainsworth, NE 69210, 402-387-2531 home, 402-387-2381 office.

PROGRAM BOOK — Fred W. Rose, P.O. Box 31, Ainsworth, NE 69210, 402-387-2527.

PUBLICITY & NEWS — Larry Rice, P.O. Box 285, Ainsworth, NE 69210, 402-387-2521 home, 402-387-1400 office.

CONCESSIONS & SALES — Delores Stec, S. Star Route, Long Pine, NE 69217, 402-273-4336 home.

GENERAL INFORMATION — Jean Bramer, Ainsworth Chamber of Commerce, 208 East 6th, Ainsworth, NE 69210, 402-387-2002 home & Chamber, 402-387-1542 office.

REFER TO PAST ISSUES FOR ADDITIONAL COMING EVENTS

COMING EVENTS

CANADIAN SUMMER SCHEDULE

- May 10 — George Watt Annual Open Doubles. A prestige trophy donated by George's family to mark his 70th year. Trophy will remain at the Hamilton Club. George invites all his friends to participate. Max. Comb. average 110%. Registration at (416) 561-4355.
- May 17, 18 — Spring Warm Up — Little Current Pre-reg. deadline May 9, Mary McVey, R.R. 1, Little Current POP 1K0. Phone (705) 368-2048. Entry fees — A classes \$10.00, all other classes \$8.00, Juniors free. This is a sanctioned tournament which means you must have your current H.O. card. Campers can stay at McVey's campground, however should you wish a motel, get in touch with Mary right away as this is a busy weekend on the Island.
- May 31 — Dowling Horseshoe Club — Qualifying tournament. Sat. 10:00 a.m., Sun. 12:00 noon. Call Jean Bellefontaine (705) 855-4708.
- June 7, 8 — Silver Shoe Ottawa
June 14, 15 — Scarborough — Singles
June 21 — Rooftop Hamilton. Call Jean Markle (416) 385-1754
July 18, 19, 20 — Ontario Championship Singles — London
July 21-30 — World Tournament — Ainsworth, Neb.
Aug. 7 — Ladies International Central Park, Burnaby, B.C. Send entries two weeks in advance to Sam Tomasevic, 3658 Rae St., Vancouver, B.C. V5R 2P5 Phone (604) 434-5328
Aug. 8-10 — Canadian Championships, Burnaby, B.C. If you are planning on participating, contact Jean Markle, 705-1185 Fennell Ave. E., Hamilton, Ontario L8T 1S4 Phone (416) 385-1754
Sept. 6, 7 — Ontario Championship Doubles — Hamilton

NORTHERN CALIF. SCHEDULE

- April 5 — Open WJ, Yuba-Sutter
April 6 — Open WJ, Yolo
April 12 — Yvonne Mauzey Open W, Sonoma County
April 12 — C Open, Turlock
April 13 — John Hagerman Open W, Sonoma County
April 13 — Harry Lucas Open, Sacramento
April 19 — Don Palmer Open, Stockton
April 20 — George Palmer Open WJ, Stockton
April 26 — Western States WJ — Men — E&F, Sacramento
April 27 — Western States Men A B C D, Sacramento
May 3 — Parks & Recreation Open WJ, Stockton
May 4 — Lefty Williamson Open WJ % Mix, Stockton
May 10 — Open, Colusa
May 10 — B Open WJ, Turlock
May 11 — MOTHER'S DAY
May 17 — Golden Gate Classic Open WJ, Golden Gate
May 18 — Florence Douglas Memorial Open W, Vallejo
May 24 — Open WJ, Tri-Valley
May 24 — Open WJ, Feather River
May 25 — Open WJ, Tri-Valley
May 25 — Ben Capp Memorial C Open, Yuba-Sutter
May 26 — Second Annual Women's Tournament, San Jose
May 31 — Indian Valley Open WJ, Indian Valley
May 31 — C Open WJ, Turlock
June 1 — Indian Valley Open, Indian Valley
June 1 — H.O. Hansen Open WJ, Seaside
June 7 — C Open & SRS. Handicap & Juniors, Shasta
June 8 — Shasta XIII Open W, Shasta
June 14 — Gold Country E Open WJ * PR, Gold Country
June 15 — Gold Country ABCD Open PR, Gold Country
June 21 — Open WJ % Mix, Rio Dell
June 21 — Al Crabtree Open WJ, Turlock
June 28 — George Greeott Open, Sonoma County
June 28 — Lee Bousfield D & Below (Men & Women) Gold Country
June 29 — Verdán Zelmar Open WJ, San Jose
July 4 — Independence Day Open WJ, San Jose
July 5 — B Open, Yolo
July 5 — Bill McNally Invitational, Tri-Valley
July 6 — Bill McNally Invitational, Tri-Valley
July 6 — Open WJ, Yolo
July 12 — Jim Miller Memorial B Open, Colusa
July 13 — Monte Latino Open, Sacramento
July 19 — Gold Diggers Days Open W, Indian Valley
July 19 — Bill Weathers Open, Turlock
July 20 — Gold Diggers Day Open W, Indian Valley
July 20 — Gordon Loveall Open W, Vallejo
July 26 — C Open WJ, Rio Dell
July 27 — Open W, Rio Dell
Aug. 2 — Frank Cravalho Open WJ % Mix, Golden Gate
Aug. 3 — Harley Swander Open WJ, Golden Gate
Aug. 9 — 2nd Annual NCHPA Picnic WJ, Sonoma County
Aug. 10 — Arnie Peters Open, Sonoma County
Aug. 16 — Jim Adams D Open WJ, Turlock
Aug. 16 — C Open, Colusa
Aug. 17 — Admiral Nimitz Open, Mosswood
Aug. 17 — C Open, Gold Country
Aug. 23 — Pacific Coast Open WJ, San Jose
Aug. 24 — Open WJ, Yolo
Aug. 30 — State Championships, So. Calif.
Aug. 31 — State Championships, So. Calif.
Sept. 9 — Open WJ, San Jose
Sept. 7 — NCHPA Sr. Championships PR, Yolo
Sept. 13 — Open WJ % Mix, Gold Country
Sept. 14 — Mayor Curtola Open WJ, Vallejo
Sept. 14 — D & F Open WJ % Mix, Ukiah Valley
Sept. 20 — Open WJ, Yuba-Sutter
Sept. 20 — E & F Open, Tri-Valley
Sept. 21 — Lucy Hanlon Open W, Sonoma County
Sept. 27 — Joe Roberts Open, Colusa
Sept. 28 — Czar Marcevic Open \$, Mosswood
Sept. 28 — B Open WJ % Mix, Ukiah Valley
Oct. 4 — Scotty Turner Invitational, Ukiah Valley
Oct. 4 — Open WJ, Yuba-Sutter
Oct. 5 — Scotty Turner Invitational, Ukiah Valley
Oct. 5 — C Open, Sacramento
Oct. 11 — NCHPA Class Championships PR, Yolo
Oct. 12 — NCHPA Class Championships PR, San Jose
Oct. 18 — Open WJ, San Jose
Oct. 19 — Walt Foreman Open WJ, San Jose
Oct. 25 — Genevieve Lavett Sweetheart Doubles, Seaside
Oct. 26 — Flash Lavett Open WJ \$, Seaside
Nov. 1 — Business Meeting & Dinner Dance, Yolo
Nov. 2 — Turkey Shoot Open WJ % Mix, Yolo

COMING EVENTS — (Continued)

OREGON SCHEDULE

- April 26 — Hermiston Sagebrush Open, Weber Field, Hermiston. No pre-registration. Check in by 9 a.m.
- May 17 — Old Timers — Clackamette Park, Oregon City. Unsanctioned. Anyone 60 or over is eligible. Check in by 8:30 a.m.
- May 24-25 — Joyner Memorial Open. Avery Park, Corvallis. Register with Hazel Chaput, 5055 N.E. Elliott Circle #143, Corvallis, OR 97330 by Thurs., eve., May 22, phone: 503-753-7982.
- June 7-8 — Lebanon Strawberry Fair, River Park, Lebanon. Register with Carl Shoberg, 34385 Brewster Rd., Lebanon, OR 97355 by Thurs., eve., June 5th. Ph. 503-258-6884.
- June 14-15 — Central Oregon Open, Juniper Park, Bend. Register with Bill Graham, 503-382-0389 by Thursday, June 12th, 10 p.m.
- June 21-22 — Portland Rose Open, Laurelhurst Park, Portland. Register with Frank Dvorshak, 503-761-2048 by Thursday, June 19, 10 p.m.
- June 28 — Phoenix Open — Phoenix Park, Phoenix. Register with Jim Wear, 503-535-4587 after 5 p.m. by Thurs., June 26th, 10 p.m.
- June 29 — Douglas County Open, Stewart Park, Roseburg. Register with Darlene Williams, 503-673-0776 or Ridge Leggett, 503-672-4626 by Friday, June 27th, 10 p.m.
- July 4, 5, 6 — Oregon Open, Weber Field, Hermiston. This is our big money tournament. Register with Rick Rebman, 503-567-8560 by Tues., July 1st.
- July 12 — Oregon City Open, Clackamette Park, Oregon City. Register with Irene Wiedrich, 503-655-3138 or Neta Otnes, 503-656-2245 by Thurs., July 10th.
- July 26 — LaGrande Open, Riverside Park, LaGrande. Check in by 9 a.m.
- Aug. 9-10 — Skinner's Bottle Open. 1st & Washington, Eugene. Register with Jerry Gorton, 503-747-8089 by Thursday, Aug. 7th.
- Aug. 16 — Oregon State Doubles, Oregon residents only.
- Aug. 23 — Sandbaggers Open. Clackamette Park, Oregon City. Register by Thurs., Aug. 21 with Irene Wiedrich, 503-655-3138 or Neta Otnes, 503-656-2245.
- Labor Day Weekend — Oregon State Championships. Oregon residents only.

WICOMICO (MD.) SCHEDULE
Salisbury, Md.

- May 17 — Wicomico County Singles. Open. May 18, Doubles. Civic Center. Horseshoe Club, Salisbury, Md.
- June 21 — Lawrence Windsor Memorial Open. Singles. Sponsor, 1st Federal. June 22, Doubles. Salisbury, Md.
- July 19 — Eastern Shores Open. Singles. Dave Duloney-Culligan. July 20, Doubles, Salisbury, Md.
- Aug. 16 — South Atlantic Open. Singles. Pepsi-Cola. Aug. 17, Doubles. Salisbury, Md.
- Aug. 30 — Maryland State (Closed) Singles. Aug. 31, Doubles. Salisbury, Md.
- Sept. 20 — Open Singles. Baker & Bounds, Sponsors. Sept. 21. Doubles. Salisbury, Md.
- State Tournament, all trophies. All Open tournaments A, B, C classes money according to entry fees. Trophies to Class D and down.
- Singles qualify 9:30 to 10:30 a.m. Register by 11:00 a.m. Tournament starts at noon. Doubles qualify and register by 1:00 p.m. Tournament starts at 2:00 p.m.

SOUTHERN UTAH SCHEDULE

- April 12 — Spring Open, Hurricane
- April 19 — No-Champs Tourney, St. George
- May 3 — 3rd Hurricane Open, Hurricane
- May 10 — Cedar City Doubles Open, Cedar City
- May 24 — Mt. Pleasant Doubles, Mt. Pleasant
- May 24 — Memorial Day Open, Mt. Pleasant
- May 31 — Crazy Days Open, Monticello
- June 7 — 5th Iron Open, Cedar City
- June 14 — Burrow Days, Ploche
- June 24 — San Juan Summer Open, Monticello
- June 28 — Kanab/Fredonia Open, Kanab
- July 3, 4, 5 — Utah Summer Games, Cedar City
- July 12 — 4th Mt. Pleasant Open, Mt. Pleasant
- Aug. 2 — Washington County Fair, Hurricane
- Aug. 9 — 7th Cedar City Open, Cedar City
- Aug. 16 — San Juan Fair Open, Monticello
- Aug. 23 — San Pete Open, Manti
- Sept. 1 — Labor Day Open, Ploche
- Sept. 6 — Abajo Peaks Open, Monticello
- Sept. 12-13 — UTAH STATE Tournament, Cedar City
- Sept. 20 — SUHPA Championships, St. George
- Oct. 11 — Hurricane Doubles, Hurricane
- Nov. 8 — St. George Open, St. George
- Nov. 22 — Dixie Open, St. George

NEBRASKA SCHEDULE

- April 27 — Arbor Day Open. 9 a.m., Nebraska City
- June 7-8 — Ainsworth Open, Ainsworth, Neb.
- June 8 — Crete Open. 9 a.m., Crete, Neb.
- June 29 — Columbus Sanctioned, Columbus, Neb.
- July 6 — Annual 4-State Tournament. 9 a.m. Falls City, Neb.
- July 21-Aug. 3 — 1986 World Tournament, Ainsworth, Neb.

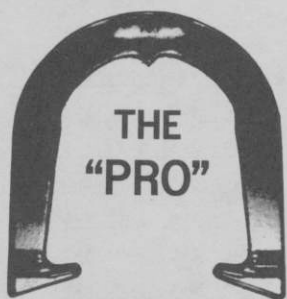
ROUND ROBIN MASTER SCHEDULES

Approved by the National Horseshoe Pitchers Association

12 MAN ROUND ROBIN							4 MAN ROUND ROBIN				
-----Courts-----							-----Courts-----				
Game:	1	2	3	4	5	6	Game:	1	2		
1	2-7	3-8	4-9	5-10	6-11	1-12	1	1-4	2-3		
2	6-10	1-11	2-12	3-7	4-8	5-9	2	2-4	1-3		
3	5-8	4-7	1-10	6-9	3-12	2-11	3	1-2	3-4		
4	1-9	2-10	3-11	4-12	5-7	6-8	6 MAN ROUND ROBIN				
5	4-11	5-12	6-7	1-8	2-9	3-10	-----Courts-----				
6	2-8	3-9	4-10	5-11	6-12	1-7	Game:	1	2	3	
7	9-12	7-11	1-6	2-3	4-5	8-10	1	1-6	2-3	4-5	
8	3-6	1-5	8-11	10-12	7-9	2-4	2	2-4	1-5	3-6	
9	1-4	8-9	3-5	2-6	10-11	7-12	3	3-5	2-6	1-4	
10	7-10	4-6	8-12	9-11	1-3	2-5	4	4-6	1-3	2-5	
11	11-12	1-2	5-6	7-8	9-10	3-4	5	1-2	5-6	3-4	
10 MAN ROUND ROBIN					8 MAN ROUND ROBIN						
-----Courts-----					-----Courts-----						
Game:	1	2	3	4	5	Game:	1	2	3	4	
1	3-7	2-10	4-5	6-9	1-8	1	4-6	5-7	2-3	1-8	
2	8-10	1-9	2-7	3-5	4-6	2	1-7	2-6	4-8	3-5	
3	2-6	4-8	3-10	1-7	5-9	3	2-8	4-5	3-7	1-6	
4	1-5	3-9	6-8	2-4	7-10	4	6-7	3-8	1-5	2-4	
5	4-7	1-10	2-5	8-9	3-6	5	5-8	1-4	2-7	3-6	
6	3-8	2-9	4-10	1-6	5-7	6	1-3	2-5	6-8	4-7	
7	6-10	5-8	7-9	2-3	1-4	7	5-6	7-8	3-4	1-2	
8	4-9	6-7	1-3	5-10	2-8						
9	1-2	3-4	5-6	7-8	9-10						
14 MAN ROUND ROBIN											
-----Courts-----											
Game:	1	2	3	4	5	6	7	8	9	10	
1	2-8	3-9	4-10	5-11	6-12	7-13	1-14	2-11	3-12	4-13	
2	6-11	7-12	1-13	2-14	3-8	4-9	5-10	6-12	7-13	8-14	
3	3-14	4-8	5-9	6-10	7-11	1-12	2-13	3-10	4-11	5-14	
4	7-10	1-11	2-12	3-13	4-14	5-8	6-9	7-11	8-12	9-13	
5	4-13	5-14	6-8	7-9	1-10	2-11	3-12	4-11	5-12	6-13	
6	5-12	6-13	7-14	1-8	2-9	3-10	4-11	5-10	6-11	7-12	
7	1-9	12-14	2-5	11-13	3-6	4-7	8-10	9-11	10-12	11-13	
8	4-6	2-10	1-7	8-14	9-11	3-5	12-13	10-11	11-12	12-13	
9	9-10	4-5	3-11	2-7	8-12	13-14	1-6	11-12	12-13	13-14	
10	1-5	3-7	9-13	4-12	10-14	2-6	8-11	12-13	13-14	14-15	
11	11-14	10-12	6-7	1-3	5-13	8-9	2-4	13-14	14-15	15-16	
12	2-3	8-13	10-11	9-12	1-4	6-14	5-7	14-15	15-16	16-17	
13	7-8	1-2	3-4	5-6	10-13	11-12	9-14	15-16	16-17	17-18	



THE ORIGINAL DROP-FORGED PITCHING SHOE



Two tournament tested models, forged from S.A.E. specified steel, are available. Both have hardened hooks and points, and may be ordered in your choice of medium, soft, or dead soft tempers.



AS THE FIRST MANUFACTURER OF THE DROP-FORGED PITCHING SHOE, THE OHIO HORSESHOE COMPANY IS RECOGNIZED WORLD-WIDE FOR ITS HIGH QUALITY PITCHING SHOES.

For price information and to order, contact:

OHIO HORSESHOE COMPANY

P.O. Box 21371
Columbus, Ohio 43221

614-457-4335