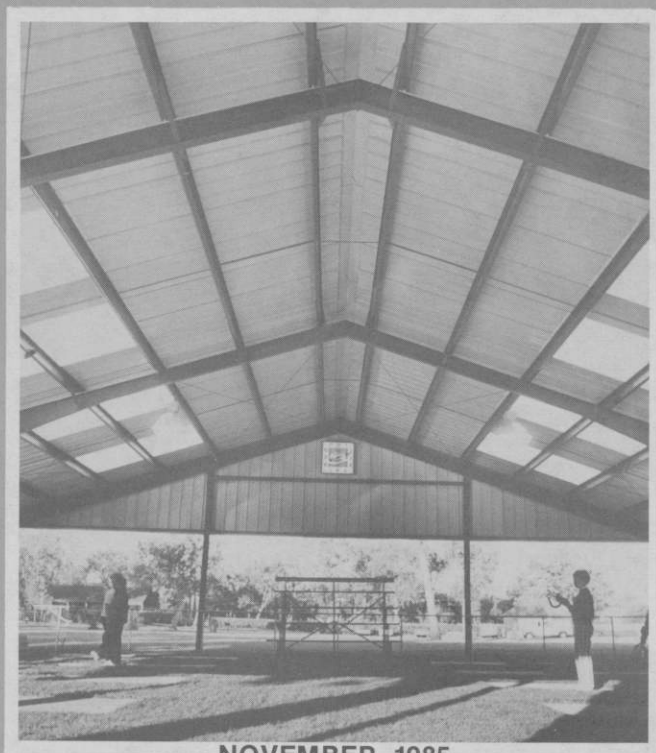




the
national horseshoe pitchers

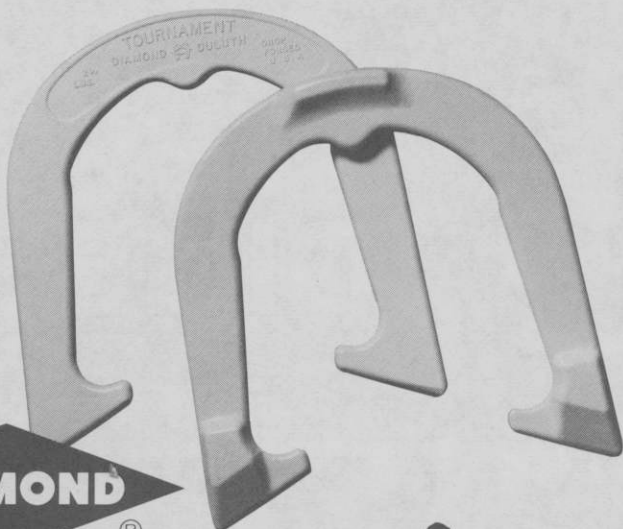
NEWS DIGEST



NOVEMBER, 1985

Official Publication of
**THE NATIONAL HORSESHOE PITCHER'S ASSOCIATION
OF AMERICA**

Look
for
the new
white
shoes!



Advanced Design

TOURNAMENT PITCHING HORSESHOES




Both backyard pitchers and pros catch and hold the stake better with DIAMOND's new advanced design "Tournament" Shoe. It features a grip positioner, hardened tips, an increased radius, a dead soft center, and a wider, deeper calk. Same drop-forged solid steel construction as DIAMOND's popular Double Ringer and Super Ringer Regulation Shoes. All American made.

Contact your nearest NHPA club or sporting goods store for DIAMOND pitching horseshoes.

For the latest pitching horseshoe catalog write:



DIAMOND TOOL and Horseshoe Co.

Subsidiary  The Triangle Corporation

P. O. BOX 6246. DULUTH, MINNESOTA 55806

"DIAMOND Pitching Horseshoes are Recognized as Official in Tournaments
Sanctioned by the National Horseshoe Pitchers Association"



THE HORSESHOE PITCHER'S NEWS DIGEST is published on the 5th of each month at Aurora, Illinois, U.S.A. by the National Horseshoe Pitcher's Association of America. Editorial office, P.O. Box 1606, Aurora, Illinois 60507. Phone: 312-898-3974. Subscription rates—1st Class \$9.00; 3rd Class \$8.00 per year in advance. NHPA membership cards are available through each state secretary for \$7.00 plus any state association dues. Forms close on the 10th day of each month preceding date of issue. Advertising rates on request. F. Ellis Cobb, Editor.

NATIONAL OFFICERS

Dave Loucks, 368 Nevar Ct., Rancho Murieta, Ca. 95683	President
Earl Winston, Rte 2, Lamonte, Mo. 65337 (816-563-3536)	1st Vice-President
Barry Chapelle, 2716 S.E. 61st Ave., Portland, OR 97206 (503-775-7876)	2nd Vice-President
Vincent Yannetti, 322 Longwood Ave., Bound Brook, N.J. 08805(201-356-3862)	3rd Vice-President
Bonnie Seibold, 1043 Grayson Ave., Huntington, Ind. 46750 (219-356-3489)	4th Vice-President
Gene VanSant, P.O. Box 270, Sun City, Ca. 92381	5th Vice-President
Donnie Roberts, Box 810, Circleville, Oh. 43113 (614-474-7727)	Sec./Treas.

Volume 29

November, 1985

No. 11

FROM YOUR PRESIDENT — DAVE LOUCKS

As I write this, I have been your president for just 2 months. A short time on the chronological calendar that unfortunately seems much longer.

I must admit a keen sense of appreciation for my predecessor, Glen Portt for I now too feel some of the utter frustration he felt. The 25-30 hours per week I have been able to make available for the NHPA are barely sufficient to keep on top of our day to day business and problems. I have found no time yet to implement any of the plans, ideas or changes I envisioned when taking office.

Fortunately, or perhaps unfortunately, the average NHPA member has little or no idea of the internal workings and problems faced every day by your executive council. We have only one full time NHPA employee, our Secy/Treas., and his work load is more than it should be. We do not have a central office and the distance between your Council members makes decision making a very slow process. Most everything is done by phone or letter generally initiated by your President or Secy/Treas. All NHPA debts are paid by check signed by these two officers. Many times a question or problem arises that necessitates the entire Council being involved. Even then, we are very limited in what we can do. Records, files and finances are kept and controlled by your Secy/Treas. Since he is the only one getting paid, that is as it should be. However, what about our plans, our growth, our Future? Next to the Secy/Treas., the NHPA delegates are the controlling force in our organization. While the delegates and members certainly should have a voice, I believe our organizational growth and improvement is hampered by time constraints and limitations placed on the Executive Council by our Constitution and By-laws. The Executive Council is voted into office by the delegates. That vote of confidence should carry with it more authority for the Council to carry out the business and direction of the NHPA, particularly where related to finances. The Council is closest to the day to day problems, reports and opportunities. We should have the authority to make timely and needed changes. The present manner of bringing everything before the delegates once a year where, unfortunately, the entire NHPA is not recognized, is slow, cumbersome and, in many cases, self defeating.

The News Digest is a good example of where your Council should have authority. Most everyone, including your President, feels it should be improved. A larger size, larger type, more feature articles, more tournament results, a better format are just some of the suggestions. This could be done but there would be a related cost increase involved. The Digest is already running a monthly deficit. Only about one NHPA member in four subscribes. At the Lafayette meeting of delegates it was referred to as "The Lifeblood of the NHPA". Five minutes later the delegates voted down a requested \$1.00 increase that your Council felt was required particularly if we are to improve it. The irony of that vote is that on a ratio basis, only one delegate in four subscribe to the Digest. Even if every Digest subscriber agreed to an increase, the delegates who don't receive it and therefore have little personal involvement, vote it down. That should not happen!

It must be said again and again, until it happens, we need some form of proxy representation. There are too many states and too many NHPA members going without a voice at our National Convention. Human nature being what it is, finds many delegates voting what they feel will be best for them, not necessarily what's best for the entire NHPA. We are not a perfect species, nor a perfect organization but we can improve our lot by recognizing all our members, not just those few who attend the convention. I hope such a change will come about during my administration.

FROM YOUR PRESIDENT — Continued

DAVE'S COURT REPORT

The important job of heading our Construction and By-Laws Committee, vacant since the resignation of Lorraine Thomas, has been filled. I am happy to announce the appointment of Bob Malley to that position.

Bob is a resident of Petaluma, California and a member of the Sonoma County Horseshoe Pitchers Club. He was born in Meadville, PA and moved to California at the age of 13. Bob attended college in Bakersfield and then St. Mary's College in Moraga. Over the years he has served in the U.S. Army, played Minor League Baseball, been a bank operations officer and for the past 15 years has been (and still is) personnel Director of the Operating Engineers Local Union No. 3 in San Francisco. He served as the Northern California Horseshoe Pitchers Association (NCHPA) Constitution and By-Laws Chairman in 1982 and 1983. His interests are in golf, coaching, traveling, writing and of course, the art of pitching horseshoes. He and his wife, Shirley, who hails from the thriving metropolis of PECULIAR, MO, have four grown children. Bob is currently working on the changes that were voted on at Lafayette. If you have a proposal to submit for the 1986 convention at Ainsworth, you can send it to: Bob Malley, 193 Webster, Petaluma, CA 94952.

RINGER REVIEW

by Kevin Cone

Answer to last month's "trivia" question:

The highest average ever pitched for a world tournament is 89.5% in 1975 by John Passmore of Indiana in the junior division. The incredible thing is, he finished in 4th place. John got beat by champion Walter Ray Williams, Jr. while pitching 89.5% compared to Walter's 96.9% and an average of 86.6% for the tournament. John also got beat by Jeff Williams. They combined for a 90.3 average. He was also the loser in what is considered the greatest game in junior history. He and Rick Howe of Massachusetts pitched a 190 shoe game. Mr. Passmore had 170 ringers (89.5%), to Howe's 172 ringers (90.5%). They had 342 total ringers, 152 doubles, 312 cancelled ringers, 61 four deads, and 12 consecutive four deads, all still junior world records. For the seven game tournament Passmore had 702 ringers out of 784 shoes pitched for an 89.5% average. An unbelievable percentage and a tremendous feat that may never be broken!

Some world records that were set at this year's world tournament: Alan Francis MO Junior Boys Complete Tournament, 11 games, 88%; Ansil Copeland OH Senior Division Complete Tournament, 11 games, 68.1%; Glen Henton 1A Intermediate Complete Tournament, 11 games, 71.5%; Vicki Winston and Fran Carnahan, Womens Division, 1 consecutive four deads.

Vicki Winston and Ruth Hangen came close to a new world record. They had a combined ringer percentage of 87.2% but the record is 88.5% set in 1983 by Debby Michaud and Tari Powell.

Ten time world champ, Vicki Winston, was in one world record and came close to a second. She averaged 80.5% but yet came in 5th place. Six women averaged 79% or better. I believe that was the best championship women's class ever. Congratulations ladies on a TREMENDOUS showing!

TRIVIA QUESTION: What two baseball Hall of Famers pitched a horseshoe exhibition during the 1928 Winter World Horseshoe Tournament in St. Petersburg, Florida?

SALISBURY, MD. PEPSI-COLA OPEN — SANC. 85-568

CLASS A — Henry Markland, 7-1-61.4; Philip Fleshman, 6-2-55.8; Al Melson, 4-3-47.1; Jack Blades, 4-3-48.5; Ernest O'Neal, 3-4-43.4; Ted Simmons, 3-4-36.8; Ken Holden, 2-5-40.2; George Carr, 0-7-24.6.

CLASS B — Willard Sammons, 5-0-42.2; Larry Thompson, 4-1-44.4; Louis Walls, 3-2-23.4; Bill Taylor, 2-3-25.9; Gary LeCompte, 1-4-22.5; Gary Rust, 0-5-20.7.

CLASS C — Charles Cherrix, Sr., 3-1-32.4; Bob Davis, 3-1-23.5; Judy Taylor, 3-1-35.5; David Sellers, 1-3-28.0; Verlon Bailey, 0-4-13.2.

CLASS D — Tom Mombrey, 4-0-24.1; Charles Cherrix, Jr., 3-1-21.1; Lee Mombrey, 2-2-18.9; Melissa Elias, 1-3-16.3; Verlon Frye, 0-4-3.88.

MIXED DOUBLES — Al Melson-Tom Mombrey, 8-0; Willard Sammons-David Sellers, 6-2; Jack Blades-Missy Elias, 5-3; Parker Sturgis-Lynn Jones, 5-3; Gary Rust-Mike Lister, 5-3; Louis Walls-Charles Cherrix, 4-4; Bill Taylor-Bill Dotson, 2-6; Ernest O'Neal-Michael Lister, 1-7; Harold Harget-Lee Mombrey, 0-8.

ROBERTS TO SEEK RE-ELECTION AS NHPA SEC.-TREAS.

Donnie Roberts has announced that he will seek re-election as NHPA Secretary-Treasurer at the 1986 NHPA Convention in Ainsworth, Nebraska.

Hamilton Horseshoe Club

265 BARTON STREET E., STONEY CREEK

UNIT 55 ONTARIO, CANADA L8E 2K4

(35 miles from Niagara Falls, N.Y.)

Presents the Fourth ELMER HOHL International
Open Singles Tournament

Indoors - December 6, 7, 8 1985

Entry Fee: Men's A & B — Ladies A.....\$20.00

All other classes.....\$15.00

100 % Payback Plus Extra Prize Money

Send Ringer Percentage or call Bob Fanjoy (416) 662-8501

Registration Deadline Nov. 29, 1985

N.H.P.A. card no. required

NHPA ISSUES CHARTER TO NORTHWEST ARKANSAS ASSOC.

Late last year a half dozen or so area people who are ardent horseshoe pitchers got together to explore the idea of forming an official sanctioned horseshoe pitching club for Fayetteville and the surrounding communities. After communicating with the N.H.P.A. the paper work was all done and the Northwest Ark. Horseshoe Pitching Assoc. received its charter. A membership drive quickly produced 35 card carrying members.

With such interest stirred up it became obvious that the club needed a suitable site for the pitching courts. Not being able to locate anyone in the private sector who was able and/or willing to provide the necessary room needed for the courts, the club followed the led of the Hot Springs and Mountain Home Clubs and approached the City Parks Board. After outlining their needs to them, approval was given. Dale Clark, Parks and Recreation Director, David Nutt, Pres. and Jim Elliott, Director of the N.W.A.H.P.A. then set about checking out various parks in the city system. A site at the South Fayetteville Lake Park off Zion Rd. was chosen. It provided enough space for 6 courts and required a minimum of preparation.

The Parks Dept. did the necessary grading and supplied enough cross ties to begin the building of the courts. Club members provided the expertise and sweat and muscle to install the 6 regulation courts. Ozark Steel donated enough steel for the stakes.

After some 5 of 6 weekends of work the courts were in and the area was re-seeded with grass and was ready for competition. Although a retaining wall remains to be built the first official league began on Monday, June 3 with 12 two man teams and continued weekly through August 19. Another league is scheduled to start September 9 and continue into autumn.

Plans for the future, in addition to the retaining wall, include further improvement of the pits themselves and installation of a lighting system for the courts.

The playing area is beautifully landscaped and the surrounding park area with its playground and sand volley ball courts makes for a most pleasant spot for organized or family outings.

Anyone interested in more information about the horseshoe pitching activities may call 443-4341 or 267-3971.

SEND DONNIE ROBERTS YOUR NEWSPAPER ARTICLE

Prior to your trip to the 1985 World Tournament many of you received lots of publicity by your local press. I would like to have a copy of your newspaper articles for my files. Please send to me at Box 810, Circleville, OH 43113.

If you have only one send it anyway. I will Xerox and return your article.

1985 NHPA HALL OF FAME INDUCTEES

JAMES JOHNSON — BONNIE SEIBOLD

HERBERT PINCH — ARTHUR HOLTER



JAMES "POP" JOHNSON



BONNIE SEIBOLD

JAMES "POP" JOHNSON — Player/Organizer

In 1945 James "Pop" Johnson won the National Amateur Championship. He was the Kentucky State Champion 1947-1950, and won the World Intermediate Championship in 1974, winning 7 games and losing none. His ringer average was 67.4%.

In the 1950 World Tournament, Pop defeated Fernando Isais and Ted Allen in back to back games.

Pop's outstanding game was pitched in the 1957 Midwest Ringer Round-Up when he had a 94.4% ringer game, 34 ringers out of 36 pitched shoes.

Mr. Johnson was Vice President of the N.H.P.A. in 1961 and a member of the National Hall of Fame Committee from 1960-1970.

In 1981 Pop received the N.H.P.A. Special Award and in 1984 he was inducted into the Ohio State Hall of Fame.

James "Pop" Johnson died a few weeks after he had been elected to the National Hall of Fame. His daughter Betty Deuwe accepted his plaque and certificate at the Hall of Fame Banquet held in Lafayette, Indiana. James "Pop" Johnson's memory will last long, enshrined in the Hall of Fame.

BONNIE SEIBOLD — Player

Bonnie Seibold is one of the top competitors of this horseshoe pitching era. She has won the Indiana State Championship 15 times. Since 1961 Bonnie has pitched in the World Tournament usually qualifying for A Class. Her best finish was in 1980 when she was runner up averaging 76.4% ringers.

Mrs. Seibold has a great sportsmanship attitude on and off the courts. She has encouraged many ladies in Indiana to pitch horseshoes and enter competition. Always a strong competitor, she regularly puts on exhibitions for community organizations and schools.

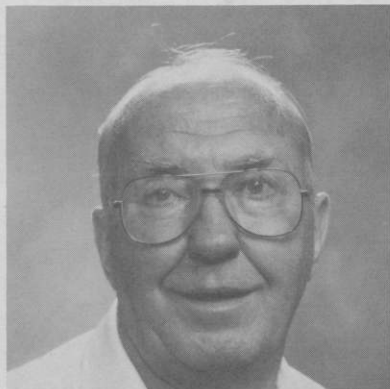
Bonnie is currently the 4th Vice President of the N.H.P.A. and has held that office for the past seven years.

In 1976 Bonnie was inducted into the Indiana Hall of Fame.

Bonnie and her husband Curly, a very good pitcher in his own right, have encouraged their 3 children to pitch horseshoes. Their instruction and help have proved very beneficial to these young people as Paris has competed in the World Championship Jr. Division. Mark has been junior boys' champion and later mens' world champion and Bonita has won the Jr. Girls World Championship.

Truly Bonnie is a fine example of a conscientious, fine pitcher, one that is a pride to the National Horseshoe Pitchers Association.

HALL OF FAME — (Continued)



HERB PINCH



ARTHUR HOLTER

HERB PINCH — Organizer

Herb Pinch is one of the most talented organizers and promoters of the sport of horseshoe pitching.

He first became interested in horseshoe pitching in 1935. Throughout the following years Herb entered many tournaments usually averaging 60-70% ringers.

Herb and his wife Dorothy have traveled to many areas of the U.S. instructing, displaying techniques, and generally contributing to the advancement of horseshoe pitching. Mr. and Mrs. Pinch also handled purchases and sales of game related items, and supplied the host club with material to be sold at the World Tournament.

Herb has been the Regional Director for the Pennsylvania and New York State Associations. He has brought exhibition games to Sharon, Pennsylvania with such great pitchers as Ted Allen, Jimmy Risk and Raymond Frye.

In 1960 Herb received the Pennsylvania State Sportsman Award, and in 1969 the Special N.H.P.A. Award given for outstanding service.

Herb was inducted into the Pennsylvania State Hall of Fame in 1978 and the following year he was elected to the Mercer County, Pennsylvania Hall of Fame.

Besides being a great worker and administrator in the horseshoe pitching area, Herb Pinch is a man of great heart and with his fun-loving personality and empathy for others, he brings encouragement and joy to those he encounters.

ARTHUR HOLTER — Player/Organizer

As a youngster Arthur, raised on a farm, pitched shoes from large work horses. That was his start in the game that later became his special involvement.

At age 47 Art really devoted his activity to horseshoe pitching. He began pitching in league with his good friend Frank Stinson. Later Art broke Frank's string of 88 consecutive wins. At Eau Claire, Wisconsin Mr. Holter threw his best game. He pitched a 92% ringer game, 46 ringers out of 50 shoes.

Arthur Holter's big triumph came in 1970 when he won the World Title in the Intermediate Class. He again won the championship in 1971.

Also in 1971 Art was selected by the Minneapolis Park Board as the outstanding amateur athlete of the year. It was the first time a horseshoe pitcher was chosen to win this award. That same year Arthur was elected as a player, to the Minnesota State Hall of Fame.

At World and State Tournaments Mr. Holter was always willing to administer help and guidance.

In 1983 Arthur was appointed to the newly formed N.H.P.A. Grievance Committee.

Arthur Holter has been a great promoter and organizer, always bringing interest and information to the young and more experienced. To one that really knows this dedicated man the expression is "Ask Art he will get it done."

COVER PICTURE... Shown this month is the Mayville, North Dakota Club's 6-court facility. The courts were covered this year and is one of the finest set-up of courts in the Midwest. The club has 90 members and Gary Erickson is the club president. — Photo by Will Gullikson.

DAVIDSONVILLE, MD. LEAGUE CLOSES SANC. SEASON

The Davidsonville, Md. Horseshoe Club has finished its third year of sanctioned play. The club began with four stakes driven in the ground, and eight pitchers. The club now boasts ten clay filled courts, concrete pads, mercury vapor lighting, bleacher seats, and a membership of forty-five. They are the only sanctioned league pitching weekly in Maryland. Club president, Phil Clow, along with many dedicated horseshoe pitchers have turned a sand lot beginning into a professional club.

The membership includes 1984 Maryland State Men's champion Dave Nehring and his son Steve who is 1984 Maryland State Jr. Boys champion. Steve also made the national top ten in ringer percentage over average. The club has sponsored tournaments the last two years, with pitchers from Pa., Md., Va., and Del. entering, all being impressed by the courts.

The club for the last three years was asked to put the tournaments on for the Anne Arundel County Fair, and for the Prince Georges County Fair. This club has come a long way in three short years, and without the serious, dedicated members of this club, it would have been impossible.

The year 1985 saw a womens league form, with wives and girlfriends pitching. The NHPA league guidance was invaluable, adding the incentive to improve. The membership should be proud.

Final Standings — 1st — Phil Clow-Dave Nehring; 2nd — John Buckmaster - Steve Nehring; 3rd — Gary Cave-Buck Cave; 4th — Ted Sammons-Don Gregory; 5th — Mike Faber-Walt Kazorek; 6th — John Clow-Harry Clow; 7th — Bob Holcomb-Lew Huntington; 8th — Vince Volrath-Wayne Lyvers.

C. DANNER ON TOP IN PENNA. OPEN — CHARLOTTE ONION UNDEFEATED IN LADIES GROUP — SANC. 85-355

CLASS A — Casey Danner, 7-2-69.8; Glenn Burris, 6-3-71.5; Glenn Rubendall, 6-3-69.5; Glenn Brown, 3-6-66.7; Grant Powers, 2-7-63.8; Art Tyson, 6-3-71.1; Dan Beshore, 6-3-71.0; Homer Snyder, 4-5-67.3; Bill MacIntyre, 3-6-66.3; Joe Schultz, 2-7-60.0.

CLASS B — Ray Bechtel, 7-0-57.5; Jack Swyers, 4-3-52.9; Dean McCurdy, 3-4-51.0; Ed Bowersox, 2-5-56.3; Dick Dart, 4-3-54.5; Jim Sibley, 4-3-48.0; Martin Bubb, 3-4-46.4; Larry Gisewhite, 1-6-40.4.

CLASS C — Ed Gohn, 7-0-55.1; Pete McCollum, 4-3-57.3; Pete Miller, 4-3-46.3; Dick Ruff, 1-6-42.0; Jack Griffith, 6-1-51.6; Gene Durham, 4-3-48.9; Dick Wilson, 2-5-44.7; Mark Clippinger, 0-7-42.1.

CLASS D — Bill Bruaw, 7-0-59.9; Al Long, 5-2-52.0; Joe Belcavitch, 2-5-45.5; Frank Smeigel, 2-5-42.7; Guy Esh, 5-2-56.0; Don Dietz, 3-4-42.6; Earl Lartz, 2-5-44.7; Wayne McCloskey, 2-5-42.1.

CLASS E — Sherwood Frankhouser, 6-1-56.4; John Clippinger, 4-3-47.6; Dale Carson, 3-4-44.9; Wayne Nielsen, 2-5-44.9; John Baugher, 4-3-49.0; John Clow, 4-3-46.6; Joel Medvidovich, 3-4-44.1; Jack Myers, 2-5-42.9.

CLASS F — Mike Bonner, 6-2-44.4; Roy Teets, 5-2-44.3; John Zimmerman, 4-3-32.2; Frank Bechtel, 2-5-31.9; Joe Shurmaitis, 6-3-37.6; Don Wagner, 4-3-33.4; Mike Spangler, 3-4-33.9; Chas Denk, 0-7-22.7.

CLASS G — Ralph Weigel, 5-0-39.5; Bob Heffner, 3-2-32.3; David Blouch, 1-4-27.8; Earl Brown, 4-1-41.1; Rich Hoover, 2-3-30.5; Glenn Epley, 0-5-15.7.

CLASS H — Jerry Hoy, 5-2-40.4; Dennis Frizzi, 4-3-32.6; Ira Stine, 4-3-28.6; Gil Pritchett, 2-5-27.7; Darryl Eberly, 4-3-35.9; Don Diehl, 4-3-28.6; Gerard Harris, 3-4-25.0; Bernie Wierbowski, 2-5-20.9.

CLASS I — Ned Kinard, 5-0-33.9; Jack Boward, 2-3-24.3; Joe Shughart, 1-4-18.3; Bruce Corl, 4-1-32.0; Dennis Lloyd, 2-3-21.2; Dick Hain, 1-4-16.1.

CLASS J — Joe Calderelli, 7-0-25.0; John Kehler, 5-2-17.3; Dave Preston, 2-5-19.5; George Miller, 2-5-9.7; Marlin Zimmerman, 6-1-26.1; Greg Long, 4-3-15.0; Dick Arnold, 2-5-12.1; Brad Lyons, 0-7-14.3.

LADIES CLASS A — Charlotte Onion, 5-0-45.1; Kim Johnson, 3-2-39.5; Jean Long, 1-4-28.3; Pat Clow, 4-1-43.1; Elinor Pritchett, 2-3-36; Betty Miller, 0-5-22.0.

LADIES CLASS B — Galle Nielsen, 7-1-25.2; Lois Hoy, 5-2-17.1; Susan Preston, 4-3-11.4; Lois Nielsen, 1-6-0.7; Betty Miller, 6-2-16.4; Dawn Lloyd, 4-3-12.8; Mildred Boyer, 2-5-10.6; Betty Gryskavics, Forfeit.

SANDBAGGERS OPEN — OREGON CITY, ORE. — SANC. 85-338

CLASS A-1 — Ben Wiedrich, 7-0-81.2; Ridge Leggett, 5-2-74.7; Lowell Davis, 5-2-72.4; Barry Chapelle, 5-2-65.4.

CLASS A-2 — Ron Ferguson, 3-4-51.3; Bob Johnson, 2-5-50.3; Lee Wallace, 1-6-53.2; Everett Clark, 0-7-48.1.

CLASS B — Pete Zumaran, 7-0-55.4; Roger Christianson, 4-3-46.3; Loy Brown, 4-3-46.9; Darlene Williams, 4-3-47.8; Len Christensen, 3-4-45.4; Don Ferguson, 3-4-44.9; Jim Kosterman, 2-5-41.1; Mel Shuss, 1-6-34.7.

CLASS C — Esthel Benner, 6-1-39.8; Larry Flanary, 5-2-41.9; Ray Meyer, 5-2-40.9; Gene Buzzini, 4-3-33.2; Tom Williams, 3-4-39.1; Phyllis Centell, 3-4-34.4; Mel Sherbert, 2-5-37.4; Bob Beesley, 0-7-28.1.

CLASS D — Buck Davis, 6-1-43.2; Willard Hufschmid, 5-2-44.2; Ken Leatherman, 4-3-40.1; Vern Wanless, 4-3-38.1; Dick Culbertson, 4-3-38.9; Gilbert Morgan, 2-5-36.7; Marvin Berg, 2-5-34.3; Noel Ness, 1-6-32.5.

CLASS E — Clarence Wood, 6-1-33.9; Dick Evans, 5-2-41.9; Tom McAdam, 4-3-37.5; Al Holland, 3-4-38.3; Floyd Flemmer, 3-4-32.2; R.E. Click, 3-4-31.6; Dave Sturdevant, 3-4-31.0; Art Norlin, 1-6-33.4.

CLASS F — Lester Young, 5-0-33.7; Bud LeDoux, 4-1-34.4; Ron Giebenhain, 3-2-28.4; Tom Ritter, 2-3-29.8; Bill Luehring, 1-4-27.7; Ben Goodling, 0-5-17.5.

CLASS G — Bill Dolan, 5-0-30.5; Steve Harris, 4-1-26.6; Glenn Chaput, 3-2-19.8; Kirk Dusenberry, 1-4-10.0; Steve Krommenacker, 1-4-9.9; Debi Wilson, 1-4-5.5.

TOWN & COUNTRY RESTAURANT OPEN — UTAH — SANC. 85-405

The sixth annual Town and Country Restaurant Cedar City open horseshoe tournament had the largest field of players in its history. Dennis Ohms defended his crown by winning 7 of 8 games for the top spot, his only loss came at the hand of Gerry Kloefer of Calif.

The Town and Country Restaurant was the host and put up the prize fund of \$700.00 for the entries.

DESIGNED FOR MAXIMUM PERFORMANCE

IMPERIAL**CAST MODEL****WIDER, THICKER BLADES**

U.S.A. PRICES
(Postpaid)

1 Pair	\$26.00
2 to 5 Pair	\$25.00
6 Pr. & Over	\$20.00
	Freight Collect

FORGED MODEL**HARDENED HOOKS AND POINTS**

U.S.A. PRICES
(postpaid)

1 Pair	\$39.00
2-5 Pair	\$37.00
	Freight Collect
6 Pair & Over	\$31.00

CLYDE MARTZ

3726 Henley Dr.

Pittsburgh, Pa. 15235

PHONE: 412-731-4662

TOWN & COUNTRY OPEN — (Continued)

Richard Buchanan of Salt Lake took second. Class B went to George Sarkis. Sarkis is the Cedar City's Club President. Class C play went to Craig Jewkes. Robert Tibbs of Indianola copped Class D. Class went down to a playoff between Delmar Beck of Mt. Pleasant and Tuff Moles of St. George. Moles won the playoff.

CLASS A — Dennis Ohms, Cedar, 7-1-49.4; Richard Buchanan, Midvale, 6-2-45.6; 3. Wendall Bundy, Cedar, 6-2-40.6; 4. Gerry Kloefer, Yucipa, CA, 6-2-35.5; 5. Jerry Moritz, Cedar, 5-3-31.5; 6. J.J. Steffen, Monticello, 3-5-29.7; 7. Gordon Lytle, Eagle Valley, 2-6-34.2; 8. Bruce Crane, Salt Lake, Withdrew; 9. Herb Rushing, Grass Valley, CA, withdrew.

CLASS B — 1. George Sarkis, Cedar, 6-0-38.0; 2. Richard Kennedy, Marysville, 5-1-45.0; 3. Grant Seegmiller, Cedar, 4-2-30.8; 4. Don Weaver, Las Vegas, Nv., 3-3-31.2; 5. Lorin Condie, Cedar, 2-4-29.9; 6. Elwin Marquardson, Cedar, 1-5-23.6; 7. Craig Zufelt, Enoch, 0-6-20.5.

CLASS C — 1. Craig Jewkes, West Valley, 5-0-27.5; 2. Nober Zuniga, Enoch, 4-1-33.5; 3. Gary Gilbert, Mt. Pleasant, 3-2-24.0; 4. Garth Bundy, St. George, 1-4-30.5; 5. Doc Hildbrand, St. George, 1-4-24.0; 6. Wilford Andelin, Leeds, 1-4-21.0.

CLASS D — 1. Robert Tibbs, Mt. Pleasant, 6-0-33.8; 2. Shirley Steffen, Monticello, 5-1-26.7; 3. Carole Marquardson, Cedar, 4-2-26.7; 4. Bob Langston, Hurricane, 3-3-25.4; 5. Gib Mitchell, Cedar, 2-4-26.3; 6. Norman Kirk, Las Vegas, Nv., 1-5-20.0; 7. Neldon Christensen, Hurricane, 0-6-21.7.

CLASS E — 1. Tuff Moles, St. George, 5-1-30.4; 2. Delmar Beck, Mt. Pleasant, 4-2-20.0; 3. L.D. Allredge, St. George, 3-2-18.0; 4. Kent Pendelton, Parowan, 2-3-17.5; 5. Lamar Naegle, Cedar, 1-4-17.0; 6. Clark Fawcett, 1-4-17.0.

CLASS F — 1. Viola Fawcett, Hurricane, 6-0-20.8; 2. Rod Bowers, Mt. Pleasant, 5-1-24.6; 3. Dianna Kennedy, Cedar, 4-2-12.9; 4. Don Howell, Mt. Pleasant, 2-4-18.8; 5. Clyde Higbee, Cedar, 2-4-15.4; 6. Jeff Hatch, Cedar 1-5-11.3; 7. Alton Fawcett, Hurricane, 1-5-9.6.

CLASS G — 1. George Hunt, Cedar, 5-1-14.3; 2. Clint Gentry, St. George, 5-1-13.6; 3. Glen Mcallister, Laverkin, 4-2-10.8; 4. Catherine Moles, 4-2-9.6; Kevin Alldredge, 2-4-5.0; 6. Allen Bowels, Cedar, 1-5-5.8; 7. Bob Landis, Hurricane, 0-6-4.2.

JUNIOR CLASS — 1. Gabe Ohms, Cedar, 5-0-22.0; 2. Keith Landis, Hurricane, 4-1-18.0; 3. Dawn Howell, Mt. Pleasant, 3-2-4.5; 4. Amy Ohms, Cedar, 2-3-3.5; 5. Darrin Hatch, Cedar, 1-4-2.5; 6. Tory Gilbert, Mt. Pleasant, 0-5-2.0.

FREE!

Trophy & Awards Catalog



Call Toll-Free
1-800-628-9657
In Mass. 1-800-282-7789

DINN BROS. The Trophy People

P.O. Box 111 • 68 Winter St. • Holyoke, MA 01041



Off I-94, Between Hwys. 20 & 11
414-886-8555

14000 LEETS BIR ROAD, STURTEVANT, WI 53177

presents

**2nd Annual
CANADIAN-AMERICAN INTERNATIONAL
FRIENDSHIP OPEN**

FEBRUARY 13, 14, 15, 16, 1986

**\$4300.00 in prize money based on 24 entries
with \$1500.00 for 1st place**

**4 PERSON PRELIMINARY TEAM ROUND-ROBIN
WITH CHAMPIONSHIP FINALS**

We've asked each state association to sponsor the entry of their four best available pitchers — men or women. We realize states are abundant with quality pitchers, so any state or individual may sponsor additional teams. If enough pitchers are not available from a state — regional teams are welcome with tournament approval.

- Also, each pitcher will receive a complimentary tournament shirt.
- Interested players must contact state association regarding form makeup.
- State association to forward their team's players' name, shirt size.

Entry deadline is December 31st and the entry fee is \$100.00 plus \$100.00 earnest money which will be refunded when teams arrive.

The official Can/Am lodging center is the luxurious Sheraton-Racine Hotel and Conference Center. Room rates are \$44.95 for single, double, triple or quad. Reservations can be made by calling 414-886-6100.

For more information contact Tom Roanhouse at Pitchin' Palace.

**WISCONSIN'S ONLY INDOOR HORSESHOE PITCHING FACILITY
12 CLAY COURTS AND ELECTRONIC SCOREBOARDS**

THE HORSESHOE PITCHERS' COMPANION

Pat. No. 4,399,614

- FEATURES:**
1. Calipers for measuring close points.
 2. File to remove burrs from shoes.
 3. A 6" notch for measuring legal points.
 4. Straight edge for measuring ringers.
 5. Scraper for removing dirt, mud, etc.
 6. Just the right size for back pockets.
 7. NHPA approved.

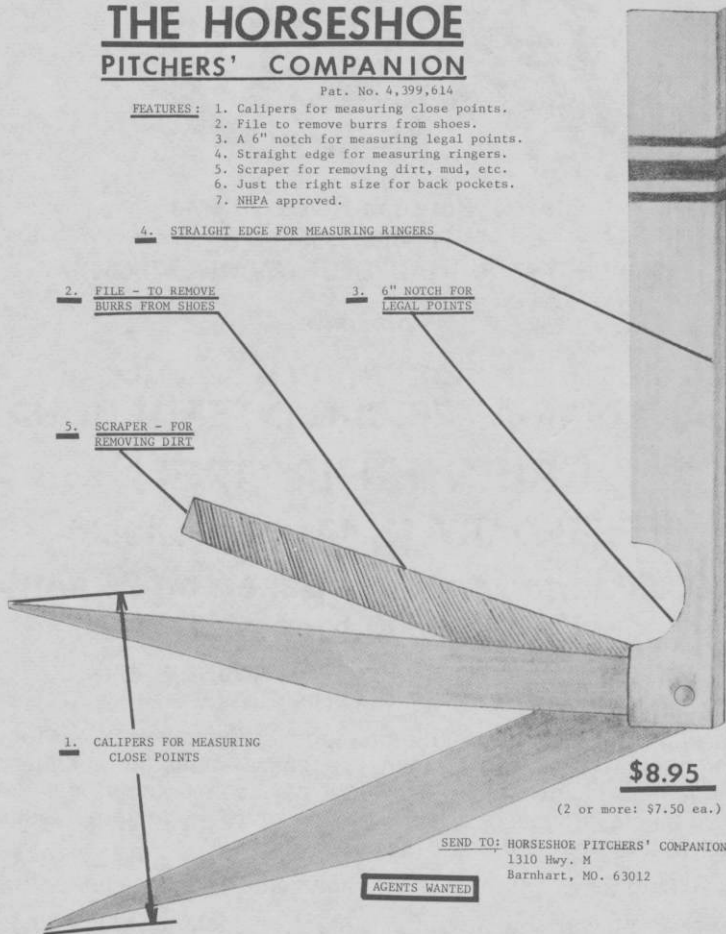
4. STRAIGHT EDGE FOR MEASURING RINGERS

**2. FILE - TO REMOVE
BURRS FROM SHOES**

**3. 6" NOTCH FOR
LEGAL POINTS**

**5. SCRAPER - FOR
REMOVING DIRT**

**1. CALIPERS FOR MEASURING
CLOSE POINTS**



\$8.95

(2 or more: \$7.50 ea.)

SEND TO: HORSESHOE PITCHERS' COMPANION
1310 Hwy. M
Barnhart, MO. 63012

AGENTS WANTED

19th DIST. ILL. VFW CLUBS ACTIVITY — SANC. 85

The 19th District VFW H.C. clubs have been doing a fine job of filling the whole summer with good shoe throwing. The teams have increased from three posts participating, to five, with the addition of Downers Grove and Le-mont posts to the Warrenville, Naperville and Lisle members already playing.

There have been some very good scores with the possibility of many patches being gained through consistent playing. The fun and friendship of those coming from some distance has made more competitive and interesting playing for the posts.

In addition, the posts are adding more courts to the ones in use, and having additional demonstration games to show what progress can be made through consistent good times.

This group is looking forward to the possible addition of a sixth post, Batavia, Ill. If this happens the structure of the play will change to make it easy for those who want to join to find a game nearby. This will make for better statistics, and more possible variety in games played.

Presently, about 30 members are throwing per session, with 24 most active. The others came too late to qualify

TOURNAMENT ACTIVITY IN TEXAS ASSOCIATION

AUSTIN OPEN — SANC. 85-171 — CLASS A WOMEN — Lucy Leonard, 4-1-49.6; Diana Polak, 4-2-40.0; Dot Crane, 3-2-44.0; Rebecca Boring, 1-3-35.5; Katie Clark, 0-4-34.5.

CLASS B WOMEN — Mary Ann Polak, 6-1-41.1; Toni Keating, 5-2-32.9; Pixie Twomey, 5-2-28.6; Sue Ann Holliday, 4-3-32.5; Betty Polak, 3-4-37.5; Bonnie Broesche, 2-5-33.6; Mary Holder, 2-5-30.4; Betty Engelhardt, 0-7-31.1.

CLASS C WOMEN — Brenda Engelhardt, 4-0-33.5; Valerie Sommers, 2-2-29.0; Karen Hetrick, 2-2-21.0; Marci Yeager, 1-3-24.5; Laura Latham, 1-3-18.5.

CLASS D WOMEN — Darlene Polak, 5-1-27.5; Betty Unscheid, 4-2-21.3; Mary Ann Kramer, 3-2-15.5; Teresa Slater, 2-3-17.0; Vanessa Twomey, 1-4-6.5; Mary Smidovec, 1-4-5.0.

JUNIOR CLASS A — Danny Polak, 3-1-49.4; Darryl Kramr, 1-3-34.4.

JUNIOR CLASS B — Nate Vogel, 6-0-22.1; Chris Caveness, 4-2-12.9; Travis McDavid, 2-4-2.9; Celeste Polak, 0-6-1.3.

CLASS A MEN — Coke Bowker, 6-0-71.7; Roger Vogel, 5-1-64.7; Stan Smith, 4-2-60.3; Bret Vogel, 2-4-57.7; Ken Fraser, 2-4-57.7; Gilbert Ramesch, 1-5-51.0; Pat Garcia, 1-5-48.0.

CLASS B MEN — Gayle Fuller, 6-1-46.4; Frank Zehentner, 5-2-40.0; Ernie Groff, 5-2-36.4; Cordell Twomey, 4-3-42.5; Walter Lawrence, 3-4-33.9; William Scott, 2-5-40.0; Ramon Kniepkamp, 2-5-39.6; Frank Polak, 1-6-40.7.

CLASS C MEN — Dwayne Twomey, 7-0-42.5; Tom Lockwood, 5-2-38.2; Ronnie Simmons, 4-3-35.7; Joe Pastusek, 4-3-32.9; Keith Umscheid, 3-4-36.1; Johnnie Polak, 2-5-29.3; Bryan Carr, 2-5-28.9; Bill Twomey, 1-6-30.7.

CLASS D MEN — Marvin Burgess, 8-1-36.9; Louis Engelhardt, 7-2-36.4; Brock Vogel, 6-2-30.6; Dean Campbell, 5-3-35.9; Iee Frump, 4-4-34.7; Warren Maybin, 3-5-24.7; Rudy Polak, 2-6-27.5; C.W. Simmons, 2-6-22.5; Gene Holliday, Jr., 1-7-24.1.

CLASS E MEN — Marvin Two Crow, 6-1-31.8; Gordon Clark, 5-2-31.8; Jim Holder, 4-3-27.5; Ray Hetrick, 4-3-23.9; Clay Twomey, 4-3-21.1; C.A. McBrearty, 3-4-26.4; Lloyd McCaughey, 3-4-21.4; Gary Crane, 2-5-18.6.

CLASS F MEN — Royce Turner, 7-1-23.1; Steve Neel, 6-2-16.4; Richard Zahradnik, 5-3-22.8; Howard Cantrell, 5-3-20.4; Mike Yeager, 4-4-16.3; Carlos Gamez, 4-4-14.1; Robert Brown, 3-5-16.6; Bubba Broesche, 2-6-19.1; Jody Polak, 0-8-13.7.

CLASS G MEN — Rodney Brown, 7-2-21.2; Rex Graham, 7-3-15.0; Joe Morrison, 6-3-15.6; Harold Leonard, 5-3-18.4; Albert Daniels, 4-4-15.3; Steve Slater, 3-5-14.6; Gary Meriwether, 3-5-11.7; Floyd Broesche, 3-5-10.6; Ricky Hester, 0-8-10.9.

ARLINGTON OPEN — SANC. 85-616 — CLASS A WOMEN — Debbie Driver, 5-0-29.2; Debbie Milligan, 3-2-34.4; Delores Zigrang, 2-3-41.2; Mary Holder, 2-3-26.8; Pixie Twomey, 2-3-24.0; Rebecca Boring, 1-4-31.6.

CLASS B WOMEN — Lydia Richardson, 5-1-26.7; Carolyn Rigdon, 4-2-34.0; Edna Anderle, 3-2-33.6; Karen Hetrick, 3-2-30.0; Marie Young, 1-4-21.6; Sharon Crane, 0-5-22.4.

CLASS A MEN — Bob McCharen, 5-0-58.2; Coke Bowker, 4-1-71.8; Bret Vogel, 3-2-53.4; Ken Fraser, 2-3-57.5; Bob Harvey, 1-4-53.4; Carroll Ray, 0-5-33.2.

CLASS B MEN — Jim Burrow, 5-1-43.0; Jeff Gaston, 4-2-39.7; Ernie Groff, 3-2-34.3; Frank Zehentner, 2-3-36.5; Glenn Morris, 1-4-32.9; Jerry Zigrang, 1-4-32.3.

CLASS C MEN — Ken Behrend, 6-0-35.9; Charles Tomerlin, 5-1-30.1; Bill Twomey, 4-2-30.6; Tom Lockwood, 2-4-29.1; Red Rodgers, 2-4-27.9; Mike Milligan, 2-4-23.5; Bryan Carr, 0-6-22.1.

CLASS D MEN — Terry Werley, 7-2-28.5; Molan Morris, 6-3-34.2; Leroy Harris, 6-3-30.2; Charlene Anderle, 5-4-37.6; Dean Campbell, 5-4-30.6; Eddie Hartsfield, 4-5-34.3; George Nelsen, 4-5-32.2; Brock Vogel, 3-6-30.2; Argie Gould, 3-6-27.0; C.W. Simmons, 2-7-23.6.

CLASS E MEN — Ross Richardson, 7-1-34.0; Michael Nevins, 6-2-27.5; Marvin Two Crow, 4-3-23.6; Ray Hetrick, 4-3-21.7; Gary Sibbitts, 3-4-29.1; Louis Parker, 3-4-24.6; Vernon Crane, 1-6-18.4; Mark Young, 0-7-5.9.

CLASS F MEN — Bill Beatty, 8-0-31.2; Teddy Buckland, 5-3-26.9; Royce Turner, 5-3-23.7; Ken Maupin, 5-3-21.6; Clay Twomey, 4-4-22.3; Jeff Burrow, 4-4-21.2; Steve Neel, 3-5-16.6; Jim Holder, 2-6-15.3; Bill Culwell, 0-8-11.5.

CLASS G MEN — Tony Endlicher, 7-1-12.9; Ken Young, 6-2-18.3; Benny Underwood, 6-2-9.6; Rusty Parks, 5-3-10.4; Joe Morrison, 4-4-7.3; Bill Hartsfield, 3-5-12.2; Gary Duffly, 3-5-11.3; James Duncan, 2-6-3.4; Joe Sullins, 0-8-11.8.

JUNIORS — Jay Harris, 3-0-15.8; Holly Fry, 0-3-2.5.

Dear Vernon:

I purchased your pamphlet about a year ago and read and re-read it at least twenty times, took it to my practice court and made three changes in my game. I went from a 41% season to last year with a resounding 51.8% for 13 weeks of play.

Had to drop a card to say thanks and let you know it was the best three dollars I ever spent. It sure is nice to know that there are guys like you around who are willing to share.

Your friend,

John Kozik, Jr.
Binghamton, NY 15901

Dear Mr. Kinser:

Please send me a copy of TIPS FOR THE HORSESHOE PITCHER AND BOWLER. I sent for a copy one other time and found it tremendously helpful. I loaned it out to some one and he liked it as much as I did so I let him keep it.

Thank you,

Frank Ellis
Frewsburg, NY 14738

A
F
A
N
T
A
S
T
I
C
N
E
W
B
O
O
K

Tips for the Horseshoe Pitcher and Bowler

Postpaid
ONE \$4.00
6 . . . \$3.00 ea.
12 . . \$2.50 ea.

Find Out:

- How to avoid the balancing act.
- About a horseshoe pitchers or bowlers version of the way baseball pitchers learn to put the ball where they want it.
- How to get the mind involved and gain control of swing by turning over flight of shoe in the mind.

Vernon Kinser
KINSER PUBLISHING, INC.
Route 3 Box 157A
Aurora, Missouri 65605

A
F
A
N
T
A
S
T
I
C
N
E
W
B
O
O
K

TO MY HORSESHOE PITCHING FRIENDS

Since I started mailing my book about a couple of years ago, some things have happened that I think some of you might like to find out about.

Imagine how gratifying it must have been when I tuned in the Baseball Worlds Series to see, as best I could tell, that the Worlds greatest pitchers are learning from my book.

From what I can make out by watching the Professional Bowlers Tour every Saturday, they must be learning from my book mostly because the age of the finalists is getting much younger.

According to a recent copy of the News Digest the top 24 men at the 1984 Worlds Tournament included 9 rookies who had never made the Class A mens division before. It goes on to point out that the 1984 Class was probably the youngest ever, as 7 of the top 24 were under 25 years of age.

What such statistics are pointing out is that it does not take 50 years to master the game of horseshoe pitching any more and it all has happened since my book was first published.

Of course, it may or may not be a coincidence that my book has come along at the same time that the younger pitchers are invading the top 24 mens class. But I sure intended for it to pave the way by furnishing instructions on how to use the feet, legs, body, arms, shoulders, and even the head.

To make sure that none of the points in my book are missed, it would be wise to go to some school or college and see if the athletic director or some one else would help by studying the book and then discussing the points one by one with you.

Yours for more ringers,

Vern Kinser

"From Out Of The Mail Bag"

Editorial Office
P.O. Box 1606
Aurora, IL 60507

Dear Mr. Cobb:

Please let me make a few observations about my memories of Lafayette.

First and most vividly, I remember Donnie Roberts doing his "thing" helping people. He must have answered a thousand questions every day. Next, being from Montana, I remember the heat and humidity. It was so hot and sticky and the sun was so bright that even the shadows were up to one-half inch thick and sticky that they stuck to my shoes like "gumbo." It was the first time that I ever had to scrape the "shadows" off of my shoes.

Then I remember throwing those shoes 40 feet and having to hurry down to the other stake and pour water on them before they got too hot to pick up. I accidentally left one pair of shoes out in the sun for about a half hour and even now they are still too hot to touch.

Sincerely,

Kennety Henry
Helena Montana

Editor's Note: Now that's really hot!

HILLSBORO, KS. OPEN BY ALLBAUGH—SANC. 85-538

CLASS A — Aiden Allbaugh, 6-1-56.3; Don Fermin, 6-1-50.9; George Buche, 4-3-51.7; Ralph Funk, 3-4-45.4; Darrel Hutchison, 3-4-44.4; Marvin Reheis, 3-4-44.2; Bob Conquest, 2-5-36.4; Delbert Peters, 1-6-35.5.

CLASS B — Bill Reh, 5-2-36.3; Herb Flickinger, 5-2-37.8; Ed Steinle, 5-2-41.2; Larry Aue, 5-2-43.3; Bill Whitely, 4-3-43.1; Dale Blandin, 3-4-34.5; Joe Miller, 1-6-24.8.

CLASS C — Dale Blandin, 4-1-34.3; Joe Miller, 3-2-28.8; Mark Holding, 3-2-25.0; Walt McCreary, 3-2-22.8; W.C. Scott, 2-3-24.5; Ed Haupt, 0-5-13.5.

CLASS D — Tip McFadden, 5-0-27.0; Dennis Voth, 3-2-27.3; Roland Duerksen, 3-2-19.0; Dan Currier, 2-3-15.0; Herb Schroeder, 2-3-9.3.

BOB McKNIGHT AND GRACE RUGG UNDEFEATED IN MIKE RIEDL MEMORIAL OPEN (PA.) — SANC. 85-191

Bob McKnight of Newcastle, Pa. took top spot in the Mike Riedle Memorial Open tournament held at Dormont, Pa. He posted a 7-0-64.7 record. Grace Rugg of Mill Run, Pa. topped the Ladies class with a 5-0-45.9 record. She also set a new single game record for the ladies with a 59.2 game.

Rain hampered the tournament with Class B having to be shortened but Ginger Meeks was declared the winner after three games. Class C was also moved to the next day with Harry Clement being the winner. Don Larkins won Class D with 6-1-33.8. In spite of the rain delays everyone had a good time.

CLASS A — Bob McKnight, New Castle, 7-0-64.7; Ray Rugg, Mill Run, 6-1-64.4; Vince Sedleack, New Kensington, 4-3-56.1; Dave Meckevic, Pittsburgh, 4-3-54.3; John B. Stadler, Mt. Oliver, 2-5-53.0; Pete Vlachos, Bridgewater, 2-5-52.2; Robert E. White, Vandergrift, 2-5-46.2; Ed Horneman, Arnold, 1-6-46.3.

CLASS B — Ginger Meeks, Washington, 3-0-44.1; Bill Stahl, Washington, 2-1-53.1; Harry Thomas, Baldwin, 2-1-45.1; Paul Gemza, 2-1-41.6; Leechburg, 2-1-41.6; Joe Pagnanelli, Bethel Park, 1-2-44.0; Rich Maroni, Arnold, 1-2-34.2; Jim Schneider, Sr., Washington, 1-2-31.0; Tom Piscalisch, Yatesboro, 0-3-26.7.

CLASS C — Harry Clement, Pittsburgh, 4-1-47.1; Al Punturi, Braddock Hills, 3-2-42.8; Ron Weiss, Pittsburgh, 3-2-39.1; Dick James, Pittsburgh, 3-2-37.1; J.F. Stadler, Mt. Oliver, 2-3-34.9; Carl Stadler, Canton, 0-5-29.0.

CLASS D — Don Larkins, 6-1-33.8; Bill Doman, Dormont, 5-2-34.8; John Rapp, Corapolis, 5-2-32.8; Bud Kerns, Beaver Falls, 4-3-32.6; Steve Monoyoudis, McKeesport, 4-3-29.3; Gene Swogger, Carnegie, 2-5-23.3; Art Partee, Bridgeville, 1-6-20.1; Butch Stover, Beaver Falls, 1-6-16.8.

LADIES CLASS — Grace Rugg, Mill Run, 5-0-45.9; Sherie Dagan, E. Liverpool, 4-1-34.5; Sandy Carnahan, Shelocta, 2-3-32.9; Jean Reefer, 2-3-19.4; Marty Wood, Shelocta, 2-3-18.0; Ruth Carnahan, Shelocta, 0-5-8.5.

NHPA PROMOTION COMMITTEE

By SOL BERMAN

1985 WORLD'S CHAMPION — WALTER RAY WILLIAMS — Walter Ray is also having a very successful bowling season, as of July 1, 1985 he is the 18th on money leaders list with \$40,010.

He is in 7th place in the 1985 Point leaders (thru the So. Calif. Open) with 13,881 points.

He's in 9th place on the 1985 PBA Average Leaders list, with a 211.612 average.

The \$115,000 Tucson, Ariz. Open was held July 12-17. Walter Ray finished in 13th place, averaging 213.1 and winning \$2,150.

A contingent of 16 of Americans outstanding professional bowlers will travel to Japan this fall to compete in the Japan Cup. Walter Ray Jr. was one of the bowlers selected.

BEHIND THE SCENES

By WALTER RAY WILLIAMS, JR.

Each horseshoe tournament has similar ingredients. Some of them are horseshoe pitchers, scorekeepers, groundskeepers, referees, statisticians, office helpers, spectators, and tournament director/committee. The world tournament is the biggest tournament and should have more of these ingredients than other horseshoe tournaments. This year there was almost a thousand entries. This requires an unbelievable amount of workers. Here are some of my opinions on what goes on behind the scenes some ideas about them.

The world tournament used 24 courts for at least 14 hours a day for 12 days which for 1 and 1/2 games per hour totals approximately 5,500 games to be kept. This is only a rough estimate, but I am sure it is low. With scorekeepers getting \$.50 a game, somebody is paying out about \$2,750.00. The present policy is that the NHPA or the host club pays for the scorekeepers. However, I feel that the players should pay for their own scorekeepers and that the fee should be \$.50 a person to give a total of \$1.00 a game to the scorekeepers. This could be collected when a player signs in. Before every session starts Donnie Roberts gets on the P.A. and asks for volunteers to keep score. This usually takes 5 to 10 minutes. He usually compliments everybody for volunteering and "threatens" to not start until all the scorekeeping chairs are filled. I believe that the NHPA has been paying \$.50 a game since at least 1972 and a small raise should be in order. This would mean that some players could end up paying \$20.00 or more to scorekeepers and might object. But if you were to keep score for one half as many games as you play, you would have your scorekeeping money. I think this would help the scorekeeping situation somewhat.

In the past several world tournaments, mainly in Alabama and North Carolina, the parks departments have hired workers to work the courts. This was great except these workers were not horseshoe players and were not given enough instructions on how to turn the courts. This year at the world tournament they used the method used in Indiana tournaments to deal with the courts. This was for each of the players to turn one end of the court when their game was finished. This turned out to be pretty good and even saved some time. Some of the spectators didn't think it looked so good for the women to turn their own courts, but I don't think the women complained too much. There were still slight problems with this as a lot of top players, especially myself, are picky about how their courts are turned and will often redo the court a little.

At the present time, the entry fees are \$10 or \$15 depending on what division a person enters. I don't know what the NHPA does with this money, but I think that at least \$5 should be set aside to pay for referees, statisticians and office help. I think that 4 referees can handle 24 courts. I think that they used about 6 statisticians and office helpers on the average throughout the tournament. This totals about 1600 office hours giving the helpers an incredible \$3.00 an hour. This isn't quite minimum wage, but I believe it is more than they receive now. It also gives the NHPA the power to encourage good office workers to stay in the office.

The referees at the World Tournament should go through some sort of orientation to inform them of the rules and show them techniques of measuring shoes. They should know that they are the boss out on the courts and if they find anybody not abiding by the rules, they should take appropriate action. Too many times it seems that the referees are afraid of the players and don't enforce the rules with the vigor they probably should. If the referees would enforce the existing foul line rule, a new foul line rule wouldn't have to be introduced.

At this year's world tournament, Donnie Roberts, the tournament director, put the massive schedule together and basically ran the whole tournament which lasted 12 days where a day was usually at least 14 hours. Being only one man, Donnie can do only so much. He does need some sleep or relaxing periods. I don't think he had an assistant tournament director who could relinquish his authority to. But I think an assistant tournament director would be a great help to the tournament director. They could alternate duties so that they could have time to relax.

I believe that the NHPA needs to hire a good writer/horseshoe player who would write daily articles on the world tournament each day and send them to the wire services and publications. I don't know how much of this was done or even if it was done at all. But, by the looks of things in September Horseshoe Pitchers' Digest, I don't think it was done because no stories were even put in our own horseshoe magazine. This is one area the NHPA needs to improve on. There were a couple of articles in the local Lafayette paper during the tournament. These were good, but some articles could have been sent to Chicago, Indianapolis, and the wire services. There were several articles in major newspapers across the nation, but they came about through efforts from the PBA Publicity Department. Horseshoe pitching is growing sport, but could still be much bigger than what it is now.

In Memoriam

The Saratoga Horseshoe Club is sorry to report the death of the President of their horseshoe club. Morris (Speed) Gillespie passed away Sept. 19, 1985. Morris died from Leukemia. He was a member of the Florida Hall of Fame. He was active in horseshoe in his home state of Indiana, before retirement. He was a very loyal and hard worker for the state and local horseshoe club. He will be greatly missed. He is survived by his wife, two sons and five grandchildren.

The Western Penna. Association and the Cambria-Somerset League has been saddened by the untimely death of one of its staunchest supporters, Tom Locher, 322 Third St., Conemaugh, Penna. on August 29.

He had been pitching horseshoes for 45 years and was a good worker and booster for the game. He was stricken shortly after winning the title in the Senior Olympics on July 29. He was a member of the National Horseshoe Pitchers Association for many years. He was laid to rest in the cemetery directly across from the courts where he had pitched for many years. He is survived by his wife Zora and four children and several grandchildren. The sympathy of the Western Penna. Association is extended to his bereaved family.

NHPA SECRETARY-TREASURER REPORT FOR AUGUST

August 1985 NHPA Receipts:

1985 World Tournament Receipts	\$ 8332.00
NHPA Digest	2160.00
NHPA Memberships	5643.50
League Program	805.50
Interest	277.64
Total August Receipts	\$17218.64

August 1985 NHPA Expenditures:

Bank Service Charge	\$ 2.50
1985 World Tournament	57866.86
League Program	3268.10
NHPA Digest	5621.76
Tournament Patches	178.77
Telephone	556.59
Supplies	144.08
Postage	749.31
Hall of Fame	766.73
Officer Travel	526.00
Equipment & Repair	381.47
Publicity	50.00
Officer Allowance	1666.66
Total August Expenditures	\$71778.83

NOTE: The above figures reflect only the books of the Sec.-Treas. A complete breakdown of the 1985 World Tournament will be published as soon as all items are in on that event.

PORTT RETAINS GEORGIA STATE CROWN — BETTIE KURTZ WINS LADIES TITLE — IRIS SANDHAM WINS AWARD

Glen Portt, former NHPA President, of Albany, Ga. retained his title for the seventh time in 9 years. He posted a 9-0-67.7 record for the tournament among which was a top game of 90.0 percent. Bettie Kurtz of Marietta won the Women's title 5-1-35.4 record. The Junior Boys title went to J. Hayes who was undefeated posting 6 wins and a 44.6 percentage. J. Shipp was the Junior Girls winner. Iris Sandham of Lilburn was awarded the Player of the Year award. Among her honors in her short one year career she won the Women's Class "K" at the 1985 W.T. with 7 straight wins. The heavy rains brought about by the hurricane Elana delayed the tournament.

CLASS A WOMEN — B. Kurtz, 5-1-35.4; I. Sandham, 5-1-29.3; S. Logan, 1-5-27.0.

JUNIOR BOYS — J. Hayes, 6-0-44.6; J. Shipp, 4-2-34.0; R. Weatherford, 2-4-24.0; C. Hayes, 0-6-20.6.

CLASS A MEN — Glen Portt, 9-0-67.7; L. Morton, 8-1-64.3; J. Black, 7-2-58.1; J. Waters, 6-3-54.7; G. Bradfield, 5-4-45.7; T. Whitlock, 4-5-48.1; T. Lawson, 3-6-43.8; L. Fowler, 2-7-32.4; L. Lindsey, 1-8-26.2.

CLASS B MEN — T. Lawson, 4-1-50.0; A. Rich, 4-1-44.2; J. Haley, 3-2-38.2; L. Anthony, 2-3-43.5; J. Force, 2-3-29.6; C. Kurtz, 0-5-28.6.

CLASS C MEN — J. Brown, 8-1-42.0; J. Wood, 6-3-36.8; E. Allen, 5-4-37.8; A. Weatherford, 5-4-36.8; J. Shipp, 5-4-35.3; W. Brake, 4-5-38.6; M. Fortenberry, 4-5-35.8; R. Dunlap, 4-5-38.4; R. Barnes, 4-5-36.3.

CLASS D MEN — C. Peterson, 4-1-28.8; A. Simpson, 4-1-22.7; W. Emerson, 2-3-23.9; R. Whitlock, 2-3-21.3; T. Logan, 2-3-20.3; G. Nickols, 1-4-17.5.

CLASS E MEN — A. Pejko, 4-1-29.5; S. Yarborough, 4-1-22.8; H. Osborne, 3-2-16.6; G. Kuck, 2-3-13.5; J. Rideout, 2-3-10.3; H. Dison, 0-5-6.0.

R. NORWOOD GOES UNDEFEATED TO WIN TENN. STATE

Roger Norwood posted a 7-0-73.1 record to win the Tennessee state championship. Don Ward was the runner-up. Maxine won the play-off over Marlene Ray to retain her title in the Women's division. R. Ward Jr. won the Boys championship. Sanction 85-341.

CLASS A — R. Norwood, 7-0-73.1; D. Ward, 5-2-72.5; T. Norwood, 5-2-68.3; R. Martino, 4-3-60.4; M. Bush, 3-4-55.1; E. Long, 2-5-58.1; G. Whaley, 2-5-57.7; G. Lewis, 0-7-46.7.

CLASS B — J. Vines, 6-1-57.0; D. Stallings, 5-2-56.0; G. Bush, 5-2-55.5; O.D. Lebow, 5-2-52.6; J. Shelton, 4-3-49.4; C. Green, 2-5-43.6; C. Montgomery, 1-6-35.0; H. Irwin, 0-7-30.9.

CLASS C — M. Bastian, 5-0-59.3; J. Haire, 4-1-47.5; S. Long, 3-2-50.0; J. Conner, 2-3-46.0; S. Callahan, 2-3-40.0; J. Adkerson, 0-5-31.6.

CLASS D — V. Fox, 4-1-50.5; J. Hammitt, 4-1-45.8; C. Bennett, 3-2-41.3; L. Sunderland, 2-3-37.9; R. Bender, 2-3-36.7; V. Browning, 0-5-16.0.

CLASS E — W. Smith, 5-0-40.8; M. Rich, 3-2-38.2; B. Henderson, 3-2-34.4; Jagala, 2-3-40.2; J. Frizzell, 2-3-35.4; S. Cornette, 0-5-32.0.

CLASS F — H. Lones, 5-0-32.9; T. Dockery, 3-2-23.4; J. Sunderland, 3-2-22.5; T. Harmon, 3-2-19.9; J. Farley, 1-4-18.9; L. Byrd, 0-5-9.8.

CLASS G — J. Davis, 5-0-21.0; F. Gaw, 4-1-24.8; W.B. Smith, 3-2-20.6; B. Browning, 2-3-23.1; W. Jennings, 1-4-18.4; J. Lewis, 0-5-7.9.

CLASS H — J. Hasting, 5-0-25.7; S. Stoner, 4-1-16.6; F. Hale, 3-2-25.5; A. Hale, 2-3-16.5; J. Woodey, 1-4-15.2; R. Tudor, 0-5-1.8.

WOMEN — M. Griffith, 4-1-43.9; M. Ray, 4-1-47.2; W. Henson, 3-2-44.3; V. Stoner, 3-2-38.0; D. Harmon, 1-4-30.2; W. Henderson, 0-5-23.4.

JUNIORS — R. Ward, Jr., 4-0-55.0; J. Frizzell, 2-2-27.1; T. Stoner, 0-4-17.0.

DOUBLES TOURNAMENT — SANCTION 85-342 — CLASS A-R — Norwood-G. Lewis, 5-1; D. Ward-V. Fox, 4-2; R. Martino-D. Stallings, 3-3; G. Whaley-J. Shelton, 0-6.

CLASS B — W. Harris-H. Lones, 4-0; C. Bennett-J. Livingston, 2-2; S. Callahan-W. White, 0-4.

CLASS C — S. Cornette-R. Ward, Jr., 4-0; B. Grindstaff-B. Dishner, 2-2; J. Davis-J. Bennett, 0-4.

KEVIN HOLLISTER VERMONT MEN'S CHAMP — JEAN BEAN WINS LADIES — MATHESON, JRS. — SANCTION 85-595

CLASS A — Kevin Hollister, 7-0-76.0; Dick Greene, 6-1-67.3; Bud Leavitt, 5-2-53.0; Paul Sylvia, 4-3-57.1; Bob Dean, 4-3-55.1; Leon O'Dell, 2-5-43.8; Frank Lergyel, 1-6-44.5; David Bell, 0-7-40.8.

CLASS B — Reid Brewster, 6-1-48.3; Lee Paquette, 5-2-38.5; Wendall Burnham, 4-3-46.2; Don Choinere, 4-3-43.0; Roger Baillargen, 3-4-43.6; Bob Many, 3-4-41.7; Ken Downer, 3-4-37.9; Real Bergeron, 0-7-25.8.

CLASS C — Elmer Moore, 6-1-35.4; Dennis Krawczyk, 5-2-42.2; Mickey Bedard, 4-3-37.0; Henry Cooper, 4-3-36.6; Arnold Brassard, 4-3-35.1; Bob Gordon, 3-4-33.7; John Coffey, 2-5-31.5.

CLASS D — Phil Summer, 7-0-36.4; Roger Forgues, 5-2-27.7; Norman Boynton, 5-2-27.5; Mike White, 4-3-28.7; Rich Lamphere, 3-4-26.7; Archie Jones, 2-5-24.5; Glenn Kennison, 1-6-29.0; Ray Gomez, Sr., 1-6-21.3.

CLASS E — Harold Wrisley, 7-0-33.7; Tony Hart, 6-1-30.0; Lorenzo Gagnon, 4-3-21.7; Charles Newton, 4-3-20.1; Mike Brown, 3-4-24.9; Ray Gomez, Jr., 3-4-19.9; Duane Bill, 1-6-17.3; Paul Davis, 0-7-14.3.

CLASS F — Ken Lorette, Jr., 6-1-19.4; Gary Lipka, 6-1-15.8; Jerry Randall, 5-2-19.4; Steve Germain, 5-2-14.7; Wheeler Gilheau, 4-3-15.8; Richard Bedell, Sr., 3-4-19.3; Rudy Gomez, 3-4-17.1; Myron Selleck, 0-7-9.7.

CLASS A WOMEN — Jean Bean, 4-2-56.2; Debra Brown, 3-3-57.9; Liz Downer, 3-3-56.6; Bev Forgues, 2-4-48.2.

CLASS B WOMEN — Connie Selleck, 6-0-37.2; Lydia Hart, 3-3-28.9; Marlene Paquette, 2-4-24.3; Jeannette Bedard, 1-5-16.9.

JUNIORS — Glenn Matheson, 8-0-62.1; Dana Bedard, 4-4-20.1; Travis White, 2-6-1.7.

Introducing The First Designed For Hors



Clay 'N Sand® is the first sports shoe designed for horseshoe pitching enthusiasts.

The soft leather composition means great give and breathability, and it's comfortable and light weight. Clay 'N Sands® provide the stability and exceptional balance you need to win games and reach goals. You can confidently wear the black, gold and white Clay 'N Sands® on your favorite pitching surface.

Don't delay. Order your revolutionary Clay 'N Sand® Shoes today!

CLAY 'N SAND® IS MADE IN THE U.S.A.

First Sports Shoe Horseshoe Pitching



Order Your Clay 'N Sand[®] Shoes today to insure Christmas delivery.

Check Size

Men's 9 9½ 10 10½ 11 11½ 12 12½

Women's 6 6½ 7 7½ 8 8½ 9 9½ 10 10½

(Both shoes come medium width only.)

PLEASE PRINT

Name _____

Address _____

City _____ State _____ Zip _____

Send check or money order for \$59.95 plus \$3.00 shipping and handling to:

Clay 'N Sand, Inc.
6901 Sheridan Rd.
Kenosha, WI 53140
414/654-6404

OR

Clay 'N Sand, Inc.
19 Ridge Road
Burlington, Conn. 06013
1-800/243-3158
8:00 a.m. - 5:00 p.m. EDT

Wisconsin residents add 5%.

M. SEIBOLD — B. SEIBOLD — S. UNGETHEIM — C. FARRIS ALL RETAIN THEIR INDIANA STATE TITLES — SANC. 85-96

CHAMPIONSHIP CLASS — (Playoff) — Mark Seibold, 10-1-75.9; Peck Anderson, 10-1-71.5; Clarence Bellman, 9-2-76.6; Bill Holland, 7-4-69.2; Arthur Burch, 6-5-67.4; Glen Hoppes, 6-5-63.9; Bill Ungetheim, 5-6-68.4; John LeMond, 4-7-63.1; Ed Kowatch, 3-8-59.1; Curley Seibold, 2-9-61.4; Dusty McNeece, 2-9-59.7; Dale Henry, 2-9-56.8.

CLASS A — Loyd Clerget, 5-2-64.8; John Shuck, 5-2-63.1; Frank Baxter, 4-3-63.6; George Sales, 4-3-62.7; Hunter Dorman, 3-4-58.5; Don Minich, 3-4-56.8; Ralph Johnson, 2-5-54.9; Carl Staley, 2-5-48.5.

CLASS B — Bob Sheppard, 5-2-61; Bill Wicker, 5-2-58.1; Bob Henderson, 4-3-59.6; Ed Hinshaw, 4-3-58.8; Bob Davis, 4-3-58.56; Ed Krull, 2-5-62.7; Ed Howdeshell, 2-5-57.7; Roger Rahfeldt, 2-5-53.

CLASS C — Dale Kirtley, 7-0-59.1; G.H. Palmer, 5-2-52.6; Lee Antonides, 4-3-52.5; Bob Moit, 4-3-51.7; Burl Taylor, 4-3-51.6; Estel Bills, 3-4-44.3; Jim Shilling, 1-6-47.1; Bill Hatt, 0-7-39.9.

CLASS D — Frank McIntyre, 6-1-50.3; Jim Lane, 5-2-55.1; David Tatman, 5-2-51.9; Curley Gladding, 4-3-50.8; J. C. Andrews, 3-4-49.4; George Dickson, 2-5-44.4; Lloyd Keller, 2-5-42.9; Art Cornelius, 1-6-41.8.

CLASS E — J. W. Cox, 5-2-47.8; Ed Clark, 4-3-50.0; Doyle Maikranz, 4-3-5.0; Harry Groce, 4-3-48.6; Gerald Cummings, 4-3-46; Frank Jones, 3-4-44.6; Ed Dunlap, 2-5-44.6; Wayne Waggoner, 2-5-40.2.

CLASS F — Leonard Conner, 9-0-51.5; Don Newell, 7-2-53.2; Gus Kuk, 7-2-51.6; Del Hough, 6-3-46.4; Harry Palmateer, 4-5-43.3; Joe Rinehart, 4-5-43; Don Bollock, 3-6-42.6; Jay Hoyer, 3-6-42.3; Marlin Wells, 2-7-36.2.

CLASS G — Greg Kuss, 6-1-52.9; Earl Richardson, 4-3-46.7; Bob Steimel, 4-3-45.7; Martin Drummond, 4-3-43.5; Jeff Bowyer, 3-4-44.2; John Walls, 3-4-41.6; Meril Anleitner, 3-4-33.4; Pete Hobbs, 1-6-37.

CLASS H — Oscar Schroer, 7-0-50.6; Glenn Sanders, 5-2-46; Jim Hyatt, 4-3-41.2; Don Opdycke, 3-4-41.4; George Watkins, 3-4-38.4; Archie Sexton, 3-4-37.7; Stan McCoy, 2-5-40.2; Wayne McClintock, 1-6-35.2.

CLASS I — Wayne Hege, 5-2-50.8; Fred Draper, 5-2-45.6; Jack Turner, 4-3-43.6; Don Draper, 4-3-40.6; Tim Tatman, 3-4-40.5; George Riall, 3-4-38.9; Lowell Swick, 3-4-37.5; Chuck Parker, 1-6-38.4.

CLASS J — Bob Dwigans, 6-1-46.3; Gib Campbell, 5-2-43; Sylvester Hahn, Sr., 4-3-44.5; Steve Rathburn, 4-3-37.3; Gene Powell, 4-3-35.1; Junior Guthrie, 3-4-43.4; Jim Kuss, 2-5-29.5.

CLASS K — Jim Turpin, 6-1-43; Jim Clark, 5-2-38.4; Byron Jervis, 5-2-36.6; Paul Joslen, 4-3-37.6; Dick Hostetler, 4-3-35.2; Jim Hagerty, 2-5-38.7; Carroll Leitch, 2-5-36.9; Glen Donaldson, 0-7-22.

CLASS L — Jim Pierson, 5-2-40.8; Joe Holloway, 5-2-38.7; Joe Hamilton, 5-2-38.6; Willis Miller, 5-2-35.5; Gene Loy, 3-4-33.5; Don Herendeen, 3-4-24.9; Grant Davis, 2-5-32.4; Darrell Taulbee, 0-7-27.7.

CLASS M — Greg Rathburn, 6-1-43.1; Jim Bailey, 5-2-40.7; Jim Griffith, 5-2-36.1; Frank Stewart, 4-3-38.6; John Barrows, 3-4-37.5; Fred Saylor, 2-5-34.3; Ron Parrish, 2-5-28.7; Jim Lemish, 1-6-33.1.

CLASS N — Steve Dunning, 6-1-43.6; LeRoy Hahn, 6-1-38.1; Harold Green, 4-3-32.7; Airl Coffey, 4-3-24.6; Stan Loy, 3-4-28.3; Virgil Jackson, 2-5-26.9; Vince Cavanaugh, 2-5-26; Jack Mead, 1-6-26.8.

CLASS O — Larry Farris, 8-1-33.6; Mike Brown, 7-2-40.1; Bob Prohaska, 6-3-36.3; Bob Heuby, 6-3-35.5; Harold Tatman, 5-4-34.1; Bob Hill, 4-5-31; Roy Lamb, 4-5-26.5; Bob Cunningham, 3-6-27.1; Lloyd Osborn, 2-7-30.5.

CLASS P — Pete Harris, 6-1-37.2; Mike DeHart, 5-2-30.4; Ralph Burkhardt, 5-2-28.8; Dailey Fogle, 4-3-32.5; Everett Bowyer, 4-3-31.7; Richard Smith, 2-5-27.1; Ron Czaja, 2-5-21.7.

CLASS Q — Elmer Branson, 7-0-35.6; Don Anderson, 6-1-31.8; Carl Mitchell, 4-3-28.4; Shelby Boldery, 4-3-28; Jim McCormick, 4-3-25; Hubert Buster, 2-5-27; Rick Lemish, 1-6-20.7.

CLASS R — Lawrence Wooster, 6-1-30.9; Terry Dauberman, 5-2-27.2; Charles Hatt, 4-3-26.8; Sonny Franks, 4-3-26.7; Mike Grimes, 3-4-30.6; Jack Mettert, 3-4-29.7; Dick Lemish, 2-5-19.7; Brian Conner, 1-6-21.7.

CLASS S — Jim Dunham, 6-1-26.8; Ken Tally, 5-2-33.9; Ed Saylor, 5-2-29.6; Charles Jarred, 4-3-27.1; Dan Rathburn, 3-4-28.9; David Herring, 2-5-24.6; Terry Kline, 2-5-24.1; Willis Reed, 1-6-24.7.

INDIANA STATE — (Continued)

CLASS T — Mike Rathburn, 9-0-32.2; Russ Sanson, 7-2-27; Jerry Barnett, 7-2-21; Doc Zarse, 6-3-18.8; Clarence Sage, 5-4-20.9; Larry LeFever, 4-5-18.5; Luther Chandler, 4-5-15.2; Butch Hahn, 2-7-16.5; Ed Bates, 1-8-14.5.

CLASS U — Smokey Wolfe, 7-0-34.5; Jim Mettert, 4-3-23.8; Lester LeMaster, 4-3-23.8; Fred Armentrout, 3-4-28.3; Willis Slaughterbeck, 3-4-24.2; Cleo Wilson, 3-4-20.9; Don Musser, 2-5-17.5; Ron Abbott, 2-5-17.5.

CLASS V — Mike Drummond, 5-0-27.6; Bob Henry, 4-1-20.6; Dennis Rahfeldt, 3-2-18.2; Ron Timmons, 2-3-16.5; George Hankins, 1-4-18; Guy DeBord, 0-5-7.7.

WOMENS CHAMPIONSHIP — (Playoff) — Bonnie Seibold, 5-1-72.7; Amy Tipton, 5-1-61; Dorothy Pittman, 2-4-52.9; Marcia Wilson, 0-6-40.1.

CLASS A WOMEN — Charline McKinley, 3-2-38; Beth Combs, 2-3-39.5.

CLASS B WOMEN — Lori Young, 5-0-41.9; Tammi Cunningham, 3-2-31.5; Mildred Hyatt, 3-2-28.5; Karen Franks, 3-2-25; Ileta Davis, 1-4-23.4.

CHAMPIONSHIP BOYS — Steve Ungetheim, 5-1-71.9; Chad Hyatt, 4-2-41.5; Rick Henry, 0-6-58.8.

CLASS A — BOYS — Jamie Conner, 5-1-45.2; Steve Turner, 4-2-39.8; Charles Bowyer, 3-3-40.1; Jon Phillips, 0-6-16.5.

CLASS B — BOYS — Steven Dunning, 6-1-29.7; Bradley Hahn, 6-1-27.3; Joe Goodrick, 5-2-28.7; Herb Piker, 4-3-19.7; Scott Dunham, 3-4-22; Louis Jones, 3-4-16; Billy Douglas, 1-6-12.3.

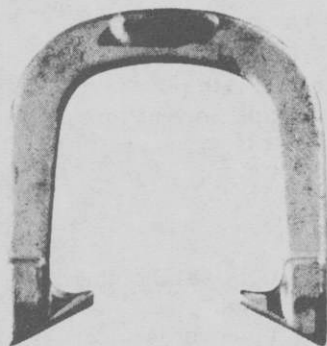
CLASS C — BOYS — Steven Bailey, 6-0-14.7; Kevin Farris, 3-3-6; Michael Griffith, 3-3-5; Justin Vershaw, 0-6-3.

CHAMPIONSHIP GIRLS — Kristi Farris, 3-0-50.8; Norma Hyatt, 0-3-27.5; Georgia Henry, 4-0-33.5; Jennifer Griffith, 2-2-15; Jodi Farris, 0-4-13.

Since 1931

GORDON

"Spin-On"



— 3 TEMPERS —

Medium With Hardened Calks
Dead Soft Hard

Southern California Representative
JERRY SCHNEIDER
3144 W. Paso Robles Drive
ANAHEIM, CALIFORNIA 92804
714-826-0684

APPROVED BY NHPA

OFFICIAL STAKES ALSO AVAILABLE

THE QUEEN CITY FORGING CO.

233 TENNYSON STREET

CINCINNATI, OHIO 45226

1985 ILLINOIS STATE TOURNAMENT — SANCTION 85-179

Cliff Baker and Tari Powell were the big winners in the 1985 Illinois State Horseshoe Tournament each pitching 69.0 percent in their battles to win their respective state titles. Woody Martin is the new Men's Sr. champion, Arnold Lester is the Men's 70+ champion, Clay Buck is the Jr. Boy champion while Shawn Beckemeyer repeats as the Jr. Girl champion. Cliff Baker and Steve Denault repeated as the Men's Doubles champion team while Lori Oberbillig and Ellen Ronk repeated as the Women's Doubles champion team.

CLASS A FINALS — C. Baker, 11-0-68.2; R. Phillips, 8-3-65.5; E. Eisel, 8-3-65.4; C. Webb, 8-3-65.4; D. Peters, 5-6-59.9; L. Ingersoll, 5-6-57.9; H. Boren, 5-6-55.1; M. Knop, 4-7-53.2; W. Savage, 4-7-50.5; L. Ward, 3-8-58.6; J. Basinger, 3-8-53.7; D. Maroon, 2-9-52.6.

CLASS A1 PRELIMS — E. Eisel, 6-1-64.6; J. Basinger, 6-1-61.1; R. Phillips, 5-2-68.0; V. Muench, 4-3-51.0; L. Knop, 3-4-56.6; H. Nelson, 3-4-53.8; D. Wade, 1-6-48.5; M. Cordes, 0-7-46.6.

CLASS A2 PRELIMS — C. Webb, 6-1-69.4; D. Peters, 4-3-61.3; D. Maroon, 4-3-59.4; J. White, 4-3-58.8; D. Prestidge, 3-4-57.7; G. Manker, 3-4-55.3; L. Wicker, 2-5-55.3; H. Moroney, 2-5-53.2.

CLASS A3 PRELIMS — C. Baker, 7-0-80.6; M. Knop, 5-2-56.4; H. Boren, 3-4-56.3; T. White, 3-4-56.1; K. Towell, 3-4-51.4; E. G. Eckart, 3-4-51.4; C. Rhoades, 2-5-51.7; H. Livengood, 2-5-46.9.

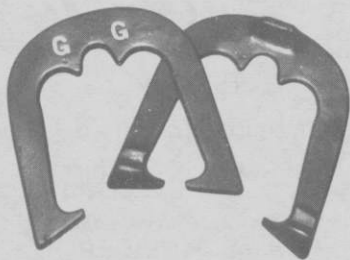
CLASS A4 PRELIMS — L. Ingersoll, 6-1-66.9; L. Ward, 5-2-64.4; W. Savage, 4-3-50.6; C. Erickson, 3-4-55.7; T. Phillips, 3-4-54.5; F. Johnson, 3-4-53.0; G. Bryant, 2-5-57.4; R. Neville, 2-5-55.4.

CLASS B — M. Ruch, 6-1-52.7; C. Wallace, 5-2-51.6; E. Brede, 5-2-48.1; R. Hatten, 4-3-50.0; G. Modde, 4-3-47.6; A. Heidenfelder, 3-4-46.7; R. Switzer, 1-6-46.0.

CLASS C — L. Buck, 5-2-47.3; R. Stobaugh, 5-2-48.9; J. Carey, 4-3-47.4; H. Lange, 4-3-46.4; J. Starwalt, 4-3-45.6; G. Schwartz, 3-4-40.6; D. Griesbaum, 3-4-40.1; T. Reid, 0-7-35.7.

CLASS D — B. Koons, 6-1-55.3; R. Ellinger, 5-2-49.0; W. Hamby, 4-3-52.1; C. Cook, 3-4-49.4; D. Simler, 3-4-49.1; E. Knop, 3-4-47.9; A. Forsyth, 3-4-45.0; A. Dart, 1-6-40.8.

"NEW" "GREEOTT GRABBER" the ultimate ringer keeper



Not JUST another horseshoe. The ultimate shock-absorbing, ringer saving design. Helps prevent loss of solidly hit ringers by rebounding.

Soft temper 2lb. 8oz.

\$28.00 pr. plus \$2.50 shipping, handling, to the 48 adjoining states. California residents add 6% tax. High grade steel casting. NOT cast iron. Send checks or money orders to:

"GREEOTT GRABBER" HORSESHOES
c/o Steve Kynard 1380 Eagle Rock
Woodland, CA 95695
Or from NHPA representatives



ILLINOIS STATE — (Continued)

CLASS E — E. Burcham, 5-2-44.2; F. Woodworth, 4-3-47.9; A. Peterman, 4-3-43.8; N. Tisdale, 4-3-42.4; D. Bailey, 4-3-39.7; H. Bozard, 4-3-38.1; R. Swinson, 3-4-39.0; R. Sornberger, 0-7-21.8.

CLASS F — Paul Martin, 6-1-43.0; W. Allen, 6-1-49.7; L. Robbins, 4-3-43.1; E. Bragg, 4-3-40.7; D. Ferguson, 3-4-42.7; D. Reid, 2-5-42.6; J. Waldhoff, 2-5-39.3; P. Reynolds, 1-6-39.9.

CLASS G — L. Rynders, 6-1-45.9; W. Green, 6-1-44.0; E. Bryant, 4-3-43.6; G. King, 3-4-40.1; R. Scott, 3-4-40.1; W. Clark, 3-4-39.8; R. Seeds, 2-5-36.4; F. Beasley, 1-6-37.5.

CLASS H — D. Dtanhaus, 7-1-41.0; H. Gill, 6-2-35.8; D. Redmon, 4-3-36.5; H. Starwalt, 4-3-33.8; J. Spidle, 3-4-37.4; E. Wisniewski, 3-4-34.7; E. Rosene, 2-5-31.9.

CLASS I — L. Fuhrman, 6-1-40.8; L. Gschwendtner, 5-2-46.3; R. Rankin, 5-2-36.6; E. Simler, 4-3-36.0; N. Keepes, 4-3-31.1; G. Woodkirk, 2-5-32.8; K. Depoister, 2-5-27.5.

CLASS J — R. Hunt, 7-0-42.3; K. Reid, 5-2-42.1; G. Beckemeyer, 4-3-32.8; D. Beckemeyer, 4-3-24.5; J. Piper, 3-4-32.8; F. Crouch, 3-4-31.3; E. H. Eckart, 2-5-29.6; J. McAnelly, 0-7-30.0.

CLASS K — R. Franke, 7-0-41.9; R. Siddens, 5-2-32.8; D. Baldes, 5-2-32.4; R. Sines, 4-3-32.2; W. Miller, 3-4-26.4; A. Jones, 2-5-30.4; W. Harr, 2-5-28.8.

CLASS L — J. Goode, Jr., 6-1-29.3; F. Wicker, 5-2-32.8; R. Feiden, 5-2-30.8; D. Shreve, 4-3-22.3; J. Korte, 3-4-21.2; M. Stotler, 2-5-24.5; J. Marshall, 2-5-22.7; C. Marit, 1-6-29.3.

CLASS M — S. Banning, 6-1-36.7; L. Bodecker, 5-2-33.9; D. Wilson, 5-2-33.7; L. Thorson, 4-3-33.4; O. Michael, 4-3-26.6; R. Miller, 3-4-31.6; R. St. George, 1-6-15.6; R. Bell, 0-7-21.4.

CLASS N — R. Attebery, 7-0-32.3; P. Gibson, 6-1-31.1; L. Weiss, 4-3-24.3; D. DeWeese, 3-4-29.7; R. Wegman, 3-4-28.9; M. Kaltenbronn, 3-4-24.3; B. Stephens, 2-5-24.5; K. Bornert, 0-7-19.1.

CLASS O — O. Worton, Jr., 6-1-23.4; J. Crouch, 5-2-22.9; R. Banning, 5-2-18.3; R. Range, 4-3-23.4; D. Goode, 3-4-20.0; S. Lewis, 3-4-15.1; W. Thompson, 2-5-16.3; L. Frey, 0-7-11.7.

WOMENS SINGLES — CLASS A — Tari Powell, 7-0-69.0; L. Oberbillig, 5-2-55.3; E. Moroney, 5-2-51.4; S. Conner, 4-3-56.4; F. Ellinger, 4-3-46.6; E. Ronk, 2-5-37.3; H. Keepes, 1-6-43.7; M. O'Guinn, 0-7-28.8.

CLASS B — M. Spidle, 7-0-35.6; D. Kull, 5-2-50.0; P. Shreve, 5-2-28.2; K. Stanhaus, 4-3-29.2; L. Simler, 3-4-33.6; D. Galvin, 3-4-28.9; L. Presley, 1-6-18.8.

JUNIOR GIRLS — CLASS A — Shawn Beckemeyer, 5-0-36.0.

JUNIOR BOYS — CLASS A — C. Buck, 5-0-40.5; D. Ruch, 4-1-16.8; M. Ellinger, 3-2-9.6; M. McGahey, 2-3-9.3.

MENS SENIORS — CLASS A — W. Martin, 5-0-51.0; H. Kohlenberger, 4-1-42.4; A. Austin, 3-2-41.0.

MENS 70+ — CLASS A — A. Lester, 2-1-49.1; D. East, 1-2-45.5.

WOMENS DOUBLES — CLASS A — L. Oberbillig-E. Ronk, 5-0; E. Moroney-S. Conner, 4-1; S. Fuhrman-M. Spidle, 3-2; M. O'Guinn-P. Shreve, 2-3; H. Keepes-D. Galvin, 1-4.

MENS DOUBLES — CLASS A — C. Baker-S. Denault, 7-0; V. Long-E. Eisel, 5-2; D. Peters-L. Ingersoll, 5-2; C. Webb-E.G. Eckart, 4-3; H. Boren-G. Manker, 3-4; G. Bryant-R. Phillips, 3-4; L. Knop-M. Knop, 1-6; L. Wicker-J. White, 0-7.

CLASS B — H. Moroney-L. Ward, 6-1; J. Basinger-W. Martin, 6-2; B. Neville-D. Wade, 5-2; F. Johnson-C. Rhoades, 4-3; H. Nelson-T. Phillips, 4-3; C. Wallace-B. Koons, 2-5; J. Starwalt-M. Cordes, 2-5.

CLASS C — A. Forsyth-E. Brede, 7-0; R. Scott-W. Allen, 5-2; J. Carey-H. Starwalt, 4-2; E. Bragg-M. Ruch, 4-3; E. Rosene-R. Sornberger, 4-3; R. Switzer-A. Castros, 2-5; R. McAnelly-F. Beasley, 1-6.

CLASS D — H. Gill-R. Rankin, 6-1; D. Ferguson-N. Keepes, 5-2; E. Knop-L. Thorson, 5-2; N. Tisdale-M. Stotler, 5-2; J. Spidle-L. Fuhrman, 3-4; F. Wicker-P. Reynolds, 3-4; J. Waldhoff-M. Martin, 1-6.

CLASS E — R. Siddens-R. Hunt, 7-0; K. Reid-A. Jones, 5-2; W. Harr-L. Rynders, 4-3; C. Marit-R. Seeds, 4-3; J. Korte-R. Miller, 3-4; L. Bodecker-K. Depoister, 3-4; G. Woodkirk-J. Goode, Jr., 2-5.

CLASS F — G. Beckemeyer-D. Beckemeyer, 4-1; F. Crouch-J. Crouch, 4-1; W. Thompson-W. Miller, 3-2; B. Stephens-R. Wegman, 2-3; R. Range-D. Goode, 1-4.

DEADEYE HORSESHOES

NOW IN

FOUR MODELS

CLYDESDALES NOW IN LIGHTER WEIGHTS

	Price Per Pr.—Up to 12 Pairs	Price Per Pr.—12 Prs. & Over
CLYDESDALES 2# 10 oz., 2# 9 oz., 2# 8 oz., & 2# 7 oz.	\$27.00/Pr.	\$20.00/Pr.
N.T. 2# 10, 9, 8, 7 oz.	\$27.00/Pr.	\$20.00/Pr.
REGULAR 2# 8, 7, 6	\$27.00/Pr.	\$20.00/Pr.
E-Z GRIP 2# 10, 9, 8, 7 & 6 oz.	\$32.00/Pr.	\$25.00/Pr.

Prices on all "DEADEYES" f.o.b. point of shipment.
Missouri residents add 4.725% sales tax and California
residents add on 6% tax.

All "DEADEYES" are dead soft (curved only).

All "DEADEYES" are guaranteed against breakage for 2 years.

All "DEADEYES" guaranteed for 2 years from date
of purchase (NOT RE-PLACEMENT DATE)

Contact (Bill Courtwright ONLY) for special prices on
rejects and returned shoes (NO GUARANTEE)

DEADEYE Caps Available — \$5.00 postpaid

W. Courtwright
P.O. Box 742
Fenton, MO 63026
Phone: (314) 376-5222 (8-5)
(314) 677-2200
(314) 842-5188

Carl Steinfeldt
44 Ridgecrest Road
Rochester, NY 14626 (summer)
Phone: (716) 225-4191

Walter Ray Williams, Jr.
P.O. Box D-361
China, CA 91708
Phone: (714) 628-6053

Carl Steinfeldt
407 Shady Lane Mobil Park
15400 Roosevelt Blvd.
Clearwater, FL 33520
(winter address)
Phone: (813) 535-3136

ORDER DIRECT or from NHPA REPRESENTATIVE

DIMARTINO IN 4-TIME WIN OF NEW YORK STATE TITLE

L. THOMAS TOPS LADIES — K. BARODY, B. BLONDIN, JRS.

Mike DiMartino of Churchville won his fourth state title and Lorraine Thomas of Lockport her 11th, but it was the junior boys division that provided the greatest drama at the 54th annual New York State Championships over Labor Day weekend.

Four boys averaged more than 70 percent, defending champion Robert Pike of Canton, who had won the last five years, finished fourth and 13-year-old Kip Barody of Gansevoort outlasted his friend and clubmate, Christopher Jackson of Gansevoort in a 90-shoe playoff to capture the title.

"It was an unbelievable demonstration," said Bill Johnston, tournament director from the host Floyd Horseshoe Club. "Barody won the playoff 40-26 and averaged 84.4 percent, but Jackson also averaged 80 percent. The two of them threw 59 doubles. It was certainly the most amazing juniors competition I've ever seen."

Barody finished 4-1 in the regular six-man round-robin with an average of 75.7. His only loss was to Pike, 40-16, in a game the defending champion pitched 86 percent. Jackson was 4-1 with 71.6 percent before the playoff while Robert Scott of Blossvale finished third with 3-2 and 72.7 percent. Pike lost his last two games, to Scott 42-37 and Jackson, 43-24, to finish fourth at 3-2 and 72.6 percent.

Thomas regained the title she lost to her long time foe Ruth Hagen of Getzville, a year ago. The two have been trading off state titles since the women's division began in 1963. Each has 11. Thomas defeated Hagen in the last game, 42-8, averaging 79 percent to Hagen's 47 percent. Thomas finished undefeated at 7-0, 72.6.

Barbara Blondin of Fort Ann won her first junior girls title in a three-way playoff. The tournament attracted a record 341 entries. DiMartino and Johnston were inducted into the state Hall of Fame. Next year's tournament returns to Falconer, site of the 1983 tournament.

MENS CLASS A — Mike DiMartino, Churchville, 6-1-76.6; Jim Lewis, Hudson Falls, 5-2-73.1; John Bogardus, Fort Edward, 5-2-68.2; Art Tyson, Mount Vernon, 3-4-67.6; John Merrill, Fulton, 3-4-66.5; Bill Coleman, Bridgeport, 3-4-59.3; Joe Schultz, Brentwood, 2-5-60.8; Lou Stines, Glendale, 1-6-56.8.

MENS CLASS A GROUP 1 QUALIFIER — Mike DiMartino, 7-0-76.8; Art Tyson, 5-2-67.3; John Merrill, 6-1-65.7; Lou Stines, 4-3-58.7; Tim Shackleton, Cobleskill, 1-6-43.3; Bob Sutton, Mineola, 2-5-53.6; Steve Fenicchia, Rochester, 2-5-48.4; Earl Brooks, Floyd, 1-6-56.0.

MENS CLASS A GROUP 2 QUALIFIER — Jim Lewis, 7-0-69.3; John Bogardus, 5-2-64.3; Bill Coleman, 4-3-62.0; Joe Schultz, 3-4-58.2; Dick Pike, Canton, 3-4-58.0; Ed Risley, Interlaken, 2-5-61.6; Walt Deuster, Hampton Bays, 2-5-60.6; Harland McFann, Floyd, 2-5-53.5.

MENS CLASS A-A — Dick Pike, 7-0-60.6; Ed Risley, 5-2-60.0; Walt Deuster, 5-2-56.2; Bob Sutton, 4-3-54.9; Walt Virkler, 3-4-48.7; Harlan McFann, 3-4-48.4; Earl Brooks, 1-6-46.9; Tim Shackleton, 0-7-45.9.

MENS CLASS B — Robert W. Moss, Delhi, 6-1-55.8; Lou Gancos, Brooklyn, 6-1-53.9; Gus Krause, Syracuse, 4-3-57.6; Clair Rigby, Webster, 4-3-54.0; John Kozik, Binghamton, 4-3-47.5; Bob Hayes, Franklinville, 3-4-50.0; Gladwin Jackson, Gansevoort, 1-6-40.1; Gerry Patchen, Wellsburgh, 0-7-49.3.

MENS CLASS C — Harry Dunbar, Baldwinsville, 5-2-52.9; George Hale, Jamestown, 5-2-49.2; George Lovell, Vestal, 4-3-56.4; Sonny Bogardus, Troy, 4-3-54.0; Larry Straub, Cuba, 4-3-49.6; Bruce Morton, Baldwinsville, 3-4-46.7; Casimir Osinski, Syracuse, 3-4-43.6; Carl Tillock, Rome, 0-7-25.6.

MENS CLASS D — Jerry Marsh, 6-1-48.1; Jan Whittlinger, Snyder, 5-2-49.3; Richard Saden, Fredonia, 5-2-46.5; Loyd Seymour, Blossvale, 4-3-51.6; Beryl Greenfield, Richland, 3-4-48.4; Bob L. Moss, Walton, 2-5-43.9; Richard Rogers, Delevan, 2-5-43.4; Lenn Davis, Hancock, 1-6-41.1.

MENS CLASS E — Fred Bailey, Arcade, 6-1-48.6; Brian Deen, New Rochelle, 4-3-48.7; Dave Rundell, Sherburne, 4-3-46.8; Jack Stenberg, 4-3-43.8; Richard Ellis, Potsdam, 4-3-42.8; Ralph Rose, Jr., Wilseyville, 3-4-47.2; Bill Graney, West Henrietta, 2-5-41.6; George Casale, Ilion, 1-6-34.4.

MENS CLASS F — Chester Albertson, Wappinger Falls, 7-0-51.4; Chuck Dickinson, Falconer, 6-1-46.5; Hal Weinberg, Peekskill, 4-3-44.1; Tom Ryan, Peekskill, 3-4-47.9; Earl Skinner, Williamstown, 3-4-39.4; Dick Moseman, Windsor, 2-5-45.8; Glen Brown, Pennellville, 2-5-41.9; Alex LaRock, Phoenix, 1-6-36.5.

MENS CLASS G — Len Porter, West Fort Ann, 5-2-41.2; Bob Traylor, Canton, 5-2-43.1; Ridge Cole, Brooktondale, 4-3-50.3; Jerry Sciarabba, Rochester, 4-3-38.4; Patrick Johnston, Floyd, 3-4-39.1; Bruce Blazey, Macedon, 3-4-36.0; Vince Clotti, Floyd, 3-4-32.2; Mike Corson, Vestal, 1-6-31.4.

MENS CLASS H — Ed Lorenz, Seneca Falls, 5-2-44.1; Richard Sposata, Liverpool, 5-2-46.6; Gordie Bennett, Burlington Flats, 5-2-45.0; Roger Meadow, Waterloo, 4-3-41.0; Pete Newey, Lee Center, 4-3-33.3; Jim Sutton, Rome, 2-5-33.9; Marc Otero, Bullville, 2-5-33.0; George Hyder, Utica, 1-6-31.5; 1-6-31.5.

MENS CLASS I — Shane Burton, 6-1-45.9; Ken Hopkins, 6-1-36.5; Walt Hurst, Willseyville, 4-3-31.8; Clayton Brown, Spencer, 4-3-30.6; Bob Yeomans, Binghamton, 3-4-34.3; Paul Pancio, Allegany, 2-5-33.5; Ivan Tweedie, Walton, 2-5-31.3; Daniel Hall, Beaver Dam, 1-6-32.6.

NEW YORK STATE — (Continued)

MENS CLASS J — Don Wilcox, Olean, 6-1-40.8; Dave Neigg, Trumansburg, 6-1-29.3; Gene Baker, North Norwich, 4-3-39.7; Dean Rogers, Delevan, 4-3-35.7; Robert Hitchcock, Fort Edward, 4-3-19.5; Don Randall, Harford Mills, 3-4-34.1; Marty Silverstein, Peekskill, 1-6-27.0; Gene Vincent, 0-7-18.6.

MENS CLASS K — Pete Newey, Lee Center, 6-1-46.4; Rob Seymour, Camden, 5-2-39.1; Randy Ball, Glens Falls, 4-3-41.1; Terry Lewis, Hudson Falls, 4-3-36.8; Joe Viger, Glens Falls, 4-3-34.1; Herb Canfield, Blossvale, 3-4-36.8; Roy Swanson, Whitesboro, 1-6-31.5; John Nutt, West Exeter, 1-6-28.3.

MENS CLASS L — Alan Overbaugh, Groton, 5-2-40.7; Bill Pert, Binghamton, 5-2-40.4; Stan Vincent, Gasport, 4-3-36.4; James Gilbert, Endicott, 4-3-31.3; Phil Ducato, Utica, 3-4-32.8; Cliff Reese, Port Leyden, 3-4-29.3; Pete Dahlberg, Camden, 3-4-27.9; Charles Reigles, Endicott, 1-6-28.1.

MENS CLASS M — Roland Rupp, Snyder, 6-1-38.7; John Ennisse, Spencer, 6-1-36.7; Gary Mason, Rome, 5-2-42.2; Ray Hall, Corning, 4-3-33.8; Ed Christiana, Holland Patent, 2-5-31.0; Robert Doty, Olean, 2-5-28.1; Cyril Krebs, Caledonia, 0-7-26.1.

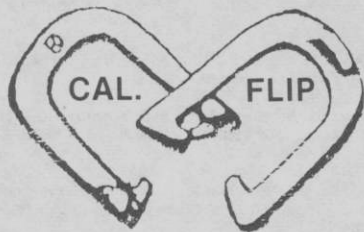
MENS CLASS N — Tony Cusimano, Jamestown, 6-1-37.7; Hubert Curtis, Eaton, 6-1-38.2; Gabby Gabbard, Rome, 4-3-33.4; Bob Carpenter, South Glens Falls, 4-3-33.0; Roland Finch, Walton, 4-3-22.6; John Hladun, Camden, 3-4-29.6; Larry Stewart, Dryden, 1-6-25.1; Hopsy Hopkins, Falconer, 0-7-21.3.

MENS CLASS O — Robert Sinsbaugh, Elmira, 7-0-40.9; David Thom, Newburgh, 5-2-24.3; Richard King, Chafee, 4-3-30.7; Bill Tassone, Canastota, 4-3-24.2; Bob White, Mattydale, 3-4-24.8; Orlando Misner, Oneonta, 3-4-20.0; Vincent Hodge, Richfield Springs, 2-5-21.4; Ed Christiana, Holland Patent, 0-7-23.2.

MENS CLASS P — Jack Carney, New Windsor, 7-0-42.8; John Meehan, Fort Edward, 5-2-36.2; Roger Casterline, Spencer, 4-3-40.6; Richard Burton, Delevan, 4-3-33.3; Mike Coffin, Marcy, 3-4-27.0; Robert McBride, Ithaca, 2-5-28.4; Frank Huckabone, Utica, 2-5-25.8; Robert Hopkins, Rochester, 1-6-24.7.

NHPA APPROVED

THE FIRST NEW DESIGN
of the
PROFESSIONAL PITCHING
HORSESHOE



The horseshoe with calkers on the reversed side of the toeplate. The FLIP-STYLE pitcher will now have the two calkers in a down position landing in pit.

HIGH GRADE STEEL
CASTING

2 lb. 9 oz. only — \$24.50 pr., plus \$2.50 shipping

Send checks or money orders to:

PETE DONOHO
704 STATE STREET
REDDING, CA 96001
Ph. 916-243-5761

CAL-FLIP

Allow ample time for delivery
Made in U.S.A.-Berkeley, Calif.



NEW YORK STATE — (Continued)

MENS CLASS Q — Tim Hopkins, Falconer, 5-2-39.1; Brian Jones, Granville, 5-2-32.0; Alan Saden, Fredonia, 4-3-29.5; Frank Barry, Ithaca, 4-3-28.0; Kip Barody, Gansevoort, 4-3-26.4; Robert Miller, Canton, 2-5-27.7; Roy Emrich, New Berlin, 2-5-25.2; Bud Munroe, Altamont, 2-5-20.5.

MENS CLASS R — Ed Gorski, Lancaster, 6-1-28.6; Lincoln Hall, Utica, 5-2-29.8; Ron Poormon, Waterloo, 5-2-29.7; Ted Schmidt, Montgomery, 4-3-29.0; Ken Nixon, Niagra Falls, 4-3-23.4; Bob Rhoades, Rome, 3-4-22.2; Mike Sweeney, Iilon, 16.0; Joe Miller, Machiasm, Forfeit.

MENS CLASS S — George Connors, Middletown, 5-2-35.7; Frank Lawlor, North Tonawanda, 5-2-27.2; Vic Davis, Hancock, 4-3-31.5; Carl Seamon, Spencer, 4-3-27.6; Bruce Aylesworth, Sherburne, 3-4-27.4; Larry Lacell, Blossvale, 3-4-26.1; Don Wangelin, Holland, 2-5-27.1; Howard Backus, Norwich, 2-5-17.9.

MENS CLASS SS — Kevin Morris, Ithaca, 7-0-30.0; Wayne Link, Rome, 5-2-27.3; John McShane, Springfield Center, 4-3-28.2; John Imhof, Eggertsville, 4-3-23.5; Robert Wright, Salamanca, 3-4-26.8; Robert Stachowski, Springville, 2-5-24.0; Tim Mottot, Williamstown, 2-5-20.0; Larry Stewart, Dryden, 1-6-23.7.

MENS CLASS T — Joe Viger, Glens Falls, 6-1-31.8; Fred Pope, 5-2-33.5; Steve Planty, Hadley Bay, 5-2-32.6; Randy Vincent, Watertown, 4-3-26.6; Frank Wojdyla, Rome, 3-4-24.1; Ward Goodale, Springfield Center, 2-5-26.3; Joe Frenza, Syracuse, 2-5-24.6; Leo Ouellette, Brooklyn, 2-5-20.3.

MENS CLASS TT — Larry Vitaris, Derby, 5-2-26.5; David Kois, Buffalo, 5-2-27.8; David Wilkinson, Canaseraga, 5-2-24.5; Bill Scone, Johnson City, 3-4-21.5; Tom Ross, Waterloo, 3-4-19.8; David Wilson, Richfield Springs, 3-4-19.6; Curt Wheat, Victor, 2-5-19.7; Bob Stachowski Sr., Springville, 2-5-18.8.

MENS CLASS U — Bruce Walker, Rush, 7-0-34.0; Glenn Davis, Clyde, 6-1-26.6; Sonny Gordon, Canton, 4-3-29.8; Lou Blondin, Fort Ann, 4-3-25.4; Garth Duell, Blossvale, 4-3-23.8; Lew Egan, Interlaken, 2-5-17.8; Rod Pratt, Holland Patent, 1-6-12.4; Ken Strickland, Willseyville, 0-7-15.5.

MENS CLASS UU — Loren Rauch, Hamburg, 4-1-27.2; Ray Sullivan, West Winfield, 3-2-28.6; Norm Wehrung, Getzville, 3-2-25.0; Joe Ducato, Utica, 3-2-22.4; Chief Kallin, Owego, 2-3-18.8; Gurney Schue, Springville, 0-5-20.5.

MENS CLASS V — Joe Matt, Rome, 6-1-23.0; Leonard Mayne, South New Berlin, 6-1-31.4; Bob Cheesman, Iilon, 5-2-23.3; George Bennett, Hudson Falls, 4-3-17.4; William Hammond, Walton, 3-4-17.7; Robert Higley, Russell, 3-4-9.9; Ev Wartars, Camden, 1-6-9.2; Malcolm Todd, Portville, Forfeit.

MENS CLASS VV — Stan Davis, Morris, 6-1-25.5; Randall Bennett, West Burlington, 5-2-24.2; Rick St. John, Glens Falls, 5-2-24.0; Robert Hastede, Nelsonville, 4-3-18.3; Larry Benkelmann, East Concord, 3-4-18.7; Paul Marquiet, New Berlin, 3-4-16.8; Jim Avery, Candor, 2-5-12.2; Roy Crandall, Olean, 0-7-13.2.

MENS CLASS W — Tom Plourde, Rome, 6-1-31.1; Jay Schultz, Falconer, 4-3-31.2; Jim Harris, Olean, 4-3-27.9; Frank Disinger, Lockport, 4-3-22.9; Ed Cowley, Altamonte, 4-3-22.6; Ed Reader, Floyd, 3-4-20.9; Lance Twyman, Canton, 2-5-29.3; Gerry Sears, Utica, 1-6-15.8.

MENS CLASS WW — Duane Puff, Springville, 6-1-28.5; Louis Valentino, Syracuse, 4-3-27.5; Ken Miller, Yorkshire, 4-3-25.3; Bruce Douglas, Rome, 4-3-24.8; Marty Shephard, New Hartford, 4-3-23.7; Jerry Moss, Whitney Point, 4-3-22.2; Randy Matuszak, Delevan, 2-5-21.5; Dave Williams, Ransomville, 0-7-13.1.

MENS CLASS X — Mike Coffin, Marcy, 5-0-31.4; Ron Griffith, Churchville, 4-1-26.5; Russ Hruby, Auburn, 3-2-20.0; Rob Mowers, Cleveland, 2-3-21.2; William Risley, Mattydale, 1-4-20.5; Dan Racquet, Oxford, 0-5-13.7.

MENS CLASS XX — Larry St. Clair, Olean, 3-2-28.0; Joe Skutnik, Floyd, 3-2-23.0; Gary West, Olean, 3-2-23.3; Ken McElwain, Newark Valley, 3-2-22.1; Walt Lewis, Lafayette, 2-3-18.1; Stan Reader, Rome, 1-4-24.5.

MENS CLASS Y — Charles Bleistan, Waterloo, 4-1-16.6; David Csejtey, Ninevah, 3-2-16.2; Sherman McElwain, Fair Haven, 3-2-14.9; Merrill Walker, Taberg, 3-2-14.8; Orliin Kittle, Franklinville, 2-3-13.2; Dave Scott, Blossvale, 0-5-8.6.

CLASS YY — Glenn Grossmann, Spencer, 5-0-19.0; Lymon Simonds, Floyd, 4-1-17.1; Gary Fisher, Morris, 3-2-15.7; Larry Swayze, Lansing, 2-5-12.3; Skip Graham, Camden, 1-4-10.4; Ray Rhone, Floyd, 0-5-6.4.

MENS CLASS Z — Dennis Hauri, Springville, 6-0-30.6; Roger Chase, 5-1-15.4; Joe LaRue, 4-2-19.3; Bob Plourde, Utica, 4-2-18.0; Lenny Racquet, Floyd, 4-2-14.3; Dan Racquet, 2-4-12.3; Matt Gorski, Lancaster, Forfeit.

MENS CLASS ZZ — Craig Smith, Red Creek, 5-0-22.3; Carl Dunham, Blossvale, 4-1-17.0; Don Vanderbent, Floyd, 3-2-11.8; Lee Waldron, Fulton, 2-3-13.4; Randy Miller, Canton, 1-4-7.7; Ward Youdron, Rome, 0-5-6.0.

WOMENS CLASS A — Lorraine Thomas, Lockport, 7-0-72.6; Ruth Hangen, Getzville, 6-1-71.2; Betty Steinfeldt, Rochester, 5-2-66.8; Traci Wartars, Camden, 4-3-63.0; Mary Heffler, Waterloo, 2-5-52.6; Carrie Carpenter, South Glens Falls, 2-5-48.5; Regina Tyson, Mount Vernon, 2-5-45.5; Linda Blondin, Fort Ann, 0-7-37.1.

NEW YORK STATE — (Continued)

WOMENS CLASS B — Helen Meehan, Fort Edward, 4-1-45.1; Rosemary Yousey, Port Leyden, 4-1-41.8; Marie Zichella, Bronx, 3-2-33.7; Carolyn Hewitt, Brooktondale, 2-3-40.5; Seana Sullivan, Lockport, 2-3-36.1; Wilda Shackleton, Walton, 0-5-9.6.

WOMENS CLASS C — Charlotte Reigles, Endicott, 5-0-50.6; Shelley Jones, Ilion, 3-2-37.7; Debbie Wendt, North Tonawanda, 2-3-38.6; Kelli Metott, Williamstown, 2-3-35.1; Paula Kingwater, Rome, 2-3-26.9; Brenna Racquet, Floyd, 1-4-27.3.

WOMENS CLASS D — Josephine Hurst, Willseyville, 4-1-33.4; Sally Milliman, Lansing, 3-2-20.7; Nancy McBride, Ithaca, 3-2-19.2; Susan Twyman, Canton, 2-3-27.2; Darlene Megerell, Lee Center, 2-3-20.5; Bonnie Strickland, Willseyville, 4-1-21.1.

WOMENS CLASS E — Connie Douglas, Rome, 4-1-25.4; Lorraine Valentino, Syracuse, 4-1-24.7; Marilyn Shivas, Floyd, 3-2-24.1; Sally Frenza, Syracuse, 2-3-23.8; Cindy Porter, West Fort Ann, 2-3-18.2; Barbara Barry, Ithaca, 0-5-4.4.

WOMENS CLASS F — Cheri Seward, Floyd, 5-0-24.0; Debbie Kryczkowski, Lee Center, 4-1-16.1; Sally Milliman, Lansing, 3-2-23.3; Ruth Robar, Potsdam, 2-3-5.4; Lorena LaRue, Rome, 1-4-3.4; Charlotte Miller, Canton, 0-5-3.3.

BOYS CLASS A — Kip Barody, Gansevoort, 4-1-75.7; Christopher Jackson, Gansevoort, 4-1-71.6; Robert Scott, Blossvale, 3-2-72.7; Robert Pike, Canton, 3-2-72.6; John Morse, Candor, 1-4-46.1; John Nutt, West Exeter, 0-5-51.7.

BOYS CLASS B — John Morse, Candor, 43.6; Jeff Van Loan, South Glens Falls, 4-1-36.1; Mike Moss, Delhi, 3-2-22.6; Mike Boyle, Waterloo, 2-3-29.6; Paul Williamson, Waterloo, 1-4-21.7; Steve Graham, Camden, 0-5-15.5.

BOYS CLASS C — Greg Wurl, Sanburn, 7-0-17.8; Robbie Kryczkowski, Lee Center, 6-1-26.0; Christopher Johnston, Floyd, 5-2-17.2; Dave Flanagan, Whitesboro, 3-4-13.6; Ken LaGasse, Lee Center, 3-4-8.7; Wayne Drake, Rome, 2-5-17.2; Robbie Shivas, Floyd, 2-5-9.5.

BOYS CLASS D — Stewart Hatzinger, Blossvale, 5-0-15.5; Mike St. Louis, Canton, 4-1-19.8; William Hatzinger, Blossvale, 3-2-9.9; James Gilbert, Herkimer, 1-4-9.0; Casey Kanclerz, Floyd, 1-4-6.5; Bruce Douglas, Rome, 1-4-5.6.

GIRLS CLASS A — Barbara Blondin, Fort Ann, 4-1-42.4; Tammi Wartens, Camden, 4-1-36.8; Sandy Graham, Camden, 4-1-42.0; Paige Porter, West Fort Ann, 2-3-36.4; Kelly Sullivan, Lockport, 1-4-31.4; Ginny Hatzinger, Blossvale, 0-5-19.9.

GIRLS CLASS B — Terri Wartens, Camden, 3-0-6.4; Amy Seward, Floyd, 2-1-9.4; Cindy Merrill, Fulton, 1-2-2.5; Chris Waldron, Fulton, 0-3-2.6.

CHARLES KILLGORE MISSOURI CHAMPION — VICKI WINSTON A. FRANCIS — W. TRAUTWEIN RETAIN TITLES — SANC. 85-603

The Missouri State tournament was held over Labor Day Weekend, at the beautiful 12 court facility at 24 Highway and Spring in McCoy Park in Independence, Missouri. The officers of the State Association want to thank Wayne Henderson, President of the Independence Horseshoe Club and other officers and members of their club and scorekeepers who made this tournament a success.

Charles Killgore of Plattsburg, Missouri won all seven games with a percentage of 75.9. Vicki Winston won all seven games with a percentage of 81.55. This is the highest ladies percentage ever pitched at a Missouri State Horseshoe Pitcher's Tournament. Mr. Wayne Trautwein takes Senior Title with an average of 55.5. Alan Francis Junior World Champion in 1982, 1983, 1984 and 1985 won the Junior Title with a percentage of 91.3. In one of Alan's games he pitched 43 ringers out of 44 shoes. He had a percentage of 97.7 for this game.

CLASS A — Charles Killgore, Plattsburg, 7-0-75.9; Sam Carter, St. Clair, 5-2-65.2; Kenneth Pogue, Ellington, 5-2-60.5; Elwyn Cooper, Kansas City, 4-3-70.0; Lillard Pinion, St. Joseph, 3-4-58.7; Kelly Hill, Columbia, 2-5-55.3; Bob Barnes, Odessa, 1-6-54.1; Gene Mosley, Neosho, 1-6-54.0.

CLASS B — M. O. Turner, Odessa, 7-0-61.5; Earl Winston, LaMonte, 6-1-55.1; Larry Francis, Blythedale, 5-2-55.8; Donald Craig, Kansas City, 4-3-48.2; Jeff Mudd, Arnold, 2-5-44.3; Jess A. Yount, Arnold, 2-5-42.8; Wayne Henderson, Independence, 2-5-40.7; Charles Kertz, Barnhart, 0-7-21.8.

CLASS C — Robert Smith, O'Fallon, 5-2-46.8; Steve Hrabovsky, St. Louis, 4-3-50.97; Robert Long, Carthage, 4-3-50.88; Donald Jones, Elk Creek, 3-4-49.7; George Johnson, Huntsville, 3-4-47.7; Randall Grady, Sikeston, 3-4-46.7; Robert Diekamp, O'Fallon, 3-4-44.0; Ray Owens, Worth, 3-4-42.6.

CLASS D — James Bray, Independence, 5-2-43.4; Val Eikel, Mexico, 5-2-45.1; Ed Jackson, St. Ann, 5-2-45.2; Rex Gutridge, Ridgeway, 4-3-43.4; Chuck Martin, Mexico, 3-4-44.5; Gern Beasley, Raymondville, 3-4-37.2; C. W. Gutshall, Jamesport, 2-5-41.0; Kenny Howell, Trenton, 2-5-38.5; James Bray won playoff..

WEBB HORSESHOES N.H.P.A. APPROVED

1-4 pair	\$25.00
5-9 pair	\$23.50
10 pair or more	\$22.00

Add \$2.00 per pair shipping cost (USA)

WEBB HORSESHOE & EQUIPMENT
1319 LICKING PIKE • WILDER, KY 41076
Phone (606) 781-0589

MISSOURI STATE — (Continued)

CLASS E — Carl Wolff, Wentzville, 7-0-41.5; James Blumenthal, Lemay, 4-3-35.6; Richard Pistole, St. Joseph, 4-3-34.5; Ken Larsen, Holt, 4-3-32.8; T. David Moore Fulton, 3-4-33.9; Robert Johnson, Kansas City, 3-4-32.8; Keith Perkins, Kansas City, 2-5-31.9; Fred Smith, Higginsville, 1-6-26.8.

CLASS F — Duane Combs, Lee's Summit, 6-1-38.5; Gordon Simmons, Lee's Summit, 5-2-33.1; Eugene H. Carter, Kansas City, 4-3-36.5; Matthew Fields, Richmond, 4-3-35.6; Wallace Sims, Lawson, 4-3-29.5; Gene Towne, Kansas City, 3-4-34.8.

CLASS G — Dale Owens, Grant, 6-1-34.4; Gene Rathburn, Blue Springs, 5-2-35.9; Arvil McCorkendale, Camden, 4-3-35.1; Bill Courtwright, High Ridge, 4-3-33.7; Leroy Dominique, Chillicothe, 3-4-33.3; Leroy Clevenger, Kansas City, 3-4-29.4; Rusty Enzor, Warrensburg, 2-5-31.0; Charlie O'Brien, Hallsville, 1-6-29.5.

CLASS H — Tom Ebers, Marshall, 7-0-42.9; Marvin Johnson, Independence, 5-2-36.2; Eugene Newkirk, Maysville, 5-2-32.3; Marshall Armstrong, Kansas City, 4-3-35.9; Joseph Been, Independence, 3-4-28.8; Jerry Griggs, St. Joseph, 2-5-31.9; Dennis McHawes, Herculaneum, 2-5-30.5; Dale Fisher, Hale, 0-7-22.4.

CLASS I — Ralph Richardson, Belton, 7-0-40.5; Gregg Craven, Greenwood, 6-1-37.5; Kenneth Hale, Independence, 4-3-33.7; Joseph B. Moses, Florissant, 4-3-33.2; Bill Johnson, Independence, 4-3-30.4; Carl W. Ryan, Puxico, 2-5-16.1; Dave Comer, Independence, 1-6-17.2.

CLASS J — Robert O. Hughes, Rolla, 4-1-37.1; Robert Lee Bowling, Crane, 4-1-30.5; Gary Bowling, Galena, 3-2-31.4; Estel Hunsicker, Hatfield, 2-3-31.6; Bill Bouyea, Hannibal, 2-3-30.3; Raymond Shults, Sedalia, 0-5-16.2; Robert Hughes won playoff.

CLASS K — Elmer Kirby, Nevada, 6-1-33.0; Leo Rice, Kansas City, 6-1-33.6; Ronald Craven, Albany, 5-2-33.5; Kenneth Carmichael, Richmond, 5-2-29.2; Lewis Kent, Clarksville, 2-5-26.8; Alvin Gwinn, Independence, 2-5-19.5; Reese Warden, Republic, 2-5-18.7; Calvin Jaeger, St. Charles, 0-7-18.8; Elmer Kirby won playoff.

CLASS L — Jack Roach, Rolla, 7-0-33.8; Joseph J. Karpel, Arnold, 6-1-31.9; Lee Rogers, St. Peters, 5-2-29.3; Burt Stegman, Albany, 3-4-25.7; Skip Penfold, St. Peters, 3-4-20.4; Billy Garner, Rolla, 2-5-17.9; Tim Warden, Billings, 2-5-14.1.

CLASS M — Mel Goodman, Independence, 6-1-40.8; Kevin Whitworth, Buckner, 6-1-31.7; Matt Cline, Independence, 5-2-32.0; Clever Gibson, New Hampton, 4-3-22.6; Steve Conrow, St. Louis, 3-4-19.2; Jerry Kohler, Defiance, 2-5-16.8; Jeff Enzor, Warrensburg, 1-6-20.9; Mike Clayton, Independence, 1-6-17.0; Mel Goodman won playoff.

CLASS N — Kent Armstrong, North Kansas City, 7-0-28.0; John L. Thomas, Marshall, 6-1-24.5; George Hendricks, Kansas City, 4-3-25.5; James Porter, Dawn, 4-3-20.5; Howard Taylor, Independence, 3-4-16.8; Terry Brooks, Holden, 2-5-17.0; Walter E. Fox, Mexico, 1-6-18.3; Ron Dunlap, Pleasant Hope, 1-6-13.8.

CLASS O — Rick Gwinn, Independence, 7-0-33.3; Dean Jameson, St. Joseph, 6-1-25.1; Irving King, Independence, 4-3-22.1; Charles Hamilton, Lee's Summit, 4-3-19.4; Donald Plowman, Chillicothe, 3-4-21.1; Edward Eliason, Springfield, 2-5-15.2; Monty McFee, Richmond, 1-6-15.0; Ron Gwinn, Rich Hill, 1-6-14.1.

CLASS P — Andy Flores, Independence, 6-1-20.0; Darrell Plowman, Chillicothe, 6-1-19.6; Frank Jameson, St. Joseph, 5-2-18.9; Ernie Ellerman, Eldon, 4-3-20.02; Charles Tuttle, Blue Springs, 4-3-14.2; Alvin L. Dial, Blackburn, 2-5-9.9; Don Roberts, Richmond, 1-6-13.2; Steve Boswell, Richmond, 0-7-5.8; Andy Flores won playoff.

MISSOURI STATE — (Continued)

SENIOR CLASS A — Wayne Trautwein, Kansas City, 5-0-55.5; Wilbur Gay, St. Joseph, 3-2-36.1; Woodrow Shepard, Slater, 3-2-28.2; Perry Craigmyle, Columbia, 2-3-35.4; Arlie Reinwald, Defiance, 2-3-25.3.

SENIOR CLASS B — Marvin Parker, Rayville, 5-0-32.3; Hale Whiting, Independence, 3-2-24.1; Woodrow Juncker, Independence, 3-2-22.6; Wilbur Hodgson, Liberty, 2-3-18.4; Larry Lowery, Kansas City, 2-3-15.8.

CLASS A WOMEN — Vicki Winston, LaMonte, 7-0-81.55; Loree Meier, Independence, 5-2-54.54; Pam Hender-son, Independence, 4-3-46.4; Sherry Larsen, Holt, 4-3-41.6; Gerri Barnes, Lone Jack, 3-4-38.8; Sherry Roberts, Polk, 3-4-35.3; Joyce Francis, Blythedale, 1-6-40.6; Frances Cramer, St. Joseph, Mo., 1-6-38.8.

CLASS B WOMEN — Frances Dominique, Chillicothe, 6-1-28.1; Darlene Blood, Independence, 6-1-32.4; Nancy Bray, Independence, 5-2-22.3; Rita Killgore, Plattsburg, 4-3-23.3; Nancy Haley, Independence, 3-4-13.9; Madeline Hale, Independence, 2-5-8.5; Sharon Armstrong, North Kansas City, 1-6-27.5; Marge Marsh, Springfield, 0-7-7.14; Frances Dominique won playoff.

CLASS A JUNIORS — Alan Francis, Blythedale, 5-0-91.3; Jeff Hart, Independence, 4-1-68.6; Tom Francis, Blythedale, 3-2-66.5; Richard Bowling, Crane, 2-3-56.4; Steve Barnes, Odessa, 1-4-29.3; Dirk Christian, St. Joseph, 0-5-37.8.

CLASS B JUNIORS — Mark Bowling, Galena, 5-0-19.8; Paul Johnson, Kansas City, 4-1-15.5; Jason Flores, In-dependence, 3-2-16.6; Allen Lackey, Independence, 2-3-15.0; Scott Dominique, Chillicothe, 1-4-7.4; Michael McFee, Richmond, 0-5-5.5.

KNISLEY RETAINS OHIO TITLE — CONNIE STILL, LADIES P. MOON, GIRLS — R. RIDINGER, BOYS — SANC. 85-43

MEN CLASS A — Jim Knisley, 11-0-85.9; Gary Roberts, 10-1-73.9; George Moon, 8-3-70.0; John Martin, 6-5-66.1; Harold Wipert, 5-6-70.3; Ancil Copeland, 5-6-68.0; Levi Miller, 5-6-67.2; Max Roseberry, 5-6-66.6; John Brown, 4-7-65.0; Ken Kugler, 4-7-58.5; Phil Hummel, 3-8-68.5; Paul Focht, 0-11-52.4.

MEN CLASS B — Eldon Sarbaugh, 11-0-70.5; Lawrence Miller, 9-2-70.5; Gary Kline, 8-3-61.1; Earl Waggoner, 5-6-68.4; Glen Riffle, 5-6-60.9; Robert Uhrig, 5-6-57.6; Tom Guill, 5-6-57.4; Dave Hummel, 4-7-63.3; Ken Waggoner, 4-7-57.6; Joe Pillion, 4-7-57.1; Merrill Bannister, 4-7-57; John Hughes, 2-9-53.6.

MEN CLASS C — Mike Oney, 11-0-72.8; Tom King, 8-3-56.7; Bob Allen, 8-3-52.1; Dave Rose, 7-4-59.4; Bob Garber, 7-4-58.5; Len Martini, 6-5-57.5; Larry Woolace, 6-5-50.0; Bob Johnson, 5-6-54.6; John Napier, 3-8-45.4; J. Kiser, 3-8-44.0; J. Deweese, 0-11-36.4.

MEN CLASS D — G. Gardner, 6-1-55.2; B. Voelker, 5-2-48.9; B. McClain, 4-3-52.8; L. Welbaum, 4-3-45.1; D. Dom-browsky, 3-4-52.5; K. Wagontfield, 3-4-44.9; H. Denlinger, 2-5-48.6; B. Ison, 1-6-37.3.

MEN CLASS E — M. Flaig, 7-0-53.9; G. Weiser, 6-1-53.8; D. Farley, 4-3-43.8; E. Noe, 3-4-47.1; D. Bussey, 3-4-43.6; L. Anthony, 2-5-42.8; M. Snider, 2-5-38.9; M. Bussey, 1-6-40.2.

MEN CLASS F — L. Stephenson, 6-1-48.8; K. Hawk, 5-2-46.8; M. Southward, 4-3-44.4; D. Pringle, 3-4-44.3; D. Ullery, 3-4-43.5; E. Turner, 3-4-41.2; C. Searls, 2-5-41.4; D. Sanders, 2-5-37.5.

MEN CLASS G — B. Sigler, 7-0-44.9; J. Hiles, 5-2-48.8; P. Allen, 5-2-42.6; W. Johns, 4-3-38.7; R. Storer, 3-4-41.6; J. Campbell, 2-5-30; E. Glass, 1-6-29.1; T. Karkarls, 1-6-25.5.

MEN CLASS H — L. Rose, 7-0-49; M. Kinder, 6-1-52.4; R. Fleckstein, 4-3-42.9; B. Kiser, 3-4-44.1; J. Jackson, 3-4-35.8; G. Cathcart, 2-5-37.6; W. Still, 2-5-32.7; H. Smith, 1-6-26.6.

MEN CLASS I — D. Reno, 7-0-49.1; J. Baldwin, 5-2-56.6; D. Whitman, 5-2-44.8; P. Burkett, 4-3-44.2; L. Schaffner, 4-3-43; F. Harris, 2-5-44; R. Hopkins, 1-6-35.2; J. Witschger, 0-7-28.1.

MEN CLASS J — C. Martin, 7-0-46.2; H. Bailey, 5-2-49.6; P. Jones, 5-2-44.1; J. Hawk, 5-2-43.4; J. Ridinger, 3-4-34.1; R. Greene, 2-5-27.7; B. Coakley, 1-6-30.2.

MEN CLASS K — R. Futrell, 6-1-41.5; H. Zennie, 5-2-38.5; G. Neff, 5-2-31.6; A. Halley, 4-3-32.5; G. McKinney, 3-4-35.5; D. Miller, 3-4-33.1; S. Harshbarger, 2-5-34.7; G. Weiser, 0-7-32.5.

MEN CLASS L — E. Pratt, 7-0-49.1; R. Fausnaugh, 5-2-41.5; L. Hite, 4-3-39.9; W. Morrow, 4-3-33.8; D. Jenkins, 3-4-37.1; G. McCutchen, 3-4-30.4; J. Mossholder, 2-5-25; R. Snyder, 0-7-28.1.

MEN CLASS M — Mel Miller, 6-1-43.6; P. Ziesmer, 5-2-38.7; C. Myers, 4-3-38.9; J. Shepard, 4-3-38.3; Mose Miller, 4-3-34.2; H. Kahle, 3-4-34.5; E. Canupp, 2-5-33.6; B. Gray, 0-7-Forfeit.

OHIO STATE — (Continued)

MEN CLASS N — D. Brown, 6-1-47.85; K. Lepard, 6-1-44.19; R. Bruns, 5-2-47.5; T. Hawkins, 5-2-42.7; B. Dillion, 2-5-34.3; B. Garrett, 2-5-34.2; J. Adkins, 1-6-31.6; R. West, 1-6-30.7.

MEN CLASS O — W. Canupp, 6-1-47.7; J. Cooper, 6-1-43.6; G. Thome, 5-2-39.3; B. Szombat, 4-3-37.2; T. Mathews, 3-4-34.4; K. Lane, 2-5-33; L. Harmon, 1-6-28.9; G. Tipple, 1-6-27.9.

MEN CLASS P — M. Royer, 6-1-27; J. Morrison, 4-3-32.4; F. Hebler, 4-3-31.8; D. Myers, 4-3-29.4; H. May, 4-3-26.7; E. Waymire, 4-3-19.2; G. Butcher, 2-5-21.6.

MEN CLASS Q — H. Angel, 5-1-50.7; R. Jenkins, 4-2-41.2; B. Cummings, 4-2-35.8; J. Adkins, 3-3-36.4; D. Willford, 3-3-35; J. Moak, 1-5-28.4; L. Maddox, 1-5-26.7.

MEN CLASS R — C. Crabtree, 5-1-33.5; D. Riddell, 5-1-30.9; R. D. Kinnamond, 4-2-30.2; D. Wheeler, 4-2-28.4; J. Schotten, 2-4-23.5; R. Park, 1-5-22.4; F. Karcia, 1-5-18.6.

MEN CLASS S — B. Ramsey, 4-1-30.5; B. Gentry, 3-2-26; L. Dudgeon, 3-2-24.3; D. McClain, 3-2-22.7; D. Waggoner, 3-2-20.8; G. Shaffer, 0-5-24.5.

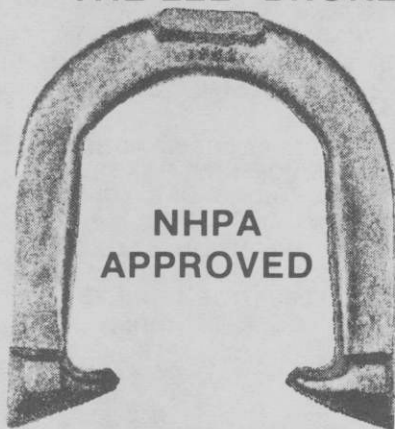
MEN CLASS T — M. Bair, 5-1-33.7; B. Kinkead, 4-2-29.1; J. Katzenbach, 3-3-28; L. Glass, 3-3-24; M. McKinney, 3-3-22.9; G. Decker, 2-4-27.

MEN CLASS U — D. Schlosser, 5-1-24.5; N. Teaford, 5-1-23.9; B. Beckman, 4-2-24.1; D. Wicker, 4-2-16.1; J. Lane, 2-4-21.7; H. Allen, 1-5-16.95; C. Bushman, 0-6-10.6.

MEN CLASS V — G. Kesler, 5-1-15.3; L. Rohe, 4-2-19.8; J. Teevan, 4-2-19.4; R. West, Jr., 3-3-12.4; G. Warvel, 3-3-10.1; F. Worner, 1-5-10.7; S. Haubel, 1-5-7.5.

WOMEN CLASS A — Connie Still, 7-0-73.9; Jean Myers, 5-2-56.2; Dorothy Smith, 5-2-51.3; Ruth Kirk, 4-3-58.3; Betty Dunlap, 4-3-56.5; Jeannie Spaller, 3-4-52.8; Shirley Spiesman, 1-6-42.8.

BACK BY POPULAR DEMAND THE LEE "BRONZE" HORSESHOE



**NHPA
APPROVED**

Cast of a new, modern
metal alloy that is

"deader" than dead soft,
yet tough as steel.

Batters No Quicker
Than Dead Soft Steel

Requires Little
or No Filing

Does Not Rust

PRICE - \$26.00 PER PAIR PLUS POSTAGE

LEE HORSESHOE COMPANY

2631 Middletown - Eaton Rd. • Middletown, OH 45042
(513) 422-5695

C. MARTZ, WEST PA. CHAMP — F. CARNAHAN WINS LADIES M. CARNAHAN TOPS IN JUNIORS — F. BOHUN, SENIORS

CLASS A — Clyde Martz, 12-3-69.1; D. Beshore, 11-4-73.3; Don Kuchcinski, 11-4-70.3; G. Burris, 11-4-68.4; G. Rubendall, 11-4-67.5; W.W. Carnahan, 9-6-71.8; C. Danner, 9-6-69.6; S. Kuchcinski, 9-6-66.7; R. Rugg, 9-6-64.7; Ron Kuchcinski, 7-8-64.2; B. McKnight, 7-8-63.7; A. Zadroga, 5-3-68.3; G. Brown, 4-11-59.2; K. Von Kleist, 3-12-58.3; Joe Kuchcinski, 0-8-35.3.

CLASS B — H. Snyder, 6-1-66.3; J.B. Stadler, 5-2-59.0; E. Blum, 4-3-63.4; Wm. Hofecker, 4-3-62.1; R. White, Sr., 3-4-57.6; J. Morris, 3-4-53.6; R.E. White, 2-5-53.3; Jim Kuchcinski, 1-6-46.4.

CLASS C — Jack Swyers, 7-0-62.0; E. Horneman, 6-1-48.2; M. Burkett, 5-2-60.3; R. Collins, 4-3-52.1; A. Long, 3-4-50.8; S. Mikan, 3-4-48.3; T. Piscolish, 3-4-43.3; H. Hayes, 0-7-39.2.

CLASS D — C. Herbe, 7-0-58.9; J. Pagnanelli, 6-1-57.3; D. Meckevic, 5-2-54.5; D. Magyar, 4-3-47.6; R. Welton, 4-3-39.6; J. Sibley, 2-5-47.6; H. Browne, 1-6-38.3.

CLASS E — J. Trayer, 6-1-45.4; L. White, 6-1-47.6; H. Thomas, 5-2-47.2; J. Griffith, 3-4-47.0; P. Gemza, 3-4-41.0; J. Geci, 2-5-40.8; E. Sell, 2-5-36.0; R. Ruff, 0-7-31.2.

CLASS E — J. Trayer, 6-1-45.4; L. White, 6-1-47.6; H. Thomas, 5-2-47.2; J. Griffith, 3-4-47.0; P. Gemza, 3-4-41.0; J. Geci, 2-5-40.8; E. Sell, 2-5-36.0; R. Ruff, 0-7-31.2.

CLASS F — A. Landsberger, 6-1-46.8; J. Griffith, 6-1-44.1; B. Stahl, 5-2-46.5; J. Belcavitch, 3-4-46.2; O. Wagner, 3-4-43.6; F. Smigiel, 3-4-41.3; H. Hayes, 2-5-34.1.

CLASS G — D. James, 6-1-43.8; D. Esh, 5-2-49.0; J. Thompson, 4-3-46.0; Wes Kuchcinski, 4-3-44.8; K. Wid-dowson, 4-3-41.7; S. Frankhouser, 3-4-33.9; G. Meley, 1-6-31.3; J. Tedrow, 1-6-29.8.

CLASS H — G. Esh, 7-0-53.8; W. McCloskey, 5-2-47.1; T. McKendree, 5-2-42.2; B. Weigel, 3-4-43.3; M. Stehnach, 3-4-41.0; J. Krouse, 3-4-37.1; G. Fulton, 2-5-39.0; C. Carnahan, 0-7-26.0.

CLASS I — D. Harper, 6-1-50.0; C. Ratkowski, 6-1-46.1; H. Clement, 4-3-40.9; R. Weiss, 4-3-32.6; T. Cancilla, 3-4-39.1; J. Abbott, 2-5-43.8; R. Cherubini, 2-5-40.2.

CLASS J — P. Cunningham, 6-1-40.3; R. Brinkley, 6-1-45.5; J. Tedrow, 5-2-31.1; A. Stoddard, 4-3-36.3; C. Jones, 3-4-35.6; G. Glacken, 2-5-32.5; J. Carnahan, 2-5-31.0; C. Denk, 0-7-18.7.

CLASS K — D. Green, 6-1-34.7; J. Medvidovich, 5-2-42.5; A. Zadroga, Jr., 5-2-36.8; G. Keth, 5-2-32.7; R. Klaiber, 3-4-37.1; G. Zayac, 2-5-31.4; D. Connally, 2-5-27.9.

CLASS L — I. Thompson, 5-2-41.5; M. Hanik, 5-2-35.7; F. Kalley, 4-3-32.9; J. Michlena, 4-3-31.1; O. Pudder, 4-3-30.6; T. Carnahan, 3-4-30.7; P. Beer, 2-5-26.7; B. McQuillen, 1-6-23.7.

CLASS M — J. Peck, 7-0-36.2; E. Warner, 6-1-27.6; K. Bowser, 4-3-29.2; R. Carnahan, 4-3-28.7; E. Forish, 3-4-25.0; G. Carnahan, 2-5-24.5; W. Chevalier, 1-6-24.0; P. Cook, 1-6-19.3.

CLASS N — D. Diehl, 6-1-30.8; H.J. Liese, 5-2-31.0; T. Hamacek, 4-3-28.5; D. Lloyd, 4-3-27.2; J. Boward, 4-3-22.8; B. Stover, 4-3-18.3; M. Slupski, 1-6-17.2; G. Dambaugh, 0-7-9.6.

CLASS O — K. Turnbull, 6-1-18.0; T. Marusa, 6-1-22.0; R. Wolfgang, 5-2-23.5; D. Wetzel, 4-3-22.5; F. Bodnar, 3-4-19.6; B. Trott, 3-4-18.0; R. Cancilla, 1-6-18.4; W. Frye, 0-7-12.0.

CLASS P — G. Schiller, 7-0-23.4; L. Fullgraf, 6-1-15.0; R. Rudolph, 4-3-13.6; D. Kahle, 4-3-11.0; T. Maisner, 3-4-8.5; F. Shaffer, 3-4-4.7; W. Frye, 2-5-6.8.

SENIORS DIV. I — F. Bohun, 5-1-75.0; F. White, 4-1-62.9; F. Kilinsky, 3-2-55.0; D. Maxwell, 2-3-44.2; G. Sebring, 1-4-34.2.

LADIES A — F. Carnahan, 7-0-72.4; G. Rugg, 6-1-48.4; E. Weston, 5-2-35.6; D. Carnahan, 4-3-46.0; L. Dolby, 3-4-30.7; L. Marshall, 1-6-35.1; S. Carnahan, 1-6-32.2.

LADIES B — J. Long, 7-0-26.4; C. Bimber, 5-2-29.1; B. White, 4-3-27.3; J. Reeper, 4-3-24.8; R. Clement, 3-4-16.8; R. Carnahan, 3-4-12.5; K. Kahle, 1-6-18.0; L. Tuley, 1-6-10.4.

JUNIORS A — M. Carnahan, 3-0-11.9; B. Stover, 1-2-13.6; T. Mock, 1-2-10.7; D. Collins, 1-2-10.1.

WILLIAMS UNDEFEATED IN MICHIGAN STATE — SANDY SMITH LADIES CHAMPION — DEAN LeCLAIR, BOYS — SANC. 85-502

Defending champion, Bob "Ozzie" Williams from Cement City, Michigan, went undefeated in retaining his title and is the first to win successive titles since 1979. Sandy Smith of Saline, Michigan won her first Class A title in a play-off with Ann Wedel of Fulton, Michigan. Dean LeClair posted a 90.0 percent game on his way to the Boys championship and his first title before leaving the Junior competition.

CLASS A — Bob Williams, 11-0-67.6; Leo Fitzpatrick, 9-2-69.5; Doc Maison, 6-5-64.3; Bill Damrau, 6-5-64.1; Floyd Bartley, 5-6-62.0.

CLASS B-1 — Bob Wells, 9-2-59.4; Jim Simmet, 9-2-60.9; Willard Wilbur, 8-3-56.0; Dick Frakes, 7-4-59.3; Ed Schultz, 6-5-52.6.

CLASS B-2 — Larry Hinton, 8-3-55.6; Dewey Howard, 7-4-47.4; Carl Dziepak, 7-4-46.1; Ben Shutt, 7-4-43.0; Al Thompson, 6-5-44.0.

CLASS C-1 — John Decker, 9-2-53.7; Bob Williams, Jr., 9-2-42.7; Dick Warner, 8-3-43.4; Oscar Hope, 8-3-39.5; Orlin Knuth, 7-4-43.7.

CLASS C-2 — Andy Matthews, 10-1-43.1; Bob Voss, 10-1-41.5; Phil Degreafrenreid, 7-4-42.1; Jim Ostrander, 7-4-41.5; Keith Briggs, 7-4-36.7.

CLASS D-1 — Boyd Stonerock, 7-4-37.8; Dave Farrand, 7-4-38.9; Tom McFarland, 7-4-36.8; Art Matthews, 6-5-38.4; Bill Fredenburg, 6-5-36.3.

CLASS D-2 — Al Moon, 9-2-37.2; Dick Pratt, 9-2-34.7; John Bukeri, 7-4-39.3; Harold Morris, 7-4-32.9; Darrin Howard, 6-5-31.4.

CLASS E-1 — Sam Lewis, 10-1-41.5; Walt Wedel, 9-2-33.9; Vern Howard, 7-4-31.1; Wayne Shively, 7-4-28.1; Rick Spearman, 6-5-30.3.

CLASS E-2 — Lloyd Bartley, 8-3-26.8; Claude Gillin, 8-3-28.8; Kirt Coulson, 7-4-27.7; Jerry Krapf, 6-5-28.2; Dave Loop, 6-5-25.3.

CLASS F-1 — Len Krauss, 8-1-26.4; Don Mattingly, 7-2-26.2; Albert Morris, 6-3-27.1; Bill Hansen, 6-3-24.4; Irv Pasch, 5-4-22.0.

CLASS F-2 — Tom Bracey, 7-2-17.0; Ernie Pickering, 7-2-25.8; Paul Ciucci, 7-2-13.1; Carl White, 7-2-13.7; Gary Traster, 5-4-16.1.

LADIES A CLASS — Sandy Smith, 4-2-63.5; Ann Wedel, 4-2-60.7; Dorothy Falk, 3-3-48.3; Judy Curtiss, 1-5-52.0.

LADIES B CLASS — Trudy Wells, 5-1-51.8; Mary Perkins, 4-2-42.7; Sheila Shively, 2-4-35.4; Chris Smith, 1-5-33.0.

LADIES C CLASS — Sally McConnell, 6-0-43.3; Norma Hansen, 3-3-24.3; Joanne Schaffer, 2-4-23.7; Marie Pratt, 1-5-19.7.

JR. BOYS — A CLASS — Dean LeClair, 4-0-76.8; Steve Loop, 3-1-64.9; Clayton Bonham, 2-2-59.5; Alan Caldwell, 1-3-56.6; Charlie Perkins, 0-4-54.7.

JR. BOYS — B CLASS — Jason Warner, 5-0-11.2; Derek Misuraca, 4-1-18.9; Nathan Burton, 3-2-11.2; Richard Spearman, Jr., 2-3-5.0; Bobby Perkins, 1-4-4.2; Aaron Ostrander, 0-5-3.8.

HERB CRISS AND MARGARET BYFIELD NEW WASHINGTON STATE CHAMPS — CRAIG LOOPER WINS JRS. — SANC. 85-385

Herb Criss and Margaret Byfield are the new state champions of Washington. They turned the trick in the annual Washington state tournament held in Yakima, Washington. Herb had 13 wins and one loss held together with a 74.5 ringer percentage. Margaret, who is the Washington state secretary, was undefeated winning 13 in a row with a 55.4 ringer percentage. In the Junior class Craig Looper was undefeated with 4 wins and 32.1 percent.

MEN'S CHAMPIONSHIP CLASS — Herb Criss, Bremerton, 13-1-74.6; Henry Knauft, Spokane, 12-2-72.6; Gerry Staley, Vancouver, 8-6-63.6; Art Sperber, Bremerton, 8-6-63.4; Joe Krug, Yakima, 7-7-61.7; Vern Miller, Selah, 5-9-58.9; Ken Elvig, Bellingham, 2-12-50.0; Ron Ferguson, 1-13-49.1.

LADIES CHAMPIONSHIP CLASS — Margaret Byfield, Mt. Vernon, 13-0-55.4; Elaine Weisdepp, Lacey, 10-3-56.6; Ruth Welsh, Spokane, 9-4-49.4; Hannah Foley, Newport, 7-6-48.0; Helen Watson, Spokane, 6-7-44.4; Carolyn Ferguson, Vancouver, 2-11-26.1; Sue Ramey, Mt. Vernon, 1-11-31.2.

WASHINGTON STATE — (Continued)

MENS CLASS A — Verl Swanson, Shelton, 9-2-59.1; Dayton Martindale, Royal City, 8-3-52.6; Thor Gadwa-Montesano, 7-4-51.7; Ray Sexton, Hoquiam, 7-4-51.7; Wally Rehard, Spokane, 6-5-54.8; Brad Pederson, Bothell, 6-5-51.9; Herb Godfrey, Aberdeen, 5-6-52.7; Don Jones, Olympia, 5-6-50.2; Harold Lemons, Brewster, 5-6-45.3; Barney Heller, Everett, 4-7-51.9; Bob Hoerner, Tacoma, 4-7-48.6.

CLASS B — Bob Pederson, Seattle, 10-2-52.3; Dick Lee, 9-4-47.3; Bob Hughes, Burley, 8-4-48.7; Mike Thorniley, Olympia, 7-4-50.6; Don Ferguson, Vancouver, 7-4-47.9; Len Weisdepp, Lacey, 6-5-52.6; Bill Owens, Mt. Vernon, 6-5-50.0; Ken Carvo, Yakima, 5-6-49.8; Jerry Erickson, Hoquiam, 5-6-47.2; Jack Bush, Marysville, 4-7-44.9.

CLASS C — Tom Schram, Vancouver, 6-2-45.2; Oliver Hartzell, Bothell, 5-3-40.7; Sam Wingfield, Naches, 4-3-42.9; Walt Weik, Spanaway, 4-3-38.6; John Byfield, Mt. Vernon, 4-3-37.1; Burl Matteson, Bremerton, 3-4-36.9; Jim Malvern, Marysville, 3-4-34.9; Bob Clark, Port Orchard, 0-7-25.7.

CLASS D — Ray Looper, Spokane, 6-2-43.5; Art Hart, Tacoma, 5-3-42.4; Don Dean, Othello, 4-3-45.5; Alton Nelson, Ellensburg, 3-4-42.2; Mel Shuss, Camas, 3-4-40.6; Ken Kuper, Spanaway, 3-4-39.7; Tom J. Worthington, Spokane, 3-4-36.8; Les Lingel, Marysville, 2-5-34.4.

CLASS E — Marv Herridge, Kent, 6-1-46.8; Errol Darling, Bremerton, 5-2-45.5; Earl Kuper, Puyallup, 5-2-40.9; Jack Salter, Kelso, 4-3-35.5; Casey McKay Moses Lake, 4-3-33.7; Ed Welsch, Spokane, 2-5-32.6; Jo Jensen, Othello, 2-5-26.2; Bill VanEgdom, Lynden, 0-7-14.8.

CLASS F — Lyle Meuret, Everett, 6-2-40.0; Mick Odell, Davenport, 6-3-35.3; Al Reusser, Kirkland, 5-3-42.9; Cyril Kitchen, Tacoma, 4-3-35.6; Mel Sherbert, Battleground, 3-4-33.3; Mike Ordos, Sumas, 3-4-32.6; Ray Stubner, Yakima, 3-4-33.5; Earl Kettleson, Spokane, 0-7-30.3.

CLASS G — Carl Wallin, Olympia, 7-1-34.3; Gerry Granerud, Davenport, 6-2-34.9; Pat Patterson, Everett, 5-2-32.5; El Day, Blaine, 3-4-31.2; Einer Loreen, Spokane, 3-4-30.2; L.P. Bodvin, Maple Valley, 3-4-28.2; Quentin Searles, Naches, 2-5-26.3; Verl Webb, Olympia, 0-7-23.4.

CLASS H — Cleve Woods, Graham, 7-0-37.5; Del Crandall, Camas, 5-2-38.3; Wendell Roberts, Port Orchard, 5-2-33.6; Don Isaacson, Seattle, 3-4-34.3; Don Fagerness, LaCenter, 3-4-33.0; Jim Hackett, Walla Walla, 2-5-26.2; John L. Kronholm, Everett, 2-5-22.1; Milt Johnson, Tacoma, 1-6-24.6.

CLASS I — Ed Pritchard, Ryerwood, 7-0-28.0; George Rachel, Everett, 5-2-24.3; Rich Carroll, Aberdeen, 5-2-22.0; Bill Connell, Tacoma, 4-3-19.0; Ross Watson, Spokane, 3-4-20.3; Bill Hendricks, Longview, 3-4-17.8; Roger Cork, Burlington, 1-6-18.5.

JUNIORS — Craig Looper, Spokane, 4-0-32.1; Fred Hardt, Yakima, 2-2-10.8; Jami Darling, Bremerton, 0-4-5.3.

OREGON STATE DOUBLES — OREGON CITY — SANC. 85-329

CLASS A — Ridge Leggett & Darlene Williams, 7-0-68.1; Ben Wiedrich & Dave Sturdevant, 5-2-53.6; Bernard Martell & Pete Zumaran, 4-3-49.4; Lowell Davis & Oren McMillan, 3-4-46.5; Bob Johnson & Larry Flanary, 3-4-45.1; Jerry Gorton & Phil Tyler, 3-4-42.2; Barry Chapelle & Lloyd Likens, 2-5-45.6; Joe James & Len Christensen, 1-6-42.8.

CLASS B — Bill & Donna Graham, 7-0-41.0; Barney Root & Harley Vallier, 5-2-42.1; Roger Christianson & Buck Davis, 5-2-41.6; Loy Brown & Vern Wantless, 3-4-36.9; Lee Wallace & Bob Beesley, 2-5-36.2; Marvin & Betty Tatchio, 2-5-33.7; Jenny Cassanova & Bill Dolan, 2-5-33.2; Irene Wiedrich & Lloyd Kilgore, 2-5-31.7.

CLASS C — Laura Lee Samples & Kathy Taylor, 6-0-32.8; George Kaufer & Dick Heim, 4-2-29.0; Esthel Benner & Wayne Ferris, 3-3-28.5; R.E. Click & Elmer Otmes, 3-3-27.6; Harold & Nancy Camp, 2-4-27.3; Art Taylor & Bud LeDoux, 2-4-25.6; Floyd Flemmer & Alta Maag, 1-5-26.9.

COMING EVENTS — (Continued)

ARIZONA SCHEDULE

Pioneer Park, Mesa, AZ

Nov. 15-16-17 — Bonanza Open. Mesa. Entries close Nov. 7. Entry fee \$5.00 to Carol Larkins.
Dec. 5-6-7 — Mesa Parks Open. Entries close Nov. 26. Entry fee of \$5.00 to Carol Larkins.
Jan. 16-17-18 — Lost Dutchman Open. Rock Shadows Resort. Entry fee of \$10.00 and percentage to Roy Sneller, Box 729. Sp. 636, Apache Jct., Ariz. 85220. Ph. 982-7797. Entries close Jan. 6.
Jan. 24-25-26 — Valley of the Sun Warm Up. Mesa. Entries close January 14. Entry fee \$5.00. Send fee and percentage to Carol Larkins. Sanctioned. NHPA and State cards required.

Feb. 11, 12, 13, 14, 15, 16 — Valley of the Sun. Entries close January 26. Sanctioned tournament. NHPA and State cards required. Entry fee \$10.00 plus extra fee of \$10.00 for Class A. Classes B, C and D \$5.00 extra. Ladies A & B \$5.00 extra. Send proper fees and percentage to Carol Larkins.
Mar. 7-8-9 — Bye, Bye Snowbirds Open. Mesa. Entries close Feb. 27. Send \$5.00 fee and percentage to Carol Larkins.
April 4-5-6 — Annual State Tournament. Yuma, Az. Kennedy Park Courts. Entries close Mar. 26. Send fee of \$5.00 and percentage to Rex E. Lee, 790 13th St., Yuma, AZ 85364. Ph. 726-4417. Sanctioned tournament. NHPA and state cards required.

COMING EVENTS

REFER TO PAST ISSUES FOR ADDITIONAL COMING EVENTS

FLORIDA SCHEDULE

- Entry fee \$10.00 per tournament. Entry fee includes score keeping fee. Send entry fee to proper contact at least 7 days before tournament date. NHPA and state card required. Mixed tournaments unless otherwise required. In two day tournaments, players with ringer average below 40% will pitch first day. Dropouts after deadline will forfeit entry fee unless tournament is cancelled. Starting time is 9:00 a.m.
- Nov. 1-2 — Clearwater Open, Clearwater. Contact Norman Houchin, 214 So. Lincoln St., Clearwater, Fla. 33516. Ph. 813-443-6139 or 813-736-5556.
- Nov. 9 — Marjco Open, Winter Haven. Contact Joe West, 6250 Halabrin Rd., Haines City, Fla. 33844. Ph. 813-422-2053 for all details.
- Nov. 16 — St. Cloud Open, St. Cloud. Contact Andy Anderson, 1100 Indiana Ave., St. Cloud, Fla. 32769. Ph. 305-892-2051 for all details.
- Nov. 23 — Naples Open, Naples. Contact Richard Warren, 1848 Crayton Rd., Naples, Fla. 33940. Ph. 813-261-5197 for all details.
- Nov. 23 — Thanksgiving Open, Orlando. Contact James Peterson, 14224 Wing Foot Rd., Fairway Country Club, Orlando, Fla. 32826. Ph. 305-275-8222 for all details.
- Nov. 29-30 — The Kiwanis Open, Bradenton. Contact Joe Morgan, 3840 Ironwood Lane, 407-H, Bradenton, Fla. 33529. Ph. 813-792-2526 for all details.
- Dec. 6-7 — Steinfeldt Handicap, Clearwater. Contact Norman Houchin, 214 So. Lincoln St., Clearwater, Fla. 33516. Ph. 813-443-6139 or 813-736-5556 for all details.
- Dec. 14 — Snowbird Open, Sebring. Contact James Fourman, Palms Tower, Apt. 817, 245 Oak Ave., Sebring, Fla. 33870. Ph. 813-385-7372 for all details.
- Dec. 21 — Santa Claus Open, Winter Haven. Contact Joe West, 6250 Halabrin Rd., Haines City, Fla. 33844. Ph. 813-422-2053 for all details.
- Dec. 28 — Lake Worth Open, Lake Worth. Contact Herman Wieser, 1502 So. Lakeside Dr., 309-N, Lake Worth, Fla. 33460. Ph. 305-582-2938. Limited to 32 entries.
- Dec. 28 — Holiday Open, Brooksville. Contact E.P. Kirk, 15549 Cortez Blvd., Brooksville, Fla. 33512. Ph. 904-799-7116.
- Jan. 4 — Snowball Open, Beverly Hills. Contact Sparky Hall, 1571 East Sheridan Lane, Hernando, Fla. 32642. Ph. 904-489-9580. 50 shoes or 40 point games.
- Jan. 11 — Windy Open, Brooksville. Contact E.P. Kirk, 15549 Cortez Blvd., Brooksville, Fla. 33512. Ph. 904-799-7116.
- Jan. 16 — Sebring Open, Sebring. Contact James Fourman, Palms Tower, Apt. 817, 245 Oak Ave., Sebring, Fla. 33870. Ph. 813-385-7372. 50 shoe or 40 point games.
- Jan. 17-18 — The Manatee Open, Bradenton. Contact Joe Morgan, 3840 Ironwood Lane, 407-H, Bradenton, Fla. 33529. Ph. 813-792-2526 for all details.
- Jan. 25 — Warren Steimle Open, Apopka. Contact Norman Davey, 3000 So. Clarcone Rd., Apopka, Fla. 32703. Ph. 305-886-8168 for all details.
- Feb. 1 — Orlando Open, Orlando. Contact James Peterson, 14224 Wing Foot Rd., Fairway Country Club, Orlando, Fla. 32826 for all details.
- Feb. 8 — Sarasota Open, Sarasota. Contact Jack Edwards, 3686 Country Place Blvd., Sarasota, Fla. 33583. Ph. 813-923-3210 for all details.
- Feb. 8 — Apopka Open, Apopka. Contact Norman Davey, 3000 So. Clarcone Rd., Apopka, Fla. 32703. Ph. 305-886-8168 for all details.
- Feb. 14-15 — The Sun Coast Open, Bradenton. Contact Joe Morgan, 3840 Ironwood Lane 407-H, Bradenton, Fla. 33529. Ph. 813-792-2526 for all details.
- Feb. 15 — Sun Bank of Osceola, St. Cloud. Contact Andy Anderson, 1100 Indiana Ave., St. Cloud, Fla. 32769. Ph. 305-892-2051 for all details.
- Feb. 20 — Sebring Open II, Sebring. Contact James Fourman, Palms Tower, Apt. 817, 245 Oak Ave., Sebring, Fla. 33870. Ph. 813-365-7372.
- Feb. 21-22 — Geo. Washington Open, Winter Haven. Contact Joe West, 6250 Halabrin Rd., Haines City, Fla. 33844. Ph. 813-422-2053 for all details.
- Mar. 1 — Palm Beach County Open, Lake Worth. Contact Herman Wieser, 1502 So. Lakeside Dr., 309-N, Lake Worth, Fla. 33460. Ph. 305-582-2938. Limited to 32 entries.
- Mar. 1 — G & H Realty Open, Apopka. Contact Norman Davey, 3000 So. Clarcone Rd., Apopka, Fla. 32703. Ph. 305-886-8168 for all details.
- Mar. 8 — Cambier Open, Naples. Contact Richard Warren, 1848 Crayton Rd., Naples, Fla. 33940. Ph. 813-261-5197 for all details.
- Mar. 8 — Hernando Open, Brooksville. Contact E.P. Kirk, 15549 Cortez Blvd., Brooksville, Fla. 33512. Ph. 904-799-7116 for all details.
- Mar. 14-15 — Fun'N Sun Open, Clearwater. Contact Norman Houchin, 214 So. Lincoln St., Clearwater, Fla. 33516. Ph. 813-443-6139 or 813-736-5556.
- Mar. 20 — Race Week Open, Sebring. Contact James Fourman, Palms Tower, Apt. 817, 245 Oak Ave., Sebring, Fla. 33870. Ph. 813-385-7372 for all details.
- Mar. 21-22 — The DeSoto Open, Bradenton. Contact Joe Morgan, 3840 Ironwood Lane, 407-H, Bradenton, Fla. 33529. Ph. 813-792-2526 for all details.
- Mar. 22 — Spring Open, Apopka. Contact Norman Davey, 3000 So. Clarcone Rd., Apopka, Fla. 32703. Ph. 305-886-8168.

Coming Events—Continued

FLORIDA SCHEDULE

- Mar. 29 — Center of the World Open. Beverly Hills. Contact Sparky Hall, 1571 East Sheridan Lane, Hernando, Fla. 32642. Ph. 904-489-9580 50 shoes or 40 point games.
- Apr. 5 — Gillespie Open. Sarasota. Contact Jack Edwards, 3686 Country Place Blvd., Sarasota, Fla. 33583. Ph. 813-923-3210 for all details.
- Apr. 5 — Peterson Open. Orlando. Contact James Peterson, 14224 Wing Foot Rd., Fairway Country Club, Orlando, Fla. 32826. Ph. 305-275-8222 for all details.
- Apr. 11-12 — Florida State Handicap Open. Clearwater. Contact Marvin Grubb, 4540 Osceola Rd., Titusville, Fla. 332780. Ph. 305-269-4138. Ringers only, 50 shoe minimum.
- Apr. 19 — Florida State Tournament (closed) Brooksville. Contact Marvin Grubb, 4540 Osceola Rd., Titusville, Fla. 32780. Ph. 305-269-4138. 50 shoes or 40 point games.

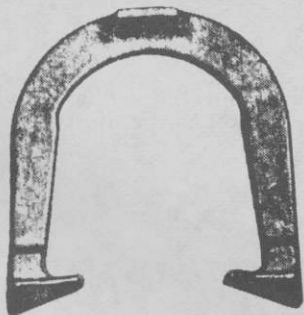
PITCHIN' PALACE SCHEDULE

Off I-94 between Hwys. 20 & 11 1400 Leetsbir Road Sturtevant, Wis. 53177

- Feb. 4 — "Homer" Tournament (see footnote). Entry fee \$24.00 per team. Deadline Tuesday, January 31.
- Feb. 18-19 — Valentine's Open. Singles. 8-man round-robin classes. Entry fee for men and women, \$12.00; Juniors \$2.00. Deadline February 8. Free pitching Friday night.
- March 3 — "Homer" Tournament. Entry fee \$12.00 per team. Deadline February 28.
- Mar. 24-25 — "The Weasel Open" Singles. 8-man round-robin classes. Entry fee \$12.00. Deadline March 10.
- April 14 — (possibly Sunday, depending on entries) Two classes, under 35 percent and over 35 percent. Double elimination singles tournament. Entry fee \$6.00. Cash prizes. 40 percent for 1st place, 20 percent second place. Deadline March 31.
- April 28-29 — The Spring Open. Singles, 8-man round-robin classes. Entry fee, men and women, \$12.00. Juniors, \$2.00. Deadline April 14.
- May 12 — Another "Homer" Tournament. Entry fee \$12.00 per team. Deadline May 1.
- May 26-27 — The Memorial Day Open. Singles, 8-man round robin classes. Entry fee men and women, \$12.00. Juniors \$2.00.

NOTE: A "Homer" tournament is a two man, double elimination, doubles tournament. 24 shoes. "Homer" means you enter under your hometown. There will be a travelling trophy, cash prizes — 40 percent first place and 20 percent second place.

TED ALLEN HORSESHOES



An original professional shoe. Still the very best professional shoe — Designed by a Champion — Used by many Champions — Not all users will become champions, but by throwing ALLEN's, you know that you've performed your best.

The designed features were invented by TED ALLEN, a 10 time world champion. He has made world records over and over with them. The design was a leader. After years it came to be a trend as a guideline in shoe equipment.

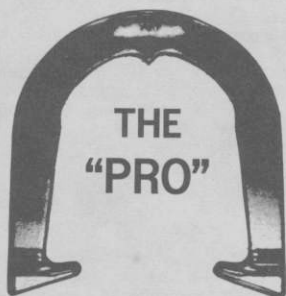
You can't go wrong in using them.

1045 LINDEN AVENUE

BOULDER, COLORADO 80302



THE ORIGINAL DROP-FORGED PITCHING SHOE



Two tournament tested models, forged from S.A.E. specified steel, are available. Both have hardened hooks and points, and may be ordered in your choice of medium, soft, or dead soft tempers.



AS THE FIRST MANUFACTURER OF THE DROP-FORGED PITCHING SHOE, THE OHIO HORSESHOE COMPANY IS RECOGNIZED WORLD-WIDE FOR ITS HIGH QUALITY PITCHING SHOES.

For price information and to order, contact:

OHIO HORSESHOE COMPANY

P.O. Box 21371
Columbus, Ohio 43221

614-457-4335