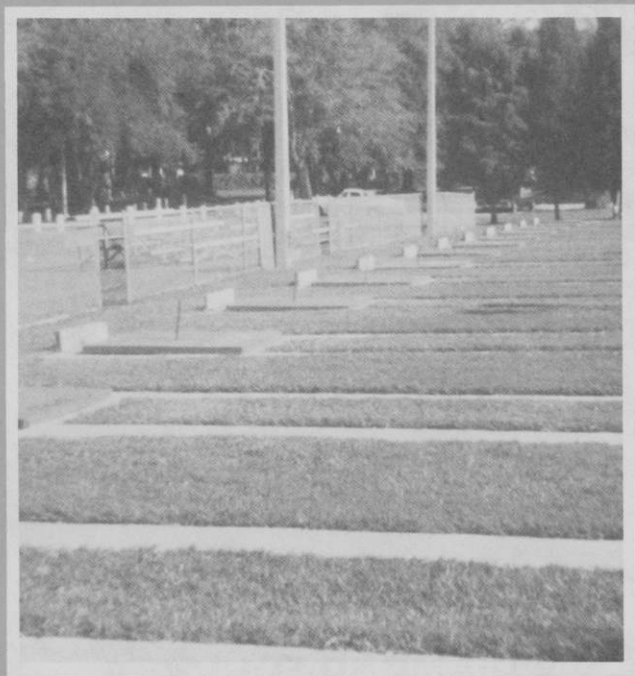




the  
national horseshoe pitchers

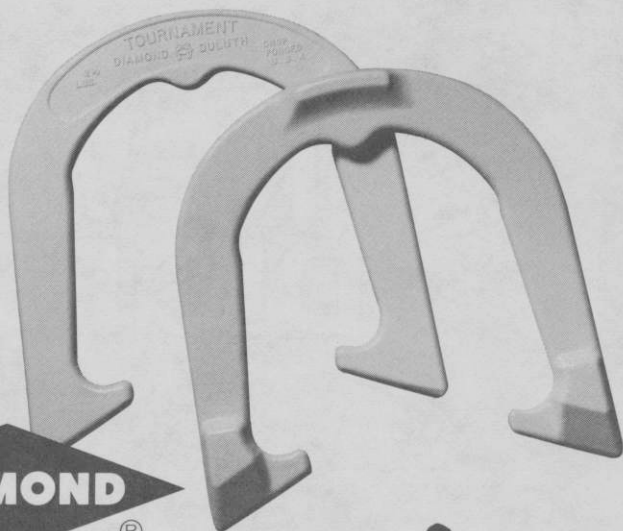
# NEWS DIGEST



OCTOBER, 1984

*Official Publication of*  
**THE NATIONAL HORSESHOE PITCHER'S ASSOCIATION  
OF AMERICA**

Look  
for  
the new  
white  
shoes!



®

Advanced Design

# TOURNAMENT PITCHING HORSESHOES




Both backyard pitchers and pros catch and hold the stake better with DIAMOND's new advanced design "Tournament" Shoe. It features a grip positioner, hardened tips, an increased radius, a dead soft center, and a wider, deeper calk. Same drop-forged solid steel construction as DIAMOND's popular Double Ringer and Super Ringer Regulation Shoes. All American made.

Contact your nearest NHPA club or sporting goods store for DIAMOND pitching horseshoes.

For the latest pitching horseshoe catalog write:

**DIAMOND TOOL** and *Horseshoe Co.*

Subsidiary  The Triangle Corporation

P. O. BOX 6246. DULUTH. MINNESOTA 55806



"DIAMOND Pitching Horseshoes are Recognized as Official in Tournaments  
Sanctioned by the National Horseshoe Pitchers Association"

**THE HORSESHOE PITCHER'S NEWS DIGEST** is published on the 5th of each month at Aurora, Illinois, U.S.A. by the National Horseshoe Pitcher's Association of America. Editorial office, P.O. Box 1606, Aurora, Illinois 60507. Phone: 312-898-3974. Subscription rates—1st Class \$9.00; 3rd Class \$8.00 per year in advance. NHPA membership cards are available through each state secretary for \$7.00 plus any state association dues. Forms close on the 10th day of each month preceding date of issue. Advertising rates on request. F. Ellis Cobb, Editor.

#### NATIONAL OFFICERS

Glen Portt, 2803 Newcomb Rd. Albany, Ga. 31705 (912-432-0067) . . . . .	President
Earl Winston, Rte 2, Lamonte, Mo. 65337 (816-563-3536) . . . . .	1st Vice-President
Barry Chapelle, 2716 S.E. 61st Ave., Portland, OR 97206 . . . . .	2nd Vice-President
Vincent Yannetti, 322 Longwood Ave., Bound Brook, N.J. 08805(201-356-3862) . . . . .	3rd Vice-President
Bonnie Seibold, 1043 Grayson Ave., Huntington, Ind. 46750 (219-356-3489) . . . . .	4th Vice-President
Donnie Roberts, Box 810, Circleville, Oh. 43113 (614-474-7727) . . . . .	Sec./Treas.
Claude White, Jr., 940 Knollwood Ct., Plainfield, NJ 07062(201-753-2298) . . . . .	Chr. Reg. Dir.

Volume 27

October, 1984

No. 10

## From Your President — Glen A. Portt

The 1984 World Tournament is past . . . finished . . . done . . . but the memories linger on. Some will remember it as the rainiest one ever. Others, the tournament in which they pitched until 6 o'clock in the morning. But just about everybody will remember it as being the best . . . Why? *Because they were there . . . competing . . . meeting old friends.* And that's what it's all about.

What about your President? Others will have their memories but I'll remember '84 as the year heralding the bright new men stars on the horizon of our game . . . Peter Clark, Kevin Cone, Mark Dyson, Don and Steve Kuchcinski.

The year 66 year old Carl Steinfeldt topped everyone with an 82.2 ringer average and came within one game of making it all the way . . .

The year Elmer Hohl didn't enter, thus stopping his string of pitching in Class A at 24 consecutive years, during which time he had 18 consecutive World Tournaments over 80%, a record which may never be beaten . . .

The year that made world tournament history when 3 sisters qualified and pitched in the Women's Class A . . . Phyllis Negaard, Sandy Karasch, and Beverly Nathe . . .

The year that saw the first video-taping of our 'Legends of Horseshoes' starring Hohl, Steinfeldt, Focht, Stinson, Lipovsky, Hangen, Thomas, Winston, Negaard, and Michaud . . .

The year that brought Double Ringer reporter Bob Champion all the way from Colorado to completely cover the event in depth and "just to see what this World Tournament is all about."

The year the Hall of Fame banquet and ceremonies went 'first class' . . . with Ruth Hangen introducing every Hall of Fame member present and giving a short synopsis of each one's accomplishment . . . with the presentation of 'Member, Hall of Fame' patches to each . . . with Oattie Reno's great 'Welcome to the Club' speech . . . with nostalgic photographs . . . and inducting the youngest person ever into the Hall of Fame . . . Mark Seibold.

The year Jack Adams joined his father, Arthur Adams, as the only father and son to make the Hall of Fame.

The year Jim Knisley made it 'all the way' after knocking at the door so many times.

The year Alan Francis won his 3rd consecutive world title and put himself in reach of Gary Roberts' 4 consecutive world junior championships.

The year the delegates made a commitment to have the World Tournament at Springfield, Mo., for five straight years and to move our National Headquarters and Hall of Fame there . . .

And, the year the World Tournament was closed out with a watermelon cutting at 1:30 a.m. Who ever heard of that before?

Yes, memories are made of these . . .

The proposed changes to the Constitution and By-Laws as submitted by your President *were approved for presentation to the delegates by 7 of the 10 members* of the Executive Council and the Constitution and By-Laws Committee. One did not vote.

Regardless of this overwhelming support, a slight majority of the delegates voted that *three months* were not enough time for them to make up their minds on *any of them*. They voted that all changes be tabled, and that a committee be appointed for further study and research, *even though a committee of 10 had already done so*. Your President appointed Lorraine Thomas and George Nick as a two-person committee. They will report to the President as to its findings.

The proposed changes which were tabled will not be listed here. They can be found in the April issue of the 1984 Digest. Member's attention is called to #35 on page 8 reference to the proposed foul line change. It is not correctly stated. It is stated correctly in the June issue, 1984, page 4. Please review.

#### WOMEN'S REPORT TO THE COUNCIL

A. — Bonnie Seibold, chairperson, recommended that *in the preliminaries*, all pitchers should pitch the same number of shoes. If there is a bye in a section, a pacer should be used and the percentage pitched against the pacer should count. (Approved by the Council. B. — At the state level, clubs which do not have platforms at the 30' distance should get a decent platform. It is hard to pitch from slippery grass areas. (Council approved and requests that each state take action. Council is also considering making this mandatory.) C. — That announcement be given to Juniors Leagues and State organizations to hold clinics and teach new pitchers to become interested in our sport. D. — That the women of the NHPA appreciated the increase in their prize money at the World Tournament.

## FROM THE PRESIDENT — (Continued)

### JUNIOR GIRL'S REPORT

A. — Kristi Farris, chairperson, strongly recommended that there be more games in the Girl's Championship flight because this is a World Tournament. (Council voted to have a minimum of 7 games in future tournaments.)

### MEN'S REPORT

A. — Carl Steinfeldt, chairman, suggested a stronger dress code... that the World Tournament is our showcase... and that we need to be dressed our best. (Council approved.) A dress code committee, headed by Bonnie Seibold with members Charles Kilgore, Jeannette Spaller and Mary Van Sant, will make recommendations to the Council. B. — Carl also gave a few 'Tips from the Top' on pitching horseshoes.

The following awards were presented: Stokes Award to Lee Elbe; Achievement Award to Clayton Kurtz and Herman Wieser; Special Award to Norman Gaseau, retiring 2nd Vice-President. Membership Awards were also presented.

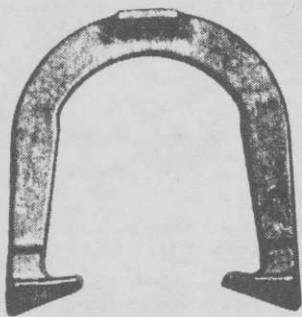
Officers elected were as follows: Bonnie Seibold, 4th Vice-President; Barry Chapelle, 2nd Vice-President and Donnie Roberts, Secretary-Treasurer.

## LOOKING AROUND LAS VEGAS

If you haven't been there... go. The Las Vegas Hacienda/Pro-Am Celebrity Horseshoe Tournament to be held on December 2 thru December 6 gives you the perfect excuse. The glitter and glamour are there and you'll enjoy all of it... as well as the free meals, free coupon books, flashing lights, wonderful shows, and of course, taking a few pulls on the slot machines. If you have been there, you'll go again because there is something about it that brings people back time and time again.

You'll have plenty of time during the day to look around and see the other side of this city of half a million people. There are many fine art galleries and Newsom's Western Art Gallery is one worth seeing. 'Old Nevada' is a replica of an old west town and has various western exhibits, plus shops, daily gunfights, etc. If you are interested in beautiful, rugged scenery, drive to Red Rock Canyon and Calico Basin. Stop at the Visitor's Center and find out about tours in the area. Of course Boulder Dam is a must for everyone. If you do not have a car, call Nevada Discovery Tours. Find out what's available. Enjoy Las Vegas and the horseshoe tournament.

## TED ALLEN HORSESHOES



An original professional shoe. Still the very best professional shoe — Designed by a Champion — Used by many Champions — Not all users will become champions, but by throwing ALLEN's, you know that you've performed your best.

The designed features were invented by TED ALLEN, a 10 time world champion. He has made world records over and over with them. The design was a leader. After years it came to be a trend as a guideline in shoe equipment.

You can't go wrong in using them.

1045 LINDEN AVENUE

BOULDER, COLORADO 80302

# ROLL OF HONOR

---

## SPECIAL RECOGNITION

RALPH DYKES

FRANCIS ASHER

VINCE YANNETTI

HARRY SCHMIDT

DONNIE ROBERTS

For Their Outstanding Contribution  
To The 1984 World Tournament

---

Come Rain . . . or Come Shine

THE DEPENDABLES

## 1984 CONSTITUTION AND BY-LAWS CHANGES AS ACTED UPON BY THE DELEGATES

### 1. ARTICLE IV — SECTION 3, PAGE 10

A. After stop play, (second sentence): Add "and shall communicate this to the affected participants directly or through the official referee." (Approved)

B. After course, Page 11: Add "If more than one hour has elapsed, warm-up pitches will be allowed." (Approved)

### 2. SAME SECTION, ARTICLE VI, SECTION 1, PAGE 11

A. After Authorized (first sentence): Add "Men's division of the" (Approved)

B. Same section, Article VI, Section 2, page 12: Delete "—'May'" (in first line). Add "shall" (be held in conjunction, etc.) (Approved)

C. Same section, Article VI, Section 2, Paragraph 2, page 12: Delete "may". Add "shall" (be held in conjunction, etc.) (Approved)

### 3. BY-LAWS — ARTICLE III, SECTION 5, PAGE 17

Delete "and/or total points" (Disapproved)

### 4. PLAYING RULES — RULE 7, PAGE 20

Add "SECTION G — Drinking of alcoholic beverages, tobacco chewing or smoking on the courts is prohibited at World Tournaments only." (Approved)

### 5. PLAYING RULES — PAGE 22

Add Rule 14 — "PRACTICE — Between games, pitchers shall be limited to 4 practice shoes once the scorekeeper and both pitchers are on the court ready to proceed with the next game." (Approved)

### 6. ARTICLE III, SECTION 4

It shall now read: "In the World Tournament, games won and lost shall determine the order in which the winners are listed. Ties between contestants for first place shall be decided as follows: If two tie, a one game play-of of 40 points. If more than two tie, first place shall be decided by a ladder-type playoff based on ringer percentages. In all other ties, trophies shall be awarded based upon ringer percentages, but the monies shall be divided equally."

## In Memoriam

The Gold Country Horseshoe Club of Nevada City, California would like to inform its many friends in the area of the untimely death of their long member, John Hintzman.

John had many friends in this club as well as the Sacramento Club, where he was a former member. He was always willing to instruct beginning pitchers as well as help wherever there was a need.

John was an engineer with Aero-Jet General in Sacramento until his retirement and perfected a template for setting the horseshoe stake, which was donated to the club by his wife Nadine. This too will make his memory vivid for years to come.

He will be missed by all and we extend our sincere sympathy to his family.

## SCHORER HEADS COMMITTEE TO RE-LOCATE MINN. ARENA

The Steering Committee headed by Bob Schorer, for re-locating the Preimesberger Arena, has been doing an outstanding job. They have spent countless hours on relocating the Arena. They have met with the Park and Recreation Departments of Fridley and Anoka and the Metro Sports Council and have been well received. Both Mr. Chuck Boudreau of the Fridley Park and Recreation Dept. and Mr. Dave Thorkilson have given their acceptance of the project. Letters have been sent out to let people become aware of the project, by making pledges and donations that it can become a reality.

At a meeting of the M.G.S.H.P.A. held at the Preimesberger Arena an appeal was to all those in attendance for donations and pledges to help get the project underway. The M.G.S.H.P.A. was the first to do so with a donation of \$2,000. These donations will show the city of Fridley and Anoka County our sincerity for the project. The State Legislature will also be informed of the project's progress. This fine facility which will be centrally located state wide and in the metropolitan area should do for horseshoes, that the Metro Dome has done for baseball and football, and make the sport of horseshoes grow, prosper and rank at the top along with other sports.

A special fund is being set up to take care of all the donations and pledges. In the event that the project is not accomplished, all money will be refunded. With 1400 members in the Minnesota State Association and others moving forward with the project, it should be accomplished. Please send your donations and pledges to: Arena Moving Fund, c/o Lloyd Henrikson, 2231 Coon Rapids Blvd., Coon Rapids, Minnesota 55433.

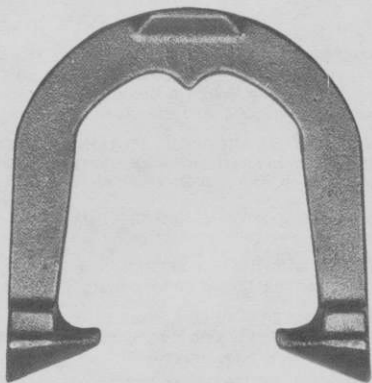
### THE NEW IMPROVED

# IMPERIAL

- BETTER ENERGY ABSORPTION
- LARGER RINGER BREAK
- WIDER BLADES
- REDUCED PRICES

U.S.A. PRICES  
(Postpaid)

1 Pair .....	\$26.00
2 to 5 Pair .....	\$25.00
6 Pr. & Over .....	\$20.00
	Freight Collect

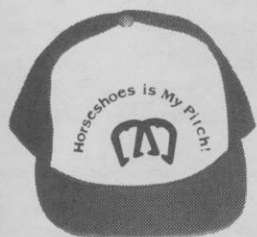


## CLYDE MARTZ

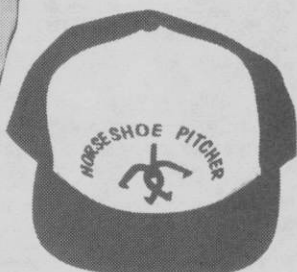
3726 Henley Dr.  
PHONE: 412-731-4662

Pittsburgh, Pa. 15235

# Pitch in Style



301



420



510

Sports shirt with Embroidered horseshoes. Caps with silk screened imprint. Caps with white front 4.95 ea. Available in red, lt. blue, royal blue, white, gold and brown. Shirts 14.95 ea. in SM-XL, XXL add 1.00. Colors red, lt. blue, royal blue, white, gold and tan.

To order, send check or money order for 4.95 per cap or 14.95 per shirt to Waltmire Silk Screen, 814 S. Main, Roswell, NM 88201. Please include 1.25 per order for shipping and handling. Allow 3 weeks for delivery.

Shirt(s)	Color	Size	14.95 ea. Total
Cap 301	Color		4.95 ea. Total
Cap 510	Color		4.95 ea. Total
Cap 420	Color		4.95 ea. Total
Shipping			1.25
Total			

## BOB MAUZEY WINNER IN DON PALMER OPEN—STOCKTON, CA SANCTION 84-183

**GROUP ONE** — Bob Mauzey of the Sonoma County Club proceeded to win over the prevailing winds and the ominous Don Titcomb of the San Jose Golden Eagles 7-0-65.4; 6-1-67.1. HIGH GAME to Titcomb — 74%.

**GROUP TWO** — Three men tied for first place with 5-2 each as high winds blew, so the winner got lee-way on the percentage basis. Emmett Schroeder of Stockton, 5-2-51.4; Jack Sorg, Golden Gate, 5-2-48.3; Verdan Zelmar was the 3rd man 5-2-46.6; H.G. Schroeder — 68%.

**GROUP THREE** — Walt Robinson of Sea Side; 6-1-40.3; over Stev Kynard of Yolo; 5-2-41.0; HIGH GAMES: Robinson (3) Kynard — 46%.

**GROUP FOUR** — Went to D. Koistenen, 6-1-36.3; over Ceres Perry of Tri-Valley; 5-2-29.3; HIGH GAME to Koistenen — 48%.

**GROUP FIVE** — J. Smith, Stockton; 7-1-35.1 over Bobby Lloyd, Tri-Valley; 6-2-26.6. SMITH beat Lloyd in play-off 46/23. High game: Smith (2) — 42%.

**GROUP SIX** — Bill Chandler, San Jose, 7-0-28.0. Chet Carter, San Jose; 5-2-23.0; HIGH GAME: Chandler — 44%.

**GROUP SEVEN** — Mel Long, Sr., Yolo; 7-0-29.3. Chick White, Gold Country; Nevada City, 6-1-20.3. HIGH GAME: Long — 36%.

**GROUP EIGHT** — Sy Sauer, San Jose, 4-1-16.8. J. Kovach, San Jose; 4-1-12.4; HIGH GAME: Sauer — 26%. Win decided by percent due to darkness and wind-tire.

**WOMENS GROUP ONE** — Maricella Mauricio of San Jose; 7-0-38.3. Joann Wanner, Sacramento; 5-2-36.9. HIGH GAME: Mauricio, Wanner, — 48%.

**WOMENS GROUP TWO** — Josephine Charley, Gold Country; Nevada City, 5-0-20.0. Twila Zelmar, San Jose; 4-1-18.0; HIGH GAME: Zelmar — 30%.

**JUNIOR BOYS GROUP** — Mel Long, Jr., Yolo; 5-0-62.5. Derek Moss, Yolo; 4-1-50.5. HIGH GAME Long - 70%.

# Hamilton Horseshoe Club

265 BARTON STREET E., STONEY CREEK



Unit 55 · ONTARIO, CANADA · L8E 2K4

(35 miles from Niagara Falls, N. Y.)

Presents the Second ELMER HOHL International  
Open Singles Tournament  
Indoors · Oct. 11, 12, 13, 14, 1984  
11th Evening only.

Entry Fee: Men's A - B — Ladies A.....\$20.00  
All other classes.....\$15.00

100% Payback Plus Extra Prize Money Added !!

Send Ringer Percentage or call tournament director  
Bob Fanjoy. (416) 544-2181 or club. 662-8501 after 7p.m.

Registration Deadline: Sept. 28, 1984

N.H.P.A. card no. required !



## NHPA SECRETARY-TREASURER REPORT FOR JULY, 1984

### July 1984 Expenditures

World Tournament Prize Money	\$20,735.00	Refunds	9.60
World Judges	35.00	1983 Membership Rebates	25.25
Donation to World Host Charity	200.00	World Scorekeepers	1500.00
Payment to Host Directors at World	200.00	League Program	92.12
NHPA Brochure Ad World	400.00	Postage	157.41
NHPA share of World Bumper Stickers	200.00	Telephone	18.68
Game Related Freight	119.67	Officer Travel	205.66
Hall of Fame Banquet	1794.45	Regional Director Petty Cash	10.00
World RR Cards	47.08	Officer Allowance	1590.00
Junior Scholarship to Steve Hohl	200.00	Supplies	1256.47
Banquet Band at World	400.00	July Total	\$29,396.39

Due to the World tournament involving two months a complete break down on the 1984 world shall be released as soon as all details are in. Many of the above expenses are reimbursed to the NHPA.

### July 1984 Receipts

Hall of Fame Ticket Sales Banquet	1864.20	Envelopes Sold	101.96
Game Related Sales at World	7676.21	Handicap Fees at World	25.00
World Handicap event entries	1375.00	League Program	378.00
World Entry Fees	1415.00	Huntsville Bid Money	15000.00
Digest	1325.75	Other	9.60
Membership	2502.25	Unused Scorekeeping Money	37.50
Stamp Sales	77.00		31787.47

These figures don't reflect the money handled by other NHPA people just that of NHPA Sec.-Treas. Foreign money exchanges, service charges, and interest are not shown.

## WARD CAPTURES TENN. SUMMER CLASSIC—SANC. 84-155

**CLASS A** — D. Ward 5-0-79.0; R. Norwood 4-1-72.6; J. Vines 3-2-60.4; G. Whaley 2-3-58.8; O.D. Lebow 1-4-58.9; G. Lewis 0-5-49.5.

**CLASS B** — R. Pruitt 6-0-60.4; C. Montgomery 4-2-55.8; D. Stallings 4-2-54.8; J. Adkerson 3-3-53.1; V. Fox 3-3-45.0; W. Bennett 1-5-49.3; J. Haire 0-6-39.3.

**CLASS C** — J. Shelton 4-1-56.0; C. Bennett 4-1-53.7; H. Foster 3-2-43.7; C. Helton 2-3-34.1; F. Fritts 1-4-33.9; W. White 1-4-31.8.

**CLASS D** — D. Isaacs 4-1-41.3; S. Cornette 4-1-34.3; F. Gregg 3-2-34.4; D. Holmes 2-3-35.6; W. Jennings 1-4-29.5; R. McIntosh 1-4-22.8.

**CLASS E** — W. Hardin 4-1-25.1; H. Lones 3-2-28.9; L. Byrd 3-2-27.8; R. Finney 3-2-23.3; K. Fisher 1-4-21.1; J. Cable 1-4-16.5.

**CLASS F** — K. Farthing 3-0-37.7; B. Bale 2-1-25.3; C. Wilcox 1-2-27.3; T. McPeck 0-3-16.4.

## SHARON PADDOCK WINS LEFTY WILLIAMSON OPEN IN STOCKTON, CA. SANCTIONED

**CLASS A** — Sharon Paddock 7-0-66.9; Emmitt Schroeder 6-1-53.1; Virginia Sturla 5-2-52.0; Marty Dunn 4-3-42.6; Holland Payne 2-5-42.0; Marthe Dunn 2-5-38.0; Tom Webb 2-5-42.0; Marisella Mauricio 0-7-36.0.

**CLASS B** — Ken Wollery 5-1-41.1; Joanne Wanner 4-2-42.3; Dick Hucke 3-2-47.6; Newton Graves 2-3-38.0; Marshall Johnson 1-4-40.4; Marilyn Webb 1-4-30.0.

**CLASS C** — Bert Charley 5-1-33.7; Gerry Saunders 4-2-37.6; Obbie Winn 2-3-26.8; Ceres Perry 2-3-25.2; Jim Cooper 2-3-23.6; Tim Saunders 1-4-26.0.

**CLASS D** — Edith Zoglman 5-0-29.2; Reese Cathy 4-1-24.0; Nick Wanner 3-2-30.4; Sue Sanders 2-3-24.4; Wally Stevens 1-4-21.0; Rick Leister 0-5-19.2.

**CLASS E** — G. Diaz 7-0-28.7; Josephine Charley 5-2-25.7; Henrey Caldwell 5-2-18.0; Kriss Cowles 4-3-14.0; Leo Wanner 3-4-14.6; Bob Fread 3-4-14.0; G. Beaty 1-6-10.0.

**CLASS F** — Jan Held 5-0-30.0; Eldon Cowles 4-1-20.0; S. Vale 3-2-14.4; Gary Saunders 1-4-11.6; Nicole Saunders 1-4-6.0; M. Reeves 1-4-4.0.

## TIB TURNER WINS KENTUCKY'S GRASSY LICK OPEN SANCTION 84-477

**CLASS A MEN** — Tib Turner, Nicholasville, 4-1-53.1; Stan Lovelace, Covington, 3-2-63.5; Jim Noble, Louisville, 3-2-57.7; Rube Blevins, Preston, 3-2-52.3; Ed Henry, Lexington, 2-3-60.0; John Hankins, Goshen, 0-5-46.5.

**CLASS B MEN** — Harold Copher, Preston, 5-0-57.0; Harold Holland, Nicholasville, 4-1-59.7; Denny Malone, Ludlow, 2-3-50.0; Chick Henn, Covington, 2-3-47.7; Bobby Clark, Preston, 1-4-37.1; Dallas Walters, Mt. Sterling, Forfeit, illness.

**CLASS C MEN** — Cliff Henn, Highland Height, 4-1-53.5; Don Hayes, Grassy Lick, 4-1-48.8; Warren Tarvin, California, 3-2-51.2; Fran Rogg, Dayton, 2-3-48.7; Bob Simpson, Nicholasville, 1-4-47.2; Glen Estes, Midway, 1-4-44.6.

**CLASS D MEN** — Ray York, Nicholasville, 5-0-57.7; Gary Jackson, Preston, 3-2-47.9; Ron Bohannon, Eminence, 3-2-46.0; Joe Minnich, Shelbyville, 2-3-43.4; Gene Webster, Stamping Grd., 1-4-35.3; Don Norton, New Castle, 1-4-35.0.

**CLASS E MEN** — Mitchell Duncan, Florence, 4-0-48.1; Ed Mason, Tollesboro, 3-1-43.0; Archie Adams, Versailles, 2-2-41.6; William Garrett, Lebanon, 1-3-36.6; Stan Kemper, Pleasurville, 0-4-34.1.

**CLASS F MEN** — Russ Dunigan, Tollesboro, 3-1-46.8; Paul Lee, Frankfort, 2-2-46.1; Julius Willhoite, 2-2-41.8; Forest Cooper, Vanceburg, 2-2-40.9; Les Simpson, Union, 1-3-38.5.

**CLASS G MEN** — Jerry Smith, Eminence, 4-0-46.6; Roy Donahue, Preston, 3-1-38.8; Ralph Sharp, Pleasurville, 2-2-37.7; Bob Snider, Ft. Thomas, 1-3-30.8; Larry Tiller, Eminence, 0-4-34.4.

**CLASS H MEN** — Gene Webster, Stamping Grd., 4-0-34.1; Randy Hankins, Goshen, 2-2-32.7; Melvin Rader, Pleasurville, 2-2-26.2; Dan Webb, Alexandria, 1-3-32.8; Mark Craig, Salvisa, 1-3-28.3.

**CLASS I MEN** — Simon Kelley, Lexington, 4-1-23.6; Ben Burrows, Midway, 4-1-21.0; Miles Cooper, Vanceburg, 3-2-27.1; Jerry Mitcheltree, Cynthiana, 2-3-24.1; Don Black, Pleasurville, 2-3-23.2; Tom Switzer, Vanceburg, 0-5-14.0.

**CLASS J MEN** — George Everhart, Winchester, 4-0-21.7; Gilbert Jones, Louisville, 2-2-21.6; Maurice Kennedy, Vanceburg, 2-2-19.1; Carlors Webb, Cold Spring, 1-3-14.7; Jerry Brown, Lexington, 1-3-13.6.

**CLASS K MEN** — Hiram Henderson, Tellesboro, 4-0-33.5; Larry Oakley, Mt. Sterling, 2-2-18.5; Eddie Reid, Owingsville, 0-4-4.9.

**CLASS A & B WOMEN** — Lois Webster, Stamping Grd., 5-0-37.5; Lillian Minnich, Shelbyville, 4-1-29.6; Ruby Estes, Midway, 2-3-31.3; Karlyn Kelley, Lexington, 2-3-27.2; Pam Bently, Midway, 1-4-26.6; Agnes Snider, Ft. Thomas, 1-4-17.5.

## EMMIT SCHROEDER WINS PARKS AND RECREATION OPEN AT STOCKTON, CA. MAY 5, SANCTION

Stockton's top pitcher Emmitt Schroeder won top honors on his home courts in the Park and Recreation Open in Stockton, CA, on May 5, with a record of 6-1-59.1. Schroeder also had high game 76.0.

**CLASS A** — Emmitt Schroeder 6-1-59.1; Ed Floyd 5-2-53.8; Ken Woolery 4-3-48.0; Dick Hucke 4-3-46.6; Dave Storck 3-4-54.8; Jim Saunders 2-5-43.7; Marty Dunn 2-5-42.3; Tom Webb 2-5-41.7.

**CLASS B** — Clair Benthin 5-1-39.3; Bert Charley 4-2-37.0; Gerry Saunders 3-2-35.2; Fred Canfield 2-3-27.0; Ceres Perry 1-4-28.4; Jim Smith 1-4-26.0.

**CLASS C** — Jim Cooper 4-1-31.6; Smoke Daily 3-2-28.4; Reese Cathy 3-2-26.0; Obie Winn 3-2-23.6; Lou Bayer 2-3-26.8; Jim Morrow 0-5-7.0.

**CLASS D** — Joe Ferrau 5-0-29.0; Bob Lloyd 4-1-24.0; Al Aluiso 3-2-22.0; Wally Stevens 2-3-20.0; Benjamin Curtis 1-4-15.6; Mel Falcon 0-5-11.2.

**CLASS E** — Fred Wood 7-0-24.0; Bob Fred 6-1-18.7; Leo Wanner 5-2-21.6; Chick White 4-3-15.0; Hank Caldwell 3-4-16.0; Sylvester Saver 2-5-14.0; Lee Henninger 1-6-8.7.

**JUNIORS** — Nick Wanner 6-1-21.6; Gary Saunders 5-2-9.6; Jim Saunders 2-4-8.0.

**WOMENS B-1** — Jan Held 7-0-24.0; Bille Penington 6-1-19.7; Josephine Charley 5-2-19.0; Sherry Vale 4-3-9.6; Paige Penington 2-5-8.0; Bonnie White 2-5-6.6; Sharon Saunders 2-5-5.0.

**JACK SORG CAPTURES FEATHER RIVER OPEN, PALERMO, CA.****MAY 27 84-200**

Jack Sorg won the toss of a coin to take top honors in the Feather River Open. Temperatures reaching 105° forced Jack Sorg and Lou Fontaine to settle first place in the top group by the toss of a coin. Jack Sorg also had high game 68%.

**CLASS A-1** — Jack Sorg 6-1-50.0; Lou Fontaine 6-1-56.3; Bob Proctor 4-3-46.6; Herb Rushing 3-4-50.3; Dick Hucce 3-4-42.9; John Sylvester 3-4-40.6; Don Williams 2-5-46.6; Matce Birde 1-6-37.1.

**CLASS A II** — Steve Kynard 6-1-48.3; Leonard Rood 5-2-41.7; Bert Charley 5-2-37.4; Newt Graves 5-2-35.7; Earl Kynard 3-4-38.9; John McCutchen 2-5-39.7; Pete Donoho 2-5-36.0; Roy Thomas 0-7-28.9.

**CLASS A III** — Gus Martin 7-0-33.0; Otis Hubbard 6-1-35.4; Jim Keys 5-2-34.0; Sylvan Stratton 3-4-28.6; Larry King 3-4-21.0; Ray Moss 2-5-23.7; Monte Jones 2-5-16.9; Lyle Mathis 0-5-22.0.

**CLASS IV** — Leo Wanner 5-2-17.5; Jerry Nylander 4-3-17.7; Ken Reid 3-3-20.0; Henrey Caldwell 3-3-11.3; Lee Hardy 2-3-21.6; Garry Dillion 1-4-19.6.

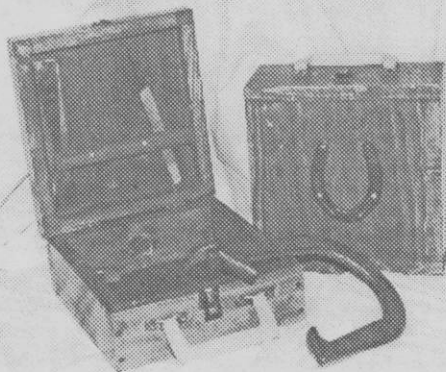
**CLASS V** — Bob Alling 5-0-13.6; Lloyd Wallace 4-1-11.6; Jerry BEach 3-2-16.4; Al Bowser 1-4-12.0; Ron McCutcheon 1-4-7.6; Marty Pilcher 1-4-6.4.

**CLASS WOMEN I** — Karen Alling 5-1-38.6; JoAnn Wanner 4-2-43.6; Sandy Hardy 3-2-44.0; Flora Jones 3-2-35.6; DelAnn Moss 1-5-26.0; Edith Zogelman 0-5-28.0.

**CLASS WOMEN II** — Jan Held 5-1-34.0; Midge Pilcher 4-2-23.6; Josephine Charley 3-2-27.0; Char Sorg 3-2-26.0; Thelma Sylvester 1-4-8.0.

**JUNIORS** — Derek Moss 3-0-50.7; Nick Wanner 2-1-24.7; Robert Stuart 1-2-11.3; Rocky Thomson 0-3-2.7.

## Horseshoe Caddy



HOLDS 2 PAIR OF  
HORSESHOES

SPACE FOR  
MEASURING  
TOOL & PENCIL

\$19.95 PPD.

JIM BRAY  
306 W. FARMER

816-461-2374  
INDEPENDENCE, MO 64050

## MIKE DiMARTINO WINS 1984 EASTERN NATIONAL

The Eastern Nationals held at Erie, Pa., June 23, 24th were dampened by rain on Saturday evening, forcing the class A pitchers to pitch all 13 games on Sunday afternoon under windy conditions. This didn't bother N.Y. state champion Mike DiMartino as he averaged 77.9%, losing only to Ralph Maddox and Greg Bean in regulation play, and defeating young Greg Bean of Ohio in a playoff match averaging 86%.



From left to right: Greg Bean; (Horseshoe Queen) Tina Glass; Clarence Butcher (Erie Club President); Mike DiMartino; Bob White (Tournament Director).

**CLASS A** — Mike DiMartino, NY, 11-2-77.9; Greg Bean, OH, 11-2-68.8; Ralph Maddox, WV, 10-3-69.5; Glen Burris, PA, 9-4-71.0; Ansil Copeland, OH, 9-4-64.5; Elmer Hohl, CAN, 8-5-68.8; Don Kuchcinski, PA, 7-6-65.3; Clyde Martz, PA, 6-7-62.3; Oscar Manns, OH, 6-7-60.8; Ray Rugg, PA, 6-7-59.8; Steve Kuchcinski, PA, 5-8-63.4; Steve Fenicchia, NY, 2-11-57.9; Joe Roebuck, PA, 2-11-54.8; Jim Solomon, PA, 0-13-50.9.

**CLASS B** — \*\*\*Rained out\*\*\*

**CLASS C** — Henry Hostetter, OH, 6-1-56.6; Donnie Roberts, OH, 5-2-55.6; Jim Kuchcinski, PA, 5-2-52.2; Dick Mudgett, NY, 4-3-49.3; Ed Blum, PA, 4-3-44.5; Laverne Butcher, CAN, 3-4-53.5; Ed Risley, NY 1-6-42.5; Kurt VonKliest, PA, 0-7-41.5.

**CLASS D** — Melvin Burkett, PA, 5-2-58.5; Carl F. Maier, PA, 5-2-56.9; Frank Kilinsky, PA, 5-2-58.1; Francis White, PA, 4-3-58.2; Glen Sebring, PA, 4-3-53.7; Charles Dunlap, OH, 3-4-52.7; Earl VanSant, OH, 2-5-50.0; Russ Welton, PA, 0-7-35.5.

**CLASS E** — George Hale, NY, 6-1-49.2; Robert E. White, PA, 5-2-48.0; Jim Hall, PA, 5-2-42.1; Clarence Dixon, PA, 4-3-49.5; Ed Horneman, PA, 4-3-45.2; Lenny Berggren, NY, 2-5-42.6; Bud Boley, OH, 2-5-38.4; George Rhea, PA, 1-6-38.2.

**CLASS F** — Ed Sell, PA, 6-1-49.1; Carl W. Herbe, PA, 5-2-51.8; Dick James, PA, 4-3-45.3; Wes Kuchcinski, PA, 4-3-45.2; Harvey Hayes, 4-3-40.4; Tom Butcher, PA, 2-5-41.7; Ed Kuchcinski, PA, 2-5-35.5; Tom Kuchcinski, PA, 1-6-40.4.

**CLASS G** — Bill Wiederhoeft, PA, 7-0-48.7; Paul Sweeney, CAN, 4-3-53.5; Robert D. White, Jr., PA, 4-3-43.1; Charles Brotzman, OH, 3-4-45.1; Joe Morris, PA, 3-4-42.7; Don Wilcox, NY, 3-4-41.8; Rich Maroni, PA, 2-5-36.7; Clark Carnahan, PA, 2-5-32.2.

**CLASS H** — Homer Browne, PA, 6-1-43.3; Ken Widdowson, PA, 6-1-42.6; James Schneider, PA, 5-2-43.1; Budd Sampson, PA, 3-4-35.0; John Kovach, OH, 3-4-32.1; Bob Golden, NY, 2-5-38.4; Wayne McCloskey, PA, 2-5-33.0; Tom Butcher, PA, 1-6-35.7.

**CLASS I** — Bill Stahl, PA, 5-2-47.8; Ken Hopkins, NY, 5-2-54.8; Frank Graham, PA, 5-2-48.2; William Graney, NY, 4-3-43.8; Harold Tuttle, OH, 3-4-44.2; Charles Dickinson, NY, 3-4-40.7; Harold Eyth, PA, 2-5-44.0; Dave Kuchcinski, PA, 1-6-36.4.

**CLASS J** — Blaine Aley, PA, 6-1-48.6; John Marusa, PA, 6-1-47.3; Marvin Krause, NY, 4-3-42.9; John F. Mathias, OH, 3-4-41.0; Ron Weiss, PA, 3-4-36.4; Kenneth Nixon, NY, 2-5-37.2; Joe Raico, OH, 2-5-35.6; Tony Cusimano, NY, 2-5-34.8.

**CLASS K** — Paul Gemza, PA, 7-0-34.4; Jack Chambers, PA, 5-2-32.9; James Schneider, Jr., PA, 4-3-25.9; Bob Doty, NY, 4-3-24.4; Taylor Carnahan, PA, 3-4-23.8; Stanley Vincent, NY, 2-5-26.4; Joseph Stanton, PA, 2-5-24.7; Joe Orsino, PA, 2-5-23.5.

**EASTERN NATIONAL — (Continued)**

**CLASS L** — Ray Cherubini, PA, 6-1-38.0; Paul Beer, PA, 5-2-34.6; Chester Mock, Sr., PA, 5-2-30.8; John Tedrow, PA, 4-3-32.4; Bud White, PA, 3-4-29.1; Paul Decker, PA, 3-4-26.8; Harry Clement, PA, 2-5-33.7; Ed Gradler, PA, 0-7-21.5.

**CLASS M** — Dale Strickland, NY, 6-1-32.8; Gordy Carpenter, NY, 6-1-38.9; Bill Mackey, PA, 5-2-40.9; Mac McQuillen, PA, 4-3-34.1; George Bercini, PA, 3-4-31.9; Jerry Peck, PA, 3-4-31.3; Hoppy Hopkins, NY, 1-6-29.2; Frank Bodner, PA, 0-7-19.8.

**CLASS N** — Buddy Loftus, OH, 6-1-34.6; Dean Zindler, NY, 6-1-40.9; Ellsworth Warner, PA, 4-3-28.7; Clair Beardley, PA, 3-4-29.6; Bob Rhinehart, PA, 3-4-26.5; Bill Meador, OH, 2-5-26.1; Andy Shurilla, NY, 2-5-23.2; Chester Mock, Jr., PA, 1-6-25.8.

**CLASS O** — Bob Chadwick, NY, 7-0-34.9; Chuck Olson, NY, 5-2-22.7; Elzie Rumbaugh, NY, 4-3-33.0; Jack Hetrick, NY, 4-3-26.6; Tim McKendree, PA, 3-4-27.0; Cyril Krebs, NY, 3-4-25.0; Joe Mosakowski, PA, 2-5-26.6; Butch Stover, PA, 0-7-15.3.

**CLASS R** — Robert Kuchcinski, PA, 6-1-29.1; Frank Ellis, NY, 6-1-26.2; Jim Thompson, PA, 5-2-31.3; Dan Connolly, PA, 4-3-28.4; Chet Mock, Jr., PA, 3-4-20.2; Bill Fry, PA, 2-5-13.1; Don Witt, PA, 1-6-14.0; Tom Marusa, PA, 0-7-13.0.

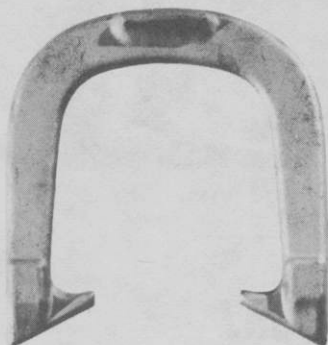
**CLASS S** — James Johnsston, NY, 6-1-27.0; Tim Hopkins, NY, 5-2-30.5; John Oeishlager, PA, 5-2-27.2; Don Witt, PA, 4-3-22.7; Glenn Herbe, PA, 4-3-20.4; Jeff Mock, PA, 2-5-19.5; Ralph Whitney, NY, 1-6-20.7; Randy Hopkins, NY, 1-6-19.1.

**CLASS T** — Jay Shultz, NY, 5-0-15.8; Gary Carter, NY, 4-1-14.9; Sherman McElwain, NY, 3-2-12.6; Kenneth McElwain, NY, 2-3-15.1; Tom Marusa, PA, 2-3-9.8; Ed Przybelinski, NY, 2-3-7.8; Birdie Dickerson, NY, 1-4-13.3; Duane Johnson, NY, 1-4-12.4.

**WOMEN — CLASS A** — Ruth Hangen, NY, 5-0-73.8; Grace Rugg, PA, 4-1-54.6; Fran Carnahan, PA, 2-3-69.3; Betty Dunlap, OH, 2-3-56.0; Jeanette Spaller, OH, 2-3-54.2; Sandy Carnahan, PA, 0-5-26.0.

**CLASS B** — Lois Marshall, PA, 7-0-27.9; Donna Boley, OH, 5-2-22.8; Mary Mathias, OH, 5-2-20.0; Linda Lou Monoskey, PA, 5-2-14.6; Anna Mae Marusa, PA, 3-4-8.1; Jerry Fry, PA, 2-5-7.2; Ruth Carnahan, PA, 1-6-7.8; Martha Wood, PA, 0-7-5.9.

Since 1931

**GORDON****"Spin-On"**

— 3 TEMPERS —

Medium With Hardened Calks

Dead Soft

Hard

Southern California Representative

**JERRY SCHNEIDER**

3144 W. Paso Robles Drive

ANAHEIM, CALIFORNIA 92804

714-826-0684

APPROVED BY NHPA

**OFFICIAL STAKES ALSO AVAILABLE****THE QUEEN CITY FORGING CO.****233 TENNYSON STREET****CINCINNATI, OHIO 45226**

## OTTIE RENO'S NOTE TO NHPA OFFICIALS & BOOK BUYERS

In my letter sent to buyers of my book on March 9, 1984, it said that it would be ready by early June. However, June came and went with no book.

I wrote the publisher on June 20 explaining that I could not face the players at this year's world tournament unless the book was ready and available at the tournament.

In their reply they say that my insistence on leaving in some 200 pictures which they tried to delete has postponed its release until September or October. Outside of keeping you informed, I don't know of anything else I can do. The decision I made for myself, after seeing the galley proofs and knowing that the book is really finished in every detail except whatever it is they are doing with those pictures, is to wait. I can only give this as my advice to others.

I have had letters from many of the buyers. Some say, "Why don't you sue the publisher?" Some ask, "What have you done, gone South with our money?" A few patient souls have said, "I give you my sympathy and I will wait for the book." I have refunded a few out of my own pocket rather than have them unhappy, but all of the money was sent to the publisher. I am going to the World Tournament, of course, and will play. I just hope that the flak is bearable.

As I see it, there is nothing that makes sense except to wait. The business about suing is pointless and there is no way to hurry them. If only they had not insisted on the advance sales, the people would not be uncomfortable. It is the fact that they dealt with me that makes them look to me rather than the publisher, even though it is the book publisher who has their money. Never again!

I will not even ask for patience again. Everyone has given too much patience already. I will simply continue to keep you informed and send the books out when they come.

Sincerely,

Ottie W. Reno  
148 Reno Road  
Lucasville, Ohio 45648

# FREE!

## Trophy & Awards Catalog



Call Toll-Free  
**1-800-628-9657**  
In Mass. 1-800-282-7789

**DINN BROS. The Trophy People**

P.O. Box 111 • 68 Winter St. • Holyoke, MA 01041

# DEADEYE HORSESHOES

## NOW IN

### FOUR MODELS

CLYDESDALES NOW IN LIGHTER WEIGHTS

	Price Per Pr.—Up to 9 Pairs	Price Per Pr.—9 Prs. & Over
CLYDESDALES 2# 10 oz., 2# 9 oz., 2# 8 oz., & 2# 7 oz.	\$23.00/Pr.	\$17.50/Pr.
N.T. 2# 10, 9, 8, 7 oz.	\$23.00/Pr.	\$17.50/Pr.
REGULAR 2# 9, 8, 7, 6, 5 & 4 oz.	\$23.00/Pr.	\$17.50/Pr.
E-Z GRIP 2# 10, 9, 8, 7 & 6 oz.	\$28.00/Pr.	\$22.50/Pr.

*Prices on all "DEADEYES" f.o.b. point of shipment.  
Missouri residents add 4-5/8% sales tax and California  
residents add on 6% tax.*

All "DEADEYES" are dead soft.

All "DEADEYES" are guaranteed against breakage for 2 years.  
All "DEADEYES" guaranteed for 2 years from date  
of purchase (NOT RE-PLACEMENT DATE)

W. Courtwright  
P.O. Box 742  
Fenton, MO 63026  
Phone: (314) 376-5222 (8-5)  
(314) 677-2200  
(314) 842-5188

Walter Ray Williams, Jr.  
6140 Grant St.  
Chino, CA 91710  
Phone: (714) 628-6053

Carl Steinfeldt  
44 Ridgecrest Road  
Rochester, NY 14626 (summer)  
Phone: (716) 225-4191

Carl Steinfeldt  
407 Shady Lane Mobil Park  
15400 Roosevelt Blvd.  
Clearwater, FL 33520  
(winter address)  
Phone: (813) 535-3136

ORDER DIRECT or from NHPA REPRESENTATIVE

## NORTHERN CALIFORNIA TOURNAMENT ACTIVITIES

**RUSHING AND LONG TOPS IN SACRAMENTO B-D OPEN** — Herb Rushing was in fine form to win top spot in Class B at Sacramento on a beautiful summer day with a 6-1-58.3 record. Jim Long topped Class D with a 7-0-36.0 record. High game went to Tom Webb with a nice 68.0 effort.

**CLASS B-1** — Herb Rushing, 6-1-58.3; Tom Webb, 5-2-49.0; Al Crabtree, 4-3-51.3; Holland Payne, 4-3-48.6; Mate McBride, 3-4-54.0; Vern Gosney, 3-4-48.6; Emmett Schroeder, 2-5-57.0.

**CLASS B-2** — Steve Kynard — 5-0-44.0; Joe Zoglman, 4-2-48.3; Don Williams, 3-3-47.0; George Greott, 0-6-37.6.

**CLASS D-1** — Jim Long, 7-0-36.0; Bob Malley, 6-1-33.4; Bert Charley, 4-3-34.9; Earl Kynard, 4-3-31.1; John Kincheloc, 2-5-30.6; Irwin Malik, 2-5-29.1; Ceres Perry, 2-5-26.6; Lee Throwhill, 1-6-25.4.

**CLASS D-2** — Ben Yost, 7-0-28.3; Bill Dise, 5-2-34.3; Marc McCuly, 5-2-27.3; Don Purdum, 3-4-27.3; Randy Daniel, 3-4-21.0; Ben Curtis, 3-4-19.0.

**CLASS D-3** — Mel Long, 7-0-36.0; John Hagerman, 5-2-25.3; Chick While, 5-2-22.3; Eldon Bryhan, 5-2-18.6; Bob Fread, 3-4-15.6; Victor Nicoli, 2-5-16.0; Don Cole, 0-7-12.0.

**HUCKE WINS GREENVILLE, CALIF. OPEN** — Dick Hucke of Reno, Nevada won the play-off for the title in the first Indian Valley Open. Willie Bradford took high single game honors with a cool 72.0 percent. Jo Ann Wanner won the Ladies title with 5-0-38.0. Nick Wanner topped the Junior class undefeated. Other class winners were as follows: Class A-3, Richard McCutchen; Class A-4, Jim Keys; Class A-5, Ron McCutcheon; Ernie Kim was in fifth place.

**CLASS A-1** Dick Hucke, 6-2-48.5; Dave Storck, 5-3-56.2; Willie Bradford, 4-3-56.5; Tal Stout, 4-3-53.4; Verdian Zelman, 3-4-51.1; Joe White, 3-4-46.0; Mike Bird, 2-5-50.0; Walter Krowel, 2-5-45.4.

**CLASS A-2** — Bob Proctor, 6-1-50.0; Jim Saunders, 4-3-45.7; Pete Donoho, 4-3-36.8; Don Muenchow, 4-3-36.0; Walt Foreman, 3-4-42.5; John Sylvester, 3-4-41.7; Robert Gillett, 2-5-39.1; Leonard Rood, 2-5-38.5.

**CLASS DAVE LOUCKS CAPTURES SUTTER OPEN — YUBA CITY — CLASS A-1** — Dave Loucks, 7-0-66.3; Holland Payne, 5-2-52.0; Bob Mauzey, 4-3-53.4; Walter Krowel, 4-3-50.6; Tom Webb, 3-4-56.9; Don Williams, 3-4-51.1; Pete Manitone, 2-5-47.4; Juke Basham, 0-7-52.2.

**CLASS A-2** — Walt Foreman, 6-1-49.0; Newton Graves, 5-2-41.3; Max Vice, 5-2-38.8; Carl Newsom, 4-3-44.7; Joe Colt, 4-3-38.8; Leonard Rood, 2-5-35.5; Jim Long, 2-5-34.7.

**CLASS A-3** — Don Purdum, 6-1-33.4; Otis Hubbard, 4-2-36.7; George Barth, 4-2-24.3; Lee Thornhill, 2-3-23.6; Gary Dillon, 1-4-24.0; Bob Pryor, 0-5-12.0. Class A-4 was won by Jerry Beach.

## SOUTHERN CALIFORNIA ASSOCIATION

**HAIGH DAY DOUBLES — Sanctioned** — Doyle Brawley-Frank Brown, 11-0; Jim Eozzo-Smokey Anderson, 8-3; Phyllis Morton-Harold Redding, 7-4; Gerry Kloefer-Ralph Carter, 6-5; Wally Shipley-Peter Trejo, 6-5; Joe Raykowski-Pete Cathalnat, 5-6; Barbara Dow-George Farrell, 5-6; Les Burroughs-Jim Dow, 5-6; George Whittemore-Kay Brawley, 4-7; Jack Chesshir-Lorenz Bramow, 4-7; Orville Lokken-Janice Atwell, 4-7; Jim Atwell-Charlie Everhart, 1-10.

**ARNIE MORTENSON DYM HCP — Sanctioned** — Orville Lokken, San Bernardino, 5-2-60.4; Nathan Williams, Chino, 5-2-58.7; George Whittemore, Rosemead, 4-3-54.9; Les Burroughs, Perris, 4-3-50.0; Jonathan Williams, Chino, 3-4-52.8; Norm Cone, Huntington Beach, 3-4-51.0; Barbara Dow, Glendale, 2-5-46.5; Earl Kerr, Laguna Hills, 2-5-44.4.

**GROUP TWO** — Milt Gibbs, San Bernardino, 5-1-39.8; Jo Vickery, Riverside, 4-2-42.8; Wally Shipley, Newport Beach, 4-2-38.7; Lorenz Bramow, Riverside, 3-3-32.1; Bob Jacobs, Tustin, 2-4-32.5; Charlie Everhart, San Bernardino, 2-4-26.2; Marlin Jay, Lakewood, 1-5-14.0.

**GROUP THREE** — Lupe Henry, Palm Springs, 5-1-38.8; Fred Craven, Bellflower, 4-2-33.1; John Shaver, Hesperia, 4-2-33.0; Ron Kecskes, Fontana, 3-3-35.2; Lois Clark, Riverside, 2-4-37.6; Roy Henry, Palm Springs, 2-4-24.4; Ken Whiteley, Anaheim, 1-5-15.2.

**GROUP FOUR** — Paul Garcia, Colton, 6-0-31.3; Steve Neal, Garden Grove, 4-2-26.9; Lee Haag, Sunnymead, 4-2-25.4; Al Wisser, Riverside, 4-2-22.2; Dixon Dumas, Anaheim, 2-4-21.0; Don Mulari, Riverside, 1-5-19.7; Kent Kelly, Riverside, 0-6-12.4.

**GROUP FIVE** — Tom Mattson, Fontana, 6-0-26.6; Kee Blackrock, Maywood, 5-1-23.7; Bear Hansen, Riverside, 3-3-19.1; Ralph Krueger, Rialto, 2-4-18.5; Tom Nation, Hemet, 2-4-15.2; Wilbur Gochanour, Fontana, 2-4-14.1; Chino Rivas, Cathedral City, 1-5-16.8.



**SOUTHERN CALIFORNIA — (Continued)**

**JONAS SNYDER DOUBLES — Sanctioned —** Chuck Tucker-Erwin Kessig, 7-2; Mike Moyer-Ed Oliver, 7-2; Harold Slagg-Bob Lowell, 6-3; Barbara Dow-George Farrell, 6-3; Wally Shipley-Jack Butler, 5-4; George Whittemore-Ralph Alvine, 4-5; Larry Ford-Bill Ponder, 4-5; Joe Gambol-Peter Trejo, 3-6; Jim Eozzo-Rita Eozzo, 2-7; Jack Vincent-Jim Dow, 1-8½

**HENRY HARPER OPEN — Sanctioned —** Ronnie Simmons, Orange, 5-0-57.1; Billy Hubbs, Jr., National City, 3-2-50.9; Jim Eozzo, Los Angeles, 3-2-47.3; Bob Austin, Escondido, 2-3-46.8; Jim Moseley, San Diego, 2-3-38.3; Tad Besemer, San Diego, 0-5-38.9.

**GROUP II —** Robert Hudson, La Jolla, 6-0-55.1; George Whittemore, Rosemead, 5-1-49.3; Earl Kerr, Laguna Hills, 4-2-49.0; Carl Grabow, Chula Vista, 3-3-49.5; Barbara Dow, Glendale, 2-4-45.8; June Gambol, San Diego, 1-5-33.9; Frank Vega, Chula Vista, 0-6-34.6.

**GROUP III —** Paul Bellah, El Cajon, 6-0-39.4; Jim Smith, Ramona, 4-2-39.4; Al Cantabrana, Oceanside, 4-2-32.2; Larry Ford, San Diego, 3-3-33.1; Mike Moyer, Pacific Beach, 3-3-33.0; Bill Ponder, San Diego, 1-5-23.9; Ed Oliver, Palm Springs, 0-6-20.1.

**GROUP IV —** Joe Gambol, San Diego, 5-0-41.6; Jim Buck, Lakewood, 3-2-37.6; Bill Hubbs, Sr., National City, 2-3-36.5; Bob Lowell, Palm Desert, 2-3-30.0; Peter Trejo, Vista, 2-3-26.4; Paul Bellah, El Cajon, 1-4-15.6.

**GROUP V —** Gordon Wilcox, San Diego, 5-1-24.3; George Farrell, Corona Del Mar, 4-2-23.3; Jack Butler, San Diego, 3-2-24.8; Ralph Alvine, Chula Vista, 2-3-18.0; Ernie Hayes, Chula Vista, 2-3-15.6; Erwin Klessig, Lynwood, 0-5-5.2.

---

## **N.E. OHIO DIST. TITLE TO G. BEAN — J. SPALLER WINS LADIES — SEAN KRAUSE, JUNIOR CHAMP**

**WOMEN'S CLASS A —** Jeannie Spaller, 5-1-67.5; Marge Spaller, 4-2-52.0; Betty Dunlap, 3-3-59.6; Shirley Spiesman, 0-6-38.6.

**WOMEN'S CLASS B —** Vernie Acirelli, 5-0-37.9; Fran Loftus, 2-3-11.5; Karen Skytta, 1-4-22.8.

**WOMEN'S CLASS C —** Margie Palsa, 5-1-19.9; Lois Luhtz, 4-2-16.2; Chris Crowley, 3-3-18.6; Edna Locke, 0-6-7.0.

**JUNIORS (Double Elimination)** Sean Krause, Charlie Greene, Buddy Loftus, Dana Krause, Rory Krause, Tony Fudurick.

**CLASS A MEN —** Greg Bean, 6-1-75.5; Phil Spiesman, 6-1-67.9; Oscar Manns, 5-2-66.0; Ansil Copeland, 4-3-67.3; Tom Wennerstrom, 3-4-58.9; Joe Markiewicz, 2-5-55.3; Charles Dunlap, 1-6-52.7; Frank Yokopovich, 1-6-52.2.

**CLASS B MEN —** R. Spaller, 5-2-51.8; E. Vansant, 5-2-56.7; B. Zieske, 5-2-53.0; J. Kovach, 4-3-47.0; B. Lautenschlager, 3-4-51.3; A. Frabotta, 3-4-50.0; G. Wills, 3-4-47.6; Joe Mazzurco, forfeit.

**CLASS C MEN —** C. Brotzman, 7-0-49.4; W. Pierce, 6-1-45.3; R. Slocum, 5-2-39.8; R. Allen, 4-3-45.0; M. Rodocker, 3-4-34.2; J.J. Lalley, 1-6-41.9; J. Raico, 1-6-29.2; D. Johnson, 1-6-27.3.

**CLASS D MEN —** J. Revach, 6-1-37.0; D. Spaller, 6-1-41.4; D. Zielenski, 5-2-39.0; J. Fenton, 5-2-38.9; J. Skrebunas, 2-5-31.3; T. Conley, 2-5-29.6; W. Redford, 1-6-29.1; J. Frederic, 1-6-28.0.

**CLASS E MEN —** R. Kobe, 7-2-34.0; O.R. Wolfe, 7-2-37.6; D. Haurin, 7-2-32.1; M. Grubich, 6-3-35.3; R. Greene, 6-3-27.7; H. Locke, 5-4-28.2; G. Krause, 4-5-26.7; R. Acirelli, 2-7-14.0; S. Palsa, 1-8-14.0.

---

## **GONZALES, PADDOCK WINNERS IN CALIF. McNALLY INV.**

**WOMEN —** Sharon Paddock, 10-0-77.2; Maricella Mauricio, 7-3-65.2; Yvonne Mauzey, 5-5-56.6; Andrea Adams, 4-6-58.4; Genevieve Lavett, 2-8-58.6; Sandy Hardy, 2-8-54.4.

**MEN'S CLASS —** Jesse Gonzales, 15-0-76.0; Walter Ray Williams, 14-1-76.2; Don Titcomb, 12-3-74.5; Dave Loucks, 11-4-66.5; Ed Floyd, 10-5-63.8; Herb Rushing, 8-7-58.9; Bob Mauzey, 8-7-57.3; Verdan Zelman, 7-8-52.9; Fred Lavett, 6-9-54.0; Vern Gosney, 6-9-53.3; Dave Storck, 5-10-54.4; Emmett Schroeder, 5-10-51.7; Juke Basham, 5-10-50.6; Al Crabtree, 4-11-49.2; Tom Webb, 3-12-51.0; Jack Sorg, 1-4-46.0.

## NEW FREEDOM, PA. OPEN TITLE WON BY GLENN RUBENDALL SANCTION 84-330

**CLASS A** — Glen Rubenall, 6-1-68.7; Dan Beshore, 6-1-71.3; Glenn Brown, 4-3-66.0; Martin Bubbs, 4-3-59.3; Dean McCurdy, 4-3-54.4; Ray Bechtel, 2-5-52.1; Fritz Lutter, 2-5-51.0; Jim Sibley, 0-7-53.3.

**CLASS B** — Dick Dart, 6-1-53.7; Larry Gisewhite, 5-2-52.5; Ed Gohn, 4-3-49.7; Jack Swyers, 4-3-49.5; Dale Carson, 4-3-49.4; Al Long, 3-4-44.1; Dick Ruff, 2-5-43.7; Dick Wilson, 0-7-42.6.

**CLASS C** — Clark Walker, 6-1-48.1; Pete McCollum, 5-2-49.7; Ed Bowersox, 4-3-45.5; Al Sweeney, 3-4-44.4; Frank Goss, 3-4-40.8; John Clippinger, 2-5-42.9; John Baugher, 1-6-40.1.

**CLASS D** — Mark Clippinger, 7-0-50.3; Ira Stine, 4-3-35.9; Fred Lutter, 4-3-34.7; Don Bubbs, 4-3-33.6; John Zimmerman, 3-4-35.7; Bob Heffner, 3-4-33.9; Don Wagner, 2-5-25.3; Mike Bonner, 1-6-28.7.

**CLASS E** — Jim Miller, 7-0-43.1; Joe Shummaitus, 6-1-39.8; Bernie Wierbowski, 4-3-29.6; Ned Kinard, 3-4-28.3; Glenn Eppley, 3-4-25.0; John Urbanc, 2-5-27.9; Ivan Horton, 2-5-24.6; Gerard Harris, 1-6-23.7.

**CLASS F** — Jim Harris, 6-1-28.0; Jim Henry, 6-1-33.2; Jerry Hoy, 5-2-26.0; Joe Shughart, 4-3-24.9; Jack Boward, 3-4-25.3; Marlin Zimmerman, 3-4-24.5; Dennis Lloyd, 1-6-15.5; Vernon Shenk, 0-7-15.9.

**LADIES** — Charlotte Onion, 5-0-47.4; Jean Long, 4-1-26.0; Kim Johnson, 3-2-23.7; Norma McCurdy, 2-3-15.3; Lois Nielsen, 1-4-10.6; Mae Orwig, 0-5-6.4.

## M. POTTS WINS ATCHISON, KS OPEN—SANC. 84-583

Merlin Potts was the winner in the 23rd annual Atchison, Kansas Open averaging 74.3 for the day. Class B went to Wayne Shelinbarger. Class C to Joe Christianson. It is hoped that the 16 new courts now under construction will be available for next year's first tournament.

**CLASS A** — Merlin Potts, 6-1-74.3; Charles Killgore, 5-2-73.4; Roger Potts, 5-2-72.1; Robert Booe, 4-3-68.6; John Smith, 3-4-67.5; Lillard Pinion, 2-5-65.9; Elwyn Cooper, 2-5-60.7; Gene Fleek, 1-6-61.8.

**CLASS B** — Wayne Shelinbarger, 6-1-47.3; Robert Long, 6-1-52.4; Wayne Henderson, 6-1-49.2; Bob Barnes, 3-4-51.2; Guy Tinder, 3-4-48.2; Jim Bray, 2-5-42.5; Harry Samuelson, 2-5-37.4; Doyle Derrick, 0-7-38.2.

**CLASS C** — Joe Christianson, 7-0-48.4; Ken Larsen, 5-2-44.1; John Eggleston, 4-3-39.7; Buzz Dickson, 4-3-38.8; Russ Rendell, 3-4-39.2; Bob Johnson, 3-4-30.3; Pap Cavaner, 1-6-38.2; Bill Chester, 1-6-30.3.

## WIEDRICH WINNER IN OREGON MONEY TOURNAMENT, LINDA MARTIN LADIES CHAMPION—SANCTIONED

We were honored to have our NHPA President, Glen Portt, at our 8th annual Oregon Money Open Tournament this year, as a guest and also as a participant. Over \$4500 was given out in prize money, which makes this one of the largest money tournaments in the country, with the exception of the World Tournament. Rick Rebman is the tournament host and the predominant sponsor. Pitchers came from Oregon, Washington, Idaho, California and Georgia.

**CLASS A** — Ben Wiedrick, 11-1-79.9; Peter Clark, 10-2-79.4; Barry Chapelle, 8-3-73.6; Henry Knauft, 8-3-72.4; Dave Loucks, 6-5-67.4; Lowell Davis, 5-6-70.4; Glen Portt, 5-6-68.5; Ridge Leggett, 5-6-67.0; Dean Curry, 4-7-67.4; Gerry Staley, 3-8-68.9; Ed Fishel, 2-9-65.1; Ken Elvig, 0-11-52.6.

**CLASS B** — Don Jones, 10-1-62.0; Herb Rushing, 9-2-56.7; Blackie Harms, 8-3-61.6; Bob Hoerner, 7-4-54.9; Mel Page, 5-6-54.9; Ron Ferguson, 5-6-52.8; Lee Wallace, 5-6-47.1; Chuck Johnston, 4-7-48.5; Rick Rebman, 4-7-47.2; Wally Rehard, 3-8-53.2; Howard Abbott, 3-8-50.2; Bob Hughes, 3-8-49.2.

**CLASS C** — Les Montaney, 6-2-47.7; Joe James, 5-3-49.3; Bill Graham, 4-3-45.9; Bob Showers, 4-3-44.9; Art Lund, 4-3-43.5; Marv Herridge, 4-3-43.2; Chuck Ball, 3-4-43.4; Ken Carvo, 0-7-38.2.

**CLASS D** — Dayton Martindale, 7-1-49.3; Bob Sletten, 6-2-51.5; Esthel Benner, 4-3-46.3; Skip Schilperoort, 4-3-43.5; Marv Herridge, 4-3-43.2; Chuck O'Brien, 2-5-39.8; Mike Thorniley, 1-6-37.1; Ray Sexton, 1-6-33.6.

**CLASS E** — Ralph Warthen, 7-1-45.4; Loy Brown, 6-2-45.5; Norm Watson, 5-2-42.3; Don Ferguson, 3-4-38.3; Walt Weik, 3-4-37.9; Jim Kosterman, 3-4-34.4; Denny Samples, 2-5-39.1; Bob Beesley, 0-7-32.0.

**CLASS F** — Doc Thackeray, 6-2-45.4; Vic Hyder, 5-3-40.8; Cyril Kitchen, 4-3-38.7; Gene Buzzini, 3-4-38.8; Tom J. Worthington, 3-4-37.9; Vern Wanless, 3-4-35.7; Wayne Maag, 3-4-35.4; Marvin Tatchio, 2-5-36.9.

**OREGON MONEY TOURNAMENT — (Continued)**

**CLASS G** — Mel Shuss, 7-1-48.9; Warren Stutzman, 6-2-47.1; Phil Hendry, 4-3-39.9; Bill Dolan, 4-3-33.9; Louie Piva, 3-4-29.3; Bob Stone, 2-5-33.1; Jim Jones, 2-5-28.8; Barney Root, 1-6-34.5.

**CLASS H** — Nick Piva, 7-0-43.6; Sam Wingfield, 6-1-41.1; Lee Centell, 4-3-35.3; Tony Apadaco, 4-3-34.3; Ray Stubner, Jr., 3-4-29.2; Dan Tucker, 2-5-35.5; Clarence Wood, 2-5-29.0; Otis Wilcox, 0-7-28.2.

**CLASS I** — Lee Edwards, 7-2-34.6; Olon Crandall, 5-3-32.0; Art Robinson, 5-3-36.0; Virgil Brayette, 4-3-25.1; Lynn Johnson, 3-4-28.7; Ed Lovejoy, 2-5-31.2; Mick Mathers, 2-5-25.3; Lloyd Erickson, 2-5-25.0.

**CLASS J** — Lee Payton, 5-1-35.8; Quentin Searles, 4-2-24.4; Glen Stutzman, 3-2-29.7; Wendell Roberts, 2-3-25.8; Joe Wright, 2-3-25.0; Bob Rebman, 0-5-20.2.

**CLASS K** — Lyle Cherry, 4-0-31.4; Larry Covey, 2-2-20.6; Ross Watson, 2-2-19.6; Dean Martin, 1-3-18.8; Tom W. Worthington, 1-3-13.1.

**WOMEN A** — Linda Martin, 7-1-53.9; Fran Cooper, 6-2-57.7; Esther Ott, 5-2-51.6; Hannah Foley, 3-4-45.9; Alice Rhard, 3-4-39.5; Helen Watson, 3-4-38.5; Shirley O'Brien, 2-5-38.7; Ethel Davis, 0-7-33.2.

**WOMEN B** — Betty Tatchio, 8-1-39.9; Helen Payton, 7-2-34.8; Phyllis Centell, 6-2-27.7; Laura Lee Samples, 5-3-28.9; Alta Maag, 3-5-25.0; Rose Johnson, 3-5-20.3; Carolyn Ferguson, 3-5-18.9; Donna Graham, 1-7-17.9; Rosemary James, 1-7-17.4.

## OREGON CITY, ORE. OPEN TITLE GOES TO LOWELL DAVIS BETTY TATCHIO WINS LADIES—SANCTION 84-312

**CLASS A** — Lowell Davis, 6-1-69.3; Ben Wiedrich, 5-2-83.4; Barry Chapelle, 5-2-69.6; Henry Knauft, 4-3-72.4; Bob West, 4-3-70.4; Dean Curry, 2-5-61.1; Gerry Staley, 1-6-57.6; Jerry Gorton, 1-6-52.5.

**CLASS B** — Ron Ferguson, 7-1-54.2; Esther Ott, 6-2-55.7; Rick Rebman, 4-3-48.6; Willis Terry, 3-4-51.7; Pete Zumaran, 3-4-45.9; Chuck Ball, 3-4-43.9; Esthel Benner, 2-5-44.8; Lee Wallace, 1-6-39.0.

**CLASS C** — Darlene Williams, 6-1-52.2; Bob Sletten, 5-2-51.1; Tom Williams, 3-3-47.1; Art Lund, 3-3-48.8; Mel Shuss, 3-3-44.5; Skil Schilperoot, 2-4-38.9; Len Christensen, 0-6-39.3.

**CLASS D** — Loy Brown, 6-0-52.1; Don Ferguson, 5-1-40.1; Bob Beesley, 4-2-40.3; Mel Sherbert, 3-3-35.5; Ron Miller, 2-4-35.2; Lloyd Likens, 1-5-36.5; Ken Leatherman, 0-6-36.1.

**CLASS E**

**CLASS Larry Flanary, 5-1-42.4; Bob Johnson, 4-2-38.2; Denny Samples, 3-2-36.5; Gen Buzzini, 2-3-37.9; Jim Kosterman, 1-4-36.6; Wayne Maag, 1-4-29.6.**

**CLASS F** — Jack Salter, 6-1-36.5; DuWayne Wiedrich, 4-3-35.8; Marvin Tatchio, 4-3-35.3; Dave Sturdevant, 4-3-33.4; Lee Centell, 3-4-36.6; Floyd Flemmer, 3-4-31.5; Bill Dolan, 2-5-30.4; Lloyd Kilgore, 2-5-29.9.

**CLASS G** — Dick Evans, 7-0-32.7; Willard Hufschmidt, 5-2-40.3; Lauren Hill, 5-2-39.3; Lester Young, 5-2-32.9; Ernest Chaput, 2-5-28.2; Clarence Wood, 2-5-26.9; Art Taylor, 1-6-18.3; Bill Johnson, 1-6-16.3.

**CLASS H** — Bud LeDoux, 7-1-31.5; Virginia Bushnell, 6-2-30.0; Dick Helm, 5-3-26.3; Dale Dufur, 4-4-24.0; Tom Ritter, 3-5-27.2; Jack Stryker, 3-5-26.4; Larry Rickert, 3-5-24.5; Bob Bushnell, 3-5-23.4; Frank Dvorshak, 2-6-23.5.

**CLASS I** — Dave Knoebel, 7-1-21.6; Henry McGrew, 6-2-19.9; Terry Everest, 5-2-20.1; John Franich, 4-3-19.8; Alan Knoebel, 3-4-16.9; Glen Chaput, 3-4-16.1; Steve Beery, 1-6-8.8; Paul Kanyak, 0-7-3.8.

**WOMEN** — Betty Tatchio, 5-0-38.1; Phyllis Centell, 4-1-34.9; Alta Maag, 3-2-35.4; Laura Lee Samples, 2-3-33.2; Kathy Taylor, 1-4-23.0; Debi Wilson, 0-5-6.4.

## J. SMITH TOP MAN IN INDEPENDENCE, MO. OPEN—84-153 VICKI WINSTON, LADIES—ALAN FRANCIS, JUNIORS

**CLASS A MEN** — John Smith, 7-0-63.4; C. Killgore, 6-1-68.6; B. Booe, 4-3-63.4; D. Dattilo, 3-4-55.3; E. Winston, 3-4-52.3; W. Trautwien, 2-5-54.9; G. Fleek, 2-5-54.3; Outt, 1-6-43.5.

**CLASS B MEN** — Bob Johnson, 6-1-51.9; Bob Barnes, 6-1-57.3; Elmore, 5-2-53.2; D. Craig, 4-3-51.9; Jim Bray, 3-4-47.9; L. Francis, 2-5-50.0; D. Kincaid, 2-5-48.5; Gutshall, 0-7-40.5.

## INDEPENDENCE OPEN — (Continued)

**CLASS C MEN** — M.O. Turner, 6-1-49.3; Combs, 6-1-45.8; W. Henderson, 5-2-50.7; Bob Johnson, 4-3-36.4; Dickson, 3-4-37.8; McCorkendale, 3-4-37.7; J.W. Brown, 1-6-33.5; W. Shepard, 0-7-26.5.

**CLASS D MEN** — Sims, 8-1-34.6; A. Turner, 8-1-40.9; K. Whitworth, 7-2-28.9; Scott, 5-4-38.6; M. Cline, 5-4-25.4; A. Gwinn, 3-6-29.2; G. Craven, 3-6-17.5; R. CRaven, 3-6-17.4; K. Armstrong, 1-8-17.7.

**CLASS E MEN** — Rathburn, 7-0-33.0; Simmons, 5-2-30.8; Bill Johnson, 4-3-34.1; Beem, 4-3-27.7; E. Carter, 3-4-30.9; M. Fields, 3-4-29.3; M. Parker, 1-6-29.2; Morrison, 1-6-19.9.

**CLASS F MEN** — Whiting, 6-1-32.5; M. Johnson, 6-1-30.2; Acock, 4-3-24.8; Sumner, 4-3-24.2; L. Masey, 3-4-27.2; Grimsley, 2-5-29.5; Rough, 2-5-27.7; K. Hale, 1-6-24.5.

**CLASS G MEN** — R. Enzor, 7-0-24.5; K. Swigart, 5-2-23.3; Clevenger, 5-2-23.0; Bill Jobe, 4-3-29.5; Mark McFee, 3-4-20.1; Calton, 2-5-20.0; I. King, 2-5-17.1; Monty McFee, 0-7-13.9.

**CLASS H MEN** — Jeff Enzor, 6-1-18.4; L. Lowery, 5-2-15.7; A. Flores, 5-2-13.1; J. Meier, 4-3-11.2; R. Gwinn, 3-4-9.3; Roberts, 3-4-8.8; Bill Bray, 2-5-7.9.

**WOMEN CLASS A** — Vicki Winston, 5-0-73.3; Loree Meier, 4-1-39.7; Joyce Francis, 3-2-50.0; Rita Killgore, 2-3-33.3; Peggy Dattilo, 1-4-30.6.

**WOMEN CLASS B** — Pam Henderson, 5-0-30.0; G. Lockyer, 3-2-26.0; Nancy Bray, 3-2-23.5; D. Blood, 1-4-22.0; S. Armstrong, 1-4-20.0.

**JUNIOR CLASS** — A. Francis, 10-0-85.4; T. Francis, 8-2-73.5; J. Hart, 6-4-64.8; S. Barnes, 4-6-37.7; Krause, 2-8-6.0.

## UNGETHEIM UNDEFEATED IN VINCENNES, IND. FESTIVAL HELEN KEEPEES TOPS LADIES: S. UNGETHEIM, JRS.

**CLASS A** — Bill Ungetheim, 7-0-70.2; Ron Lewis, 5-2-60.9; Burl Taylor, 5-2-56.6; Dale Henry 4-3-58.1; Will McNeece, 3-4-53.4; Hunter Dorman, 2-5-56.1; G. H. Palmer, 1-6-50.3; Doyle Maikranz, 1-6-48.6.

**CLASS B** — Ed Howdeshell, 6-1-53.2; Ed Weyer, 4-3-53.3; Marlin Wells, 4-3-50.7; Jim Lane, 3-4-52.4; Leo Dellinger, 3-4-49.0; Mose Spainhour, 3-4-49.2; Frank McIntyre, 3-4-43.7; Curly Gladding, 2-5-47.4.

**CLASS C** — Bob Henderson, 5-0-50.5; Meril Anleitner, 3-2-46.9; L. E. Bowman, III., 3-2-42.7; Brett Kramer, 2-3-46.4; Ken Tally, 1-4-37.5; John Miller, 1-4-31.8.

**CLASS D** — (Play-off) Bob Steimel, 6-1-41.9; Bob Heuby, 6-1-39.5; Ray Dillon, 6-1-36.1; John Lowe, 4-3-31.3; C. B. Batts, 3-4-29.4; Wendell Hose, 2-5-25.5; Norman Keepees, III., 1-6-25.

**CLASS E** — Lloyd Shelton, III., 6-1-31.6; Larry Thomason, N. Jersey, 5-2-35.0; Pat Kluesner, 5-2-31.7; Pete Shain, III., 4-3-33.9; Mike Weiss, III., 4-3-26.6; Bob Reid, 3-4-24.2; Chester Evans, III., 1-6-20.0.

**WOMEN CLASS A** — Helen Keepees, III., 38.3; Sharon Weiss, III., 12.8.

**JUNIOR CLASS A** — Steve Ungetheim, 76.6; Rick Henry, 43.8.

### WEBB HORSESHOES N.H.P.A. APPROVED

1-4 pair .....	\$25.00
5-9 pair .....	\$23.50
10 pair or more .....	\$22.00

Add \$2.00 per pair shipping cost (USA)

WEBB HORSESHOE & EQUIPMENT  
1319 LICKING PIKE • WILDER, KY 41076  
Phone (606) 781-0589

## LLOYD WARD AND TARI POWELL WIN AT ROSEBUD CAFE OPEN AT SHELBYVILLE, ILL.—SANC. 84-417

**WOMENS CLASS A** — *Tari Powell, Rankin, 7-0-76.0; Emerald Moroney, Decatur, 6-1-68.1; Sis Conner, Mode, 5-2-49.5; Dona Galvin, Herrick, 2-5-41.6; Jane Rubin, Vandalia, 1-6-19.2.*

**CLASS A** — *Lloyd Ward, Mulberry Grove, 6-1-68.0; Lyle Wicker, Shelbyville, 6-1-58.6; Jesse White, Shelbyville, 5-2-61.7; Hastings Moroney, Decatur, 4-3-59.7; Bob Switzer, Peoria, 3-4-49.7; Brad Koons, Tower Hill, 3-4-42.9; Wendell Savage, Litchfield, 1-6-47.7; Chinko Wallace, Decatur, 0-6-38.0.*

**CLASS B** — *Melvin Ruch, Sullivan, 6-1-51.7; Charles Cook, Casey, 4-3-43.8; Ron Stobaugh, Rantoul, 4-3-45.2; Dwayne Connour, Hindsboro, 4-3-43.6; Roy Siddens, E. Alton, 4-3-37.4; Buck Neville, Tremont, 3-4-41.0; Paul Martin, Mode, 2-5-38.3; Jim Cook, Kincaid, 0-7-36.0.*

**CLASS C** — *Rich McAnelly, Decatur, 6-1-39.5; Roy Miller, Beecher City, 4-3-38.3; Harold Gill, Shelbyville, 4-3-37.9; Floyd Beasley, Shelbyville, 4-3-31.6; F. W. Clark, Decatur, 4-3-33.4; Phil Reynolds, Cowden, 3-4-38.7; Dale Ferguson, Tower Hill, 2-5-34.2; George King, Springfield, 2-5-33.0.*

**CLASS** — *Rex Seeds, Peoria, 5-2-33.7; Jim DuBridge, Cowden, 4-3-39.5; Rich Galvin, Herrick, 4-3-32.0; Larry Garmon, Greenville, 3-4-26.8; Pete Rankin, Shelbyville, 3-4-34.7; Victor Lady, Wheeler, 3-4-28.9; Larry Smith, Oakley, 3-4-30.2; Roy Franke, Centralia, 3-4-30.2.*

**CLASS E** — *Tim Maroon, Greenville, 7-0-25.2; Paul Gibson, Centralia, 5-2-18.7; Mike Rubin, Vandalia, 5-2-9.5; Elvis Hale, Greenville, 4-3-13.9; Gene Reynolds, Shelbyville, 3-4-14.1; Mike Malcom, Findley, 3-4-6.1; Dave Sanborn, Shelbyville, 0-6-1.2.*

**MEN 70+** — *Dennis East, Jerseyville, 5-2-45.9; Henry Franke, Centralia, 3-4-50.8.*

## BEEMAN ON TOP IN WINDSOR OPEN A SALISBURY, MD. H. MARKLAND—S. FLESHMAN DOUBLES CHAMPS

**CLASS A** — *Fred Beeman, 6-0-59.8; Allen Foley, 5-1-45.6; Phillip Fleshman, 4-2-48.2; John Shaw, 3-3-52.8; Ted Simmons, 2-4-39.9; Willard Sammons, 1-5-36.1; Ken Holden, 0-6-41.8.*

**CLASS B** — *Parker Sturgis, 5-0-46.5; Louis Walls, 3-2-37.2; Hazel Fleshman, 3-2-31.0; Steve Fleshman, 2-3-40.8; Jack Blades, 2-3-39.9; Ernest O'Neal, 0-5-24.2.*

**CLASS C** — *Al Nelson, 5-0-45.4; John Satterfield, 3-2-40.1; Dave Moser, 3-2-37.7; Harry Lecompte, 2-3-31.0; Don Fleshman, 2-3-29.8; Don Gregory, 0-5-27.6.*

**CLASS D** — *Bill Taylor, 5-0-32.8; Wm. Foze, 4-1-28.4; Charles Cherrix, Sr., 3-2-24.0; Bob Davis, 1-4-19.6; Allen Causey, 1-4-17.2; Curtis Fleshman, 1-4-15.2.*

**CLASS E** — *Missy Elias, 5-0-23.2; Darin Henry, 4-1-17.2; Vernon Bailey, 3-2-14.8; Mike Payne, 2-3-14.8; Robert Bunn, 1-4-11.2; Verlon Frye, 0-5-2.0.*

## GIDDES ON TOP IN HUNTERDON COUNTY CLASSIC HELD AT MIDDLESEX, NJ—6-30—SANC. 84-533

**CLASS A** — *Jack Giddes, 8-1-49.1; Bob Hall, 7-2-53.8; Bill Kolb, 6-3-50.3; Marty Waisempacher, 6-3-47.9; David Everitt, 5-4-43.3; Tom Skinner, 5-4-41.4; Jim Reed, 3-6-41.9; Gil Franke, 3-6-38.2; Jim Burd, 2-7-36.6; Joe Fritts, 0-9-26.7.*

**CLASS B** — *Joe Belcovitch, 7-0-45.3; Frank Rozzo, 6-1-30.5; Tom Reitz, 4-3-32.6; John Dykstra, 3-4-29.7; Bob Manzoni, 3-4-26.8; Vince Yannetti, 3-4-23.2; George Patrick, 1-6-29.7; Gene Castner, 1-6-26.6.*

**CLASS C** — *Bob Salmon, Sr., 6-1-32.6; Gene Lupo, 5-2-28.8; Don Knapp, 5-2-28.1; Tom Walker, 5-2-27.7; Andy Waisempacher, 4-3-27.6; Marty Hoffman, 2-5-19.6; Leo Ouellette, 1-6-17.9; Ralph Coleman, 0-7-12.4.*

**CLASS D** — *John Danko, 6-1-18.9; Bryan Schneider, 5-2-18.6; Bob Salmon, Jr., 5-2-16.1; Wayne Burnett, 5-2-15.6; Larry Cimirro, 4-3-17.7; Robert Burnett, 2-5-9.1; Dave Everitt, Jr., 2-5-8.9; KKevin Wolfenden, 0-7-6.0.*

# 1984 Las Vegas/Hacienda Pro/Am Celebrity Horseshoe Tournament

December 2-6, 1984 at the Hacienda Hotel — Las Vegas

<p><b>1 SINGLE OCCUPANCY</b> One person in Room Who Will Enter Tournament <b>\$205<sup>00</sup></b> *A-B-C-D-E-F</p>	<p><b>2 DOUBLE OCCUPANCY</b> 2 Persons in Room, Both Entering Tournament <b>\$290<sup>00</sup></b> *A-B-C-D-E-F</p>	<p><b>3 DOUBLE OCCUPANCY</b> (2 Persons in Room) Only one Entering Tournament <b>\$240<sup>00</sup></b> *A-C-D-E-F B is for One-All — The Rest For Two</p>
<p><b>4 SINGLE CONTESTANT</b> Not Registered At Hacienda Hotel <b>\$75<sup>00</sup></b> *B-C-D-E-F</p>	<p><b>5 NON-CONTESTANT</b> Person Not Registered At Hacienda Hotel <b>\$30<sup>00</sup></b> *C-D-E-F</p>	<p><b>6 MINORS (UNDER 18)</b> Who Attend Awards Dinner <b>\$12<sup>50</sup></b></p>

**NOTE: All packages apply to 5 nights (December 2-6)**

- \* (A) All Rooms with 2 double-size beds.  
 (B) Tournament Registration Entry Fee  
 (C) Welcome Cocktail Party (D) Awards Dinner  
 (E) Nightly Champagne Cocktail Party  
 (F) Free Casino Fun Book

## REGISTRATION & ENTRY FORM

Name \_\_\_\_\_ NHPA CARD NUMBER \_\_\_\_\_

Address \_\_\_\_\_ ZIP \_\_\_\_\_

Last 3 Sanc. Tourn. \_\_\_\_\_ Phone \_\_\_\_\_

Please enter me under package No. 1 — No. 2 — No. 3 — No. 4 — No. 5  
 — No. 6 — Please circle package(s) selected.

Enclosed is my Reservation Check in the Amount of: \_\_\_\_\_  
 (Male) (Female)

Please Make Check Payable To: HORSESHOE TOURNAMENT and mail care of The HACIENDA HOTEL, P.O. Box 15566, Las Vegas, Nevada, 89114. Att: HORSESHOE TOURNAMENT. DEADLINE: Oct. 30

## GALESBURG, IL. JULY 4TH OPEN WON BY RAY PHILLIPS SANCTION 84-415

**CLASS A** — Ray Phillips, 5-0-67.7; H. Nelson, 3-2-53.4; B. Hafner, 2-3-58.2; S. Jackson, 2-3-57.4; D. Swank, 2-3-51.1; L. Gillespie, 1-4-49.3.

**CLASS B** — B. Switzer, 4-1-49.6; L. Carey, 3-2-46.6; R. Sornberger, 3-2-46.8; G. Hintz, 2-3-42.0; H. Schumaker, 2-3-43.7; H. Bozard, 1-4-44.6.

**CLASS C** — B. Barnes, 3-2-41.6; J. Sims, 3-2-38.6; V. Stangeland, 3-2-37.0; D. Jackson, 3-2-35.4; E. Rosene, 2-3-33.6; H. Goudy, 1-4-30.6.

**CLASS D** — E. Reedy, 5-0-34.2; R. Seeds, 4-1-31.8; D. Wehrle, 3-2-35.5; J. Davis, 2-3-28.8; B. St. George, 1-4-25.6; C. Jones, 0-5-16.2.

**CLASS E** — C. Grigsby, 5-0-26.6; T. Ronk, 3-2-19.6; B. Wegman, 3-2-16.0; T. Mueller, 3-2-16.2; H. Carson, 1-4-12.5; C. Scheurman, 0-5-13.4.

## JULY 4TH OPEN—CEDARTOWN, GA—SANCTION 84-348

**CLASS A** — Larry Morton, 7-0-65.9; James Black, 5-2-58.6; Sonny Conaway, 4-3-57.2; Willis Grant, 4-3-49.7; Jim Waters, 3-4-53.8; Lamar Fowler, 3-4-43.6; Carl Gable, 2-5-39.6; Danny Wallac, 0-7-42.6.

**CLASS B** — Orval McElroy, 6-1-42.4; Clayton Kurtz, 5-2-43.5; Hank Irwin, 4-3-46.5; Dwight Carter, 4-3-44.7; Alex Simpson, 4-3-34.7; Pete Glenn, 3-4-43.3; A. W. Weatherford, 2-5-32.9; George Bradfield, 0-7-32.7.

**CLASS C** — Richard Williams, 6-1-36.3; James Fowler, 6-2-38.6; Jim Wood, 4-2-35.0; Bodie Spencer, 3-3-33.2; Tommy Lawson, 3-3-28.1; Frank Earwood, 1-5, Rick Presley, 0-6-25.2.

**CLASS D** — Roy Whitlock, 6-1-28.2; Terry Logan, 6-2-23.4; Donnie Williams, 5-3-18.4; Anthony Brock, 4-3-21.6; Steve Crumley, 4-3-20.7; Hershel Dison, 3-4-18.6; Walter Remic, 1-6-17.0; Jimmy Spencer, 0-7-9.8.

## KAPNIS EASY WINNER IN LOWELL, MASS. OPEN — SANC. TYNGSBORO, MASS.

**CLASS A** — John Kapnis, 5-0-69.1; Bertha Baillargeon, 4-1-57.2; Jeffery Bochese, 3-2-49.4; Pete Bochese, 2-3-53.3; Paul Dumont, 1-4-40.4; Sam Raymond, 0-5-29.8.

**CLASS B** — Mary Ryan, 6-1-46.0; Danny Martin (Jr.), 5-2-36.0; Bill Choser, 4-3-40.5; John Layman, 4-3-39.2; Bill Lawson, 3-4-36.1; Tom Hanley, 3-4-33.3; Norm Ricard, 2-5-40.8; Ernie Baillargeon, 1-6-25.1.

**CLASS C** — Barbara McNeill, 6-1-42.1; Bob Evans, 6-1-36.9; Dick Campbell, 5-2-31.4; Paul Dupuis, 4-3-26.1; Leon Pauling, 3-4-28.0; George St. Pierre, 2-5-29.7; Chuck McNeill, 1-6-30.7; Don Harrison, 1-6-26.1.

**CLASS D** — Howard Stewart, 5-0-24.6; Ed Peck, 4-1-30.5; George Harris, 3-2-25.6; Tom Courtney, 2-3-20.4; John Garson, 1-4-22.7; John Martin, 0-5-25.2.

**CLASS E** — Irvine Hunter, 5-1-27.8; Chuck McNeill, 5-1-28.6; Bill Charette, 4-2-25.0; Betty Harris, 3-3-27.8; Alan Bell, 2-4-25.6; Tom Matis, 2-4-22.2; Charles Denehy, 1-5-17.8.

**CLASS F** — Sandy Matis, 6-0-20.5; John Duran, 3-3-21.0; Gloria Martin, 3-3-17.4; Kenneth Lawson, 3-3-16.6; Wayne Philbrick (Jr.), 2-4-19.8; Buddy Whitehouse, 2-4-17.2; Wayne Bell (Jr.), 2-4-16.6.

**CLASS G** — Rudy Gauthier, 6-1-25.3; Frank Ryan, 6-1-20.6; Sharon Meredith, 4-3-19.8; Danny Pacheco, 4-3-15.3; Lisa McNeill, 3-4-18.8; Tom Saucier (Jr.), 3-4-12.6; Norma Hjulstrom, 2-5-14.3; Mickey McNeill, 1-6-13.8.

**CLASS H** — Alan Roscoe, 6-1-23.1; James Greeley, 5-2-19.8; Pauline Tourville, 4-3-12.5; Dav Tremblay, 3-4-14.1; Russell Webster, 3-4-13.7; Albert Little, 3-4-10.4; Shirley Nobles, 3-4-7.9; Pete Radzik, 1-6-6.8.

## GARDEN STATE GAMES TITLE TO BILL MACINTYRE MIDDLESEX, NJ—SANC. 84-532

**CLASS A** — Bill MacIntyre, 7-0-63.6; Joe McCrink, 6-1-58.3; Marty Waisempacher, 4-3-53.7; Jack Giddes, 3-4-50.3; Phil Zozzaro, 3-4-50.0; Stan MacCarty, 2-5-48.9; Donn Grady, 2-5-45.5; Bob Hall, 1-6-37.6.

## GARDEN STATE — (Continued)

**CLASS B** — Jack Fritzges, 6-1-45.4; Frank McCrink, 5-2-42.2; Gil Franke, Jr., 5-2-35.7; Henry Potts, 4-3-39.4; Ron Vogel, 3-4-35.7; Wes Cook, 3-4-32.3; Herman Wieser, 1-6-38.6; Lou Testa, 1-6-29.7.

**CLASS C** — Henry Batson, 7-0-32.8; Bob Manzoni, 4-3-30.6; Vince DeMicco, 4-3-29.8; Frank Rozzo, 4-3-25.4; George Patrick, 4-3-25.4; John Forti, 3-4-28.0; Bob Salmon, Sr., 1-6-25.7; Bill Gurgurich, 1-6-23.3.

**CLASS D** — Tom Manzoni, 7-0-38.7; Larry Thomason, 4-3-31.0; Joe Fritts, 4-3-30.0; Don Gotts, 4-3-28.6; Andy Waisempacher, 4-3-26.2; Vince Soriero, 2-5-26.6; Tom Walker, 2-5-22.9; Ed Dalton, 1-6-23.2.

**CLASS E** — Don Winkler, 7-0-25.9; Clarence Moss, 6-1-25.0; Bryan Schneider, 5-2-18.5; Marty Hoffman, 4-3-17.6; Wayne Burnett, 3-4-17.9; Bob Burnett, 2-5-7.2; Richard Molnar, 1-6-6.4; Kevin Wolfenden, 0-7-5.8.

## KNAUFT OF WASHINGTON TOPS LEWISTON, IDAHO OPEN SANCTION 84-490

**CLASS A — MEN** — Henry Knauft, 7-0-68.5; George Sala, 5-2-52.0; Dean Curry, 4-3-61.3; Rick Rebman, 4-3-52.0; Wally Rehard, 3-4-46.4; Norm Watson, 2-5-48.5; Chuck O'Brian, 2-5-36.3; Howard Abbott, 1-6-35.8.

**CLASS B — MEN** — Ken Riersgard, 6-1-44.9; Tom J. Worthington, 4-3-36.1; Bob Winn, 4-3-34.8; Todd Schoenwald, 4-3-33.9; Ray Looper, 3-4-39.9; Wallace Michael, 3-4-31.6; Art Robinson, 2-5-29.8; Jo Jensen, 2-5-27.4.

**CLASS C — MEN** — Virgil Brayette, 6-1-25.0; Alan Hobdey, 5-2-26.6; Tom Brownlee, 5-2-23.2; Max Harris, 4-3-25.5; Barney Brownlee, 4-3-21.5; Kraig Allen, 3-4-21.9; Ross Watson, 1-6-18.5; Tom W. Worthington, 0-7-6.4.

**CLASS D — MEN** — Larry Covey, 7-0-17.7; Morris Martin, 5-2-19.1; Sid Bigelow, 5-2-15.1; Don Allen, 3-4-11.1; Jim Firzloff, 1-6-5.43; Mike Worthington, 0-7-3.4.

**LADIES & JRS.** — Shirley O'Brian, 5-0-45.0; Hannah Foley, 4-1-41.6; Helen Watson, 3-2-31.7; Alice Rehard, 2-3-29.5; JoAnn Allen, 0-5-6.3; Chris Worth, 1-4-20.2.

## KENTUCKY'S TOLLESBORO OPEN WON BY S. LOVELACE SHIRLEY MOORE LADIES; TONY WEBB, JRS.

The Tollesboro Open was the smoothest one of the 1984 season. It was only a one day affair. Class winners are as follows: Class A: S. Lovelace; Class B: B.W. Tarvin; Class C: G. Estes; Class D: G. Webster; Class E: B. Snider; Class F: H. Lovelace; Class G: T. Switzer; Class A Women: S. Moore; Class B Women: R. Estes; Jr. Class: T. Webb.

**CLASS A MEN** — Stan Lovelace, 7-0-71.1; Rube Blevins, 4-3-65.2; Ed Henry, 4-3-65.0; Jim Noble, 4-3-57.6; Denny Malone, 4-3-56.5; Harold Holland, 3-4-61.8; Jim Steel, 2-5-57.4; Forrest Cooper, 0-7-44.6.

**CLASS B MEN** — Warren Tarvin, 6-1-54.6; Ed Curran, 6-1-56.9; Ray York, 4-3-54.0; Robert Simpson, 3-4-57.8; Chick Henn, 3-4-48.4; Wm. Litteral, 3-4-45.1; Don Hayes, 2-5-50.5; John Hankins, 1-6-50.6.

## NHPA PUBLICITY REPORT FOR OCTOBER

By BERNARD HERFURTH

No sport has proven successful without a good National Association. The NHPA does not wish to dictate to the State Associations. It wishes to work in harmony with the States to promote ours as a better organized sport.

For years our membership hovered around the 5000 mark. Today we are over the 8000 mark and still growing. With Publicity, Promotion and Membership Committees it is our hope to reach the 10,000 membership mark soon.

Publicity gives out suggestions on how to increase publicity in your local areas. Plans and ideas are usually published monthly in our *Digest*. It is hoped that more members will subscribe to the *Digest*. It keeps you up-to-date with information concerning our sport, nationwide.

The NHPA plan to reach out and give information concerning organized horseshoe pitching has been successful. Hundreds have sent in requests for the 12 page NHPA flyer. The names were obtained by inserting the NHPA in local newspapers.

All members are requested to publish the NHPA address in all newspaper articles. Please insert the following: **Free 12 page Horseshoe Pitching. Send a large stamped, self-addressed envelope to NHPA, Box 810, Circleville, Ohio 43113.**

This fall should see a feature article concerning our sport in a "Sports Illustrated." Show your local sports editor this article when it is published. Possibly he will show more interest in publishing your articles in the



**PUBLICITY REPORT — (Continued)**

future. It will let newspapers realize that we are getting recognition.

Our NHPA Christmas stamp is getting good response. A sheet of 48 stamps for \$1.00. Plans to issue a regular stamp for the year around sale is being planned. Send your order to Donnie Roberts.

NHPA Publicity wishes to thank all those who have cooperated in helping out our Publicity Program. We hope more members will take an active part in giving our sport more publicity during the coming year. Thanks.

**D. WARD HEAD MAN IN TENN. DAVENPORT MEMORIAL OPEN**

**CLASS A** — D. Ward, 7-0-71.0; R. Norwood, 6-1-72.8; J. Vines, 4-3-56.1; J. Black, 3-4-54.1; C. Montgomery, 3-4-52.6; G. Whaley, 3-4-50.7; D. Stallings, 2-3-51.4; J. Shelton, 1-6-47.7.

**CLASS B** — G. Lewis, 4-1-52.2; H. Jackson, 3-2-51.5; J. Adkerson, 3-2-48.7; H. B. Fowler, 3-2-47.9; W. Bennett, 2-3-44.2; C. Bennett, 0-5-35.1.

**CLASS C** — J. Walker, 5-0-47.9; Jr. Haire, 4-1-42.5; R. Massengill, 3-2-32.5; S. Cornette, 2-3-40.0; H. Foster, 1-4-30.0; W. Jennings, 0-5-34.3.

**CLASS D** — L. Byrd, 3-1-34.4; J. McIntosh, 3-1-32.7; J. Nash, 2-2-28.8; H. Lones, 2-2-26.6; J. Davis, 0-4-21.0.

**A. PERRY, T. POWELL, M. RIDINGER, K. FARRIS  
TITLISTS IN GREENVILLE, OH. RINGER CLASSIC**

**CLASS A** — Alvin Perry, 10-1-83; Don Kuchcinski, 10-1-81.8; Jim Knisley, 9-2-80.4; Mark Seibold, 8-3-79.7; Ralph Maddox, 6-5-77.0; George Moon, 5-6-74.7; Levi Miller, 5-6-69.2; Mark Dyson, 4-7-73.7; Elmer Hohl, 4-7-71.1; Roger Norwood, 4-7-66.8; Lawrence Miller, 1-10-61.9; Dale Dombrosky, 0-11-62.1.

**CLASS B** — Earl Waggoner, 10-1-73.4; Steve Hohl, 9-2-71.7; Gordon Meece, 8-3-68.0; Ansil Copeland, 7-4-68.1; Al Zadroga, 7-4-67.8; Clarence Bellman, 6-0-65.7; Donnie Roberts, 4-7-62.5; Bill Campbell, 4-7-60.7; Dan Kuchcinski, 4-7-59.8; John Brown, 3-8-61.6; Estil Bills, 2-9-60.5; Allen Perry, 2-9-55.9.

**CLASS C** — Clyde Martz, 7-3-64.4; Marvin Craig 7-3-65.5; Gary Roberts, 7-3-65.1; Ken Kugler, 6-4-64.8; Henry Hostetler, 5-5-61.4; Gene Rice, 5-5-60.7; Max Roseberry, 5-5-59.4; Joe Kuchcinski, 5-5-56.5; Jim Kuchcinski, 4-6-58.4; LaVergne Butcher, 3-7-50.0; Fred Brown, 1-9-45.4.

**CLASS D** — Loren Coy, 5-0-67; John Brown, 4-1-60.8; Lester Stephenson, 3-2-54.5; Bill McClain, 1-4-57.1; Steve Powers, 1-4-55.8; Dave Rose, 1-4-47.6.

**CLASS E** — D. Carnahan, 5-0-62.9; J. Markewicz, 4-1-57.4; F. Collins, 2-3-57.8; C. Dunlap, 2-3-54.2; F. Hix 1-4-50.6; J. Witschger, 1-4-44.5.

**CLASS F** — K. Waggoner, 6-0-61.2; R. Johnson, 4-2-64.6; E. Schultz, 4-2-62.8; J. Hughes, 3-3-61.9; E. Risley, 3-3-55.7; J. Hurst, 1-5-53; M. Frazier, 0-6-46.4.

**CLASS G** — E. Sarbaugh, 6-0-64.8; R. Gyorkos, 4-2-65.3; B. Colville, 4-2-56.4; B. Garber 4-2-50.8; L. Woolace, 2-4-51.8; B. Baldwin, 1-5-59.8; L. Rose, 0-6-38.6.

**CLASS H** — O. Reno 5-1-57.4; B. Ison, 5-1-50.0; J. Boesch, 4-2-49.1; E. Noe 3-3-50.0; George Stifel, 2-4-40.8; J. Ridinger, 1-5-43.1; F. Dyson, 1-5-41.5.

**CLASS I** — D. Steward, 5-0-50.0; B. Fourman, 3-2-43.3; W. Green, 3-2-42.9; M. Snider, 2-3-43.9; G. Neff, 2-3-38.7; H. Miller, 0-5-37.3.

**CLASS K** — L. Martini, 5-0-44.1; M. Eakins, 4-1-44.9; B. Pence, 3-2-40.1; M. Miller, 2-3-42.4; C. Meyer, 1-4-36.8; W. Kreiger, 0-5-36.8.

**CLASS L** — F. Asher, 4-1-45.1; T. Randolph, 4-1-42.6; M. Rodocker, 2-3-44.4; J. Taylor, 2-3-38.5; R. Whitesel, 2-3-38.3; E. Pratt, 1-4-41.6.

**CLASS M** — M. Gross, 6-0-42.1; H. Denlinger, 4-2-39.6; R. Futrell, 3-3-43.4; B. Shuler, 3-3-35.2; B. Robinette, 3-3-33.3; W. Beckman, 2-4-35.5; C. Cottle, 0-6-24.1.

**CLASS N** — R. Flowers, 4-1-44.5; D. Sanders, 4-1-41.7; W. Still, 3-2-42.3; L. Glass, 2-3-41.1; J. Revack, 1-4-37.7; H. Mays, 1-4-35.75.

**CLASS O** — K. Sarbaugh, 6-0-39.7; A. Halley, 4-2-41.4; R. West, 4-2-32.2; J. Snyder, 3-3-32.1; L. Schaffner, 2-4-33.7; E. Kucharski, 2-4-30.9; D. Wheeler, 0-6-20.9.

**GREENVILLE RINGER CLASSIC — (Continued)**

**CLASS P** — B. Meyer, 6-0-38.2; L. Jacobs, 5-1-36.0; B. Bolling, 3-3-31.3; E. Canupp, 3-3-28.9; W. Canupp, 2-4-25.1; K. Walters, 2-4-23.8; D. Von Stein, 0-6-24.1.

**CLASS R** — G. Liette, 3-1-31.1; B. Gentry, 3-1-23.4; B. Allread, 2-2-23.5; B. Bradley, 1-3-27.5; D. Knisley, 1-3-20.3.

**CLASS S** — Bushman, 5-1-16.8; Schlosser, 3-3-19.3; F. Worner, 3-3-16.7; E. Ehemann, 1-5-12.1.

**CLASS T** — D. Kinnaman, 5-0-22.7; R. Brackney, 4-1-18.2; B. Pence, 2-3-16.5; J. Teevan, 2-3-15.6; G. Warvel, 2-3-11.9; R. McClain, 0-5-13.3.

**WOMEN CLASS A** — Tari Powell, 4-1-73.4; in play-off; Connie Still, 4-1-70.2; Fran Carnahan, 3-2-67.1; Bonnie Seibold, 2-3-67.1; Renee Hix, 2-3-60.9; Katherine Harrison, 0-5-56.7.

**WOMEN CLASS B** — Jean Myers, 4-1-60.1; Betty Dunlap, 3-2-54.3; Bev Smith, 3-2-50.6; Linda Von Stein, 2-3-52.0; Dorothy Slocum, 2-3-46.4; Joyce Schlosser, 1-4-47.1.

**WOMEN CLASS C** — Rose Curley, 4-1-39.6; Helen Eakins, 4-1-39.3; Lorna Reno, 3-2-38.7; Rhonda Haw, 2-3-34.9; Lillian Buterbath, 2-3-29.1; Avanelia Brown, 0-5-28.7.

**WOMEN CLASS D** — Carol Ridinger, 2-1-28.6; Millie Bushman, 2-1-22.7; Ruth Hix, 2-1-16.3; Sandy Moon, 0-3-12.5.

**GIRLS CLASS A** — Kristi Farris, 4-0-57; Lori McEldowney, 3-1-40.4; Amy Brown, 2-2-47.9; Sonya Hix, 1-3-4.8; Tonya Hix, 0-4.

**BOYS CLASS A** — Michael Ridinger, 4-1-44.8; Darrell Reno, 4-1-53; Tim Hymer, 3-2-52.9; Shawn Brown, 3-2-30.0; Doug Moon, 1-4-35.7; Eugene Hix, 0-5-32.3.

**BOYS CLASS B** — John Sigler, 4-1-33.8; J. Ridinger, 4-1-23.6; K. Collins, 4-1-18.0; J. Snider, 2-3-10.7; D. Snider, 1-4-13.3; Mark Ridinger, 0-5-5.5.

**A. TYSON TOPS MIDDLESEX, N.J. OPEN — SANC. 84-534**

**CLASS A** — Art Tyson, 7-0-72.7; Bill MacIntyre, 6-1-72.5; Stan MacCarty, 4-3-51.8; Ed Severs, 3-4-55.6; Bill Kolb, 3-4-55.0; Bob Hall, 2-5-49.0; Phil Zozzaro, 2-5-48.4; Al Cherry, 1-6-49.3.

**CLASS B** — Donn Grady, 6-1-55.5; Al Ravencraft, 5-2-49.6; Tom Skinner, 4-3-56.7; Marty Waisempacher, 3-4-49.3; Owen Farmer, Jr., 3-4-48.6; Jack Giddes, 3-4-43.6; Wayne Harrison, 2-5-45.2; Claude White, 2-5-43.3.

**CLASS C** — Jack Fritzges, 6-1-48.4; Joe Belcovitch, 6-1-46.6; Jim Burd, 4-3-42.5; Gil Franke, 4-3-41.8; Charles Davis, 3-4-42.8; Frank Smigiel, 2-5-39.4; Herman Wieser, 2-5-33.1; Dave Everitt, 1-6-34.6.

**CLASS D** — Wes Cook, 6-1-42.0; Lou Testa, 6-1-39.6; Tom Manzoni, 6-1-35.4; Hank Potts, 4-3-40.7; Henry Batson, 3-4-30.6; George Patrick, 1-6-30.8; Gene Castner, 1-6-24.5; Larry Thomason, 1-6-24.0.

**CLASS E** — Gary Diacik, 6-1-35.7; Gene Lupo, 6-1-25.8; Bill Fournier, 5-2-29.7; Lou Harlan, 5-2-26.8; Gary Pierson, 3-4-18.4; Bob Salmon Sr., 2-5-29.3; Gil Ciresa, 1-6-18.7; Bryan Schneider, 0-7-14.8.

**CLASS F** — Bob Harrison, 5-0-28.7; Bob Salmon, Jr., 4-1-22.5; Wayne Burnett, 2-3-20.4; Art Hall, 2-3-15.2; Dave Everitt Jr., 2-3-7.6; Bob Burnett, 0-5-9.8.

**1984 WORLD TOURNAMENT JUDGES' NAMES NEEDED**

Vince Yannetti of 322 Longwood Ave., Bound Brook, NJ 08805 needs the names of the following men who served as judges at the 1984 World Tournament: Ken Green, Dean Mayes, Arnold Thomas, and Norman Hutchins. PLEASE RESPOND.

**CHAMPS...** A new book on horseshoe pitching champions will be available by December 1. Read about and see pictures of such champions as Ted Allen, Curt Day, Eimer Hohl, Danny Kuchcinski, Walter Ray "Deadeye" Williams, Jim Knisley, Dale Lipovsky and others. Written by Will Gullickson, Stokes Award winner, and 1967 World Tournament manager who has booked championship tournaments and exhibition acts across the country. Known as the person who has written more on the sport than any other. Manager of Danny Kuchcinski when he was booked for the first time on the Johnny Carson TV show. Send \$10.00 to Will Gullickson, 2850-26th St. S., Moorhead, MN 56560.

## WE DESERVE A BREAK

After all these years of trying almost everything imaginable to better our position in the eyes of the spectator and in the world of sports, only to be let down again and again, but never giving up.

We knew that someday, somehow, something would happen to give our sport this breakthrough.

### AND IT HAPPENED

The Schummer System in its entirety, which includes the magnificent courts and scoreboards, supplies us with all our needs. It gives our sport far more than we thought was ever possible. The better you get to understand it, the more you will realize its potential. I have reports from almost every state in the Union to back this up.

### "OUR SPORT CAN COME ALIVE IN 85"

Get your *FREE* "3 Cheers" and blue prints and do your little part in making our sport the No. sport worldwide.

To those of you who have received your latest issue of the "3 Cheers" and don't fully understand it, I am asking you to drop me a line (or, if you have any doubt whatsoever). I know that I can satisfy you 100% that it is the only way to go to get our sport where it deserves to be in the world of sports.

### TOGETHER WE CAN GO TO THE TOP

ONE LANGUAGE WHEREVER IT IS PLAYED — P.A.R. HORSESHOE (PAR means PRO - AM - RATED)... ONE COMPLETE SYSTEM (The Schummer System) (Until we find one better)... ONE TEAM (N. H. P. A.) In complete harmony with ONE GOAL (The No. 1 Family Sport)

### WE WILL MAKE EVERY EFFORT TO COME TO YOUR AREA TO EXPLAIN THE SYSTEM

I had the distinct honor and privilege to be invited by the South Dakota State Horseshoe Pitchers Association to be the key-note speaker at their 1984 State Tournament Convention in Mitchell, over the Labor Day Weekend. We visited about our many N.H.P.A. activities over the past year and I gave a brief summary of the Schummer System which was on display Sunday and Monday at the State Tournament Courts.

Our sincere congratulations to all the Executive Officers, Directors and players in the South Dakota State Horseshoe Pitchers Association and to the Corn Palace Horseshoe Club in Mitchell — the Host Club. Believe me, they were wonderful hosts to my wife and me over the Labor Day Weekend.

Your friend in Horseshoe,  
Glen "Red" Henton

P.S. Let's make January 1st, 1985 — "Day One," our target for a new horseshoe era. There is no need for any delay, we can't afford it! Picture what TV and Sponsors will do with the No. 1 Family Sport... FROM THERE EVERYTHING FALLS IN PLACE.

(ADVERTISEMENT)

## 4-STATE TOURN. WON BY J. SMITH—FALLS CITY, NEB. SANC. 84-591—E. WINSTON HONORED GUEST

**CLASS A** — John Smith, Ks., 7-0-72.3; Charles Kilgore, Mo., 5-2-66.8; Dale Seybert, Ne., 5-2-65.8; Elwyn Cooper, Mo., 4-3-59.4; Lillard Pinion, Mo., 4-3-56.9; Bob Booe, Ks., 2-5-61.6; Gene Fleek, Ks., 1-6-51.3; LaVon Sperline, Ks., 0-7-46.6.

**CLASS B** — Bob Johnson, Ne., 55.2; Loren Mills, Ne., 6-1-48.2; (play-off); Glen Grotrian, Ne., 5-2-49.4; Al Rosenbohm, Ne., 4-3-47.6; Don Abernathy, Ne., 3-4-46.0; Doyle Derrick, Ks., 2-5-37.0; Ray Daugherty, Ia., 1-6-38.2; Dean Carter, Ia., 1-6-32.0.

**CLASS C** — Emery Brant, Ne., 5-0-55.2; Harry Samuelson, Ks., 3-2-50.4; Leonard Werner, Ne., 3-2-42.1; Joe Christianson, Ks., 2-3-44.3; Marion Ryan, Ne., 1-4-42.7; George Rice, Mo., 1-4-35.8.

**CLASS D** — Fay Kapke, Ne., 4-1-39.1; Ken Larson, Mo., 4-1-37.7 (play-off); Bob Hitchcock, Mo., 3-2-39.2; Jesse Hobbs, Ks., 2-3-36.0; Dean Rusho, Ne., 2-3-32.3; Wilber Gay, Mo., Forfeit.

**CLASS E** — Merle Cottle, Ne., 5-0-39.0; Doyle Derrick, Ks., 3-2-46.8; David Keys, 2-3-33.7; Marvin Edson, Ne., 2-3-31.7; Lloyd Rutherford, Ia., 2-3-26.6; Ron Scott, Ne., 1-4-26.5.

**CLASS F** — Danny Brant, Ne., 4-1-31.7; Bob Erickson, Ne., 3-2-35.7; Keith Fish, Ne., 3-2-27.2; Dale Verhoeff, Ne., 2-3-29.1; Lawrence Massey, Ne., 2-3-25.4; Lee Bussard, Ne., 1-4-20.0.

**CLASS G** — Ray German, Ne., 5-0-34.1; Lewis Brindle, Ia., 4-1-33.1; W. O. Nelson, Ks., 2-3-27.0; Elmer Schlapf, Ne., 2-3-26.2; Earl Barker, Ne., 2-3-23.0; Alvin Strasil, Ne., 0-5-22.3.

**CLASS H** — Arlo Bartels, Ne., 5-0-29.2; Murph Tinus, Ne., 4-1-23.5; Bob Hopkins, Ne., 3-2-23.5; Shady Heist, Ne., 2-3-27.4; Charles Brandt, Ne., 1-4-14.7; Milt Harmon, Ne., 0-5-16.1.

**CLASS I** — Don Grotrian, Ne., 5-0-20.5; Fred Beeson, Ne., 3-2-24.4; Marvin Mount, Ia., 3-2-15.0; Jay Beach, Ia., 2-3-15.5; Tim Boerner, Ne., 1-4-17.7; Bill Niemeyer, Ne., 1-4-12.6.

**LADIES CLASS A** — Sherry Larson, Mo., 3-1-32.1; Vonda Kapke, Ne., 2-2-30.0; Rita Kilgore, Mo., 1-3-24.0.

**JUNIOR BOYS CLASS A** — Tom Johnson, Ne., 2-0-20.0; Jason Brandt, Ne., 1-1-15.6; Tim Brandt, Ne., 0-2-6.3.

## CHURUBUSCO, IND. SPECIAL WON BY BELLMAN—SANC. 84-450

**CLASS A** — (play-off) Clarence Bellman, 5-2-62.0; Leroy Rowe, 5-2-63.7; Ed Kowatch, 5-2-58.3; Jim Schilling, 4-3-59.7; curly Seibold, 3-4-58.5; Bonnie Seibold, 3-4-57.5; Ed Howdeshell, 2-5-52.7; Stan McCoy, 1-6-46.9.

**CLASS B** — Robert Davis, 6-1-57.0; Walt Pickard, 5-2-53.7; Lee Antonides, 4-3-50.7; J. Cox, 4-3-47.4; Mel Bussert, 3-4-50.7; Ed Clark, 3-4-50.3; Don Newell, 3-4-48.6; Bob Pence, 0-7-37.2.

**CLASS C** — Joe Holloway, 6-1-45.9; Gale Ruschhaupt, 5-2-42.2; Glenn Sanders, 5-2-40.2; Archie Sexton, 4-2-37.7; Dale Eshelman, 3-4-47.4; George Dickson, 3-4-35.3; Mike Grimes, 2-5-28.9; Bob Hoover, 0-7-31.9.

**CLASS D** — (play-off) Stan McCoy, 6-1-50.0; Kevin Teague, 6-1-38.9; Frank Stewart, 5-2-36.1; Virgil Jackson, 5-2-34.1; Don Opdycke, 3-4-31.1; Luther Chandler, 2-5-25.6; Dale Hyndman, 1-6-22.5; Dick Lemish, 0-7-16.3.

**CLASS E** — (play-off) Chuck Parker, 5-2-40.5; John Barrows, 5-2-30.1; Gordon Sams, 5-2-34.0; Lowell Swick, 4-3-31.9; Dale Hyndman, 4-3-28.9; Eugene Brown, 2-5-28.4; Dick Sanders, 2-5-25.0; Lawrence Wooseter, 1-6-27.9.

**CLASS F** — Jim Lemish, 5-2-35.9; Bob Prohaska, 4-3-36.6; Don Herendeen, 4-3-34.7; Lynn Bair, 4-3-30.5; Wink Weinberg, 4-3-30.4; Don Bollock, 3-4-28.2; Dave Herring, 3-4-27.4; Don Hyndman, 1-6-27.8.

**CLASS G** — Pete Hobbs, 7-0-34.6; Stan Holderly, 5-2-33.3; Lawrence Wooster, 3-4-26.9; Russ Sanson, 3-4-26.0; Dick Lemish, 3-4-24.7; Stan Loy, 2-5-18.3; Doc Zarse, 0-7-16.7.

**CLASS H** — Carroll Leitch, 7-0-33.3; James Smith, 6-1-32.7; John Chandler, 4-3-21.1; Dailey Fogle, 3-4-18.4; Larry LaFever, 2-5-20.1; Joe Trobaugh, 2-5-19.4; Rick Lemish, 2-5-18.7; Don Bilbee, 2-5-16.0.

**CLASS I** — (play-off) Randy Davis, 6-1-20.4; Jim McCormick, 6-1-17.6; Roger Smith, 5-2-12.4; Steve Zarse, 4-3-12.1; Jim Mettert, 3-4-13.0; Landry Linn, 2-5-9.2; Wayne Ringer, 2-5-6.4; Ronald Grawcock, 0-7-7.6.

COVER PHOTO... Shown this month is a scene of the Clearwater Horseshoe Club courts in Ed Wright Park in Clearwater, Florida. Several winter tournaments are held here under the direction of Norm Gaseau. There is also a club house at courtside. During tournaments, there is also a public address system in use. This is truly a beautiful layout.

## COMING EVENTS

### ARIZONA ASSOCIATION SCHEDULE

#### PIONEER PARK, MESA, AZ

- Mar. 1-2-3 — Bye-Bye Snowbird Open. Entries close Feb. 19.  
 Apr. 6-7 — Annual Arizona State Tournament. Sanctioned. State and NHPA card required. Entries close Mar. 25.  
 Entry fees — \$5.00 (except Valley of the Sun. Entry fees for Valley of the Sun: \$10.00 each; \$10.00 additional for Men's class "A", \$5.00 additional for Men's classes "B," "C," "D," \$5.00 additional for Women's classes "A" and "B."
- Oct. 19-20 — Art Kamman Open. Entries close Oct. 9.  
 Nov. 16-17-18 — Bonanza Open. Entries close Nov. 6.  
 Dec. 14-15-16 — Mesa Open. Entries close Dec. 4.  
 Jan. 25-26-27 — Valley of the Sun Warm-Up. Sanctioned. State and NHPA card required. Entries close Jan. 15.  
 Feb. 12-13-14-15-16-17 — Annual Valley of the Sun Open. Sanctioned. State and NHPA card required. Entries close Jan. 25.

Send all entries and proper fees with NHPA card number and current ringer percentage to Bud Fenimore, Secy., 8152 East Hayne St., Tucson, Arizona 85710. Phone 602-296-5087.

### ARIZONA ASSOCIATION SCHEDULE

#### REID PARK, TUCSON, AZ

- Jan. 11-12 — Pima County Classic. Sanctioned. State and NHPA card required. Entries close Jan. 2.  
 Feb. 1-2 — Old Pueblo Special. Sanctioned. State and NHPA card required. Entries close Jan. 21.  
 Mar. 15-16 — President's Open. Entries close Mar. 5.  
 Apr. 19-20 — The Wind-Up. Entries close Apr. 9.
- Oct. 5-6 — Association Secretary's Open. Entries close Sept. 26.  
 Nov. 2-3 — Reid Park Classic. Sanctioned. State and NHPA card required. Entries close Oct. 10.  
 Nov. 30-Dec. 1 — Tucson Open. Entries close Nov. 20.

Entry fees: \$5.00. Send all entries and proper fees and current ringer percentage to Bud Fenimore, Secy., 8152 East Hayne St., Tucson, Arizona 85710. Phone 602-296-5087.

### YUMA, ARIZONA SCHEDULE

#### Kennedy Park

#### Yuma, Arizona

- Oct. 14 — Bingham Memorial. Singles Open. Sanction 84-552.  
 Nov. 10 — Second Annual Singles Open. Sanctioned.  
 Dec. 8 — Welcome Snowbirds Fun Weekend. Singles Open. Sanction 84-553.
- Dec. 9 — Welcome Snowbirds Fun Weekend. Doubles Open. Sanction 84-554. Possible Potluck.  
 Jan. 12 — Budweiser Second Annual Sanctioned Singles.  
 Feb. 10 — Wild & Wooley NHPA Members Singles.  
 Mar. 17 — St. Patrick's Sanctioned Singles.

Sanctioned Tournaments — State and NHPA membership required. Entry fee to all tournament YHPA members \$3.00. Non-members \$5.00. Qualifying and entry fee will close 3 days prior to tournament date. All tournaments start at 8:30 a.m.

## COMING EVENTS — (Continued)

## FLORIDA SCHEDULE

- Entry fee \$7.00, pre-registration required. Send entry fee to proper tournament director 7 days before tournament date. Scorekeeper fee 25 cents per game. NHPA and State card required. All games cancellation, 40 points or 50 shoes, whichever comes first.
- Oct. 6 — Joe Holland Open. Clearwater. Contact Norm Gaseau, 1908 Nuggett Drive, Clearwater, FL 33515. Ph. 813-443-2892.
- Oct. 13 — Fall Open. Winter Haven. Contact Joe West. 6250 Halabrin Rd., Haines City, FL 33844. Ph. 813-422-2053.
- Oct. 20 — Bee Ridge Open. Sarasota. Contact Paul Scheub, 2139 Piazza Dr., Sarasota, FL 33583. Ph. 813-966-5462. Limited to 1st 56 entries, pitch 40 ft. only.
- Oct. 27 — Beverly Hills Open. Beverly Hills. Contact Ralph Cullum, 1006 So. Bunting Way, Inverness, FL 32650. Ph. 904-726-6786. Limited to 1st 56 entries, pitch 40 ft. only.
- Nov. 3 — Clearwater Open. Clearwater. Contact Norm Gaseau, 1980 Nuggett Drive, Clearwater, FL 33515. Ph. 813-443-2982.
- Nov. 10 — Osceola Open. St. Cloud. Contact Andy Anderson, 110 Indiana Ave., St. Cloud, FL 32769. Ph. 305-892-2051. Pitch 40 ft. only.
- Nov. 17 — Marjco Open. Winter Haven. Contact Joe West, 6250 Halabrin Rd., Haines City, FL 33844. Ph. 813-422-2053.
- Nov. 24 — Orange Gore. Inaugural. Orlando. Contact James Peterson, 14224 Wing Ft. Rd., Fairway Country Club, Orlando, FL 32826. Ph. 305-275-8222.
- Nov. 30-Dec. 1 — Steinfeldt Handicap. Clearwater. Contact Norm Gaseau, 1908 Nuggett Dr., Clearwater, FL 33515. Ph. 813-443-2892.
- Dec. 8 — Bill Rowsen Open. Brooksville. Contact Dwight Thatcher, 18443 Shadyside Dr., Brooksville, FL 33512. Ph. 904-796-8922.
- Dec. 15 — Snowbird Open. Sebring. Contact Jim Fourman, 2832 Bolin Lane, Sebring, FL 33870. Ph. 813-385-7372.
- Dec. 22 — Naples Open. Naples. Contact Harold Cheffer, 1114 Hollygate Lane, Naples, FL 33940. Ph. 813-261-3120. Limited to 1st 42 entries.
- Dec. 29 — Lake Worth Open. Lake Worth. Contact Herman Wieser, 1502 So. Lakeside Dr., Lake Worth, FL 33460. Limited to 1st 32 entries.
- Dec. 29 — Holiday Open. Brooksville. Contact Dwight Thatcher, 18443 Shadyside Dr., Brooksville, FL 33512. Ph. 904-796-8922.
- Jan. 5 — New Years Open. Miami. Contact Frank Boyd, 15274 S.W. 102nd Court, Miami, FL 33157. Ph. 305-232-1401.
- Jan. 5 — Frozen Fingers Open. Brooksville. Contact Dwight Thatcher, 18443 Shadyside Dr., Brooksville, FL 33512. Ph. 904-796-8922.
- Jan. 10 — Highland County Open. Sebring. Contact Jim Fourman, 2932 Bolin Lane, Sebring, FL 33870. Ph. 813-385-7372.
- Jan. 11-12 — Manatee Open. Bradenton. Contact Jim Pelkey, Box 60, Lincoln Arms, 5030 - 14th St., West, Bradenton, FL 33507. Ph. 813-756-3992.
- Jan. 19 — Sunshine Open. Winter Haven. Contact Joe West, 6250 Halabrin Rd., Haines City, FL 33844. Ph. 813-422-2053.
- Jan. 26 — Yogi Bear Open. Apopka. Contact Norm Davey, Rte. 1, Box 2000, Apopka, FL 32703. Ph. 305-886-8168.
- Mixed tournaments unless otherwise indicated. In 2-day tournaments, players with ringer average below 40 percent will pitch on first day. Dropouts after deadline will forfeit entry unless tournament is cancelled. Starting time 9:00 a.m.
- Feb. 2 — Sarasota Open. Sarasota. Contact Paul Scheub, 2139 Piazza Dr., Sarasota, FL 33583. Ph. 813-966-5462. Limited to 1st 56 entries. Pitch 40 ft. only.
- Feb. ?? — Florida State Fair, Tampa. Contact Norm Gaseau, 1908 Nuggett Dr., Clearwater, FL 33515. Ph. 813-443-2892.
- Feb. 9 — Rotary Park Open. Winter Haven. Contact James Peterson, 14224 Wing Foot Rd., Fairway Country Club, Orlando, FL 32826. Ph. 305-275-8222.
- Feb. 14 — Sebring Open. Sebring. Contact Jim Fourman, 2932 Bolin Lane, Sebring, FL 33870. Ph. 813-385-7372.
- Feb. 15-16 — Suncoast Open. Bradenton. Contact Jim Pelkey, Box 60, Lincoln Arms, 5030 - 14th St. West, Bradenton, FL 33507. Ph. 813-756-3992.
- Feb. 16 — Orlando Open. Orlando. Contact James Peterson, 14224 Wing Ft. Rd., Fairway Country Club, Orlando, FL 32826. Ph. 305-275-8222.
- Feb. 22-23 — Sun Bank of Osceola. St. Cloud. Contact Andy Anderson, 1100 Indiana Ave., St. Cloud, FL 32769. Ph. 305-892-2051. Pitch 40 feet only.
- Feb. 23 — 50th Anniversary of Lake Worth. Contact Herman Weisser, 1502 So. Lakeside Dr., Lake Worth, FL 33460. Ph. 305-582-2938. Limited to 1st 32 entries.
- Mar. 2 — Tamiami Open. Miami. Contact Frank Boyd, 15274 S.W. 102nd Court, Miami, FL 33157. Ph. 305-232-1401.
- Mar. 2 — Jellystone Open. Apopka. Contact Norm Davey, Rte. 1, Box 2000, Apopka, FL 32703. Ph. 305-886-8168.
- Mar. 9 — Hernando Open. Brooksville. Contact Dwight Thatcher, 18443 Shadyside Dr., Brooksville, FL 33512. Ph. 904-796-8922.
- Mar. 15-16 — DeSoto Open. Bradenton. Contact Jim Pelkey, Box 60, Lincoln Arms, 5030 - 14th St. West, Bradenton, FL 33507. Ph. 813-756-3992.
- Mar. 21 — Race Week Open. Sebring. Contact Jim Fourman, 2832 Bolin Lane, Sebring, FL 33870. Ph. 813-385-7372.
- Mar. 22-23 — Fun 'n Sun Festival. Clearwater. Contact Norm Gaseau, 1908 Nuggett Dr., Clearwater, FL 33515. Ph. 813-443-2892.
- Mar. 30 — 25th Anniversary Open. Beverly Hills. Contact Ralph Cullum, 1006 So. Bunting Way, Inverness, FL 32650. Ph. 904-726-6786. Limited to 1st 56 entries. Pitch 40 ft. only.
- Mar. 30 — King Neptune Open. Sarasota. Contact Paul Scheub, 2139 Piazza Dr., Sarasota, FL 33583. Ph. 813-966-5462. Limited to 1st 56 entries. Pitch 40 ft. only.
- Apr. 6 — Peterson Open. Orlando. Contact James Peterson, 14224 Wing Foot Rd., Fairway Country Club, Orlando, FL 32826. Ph. 305-275-8222.
- Apr. 13 — Florida State Tournament (CLOSED). Sebring. Contact Norm Gaseau, 1908 Nuggett Dr., Clearwater, FL 33515. Ph. 813-443-2892.
- Apr. 20 — Florida State Handicap (CLOSED). Clearwater. Contact Norm Gaseau, 1908 Nuggett Dr., Clearwater, FL 33515. Ph. 813-443-2892.

**COMING EVENTS — (Continued)**

**FAYETTE COUNTY, PA. H.S. ASSOC.**

253 S. Mt. Vernon Ave., Uniontown, PA 15401

**Winter Schedule**

Our tournaments will be 6, 7, or 8-man Round Robin, with all games being 40 points cancellation, and 1 point each for four dead.

Trophies or equivalent will be awarded for 1st and place.

Entry fee of \$10.00 (includes scorekeeping fee) payable to Fayette County Horseshoe Pitchers

Oct. 19-20-21 — Halloween Special. Contact John Chambers, P.O. Box 707, Vanderbilt, PA 15486 or Joey Gibbs, Jr., Rte. 1, Box 1-AB, Vanderbilt, PA 15486. Ph. 412-529-2331.

Nov. 16-17-18 — Thanksgiving Special. Contact Jim Solomon, 95 Dawson Ave., Uniontown, PA 15401. Ph. 412-437-4392 or Bob Straitiff, Box 263, Uleidi, PA Ph. 412-437-6374.

Dec. 14-15-16 — Ed Donawitz Memorial. Contact Joe Gibbs, Rte. 1, Box 1-AB, Vanderbilt, PA 15486. Ph. 412-529-2331 or Jack Chambers, Box 763, Vanderbilt, PA 15486. Ph. 412-529-7266.

Jan. 18-19-20 — Chuck Roball Memorial. Contact Glenn Williams, Rte. 4, Box 248, Uniontown, PA 15401. Ph. 412-437-7733 or Rick Liptak, 2 Jamison St., Uniontown, PA 15401. Ph. 412-439-3224.

Association should accompany your entry 10 days prior to date of tournament. You will be classed according to your recorded percentage. Oct., Nov. April and May tournaments will be NHPA sanctioned. Entries will be refunded if you are unable to attend, at the discretion of the tournament director.

Feb. 15-16-17 — Valentine Open. Contact Andy Liptak, Sr. or Andy Liptak, Jr., 2 Jamison St., Uniontown, PA 15401. Ph. 412-439-3224.

Mar. 15-16-17 — St. Patrick's Open. Contact Joe Roebuck, 603 Braddock Ave., Uniontown, PA 15401. Ph. 412-438-5670 or Jake Yauger, Box 377, Hopwood, PA 15445. Ph. 412-438-2429.

Apr. 19-20-21 — Joe Tomayko Memorial. Contact Alex Burns, Box 476, New Salem, PA 15468. Ph. 412-245-8600.

May 17-18-19 — Jim Danner Memorial. Contact Casey Danner, Box 288, Newell, PA 15466. Ph. 412-938-2397.



**The shoe for the 1980's**

**STAR**

**STAINLESS HORSESHOES**

**Give them for Christmas**

**All Star's are dead soft  
and they weigh 2 lbs. 8 oz.**

**Send Check or  
Money Order to:**

**Alfred R. Boudreau Jr.  
301-A Old Ipswich Rd.  
Rindge, N.H. 03461**

**NHPA  
APPROVED**

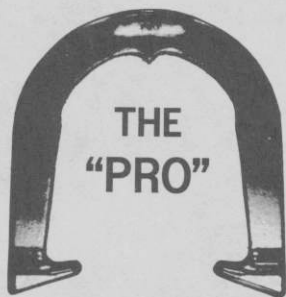


**\$69.00 per pair  
postpaid**





## THE ORIGINAL DROP-FORGED PITCHING SHOE



Two tournament tested models, forged from S.A.E. specified steel, are available. Both have hardened hooks and points, and may be ordered in your choice of medium, soft, or dead soft tempers.



AS THE FIRST MANUFACTURER OF THE DROP-FORGED PITCHING SHOE, THE OHIO HORSESHOE COMPANY IS RECOGNIZED WORLD-WIDE FOR ITS HIGH QUALITY PITCHING SHOES.

For price information and to order, contact:

# OHIO HORSESHOE COMPANY

P.O. Box 21371  
Columbus, Ohio 43221

614-457-4335