



the  
national horseshoe pitchers

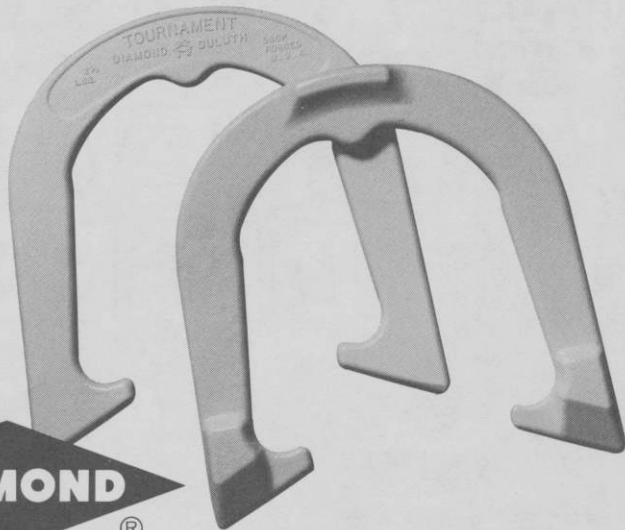
# NEWS DIGEST



MAY, 1984

Official Publication of  
**THE NATIONAL HORSESHOE PITCHER'S ASSOCIATION  
OF AMERICA**

**New!**



Advanced Design

# **TOURNAMENT PITCHING HORSESHOES**



Both backyard pitchers and pros catch and hold the stake better with DIAMOND's new advanced design "Tournament" Shoe. It features a grip positioner, hardened tips, an increased radius, a dead soft center, and a wider, deeper calk. Same drop-forged solid steel construction as DIAMOND's popular Double Ringer and Super Ringer Regulation Shoes. All American made.

Contact your nearest NHPA club or sporting goods store. For latest pitching horseshoe catalog write: DIAMOND TOOL and Horseshoe Co., P. O. Box 6246, Duluth, MN 55806.



**DIAMOND TOOL** *and Horseshoe Co.*

Subsidiary  The Triangle Corporation

P. O. BOX 6246. DULUTH, MINNESOTA 55806



"DIAMOND Pitching Horseshoes are Recognized as Official in Tournaments Sanctioned by the National Horseshoe Pitchers Association"

THE HORSESHOE PITCHER'S NEWS DIGEST is published on the 5th of each month at Aurora, Illinois, U.S.A. by the National Horseshoe Pitcher's Association of America. Editorial office, P.O. Box 1606, Aurora, Illinois 60507. Phone: 312-898-3974. Subscription rates—1st Class \$9.00; 3rd Class \$8.00 per year in advance. NHPA membership cards are available through each state secretary for \$7.00 plus any state association dues. Forms close on the 10th day of each month preceding date of issue. Advertising rates on request. F. Ellis Cobb, Editor.

---



---

#### NATIONAL OFFICERS

Glen Portt, 2803 Newcomb Rd. Albany, Ga. 31705 (912-432-0067) . . . . .	President
Earl Winston, Rte 2, Lamonte, Mo. 65337 (816-563-3536) . . . . .	1st Vice-President
Norman Gaseau, 1908 Nuggett Dr., Clearwater, Fla. 33515 (813-443-2892) . . . . .	2nd Vice-President
Vincent Yannetti, 322 Longwood Ave., Bound Brook, N.J. 08805(201-356-3862) . . . . .	3rd Vice-President
Bonnie Seibold, 1043 Grayson Ave., Huntington, Ind. 46750 (219-356-3489) . . . . .	4th Vice-President
Donnie Roberts, Box 810, Circleville, Oh. 43113 (614-474-7727) . . . . .	Sec./Treas.
Claude White, Jr., 940 Knollwood Ct., Plainfield, NJ 07062(201-753-2298) . . . . .	Chr. Reg. Dir.

Volume 27

May, 1984

No. 4

---



---

## From Your President — Glen A. Portt

When elected your President, I outlined specific programs to the Council which I wanted accomplished. One was the establishment of a 'Letter to the Editor' page on a regular basis where every member would have a chance to voice his or her opinion. The 'Form Out of the Mail Bag' column fulfills this requirement. It is a vehicle whereby the men and women of the NHPA can express their honest differences as to what they believe is best for our organization.

Some of the letters received have obviously been fired off in anger primarily due to a lack of complete information; others because of misinterpretation. Many members, in the interest of promoting harmony and growth in the NHPA, have written directly to myself or other Council members for answers and, in my opinion, have received satisfactory explanations. Nevertheless, *if you are a member* and wish to air your feelings to the membership as a whole, you have the right to do so. That is what our great country is all about.

Several questions have arisen which I will answer. First, why does the NHPA Sanction Certificate contain the 'TV and Video Tape' clause? The answer in one word: Protection! Every sport (baseball, basketball, golf, bowling, tennis) has this protective clause. Each of them are in the business of putting on a 'show' and because it is *their* 'show', no one televises or reproduces it without first clearing with them. In these sports, millions of dollars are at stake. True, the NHPA is not into big time TV yet, but hopefully, somewhere down the road, it will be. The protection is primarily for our World Tournaments and the Majors we are planning. (Local televising of club's regularly scheduled events is encouraged and it is not felt there is a big problem here.) Your Council felt this overall protective clause was needed. It took the proper action. In addition, it initiated action to register our NHPA LOGO with the U.S. GOV'T TRADEMARK Division as another protective measure. Our LOGO can not now be used without our permission.

Second, the decision of the Council to print results of Sanctioned Tournaments only appears to have come under fire. First, let's consider just what a Sanctioned tournament is. Primarily, that the courts are as prescribed by the NHPA, that the tournament will be run within prescribed rules, and that all contestants be NHPA members. About the only reason to hold an UNSanctioned event would be to let non-members pitch. These are the people who use Sanctioned shoes, who pitch Sanctioned distances, on Sanctioned courts, under NHPA rules, taking advantage of all the things which the NHPA has developed over the years, but who don't want to become members. They want a free ride. REMEMBER THIS: *NHPA members are the ones who are paying for the Digest with their dues and their subscriptions.* Ask yourselves just one question: Why should these NHPA members subsidize and pay to publish the names and results of pitchers who are not members?

Third, there is a question as to the propriety of the Council's action in granting charters. All charters have been granted in accordance with our Constitution. There has been no impropriety. The present rule has been in effect for considerable time. It may need amending. If an amendment is needed, it should be brought before the delegates at the annual convention. That is the NHPA way.

Fourth and last, but most important: What is the role of the NHPA? Answer: *The NHPA is the National Governing Body of our sport.* Every sport has one. National rules are set and followed. If each of the 50 states wanted to make and follow its own rules, there would be utter chaos. . . and

## PRESIDENT — (Continued)

No Governing Body in any sport. Thankfully, that is not so. The rules which we now have were made down through the years by chosen delegates at our annual conventions...by the democratic process. Problems can best be settled by frank discussions... people to people. Your Council encourages this.

### National Handicap Tournament

The entries are coming in. My congratulations to the Bradenton, Fla. club for being the first!

### AWARDS

There are many deserving people in our organization who have never been recognized for their continuing work in behalf of our sport. This has been due, primarily, because they have not been brought to the attention of the Council.

Although your Council does have knowledge of a few, its overall view is limited in scope. It, therefore, invites members to nominate those people whom they think deserve recognition.

Each year a few are selected for Achievement Awards plus one outstanding individual for the coveted Stokes Award.

Send your nominations to Sec-Treasurer not later than 1 July, 1984. Tell the Council why an award should be granted.

## SPRING OPEN, SHELDON, ILL., MAY 27, SANCTIONED

The Sheldon Ringers Club will sponsor their Spring Open on Sunday, May 27 at their courts in Sheldon, Illinois. Tournament starts at 10 a.m. and will be sanctioned. Entry fee is \$5.00. Advance entries appreciated. Contact J.R. Gillespie, Rte. 1, Box 85, Martinton, Ill. 60951. Ph. 815-428-7452.



Pitchin' Palace is a 12-court indoor facility located off Interstate-94 between Milwaukee and Chicago. It's 20 minutes south of Milwaukee in Racine County and 10 minutes north of the Illinois border. Travelers heading south exit at Highway 20 and those going north exit at Highway 11. In each case we're off the West Frontage Road.

Pitchin' Palace is a new facility and it includes a cocktail lounge offering a complete line of beer and liquors. Each court has an electronic scoreboard which can be operated at either pit.

We welcome you to come and see our facility and we promise to work hard to make your visit a pleasurable experience. Thank you! Pitchin' Palace Staff.

Here's our tournament schedule for January through May and we welcome club and group outings. Inquiries can be made by telephoning Pitchin' Palace 414-886-8555. Entries are mailed to Pitchin' Palace, 14000 Leetsbir Road, Sturtevant, Wis. 53177.

### Saturday, May 12

Another "HOMER" tournament. Entry fee: \$24 per team. Deadline May 1.

### Saturday and Sunday, May 26-27

The Memorial Day Open. Singles, eight-man, round-robin, entry fee for men and women: \$12, juniors: \$2.

(ADVERTISEMENT)

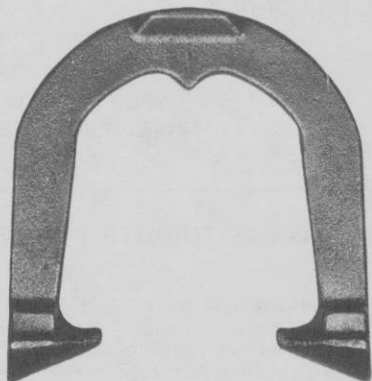
THE NEW IMPROVED

**IMPERIAL**

- BETTER ENERGY ABSORPTION
- LARGER RINGER BREAK
- WIDER BLADES
- REDUCED PRICES

U.S.A. PRICES  
(Postpaid)

1 Pair .....	\$26.00
2 to 5 Pair .....	\$25.00
6 Pr. & Over .....	\$20.00
	Freight Collect

**CLYDE MARTZ**

3726 Henley Dr.  
PHONE: 412-731-4662

Pittsburgh, Pa. 15235

## NOTICE TO: CITIES, CIVIC ORGANIZATIONS, HORSESHOE CLUBS, INDIVIDUALS AND SPONSORS

Want to Honor Your Favorite Horseshoe Player or Club? Contact the City of Huntsville Parks and Recreation Department about placing their picture in the 1984 Official World Tournament Program. Several price ranges are available. Call (205) 532-7418 prior to May 15, 1984, to reserve your space.

## SIX STATES COMPETING FOR NHPA HALL OF FAME SITE

By CLAUDE WHITE, RD Chr.

Southern California, Minnesota, Missouri, Ohio, Utah and West Virginia have thrown their collective hats into the ring in an effort to entice the NHPA to have the coveted Hall of Fame headquartered within their borders.

It seems that Jack Holesapple, a Waverly business agent, has presented to the Pike County (Ohio) Chamber of Commerce plans (which were approved) for a \$1.9 million recreational development of which the proposed focal point would be the NHPA's Hall of Fame.

Charles Bunner, 1st Vice-President of the Monongahela Valley HPA, Fairmont, West Virginia already has the endorsement of his City Council and a resolution from his Mayor, authorizing the City Administration to assist in a Hall of Fame presentation.

Guidelines outlining the NHPA's requirements have been forwarded to the above state's RDs, including Jack and Charles, with replies expected in June.

## WEBB HORSESHOES N.H.P.A. APPROVED

1-4 pair .....	\$25.00
5-9 pair .....	\$23.50
10 pair or more .....	\$22.00

Add \$2.00 per pair shippin cost (USA)

**WEBB HORSESHOE & EQUIPMENT**  
1319 LICKING PIKE • WILDER, KY 41076  
Phone (606) 781-0589

## A MEMORIAL TRIBUTE TO LEE DAVIS AND CLETUS CHAPELLE

By RUTH HANGEN

In the past year the Hall of Fame Committee has lost two of its members, Lee Davis and Cletus Chapelle. These conscientious, loyal workers have passed away. Both men always gave their best and fulfilled their obligations with scrupulous, upright actions. They will be missed by all. Our sincere condolences to their families.

The Hall of Fame Committee also wishes to extend sympathy to the family of Lloyd Frederickson. At the time of his passing most of us were unaware of it. We are very appreciative of all the work Lloyd put into the Hall of Fame Book and Plaque. He designed these and poured many hours of effort into this endeavor. They will be an enduring memory to his talent and generosity.

The N.H.P.A. Hall of Fame Committee is most proud that these three men, with their adherence to a code of values, brought such integrity to our Association.

## SUPPORT THE NHPA & THE 1984 WORLD TOURNAMENT

By making a donation to Friends of Horseshoes. Send your name and donation to City of Huntsville Parks and Recreation Dept. 125 Earl Street, Huntsville, Alabama 35805.

YOUR NAME will appear in the 1984 OFFICIAL PROGRAM as a sponsor of the NHPA World tournament in HUNTSVILLE, ALABAMA.

## HOUSING AT 1984 W.T., HUNTSVILLE, ALABAMA

BARCLAY NORTH, 2201 N. Memorial Parkway, Huntsville, Ala. 35810. Ph. 205-536-7441. Singles, \$32.00-\$35.00; Doubles \$35.00-\$44.00. Discount rates available to NHPA members identifying themselves.

BARCLAY SOUTH, 3312 So. Memorial Parkway, Huntsville, Ala. 35801. Discount rates available to NHPA members with identification. Singles \$32.00. Dble. \$35.00.

BEST WESTERN CARRIAGE INN, 3811 University Dr., Huntsville, Ala. 35805. Ph. 205-837-5555. Discount rates to NHPA members with identification. Rates on request.

BEST WESTERN SANDS, 2700 So. Memorial Parkway, Huntsville, Ala. 35801. Ph. 205-536-6661. Single, \$33.00-\$35.00. Dbl. \$39.00. Discount to NHPA members with identification.

HOLIDAY INN, 3810 University Dr., Huntsville, Ala. 35805. Ph. 205-837-7171. Discount to NHPA members with identification. Rates on request.

LA QUINTA INN, 3141 University Dr., Huntsville, Ala. 35805. Ph. 205-533-0756. Discount to NHPA members with identification. Single, \$34.00, Dbl., \$38.00-\$40.00.

RAMADA INN HUNTSVILLE, 3502 So. Memorial Parkway, Huntsville, Ala. 35801. Ph. 205-881-6120. Discount to NHPA members with identification. Single \$30.00-\$34.00. Dbl. \$38.00-\$42.00.

RAMADA INN MADISON, 8716 Highway 20 West, Madison, Ala. 35758. Ph. 205-772-0701. Discount to NHPA members with identification. Rates on request.

SHERATON INN HUNTSVILLE, 4404 University Dr., Huntsville, Ala. 35805. Ph. 205-837-3250. Discount to NHPA members with identification. Rates on request.

THE REGIS INN, 1220 No. Memorial Parkway, Huntsville, Ala. 35810. Ph. 205-539-8171. Discount to NHPA members with identification. Single, \$34.00-\$24.00. Dbl. \$35.00.

BROOKSMOTEL, 3800 Governors Dr., Huntsville, Ala. 35805. Ph. 205-539-6526. Single, \$16.00-\$18.00. Dbl. \$20.00-\$25.00.

CATALINA MOTEL, 5011 Governors Dr., Huntsville, Ala. 35805. Ph. 205-837-2200. Single \$16.00-\$18.00-\$21.00. Dbl. \$25.00.

**HUNTSVILLE HOUSING — (Continued)**

COLONY INN, 4800 Governors Dr., Huntsville, Ala. 35805. Ph. 205-837-9370. Single \$21.00. Dbl. \$25.00.  
 FRANK-ANN MOTEL, 2101 So. Memorial Parkway, Huntsville, Ala. 35801. Ph. 205-536-8511. Single \$20.00. Dbl. \$26.00.  
 HERTZ SKYCENTER, 10001 Highway 20, Huntsville, Ala. 35806. Ph. 205-772-9661. Rates on request.  
 HOWARD JOHNSON MOTOR LODGE, 2524 No. Memorial Parkway, Huntsville, Ala. 35810. Ph. 205-852-9200. Single \$34.00. Dbl. \$44.00  
 HUNTSVILLE HILTON, 401 Williams Ave., Huntsville, Ala. 35801. Ph. 205-533-1400. Rates on request.  
 MAPLE GROVE, 2515 Meridian Street, Huntsville, Ala., 35811. Ph. 205-536-5831. Single \$13.00.  
 MOTOR INN, 1300 Memorial Parkway, Huntsville, Ala. 35801. Ph. 205-536-0701. Single \$16.00. Dbl. \$21.00.  
 PARK VALLEY MOTEL, 11821 So. Memorial Parkway, Huntsville, Ala. 35803. Ph. 205-881-3423. Single \$20.00. Dbl. \$22.00.  
 QUEEN MOTOR LODGE, 10013 So. Memorial Parkway, Huntsville, Ala. 35803. Ph. 205-881-7620. Single \$22.00. Dbl. \$32.00.  
 SANDMAN MOTEL, 11505 So. Memorial Parkway, Huntsville, Ala. 35803. Ph. 205-881-6850. Rates on request.  
 SHELBY MOTEL, 2209 No. Memorial Parkway, Huntsville, Ala. 35810. Ph. 205-534-2481. Single \$22.00-\$24.00. Dbl. \$28.00.  
 SOUTHLAND MOTEL, 3808 Governors Drive, Huntsville, Ala. 35805. Ph. 205-539-9391. Single \$17.00-\$22.50. Dbl. \$22.50-\$24.50.  
 TRAVEL INN, 2901 No. Memorial Parkway, Huntsville, Ala. 35810. Ph. 205-852-2110. Single \$22.00-\$24.00. Dbl. \$27.00.  
 TOURWAY INN, 1304 No. Memorial Parkway, Huntsville, Ala. 35810. Ph. 205-539-9671. Single \$27.00-\$30.00. Dbl. \$34.00-\$38.00.  
 UNIVERSITY PLAZA, 4212 Governors Drive, Huntsville, Ala. 35805. Ph. 205-539-4421. Single \$20.00. Dbl. \$26.00.  
 SUPER 8 MOTEL, 3803 University Drive, Huntsville, Ala. 35805. Ph. 205-843-1991. Rates on request.  
 ECONO LODGE, 3772 University Drive, Huntsville, Ala. 35805. Ph. 205-534-7061. Rates on request.

**1984 WORLD TOURNAMENT**  
**Huntsville, Alabama — July 25 through August 4**

## Tips for the Horseshoe Pitcher and Bowler

### FIND OUT:

- How to avoid the balancing act.
- About a horseshoe pitchers or bowlers version of the way baseball pitchers learn to put the ball where they want it.

**\$4.00 POSTPAID**

**VERNON KINSER**

**KINSER PUBLISHING, INC.**

**JENKINS, MISSOURI 65677**

A FANTASTIC NEW BOOK

A FANTASTIC NEW BOOK

# DEADEYE HORSESHOES

## NOW IN

### FOUR MODELS

CLYDESDALES NOW IN LIGHTER WEIGHTS

	Price Per Pr.—Up to 9 Pairs	Price Per Pr.—9 Prs. & Over
CLYDESDALES 2# 10 oz., 2# 9 oz., 2# 8 oz., & 2# 7 oz.	\$23.00/Pr.	\$17.50/Pr.
N.T. 2# 10, 9, 8, 7 oz.	\$23.00/Pr.	\$17.50/Pr.
REGULAR 2# 9, 8, 7, 6, 5 & 4 oz.	\$23.00/Pr.	\$17.50/Pr.
E-Z GRIP 2# 10, 9, 8, 7 & 6 oz.	\$28.00/Pr.	\$22.50/Pr.

*Prices on all "DEADEYES" f.o.b. point of shipment.  
Missouri residents add 4-5/8% sales tax and California  
residents add on 6% tax.*

All "DEADEYES" are dead soft.

All "DEADEYES" are guaranteed against breakage for 2 years.  
(Subject to change). Please specify desired weight when  
ordering from:

W. Courtwright  
P.O. Box 742  
Fenton, MO 63026  
Phone: (314) 376-5222 (8-5)  
(314) 677-2200  
(314) 842-5188

Carl Steinfeldt  
44 Ridgcrest Road  
Rochester, NY 14626 (summer)  
Phone: (716) 225-4191

Walter Ray Williams, Jr.  
6140 Grant St.  
Chino, CA 91710  
Phone: (714) 628-6053

Carl Steinfeldt  
407 Shady Lane Mobil Park  
15400 Roosevelt Blvd.  
Clearwater, FL 33520  
(winter address)  
Phone: (813) 535-3136



## PUBLICITY — MAY NEWS RELEASE

By BERNARD HERFURTH

### HORSESHOE PITCHERS BID FOR COMMEMORATIVE STAMP

The thousands of pitchers of the National Horseshoe Pitchers Association are making their annual request to the United States Postal Service for a commemorative stamp to honor the long time American sport of horseshoe pitching.

The public at large, horseshoe enthusiasts and friends of horseshoes are asked to send a written request to the POSTMASTER GENERAL, POSTAL SERVICE HEADQUARTERS, WASHINGTON, D.C. 20260. The request should be sent in immediately. Excerpts from the following sample letters could be used.

Dear Postmaster General:

As a horseshoe pitching enthusiast, I respectfully submit the following request that the United States Postal service issue a commemorative stamp honoring the sport of horseshoe pitching. Following is a summary of why I believe that the true American sport of horseshoe pitching deserves such an honor.

1) We know of no sport more truly American than the sport of pitching horseshoes. Our soldiers in the American Revolutionary War pitched horseshoes on the Boston Common for recreation. The Duke of Wellington has been recorded in history as remarking, "The war was won by the pitchers of steel (horseshoes)."

2) Approximately thirty (30) million players, men and women, boys and girls, enjoy this sport in organized tournaments, leagues, recreation areas and backyards. It is an American family sport boasting of an annual national champion in each of four categories (men, women, boys and girls) for the past fifty years. It is a rare, popular sport that can be played economically in the backyard.

3) It supports the government's physical fitness program offering the exercise of walking, bending and reaching that is an integral part of the sport.

4) It would be an honor and a thrill for the millions of horseshoe enthusiasts to place a commemorative stamp honoring their sport on their personal and business letters.

Our great sport has been introduced in many foreign countries.

Thank you for your consideration.

Respectfully,

END OF ARTICLE

## NHPA PROMOTION COMMITTEE REPORT

By SOL BERMAN, Chr.

Following is an excerpt from a letter received from Mary Tickle, Contest Coordinator for the General Mills "Wheaties Search For Champions" in answer to a request for eligibility information, athletic and otherwise.

A question which we are still looking into at this time is that of whether or not ballots from Florida and Washington can be submitted. I would suggest at this point that you *not* solicit votes from these states. The promotion is void in Florida and Washington because of state laws. Our legal department has indicated that votes coming from those states might not be considered valid and therefore could not be accepted by us. Final confirmation of this fact is pending, and I will contact you as soon as there is a definite answer.

If you have ballots for the Wheaties Search for Champions contest please use addresses other than those from Florida or Washington. Please send your ballots as soon as possible. I should receive an up to date accounting by May 1st. Set up a ballot box at all your tournaments and meetings.

Let PITCHER'S PAL 

help pick up the shoes

- Save your back
- Avoid fingernail damage
- Protect your hands

Send \$5<sup>95</sup> to:

post paid



Pitcher's Pal P.O. Box 583 West Middlesex Pa. 16159

COVER PHOTO. . . The faces of fun as shown during the Calico Ghost Town's Seventh annual Hullabaloo celebration and 2-day Open Horseshoe tournament held at Barstow, Ca. April 14-15. Activities also included a bucket brigade contest, greased pole climb and other contests.

## COUNCIL GRANTS COMPLIMENTARY CARD

At the suggestion of several members, the NHPA Council has authorized the use of one NHPA card to be used in inviting non-members to pitch in one Sanctioned NHPA event without having to buy a card. Each club may use *one* NHPA card for this purpose. The club uses this card number for the invited person. If the card number is 1000, the number 1000C is put after the invited pitcher's name to indicate 'complimentary'. The club never relinquishes the card. As the back of the card has 14 lines, a club can invite 14 different players to pitch during the year. The name of each will be printed on the back of the card. The club will not have to pay for this card. However, it will have to account for it and turn it back to the NHPA Sec-Treas as 'unsold'. It is hoped that its publicity will attract new members for the NHPA.

## ANNUAL SILVER SHOE TOURNAMENT, JUNE 2-3 — OTTAWA, ONT.

The 11th annual Silver Shoe tournament will be held on Saturday and Sunday, June 2-3 at the Lansdowne Park courts in Ottawa, Ontario, Canada. The men's B, C, and ladies b doubles competition will start at 9 a.m. on Saturday with the Men's A and ladies B doubles at 7 p.m. in the evening. Men's D and ladies open singles starting at 9 a.m. on Sunday. N.B. starting times will be strictly enforced. 1983 ringer percentages will be used as basis for forming classes.

## HAMILTON, OH. MAY OPEN SET FOR MAY 19-20. (SANC.)

The Hamilton, Ohio May Open will be held in that city on Saturday and Sunday, May 19-20. It will be a sanctioned tournament. Women and Juniors are welcome. Deadline for entries is May 12 and should be sent to Wayne Still, 4220 West St., Oxford, Ohio 45056. Entry fee is \$8.50. Ph. 513-523-6025.

On July 21-22 the club will conduct a World Warm-Up tournament on the same courts as above. Entry fee of \$10.00 should be sent to Wayne Still, 4220 West St., Oxford, Ohio 45056. Ph. 513-523-6025. Deadline for entries, July 14. Prize money and trophies for all classes.

## SOL BERMAN CANDIDATE FOR NHPA 2ND VICE-PRESIDENT

By HERMAN WIESER

Dr. Sol Berman, formerly of Elizabeth, N.J., and now a resident of Palm Beach Gardens, Florida, has agreed to be a candidate for the Office of 2nd Vice-President of the NHPA at the Convention in July, 1984 at Huntsville, Ala. Doc Berman, as he is affectionately known has been an outstanding member of the NHPA since its infancy in 1941. Over the years he served honorably in many areas within the NHPA, currently being the Chairman of the Promotion Committee.

In the New Jersey State H.P.A. he has held various offices such as President, Vice-President, Sec.-Treas., many times Tournament Director and other Committee positions. He was a member of the New Jersey delegation at 20 Conventions.

From 1973 to 1982 he served as Chairman of the Publicity and Promotion Committees of the NHPA. Prepared the format for the 1976 World Championship; cooperated with Donnie Roberts from 1973 to 1982 in presenting formats for the World Championships during that period. In 1977, Doc Berman prepared a Directory, "Horseshoe Courts and Clubs." His activities in 1982 gained him the coveted Arch Stokes Achievement Award.

Dr. Berman wrote the section on "Horseshoe Pitching" for the "Encyclopedia of Sports Sciences and Medicine", in 1971. Numerous articles pertaining to horseshoes have appeared in the New York Times, Medical Tribune and M.D. magazines written by Dr. Berman who wants to serve you as 2nd V.P. of the NHPA.

**GREENVILLE, OHIO**  
***Fourth of July Ringer Classic***  
**JULY 4-5-6-7-8**



Fort Greene Ville 1793

On the All-new Courts in Greenville City Park with an expanded pitching format for 1984.

\$10.00 Entry fee for Men and Women. Must accompany all entries. No entry fee for Juniors.

Deadline for receiving entry, Wednesday, June 20.

List latest Tournament or League ringer percentage.

The top 36 men will pitch a 6-man round-robin preliminary round Saturday morning to determine A - B and C Classes.

Classes A - B - C will pitch 12 man round-robin Saturday evening and Sunday, 7th and 8th.

Womens and Junior Divisions will pitch on Saturday.

July 4th round-robin Classes will commence in the morning and continue through early evening.

The 5th and 6th competition will be pitched in evenings.

Men's Champion will receive \$400 and Women's Champion \$100.

Cash and trophies for all Adult Classes. Trophies for Junior Classes.

Pitchers will be advised by letter on Pitching Schedule.

-----  
Send entry to Fritz Worner, 150 Ridgeview Dr.  
Greenville, O. 45331

Name \_\_\_\_\_ Ringer% \_\_\_\_\_

Address \_\_\_\_\_ Phone No. \_\_\_\_\_

City \_\_\_\_\_ State \_\_\_\_\_ Zip \_\_\_\_\_

( ) I can pitch July 5th or 6th after 6:00 P.M.

(ADVERTISEMENT)

## NHPA PUBLICITY AND REPUBLIC RELATIONS

By BERNARD HERFORTH

### ITEM: NHPA ADDRESS PUBLICATION

All publicity coordinators and the membership is repeatedly asked to publish the NHPA address and free flyer of-fer in all future newspaper articles. Please include: for free 12 page Horseshoe Pitching Flyer please send a large stamped self addressed envelope to, **NHPA, Box 810, Circleville, Ohio 43113**. Donnie Roberts answers each in-quiry immediately with an NHPA flyer, a thank you letter with the address of their state secretary and game related items distributor.

### ITEM: AN NHPA STAMP OR SEAL

A detailed plan for issuing such a stamp to be processed similar to Coristmas, Easter and Olympic will be published in the May digest. It could give us publicity and be a publicity fundraiser.

### ITEM: 1984 HUNTSVILLE WORLD TOURNAMENT

Huntsville, Alabama will host this tournament for the third time. Anyone who has not been to Huntsville should plan on attending this year. Some good reasons for attending are, excellent hospitality, good court site, most motel and eating places are from two to four miles from the courts. No games to be played in the heat of the day. You will be notified as to exactly what day and time you will pitch. You can plan on staying from 10 days to two or three. It's a blessing not to have to waste time for days with the former 200 qualifying round. See you in Huntsville July 25—August 4.

### ITEM: WHEATIES SEARCH FOR CHAMPIONS

Read Dr. Sol Berman's Wheaties articles in the digest. Please ask your relatives and friends to give you ballots from Wheaties boxes. Ask your children or grandchildren to ask their friends to save you the ballots. As a piano teacher I have asked scores of pupils to save their ballots for me. Fill out ballot: **Boni Boser, Route 3, Fish Like, Pierz, MN 56364. Send ballots to NHPA, 2803 Newcomb Road, Albany, GA 31705**. Boni Boser was our Junior 1981 and 1983 world champion.

### ITEM: NHPA "MAIL-IN" TOURNAMENT

All members should plan to enter this tournament. For the first time low percentage pitchers can win large cash prizes. the handicap system favors low percentage players. Check with your local officials for more details or write to Col. Glen Portt, 2803 Newcomb Road, Albany, Georgia 31705. It is our president's plan, back it up!

### ITEM: NHPA U.S. COMEMORATIVE STAMP

The NHPA Publicity monthly news release for local newspapers concerns our annual request to the United States Postal Ssystem for a commemorative stamp to honor our sport. All members are requested to give the commemorative news release in this month's digest to their sports or city newspaper editor. Please help. Be sure to include NHPA address and free offer.

### ITEM: TOURNAMENT DIRECTORS

NHPA publicity and public relations are requested to announce each tournament and the results in their local newspapers. Try to give human interest stories to players regardless of how low a class he or she pitches in. Directors are asked to have an information table at each tournament with NHPA flyers and state information along with some game related items for sale. Request no drinking of alcoholic beverages or smoking on the courts.

### ITEM: HORSESHOE MANUFACTURERS

Donnie Roberts, our sec-treas recently had a new supply of NHPA flyers published. Donnie will send flyers to horseshoe manufacturers asking that they favor the NHPA by inserting our flyer in each box. It carries our NHPA address. The court layout plan in the flyer has been dressed up and is more presentable. Thanks Donnie.

### ITEM: NHPA DIGEST

Ellis Cobb has been most cooperative in publishing NHPA publicity and I thank him. I am suggesting for two or three months that if possible he would try publishing the digest printing in royal blue with the white background, it would go along with the color scheme of NHPA stationery. It is only an NHPA suggestion.

### ITEM: NHPA STATIONERY

NHPA publicity favors Donnie Roberts' offer to sell NHPA stationery. It adds up to more publicity for our sport. The stationery offer is on page 3 of the January 1984 digest, order your stationery now.

## MARCH 1984 NHPA INCOME & EXPENSES

By DONNIE ROBERTS

March Receipts		March Expenditures	
NHPA Digest	\$3495.00	NHPA Digest	\$2384.25
NHPA Membership	4019.25	Postage	58.65
Game Related	1000.00	League	300.00
World Entry	35.00	Officer Allowance	833.33
League	96.00	Telephone	119.25
March Total Receipts	8645.25	Copy Work	77.89
		Supplies	43.46
		1984 Tourney Patches	4815.78
		March Total Expenditures	8632.61

The above figures do not reflect the books of the News Digest Editor nor those of the game related sales people or any other receipts. The above are the journal entries of the Secretary-Treasurer during the month listed above.

## ROBERTS &amp; WINSTON MEET WITH AAU OFFICIALS



At a recent meeting at the AAU House in Indianapolis, Indiana, Donnie Roberts and Earl Winston conferred on a possible allied arrangement with the AAU organization. Shown in the photo left to right are: Mason Bell — Executive Director of the AAU; Josiah Henson — President of the AAU; Donnie Roberts — Secretary Treasurer of the National Horseshoe Pitchers Association of America; Richard E. Harkins — Vice President of the AAU, Earl Winston — NHPA First Vice-President, Fred W. Schwartz — Chairman AAU Horseshoe Pitching Committee.

## RENO HORSESHOES

*Order From:*

**Reno Horseshoe Company**

**670 Reno Road**

**Lucasville, Ohio, 45648**



**IN 1983**

**EIGHT STATE CHAMPIONS**

**WON THEIR TITLES**

**WITH RENO SHOES**

**NHPA Approved**

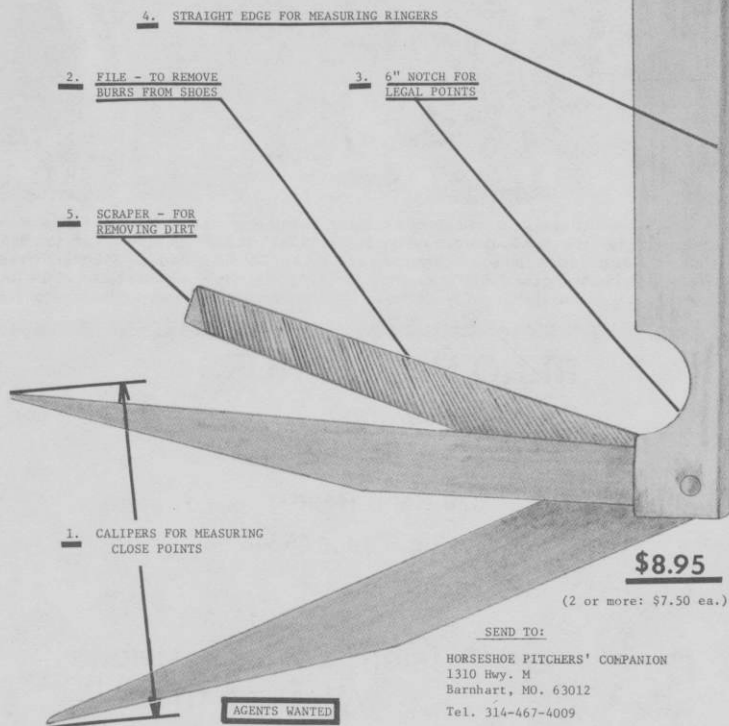
**\$25.00 plus postage % \$22.00 five or more pairs**

All drop forged, medium temper with hard caulks.  
West Coast Distributor — Wally Shipley Horseshoe Outlet.

## THE HORSESHOE PITCHERS' COMPANION

Pat. No. 4,399,614

- FEATURES:
1. Calipers for measuring close points.
  2. File to remove burrs from shoes.
  3. A 6" notch for measuring legal points.
  4. Straight edge for measuring legal points.
  5. Scraper for removing dirt, mud, etc.
  6. Just the right size for back pockets.
  7. NHPA approved.



**\$8.95**

(2 or more: \$7.50 ea.)

SEND TO:

HORSESHOE PITCHERS' COMPANION  
1310 Hwy. M  
Barnhart, MO. 63012  
Tel. 314-467-4009

**AGENTS WANTED**

### WILL GULLICKSON's Double Ringer Roundup

featuring World Tournament results, features and pictures. Eight editions available starting in May by sending \$10 to Will Gullickson, 2850 26th St. S., Moorhead, MN 56560.

The shoe for the 1980's

# STAR

## STAINLESS HORSESHOES

NOW PRECISION MANUFACTURED BY  
A COMPANY THAT MAKES STAINLESS  
STEEL PRODUCTS OF ALL KINDS.

THEY HAVE OVER 30 YEARS  
EXPERIENCE IN THIS FIELD AND THE  
LATEST IN STATE-OF-THE-ART  
TECHNOLOGY. THE STAR STAINLESS  
IS A TOP QUALITY SHOE FOR THE  
PROFESSIONAL PITCHER.

NHPA  
APPROVED



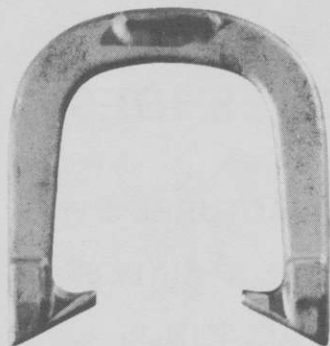
Send Check or  
Money Order to:

Alfred R. Boudreau Jr.  
301-A Old Ipswich Rd.  
Rindge, N.H. 03461

\$69.00 per pair  
postpaid

ALSO AVAILABLE THROUGH N.H.P.A. AREA DEALERS

Since 1931

**GORDON** "Spin-On"

— 3 TEMPERS —

Medium With Hardened Calks

Dead Soft

Hard

Southern California Representative

**JERRY SCHNEIDER**

3144 W. Paso Robles Drive

ANAHEIM, CALIFORNIA 92804

714-826-0684

APPROVED BY NHPA

OFFICIAL STAKES ALSO AVAILABLE

**THE QUEEN CITY FORGING CO.**

233 TENNYSON STREET

CINCINNATI, OHIO 45226

**BARRY CHAPELLE CANDIDATE FOR NHPA 2ND V.P.**

I am excited about the new activities and increased money coming into our sport and will work to support, continue, and increase opportunities of this type. I also feel that in order to maintain the "National" aspect of our organization we need some executive input from the West Coast.

The Chapelle family is an NHPA family. My father, Cletus Chapelle, and sister, Vicki Chapelle Winston, are both NHPA Hall of Fame members and past NHPA officers. I attended my first World Tournaments in the 1950's, playing in the Junior Class, and have been actively involved in the game since graduating from college in 1965. I have been an officer in the Oregon Horseshoe Pitchers Association since 1970 and the NHPA Regional Director for the Pacific Northwest States the past several years. I am presently serving as the Assistant Regional Director Chairman under Claude White. All I can say is that if I am elected, I will work with the NHPA Executive Council and NHPA members to help our sport continue to grow.

**GALESBURG, ILL. CLUB TO HOLD TWO SANC. TOURNEYS**

(Sanctions Applied for)

The annual 4th of July Open tournament conducted by the Galesburg, Ill. club will be held at the Lincoln Park courts on Rte. 150 north of Galesburg, Illinois on July 4th. The first 30 pitchers to sign in by 12:00 noon will pitch. Tournament will start at 1:00 PM Sharp. Entry fee will be \$5.00. A pay-off of \$2.00 will be paid for each game won. This will be a sanctioned tournament.

On Sunday, August 12 the 26th Annual Galesburg National Open will get underway on the same courts. The first 48 players to send in their 100-shoe scores will make up the men's classes. The first 12 ladies to send in their entry fee of \$8.00 will pitch. In the event there are not enough women signed in there will be men replacements. One class of ladies will play in the morning and the other class of ladies will play in the afternoon.

Entry fee will be \$8.00 for ALL pitchers. Class A and B men will pay an extra \$5.00 on reporting in. Send all entry fees and scores to: Eugene Connors, 1796 Brentwood, Galesburg, Illinois 61401. Ph. 309-344-2308.



## BILLY HUBBS, JR., 13 YRS. OLD, WINS JIM WEEKS OPEN AT SAN DIEGO, CALIF., MAR. 25, SANCTION 84-116

**GROUP I** — Billy Hubbs, Jr., National City, 6-0-74.0; Vince Satern, Sun City, 4-2-57.9; Jim Eozzo, Los Angeles, 4-2-53.2; Jim Moseley, San Diego, 3-3-49.0; Bob Austin, Escondido, 2-4-55.1; George Whittemore, Rosemead, 1-5-50.9; Robert Hudson, La Jolla, 1-5-47.5

**GROUP II** — Tad Besemer, San Diego, 6-1-54.5; Les Burroughs, Perris, 5-2-48.2; Barbara Dow, Glendale, 4-2-51.5; Norm Cone, Huntington Beach, 3-3-44.1; Jack Vincent, La Mesa, 2-4-42.5; Charles Kerr, San Diego, 1-5-39.5; Jim Atwell, Los Angeles, 1-5-35.2

**GROUP III** — Bill Hubbs, Jr., National City, 5-0-66.7; Frank Vega, Chula Vista, 3-2-51.9; Tom Didmon, Hemet, 2-3-53.7; Earl Kerr, Laguna Hills, 2-3-50.4; Bob Wells, Lakeside, 2-3-45.2; Carl Grabow, Chula Vista, 1-4-40.6

**GROUP IV** — Wally Shipley, Newport Beach, 5-0-38.0; Tom Buck, Sun City, 3-2-30.8; Stan Dobson, La Mesa, 2-3-33.6; Jim Buck, Lakewood, 2-3-30.5; Paul Bellah, El Cajon, 2-3-26.8; Al Cantabrana, Oceanside, 1-4-33.6

**GROUP V** — Larry Ford, San Diego, 6-0-36.3; Bill Ponder, SAn Diego, 4-2-31.3; Joe Gambol, San Diego, 3-3-34.1; Gordon Wilcox, San Diego, 3-3-26.4; Jim Dow, Glendale, 3-3-23.3; Glen Wells, El Cajon, 3-3-26.4; Len Blankratz, El Cajon, 1-5-23.8

**GROUP VI** — Peter Trejo, Vista, 4-1-36.9; Edwin Agner, Beaumont, 4-1-30.1; Bob Lowell, Palm Desert, 3-2-28.9; Jack Butler, San Diego, 2-3-29.9; Fred Craven, Bellflower, 2-3-25.0; George Farrell, Corona Del Mar, 0-5-22.2

**GROUP VII** — Willy Bates, Spring Valley, 3-1-16.9; Ralph Alvine, Chula Vista, 2-2-16.9; Chuck Cummins, San Diego, 1-3-8.8

**JOHN WALKER DOUBLES — MAR. 24 — SANCTION 84-115** — Tad Besemer-Dick Rios, 9-1; Jim Eozzo-Ina Voets, 7-3; Paul Bella-Fred Craven, 8-2; Bob Wells-Rick Rios, -4; Larry Ford-George Farrell, 6-3; Barbara Dow-Pat Morrison, 6-3; Joe Gambol-Larry Sprague, 6-3; Harold Slagg-Jack Butler, 5-4; George Whittemore-Rita Eozzo, 4-5; Jim Buck-Ed Agner, 4-5; Jim Smith-GLen Wells, 3-6; Jim Atwell-Bill Ponder, 3-6; Stan Dobson-Pete Wojtyszyn, 3-6; Al Cantabrana-Jim Dow, 3-6; Art Sauer-Gordon Wilcox, 3-6; Wally Shipley-Ernie Hayes, 3-6; Tom Buck-Peter Trejo, 2-7; Carl Grabow-Jerry Voets, 2-7; Charles Kerr-Marina Rios, 2-7

## PIT PAL

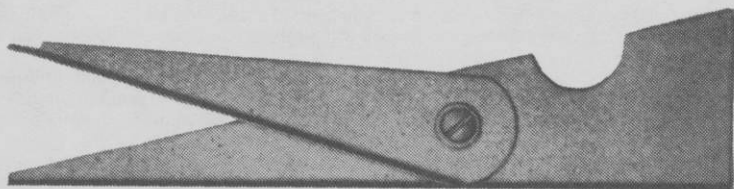
*Get the most from your games*

- Straight edge, full 6 inch caliper & distance gauge
- Wide end is a shovel & a scraper
- High quality leather sheath (protects your back pocket)
- Heavy gauge stainless steel

Send \$9.95 (Postpaid) to: **PIT PAL**

**PO Box 02336**

**Portland, Oregon 97202**



## SHARON PADDOCK WINS MAURICO OPEN AT SAN JOSE, CA. MAR. 30 — SANCTION 84-173

Sharon Paddock, California State Ladies Champion, edged out Don Titcomb to win the Vince Maurico Open held at the new Senter Park courts in San Jose, Calif. on March 30, with a record of 5-0-77.2. Thirteen groups comprised of 76 players made up the tournament. High single game honors went to Titcomb who posted an 86.0.

**GROUP ONE** — Sharon Paddock, Rio Del, 5-0-77.2; Don Titcomb, San Jose, 4-1-75.2; Ed Floyd; T.V. 3-2-65.6; Jack Sorg, G.G. 2-3-53.5; Marisela Mauricio, S.J. 1-4-59.6; Pete Manitone, Sac. 0-5-53.2. H.G. Titcomb - 86%.

**GROUP TWO** — Fred Lavett, Seaside, 7-0-65.7; Vern Gosney, Vallejo, 6-1-58.7; Mate McBride Sac., 5-3-58.7; Holland Payne, Sac., 3-4-51.3; Verdian Zelmar, San Jose, 3-4-50.0; Andrea Adams, Turlock, 3-4-47.3; Marty Dunn, T.V. 1-6-53.3. H.G. Lavett — 70%.

**GROUP THREE** — Vera Floyd, T.V. 5-0-54.8; Dave Storck, Yolo, 4-1-66.8; Walt Foreman, S.J. 3-2-41.6; Vince Mauricio, S.J. 2-3-49.6; Geo. Greeott, Son Co., 1-4-38.4; Chuck Rodrigues SonCo., 0-5-27.2. H.G. Storck — (2) 72%.

**GROUP FOUR** — Genevieve Lavett, S.S., 5-0-59.2; Marthe Dunn, T.V. 3-2-36.4; Walt Robinson, S.S. 3-2-46.4; Al Adams, Tur. 3-2-40.8; Bill Paddock, Rio Del., 0-5-37.6; Jim Long, Sac. 1-4-34.4. H.G. G. Lavett — 64%.

**GROUP FIVE** — Joanne Wanner, Sac., 5-0-52.4; Bert Charley, N.C. 3-2-41.2; Stewart Snyder, SonCo., 3-2-37.6; Martin Lasich, S.J. 2-3-34.4; Gary Saunders, Sr., Yolo, 1-4-36.0; Jean Robinson, S.S. 1-4-31.2. H.G. Wanner — 56%.

**GROUP SIX** — Vada Dunn, T.V. 5-1-39.7; Obie Winn, T.V. 4-2-27.2; Carol Casados, Tur. 3-2-36.8; Tim Saunders, T.V. 3-2-35.5; Bill Carns, S.J. 1-4-27.6; Shirley Cahill, 0-5-6.0. H.G. Dunn — 50%.

**GROUP SEVEN** — Fred Laam, Tur. 5-1-38.3; Ceres Perry, T.V. 4-2-35.0; Josephine Charley, 3-2-18.8; Mike Bradshaw, Tur. 3-2-17.6; Mel Falcon, S.S. 1-4-16.8; Bob Fread, T.V. 0-5-13.6. H.G. Laam — 48%.

**GROUP EIGHT** — Ray Bojorgues, S.S. 4-1-30.4; Nick Wanner, Sac. 3-2-27.2; Lee Thornhill, Sac., 3-2-21.6; Gary Adams, Tur. 3-2-21.1; Joe Ferrau, T.V. 2-3-23.2; Earl Conaway, SonCo., 0-5-16.8. H.G. BOjorgues — 38%.

**GROUP NINE** — Charles Hoage, Sr., San Jose, 4-1-21.2; Wally Stevens, San Jose, 3-2-24.4; Leo Wanner, Sac. 3-2-18.4; Chet Carter, S.J., 2-3-18.0; Elton Cowels, Moss. 2-3-13.2; Kris Cowels, Moss., 1-4-11.2. H.G. Stevens — 34%.

**GROUP TEN** — Bob Lloyd, T.V. 5-1-29.3; Sue Saunders, T.V. 4-2-25.3; Page Pennington, S.J. 3-2-18.4; Twila Zelmar, S.J. 3-2-17.2; Bill Chandler, S.J. 1-4-20.0; Joe Kovach, S.J. 0-5-13.2. H.G. Lloyd — 38%.

**GROUP ELEVEN** — Billi Pennington, S.J. 5-0-18.0; Bernice Smith, S.J. 4-1-12.5; Jim Dunn, T.V. 3-2-14.5; Henry Caldwell, S.J. 2-3-14.0; Sy SAuer, 0-5-10.5. H.G. Pennington, (2), Dunn — 20%.

**GROUP TWELVE** — Lillian Lloyd, T.V. 5-0-30.0; Paula Carns, S.J. 4-1-12.0; Scott Wass, 2-3-10.0; Jean Caldwell, S.J. 2-3-8.0; Char Sorg, G.G. 2-3-5.0. H.G. Lloyd — 32%.

**GROUP THIRTEEN** — Rick Saunders, T.V. 5-0-8.0; Kerry Lacoool, 3-2-8.0; Charles Hoage, Jr., 3-2-6.5; Harr Fletcher, S.J. 3-2-4.5; Nicole Saunders, T.V. 1-4-1.5. H.G. Hoage, Jr. — 14%.

## 5TH ANNUAL CAPITOL CITY OPEN, JUNE 23-24

(Sanction Applied for)

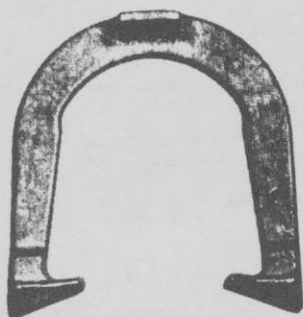
The 5th annual Capitol City Open tournament will be held at the Moores Park courts in Lansing, Michigan on June 23-24. Class A Men and Ladies will pitch 40 point games, all other classes will pitch 50 shoe games.

Men's classes will be 8-men, ladies in groups of six, or 8 depending on number of entries and percentage. There will be a class for 70 years or older and they will be allowed to pitch 30 feet or 40 feet. Those who enter the 70 or over class should include phone number on entry as they will be notified of time.

All entrants will pitch either Saturday or Sunday, no one will pitch both days. Lower classes on Saturday if possible and higher classes on Sunday.

Send entry fee and percentage to Casey Moubay, 1516 Centennial, Lansing, Michigan 48910. Ph. 517-694-4288. Deadline June 14th. Entry fee: Men, \$15.00; Ladies, \$12.00; Juniors free. Men's Classes A, B, C will pay extra \$3, \$2, \$1 respectively at sign-in time.

# TED ALLEN HORSESHOES



An original professional shoe. Still the very best professional shoe — Designed by a Champion — Used by many Champions — Not all users will become champions, but by throwing ALLEN's, you know that you've performed your best.

The designed features were invented by TED ALLEN, a 10 time world champion. He has made world records over and over with them. The design was a leader. After years it came to be a trend as a guideline in shoe equipment.

You can't go wrong in using them.

1045 LINDEN AVENUE

BOULDER, COLORADO 80302

## STEINFELDT OVER LIPOVSKY IN CLEARWATER, FLA. MATCH

(Sanction 84-26)

**Clearwater, Fl. March 24, 1984.** Pitching for a \$1,000 purse posted by Chief Charley's Restaurant, Carl Steinfeldt over-powered Dale Lipovsky in a scheduled 7-game math. Pitching before a capacity crowd, Carl won the first 3 games, with Dale bouncing back to take the next 2 games. Carl won the next game and the match by 1 point, with 4 wins and 2 losses. The 50-shoe game plan, with ringers only counting 1 point, was mutually agreed upon by both players. All games were crowd pleasers with close scores throughout the match. The match was a feature event of the eighth annual Fun 'N Sun Tournament hosted by the Clearwater Club. Clearwater's Mayor, Kathy Kelly, was in attendance and presented Dale with a "Key to the City." Also present was NHPA President, Glen Portt, who pitched in the regular tournament. The Clearwater Club presented Glen with a "Golden Deadeye Horseshoe" as a souvenir of his first visit to Clearwater as NHPA President.

**CLASS A** — Larry Morton, Ga. 6-1 69.6; Glen Portt, Ga. 5-2 69.0; Chet Reel, New Port Richey 5-2 67.9; Marvin Grubb, Titusville 4-3 68.0; Ed. Schultz, Sarasota 3-4 64.6; Floyd Bartley, Mich. 3-4 61.7; Henry Hostetler, Ohio 2-5 59.8; Joe Holland, Clearwater 0-7 58.2.

**CLASS B** — Bonnie Seibold, Ind. 4-2 59.4; Gene Rademacher, Dover 4-2 62.5; Ed. Risley, N.Y. 4-2 58.8; Paul Scheub, Sarasota 3-3 56.3; Marls Goodrich, Bradenton 3-3 59.5; Omar Blacketer, Ky. 3-3 52.7; Bob Widdersheim, Clw. 0-6 45.3

**CLASS C** — Curley Seibold, Ind. 5-2 55.4; Cliff Madren, Orlando 4-2 59.1; Elmer Swartz, Va. 4-2 56.5; Earle Morris, Tampa 4-2 47.4; Ed. Howdeshell, Ind. 3-3; Howard White, N.H. 0-6 45.9; Richard Senger, Eagle Lake 0-6 45.9.

**CLASS D** — Walter House, Sarasota 4-2 47.6; Henry Mullet, Sarasota 4-2 44.6; Sparky Hall, Hernando 4-2 42.5; Norman Hahn, Dunedin 4-2 39.9; Bud Leavitt, Vt. 3-3 40.2; Ray Arthur, Seminole 2-4 41.9; Joe West, Haines City 0-6 28.3.

**CLEARWATER — (Continued)**

**CLASS E** — Chas. Bennett, Dunedin 5-0 50.8; Rob't Bjorkgren, Iowa 3-2 46.4; Geo. Buskey, Clw. 3-2 45.9; Clyde Robinson, Lady Lake 2-3 46.6; Maurice Rodocker, Bradenton 1-4 39.0; Wm. Roach, Ont. 1-4 40.6.

**CLASS F** — Don Knotts, Orange Park 6-1 47.6; Rick Weigel, Largo 4-2 39.1; Norman Houchin, Clw. 3-3 38.0; Gene Bennett, Tarpon Springs 3-3 37.0; Guy Nightingale, Clw. 3-3 35.1; Frank Toal, Tarpon Springs 2-4 27.8; Al Simpson, Ga. 1-6 30.9.

**CLASS G** — Vern Holland, Ind. 4-2 43.5; Jack Edwards, Sarasota 4-1 47.8; Herman Wieser, Lake Worth 3-2 35.4; Paul Weston, Apopka 3-2 41.9; Harold Roberts, Apopka 1-4 39.1; Marvin Glass, Clw. 0-5 34.7.

**CLASS H** — Rowland Conrad, Clw. 4-1 34.8; Geo. Bush, Inverness 3-2 30.6; Cliff Richards, Brooksville 3-2 26.1; Roger Sutor, Tampa 2-3 23.0; Russ Lobuzzetta, Sarasota 2-3 30.6; Mike Buck, Fern Park 1-4 19.8.

**CLASS I** — Jake Jacobus, Bradenton 5-0 37.3; Norm Davey, Apopka 3-2 35.1; Sherman Gray, Crystal River 3-2 32.2; Orval Coxon, Ont. 2-3 30.4; Don Barker, Apopka 2-3 34.4; Wm. Cooper, Seminole 0-5 24.1.

**STEINFELDT WINS KING NEPTUNE OPEN — SANC. 84-28**

Carl Steinfeldt of Clearwater Fl. successfully defended his crown as champion of the annual King Neptune Frolics tournament held at the Bee Ridge Courts, Sarasota, Fl. Henry Hostettler finished second in the championship class pitching his first 70 percent tournament. This March 3, 1984 tournament was held on a beautiful sunny day.

**CLASS A** — C. Steinfeldt, 7-0-79.0; H. Hostettler, 6-1-70.7; F. Bartley 3-3-61.0; Ed Schultz, 4-3-59.5; O. Blacketer, 3-4-58.0; P. Scheub — 2-5-56.7; M. Goodrich — 1-6-51.3; J. Holland — 1-6-57.0.

# FREE!

## Trophy & Awards Catalog



Call Toll-Free  
**1-800-628-9657**  
In Mass. 1-800-282-7789

**DINN BROS. The Trophy People**

P.O. Box 111 • 68 Winter St. • Holyoke, MA 01041

**NEPTUNE — (Continued)**

**CLASS B** — J. Rademacher, 6-0-62.3; R. Ferguson, 4-2-47.8; C. Bennett 3-3-43.8; H. Lea — 2-4-46.1; R. Swinson, 2-4-41.7; H. Mullet 1-5-45-1.

**CLASS C** — B. Bjorkgren, 5-2-52.0; Roach, 5-2-32.8; B. Bauman, 4-3-38.8; Randolph 4-3-38.8; W. Smith, 3-4-40.8; M. Rodocker, 2-5-33.2; N. Houchin, 2-5-36.4; G. Buskey, 2-5-32.7.

**CLASS D** — J. Edwards, 5-1-41.4; M. Miller, 5-1-41.2; F. Gyorkos, 3-3-38.6; V. Holland, 3-3-38.8; R. Lobuzzetta, 3-3-38.2; H. Cheffer, 2-4-31.0; R. Sutor, 0-6-15.7.

**CLASS E** — M. Gillespie 6-0-39.9; P. O'Toole 4-2-34.5; B. Zimmerman 4-2-31.5; Jacobus, 3-3-33.2; P. Milnes 3-3-39.7; B. King 1-5-26.9; E. Colgan, 0-6-22.9.

**CLASS F** — R. Warren, 5-1-29.0; E. Carlin, 4-2-22.8; Lawson, 4-2-21.6; J. Manning, 4-2-19.3; Judd, 3-3-17.5; G. Kokajko, 1-5-8.4; Dey, 0-6-7.7.

## KEN KUGLER 4-TIME WINNER OF HENN MEMORIAL AT O.K. COURTS, CINCINNATI, OHIO, SANCTION 84-53

Ken Kugler has returned! He has staged his fourth victory in five years that the Harry Henn Memorial Open has been held at the O.K. courts in Cincinnati, Ohio. Class B ended up with five pitchers tied for first place. Winner was determined by ringer percentage. The ladies class was won by A. Snider with a 5-1-22.6 record.

**CLASS A** — Ken Kugler, 7-0-62.0; S. Lovelace, 5-2-57.6; D. Malone, 4-3-59.1.

**CLASS B** — H. Holland, 4-3-51.67; F. Rogg, 4-3-51.66; V. Stoner, 4-3-50.5.

**CLASS C** — J. Steelw, 7-0-45.3; Cliff Henn,, 5-2-45.9; B. Beckman, 4-3-41.1.

**CLASS D** — P. Coleman, 6-1-51.5; L. Voelker, 6-1-45.9; D. Humphrey, 5-2-43.2.

**CLASS E** — E. Henn, 6-1-36.8; B. Snider, 5-2-37.9; B. Kenton, 5-2-32.4.

**CLASS F** — B. Cummings, 7-0-33.6; G. McKinney, 6-1-34.9; L. Hartman, 4-3-26.9.

**CLASS G** — J. Anderson, 6-1-31.0; P. Gerrety, 5-2-20.6; M. Zink, 4-3-25.0.

**CLASS H** — J. Wilson, 7-0-25.0; E. Boddenberger, 5-2-16.1; H. Hall, 4-3-11.8.

**LADIES CLASS** — A. Snider, 5-1-22.6; P. Nudds, 4-2-20.3; D. Henn, 2-4-20.8.

## GRUBB WINS ORLANDO, FLA. FINAL FLING, MAR. 31

Holding their last tournament at the Sunshine Park site they had enjoyed for a quarter century, the Orlando Horseshoe Club made use of their familiar surroundings to take four second place trophies, and invite their out-of-state and out-of-town friends to challenge them this Fall at their new 12-court layout where ground was broken earlier.

Sanction No. 84-29

**CLASS A** — Grubb, Titusville, 4-1 (64.9%); Madren, Orlando, 4-1 (57.7) Cullum, Inverness, 3-2 (55.2); Adams, Titusville, 2-3 (49.5%); Howdeshell, Winter Haven, 1-4 (52.2%); Senger, Winter Haven, 1-4 (47.2%).

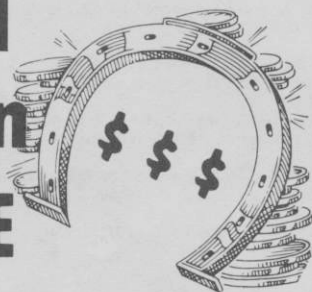
**CLASS B** — Ellenberger, Clermont, 3-2 (44.4); Whitaker, Orlando, 3-2 (44.9%) Wagner, Winter Haven 3-2 (45.8%); Robinson, Lady Lake 3-2 (43.0) Brown, Winter Haven, 2-3 (39.3%); Roberts, Apopka, 1-4 (36.1%).

**CLASS C** — Gallant, St. Cloud, 5-0 (38.4%); Bostic, Orlando, 3-2 (39.3%); Davey, Apopka, 2-3 (31.9%); Richards, Brooksville, 2-3 (29.3%); Gambriel, Michigan, 2-3 (32.9%); Anderson, St. Cloud 1-4 (28.0%).

**CLASS D** — Young, Cocoa Beach 4-1 (35.5%); Barker, Apopka 4-1 (31.2%); Perry, Orlando 3-2 (29.1); Dickerson, Beverly Hills 2-3 (35.9%); Davies, Apopka 2-3 (30.4%); Long, Bradenton 0-6 (14.3%).

**CLASS E** — Northern, Eustis 4-1 (27.4%); Berrall, Orlando 4-1 (30.0%); Olson, Orlando 3-2 (17.5%); Buck, Fern Park 2-3 (18.0%); Steimle, Apopka 2-3 (12.0%); Rollins, Brooksville, 0-6 (10.0).

# 8th Annual Oregon Open HORSESHOE TOURNAMENT



WEBER Field, Hermiston, Ore.  
JUNE 23-24, 1984

*Pre-Registration must be received by June 20th*

12 MAN CLASS "A" (If possible)  
12 MAN CLASS "B" (If possible)  
8 MAN ALL OTHER CLASSES (If possible)

Start Pitching at 9:00 a.m. Each Day

(CAMPING FACILITIES AVAILABLE)

Your percentage will be an average of your two highest tournaments in the past 12 months

SPONSORS OF THIS  
TOURNAMENT ARE:

Northwest  
Motorhome Center  
Oregon Association  
KOHU Radio  
Nickel Want-Ads  
Greybeal Distributors  
Hermiston Herald

**Entry Fee: Class "A" \$25.00**

**Class "B" thru "Z" \$20.00**

**Women's Classes \$20.00**

**100% Payout of All Entry Fee Money PLUS \$2,300 in Added Prize Money.**

Top 12 in Class "A" in the Money

Top 6 in Class "B" in the Money

Top 4 in All Other Classes in the Money

SEND REGISTRATION ENTRY FEE TO:

Rick Rebman

P.O. Box 319 — Hermiston, OR 97838

Phone: (503) 567-8560

**SANCTIONED**

**BARTLEY FINALIST — DESOTO OPEN, BRADENTON, FL.****MAR. 16-17 — SANCTION 84-24**

**CLASS A** — Floyd Bartley, 4-1-60; Ed Schultz, 4-1-64.5; Bonnie Seibold, 3-2-62; Omar Blacketer, 2-3-59; Marv Richmond, 2-3-56.7; Henry Hostetler, 0-5-51.3.

**CLASS B** — Marl Goodrich, 4-1-62; Len Robinson, 3-2-55; C. Wicker, 3-2-57.5; Paul Schueb, 2-3-51.2; Wm. Riley, 2-3-53.7; Ed Risley, 1-4-52.8.

**CLASS C** — Walter House, 4-2-48.5; Howard Lea, 4-2-50.4; Royce Wrucke, 4-2-47.7; Elmer Swartz, 3-3-51.8; Ann Wedel, 3-3-50.7; Curley Seibold, 3-3-41.9; Joe West, 0-6-33.3.

**CLASS D** — Rex Swinson, 5-0-49.1; Bob B. Jorkgren, 3-2-44.3; Harold Shaw, 3-2-37.8; Chester Anderson, 2-3-42.2; Maurice Rodocker, 1-4-35.4; Bill Bauman, 1-4-39.3.

**CLASS E** — Tom Randolph, 5-1-44.3; Charlie Lentz, 4-2-38.9; Walley Smith, 4-2-40.5; Pete Milnes, 3-3-36.7; Bob Babock, 3-3-41.5; Pat O'Toole, 1-5-34.3; Speed Gillespie, 1-5-32.7.

**CLASS F** — Bob Zimmerman, 4-1-38.9; T. Edwards, 4-1-40.9; Gib Beckemeyer, 3-2-38.7; Walt Wedel, 2-3-39.6; John King, 2-3-33.5; Joe Morgan, 0-5-33.2.

**CLASS G** — J. Lobuzzetta, 5-0-42.3; Harold Reed, 3-2-27.1; Chris Miller, 3-2-29.9; Gene Jacobus, 2-3-35.7; B. Beardstel, 1-4-30.6; Harland Bennett, 1-4-30.7.

**CLASS H** — Earl Colgan, 5-0-21.6; L. Lafrance, 4-1-26.4; Ed Risley, 3-2-25.6; Ed Schultz, 1-4-17.9; Geo. Utzman, 1-4-22.4; Joe Manning, 1-4-17.6.

**D. OHMS WINS S. UTAH KICK-OFF OPEN — HURRICANE, UT.**

(Sanction 84-238)

**CLASS A** — Dennis Ohms, 7-1-42.8; Jerry Moritz, 6-2-41.3; John Bracken, 5-2-32.9; George Sarkis, 5-2-27.9; Paul Vance, 3-4-22.5; Willford Andelin, 2-5-20.7; Bob Langston, 1-6-15.7; Ron Hunt, 0-7-18.9.

**CLASS B** — Nober Zuniga, 5-0-39.0; Lew Brown, 3-2-30.5; Earl Davenport, 3-2-25.0; Garth Bundy, 2-3-28.5; Doc Hildebrand, 1-4-25.0; Gary Gilbert, 1-4-22.0.

**CLASS C** — Joe Didier, 5-0-27.5; Elwin Marquardson, 3-2-21.5; Russ Hunt, 3-2-19.5; Clark Fawcett, 2-3-19.0; Neldon Christiansen, 1-4-20.0; Afton Fawcett, 1-4-26.0.

**CLASS D** — Allen Heaton, 3-0-15.0; Carol Ohms, 1-2-10.0; Kent Fawcett, 1-2-8.3; Clint Gentry, 1-2-6.7.

**CLASS E** — Clayton Beatty, 3-0-16.7; Bob Landis, 1-2-14.2; Dwayne Sullivan, 1-2-12.5; Dan Haycock, 1-2-6.7.

**JUNIORS** — Amy Ohms, 2-0-5.0; Gabe Ohms, 1-1-3.3; Jenny Ohms, 0-2-1.7.

**1ST ANNUAL BERKLEY, MICHIGAN INVITATIONAL—MAY 17-20**

The first annual Berkley Invitational tournament will be held at the courts in Berkley, Michigan beginning on May 17 through May 20. This will be a sanctioned tournament. \$1,000 in prize money will be awarded based on 64 paid entries. Entry fee for men, Class A, \$20.00; Class B, \$15.00; Class C-f, \$12.00; Ladies Class, \$12.00; Juniors, free.

**May 17 & 18** Thurs./Fri.-7:00 p.m. Tournament for *area* men, women and juniors only. 50 shoes, count all, handicapped. Trophies awarded to top three places in each class. Entry fee \$5.00 each, Juniors — no fee. No pre-registration required.

**May 19** — Saturday — 10:00 a.m. Ladies and Juniors Classes Play

**May 19** — Saturday — 2:30 p.m. Top Invitational Classes Play

**May 20** — Sunday — 10:00 a.m. Lower Invitational Classes Play

Juniors must be under age 17 on May 17, 1984. NHPA card or added \$2.00 guest fee required for Invitational Tournament qualification. All Saturday classes will pitch 35 point games, except Juniors and Ladies who will play count-all handicap. All Sunday classes will pitch 50 shoe games with last point option. 1983 average will be used.

Pre-registration required for all Sat. and Sun. Invitational play. Deadline is May 11. Mail entries to: Michael Ardelean, 2552 Crofthill, Auburn Hills, MI 48057 and indicate ringer percentage or handicap and group you wish to pitch in. Registrants will be provided added info and starting times. Make check payable to "Berkely Horseshoe Club."

Welcome To The... **Falconer Horseshoe Club**  
**INDEPENDENCE DAY OPEN**  
**HORSESHOE CHAMPIONSHIP**  
**\$2500.00 PRIZE FUND**  
**JUNE 30—JULY 1** (JULY 2 RAIN DATE)

Entry Fee **\$14.00** Includes Scorekeepers  
 (\$2.00 Discount for Entries Submitted by May 1 — Deadline June 1.)

**100% PLUS PAYBACK**

**\*\*MEN'S "A" CLASS\*\***

12 man class (2 days)  
 1st \$200.00 trophy  
 2nd \$150.00  
 3rd \$100.00  
 4th \$50.00

**\*\*LADIES "A" CLASS\*\***

8 lady class (1 day)  
 1st \$150.00 trophy  
 2nd \$100.00  
 3rd \$75.00

**CLASS "B" MEN**

\*8 MAN CLASS\*1st—\$75.00 & TROPHY\*2nd—\$50.00-3rd—\$25.00

ALL OTHER CLASSES 8 MAN OR LADIES

1st—\$35.00 & TROPHY-2nd—\$25.00-3rd—\$15.00

\*THIS TOURNAMENT IS LIMITED TO 192 PITCHERS —  
 GET YOUR ENTRY IN EARLY

\*\*\*\*\*  
**\*\*\*OFFICIAL ENTRY BLANK\*\*\***

Name \_\_\_\_\_

**RINGER % AVE.**

Street \_\_\_\_\_

1983 State Tour. \_\_\_\_\_ %

City \_\_\_\_\_

1983 League Ave. \_\_\_\_\_ %

State \_\_\_\_\_ Zip \_\_\_\_\_

83-84 Other Tour. \_\_\_\_\_ %

N.H.P.A. Card # \_\_\_\_\_

All tournament and league percentages  
 will be verified\*\*Please send address  
 and phone number of tour. dir. or league  
 sec. with entry. . .

\_\_\_\_\_ Men \_\_\_\_\_ Ladies

\_\_\_\_\_ Jr. boy or girl (12-16 yrs.)

Birth Date \_\_\_\_\_

\_\_\_\_\_

\_\_\_\_\_

\_\_\_\_\_

**\*\*This tournament is N.H.P.A. sanctioned\*\***

Mail entries to:

Ralph Whitney, Tournament Director, R.D.#1, Box 376, Ashville, New York 14710

**\*Save \$2.00 mail your entry today\*Until May 1, 1984\***

**\*Make checks payable to the "Falconer Horseshoe Club"**

**\*Deadline on all entries — June 1, 1984\***

**ANYONE USING THIS AD TO ENTER TOURNAMENT WILL GET A \$2.00  
 DISCOUNT UNTIL MAY 18, 1984. ENTER EARLY AND SAVE. . .**



## LATEST REPORT ON OTTIE RENO'S LONG AWAITED BOOK

In a letter dated March 9, 1984 from the publisher of his book, "Who's Who in Horseshoe Pitching" Oattie Reno has this to say, that the book will be ready by early June and if there is any delay beyond that, it will be very brief, and the book will be on the market sometime in the summer. It has been a most discouraging project for each delay, and for whatever time and for whatever reason and can only keep everyone who has ordered the book, posted.

## EAU CLAIRE, WIS. OPEN SET FOR JUNE 9-10

(Sanction applied for)

The Eau Claire Open tournament will get underway on June 9-10 at the Carson Park courts in Eau Claire, Wisconsin. Dave Hughes of Bloomington, Minn. is the defending men's champion. Phyllis Negaard is defending Ladies champion. For further details contact Ron Cater, 2251 Daniels Ave., Altoona, Wisconsin 54720. Ph. 715-835-7971.

## NOTICE—All tournaments for the PREIMESBERGER ARENA

will be CANCELLED.

Henry and Dolores Preimesberger

## STEVE KUCHCINSKI WINS HICKORY LAKE INDOOR COURTS SECOND ANNUAL OPEN, NEWBURY, OHIO, MARCH 16-17-18

(Sanction No. 84-70)

Steve Kuchcinski with a 6-1-73.6 record won the Second Annual Open at Newbury, Ohio, Hickory Lake Indoor Courts. Jeannie Spaller, 3-1-56.6 wins Class A Ladies over Betty Dunlap in play off. All classes sanctioned, all classes playing 40 points cancellation games. Total prize money given was just over eight hundred dollars. A special thanks to Shirley Spiesman.

**CLASS A WOMEN** — Jeannie Spaller, 3-1-56.6, Betty Dunlap, 3-1-56.0, Marge Spaller, 2-2-55.1, Shirley Spiesman, 2-2, 50.0, Vernie Cicirelli, 0-4-36.4.

**CLASS B WOMEN** — Karen Skytta, 5-1-29.5, Eileen Genske, 5-1-24.2, Margie Palsa, 3-3-17.9, Lois Luhta, 3-3-16.3, Cherie Meschko, 2-4-15.2, Charlie Green, 2-4-13.7, Lynda Robinson, 1-5-9.9.

**CLASS A MEN** — Steve Kuchcinski, 6-1-73.6, Don Kuchcinski, 5-2-74.7, Oscar Manns, 5-2-71.1, Wayne Luoma, 4-3-70.8, Tom Wennerstrom, 3-4-69.5, Phil Spiesman, 3-4-61.9, Joe Markiewicz, 2-5-58.2, Gregg Bean, 0-7-55.4.

**CLASS B MEN** — Joe Markiewicz, 6-1-61.5, Charles Dunlap, 5-2-61.0, Clyde Ryan, 5-2-59.0, Earl Vansant, 4-3-49.3, Bob Lautenschleger, 3-4-51.4, Walter Sargent, 3-4-47.7, Joe Mazzurco, 2-5-53.9, Bill Zieske, 0-7-41.4.

**CHARLES C MEN** — Armond Frabotta, 7-0-54.0, Guy Wills, 5-2-55.5, John Lalley, 5-2-48.2, Jim Kuchcinski, 4-3-45.4, Dan LaForce, 3-4-45.7, Joe Raico, 2-5-46.4, Charles Brotzman, 2-5-42.9, Dave Kuchcinski, 0-7-35.8.

**CLASS D MEN** — John Kovach, 7-0-46.6, Bob Allen, 6-1-44.0, Dick Spaller, 4-3-40.0, Bill Beckett, 4-3-33.8, Earl Kilchenman, 3-4-37.4, Bob McKinney, 2-5-27.0, Larry Luoma, 1-6-26.6, Joe Sipan, 1-6-25.4.

**CLASS E MEN** — Fred Schroeder, 7-0-43.5, John Beharry, 5-2-37.6, Nestor Kolehmainen, 4-3-42.7, Bob Lapping, 4-3-38.7, John Revack, 3-4-37.6, Thurman Conley, 3-4-34.9, Charlie Fowler, 2-5-25.1, Bob McKinney, 0-7-18.6.

**CLASS F MEN** — Jim Krouse, 5-2-31.3, Ray Greene, 5-2-32.2, Bob Facemyer, 4-3-32.1, Dick Johnson, 4-3-29.6, Harry Genske, 4-3-27.6, Gary Krause, 2-5-29.6, John Brown, 2-5-28.6, Jeff Bean, 2-5-24.7.

**CLASS G MEN** — Hugh Locke, 6-1-27.7, Larry Deyling, 5-2-18.0, Mike Grubish, 5-2-16.4, John Fuduric, 4-3-20.7, Mike Moore, 3-4-19.8, Ray Jacobsky, 3-4-16.7, Rick Plotts, 1-6-15.3, Rolly Cicirelli, 1-6-9.7.

## **N.H.P.A. CONCERVES HUMANITY**

Let's put our sport into the form to do just that, and at the same time get far more out of it for ourselves. This sport can mushroom into one beyond our imagination, if we bring to light all the potential that has been hiding from us all these years.

It should all start with the N.H.P.A. We will bend to the limit, but the tale will be told in Springfield.

Continuously painting a false, rosy picture never did and never will get us anywhere. The time is here when we have to stop kidding ourselves. This continual squabbling over the constitution and by-laws, rules and regulations, foul lines and committees to no end, can all come to a halt with a complete system that will give us everything we need.

We can take all the work out of this sport, and put it into it far more pleasure.

As I have previously stated, recognition of this P.A.R. (Pro-Am-Rated) horseshoe system and its components can exceed everything we have done in the past 50 years.

Your friend in horseshoe,

Glen (Red) Henton  
513 West Platt St.  
Maquoketa, Iowa 52060

(ADVERTISEMENT)

## 1984 WORLD TOURNAMENT CASH PRIZE LIST

MEN'S CHAMPIONSHIP	
1.....	\$2500.00
2.....	1600.00
3.....	1000.00
4.....	700.00
5.....	600.00
6.....	400.00
7.....	350.00
8.....	325.00
9.....	300.00
10.....	250.00
11.....	200.00
12.....	155.00
13.....	150.00
14.....	148.00
15.....	144.00
16.....	142.00
17.....	140.00
18.....	138.00
19.....	136.00
20.....	134.00
21.....	132.00
22.....	130.00
23.....	128.00
24.....	126.00
	\$10,028

### MEN'S CLASS B

1.....	\$90.00
2.....	80.00
3.....	75.00
4.....	70.00
5.....	65.00
6.....	60.00
7.....	55.00
8.....	50.00
9.....	45.00
10.....	40.00
11.....	38.00
12.....	36.00
	\$704.00

### MEN'S CLASS C

1.....	\$35.00
2.....	25.00
	\$60.00

### MEN'S CLASS D

1.....	\$20.00
2.....	15.00
	\$35.00

SENIOR & INTERMEDIATE MEN'S CHAMPIONSHIP	
1.....	\$300.00
2.....	150.00
3.....	100.00
4.....	75.00
5.....	70.00
6.....	65.00
7.....	60.00
8.....	55.00
9.....	50.00
10.....	45.00
11.....	40.00
12.....	35.00
Each Class	\$1045.00

### WOMEN, SENIOR & INTERMEDIATE CLASS B

1.....	\$25.00
2.....	20.00
Each Class	\$45.00

WOMEN'S CHAMPIONSHIP	
1.....	\$1000.00
2.....	600.00
3.....	300.00
4.....	200.00
5.....	150.00
6.....	135.00
7.....	120.00
8.....	100.00
9.....	80.00
10.....	70.00
11.....	65.00
12.....	60.00
	\$2880.00

### WOMEN, SENIOR & INTERMEDIATE CLASS C

1.....	\$20.00
2.....	15.00
Each Class	\$35.00

### AVAILABLE FUNDS:

Statesville.....	\$15,000.00
NHPA Contribution.....	3,000.00
Total:	\$18,000.00

### EXPENSES:

Cash Prizes.....	\$16,037
Junior Girl's Championship Scholarship.....	200.00
Junior Boy's Championship Scholarship.....	200.00
*NHPA contribution in purchasing 105 Division Class Trophies.....	1,200.00
Total:	\$18,000.00

\*In addition NHPA pays for all the extra class 1st and 2nd place trophies and special awarded trophies.

### REGISTRATION FEES

Men's Division.....	\$15.00
Women.....	15.00
Intermediate.....	10.00
Seniors.....	10.00
Juniors.....	None

### ENTRY FEES

Men's Championship.....	\$35.00
Men's Class B.....	10.00
Men's Class C.....	5.00
Men's Class D.....	2.00
Women's Championship.....	\$35.00
Inter. Championship.....	5.00
Senior Championship.....	5.00
Juniors.....	None

## FLANN TOPS IN ARCHIE GREGSON SENIOR HCP.-SO. CA.

(Sanction No. 84-113) Mar. 17

**GROUP ONE** — Newell Flann, Westminster, 7-1-63.7; Joe Templeton, Pennsylvania, 5-2-49.4; Barbara Dow, Glendale, 5-2-45.1; Wally Shipley, Newport Beach, 3-3-40.3; Les Stewart, Hesperia, 1-5-33.8; Frank Brown, Pomona, 1-5-35.7; Bob Thompson, Orange, 1-5-37.0.

**GROUP TWO** — Leonard Lifton, Torrance, 5-1-36.9; Peter Trejo, Vista, 3-3-33.7; Leo Raymond, Newport Beach, 3-3-33.0; Tom Buck, Sun City, 3-3-30.0; Jim Dow, Glendale 3-3-24.4; Lorenz Bramow, Riverside, 2-4-30.4; Jack Schoonover, Orange, 3-4-23.9.

**HAROLD SLAGG DOUBLES** — Sanction 84-114 — Tim Atwell-Harold Redding, 7-0; Loris Hauck-Simi Valley, 5-2; Wally Shipley-George Farrell, 4-3; Arnie Mortenson-Erwin Klessig, 4-3; Larry Hilton-Hudson, 2-5; Barbara Dow-Wink, G-2.5; Harold Slagg-Gene Bolsinger, 2-5; Chuck Yoshida-Helge Alm, 2-5.

## GONZALES FRONT RUNNER IN TOM BROWNELL OPEN AT SAN JOSE, CALIF., MAR. 3, SANCTION 84-168

**MEN I** — Jess Gonzales, Los Osos 7-0-76.3; Don Titcomb, San Jose, 5-2-70.3; Ed Floyd, Tri-Valley, 5-2-64.6; Dave Loucks, San Jose, 5-2-62.9; Bob Mauey, Sonoma County, 2-5-56.3; Tom Webb, Rio Del Scotia, 2-5-55.1; Harvey Robbins, 1-6-56.6; Jack Sorg, Golden Gate, 1-6-52.6; HIGH GAME: Gonzales — 86%.

**MEN II** — Dave Storch, Yolo, 7-1-58.0; Juke Basham, Yuba-Sutter, 6-2-54.6; Fred Lavett, Seaside, 4-3-59.1; Marty Dunn, Tri Valley, 4-3-53.1; Holland Payne, Sacramento, 4-3-53.1; Vern Gosney, Vallejo, 2-5-47.2; Herb Rushing, Nevada City, 2-5-49.7; Ernie Fairchild, San Jose, 0-7-42.3; Storck won play-off with Basham. HIGH GAME: Lavett — 68%.

**MEN III** — Jim Saunders, Sr. S.J. 7-1-49.5; Lou Fontaine, S.J. 6-2-58.3; Vince Mauricio, S.J. 5-2-49.1; Walt Robinson, S.S. 4-3-41.7; Walt Foreman, S.J. 3-4-49.7; Bill Brown, T.V. 2-5-39.4; Steve Kynard, Yolo, 2-5-37.7; Bill Penix, S.J. 0-7-30.9; H.G. Fontaine-70%.

**MEN IV** — Earl Kynard, Yolo, 5-2-34.3; Bob Garcia, S.J. 4-3-38.9; Tom Burns, Ukiah, 4-3-35.4; Oscar Skanderup, G.G. 4-3-34.9; Gerry Saunders, Sr. T.V. 4-3-32.6; Lee Oliver, Yolo 3-4-34.0; Bert Charley, Nevada City, 2-5-32.9; Dale Korstinien, S.J. 2-5-31.1; H.G. Kynard-56%.

**MEN V** — Tim Saunders, T.V. 6-1-31.7; Ceres Perry, T.V. 5-2-32.0; Fred Laam, Turlock, 5-2-36.6; Mickey Cutbirth, S.J. 5-2-24.6; Bob Fread, T.V. 2-5-28.3; Earl Anderson, T.V. 2-5-26.0; Obie Winn, T.V. 2-5-24.6; Bill Carns, S.J. 1-6-23.1; H.G. Perry, Anderson-38%.

**MEN VI** — Lee Van Dalsen, G.G. 7-0-29.7; Mel Falcon, S.S. 6-1-29.3; Gary Cole, Sac. 4-3-19.1; Red Taylor, S.J. 3-4-23.3; Elton Cowles, Moss. 3-4-17.1; Glenn Jamieson, T.V. 3-4-14.3; Elton Forbes, T.V. 2-5-18.3; (Bob Bendorf, Jr. Y.S. 0-4-26.5; 4 games only: illness); HIGH GAME: Dalsen-38%.

**MEN VII** — Gary Cole, Yolo, 5-1-17.5; Bill Chandler, S.J. 4-2-22.0; Jim Kissinger, S.S. 4-2-13.5; Tom Melling, S.J. 2-3-8.6; Don Cole, T.V., 1-4-8.1.

**MEN VII** — Henry Caldwell, S.J. 6-2-16.9; Jim Dunn, T.V. 5-3-9.4; JOe Kovach, S.J. 4-3-14.7; E. Acuna, Sr. S.J. 4-3-12.3; Ernie Kim, Moss. 4-3-9.7; Harry Fletcher, S.J.; 4-3-6.3; Sylvester Sauer, S.J. 3-4-8.0; HIGH GAME: Kovach-24%.

**WOMEN I** — Yvonne Mauey, SonCo, 7-1-61.8; Marisella Mauricio, S.J. 67-2-56.9; Vera FLoyd, T.V. 5-2-58.0; Genevieve Lavett, S.S. 5-2-42.6; Marthe Dunn, T.V. 3-4-49.5; Marilyn Webb, Rio Del, 2-5-35.7; Vada Dunn, T.V. 1-6-34.0; Jean Robinson, S.S. 0-7-30.9; H.G. Mauey-68%.

**WOMEN II** — Lillian Lloyd, T.V. 7-1-22.6; Billy Pennington, T.V. 6-2-17.1; Sue Saunders, T.V. 5-2-22.6; Josephine Charley, N.C. 4-3-15.1; Twila Zelmar, S.J. 4-3-13.7; Bernice Smith, G.G. 2-5-12.2; Sharon Saunders, T.V. 1-6-4.6; HIGH GAME: Lloyd-32%.

**JUNIORS I** — Mike Bradshaw, Tur. 3-0-25.3; Eugene Acuna, Jr. S.J. 2-1-28.0.

**JUNIORS II** — Jim Saunders, Jr. S.J. 2-0-17.0. Gerry Saunders, JR., T.V. 1-1-4.0; Nicoe Saunders, T.V. 0-2-4.0; HIGH GAME: J. Saunders-18%.

Pete Quintana, well known Californian, died of lung cancer March 9. He would have been 76 in August.

He was a consistent 45% pitcher and held all of the officer positions; most recently the Vallejo Clubs Secretary-Treasurer.

Pete's poor health prevented him from being an active pitcher in tournaments in the last two years, but he devoted much of his spare time to improving the park and pitching area. He will be sadly missed by California horseshoe pitchers.



**1984 WORLD HORSESHOE TOURNAMENT - HUNTSVILLE, ALABAMA - ENTRY BLANK**  
 July 25 through August 4, 1984

Name \_\_\_\_\_ NHPA CARD NUMBER \_\_\_\_\_

Address \_\_\_\_\_ SOCIAL SECURITY NUMBER \_\_\_\_\_

Occupation \_\_\_\_\_ zip \_\_\_\_\_

What is your ringer percentage in competition? 83 World \_\_\_\_\_ 83 State \_\_\_\_\_ Last 3 Events \_\_\_\_\_  
 Please be accurate. We reserve the right to change it if records indicate that your average is not accurate on this form.

Be sure to include your entry fee: Men - \$15.00, Women - \$15.00, Seniors and Intermediates - \$10.00, Handicapped - \$10.00. Boys and Girls - Free, 70 and Older - \$10.00.

It is very important that you enter the correct division. Any male regardless of age may enter the Men's Division. Any female regardless of age may enter the Women's Division. However, Juniors who enter the adult divisions must pitch adult distance and will forfeit their junior standing. If you are 17 years old or younger on or after January 1, 1984 you may enter the Junior Divisions. You may enter the Intermediate Division if you are between 59 and 66 years of age by July 24, 1984. That is you must be 60, 61, 62, 63, 64, or 65 years old as of July 24, 1984 to enter the Intermediates. To enter the Senior Division you must be 66 years old or older by July 24, 1984. If you become 66 during the tournament you will be allowed to finish competition in the intermediates and may not enter the Seniors until next year. This year we will have a Senior group for anyone 70 years of age or older by July 24, 1984. Entering this division is optional. We will, also, have a division for handicapped pitchers which is optional. Verification of handicap will be required. The 70 and older group and the handicapped group may pitch at any distance beyond 30 feet. Please circle below the division you plan to enter. You may enter only one. Be careful in your selection.

Men \_\_\_\_\_ Women \_\_\_\_\_ Boys \_\_\_\_\_ Girls \_\_\_\_\_ Seniors \_\_\_\_\_ Intermediates \_\_\_\_\_

Handicapped \_\_\_\_\_ 70 and older \_\_\_\_\_ Please show date of birth \_\_\_\_\_

Defending Champions must enter. All entries must be postmarked by June 1, 1984. Late entries and entries with no entry fee will be returned. You will receive a complete schedule by July 1, 1984. Mail entries to: Donnie Roberts, Box 810 Circleville, Ohio 43113 or call 614-474-7727. Please enclose a 5 x 7 black & white close-up photo of yourself and write the name and address of your hometown newspaper on the back of this form.

# "From Out Of The Mail Bag"

F. Ellis Cobb, Editor  
 Horseshoe Pitchers' News Digest  
 Box 1606  
 Aurora, IL 60507

Dear Editor,

On page 27 of the April 1984 issue of the Horseshoe Pitchers News Digest a letter from the Arizona State President was published.

There are a couple of things which need to be mentioned. Horseshoe tournaments like golf or bowling must have the permission of the parent governing organization for sponsored TV programs. All TV stations are aware of this. This doesn't interfere with local coverage which comes along without sponsors. You don't really think some TV station could cover the Super Bowl without the permission of professional football!!

Be it right or wrong at this point it is the feeling of the NHPA that tournaments *not* requiring NHPA and state membership *nor* sanctioning their event are *not* entitled to have their results published along side those who do sanction their events. Those who promote unsanctioned events are doing harm to our sport.

There is no secret about the Yuma Arizona charter. Yuma submitted an application for a charter according to the NHPA Constitution and By-Laws. Every detail of the NHPA Constitution and By-Laws was followed to the letter in issuing the Yuma Charter. The facilities and people in Yuma were ready, the existing charter was contacted and said they were in favor and the charter was issued accordingly.

One final note is that if I felt Gary Minnick had made an error or was doing something that I didn't agree with in Arizona, probably I should give him a call and try to get it squared away rather than write a letter to the whole horseshoe world.

Sincerely yours,

Donnie Roberts  
 NHPA Sec.-Treas.

## LOGG WINS DEAN BROWN OPEN, RIVERSIDE, CA., MAR 11

(Sanction No. 84-112)

**GROUP ONE** — Ben Logg, Barstow, 6-0-64.1; Jeffrey Williams, Chino, 4-2-62.9; Jonathan Williams, Chino, 3-3-55.9; Dean Zollinger, Hemet, 3-3-55.0; Orville Lokken, San Bernardino, 3-3-53.0; Vince Satern, Sun City, 2-4-55.4; Earl Kerr, Laguna Hills, 0-6-44.4.

**GROUP TWO** — Jim Eozzo, Los Angeles, 4-1-46.4; George Whittemore, Rosemead, 3-2-50.4; Les Burroughs, Peris, 3-2-41.4; Nat Clark, Hemet, 3-2-41.0; Barbara Dow, Glendale, 2-3-49.5; Chuck Yoshida, Carson, 0-5-39.6.

**GROUP THREE** — Billy Hubbs Jr., National City, 5-0-58.8; Joe Templeton, Pennsylvania, 4-1-42.3; Bob McGowan, California City, 2-3-36.4; Tom Didmon, Hemet, 2-3-36.2; Tom McQueen, Bishop, 2-3-35.2; Edwin Agner, Beaumont, 0-5-25.0.

**GROUP FOUR** — Pat Brady, Torrance, 5-0-39.6; Harold Slagg, Ontario, 4-1-36.7; Mary Van Sant, Sun City, 3-2-40.2; Doyle Brawley, Riverside, 2-3-36.0; Jim Atwell, Los Angeles, 1-4-28.8; Leonard Lifton, Torrance, 0-5-26.7.

**GROUP FIVE** — Lorenz Bramow, Riverside, 5-0-35.1; Wally Shipley, Newport Beach, 4-1-42.8; Bill Hubbs, Sr., National City, 2-3-29.0; Bob Jacobs, Tustin, 2-3-22.9; Bob Lowell, Palm Desert, 1-4-28.7; Lee Hubbs, Burbank, 1-4-23.7.

**GROUP SIX** — Richard Gustafson, Ontario, 4-1-28.0; Jim Dow, Glendale, 3-2-26.1; Earl Hogan, San Bernardino, 3-2-25.4; Joe Holder, Yucaipa, 2-3-24.8; Doug Soward, Lake Isabella, 2-3-24.4; Ralph Carter, Rialto, 1-4-23.6.

**GROUP SEVEN** — Bruce Schroeder, Idaho, 5-0-36.0; Tom Nation, Hemet, 4-1-16.5; Lupe Henry, Palm Springs, 3-1-34.0; John George, So El Monte, 3-1-13.3; John Shaver, Hesperia, 2-2-27.5; Dick Rios, El Sinore, 2-2-14.0; Roy Henry, Palm Springs, 1-3-21.5; Mel Coss, El Monte, 1-3-6.0; Bruce Hansen, Riverside, 0-4-15.0.

**GROUP EIGHT JUNIORS** — Willy Bates, Spring Valley, 4-1-14.4; Chuck Cummins, San Diego, 3-2-8.0; Rick Rios, El Sinore, 0-4-6.5.

## SANJOSE, CA. "C-E" TITLES TO SAUNDERS &amp; EAST

## MARCH 4 — SANCTION 84-169

**CLASS C — MEN I** — Jim Saunders, Sr. S.J. 7-1-48.3; Vince Mauricio, S.J. 6-2-45.0; Emmett Schroeder, Stock. 5-2-51.7; Walt Foreman, S.J. 4-3-45.0; Marshall Johnson, Stock. 3-4-47.0; Walt Robinson, S.S. 3-4-38.0; Bill Penix, S.J. 1-6-26.3; **HIGH GAME:** Schroeder, Johnson-58%.

**MEN II** — Bert Charley, N.C. 6-1-42.9; Gerry Saunders, T.V. 5-2-36.4; Don Muenchow, Moss, 5-2-33.1; Bob Garcias, S.J. 37.0; Gordon Hammerud, G.G. 36.0; Tom Burns, Ukiah, 3-4-29.4; Lee Oliver, Yolo, 1-6-33.1; Bob Malley, SonCo. 1-6-26.0. **HIGH GAME:** Charley-50%.

**CLASS E — MEN II** — Andy Anderson, T.V. 6-1-31.1; Bob Fread, T.V. 5-2-26.6; Mickey Cutbirth, S.J. 4-3-26.9; Jim Cosgrove, S.J. 4-3-24.3; Jerry Pawloski, T.V. 4-3-18.9; Al Alviso, T.V. 2-5-23.1; Mel Falcon, S.S. 2-5-20.1; Marc Desmond, 1-6-13.4. **HIGH GAME:** Anderson-40%.

**MEN III** — Fred Wood, 6-1-20.9; Bob Lloyd, T.V. 5-2-25.7; Tom Melling, G.G. 4-3-19.1; Leo Wanner, Sac., 4-3-16.6; Bill Chandler, S.J. 3-4-18.9; Chas. Hoage, Sr., 2-5-19.1; Glenn Jamieson, T.V. 2-5-18.9; Chester Anderson, Moss. 2-5-16.6; H.G. Lloyd, Hoage, Wood-34%.

**CLASS E — MEN I** — Walt East, Moss. 32.9; Obie Winn, T.V. 24.0; Tim Saunders, T.V. 5-2-25.4; Fred Laam, Tur. 4-3-25.4; Ceres Perry, T.V. 4-3-23.1; Dick Pawlowski, T.V. 2-5-18.9; Luke Braun, Moss. 1-6-15.0; Jim Morrow, S.J. 0-7-5.4. **HIGH GAME:** East-46%.

**MEN III** — Joe Kovach, 6-1-12.3; Sy Sauer, 5-2-14.3; Roy Heyden, T.V. 5-2-12.3; Eugene Acuna, Sr., 5-2-10.0; Hank Caldwell, S.J. 3-4-13.0; Ernie Kim, Moss. 3-4-8.2; Harry Fletcher, S.J. 1-6-5.7; **HIGH GAME:** Caldwell-20%.

## DALE LIPOVSKY 1982-83 WORLD CHAMPION

Lipovsky feels that the fact he can play against some of the best pitchers right in his "backyard" has helped him. Take for instance, he has his dad, Leonard, right at home to pitch on a daily basis. Leonard is one of the top all-time tossers in Minnesota and was in the Championship Division in the State Tourney again in Genola, Minn. in 1982. Then there are such tossers as Stinson, Jim Aleckson, Jack O'Conner, Marv Richmond and others who give Lipovsky plenty of competition in open and state tourneys. And don't forget Horseshoe Joe Anzaldi of St. Paul, who has compiled a sensational record over 25 years of tossing in the top class.

An abundance of tournaments at Genola and other Minnesota sites as well as Wisconsin and North Dakota and Iowa give the Lipovsky team a chance to pitch to their heart's delight. While horseshoe has become nearly a year around sport for the Lipovskys, they turn to bowling in the winter.

Dale takes after his dad, Len, when it comes to attitude. Both are quiet competitors and good sportsmen. When it comes to the last pitch, they are both tough as nails but win or lose, they have a ready handshake for the opponent. This attribute is not known to all pitchers. Built like a lean greyhound, Dale is hungry to win when it comes to taking to the courts. He doesn't have much to eat or drink the day of a gruelling tournament and sticks to orange juice and water during the games. Dale does get his appreciation for a cigarette at times during or between games.

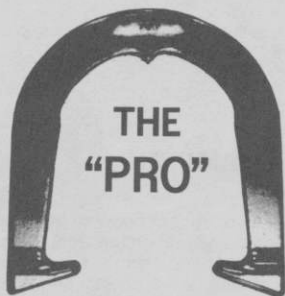
Winning the \$2,500 first place prize money in the World Tourney gave Dale his biggest winning total in the sport. He will be aiming to repeat in the tournament at Statesville, N.C., in July. At his age, Dale has the opportunity to become one of the all-time greats in the World Tournament. He could take his place along side such as Ted Allen, Elmer Hohl, Curt Day and Fernando Isais. Realizing his first dream by winning at Huntsville, Dale also knows that it will be a complex situation when he toes the slab at Statesville. Then, he realizes that all other pitchers will be going after the lefty with the lettering "World Champion" on his shirt-back.

Left-handers have taken their place in the World Tournament and Dale is the newest. Three-time champion Danny Kuchcinski, of Pa., won his first title at age 18 at Fargo, N.D. He won twice more before having his game slip. Kuchcinski also comes from a horseshoe pitching family and when Danny is not at the World, there are usually other Kuchcinski's on hand. Mark Siebold of Indiana is one of the great lefties of the sport.

Dale started pitching in the sport as a Junior-aged tosser. An athlete at Minneapolis South High School, he learned the trade quickly and was elevated into higher classes often in the Minneapolis League. Then his hometown of Bloomington, Minn., built 24 of the best courts in the nation and he found a new home there.



## THE ORIGINAL DROP-FORGED PITCHING SHOE



Two tournament tested models, forged from S.A.E. specified steel, are available. Both have hardened hooks and points, and may be ordered in your choice of medium, soft, or dead soft tempers.



AS THE FIRST MANUFACTURER OF THE DROP-FORGED PITCHING SHOE, THE OHIO HORSESHOE COMPANY IS RECOGNIZED WORLD-WIDE FOR ITS HIGH QUALITY PITCHING SHOES.

For price information and to order, contact:

# OHIO HORSESHOE COMPANY

P.O. Box 21371  
Columbus, Ohio 43221

614-457-4335