



the
national horseshoe pitchers

NEWS DIGEST



JULY, 1984

Official Publication of
THE NATIONAL HORSESHOE PITCHER'S ASSOCIATION
OF AMERICA

DEADEYE HORSESHOES

NOW IN

FOUR MODELS

CLYDESDALES NOW IN LIGHTER WEIGHTS

	Price Per Pr.—Up to 9 Pairs	Price Per Pr.—9 Prs. & Over
CLYDESDALES 2# 10 oz., 2# 9 oz., 2# 8 oz., & 2# 7 oz.	\$23.00/Pr.	\$17.50/Pr.
N.T. 2# 10, 9, 8, 7 oz.	\$23.00/Pr.	\$17.50/Pr.
REGULAR 2# 9, 8, 7, 6, 5 & 4 oz.	\$23.00/Pr.	\$17.50/Pr.
E-Z GRIP 2# 10, 9, 8, 7 & 6 oz.	\$28.00/Pr.	\$22.50/Pr.

*Prices on all "DEADEYES" f.o.b. point of shipment.
Missouri residents add 4-5/8% sales tax and California
residents add on 6% tax.*

All "DEADEYES" are dead soft.

All "DEADEYES" are guaranteed against breakage for 2 years.
(Subject to change). Please specify desired weight when
ordering from:

W. Courtwright
P.O. Box 742
Fenton, MO 63026
Phone: (314) 376-5222 (8-5)
(314) 677-2200
(314) 842-5188

Carl Steinfeldt
44 Ridgecrest Road
Rochester, NY 14626 (summer)
Phone: (716) 225-4191

Walter Ray Williams, Jr.
6140 Grant St.
Chino, CA 91710
Phone: (714) 628-6053

Carl Steinfeldt
407 Shady Lane Mobil Park
15400 Roosevelt Blvd.
Clearwater, FL 33520
(winter address)
Phone: (813) 535-3136

ORDER DIRECT or from NHPA REPRESENTATIVE

THE HORSESHOE PITCHER'S NEWS DIGEST is published on the 5th of each month at Aurora, Illinois, U.S.A. by the National Horseshoe Pitcher's Association of America. Editorial office, P.O. Box 1606, Aurora, Illinois 60507. Phone: 312-898-3974. Subscription rates—1st Class \$9.00; 3rd Class \$8.00 per year in advance. NHPA membership cards are available through each state secretary for \$7.00 plus any state association dues. Forms close on the 10th day of each month preceding date of issue. Advertising rates on request. F. Ellis Cobb, Editor.

NATIONAL OFFICERS

Glen Portt, 2803 Newcomb Rd. Albany, Ga. 31705 (912-432-0067) President
 Earl Winston, Rte 2, Lamonte, Mo. 65337 (816-563-3536) 1st Vice-President
 Norman Gaseau, 1908 Nuggett Dr., Clearwater, Fla. 33515 (813-443-2892) 2nd Vice-President
 Vincent Yannetti, 322 Longwood Ave., Bound Brook, N.J. 08805(201-356-3862) 3rd Vice-President
 Bonnie Seibold, 1043 Grayson Ave., Huntington, Ind. 46750 (219-356-3489) 4th Vice-President
 Donnie Roberts, Box 810, Circleville, Oh. 43113 (614-474-7727) Sec./Treas.
 Claude White, Jr., 940 Knollwood Ct., Plainfield, NJ 07062(201-753-2298) Chr. Reg. Dir.

Volume 27

July, 1984

No. 7

From Your President — Glen A. Portt

During the period 28-29 May, your Council met in executive session at Springfield, Missouri. Work periods were from 8 a.m. to 5 p.m. both days. As may be surmised from the time involved, many subjects were discussed. One of these I wish to share with you. I have sent this to the State Presidents and State Secretaries:

There must be a clear understanding of our present Constitution and By-Laws. These rules gradually evolved through the 70 years the NHPA has been in existence. Every paragraph was submitted and approved at some time or another *by state delegates* in convention. Therefore, it must be realized by everyone that the *states* made our present rules. That is the way it was and that is the way it should be. The *states* decided the NHPA should have a governing body...so they created the Executive Council to be in charge of its affairs. This is no different than any other corporation.

When the Executive Council makes a decision telling a state what it can or can not do, in reality it is the 49 other states that are saying it...because they have written and approved our Constitution. The Executive Council, to the best of its ability, is simply saying it for them.

I feel I have a dedicated, outstanding Council and its desire is to work in harmony with every state. It recommends that if the *majority of a state's members* is unhappy with the Constitution and By-laws, then the remedy is to submit changes or amendments to it. Again, it will be the other 49 states who will either approve or disapprove. Your Council will act accordingly.

Before becoming your President, I felt there should be more input into the NHPA by the states. In January, '84, I therefore created a *State Secretaries Committee* to get this input. I appointed James Acock, a 20 year NHPA member and also the Sec-Treasurer of the Missouri HPA to chair it.

I am requesting each State President and Secretary to work closely with the state's members and let the state's desires be known. The Council looks forward to meeting with you at the W.T.

NOTICE

The following members have agreed to represent you at the W.T. convention: Carl Steinfeldt (men), 44 Ridgecrest Rd., Rochester, N.Y. 14626; Bonnie Seibold (women), 1043 Grayston Ave., Huntington, Ind. 46750; Alan Francis (boys), Rt. 1., Blytheville, Mo. 64426; and Kristi Farris (girls), 1523 Atchison Ave., Whiting, IN 46394. Please make your ideas known to these people. Write!

HALL OF FAME BANQUET

The Hall of Fame banquet will be a special affair and will be held in the new air conditioned Redstone Arsenal Officers' Club on Sunday, July 29, 1984. Coat and tie are required for the men. The Social hour is 6-7 p.m. with dinner at 7 and entertainment at 9. The cost is \$11.95 per person which includes a dinner dance. A cash bar will be available. Tickets must be purchased prior to 12 p.m. on July 27, 1984. Special awards, Achievement Awards and the coveted Stokes award will be presented prior to the final presentation of the new selectees to the Hall of Fame. Don't miss this one!

1984 HALL OF FAME INDUCTEES

MARK SEIBOLD, Indiana — Player; LEE JACOBS, Michigan — Player and Organizer
 JACK ADAMS, Canada — Organizer; WINNIE WINETROUT, Washington — Player and Organizer

SPECIAL NOTICE — ELECTION OF VICE-PRESIDENTS

By GLEN PORTT, President

Your Executive Council voted that effective at this World Tournament Convention, a new method will be used in the election of Vice-Presidents *if delegates agree*. A change to Art. 111, Sec. 5, pg. 7 will be required.

Members running for a vice-president position will *not* be running for a specific position, such as 2nd or 4th vice-president. They will be running for a vice-president slot.

This system will provide orderly progression for Council officers toward the top position, much like Art. 11, Sec. 13, par. 2, pg. 6, Constitution, which provides for orderly progression in case of death resignation or removal.

The three members who are presently running for 2nd VP (Dr. Sol Berman, Barry Chapelle, Fran Carnahan), and Bonnie Siebold (running for 4th VP) will all be running for a position.

Their names will be on a ballot. Delegates shall vote for only one on the first ballot. If a woman is elected, then on the second ballot, delegates shall vote for one of the three remaining candidates.

If a woman is not elected on the first ballot, then on the second ballot delegates would have to vote for one of the two women as the Constitution requires at least one of the VPs to be a woman.

The candidates listed above have been informed and have agreed to the above. All members and delegates are asked to read Sec. 13, pg. 6; sec. 5, pg. 7; and Art. 1, Sec. 1, pg. 15.

Delegates will be asked to amend Art. 111, Sec. 5, pg. 7 to the following:

Sec. 5. All vice-presidents shall be elected for a term of two (2) years. Two VPs shall be elected on odd numbered years; two on even numbered years. The newly elected officers will normally fill the 3rd and 4th VP positions, Senior officers *not* running shall move up into the next VP position unless a senior officer running for re-election is elected. That officer shall then maintain his VP position or move up.

FREE!

Trophy & Awards Catalog



Call Toll-Free
1-800-628-9657
In Mass. 1-800-282-7789

DINN BROS. *The Trophy People*

P.O. Box 111 • 68 Winter St. • Holyoke, MA 01041

The shoe for the 1980's

STAR

STAINLESS HORSESHOES

NOW PRECISION MANUFACTURED BY
A COMPANY THAT MAKES STAINLESS
STEEL PRODUCTS OF ALL KINDS.

THEY HAVE OVER 30 YEARS
EXPERIENCE IN THIS FIELD AND THE
LATEST IN STATE-OF-THE-ART
TECHNOLOGY. THE STAR STAINLESS
IS A TOP QUALITY SHOE FOR THE
PROFESSIONAL PITCHER.

Send Check or
Money Order to:

Alfred R. Boudreau Jr.
301-A Old Ipswich Rd.
Rindge, N.H. 03461

NHPA
APPROVED



\$69.00 per pair
postpaid

NHPA SECRETARY-TREAS. REPORT FOR APRIL, 1984

April 1984 NHPA RECEIPTS:

Digest	\$2318.80
Membership	5233.00
Envelope Sales	30.00
World Entry Fees	190.00
Help Ourselves Program	50.00
Court Sanction	25.00
League	17.00
Total April Receipts	\$7863.80

May 1984 Receipts

1984 World Entry Fees	\$ 6233.00
Publicity Donation	5.00
NHPA Digest	1532.50
Memberships	5022.75
NHPA Envelope Sales	10.00
State Dues	32.00
Help Ourselves Donations	70.00
NHPA League	207.00
Court Sanction	25.00
Total May Receipts	\$13137.25

April 1984 Expenditures:

Postage	\$1090.17
League	49.78
World 1984	314.89
Telephone	127.45
Officer Travel	115.00
Supplies	859.84
Officer Allowance	908.33
April Total Expenditures	\$3465.46

May 1984 Expenditures:

NHPA Telephones	\$ 178.70
Supplies	133.67
NHPA Digest 2 issues	4864.86
Officer Allowance	2458.33
Equipment & Equipment Repair	2074.44
Postage	49.09
Officer Travel	1099.43
Refunds	10.00
League	182.57
1983 State .25 rebates	1911.00
1984 World Patches	812.08
Total May Expenditures	\$13594.17

Note: these figures are from the books of the NHPA Secretary-Treasurer and do not reflect the records of others in the NHPA who handle separate accounts. Interest, service charges, foreign money exchanges, returned checks, etc. are not reflected here.

NHPA PROMOTION COMMITTEE REPORT

By SOL BERMAN, Chr.

The NHPA is in the top 50 of the Wheaties Search for Champion II Contest. Keep sending in the ballots so that we can remain in the top 50 and collect the \$5,000. If we all help perhaps we can get Bonis photo on the Wheaties box.

Len Lipovsky, Minnesota coordinator reports that Minnesota's going all out. He's been in contact with Ms Tickle the contest director.

Cornwall Books office was visited. I was told that Oattie Reno's book should be completed before the World Championship.

They gave me an unbound copy of my book "Horseshoe Film Facts and Fun." It will be available in 3-4 weeks. It contains articles, cartoons and sketches on horseshoes. Cartoons and sketches were made by John Yernberg of Duluth, Minn., former Minnesota State Champion and member of the Minnesota Hall of Fame.

Tips from the Top

Guy Zimmerman (1954 World Champion) says the reason many players tense up is because they don't try as hard during practice as they do in competition. While practicing they merely toss their shoes back and forth without concentrating enough on what they are doing. The result is they play as they practice, half heartedly with little confidence. They may pitch very well for a while but when the chips are down they break under the pressure of competition.

WORLD TOURNAMENT HEADQUARTERS PHONE NUMBER

The telephone number for the 1984 World Tournament headquarters at Huntsville, Alabama, July 25 through August 4 is 205-533-2745.

1983 NHPA CONVENTION MINUTES

by Donnie Roberts

The annual NHPA convention was called to order at 7:00 a.m. on Tuesday, August 1, 1983 at the Armory in Statesville, North Carolina by Wally Shipley, NHPA President. Paul Thomas gave the pledge of Allegiance to the Flag. NHPA Chaplain, Rev. Burgess led the prayer. President Shipley commanded the delegates to cooperate in running a smooth convention by making speeches brief. Everyone was checked to make sure they had a delegate packet. The coffee break was explained plus the restroom procedure. Each delegate was asked to give his/her name prior to speaking.

The following NHPA Officers were introduced: Leo McGrath-1st Vice, Norm Gaseau-2nd Vice, Earl Winston-3rd Vice, Bonnie Seibold-4th Vice, Donnie Roberts-Secretary-Treasurer, Claude White-Regional Director Chairman, Wally Shipley-President. The following committee chairmen were introduced: John Walker-Constitution and By-

CONVENTION MINUTES — (Continued)

Laws, Gary Kline-Statistician and Historian, Pete Shepard-Horseshoe Manufacturers, Jack Springer-Youth, Marvin Burgess-Chaplain, F. Ellis Cobb-Digest Editor, Sol Berman-Promotion, Russell Gadoury-League Coordinator, Bernard Herfurth-Publicity, and Ruth Hangen-Hall of Fame.

Ruth Hangen, Hall of Fame Chairman, introduced and named the 1983 inductees. They were Esther James-pitcher, Emma Focht-Organizer, Byron Jaskulek-Organizer, and Ray Miller-pitcher. John Bullard, Jack Springer, and Bryan Fuller of the 1983 Statesville area welcomed everyone to Statesville. Ken Gipson from Huntsville extended a warm welcome to everyone to visit Huntsville in 1984. Dick McNeely, Publisher-Promoter and Clem Bernier-Vice-President and General Manager of the Hacienda Hotel in Las Vegas, Nevada presented their proposal on the 1983 horseshoe tournament to be held in Las Vegas and answered all questions anyone had about the event. The only bid presented for 1985 was by Springfield, Missouri in the amount of \$35,000.00 plus \$2000 in junior scholarships. They promised 24 courts in Springfield.

The minutes of the 1982 NHPA convention were approved as printed in the delegate packet. The financial report and audit were approved as printed in the delegate packet. Both items were presented for approval by Donnie Roberts. All seven NHPA officers gave brief reports of activities during the past year. The Constitution and By-Laws changes were presented with the results printed on page 5 of the September 1983 News Digest. That section of page 5 are a part of these minutes. Bonnie Seibold spoke on behalf of the women, Renee Hix on behalf of the girls, and Alan Francis on behalf of the boys. No one spoke on behalf of the men. Wally Shipley presented the President's Memorandum and gave his report both of which are printed on page 4 of the September 1983 News Digest and are part of these minutes. There was no unfinished business. A long discussion was held debating world cash prizes for men and women. The delegates voted to the ladies motion to pay the same entry fee as the men, effective in 1984. Wally Shipley explained the new game related program approved by the executive council with Ed Domey in charge.

A motion for the NHPA officers to have a mid-year meeting was tabled pending council research of the feasibility of an Audio-Visual Conference. The following By-Law was tabled: All ties for World Tournament Division Championships will play one sudden death game for the title. When more than two players are tied, the World Tournament Director and Council will determine play-off procedures. The president is to appoint a committee to come up with a proposal.

The 1983 NHPA Stokes Award went to Lee Davis. 1983 Achievement awards went to John Bullard, Lee Elbe, O.S. Plott, Al Ward, John Huntzinger, and Bob Champion. Northern California had the largest 1983 membership with 448. Ohio made the largest increase with 82 more than 1982. New York had the largest junior membership with 65. NHPA special awards went to Lee Davis, Gene Anderson, and Marlow Neuberger. Earl Winston, Leo McGrath, Bernard Herfurth, Sol Berman, John Walker, James Solomon, F. Ellis Cobb, Don and June Koso, Herb and Dorothy Pinch, Pete Shepard, Paul Thomas, and Rev. Burgess received Presidential plaques. Glen Fort was elected President, Earl Winston-1st Vice President, and Vincent Yannetti-3rd Vice-President. MEETING ADJOURNED.

"PITCH HORSESHOES FOR HEALTH" MONTH

By BERNARD HERFURTH

During the month of July the NHPA promotes "Pitch Horseshoes for Health" month. All regional directors, state officers, local clubs and the members are requested to assist in getting our sport better known, especially during this month.

You can help in the following manner, give new releases to your daily and weekly newspapers calling attention to the 1984 Huntsville World Tournament, activity in your state and local area concerning scheduled tournaments, novice tournaments and league results. Give feature stories about local players' activities regardless of ringer percentage; boost human interest stories. Give excerpts from past monthly NHPA news releases for local newspapers in the past few months, that have appeared in the Digest. Please add the following to all news releases, for free 12 page Horseshoe Flyer, send a large stamped self-addressed envelope to NHPA, Box 810, Circleville, Ohio, 43113. Also give news releases to your T.V. and radio stations. Try to get on a radio talk show program giving news of our sport.

Plan to run novice tournaments if you have two or more courts. Furnish the contestants with shoes and have someone on each court to offer advice. Play short games, perhaps 10 point games teaching the contestants how to score properly. Advertise for men, women and junior contestants. Please send the names and addresses of all contestants to Donnie Roberts, same address as the free flyer offer.

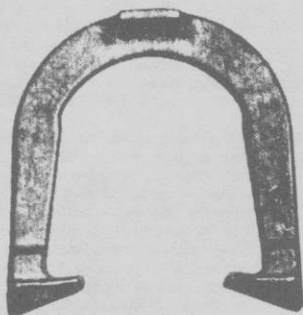
If you have only one court, plan a ten or twelve shoes count-all game with only one contestant at one time pitching. This system proved very successful in Florida. Give advice and keep their score.

Please help promote our sport by taking an active part and send results to Donnie Roberts.

WILL GULLICKSON's Double Ringer Roundup

featuring World Tournament results, features and pictures. Eight editions available starting in May by sending \$10 to Will Gullickson, 2850 26th St. S., Moorhead, MN 56560.

TED ALLEN HORSESHOES



An original professional shoe. Still the very best professional shoe — Designed by a Champion — Used by many Champions — Not all users will become champions, but by throwing ALLEN's, you know that you've performed your best.

The designed features were invented by TED ALLEN, a 10 time world champion. He has made world records over and over with them. The design was a leader. After years it came to be a trend as a guideline in shoe equipment.

You can't go wrong in using them.

1045 LINDEN AVENUE

BOULDER, COLORADO 80302

1983 MINUTES OF STATE OFFICERS MEETING HELD AT STATESVILLE, NORTH CAROLINA

By RUSS GADOURY

1. It was pointed out that the State Championship patches had changed color. DONNIE ROBERTS AND CLAUDE WHITE CORRECTED THIS IN 1984.
2. World Class Champion patches had not been ordered for the world. DONNIE ROBERTS MAILED THEM AND THE 1984 SUPPLY IS ON HAND.
3. In reference to junior programs novice events were discussed, free events for juniors, films for juniors were discussed, and a unit of study was mentioned for schools. NOT AWARE OF ANY PROGRESS ON ANY OF THESE.
4. Norm Gaseau mentioned Tax Exempt status with the IRS. The NHPA is of course exempt. NO WORD ON WHETHER NORM HAS PURSUED THIS ITEM.
5. NOrm Gaseau suggested a simpler membership form for reporting and for tournament reporting. 1985 WILL BE A TOUGH YEAR AS WE WANT TO GET EVERYTHING FROM EACH MEMBER FOR THE COMPUTER WHICH WILL RESULT IN A VERY EASY 1986 REPORTING SYSTEM.
6. BONDING AND INSURANCE WERE MENTIONED. This was checked out and each state must get their own at this point.
7. Minnesota mentioned some needed improvements with the sanctioned league program. League coordinator to check out.
8. An S for a single ringer and D for a double ringer on scoresheet. NOTHING HAS BEEN DONE.
9. Calhoun from Alabama said we should work closely with Parks and Recreation.
10. There was a call for a uniform format for tournaments. THIS IS A TOUGH ONE.
11. More post World Tournament publicity was mentioned.

Typed from Russell Gadoury's notes by Donnie Roberts. If there are any corrections or additions just let me know. 50 officers were in attendance.

NHPA MEMBERSHIP COMMITTEE REPORT

By HERMAN WIESER

After having sent out letters to all State Secretaries in January and then sending a second letter to twenty-seven in April of this year, requesting membership figures for 1982 and 1983, fourteen officers have not responded. Rhode Island, East and West Maryland, Washington, Nevada, Minnesota, Delaware, Wyoming, Connecticut,

MEMBERSHIP COMMITTEE — (Continued)

Maine, Texas, Virginia, North Dakota and Hawaii have not been heard from to date.

Therefore, my report can only include the information of the cooperating State Secretaries. It appears that in 28 areas increases were noted. Fortunately, only seven states reported slight decreases in membership.

It is interesting to note what caused the increases as opposed to the decreases among the various states. On the plus side, some of the answers or suggestions were as follows:

1. Personal contact...each member brings in at least one new member. Enthusiasm for our sport will "deliver."
2. Leadership plays an important part. Hard work and promotional ideas bring desired results.
3. All members who are involved in other organizations such as bowling leagues, Masonic or Fraternal Orders, Churches, Community Clubs etc. should discuss and/or distribute local, state or NHPA informational brochure.
4. Horseshoe pitching exhibitions at various functions by 50% or better pitchers, using portable courts, (there are numerous types available) and inviting the public to "try it."
5. More State-sanctioned tournaments and league play, especially one or two evenings a week.
6. Emphasis on lower average pitchers. New members are easily discouraged when they are unable to make good progress. Have pitching clinics...better pitchers should be willing to help improve the lower average pitchers who may have developed bad pitching habits, etc.
7. Indoor horseshoe courts are springing up all over; will preclude postponing tournament play. It will cost more but the certainty of play will offset the difference.

On the negative side, it appears location has much to do with attendance at tournaments. Of course, the weather is also a prime factor in the game of horseshoes, especially where temperatures refuse to ease in the spring. Unemployment in some states has curtailed membership which is understandable. Distances from World Tournaments to the home State, even distances from State Tournaments to certain localities discourages participation. In some instances, poverty is also quite a challenge. Consequently one fails to join the State or National organizations. True, the sport of horseshoes does not require large sums of money but to some it is prohibitive when one considers traveling expenses, etc.

With everyone's cooperation and the anticipated huge participation and attendance at the World Tournament in Huntsville, Ala. July 25-August 4, 1984, membership this year will exceed all expectations. And don't forget the "Mail-in" event.

Note—My address will be Herman Wieser, 71 North Dover Ave., Somerset, N.J. 08873 until the end of October.

PIT PAL

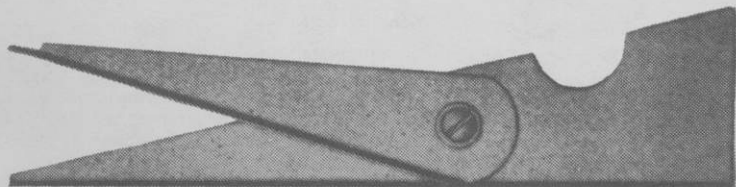
Get the most from your games

- Straight edge, full 6 inch caliper & distance gauge
- Wide end is a shovel & a scraper
- High quality leather sheath (protects your back pocket)
- Heavy gauge stainless steel

Send \$9.95 (Postpaid) to: **PIT PAL**

PO Box 02336

Portland, Oregon 97202



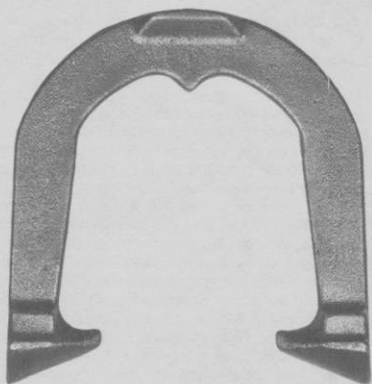
THE NEW IMPROVED

IMPERIAL

- BETTER ENERGY ABSORPTION
- LARGER RINGER BREAK
- WIDER BLADES
- REDUCED PRICES

U.S.A. PRICES
(Postpaid)

1 Pair	\$26.00
2 to 5 Pair	\$25.00
6 Pr. & Over	\$20.00
	Freight Collect

**CLYDE MARTZ**

3726 Henley Dr.

Pittsburgh, Pa. 15235

PHONE: 412-731-4662

WHEATIES CONTEST — SEARCH FOR CHAMPIONS

By SOL BERMAN

Boni Boser is still in the Top 50. I spoke to her in Springfield, MO at the Ron Frakes Tournament. She told me that they were working hard in getting votes in her area.

R.A. Switzer-Secr.-Treas. Illinois reports that he sent for a promotion kit. He is sending a note to all tournament directors in the state to talk up the contest and urge people vote for Boni. The July publication to all pitchers in the State of Illinois will include details about the contest and the need to get out the vote.

Don Koso, Nebraska, will give the last place of all classes in the Neb. tournaments a box of Wheaties.

Len Lipovsky-Minn. has contacted all parts of the state and urged them to send in ballots.

Bernard Herfurth is pushing the program at all tournaments that he attends.

We are planning on setting up a ballot box in Huntsville. A raffle will be held when we collect at least 200 ballots.

Please let me know how you are doing in your area.

STEINFELDT OVER WILLIAMS FOR RON FRAKES TOURNAMENT OF CHAMPIONS—MAY 26-30—SPRINGFIELD, MISSOURI

Sanction 84-1

The Repair Shop Horseshoe Courts in Springfield, MO played host to horseshoe pitchers from 23 states who came to participate in the Ron Frakes Tournament of Champions, May 26-May 30. Included in the Men's Division were the current World Champion and two former World Champions. Despite the intense cold, spectators viewed some very fine pitching, with the Men's Class A coming down to the last round to decide the winner. Steinfeldt was victorious over Williams 40-20, averaging 85.1% to Williams 78.8% in the deciding game.

The Women's Division featured the current World Champion, plus three former World Champions and two Junior Girl Champions, who have now moved up to compete with the ladies. The winner of Class A of this division was also in question until the final round was played and Winston defeated Michaud 40-35, averaging 82.9% to Michauds 81.8%. Had Winston lost, there

STEINFELDT — (Continued)

would have been a 3 way tie for first place. The ladies did some fine pitching despite the adverse conditions.

Our Junior Boys World Champion was in fine form, averaging 86.1% in his overall performance. Also present were some World Champions in various Senior Divisions, all pitching well.

We thank the participants for coming to our "mini" World Tournament. We enjoyed having you. To those who are wondering, we did finally see sunshine on Tuesday, and Wednesday was beautiful. If you left early, we're sorry you missed the good weather.

MEN'S PRELIMINARIES — GROUP 1 — Merlin Potts, Kan.-74.7, Sam Carter, Mo.-68.3, Dale Lipovsky, Minn.-68.1, Bob May, Ind.-67.22, Roger Vogel, Tex.-67.20, Gene Mosley, Mo.-65.8, Elwyn Cooper, Mo.-64.8, Jerry Holt, Okla.-60.1.

GROUP 2 — Ron Frakes, Mo.-73.4, Jim Knisley, Ohio-72.4, Harold Darnold, Iowa-69.7, John Smith, Kan.-68.9, Danny Erbe, Kan.-64.4, Levi Miller, Ohio-60.4, Gene Fleek, Kan.-48.6.

GROUP 3 — Carl Steinfeldt, Fla.-80.3, Kevin Cone, Iowa-67.8, Charlie Webb, Ill.-67.7, Ron Martin, Kan.-65.3, Len Lipovsky, Minn.-62.5, Jim Kuchcinski, Pa.-60.0, Max Roseberry, Ohio-54.2.

GROUP 4 — Walter R. Williams Jr., Cal.-77.6, Charles Killgore, Mo.-73.8, Don Kuchcinski, Pa.-70.4, Robert Booe, Kan.-65.5, Earl Winston, Mo.-61.7, Barry Chapelle, Ore.-57.2, Chuck Arnold, Okla.-50.4.

MEN'S FINALS — CLASS A — 1. Carl Steinfeldt, Fla., 15-0, 82.2. 2. Walter R. Williams Jr., Cal., 14-1, 82.5. 3. Dale Lipovsky, Minn., 11-4, 72.4. 4. Jim Knisley, Oh., 9-6, 76.5. 5. Kevin Cone, Iowa, 9-6, 72.8. 6. Harold Darnold, Iowa, 9-6, 68.7. 7. Merlin Potts, Kan., 8-7, 68.5. 8. Don Kuchcinski, Pa., 8-7, 66.9. 9. Charlie Webb, Ill., 6-9, 68.4. 10. Charles Killgore, Mo., 6-9, 67.2. 11. Ron Frakes, Mo., 6-9, 66.1. 12. John Smith, Kan., 6-9, 62.1. 13. Bob May, Ind., 4-11, 63.8. 14. Sam Carter, Mo., 4-11, 62.3. 15. Roger Vogel, Tex., 3-12, 68.9. 16. Gene Mosley, Mo. 2-13, 60.1.

CLASS B — 1. Elwyn Cooper, Mo., 5-2, 66.2. 2. Jerry Holt, Okla., 5-2, 68.2. 3. Ron Martin, Kan., 4-3, 63.3. 4. Robert Booe, Kan., 4-3 61.7. 5. Len Lipovsky, Minn., 3-4, 59.6. 6. Levi Miller, Ohio, 3-4, 58.8. 7. Danny Erbe, Kan., 3-4, 55.6. 8. Earl Winston, Mo., 1-6, 52.9.

CLASS C — 1. Barry Chapelle, Ore., 5-0, 63.9. 2. Gene Fleek, Kan., 4-1, 61.6. 3. Chuck Arnold, Okla. 3-2, 53.9. 4. Jim Kuchcinski, Pa., 2-3, 57.4. 5. Max Roseberry, Ohio, 1-4, 42.0. 6. Bye.

CLASS D — 1. Alden Allbaugh, Kan., 6-1, 59.8. 2. Joe Douchant, Ill., 6-1, 56.7. 3. Jerry Comstock, Colo., 5-2, 55.4. 4. David Dattilo, Mo., 4-3, 49.4. 5. Don Jones, Mo., 3-4, 52.9. 6. Floyd Hix, Va., 3-4, 46.2. 7. Tom Chambers Jr., Iowa, 1-6, 36.7. 8. Bye.

CLASS E — 1. Donnie Roberts, Ohio, 7-0, 71.9. 2. Jim Bray, Mo., 5-2, 58.1. 3. Robert Long, Mo., 4-3, 55.8. 4. Glen Hoppes, Ind., 4-3, 54.3. 5. Hiram Nelson, Ill., 3-4, 60.3. 6. George Buche Jr., Kan., 3-4, 52.9. 7. Jake Edmondson, Mo., 2-5, 52.5. 8. Bye.

CLASS F — 1. Kenneth Pogue, Mo., 6-1, 64.7. 2. Marvin Rehels, Kan., 4-3, 55.8. 3. Bill Vines, Okla., 4-3, 52.0. 4. Lloyd Laughlin, Colo., 3-4, 55.5. 5. Virgil Williams, Iowa, 3-4, 55.4. 6. Earl Pearce, Kan., 3-4, 51.1. 7. Larry Francis, Mo., 3-4, 48.1. 8. Steve Hrabovsky, Mo., 2-5, 51.1.

CLASS G — 1. Robert L. Barnes, Mo., 7-0, 52.9. 2. Jim Hayward, Mo., 6-1, 51.7. 3. Gern Beasley, Mo., 4-3, 49.0. 4. Bob Cantrell, Mo., 4-3, 45.1. 5. Val Eikel, Mo., 3-4, 49.1. 6. Kenneth Larsen, Mo., 2-5, 41.8. 7. Don Hanes, N. Mex., 2-5, 36.6. 8. Bye.

CLASS H — 1. Ralph Funk, Kan., 6-1, 46.5. 2. Wayne Henderson, Mo., 5-2, 43.9. 3. Tom White, Ind., 4-3, 42.4. 4. Jim Iarkin, Mo., 4-3, 38.4. 5. Micky Mueller, Minn., 4-3, 37.5. 6. Allen Rowe, Mo., 3-4, 36.0. 7. Robert E. Johnson, Mo., 2-5, 35.9. 8. Bye.

CLASS I — 1. Dorsey Durfee, Mo., 5-2, 34.0. 2. Bill Whitely, Kan., 5-2, 39.8. 3. Bill Weaver, Ark., 5-2, 40.2. 4. Quentin Smith, Kan., 4-3, 32.6. 5. Jerry Griggs, Mo., 4-3, 28.4. 6. David Kuchcinski, pa., 3-4, 30.2. 7. Homer Cain, Okla., 2-5 35.8. 8. Wilbur Gay, Mo., 0-7, 13.9.

CLASS J — 1. Thomas Chambers, Iowa, 6-1, 42.9. 2. John Eggleston, Mo., 6-1, 33.1. 3. Rick Tatum, Mo., 5-2, 37.0. 4. Larry Vaught, Mo., 4-3, 31.1. 5. Harold Bull, Ill., 3-4, 31.7. 6. Wayne Clark, Ill., 3-4, 28.6. 7. Gene Rathburn, Mo., 1-6, 23.7. 8. Bye.

STEINFELDT — (Continued)

CLASS K — 1. Don Weaver, Nev., 7-0, 38.6. 2. Gene Dixon, Kan., 5-2, 36.2. 3. Dennis Hinkle, Mo., 4-3, 34.7. 4. Eugene Carter, Mo., 4-3, 31.4. 5. Russell Bennett, Mo., 3-4, 25.9. 6. C.B. Foust, Mo., 3-4, 25.8. 7. Karl Arnold, Mo., 2-5, 18.3. 8. Bfe.

CLASS L — 1. Elmer Kirby, Mo., 6-1, 29.2. 2. Jim Acock, Mo., 5-2, 33.6. 3. Robert Hughes, Mo., 5-2, 29.6. 4. Hadley Reser, Mo., 3-4, 35.6. 5. Jim Claxton, Mo., 3-4, 27.8. 6. Kevin Whitworth, Mo., 3-4, 19.6. 7. Austin Ott, Mo., 2-5, 23.6. 8. Bye.

CLASS M — 1. Joe Beem, Mo., 6-1, 34.4. 2. Richard Kinney, Kan., 6-1, 40.5. 3. Roy Franke, Ill., 5-2, 29.4. 4. Thomas Buck, Cal., 4-3, 27.5. 5. Kenneth Hale, Mo., 3-4, 26.1. 6. Leslie Hottle, Iowa, 2-5, 22.7. 7. Edward Eliason, Mo., 2-5, 20.7. 8. Bye.

CLASS N — 1. Melbern Hutchison, Okla., 7-0, 39.0. 2. Tony Tysdal, Ark., 5-2, 32.7. 3. Dennie Masters, Mo., 4-3, 36.0. 4. Charles O'Brien, Mo., 4-3, 25.4. 5. Jack McKinney, Neb., 3-4, 34.6. 6. Don "Zip" Roder, Mo., 3-4, 31.6. 7. Tick Johnston, Okla., 2-5, 26.1. 8. Gene Van Sant, Cal., 0-7, 11.1.

CLASS O — 1. Reese Warden, Mo., 4-1, 33.6. 2. Allen Fisher, Iowa, 3-2, 35.0. 3. Lilburn Inman, Okla., 3-2, 33.2. 4. Dale Fisher, Mo., 3-2, 27.0. 5. Rick Foust, Mo., 2-3, 35.0. 6. Jerry Kohler, Mo., 0-5, 17.1.

CLASS P — 1. Alvin Strasil, Neb., 4-1, 21.3. 2. Milton Harmon, Neb., 4-1, 21.5. 3. Charles Calton, Mo., 3-2, 20.5. 4. Dale Carpenter, Mo., 2-3, 18.5. 5. Tim Warden, Mo., 2-3, 17.3. 6. Carl Carter, Mo., 0-5, 4.0.

WOMEN'S PRELIMINARIES — GROUP 2 — Vicki Winston, Mo.-81.3, Debby Michaud, Mass.-79.3, Sandy Karasch, Minn.-69.0, Ruth Hangen, N.Y.-67.7, Bonnie Seibold, Ind.-62.3, Bonnie Boser, Minn.-60.3, Marilyn Hanes, N. Mex.-46.7.

GROUP 1 — Fran Carnahan, Pa.-72.3, Phyllis Negaard, Minn.-71.7, Renee Hix, Va.-69.4, Katherine Harrison, Ohio-66.0, Bev Nathe, Minn.-60.9, Tari Powell, Ill.-54.3, Emalene Pearce, Kan., 49.8, Sherry Larsen, Mo.-34.9.

WOMEN'S FINALS — Class A — 1. Vicki Winston, Mo., 6-1, 73.7. 2. Phyllis Negaard, Minn., 5-2, 70.6. 3. Debby Michaud, Mass., 4-3, 76.5. 4. Fran Carnahan, Pa., 4-3, 63.7. 5. Sandy Karasch, Minn., 3-4, 66.3. 6. Katherine Harrison, Ohio, 2-5, 65.3. 7. Ruth Hangen, N.Y. 2-5, 64.7. 8. Renee Hix, Va., 2-5, 64.0.

CLASS B — 1. Boni Boser, Minn., 5-0, 67.2. 2. Bonnie Seibold, Ind., 4-1, 63.8. 3. Bev Nathe, Minn., 3-2, 62.6. 4. Emalene Pearce, Kan., 2-3, 50.9. 5. Marilyn Hanes, N. Mex., 1-4, 43.7. 6. Sherry Larsen, Mo., 0-5, 33.8.

CLASS C — 1. Loree Meier, Mo., 5-0, 52.5. 2. Joyce Francis, Mo., 4-1, 42.7. 3. Pam Henderson, Mo., 3-2, 36.8. 4. Ginger Cain, Okla., 1-4, 31.0. 5. Rita Killgore, Mo., 1-4, 28.8. 6. Mary Van Stant, Cal., 1-4, 24.3.

CLASS D — 1. Gerri Barnes, Mo., 5-0, 43.8. 2. Shirley Jones, Mo., 4-1, 47.6. 3. Peggy Dattilo, Mo., 3-2, 32.6. 4. Nancy Bray, Mo., 2-3, 15.5. 5. Helen Blacketer, Ky., 1-4, 15.3. 6. Bye.

CLASS E — 1. Norma Ott, Mo., 5-0, 28.0. 2. Mildred Hottle, Iowa, 4-1, 17.0. 3. Ruth Hix, Va., 3-2, 14.4. 4. Lisa Sallee, Mo., 2-3, 10.9. 5. Ann Hope, Mo., 1-4, 6.3. 6. Bye.

SENIORS — CLASS A — 1. Glen Henton, Iowa, 6-1, 72.8. 2. Glen Portt, Ga., 5-2, 69.0. 3. Charles Hilton, Mo., 4-3, 62.0. 4. Sol Berman, Fla., 3-4, 61.7. 5. Don Harris, Mo., 3-4, 61.6. 6. Dick Carnahan, Pa., 3-4, 61.5. 7. Omar Blacketer, Ky., 3-4, 59.6. 8. Joe Holland, Fla., 1-6, 54.4.

CLASS B — 1. Bud Hamilton, Okla., 5-0, 62.2. 2. Loren Gillespie, Ill., 3-2, 50.5. 3. Leonard Werner, Neb., 2-3, 46.4. 4. Arnold Hanson, Ia., 2-3, 45.6. 5. Curly Seibold, Ind., 2-3, 42.5. 6. Leora Kelly, Mo., 1-4, 43.4.

CLASS C — 1. Donald Marx, Iowa, 6-1, 49.0. 2. Marion Lange, Iowa, 5-2, 51.5. 3. Charles Bailey, Okla., 5-2, 43.9. 4. Carl Christiansen, Iowa, 4-3, 36.6. 5. Woodrow Shepard, Mo., 3-4, 38.6. 6. John Audiss, Kan., 3-4, 36.6. 7. Clarence Leavengood, Okla., 2-5, 29.1. 8. Bye.

CLASS D — 1. Ervin Petersen, Neb., 4-1, 34.4. 2. Perry Craigmyle, Mo., 3-2, 30.3. 3. George Hendricks, Mo., 3-2, 26.2. 4. Johnny McCarron, Mo., 3-2, 22.3. 5. Tom Allen, Mo., 1-4, 23.6. 6. Amos Edwards, Okla., 1-4, 21.8.

70 AND OLDER (30 feet) — 1. Henry Franke, Ill., 3-0, 54.5. 2. Dennis East, Ill., 0-3, 42.3.

JUNIORS — JR. BOYS A CLASS — 1. Allen Francis, Mo., 5-0, 86.1. 2. Tom Francis, Mo., 4-1, 74.8. 3. Steven Ungetheim, Ind., 2-3, 59.7. 4. Rick Henry, Ind., 2-3, 55.3. 5. Jeff Hart, Mo., 2-3, 50.0. 6. Stan Hayward, Mo., 0-5, 33.9.

JR. BOYS CLASS B — 1. Steven Barnes, Mo., 7-0, 47.6. 2. Scott Tatum, Mo., 5-2, 29.3. 3. Chris Roder, Mo., 5-2, 26.2. 4. Eugene Hix, Va., 4-3, 29.3. 5. Michael Hanes, N. Mex., 4-3, 22.3. 6. Christopher Fisher, Iowa, 2-5, 12.7. 7. Scott Ellerman, Mo., 1-6, 13.1. 8. Bye.

JUNIOR GIRLS — 1. Shawneen Michaud, Mass., 6-0, 23.1. 2. Tonya Hix, Va., 3-3, 1.1. 3. Sonya Hix, Va., 3-3, 5.4. Bye.

NHPA PUBLICITY FOR JULY

By BERNARD HERFURTH

Item: World Tournament:

If you are still undecided on going to the 1984 Huntsville World Tournament, make up your mind to attend, today. Who knows what 1985 may bring. There should be no problem in getting last minute motel reservations. If you did not send in your entry by June 1, you may get to take the place of an absentee or a drop-out contestant. You may just want to stop by for a few days during championship week as a spectator.

Item: Wheaties Search for Champions

Please continue to eat Wheaties and canvass friends and relatives for Wheaties box ballots. We are sponsoring Boni Boser, Route 3, Fish Lake, MN 58364. Please cooperate.

Item: NHPA Stamp:

An NHPA stamp is being issued as a means of adding funds to the NHPA Publicity Fund. Donnie Roberts will have an article in the Digest concerning the publicity stamp program.

Item: NHPA address for publicity:

This plan asks all members to include in all newspaper releases "For free 12 page flyer, send a large stamped self-addressed envelope to NHPA, Box 810, Circleville, Ohio 43113," is giving the NHPA numerous inquiries from all parts of the country. NHPA thanks all those who have and those who will cooperate in giving out the NHPA address. Don't let up.

Item: NHPA "Mail-in" Tournament:

Check with your club for details or read past articles in the Digest for information. Plan to participate.

Item: World Tournament Prizes:

NHPA Publicity and Public Relations again does not want to cut back on any prizes, it only hopes that no additional prize money is given until the money that was taken away from classes B-C-D is restored. These classes often do not care to continue to play after a certain place due to having to pitch so many games with nothing at stake. It was most fortunate to take away prizes that were given for years and yet boost championship classes. Our non-championship classes keep the show on the road.

STERLING, ILL. OPEN — JULY 14 — SANCTION 94-555

The Sterling-Rock Falls, Ill., club will hold another open tournament on Sat., July 14, at the Laurence Park courts midway between Rock Falls and Sterling, Ill.,. All classes are intended to be 6-man. We also intend to have a class for the ladies.

Deadline for entries will be 9 a.m. on the day of the tournament and the first 60 entries will make up the tournament and the lower classes will start at 10 a.m. and the upper will start immediately after. Entry fee will be \$6.00 with a first place and second place trophy and cash or ringer for third or fourth place in each class.

Send entry or call Les Long R.R.1 Sterling, Ill., 61081 or phone 815-625-2832, if no answer call Wilbert Gentz 815-626-4003. Send league count-all average or tournament ringer percentage, the league are for 50 shoes of 70-75 or 40 to 45% will be dividing line for a.m. and p.m. players. Rain date July 21.

W. GULLICKSON RECOVERING FROM OPEN HEART SURGERY

Will Gullickson, North Dakota sports writer, is recovering from open heart surgery performed recently. He will be home for several weeks. He would appreciate cards. His address is Will Gullickson, 2850-26th Street, S. Circle, Moorhead, Minn. 56560.



TROPHIES YOU CAN USE

	Qty.	Price
\$5.00 each	_____ 1st Place	\$ _____
	_____ 2nd Place	_____
2-3 weeks delivery	_____ 3rd Place	_____
	_____ 4th Place	_____

P&H .50¢ per mug (Min. \$2.00)

California residents add 6% tax

Please write for quote when additional info needed... we do names, too,

Total \$ _____

Name _____

Address _____

GOLDLINE CERAMICS — 3024 Gayle St., Orange, CA 92665

SIMMONS TOPS ORANGE BLOSSOM OPEN — ORANGE, CALIF.

Ronnie Simmons defeated Orville Lokken in a playoff to capture the First annual Orange Blossom open in Orange, CA. Ron's 7/0 included a high game of 94.4, and high tournament average of 77.1.

CHAMPIONSHIP — R. Simmons, Orange, 7-0, 77.1, O. Lokken, San Bernardino, 6-1, 64.8, N. Flann, Westminster, 5-1, 71.1, A. Nichols, Carson, 5-1, 62.0, J. Schneider, Anaheim, 4-2, 63.5, E. Brown, Anaheim, 3-3, 63.4, J. Williams, Chino, 3-3, 55.9, H. Standard, Orange, 3-3, 54.8, J. Eozzo, Los Angeles, 3-3, 53.2, H. Larson, Lakewood, 2-4, 51.8, C. Yoshida, Carson, 1-5, 41.5, L. Raymond, Newport Beach, 1-5, 36.5, L. Lilton, Torrance, 0-6, 40.3, D. Eppel, Orange, 0-6, 34.9.

WHEATIES CONTEST RESPONSE FROM GENERAL MILLS

By SOL BERMAN

The General Mills Inc. Co. informed me that of May 10 the NHPA was in the Top 50. That means that if we send at least 5000 ballots and remain in the top 50 we'll receive \$5,000.

We only have three months left, so let's set up ballot boxes at all tournaments, schools, churches, etc. Perhaps we can get Boni's picture on the Wheaties box.

The Search for Champions I winner Chris Spielman has his picture on the newly released Wheaties boxes. He's an 18 year old senior from Massilon, Ohio. His main sport is football. He also was on the basketball team. He's on the track team and plays softball. He does volunteer work. Chris is an honor student with a 3.75 grade average.

FAREWELL AND THANKS TO ED, CLETUS AND LEE

By BERNARD HERFURTH

Since the 1983 World Tournament the NHPA has had the great misfortune to lose Ed McFarland of Texas, Cletus Chapelle of Oregon and Lee Davis of Florida. Each has passed away since that time.

During the ten years that I served as chairman of the NHPA Hall of Fame Committee I had the pleasure of having these fine men on my committee. I can say that each was a very cooperative member and a gentleman all the way. I do not remember even hearing a harsh word about anyone or anything from these men. They all put many years of work and interest towards making ours a better sport. They will be greatly missed. We will not forget them.

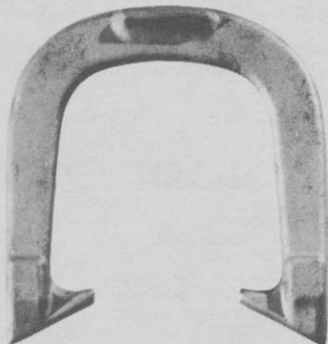
Since 1931

GORDON

"Spin-On"

— 3 TEMPERS —

Medium With Hardened Calks
Dead Soft Hard



Southern California Representative
JERRY SCHNEIDER
3144 W. Paso Robles Drive
ANAHEIM, CALIFORNIA 92804
714-826-0684

APPROVED BY NHPA

OFFICIAL STAKES ALSO AVAILABLE

THE QUEEN CITY FORGING CO.

233 TENNYSON STREET

CINCINNATI, OHIO 45226

"From Out Of The Mail Bag"

Mr. Dennis Ryan
Goulycluff Athy
Co. Kildare
IRELAND

Dear Dennis,

It was with great pleasure that I read your letter describing the Horseshoe pitching association of Ireland. I have enclosed a lot of information for you which should prove very valuable to you. I certainly hope that you will consider forming a charter for Ireland as described in the enclosed blue book. It is our hope that you will stay in contact with us so that we can work out some mutual horseshoe efforts. Please send me a map and exact location of your events as well as the dates. Many of our 12000 members travel a lot and will likely drop in to visit you.

If after reading the enclosed material you have questions just let me know.

Sincerely yours,
Donnie Roberts
NHPA Sec. Treasurer

F. Ellis Cobb, Editor
The Horseshoe Pitcher's
News Digest

Dear Ellis,

Hi! Horseshoe pitchers, guess what? I went mushroom hunting and found 130 mushrooms, er, I mean 130 horseshoe pitchers right under my nose 25 miles from where I live. I've been yelling and screaming at you people to promote horseshoes and I stumble onto something like this. The good thing about these mushrooms is that they are edible, er, I mean eligible for N.H.P.A. They pitch in the Fort Wayne area in what's called a traveling league and I joined them. So hopefully with a little persuasion, some will become interested in N.H.P.A. The real point of this is that horseshoe pitchers are like mushrooms. If you poke around a little you will find them.

Sincerely,
Jim Schilling
Regional Director, IN

Mr. Donnie Roberts
N.H.P.A. Secretary-Treasurer
Box. 810
Circleville, Ohio 43113

1216 S. Grand Avenue
Waukesha, Wisconsin 53186

Dear Donnie:

The deadline is quickly approaching for World Tournament participation eligibility and I would like to make a few comments relative to the Junior portion of the program.

It seems during the past few months there has been more than one article in the News Digest regarding the enhancement of the Junior Division. I concur wholeheartedly that we should do all we can to promote the sport at that level. Given that, I believe two items, at least, should be re-examined and addressed before the World Horseshoe Tournament. I have attended only two World Tournaments, 1981 and 1983. Although I had a fine time at both I was extremely distressed at the lack of respect afforded the Juniors. Both years I was absolutely appalled at the lack of attention and focus on the championship awards presentation and in 1983 the pitching time schedule for the Juniors was, on more than one occasion, ludicrous.

It makes little sense to me to have men (40 percent pitchers — and I happen to be one of those) pitching at the prime time of 7:00 p.m. and 75-85 percent Juniors throwing at two o'clock in the morning. I thoroughly enjoy watching the Juniors and I did see them perform in the middle of the night at least once, but it would have been much more pleasant in the early evening and, more importantly, at that time they would come a good deal closer to receiving the kind of exposure and treatment they deserve. If there is a real desire to promote the Junior program then it would follow that a more appropriate and appealing pitching schedule be presented to them.

Also, I think the presentation of awards in the Junior Program merits some serious re-evaluation. I thought the lack of attention and respect directed towards the Juniors during the final awards presentations, particularly in Statesville, but also in Genola, was completely inappropriate. During the time that the best Junior player in the World Tournament was receiving a championship trophy, play was not interrupted, even momentarily, on the courts. That kind of inattention, I firmly believe, is unacceptable whether the pitchers on the courts at the time are 80 percenters or 15 percenters. It seems that all action could be halted for the very few minutes needed to recognize such outstanding achievement on the part of the Junior winners.

I am writing to request that you consider a pitching schedule for the Juniors which is somewhat more reasonable. I would also solicit your consideration regarding a more appropriate and meaningful championship awards presentation for the same groups.

Thank you for anything that can be done to give the young people a bit more recognition, exposure and visibility.

Sincerely,
Howard C. Voiles
RD2 Box 332
Ulster, PA 18850

MAILBAG — (Continued)

F. Ellis Cobb, Editor
The National Horseshoe Pitcher's News Digest
P.O. Box 1606 Aurora, IL 60507

Dear Ellis:

In my opinion, Dick Hanshew, in his letter on page 16 of the June issue, gave the solution to the foul line rule. The trouble with the present rule is that no one can prove when the shoe leaves the pitcher's hand.

The rule should state: "In delivering a shoe, the pitcher must remain behind the foul line **until the shoe lands.**" (Instead of: "Until the shoe has left his hand.")

Sincerely,
Joe Templeton
Eastern Pennsylvania

F. Ellis Cobb, Editor
The Horseshoe Pitchers Digest
P.O. Box 1606
Aurora, IL 60507

Dear Ellis:

First I want to thank you for your cooperation in inserting the Ukiah Valley Horseshoe Club's announcement of our August 26 money tournament, even though we were late getting it to you. Thanks again.

Second, I would like to comment on Marion Hawley's article in the June issue. (Marion is the N.C.H.P.A. Statistition, and an exceptionally good one I might add). I agree wholeheartedly that more consideration should be shown the lower class pitchers who carry the bulk of the load, and yet have to register at the same time as the elite, then sit around til mid afternoon, to get to pitch, usually on hard clay and finishing anywhere from 5:30 to seven p.m. then traveling maybe 100 to 150 miles home. It can get quite discouraging, somehow something should be done, if possible to ease the situation in that department. As Dick Hanshew states in his letter, these letters start the Pitchers thinking and eventually we arrive at an equitable solution.

Third, the foul line issue is also a pet peeve of mine, although I do not agree with Marion's idea that there is no problem and it should be left as it is. That is not the real issue. In any other sport any foul committed is dealt with, therefore keeping the contestants in line. Until that is accomplished, I feel that the sport of Horseshoe Pitching will remain a social or picnic affair and never be able to take its place in the world of sports that we deserve.

Sincerely,
Barak C. Wright
210 Rosemary Lane
Ukiah, CA 95482

Horseshoe Digest
NHPA Executive Council
New York State Officer's
Regional Director Chairman

Dear Sirs:

When big money gets into the sport of Horseshoes I just as soon not be a part of the game. The fun of a great sport will be gone. And gone, too, will be the horseshoe pitcher who played for the sport. Only the really good pitchers will be left. I wonder who will do the work? It's always been the dedicated person who made horseshoes what it is today, not big money and not all the good pitchers. If 50% of the low pitchers did nothing but pitch shoes and left the work to others we would probably be flooded with good pitchers. The only thing is there would be no work done, and all you would have is good pitchers doing nothing. No Tournaments, no work, no fun.

I say keep the big money out, treat all pitchers equal. Give the workers some recognition.

The people now in the NHPA are out to push the big bucks. But only for the "A" class. If you change the rules change them for the "A" class only. Leave the game alone. The low percent pitcher plays for fun not big money and blood.

You want to improve horseshoes than help the Juniors. This is where the future of horseshoes is and you had better believe it. There's no future in big money and rule changes. You're only chasing the pitchers away.

For the above reasons I see no reason to continue as Regional Director for the NHPA. I have forfeited my reservations to the 1984 world tournament as I think all horseshoe pitchers should stay home except the "A" class as this is what the World Tournament is designed for.

Regretfully Yours,
Ernie Graham

SPECIAL NOTICE

On page 11 of the June issue concerning Fran Carnahan's candidacy it was erroneously stated that she was the Secretary-Treasurer of the Western Pennsylvania Horseshoe Pitchers Association. Mr. Joe Mancini has been Secretary-Treasurer for the past 11 years and Mr. Herman Boyer has been President for the last 11 years. Mrs. Fran Carnahan is only the Pennsylvania Representative.

In Memoriam

A sad note has been received from Mr. Ray Miller of 1422 Eastgate Road, Springfield, Ohio 45503 stating that while he was recuperating from a broken arm and hip injury, his lovely wife passed away very suddenly. She had always been in attendance with Ray at World Tournaments. She was always willing to help whenever possible. She will be missed by her many friends.

The sympathy of the Ohio State Association and that of the NHPA is extended to her husband Ray and to her son.

Gust Magnuson, 76, Dilworth, Minn., a former Minnesota state horseshoe pitching champion and one of the winningest pitchers in the state more for more than 20 years, died May 7.

Magnuson, who was one of the top pitchers in the Fargo and Moorhead leagues for many years, also pitched while living at Canby, Minn., and Hawley, Minn.

He won many open tournaments and was a consistent 70 and over percent tosser. Magnuson was treasurer of the Fargo association when the World Tournament was held in Fargo in 1967. He pitched in the world tourney that year as well as in 1981 when it was held at Genola, Minn., at Preimesberger Arena. He served as court keeper many years in Fargo and Moorhead.

Mention horseshoes in Texas and immediately you think of Ed McFarland. 17 times Texas State Horseshoe Pitching Champion and a member of the Texas Hall of Fame. Ed is no longer here but his memory will be with us always. He was a pioneer in the truest sense of the word. His guidance has been instrumental in the forming of the Greater Houston Horseshoe Pitchers Association back in Sept. 1981.

The unique court design in Bear Creek Park was Ed McFarland's 25 year old dream. The Ed McFarland Open Tournament in April of each year is named in his honor. Trophies for the tournament are a sculptured replica of Ed McFarland's patented pitching stance.

The last tournament Ed pitched in was his own in April 1983. A winner on and off the court the Houston Club will miss his pleasant personality and a big smile. Ed McFarland was truly "A" class.

He is survived by his lovely wife Joyce, two sons, Tom and David and daughter Barbara.

RENO HORSESHOES

Order From:

Reno Horseshoe Company

670 Reno Road

Lucasville, Ohio, 45648



IN 1983

EIGHT STATE CHAMPIONS

WON THEIR TITLES

WITH RENO SHOES

NHPA Approved

\$25.00 plus postage % \$22.00 five or more pairs

All drop forged, medium temper with hard caulks.

West Coast Distributor — Wally Shipley Horseshoe Outlet.

REVISED PRIZE LIST FOR 1984 WORLD TOURNAMENT

This prize list was adopted by the NHPA Officers at their meeting in Springfield, Missouri on May 29, 1984. This list replaces the one published in the May 1984 NHPA News Digest.

CHAMPIONSHIP MEN	CLASS B MEN	CHAMPIONSHIP WOMEN
1 \$25000	1 \$150	1 \$1300
2 1500	2 135	2 1000
3 1000	3 125	3 700
4 800	4 115	4 500
5 600	5 110	5 350
6 500	6 105	6 250
7 400	7 100	7 150
8 350	8 95	8 125
9 250	9 90	9 100
10 220	10 85	10 100
11 215	11 80	11 100
12 210	12 75	12 100
13 205	13 70	Total \$4775
14 200	14 65	
15 195	15 64	
16 190	16 63	
17 185	17 62	
18 180	18 61	
19 175	19 60	
20 170	20 59	
21 165	21 58	
22 160	22 57	
23 155	23 56	
24 150	24 55	
Total \$10625	Total \$1995	Total Each \$140

INTERMEDIATE, WOMEN & SENIOR CLASS B

1 \$50
2 40
3 30
4 20
Total Each \$140

BOY CHAMPIONSHIP SCHOLARSHIP

\$300

GIRL CHAMPIONSHIP SCHOLARSHIP

\$300

70 & OLDER CHAMPIONSHIP

1 \$75
2 50
3 25
Total \$150

INTERMEDIATE, WOMEN & SENIOR CLASS C

1 \$30
2 20
3 15
4 10
Total each \$75

CHAMPIONSHIP SENIOR & INTERMEDIATE MEN

1 \$275
2 175
3 115
4 95
5 80
6 65
7 50
8 45
9 40
10 35
11 30
12 25
Total each \$1030

CLASS C MEN

1 \$55
2 50
3 45
4 40
5 35
6 30
7 25
8 25
Total \$305

CLASS D MEN

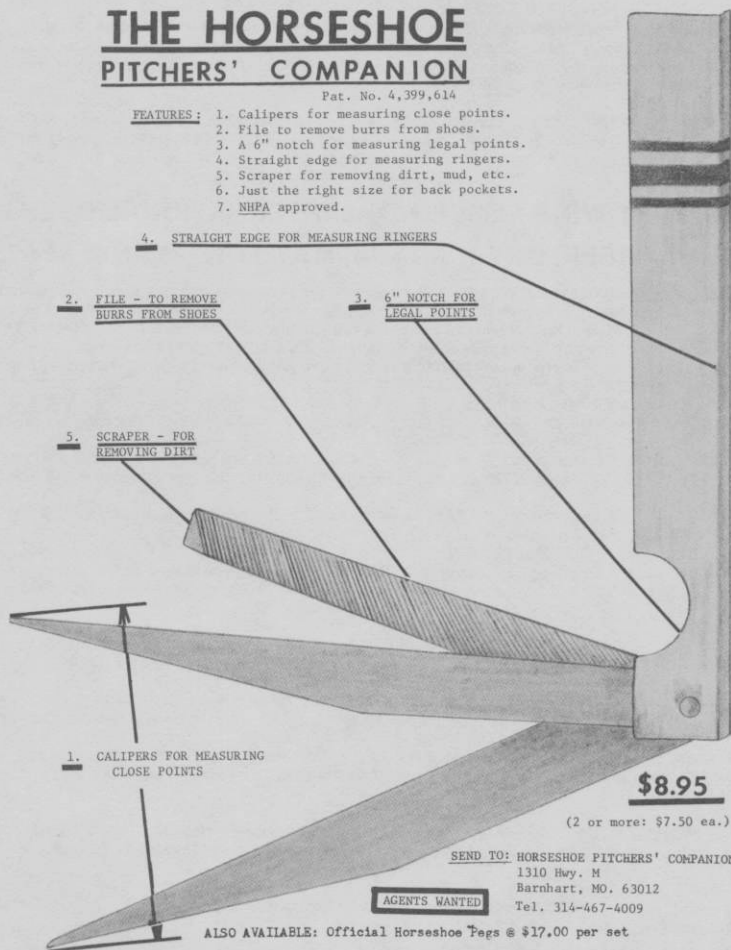
1 \$40
2 35
3 30
4 25
5 20
6 15
7 10
8 5
Total \$180

TOTAL PURSE \$21,335.00

THE HORSESHOE PITCHERS' COMPANION

Pat. No. 4,399,614

- FEATURES:**
1. Calipers for measuring close points.
 2. File to remove burrs from shoes.
 3. A 6" notch for measuring legal points.
 4. Straight edge for measuring ringers.
 5. Scraper for removing dirt, mud, etc.
 6. Just the right size for back pockets.
 7. NHPA approved.



MacINTYRE TOPS NEW JERSEY STATE MEMORIAL OPEN MIDDLESEX, N.J. JUNE 3 — SANCTION 84529

CLASS A — Bill MacIntyre, Somerville, N.J. 6-1-62.5; Bill Kolb, Toms River, N.J. 4-3-58.5; /Sol Berman, Cranberry, N.J. 4-3-56.1; Al Cherry, Plainfield, N.J. 4-3-50.0; Phil Zozzaro, Little Falls, N.J. 3-4-48.2; Marty Waisem-pacher, Flemington, N.J. 3-4-45.5; Bob Hall, Flemington, N.J., 2-5-43.4; Jim Reed, Oldwick, N.J. 2-5-40.2.

CLASS B — Jack Fritzges, Long Valley, N.J., 7-0-48.8; Wes Cook, Toms River, N.J. 4-3-37.6; Charles Davis, Hackettstown, N.J. 4-3-34.1; Gil Franke, Ringoes, N.J., 3-4-40.7; Jim Burd, Califon, N.J. 3-4-39.1; Andy Lopusnak, Clifton, N.J., 3-4-38.0; Ray Shober, Newfield, N.J., 2-5-36.4; John Thomas, Ship Bottom, N.J., 2-5-34.4.

MacINTYRE — (Continued)

CLASS C — Bob Manzoni, West Milford, N.J., 8-0-30.9; Henry Potts, Far Hills, N.J., 5-3-37.6; Larry Thomason, Woodbury, N.J. 5-3-33.7; Henry Batson, Stanhope, N.J., 4-4-28.6; Andy Waisempacher, Flemington, N.J. 3-5-27.0; Tom Manzoni, Pequannock, N.J. 3-5-25.5; Lou Harlan, Wharton, N.J., 3-5-25.4; Bob Turner, Bridgeton, N.J., 3-5-25.1; John Dykstra, Englewood, N.J., 2-6-25.1.

CLASS D — George Patrick, Phillipsburg, N.J., 6-1-29.4; John Danko, White House Station, N.J., 5-2-20.4; Wayne Burnett, Millington, N.J., 5-2-20.1; Bryan Schneider, Long Valley, N.J. 4-3-20.5; Gil Ciresa, Long Valley, N.J., 3-4-18.4; Art Hall, Milford, NJ, 3-4-15.3; Robert Burnett, Millington, NJ, 2-5-10.3, Al Johnson, Clifton, NJ, 0-7-3.5.

LIPOVSKY WINS ELMER HOHL INTERNATIONAL OPEN STONEY CREEK, ONT. CANADA, MAY 11-13—SANC. 84-575

Dale Lipovsky of Minnesota and current World Champion was the final winner in the first Elmer Hohl International Open tournament held at the seven indoor courts at Stoney Creek, Ontario, Canada on May 11 through 13. He posted a 4-1-76.5 record. Don Kuchcinski of Penna. took high single game honors with 89.3 percent. Lipovsky also had high tournament average of 76.5. Sheila McGrath had 87.5 for ladies high handicap high game. She also took the ladies handicap high average. Louise Jorgensen won the Ladies championship with 5-2-45.6 record.

MEN'S A-1 — Steve Kuchcinski, PA 6-0-73.6; Dale Lipovsky, MN 5-1-75.2; Steve Hohl, Ont. 4-2-70.7; Ron Jinkerson, Ont. 3-3-63.0; Vern Butcher, Ont. 2-4-62.7; Jimmy Kuchcinski, Pa. 1-5-60.0; Steve Fenicchia, NY, 0-6-58.0.

MEN'S A-2 — Mike DiMartino, NY 5-1-75.6; Don Kuchcinski, PA 5-1-73.5; Elmer Hohl, Ont. 4-2-72.3; Frank Weaver, Ont. 4-2-66.1; Bill Vandenburg, Ont. 2-4-63.4; Levi Miller, Ohio, 1-5-50.0; Joe Kuchcinski, PA 0-6-57.1.

MEN'S A FINAL — Dale Lipovsky, MN 4-1-76.5; Steve Kuchcinski, PA 3-2-75.6; Steve Hohl, Ont. 3-2-74.5; Don Kuchcinski, PA 2-3-74.7; Mike DiMartino, NY 2-3-73.4; Elmer Hohl, Ont. 1-4-71.2.

MEN'S B — Tom Gallina, Ont. 6-1-61.3; George Watt, Ont. 6-1-59.7; Bob Hayes, NY 4-3-52.9; Clarence Hoggarth, Ont. 4-3-51.2; Tom Stroh, Ont. 3-4-50.3; Paul Sweeney, Ont. 3-4-48.6; Mike Stack, OH, 2-5-50.0; Frank Yokovich, OH, 0-7-45.8.

MEN'S C — Joe Markiewicz, OH 6-0-53.1; Leo Arsenault, Ont. 5-1-43.0; Paul Sweeney, Ont. 3-3-48.5; Bill Roach, Ont. 3-3-43.8; Harold Kipp, Ont. 2-4-36.7; Harold Eyth, Pa. 1-5-38.0; Don Wilcox, NY 1-5-29.5.

MEN'S D — Orval Coxon, Ont. 6-1-39.5; Ken Roy, Ont. 5-2-39.2; John Shuett, Ont. 4-3-38.9; Ken Nixon, NY 3-4-39.7; Yvan Roy, Ont. 3-4-39.4; Vic Heaps, Ont. 3-4-38.9; Bob Doty, NY 3-4-35.4; Dennis Weaver, Ont. 1-6-29.8.

MEN'S E — Jim McLaughlin, Ont. 5-2-32.0; Wilf Robichaud, Ont. 5-2-31.7; Marvin Falk, Mich. 5-2-30.7; Al Corbett, Ont. 3-4-32.1; Glen Pyke, Ont. 3-4-28.9; Joe Berube, Ont. 3-4-23.8; Ken DeMerchant, Ont. 2-5-26.3; Cecil Carnahan, Ont. 2-5-23.3.

MEN'S F — Ted Hansen, Ont. 7-0-33.6; Jack Litster, Ont. 5-2-23.8; Dwayne Litster, Ont. 4-3-23.1; Embro Trieste, Ont. 4-3-23.0; Bob Lamb, Ont. 3-4-18.8; Bill McIntyre, Ont. 2-5-26.1; Jack Moore, Ont. 2-5-21.4; John Kirchin, Ont. 1-6-9.5.

MEN'S G — Gil Tait, Ont. 5-0-26.1; Grant Corbett, Ont. 3-2-17.0; Charlie Logan, Ont. 3-2-13.5; Bill Morton, Ont. 2-3-13.1; Dave Hackney, Ont. 1-4-11.8; Art Litster, Ont. 1-4-11.6.

LADIES HANDICAP — Louise Jorgensen, Ont. 5-2-45.6; Rhonda Haw, Ont. 5-2-31.9; Sheila McGrath, Ont. 4-3-61.2; Denise Stanley, Ont. 4-3-39.5; Olive Tait, Ont. 3-4-38.5; Kim Leetham, Ont. 3-4-32.2; Dorothy Falk, MI 2-5-34.3; Doreen Fanjoy, Ont. 2-5-22.5.

G. ROBERTS OVER G. MOON FOR WOLFE OPEN TITLE AT XENIA, OH—MAY 27—SANCTION NO. 84-56

CLASS A — Gary Roberts 5-2-75.0; George Moon 5-2-70.6; Earl Waggoner 4-3-71.9; Wilber Kabel 4-3-61.5; Loran Coy 3-4-68.9; Stan Manker 3-4-63.0; Lawrence Miller 2-5-62.6; Gordon Meece 2-5-64.0.

CLASS B — Bob Fields 7-0-62.7; Bill Campbell 6-1-58.1; Mike Stack 4-3-61.3; John Hughes 4-3-50.7; Ken Waggoner, 3-4-48.3; Joe Pillion 2-5-51.5; Paul Focht 2-5-49.3; Les Rose 0-7-41.0.

CLASS C — Dick Curtis 5-0-57.9; Frank Smith 4-1-62.3; Tom King 2-3-45.8; Mariece Flaig 2-3-48.5; Larry Mays 2-3-45.8; George Thome 0-5-38.0.

CLASS D — Bill McClain 6-1-53.2; Knute Wagonfield 5-2-45.5; Ed Pratt 5-2-44.2; Dan Sanders 5-2-40.0; Earl Noe 3-4-42.4; Len Martini 3-4-35.0; Ray Morse 1-6-41.5; Bill Beckman 0-7-28.2.

**3,600.00
PRIZE FUND**



**3,600.00
PRIZE FUND**

Sanctioned—84-489

**COORS BEER
EAST COAST TOURNAMENT OF CHAMPIONS**

SANCTIONED BY THE N.H.P.A.

DATE—Sat. & Sun. September 29th & 30th (Rain Date Oct. 6 & 7) 1984

LOCATION—Tournament will be held at the MARY VALE COURTS,
West Patrick Street, Frederick, Maryland

ENTRY FEE—\$12.00 all classes except Jr's \$5.00.

In addition to entry fee an additional fee will be charged for classes A, B, C, D,
and women as follows

Class A—\$15.00 B—\$10.00 C—\$5.00 D—\$3.00 Women—\$10.00

1st Place plaque for all classes

PAYOUT CLASS A—1st—\$500.00 2nd—\$250.00 3rd—\$150.00
4th—\$100.00 5th—\$75.00 6th—\$50.00 7th—\$30.00 8th—\$20.00

CLASS B—1st—\$200.00 2nd—\$100.00 3rd—\$75.00 4th—\$25.00

CLASS C—1st—\$100.00 2nd—\$50.00 3rd—\$35.00 4th—\$10.00

CLASS D—1st—\$50.00 2nd—\$35.00 3rd—\$25.00 4th—\$10.00

WOMEN—1st—\$200.00 2nd—\$100.00 3rd—\$75.00 4th—\$35.00
5th—\$15.00

CLASSES E, F, G, H, I, J, K, L, M, N, O, P, Q, R, S, T—1st—\$35.00 2nd—\$20.00
3rd—\$15.00 4th—\$10.00

JUNIORS—1st—2nd—3rd place plaques

All classes will be 8 man Round Robin, Except A class 16 man Round Robin. Classes will be
made up by percentages.

PITCHING TIME—starts at 9:00 A.M. Sat. & Sun.

*This Tournament is limited to 184 pitchers, so send entry early. Entry deadline will be September
9th, 1984.*

OFFICIAL ENTRY BLANK

Name _____ Last Three Tournament Ringer % _____

Street _____

City _____

State _____ Zip _____

N.H.P.A. CARD # _____

Men _____ Ladies _____ Jr _____

Mail entry to:

Frederick Horseshoe Club
P.O. Box 3249
Frederick, Maryland 21701

Make check payable to the Frederick
Horseshoe Club.

We will send you class, time and day you
will pitch.

CONCESSION AND ACCOMMODATION AVAILABLE

For further information contact Phil Davis at 301-662-7951

If you need an N.H. P.A. Card send an additional \$7.00 and we will send you one.

NEW NHPA CHRISTMAS STAMPS NOW AVAILABLE

The new NHPA Christmas stamps shown on the cover of the June issue are now available for \$1.00 per sheet and can be secured from the NHPA Secretary, Donnie Roberts, Box 810, Circleville, Ohio 43113. Make checks or money orders payable to the NHPA and send a self-addressed, stamped envelope with your order. These are a very attractive stamp and a good way to promote our sport. Bernard Herfurth proposed the idea.

HARRIS TAKES TURLOCK, CA., D OPEN, MAY 12, SANC. 84-192

CLASS D-1 — Harley Harris, Turlock, 4-1-44.4; Fred Lamm, Turlock, 3-2-36.8; Bert Charley, N.C., 3-2-36.0; Martin Lasich, S.J., 2-3-38.0; Earl Kynard, Yolo, 2-3-33.2; Ceres Perry, T.V., 1-4-23.6.

CLASS D-2 — Ray Bojorquius, S.S. 4-1-34.8; Lou Bayer, Stocken, 4-1-30.8; Bob Lloyd, T.V., 2-3-27.6; Joe Ferrau, T.V. 2-3-23.6; Al Aliuiso, TV 2-3-21.2; Bob Pryor, GC, 1-4-19.6.

CLASS D-3 — Bob Fred, T.V. 5-0-20.5; Hank Caldwell, S.J., 3-2-13.5; Glen Jamieson, T.V., 2-3-16.0; Red Taylor, S.S., 2-3-10.5; Roy Heyden, T.V. 3-2-9.5.

BASHAM WINS B OPEN — CLASS B-1 — J. Basham, 4-1-56; W. Foreman, 3-2-52; T. Webb, 3-2-49.2; Marty Dunn, 3-2-48.8; H. Martinelli, 2-3-41.2; M. Webb, 0-5-36.4.

CLASS B-2 — Marthe Dunn, TV 5-2-46; J. Colt, 4-3-44; B. Wright, 3-3-43; G. Greeott, 3-3-39; D. Shelton, 2-3-39.6; W. Oster, 1-4-46.8.

CLASS B-3 — T. Burns, 5-0-34.8; L. Gayet, 4-1-23.6; S. Snyder, 3-2-31.2; F. Kroh, 1-4-28.4; B. Curtis, 1-4-22; M. Stapp, 1-4-20.8.

CLASS B-4 — B. Sanders, 6-1-20.5; J. Hagerman, 5-2-19.1; G. McKay, 4-2-15.6; J. Beach, 3-3-21.3; E. Conaway, 3-3-15; E. Hall, 1-5-16.6; S. Snook UK 0-6-5.6.

Fran Carnahan

Pitches In

Exhibition

Fran Carnahan who finished 3rd in the 1983 World Tournament pitched in an exhibition at the Richland Mall in Johnstown, Pa. on May 3-5th.

Charles (Chick) Denk made the arrangements and TV Channel 6 televised the event. The mall management and every one else was very pleased with the show. The comments from the spectators were out of this world. They had a large group of spectators all the time they were pitching. This was her first time pitching in an exhibition and it was a very interesting experience. Don Kuchcinski, Pa. mens state champion also participated.

Fran started pitching horseshoes 8 years ago. She won the New York state championship in 1979. After her husband Dick retired they moved to Pa. She has been Pa. state champion from 1980 through 1983.

Fran and Dick have 4 children and 7 grandchildren. Some of her other hobbies are crocheting, knitting, sewing, hunting, golf, bowling, and fishing.

DORMAN WINS OWENSVILLE, IN. SPEC. 5-12, SANC. 84-435

CLASS A — Hunter Dorman 7-0-64.6; Doyle Maikranz 5-2-50.0; Dale Henry 5-2-49.4; Jim Lane 3-4-49.0; G.H. Palmer 3-4-43.8; Frank McIntyre 2-5-43.3; Art Cornelius 1-6-42.8; Marlin Wells 1-6-42.8.

CLASS B — L.E. Bowman, III., 5-0-50.0; Leo Dellinger 4-1-50.5; Meril ANleitner 3-2-40.1; Ken Tally 2-3-33.5; Ray Dillon 1-4-28.7; Jim McKnight, III., 0-6-26.5.

CLASS C — Pete Shain, III., 6-1-31.8; Smoky Wolfe 5-2-30.5; Bob Heuby 4-3-29.3; Pat Kluesner 4-3-27.7; Norman Keeps, III., 4-3-25.9; John Miller 1-6-24.2; Chet Evans, III., 1-6-19.0; Fred Armentrout 1-6-17.3.



1983 NHPA & STATE MEMBERSHIP REPORT PREPARED BY DONNIE ROBERTS 5-22-84

State	82 Total	83 Total	83 Jrs	83 Adults	84 Delegates
ALABAMA	64	82	14	68	2
ALASKA	1	102	0	102	4
ARIZONA-TUCSON	112	140	7	133	5
ARIZONA-YUMA	0	0	0	0	0
ARKANSAS	23	23	0	23	1
N. CALIFORNIA	448	469	48	421	12
S. CALIFORNIA	156	158	6	152	6
CANADA	27	27	2	25	1
COLORADO	163	191	8	183	7
CONNECTICUT	35	45	0	45	1
DELAWARE	8	11	0	11	1
FLORIDA	203	228	1	227	8
GEORGIA	95	90	6	84	3
HAWAII	0	8	0	8	1
IDAHO	114	104	9	95	3
ILLINOIS	308	266	10	256	9
INDIANA	413	437	40	397	11
IOWA	142	123	4	119	4
KANSAS	106	130	5	125	5
KENTUCKY	125	146	11	135	5
MAINE	117	116	13	103	4
E. MARYLAND	117	61	6	55	2
W. MARYLAND	96	108	4	104	4
MASSACHUSETTS	171	179	16	163	6
MICHIGAN	232	255	21	234	8
MINNESOTA	328	292	28	264	9
MISSISSIPPI	0	0	0	0	0
MISSOURI	250	444	24	420	12
E. MONTANA	66	74	3	71	2
W. MONTANA	177	208	14	194	7
E. NEBRASKA	113	158	14	144	5
W. NEBRASKA	0	87	8	79	3
NEVADA	41	7	0	7	0
NEW HAMPSHIRE	160	129	10	119	4
NEW JERSEY	111	126	4	122	4
E. NEW MEXICO	107	107	5	102	4
W. NEW MEXICO	0	128	12	116	4
NEW YORK	362	431	69	362	11
N. CAROLINA	145	110	6	104	4
N. DAKOTA	0	0	0	0	0
OHIO	447	485	30	455	13
OKLAHOMA	132	136	25	111	4
OREGON	159	195	8	187	7
E. PENNSYLVANIA	80	102	4	98	3
W. PENNSYLVANIA	379	414	35	379	11
RHODE ISLAND	3	5	0	5	0
S. CAROLINA	7	30	0	30	1
S. DAKOTA	23	11	0	11	1
TENNESSEE	79	78	2	76	3
TEXAS	194	206	20	186	7
N. UTAH	51	54	0	54	2
S. UTAH	0	74	12	62	2
VERMONT	107	118	22	96	3
VIRGINIA	16	50	12	38	1
WASHINGTON	257	246	3	243	8
WEST VIRGINIA	78	66	3	63	2
WISCONSIN	105	99	18	81	3
WYOMING	88	61	5	56	2
TOTALS	7341	8230	627	7603	255

If you spot an error on this list just drop me a note so I can correct it.

COLUMBUS, GA., OPEN HANDICAP SANCTION #84-344 5/6/84

Kenneth Kurtz went undefeated to win the tournament with a 43.8 ringer percentage, Gene Brooks was second with a 25.2%, Earl Ransom was 3rd with 28.0% and David Revell was 4th. with a 30.6%.

NAVE TOPS MARIETTA, GA. OPEN MAY 5, SANC. 84-345

CLASS A — A.J. Nave, 6-2-58.8; Johnny Solesbee 5-3-62.4; Jim Waters 4-3-61.4; Willie Stephens 4-3-59.9; James Black 4-3-58.3; Carl Montgomery 3-4-55.6; Loran Lindsey 2-5-48.7; Danny Wallace 1-6-35.1.

CLASS B — Claude Fender 6-1-57.2; Clayton Kurtz 5-2-54.3; David Solesbee 5-2-47.1; Ted Whitlock 4-3-50.5; Walter Brake 4-3-43.1; Rocky Stephens 2-5-40.2; Richard Williams 1-6-35.2; Jr. Hair 0-7-38.3.

CLASS C — Jim Wood 7-0-42.5; Lamar Fowler 6-1-47.1; A.D. Weatherford 4-3-39.7; Earl Wofford 3-4-33.3; S.C. Beard 3-4-26.4; Frank Fitts 2-5-29.8; Rickey Presley 1-6-45.7; James Spencer 1-2-29.2.

CLASS D — Terry Lodan 5-0-31.1; Fred Wilkins 4-1-22.5; Tommy Lawson 3-2-33.3; Mark Wilkins 2-3-16.9; Anthony Brock 1-4-15.0; Randy Gautier 0-5-10.4.

NAVE — (Continued)

ALBANY, GA, OPEN — SANCTION #84-343 — G.W. Kuck 5-3-26; George Addison 5-4-49; Willie Emerson 4-3-22.7; Arnold Rich 4-4-40.7.

FOREMAN WINS MOSSWOOD C, (CA.) 4-14, SANC. 84-180

GROUP ONE — Walt Foreman, S.J. 6-1-44.9; Steve Kynard, Yolo, 5-2-41.4; Dick Hucke, Reno, Nev., 4-3-48.9; Clair Benthin, Val. 4-3-42.0; Pete Donoho, Shasta, 3-4-46.6; Bill Brown, T.V. 3-4-44.0; Bert Charley, N.C. 2-5-40.3; Vince Mauricio, S.J. 1-6-41.4; H.G. Pete Donoho — 70.

GROUP TWO — Tom Burns, Ukiah, 7-0-35.0; Jim Long, Yolo, 5-2-36.6; Bob Malley, SonCo. 4-3-32.0; Bob Burnett, Moss. 4-3-22.6; Ceres Perry, T.V. 3-4-27.4; Ben Yost, Val. 3-4-22.9; Bob Lloyd T.V. 1-6-20.0; Roy Parker, T.V., 1-6-19.1; H.G. Long — 44.

GROUP THREE — Leo Wanner, Sac. 5-1-20.4; JOe Ferrau, T.V. 4-2-20.0; Bob Fread, T.V. 3-2-15.0; Wally Stevens, S.J. 2-3-19.5; Sam Watts, G.G. 2-3-11.5; H.G. Ferrau — 28.

GROUP FOUR — Glenn Jamieson, T.V. 5-1-22.4; Walt Hyzer, G.G. 4-2-19.2; Lee Henninger, T.V., 3-2-14.0; Sylvester Sauer, S.J. 2-3-16.5; Henry Caldwell, S.J. 2-3-11.0; H.G. Hyzer — 32.

STORCK, Y. MAUZEY, M. LONG, WINNERS IN FEATHER RIVER CALIF. OPEN. 4-21. SANCTION 84-178

Dave Storck, the Woodland, CA, resident playing out of the Yolo Club delivered a 7-0-59.4; over a Lodi, CA, (Emment Schroder) playing out of the Stockton, CA Club following with 5-2-57.7.

GROUP TWO — Joe Colt, Yuba-Sutter at Yuba City, CA, beat out Bert Charley of Gold Country at Nevada City, CA, 6-1-44.6 to 5-2-44.0. Colt high game 58.

GROUP THREE — Robert Green of the Colusa, CA, over Jim Keyes, Sr., of Feather River Club, Palermo, CA, 6-2-32.3 to 5-3-31.0. Van Dalsen, high game 38.

GROUP FOUR — Lee Thornhill of the Sacramento Club, Camellia Capitol, etc., over Thermond Watkins of the Yuba-Sutter Club, 5-0-31.6 to 3-2-28.8. Thornhill high game, 38.

GROUP FIVE — George Gillett of Shasta Club, Redding, CA, 4-1-34.8 over Gary Dillon of the Yuba-Sutter, 4-1-34.8 to 3-2-24.0. High game to Gillett (2) — 42.

WOMAN'S GROUP ONE — Yvonne Mauzey of the Sonoma Country Club, 5-0-61.2; Sandy Hardy of the Shasta Club 4-1-46.8. High game, Mauzey — 74.

WOMEN'S GROUP TWO — Dell Ann Moss, Yolo, 7-0-23.0; Midge Pilcher of Feather River, 6-1-17.7; H.G. Moss — 37.

JUNIORS GROUP ONE — Mel Long, Jr., 6-0-67.0; Joe Long, 4-2-38.7; both brothers in the Yolo Club near Davis, CA. High game — M. Long — 82.

WEBB HORSESHOES N.H.P.A. APPROVED

1-4 pair	\$25.00
5-9 pair	\$23.50
10 pair or more	\$22.00

Add \$2.00 per pair shipping cost (USA)

WEBB HORSESHOE & EQUIPMENT
1319 LICKING PIKE • WILDER, KY 41076
Phone (606) 781-0589

WARD WINS BURNS OPEN, TENN. SANCTION 84-156

CLASS A — D. Ward 5-0-70.0; R. Norwood 4-1-72.7; C. Montgomery 3-2-58.8; G. Whaley 2-3-63.7; J. Waters 1-4-58.6; J. Black 0-5-56.3.

CLASS B — J. Vines 3-2-60.4; G. Bush 3-2-57.7; D. Stallings 3-2-56.9; G. Lewis 3-2-54.9; J. Smith 3-2-53.9; J. Haire 0-5-56.0.

CLASS C — S. Long 5-0-57.8; W. Bennett 4-1-47.2; L. Lindsey 2-3-51.5; H. Irwin 2-3-50.8; C. Bennett 1-4-44.7; J. Shelton 1-4-32.5.

CLASS D — J. Adkerson 5-0-47.2; S. Cornette 3-2-38.8; M. Bush 3-2-33.3; J. Cunyningham 2-3-40.6; F. Fritts 2-3-27.9; J. Dockery 0-5-31.8.

CLASS E — L. Byrd 3-0-33.8; H. Lones 2-1-29.4; W. Jennings 1-2-22.6; J. Davis 0-3-20.8.

MILLS WINS IND. SPRING SPECIAL, 5-6, SANC. 84-434**P. ANDERSON WINS LADIES; R. HENRY, JUNIORS**

CLASS A — Jerry Mills, 5-2-65.4; Ronnie Colvin 71.97; Peck Anderson 5-2-69.4; Hunter Dorman 5-2-64.1; Bill Ungetheim 5-2-70.3; George Sales 2-5-64.3; Arthur Burch 1-6-62.7; Ed Kowatch 0-7-58.3.

CLASS B SAT. — (play-off) Jim Kemple 5-2-60.4; Bob Moit 5-2-53.4; Ed Howdeshell 4-3-56.4; Jim McIntire 4-3-51.8; Bill Wicker 4-3-51.1; Curly Gladding 3-4-50.0; Lee Wilcox 3-4-48.0; Bob Sheppard had to drop out.

CLASS B SUN. — (play off) Frank Baxter 6-1-59.1; Dale Henry 6-1-62.6; Ralph Johnson 5-2-59.8; Ed Weyer 4-3-53.4; Dennis Ferree 3-4-54.5; G.H. Palmer 3-4-53.4; Bob Henderson 1-6-40.2; Jim Pierson 0-7-36.

CLASS C — Jim Lane 7-0-54.6; Kenny Perkins 5-2-49.3; Leo Dellinger 4-3-51.6; Art Cornelius 4-3-45.8; David Tatman 3-4-47.7; Ken Tally 3-4-45.2; Bob Dwigans 2-5-42.0; Pat Kluesner 0-7-19.1.

CLASS D — Joe Titsworth 6-1-43.5; Mose Spainhour 5-2-43.8; Offord Burkhart 5-2-42.1; Ed Pauley 4-3-45.3; Bob Dwigans 4-3-38.2; Junior Guthrie 3-4-46.9; Jim Turpin 1-6-24.4.

CLASS E — Tim Tatman 7-0-49.6; Meril Anleitner 5-2-42.5; C.B. Batts 5-2-32.2; Harold Tatman 4-3-38.5; Oran Hollandbeck 3-4-32.0; Pete Hobbs 3-4-26.8; Bob Hill 1-6-23.5; Luther Chandler 0-7-25.8.

CLASS F — Glenn Zollman 7-0-31.1; Steve Dunning 4-3-34.5; Paul Joslen 4-3-32.2; Jack Turner 4-3-28.9; Glen Donaldson 3-4-28.5; Ralph Bunn 2-5-23.8; Dick Lemish 2-5-21.5; Rick Lemish 2-5-20.8.

CLASS G — Lloyd Carstons 7-0-31.2; Larry Robinson 6-1-25.5; Jim Gosnell 5-2-29.9; Fred Armentrout 3-4-22.9; Dale Wehmeier 3-4-21.6; Bob Henry 2-5-23.6; Danny Cox 1-6-16.1.

CLASS H — Lowell Vandeventer 6-0-27.7; Lowell Cummings 5-1-16.4; Joe Trobaugh 2nd 4-2-20.9; Gerry Dreyer 2-4-17.7; John Chandler 2-4-15.4; Steve Battin 2-4-11.7; Buck Shively had to drop out.

WOMEN CLASS A-B — Phyllis Anderson 6-0-46.6; Charline McKinley 3-3-15.8; Mona Cummings 1-5-17.0; Darlene Colvin 2-4-15.3.

JUNIOR CLASS A — Rick Henry 6-0-66.6; Steve Ungetheim 4-2-63.7; Tony Cummings 2-4-41.5; Jon Phillips 0-6-17.1.

JUNIOR CLASS B — Tony Cumminbs 67-0-32.4; Robert Robinson 4-2-21.1; Carrie Cummings 2-4-19.5.

WILLIAMS WINS SOUTHWEST WASH. OPEN — 5-12-84-384

Our Local Club holds one of the largest Tournaments held, at this one there were 81 entrants with some of the top pitchers from three states in attendance. They were Former World Champion Walter Ray Williams, Oregon's Mens and Ladies State Champions Ben Wiedrich and Esther Ott, also there were two of Washington's own former State Champions Herb Criss and Junior Champion Peter Clark.

CLASS A — Walter Ray Williams 6-1-73.9; Herb Criss 5-2-74.6; Ben Wiedrich 5-2-73.1; Barry Chapelle 4-3-70.2; Art Sperber 4-3-69.5; Peter Clark 3-4-71.0; Don Jones 1-6-55.3; Gerry Staley 0-7-55.5.

CLASS B — Jerry Gorton 7-0-57.1; Bernie Martell 5-2-58.3; Chuck Johnston 4-3-50.1; Rick Rebman 4-3-49.1; Ron Ferguson 3-4-54.2; Esther Ott 3-4-47.5; Jim Alexander 2-5-44.9; Irv Farron 0-7-38.9.

CLASS C — Lee Wallace 7-1-54.5; Jack Bush 6-2-44.8; Chuck Ball 5-2-46.2; Ray Simmonds 4-3-50.0; Verl Lawson 2-5-45.9; Ray Powell 2-5-45.6; Jim Malvern 2-5-43.0; Vic Fletcher 1-6-35.2.

WILLIAMS — (Continued)

CLASS D — Bob Sletton 7-1-50.5; Mike Thorniley 6-2-42.2; Don Ferguson 4-3-38.4; Mel Sherbert 4-3-38.1; Barney Heller 3-4-43.8; Frank Green 3-4-32.8; R.E. Click 2-5-32.6; Verl Webb 0-7-32.8.

CLASS E — Bill Graham 7-0-45.9; Wayne Maag 5-2-39.5; Jim Kosterman 4-3-33.7; Lyle Meuret 3-4-42.7; Denny Samples 3-4-41.7; Ken Kuper 3-4-39.1; Darrell Jones 2-5-35.6; Lloyd Likens 1-6-35.3.

CLASS F — Gene Buzzini 4-1-37.3; Vern Wanless 3-2-30.8; Cyril Kitchen 2-3-34.3; Marvin Tatchio 2-3-33.1; Dick Evans 2-3-33.1; Lloyd Kilgore 2-3-26.9; Cliff Parr forfeit.

CLASS G — Francis Nelson 7-0-38.3; Roger Christianson 4-0-40.7; Mel Shuss 4-3-34.9; Phil Norby 4-3-26.5; Carl Wallin 2-5-28.4; Mick Odell 2-5-22.0; Bill Dolan 1-6-28.9.

CLASS H — Bob Winn 7-0-35.7; Les Andrews 6-1-34.9; Orrin Underwood 5-2-34.3; Bill Johnson 4-3-18.3; Charlie Tank 2-5-22.4; DuWayne Wiedrich 1-6-22.3; Rich Carroll 0-7-14.9.

CLASS I — Loy Brown 6-0-40.3; Bob Clark 5-1-31.1; Larry Rickert 3-3-26.4; Frank Dvorshak 3-3-21.2; Wendell Roberts 2-4-26.4; Milt Johnson 2-4-25.6; Jack Stryker 0-6-19.0.

CLASS J — Dick Culbertson 6-0-32.5; Larry Clark 5-1-28.0; Ed Lovejoy 4-2-30.3; Don Fagerness 3-3-26.2; Tom W. Worthington 2-4-12.9; Steve Harris 1-5-10.9; Steve Krommenacker 0-6-10.5.

LADIES CLASS — Bonnie Lewis 5-1-26.9; Alta Maag 4-2-27.6; Laura Lee Samples 3-3-29.3; Donna Graham 0-6-11.9.

KNISLEY TOPS BERKLEY, MI. INVITATIONAL — 5-12-84-335

CLASS A — Jim Kinsley 6-1-74.8; Floyd Bartley 5-2-62.6; Steve HOhl, 4-3-64.2; Leo Fitzpatrick 4-3-58.7; Chal Torrey 3-4-60.0; Doc Maison 3-4-54.8; Dale Dombrowsky 2-5-58.4; Dick Pelton 1-6-47.2.

CLASS B — Charles Frazier 6-1-58.6; Edward Schultz 5-2-64.4; Justin Perticone 4-3-63.0; Gary Gardner 4-3-60.3; Bill Damrau 3-4-62.1; Mike Federoff 3-4-56.5; Stan Swarouth 2-5-57.3; Rick Gyorkos 0-7-46.8.

CLASS C — Chuck Perkins 7-0-62.4; Ozzie Williams 5-2-51.9; Ken Miller 5-2-49.3; Bob Wells 4-3-53.9; Oscar Hope 3-4-44.2; Gil Jaeger 2-5-46.5; Bob Seaman 2-5-35.3; Frank Penterics 0-7-47.8.

CLASS D — Richard Stehno 5-2-39.4; George Stifel 5-2-40.7; Roy Teets 4-3-43.6; Dewey Howard 4-3-37.9; Paul Wishon 3-4-42.0; Larry McCreia 3-4-38.1; Wally Koski 3-4-38.0; Kenneth Connin 1-6-33.4.

CLASS E — Bernie DeGroat 7-0-45.2; Dennis Soldan 4-3-35.1; Walt Wedel 4-3-30.6; Charles Bowen 3-4-35.3; Charles Brososky 3-4-33.4; Marv Kangas 3-4-30.5; Walt Krieger 2-5-36.3; Roy Colby 2-5-31.1.

CLASS F — Boyd Smith 3-1-29.3; Marv Falk 3-1-38.2; Merle Farrand 2-2-34.9; Michael Ardelean 2-2-32.8; Jim Miller 0-4-17.4.

CLASS G — Ernie Sewell 5-0-41.4; Benny Sexton 3-2-28.5; Dick Brown 2-3-25.9; Boyd Stonerock 2-3-24.6; Rex Ryan 2-3-22.8; Henry Price 1-4-17.8.

CLASS H — Duane Wilson 4-0-24.1; Rick Brown 2-2-24.5; Ralph Wolfston 2-2-19.4; Tom Bracey 2-2-13.9; Ted Temple 0-4-14.7.

LADIES — Ann Wedel 3.5-5-60.0; Mary Perkins 2.5-1.5-35.5; Dorothy Falk 1.5-2.5-40.0; Trudy Wells 1.5-2.5-40.5; Chris Smith 1-3-29.5.

JUNIOR BOYS — Steve Loop 5-0-50.4; Darrin Howard 4-1-44.4; Charlie Perkins 2-3-48.8; Dean LeClair 2-3-45.6; Tom Williams 1-4-50.4; Clayton Bonhem, Jr., 1-4-44.0.

HOLLISTER WINS VT. MOTHERS DAY OPEN — 5-20-SANC'D

CLASS A — Kevin Hollister 5-0-69.4; Bob Dean 4-1-46.9; Liz Downer 3-3-50.0; Bud Leavitt 2-3-43.6; Ken Downer 1-4-36.1; Bev Forgues 0-5-37.2.

CLASS B — Bob Many 7-2-44.9; Debbie Brown 7-2-43.9; Jean Bean 6-3-47.4; Wendell Burnham 5-4-36.3; Bob Gauthier 5-4-33.6; Joe Forgues 4-5-41.4; Ralph Cayia 4-5-38.1; Reid Brewster 3-6-34.2; Dave Smith 3-6-32.9.

CLASS C — Don Choniere 8-1-33.2; Bob Gordon 8-1-36.0; Blakely Bigelow 7-2-31.3; Connie Selleck 6-3-34.6; Paul Turner 5-4-22.5; Alton Nichols 4-5-25.8; Don Dean 3-6-21.2; Walt Webber 2-7-17.9; Kay Brewster 2-7-16.8.

HOLLISTER — (Continued)

CLASS D — Lee Paquette (play-off winner) 5-1-23.4; John Coffey 5-1-30.3; Jim Forgues 4-2-32.4; Jeanette LaVallee 2-4-24.6; Joe Bougor 2-4-24.0; Betty Bedard 2-4-21.8; Ray Benson 1-5-24.8.

CLASS E — Roger Forgues Sr. 8-1-23.6; Ray Gomez Sr. 7-2-27.9; Glen Norris 6-3-22.3; Bud Garrett 6-3-21.0; Dick Bedell Sr. 6-3-19.1; Ray Gomez Jr. 5-4-18.0; George Finch 4-5-18.4; David White 2-7-11.4; Mike Brown 1-8-12.1.

CLASS F — Harold Wrisley 4-0-19.6; Bob Euber 2-2-11.0; Irv Stiefel 2-2-2.5; Myron Selleck 1-3-6.6; Willie Francis 1-3-3.5.

JUNIOR CLASS — W/HDCP. — Dick Bedell Jr. 4-0-31.3; Denny Young 2-2-37.0; Dana Bedard 0-4-14.7.

TITCOMB WINS WESTERN STATES OPEN — CA — SANC. 84-186

MEN'S GROUP ONE — D. Titcomb, SJ 7-0-78.5; J. Basham, YS 6-1-58.6; P. Manitone, Sac., 5-2-65.1; B. Mauzey, SonCo., 3-4-60.6; R. Lee, GC 2-5-55.1; V. Gosney, Val., 2-5-50.3; T. Webb, RD 2-5-47.4; E. Schroeder, St., 1-6-52.3; H.G. Titcomb — 88.

GROUP TWO — V. Zelmar, SJ 6-2-52.3; S. Kynard, Yolo, 5-3-43.5; D. Williams, F.R. 4-3-48.6; k. Woolery, SonCo., 4-3-46.9; N. Graves, Sac., 3-4-42.9; W. Foreman, J 3-4-39.1; D. Hucke, Remo, 2-5-47.1; M. Dunn, TV 2-5-42.0; H.G. Zelmar 64.

GROUP THREE — P. Donoho, Shasta, 7-0-35.0; B. Charley, GC 5-2-37.0; L. Rood, FR, 5-2-35.0; D. Gore, RENO, 5-2-32.6; D. Palmer, Reno, 3-4-28.3; E. Kynard, Yolo, 2-5-25.0; D. Purdum, Yolo, 1-6-15.6; H.G. Rood — 48.

SMITH WINS KEENE, N.H. SPRING WARM-UP — 5-22

CLASS A — B. Smith, Keene, 6-1-59.6; A. Boudreau, Rindge, 5-2-56.6; M. Donaven, Bedford 5-2-52.8; P. Bergeron, Merrimack 4-3-52.1; B. Traquair, Keene 4-3-52.0; D. Westcott, Concord 2-5-45.2; M. Kibbee, Boscawen 2-5-38.5; H. White Portsmouth FO.

CLASS B — L. Croteau, Keene 6-1-51.0; K. Dyer, Keene 5-2-43.2; R. Plourde, Svncook 4-3-45.2; Dick Doble, Keene 4-3-40.0; H. Murphy, Compton 3-4-42.4; T. Booth, Concord, 3-4-39.5; D. Sawyer, Concord 2-5-43.4; L. Putnam, Marlborough 1-6-39.5.

CLASS C — R. Ladd, BOW 5-2-42.8; D. Ladd, Weare 5-2-37.7; D. Lachance, Manchester 5-2-37.3; N. Ricard, Hudson 4-3-40.3; W. Hall, Nashua 4-3-35.9; S. Raymond, Pelham 3-4-31.4; Ray Fife, Warner 2-5-33.7; R. Berube, Groveton 0-7-25.0.

CLASS D — L. French, Chichester 7-0-41.4; L. Crogeau, Campton, 5-2-40.2; C. Boudreau, Rindge 5-2-39.4; P. Gagnon, Loudon 4-3-32.8; D. Alexander, Peterborough 3-4-34.7; A. Deneault, Suncook, 3-4-29.8; J. Page, Raymond 1-6-24.7; J. Styles, Merrimack 0-7-21.9.

CLASS E — G. Loring, Campton 7-0-40.8; H. Locke, Chichester 6-1-39.6; L. French, SR, Chichester 4-3-31.6; G. Blais, Nashua 4-3-29.1; F. Rollins, Wilton 3-4-24.7; H. Labine, Nashua 2-5-25.2; B. Miller, Keene 1-6-24.1; Rick Fife, Pencook 1-6-20.9.

CLASS F — B. Bailey, Exeter 7-0-36.0; J. Bergeron, Merrimack 6-1-31.3; B. Eckhardt, Exeter 4-3-27.0; B. Mayo, Plaistow 3-4-25.4; D. Fales, W. Franklin 3-4-19.2; D. Cleveland, Keene 2-5-24.3; P. Lavole, 2-5-20.2; B. Wellington, Hinsdale 1-6-23.2.

CLASS G — Don McIlvene, Keene 7-0-23.1; F. McCarron, Hampstead 6-1-18.9; M. Georgina, Keene 4-3-12.6; D. McCarron, Hampstead 4-3-11.0; D. Lister, Sandown 3-4-11.4; P. Mayo, Plaistow 2-5-6.6; W. Miller, Nashua 2-5-6.5; M. Granja, Kene 0-7-3.0.

JUNIORS — B. Dyer, Keene 4-1-15.6; C. Jensen, Bow 4-1-13.2; T. Kelchner, Raymond 4-1-10.8; T. Gagnon, Loudon, 2-3-8.4; S. Daneault, Suncook 1-4-44.4; W. Mayo, Plaistow 0-5-9.6.

M. KNOP TOPS SHELDON, ILL. OPEN—5-27—SANCTION 84-502

First of all, we the officers of the Horseshoe Club, would like to extend our apologies for the confusion in getting the tournament started late and for any misunderstandings there may have been. We assure that our future tournaments will be handled in a more systematic manner.

All in all we had a good tournament with 20 participants in 3 classes. Mike Knop, 7-0-60.9 took first in Class A., Ray Mayhew, 6-1-43.1 took first in Class B, and Tim Williamson, 3-0-22.6 took first in Class C.

CLASS A — M. Knop 7-0-60.9; R. Stobauth, 5-2-51.5; G. Hintz, 6-1-49.9; D. Natschke, 4-3-47.2; G. Gillespie, 2-5-42.6; H. Bull, 0-7-31.5; F. Woodworth, 2-5-40; Jr. Simoneau, 2-5-34.2;

M. KNOP — (Continued)

CLASS B — R. Mayhew, 6-1-43.1; G. O'Neal, 5-2-36.9; D. West, 4-3-36.8; D. Simler, 3-4-35.7; J. Kolaiser, 4-3-39.3; E. Simler, 2-5-24.8; B. Stevenson, 3-4-25; R. Knop, 1-6-23.9.

CLASS C — T. Williamson, 3-0-22.6; J. Conrad, 2-1-13.2; S. Brammer, 1-2-5.3; J. Fry, 0-3-6.0.

WICOMICO CLUB OPEN — SALISBURY, MD — 5-19-20 — SANC.

CLASS A — John Shaw, VA 7-0-60.1; Fred Beeman, MD 6-1-59.5; Tom Chance, DEL 4-3-48.4; Henry Markland, DEL 4-3-47.5; Eddie Gohn, PA 3-4-44.2; Willard Sammons, DEL 3-4-40.3; Richard Bevan, MD 1-6-38.6; Dick Hurley, DEL 0-7-32.0.

CLASS S — Allen Foley, VA Playoff 7-1-46.0; Kelly Hatrick, DEL Playoff 6-2-52.5; Philip Fleshman, MD 5-2-49.2; Wayne Walley, MD 4-3-34.2; Hazel Fleshman, MD 3-4-34.9; Ken Holden, MD 2-5-39.4; Louis Walls, MD 2-5-34.8; Bill Joy, MD 0-7-19.0.

CLASS C — Sherman Gray FL 6-1-38.8; Ted Simmons, MD 5-2-42.1; Dave Moser, VA 5-2-33.4; Gary LeCompte, MD 5-2-30.4; Don Gregory, MD 3-4-32.2; Gary Rust, DEL 2-5-23.2; Bill Taylor, MD 1-6-25.7; Sonny Holste, MD 1-6-21.6.

CLASS D — Elmer Martella, VA 6-1-36.0; Steve Fleshman, MD 5-2-37.4; Charles Chernx MD 5-2-30.8; Bill Young, MD 4-3-32.2; John Satterfield, MD 3-4-33.1; Allen Causey, MD 3-4-20.0; Bill Dotson, MD 1-6-21.7; Bob Davis, MD 1-6-21.1.

CLASS E — Earl Sarvis, Del 8-0-22.0; Curt Fleshman, MD 6-2-21.7; Ernest Clarkson, Del 5-3-19.2; Nelson Clark, MD 5-3-24.0; Missy Elias, MD 3-5-17.0; Mike Payne, Del 3-5-15.2; Vernon Bailey, MD 4-4-18.0; Steve Hudson, Del 2-6-14.5; Verlon Frye, MD 1-7-5.2

In the doubles competition Fred Beeman and Philip Fleshman took top honors in Class A while William Young and Rob Bunn copped first place in Class B.

BIG MONEY DOUBLES TOURNAMENT

Shelbyville, Illinois

JULY 14, 1984

MEN'S & LADIES' CLASSES

All entry fees, \$10.00 except Men's Championship
Class which will be \$15.00

CASH AWARD \$250 1st PLACE GUARANTEED

Register at 9:00 A.M.

Play starts at 10:00 A.M. Approx.

FREE BEVERAGES FOR ALL PITCHERS

Tournament Director, Dean Conner

Ph. 217-783-6323

WARD WINS TENN. DOGWOOD OPEN — APR. 7 — SANC. 84-154

CLASS A — D. Ward 5-0-75.2; G. Whale 3-2-57.1; R. Pruitt 2-3-57.5; G. Lewis 2-3-51.9; D. Stallings 2-3-46.8; R. Norwood 1-5-50.9.

CLASS B — C. Montgomery 4-1-57.4; J. Vines 4-1-51.5; V. Fox 3-2-45.9; J. Connors 3-2-42.0; W. Bennett 1-4-43.2; J. Walker 0-5-41.1.

CLASS C — J. Smith 4-1-51.3; Jr. Haire 4-1-49.6; C. Bennett 3-2-42.9; J. Cunnyingham 3-2-37.7; J. Shelton 1-4-28.6; R. Bender 0-5-25.0.

CLASS D — M. Bouton 4-1-41.0; H.B. Fowler 4-1-37.2; J. Nash 3-2-30.6; S. Garnette 2-3-35.0; Dan Isaacs 1-4-32.7; L. Byrd 1-4-24.0.

CLASS E — F. Gregg 5-1-35.0; R. Massengill 3-2-26.3; F. Fritts 3-2-25.1; C. Wilcox 2-3-22.6; R. Ward 1-4-19.5; R. Finney 1-4-16.9.

CLASS F — L. Watson 2-1-25.2; H. Lones 2-1-23.1; D. Self 1-2-18.8; B. Bales 1-2-13.0.

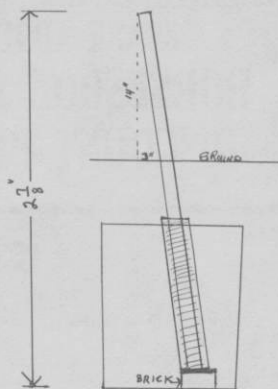
CLASS G — J. Davis 4-0-27.2; F. Gaw 1-3-20.6; T. McPeck 1-3-18.3.

PORTT WINS FITZGERALD, GA. HANDICAPPER — Apr. 18

Glen Portt, 7-2, 66%, Ronald Tanner, 6-2, 21%, Roger Long, 5-4, 20.6%.

LARRY MORTON METHOD OF STAKE CONSTRUCTION

Following is a description of my method of setting a good sturdy stake. Take a five-gallon plastic bucket, place a half brick in the bottom (the purpose of the brick is that when it is completely surrounded by concrete and in a non-corrosive plastic bucket, the stake cannot ever be driven down below its proper height.) Now place about a 12" piece of sand blasting hose that has a one inch diameter over the bottom of a 1" cold-rolled steel rod about 34" in length. To prevent anyone from removing the stake, place a washer with a 1" diameter hole on the bottom of the stake and either weld it on or brad the end of the stake so it cannot be pulled up. Now place the peg/unit on top of the brick and measure down 14 inches from the top and lean the peg/unit to where the base of the triangle will measure 3 inches, to give the proper lean. Now fill the bucket with concrete. When in use this completely deadens the shock when the shoe hits the stake. Sink into clay area 10 or 12 inches below ground level.

**HALL OF FAME DINNER DRESS REQUIREMENTS**

For all those players and friends planning on attending the Hall of Fame dinner in Huntsville special notice is given as to dress requirements.

Inasmuch as it will be held at the Officers Club in Huntsville, the men will be required to wear a coat and tie. The ladies should wear either a dress or dress slacks.

No jeans or tennis shoes will be allowed.

Cost of dinner will be \$11.95 per person and will be held on Sunday, July 29. Time to be announced.

ALL MEMBERS URGED TO USE NHPA ENVELOPES

It would be nice if all horseshoe pitchers would use envelopes with the NHPA logo on them for all of their mailing. This is one way that our sport could be promoted all over the world. To make this possible the NHPA has envelopes available for you to purchase at or near our cost. 500 envelopes cost \$25.00, 400 envelopes cost \$20.00, 300 envelopes cost \$15.00, 200 cost \$10.00 and 100 cost \$5.00. Please specify the size you want. We will even have them printed with your return address on them in lots of 500 or more. Minimum order is 100. Prices are post paid. Send all orders to Donnie Roberts, 9439 Camp Creek Rd., Lucasville, Ohio 45648.

**BUY YOUR TROPHIES & AWARDS
DIRECT FROM THE FACTORY
WE WILL BEAT ANY LEGITIMATE
TROPHY DEAL ANYWHERE
GUARANTEED LOWEST PRICES**

FREE ENGRAVING - FREE FREIGHT PROGRAM

**MOST UNIQUE PACKING SYSTEM FOR
TROPHIES & PLAQUES IN THE U.S.A.**

LET US CUSTOMIZE YOUR NEXT TOURNAMENT

**SEE US FOR CUSTOM-PRINTED
CAPS, T-SHIRTS, & JACKETS**

CALL TOLL FREE 1-800-638-3044

**& ASK ABOUT OUR
HORSESHOE PITCHING
DISCOUNT PROGRAM**



**OLYMPIC
TROPHY COMPANY
701 PARK LANE
HAGERSTOWN, MD. 21740
TOLL FREE 1-800-638-3044
In Maryland call (301)739-5811**

Coming Events

UTAH SCHEDULE

- July 7 — *Murray Park — Murray, Utah, Sanction No. 84-511. 7:00 p.m.
 July 14 — *Washington Terrace, Ogden, Utah, Sanction No. 84-512. 4:00 p.m.
 July 20 — American Fork — Steel Days, Classes C, D and E. 7:00 p.m.
 July 21 — American Fork — Steel Days, Classes A and B. 7:00 p.m.
 July 28 — *Liberty Park, Salt Lake City, Utah. Sanction 84-513. 7:00 p.m.
 Aug. 4 — Murray Park — WAHLIN MEMORIAL — 7:00 p.m.

Please note the time of each tournament. Sanctioned tournament — Open to anyone with a National and State card.

INDIANA SCHEDULE

- Aug. 4-5 — (84-455) — Perrysville Fun Days, City Park, Perrysville, Entry fee \$7.00, awards, mailing deadline July 25, phone deadline July 29.
 Aug. 4-5 — Wabash Special, West Hill Street, Wabash, entry fee \$7.00, awards, mailing deadline July 25, phone deadline July 29.
 Aug. 11-12 — (84-457) — Paul Cunningham Memorial, 13th and Geneva St., Marion, Entry fee \$7.00, awards, mailing deadline Aug. 1, phone deadline Aug. 5.
 Aug. 11 — *Washington Terrace, Ogden, Utah, Sanction No. 84-514. 4:00 p.m.
 Aug. 18 — Deweyville — Deweyville Days — 2:00 p.m.
 Aug. 24 and 25 — Liberty Park, State finals, Classes C, D and E. 7:00 p.m.
 Aug. 31-Sept. 1 — Murray Park, State finals, Class B. 7:00 p.m.
 Sept. 7-8 — American Fork, State finals, Class A. 7:00 p.m.
 Memorial Park, US24, Huntington, entry fee \$7.00, awards, mailing deadline Aug. 8, phone deadline Aug. 12.
 Aug. 22 — LAST DAY TO SEND IN ENTRY FOR THE INDIANA STATE TOURNAMENT, AND ENTRY MUST BE PAID IN ADVANCE
 Aug. 24-25-26 — (84-46D) — SECOND ANNUAL INDIANA OPEN STATE FAIR CHAMPIONSHIP
 Sept. 1-2-3 — (84-461) — Indiana State Tourn., Riverfront Park, Canal St., Lafayette, Entry fee \$10.00,

Coming Events—Continued

Aug. 18-19 — (84-458) (Johnson Co. Courts Special (under roof), Atterbury, Edinburg, Entry fee \$8.00, Awards, Mailing deadline Aug. 8, phone deadline Aug. 12.

Aug. 18-19 — (84-459) — Huntington Special,

There will be intermediate and senior divisions along with the State Tournament. A player can play in only one (1) division at the Indiana State Tournament.

awards and cash, mailing deadline Aug. 22. All State Tour. entries *must* be paid in advance.

VERMONT SCHEDULE

July 14-15 — (84-520) — Vt. Pre-State Rotation. Champlain Valley Club, Colchester, Vt.

July 28-29 — (84-521) — Sodbusters Open. Sodbusters Club. Bennington, Vt.

Aug. 11-12 — (84-522) — Vermont State Tournament Lennington, Vt.

Aug. 26 — (84-523) — August Sizzler, Springfield Club.

Sept. 8-9 — (84-524) — Fall Round-Up. Sodbusters Club.

Sept. 15-16 — (84-525) — Vermont Open. Springfield Club.

NEW JERSEY SCHEDULE

July 7 — (84-534) — Middlesex Club Memorial, (open) Middlesex, 6:00, R. Coleman, 201-356-491.

July 14 — (84-535) — Cumberland County (Open), Vineland, 5:30, E. Severs — 609-691-4306.

July 15 — (84-536) — Garden State Games (Closed), Middlesex, 2:00, V. Yannetti.

July 22 — (84-537) — Flemington (Open), Flemington High School, 10:00-2:00, B. MacIntyre — 201-526-5331.

Aug. 4 — (84-538) — New Jersey Open (State), Middlesex, 6:00 (All), R. Vogel — J. Burd.

Aug. 11 — (84-539) — Vineland Open, Vineland, 5:30 (All), E. Severs — 609-691-4306.

Aug. 18 — (84-540) — Middlesex Club Open, Middlesex, 6:00 (All), R. Coleman, 201-356-4691.

Aug. 27 — Sept. 3 — (84-541) — N.J. State Singles and Doubles, Flemington Fair, C. White, R. Vogel, J. Burd.

Sept. 9 — (84-542) — North Jersey Open, Newark, 9:30-1:30, R. Jenson, 201-356-3820.

Sept. 15 — (84-543) — Woodbury Open, Vineland, 5:30-E. Severs, L. Thomason.

Sept. 16 — (84-544) — Mid-Atlantic Open (State), Middlesex, 12:30, R. Vogel, J. Burd.

Sept. 23 — (84-545) — Clifton Open, Clifton, 9:30-1:30, P. Zozzaro, 201-256-8996.

WICOMO (MD) SCHEDULE

July 21 — Singles — *Eastern Shore Open, 84-578, Sponsored by: Culligan Water, Dave Dulany.

July 21 — Doubles — *Eastern Shore Open

August 18 — Singles — *South Atlantic Open, 84-579 Sponsored by: Pepsi-Cola Bottling of Salisbury.

August 19 — Doubles — *South Atlantic Open.

Sept. 1-2 — Singles — "State of Maryland Horseshoe Tournament" Sponsored by: R.C. Cola will be held in Salisbury, Md.; for information call Jack Taylor

at 301-749-7527 (Next year 1985 Tournament will be in Frederick).

Sept. 22 — Singles — *Salisbury Open — 84-580 — Sponsored by: Baker and Bounds Funeral Home.

Sept. 23 — Doubles — *Salisbury Open.

Qualifying Time: 9:00 a.m.-10:30 a.m. sharp and a \$1.00 qualifying fee.

*No qualifying if we have your record. RAIN DATE: The following weekend 301-742-4557 or 301-749-7527.

All the above tournaments are held at Salisbury City Park located in Salisbury, Maryland and are sponsored by the Wicomico County Department of Recreation and Parks in conjunction with the Wicomico Horseshoe Club. Singles will be held Saturday morning at 11:00 a.m. Sharp. Doubles are held Sunday afternoon at 2:00 p.m. Sharp. Ladies — If there are not enough to form a class of 4 or more, then they may pitch at 30 feet with men. Ladies and Juniors must have their own class (ringer percentage will be used) for **State Tournaments Only**.

*Must qualify and be N.H.P.A. registered in order to participate.

EASTERN PA SCHEDULE

Aug. 10-11 — Reedsville 4-H Fair Open. Reedsville, Pa. Contact Jack Swyers, Rte. 2, Box 145, Belleville, Pa. 17004. Ph. 717-935-5337.

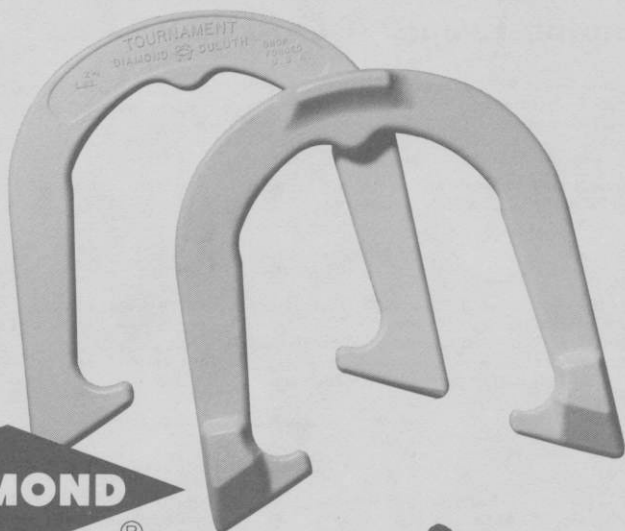
Aug. 18-19 — Pennsylvania Open. New Cumberland, Pa. Contact Dan Beshore, 430 Old York Road, New

Cumberland, Pa. 17079. Ph. 717-938-2945.

Aug. 25-26 — Strasburg Harvest Open. Strasburg, Pa. Contact Richard Wilson, Rte. 1, Box 1401, Stewartstown, Pa. 17363. Ph. 717-993-6584.

These will be sanctioned tournaments. Send fee of \$10.00 and percentage to your tournament director 10 days prior to tournament.

Look
for
the new
white
shoes!



Advanced Design

TOURNAMENT PITCHING HORSESHOES




Both backyard pitchers and pros catch and hold the stake better with DIAMOND's new advanced design "Tournament" Shoe. It features a grip positioner, hardened tips, an increased radius, a dead soft center, and a wider, deeper calk. Same drop-forged solid steel construction as DIAMOND's popular Double Ringer and Super Ringer Regulation Shoes. All American made.

Contact your nearest NHPA club or sporting goods store for DIAMOND pitching horseshoes.

For the latest pitching horseshoe catalog write:



DIAMOND TOOL and Horseshoe Co.

Subsidiary  The Triangle Corporation

P. O. BOX 6246. DULUTH. MINNESOTA 55806

"DIAMOND Pitching Horseshoes are Recognized as Official in Tournaments
Sanctioned by the National Horseshoe Pitchers Association"

