



the
national horseshoe pitchers

NEWS DIGEST

Seasons



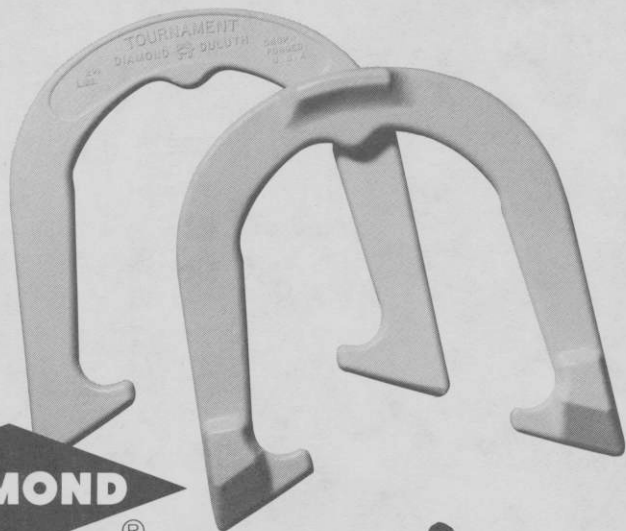
Greetings

NHPA AND NEWS DIGEST STAFF

DECEMBER, 1984

Official Publication of
THE NATIONAL HORSESHOE PITCHER'S ASSOCIATION
OF AMERICA

Look
for
the new
white
shoes!



®

Advanced Design

TOURNAMENT PITCHING HORSESHOES



Both backyard pitchers and pros catch and hold the stake better with DIAMOND's new advanced design "Tournament" Shoe. It features a grip positioner, hardened tips, an increased radius, a dead soft center, and a wider, deeper calk. Same drop-forged solid steel construction as DIAMOND's popular Double Ringer and Super Ringer Regulation Shoes. All American made.

Contact your nearest NHPA club or sporting goods store for DIAMOND pitching horseshoes.

For the latest pitching horseshoe catalog write:



DIAMOND TOOL and *Horseshoe Co.*

Subsidiary  The Triangle Corporation

P. O. BOX 6246. DULUTH. MINNESOTA 55806

"DIAMOND Pitching Horseshoes are Recognized as Official in Tournaments
Sanctioned by the National Horseshoe Pitchers Association"



THE HORSESHOE PITCHER'S NEWS DIGEST is published on the 5th of each month at Aurora, Illinois, U.S.A. by the National Horseshoe Pitcher's Association of America. Editorial office, P.O. Box 1606, Aurora, Illinois 60507. Phone: 312-898-3974. Subscription rates—1st Class \$9.00; 3rd Class \$8.00 per year in advance. NHPA membership cards are available through each state secretary for \$7.00 plus any state association dues. Forms close on the 10th day of each month preceding date of issue. Advertising rates on request. F. Ellis Cobb, Editor.

NATIONAL OFFICERS

Glen Portt, 2803 Newcomb Rd. Albany, Ga. 31705 (912-432-0067)	President
Earl Winston, Rte 2, Lamonte, Mo. 65337 (816-563-3536)	1st Vice-President
Barry Chapelle, 2716 S.E. 61st Ave., Portland, OR 97206	2nd Vice-President
Vincent Yannetti, 322 Longwood Ave., Bound Brook, N.J. 08805(201-356-3862)	3rd Vice-President
Bonnie Seibold, 1043 Grayson Ave., Huntington, Ind. 46750 (219-356-3489)	4th Vice-President
Donnie Roberts, Box 810, Circleville, Oh. 43113 (614-474-7727)	Sec./Treas.
Claude White, Jr., 940 Knollwood Ct., Plainfield, NJ 07062(201-753-2298)	Chr. Reg. Dir.

Volume 27

December, 1984

No. 12

From Your President . . . Glen A. Portt

A MERRY CHRISTMAS, A HAPPY NEW YEAR, PEACE, AND GOODWILL TO ALL.

Each year brings forth new challenges and 1985 will be no different. Each of us will make a few New Year's resolutions . . . and probably break most of them. I don't know who wrote the following sentences, or even if they were intended as resolutions with which to start the new year . . . but they do seem to contain some good thoughts for all of us.

	Mend a quarrel.	
	Seek out a forgotten friend.	
	Share some treasure.	
	Give a soft answer.	
*****	Encourage youth.	*****
	Keep a promise.	
	Apologize if you were wrong.	
	Be gentle.	
	Laugh a little.	
	Laugh a little bit more.	

The NHPA is a great organization with great people. It *can* be greater. Let us all make a *resolution to help* in making it so.

PROMOTION COMMITTEE REPORT FOR 1983-84

By SOL BERMAN, CHR.

The 1983 World Championship held in Statesville, N.C., was video-taped. The play-off games (2) between the Francis brothers was taped, also the final game between Debbie Michaud and Phylis Negaard. Copies were made for the Francis's and Debbie Michaud.

The movie "World of Horseshoes" (45 mm - 16 mm) was sent out 30 times. Also 30 requests to view my video-tapes were filled. Video-tapes were sent to the Hacienda Hotel in Las Vegas to promote the Dec. 1983 tournament.

A copy of "You Asked For it," a video-tape was sent to Mr. Miller, Danny and Sue Kuchcinski's manager. He is trying to get Danny and Sue on "That's Incredible."

Promotion of the Wheaties "Search for Champions" contest was started in February. Over 200 letters were sent to horseshoe clubs and top NHPA boosters. Herman Wieser, Len Lipovsky and Art Holter were the top ballot collectors.

"Horseshoe, Film Facts and Fun" a book that I put together was released on July 1st. Twenty copies were sent to people who assisted me with the book, promoters, publicity men and libraries.

I helped start a horseshoe program at Rossmoor Retirement Community in Jamesburg, N.J. and at Clearbrook Cranbury, N.J.

Several games were video-taped at the 1984 World Tournament held at Huntsville, Alabama. "Legends of Horseshoes" was also taped for the NHPA. Several days were spent assisting Jacqueline Duvoisin, photographer for Sports Illustrated, spotting interesting people to photograph. She promised to get me copies of the pictures.

Kailua-Kona, Hawaii Granted Charter

By Donnie Roberts

On September 11, 1984, a NHPA Charter was issued to the Kona Horseshoe Pitcher's Club (KHPC). This charter is located on Kailua-Kona, Hawaii. The contact person there is Reggie Gomes, 74-5136 Iluna Place, 96740. They currently have 62 dues paying members and are in the process of affiliating with 6 more clubs on the east side of the Island. They anticipate NHPA membership of at least 150 for 1985.

The KHPC has built a ten court pitching compound and can accommodate 200 players for a 2 day tournament. They had 120 entries in their last tournament. They are playing four major tournaments per year plus other special events such as MDA fund raiser toss, Turkey toss, March of Dimes, and Senior Citizens playoff among others.

They have adopted all the rules of the NHPA with all other clubs on the Island complying.

I say "Welcome aboard KHPC!" Just watch us grow!!! I must check with the airline to see what a ticket costs. Perhaps you will want to write Reggie a letter of welcome to the NHPA.

RESULTS OF NAT'L MAIL-IN HDPC. TOURN. ANNOUNCED

By GLENN PORTT

The results of the National Handicap Mail-In Tournament have been completed and the top prize winners are listed. One hundred and forty-one pitchers participated.

	Games Won	Prize Money		Games Won	Prize Money
Wood, Arch	398	141.00	Knaub, Ed	339	
Vansant, Earl	394	123.37	Circirelli, Vernie	337	
Engle, Bob	393	105.75	Josselyn, Clark	335	
Wruckle, Royce	390	88.12	Lee, Rex	335	
Stewart, George	385	81.07	Dunlop, Charles	328	
Kashner, Gordon	379	70.50	Kuck, Gw.	328	
Anderson, Chester	375	63.45	Goff, Barbara	326	
Redford, Travis	366	56.40	Nehring, Steve	324	
Spaller, Jeannie	364	42.30	Davis, Bill	322	
Yokovich, Frank	364	49.35	Johnson, Evelyn	314	
Tulk, Jim	361	38.77	Passmore, John	312	
Yockstick, Mel	360	35.25	Slavick, Ed	311	
Sperdigiozzi, Tony	356	31.72	Richmond, Marvin	309	
Johnson, Bob	354	24.67	Johnson, Leland	308	
Bossen, Bill	354	28.20	Pintor, Rich	303	
Portt, Glen	349	21.15	Everitt, David J.	303	
Hosteller, Henry	341	17.62	Knight, Jerry	301	
Beharry, John	340	14.10	Williams, Daniel	300	
Gorton, Jerry	340	10.57	Schneck, Don	299	
			Simmons, Ted	298	
			Wykle, Jerry	297	
			Crow, John	286	

22 received \$7.05 each

Let PITCHER'S PAL 

help pick up the shoes

- Save your back
- Avoid fingernail damage
- Protect your hands

Send \$5⁹⁵ to:

post paid

A
Great
Gift!

Pitcher's Pal P.O. Box 583 West Middlesex Pa. 16159

In Memoriam

Members and friends of the Southern California Horseshoe Pitching Association (SCHPA) were saddened to learn of the passing of Ralph Randall of Barstow, California, on 11 October, 1984 after a lingering illness.

Ralph was a member of the Barstow Horseshoe Pitching Club, and had been a member of various clubs, the SCHPA, and the NHPA over a period spanning 45 years. He was a four-time winner of the Oklahoma State title, and in 1973 won the World Intermediate Division title. In 1980 he was elected to the SCHPA Hall-of-Fame. In 1981 the San Bernardino County Park & Recreation District honored him by naming his local courts the "Ralph Randall Horseshoe Courts." An SCHPA sanctioned tournament held in Barstow each October is named in his honor. At home he has long been known as "Mr. Horseshoes," for his unusual dedication and contribution to the game. Horseshoe pitching has lost a fine promoter and competitor who will be sadly missed by all who knew him.

He is survived by his wife, Josephine, and one son. The sympathy of the SCHPA and the NHPA is extended to his bereaved family in their hour of sadness.

* * * * *

The Illinois Association was saddened by the passing of Kenneth Wiles, 64, of 1385 Jefferson St., Galesburg, Ill. on October 7 after an illness that plagued him for many months.

He was president of the Galesburg Club until he moved to Hickory, N.C. where he lived until two years ago when he moved back to Galesburg.

He was a veteran of World War II and the Vietnam conflict where he served in the Air Force.

He was engaged in farming in the Oneida area where he was born and raised and educated.

He was laid to rest in the Oneida Cemetery with full military honors conducted by the American Legion Post, No. 285 of Galesburg.

To his loving wife and two daughters, two sisters and one brother and grandchildren the sympathy of the Galesburg Club and that of the NHPA is sincerely extended in their dark hour of bereavement.

DENNIS OHMS IN 1ST UTAH STATE TITLE — L. JOHNSON LADIES — D. JOHNSON — A. OHMS — V. SHEELEY ALSO WIN

The annual Utah state tournament held at Cedar City drew 72 pitchers from all over the state and hosted by the Southern Utah Association. \$1600.00 in prize money was awarded having been donated by many businesses and townspeople.

CLASS A — Dennis Ohms, 9-0-55.1; Clarence Giles, 7-2-57.0; Roger Parsons, 6-3-55.7; Bruce Crane, 6-3-54.0; Richard Buchanan, 5-4-42.3; Jack Raymond, 4-5-48.7; Gary Hughes, 4-5-39.2; Tito Archuleta, 2-7-42.8; Wendel Bundy, 2-7-35.6; Jerry Moritz, *Forfeit*.

CLASS B — Frank Minster, 7-2-42.5; Elwin Marquardson, 6-3-37.0; Garth Bundy, 6-3-32.9; Joe Didier, 6-3-32.2; Grant Seegmiller, 5-4-33.2; Doyle Peterson, 5-4-32.7; George Sarkis, 5-4-31.4; Cleo Snarr, 3-6-29.7; Nober Zuniga, 1-8-24.2; Bruce Eyre, 23.5.

CLASS C — Gary Gilbert, 9-1-37.0; Denis Andelin, 8-2-37.8; Craig Zufelt, 6-3-34.4; Barry Johnson, 5-4-34.7; Cal Sorenson, 4-5-31.9; Steve Minster, 4-5-31.1; Lynn Palmer, 3-6-27.8; Lamar Naegle, 3-6-20.3; Robert Tibbs, 2-7-24.2; Gib Mitchell, 2-7-23.9.

CLASS D — Bud Schardine, 8-1-26.9; Neldon Christensen, 7-2-25.3; Marlow Peterson, 6-3-23.9; Clark Fawcett, 6-3-22.8; Larry Overson, 5-4-23.3; Hans Seibold, 5-4-23.3; Robert Langston, 3-6-23.3; Larry Hafen, 3-6-17.2; Alton Fawcett, 1-8-16.1; Allen Heaton, 1-8-13.6.

CLASS E — Clyde Higbee, 5-0-14.4; Don Howell, 3-2-16.3; Doyle Swallow, 3-2-15.6; Don Hunter, 3-2-12.5; Bill Sheehan, 1-4-9.4.

CLASS F — Al Hatch, 3-0-10.8; Jeff Hatch, 2-1-9.2; Robert Landis, 1-2-5.0; Pat Sheehan, 0-3-11.7.

SENIOR CLASS — Vernile Shelley, 3-0-37.7; Wilford Andelin, 2-1-31.6; George Hunt, 1-2-16.7; Earl Davenport, 0-3-20.1.

WOMENS CLASS — Louise Johnson, 6-0-34.2; Carol Ohms, 4-2-23.1; Viola Fawcett, 2-4-13.1.

JUNIOR BOYS CLASS A — Doug Johnson, 5-1-27.1; David Andelin, 4-2-24.0; Denis Andelin, Jr., 3-3-27.1; James Ahfen, 3-2-22.1; Jay Palmer, 1-4-18.3.

JUNIOR BOYS CLASS B — Gabe Ray Ohms, 5-1-8.5; Wade Johnson, 4-2-5.5; Darrin Hatch, 3-2-2.5; Perry Ray, Jr., 2-3-5.0; Tory Gilbert, 2-3-2.5.

JUNIOR GIRLS — Amy Ohms, 3-0-5.4; Jenny Ohms, 2-1-3.1; Dawn Howell, 1-2-2.4; Sandra Howell, 0-3-2.0.

SCHLISKE, LAURIN, BUNDY TOPS IN WYOMING STATE

Eighty-two pitchers took part in the annual Wyoming state tournament held in Wheatland, Wyoming over the past Labor Day weekend. Bud Schliske retained his state title win with an 8-1-52.4 record. Beverly Laurin was undefeated in winning the Ladies title. The Junior championship went to Miles Bundy. The most improved pitcher award was given to Carol Moore.

CLASS A — Bud Schliske, Cheyenne, 8-1-52.4; Ken Raymond, Rawlins, 7-1-53.3; Vern German, Casper, 7-2-52.5.

CLASS B — Grant Ventling, Rawlins, 9-0-47.0; Don Clausen, Lander, 8-1-48.7; Al Martin, Laramie, 6-3-39.5.

CLASS C — Earl Parsons, La Grange, 8-2-39.1; Rick Hytrek, Casper, 7-3-44.1; Jim Duncan, Lingle, 6-3-39.6.

CLASS D — Eldon Conilogue, Lander, 8-2-33.9; Ray Johnson, Rancho, 8-3-33.3; Drank Willoughby, Rock Springs, 7-3-30.0.

CLASS E — Jim Pittman, Dayton, 7-1-34.2; Duane Schlagel, Glendo, 6-2-24.5; Alvis Marshall, Wheatland, 4-4-25.7.

CLASS F — Ed North, Casper, 9-2-24.4; Gary Dlock, Lingle, 7-3-30.6; Bruce Bundy, Casper, 7-3-24.7.

CLASS G — Gary Mauck, Buffalo, 8-1-22.7; Laddie Pilnacek, Laramie, 7-2-15.2.

LADIES — Beverly Laurin, Cheyenne, 49.7.

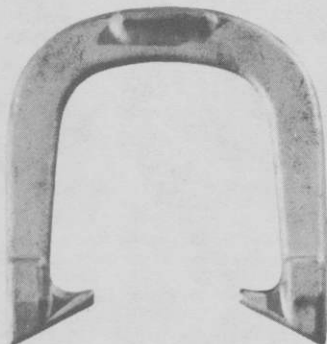
LADIES B — Donna Overeem, Casper, 7-3-25.8; Carol Moore, Albin, 6-4-34.1; Alice Stewart, Encampment, 4-6-26.7.

JUNIORS — Miles Bundy, Casper, 8-2-32.3; Barry Hansen, Cheyenne, 7-3-32.7; Donna Laurin, Cheyenne, 7-3-27.8.

Since 1931

GORDON

"Spin-On"



— 3 TEMPERS —

Medium With Hardened Calks
Dead Soft Hard

Southern California Representative

JERRY SCHNEIDER

3144 W. Paso Robles Drive

ANAHEIM, CALIFORNIA 92804

714-826-0684

APPROVED BY NHPA

OFFICIAL STAKES ALSO AVAILABLE

THE QUEEN CITY FORGING CO.

233 TENNYSON STREET

CINCINNATI, OHIO 45226

C. BONANI, M. RYAN, G. BAILLARGEON WIN MASS. STATE TITLES — FRANK AND MARY RYAN DOUBLES CHAMPIONS

CLASS A — Charles Bonani 6-1-67.1; John Kaphnis, 6-1-69.2; Rick Howe, 4-3-59.6; John Belsito, 4-3-59.5; Paul Cormier, 3-4-54.2; Charles Richardson, 3-4-52.9; Ed Domey, 2-5-58.1; Bernard Herfurth, 0-7-46.0.

CLASS A WOMEN — Mary Ryan, 4-0-63.7; Bertha Baillargeon 3-1-59.8; Brenda Lund, 2-2-41.5; Barbara McNeill, 1-3-40.1; Evie Brooks, 0-4-34.5.

CLASS A JUNIOR BOYS — Gary Baillargeon, 4-0-59.7; Danny Martin, 1-3-40.7; Sheldon Steeves, 1-3-39.4.

CLASS A JUNIOR GIRLS — Lisa McNeill, 4-0-21.9; Shelly Saucier, 1-3-18.7; Shawneen Michaud, 1-3-15.2.

CLASS B WOMEN — Sharon Meredith, 6-0-25.6; Leona Lima, 4-2-25.6; Pauline Tourville, 4-2-20.5; Sandy Matis, 3-3-23.6; Gloria Martin, 2-4-18.7; Carol Saucier, 1-5-11.9; Shirley Nobles, 1-5-9.3.

CLASS B JUNIOR BOYS — Wayne Philbrick, 4-0-23.1; Wayne Bell, 1-3-8.3; Guy Martino, 1-3-6.8.

CLASS B MEN — Angelo Cieslak, 7-0-51.8; John Duffy, 6-1-55.5; Thomas Sheerin, 5-2-52.9; Fran Norman, 3-4-43.9; Bob Copley, 3-4-43.2; Paul Dumont, 2-5-41.3; Michael Murphy, 1-6-41.6; Paul Morrisette, 1-6-40.8.

CLASS C MEN — Gerard Labrie, 6-1-47.7; Bill Lawson, 6-1-40.4; Dennis Vargeletis, 6-1-40.4; Bill Dickinson, 3-4-35.5; Victor Stewart, 3-4-34.1; Huck Dei, 2-5-32.2; Bruce Rowland, 1-6-32.6; Bill McMahan, 1-6-29.0.

CLASS D MEN — Bob Evans, 5-2-40.6; Ed Peck, 4-3-37.5; Bill Galligan, 4-3-36.0; Thomas Henley, 4-3-30.9; Charles Tracchia, 4-3-30.1; Don Cleveland, 3-4-37.9; Harry Schricker, 3-4-33.1; Claude Gelinis, 1-6-26.5.

CLASS E MEN — David Martin, 7-0-41.8; Dick Campbell, 6-1-44.4; George St. Pierre, 4-3-35.7; George Harris, 4-3-35.3; John Cragen, 3-4-33.1; Ralph Forstrom, 2-5-22.9; Bill Progen, 1-6-25.5; Howard Stewart, 1-6-24.8.

CLASS F MEN — Tom Mitstifer, 6-1-32.9; Leon Pauling, 6-1-30.2; Jim Tyrie, 4-3-22.5; Anthony Nacewicz, 4-3-22.4; Tom Courtney, 3-4-24.7; Charles Jokinen, 3-4-24.1; Ernie Baillargeon, 1-6-27.7; Alan Brady, 1-6-22.5.

CLASS G MEN — Robert Steeves, 6-1-22.7; Bill Charette, 5-2-26.4; Bill English, 4-3-24.6; Tom Matis, 4-3-23.3; Ernest LeVangie, 3-4-23.4; Charles Denehy, 3-4-21.7; Wayne Henderson, 2-5-20.5; Jim McRobbie, 1-6-16.1.

CLASS H MEN — Bill Morse, 7-0-30.9; Frank Ryan, 6-1-25.9; Buster Johnson, 4-3-21.9; Dick Gauthier, 3-4-16.2; Gene Saucier, 3-4-12.6; Bart Sargent, 2-5-16.4; Rudy Gauthier, 2-5-16.0; Ken Lawson, 1-6-11.8.

CLASS I MEN — Charles Jokinen Jr., 6-0-22.4; Alan Roscoe, 5-1-18.2; Don Baillargeon, 4-2-20.7; Ken Sargent, 2-4-16.4; Russell Webster, 2-4-13.1; James Greeley 1-5-18.3; Tom Reid, 1-5-12.6.

CLASS J MEN — Clayton French, 4-1-22.1; Dave Tremblay, 4-1-14.3; Albert Little, 3-2-10.8; Pete Radzik, 3-2-10.3; John Lund, 1-4-3.6; Brian Knapp, 0-5-2.7.

STEINFELDT OVER WILLIAMS FOR MISSOURI TOURNAMENT OF CHAMPIONS TITLE — LADIES TITLIST VICKI WINSTON

The Repair Shop Horseshoe Courts in Springfield, Mo., played host to horseshoe pitchers from 23 states who came to participate in the Ron Frakes Tournament of Champions, May 26-May 30. Included in the Men's Division were the current World Champion and two former World Champions. Despite the intense cold, spectators viewed some very fine pitching, with the Men's Class A coming down to the last round to decide the winner. Steinfeldt was victorious over Williams 40-20, averaging 85.1% to Williams 78.8% in the deciding game.

The Women's Division featured the current World Champion, plus three former World Champions and two Junior Girl Champions, who have now moved up to compete with the ladies. The winner of Class A of this division was also in question until the final round was played and Winston defeated Michaud 40-35, averaging 82.9% to Michauds 81.8%. Had Winston lost, there would have been a 3-way tie for first place. The ladies did some fine pitching.

Our Junior Boys World Champion was in fine form, averaging 86.1% in his overall performance. Also present were some World Champions in various Senior Divisions, all pitching well.

Our publicity director, Lee Elbe, has announced that a Ron Frakes Tournament of this magnitude will not be planned for May 1985, due to the World Tournament being held in Springfield just a few weeks later. We will look forward to seeing all of you back in Springfield in July, 1985 for the World Tournament.

Men's Preliminaries

GROUP 1 — Merlin Potts, Kan.-74.7; Sam Carter, Mo.-68.3; Dale Lipovsky, Minn.-68.1; Bob May, Ind.-67.22; Roger Vogel, Tex.-67.20; Gene Mosley, Mo.-65.8; Elwyn Cooper, Mo.-64.8; Jerry Holt, Okla.-60.1.

MISSOURI TOURNEY — Continued

GROUP 2 — Ron Frakes, Mo.-73.4; Jim Knisley, Ohio-72.4; Harold Darnold, Iowa-69.7; John Smith, Kan.-68.9; Danny Erbe, Kan.-64.4; Levi Miller, Ohio-60.4; Gene Fleek, Kan.-48.6.

GROUP 3 — Carl Steinfeldt, Fla.-80.3; Kevin Cone, Iowa-67.8; Charlie Webb, Ill.-67.7; Ron Martin, Kan.-65.3; Len Lipovsky, Minn.-62.5; Jim Kuchcinski, Pa.-60.0; Max Roseberry, Ohio-54.2.

GROUP 4 — Walter R. Williams Jr., Cal.-77.6; Charles Killgore, Mo.-73.8; Don Kuchcinski, Pa.-70.4; Robert Booe, Kan.-65.5; Earl Winston, Mo.-61.7; Barry Chapelle, Ore.-57.2; Chuck Arnold, Okla.-50.4.

CLASS A — Carl Steinfeldt, Fla. 15-0-82.2; W.R. Williams Jr., Ca. 14-1-82.5; Dale Lipovsky, Minn., 11-4-72.4; Jim Knisley, Ohio, 9-6-73.5; Kevin Cone, Iowa, 9-6-72.8; Harold Darnold, Iowa, 9-6-68.7; Merlin Potts, Kan. 8-7-68.5; Don Kuchcinski, Pa., 8-7-66.9; Charlie Webb, Ill. 6-9-68.4; Charles Killgore, Mo., 6-9-67.2; Ron Frakes, Mo. 6-9-66.1; John Smith, Kan. 6-9-62.1; Bob May, Ind., 4-11-63.8; Sam Carter, Mo., 4-11-62.3; Roger Vogel, Tex., 3-12-68.9; Gene Mosley, Mo., 2-13-60.1.

CLASS B — Elwyn Cooper, Mo., 5-2-66.2; Jerry Holt, Okla. 5-2-68.2; Ron Martin, Kan., 4-3-63.3; Robert Booe, Kan., 4-3-61.7; Len Lipovsky, Minn., 3-4-59.6; Levi Miller, Ohio, 3-4-58.8; Danny Erbe, Kan., 3-4-55.6; Earl Winston, Mo., 1-6-52.9.

CLASS C — Barry Chapelle, Ore., 5-0-63.9; Gene Fleek, Kan., 4-1-61.6; Chuck Arnold, Okla., 3-2-53.9; Jim Kuchcinski, Pa., 2-3-57.4; Max Roseberry, Ohio, 1-4-42.0.

CLASS D — Alden Allbaugh, Kan., 6-1-59.8; Joe Douchant, Ill., 6-1-56.7; Jerry Comstock, Colo., 5-2-55.4; David Dattilo, MO., 4-3-49.4; Don Jones, Mo., 3-4-52.9; Floyd Hix, Va., 3-4-46.2; Tom Chambers Jr., Iowa, 1-6-36.7.

CLASS E — Donnie Roberts, Ohio, 7-0-71.9; Jim Bray, Mo., 5-2-58.1; Robert Long, Mo., 4-3-55.8; Glen Hoppes, Ind., 4-3-54.3; Hiram Nelson, Ill., 3-4-60.3; George Buche Jr., Kan., 3-4-52.9; Jake Edmonson, Mo., 2-5-52.5.

CLASS F — Kenneth Pogue, Mo., 6-1-64.7; Marvin Reheis, Kan., 4-3-55.8; Bill Vines, Okla., 4-3-52.0; Lloyd Laughlin, Colo., 3-4-55.5; Virgil Williams, Ia., 3-4-55.4; Earl Pearce, Kan., 3-4-51.1; Larry Francis, Mo., 3-4-48.1; Steve Hrabovsky, Mo., 2-5-51.1.

CLASS G — Robert L. Barnes, Mo., 7-0-52.9; Jim Hayward, Mo., 6-1-51.7; Gern Beasley, Mo., 4-3-49.0; Bob Cantrell, Mo., 4-3-45.1; Val Eikel, MO., 3-4-49.1; Kenneth Larsen, Mo., 2-5-41.8; Don Hanes, N. Mex., 2-5-36.6.

CLASS H — Ralph Funk, Kan., 6-1-46.5; Wayne Henderson, Mo., 5-2-43.9; Tom White, Ind., 4-3-42.4; Jim Larkin, Mo., 4-3-38.4; Micky Mueller, Minn., 4-3-37.5; Allen Rowe, Mo., 3-4-36.0; Bob E. Johnson, Mo., 2-5-35.9.

CLASS I — Dorsey Durfee, Mo., 5-2-34.0; Bill Whitely, Kan., 5-2-39.8; Bill Weaver, Ark., 5-2-40.2; Quentin Smith, Kan., 4-3-32.6; Jerry Griggs, Mo., 4-3-28.4; David Kuchcinski, Pa., 3-4-30.2; Homer Cain, Okla., 2-5-35.8; Wilbur Gay, Mo., 0-7-13.9.

CLASS J — Tom Chambers, Iowa, 6-1-42.9; John Eggleston, Mo., 6-1-33.1; Rick Tatum, Mo., 5-2-37.0; Larry Vaught, Mo., 4-3-31.1; Harold Bull, Ill., 3-4-31.7; Wayne Clark, Ill., 3-4-28.6; Gene Rathburn, Mo., 1-6-23.7.

CLASS K — Don Weaver, Nev., 7-0-38.6; Gene Dixon, Kan., 5-2-36.2; Dennis Hinkle, MO., 4-3-34.7; Eugene Carter, Mo., 4-3-31.4; Russell Bennett, Mo., 3-4-25.9; C.B. Foust, Mo., 3-4-25.8; Carl Arnold, Mo., 2-5-18.3.

CLASS L — Elmer Kirby, Mo., 6-1-29.2; Jim Acoust, MO., 5-2-33.6; Robert Hughes, Mo., 5-2-29.6; Hadley Reser, Mo., 3-4-35.6; Jim Claxton, Mo., 3-4-27.8; Kevin Whitworth, Mo., 3-4-19.6; Austin Ott, Mo., 2-5-23.6.

CLASS M — Joe Beem, Mo., 6-1-34.4; Richard Kinney, Kan., 6-1-40.5; Roy Franke, Ill., 5-2-29.4; Thomas Buck, Cal., 4-3-27.5; Kenneth Hale, MO., 3-4-26.1; Leslie Hottle, Iowa, 2-5-22.7; Edward Eliason, Mo., 2-5-20.7.

CLASS N — Melbern Hutchison, Ok., 7-0-39.0; Tony Tysdal, Ark., 5-2-32.7; Dennie Masters, Mo., 4-3-36.0; Charles O'Brien, Mo., 4-3-25.4; Jack McKinney, Neb., 3-4-34.6; Don "Zip" Roder, Mo., 3-4-31.6; Tick Johnston, Ok., 2-5-26.1; Gene Van Sant, Cal., 0-7-11.1.

CLASS O — Reese Warden, Mo., 4-1-33.6; Allen Fisher, Iowa, 3-2-35.0; Lilburn Inman, Okla., 3-2-33.2; Dale Fisher, Mo., 3-2-27.0; Rick Foust, Mo., 2-3-35.0; Jerry Kohler, Mo., 0-5-17.1.

CLASS P — Alvin Strasil, Neb., 4-1-21.3; Milton Harmon, Neb., 4-1-21.5; Charles Calton, Mo., 3-2-20.5; Dale Carpenter, Mo., 2-3-18.5; Tim Warden, Mo., 2-3-17.3; Carl Carter, Mo., 0-5-4.0.

Women's Preliminaries

GROUP 1 — Fran Carnahan, Pa., 72.3; Phyllis Negaard, Minn., 71.7; Renee Hix, Va., 69.4; Katherine Harrison, Ohio, 66.0; Bev Nathe, Minn., 60.9; Tari Powell, Ill., 54.3; Emalene Pearce, Kan., 49.8; Sherry Larsen, Mo., 34.9.

GROUP 2 — Vicki Winston, Mo., 81.3; Debby Michaud, Mass., 79.3; Sandy Karasch, Minn., 69.0; Ruth Hangen, N.Y., 67.7; Bonnie Seibold, Ind., 62.3; Boni Boser, Minn., 60.3; Marilyn Hanes, N. Mex., 46.7.

MISSOURI TOURNEY — Continued

Women's Finals

CLASS A — WOMEN — Vicki Winston, Mo., 6-1-73.7; Phyllis Negaard, Minn., 5-2-70.6; Debby Michaud, Mas., 4-3-76.5; Fran Carnahan, Pa., 4-3-63.7; Sandy Karasch, Minn., 3-4-66.3; Katherine Harrison, Oh., 2-5-65.3; Ruth Hangan, N.Y. 2-5-64.7; Renee Hix, Va., 2-5-64.0.

CLASS B — WOMEN — Boni Boser, Minn., 5-0-67.2; Bonnie Seibold, Ind., 4-1-63.8; Bev Nathe, Minn., 3-2-62.6; Emalene Pearce, Kan., 2-3-50.9; Marilyn Hanes, N. Mex., 1-4-43.7; Sherry Larsen, Mo., 0-5-33.8.

CLASS C — WOMEN — Loree Meier, Mo., 5-0-52.5; Joyce Francis, Mo., 4-1-42.7; Pam Henderson, Mo., 3-2-36.8; Ginger Cain, Okla., 1-4-31.0; Rita Killgore, Mo., 1-4-28.8; Mary Van Sant, Cal., 1-4-24.3.

CLASS D — WOMEN — Gerri Barnes, Mo., 5-0-43.8; Shirley Jones, Mo., 4-1-47.6; Peggy Dattilo, Mo., 3-2-32.6; Nancy Bray, Mo., 2-3-15.5; Helen Blacketer, Ky., 1-4-15.3.

CLASS E — WOMEN — Norma Ott, Mo., 5-0-28.0; Mildred Hottle, Iowa, 4-1-17.0; Ruth Hix, Va., 3-2-14.4; Lisa Sallee, Mo., 2-3-10.9; Ann Hope, Mo., 1-4-6.3; Bye.

CLASS A — SENIORS — Glen Henton, Iowa, 6-1-72.8; Glen Portt, Ga., 5-2-69.0; Charles Hilton, Mo., 4-3-62.0; Sol Berman, Fla., 3-4-61.7; Don Harris, Mo., 3-4-61.6; Dick Carnahan, Pa., 3-4-61.5; Omar Blacketer, Ky., 3-4-59.6; Joe Holland, Fla., 1-6-54.4.

CLASS B — SENIORS — Bud Hamilton, Okla., 5-0-62.2; Loren Gillespie, Ill., 3-2-50.5; Leonard Werner, Neb., 2-3-46.4; Arnold Hanson, Iowa, 2-3-45.6; Curly Seibold, Ind., 2-3-42.5; Leora Kelly, Mo., 1-4-43.4.

CLASS C — SENIORS — Donald Marx, Iowa, 6-1-49.0; Marion Lange, Iowa, 5-2-51.5; Charles Bailey, Okla., 5-2-43.9; C. Christiansen, Ia., 4-3-36.6; Woodrow Shepard, Mo., 3-4-38.6; John Audiss, Kan., 3-4-36.6; C. Leavengood, Okla., 2-5-29.1.

CLASS D — SENIORS — Ervin Petersen, Neb., 4-1-34.4; Perry Craigmyle, Mo., 3-2-30.3; Geo. Hendricks, Mo., 3-2-26.2; Johnny McCarron, Mo., 3-2-22.3; Tom Allen, Mo., 1-4-23.6; Amos Edwards, Okla., 1-4-21.8.

70 AND OLDER (30 FT.) — Henry Franke, Ill., 3-0-54.5; Dennis East, Ill., 0-3-42.3.

JR. BOYS CLASS A — Allen Francis, Mo., 5-0-86.1; Tom Francis, Mo., 4-1-74.8; Steve Ungetheim, Ind., 2-3-59.7; Rick Henry, Ind., 2-3-55.3; Jeff Hart, Mo., 2-3-50.0; Stan Hayward, Mo., 0-5-33.9.

JR. BOYS CLASS B — Steven Barnes, Mo., 7-0-47.6; Scott Tatum, Mo., 5-2-29.3; Chris Roder, Mo., 5-2-26.2; Eugene Hix, Va., 4-3-29.3; Michael Hanes, N. Mex., 4-3-22.3; Chris. Fisher, Iowa, 2-5-12.7; Scott Ellerman, Mo., 1-6-13.1.

JUNIOR GIRLS — Shawneen Michaud, Mass., 6-0-23.1; Tonya Hix, Va., 3-3-1.1; Sonya Hix, Va., 3-3-5

MADDOX UNDEFEATED IN W. VA. STATE—LOUDERMILK WINS WOMENS STATE TITLE—GEO. BENNETT JR. CHAMPION

CLASS A MEN — Ralph Maddox, 9-0-75.6; Jerry Wykle, 7-2-66.9; Joe Cochran, 7-2-66.1; Sonny Bertrand, 5-4-63.0; Jim Titus, 5-4-60.6; Loman Tumlin, 5-4-59.7; Allen Withrow, 4-5-66.2; Mike Stout, 3-6-57.5; Bill Heaster, 1-8-57.3.

CLASS B MEN — Herb Murry, 6-1-54.8; Carl Shawver, 6-1-56.5; Floyd Riggelman, 5-2-51.6; Lynn Reed, 4-3-53.4; Gordon Sands, 3-4-50.9; Larry Spencer, 3-4-46.4; Lee Young, 1-6-38.7.

CLASS C MEN — Bill Burkhammer, 7-0-51.9; Joel Plevich, 5-2-52.2; Robert Barker, 5-2-46.6; Marshal Flowers, 4-3-53.0; Jim Johnson, 3-4-49.0; Davis Woodward, 3-4-46.9; Larry Riggelman, 1-6-34.6; Russ Wade, 0-7-31.9.

CLASS D MEN — Don Swain, 7-0-51.4; Dayton McClung, 4-3-46.0; John Strader, 4-3-43.6; Harold Maze, 4-3-36.8; Ted Harbert, 4-3-31.1; Dennis Unger, 3-4-35.3; Larry Gault, 2-5-30.8.

CLASS E MEN — Buck Mann, 6-1-40.1; David Barnett, 5-2-41.4; Tink Gower, 4-3-38.5; Forest Robinson, 4-3-38.2; Ken Lightner, 3-4-36.8; Raymond Harmon, 3-4-32.0; Leroy McClintock, 2-5-36.1; Bob McCord, 1-6-30.7.

CLASS F MEN — Bobby McCord, 6-1-41.7; Walter Workman, 6-1-32.4; Kyle Loudermilk, 5-2-37.6; Keith Spencer, 5-2-30.6; David Hardman, 3-4-35.8; Rex Mills, 2-5-31.6; Robert Gabbert, 1-6-21.1; Jim Simmons, 0-7-11.0.

CLASS G MEN — David Bertrand, 6-1-40.6; Rick Gerrard, 5-2-33.9; Dana Loudermilk, 5-2-30.6; Larry McClintock, 4-3-24.2; Junior Carpenter, 3-4-32.3; David Burke, 3-4-28.0; James Bowling, 2-5-22.5; James Welch, 0-7-27.0.

CLASS H MEN — Hoy Casto, 7-0-31.3; Roger Carpenter, 4-3-22.8; Tim Titus, 4-3-18.2; Roy Murphy, 4-3-11.8; Artie Lightner, 3-4-25.2; Tom Bragg, 3-4-14.0; Les Setliff, 3-4-12.8.

WEST VIRGINIA STATE — Continued

CLASS A WOMEN — Connie Loudermilk, 7-0-48.1; Barbara Setliff, 5-2-39.5; Eloise Keene, 4-3-37.8; Virginia Thompson, 4-3-33.8; Debra Spencer, 4-3-32.9; Ruth Anderson, 3-4-31.3; Ilene Burke, Forfeit.

CLASS B WOMEN — Nancy Coburn, 4-1-28.6; Kathy Maze, 4-1-32.1; Joyce Whetzel, 3-2-23.4; Linda Swiger, 2-3-20.8; Tammy Bertrand, 1-4-20.5; Bye.

CLASS A JR. BOYS — George Bennett, 6-1-29.0; David Bennett, 6-1-30.1; Ray Bennett, 6-1-18.0; Jack Burnside, 4-3-10.0; Steven Scott, 2-5-5.8; Jeff Kidd, 2-5-5.3; Mike Morris, 2-5-3.0; Eddie Gall, 1-6-6.0.

GENE TRUDELL OVER CLARK FOR MONTANA STATE CROWN

CLASS A — Gene Trudell, 5-2-54.3; Nat Clark, 5-2-58.0; George Chapman, 4-3-56.4; Dave Pentland, 4-3-52.3; Phil Capps, 3-4-56.0; Archie Dulaney, 3-4-50.4; Irv Kershner, 3-4-50.2; Jim Nordhagen, 1-6-50.2.

CLASS B — Doug Holbert, 6-2-51.6; Clayton Warner, 5-3-55.0; Dave Riggin, 5-3-50.4; Willard Martin, 4-4-53.2; Jim Goffrey, 4-4-50.8; Dennis Trudell, 4-4-50.8; Bill Barth, 3-5-47.8; Jack Boston, 3-5-44.9; Terry Carlson, 2-6-50.3.

CLASS C — Gary Roe, 6-1-50.7; Benny Berdahl, 5-2-47.6; Carl Bergquist, 5-2-47.2; Stan Richards, 5-2-44.5; Wally Immonen, 3-4-43.5; Tom Gerrells, 2-5-36.3; Lester Nielsen, 1-6-37.6; Kipp Gabrielson, 1-6-36.8.

CLASS D — Dick Rudio, 6-1-40.8; Bill Hilliard, 4-3-39.9; Don Bolenske, 3-4-40.5; Jerry Redding, 3-4-39.5.

CLASS E — Ivor Johnson, 7-0-41.9; Ron Traynor, 5-2-42.3; Larry Zeller, 4-3-42.2; Lowell Fields, 4-3-35.7.

CLASS F — Bill Busse, 6-1-34.5; Floyd Fredericks, 6-1-35.8; Ken Henry, 5-2-31.7; John Cain, 4-3-30.6.

CLASS G — Ray Kallis, 6-1-34.7; Peter Weisbeck, 5-2-31.8; Joe Zahn, 4-3-34.3; Jack Ayers, 4-3-28.9.

CLASS H — Chuck D'Arcy, 6-1-35.5; Jack Price, 6-1-37.3; Jack Belzer, 5-2-35.9; Mike Gribben, 4-3-29.9.

CLASS I — Fred Biehl, 7-0-34.8; Ray Trudell, 5-2-27.7; John Frey, 4-3-25.2; Henry Philhower, 4-3-24.6.

CLASS J — Ruth Falki, 6-1-29.6; Bill Macy, 5-2-25.9; Rod Hilliard, 4-3-30.8; Darin Banschbach, 4-3-27.5; Stack Kovich, 3-4-25.0; Ralph Domer, 3-4-24.7.

CLASS K — Tom McCall, 6-1-26.4; Jay Banschbach, 5-2-29.4; Arnie Johnson, 5-2-23.1; Vern Tessmer, 4-3-21.6.

CLASS L — Frank Guzman, 6-0-18.9; Dave Bernhardt, 4-2-14.9; Glenn Torske, 4-2-13.5; Don Bruch, 3-3-14.4.

ARNIE MORTENSON COMES BACK TO WIN EMILY WEEKS OPEN HELD IN SAN DIEGO

GROUP I — Arnie Mortenson, La Crescenta, 6-0-60.6; Robert Hudson, La Jolla, 5-1-55.2; Billy Hubbs, Jr., National City, 4-2-48.8; Norm Cone, Huntington Beach, 2-4-48.5; Jim Eozzo, Los Angeles, 2-4-45.0; Bob Wells, Lakeside, 2-4-44.3; Barbara Dow, Glendale, 0-6-30.4.

GROUP II — Joe Gambol, San Diego, 5-0-47.2; Carl Grabow, Chula Vista, 3-2-53.7; Jack Vincent, La Mesa, 3-2-46.2; Jim Atwell, Los Angeles, 3-2-41.0; Bob Morris, Alpine, 1-4-19.8; Wally Shipley, Newport Beach, 0-5-36.9.

GROUP III — Stan Dobson, La Mesa, 6-0-43.2; Frank Brown, Pomona, 5-1-41.5; Bruce Stuart, Torrance, 4-2-32.6; Glen Wells, El Cason, 3-3-28.5; Chuck Kerr, San Diego, 2-4-33.0; Bob Morris, Alpine, 1-5-24.8; Bill Ponder, San Diego, 0-6-21.7.

GROUP IV — Larry Ford, San Diego, 6-1-40.6; Steven Wyrill, Descanso, 6-2-38.0; Gordon Wilcox, San Diego, 5-2-34.0; Bob Lowell, Palm Desert, 2-4-28.8; Fred Craven, Bellflower, 2-4-27.9; Tom Buck, Sun City, 1-5-20.5; Ed Oliver, Needles, 1-5-18.8.

GROUP V — Smokey Anderson, Van Nuys, 6-0-21.3; Rita Eozzo, Los Angeles, 3-3-7.1; Emily Weeks, Norwalk, 2-4-4.6; Ralph Alvine, Chula Vista, 1-5-11.7.

LOUIS DEAN DOUBLES — Stan Dobson — Glen Wells, 12-2; Jim Eozzo, Rita Eozzo, 11-3; Mike Moyer, George Farrell, 9-4; Fred Craven — Jack Butler, 8-5; Tad Besemer, Gene Van Sant, 8-5; Joe Gambol — Pete Wojtyszyn, 8-5; Barbara Dow, Ralph Alvine, 6-7; Mary Van Sant — Paul Bellah, 6-7; Tom Buck — Harold Redding, 6-7; Jack Vincent — Jack Davenport, 5-8; Bill Ponder — Richard Vilorio, 5-8; Bob Lowell — Jim Dow, 5-8; Arnie Mortenson — Emily Weeks, 3-10.

HELP

HORSESHOE **E**ND **L**EISURETIME **P**ROBLEMS

LEISURETIME BREEDS VIOLENCE, CRIME, LONELINESS, DEPRESSION, WORRY, ETC., ETC., ETC. WITH YOUR HELP OUR SPORT CAN BE MADE INTO ONE TO DO MORE GOOD THAN WE MAY THINK. IT CAN GROW INTO ONE TO HELP ALL GENERATIONS TO COME. IT HAS EVERYTHING IN ITS FAVOR.

\$1000.00 Up For Grabs

TEN \$100.00 WINNERS

THIS IS OPEN TO ANYONE THAT CAN ADD TO OR TAKE AWAY FROM THE SCHUMMER SYSTEM FOR THE BETTERMENT OF THE SPORT. WINNERS WILL BE PUBLISHED IN THE HORSESHOE DIGEST. IT IS NOT NECESSARY TO BE N.H.P.A. MEMBERS OR EVEN STATE MEMBERS, THE GREEN LIGHT IS ON FOR EVERYONE.

FREE

SEND FOR YOUR "THREE CHEERS" BROCHURE ALONG WITH COURT AND SCOREBOARD BLUEPRINTS. THEN GIVE IT TIME AND STUDY TILL YOU UNDERSTAND. IT IS EASY TO UNDERSTAND WITH ANY DESIRE. YOU CAN HELP PUT OUR SPORT WHERE IT DESERVES TO BE. WE NEED YOUR HELP.

WRITE OR PHONE:

GLEN "RED" HENTON,
513 W. PLATT ST.,
MAQUOKETA, IOWA 52060
PHONE (319) 652-4250

B. SMITH AND D. PICKERING WIN N.H. STATE TITLES WALT PILETZ, Sr. INDUCTED INTO N.H. HALL OF FAME

CLASS A — Brian Smith, 5-2-59.9; Phil Bergeron, 5-2-56.5; Mike Kibbee, 5-2-51.9; Mike Donovan, 4-3-56.5; Herb Cox, 3-4-48.9; Al Boudreau, 3-4-48.4; Don Sawyer, 3-4-45.7; Lee Ashford, Forfeit.

CLASS B — Steve Squires, 7-0-60.3; Larry Croteau, 5-2-52.5; Bob Traquair, 5-2-50.0; Dave Westcott, 3-4-54.3; Ray Towle, 3-4-44.; Dick Doble, 2-5-44.2; Duke Sawyer, 2-5-41.0; Sam Raymond, 1-6-30.2.

CLASS C — George Loring, 7-0-47.5; Howard Murphy, 5-2-37.1; Tom Booth, 4-3-40.4; Dave Wilson, 4-3-40.4; Lloyd Putnam, 3-4-34.5; Don Lachance, 2-5-37.1; Walt Sweren, 2-5-35.3; Robert Ladd, 1-6-39.4.

CLASS D — Leland French, 7-0-49.1; Andy Bedard, 5-2-40.4; Jay Burbee, 5-2-40.1; Mike Tebo, 4-3-37.5; Ray Fife, Sr., 3-4-33.2.

CLASS F — L.H. French, 7-0-39.6; D. Baillargren, 6-1-43.3; Andy Daneault, 5-2-33.3; Ricky Fife, 4-3-29.9; Hank Labine, 2-5-28.6.

CLASS G — Pete Sevigny, 6-1-34.7; Bill Smith, Jr., 5-2-34.3; Jim Daneault, 5-2-30.6; John Page, 3-4-27.8; Robert Gesick, 3-4-27.7.

CLASS H — Bill Kohler, 6-1-28.1; Bill Weber, 6-1-28.4; Forest Rollins, 4-3-25.7; Edwin Mason, 4-3-25.4; Al Brochu, 3-4-25.

CLASS I — Glenn Magmusson, 6-1-26; Don Fales, 4-3-20; Roland Henner, 4-3-18; Gary Barney, 4-3-17; Rob MacGregor, 4-3-17; Ed Bourgeois, 3-4-20.

CLASS J — Mal Georgina, 6-1-20.7; David Nault, 6-1-23.3; Curt Farrar, 5-2-23.2; Dean Squires, 4-3-19.3; Wally Miller, 3-4-11.4.

CLASS A-B — WOMEN — Debbie Pickering, 5-0-70; Katy Dyer, 3-2-59; Ginny Croteau, 3-2-47; Pat Metwier, 2-3-43; Colleen Boudreau, 2-3-37.

CLASS C WOMEN — Althea Sevigny, 5-0-49; Debbie Alexander, 3-2-41; Linda Dennis, 3-2-33; Jeanette Bergeron, 3-2-30; Lynn Magmusson, 1-5-11.

JUNIORS — Scott Daneault, 4-0-54.0; Betsy Dyer, 2-2-15.4; Tanya Kelchner, 2-3-16.5; Sean Jensen, 2-2-11.0; Priscilla Page, 0-4-2.0.

RUBENDALL "BLAZES" THRU STRAUSBERG, PA. FESTIVAL

CLASS A — Glenn Rubendall, 7-0-80.4; Dan Beshore, 6-1-68.8; Dean McCurdy, 5-2-63.3; Martin Bubb, 3-4-59.1; Dick Dart, 3-4-53.1; Glenn Brown, 2-5-63.0; Ray Bechtel, 2-5-53.8; Jack Swyers, 51.0-0.7.

CLASS B — Al Long 6-1-48.6; Ed Bowersox, 5-2-41.6; Dick Ruff, 4-3-51.9; Pete McCollum, 4-3-48.1; Frank Goss, 3-4-54.0; Dick Wilson, 3-4-48.9; Dale Carson, 2-5-37.8; John Baugher, 1-6-44.4.

CLASS C — Ted Lewis, 7-0-52.8; Joe Belcavitch, 5-2-46.2; Sherwood Frankhouser, 4-3-45.2; Guy Esh, 4-3-44.2; Don Bubb, 3-4-42.6; Robert Gable, 2-5-41.4; Robert Heffner, 2-5-39.6; John Zimmerman, 1-6-36.7.

CLASS D — Mike Bonner, 7-1-42.4; Jim Mason, 6-2-42.0; Glenn Eppley, 5-2-41.7; Jim Henry, 4-3-33.2; David Bluch, 4-3-30.8; Joe Shurmaitis, 2-5-34.1; Gerard Harris, 1-6-24.5; Vernon Shenk, 0-7-13.3. Mike Bonner Playoff Winner.

CLASS E — Bernie Wierbowski, 7-0-28.3; Joe Shughart, 6-1-27.5; Jack Boward, 5-2-23.8; Jerry Hoy, 3-4-28.5; Denis Lloyd, 2-5-19.7; Elwood Carpenter, 2-5-19.4; Terry Haverstock, 2-5-18.5; Rich Arnold, 1-6-18.7.

LADIES — Kim Johnson, 5-0-31.9; Charlotte Onion, 4-1-47.6; Viola Harris, 3-2-16.4; Jean Long, 2-3-16.5; Lois Nielsen, 1-4-14.9; Dawn Lloyd, 0-5-6.0.

DENNIS OHMS ON TOP IN MT. PLEASANT, UTAH OPEN

CLASS A — Dennis Ohms, 6-1-46.9; Vernile Shelley, 5-2-43.1; Rod Bowers, 1-4-28.2; Denis Andelin, 1-4-25.9.

CLASS B — Gary Gilbert, 5-1-18.3; Robert Tibbs, 4-2-23.8; Claude Workman, 1-4-14.5; Gary Aiken, 1-4-14.1.

CLASS C — Claude Workman, 3-1-15.6; Don Howell, 2-2-13.8; Carol Ohms, 2-2-13.8; Delmar Beck, 2-2-10.6; Ervin Shelley, 1-3-8.0.

JUNIOR CLASS — David Andelin, 7-1-17.1; James Hafen, 6-2-11.3; Mike Lindsay, 5-2-13.3; Gabe Ohms, 5-2-11.9; Amy Ohms, 3-4-6.6; Jenny Ohms 2-5-3.8; Tory Gilbert, 1-6-1; Dawn Howell, 0-7-1.

WIEDRICH DOES IT AGAIN — WINS VANCOUVER — U.S.A. OPEN — PHYLLIS CENTELL WINS LADIES CHAMPIONSHIP

CLASS A — Ben Wiedrich, 7-0-74.5; Gerry Staley, 6-1-64.1; Don Jones, 4-3-56.9; Ron Ferguson, 3-4-55.5; Jerry Gorton, 3-4-51.1; Dan Leary, 2-5-49.2; Lee Wallace, 2-5-46.1; Len Weisdepp, 1-6-46.7.

CLASS B — John Garcia, 6-1-50.9; Bill Graham, 5-2-51.4; Bob Sletten, 5-2-48.0; Ray Simmonds, 4-3-49.4; Bob Showers 3-4-45.4; Jack Bush 2-5-43.6; Mike Thorniley 2-5-40.0; John Hilberg, 1-6-38.9.

CLASS C — Chuck Ball, 5-2-43.3; Ray Sexton, 4-3-43.8; Mel Shuss, 3-3-47.2; Barney Heller, 3-3-46.7; Vic Fletcher, 3-3-41.2; Mel Sherbert, 3-3-40.3; Lyle Meuret, 1-5-32.5.

CLASS D — Pete Zumaran, 6-0-49.0; Tom Schram, 5-1-42.4; Don Ferguson, 4-2-44.9; Jack Salter, 2-4-36.7; Darrell Jones, 2-4-35.5; Dave Sturdevant, 1-5-38.0; Denny Samples, 1-5-36.7.

CLASS E — Larry Flannery, 6-1-45.4; Bob Johnson, 5-2-45.2; Jim Kosterman, 5-2-41.1; Gene Buzzini, 3-4-39.5; Wayne Maag, 3-4-36.1; Ken Kuper, 3-4-35.4; Ray Looper, 2-5-38.9; DuWayne Wiedrich, 1-6-35.2.

CLASS F — Sam Wingfield, 6-1-43.2; Betty Tatchio, 5-2-40.2; Charlie Tank, 5-2-39.2; Cyril Kitchen, 3-4-33.4; Al Reusser, 3-4-31.0; Marvin Tatchio, 2-5-34.8; Bill Dolan, 2-5-31.0; Dale McKay, 2-5-29.8.

CLASS G — Floyd Flemmer, 6-1-40.3; Lee Centell, 5-2-40.7; Dick Evans, 5-2-36.3; Lloyd Likens, 4-3-36.6; Joe Wright, 4-3-35.2; Orrin Underwood, 3-4-29.6; Bill Van Egdorn, 1-6-27.6; John Alexander, 0-7-21.0.

CLASS H — Lester Young, 6-1-39.8; Dick Culbertson, 4-3-32.0; Lloyd Kilgore, 4-3-28.2; R.E. Click, 3-4-34.9; Art Taylor, 3-4-28.1; Bud LeDoux, 3-4-27.9; Wendell Roberts, 3-4-27.1; Rich Carroll, 2-5-27.5.

CLASS I — Clarence Wood, 6-1-30.0; Bob Bushnell, 5-2-34.1; Burton Gravelle, 5-2-31.2; Vi Bushnell, 4-3-32.9; Larry Clark, 4-3-27.3; Frank Dvorshak, 2-5-25.0; Jack Stryker, 1-6-22.5; Larry Rickert, 1-6-17.7.

CLASS J — Frank Moan, 7-0-26.3; Don Fagerness, 6-1-25.9; Bill Edgecomb, 4-3-21.0; Kathy Taylor, 4-3-16.3; Steve Krommenacker, 3-4-16.1; Steve Harris, 2-5-14.7; Dennis Pyles, 1-6-14.2; Kirk Dusenberry, 1-6-12.6.

CLASS LADIES — (handicapped) — Phyllis Centell, 7-2-34.8; Laura Lee Samples, 6-3-34.2; Elaine Weisdepp, 4-4-45.8; Alta Maag, 2-6-23.2; Carolyn Ferguson, 2-6-14.9.

NEHRING IN MARYLAND STATE TOURNAMENT WIN STEVE FLESHMAN—S. NEHRING STATE DOUBLES CHAMPS

CLASS A — Dave Nehring, Md., 9-0-56.3; Charles Twigg, Md., 7-2-61.2; Phillip Fleshman, Md., 6-3-55.4; Roy May, Md., 5-4-42.7; Fred Bellman, Md., 4-5-49.3; Charles Beachley, Md., 4-5-48.2; John Passmore, Md., 4-5-47.5; Eric Zimmerman, Md., 3-6-53.7; Jene Durham, Md., 3-6-45.0; Elbert Sheffelt, Md., 1-8-38.9.

CLASS B — Wayne Welley, Md., 8-1-43.3; Ted Simmons, Md., 7-2-38.0; Walter Fogle, Md., 5-4-48.0; Ken Holden, Md., 5-4-38.0; Don Jenkins, Md., 4-5-36.6; John Clow, Md., 4-5-34.7; Don Fleshman, Sr., Md., 4-5-30.3; Ernest Atkinson, Jr., Md., 3-6-30.3; Ernest Atkinson, Sr., Md., 3-6-28.3; Ray Matlock, Md., 2-7-34.0.

CLASS C — Jck Blades, Md., 9-0-41.4; Jack Anderson, Md., 8-1-39.9; John Satterfield, Md., 6-3-46.7; Richard Besece, Md., 6-3-40.8; Stanley Abell, Md., 6-3-29.0; Max Anderson, Md., 3-6-33.2; Don Gregory, Md., 3-6-31.3; Ed Walsh, Md., 2-7-28.6; Alton Runkles, Md., 2-7-28.0; Louis Walls, Md., 0-9-25.6.

CLASS D — Pierre Twiggs, Md., 10-0-36.2; Alton Atkins, Md., 9-1-37.0; Bill Foy, Md., 8-2-32.4; Phil Clow, Md., 6-4-28.4; William Taylor, Md., 6-4-27.8; Robert Draper, Md., 4-6-26.0; Gary Leconte, Md., 3-7-25.1; James Ward, Md., 3-7-22.8; Charles Cherry Sr., Md., 3-7-21.0; Paul May, Md., 2-8-17.6; Ed Lewis, Md., 1-9-21.3.

CLASS E — Nelson Clark, Md., 9-3-24.6; Dave Albert, Md., 7-4-25.6; Sonny Holste, Md., 7-4-21.4; Eino Wilitala, Md., 7-3-23.6; Bob Davis, Md., 6-4-20.2.

CLASS F — Chuck Kavanaugh, Sr., Md., 8-1-16.7; Vernon Barley, Md., 7-2-17.0; Tex Benik, Md., 5-4-16.2; Phil Davis, Md., 5-3-13.4; Tom Carey, Md., 3-5-12.2.

LADIES — Ann Anderson, Md., 5-0-44.5; Hazel Fleshman, Md., 4-1-56.2; Lorraine Clow, Md., 3-2-32.8; Elsie Atkinson, Md., 1-4-11.4; Diane Davis, Md., 2-3-24; Melissa Elias, Md., 0-5-14.8.

JUNIORS — Steve Nehring, Md., 4-0-47.5; Steve Fleshman, Md., 3-1-45.5; Curt Fleshman, Md., 3-1-26.5; Fred Beeman, Md., 1-3-27.0; Jack Holland, Md., 0-4-7.0.



Off I-94, Between Hwys. 20 & 11

414-886-8555

14000 LEETSBIR ROAD, STURTEVANT, WI 53177

PRESENTS

1st Annual

**CANADIAN-AMERICAN INTERNATIONAL
FRIENDSHIP OPEN**

JANUARY 12, 1985

**4 PERSON PRELIMINARY TEAM ROUND-ROBIN
WITH CHAMPIONSHIP FINALS**

We've asked each state association to sponsor the entry of their four best available pitchers.

- Also, each pitcher will receive a complimentary tournament shirt which displays his/her respective state or province.
- Interested players must contact state association regarding form makeup.
- State association to forward their team's players' name, shirt size and number of days of lodging needed.

Entry deadline is December 15th. There is a possibility this event will be televised locally/nationally.

For more information contact Pitching Palace or Bob Fanjoy after 7:00 p.m. at Hamilton Horseshoe Club, Canada, 416-662-8501.

WISCONSIN'S ONLY INDOOR HORSESHOE PITCHING FACILITY
12 CLAY COURTS AND ELECTRONIC SCOREBOARDS

THORSTAD DETHRONES DUNKER TO WIN SO. DAK. TITLE

Ed Horstad went undefeated to win the 1984 South Dakota state title thereby dethroning Leigh Dunker the defending champion many times over. Deni Christopherson, a 13 year old, won the Junior crown while Lois Bolstad won the Ladies championship. In the doubles event Bolstad paired up with Kaspersen to win the first ever So. Dakota doubles championship. Cliff and Lois Sorenson were inducted into South Dakota's Hall of Fame.

CHAMPIONSHIP — Ed Thorstad; Leigh Dunker; Jim Gunderson. **CLASS A** — LaVerne Wipf; Dennis KJose; Don Dunham. **CLASS B** — Bill Waddle; Jim Ullom; Gene Ehresman. **CLASS C** — Bert Bertleson; Floyd Fletcher; Carlton Leikvold. **CLASS D** — LaVerne Boterman; Dave Zilverberg; Ken Hunt. **CLASS E** — Carl Ness; Martin Anderson; Ross Hautschild. **CLASS F** — Dale Christopherson; Dave Dykstra; Russ Nagel. **CLASS G** — John Symens; Steve Cihak; Ron Robison. **CLASS H** — Grover Brown; Paul Hilgenberg; Ken Leotner. **CLASS I** — Marvin Parkinson; Ed Gebhart; Marvin Westin. **CLASS J** — Carl Chambers; Herman Falk; Ron Johnson. **CLASS K** — Robert Strand; Verdel Van Briesen; Olaf Hetlet. **CLASS L** — Arnold Staum; Orval Elliott; Milton Merry. **CLASS M** — Harlof Jensen; Gib Cadotte; Rudy DeZeeuw. **CLASS N** — Robert Bowker; Doug Hai; Steve Olson. **CLASS O** — Kent Robinson; Eideen KJose; James Vorse. **CLASS P** — Clint Bryson; Keith Rosser; Charles Hawks. **CLASS Q** — Bill Spencer; Mile Alligier; Leonard Frederich. **CLASS R** — Jim Jledon; Henry Jeltz; Clyde Ross. **LADIES CHAMPIONSHIP** — Lois Bolstad; Lois Sorenson; Yvonne Ficek. **JUNIOR CHAMPIONSHIP** — Deni Christopherson; Jami Lipp; Darin Peter.

BEAN WINNER IN PAINESVILLE, OH. NEWS-HERALD OPEN JEANNIE SPALLER WINS LADIES — BRYAN SCHIRA, JRS.

CLASS A MEN — Greg Bean, 5-0-77.6; Oscar Manns, 4-1-64; Phil Spiesman, 3-2-64; Henry Hostettler, 2-3-68.8; Rich Spaller, 1-4-52.8; Joe Markiewicz, 0-5-53.6.

CLASS B MEN — Joe Mazzurco, 5-0-53.6; Earl Vansant, 4-1-46.8; Bob Lautenschlager, 3-3-46.4; Bill Zleske, 2-3-46; Chuck Dunlap, 2-3-41.6; John Remington, 0-4-36.

CLASS C MEN — Guy Wills, 5-0-53.2; Frank Yokopovich, 3-2-53.6; Armond Frabotta, 3-2-49.2; Charlie Brotzman, 2-3-44.4; John Lalley, 2-3-39.2; Walt Pierce, 0-5-34.8.

CLASS D MEN — Tom Randolph, 5-0-48.8; Ford Christian, 3-2-45.6; John Kovach, 3-2-41.6; Joe Raico, 2-3-34.8; Dick Spaller, 1-4-42.8; John BeHarry, 1-4-38.8.

CLASS E MEN — Dick Zielenski, 4-1-45.6; Frank Hiendlmayr, 3-2-39.6; John Revack, 3-2-39.6; Gordon Miller, 3-2-35.2; Feathers, 2-3-30.8; Ernie Wanska, 0-5-27.6.

CLASS F MEN — Rudy Kobe, 5-1-40.6; Earl Kilchenman, 4-2-38; L. Ozanick, 2-4-37.3; A. Drake, 1-5-2.6.

CLASS G MEN — Ed Slavick, 5-1-42.; Greg Hartegan, 3-3-44.8; Thurman Conley, 2-4-39.6; Larry Dehling, 2-4-37.2.

CLASS H MEN — Buddy Loftus, 4-1-37.6; Dave Haurin, 4-1-33.6; Dave Leroy, Sr., 3-2-26.4; Ray Greene, 2-3-31.6; Dick Johnson, 2-3-28.4; Hugh Locke, 0-5-23.2.

CLASS I MEN — G. Hartegan, 6-0-35; Ben Yuki, 2-4-26.6; Roy Wolf, 2-4-23; John Fuduric, 2-4-18.6.

CLASS J MEN — Harry Leroy, 5-1; Rolly Cicirelli 5-1; Steve Palsa 2-4.

JUNIORS — Bryan Schira, 2-1-37.5; Fortney, 2-1-26.6; Charlie Greene, 2-1-19.1; Tony Fuduric, 0-3-12.5.

CLASS A LADIES — Jeannie Spaller, 5-0-67; Betty Dunlap, 4-1-62; Marge Spaller, 2-3-51.5; Shirley Spiesman, 2-3-46.5; Vernie Cicirelli, 1-39.5.

CLASS B LADIES — Kathy Waters, 5-0-26.5; Margie Palsa, 4-1-29.5; Fran Loftus, 3-2-20; Lois Luhta, 2-3-13; Mary Greene, 1-4-10.5; Edna Locke, 0-5-4.5.

MOUNTAIN HOME, ARKANSAS SANCTIONED LEAGUE CLOSES

The Mountain Home Horseshoe Club completed their second year of Sanctioned League play at Old Hickory Park. Twelve men plus a number of substitutes participated on a weekly basis. Six two man teams on four courts pitched two fifty shoe count all games using an 80% handicap. This format seemed to work well with all the players considering the differences of abilities.

Bill Knuth won the Sportsmanship award, was an able competitor and in general was a big help to the Club. Art Sassa a newcomer to the group nailed down single high game over average with a plus 27. Most improved player was Al Sievert who had an increase of eight points over last year's 50 shoe point score. Team Champions were Al Leider, another newcomer and Bill Weaver with 33½ wins and 14½ losses. Bill Weaver had high ringer percentage 39% with an average point score of 78 for 50 shoes. At the close of the season we were able to upgrade the courts with a good load of clay, purchased from a brick company in Jonesboro, Ar. All members received the Award of Merit for their participation. Hope to see many of my Horseshoe pitching friends next year at the World Tournament in Springfield, Mo.

CLARK EDGES WIEDRICH—WINS ORE. SANDBAGGERS OPEN SANDY BARTEL IN LADIES WINNERS CIRCLE

CLASS A — Peter Clark, 7-0-78.7; Ben Wiedrich, 6-1-76.4; Ridge Leggett, 5-2-72.0; Bob West, 4-3-68.5; Art Sperber, 2-5-68.6; Barry Chapelle, 2-5-64.8; Lowell Davis, 1-6-63.6; Gerry Staley, 1-6-62.5.

CLASS B — Jerry Gorton, 6-2-53.3; Lee Wallace, 5-3-53.1; Joe James, 5-3-53.1; Ron Ferguson, 5-3-53.2; Charles Wendling, 5-3-53.3; Dan Leary, 4-4-45.8; Bill Graham, 3-5-49.0; Esthel Benner, 0-8-33.7.

CLASS C — Everett Clark, 6-2-51.4; Pete Zumaran, 5-3-48.8; KRon Hegefeld, 5-3-45.8; Loy Brown, 5-3-45.4; Irv Farron, 5-3-46.8; Willis Terry, 4-4-46.6; Len Christensen, 2-6-40.8; Chuck Ball, 2-6-40.3; Mel Sherbert, 2-6-36.7.

CLASS D — Don Ferguson, 8-0-46.3; Bob Johnson, 6-2-42.9; Larry Fianary, 6-2-43.6; Bob Showers, 4-4-40.9; Roger Christianson, 4-4-40.6; Wayne Maag, 3-5-35.5; Ken Leatherman, 2-6-39.5; Marvin Tatchio, 2-6-35.7; Jim Kosterman, 1-7-33.8.

CLASS E — Bill Dolan, 6-1-35.0; Floyd Flemmer, 5-2-38.0; Gene Buzzini, 4-3-33.2; Lester Young, 4-3-32.6; Vern Wanless, 4-3-31.9; DuWayne Wiedrich, 3-4-35.9; Les Andrews, 1-6-32.8; Ronald Giebenhain, 1-6-27.3.

CLASS F — Gene Sorenson, 7-1-38.8; Skip Neubold, 6-2-38.5; John Thomas, 5-2-35.8; Lloyd Likens, 4-3-31.1; Art Taylor, 3-4-33.1; Ernest Chaput, 2-5-29.4; Dick Evans, 2-5-27.9; Tom Ritter, 0-7-21.4.

CLASS G — Bobby Woodford, 7-1-37.6; Bud LeDoux, 6-2-33.7; Frank Dvorshak, 5-3-25.5; Dick Helm, 4-3-27.3; Clarence Wood, 1-5-25.9; Dave Knaebel, 1-5-22.8; Wayne Ferris, 1-5-21.2.

CLASS H — Bill Johnson, 5-1-33.2; Marvin Berg, 4-2-29.2; Lyle Andrews, 2-3-25.5; Glenn Chaput, 2-3-18.8; Alan Knaebel, 2-3-18.5; Jack Stryker, 1-4-16.0.

WOMEN A-1 — Sandy Bartel, 7-0-50.3; Esther Ott, 6-1-49.3; Ethel Davis, 4-3-38.8; Betty Tatchio, 3-4-32.7.

WOMEN A-2 — Larua Lee Samples, 4-3-35.3; Alta Maag, 2-5-26.4; Kathy Taylor, 2-5-19.4; Debi Wilson, 0-7-9.3.

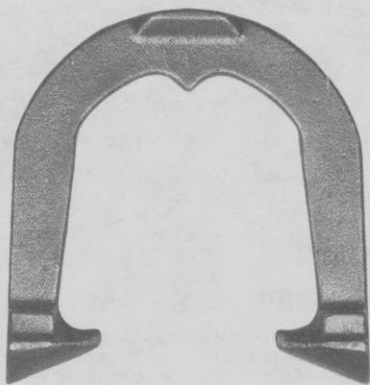
THE NEW IMPROVED

IMPERIAL

- BETTER ENERGY ABSORPTION
- LARGER RINGER BREAK
- WIDER BLADES
- REDUCED PRICES

U.S.A. PRICES
(Postpaid)

1 Pair	\$26.00
2 to 5 Pair	\$25.00
6 Pr. & Over	\$20.00
	Freight Collect



CLYDE MARTZ

3726 Henley Dr.

Pittsburgh, Pa. 15235

PHONE: 412-731-4662

BUD HAMILTON—LYNDA FREDERICK—BILL FORDYCE—BILL THOMPSON—MISSY HOYER WIN OKLA. STATE TITLES

Bud Hamilton of Miami won his third state (Okla.) title and first in five years. Lynda Frederick of Laverne won her first state title without losing a game. Bill Thompson won his first senior title while Bill Fordyce and Missy Hoyer won their first junior titles.

CLASS A — Bud Hamilton, 5-2-48.0; Ronnie Frederick, 5-2-57.5; Larry Fordyce, 4-3-51.7; Jerry Kahle, 4-3-51.4; Jerry Holt, 4-3-48.2; Chuck Arnold, 3-4-49.7; Leland Johnson, 2-5-47.2; Carl Redgate, 1-6-42.9.

CLASS B — Willard Brahhage, 6-1-40.9; Jack McCorkell, 5-2-41.2; Charlie Bailey, 4-3-34.5; Jim Crockett, 4-3-34.1; Dwight Crawford, 3-4-38.0; Homer Cain, 3-4-31.3; Bob Belden, 2-5-23.2; Melburn Hutchison, 1-6-22.7.

CLASS C — Don Walrod, 6-1-35.5; Vern Hoyer, 6-1-36.8; Rick Cullen, 5-2-30.7; J. C. Diedrich, 4-3-30.5; Tom Goff, 3-4-29.7; Tick Johnston, 2-5-27.3; Willie Loucks, 2-5-22.3; Lilburn Inman, 0-7-17.7.

CLASS D — Glenn King, 7-0-31.0; Tom Clinton, 6-1-27.2; Bill Diedrich, 5-2-27.5; Gordon Epps, 4-3-20.1; Truman Shultz, 3-4-22.6; Scoop Fischer, 2-5-16.4; Amos Edwards, 1-6-16.8; Fred Holland, 0-7-15.3.

CLASS E — Roy Privott, 3-1-17.0; Everett Gullett, 3-1-16.5; Ed Hummingbird, 2-2-20.5; Walter Watkins, 2-2-15.5; Larry Backhaus, 0-4-7.5.

CLASS F — Fred Nelson, 6-0-12.7; Brian Holley, 4-2-10.0; Floyd Born, 4-2-10.0; Richard Diedrich, 4-2-7.0; John Cox, 2-4-2.7; Robert Cunningham, 1-5-3.0; Gary Maixner, 0-6-4.3.

CLASS A WOMEN — Lynda Frederick, 7-0-54.9; Janet Walrod, 6-1-56.9; Debra Frederick, 4-3-50.5; Evelyn Johnson, 4-3-48.0; Louise Ambercrombie, 3-4-46.5; Barbara Goff, 2-5-47.2; Tina Rash, 2-5-35.7; Ginger Cain, 0-7-36.4.

CLASS B WOMEN — Ada Loucks, 4-0-27.9; Marge Backhaus, 3-1-27.3; Dorothy Hummingbird, 2-2-23.0; Beverly Born, 1-3-23.1; Norma Hoyer, 0-4-4.0.

CLASS C WOMEN — Shelly Kennedy, 3-1-7.5; Teresa Burk, 3-1-9.0; Cindy Cain, 0-4-4.0.

JUNIOR GIRLS — Missy Hoyer, 4-0-9.5; Becky Goff, 3-1-5.5; Donna Walrod, 2-2-8.0; Melanie Maixner, 1-3-3.5; Marlana Davidson, 0-4-5.5.

JUNIOR BOYS — Bill Fordyce, 5-1-30.2; John Holland, 5-1-32.9; Seth Maixner, 4-2-32.0; Tim Goff, 4-2-25.8; Jason Fordyce, 2-4-16.7; Glenn Holland, 1-5-20.8; Michael Davidson, 0-6-15.3.

JUNIOR BOYS (B) — Jonathan Elmore, 3-1-9.0; Darrell Barton, 1-3-6.0.

SENIOR MEN — Bill Thompson, 4-0-30.0; Clarence Leavengood, 3-1-18.3; Alva Carruth, 2-2-18.6; Andy Mogus, 1-3-15.7; Al Belden, 0-4-11.4.

REMAINDER OF MEN'S CLASS H OF 1984 W.T.

CLASS H MEN'S PRELIMINARIES—Sec. 2

	Won	Lost	%
1. Kenneth Hale, Mo	10	1	29.8
2. Donald Smith, N.C.	9	2	31.17
3. Robert Hopkins, Ne.	9	2	21.8
4. Lonnie Byrd, Tn.	8	3	29.2
5. James Fowler, Ga.	6	5	30.0
6. Ernest Baillargeon, Ma.	6	5	20.7
7. Ben Burrows, Ky.	5	6	21.9
8. Gilbert Jones, Ky.	4	7	15.2
9. Gerard Harris, Pa.	4	7	12.6
10. Gene Freese, La.	3	8	15.9
11. Terry Logan, Ga.	2	9	20.4
12. Bye			

CLASS H MEN'S PRELIMINARIES—Sec. 3

	Won	Lost	%
1. Bob Cummings, Oh.	10	1	30.0
2. John Atchley, La.	8	3	31.15
3. George King, Il.	8	3	28.8
4. Joseph Beem, Mo.	7	4	25.9
5. Roy Hoffman, La.	6	5	23.1
6. Miles Cooper, Ky.	5	6	23.3
7. Leo Ouellette, N.Y.	5	6	19.8
8. Kenneth McElwain, N.Y.	5	6	17.5
9. David Garen, Oh.	5	6	17.3
10. Clayton Bushman, Oh.	4	7	14.4
11. Jackie Shipp, Ga.	3	8	26.0
12. Bye			

CLASS H MEN'S PRELIMINARIES—Sec. 4

	Won	Lost	%		Won	Lost	%
1. Travis Redford, Oh.	11	0	42.4	7. Ronnie West, Oh.	5	6	27.2
2. Kelly Sarbaugh, Oh.	10	1	39.2	8. Robert Leighton, Va.	4	7	18.2
3. Otis Mayes, Al.	8	3	31.5	9. Freeman Gaw, Tn.	4	7	17.5
4. Fred Northern, Fl.	8	3	26.5	10. Warren King, Al.	2	9	14.3
5. William Progen, Ma.	6	5	28.2	11. Henry Allen, Oh.	2	9	11.6
6. Thomas Lockwood, Tx.	6	5	27.5	12. Bye			

BILL MACINTYRE FRONT RUNNER IN N.J. STATE OPEN

CLASS A — Bill MacIntyre, 6-1-66.7; Joe McRink, 5-2-65.0; Tom Chance, 5-2-59.0; Jack Giddes, 5-2-56.1; Marty Waisempacher, 3-4-53.5; Stam MacCarty, 2-5-48.1; Bill Kolb, 2-5-46.6; Tom Skinner, 0-7-44.8.

CLASS B — Claude White, 6-1-46.5; Bob Hall, 5-2-51.2; Henry Markland, 5-2-49.6; Al Ravencraft, 4-3-56.0; Ted Lewis, 4-3-48.4; Jack Dille, 3-4-47.4; Ray Shober, 1-6-28.7; Gil Franke, 0-7-33.9.

CLASS C — Joe Hickey, 6-1-47.6; Wes Cook, 6-1-43.5; Homer Powell, 4-3-37.1; Henry Batson, 4-3-32.8; Bob Manzoni, 3-4-36.2; John Seland, 3-4-34.8; Lou Testa, 1-6-34.3; Dale Mattison, 1-6-26.8.

CLASS D — Larry Thomason, 6-1-26.7; John Forti, 5-2-35.6; George Patrick, 5-2-30.5; Don Winkler, 5-2-30.3; Bob Turner, 3-4-27.5; Bob Salmon, Sr., 2-5-23.4; George Morio, 1-6-25.0; Don Gotts, 1-6-20.3.

CLASS E — Clarence Moss, 5-1-27.4; Wayne Burnett, 5-1-19.8; Dave Everitt Jr., 4-2-24.0; Bryan Schneider, 4-2-23.1; Art Hall, 2-4-19.5; John Danko, 1-5-16.7; Robert Burnett, 0-6-8.0.

JIM KNISLEY EASY WINNER IN HEBRON, OHIO OPEN CONNIE STILL PLAY-OFF WINNER IN LADIES

CLASS A — Jim Knisley, 6-1-83.3; Donnie Roberts, 5-2-69.9; Lawrence Miller, 5-2-67.7; Levi Miller, 4-3-67.3; Ken Kugler, 4-3-66.5; Paul Focht, 2-5-59.8; Max Roseberry, 1-6-58.9; Bill Campbell, 1-6-56.8.

CLASS B — Phil Hummel, 6-1-66.4; Stan Manker, 5-2-60.5; Bob Johnson, 5-2-57.2; Eldon Sarbaugh, 4-3-63.2; Mearle Bannister, 4-3-55.4; Don Bussey, 3-4-52.3; Les Rose, 1-6-40.1; Dave Hummel, 0-7-44.1.

CLASS C — Loman Tumlin, 6-1-59.4; Mark Bussey, 6-1-50.9; Norm Snyder, 5-2-48.5; Earl Noe, 4-3-47.2; Dick Whiteman, 3-4-42.7; Francis Asher, 3-4-40.2; Ken Hawk, 1-6-40.7; Wilbur Morrow, 0-7-38.4.

CLASS D — Jerry Boesch, 5-0-59.4; Ed Pratt, 4-1-45.8; Claude Bostic, 3-2-45.8; Les Grosklos, 2-3-39.2; Bill Bauman, 1-4-36.6; Elmer Harrison, Forfeit.

WOMEN CLASS A — Connie Still, 3-1-63.1; Kathryn Harrison, 3-1-64.8; Jean Myers, 3-1-63.5; Lil Butterbaugh, 1-3-35.5; Bev Smith, 0-4-40.6.

V. PICCOLI TOPS N.M. ED MANN SANC. TOURNEY

CLASS A — V. Piccoli, 4-1-42.1; M. Larkins, 3-2-39.9; K. Krueger, 0-4-29.7.

CLASS B — G. Johnson, 3-0-24.7; F. Young, 2-1-24.2; I. Perino, 1-2-24.2.

CLASS C — M. Carrillo, 4-0-23.5; B. Waldron, 2-2-17.2; H. Jones, 0-4-10.

CLASS D — R. Gay, 2-1-13.3; C. Coolidge, 2-1-10.8; D. Larkins, 2-1-9.1.

CLASS E — B. Mumm, 4-0-8.1; K. Harris, 2-2-9.3; A. Carvill, 0-4-4.3.

WOMEN — M.F. Caranta, 3-1-6.2; R. Carvill, 3-1-3.1; H. Harris, 0-4-2.5.

CLASS A JUNIORS — S. Morrison, 3-0-10.9; Celina Larkins, 2-1-2.1; A. Frye, 1-2-4.4.

McKNIGHT ON TOP IN DORMONT, PA. OPEN—SANC. 84-98 GRACE RUGG WINS FIRST LADIES CROWN

CLASS A — Bob McKnight, 6-1-68.5; Casey Danner, 5-2-69.3; Ray Rugg, 4-3-67.7; John Stadler, 4-3-60.2; Pete Vlachos, 4-3-58.2; Vince Sedlack, 3-4-60.0; Jack Rainbow, 2-5-58.0; Ed Blum, 0-7-56.2. McKnight posted high single game of 83.5.

CLASS B — Ed Horneman (play off) 6-1-57.9; Robert White, 6-1-60.4; Dick James, 5-2-46.2; Carl Herbe, 4-3-53.0; John F. Stadler, 3-4-46.1; Joe Pagnanelli, 1-6-33.3; Clark Carnahan, 0-7-30.7. Horneman had high single game of 70.0.

CLASS C — Bill Stahl, (play-off) 5-2-41.8; Paul Gemza, 5-2-43.5; Rich Maroni, 4-3-46.2; Harry Thomas, 4-3-42.5; Jim Zdrale, 4-3-37.9; Bob Lapping, 3-4-41.8; Harry Clement, 3-4-39.4; Paul Decker, 0-7-25.1. Harry Thomas had high game, 59.5.

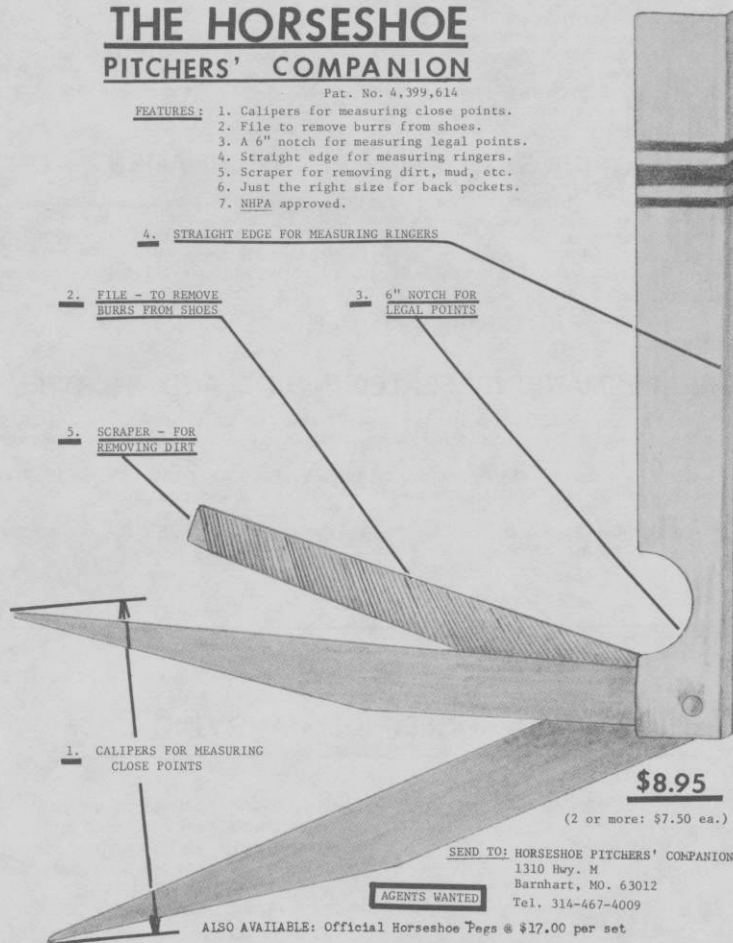
CLASS D — Geo. Bercini, 6-0-31.1; Bob Rinehart, 5-1-26.5; Richard Carnahan, 4-2-29.5; Paul Gray, 3-3-28.5; Chet Mock, Jr., 2-4-20.9; Steve Monoyoudis, 1-5-23.9; Gene Swogger, 0-6-17.5; Bob Rinehart had high game, 42.1.

WOMEN'S CLASS — Grace Rugg, 5-0-42.5; Sheri Dagan, 4-1-36.1; Sandy Carnahan, 3-2-31.5; Linda Monoskey, 2-3-23.2; Martha Wood, 1-4-10.1; Ruth Carnahan, 0-5-3.6; Grace Rugg posted high single game of 50.0.

THE HORSESHOE PITCHERS' COMPANION

Pat. No. 4,399,614

- FEATURES:
1. Calipers for measuring close points.
 2. File to remove burrs from shoes.
 3. A 6" notch for measuring legal points.
 4. Straight edge for measuring ringers.
 5. Scraper for removing dirt, mud, etc.
 6. Just the right size for back pockets.
 7. NHPA approved.



2. FILE - TO REMOVE
BURRS FROM SHOES

3. 6" NOTCH FOR
LEGAL POINTS

5. SCRAPER - FOR
REMOVING DIRT

1. CALIPERS FOR MEASURING
CLOSE POINTS

\$8.95

(2 or more: \$7.50 ea.)

SEND TO: HORSESHOE PITCHERS' COMPANION
1310 Hwy. M
Barnhart, MO. 63012
Tel. 314-467-4009

AGENTS WANTED

ALSO AVAILABLE: Official Horseshoe Pegs @ \$17.00 per set

NEW TOURNAMENT DIRECTOR FOR BROOKSVILLE, FLA.

Due to the sudden passing of Dwight Thatcher, who was the tournament director of the tournaments held at the Brooksville, Florida courts, Norm Gaseau announces that Ralph Rollins of 8361 Oakgren Road, Brooksville, Florida 33512. Ph. 904-796-7489 has graciously accepted to be the Brooksville Tournament Director for the following remaining tournaments: DEC. 8 — Bill Rows Open; Dec. 29 — Holiday Open; JAN. 5, 1985 — Frozen Fingers Open and MAR. 9 — Hernando Open. All players who wish to play in the above tournaments should contact Mr. Ralph Rollins 7 days prior to tournament date.

FLORIDA STATE FAIR OPEN TOURNAMENT

The Florida State Fair Open tournament will be held at the Florida State Fairgrounds on February 13, 14, and 15, 1985 located at I-4 and US 301, Tampa, Florida. Entry fee will be \$10.00 and the first 96 entries will be accepted. Deadline for all entries is January 15, 1985. All classes will be six (6) players each with a minimum of \$100 prize money for each class. FREE 1-day pass to Fair and parking for player and guest. Out-of-state players send NHPA card number and 1984 World Tournament or State average along with entry fee to Norman Gaseau, 1908 Nugget Drive, Clearwater, Florida 33515: Ph. 813-443-2892.

FRED BEEMAN UNDEFEATED IN VINELAND, N.J. OPEN

CLASS A — Fred Beeman, 9-0-57.6; Stan MacCarty, 8-1-57.2; Henry Markland, 7-2-54.4; Tom Chance, 5-4-51.4; Dennis Joslin, 4-5-50.2; Woody Smith, 4-5-45.5; Herb Hurley, 4-5-44.0; William Miller, 2-7-44.0; Ron Wolfe, 2-7-42.2.

CLASS B — Larry Thompson, 9-0-41.1; Ray Shober, 7-2-40.6; John Forti, 7-2-33.0; Wes Cook, 6-3-39.4; Al Price, 4-5-33.0; Alex Dobzanski, 3-6-30.8; Bill Gurgurich, 3-6-30.2; Harget, 3-6-22.5; Tom Reitz, 2-7-16.1.

CLASS C — Lou Polizzi, 7-0-36.0; George Carr, 5-2-29.0; Vince Soriero, 4-3-28.4; Mel Elmer, 4-3-26.1; Ernie Nolder, 4-3-25.5; Al Bowers, 3-4-22.7; Mike Price, 1-6-17.5.

THE ORIGINAL

D.A. BAKER HORSESHOE CARRYING CASE



These handcrafted cases, made from select hardwoods with mitered and glued corners for extra strength and beautiful appearance are now available from RINGER ENTERPRISES.

Inside there is room for several pairs of shoes, measuring tool, file, and pencils -- a fine gift for the "class" horseshoe pitcher. You can count on top quality with the "Bake" Baker line -- "Bake" wouldn't have it any other way -- that's why his name is stamped on each one.

Send check or money order for \$24.95 to:

RINGER ENTERPRISES
P.O. Box 603
New Castle, PA 16101
(PA residents add 6% sales tax)

MERLIN POTTS SWEEPS ST. JOE, MO. OPEN — SHERRY LARSEN UNDEFEATED IN LADIES—DIRK CHRISTIAN JR. CHAMP

CLASS A — Merlin Potts KS 7-0-81.7; Charles Killgore Mo 6-1-67.4; Roger Potts Ks 4-3-67.3; John Smith Ks 3-4-67.9; Lillard Pinlon Mo 3-4-67.0; Gene Fleek Ks 3-4-59.7; Elwyn Cooper Mo 2-5-62.7

CLASS B — Wayne Shellenbarger Ks 5-2-50.2; Marvin Reheis Ks 5-2-51.7; Ray Owens Mo 5-2-54.8; Henry Samuelson Ks 4-3-48.9; Bob Outt Ks 3-4-51.8; Dave Kincaid Ks 3-4-49.1; Wayne Henderson Mo 3-4-47.1; Jess Hobbs Ks 0-5-42.0.

CLASS C — Guy Tinder Ks 4-1-43.4; Ken Larsen Mo 3-2-43.9; Doyle Derrick Ks 3-2-42.6; Pap Cavaner Ks 3-2-39.3; Buz Dickson Ks 1-4-31.6; Richard Pistole Mo 1-4-31.3.

CLASS D — Russ Randell Ks 5-0-48.2; Glen Harding Mo 3-2-44.5; Cotton Gutshall Mo 3-2-39.3; Walt King Mo 2-3-43.7; Clark Owen Mo 2-3-33.5.

CLASS E — Geo Rice Mo 4-1-46.3; Bob Johnson Mo 4-1-41.3; John Eggleston Mo 4-1-35.9; Duane Combs Mo 2-3-26.2; Fred Smith Mo 1-4-25.7.

CLASS F — Ed Owen Mo 4-1-39.6; Gene Newkirk Mo 3-2-37.6; Dale Shellenbarger Ks 3-2-33.8; Ray Roseberry Mo 3-2-29.6; Jim Long Mo 2-3-29.6; Marvin Lowry Mo 0-5-16.5.

CLASS G — Dale Owens Mo 6-1-32.6; Estel Hunsickler Mo 5-2-31.0; Cecil Rainez Mo 5-2-25.8; Bert Stegman Mo 4-3-31.3; Neil Preston Mo 4-3-29.7; C.O. Gibson Mo 3-4-26.0; Glen Plaisted Ks 1-6-22.0.

CLASS H — Bob Frakes Ks 4-1-41.4; W.O. Nelson Ks 4-1-35.2; Gene Stigall Mo 3-2-30.7; Bob Kinder Mo 3-2-30.4; Dean Jameson Mo 1-4-15.3; Ted Cates Mo 0-5-13.2.

CLASS I — Lloyd Beaman Ks 5-0-24.7; John Butler Ks 3-2-16.6; Darrel Buis Mo 3-2-13.5; Danny Claycomb Mo 3-2-12.5; Bill Clements Mo 1-4-8.2; Jeff Bird Mo 0-5-1.0.

WOMEN — Sherry Larsen Mo 5-0-44.0; Gerri Barnes Mo 4-1-43.3; Pam Henderson Mo 3-2-28.1; Rita Killgore Mo 2-3-32.5; Norma Ott Mo 1-4-24.8; Gloria Noland Mo 0-5-27.5.

JUNIORS — Dirk Christian Mo 5-0-28.4; Frank Jameson Mo 4-1-19.0; Paul Johnson Mo 2-3-16.0; Heidi Noland Mo 2-3-8.0; Jerri McDermott Mo 1-4-10.0; Elizabeth McDermott Mo 1-4-6.0.

TURCHEK, THOMPSON, HANSEN—WYOMING OPEN WINNERS SANCTION 84-422

CLASS A MEN — Turчек, NE, 8-1-64.6; Engel, CO 7-2-60.1; Cork, CO 6-3-59.3; Pintor, CO 6-3-58.2; Tulk, CO 4-5-60.9; Schneck, CO, 4-5-54.4; German, WY, 4-5-50.0; Boss, CO 3-6-46.0; Raymond, WY 2-7-48.5; Robison, NE, 1-8-48.5.

CLASS A WOMEN — Thompson, CO 3-3-45.8; Laurin, WY 3-3-41.4; Play off.

CLASS B WOMEN — T. Grooms, NE 8-0-30.2; S. Grooms, NE 6-2-29.5; Raymond, WY 6-2-17.3; A. Stewart, WY 5-3-22.1; Moore Wy, 5-3-20.0; Hytrek, WY 2-6-14.8; V. Stewart, Wy, 2-6-14.0; Robison, NE 2-6-10.9; Ve. Stewart Co. 0-8-14.0.

JUNIOR CLASS — Hansen, WY 5-1-28.0; Laurin, NY 5-1-28.0; Clark, WY 3-3-8.3; Dixon, OK, 0-5-3.0. Play off.

CLASS B MEN — Hanshew, NE 8-1-47.1; Stemple, Wy 8-1-48.8; GUettler, NE, 6-3-43.8; Rickard, Wy, 5-4-45.0; Thompson, Co., 5-4-41.7; Bakken, NE, 3-6-41.7; Harrison, Wy, 36-41.7; Grooms, Ne 3-6-40.8; Amack, Co 2-7-43.3; Schliske, WY 2-7-40.5; Play off.

CLASS C MEN — Bale, NE 10-1-44.4; Nobles, Co 8-3-40.1; Colpits, Co 8-3-39.6; Randall, Ne 6-5-36.8; Hughes, Co 6-5-34.3; Bobberstine, Ne 5-6-38.3; Matson, Wy 5-6-38.0; Pyle, Co 5-6-35.3; Lang, Co 5-6-31.8; Wilcox, Co 3-8-37.3; Schutz, Wy 3-8-28.7; Duncan, Ne 2-9-33.6.

CLASS D MEN — Shepherd, Co 11-0-36.6; Laurin Wy 10-1-37.8; Hytrek, Wy 8-3-31.7; Balogh, Co 7-4-35.4; Guettler, Ne 6-5-31.5; Morse, Co 6-5-27.5; Rein, Ne 5-6-28.5; Olson, Co 5-6-26.1; Willoughby, Wy 4-7-26.1; Parmenter, Co 3-8-22.6; Schroyer, Wy 1-10-18.6; Richter, Id forfeit.

CLASS E MEN — Wills, Ne 7-2-23.6; Scritchfield, Co 7-2-26.6; Welsch, Ne 7-2-22.9; Foster, Wy 6-3-20.1; Thomas, Co 6-3-19.7; Bennett, Wy 4-5-17.6; Brownwood, Co 4-5-16.1; Hansen, Wy 2-7-17.2; Sorenson, Wy 2-7-15.8; Collins, Wy 0-9-5.8. Play off.

CLASS F MEN — Wagner, Wy 9-1-19.8; Pilnacek, Wy 8-2-13.3; Moore, Wy 6-4-14.3; Peterson, Wy 4-6-9.8; Stewart, Wy 4-6-6.1; Selk, Co 0-10-7.5.

KNISLEY REGAINS MOUNDVILLE, W. VA. OPEN TITLE WOMEN'S TITLE WON BY G. RUGG

Jim Knisley of Bremen, Ohio, went undefeated in his effort to regain his title as champion of the 12th annual Moundville Open tournament held at Moundville, West Virginia. This was a sanctioned tournament. Ralph Maddox of Poca, West Virginia was the runner-up in the finals of this annual event.

CLASS A-1 — R. Maddox, W. Va., 5-0-72.9; C. Martz, Pa., 4-1-70.0; C. Danner, Pa., 3-2-70.0; C. Over, Pa., 2-3-62.0; J. Roebuck, Pa., 1-4-62.0; J. Ludwig, Oh., 0-5-45.0.

CLASS A-2 — J. Knisley, Oh., 5-0-75.0; R. Rugg, Pa., 4-1-71.0; J. Carter, Oh., 2-3-63.0; S. Bertrand, W. Va., 2-3-60.0; Ed Blum, Pa., 2-3-60.0; J. Solomon, Pa., 0-5-51.0.

CLASS C — M. Stout, W.V., 5-0-67.0; J. Chambers, Pa., 3-2-47.0; C. Bunner, W.V., 3-2-43.0; M. Flowers, W.V. 2-3-38.0; B. Rugg, Pa., 1-4-39.0; Ed. Sell., Pa., 1-4-36.0.

CLASS D — R. Barnett, W.V., 4-1-50.0; L. Groszkos, Oh, 4-1-49.0; G. Stiffel, Oh, 3-2-48.0; J. Strader, W.V., 2-3-44.0; Ed. Dennison, Pa., 2-3-46.0; McClung, W.V.

CLASS F — Jack Chambers, Pa., 5-0-48.0; R. Wade, W.V., 3-2-41.0; Alloway, Pa., 3-2-36.0; T. Gower, W.V., 3-2-39.0; Tedro, Pa., 1-4-28.0; B. Lightner, W.V., 0-5-34.9.

CLASS F — Tunney, Pa., 5-0-31.0; S. Davis, W.V., 3-2-32.0; Jr. Lisk, Oh, 2-3-26.0; J. Bowling, W.V., 2-3-26.0; R. McCord Jr., W.V., 2-3-33.0; J. Orsino, Pa., 1-4-23.0.

CLASS G — L. Bozendorf, W.V., 7-0-31.0; R. Harmon, W.V., 5-2-28.0; S. Stover, Pa., 4-3-26.0; R. Parker, W.V., 4-3-26.0; Burns, Pa., 3-4-24.0; Geo. Bennett, W.V., 3-4-26.0; Gibbs, Pa., 2-5-23.0; McGill, Pa., 0-7-19.0.

WOMEN'S CLASS — (play-off) — G. Rugg, Pa., 4-1-37.0; D. Spencer, W.V., 4-1-40.0; G. Thompson, W.V., 4-1-39.0; S. Dagan, Oh., 2-3-32.0; N. Coburn, W.V., 1-4-27.0; C. Maze, W.V. 0-5-20.0.

FREE!

Trophy & Awards Catalog



Call Toll-Free
1-800-628-9657
In Mass. 1-800-282-7789

DINN BROS. The Trophy People

P.O. Box 111 • 68 Winter St. • Holyoke, MA 01041

INDIANA STATE ASSOCIATION TOURNAMENT ACTIVITY

HAYNES APPERSON FESTIVAL, KOKOMO, IND. — CLASS A — John LeMond, 4-1-64.4; Ed Krull, 3-2-67.0; John Shuck, 3-2-64.8; Ed Kowatch, 3-2-60.1; Frank Baxter, 2-3-66.5; Fred Gross, 0-5-59.4.

CLASS B — Paul Rohrs, Ohio, 7-0-52.9; Carl Staley, 6-1-55.0; Charley Fix, 3-4-53.2; Walt Pickard, 3-4-51.3; Bob Moit, 3-4-49.7; Joe Holloway, 3-4-41.2; Kenny Pendergrass, 2-5-40.5; Jim Isaacs, 1-6-42.7.

CLASS C — Bill Wicker, 6-1-56.2; Earl Richardson, 5-2-46.2; Bob Sheppard, 4-3-48.9; Ed Clark, 3-4-47.0; Mel Bussert, 3-4-45.6; Walter House, 3-4-45.0; J. Cox, 2-5-47.1; Clarence Bowland, 2-5-39.0.

CLASS D — Wayne Waggoner, 6-1-50.4; Gerald Cummings, 5-2-43.4; George Dickson, 4-3-41.7; Clarence Hyatt, 3-4-46.2; Don Spray, 3-4-43.3; Bob Dwigans, 3-4-37.4; Wayne Irwin, 3-4-34.5.

CLASS E — Bill Hatt, 5-2-47.6; Harold Bice, 5-2-39.1; Gib Campbell, 5-2-44.3 (play-off); James Bennett, 4-3-41.3; Bob Rich, 4-3-36.1; John Black, 2-5-32.4; Virgil Jackson, 2-5-29.3; Byron Jervis, 1-6-35.1.

CLASS F — Archie Sexton, 6-1-36.0; Joe Rodgers, 5-2-34.6; Glenn Donaldson, 5-2-34.5; Jim Turpin, 4-3-35.6; Ray Schoolcraft, 4-3-34.8; Jack Currens, 2-5-21.6; Harold Green, 1-6-24.1; Joe Robinson, 1-6-23.6.

CLASS G — (play-off) Don Draper, 5-2-37.5; Wes Molencupp, 5-2-38.3; Steve Terrell, 4-3-32.5; Jeff Bowyer, 4-3-30.2; John Walls, 3-4-32.4; Pete Hobbs, 3-4-28.3; Hubert Buster, 2-5-32.6; Bob Herring, 2-5-30.1.

CLASS H — Bill Goldsberry, 6-1-38.4; Ray Bennett, 5-2-37.7; Dave Herring, 5-2-32.2; Bob Prohaska, 5-2-31.4; Pete Kemp, 4-3-33.7; Elmer Branson, 2-5-27.1; Rick Wayne, 1-6-22.5; Bob Henry, 0-7-17.8.

CLASS I — (play-off) Gene Robinson, 5-2-23.8; Terry Wilken, 5-2-28.7; Jack Mead, 5-2-27.4; Everett Bowyer, 4-3-25.3; Jim Dunham, 3-4-26.9; Rick Walters, 3-4-24.8; Charles Hatt, 3-4-19.8; Roger Jenkins, 0-7-11.4.

CLASS J — Gene Powell, 5-0-27.9; Buck Shively, 3-2-30.1; Bill McDaniel, 2-3-21.5; Bob Cunningham, 2-3-18.8; Roger Smith, 2-3-16.8; Doc Zarse, 1-4-22.4.

CLASS K — (play-off) John Poore, 6-1-26.4; Bob Ranck, 6-1-17.1; Joe Trabough, 4-3-13.9; Jim Hicks, 4-3-11.6; Jim Stewart, 4-3-10.8; Curt Ramsey, 2-5-10.6; Keith DeVoss, 2-5-8.0; Byron Gould, 0-7-6.6.

CLASS L — Lowell Cummings, 4-1-17.2; Larry Cain, 4-1-17.2; David Johnson, 3-2-13.3; Tom Poore Sr., 3-2-10.2; Randy McKinniss, 1-4-8.2.

WOMEN CLASS A — Amy Herring, 7-0-36.8; Lori Young, 6-1-33.3; Tammi Cunningham, 5-2-32.5; Mona Cummings, 3-4-20.3; Chris Buell, 2-5-16.7.

WOMEN CLASS B — Mildred Hyatt, 3-4-23.1; Hazel Shuck, 2-5-13.0.

WOMEN CLASS C — Susie Hamlin, 0-7-5.9.

JUNIOR CLASS A — Chad Hyatt, 41.1; Charles Bowyer, 32.1.

JUNIOR CLASS B — Norma Hyatt, 30.1; Jon Phillips, 22.4; Scott Dunham, 5.6.

JUNIOR CLASS C — John Molencupp, 23.7; Jamie Bennett, 14.3; Corena Oliver, 5.7; Andy Kline, 2.0.

WEBB HORSESHOES N.H.P.A. APPROVED

1-4 pair	\$25.00
5-9 pair	\$23.50
10 pair or more	\$22.00

Add \$2.00 per pair shipping cost (USA)

WEBB HORSESHOE & EQUIPMENT
1319 LICKING PIKE • WILDER, KY 41076
Phone (606) 781-0589

ART TYSON OF N.Y. WINS KEENE, N.H. OPEN TITLE DEBBIE MICHAUD RETAINS WOMENS' CHAMPIONSHIP

With perfect weather prevailing, Art Tyson of New York had a record of 6-1-79.3 to win the annual Keene Open held at the Wheelock Park courts in Keene, N.H. In the womens competition it was Debbie Michaud of Raynham, Mass. retaining her title over Debbie Pickering of Keene and Liz Downer of Bristol, Vermont. The tournament was saddened and subdued when Don Harrison was stricken and collapsed after his first game and passed away soon afterwards at a local hospital.

CLASS A — A. Tyson, NY, 6-1-79.3; K. Hollister, Vt, 5-2-77.3; D. Kienia, Me, 4-3-67.7; J. Festa, Ct., 4-3-66.2; B. Smith, NH, 3-4-69.9; N. Rioux, Ct, 3-4-69.3; J. Kapnis, Ma, 2-5-70.1; J. Schultz, NY, 1-6-60.4.

CLASS B — P. Cormier, Ma, 6-1-63.9; R. Howe, Ma., 5-2-61.4; C. Bonani, Ma, 4-3-65.4; W. Deuster, NY, 3-4-59.0; L. Ashford, NH, 3-4-57.0; C. Richardson, Ma, 3-4-55.0; C. Simmons, Me, 3-4-52.8, P. Sylvia, Vt, 1-6-47.5.

CLASS BB — Al Lord, Me, 7-0-69.7; P. Bochester, Vt, 5-2-57.6; J. Merritt, Ma, 4-3-55.1; Al Boudreaux, Vt, 4-3-54.6.

CLASS C — Bruce Kienia, Me, 7-0-69.9; N. Sortini, Ct, 6-1-57.2; Bud Leavitt, Vt, 5-2-52.4; A. Cieslak, Ma, 3-4-49.3; F. Lengyel, Vt, 3-4-49.2; J. Bochese, Ct, 3-4-44.0.

CLASS CC — A. Pichette, Me, 6-1-56.1; J. Duffy, Ma, 6-1-51.8; C. Costello, Ct, 4-3-49.4; J. Cabe, Me, 4-3-48.4; P. Prouty, Vt, 3-4-50.0; P. Dumont, Ma, 2-5-46.5.

CLASS D — B. Maney, Vt, 6-1-47.2; R. Traquair, Nh, 5-2-51.5; M. Kibbee, NH, 4-3-53.2; J. Buzik, Ct, 4-3-47.9; E. Hill, Jr., Ct, 4-3-47.2; A. Whittaker, Ma, 3-4-45.1.

CLASS DD — J. Labrie, Ma, 6-1-47.7; R. Doble, NH, 5-2-43.8; D. Westcoff, NH, 4-3-46.0; D. Vargeletis, Ma, 4-3-43.1.

CLASS A WOMEN — D. Michaud, Raynham, Ma, 5-1-80.9; D. Pickering, Keene, NH, 3-3-79.7; L. Downer, Bristol, Vt, 1-5-71.3.

Other men's class winners were: **CLASS E**, G. Loring, 6-1-44.1; **CLASS EE**, A. Grant, 7-0-48.2; **CLASS F**, R. Gokey, 6-1-47.0; tied with D. Sawyer, 6-1-46.3; **CLASS F**, S. Raymond, 7-0-42.8; **CLASS G**, H. Murphy, 6-1-42.2; **CLASS GG**, E. Mancini, 6-1-37.5; **CLASS H**, D. Cleveland, 6-1-37.5; **CLASS HH**, D. Ladd, 6-1-40.1; tied with C. Hewitt, 6-1-31.0; **CLASS I**, G. Harris, 5-2-33.0; **CLASS II**, R. Coty, 6-1-30.9; **CLASS J**, J. Levesque, 5-2-24.8; **CLASS JJ**, B. Wellington, 6-1-27.3; **CLASS K**, F. Durinick, 6-1-19.9; **CLASS KK**, W. Miller, 7-0-8.8; **WOMEN'S CLASS B**, P. Metivier, 5-0-47.5; **WOMEN'S CLASS C**, K. Brewster, 5-0-43.5; **WOMEN'S CLASS D**, P. Tourville, 5-0-21.8; **JUNIOR CLASS**, S. Ather-ton, 6-1-29.7.

G. BROWN ON TOP IN SHILOH, PA. OPEN

CLASS A — Glenn Brown 6-1-61.5; Dan Beshore 5-2-68.2; Glenn Rubendall 5-2-64.2; Fritz Lutter 5-2-57.1; Dean McCurdy 3-4-53.4; Jim Sibley 2-5-50.3; Martin Bubb 2-5-50.0; Ray Bechtel 0-7-50.8.

CLASS B — Dick Dart 5-0-59.3; Dick Ruff 4-1-54.1; Mark Clippinger 3-2-51.6; Al Long 2-3-47.0; Dale Carson 1-4-36.4; John Baugher 0-5-40.8.

CLASS C — Pete McCollum 5-0-51.4; Ed Bowersox 4-1-50.4; Clark Walker 3-2-48.2; John Clippinger 2-3-44.4; Wayne McCloskey 1-4-29.5; Jim Diehl 0-5-33.8.

CLASS D — Jack Griffith 5-0-49.0; Ted Lewis 4-1-47.8; Ginger Meeks 3-2-41.7; Frank Goss 2-3-42.1; John Clow 1-4-39.1; Earl Brown 0-5-37.1.

CLASS E — Jim Schneider 4-1-42.1; Jim Miller 4-1-46.9; Frank Bechtel 3-2-40.7; Guy Esh 3-2-40.1; Bernie Wierbowski 1-4-32.4; Ira Stine 0-5-32.3; Schneider won play-off from Jim Miller 50-33.

CLASS F — John Zimmerman 4-1-40.8; Sherwood Frankhouser 3-2-44.5; Chas. Denk 3-2-35.2; Fred Lutter 2-3-39.9; Joe Belcavitch 2-3-39.5; Bob Heffner 1-4-31.0.

CLASS G — Darle Esh 5-0-41.0; Don Wagner 4-1-35.1; Jim Shurmaitis 2-3-32.7; Don Bubb 2-3-29.4; Ned Kinard 2-3-28.2; Gerard Harris 0-5-19.0.

CLASS H — Bernie Wierbowski 5-0-28.4; Jim Henry 3-2-30.4; Marlin Zimmer 2-3-30.0; Don Diehl 2-3-27.7; John Urbanc 2-3-27.5; Dennis Lloyd 1-4-19.7.

CLASS I — Richard Scott 5-0-33.3; Jerry Hoy 4-1-29.4; Jim Harris 3-2-24.1; Elwood Carpenter 2-3-23.5; John Bradbury 1-4-15.3.

LADIES — Kim Johnson 3-1-21.8; Jean Long 2-2-14.2; Lois Nielson 1-3-10.7.

DEADEYE HORSESHOES

NOW IN

FOUR MODELS

CLYDESDALES NOW IN LIGHTER WEIGHTS

	Price Per Pr.—Up to 9 Pairs	Price Per Pr.—12 Prs. & Over
CLYDESDALES 2# 10 oz., 2# 9 oz., 2# 8 oz., & 2# 7 oz.	\$23.00/Pr.	\$17.50/Pr.
N.T. 2# 10, 9, 8, 7 oz.	\$23.00/Pr.	\$17.50/Pr.
REGULAR 2# 9, 8, 7, 6, 5 & 4 oz.	\$23.00/Pr.	\$17.50/Pr.
E-Z GRIP 2# 10, 9, 8, 7 & 6 oz.	\$28.00/Pr.	\$22.50/Pr.

*Prices on all "DEADEYES" f.o.b. point of shipment.
Missouri residents add 4-5/8% sales tax and California
residents add on 6% tax.*

All "DEADEYES" are dead soft (curved only).

All "DEADEYES" are guaranteed against breakage for 2 years.

All "DEADEYES" guaranteed for 2 years from date
of purchase (NOT RE-PLACEMENT DATE)

Contact (Bill Courtwright ONLY) for special prices on
rejects and returned shoes (NO GUARANTEE)

DEADEYE Caps Available — \$5.00 postpaid

W. Courtwright
P.O. Box 742
Fenton, MO 63026
Phone: (314) 376-5222 (8-5)
(314) 677-2200
(314) 842-5188

Carl Steinfeldt
44 Ridgecrest Road
Rochester, NY 14626 (summer)
Phone: (716) 225-4191

Walter Ray Williams, Jr.
6140 Grant St.
Chino, CA 91710
Phone: (714) 628-6053

Carl Steinfeldt
407 Shady Lane Mobil Park
15400 Roosevelt Blvd.
Clearwater, FL 33520
(winter address)
Phone: (813) 535-3136

ORDER DIRECT or from NHPA REPRESENTATIVE



COLORFUL BUMPER STICKER

\$1.95 Postpaid

OGLE-ART DESIGNS, Dept B

P.O. Box 49605

Austin TX 78765

SKINNERS BUTTE OPEN WON BY LEGGETT — OREGON

CLASS A — Ridge Leggett, 7-0-72.6; Barry Chapelle, 6-1-70.4; Lowell Davis, 4-3-64.4; Jerry Gorton, 4-3-54.1; Lee Wallace, 3-4-51.5; Bill Graham, 2-5-53.6; Dave Gutcher, 1-6-51.9; Ron Ferguson, 1-6-53.8.

CLASS B — Art Lund, 8-2-44.3; Bob Johnson, 6-3-44.9; Larry Flanary, 6-3-41.9; Roger Christianson, 5-3-37.8; Don Ferguson, 4-4-41.7; Harley Vallier, 4-4-39.1; Denny Samples, 3-5-32.8; Kyle Dixon, 2-6-37.1; Len Christensen, 0-8-28.7.

CLASS C — Dave Sturdevant, 5-1-31.6; Phil Hendry, 4-2-41.9; Phyllis Centell, 4-2-34.2; Betty Tatchio, 4-2-33.7; Marvin Tatchio, 2-4-34.0; Lee Centell, 1-5-28.9; Don Snethen, 1-5-27.1.

CLASS D — Al Moen, 6-0-39.1; Bud LeDoux, 4-2-31.3; Laura Samples, 3-3-32.7; Lloyd Kilgore, 2-4-27.2; Lester Young, 2-4-26.6; Thurman Bates, 2-4-25.5; Frank Moan, 2-4-21.7.

CLASS E — Chuck Ricketts, 6-0-41.1; Gordon Bergeson, 5-1-33.9; Donna Graham, 4-2-30.0; Al Holland, 3-3-30.4; Noel Ness, 2-4-26.8; Tom Ritter, 1-5-19.5; Carolyn Ferguson, 0-6-20.0.

CLASS F — George Hughes, 6-0-32.9; Carl Wheeler, 5-1-24.8; Jim Johnson, 4-2-21.7; Lauren Gorton, 2-4-16.5; David Gorton, 2-4-12.2; Bob Morrall, 1-5-11.9; Steve Beery, 1-5-11.2.

The shoe for the 1980's

STAR

STAINLESS HORSESHOES

Give them for Christmas

All Star's are dead soft
and they weigh 2 lbs. 8 oz.

Send Check or
Money Order to:

Alfred R. Boudreau Jr.
301-A Old Ipswich Rd.
Rindge, N.H. 03461

NHPA
APPROVED



\$69.00 per pair
postpaid

TITCOMB WINS SO. CALIF. GONZALES OPEN—SANC. 84-126

GROUP I — Don Titcomb, San Jose 7-0-75.8; Jesse Gonzales, Los Osos 6-1-73.3; George Whittemore, Rosemead 4-3-56.7; Jerry Schneider, Anaheim 3-4-59.9; Diane Lopez, Santa Barbara 3-4-54.5; Bill Cork, Shoshone 3-4-52.0; Fred Lavett, Seaside 1-6-50.9; Jim Eozzo, Los Angeles 1-6-50.0.

GROUP II — Walt Foreman, San Jose 6-1-45.6; Marthe Dunn, Pleasanton 5-2-42.7; Marty Dunn, Pleasanton 4-3-51.0; Norm Cone, Huntington Beach 4-3-50.3; Les Burroughs, Perris 4-3-49.7; Barbara Dow, Glendale, 3-4-35.6; Ray Silva, Santa Barbara 1-6-40.8; Vince Mauricio, San Jose 1-6-37.4.

GROUP III — Genevieve Lavett, Seaside 6-1-51.9; Doyle Brawley, Riverside 5-2-47.0; Wally Shipley, Newport Beach 4-3-39.9; Ernie Knorp, Goleta 3-4-40.5; Flora Jones, Grass Valley 3-4-39.3; Jim Atwell, Los Angeles 3-4-34.9; Tom McQueen, Bishop 2-5-36.0; Dave Rodriguez, Santa Barbara 2-5-34.4.

GROUP IV — Frank Morales, Santa Barbara 5-1-36.8; Stewart Snyder, Cloverdale 4-2-32.6; Ed Oliver, Palm Springs 3-3-37.6; Bill Harris, San Luis Obispo 3-3-37.3; Steve Silva, Santa Barbara 3-3-36.4; Lee Van Dalsen, Nevada City 2-4-29.8; Mary Van Sant, Sun City 1-5-24.8.

GROUP V — Bill Harris, San Luis Obispo 7-1-35.0; Lillian Lloyd, Newark 5-2-38.4; Len Ramirez, Santa Maria 5-2-32.8; Jim Dow, Glendale 2-4-24.5; John Bowers, Santa Barbara 2-4-23.1; Bob Lloyd, Newark 1-5-19.3; Lee Sandoval, San Luis Obispo 0-6-11.9.

GROUP VI — Monty Jones, Grass Valley 5-0-19.2; Gene Van Sant, Sun City 3-2-15.2; Betty McQueen, Bishop 2-3-16.0; Red Taylor, King City 2-3-12.8; Smokey Anderson, Van Nuys 1-4-15.6; Ron Fitzmorris, Port Hueneme 1-4-12.4.

GROUP VII — Pat Silva, Santa Barbara 5-0-8.1; Nancy Voets, Los Angeles 3-2-10.8; Genevieve Seda, Huntington Beach 3-2-8.0; Kay Brawley, Riverside 2-3-9.6; Sally Shipley, Newport Beach 1-4-5.6; Rita Eozzo, Los Angeles 1-4-3.6.

GROUP VIII — Emily Weeks, Norwak 5-0-4.4; Ina voets, Los Angeles 3-2-4.0; Jerr Voets, Los Angeles 3-2-3.2; Janice Atwell, Los Angeles 3-2-1.6; Frank Lescouri, Los Angeles 1-4-2.8; Shirley Lescouri, Los Angeles 0-5-0.0.

SPECIAL — I — HLP — Norm Cone, Huntington Beach 7-1-51.1; Lisa Gonzales, Los Osos 6-2-54.4; Diane Lopez, Santa Barbara 4-3-54.1; Jim Eozzo, Los Angeles 4-3-48.5; Ray Silva, Santa Barbara 4-3-40.5; Bill Cork, Shoshone 3-4-41.8; Vince Mauricio, Jim Sajo 1-6-41.7; Barbara Dow, Glendale, 0-7-31.2.

SPECIAL — II — HLP — Ernie Knorp, Goleta 5-1-34.2; Steve Silva, Santa Barbara 4-2-35.9; Ed Oliver, Palm Springs 4-2-33.2; Frank Morales, Santa Barbara 3-3-37.3; Dave Rodriguez, Santa Barbara 3-3-33.6; Jeff Weaver, Santa Barbara 2-4-25.0; Al Cantabrana, Oceanside 0-6-22.7.

SPECIAL III — HLP — Jeff Weaver, Santa Barbara 5-1-31.7; Ken Bennett, San Luis Obispo 4-2-25.7; Lee Sandoval, San Luis Obispo 3-2-15.6; Andrew Hernandez, San Luis Obispo 2-3-22.4; Nancy Voets, Los Angeles 2-3-16.0; Red Taylor, King City 0-5-8.2.

DOUBLES — Tom McQueen-Betty McQueen 5-2; Ray Silva-Pat Silva 5-2; Doyle Brawley-Kay Brawley 5-2; Jesse Gonzales-Sylvia Gonzales 5-2; Marty Dunn-Marthe Dunn 4-3; Monty Jones-Flora Jones 3-4; Jim Dow-Barbara Dow 1-6; Mary Van Sant-Gene Van Sant 0-7.

DON KUCHCINSKI—R. HANGEN WIN PA. KINZUA CLASSIC

CLASS A — Don Kuchcinski 7-0-75.0; Steve Kuchcinski 6-1-68.1; D. Carnahan 4-3-66.0; R. Kuchcinski 4-3-58.6; R. Mudgett 4-3-51.5; P. Vlachos 2-5-49.0; J. Kuchcinski 1-6-47.9.

CLASS B — K. Von Kleist, 6-1-54.9; F. White, 6-1-58.5; R. Hayes, 4-3-62.2; V. Sedlacek, 4-3-53.7; Glen Sebring, 3-4-45.9; J. Kuchcinski, 3-4-46.1; R. Welton, 2-5-48.9; D. Maxwell, 1-6-44.5.

CLASS C — B. White, 6-1-50.6; G. Hale, 6-1-54.8; Wm. Hofecker, 5-2-54.5; R. Maroni, 4-3-45.5; B. White Sr., 4-3-51.8; G. Rhea, 2-5-45.5; J. Geci, 1-6-49.4; H. Hayes, 1-6-44.4.

CLASS D — J. Hall, 6-1-51.3; B. Williams, 6-1-55.6; R. Brown, 4-3-45.4; C. Butcher, 4-3-43.2; H. Brown, 3-4-41.6; H. Farnen, 3-4-40.4; P. Wentworth, 1-6-31.5; C. Carnahan, 1-6-31.1.

CLASS A — LADIES — R. Hangen 5-0-69.2; F. Carnahan, 4-1-70.8; J. Spicer, 3-2-39.7; S. Carnahan, 2-3-29.0; B. St. Clair, 1-4-28.

CLASS B — E. Weston 4-1-33.1; D. Mickelson 4-1-34.5; K. Weston, 4-1-26.4; L. Marshall, 2-3-25.3; R. Carnahan, 1-4-1.2.

Other division finishers were: **CLASS E**, F. Graham, 7-0-43.2; **CLASS F**, J. Trayer, 7-0-40.6; **CLASS G**, H. Framton, 6-1-40.7; **CLASS H**, B. Weidenhorft, 6-1-40.6; **CLASS I**, J. Krouse, 7-0-34.2; **CLASS J**, A. Shurilln, 6-1-38.7; **CLASS K**, Craig Allen, 7-0-41.8; **CLASS L**, J.T. Thompson, 6-1-35.6; **CLASS M**, D. Williams, 4-1-28.1; **CLASS N**, S. Wood, 5-1-13.0.

GOVERTS OVER KENNEY FOR NEBRASKA CITY, NEB., ARBOR DAY OPEN CHAMPIONSHIP — SANC. 84-593

CLASS A — Jack Govarts, Ne, 4-1-57.6; Charley Kenny, Mo, 4-1-55.7; Bob Outt, Ks, 2-3-44.2; Joe Christensen, Ks, 2-3-42.8; Fred Kenny, Mo, 2-3-42.5; John Ingram, Ne, 1-4-42.9.

CLASS B — Ray Daughy, Ia, 5-0-47.3; Clare West, Ne, 4-1-42.5; Glen Grotian, Ne, 3-2-47.3; Hilbert Anderson, Ne, 1-4-39.4; Don Abernathy, Ne, 1-4-36.1; Allen Younger, Ne, 1-4-27.4.

CLASS C — Emery Brandt, Ne, 4-1-54.4; Elmer Vogt, Ne, 4-1-37.7; Doyle Derrick, Ks, 3-2-40.3; Darrell Nation, Ia, 3-2-37.3; Bob Hitchcock, Mo, 2-3-30.7; Roy Fern, Ne, 0-5-39.4.

CLASS D — Marvin Edison, Ne, 5-0-44.6; Dick Schell, Ia, 3-2-38.0; Dan Brandt, Ne, 3-2-37.1; Shady Heist, Ne, 2-3-27.8; Dennis Rusho, Ne, 1-4-32.8; Merle Cottle, Ne, 1-4-31.7.

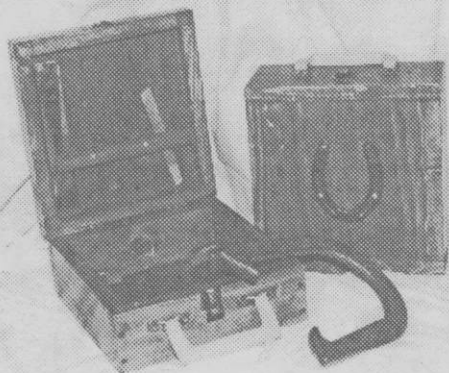
CLASS E — Bob Crickson, Ne, 5-1-31.5; Dr. Nelson, Ks, 5-1-24.6; Ervin Peterson, Ne, 3-3-31.9. Louis Hoffman, Ne, 2-4-25.4; Gabe Catlett, Ia, 2-4-24.6; Lew Brindle, Ia, 2-4-23.3; Lee Bussard, Ne, 2-4-17.4.

CLASS F — Wade Huff, 4-1-32.6; Floyd Ruterford, Ne, 4-1-30.0; Earl Barker, Ne, 3-2-26.1; George West, Ia, 2-3-28.9; Pat Allen, Ne, 1-4-29.5; Lowell Fanning, Ia, 1-4-17.6; Keith Fish, forfeit.

CLASS G — Lelan Schlinder, Ia, 4-1-24.5; Murph Tinius, Ne, 4-1-19.9; Alvin Strasil, Ne, 4-1-19.3; Fred Beeson, Ne, 2-3-21.8; Troy Laughlin, Ne, 1-4-10.7; Ervin Stone, Ne, 0-5-10.7.

CLASS H — Jay Beach, Ia, 5-0-21.3; Milton Harmon, Ne, 4-1-23.8; Marvin Mount, Ia, 3-2-20.7; Roger Freye, Ne, 2-3-15.8; Bill Edwards, Ne, 1-4-17.2; Bruce Bolander, Ne, 0-5-8.6.

Horseshoe Caddy



HOLDS 2 PAIR OF
HORSESHOES

SPACE FOR
MEASURING
TOOL & PENCIL

\$19.95 PPD.

JIM BRAY
306 W. FARMER

816-461-2374
INDEPENDENCE, MO 64050

IDAHO'S FESTIVAL OF PRIDE TOURNAMENT CHAMPIONSHIP WON BY STUTZMAN — L. REISE LADIES TITLIST

CLASS A MEN — Warren Stutzman, Rupert, 8-0-50.5; Doc Thackery, Jerome, 6-2-43.6; Otto Kubal, St. Anthony, 6-2-41.1; Dan Tucker, Hailey, 4-4-42.4; Henry Reid, Jerome, 4-4-36.6; Bob Mitchell, Shelley, 4-4-32.5; Lee Edwards, Gooding 3-5-37.7; Rod McAfee, Ketchum, 1-7-26.8; Lee Payton, Jerome, 0-8-23.7.

CLASS B MEN — Virgil Johnson, Mountain Home, 9-1-37.4; Leo Peterson, Twin Falls, 8-2-36.4; Sam Williams, Driggs, 6-3-31.7; Berle Reise, Fairfield, 5-4-32.2; Glen Stutzman, Gibbonsville, 5-4-30.7; Ralph Morgan, Mountain Home, 5-4-28.5; Roger Andrews, Jerome, 3-6-26.6; Ray Grossaint, Twin Falls, 3-6-22.5; Tony Apodaca, Jerome, 3-7-28.0; Jerry Ostler, Jerome, 0-7-25.2.

CLASS C MEN — Bert Stoddard, Idaho Falls, 6-0-28.5; Clyde Marquez, Idaho Falls — 5-1-31.6; Bob Bonning, Hagerman, 4-2-31.4; Ted Gardner, Jerome, 3-3-27.0; John Webster, Jerome, 2-4-21.7; Don Scarrow, Jerome — 1-5-23.2; Lou Logosz, Jerome, 0-6-10.0.

CLASS D MEN — Lester Agee, Eden, 4-1-16.1; Junior Bentley, Eden, 3-2-12.2; Ed Pettit, Jerome, 3-2-12.0; Clyde Campbell, Jerome, 2-3-13.8; Kerry Rushing, Jerome, 2-3-11.0; Harry Chapin, Twin Falls, 1-4-11.7.

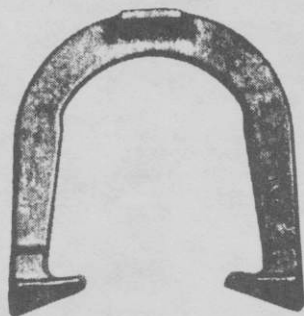
CLASS A LADIES — Leona Reise, Fairfield, 5-1-24.3; Doris Grossaint, Twin Falls, 4-2-21.2; Connie Payton, Jerome, 2-4-23.8; Rose Kubal, St. Anthony, 1-5-20.9.

CLASS B LADIES — Lou Hessler, Jerome — 3-1-6.5; Marian Reid, Jerome, 2-2-5.5; Lorrie Whaley, Jerome, 1-3-4.5.

JUNIORS — Jay Ostler, Jerome, 2-0-27.0; Steve Payton, Jerome, 1-1-31.0; Wade Patterson, 0-2-2.0.

PLAN NOW FOR 1985 WORLD TOURNAMENT SPRINGFIELD, Missouri

TED ALLEN HORSESHOES



An original professional shoe. Still the very best professional shoe — Designed by a Champion — Used by many Champions — Not all users will become champions, but by throwing ALLEN's, you know that you've performed your best.

The designed features were invented by TED ALLEN, a 10 time world champion. He has made world records over and over with them. The design was a leader. After years it came to be a trend as a guideline in shoe equipment.

You can't go wrong in using them.

1045 LINDEN AVENUE

BOULDER, COLORADO 80302

COMING EVENTS

FLORIDA SCHEDULE

Entry fee \$7.00, pre-registration required. Send entry fee to proper tournament director 7 days before tournament date. Scorekeeper fee 25 cents per game. NHPA and State card required. All games cancellation, 40 points or 50 shoes, whichever comes first.

- Dec. 8 — Bill Rowes Open. Brooksville.
 Dec. 15 — Snowbird Open. Sebring. Contact Jim Fourman, 2832 Bolin Lane, Sebring, FL 33870. Ph. 813-385-7372.
 Dec. 22 — Naples Open. Naples. Contact Harold Cheffer, 1114 Hollygate Lane, Naples, FL 33940. Ph. 813-261-3120. Limited to 1st 42 entries.
 Dec. 29 — Lake Worth Open. Lake Worth. Contact Herman Wieser, 1502 So. Lakeside Dr., Lake Worth, FL 33460. Limited to 1st 32 entries.
 Dec. 29 — Holiday Open. Brooksville.
 Jan. 5 — New Years Open. Miami. Contact Frank Boyd, 15274 S.W. 102nd Court, Miami, FL 33157. Ph. 305-232-1401.
 Jan. 5 — Frozen Fingers Open. Brooksville.
 Jan. 10 — Highland County Open. Sebring. Contact Jim Fourman, 2832 Bolin Lane, Sebring, FL 33870. Ph. 813-385-7372.
 Jan. 11-12 — Manatee Open. Bradenton. Contact Jim Pelkey, Box 60, Lincoln Arms, 5030 - 14th St., West, Bradenton, FL 33507. Ph. 813-756-3992.
 Jan. 19 — Sunshine Open. Winter Haven. Contact Joe West, 6250 Halabrin Rd., Haines City, FL 33844. Ph. 813-422-2053.
 Jan. 26 — Yogi Bear Open. Apopka. Contact Norm Davey, Rte. 1, Box 2000, Apopka, FL 32703. Ph. 305-886-8168.
 Feb. 2 — Sarasota Open. Sarasota. Contact Paul Scheub, 2139 Piazza Dr., Sarasota, FL 33583. Ph. 813-966-5462. Limited to 1st 56 entries. Pitch 40 ft. only.
 Feb. ?? — Florida State Fair, Tampa. Contact Norm Gaseau, 1908 Nuggett Dr., Clearwater, FL 33515. Ph. 813-443-2892.
 Feb. 9 — Rotary Park Open. Winter Haven. Contact James Peterson, 14224 Wing Foot Rd., Fairway Country Club, Orlando, FL 32826. Ph. 305-275-8222.
 Feb. 14 — Sebring Open. Sebring. Contact Jim Fourman, 2932 Bolin Lane, Sebring, FL 33870. Ph. 813-385-7372.
 Feb. 15-16 — Suncoast Open. Bradenton. Contact Jim Pelkey, Box 60, Lincoln Arms, 5030 - 14th St. West, Bradenton, FL 33507. Ph. 813-756-3992

Mixed tournaments unless otherwise indicated. In 2-day tournaments, players with ringer average below 40 percent will pitch on first day. Dropouts after deadline will forfeit entry unless tournament is cancelled. Starting time 9:00 a.m.

- Feb. 16 — Orlando Open. Orlando. Contact James Peterson, 14224 Wing Ft. Rd., Fairway Country Club, Orlando, FL 32826. Ph. 305-275-8222.
 Feb. 22-23 — Sun Bank of Osceola. St. Cloud. Contact Andy Anderson, 1100 Indiana Ave., St. Cloud, FL 32769. Ph. 305-892-2051. Pitch 40 feet only.
 Feb. 23 — 50th Anniversary of Lake Worth. Contact Herman Weisser, 1502 So. Lakeside Dr., Lake Worth, FL 33460. Ph. 305-582-2938. Limited to 1st 32 entries.
 Mar. 2 — Tamiami Open. Miami. Contact Frank Boyd, 15274 S.W. 102nd Court, Miami, FL 33157. Ph. 305-232-1401.
 Mar. 2 — Jellystone Open. Apopka. Contact Norm Davey, Rte. 1, Box 2000, Apopka, FL 32703. Ph. 305-886-8168.
 Mar. 9 — Hernando Open. Brooksville.
 Mar. 15-16 — DeSoto Open. Bradenton. Contact Jim Pelkey, Box 60, Lincoln Arms, 5030 - 14th St. West, Bradenton, FL 33507. Ph. 813-756-3992.
 Mar. 21 — Race Week Open. Sebring. Contact Jim Fourman, 2832 Bolin Lane, Sebring, FL 33870. Ph. 813-385-7372.
 Mar. 22-23 — Fun 'n Sun Festival. Clearwater. Contact Norm Gaseau, 1908 Nuggett Dr., Clearwater, FL 33515. Ph. 813-443-2892.
 Mar. 30 — 25th Anniversary Open. Beverly Hills. Contact Ralph Cullum, 1006 So. Bunting Way, Inverness, FL 32650. Ph. 904-726-8786. Limited to 1st 56 entries. Pitch 40 ft. only.
 Mar. 30 — King Neptune Open. Sarasota. Contact Paul Scheub, 2139 Piazza Dr., Sarasota, FL 33583. Ph. 813-966-5462. Limited to 1st 56 entries. Pitch 40 ft. only.
 Apr. 6 — Peterson Open. Orlando. Contact James Peterson, 14224 Wing Foot Rd., Fairway Country Club, Orlando, FL 32826. Ph. 305-275-8222.
 Apr. 13 — Florida State Tournament (CLOSED). Sebring. Contact Norm Gaseau, 1908 Nuggett Dr., Clearwater, FL 33515. Ph. 813-443-2892.
 Apr. 20 — Florida State Handicap (CLOSED). Clearwater. Contact Norm Gaseau, 1908 Nuggett Dr., Clearwater, FL 33515. Ph. 813-443-2892.

YUMA, ARIZONA SCHEDULE

Kennedy Park Yuma, Arizona

- Dec. 8 — Welcome Snowbirds Fun Weekend. Singles Open. Sanction 84-553.
 Dec. 9 — Welcome Snowbirds Fun Weekend. Doubles Open. Sanction 84-554. Possible Potluck.
 Jan. 12 — Budweiser Second Annual Sanctioned Singles.
 Feb. 10 — Wild & Wooley NHPA Members Singles.
 Mar. 17 — St. Patrick's Sanctioned Singles.

Sanctioned Tournaments — State and NHPA membership required. Entry fee to all tournament YHPA members \$3.00. Non-members \$5.00. Qualifying and entry fee will close 3 days prior to tournament date. All tournaments start at 8:30 a.m.

CAROLINA DOGWOOD FESTIVAL OPEN TOURNAMENT

STATESVILLE, N.C. APRIL 19, 20, 21, 1985

Coming Events—Continued

ARIZONA ASSOCIATION SCHEDULE

PIONEER PARK, MESA, AZ

- Dec. 14-15-16 — Mesa Open. Entries close Dec. 4.
 Jan. 25-26-27 — Valley of the Sun Warm-Up. Sanctioned. State and NHPA card required. Entries close Jan. 15.
 Feb. 12-13-14-15-16-17 — Annual Valley of the Sun Open. Sanctioned. State and NHPA card required. Entries close Jan. 25.
 Mar. 1-2-3 — Bye-Bye Snowbird Open. Entries close Feb. 19.

Apr. 6-7 — Annual Arizona State Tournament. Sanctioned. State and NHPA card required. Entries close Mar. 25.

Entry fees — \$5.00 (except Valley of the Sun. Entry fees for Valley of the Sun: \$10.00 each; \$10.00 additional for Men's class "A", \$5.00 additional for Women's classes "B," "C," "D," \$5.00 additional for Women's classes "A" and "B.")

Send all entries and proper fees with NHPA card number and current ringer percentage to Bud Fenimore, Secy., 8152 East Hayne St., Tucson, Arizona 85710. Phone 602-296-5087.

FAYETTE COUNTY, PA. H.S. ASSOC.

253 S. Mt. Vernon Ave., Uniontown, PA 15401

Our tournaments will be 6, 7, or 8-man Round Robin, with all games being 40 points cancellation, and 1 point each for four dead.

Trophies or equivalent will be awarded for 1st and place.

Entry fee of \$10.00 (includes scorekeeping fee) payable to Fayette County Horseshoe Pitchers

Association should accompany your entry 10 days prior to date of tournament. You will be classed according to your recorded percentage. Oct., Nov. April and May tournaments will be NHPA sanctioned. Entries will be refunded if you are unable to attend, at the discretion of the tournament director.

Dec. 14-15-16 — Ed Donawitz Memorial. Contact Joe Gibbs, Rte. 1, Box 1-AB, Vanderbilt, PA 15486. Ph. 412-529-2331 or Jack Chambers, Box 763, Vanderbilt, PA 15486. Ph. 412-529-7266.

Jan. 18-19-20 — Chuck Roball Memorial. Contact Glenn Williams, Rte. 4, Box 248, Uniontown, PA 15401. Ph. 412-437-7733 or Rick Liptak, 2 Jamison St., Uniontown, PA 15401. Ph. 412-439-3224.

Feb. 15-16-17 — Valentine Open. Contact Andy Liptak, Sr. or Andy Liptak, Jr., 2 Jamison St., Uniontown, PA 15401. Ph. 412-439-3224.

Mar. 15-16-17 — St. Patrick's Open. Contact Joe Roebuck, 603 Braddock Ave., Uniontown, PA 15401. Ph. 412-438-5670 or Jake Yauger, Box 377, Hopwood, PA 15445. Ph. 412-438-2429.

Apr. 19-20-21 — Joe Tomayko Memorial. Contact Alex Burns, Box 476, New Salem, PA 15468. Ph. 412-245-8600.

May 17-18-19 — Jim Danner Memorial. Contact Casey Danner, Box 288, Newell, PA 15466. Ph. 412-938-2397.

ARIZONA ASSOCIATION SCHEDULE

REID PARK, TUCSON, AZ

Jan. 11-12 — Pima County Classic. Sanctioned. State and NHPA card required. Entries close Jan. 2.

Feb. 1-2 — Old Pueblo Special. Sanctioned. State and NHPA card required. Entries close Jan. 21.

Mar. 15-16 — President's Open. Entries close Mar. 5.

Apr. 19-20 — The Wind-Up. Entries close Apr. 9.

Entry fees: \$5.00. Send all entries and proper fees and current ringer percentage to Bud Fenimore, Secy., 8152 East Hayne St., Tucson, Arizona 85710. Phone 602-296-5087.

OHIO-KENTUCKY CLUB SCHEDULE

1455 Dalton St., Cincinnati, Oh. 45214

Cincinnati, Ohio Indoor courts, 1985 tournaments. Mail name and address with ringer percentage plus \$10.00 entry fee 10 days in advance of tournament to tournament director listed.

Feb. 9-10 — Snowball Classic — Send \$10.00 fee and percentage to Bill Kenton, 32 Crestwood, Highland Heights, Kentucky 41076, 10 days prior to tournament. Classes A and B sanctioned.

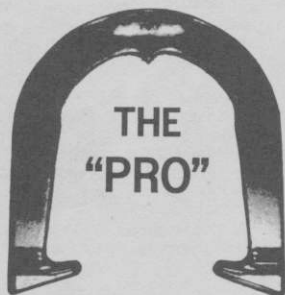
Jan. 12-13 — Queen City Open. Send \$10.00 fee and percentage to Frank Hebler, 4141 St. Lawrence Ave., Cincinnati, Ohio 45205, 10 days prior to tournament. Classes A and B sanctioned.

Mar. 9-10 — Harry Henn Memorial. Send \$10.00 fee and percentage to Bill Henn, 206 prospect, Bellevue, Kentucky 41073, 10 days prior to tournament. Classes A and B sanctioned.

**PLAN NOW FOR 1985 WORLD TOURNAMENT
 SPRINGFIELD, Missouri**



THE ORIGINAL DROP-FORGED PITCHING SHOE



Two tournament tested models, forged from S.A.E. specified steel, are available. Both have hardened hooks and points, and may be ordered in your choice of medium, soft, or dead soft tempers.



AS THE FIRST MANUFACTURER OF THE DROP-FORGED PITCHING SHOE, THE OHIO HORSESHOE COMPANY IS RECOGNIZED WORLD-WIDE FOR ITS HIGH QUALITY PITCHING SHOES.

For price information and to order, contact:

OHIO HORSESHOE COMPANY

P.O. Box 21371
Columbus, Ohio 43221

614-457-4335