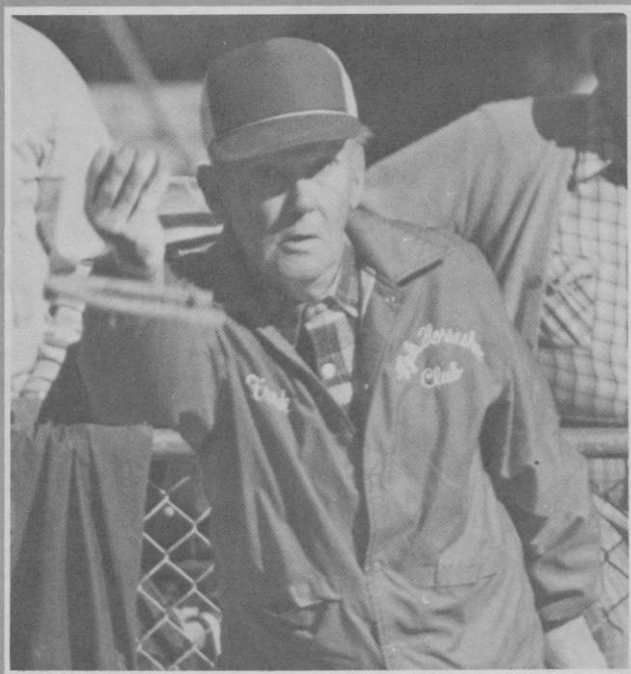




the
national horseshoe pitchers

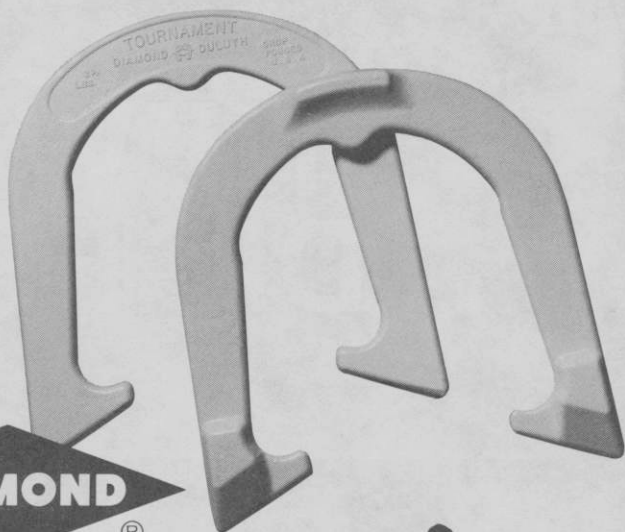
NEWS DIGEST



AUGUST, 1984

Official Publication of
**THE NATIONAL HORSESHOE PITCHER'S ASSOCIATION
OF AMERICA**

Look
for
the new
white
shoes!



Advanced Design

TOURNAMENT PITCHING HORSESHOES




Both backyard pitchers and pros catch and hold the stake better with DIAMOND's new advanced design "Tournament" Shoe. It features a grip positioner, hardened tips, an increased radius, a dead soft center, and a wider, deeper calk. Same drop-forged solid steel construction as DIAMOND's popular Double Ringer and Super Ringer Regulation Shoes. All American made.

Contact your nearest NHPA club or sporting goods store for DIAMOND pitching horseshoes.



For the latest pitching horseshoe catalog write:

DIAMOND TOOL and Horseshoe Co.

Subsidiary  The Triangle Corporation

P. O. BOX 6246. DULUTH, MINNESOTA 55806

"DIAMOND Pitching Horseshoes are Recognized as Official in Tournaments
Sanctioned by the National Horseshoe Pitchers Association"



THE HORSESHOE PITCHER'S NEWS DIGEST is published on the 5th of each month at Aurora, Illinois, U.S.A. by the National Horseshoe Pitcher's Association of America. Editorial office, P.O. Box 1606, Aurora, Illinois 60507. Phone: 312-898-3974. Subscription rates—1st Class \$9.00; 3rd Class \$8.00 per year in advance. NHPA membership cards are available through each state secretary for \$7.00 plus any state association dues. Forms close on the 10th day of each month preceding date of issue. Advertising rates on request. F. Ellis Cobb, Editor.

NATIONAL OFFICERS

Glen Portt, 2803 Newcomb Rd. Albany, Ga. 31705 (912-432-0067) President
 Earl Winston, Rte 2, Lamonte, Mo. 65337 (816-563-3536) 1st Vice-President
 Norman Gaseau, 1908 Nuggett Dr., Clearwater, Fla. 33515 (813-443-2892) 2nd Vice-President
 Vincent Yannetti, 322 Longwood Ave., Bound Brook, N.J. 08805(201-356-3862) 3rd Vice-President
 Bonnie Seibold, 1043 Grayson Ave., Huntington, Ind. 46750 (219-356-3489) 4th Vice-President
 Donnie Roberts, Box 810, Circleville, Oh. 43113 (614-474-7727) Sec./Treas.
 Claude White, Jr., 940 Knollwood Ct., Plainfield, NJ 07062(201-753-2298) Chr. Reg. Dir.

Volume 27

August, 1984

No. 8

From Your President — Glen A. Portt

To every NHPA member:

During this month, August, 1984, **you** have the greatest opportunity you will ever have to participate in the 'Help Ourselves' program. I doubt if NHPA members will ever again have a chance to make a considerable amount of money with so little effort. Will **they** fail the test? I hope not. Will **you** do your fair share? I hope so.

The Wheaties "Search for Champions II" contest can be the answer to many things. I find in my travels that many members have not heard about the contest and our efforts to elect Boni Boser as the Official Champion. **If she wins, her picture and a short story telling about her horseshoe pitching and other achievements will be on several 100,000 boxes of Wheaties for over a year. This will give our sport the greatest publicity boost it has ever had.** Can we afford to lose this opportunity? Can **you** sit by and watch others try to do it alone?

What are the rules of the contest? Simply buy Wheaties, cut out the ballot which is on the front or side of the box, and fill it out like this: Boni Boser, Rte. 3, Fish Lake Rd., Pierz, MN 56364. National Horseshoe Pitchers' Association, 2803 Newcomb Rd., Albany, GA 31705. Mail to address shown on the ballot.

How much can we win? \$11,000! Please read:

If Boni finishes in the top 50, we get \$1 per ballot up to \$5,000.

If she finishes in the top six, we receive another \$1,000.

If we submit the largest number of votes, we receive another \$5,000.

We have 8230 NHPA members plus 3265 sanctioned league members for a total of 11,495 people who, if they make up their minds, can go out and win \$11,000. **You are one of those people.**

Although there is nothing absolutely sure in this world, we could almost guarantee winning if each person bought 10 boxes of Wheaties at one time and mailed the ballots before September 1, 1984.

If everyone bought 10 boxes	114,950 votes
If 75% bought 10 boxes	86,212 votes
If 50% bought 10 boxes	57,475 votes
If 25% bought 10 boxes	28,737 votes

Because families are involved in these figures, it seems reasonable to say that 50% is a very reachable goal. And suppose each one asked their best friends and relatives to buy 1 or 2 boxes? The possibilities stagger the imagination.

And what is the cost to **you**? Really nothing! You buy breakfast food regularly. All you'd be doing is buying it ahead. . . and it will keep for over a year. So, go out today, buy 10 boxes, and mail the ballots in. Do **your** share. Let's 'Help Ourselves' . . . \$11,000 worth!

NHPA PUBLICITY — AUGUST NEWS RELEASE

By BERNARD HERFURTH

WORLD'S HORSESHOE PITCHING CHAMPIONSHIP

The 1984 World's Horseshoe Pitching Championship is being held in Huntsville, Alabama. Approximately 500 men, women, boys and girls will participate in the 10-day event. Also included in the six championship classes will be a senior division, also an intermediate section and a division for pitchers 70 years and over.

One hundred and eight men will have a chance at the championship after which 24 men will be chosen from the preliminary games to play in a 24-man round-robin to decide the title. The remaining championship classes will be decided in a similar style with a lesser number of contestants. There will be supplementary classes that allows for every player to participate in a round-robin contest.

All championship preliminaries will be 50-shoe cancellation games. All finals will be 40-point cancellation games with no shoe limit.

A total of \$25,000 in cash prizes, scholarships, trophies and special awards will be awarded.

The 1985 World Championship will be held in the new horseshoe pitching complex in Springfield, Missouri.

For a free 12 page horseshoe flyer, send a large, self-addressed, stamped envelope to National Horseshoe Pitchers Association, Box 810, Circleville, Ohio 43113.

TITLE FOR LAS VEGAS DECEMBER 2-6 EVENT CHANGED

At the request of the promoter, the December 2-6 event at Las Vegas, Nevada, will be called the Las Vegas/Hacienda/Pro-Am celebrity Championship Tournament., and **NOT** the U.S. Open. Bids for the 1985 U.S. Open are invited.

NHPA SECRETARY-TREAS. REPORT FOR JUNE, 1984

June 1984 Receipts

1984 World Entry Fees	\$ 375.00
1983 World Receipts	81.00
News Digest	1978.25
Memberships	7120.05
NHPA Stamp Sales	97.00
Help Ourselves	80.00
NHPA Envelope Sales	80.00
League	1181.00
Total June Receipts	10992.30

June 1984 Expenditures

Supplies	\$ 222.84
Hall of Fame	4.00
Postage	500.37
Telephone	207.67
Officer Travel	1131.00
News Digest	2395.96
Officer Allowance	833.33
Total June Expenditures	5295.17

Note: These figures are from the books of the NHPA Secretary-Treasurer and do not reflect the records of others in the NHPA who handle separate accounts. Interest, service charges, foreign money exchanges, returned checks, etc. are not reflected here.



TROPHIES YOU CAN USE

	Qty.	Price
\$5.00 each	_____ 1st Place	\$ _____
	_____ 2nd Place	_____
2-3 weeks delivery	_____ 3rd Place	_____
	_____ 4th Place	_____

P&H .50¢ per mug (Min. \$2.00)

California residents add 6% tax

Please write for quote when additional info needed... we do names, too,

Total \$ _____

Name _____

Address _____

GOLDLINE CERAMICS — 3024 Gayle St., Orange, CA 92665

APPRECIATION LETTER TO "HELP OURSELVES" DONOR

1 July, 1984

Jerry Nordlee
609 N. Chatham St.
Janesville, WI 53545

Dear Jerry,

I wish to thank you personally for the \$10 you sent for the 'Help Ourselves' Program. Your help makes me feel real good. Although we will continue to look for sponsors, I am convinced that helping ourselves is the way to go. We don't have to depend upon others.

Your club's gift of \$50 was a most welcome surprise. I will make sure that the NHPA membership knows about the contribution of the Janesville, Wisconsin Horseshoe Club. Please give my best wishes to each member. The club's gift is appreciated.

Sincerely,
Glen A. Portt
President, NHPA

NHPA PROMOTION COMMITTEE REPORT

By SOL BERMAN

WHEATIES SEARCH FOR CHAMPIONS CONTEST

We only have until Sept. 1, 1984, to send in our ballots. Fill out your ballot as follows: Boni Boser Route 3 Fishlake, Pierz, MN 56364. National Horseshoe Pitchers' Association, 2803 Newcomb Rd. Albany, Georgia 31705. Send your ballots to — Wheaties Search for Champions Contest, Box 5141 Minneapolis, MN 55460.

Dale Lipovsky and Art Holter of MN are doing a great job in getting votes. Your president, Glen Portt, has sent in 10 ballots.

Collect ballots from your friends. If you're coming to Huntsville, bring your ballot along. I'll gladly mail them in, or Art Holter and Dale Lipovsky will drop them off at the General Mills Plant.

We're still in the top 50 which means that if we remain there we'll receive \$5,000, if our ballot total is over 5,000.

I attended three tournaments, Frakes Tournament in Springfield, MO, the Florida State Championship and a Middlesex, NJ, tournament. I was disappointed. There was no effort to promote Boni M. Boser at any of the three sites.

Here's an opportunity for horseshoe pitchers to help themselves and help promote our sport.

SPOTLIGHT ON THE LADIES

By Bonnie Siebold

Our spotlight is on our 5-time World Champ, Ruth Hagen. Ruth started pitching horseshoes in the back yard in 1940 where husband Harry taught her to pitch. In 1965 she read about the New York State tournament to be held at Lockport, NY. Harry encouraged her to enter. Lorraine Thomas loaned Ruth a pair of sanctioned shoes, invited her to join the league and also told her about the World Tournament at Keene, NH. That year Ruth came in 2nd in the State competition and 6th in the World. That was the start of her horseshoe pitching career. The bug had bitten! Pitching at least 2 hrs. each day, with ambition and drive she climbed to heights beyond what she ever imagined.

In 1967 she won her first State and in 1970 won the World Championship. She says she owes her success to practice, which heads to good timing, concentration, and coordination.

Ruth usually averages between 75-80% ringers in tournament competition. Among her many accomplishments, she has been World Champion 5 times, New York State Champion 11 times and Eastern National Champion 12 times. She holds 10 World records, most outstanding one was in 1974 when she made 42 ringers in succession. She is the only woman to win 4 World titles consecutively, 1970-73.

Ruth was listed in the Guinness Book of World Records in 1980. She has won over 100 trophies in various tournaments throughout the U.S. She appeared on various local T.V. sport shows promoting horseshoes. Also appeared on the following National T.V. shows: Virginia Graham Show, What's My Line?, and the Mike Douglass Show.

Ruth still pitches in the weekly league at Lockport and puts on exhibitions with Lorraine Thomas there. In her spare time she gives instructions to the Senior Citizens at area Senior Center.

Ruth was inducted into the New York State Hall of Fame in 1974 and

into the National Hall of Fame in 1975. She was appointed in 1982 as chairman of the Hall of Fame Committee.

Ruth and Harry have 2 sons, 2 daughters, 10 grandchildren and 3 great grandchildren.



COVER PICTURE... Featured this month is Frank Stinson of Minnesota. He has been an untiring horseshoe pitcher for sixty-three years starting at the age of 11. He has established remarkable records, a challenge for newcomers to the game. He won the Minnesota State title 8 times. Also he is a former Senior Men's World Champion. However, his ultimate award was that of being inducted into the NHPA Hall of Fame.

FRANK STINSON OF MINNESOTA — A PITCHING LEGEND

By Stewart N. Snyder
225 Preston Drive
Cloverdale, CA 95425

(See Cover Photo)

Frank Stinson was born in Illinois in 1910 when pitching shoes had holes in them and were worn smooth by horses treading stony fields and hard rock roads. He has been an untiring horseshoe pitcher for sixty-three years and has established remarkable records, the envy of any old-timer, and a challenge for newcomers to the game. Minneapolis, Minnesota has been his home where he retired from Honeywell Corporation after a thirty-six year commitment of responsibility.

There may be others who have pitched as many years as Frank, but have they won as many honors over an uninterrupted span of sixty years? At age eleven he started pitching in the back yard; he doesn't remember the distance apart the stakes were set, but that didn't matter too much, then. In 1923, at age 13, he won the Minnesota Junior Boy's State Championship and in 1924 he won the Junior Boy's World Championship with a ringer percentage of 47 pitching 40 feet while his young opponents all threw 30 feet. Knowing Frank as one who doesn't give up, he celebrated fifty-two years of marathon pitching in 1976 by winning the Senior Men's World Championship.

Frank was a pioneer, so to speak, in that he was willing to pitch, against short-lived criticism, the new hooked horseshoes invented by Putt Mossman in 1927 (erroneously stated 1933 in some publications). In the '27 World Tournament held in Duluth, Frank was the first Minnesota player to pitch these new Mossman shoes.

In reminiscing about the controversy over Mossman's newly designed pitching shoes with the innovative hooks, Frank expressed the current sentiment: "Other horseshoe manufacturers, at a pretournament convention, tried to have Mossman's new, so-called freak (illegal shoes), barred from use. But after a vote of all the tournament players, it was decided to allow the new hooked shoes to be used.

The many years between Frank's championship winnings exemplify the resilience of a champion: A lifetime filled with countless wins and trophies, among them Minnesota State Champion eight times, and as the ultimate award, induction into the NHPA Hall of Fame brought recognition of merit.

Frank walks the courts with a sure-footed stride; he has tread their measured distance for over half a century. In his quiet unassuming way he estimates (conservatively speaking) the miles walked between stakes would make a distance equal to once around the world at the equator. One might think that distance would be enough to slow him down, but consider on top of that, the burden of iron he has pitched from one stake to another. If it were fair to assume that he has thrown two shoes for each forty feet of that 25,000 mile walk, and that this distance equals 132,000,000 feet, divided by 40, multiplied by two, equals 6,600,000 shoes, times two-and-a-half pounds each shoe, you get the stupendous figure of 165,000,000 pounds or 82,500 tons of iron. (If one finds it difficult to believe the vagaries of arithmetic, then he is free to speculate as he wishes.)

Now, if Frank, a right-hander, appears to list a little to starboard today (but he doesn't) as he courses the forty feet between stakes you will understand — miles of walking, tons of iron, wins by the bushel: What has made all this possible? Clean living, good health and being a gentleman on the courts. After pitching he steps across the pit in front of the stake and stands quietly at ease on the platform behind the stake not to disturb his opponent's pitch. When not in a game you will find him keeping score or turning pits, always helpful for the betterment of the game.

WARD TOPS WARD OPEN — CLEVELAND, TN — SANC. 84-157

Don Ward captured the Ward Open in honor of his father on May 12 at Cleveland, Tennessee. He averaged 81.9 percent for the tournament which included a high single game of 88.8.

CLASS A — D. Ward 5-0-81.9; R. Narwood 4-1-67.7; J. Vines 2-3-58.2; G. Bush 2-3-57.9; S. Lang 1-4-54.7; C. Montgomery 1-4-50.4.

CLASS B — J. Black 4-1-62.7; D. Stallings 4-1-55.5; J. Smith 3-2-52.7; Jr. Haire 2-3-48.1; H. Irwin 2-3-43.2; G. Lewis 0-5-49.1.

CLASS C — W. Bennett 4-1-51.0; W. Gee 4-1-48.3; V. Fox 3-2-52.0; D. Jacobs 3-2-50.7; C. Bennett 1-4-46.7; J. Adkerson 0-5-42.3.

CLASS D — J. Cunyngnam 4-0-36.0; F. Fritts 3-1-33.6; R. Bender 2-2-27.5; L. Byrd 1-3-24.0; H. Lones 0-4-24.0.

CLASS E — J. Davis 3-0-26.9; R. Ward 2-1-23.4; F. Gaw 1-2-15.5; F. Babb 0-3-3.0.

DEADEYE HORSESHOES

NOW IN

FOUR MODELS

CLYDESDALES NOW IN LIGHTER WEIGHTS

	Price Per Pr.—Up to 9 Pairs	Price Per Pr.—9 Prs. & Over
CLYDESDALES 2# 10 oz., 2# 9 oz., 2# 8 oz., & 2# 7 oz.	\$23.00/Pr.	\$17.50/Pr.
N.T. 2# 10, 9, 8, 7 oz.	\$23.00/Pr.	\$17.50/Pr.
REGULAR 2# 9, 8, 7, 6, 5 & 4 oz.	\$23.00/Pr.	\$17.50/Pr.
E-Z GRIP 2# 10, 9, 8, 7 & 6 oz.	\$28.00/Pr.	\$22.50/Pr.

*Prices on all "DEADEYES" f.o.b. point of shipment.
Missouri residents add 4-5/8% sales tax and California
residents add on 6% tax.*

All "DEADEYES" are dead soft.

All "DEADEYES" are guaranteed against breakage for 2 years.
All "DEADEYES" guaranteed for 2 years from date
of purchase (NOT RE-PLACEMENT DATE)

W. Courtwright
P.O. Box 742
Fenton, MO 63026
Phone: (314) 376-5222 (8-5)
(314) 677-2200
(314) 842-5188

Carl Steinfeldt
44 Ridgecrest Road
Rochester, NY 14626 (summer)
Phone: (716) 225-4191

Walter Ray Williams, Jr.
6140 Grant St.
Chino, CA 91710
Phone: (714) 628-6053

Carl Steinfeldt
407 Shady Lane Mobil Park
15400 Roosevelt Blvd.
Clearwater, FL 33520
(winter address)
Phone: (813) 535-3136

ORDER DIRECT or from NHPA REPRESENTATIVE

15TH ANNUAL STATESVILLE, NC AUTUMN OPEN — SEPT. 22-23

The 15th annual Statesville Autumn Open tournament will be held at the 24-courts in Lakewood Park in Statesville, North Carolina on Saturday and Sunday, September 22-23.

It will be sponsored by the Statesville, NC Recreation Dept. directed by John Bullard and in cooperation with the North Carolina Association.

Cash awards will be: Men's A, 1st \$200, 2nd, \$100 and 3rd, \$50. Four \$25.00 awards and 5 \$15.00 awards. The women's Class A and men's Class B, 1st \$100, 2nd \$50.00, 3rd, \$15.00. All other classes, 1st, \$15.00 2nd, \$5.00. Trophies to the top 5 in the Men's and women's Class A. All other classes, 1st and 2nd.

Registration fee, \$9.00 plus class fee. Men, \$5.00. \$4.00. Juniors FREE. Players may pre-register by sending percentage and \$9.00 fee by Sept. 17 or register with percentage at courts on Sept. 22. Pitchers may qualify with 50 shoes at courts on Sept. 22 not later than 11 a.m. Tournament will start at 11 a.m. plus on Saturday morning, Sept. 22.

For further information as to motels, restaurants, etc. write Jack Springer, 925 Henkel Road, Statesville, NC 28677. Ph: 1-704-872-5659.

AURORA, IL OPEN WON BY BRYANT, 6-30-SANC. 84-433

CLASS A — Glen Bryant 6-1-65.3; Don Peters 5-2-59.7; Carl Thurman 4-3-61.6; Wayne Hooper 4-3-57.1; Hiram Nelson 3-4-58.3; Clint Spirset 3-4-55.4; Larry Knop 3-4-54.4; Dave Rodenback 0-7-47.3.

CLASS B — Mike Knop 7-0-55.1; Abe Austin 5-2-51.2; Pat Prestige 5-2-49.2; Al Johnson 4-3-41.4; Ed Knop 3-4-44.1; Harvey Johnson 3-4-35.9; Harold Bull 1-6-35.0; Larry Robbins 0-7-33.0.

CLASS C — Grant Hintz 5-2-36.8; Harland Hoffman 5-2-37.9; Steve Janovyak 5-2-38.3; John Legowski 4-3-45.9; Marty Schmitke 4-3-37.6; Don Lindholm 4-3-36.1; Bill Stevenson 1-6-21.9.

CLASS D — Dennis Simler 5-0-41.2; Emery Kalman 3-2-36.4; Pete Mosler 2-3-33.2; Ken Erb 2-3-30.4; Ralph Oliver 2-3-28.0; Norman Martin 1-4-33.6.

CLASS E — Russ Cook 3-2-28.0; Art Felgenauer 3-2-33.2; Earl Semler 3-2-31.2; Rickey Rieckert 2-3-32.8; Fred Rowcliff 2-3-24.0; James Salvino 2-3-20.0.

CLASS F — Henry Slusarak 5-0-32.4; Claud Sipes 3-2-24.4; Harry Wroble 3-2-24.0; L.L. Brown 3-2-15.6; Rick Martin 1-4-17.2; Charley Popejoy 0-5-14.0.

NEWCASTLE, PA. SPRING FLING WON BY DON KUCHCINSKI 6-2-3 — Sanction 84-94

CLASS A — Don Kuchcinski 7-0-7.9; Steve Kuchcinski 4-3-69.6; Curt Over 4-3-66.9; Jack Rainbow 4-3-63.6; Dan Kuchcinski 3-4-64.5; Clyde Martz 2-5-64.6; Ray Rugg 2-5-60.3; Casey Danner 2-5-58.2.

CLASS B — Pete Vlachos 7-0-58.6; Jim Kuchcinski 6-1-57.1; Bob McKnight 5-2-64.9; Melvin Burkett 3-4-58.9; Ed Blum 3-4-55.6; Glen Sebring 2-5-51.7; Joe Kuchcinski 1-6-55.5; Joe Markiewicz 1-6-52.7.

CLASS C — Frank Kilinski 6-6-51.2; Vince Sedaleck 5-2-57.8; Clarence Dixon 5-2-52.6; Merle Brightshue 4-3-51.6; Carl Elder 3-4-39.6; Francis White 2-5-48.2; John Ruskin 2-5-39.5; Rich Maroni 1-6-37.7.

CLASS D — Russ Welton 7-0-53.2; Wilford Boley 4-3-51.9; JOe Geci 4-3-50.0; George Rhea 4-3-49.3; Dave Baker 4-3-42.8; Joe Morris 3-4-45.8; Ed Horneman 2-5-46.5; Blair Shever Forfeit.

CLASS E — Edwin Sell 6-1-44.7; Francis Benedict 5-2-412.6; Marvin Sayers 4-3-47.9; Robert White Sr. 4-3-43.9; Dick James 4-3-42.0; Ed Kuchcinski 2-5-36.8; Jack Bruny 1-6-41.4; Clarence Butcher 1-6-38.0.

CLASS F — Budd Sampson 6-1-52.9; Tom Pischolish 5-2-49.1; Robert White D. Jr. 5-2-47.3; Charles Schech 5-2-44.1; Ken Widdowson 4-3-34.7; Robert Allen 2-5-41.8; Paul Gemza 1-6-33.6; Dave Kuchcinski 0-7-31.2.

CLASS G — Robert E. White 7-0-54.1; Bob Lapping 5-2-43.3; Henry Hansen 5-2-39.1; Earl Winsper 4-3-44.9; Jack Chambers 4-3-43.3; Paul Decker 2-5-33.7; Bill Meador 1-6-27.9; Joe Orsini 0-7-30.7.

CLASS H — Harold Tuttle Won play off 6-1-48.4; Gayle Meley 6-1-35.4; Ron Weiss 4-3-37.8; James Zdrale 4-3-35.9; Skip Gibson 4-3-34.4; Loyal White 2-5-28.3; John Tedeow 1-6-27.9; Clair Beardstley 1-6-26.8.

CLASS I — Harvey Hayes 6-1-34.1; Walter Beech 5-2-28.6; John Wasas 5-2-29.4; Tim McKendree 5-2-25.6; George Zayac 2-5-23.7; Dwight Wetzel 2-5-21.5; Gary Dambaugh 2-5-19.0; Butch Stover 1-6-18.1.

CLASS J — Orie Pudder 4-1-28.7; Ray Williamson 3-2-17.1; Rudy Kwiat 2-3-23.3; Robert Kuchcinski 2-3-20.1; Robert Campbell 2-3-19.8; Don Witt 2-3-18.8.

TITCOMB & M. MAURICIO WINNERS IN SAN JOSE, CA. OPEN SANCTION 84-168

CLASS A — Don Titcomb 6-0-76.7; Jesse Gonzales 4-2-75.0; Ed Floyd 2-4-66.3; Dave Storck 0-6-56.7.

CLASS B — Lou Fontaine 5-0-63.2; Jim Saunders Sr. 3-2-54.4; Verdan Zelmar 2-3-51.2; Walt Forman 2-3-48.8; Vince Mauricio 1-4-42.8; Steve Kynard 0-5-43.2.

CLASS C — Al Adams 5-0-53.6; Martin Lasich 4-1-33.3; Fred Lamm 2-3-30.4; Obie Winn 2-3-24.4; Bob Lloyd 1-4-31.2; Tim Saunders 1-4-27.6.

CLASS D — Micky Catbirth 4-1-31.5; Joe Ferrau 3-2-27.0; Bill Chandler 3-2-26.5; Jim Cosgrove 3-2-20.0; Wally Stevens 2-3-18.5.

CLASS E — Leo Wanner 5-0-15.5; Red Taylor 4-1-19.5; Kirby Elton 3-2-18.0; Jim LeFeur 2-3-10.5; Mel Falcon 1-4-7.5.

CLASS F — Hank Caldwell 3-1-21.0; Tom Pennington 2-2-18.0; Joe Kovack 1-2-14.7; Sy Sauer 1-2-11.3.

WOMEN'S CLASS A — Marisella Mauricio 5-0-69.6; Andrea Adams 4-1-47.6; Vada Dunn 2-3-43.2; Carol Casdalos 2-3-34.8; Joann Wanner 1-4-40.8; Lillian Lloyd 1-4-32.8.

WOMEN'S CLASS B — Twila Zelmar 5-0-25.0; Billie Sue Pennington 4-1-25.0; Jewel LeFeur 3-2-19.0; Paige Pennington 2-3-13.0; Sharon Saunders 1-4-12.5.

JUNIOR BOYS CLASS A — Nick Wanner 2-0-35.0; Gary Adams 0-2-20.0.

JUNIOR BOYS CLASS B — Mike Bradshaw 3-0-26.0; Scott Wass 2-1-15.3; Gerry Saunders Jr. 1-2-10.7; Rick Saunders 0-3-10.6.

FREE!

Trophy & Awards Catalog



Call Toll-Free
1-800-628-9657
In Mass. 1-800-282-7789

DINN BROS. The Trophy People

P.O. Box 111 • 68 Winter St. • Holyoke, MA 01041

FRANKE SPECIAL, CENTRALIA, IL, AUG. 18 SANC.

The 12th annual Henry Franke Special will be held in Centralia, IL August 18. The first 40 men and women entrants will be accepted plus the first four junior entrants. Classes C, D and juniors will begin play at 9:30 a.m. Classes A, B and E will begin about 1:30 p.m. (Sanction No. 84-254).

This is an NHPA mixed tournament and participants must have an NHPA card except for juniors and Class E. Entry fee is \$7.00 adults. Juniors free. Deadline for entries is Aug. 11 midnight. Women and 70-year-and-older pitchers will be allowed to pitch from 30 feet and will be placed in Class A, B, C, D or E according to where their ring percentage dictates. There will be three trophies per class, with money for each class winner.

Mail entries to: Roy Franke, P.O. Box 67, Centralia, IL 62801 or telephone 618-532-3267 after 6 p.m.

BERWYN, IL CLUB SANCTIONED LEAGUE FINALS

CLASS A — Charles E. Witkay 14-8-37.3; Daniel Sattler 14-8-30.5; Relio Tinor 11-11-24.0; Hal Kotora 10-12-28.2; John E. Legowski 10-12-45.2; Harold Palmer 10-12-23.7; Orville Michael 9-13-24.8; William Rabe 10-12-23.8.

CLASS B — Maurice A. Dore 18-6-19.4; James Solava 13-11-18.5; Charles Bachtell 13-11-8.9; L.L. Brown 12-12-15.2; Murrell Coomer 9-15-16.1; Frank Favicchio 9-15-16.2; Arthur H. Reis 9-15-18.2; David Bruschuk 9-15-14.2; Donald Frestel 8-16-16.6.

CLASS C — Harry G. Koko 15-9-6.5; Donald Hanley 14-10-12.9; Fred Kirkwood 14-10-5.7; William Kunz 11-13-5.2; Donald Fiala 10-14-10.0; Ken Daudelin 9-15-23.9; Michael Black 8-16-3.4; Thomas Stradal 7-17-10.6.

SO. CA. — DOW WINS BRAWLEY C OPEN — 5-1 — SANC. 84-118

GROUP 1 — Barbara Dow, Glendale 6-0-50.3; Chuck Yoshida, Carson 5-1-43.7; Norm Cone, Huntington Beach 4-2-44.0; Jo Vickery, Riverside 3-3-43.2; Charles Kerr, San Diego 2-4-35.2; Clyde Herren, Bloomington 1-5-37.0; Jack Chesshir, Apple Valley 0-6-34.2.

GROUP II — Stan Dobson, La Mesa 5-1-40.1; Joe Raykowski, Rialto 4-2-38.6; Wally Shipley, Newport Beach 4-2-37.6; Pat Brady, Torrance 3-3-38.4; Loris Hauck, Simi Valley 3-3-32.9; Larry Ford, San Diego 2-4-30.4; Frank Brown, Pomona 0-6-28.1.

GROUP III — Darrell Lamoureux, Boron 4-1-40.2; Mary Van Sant, Sun City 3-2-38.4; Louis Mahlstedt, Lake Isabella 3-2-37.0; Don Weaver, Nevada 3-2-35.3; Harold Slagg, Ontario 2-3-33.6; Lorenz Bramow, Riverside 0-5-32.4.

GROUP IV — Ed Arionus, Boron 5-0-30.8; Doyle Brawley, Riverside 4-1-35.2; Fred Birand, No. Edwards 3-2-14.4; Ed Oliver, Palm Springs 2-3-32.0; George Lamoureux, Boron 1-4-19.6; Lynn Hill, Boron 1-4-10.0.

GROUP V — Leonard Lifton, Torrance 5-0-45.4; Victor Lamoureux, Boron 4-1-37.3; Bob Lowell, Palm Desert 3-2-30.1; Tom Buck, Sun City 2-3-32.7; Butch McIntosh, Boron 1-4-18.3; Gene Van Sant, Sun City 0-5-9.7.

GROUP VI — Ernie Knorp, Goleta 5-0-37.8; Pete Cathalinat, Crest Park 4-1-29.5; John Shaver, Hesperia 3-2-27.9; George Farrell, Corona Del Mar 2-3-26.0; Jim Dow, Glendale 1-4-20.7; Gene Bolsinger, Simi Valley 0-5-21.2.

GROUP VII — Dick Rios, Lake Elsinore 5-1-16.3; Rick Rios, Lake Elsinore 4-2-16.1; Bear Hansen, Riverside 3-2-13.2; Jack Davenport, Sun City 2-3-12.4; John Green, Boron 1-4-9.4; Pete Lopez, Boron 1-4-8.0.

WEBB HORSESHOES N.H.P.A. APPROVED

1-4 pair	\$25.00
5-9 pair	\$23.50
10 pair or more	\$22.00

Add \$2.00 per pair shipping cost (USA)

WEBB HORSESHOE & EQUIPMENT
1319 LICKING PIKE • WILDER, KY 41076
Phone (606) 781-0589

**BUY YOUR TROPHIES & AWARDS
DIRECT FROM THE FACTORY**

**WE WILL BEAT ANY LEGITIMATE
TROPHY DEAL ANYWHERE**

GUARANTEED LOWEST PRICES

FREE ENGRAVING - FREE FREIGHT PROGRAM

**MOST UNIQUE PACKING SYSTEM FOR TROPHIES & PLAQUES
IN THE U.S.A. THIS SYSTEM SEALS YOUR AWARDS UNDER
PLASTIC AGAINST A STURDY CARDBOARD BACKING,
PROVIDING AN EXCELLENT DISPLAY AT YOUR EVENT WITH
NO WORRY OF DUST, MUD, OR DAMAGE FROM THE ELEMENTS**

LET US CUSTOMIZE YOUR NEXT TOURNAMENT

**SEE US FOR CUSTOM-PRINTED
CAPS, T-SHIRTS, & JACKETS**

CALL TOLL FREE 1-800-638-3044

& ASK ABOUT OUR

**HORSESHOE PITCHING
DISCOUNT PROGRAM**



**OLYMPIC TROPHY COMPANY
701 PARK LANE
HAGERSTOWN, MD. 21740**

Phone (301)739-5811

OUT OF STATE CALL TOLL FREE 1-800-638-3044



E. BROWN TOPS SO. CA. B OPEN — 5-6 — SANC. 84-119

GROUP ONE — Eston Brown, Anaheim 6-1-56.8; Al Nichols, Carson 5-2-59.6; Norm Cone, Huntington Beach 5-2-51.8; Jim Eozzo, Los Angeles 5-2-47.9; Barbara Dow, Glendale 4-3-47.0; Ray Silva, Santa Barbara 1-6-41.2; Chuck Yoshida, Carson 1-6-38.1; Pat Brady, Torrance 1-6-35.4.

GROUP TWO — Wally Shipley, Newport Beach 6-1-41.2; Fred Percy, La Habra 5-2-45.5; Loris Hauck, Simi Valley 5-2-41.3; Jim Atwell, Los Angeles 4-3-36.8; Lorenz Bramow, Riverside 3-4-35.8; Doyle Brawley, Riverside 3-4-35.3; Harold Slagg, Ontario 1-6-30.4; Mary Van Sant, Sun City 1-6-22.8.

GROUP THREE — Hans Petersen, Pico Rivera 7-0-35.9; Jim Buck, Lakewood 5-2-27.0; Jeff Weaver, Santa Barbara 4-3-29.3; Fred Craven, Bellflower 3-4-27.6; George Farrell, Corona Del Mar 3-4-24.6; Dan Eppel, Orange 2-5-31.2; Gene Bolsinger, Simi Valley 2-5-26.3; Richard Dillon, Gardena 2-5-24.0.

GROUP FOUR — Tim Rielly, Orange 6-1-29.7; Jim Dow, Glendale 6-2-24.3; Willard Harper, Bell Gardens 5-2-16.0; Jack Davenport, Sun City 3-3-12.0; Kee Blackrock, Maywood 2-4-13.7; Gene Van Sant, Sun City 1-5-3.7; Nancy Voets, Los Angeles 0-6-6.0.

JERRY SCHNEIDER DOUBLES — Doyle Brawley — Tim Rielly 10-0; Pat Brady — Steve Neal 8-2; Al Nichols — Dick Rios 8-2; Jim Atwell — Richard Dillon 7-3; Barbara Dow — Rick Rios 7-2; Newell Flann — Marina Rios 7-2; Tom Buck — Fred Craven 6-3; Leo Raymond — Dan Eppel 6-3; Wally Shipley P Art Risley 5-4; Marlin Jay — Bob Jacobs 5-4; Heman Standard — Rita Eozzo 4-5; Mike Nelson — Willard Harper 5-4; Norman Cone — Kee Blackrock 3-6; Peter Trejo — Dixon Dumas 3-6; Lorenz Bramow — Jim Dow 3-6; Jim Eozzo — Ron Laudensberger 3-6.

ORVILLE LOKKEN WINNER IN ISAIS OPEN SOUTHERN CALIFORNIA — SANCTION 84-121

GROUP ONE — Orville Lokken, San Bernardino 5-1-60.2; Jim Eozzo, Los Angeles 4-2-50.0; Blackie Harms, Shoshone 3-3-52.6; Les Burroughs, Perris 3-3-46.0; Bill Cork, Shoshone 2-4-51.0; Barbara Dow, Glendale 2-4-41.6; Frank Vega, Chula Vista 1-5-38.0.

GROUP TWO — Frank Brown, Pomona 6-0-41.8; Jo Vickery, Riverside 4-2-42.1; Bob Jacobs, Tustin 4-2-38.1; Norm Cone, Huntington Beach 3-3-33.1; Bruce Fries, Barstow 3-3-32.8; Ralph Clark, Riverside 1-5-26.9; Carl Grabow, Chula Vista 0-6-27.3.

GROUP THREE — Wally Shipley, Newport Beach 3-2-37.9; Ed Arionus, Boron 3-2-35.7; Jack Chesshir, Apple Valley 3-2-34.5; Stan Dobson, La Mesa 3-2-33.2; Ken Ziemer, Barstow 3-2-29.7; Paul Garcia, Colton 0-5-20.6.

GROUP FOUR — Jim Atwell, Los Angeles 5-0-33.8; Doyle Brawley, Riverside 4-1-43.3; Tom McQueen, Bishop 3-2-40.9; Mary Van Sant, Sun City 2-3-30.7; Lorenz Bramow, Riverside 1-4-29.2; Charlie Everhart, San Berdu 0-5-24.6;

GROUP FIVE — Bob Jacobs, Tustin 5-0-41.6; Lupe Henry, Palm Springs 4-1-34.0; Bob Lowell, Palm Desert 2-3-38.4; Ed Oliver, Palm Springs 2-3-29.2; Roy Henry, Palm Springs 1-4-25.2; Tom Mattson, Fontana 1-4-23.2.

GROUP SIX — Lois Clark, Riverside 5-0-34.8; John Shaver, Hesperia 3-2-28.8; Pete Cathalinat, Crest Park 3-2-28.8; Earl Hogan, San Bernardino 2-3-26.8; Ron Kennel, Bloomington 2-3-22.8; Joe Holder, Yucaipa 1-4-20.8.

GROUP SEVEN — Ralph Carter, Rialto 5-1-28.6; Roy Holliday, Ontario 4-2-20.7; Ron Keckskes, Fontana 3-2-23.2; Al Wisser, Riverside 2-3-16.8; Don Mulari, Riverside 1-4-18.4; Kent Kelley, Riverside 1-4-16.0.

GROUP EIGHT — Betty McQueen, Bishop 5-0-24.4; Chuck Everhart, Ridgecrest 4-1-18.0; Ralph Krueger, Rialto 3-2-14.0; Chino Rivas, Cathedral City 1-4-12.0; Gene Van Sant, Sun City 1-4-11.2; Jack Davenport, Sun City 1-4-8.2.

DOUBLES — Lloyd Porter — Doug Frank 8-0; Jim Eozzo — Gene Van Sant 5-3; Peter Trejo — Gary Alborn 6-2; Gerry Kloefer — Wilbur Cochanda 5-3; Tom Mattson — Bob Alborn 5-2; Tom Buck — George Farrell 4-3; Tom McQueen — David Rosas 4-3; Les Burroughs — Terrill Friend 3-4; Harold Slagg — Orman Weethee 3-4; Jo Vickery — Ken Vickery 3-4; Barbara Dow — Ralph Alvine 3-4; Fred Craven — Jim Dow 3-4; Mary Van Sant — Betty McQueen — 2-5; Lorenz Bramow — Al Alvarez 2-5; Ron Keckskes — Chuck Everhart 2-5; Dan Taylor — Henry Friend — 0-7.

TOWN AND COUNTRY REST. OPEN — CEDAR CITY, UTAH

The Town and Country Restaurant 5th Annual Cedar City Open tournament will be held in that city on August 11. Sanction 84-248. Cash awards of \$500 will be offered sponsored by the restaurant. Send entry fee of \$5.00 and percentage to Dennis Ohms, 777 West Midvalley Road, Cedar City, Utah 84720 by August 8.

The annual Utah State tournament will be held Sept. 14-15. Entry fee will be \$10.00 and deadline for entries is Sept. 10. Tournament starts at 4 p.m. on Sept. 14.

ROGER NORWOOD TOP MAN IN J.M. NAVE OPEN AT ELIZABETHTON, TENN. — 5-29 — SANCTION 84-158

CLASS A — R. Norwood 5-0-72.8; J.B. Fuller 4-1-70.7; D. Ward 3-2-77.5; G. Whaley 2-3-56.4; A. J. Nave 1-4-58.8; W. Stephens 0-5-54.0.

CLASS B — J. Vines 5-0-52.5; D. Salsbee 4-1-54.1; D. Stallings 3-2-48.1; J. Smith 1-4-45.4; W. Bennett 1-4-45.2; J. Sumlin 1-4-45.1.

CLASS C — G. Lewis 5-0-57.0; M. Altizer 4-1-48.0; C. Bennett 3-2-43.0; H. Foster 2-3-37.5; W. Jennings 1-4-34.7; S. Cornette 0-5-33.9.

CLASS D — W. White 5-0-37.9; J. Whaley 4-1-37.8; F. Gregg 3-2-30.0; D. Isaccs 2-3-27.6; L. Watson 1-4-26.8; J. Davis 0-5-18.9.

CLASS E — R. Finney 3-0-21.5; C.R. Wilcox 2-1-19.5; B. Bales 1-2-15.2; T. McPeck 0-3-13.4.

FIRST LADIES SANCTIONED LEAGUE IN MISSOURI

After spending several months trying to get enough women pitchers together for 4-6 women teams to organize a women's sanctioned league, the Golden Triangle Horseshoe Club, located at County Sports, Inc., in St. Charles County, have accomplished their goal. Not only do they have 4-6 women teams but have over 50 women who will pitch in the sanctioned league.

Judy Penfold, 11 St. Xavier Drive, St. Peters, Mo. 63376 is coordinator for the women. They will have 38 women playing on Monday night and hope to have 24 playing on Thursday night.

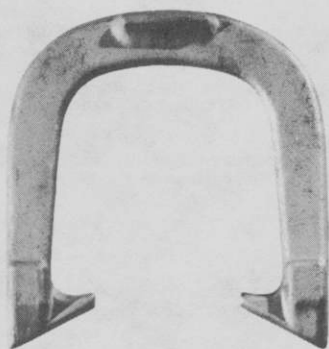
Some of the women had never pitched a horseshoe before qualifying but were quite thrilled with their new sport and did quite well for beginners.

Mr. (Skip) Penfold, Judy's husband is President of the club and is in charge of the men's sanctioned league who pitch on Tuesday and Wednesday on the same courts. The mens league have about 65 members. The club is also in process of trying to start junior leagues.

Since 1931

GORDON

"Spin-On"



— 3 TEMPERS —

Medium With Hardened Calks
Dead Soft Hard

Southern California Representative
JERRY SCHNEIDER
3144 W. Paso Robles Drive
ANAHEIM, CALIFORNIA 92804
714-826-0684

APPROVED BY NHPA

OFFICIAL STAKES ALSO AVAILABLE

THE QUEEN CITY FORGING CO.

233 TENNYSON STREET

CINCINNATI, OHIO 45226

TWIN COUNTY, MASS. LEAGUE OPENS 30TH SEASON

The Twin County Massachusetts Doubles League opened its 30th season with eight teams. The past season winners were as follows: East Division, Mixed Five; West division, Orange Peels from Orange, Mass. The Shelburne Falls V.F.W. League won the championship with a 35.6 ringer percentage and 8-9 in double ringer percent. The top season's players were Ricky Howe, 54.1 percent; High single game, 73.3; High Match, 65.0; Angie Cieslak, 49.7; High game, 73.3; High Match, 57.5; Bob Copley, 48.2; High game, 73.3; High Match, 63.3; Ed Jepson, 48.2; High game, 66.6; High Match, 55.5. During the season the league was saddened by the passing of the Barnes brothers.

LOVELACE TOPS MILLVILLE, KY, OPEN — 5-12 — SANC. 84-476

CLASS A MEN — Stan Lovelace Covington 6-1-67.2; Tib Turner Nicholasville 5-2-58.5; Rube Blevins Preston 3-4-62.9; Ron Colvin Jeffersonville, IN 3-4-62.8; Ed Henry Lexington 3-4-61.2; Jim Noble Louisville 3-4-58.6; John Stevenson Louisville 3-4-51.1; Omar Blacketer Louisville 2-5-53.4.

CLASS B MEN — Dallas Walters Mt. Sterling 6-1-54.3; John Hankins Goshen 5-2-59.5; Denny Malone Ludlow 5-2-56.7; Warren Tarvin California 4-3-51.6; Dickie Stevens Clarksville 3-4-50.0; Willard Drane Louisville 2-5-49.4; Billy oaks Nicholasville 2-5-47.8; Ray York Nicholasville 1-6-47.1.

CLASS C MEN — Glenn Estes Midway 6-1-51.7; Ed Curran Paris 5-2-48.1; Joe Minnich Shelbyville 5-2-46.1; Harold Holland Nicholasville 3-4-53.4; Bob Simpson Nicholasville 3-4-50.8; Austin Tomlin Dry Ridge 2-5-53.2; Warren Tarvin California 2-5-47.3; Jim Steel Nicholasville 2-5-46.7.

CLASS D MEN — Jeff Henn Covington 7-0-55.4; Chick Henn Covington 6-1-54.1; Robert Hudnall Quality 4-3-49.1; Ed Mason Tollesboro 4-3-42.5; Ray York Nicholasville 3-4-43.9; Bob Snider Ft. Thomas 3-4-33.6; Brit Sanders Millville 1-6-33.0; Pacer.

CLASS E MEN — Rich Caudle Frankfort 5-1-49.7; Mitchell Duncan Florence 3-3-42.1; William Garrett Lebanon 3-3-41.5; Sam Ingram Owingsville 3-3-39.9; Clyde Decker Louisville 3-3-39.6; Forest Cooper Vanceburg 2-4-41.4; Ed Bottom Perryville 2-4-36.5.

CLASS F MEN — Gary Jackson Owingsville 5-1-47.5; Don Hayes Mt. Sterling 4-2-52.7; Archie Adams Versailles 4-2-41.3; Ron Bohannon Eminence 3-3-48.7; Williams Evans Versailles 2-4-39.6; Jake Jacobs Millville 2-4-33.8; Paul Lee Frankfort 1-5-37.0.

CLASS G MEN — Scott McVey, Preston 5-1-46.8; Stan Kemper Pleasureville 5-1-42.3; John Streible Crestwood 4-2-38.7; Les Simpson Union 3-3-39.6; Wm. Kenton Highland Heights 2-4-40.2; Jerry Smith Eminence 1-5-34.0; Ronnie Smith Crestwood 1-5-27.0.

CLASS H MEN — Ralph Sharp Pleasureville 4-1-34.1; Ed Henn Elsmere 4-1-35.3; Randy Hankins Goshen 3-2-30.8; Gilbert STrode Tollesboro 2-3-28.4; Dan Webb Alexandria 2-3-28.2; Bob Cumming Cincinnati 0-5-12.8.

CLASS I MEN — Larry Tiller Eminence 5-0-36.0; Billy Oaks Nicholasville 4-1-32.9; Clarence Gullion Walton 2-3-34.2; Odis Lainhart Petersburg 2-3-21.5; Bill Price Louisville 1-4-20.7; Lee Portwood Burlington 0-5-7.3.

CLASS J MEN — Bobby Clark Preston 5-0-55.5; Don Norton New Castle 4-1-43.3; Bob Hardesty Louisville 2-3-30.1; Arnold Beck Alexandria 2-3-26.7; Don Black Pleasureville 2-3-26.6; Brad Coleman Highland Heights 0-5-21.6.

CLASS K MEN — Julius Willhoite Pleasureville 5-0-38.9; Maurice Norton Eminence 4-1-27.6; Larry Powell Eminence 3-2-30.1; Melvin Rader Pleasureville 2-3-34.0; Irvin Worthington Parksville 1-4-22.8; Eliza Ranes Burlington 0-5-16.3.

CLASS L MEN — Jim Hill Frankfort 4-0-32.6; Ben Burrows Midway 3-1-22.6; Mark Craig Bondville 2-2-29.7; Simon Kelley Lexington 1-4-23.4; David McCarty Pleasureville 0-4-19.0.

CLASS M MEN — Miles Cooper Vanceburg 5-0-24.8; Tom Switzer Vanceburg 4-1-18.9; Carols Webb Cold Spring 2-3-18.4; Gilbert Jones Louisville 2-3-18.2; Jerry Brown Lexington 1-4-18.8; Maurice Kennedy Vanceburg 1-4-13.3.

CLASS A WOMEN — Sue Hale Lancaster 4-0-37.6; Mable Hornback E-Town 3-1-45.2; Kathy Nockerts Louisville 2-2-39.0; Charlotte Knabel Lou. 1-3-33.0; Lillian Minnich Shelbyville 0-4-30.0.

CLASS B WOMEN — Karlyn Kelley Lexington 3-1-27.8; Judy Worthington Parksville 3-1-20.6; Helen Blacketer Lou. 2-3-14.5; Bes Bottom Perryville 1-3-21.8; Billie Cayes Franksort 1-3-16.1.

CLASS C WOMEN — Ruby Estes Midway 5-1-30.9; Pam Bently Midway 3-3-23.8; Millie Hellman Louisville 3-3-14.1; MAMie Clarkson Junction City 1-5-17.2.

JUNIOR BOYS — Tony Webb Alexandria 6-0-38.6; Junior Alder Shelbyville 3-3-15.9; Tony Hankins Goshen 2-4-14.8; Larry Tiller Eminence 1-5-9.8.

SIMPSONVILLE, S.C. OPEN — 6-2 — SANC. 84-301

LADIES CLASS — Mary Sanders, 45.0; Betty Sanders, 46.0; Lynn Sanders, 35.0; Bert Stephens, 33.6.

CLASS A MEN — Willie Stephens, 7-0-71.5; J. B. Fuller 6-1-70.2; Mark Dyson 5-2-68.9; A.J. Nave 4-3-61.8; Jim Vines 2-5-51.9; Dave Selesbee 2-5-52.1; Wilbert Bennett 2-5-41.8; Rocky Stephens 1-6-49.0.

CLASS B MEN — Oren Selesbee 5-1-47.9; Terry Cook 5-1-47.9; Tom Lawson 5-1-31.7; Coy Bennett 2-4-37.8; Norman Kelly 3-3-35.8; Mike Dunas 1-5-20.3; Herman Lones 0-6-19.9.

BEN WIEDRICH WINS STRAWBERRY FAIR OPEN AT LEBANON, OREGON — JUNE 2-3 — SANCTION 84-308

CLASS A-1 — Ben Wiedrich 7-0-78.9; Barry Chapelle 6-1-74.2; Ridge Leggett 4-3-67.1; Lowell Davis 3-4-65.3.

CLASS A-2 — Jerry Gorton 4-3-61.6; Ron Ferguson 3-4-60.7; Dave Gutcher 1-6-57.3; Esther Ott 0-7-52.8.

CLASS B — Joe James 7-0-56.9; Harold Hoffman 6-1-53.3; Lee Wallace 5-2-51.8; Bob Johnson 3-4-41.7; Art Lund 3-4-40.0; Esthel Benner 2-5-43.3; Len Christensen 2-5-38.8; Irv Farron 0-7-35.3.

CLASS C — Charles Wendling 8-1-53.6; Bill Graham 7-2-49.6; Ron Hegefeld 6-2-47.5; Ray Meyer 4-4-44.9; Bob Beesley 4-4-38.5; Ken Leatherman 3-5-35.9; Ethel Davis 2-6-38.2; Denny Samples 2-6-34.9; Lloyd Likens 1-7-32.4.

CLASS D — Vic Hyder 6-2-39.8; Wayne Maag 5-3-42.1; Loy Brown 4-3-44.9; Vern Wanless 4-3-36.9; Marvin Tatchio 3-4-36.9; Jim Kosterman 3-4-35.4; Gene Buzzini 2-5-36.3; Dave Sturdevant 2-5-33.9.

CLASS E — DuWayne Wiedrich 7-0-38.9; Barney Root 5-2-39.4; Al Moen 5-2-33.8; Bill Dolan 4-3-38.1; Lloyd Kilgore 4-3-30.2; Lee Centell 2-5-31.8; Elmer Otnes 1-6-27.7; George Hughes 0-7-19.1.

CLASS F — Don Snethen 5-1-34.1; Gordon Bergeson 4-2-29.0; Tom McAdam 3-3-31.0; Ernest Chaput 3-3-27.6; Bill Johnson 3-3-26.4; Earl Hansen 2-4-22.7; Gil MOrgan 1-5-19.9.

CLASS G — Clarence Wood 5-1-27.4; Buck Davis 4-2-32.2; Al Holland 4-2-27.2; Charles Fromherz 3-3-28.9; Larry Rickert 3-3-26.8; Frank Dvorshak 2-4-19.0; Ben Goodling 0-6-18.9.

CLASS H — Tom Ritter 6-0-27.4; Bob Bushnell 4-2-27.5; Phil Bellefeuille 4-2-25.0; Homer Matson 3-3-27.8; Mel Basim 2-4-18.1; Jack Stryker 1-5-20.8; Glenn Chaput 1-5-18.3.

LADIES — Betty Tatchio 6-1-31.5; Irene Wiedrich 5-2-23.2; Phyllis Centell 5-2-35.1; Rosemary James 4-3-18.1; Laura Lee Samples 3-4-23.7; Alta Maag 3-4-21.1; Donna Graham 2-5-11.1; Carolyn Ferguson 0-7-12.9.

**JOYNER MEMORIAL OPEN TITLE TO BEN WIEDRICH
CORVALLIS, OREGON — MAY 26-27 — SANCTION 84-307**

CLASS A — Ben Wiedrich 6-0-77.7; Lowell Davis 5-1-70.4; Ridge Leggett 4-2-65.7; Dave Gutcher 2-4-58.8; Lee Wallace 2-4-56.1; Ron Ferguson 2-4-54.2; Irv Farron 0-6-46.1.

CLASS B — Joe James 5-1-44.9; Everett Clark 4-2-48.0; Bob Beesley 4-2-43.4; Charles Wendling 3-3-44.6; Esthel Benner 3-3-42.2; Len Christensen 1-5-37.3; Art Lund 1-5-35.7.

CLASS C — Bill Graham 6-0-48.2; Jerry Wolfe 4-2-39.3; Ken Leatherman 4-2-40.6; Jim Kosterman 3-3-32.6; Lloyd Likens 2-4-35.5; Denny Samples 2-4-26.4; Ron Miller 0-6-27.4.

CLASS D — Bob Johnson 5-1-43.8; Vic Hyder 4-2-39.1; Roger Christianson 2-3-35.1; Wayne Maag 2-3-36.6; Marvin Tatchio 2-3-35.5; Dick Culbertson 1-4-32.8.

CLASS E — Floyd Gray 6-1-40.2; Lee Centell 5-2-36.9; Dave Sturdevant 5-2-40.4; Lloyd Kilgore 4-3-33.2; Floyd Flemmer 4-3-32.9; DuWayne Wiedrich 3-4-31.1; Elmer Otnes 1-6-20.2; George Hughes 0-7-17.1.

CLASS F — Ernest Chaput 6-1-31.9; Jack McGrew 5-2-32.1; Gordon Bergeson 4-2-30.1; Art Taylor 4-2-29.4; Ed Dachtler 1-5-23.5; Phyllis Centell 1-5-23.2; Bill Johnson 1-5-17.3.

CLASS G — Frank Dvorshak 5-0-27.0; Al Holland 4-1-31.6; Carl Shoberg 3-2-26.0; Jack Stryker 2-3-19.4; Glenn Chaput 1-4-18.3; Kathy Tylor 0-5-9.9.

LADIES CLASS A — Esther Ott 6-0-51.2; Ethel Davis 4-2-43.1; Irene Wiedrich 2-4-32.0; Carolyn Ferguson 0-6-14.3.

LADIES CLASS B — Betty Tatchio 6-0-31.5; Laura Lee Samples 3-3-24.1; Alta Maag 2-4-18.7; Rosemary James 1-5-19.8.

TURECHEK AND M. TARKET RETAIN TITLES IN TRI-STATE AT SCOTTSBLUFF, NEBRASKA — MAY 26 — SANCTION 84-39

CLASS A — B. Turechek, NB 6-1-55.8; D. Weatherbee, CO 5-2-55.8; F. Holmes, CO 4-3-50.9; R. Pintor, CO 3-4-51.5; F. Madison, NB 3-4-47.8; P. Lacross, CO 3-4-47.6; J. Tulk, CO 2-5-52.3; K. Raymond, WY 2-5-45.8.

CLASS B — J. Spencer, CO 7-2-49.5; E. Graves, CO 6-3-46.5; P. Anderson, NB 6-3-46.3; D. Hanshaw, NB 5-4-44.4; D. Tarket, CO 5-4-39.6; G. Schmidt, NB 4-5-45.4; M. Bakken, NB 4-5-41.6; B. Schliske, WY 4-5-36.9; G. Stewart, CO 4-5-32.8.

CLASS C — G. Rickard, WY 9-0-43.1; P. Pintor, CO 6-2-40.9; Play off; R. Grooms, NB 4-3-37.4; B. Johns, NB 3-4-42.7; H. Guettler, NB 3-4-38.3; H. Bauer, NB 3-4-36.6; D. Randall, NB 1-5-39.0; G. Bale, NB 0-7-24.1.

CLASS D — J. Hilzer, NB 6-2-40.7; G. Pyle, CO 5-3-38.7; Play off; D. Clausen, WY 4-3-35.0; C. Dobberstine, NB 3-4-34.5; J. Dunkon, WY 3-4-34.5; D. Laurin, WY 3-4-29.0; D. Roberts, NB 3-4-29.0; K. Thompson, CO 2-5-27.0.

CLASS E — E. Knaub, CO 7-2-28.8; J. Knight, CO 6-3-32.0; B. Shepard, CO 6-3-30.5; D. Hyder, CO 5-4-30.9; D. Fraass, NB 5-4-30.0; C. Grooms, NB 5-4-30.0; D. King, NB 5-4-29.5; J. Guettler, NB 5-4-24.3; D. Verhoeff, NB 1-8-22.6.

CLASS F — R. Hytrek, WY 7-0-32.5; F. Vergil, NB 6-1-28.4; E. Conilogue, WY 6-1-22.7; J. Andreas Jr, NB 3-4-18.4; J. Hult, CO 3-4-18.1; S. Ruhl, NB 2-5-23.4; J. Maser, NB 2-5-22.7; T. Westphal, NB 1-6-16.2.

CLASS G — F. Rein, NB 7-0-28.8; D. Medina, NB 5-2-22.4; R. Sjostrom, WY 5-2-21.5; R. Wills, NB 4-3-23.2; J. Stencil, CO 4-3-21.5; T. Schmidt, NB 2-5-13.6; F. Anderson, NB 2-5-9.1; V. Hesslink, NB 0-7-15.3.

CLASS H — S. Lease, NB 6-1-24.6; M. Fraass, NB 5-2-22.8; G. Beers, NB 5-2-20.8; C. Gillespie, NB 4-3-19.6; G. Walker, NB 3-4-15.8; B. Stencil, CO 3-4-14.7; J. Darnell, NB 2-5-16.2; R. Gompert, NB 0-7-11.5.

CLASS I — S. Popp, NB 7-0-17.6; R. Vergil, NB 6-1-15.5; M. Adams, NB 5-2-13.7; R. Richards, WY 3-4-9.5; R. Gillespie, NB 3-4-4.2; M. Sitzman, NB 2-5-8.7; B. Woodward, NB 2-5-6.9; M. O'Brien, NB 0-7-7.0.

WOMEN CLASS A — M. Tarket, CO 6-0-58.5; J. Thompson, CO 4-1-42.1; B. Laurin, WY 3-2-39.6; P. Grooms, NB 2-3-25.1; T. Grooms, NB 1-4-27.8; V. Stewart, CO 0-5-13.6.

WOMEN CLASS B — S. Grooms, NB 5-0-39.2; I. Richards, WY 3-2-28.3; R. Raymond, WY 3-2-27.6; L. Westphalen, NB 2-3-25.7; A. Grooms, NB 2-3-23.1; W. Roberts, NB 0-5-25.5.

WOMEN CLASS C — D. Spencer, CO 5-0-19.9; J. Heytrek, WY 3-2-18.9; C. Gompert, NB 3-2-11.1; J. Hanshaw, NB 3-2-11.8; W. Gillespie, NB 1-4-4.2; S. Hill, NB 0-5-3.6.

JUNIOR CLASS A — D. Laurin, WY 5-0-29.1; T. Rein, NB 3-2-19.6; J. Maser, NB 3-2-18.5; D. Vergil, NB 3-2-15.6; J. Hanshaw, NB 1-4-9.2; J. Maser, NB 0-5-10.4.

JUNIOR CLASS B — R. Hytrek Jr., WY 5-0-12.8; S. Groff, WY 4-1-11.6; J. Clark, WY 3-2-7.8; T. Hesslink, NB 2-3-4.9; D. Fitts, NB 1-4-1.7; J. Maser, NB 0-5-1.8.

Let PITCHER'S PAL

help pick up the shoes

- Save your back
- Avoid fingernail damage
- Protect your hands

Send \$5⁹⁵ to:



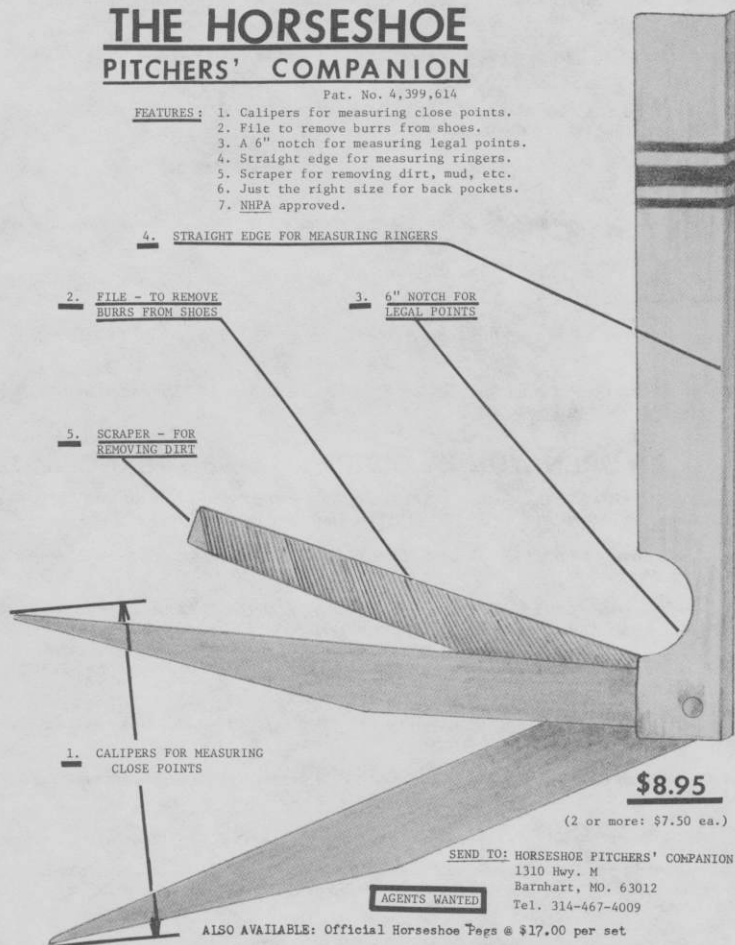
post paid

Pitcher's Pal, P.O. Box 583 West Middlesex Pa. 16159

THE HORSESHOE PITCHERS' COMPANION

Pat. No. 4,399,614

- FEATURES:**
1. Calipers for measuring close points.
 2. File to remove burrs from shoes.
 3. A 6" notch for measuring legal points.
 4. Straight edge for measuring ringers.
 5. Scraper for removing dirt, mud, etc.
 6. Just the right size for back pockets.
 7. NHPA approved.



\$8.95

(2 or more: \$7.50 ea.)

SEND TO: HORSESHOE PITCHERS' COMPANION
1310 Hwy. M
Barnhart, MO. 63012
Tel. 314-467-4009

AGENTS WANTED

ALSO AVAILABLE: Official Horseshoe Pegs @ \$17.00 per set

RALPH MADDOX WINS VA. APPLE CAPITOL OPEN

CLASS A — R. Maddox 11-0-71.6; Alv. Perry 10-1-75.4; C. Martz 9-2-65.1; All. Perry 8-3-61.9; D. McCurdy 6-5-57.4; C. Twigg 5-6-56.7; R. Toney 5-6-55.1; F. Hix, Jr. 4-7-53.8; J. Melton 4-7-53.6; K. Sites 3-8-51.6; R. Hinkle 1-10-50.8; B. Dean 1-10-39.9.

CLASS B — J. Patrick 6-1-50.5; C. Walker 6-1-46.6; P. McCollum 4-3-48.2; C. Henson 4-3-43.4; D. Carson 3-4-43.6; C. Owens 3-4-36.3; E. Orndorff 1-6-30.0; J. Antesberger 0-7-26.3.

CLASS C — R. Roper 7-0-52.9; C. Ball 5-2-42.2; G. Tidwell 4-3-42.0; C. Cooper 4-3-40.0; D. Swaim 3-4-42.4; D. Davis 3-4-39.8; W. Shifflett 1-6-34.3; J. Baugher 0-7-26.9.

KNISLEY TOPS LANCASTER, OHIO SILVER DOLLAR OPEN

The annual Silver Dollar Open was held June 9-10 at Lancaster, Ohio, and was won by Jim Knisley of Bremen, Ohio. He set a new tournament record of 85.1 percent. Jean Myers won the Ladies championship followed by Lilly Butterbaugh in second spot. Tournament was NHPA sanctioned, 84-58.

CLASS A — Knisley 7-0-85.1; Moon 6-1-71.8; Roberts 5-2-70.0; Martz 3-4-64.4; Copeland 2-5-66.2; Kabel 2-5-62.8; Coy 2-5-59.6; Meece 1-6-63.3.

CLASS B — Wipert 7-0-67.6; Levi Miller 6-1-64.4; L. Miller 5-2-61.2; Roseberry 4-3-56.6; Manker 3-4-59.4; E. Waggoner 2-5-57.7; K. Waggoner 1-6-48.2; Campbell 0-7-53.6.

CLASS C — Tumlin 6-1-56.5; Rhymer 5-2-54.8; Hughes 5-2-53.8; Santee 4-3-47.9; Stephenson 4-3-45.8; Sarbaugh 3-4-45 0; King 1-6-34.3.

CLASS D — Noe 7-0-43.2; Martin 6-1-50.3; Johnson 5-2-46.3; Thome 4-3-37.2; Bechtel 3-4-38.0; Rose 2-5-36.8; Morrow 1-6-33.5.

CLASS E — Boesch 6-1-45.0; Hill 6-1-44.1; Grosklos 6-1-42.8; Hite 3-4-30.9; Pratt 2-5-34.3; Mitchell 2-5-31.9; Davis 2-5-31.7; Morse 1-6-30.8.

CLASS F — Myers 7-0-38.3; Preston 6-1-33.6; Bostic 5-2-31.4; Hawk 4-3-32.9; Sarbaugh 3-4-31.9; Kiger 2-5-28.2; Dittoe 1-6-17.8; Cochran 0-7-25.5.

CLASS G — Robertson 6-1-25.5; Kinnaman 5-2-22.0; Shea 5-2-18.9; Cooper 4-3-22.5; Robinson 3-4-17.4; Martin 3-4-17.2; Eaton 1-6-19.1; Mitchell 1-6-8.5.

DALLAS, PA OPEN WON BY BURRIS — 6-2-3 — SANC. 84-328

CLASS A — Glenn Burris 7-0-78; Dan Beshore 5-2-73; Glenn Rubendale 5-2-65.9; Glenn Brown 3-4-68.3; Dean McCurdy 3-4-62.9; Ray Bechtel 3-4-62.4; Dick Dart 2-5-50.9; Pete McCollum 0-7-49.4.

CLASS B — Jack Swyers 5-1-50.0; Jim Sibley 4-2-52.5; Al Sweeney 2-3-48.4; Al Long 2-3-47.5; Frank Smigiel 2-3-47.0; Ted Lewis 1-4-46.0.

CLASS C — Joe Templeton 6-1-44.2; Joe Sadowski 5-2-43.3; Wayne McCloskey 4-3-45.9; Ed Bowersox 4-3-44.4; Frank Goss 3-4-39.0; Bernie Wierbowski 3-4-29.2; John Clippinger 2-5-36.8; Sherwood Frankhouser 1-6-35.7.

CLASS D — Joe Belcavitch 4-1-38.1; Joe Shurmaitus 3-2-34.4; Don Bubb 3-2-31.9; Jerry Lyons 3-2-28.2; B. Wierbowski 2-3-24.1; Gerard Harris 0-5-23.6.

CLASS E — Bernie Wierbowski 5-0-27.2; Ned Kinard 4-1-30.4; Dennis Lloyd 3-2-28.7; Jack Boward 2-3-22.2; Ken McElwain 1-4-21.1; Elwood Carpenter 0-5-16.6.

LADIES & JRS. — Jean Long 3-0-22.0; Kevin Lloyd 2-1-12.5; Dawn Lloyd 1-2-7.2; Grace Marchokitus 0-3-1.3.

IRON OPEN — CEDAR CITY, UTAH — JUNE 9 — SANC. 84-244

CLASS A — Jerry Moritz, Cedar City 6-0-43.2; Dennis Ohms, Cedar City 4-2-40.7; Don Weaver, Las Vegas 3-3-35.7; Nober Zuniga, Enoch 3-3-34.8; Joe Didier, Enoch 3-3-34.6; Lorin Condie, Cedar City 1-7-30.4; George Sarkis, Cedar City 1-7-27.4.

CLASS B — Wendel Bundy, Cedar City 6-3-37.2; Gordon Lytle, Eagle Valley 7-2-36.9; Elwin Marquardson 6-2-32.2; Wilford Andelin, Hurricane 5-3-33.5; Louise Johnson, Enoch 2-6-31.4; Denis Andelin Sr., Mt. Pleasant, 3-1-29.8; Lewis Rollins, Las Vegas 1-3-26.1; Cal Sorenson, Enoch 1-3-25.7; Rose Johnny, Panaca 0-4-22.9; Gary Gilbert, Mt. Pleasant 0-4-19.6.

CLASS C — Barry Johnson, Enoch 5-1-27.2; Rod Bowers, Mt. Pleasant 4-2-29.2; Neldon Christenson, Hurricane 4-2-22.4; Alton Fawcett, Hurricane 4-2-21.5; Bob Langston, Hurricane 3-3-15.5; Clark Fawcett, Hurricane 1-5-19.4; Doc Hildbrand, Las Vegas withdrew.

CLASS D — Lamar Neagle, Cedar City 5-2-27.1; Russell Johnny, Panacea 5-3-21.6; Carol Marquardson, Cedar City 4-3-21.4; Joe Cwik, Cedar City 3-3-20.4; Larry Overson, Enoch 3-3-17.1; George Hunt, Cedar City 2-4-9.6; Allen Heaton, Cedar City 1-5-11.7.

CLASS E — Carol Ohms, Cedar City 6-1-20.4; Viola Fawcett, Hurricane 5-2-19.3; Jaylynn Sorenson, Enoch 4-2-13.8; Gerald Tichenor, Hurricane 3-3-8.8; Bill Sheehan, Cedar City 2-4-7.9; Dick Waldron, Hurricane 1-5-7.1; Pat Sheehan, Cedar City 1-5-5.0.

JUNIORS CLASS — David Andelin, Mt. Pleasant 4-0-15.8; Amy Ohms, Cedar City 3-1-5.8; Denis Andelin Jr., Mt. Pleasant 2-2-7.5; Gabe Ohms, Cedar City 1-3-4.2; Jenny Ohms, Cedar City 0-4-5.8.

RUBENDALL ON TOP IN STRASBURG, PA EQUESTRIAL OPEN MAY 28-29 — SANCTION 84-127

CLASS A — Glenn Rubendall 6-1-67.8; Glenn Burris 5-2-74.9; Dan Beshore 5-2-72.3; Homer Snyder 4-3-63.7; Glenn Brown 4-3-63.0; Dean McCurdy 2-5-61.7; Dick Dart 1-6-56.0; Frank Smigiel 1-6-51.0.

CLASS B — Dick Wilson 6-1-45.7; Ed Gohn 5-2-51.6; Pete McCollum 4-3-42.9; Dick Ruff 4-3-39.3; Al Long 3-4-39.3; John Clippinger 3-4-36.9; Charlie Koons 2-5-30.3; John Baugher 1-6-31.8.

CLASS C — Blaine Aley 7-1-45.1; Joe Sadowski 6-2-47.7; Joe Belcavitch 4-3-48.0; Bob Gable 3-4-48.4; Ted Lewis 3-4-47.8; Raymond Shober 3-4-43.8; Joe Shurmatis 3-4-41.6; Ira Stine 0-7-28.3.

CLASS D — Mike Bonner 7-1-35.8; Dennis Lloyd 6-2-21.6; Ned Kinard 4-3-26.4; Jack Boward 3-4-26.0; Larry Thomason 3-4-24.2; Gerard Harris 3-4-22.3; Glenn Eppley 3-4-19.7; Ken McElwain 0-7-17.7.

VERMONT ASSOCIATION TOURNAMENT ACTIVITY — SANC.

MOTHER'S DAY OPEN — BRISTOL — SANCTION 84-515 — CLASS A — Kevin Hollister 5-0-69.4; Bob Dean 4-1-46.9; Liz Downer 3-2-50.0; Bud Leavitt 2-3-43.6; Ken Downer 1-4-36.1; Bev Forgues 0-5-37.2.

CLASS B — Bob Many 7-2-44.9; Debbie Brown 7-2-43.9; Jean Bean 6-3-47.4; Wendell Burnham 5-4-36.3; Bob Gauthier 5-4-33.6; Joe Forgues 4-5-41.4; Ralph Cayia 4-5-38.1; Reid Brewster 3-6-34.2; Dave Smith 3-6-32.9.

CLASS C — Don Choniere 8-1-33.2; Bob Gordon 8-1-36.0; Blakely Bigelow 7-2-31.3; Connie Selleck 6-3-34.6; Paul Turner 5-4-22.5; Alton Nichols 4-5-25.8; Don Dean 3-6-21.2; Walt Webber 2-7-17.9; Kay Brewster 2-7-16.8.

CLASS D — Lee Paquette 5-1-23.4; John Coffey 5-1-30.3; Jim Forgues 4-2-32.4; Jeanette Lavallee 2-4-24.6; Joe Bougor 2-4-24.0; Betty Bedard 2-4-21.8; Ray Benson 1-5-24.8.

CLASS E — Roger Forgues 8-1-23.6; Ray Gomez Sr. 7-2-27.9; Glen Norris 6-3-22.3; Bud Garrett 6-3-21.0; Dick Bedell Sr. 6-3-19.1; Ray Gomez Jr. 5-4-18.0; George Finch 4-5-18.4; David White 2-7-11.4; Mike Brown 1-8-12.1.

CLASS F — Harold Wrisley 4-0-19.6; Bob Euber 2-2-11.0; Irv Stiefel 2-2-2.5; Myron Selleck 1-3-6.6; Willie Francis 1-3-3.5.

JUNIORS — Dick Bedell Jr. 4-0-31.3; Denny Young 2-2-37.0; Dana Bedard 0-4-14.7.

FATHER'S DAY OPEN, MIDDLEBURY — JUNE 17 — SANCTION 84-518 — CLASS A — Jean Bean 5-2-50.8; Dick Greene 5-2-54.4; Debbie Brown 5-2-50.2; Pete Baldwin 4-3-47.1; Bob Many 4-3-45.3; Ray Barker 2-5-40.3; Joe Forgues 2-5-39.0; Ralph Cayia 1-6-36.2.

CLASS B — Bev Forgues 7-0-48.0; Reid Brewster 5-2-41.6; Ken Downer 5-2-41.2; Bob Gauthier 4-3-32.7; Don Choiniere 2-5-36.3; Dennis Krawczyk 2-5-34.9; Elmer Moore 2-5-33.0; Connie Selleck 1-6-20.9.

CLASS C — Walt Weber 6-0-32.9; John Coffey 5-1-34.0; Kay Brewster 4-2-28.0; Mickey Bedard 3-3-24.6; Alton Nichols 2-4-21.7; Phil Sumner 1-5-20.0; Gary Lipka 0-6-13.7.

CLASS D — Roger Forgues 5-2-24.3; Joe Bougor 5-2-26.1; Betty Bedard 5-2-23.5; Rick Lamphere 4-3-28.1; Jeanette LaVallee 4-3-27.7; Gibb Greene 3-4-22.1; Don Fales 2-5-15.9; Bob Paquette 0-7-15.6.

CLASS E — Harold Wrisley 4-1-16.6; George Finch 3-2-21.9; Mike Brown 3-2-21.1; Jeanette Bedard 3-2-19.2; Bill Blair 2-3-20.2; Dick Bedell Sr. 0-5-12.7.

CLASS F — Willie Francis 5-1-11.1; Irving Stiefel 4-2-1.3; Myron Selleck 3-3-3.6; Bob Euber 0-6-3.4.

JUNIOR CLASS A — Dick Bedell Jr. 5-1-34.0; Bernie Bergeron 3-3-20.6; Dana Bedard 1-5-12.6.



COLORFUL BUMPER STICKER

\$1.95 Postpaid

OGLE-ART DESIGNS, Dept B

P.O. Box 49605

Austin TX 78765

The shoe for the 1980's

STAR

STAINLESS HORSESHOES

NOW PRECISION MANUFACTURED BY
A COMPANY THAT MAKES STAINLESS
STEEL PRODUCTS OF ALL KINDS.

THEY HAVE OVER 30 YEARS
EXPERIENCE IN THIS FIELD AND THE
LATEST IN STATE-OF-THE-ART
TECHNOLOGY. THE STAR STAINLESS
IS A TOP QUALITY SHOE FOR THE
PROFESSIONAL PITCHER.

Send Check or
Money Order to:

Alfred R. Boudreau Jr.
301-A Old Ipswich Rd.
Rindge, N.H. 03461

NHPA
APPROVED



\$69.00 per pair
postpaid

MARTZ WINS TOMAYKO OPEN — UNIONTOWN, PA — SANC. 84-91

CLASS A-1 — Clyde Martz, PA 4-1-75.4; Oscar Mann, OH 4-1-66.2; Al Zadroga, PA 3-2-74.5; Wayne Luoma, OH 3-2-74.3; Casey Daner, PA 1-4-62.2; Jim Solomon, PA 0-5-50.4; Clyde Martz over Oscar Manns in playoff for first place.

CLASS A-2 — Ray Rugg, PA 4-1-65; Joe Roebuck, PA 3-2-67.1; Phil Spiesman, OH 3-2-66.1; Bob Straitiff, PA 3-2-62.0; Jack Rainbow, PA 2-3-58.8; Henry Hostetler, OH 0-5-55.2.

CLASS B — John Chambers, PA 3-2-47.7; Bill Stahl, PA 3-2-44.7; Joe Markiewicz, OH 3-2-52.1; Steve Mikan, PA 3-2-50.8; Joe Pagnanelli, PA 2-3-44; John Schneider, PA 1-4-45.

CLASS C — Ken Alloway, PA 4-1-34.6; Joe Orsino, PA 2-3-32.8; Jack Chambers, PA 3-2-30.9; Gerald Glacken, PA., 3-2-29.8; Forest Robinson, W. VA 2-3-29.5; Duane Armstrong, PA 0-5-15.7.

CLASS D — Rich Liptak, PA 5-0-22.6; Jake Yauger, PA 4-1-21.9; Bill McGill, PA 2-3-20.5; Joe Gibbs, Sr., PA 2-3-16.9; Joe Gibbs, Jr., PA 1-4-11.8; Ed Straitiff, PA 1-4-11.6.

INDIANA ASSOCIATION TOURNAMENTS — ALL SANCTIONED

CLAYTON MEMORIAL — RICHMOND — SANCTION 84-436 — Rains cancelled some of the classes in this tournament.

CLASS B — Clarence Andrews, 7-0-52.7; Dale Kirtley 6-1-53.3; Lonnie Mullins 4-3-49.3; Bill Wicker 4-3-47.1; Eric Kingma 3-4-45.9; Kenny Perkins 2-5-43.5; Jim Crone 2-5-36.4; Leonard Conner 1-6-39.9.

CLASS C — Ed Clark 7-0-48.8; Leonard Conner 6-1-42.3; Bill Hatt 5-2-33.6; Bob Sharp 4-2-37.1; Ken Tally 3-4-37.8; Elmer Branson 2-5-30.95; Luther Chandler 1-6-23.48; Lloyd Karstens 0-7-20.9.

CLASS D — Kenny Gray 4-1-28.3; David Herring 4-1-33.5; Glenn Elliott 4-1-31.7; Bob Cunningham 2-3-19.7; Carl Cooper 1-4-24.4; John Chandler 0-5-17.1.

CLASS F — Jim Mikesell 6-1-29.0; Bob Herring 6-1-23.1; (play-off); Fred Armentrout 5-2-19.2; Bob Ranck 4-3-16.9; Jim Bailey, 4-3-15.1; Danny Pearson 2-5-11.6.

SPIRIT OF VINCENNES — SANCTION 84-437 — MAY 26-27 — CLASS A — (play off) Peck Anderson 6-1-69.3; Dusty McNeece 6-1-59.7; Hunter Dorman 4-3-69.5; Dale Henry 4-3-63.9; Burl Taylor 4-3-61.6; Ralph Johnson 3-4-59.7; Ed Weyer 1-6-53.7; Bob Henderson 0-7-38.





CLASS B — B.H. Palmer 6-1-59.9; Leo Dellinger 4-3-54.4; Dennis Ferree 4-3-50.6; Curly Gladding 4-3-48.7; Marlin Wells 3-4-55.3; Doyle Maikranz 3-4-52.2; Frank McIntyre 2-5-49.4; Jim Lane 2-5-46.5.

SAT. CLASS C — Mose Spainhour 7-0-46.8; Meril Anleitner 5-2-42.5; L.E. Bowman, IL 4-3-43.8; Glenn Cummins 4-3-40.6; Bob Steimel 4-3-29.5; John Miller 2-5-34.1; Wendell Hose 2-5-24.7; Glenn Zollman 0-7-30.9.

SUN. CLASS C — Art Cornelius 6-1-50.0; Ken Tally 5-2-42.2; Bob Steimel 4-3-40.9; Jim Clark 4-3-37.3; Martin Drummond 4-3-34.1; Bob Heuby 3-4-33.7; John Miller 2-5-41.0; Mike Drummond 0-7-20.

CLASS D — John Miller 7-0-39.3; Pete Shain, IL 5-2-36.5; Pat Kluesner 4-3-37.9; Smokey Wolfe 4-3-30.1; Steve Dunning 3-4-33.8; Ray Dillon 3-4-28.1; Luther Chandler 2-5-33.5; Ray Hunckler 0-7-17.7.

PLEASE INDICATE YOUR CHOICES:

- S M L XL
- RED WHITE ROYAL BLUE
-  \$8.95. 100% COTTON. POCKET. KID SIZES AVAILABLE.
-  \$9.95. 50/50. SCOOPED NECK, FRENCH-CUT SLEEVES.
-  \$13.95. 50/50. SWEATSHIRT. KID SIZES AVAILABLE.
-  \$14.95. 50/50. OPEN COLLAR, POCKET, SHORT SLEEVES.

Red, Black, and White Design
Silkscreened on Back of Shirt



PLEASE ADD \$1.00 FOR POSTAGE

Send Check or Money Order to:
OGLE-ART DESIGNS
Department C
P.O. Box 49605
Austin TX 78765

INDIANA — (Continued)

SAT. CLASS E — Brett Kramer 7-0-47.3; Mike Weiss 6-1-31.3; Terry Shelton 4-3-34.9; Chester Evans 3-4-23.9; Kenny Phillips 3-4-20.8; Herb McCoskey 3-4-17.2; John Chandler 1-6-17.9; Butch Hahn 1-6-15.7.

SUN. CLASS E — John Lowe 5-0-30.9; Norman Keepes 4-1-27.3; Fred Armentrout 3-2-21.7; Mike Drummond 2-3-18.5; Larry Robinson 1-4-14; Steve Battin 0-5-9.4.

WOMEN A — Phyllis Anderson 3-0-42.7; Helen Keepes 0-3-35.3. Juniors A-B; Robert Robinson 7.9; Bradley Hahn, 9.5.

WINGATE PIG ROAST OPEN — JUNE 2 — SANCTION 84-439 — CLASS A — Bob Vail 6-1-45.8; James Gaylor 5-2-55.1; Vern Holland 4-3-43.3; Harry Groce 4-3-42.8; Earl Richardson 4-3-38.8; Ed Howdeshell 3-4-43; Jim Bennett 1-6-37.4; Fred Drape 1-6-36.9.

CLASS B — Ron Minick 6-1-40.3; Pat Reeves 5-2-31.4; Lowell Denman 4-3-34.5; Ray Bennett 4-3-29.2; Bob Henry 4-3-33.7; Charles Jarred 3-4-30.4; Ed Pearson 2-5-19.4; Paul Deck 1-6-23.5.

CLASS C — John Walls 5-0-16.7; Hubert Buster 4-1-28.9; Rick Wayne 3-2-19.8; Terry Wilken 2-3-15.8; Bob Cunningham 1-4-18.5.

CLASS D — Tom Poore, Sr., 5-0-18.0; Eric Vandeventer 4-1-18.8; Gerry Dreyer 3-2-14.; Curt Ramsey 2-3-10.0; Larry Cain 1-4-7.1.

SUMMER SPECIAL, EDINBURG — JUNE 3 — SANCTION 84-440 — CLASS A — Jerry Mills 7-0-74.4; Ronnie Colvin 4-3-70.6; Peck Anderson 4-3-70.0; George Sales 4-3-69.4; John LeMond 3-4-67.4; Bill Ungetheim 2-5-70.1; Arthur Burch 2-5-67.2; Chuck Grothe 2-5-67.1.

SAT. CLASS B — Jim Kemple 6-1-62.; G.H. Palmer 6-1-56.9; Bill Wicker 5-2-49.0; Marlin Wells 4-3-53.3; Jim McIntire 3-4-46.2; curly Gladding 2-5-49.7; Jim Pierson 1-6-41.4; Joe Titsworth 1-6-38.2.

SUN. CLASS B — Frank Baxter 7-0-64.1; Dennis Ferree 5-2-65.6; Ralph Johnson 5-2-58.6; David Tatman 4-3-53.2; Ed Howdeshell 3-4-50.3; Bob Moit 2-5-47.8; Art Cornelius 2-5-42.7; Bob Hendrson 0-7-39.8.

SAT. CLASS C — Brett Kramer 6-1-47.4; Offord Burkhart 6-1-48.2 (playoff); George Dickson 4-3-43.7; Jim Turpin 4-3-36.8; Pete Hobbs 4-3-35.2; Gib Campbell 2-5-32.5; Glenn Zollman 1-6-34.1; Paul Joslen 1-6-30.8.

SUN. CLASS C — (play-off) Mose Spainhour 6-1-47.7; Harold Tatman 6-1-36.1; Steve Dunning 4-3-34.7; Ken Tally 4-3-32.7; Bill Hatt 4-3-32.; Tim Tatman 2-5-36.8; Gerald Cummings 2-5-29.6; Rolland Kight 0-7-26.8.

CLASS D — Bob Hill 5-0-34.3; Clarence Hyatt 3-2-29.7; Luther Chandler 3-2-27.8; Jack Turner 2-3-29.9; John Chandler 1-4-25.; Dailey Fogle 1-4-16.8.

CLASS E — Carl Mitchell 7-0-39.8; Dale Wehmeier 6-1-28.3; Jim Gosnell 5-2-28.4; Lowell Vandeventer 3-4-26.3; Ken Phillips 3-4-16.0; Herb McCoskey 2-5-22.3; Aubrey Callon 1-6-18.7; Joe Trobaugh 2nd 1-6-17.8.

CLASS F — (play-off) Russell Turner 6-1-23.3; Bob Ranck 6-1-15.3; Charles Hatt 5-2-21.4; Danny Cox 4-3-12.2; Lowell Cummings 4-3-9.6; Steve Battin 2-5-12.0; Lowell Vandeventer 1-6-16.2.

WOMEN CLASS A — Phyllis Anderson 39.5; Class B — Charline McKinley 32.6.

JUNIOR CLASS A — (play-off) Rick Henry 4-1-61.3; Steve Ungetheim 4-1-65.8; Chad Hyatt 57.5; Norma Hyatt 2-3-30.4; Steve Turner 0-5-21.4.

HOLLISTER SWAMPS BENNINGTON, VT. INV. — MAY 27

CLASS A — Kevin Hollester 6-0-78.2; Gale Greene 4-2-61.6; Leon O'Dell 1-5-49.6; Liz Donner 1-5-45.6.

CLASS B — Reid Brewster 5-2-42.6; Deb Brown 5-2-46.; Bob Gauthier 4-3-39.4; Bill Krawczyk 4-3-38.; Pete Baldwin 3-4-43.9; Robert Snide 3-4-33.9; Bob Gokey 2-5-37.0; John Gokey 2-5-33.3.

CLASS C — Bill Krawczyk 6-1-36.9; Robert Gordon 6-1-37.6; Dennis Krawczyk 5-2-39.3; David Smith 4-3-37.6; Kay Brewster 4-3-33.6; Albert Dickinson 2-5-33.7; Walter Weber 1-6-18.9.

CLASS D — Gibb Greene 5-0-19.6; Lee Hutton 4-1-21.9; Leo LaValley 3-2-29.6; Mike Brown 2-3-24.5; Milton Mull 1-4-2.2.

CLASS E — Billy Sweet 4-1-23.0; Glen Matheson 4-1-62.0; Charles McDonald 4-1-15.0; Denny Young 2-3-30.5; Anna Gokey 1-4-9.5.

ROSE FESTIVAL OPEN, OREGON CITY, OREGON — JUNE 9

CLASS A — Ben Wiedrich 7-1-80.3; Herb Criss 7-2-75.4; Peter Clark 6-2-69.0; Lowell Davis 4-3-68.1; Barry Chapelle 3-4-69.5; Art Sperber 2-5-63.2; Dean Curry 1-6-60.7; Gerry Staley 0-7-51.6.

CLASS B — Ron Ferguson 6-1-52.7; Esther Ott 4-3-53.8; Bernard Martell 4-3-53.1; Howard Abbott 4-3-51.9; Lee Wallace 3-4-50.8; Rick Rebman 3-4-50.0; Chuck Ball 3-4-48.3; Esthel Benner 1-6-44.4.

CLASS C — Bill Graham 6-1-49.7; Bob Sletten 5-2-47.8; Don Ferguson 4-2-40.1; Arnie Coleman 3-3-43.9; Ken Leatherman 2-4-37.7; R.E. Click 1-5-28.8; Ethel Davis 1-5-28.1.

CLASS D — Loy Brown 6-0-45.1; Wayne Maag 5-1-40.7; Bob Johnson 4-2-36.1; Lloyd Likens 3-3-36.2; Jim Kosterman 1-5-33.6; Ron Miller 1-5-32.9; Denny Samples 1-5-25.7.

CLASS E — DuWayne Wiedrich 7-0-41.9; Marvin Tatchio 5-2-39.3; Bill Dolan 4-3-38.5; Gene Buzzini 4-3-36.5; Willard Hutschmid 4-3-31.9; Floyd Flemmer 3-4-36.7; Lloyd Kilgore 1-6-28.1; Vern Wanless 0-7-25.1.

CLASS F — Buck Davis 6-1-28.4; Dick Evans 5-2-35.5; Jack Stryker 4-3-23.6; Larry Rickert 4-3-29.0; Art Taylor 4-3-32.3; Frnak Dvorshak 3-4-27.5; Clarence Wood 2-5-24.7; Bill Johnson 0-7-17.0.

CLASS G — Bud LeDoux 6-1-28.2; Tom Ritter 5-2-25.0; Don Ferguson 4-3-21.6; Bob Bushnell 4-3-21.1; Bryon Kerr 3-4-21.2; Terry Everest 3-4-20.3; Ben Goodling 3-4-17.9; Steve Harris 0-7-10.6.

WOMEN — Alta Maag 8-2-26.4; Vi Bushnell 6-3-27.1; Laura Lee Samples 5-3-28.3; Betty Tatchio 5-3-29.3; Irene Wiedrich 5-3-27.4; Donna Graham 2-5-15.1; Kathy Taylor 1-6-7.6; Debi Wilson 0-7-4.3.

FATHER'S DAY OPEN, SALEM, OREGON — JUNE 16 & 17

CLASS A — Ben Wiedrich 5-1-75.2; Barry Chapelle 5-2-70.1; Lowell Davis 4-2-67.8; Ron Ferguson 2-3-57.8; Ridge Leggett 1-4-48.6; Dave Gutcher 0-5-52.5.

CLASS B — Charles Wendling 6-0-53.9; Esther Ott 5-1-52.6; Lee Wallace 4-2-52.3; Chuck Ball 2-4-44.0; Darlene Williams 2-4-40.5; Joe James 1-5-48.4; Esthel Benner 1-5-41.5.

CLASS C — Bob Sletten 5-0-46.6; Bill Graham 4-1-46.8; Bob Showers 3-2-39.1; Tom Williams 1-4-43.4; Art Lund 1-4-39.3; Len Christensen 1-4-33.8.

CLASS D — Jim Kosterman 5-1-40.2; O.D. McMillan 4-2-35.7; Wayne Maag 3-2-38.5; Ron Miller 2-3-37.2; Bob Beesley 1-4-35.7; Vern Wanless 1-4-32.4.

CLASS E — Marvin Tatchio 6-2-38.2; Roger Christianson 4-4-37.2; Phil Hendry 4-4-33.4; DuWayne Wiedrich 3-5-34.7; Lloyd Kilgore 3-5-29.2.

CLASS F — Dick Evans 5-1-35.7; Skip Neubold 4-2-33.7; Floyd Flemmer 3-2-31.9; Art Taylor 2-3-30.6; Lee Centell 2-3-29.6; Bill Johnson 0-5-23.7.


CLASS G — Mick Mathers 4-0-33.9; Wayne Ferris 3-1-27.0; Bob Bushnell 2-2-23.5; Ben Goodling 1-3-16.4; Carl Shoberg 0-4-18.2.


WOMEN — Betty Tatchio 7-0-38.8; Phyllis Centell 6-1-30.2; Irene Wiedrich 4-3-29.1; Alta Maag 3-4-26.7; Donna Graham 3-4-26.4; Virginia Bushnell 3-4-20.6; Rosemary James 2-5-18.5; Carolyn Ferguson 0-7-12.5.


PLEASE INDICATE YOUR CHOICES:


S M L XL

RED WHITE ROYAL BLUE

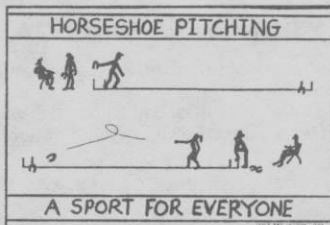
 \$8.95. 100% COTTON. POCKET.
KID SIZES AVAILABLE.

 \$9.95. 50/50. SCOOPED NECK,
FRENCH-CUT SLEEVES.

 \$13.95. 50/50. SWEATSHIRT.
KID SIZES AVAILABLE.

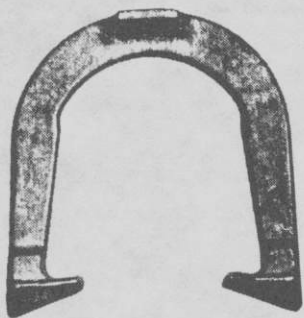
 \$14.95. 50/50. OPEN COLLAR,
POCKET, SHORT SLEEVES.

Design silkscreened on back of shirt.



PLEASE ADD \$1.00 FOR POSTAGE
Send Check or Money Order to:
OGLE-ART DESIGNS, Department A
P.O. Box 49605, Austin TX 78765

TED ALLEN HORSESHOES



An original professional shoe. Still the very best professional shoe — Designed by a Champion — Used by many Champions — Not all users will become champions, but by throwing ALLEN's, you know that you've performed your best.

The designed features were invented by TED ALLEN, a 10 time world champion. He has made world records over and over with them. The design was a leader. After years it came to be a trend as a guideline in shoe equipment.

You can't go wrong in using them.

1045 LINDEN AVENUE

BOULDER, COLORADO 80302

WORLD BIDS TO BE SEALED & SECRET

Any bid for future world tournaments must be sealed and be kept secret as far as public announcements are concerned. This decision was made by the NHPA officers due to the fact that announcement of large bids tends to scare out other bidders. This will be in effect for 1987 and into the future unless otherwise decided.

SCHUMMER SYSTEM SANCTIONED

The George Schummer system is sanctioned by the NHPA as a game related item and is a very lovely system. Those of you who are concerned about whether to use this system in tournaments to replace the current one must remember that all sanctioned events are governed by the NHPA rules as adopted by the membership.

DON WARD WINS GA. TOURNAMENT — SAN. 84-347

Don Ward of Morristown, Tn., bested all opponents in Ringgold, Ga., on a hot muggy 95 degree day, June 16.

Danny Wallace of Ga. had a good day with all wins to capture Class B. Class C was decided by playoff with James Fowler coming out on top over Roy Parker.

CLASS A — D. Ward, Tn. 5-0-64.8; Gil Lebow, Tn. 4-1-60.0; O.D. Lebow, Tn. 2-3-58.0; D. Stallings, Tn., 2-3-56.6; J. Waters, Ga., 2-3-54.2; J. Black, Ga. 0-5-56.8.

CLASS B — D. Wallace, Ga. 7-0-50.3; Lamar Fowler, Ga. 5-2-50.9; Van Fox, Tn., 5-2-48.5; Steve Long, Tn., 4-3-51.4; J.E. Brooks, Ga., 4-3-3.1; Bud Kurtz, Ga., 2-5-45.5; R. Williams, Ga., 1-6-27.4; B. Barnes, Ga., 0-7-23.3.

CLASS C — J. Fowler, Ga. 4-1-35.8; R. Parker, Tn. 4-1-38.2; H. Lambert, Tn. 2-3-22.5; R. Frost, Tn. 2-3-22.4; T. Logan, Ga. 2-3-16.2; R. Presley, Ga. 1-4-19.0.

LEMOND WINS MARTINSVILLE, IND. SPECIAL — SANC. 84-442

CLASS A — John LeMond 8-1-68.3; Jerry Mills 7-2-70.7; Bill Holland 7-2-67.5; Chuck Grothe 6-3-66.6; Arthur Burch 6-3-61.6; Peck Anderson 5-4-65.9; Hunter Dorman 3-6-64.8; Ed Hinshaw 2-7-52.1; Bill Query 1-8-41.1.

CLASS B — Ed Weyer 4-1-60.4; Dale Henry 3-2-57.; Ralph Johnson 3-2-56.4; Jim Kemple 2-3-50.9; Burl Taylor 2-3-46.7; Ron Lewis 1-4-45.7.

CLASS C — (play-off) G.H. Palmer 6-1-50.8; Dale Kirtley 6-1-52.8; Denniss Ferree 5-2-55.8; Leo Dellinger 4-3-50.8; Bob Moit 3-4-54.7; Doyle Maikranz 2-5-49.6; Jim Lane 2-5-44.9.

CLASS D — (play-off) Bill Wicker 6-1-50.7; Ed Clark 6-1-48.; Carly Gladding 5-2-50.4; Bob Henderson 4-3-45.9; Brett Kramer 4-3-43.; C.B. Batts 2-5-35.8; Offord Burkhart 1-6-32.6.

CLASS E — Bob Steimel 4-1-39.1; George Dickson 3-2-35.7; Jim Clark 3-2-32.8; Wayne Waggoner 2-3-34.4; John Miller 2-3-33.3; Steve Dunning 1-4-27.4.

CLASS F — Clarence Hyatt 7-0-43.6; Gib Campbell 6-1-39.4; Ken Tally 5-2-42.6; Marvin Maxwell 4-3-42.5; Jim Turpin 3-4-31.1; Pete Hobbs 2-5-32.0; Bob Henry 1-6-29.2; Darrell Campbell 0-7-19.

CLASS G — (play-off) Paul Joslen 5-2-33.8; Bob Hill 5-2-35.7; Lloyd Karstens 5-2-28.2; Luther Chandler 4-3-25.9; Jack Turner, 3-4-30.4; Cecil Burris 3-4-20.7; Bill McDaniel 2-4-19.6.

CLASS H — Lowell Vandeventer 5-0-26.7; John Chandler 4-1-22.5; Joe Trobaugh 3-2-25.5; Butch Hahn 2-3-18.1; Fred Armentrout 1-4, 22.5; Steve Battin 0-5-6.4.

JUNIOR CLASS A — (play-off) Steve Ungetheim 64; Chad Hyatt 50.7; Rick Henry 61.1; Norma Hyatt 23.1.

CLASS B — JUNIORS — Steve Turner 19; Dennis Hyatt 14; Bradley Hahn 9.5.

BAKER WINS IND. WOLCOTT SPECIAL — JUNE 2 — SANC. 84-441

CLASS A — Cliff Baker, IL 4-1-68.6; Loyd Clerget 4-1-60.6; Ed Kowatch 3-2-63.; John Shuck 3-2-61.8; Tim Poindexter 1-4-43.7; Gary Poindexter 0-5-45.1.

CLASS B — Eric Kingma 6-1-45.6; Jim Bennett 5-2-41.8; Martin Drummond 5-2-40.8; Earl Richardson 4-3-41.3; Fred Draper 3-4-44.1; Harold Bice 2-5-35.1; Joe Rinehart 2-5-34.8; Jim Clark 1-6-33.

CLASS C — Glenn O'Neal, IL 5-0-40.8; Bob Prohaska 3-2-37.2; Elmer Branson 3-2-32.3; Ron Kukral 3-2-30.6; Jeff Bowyer 1-4-31.7; We Mollencupp 0-5-22.5.

CLASS D — Bob Herring 5-0-33.4; Jim Taylor 4-1-38.2; Russ Sanson 2-3-26.5; David Herring 2-3-21.3; Don Stivers 2-3-20.0; Fred Miles 0-5-28.0.

CLASS E — Troy Kingma 6-1-37.9; Ray Mayhew, IL 6-1-35.9; Glenn Donaldson 5-2-34.8; Fred Saylor 4-3-31.1; Paul Deck 3-4-28.9; Ray Bennett 2-5-32.; Ed Pearson 2-5-25.7.

CLASS F — Ed Saylor 6-1-22.7; Rick Wayne 5-2-24.8; John Walls 5-2-24.3; Terry Wilken 4-3-22.6; Jerry Barnett 4-3-14.8; Curt Ramsey 3-4-14.7; Larry Cain 1-6-8.7.

CLASS G — Hubert Buster 5-0-26.0; Mike Drummond 4-1-18.6; Tom Poore Sr. 3-2-10.0; John Poore 2-3-5.0; Tom Poore Jr. 0-5-2.8.

WOMEN CLASS A — Lorena Poindexter 50.; **Class B** — Mary Ann Miles 6.8; **Juniors Class A** — Charlie Bowyer 36.8; **Class B** — John Mollencupp 18.4.

TITCOMB WINS GOLDEN GATE CLASSIC — CALIF. — SAN. 84197

CLASS A — Don Titcomb 9-0-76.8; Jesse Gonzales 8-1-72.5; Bob Mauzey 7-2-66.5; Marly Dunn 5-4-50.0; Vern Gosney 4-5-52.0; Tom Webb 4-5-50.0; Walt Foreman 3-6-48.8; Chuck Farrell 3-6-45.5; George Greeott 2-7-38.8.

CLASS B — Bob Malley 9-1-36.9; Bert Charley 8-2-35.6; Dale Koistenen 7-2-37.0; Jim Smith 6-3-37.0; Jim Diaz 4-5-29.8; Stewart Snyder 4-5-27.3; Tim Saunders 3-6-29.0; Robert Burnett 4-5-28.5; Bill CarLise 1-8-19.3.

CLASS C — Lou Gayet 9-0-28.5; Kris Cowels 7-2-25.0; Elton Cowels 7-2-21.0; Nick Wanner 6-3-30.5; Elden Bryan 4-5-18.0; Henrey Caldwell 4-5-16.0; Leo Wanner 4-5-13.5; Chester Anderson 3-6-14.8; Philip Nesbitt 1-8-9.8.

WOMENS CLASS — Marthe Dunn 6-1-52.0; Lisa Gonzales 4-3-46.0; Iris Kiley 4-3-43.7; Billie Pennington 3-4-31.7; Joanne Wanner 2-5-36.9; Roberta Lovelady 2-5-29.7; Sue Sanders 0-7-22.3; Yvonne Mauzey 7-0-64.9

NORTHERN CALIFORNIA ASSOCIATION ACTIVITY

STURLA ON TOP IN SACRAMENTO W/J OPEN — Sanction 84-185 — **WOMENS GROUP ONE** — V. Sturla, Tik. 6-1-51.6; Y. Mauzey, Son. Co., 6-1-52.0; J. Wanner, Sac., 4-3-41.0; M. Dunn, T.V., 4-3-38.3; K. Alling, G.C., 4-3-34.3; F. Jones, G.C., 2-5-37.0; L. Anderson, G.C., 36.7; H.G. Sturla - 64%.

WOMENS GROUP TWO — L. Lloyd, T.V., 7-0-28.0; J. Charley, G.C., 5-2-24.0; J. Held, F.R., 4-3-21.4; B. Pennington, S.J., 4-3-20.3; M. Pilcher, F.R., 17-1; P. Pennington, S.J., 3-4-14.9; S. Vale, Son. Co., 2-5-13.1; B. White, 0-7-8.3; H.G. Lloyd — 44%.

JUNIOR BOYS GROUP — M. Long, Jr., Yolo, 3-0-73.3; J. Long, Yolo, 2-1-35.3; N. Wanner, Sac., 1-2-30.7; R. Stuart, F.R., 0-3-4.0; H.G. M. Long, Jr. — (2) 74%.

STORCK TOPS FEATHER RIVER OPEN, Palermo, Calif. — Sanction 84-184 — **GROUP ONE** — Dave Storck, Yolo, 7-0-59.4; Emmett Schroeder, Stk., 5-2-57.7; Bob Mauzey, Son. Co., 4-3-59.7; Juke Basham, Y.S., 4-3-53.1; Herb Rushing, G.C., 3-4-52.0; Walter Krowel, F.R., 3-4-48.9; John Sylvester, F.R., 2-5-44.0; Dick Hucke, Reno, 0-7-45.7; H.G. Storck — 72%.

GROUP TWO — Joe Colt, Y.S., 6-1-44.6; Bert Charley, G.C., 5-2-44.0; Earl Kynard, Yolo, 5-2-41.4; Don Williams, F.R., 4-3-39.1; Robert Gillett, Shas., 4-3-34.9; Leonard Rood, F.R., 2-5-38.6; Harold Hoar, G.C., 2-5-35.1; Jim Long, Yolo, 0-7-30.0; H.G. Colt — 58%.

GROUP THREE — Robert Green, Col., 6-2-32.3; Jim Keyes, Sr., F.R., 5-3-31.0; Lee Van Dalsen, G.C., 4-3-28.3; Otis Hubbard, Y.S., 4-3-26.3; John Kincheloe, Yolo, 3-4-27.1; Bob Lloyd, T.V., 3-4-26.9; Jay Bush, G.C., 3-4-24.3; Ray Moss, Yolo, 1-6-24.0; H.G. Van Dalsen — 38%.

GROUP FOUR — Lee Thornhill, Sac., 5-0-31.6; Thernond Watkins, Y.S., 3-2-28.8; Mickey Cutbirth, S.J., 3-2-23.6; Lyle Mathis, G.C., 2-3-28.0; Bob Bendorf, Jr., Y.S., 2-3-22.8; Jerry Nylander, Y.S., 0-5-10.8; H.G. — 38%.

GROUP FIVE — George Gillett, Shas., 4-1-34.8; Gary Dillon, Y.S., 3-2-24.0; Randy Daniel, Y.S., 3-2-20.0; Lee Hardy, Shas., 2-3-22.8; Leo Wanner, Sac., 2-3-16.8; Henry Caldwell, S.J., 1-4-16.8; H.G. Gillett — (2) — 42%.

WOMEN — GROUP ONE — Yvonne Mauzey, Son. Co., 5-0-61.2; Sandy Hardy, Shas., 4-1-46.8; Joanne Wanner, Sac., 3-2-38.0; Leona Anderson, G.C., 2-3-32.0; Lillian Lloyd, T.V., 1-4-28.8; Josephine Charley, G.C., 0-5-18.0; H.G. Mauzey — 74%.

WOMEN — GROUP TWO — Dellann Moss, Yolo, 7-0-23.0; Midge Pilcher, F.R., 6-1-17.7; Billie Sue Pennington, S.J., 4-3-15.0; Jeanne Caldwell, S.J., 4-3-11.0; Jean Bush, G.C., 4-3-7.3; Bonnie White, G.C., 2-5-5.7; Jan Held, F.R., 1-6-2.0; H.G. Moss — 36%.

JUNIORS — GROUP ONE — Mel Long, Jr., Yolo, 6-0-67.0; Joe Long, Yolo, 4-2-38.7; Derex Moss, Yolo, 2-4-38.0; Nick Wanner, Sac., 0-6-24.7; H.G. M. Long — 82%.

STORCK REPEATS IN FEATER RIVE II — Sanction 84-179 — **GROUP ONE** — Dave Storck, Yolo, 7-1-58.0; Herb Rushing, G.C., 6-2-51.0; Bob Mauzey, Son. Co., 4-3-57.2; Juke Basham, Y.S., 4-3-55.6; Verdian Zelmar, S.J., 3-4-50.4; Emmett Schroeder, Stk., 3-4-49.6; Walter Krowel, F.R., 2-5-60.0; H.G. Mauzey — 70%. Storck over Rushing in play-off 33/28.

GROUP TWO — Dick Hucke, Reno, 7-1-50.0; Walt Foreman, S.J., 6-2-45.7; Bob Proctor, Shas., 5-2-47.3; Don Williams, F.R., 4-3-43.2; Jim Long, Yolo, 3-4-38.7; Newton Graves, Sac., 3-4-40.4; Richard McCutchen, I.V., 1-6-31.3; H.G. Hucke (2), Proctor, Foreman — 60%. Hucke beat Foreman 48/14 in play-off.

GROUP THREE — Robert Gillett, Shas., 5-0-46.0; Lee Van Dalsen, G.C., 3-2-31.6; Roy Thomas, Shas., 3-2-31.2; Otis Hubbard, Y.S., 2-3-32.8; Bob Bendorf, Jr., Y.S., 1-4-27.2; Ray Moss, Yolo, 1-4-26.0; H.G. Gillett — 58%.

GROUP FOUR — George Gillett, Shas., 7-0-35.5; Dan Smith, 5-2-30.0; Don James, I.V., 5-2-26.9; Lee Thornhill, Sac., 4-3-32.0; Mickey Cutbirth, S.J., 3-4-25.4; Jerry Nylander, Y.S., 2-5-20.0; Lee Hardy, Shas., 1-6-18.9; Rich Leister, G.G., 1-6-18.0; H.G. Thornhill — 46%.

GROUP FIVE — Greg Diaz, G.G., 7-1-26.9; Henry Caldwell, S.J., 6-2-17.7; Leo Wanner, Sac., 5-2-19.3; Al Bowser, F.R., 5-2-17.3; Bob Alling, G.C., 3-4-12.3; Marty Pilcher, F.R., 2-5-5.3; Ernie Reynolds, F.R., 0-7-2.0; H.G. Diaz — 36%. Diaz beat Caldwell in play-off.

WOMENS GROUP ONE — Joanne Wanner, Sac., 5-1-43.7; Sandy Hardy, Shas., 4-2-51.0; Leona Anderson, F.R., 3-2-30.8; Karen Alling, G.C., 2-3-37.6; Lillian Lloyd, T.V., 2-3-23.6; Billie Sue Pennington, S.J., 0-5-15.2; H.G. Hardy — 68%. Wanner beat Hardy in play-off 34/24.

WOMENS GROUP TWO — Dellanne Moss, Yolo, 6-1-20.9; Twila Zelmar, S.J., 4-2-20.3; Midge Pilcher, F.R., 4-2-16.3; Paige Pennington, S.J., 2-3-20.0; Jan Held, F.R., 1-4-12.8; Jeanne Caldwell, S.J., 0-5-12.0; H.G. Zelmar 34%. Moss beat Pilcher 29/19, Zelmar 32/27 in 3-way.

JUNIORS GROUP ONE — Derex Moss, Yolo, 5-0-63.0; Mel Long, Jr., Yolo, 4-1-57.0; Joe Long, Yolo, 2-2-30.5; Nick Wanner, Sac., 2-2-15.5; Joe Perkins, F.R., 0-4-6.5; H.G. Moss, M. Long, (2) — 60%.

KENTUCKY E-TOWN OPEN TO NOBLE — SANCTION 84-478

CLASS A MEN — Jim Noble, Louisville, 6-1-64.6; Omar Blacketer, Louisville, 5-2-61.8; Harold Copher, Preston, 4-3-58.3; Ed Henry, Lexington, 3-4-60.1; Tib Turner, Nicholasville, 3-4-58.2; Rube Blevins, Preston, 3-4-56.1; Cliff Henn, Highland Height, 3-4-48.8; Harold Holland, Nicholasville, 1-6-54.9.

CLASS A WOMEN — Charlotte Knabel, Louisville, 5-0-46.0; Mable Hornback, E-Town, 3-2-45.0; Sue Hale, Lancaster, 3-2-44.0; Lois Webester, Stamping Grd., 3-2-41.4; Ruby Estes, Midway, 1-4-32.6; Karlyn Kelley, Lexington, 0-6-25.2.

CLASS B MEN — John Stevenson, Lou., 6-1-64.2; Willard Drane, Lou., 5-2-64.2; Bob Simpson, Nichol., 5-2-61.3; Denny Malone, Ludlow, 5-2-52.3; Robert Hudnall, Quality, 3-4-52.9; John Hankins, Goshen, 2-5-58.0; Holme Stiles, E-Town, 2-5-51.3; Billy Oaks, Nicholas, 0-7-43.9.

CLASS B WOMEN — Bea Bottom, Perryville, 3-1-25.9; Pam Bentley, Midway, 3-1-30.0; Helen Blacketer, Louisville, 3-1-25.7; Millie Hellman, Louisville, 1-3-17.6; Ann Frankrone, Louisville, 0-4-17.7.

CLASS C MEN — Sam Ingram, Owingsville, 6-1-51.1; Gary Jackson, Preston, 6-1-56.2; Ed Mason, Tollesboro, 4-3-47.9; Paul Coleman, Highland, 3-4-47.1; Glen Estes, Midway, 3-4-46.8; Lou Pottinger, E-Town, 3-4-42.2; Francis Nockerts, Lou., 2-5-39.4; Russ Dunigan, Toll., 1-6-43.6.

CLASS D MEN — Richard Barrett, Louisville, 6-1-43.4; David Ward, E-Town, 6-1-38.5; Gene Webester, Stamping Grd., 4-3-38.3; Larry Collins, Bedford, 4-3-34.6; Ed Bottom, Perrysville, 3-4-38.3; Clyde Decker, Louisville, 3-4-35.6; Julius Willhoite, Pleasure, 1-6-33.1; Russ Hornback, E-Town, 1-6-23.9.

CLASS F MEN — Ronnie Smith, Crest., 6-0-34.8; Randy Hankins, Goshen, 4-2-34.3; Jim Hill, Frankfort, 2-4-24.1; Jerry Mitchelltree, Cynthiana, 0-6-19.9.

JUNIOR BOYS — Tony Webb, Alexandria, 6-0-37.4; Tony Hankins, Goshen, 2-4-19.8; Jonathan Farrow, Stamping Grd., 1-5-18.9.

CLASS G MEN — Randy Langley, E-Town, 6-0-33.1; Bill Price, Lou., 4-2-25.9; Ben Burrows, Midway, 4-2-20.2; Carlos Webb, Cold Sp., 3-3-24.5; George Everhart, Grassy, 3-3-23.3; Gilbert Jones, Lou., 1-5-19.2; Jerry Brown, Lex., 0-6-12.3.

THE NEW IMPROVED

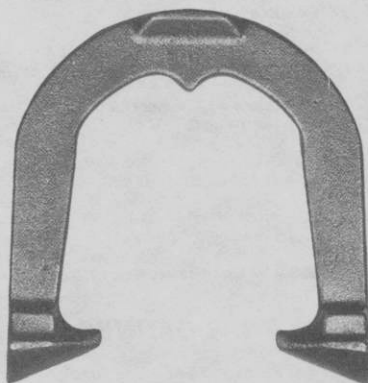
IMPERIAL

- BETTER ENERGY ABSORPTION
- LARGER RINGER BREAK
- WIDER BLADES
- REDUCED PRICES

U.S.A. PRICES
(Postpaid)

1 Pair	\$26.00
2 to 5 Pair	\$25.00
6 Pr. & Over	\$20.00

Freight Collect



CLYDE MARTZ

3726 Henley Dr.

Pittsburgh, Pa. 15235

PHONE: 412-731-4662

RON COLVIN TOPS METRO CLASSIC — LOUISVILLE, KY

C. KNABEL, LADIES — T. WEBB, JRS. — SANC. 84-479

CLASS A MEN — Ron Colvin, Ind., 6-1-66.8; Rube Blevins, Ky., 6-1-61.1; Ed. Henry, Ky., 5-2-56.7; Jim Noble, Ky., 3-4-55.0; Willard Drane, Ky., 2-5-53.1; J. Stevenson, Ky., 2-5-53.0; Tib Turner, Ky., 2-5-52.9; H. Copher, Ky., 2-5-51.5.

CLASS B MEN — Ron Lewis, Ind., 6-1-59.1; Jeff Henn, Ky., 5-2-58.0; Bill Henn, Ky., 5-2-54.8; Holmes Stiles, Ky., 4-3-52.1; B. Simpson, Ky., 3-4-52.9; Cliff Henn, Ky., 3-4-50.0; J. Hankins, Ky., 2-5-41.8; R. Hudnall, Ky., 0-7-40.4.

CLASS C MEN — Ray York, Ky., 5-2-51.5; D. Stevens, Ind., 4-3-49.1; G. Jackson, Ky., 4-3-49.1; J. Minnich, Ky., 4-3-45.3; R. Barrett, Ky., 4-3-44.0; G. Estes, Ky., 3-4-43.9; D. Nockerts, Ky., 2-5-39.9; R. Bohannon, Ky., 2-5-39.6.

CLASS D MEN — L. Pottinger, Ky., 6-1-40.2; Paul Lee, Ky., 6-1-43.2; F. Nockerts, Ky., 4-3-40.8; W. Evans, Ky., 4-3-37.2; J. Smith, Ky., 4-3-31.3; J. Streible, Ky., 3-4-35.9; Les Simpson, Ky., 1-6-31.8; Don Norton, Ky., 0-7-25.2.

CLASS E MEN — D. Ward, Ky., 6-2-40.3; C. Decker, Ky., 6-2-39.6; J. Willhoite, Ky., 6-2-37.7; G. Webster, Ky., 5-3-40.2; R. Sharp, Ky., 5-3-36.0; Ed Bottoms, Ky., 3-5-33.1; B. Hardesty, Ky., 2-6-26.5; L. Tiller, Ky., 2-6-25.6.

CLASS F MEN — L. Collins, Ky., 6-1-45.0; R. Hankins, Ky., 6-1-43.1; B. Snider, Ky., 5-2-34.8; D. Webb, Ky., 3-4-38.4; J. Turner, Ind., 3-4-31.4; R. Smith, Ky., 2-5-34.1; Bob Cook, Ky., 2-5-31.1; M. Rader, Ky., 1-6-32.2.

CLASS G MEN — M. Norton, Ky., 4-2-26.9; R. Hornback, Ky., 4-2-26.9; S. Kelley, Ky., 3-3-27.8; Don Black, Ky., 3-3-27.0; Jim Hill, Ky., 3-3-23.3; T. Bishop, Ky., 2-4-26.2; L. Powell, Ky., 2-4-23.7.

CLASS H MEN — Bill Marks, Ky., 7-0-28.2; Bill Price, Ky., 6-1-25.3; C. Webb, Ky., 4-3-20.9; G. Jones, Ky., 4-3-17.5; B. Burrows, Ky., 3-4-23.2; E. Ranes, Ky., 3-4-22.1; D. McCarty, Ky., 1-6-15.3; S.E. Clarke, Ind., 0-7-7.5.

CLASS A — JR. BOYS — Tony Webb, Ky., 5-0-30.5; R. Collins, Ky., 4-1-20.1; T. Hankins, Ky., 3-2-16.0; B. Collins, Ky., 1-4-12.7; L. Tiller, Ky., 1-4-9.3; S. Collins, Ky., 1-4-8.7.

CLASS A WOMEN — Ch. Knabel, Ky., 3-1-46.0; L. Webster, Ky., 2-2-50.0; T. Wallace, Ky., 2-2-47.6; K. Nockerts, Ky., 2-2-44.2; M. Hornback, Ky., 1-3-46.7.

CLASS B WOMEN — L. Minnich, Ky., 4-0-50.0; R. Estes, Ky., 2-2-33.2; K. Kelley, Ky., 2-2-28.7; B. Bottoms, Ky., 1-3-21.6; D. Henn, Ky., 1-3-18.6.

CLASS C WOMEN — H. Blacketer, 5-0-29.6; A. Frankrone, 3-2-25.7; M. Hellmann, 3-2-22.6; M. Clarkson, 2-3-22.7; B. Cayes, 1-4-22.5; A. Snider, 1-4-14.2.

BELLMAN TOPS IND. NORTH. WEST OPEN — SAN. 84-443

CLASS A — Clarence Bellman 5-0-66.7; Ed Kowatch 4-1-53.5; Ed Howdeshell 50.8; Carl Staley 2-3-49.2; Greg Kuss 2-3-45.9; Del Hough 0-5-38.2.

CLASS B — Harold Pearson 6-1-54.3; Gus Kuk 6-1-50 (play-off); Dick Judd 5-2-46.0; Roger Rahfeldt 3-4-43.6; Jim Shilling 3-4-41.9; J. Cox 2-5-38.7; Bob Pence 2-5-37.5; Jim Pierson 1-6-31.3.

CLASS C — Jim Kuss 4-1-50. Junior Guthrie 3-2-39.7; Merideth Judd 3-2-39.6; Bob Prohaska 2-3-35.1; Jeff Young 2-3-29.1; Archie Sexton 1-4-36.0.

CLASS D — Ray Schoolcraft 5-0-31.9; Glenn Sanders 3-2-37.5; Barry Young 3-2-31.1; Harry Palmeter 2-2-30.3; Gene Robinson 1-4-20.6; Bob Reid 0-5-15.0.

CLASS E — Glenn Sanders 5-0-33.3; Chet Sutphin 4-1-30.0; Ralph Bunn 3-2-28.0; Bill Tom 2-3-16.6; Dennis Rahfeldt 1-4-11.4; Dailey Fogle 0-5-16.1.

WOMEN CLASS A — Charline McKinley 3-0-37.5; Carol Rahfeldt 0-3-25.

ROEBUCK TOPS DANNER, (PA) MEMORIAL OPEN — MAY 18-20

CLASS A — Joe Roebuck 3-1-67.2; Joe Leech 2-2-62.1; Casey Danner 2-2-61.0; Bob Stratiff 2-2-57.4; Ray Rugg 1-3-62.4.

CLASS B — Sreve Mikan 3-0-54.1; John Strader 2-1-54.3; Jim Bassinger 1-2-35.2; Glenn Williams 0-3-41.4.

CLASS C — Walt Smodic 3-0-37.6; Jack Chambers 2-1-33.1; Bob Austin 1-2-25.7; Joe Orsino 0-3-25.3.

CLASS D — Rich Liptak 4-0-25.7; Bill McGill 3-1-18.6; Joe Gibbs Sr. 2-2-20.7; Andy Liptak Jr. 1-3-11.9; Joe Gibbs Jr. 0-4-11.1.

ILL-IND-OHIO TITLE TO M. SEIBOLD, MARION, IND. B. SEIBOLD, LADIES, PHILLIPS, JRS., SANC. 84-444

CLASS A — Mark Seibold, 7-0-82.6; John LeMond, 5-2-73.8; Clarence Bellman, 5-2-73.5; Jerry Mills, 4-3-71.5; Peck Anderson, 3-4-68.5; George Sales, 2-5-63.1; Frank Baxter, 1-6-62.0; Chuck Groethe, 1-6-61.5.

CLASS B — Ed Kowatch, 5-2-63.5; Glenn Hoppes, 5-2-62.4 (lay-off); Curley Seibold, 4-3-55.97; Jim Kemple, 4-3-56.1; Walter House, 4-3-51.4; Carl Staley, 3-4-55.4; Dale Kirtley, 3-4-52.4.

CLASS C — (Play-off) Ed Howdeshell, 5-2-53.6; Jim Shilling, 5-2-54.5; Earl Richardson, 4-3-49.8; Ed Clark, 4-3-49.7; Lonnie Mullins, 4-3-49.2; Bill Wicker, 3-4-50.3; J. Cox, 2-5-46.5; Junior Guthrie, 1-6-44.2.

CLASS D — Dick Judd, 7-0-44.5; Gerald Cummings, 5-2-42.5; Del Hough, 4-3-41.5; Eric Kingma, 3-4-39.9; Jim Plerson, 3-4-39.8; Gus Kuk, 2-5-39.3; Bob Dwigans, 2-5-37.9; Steve Lines, 2-5-31.9.

CLASS E — Mel Bussert, 6-1-49.7; Bob Pence, 5-2-43.8; Joe Rinehart, 4-3-47.6; Harry Groce, 4-3-43.6; Ken Tally, 4-3-42.1; Joe Holloway, 3-4-46.4; Bob Henderson, 2-5-37.2; Don Spray, 0-7-31.6.

CLASS SAT. F — Ed Pauley, 6-1-49.1; Clarence Bowland, 5-2-46.4; Bill Hatt, 4-3-41.2; George Dickson, 4-3-36.9; Elmer Branson, 3-4-35.1; Jim Griffith, 3-4-33.4; Sylvester Hahn, Sr., 2-5-38.9; Bob Prohaska, 1-6-30.9.

CLASS SUN. F — Martin Drummond, 7-0-47.1; Glenn Sanders, 6-1-41.5; John Barrows, 4-3-33.3; Steve Terrell, 3-4-35.5; Troy Kingma, 3-4-35.1; Steve Line, 2-5-30.7; Don Bollock, 2-5-30.3; Gordon Sams, 1-6-30.5.

CLASS G — Jim Turpin, 7-0-38.8; Glenn Donaldson, 6-1-36.3; Wayne Cummings, 5-2-35.3; Stan Holderly, 3-4-30.0; Fred Kingma, 3-4-28.4; Jack Mead, 2-5-23.3; Wink Weinburg, 1-6-28.9; Grant Davis, 1-6-26.3.

CLASS H — Byron Jervis, 7-0-40.2; Pete Hobbs, 6-1-40.3; Dave Herring, 4-3-34.6; Hubert Buster, 3-4-34.5; Luther Chandler, 3-4-33.1; Lowell Swick, 3-4-30.3; Jim Dunham, 2-5-27.4; Russ Sanson, 0-7-29.6.

CLASS I — Kyle Kingma, 7-0-41.4; Ralph Bunn, 6-1-31.4; Bob Herring, 5-2-31.2; Lloyd Karstens, 3-4-32; Don Stivers, 3-4-25.8; Lawrence Wooster, 3-4-24.2; Bob Cunningham, 1-6-17.3; Jim Dunham, 0-7-12.1.

CLASS J — John Walls, 5-0-39.2; Rick Wayne, 4-1-24.4; Bob Cunningham, 3-2-20.3; Dailey Fogle, 2-3-23.0; Bill McDaniel, 1-4-15.0.

CLASS K — Charles Hatt, 6-1-27.5; Charley Cardwell, 5-2-24.4; Jim Mikesell, 5-2-23.7; Willis Reed, 3-4-26.2; Doc Zarse, 3-4-23.1; John Chandler, 3-4-20.6; Joe Trobaugh, 2-5-12.0; Jim Stewart, 1-6-5.5.

CLASS L — Rick Walters, 6-1-22.1; Butch Hahn, 5-2-24.2; Bob Ranck, 5-2-16.9; Mike Drummons, 4-3-22.1; Ron Timmons, 4-3-12.2; Terry Kline, 3-4-12.7; Pat Downden, Forfeit.

CLASS M — John Poore, 5-0-20.1; Tom Poore, Sr., 3-2-14.4; Dave Johnson, 3-2-13.7; Steve Zarse, 3-2-10.4; Tom Poore, Jr., 1-4-2.1.

WOMEN CLASS A — Bonnie Seibold, 61.9; Phyllis Anderson, 45.7; Jackie Fisher, 36.1.

WOMEN CLASS B — Charline McKinley, 33.9; Ileta Davis, 29.3; Tammi Cunningham, 23.9.

WOMEN CLASS C — Susie Hamlin, 5.2.

JUNIOR CLASS A — Jon Phillips, 26.7; David Cunningham, 13.3; Robbie Cardwell, 14.1; Bradley Hahn, 6.0.

JUNIOR CLASS B — Scott Dunham, 4.7; Jennifer Griffith, 3.3; Corena Oliver, 2.7; Michael Griffith, 3.3.

MARTINELLI ON TOP IN SANTA ROSA, CA. OPEN — SAN. 84-195

CLASS C-1 — Harry Martinelli 6-2-44.3; Bert Charley 5-3-39.3; Floyd Edwards 4-3-40.6; Chuck Farrell 4-3-39.7; Chuck Rodrigues 3-4-40.0; Don Muenchow 3-4-37.7; Harley Harris 2-5-42.9; George Greeott 2-5-34.0.

CLASS C-2 — Charlie Nader 7-1-41.7; Bib Malley 6-2-39.7; Don Gore 4-3-30.7; John Kincheloe 3-4-33.3; Earl Kynard 3-4-30.7; Stewart Snyder 3-4-27.3.

CLASS C-3 — Lou Gayet 5-1-26.0; Gordon Loveall 4-2-22.3; Irwin Malik 3-2-30.8; Don Purdum 2-3-26.0; John Hagerman 2-3-19.6; Bill Fahwider 0-5-19.2.

CLASS C-4 — Eldon Bryhan 5-0-17.6; Gary McKay 3-2-20.0; Page Kesler 3-2-16.4; Roy Heyden 3-2-13.2; Lee Henninger 1-4-8.4; Ernie Kim 0-5-10.8.

REEDSVILLE, PA. FIREMAN'S OPEN TITLE GOES TO BURRIS

JUNE 15-16 — SANCTION 84-329

CLASS A — G. Burris, 5-0-78.8; Rubendall, 3-2-70.4; Beshore, 3-2-69.4; G. Brown, 2-3-60.6; C. Danner, 1-4-62.9; H. Snyder, 1-4-61.8.

CLASS B — McCurdy, 5-0-55.9; M. Bubb, 3-2-54.0; J. Sibley, 3-2-52.5; L. Gisewhite, 2-3-52.0; J. Swyers, 1-4-51.7; C. Seamans, 1-4-45.6.

CLASS C — B. Aley, 4-1-56.0; W. McClosky, 3-2-45.5; A. Sweeney, 3-2-44.3; E. Bowersox, 2-3-45.4; A. Long, 2-3-40.9; J. Baugher, 1-4-33.9.

CLASS D — S. Frankhouser, 5-0-40.1; F. Goss, 4-1-36.5; G. Esh, 3-2-39.8; J. Zimmerman, 1-4-34.0; I. Stine, 1-4-31.1; H. Erb, 1-4-27.9.

CLASS E — D. Esh, 7-0-42.0; F. Belcavitch, 6-1-36.3; D. Bubb, 4-3-39.9; P. Ponner, 4-3-34.4; W. Hoy, 3-4-36.9; G. Harris, 2-5-24.3; J. Shumatias, 1-6-23.3; B. Wierbowski, 1-6-21.0.

TIPS FROM THE TOP

By SOL BERMAN

Don Titcomb (1960 World Champion)

Mistakes made in practice through lack of concentration and determination will form bad habits and will come back to haunt you in tournament games.

Paul Focht (1962 World Champion)

Pitch every shoe in practice just as you would in a tournament, as if the title depend on throwing a ringer.

Harold Reno (1961-1964 World Champion)

Find a way to relax before you pitch each shoe. I do this by using an extra swing of my arms.

Hamilton Horseshoe Club

265 BARTON STREET E., STONEY CREEK



Unit 55 · ONTARIO, CANADA · L8E 2K4

(35 miles from Niagara Falls, N. Y.)

Presents the Second ELMER HOHL International
Open Singles Tournament

Indoors · Oct. 11, 12, 13, 14, 1984

11th Evening only.

Entry Fee: Men's A · B — Ladies A.....\$20.00
All other classes.....\$15.00

100% Payback Plus Extra Prize Money Added !!

Send Ringer Percentage or call tournament director

Bob Fanjoy. (416) 544-2181 or club..662-8501 after 7p.m.

Registration Deadline: Sept. 28, 1984

N.H.P.A. card no. required !

Coming Events

VIRGINIA SCHEDULE

- Aug. 11-12 — Circle K. Open, Petersburg, Va.
 Aug. 25-26 — Claude Painter Open, Waynesboro, Va.
 Sept. 1-2 — Va. State Singles, Dublin, Va.
 Sept. 7,8,9 — Raymond Frye Open, Winchester, Va.
 Sept. 15-16 — Fall Open, Dublin, Va.

ALASKA SCHEDULE

- Aug. 4-5 — AHPA State Doubles Championships, Eagle River Lions Park, Eagle River, Alaska, Sanction 84-587.
 Aug. 11-12 — Tanana Valley Rair Tourney (Open), Fairbanks, Alaska. Qualifications for AHPA State Singles Championships.
 Aug. 18-19 — Alaska State Fairgrounds, Palmer, Alaska. Sanction 84-588.
 Aug. 25-26 — AHPA State Singles Championships, Alaska State Fairgrounds, Palmer, Alaska. Sanction 84-589.
 Sept. 2 — Muscular Dystrophy Association (MDA) Open, Eagle River, Lions Park, Eagle River, Alaska.

YUMA, ARIZONA SCHEDULE

Kennedy Park Yuma, Arizona

- Aug. 12 — Desert Rats Doubles Open, Sanction 84-550.
 Sept. 15 — Roadrunners Singles Open. Sanction 84-551.
 Oct. 14 — Bingham Memorial. Singles Open. Sanction 84-552.
 Nov. 10 — Second Annual Singles Open. Sanctioned.
 Dec. 8 — Welcome Snowbirds Fun Weekend. Singles Open. Sanction 84-553.
 Dec. 9 — Welcome Snowbirds Fun Weekend. Doubles Open. Sanction 84-554. Possible Potluck.
 Jan. 12 — Budweiser Second Annual Sanctioned Singles.
 Feb. 10 — Wild & Wooley NHPA Members Singles.
 Mar. 17 — St. Patricks Sanctioned Singles.

Sanctioned Tournaments — State and NHPA Membership required. Entry fee to all tournament YHPA members, \$3.00. Non-Members, \$5.00. Qualifying and entry fee will close 3 days prior to tournament date. All tournaments start at 8:30 a.m.

ARIZONA ASSOCIATION SCHEDULE

Tournaments for PIONEER PARK, MESA, AZ

- Oct. 19-20 — Art Kamarian Open. Entries close October 9.
 Nov. 16-17-18 — Bonanza Open. Entries close Nov. 6.
 Dec. 14-15-16 — Mesa Open. Entries close Dec. 4.
 Jan. 25-26-27 — Valley of the Sun Warm-Up. Sanctioned State and NHPA card required. Entries close Jan. 25.
 Mar. 1-2-3 — Bye-Bye Snowbird Open. Entries close Feb. 19.
 Apr. 6-7 — Annual Arizona State Tournament. Sanctioned. State and NHPA card required. Entries close Mar. 25.

Entry fees — \$5.00 (except Valley of the Sun. Entry fees for Valley of the Sun, \$10.00 each; \$10.00 additional for Men's class "A." \$5.00 additional for Men's classes "B," "C," "D." \$5.00 additional for Women's classes "A" and "B."

ARIZONA ASSOCIATION SCHEDULE

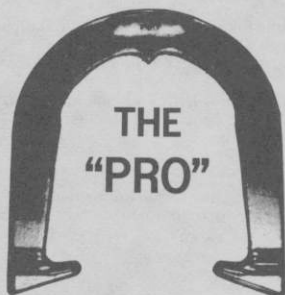
Tournaments for REID PARK, TUCSON, AZ

- Oct. 5-6 — Association Secretary's Open. Entries close Sept. 26.
 Nov. 2-3 — Reid Park Classic. Sanctioned. State and NHPA card required. Entries close Oct. 10.
 Nov. 30-Dec. 1 — Tucson Open. Entries close Nov. 20.
 Jan. 11-12 — Pima County Classic. Sanctioned. State and NHPA card required. Entries close Jan. 2.
 Feb. 1-2 — Old Pueblo Special. Sanctioned. State and NHPA card required. Entries close Jan. 21.
 Mar. 15-16 — President's Open. Entries close Mar. 5.
 Apr. 19-20 — The Wind-Up. Entries close Apr. 9.

Entry fees: \$5.00. Send all entries and proper fees and current ringer percentage to Bud Fenimore, Secy., 8152 East Hayne St., Tucson, Arizona 85710. Phone: 602-296-5087.



THE ORIGINAL DROP-FORGED PITCHING SHOE



Two tournament tested models, forged from S.A.E. specified steel, are available. Both have hardened hooks and points, and may be ordered in your choice of medium, soft, or dead soft tempers.



AS THE FIRST MANUFACTURER OF THE DROP-FORGED PITCHING SHOE, THE OHIO HORSESHOE COMPANY IS RECOGNIZED WORLD-WIDE FOR ITS HIGH QUALITY PITCHING SHOES.

For price information and to order, contact:

OHIO HORSESHOE COMPANY

P.O. Box 21371
Columbus, Ohio 43221

614-457-4335