



the  
national horseshoe pitchers

# NEWS DIGEST

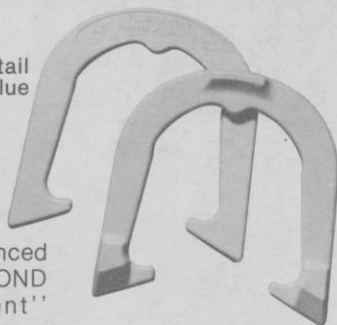


NOVEMBER, 1983

*Official Publication of*  
**THE NATIONAL HORSESHOE PITCHER'S ASSOCIATION  
OF AMERICA**

# Special **Introductory Offer!**

\$23 retail  
value



**New** advanced design DIAMOND "Tournament" Shoes feature a grip positioner, hardened tips, an increased radius, a dead soft center, and a wider, deeper calk. Solid drop-forged steel. All American made.

Mail coupon along with check or money order for \$11.50 (add appropriate state sales tax where applicable), along with \$2.50 shipping and handling, to the NHPA Game Related Sales office serving your state:



**DIAMOND TOOL**

*and Horseshoe Co.*

Subsidiary  The Triangle Corporation

P. O. BOX 6246. DULUTH, MINNESOTA 55806

AZ, CA, NM, OR, WA:  
NHPA Game Related Sales  
2646 Basswood St.  
Newport Beach, CA 92660

CO, ID, KA, MN, MT, NB, ND, NV,  
SD, UT, WY:  
NHPA Game Related Sales  
P. O. Box 100SU  
Cedar City, Utah 84720

AL, AR, FL, GA, KY, LA, MS, NC,  
OK, SC, TN, TX, VA, WV:  
NHPA Game Related Sales  
P. O. Box 5956  
Clearwater, Florida 33518

CT, DC, DE, MA, MD, ME, NH, NJ,  
NY, RI, VT:  
NHPA Game Related Sales  
P. O. Box 298  
Wilkinsonville, MA 01590

IA, IL, IN, MO, WI:  
NHPA Game Related Sales  
P. O. Box 241  
Scottsburg, Indiana 47170

MI, OH, PA:  
NHPA Game Related Sales  
P. O. Box 810  
Circleville, Ohio 43113

"DIAMOND Pitching Horseshoes are Recognized as Official in Tournaments Sanctioned by the National Horseshoe Pitchers Association."



**50% OFF**  **Advanced Design**  
**TOURNAMENT PITCHING SHOES** WITH COUPON

Enclosed is my check for \$\_\_\_\_\_. Please send one pair DIAMOND "Tournament" Pitching Horseshoes to:

Name \_\_\_\_\_

Address \_\_\_\_\_

City \_\_\_\_\_ State \_\_\_\_\_ Zip \_\_\_\_\_

Limit one pair DIAMOND #2TS "Tournament" Pitching Horseshoes with coupon. Offer expires Dec. 31, 1983. DO NOT DUPLICATE COUPON.

**VALUABLE COUPON**

THE HORSESHOE PITCHER'S NEWS DIGEST is published on the 5th of each month at Aurora, Illinois, U.S.A. by the National Horseshoe Pitcher's Association of America. Editorial office, P.O. Box 1606, Aurora, Illinois 60507. Phone: 312-898-3974. Subscription rates—1st Class \$9.00; 3rd Class \$8.00 per year in advance. NHPA membership cards are available through each state secretary for \$7.00 plus any state association dues. Forms close on the 10th day of each month preceding date of issue. Advertising rates on request. F. Ellis Cobb, Editor.

NATIONAL OFFICERS

- Glenn Portt, 2803 Newcomb Rd. Albany, Ga. 31705..... President
- Earl Winston, Rte 2, Lamonte, Mo. 65337..... 1st Vice-President
- Norman Gaseau, 1908 Nuggett Dr., Clearwater, Fla. 33515..... 2nd Vice-President
- Vincent Yannetti, 322 Longwood Ave., Bound Brook, N.J. 08805..... 3rd Vice-President
- Bonnie Seibold, 1043 Grayson Ave., Huntington, Ind. 46750..... 4th Vice-President
- Donnie Roberts, 9439 Camp Creek Rd., Lucasville, Oh. 45648 / (614) 289-4101 / 614-474-7727..... Sec./Treas.
- Claude White, Jr., 940 Knollwood Ct., Plainfield, NJ 07062..... Chr. Reg. Dir.

Volume 26

November, 1983

No. 11

FROM YOUR PRESIDENT . . . Glen A. Portt  
OUR "VOLUNTEER" PROGRAM

Last month I told you our Number 1 priority was to aggressively seek out sponsors and that I had given specific responsibilities to council members. Each of the VP's have a minimum goal: Earl Winston to raise \$10,000 for the men's division; Bonnie Seibold, \$10,000, women's division; Norm Gaseau, \$5,000 senior divisions; and Vince Yannetti, \$5,000, junior divisions.

These NHPA officers and/or a member of their 'team' will contact sponsors in person. As there are an unlimited number of possible sponsors, they need YOU on their team. This is where our 'Volunteer' program comes in. Write or phone the VP with whom you would like to work. Your name will be printed in the Digest under 'Volunteer Honor Roll.'

Most important, the money raised by each division will be kept solely for prize money for that division. The sky is the limit. It won't be easy but if YOU want more prize money for your division, step forward and become a member of our NHPA team.

The greater number we have working, the greater will be our chance of success.

"THIS IS THE NHPA"

This booklet was published primarily for use in obtaining sponsors. Because of the cost, it is impossible to give members a free copy. However, if you would like one, send \$1.25 check to the NHPA Sec.-Treas., 9439 Camp Creek Road, Lucasville, Ohio 45648.

NHPA PROMOTION COMMITTEE REPORT

By SOL BERMAN

About two years ago Danny and Sue Kuchinski appeared on "You Asked for It."

Last June the videotapes of "You Asked for It" were sent to Richard McNeely for the promotion of the Horseshoe Tournament Dec. 11-15 at the Hacienda Hotel in Las Vegas.

In August a copy of the tapes were sent to Gilbert Miller Agency, W. Hollywood, Calif. He's Danny and Sue's agent. He's trying to get the Kuchinski's on "That's Incredible."

I spoke to David Sher, Century National Productions, Los Angeles, Cal. recently. He's planning an hour show at the Hacienda Hotel in conjunction with the tournament. I suggested that he have Sue and Danny put on their act. I sent him a copy of "You Asked for It."

Elite Films Incorporated, New York City, contacted me a few weeks ago. I was invited to act as technical advisor. I arranged to have Herman Wieser, Somerset, N.J. go. They did a video commercial for Monsanto. "Round-Up Herbicide." A father and son discussed the herbicide while pitching horseshoes.

The Florida National Olympics will be held at the PGA Sheraton Resort, Avenue of Champions, Palm Beach Gardens, Florida beginning on Sunday, Nov. 20 through Saturday, Nov. 26. Many Joyce is the Director, 301 Broadway, Suite 214, Riviera Beach, Florida 33404.

Ms. Joyce writes that if enough interest is shown that handball, horseshoes and table tennis will be added to this year's program.

## NHPA PUBLICITY SUGGESTS A STATE DIRECTORY

By BERNARD HERFURTH

NHPA Publicity is suggesting that each state publishes a State Directory for 1984. This plan is endorsed by our new President Glen Portt.

The directory would be about the size of our Digest or slightly larger. The contents would give dates and locations of State Tournaments and league activity. It would give directions to the court sites, the names and addresses and phone numbers of the tournament directors and other information that is usually given on entry blanks.

The booklet would also give the history of the State Association, the names and addresses of State Officers. It could also list the names of the present state champions.

The NHPA would also like to have it contain excerpts from the NHPA flyer, such as the NHPA Purpose, family sport, physical fitness aspects, sports origin, World Tournament, indoor courts, basic rules and list of game related items.

The state would raise money to defray costs by soliciting ads. NHPA Publicity is requesting that the NHPA contribute a sum to each state that publishes such a directory.

Rather than have pages of consecutive ads it is suggested that information be printed on the right side of the directory and ads be printed on the left hand side page. This would balance off the booklet giving equal space.

Such a directory would give publicity to each state's activities plus the knowledge of a national organization. It is hoped that each will cooperate. Please send your plans to NHPA Publicity, Bernard Herfurth, 17 Fort St., Northampton, Mass. 01060. Also send for an NHPA flyer for information.

## NEW NHPA GAME RELATED SALES DISTRIBUTORS

Price lists available from distributors

**DISTRIBUTOR AREA 1** — Wally Shipley, 2646 Basswood St., Newport Beach, Calif. 92660. Phone 714-760-3658. Serving Calif., Arizona, New Mexico, Oregon, Washington, Hawaii, Alaska, and British Columbia.

**DISTRIBUTOR AREA 2** — Dennis Ohms, P.O. Box 100SU, Cedar City, Utah 84720. Phone 801-586-9352. Serving Utah, Idaho, Montana, Wyoming, Colorado, North Dakota, South Dakota, Nebraska, Kansas, Minnesota, Nevada, Alberta, Sask. Canada and Manitoba.

**DISTRIBUTOR AREA 3** — Florida State, P.O. Box 5956, Clearwater, Fla. 33515. Phone 813-443-2892. Serving Florida, Georgia, So. Carolina, No. Carolina, Tennessee, Arkansas, Oklahoma, Texas, Louisiana, Mississippi, Alabama, Kentucky, W. Virginia and Virginia.

**DISTRIBUTOR AREA 4** — Ed Dorney, P.O. Box 298, Wilkinsville, Mass. 01590. Phone 617-865-4619. Serving Mass., Maine, New Hampshire, New York, Rhode Island, Connecticut, New Jersey, Maryland, Delaware, Washington, D.C., Vermont and New Brunswick, Canada.

**DISTRIBUTOR AREA 5** — Robert Reid, P.O. Box 241, Scottsburg, Indiana 47170. Phone: 812-752-2195. Serving Indiana, Illinois, Missouri, Iowa, Wisconsin and Ontario, Canada.

**DISTRIBUTOR AREA 6** — Pike County H.S. Club, P.O. Box 810, Circleville, Ohio. 43113. Phone 614-474-7727. Serving Ohio, Michigan, Pennsylvania and Quebec, Canada.

## CHARLIE WEBB FRANKE SPECIAL (ILL.) AUG.

**CLASS A** — Charlie Webb, 7-0-67.8; Steve Denault, 6-1-65.7; Joe Waterman, 4-3-61.1.

**CLASS B** — Wendell Savage, 7-0-54.7; Bob Kraus, 5-2-47.1; Wayne Hamby, 5-2-47.6.

**CLASS C** — Edward Jackson, 7-0-43.2; Chinko Wallace, 5-2-45.5; D. Cunningham, 5-2-34.4.

**CLASS D** — Gary Wooters, 6-1-22.4; Rich Galvin, 5-2-28.7; Glen Koos, 5-2-25.0.

**SENIORS** — Henry Franke, 5-0-60.1; Virgil Bunge, 4-1-45.2; Dennis East, 3-2-46.7.

**JUNIORS** — Scott Jackson, 5-0-3.5; Butch Alton, 4-1-8.1; Bill Henson, 3-2-4.0.

**LADIES** — Emerald Moroney, 5-1-53.7; Sis Connors, 4-2-44.5; Donna Galvin, 3-3-32.1.

## 1983 WORLD TOURNAMENT PHOTOS AVAILABLE

For anyone desiring photos taken during the 1983 World Tournament at Statesville, North Carolina can secure them from the official photographer Mr. Paul Kennedy of the Kennedy Studio, 626 Margaret Road, Statesville, North Carolina 28677. Phone 704-872-3864.

## SEEK PERMANENT SITE FOR NHPA HALL OF FAME

By CLAUDE WHITE, RD Chr.

All Regional Directors have been contacted and are now in the process of asking the State Associations within their areas of responsibility the following basic questions:

1. Are the majority of the members in \_\_\_\_\_ interested in the NHPA having a permanent Hall of Fame? Yes \_\_\_\_\_ No \_\_\_\_\_
2. Would you like to have your State bid for this site? Yes \_\_\_\_\_ No \_\_\_\_\_

As your State Association will probably be getting in touch with all their members in reference to the above questions between now and December, it was decided that this would be a good way to help alert the readership of the Digest beforehand.

We feel that this is a very important question and that perhaps you would want all the time you could get in order to make your decision.

## LETS DO IT NOW

By LEE ELBE

(Host for the 1985 World Horseshoe Tournament)

Dear Horseshoe Pitchers, Officers and Friends:

I would like to express my views to the Mothers and Fathers who have children, to be more concerned about the future growth of the NHPA.

The day will come when, for some reason or other the horseshoes will be getting a little heavy, and you can't pitch the distance any more. You will have to "hand 'em up", and live on the wonderful memories of the past. (SOMEONE HAS TO TAKE OUR PLACE.)

From the Ron Frakes Tournament of Champions memorial day weekend 1983, we would like to thank all the participants, guests and friends that came from many out of state and Missouri to make this tournament a success. (But there was one class missing. Junior girls, and a small entry of Junior boys.)

A \$200.00 scholarship was awarded to the boy champion and the \$200.00 scholarship for the girl champion was returned to the prize fund. (No entry.)

For 40 years, I was active in the bowling business as owner, operator and general manager with a wide knowledge of the bowling industry. Bowling would not be the success it is today if there were no Bantam, Junior, High School and College Leagues to take their place in adult leagues.

We have tried this, and it works. By starting from 15 ft. with lightweight shoes and as they progress, move them back to 20 ft., 25 ft. and 30 ft.!!!

When you go out to practice, take your children with you. Drive two stakes in the yard just to get them started. Practice with your children or have a Mother and Daughter or Father and Son Tournament with trophies for the winner. This will bring you closer together, in the world we live in today.

I have my own Sunday School, so you know what it means. (SO LETS DO IT NOW.)

P.S. On October 27th and 28th, we had a very important meeting for the 1985 NHPA World Tournament here in Springfield. Glenn Portt, president, Earl Winston, vice president, Donnie Roberts, secretary-treasurer, Bob Booe, regional director, along with our promotion committee, will bring you up to date in the December NHPA Digest.

## TORREY, POWELL, UNGETHEIM, FRANKE WINNERS IN MIDWEST TOURNAMENT OF CHAMPIONS

Although the wind was rather gusty, beautiful weather prevailed all during the Midwest Tournament of Champions played at the Shelbyville, Ill. Club courts on September 16-17 in that city. Following are the first three place winners in each class.

High single game honors went to Peck Anderson of Indiana with 87.5 percent. Tari Powell and Ron Sutton each had 14 consecutive ringers for the most consecutive ringers honors. The high tournament average honors went to Tari Powell with a 73.6 percentage.

## MIDWEST TOURNAMENT OF CHAMPIONS — (Continued)

**MENS'S CHAMPIONSHIP** — Chal Torrey, Michigan; Clarence Bellman, Indiana; Peck Anderson, Indiana.

**WOMEN'S CHAMPIONSHIP** — Tari Powell, Illinois; Ann Wedel, Michigan; Emerald Moroney, Illinois.

**JUNIOR CHAMPIONSHIP** — Steve Ungetheim, Indiana; Kristi Farris, Indiana; Melvin Galvin, Illinois.

**CLASS A-1 MEN** — Peck Anderson, Indiana; Hastings Moroney, Illinois; Dick Pelton, Michigan.

**CLASS A-2 MEN** — Bill Ungetheim, Indiana; Loren Gillespie, Illinois; John Shuck, Indiana.

**CLASS C MEN** — Charles Cook, Illinois; Ron Stobaugh, Illinois; Lyle Wicker, Illinois.

**CLASS D MEN** — Emmett Burcham, Illinois; Don Bailey, Illinois; George King, Illinois.

**CLASS E MEN** — Ernie Sewell, Michigan; Larry Smith, Illinois; Norman Keeps, Illinois.

**CLASS B WOMEN** — Janata Smith, Illinois; Hazel Shuck, Indiana; Charlotte Pelton, Michigan.

**70 YEARS AND OVER CLASS** — Henry Franke, Illinois; Dennis East, Illinois.

## DEAN CURRY TOPS IDAHO STATE — AUGUST 27-28

**CLASS A** — Dean Curry, Lewiston, 9-0-64.5; Wayne Scriven, Coeur d'Alene, 7-2-44.6; John Bishoff, St. Anthony, 6-3-39.2.

**CLASS B** — Norm Watson, Kellogg, 10-0-47.9; Jim Davis, Coeur d'Alene, 7-3-50.5; Bill Rust, Sandpoint, 7-3-46.1.

**CLASS C** — Pete Feist, Sagle, 9-0-42.2; Lyle Anderson, Idaho Falls, 7-2-35.4; Dean Oman, Osburn, 7-2-32.6.

**CLASS D** — Warren Stutzman, Rupert, 8-1-38.2; Cort Mathewson, Kellogg, 7-2-36.6; Dale Hunt, Smeltersville, 6-3-34.4.

**CLASS E** — Sam Williams, Driggs, 8-1-30.0; Louis Logosz, Jerome, 7-2-25.1; Max Harris, Lewiston, 6-2-27.0.

**CLASS F** — Lynn Johnson, Challis, 7-0-28.5; Ed Lunceford, Smeltersville, 6-1-21.4; Glen Wessel, Post Falls, 5-2-14.8.

**LADIES CLASS A** — Willa Lunceford, Smeltersville, 6-1-49.2; Helen Payton, Jerome, 6-1-42.1; Linda Martin, Fairfield, 5-2-48.8.

**LADIES CLASS B** — Katherine Feist, Sagle, 7-1-34.5; Ruth Anderson, Idaho Falls, 5-2-29.7; Doris Grossaint, Twin Falls, 5-2-25.1.

**JUNIORS CLASS A** — Brent Poole, Coeur d'Alene, 3-0-42.2; Matt Feist, Sagle, 2-1-37.3; Connie Payton, Jerome, 1-2-24.6.

**JUNIORS CLASS B** — Jay Ostler, Jerome, 4-0-32.5; Steve Payton, Jerome, 31.0; Bryce Hawks, Samuels, 2-2-9.5.

## ELMER HOHL HORSESHOE AVAILABLE DESIGNED AND PITCHED BY ELMER HOHL

(6 Times World Champion)

Order from:

**DON KOSO**  
803 East 12th Street  
Falls City, Nebraska 68355

**HERB PINCH**  
592 Hull Street  
Sharon, Pennsylvania 16146

**WRITE FOR PRICES**



**NHPA Approved**

## VIC LONG NEW ILLINOIS STATE CHAMPION — SEPT. 3-4-5

A gusting wind created problems for some of the pitchers in the men's Class A finals played on Labor Day in Hecker, Il. Vic Long, East Alton, with his low hard shoe, was seemingly not bothered by the wind and averaged 67.2 while compiling a 6-1 record. Tari Powell, Rankin, fresh from her second place and 81% ringer percentage at the World Tournament continued her domination of the Women's Class A by compiling a 7-0 record while averaging 68.3%. Angie Hamilton won the Jr. Girl championship. Brian Forsyth won the Jr. Boys championship with a 6-1 record and 41.1%. Wendell Savage unseated Harvey Kohlenberger, Millstadt as the Senior Men's champion going 4-0 with a 61.0%. Henry Franke continued as the Men's 70+ champion with a record of 4-0-59.0%.

**CLASS A** — Vic Long, 6-1-67.2; Cliff Baker, 5-2-67.7; Larry Knop, 4-3-63.6.

**WOMENS CLASS A** — Tari Powell, 7-0-68.3; Jane Rubin, 5-2-51.0; Ellen Ronk, 5-2-48.3.

**MENS CLASS B** — Ron Sutton, 5-2-63.0; Tony Jarvis, 5-2-56.0; Dusty Rhoades, 5-2-53.3.

**WOMENS CLASS B** — Marilyn O'Guinn, 5-1-36.3; Shirley Jones, 4-2-37.0; Dona Galvin, 3-2-30.4.

**MENS CLASS C** — Jim Rehmer, 5-1-54.3; Wayne Hamby, 4-2-42.0; Eddie Knop, 3-2-50.0.

**WOMENS CLASS C** — Linda Rohrbach, 3-1-21.5; Karen Yoder, 2-2-24.5; Lil Yates, 1-3-20.0.

**MENS CLASS D** — Russ Kloes, 6-1-50.6; Harold Lange, 5-2-54.9; Ron Young, 4-3-46.5.

**CLASS E** — Charles Cook, 6-1-54.4; Tom Phillips, 6-1-53.6; Gary Schwartz, 5-2-49.3.

**CLASS F** — Emmett Burcham, 6-1-44.9; Jesse Sims, 5-2-35.1; Sonny Reid, 4-3-44.0.

**CLASS G** — Charles Webb Sr., 6-2-42.8; Leo Wilhelm, 5-2-42.3; Jerry Koons, 5-2-40.0.

**CLASS H** — Wayne Clark, 7-0-37.8; Jim Short, 6-1-42.5; Jim Carey, 5-2-41.2.

**CLASS I** — Ralph Eckart, 5-2-36.3; Dale Ferguson, 5-2-36.3; Richard Hunt, 4-3-37.3.

**CLASS J** — Steve Kipping, 6-1-43.1; Harold Bull, 6-1-39.7; Eddie H. Eckart, 5-2-41.1.

**CLASS K** — Dan Sattler, 5-2-31.1; Don Bailey, 5-2-38.9; Richard Galvin, 4-3-29.4.

**CLASS L** — Jim DuBridge, 6-2-32.3; Don Dick, 5-3-27.1; Larry Smith, 4-3-28.0.

**CLASS M** — William Eckart, 6-1-27.7; Gene Reynolds, 5-2-24.0; Mike Kaltelbronn, 4-3-22.9.

**CLASS N** — Marshall Roper, 4-1-20.2; Ray Banning, 3-2-19.2; Marvin Cooper, 3-2-18.8.

**JR. BOYS** — Brian Forsyth, 6-1-41.1; Scott Raker, 5-2-36.0; Keith Cessna, 5-2-33.4.

**JR. GIRLS** — Angie Hamilton, 2-0-20.0; Becky Swalley, 0-2-11.0.

**SENIOR MEN** — Wendell Savage, 4-0-61.0; Harvey Kohlenberger, 2-2-61.0; Gib Beckemeyer, 0-4-41.5.

**SENIOR MEN 70+** — Henry Franke, 4-0-59.0; Dennis East, 2-2-41.5; Virgil Bunge, 0-4-32.0.

A doubles tournament was held on the Hecker, IL courts on Friday night before the State Tournament. A good time was had by all the participants and Eddie G. Eckart and Steve Denault teamed up to win the Class B. The event was so popular it will become part of the State Tournament next year.

## BELLMAN CAPTURES 1983 INDIANA STATE CHAMPIONSHIP

**CHAMPIONSHIP CLASS** — Clarence Bellman, 7-0-80.2; Mark Seibold, 6-1-80.5; Leroy Rowe, 5-2-75.0.

**CLASS A** — Arthur Burch, 6-1-72.6; Chuck Grothe, 5-2-69.5; Ed Kowatch, 4-3-67.9.

**CLASS B** — Burl Taylor, 6-1-60.4; Glenn Hoppes, 5-2-62.0; Ed Hinshaw, 5-2-62.0.

**CLASS C (play-off)** — Dickie Stevens, 5-2-59.3; Loyd Clerget, 5-2-55.7; Lloyd Keller, 4-3-58.7.

**CLASS D** — Ed Weyer, 5-0-59.6; Leo Dellinger, 4-1-54.1; David Tatman, 3-2-55.3.

**CLASS E** — Curly Gladding, 6-1-57.8; Bob Sheppard, 5-2-57.7; Kenny Perkins, 5-2-51.3.

**INDIANA — (Cont.)**

**CLASS F** — Dale Kirtley, 7-0-54.0; Jim Pierson, 5-2-52.0; Offord Burkhart, 5-2-45.2.

**CLASS G** — Gerald Cummings, 6-1-52.4; Joe Rinehart, 4-3-42.3; Bob Sharp, 4-3-42.2.

**CLASS H** — Earl Richardson, 4-1-44.4; Junior Guthrie, 3-2-41.8; Vernon Holland, 3-2-41.0.

**CLASS I (play-off)** — Leonard Conner, 6-1-46.4; Ed Clark, 6-1-46.3; Art Cornelius, 5-2-45.0.

**CLASS J** — Don Newell, 6-1-51.3; Ken Tally, 6-1-48.4; Joe Holloway, 5-2-45.1.

**CLASS K** — Jeff Bowyer, 6-1-44.1; Jim Turpin, 5-2-44.6; Don Spray, 5-2-40.5.

**CLASS L** — Wayne Waltz, 4-1-45.8; Lester Jones, 3-2-41.9; Everett Beason, 3-2-40.3.

**CLASS M** — Wayne Waggoner, 5-0-50.8; Dan Wiggans, 4-1-43.3; Bob Hill, 2-3-40.5.

**CLASS N (play-off)** — Paul Joslen, 4-1-36.7; Kevin Teague, 4-1-40.0; Paul Cleary, 3-2-36.7.

**CLASS O (play-off)** — George Dickson, 4-1-39.0; Jim Griffith, 4-1-44.3; Elmer Branson, 3-2-38.9.

**CLASS P** — Jim Hagerty, 7-0-39.1; Wes Molencupp, 5-2-39.1; Stan Holderly, 5-2-36.9.

**CLASS Q** — Glenn Zollman, 7-0-40.8; Lynn Bair, 5-2-36.3; Harold Green, 5-2-30.3.

**CLASS R (play-off)** — Dale Hyndman, 5-2-28.8; Joe Rodgers, 5-2-30.3; Wayne Cummings, 4-3-33.5.

**CLASS S** — Gary Brown, 7-0-34.7; Rick Lemish, 5-2-23.9; Don Hyndman, 4-3-34.1.

**CLASS T** — Lloyd Karstens, 6-1-28.1; Larry Farris, 5-2-29.2; Carl Mitchell, 5-2-28.9.

**CLASS U** — Bob Cunningham, 4-1-30.0; Willis Reed, 3-2-20.4; Mike Drummond, 3-2-17.4.

**CLASS V** — Jack Workman, 7-0-27.3; Bill McDaniel, 5-2-27.7; Jim Stewart, 5-2-23.2.

**CLASS W** — Jim Saylor, 6-1-33.9; Butch Hahn, 5-2-20.6; Larry Ward, 4-3-19.3.

**CLASS X** — Steve Battin, 9-1-21.4; Bryan Gould, 8-2-18.7; Jerry Barnett, 7-3-17.5.

**INTERMEDIATE A** — Will McNeese, 6-0-64.8; Ed Howdeshell, 3-3-57.4; Carl Knight, 2-4-55.1; Walter Wilhoite, 1-5-55.8.

**SENIOR A** — Jim Kemple, 4-2-56.9; Doyle Maikranz, 3-3-52.1; Bob Dwigans, 3-3-47.9; Granny Palmer, 2-4-50.0.

**SENIOR B (play-off)** — Charles Batts, 4-1-34.9; Pete Hobbs, 4-1-36.3; Joe Morgan, 2-3-33.9.

**SENIOR C** — Cecil Burris, 5-1-22.3; Buck Shivley, 3-3-22.9; Bob Ranck, 3-3-22.0.

**WOMEN CLASS A** — Phyllis Anderson, 9-1-56.0; Bonnie Seibold, 7-3-9.0; Joan Keith, 6-4-51.9.

**WOMEN CLASS B** — Mona Cummings, 5-1-35.2; Lori Young, 4-2-29.5; Chris Buell, 2-4-25.8.

**JUNIOR BOYS CLASS A** — Steve Ungetheim, 5-0-75.0; Rick Henry, 4-1-67.8; Chad Hyatt, 3-2-56.8.

**BOYS CLASS B** — Charles Bowyer, 5-0-32.3; Robert Robinson, 3-2-27.7; Scott Caudill, 3-2-20.9.

**BOYS CLASS C (play-off)** — John Molencupp, 4-1-9.0; Bradley Hahn, 4-1-13.5; David Cummings, 3-2-19.0.

**GIRLS CLASS A—B—C** — A. Kristi Farris, 4-1-50.0; B. Carrie Cummings, 4-1-35.2; C. (play-off) Norma Hyatt, 3-2-24.5; Julie Dunham, 3-2-16.7; Linda Henry, 1-4-15.5. D. Georgia Henry, 3-0-8.0; Jennifer Griffith, 0-3-4.7.

**M. POTTS IN 17th KANSAS STATE WIN OVER LABOR DAY**

**CLASS A** — M. Potts, 11-0-69.1; D. Erbe, 9-2-65.2; J. Smith, 8-3-60.7.

**CLASS B** — B. Outt, 9-2-52.9; H. Samuelson, 8-3-50.8; E. Pearce, 7-4-50.8.

**CLASS C** — M. Everhart, 7-0-53.6; D. Hutchison, 6-1-47.3; D. Prichard, 3-4-46.4.

**CLASS D** — G. Buche, 7-0-56.9; L. Esau, 6-1-52.2; B. Conquest, 5-2-47.9.



**KANSAS — (Cont.)**

**CLASS E** — L. Goertzen, 7-0-49.1; R. Smith, 6-1-45.3; L. Turner, 4-3-44.3.

**CLASS F** — O. Carver, 5-2-42.9; Q. Smith, 5-2-45.1; R. Sharp, 4-3-40.3.

**CLASS G** — R. Bolinger, 6-1-44.1; H. Fleming, 5-2-35.3; W. Pirtle, 4-3-37.4.

**CLASS H** — D. Blandin, 6-1-32.3; M. Franzen, 5-2-33.5; T. McFadden, 5-2-29.1.

**CLASS I** — J. Nicodemus, 7-0-43.4; E. Haupt, 5-2-29.5; L. Haughn, 5-2-23.9.

**CLASS J** — B. Koepsel, 6-1-27.4; R. Oswald, 5-2-25.4; L. Aue, 4-3-25.2.

**CLASS K** — E. Parker, 4-1-20.3; B. Audiss, 3-2-19.9; T. Ridder, 3-2-19.3.

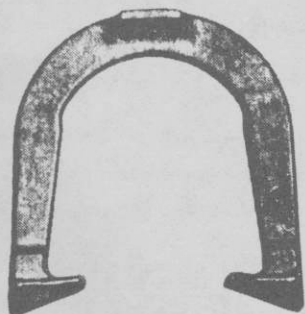
**LADIES** — E. Pearce, 5-0-51.5; M. Peninger, 4-1-40.2; M. Clark, 3-2-48.1.

**JUNIORS** — M. Williams, 6-0-45.0; T. Allen, 4-2-26.0.

**KAPNIS, MICHAUD, MARTIN, McNEILL 1983 MASS. CHAMPS**

John Kapnis topped his 1983 season by defeating Charlie Bonani, defending Mass. state champion in a play-off game 45-21 with a 70-4 game while Bonani had a 54.5 percentage game. Tournament was played August 13-14-20 at the Hamilton Club courts.

Debbie Michaud won her eleventh state crown easily with 5 straight wins and a 68.4 ringer average. There were 12 women competing this year. In the Boys division it was Danny Martin in the winner's circle after a three-way play-off McNeill retained her Girl's title with a 4-0 record. Joy and Emile Veradt won the State Doubles title.

**TED ALLEN HORSESHOES**

An original professional shoe. Still the very best professional shoe — Designed by a Champion — Used by many Champions — Not all users will become champions, but by throwing ALLEN's, you know that you've performed your best.

The designed features were invented by TED ALLEN, a 10 time world champion. He has made world records over and over with them. The design was a leader. After years it came to be a trend as a guideline in shoe equipment.

You can't go wrong in using them.

**1045 LINDEN AVENUE**

**BOULDER, COLORADO 80302**

**MASS. — (Cont.)**

**MENS CLASS A** — John Kapnis, 6-1-67.0; Charlie Bonani, 6-1-66.7; John Belsito, 5-2-56.4.

**CLASS B** — Robert Dorn, 7-0-47.0; Ed Bodinski, 5-2-47.6; Arnold Grant, 5-2-42.3.

**CLASS C** — Mike Murphy, 6-1-42.6; Harry Schricker, 5-2-37.8; Bill Martin, 4-3-33.7.

**CLASS D** — Charlie Tracchia, 7-0-33.4; Bill Lawson, 6-1-40.5; Joe Conquest, 4-3-34.4.

**CLASS E** — Jean Begin, 6-1-37.1; Joe Marinelli, 5-2-32.3; Bob Evans, 4-3-35.2.

**CLASS F** — James McRobbie, 5-1-26.8; George St. Pierre, 4-2-26.2; Ernest Baillargeon, 4-2-25.7.

**CLASS G** — Irving Hunter, 6-0-23.1; Bill Quinn, 5-1-25.0; Arthur Conquest, 4-2-21.5.

**CLASS H** — Charles Jokinen, 6-1-23.8; Bill English, 6-1-21.9; Stanley Fielding, 5-2-16.7.

**CLASS I** — Walter Demers, 5-1-11.7; Rudy Gauthier, 5-1-18.4; Gene Saucier, 4-2-17.1.

**WOMEN — CLASS A** — Debby Michaud, 5-0-68.4; Bertha Baillargeon, 4-1-51.8; Mary Ryan, 3-2-40.7.

**CLASS B — WOMEN** — Sandra Matis, 4-1-20.7; Gloria Martin, 4-1-25.3; Ev Brooks, 3-2-22.8.

**BOYS CLASS A** — Dan Martin, 2-1-37.9; Gary Baillargeon, 2-2-35.7; Scott Atherton, 2-2-28.6.

**BOYS PLAYOFF NO. 1** — Baillargeon, 42-44.1, Atherton, 7-11.7; **NO. 2** — Martin 41, 43.4; Baillargeon, 22-34.7.

**CLASS B BOYS** — Robert L'Heureux, 3-0-21.2; Tom Saucier, 1-2-11.8; Wayne Philbrick, 0-2-15.3.

**GIRLS CLASS A** — Barbara McNeill, 4-0-27.2; Lisa McNeill, 3-2-17.8; Robin Gadoury, 2-2-9.2.

## **LIPOVSKY EASY WINNER IN MINNESOTA STATE—SEPT. 3-4-5 PREIMESBERGER ARENA, GENOLA, MINN.**

**CHAMPIONSHIP CLASS — MEN** — Dale Lipovsky, Bloomington, 11-0-82.0; Jack O'Connor, Brainerd, 8-3-75.5; Len Lipovsky, Bloomington, 8-3-70.3.

**CLASS A** — Elwood Johnson, Elmore, 10-1-66.2; Frederick Krentz, BellePlaine, 8-3-63.0; Lloyd Henrikson, Coon Rapids, 8-3-60.6.

**CLASS B** — Alan Berg, Redwood Falls, 6-1-50.8; Bill Sullivan, New Hope, 5-2-50.2; Dave Evenson, Donnelly, 4-3-56.5.

**CLASS C** — Robert Stewawrt, Cokato, 6-1-55.4; Lloyd Olfert, Richfield, 6-1-48.8; Walt Foth, Lakeville, 5-2-54.0.

**CLASS D** — Curt Boser, Pierz, 6-1-54.2; Gene Zakrzewski, St. Paul, 4-3-49.7; Rolland Swenson, Otisco, 4-3-48.5.

**CLASS E** — Geo. C. Anderson, North Branch, 6-1-45.1; Ed Tio., St. Paul, 4-3-44.5; Kurt Isenberg, Fairmont, 4-3-41.1.

**CLASS F** — Bud Helmen, Roseville, 6-1-48.6; Gene Comero, Rochester, 5-2-42.0; Henry Pongratz, Mankato, 4-3-42.3.

**CLASS G** — Delbert Karsjens, Clarks Grove, 6-1-46.5; Lyle Van Blaricon, Anoka, 5-2-44.8; Selmer Lind, Cook, 3-4-42.5.

**CLASS H** — Marv Richardson, Esko, 5-2-48.2; Mark Rowell, Amiret, 5-2-48.0; Joel Stenhaug, Dennison.

**CLASS I** — Erwin Tischer, N. Mankato, 6-1-43.4; Jacob David, Kilkenny, 5-2-44.0; Oliver Roesler, New Richmond, 5-2-36.5.

**CLASS J** — Wilbur Kemp, Paynesville, 6-1-42.0; Albert Wielinski, Little Falls, 4-3-38.5; Lester Seppelt, Hillman, 4-3-35.4.

**CLASS K** — James Beyer, New Hope, 7-0-42.0; Rolland Kettner, New Ulm, 4-3-37.7; Robert Winterhalter, Minneapolis, 4-3-36.5.

**CLASS L** — Ray Politano, Hibbing, 6-1-39.1; Jerry Hikkala, South Haven, Harry E. Benson, Hibbing, 5-2-37.4.

MINNESOTA — (Cont.)

**CLASS M** — Ron Ruhoff, Sauk Rapids, 5-2-37.1; Dennis Carlson, St. Cloud, 5-2-31.4; Darrel Mineheine, Delano, 4-3-30.5.

**CLASS N** — Roger Isenberg, Elmore, 6-1-40.0; Geno Sam, Minneapolis, 5-2-39.4; Joe Lunz, St. James, 5-2-39.1.

**CLASS O** — Phil Warzecka, Sauk Rapids, 7-0-36.0; Marvin Feller, Alexandria, 6-1-35.7; Leonard Murray, St. Paul, 4-3-34.2.

**CLASS P** — Herb Swanson, Hillman, 6-1-32.0; Hap Ziebarth, LeSueur, 5-2-31.3; Harold Bischof, Richfield, 4-3-31.6.

**CLASS Q** — Ray Salfer, Savage, 7-0-35.4; Don Froland, Maple Grove, 5-2-21.1; Bob Bayerl, Pierz, 4-3-28.5.

**CLASS R** — Michael France, St. Paul, 5-0-32.8; Ed Marcotte, Grasston, 4-1-28.4; Lee Corneliusen, Bloomington, 3-3-25.2.

**CLASS S** — Ronald Lybeck, Sauk Rapids, 5-2-27.7; James Studneski, Sauk Rapids, 5-2-27.1; Frank Markee, Cedar, 5-2-26.5.

**CLASS T** — David Paulsrud, Hopkins, 5-0-22.4; Steven Crandall, Wyoming, 3-2-18.8; Tim Wright, Little Falls, 3-2-13.6.

**SENIORS — CHAMPIONSHIP CLASS** — Marv Richmond, Pequot Lakes, 5-0-67.7; Hjalmer Johnson, Menahga, 4-1-62.3; Frank Stinson, Minneapolis, 3-2-57.6.

**CLASS A — SENIORS** — George Fischer, Mapleton, 4-1-44.8; Fred Volkers, Sauk Rapids, 4-1-37.6; Henry Stromgren, Cedar, 3-2-38.0.

**CLASS B — SENIORS** — Wallace Lofgren, Minneapolis, 6-0-31.7; Laurence Barott, Mapleton, 3-3-18.3; Clayton Herman, Cross Lake, 2-4-12.0.

# KERTZ SHOE CHECK

PAT. PEND.

FIVE TOOLS IN ONE

PERFECT FOR ALL HORSESHOE PITCHERS

JUST THE RIGHT SIZE FOR BACK POCKETS

8" x 1" x 1/4"

SEND \$8.45; 2 OR MORE \$6.75 EA.

POSTAGE INCLUDED

SCRAPER —

FILE FOR  
BURRS

CALIPHERS  
FOR CLOSE POINTS

6" NOTCH FOR LEGAL POINTS

STRAIGHT EDGE

KERTZ SHOE CHECK  
P.O. BOX 483  
ARNOLD, MO. 63010

PLEASE INCLUDE  
ZIP CODE

NHPA APPROVED

**MINNESOTA — (Cont.)**

**LADIES — CHAMPIONSHIP CLASS** — Phyllis Negaard, St. Joseph, 10-1-79.7; Sandy Karasch, St. Joseph, 10-1-72.6; Judy Bjorlin, Chokio, 9-2-69.6.

**LADIES — CLASS A** — Sue Geisler, Coon Rapids, 6-1-46.2; Darlene Whisney, Jackson, 5-2-44.0; Darlene Klug, St. Cloud, 5-2-40.8.

**LADIES CLASS B** — Barb Lind, Eden Prairie, 7-0-50.8; Rosie Tischer, Good Thunder, 5-2-39.7; Jackie Lybeck, Alexandria, 4-3-40.8.

**LADIES — CLASS C** — Lynn Tomczak, Crystal, 6-1-38.3; Wilma Kolbeck, Sauk Rapids, 6-1-33.6; Karen Campion, Bloomington, 4-3-64.6.

**LADIES — CLASS D** — Helen Starr, Sauk Rapids, 7-0-24.2; Kaye Eilers, Canby, 5-2-26.8; Jan Girtz, Pierz, 4-3-18.2.

**LADIES — CLASS E** — Hilde Goebel, Bloomington, 5-1-24.6; Maxine Abeln, Bloomington, 4-2-21.3; Julie Ulku, Bloomington, 3-3-10.5.

**GIRLS — CHAMPIONSHIP CLASS** — Boni Boser, Pierz, 6-0-69.3; Corine Cave, Rice, 4-2-52.5; April Gage, St. Paul, 1-5-33.6.

**GIRLS — CLASS A** — Janet Roubinek, Pine City, 6-0-39.0; Carrie Isenberg, Elmore, 3-3-17.6; Dianne Eliason, Duluth, 2-4-13.6.

**BOYS — CHAMPIONSHIP CLASS** — Chris White, Maplewood, 7-0-88.4; Mike Eliason, Duluth, 6-1-67.9; Steve Backhaus, Rogers, 4-3-64.3.

**BOYS — CLASS A** — Randy Austin, Pierz, 5-0-44.8; Eric Boser, Pierz, 4-1-45.1; Mike Armitage, Canby, 3-2-50.8.

**BOYS — CLASS B** — Jason Armitage, Canby, 5-1-26.6; Kelly Nyblom, LeSueur, 3-3-14.6; Jared Eilers, Canby, 2-4-19.6.

**CARTER, V. WINSTON, A. FRANCIS, HARRIS TOPS IN MO.**

The Missouri State tournament was held over the Labor Day weekend at the Repair Shop courts in Springfield, Mo. There were 203 entries.

Sam Carter topped Ron Frakes in the play-off for the title. Vicki Winston was in good form winning the Ladies title with a 78.1 percentage. Alan Francis topped the Junior class with a blazing 91.4 percent. Tom Francis was runner-up with 83.0. Don Harris retained his Senior title.

Special thanks to Mr. Robert Martin of the Repair Shop and Lee Elbe for promotion and to all the scorekeepers and others for making this a most successful state tournament.

**CLASS A** — Sam Carter, St. Clair, 10-1-72.8; Ron Frakes, Springfield, 10-1-72.0; Dave Baker, Wentworth, 9-2-72.7.

**CLASS B** — Rayford Phelps, Hawk Point, 6-1-55.8; Dave Dattilo, St. Louis, 5-2-58.4; Wayne Trautwein, Kansas City, 4-3-57.0.

**CLASS C** — Donald Craig, Kansas City, 6-1-59.8; Vernon Brooks, Bates City, 5-2-50.6; Jake Edmonson, Springfield, 4-3-55.3.

**CLASS D** — Val Eikel, Mexico, 5-2-51.4; Bill Courtwright, St. Louis, 4-3-45.2; Bob Cantrell, Grove Springs, 4-3-44.6.

**CLASS E** — Larry Francis, Blythedale, 7-0-55.2; Chuck Martin, Mexico, 5-2-50.3; Dave Sparkman, Cassville, 5-2-49.4.

**CLASS F** — Theon Garbs, Washington, 5-2-39.1; Jim Larkin, St. Louis, 5-2-46.6; Wayne Henderson, Independence, 5-2-40.9.

**CLASS G** — Jerry Griggs, St. Joseph, 6-1-41.4; Norman Blumenberg, Cape Girardeau, 5-2-43.4; Raymond Barnes, Sedalia, 5-2-42.7.

**CLASS H** — Paul Van Someron, Springfield, 7-0-41.4; Russell Bennett, Lebanon, 4-3-38.9; Carl Wolff, Wentzville, 4-3-35.8.

**CLASS I** — Dan Murphy, Cape Girardeau, 7-0-50.7; Jim Acock, Independence, 6-1-38.1; Pete Layne, Springfield, 4-3-37.8.

**MISSOURI — (Cont.)**

**CLASS J** — Matt Field, Richmond, 6-1-36.3; Marshall Armstrong, Kansas City, 5-2-34.9; Leroy Dominique, Chillicothe, 5-2-33.2.

**CLASS K** — David Bancroft, Leeton, 7-0-36.1; Joe Beem, Independence, 6-1-33.3; Kevin Whitworth, Warrensburg, 5-2-31.7.

**CLASS L** — Rick Tatum, Springfield, 6-1-35.8; Lee Good, Bolivar, 5-2-33.9; Charlie O'Brien, St. Louis, 5-2-31.0.

**CLASS M** — Dale Fisher, Hale, 6-1-29.4; Wayne Vest, Polk, 5-2-27.7; Skip Penford, St. Peters, 4-3-26.1.

**CLASS N** — Reese Warden, Republic, 3-0-27.1; Dan Carver, Aurora, 1-2-24.0; Charles Calton, Verona, 1-2-22.9.

**CLASS O** — Al Davis, Springfield, 5-0-26.7; Dean Hunt, Independence, 3-2-27.1; Frank Bruegal, Verona, 2-3-24.0.

**CLASS P** — Gene Stigall, Breckenridge, 5-0-24.8; Tillman Harrington, Billings, 4-1-23.5; Rick Gwinn, Independence, 3-2-17.6.

**CLASS Q** — Rusty Carter, Springfield, 4-1-8.7; Ed Eliason, Springfield, 3-2-8.0; Mike Lacey, Springfield, 3-2-5.5.

**CLASS R** — Alan Perkins, Springfield, 5-0-20.4; Charles Ball, Springfield, 4-1-12.7; Bruce Johnson, Springfield, 3-2-11.0.

**CLASS S** — Ronnie Long, Springfield, 5-0-31.2; Leonard Roberts, Pittsburg, 3-2-20.4; Bob Rupe, Springfield, 3-2-16.9.

**SENIOR MEN A CLASS** — Don Harris, Smithville, 5-0-61.0; Wayne Trautwein, Kansas City, 4-1-54.0; Wilbur Gay, St. Joseph, 3-2-38.6.

**SENIOR MEN B CLASS** — Allan Rowe, Nixa, 6-1-43.7; Johnny McCarron, Leadwood, 5-2-32.5; C.B. Foust, Everton, 4-3-38.8.

**SENIOR MEN C CLASS** — Reese Warden, Republic, 5-0-27.7; Marvin Parker, Rayville, 3-2-27.5; Frank Bruegal, Verona, 2-3-26.7.

**WOMEN CLASS A** — Vicki Winston, LaMonte, 7-0-78.1; Rita Killgore, Plattsburg, 5-2-42.0; Loree Meier, Independence, 4-3-51.5.

**WOMEN CLASS B** — Frances Dominique, Chillicothe, 4-1-39.4; Pam Henderson, Independence, 3-2-35.4; Edna Barnes, Odessa, 3-2-26.4.

**WOMEN CLASS C** — Frances Cramer, St. Joseph, 5-0-39.2; Peggy Dattilo, St. Louis, 4-1-34.3; Rose Cartright, Chillicothe, 3-2-20.8.

**WOMEN CLASS D** — Sherry Roberts, Polk, 3-0-34.5; Ann Hope, Springfield, 2-1-6.3; Carla Turner, Springfield, 1-2-5.2.

**CLASS A BOYS** — Alan Francis, Blythedale, 5-0-91.4; Tom Francis, Blythedale, 4-1-83.0; Jeff Hart, Independence, 3-2-53.7.

**CLASS B BOYS** — Mike Hedden, Springfield, 5-0-38.6; Steve Barnes, Odessa, 4-1-36.5; Michael Wolff, Wentzville, 2-3-21.9.

**DAVE PENTLAND NEW CHAMPION OF MONTANA STATE**

One hundred and forty-nine pitchers converged on Butte, Montana on Sept. 3-4 to make it the largest state tournament to date. Dave Pentland of Deer Lodge won the 1983 title after working through a four-way tie ending up with a 56.8%.

**CLASS A** — Dave Pentland, Deer Lodge, 5-2-56.8; Nat Clark, McLeod, 5-2-53.7; George Chapman, Laurel, 5-2-51.9.

**CLASS B** — Joe King, Gallatin Gateway, 7-0-54.4; Ed Holmberg, Big Timber, 6-1-50.8; Bill Barth, Butte, 5-2-47.7.

**CLASS C** — Gary Roe, Billings, 6-1-46.8; Willard Martin, Conrad, 5-2-49.7; Carl Berquist, Billings, 5-2-48.0.

**CLASS D** — Les Reese, Great Falls, 5-2-45.0; Irwin Mueller, Butte, 4-3-43.5; Terry Carlson, Savage, 4-3-39.8.

**CLASS E** — Wally Immonen, Butte, 5-2-42.4; Stan Richards, Great Falls, 5-2-42.1; Lester Nielson, Reserve, 4-3-40.4.

**MONTANA — (Cont.)**

**CLASS F** — LeRoy, Lee, Butte, 5-2-43.4; Phil Townsend, Manhattan, 5-2-42.9; Del Dunham, Laurel, 4-3-37.1.

**CLASS G** — Ron Traynor, Butte, 6-1-39.2; Richard Rudio, Billings, 5-2-42.1; Alan Schagunn, Poplar, 4-3-36.3.

**CLASS H** — Lew Parrett, Butte, 5-2-39.2; Russ Johnson, Lewistown, 5-2-33.8; Bob Jelich, Butte, 4-3-32.5.

**CLASS I** — Marvin Falk, Thompson Falls, 4-3-35.6; Floyd Frederick, Darby, 4-3-34.4; Jack Price, Avon, 4-3-31.9.

**CLASS J** — Stack Kovich, East Helena, 6-1-31.0; Henry Cantrell, Billings, 5-2-32.3; Ed Sheehan, Butte, 4-3-29.9.

**CLASS K** — John Cain, Billings, 5-2-22.8; Al Bridgewater, Crackerville, 5-2-29.9; Fred Biehl, Lewistown, 4-3-26.7.

**CLASS L** — Jack Belzer, Belgrade, 6-1-35.9; Gerald Robson, Deer Lodge, 5-2-29.1; William Whitney, Deer Lodge, 4-3-33.1.

**CLASS M** — George Houtchens, Helmsville, 7-0-27.0; Ray Trudell, Sidney, 5-2-25.1; Gerry Banzet, Kalispel, 5-2-21.18.

**CLASS N** — Jerry Asich, Missoula, 5-2-26.3; Bob Thrans, Bozeman, 4-3-32.7; Walt Shular, Twin Bridges, 4-3-19.1.

**CLASS O** — Al Carkeek, Helena, 6-1-25.8; Rod Hilliard, Savage, 5-2-27.9; Earl Casagrande, Butte, 5-2-18.9.

**CLASS P** — Frank Kiedrowski, Hogeland, 7-0-24.4; Larry Davidson, Sun River, 5-2-16.1; Ruth Falk, Thompson Falls, 4-3-18.0.

**CLASS Q** — Jack Sullivan, Twin Bridges, 5-2-15.0; Charlie Lipes, Helena, 5-2-19.1; Bill Gunderson, Chester, 4-3-17.0.

**CLASS R** — Arnie Johnson, Billings, 6-0-18.2; Rich Shular, Twin Bridges, 5-1-15.5; Shawn Gribben, Butte, 4-2-15.1.

**CLASS S** — Mike Heller, Helena, 6-0-20.4; Dawn Paul, Great Falls, 4-2-14.9; Tom Billteen, Jr., Butte, 4-2-11.6.

**MADISON WINS EASTERN NEBR. STATE CHAMPIONSHIP**

Frank Madison was the winner of the first Western Nebraska State Championship held at Scotsbluff, Nebraska, Sept. 3. In this sanctioned event, Madison hit an 80.0 percent game during his title run. Wendy Roberts became the first lady champ, and 11 year old John Maser rolled the Junior class with a 5-0-26.3 record.

**CLASS A** — F. Madison, 6-1-56.8; B. Turechek, 5-2-60.6; D. Hanshew, 4-3-47.3.

**CLASS B** — D. Fraass, 6-1-38.8; R. Hanshew, 5-2-41.1; T. Brandt, 4-3-38.8.

**CLASS C** — Play Off — R. Jessen, 7-1-36.9; M. Brauer, 6-2-34.8; J. Guettler, 4-3-32.5.

**CLASS D** — F. Vergil, 7-0-40.0; R. Wills, 4-3-34.8; F. Fein, 4-3-30.6.

**CLASS E** — M. Adams, 6-1-18.6; S. Lease, 5-2-23.1; B. Schilz, 5-2-22.5.

**CLASS F** — Play-off — W.D. Lewellen, 6-1-21.1; M. Fraass, 5-2-18.8; H. Boltjes, 4-3-21.3; G. Walker, 4-3-18.3.

**CLASS G** — Play-Off — B. Woodward, 5-1-10.8; S. Popp, 4-2-13.4; R. Peister, 3-2-11.7.

**WOMEN A ONLY** — W. Roberts, 5-0-26.8; L. Westphalen, 4-1-22.5; C. Gompert, 3-2-12.4.

**JUNIORS ONE CLASS** — J. Maser, 5-0-26.3; T. Rein, 4-1-15.9; J. MAser, 3-2-8.2.

**B. SMITH WINS 1983 NEW HAMPSHIRE STATE CROWN**

Amidst various kinds of weather, Brian Smith of Keene, N.H. managed to put 7 straight victories on the board with a 70.9 ringer percentage to wrap up the New Hampshire state championship. All this took place in Keene's Wheelock park on August 21. Debbie Pickering had 5-0 to win the Jr. Boys title. Maureen Finnegan was undefeated in the Jr. Girls' title with 6-0. 100 pitchers took part in the annual event. Dick Doble was inducted into the N.H. Hall of Fame at the annual meeting.

## NEW HAMPSHIRE — (Cont.)

**CLASS A** — Brian Smith, Keene, 7-0-70.9; Bernard Davis Sr., Boscawren, 5-2-63.5; Phil Bergeron, Merrimack, 5-2-59.7.

**CLASS B** — Al Boudreau, Rindge, 4-1-53.1; Dave Westcott, Concord, 4-1-59.1; Mike Kibbee, Boscawren, 4-1-51.0.

**CLASS C** — Jim Zarta, Gilmanton, 5-0-34.1; Henry Osmer, Gilmanton, 4-1-44.9; Howard Murphy, Campton, 2-3-39.9.

**CLASS D** — Duke Sawyer, Concord, 6-1-34.8; Warren Hall, Nashua, 6-1-38.9; Lloyd Putnam, Keene, 5-2-42.1.

**CLASS E** — Jay Burbee, New Boston, 6-1-43.9; Walt Sweren, Nashua, 5-2-35.3; David Ladd, Weare, 4-3-39.3.

**CLASS F** — Richard Plourde, Suncook, 6-1-40.2; John Page, Raymond, 5-2-33.1; Roger Bernard, Suncook, 5-2-28.3.

**CLASS G** — Harley Locke, Chichester, 7-0-33.4; Dave Cleveland, Keene, 5-2-31.6; Brad Miller, Keene, 4-3-31.4.

**CLASS H** — Mike Tebo, Keene, 7-0-31.9; Ron Leky, 6-1-26.0; Al Brochu, Penacook, 5-2-23.3.

**CLASS I** — Robert Swain, 7-0-27.8; Bob Broukard, Nashua, 5-2-24.7; Jim Daneault, Suncook, 5-2-24.2.

**CLASS J** — Victor Sirois, Union, 7-0-32.6; Bill Mayo, 5-2-25.9; Moe Bernier, Goffstown, 4-3-22.1.

**CLASS K** — Wally Trudeau, Milford, 7-0-25.2; Larry Kearley, 6-1-26.0; Richard Henner, Union, 5-2-15.5.

**CLASS L** — Don Fales, W. Franklin, 7-0-20.9; Bob Consaul, Salem, 5-2-19.0; Don Pacheco, Pelham, 5-2-15.7.

**CLASS A WOMEN** — Debbie Pickering, Keene, 5-0-81.2; Kathy Dyer, Keene, 4-1-53.3; Ginny Croteau, Campton, 3-2-37.3.

**CLASS B WOMEN** — Diana Beardsley, E. Hampstead, 6-0-15.9; Olga Simpson, Salem, 4-2-14.0; Debbie Pacheco, Pelham, 1-5-8.0.

**JR. BOYS** — Scott Daneault, Suncook, 5-0-59.3; Chris Zarta, Gilmanton, 4-1-11.4; Cean Jensen, Bow, 3-2-5.8.

**JR. GIRLS** — Maureen Finnigan, E. Hampstead, 6-0-27.5; Tanya Kelchner, Raymond, 4-2-13.3; Betsy Dyer, Keene, 1-5-12.2.

## NEW JERSEY STATE TITLE WON BY JOE McCRINK AT FLEMINGTON, N.J. — AUG. 26 to SEPT. 4

**CLASS A** — Joe McCrink, Jr., West Orange, N.J., 10-1-70.5; Sol Berman, Elizabeth, N.J., 9-2-60.2; Al Cherry, Plainfield, N.J., 7-4-55.5.

**CLASS B** — Marty Waisempacher, Flemington, N.J., 9-2-53.7; Jim Reed, Oldwick, N.J., 8-3-47.6; Wayne Harrison, Callfon, N.J., 6-5-49.6.

**CLASS C** — Lou Testa, Lambertville, N.J., 6-0-39.1; Bill Gurgurich, Trenton, N.J., 4-2-43.0; Bill Miller, Millville, N.J., 3-3-44.7.

**CLASS D** — Vince Yannetti, Bound Brook, N.J., 5-1-35.4; Al Price, Fanwood, N.J., 4-2-32.8; Vince Soriero, Flemington, N.J., 3-3-30.0.

**CLASS E** — Lumen Harlan, Wharton, N.J., 6-1-40.6; Roy Jensen, Manville, N.J., 6-1-30.2; Gary Diacik, Chester, N.J., 4-3-32.6.

**CLASS F** — Bob Lobell, Lebanon, N.J., 6-2-22.4; John Danko, Whitehouse St., N.J., 6-2-23.5; Mike Price, Cranford, N.J., 5-3-24.1.

**JUNIORS** — Jackie Webster, Somerset, N.J., 4-0-24.0; Bob Salmon, Jr., Hampton, N.J., 2-2-14.0; Bob Harrison, Callfon, N.J., 0-4-14.8.

**CLASS A — DOUBLES** — Joe McCrink, Jr., West Orange, N.J., Frank McCrink, Fairfield, N.J., 7-2-45.9; Dixon Deranek, Rahway, N.J., Claude White, Plainfield, N.J., 7-2-45.3; Sol Berman, Elizabeth, N.J., Phil Zozzaro, Little Falls, N.J., 6-3-45.0.

# DEADEYE HORSESHOES

## NOW IN

### FOUR MODELS

	Price Per Pr.—Up to 9 Pairs	Price Per Pr.—9 Prs. & Over
CLYDESDALES 2# 10 oz. & 2#9 oz.	\$23.00/Pr.	\$17.50/Pr.
N.T. 2# 10, 9, 8, 7 oz.	\$23.00/Pr.	\$17.50/Pr.
REGULAR 2# 9, 8, 7, 6, 5 & 4 oz.	\$23.00/Pr.	\$17.50/Pr.
E-Z GRIP 2# 10, 9, 8 & 7 oz.	\$28.00/Pr.	\$22.50/Pr.

*Prices on all "DEADEYES" f.o.b. point of shipment.  
Missouri residents add 3-5/8% sales tax and California  
residents add on 6% tax.*

All "DEADEYES" are dead soft.

All "DEADEYES" are guaranteed against breakage for 2 years.  
(Subject to change). Please specify desired weight when  
ordering from:

W. Courtwright  
P.O. Box 742  
Fenton, MO 63026  
Phone: (314) 376-5222 (8-5)  
(314) 677-2200  
(314) 842-5188

Carl Steinfeldt  
44 Ridgecrest Road  
Rochester, NY 14626 (summer)  
Phone: (716) 225-4191

Walter Ray Williams, Jr.  
6140 Grant St.  
Chino, CA 91710  
Phone: (714) 628-6053

Carl Steinfeldt  
407 Shady Lane Mobil Park  
15400 Roosevelt Blvd.  
Clearwater, FL 33520  
(winter address)  
Phone: (813) 535-3136



**NEW JERSEY — (Cont.)**

**CLASS B — DOUBLES** — Marty Waisempacher, Flemington, N.J., Gil Franke, Jr., Ringoes, N.J., 5-0-44.6; John Forti, Freehold, N.J., Jim Nardiello, Roselle Park, N.J., 4-1-35.0; Andy Waisempacher, Flemington, N.J., Lou Testa, Lambertville, N.J., 3-2-32.0.

**CLASS C — DOUBLES** — Lou Harlan, Wharton, N.J., Gil Ciresa, Long Valley, N.J., 5-0-28.6; Gary Diacik, Chester, N.J., Gary Pierson, Mine Hill, N.J., 4-1-26.0; John Danko, Whitehouse St., N.J., Art Hall, Milford, N.J., 2-3-23.4.

## **J. YOUNG PLAY-OFF WINNER OF NORTH CAROLINA STATE STATESVILLE, NORTH CAROLINA — JUNE**

**CLASS A-1 MEN** — J.B. Fuller, 4-1-63.7; Bud Presnell, 3-2-62.6; Doug Shear, 3-2-57.1.

**CLASS A-2 — MEN** — Joe Young, 5-0-66.9; Tommy Nall, 4-1-54.4; Gurney York, 3-2-54.8.

**JUNIOR BOYS** — Mark Dyson, 6-0-65.2; Teddy Vernon, 4-2-40.8; John Moose, 1-5-26.3.

**WOMENS CLASS** — Jean Brown, 4-0-28.1; Joann Burrow, 3-1-25.5; Polley Munday, 2-2-20.3.

**CLASS B MEN** — James Sumlin, 5-0-55.3; Gilbert Brown, 3-2-48.8; James Coggins, 3-2-46.6.

**CLASS C MEN** — Blane Curley, 4-1-47.3; John Carpenter, 3-2-46.5; Luther Ross, 3-2-44.2.

**CLASS D MEN** — Joe Garner, 4-1-54.5; Clyde Souther, 4-1-54.3; Lawrence Holsclaw, 4-1-48.2.

**CLASS E MEN** — Wayne Hedgepath, 4-1-42.8; Lester Hedrick, 4-1-40.1; Theo Vernon, 2-3-37.4.

**CLASS F MEN** — F.D. Pearson, 5-2-44.3; George Kennedy, 3-2-37.6; Timothy Lewis, 3-2-29.5.

**CLASS G MEN** — John Boone, 5-0-24.0; Paul Marsh, 3-2-28.1; Ed Gurley, 3-2-25.9.

**CLASS I MEN** — T.R. Lewis, 6-0-33.2; D.R. Moore, 5-1-21.9; Richard Burton, 4-2-15.0.

**CLASS H MEN** — Jerry Russell, 4-1-44.2; N.A. Moore, 3-2-35.5; Wayne Ratliff, 3-2-25.4.

## **KNISLEY RETAINS OHIO STATE TITLE — OPAL RENO IN 7TH TITLE WIN — L. RENO GIRLS — DON BROWN, BOYS**

Jim Knisley of Bremen, Ohio swept through Class A with a clean slate of 13 wins topped with an 80.4 ringer average. Opal Reno took home her 7th straight Ohio Women's championship posting a 5-0-81.0. The Junior Girls title went to Lorna Reno. Dan Brown had a successful record of 5-0-65.4.

**CLASS A** — Jim Knisley, 13-0-80.4; Gordon Meece, 11-2-76.5; Wilbur Kabel, 10-3-75.0.

**CLASS B** — Glen R. Riffle, 9-2-62.0; Bob Fields, 9-2-61.3; Phil Hummel, 8-3-62.0.

**CLASS C** — John Hughes, 6-1-61.0; Melle Bannister, 6-1-57.9; John Martin, 4-3-55.8.

**CLASS E** — Gary Gardner, 5-0-64.5; Jim McCombs, 4-1-55.0; Paul Rohrs, 2-3-55.0.

**CLASS D** — Earl Sarbaugh, 5-0-59.9; Bill Campbell, 4-1-56.3; Paul Hall, 3-2-53.0.

**CLASS F** — Geo. Holsapple, 5-0-58.1; Maurice Flaig, 4-1-55.6; Dick Curtis, 3-2-56.6.

**CLASS G** — Don Bussey, 4-1-46.0; Joe Kiser, 3-2-51.3; Norwood Ramey, 3-2-47.4.

**CLASS H** — Jack Baldwin, 5-0-59.1; Ray Brandon, 3-2-52.6; Bill McClain, 3-2-48.3.

**CLASS I** — Fred Raisbeck, 5-0-51.8; Herman May, 3-2-50.0; Vince Stoner, 3-2-44.8.

**CLASS J** — Ron Storer, 4-1-48.0; K. Wagonfield, 4-1-44.3; Dan Sanders, 2-3-47.8.

**CLASS K** — Fred Brown, 4-1-51.4; Bill Ison, 4-1-47.6; W.C. Robinette, 3-2-48.4.

**CLASS L** — D. Dombrowski, 5-0-51.5; E. Glass, 3-2-47.2; Dale Jenkins, 3-2-40.1.

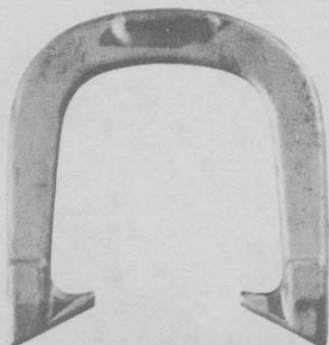
## OHIO — (Cont.)

- CLASS M — Bob Gardner, 5-0-50.0; Jim Hurst, 4-1-55.3; Harvey Zennie, 2-3-47.2.
- CLASS N — Ray Boyd, 4-1-44.1; John Taylor, 3-2-40.8; John Hiles, 3-2-39.8.
- CLASS O — Earl Noe, 4-1-49.0; Jim Dunkerly, 4-1-41.6; Kenny Lane, 3-2-46.4.
- CLASS P — C. Crabtree, 5-0-47.5; W. Perkins, 4-1-38.9; F. Asher, 2-3-43.0.
- CLASS Q — Dave Rose, 5-0-60.9; Dale L. Miller, 4-1-49.1; Paul Zeismer, 2-3-43.0.
- CLASS R — L. Hite, 4-1-44.8; M. Hurley, 4-1-44.7; G. Catheart, 2-3-38.5.
- CLASS S — S. Kahle, 5-0-52.6; K. Witschger, 4-1-44.5; R. Futrell, 2-3-39.1.
- CLASS T — G. Thome, 3-1-58.2; Wm. Woodson, 2-2-40.3; T. McPhall, 2-3-39.8.
- CLASS U — H. Rutherford, 5-0-41.4; M. Gross, 3-2-40.5; C. Brady, 3-2-34.3.
- CLASS V — R. Rodriques, 4-1-37.6; L. Rose, 4-1-37.1; J. Hiles, 3-2-34.7.
- CLASS W — L. Schaffner, 4-0-38.3; R. Park, 3-1-34.0; W. Mayes, 1-3-29.9.
- CLASS X — D. Hawk, 5-0-51.1; J. Katzenback, 3-2-36.1; D. Riddell, 3-2-32.0.
- CLASS Y — H. Bottomly, 3-1-29.4; L. Dexter, 3-1-28.7; A. Halley, 2-2-35.0.
- CLASS Z — Bob Gray, 5-0-40.9; F. Zimmerman, 4-1-29.0; Gil Skaggs, 2-3-25.5.
- CLASS Z-1 — R. Jenkins, 5-0-36.0; F. Karacia, 3-2-25.8; Al Butts, 2-3-28.0.
- CLASS Z-2 — D. Schlosser, 4-1-30.3; D. Wicker, 4-1-26.7; G. Kesler, 3-2-22.2.
- CLASS Z-3 — H. Angel, 5-0-34.4; E. Waymire, 3-2-27.2; F. Grubbs, 3-2-26.8.
- CLASS Z-4 — E. Dupler, 4-1-28.0; W. Godwin, 4-1-24.4; Ed Kucharski, 3-2-25.6.
- CLASS Z-5 — M. Joyal, 5-0-31.6; R. Curry, 4-1-20.8; L. Crabtree, 3-2-16.0.
- CLASS Z-6 — L. Rohe, 2-1-22.0; G. Park, 2-2-15.3; F. Worner, 2-1-11.3.
- CLASS A LADIES — Opal Reno, 5-0-81.0; Connie Still, 4-1-76.7; K. Harrison, 3-2-68.8.
- CLASS B LADIES — B.A. Dunlap, 5-0-63.5; Barb Rose, 4-1-51.2; J. Schlosser, 3-2-48.1.
- CLASS C LADIES — D. Slocum, 3-1-52.8; Bev Smith, 3-1-40.6; O. Frazier, 2-2-44.8.
- CLASS D LADIES — K. Piras, 4-0-38.4; Deb Wigker, 3-1-37.9; M. Bushman, 2-2-25.9.
- GIRLS CLASS — L. Reno, 3-0-55.9; B. Reno, 2-1-53.5; L. McEldowney, 1-2-52.3; Pam Moon, 0-3-31.0.
- CLASS A BOYS — Dan Brown, 5-0-65.4; J. Thornsberry, 4-1-58.6; T. Hymer, 2-3-54.2.
- CLASS B BOYS — G. Peterson, 5-0-50.8; D. Reno, 4-1-51.2; D. Moon, 3-2-37.6.
- CLASS C BOYS — M. Ashworth, 6-0-25.0; J. Sigler, 5-1-19.6; R. Jenkins, 3-3-19.3.

## J. SALESBEE NEW SOUTH CAROLINA CHAMPION MARY SANDERS NEW WOMEN'S TITLIST

- CLASS A — Johnny Salesbee, 5-0-64.3; W.E. Stephens, 4-1-65.8; Oren Salesbee, 1-4-46.8.
- CLASS B — Lewis Shepard, 4-0-43.4; Norman Kelley, 3-1-36.4; Jimmie Bloome, 2-2-25.0.
- CLASS C — Steve Kelley, 5-1-25.0; Kim Kelley, 4-2-20.9; Randy Duncan 3-3-21.0.
- WOMEN'S CLASS — Mary Sanders, 6-0-32.0; Betty Sanders, 4-2-25.5; Jackie Kelley, 2-4-9.9; Mary Sanders pitched the highest ringer percentage for a single for women of 70.8.

Since 1931

**GORDON***"Spin-On"*

— 3 TEMPERS —

Medium With Hardened Calks  
 Dead Soft                      Hard

Southern California Representative

**JERRY SCHNEIDER**

3144 W. Paso Robles Drive

ANAHEIM, CALIFORNIA 92804

714-826-0684

APPROVED BY NHPA

OFFICIAL STAKES ALSO AVAILABLE

**THE QUEEN CITY FORGING CO.**

233 TENNYSON STREET

CINCINNATI, OHIO 45226

**DON KUCHCINSKI NEW PENNSYLVANIA STATE CHAMPION  
 NEW CUMBERLAND, PENNA. — SEPT. 2-3-4-5**

CLASS A — Don Kuchcinski, 14-1-79.6; Glenn Burris, 12-3-73.5; Clyde Marts, 12-3-73.3; Al Zadroga, 11-4-74.3.

CLASS B — Fritz Lutter, 5-2-58.0; Francis White, 5-2-55.4; Dick Carnahan, 4-3-58.3.

CLASS C — Melvin Burkett, 6-1-56.6; Jerry Halderman, 5-2-56.1; Glenn Sebring, 4-3-60.5.

CLASS D — Ray Benedict, 6-1-51.9; Dick Wilson, 5-2-48.1; Jack Griffith, 5-2-46.2.

CLASS E — Martin Bubb, 7-0-57.6; Jack Swyers, 6-1-53.7; Jim Sibley, 5-2-54.6.

CLASS F — Frank Kilinsky, 7-2-58.0; Dick Ruff, 6-3-49.8; Wayne McCloskey, 5-4-49.6.

CLASS G — Frank Smigiel, 6-1-52.0; Earl Lartz, 6-1-47.0; Chas. Schech, 5-2-41.6.

CLASS H — Guy Esh, 7-0-44.7; Rod Wilkinson, 6-1-44.5; Ray Folkenroth, 3-4-39.9.

CLASS I — Ed Bowersox, 7-0-48.1; Pete McCollum, 6-1-46.6; Mike Stehnach, 5-2-46.8.

CLASS J — Harold Clippinger, 6-1-44.4; John Zommerman, 6-1-43.1; Ned Kinard, 4-3-35.0.

CLASS K — Roy Brinkley, 6-1-37.9; Don Bubb, 4-3-37.7; William Stahl, 4-3-32.5.

CLASS L — Don Wagner, 7-0-39.0; Mike Spangler, 5-2-41.6; Don Diehl, 5-2-35.9.

CLASS M — Fred Bird, 8-1-35.5; Barry McQuillen, 8-1-33.7; Clair Beardsley, 7-2-29.0.

JR. BOYS — Joey Morris, 4-0-53.8; Donnie Dell, 2-2-9.3; Todd Lloyd, 0-4-5.6.

LADIES CHAMPIONSHIP — Fran Carnahan, 5-0-76.2; Charlotte, Onion, 4-1-54.5; Viola Harris, 3-2-34.3.

## OREGON STATE CHAMPIONSHIP WON BY B. WIEDRICH ROSEBURG, OREGON — SEPT. 3-4-5

**CLASS A** — B. Wiedrich, 7-0-82.1; B. Chappelle, 6-1-69.9; Leggett, 5-2-68.9.

**CLASS B** — J. Gorton, 6-2-51.3; L. Chris, 5-3-49.2; R. Burke, 5-2-48.1.

**CLASS C** — H. Hoffman, 6-1-48.9; R.E. Click, 5-2-40.7; J. Stockton, 4-3-37.4.

**CLASS D** — C. Ricketts, 7-2-44.3; R. Meyer, 6-3-42.7; K. Leather, 6-3-43.2.

**CLASS E** — H. Vallier, 6-1-44.7; V. Hyder, 5-2-37.3; Bob Johnson, 3-3-38.3.

**CLASS F** — F. Flemmer, 5-0-36.4; B. Dolan, 4-2-37.5; R. Christ, 4-2-31.5.

**CLASS G** — P. Hendry, 5-1-37.1; W. Hufsch., 4-2-336.9; E. Chaput, 3-2-34.0.

**CLASS H** — K. Dixon, 6-0-38.5; F. Dvorshak, 5-1-29.3; L. Rickert, 3-3-31.9.

**CLASS I** — J. McGrew, 5-1-33.5; W. Ferris, 4-2-23.9; S. Neubold, 4-2-32.2.

**CLASS A WOMEN** — Darlene, 5-1-52.2; E. Davis, 4-2-38.6; S. Bartel, 3-2-51.6.

**CLASS B WOMEN** — L.L. Samples, 5-0-21.3; D. Graham, 4-1-24.4; V. Lund, 2-3-8.3.

## WARD WINS TENN. STATE CROWN — MARLENE RAY RETAINS LADIES CHAMPIONSHIP — AUG. 13 — CLEVELAND, TENN.

Forty-five men and four ladies participated in the annual Tennessee state tournament held in Cleveland, Tenn. on August 13. Don Ward topped Class A with a 7-0-75.4 record. Marlene Ray retained her title with a 3-0-48.2 record. Maxine Shackleton tossed 13 ringers out of 18 shoes to claim high single game honors of 72.2 percent. She was the runner-up in the ladies class with a 2-1-51.7 record. Roger Norwood and Grady Whaley teamed together to win the Tenn. state doubles championship.

**CLASS A** — D. Ward, 7-0-75.4; R. Norwood, 5-2-72.7; G. Lebow, 5-2-71.8.

**CLASS B** — J. Vines, 6-1-54.7; R. Pruitt, 5-2-61.3; W. Grant, 5-2-59.7.

**CLASS C** — W. Gee, 5-0-55.9; J. Conners, 3-2-54.1; J. Hammitt, 2-3-47.1.

**CLASS D** — J. Cunyngnam, 4-1-46.9; C. Bennett, 3-2-46.8; J. Hickey, 3-2-45.8.

**CLASS E** — M. Bouton, 5-0-38.5; L. Byrd, 4-1-32.8; F. Gregg, 3-2-30.7.

**CLASS F** — R. Ward Jr., 4-1-39.4; W. Stoner, 4-1-35.5; F. Fritts, 3-2-29.7.

**CLASS G** — J. Foster, 4-0-21.4; F. Gaw, 2-2-14.4; J. Bouton, 2-2-9.8.

**LADIES CLASS** — M. Ray, 3-0-48.2; M. Shackleton, 2-1-51.7; A. Smith, 1-2-27.4.

## HOLLISTER VERMONT TITLIST — AUGUST 14 — LIZ DOWNER WINS LADIES — J. LAVELLE, GIRLS — MATHESON, BOYS

**CLASS A** — Kevin Hollister, 8-0-70.2; Gale Green, 6-2-57.0; Dick Green, 5-3-56.6.

**CLASS B** — Ray Barker, 8-0-45.4; Dave Lafreniere, 6-2-45.0; Bob Many, 6-2-44.2.

**CLASS C** — Dave Smith, 5-1-39.0; John Blair, 4-2-36.8; Ken Wallace, 3-3-30.4.

**CLASS D** — Reid Brewster, 6-1-35.2; Don Choiniere, 6-1-43.7; Donald Dean, 4-3-32.2.

**CLASS E** — Lee Paquette, 7-1-28.9; Glenn Kennison, Jr., 5-3-30.6; Bob Gordon, 5-3-30.2.

**CLASS F** — Pete White, 6-1-22.9; Paul Pouliot, 6-1-21.9; Mike White, 4-3-28.8.

**CLASS G** — Dick Bedell, Sr., 7-0-24.2; Ray Gomez, Jr., 5-2-17.7; George Finch, 4-3-16.3.

COVER PICTURE... Shown this month are the new members of the Florida Hall of Fame each holding their Hall of Fame plaques. All are members of the Clearwater Club. Pictured left to right are: Norman Gaseau, Marion Collins, Joe Holland and George Buskey. Gaseau is NHPA 2nd Vice-Pres. also secretary-Treas. of Florida state association and President of the Clearwater Club. Holland is Vice-Pres. of Florida state and sec. of Clearwater Club. Buskey is State statistician and vice-pres. of Clearwater Club.

## VERMONT — (Cont.)

**CLASS H** — Leonard Jerome, 5-1-11.8; Willie Francis, 4-2-8.9; Chris Wissell, 3-3-7.6.

**WOMENS CLASS A** — Liz Downer, 6-0-59.3; Jean Brown, 2-4-49.7; Debbie Brown, 2-4-48.5.

**WOMENS CLASS B** — 6-0-24.0; Kay Brewster, 4-2-24.6; Jeanette Thompson, 1-5-18.4.

**JUNIOR GIRLS** — Jeanette Lavelle, 6-0-25.6; Wendy Burnham, 2-4-16.9; Marlene Burnham, 1-5-14.4.

**JR. BOYS CLASS A** — Glenn Matheson, 5-0-61.4; Carl Baillargeon, 4-1-55.9; Jim Forgues, 3-2-43.6.

**JR. BOYS CLASS B** — Brian Baillargeon, 5-1-25.9; Tim Page, 4-2-18.7; Andre Bergeron, 3-3-17.6.

## SHIPLEY EXTENDS THANKS TO COUNCIL, STAFF, MEMBERS

Just a note to thank you for all you have done to support me, my administration and the NHPA these past 10 years.

With your continued efforts and support for the new NHPA Administration I am confident our sport will continue to grow and progress.

Wishing you and your family the best of health.

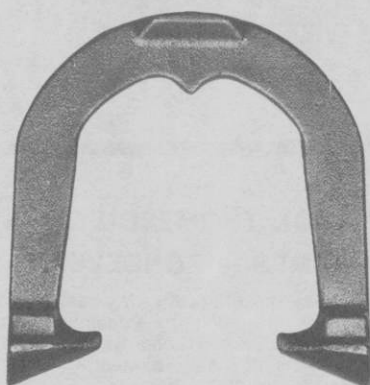
### THE NEW IMPROVED

# IMPERIAL

- BETTER ENERGY ABSORPTION
- LARGER RINGER BREAK
- WIDER BLADES
- REDUCED PRICES

U.S.A. PRICES  
(Postpaid)

1 Pair .....	\$26.00
2 to 5 Pair .....	\$25.00
6 Pr. & Over .....	\$20.00
	Freight Collect



## CLYDE MARTZ

3726 Henley Dr.

Pittsburgh, Pa. 15235

PHONE: 412-731-4662

## *In Memoriam*

Word has been received of the passing of John Law, of Gladstone, Illinois on July 25 after a long lingering illness. He was a long time member of the Illinois State Association and the NHPA also a subscriber to the News Digest for many years.

He participated in most major tournaments and was always a contender for any title and had won many trophies during his pitching career. He also was a member of the Monmouth, Illinois Horseshoe Club.

He is survived by his loving wife Virginia, two sons, two brothers and seven grand children. The sympathy of the Illinois Association and that of the NHPA is extended to his bereaved family.

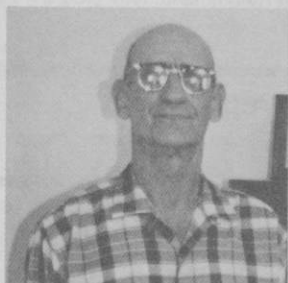
\* \* \* \* \*

The Ohio Association was saddened by the death of Pete Finch of 718 Balfe St., Toledo Ohio 43609 in August. Horseshoes was his hobby for many years and he had many trophies to show for his playing ability. He was a collector of old horseshoes for many years of various models and had accumulated over 1,000.

He was a great competitor and won the Ohio State title in 1962. He was a fine gentleman and his presence will be sadly missed in Ohio pitching circles.

He is survived by his wife Mary and a son. To her and her son and relatives we extend our sincere sympathy.

\* \* \* \* \*



Clifford Arnold of Roxana, Illinois passed away September after a long illness of lung cancer. He played in many tournaments since he started in 1943 and had acquired 37 trophies of which he had a story for each trophy. He loved competition and never gave up. He pitched a low hard shoe. He was a member of the Illinois State Association and the NHPA and an ardent reader of the News Digest.

He will be sorely missed by all his friends and associates. To his bereaved family our heartfelt sympathy is extended.

---

## **MADDOX, THOMPSON & WHITLOW 1983 WEST VIRGINIA STATE CHAMPS — RONCEVERTE, W.VA. — LABOR DAY WEEKEND**

Ralph Maddox of Poca, W. Va. has won the title of the 1983 State Champion in the mens "A" Class Division by being undefeated with a 75.9 average. The State Tournament was held at Ronceverte, W.Va. over Labor Day weekend.

Virginia Thompson of Fairmont, W.Va. captured her title as 1983 Ladies Champion by being undefeated with a 40.4 average.

Chris Whitlow of Peterstown, W. Va. won his title as 1983 Jr. Boys Champion by winning a play-off from 8 year old David Wiseman. Whitlow had a record of 4-1 with a 32.1 average.

**CLASS A MEN** — Ralph Maddox, Poca, 13-0-75.9; Howard Barnett, Charleston, 11-2-61.3; Joe Cochran, Ronceverte, 9-4-66.4.

**CLASS B MEN** — Robert Baker, Ronceverte, 8-1-53.3; Ed Slaven, Ronceverte, 8-1-55.7; Bill Heaster, Weston, 7-2-49.7.

**WEST VIRGINIA — (Cont.)**

**CLASS C MEN** — Lee Young, Beverly, 7-0-50.3; Davis Woodward, Fairmont, 5-2-41.7; Larry Wykle, Frankford, 4-3-40.1.

**CLASS D MEN** — Floyd Riggelman, Beverly, 6-1-38.9; Bill Burkhammer, Weston, 5-2-46.6; Lewis Baker, Ronceverte, 5-2-43.3.

**CLASS E MEN** — Clyde Baker, Maxwelton, 4-1-36.7; Larry Spencer, Linden, 4-1-40.1; Kyle Loudermilk, Frankford, 2-3-35.9.

**CLASS F MEN** — Robert Gabbert, Parkersburg, 5-0-34.0; David Burke, Rockport, 4-1-28.8; James Bowling, Charleston, 3-2-24.2.

**CLASS A LADIES** — Virginia Thompson, Fairmont, 7-0-40.4; Debra Spencer, Linden, 6-1-30.8; Eloise Keene, Ronceverte, 5-2-39.5.

**JR. BOYS** — Chris Whitlow, Peterstown, 4-1-32.1; David Wiseman, Asbury, 4-1-30.0; Keith Spencer, Linden, 3-2-37.0.

---

**BESTUL PLAY—OFF WINNER IN 1983 WISCONSIN STAE  
EAU CLAIRE, WISCONSIN — SEPT. 3-4-5**

**CLASS A MEN** — Harold Bestul, Rosholt, 5-2-66.8; John Udelhofen, Platteville, 5-2-67.1; Roger Poutanen, Wausau, 5-2-64.8.

**CLASS B MEN** — Don Hendricks, Benton, 5-2-58.5; Bernard Carley, Edgerton, 5-2-53.4; Mary Huffman, Broadhead, 4-3-55.4.

**CLASS C MEN** — Norm Mauthe, Platteville, 6-1-58.0; Gib Gingras, Eau Claire, 6-1-51.4; Ted Laursen, Eau Claire, 4-3-57.1.

**CLASS D MEN** — Al Lonning, Eau Claire, 7-0-53.1; Steve Wiegert, Green Bay, 5-2-59.1; Archie Johnson, Eau Claire, 5-2-54.0.

**CLASS E MEN** — Gary Schwartz, Random Lake, 5-2-48.0; Al Ayres, Eau Claire, 5-2-44.0; JerryNordlee, Janesville, 4-3-43.4.

**CLASS F MEN** — Brian Repinski, Plover, 6-1-56.0; Jim Poquette, Hubertus, 5-2-48.2; Verne Thompson, Wonewoc, 5-2-47.4.

**CLASS G MEN** — Harvey Bilz, Janesville, 7-0-50.0; Gerald Gronowski, Oconomowoc, 5-2-42.0; Rudy Larson, River Falls, 4-3-45.1.

**CLASS H MEN** — Chuck Hansen, Franksville, 5-2-35.4; Jim Bloemers, Fond du Lac, 4-3-36.2; Al McGowan, Milwaukee, 4-3-35.7.

**A M E R I C A N**

**NHPA APPROVED**

**DESIGNED AND PITCHED BY CARL STEINFELDT**

**1 TO 4 PAIRS — \$15.00/pr.      5 OR MORE PAIRS—\$14.00/pr.**

**POSTAGE PAID**

Order Direct or from NHPA Representative

**CARL STEINFELDT, 44 Ridgecrest Road, Rochester, NY 14626**

**Wally Shipley, 2646 Basswood St., Newport Beach, CA 92660**

**WISCONSIN — (Cont.)**

**CLASS I MEN** — Wayne Vanderhei, Muskego, 5-2-38.5; Ken Jevne, Mondovi, 5-2-38.5; William McNaughton, Eau Claire, 5-2-38.5.

**CLASS J MEN** — Richard Engmann, Marshfield, 7-0-41.4; Bruce Goshaw, Eau Claire, 6-1-40.8; Dennis Ambuehl, Oconomowoc, 5-2-41.4.

**CLASS K MEN** — Len Mauthe, Cuba City, 6-1-37.1; Dennis Zeisse, Caledonia, 6-1-38.5; Lyell Gleason, Boyceville, 4-3-33.4.

**CLASS L MEN** — Randy Rein, Mosinee, 6-1-42.2; Ducey Valle, Brownsville, 5-2-41.7; Ron Rogalski, Thorp, 4-3-39.4.

**CLASS M MEN** — Carl Heikkinen, Brantwood, 7-0-44.0; Albert Valle, Brownsville, 5-2-34.5; Sid Hough, Stratford, 5-2-33.1.

**CLASS N MEN** — Al Johnson, Eau Claire, 7-0-35.3; Frank Warmbrunn, Appleton, 5-2-33.6; Eldon Eaton, Eau Claire, 5-2-31.0.

**CLASS O MEN** — Bob Anderson, Eau Claire, 6-1-35.4; Jerry Briggs, Eau Claire, 5-2-34.0; Herb Theisen, Lomira, 5-2-32.9.

**CLASS P MEN** — Jeff Gallistel, Medford, 7-0-30.2; Greg Mattson, Menomonie Falls, 5-2-26.5; Tom Porn, Eau Claire, 4-3-32.5.

**CLASS Q MEN** — Gary Bloedorn, Fond du Lac, 6-1-33.7; LeRoy Huson, Arena, 5-2-22.0; Allen Belqum, Arena, 4-3-24.8.

**CLASS R MEN** — Ivan Ruzic, Willard, 4-1-28.8; Bob Jackson, Baraboo, 4-1-20.4; Andy Brezina, Menomonie, 3-2-20.8.

**CLASS S MEN** — Willard Bauer, Knowles, 4-1-14.8; Clarence Guenther, Marshfield, 3-2-20.0; Wayne Satonica, Owen, 2-3-18.8.

**CLASS T MEN** — Dan Hanson, Boyceville, 5-0-20.4; Art DeRusha, Eau Claire, 4-1-17.2; Darrell Peterson, Arena, 2-3-17.6.

**JUNIOR BOYS — CLASS A** — Hank Schwartz, Random Lake, 4-2-79.0; Brett Pritzlaff, Germantown, 3-3-78.0; John Crook, Spring Green, 3-3-69.3.

**JUNIOR BOYS — CLASS B** — Mike Stuebing, Campbellsport, 5-1-43.3; David Bestul, Eau Claire, 4-2-41.0; Troy Christenson, New Richmond, 3-3-28.6.

**JUNIOR GIRLS** — Debby Bestul, Eau Claire, 3-0-16.6; Kristy Christenson, New Richmond, 0-3-3.3.

**LADIES CLASS A** — Shary Klopp, Eau Claire, 7-0-68.8; Jane Smith, Milltown, 6-1-59.7; Pat Eaton, Eau Claire, 5-2-68.2.

**LADIES CLASS B** — Ev Goshaw, Eau Claire, 4-1-45.5; Mary Burton, Eagle, 4-1-41.0; Patsy Johnson, Eau Claire, 3-2-41.0.

**LADIES CLASS C** — Elly McCarn, Eau Claire, 6-0-31.0; Debby Thompson, Cushing, 4-2-23.0; Margaret Hessling, Dickeyville, 2-4-21.5.

---

## **SCHLISKE, BEV. LAURIN, D. LAURIN TITLE WINNERS IN WYOMING STATE — SEPT. 3-4 — WHEATLAND, WYOMING**

A.E. "Bud" Schliske and Beverly Laurin both of Cheyenne, went undefeated to successfully defend their State Championships in the men's and women's divisions. Vern German of Casper and Alice Stewart of Encampment were the runners-up. Donna Laurin of Cheyenne defeated the 1983 champion, Miles Bundy of Casper to win her first Junior Championship.

**MENS CLASS A** — A.E. "Bud" Schliske, Cheyenne, 9-0-54.0; Vern German, Casper, 7-2-57.2; Ken Raymond, Rawlins, 7-2-55.5.

**WOMENS CLASS A** — Beverly Laurin, Cheyenne, 6-0-52.8; Alice Stewart, Encampment, 0-6-27.5.

**JUNIORS** — Donna Laurin, Cheyenne, 6-1-33.8; Miles Bundy, Casper, 5-2-30.6; Barry Hansen, Cheyenne, 1-5-17.4.



**WYOMING — (Cont.)**

**MENS CLASS B** — Bill Roberts, Cheyenne, 9-0-48.0; Dick Gunderson, Yoder, 6-3-43.47; Don Laurin, Cheyenne, 6-3-41.3.

**WOMEN CLASS B** — Ruth Raymond, Rawlins, 8-0-19.5; Carol Moore, Albin, 5-3-15.2; Sandra Hansen, Hillsdale, 4-4-15.9.

**MENS CLASS G** — Jim Christensen, Buffalo, 8-2-39.4; Don Clausen, Lander, 7-3-38.4; Jerry Christoffer, Buffalo, 7-2-32.3.

**MENS CLASS D** — Byron Nelson, Buffalo, 8-1-33.3; Matt Laurunen, Rock Springs, 7-2-24.1; Clyde Mauck, Buffalo, 6-3-28.6.

**MENS CLASS E** — Earl Parsons, LaGrange, 9-0-36.4; Joe L. Williams, Casper, 7-2-30.7; Travis Lenz, Torrington, 7-2-24.1.

**MENS CLASS F** — Punch Marshall, Wheatland, 9-0-25.6; Bob Wagner, Albin, 7-2-18.3; Laddie Ptnacek, Laramie, 7-2-16.5.

**WIEDRICH WINS OREGON CITY, ORE. OPEN (JULY)**

**CLASS A** — Ben Wiedrich, Oregon City, 6-0-78.5; Lowell Davis, Creswell, 5-1-69.6; Jim Burke, Albany, 4-2-65.1.

**CLASS B** — Phil Tyler, Springfield, 5-0-58.9; Bob Beesley, Culver, 3-2-47.7; D.D. McMillan, Eugene, 3-2-41.1.

**CLASS C** — Bob Showers, Salem, 5-1-50.0; Skip Schilperoort, Sunnyside, 4-2-46.2; Ken Leatherman, Portland, 3-3-45.7.

**CLASS D** — Art Lund, Eugene, 4-1-42.3; Dave Gutcher, Bend, 3-2-40.6; Lee Wallace, Terrebonne, 2-3-42.5.

**CLASS E** — Gene Buzzini, Vanc. Wa., 5-1-35.7; Jim Gregory, Portland, 4-2-37.9; Lee Centell, Salem, 4-2-30.6.

**CLASS F** — Lloyd Likens, Portland, 7-1-40.5; Dave Sturdevant, Newberg, 6-2-37.8; Lloyd Kilgore, Eugene, 4-3-39.1.

**CLASS G** — Denny Samples, Redmond, 7-0-38.0; Bill Dolan, Gladstone, 6-1-31.9; Lauren Hill, Sandy, 5-2-34.7.

**CLASS H** — Les McFarland, Seaside, 6-1-30.8; Larry Fitzgerald, Corvallis, 5-2-27.8; Freeman Williams, Roseburg, 5-2-26.4.

**WOMEN CLASS A** — Darlene Williams, Roseburg, 5-0-48.6; Esther Ott, Oregon City, 3-2-46.1; Irene Wiedrich, Oregon City, 1-4-30.9.

**WOMEN CLASS B** — Lenna Maskell, Salem, 5-0-32.3; Phyllis Centell, Salem, 3-2-35.3; Betty Tatchio, Salem, 3-2-20.6.

**JUNIORS** — Mike Gibson, Oregon City, 5-1-22.7; Tom Gibson, Oregon City, 2-4-19.4; Bobby Woodford, Portland, 2-4-21.9.

Let PITCHER'S PAL 

help pick up the shoes

- Save your back
- Avoid fingernail damage
- Protect your hands

Send \$5<sup>95</sup> to:

post paid

**A  
Great  
Gift!**

Pitcher's Pal P.O. Box 583 West Middlesex Pa. 16159

# U-PITCHER T-SHIRTS

Hats  
\$5<sup>00</sup> pp



Ring in  
the  
Holidays

For U-Pitchers By U-Pitchers

T-SHIRTS - \$ 6.50  
KNIT GOLF SHIRTS - \$16.00  
WINDBREAKERS - \$29.00  
Sizes - S, M, L, XL

Postage Paid

## CLUBS ★ PROMOTIONS ★ PRIZES

STOCK MESSAGES: #1 - (Shown above) "Horseshoe Pitchers Get It On". #2 - "Star Horseshoe Pitcher". #3 - (Old West Wanted Poster) "Wanted, Horseshoe Pitchers". #4 - "Pitch Horseshoes, Not Bombs". #5 - "I Love Horseshoe Pitching". (Specify number, size & quantity with orders.)

### CUSTOM DESIGNING:

- ★ T-SHIRTS
- ★ EMBLEMS
- ★ TROPHY PINS

OTHER ITEMS AVAILABLE; WRITE FOR DETAILS  
- SEND \$1.00 WITH ALL INQUIRIES (APPLIES TO PURCHASE)  
QUANTITY DISCOUNTS      DEALER INQUIRIES INVITED

## Horseshoe-Pro Promotions

P.O. BOX 15061, SALEM, OREGON 97309 (503) 585-3324

VISA & MASTERCARD WELCOME

**WIEDRICH WINNER IN OREGON MONEY TOURNAMENT (JUNE)**

**CLASS A** — Ben Wiedrich, Oregon City, 10-0-79.4; Walter R. Williams, Chino, Ca., 9-1-82.5; Herb Criss, Bremerton, Wa., 7-3-74.6.

**CLASS B** — Gerry Staley, Vanc., Wa., 9-2-58.5; Vern Miller, Yakima, Wa., 8-3-58.7; Ron Ferguson, Vanc., Wa., 7-4-56.8.

**CLASS C** — Everett Clark, Salem, 6-1-52.0; Joe James, Eugene, 4-3-47.9; Dayton Martindale, Royal City, 4-3-43.5.

**CLASS D** — Bob Showers, Salem, 5-1-45.2; Skip Schilperoot, Sunnyside, 4-2-40.2; George Hughes, Riddle, 3-3-39.0.

**CLASS E** — R.E. Click, Warrenton, 6-1-46.6; Lee Wallace, Terrebonne, 5-2-43.9; Tom J. Worthington, Spokane, 5-2-41.1.

**CLASS F** — Chuck Seal, Bend, 7-0-44.0; Ralph Warthen, Caldwell, Ind., 6-1-44.1; Otis Wilcox, Hermiston, 5-2-38.3.

**CLASS G** — Lee Centell, Salem, 6-1-37.3; Lloyd Likens, Portland, 5-2-35.7; DuWayne Wiederich, Portland, 5-2-35.0.

**CLASS H** — Clarence Wood, Seaside, 6-1-34.5; Allen Hobday, Idaho, 5-2-34.8; Bill Graham, Bend, 4-2-34.4.

**CLASS I** — Tony Apadaca, Jerome, Id., 7-0-34.0; Denny Samples, Redmond, 5-2-33.0; Virgil Brayette, Clarkston, Wa., 5-2-30.2.

**CLASS J** — Lloyd Erickson, Baker, 6-1-33.9; Keith Devenberg, Salem, 5-2-30.2; Dale Miller, Wash., 5-2-29.5.

**CLASS K** — Lee Payton, Idaho, 5-0-26.7; Frank Czubiak, Pendleton, 4-1-18.6; Dean Martin, Fairfield, Id., 3-2-20.7.

**CLASS A WOMEN** — Hannah Foley, Spokane, Wa., 5-1-50.7; Fran Cooper, Hermiston, 4-2-50.8; Ruth Welsch, Spokane, Wa., 3-2-48.0.

**CLASS B WOMEN** — Helen Payton, Idaho, 5-0-34.7; Lenna Maskell, Salem, 4-1-31.4; Sigrid Jones, LaGrande, 3-2-35.7.

**GLEN RIFFLE ON TOP IN PIQUA, OH OPEN (JULY)**

**CLASS A** — G. Riffle, 6-1-70.9; H. Wipert, 6-1-68.9; G. Roberts, 5-2-73.1.

**CLASS B** — Jeff Davis, 5-0-55.1; Joe Kiser, 4-1-43.5; James Hurst, 3-2-47.

**CLASS C** — G. Thome, 5-0-46; K. Wagonfield, 4-1-42.5; F. Asher, 2-3-38.1.

**CLASS D** — H. Zennie, 5-0-39.9; C. Cottle, 3-2-36.7; D. Carson, 2-3-30.5.

**CLASS E** — H. Miller, 5-0-37.3; A. Davis, 4-1-43.7; E. Harrison, 3-2-35.1.

**CLASS F** — D. Crawford, 3-0-45.8; L. Schaffner, 2-1-40.6; C. Vore, 1-2-24.5.

**CLASS G** — B. Bowling, 5-0-36.6; D. Bowers, 4-1-52.6; J. Snyder, 3-2-29.3.

**CLASS H** — W. Godwin, 4-1-22.6; J. Slatery, 3-2-20.9; D. Schloser, 3-2-20.8.

**CLASS A WOMEN** — K. Harrison, 5-0-50.5; C. Swartz, 4-1-56.0; O. Frazier, 3-2-40.9.

**JUNIORS** — Murphy Frazier Jr., Miamisburgh, 5-0-50; Angie Spruance, Piqua, 4-1-8.

**IOWA ASSOCIATION SEASON ACTIVITY**

**COUNCIL BLUFFS OPEN — CLASS A** — Ray Daugherty, 4-1-41.5; Jan Flemming, 3-2-52.0; Tom Chambers, Jr., 3-2-54.0.

**CLASS B** — Ed Savery, 4-0-40.8; Kevin Vermeys, 3-1-40.1; Larry Fender, 1-3-32.4.

**CLASS C** — Dick Uaurick, 3-1-33.8; Don Madsen, 3-1-28.3; Lewis Brindle, 2-2-28.7.

**HANCOCK OPEN — CLASS A** — Tom Chambers, Jr., 4-1-59.3; Guy Spitzer, 4-1-55.6; Wil Rasmussen, 3-2-52.1.

**CLASS B** — Darrell Nation, 4-1-37.4; Kevin Vermeys, 4-1-41.4; Ed Savery, 3-2-38.9.

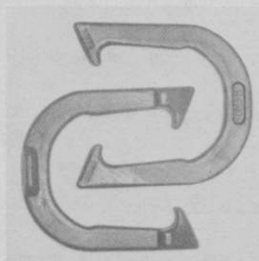
## RENO HORSESHOES

Order From:

**Reno Horseshoe Company**

**670 Reno Road**

**Lucasville, Ohio, 45648**



Jean Swarhout won the 1982 Michigan state women's title averaging 64.9% and setting a state record game of 91.7% with the Reno shoes.

**NHPA Approved**

**\$25.00 plus postage % \$22.00 five or more pairs**

All drop forged, medium temper with hard caulks.

West Coast Distributor — Wally Shipley Horseshoe Outlet.

### IOWA — (Cont.)

**CLASS C** — Harold Young, 4-1-29.3; Don Vermeys, 3-2-41.8; Tade Knapp, 3-2-28.7.

**DOC RODDA MEMORIAL — CLASS A** — Kevin Cone, 7-0-74.2; Bob Galles, 4-3-48.2; Ken Schorg, 3-4-48.5.

**CLASS C** — Carl Metz, 4-0-45.5; Kevin Vermeys, 3-1-48.5; Ival Dicus, 2-2-44.0.

**CLASS D** — Martin Simonsin, 4-0-46.5; Marvin Dirks, 3-1-31.0; Mel Swanson, 2-2-33.5.

**MASON CITY OPEN — CLASS A** — Dewey Johnson, 5-0-52.0; Elwood Johnson, 4-1-55.2; Marv Engsteler, 3-2-41.2.

**CLASS B** — Steve Meyer, 5-0-46.8; Owen Simmons, 4-1-43.2; Arnold Hanson, 2-3-38.4.

**CLASS C** — C. Christiansen, 3-2-40.0; Ole Lauden, 3-2-36.4; Don Brandau, 3-2-35.6.

**TIPTON FAIR OPEN — CLASS A** — Herman Beebe, 5-0-37.2; Bill Harder, 4-1-37.6; John Michels, 3-2-25.6.

**CLASS B** — Betty McGregor, 6-0-39.3; Don Traver, 4-2-26.3; Phil Schneider, 3-3-32.3.

**CLASS C** — Mildred Hottle, 3-0-12.6; Howard Siders, 2-1-11.3; Mike Moore, 1-2-5.3.

**NORTHEAST IOWA REGIONAL — CLASS A** — Ralph Simon, 7-0-65.9; Wil Foelske, 5-2-64.1; Kevin Cone, 4-3-64.5.

**CLASS B** — Muriel Maurer, 5-0-45.0; Ray Kamper, 3-2-46.8; William Wilson, 3-2-44.7.

**CLASS C** — Arlos Fisher, 4-1-34.4; Don Brandau, 3-2-38.0; Marianne Colony, 3-2-37.6.

**KEOKUK CO. FAIR — CLASS A** — Byron Hafner, 5-0-57.9; Richard Proctor, 4-1-57.1; Don Prottzman, 2-3-50.4.

**CLASS B** — Jack Draper, 5-0-47.2; Jerry Sease, 3-2-49.5; Bob Andresen, 3-2-43.2.

**IOWA — (Cont.)**

**CLASS C** — Arlos Fisher, 4-1-34.4; Don Brandau, 3-2-38.0; Marianne Colony, 3-2-37.6.

**KEOKUK CO. FAIR — CLASS A** — Byron Hafner, 5-0-57.9; Richard Proctor, 4-1-57.1; Don Prottzman, 2-3-50.4.

**CLASS B** — Jack Draper, 5-0-47.2; Jerry Sease, 3-2-49.5; Bob Andresen, 3-2-43.2.

**CLASS C** — Jake Davis, 4-1-44.9; Floyd Gerholdt, 4-1-44.9; Gene Acord, 3-2-36.0.

**MARCUS OPEN — CLASS A** — Ken Garver, 5-0-54.8; Marls Goodrich, 3-2-61.6; Don Heikens, 3-2-40.4.

**CLASS B** — Bob Bjorkgren, 7-0-50.8; Kevin Vermeys, 6-1-49.7; Chester Anderson, 4-3-45.1.

**CLASS C** — Bruce Taylor, 4-1-41.2; Chester Specht, 3-2-35.6; Ival Dicus, 3-2-39.6.

**WEST DES MOINES OPEN — CLASS A** — Ralph Simon, 6-1-56.7; Bill Vandegriff, 5-2-65.9; Keith Baker, 5-2-66.1.

**CLASS B** — Larry Francis, 3-2-42.0; Chet Foster, 3-2-41.0; Walt Clark, 3-2-39.6.

**CLASS C** — John Brown, 5-0-44.8; Jack Draper, 4-1-39.3; Nick Baedaro, 2-3-35.6.

**ANKENY CENTRAL IOWA OPEN — CLASS A** — Harold Darnold, 4-1-66.8; Wil Foelske, 4-1-61.2; Ralph Simon, 3-2-62.4.

**CLASS B** — Chet Foster, 4-1-50.3; Maurice Skinner, 4-1-45.2; Nick Baedaro, 3-2-42.9.

**CLASS C** — Marianne Colony, 4-1-34.0; G. Dockstader, 4-1-32.4; Dick Lowery, 4-1-30.8.

**OTTUMWA OPEN — CLASS A** — Bill Vandegriff, 4-1-63.3; Don Prottzman, 3-2-61.0; Ron Burgess, 3-2-63.7.

**CLASS B** — Art Brown, Phil Carlisle, 3-2-31.2; DonSchutzer, 2-3-41.2.

**CLASS C** — Jake Davis, 4-1-43.7; V.R. Rutter, 4-1-32.4; Madelon Blake, 3-2-34.3.

**SCHUMMER SYSTEM TURNS THE GREEN LIGHT ON**

1. This system in its entirety is good enough to take our sport to every corner of the globe.

**THE TRUTH IS THE TRUTH**

2. This system in its entirety has more to offer for our sport than than anything that we have done in the past 50 years.

**THE TRUTH IS THE TRUTH**

3. This system in its entirety will not get any place, if we do not all pull together in complete harmony and make it happen.

**THE TRUTH IS THE TRUTH**

**EQUAL OPPORTUNITY** — The potential for ALL OF US to make and sell horseshoe courts and scoreboards will be endless when we get our new image on display and the good news spread.

**GETTING EDUCATED IS THE FIRST STEP YOU HAVE TO TAKE**

Write for the "Three Cheers" Brochure

**GLEN "Red" HENTON, 513 West Platt St., Maquoketa, IA 52060**  
Phone:: 319-652-4250

## Coming Events—Continued

### FLORIDA SCHEDULE

- Entry fee is \$7.00. Pre-registration required. Send entry fee to proper contact 7 days prior to tournament. Scorekeeper fee 25¢ per game. Tournaments are sanctioned. NHPA and State card required. All games cancellation. 40 oints of 50 shoes, whichever comes first. Mixed tournaments unless otherwise indicated. In 2-day meets players with percentage under 40% will pitch 1st day. Dropouts after deadline forfeit entry fee unless tournament is cancelled. Starting time 9:00 a.m.
- Oct. 15 — Bee Ridge Open. Sarasota. Limited to 1st 56 pitchers who pitch 40 ft. ONLY. Contact Paul Scheub, 2139 Piazza Dr., Sarasota, FL 33583. Ph. 813-966-5462.
- Oct. 22 — Osceola Open. St. Cloud, Limited to 1st 42 pitchers who pitch 40 ft. ONLY. Contact Andy Anderson, 1100 Indiana Ave., St. Cloud, FL 32769. Ph. 305-892-2051.
- Oct. 29 — Bullington Enterprise Open. Winter Haven. Contact Joe West, 6250 Halabrin Rd., Haines City, FL 33844. Ph. 813-422-2053.
- Nov. 5 — Clearwater Open. Clearwater. Contact Norm Gaseau, 1908 Nugget Dr., Clearwater, FL 33515. Ph. 813-443-2892.
- Nov. 12 — Veterans Open. Titusville. Contact Joe Stafford, 1320 Sharon Dr., Titusville, FL 32780. Ph. 305-269-3557.
- Nov. 15 — Sunshine Open. Orlando. Contact Jim Peterson, 220 Maynard Dr., Orlando, FL. Ph. 305-894-3379.
- Nov. 26 — White Aluminum Open. Apopka. Contact Norm Davey, 305-886-8168. Rte. 1, Apopka, FL 32703.
- Dec. 3 — Steinfeldt Open. Clearwater. Contact Norm Gaseau, 1908 Nugget Dr., Clearwater, FL 33515. Ph. 813-443-2892.
- Dec. 10 — Brooksville Open. Brooksville. Contact DWight Thatcher, 18443 Shadyside Dr., Brooksville, FL 33512. Ph. 904-796-8922.
- Dec. 17 — Snowbird Open. Sebring. Contact Jim Fourman, 2932 Bolin Lane, Sebring, FL 33870. Ph. 813-385-7372.
- Dec. 28 — Lake Worth Open. Bryant Park, S. 2nd Ave. & Golfview Dr., Lake Worth. Contact Herman Wieser, 1502 So. Lakeside Dr., Apt. 309N, Lake Worth, FL 33460. Ph. 305-582-2938.
- Jan. 7 — Tamiami New Year Open, Tamiami Park, 10901 S.W. 24th St., Miami. Contact Thomas Holmes, Jr., 9835 S.W. 70th St., Miami, FL 33173. Ph. 305-271-6864.
- Jan. 12 — Highland County Open, Sebring. Contact Jim Fourman, 2832 Bolin Lane, Sebring, FL 33870. Ph. 813-385-7372.
- Jan. 14 — Plant City Open, Plant City. Contact John Rademacher, 408 Pevery Dr., Plant City, FL 32566. Ph. 813-752-1226.
- Jan. 20-21 — Manatee Open, Bradenton. Contact Jim Pelkey, Box 80, Lincoln Arms, 5030 - 14th St., W., Bradenton, FL 33507. Ph. 813-756-3992.
- Jan. 21 — Yogi Bear Open. Apopka. Contact Norm Davey, Rte. 1, Box 2000, Apopka, FL 32703. Ph. 305-886-8168.
- Jan. 28 — Orlando Open. Orlando. Contact Jim Peterson, 220 Maynard Ave., Orlando, FL 32803. Ph. 305-894-3379.
- Feb. 4 — Barnett Bank Open, Apopka, Fla. Contact Norm Davey, Rte. 1, Box 2000, Apopka, Fla. 32703. Ph. 305-886-8168.
- Feb. — Florida State Fair Open. Tampa, Fla. (Date to be announced.) Contact Norm Gaseau, 1908 Nugget Drive, Clearwater, Fla. 33515. Ph. 813-443-2892.
- Feb. 11 — Hernando County Open. Brooksville, Fla. Contact Dwight Thatcher, 18443 Shadyside Drive, Brooksville, Fla. 33512. Ph. 904-796-8922.
- Feb. 18 — Sebring Open. Sebring, Fla. Contact Jim Fourman, 2832 Bolin Lane, Sebring, Fla. 33870. Ph. 813-385-7372.
- Feb. 17-18 — Suncoast Open. Bradenton, Fla. Contact Jim Pelkey, Box Lincoln Arms, 5030 - 14th St., West - Bradenton, Fla. 33507. Ph. 813-756-3992.
- Feb. 18 — Sun Bank of Osceola Open. St. Cloud, Fla. Tournament limited to first 42 entries who will pitch 40 feet ONLY. Contact Andy Anderson, 1100 Indiana Ave., St. Cloud, Fla. 32769. Ph. 305-892-2051.
- Feb. 25 — Sarasota Open. Sarasota, Fla. Tournament limited to first 56 entries who will pitch 40 feet ONLY. Contact Paul Scheub, 2139 Piazza Drive, Sarasota, Fla. 33583. Ph. 813-966-5462.
- Feb. 25 — Leap Year Open. Winter Haven, Fla. Contact Joe West, 6250 Halabrin Road, Haines City, Fla. 33844. Ph. 813-422-2053.
- Mar. 2-3 — Strawberry Festival Open. Plant City, Fla. Contact John Rademacher, 408 Pevery Drive, Plant City, Fla. 33566. Ph. 813-752-1226.
- Mar. 10 — Tom Varn Open. Brooksville, Fla. Contact Dwight Thatcher, 18443 Shadyside Drive, Brooksville, Fla. 33512. Ph. 904-796-8922.
- Mar. 15 — Race Week Open. Sebring, Fla. Contact Jim Fourman, 2832 Bolin Lane, Sebring, Fla. 33870. Ph. 813-385-7372.

**BALANCE OF FLORIDA SCHEDULE WILL BE IN DECEMBER ISSUE**

### JIM KNISLEY'S INDOOR COURTS 415 North Columbus St., Lancaster, Ohio 43130

- Oct. 22-23 — Harold Reno Open  
Nov. 19-20 — Paul Focht Open  
Dec. 10-11 — Wilbur Kabel Open  
Jan. 14-15 — Stan Manker Open  
Feb. 4-5 — Harold Anthony Open  
Mar. 17-18 — Glen Riffle Open  
Apr. 14-15 — Pop Johnson Open. Lady pitchers welcome.

Entry fee \$9.00. 8-man classes. 40 point games. Trophies for 1st and 2nd place. Deadline 10 days prior to date. Jim Knisley Classic Billiards, 415 North Columbus St., Lancaster, Ohio 43130. Ph. 614-653-0545.

### OPDYCKE INDOOR COURTS N. Wayne St., Angola, Ind. Behind MacDonalds

- |                |              |
|----------------|--------------|
| October 22-23  | January 7-8  |
| November 19-20 | February 4-5 |
| December 10-11 | March 24-25  |
|                | April 14-15  |

\$8.00 entry fee. 35 point games. Pay scorekeeper 25 cents per game. All ties decided by ringer percentage for that day. Deadline Sunday by telephone. Mail deadline 20 days before to Don Opdycke, Box 56, Pleasant Lake, Indiana 46779. Phone 219-475-5215.

# FREE!

## Trophy & Awards Catalog



Call Toll-Free  
**1-800-628-9657**  
In Mass. 1-800-282-7789

### DINN BROS. *The Trophy People*

P.O. Box 111 • 68 Winter St. • Holyoke, MA 01041

## COMING EVENTS

### ARIZONA STATE SCHEDULE Pioneer Park

- Oct. 22 — Annual Arizona State Tournament. Sanctioned. State & NHPA card required. 100 shoe qualification. Entries close Oct. 13.
- Nov. 25-26 — Bonanza Restaurant Open. Entries close Nov. 16.
- Dec. 16-17 — Mesa Parks Open. Entries close Dec. 7.
- Jan. 20-21 — Valley of the Sun Warm-Up. Sanctioned. State and NHPA card required. Entries close Jan. 11.
- Jan. 27-28-29 — Lost Dutchman Open. (check for exact location). Entry fee of \$7.00 with current ringer percentage should be sent to Roy Sneller, Space 636 or Wayne Jones, Space 743, Rock Shadows Trailer Resort, 600 South Idaho Road, Apache Junction, Arizona 85220. Phone: 602-982-7997.

- Feb. 14-15-16-17-18-19 — Annual Valley of the Sun Open. Sanctioned. State and NHPA card required. Entries close Jan. 30.
- Mar. 16-17 — Bye-Bye Snowbird Open. Entries close Mar. 7.

Entry fees: \$5.00 except Valley of the Sun and the Lost Dutchman Open. Entry fees for the Valley of the Sun: \$10.00 each. \$10.00 additional for Men's Class A. \$5.00 additional for Women's Class A and for Men's Class B, C & D. Send all entries and proper fee (except Lost Dutchman) and NHPA card number and current ringer percentage to: M.H. Fenimore, 8152 East Hayne St., Tucson, Arizona 85710. Phone 602-296-5087.

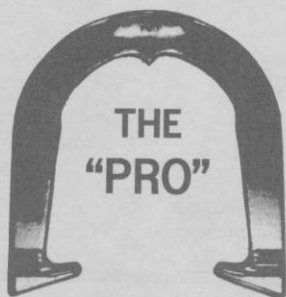
### TUCSON, ARIZ. SCHEDULE REID PARK—TUCSON

- Oct. 8 — Arizona State Warm-Up Tournament, Reid Park courts. 100-shoe qualifying. Entries close Sept. 29.
- Nov. 12 — Reid Park Classic. Reid Park courts. Sanctioned. State & NHPA card required. Entries close Nov. 3.
- Dec. 10 — Tucson Open Tournament. Reid Park courts. Entries close Dec. 1.
- Jan. 7 — Pima County Classic. Reid Park Courts. Sanctioned State & NHPA card required. Entries close Dec. 30.
- Jan. 27-28-29 — Lost Dutchman Open (check for exact location). Entry fee of \$7.00 with current ringer percentage should be sent to Roy Sneller, Space 636 or Wayne Jones, Space 743, Rock Shadows Trailer Resort, 600 South Idaho Road, Apache Junction, Arizona 85220. Phone: 602-982-7997.
- Feb. 4 — Old Pueblo Special. Reid Park courts. Sanctioned State & NHPA card required. Entries close Jan. 28.
- Mar. 3 — The Wind-Up tournament. Reid Park courts. Entries close Feb. 23.

Entry fees for all above tournaments is \$5.00 except Lost Dutchman. Send all entries (except Lost Dutchman) and proper fee with NHPA card number and current ringer percentage to: M.H. Fenimore, 8152 East Hayne St., Tucson, Arizona 85710. Ph: 622-296-5087.



## THE ORIGINAL DROP-FORGED PITCHING SHOE



Two tournament tested models, forged from S.A.E. specified steel, are available. Both have hardened hooks and points, and may be ordered in your choice of medium, soft, or dead soft tempers.



AS THE FIRST MANUFACTURER OF THE DROP-FORGED PITCHING SHOE, THE OHIO HORSESHOE COMPANY IS RECOGNIZED WORLD-WIDE FOR ITS HIGH QUALITY PITCHING SHOES.

For price information and to order, contact:

# OHIO HORSESHOE COMPANY

P.O. Box 21371  
Columbus, Ohio 43221

614-457-4335