



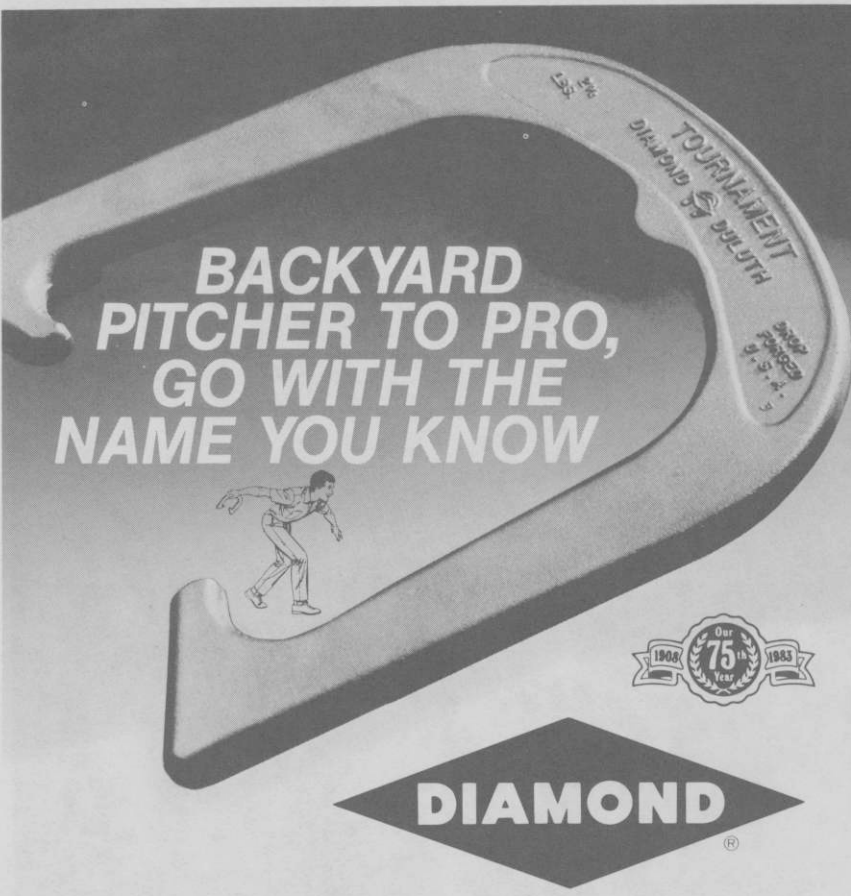
the
national horseshoe pitchers

NEWS DIGEST



APRIL, 1983

Official Publication of
**THE NATIONAL HORSESHOE PITCHER'S ASSOCIATION
OF AMERICA**



BACKYARD PITCHER TO PRO, GO WITH THE NAME YOU KNOW



DIAMOND

Three pitching shoe models. All recognized as official by the National Horseshoe Pitchers Association. DIAMOND Tournament Shoes feature hard points and dead soft centers so shoe catches and holds the stake. All models solid steel drop forged for durability.


Go with the name you know. Contact your nearest NHPA club or sporting goods store. For latest pitching horseshoe catalog write: DIAMOND TOOL and Horseshoe Co., P.O. Box 6246, Duluth, Minnesota 55806.

*The Great
American Shoe
For All
American Hands.*



DIAMOND TOOL
and Horseshoe Co.



Subsidiary  The Triangle Corporation

"DIAMOND Pitching Horseshoes are Recognized as Official in Tournaments
Sanctioned by the National Horseshoe Pitchers Association"

THE HORSESHOE PITCHER'S NEWS DIGEST is published on the 5th of each month at Aurora, Illinois, U.S.A. by the National Horseshoe Pitcher's Association of America. Editorial office, P.O. Box 1606, Aurora, Illinois 60507. Phone: 312-898-3974. Subscription rates—1st Class \$9.00; 3rd Class \$8.00 per year in advance. NHPA membership cards are available through each state secretary for \$6.00 plus any state association dues. Forms close on the 10th day of each month preceding date of issue. Advertising rates on request. F. Ellis Cobb, Editor.

NATIONAL OFFICERS

Wally Shipley, 2646 Basswood St., Newport Beach, Calif. 92660	President
Leo McGrath, 1937 Lawn Ave., Cincinnati, Ohio 45237	1st Vice-President
Norman Gaseau, 1908 Nuggett Dr., Clearwater, Fla. 33515	2nd Vice-President
Earl Winston, Route 2, LaMonte, Mo. 65337	3rd Vice-President
Bonnie Seibold, 1043 Grayson Ave., Huntington, Ind. 46750	4th Vice-President
Donnie Roberts, 9439 Camp Creek Rd., Lucasville, Oh. 45648 / (614) 289-4101	Sec./Treas.
Claude White, Jr., 940 Knollwood Ct., Plainfield, NJ 07062	Chr. Reg. Dir.

Volume 26

April, 1983

No. 4

NHPA PRESIDENT'S MESSAGE

By Wally Shipley

The Valley of the Sun Tournament in Mesa, Arizona had a record 200 entrees. We had great weather. On behalf of all entrees thanks to the Arizona officers, office help and all scorekeepers for a well run smooth tournament and job well done.

The entire tournament was played at Pioneer Park. This in my opinion was fantastic. We all could visit and see everyone pitch.

President Gary Minnick tells me in 1984 they are considering adding a juniors class and one more day to the tournament. Great idea, Gary! Even your request to the City for more courts at Pioneer Park. Keep up the great work for horseshoes.

I was given the honor in speaking and participating in Arizona's Charter Hall of Fame Induction. Not only as NHPA President but I was personally touched. I have attended this tournament since 1965 — 18 years. Three of the charter members I have pitched against and worked with for years — Walter Stearns, Art Kamman and Willard Phillips. The other two were Stan De Leary and Deceased James O. Lechy. Again congratulations to all five on behalf of the NHPA and Horseshoes. Thanks for all your years of great pitching, hard work and supporting our sport.

Congratulations to the Peoria, Illinois Horseshoe Club on their 30 year anniversary. They will be having a tournament over Memorial week end. Hope many of you can attend. Cash prizes will be awarded, more later in the Digest. All entrees must be sent to the Secretary Aral L. Castros, 917 So. Greenlawn, Peoria, Ill. 61605 or phone 309-637-5796.

FANTASTIC the NHPA continues to grow. We now have a charter in Alaska and Hawaii.

Southern California Association is sorry for the errors that were in the schedule submitted to the Digest and published in the February issue. They were corrected in the March issue.

Important dates and times at the 1983 World Tournament in Statesville, N.C.:

- Opening Ceremonies, Tuesday, July 26 at 7:30 p.m.
- NHPA Banquet and party for adults and juniors and Hall of Fame Inductees, Sunday, July 31 at 6:00 p.m.
- NHPA Convention, Tuesday, August 2 at 7:00 p.m.

The 1983 proposed By-Laws changes are listed elsewhere in this issue. Please read carefully and tell your delegates how you want them to vote. Notice each proposal tells who submitted and how Council and By-Law committee voted.

NHPA PUBLICITY NEWS FOR APRIL

By BERNARD HERFURTH

NHPA Publicity suggests that the membership cooperate in giving our sport renewed publicity in their respective areas. Plan to give your local newspapers the schedule of all state tournaments and their location together with the names and addresses of tournament directors.

If there is an NHPA sanctioned league in your area plan to increase the number of teams and players. Explain the NHPA league format in your newspapers.

All tournament directors are asked to have all trophy winners give an account of their activity to their local news media. Generally the local newspapers are interested in local participants in local contests. However, if the Sports Editor is not interested, give it to the City Editor.

PUBLICITY — (Continued)

It will help to create interest in state tournaments if there was audience participation advertised. Perhaps this could be arranged on one of the vacant end courts having spectators pitch 10 or 12 shoes for a count-all score and giving small prizes for the top one or two spectators. Also furnish information concerning horseshoe pitching.

HERFURTH'S COMMENTS ON SMOKING ON THE COURTS

One of the objects of the World Tournament is to present our sport in its highest form. When spectators see world champion contestants smoking while in competition on the courts it has a tendency to give the sport a bad image.

We have always presented our sport as a health giving sport, but such a presentation is undermined when smoking is permitted on the courts.

We do not have a rule prohibiting smoking on the courts, however, I believe it would be in the best interest of the game if players in the world tournament would voluntarily refrain from smoking on the courts. I am sure that no tournament officer will make such a request at the tournament. It will have to be done on a volunteer basis.

NHPA Publicity is interested in knowing the thoughts of the membership on the subject. Send comments to Bernard Herfurth, 17 Fort St., Northampton, Mass. 01060.

NHPA PROMOTION COMMITTEE REPORT

By SOL BERMAN

Mr. Peter Engelhart of ABC-TV called me from Peoria, Illinois on Friday, February 25 from the Professional Bowling Tour and requested video tapes of Walter Ray Williams, Jr. pitching horseshoes. He sent a messenger to pick up the tapes that were to be used on Saturday, February 26 at the Ray Berger Landmark Lanes in Peoria, Illinois.

Walter Ray was third in the qualifying round previous to the TV show. In his first TV appearance, Walter Ray was matched against Mr. Baker to start the finals. He defeated Baker with a brilliant game of 269 with a string of six strikes. His next opponent was Mr. Acosta to whom he lost ending with a 207 game. A very fine performance by Walter Ray, finishing third in the finals.

A video tape of the finals was made but the tapes requested earlier were not used but will be used when Walter Ray wins a title. Among those present and visible by TV viewers were Mrs. Esther Williams, Mr. and Mrs. Ralph E. Dykes, former president of the NHPA. At various times during the bowling, the commentators would mention about Walter Ray's achievements in the world of horseshoe pitching.

W. Ray Williams, Sr. writes that a major TV network has expressed an interest in the proposed TV series on horseshoes and that their legal department has researched and approved our format. They appear ready to put their O.K. on the production of this series.

ELMER HOHL HORSESHOE AVAILABLE DESIGNED AND PITCHED BY ELMER HOHL

(6 Times World Champion)

Order from:

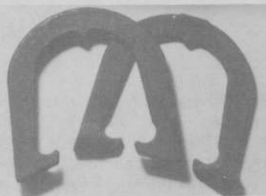
DON KOSO

803 East 12th Street
Falls City, Nebraska 68355

HERB PINCH

592 Hull Street
Sharon, Pennsylvania 16146

WRITE FOR PRICES



NHPA Approved

COVER PICTURE... Shown this month is a couple who have done much in promoting horseshoes in Minnesota. Lloyd and Brooks Henrikson of Coon Rapids, Minnesota, were surprised and honored at the 1982 Minnesota State Tournament when they were presented with the 1982 Outstanding State Contributor Award. Lloyd is 1st Vice-President of the state association and both are avid pitchers and supporters of the sport. — Photo by courtesy of Bob Wright of the Minnesota Ringer Digest.

NHPA MONTHLY REPORT OF RECEIPTS AND EXPENSES

By DONNIE ROBERTS

February 1983 Receipts:

Digest	\$3891.00
Membership	2894.25
World Entries	70.00
League	362.00
Game Related Sales	1000.00
	<u>\$8217.25</u>

February 1983 Expenditures:

Postage	590.95
Officer Allowance	1390.02
83 World Tournament	1573.89
Telephone	199.82
League	5447.06
Supplies & Printing	1304.26
Digest	2305.62
State Rebates	19.75
	<u>\$12831.37</u>

These figures do not reflect the income and expenditures of the game related sales people and the Digest Editor.

1983 PROPOSED BY-LAWS CHANGES

Approved by the Executive Council and By-Laws Committee

ADMINISTRATION

ARTICLE 2 — SECTION 2 — PARAGRAPH 2 (CHANGE) — Submitted by Donnie Roberts
Change the word *two* charters to read *three* charters.

FOR: Shipley, Gaseau, Seibold, White, Standard
AGAINST: McGrath, Winston, Walker, Nick

ARTICLE 2 — SECTION 8 (CHANGE) — Submitted by Barry Chapelle and Sol Berman.
Voting by proxy or mail will be allowed.

FOR: Shipley, Roberts, Winston, White, Walker, Nick, Standard.
AGAINST: McGrath, Gaseau, Seibold.

ARTICLE 2 — SECTION 11-B (ADDITION) — Submitted by Barry Chapelle.
(DELETE IF PROXY VOTE DOESN'T PASS)

Candidates for N.H.P.A. office will submit their resumes to the N.H.P.A. secretary by February 28 of the year they are running for office. The secretary will present the candidates to the N.H.P.A. membership through the News Digest and communication to state association secretaries by May 31 of the year they are running for office. Votes will be sealed and hand delivered by a designated delegate of the state to the N.H.P.A. secretary at the World Tournament two days before the convention. If a state will not be represented at the convention, an authorized state delegate may send his state's vote (in a sealed envelope) to the N.H.P.A. secretary before the tournament. The votes will be opened and counted by the N.H.P.A. officers (or a committee appointed by them) at the World Tournament and the results will be announced at the convention. Each state association will be given as many votes as allowed under the current N.H.P.A. Constitution.

FOR: Shipley, Roberts, White, Walker, Standard.
AGAINST: McGrath, Gaseau, Seibold, Nick.

JUDICIARY

ARTICLE 3 — SECTION 6 (ADDITION) — Submitted by Wally Shipley.

The N.H.P.A. News Digest Editor will be appointed by the N.H.P.A. Executive Council. To change the editor either party will give the other party a six months notice.

FOR: Everyone

1983 BY LAWS — (Continued)

ARTICLE 3 — SECTION 10 (CHANGE) — Submitted by Bernard Herfurth.
Change 50 cents per member to \$1.00 per member.

FOR: Shipley, Roberts, Winston, White, Standard.
AGAINST: McGrath, Gaseau, Seibold, Walker, Nick.

ARTICLE 3 — SECTION 17 (NEW SECTION) — Submitted by Bernard Herfurth.
Fifty cents per member shall be set aside for publicity expenses on approval of the Executive Council.

FOR: Shipley, Roberts, Winston, Seibold, White, Nick, Standard.
AGAINST: McGrath, Gaseau, Walker.

ARTICLE 6 — SECTION 3-B (ADDITION) — Submitted by Barry Chapelle.
(DELETE IF PROXY VOTE DOESN'T PASS)

Bids for the World Tournament shall be submitted to the N.H.P.A. secretary by February 28 and presented to the N.H.P.A. membership by the secretary through the News Digest and communication to state membership secretaries by May 31st, two years prior to the year the bid is for. Votes will be sealed and hand delivered by a designated delegate of the state to the N.H.P.A. secretary at the World Tournament two days before the convention. If a state will not be represented at the convention, an authorized state delegate may send his state's votes (in a sealed envelope) to the N.H.P.A. secretary before the tournament. The votes will be opened and counted by the N.H.P.A. officers (or a committee appointed by them) at the World Tournament and the results will be announced at the convention. Each state association will be given as many votes as allowed under the current N.H.P.A. Constitution.

FOR: Roberts, Winston, White, Walker, Standard.
AGAINST: Shipley, Gaseau, Seibold, Nick.

BY-LAWS

ARTICLE 3 — SECTION 5 (CHANGE) — Submitted by Sol Berman.
Delete and/or total points.

FOR: Shipley, McGrath, Gaseau, Seibold, White, Walker, Standard.
AGAINST: Roberts, Winston, Nick.

ARTICLE 3 — SECTION 5 (ADDITION) — Submitted by Wally Shipley.
All ties for World Tournament Division Championships will play one sudden death game for the title. When more than two players are tied the World Tournament Director and Council will determine playoff procedures.

FOR: Shipley, Roberts, McGrath, Gaseau, Seibold, Walker, Nick, Standard.
AGAINST: Winston, White.

ARTICLE 5 — SECTION 1 (CHANGE) — Submitted by Bernard Herfurth.
Change National dues from \$6.00 a year to \$7.00 a year.

FOR: Shipley, Roberts, Winston, Seibold, Nick, Standard.
AGAINST: McGrath, Gaseau, White, Walker.

ARTICLE 6 — RULE 7 — SECTION C (ADDITION) — Submitted by Glenn Portt.
(ADD THE WORDS *OR MOVE* TO THE FIRST SENTENCE)
No contestant shall touch *or move* his own or opponent's shoe or shoes.

FOR: Everyone.

ARTICLE 6 — RULE 22 — SECTION G (ADDITION) — Submitted by Glen Portt.
Corrections can be made at any time if the scorekeeper records the score incorrectly on the official score sheet and/or the scoreboard. The players can be made responsible for ensuring their records are correct.

FOR: Everyone.

There was only one clearly defeated proposal.

1983 BY LAWS — (Continued)

Submitted by Sol Berman.

"A regulation game shall consist of forty (40) points in all contests where a National title is involved, but the winner of the game must win by two points.

AGAINST: Shipley, McGrath, Gaseau, Winston, Seibold, Walker, Nick.

My thanks to John Walker, Chairman of the By-Laws for compiling all the proposed changes, a fantastic job. Also my appreciation Johns committee—George Nick and Herman Standard and to the Council for their time and comments.

WATCH US GROW!!!!

by Donnie Roberts

The NHPA membership is going up every year. The NHPA League program is growing every year. We are forming more and more charters. More and more states are going to all sanctioned events. Digest subscriptions are increasing each year. Prize money is getting better. More indoor courts going up all the time. More outdoor courts are being built. More types of shoes are being developed. Just any facet of horseshoe that you look at is getting better and better. Just "WATCH US GROW!"

We have a new charter in Alaska. Contact John B. Grohol, 606 Chatanika Lp, Eagle River, Alaska 99577. We, also, have a new charter in Hawaii. Contact Tim Plunkett, Lot 303 Kekio Rd., Box 533, Kaaawa, Hawaii 96730. We have four current requests for new charters under consideration. Just "WATCH US GROW!"

The sport of horseshoes, activities in the states, and the National Horseshoe Pitchers Association are all very, very healthy and active. So, get involved, and lets make 1983 even better than 1982.

FOR THOSE WHO DESIRE THE VERY BEST

IMPERIAL**U.S.A. PRICE LIST****ALL POSTAGE PAID**

1 Pair	\$29.00
2 to 5 Pair	\$27.00
6 Pr. & Over	\$24.00

**Available in Dead Soft and
Medium Soft with
Hardened Hooks
and Points**

- WE PAY ALL POSTAGE EVEN ON 6 PAIR AND OVER SHIPMENTS
- MASTER CARD AND VISA PHONE ORDERS ACCEPTED AFTER 6 P.M.

CLYDE MARTZ

3726 Henley Dr.
PHONE: 412-731-4662

Pittsburgh, Pa. 15235

In Memoriam

It is with sadness that we report the passing of Lora "Red" Pearman of Newport, Indiana on Sunday, February 20 of an apparent heart attack.

He conducted the annual "Ora Pearman Memorial Open" tournament for the past several years. Ora was Lora's twin brother and passed away five years ago. This tournament is held every year in October.

Mr. Pearman served in the army during World War II as a technician in the medical air evacuation squadron and was a member of the Newport American Legion. His hobbies included hunting, fishing and particularly participating in horseshoe pitching.

He is survived by his wife Lorene, a daughter Linda, two sons, Gary and David, a brother, Fern and three sisters and several grandchildren. He was preceded in death by his brother Ora. He was laid to rest in Thomas Cemetery near Newport, Ind. with full military honors.

To his bereaved family the sympathy of his many friends and that of the Indiana State Association and NHPA is extended in their solemn hour.

* * * * *

The Pennsylvania Horseshoe Pitchers Association is saddened to report the passing away of Michael Riedl of Dormont, Pennsylvania on January 10 at the age of 90.

Mike was very active in promoting horseshoes in Western Pennsylvania from 1935 until the very end. None of us really knew that Mike was 90 years old, because he was so very active. Mike was a member of the Pennsylvania Hall of Fame and a charter member of the Pennsylvania Pitchers Association.

Mike was truly an outstanding individual and will be missed by all of us in the Pennsylvania Association along with his many friends in horseshoes across the United States.

To his bereaved family, we extend our sincere sympathy.

PABST BLUE RIBBON OPEN — JULY 23 — DIETERICH, IL

The Dieterich Horseshoe Club in cooperation with Pabst Brewing Company will host the 3rd Annual Tournament on the American Legion 16 man courts. Send 50 shoe scores with \$8.00 entry fee before July 17. Address to John Waldhoff, Dieterich, IL 62424 or phone 217-925-5167. Notice post card with starting time of your class to be mailed before July 23. Rain date — July 24. \$300.00 in prize monies and trophies.

LUOMA WINS MANATEE OPEN AT BRADENTON, FLORIDA

CLASS A — W. Luoma, 5-0-65; Jack Fahey, 4-1-70.5; Floyd Bartley, 2-3-66.7; Wm. Riley, 2-3-57.8; Henry Hostetler, 1-4-60.7; Marv Richmond, 1-4-54.3.

CLASS B — Omar Blacketer, 4-1-55.2; Micky Broughton, 3-2-55.7; Bob Widdershelm, 2-3-56.3; Paul Scheub, 2-3-54.4; Ann Wedel, 2-3-55.7; Howard Lea, 2-3-45.6.

CLASS C — Henry Franke, 5-1-56.6; Walter House, 5-1-54.7; Len Robinson, 4-2-53.4; Kay Bayless, 2-4-50.0; Mel Goodrich, 2-4-50.0; Henry Mullet, 2-4-48.5; Rene Rodrique, 1-5-50.0.

CLASS D — Rex Swinson, 6-0-49.8; Joe West, 4-2-47.2; Harold Shaw, 4-2-42.5; Ken Reeb, 3-3-46.3; Speed Gillespie, 2-4-38.3; Chester Anderson, 1-5-44.5; Frank Stiles, 0-6-30.6.

CLASS E — Ed Schultz, 5-0-53.3; N. Ramey, 4-1-42.1; E. Parr, 3-2-43.8; Melvin Ringer, 2-3-45.5; John King, 1-4-32.4; G. Hill, 0-5-31.3.

CLASS F — Harold Reed, 4-1-39.5; Walt Wedel, 3-2-40.6; Bob Babcock, 3-2-42.8; Ed Schuetz, 2-3-32.1; Ed Donawitz, 2-3-28.3; Lee Davis, 1-4-33.5.

CLASS G — Gene Bennett, 4-1-39; Wally Smith, 4-1-39.8; Clark Karr, 2-3-33.2; Ed Schuetz, 2-3-28.9; Les Long, 2-3-28.2; Walt Wedel, 1-4-27.9.

CLASS H — F. Tibbie, 6-0-36.8; Joe Morgan, 4-2-32.8; Harold Reed, 3-2-30.5; Jim Pelkey, 2-3-23.9; Geo Utzman, 1-4-20.9; Jene Jacobus, 1-4-23.8.

CLASS I — Gib Beckemeyer, 4-1-29.2; Jim Pelkey, 4-1-24.1; John Manning, 3-2-19.8; Jim Dey, 3-2-16.5; Howard Fullerton, 1-4-12.7; G. Kokajko, 0-5-6.9.

SOUTHERN CALIFORNIA ASSOCIATION

NORMAN SMITH DOUBLES — Al Nichols - Ernest Becker, 7-0; Heman Standard - Don Laudenberger, 6-1; Barbara Dow - Erwin Klessig, 5-2; Jim Weeks - Jim Dow, 4-3; Ken Lamb - Hank Romines, 2-5; Kee Blackrock - Willard Harper, 2-5; George Whittemore - George Farrell, 2-5; Jim Buck - Harold Redding, 0-7.

HOLLINGSWORTH OPEN — Ronnie Simmons, Bellflower, 6-1-67.8; Heman Standard, Orange, 5-2-63.1; Eston Brown, Anaheim, 3-3-55.8; Newell Flann, Westminster, 2-4-55.9; Dean Zollinger, Hemet, 2-4-55.8; John Balzer, Santa Ana, 2-4-55.2; Tom Didmon, Hemet, 2-4-51.2.

GROUP TWO — Barbara Dow, Glendale, 6-0-49.3; Jim Eozzo, Los Angeles, 4-2-43.6; Mary Van Sant, Sun City, 4-2-43.2; Doyle Brawley, Riverside, 3-3-39.5; Gene Van Sant, Sun City, 2-4-37.0 Ernest Becker, Torrance, 2-4-24.7; George Farrell, Corona Del Mar, 0-6-16.9.

GROUP THREE — Peter Trejo, Vista, 5-0-30.0; Dan Epele, Orange, 4-1-32.0; Jim Buck, Lakewood, 3-2-24.5; Henry Friend, Bloomington, 2-3-16.0; Bob Obermeyer, Ontario, 1-4-15.5; Don Laudenberger, Orange, 0-5-7.0.

GROUP FOUR — Harold Slagg, Ontario, 5-1-43.9; Ken Lamb, Norwalk, 4-2-36.7; Wally Shipley, Newport Beach, 3-2-31.5; Hans Peterson, Pico Rivera, 3-2-29.0; Charlie Parsons, Lucerne, 2-3-28.0; Jim Dow, Glendale, 0-5-23.0.

WALTER RAY WILLIAMS PAYS VISIT TO NEWBERRY, OHIO

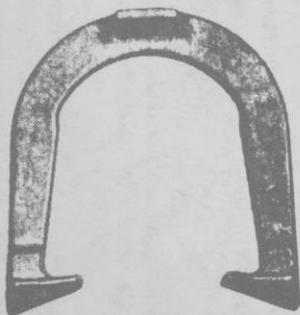
The Northeast Ohio Horseshoe Association had the honor of a courtesy visit by Walter Ray Williams, Jr., three-time NHPA World Champion.

Walter Ray is on the Pro Bowlers Tour stopping at Cleveland, Ohio. Through arrangements made by Ford Christian of our area, Walter Ray came to our new indoor facility.

He pitched some shoes with several of our area players. Due to the closeness of the fences behind the states, Walter Ray was held to 80 percent ringers.

We at Northeast Ohio would like to extend our thanks to Walter Ray for taking time from his busy schedule to come to our courts and we look forward to a return visit. What a true champion and promoter of future horseshoes.

TED ALLEN HORSESHOES



An original professional shoe. Still the very best professional shoe — Designed by a Champion — Used by many Champions — Not all users will become champions, but by throwing ALLEN's, you know that you've performed your best.

The designed features were invented by TED ALLEN, a 10 time world champion. He has made world records over and over with them. The design was a leader. After years it came to be a trend as a guideline in shoe equipment.

You can't go wrong in using them.

1045 LINDEN AVENUE

BOULDER, COLORADO 80302



1983 WORLD HORSESHOE TOURNAMENT - STATESVILLE, NORTH CAROLINA - ENTRY BLANK
July 28 through August 6, 1983

Name _____ NHPA CARD NUMBER _____

Address _____

ZIP _____

What is your ringer percentage in competition? 82 World _____ 82 State _____ Last 3 Events _____
Please be accurate. We reserve the right to change it if records indicate that your average is not accurate on this form.

Be sure to include your entry fee: Men - \$15.00, Women - \$10.00, Seniors and Intermediates - \$10.00, Handicapped - \$10.00, Boys and Girls - Free, 70 and Older - \$10.00.

It is very important that you enter the correct division. Any male regardless of age may enter the Men's Division. Any female regardless of age may enter the Women's Division. However, Juniors who enter the adult divisions must pitch adult distance and will forfeit their junior standing. If you are 17 years old or younger on or after January 1, 1983 you may enter the Junior Divisions. You may enter the Intermediate Division if you are between 59 and 66 years of age by July 27, 1983. That is you must be 60, 61, 62, 63, 64, or 65 years old as of July 26, 1983 to enter the Intermediates. To enter the Senior Division you must be 66 years old or older by July 26, 1983. If you become 66 during the tournament you will be allowed to finish competition in the intermediates and may not enter the Seniors until next year. This year we will have a Senior group for anyone 70 years of age or older by July 26, 1983. Entering this division is optional. We will, also, have a division for handicapped pitchers which is optional. Verification of handicap will be required. The 70 and older group and the handicapped group may pitch at any distance beyond 30 feet. Please circle below the division you plan to enter. You may enter only one. Be careful in your selection.

Men

Women

Boys

Girls

Seniors

Intermediates

Handicapped

70 and older

Please show date of birth _____

Defending Champions must enter. All entries must be postmarked by June 1, 1983. Late entries and entries with no entry fee will be returned. You will receive a complete schedule by July 1, 1983. Mail entries to: Donnie Roberts, 9439 Camp Creek Road, Lucasville, Ohio 45648 or call 614-289-4101.

VAN SANT OF INDIANA TOPS FLORIDA SUNCOAST OPEN

In spite of all the rain that has fell on Florida this winter, the annual Suncoast Open tournament held at Bradenton, Florida on February 18-19 was conducted in its entirety without rain, much to the joy of all players. A surprise visitor happened by not knowing of a tournament 15 minutes before Class A was to start. The visitor was Karl Van Sant of Cayuga, Indiana, and because Class A was short of one player, Van Sant was put in. He then proceeded to take top honors in Class A winning all 7 games and averaging 73.3 percent. Floyd Bartley was runner-up with a 4-3-63.0 record. Ann Wedel playing in Class A with the men had 3-4-55.9 taking sixth place.

CLASS A — Karl Van Sant, 7-0-73.3; Floyd Bartley, 4-3-63; Marv Richmond, 4-3-62.9; Wm. Riley, 4-3-59.2; Elmer Swartz, 3-4-62.5; Ann Wedel, 3-4-55.9; Henry Hostettler, 2-5-59.6; Bob Dean, 2-5-58.7.

CLASS B — Omar Blacketer, 5-0-63.8; Merl Goodrich, 4-1-60.0; Len Robinson, 3-2-53.9; Ed Schultz, 2-3-50.7; Harvey Johnson, 1-4-51.1; Chester Anderson, 0-5-43.5.

CLASS C — Royce Wrucke (age 80), 5-1-50.7; Oscar Hope, 4-2-48.6; Rex Swinson, 4-2-47.7; Jim Wiltse, 3-2-46.3; Howard Lea, 3-2-47.5; Maurice Radocker, 1-4-43.5.

CLASS D — Harold Shaw, 5-0-50.9; Bill Roach, 4-1-44.6; Al Moon, 3-2-46.6; Frank Toal, 2-3-42.6; Frank Stites, 1-4-31.4; Wes Gore, 0-5-40.8.

CLASS E — John King, 5-0-43.2; Chris Miller, 4-1-39.4; Wally Smith, 3-2-38.9; Pat O'Toole, 2-3-34.8; Joe Morgan, 1-4-30.4; Roger Sutor, 0-5-28.9.

CLASS F — Harold Reed, 4-1-39.5; Walt Wedel, 3-2-40.8; Bob Babcock, 3-2-42.8; Ed Schuetz, 2-3-32.1; Ed Donawitz, 2-3-28.3; Lee Davis, 1-4-33.5.

CLASS G — Pete Milnes, 4-1-32.6; Clark Karr, 4-1-33.3; Gib Beckemeyer, 3-2-32.4; Ivan Gilman, 2-3-28.; Harland Bennett, 1-4-22.3; John Zehnder, 0-5-29.0.

CLASS H — Gene Jacobus, 4-1-27.5; Jim Pekey, 4-1-23.9; John Manning, 3-2-22.2; Jim Dey, 3-2-21.8; Geo Utzman, 1-4-20.9; Howard Fullerton, 0-5-15.9.

KERTZ SHOE CHECK PAT. PEND.

FIVE TOOLS IN ONE

PERFECT FOR ALL HORSESHOE PITCHERS

JUST THE RIGHT SIZE FOR BACK POCKETS

8" x 1" x 1/4"

SEND \$8.45; 2 OR MORE \$6.75 EA.

POSTAGE INCLUDED

SCRAPER

FILE FOR
BURRS

CALIPERS
FOR CLOSE POINTS

6" NOTCH FOR LEGAL POINTS

STRAIGHT EDGE

KERTZ SHOE CHECK

P.O. BOX 483

ARNOLD, MO. 63010

PLEASE INCLUDE
ZIP CODE

NHPA APPROVED

HANSHAW OVER RAYMOND FOR LANDER, WYOMING WINTER FAIR OPEN TITLE; JOANN HYTREK LADIES CHAMPION

This sixth annual tournament was the biggest and best of any of the Winter Fair Open tournaments ever held at the foothills of the Wind River Range of the Rocky Mountains in Lander, Wyoming. The weather was beautiful with no wind or snow, which was a first. Tournament was played on 10 indoor courts.

Pitchers came from the Scottsbluff area of Nebraska, Rawlins, Rock Springs, Buffalo, Casper, Laramie, Wheatland, Riverton and Lander all in Wyoming.

There was a playoff between Dick Hanshaw of Nebraska and Ken Raymond of Wyoming, both of whom were tied with identical records of 8-1. Hanshaw won the playoff and the trophy for first place. JoAnn Hytrek won the Ladies title.

CLASS A MEN — Dick Hanshaw, Nebr., 8-1-45.3; Ken Raymond, Wyo., 8-1-44.1; Farron Eisemann, Wyo., 7-2-45.6; Ivan Haggerty, Wyo., 5-4-37.2; Bill Johns, Nebr., 4-5-41.1; Hank Guettler, Nebr., 4-5-36.5; Gary Rickard, Wyo., 4-5-35.2; Al Martin, Wyo., 4-5-32.5; Jim Christenson, Wyo., 1-8-25.2; Lloyd Berry, Wyo., Forfeit.

CLASS B MEN — Butch Pierson, Wyo., 9-0-38.9; Jerry Christoffer, Wyo., 6-3-31.3; Ed Archer, Wyo., 6-3-29.3; Charles Doberstein, Nebr., 5-4-30.6; Don Clausen, Wyo., 5-4-30.1; Roy Lacey, Wyo., 5-4-29.2; Eldon Conillogne, Wyo., 5-4-28.7; Joe Eisemann, Wyo., 3-6-25.8; Frank Willoughby, Wyo., 1-8-19.6; Duane Schlagel, Wyo., 0-9-16.3.

CLASS C MEN — Amos Graves, Wyo., 9-0-30.8; Dave Brown, Wyo., 7-2-30.6; Darrell Mauck, Wyo., 5-4-26.2; Rick Hytrek, Wyo., 5-4-24.4; John Guettler, Nebr., 4-5-24.7; Mike Hamilton, Nebr., 4-5-23.9; Ralph Sjostrom, Wyo., 4-5-23.0; J.L. Wilkinson, Wyo., 4-5-20.0; Dick Eversull, Wyo., 2-7-22.1; Philbert Willow, Wyo., 2-7-17.8.

CLASS D MEN — Mike Adams, Nebr., 8-1-20.1; Geo. Willow, Wyo., 7-2-18.0; Dave Berg, Wyo., 7-2-17.5; Allan Stede, Wyo., 6-3-18.6; Ron Burnett, Wyo., 5-4-18.0; Bill Curless, Wyo., 5-4-9.0; Greg Walker, Nebr., 4-5-18.5; Mike Ravert, Wyo., 2-7-10.3; Jim Darnell, Nebr., 1-8-10.6; Del Derby, Wyo., 0-9-6.2.

CLASS E MEN — Loren York, Wyo., 9-0-13.4; Lynn Koehler, Wyo., 6-3-9.5; Don Riddle, Wyo., 6-3-7.1; Jerry Heckert, Wyo., 5-4-8.3; Walt Coy, Wyo., 5-4-6.8; Dick Lehman, Wyo., 5-4-4.5; Harold Davis, Wyo., 4-5-7.0; Tom Rush, Wyo., 4-5-4.1; Gil Rous, Wyo., Forfeit; Don Collesoses, Wyo., Forfeit.

CLASS A WOMEN — JoAnn Hytrek, Wyo., 5-0-24.5; Julie Wilkinson, Wyo., 3-2-11.0; Janell Trimmer, Wyo., 2-3-8.8.

CLASS B WOMEN — Ingrid Sjostrom, Wyo., 4-1-12.0; Chris Rush, Wyo., 1-4-5.1; Gaylene Burnett, Wyo., 0-5-3.0.

CLEARWATER-SEMINOLE, FLA. HANDICAP LEAGUE FINALE

Team #1 with Gene Bennett-Capt. started the season in first place and outside of being tied once in Dec., lead all the way. The last few weeks they kept increasing their lead to win by 24 points.

The next three games were only nine points apart with team #2 Shorty Collins-Capt. getting second, team #4 Ray Arthur-Capt. third and last year's winners team #3 Norman Gaseau-Capt. in fourth spot.

Team #6 Bob Koons-Capt. in the last couple of weeks pulled themselves out of the cellar and were only nine points back in fifth spot. Team #6 Bob Widdersheim-Capt. won only six points the last three weeks due to sickness and absenteeism.

There were many close games this season as 13 were tie games, 27 were won by one point and 34 by two points. Approximately 60% of the games were won by less than 5 points.

Joe Holland continued to win the highest ringer percentage and scored most actual points in one game (119) and had the lowest handicap (40). Joe and Bob Koons tied for the highest percentage for one game at 72%. Joe missed matches due to sickness so Bob Widdersheim had the most points scored for the season (5124). Bill Roach won the most games with 39, Frank Toal had 36 wins and Ray Arthur and Carlton Jullinex had 33 wins each.

Bill Roach had the highest handicap game at 173 with Bob Koons close behind with 170. Again nine players had games in the 160's, Joe Holland and Bob Widdersheim had 166, Orval Tansy had 165, Marion Collins had 164, Norman Hahn and Mike Povich had 163, Carlton Mullinex and Gene Meyers 161 and Guy Nightingale had 160 even.

Bill Roach got the most improved player award as he lowered his handicap by 7.6 points. The player of the year award went to Ray Arthur for the second year in a row.

Final standings: Team #1—Gene Bennett, Capt.—258 pts.; Team #2—Shorty Collins, Capt.—234 pts.; Team #4—Ray Arthur, Capt.—227 pts.; Team #3—Norman Gaseau, Capt.—223 pts.; Team #6—Bob Koons, Capt.—214 pts.; Team #5—Bob Widdersheim, Capt.—194 pts.

FREE!

Trophy & Awards Catalog



Call Toll-Free
1-800-628-9657
In Mass. 1-800-282-7789

DINN BROS. *The Trophy People*

P.O. Box 111 • 68 Winter St. • Holyoke, MA 01041

JUNIORS ELIGIBLE FOR FRAKES TOURN. OF CHAMPIONS

Mr. Lee Elbe, P.R. Director for the Ron Frakes Tournament of Champions to be held May 28-29-30 makes the following announcement that Juniors will be eligible to play in the tournament. There will be a \$200.00 scholarship award for the boys and girls division, plus trophies and runner-ups. There will be NO ENTRY FEE.

He also states that if you can not make it to this tournament, he will see you in Statesville, N.C. when they will make a bid for the WORLD TOURNAMENT.

ANNUAL MEMORIAL DAY OPEN, PEORIA, ILL. MAY 30

The Peoria Horseshoe Club will host its Annual Memorial Day Open at the Bradley Park Courts, Peoria, IL. on Monday, May 30, 1983. All men's classes to be 6-man. Lower classes begin pitching at 9:30 a.m. Higher classes at 1 p.m. All games 40 pts. Women, juniors and 75 or older men entries will be accepted on condition of receipt of two or more entrees per class. No mixing of 30 and 40 footers. Placement in class determined by ringer percentage turned in or state record, whichever is higher. Entry fee is \$6.00, payable at the courts. Mens Class A and B to donate extra \$4.00 each for class prize fund. Entries must be in to Bob Switzer, 2811 W. James Rd., Peoria, IL 61615, 309-691-2521 by 9 a.m. tournament day.

THREE OPEN TOURNAMENTS SET FOR PARKERSBURG, W.VA.

June 4 and 5 — Parkersburg, W. Va. Send to Herb Murray, 1303 Clyde St., Parkersburg, W. Va. 26101. Phone 304-428-5646. Deadline May 29.

Aug. 20 and 21 — Parkersburg, W. Va. Send to Herb Murray, 1303 Clyde St., Parkersburg, W. Va. 26101. Phone 304-428-5646. Deadline Aug. 14.

Oct. 1 and 2 — Parkersburg, W. Va. Send to Herb Murray, 1303 Clyde St., Parkersburg, W. Va. 26101. Phone 304-428-5646. Deadline Sept. 25.

18th ANNUAL APPLE CAPITOL OPEN, WINCHESTER, VA.

The 18th annual Apple Capitol Open tournament will take place on Saturday and Sunday, May 21-22 at the Raymond L. Frye courts in Winchester, Virginia. The men's Class A and B will be the only (2) classes that will require an NHPA card. All other classes will be non-sanctioned, no NHPA card necessary.

Pitchers will be seeded by ringer percentage. You may qualify with 100 shoes at the courts. Both sign-up and qualifying will end at 12:00 noon on Saturday, May 21. Qualifying scores may also be sent in by mail. Highest percentages will be used. Tie entries will be seeded by time of entry. All entries must be accompanied with proper entry fee.

Entry fees are as follows: Men, \$7.00; Women, \$7.00; Juniors, \$3.00; Extra class pitching fee, Men's Class A, \$6.00; Men's Class B, \$2.00. Send entries and fees to: Les Singhass, War Memorial Bldg., Winchester Parks & Recreation, Winchester, Virginia 22601. Make checks payable to Winchester Horseshoe Pitchers Association.

All play will be round-robin. Men's Class A will consist of defending champion and the top 11 qualifiers. Class B will be 8 man. All lower classes will be 8-man or as determined feasible by tourn. director. All games in all classes will be 40 points. First place ties determined by sudden death play-off.

Cash awards will be given in Classes A and B. All other classes will be awarded 1st and 2nd place trophies as long as there are at least 4 players in a class.

10th ANNUAL NEW MEXICO SPITTOON OPEN, MAY 21-22

The 10th Annual Spittoon Open will get underway on Saturday and Sunday, May 21-22 on the Los Altos Park courts in Albuquerque, New Mexico.

This is an NHPA sanctioned tournament. Scorekeepers will be paid. Every entrant has a chance to win the Famous Fur-Lined Brass Spittoon.

Send ringer percentage and entry fee of \$8.00 to Don or Marilyn Hanes, 10608 Constitution, N.E. Albuquerque, New Mexico 87112. Ph. 505-298-5785 or to Nancyor Joe Schmitz, 123 Espejo, N.E., Albuquerque, New Mexico 87123. Ph. 505-298-1328.

Brass Spittoons will be awarded to all 1st, 2nd and 3rd place winners in each class. First place women will receive the "Spitunia" (Brass Spittoon with a fresh Petunia plant) and the 1st place Junior getting the "Spitteen" (Brass Spittoon filled with candies and gum).

WHITMER TOPS STRAWBERRY OPEN AT PLANT CITY, FLA.

CLASS A — Duane Whitmer, 6-1-61.6; F. Bartley, 6-1-69.6; Bob Deuster, 5-2-59.1; H. Hostetler, 4-3-54.4; Ralph Cullum, 3-4-55.1; Troy Harrison, 2-5-53.1; Dyke Thatcher, 2-5-52.2; Bob Dean, *Withdrew*.

CLASS B — Ann Wedel, 7-0-53.6; Broughton, 5-2-54.1; E. Swartz, 4-3-50.3; E. Howdeshell, 4-3-48.5; Omar Blacketer, 4-3-48.1; G. Rademacher, 2-5-48.1; B. Widdersheim, 2-5-44.5; Paul Scheub, 0-7-36.2.

CLASS C — Marvin Grubb, 5-1-61.7; C. Torrey, 5-1-57.7; Len Robinson, 5-1-53.3; Marls Goodrich, 3-3-50.3; Walter House, 2-4-26.0; Bob Griffith, 1-5-50.0; J. McCarron, 0-6-24.3.

CLASS D — Chet Albertson, 4-3-51.1; Earle Morris, 4-3-50.6; Max Bayless, 4-3-48.3; Harv Johnson, 4-3-45.7; Don Knotts, 4-3-41.4; Bob Mays, 3-4-45.7; Fr. Beauchamp, 3-4-42.3; E. Schultz, 2-5-42.9.

CLASS E — H. Kohlenberger, 6-1-54.6; Dick Senger, 5-2-46.0; J. Wiltze, 5-2-44.6; Oscar Hope, 4-3-47.7; Royce Wrucke, 3-4-38.9; Joe West, 3-4-44.9; Mel Ringger, 1-6-41.1; Chet Anderson, 1-6-39.7.

CLASS F — Dale Miller, 7-0-47.3; Hal Cheffer, 5-2-40.0; A. Moon, 4-3-42.3; L. Antondias, 4-3-42.7; W. Ballhagan, 3-4-40.0; Cindy Dean, 3-4-39.3; Budd Sampson, 2-5-35.7; E. Shippe, *Withdrew*.

CLASS G — Wal Smith, 5-0-45.2; C. Brown, 4-1-40.0; D. Brooks, 2-3-35.2; M. Rodocker, 2-3-32.8; B. Roach, 2-3-32.4; F. Toal, 0-5-36.0.

CLASS H — Gene Bennett, 4-1-42.8; J. Koenig, 4-1-41.2; Len Fox, 3-2-36.0; Bill Calhoun, 3-2-43.2; B. Dockstader, 1-4-30.8; E. Donawitz, 0-5-26.0.

STRAWBERRY OPEN — (Continued)

CLASS K — Les Long, 5-0-30.0; Joe Irey, 3-2-34.4; C. Bostic, 3-2-35.6; G. Beckemeyer, 3-2-34.4; O. Coxon, 2-3-26.4; G. Weiland, 0-5-22.0.

CLASS J — H. Gath, 4-3-37.7; Jack McGing, 4-3-35.1; John King, 4-3-34.0; Walter Wedel, 4-3-34.0; C. Richards, 4-3-32.6; Roger Sutor, 4-3-32.3; R. Hostetter, 2-5-29.1; John Zender, 2-5-28.3.

CLASS L — G. Jacobus, 4-1-25.6; Herb Olson, 3-2-23.2; H. Bennett, 3-2-28.0; J. Berrall, 2-3-23.2; W. Wallshlager, 2-3-22.4; E. Colgan, 1-4-18.8.

CLASS M — Jim Pelkey, 4-1-26.4; R. McCartney, 4-1-33.3; C. Bonham, 3-2-22.8; Pappy Halstead, 2-3-15.6; Jim Dey, 1-4-18.8; K. McElwadin, 1-4-17.2.

PERL PEPPLE OPEN, TOPEKA, KANSAS, MAY 29

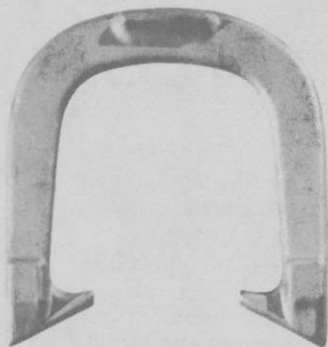
The Perl Pepple Open tournament will be held at the Gage Park courts in Topeka, Kansas on Sunday, May 29. Send ringer percentage to Wayne Shelinberger, 1233 Pinecrest Drive, Topeka, Kansas 66605. Phone 913-266-8941.

SPRING OPENER, KINGS PARK, APR. 2, PITTSFIELD, ILL.

Starting on Saturday, April 2, Floyd Hammitt of Pittsfield, Illinois will hold his first tournament at Kings Park courts in Pittsfield. There will be 8-man classes pitching 40-point games. There will be an entry fee of \$5.00. There will be a tournament held every two weeks. If it rains on Saturday tournament will be held on Sunday, the exception being that there will not be any postponed meet on Easter Sunday. There may be some doubles tournaments decided by the players.

Other tournament dates are as follows: Apr. 16; Apr. 30; May 14; May 28; June 11; June 25; July 9; July 23; Aug. 6; Aug. 20; Sept. 3; Sept. 17; Oct. 1 and Oct. 15.

Since 1931

GORDON**"Spin-On"**

— 3 TEMPERS —

Medium With Hardened Calks

Dead Soft

Hard

Southern California Representative

JERRY SCHNEIDER

3144 W. Paso Robles Drive

ANAHEIM, CALIFORNIA 92804

714-826-0684

APPROVED BY NHPA

OFFICIAL STAKES ALSO AVAILABLE

THE QUEEN CITY FORGING CO.

233 TENNYSON STREET

CINCINNATI, OHIO 45226

DEADEYE HORSESHOES

NOW IN

FOUR MODELS

	Price Per Pr.—Up to 9 Pairs	Price Per Pr.—9 Prs. & Over
CLYDESDALES 2# 10 oz. & 2#9 oz.	\$23.00/Pr.	\$17.50/Pr.
N.T. 2# 10, 9, 8, 7 oz.	\$23.00/Pr.	\$17.50/Pr.
REGULAR 2# 9, 8, 7, 6, 5 & 4 oz.	\$23.00/Pr.	\$17.50/Pr.
E-Z GRIP 2# 10, 9, 8 & 7 oz.	\$28.00/Pr.	\$22.50/Pr.

*Prices on all "DEADEYES" f.o.b. point of shipment.
Missouri residents add 3-5/8% sales tax and California
residents add on 6% tax.*

All "DEADEYES" are dead soft.

All "DEADEYES" are guaranteed against breakage for 2 years.
(Subject to change). Please specify desired weight when
ordering from:

W. Courtwright
P.O. Box 742
Fenton, MO 63026
Phone: (314) 376-5222 (8-5)

Walter Ray Williams, Jr.
6140 Grant St.
Chino, CA 91710
Phone: (714) 628-6053

Carl Steinfeldt
44 Ridgecrest Road
Rochester, NY 14626
(summer address)
Phone: (716) 225-4191

Carl Steinfeldt
407 Shady Lane Mobil Park
15400 Roosevelt Blvd.
Clearwater, FL 33520
(winter address)
Phone: (813) 535-3136

11th ANNUAL MOUNDVILLE, W. VA. OPEN, JULY 16-17

The 11th annual Moundville Open will be held at the Riverside courts in Moundville, W. Va. on Saturday and Sunday, July 16-17. All games will be 50-point cancellation. We now have 12 courts. There will be no limit on the number of entries. The number of entries will determine 6 or 8 man classes. The entry fee will be \$11.00. Class A will pay \$17.00. However, we will pay the scorekeepers, so this is only a \$1.00 increase. Cash and trophies will be awarded to each class. Send check and ringer percentage to Charles Clark, 1202 — 9th Street, Moundville, West Virginia 26041.

RUTH KIRK VICTOR IN TWO OHIO WOMEN'S TOURNAMENTS

The Ohio Women's Horseshoe Pitchers Association has conducted its first two tournaments for women only on the Pike County indoor courts. Both are NHPA sanctioned. Both were won by Ruth Kirk and in both Janet Reno was second. Ruth hit the high game of 75% and Janet's high game was 67.6%.

KATHERINE OVERMAN OPEN — Ruth Kirk, 5-0-68.1; Janet Reno, 4-1-38.5; Avanelle Brown, 3-2-42.1; Brenda Smith, 2-3-25.5; Jenny Reno, 1-4-16.3; Mitzi Roberts, 0-5-25.5.

RUTH BENNETT CLASSIC — Ruth Kirk, 5-0-54.1; Janet Reno, 4-1-52.6; Mitzi Roberts, 2-3-38.2; Jenny Reno, 2-3-23.9; Fonda Peters, 1-4-6.8; Avanelle Brown, 0-5-Forfeit.

We hope that more women will participate in future tournaments and there are indications that they will. The Pike County courts are in first class condition and good roads come to the courts from all directions.

BRADENTON, FLA. HANDICAP LEAGUE CLOSES SEASON

The Bradenton Handicap Horseshoe League closed out the 1982 season on Dec. 28th, with Jack Fahey and Earl Johnson tied for 1st with 49 points each.

Jack Fahey had the high scratch game with 133, and also had the high average handicap game 134.27. High game over average went to Lynn Robinson with 33.44 - 166. Most improved player was Earl Johnson at age 79. The Sportsmanship award went to Howard Lea.

Howard Lea was 3rd with 47 points, John Manning and Jim Pelkey tied for 4th with 42 points, Jake Jacobus was 6th with 39 and Frank Stites 7th with 36.

This is the 7th league for us to complete under the NHPA League Program and the players are all well pleased with the program.

MOORHEAD, MINN. LEAGION OPEN TOURNAMENT—MAY 14-15

The Moorhead American Legion Melvin E. Hearl Post 21 will host the seventh annual men's and women's open tournament May 14 and 15 at the Memorial Park courts near downtown Moorhead, Minn.

Will Gullickson, tournament chairman, said that 1982 World Champion Dale Lipovsky of Bloomington, Minn., will be in the championship class of tossers. Lipovsky won the first tournament of Champions at the courts last October. The Tournament of Champions tourney was jointly sponsored by Budweiser, the Legion and Ohio Horseshoe Co.

Pitchers are asked to send their \$10 entry fee by May 10 and their ringer average from last season to Will Gullickson, 2850 26th St. S., Moorhead, MN 56560. Tele. 218-233-1263.

THE GRAHAM PRINCIPLES

by BOB GRAHAM

My scientific observation of the Horseshoe Scene over the past two decades has led me to the formulation of the Graham Principles. My reason for formulating these principles was to provide the Horseshoe pitching enthusiast with a set of worthwhile rules that would enable him to better survive various kinds of unfortunate situations the pitcher commonly encounters. Also, I've often been accused of being without principle, and I thought this would be a good way to lay that rumor to rest.

Principle No. 1 — In any important game, after carefully explaining a score back and lack of practice, your opponent will immediately start off with six (6) doubles.

Principle No. 2 — The Shoe that you must measure for the game winning Ringer will always be 1/32" short.

Principle No. 3 — Anyone who claims he can teach you how to develop a pendulum swing will

GRAHAM PRINCIPLE — (Continued)

turn out to be a Homicidal Maniac.

Principle No. 4 — N.H.P.A. Officers elected on a one term platform tend to remain in office for life.

Principle No. 5 — *The opponent who tells you he is in a bad slump never is when you pitch him.*

Principle No. 6 — The perfect Ringers that you lose will always be the ones you desperately need to win.

Principle No. 7 — The days that you find the perfect rhythm will be the times you are practicing alone in the back yard.

Principle No. 8 — Your open frames will always occur at those times a double is needed.

Principle No. 9 — A Retired Pitchers percentage increases in direct proportion to the years he has been retired.

Principle No. 10 — Toward the end of a long, boring, 6 hour W.T. Convention, the last person rising to speak will be Pete Shepard.

Principle No. 11 — In any group of Pitchers the work expended in court preparation will be in inverse proportion to their percentages.

PORTT ANNOUNCES PLATFORM FOR NHPA PRESIDENCY

1. **Long range program (2-8 years)** — Establish a site for a permanent home for the NHPA which will include the NHPA Hall of Fame. The first step will be to determine if the majority of pitchers want one.

If so, draw up plans and cost of the complex.

Establish a program to provide funding by working with major corporations and large foundations to give donations to the NHPA Building Fund.

2. **Immediate and continuing program** — Aggressively seek out sponsors to promote horseshoes in as many ways as possible. Our qualified volunteer personnel will work to make as many contacts as possible in order to find THE sponsor the NHPA needs. Contacts are unlimited. For example: Cereal and Coca-Cola companies for juniors; cigarette companies such as Virginia Slims for the ladies; and beer companies such as Budweiser and Miller for the men.

I will use the 4 Vice-Presidents to the widest extent possible in this program. In addition, I will recruit volunteers from the membership.

3. **The 'Help Ourselves' program** — To double our W.T. prize money and be able to support Regional Tournaments, I will ask every member to donate \$10 which will give him or her a chance to win \$2500. This opportunity would be restricted to NHPA members and their immediate families. As our able Sec-Treas recently pointed out, what is \$10 these days? A case of beer, a trip to McDonald's, a night of bowling, a movie. If we cannot give up just one of these per year in order to promote our sport, then we are just not really interested in getting our sport to the fore.

I will request members who can afford it to loan \$500-\$1000 interest free for 10 years to the NHPA. The interest generated would go to our BUILDING FUND. The loans would be repaid at end of ten years.

4. **The 'Professional Approach' program** — We will make professional quality video tapes of action in our six major divisions in the W.T. Good narration will be emphasized. Copies will be made from the originals. These tapes will be the property of the NHPA and will be used in presenting 'our story' and 'our sport' to possible sponsors by our designated representatives.

These tapes will be available to all clubs in helping them obtain sponsors and promoting horseshoes through showings at local schools and on TV. No charge!

5. **Improving the Horseshoe Pitcher's Digest** — Require timeliness for all tournament reports.

Use material from sanctioned tournaments only.

Have monthly articles from both famous pitchers and the infamous ones.

Have a 'Letter to the Editor' page or pages.

6. **Institute 'Proxy' voting** — Every major corporation in the U.S. has the proxy vote. Why not the NHPA? I am for proxy voting *by delegates*. If a state is entitled to 15 delegates and only 5 are able to attend, those 5 should cast 15 votes.

7. **'Preserve Our History' program** — Pictures will be taken every year of our major championship groups plus individual pictures of each champion. Hall of Fame inductees plus certain others

PLATFORM — (Continued)

would be included. This would be at NHPA expense. These pictures would be given to our statistician for preservation and caring until entered in the Hall of Fame.

Along with the pictures, copies of the W.T. video tapes would be preserved for future generations.

8. **Eliminate the 10¢ per member rebate to clubs** — The amount is so small it really does the individual club any good. However, NHPA-wise, it amounts to about \$800. I would take the 10¢ per member and put it in our Building Fund in our 'Help Ourselves' program.
9. **My 'money' program** — I will be as conservative as possible in accomplishing my goals. However, to make money, you must spend money. I will spend money. *Authorized* volunteers, who charge nothing for their time and effort, will not be asked to pay their own expenses. They must be re-imbursed.

I will look closely at the accounting for all NHPA assets.

TITCOMB OF CALIF. WINS VALLEY OF THE SUN SILVER ANNIVERSARY OPEN — PHYLISS NEGAARD LADIES CHAMP

Although he dropped a game in regular play to Kevin Cone of Iowa, Don Titcomb of California edged out Jesse Gonzales, also of California in the playoff game 40-37 to win the Valley of the Sun Silver Anniversary Open tournament held on the Pioneer Park courts in Mesa, Arizona. Phyliss Negaard of Minnesota and current Women's World Champion was undefeated to win the Class A Ladies championship with a 6-0-63.4 record. Yvonne Mauzey of California was the runner-up with a 5-1-64.3 record. Two hundred pitchers representing 21 states and Canada with 13 players, converged on Mesa, Arizona for the February 9-13 ringer extravaganza. All action took place on the Pioneer Park courts. It is planned to extend the tournament another day and include a Junior class if possible.



Shown above holding Hall of Fame Awards are the Arizona Hall of Fame inductees, left to right: Walter Stearns, Willard Phillips, Art Kamman, and Stanley DeLeary.

In an impressive ceremony held on Sunday, February 13, Art Kamman, Walter Stearns, Willard Phillips, Stanley DeLeary and James O. Lecky (deceased) were inducted into the Arizona State Horseshoe Pitchers Hall of Fame. Each recipient was given a written citation and a memento of the occasion. Wally Shipley, NHPA President, made a few brief remarks and congratulated the Hall of Fame inductees and the Arizona Association on the growth of the Valley of the Sun tournament from a meager start of 12 players 25 years ago to this year's entry of 200.

LADIES CLASS A — P. Negaard, Mn., 6-0-63.4; Y. Mauzey, Ca., 5-1-64.3; D. McAllister, Ca., 3-3-51.6; B. Seibold, In., 2-4-50.7; E. Weisdepp, Wa., 2-4-49.0; M. Byfield, Wa., 2-4-44.9; L. Hughes, Mn., 1-5-44.8.

LADIES CLASS B — T. Lievrouw, Az., 5-1-43.4; M. Clark, Ks., 4-2-47.3; E. Pearce, Ks., 4-2-45.3; G. Adkins, NM, 3-3-44.0; V. Hegarty, Ia., 3-3-38.8; M. Hanes, NM, 2-4-36.8; B. Dow, Ca., 0-6-27.4.

LADIES CLASS C — D. Rehels, Ks., 6-0-40.1; H. Erickson, Mn., 4-2-37.4; S. Jones, Or., 4-2-34.8; F. Morton, Cn., 3-3-35.0; D. Hutchings, Cn., 2-4-33.5; A. Zogman, Ca., 1-5-31.6; R. Smith, Az., 1-5-24.0.

VALLEY OF THE SUN — (Continued)

LADIES CLASS D — J. Thomas, Wa., 6-0-29.3; M. Ferguson, Wa., 4-2-1.2; C. Larkins, Az., 3-3-25.0; P. Centell, Or., 3-3-24.7; R. Kubal, Id., 3-3-18.4; C. Atkinson, Az., 2-4-16.1; J. Ulku, Mn., 0-6-15.9.

MEN'S CLASS A — D. Titcomb, Ca., 10-1-67.5; J. Gonzales, Ca., 10-1-73.9; K. Cone, Ia., 8-3-65.3; G. Minnick, Az., 6-5-61.4; R. Booe, Ks., 5-6-61.8; R. Mauzey, Ca., 5-6-58.3; E. Johnson, Mn., 5-6-55.7; J. Williams, Ca., 4-7-57.9; A. Allbaugh, Ks., 4-7-56.1; N. Flann, Ca., 3-8-55.9; B. Hafner, Ia., 3-8-55.7; D. Loucks, Ca., 3-8-53.4.

MEN'S CLASS B — Jo Williams, Ca., 9-2-56.9; H. Robbins, Ca., 7-4-56.6; Ruben Lee, Ca., 7-4-56.0; L. Fitzpatrick, Mi., 7-4-53.7; V. Long, Il., 7-4-53.4; M. Reheis, Ks., 6-5-52.7; L. Gillespie, Il., 6-5-52.5; E. Pearce, Ks., 5-6-48.3; F. Stinson, Mn., 5-6-48.1; J. Comstock, Co., 3-8-45.4; R. Ferguson, Wa., 3-8-44.6; B. Cork, Ca., Forfeit.

MEN'S CLASS C — D. Cramer, Az., 11-0-58.2; H. Rushing, Ca., 8-3-53.1; D. Ohms, Ut., 8-3-49.0; C. Bugger, Ut., 8-3-47.7; J. James, Or., 6-5-49.0; B. Landrum, NM, 6-5-42.9; M. Larkins Sr., NM, 5-6-47.6; M. Bakken, Nb., 5-6-46.3; H. Harlow, Mn., 4-7-46.9; J. Raymond, Ut., 3-8-44.8; W. Sullivan, Mn., 2-9-36.2; D. Hanes, NM, 1-10-38.2.

MEN'S CLASS D — R. Hughes, Wa., 7-2-47.5; N. Williams, Ca., 7-2-47.3; G. Kloefer, Ca., 7-2-45.4; F. Green, Wa., 5-4-48.8; D. Earleywine, Nb., 5-4-42.9; C. Ball, Or., 4-5-42.0; E. Clark, Ks., 4-5-40.0; K. Erickson, Ut., 4-5-37.3; M. Flann, Mn., 1-8-40.5; R. Rebman, Or., 1-8-33.7.

MEN'S CLASS E — C. McClain, Il., 5-0-44.9; B. Knudson, Cn., 4-1-50.4; G. Nick, Mn., 3-2-35.5; A. Lund, Wa., 2-3-31.1; F. Woods, Wa., 1-4-29.7; C. Mays, Ca., Forfeit.

MEN'S CLASS F — C. Seibold, In., 4-1-41.8; S. Finrock, Az., 3-2-44.0; J. Eozzo, Ca., 2-3-43.9; B. Courtwright, Az., 2-3-41.2; E. Zinn, Ia., 2-3-36.6; A. Schliske, Wy., 2-3-35.7.

MEN'S CLASS G — S. Ulku, Mn., 5-0-52.9; G. Dixon, Ks., 4-1-50.4; D. Arionus, Az., 3-2-49.2; R. Swenson, Mn., 2-3-37.3; F. Butcher, Ca., 2-3-28.7; B. Trolen, Az., 0-5-25.9.

MEN'S CLASS H — N. Cone, Ca., 4-1-43.8; W. Reichard, Ks., 4-1-39.3; R. Gueck, Can., 3-2-43.7; J. Zogelman, Ca., 3-2-42.5; W. Foreman, Ca., 1-4-39.0; D. Brawley, Ca., Forfeit.

MEN'S CLASS I — I. Davis, Mn., 4-1-49.1; F. Nelson, Az., 4-1-44.9; G. Mitchell, Oh., 3-2-40.0; R. McKissen, Mn., 2-3-38.8; F. Rackley, Az., 2-3-38.6; J. Aaskow, Cn., 0-5-39.0.

MEN'S CLASS J — W. Andrews, Io, 4-1-46.9; M. McKissack, Az., 4-1-38.2; J. Niemitalo, ND, 3-2-38.5; D. Marx, Ia., 2-3-41.3; H. Reid, Ia., 1-4-34.7; G. Larson, SD, 1-4-28.1.

MEN'S CLASS K — B. Bissell, Az., 4-1-40.4; C. Cone, Ia., 3-2-39.3; L. Weisdepp, Wa., 3-2-35.8; E. Schilperoord, Wa., 2-3-33.9; H. Hoar, Ca., 2-3-31.8; J. Hoaglin, Ca., 1-4-28.4.

MEN'S CLASS L — A. Erickson, Mn., 4-1-43.4; J. Raykowski, Ca., 4-1-39.9; J. Morrow, Ca., 4-1-31.4; O. Thomas, Wa., 2-3-34.9; C. Lundeen, Mn., 1-4-25.9; T. Lievrouw, Az., Forfeit.

MEN'S CLASS M — O. Kubal, Id., 5-0-34.9; B. Briggs, Cn., 3-2-36.9; L. Centell, Or., 3-2-32.3; F. Edwards, Ca., 2-3-38.7; J. Byfield, Wa., 1-4-26.4; R. Jones, Cn., 1-4-25.2.

MEN'S CLASS N — C. Sandell, Ia., 4-1-38.3; N. Liudahl, ND, 4-1-32.1; M. Bridges, Az., 3-2-28.6; R. Hummel, Cn., 2-3-25.0; J. Randall, Az., 2-3-17.0; W. Nelson, Wy., Forfeit.

MEN'S CLASS O — B. Bajari, Az., 4-1-40.9; W. Kjellberg, Az., 3-2-36.7; L. Brindle, Wa., 3-2-36.4; A. Schagunn, Az., 2-3-30.3; D. Kottke, Az., 2-3-22.9; R. Garcia, Ca., 1-4-88.0.

MEN'S CLASS P — A. Hoffman, Cn., 4-1-33.2; H. Anderson, Mn., 3-2-29.5; E. Vines, Mn., 3-2-28.0; P. Kline, Mn., 3-2-24.6; C. Johnson, Mn., 1-4-27.8; H. Perry, Az., 1-4-25.7.

MEN'S CLASS Q — H. Ruby, Az., 4-1-28.9; C. Wood, Or., 4-1-26.0; G. McDonald, Az., 3-2-28.1; Cy. Narlock, Mn., 2-3-23.1; J. Hoffman, Cn., 1-4-21.0; L. Cherry, Az., 1-4-19.9.

MEN'S CLASS R — R. Christianson, Or., 3-2-30.6; D. Tucker, Id., 3-2-29.2; J. LaPlant, Mn., 3-2-29.0; S. Snyder, Ca., 2-3-27.6; W. Shipley, Ca., 2-3-27.0; A. Luers, Ia., 2-3-23.5.

MEN'S CLASS S — M. Mimbach, Mn., 5-0-41.2; G. Sneller, Mi., 4-1-30.3; L. Bayer, Ca., 3-2-33.6; F. Mulnix, Co., 2-3-28.9; F. Bruns, Az., 1-4-30.2; M. Larkins Jr., Az., 0-5-20.9.

MEN'S CLASS T — M. Carlson, Wi., 4-1-33.4; R. Sneller, Mi., 4-1-21.1; A. Perreault, Cn., 3-2-31.1; B. Richter, Id., 3-2-26.1; F. Grenier, Mi., 1-4-24.1; A. Lee, Id., Forfeit.

MEN'S CLASS U — R. Lemaster, Az., 3-2-25.8; A. Dwyer, Az., 3-2-25.0; M. Glennie, Cn., 3-2-22.0; M. Jones, Ca., 3-2-20.3; W. Roberts, Wa., 2-3-22.4; C. Helm, Mt., 1-4-18.3.

VALLEY OF THE SUN — (Continued)

MEN'S CLASS V — D. Pace, In., 5-0-25.4; F. Pinneo, Ks., 3-2-21.9; K. Bayless, In., 2-3-20.8; P. Free, Or., 2-3-18.2; C. Dunlap, Mi., 1-4-17.8; C. Parker, Mi., 1-4-12.3.

MEN'S CLASS W — P. Trejo, Ca., 5-0-23.6; A. Henke, Co., 4-1-29.4; H. Hegarty, Ia., 3-2-23.4; J. Kronholm, Wa., 2-3-19.6; W. Atkinson, Az., 1-4-15.2; L. Resseguie, Az., Forfeit.

MEN'S CLASS X — D. Taylor, Az., 4-1-22.4; W. Minnick, Az., 4-1-17.6; J. Hutchings, Cn., 3-2-14.4; E. Bryhan, Ca., 3-2-10.6; R. Alvine, Ca., 1-4-10.0; J. Kincaid, Az., Forfeit.

MITCHELL, S.D. SANCTIONED LEAGUE ACTIVITIES

(1982 RESULTS RECEIVED MARCH 1, 1983)

The Mitchell, S.D. Club enjoyed its first year in the NHPA sanctioned league program. Three tournaments were held and conducted by the club. A mixed doubles tournament was held in September. Cliff Ziehl was voted the player of the year for his great work during the year in the improving of the courts, and getting courts established at the Junior High School. Awards went to Wally Zeal and Harry Everhart as League Champions for 1st and 2nd half. Class C Cliff Ziehl, Class D Jewel and Dennis Kuechenmeister. High average, Wally Ziehl. High game Scratch, Wally Ziehl. High game with handicap, Robert Kutil. Most Improved Player, Jeri Ziehl.

CORN PALACE LEAGUE TOURNAMENT—CHAMPIONSHIP CLASS — Harry Everhart, 3-0-42.0; Lloyd Storla, 2-1-41.3; Steve Cihak, 1-2-41.3; Wally Zeal, 0-3-33.3.

CLASS A — Jerilyn Ziehl, 3-0-42.0; Robert Kutil, 2-1-34.6; Verdal VanBriesen, 1-2-28.6; George Larson, 0-3-38.0.

CLASS B — Clifford Ziehl, 3-0-30.0; John Jerke, 2-1-20.0; Carl Hanson, 1-2-35.3; Otto Oehlerking, 0-3-16.0.

CLASS C — Dennis Kuechenmeister, 3-0-6.6; Lucille Kinsey, 2-1-2.6; Jewel Kuchenmeister, 1-2-6.6.

MITCHELL OPEN — CHAMPIONSHIP — Jim Gunderson, 7-0-60.9; Don Coy, 6-1-48.0; Harold Paxton, 4-3-46.3; Eldon Anderson, 4-3-42.0; Jim Ullom, 3-4-38.6; Wally Zeal, 2-5-41.7; Laverne Wipf, 1-6-35.1; Harry Everhart, 1-6-33.8.

CLASS A — Jerilyn Ziehl, 5-2-35.4; Laverne Boterman, 4-3-46.0; Steve Cihak, 4-3-42.3; Roy Kangas, 4-3-40.3; Robert Kutil, 4-3-36.3; Forest Gaetze, 3-4-34.3; Lloyd Storla, 2-5-32.9; Larry Duerkson, 2-5-28.3.

CLASS B — Orvel Madden, 6-1-44.3; Gene Austed, 6-1-33.1; Larry Jucht, 5-2-43.7; Carlton Leikvold, 3-4-36.0; Paul Hilgenberg, 3-4-29.9; George Larson, 3-4-28.4; Lynn Kalvig, 2-5-28.3; Don Bunkers, 0-7-25.1.

CLASS C — Dave Dykstra, 7-0-44.3; Darrin Pater, 5-2-37.7; Carl Hanson, 5-2-34.9; Otto Jorgenson, 4-3-32.9; Henry Pater, 3-4-38.0; Marvin Parkinson, 3-4-33.7; Cliff Ziehl, 2-5-28.9; Verdal VanBriesen, 0-7-29.4.

CLASS D — Orval Elliott, 5-2-23.7; Milt Merry, 4-3-27.1; Lowell Erickson, 4-3-21.1; Ed Gebhart, 4-3-20.3; Dave Krumvieda, 3-4-21.7; Don Peterson, 3-4-17.1; John Jerke, 3-4-15.7; Bernie Waldner, 2-5-25.7.

CLASS E — Ivar Ericsson, 7-0-28.0; Jack Sievers, 5-2-16.9; Howard Weiss, 5-2-15.2; Randy Bluhm, 4-3-15.1; Myron Lippert, 3-4-12.9; Ralph Hass, 2-5-8.3; Jewel Kuechenmeister, 1-6-11.4; Dennis Kuechenmeister, 1-6-8.0.

CORN PALACE DOUBLES TOURNAMENT—CHAMPIONSHIP — Lois Bolstad, 5-0-64.0; Rosella Kasperson, 5-0-50.8; Jim Gunderson, 4-1-46.4; Laverne Boterman, 4-1-35.2; Wally Zeal, 3-2-36.4; Jeri Ziehl, 3-2-31.2; Dave Erlman, 2-3-38.0; Harry Everhart, 2-3-28.8; Roland Kleinschmidt, 1-4-31.2; David Zilverberg, 1-4-33.6; Larry Duerkson, 0-5-20.8; Larry Jucht, 0-5-32.8.

CLASS A — Forest Gaetze, 4-1-36.0; Roy Kangas, 4-1-34.0; Erwin Koerner, 4-1-34.5; Edgar Miller, 4-1-29.5; Darrin Pater, 3-2-40.0; Henry Pater, 3-2-29.5; Joan Austed, 2-3-38.0; Virgil Bolstad, 2-3-27.2; Laverne Wipf, 2-3-28.4; Gene Austed, 2-3-28.8; Charley Riley, 0-5-26.4; Mel Halsett, 0-5-13.6.

CLASS B — Lloyd Storla, 5-0-35.2; Cliff Ziehl, 5-0-26.4; George Larson, 3-2-32.0; Carl Hanson, 3-2-31.6; Marv Parkinson, 3-2-31.6; Ed Gebhart, 3-2-26.4; Bob Kutil, 3-2-31.6; Verdal VanBriesen, 3-2-24.4; Lynn Kalvig, 1-4-31.2; Don Adlter, 1-4-12.8; Carl Chambers, 0-5-28.8; Bryce Chambers, 0-5-20.8.

CLASS C — Otto Joergeson, 4-1-38.0; Don Peterson, 4-1-21.6; Lowell Erickson, 4-1-27.2; Ivar Ericsson, 4-1-18.4; Dave Dykstra, 3-2-34.4; Ken Hauge, 3-2-8.8; Grover Brown, 2-3-33.2; Bernie Waldner, 2-3-25.6; Dave Krumvieda, 2-3-21.2; Vern Hanson, 2-3-21.2; Don Bunkers, 0-5-22.8; John Jerke, 0-5-16.4.

CLASS D — Jack Sievers, 6-0-14.1; Myron Lippert, 6-0-11.5; Randy Bluhm, 3-3-14.2; Howard Weisz, 3-3-6.7; Jewel Kuechenmeister, 2-4-9.2; Dennis Kuechenmeister, 2-4-3.8; Shelly Kutil, 1-5-12.5; Joyce Everhart, 1-5-1.3.

1982 CANADIAN TOURNAMENT ACTIVITY FINALS

CANADIAN CHAMPIONSHIPS HELD AT VICTORIA, B.C. — MEN'S CHAMPIONSHIP DIVISION — Elmer Hohl, Ont., 75.1; Fernand Thibeault, Que., 62.3; Steve Hohl, Ont., 69.6; Jean Gauthier, Que., 66.1; Howard Weitzel, Sask, 62.7; Clayton English, B.C, 60.4; Matt Zabolotney, B.C., 60.2; Gaetan Dallaire, Que., 62.5; Tal Severson, B.C., 60.8; Andre Leclerc, Que., 64.9; Larry Griffith, Alta., 60.6; Marvin Ellison, Sask., 59.4; Andy Douville, Sask., 51.3; Bill Vanderburg, Ont., 55.8; Don Smith, Man., 45.3; Marcel Gariepy, Que., 44.2.

WOMEN'S CHAMPIONSHIP DIVISION — Margaret Johns, Alta., 70.2; Mary Archer, Ont., 63.2; Sheila McGrath, Ont., 62.0; Eileen Kozakewich, Sask., 58.9; Solange Leclerc, Que., 58.5; Gerri Bigham, B.C., 55.3; Vi Elliott, Man., 57.6; Doris Wilton, B.C., 57.2; Barbara Douville, Sask., 51.7; Wilma Larson, Alta., 37.5; Shirley Ann Fisher, Man., 54.3; Ruby Finnie, Sask., 50.7; Alice Hickman, B.C., 47.7; Mary Tiechroeb, Sask., 46.3; Laverne Peterson, Alta., 26.9.

JUNIOR BOYS CHAMPIONSHIP DIVISION — Barry Meyer, Alta., 6-1-67.9; Terry Spilchen, Sask., 5-2-64.9; Kevin Fisher, Man., 4-2-67.8; Shawn Larson, Alta., 3-3-61.8; Rob Crawford, B.C., 2-4-52.6; Munj Manhas, B.C., 1-5-56.8; Brian Friesen, Sask., 1-5-51.0.

BRITISH COLUMBIA SUMMER GAMES, FINALS — MEN'S CLASS A — Matt Zabolotney, 8-0-61.9; Tal Severson, 6-2-64.7; Ed Tolway, 7-3-57.8; Walter Kinakin, 5-4-61.1; Jim Ball, 5-4-54.6; Jerry Melissa, 3-5-57.0; John Griffin, 2-6-47.0; Lloyd Reyklin, 2-6-45.4; Earle Gillard, 0-8-35.2.

LADIES CLASS A — Marg Murray, 5-1-56.4; Gerri Bigham, 4-2-55.6; Shirley Vaugeois, 0-6-42.8.

JUNIOR BOYS CLASS A — Munj Manhas, 6-0-59.8; Kelly Hoodkoff, 3-3-57.5; Dave Gillard, 0-6-32.1.

BRITISH COLUMBIA CHAMPIONSHIP, CLOVERDALE, B.C. — MENS A CLASS — Clayton English, 8-1-67.8; Matt Zabolotny, 7-2-63.9; Harvey Robbins, 7-2-58.8; John Griffin, 5-4-50.4; Walter Kinakin, 4-5-55.0; Jim Ball, 4-5-52.5; Bob Timothy, 4-5-51.7; John Meeres, 4-5-46.8; Murray Rayner, 2-7-44.1; Lloyd Reyklin, 0-9-42.0.

VANCOUVER ISLAND, LADYSMITH, B.C. — CHAMPIONSHIPS — MENS A CLASS — Harvey Robbins, Ladysmith, Clayton English, Victoria, Jerry Melissa, Duncan, Tom Didmon, Cobble Hill.

LADIES A CLASS — Alice Hickman, Victoria, Shirley Vaugeois, Victoria, Cass Johnson, Victoria.

JUNIOR BOYS A CLASS — Munj. Manhas, Victoria, Rob Crawford, Victoria.

NORTHERN CALIFORNIA ASSOCIATION TOUR. ACTIVITY

(Following results were received Feb. 15)

TITCOMB WINNER AT SANTA ROSA — California State Champion, Don Titcomb of the San Jose Golden Eagle Club, was complete master at the Sonoma County Fairgrounds in Santa Rosa on October 10th. Don was on-line all day to finish with a perfect 7-0 record and a percentage of 78.3%. Bob Mauzey of the home club placed second; Mate McBride won group II and Bob Malley defeated Jim Morrow in a playoff in group III.

CLASS AA-1 — Don Titcomb, 7-0-78.3; Bob Mauzey, 6-1-60.3; Ed Floyd, 5-2-64.3; Vern Gosney, 3-4-53.7; Bob Hanlon 3-4-50.0; Tom Webb, 2-5-56.6; Verdan Zelmar, 1-6-50.3; Marty Dunn, 1-6-45.7.

CLASS AA-2 — Mate McBride, 6-1-56.6; Jim Long, 5-2-47.1; Newton Graves, 5-2-46.3; George Regott, 4-3-47.4; Walt Foreman, 4-3-43.4; Ben Yost, 3-4-39.1; Joe Zoglman, 1-6-40.9; Dave Storck, Sr., 0-7-37.7.

CLASS AA-3 — Bob Malley, 7-1-42.3; Jim Morrow, 6-2-37.7; Don Purdum, 5-2-39.3; Bert Charley, 3-4-36.3; Floyd Edwards, 3-4-35.3; Gerry Saunders, Sr., 2-5-29.7; Marco McCauley, 2-5-26.7.

GONZALES & M. WEBB CLASS WINNERS IN LAVETT OPEN — Fred Lavett hosted his annual open on the 10 excellent courts in Seaside on October 17th in excellent fall weather and it was Jesse Gonzales all the way as the Los Osos's flip-flopper went unbeaten to win. Don Titcomb placed 2nd. Marilyn Webb pitched masterfully to take Group I of the ladies division. JoAnn Wanner won group II.

CLASS AA-1 — Jesse Gonzales, 7-0-77.4; Don Titcomb, 5-2-78.0; Monte Latino, 4-3-63.4; Ed Floyd, 4-3-62.0; Fred Lavett, 4-3-60.9; Bob Mauzey, 3-4-66.3; Tom Webb, 1-6-56.6; Marty Dunn, 0-7-52.0.

CLASS AA-2 — Joe Zoglman, 7-1-48.5; Verdan Zelmar, 6-2-51.3; Walt Robinson, 4-3-44.9; Walt Foreman, 4-3-44.9; Vince Mauricio, 4-3-44.3; Don Forbes, 2-5-43.7; Jim Morrow, 2-5-42.0; Lyle Bartels, 0-7-35.1.

WOMEN GROUP I — Marilyn Webb, 5-1-48.0; Vera Floyd, 4-2-47.2; Jean Robinson, 3-2-40.0; Marthe Dunn, 2-3-41.5; Betty Forbes, 2-3-41.5.

N. CALIFORNIA — (Continued)

TITCOMB HITS 80 PERCENT AT TURLOCK — The day was cool but Don Titcomb heated it up considerably as the California State Champion pounded the pegs at a 82.5% clip and hit a 92% game enroute, to register his best performance of the season. Bob Mauzey placed second. Yvonne Mauzey of the Sonoma Club, California Ladies Champion, went 7-0 to outdistance Marisella Mauricio of San Jose. Men's group II went to Sam Caputo, and group III to Fred Laam.

CLASS AA-1 — Don Titcomb, 9-0-82.5; Bob Mauzey, 8-1-64.3; Tom Webb, 6-3-63.3; Ed Floyd, 6-3-59.5; Fred Lavett, 4-5-55.0; Jack Sorg, 4-5-54.3; Marty Dunn, 4-5-51.0; Holland Payne, 2-7-47.3; Herman Schneider, 2-7-45.8.

WOMEN — Yvonne Mauzey, 7-0-55.1; Marisella Mauricio, 5-2-54.3; Virginia Sturla, 5-2-50.0; Marilyn Webb, 5-2-46.6; Marthe Dunn, 3-4-40.9; Vera Floyd, 2-5-41.1; Genevieve Lavett, 1-6-31.7; Del Ann Moss, 0-7-17.4.

TOURNAMENT OF CHAMPIONS TO TITCOMB AND STURLA — San Jose's Don Titcomb avenged his only loss (to Jesse Gonzales) since becoming California Champion by edging the tough Los Osos pitcher 22-16, averaging 78.3% and hitting 84% in the final game. The annual event was held on the Ryland Park courts in San Jose. Mate McBride of Sacramento continued his late season surge by annexing Group II; Al Adams topped Group III; Steve Kynard, Group IV; Joe Novakovich, Group V, Eddie Loretto of San Jose, the Junior group and Virginia Sturla won the ladies championship. Group II of the ladies division went to Genevieve Lavett of Seaside.

CLASS AA-1 — Don Titcomb, 7-0-78.3; Jesse Gonzales, 6-1-82.3; Bob Mauzey, 5-2-63.7; Ed Floyd, 4-3-66.6; Jack Sorg, 3-4-53.4; Harley Swander, 2-5-60.9; Tom Webb, 1-6-52.3; Fred Lavett, 0-7-46.6.

CLASS AA-2 — Mate McBride, 6-1-60.2; Vince Mauricio, 5-2-50.9; Verdan Zelmar, 4-3-54.9; Sam Caputo, 4-3-49.4; Vern Gosney, 3-4-50.9; Herb Rushing, 2-5-53.7; Marty Dunn, 2-5-52.2; Don Forbes, 2-5-46.0.

WOMEN — Virginia Sturla, 5-0-63.2; Marisella Mauricio, 4-1-59.6; Marilyn Webb, 3-2-50.4; Betty Forbes, 2-3-52.0; Vera Floyd, 1-4-38.8; Yvonne Mauzey, 0-5-48.0.

JUNIORS — Eddie Loretto, 3-0-32.7; Gary Adams, 2-1-20.0; George Paul, Jr., 1-2-24.7; Gerry Saunders, Jr., 0-3-2.7.

TITCOMB TRIUMPHS IN TURKEY SHOOT — The Northern California finale was held at Golden Gate Park on Nov. 7th and was hosted by the Golden Gate Club. Don Titcomb, Calif. State Champion, won still another title to end a great 1982 season for the former World Champion. The smooth swinging San Josean came back from an upset loss to Mel Long Jr., No. Calif. Junior champion, to average 73.7% and win 6 of 7 matches. San Jose's premier gal pitcher, Marisella Mauricio, topped 7 surprised men to easily take Group II and average an even 60% for the day. Newton Graves of Sacramento, former NCHPA champion, continued his comeback with the win in Group III; Lon Gayet took Group IV; Floyd Edwards, Group V; Earl Kynard, Group VI; Frank Westbrook, Group VII; and Leo Warner, Group VIII.

CLASS AA-1 — Don Titcomb, 6-1-73.7; Mel Long, Jr., 5-2-68.0; Sharon Paddock, 4-3-67.7; Virginia Sturla, 4-3-61.7; Bob Mauzey, 3-4-63.7; Tom Webb, 3-4-62.0; Jack Sorg, 2-5-54.8; Harley Swander, 1-6-56.0.

CLASS AA-2 — Maricella Mauricio, 7-0-60.0; Vern Gosney, 5-2-57.1; Juke Basham, 5-2-55.4; Sam Caputo, 5-2-53.1; Marty Dunn, 2-5-50.0; Vince Mauricio, 2-5-48.5; Herman Schneider, 2-5-48.2; Don Forbes, 0-7-39.4.

NORTHERN CALIFORNIA SENIOR CHAMPIONSHIP TO MARSHALL JOHNSON — Stockton's Marshall Johnson saved his best game for Sonoma County's Bob Mauzey, No. Calif. 1982 Senior Champion, and went on to an upset win at the Sonoma County Fairgrounds in Santa Rosa on Sept. 26th. Marshall won all 7 games but Mauzey pitched the tournament high % of 63.8%. Lou Gayet won group II and Ernie Hall topped Group III.

CLASS SR 1 — Marshall Johnson, 7-0-52.5; Bob Mauzey, 6-1-63.8; Pete Manitone 4-3-54.7; Bob Hanlon, 3-4-50.7; Emmett Schroeder, 3-4-49.0; Mate McBride, 3-4-50.2; George Greeott, 1-6-43.9; Jim Long, 1-6-38.2.

CLASS SR 2 — Lou Gayet, 4-1-42.8; Walt Foreman, 3-2-40.9; Bert Charley, 3-2-34.1; Don Muenchow, 2-3-32.9; Stewart Snyder, 2-3-27.7; Barak Wright, 1-4-27.4.

CLASS SR 3 — Ernie Hall, 3-0-22.3; Jim Adams, 2-1-19.8; Roy Heyden, 1-2-8.9; Ernie Kim, 0-3-11.4.

ARNOLD DAVIS WINS SHASTA C OPEN (NO. CALIF) — **CLASS C-1** — Arnold Davis, 6-0-46.3; Bud Lathe, 4-2-44.3; Larry Karlen, 1-5-33.7; Buck Gendron, 1-5-24.0.

CLASS C-2 — Roy Thomas, 6-0-29.3; Fred Laam, 4-2-23.7; Bob Lloyd, 1-5-19.0; Randy Daniel, 1-5-15.3.

NORTHERN CALIF. — (Continued)

CLASS AA-1 — Jesse Gonzales, Sr., 7-0-79.7; Don Titcomb, 6-1-80.3; Monte Latino, 5-2-64.0; Ed Floyd, 4-3-66.3; Tom Webb, 3-4-60.3; Bob Mauzey, 2-5-60.3; Pete Manitone, 1-6-51.7; Herman Schneider, 0-7-52.6.

CLASS AA-2 — Vern Gosney, 8-1-54.0; Jack Sorg, 7-2-58.5; Vince Mauricio, 7-2-49.3; Holland Payne, 5-4-51.3; Marty Dunn, 5-4-49.8; George Greeott, 5-4-48.3; Mate McBride, 4-5-52.3; Verdan Zelmar, 3-6-47.8; Don Forbes, 1-8-41.0.

CLASS AA-3 — Jim Long, 6-1-40.9; Jim Morrow, 5-2-39.1; Newton Graves, 5-2-38.6; Lou Gayet, 5-2-38.3; Walt Foreman, 3-4-41.1; Lyle Houk, 3-4-35.4; Floyd Edwards, 1-6-24.0; Don Koehler, 0-7-17.1.

CLASS AA-4 — Bert Charley, 6-2-34.0; Gerry Saunders, Sr., 5-3-32.3; Ceres Perry, 4-3-29.7; Marion Hawley, 4-3-27.1; Elton Cowels, 4-3-24.0; Bob Fread, 3-4-28.3; Don Muenchow, 3-4-24.6; Glenn Jamieson, 0-7-16.6.

LATHE TOPS IN YOLO CLASS "B" — CLASS B-1 — Bub Lathe, 5-2-45.7; Joe Zoglman, 4-3-50.3; Walt Foreman, 4-3-48.6; Al Adams, 4-3-46.9; Ed Adams, 4-3-40.9; John Hintzman, 3-4-42.6; Jim Morrow, 3-4-37.7; Jim Long, 2-5-38.9.

CLASS B2 — Lou Gayet, 7-0-52.3; Floyd Edwards, 4-3-40.9; Steve Kynard, 4-3-37.1; Buck Nelson, 4-3-31.7; Lee Oliver, 3-4-41.1; Bert Charley, 3-4-30.0; Don Purdum, 2-5-32.9; Al Hunt, 1-6-32.3.

CLASS B3 — Gerry Saunders, Sr., 6-2-43.8; Ray Moss, 5-3-29.8; Jay Bush, 4-3-29.7; George Palmer, 3-4-33.4; Ceres Perry, 3-4-28.3; Mel Falcon, 3-4-26.3; Marion Hawley, 3-4-25.1; John Kincheloe, 2-5-29.7.

TITCOMB AND V. STURLA WINNERS IN MAYOR CURTOLA OPEN — Don Titcomb, California State Champion, outlasted Monte Latino of Sacramento to take the annual Mayor Curtola Open held at Vallejo on October 3rd. Virginia Sturla overcame State Champion, Yvonne Mauzey to take the ladies title. Other winners were: Joe Zoglman, Group 2; Lou Gayet, Group 3; Earl Kynard, Group 4, Ed Novak, Group 5.

CLASS AA-2 — Don Titcomb, 7-0-74.3; Monte Latino, 6-1-70.9; Bob Mauzey, 4-3-64.6; Tom Webb, 4-3-60.3; Harley Swander, 3-4-59.1; Holland Payne, 3-4-54.6; Fred Lavett, 2-5-56.0; Herman Schneider, 0-7-50.6.

WOMEN — Virginia Sturla, 5-0-60.0; Yvonne Mauzey, 4-1-60.8; Marthe Dunn, 2-3-39.6; Genevieve Lavett, 2-3-30.4; Edith Zoglman, 1-4-28.4; Josephine Charley, 0-5-27.2.

MORROW WINS SAN JOSE CLASS C OPEN — San Jose's Jim Morrow is a firm believer in the old horseshoe adage "if you go to enuff' of 'em, you're gonna win one sooner or later." Jim did just that on October 9th on the friendly home courts in Ryland Park, San Jose, as the determined transplanted North Carolinian pitched his best tournament of the 1982 season, a fine 51.6% effort. Earl Anderson of Tri-Valley took group 2; Bob Fread of Tri-Valley Group 3; Joe Novakovich of San Jose took Group 4, and Bob Duarte, also of the home club, won Group 5.

CLASS C-1 — Jim Morrow, 4-1-51.6; Steve Kynard, 3-2-40.4; Don Gann, 3-2-32.8; Ernie Fairchild, 2-3-40.8; Bill Penix, 2-3-40.8; Bert Charley, 1-4-24.8.

CLASS C-2 — Earl Anderson, 5-0-40.0; Earl Kynard, 4-1-25.2; Bill Brown, 2-3-28.8; Mel Falcon, 2-3-26.4; Marion Hawley, 2-3-25.2; Art Rector, 0-5-26.8.

CLASS C-3 — Bob Fread, 5-1-24.7; Joe Ferreau, 4-2-22.0; Elton Forbes, 3-2-29.2; Mickey Cutbirth, 2-3-24.4; Bill Carns, 1-4-22.4; Chester Anderson, 1-4-17.6.

EAU CLAIRE, WISC. CLUB SETS DATES FOR TWO MEETS

The Eau Claire Club announces two tournaments to be held in Eau Claire this season. June 11-12—Eau Claire Open to be held at the Carson Park courts in Eau Claire. Sept. 3-4-5—Annual Wisconsin State tournament at the Carson Park courts in Eau Claire. For further information contact Eleanore McCarn, secretary, 1911—14th Street, Eau Claire, Wisconsin 54701.

1983 WORLD TOURNAMENT

Statesville, North Carolina

July 27 to August 6



Pabst



OPEN TOURNAMENT

**\$300
PRIZE
MONIES**



TROPHIES

July 23

**Dieterich Horseshoe Club
Dieterich, Illinois**

ENTRY MUST BE RECEIVED BEFORE JULY 17

Send 50 Shoe Scores with \$8.00 Entry Fee To:

**John Waldhoff
Dieterich, Illinois 62424
Phone: 217 925-5167**

You will be notified of class and starting time.

Dieterich is 9 miles SE of Effingham, Illinois
on Rt. 33

RAIN DATE: JULY 24, 1983

21st ANNUAL RON FRAKES TOURNAMENT OF CHAMPIONS

May 27, 28,29 and 30, 1983

THE REPAIR SHOP HORSESHOE COURTS, 2435 S. Campbell, Springfield, MO 65807

This tournament is sanctioned and is open to men and women holding 1983 NHPA cards. Guaranteed prize fund of at least \$1,500 for men, \$600.00 for women. Guaranteed 1st prize for men — \$250.00 plus; women — \$200.00 plus trophies.

Entry fee for all classes is \$10.00. All entry fees will be added to the guaranteed prize fund. Entries should be mailed to Earl Winston, Route 2, LaMonte, Missouri 65337. Entries must be postmarked by April 27, 1983. All contestants will be notified by mail of their class and time to appear.

Entry will be by a combined average of your *two or three highest* percentage tournaments pitched between May 1, 1982 and April 24, 1983. Entrants not having a known average will be allowed to send in a qualifying scoresheet of 200 shoes for men and 100 shoes for women. The scoresheet must be kept and signed by a current NHPA member. The tournament director reserves the right to rerate all entrants submitting qualifying scoresheets.

Classes will consist of eight players and will pitch round robins using 40 point cancellation games. Winners will be determined by wins and losses. A tie for first place in a class will be pitched off, all other ties will be determined by ringer percentage. The tournament is governed by rules of the NHPA and decisions of the tournament committee will be final. Contestants failing to appear at their scheduled time shall forfeit all prize money.

TOURNAMENT COMMITTEE: Earl Winston, President; Ron Frakes, Vice-President, Vicki Winston, Secretary-Treasurer.

W. VA. MOUNTAINEER OPEN—MEMORIAL DAY WEEKEND

Due to conflict with other scheduled tournaments and vacation schedules, the annual Mountaineer Open tournament will be held at the East Marion Recreational park courts beginning on May 28 through May 30.

Entry fees are as follow: Men, \$10.00; Ladies, \$10.00 as the adult fee. Juniors must register and pay \$2.00. All entries must be sent to Charles M. Bunner, 508 Ohio Ave., Fairmont, W. Va. 26554 together with checks payable to Monongahela Valley Horseshoe Pitchers Association and must include your ringer percentage and name and address and phone number. Deadline for all entries is May 14th.

The Ladies Class A and Men's classes A, B, C will pay an additional fee. Ladies, \$5.00. Men, Class A, \$5.00. Men, Class B, \$4.00. Men, Class C, \$3.00 and Class D \$2.00. Method of play will be round-robin, 50 point cancellation.

The above classes will receive cash prize awards and trophies, while all other Classes will receive trophies.

The mens A class will be composed of 16 players provided sufficient high ringer percentage players enter. Otherwise all Classes will be composed of eight players, including the A class.

OHIO SILVER DOLLAR OPEN SET FOR JUNE 11-12

The annual Silver Dollar Open tournament will be staged at the courts in Lancaster, Ohio on Saturday and Sunday, June 11-12. The top four classes will be sanctioned and all games in tournament will be 50-point cancellation. There will be three trophies per class plus silver dollars to every entrant. Send latest tournament average together with eight dollar entry fee to Weldon Martin, 611 Edgewood Drive, Lancaster, Ohio 43130. Ph. 614-654-1817. All entries must be received by midnight, June 6. Early entry is suggested since the number of entries may be limited and the early entries will be given priority.

MARIETTA, OHIO SCHEDULES TWO OPEN TOURNAMENTS

The 16th Annual Marietta Open Tournament will be held on Saturday and Sunday, July 9 and 10 in Marietta, Ohio. Deadline for all entries is July 2. Send percentage and entry fee of \$7.00 to LESTER GROSKLOS, 102 GRAYLING DR., MARIETTA, OHIO 45750. Phone 614-373-6817.

The 18th Annual Washington Co. Open Tournament will be held on Sept. 17 and 18. Send percentage and entry fee of \$7.00 to LESTER GROSKLOS, 102 GRAYLING DR., MARIETTA, OHIO 45750. Phone 614-373-6817.

LARRY MORTON WINS FLORIDA STATE FAIR OPEN

Georgia State Champ, Larry Morton, overcame all competition at the inaugural Florida Fair Tournament in Tampa on Feb. 9-10. Larry ended the day with an 8-0 record, tossing his highest game (84%) of the day against Carl Steinfeldt. Carl placed 2nd with a high single of 88% and 78.2% for the day. In third spot was West Virginia's Ralph Maddox with a 5-3 record. Former Senior World Champ Glen Portt of Albany, Ga. ended in 4th spot with a 5-3 record. This was the first sanctioned tournament held during the annual Florida State Fair and promises to be a fore-runner of more to come. The tournament was played under cover on portable clay courts. With free passes to the fair for contestants and spouses, the limitation of 96 entries was reached 4 weeks before game time. The Fair Authority expressed pleasure with the attraction and has asked for a repeat next year. Details follow:

CLASS A — Larry Morton, Columbus, 8-0-65.2; Carl Steinfeldt, Clearwater, 7-1-78.2; Ralph Maddox, W. Va., 5-3-67.7; Glen Portt, Albany, 5-3-67.5; Duaine Whitmer, Winter Haven, 4-4-61.2; Floyd Bartley, Mich., 3-5-66.5; Ralph Cullum, Inverness, 2-6-59.2; Wm. Neilson, Indiana, 2-6-55.0; Bob Dean, Clearwater, 8-0-62.5.

CLASS B — Marvin Richmond, Minn., 6-1-66.2; John Rademacher, Plant City, 5-2-59.4; Chet Albertson, St. Cloud, 5-2-64.0; Ann Wedel, Mich., 3-4-61.4; Dike Thatcher, Brooksville, 3-4-60.0; Ed Howdeshell, Ind., 2-5-58.2; Henry Hostetter, Ohio, 2-5-56.6; Omar Blacketer, Kentucky, 2-5-55.7.

CLASS C — Robert Griffith, Avon Park, 5-2-55.4; Marvin Broughton, Tampa, 5-2-57.1; Bob Widdersheim, Clearwater, 5-2-52.8; Bob Fuller, Clearwater, 4-3-52.0; Paul Scheub, Sarasota, 3-4-54.5; Len Robinson, Ruskin, 3-3-49.7; Robert Mays, Ohio, 2-5-48.5; Gene Meyers, Clearwater, 1-6-43.4.

CLASS D — Joe West, Winter Haven, 6-1-50.5; Luther Adams, Titusville, 5-2-47.4; E. P. Schultz, Sarasota, 4-3-48.8; Phillip Law, Titusville, 4-3-44.0; Walter House, Sarasota, 3-4-49.1; Ray Arthur, Seminole, 3-3-43.7; Dick Senger, Winter Haven, 2-5-41.4; Rex Swinson, Sarasota, 1-6-43.7.

CLASS E — Carlton Mullinix, Dunedin, 5-2-44.0; E. Shippee, Titusville, 4-3-46.2; Frank Stites, Bradenton, 5-2-41.1; Carroll Brown, Orlando, 4-3-46.2; Andy Doshna, Clearwater, 4-3-38.0; Chas. Bennett, Dunedin, 3-4-39.7; M. Rodocker, Ohio, 2-5-34.2; Wm. Cooper, Seminole, 0-7-29.7.

CLASS F — Pat Gallant, St. Cloud, 5-2-46.0; Frank Topal, Tarpon Springs, 5-2-46.8; Bill Roach, Canada, 5-2-39.7; Pat O'Toole, Canada, 5-2-42.0; Oscar Gaudette, New Smyrna Beach, 4-3-38.8; Wally Smith, Ruskin, 3-4-36.2; Les Long, Bradenton, 0-7-30.5; Orval Coxon, Canada, 0-7-27.1.

CLASS G — Joe Morgan, Bradenton, 5-1-36.6; Cindy Dean, Clearwater, 5-1-45.3; Len Tibbie, Brooksville, 4-2-34.0; Max Jaquette, Zephyrhills, 3-3-35.0; Dale Brooks, Avon Park, 2-4-27.3; Roger Sutor, Tampa, 2-4-26.0; Andy Anderson, St. Cloud, 6-0-24.0.

CLASS H — Bob Koons, Seminole, 6-1-41.7; Chas. Jones, New Smyrna Beach, 5-2-36.2; John Zehnder, Ruskin, 5-2-32.2; Clifton Richards, Brooksville, 3-4-32.3; Jack McGing, Port Richey, 3-4-30.3; Clint Dickinson, Beverly Hills, 3-4-29.7; J. Dockstader, Haines City, 2-5-31.4; Wm. Packard, Venice, 1-6-28.2.

CLASS I — Rowland Conrad, Clearwater, 6-0-33.3; Harland Bennett, Michigan, 4-2-29.6; Walter Wedel, Michigan, 3-3-31.0; Bobby Ratcliffe, Beverly Hills, 3-3-28.0; Sherman Gray, Crystal River, 3-3-25.0; Taylor Carahan, St. Cloud, 2-4-22.3; Dick Lapeer, Sarasota, 0-6-10.0.

CLASS J — Sparky Hall, Hernando, 7-0-39.7; Floyd Tibbie, Brooksville, 5-2-31.7; Lee Davis, Seminole, 4-3-32.8; Arthur Tracy, Titusville, 4-3-26.8; Erv Stanton, Ruskin, 3-4-27.1; A. R. Hagemeyer, New Smyrna Beach, 2-5-20.5; Herb Olson, Winter Springs, 2-5-23.1; Harold Halstead, Winter Haven, 1-6-26.5.

CLASS K — Gib Beckemeyer, Englewood, 5-1-32.6; Orval Tansy, Clearwater, 5-1-25.0; Geo. Utzman, Bradenton, 5-1-21.0; Alex Gritske, Beverly Hills, 3-3-17.3; Chas. Byrd, Panama City, 2-4-15.6; Chet Larson, St. Cloud, 1-5-13.6; Ralph Rollins, 0-6-14.6.

CLASS L — Jim Dey, Ruskin, 6-1-19.4; Fred Lindell, Brooksville, 6-1-23.1; Slim Allen, Iowa, 4-3-23.4; Gary Aswegan, Iowa, 4-3-18.0; Floyd Groesbeck, Tampa, 4-3-15.4; Wm. Pence, Tampa, 3-4-16.5; John Manning, Bradenton, 1-6-9.1; Geo. Kokajko, Sarasota, 0-7-8.3.

HAROLD WOLFE MEMORIAL OPEN, XENIA, OHIO, MAY 28-29-30

The Greene County Ohio Horseshoe Club will hold the Harold Wolfe Memorial Open Tournament on May 28, 29, and 30 in Xenia, Ohio. This sanctioned tournament will award trophies or plaques for first and second place in each class.

Entrants should send ringer percentage and \$8.00 fee to Ken Waggoner 476 Cottage Grove Ave., Xenia, Ohio 45385 (Phone 1-513-372-1550) by Wednesday, May 18th. Please make checks payable to Greene County Horseshoe Club.

ELWOOD JOHNSON RETAINS VALLEY OF THE SUN WARM-UP TITLE; E. WEISDEPP, LADIES; PAUL MINNICK TOPS JRS.

Elwood Johnson of Minnesota successfully defended his crown by again winning the Valley of the Sun Warm-Up tournament held at the Pioneer Park courts in Mesa, Arizona on Jan. 14-15. Johnson was defeated by Minnick 41-34 which caused a play-off in which Johnson topped Minnick 40-24 to clinch the title for the second year in a row. In the ladies Class A, E. Weisdepp was the winner with a 5-0-49.4 record while in the Junior division it was Paul Minnick.

CLASS A — E. Johnson, 4-1-66.2; G. Minnick, 4-1-65.6; B. Kamm, 2-3-57.2; A. Fitzpatrick, 2-3-52.7; R. Beem, 2-3-46.7; Ruben Lee, 1-4-56.2.

CLASS B — M. Reheis, 5-0-52.9; F. Green, 2-3-51.2; D. Cramer, 2-3-50.3; H. Harlow, 2-3-50.3; B. Knudson, 2-3-48.2; C. McLain, 2-3-44.4.

CLASS C — B. Courtwright, 4-1-42.8; S. Ulku, 3-2-40.6; R. Marx, 2-3-40.6; J. Zogman, 2-3-39.0; E. Schipleroot, 2-3-38.3; F. Woods, 2-3-33.0.

CLASS D — W. Reichard, 3-2-44.5; R. McKissen, 3-2-42.5; G. Mitchell, 3-2-33.5; E. Smith, 2-3-40.5; M. McKissack, 2-3-40.3; E. Baker, 2-3-37.7.

CLASS E — J. Niemalto, 3-2-46.0; C. Sandell, 3-2-42.0; L. Weisdepp, 3-2-38.2; B. Bissell, 3-2-36.3; T. Lievrouw, 2-3-39.8; I. Davis, 1-4-40.0.

CLASS F — R. Gueck, 4-1-42.4; D. Dean, 3-2-40.0; A. Erickson, 3-2-31.5; J. Hoaglin, 3-2-30.5; W. Nelson, 2-3-28.7; H. Ruby, 0-5-25.4.

CLASS G — O. Thomas, 4-1-40.1; W. Kjellberg, 3-2-36.0; L. Brindle, 3-2-35.8; J. Stablyk, 2-3-38.6; C. Johnson, 2-3-34.3; B. Bajari, 1-4-33.4.

CLASS H — A. Hoffman, 4-1-33.6; P. Klein, 3-2-38.3; A. McGladrie, 3-2-37.1; M. Eckert, 3-2-34.2; R. Jones, 2-3-34.4; R. Robitaille, 0-5-26.9.

CLASS I — B. Briggs, 5-0-46.7; H. Perry, 3-2-33.2; H. Waltz, 2-3-29.4; F. Bruns, 2-3-28.0; G. Vines, 2-3-25.7; C. Bjorlin, 1-4-33.4.

CLASS J — O. Kubal, 5-0-37.9; G. Sneller, 4-1-34.7; F. Mulinix, 2-3-31.5; C. Helm, 2-3-22.4; L. Bayer, 2-4-28.4; W. Roberts, 1-4-24.6.

CLASS K — B. VanZanten, 4-1-24.6; M. Glennie, 4-1-19.1; R. Lemaster, 3-2-23.5; Paul Free, 3-2-21.3; A. Dwyer, 1-4-15.5; J. Minnick, 0-5-Forfeit.

CLASS L — M. Carlson, 7-0-28.3; A. Perreault, 5-2-26.8; F. Grenier, 4-3-25.6; H. Hegarty, 4-3-24.1; C. Dunlap, 3-4-22.4; C. Parker, 3-4-20.1; H. Kolzow, 2-5-17.9; J. Kronholm, 0-7-9.2.

CLASS M — Dale Taylor, 4-1-21.5; F. Pinneo, 3-2-22.5; D. Kottke, 3-2-22.1; K. Bayless, 3-2-20.3; W. Minnick, 2-3-20.8; J. Hutchings, 0-5-16.8.

LADIES A — E. Weisdepp, 5-0-49.4; S. Jones, 4-1-41.5; D. Reheis, 3-2-29.3; T. Lievrouw, 2-3-35.1; H. Erickson, 4-4-30.8; V. Hegarty, 0-5-Forfeit.

LADIES B — D. Hutchings, 7-0-30.0; F. Morton, 5-2-29.3; Peggy Roe, 5-2-25.0; R. Smith, 4-3-27.8; A. Zogman, 4-3-26.4; R. Kubal, 1-6-16.5; J. Thomas, 1-6-15.5; J. Ulku, 1-6-13.9.

JUNIORS — Paul Minnick, 4-1-6.2; Loren Minnick, 4-1-3.7; Brad Cardinale, 3-2-3.4; Danny Mills, 3-2-1.2; Tony Cardinale, 0-4-2.2; Scott Cardinale, 0-5-0.6.

Carolina Dogwood Festival
Open Horseshoe Tournament
 FRIDAY, SATURDAY AND SUNDAY
 APRIL 22-23-24, 1983
 Statesville, N. C.

STATESVILLE, N.C. HOUSING FACILITIES FOR 1983 W.T.

For motel or campground reservations for the 1983 World Horseshoe Tournament in Statesville, North Carolina on July 27—August 6, 1983—you must write or telephone as soon as possible and make your own reservations. For further information, write or call The Greater Statesville Chamber of Commerce, 115 East Front Street, Statesville, N.C. 28677, Phone—1-704-873-2892.

Holiday Inn, Highway 21, (Near Courts), Statesville, NC 28677. Telephone: 704-872-4101. Rates: Single \$34, Double \$40, Extra \$5 per person over 2

Master Hosts Inn, 725 Sullivan Road. (Near Courts), Statesville, NC 28677. Telephone: 704-873-5236. Rates: Single \$29, Double \$38, Extra \$5 per person over 2

Scottish Inns, Interstate 40 (Nearest to Courts), Statesville, NC 28677. Telephone: 704-872-9891. Rates: Single \$22.88, Double \$26.96, 2 Double \$29.04, 3 or more people \$32.20.

Cline's In-Town Motel, 1323 West Front Street, Statesville, NC 28677. Telephone: 704-872-2748. Rates: Single \$16, Double \$24, 3 or more people \$32.

Days Inn, Sullivan Road, (Near Courts), Statesville, NC 28677, Telephone: 704-873-5252. Rates: Single \$30, Double \$35.20, Extra \$5 per person over 2

Ramada Inn, U.S. 70E at I-40, Statesville, NC 28677. Telephone: 704-872-5215, Rates: Single \$33, Double \$41, Extra \$5 per person over 2

U.S. 21 Motel, 1415 Shelton Avenue, Statesville, NC 28677. Telephone: 704-873-8062. Rates: Single \$15, Double \$20, 3 or more people \$23.92.

Hallmark Inn Motel, Highway 64 at I-40, Statesville, NC 28677. Telephone: 704-872-2781. Rates: Single \$17.95, Double \$22, Extra \$3 per person over 2

KOA Campground, Off I-77, Amity Hill Road, (Nearest to Courts), Statesville, NC 28677. Telephone: 1-704-873-5560. 30 acres, 89 camp sites, 4 courts, swimming pool.

Lake Myers Campground, Rt. 1, Box 90, Mocksville, NC 27028. Telephone: 1-704-492-7736. 178 acres, 230 camp sites, swimming pool, (everything)

Midway Family Campground, Route 4, Statesville, N.C. Telephone: 546-7615. 12 mi. E. of Statesville to Middle 64 & I-40

Old Water Mill Campground, Route 1, Union Grove, N.C. Telephone: 592-2902. 20 mi. N.W. on Hwy. 115

Duke Power State Park, Lake Norman, Troutman, N.C. 5 mi. W. of U.S. 21 S.

Pier Marina Campground, Route 4, Box 217, Mooresville, N.C. Telephone: 663-4225. Hwy. 150 W., 4 mi. off I-77.

Cross Country Campground, Route 1, Box 68A, Denver, N.C. Telephone: 483-5897. Hwy. 150, 1 1/2 mi. off Hwy. 8 mi. off I-77.

Holidayland Campground, Route 2, Box 766, Denver, N.C. Telephone: 483-5746. 18 mi. N. of Charlotte on Hwy.

Wildlife Wood Campground, Denver, N.C., From I-40 take St. Rt. 16 for 19 mi. L. on St. Rt. 150.

Bear Creek Family Campground, Mocksville, N.C., Telephone: 492-5154. 4 mi. W. of Mocksville on U.S. 64, 1 mi. W. of I-40 on left.

Crazy Horse Campground, Box 90, Mocksville, N.C., 25 mi. W. on I-40.

Tanglewood Campground, Clemmons, N.C., 10 mi. W. of Winston-Salem, 1/2 mi. off I-40.

Lake Hickory Campground, Box 2348, Hickory, N.C., N.E. of Hickory off Springs Road

For further help or information telephone Jack Springer at 1-704-872-5659 or John Bullard, Co-Directors or write: Jack Springer, 925 Henkel Road, Statesville, N.C. 28677.

COMING EVENTS

FLORIDA SCHEDULE NHPA SANCTIONED

Mixed tournaments unless otherwise indicated. All tournaments will be 50-shoe games, alternate pitch, RINGERS ONLY counting 1 point. Send \$7.00 entry fee to proper contact 7 days prior to tournament date. Scorekeeper fee 25¢ per game. Dropouts after

deadline will forfeit entry fee unless tourney is cancelled.

Apr. 1-2 — DeSoto Open. Bradenton, FL. 1st day 45% and under. Contact Earle Johnson, 3031-12th Ave., East, Manatee, FL 33508. Ph. 813-746-8298.

REFER TO PAST ISSUES FOR ADDITIONAL COMING EVENTS

COMING EVENTS

1983 COLORADO SCHEDULE

- May 28 — Tri State Open, State & National Cards, City Park, contact: Dick Hanshaw, 1511 Broadway, Scottsbluff, NE 69361, office 308-635-1332, home 308-635-1904.
- June 4-5 — North Weld Open, State & National cards, Windsor Town Park, contact: John Huntzinger, Box 1423, Windsor, CO 80550; office 303-482-5811, ext. 1234 or home 303-686-5977.
- June 11-12 — Speakeasy Benefit Tournament, Rocky Mountain Park, contact: George Rogers, 3160 Wright Street, Denver, CO 80215; 303-237-3600.
- June 18-19 — Cheyenne Open, State & National cards, Holiday Park, contact: Don Laurin, 320 Avenue C4, Cheyenne, WY 82001; 307-634-4671.
- June 25-26 — Fort Collins Open, State & National cards, Edora Park, contact: Jack Spencer, 1311 Elm Ave., Loveland, CO 80537; 303-663-1412.
- July 2-3 — Cowboy Open, State & National cards, Washington Park. Contact: Ken Raymond, Lander Route, Rawlins, WY 82301; 307-324-6828.
- July 9-10 — Denver Open, State & National cards, Rocky Mountain Park. Contact: Arch Wood, 2760 W. Hampden Ave., Englewood, CO 80110; 303-761-5262 or 303-238-2729.
- July 16-17 — Rocky Mountain Open, State & National cards, Rocky Mountain. Contact Dale Boss, 4224 Greenbriar Rd., Boulder, CO 80303. 303-494-3724.
- July 16-17 — Albuquerque Open. Contact Marilyn Hanes, 10608 Constitution N.E., Albuquerque, NM 87110. 505-298-5785.
- July 23-24 — Laramie Open, State and National cards. Washington Park. Contact Gary Rickard, 322 Arthur, Laramie, WY 82070. 307-742-3218.
- July 31 — Denver Doubles, Rocky Mountain Park, Contact Mel Yockstick, 7659 Routt Ct., Arvada, CO 80003. 303-421-6433.
- Aug. 6-7 — Wheatland Open. State & National cards. Town Park. Contact Hugo Lenz, Box 458, Wheatland, WY 82201. Office 307-322-3244; Home 307-322-4705.
- Aug. 13-14 — Western Nebraska Open. State & National Cards, City Park. Contact Dick Hanshaw, 1511 Broadway, Scottsbluff, NE 69361. Office 308-635-1332. Home 308-635-1904.
- Aug. 20-21 — Winter Park Open, State & National cards. Mary Jane Center. Contact Mary Wakefield, Box 36, Winter Park, CO 80482. 303-892-0961.
- Aug. 27-28 — Pikes Peak Open, State & National cards, Memorial Park. Contact: Ben Fields, 905 Delft Drive, Colorado Springs, CO 80907. 303-598-7255.
- Sept. 3-4 — (5th if necessary) — Colorado State Tournament, State & National cards, Edora Park, Fort Collins. Contact Bob Engel, 57876 Weld Co. Rd. 37, Nunn, CO 80648. 303-897-2223.
- Sept. 10-11 — Open Date.
- Sept. 17-18 — Mesa County Open, State & National cards, Lincoln Park. Contact: Dick Duel, 225 Independence Ave., Grand Junction, CO 81501. 303-242-7212.

For further information please write: Dale Boss, Colorado State Secretary, 4224 Greenbriar, Boulder, CO 80303.

OKLAHOMA SCHEDULE

- April 16 — Prairie City Days. Marshall. Contact J.C. Diedrich, P.O. Box 135, Marshall, OK 73056. 405/935-6698.
- May 7 — Woodward. Richard B. Shaw. Contact Tom Goff, 2409 Kansas. Woodward 73801. 405/254-3889. Entry fee \$6.00. Deadline April 30.
- May 21 — Bartlesville, Okla. Open. Contact Chuck Arnold. 516 N.E. Avondale, OK 74003. 918/333-6671. Entry fee \$8.00. Deadline 16th. Sanctioned.
- June 4 — Waynoka, Harrison Olson. Contact Charles Fischer, 404 S. Murrow, Waynoka, 73860. 405/824-2651.
- June 18 — Ponca City. Pro-AM. Doubles-Recruit new pitchers. Sanctioned. Homer Cain, Rt. 1, Marland, OK 74644. 405/268-3243.
- June 19 — Woodward County Open. Contact Tom Goff, 2409 Kansas, Woodward 73801. 405/254-3889. Entry fee \$6.00. Deadline June 12.
- June 25 — Yukon. Pat Fitzmorris Memorial. Pitch for cash. Entry fees: A-Class, \$12.00; B-Class, \$10.00; Other classes \$8.00. Contact Harold Crist, 401 Mark Ave., Yukon 73099. 405/354-3509. Sanctioned.
- July 23-24 — Donut Open. Ponca City. Contact Homer Cain, Rte. 1, Marland, OK 74644 for details.
- Aug. 13 — David Guthrie Memorial. Woodward. Sanctioned. Contact Tom Goff, 3409 Kansas, Woodward, OK 73801. 405-254-3889. Entry fee \$6.00. Deadline Aug. 6.
- Aug. 20 — State Warm-up. Waynoka. Sanctioned. Contact "Scoop" Fisher, 404 S. Morrow, Waynoka, OK 73860. 405-824-2651 or Milburn Hutchinson, Rte. 2, Waynoka, OK 73860. 405-697-3342.
- Sept. ?? — Oklahoma State Tournament. Contact "Scoop" Fisher.
- Sept. 24 — Yukon Czech Festival. Sanctioned. Entry fee \$8.00. Deadline Sept. 17. Contact Roy A. Privotf, 1304 Kingston Drive, Yukon, OK 73099. 405-354-5660.

WINCHESTER, VA. SCHEDULE

- May 21-22 — Annual Apple Capitol Open. Winchester, VA. Winchester Parks and Recreation Dept.
- June 18-19 — Moose Local District Tournament (Closed) Winchester, Va.
- June 16-17 — Moose State Singles and Doubles Tournament (Closed). Winchester, VA.
- Sept. 9-10-11 — Annual Frye Memorial Open Tournament. Winchester, VA.
- For more information contact Charles L. Merriner, Jr., 1268 Circle Street, Winchester, Virginia 22601. Ph: 1-703-662-5406. All tournaments will be held at the Winchester Parks and Recreation 24 lighted courts in Winchester, Virginia.

Coming Events—Continued

WASHINGTON SCHEDULE

- Apr. 9 — Daffodil Open. Wright Park, Tacoma.
 Apr. 16 — County Tournament at Sprinker. Unsanct. Wright Park, Tacoma.
 Apr. 24 — Skagit County Open. Owens Courts, Mt. Vernon.
 May 7 — Gilbo Open. Wright Park, Tacoma.
 May 14-15 — S.W. Open, Marshall Center, Vancouver.
 May 21 — Lilac Open - Franklin Park, Spokane.
 May 29-30 — Seattle Memorial. Woodlawn Park, Seattle.
 June 4-5 — Monasmith Open. Elks Memorial Park, Yakima.
 June 18-19 — Everett Open. Forest Park, Everett.
 June 26 — Strawberry Open. Owens Courts, Mt. Vernon.
 July 3-4 — Allones Open. Evergreen Park. Bremerton.
 July 9 — Spokane Open. Franklin Park, Spokane.
 July 16 — Tac-Foss Memorial Open, Wright Park, Tacoma.
- July 30-31 — U.S. Vancouver Open. Marshall Center, Vancouver.
 Aug. 6-7 — Snohomish County Open. Forest Park, Everett.
 Aug. 14 — Bellingham-International Open. Cornwall Park. Bellingham.
 Aug. 21 — Greater Seattle (Closed). Woodlawn Park, Seattle.
 Aug. 20 — South Puget Sound (Closed). Olympia.
 Sept. 3-4-5 — Washington State Tournament. Franklin Park, Spokane.
 Sept. 17-18 — Pacific Northwest Champion Open, Elks Memorial Park, Yakima.
 Oct. 1-2 — Brumfield Halloween Open - Forest Park, Everett.
 Nov. 5 — Tacoma Turkey Shoot, Wright Park, Tacoma.
 Nov. 20 — Seattle Turkey Shoot, Woodlawn Park, Seattle.

OREGON SCHEDULE

- Apr. 30 — Sagebrush Open. Weber Field. Hermiston.
 May 7 — Salem Open. Bush Pasture Park, Salem, OR.
 June 21 — Old Timers Tournament. 60 yrs. and over. Clackamette Park. Oregon City, OR.
 May 22 — Mixed Doubles Tournament. Clackamette Park. Oregon City, OR.
 May 28-29 — Joyner Memorial Open. Avery Park. Corvallis, OR.
 June 4-5 — Strawberry Fair Open. River Park, Lebanon, OR.
 June 11-12 — Annual Rose Festival Open. Laurelhurst Park. Portland, OR.
 June 18-19 — Father's Day Open. Bush Pasture Park. Salem, OR.
 June 25-26 — Oregon Open. Weber Field. Hermiston, OR.
 July 2-3 — Oregon City open. Clackamette Park. Oregon City, OR.
 July 9 — Douglas County Open. Stewart Park. Roseburg, OR.
 July 16-17 — Skinner's Butte Open. 1st and Washington Sts., Eugene, OR.
- July 23 — Greater Portland Tournament. Laurelhurst Park. Portland, OR.
 July 24 — Willamette Valley Tournament. 1st and Washington Sts., Eugene, OR.
 July 30 — LaGrande Open. Riverside park. LaGrande.
 Aug. 6-7 — Sandbagger's Open. Clackamette Park. Oregon City, OR.
 Aug. 13 — Oregon Horseshoe Pitchers Association State Doubles Tournament. Timberlin Park, Albany, OR.
 Aug. 14 — Double Your Money Open. Bush Pasture Park. Salem, OR.
 Aug. 27-28 — Albany Open. Timberlin Park, Albany.
 Sept. 3-4-5 — Annual Oregon State Tournament. Stewart Park. Roseburg, OR.
 Sept. 10 — Tillamock Open. Rockaway, OR.
 Sept. 10 — Tillamock County Open. Rockaway, OR.
 Sept. 11 — Tillamock County Doubles. Rockaway, OR

NOTE: Most of these tournaments have a pre-registration deadline. Contact Barry Chapelle, 2716 S.E. 61st Ave., Portland, Ore. 97206 for details. Ph. 503-775-7876.

EASTERN PENNA. SCHEDULE

DEADLINE 10 DAYS PRIOR TO TOURNAMENTS

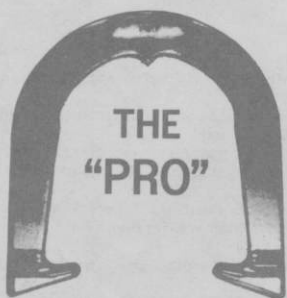
- June 4-5 — Dallas Area Open Tournament. Dallas, PA 18612. \$10.00 entry fee and percentage. Contact A.
 June 10-11 — Reedsville Fireman's Festival Open Tournament. \$10.00 entry fee and percentage. Contact B.
 June 25-26 — New Freedom Open Tournament. New Freedom, PA 17349. \$10.00 entry fee and percentage. Contact C.
 July 16-17 — Pennsylvania Open Tournament. New Cumberland, PA 17070. \$10.00 entry fee and percentage. Contact D.
 Aug. 12-13 — Reedsville 4-H Fair Open Tournament. \$10.00 entry fee and percentage. Contact E.
 Aug. 20-21 — York County Open Tournament. Shiloh (York, Pa. 17404) \$10.00 entry fee and percentage. Contact E.
- Aug. 27-28 — Stewartstown Harves Open Tournament. Stewartstown, PA 17363. \$10.00 entry fee and percentage. Contact F.
 Sept. 2-3-4-5 — Pennsylvania State Tournament (Closed). New Cumberland, PA 17070. \$8.00. Entry fee plus \$2.00 scorekeepers fee. Contact D.

Tournament Directors

- A - John Urbanc, RD 2, Hunlock Creek, PA 18621. Phone 717-477-5629.
 B - Jack Z. Swyers, RD 2, Box 145, Belleville, PA 17004. Phone 717-935-5337.
 C - Glenn Brown, RD 3, Box 100, Felton, PA 17322. Phone 927-6997.
 D - San Beshore, 430 Old York Road, New Cumberland, PA 17070. Phone 717-938-2945.
 E - Raymond Bechtel, 2210 Sycamore Road, New York, PA 17404. Phone 717-764-4065.
 F - Richard Wilson, RD 1, Box 1401, Stewartstown, PA 17363. Phone 717-993-6584.



THE ORIGINAL DROP-FORGED PITCHING SHOE



Two tournament tested models, forged from S.A.E. specified steel, are available. Both have hardened hooks and points, and may be ordered in your choice of medium, soft, or dead soft tempers.



AS THE FIRST MANUFACTURER OF THE DROP-FORGED PITCHING SHOE, THE OHIO HORSESHOE COMPANY IS RECOGNIZED WORLD-WIDE FOR ITS HIGH QUALITY PITCHING SHOES.

For price information and to order, contact:

OHIO HORSESHOE COMPANY

P.O. Box 21371
Columbus, Ohio 43221