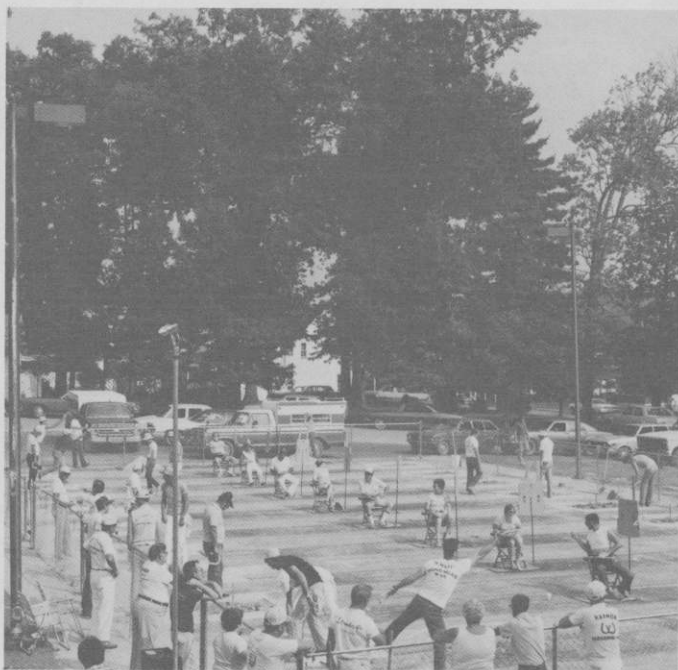




the  
national horseshoe pitchers

# NEWS DIGEST



**NOVEMBER, 1982**

*Official Publication of*

**THE NATIONAL HORSESHOE PITCHER'S ASSOCIATION  
OF AMERICA**

## INTRODUCING . . .

The brand new Horseshoe Pitcher's Ringer Caps!

These great caps are made of cotton with 4 nylon mesh panels and are fully adjustable. Comes in bright colors of either Red and White or Blue and White.



The colorful horseshoe and peg design lets everyone know . . .

**YOUR A HORSESHOE PITCHER!!!**

To order your cap(s) NOW . . .  
Just send \$6 plus \$1 for postage & handling with your name, address and zipcode to:  
*(Don't forget to specify the color you want.)*



**RINGER WORLD**  
60 East 42nd Street % Suite 411  
New York, NY 10165

**WHY NOT "SHOW OFF" THAT YOU'RE  
A HORSESHOE PITCHER??**

**COMPLETE YOUR HORSESHOE PITCHING  
OUTFIT WITH OUR NEW**

**RINGER T-SHIRTS!!!!**



\*\*\*\*\*  
All our Ringer T-Shirts are machine washable (wasn'n wear) and come with the same Distinctive Horseshoe & Peg Design as shown on our Ringer Caps. Order NOW!!! Just send \$6 plus \$1 for postage & handling per shirt and specify below your favorite color and your shirt size. We will RUSH your new RINGER T-SHIRT to wear and enjoy.

**DON'T FORGET ABOUT OUR SPECIAL:  
BUY 5 caps and/or t-shirts—Get 1 FREE!**

---

**T-Shirt Colors:** Light Blue - Yellow - Beige - Red  
**Children's Sizes:** Small (6-8) Medium (10-12) Large (14-16)  
**Adult Sizes:** Small (32-34) Medium (36-38) Large (40-42)  
Extra Large (44-46)

THE HORSESHOE PITCHER'S NEWS DIGEST is published on the 5th of each month at Aurora, Illinois, U.S.A. by the National Horseshoe Pitcher's Association of America. Editorial office, P.O. Box 1606, Aurora, Illinois 60507. Phone: 312-898-3974. Subscription rates—1st Class \$9.00; 3rd Class \$8.00 per year in advance. NHPA membership cards are available through each state secretary for \$6.00 plus any state association dues. Forms close on the 10th day of each month preceding date of issue. Advertising rates on request. F. Ellis Cobb, Editor.

---



---

#### NATIONAL OFFICERS

Wally Shipley, 2646 Basswood St., Newport Beach, Calif. 92660.....	President
Leo McGrath, 1937 Lawn Ave., Cincinnati, Ohio 45237.....	1st Vice-President
Norman Gaseau, 1908 Nuggett Dr., Clearwater, Fla. 33515.....	2nd Vice-President
Earl Winston, Route 2, LaMonte, Mo. 65337.....	3rd Vice-President
Bonnie Seibold, 1043 Grayson Ave., Huntington, Ind. 46750.....	4th Vice-President
Donnie Roberts, 9439 Camp Creek Rd., Lucasville, Oh. 45648/(614) 289-4101.....	Sec./Treas.
Claude White, Jr., 940 Knollwood Ct., Plainfield, NJ 07062.....	Chr. Reg. Dir.

Volume 25

November, 1982

No. 11

---



---

## NHPA PRESIDENT'S MESSAGE

BY WALLY SHIPLEY

A new game related organization was unveiled after the WT. We had a meeting in Huntsville. As soon as we have it finalized it will be published in the News Digest.

As you know we are trying to standardize our classification nationwide. Earl Winston will have more on this later. Also I feel that we are coming into an era of Regional Tournaments. As I told you, I have appointed a committee of which Barry Chapelle is the chairman and will have more on this project later.

With the economic situation today, I can see that perhaps some states may be asking for more charters. The Council agrees with this concept, especially if the present charter concurs and both agree to alternate being host to the State tournament if both have proper facilities to conduct a State tournament.

Congratulations to Elmer Webb of Kentucky on his new horseshoe design. The Council has approved his request to manufacture the new "Web Shoe."

Also my congratulations to Don Titcomb on his winning the California State championship for the 9th time.

A great way to promote and help your area knowledgeable of our sport would be for an individual or club or state association to donate one or both of Gary Kline's and/or Otlie Reno's books to your local library.

Our News Digest is not running in the black as I mentioned before. I have received a few comments along with those printed in the Digest, concerning not to print non-sanctioned tournaments. We will take all your thoughts and suggestions under advisement before we make our final decision.

Let me give you some actual facts and figures in publishing our News Digest. The July issue cost \$2557.00 for 2700 copies, which make the cost per issue 84 cents. If we take one subscriber for one year (12) issues that is what we have: 12 issues @.84 each which total \$10.08 per subscriber. This \$10.08 per yearly subscription is what it is costing us to publish the Digest. There are some additional expenses such as renewal notices. Donnie's postage, the editor's allowance per year and some others so I figure we are at \$10.50 per subscriber per year to be conservative. Our Digest ads would only cut about 5 cents off of this cost over a period of a year. As a result it costs \$10.50 to publish and our return is \$8.00 and \$9.00 so we lose \$2.50 per 3rd Class subscription and \$1.50 per First Class subscription.

My suggestion is that we increase to a flat rate of \$12.00 per year minimum. I do not think that two rates are no longer needed. We cannot afford to lose money on our Digest. Perhaps we should only publish every two months, or omit a couple issues.

My bottom line and future wish is one price for the dues and Digest. Keep in mind that if there is more than one member in the same residence address then only one subscription to the Digest would be necessary. So the other member would only pay dues.

I think that we will need to decide at the next convention in Statesville as to how we will handle this problem. I will appreciate any and all suggestions.

**PRESIDENT'S MEMORANDUM** — My ninth year as NHPA President. This past year your efforts have been fantastic. You have increased the 1981 membership to 7398. This was an additional 1398 new members or 19% over 1980. (Donnie said in many areas more cards were requested so far over 1981). Congratulations and many thanks for an outstanding job well done.

## PRESIDENT'S MESSAGE — (Continued)

Thanks to the Huntsville Parks and Recreation for correcting and improving the courts since the 1980 W.T. Everyone's efforts and cooperation have been outstanding. Thanks to the Clearwater Club in Florida for their 2nd annual Tournament. Let's hope there will be a 3rd and many more..

Special thanks and congratulations to the Greater Houston Horseshoe Pitchers Association for their first annual invitational. What a super show and fantastic showplace to expose our sport. Their efforts are outstanding in acquiring two top sponsors — Coors Beer and Godfather's Pizza for a total of \$10,000.00. Hats off to all their staff of officers and membership for a job well done. Especially to Bill and Jackie Joseph.

I am sure that you will have an outstanding success with your 2nd annual tournament, which I understand the dates are February 18-19-20, 1983.

With everyone's continued interest, cooperation, support, hard work and confidence our sport will continue to grow.

The 1983 World Tournament dates are Wednesday, July 27th through Saturday, August 6th and will be held at the 24 courts in Lakewood Park, Statesville, North Carolina. Our format will call for no playing in mid-day as in Huntsville, unless rain delays cause us to do otherwise.

HAPPY THANKSGIVING TO YOU, YOUR LOVED ONES AND ENTIRE FAMILY.

## MINUTES OF THE 1982 NHPA CONVENTION

Prepared by Donnie Roberts

The meeting was called to order by President Wally Shipley at 7:00 a.m. on August 3, 1983 in the Activity Center located in Brahan Spring Park in Huntsville, Alabama.

Prayer and the pledge to the flag were given, followed by the recognition of guests. The NHPA was welcomed to Alabama by Jill Calhoun, Alabama president and NHPA regional director. Jack Springer spoke on the 1983 World Tournament to be held in Statesville, North Carolina. He extended a warm welcome to everyone in 1983. Sealed bids were read by Donnie Roberts for the 1984 world tournament. Bids were received from Fargo, North Dakota presented by Will Gullickson and Huntsville, Alabama presented by Glen Wallace. Fargo bid \$15,000 and Huntsville bid \$18,000 plus about six or seven thousand in other services to put their total bid over \$20,000. Huntsville was voted as host for 1984 by the delegates seated. The minutes of the 1983 convention were approved as presented in the delegate packet. The financial report was read by Donnie Roberts and approved.

A report was given by Leo McGrath, John Rademacher, Earl Winston, and Bonnie Seibold, all NHPA Vice-Presidents. Donnie Roberts, NHPA Secretary-Treasurer, also gave a report. President Shipley requested everyone's help in having a smooth convention, explained the coffee break, use of restroom, giving your name before you speak, introduced all the NHPA officers, introduced the chairmen of all committees, introduced the president of the women's professional association, and introduced his wife, Sally. Glen Wallace and Ken Gipson were introduced from Alabama. President Shipley discussed the deficit on the Digest and suggested fewer issues and ask that folks write to him with suggestions. President Shipley gave his report to the delegates. He pointed out the new plan for game related items, standardization of classifications nationwide, regional tournaments, additional charters, the new Webb shoe, mentioned Ottie Reno's book and Gary Kline's book, pointed out that the 13th issue of the Digest would stop, that the issue of non-sanctioned events being published in the Digest needed attention. The NHPA auditors report was presented and approved. Barry Chapelle gave the NHPA Regional directors report.

The following Constitution and By-Laws changes were approved:

**ARTICLE 2 - SECTION 8-B (New Section)** — All constitution and By-Laws changes voted in by the Delegates at the National Convention shall become effective on the first day of January of the following year.

**JUDICIARY ARTICLE 6 - SECTION 2 (Addition)** — A men's 70 years and older, and a physically handicapped tournament may be held in conjunction with the men's tournament. The pitching distance shall be the same as marked for women and juniors. Entrants must have proof of handicap where needed.

**BY-LAWS ARTICLE 5 (Change) Section 5** — Men's championship cash prize for first place shall be a minimum of \$2000 and the Women's championship cash prize for first place shall be a minimum of \$1000.

**PLAYING RULES ARTICLE 6 RULE 12 SECTION A (FOUL SHOES) (Change)** — Any shoe pitched by a contestant which lands outside the clay area of the opposite pitching box is a foul shoe. Any shoe that lands in fair territory but hits the backstop or other objects and comes back into their pitching area shall be called a foul shoe.

COVER PICTURE... Shown this month is an action view of the 10 new courts in Parkersburg, West Virginia. It is complete with a chain link fence and nicely lighted for night time pitching. Lynn Reed is the secretary of the West Virginia State Association and can be contacted at 107 Montgomery Street, Weston, West Virginia 26452. Note also the scoring devices being used.

## MINUTES — (Continued)

**ARTICLE 6 RULE 12 SECTION D (New Section)** — When a foul shoe disrupts the position of a shoe in fair territory, the foul shoe is to be removed from the pitching area at the request of the opponent, and all other shoes are to remain as they area.

**ARTICLE 7 RULE 21 SECTION B (New Section) RECORDING OF RESULTS** — All past and future World Tournament playoffs in any Championship Division is to be included in total World Tournament Stats.

**ARTICLE 6 RULE 22 (New Rule) RECORDING OF RECORDS** — Any record set in a sanctioned tournament shall be called a World Record. Any record set in a World Tournament shall be called a World Tournament Record. The stats will be kept in two different sets of records and recorded as such. The executive council will decide on the authenticity of records.

A proposed change in the foul line and the use of alternate pitch were both defeated.

President Shipley gave his memorandum. Shipley commented on the increased NHPA membership, up 19%, thanked the Huntsville people for their fine facility, complimented the Clearwater Club on another fine event, congratulated the Houston, Texas people on their money tournament, and requested everyone's help in continuing the growth of horseshoes.

Bonnie Seibold spoke as represented for the women horseshoe pitchers. Boni Boser spoke as the girls representative. Mark Dyson spoke on behalf of the boys. Earl Winston spoke on standardization of percentages as did Barry Chapelle. Barry Chapelle also spoke on regional tournaments.

Under new business a motion was passed requiring the officers to publish in the digest how each officer voted on important issues. The resignation of the Koso's and Pinch's as game related people was discussed. Awards were presented to Minnesota for the largest 1981 membership — 622, to John Rademacher for 10 years as an NHPA officer, to Don and Judy Koso for many years as game related sales people, and to Dorothy and Herb Pinch for many years as game related sales people.

A motion was passed to appoint someone to train the groundkeepers at each world tournament. A motion was passed to design new scoreboards which shows shoes as well as score for the 1983 W.T. Shipley reported on good and welfare. A clinic was presented by Carl Steinfeldt on pitching tips. Donnie Roberts ran unopposed for 4th Vice-President and was re-elected. Norm Gaseau, Walter Ray Williams, Jr. and Vince Yannetti ran for 2nd Vice President. Williams was eliminated on the first ballot. Gaseau was elected on the second ballot. The 1983 World Tournament dates were set for July 27 through August 6.

President Shipley added that he would not be a candidate for re-election in 1983.

Being no further business before the convention the meeting was adjourned by President Shipley.

## ELMER HOHL HORSESHOE AVAILABLE DESIGNED AND PITCHED BY ELMER HOHL

(6 Times World Champion)

Order from:

**DON KOSO**

803 East 12th Street  
Falls City, Nebraska 68355

**HERB PINCH**

592 Hull Street  
Sharon, Pennsylvania 16146

**WRITE FOR PRICES**



**NHPA Approved**

## DONNIE ROBERTS REPORTS ON NHPA FINANCES

The last NHPA audit was published in a recent issue of the digest as required by the NHPA rules. The following are income and receipts by month since that report. The audit was through March 31, 1982.

### April 1982 Receipts:

News Digest	979.40
Membership Dues	1722.00
World Entry Fees	280.00
League Dues	76.00
Court Sanction	25.00
<b>Total Receipts</b>	<b>3082.40</b>

### May 1982 Receipts:

News Digest	1430.00
Membership Dues	4156.00
World Entry Fees	3796.00
World Patch Sales	43.00
League Dues	161.50
Game Related Sales	6000.00
Digest Ad	60.00
<b>Total Receipts</b>	<b>15646.50</b>

### June 1982 Receipts:

News Digest	1236.00
NHPA Membership	2421.00
World Patch Sales	9.00
World Entry Fees	2320.00
Game Related Sales	6500.00
League Dues	1305.00
<b>Total Receipts</b>	<b>13791.00</b>

### July 1982 Receipts:

News Digest	1399.00
World Entry Fees	65.00
Membership Dues	4337.25
League Dues	1014.00
Game Related Sales	6831.74
Shoe Sanction	300.00
World Bid	15000.00
World Scoring	2000.00
<b>Total Receipts</b>	<b>30946.99</b>

### August 1982 Receipts:

News Digest	1755.00
Membership Dues	4875.00
League Dues	1697.00
Game Related Sales	8986.20
Qualifying Fees	1613.31
<b>August Total Receipts</b>	<b>18926.51</b>

### September 1982 Receipts:

News Digest	988.00
Membership Dues	3502.00
League Dues	1154.00
Game Related Sales	14000.00
<b>Total</b>	<b>19644.00</b>

### April 1982 Expenditures:

News Digest	2415.17
World Patches	1072.00
Officer Allowance	1194.50
NHPA Phone Calls	147.52
Postage	236.92
Petty Cash	12.00
<b>Total Expenditures</b>	<b>5078.11</b>

### May 1982 Expenditures:

News Digest	2257.41
NHPA Phone	99.28
Postage	371.02
Game Related Buys	2113.20
League	147.32
Petty Cash	10.01
World Prize	60.00
<b>Total Expenditures</b>	<b>5058.24</b>

### June 1982 Expenditures:

News Digest	2355.32
Supplies	10.03
World Travel	380.00
NHPA Phones	103.04
Postage	619.13
Game Related Buys	1647.90
League	306.22
World Prize	30.00
Tournament Patches	132.47
<b>Total Expenditures</b>	<b>5979.99</b>

### July 1982 Expenditures:

News Digest	2707.11
NHPA Phones	140.63
World Expenses	7127.29
League	120.61
Game Related Buys	4526.71
Officer Allowances	2675.00
Postage	67.21
Hall of Fame	136.81
<b>Total Expenditures</b>	<b>17501.37</b>

### August 1982 Expenditures:

NHPA Phone	134.31
Postage	416.51
World Tourney Exp.	3654.74
League Expenses	103.54
Game Related	2394.20
Patches	432.78
World Prize Money	16198.00
<b>Total</b>	<b>23334.08</b>

### September 1982 Expenditures:

News Digest	4671.34
Postage	487.31
Game Related	6428.87
Officer Allowance	75.00
League	833.54
Supplies	4.86
NHPA Phone	62.99
World Scoring, supplies, Trophies, etc.	3231.40
<b>Total</b>	<b>15795.31</b>

**NOTE:** These figures reflect ONLY the books of the NHPA Secretary-Treasurer and not the income and outgo that are handled by the editor and game related persons.

## NHPA PUBLICITY NEWS

By Bernard Herfurth

As the World Tournament at Huntsville, the Executive Council gave the Publicity Committee permission to go ahead with its plan for a "one-shot" tabloid newspaper issue. A draft will be drawn up during the year and presented to the Council for approval.

This tabloid could be used for publicity for several years. The main feature of this issue would be in the form of a "directory". It would give approximate dates of all state tournaments and league schedules. It would list all the major courts in the states and provinces of Canada. Also the names and addresses of Regional Directors, state secretaries and all tournament directors. It would let all persons interested in organized horseshoe pitching know where the courts are located in their respective area and whom to contact for information.

The tabloid would have NHPA flyer printed therein. Also an up-date version of instruction, teaching how to throw the various turns, etc.

The membership will be kept informed of the publicity in future issues of the Digest. NHPA publicity has also suggested that the NHPA publish a bi-annual news letter informing them of all the NHPA business matters and activities throughout the year, in promoting our great sport. A member pays dues but gets no information unless he or she is a subscriber to the Digest. Sometime in the future, the Digest should be incorporated with the NHPA dues.

Any suggestions concerning the tabloid should be sent to Bernard Herfurth, 17 Fort Street, Northampton, Mass. 01060.

### WALKER SHANEYFELT NEW ALABAMA CHAMPION—

### PEGGY LANG, LADIES CHAMP—MIKE HENDERSON BOYS TITLIST

**CLASS A** — Walker Shanneyfelt, 6-1-54.8; Carl Baker, 5-2-54.7; James Conaway, 5-2-51.5; Bob Stowe, 3-4-47.9; Fred Betterton, 3-4-45.2; William Lynn, 3-4-43.8; Oattie Reno, 2-5-39.7; James Johnson, 1-6-35.2.

**CLASS B** — Jack Henderson, 7-0-47.0; Jim Harris, 6-1-45.7; Mike Connally, 4-3-48.1; Orville McElroy, 3-4-38.9; Ralph Cantrell, 3-4-36.0; Bill Calhoun, 3-4-33.0; D. M. Vessey, 1-6-32.0; John Nichols, 1-6-28.8.

Class C was won by Ken Gipson with a 6-1-37.0 record while in Class D it was Jim Poff with 6-1-20.7. Peggy Lang was undefeated winning all her games with a 35.8 percentage. In the Junior division it was Mike Henderson with 7 straight wins and a 46.9 average.

### TITCOMB WINS HIS NINTH CALIFORNIA STATE TITLE

Don Titcomb of San Jose and a former World Champion, went undefeated to win the 1982 California state championship and making it his ninth state title win. He had 11 straight tied together with a 74.5 ringer percentage. His last title was in 1967. Yvonne Mauzey regained the Ladies championship with a 6-1-63.7 record. Jonathon Williams won the Class A Boys title with 3-1-54.2. It was one of the best California State tournaments ever had and Jim Weeks expresses his thanks to all who helped in making it such a success.

**CLASS A** — Don Titcomb, San Jose, 11-0-74.5; Jesse Gonzales, Los Osos, 9-2-77.7; Monte Latino, Sacramento, 8-3-68.1; Bob Mauzey, Petaluma, 7-4-64.4; Ed Floyd, Fremont, 6-5-65.1; Ben Logg, Barstow, 5-6-62.6; Ronnie Simons, Bellflower, 5-6-61.7; Orville Lokken, San Bernardino, 5-6-56.9; Heman Standard, Orange, 4-7-65.0; Newell Flann, Westminster, 4-7-60.7; Arnie Mortenson, Montrose, 1-10-57.1; Al Crabtree, Waterford, 1-10-56.9.

**CLASS B** — Marty Dunn, Pleasanton, 10-2-55.7; John Balzer, Santa Ana, 9-3-56.9; Bob Hudson, La Jolla, 8-3-56.9; Eston Brown, Anaheim, 8-3-54.6; Jack Sorg, San Mateo, 7-4-60.6; Jack Webb, Scotia, 7-4-55.7; Bob Hanlon, Santa Rosa, 5-6-44.7; Vern Gosney, Vallejo, 4-7-48.1; Steven Hanes, Reseda, 4-7-47.4; Jim Gozzo, Los Angeles, 3-8-45.1; Emmett Schroeder, Lodi, 2-9-37.5; Gerry Kloepler, Yucaipa, 0-11-41.7.

**CLASS C** — Chuck Kerr, San Diego, 7-2-51.5; Stan Dobson, La Mesa, 6-3-50.6; Dave Storck, Woodland, 6-3-44.8; Harry Dabbs, Norco, 5-4-48.4.

**CLASS D** — Dean Zollinger, Hemet, 6-0-52.7; Frank Butcher, Fresno, 4-2-46.7; Chuck Yoshida, Carson, 3-3-43.3; Walt Foreman, San Jose, 3-3-41.0.

**CLASS E** — Norm Cone, Huntington Beach, 7-1-44.9; Greg Tweedy, Suisun City, 6-2-45.3; Harold Slagg, Ontario, 4-3-38.7; Al Nichols, Carson, 3-4-40.3.

**CLASS F** — Jim Morrow, San Jose, 7-0-31.7; Leonard Lifton, Torrance, 5-2-36.8; Joe Raykowski, Rialto, 5-2-36.3; Ray Silva, Santa Barbara, 4-3-38.0; Carl Grabow, Chula Vista, 4-3-34.6.

**CALIFORNIA — (Continued)**

**CLASS G** — *Walt East, Oakland, 5-0-34.8; Steve Kynard, Woodland, 3-2-33.6; Kee Blackrock, Maywood, 3-2-31.2; Wally Shipley, Newport Beach, 2-3-30.0.*

**CLASS H** — *Earl Hogan, San Bernardino, 7-0-31.4; Ed Oliver, Palm Springs, 6-1-27.4; Earl Kynard, Woodland, 4-3-27.1; Walter Williams, Sr., Chino, 3-4-23.1; Jeff Weaver, Santa Barbara, 2-5-21.7.*

**CLASS I** — *Charlie Parsons, Lucerne, 7-0-28.9; Peter Trejo, Vista, 4-3-26.0; Tom Nation, Hemet, 4-3-24.3; Ralph Alvine, Chula Vista, 4-3-22.6.*

**WOMEN — A** — *Yvonne Mauzey, Petaluma, 6-1-63.7; Virginia Sturla, Waterford, 5-2-60.3; Dorothy McAllister, Sun City, 4-2-55.7; Sandy Hardy, Vina, 3-3-50.0; Mary Van Sant, Sun City, 2-4-43.9; Barbara Dow, Glendale, 1-5-43.3; Marilyn Webb, Scotia, 1-5-40.3.*

**WOMENS — B** — *Jo Vickery, Riverside, 6-0-49.0; Phyllis Morten, Whittier, 4-2-48.7; Vera Floyd, Fremont, 4-2-43.7.*

**SENIOR — A** — *Sam Costello, La Mesa, 6-0-53.0; Fred Lavett, Seaside, 4-2-51.6.*

**SENIOR — B** — *Jim Dow, Glendale, 5-2-24.0; Stewart Snyder, Cloverdale, 4-3-27.4.*

**BOYS — A** — *Jonathan Williams, Chino, 3-1-54.2; Nathan Williams, Chino, 1-3-44.5.*

**BOYS — B** — *Dave Condon, Orange, 5-0-31.2; Larry Hilton, Burbank, 4-1-36.8.*

**GIRLS** — *Lisa Gonzales, Los Osos, 2-0-38.8; Cindy Romines, Norwalk, 0-2-3.7.*

**HORSESHOE PITCHING IN TOGO, WEST AFRICA**

By Bernard Herfurth

The following letter was written to Mr. Agoudavi Afantsao who is promoting horseshoe pitching in Togo, West Africa.

Mr. Agoudavi A. Afantsao  
B.F. 3452  
Lome, Togo

September 26, 1982

Dear Andre:

Ambassador Ryan has shared with us your letter of August 13, 1982. Also the photos and articles from your newspaper. We are all pleased and very impressed with your achievements to date. We, the N.H.P.A. who represent organized horseshoes, send you, your pitching associates, and your cooperative Government officials, our sincere congratulations for promoting our great sport in Togo. We wish you continued success.

It always takes a person such as yourself to promote and get things done that make for success which you have accomplished in Togo. We, the N.H.P.A., especially thank you for your great effort. As we say in America "A job well done, Andre." We are happy to know that we have had a small part in helping you. We hope that we can continue to be of help. More on that at a later date.

I personally will discuss with Ambassador Ryan, when I see him, and N.H.P.A. officials, what kind of assistance we can give you in the future. We want you fellows to continue to have enough of horseshoes to pitch with.

As Publicity Director I have had articles printed in our National Monthly concerning the "Togo Horseshoe Pitching". I plan to publish the contents of this letter to you to let our membership know about our mutual interest in our great sport.

I recently returned from the 12 day World's Championship at Huntsville, Alabama. It is about a 2400 mile round trip by automobile. My wife and I attend these meetings annually. We are in our early 70's (of age). I am enclosing some newspaper articles from the World Tournament and some from my articles. About 600 players, men, women, boys and girls, took part in this event from the United States and Canada.

Please send me news of your 1982 results and your plans for the future and any suggestions you may have.

Again, my personal congratulations to you and your horseshoe colleagues for introducing the American sport of Horseshoe Pitching in Togo. Keep up the good work.

With warmest regards,

Bernard Herfurth  
N.H.P.A. Publicity Director  
Northampton, MA 01062



## LACROSSE VICTOR OVER TULK FOR COLORADO STATE

**CLASS A** — Paul LaCrosse, 11-1-64.9; Jim Tulk, 10-2-61.8; Dick Wetherbee, 7-4-62.8; Bill Thomas, 7-4-59.2; Bob Engel, 6-5-56.4; Rich Pintor, 6-5-60.6; Don Schneck, 5-6-52.7; Charlie Ault, 5-6-51.4; Jerry Comstock, 4-7-54.2; Ben Fields, 3-8-54.0; Les Grosenbach, 2-9-45.1; Floyd Holmes, 1-10-49.0.

**CLASS B** — Dale Boss, 10-2-52.5; Gail Campbell, 9-3-51.8; Orvan Bennett, 7-3-49.6.

**CLASS C** — Arch Wood, 9-3-41.1; Gil Pyle, 8-4-42.1; Richard Schmidt, 7-4-44.1.

**CLASS D** — Mike Thomas, 9-2-41.1; Pete Pintor, 8-3-36.3; Mike Stertz, 8-3-32.6.

**CLASS E** — Richard Van Leuven, 9-2-40.3; David Abila Sr., 8-3-40.6; Lewis Colpitts, 8-3-38.7.

**CLASS F** — Star Dearings, 9-2-29.3; Perry Alderin, 8-3-30.9; Ken Peterson, 8-3-26.4.

**CLASS G** — Roger Sandoval, 11-1-26.9; Leo Huls, 10-2-26.1.

**WOMEN CLASS A** — Sadie Sanchez, 9-0-58.6; Margaret Tarket, 4-5-44.8; Fran Roth, 3-6-41.2; Betty Lohry, 2-7-35.2.

**WOMEN CLASS B** — Janie Thompson, 8-1-31.5; Virginia Sandoval, 7-2-30.4; Sue Obluda, 3-5-23.2.

**JUNIORS** — Luke Weith, 8-0-26.9; Rick Griego, 5-3-19.3; Lisa Pintor, 3-5-19.6.

## ROGER VOGEL RETAINS ILLINOIS STATE CHAMPIONSHIP

**CHAMPIONSHIP — MEN** — R. Vogel, 9-2-72.5; R. Wittlich, 8-3-69.6; L. Webb, 7-4-71.8; J. Waterman, 7-4-69.6; D. Peters, 6-5-65.4; R. Phillips, 6-5-65.3; B. Eisel, 6-5-64.7; G. Bryant, 6-5-61.6; D. Maroon, 4-7-57.7; L. Gillespie, 3-8-61.7; J. White, 3-8-59.0; W. Simmermaker, 1-10-50.0.

**CLASS B MEN FINALS** — Vic Long, 5-0-60.5; Bob Erickson, 3-2-63.4; Ron Sutton, 3-2-56.4; Hiram Nelson, 2-3-61.6; Ron Young, 2-3-48.8; Mike Knop, 0-5-50.0.

## KERTZ SHOE CHECK PAT. PEND.

FIVE TOOLS IN ONE

PERFECT FOR ALL HORSESHOE PITCHERS

JUST THE RIGHT SIZE FOR BACK POCKETS

8" x 1" x 1/4"

SCRAPER —

FILE FOR  
BURRS

CALIPERS  
FOR CLOSE POINTS

6" NOTCH FOR LEGAL POINTS

STRAIGHT EDGE

SEND \$6.95; 2 OR MORE \$6.00 EA  
PLUS \$1.50 SHIPPING PER TOOL

KERTZ SHOE CHECK

P.O. BOX 483

ARNOLD, MO. 63010

PLEASE INCLUDE  
ZIP CODE

## ILLINOIS — (Continued)

**CLASS C MEN** — J. Reid, 6-1-49.1; Bob Switzer, 5-2-53.9; Ken Towell, 48.6. **CLASS D MEN** — Rex Swinson, 5-0-59.0; Harold Lange, 4-1-49.7; V. Muench, 2-3-53.8; **CLASS E MEN** — M. Connour, 5-0-49.2; J. Waldhoff, 4-1-44.4; L. Boyer, 3-2-37.5; **CLASS F MEN** — J. Berry, 6-1-52.9; E. Knop, 5-2-51.9; D. Prestidge, 5-2-46.3; **CLASS G MEN** — R. Rehmer, 6-1-44.9; A. Forsyth, 5-2-51.5; J. Metzger, 5-2-46.4; **CLASS H MEN** — 6-1-43.6; C. Cook, 6-1-40.2; J. Sims, 5-2-38.7; **CLASS I MEN** — H. Albert, 7-0-51.9; D. Brunk, 6-1-44.7; R. Miller, 4-3-39.3; **CLASS J MEN** — R. Kloess, 6-1-51.2; J. Totten, 5-2-50.0; **CLASS K MEN** — G. Meyer, 6-1-54.5; D. Brown, 5-2-42.1; **CLASS L MEN** — S. Reid, 6-1-43.9; J. Lang, 5-2-42.2; W. Clarke, 5-2-32.9; P. Rankin, 4-3-36.8; **CLASS M MEN** J. Johnston, 6-1-40.3; A. Dart, 6-1-38.7; **CLASS O MEN** — J. Smith, 6-1-42.2; M. Lordes, 6-1-32.8; **CLASS P MEN** — A. Castros, 4-1-38.6; E. Eckert, 4-1-34.5; **CLASS Q MEN** — D. Bacon, 5-0-35.8; A. Louveau, 4-11-9.3; **CLASS R MEN** — R. Landsdorf, 6-1-25.1; R. Franke, 6-1-29.2; **CLASS S MEN** — H. Maxedon, 4-1-31.5; C. Grigsby, 4-1-25.2; **CLASS T MEN** — J. Crouch, 3-1-14.9.

**WOMENS CLASS FINALS** — T. Powell, 5-0-65.5; T. Wells, 3-2-54.3; E. Ronk, 3-2-47.2; S. Conner, 2-3-50.0; F. Ramsey, 2-3-47.1; R. DuBridge, 0-5-47.2.

**WOMENS CLASS B** — M. Knearem, 4-1-26.7; D. Galvin, 4-1-37.1. **WOMENS CLASS C** — J. Smith, 5-0-22.9; Joann Smith, 4-1-17.3.

**BOYS CLASS** — C. Cessna, 8-1-41.1; B. Forsyth, 8-1-36.3; **GIRLS CLASS** — J. Ramsey, 6-0-41.5; S. DuBridge, 4-2-23.7.

**SENIOR CLASS** — H. Kohlenberger, 5-0-55.7; W. Savage, 3-2-56.3; **75 YEARS & OLDER CLASS** — H. Franke, 6-1-62.8; W. Stinnett, 5-1-57.7; Dennis East, 1-5-45.9; C. Arnold, 1-5-36.6.

## LARRY MORTON NEW GEORGIA STATE CHAMP AT MARIETTA, GA

After three years of being the runner up, Larry Morton finally won over Glen Portt, who had been State Champion for five years. Suzzette McTaggart tops in womens class with a new record high ringer percent of 48.3%.

Winners in other classes were: Class C, Henry Turner; Class D, Earl Wolford; Class E, S.C. Beard; Class F, Ronald Lively; Women's Class, Suzzette McTaggart and in the Junior Class Kenneth Kurtz.

**MENS A CLASS** — Larry Morton, 6-0-67.7; Glen Portt, 5-1-62.2; Jim Waters, 3-2-52.0; Lester Anthony, 1-4-59.6; James Black, 0-4-51.0.

**CLASS B** — Bill Duncan, 5-2-47.7; Murl Shipp, 5-2-45.3; Claude Fender, 4-3-45.8; Wayne Soderquist, 4-3-45.5; Clayton Kurtz, 4-3-44.3; George Addison, 3-2-48.9; Lamar Fowler, 2-5-42.8; Loren Lindsey, 2-5-41.8; Carl Gable, 2-5-40.0; Jeff Barnes, 1-3-35.4.

M. SEIBOLD, B. SEIBOLD, B. NEILSON, W. McNEECE,  
R. HENRY, A. HERRING CLASS CHAMPS IN INDIANA

**CHAMPIONSHIP CLASS** — Mark Seibold, Huntington, 13-2-77.25; Clarence Bellman, Bremen, 12-3-77.6; Bill Neilson, Dugger, 11-4-68.3; Peck Anderson, Martinsville, 11-4-68.0; Leroy Rowe, Angola, 8-7-72.0; Bill Ungetheim, Owensville, 8-7-70.2; Ron Colvin, Jeffersonville, 8-7-66.7; John Schuck, Sharpsville, 8-7-62.6; Bill Holland, Stilesville, 7-8-66.3; Ralph Guffey, New Castle, 6-9-64.7; John LeMond, Anderson, 6-9-63.9; Estel Bills, Conersville, 5-10-63.5; Hunter Dornin, Jasonville, 5-10-61.5; Vic Pfaff, Huntingburg, 4-11-64.2; Paul Day, Lebanon, 4-11-60.5; Dale Henry, Owensville, 4-11-54.6.

**CLASS A** — Will McNeece, Patoka, 7-0-65.1; Ed Kowatch, Culver, 5-2-64.5; Frank Baxter, Tipton, 4-3-62.4; Glenn Hoppes, Summitville, 4-3-53.7.

**CLASS BB** — (Play-off) Norm Hayden, Columbus, 5-2-60.8; Arthur Burch, Scottsburg, 5-2-59.1; Carl Staley, Bristol, 5-2-57.3; Burl Taylor, Greencastle, 3-4-54.0.

**CLASS B** — Roy Billingsley, Crawfordsville, 7-0-65.9; Arthur Burch, Scottsburg, 5-2-61.5; Burl Taylor, Greencastle, 4-3-58.7; Bob Henderson, Bloomfield, 4-3-55.7.

**CLASS C** — (Play-off) G. H. Palmer, Vincennes, 5-2-65.5; Jim Lane, Vincennes, 5-2-57.2; Lloyd Keller, Franklin, 4-3-54.9; Poindexter, Wolcott, 3-4-53.3.

**CLASS D** — (Play-off) Greg Kuss, Whiting, 6-1-53.3; Doyle Maikranz, Owensville, 6-1-55.3; Evans Gladding, Ninevah, 4-3-54.4; Curley Seibold, Huntington, 4-3-54.0.

**CLASS E** — (Play-off) Jim Pierson, Mooresville, 6-1-48.5; E. B. Batts, Holland, 6-1-58.6; Jim Isaacs, Russiaville, 6-1-48.1; Ed Pauley, Mishawaka, 4-3-48.2.

## INDIANA — (Continued)

**CLASS F** — Lee Antonides, Kendallville, 6-1-47.9; Marlin Wells, Oakland City, 4-3-53.11; Bob Pence, Lafayette, 4-3-45.6; Wayne Waggoner, Seymour, 4-3-44.7.

**CLASS G** — (Play-off) Don Newell, Kokomo, 5-2-44.0; A. W. Thomas, Speedway, 5-2-44.4; George Riall, Dublin, 4-3-46.3; Lora Pearman, Newport, 3-4-45.9.

**CLASS H** — Bob Dwigans, Russiaville, 7-0-51.2; Lee Wilcox, Indianapolis, 6-1-57.6; Gene Loy, Union City, 5-2-50.6; Ralph McIntosh, Owensville, 4-3-34.9.

**CLASS I** — Bob Sharp, Cambridge City, 6-1-42.6; Paul Caudill, Warsaw, 4-3-44.6; Paul Joslen, Franklin, 4-3-43.7; Mel Bussert, Gas City, 4-3-42.5.

**CLASS J** — Gib Campbell, Kokomo, 6-1-45.1; Don Spray, Frankfort, 4-3-45.1; Sylvester Hahn, Sr., Elwood, 4-3-41.1; Bob Prohaska, Porter, 4-3-39.1.

**CLASS K** — Wayne Irwin, Summitville, 6-1-40.3; Pete Luster, Veedersburg, 5-2-35.6; Olie Hubbard, Henryville, 4-3-33.3; Don Opdycke, Pleasant Lake, 4-3-30.3.

**CLASS L** — (Play-off) Bill Hatt, Alexandria, 5-2-41.9; Ron Levensky, Gas City, 5-2-38.9; Oran Hollandbeck, Franklin, 5-2-33.6; Elmer Branson, Gaston, 4-3-34.2.

**CLASS M** — (Play-off) Aubrey Callon, Edinburg, 6-1-32.8; Jeff Bowyer, Frankfort, 6-1-36.1. Ray Dillon, Vincennes, 5-2-34.4; Gary Brown, Huntington, 4-3-36.5.

**CLASS N** — Dan Wiggans, Lawrence, 6-1-35.8; Joe Holloway, Jonesboro, 5-2-38.3; Bob Heuby, Vincennes, 4-3-32.5; Don Bollock, Somerset, 3-4-35.6.

**CLASS O** — Ron Kukral, Chesterton, 6-1-42.2; Bud Derbyshire, Angola, 5-2-44.7; Virgil Jackson, Warsaw, 5-2-32.9; Art Cornelius, Linton, 4-3-40.3.

FOR THOSE WHO DESIRE THE VERY BEST

# IMPERIAL

## U.S.A. PRICE LIST

ALL POSTAGE PAID

1 Pair .....	\$29.00
2 to 5 Pair .....	\$27.00
6 Pr. & Over .....	\$24.00

Medium Soft with  
Hardened Hooks  
and Points

# CLYDE MARTZ

- WE PAY ALL POSTAGE EVEN ON 6 PAIR AND OVER SHIPMENTS

- MASTER CARD AND VISA PHONE ORDERS ACCEPTED AFTER 6 P.M.

3726 Henley Dr.  
PHONE: 412-731-4662

Pittsburgh, Pa. 15235

## INDIANA — (Continued)

**CLASS P** — Bill Ridge, Bargersville, 7-0-37.2; Charles Jarred, Perrysville, 6-1-36.9; Jim Kuss, Whiting, 5-2-34.0; Dale Hyndman, Churubusco, 4-3-28.4

**CLASS Q** — Ron Kukral, Chesterton, 7-0-37.2; Harold Green, Lafayette, 4-3-35.2; Russ Sanson, North Manchester, 4-3-34.2; Lester Jones, Hammond, 4-3-30.4.

**CLASS R** — Lloyd Karstens, Rushville, 6-1-28.9; Pete Hobbs, Marion, 5-2-31.7; Don Foulks, Reynolds, 5-2-31.1; Ron Kukral, Chesterton, 4-3-36.5.

**CLASS S** — Darrell Campbell, Hemlock, 6-1-33.4; Bill Daniel, New Castle, 5-2-27.3; Duane Bills, Rushville, 4-3-29.3; Larry Wooster, Orland, 4-3-28.7.

**CLASS TT** — Wayne Cummings, Sweetser, 7-0-35.2; Ralph Bunn, Churubusco, 5-2-31.2; Bob Cunningham, Jonesboro, 5-2-25.3; Don Stivers, Lafayette, 4-3-27.5.

**CLASS T** — Jim Saylor, Idaville, 7-0-29.0; Dennis Mirante, Wabash, 4-3-28.9; Jim Buell, Reynolds, 4-3-25.5; Mike Ogle, Idaville, 4-3-24.0.

**CLASS U** — Danny Taylor, Owensville, 7-0-29.0; Rick Lemish, Ft. Wayne, 5-2-25.3; Larry Ward, Crawfordsville, 4-3-21.0; Brian Poindexter, Wolcott, 3-4-22.4.

**CLASS V** — (Play-off) Hubert Buster, Attica, 6-1-25.7; Butch Hahn, Elwood, 6-1-21.9; Willis Reed, Huntington, 5-2-16.2; Ron Timmons, Marion, 3-4-16.1.

**CLASS W** — Jim Stewart, Marion, 5-1-11.2; Randy McKinniss, Lafayette, 3-3-11.2; Steve Battin, Martinsville, 3-3-8.7; Jim Blitz, Highland, 1-5-8.9.

**SENIOR CLASS** — (Play-off) Bill Neilson, Dugger, 4-1-68.8; Jim Kemple, Rushville, 4-1-66.3; G. H. Palmer, Vincennes, 3-2-66.6; Leroy Rowe, Angola, 3-2-62.5.

**SENIOR CLASS B** — Doyle Maikranz, Owensville, 5-0-59.2; Bob Dwigans, Russiaville, 4-1-53.8; Harold Tatman, 3-2-43.3; C. B. Batts, Holland, 2-3-48.2.

**SENIOR CLASS C** — (Play-off) Aubrey Callon, Edinburg, 4-1-35.9; Pete Luster, Veedersburg, 4-1-36.7; Everett Bowyer, 3-2-34.0; Cecil Burris, Milton, 2-3-28.7; Joe Morgan, Scottsburg, 1-4-33.8.

**SENIOR CLASS D** — Randy Fluhrur, Warren, 5-0-26.1; Ralph Bunn, Churubusco, 4-1-28.7; Fred Armentrout, Speedway, 3-2-30.5.

**INTERMEDIATE CLASS A** — Will McNeece, Patoka, 5-0-67.6; Ed Howdeshell, Rochester, 4-1-63.5; Earl Richardson, Lafayette, 3-2-48.6; Maurice Spainhour, Clarksville, 2-3-42.1; Walter Wilhoite, Lebanon, 1-4-42.2. Joe Bombe, Vincennes, 0-5-35.8.

**INTERMEDIATE CLASS B** — Dick Hostetler, Indianapolis, 4-1-39.3; Joe Rinehart, Lafayette, 3-2-38.3; Elmer Branson, Gaston, 3-2-37.4; Herb McCoskey, Pekin, 3-2-26.1; Bob Henry, Crawfordsville, 2-3-30.7; Max Gunyon, Frankfort, 0-5-19.8.

**WOMEN CLASS A** — Bonnie Seibold, Huntington, 6-1-65.3; Betty Branson, Gaston, 5-2-55.2; Candy Loy, Union City, 4-3-54.2; Phyllis Anderson, Martinsville, 4-3-52.1; Joan Keith, Indianapolis, 4-3-51.0; Lorena Poindexter, Wolcott, 3-4-48.1; Marilyn Hutton, Indianapolis, 1-6-43.3; Pat Spainhour, Clarksville, 1-6-41.9.

**WOMEN CLASS B** — (Play-off) Lisa Battin, Martinsville, 5-2-45.8; Mona Cummings, Indianapolis, 5-2-38.6; Chris Buell, Reynolds, 5-2-33.1; Ileta Davis, Otterbein, 4-3-36.8; Charlaire McKinley, 4-3-35.7; Jackie Fisher, Elwood, 3-4-30.1; Tammi Cunningham, Marion, 2-5-27.7.

**WOMEN CLASS C** — Hazel Shuck, Sharpsville, 3-0-21.5; Margie Stivers, Lafayette, 0-3-6.3.

**JUNIOR GIRLS** — Amy Herring, Marion, 51.6; Kristie Farris, Hammond, 34.1; Linda Henry, Owensville, 15.2; Nora Burnworth, Upland, 9.8; Carrie Cummings, Indianapolis, 9.5.

**JUNIOR BOYS CLASS A** — Rick Henry, Owensville, 5-1-71.0; Charles Ungetheim, Owensville, 4-2-66.6; Steve Ungetheim, Owensville, 3-3-60.9; Jody Burnworth, Upland, 0-6-42.5.

**JUNIOR BOYS CLASS B** — (Play-off) Chuck Cummings, Indianapolis, 4-1-32.2; Tony Cummings, Indianapolis, 4-1-33.3; Mike Plaff, Huntington, 3-2-44.1; Paul Caudill, Warsaw, 3-2-35.8; Steve Caudill, Warsaw, 1-4-15.0.

**JUNIOR BOYS CLASS C** — (Play-off) Bradley Hahn, Elwood, 4-1-14.0; Jimmy Blitz, Highland, 4-1-14.5; David Cummings, Sweetser, 3-2-12.0; Aaron Hubbard, Henryville, 2-3-6.5; Doug Mikesell, Economy, 2-3-5.0.

**RUBE BLEVINS UNDEFEATED IN KENTUCKY STATE MEET****T. WALLACE LADIES—E. HELPINSTINE JUNIOR CHAMPION**

Rube Blevins retained his Kentucky State title going undefeated for seven games and ending with 67.1 ringer percentage. Also in the Ladies Class A it was Trina Wallace with 5-0-46.4 record to win that title. In the junior class E. Helpinstine had a perfect record of 7 straight wins and a 36.9 average.

Winners in the other classes were: Class B, O. Blacketer, 6-1-62.3; Class C, J. Easton, 5-2-52.8; Class D, A. Tomlin, 5-2-52.8; Class E, B. Litteral, 6-1-44.9; Class F, E. Henn, 5-2-43.0; Class G, M. Donohew, 6-1-38.8; Class H, D. Johnson, 6-1-42.0; Class I, J. Jones, 6-1-37.7; Class J, B. Price, 7-0-39.2; Class K, E. Helpinstine, 6-1-24.2; Class L, G. Smith, 5-0-36.3; Class B Women, W. Wine, 4-1-42.1; Class C Women, S. Moore, 5-0-28.2.

**CLASS A** — R. Blevins, 7-0-67.1; E. Henry, 5-2-69.0; F. Rogg, 4-3-66.8; S. Lovelace, 4-3-60.2; J. Noble, 4-3-56.9; W. Henn, 2-5-53.7; J. Stevenson, 2-5-50.4; H. Copher, 0-7-50.7.

**WOMEN A** — T. Wallace, 5-0-46.4; S. Moore, 4-1-59.6; L. Campbell, 3-2-44.0; M. Hornback, 2-3-44.9; L. Minnich, 1-4-35.8; K. Kelley, 0-5-31.6.

**JR. BOYS** — E. Helpinstine, 7-0-36.9; D. Black, 6-1-36.6; R. Hankins, 5-2-36.6; K. Strode, 4-3-26.8.

**M. PATENEAUDE WINS MAINE STATE IN PLAYOFF — LADIES****TITLE GOES TO L. PATENEAUDE—R. MORIN TOPS JUNIORS**

The annual Maine state tournament was played at the Kennebec Club courts late in August. The final game which was for the title was played under car lights. It took two playoff games to decide the winner who finally was Mike Pateneau with a 41-66.0% over Lee Cameron, 28-54%. Doug Kinia was eliminated by Cameron. Linda Pateneau was an easy winner in the Women's class with 6 wins and 56.9 percent. Pateneau was an easy winner in the Women's class with 6 wins and 56.9 percent. Bob Morin copped the Junior crown with 6 in a row and 40.7 percent. Class B went to Stuart Kelley; Class C-Cyp Johnson; Class D-Joe Auge; Class E-Blaine Irish; Class F-Bob Mennealy; Class G-Larry Guimond; Class H-Earl Emery; Class I-Jim Flagg; Junior Class B-Regina Dewitt. Mike Pateneau had the high single game percentage of 89.4. Linda Pateneau had high single game in the Ladies class with 65.0%.

**CLASS A** — Mike Pateneau, 4-1-74.4; Lee Cameron, 4-1-61.6; Doug Kinia, 4-1-71.5; Albert Lord, 2-3-52.2; Clint Simmons, 1-4-38.2; Brian Simmons, 0-5-55.0.

**JUNIORS CLASS A** — Robert Morin, 6-0-40.7; Dave Doyon, 3-3-32.0; Mark Lapierre, 3-3-31.6; James Pichette, 0-6-17.5.

**CLASS A (LADIES)** — Linda Pateneau, 6-0-56.9; Vicky Pateneau, 4-2-37.4; Anita Pateneau, 2-4-25.4; Connie Millett, 0-6-13.9.

**A M E R I C A N****NHPA APPROVED****DESIGNED AND PITCHED BY CARL STEINFELDT****Additional Charge:**

1- 500 miles, add \$1.00 per pr.  
500-1000 miles, add \$1.50 per pr.  
1000-2000 miles, add \$1.75 per pr.  
2000 mi. or over, add \$2.00 per pr.

Order Direct or from NHPA Representative

1 to 4 pairs — \$13.00 pr.

5 or more — \$12.00 pr.

Plus Postage  
Port of Shipment

**CARL STEINFELDT, 44 Ridgecrest Road, Rochester, NY 14626**  
**Wally Shipley, 2646 Basswood St., Newport Beach, CA 92660**

## M. POTTS IN 16th TITLE WIN IN KANSAS—E. PEARCE RETAINS LADIES TITLE—J. CHESTER JUNIOR CHAMPION

The Kansas State Tournament was held at the Gage Park Courts in Topeka, Kansas over the Labor Day weekend. We did get one day of pitching in before the rain came. The tournament was finished on the following weekend with Merlin Potts of Leonardville winning his 16th Kansas State title with a 10-1-71.0 record. Emaline Pearce retained her title with 5-0-52.8 while John Chester came thru in the Junior class 3-0-36.5.

**CLASS A** — Merlin Potts, Leonardville, 10-1-71.0; John Smith, Atchison, 9-2-72.0; Danny Erbe, Altoona, 9-2-66.96; Alden Allbaugh, Newton, 7-4-67.0; Marines Tamboer, Wichita, 7-4-63.0; Wesley Schendel, Eudora, 5-6-63.8; Bob Booe, Atchison, 5-6-62.8; Paul Toole, Topeka, 5-6-62.0; Gene Fleek, Leavenworth, 4-7-52.6; Marvin Reheis, Wichita, 3-8-56.3; Roger Potts, Leonardville, 2-9-60.3; Ron Martin, Wichita, Forfeit.

**CLASS B** — Jesse Hobbs, Horton, 9-2-51.3; Bob Outt, Olathe, 9-2-53.5; Earl Pearce, Garden City, 9-2-54.6; Art Krehbiel, Moundridge, 7-4-52.4.

**CLASS C** — Vernard Bell, Garnett, 10-1-45.1; LaVon Sperline, Morrell, 8-3-51.9; Gene Dixon, Wichita, 8-3-43.4; Doyle Derrick, Highland, 6-5-42.6.

**CLASS D** — Lyle Turner, Ottawa, 8-3-39.3; Marshall Allen, Ottawa, 8-3-40.1; Clyde Cammack, Lansing, 8-3-38.9; Monte Erbe, Altoona, 7-4-39.0.

**CLASS E** — Bob Conquest, Moundridge, 10-1-43.3; Wayne Reichard, Williamsburg, 8-3-38.95; John Audiss, Bufalo, 8-3-37.96; Albert Ewy, Moundridge, 8-3-30.0.

**CLASS F** — John Nicodemus, Newton, 11-0-37.4; Lloyd Cattrell, Holton, 9-2-32.4; Leroy Tralle, Topeka, 9-2-28.7; Roland Duerksen, Lehigh, 8-3-27.7.

**CLASS G** — Harley Tucker, Ottawa, 7-0-25.4; Joe Shobney, Topeka, 6-1-19.4; Dan Currier, Wichita, 5-2-16.0; Bob Plankinton, Holton, 4-3-16.1.

**LADIES** — Emaline Pearce, Garden City, 5-0-52.8; Mary Clark, Garden City, 3-2-44.2; Deanie Reheis, Wichita, 3-2-33.6; Mary Ann Peninger, Derby, 2-3-37.7; Sue Amaral, Leavenworth, 2-3-30.2; Audrey Parkins, Augusta, 0-5-22.5.

**JUNIORS** — John Chester, Leavenworth, 3-0-36.5; Mike Williams, Leroy, 2-1-23.4; Joe McClaskey, Hoyt, 1-2-18.8; Todd Allen, Berryton, 0-3-3.8.

## BONANI, BAILLARGEON, McNEILL, NEW MASS. STATE CHAMPS DEBBY MICHAUD RETAINS LADIES' CHAMPIONSHIP

A happier horseshoe pitcher than always smiling Charlie Bonani you couldn't find. Charlie, often called "The World's Greatest Double Flipping Used Car Salesman" proved the value of his unusual delivery by capturing the Mass. State title with an average of 68.8 percent. He could have wrapped up the title in Round Six by toppling once defeated Charlie Richardson, but Richardson pulled back into contention with a 41-34 decision over Bonani, only to be upset in turn by Paul Cormier.

A record 5 boys, 5 girls and 9 women competed for titles in the other divisions. Eric Baillargeon topped the boys, Barbara McNeill became the third McNeill to win a State title by capturing the girls, and Debby Michaud won the Women's for the tenth time in 11 years.

In other classes Mary Ryan won Massachusetts' first ever Class B Women. Ed Bodinski was tops in Class B Men; Class C was won by Bill Progen via playoff; Tom Henley took D, Tony Grassia E, Bill Lee F, Tony Nacewicz by playoff in G, and Percy Howe captured H, also via playoff.

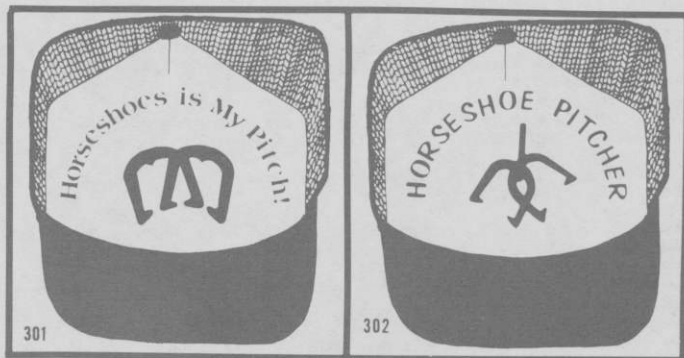
**CLASS A MEN** — Charlie Bonani, 6-1-68.8; Charlie Richardson, 5-2-65.7; John Belsito, 4-3-66.9; John Duffy, 3-4-55.9; Rick Howe, 3-4-55.8; Ed Domey, 3-4-54.5; Paul Cormier, 2-5-57.1; Angelo Cieslak, 2-5-54.8.

**CLASS A WOMEN** — Debby Michaud, 5-0-71.4; Bertha Baillargeon, 4-1-59.8; Brenda McNeill, 3-2-47.3; Mary Ryan, 2-3-44.6; Rita Gelinas, 1-4-33.9; Edith Gadoury, 0-5-33.0.

**CLASS A BOYS** — Eric Baillargeon, 4-0-39.0; Dennis Janowicz, 3-1-29.5; Sheldon Steeves, 2-2-28.3; Gary Baillargeon, 1-3-29.9; Chuck McNeill, 0-4-22.7.

**CLASS A GIRLS** — Barbara McNeill, 4-0-24.4; Lisa McNeill, 3-2-12.1; Robin Gadoury, 2-2-7.4; Shawnee Michaud, 1-3-5.5; Patty Derosa, 0-4-4.1.

# PITCHING HATS



TWO VERY DISTINCT DESIGNS ON A TOP QUALITY HAT. AVAILABLE IN 10 COLORS. RED. ROYAL BLUE. LT. BLUE. NAVY BLUE. GOLD. KELLY GREEN. ORANGE. BROWN AND BLACK. THE MESH BACK AND PADDED BILL ARE THE SAME COLOR. THE FRONT IS WHITE WITH A BLACK PRINT. HATS WITH A SOLID BACK AVAILABLE (ADD 50¢)

TO ORDER: SEND CHECK OR MONEY ORDER FOR 4.95 PER HAT TO WALTWIRE SILK SCREEN P. O. BOX 2401, ROSWELL, NM 88201. PLEASE INCLUDE 1.25 FOR SHIPPING & HANDLING. ALLOW 3 WEEKS FOR DELIVERY.

## PINION, MISSOURI STATE WINNER—V. WINSTON RETAINS LADIES TITLE—ALAN FRANCIS JR.—D. HARRIS SENIORS

The Missouri State Horseshoe Tournament sponsored by the Pony Express Horseshoe Club of St. Joseph and Coors, was held at the Ray Cavin Courts over Labor Day Weekend, September 3, 4, and 5 in St. Joseph, Missouri. The officers and members of the club are to be commended for conducting a fine tournament.

Lillard Pinion and Dave Baker tied for first place in Class A with a record of 7 wins and 2 losses. In the playoff Pinion was the winner with a 78.1 average for the game. In the Ladies Class A Vicki Winston retained her title with a 9-0 record. Vicki had a high game of 85.7%. Don Harris won the Senior Class with a record of 7-0. Alan Francis tops the Juniors with a record of 5-0 to retain his title. Alan's high game was 95.8%.

**CLASS A** — Lillard Pinion, St. Joseph, 7-2-65.8; David Baker, Wentworth, 7-2-69.6; Charles Killgore, Plattsburg, 6-3-70.4; Ron Frakes, Springfield, 6-3-64.6; Jerry Woodon, Dawn, 6-3-62.7; Sam Carter, St. Clair, 5-4-65.9; Elwyn Cooper, Kansas City, 4-5-63.1; Gene Mosley, Neosho, 3-6-56.6; Charles Kenny, Skidmore, 1-8-60.0; Earl Winston, LaMonte, Pinion won playoff.

**CLASS B** — Don Jones, Elk Creek, 6-1-55.3; Stan Griggs, St. Joseph, 5-2-51.7; Ray Owens, Worth, 5-2-48.6; Don Craig, Kansas City, 5-2-45.1.

**CLASS C** — C.W. Gutshall, Jamesport, 5-2-44.4; Robert Barnes, Odessa, 5-2-47.1; Steve Tompkins, Maryville, 4-3-46.4; Kelly Hill, Columbia, 4-3-46.0.

## MISSOURI — (Continued)

**CLASS D** — Otha Ellerman, El Dorado Springs, 6-1-38.5; Walt King, St. Joseph, 5-2-45.4; Woodrow Shepard, Slater, 5-2-42.8; Glen Harding, Jefferson City, 3-4-38.7.

**CLASS E** — Gordon Simmons, Lee's Summit, 4-1-37.0; Fred Smith, Higginsville, 4-1-42.0; Estel Hunsicker, Hatfield, 3-2-35.3; Bill Bouyea, Hannibal, 2-3-34.6.

**CLASS F** — Alvin Gwinn, Independence, 6-1-32.3; Dale Owens, Grant City, 6-1-33.9; Robert Johnson, Kansas City, 5-2-38.0; Gene Newkirk, Maysville, 4-3-27.7.

**CLASS G** — Richard Pistole, Agency, 6-1-37.4; Jerry Griffen, Chillicothe, 4-3-36.9; Ray Barnes, Sedalia, 4-3-36.8; Gregg Craven, Greenwood, 4-3-32.2.

**CLASS H** — Marshall Armstrong, Kansas City, 7-0-38.6; Joe Evans, Gallatin, 5-2-35.4; Bill O'Brien, Lamar, 5-2-31.9; Ted Grant, St. Joseph, 5-2-28.1.

**CLASS I** — James Porter, Dawn, 5-2-25.7; Buddy Griffin, Chillicothe, 5-2-21.4; Dale Fisher, Chillicothe, 4-3-24.4; Ted Cates, Blue Springs, 4-3-21.5.

**CLASS J** — Bill Jobe, Sedalia, 4-1-20.5; Mark McFee, Richmond, 4-1-14.2; Robert H. Barnes, Odessa, 3-2-17.2; Monty McFee, Richmond, 3-2-12.4.

**SENIOR A** — Don Harris, Smithville, 7-0-63.7; Wayne Trautwein, Kansas City, 6-1-52.9; Fred Kenny, Graham, 5-2-52.1; Bruce Winston, Lee's Summit, 4-3-51.9.

**SENIOR B** — Wilbur Gay, St. Joseph, 8-1-49.4; Woodrow Shepard, Slater, 7-2-47.8; Max Ungles, Skidmore, 7-2-44.4; Clarence Wehde, Old Monroe, 6-3-37.1.

**WOMEN A** — Vicki Winston, LaMonte, 9-0-76.5; Judy Sappington, Ashland, 8-1-48.2; Joyce Francis, Blythedale, 7-2-50.0; Jeri Barnes, Sedalia, 5-4-43.5; Rita Killgore, Plattsburg, 5-4-36.1; Gayle Lewis, Springfield, 4-5-34.1; Peggy Dattilo, St. Louis, 3-6-29.7; Edna Barnes, Sedalia, 2-7-26.5; Pam Henderson, Independence, 2-7-25.9.

**WOMEN B** — Frances Cramer, St. Joseph, 8-1-21.8; Jane Barnes, Odessa, 8-1-22.0; Norma Ott, St. Joseph, 7-2-14.1; Brenda Owens, Worth, 6-3-17.5.

**JUNIOR A** — Alan Francis, Blythedale, 5-0-86.4; Jeff Hart, Independence, 3-2-48.3; Tom Francis, Blythedale, 3-2-43.6; Kevin McDermott, St. Joseph, 2-3-34.6; Charles Simpson, Hannibal, 2-3-31.6. **JUNIOR B** — Ricky Gwinn, Independence, 5-0-41.1.

---

## JOE McCRINK, JR., OVER SOL BERMAN FOR NEW JERSEY STATE CROWN—BOB SALMON, JR., TOPS IN JUNIOR CLASS

The 1982 New Jersey State tournament conducted at the Felmington Fair in Felmington, NJ was won by Joe McCrink, Jr. West Orange, NJ in a playoff of two games in a best of three with Dr. Sol Berman after being tied with 10 wins and one loss apiece. Dr. Berman was the defending champion. McCrink is the second youngest player ever to win the State title.

**CLASS A** — Joe McCrink, Jr., W. Orange, 10-1-65.6; Sol Berman, Elizabeth, 10-1-66.3; William Kolb, Belleville, 9-2-57.8; Robert Hall, Flemington, 7-4-54.4; Jack Giddes, Warren, 6-5-51.7; Phil Zozzaro, Little Falls, 6-5-48.3; Wayne Harrison, Califon, 4-7-48.6; Donn Grady, Flemington, 4-7-48.2; Dixon Deranek, Rahway, 3-8-48.4; James Reed, Oldwick, 3-8-43.6; Ed Severs, Vineland, 3-8-38.8; Dennis Joslin, Vineland, 1-10-46.5.

**CLASS B** — Owen Farmer, Jr., E. Brunswick, 9-2-47.2; Marty Waisempacher, Flemington, 9-2-49.6; Ted Lewis, Millville, 6-5-46.9; James Burd, Califon, 6-5-44.8.

**CLASS C** — Claude White, Plainfield, 6-1-46.9; John Forti, Holmdel, 6-1-42.0; Ron Wolfe, Bridgeton, 5-2-46.3; Ron DeCoff, Trenton, 5-2-40.0.

**CLASS D** — Joe Fritts, Washington, 8-1-38.0; Vince Soriero, Flemington, 7-2-32.9; Frank Rozzo, Flemington, 7-2-27.7; Don Gotts, Linden, 6-3-24.1.

**CLASS E** — Robert Salmon Sr., Hampton, 6-1-32.8; William Gurgurich, Trenton, 5-2-32.4; Paul Allen, Oxford, 5-2-22.8; Mel Elmer, Cedarville, 4-3-25.6.

**CLASS F** — John Danko, Whitehouse St., 7-0-20.6; James Servidio, Budd Lake, 6-1-25.0; Roy Jensen, Manville, 4-3-25.6; Ralph Coleman, Middlesex, 4-3-18.9.

**JUNIORS** — Robert Salmon Jr., Hampton, 5-1-24.5; Jackie Webster, Somerset, 5-1-20.8; Robert Harrison, Califon, 2-4-10.6; April Harrison, Califon, 0-6-5.6.



# DEADEYE HORSESHOES

## NOW IN

### FOUR MODELS

	Price Per Pr.—Up to 9 Pairs	Price Per Pr.—9 Prs. & Over
CLYDESDALES 2# 10 oz. & 2#9 oz.	\$23.00/Pr.	\$17.50/Pr.
N.T. 2# 10, 9, 8, 7 oz.	\$23.00/Pr.	\$17.50/Pr.
REGULAR 2# 9, 8, 7, 6, 5 & 4 oz.	\$23.00/Pr.	\$17.50/Pr.
E-Z GRIP 2# 10, 9, 8 & 7 oz.	\$28.00/Pr.	\$22.50/Pr.

*Prices on all "DEADEYES" f.o.b. point of shipment.  
Missouri residents add 3-5/8% sales tax and California  
residents add on 6% tax.*

All "DEADEYES" are dead soft.

All "DEADEYES" are guaranteed against breakage for 2 years.  
(Subject to change). Please specify desired weight when  
ordering from:

W. Courtwright  
P.O. Box 742  
Fenton, MO 63026  
Phone: (314) 376-5222 (8-5)

Walter Ray Williams, Jr.  
6140 Grant St.  
Chino, CA 91710  
Phone: (714) 628-6053

Carl Steinfeldt  
44 Ridgcrest Road  
Rochester, NY 14626  
(summer address)  
Phone: (716) 225-4191

Carl Steinfeldt  
407 Shady Lane Mobil Park  
15400 Roosevelt Blvd.  
Clearwater, FL 33520  
(winter address)  
Phone: (813) 535-3136

## GEORGE CHAPMAN TOPS 1982 MONTANA STATE TOURNEY

George Chapman of Laurel, Montana came out on top for the second straight time to win the 1982 Montana State tournament championship. Tournament was held in Billings this year but will take place in Butte, Montana 1983. All games hereafter will be 40 points instead of 50. The tourney started on Saturday with the top 24 pitchers in the state pitching for a chance to be in the top eight on Sunday. They were divided into four divisions with the winner of each division and the top four percentages advancing to Class AA. The next eight went to Class A and the bottom eight into Class B. There were many playoffs for places on this Labor Day weekend.

Following are the class winners, the first four groups being those who were eliminated in the top 24 semi-finals; Class A-Clayton Warner, 6-1-55.8; Class B-Dave Riggan, 6-2-42.9; Class C-Benny Berdahl, 6-1-51.7; Class D-Art Hamilton, 6-1-46.3; Class E-Tom Billteen, 6-1-36.9; Class F-John Humphrey, 7-0-39.8; Class G-Jack Belzer, 6-1-33.9; Class H-Vic Hergett, 6-0-36.1; Class I-Ray Hatfield, 6-0-33.7; Class J-Fred Biehl, 5-1-32.2; Class K-Tom Drown, 6-0-28.2; Rod Hilliard, 6-0-24.1.

**CLASS AA** — George Chapman, Laurel, 6-1-55.1; Dave Pentland, Deer Lodge, 6-1-56.9; Willard Martin, Conrad, 5-2-48.2; Ed Holmberg, Big Timber, 3-4-56.8; FLes Reese, Great Falls, 3-4-45.9; Odin Neckstad, Augusta, 2-5-49.8; Rich Paul, Great Falls, 2-5-47.4; Archie Dulaney, Anaconda, 1-6-49.8.

## TYSON THREE-TIME WINNER OF N.Y. STATE CHAMPIONSHIP HANGEN, DENNISON, WARTERS, PIKE TITLE WINNERS

Art Tyson of Mount Vernon became a three-time New York State champion over Labor Day weekend, defeating another former champion, Joe Schultz of Brentwood, in a one-game playoff.

Tyson, who owns a window-cleaning service in Westchester County, battled Schultz to a tie in the regular 12-man round-robin competition in Class A at the Pinegrove Horseshoe Courts in Camden, north of Syracuse. Each finished 9-2 as Schultz defeated Tyson, 36-34 but then lost to defending champion Mike DiMartino to force the playoff. Tyson easily won the playoff, 35-18. and finished the tournament with a 73.0 ringer percentage.

Ruth Hangen of Getzville, near Buffalo, retained her No. 1 ranking in the Women's division, but needed a playoff victory over Joyce Dahlberg of Camden. Dahlberg, appearing in only her second state tournament, tied Hangen with a 6-1 record before losing the title in the playoff.

In the newly-created senior men's division, Chester Dennison of Frewsburg prevailed over seven others, winning all his games while pitching 41 percent.

Traci Warters, a member of the host club, provided her hometown fans with some exceptional pitching in the junior girls division. She defended her title by pitching 60.3 percent.

Robert Pike of Canton, 13, continued his mastery in the junior boys division, winning for the third straight year. He won all his games handily, averaging 71.4 percent in seven games.

**MEN'S CLASS A** — Art Tyson, Mount Vernon, 9-2-73.0; Joe Schultz, Brentwood, 9-2-72.9; Steve Fenicchia, Rochester, 8-3-64.7; John Bogardus, Fort Edward, 7-4-65.5; Jim Lewis, Hudson Falls, 6-5-69.1; Lou Stines, Glendale, 6-5-64.4; Mike DiMartino, Churchville, 4-7-64.7; Bob Sutton, Mineola, 4-7-61.3; Gus Krause, Syracuse, 4-7-58.5; Dick Mudgett, Cattaraugus, 4-7-58.4; William MacIntyre, Brooklyn, 3-8-56.5; Eugene Smalt, Bath, 2-9-56.2.

**MENS CLASS B** — Richard Pike, Canton, 5-2-58.2; Ed Risley, Interlaken, 5-2-58.3; Clair Rigby, Webster, 5-2-58.3; Sonny Bogardus, Gansevoort, 5-2-58.0; Paul Wilson, Pulaski, 3-4-50.3.

**MENS CLASS C** — Earl Brooks, Rome, 6-1-58.1; Larry Straub, Cuba, 5-2-54.2; John Merrill, Fulton, 5-2-51.7; Lance Hinman, East Syracuse, 4-3-48.3; Robert L. Moss, Walton, 3-4-49.7.

**MENS CLASS D** — George Hale, Jamestown, 6-1-50.0; Brian Deen, New Rochelle, 5-2-44.5; Gerald Patchen, Wellsburg, 4-3-52.4; Jack Townsend, Canton, 4-3-36.5; Fred Bailey, Arcade, 3-4-44.4.

**MENS CLASS E** — Joe Morton, Liberty, 5-2-43.4; Bill Pert, Binghamton, 5-2-49.3; James Sutton, Rome, 4-3-37.9; Ralph Rose Jr., Willseyville, 3-4-45.5; Dick Rogers, Delevan, 3-4-42.7.

**MENS CLASS F** — Len Porter, West Fort Ann, 6-1-45.9; Walter Deuster, Hampton Bays, 5-2-45.7; Gladwin Jackson, Gansevoort, 5-2-41.3; Harry Kinner, Vestal, 4-3-43.3; Thoms Dawson, Canton, 4-3-43.2.

**MENS CLASS G** — Walter Virkler, Dickinson, 6-1-53.4; George Hyder, Utica, 5-2-45.7; Al Hilsinger, North Rose, 5-2-43.0; John Meehan, Fort Edward, 4-3-39.9; Tony Cusimano, Jamestown, 3-4-42.4.

**MENS CLASS H** — Donald Wilcox, Olean, 6-1-44.9; Donald Harris, Little Valley, 5-2-38.4; Bob Carpenter, Glens Falls, 5-2-38.1; Chuck Dickinson, Falconer, 4-3-36.3; Ray Bernard, Glens Falls, 3-4-35.8.

**MENS CLASS I** — Tom Ryan, Peekskill, 6-1-43.1; Gerald Marsh, Marcy, 5-2-46.3; Gene Baker, North Norwich, 5-2-40.9; Robert Sensabaugh, Elmira, 4-3-38.1; Keith Perry, Canton, 3-4-34.1.

## RENO HORSESHOES

Order From:

**Reno Horseshoe Company**

**670 Reno Road**

**Lucasville, Ohio, 45648**



Lorraine Thomas of Lockport, New York, two time Women's World Champion, averaged 79.3% including a 90% game of 45 out of 50 in the preliminaries of the 1981 World Tournament at Genoa, Minnesota.

**NHPA Approved**

**\$25.00 plus postage % \$22.00 five or more pairs**

All drop forged, medium temper with hard caulks.

West Coast Distributor — Wally Shipley Horseshoe Outlet.

### NEW YORK STATE — (Continued)

**MENS CLASS J** — Richard Ellis, Potsdam, 5-2-40.3; Lenn Davis, Hancock, 4-3-39.7; Gordon Bennett, Nurlington Flats, 4-3-37.8; Walter Hooley, Montrose, 4-3-37.5; Pete Dahlberg, Camden, 4-3-37.3.

**MENS CLASS K** — Roy Swanson, Whitesboro, 7-0-44.7; Sonny McPherson, Antwerp, 5-2-41.1; Mark Sylvester, Lockport, 4-3-35.9; Richard Tatar, Walton, 3-4-37.9; Clyde Morse, Owego, 3-4-30.0.

**MENS CLASS L** — Alec LaRock, Phoenix, 7-0-38.6; Dean Rogers, Delevan, 6-1-40.5; Rob Seymour, Camden, 4-3-33.0; Dale Strickland, Candor, 3-4-34.2; Glenn Davis, Clyde, 2-5-32.5.

**MENS CLASS M** — Earl Skinner, Williamstown, 6-1-36.4; Floyd Lamica, Constable, 6-1-31.2; James Murphy, Ford Edward, 4-3-37.7; Robert Doty, Olean, 4-3-30.9; Louis Blondin, Fort Ann, 3-4-33.3.

**MENS CLASS N** — Pete Newey, Lee Center, 5-2-41.1; Hoppy Hopkins, Falconer, 5-2-34.2; Jim Csator, Fairport, 4-3-35.8; Richard King, Chaffee, 4-3-35.4; Thomas Plourde, Rome, 3-4-29.4.

**MENS CLASS O** — Carl Tillock, Rome, 5-2-39.3; Sam Barbuto, Liverpool, 5-2-31.8; Earl Clark, Oneida, 5-2-34.3; Bruce Aylesworth, Sherburne, 4-3-33.2; Richard Burton, Delevan, 4-3-33.2.

**MENS CLASS P** — Robert LaCombe, Malone, 7-0-39.5; Noel Whitman, Canton, 5-2-37.0; Terry Mayville, Malone, 5-2-33.9; Bill Tassone, Canastota, 4-3-25.0; Larry Lacell, Blossvale, 3-4-26.7.

**MENS CLASS Q** — Victor Davis, Hancock, 6-1-32.4; Bert Thomas, Madrid, 5-2-33.4; Brian Jones, Granville, 5-2-33.4; Ollie Brown, Blossvale, 3-4-29.4; Robert Stachowski, Springville, 3-4-26.3.

**MENS CLASS R** — Hubert Curtis, Eaton, 6-1-33.8; Randall Bennett, West Burlington, 5-2-27.4; Robert Rhoades, Rome, 4-3-28.7; Frank Disinger, Lockport, 4-3-23.8; James Sayer, Canton, 3-4-22.5.

**MENS CLASS S** — Dick Hastede, Nelsonville, 7-0-29.9; Don VanSchoick, Williamstown, 6-1-32.8; Robin Mowers, Cleveland, 4-3-20.3; Bud Monroe, Altamont, 3-4-27.1; Lloyd Sanderson, Altamont, 3-4-21.3.

## NEW YORK STATE — (Continued)

**MENS CLASS T** — Walt McElhenny, Delvan, 6-2-27.1; Mert Flagg, Camden, 6-2-25.4; Gene Plyter, West Monroe, 5-3-23.7; Roscoe Clark, Verona Beach, 4-4-23.5; Lenny Webb, Hartwick, 4-4-22.6.

**MENS CLASS U** — Chuck Stoddard, Bridgeport, 6-2-25.7; Kenneth McElwain, Newark Valley, 6-2-20.0; Jack Marshall, Kirkville, 5-3-24.1; John Horrigan, Chittanooga, 5-3-23.5; Ed Cowley, Altamont, 4-4-19.3.

**MENS CLASS V** — Dale Steiner, Delevan, 6-2-24.0; Bill Bristol, Rome, 5-3-20.9; Earl Clark, Jr., Oneida, 5-3-20.9; Martin Shephard, New Hartford, 4-4-19.4; Bill Risley, Interlaken, 4-4-16.6.

**MENS CLASS W** — Roger White, Central Square, 8-0-17.1; Thomas Johnston, Verona Beach, 6-2-15.8; Ed Bristol, Blossvale, 5-3-15.2; Leonard Racquet, Rome, 4-4-14.9; Richard Loucks, Stittville, 4-4-11.9.

**SENIOR MENS** — Chester Dennison, Frewsburg, 7-0-41.0; James Sharkey, North Salem, 6-1-38.0; Orlando Misner, Oneonta, 4-3-28.4; Pete Fitsik, Rome, 3-4-28.0; Stanley Vincent, Gasport, 3-4-27.6.

**WOMENS CLASS A** — Ruth Hangen, Getzville, 6-1-69.8; Joyce Dahlberg, Camden, 6-1-55.0; Lorraine Thomas, Lockport, 5-2-65.0; Vivian Deuster, Hampton Bays, 4-3-58.1; Helen Meehan, Fort Edward, 2-5-49.6; Regina Tyson, Mount Vernon, 2-5-46.7; Deborah Kemp, Castile, 2-5-44.4; Alice Case, Newfane, 1-6-37.6.

**WOMENS CLASS B** — Mary Jane Young, Canton, 5-2-45.3; Janet Scott, Blossvale, 5-2-50.7; Betty Steinfeldt, Rochester, 4-3-45.8; Carol Streit, Canton, 4-3-43.4; Velma Tatar, Walton, 4-3-39.6.

**WOMENS CLASS C** — Wilda Shackelton, Walton, 6-1-42.9; Frances Kiernan, Vernon, 6-1-46.3; Bonnie Kellogg, Blossvale, 6-1-45.1; Janet Marsh, Marcy, 3-4-38.3; Cherie Guppy, West Monroe, 3-4-35.6.

**WOMENS CLASS D** — Carrie Carpenter, Glens Falls, 7-0-41.1; Brenna Olmstead, Rome, 5-2-18.2; Patricia Rocker, Blossvale, 4-3-21.1; Sheila Foulks, Oneida, 4-3-18.2; Alicia Williams, Lockport, 3-4-25.4.

**WOMENS CLASS E** — Margibeth Miller, Parish, 5-0-30.5; Dutch Graham, Camden, 4-1-22.0; Debbie Kryczkowski, Lee Center, 3-2-25.5.

**WOMENS CLASS F** — Nancie McBride, Ithaca, 4-1-22.0; Kathy Bullard, North Syracuse, 4-1-20.0; Ruth Bennett, Blossvale, 2-3-18.5.

**JUNIOR BOYS CLASS A** — Robert Pike, Canton, 7-0-71.4; Robert Scott, Blossvale, 5-2-56.4; Patrick Johnston, Rome, 5-2-49.6; Tom Dawson, Canton, 4-3-45.8; Louis Blondin, Jr., Fort Ann, 4-3-45.2; Shane Burton, Delevan, 2-5-34.1; Brett Porter, Fort Ann, 1-6-28.2; Terry Lewis, Hudson Falls, 0-7-22.2.

**JUNIOR BOYS CLASS B** — Rodney Scott, Blossvale, 7-0-22.5; Chris Jackson, Gansevoort, 6-1-37.5; Tim Hopkins, Falconer, 5-2-23.2; Mark Snow, Blossvale, 3-4-21.3.

**JUNIOR BOYS CLASS C** — Jeffrey Clark, Oneida, 6-1-21.1; Jay Schultz, Falconer, 6-1-18.9; Craig Reed, Blossvale, 5-2-23.9; Andy Dawson, Canton, 4-3-17.2; **JUNIOR BOYS CLASS D** — Louis Thayer, Fort Edward, 7-0-19.0; Robert Plyter, West Monroe, 6-1-16.7.

**JUNIOR GIRLS CLASS A** — Traci Warters, Camden, 5-0-60.3; Paige Porter, West Fort Ann, 4-1-27.1; Deb Dawson, Canton, 3-2-31.2; Sandy Graham, Camden, 2-3-22.7; Tammy Armstrong, Blossvale, 1-4-22.3; Crissy Armstrong, Blossvale, 0-5-8.0.

**JUNIOR GIRLS CLASS B** — Barbara Blondin, Fort Ann, 7-0-23.3; Ginny Hatzinger, Blossvale, 6-1-12.9; Florence Snow, Blossvale, 5-2-21.9; Tammi Warters, Camden, 4-3-25.2. **JUNIOR GIRLS CLASS C** — Donna White, Matydale, 5-0-8.7.

## KAHLE WINS OKLA. "DIAMOND JUBILEE" STATE TOURNEY

This being Oklahoma's Diamond Anniversary (75 years of Statehood) our State Tournament was designated as a "Diamond Jubilee Event" for which our organization is most proud, by being so honored. Tournament was staged at Ponca City, Oklahoma on September 4. Many thanks to everyone who helped in making it run smoothly and on schedule. Jerry Kahle of Bartlesville was the winner of the state title losing only one game and averaging 53.9. Janet Walrod came through with 5 straight to top the Ladies division while Bill Fordyce captured the Boys title and Becky Goff was Girls' champ. Harold Crist was easy winner in the Senior class. Jim Willie took the handicap title.

**CLASS A MEN** — Jerry Kahle, 6-1-53.9; Buford Rhodes, 5-2-46.2; Chuck Arnold, 4-3-50.3; Bud Hamilton, 4-3-48.9; Jerry Holt, 3-4-47.4; Charlie Brewer, 3-4-44.7; Carl Redgate, 2-5-44.6; Ron Frederick, 1-6-40.8.

**CLASS B MEN** — Bill Vines, 6-1-50.6; Larry Fordyce, 5-2-48.0; Don Walrod, 5-2-39.4; Dwight Crawford, 4-3-32.0; Bob Belden, 3-4-33.7.

## OKLAHOMA — (Continued)

**CLASS C MEN** — Bill Estes, 5-2-30.9; Melbern Hutchison, 4-3-35.1; Tick Johnston, 4-3-32.3; Homer Cain, 4-3-29.4; Willard Brakhage, 4-3-29.4.

**CLASS D MEN** — Leland Johnson, 5-2-28.9; Lloyd LeBaron, 5-2-28.6; Tom Goff, 4-3-34.0; John Lucas, 4-3-24.9; Lilburn Inman, 3-4-27.4.

**CLASS E MEN** — Amos Edwards, 6-1-19.1; George Pingleton, 6-1-20.3; David Mogus, 5-2-20.0; Andy Mogus, 5-2-17.4; Jim Jacobs, 3-4-16.6.

**CLASS F MEN** — Roy Privott, 4-1-18.4; Barry Roller, 4-1-19.6; Dale White, 3-2-19.2; Wendell Presley, 3-2-17.2.

**CLASS G MEN** — Bill Fleming, 3-1-8.0; Ken Jorboe, 2-2-10.0; Ken Horinek, 2-2-6.5.

**CLASS A WOMEN** — Janet Walrod, 5-0-55.1; Evelyn Johnson, 4-1-60.7; Louise Abercrombie, 3-2-38.8; Tina Rash, 2-3-37.7; Debra Frederick, 1-4-40.3; Ginger Cain, 0-5-30.8.

**CLASS B WOMEN** — Lynda Frederick, 5-0-33.6; Ada Loucks, 4-1-16.0; Barbara Arnold, 3-2-23.6; Helen Belden, 2-4-20.4.

**SENIOR MEN** — Harold Crist, 5-1-40.8; Clarence Leavengood, 3-3-27.9; Charlie Bailey, 2-4-30.8; Bill Thompson, 2-4-27.9.

**BOYS CLASS A** — Bill Fordyce, 4-2-25.7; Alan Cook, 4-2-34.0; Glenn Holland, 3-3-26.7; John Holland, 1-5-24.3.

**BOYS CLASS B** — Dicky Diedrich, 5-0-7.6; Tim Goff, 4-1-8.4; Jason Fordyce, 3-2-4.4.

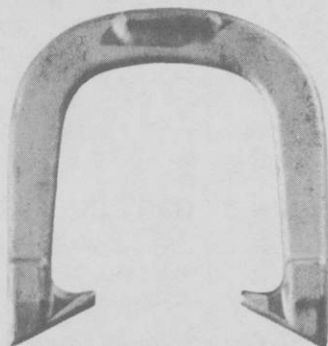
**BOYS CLASS C** — Scott Presley, 4-1-5.8; Ron Asbill, 4-1-4.2; Keith Presley, 3-2-1.6.

**JR. GIRLS** — Becky Goff, 4-0-4.0. **Handicap** — Jim Willis, 50 shoes/38 pts., 14.0.

Since 1931

GORDON

"Spin-On"



— 3 TEMPERS —

Medium With Hardened Calks  
Dead Soft                      Hard

Southern California Representative  
**JERRY SCHNEIDER**  
3144 W. Paso Robles Drive  
ANAHEIM, CALIFORNIA 92804  
714-826-0684

APPROVED BY NHPA

OFFICIAL STAKES ALSO AVAILABLE

**THE QUEEN CITY FORGING CO.**

233 TENNYSON STREET

CINCINNATI, OHIO 45226

## SMITH NEW CHAMP IN NEW HAMPSHIRE—DEBBIE PICKERING REPEATS—S. DANEAULT AND M. FINNEGAN JR. CHAMPS

The 1982 New Hampshire state tournament was held at the Wheelock Park courts in Keene, NH late in August. There were 96 entries, the largest field ever held in many years and played in ideal weather. Brian Smith became the new state champion, with a perfect record of 7 wins and posting a 68.9 percentage. Debbie Pickering retained her title as she also recorded 5 straight wins and tied it together with a 75.9 ringer percentage. A feature of the tournament was the introduction of Debbie Pickering as a pitcher and Larry Croteau as an organizer, into the NH Hall of Fame during the state meeting.

**CLASS A** — Brian Smith, Keene, 7-0-68.9; Bernard Davis, Sr., Boscawen, 5-2-59.4; Lee Ashford, E. Hampstead, 4-3-57.4; Don Sawyer, Milford, 4-3-56.1.

**CLASS B** — Richard Belanger, Bedford, 6-1-53.3; Larry Croteau, Keene, 5-2-59.0; Brian Burke, Goffstown, 4-3-52.0; Al Boudreau, Rindge, 4-3-47.8.

**CLASS C** — Dave Wescott, Concord, 5-0-50.0; Dick Doble, Keene, 3-2-40.3; Mike Kibbe, Boscawen, 3-2-38.9; Norm Ricard, Hudson, 2-3-36.6.

**CLASS D** — Herb Cox, Milton, 7-0-44.1; Robert Ladd, Concord, 6-1-42.4; Warren Hall, Nashua, 4-3-43.8; Walt Sweren, Nashua, 4-3-37.0.

**CLASS E** — Dick Plourde, Suncook, 6-1-39.4; Howard Murphy, Campton, 5-2-39.0; G. Waters, Keene, 5-2-35.8; Andy Daneault, Suncook, 4-3-39.8.

**CLASS F** — Ray Towle, Litchfield, 6-1-37.8; Steve Lowell, Warner, 6-1-40.0; Lynn Fullam, Charlestown, 4-3-33.8; D. Ladd, Weare, 3-4-43.0.

**CLASS G** — Dave Baillargeon, New Market, 7-0-40.3; Brad Miller, Keene, 6-1-39.2; Roger Bernard, Suncook, 5-2-31.1; Jay Burbee, Groveton, 4-3-32.8.

**CLASS H** — Paul Gagnon, Concord, 6-1-28.5; Jesse Reczko, Nashua, 6-1-27.2; Bert Bailey, Exeter, 4-3-28.6; Victor Sirois, Union, 4-3-25.1.

**CLASS I** — William Veroneau, Concord, 6-1-26.8; Gus Anderson, Seabrook, 6-1-21.6; Mo Bernier, Goffstown, 4-3-22.6; Richard Smith, Keene, 3-4-22.2.

**CLASS J** — Jim Daneault, Suncook, 7-0-25.1; Frank King, Nashua, 5-2-16.7; Glenn Magnusson, Kingston, 4-3-21.3; Lary Kearley, Hampstead, 4-3-17.2.

**CLASS A WOMEN** — Deb Pickering, Keene, 5-0-75.9; Katy Dyer, Keene, 3-2-37.8; Colleen Boudreau, Rindge, 3-2-40.2; Diana Beardsley, E. Hampstead, 2-3-33.0; Viola Ashford, E. Hampstead, 2-3-28.6; Mabel Anderson, Seabrook, 0-5-22.1. **CLASS B WOMEN** — Lyn Magnusson, Kingston, 3-1-6.3; Frances McCarron, Hampstead, 2-2-12.4; Jeanette Bergeron, Nashua, 1-3-10.1.

**JR. A BOYS** — Scott Daneault, Suncook, 5-0-52.1; Jason Brochu, Penacook, 3-2-13.6; Alan Poulin, Penacook, 3-2-7.8; Tracy Culbertson, Suncook, 2-3-10.2; Ricky Kempton, Keene, 2-3-5.5.

**JR. GIRLS A** — Maureen Finnegan, E. Hampstead, 2-1-24.7; Debbie Dyer, Keene, 1-2-30.1. **JR. GIRLS B** — Betsy Dyer, Keene, 2-0-6.6; Tanya Kelchner, Raymond, 0-2-3.7.

## SOUTHEASTERN DISTRICT TITLE WON BY GARY ROBERTS

**CLASS A** — Gary Roberts, 5-0-72.9; Harold Wipert, 4-1-70.2; Lawrence Miller, 3-2-61.8; Glenn Santee, 2-3-60.2; Lester Stephenson, 1-4-54.1; Tom King, 0-5-50.0.

**CLASS B** — Dave Hawk, 7-0-54.9; Jim King, 5-2-50.7; Joe Gringsby, 5-2-43.8; H. McCollister, 4-3-44.1.

**CLASS C** — Bill Kiser, 5-0-38.8; Larry Mays, 4-1-40.1; Terry Davis, 3-2-28.4; Kenny Cottrill, 1-4-34.7.

**CLASS D** — Rick Jenkins, 7-0-39.5; Mike Gilpin, 5-2-28.3; Mark McCann, 4-3-25.0; Marvin Ramey, 4-3-23.9.

**CLASS A WOMEN** — Ruth Kirk, 7-0-61.4; Avanelle Brown, 6-1-38.6; Janet Reno, 5-5-42.2.

**CLASS B WOMEN** — Barbara Dixon, 3-4-32.0; Jennifer Reno, 3-4-30.4; Mitzi Roberts, 3-4-28.2; Kim Hignite, 1-6-19.4.

**CLASS A JUNIORS** — Mark Ashworth, 5-0-21.6; Lonnie Hawk, 4-1-20.4; Mike Gilpin, 3-2-15.2; David Kinnamon, 2-3-11.6; Kenny Cottrill, 1-4-6.0; Duane Wipert, 0-5-4.4.

## KNISLEY REGAINS OHIO STATE TITLE — OPAL RENO AGAIN LADIES CHAMPION — BRENDA RENO GIRLS — FRAZIER BOYS

Jim Knisley regained his Ohio State title in the Ohio State tournament held at the City Park courts in Greenville, Ohio over the Labor Day weekend. Opal Reno retained her Ladies title as did Brenda Reno in the Girls class. Jeff Davis came through with a playoff victory over Murphy Frazier to win the Boys title. The tournament was honored with Mayor Schlagetter who extended greetings from the City of Greenville and invited the tournament to come back in 1983. Thanks are extended to all who helped qualify, scorekeepers and tournament committee in keeping statistics and a smooth running tournament.

**CLASS A** — J. Knisley, 13-0-82.2; G. Roberts, 11-2-75.2; L. Coy, 11-2-75.0; H. Wipert, 10-3-75.9; G. Moon, 8-5-75.1; Levi Miller, 7-6-68.6; A. Copeland, 7-6-65.5; Paul Focht, 5-8-65.8; E. Waggoner, 4-9-65.3; Z. Campbell, 4-9-63.3; T. McEldowney, 3-10-64.0; R. Bruner, 3-10-63.8; G. Riffle, 3-10-58.4; Law. Miller, 2-11-63.4.

**CLASS B** — G. Meece, 9-2-69.9; F. Brown, 9-2-65.3; D. Rose, 9-2-65.1; M. Roseberry, 8-3-65.7; S. Powers, 7-4-60.4; T. King, 6-5-55.2; D. Pringle, 5-26-60.2; L. Stephenson, 5-6-60.0; J. Pillion, 4-7-53.7; K. Wagonfield, 1-10-50.4; J. Hughes, Forfeit; T. Boesch, Forfeit.

**CLASS C** — V. Stoner, 5-2-57.6; G. Holsapple, 5-2-54.8; B. Johnson, 5-2-54.0; H. Hopkins, 5-2-53.2; P. Hummel, 4-3-54.5; Earl Noe, 3-4-44.9; J. Schaffner, 1-6-46.6; J. Napier, 0-7-Forfeit.

**CLASS D** — F. White, 5-0-57.8; B. Sigler, 3-2-52.3; H. Wright, 3-2-50.0; P. Rohrs, 2-3-54.5.

**CLASS E** — K. Waggoner, 5-0-53.8; D. Hummel, 4-1-51.6; G. Gardner, 3-2-54.1; B. Johns, 1-4-50.3.

**CLASS F** — B. Poluille, 4-1-53.5; J. Brown, 3-2-59.2; M. Flaig, 3-2-50.7; G. Kline, 3-2-50.4.

**CLASS G** — R. Hymer, 4-1-53.3; D. Snavely, 4-1-48.7; S. Sobleski, 3-2-44.2; N. Ramey, 2-3-46.5.

**CLASS H** — L. Welbaum, 5-0-52.8; L. Rose, 3-2-51.0; D. Buckingham, 3-2-49.3; G. Pierson, 2-3-53.4.

**CLASS I** — J. Kiser, 4-1-49.4; G. Thome, 3-2-47.9; J. Ludwig, 3-2-47.6; B. Schuler, 3-2-43.5.

**CLASS J** — D. Stewart, 4-0-48.8; E. Pratt, 2-2-45.4; W. McClain, 2-2-44.7; F. Asher, 2-2-40.2.

**CLASS K** — J. Hurst, 5-0-57.4; F. Smith, 4-1-56.5; C. Sparks, 3-2-50.8; H. Kahle, 2-3-44.5.

**CLASS L** — E. Turner, 5-0-49.1; E. Glass, 3-2-49.0; J. Ridinger, 3-2-39.5; J. Deweese, 2-3-41.5.

**CLASS M** — D. Riffle, 5-0-50.3; L. Hite, 4-1-46.2; J. Taylor, 3-2-41.6; R. Walters, 2-3-42.9.

**CLASS N** — E. Sarbaugh, 5-0-53.6; D. Whiteman, 4-1-45.7; D. Dill, 2-3-45.7; D. Jenkins, 2-3-38.5.

**CLASS O** — R. Storer, 4-1-47.1; G. Wheeler, 4-1-44.0; L. Thornsberry, 2-3-44.4; J. Kern, 2-3-36.3.

**CLASS P** — C. Crabtree, 4-1-43.6; B. Hassinger, 4-1-39.7; R. Miller, 3-2-42.4; J. Campbell, 2-3-38.1.

**CLASS Q** — B. Voelker, 5-0-52.4; H. May, 4-1-36.7; Jr. Lisk, 3-2-35.6; M. Snider, 2-3-34.5.

**CLASS R** — K. Leopard, 4-1-44.4; B. Beckman, 4-1-40.3; R. Waymire, 4-1-33.8; J. Schotten, 2-3-34.1.

**CLASS S** — H. Miller, 4-1-34.9; B. Ison, 4-1-31.3; G. Peterson, 3-2-37.1; D. Guill, 3-2-32.3.

**CLASS T** — G. Cathcart, 5-0-36.7; S. Harshbarger, 3-2-34.3; C. Myers, 3-2-30.6; D. Ackerman, 2-3-29.2.

**CLASS U** — M. Gross, 5-0-35.6; C. Cottle, 4-1-40.1; D. Miller, 3-2-33.0; A. Davis, 2-3-37.7.

**CLASS V** — L. Martini, 5-0-43.6; M. Miller, 4-1-37.4; J. Jones, 3-2-32.7; C. Shreeves, 2-3-29.7.

**CLASS W** — K. Cuttrill, 5-0-40.3; D. Myers, 4-1-32.2; W. Mayes, 3-2-23.4; E. Kucharski, 2-3-24.0.

**CLASS X** — R. Jenkins, 4-1-39.7; AC Butts, 3-2-33.4; M. Gilpin, 3-2-29.7; D. Wheeler, 3-2-29.5.

**CLASS Y** — N. Teaford, 4-1-26.5; B. Gentry, 3-2-26.1; H. Angel, 3-2-25.6; B. Kinkead, 3-2-23.2.

**CLASS Z** — D. Morrow, 5-0-30.9; W. Pence, 4-1-22.5; M. McCann, 3-2-24.1; P. McFall, 2-3-20.7.

**CLASS Z-1** — A. Hall, 5-0-34.5; H. Bottomly, 4-1-34.8; R. Flower, 3-2-30.9; J. Katzenbach, 2-3-25.7.

**CLASS Z-2** — H. Rademacher, 4-1-29.4; H. Cole, 4-1-25.9; G. Strickland, 3-2-20.4; R. Fullenkemp, 2-3-19.6.

## OHIO STATE — (Continued)

**CLASS Z-3** — John Teevan, 3-2-22.7; A. Stolarik, 3-2-16.8; B. Stover, 3-2-15.6; D. Stump, 2-3-20.3.

**CLASS Z-4** — J. Fourman, 3-0-22.8; R. Curry, 2-1-21.2; L. Cox, 1-2-14.9; H. Allen, 0-3-15.7.

**CLASS Z-5** — S. Schuler, 3-0-19.5; M. Ramey, 2-1-24.7; T. Jervis, 1-2-7.6; E. Tobias, 0-3-8.4.

**CLASS A WOMEN** — O. Reno, 5-0-82.3; C. Still, 4-1-71.7; J. Myers, 3-2-70.6; C. Swartz, 2-3-57.0; R. Kirk, 1-4-64.2; B. Smith, 0-5-40.5.

**CLASS B WOMEN** — D. Slocum, 4-1-48.6; L. Vonstein, 4-1-46.3; G. Wheeler, 3-2-50.4; S. Dagan, 2-3-43.3; J. Reno, 2-3-42.2; A. Brown, 0-5-35.5.

**CLASS C WOMEN** — B. Rose, 5-0-44.7; R. Curley, 4-1-40.8; Jenny Reno, 2-3-34.3; M. Roberts, 2-3-30.6; J. Buckingham, 2-3-27.6; B. Tackett, 0-5-22.5.

**CLASS D WOMEN** — C. Ridinger, 3-0-35.6; B. Strickland, 2-1-28.1; B. Cox, 1-2-10.4; D. Storer, 0-3-4.5.

**JUNIOR GIRLS** — B. Reno, 3-0-52.4; L. Reno, 2-1-45.3; L. McEldowney, 1-2-48.5; C. McEldowney, 0-3-26.7.

**JUNIOR GIRLS CLASS B** — Pam Moon, 3-0-11.5; K. Strickland, 2-1-9.8; L. Tackett, 1-2-5.1; Alisha Cox, 0-3-1.8.

**JUNIOR BOYS CLASS A** — J. Davis, 4-1-64.8; M. Frazier Jr., 4-1-61.7; J. Thornsberry, 3-2-50.9; T. Hymer, 2-3-48.7; B. Allen, 1-4-51.1; R. Conlin, 1-4-48.1.

**JUNIOR BOYS CLASS B** — G. Peterson Jr., 5-0-45.6; T. Schlosser, 4-1-33.6; M. Myers, 2-3-24.4; T. Kern, 2-3-22.0; M. Ashworth, 1-4-28.8; J. Huff, 1-4-24.4.

**JUNIOR BOYS CLASS C** — M. Ridinger, 6-0-26.0; D. Moon, 5-1-24.0; R. Swartz, 3-3-17.0; Rusty Swartz, 3-3-14.0; L. Hawk, 2-4-20.3; J. Ridinger, 2-4-11.0; S. Riddell, 0-6-1.7.

**JUNIOR BOYS CLASS D** — C. Pringle, 5-0-4.8; D. Kahrig, 4-1-5.2; J. Hall, 3-2-4.8; J. Johnson, 2-3-4.0; T. Swartz, 1-4-1.6; M. Gilpin, 0-5-1.6.

**BUY DIRECT FROM  
THE MANUFACTURER**

Join the thousands of Leagues,  
Clubs, Schools, Business Groups  
and Athletic Departments who  
enjoy BUYING DIRECTLY from us

No Middleman....  
Means Savings to you  
Nov. Dept. HP1182

**FREE!**  
**for the asking**

1982 Catalog of

**Trophies • Plaques • Medals  
Ribbons • Pins • Jewelry  
Silverware • Desk Sets**

Don't Delay...Call or Write Today  
Phone Toll-Free Now!

**1-800-628-9657**  
In Massachusetts  
**1-800-282-7789**

**DINN BROS. The Trophy People**  
P.O. Box 111 • 68 Winter St. • Holyoke, MA 01041



## WIEDRICH IN WINNER'S CIRCLE FOR OREGON STATE TITLE SANDY BARTEL WINS LADIES — M. EILENBERGER JUNIORS TYLER AND GORTON RETAIN STATE DOUBLES TITLE

**CLASS A** — Ben Wiedrich, Oregon City, 7-0-78.4; Ridge Leggett, Roseburg, 5-2-72.9; Barry Chapelle, Portland, 5-2-65.2; Lowell Davis, Creswell, 4-3-70.3; Jim Burke, Albany, 3-4-62.1; Jerry Gorton, Pleasant Hill, 2-5-60.5; Randy Burke, Albany, 2-5-60.0; George Harteloo, Stayton, 0-7-46.7.

**CLASS B** — Cletus Chapelle, Portland, 7-0-54.7; Phil Tyler, Springfield, 6-1-53.7; Ken Lukens, Hermiston, 4-3-51.1; Ron Hegefeld, Albany, 3-4-48.8; Irv Farron, Portland, 3-4-48.3; O.D. McMillan, Eugene, 2-5-48.3; Bob Beesley, Culver, 2-5-45.5; Bob Showers, Salem, 1-6-41.1.

**CLASS C** — Charles Wendling, Scio, 6-1-51.2; Chuck Ball, Portland, 5-2-46.4; Len Christensen, Harrisburg, 5-2-51.8; George Hughes, Diamond Lake, 4-3-45.7.

**CLASS D** — Bob Johnson, Eugene, 6-1-47.3; Bob Beesley, Culver, 4-3-50.0; Bob Showers, Salem, 4-3-49.3; Tom Williams, Roseburg, 4-3-46.2.

**CLASS E** — Chuck Eilenberger, Medford, 7-2-44.8; Al Moen, Eugene, 6-3-44.4; Ken Southern, Corvallis, 6-3-38.7; David Brown, Mt. Angel, 5-4-42.8.

**CLASS F** — Esthel Benner, Salem, 7-1-42.5; Jack Stryker, Portland, 6-2-38.3; R. E. Click, Warrenton, 5-2-40.6; Roland Ferguson, Portland, 4-3-43.5.

**CLASS G** — Gale Smith, Portland, 7-0-41.1; Ed Dachtler, DePoe Bay, 5-2-36.2; Gilbert Morgan, Lebanon, 4-3-30.5; Dale Dufur, Lebanon, 3-4-31.6.

**CLASS H** — DuWayne Wiedrich, Portland, 6-1-35.4; Don Snethen, Eugene, 5-2-33.4; Dick Helm, West Linn, 4-3-24.0; Henry McGrew, Albany, 4-3-32.9.

**CLASS I** — Bud LeDoux, Oregon City, 6-1-31.8; Darrel Ireland, Albany, 5-2-22.2; Dave Sturdevant, Newberg, 4-3-27.2; Roger Christiansen, Sherwood, 4-3-29.5.

**WOMEN** — Sandy Bartel, West Linn, 4-0-51.5; Esther Ott, Oregon City, 3-1-42.7; Esthel Davis, Creswell, 2-2-42.0; Irene Wiedrich, Oregon City, 1-3-41.2; Carriene McLeod, Eugene, 0-4-16.8.

**JUNIORS A** — Matt Eilenberger, Medford, 6-0-60.1; Richard Furrer, Oregon City, 3-3-37.5; Tom Gibson, Oregon City, 2-4-28.4; Bobby Woodford, Portland, 1-5-31.6.

**JUNIORS B** — Doug Platt, Oregon City, 6-0-25.3; Mike Gibson, Oregon City, 4-2-17.0; Eric Zwald, Portland, 2-4-6.3; Missy Platt, Oregon City, 0-6-4.0.

## AL ZADROGA PENN STATE TITLIST — FRAN CARNAHAN WINS LADIES TITLE WITH EASE — JOEY MORRIS JR.

**CLASS A** — Al Zadroga, 12-3-76.0; Glenn Burris, 11-4-72.6; Raymond Rugg, 11-4-68.5; Don Kuchcinski, 11-4-68.2; Curt Over, 11-4-67.6; Jim Solomon, 10-5-70.0; Carl Martz, 10-5-69.9; Dan Beshore, 10-5-69.5; Steve Kuchcinski, 8-7-66.5; Clair Bruce, 6-9-64.3; Glenn Brown, 5-10-62.3; Bob McKnight, 5-10-58.8; Pete Vlachos, 4-11-59.5; Joe Kuchcinski, 3-12-61.5; Jack Rainbow, 2-13-61.9; Wm. Dick Carnahan, 1-14-52.8.

**CLASS B-1** — Joe Ruskin, 6-1-68.2; Ron Kuchcinski, 6-1-56.7; Jim Kuchcinski, 5-2-62.4; Ed Sell, 4-3-54.1; Ed Blum, 3-4-55.0; Melvin Burkett, 2-5-51.7; Carl Maier, 2-5-48.8; Ed Kuchcinski, 0-7-40.8.

**CLASS B-2** — Robert Morris, 6-1-57.6; Thomas Miller, 5-2-60.6; Kurt VonKliet, 5-2-49.7; Larry Gisewhite, 3-4-50.5; Glenn Sebring, 3-4-50.2; Sam Garwig, 2-5-50.3; Charles Roball, 2-5-48.6; Vince Sedlacek, 2-5-47.4.

**CLASS C** — Francis White, 5-2-51.7; Dave Meckevic, 5-2-55.5; Jerry Halderman, 4-3-55.9; Ed Horneman, 4-3-48.4; Joe Gecl, 3-4-48.6.

**CLASS D** — Frank Giampa, 6-1-47.8; Clarence Dixon, 6-1-56.4; Bill Hofecker, 5-2-45.5; Wilbert Rugg, 3-4-47.7; Joe Pagnanelli, 3-4-46.2.

**CLASS E** — George Rhea, 6-1-48.5; Herman Boyer, 4-3-49.7; George Fichter, 4-3-46.0; Jim Hall, 3-4-52.3; Ben Fink, 3-4-51.8; Harry Eilenberger, 3-4-45.4.

**CLASS F** — Bob Scekeres, 6-1-46.9; Homer Brown, 5-2-48.1; Marvin Sayers, 5-2-41.9; Ed Dennison, 4-3-45.9; Glenn Williams, 4-3-44.0.

**PENNSYLVANIA — (Continued)**

**CLASS G** — Tom Piscalish, 7-0-51.1; John Marusa, 4-3-44.5; Earl Brown, 4-3-43.6; Al Zadroga Jr., 4-3-40.9; Clarence Butcher, 4-3-38.3.

**CLASS H** — Bob White, Sr., 6-1-40.5; Jim Danner, 6-1-44.1; Harry Clement, 5-2-34.0; Ron Gaydos, 4-3-37.0; Dick James, 3-4-40.6.

**CLASS I** — Alvin Long, 7-0-43.8; Paul Beer, 6-1-39.3; Tom Weston, 4-3-44.5; Ron Fleming, 4-3-37.9; Ron Weiss, 4-3-34.9.

**CLASS J** — Bob White, Jr., 6-1-35.6; Carl Herbe, 4-3-37.9; John Williams, 4-3-32.9; Bill Geci, 4-3-30.7; Bob Foster, 3-4-31.2.

**CLASS K** — Ken Widdowson, 6-1-43.2; Rodney Wilkinson, 6-1-43.4; Henry Hanson, 5-2-38.5; Don Harper, 4-3-33.1; Paul Gray, 3-4-33.4.

**CLASS L** — Joseph Templeton, 7-0-35.9; Orië Pudder, 6-1-34.0; Charles Weston, 4-3-34.5; Don Carnahan, 4-3-30.4; Jack Chambers, 3-4-31.6.

**CLASS M** — John Tedrow, 7-0-35.3; Jim Gibson, 5-2-41.2; Fred Arcurio, 5-2-31.0; Don "Skip" Carnahan, 4-3-30.4; Bob Hartzell, 4-3-30.1.

**CLASS N** — Wayne Wood, 7-0-36.1; Chester Mock, Sr., 6-1-29.0; Dick Carnahan, 5-2-26.3; John Carnahan, 3-4-28.3; Butch Stover, 3-4-24.7.

**CLASS O** — Gerald Glacken, 6-1-31.4; Clair Beardsley, 5-2-28.2; Joe Stanton, 4-3-24.1; Dwight Wetzell, 4-3-22.2; Vaughn Dotts, 3-4-25.5.

**CLASS P** — Jim Woods, 6-1-25.6; Ron Blystone, 5-2-23.0; Ron Byers, 4-3-21.6; Tom Bash, 3-4-22.7; Alvin Weston, 3-4-18.8.

**CLASS Q** — Darrell Kribbs, 7-0-29.5; Rob Kuchcinski, 6-1-22.2; Roger McManon, 5-2-20.2; Bob Bisby, 4-3-21.6; Clarence McCullough, 3-4-13.9.

**CLASS R** — Bob Campbell, 7-0-27.4; Jim Carnahan, 5-2-22.0; Tom Smith, 4-3-23.3; Lyle Kunkle, 4-3-17.8; Tom St. Clair, 3-4-19.5.

**CLASS S** — Barry McQuillen, 7-0-22.2; Dave Carnahan, 6-1-15.7; Chester Mock, Jr., 5-2-18.8; Ken Turnbull, 4-3-15.3; Richard Orr, 2-5-12.7.

**CLASS T** — Duane Bash, 5-1-20.6; Ken Bash, 5-1-16.6; Bob Booth, 2-4-11.3; Larry Konieczny, 0-6-3.2. (Herm Blakley & Allen Held cancelled).

**LADIES CLASS A** — Fran Carnahan, 7-0-77.7; Carl Rinehart, 5-2-39.4; Kay Bittner, 5-2-35.7; Sue Weston, 4-3-34.2; Dot Carnahan, 3-4-34.3; Grace Rugg, 3-4-31.5; Eleanor Weston, 1-6-33.9; Lois Marshall, 0-7-21.5.

**LADIES CLASS B** — Margaret Orr, 5-2-24.0; Kay Erb, 5-2-35.8; Carol Weston, 5-2-25.7; Sandy Carnahan, 4-3-27.3; Shirley Porter, 3-4-31.4; Judy Gray, 2-5-23.4; Peggy Schmalz, 2-5-21.6; Marsha Carnahan, 2-5-18.2.

**LADIES CLASS C** — Margaret Orr, 6-1-22.2; Martha Wood, 4-3-15.1; Ruth Carnahan, 4-3-13.7; Vivian Foster, 4-3-12.7; Jerry Frye, 4-3-11.9; Janet Black, 3-4-9.0; Anna Mae Marusa, 2-1-6.0; Jan Konieczny, 1-6-10.4.

**JUNIOR CLASS A** — Joey Morris, 7-0-57.9; Kelli Weston, 5-2-30.3; David Bittner, 5-2-27.1; Bill Carnahan, 4-3-18.0; Scott Orr, 3-4-20.0; Bob Stover, 2-5-24.6; Kevin Edwards, 2-5-15.9; Joey Bittner, 0-7-13.1.

**JUNIOR CLASS B** — Keith Bash, 7-0-20.1; Tim Zayac, 6-1-23.6; George Zayac, Jr., 5-2-18.1; Mike Weston, 4-3-11.6; Will Orr, 2-5-11.5; Vince Sharp, 2-5-7.2; Scott Wood, 1-6-7.4; Kyle Sharp, 1-6-3.6.

## **CRISS UNDEFEATED FOR WASHINGTON STATE TITLE HANNAH FOLEY LADIES CHAMP**

**MENS CHAMPIONSHIP CLASS** — Herb Criss, Bremerton, 12-0-5.4; Henry Knauft, Spokane, 7-5-3.5; Joe Krug, Yakima, 7-5-4.9; Ken Elvig, Bellingham, 5-7-1.5; Peter Clark, Port Orchard, 5-7-0.3; Art Sperber, Bremerton, 3-9-1.1; Vern Miller, Selah, 3-9-9.7; John Monasmith, Yakima, Forfeit.

**MENS CLASS A** — Thor Gadwa, Montesano, 9-0-63.2; Gerry Staley, Vancouver, 7-2-57.9; Don Jones, Olympia, 6-3-57.1; Ron Ferguson, Vancouver, 6-3-57.0; Frank Woods, Tacoma, 5-4-50.5; Dayton Martindale, Royal C., 4-5-48.4; Bob Clark, Port Orchard, 2-7-53.9; MelPage, Walla Walla, 2-7-53.0; Brad Pederson, Seattle, 2-7-49.4; Kelly Laraway, Bremerton, 2-7-49.4.

## WASHINGTON STATE — (Continued)

**MENS CLASS B** — Bob Hoerner, Tacoma, 7-2-47.1; Bob Sletten, Vancouver, 6-3-53.2; John Hilberg, Clinton, 5-4-51.2; Sig Pederson, Seattle, 5-4-48.1.

**MENS CLASS C** — Don McDugle, Anacortes, 8-1-57.4; Bill Owens, Mt. Vernon, 7-2-55.9; Bob Hughes, Burley, 6-3-46.8; Bob Good, Alderwood Manor, 5-4-51.3.

**MENS CLASS D** — Art Hart, Tacoma, 5-2-52.2; Les Andrews, Battleground, 4-3-48.0; Len Weisdepp, Olympia, 3-3-48.2; Alton Nelson, Ellensburg, 3-3-43.6.

**MENS CLASS E** — Frank Green, Longview, 7-0-52.7; Herb Godfrey, Aberdeen, 5-2-48.8; Jerry Erickson, Hoquiam, 4-3-46.3; Mel Sherbert, Battleground, 4-3-46.2.

**MENS CLASS F** — Bob Pederson, Seattle, 5-1-42.9; Ed Welsch, Spokane, 4-2-40.5; Ken Kuper, Spanaway, 4-2-37.3; Ray Stubner, Sr., Yakima, 3-3-40.2.

**MENS CLASS G** — Earl Yuper, Puyallup, 7-0-46.1; Les Myers, Prosser, 6-1-40.6; Fuzz Frazer, Aberdeen, 4-3-29.5; Paul Williams, Tacoma, 3-4-38.0.

**MENS CLASS H** — Dale McKay, Auburn, 7-0-41.5; John M. Kronholm, Everett, 6-1-38.2; Gene Buzzini, Vancouver, 4-3-38.3; John Byfield, Mt. Vernon, 4-3-34.1.

**MENS CLASS I** — Burl Matteson, Bremerton, 6-0-37.1; Bill Spaulding, Yakima, 4-2-33.1; Elmer Stirn, Tacoma, 4-2-32.5; Ray Stubner, Jr., Yakima, 3-3-31.9.

**MENS CLASS J** — Sam Wingfield, Naches, 6-0-31.5; Richard Carroll, Aberdeen, 4-2-30.6; Don Isaacson, Seattle, 3-3-36.9; John Alexander, Bothell, 3-3-34.8.

**MENS CLASS K** — Ray Sexton, Hoquiam, 5-0-35.0; Al Green, Hoquiam, 3-2-27.5; Wilson Franks, Tacoma, 2-3-27.3; Ahti Laine, Aberdeen, 2-3-26.7.

**MENS CLASS L** — Dick Oldfield, Arlington, 5-1-22.9; Ross Watson, Spokane, 4-2-19.4; Dale Keister, Battleground, 3-2-14.3; Wally Rehard, Spokane, 3-2-13.1.

**LADIES CHAMPIONSHIP CLASS** — Hannah Foley, Newport, 8-2-59.6; Elaine Weisdepp, Olympia, 7-3-62.3; Ruth Welsch, Spokane, 6-4-57.3; Margaret Byfield, Mt. Vernon, 5-5-58.4; Kelly O'Keister, Battleground, 2-8-45.2; Alice Rehard, Spokane, 2-8-42.2.

**LADIES CLASS A** — Betty Nelson, Aberdeen, 6-0-36.9; Judy Looper, Spokane, 4-2-29.7; Corrine Buzzini, Vancouver, 1-5-22.6; Caroline Ferguson, Vancouver, 1-5-16.6.

**JUNIOR BOYS CHAMPIONSHIP CLASS** — Larry Call, Yakima, 8-0-48.8; Tom Call, Grandview, 6-2-51.5.

**JUNIOR BOYS CLASS A** — Craig Looper, Spokane, 4-4-23.5; Neil Spaulding, Yakima, 2-6-11.2; David Call, Yakima, 0-8-16.9.

## JOHN UDELHOFEN 1982 WISCONSIN STATE CHAMPION

**CLASS A MEN** — John Udelhofen, Platteville, 6-1-57.7; Rick Pritzlaff, Germantown, 5-2-55.1; Carl Joppe, Green Bay, 5-2-51.5; Harold Bestul, Rosholt, 4-3-58.0; Curt Bestul, Eau Claire, 4-3-48.0; Roger Poutanen, Wausau, 2-5-41.4; Gilbert Gingras, Eau Claire, 1-6-46.8; Steve Kohn, Eagle, 1-6-46.0.

**CLASS B MEN** — Donald Hostrup, Frederich, 6-1-56.0; Mer Sorenson, De Pere, 6-1-47.4; Gene Mason, Appleton, 5-2-51.1; Dan Bloom, Janesville, 5-2-46.2; Wally Srenaski, Green Bay, 3-4-34.5.

**CLASS C MEN** — Don Hendricks, Benton, 5-2-50.5; Orv Anderson, Green Bay, 5-2-54.2; John Secord, FDL, 5-2-49.1; Norb Gossens, Neenah, 3-4-47.4; Charley Christopolis, Sheb, 3-4-46.9.

**CLASS D MEN** — Tom Bestul, Rosholt, 6-1-49.1; Dick Goetz, GB, 5-2-49.1; Archie Johnson, Eau Claire, 5-2-47.4; Norman Kuen, Knowles, 5-2-45.1; Bernard Carley, Edgerton, 3-4-39.4.

**CLASS E MEN** — Tim Hendricks, Benton, 7-0-53.7; Wes Taylor, West Bend, 5-2-40.8; Roger Comero, Cochrane, 5-2-39.7; Royce Wrucke, Horicon, 4-3-38.5; Harvey Bilz, Janesville, 3-4-33.4.

**CLASS F MEN** — Joe Udelhofen, Potosi, 6-1-44.3; Al Lonning, Eau Claire, 4-3-44.9; Alan Ayers, Eau Claire, 4-3-42.3; Richard Hansen, Franksville, 4-3-37.4.

**CLASS G MEN** — Ken Jaeger, New London, 6-1-41.7; Arnie Christianson, GB, 5-2-44.8; Mike Wiegert, GB, 4-3-45.1; Al Hanold, GB, 4-3-44.2.

## WISCONSIN — (Continued)

**CLASS H MEN** — Chris Kittl, Wauwatosa, 6-1-46.2; Todd Schultz, Marshfield, 5-2-42.5; Milton Larson, New Berlin, 4-3-44.0; James Brown, Arena, 4-3-39.7.

**CLASS I MEN** — James Valle, Brownsville, 6-1-42.8; Gerald Rivera, Omro, 4-3-40.0; Al Brouillette, Milwaukee, 4-3-37.7; Ted Padgett, Kenosha, 4-3-34.5.

**CLASS J MEN** — Howard Voilles, Brown Deer, 6-1-33.1; Robert Eichstedt, Ripon, 5-2-29.7; Geno LaVarda, Lomira, 5-2-28.0; Gary Schwartz, Random Lake, 3-4-29.1.

**CLASS K MEN** — Brian Repinski, Plover, 6-1-38.0; Don Jakel, Spencer, 4-3-42.2; Gerald Gromowski, Oconomowoc, 4-3-37.4; Archie Johnson, Chilton, 4-3-27.4.

**CLASS L MEN** — Jack Brooks, GB, 6-1-35.4; Gerald White, Arena, 5-2-34.5; C. L. Ollerman, FDL, 4-3-38.0; Bud Kuhnert, Fall Creek, 4-3-36.0.

**CLASS M MEN** — LaVern Richard, 6-1-31.4; J. D. Second, FDL, 5-2-35.4; Gus Bell, Mondovi, 5-2-35.4; Eldon Eaton, Eau Claire, 4-3-28.2.

**CLASS N MEN** — Norb Nigbur, GB, 7-0-35.1; Bill Lemorande, GB, 5-2-29.7; Elmer Bigfire, GB, 4-3-31.7; Al McGowan, Milwaukee, 4-3-30.8.

**CLASS O MEN** — Bernie VandenElzen, GB, 7-0-31.7; Ron Molitor, Port Washington, 5-2-29.4; Ron Pritzlaff, Germantown, 4-3-30.2; James Haupt, Milwaukee, 4-3-22.5.

**CLASS P MEN** — Kevin Mattson, Menomonee Falls, 6-1-28.8; Jim Baenen, GB, 5-2-24.8; Harvey Bastan, West Bend, 4-3-24.5; Roger Schultz, Marshfield, 4-3-23.4.

**CLASS Q MEN** — Kenneth Amble, Arena, 7-0-33.3; Chris Koehn, GB, 5-2-22.6; Martin Carlson, Abbottsford, 5-2-21.3; Bill Kling, GB, 4-3-24.0.

**CLASS R MEN** — Herbert Theisen, Lomira, 5-2-27.1; Jeff Gallistel, Medford, 5-2-28.2; Sam J. Davies, Pickett, 4-3-23.7; Andy Brezina, Menomonie, 4-3-22.8; Ed Schuetz, Milwaukee, 4-3-22.0.

**CLASS S MEN** — Dennis Ambuehl, Oconomowoc, 7-0-30.5; Warren Bottlemey, Owen, 5-2-24.8; Donny Burmeister, Brown Deer, 4-3-25.7; Dan Kuen, Knowles, 4-3-22.0.

**CLASS T MEN** — Robert Mattson, Menomonee Falls, 4-1-20.4; Lawrence Suda, Green Wood, 4-1-21.6; Roger Schultz, Marshfield, 4-1-20.8; Mike Terrien, GB, 2-3-16.4; Larry Secord, FDL, 1-4-16.4.

**CLASS U MEN** — Howard Baenen, GB, 4-1-24.0; Butch Gengler, Kewauskum, 4-1-16.4; Don Jacak, Random Lake, 3-2-22.4; Gene Schmoll, Madison, 3-2-12.8.

**CLASS V MEN** — Sal Okon, Mayville, 6-1-25.0; Brian Parady, Sussex, 5-2-21.0; Ron Janus, GB, 5-2-18.0; Otto Kulhanek, GB, 4-3-18.6; Wayne Satonica, Owen, 4-3-13.6.

**CLASS W MEN** — Bill Bauer, Knowles, 4-1-20.8; Bruce Carter, GB, 4-1-24.0; Ralph Struebing, Kewauskum, 3-2-22.4; John Boegel, Kewauskum, 2-3-26.8.

**CLASS X MEN** — Robert Fiebelkorn, Beaver Dam, 3-2-22.8; Clyde Verhaagh, GB, 3-2-20.0; Pete Erickson, Slinger, 3-2-12.4; Don Navarrette, Appleton, 2-3-21.2.

**CLASS Y MEN** — Leo Zamzow, FDL, 4-1-20.4; Milon Lambrecht, Mountain, 3-2-17.2; Al Rohlinger, Kewauskum, 3-2-16.8; Joe Laurant, GB, 3-2-10.0.

**CLASS A JR. GIRLS** — Debbie Bestul, Eau Claire, 5-1-33.0; Kim Secord, FDL, 3-3-19.7; Mally Schwartz, Random Lake, 2-4-23.0; Kimberly Klopp, Eau Claire, 2-4-17.7.

**CLASS A JR. BOYS** — Bret Pritzlaff, Germantown, 5-0-82.4; Hank Schwartz, Random Lake, 4-1-72.0; Jeff Secord, FDL, 3-2-54.4; Mike Struebing, Campbellsport, 2-3-36.0; Darwin Olsen, Mountain, 1-4-38.4; Gregg Mattson, Menomonee Falls, 0-5-24.8.

**CLASS B JR. BOYS** — Andy Hartman, Mountain, 5-0-38.8; Tim Jacak, Random Lake, 4-1-38.0; Dan Bloemers, FDL, 2-3-16.8; Steve Schmidt, FDL, 2-3-13.2.

**CLASS A WOMEN** — Shary Klopp, Eau Claire, 7-0-52.6; Jane Smith, Balsam Lake, 6-1-58.8; Pat Eaton, Eau Claire, 5-2-51.1; Cyrena Srenaski, GB, 4-3-45.7; Tammie Mattson, Menomonee Falls, 2-5-42.9; Ann Opsteen, Combined Locks, 2-5-38.0; Sarah Ross, Owen, 1-6-41.1; Sherry Stone, Germantown, 1-6-31.7.

**CLASS B WOMEN** — Barb Gengler, Kewauskum, 4-1-44.0; Alice Sukowatey, Sheboygan, 4-1-38.4; Toni Gossens, Neenah, 3-2-34.0; Sue Bredemann, Marshfield, 2-3-27.6.

**WISCONSIN — (Continued)**

**CLASS C WOMEN** — *Lorrie Stoffel, West Bend, 5-0-31.2; Shirley Mattson, Menomonee Falls, 4-1-32.4; Rita Boegel, Kewaunum, 2-3-28.8; Sandy Weber, Germantown, 2-3-21.2.*

**CLASS D WOMEN** — *Carole Seidl, Marshfield, 4-1-34.8; Janet Rohlinger, Kewaunum, 3-2-26.8; Nancy Boegel, Kewaunum, 3-2-20.4; Mary Matzke, GB, 3-2-19.2.*

## **BUD SCHLISKE WINS HIS FIRST WYOMING STATE TITLE BEV LAURIN WINS LADIES TITLE — M. BUNDY RETAINS JR.**

**CLASS A** — *Bud Schliske, Cheyenne, 9-0-49.7; Darrow Stemple, Rawlins, 7-2-52.2; Ken Raymond, Rawlins, 7-2-48.6; Howard Rice, Casper, 5-4-45.4; Dave Harrison, Cheyenne, 4-5-46.2; Hugo Lenz, Wheatland, 4-5-40.5; Tony Demshar, Rock Springs, 4-5-36.8; Willard Schutz, Laramie, 1-8-38.7; Gary Rickard, Laramie, 1-8-34.1.*

**CLASS B** — *Robert Pierson, Buffalo, 8-1-44.8; Al Martin, Laramie, 6-3-40.0; Elwood Baker, Casper, 6-3-37.5; Ray Willoughby, Big Piney, 6-3-34.0; Don Laurin, Cheyenne, 5-4-41.7.*

**CLASS C** — *Gerald Christoffer, Buffalo, 9-1-33.5; Gene Bennett, Cheyenne, 7-3-29.8; Wayne Smith, Laramie, 6-4-28.8; Frank Willoughby, Big Piney, 6-4-27.9.*

**CLASS D** — *Eddie Vigil, Casper, 8-2-29.3; Matt Laurunen, Rock Springs, 7-3-25.1; Bruce Bundy, Casper, 5-5-22.3; Don Pope, Big Piney, 4-6-24.0.*

**CLASS E** — *Mike Hamilton, Laramie, 6-0-19.7; Laddie Pilnacek, Laramie, 3-3-13.3; Rick Hansen, Cheyenne, 2-4-14.8; Kirk Bundy, Casper, 1-5-8.4.*

**LADIES CLASS A** — *Beverly Laurin, Cheyenne, 6-1-40.8; Gloria Willoughby, Big Piney, 1-6-39.9.*

**LADIES CLASS B** — *Ella Lubovich, Green River, 7-2-18.8; Ruth Raymond, Rawlins, 6-3-16.8; Maisie, Pope, Big Piney, 5-3-16.9; JoAnn Hytrek, Casper, 3-5-11.8; Dorothy Parsons, LaGrange, 0-8-5.4.*

**JUNIOR CLASS** — *Miles Bundy, Casper, 10-0-31.1; Mark Bundy, Casper, 8-2-17.2; Donna Laurin, Cheyenne, 6-4-22.8; Barry Hansen, Cheyenne, 3-7-11.0; Rhonda DeVries, Green River, 3-7-5.2; John Clark, Casper, 3-10-4.6.*

**WHY JOIN THE STATE & NATIONAL ASSOCIATIONS?****Donnie Roberts says "WHY NOT?"**

This question has been asked many times. My response is not intended to be hostile or critical but rather informative.

All the rules that we play by were developed by the NHPA. Your state champions are officially recognized. If your state tournament was not sanctioned you would have no official state champ. Your sanctioned tournament winners receive patches from the NHPA.

The Los Angeles Dodgers would not be world champions if they didn't belong to the National League. Jack Nicklaus could not compete in tournaments if he did not join the PGA. Bowlers can't be on the TV tour if they didn't join the BPA. If horseshoes didn't have the NHPA they wouldn't have an official event, no digest, no world tournament, no rules, no organization, no league program, no anything. We have gotten TV, Radio and newspaper coverage all over the world. We have a Hall of Fame. If we did away with the NHPA we would have fifty states playing 50 different ways. Horseshoes would really suffer. What if we didn't control the types of shoes on the market?

\$6.00 is nothing for membership. One carton of cigarettes, a 12 pack of beer, ¼ tank of gas, one night at the bowling alley, a stop at McDonald's or one trip across the West Virginia Turnpike are things which cost about \$6.00. Surely we provide that much benefit.

Our league program offers more than the bowling leagues get from the PBA and for less money.

The NHPA is ready, willing, and able to respond to the needs of the states. I know of no request that any state or pitchers has made of the NHPA that was not given consideration so ask. Unsanctioned tournaments and separate state cards are not the answer to the future of horseshoes in your state. You only kid yourself if you think so. Pete Rose will never be in the baseball hall of fame if he plays at the local high school on Sunday afternoon. Even tennis realized that two separate groups was not workable. If you have officers in your state who advocate breaking away from the NHPA vote them out. They are not good for our sport. Horseshoes will benefit most from strong state associations and a strong NHPA.

## COMING EVENTS

FLORIDA SCHEDULE  
NHPA SANCTIONED

Mixed tournaments unless otherwise indicated. All tournaments will be 50-shoe games, alternate pitch, RINGERS ONLY counting 1 point. Send \$7.00 entry fee to proper contact 7 days prior to tournament date. Scorekeeper fee 25¢ per game. Dropouts after deadline will forfeit entry fee unless tourney is cancelled.

- Oct. 23—Charlie Brown Doubles, Winter Haven, Fl. Contact 4.
- Oct. 30—Sunshine Open, Orlando, Fl. Contact 1.
- Nov. 5-6—Clearwater Open, Clearwater, Fl. Contact 5. 1st day, 45% and under.
- Nov. 13—Veterans Open, Titusville, Fl. Contact 2.90% Handicap.
- Nov. 19-20—Osceola Open, St. Cloud, Fl. Contact 1. 1st day 45% and under.
- Nov. 27—Jellystone Open, Opopka, Fl. Contact 7.
- Dec. 3-4—Steinfeldt Handicap, Clearwater, Fl. Contact 5. 1st day 45% and under.
- Dec. 11—Polk County Ridge Open, Winter Haven, Fl. Contact 4.
- Dec. 16—Snowbird Open, Sebring, Fl. Contact 8.
- Dec. 18—Yogi Open, Apopka, Fl. Contact 7.
- Jan 8—Plant City Open, Plant City, Fl. Contact 9.
- Jan. 14-15—Manatee Open, Bradenton, Fl. Contact 12
- Jan. 15—Cindy Open, Apopka, Fl. Contact 7.
- Jan. 20—Highland County Open, Sebring, Fl. Contact 8.
- Jan. 21-22—Brooksville Jaycees Open, Brooksville, Fl. Contact 10. 1st day 45% and under.
- Feb. 5—Heart of Florida Open, Winter Haven, Fl. Contact 4.
- Feb. 9-10—Florida State Fair Open, Tampa, Fl. 90% handicap.
- Feb. 12—Boo Boo Open, Apopka, Fl. Contact 7.
- Feb. 12—Sarasota Open, Sarasota, Fl. Contact 3. Men only. 1st 56 entries.
- Feb. 17—Sebring Open, Sebring, Fl. Contact 8.
- Feb. 18-19—Sun Bank of Osceola Open, St. Cloud Fl. Contact 6. 1st day 45% and under.
- Feb. 25-26—Strawberry Festival, Plant City, Fl. Contact 9. 1st day 45% and under.
- Mar. 5—Winter Haven Open, Winter Haven, Fl. Contact 2.
- Mar. 4-5—Brooksville, Open, Brooksville, Fla. Contact 10. 1st day 45% and under.
- Mar. 10—Race Week Open, Sebring, Fl. Contact 8.
- Mar. 11-12—Pow-Pow Open, Seminole, Fl. Contact 11. 1st day 45% and under.
- Mar. 18-19—Fun 'N Sun Festival, Clearwater, Fl. Contact 5. 1st day 45% and under.
- Mar. 26—King Neptune Open, Sarasota, Fl. Men only 1st 56 entries.
- Mar. 25-26—Metro Dade Parks, % Rec. Open. Contact 13. 1st day 45% and under.
- Apr. 1-2—DeSoto Open, Bradenton, Fl. Contact #2. 1st day 45% and under.

## TOURNAMENT DIRECTORS

1. Jim Peterson, 220 Maynard Ave., Orlando, Fl. 32803. Phone 305-894-3379.
2. Joe Stafford, 1320 Sharon Dr., Titusville, Fl. 32780. Phone 305-269-3557.
3. Paul Scheub, 2139 Piazza Dr., Sarasota, FL 33581. Ph. 813-966-5462.
4. Joe West, 6250 Halabrin Rd., Haines City, FL 33844. Ph. 813-422-2053.
5. Norm Gaseau, 1908 Nugget Dr., Clearwater, FL 33515. Ph. 813-443-2892.
6. Harry Anderson, 1100 Indiana Ave., St. Cloud, FL 32769, Ph. 305-892-2051.
7. Norman Davey, Rt. 1, Box 2000, Apopka, FL 32703. Ph. 305-886-8168.
8. Jim Fourman, 2832 Bolin Ln., Sebring, FL 33870. Ph. 813-385-7372.
9. John Rademacher, 408 Pevetty Dr., Plant City, FL 33566. Ph. 813-752-1226.
10. Dwight Thatcher, 18443 Shadyside Dr., Brooksville, FL 33512. Ph. 904-796-8922.
11. Lee Davis, P.O. Box 3426, Seminole, Fl 33542. Ph. 813-392-8504.
12. Earle Johnson, 3131—12th Ave. E., Bradenton, FL 33508. Ph. 813-746-8298.
13. Tom Miller, Tamiami Park, 10901 SW 24th St., Miami, FL 33165. Ph. 305-223-7077 Ext. 138.

## INDIANA INDOOR SCHEDULE

Rush Indoor Courts • 2nd Floor, Coca Cola Co. • 131 W. First St. • Rushville, Ind. 46173

**Sanctioned Tournaments:** Send entry to State Secretary, Robert L. Reid, 34 North Beechwood Ave., Scottsburg, IN 47170. Phone: (812) 752-2195. Entries should be mailed 10 days in advance. Phone one week in advance.

- Oct. 23-24—October Special  
Nov. 6-7—Al Bills Special  
Nov. 27-28—Thanksgiving Special  
Dec. 11-12—Christmas Special  
Jan. 8-9—John Hamilton Special  
Jan. 22-23—January Special

- Feb. 12-13—Henry Frank Special  
Feb. 26-27—February Special  
Mar. 5-6—Marvin Chrisman Special  
Mar. 26-27—March Special  
April 9-10—April Special  
April 23-24—Indoor State Tournament

## Coming Events—Continued

### TUCSON, ARIZONA SCHEDULE

#### Reid Park, Tucson, Arizona

Nov. 20 — Reid Park Classic. Sanctioned. State and NHPA card required. Entries close Nov. 12.

Dec. 11 — Tucson Open. Sanctioned. State and NHPA card required. Entries close Dec. 3.

Jan. 8 — Pima County Classic. Entries close Dec. 31.

Jan. 21-22-23 — The Lost Dutchman tournament. Held at Apache Junction, Arizona. Send entry fee of \$7.00 to W.R. Reichard before Jan. 14, 1983.

Feb. 5 — Old Pueblo Special. Sanctioned. State and NHPA card required. Entries close Jan. 28.

March 19 — The Wind-Up tournament. Entries close March 11.

Entry fees for all above tournaments are \$5.00 and should be sent to: Melvin Fenimore, 8152 East Hayne St., Tucson, Arizona 85710. Ph. 601-296-5087.

### Arizona State Association Pioneer Park-Mesa, Arizona

Oct. 23 — Arizona State Tournament, Tucson. Sanctioned. State and NHPA card required. 100 shoe qualification. Entries close Oct. 15.

Nov. 12-13 — Bonanza Restaurant Open tournament. Entries close Nov. 4.

Dec. 3-4 — Mesa Parks Open tournament. Entries close Nov. 26.

Jan. 14-15 — Valley of the Sun Warm-Up. Sanctioned. State and NHPA card required. Entries close Jan. 6.

Feb. 9-10-11-12-13 — VALLEY OF THE SUN OPEN. Sanctioned. State and NHPA card required. Entries close Jan. 25.

March 11-12 — Bye, Bye Snowbird Open. Entries close March 3.

Entry fees are \$5.00 (EXCEPT VALLEY OF THE SUN).

Following are the entry fees for the VALLEY OF THE SUN: \$10.00 each; \$10.00 additional for MEN'S CLASS A. \$5.00 additional for WOMEN'S CLASS A; and \$5.00 additional for MEN'S CLASSES B, C & D.

Send all entries and proper fee to: Melvin Fenimore, 8152 East Hayne St., Tucson, Arizona 85710. Ph. 602-296-5087.

### OHIO INDOOR TOURNAMENTS

Following are several tournament dates for Ohio indoor meets. Nov. 13-13; Jan. 22-23; Mar. 26-27; and Apr. 9-10. Deadline for each tournament will be 8 days prior to tournament dates. NO PHONE CALL WILL BE AC-

CEPTED. Send \$10.00 entry fee and percentage to: Joe Witscher, 4020 Plainville, Cincinnati, OH 45227. He will inform you as to where you will play the tournament.

### OPDYCKE INDOOR COURTS

North Water Street • Behind McDonald's • Angola, Indiana 46703

**Non-Sanctioned Tournaments** — Entry fee \$8.00, 35 point games. Pay scorekeepers 25¢ per game. All ties will be decided by ringer percentage for that day. Go north of monument in Angola to first corner past McDonald's. Turn left for about 150 yards to railroad — Don't cross railroad but turn left into driveway

along side of tracks. Go 100 yards to brick building. Courts are upstairs. Sign above door. Don Opdycke, Box 56 Pleasant Lake, IN 46779. Phone (219) 475-5215. Phone deadline Sunday before. Mail deadline 10 days before.

January 15-16  
November 13-14  
December 4-5

October 16-17  
February 19-20  
March 12-13  
April 16-17

### CLASSIC INDOOR COURTS

415 North Columbus St. • Lancaster, OH 43130 • Phone: 614-653-0545

Entry fee, \$8.00, 40 point games. 8-man round robin classes. Top four classes are NHPA sanctioned.

Players to pay scorekeepers 25¢ per game. Deadline for entries — Mail or phone 10 days before date.

Oct. 23-24—Harold Reno Open.  
Nov. 20-21—Paul Focht Open.  
Dec. 11-12—Wilbur Kabel Open.  
Jan. 14-15—Stan Manker Open.

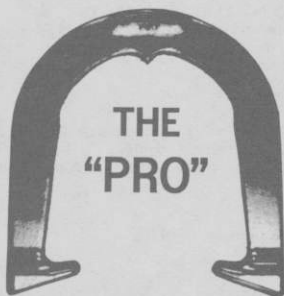
Feb. 5-6—Harold Anthony Open.  
Mar. 19-20—Glenn Riffle Open.  
Apr. 16-17—Pop Johnson Open.

## INFORMATION ON 1983 VALLEY OF THE SUN TOURNAMENT

Due to the fact that Ralph McCarty has resigned the position of State Secretary of Arizona Horseshoe Pitchers Association, I have been appointed to fill out his term of office. My name is M.H. "Bud" Fenimore, 8152 E. Haynes St., Tucson, AZ 85710. Phone (602) 296-5087. All entries to scheduled tournaments in Mesa and Tucson are to be sent to me. When mailing entries please include proper fees, current ringer percentage, and current NHPA card number. This is critical for Valley of the Sun Entries. Refer to Sept. 82 News Digest for changes in fees (inside last page). All competition will be at Pioneer Park, Mesa, AZ. That is the reason for a five day tournament. Lowest classes will start 9th Feb. with four classes in A.M. and four classes in P.M. We will work our way through the week with classes A, B, C, and D on 12th and 13th Feb. Ladies will pitch on 11th Feb.



## THE ORIGINAL DROP-FORGED PITCHING SHOE



Two tournament tested models, forged from S.A.E. specified steel, are available. Both have hardened hooks and points, and may be ordered in your choice of medium, soft, or dead soft tempers.



AS THE FIRST MANUFACTURER OF THE DROP-FORGED PITCHING SHOE, THE OHIO HORSESHOE COMPANY IS RECOGNIZED WORLD-WIDE FOR ITS HIGH QUALITY PITCHING SHOES.

For price information and to order, contact:

# OHIO HORSESHOE COMPANY

P.O. Box 21371  
Columbus, Ohio 43221