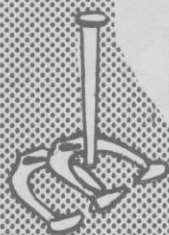


*The Horseshoe Pitcher's*



# NEWS DIGEST

# MORE 1981 TOURNAMENT FINALS

**JANUARY, 1982**

*Official Publication of*  
**THE NATIONAL HORSESHOE PITCHER'S ASSOCIATION  
OF AMERICA**

**BACKYARD  
PITCHER TO PRO,  
GO WITH THE  
NAME YOU KNOW**



135 1/2  
**TOURNAMENT**  
DIAMOND HORSESHOE

Official  
Pitching  
Shoe  
U.S.A.

**DIAMOND**®

Three pitching shoe models. All recognized as official by the National Horseshoe Pitchers Association. DIAMOND Tournament Shoes feature hard points and dead soft centers so shoe catches and holds the stake. All models solid steel drop forged for durability.

Go with the name you know. Contact your nearest NHPA club or sporting goods store. For latest pitching horseshoe catalog write: DIAMOND TOOL and Horseshoe Co., P.O. Box 6246, Duluth, Minnesota 55806.

*The Great  
American Shoe  
For All  
American Hands.*



**DIAMOND TOOL**  
*and Horseshoe Co.*



"DIAMOND Pitching Horseshoes are Recognized as Official in Tournaments  
Sanctioned by the National Horseshoe Pitchers Association"

THE HORSESHOE PITCHER'S NEWS DIGEST is published on the 5th of each month at Aurora, Illinois, U.S.A. by the National Horseshoe Pitcher's Association of America. Editorial office, P.O. Box 1606, Aurora, Illinois 60507. Phone: 312-898-3974. Subscription rate is \$8.00 per year in advance. NHPA membership cards are available through each state secretary for \$6.00 plus any state association dues. Forms close on the 10th day of each month preceeding date of issue. Advertising rates on request. F. Ellis Cobb, Editor.

NATIONAL OFFICERS

- Wally Shipley, 2646 Basswood St., Newport Beach, Calif. 92660.....President
- Leo McGrath, 1937 Lawn Ave., Cincinnati, Ohio 45237.....1st Vice-President
- John Rademacher, 408 No. Pevetty Dr., Plant City, Fla. 33566.....2nd Vice-President
- Earl Winston, Route 2, LaMonte, Mo. 65337.....3rd Vice-President
- Bonnie Seibold, 1043 Grayson Ave., Huntington, Ind. 46750.....4th Vice-President
- Donnie Roberts, 9439 Camp Creek Rd., Lucasville, Oh. 45648/(614) 289-4101.....Sec./Treas.
- Claude White, Jr., 940 Knollwood Ct., Plainfield, NJ 07062.....Chr. Reg. Dir.

Volume 25

January, 1982

No. 1

NHPA PRESIDENT'S MESSAGE

By Wally Shipley

"I sincerely hope and pray that it will be a healthy, happy and prosperous New Year for you, your family and horseshoes."

What a wonderful way to start off 1982. I am happy to announce the NHPA now has a National Youth Chairman. Jack Springer from Statesville, NC has accepted this position. Thanks Jack! His acceptance letter follows:

Wally Shipley, President  
 National Horseshoe Pitchers Association  
 2646 Basswood Street  
 Newport Beath, CA 92660

November 9, 1981

Dear Wally:

Yes, I accept your kind offer to be chairman of the NHPA National Youth Committee. I wholeheartedly agree with you that we need to increase the backbone of our sport of horseshoes — Our Youth Program!

At the same time, Wally, I would like to make clear, if any long trips would be necessary for any meetings, etc., financial backing would have to be provided to me by the NHPA.

After hearing from you on my final appointment, I will start putting on my thinking and planning cap and see what I can come up with for our NHPA youth horseshoe pitchers.

We had another very successful recreation department Industrial Horseshoe Fall League headed by my assistant John Bullard. At the end of league play we held a big Industrial Tournament for the league participants and anyone working in an Iredell County Industry. The participants purchased through our office 24 pairs of horseshoes from Herb Pinch in Pennsylvania.

Best regards to you and your charming wife.

Sincerely,

Jack Springer,  
 Director of Recreation

Ellis Cobb, editor of our News Digest asked me again to remind everyone of ways to make his job easier. Send good clear copies or it might be returned. In addition, PLEASE do not write your copy on both sides of the paper — one side only!

The 1982 World Tournament dates are Wednesday, July 28 thru Saturday, August 7. This gives many people Sunday to get back home.

The following letter is from Huntsville, Alabama, site of the 1982 event. It's an answer to a letter I sent to Glen Wallace, Director of Parks and Recreation.

**PRESIDENT'S MESSAGE — (Continued)**

Mr. Wally Shipley, President  
National Horseshoe Pitchers Association  
2646 Basswood Street  
Newport Beach, CA 92660

November 24, 1981

Dear Mr. Shipley:

We are under way in making preparations for the 1982 World Tournament and several things have been completed.

I will try to answer your questions in the order that you asked them.

1. The clay and stakes have been corrected. We sent trucks to Huntingburg, Indiana and brought in blue Indiana clay to use in the pits. The stakes built to NHPA specifications.
2. Chairpersons for the committees have not been appointed. We are presently working with the Jaycees to assist us in this tournament. More about this later.
3. The Huntsville Convention and Visitors Bureau is going to assist us in this effort. We will have everything ready by the February Digest issue. Our department will accept reservations for camping facilities in the lot adjacent to the court as we did in 1980.
4. I met with Mr. Herfurth in Genola and have talked with him on the phone since that time. We will coordinate our efforts very closely with his.
5. Yes, we will have tours to the Space and Rocket Center, Point Mallard Wave Pool and several other places. As Mr. Herfurth mentioned in the October Digest, we hope to have two other attractions completed and open by July 1.
6. The convention will be held in the same location but we may utilize a different site for the NHPA Party.

I am sorry I cannot be more specific about some issues but details are still being worked out. We in Huntsville are looking forward to hosting the 1982 Tournament and will work with you and your staff in any way possible to assure us both a very successful tournament.

Happy Holidays!!!

Respectfully,

Kenneth F. Gipson,  
Supt. Special Facilities

## **SO. CALIF. CLASS C WON BY BURROUGHS; FARALD SUTHERLIN CLASS F CHAMPION**

Les Burroughs is the new Class C champ in So. Calif. Farald Sutherlin edged Erwin Klessig for Class F honors. Ernie Knorp had high single game with a nice 83.3 percentage.

**CLASS C CHAMPIONSHIP** — Les Burroughs, Perris, 8-1-41.4; Ernie Knorp, Goleta, 7-2-45.2; Doyle Brawley, Riverside, 7-2-40.0; Art Amador, Los Alamitos, 6-3-39.4; Harold Slagg, Ontario, 6-2-38.8; Jim Eozzo, Los Angeles, 5-3-42.7; Jim Vining, Anaheim, 5-3-34.5; Bill Robb, Burbank, 4-4-42.7; Pablo Lino, Goleta, 4-4-37.1; Ray Silva, Santa Barbara, 4-4-34.6; George Whittemore, Rosemead, 4-4-33.7; Fred Craven, Bellflower, 4-4-32.1; Kee Blackrock, Maywood, 2-6-33.0; John Andruski, Brea, 2-6-28.3; Bill Neal, Anaheim, 2-6-27.8; Sal Ybarra, Santa Barbara, 2-6-27.7; Wally Shipley, Newport Beach, 2-6-26.2.

**CLASS F CHAMPIONSHIP** — Farald Sutherlin, Lakewood, 8-1-28.2; Erwin Klessig, Lynwood, 7-2-23.3; Richard Elliott, Goleta, 6-2-36.1; Dan Eppel, Santa Ana, 5-3-24.6; Hank Romines, Long Beach, 4-4-27.4; Rodney Hilton, El Monte, 3-5-24.6; George Farrell, Corona Del Mar, 2-6-23.4; Boyce Miller, San Clemente, 2-6-18.2; Chuck Abblett, Simi Valley, 0-8-4.2.

# In Memoriam

The State of Oregon is saddened by the death of one of its stalwart performers and true gentlemen, Vic Joyner, on Oct. 30. Vic was stricken with a rare brain-afflicting virus and had been bedridden since late June.

Vic was a top pitcher in the Northwest for many years. He was always in class A or B and although he never quite reached champion status, he was always a contender and capable of the big upset. He was, in the truest sense, a gentleman and sportsman.

Vic was quiet by nature and couldn't be placed in the organizer category. Yet, his contributions were many. He was a faithful member of the Corvallis Club for years and when the Club found a facility for indoor courts Vic got the lumber mill where he worked to donate the material for the courts and then he helped build them. We have enjoyed many years of pitching on them. Vic also got his company to donate \$200 every year for an annual team match pitting the best in southern Oregon against the best in northern Oregon.

The three main things in his life were horseshoes, his work, and his wife Phyllis. We are especially proud of this courageous lady who spent the last four months of his life being not only wife and constant companion, but also nurse. Our deepest sympathies go to her.

A special thanks goes to NHPA members from Oregon, Washington, and Idaho, who, through donations and special benefits raised over \$2000 to help Phyllis with medical expenses.

\*\*\*\*\*

Indiana was saddened with the passing of Helen Day of 1200 E. Washington Street, Frankfort, Indiana 46041, on December 10. She had been ill six months and had cancer surgery just seven weeks prior to her death. She was the wife of Curtis Day, three time World Champion. She was a beautician, artist and homemaker. She was a member of the St. Mary's Catholic Church, the Altar and Rosary Society, the Ladies of Charity and the Strawberry Prayer Group. She also taught Confraternity of Christian Doctrine Classes.

She was a very devoted wife and mother and was instrumental in helping her husband, Curtis, in his horseshoe pitching and will be greatly missed by her family, friends and anyone who knew her.

She is survived by her husband Curtis and four sons, two daughters, three sisters, her father and twelve grandchildren.

The sympathy of the Clinton County Horseshoe Association and the National Horseshoe Pitchers Association of Indiana, is extended in a most solemn hour of bereavement.

\* \* \* \* \*

Word has been received of the passing of Albert (Dick) Campbell of 144 Redwood Lane, Holiday Manor, Naples, Florida 33942 on September 27, 1981. He had been ill for many months suffering from cancer. He was laid to rest in Mason, Michigan.

He and his wife Myrna were ardent supporters of the game for many years and had made many friends within the organization.

The sympathy of the Florida State Association and that of the NHPA is extended to his family.

\* \* \* \* \*

From Kansas comes the report of the passing of Mrs. Etta Pepple, wife of Perl Pepple of Topeka, Kansas.

She spent many hours pursuing the many horseshoe activities of her husband in his 34 years of pitching and promoting horseshoes in the Kansas State area. He was Regional Director for the Western States in 1957-58.

The sympathy of the Kansas State Association and the National Horseshoe Pitchers Association is extended to her family in their hour of sadness.

\* \* \* \* \*

Pete Waukechon of Keskeno, Wisconsin passed away recently at the age of 67 years. He was one of the top pitchers in Wisconsin during the 1950's and 1960's. He was a member of the Traveling team of Shawano, Wisconsin. He will be missed by all of his friends and associates.

## COLUMBUS, GEORGIA LEAGUE COMPLETES SEASON

By JOE FORCE

Columbus Horseshoe Pitchers Assn. of Columbus, Georgia had a fine league in 1981. 14 man single round robin, 50 shoe count-all, 100% handicap.

Gene Brooks came through with the championship by one game point. Dave Revell took 2nd place and one game point behind him was Leonard Roberts with 3rd place. Larry Morton pitched the high scratch game 127, and ended up with the high average, 104. Jack Franklin pitched the highest game above his average, 62, which was 35 points above his average. Roy Moore was presented the sportsman award for giving much of his time and effort to improve the club and league. The most improved player award went to Gene Brooks. At the end of the league we had a family picnic and a doubles tournament. Larry Morton and Curtis Roberts ran away with 1st place.

October 20, a local radio station, WDAK K Country had a big promotion and part of it was a horseshoe pitching contest. Glen Portt of Albany, Georgia put on an exhibition and was given some air time to promote horseshoe pitching in the area. Larry Morton and Joe Force took 1st place in the men's doubles division. Joe Force and Larry Morton went down to the wire, both undefeated and playing the final game for the men's singles championship. Joe Force won the game by a three point edge over Larry Morton to become the K-Country Champ for 1981.

Gene Brooks, 36-9; David Rewell, 35-10; Leonard Roberts, 34-11; Joe Force, 30-15; Larry Morton, 28-17; Steve Tigges, 28-17; Steve Franklin, 27-18; Curtis Roberts, 27-18; Robert Starling, 23-22; Luther Nelson, 23-22; Roy Moore, 23-22; Jack Franklin, 19-26.

## HUFF TOPS IN ED MANN TOURNEY AT AZTEC, NEW MEXICO

**MENS CLASS A** — Joe Huff, 40.8; Clyde Kannon, 31-4; Harold Larvingo, 41.5; Keith Bishop, 32-5; Larry Waggoner, 24.9.

**MENS CLASS B** — Dean Roquemore, 28.8; George Johnson, 21.8; Ivan Weatherly, 27.1; Joe Lester, 24.6; Mark Kannon, 18.7.

**MENS CLASS C** — Tony Martinez, 23.1; Frank Hanagarni, 14-3; Curtis Beeson, 11.3; Howard Jones, 13.0; Harvey Shaffner, 12.0; Harvey Rials, 10.8.

**MENS CLASS D** — Dewayne Larkins, 10.0; Dar Gunnick, 12.0; Norman Beeson, 8.6; John Ously, 4.6.

**MENS CLASS E** — Jerry Jahrman, 8.7; Bernie Pope, 9.7; Ed Howe, 6.0; Al Carville, 5.0; Harry Johnson, 3.5.

**LADIES CLASS A** — Jo Ann Lester, 34.0; Jody Lester, 39.6; Violet Picolli, 34.7; Irene Perino, 22.6.

**LADIES CLASS B** — Becky Johnson 21.0; Norma Beeson, 10.0; Mary Beeson, 6.0.

**LADIES CLASS C** — Rilda Carville, 10.5; Barbara Stock, 7.0; Natile Choal, 8.0; Machille Waggoner, 8.0; Joyce Smith, 4.0.

# A M E R I C A N

**NHPA APPROVED**

**DESIGNED AND PITCHED BY CARL STEINFELDT**

**Additional Charge:**

1- 500 miles, add \$1.00 per pr.

500-1000 miles, add \$1.50 per pr.

1000-2000 miles, add \$1.75 per pr.

2000 mi. or over, add \$2.00 per pr.

Order Direct or from NHPA Representative

1 to 4 pairs — \$13.00 pr.

5 or more — \$12.00 pr.

Plus Postage

Port of Shipment

**CARL STEINFELDT, 44 Ridgcrest Road, Rochester, NY 14626**

**Wally Shipley, 2646 Basswood St., Newport Beach, CA 92660**

## MINUTES OF THE HORSESHOE MANUFACTURING COMMITTEE MEETING HELD AT 1981 W.T. AT GENOLA, MINN.

By PETER SHEPARD, Chr.

It was recommended and approved by your Executive Board that the annual \$300.00 associate membership dues be dropped. As it stands now, after your shoe has been approved and you pay the initial \$300.00 for its sanction, there will be no other charge to the manufacturer. Your President carried the message to the Executive Board and sought its approval.

All the manufacturers feel that they can do more and feel a greater part of this organization by contributing horseshoes and letting the local people sell them to make money from their tournaments.

Also, as suggested, your manufacturing committee is seriously considering establishing a central Buying Headquarters. We will have about ten distribution points in the U.S. and will make all materials available to all the members of the N.H.P.A. By doing this, your Buying Headquarters could order 500 pair of horseshoes at a better price and drop-ship them to your distribution points throughout the U.S.A. This will save all extra handling and freight charges which are a major cost nowadays.

All the game-related merchandise men who attended the meeting felt the Buying Headquarters is a good idea and all horseshoe manufacturers and distributors have been asked to help with any suggestions for the committee. The committee, in turn, will help the N.H.P.A. move forward.

We feel that we need to help ourselves first and the rest will follow.

### 17th ANNUAL OHIO SNOWBALL OPEN SET FOR FEBRUARY

The SNOWBALL OPEN will once again be the "hot" winter event at the Darke County Horseshoe Club's indoor court facility in Greenville, Ohio. The 1982 SNOWBALL will be pitched on the week-ends of February 6-7; 13-14 and 20-21 at the Club's indoor court building.

The Courts will be open for qualifying on Saturday and Sunday, January 30 and 31. Pitchers not desiring to qualify on these dates may mail in their Ringer percentages along with the \$6.00 entry fee. Deadline for receiving entries will be Monday, February 1. The Tournament Committee reserves the right to place pitchers in classes as deemed appropriate.

The Snowball Open will be a sanctioned "trophy" tournament, with trophies awarded for first and second place in each Class. No substitutions will be allowed. Entrants unable to pitch when scheduled will forfeit their entry fee. All entrants will be notified by mail of their pitching schedule.

"A" and "B" Classes will pitch on Sunday, February 14.

The \$6.00 entry fee check should be made payable to the DARKE COUNTY HORSESHOE CLUB and mailed to Fritz Worner, 150 Ridgeview Dr., Greenville, OH 54331.

The Tournament courts are in the Darke County Fairgrounds which is on Business Routes US 127 and Ohio 49. There will be a lunch stand at the courts and restaurant and motel accommodations nearby.

#### EFFECTIVE JANUARY 1

SUBSCRIPTION RATES FOR NEWS DIGEST WILL BE

FIRST CLASS \$9.00

THIRD CLASS \$8.00

## NO. CALIF. McNALLY OPEN TITLISTS, WILLIAMS & FLOYD

World Champion, Walter Ray Williams, electrified the Alameda County Fair onlookers by pitching a perfect 50-shoe game on his way to the Bill McNally Invitational Title. The tourney held in Pleasanttown saw Don Titcomb, 1980 winner, place second losing only two games. Jesse Gonzales was 3rd, administering the only defeat to Walter Ray 17-15, as both of these great competitors pitched 86%. There were 8 games over 90% in the tourney, with the World Champ registering 7 of these; Titcomb had the other. Williams averaged a spectacular 90.4% average for the 2-day meet. Bob Hanlon and Bill Lewis both pitched their 1st 80% game (against each other), with Bob taking the game 26-24. Vera Floyd continued her exceptional streak of masterful pitching as the Tri-valley star won 9 of 10 and averaged 69.6% to take home the heaviest money purse. Sharon Paddock, former California Champ, lost only 3 games and had her best tournament of the season; a fine 68.4%. Vera pitched a high game of 78%.

**MEN** — W. "Deadeye" Williams, 14-190.4; Don Titcomb, 13-275.1; Jesse Gonzales, 12-374.5; Dave Loucks, 10-569.3; Harley Swander, 10-567.1; Al Crabtree, 9-665.3; Bob Hanlon, 9-662.4; Ed Floyd, 8-764.9; Bob Mauzey, 8-763.6; Tom Webb, 6-962.0; Emmet Schroeder, 6-958.0; Verdan Zelman, 5-1049.9; Bill Lewis, 4-1159.2; Jack Sorg, 3-1251.2; Marty Dunn, 2-1356.9; Walter Krowel, 2-1351.9.

**WOMEN** — Vera Floyd, 9-169.6; Sharon Paddock, 7-368.4; Yvonne Mauzey, 6-461.6; Virginia Sturla, 5-557.4; Marilyn Webb, 2-846.4; Carol Van DeVeere, 1-934.2.

## BEN YOST TOPS CLASS C COLUSA OPEN (NO. CALIF)

Vallejo's Ben Yost got the good game when needed on July 18th and cruised through to a satisfying win on the excellent clay at Colusa. Other winners were: Barak Wright; Group II — Jim Keyes Sr, Group III — Eldon Bryham, Group IV — and Bob Alling, Group V. Pete Donoho of Shasta pitched the high game of 62%.

**CLASS C-ONE** — Ben Yost, 6-143.7; John Sylvester, 5-243.1; Pete Donoho, 4-344.9; Bob Malley, 3-444.3; Harry Martinelli, 3-443.1; Bob Pascoe, 3-435.4; Clair Lenz, 2-537.7; Mel Long, Sr., 2-532.6.

**CLASS C-TWO** — Barak Wright, 7-138.5; Glenn Peck, 6-244.3; Al Hunt, 4-333.1; Joe Colt, 4-332.3; Bob Miller, 4-331.3; Marion Hawley, 3-425.4; Bob Schnur, 1-623.1; George Gigli, 0-725.7.

**CLASS C-THREE** — Jim Keyes, Sr., 6-231.3; Sylvan Stratton, 6-332.0; Larry Karlen, 5-329.8; Arnold Davis, 4-330.0; Ceres Perry, 4-329.7; Lee Oliver, 3-424.0; Art Rector, 2-526.0; Bob Bendorf, Jr., 0-713.1.

**CLASS C-FOUR** — Eldon Bryhan, 6-126.0; Gordon Pritchard, 5-222.6; Bob Green, 4-329.1; Wally Wahweotten, 4-320.6; Bill Botelli, 4-318.0; Marv Stapp, 3-423.4; Dave Henderson, 1-617.4; Roy Heyden, 1-617.1.

**CLASS C-FIVE** — Bob Alling, 4-019.5; Reese Cathy, 3-122.5; Ernie Kim, 1-318.5; Bob Kinchloe, 1-313.0; Elmer Wilson, 1-36.5.

## ELMER HOHL HORSESHOE AVAILABLE DESIGNED AND PITCHED BY ELMER HOHL

(6 Times World Champion)

Order from:

**DON KOSO**  
803 East 12th Street  
Falls City, Nebraska 68355

**HERB PINCH**  
592 Hull Street  
Sharon, Pennsylvania 16146

WRITE FOR PRICES



NHPA Approved



## TOGO WEST AFRICA, NATIONAL CHAMPIONSHIP

By Bernard Herfurth, Publicity Chairman

The National Championship finals was held in Togo, West Africa, the first week in November. A copy of the half page article from the Lome Newspaper "La Nouvelle Marche" was sent to former ambassador Robert Ryan by the American Horseshoe Attache, Irvin Hick, from the American Embassy.

Through the efforts of Robert Ryan, the St. Pierre Mfg. Co. and NHPA, horseshoe pitching appears to be well-established in West Africa. The Togolese players formerly used "picnic shoes" that had been repeatedly broken and welded. The twelve pairs of new American horseshoes that were donated by St. Pierre and the NHPA last spring gave the sport a shot in the arm with welcomed 12 new pairs of shoes.

The Togo First National Championship was held in Lome Libertin Square. It was attended by the members of the Ministry of Sports and Culture. A Lieutenant was responsible for the team representing Genda Merle National (Police).

The newspaper picture shows a beautiful trophy being presented by the Sports and Culture representative to the winning team, Captain Afatsao Agoudavi. The picture also showed a large crowd on hand with a loudspeaker system being at the site.

The NHPA had previously sent a certificate of recognition to the Lome sports and Culture Minister.

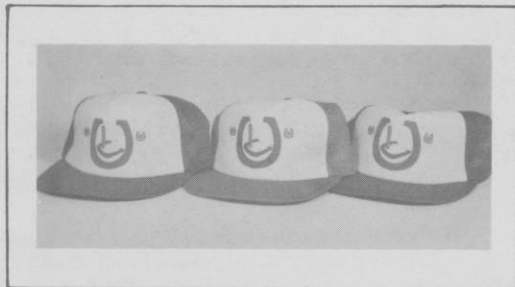
It is suggested that the members of the NHPA send a letter of congratulations to the Togolese players. Send to Mr. Afatsao Agoudavi, BP 3452, Lome, Togo — West Africa.

Also mention the activities that took place in your area during the past year. Your cooperation will be appreciated.

### INTRODUCING . . .

The brand new Horseshoe Pitcher's Ringer Caps!

These great caps are made of cotton with 4 nylon mesh panels and are fully adjustable. Comes in bright colors of either Red and White or Blue and White.



The colorful horseshoe and peg design lets everyone know . . .

**YOUR A HORSESHOE PITCHER!!!**

To order your cap(s) NOW . . .

Just send \$6 plus \$1 for postage & handling with your name, address and zipcode to:  
(Don't forget to specify the color you want.)



**RINGER WORLD**  
60 East 42nd Street % Suite 411  
New York, NY 10165

## ENTRY BLANK

### 1982 U.S. OPEN TOURNAMENT — CLEARWATER, FL.

APRIL 1, 2, 3 & 4, 1982 (Rain date April 5)

Name: \_\_\_\_\_ Phone: \_\_\_\_\_

Address: \_\_\_\_\_

City: \_\_\_\_\_ State: \_\_\_\_\_ Zip: \_\_\_\_\_

**RECORD OF PERFORMANCE:** (List as many as possible)

1981 World Tournament Average..... \_\_\_\_\_

1981 State Tournament Average..... \_\_\_\_\_

1981 Other Major Tournament Average..... \_\_\_\_\_

We reserve the right to place pitchers if we feel the averages turned in are wrong.

**ENTRY FEE:** \$10.00 (Juniors Free). Men's Championship class, \$15.00 extra — payable at tournament. Mail fee to:

Carl Steinfeldt, 407 Shady Lane Park  
15400 Roosevelt Rd., Clearwater, FL 33520

Players will be assessed \$2.00 at the courts to defray cost of scorekeepers.

**DIVISION:** Please check the division you are entering:

Men \_\_\_ Women (Non-Pro) \_\_\_ Seniors \_\_\_ Boys \_\_\_ Girls \_\_\_

**DEADLINE:** Entry must be postmarked no later than **March 1, 1982.**

1982 NHPA Card No. (May be purchased at tournament if you don't have one).

**NOTE:** Enclose STAMPED SELF-ADDRESSED ENVELOPE with entry fee if you wish to receive notice of your starting time. Notice to you will be mailed by March 15.

**GAME PLAN:** The Men's Championship Class will consist of the top 14 players. All other groups will consist of 8 players. Each game will consist of 50 shoes, with players alternating pitch. *Ringers only* will be counted with each ringer counting 1 point. Winner of each game will receive 3 bonus points. In case of a tie at end of a 50-shoe game, both players will pitch 4 additional shoes to determine winner, repeating 4-shoe play as long as necessary to break the tie. Group winners will be determined by total points accumulated by a player and not by games won and lost. In the Men's Championship Division (and possibly Women's Pro Group), a 5-player ladder tournament will be played on Sunday, April 4 to determine tournament champion.

**DRESS CODE:** Men — Clean sport shirt and shoes or trousers. Women — Clean blouse or sport shirt with skirt, shorts or slacks. Back of all sport shirts and blouses to bear player's name, home town and state, preferably in contrasting color of plain or full block letters.

**WEATHER:** Average temperatures April 1-4 in Clearwater are 80 degrees high and 59 degrees low, with little or no precipitation.

**SUBSCRIPTION RATES FOR NEWS DIGEST WILL BE**  
**FIRST CLASS \$9.00      THIRD CLASS \$8.00**

## AL ZADROGA CAPTURES UNIONTOWN, PA. OCTOBER CLASSIC

Al Zadroga of Elizabeth, Pa. went undefeated going 5-0 to capture high honors in Class A in this fall's First Indoor Tournament at Uniontown, Pa. held on Oct. 16, 17, 18. He averaged 79.8% for the tournament. Former State Champ Jim Solomon of Uniontown, Pa. had the days highest game of 90.5%. He made 38 ringers out of 42 shoes. Dave Meckevic of Pittsburg won Class C honors via 4-way playoff for 1st place with 54.4 average. Frank Kennison of Haydentown won Class D via playoff with a 47.9% average. Jim Danner of Vanderbilt took Class F with a playoff win over Joe Orsino of Brownsville and had a 40.7% average. Class G also had a three-way tie for First Place with Alex Burns of New Salem coming out on top and averaging 34.3%.

**CLASS A** — Al Zadroga, Elizabeth, PA, 5-0-79.8; Casey Danner, Newell, PA, 4-1-72.9; Jim Solomon, Uniontown, PA, 3-2-75.0; Clyde Martz, Pittsburgh, Pa, 2-3-65.2; John Ruskin, Pittsburgh, PA, 1-4-60.2; Ray Rugg, Mill Run, PA, 0-5-57.7.

**CLASS B** — John Ruskin, Pittsburgh, PA, 5-0-65.2; Joe Carter, Mingo Jct., OH, 4-1-66.0; Joe Leech, Smithfield, PA, 3-2-59.1; Ken Smith, E. Liverpool, OH, 1-4-53.9; Rich Maroni, Arnold, PA, 1-4-48.2; Chuck Semans, Pittsburgh, PA, 1-4-48.2.

**CLASS C** — Dave Meckevic, Pittsburgh, PA, 3-2-54.4; Frank Giampa, Pittsburgh, PA, 3-2-48.5; Dave Remington, Hiller, PA, 3-2-54.5; Chuck Roball, Pittsburgh, PA, 3-2-46.7; Joe Roebuck, Uniontown, PA, 2-3-45.8; Joe Pagnanelli, Bethel Park, PA, 1-4-42.1.

**CLASS D** — Frank Kennison, Smithfield, PA, 4-1-47.9; Glenn Williams, Uniontown, PA, 4-1-42.9; Bert Rugg, Mill Run, PA, 3-2-44.9; Frank Yokopovich, Cleveland, OH, 2-3-44.4; Ed Moitoris, Fredericktown, PA, 1-4-40.1; Ed Jones, Belle Vernon, PA, 1-4-39.8.

**CLASS E** — Dick James, Wilkinsburg, PA, 4-1-35.4; George Jodon, Windber, PA, 3-2-36.7; Bill Williams, Uniontown, PA, 3-2-30.3; Harry Clement, Pittsburg, PA, 2-3-30.1; Ed Donawitz, New Brighton, PA, 2-3-30.0; Chick Denk, Johnstown, PA, 1-4-33.2.

**CLASS F** — Jim Danner, Vanderbilt, PA, 4-1-40.7; Joe Orsino, Brownsville, PA, 4-1-35.4; Forrest Robinson, Worthington, W.Va., 3-2-36.5; Ray Gaydos, Uniontown, PA, 3-2-33.4; Dick Tunney, New Brighton, PA, 1-4-25.7; Butch Stover, Monaca, PA, 0-5-17.3.

**CLASS G** — Alex Burns, New Salem, PA, 4-1-34.3; John Smarslok, Uniontown, PA, 4-1-28.7; Tony Krizner, Uniontown, PA, 4-1-33.0; Chuck VanSickle, Uniontown, PA, 2-3-22.4; Scott Williams, Ohioptyle, PA, 1-4-14.2; Calvin Bittner, Mill Run, PA, Forfeit.

## R. SIMON WINNER AT PREIMESBERGER HALLOWEEN OPEN PHYLLIS NEGAARD LADIES CHAMP — P. O'CONNOR BOYS

**CLASS A** — Ralph Simon, Waterloo, IA, 10-1-72.1; Wilbert Foelske, Denver, IA, 8-3-70.3; Dave Hughes, Bloomington, MN, 8-3-68.1; LeRoy Hagert, Springfield, MN, 8-3-65.4; Jack O'Connor, Brainerd, MN, 7-4-72.3; Elwood Johnson, Elmore, MN, 6-5-61.0; Jerry Black, Fargo, ND, 5-6-61.0; Jack /Roubinek, Pine City, MN, 5-6-58.1; Lee Sharff, Jamestown, ND, 4-7-55.2; Stan Griggs, St. Joseph, MO, 2-9-53.6; Ray Lust, Graceville, MN, 2-9-52.5; Dave Evenson, Donnelly, 1-10-55.0.

**CLASS B** — Lloyd Henrikson, Coon Rapids, MN, 8-2-59.6; Cliff Swayze, Wilmot, SD, 6-4-53.0; Harry W. Benson, Hibbing, 6-4-51.0; Rick O'Connor, Brainerd, 5-5-50.6; Ken Lindberg, Roseau, 4-6-48.6; Rudy Larson, River Falls, WI, 1-9-31.0.

**CLASS C** — Curt Boser, Pierz, 8-2-55.3; Norman Loidolt, Little Falls, 6-4-53.1; Henry Pongratz, Mankato, 6-4-51.7; Stan Eaton, Owatonna, 5-5-44.6; Henry Preimesberger, Pierz, 4-6-43.1; David R. Johnson, Marine, 1-9-43.2.

**CLASS D** — George Nick, Mendota Heights, 7-3-47.2; Waldo Tesch, Kokato, 7-3-46.8; Rollie Schreiner, Pierz, 5-5-41.8; Donald Tiegs, Ortonville, 4-6-43.8; Dennis Cielinski, Merrifield, 4-6-37.6; Walter Busse, Appleton, 3-7-43.0.

**CLASS E** — Glen Werk, Donnelly, 7-3-46.6; Alan Berg, Redwood Falls, 6-4-50.2; Jim Holland, Anoka, 6-4-43.2; Bert Bertelson, Marvin, SD, 5-5-44.8; Carroll Johnson, Becker, 5-5-40.6; Wilbur Gay, St. Joseph, MO, 1-9-33.0.

**CLASS F** — Victor Rosenow, Coon Rapids, 8-2-47.2; Jerry Griggs, St. Joseph, 7-3-42.4; Fred Smith, Higgensville, MO, 7-3-40.8; Marvin Richardson, Cloquet, 3-7-39.2; Terry Berg, N. Redwood, 3-7-35.2; Bud Hill, Valley City, ND, 2-8-37.6.

**CLASS G** — Harry Sather, Appleton, 8-2-44.0; Tony Rueter, Bloomington, 7-3-43.7; Wilfred Blunkush, St. Joe, 7-3-39.5; Harry Everhart, Artesian, S.D., 4-6-42.0; Bob Brezinka, Swanville, 3-7-36.2; James Rextraw, Osseo, 1-9-28.0.

## **HALLOWEEN OPEN — (Continued)**

**CLASS H** — Wayne Stanley, Elmo, 7-3-38.4; Gene Anderson, ST. Paul, 6-4-43.2; Walter Aspelund, Rosholt, SD, 6-4-40.8; Lloyd Peterson, Big Fork, 6-4-40.6; Ray Puetz, Brainerd, 3-7-30.4; Ken Greelee, Fridley, 2-8-28.0.

**CLASS I** — Owen Simmons, Nashua, IA, 8-2-45.6; Robert Stewart, Cokato, 6-4-43.0; Geo. C. Anderson, N. Branch, 5-5-45.0; Jerry Waldvogel, Little Falls, 5-5-43.0; Al Lonning, Eau Claire, WI, 4-6-34.8; Julius Kubes, Shakopee, 2-8-33.4.

**CLASS J** — Robert Weech, Fairmont, 7-3-37.6; Ervin Tischer, Good Thunder, 7-3-36.8; Byron Eckholm, Big Lake, 6-4-34.0; Cliff Hanson, Braham, 5-5-35.6; Henry Stomgren, Cedar, 5-5-34.4; Tom Stack, Jr., Cohasset, 0-10-16.2.

**CLASS K** — Paul Samuelson, Cokato, 7-3-36.0; Austin Ott, St. Joseph, 7-3-32.8; Gordon Schiltz, Rosholt, SD, 7-4-44.6; Tom Johnson, Braham, 6-4-34.4; Delbert Karsjens, Clark Grove, 3-7-29.1; B. Middendorf, St. Cloud, 1-9-36.0.

**CLASS L** — Dennis Carlson, St. Cloud, 8-2-33.0; Arnold Duevel, Royalton, 7-3-36.2; Marvin Feller, Alexandria, 5-5-30.2; Ken Paulson, Pierz, 4-6-32.8; M. Palmersheim, St. Joseph, 4-6-30.8; Jerry Marshik, Pierz, 2-8-24.6.

**CLASS M** — Stan Erickson, Braham, 9-1-36.0; Joe Lunz, St. James, 7-3-31.0; Lyle VanBlaricon, Anoka, 6-4-31.2; Jack Anderson, Braham, 4-6-26.8; Adrian Johnson, Grygla, 3-7-27.4; Dennis Foss, Rice, 1-9-23.0.

**CLASS N** — H. Achterkirch, Cokato, 8-2-33.4; Walter Jensen, Foreston, 7-3-33.0; Richard Zajac, Hillman, 6-4-44.6; Les Holland, Dayton, 4-6-30.2; E. Duesterhoef, Hutchinson, 3-7-23.6; Daniel Girtz, Pierz, 2-5-25.0.

**CLASS O** — Dale Higgins, Bloomington, 7-0-32.0; Don Miklos, Bowlus, 6-1-32.2; Cyril Narlock, Bloomington, 4-3-26.5; Eric Anderson, St. Paul, 4-3-22.8; LeRoy Diehl, Donnelly, 2-5-29.4; Dan Johnson, Braham, 2-5-22.5; Don Jones, Wheaton, 2-5-21.1; Dale Hiscock, Rice, 1-6-12.0.

**CLASS P** — Pete Hansen, Ogilvie, 6-1-31.7; Clarence Stites, Roseau, 5-2-32.8; Kevin Stensrud, Mpls., 5-2-24.8; L. VandeKamp, N. Branch, 4-3-23.7; Merlin Bentz, Waconia, 3-4-31.7; Riney Kurtz, Coon Rapids, 2-5-22.5; Gerald Hiscock, Rice, 2-5-16.8; Ingeman Teslow, Decorah, IA, 1-6-24.5.

**CLASS Q** — Dean Hohesiel, Pierz, 5-2-23.4; Clayton Herman, Cross Lake, 5-2-21.1; Don Froland, Osseo, 4-3-24.8; Marvin Tretter, Pierz, 4-3-22.8; Brian Busch, Alexandria, 4-3-20.2; Bob Bayerl, Pierz, 3-4-19.7; Mike Binczik, St. Cloud, 2-5-16.8; Delbert Lackey, Rosholt, SD, 0-7-9.7.

**CLASS R** — Duane Stay, Zimmerman, 5-1-13.0; A. Youngberg, New Richland, 4-2-13.0; Bob Wright, Little Falls, 3-3-8.6.

**CLASS A LADIES** — Phyllis Negaard, St. Joseph, 10-0-81.0; Sandy Karasch, St. Joseph, 7-3-68.0; Bev Nathe, St. Joseph, 5-5-63.0; Boni Boser, Pierz, 5-5-60.8; Debbie Gall, Pierz, 2-8-52.4; Lynn Hughes, Bloomington, 1-9-49.6.

**CLASS B LADIES** — Jackie O'Connor, Brainerd, 10-0-60.0; Brooks Henrikson, Coon Rapids, 7-3-48.5; Deanna Foss, Rice, 6-4-40.2; Edi Holland, Dayton, 5-5-43.7; Dorothy Eaton, Owatonna, 2-8-35.5; Evelyn Vober, Bloomington, Forfeit.

**CLASS C LADIES** — Jeannine Nordin, Cloquet, 6-1-37.1; Marilyn Schreiner, Pierz, 6-1-34.8; Dolores Preimesberger, Pierz, 5-2-27.4; Rosy Tischer, Good Thunder, 4-3-36.8; Diane Schaefer, Pierz, 3-4-31.7; Kim Hiscock, Rice, 2-5-29.1; Sandy Lindberg, Little Falls, 1-6-23.7; Norma Ott, St. Joseph, MO, 1-6-15.4.

**CLASS D LADIES** — RoseAnn Eckholm, Big Lake, 6-1-25.7; Alice Paulson, Pierz, 5-2-23.1; Darlene Hiscock, Rice, 4-3-24.0; Judy Stanek, Little Falls, 4-3-24.0; Judy Karsjens, Clarks Grove, 4-3-19.7; Michaelle Olson, Randall, 4-3-18.2; Jan Girtz, Pierz, 1-6-10.8; Ellen Tretter, Pierz, 0-7-15.7.

**CLASS A BOYS** — Pete O'Connor, Brainerd, 10-0-81.3; Russell Girtz, Pierz, 5-5-47.1; Jeff Eckholm, Big Lake, 5-5-46.8; Duane Meyer, Pierz, 4-6-44.2; Tom Holland, Dayton, 3-8-43.8; Dan Preimesberger, Pierz, 3-7-42.4.

**CLASS B BOYS** — Jerry Evenson, Donnelly, 6-0-39.0; Robert Wuellner, Crystal, 3-3-25.0; Travis Eckholm, Big Lake, 3-3-17.3; John Preimesberger, Pierz, 0-6-3.6.

## **ALLEGHENY COUNTY CHAMPIONSHIP — PITTSBURGH, PA.**

In the Allegheny County Championships held at Pittsburgh, Pa., 30 players took part making up 4 classes. John Ruskin topped Class A with a 7-0-62.5 record. In Class B it was Joe Pagnanelli with 5-0-52.1. Harry Clement took charge of Class C with 6-2-36.1. Ron Weiss won Class D with 6-1-30.0. The champions of each class had high games of 73.6 for A; 65.0 for B; 47.0 for C and 42.5 for D. Runner-ups were Chuck Seamans, Class A; George Fichter, Class B; Harry Thomas, Class C and Joe Stanton, Class D. Clyde Martz donated a pair of Imperial shoes which were won by Skip Jonas.

FOR THOSE WHO DESIRE THE VERY BEST

**IMPERIAL**

## U.S.A. PRICE LIST

Postpaid

1 Pair.....	\$29.00
2 to 5 Pair.....	\$27.00
Freight Collect	
6 Pr. & Over.....	\$24.00

Available in Dead Soft and  
Medium Soft with  
Hardened Hooks  
and Points

**CLYDE MARTZ**

3726 Henley Dr.

Pittsburgh, PA 15235

- We now accept  
**MASTER CARD** and  
**VISA.**

- Note change of address.

- For quick service, phone  
in your order after 6  
p.m. Its cheap and easy.  
Call (412) 731-4662

**E. BILLS TOPS MAYOR GIBSON SPECIAL—RUSHVILLE, IND.**

**CLASS A** — Estel Bills, Connersville, 6-1-70.2; John LeMond, Anderson, 5-2-70.6; Jim Kemple, Rushville, 5-2-68.4; William Neilson, Dugger, 4-3-63.2; Peck Anderson, Martinsville, 3-4-65.9; Bob May, Glenwood, 3-4-63.7; Ed Hinshaw, Richmond, 1-6-52.9; Larry Hill, Indianapolis, 1-6-52.1.

**CLASS B** — Ralph Guffey, New Castle, 7-0-66.7; Gary Poindexter, Wolcott, 5-2-55.3; Arthur Burch, Scottsburg, 5-2-50.7; Dale Kirtley, Modoc, 4-3-51.0; Reece Baughn, New Castle, 3-4-51.0; Bob Henderson, Bloomfield, 3-4-50.0; Bob Sheppard, Rushville, 1-6-40.6; Charley Bennett, Scottsburg, 0-7-40.2.

**CLASS C** — Jim Pierson, Mooresville, 6-1-51.5; George Riall, Dublin, 5-2-50.0; Harold Tatman, Greensburg, 5-2-45.5; Bob Moit, Indianapolis, 4-3-53.3; Kenny Perkins, Rushville, 3-4-49.0; David Tatman, Hope, 2-5-45.3; Tim Tatman, Hartsville, 2-5-40.5; Jim Crone, New Lisbon, 1-6-43.8.

**CLASS D (Playoff)** — Jim McIntire, Franklin, 6-1-44.6; Steve Doty, Whitland, 6-1-42.4; Bill Sutton, Edinburg, 5-2-45.6; Wayne McClintock, Anderson, 4-3-44.1; Bill Hatt, Alexandria, 3-4-39.2; Paul Joslen, Franklin, 2-5-35.5; Charles Fowler, New Whiteland, 2-5-35.0.

**CLASS E** — Lloyd Karstens, Rushville, 5-0-40.3; Charles Hollingsworth, Richmond, 3-2-31.8; Lowell Cummings, Indianapolis, 3-2-30.5; Bob Hill, Shelbyville, 2-3-31.0; Cecil Burris, Milton, 1-4-23.9; Clayton Smith, Richmond, 1-4-19.1.

**CLASS F** — Lloyd Karstens, Rushville, 5-0-35.4; Olie Hubbard, Henryville, 3-2-29.9; Bob Henry, Crawfordsville, 3-2-26.7; Aubrey Callon, Edinburg, 2-3-25.8; Bill McDaniel, New Castle, 2-3-24.0; Jack Workman, Edinburg, 0-5-22.5.

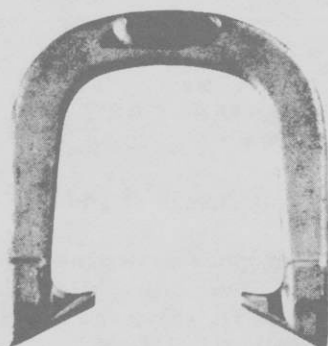
**CLASS G — (Playoff)** Luther Chandler, Indianapolis, 4-1-33.7; John Walls, Attica, 4-1-32.0; Gene Mendenhall, Noblesville, 3-2-28.0; Turner Ridge, Greenwood, 3-2-25.8; Bob Ranck, Richmond, 4-1-16.7; Mark Shepherd, Rushville, 0-5-6.8.

**WOMEN'S CLASS A** — Sue Smith, Richmond, 54.9; Phyllis Anderson, Martinsville, 38.3.

**WOMEN'S CLASS B** — Charline McKinley, West Newton, 28.4; Mona Cummings, Indianapolis, 10.4.

**JUNIORS CLASS A** — Eric Kingma, Lafayette, 4-1-51.8; Steve Bills, Connersville, 2-2-42.2; Phil Bills, Connersville, 0-4-31.8.

Since 1931

**GORDON***"Spin-On"*

— 3 TEMPERS —

**Medium With Hardened Calks**  
**Dead Soft                      Hard**


---

 Southern California Representative  
**JERRY SCHNEIDER**  
 3144 W. Paso Robles Drive  
 ANAHEIM, CALIFORNIA 92804  
 714-826-0684
 

---

APPROVED BY NHPA

**OFFICIAL STAKES ALSO AVAILABLE****THE QUEEN CITY FORGING CO.****233 TENNYSON STREET****CINCINNATI, OHIO 45226**

## TOM TOWNE RETAINS NEW MEXICO STATE TITLE WITH A PERFECT GAME: A. VIGIL WINS LADIES; M. HOLLY, JR.S.

Tom Towne displayed unusual skill when he pitched a perfect game before a large crowd at the State Fairgrounds. He pitched 22 straight ringers in blanking his opponent and defended his crown by defeating all other players. Ann Vigil edged out Gerry Adkins in the ladies division. Young Danny Pasono moved from a 5th place last year to win Class B and newcomer Marty Holly overwhelmed the Junior division. Peggy Henson received the most improved player award by virtue of a good showing in the league and a 3rd place game tie for State.

Officers elected for 1982 are: Bob Schuch, President, Keith Bishop, Vice President, and Peggy Henson, Secretary/Treasurer.

**CLASS A MEN** — T. Towne, 7-0-67.1; B. Landrum, 5-2-47.7; J. Otterbach, 5-6-46.0; D. Hanes, 3-4-41.1; O. Henson, 3-4-36.7; G. Martin, 2-5-41.8; H. Bentz, 2-5-39.1; F. Romero, 1-6-36.7.

**CLASS B MEN** — D. Pasono, 8-1-45.4; H. Larvingo, 8-1-44.9; M.J. Martin, 7-2-41.9; M. Neid, 6-3-43.7; R. Priddy, 5-4-42.1; B. Heerde, 5-4-36.6; W. Tyler, 4-5-32.3; J. Jaramillo, 0-9-22.7.

**CLASS C MEN, GROUP A** — N. Pasono, 4-1-31.4; K. Bishop, 4-1-33.9; K. Bodley, 3-2-31.9; D. Branch, 3-2-30.0; M. Cahill, 1-4-26.0; B. Barker, 0-5-20.3.

**CLASS C MEN, GROUP B** — R. Schuch, 6-0-35.0; J. Huff, 4-2-40.7; H. Russell, 3-3-33.9; R. Handley, 3-3-30.5; C. Bodley, 3-3-30.2; J. Bishop, 2-4-29.9; Martinez, 0-6-14.7.

N. Pasono beat R. Schuch in the playoffs. J. Huff won 3rd with a 70% game. Watch out for Joe Huff in '82.

**CLASS D MEN, GROUP A** — E. Mason, 7-0-29.4; T. Gallegos, 6-1-29.6; J. Adamiak, 5-2-25.5; Hadley, 3-4-22.4; Clover, 3-4-19.2; Hobaugh, 3-4-17.5; G. Jones, 1-6-15.0.

**CLASS D MEN, GROUP B** — Mascarenes, 6-2-24.3; Hill, 6-2-23.5; B. Cruz, 5-3-26.5; Reid, 4-4-26.1; Salazar, 5-3-22.1; Nazzarett, 4-4-21.3; Caviggia, 3-5-24.5; Ellis, 2-6-13.2.

**NEW MEXICO — (Continued)**

**PLAYOFFS:** Mascarenes Champion, Mason, 2nd; Gallegos, 3rd.

**CLASS E MEN** — J. Bogle, 7-1-20.7; S. Ezell, 6-2-24.2; J. Sinacore, 5-3-18.8; J. Orosco, 5-3-13.4; E. Smith, 4-4-13.0; M. Adamiak, 3-5-13.5; D. Miller, 2-6-12.0; F. Vargo, 2-6-9.0; A. Bishop, 2-6-8.0.

**LADIES CLASS A** — A. Vigil, 5-0-47.8; G. Adkins, 4-1-47.4; S. Cahill, 2-3-36.1; P. Henson, 2-3-32.8; T. Pasono, 1-4-29.3; L. Wood, 1-4-27.5.

**LADIES CLASS B** — M. Ezell, 3-1-13.2; D. Bogle, 2-2-11.2; F. Jones, 1-3-13.4.

**JUNIORS CLASS A** — M. Holley, 7-0-40.3; D. Caviggia, 6-1-22.2; W. Red Cloud, 5-2-23.9; M. Garcia, 4-3-25.2; J. Red Cloud, 3-4-15.4; Pozzi, 2-5-7.3; Hanes, M., 1-6-8.1; A. Newfield, 0-7-8.1.

**CUNNINGHAM MEMORIAL WON BY NELSON—MARION, IND.**

**CLASS A** — Bill Neilson, Dugger, 6-1-65.2; Ed Krull, Kokomo, 5-2-65.2; John LeMond, Anderson, 4-3-69.0; Ralph Guffey, New Castle, 4-3-67.4; Frank Baxter, Tipton, 3-4-63.1; Peck Anderson, Martinsville, 3-4-53.2; Dick Burnworth, Upland, 2-5-62.6; John Gall, Anderson, 1-6-52.5.

**CLASS B** — (Playoff) Ed Kowatch, Culver, 5-2-60.9; Dale Kirtley, Modoc, 5-2-57.8; Jim Shilling, Spencerville, 5-2-51.1; John Shuck, Sharpsville, 5-2-55.6; Ed Howdeshell, Rochester, 4-3-55.9; Jay Hoyer, Pleasant Lake, 2-5-47.0; Curly Seibold, Huntington, 2-5-45.2; George Riall, Dublin, 0-7-34.9.

**CLASS C** — (Playoff) Glenn Hoppes, Summitville, 6-1-59.1; Gary Poindexter, Wolcott, 6-1-53.8; J.W. Cox, Wabash, 5-2-52.8; Steve Doty, Whiteland, 5-2-48.0; Gene Loy, Union City, 3-4-41.3; Jim Isaacs, Russiaville, 1-6-41.3; Charles Fowler, N. Whiteland, 1-6-38.8; Junior Guthrie, South Bend, 1-6-38.8.

**CLASS D** — Jim Pierson, Mooresville, 7-0-55.0; Ron Levensky, Gas City, 4-3-47.1; John Bonewit, Wabash, 4-3-45.2; Roger Rahfeldt, Portage, 3-4-44.5; Clyde Winkler, Huntington, 3-4-40.8; Bob Pence, Lafayette, 3-4-47.0; Earl Richardson, Lafayette, 2-5-40.4; Bud Derbyshire, Angola, 1-6-34.5.

**CLASS E** — Wayne Irwin, Summitville, 7-0-47.4; Gib Campbell, Kokomo, 5-2-41.0; Jim McIntire, Franklin, 5-2-40.8; Don Newell, Kokomo, 4-3-43.1; Dale Zollman, Scottsburg, 2-5-44.3; Jack Dean, Summitville, 2-5-39.0; Steve Croddy, Kokomo, 2-5-34.8; Walt Vctor, Alexandria, 1-6-38.0.

**CLASS F** — Mel Bussert, Gas City, 7-0-44.4; Jeff Bowyer, Frankfort, 5-2-36.5; Don Bollock, Somerset, 4-3-36.8; Bill Hatt, Alexandria, 4-3-33.5; Lawrence Wooster, Orland, 3-4-36.3; Everett Bowyer, Peru, 3-4-33.2; Joe Rinehart, Battleground, 2-5-31.5; Richard Shively, Wabash, 0-7-17.5.

**CLASS G** — Elmer Branson, Gaston, 7-0-45.4; George Watkins, Valparaiso, 5-2-36.3; Don Opdycke, Pleasant Lake, 4-3-37.6; Grant Davis, Otterbein, 4-3-36.4; Byron Price, Huntington, 4-3-30.2; Don Stivers, Lafayette, 2-5-25.9; Clayton Smith, Richmond, 2-5-21.9; Roy Lamb, Lafayette, 0-7-25.6.

**CLASS H** — Ron Levensky, Gas City, 7-0-45.9; Marlin Wells, Oakland City, 5-2-39.6; Gary Brown, Huntington, 4-3-33.0; Wink Weinberg, Orland, 4-3-32.6; Ron Kukral, Chesterton, 3-4-29.6; Gordon Sams, Hudson, 2-5-32.0; Jim Buell, Reynolds, 2-5-25.7; Gale Ruschhaupt, Huntington, 1-6-24.8.

**CLASS I** — (Playoff) Dave Herring, Marion, 5-2-30.0; Max Gunion, Frankfort, 5-2-34.9; Harold Green, Lafayette, 4-3-37.2; Lowell Cummings, Indianapolis, 4-3-27.6; Dick Sanders, Orland, 3-4-28.1; Russ Sanson, North Manchester, 3-4-25.4; Jim Griffith, Jonesboro, 2-5-22.8; Jim Mikesell, Economy, 2-5-17.1.

**CLASS J** — Pete Hobbs, Marion, 6-1-34.4; Virgil Jackson, Warsaw, 5-2-26.2; Glenn Zollman, Scottsburg, 4-3-30.1; Bill Tom, Elkhart, 4-3-24.7; Bill Tibbetts, Lafayette, 3-4-26.3; Luther Chandler, Indianapolis, 3-4-25.4; Turner Ridge, Greenwood, 2-5-22.4; Bob Cunningham, Jonesboro, 1-6-18.6.

**CLASS K (playoff)** Joe Holloway, Jonesboro, 4-1-21.9; Jim Griffith, Jonesboro, 4-1-29.4; Ken Owsley, Kokomo, 3-2-21.3; Frank Partin, Lafayette, 2-3-19.9; Rick Batson, DeMotte, 1-4-12.4; Rich Shively, Wabash, 0-5-14.6.

**CLASS L** — Gene Mendenhall, Noblesville, 5-0-26.6; Willis Reed, Huntington, 3-2-23.0; Ed Saylor, Monticello, 3-2-20.8; Randy McKinniss, Lafayette, 2-3-16.4; Bob Ranck, Richmond, 2-3-14.2; Jim Dunham, Marion, 0-5-4.8.

**WOMENS CLASS A** — Bonnie Seibold, Huntington, 5-0-69.8; Sue Smith, Richmond, 4-1-54.8; Phyllis Anderson, Martinsville, 3-2-39.8; Lorena Poindexter, Wolcott, 2-3-40.3; Candy Loy, Union City, 1-4-44.6; Betty Branson, Gaston, 40.4.

**WOMENS CLASS B** — Jan Myers, Orland, 4-0-37.3; Ileta Davis, Otterbein, 2-2-26.4; Tami Cunningham, Marion, 27.2.

**CLASS C** — Beth Herring, Marion, 5-0-32.9; Tina Batsin, DeMotte, 4-1-27.1; Carol Rahfeldt, Portage, 3-2-27.3; Charline McKinley, West Newton, 2-3-24.5; Christine Buell, 0-5-14.2.

**JUNIOR CLASS A** — Eric Kingma, Lafayette, 6-0-60.6; Jeff Holloway, Jonesboro, 2-4-37.7; Amy Herring, Marion, 2-4-29.5; Brian Myers, Orland, 2-4-25.3.

## CUNNINGHAM MEMORIAL — (Continued)

**JUNIOR CLASS B** — Jeff Ryan, Summitville, 5-0-23.6; Lennie Ryan, Summitville, 3-2-22.8; Del Tibbetts, Lafayette, 2-3-16.4; Andy Hoppes, Summitville, 2-3-14.8; Amy Hoppes, 2-3-9.2; George Hankins, Clarkshill, 1-4-19.2.

**JUNIOR CLASS C** — Ronnie Dunham, Marion, 6-2-18.3; Jody Burnworth, Upland, 5-3-17.9; Ronnie Huston, Marion, 5-3-15.0; Ronda Huston, Marion, 3-5-15.4; Delorn Bright, 1-7-9.6.

**JUNIOR CLASS D** — Nora Burnworth, Upland, 5-0-8.9; Julie Dunham, Marion, 3-2-6.7; Billy Douglas, Lafayette, 3-2-5.3; Chris Small, Summitville, 2-3-4.7; Joe Small, Summitville, 2-3-3.3; Scott Dunham, Marion, 0-5-0.7.

## FRED LAVETT WINS TURLOCK B (NO. CALIF.)

Pitching in his inaugural outing of the '81 season, Fred "Flash" Lavett of Seaside made it an auspicious start by winning 6 of 7 and averaging 56% in the June 27th tourney. Group II went to Bill Victorino of Hollister; Group III to Rod Hughes, also of Hollister, and Group IV to San Jose's Jim Cosgrove.

**CLASS B-I** — Fred Lavett, 6-1-56.0; Arnold Coleman, 5-2-48.6; Don Burgess, 5-2-48.0; Marshall Johnson, 4-3-44.6; Juke Basham, 4-3-43.1; Glen Casey, 3-4-36.0; Don Forbes, 1-6-36.9; Bill Weathers, 0-7-36.0.

**CLASS B-II** — Bill Victorino, 5-0-40.0; Wayne McGhee, 4-1-43.2; Gene Castro, 2-3-32.4; Walter Robinson, 1-4-28.8; Ray Mittlesteadt, 1-4-28.4; Hank Schroeder, 1-4-27.2.

**CLASS B-III** — Rod Hughes, 5-0-36.8; Lyle Bartels, 4-1-36.0; Marion Hawley, 3-2-32.8; Jim Adams, 2-3-33.2; Bob Hibbard, 1-4-30.0; Art Rector, 0-5-26.4.

**CLASS B-IV** — Jim Cosgrove, 4-1-23.6; Rick Searcy, 3-2-22.0; Tony Santos, 3-2-21.2; Joe Novakovich, 2-3-22.4; Ernie Kim, 2-3-17.6; Jim Long, 1-4-21.6.

## ★ ★ SPECIAL OFFER!!! ★ ★

**SPECIAL GROUP DISCOUNT:** 1 carton (52) hardcovers: \$230.00 (Plus UPS to follow).  
1 carton (52) paperbacks: \$130.00 (Plus UPS to follow).

*You save \$235.40 on hard & \$127.40 on paper... Great Value*

**SPECIAL SALE** For limited time ONLY, Oattie Reno's Pitching Championship Horseshoes which sells for \$4.95 (paperback) and \$8.95 (hardcover) plus postage... You pay ONLY... \$3.00 (paperback) and \$6.00 (hardcover) plus \$1.00 postage & handling.

**SPECIAL SALE** If you buy 5 books, Ringer World will send you ONE book absolutely FREE! You will receive 6 paperbacks for ONLY \$15.00 for 6 hardcovers for ONLY \$30.00 plus \$4.00 postage & handling.

If you buy 10 books, Ringer World will send you THREE books absolutely FREE! You will receive 13 paperbacks for ONLY \$30.00 or 13 hardcovers for ONLY \$60.00, plus \$8.00 postage & handling.

**SURPRISE your Tournament Winners with this Great Horseshoe Pitching Book**  
instead of the usual trophies

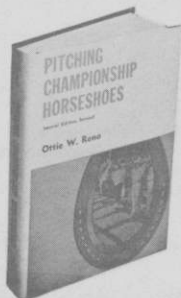
## PITCHING CHAMPIONSHIP HORSESHOES

(Second Edition, Revised) by Oattie W. Reno

PITCHING CHAMPIONSHIP HORSESHOES is clearly written, well-illustrated by a state champion... it is crammed with rules, records, instructions for laying out your own backyard or tournament-style court, photographs of top players in action and these players' own pitching tips.

**ACT NOW... Inventory is going FAST!!!**

Just send your name, address and zip code with your check or money order to:



**RINGER WORLD**  
60 East 42nd Street • Suite 411  
New York, NY 10165



## U.S. OPEN — APRIL 1-2-3-4 — CLEARWATER, FLORIDA

The U.S. Open tournament will be held at the Ed Wright park courts in Clearwater, Florida on April 1-2-3-4.

Men, Women, Senior's Divisions, Boys and Girls Divisions (FREE) Entry fee: \$10.00. Championship Classes \$15.00 extra.

CASH PRIZE LIST MINIMUM OF \$5.00 (based on 200 entries) Details to be announced later.

### CASH PRIZE LIST

MEN'S CHAMPIONSHIP		MEN'S CLASS B		MEN'S CLASS C	
1.....	\$750.00	1.....	\$60.00	1.....	\$25.00
2.....	500.00	2.....	50.00	2.....	20.00
3.....	400.00	3.....	40.00	3.....	15.00
4.....	300.00	4.....	30.00	4.....	14.00
5.....	250.00	5.....	25.00	5.....	13.00
6.....	125.00	6.....	20.00	6.....	12.00
7.....	100.00	7.....	15.00	7.....	11.00
8.....	75.00	8.....	10.00	8.....	10.00
9.....	65.00				
10.....	60.00		\$250.00		\$120.00
11.....	55.00				
12.....	50.00				
13.....	45.00				
14.....	40.00				
	\$2815.00				

WOMEN (NON-PRO) SENIORS		MEN'S CLASS D	
1.....	\$50.00	1.....	\$20
2.....	35.00	2.....	15.00
3.....	25.00	3.....	14.00
4.....	20.00	4.....	13.00
5.....	15.00	5.....	12.00
6.....	15.00	6.....	11.00
7.....	10.00	7.....	10.00
8.....	10.00	8.....	10.00
	\$180.00		\$105.00

All other groups will be awarded trophies. Championship classes will receive prize in addition to cash.

It is anticipated that 8 top pitchers of the Women's Professional Horseshoe Pitchers Assn. will compete during this tournament period for a separate purse if their plans for sponsorship mature.

### DON SAWYER VICTOR IN NASHUA, N.H. LEAGUE TOURNEY

Don Sawyer came through the 1981 Nashua, N.H. City League tournament with a 6-1-51.2 record to claim the title. Six classes took to the courts for this annual event. Other class winners were J. Reczko, Class B; Hank Labine, Class C; R. Caron, Class D; Art Hardy, Class E and C. Shufelt, Class F.

**CLASS A** — D. Sawyer, 6-1-51.2; G. Dearborn, 5-2-46.2; D. Belanger, 5-2-46.8; B. Wilkie, 5-2-42.6; N. Davey, 3-4-40.5; P. Bergeron, 2-5-43.6; G. Blais, 2-5-36.4; G. Sylvain, 0-7-25.9.

**CLASS B** — J. Reczko, 5-0-40.4; N. Ricard, 3-2-38.9; W. Hall, 3-2-37.1; R. Savage, 3-2-36.3; Ray Thebodeau, 1-4-33.8; Ken Thebodeau, 0-5-28.4.

**CLASS C** — H. Jabine, 4-1-30.8; R. Towle, 3-2-30.4; B. Goudreau, 3-2-29.9; B. Brouillard, 3-2-23.6; G. Rioux, 1-4-27.4; J. Miner, 1-4-22.0.

**CLASS D** — R. Caron, 6-1-19.3; J. Styles, 5-2-30.3; D. Russell, 5-2-25.2; C. Lawrence, 5-2-20.0; H. Jabine, 3-4-20.3; D. Moreau, 2-5-18.9; B. Lawrence, 2-5-15.3.

**CLASS E** — A. Hardy, 5-1-14.2; R. Marios, 4-2-14.6; S. Miller, 3-2-19.3; B. Corbin, 2-3-13.4; F. King, 2-3-9.0; R. Beardsly, 0-5-6.0.

**CLASS F** — E. Shufelt, 4-1-11.3; D. Miner, 4-1-8.0; P. Thebodeau, 3-2-10.3; W. Miller, 2-3-7.0; E. Stevens, 2-3-2.0; R. Hilton, 0-5-4.0.

## MARYLAND FRUITLAND OPEN TITLE TO FRED BEEMAN

**CLASS A** — Fred Beeman, MD, 6-1-52.6; Eddie Gohn, PA, 5-2-41.7; Willard Sammons, DE, 4-3-45.7; Clayton Henson, VA, 4-3-4.5; Ken Holden, MD, 4-3-44.2; Jack Blades, MD, 3-4-47.0; Ernest O'Neal, DE, 2-5-41.7; Charles Walker, VA, 0-7-31.0.

**CLASS B** — Tom Chance, DE, 9-1-46.9; Wayne Walley, MD, 8-2-40.7; Ed Clobus, VA, 6-3-38.5; Hazel Fleshman, MD, 5-4-38.9; Al Melson, MD, 5-4-35.0; Gary Rust, DE, 5-4-37.5; Don Fleshman, JR., MD, 3-6-32.0; Milton Paquin, VA, 2-7-31.3; Don Fleshman, Sr., MD, 2-7-31.4; Al Beebe, NJ, 3-2-Foefeit.

**CLASS C** — Henry Markland, DE, 7-0-36.9; Jack Anderson, MD, 5-2-31.6; Charles Cherrix, Sr., MD, 5-2-27.3; Robert Bowdle, MD, 3-4-30.4; Louis Walls, MD, 2-5-31.1; Ben Jankowski, VA, 2-5-23.8; Sonny Holste, MD, 2-5-22.6; Hal Ronning, VA, 1-6-22.3.

**CLASS D** — Bill Dotson, MD, 4-1-29.6; William C. Taylor, MD, 3-2-2; Bill Taylor, VA, 2-2-28.6; Wayne Parkinson, MD, 1-3-23.9; Phillip Fleshman, MD, 1-3-23.0.

**CLASS E** — Ron Christopher, MD, 5-1-28.3; Ed Lewis, MD, 4-2-20.0; Bob Drudge, MD, 3-2-19.4; Lester Carroll, MD, 3-2-19.1; Duane Smith, MD, 1-4-9.2; Verlon Frye, MD, Forfeit.

**CLASS A DOUBLES** — Jack Blades, Robert Bowdle, 7-0-40.1; Hazel Fleshman, Louis Walls, 5-2-36.0; Fred Beeman, Ed Atkins, 4-3-39.0; Willard Sammons, Charles Cherrix, Sr., 4-3-36.2; Henry Markland, Tom Chance, 4-3-36.0; Gary Rust, Don Fleshman, Sr., 2-5-33.0; Parker Sturges, Don Fleshman, Jr., 1-6-29.7; Ernest O'Neal, Ron Tarbutten, 1-6-22.5.

**CLASS B DOUBLES** — Bill Taylor, Ron Christopher, 6-1-22.0; Jack Anderson, Verlon Frye, 5-2-16.6; Robert Christopher, Phil Chance, 4-3-22.4; Bill Dotson, Nelson Clark, 4-3-21.8; William Taylor, Lester Carroll, 3-4-17.9; George Layton, Charles Spencer, 3-4-17.3; Phil Fleshman, Duane Smith, 3-4-14.8; Chuck Kavanaugh, Bob Bunn, 0-5-Foefeit.

## MARYLAND ASSOCIATION TOURNAMENT ACTIVITY

Edward Gohn of Pennsylvania was the winner in the Dave Dulaney Culligan Open tournament held at the Picnic Island courts in Salisbury, Maryland. It was conducted by the Wicomico Club. Willard Sammons was the runner-up. Kennard Holden and Mike Doukas won the doubles title in a play-off over Willard Sammons and Charles Cherrix, Sr.

**CLASS A** — Edward Gohn, Pa., 6-1-55.8; Willard P. Sammons, Del., 5-2-50.7; Wayne Willey, Md., 5-2-45.6; Fred Beeman, Md., 4-3-50.8; Richard Bevan, Md., 4-3-40.5; John Clow, Md., 2-5-44.7; Jack Blades, Md., 2-5-43.3; Louis Clow, Md., 0-7-30.9.

**CLASS B** — Kennard Holden, Md., 6-1-48.1; Gary Rust, Del., 5-2-41.8; Don Fleshman Sr., Md., 4-2-39.6; Thomas Chance, Del., 3-3-38.3; Hazel Fleshman, Md., 2-4-37.5; Ed Clobus, Va., 2-4-36.5; Eugene Bough, Md., 0-6-25.2.

**CLASS C** — Don Fleshman, Md., 7-1-36.2; Mike Doukas, Del., 6-2-36.9; Charles Cherrix Sr., Md., 5-2-31.9; Louis Walls, Md., 5-2-28.1; Charles Stapleton, Md., 3-4-25.8; William Taylor, Va., 2-5-21.6; Frank Marshall, Md., 1-6-16.5; George Layton, Md., Forfeit.

**CLASS D** — Jimmy Fleshman, Md., 4-0-18.5; Paul Baker, Md., 3-1-20.0; Robert Bunn, Md., 2-2-8.0; Ed Cooper, Md., 1-3-7.0; Glen Hell, Md., 0-4-5.0.

## C. HENSON TOPS WICOMICO CLUB OPEN AT SALISBURY, MD. O'NEAL-LAYTON DUO WINNERS IN DOUBLES EVENT

**CLASS A** — Clayton Henson, Va., 7-0-52.5; Eddie Gohn, Pa., 6-1-54.8; Fred Beeman, Md., 5-2-50.8; Richard Bevan, Md., 4-3-49.8; Jack Blades, Md., 2-5-45.2; Ken Holden, Md., 2-5-41.8; Willard Sammons, Del., 1-6-41.1; Wayne Willey, Md., 1-6-37.5.

**CLASS B** — Ed Clobus, Va., 7-0-44.6; Hazel Fleshman, Md., 5-2-43.7; Don Fleshman Sr., Md., 5-2-35.8; Gary Rust, Del., 3-4-38.9; Al Melson, Md., 3-4-31.0; Louis Walls, Md., 3-4-30.3; Stanley Abell, Md., 2-5-27.0; Hal Ronning, Va., 0-7-23.8.

**CLASS C** — Don Fleshman Jr., Md., 5-0-41.2; George Layton, Md., 3-2-30.8; Robert Bowdle, Md., 3-2-29.8; Charles Cherrix Sr., Md., 2-3-28.0; Bill Taylor, Va., 2-3-22.0; William Taylor, Md., 0-5-13.9.

**CLASS D** — Jack Anderson, Md., 5-0-22.2; Paul Chesm, Md., 4-1-24.4; Duane Smith, Md., 3-2-15.5; Lester Carroll, Md., 2-3-15.5; Jay Messick, Md., 1-4-9.4; Jim Wooters, Md., 0-5-8.6.

**JUNIORS** — Steve Fleshman, Md., 3-1-17.9; Curt Fleshman, Md., 2-2-8.3; Kim Fleshman, Md., 1-3-14.2.

## V. STURLA & D. TITCOMB WIN GOLD COUNTRY OPEN N. CALIF.

Consistency paid off for Virginia Sturla, as the smooth pitching Turlock lass took advantage of below par games by Yvonne Mauzey and Sandy Hardy to sweep the Gold Country Open Ladies Division held on June 20-21 in Nevada City. Sandy lost only to Virginia to place second. San Jose's Don Titcomb dropped a close game to Tom Webb but came back to defeat hometown favorite, Rueben Lee in the playoff. Tom pitched the high game of the day; 82%. Holland Payne wrapped up still another group title to take the Group II title in the men's division. Karen Alling of the home club won in ladies Group II and Michael DeSanto of Feather River went 6-0 to easily take the Jr. Group. Michael will be heard from, and is showing steady improvement as the season goes on.

**WOMEN I** — Virginia Sturla, 5-0-56.8; Sandy Hardy, 4-1-48.0; Yvonne Mauzey, 3-2-51.6; Flora Jones, 2-3-45.6; Leona Anderson, 1-4-32.4; Marilyn Webb, 0-5-42.0.

**WOMEN II** — Karen Alling, 5-1-33.3; Betty Forbes, 4-2-44.7; Annette Williams, 3-3-31.0; Thelma Sylvester, 0-6-2.0.

**JUNIORS** — Michael DeSanto, 6-0-33.7; Anthony Keyes, 4-2-17.7; Joe Long, 2-4-11.3; M. Quintanilla, 0-6-4.7.

**CLASS AA-I** — Don Titcomb, 7-1-72.7; Rueben Lee, 6-2-64.0; Al Crabtree, 5-2-60.0; Tom Webb, 3-4-62.6; William Bradford, 3-4-53.1; Bill Lewis, 2-5-56.9; Mate McBride, 2-5-52.6; Bob Mauzey, 1-6-61.1.

**CLASS AA-II** — Holland Payne, 7-0-53.7; Vern Gosney, 6-1-52.9; Herb Rushing, 5-2-56.3; Don Burgess, 3-4-46.3; Dick Hucce, 3-4-42.6; Chuck Farrell, 2-5-47.7; Don Forbes, 1-6-36.6; George Wilfon, 1-6-36.0.

**CLASS AA-III** — Harold Hoar, 7-1-41.5; John Lucich, 6-2-44.3; Wayne Oster, 5-2-39.7; Newton Graves, 4-3-38.6; Bob Pascoe, 2-5-35.7; Joe Colt, 2-5-35.1; Pete Donoho, 2-5-33.1; AUGCie Fragale, 1-6-30.6.

**CLASS AA-IV** — John Sylvester, 5-0-45.6; Jim Long, 3-2-29.2; Mel Falcon, 3-2-28.8; Sylvan Stratton, 2-3-24.4; Buster Ridinger, 2-3-22.8; Marco McCauley, 0-5-21.2.

**CLASS AA-V** — Barak Wright, 7-0-39.1; Jim Keyes, Sr., 4-3-30.0; Gene Hood, 4-3-28.3; Jim Long, 4-3-27.1; Lyle Bartels, 3-4-25.1; Sylvan Stratton, 2-4-27.1; Ernie Harries, 2-5-20.3; Lyle Mathis, 1-6-22.3.

**CLASS AA-VI** — Wally Wahweotten, 6-1-21.1; Lee Thornhill, 5-2-26.3; Jim Cosgrove, 5-2-19.1; Joe Navakovich, 4-3-20.3; Darold Lambert, 3-4-18.0; Bob Pryor, 3-4-12.9; Jim Keyes, Jr., 2-5-19.1; Bill Padquett, 0-7-8.9.

## CARTER VICTOR IN ANNUAL HECKER, ILL. TOURNAMENT

The annual Singles and Doubles tournament sponsored by the Hecker, Ill. Commercial Club at the Hecker Stadium in Hecker, Ill. (site of the 1981 Illinois State Tournament) was a huge success. There were 40 men and 8 ladies entered.

**CLASS A MEN'S SINGLES** — Sam Carter, 7-0; Mike Linch, 6-1; Charlie Webb, Jr., 5-2.

**CLASS B MEN'S SINGLES** — Edmund G. Eckart, 7-0; Mary Tributon, 6-1; Steve Denault, 5-2.

**CLASS C MEN'S SINGLES** — Howard Albert 7-0; Jeff Mudd 6-1; Jerry Berry, 5-2.

**CLASS D MEN'S SINGLES** — Ralph Eckart 6-1; Ken Hertel, 5-2.

**CLASS E MEN'S SINGLES** — Jim Grant, 7-0; Larry Freeland, 6-1; Ronald Braun, 5-2.

**WOMEN'S SINGLES** — Sue Conner, 6-1; Geri Eckart, 6-1; Carol Toenjes, 5-2.

**CLASS A MEN'S DOUBLES** — Bud Eisel and Vic Long, 8-0; Paul Becker and Harvey Kohlenberger, 6-2; Joe Douchang and Charlie Webb, Jr., 6-2.

**CLASS B MEN'S DOUBLES** — John Chilovich and Steve Denault, 7-0; Fredd Boehne and Russell Mueller, 5-2; Howard Albert and Joe Waterman, 5-2.

**CLASS C MEN'S DOUBLES** — Jay Davis and Charlie Webb, Sr., 5-2; Roy Heusohn and Herb Wolf, 5-2; Wayne Meyer and Russ Shelton, 5-2.

**CLASS D MEN'S DOUBLES** — Curt Angle and Joe Leroy, 7-0; Clarence Osick and Butch Sauer, 6-1; Ben Bailey and Ernie Hamilton, 5-2.

**CLASS E MEN'S DOUBLES** — Lloyd Arras and Jim Reeves, 7-0; Todd Papenberg and Jeff Toenjes, 6-1; Ken Diemert and Dave Speighinger, 5-2.

## ★ ★ ★ ★ ZADROGA, TOOLE, CHAPELLE, ADAMS IN

**ZADROGA****TOOLE**

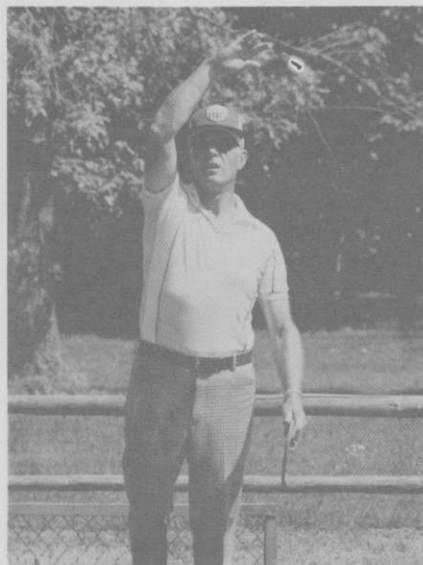
**Albert Zadroga** of Elizabeth, Pa., current Pennsylvania State champion, started pitching horseshoes in 1927. He won his first tournament at the age of 15. However, he gave up horseshoes for an outstanding career in basketball and as one of the top Duckpin bowlers in his district. He also was a star football player and in other sports until his age caught up with him. He returned to horseshoe competition in 1953 entering his first Penna. State tournament where he placed 8th. His next try was the Eastern National tournament winning only one game. This was what started it all again and with a strong determination, he went on to win the Eastern National title in 1967 and again in 1976 posting a record of 15-0-84.4.

Al's first World Tournament was at Muncie, Indiana in 1960 placing second in Class B. He was participated in 14 Class A World Tournaments. In 1976 he hit his all-time high percentage game with 46 ringers in 48 shoes for 95.8 percent. He was top qualifier in 1975 with 551 points and again in 1979 with 558 points. At the 1977 W.T. at Greenville, Ohio, he had games of 92%, 94%, and 90%. In the 178 W.T. at DesMoines, Iowa, he hit 38 ringers in 40 shoes for 95 percent. He tied for second place in this W.T.

He has been Pennsylvania State champion eight times and was inducted into the Pennsylvania Hall of Fame in 1978. In the 1976 Spring Fling held at New Castle, Pa. he posted an 89.0 percentage for the highest tournament percentage in Pennsylvania history with games of 86.4; 86.8; 87.0; 88.8; 87.0; 92.1; and 92.7.

Outside of his Pennsylvania achievements he has recorded wins at Greenville, Ohio Ringer Classic; Hill City Open, Lynchburg, Va.; Moundsville, W.Val; Mingo Junction, Ohio; Winston-Salem, N.C.; Elmont Open, Va.; Sutton, Mass; Shenandoah Apple Blossum Open, Va.; and the Raymond Frye Memorial Open at Winchester, Va. sponsored by Carl Frye in memory of his father, one of Virginia's greats. Al has won it twice in a row and will be trying for his third, thereby gaining permanent possession of the coveted traveling trophy. He has won the title 8 times in the last 10 years.

## INDUCTED INTO 1981 NHPA HALL OF FAME ★ ★ ★ ★

**CHAPELLE****ADAMS**

Al's working career since 1938 has been with Hillman Transportation Co. retiring in 1980 as Vice President of River Transportation in the movement of coal mostly via barge from the mines along the Monongahela, Allegheny and the Ohio Rivers to the steel mills, power plants, etc. in the Pittsburgh District.

His wife Emma claims to be the world champion bench sitter. Since 1932 she has observed all of his athletic activities, especially horseshoes.

They have one son, Albert Jr., a daughter-in-law Barbara and two granddaughters, Allison and Amanda, all residing in Allison Park, Pa.

\* \* \* \* \*

**Floyd Toole** of Little Rock, Arkansas has achieved many honors in his pitching career. He was the state champion of Arkansas from 1953 through 1957. During all these state meets he did not lose a game. He was the A.A.U. Champion in 1954 and in 1957 and was runner-up in 1955 and 1956.

He was voted the Outstanding Athlete of the state of Arkansas in 1954.

In World Tournament competition he finished in the top 10 eight times. In 1965 he won the Class B championship. He has been able to win from all champions since 1958 with the exception of Mark Seibold.

He was in the longest game in NHPA history until 1971, pitching 178 shoes and averaging 86 percent losing to Paul Focht of Ohio 50-48. In 1965 he pitched four straight games of over 90 percent.

\* \* \* \* \*

**Cletus Chapelle** of Portland, Oregon started pitching in 1925 and pitched in his first State Tournament in 1928 at the age of 16. He played for the next few years and competed against Ted Allen in the 1932 State Tournament. Ted won that event.

*(please turn page)*

## HALL OF FAME — (Continued)

Cletus was fairly inactive for the next few years while serving in the C.C.C., getting married, starting regular employment and starting a family. He returned to the game in the last 1930's and has remained active ever since.

Highlights of his playing career include 4 State Championships and participation in more tournaments than probably any other pitcher on the West Coast. He helped found the Northwest Tournament in Yakima, Wa. in 1946 and has never missed playing in it.

Cletus was a Portland Club and Oregon State Officer in 40's and helped get many tournaments started. He currently serves the State as a member of the Hall of Fame Committee and by finishing all the plaques used in our plaque system.

In the 50's, Cletus attended the World Tournament every year and served for several years as NHPA Vice President. In 1957, he served as President of the NHPA.

Cletus is one of the few people who can say that his entire family is in Horseshoes. His wife, Daisy, is the OHPA Statistician. His two children, Vicki and Barry, are well-known a well. Vicki is generally known as the first lady of Horseshoes and has been World's Women's Champion 10 different times. Barry is NHPA Regional Director of the Northwest, OHPA Secretary/Treasurer and a top Class A pitcher in area events.

\* \* \* \* \*

**Arthur E. Adams**, of Saskatoon, Saskatchewan, Canada was born in Chestnut, Hartfordshire, England February 5, 1894 and came to Canada with his parents in 1906. He was a successful masonry contractor for many years.

He started playing horseshoes in 1925 and won his first tournament in 1928. He won the City of Saskatoon championship from 1931 to 1944 inclusive. He was the Province of Saskatchewan singles champion from 1933 to 1944 inclusive. His last tournament win was in 1958. Total years as an active player was 33.

He formed the first indoor horseshoe club in Saskatoon and Western Canada in 1930 which allowed players to pitch all year round. This club, a 4 court layout, operated continuously from 1930 to 1935.

He supplied the materials and labor free of charge when the Saskatoon Horseshoe Club constructed 10 concrete permanent courts in the mid 1930's.

He was secretary of the Saskatoon Horseshoe Club, including the indoor winter program during the 1930's when the sport enjoyed a very healthy membership during the depression years.

He reported the Canadian news for Harry Woodfield, former editor of the NHPA from the Saskatchewan area for many years.

He was inducted as a charter member into the Saskatchewan Horseshoe Players Association Hall of Fame in 1976.

It can be said that he was a keep competitor and an expert in the art of pitching and a great supporter of the game. Economic conditions prevented him from competing in prestige tournaments such as World Tournaments and Canadian Championships.

His expertise in horseshoe pitching was demonstrated in such acts as: pitching 2 shoes at the stake with the second shoe landing on the stake ahead of the first one.

Placing a chair over the stake and having a person sitting on the chair with legs straddling the chair, he could pitch 4 shoes consecutively making a ringer on each front chair leg and 2 ringers on the stake.

Placing a normal 45 gallon oil drum 3 feet in front of the stake and touching the outside edge of the foul line, he could make ringers 75% of the time.

Standing in the center at one end of a 4 court layout (courts 10 feet apart) he could throw 4 shoes consecutively making a ringer on each of the 4 opposite states better than 50% of the time.

He could throw 2 ringers on the stake, with 2 other horseshoes placed on top of the stake and not knock them off better than 50% of the attempts.

## CRISS OF WASHINGTON WINS OREGON SANDBAGGERS OPEN SANDY BARTEL LADIES TITLIST; TOM GIBSON JUNIORS

The annual Sandbaggers Open was held on a beautiful week-end with 655 entries, 8 of them from Washington. One of these 8, Herb Criss from Bremerton, captured first place in Class A with the best percentage he has ever had in a tournament. Ben Wiedrich came in a close second with just .45 less percentage.

The women played a handicap tournament and since there was a drop-out, their 5th game was figured with their percentage on a 50 shoe game.

**CLASS A** — Herb Criss, Bremerton, Wa., 7-0-77.7; Ben Wiedrich, Oregon City, 6-1-77.3; Ridge Leggett, Roseburg, 5-2-71.1; Cletus Chapelle, Portland, 3-4-69.4; Art Sperber, Bremerton, Wa., 3-4-66.3; Jim Burke, Albany, 2-5-68.7; Barry Chapelle, Portland, 2-5-68.2; Bob West, Scappoose, 0-7-60.8.

**CLASS B** — Pete Zumaran, Portland, 6-2-54.3; Jim Alexander, Fidgefield, 4-3-56.0; Rich Rebman, Hermiston, 4-3-46.6; Bernard Martell, Portland, 3-3-55.6; Bob Sletten, Vancouver, Wa., 3-3-48.9; Kelly Laraway, Bremerton, Wa., 2-4-48.5; Chuck Ball, Portland, 1-5-47.5.

**CLASS C** — Oren McMillan, Eugene, 6-0-53.1; Tom Williams, Roseburg, 4-2-43.3; Ron Hegefeld, Albany, 4-2-47.4; Ken Lukens, Hermiston, 3-3-37.5; Ron Miller, Hubbard, 2-4-47.9; Bob Beesley, Culver, 2-4-44.1; Ken Leatherman, Portland, 0-6-39.1.

**CLASS D** — Joe James, Eugene, 7-1-49.7; Irv Farron, Portland, 6-2-39.8; Bill Hulshof, Portland, 5-2-39.0; Pete Edger, Dallas, 4-3-45.6; Vern Wanless, McMinnville, 4-3-37.0; Mel Sherbert, Battleground, 2-5-35.7; Ray Schiedler, Silverton, 1-6-32.1; Don Ferguson, Vancouver, 0-7-34.7.

**CLASS E** — R. E. Click, Warrenton, 7-1-44.8; Esthel Benner, Salem, 6-2-41.7; Bill Dolan, Gladstone, 5-2-42.9; Walt Bernhardt, Lebanon, 3-4-37.8; Gene Buzzini, Vancouver, 3-4-33.8; Vic Hyder, Madras, 2-5-38.4; Jack Stryker, Portland, 2-5-34.3; Willard Hufschmid, Portland, 1-6-33.5.

**CLASS F** — Lloyd Kilgore, Dexter, 6-0-35.7; Barney Root, Myrtle Creek, 5-1-36.0; Art Lund, Eugene, 3-3-29.2; Jim Gregory, Portland, 3-3-27.5; Ray Whittington, Salem, 2-4-26.5; Wilbur Haskins, Merrill, 1-5-31.7; George Hughes, Riddle, 1-5-26.0.

**CLASS G** — Gale Smith, Portland, 7-1-32.3; Dale Dufur, Lebanon, 5-3-26.7; Bill Frison, Portland, 5-3-29.6; Manuel Santos, Oregon City, 5-3-26.5; Dick Helm, West Linn, 4-4-29.8; Lee Centell, Salem, 4-4-27.2; Rick Bienapfl, Beaver Creek, 4-4-26.2; Roland Ferguson, Portland, 2-6-25.2; Lance Koch, Oregon City, 0-8-11.9.

**WOMEN** — Sandy Bartel, Oregon City, 4-0-57.4; Darlene Williams, Roseburg, 3-1-38.4; Irene Wiedrich, Oregon City, 1-3-35.7; Esther Ott, Oregon City, 1-3-33.8; Karen Miller, Hubbard, 1-3-18.0.

**JUNIORS** — Tommy Gibson, Oregon City, 5-0-32.0; Bobby Woodford, Portland, 4-1-18.4; Dick Furrer, Oregon City, 3-2-23.2; Mike Gibson, Oregon City, 1-4-12.8; Ricky Bienapfl, Beaver Creek, 1-4-6.0; Illiah Muir, Portland, 1-4-2.8.

## MINN. STATE PRESIDENT, GEORGE NICK, REFLECTS ON SOME OF THE HIGHLIGHTS OF THE 1981 WORLD TOURNEY

Now that the 1981 World Tournament is history, I would like to reflect on some of the highlights of the event.

If space permitted to list all the individuals who contributed to the success of the tournament, undoubtedly, I would overlook someone. Therefore, I want to say thank you to everyone who helped in any way.

Special recognition is due to the tournament committee, the MGSHPA officers and membership, organized league members, Friends of Horseshoe, Ellis Cobb for prompt coverage in the Digest, the NHPA staff and membership, and Henry and Dolores Preimesberger and their entire family for their dedication to the sport of horseshoe and that superb arena.

There were many world tournament firsts initiated this year. A few of these were:

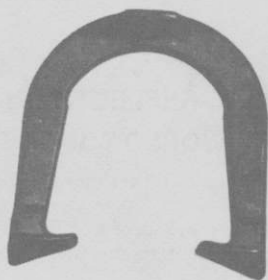
1. A six-man marathon of 144 hours, that preceded the tournament and broke the record of 130 hours in the Guinness Book of Records.

**MINN. STATE — (Continued)**

2. The event was held in an arena designed and constructed exclusively for the sport of horseshoe. In spite of unseasonable weather, the tournament schedule was uninterrupted.
3. Make-up of the championship classes was changed to 96 pitchers in Mens, 24 in Ladies, 16 in Girls, 32 in Boys, 24 in Intermediate, and 24 in Seniors.
4. Over 1200 prequalified pitchers competed in the tournament.
5. The "Tournament Update", a newsletter conceived and edited by Bob Wright, highlighting daily competition results, special features, and the progress of the tournament.
6. A nine-peg par 36 miniature horseshoe course, designed by Art Moran.
7. The longest ringer contest.
8. The multicolored quad-peg horseshoe game with the matching horseshoes supplied by Karl VanSant, of Cuyuga, Indiana.
9. Numerous activities available for the children, under the very capable leadership of Alice Moran. Now that the river has subsided, you should see the size of the fish caught during the state tournament.

In closing, I want to say "congratulations" to all who competed in the 1981 World Tournament, and especially to all the winners.

## **TED ALLEN HORSESHOES**



---

---

**A steady long back-log of orders  
for 4 - 5 years came to an end in  
August, 1979.**

**Allow a week for orders to be  
mailed out.**

---

---

**A Top Pro Favorite since 1938**

**1045 LINDEN AVENUE**

**BOULDER, COLORADO 80302**



### FINGER LAKES CLASSIC LEAGUE (N.Y.)

Lindys dominated the Classic League by winning both halves of the split season and dethroning last year's champions, the Danby Pirates Club, who won both halves last year.

Lindys Restaurant was the scene of the annual banquet, Sept. 19, 1981, when the team of Al Bickal, Bill Campbell, Ken Campbell, Lou Ferino, Danny Monroe and Wayne Taggart received their trophies and league champions patches. Wayne Taggart also won the high average patch with a 45.7%. High scratch game and high game over average was virtually a toss-up between Carl Seamon and Clyde Morse who both had games of 7 ringers out of 8 shoes for 87.5%. Clyde Morse had 55 over average. Sportsmanship was awarded to Fred Christopher who was also inducted into the local association's Hall of Fame last year. The most improved player was Glen Addicott, who raised his ringer percentage 15.3 during the year.

This being the first year that the league was in the NHPA and State Sanctioned League Program everyone else received their certificate of achievement and percentage patches. The Classic League is composed of 8 teams of 6 men per team, (3 sets of doubles play) 9 games per match with total points possible of 11 with home and home matches for 14 weeks plus 4 position rounds sprinkled in.

The league is part of the Fingerlakes Horseshoe Pitching Association who have nearly 200 people in organized competition on Tuesday nights during the short summer in upstate New York near Ithaca.

1st Half	2nd Half
Lindys.....81	Lindys.....80
Pirates.....68	Pirates.....63
Candor.....60	Candor.....62
Cecils.....54	Chris &.....
Chris &.....	Greens.....57
Greens.....51	Cecils.....56
Kenton.....42	Kenton.....37
Gin Mill.....24	Gin Mill.....33
Lindys B.....16	Lindys B.....8

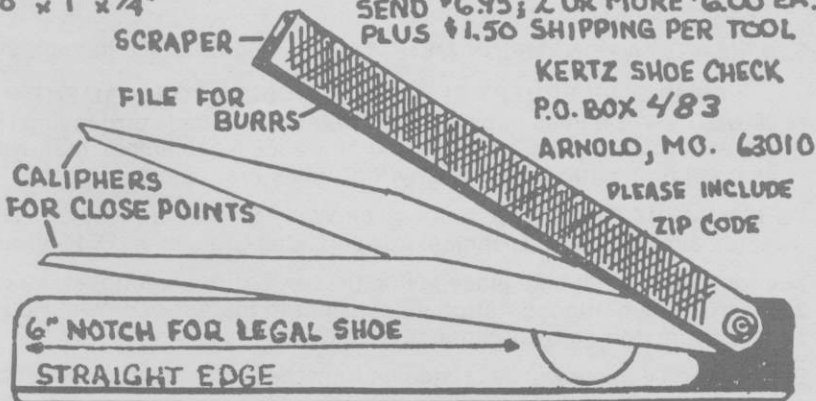
## KERTZ SHOE CHECK

PAT. PEND.

**FIVE TOOLS IN ONE  
PERFECT FOR ALL HORSESHOE PITCHERS  
JUST THE RIGHT SIZE FOR BACK POCKETS**

8" x 1" x 1/4"

SEND \$6.95; 2 OR MORE \$6.00 EA.  
PLUS \$1.50 SHIPPING PER TOOL



**KERTZ SHOE CHECK  
P.O. BOX 483  
ARNOLD, MO. 63010**

PLEASE INCLUDE  
ZIP CODE

6" NOTCH FOR LEGAL SHOE  
STRAIGHT EDGE

# THE GREATER HOUSTON HORSESHOE PITCHERS ASSOCIATION, INC.



Announces the 1st Annual

## HOUSTON Livestock Show and Rodeo

### INVITATIONAL HORSESHOE TOURNAMENT

Sponsored by the

ADOLPH *Coors* COMPANY

SATURDAY, FEBRUARY 20, <sup>Premium</sup> EXHIBITION TOURNAMENT

(Invitations extended based on ringer percentage in the  
1981 World or Texas State Tournament)

#### 2:00 P.M.: CHAMPIONSHIP MEN

Class of eight, including Walter Ray Williams, Jr. and seven other world class men.

1st prize.....	\$1,000
2nd prize.....	850
3rd prize.....	750
4th prize.....	650
5th prize.....	600
6th prize.....	525
7th prize.....	475
8th prize.....	400

\$5250

#### CHAMPIONSHIP WOMEN

Class of six, including five world class and the Texas women's champion.

1st prize.....	\$750
2nd prize.....	600
3rd prize.....	500
4th prize.....	400
5th prize.....	350
6th prize.....	150

\$2750

**Plus:** A Juniors Exhibition (Invitations extended to the top World Class and Texas boys and girls)

**5:30 PM—TEXAS CHAMPION MEN**—Class of eight: \$1,000 in cash prizes

#### SUNDAY, FEBRUARY 21, 1982 — DOUBLES TOURNAMENT

**12:00 NOON** — Doubles champions from forty counties surrounding Houston will compete for trophies and the \$500 scholarship that will be awarded to a youth in the county that takes first place.

**TOURNAMENT OFFICIALS:** Announcer: Wally Shipley; Judge: Ottie Reno; Director: Jim Woodson; Technical Advisors: Bob Graham and Ed McFarland

The tournament will take place inside the Astro-turfed central arena of the 22.5 acre air-conditioned Astrohalla, adjacent to the Astrodome in Houston, Texas. Estimated daily attendance: 50,000

Several live TV spots will be broadcast from the tournament and most of the play will be video taped.

**MANY OTHER SPECIAL ATTRACTIONS**

## DEADEYE HORSESHOES

"DEADEYE" Horseshoes finish in 1st & 2nd in Worlds Tourney. Walter Ray Williams finished 1st with 88.1% ringer average and Carl Steinfeldt finished 2nd with 83.5%. Both players used "DEADEYE" Clydesdale model 2 lb. 10 oz. horseshoes in the Worlds Tourney and in all the following tournaments:

### RECORD OF CARL STEINFELDT IN 1981

April	Florida State Tournament	1st
April	Dogwood Open - Statesville, NC	1st
June	Eastern Nationals	1st
July	Ringer Classic - Greenville, OH	1st
July	Imperial Invitational	2nd
Aug.	World Tournament	2nd
Sept.	Raymond Fry - Winchester, VA	1st

*Overall average 83.1% by Carl Steinfeldt  
(age 64 years young — not bad)*

### RECORD OF WALTER RAY WILLIAMS IN 1981

Jan.	Baldwin Park, CA	1st	82.56%	90%	high game
Feb.	Pomona, CA	1st	85.85	94.0	
Feb.	Mesa, AZ	1st	81.68	91.2	
Mar.	Clearwater, FL	2nd	90.53	94.0	(4 times)
Apr.	Calico, CA	1st	82.00	88.0	
May	Albuquerque, NM	1st	86.72	100.00	(24 shoes)
June	Hermiston, OR	1st	89.48	97.1	(66 of 68)
July	Pleasanton, CA	1st	90.27	100.0	(50 shoes)
July	Ponca City, OK	1st	81.00	90.0	
Aug.	Genola, MN	1st	87.09	94.0	(prelim.)
Aug.	Genola, MN	1st	88.08	94.6	
Aug.	Dubuque, IA	1st	89.64	96.0	
Sept.	Stockton, CA	2nd	81.92	90.9	
Sept.	Pomona, CA	1st	86.18	91.1	(3 times)

*Overall average 86.5% by Walter Ray Williams (age 22)  
Coming out soon will be a new drop forged "DEADEYE" Horseshoe.*

## NHPA SANCTIONED LEAGUE NATIONAL AWARDS — CORRECTION

By RUSSELL GADOURY, NHPA LEAGUE COORDINATOR

I goofed! In last June's report I announced the winner and top ten pitchers in the awards category, "High Game Over Average." Shown in fifth place among the men was Michael Magouryrk from Texas. What I overlooked was that this young man is a 14-year old pitcher. His high game of 46% over a season average of 16.5%, or +29.5% was actually tops among all juniors in this awards category.

Therefore, the top junior is MICHAEL MAGOURYRK. He has already received a placque commemorating this fact. However, rather than try to sort out the awards that were given earlier, with attendant disappointments, I have decided to declare Mike Magouryrk and Mike Armitage of Minnesota as co-winners of this award for 1980.

**MORE LEAGUE NEWS** — As I write, most of the 1981 league statistics have been received and I will soon be compiling similar awards for 1981. At present I have not received any letters from league directors offering one of their members for consideration of the NHPA SPORTSMANSHIP AWARD for 1981. Without those letters I cannot make a selection. So, league directors, please take pen in hand, give me your candidate, and tell me why he or she is worthy of this award.

With less than half a dozen leagues left to report their rosters, our present total of sanctioned league participants in 1981 is 3,279. Of these, there are 2744 men, 419 women, and 116 juniors. Pine Grove Junior League in New York had 32 youngsters participating. Tri-County HPA in central Minnesota had 50 women.

This year I have sanctioned 74 leagues, or clubs with multiple leagues, up from 55 in 1980. New York and Wisconsin have shown the greatest increases in number of clubs. Ten of the 13 clubs sanctioned in 1978, the first year, are still active in the sanctioned league program.

**A PLEA FOR COOPERATION** — With the continued increase in number of clubs, my work load keeps getting bigger. I am at the point where I can no longer take the time to sort out the odd ways some of the league directors send their reports to me. Please, directors, read the red book "Sanctioned League Guide," and prepare your reports in the manner described therein. If you are a new league director taking over for someone else, discuss the reporting procedure with him or her and review prior year's correspondence. It will make both our jobs easier. Thank you.

### 8TH WIN FOR DON TITCOMB—BILL FRASER OPEN N. CALIF.

Golden Gate park in San Francisco was the site, June 28th the date, and Don Titcomb was the master as the crafty lefty from the San Jose Golden Eagle club registered 7 straight wins to rack up his 8th win of the season. He also pitched the high game of 88%! George Greeott, 71 years young, won a 4-way playoff in Group II; Louie Montoya topped Frank Cravalho in a playoff in Group III; Elton Cowles took Group IV; Cruz Sagasta, Group V, and Wally Wahweotten won another playoff to take Group VI.

**CLASS AA-I** — George Greeott, 7-2-49.1; Al Guiriato, 6-3-47.1; Holland Payne, 5-3-52.5; Don Burgess, 5-3-46.5; Vern Gosney, 4-3-51.7; Sam Caputo, 2-5-42.6; Chuck Farrell, 1-6-44.6; Don Forbes, 1-6-36.0.

**CLASS AA-III** — Lou Montoya 7-1-38.0; Frank Cravalho, 6-2-39.8; Harry Martinelli, 4-3-33.4; Lou Gayet, 3-4-37.7; Wayne Oster, 3-4-34.0; Oscar Skanderup, 2-5-33.1; Mel Long, Sr., 2-5-32.6; Don Gann, 2-5-30.0.

**CLASS AA-IV** — Elton Cowles, 7-0-37.4; Mel Falcon, 5-2-30.6; Lyle Bartels, 4-3-35.4; Gene Hood, 3-4-30.3; Earl Anderson, 3-4-27.7; Marion Hawley, 2-5-32.3; Stewart Snyder, 2-5-30.3; Bob Schnur, 2-5-26.6.

**CLASS AA-V** — Cruz Sagasta, 7-1-33.0; Don Koehler, 6-2-28.0; Art Rector, 5-2-23.1; Jim Long, 4-3-29.7; Gordon Hammerud, 3-4-25.1; Dave Schreiber, 3-4-22.6; Joe Navakovich, 1-6-15.7.

**CLASS AA-VI** — Wally Wahweotten, 8-1-26.3; Chuck Rogers, 6-2-29.8; Ernie Kim, 6-2-19.3; Richard Leister, 4-3-20.3; Chuck Robinette, 3-4-17.1; Bill Carlisle, 2-5-12.9; Jim Kincaid, 1-6-10.6; Joe O'Brien, 0-7-6.3.

## FINGER LAKES CANDOR MIXED LEAGUE (N.Y.)

Winners of the Candor Mixed Doubles League were Lana and Clyde Morse, which consisted of 2/3 new pitchers being introduced to the fine art of horseshoe pitching and the remaining 1/3 being exposed to Hcp. play and count-all play for the first time in this small village in upstate New York.

The Candor American Legion hosted the 12 team league with 6 sets of san pits for this initial 12 week season. Each team consisted of one man and one woman while each pitched 3 games of 20 shoes per game, with 100% Hcp. and "Count-All" points.

It wasn't until Carl Steinfeldt put on a demonstration at the Danby Pirates Club, that some of the ladies would believe their mates that pitching from 30 feet was to their advantage.

The Candor American Legion also hosted the League Banquet Sept. 26, when all the new founded friends gathered to dine, dance and receive their percentage patches and certificates of achievements from the NHPA and State Sanctioned League Awards.

In addition to Clyde and Lana Morse receiving League Champions Awards, Bob McBride captured High Pct. Game (75%), High Game Scratch (49). High 3 Games w/HCP (214), High Game w/HCP (63 over) and tied for 1st place in High 3 Games with Frank Barry (103). Frank Berry also captured High Average (38.75%) and consecutive ringers (8). Creighton Diles won the beautiful belt buckle for the most improved player. Ken Strickland was awarded the Sportsmanship Patch.

On the women's side of the ledger, Josie Hurst captured the most improved player (female) award and added High Average (9.54%) and High Pct. Game (30). Mildred Beebe won High 3 Games w/HCP (204), High 3 Games Scratch (54), High Game scratch (22) and tied Barb Barry for High Game w/HCP (72). Barb Barry won High Game w/HCP over average with 72 pts. (64 over). Plans are already underway to expand next year.

The final league standings are as follows:

69ers .....	45	Golden Retrievers.....	30.5
No Names.....	40	Flip & Flop.....	28.5
The Odd Couple.....	35.5	Don't & No.....	25.5
The Pits.....	34	Hit & Miss.....	24
Goodie Two Shoes.....	34	Frick & Frack.....	19.5
Ringer & Dinger.....	34	Pull & Squeeze.....	9.5

## CARL STEINFELDT VICTOR IN CARL FRYE MEMORIAL OPEN

### F. CARNAHAN LADIES CHAMP; MARK DYSON SWEEPS BOYS

Carl Steinfeldt, former World Champion, now a resident of Florida topped Class A with a record of 13-2-81.2 to win the annual Carl Frye Memorial Open held at Winchester, Virginia. In the Ladies Class A, Frances Carnahan of Pennsylvania won the playoff match over Juanita Phelps of Virginia posting a record 6-1-83.8 to win the Ladies Championship. Mark Dyson, World Champion Boys' titleholder swept through the Junior class with 6 wins and no losses and having a 78.8 ringer percentage for the event. Sponsors for several of the classes were Dulf's Rebel Restaurant; Charles Zuckerman & Son; Winchester Coca-Cola; Elms Motel; Rent-A-Lift; Massey Wholesale and H. C. Christianson. Players from eleven states took part.

**MEN'S CLASS "A" — THE CARL FRYE CLASS** — Carl Steinfeldt, Florida, 13-2-81.2; Wilbur Kable, Ohio, 12-3-77.4; Al Zadroga, Pennsylvania, 12-3-75.6; Alvin Perry, Virginia, 11-4-75.0; Art Tyson, New York, 11-4-74.2; Clyde Martz, Pennsylvania, 11-4-74.0; Ralph Maddox, West Virginia, 10-5-77.3; Cecil Monday, Virginia, 9-6-76.1; Dan Beshore, Pennsylvania, 6-9-71.1; Raymond Rugg, Pennsylvania, 4-11-68.9; Joe Schultz, New York, 4-11-67.5; Allen Perry, Virginia, 4-11-65.8; "Casey" Danner, Pennsylvania, 4-11-65.0; Dave Rose, Ohio, 4-11-65.3; Max Rosenberry, Ohio, 3-12-63.6; Curt Over, Pennsylvania, 2-13-68.0.

**MEN'S CLASS B** — Dick Carnahan, Pennsylvania, 7-0-66.7; Bill McIntyre, New Jersey, 6-1-69.3; Ansil Copeland, Ohio, 5-2-70.3; Earl Linkous, Virginia, 3-4-64.4; Charles Price, Virginia, 3-4-60.6; Dale Carson, Maryland, 3-4-58.7; Kenny Smith, Ohio, 1-6-56.5; Paul Shultz, New York, 1-6-49.7.

**MEN'S CLASS C** — Dean McCurdy, Pennsylvania, 7-0-62.2; Dutch Swartz, Virginia, 6-1-62.8; Fred M. Lutter, Pennsylvania, 4-3-60.2; Jack Walker, Virginia, 3-4-57.3; Frank Gionpa, Pennsylvania, 3-4-54.0; Dick Sites, Maryland, 3-4-48.2; Glen Sebring, Pennsylvania, 1-6-47.8; Chuck Semans, Pennsylvania, 1-6-46.7.

## CARL FRYE MEMORIAL OPEN — (Continued)

**MEN'S CLASS D** — Floyd Hix, Jr., Virginia, 6-1-58.4; Ralph Hinkle, West Virginia, 6-1-54.9; Joe Cochran, West Virginia, 4-3-55.6; Charles Bunner, West Virginia, 3-4-52.7; Gary Austin, Virginia, 3-4-51.9; Bill Sites, Maryland, 2-5-50.0; Les Rose, Ohio, 2-5-43.9; C. F. Maier, Pennsylvania, 2-5-39.9.

**MEN'S CLASS E** — Ray Bechtel, Pennsylvania, 6-1-53.9; Ray Deal, Virginia, 5-2-56.0; Cecil Phelps, Virginia, 4-3-52.0; Chadwick Mays, Ohio, 4-3-47.4; Joe Roebuck, Pennsylvania, 3-4-47.2; Chuck Roball, Pennsylvania, 3-4-46.6; John Antesberger, Pennsylvania, 2-5-40.6; Fred Lutter, Pennsylvania, 1-6-43.9.

**MEN'S CLASS F** — David Meckevec, Pennsylvania, 5-0-53.1; Wilbert Rugg, Pennsylvania, 3-2-51.2; Bill Bruan, Pennsylvania, 3-2-47.9; Roger Dean, Virginia, 2-3-46.2; Jack Melton, Virginia, 2-3-41.3; Dennis Unger, West Virginia, 0-5-39.4.

**MEN'S CLASS G** — James Clippinger, Pennsylvania, 5-0-46.3; Ken Stormer, Maryland, 4-1-43.0; Cliff Clites, Pennsylvania, 2-3-44.0; Glen Eppley, Pennsylvania, 2-3-39.3; Ed Rosser, West Virginia, 1-4-40.5; George Wertz, Pennsylvania, 1-4-29.1.

**MEN'S CLASS H** — Richard Wiseman, West Virginia, 4-1-46.6; Eddie Orndorff, Virginia, 3-2-41.7; Howard Mann, West Virginia, 3-2-39.2; Flake Dyson, North Carolina, 2-3-41.6; Clark Walker, Pennsylvania, 2-3-41.4; Harold Tuttle, Pennsylvania, 1-4-29.3.

**MEN'S CLASS I** — Warren Early, Pennsylvania, 4-1-44.0; Jackie Blades, Maryland, 3-2-41.2; James Trail, Maryland, 3-2-33.5; Glenn Williams, Pennsylvania, 2-3-33.0; John Baugher, Pennsylvania, 2-3-31.4; William Trail, Pennsylvania, 1-4-32.5.

**MEN'S CLASS J** — Harold Maze, West Virginia, 4-1-35.5; Charles Walker, Virginia, 3-2-41.7; Carl Puffinburger, Maryland, 3-2-40.6; Mac Swaim, West Virginia, 3-2-38.5; Don Swaim, West Virginia, 2-3-41.0; Jimmy Barnette, Virginia, 0-5-24.8.

**MEN'S CLASS K** — Willard Sammons, Delaware, 5-0-48.6; Donald Miller, West Virginia, 3-2-37.3; Richard Ruff, Pennsylvania, 2-3-38.48; Michael Potter, West Virginia, 2-3-38.43; Donald Fleshman, Sr., Maryland, 2-3-30.8; Eugene Brooks, Virginia, 1-4-30.7.

**MEN'S CLASS L** — Kennard Holden, Maryland, 5-0-49.3; Russell Wade, West Virginia, 4-1-37.2; Mark West, Virginia, 3-2-30.9; Herman Torrence, Virginia, 2-3-28.8; Charles Worsham, Virginia, 1-4-32.6; Joe Orsino, Pennsylvania, 0-5-29.9.

**MEN'S CLASS M** — D. Flehsman, Jr., Maryland, 5-0-42.0; W. I. Meador, Ohio, 3-2-38.6; Jim Danner, Pennsylvania, 3-2-38.4; John Patrick, Virginia, 3-2-37.2; Chuck West, Virginia, 1-4-28.8; Raymond Triplett, Pennsylvania, Forfeit.

**MEN'S CLASS N** — Charles Cooper, West Virginia, 5-0-35.0; Junior Weigler, West Virginia, 4-1-36.9; Preston Rose, West Virginia, 3-2-37.5; Darrel Caldwell, Maryland, 2-3-27.8; Howard Walker, Virginia, 1-4-25.0; Donald Wagner, Pennsylvania, W.D.

**MEN'S CLASS O** — Richard Besece, Maryland, 4-1-35.6; George Layton, Maryland, 4-1-37.0; Louis Walls, Maryland, 3-2-26.7; Alex Burns, Pennsylvania, 3-2-24.8; Ken Green, Maryland, 1-4-21.6; Roy Decker, West Virginia, 0-5-13.1.

**MEN'S CLASS P** — Hal Ronning, Virginia, 4-1-25.3; Walter Foster, Jr., Virginia, 3-2-27.2; Lynn Mellott, Maryland, 3-2-26.6; Louis Spence, Virginia, 3-2-25.5; Rod Melton, Pennsylvania, 2-3-21.7; Calvin Bittner, Pennsylvania, 0-5-20.2.

**MEN'S CLASS Q** — Frank Shephard, Virginia, 3-0-31.4; G. Datson, Maryland, 2-1-25.7; Paul Chism, Maryland, 1-2-27.2; Jesse Grim, Virginia, 0-3-17.2; Richard Youngblood, West Virginia, Forfeit.

**MEN'S CLASS R** — Dwayne Smith, Maryland, 3-0-10.0; Dave Twigg, Virginia, 2-1-13.3; Courtney Lowe, Virginia, 1-2-9.9; Allen Tressler, Pennsylvania, 0-3-10.1.

**JUNIOR BOY'S CLASS** — Mary Dyson, North Carolina, 6-0-78.8; Timmy Barnette, Virginia, 5-1-55.1; Wayne Phelps, Virginia, 4-2-55.7; Jeromy Lambert, Virginia, 3-3-48.8; Phil Fleshman, Maryland, 2-4-32.2; Steve Fleshman, Maryland, 1-5-26.0; C. Curtis, Maryland, 0-6-19.0.

**LADIES CLASS A** — Frances Carnahan, Pennsylvania, 6-1-83.8; Juanita Phelps, Virginia, 6-1-68.5; Renee Hix, Virginia, 5-2-66.4; Cindy Dean, Virginia, 5-2-55.0; Hazel Fleshman, Maryland, 3-4-41.0; Virginia Thompson, West Virginia, 2-5-38.9; Charlotte Onion, Pennsylvania, 1-6-39.0; Kay Maze, West Virginia, 0-7-27.0.

**LADIES CLASS B** — Kay Bittner, Pennsylvania, 6-1-37.7; Beverly Grimes, Virginia, 6-1-23.2; Sandy Tressler, Pennsylvania, 5-2-23.8; Kimberly Fleshman, Maryland, 4-3-14.2; Cindy Merriner, Virginia, 2-5-14.2; Amy Tressler, Pennsylvania, 2-5-12.5; Grace Rugg, Pennsylvania, 2-5-9.6; B. Miller, Maryland, 1-6-6.5.

# DEADEYE HORSESHOES

The Shoes of a Champion



Walter Ray Williams, Jr.

1978 World Champion 84.2% Average

1980 World Champion, 85.7% Average

1980 California State Champion 87.8 Average

**PITCHED & ENDORSED  
BY**

*Walter Ray Williams*

**TEMPERED DEAD SOFT—**

**NHPA APPROVED**

**\$23<sup>00</sup> Per Pair**

**TWO YEAR  
GUARANTEE AGAINST  
BREAKAGE**

**VALID THROUGH 1981**

*Write W. Courtwright  
or*

*Walter Ray Williams  
for*

**SPECIAL CLUB PRICES**

"DEADEYE" Clydesdale model available in 2# 10 oz. and 2# 9 oz.

"DEADEYE" Regular model available in 2# 8 oz. down to 2#3 oz. in 1 oz. increments.

"DEADEYE" N.T. Model (No point in back) available in 2# 9 oz.; 2# 8 oz., and 2# 7 oz.

*Please specify weight desires when ordering*

**PROMPT SHIPMENT FROM:**

Walter Ray Williams, Jr.  
6140 Grant Street  
Chino, California 91710

W.A. Courtwright  
2250 North Lark Drive  
Fenton, Missouri 63026  
Phone: 314-376-5222

Carl Steinfeldt  
44 Ridgecrest Road  
Rochester, NY 14626  
(Summer Address)

Carl Steinfeldt  
418 Shady Lane Mobile Park  
15400 Roosevelt Blvd.  
Clearwater, Florida 33520  
(Winter Address)

**Effective November 1, 1980 — ADD ON FOR POSTAGE**

**1-500 Miles: Add \$1.00 per pair**

**500-1000 Miles: Add \$1.50 per pair**

**1000-2000 Miles: Add \$1.75 per pair**

**2000 Miles or Over: Add \$2.00 per pair**

## CHARLIE AULT 1981 WESTERN NEBRASKA OPEN CHAMPION

The 8th annual Western Nebraska Open tournament was held at Frank Park, in Scottsbluff, Nebr. Charlie Ault won the men's Championship, Beverly Laurin won the women's Championship in a play off win over Alice Abrams.

**CHAMPION CLASS** — Charlie Ault, Co. 10-1-57.6; D. Weatherbee, Co. 8-3-56.6; P. Anderson, Nebr. 8-3-52.9; B. Turecheck, Nebr. 7-4-55.7; D. Hanshew, Neb. 7-4-48.0; J. Tulk, Col. 6-5-55.2; M. Bakken, Nebr. 6-5-47.2; R. Weatherbee, Co. 5-6-49.1; G. Schmidt, Nebr. 4-7-46.2; V. German, Wyo. 3-8-48.7; H. Lenz, Wyo. 3-8-47.4; D. Harrison, Wyo. 3-8-43.3.

**CLASS A** — G. Stewart, Col. 11-0-52.0; B. Schliske, Wyo. 8-3-45.3; G. Bale, Nebr. 8-3-42.4; R. Grooms, Nebr. 7-4-38.7; G. Abrams, Co. 6-5-41.5; K. Peck, Nebr. 6-5-38.1; H. Bauer, Nebr. 6-5-37.6; H. Guettler, Nebr. 6-5-36.4; D. Whitman, Wyo. 4-7-38.6; D. Tarket, Co. 3-8-34.3; H. Bindshadler, Wyo. 3-8-31.5.

**CLASS B** — J. Fiala, Nebr. 8-1-37.7; M. Brauer, Nebr. 7-2-45.3; D. Lauren, Wyo. 7-2-38.5; D. Graass, Nebr. 5-4-35.8; V. King, Nebr. 4-5-38.6; G. Rickard, Wyo. 4-5-29.6; M. Calve, Co. 3-6-36.8; J. Anderson, Nebr. 3-6-34.2; B. Champion, Co. 3-6-30.2; G. Pyle, Co. 2-7-34.4.

**CLASS C** — B. Johns, Nebr. 8-2-33.8; D. Pineda, Co. 8-2-36.5; D. King, Nebr. 7-3-33.0; D. Evens, Co. 6-4-33.1; C. Dobberstine, Nebr. 6-4-29.2; R. Jessen, Nebr. 5-5-32.7; B. Rupp, Nebr. 4-6-33.5; D. Gunderson, Wyo. 3-7-32.6; F. Rein, Nebr. 3-27.2; J. Andreas, Nebr. 3-7-25.6; W. Rogers, Nebr. 1-9-27.3.

**CLASS D** — T. Westphalean, Nebr. 10-1-23.3; D. Roberts, Nebr. 9-2-26.7; J. Hilzer, Nebr. 9-2-26.4; H. Zalesky, Nebr. 7-4-24.5; S. Ruhl, Nebr. 7-4-22.1; D. Parmenter, Co. 6-5-21.9; F. Lohry, Co. 5-6-22.6; R. Hanshew, Nebr. 4-7-20.5; W. Lewellen, Nebr. 3-8-22.4; A. Rawley, Nebr. 3-8-20.2; C. Pyle, Co. 3-8-18.8; J. Darnall, Nebr. 1-10-13.9.

**CLASS E** — L. Colpitts, Co. 8-1-25.5; J. Maser, Nebr. 8-1-25.9; R. Bossen, Co. 7-2-25.0; G. Walker, Nebr. 5-4-15.2; R. Wills, Nebr. 5-4-14.8; S. Lease, Nebr. 4-5-16.1; R. Hansen, Co. 4-5-13.2; J. Wyatt, Nebr. 3-6-15.8; D. Freeburg, Wyo. 2-7-12.9; K. Soule, Nebr. 1-8-9.7.

**CLASS F** — M. Adams, Nebr. 5-1-14.7; G. Kaps, Nebr. 4-2-10.6; E. Bixler, Nebr. 2-4-9.9; D. Kirkpatrick, 0-6-4.6.

**WOMEN CHAMPIONSHIP** — B. Laurin, Wyo. 5-1-45.1; A. Abrams, Co. 5-1-43.1; M. Tarket, Co. 2-4-39.2; B. Lohry, Co. 0-6-35.3;

**WOMEN CLASS A** — S. Grooms, Nebr. 5-1-30.9; L. Westphalen, Nebr. 4-2-13.4; V. Stewart, Co. 3-3-19.9; J. Hanshew, Nebr. 0-6-9.8.

**JUNIOR CLASS** — D. Laurin, Wyo. 9-0-19.1; P. Grooms, Nebr. 8-1-26.1; T. Grooms, Nebr. 7-2-14.4; J. Maser, Nebr. 6-3-15.4; W. Roberts, Nebr. 5-4-10.5; R. Rein, Nebr. 4-5-12.3; J. Maser Jr., Nebr. 2-7-10.5; S. St. Onge, Nebr. 2-7-5.0; J. Hanshew, Nebr. 1-8-2.4.

## SOUTHERN CALIFORNIA ASSOCIATION

**D HANDICAP** — Ron Kennel, Riverside, 8-0-42.0; Jack Schoonover, Orange, 7-2-43.5; Kee Blackrock, Maywood, 6-2-34.6; Chuck Yoshida, Carson, 6-1-35.9; Ernest Durr La Puente, 6-1-45.6; Jim Eozzo, Los Angeles, 5-2-47.6; Ken Vickery, Riverside, 5-2-36.8; Ward Harman, Palos Verdes, 4-3-31.5; Jim Dow, Glendale, 4-3-34.8; Fred Craven, Bellflower, 4-3-28.1; Loris Hauck, Simi Valley, 4-3-35.6; Chuck Hansen, Torrance, 4-3-24.5; Hank Romines, Long Beach, 4-3-22.2; Al Nichols, Carson, 3-4-35.1; Boxce Miller, San Clemente, 3-4-23.6; Ron St. Thomas, Norwalk, 2-5-35.8; George Farrell, Corona Del Mar, 2-5-24.7; Lee Forest, Sherman Oaks, 2-5-34.4; Jim Hudson, Burbank, 2-5-33.2; Leonard Lifton, Torrance, 2-5-30.5; Hans Peterson, Pico Rivera, 2-5-35.1; Doyle Brawley, Riverside, 1-6-31.0.

**WOMEN'S HANDICAP** — Mary Van Sant, Sun City, 4-0-56.6; Jo Vickery, Riverside, 3-1-57.7; Barbara Dow, Glendale, 2-2-40.2; Kay Brawley, Riverside, 1-3-14.5; Betty Mitchell, Sun City, 0-4-14.0.

**SIMMONS 32% & UNDER HCP** — Kee Blackrock, Maywood, 8-1-33.8; Jim Vining Anaheim, 7-2-31.9; Gil Salazar, Pasadena, 6-3-30.8; Fred Craven, Bellflower, 6-3-28.8; Bill Neal, Anaheim, 6-3-26.4; Boxce Miller, San Clemente, 4-5-23.4; Chuck Hansen, Harbur City, 3-6-20.4; John Smeets, Dana Point, 2-7-18.6; Paul Cleveland, Anaheim, 2-7-17.1; Ken Ratley, San Bernardino, 1-8-18.4.

**WALTER KROWEL DOUBLES** — Arnie Mortenson, Glenn Solomon, 6-1; Barbara Dow, Harold Baughman, 5-2; Loris Hauck, Harold Redding, 4-3; Ray Donney, Jim Dow, 4-3; Bill Robb, Kee Blackrock, 3-4; Jim Eozzo, Chuck Hansen, 3-4; Jim Weeks, Gene Winkler, 3-4; Leonard Lifton, Jim Hudson; 0-7.

**EMILEY WEEKS B HANDICAP** — Bill Robb, Burbank, 8-2-52.0; Robert Hudson, La Jolla, 7-3-56.5; Charles Kerr, San Diego, 5-5-44.0; Jim Eozzo, Los Angeles, 5-5-45.5; Larry Ford, San Diego, 5-5-35.5; Richard Reinert, Lemon Grove, 0-10-17.5.



## SOUTHERN CALIFORNIA ASSOCIATION

**EMILY WEEKS B HANDICAP** — Joe Cryus, El Cajon, 8-0-30.0; Chuck Yoshida, Carson, 7-1-39.8; Paul Bella, Spring Valley, 7-1-40.0; Julian Numan, El Cajon, 5-3-25.3; John Tavares, San Diego, 5-2-29.4; Bill Hubbs, San Ysidro, 5-2-37.3; Kee Blackrock, Maywood, 5-2-29.4; Joe Holder, Calimesa, 3-4-27.4; George Farrell, Corona Del Mar, 3-4-28.8; Erwin Klessig, Lynwood, 3-4-15.9; Al White, San Diego, 2-5-26.3; Jack Butler, San Diego, 2-5-22.3; Frank Vega, San Diego, 2-5-25.5; Boyce Miller, San Clemente, 1-6-19.2; Ralph Alvine, Chula Vista, 0-7-13.7.

**OSCAR PEARCY DOUBLES** — Mike Moyer - Paul Bellah, 8-3; Stan Dobson - Erwin Klessig, 8-3; Roger Zeller - Al White, 8-3; John Walker - Ralph Alvine, 7-4; Jim Eozzo - George Farrell, 7-4; Arnie Grundstrum - Harold Redding, 7-4; Cathy Ringo - Julian Numan, 6-5; Harry Morse - Jack Butler, 5-6; John Walsh - Frank Vega, 4-7; Jim Weeks - Chuck Abblett, 2-9; George Whitmore - Richard Reinert, 2-9.

**WALLY SHIPLEY CHAMPIONSHIP DOUBLES — CLASS A** — Jerry Schneider - Wally Shipley, 9-1; Roger Zeller - Charles Kerr, 8-2; Stan Hilton - Bill Robb, 6-4; Newell Flann - Kee Black Rock, 5-8; Jo Vickery - Ken Vickery, 2-8..

**CLASS B — JOE CRYNE — PAUL BELLAR** — Loris Hauck - Bolsinger, 9-4; Arnie Mortenson - Erwin Klessig, 9-4; Chuck Yoshida - Leonard Lifton, 8-5; Bill Hubbs - Lee Hubbs, 8-5; Barbara Dow - Ron Kennel, 7-6; Jim Weeks - Jim Eozzo, 7-6; Dan Eppele - Chuck Hansen, 6-7; George Whitmore - Gerry Kloepter, 6-7; Stan Dobson - Larry Ford, 6-7; Harold Slagg - George Farrell, 6-7; Fred Craven - Chuck Abblett, 4-9; Jack Schoonover - Jim Dow, 3-10.

## RON WEISS WINS MT. OLIVER LEAGUE CHAMPIONSHIP

The Mt. Oliver Mustangs Horseshoe Club of Pittsburgh, Pa. closed its sanctioned league season with Ron Weiss topping the league as the 1981 champions. He set a new league record of 62 wins and 13 losses and 82%. This was the second time in the last three years that Weiss has won the title. Ralph Woods was close behind with 59 wins and 16 losses and 78.6. He was the defending champion. Ralph joined Bob Grill in the 500 Club made up of those who have won 500 games in a lifetime.

Other winners were Class B, Jim Werthman, 46-29-61.3; Ezed Class C with 37-38-49.3. He defeated Nick Pasqualini in the playoff game. Class D went to Skip Jonas with 30-45-40.0 who won his first trophy. The Sportsmanship award went to Bob Schneider. Bob Bisbey was the Most Improved Pitcher with 22 wins. The club was most proud of Joe Stanton who won the class K Championship in the 1981 Pennsylvania State tournament.

## ANNUAL NORTHWEST OPEN CROWN WON BY WIEDRICH OF ORE. KELLY KEISTER OF WASHINGTON LADIES CHAMP; PETER CLARK EASY WINNER TO WIN JUNIOR CLASS CROWN

**CLASS A** — Ben Wiedrich, Oregon City, 9-1-71.4; Herb Criss, Bremerton, 8-2-75.8; Henry Knauff, Spokane, 8-2-75.5; John Monasmith, Yakima, 6-4-68.7; Barry Chapelle, Portland, OR, 5-5-68.9; Ed Fishel, Neilton, 5-5-65.3; Joe Krug, Yakima, 4-6-68.0; Cletus Chapelle, Portland, OR, 4-6-59.4; Art Sperber, Bremerton, 2-8-62.1; Gerry Staley, Vancouver, 2-8-56.8; George Sala, Spokane, 2-8-50.7; Ray Brumfield, Lynwood, Forfeit.

**CLASS B** — Vern Miller, Yakima, 9-0-66.4; Thor Gadwa, Montesano, 7-2-59.9; Dean Curry, Lewiston, ID, 6-3-58.6; Willis Terry, Portland, OR, 5-4-54.8; Kelly Laraway, Bremertown, 5-4-54.7; Dayton Martindale, Royal City, 4-5-52.3; Pete Rebman, Alma, NB, 3-6-50.7; Bob Clark, Port Orchard, 3-6-49.2; Brad Pederson, Seattle, 2-7-49.8; Bart Barber, Anacortes, 1-8-46.8.

**CLASS C** — Chuck Ball, Portland, OR, 7-1-56.3; Mel Page, Walla Walla, 6-2-52.5; Darrell Buell, Eugene, OR, 5-2-51.8; Bob Sletten, Vancouver, 4-3-49.3; Don McDugle, Anacortes, 3-4-46.3; Oliver Hartzell, Bothell, 3-4-43.3; Rick Rebman, Hermiston, OR, 1-6-39.4; Jack Salter, Kelso, 0-7-44.4.

**CLASS D** — Orlean Clinton, Seattle, 6-1-54.3; Ken Carvo, Yakima, 5-2-46.8; Dan Woodman, 5-2-42.4; Verl Webb, Olympia, 4-3-46.1; Skip Schilperoort, Sunnyside, 3-4-45.1; Chuck O'Brien, 3-4-41.4; Frank Woods, Tacoma, 2-5-43.1; Ralph Warthen, Hoquiam, 0-7-28.7.

**CLASS E** — Casey McKay, Moses Lake, 6-1-45.1; Bob Beesley, Culver, OR, 5-2-47.7; Jack Bush, Marysville, 4-3-41.3; Don Jones, Olympia, 4-3-38.6; Ron Ferguson, Vancouver, 3-4-39.9; Ken Lukens, Hermiston, OR, 2-5-41.9; John Reedy, Edmonds, 2-5-40.9; Bob Hughes, Burley, 2-5-39.6.

**CLASS F** — Bill Coppernoll, Seattle, 6-2-52.4; Jim Malvern, Marysville, 6-3-45.0; Melvin Shuss, Yacolt, 5-3-48.3; Gerald Gorton, Pleasant Hill, OR, 4-3-44.3; Jim Kosterman, Vancouver, 4-3-42.0; John Henson, Anacortes, 4-3-41.9; Dale McKay, Auburn, 1-6-36.4; Elmer Currie, Coeur d'Alene, ID, 0-7-31.4.

## NORTHWEST OPEN — (Continued)

**CLASS G** — R.E. Click, Warrenton, OR, 7-0-50.7; Les Andrews, Battleground, 5-2-45.5; Jack Smith, Ellensburg, 5-2-45.1; Don Ferguson, Vancouver, 5-2-44.9; Norm Watson, Osborn, 3-4-39.8; Les Spilseth, Olympia, 2-5-38.6; Vern Wanless, McMinnville, OR, 1-6-33.7; Lyle Meuret, Everett, 0-7-34.1.

**CLASS H** — Alton Nelson, Ellensburg, 7-1-47.1; Walt Weik, Spanaway, 6-2-36.2; Len Christensen, Harrisburg, OR, 5-2-40.9; Ed Pritchard, The Dalles, OR, 5-2-40.9; Earl Kuper, Puyallup, 3-4-30.0; Ray Schiedler, Silverton, OR, 2-5-33.2; Mickey O'Dell, Davenport, 1-6-25.9; George Bannon, Woodinville, 0-7-33.5.

**CLASS I** — John Hilberg, Clinton, 7-0-38.6; Leonard Weisdepp, Olympia, 5-2-41.9; Bob Hoerner, Tacoma, 5-2-40.3; Irv Farron, Portland, OR, 3-4-38.8; MEI Sherbert, Battleground, 3-4-32.5; Ed Welsch, Spokane, 2-5-30.6; Otis Wilcox, Hermiston, OR, 2-5-28.6; Bill Dolan, Gladstone, OR, 1-6-30.9.

**CLASS J** — Tom J. Worthington, Spokane, 7-1-37.2; Ray Powell, North Bend, 6-2-41.2; Wendell Roberts, Port Orchard, WA, 5-2-34.0; Ray Looper, Spokane, 4-3-35.4; Ken Kuper, Spanaway, 4-3-30.8; Cyril Kitchen, Tacoma, 2-5-30.0; Russ Rattie, Elma, 1-6-26.0; Jack Stryker, Portland, 0-7-26.3.

**CLASS K** — George Schuster, Hermiston, OR, 6-2-41.3; Darrel Jones, Olympia, 5-3-32.6; Lloyd Kilgore, Dexter, OR, 4-3-37.6; Don Tysver, Bremerton, 4-3-36.9; Vic Hyder, Madras, OR, 4-3-36.8; John Kronholm, Everett, 3-4-32.3; Ed Tveden, Olympia, 2-5-24.4; Jake Lamatta, Tacoma, 1-6-24.4.

**CLASS L** — George Sprague, Kent, 6-1-41.5; Jim Jones, LaGrande, OR, 5-2-40.9; Ray Stubner, Sr., Yakima, 5-2-40.7; Tom Tyrell, Tieton, 4-3-36.9; Raleigh Smith, Selah, 4-3-35.; Barney Heller, Everette, 2-5-32.5; Art Lund, Eugene, OR, 1-6-36.1; Lyle Andrews, Vancouver, 1-6-25.9.

**CLASS M** — Les Myers, Prosser, 6-1-33.1; Glen Fich, Vancouver, 5-2-40.7; Joe Jensen, Othello, 4-3-29.6; Tom Roberts, California, 4-3-28.2; Ray Stubner, Jr., Yakima, 3-4-34.7; Bill Spaulding, Yakima, 3-4-29.8; Roland Ferguson, Portland, OR, 2-5-32.3; Jay Gouge, Vancouver, 1-6-22.3.

**CLASS N** — Kraig Allen, Lewiston, ID, 6-1-29.7; Don Isaacson, Seattle, 5-2-29.4; George Goodwin, Spokane, 5-2-27.8; Paul Call, Yakima, 4-3-27.3; Quentin Searls, Naches, 3-4-23.9; Bill Vanegdom, Lynden, 3-4-20.8; Gil Kroetsching, Ellensburg, 1-6-18.5; Tom W. Worthington, Spokane, WA, 1-6-16.5.

**CLASS O** — Burl Matteson, Bremerton, 5-0-32.4; Ross Watson, Spokane, 3-2-17.4; Dale Keister, Vancouver, 3-2-13.0; Wally Rehard, Spokane, 2-3-17.0; Leo Connolly, Eugene, OR, 2-3-13.8; Chuck Peek, Lewiston, ID, 0-5-7.2.

**LADIES CLASS A** — Kelly Keister, Vancouver, 5-0-66.6; Ruth Welsch, Spokane, 4-1-60.8; Hannah Foley, Newport, 3-2-60.0; Margaret Byfield, Mt. Vernon, 2-3-62.3; Lorraine Woodman, Spokane, 1-4-46.3; Shirley O'Brien, Spokane, 0-5-44.2.

**LADIES CLASS B** — Bonnie Schuster, Hermiston, OR, 5-0-48.1; Alice Rehard, Spokane, 4-1-48.6; Helen Watson, Spokane, 3-2-49.6; Sue Ramey, Mt. Vernon, 2-3-40.8; Irene Wiedrich, OregonCity, OR, 1-4-36.8; Grace Clark, Spokane, 0-5-14.1.

**JUNIORS** — Peter Clark, Port Orchard, 8-0-74.6; Tom Call, Grandview, 7-1-43.8; Robbie Tyrell, Tieton, 6-2-28.8; Dick Furrer, Oregon City, OR, 5-3-26.6; Larry Call, Yakima, 4-4-32.3; Bonnie Clark, Port Orchard, 2-6-23.7; David Call, Yakima, 2-6-10.3; Holly Currie, Coeur d'Alene, ID, 1-7-25.2; Duane Oliver, Coeur d'Alene, ID, 1-7-15.0.

## 1981 TOURNAMENT OF CHAMPIONS IN TENN. WON BY WARD

Don Ward came on strong in the annual Tournament of Champions held at Elisabethton, Tenn. going undefeated with 5 wins and no losses and averaging 79.2 percent for the day. His lowest game being 74.1 and his highest game being 87.5. He hails from Morristown, Tennessee and is the top pitcher in the Tennessee Association this year. Congratulations to a very fine pitcher, T. R. Little ran second with 3-2-69.3. In the Junior class R. Ward went through without losing a game having a 4-0-18.3 record.

**CLASS A** — D. Wood, 5-0-79.2; T.R. Little, 3-2-69.3; D. Stallings, 3-2-62.4; G. Whaley, 2-3-59.9; S. Jackson, 1-4-59.6; G. Lewis, 1-4-56.7.

**CLASS B** — C. Brown, 5-0-53.5; C. Green, 4-1-52.8; J. Hammitt, 2-3-44.6; J. Whaley, 2-3-44.0; R. Ward, 2-3-36.3; D. Jacobs, 0-5-39.9.

**CLASS C** — J. Shelton, 4-0-47.0; H. Self, 3-1-45.5; G. Bush, 2-2-37.2; W.K. Sampson, 1-4-29.9; F. Gregg, 0-4-31.0.

**CLASS D** — Grindstoff, 3-0-27.9; L. Byrd, 2-1-23.3; J. Davis, 1-2-9.0; D. Ward, 0-3-9.8.

**JUNIOR BOYS** — R. Ward, 4-0-18.3; L. Byrd, 2-2-7.6; R. Stout, 2-2-5.0; J. Hatley, 2-2-4.7; B. Sampson, 0-4-1.3.

## AL EWERTZ UNDEFEATED IN ST. LOUIS, MO. OPEN

Sixty-Nine year old Al Ewertz playing on his home courts in Carondelet Park was too much for his competitors as he compiled a 7-0 record to win class A in the Annual St. Louis Fall Open Tournament on Sept. 13. All classes pitched 40 point games with alternate pitch.

**CLASS A** — A. Ewertz, St. Louis, Mo., 7-0; C. Lawrence, Union, Mo., 5-2; E. Eckert, Waterloo, Ill., 5-2; C. Hilton, St. Louis, Mo., 5-2; S. Carter, St. Clair, Mo., 3-4; M. Lynch, Barnhart, Mo., 2-5; C. Webb, Waterloo, Ill., 1-6; W. Savage, Litchfield, Ill., 0-7.

**CLASS B** — D. Dattili, St. Louis, Mo., 6-1; S. Hrabovsky, St. Louis, Mo., 5-2; N. Hahn, St. Louis, Mo., 4-3; S. Denault, Sparta, Ill., 3-4; J. Waterman, Fairview Heights, Ill., 3-4; H. Fernandez, St. Louis, Mo., 3-4; B. Masterson, Cape Girardeau, Mo., 2-5; L. Steirs, St. Louis, Mo., 2-5.

**CLASS C** — B. Courtwright, St. Louis, Mo. 6-1; Mark Tribout, St. Louis, Mo. 5-2; J. Tayoan, St. Louis, Mo. 4-3; John Johnsen, Gerald, Mo., 3-4; Mark Lynch, Arnold, Mo., 3-4; S. Conrow, St. Louis, Mo., 3-4; Jeff Johnsen, Springfield, Mo., 2-5; A. Schroeder, Creve Couer, Mo., 2-5.

**CLASS D** — R. Hoff, St. Louis, Mo., 5-1; G. Pogue, Arnold, Mo., 4-2; J. Mudd, Arnold, Mo. 4-2; J. Davis, St. Louis, Mo., 3-3; C. Gaudlen, Fenton, Mo., 2-4; G. Sutter, Arnold, Mo., 1-5; E. Breuer, St. Louis, Mo. 1-5; T. Lazarz, St. Louis, Mo., Forfeit.

**CLASS E** — S. Conrow, St. Louis, Mo., 6-1; J. Yount, Arnold, Mo., 5-2; C. Arnold, Roxana, Ill., 5-2; C. Kertz, Arnold, Mo., 4-3; Terry Tribout, St. Louis, Mo., 3-4; J. Leroy, Cahokia, Ill., 3-4; D. Moore, St. Peters, Mo. 2-5; W. Dumlapp, St. Louis, Mo., 0-7.

**CLASS F** — D. Eye, Arnold, Mo., 7-0; D. McHawes, Herculaneum, Mo., 6-1; S. Piper, St. Louis, Mo., 5-2; L. Stevenson, St. Louis, Mo., 4-3; Mel Tribout, St. Louis, Mo., 3-4; Dave Tribout, St. Louis, Mo. 2-5; G. Johnsen, St. Louis, Mo., 1-6; B. Byington, Kirkwood, Mo., 0-7.

**CLASS G** — R. May, St. Louis, Mo., 6-1; R. Adams, St. Louis, Mo., 5-2; J. Matheny, St. Louis, Mo., 5-2; R. Roy, St. Louis, Mo., 5-2; Mike Tribout Sr., St. Louis, Mo., 4-3; S. Jaco, Arnold, Mo., 2-5; Tim Tribout, St. Louis, Mo., 1-6; J. Kohler, Defiance, Mo., 0-7.

**CLASS H** — J. Toenjes, Columbia, Ill., 6-0; C. Toenjes, Columbia, Ill., 5-1; B. Robertson, St. Louis, Mo., 4-2; R. Braun, Overland, Mo., 3-3; P. Dattilo, St. Louis, Mo. 2-4; C. O'Brien, St. Louis, Mo. 1-5; J. Kelley, Festus, Mo., 0-6.

**CLASS I** — A. Fesser, Columbia, Ill., 5-0; Mike Tribout Jr., St. Louis, Mo., 4-1; T. Hardy, Ellisville, Mo., 2-3; J. Estell, St. Louis, Mo., 2-3; G. Breuer, St. Louis, Mo. 1-4; T. Breuer, St. Louis, Mo., 1-4.

## NEW CASTLE, PA. FALL ROUND-UP TITLE WON BY CLYDE MARTZ; CAROL RINEHART WINS LADIES CHAMPIONSHIP

**CLASS A** — Clyde Martz, Pitts., PA, 7-0-71.7; Don Kuchcinski, Erie, PA, 6-1-72.2; Clair Bruce, New Castle, 5-2-72.3; Casey Canner, Jr., Newell, 3-4-63.5; Ansil Copeland, Akron, OH, 3-4-62.9; Steve Kuchcinski, Erie, 3-4-59.2; Ken Smith, East Liverpool, OH, 1-6-60.8; Rich Marooni, Arnold, 0-7-45.5.

**CLASS B** — Pete Vlachos, Bridgewater, 7-0-64.1; Russ Welton, St. Marys, 5-2-60.4; Ed Blum, Darlington, 4-3-62.0; Joe Kuchcinski, Erie, 4-3-53.0; Lou Edmiston, New Castle, 3-4-61.7; Ed Kuchcinski, Erie, 3-4-53.2; Chuck Semans, Pitts, 2-5-50.0; Jim Kuchcinski, Jr., Erie, 0-7-45.0.

**CLASS C** — Melvin Burkett, Falls Creek, 6-1-63.9; Carl Maier, Altoona, 5-2-58.8; Bob Morris, New Castle, 5-2-53.0; Vince Sedlacek, New Kensington, 4-3-51.0; Francis White, Erie, 3-4-52.1; Carl Elder, New Castle, 2-5-51.6; Joe Roebuck, Uniontown, 2-5-49.7; Chuck Roball, Pitts., 1-6-48.8.

**CLASS D** — Dave Baker, New Castle, 6-1-54.6; Frank Giampa, Pitts., 5-2-52.5; Clarence Dixon, Indiana, 5-2-51.3; Joe Geci, St. Marys, 4-3-47.2; Glenn Williams, Uniontown, 3-4-45.9; Ed Molitoris, Fredericktown, 2-5-53.8; John Ludwig, East Liverpool, OH, 2-5-48.2; Merle Brightshue, New Castle, 1-6-48.1.

**CLASS E** — Ed Sell, Osterburg, 7-0-52.6; Bert Rugg, Mill Run, 5-2-46.9; Jim Funkhouser, Beaver, 5-2-40.0; Jack Brny, Beaver Falls, 4-3-37.3; Harold Boyer, Monaca, 2-5-47.2; John Antesberger, Altoona, 2-5-39.2; Earl Winsper, Youngstown, OH, 2-5-37.7; John Farnen, Connoquenessing, PA, 1-6-40.9.

**CLASS F** — Homer Browne, Butlem, 7-0-40.4; Harvey Hayes, Erie, 5-2-40.1; Clark Carnahan, Shelocta, 5-2-36.1; Clarence Butcher, Erie, 4-3-37.1; Paul Decker, Beaver Falls, 4-3-34.0; John Marusa, Marion Center, 2-5-30.4; Calvin Bittner, Mill Run, 28.6; Bob Rinehart, Shelocta, 0-7-25.0.

## NEW CASTLE — (Continued)

**CLASS G** — John Wilson, Hermitage, 6-1-42.8; Bill Meader, Youngstown, OH, 5-2-41.6; Jim Danner, Vandergrift, 5-2-42.3; Francis Benedict, Bob White, 2-5-34.8; Al Stoddard, Sugar Grove, 1-6-30.1; Dick Carnahan, Shelocta, 0-7-21.3.

**CLASS H** — August Landsberger, Enon Valley, 7-1-44.2; John Pelegrinelli, Lower Burrell, 6-2-34.5; Kenn Widowson, Indiana, PA, 5-2-34.5; Taylor Carnahan, Shelocta, 4-3-30.1; Glenn Carnahan, Shelocta, 3-4-33.4; Joe Orsini, Brownsville, 3-4-31.9; Charles Weston, Shelocta, 1-6-22.9; Paul Gray, Shelocta, 0-7-23.4.

**CLASS I** — Lisle Weston, Shelocta, 5-0-29.2; John Carnahan, Apollo, 3-2-28.0; Vaughn Dotts, West Lebanon, 3-2-19.3; Jim Dunmire, Marion Center, 2-3-19.8; Bob White, Jr., Erie, 1-4-23.7; Ray Penrose, Shelocta, 1-4-15.7.

**CLASS J** — Russ Blystone, Shelocta, 7-1-25.2; Don Carnahan, Shelocta, 6-2-22.0; Don Skip, Carnahan, Shelocta, 5-2-27.0; Butch Stover, Monaca, 3-4-23.3; Harry Tressler, Mill Run, 3-4-18.4; Ken Turnbull, Saltsburg, 3-4-17.3; Bill Frye, Marion Center, 1-6-16.3; Jim Maloney, Franklin, 1-6-7.2.

**CLASS A WOMEN** — Carol Rinehart, Shelocta, 7-0-37.9; Kay Bittner, Mill Run, 6-1-36.3; Sherry Dagan, East Liverpool, OH, 4-3-35.1; Debbie Butcher, Erie, 3-4-28.3; Sandy Tressler, Mill Run, 3-4-26.8; Elenor Weston, Shelocta, 2-5-24.3; Sue Weston, Shelocta, 2-5-23.9; Amy Tressler, Mill Run, 1-6-23.6.

**CLASS B WOMEN** — Grace Rugg, Mill Run, 7-0-12.9; Jerry Frye, Marion Center, 6-1-11.3; Sandy Carnahan, Shelocta, 4-3-11.8; Dorothy Carnahan, Shelocta, 4-3-10.1; Marsha Carnahan, Elderton, 3-4-10.1; Anna Mae Marusa, Marion Center, 3-4-9.6; Ruth Carnahan, Shelocta, 1-6-6.0; Marg Orr, (Cancelled).

## TYSON PLAYOFF WINNER IN LEO OUELLETTE OPEN, N.Y.

In playoff Tyson defeated Festa 30-7; Schultz defeated Sutton 30-4; Tyson defeated MacIntyre 31 (87.5%) - 10 (70%); Tyson defeated Schultz 31-10.

The pitcher with the highest average and the pitcher with the highest game in each class received a prize. Each participant received a gift from sponsor Leo Ouellette.

**CLASS A** — Art Tyson, NY, 7-2-75.7; Joe Schultz, NY, 7-2-73.6; Bill MacIntyre, NJ, 7-2-70.6; Bob Sutton, NY, 7-2-71.4; Joe Festa, CT, 7-2-64.9; Vivien Deuster, NY, 3-6-64.5; Donn Grady, NJ, 3-6-58.0; Bernie Mullady, NJ, 2-7-59.9; Bobby Deuster, NY, 2-7-58.4; Dave Nemschick, NY, 1-8-59.5.

**CLASS B** — Walt Mrozak, CT, 5-0-58.0; Gerry Moore, 4-1-57.0; Roger Hensen, CT, 3-2-56.0; Joe Siwek, CT, 1-4-55.8; Owen Farmer, Jr., NJ, 1-4-46.5; Joe Hickey, NJ, 1-4-43.4.

**CLASS C** — John Loughery, NY, 4-1-47.6; Bob Hall, NJ, 3-2-46.9; Fred Tyson, CT, 3-2-46.9; Walt Bagley, CT, 2-3-41.3; Len Zimmerman, NY, 2-3-39.2; Walt Deuster, NY, 1-4-37.2.

**CLASS D** — Les Huebsch, NY, 5-0-39.2; Tom Reitz, NY, 4-1-32.4; Horr Lee, NY, 2-3-35.6; Walt Hooley, NY, 2-3-34.8; Jay Morton, NY, 1-4-32.4; Bill MacLeod, NY, 1-4-20.8.

**CLASS E** — Regina Tyson, NY, 5-0-35.6; George Spano, NY, 4-1-25.6; Paul Meyerhoff, NY, 2-3-32.8; Marge Ouellette, NY, 2-3-26.8; Art Cosgrove, NY, 2-3-24.4; Jesse Cobb, NY, 0-5-17.2.

## TYSON ON TOP IN SAL, PETE, JOHN, VITO OPEN (NEW YORK)

Although he pitched a perfect game in round-robin play with 28 ringers in 28 shoes and other games of 87.5 percent and 91.6, Joe Schultz lost the playoff to Tyson who had games of 83.6 and 71.7 percent. Tournament play was at the Sharkey Park courts in New Rochelle, NY.

**CLASS A** — Art Tyson, Mt. Vernon, NY, 6-1-75.0; Joe Schultz, Brentwood, 6-1-79.6; Bob Sutton, Mineola, 5-2-70.9; Vivien Deuster, Hampton Bays, 3-4-67.5; Dave Nemschick, Patchogue, 3-4-66.0; Bill MacIntyre, Middlesex, NJ, 2-5-67.5; Jerry Nemschick, Medford, 2-5-56.6; Bob Deuster, Hampton Bays, 1-6-61.4.

**CLASS B** — Joe Hickey, Nutley, NJ, 7-0-54.8; Walt Bagley, New Haven, CT, 5-2-59.4; John Loughery, Sr., Bronx, 5-2-43.1; Terry Early, New Rochelle, 3-4-50.9; Len Zimmerman, Bronx, 3-4-45.2; Walt Deuster, Hampton Bays, 3-4-44.8; Brian Deen, New Rochelle, 1-6-43.3; Owen Farmer, Sr., Manhattan, 1-6-36.4.

**CLASS C** — Brian Deen, New Rochelle, 5-0-48.8; Sid Berkowitz, New York, 4-1-37.2; John Dykstra, Englewood, 3-2-32.0; Walt Hooley, Montrose, 2-3-38.4; Jim Zygmunt, New Haven, 1-4-30.6; R. Tyson, New Haven, 0-5-20.9.

**CLASS D** — George Spano, New Rochelle, NY, 5-0-29.1; John Loughery, Jr., Bronx, 4-1-29.4; Art Cosgrove, Yonkers, 2-3-26.3; Paul Meyerhoff, Yonkers, 2-3-26.0; Jessie Cobb, New Rochelle, 2-3-18.0; Andy Lettus, New Rochelle, 0-5-10.5.

## COMING EVENTS

## FLORIDA SCHEDULE

All tournaments are NHPA sanctioned. Entry fee: \$7.00 (U.S. Open \$10.00). Send entry fee to proper contact, 7 days before tournament date (U.S. Open 3 weeks in advance). Pay scorekeepers 25 cents per game. Dropouts after entry deadline will forfeit entry fee unless tourney is cancelled.

- Jan. 15-16 — Manatee Open, Bradenton, Fla. 1st day for 40% and under. Contact H.  
 Jan. 21 — Highland County Open, Sebring, Fla. Contact E.  
 Jan. 22-23 — Sun Bank of Osceola County Open, St. Cloud, Fla. 1st day for pitchers 40% and under. Contact A.  
 Jan. 29-30 — Pinellas County Open, Seminole, Fla. 1st day for pitchers 40% and under. Contact C.  
 Jan. 30 — Yogi Bear Camp Resort Open, Orlando, Fla. Contact I.  
 Feb. 6 — Sarasota Open, Sarasota, Fla. Contact D.  
 Feb. 6 — Heart of Florida Open, Winter Haven, Fla. Contact L.  
 Feb. 12-13 — Suncoast Open, Bradenton, Fla. 1st day for pitchers 40% and under. Contact H.  
 Feb. 18 — Sebring Open (Thursday) Sebring, Fla. Contact E.  
 Feb. 19-20 — Silver Spurs Rodeo Open, St. Cloud, Fla. 1st day for 40% pitchers and under. Contact A.  
 Feb. 26-27 — Strawberry Open, Plant City, Fla. 1st day for 50% pitchers and under. Contact J.

- Mar. 5-6 — Sunshine Open, Orlando, FL. 1st day for pitchers 40% and under. Contact I.  
 Mar. 5-6 — DeSoto Open, Bradenton, FL. 1st day for pitchers 40% and under. Contact H.  
 Mar. 12-13 — Seminole Pow-Wow, Seminole, FL. 1st day for pitchers 40% and under. Contact C.  
 Mar. 13 — American Legion Open, Titusville, FL. 50 shoe 90% handicap tourney, Ringers only count 1 point. Contact K.  
 Mar. 19-20 — Fun 'N Sun Festival, Clearwater, FL. 1st day for pitchers 40% and under. Contact B.  
 Mar. 20 — Race Week Open, Sebring, FL. Contact E.  
 Mar. 26-27 — King Neptune Open, Sarasota, FL. 1st day for pitchers 40% and under. Contact D.  
 Apr. 1-2-3-4 — U.S. Open, men, women, Juniors, Clearwater, FL. Championship Class, men and women, \$15.00 extra. Boys and girls free. Send authentic ringer percentage with entry fee. Pitching schedule will be sent to entrants 2 weeks in advance. Cash prizes to be announced. Contact B.  
 Apr. 10 — Easter Holiday Open, Winter Haven, FL. 50 shoe 90% handicap tourney. Ringers only count 1 point. Contact L.  
 Apr. 17 — Florida State Handicap (closed) New Smyrna Beach, FL. 50 shoe 90% handicap tourney, Ringers only count 1 point. Contact G.  
 Apr. 24 — Florida State Tournament (closed) Sarasota, FL. Contact B.

## TOURNAMENT DIRECTORS

- A-H. Anderson, 1100 Indiana Ave., St. Cloud, FL 32769 (305-892-2051)  
 B-Carl Steinfeldt, 407 Shady Lane Park, 15400 Roosevelt Blvd., Clearwater, FL 33520 (813-535-3136)  
 C-Lee Davis, P.O. Box 3426, Seminole, FL 33542 (813-392-8504)  
 D-R. Ferguson, 4337 Midland Rd., Sarasota, FL 33581 (813-924-4117)  
 E-Jim Fourman, 2832 Bolin Lane, Sebring, FL 33870 (813-385-7372)  
 G-O. Gaudette, 718 Francis Ave., New Smyrna Beach, FL 32069 (904-428-4288)  
 H-Earle Johnson, 3031-12th Ave. E., Bradenton, FL 33508 (813-746-8298)  
 I- Jim Peterson, 220 Maynard Av., Orlando, FL 32803 (305-894-3379)  
 J- John Rademacher, 408 Pevetty Dr., Plant City, FL 33566 (813-752-1226)  
 K-Joe Stafford, 1320 Sharon Dr., Titusville, FL 32780 (305-269-3557)  
 L-Joe West, 6250 Halabrin Rd., Haines City, FL 33844 (813-422-2053)

## CLASSIC INDOOR COURTS

"Home of Winter Tournaments, Lancaster, OH — Winter Schedule "Open"

- Jan. 16-17 — Wilbur Kabel, Classic  
 Feb. 6-7 — Stan Manker, Classic  
 Mar. 13-14 — Harold Anthony, Classic  
 Apr. 17-18 — Glenn Riffle, Classic  
 May 15-16 — Pop Johnson, Classic

8-man classes. Trophies 1st, 2nd, 3rd. 50 point cancellation 1 pt. each for 4-dead up to 40 pts. Entry fee \$8.00. Deadline 10 days before tourney date.

Mail entries to: Classic Billiards, c/o Jim Knisley, 415 N. Columbus St., Lancaster, OH 43130. Phone (614) 653-0545.

## ARIZONA SCHEDULE — PIONEER PARK

## MESA, ARIZONA

- Jan. 15-16—VALLEY OF THE SUN WARM-UP Sanctioned. State and NHPA membership card required. Entries close Jan. 9.  
 Feb. 12-13-14—VALLEY OF THE SUN OPEN. Sanctioned. State and NHPA membership card required. ENTRIES CLOSE Jan. 30. Entry fee \$10.00 with an additional \$10.00 for CLASS A.  
 Mar. 12-13—BYE, BYE SNOWBIRD OPEN. Entries close March 6.

FEEs: \$4.00 EXCEPT VALLEY OF THE SUN which is \$10.00 with an additional \$10.00 for CLASS A.

LIMITED ENTRIES: 84 men and 12 ladies (ringer percentage will decide. No limit for VALLEY OF THE SUN).

SANCTIONED TOURNAMENTS: State and NHPA membership required.

## COMING EVENTS — (Continued)

**FAYETTE COUNTY, PA. SCHEDULE**  
 253 South Mt. Vernon Ave.  
 Uniontown, PA 15401

The club's new rules and regulations permit us, as Tournament Directors, to accept only the FIRST 42 PAID ENTRANTS. In other words, first come, first serve. Our tournaments will be a 6 Man Round Robin, all games will be 50 point cancellation unless a change is deemed necessary by the Tournament Directors, with 1 point piece for 4 dead up to 40 points, and hopefully 7 classes depending upon participation. We will notify you as to pitching time and day.

Entry fee of \$10.00, payable to F.C.H.P.A. and highest percentage must accompany your entry 10 days prior to tournament date. Telephone calls will be accepted unless tournament is full. No refund of entry if unable to attend.

- Jan. 15-16-17 — Joe & Doug Leech, R.D. #3, Box 234, Smithfield, PA 15478, 412-569-2830.  
 Feb. 12-13-14 — Wilbert Rugg, R.D. #1, Box 43, Mill Run, PA 15464, 412-455-3677. Calvin Bittner, R.D. #1, Box 205A, 412-455-3769. Harv Tressler, R.D. #1, Mill Run, PA 15464, 412-455-2774.  
 Mar. 12-13-14 — Ed & Pauline, Molitoris, Box 285, Fredricktown, PA 15333, 412-377-2530.  
 April 16-17-18 — Ed Martinko, P.O. Box 113, Markleysburg, PA 15459, 412-329-4972. Dallas Jenkins, R.D. #1, Box 98, Markleysburg, PA 15459, 412-329-4877.  
 May 14-15-16 — Alex P. Burns, Box 476, New Salem, PA 15468, 412-245-8600.

**INDIANA INDOOR SCHEDULE**
**Opdycke Indoor Horseshoe Courts, N. Wayne Street, Angola, Indiana (Behind Mc'Donald's Restaurant)**

Send entries to Don Opdycke, P.O. Box 56, Pleasant

Phone deadline—Sunday before tournament, mail deadline 10 days before.

Lake, IN 46779. Phone 219-475-5215.

January 16-17 February 20-21 April 17-18

**HERITAGE REC. SCHEDULE**

- Jan. 10 — January Thaw, 35% & Under  
 Jan. 17 — January Thaw, 36% & Up.  
 Feb. 7 — Edward Courville Memorial 35% & Under.  
 Feb. 14 — Edward Courville Memorial 36% & up.  
 Mar. 7 — March winds 35% & Under  
 Mar. 14 — March winds 36% & up.

- Mar. 28 — Easter Ham Shoot 35% & Under.  
 Apr. 4 — Easter Ham Shoot 36% & up.  
 Apr. 25 — Heritage National 35% & Under.  
 May 2 — Heritage National 36% & up. Class 1 Pitches Saturday evening and Sunday afternoon (guest pitcher)  
 May 23 — Heritage Club Championship.

**TUCSON, ARIZONA SCHEDULE**

Tucson, Arizona  
 Reid Park Courts

- Jan. 9 — Pima County Classic, Reid Park Courts. Entries close Jan. 2.  
 Feb. 6 — Old Pueblo Special. Reid Park Courts, Entries close Jan. 30.  
 Mar. 20 — The Wind-Up Tournament. Reid Park Courts. Entries close March 13.  
 Send entry fee of \$4.00 to M.H. Fenimore, Secretary, 8152 East Hayne, Tucson, AZ 85710. Phone 602-296-5087. All games will be played at Reid Park in Tucson.

**FRANKLIN SQUARE INDOOR SCHEDULE**

Quincy, Illinois

Lunch Available at all Tournaments

- Dec. 12 — Sat. Open, 3 classes 36% and over. \$8.00 entry fee. Trophies. Sign up by 11:30 a.m. Doors open 9 a.m.  
 Jan. 24 — 1982 — Sat. Membership Tourney Only. Details posted.

**RUSH INDOOR SCHEDULE**  
 Upstairs over Coca Cola plant  
 Rushville, Ind.

For sanctioned tournaments send entries to State Secretary, Robert L. Reid, 34 North Beechwood Ave., Scottsburg, IN 47170. Ph. 812-752-2195. Entry fee \$8.00 one week in advance.

**WOMEN'S INDOOR OPEN TOURNAMENTS**  
 CLASSIC BILLIARDS COURTS

415 N. Columbus St., Lancaster, OH 43130

- Jan. 11—Open Apr. 12—Open  
 Feb. 15—Open May 10—Open  
 Mar. 8—Open

Send entry and fee to Classic Billiards, c/o Jim Knisley, 415 N. Columbus St., Lancaster, OH 43130. Ph. 653-0545.

Entry deadline (mail) 10 days before event. Entry fee, \$8.00. 8-man classes if possible. 50 point cancellation. 1 point each for 4-dead up to 40. Pay scorekeeper 25 cents per game. Trophies for 1st, 2nd & 3rd. Class A plays on Sunday, 1 p.m. Class B plays on Sunday at 5 p.m. Carol Brown, tournament director.

- Jan. 30-31—John Hamilton Special  
 Feb. 13-14—Henry Franke Special  
 Mar. 13-14—Marvin Chrisman Spec.  
 Apr. 24-25—Indiana Indoor State

Following is the Indoor Schedule for Non-Sanctioned tournaments. Send entries to Joe Hamilton, 2110 Western Ave., Connersville, IN 47331. Ph. 317-827-0532 or to Estil Bills, 725 East 5th St., Connersville, IN 47331. Ph. 317-825-0191. Entries one week in advance. Entry fees, Class A \$10.00; Class B, \$9.00; Others: \$8.00. Cash prizes only.

- Jan. 9-10 Mar. 27-28  
 Feb. 27-28 Apr. 10-11

## COMING EVENTS — (Continued)

PREIMESBERGER ARENA SCHEDULE  
PIERZ, MINNESOTA  
PH: 612-468 / 612-468-2345

- Mar. 20-21 — 4th annual St. Patrick's Open. Sign up Deadline — March 10. Entry fee, \$15.00. All classes 8-Man. 3 winners. Winners have choice of cash or trophy.
- May 29-30 — 2nd annual Memorial Day Open. Sign up Deadline, May 19. Entry fee, \$15.00. All classes 8-Man. 3 winners. Winners have choice of cash or trophy.
- July 1-5 — 5th annual 4th of July Open. Sign up Deadline, June 10. Entry fee, \$25.00. All classes 8-Man. 4 winners. Winners 1st-\$60.00; 2nd-\$30.00; 3rd-\$25.00; 4th-\$25.00; Trophies will be available.
- Sept. 4-6 — Minnesota State Tournament. Sign up Deadline, August 9. Tournament Directors: Ken

- Paulson, Rte #1, Pierz, Minn. 56364. Ph. 612-468-6133. Jan Girtz, Rte #2, Pierz, Minn. 56364. Ph. 612-468-6193. More information later.
- Oct. 30-31 — 5th annual Halloween Open. Sign up Deadline, October 20. Entry fee, \$15.00. All classes 8-man, 3 winners. Winners have choice of cash or trophy.
- Nov. 27-28 — 4th annual Thanksgiving Open. Sign up Deadline, November 17. Entry fee, \$15.00. All classes 8-man. 4 winners. Winners will receive dressed turkeys.

Send all entries to: Henry Preimesberger, Rte #2, Pieez, Minn. 56364. PLEASE NOTE: ALL ENTRIES MUST HAVE RESIDENT STATE CARD. Additional information on tournament flyers. Admission will be charged at all tournaments. All entrants will receive free admission buttons.

FRANKLIN SQUARE INDOOR SCHEDULE  
QUINCY, ILL.

Lunch Available at all tournaments

- Jan. 24 — Membership Tournament Only. Details posted.
- Feb. 6 — Open Tournament. 35% and under, \$7.00 entry fee. Trophies. 3 six man classes. Sign up by 11:30 A.M. Doors open, 9 a.m. Walk-in by chance.

- Send score to Bill Heaton, 609 So. 19th, Quincy, Ill. 62301. Ph: 217-223-7137.
- Feb. 13 — Open Tournament. 36% and over, \$7.00 entry fee. Trophies. 3 six man classes. Sign up by 11:30 A.M. Doors open, 9 A.M. Walk-in by chance. Send score to Bill Heaton, 609 So. 19th, Quincy, Ill. Ph: 217-223-7137.
- March, April and May tournament to be listed in future Digests.

## WESTERN PENNSYLVANIA SCHEDULE

Entry fee of \$8.00 must accompany your entry 10 days prior to tournament date. There will be no refund of entry fee if you are unable to attend. All Tournaments will be sanctioned so all participants must be a member of the National H.P.A. in good standing. Western Pa. H.P.A. Sec. Treas. Joseph J. Mancini, 1025 Dewey ave. New Castle, Pa. 16101.

All tournaments held by the Western Pa. H.P.A. will be non mixed.

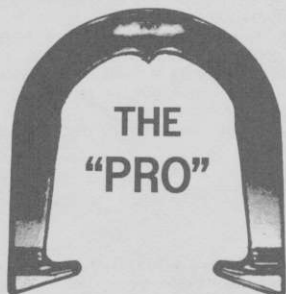
- May 29-30 — Beaver Spring Warm Up, 6 Man — 50 Points Contact A.
- June 5-6 — New castle, Spring Fling, 40 Points Contact B.
- June 12-13 — Shelocta, Keystone Special, 40 Points Contact C.
- June 19-20 — Ohiopyle, Dogwood Acre Spring Fling, 40 Points, Contact D.
- June 26-27 — Erie, Eastern Nationals, 40 Points Contact E.
- July 10-11 — Dormont, Dormont Open, 40 Points. Contact F.
- July 17-18 — Warren, Kinzua Country Classic, 40 Points, Contact G.
- July 24-25 — Beaver, Beaver County Open, 6 Man 50 Points, Contact A.
- Aug. 7-8 — Shelocta, Pine Tree Open, 40 Points Contact C.
- Aug. 14-15 — All County Tournaments
- Aug. 21-22 — Ohiopyle, Maple Summit Round Up, 40 Points, Contact D.
- Aug. 28-29 — Dormont, Mike Riedl Open, 40 Points Contact F.
- Sept. 4-5-6 — Shelocta, Penna. State Tournament, 40 Points, Contact C.
- Sept. 18-19 — New Castle, Fall Round Up, 40 Points Contact B.

## TOURNAMENT DIRECTORS

- A — Wilber Stover, 639 Frankford Rd., Monaca, Pa. 150611. (412-495-7481)
- B — Joseph Mancini, 1025 Dewey Ave., New Castle, Pa., 16101. (412-652-0258)
- C — Lisle Weston, R.D. #3, Shelocta, Pa., 15774. (412-354-2344)
- D — Calvin Bittner, R.D. #1 Box 205a Mill Run, Pa. 15464. (412-455-3769)
- E — Clarence Butcher, 1953 W. 11th St., Erie, Pa., 16506. (814-454-4280)
- F — Frank Giampa, 2736 Louisiana Ave., Pittsburgh, Pa., 15216. (412-341-8422)
- Ron Weiss, 3897 Edge St. Pittsburgh, Pa. 15227. (412-884-7092)
- G — Kurt VonKliet Jr., R.D.#1 Box 1082, Russell, Pa., 16345. (814-757-8696)



## THE ORIGINAL DROP-FORGED PITCHING SHOE



Two tournament tested models, forged from S.A.E. specified steel, are available. Both have hardened hooks and points, and may be ordered in your choice of medium, soft, or dead soft tempers.



AS THE FIRST MANUFACTURER OF THE DROP-FORGED PITCHING SHOE, THE OHIO HORSESHOE COMPANY IS RECOGNIZED WORLD-WIDE FOR ITS HIGH QUALITY PITCHING SHOES.

For price information and to order, contact:

## OHIO HORSESHOE COMPANY

P.O. Box 5801  
Columbus, Ohio 43221

or

DONNIE ROBERTS  
9439 Camp Creek Road  
Lucasville, Ohio 45648  
(614 - 289-4101)