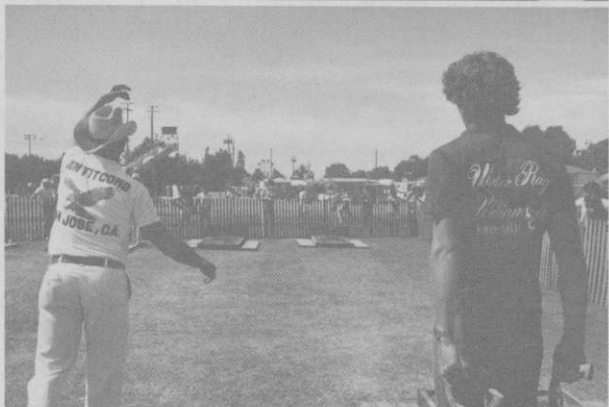




the
national horseshoe pitchers

NEWS DIGEST



DECEMBER, 1982

Official Publication of
**THE NATIONAL HORSESHOE PITCHER'S ASSOCIATION
OF AMERICA**



MINI-PRO HORSESHOES

EXECUTIVE DESK OR TABLE GAME

Professional People

•

Grandma & Grandpa

•

Mom & Dad

•

Sister & Brother



Office

•

Home

•

Camp Site

•

Picnic

ANYONE CAN PLAY ANYWHERE!

ORDER NOW

Quan: in Box for Product Desired. Mark Color Selections

_____ HORSESHOE GAME at 5.00ea. _____

_____ CRYING TOWEL at 3.50ea. _____

With chain for belt loop. Approx. size 11" x 18"

Red Blue Yellow Green Brown

Please mark second choice, if out of stock.

Red Blue Yellow Green Brown

_____ HORSESHOE KEYCHAIN at 1.00ea. _____

Sub Total _____

Please add .04% Mich. Sales Tax _____

Please add handling charge 1.50

Total amount mailed _____

Mail check or money order to:

SHOW-TIME PUPPETS 14689 E. 11 Mile Rd. Warren, MI 48093

Name _____

Street Address _____

City _____ State _____ Zip _____

THE HORSESHOE PITCHER'S NEWS DIGEST is published on the 5th of each month at Aurora, Illinois, U.S.A. by the National Horseshoe Pitcher's Association of America. Editorial office, P.O. Box 1606, Aurora, Illinois 60507. Phone: 312-898-3974. Subscription rates—1st Class \$9.00; 3rd Class \$8.00 per year in advance. NHPA membership cards are available through each state secretary for \$6.00 plus any state association dues. Forms close on the 10th day of each month preceding date of issue. Advertising rates on request. F. Ellis Cobb, Editor.

NATIONAL OFFICERS

Wally Shipley, 2646 Basswood St., Newport Beach, Calif. 92660..... President
 Leo McGrath, 1937 Lawn Ave., Cincinnati, Ohio 45237..... 1st Vice-President
 Norman Gaseau, 1908 Nugget Dr., Clearwater, Fla. 33515..... 2nd Vice-President
 Earl Winston, Route 2, LaMonte, Mo. 65337..... 3rd Vice-President
 Bonnie Seibold, 1043 Grayson Ave., Huntington, Ind. 46750..... 4th Vice-President
 Donnie Roberts, 9439 Camp Creek Rd., Lucasville, Oh. 45648/(614) 289-4101..... Sec./Treas.
 Claude White, Jr., 940 Knollwood Ct., Plainfield, NJ 07062..... Chr. Reg. Dir.

Volume 25

December, 1982

No. 12

NHPA PRESIDENT'S MESSAGE

By Wally Shipley

SEASON'S GREETINGS WITH THIS MESSAGE.

*The real Christmas feeling,
 That warm friendly glow,
 Comes from greeting the people,
 We're happy to know!*

*"Our best
 of wishes
 for your
 Merry Christmases
 and your
 Happy New Years,
 your long lives
 and your
 true prosperities."*

FROM YOUR
 NHPA EXECUTIVE COUNCIL AND
 NEWS DIGEST EDITOR

COVER PICTURE... Shown this month is the "Pitch and Win" booth at the Sant Clara Calif. County Fair. Also shown are Don Ticomb and Walter Ray Williams demonstrating pitching style. Over 10,000 spectators pitched 4 shoes to win a patch. Of these, there were 2,000 who tried to qualify for the 40 positions in the San Jose Golden Eagle Amateur tournament.

MESSAGE — (Cont.)

The Valley of the Sun Tournament in Mesa, Arizona will be February 9-10-11-12-13. I understand all pitching will take place at Pioneer Park. This the reason for 5 days. There will be discount rates again at Maricopa Inn Motel in Mesa. You must tell them when you make reservations that you're a horseshoe member. Will look forward to seeing everyone.

Council has agreed NOT to revise and reprint the By-Law book. We will issue a supplement showing the changes passed at the 1982 Convention. This saves NHPA dollars.

Message from Sol Berman NHPA Promotion Chairman. If any one has old movies on our sport or has a Video Camera to interview people with, please contact Sol. His address is 351 Rahway Ave., Elizabeth, NJ 07202, telephone number 201-353-3764.

We are still working on the Game Related proposal new idea. All you interested parties who submitted wishes of being a distributor I have not forgotten you. I will be in contact as soon as we have everything firmed up. I can say it appears the new distributors will be on a franchise basis. The dollar of the franchise has not been decided.

Council also working on the 1983 World Tournament Cash Prize List and schedule format.

RIoux EASY WINNER OF CONNECTICUT STATE TITLE

CLASS A — Norman Rioux, 7-0-71.1; Joseph Festa, 5-2-56.3; Roger Henson, 4-3-56.0; Joseph Siwek, 4-3-56.0; Fred Tyson, 3-4-54.9; George Trabucchi, 3-4-54.8; Pete Bochese, 2-5-55.6; Dominic Majewski, 0-7-43.5.

KERTZ SHOE CHECK PAT. PEND.

FIVE TOOLS IN ONE

PERFECT FOR ALL HORSESHOE PITCHERS

JUST THE RIGHT SIZE FOR BACK POCKETS

8" x 1" x 1/4"

SCRAPER —

FILE FOR
BURRS

CALIPERS
FOR CLOSE POINTS

6" NOTCH FOR LEGAL POINTS

STRAIGHT EDGE

SEND \$6.95; 2 OR MORE \$6.00 EA
PLUS \$1.50 SHIPPING PER TOOL

KERTZ SHOE CHECK

P.O. BOX 483

ARNOLD, MO. 63010

PLEASE INCLUDE
ZIP CODE

HOW TO: by Donnie Roberts

At the 1982 World Tournament many people stated that we needed more how to information published in the digest. So I will try to provide some such information to you month by month. As a tournament or league director you will have ties in your tournament for first and other positions. Your problem is how to solve them. Please remember that you may have an idea that I leave out. If so send it to me so I can share. The main thing to remember is that contestants must be made aware of your system of breaking ties before the event starts. Don't wait until half way through the final round, realize a tie might occur and rush to you help to decide what to do. Also, don't ask the players involved for their ideas. The tournament committee or director make all such decision hopefully in advance of the event. The rules say that in any tournament, ties between contestants for first place shall be settled by play-off. Other ties will be settled by percentage and/or total points. This rule applies to finals not to preliminary rounds. Do not use total points in cancellation tournaments.

If you have a two way tie for first just have the two players play one game or two best of three. If you have a three way tie for first the two low percentages play, the loser is third and the winner play the high percentage for first. If you have a four way tie the high percentage plays the low percentage and the two middle percentages play. The two winners play for first and second and the two losers play for third and fourth. If you have a five way tie or larger there are all kinds of ways. These are the normal ways listed above which most folks approve of. I will make other suggestions for your thought. At times it is possible that you don't have time or courts for play-offs. Although it violates the rules it still happens. If two people tie for first we could use the National Football league method. Whichever player won in their game with each other is the winner. If football teams tie it is decided on how they did against each other. You could use percentage. You could flip a coin. Co-champions could be declared. A three way tie could use the football method if one guy beat both of the other two. That doesn't always happen. The two high percentages could play one game. Battle of the network stars used one I had never heard but after thought I must mention it. # plays #3. The loser plays #2. The winner of the second game plays the winner of game one for the title. Someone devised that for their show. Ties with five or more usually play another round robin which usually ends in another tie. Perhaps we should use the NCAA basketball bracket system for all ties with five or more. I will explain the six man class with a five way tie. If you want to know how to bracket a six or seven or higher tie write to me. In the six man class with a five way tie the high percentage man would draw a bye. The #2 man vs #5 and #3 vs. #4. The two winners play for the right to meet the #1 man for the title. This has many variations but is quicker than a round robin. In ties of five or more you could just let the two top percentages play it off. For second place everything is easy unless the percentages are tied. What to do then? Try any of the above. The unfortunate thing is that there is no set system for play-offs. I have tried to expose you to some used ones and some to think about. After some feedback from you perhaps I can propose a standard set to use as a guideline. You use what best fits your event, facilities, and schedule. Just set it up in advance. Play-offs should always occur on a neutral court and if more than one game is involved players should not pitch them all on one court. Move them around.

Just a note of interest. In my mail the most asked question is: Do I throw both shoes or do I throw 1 then my opponent 1 then me 1 and then my opponent 1?" It used to be done that way. Anyway I throw two shoes and then you throw two shoes. Just in case you need it I am listing the official six man round robin schedule:

	Court 1	Court 2	Court 3
Round 1	1-6	2-5	3-4
Round 2	2-4	3-6	1-5
Round 3	1-3	4-5	2-6
Round 4	5-6	2-3	1-4
Round 5	1-2	4-6	3-5

In the next issue I will discuss other subjects of interest. If you have a subject that you feel would be of interest just drop me a note and I'll try to use your idea. If your question appears in the article I'll mention your name and send you a free NHPA patch. Support your state association. Join today.

NHPA PUBLICITY REPORT

By Bernard Herfurth

NHPA Publicity Director, Bernard Herfurth, has been given permission to submit a plan for a one issue tabloid newspaper concerning our sport.

The feature of this paper will be a directory listing all major courts in each state. It will give the dates of all tournaments and league activities, tournament directors and state secretaries names and addresses.

All details concerning the contents of the proposed tabloid, plus costs and distribution will be submitted to the Executive Council for their approval.

State secretaries are asked to please send the following information: to Bernard Herfurth, 17 Fort Street, Northampton, Mass. 01060. A list of the location and number of courts in each site indicating clay or dirt. Dates of all 1982 tournaments and league and their location. Also, names and addresses of tournament directors. Please favor our sport by sending in this information promptly.

Members are also asked to send in any suggestions that they have concerning this proposed paper. Proper credit will be given for any and all suggestions.

DALE LIPOVSKY — INSTANT CHAMP

Read the story of how Lipovsky won the NHPA WORLD TITLE in his first try. Also, pictures and stories on other champs. Send \$5.00 to Will Gullickson, 2850 · 26th St., S. Moorehead, Minnesota 56560.

FOR THOSE WHO DESIRE THE VERY BEST

IMPERIAL

U.S.A. PRICE LIST

ALL POSTAGE PAID

1 Pair	\$29.00
2 to 5 Pair	\$27.00
6 Pr. & Over	\$24.00

Available in Dead Soft and
Medium Soft with
Hardened Hooks
and Points

- WE PAY ALL POSTAGE EVEN ON 6 PAIR AND OVER SHIPMENTS
- MASTER CARD AND VISA PHONE ORDERS ACCEPTED AFTER 6 P.M.

CLYDE MARTZ

3726 Henley Dr.

Pittsburgh, Pa. 15235

PHONE: 412-731-4662

SANTA CLARA COUNTY FAIR, (CALIF.), HORSESHOE PITCH AND WIN BOOTH ATTRACTS 10,000 (NO. CALIF.)

The banners over the San Jose Golden Eagle Club's PITCH AND WIN enclosure read "PITCH AND WIN FREE", and fairgoers at the 38th Annual Santa Clara County Fair flocked to the Fair's newest attraction to pitch 4 shoes and try to win a badge emblazoned with a green horseshoe and the words "I SCORED AT THE FAIR." At the end of the Fair's 11-day run, August 5-15, over 10,000 horseshoe enthusiasts had pitched their 4 shoes. Of these 10,000, over 2,000 entered the club's 20-shoe amateur contest. The top eight count-all scorers in 5 divisions, Men, Senior Men, Women, Jr's ages 6-12 and Jr's ages 13-17 were given 30-day honorary NCHPA membership cards and were invited back as guests of the San Jose Club and the Santa Clara County Fair for the amateur finals on Saturday and Sunday, August 14-15. They were given equal billing with the invited professional pitchers on the weekend. Each of the 40 amateur finalists received a trophy.

Don Titcomb, Fair Marketing Manager, Jeffrey Mullins, and San Jose Club President, Verdan Zelmar spearheaded the venture, which is believed to be the largest tournament of its kind in the history of the game. The San Jose club members not only built 14 portable courts, constructed the Pitch and Win enclosure, and horseshoe arena, but solicited materials and donations for the project. As a direct result of the all-out effort, more than 60 of the amateurs have already become members of the local San Jose Club and other No. Calif. clubs. Names of out-of-town entrants have been sent to member NCHPA clubs, the Southern California Assn., and to out of State charters.

The Fair horseshoe program also included four to six pitching exhibitions per day by the new California champion, Don Titcomb. Walter Ray Williams, 1981 World Champion, performed for the crowds on the final two days. Over \$2,000 in cash prizes were distributed to the professional participants.

The hard work of all concerned, the superb support of Jeffrey Mullins, and the Santa Clara County Fair Board made this venture possible. A special thanks to the San Jose Club workers and scores of volunteer workers who donated countless hours of their time during the eleven 10-hour days. With their unselfish help and love of the game, we were able to bring horseshoes to the attention of thousands of fairgoers.

JUNIORS — Jonathon Williams, So. Calif., 10-0-70.0; Lisa Gonzales, So. Calif., 8-2-50.0; Guy Burt, San Jose, 5-5-35.1; Kendall Perry, San Jose, 4-6-27.1; Jeff Saunders, San Jose, 4-3-22.7; Gary Adams, Turlock, 2-5-10.0; Jim Saunders, San Jose, 1-6-8.0.

PROFESSIONAL DIVISION — CLASSIC I MEN — Walter Ray Williams, So. Calif., 1509-83.2; Jesse Gonzales, Los Oso, 1345-71.0; Don Titcomb, San Jose, 1222-67.4; Ed Floyd, Fremont, 1167-66.0; Lou Fontaine, Los Gatos, 1164-57.2; Emmett Schroder, Stockton, 1020-58.0; Verdan Zelmar, Santa Clara, 1014-54.0; Fred LaVett, Seaside, 935-47.4.

CLASSIC II MEN — Vern Gosney, Vallejo, 5-2-52.9; Ed Adams, Turlock, 4-3-49.2; Al Adams, Turlock, 4-3-49.2; Greg Tweedy, Vallejo, 4-3-46.0; Don Gann, San Jose, 4-3-44.9; Jim Saunders, Sr., San Jose, 4-3-41.4; Jim Morrow, San Jose, 3-4-44.2; Wally Stevens, San Jose, 0-7-19.7.

CLASSIC WOMEN — Andrea Adams, Turlock, 9-3-50.7; Vera Floyd, Fremont, 8-3-48.8; Marisela Mauricio, San Jose, 8-3-54.6; Jean Robinson, Seaside, 4-6-34.0; Roberta Lovelady, Golden Gate, 4-3-31.3; Genevieve LaVett, Seaside, 2-5-31.6; Janet Morrow, San Jose, 1-6-5.0.

SENIOR MEN — Holland Payne, Sacramento, 6-1-50.7; Al Crabtree, Turlock, 5-2-43.3; Vince Mauricio, San Jose, 5-2-36.3; Walt Robinson, Seaside, 4-3-42.7; Marshall Johnson, Stockton, 4-3-40.6; Bill Henry, Seaside, 3-4-36.3; Walt Foreman, San Jose, 1-6-29.3.

AMATEUR DIVISION — JUNIORS 6-12 — Rodney Brooks, Eddie Santos, Jason Rolling, Robert McGovern, Paul Ellis, Bobby Henline, Shawn Ellis, Matthew Moore.

JUNIORS 13-17 — Eddie Loretto, Geo Edw Paul, Denny Evans, Patti Sofonoff, Kevin Maeda, Brian Hunt, Ken Best, Kenny Addison

WOMEN — Lyn Hertz, Joan Mitchell, Cheryl Aila, Sandy Hengl, Robin Riley, Sandra Quill, Katie Harris.

SENIOR MEN — David Rickards, Wm. Van Zanten, Arthur Quick, Charles Hertz, Bob McKinney, Dino Tognietti, E. W. Austin, Charles Hill

MEN — Chuck Sampson, Sam Gonzales, Carlos Strangis, Michael Follmer, Wenslo Alvarez, Dennis Connell, Eugene Holt, Henry Shuba

SOUTHEASTERN DISTRICT TITLE WON BY GARY ROBERTS RUTH KIRK WOMEN'S CHAMP — MARK AINSWORTH JUNIORS

CLASS A — Gary Roberts, 5-0-72.9; Harold Wipert, 4-1-70.2; Lawrence Miller, 3-4-61.8; Glenn Santee, 2-3-60.2; Lester Stephenson, 1-4-54.1; Tom King, 0-5-50.0.

CLASS B — Dave Hawk, 7-0-54.9; Jim King, 5-2-50.7; Joe Gringsby, 5-2-43.8; H. McCollister, 4-3-44.1. Lester Grosklos, 3-4-39.2; George Shoemaker, 2-5-42.4; Earl Rea, 2-5-32.9.

CLASS C — Bill Kiser, 5-0-38.8; Larry Mays, 4-1-40.1; Terry Davis, 3-2-28.4; Kenny Cottrill, 1-4-34.7; Harold Blosser, 1-4-23.0; Danny Wicker, 1-4-23.0.

CLASS D — Rick Jenkins, 7-0-39.5; Mike Gilpin, 5-2-28.3; Mark McCann, 4-3-25.0; marvin Ramey, 4-3-23.9; Ron Park, 4-3-23.6; Mike Hall, 2-5-2.18; John Hawk, 2-5-21.3; Gary Park, 0-7-23.3.

CLASS E — Roger Kinnamon, 6-0-21.0; Larry Dixon, 4-2-12.5; John Montgomery, 2-4-7.9; Mike Mathuews, 0-6-6.2.

CLASS A — WOMEN — Ruth Kirk, 7-0-61.4; Avanelle Brown, 6-1-38.6; Janet Reno, 5-5-42.2.

CLASS B — WOMEN — Barbara Dixon, 3-4-32.0; Jennifer Reno, 3-4-30.4; Mitzi Roberts, 3-4-28.2; Kim Hignite, 1-6-19.4.

CLASS A — JUNIORS — Mark Ashworth, 5-0-21.6; Lonnie Hawk, 4-1-20.4; Mike Gilpin, 3-2-15.2; David Kinnamon, 2-3-11.6; Kenny Cottrill, 1-4-6.0; Duane Wipert, 0-5-4.4.

STAN SMITH NEW CHAMPION OF TEXAS

The Texas state championship was held at the Stephenville courts on October 16-17. The weather was ideal for the largest ever state tournament. Defending champion Coke Bowker, Azle, lost the title to 3/4 turn tosser Stan Smith of Del Rio. Jerry Babb of Del Rio regained the women's championship after being forced into a playoff game with Terri Jenschke, San Antonio. Mike Gerdson, San Antonio, repeated as junior champion by going undefeated.

CLASS A — Stan Smith, 6-1-65.1; Coke Bowker, 5-2-69.5; Bob McCharen, 5-2-59.7; Lloyd Viles, 3-4-61.8; Bob Graham, 3-4-60.6; Jeff Gaston, 3-4-52.2; Ed McFarland, 3-4-48.6; Charles Posey, 0-7-46.9.

CLASS B — Jesse Brown, 7-2-44.0; Bob Harvey, 5-4-50.0; Zeke Zehler, 5-4-49.7; Dale Henry, 5-4-44.5; Scott McBrearty, 2-4-44.3; Glen Morris, 2-4-41.8; Steve Oelinger, 1-5-43.7.

CLASS C — Terrell Wilkinson, 6-1-37.7; Ken Willette, 5-2-37.7; Bill Joseph, 4-3-37.4; Chester Bingham, 3-4-40.6; Dean Campbell, 3-4-35.4; Perry Craigmyle, 3-4-30.6; David Penwell, 2-5-36.6; Gary Sibbitts, 2-5-30.3.

WOMEN CLASS A — Jerry Babb, 7-1-55.5; Terri Jenschke, 6-2-44.8; Leah Posey, 5-2-37.1; Lucy Hart, 3-4-37.1; Sharon Crane, 3-4-33.7; Margie Viles, 2-5-38.0; Edna Anderle, 2-5-28.0; Katie Clark, 1-6-25.7.

JUNIORS A — Mike Gerdson, 5-0-60.3; Joey Joseph, 4-1-49.2; Tammy Gerdson, 3-3-33.5; Chris Moyer, 2-3-25.6; Shayne McBrearty, 1-4-20.8; Kevin Meyer, 0-5-24.8.

Other class winners were: **CLASS D** — Al Ward, 7-1-45.8; **CLASS E** — Clyde Gerdson, 6-2-33.3; **CLASS F** — Vernon Crane, 8-2-31.8; **CLASS G** — Jack Babb, 6-0-33.0; **WOMEN'S CLASS B** — Dolores Zigrang, 8-0-36.9; **CLASS C** — **WOMEN** — Bonnie Blount, 5-1-15.7; **WOMEN'S CLASS A** — Handicap — Leah Posey, 5-2; **JUNIOR'S CLASS A Handicap** — Tammy Gerdson, 4-1; **JUNIOR CLASS B** — Bryan Smith, 6-3-14.3; **JUNIOR CLASS B** — Handicap — Brad Gowanlock, 5-4.

MAISON TOPS IN MICHIGAN WATER WONDERLAND OPEN TRUDY WELLS OF ILLINOIS WINS LADIES TITLE

With a new system installed, Class A of 14 players, split in 2 groups after head to head match of 6 games on Saturday, the winner of each group, and the player with the highest ringer percentage in each group pitched on Sunday, following the procedure established by professional bowlers. Class A-1 winner, Doc Maison, Warren, Michigan and LeRoy Rowe, Angola, Indiana represented one group. Class A-2 winner, Bill Holland, Stillsville, Indiana and Justin Perticone, Jackson, Michigan represented this group. Perticone defeated Rowe 37-30 in the first play-off game, Second game, Perticone defeated Holland 37-22. Third game Maison defeated Perticone 36-24 to win.

CLASS A-1 — Doc Maison, Warren, 6-0-69.2; Leo Fitzpatrick, Jackson, 3-3-61.9; Rick Gyorkos, Romulas, 3-3-60.3; Chal Torrey, Jackson, 3-3-59.9; Stan Swarthout, Milan, 3-3-58.0; Leroy Rowe Angelo, Ind., 2-4-64.7; Joe Vanderlinder, Big Rapids, 1-5-61.0; High game Rowe, 81.7.

WATER WONDERLAND — (Cont.)

CLASS A-2 — Bill Holland, Stillville, Ind., 6-0-65.2; Roy Smith, Muskegon, 4-2-59.6; Dick Pelton, Jackson, 4-2-59.5; Justin Perticone, Jackson, 3-3-65.5; Hiram Nelson, Ottawa, Ill., 3-4-56.8; Phil Carra, Vicksburg, 1-5-48.7; Fred Brown, Ohio, 0-6-44.9; High game Perticone 77.4.

CLASS B-1 — Glen Lehrke, Jackson, 5-0-55.3; Walley Frakes, Detroit, 4-1-50.4; Ben Paul Shutt, St. Joseph, 3-2-55.1; Ozzie Williams, Cement City, 2-3-49.5; Len Robinson, Charlotte, 1-4-44.8; Andy Mathews, Detroit, 0-5-31.8.

CLASS B-2 — Dale Dombrowski, Oregon, Ohio, 5-0-55.0; Gary Gardner, Toledo, 4-1-61.3; Red Totten, Midland, 2-3-55.0; Oscar Hope, Lansing, 2-3-52.5; Bob Wells, Dearfield, Ill., 2-3-50.8; George Puskar, Detroit, 0-5-50.0.

CLASS C — Jim Shilling, Ohio, 5-2-48.7; Ken Miller, Jackson, 4-3-50.7; Al Moon, Lansing, 4-3-47.1; Kevin Smith, Warren, 4-3-46.1; Chuck Perkins, Ypsilanti, 3-4-48.7; Gil Jaeger, Ann Arbor, 3-4-47.9; Tom McFarland, Holt, 3-4-42.3; Dave Young, Jackson, 2-5-43.3.

CLASS D — Casey Moubray, Lansing, 6-1-54.1; Ken Bailey, Kalamazoo, 6-1-53.6; Dick DeBrafander, 5-2-47.4; George Stifel, Toledo, 3-4-37.8; Dick Frakes, Kalamazoo, 3-4-35.0; Bob Young, Jackson, 2-5-42.8; Bob Zeis, Lansing, 2-5-39.4; Dale Kaufman, Calton, 1-6-31.0.

CLASS E — Roy Colby, Jackson, 5-1-40.1; Walt Weidel, Fulton, 5-1-41.1; Marve Falk, Roseville, 4-2-44.8; Larry McCrea, Dundee, 3-3-47.9; Don Freese, Jackson, 3-3-41.5; Merle Silbey, Chelsea, 1-5-37.0; Moses Smith, Warren, 0-6-32.5.

CLASS F — Richard Sihaefer Taylor, 6-1-34.9; Walt Ranson, Lansing, 5-2-38.3; Ron Welzel, Jackson, 5-2-36.7; Frank Barnes, Battle Creek, 4-3-33.8; Rex Ryan, Hillsdale, 4-3-33.1; Joe Spitzer, Jackson, 2-5-29.0; Harland Bennett, Fulton, 1-6-26.1; Dale Kauffman, Calton, 1-6-24.9.

CLASS G — Mike Ardelean, Auburn Hts., 5-2-28.3; Bill Palmer, Jackson, 4-3-28.7; Curtis Dunlap, Galesburg, 4-3-25.6; Dave Hess, Calton, 4-3-23.7; Chet Winegar, Lansing, 3-4-24.1; Bob Horton, Jackson, 3-4-23.1; Burr Rice, Jackson, 3-4-22.9; Jerry James, Jackson, 2-5-23.4.

CLASS H — Dick Pickering, Jackson, 6-1-20.8; Eric Thomas, Jackson, 6-1-22.7; Ron Tucker, Jackson, 5-2-18.3; Charles Parker, Hastings, 4-3-16.8; Bob Kaufman, Sturgis, 3-4-15.7; Ted Temple, Detroit, 3-4-13.1; Garth Walters, Jackson, 1-6-13.6; Terry Frakes, Kalamazoo, 0-7-7.0.

CLASS A WOMEN — Trudy Wells, Deerfield, IL., 5-0-53.2; Jean Swarthout, Milan, 4-1-48.7; Ann Wedel, Fulton, 2-3-52.9.

CLASS B WOMEN — Chris Smith, Warren, 4-1-34.3; Mitzi Tucker, Jackson, 4-1-35.0; Marla Jennings, Kalamazoo, 3-2-36.0.

ROGEL VOGEL WINS FIRST ANNUAL MIDWEST TOURNAMENT OF CHAMPIONS — TARI POWELL, LADIES—S. UNGETHEIM, JRS.

In the first annual Midwest Tournament of Champions sponsored by the Illinois-Indiana and Michigan State associations at the Johnson County Horseshoe Club courts in Atterbury, Indiana on Sept. 18-19, Roger Vogel of East Peoria, Illinois was the champion with a record of 77.0 ringer percentage and posting 13 wins and 2 losses. Tari Powell of Rankin, Illinois was undefeated in the Women's Class A with a 9-0-74.0 record. Steve Ungetheim of Indiana scored 5 straight wins with a 70.4 percentage.

PRO MENS DIVISION — Roger Vogel, IL, 13-2-77.0; Mark Seibold, IN, 12-3-79.7; Jim Knisley, OH, 11-4-82.9; Clarence Bellman, IN, 11-4-75.7; Roy Smith, MI, 10-5-74.6; John LeMond, IN, 10-6-69.5; Leroy Rowe, IN, 8-7-74.4; Peck Anderson, IN, 8-7-70.5; Clifford Baker, IL, 7-8-70.1; Bill Ungetheim, IN, 6-9-69.5; Gerald Maison, 6-9-68.0; John Shuck, IN, 5-10-62.9; Charley Fix, IN, 4-11-66.1; Estel Bills, IN, 4-11-61.1; Ronald Colvin, IN, 3-12-64.4; Bill Holland, IN, 2-13-63.4.

PRO MENS DIV. GROUP A-1 — Estel Bills, IN, 6-1-67.2; Ralph Guffey, IN, 6-1-66.2; Ed Howdeshell, IN, 6-1-61.0; Glenn Hoppes, IN, 4-3-56.1; Kevin Smith, MI, 3-4-45.4; Casey Moubray, MI, 2-5-50.3; Carl Knight, IN, 1-6-48.4.

PRO MENS DIV. GROUP A-2 — Chal Torey, MI, 7-0-69.0; John Shuck, IN, 5-2-63.8; Hunter Dorman, IN, 5-2-62.2; Bill Querry, IN, 4-3-57.9; Bob Henderson, IN, 3-4-54.6; Jim Lane, IN, 3-4-53.2; John Decker, MI, 1-6-48.1.

PRO MENS DIV. GROUP A-3 — Charley Fix, IN, 7-0-62.9; Arthur Burch, IN, 5-2-63.6; Bob Wells, IL, 5-2-60.2; Jim Shilling, IN, 4-3-54.8; Richard Gyorkos, MI, 3-4-54.1; Robert Moit, IN, 3-4-49.3; Lee Wilcox, IN, 1-6-45.2.

MEN CLASS B — Ed Kowatch, IN, 6-0-64.0; Frank Baxter, IN, 3-4-56.0; Edward Weyer, IN, 3-3-52.7; Bob Shepard, IN, 0-6-45.8.

MIDWEST CHAMPIONS — (Cont.)

MENS CLASS C — Jim Pierson, IN, 6-1-48.6; Gerald Cummings, IN, 6-1-46.7; Jim McIntire, IN, 5-2-54.2; Marlin Wells, IN, 5-2-49.0; Lora Pearman, IN, 3-4-44.9; Martin Drummond, IN, 2-5-40.4; Jay Hoyer, IN, 1-6-38.1; Paul Gibson, IL, 0-7-22.5.

MENS CLASS D — Bill Hatt, IN, 6-1-46.1; Paul Jolsen, IN, 5-2-44.9; Tim Tatman, IN, 5-2-42.0; Dick Warner, MI, 5-2-40.3; Lloyd DKarstens, IN, 3-4-27.3; Richard Hostetler, IN, 2-5-36.0; Elmer Branson, IN, 2-5-29.7; Robert Steimel, IN, 0-7-33.4.

MENS CLASS E — G. G. Derbyshire, IN, 8-1-45.0; Sylvester Hahn, Sr., IN, 6-3-40.3; Harry Holland, IN, 6-3-28.2; James Snoddy, IN, 5-4-37.3; Joe Morgan, IN, 5-4-34.2; Robert Hill, IN, 4-5-35.8; David Kramer, IN, 4-5-35.7; Ron Coffey, IN, 4-5-30.0; Don Anderson, IN, 3-6-32.9; Virgil Jackson, IN, 0-9-21.9.

MENS CLASS F — Wink Weinburg, IN, 6-1-35.7; Marvin Falk, MI, 5-2-35.1; Ray Maciejewski, MI, 5-2-28.3; Gordon Sams, IN, 4-3-33.0; Franklin Barnes, MI, 3-4-29.5; Richard Schaefer, MI, 3-4-25.5; Carl Mitchell, IN, 1-6-24.3; Dick Sanders, IN, 1-6-23.8.

MENS CLASS G — Winfield Weinburg, IN, 6-1-38.2; Lawrence Wooster, IN, 5-2-30.3; John Barrows, MI, 5-2-29.6; Harold Green, IN, 4-3-33.2; Fred Armentrout, IN, 4-3-29.8; Lowell Cummings, IN, 2-5-28.1; Luther Chandler, IN, 2-5-27.2; Max Gunyon, IN, 0-7-16.0.

MENS CLASS H — Michael Ardelean, MI, 9-0-27.2; Dominick Misuraca, MI, 7-2-29.3; Len Chouinard, MI, 7-2-27.8; Paul Gibson, IL, 6-3-23.8; Mark Havert, IL, 5-4-25.8; Tiny Brady, IL, 4-5-15.1; Scott Frayle, IL, 3-6-20.6; Lucky Bork, IL, 3-6-20.1; Mike Madsen, IL, 1-8-15.8.

WOMEN CLASS A — Tari Powell, IL, 9-0-74.0; Bonnie Seibold, IN, 8-1-69.2; Vivian Kramer, IN, 6-3-48.5; Betty Branson, IN, 4-5-46.0; JoAnn Keith, IN, 4-5-45.7; Phyllis Anderson, IN, 4-5-43.8; Trudy Wells, IL, 3-6-45.6; Dorothy Falk, MI, 3-6-44.0; Chris Smith, MI, 3-6-32.9; Ramona Cummings, IN, 1-8-32.0.

WOMEN CLASS B — Ramona Cummings, Ind., 4-2-31.6; Charlene McKinley, IN, 4-2-25.2; Carolyn Holland, IN, 3-3-28.3; Hazel Shuck, IN, 1-5-19.2.

JUNIOR CLASS A — Steve Ungetheim, IN, 5-0-70.4; Chuck Cummings, IN, 4-1-41.2; Tony Cummings, IN, 3-2-27.2; Buddy Warner, MI, 2-3-30.8; Chad Hyatt, IN, 1-4-24.4; Carrie Cummings, IN, 0-5-14.

WALTER RAY WILLIAMS STAR OF HERITAGE NAT'L OPEN

Well, he has pitched a slightly higher tournament percentage and he didn't break the Heritage record for highest game but Walter Ray Williams did put on some show! He traveled from California to Massachusetts as the annual special guest of Mr. and Mrs. Ed Domey for the Heritage Budweiser National Open and showed the Northeast how it's done. Out of 13 games, he pitched only 4 below 90%. During the second day of competition, pitted against the higher % players, he averaged 91.8%.

There were 8 other classes in the competition. In Class 2 Paul Cormier used his excellent style to win. In Class 3, Joe Shyme lost to Ray Peloquin to emerge class winner. New Hampshire had a winner in Class 4 in the form of Dave Westcott who breezed to victory, with an 81.8% game helping him out.

In Class 5 young Brenda McNeill showed why she is going to be a threat in her first year in the Women's division, pitching 47.9% to win. Al Latouche showing excellent concentration and promise edged out Don Harrison to win Class 6. Barbara McNeill started things out for the McNeill's as she was undisputed winner in Class 7. John Garson came in number 1 in Class 8 and left the same way although he had to survive a playoff over Mike Desroches to do it. Bill Ryan won Class 9 with only one loss.

CLASS 1 — Walter Ray Williams, Jr., CA, 13-0-90.9; Art Tyson, NY, 10-3-76.0; Ray Domey, RI, 10-3-75.2; Norman Rioux, CT, 10-3-75.0; Joe Schultz, NY, 10-3-72.4; Debby Michaud, MA, 9-4-77.9; Ed Domey, MA, 7-6-67.9; John Belsito, MA, 5-8-67.2; Bernard Davis, NH, 5-8-66.3; Bill MacIntyre, NJ, 5-8-65.8; Charles Bonani, MA, 4-9-65.9; Rick Howe, MA, 2-11-61.3; George Trabucchi, CT, 1-12-61.3; Bernard Mullady, NJ, 0-13-48.6.

CLASS 2 — Paul Cormier, MA, 5-1-64.2; Bernard Herfurth, MA, 4-2-63.7; Angie Cieslak, MA, 4-2-56.5; Ed Bodinski, MA, 3-3-56.9; Mike Donovan, NH, 2-4-61.9; Joe Festa, CT, 2-4-58.8; John Duffy, MA, 1-5-58.8.

CLASS 3 — Joe Shyme, MA, 5-1-52.2; Roger Henson, CT, 4-2-59.8; Joe Merritt, MA, 3-3-53.1; Brian Smith, NH, 3-3-52.8; Ray Peloquin, MA, 3-3-45.3; Fran Norman, MA, 2-4-50.0; Gerry Moore, CT, 1-5-43.6.

CLASS 4 — Dave Westcott, NH, 7-0-53.7; John Kraus, MA, 5-2-54.7; Edgar Cote, MA, 5-2-48.2; Bill DuPont, MA, 3-4-47.9; Joe Hickey, NJ, 3-4-42.1; Paul Dumont, MA, 2-5-42.8; Bob Dorn, Sr., MA, 2-5-39.8; Larry Croteau, MA, 1-6-36.9.

HERITAGE NAT'L. — (Cont.)

CLASS 5 — Brenda McNeill, MA, 6-1-47.9; Gerry Labrie, MA, 5-2-44.1; Fred Simon, MA, 5-2-41.2; Joe Guy, MA, 4-3-40.7; Orton Cushman, MA, 4-3-37.1; Sam Raymond, NH, 3-4-40.4; Mel Merritt, MA, 3-4-36.9; John Markey, MA, 2-5-40.8; Tom Henley, MA, 2-5-36.5; Nick Ricci, MA, 1-6-35.4.

CLASS 6 — Al Latouche, CT, 5-2-35.5; Don Harrison, MA, 5-2-36.9; Bill McMahon, MA, 4-3-42.3; Bob Traquair, NH, 4-3-42.0; Steve Lowell, NH, 3-4-39.3; Gary Collins, NH, 3-4-34.9; Bill White, MA, 2-5-35.5; Don Lachance, NH, 2-5-35.1.

CLASS 7 — Barbara McNeill Sr., MA, 6-1-39.0; Herbert Cox, NH, 5-2-42.1; Bill Lawson, MA, 5-2-38.7; Dave Baillargeon, NH, 5-2-37.4; Ed Snow, NH, 4-3-38.0; Ray Towle, NH, 3-4-31.2; Jean Begin, MA, 2-5-34.7; Andy Dominiq, MA, 2-5-28.8; Bud Ploof, MA, 0-8-30.0.

CLASS 8 — John Garson, MA, 6-1-31.1; Mike Desroches, MA, 6-1-33.4; Mike Cox, NH, 5-2-27.4; Walt Sweren, NH, 4-3-27.5; Barbara McNeill, Jr., MA, 4-3-26.3; Ernest Levangie, MA, 4-3-18.6; Charlie Rutkowski, MA, 3-4-24.9; Dick Dumont, MA, 2-5-19.2; Red Cote, MA, 1-6-20.3; Gerry Begin, MA, 0-7-15.5.

CLASS 9 — Bill Ryan, CT, 6-1-21.8; Tony Nacewicz, MA, 5-2-21.2; Jim Styles, NH, 5-2-19.8; Dusty Rhodes, CT, 5-2-19.6; Victor Sirois, NH, 4-3-23.9; Reggie Ploof, MA, 3-4-15.9; Paul Duff, CT, 3-4-13.6; Roland Henner, NH, 2-5-18.5; Leo Michaud, MA, 1-6-12.8; Chuck McNeill, MA, 1-6-9.9.

MAROON TOP MAN IN FRANKE SPECIAL — CENTRALIA, ILL.

FAY RAMSEY WINS LADIES — BRIAN FORSYTH, JUNIORS

Pitcher-promoter Delbert Maroon of Altamont reeled off five games over sixty-five per cent and won six games losing only one to win the Henry Franke Special at Centralia, Illinois.

Fifty-four pitchers from two states competed. Dick Waterman of Fairview Heights and Archie Barnett of Greenfield each won five games and lost two to finish second and third.

CLASS AA — Henry Franke, Centralia, 4-1-49.5; Walt Stinnett, Greenfield, 4-1-39.7; Dennis East, Jerseyville, 4-1-45.0; Cliff Arnold, Roxana, 2-3-30.3; Elmer Knobloch, Mascoutah, 1-4-26.0.

CLASS A — Delbert Maroon, Altamont, 6-1-60.7; Dick Waterman, Fairview Heights, 5-2-55.2; Archie Barnett, Greenfield, 5-2-55.3; Steve Denault, Sparta, 4-3-50.8; Wendell Savage, Litchfield, 3-4-49.1; Ken Towell, Litchfield, 2-5-50.5; Wes Simmermaker, Jerseyville, 2-5-46.4; Norm Siefker, Breese, 1-6-41.2.

Other class winners were as follows: **CLASS B** — Cliff Kellerman, 6-1-56.0; **CLASS C** — Gene Evans, 7-0-47.1; **CLASS D** — Gene Evans, 5-0-40.0; **CLASS E** — Lester Frey, 4-1.

BOYS CLASS — Brian Forsyth, 3-0; De Wayne Cunningham, 1-2; Jeff Foppe, 1-2; Steve Deien, 1-2.

LADIES CLASS — Faye Ramsey, 7-0-51.9; Sis Conner, 6-1-42.0; Ronda DuBridg, 5-2-48.3; Emerald Moroney, 4-3-31.4; Donna Galvin, 3-4-32.4; JoAnn Smith, 2-5-18.8; Sandy Ennis, 1-6-16.5.

DON TITCOMB ANNOUNCES CANDIDACY FOR NHPA PRESIDENT

Mr. Wally Shipley
President, NHPA

Dear Wally:

It is always cause for sadness when one decides to end a job into which he has put so many years and so much effort. You have had divided factions, limited time and the geography of a large nation to contend with. I can sympathize with the patience and forbearance required to deal with those less informed and the slowness with which things develop. You should feel proud of the accomplishments of the National under your guidance. We have grown.

Nonetheless, I would like to submit my name for consideration as President of the NHPA. It is not ego that I want to satisfy with this candidacy. I sincerely love the game, and have and will continue to promote horseshoe pitching. I have given countless exhibitions, clinics and demonstrations for schools, industries, clubs, and the general public in parks, shopping malls, and most recently at the Santa Clara County Fair. I, and horseshoe pitching, have been featured in the national and local media. Through my efforts, new courts have been built in Sunnyvale and Los Gatos. IBM installed 16 courts, used by 250 people a day, after my exhibition there. I have appeared at Westinghouse, Sylvania, Hewlett-Packard, GE and many other industries in the area.

I believe that my experience in bringing the game to the notice of the public is needed. We have reached only about 5% of the population. I don't pretend to know the only ways to bring the game

TITCOMB — (Cont.)

to the level of popularity it deserves. I do know that the things I have tried have been successful.

The recent promotion that I and the San Jose Horseshoe Club and the Horseshoe Store put on at the Santa Clara County Fair is a prime example of the kind of drive and imagination I can bring to the National Association. Through the combination of 4 demonstrations a day, a free Pitch & Win booth and a free amateur tournament we got over 10,000 people to pitch shoes, many for the first time ever or "in years." 1400 tried to qualify for our tournament, 600 juniors, 600 men, 100 women and 100 seniors.

I'm proud to have been instrumental in the conception, and successful conclusion of this project, which was, I believe, the largest of its kind in the U.S.A. It took leadership, yes, but it also took full cooperation by all, and this we achieved. Our club has quadrupled in size!

I have just received word that the San Jose Recreation Dept. has allocated \$50,000 toward the building of new courts for our San Jose Club. This is a result of four years of work by the club and me.

I would like to remind you that I have served as a National Vice-President. It was at my instigation that the NHPA now has regional directors, and that I was one of the first. I have worked for equality for women and juniors in court conditions and publicity and for standardization of players' averages across the nation. With the membership's support I hope to implement these and many more ideas for the furtherance of the Game.

During your tenure you have built a fine staff of loyal officers who have been a tremendous asset to the game and will, I know, continue to be so. I only wish to be a part of this fine work, on a national level.

Yours truly,

Don Titcomb
2600 Senter Rd., Sp. 211
San Jose, Calif. 95111

**BUY DIRECT FROM
THE MANUFACTURER**

Join the thousands of Leagues,
Clubs, Schools, Business Groups
and Athletic Departments who
enjoy BUYING DIRECTLY from us

No Middleman....
Means Savings to you

Dec. Dept. HP1282

FREE!
for the asking

1982 Catalog of
**Trophies • Plaques • Medals
Ribbons • Pins • Jewelry
Silverware • Desk Sets**

Don't Delay...Call or Write Today
Phone Toll-Free Now!

1-800-628-9657
In Massachusetts
1-800-282-7789

DINN BROS. The Trophy People
P.O. Box 111 • 68 Winter St. • Holyoke, MA 01041

ROGER NORWOOD REGAINS TENN. STATE CHAMPIONSHIP MARLENE RAY TOPS IN LADIES — S. LONG JUNIORS

Roger Norwood who has eight state titles to his credit added the 1982 Tennessee State championship to his list in the annual state tournament held in Cleveland, Tennessee. He dropped one game to Don Ward, defending state champion. Don had the high single game with 82.6 percent and also the longest game honors with 87 ringers in 114 shoes. Marlene Ray topped the Ladies class with 6 straight wins tied together with a 49.0 ringer percentage. In the Junior division it was won by S. Long going undefeated with a 4-0-56.1 record. There were 56 entries which made the 1982 event the largest ever to be held in Tennessee.

CLASS A — R. Norwood, 6-1-74.0; D. Ward, 5-2-74.3; G. Lebow, 5-2-70.7; T. R. Little, 4-3-63.2; W. Grant, 3-2-59.0; J. Lawson, 3-2-58.3; O.D. Lebow, 2-3-55.0; G. Whaley, 0-7-50.9.

CLASS B — C. Montgomery, 6-1-62.4; E. Long, 6-1-56.5; D. Stallings, 5-2-61.1; J. Vines, 3-4-52.7.

CLASS C — J. Shelton, 5-0-53.9; G. Bush, 3-2-52.4; M. Rich, 3-2-48.4; B. Arms, 2-3-45.5.

CLASS D — J. Davis, 4-1-39.8; D. Holmes, 3-2-35.6; H. Foster, 3-2-34.8; W. Jennings, 3-2-33.6; R. Bender, 2-3-37.0; R. Ward, 0-5-29.2.

CLASS E — L. Byrd, 4-1-35.2; W. Bennett, 4-1-33.0; S. Cornette, 3-2-33.4; F. Fritts, 3-2-30.5; Wayne Jennings, 1-4-21.9; T. McPeck, 0-5-20.6.

CLASS F — R. Finney, 4-1-20.8; B. Oliver, 3-2-24.4; T. Dockery, 3-2-21.7; L. Watson, 2-3-18.3; B. Bales, 2-3-15.3; J. Davis, 1-4-14.9.

CLASS G — E. Chambers, 3-0-19.3; C. Bennett, 2-1-22.8; F. Gaw, 1-2-10.6; D. Ward, 0-3-10.4.

WOMEN — Marlene Ray, 6-0-49.0; Maxine Shockelton, 5-1-35.1; Lis Wilson, 4-2-16.5; Avis Smith, 3-3-18.8; Nancy Ward, 2-4-9.7; Katie Bender, 1-5-3.2; Wilma Gobble, 0-6-4.6.

JUNIORS — S. Long, 4-0-56.1; M. Bush, 3-1-41.6; T. Duke, 2-2-34.6; R. Rich, 1-3-15.1; M. Arms, 0-4-1.06.

FULLER OVER CHURCH FOR NORTH CAROLINA STATE TITLE M. DYSON SWEEPS JUNIORS — J. BURROW TOPS IN LADIES

CHAMPIONSHIP — J. B. Fuller, 6-1-72.0; Fred Church, 6-1-61.2; Bud Presnell, 5-2-68.5; John Edmonds, 4-3-62.7; Gurney York, 3-4-56.4; David Burnette, 2-5-57.7; David Sartin, 1-6-54.2; Wayne Taggart, 1-6-53.5.

CLASS A — J. D. Carpenter, 4-1-58.9; Jones Burrows, 4-1-58.9; Doug Shear, 3-2-60.2; Joe Young, 2-3-56.6; Raymond Smith, 1-4-50.3; Bud Koykendall, 1-4-49.6.

CLASS B — B. J. Brown, 5-0-48.6; L. G. Brown, 3-2-52.1; Gilbert Moore, 3-2-53.1; Theo Vernon, 3-2-49.7; Roy Littrell, 1-4-46.1; Ty Minor, 0-5-33.1.

CLASS C — Lester Hedrick, 4-1-47.3. Defay Pearson, 3-2-46.4; James Scotten, 3-2-46.6; James Coggins, 3-2-45.6; Lawrence Holsclaw, 2-3-37.6; Carl Moore, 0-5-36.8.

CLASS D — T. H. Hinshaw, 5-0-50.9; Tommie Nall, 3-2-44.4; Flake Dyson, 2-3-44.5; Jones Reid, 2-3-39.1; Buck Puetette, 2-3-34.7; Jack Stevens, 1-4-37.8.

CLASS E — E. A. Bingham, 5-0-48.7; Robert Holsclaw, 4-1-48.1; Lonnie Robertson, 3-2-36.5; Pete Seagraves, 2-3-37.2; Joe Garner, 1-4-37.7; A. J. Gates, 0-5-34.6.

CLASS F — Tom Purvis, 4-1-35.2; James Cook, 4-1-40.0; Melvin Canter, 3-2-36.1; John Boone, 2-3-41.8; George Kennedy, 2-3-27.4; Roger Johnson, 0-5-14.0.

CLASS G — Billy Dunn, 4-0-27.7; Grover Minor, 3-1-27.5; Wallace Hensley, 2-2-28.4; Dale Raprager, 1-4-20.1; Terry Kidd, 0-4-25.3.

CLASS H — Pete Willard, 2-1-27.0; Frank Oldenburg, 2-1-20.4; Lester Myrick, 2-1-24.5; Kenneth Aldridge, 0-3-18.7.

JUNIORS — Mark Dyson, 2-0-90.3; Teddy Vernon, 1-1-58.9; Dean Vernon, 0-2-16.1.

WOMENS — Jo Anne Burrow, 1-0-22.7; Jean Brown, 0-1-9.

**BEV FORGUES—KEVIN HOLLISTER—RICH FORGUES—
MARLENE BURNHAM WINNERS
IN 1982 VERMONT STATE TOURNAMENT**

WOMENS A — Bev Forgues, 6-0-60.6; Joyce Gilbeau, 3-3-49.6; Donna Ames, 2-4-42.2; Karen Burnham, 1-5-40.5.

WOMENS B — Jean Bean, 7-0-39.1; Debbie Brown, 6-1-37.3; Denise Krawczyk, 5-2-27.1; Wilma Pecor, 4-3-23.2; Cindy Nichols, 3-4-16.5; Kay Brewster, 2-5-12.4; Tina Prior, 1-6-9.0; Jeannette Thompson, 0-7-11.7.

GIRLS A — Marlene Burnham, 4-2-20.0; Wendy Burnham, 2-3-23.0; Jeannette Lavelle, 2-3-17.7.

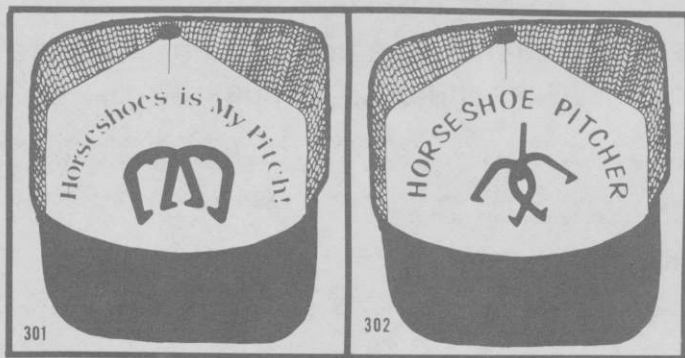
MENS A — Kevin Hollister, 7-2-68.7; Brian Lander, 6-3-54.4; Gale Greene, 6-3-58.8; Dick Greene, 6-3-57.2; Bud Lavitt, 6-3-56.8; Paul Sylvia, 5-4-54.1; Frank Lenguel, 4-5-51.1; Leon O'Dell, 2-7-51.6; Harold Ames, 2-7-51.5; Mike Boudreau, 1-8-51.1.

MENS B — Bob Dean, 6-2-52.9; Forrest Lander, 5-3-48.3; Bob Gokey, 4-3-53.6; David Bell, 4-3-48.8; Bill Wescott, 4-3-48.2; Ken Downer, 3-4-48.4; Pete Pronty, 2-5-46.3; Bob Many, 1-6-40.7.

MENS CLASS C — Granny Dressel, 5-2-42.2; Ken Wallace, 4-3-44.7; Roger Baillargeon, 4-3-41.5; Cliff Richards, 4-3-38.9; Bob Snide, 4-3-38.5; Ray Barker, 3-4-41.0; Wendall Burnham, 3-4-37.3; John Blair, 1-6-38.3.

MENS D — Blakely, Bigelow, 6-1-37.0; Donald Dean, 4-3-33.5; Peter Baldwin, 4-3-32.9; Lee Paquette, 4-3-30.9; Donald Choiniere, 4-3-30.1; Ron Emmons, 3-4-24.4; Elmer Moore, 2-5-31.8; Bob Gauthier, 1-6-30.8.

PITCHING HATS



TWO VERY DISTINCT DESIGNS ON A TOP QUALITY HAT. AVAILABLE IN 10 COLORS. RED. ROYAL BLUE. LT. BLUE. NAVY BLUE. GOLD. KELLY GREEN. ORANGE. BROWN AND BLACK. THE MESH BACK AND PADDED BILL ARE THE SAME COLOR. THE FRONT IS WHITE WITH A BLACK PRINT. HATS WITH A SOLID BACK AVAILABLE (ADD 50¢)

TO ORDER: SEND CHECK OR MONEY ORDER FOR 4.95 PER HAT TO WALT WIRE SILK SCREEN
P.O. BOX 2401, ROSWELL, NM 88201. PLEASE INCLUDE 1.25 FOR SHIPPING & HANDLING.
ALLOW 3 WEEKS FOR DELIVERY.

VERMONT STATE — (Cont.)

MENS E — Dennis Krawczyk, 7-0-35.0; Ed Sorrell, 6-1-34.3; Roger Forgues, 5-2-34.0; Ray Gomez, Sr., 4-3-29.5; Mike Brown, 4-3-28.8; Paul Pouliot, 2-5-26.2; Bud Balalgeon, 1-6-22.1; Rod Burnham, 0-7-19.7.

MENS F — Reid Brewster, 7-1-35.4; Arnold Brassaid, 6-2-31.8; Ben Bell, 5-2-33.7; Philip Sumner, 3-4-21.0; Ray Gokey, 3-4-17.8; Al Companion, 2-5-25.3; Mark Pouliot, 2-5-20.4; Paul Dunbar, 1-6-19.5.

MENS G — Ray Gomez, Jr., 7-1-21.3; Stanley Prior, 6-2-20.6; David Smith, 5-2-18.6; Harold Wrisley, 4-3-15.6; Richard Bedell, Sr., 4-3-15.5; Ed Carroll, 2-5-15.9; Willfred Francis, 1-6-9.3.

JR. BOYS A — Rich Forgues, 7-0-72.9; Glen Matheson, 6-1-61.1; Mike Sylvia, 5-2-62.2; John Burnham, 4-3-46.8; John Gokey, 3-4-42.2; Jim Forgues, 2-5-48.8; Carol Baillargeon, 1-6-41.9.

JR. BOYS B — Richard Bedell, Jr., 5-0-32.7; Denny Young, 4-1-39.9; Brian Baillargeon, 3-2-20.8; Billy Sweet, 2-3-21.2; Tim Page, 1-4-19.9; John Nichols, 0-5-7.5.

LYKKEN & ROLAND NO. DAK. HALL OF FAME INDUCTEES

Gene Lykken of Kindred and the late Ernoif "Red" Roland of Billings, Mont., were enshrined in the North Dakota Horseshoe Association Hall of Fame Sept. 4 at West Fargo, N.D.

Lykken, 51, won three state titles and was trying for No. 4 in the tourney. He is a member of the Fargo, N.D. league and has pitched in many tournaments around the area.

Both Lykken and Roland were at the 1967 World Tournament held at Fargo, N.D. They are both known to many Minnesotans and pitchers across the nation.

Roland promoted the sport at Billings, Mont., after moving there from Minot, N.D. He became the youngest state title winner ever in 1933 when he won the N.D. crown at Minot.

Lykken won state titles in 1958, 1962 and 1971. A farmer, he has pitched in 33 state tourneys and hurled his highest ringer percentage ever — 82.9 at Mesa, Ariz., last February in the Valley of The Sun tournament.

HARTZELL FINALIST IN GREATER SEATTLE, WA. TOURNEY

CLASS A — Oliver Hartzell, Bothell, 9-2-49.3; Les Buchert, Seattle, 8-3-51.3; Jack Bush, Marysville, 7-3-48.7; Sig Pederson, Seattle, 6-4-52.1; Bob Good, Alderwood Manor, 6-4-51.2; Ray Brumfield, Lynnwood, 6-4-50.3; Brad Pederson, Seattle, 5-5-51.9; Orlean Clinton, Seattle, 5-5-46.9; Jim C. Malvern, Marysville, 2-8-42.0; John Hilberg, Clinton, 1-9-43.5; Bill Coppernoll, Seattle, 1-9-37.1.

CLASS B — Ray Powell, North Bend, 9-0-48.6; Dick Lee, Bellevue, 8-1-50.0; George Bannon, Woodinville, 6-3-42.0; Dick Wasson, Des Moines, 5-4-41.4; George Fagala, Edmonds, 4-5-40.6; Lyle Meuret, Everett, 4-5-40.1; Gene Beach, Marysville, 3-6-38.4; Len Huson, Seattle, 3-6-34.3; Charlie Tapper, Kent, 2-7-36.2; Bob Pederson, Seattle, 1-8-34.7.

CLASS C — John M. Kronholm, Everett, 7-1-37.2; John L. Kronholm, Everett, 5-2-37.7; Duane Patterson, Everett, 5-2-36.0; Milt Johnson, Auburn, 3-3-30.3; Roger Wirtanen, Lake Stevens, 2-4-25.6; John Alexander, Seattle, 1-5-25.8; Mac Huson, Seattle, Forfeit; Bruce Huson, Lynnwood, Forfeit.

ELMER HOHL HORSESHOE AVAILABLE

DESIGNED AND PITCHED BY ELMER HOHL

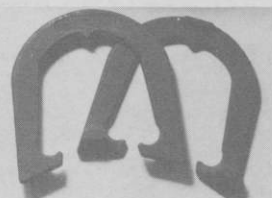
(6 Times World Champion)

Order from:

DON KOSO
803 East 12th Street
Falls City, Nebraska 68355

HERB PINCH
592 Hull Street
Sharon, Pennsylvania 16146

WRITE FOR PRICES



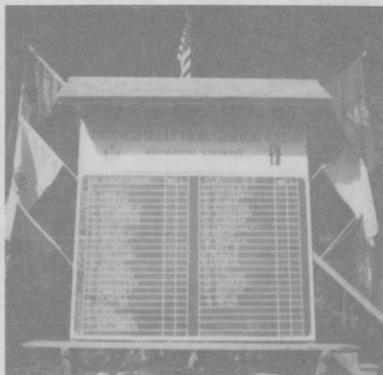
NHPA Approved

NORM RIOUX CAPTURES 1982 NEW ENGLAND CHAMPIONSHIP DEBBIE MICHAUD LADIES, R. FORGUES, B. McNEILL JRS.

The Horseshoe Park courts in Springfield, Vermont was the scene of the 1982 annual New England Championships held on the Labor Day weekend. 234 pitchers assembled and as the saying goes, "They came, they saw, they conquered and were conquered."

Norm Rioux, the genial gentleman from Connecticut, proved "his metal" winning 7 straight games and posting a 74.5 ringer percentage. In the Ladies Class A, Debbie Michaud, posting her best ringer percentage ever of 81.9 won the Ladies championship with a clean slate of 5 victories. Rich Forgues had his day "in the sun" hitting a cool 77.6 ringer average and 7 straight wins to take home the Junior Boys title. Barbara McNeill recorded 6 wins and 1 loss and 35.3 ringer average to win the Girls Championship. Doug Klenia had the high single game honors with an 88.5 percent game.

To bring a tournament to a successful conclusion, such as this one was, requires the work and cooperation of many hands. Paul Sylvia assisted by his wife Carol, together with Jane, Carl and Karan York and Donna Ames and Bev Gokey and all others are to be commended for a tremendous job accomplished.



MENS CLASS A — N. Rioux, 7-0-74.3; B. Domey, 5-2-74.5; D. Klenia, 5-2-73.8; M. Pateneau, 4-3-74.3; E. Domey, 3-4-59.1; C. Richardson, 2-5-59.6; B. Smith, 1-6-63.7; B. Leavitt, 1-6-58.9.

MENS CLASS B — R. Hollister, 6-1-69.7; B. Lander, 6-1-65.7; C. Bonani, 4-3-66.5; A. Lord, 4-3-64.2; R. Howe, 3-4-57.9; G. Trabucchi, 3-4-58.7; P. Bouchese, 2-5-50.8.

MENS CLASS BB — R. Henson, 5-2-57.0; F. Lengyel, 5-2-55.5; L. Croteau, 5-2-53.8; P. Bergeron, 4-3-57.7; D. Greene, 3-4-57.3; A. Cieslak, 3-4-54.0; B. Dean, 3-4-49.4; D. Wescott, 0-7-47.0.

MENS CLASS C — A. Whitaker, 6-1-56.6; A. Pichette, 5-2-52.2; H. Ames, 4-3-50.7; G. Gokey, 4-3-44.9; W. Wescott, 3-4-50.3; B. Burke, 3-4-48.2; R. Casey, 2-5-42.7; C. York, 1-6-38.9.

MENS CLASS CC — F. Sibley, 7-0-53.8; A. Boudreau, 6-1-47.2; J. Buzik, 4-3-47.8; B. Traquair, 4-3-42.2; D. Hansen, 3-4-44.0; C. Costello, 2-5-42.8; G. LaBrie, 1-6-39.3; F. Lander, 1-6-36.6.

MENS CLASS DD — A. LaTouche, 6-1-48.4; F. Hill, Jr., 5-2-50.6; H. Cox, 5-2-40.9; R. Many, 4-3-44.4; R. Dorn, Sr., 4-3-39.6; V. Williams, 2-5-36.8; F. Wagner, 2-5-34.2; K. Downer, 0-7-33.0.

MENS CLASS DD — H. Murphy, 6-1-46.8; R. Ladd, 5-2-46.8; R. Doble, 5-2-44.7; N. Ricard, 4-3-44.2; W. Hall, 4-3-40.3; W. Pateneau, 2-5-40.6; F. McMahon, 2-5-36.6; P. Morrissette, 0-7-30.0.

MENS CLASS E — R. Barker, 5-2-50.7; B. Progen, 5-2-41.4; J. Balne, 5-2-41.2; F. Rivers, 4-3-40.1; H. Dei, 4-3-38.4; J. Blair, 2-5-41.1; M. Kibbee, 2-5-39.6; S. Lowell, 1-6-33.7.

MENS CLASS EE — N. Stortini, 8-1-45.5; J. Auge, 7-2-49.6; T. Henley, 6-3-37.9; A. Daneault, 5-4-37.5; W. Misella, 5-4-31.2; R. Plourde, 4-5-31.1; S. Raymond, 3-6-36.0; R. Snide, 3-6-32.9; B. Bigelow, 3-6-32.9.

MENS CLASS F — R. Harriman, 8-1-42.0; B. Lawson, 7-2-37.3; H. Reid, 7-2-34.2; C. Richards, 7-2-34.4; G. Collins, 5-4-36.2; B. Choser, 4-5-25.4; D. Harrison, 2-7-26.0; C. Steinbach, 1-6-27.6.

MENS CLASS FF — G. St. Pierre, 7-0-44.4; G. LeBourdais, 5-2-37.5; R. Fife, 5-2-35.2; W. Burnham, 4-3-41.3; R. Towle, 4-3-29.6; E. Snow, 2-5-27.6; D. Krawczyk, 1-6-17.2; L. Kearley, 0-7-22.0.

MENS CLASS G — C. Gelinas, 5-2-41.2; B. White, 5-2-37.6; B. Lee, 4-3-36.6; J. Page, 4-3-35.5; B. Miller, 3-4-37.0; E. Sorrell, 3-4-31.9; D. Dean, 2-5-34.9; C. Tracchia, 2-5-34.4.

MENS CLASS GG — R. Venables, 5-2-40.9; E. Veradt, 5-2-36.4; D. Gardner, 5-2-34.8; E. Mancini, 4-3-30.3; F. Lima, 3-4-30.3; P. Baldwin, 2-5-26.8; L. Fullam, 2-5-26.1; A. Doucette, 1-6-28.5.

CLASS H — A. Nacewicz, 5-2-38.4; E. Moore, 5-2-35.1; R. Forgues, 5-2-24.7; D. Baillargeon, 4-3-27.9; R. Emmons, 4-3-25.5; R. Brewster, 3-4-29.9; D. Holyoke, 2-5-35.6.

NEW ENGLAND — (Cont.)

CLASS HH — D. Hansen, 6-1-37.1; L. Paquette, 6-1-34.0; L. Kent, 5-2-32.8; R. Worby, 4-3-36.1; J.C. Begin, 3-4-31.7; R. Gomez, Jr., 2-5-27.8; B. Gauthier, 2-5-27.4; J. Garson, 0-7-24.2.

MENS CLASS I — D. Richard, 6-1-33.2; B. Sjoval, 5-2-32.9; H. Schriker, 4-3-24.1; M. Sciolette, 3-4-24.8; M. Brown, 3-4-21.2; D. McIlvene, 3-4-19.3; F. Ryan, 3-4-17.8; R. Bernard, 1-6-19.1.

MENS CLASS II — J. Lively, 5-2-27.9; Ray Fife, 4-3-33.3; E. Melton, 4-3-29.5; J. Conquest, 4-3-27.5; J. Daneault, 4-3-27.6; B. Cleveland, 4-3-23.9; B. Ryan, 3-4-27.5.

CLASS J — L. Rhodes, 6-1-25.8; D. Colandene, 5-2-27.9; R. Forsstrom, 5-2-23.9; N. Anderson, 4-3-27.8; R. Gesick, 4-3-21.3; V. Sirois, 2-5-20.6; A. Solhem, 2-5-18.3; C. Greenleaf, 0-7-16.9.

MENS CLASS JJ — A. Brassard, 7-0-34.9; P. Sumner, 5-2-25.9; D. Smith, 5-2-21.9; G. Magnusson, 4-3-24.1; R. Gokey, 3-4-19.4; R. Gomez, Jr., 3-4-17.0; A. Companion, 1-6-20.2.

MENS CLASS K — R. Smith, Sr., 6-1-29.1; B. York, 6-1-27.1; R. Henner, 5-2-21.3; R. Brooks, 4-3-23.6; M. McNeill, 3-4-17.4; R. Doyon, 3-3-12.4; J. Gagne, 2-5-13.5; R. McCarron, 0-7-8.3.

MENS CLASS KK — R. Blanchard, 6-1-26.9; F. Ryan, 5-2-24.2; L. Kearley, 5-2-23.9; B. Cosgrove, 4-3-16.9; H. Wrisley, 4-3-11.4; S. Miller, 2-5-18.8; R. Bedell, Sr., 2-5-15.8.

MENS CLASS L — P. Howe, 6-1-20.2; M. Georgina, 6-1-18.3; W. Francis, 5-2-16.1; F. Snowdeal, 4-3-12.1; W. Miller, 4-3-6.4; A. Deluca, 2-5-5.3; L. Michaud, 1-6-5.8.

WOMENS CLASS A — D. Michaud, 5-0-81.9; D. Pickering, 4-1-77.3; L. Downer, 3-2-60.7; L. Pateneau, 2-3-60.2; B. Forgues, 1-4-52.7.

WOMENS CLASS B — J. Gilbeau, 7-3-44.4; D. Ames, 7-3-42.2; B. Baillargeon, 6-4-45.4; B. McNeill, 6-4-42.1; M. Ryan, 4-6-40.6.

WOMENS CLASS C — K. Burnham, 6-1-48.1; D. Brown, 5-2-45.2; K. Dyer, 4-3-41.7; J. Veradt, 4-3-39.6; B. McNeill, 4-3-36.7; K. Mahoney, 3-4-35.8; R. Gelinis, 1-6-30.0; E. Gadoury, 1-6-29.1.

WOMENS CLASS D — D. Beardsley, 5-2-30.5; E. Brooks, 5-2-28.2; W. Pecor, 5-2-24.7; G. Martin, 4-3-26.7; M. Anderson, 3-4-28.5; A. Pateneau, 3-4-25.2; D. Krawczyk, 2-5-22.8; L. Lima, 1-6-21.2.

WOMENS CLASS E — K. Brewster, 6-1-22.6; G. Begin, 6-1-21.6; J. Thompson, 4-3-15.7; T. Downer, 4-3-11.4; L. Magnusson, 4-3-9.4; P. Croteau, 2-5-12.5; C. Millet, 2-5-11.3.

JUNIOR BOYS A — R. Forgues, 7-0-77.6; G. Matheson, 6-1-66.0; J. Burnham, 5-2-50.3; M. Sylvia, 3-4-58.4; J. Forgues, 3-4-57.0; S. Daneault, 3-4-55.9; J. Gokey, 1-6-33.8.

JUNIOR BOYS B — D. Doyon, 7-0-43.8; E. Baillargeon, 4-1-45.1; R. Morin, 2-3-36.3; D. Young, 2-3-32.3; D. Martin, 2-3-28.8.

JUNIOR BOYS C — G. Baillargeon, 5-1-34.7; R. Bedell, Jr., 4-2-29.0; J. Pichette, 2-4-22.4; C. McNeill, 1-5-17.9.

JUNIOR GIRLS A — B. McNeill, 6-1-35.3; M. Finnigan, 4-2-38.4; M. Burnham, 3-2-24.5; D. Dyer, 3-2-21.2; J. Lavallee, 1-4-11.0.

JUNIOR GIRLS B — S. Michaud, 5-0-16.5; R. Gadoury, 4-1-9.6; B. Dyer, 3-2-10.5; L. McNeill, 2-3-11.9; T. Keichner, 1-4-2.7.

JAMES MELSON WINS FIRST ARKANSAS STATE CHAMPIONSHIP

James Melson of Altus, Arkansas won the Arkansas State Championship in the first sanctioned State Tournament at Family Park, Hot Springs, Arkansas on Oct. 16. Melson won in a playoff with Bill Weaver of Mountain Home after a tie in the Championship Division.

James Walker of Clarksville won the Class B Division by defeating Eugene Edgin of Ozark, Arkansas in a playoff. John Tatum of Hot Springs, Arkansas won the Class C Division. Floyd Toole, Little Rock, N.H.P.A. Hall of Fame Honoree was the official judge.

The Arkansas State Assn. extends thanks to the Hot Springs Horseshoe Club for its efforts in arranging details of the tournament.

CHAMPIONSHIP — James Melson, 4-1-37.2; Bill Weaver, 4-1-33.6; Thurman Eccleston, 3-2-38.4; Lester Skaggs, 2-3-31.2; Ira Scott, 1-4-36.8; Charles Veazey, 1-4-27.6; **CLASS B** — James Walker, 4-1-37.2; Eugene Edgin, 4-1-28.4; Jerry Hood, 3-2-28.4; Bill Webb, 3-2-25.2; Ben Buxton, 1-4-27.2; Doug Edgin, 0-5-11.2.

GARY MINNICK REGAINS ARIZONA STATE TITLE — TERESA LIEVROUW WINS LADIES — JIM LARKINS JUNIORS

Bearing down on five opponents, Minnick took the State title he lost last Oct. '81 in Mesa's Pioneer Park. He had no trouble with last year's nemesis, Joe Walker of Green Valley. During the course of play, Minnick pitched a 92.3% game, tossing 24 ringers out of 26 shoes.

CLASS A — G. Minnick, Tucson, 5-0-71.9; J. Walker, Green Valley, 4-1-65.8; B. Courtwright, Green Valley, 3-2-44.7; M. McKissack, Phoenix, 2-3-38.8; Sam Finfock, Wellton, 1-4-31.5; Rex Lee, Yuma, 0-5-39.2.

CLASS B — M. Larkins, Sr., Tucson, 5-0-58.7; Ev. Clark, Tucson, 4-1-52.0; D. Cramer, Tempe, 3-2-52.5; L. Montaney, Mesa, 2-3-50.4; Ken Cole, Tucson, 1-4-38.6; J. McKissack, Phoenix, 0-5-Forfeit.

CLASS C — W. Edmondson, Mesa, 5-0-42.9; R. Weatherly, Tucson, 4-1-36.4; J. Vitton, Tucson, 3-2-32.5; D. Arionus, Yuma, 2-3-40.0; C. Calzada, Yuma, 1-4-34.0; B. VanZanten, Tempe, 0-5-33.6.

CLASS D — F. Nelson, Yuma, 4-1-42.4; (won P.O.); D. Ehlenberg, Tucson, 4-1-39.8; B. Velthoven, Tucson, 2-3-32.9; F. Bruns, Tempe, 2-3-31.7; M. Larkins, Jr., 2-3-29.4; P. Nicastro, Phoenix, 1-4-31.7.

CLASS E — H. Ruby, Phoenix, 4-1-40.2 (won in P.O.); Al Larson, Tucson, 4-1-35.8; L. Minnick, Mesa, 3-2-35.3; Terry Lievrouw, Florence, 3-2-35.1; G. Killingsworth, Tucson, 1-4-18.7; R. Weber, Phoenix, 0-5-Forfeit.

CLASS F — Stan Baker, Tucson, 4-1-22.9 (won in P.O.); K. Porath, Tucson, 4-1-20.7; L. Resseguie, Cottonwood, 4-1-15.7; W. Minnick, Tucson, 2-3-6.4; H. Kozlow, Phoenix, 0-5-Forfeit.

LADIES — Teresa Lievrouw, Florence, 2-1-35.6; Carol Larkins, Tucson, 1-2-28.1.

JUNIORS — J. Larkins, Tucson, 3-1-18.5 (won in P.O.); P. Minnick, Mesa, 3-1-10.0; S. Owens, Tucson, 2-1-10.0; C. Owens, Tucson, 1-3-5.0; L. Minnick, Mesa, 1-3-8.0.

JACK RAYMOND FRONT RUNNER FOR UTAH STATE CROWN

CLASS A — Jack Raymond, 10-1-49.6; Dennis Ohms, 8-3-51.7; Gary Hughes, 7-4-49.4; Byron Bowman, 7-4-42.5; Nolan Benson, 7-4-47.2; Keith Erickson, 6-5-50.7; Henry Benson, 6-5-43.3; Bruce Crane, 4-7-40.2; Lamont Gardner, 4-7-42.7; Art Hunsaker, 4-7-34.6; Rudy Labotto, 3-8-41.0; Bill Shelton, 1-10-40.9.

CLASS B — Rudy Labotto, 10-1-47.2; Harlow Griffin, 8-3-43.0; Bruce Crane, 8-3-42.6; Bill Shelton, 8-3-46.4; Bruce Eyre, 7-4-41.0; Doyle Peterson, 5-6-46.7; Jay West, 5-6-43.6; Bruce Lindow, 4-7-40.9; Frank Minster, 3-8-35.4; Tito Archuleta, 3-8-35.6; Charlie Johnson, 3-8-37.2; Cleo Snarr, 2-9-36.0.

CLASS C — Wendell Bundy, 7-1-33.7; Cleo Snarr, 6-2-32.5; Russ Horan, 6-2-31.8; Marty Hughes, 5-3-31.5; Joe Oborn, 5-3-23.8; Lee Jolley, 4-4-27.8; Bob Morley, 1-7-23.9; Herbert Zafft, 1-7-21.8; Floyd Holley, 1-7-15.0.

CLASS D — Willard Lindsay, 4-0-27.4; Herbert Zafft, 3-1-20.9; Steve Mecham, 2-2-19.4; Ray Brownson, 1-3-15.5.

MASS. STATE TOURN. CLASSES OMITTED FROM NOV. ISSUE

CLASS B WOMEN — Mary Ryan, 6-0-44.6; Joy Veradt, 4-2-40.3; Kathy Mahoney, 1-5-31.6; Leona Lima, 1-5-23.9.

CLASS B MEN — Ed Bodinski, 6-1-53.8; Robert Copley, 5-2-56.3; Fran Norman, 5-2-45.9; Joe Shyme, 4-3-45.4; Ray Peloquin, 3-4-48.8; William Dupont, 3-4-43.9; Gerald Labrie, 2-5-42.4; Frank Lima, 0-7-32.7.

CLASS C — Bill Progen, 5-2-43.0; Huck Dei, 5-2-39.1; Fred Simon, 4-3-44.8; Nick Ricci, 4-3-39.9; Arnold Grant, 4-3-39.2; Bones Hastings, 2-5-36.0; Bill Dickinson, 2-5-34.8; George St. Pierre, 2-5-34.6.

CLASS D — Tom Henley, 6-1-38.8; Don Harrison, 5-2-40.0; Gardner Alden, 5-2-33.1; Paul Morrissette, 4-3-40.8; Bill Lowson, 4-3-35.5; Bill White, 2-5-34.9; Richard Everitt, 1-6-28.9; Bud Morello, 1-6-26.9.

CLASS E — Tony Grassia, 6-1-32.1; Nick Vafides, 5-2-33.8; Al Doucette, 5-2-32.5; Emile Veradt, 4-3-32.5; Elwin Barton, 3-4-31.1; Jean Begin, 3-4-29.3; James Tyrie, 1-6-29.0; Andy Dominique, 1-6-23.2.

CLASS F — Bill Lee, 6-1-37.3; Claude Gelinas, 5-2-38.0; James Murphy, 5-2-34.2; Guy Sibley, 4-3-31.4; Harry Schricker, 4-3-31.3; Richard Dumont, 2-5-29.3; Buddy Ploof, 2-5-28.6; John Garson, 0-7-20.1.

CLASS G — Tony Nacewicz, 6-1-38.0; Charles Rutkowski, 6-1-34.6; Frank Lima, 5-2-33.3; Ralph Forsstrom, 4-3-28.9; Ernest Baillargeon, 3-4-24.6; Bill English, 2-5-21.7; Robert Steeves, 1-6-16.6; Bill Morse, 1-6-16.0.

CLASS H — Percy Howe, 6-1-13.4; James McRobbie, 6-1-18.0; Micky McNeill, 4-3-18.9; Frank Ryan, 4-3-18.4; Ken Lawson, 4-3-14.7; Reggie Ploof, 3-4-14.5; Bart Sargent, 1-6-14.0; Armando Deluca, 0-7-6.6.

DEADEYE HORSESHOES

NOW IN

FOUR MODELS

	Price Per Pr.—Up to 9 Pairs	Price Per Pr.—9 Prs. & Over
CLYDESDALES 2# 10 oz. & 2#9 oz.	\$23.00/Pr.	\$17.50/Pr.
N.T. 2# 10, 9, 8, 7 oz.	\$23.00/Pr.	\$17.50/Pr.
REGULAR 2# 9, 8, 7, 6, 5 & 4 oz.	\$23.00/Pr.	\$17.50/Pr.
E-Z GRIP 2# 10, 9, 8 & 7 oz.	\$28.00/Pr.	\$22.50/Pr.

*Prices on all "DEADEYES" f.o.b. point of shipment.
Missouri residents add 3-5/8% sales tax and California
residents add on 6% tax.*

All "DEADEYES" are dead soft.

All "DEADEYES" are guaranteed against breakage for 2 years.
(Subject to change). Please specify desired weight when
ordering from:

W. Courtwright
P.O. Box 742
Fenton, MO 63026
Phone: (314) 376-5222 (8-5)

Walter Ray Williams, Jr.
6140 Grant St.
Chino, CA 91710
Phone: (714) 628-6053

Carl Steinfeldt
44 Ridgecrest Road
Rochester, NY 14626
(summer address)
Phone: (716) 225-4191

Carl Steinfeldt
407 Shady Lane Mobil Park
15400 Roosevelt Blvd.
Clearwater, FL 33520
(winter address)
Phone: (813) 535-3136

NORMAN WINS ST. PIERRE TOURNAMENT OF CHAMPIONS AT HERITAGE RECREATOIN IN SUTTON, MASS.

One year ago, Fran Norman had to settle for runnerup when he stopped throwing ringers in the Championship game. Fran relived those missed ringers and vowed it would not happen again.

It did not. One year later Fran Normanonce again found himself in the Championship Game. After leading for most of the 50-shoe match Fran trailed by one ringer with four shoes to go, and Mary Ryan had just thrown a double. Champions rise to the occasion. Fran topped the double, to remain one ringer behind with two shoes left. Pitching first, Fran knows that no ringers loses, one ringer probably loses, but a double has a chance of at least a tie. Fran Throws that double!

Now it is Mary Ryan's moment of truth, in her first year of tournament pitching, in her first Tournament of Champions, and in her first Championship Game. Two ringers will win it. One ringer will tie it. No ringers will lose it. Unaccountably, after six pressure packed qualifying games, after six quarter-final games, and after out-duelling Vivien Deuster in the last ten shoes of her semi-final game, Mary missed both shoes! And FRAN NORMAN was the Tournament of Champions champion at last.

The 1982 edition of the St. Pierre Tournament of Champions featured superlative pitching, record attendance, and the champion picking up bonus money. The bonus money came about when St. Pierre offered to increase their sponsorship money by \$50 to \$75. So a deal was struck. Sponsorship would be for \$250. But if the champion pitched American brand shoes for the entire tournament, he or she would earn an additional \$25. Fran Norman pitches with Americans. Always has. So instead of winning \$160 (\$60 more than any previous champion), Fran won \$185.

The tenth annual Tournament of Champions also featured a record turnout — 104 adults and 11 juniors pitched — despite an increase in the entry fee. The addition of four more qualifying groups pushed the number making the finals to 28, which in turn necessitated reducing the quarter-final round robins to 40-shoe games instead of 50 shoes. Perhaps a word of explanation about the tournament here. To be eligible you must win your class of a tournament in the past year. Entrants are placed in Qualifying Groups who play round robins. First and Second place ad-

A Fantastic New Book

Tips for the Horseshoe Pitcher and Bowler

FIND OUT HOW TO AVOID THE BALANCING

ACT AND MORE

\$3.00 POSTPAID

VERNON KINSER

KINSER PUBLISHING, INC.

JENKINS, MISSOURI 65677

NORMAN WINS — (Cont.)

vance to quarter-finals. Winners of the four quarter-final round robins are "Final 4" and pitch single elimination semi-final and Championship games.

The quality of the pitching was on a par with previous years, with pitchers setting new personal highs for the year or their careers. Twenty eight great stories about the finalists could be told; more stories among those who did not even make the cut. Only a few can be told here. We have already mentioned Fran Norman, who achieved a first by being runnerup one year and champion the next. Fran tied Mary Ryan for first place in qualifying group 6 when he lost to her in the last game, giving her a clear, non-playoff entry to the finals, and had to defeat Debby Michaud via playoff to make the Final 4.

Mary Ryan had proven in several tournaments that 44% was right for handicapping purposes. She averaged 47.3% qualifying. She averaged 51.1% in the finals. She pitched 42% to defeat co-finalist Vivien Deuster, and 48% in the one ringer loss to Norman. But her comebacks were outstanding. Against Deuster she started with 3 ringers for 12 shoes, but closed with 6 ringers in the last 10 shoes. Against Norman she had a disastrous 2 for 16 opener, yielding the 4 ringer spot advantage and actually trailing by 3 ringers. She closed with 22 for 34, but, alas, could not put those last two on the stake. I'm told she pitched those same shoes over and over all night, and they still would not go on.

The third of the Final 4, Vivien Deuster, had but one bad game — unfortunately against Mary Ryan. Until then her lowest game had been 58% and her highest 82.5%.

The fourth Final 4, Ginny Croteau, generated an amazing on-court story. Her highest tournament had been 32.6%. But in the Tournament of Champions she whaled the qualifying competition with 40.3%, and then, you would assume, utterly destroy her co-finalists with her 50.0% average. Not true. You're dealing with proven champions here. When she pitched only 37.5 in round 5 of Finals Group 3, group runnerup James Larkin took her out of the play by 6 ringers with a 48% game. Then, in round 7, 25% pitcher Richard Smith, who finished 5th, played her at her own game, tossing a big 47.5%er, 22% over average, forcing a Croteau-Larkin playoff. Ginny "went to school" on her first match with Larkin and laid out a 52.5% game, good for a one ringer victory.

Your heart and your hand has to go out to Art Tyson. Art has missed the finals only once in 10 years. This year he easily(?) made the finals again with an 81.4% average for seven games. He blazed his way through most of his co-finalists with an 81.2% average. In round 2 he fired a 90% game. In round 4 he faced Mary Ryan and fired an 82.5% game. Unfortunately, Mary was tossing a scratch 60% at him — Art needed 87.5% to tie and 90% to win. One of the reasons for the great success of the Tournament of Champions has been the support of top pitchers like Tyson, Joe Schultz, Debby Michaud, and many others. On paper the tournament favors them because of the 80% handicap, IF, they pitch their average.

Perhaps the biggest story of this tournament was the overall performance of the women. 14 entered the tournament, 12 actually pitched, nine made the finals.

FINAL GROUP 1 — Francis Norman, MA, (54.0), 4-2-55.8; Debby Michaud, MA, (80.6), 4-2-75.8; Barbara McNeill, MA, (38.2), 3-3-44.1; Ev Brooks, MA, (31.1), 3-3-33.3; George Loring, MA (42.2), 3-3-41.6; Rick Howe, MA (59.6), 3-3-58.7; Gerry Begin, MA (23.6), 1-5-25.8.

FINAL GROUP 2 — Mary Ryan, MA, (44.5), 6-0-51.1; Art Tyson, NY (76.9), 5-1-81.2; Walter Weber, NY (33.5), 3½-2½-38.7; Ron Brooks, MA, (21.6), 2½-3½-27.5; Roger Bolduc, ME, (35.2), 2-4-32.9; Amos Whitaker, MA (53.3), 2-4-46.6; Larry Croteau, NH, (58.4), 0-6-47.5.

FINAL GROUP 3 — Ginny Croteau, MA, (32.6), 4-2-50.0; James Larkin, CT (40.6), 4-2-48.3; Walter Deuster, NY, (47.0), 3-3-50.0; Charlie Bonani, MA (69.7), 3-3-66.2; Richard Smith, NH, (25.6), 2½-3½-33.3; Tom Monigan, CT, (56.0), 2½-3½-52.5; Rene Doyon, ME, (19.7), 2-4-19.5.

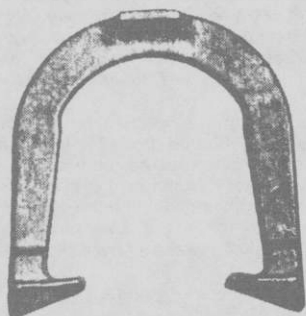
FINAL GROUP 4 — Vivien Deuster, NY, (66.0), 4½-½-68.5; Bertha Baillargeon, MA, (55.1), 3-2-62.5; Brenda McNeill, MA, (48.1), 3-2-45.5; Robert White, ME, (29.8), 2½-2½-30.5; Robert Menneally, ME, (33.7), 2-3-30.0; Claude Gelinias, MA, (39.6), 0-5-30.5; Nello Stortini, CT, (45.5), Withdrew.

QUALIFYING GROUP 1 — Charlie Bonani, MA (69.7), 6½-½-70.0; Claude Gelinias, MA, (39.6), 4-3-34.3; Dick Belanger, NH, (49.3), 4-3-50.9; Walter Sweren, NH, (35.6), 3½-3½-36.9; Victor Sirois, NH, (25.2), 3-4-20.0; Orton Cushman, MA (45.8), 3-4-39.4; John Miner, NH (30.0), 2-5-22.0; Don Lanchance, NH, (41.3), 2-5-33.4.

QUALIFYING GROUP 2 — Barbara McNeill, MA (38.2), 6-1-45.4; James Larkin, CT (40.6), 5½-1½-44.9; Gerard Labrie, MA (47.3), 5-2-44.9; Ron Blanchard, NH (25.6), 2½-4½-21.7; Herbert Cox, NH, (43.7), 2½-4½-39.7; William Ryan, CT (29.8), 2½-4½-24.6; Mike Donovan, NH, (59.3), 2½-4½-50.0; Arnold Brassard, VT (35.4), 1½-5½-30.9.

QUALIFYING GROUP 3 — Richard Smith, NH (25.6), 6-1-36.6; Larry Croteau, NH, (58.4), 5-2-59.7; Robert Dorn, MA (46.6), 4-3-49.7; Sam Raymond, NH (40.3), 4-3-41.1; Dwight Hansen, CT (33.0), 3½-3½-32.0; Dan Miner, NH (13.7), 2½-4½-15.1; Al Doucette, MA (35.6), 2-5-30.0; William McMahon, MA, (42.1), 1-6-34.9.

TED ALLEN HORSESHOES



An original professional shoe. Still the very best professional shoe — Designed by a Champion — Used by many Champions — Not all users will become champions, but by throwing ALLEN's, you know that you've performed your best.

The designed features were invented by TED ALLEN, a 10 time world champion. He has made world records over and over with them. The design was a leader. After years it came to be a trend as a guideline in shoe equipment.

You can't go wrong in using them.

1045 LINDEN AVENUE

BOULDER, COLORADO 80302

NORMAN WINS — (Cont.)

QUALIFYING GROUP 6 — Francis Norman, MA (54.0), 5-1-57.7; Mary Ryan, MA (44.5), 5-1-47.3; Ray Towle, NH (34.5), 4-2-41.0; Bill White, MA (37.6), 2-4-39.0; Ed Domey, MA (61.5), 2-4-61.7; Robert Dean, VT (57.8), 2-4-55.3; Dominic Colandene, CT (25.8), 1-5-31.7.

QUALIFYING GROUP 7 — Ev Brooks, MA (31.1), 5-1-31.3; Brenda McNeill, MA (48.1), 4 1/2-1 1/2-47.3; Albert Pichette, ME (51.2), 4-2-54.3; Raymond Gokey, VT (22.2), 3-3-27.0; Jean Claude Begin, MA (30.8), 3-3-30.6; Tony Nacewicz, MA (38.2), 1 1/2-4 1/2-33.3; Kathy Mahoney, MA (35.1), 0-6-25.6.

QUALIFYING GROUP 8 — Gerry Begin, MA (23.6), 5-1-23.3; Ron Brooks, MA (21.6), 4-2-26.3; Robert Gokey, VT (52.1), 4-2-51.3; Fred Simon, MA (43.0), 3-3-35.3; Diana Beardsley, NH (31.7), 2-4-27.3; Bill Lee, MA (36.9), 2-4-29.0; John Garson, MA (31.0), 1-5-23.3.

QUALIFYING GROUP 9 — Nello Stortini, CT (45.5), 5-1-48.3; Debby Michaud, MA (80.6), 4-2-74.3; Debbie Brown, VT (42.9), 3 1/2-2 1/2-40.0; Russell Venables, CT (40.9), 3-3-49.6; Phil Bergeron, NH, (55.3), 2 1/2-3 1/2-49.6; Fred Sibley, ME (49.6), 2-4-48.3; Dennis Richard, CT (33.9), 1-5-35.6.

QUALIFYING GROUP 10 — Rene Doyon, ME (19.7), 5-1-26.0; Amos Whitaker, MA (53.3), 5-1-50.6; Francis McMahon, ME (42.6), 3 1/2-2 1/2-41.6; Carl York, ME (49.4), 3-3-44.3; Elmer Moore, VT (36.5), 2 1/2-3 1/2-33.3; Normand Ricard, NH (45.2), 2-4-38.0; Bryce York, ME (20.3), 0-6-12.6.

QUALIFYING GROUP 11 — Tom Monigan, CT (56.0), 6-0-59.0; Robert White, ME (29.8), 5-1-36.3; Al Latouche, CT (50.0), 3-3-47.6; Maurice Scioletti, CT (34.3), 3-3-29.3; James Balne, CT (47.3), 2-4-42.0; Warren Hall, NH (42.0), 2-4-33.3; Frank Wagner, CT (44.6), 0-6-26.3.

QUALIFYING GROUP 12 — Art Tyson, NY (76.9), 7-0-81.4; Robert Menneally, ME (33.7), 5-2-33.7; Paul Dumont, MA (47.8), 4 1/2-2 1/2-51.1; Ed Bodinski, MA (57.4), 4 1/2-2 1/2-56.2; Paul Cormier, MA (60.6), 3-4-56.8; Charles Tracchia, MA (35.1), 2-5-34.2; Ken Erickson, CT (39.7), 2-5-34.5; Tom Henley, MA (42.8), 0-7-33.4.

QUALIFYING GROUP 13 — Walter Weber, NY (33.5), 5 1/2-1 1/2-40.2; Walter Deuster, NY (47.0), 5-2-55.1; Joe Schultz, NY (74.3), 5-2-72.0; John Kapnis, MA (60.6), 3 1/2-3 1/2-64.0; Dave Wescott, NH (52.4), 3 1/2-3 1/2-50.0; George St. Pierre, MA, (42.3), 2 1/2-4 1/2-43.1; Rosaire Tardiff, ME (37.0), 2 1/2-4 1/2-35.1; Dick Allspaugh, CT (34.9), 1/2-6 1/2-32.8.

NORMAN WINS — (Cont.)

QUALIFYING GROUP 14 — Vivien Deuster, NY (66.0), 5-2-65.1; Roger Bolduc, ME (35.5), 4½-2½-38.0; Robert Ladd, NH (46.1), 4½-2½-48.5; Richard Whitehouse, MA (22.0), 3½-3½-24.8; Paul Bittner, NY (40.2), 3½-3½-35.7; Ed Salmon, CT (48.5), 3-4-43.4; Roger Henson, CT (58.0), 2½-4½-46.8; Tom Courtney, MA (34.2), 1½-5½-29.4.

A record eleven juniors pitched in the St. Pierre Tournament of Champions. Six of them pitched over their entering averages. When the dust had settled Jim Pichette emerged the winner.

Jim swept four games in his qualifying group by pitching his highest tournament ever, 33.2%. Robert Morin, John Gokey, and Lisa McNeill were also pitching high tournaments for the year.

Facing Pichette in the Championship Game was 1980 champion Chuck McNeill, who hoped to make his last junior tournament a memorable one. But first he had to get by his sister, Barbara. Their qualifying round game was inclusive—they tied. Both averaged their best for the year and finished tied for first place. In the playoff it was Chuck by two ringers, in a strong 30% game.

The championship game was all Pichette for 26 shoes, as he overcame the two-ringer spot score and led by nine ringers. Chuck could do nothing right until then. Chuck finally got his act together and began to close the lead with several doubles, but fell four ringers short. Jim had pitched especially well in the first half of the game.

JUNIOR GROUP 1 — James Pichette, ME (27.7), 4-0-33.2; Robert Morin, ME (38.5), 2½-1½-46.5; John Gokey, VT (44.1), 1½-2½-50.0; Gary Baillargeon, MA (36.2), 1½-2½-34.5; Lisa McNeill, MA (15.6), ½-3½-21.0.

JUNIOR GROUP 2 — Chuck McNeill, MA (21.5), 4½-½-28.3; Barbara McNeill, MA (36.8), 4½-½-40.7; David Doyon, ME (40.7), 3-2-38.4; Eric Baillargeon, MA (44.2), 1½-3½-37.2; Maureen Finnigan, NH (35.6), 1-4-25.2; Shawneen Michaud, MA (15.8), ½-4½-10.0.

NHPA PUBLICITY SPECIAL REQUEST

By BERNARD HERFURTH

The NHPA and St. Pierre Mfg. Co. through the government diplomatic channels, sent 12 pairs of new horseshoes to Lome, Togo, West Africa earlier this year. The natives there have since started a league and National championships since. They sometimes curtail their pitching due to fear of breaking shoes and not being able to continue.

I recently met with former ambassador, Mr. Robert Ryan who has kept NHPA Publicity up to date with Togo activities. He likes the idea of sending second hand shoes to Togo to keep the sport active.

As the average Togo pitcher lives in a mud hut approximately 20 feet square, they would be in no position to buy our costly together with the high cost of transportation.

THEFORE I MAKE THIS NHPA PUBLICITY SPECIAL REQUEST that all who can please send one or two of old used shoes that are not being used anymore to Bernard Herfurth, 17 Fort St., Northampton, Mass. 01060. I will get them cleaned up and sent to Washington, D.C. Thus, through diplomatic channels they will be sent to Togo, West Africa. Please put your name on a card in the package.

In the spirit of the Christmas Season, your gift will be greatly appreciated by the Togo pitchers. Please send them as quickly as possible.

DARKE COUNTY OHIO SNOWBALL OPEN GOES FOR 18TH YEAR

The SNOWBALL OPEN tournament will kick off the 1983 season for the Darke County Horseshoe Club sponsored events on the weekends of February 5 and 6 and 12 and 13. This is the 18th annual pitching of the tournament at the Club's Indoor Court facility in the Darke County Fairgrounds.

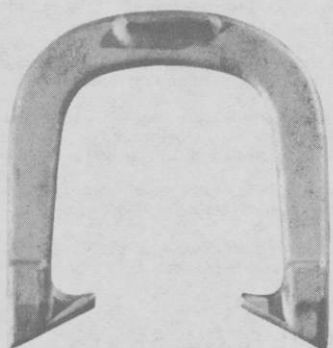
The Courts will be open for pitchers desiring to qualify on Saturday and Sunday, January 29 and 30. Pitchers who do not wish to qualify on these dates may mail in their Ringer Percentages along with the \$6.00 entry fee. Deadline for receiving entries will be Monday, January 31. The Tournament Committee reserves the right to place pitchers in classes as deemed appropriate.

The Snowball Open will be a sanctioned "Trophy" tournament, with trophies for first and second place in each Class. No substitutions will be allowed. All entrants will be notified by mail of their pitching schedule.

"A" and "B" classes will pitch on Sunday, February 13. The \$6.00 entry fee check should be made payable to the Darke County Horseshoe Club and mailed to Fritz Worner, 150 Ridgeview Dr., Greenville, OH 45331.

The Darke County Fairgrounds are on Business Routes US 127 and Ohio 49. There will be a lunch stand at the courts and restaurant and motel accommodations nearby.

Since 1931

GORDON*"Spin-On"*

— 3 TEMPERS —

Medium With Hardened Calks
 Dead Soft Hard

Southern California Representative
JERRY SCHNEIDER
 3144 W. Paso Robles Drive
 ANAHEIM, CALIFORNIA 92804
 714-826-0684

APPROVED BY NHPA

OFFICIAL STAKES ALSO AVAILABLE

THE QUEEN CITY FORGING CO.**233 TENNYSON STREET****CINCINNATI, OHIO 45226****KNAUFT OF WASHINGTON TOPS LEWISTON, IDAHO OPEN**

CLASS A — Henry Knauft, Spokane, WA, 7-0-74.4; George Sala, Spokane, WA, 5-2-61.3; Dean Curry, Lewiston, WA, 5-2-58.7; Hannah Foley, Newport, WA, 5-2-52.7; Howard Abbott, LaGrande, OR, 3-4-49.2; Rick Rebman, Hermiston, OR, 2-5-46.2; Ken Lukens, Hermiston, OR, 1-6-38.8; Elmer Currie, Coeur d'Alene, 0-7-27.3.

CLASS B — Ken Riersgard, Moscow, 5-0-36.5; Wayne Scrivens, Coeur d'Alene, 4-1-40.1; Ray Looper, Spokane, WA, 3-2-34.1; Kraig Allen, Lewiston, 1-4-25.0; Walt McGarvey, Lewiston, 1-4-23.6; Alan Hobbey, Lewiston, 1-4-21.8.

CLASS C — Virgil Brayette, Clarkston, WA, 6-0-23.5; Wally Rehard, Spokane, WA, 4-2-18.8; Morris Martin, Spokane, WA, 4-2-14.6; Sid Bigelow, Coeur d'Alene, 3-3-16.1; Craig Looper, Spokane, WA, 3-3-15.8; Rick Malcolm, Lewiston, 1-5-10.9; Mike Thomas, Spokane, WA, 0-6-7.4.

2nd ANNUAL HOUSTON LIVESTOCK SHOW AND RODEO AND INVITATIONAL HORSESHOE TOURNAMENT, FEB. 19-20

The Greater Horseshoe Pitchers Association cordially invites all pitchers and friends to attend the second annual Houston Livestock Show and Rodeo and Invitational Horseshoe Tournament to be held in the Astrohall in Houston, Texas on Saturday and Sunday, February 19th and 20th, 1983.

It will be sponsored by AIFAM, the Wishita, Kansas based franchise of GODFATHER'S PIZZA who are offering \$10,000 in prize money to participants.

SATURDAY EVENTS (9:00 am-9:00 pm) — **WORLD CLASS COMPETITION CLASSIC** — one 12-person adult mixed singles class pitching a full round-robin (including top men and women in the same class — many past World Champions). Prize monies to all twelve participants, ranging from a minimum of \$400 up to \$1100!

JUNIORS COMPETITION — Four World Class boys and girls and four top Texas boys and girls in both team and singles competitions throughout the day.

TEXAS ADULT CLASS — Eight of the top men and women in the state contend for the opportunity to fill the twelfth place in the World Class competition.

HOUSTON — (Cont.)

SUNDAY EVENTS (10 am-6 pm) — Champion Doubles teams (men's, women's and juniors divisions) from 46 counties surrounding Houston compete for trophies and points to win scholarships for their counties' youth.

The Houston Livestock Show and Rodeo, largest in the world, has considerable local and national TV coverage. Last year over one million people visited with proceeds benefitting youth and supporting education and agricultural research.

If you'd like to come watch this special event, please contact Jackie Joseph, Tournament Chairman for details: 1249 Blalock, Suite 203, Houston, Texas 77055. Phone (713) 467-7593.

BIG TEXAS ROUNDUP INVITATIONAL — HOUSTON, TEXAS

The first annual Big Texas Roundup Western Merchandise Mart and Entertainment Show was held September 3, 4, 5 and 6 at the Astrohall in Houston, Texas. The promoter of this event contacted the Greater Houston Horseshoe Pitchers Association (GHHPA) about staging an exhibition tournament over the four days. They had received favorable comments about the Houston Livestock Show and Rodeo Invitational Tournament in February of this year. The four day event included reserved performances by Merle Haggard, Tammy Wynette, Alabama, Dr. Hook, Hank Williams, Jr., Doc Sevrinson, Ray Charles, T. G. Sheppard, and the Kroft Puppets. Other events included stage shows by local entertainers, Jerry Clower, fashion shows, mechanical bull riding championships, Texas wrist wrestling championship, Joe Bowman (straight shooter exhibition), square dancing, country & western dancing, and booth exhibitors displaying western merchandise.

Lu-Matt Productions, Inc. provided \$1,000 in cash prizes, \$1,000 worth of weekend vacation trips, shirts for the participants and a travel trophy. The GHHPA staged four (4) different events throughout the weekend. Eight (8) of the top adult pitchers in Texas were invited to compete in a round robin exhibition tournament competing for the \$1,000 in cash. Games were 50 shoes utilizing count-all ringers only with 1 ringer being 1 point and the winner of a game gaining an additional 3 points.

A Houston vs. Dallas shootout exhibition was staged (the Dallas Cowboys and Houston Oilers played a preseason football game that weekend) which included a team of 4 pitchers each from Houston and Dallas competing for a beautiful travel trophy built by Leonard Kasprazar of the GHHPA. The same format was used as in the Best in Texas Tournament.

We also included the top 25 available pitchers in the GHHPA in a tournament of five (5) classes.

Throughout the weekend an open contest was run allowing the general public to pitch 10 shoes for \$2.00 with a trophy going to the top pitcher each day. The GHHPA earned \$300 in this event to go to our horseshoe court construction at Bear Creek Park.

CLASS A — Zehler, 4-0-47.0; B. Joseph, 3-1-38.0; Joseph, Jr., 2-3-31.0; Zarnicki, 1-3-30.0; Mathis, 0-4-26.5.

CLASS B — Zach, 4-0-26.5; Geyer, 3-1-27.5; Lawrence, 2-2-18.5; D. Zigrang, 1-3-17.0; Nyenhuis, 0-4-6.5.

CLASS C — Kleb, 4-0-30.5; Alewine, 3-1-22.5; Lackey, 2-2-17.0; True, 1-3-22.0; Partlow, 0-4-9.5.

CLASS D — Bruce, 4-0-24.0; Nevins, 2-2-21.5; T. Zigrang, 2-2-17.5; Bond, 2-2-14.5; Laws, 0-4-10.5.

CLASS E — Labell, 4-0-19.0; J. Joseph, 3-1-8.5; Maloy, 2-2-7.9; Brueggeman, 1-3-3.4; Kasprzak, 0-4-3.9.

REGIONAL CHAIRMAN'S SEMI-ANNUAL REPORT

Omar Blacketer, our RD from Kentucky said that they have just concluded their 1982 schedule and had a very successful season. Rube Bleviss retained his state title and Trina Hill is the next ladies champ. Two new facilities are being added to their schedule for next year: Alexandria and Vanceburg. Alexandria has 16 beautiful courts with Vanceburg being in the midst of constructing 12 new courts with walkways. Omar's new Assistant RD, Elmer Webb and his son, Kentucky State President, Danny Webb, were instrumental in building the new facility at Alexandria.

Joe Minnish, State secretary is doing a great job and has to be commended for the phenomenal growth of horseshoe pitching in Kentucky.

There has been a tremendous growth in women pitching in Kentucky; in his first year of pitching in 1975, they had two women in their State tournament; this year they had 18 women players.

REGIONAL — (Cont.)

George Engelmann, Iowa's very capable Assistant RD writes that 87 youngsters played at B.V.'s Fair in Velta; 48 pitched at 30 feet, 19 played in singles and 20 pitched in doubles. George says the 50 shoe count all is popular and something he's advocated towns involved in celebrations should do since the players can choose his or her time to pitch.

The 42 pitchers at Rodda, 342 at Spence and 194 at Alta makes a total of 578 contestants for George's three promotions.

Lee Davis our RD from Florida says that out of 39 tournaments held in Florida this past year the U.S. Open was the outstanding one and also, one that attracted many of the top pitchers. Again the Clearwater Club deserves a lot of credit for running a very nice tournament. They had the best TV coverage that they have ever had, as Cable Vision taped the complete finals of both the old timers and the regular men's ladder play. It was shown on Tuesday, April 6.

Florida had three sanctioned leagues this year with the prospects of more next season. Handicap leagues will build interest in horseshoes the same as it did in bowling.

Florida's tournaments will use the complete round alternate pitch with no play off for ties. Whenever a tie occurs, the winner will be the prior winner between the two players.

Lakeworth, Florida, a former hot bed for horseshoes and where two national tournaments were held, is coming to life again. Mr. Herman Wieser is doing an outstanding job and has over 100 members in the club. They are making plans to hold a sanctioned tournament in the future.

Ira Scott, Assistant RD for Arkansas, writes that the Arkansas HPA was organized during the first unsanctioned, unofficial State Tournament last June. There were only 10 members during 1981. During the first years, their efforts were mainly in organizing and making an effort to inform pitchers throughout the State of the NHPA and to keep Arkansas pitchers informed of the tournaments being held. By April they had 12 NHPA members, an organized State schedule, one sanctioned league and a sanctioned State Tournament planned in last October, 1982 at Family Park in Hot Springs. Hot Springs has eight excellent courts and there are six good courts in Clarksville. Our 1982 president is Bill Webb. Their future plans are to get more sanctioned leagues and tournaments, more NHPA members, plus helping more young players.

Clarence Giles, Utah RD says that Utah is starting to move forward again in developing a good horseshoe pitching attitude. This after an almost disastrous period. There are now 24 new courts in the Ogden area. Firm commitments have been received to expand Riverton courts and also, to add lights. The sanctioned club in Cedar City is progressing very well under the push of Dennis Ohms.

Dale Boss, our RD from Colorado says that they have three more cities in Colorado forming horseshoe clubs: Fort Collins is building 16 lighted courts. They think they should be finished by August this year. They already want the 1983 State Tournament. Frazier, the "Ice Box of Colorado" is starting with four courts. They had a small tournament last year (12 entries). Grand Junction has eight lighted courts. They had a tournament in September. Dale is trying to get eight new lighted courts in Boulder. That would give them 16.

Colorado's first Hall of Fame inductees: Ted Allen, Dick Wetherbee, Gerry Labbe, Eino Tiilikainen, George Rogers and Dale Boss!

Ernie Graham, our new and active RD from New York states that for more than two years, they have conducted a ticket raffle which resulted in an increase of State tournament prize money, which in turn, has helped to increase the size of the entries. They plan on contributing this excellent source of additional money. Ernie has what they call State Directors. This is a person from each club registered with the State. Their job is to bring before each individual member in their area what the State is doing. Also, to take any grievances or suggestions from them to the State meeting. In this way, the meetings can be brought to order and confined to the Directors of each area. They have been doing this for about two years and Ernie says this has worked out real well and they have accomplished quite a bit. They are elected by the club they represent.

Glen Portt, our new RD from Georgia started right in working hard by organizing items such as the now defunct Regional Tournament for the Southeastern United States Horseshoe Championship. Budweiser was willing to finance it with \$600.00 if Glen could get 16 of the top pitchers in the U.S. Southeastern States (Mississippi, Alabama, Tennessee, North Carolina, South Carolina and Florida) to participate. The local people even went to their headquarters for matching funds. Unfortunately, Glen could only come up with 12 pitchers.

WINNERS IN TWO PENNA. SANCTIONED TOURNAMENTS

Glenn Burris topped the 4-H Fair tournament held at Redsville, Pa. with a record of 5-0-80.3. Dan Beshore followed in second place with 4-1-74.1.

In the annual Pennsylvania Open held at New Cumberland, Pa. it was Dan Beshore hitting 71.4 percent for the day and going undefeated with seven straight wins. Clyde Martz was the runner-up with 6-1-8.

4-H FAIR TOURNAMENT — CLASS A — Glenn Burris, 5-0-80.3; Dan Beshore, 4-1-74.1; Dale Carson, 2-3-60.2; Ray Bechtel, 2-3-56.5; Glenn Brown, 1-4-60.2; Dean McCurdy, 1-4-59.5.

CLASS B — Larry Gisewhite, 5-0-57.4; Dick Dart, 4-1-58.7; Jerry Halderman, 3-2-57.4; Jack Swyers, 2-3-52.0; Bill Bruaw, 1-4-48.1; Merle Resides, 0-5-38.8.

CLASS C — FJim Sibley, 5-0-52.3; Al Long, 4-1-53.9; Sherwood Frankhouser, 3-2-52.1; Earl Brown, 2-3-37.5; John Baugher, 1-4-42.7; Dick Ruff, 0-5-36.0.

CLASS D — Mark Clippinger, 4-1-49.4; Martin Bubb, 4-1-46.6; Chas. Koons, 3-2-48.7; Blaine Aley, 2-3-47.7; Ira Stine, 2-3-41.0; Glenn Eppley, 0-5-25.2.

CLASS E — Ivan Curry, 5-0-54.2; Darle Eash, 3-2-40.6; Chas. Denk, 3-2-37.5; John King, 3-2-35.9; Guy Esh, 1-4-34.5; Wayne McCloskey, 0-5-28.9.

CLASS F — Ed Bowersox, 5-0-35.3; Ed Goss, 4-1-34.7; John Urbanc, 3-2-31.9; Herm Specht, 2-3-29.4; Joe Shughart, 1-4-22.8; Dennis Lloyd, 0-5-5.0.

PENNSYLVANIA OPEN — CLASS A — Dan Beshore, 7-0-71.4; Clyde Martz, 6-1-66.8; Bill McIntyre, 3-4-64.6; Glenn Brown, 3-4-63.2; Dean McCurdy, 3-4-60.4; Fritz Lutter, 3-4-59.7; Dale Carson, 3-4-59.7; Ray Bechtel, 0-7-49.7.

CLASS B — Dick Dart, 6-1-53.6; Glenn Rubendall, 5-2-58.0; Larry Gisewhite, 5-2-52.9; Bill Bruaw, 4-3-53.4; Pete Miller, 4-3-53.0; John Clippinger, 3-4-46.2; Fred Lutter, 1-6-41.6; Ed Gohn, 0-7-38.1.

CLASS C — Jack Griffith, 7-0-53.8; Dick Wilson, 5-2-53.6; Mark Clippinger, 4-3-56.9; Clark Walker, 4-3-50.0; Jack Swyers, 3-4-49.7; Earl Brown, 3-4-45.5; John Baugher, 2-5-49.7; John Fulton, 0-7-29.4.

CLASS D — Dick Ruff, 5-0-44.2; Gerard Harris, 4-1-43.0; Jim Diehl, 3-2-36.6; Bob Anderson, 1-4-39.7; Ira Stine, 1-4-37.7; Glenn Eppley, 1-4-33.3.

CLASS E — Martin Bubb, 7-0-49.3; Chick Denk, 5-2-40.3; Guy Esh, 4-3-35.4; John King, 4-3-35.3; Ned Kinard, 2-5-32.4; Darle Esh, 2-5-29.3; Wayne McCloskey, 2-5-29.1; Tom Steinfelt, 2-5-28.9.

CLASS F — Pete McCollom, 7-0-35.1; Mike Bowersox, 5-2-34.6; John Zimmerman, 5-2-33.5; Ivan Horton, 4-3-35.2; John Urbanc, 3-4-30.6; Jim Harris, 2-5-21.6; Joe Shughart, 2-5-21.5; Dennis Lloyd, 0-7-4.9.

WIEDRICH WINS OREGON "DOUBLE YER MONEY" TOURNEY

"Double Yer Money" tournament was held at Bush Pasture Park, Salem, Oregon. Twenty-seven pitchers made up four classes; entry fees varied according to the number of games played and \$2 was awarded for each game won. Ben Wiedrich ran his season won-loss record to a spectacular 81-6 and extended his current winning string to 23 games:

CLASS A — Ben Wiedrich, Ore. City, 6-0-75.4; Pete Zumeran, Portland, 4-2-58.4; Jerry Gorton, Pleas. Hill, 4-2-52.7; Jack Salter, WA, 3-3-52.6; Ron Ferguson, WA, 2-4-53.0; O.D. McMillan, Eugene, 2-4-50.0; Irv Farron, Portland, 0-6-48.0.

CLASS B — Jim Kosterman, WA, 5-1-43.0; Art Lund, Eugene, 4-2-44.5; Ray Meyer, Salem, 3-3-44.9; Vern Wanless, McMinnville, 3-3-42.8; Bob Showers, Salem, 3-3-41.6; George Harteloo, Stayton, 2-4-34.7; Chuck Ricketts, Roseburg, 1-5-44.6.

CLASS C — Abe Ediger, Dallas, 5-1-44.1; Esthel Benner, Salem, 5-1-32.9; Gene Buzzini, WA, 4-2-35.9; Wayne Ferris, Salem, 3-3-30.1; Bill Johnson, Springfield, 3-3-29.2; Lloyd Kilgore, Eugene, 1-5-24.5; Ray Whittington, Salem, 0-6-22.3.

CLASS D — Mick Mathers, Salem, 5-0-35.2; John Gallino, Springfield, 4-1-31.2; Tom Gallino, Springfield, 3-2-26.6; Roger Christianson, Sher., 2-3-25.0; DuWayne Wiedrich, Portland, 1-4-19.5; Carolyn Ferguson, WA, 0-5-6.6.

S. KUCHINSKI VICTOR OVER MUDGETT AT FALCONER, NY

A record number 104 men and women from New York and Pennsylvania participated in Falconer Horseshoe Club's Open Tournament held in Falconer, New York near Jamestown. The highest successful event was held on the 16 Larry Proudman Memorial Courts in Falconer Park which will be the site of the 1983 New York State Tournament.

Steve Kuchinski from Erie, Pa. captured the championship Class A title with a 6-1 record and averaged 66.0%. Kuchinski shot 77.5% (31 of 40) in a playoff game with Dick Mudgett to win his first ever Class A division. Mudgett, from Cattaraugus, NY and the local clubs top pitcher, had defeated Kuchinski earlier in the tournament but lost to third place finisher Geme Smalt from Bath, NY to force a playoff game with the eventual winner.

Six women from Pennsylvania comprised the ladies Class A with Russell's Joyce Spicer coming out on top. Spicer averaged 39.2% and finished with an unblemished 5-0 record. Lu Collins finished one game back and averaged a fine 43.2%.

CLASS A — S. Kuchinski, Erie, 6-1-66.0; D. Mudgett, Cattaraugus, 6-1-65.8; G. Smalt, Bath, 4-3-57.3; R. Collins, Sugargrove, 4-3-55.9; F. White, Erie, 3-4-55.6; J. Kuchinski, Erie, 3-4-53.4; J. Mathys, Bradford, 2-5-47.3; E. Kuchinski, Erie, 0-7-37.8.

CLASS B — D. Saden, Fredonia, 5-0-52.1; K. VonKleist, Russell, 3-2-58.7; E. Risley, Interlaken, 3-2-57.8; G. Hale, Jamestown, 2-3-50.4; A. Conklin, Jamestown, 1-4-47.7; L. Berggren, Westfield, 1-4-47.1.

CLASS C — D. Smith, Silver Creek, 6-1-53.7; G. Rhea, Erie, 6-1-54.5; J. Patchen, Wellsburg, 5-2-49.4; J. Hall, Russell, 3-4-48.5; R. Saden, Dunkirk, 3-4-43.2; B. Williams, Frewsburg, 2-5-46.0; C. Butcher, Erie, 2-5-42.0; L. Stearns, South Dayton, 1-6-34.4.

CLASS D — E. Williams, Lockport, 3-1-39.1; C. Dickinson, Falconer, 3-1-37.3; C. Dennison, Frewsburg, 2-2-43.1; D. Wilcox, Olean, 2-2-40.7; B. White, Sr., Erie, 1-3-38.0; S. Vincent, Gasport, 1-3-31.3.

CLASS E — P. Dahlberg, Camden, 6-1-41.0; D. Harris, Little Valley, 5-2-41.6; J. Graham, Camden, 4-3-41.0; E. Graham, Camden, 4-3-37.9; J. Arvidson, Canisteo, 3-4-38.6; D. Crandall, Hornell, 3-4-34.2; I. Stanton, Prattsburg, 2-5-28.9; B. Sinsabaugh, Elmira, 1-6-30.6.

CLASS F — B. Parker, Buffalo, 5-0-42.0; D. Waite, Cattaraugus, 3-2-32.6; G. Haight, Fredonia, 2-3-39.0; A. Stoddard, Sugargrove, 2-3-33.5; H. Roche, Lakewood, 2-3-32.2; B. White, Jr., Erie, 1-4-28.4.

CLASS G — O. Pudder, Sugargrove, 4-0-31.6; D. Zindler, Falconer, 3-1-35.1; R. King, Chaffee, 3-1-33.5; C. Allen, Pittsfield, 2-2-23.2; J. Conti, Jamestown, 1-3-26.4; R. Doty, Olean, 1-3-25.3; G. Carpenter, Jamestown, 1-3-22.5; K. Chadwich, Sinclairville, 1-3-21.4.

CLASS H — J. Hetrick, Frewsburg, 7-0-33.7; J. Hladun, Camden, 6-1-34.0; R. Brinkley, Kane, 4-3-31.8; J. Ernisse, Spencer, 3-4-29.5; J. Dineen, Ellicottville, 3-4-26.4; M. Ludwick, Sugarrove, 3-4-19.0; E. Wartars, Camden, 2-5-15.6; C. Raecher, Ellicottville, 0-7-17.0.

CLASS I — B. Arnholt, Stow, 6-1-36.4; B. Golden, Bemis Point, 5-2-36.4; A. Rumbaugh, Frewsburg, 5-2-33.9; G. Carpenter, Jamestown, 5-2-33.1; E. Graham, Camden, 3-4-30.8; D. Beaver, Kennedy, 3-4-25.0; C. Beardsley, 1-6-23.5; A. Peterson, Jamestown, 0-7-23.2.

CLASS J — N. Shongo, Lakewood, 4-0-22.6; T. Willett, Falconer, 3-1-21.0; A. Saden, Dunkirk, 3-1-20.6; J. Gastol, Falconer, 2-2-19.3; M. Alexander, Titusville, 2-2-9.9; F. Ellis, Frewsburg, 1-3-14.9; R. Hopkins, Falconer, 1-3-12.0; D. Shongo, Lakewood, 0-4-9.3.

CLASS K — B. Mackey, Erie, 6-1-26.9; W. Hodges, Kennedy, 5-2-24.3; D. Kribbs, Kane, 5-2-22.8; K. Evans, Jamestown, 4-3-29.4; W. Studd, Jamestown, 4-3-24.4; P. Mills, Sugargrove, 2-5-19.5; R. Whitney, Ashville, 1-6-16.6; G. Jones, Russell, 1-6-16.6.

CLASS L — B. McQuillen, Kane, 5-2-18.4; A. Shurilla, Salamanca, 5-2-23.1; D. Posey, Greenhurst, 5-2-15.1; D. Johnson, Falconer, 4-3-18.6; T. Westerdahl, Jamestown, 4-3-18.0; D. McCray, Jamestown, 2-5-13.1; J. Piazza, Jamestown, 2-5-11.6; R. McMahon, Kane, 1-6-12.4.

CLASS M — J. Johnston, Jamestown, 6-1-15.2; J. Walker, Sinclairville, 6-1-11.9; W. Hunzinger, Jamestown, 5-2-8.0; B. Evans, Jamestown, 4-3-13.9; R. Kozlowski, Fredonia, 3-4-9.4; B. Saden, Fredonia, 2-5-4.3; D. Armstrong, Jamestown, 1-6-8.5; P. Walker, Sinclairville, 1-6-7.0.

LADIES CLASS A — J. Spicer, Russell, 5-0-39.0; L. Collins, Sugargrove, 4-1-43.2; D. Butcher, Erie, 3-2-34.9; L. Marshall, Warren, 1-4-25.0; S. Porter, Russell, 1-4-23.9; D. Mickelson, Warren, 1-4-19.8.

COMING EVENTS

FLORIDA SCHEDULE
NHPA SANCTIONED

Mixed tournaments unless otherwise indicated. All tournaments will be 50-shoe games, alternate pitch, RINGERS ONLY counting 1 point. Send \$7.00 entry fee to proper contact 7 days prior to tournament date. Scorekeeper fee 25¢ per game. Dropouts after deadline will forfeit entry fee unless tourney is cancelled.

- Dec. 3-4—Steinfeldt Handicap. Clearwater, Fl. Contact 5. 1st day 45% and under.
Dec. 11—Polk County Ridge Open. Winter Haven, Fl. Contact 4.
Dec. 16—Snowbird Open, Sebring, Fl. Contact 8.
Dec. 18—Yogi Open, Apopka, Fl. Contact 7.
Jan 8—Plant City Open. Plant City, Fl. Contact 9.
Jan. 14-15—Manatee Open, Bradenton, Fl. Contact 12.
Jan. 15—Cindy Open, Apopka, Fl. Contact 7.
Jan. 20—Highland County Open. Sebring, Fl. Contact 8.
Jan. 21-22—Brooksville Jaycees Open. Brooksville, Fl. Contact 10. 1st day 45% and under.
Feb. 5—Heart of Florida Open. Winter Haven, Fl. Contact 4.
Feb. 9-10—Florida State Fair Open. Tampa, Fl. 90% handicap.

- Feb. 12—Boo Boo Open. Apopka, Fl. Contact 7.
Feb. 12—Sarasota Open. Sarasota, Fl. Contact 3. Men only. 1st 56 entries.
Feb. 17—Sebring Open, Sebring, Fl. Contact 8.
Feb. 18-19—Sun Bank of Osceola Open, St. Cloud Fl. Contact 6. 1st day 45% and under.
Feb. 25-26—Strawberry Festival. Plant City, Fl. Contact 9. 1st day 45% and under.

- Mar. 5—Winter Haven Open, Winter Haven, Fl. Contact 2.
Mar. 4-5—Brooksville, Open. Brooksville, Fla. Contact 10. 1st day 45% and under.
Mar. 10—Race Week Open. Sebring, Fl. Contact 8.
Mar. 11-12—Pow-Pow Open. Seminole, Fl. Contact 11. 1st day 45% and under.
Mar. 18-19—Fun 'N Sun Festival. Clearwater, Fl. Contact 5. 1st day 45% and under.
Mar. 26—King Neptune Open. Sarasota, Fl. Men only 1st 56 entries.
Mar. 25-26—Metro Dade Parks. % Rec. Open. Contact 13. 1st day 45% and under.
Apr. 1-2—DeSoto Open. Bradenton, Fl. Contact 12. 1st day 45% and under.

TOURNAMENT DIRECTORS

1. Jim Peterson, 220 Maynard Ave., Orlando, Fl. 32803. Phone 305-894-3379.
2. Joe Stafford, 1320 Sharon Dr., Titusville, Fl. 32780. Phone 305-269-3557.
3. Paul Scheub, 2139 Piazza Dr., Sarasota, FL 33581. Ph. 813-966-5462.
4. Joe West, 6250 Halabrin Rd., Haines City, FL 33844. Ph. 813-422-2053.
5. Norm Gaseau, 1908 Nugget Dr., Clearwater, FL 33515. Ph. 813-443-2892.
6. Harry Anderson, 1100 Indiana Ave., St. Cloud, FL 32769. Ph. 305-892-2051.
7. Norman Davey, Rt. 1, Box 2000, Apopka, FL 32703. Ph. 305-886-8168.
8. Jim Fourman, 2832 Bolin Ln., Sebring, FL 33870. Ph. 813-385-7372.
9. John Rademacher, 408 Pevetty Dr., Plant City, FL 33566. Ph. 813-752-1226.
10. Dwight Thatcher, 18443 Shadyside Dr., Brooksville, FL 33512. Ph. 904-796-8922.
11. Lee Davis, P.O. Box 3426, Seminole, Fl 33542. Ph. 813-392-8504.
12. Earle Johnson, 3131—12th Ave. E., Bradenton, FL 33508. Ph. 813-746-8298.
13. Tom Miller, Tamiami Park, 10901 SW 24th St., Miami, FL 33165. Ph. 305-223-7077 Ext. 138.

CLASSIC INDOOR COURTS

415 North Columbus St. • Lancaster, OH 43130 • Phone: 614-653-0545

Entry fee, \$8.00, 40 point games. 8-man round robin classes. Top four classes are NHPA sanctioned.

- Dec. 11-12—Wilbur Kabel Open.
Jan. 14-15—Stan Manker OPEN.

Players to pay scorekeepers 25¢ per game. Deadline for entries — Mail or phone 10 days before date.

- Feb. 5-6—Harold Anthony Open.
Mar. 19-20—Glenn Riffle Open.
Apr. 16-17—Pop Johnson Open.

INDIANA INDOOR SCHEDULE

Rush Indoor Courts • 2nd Floor, Coca Cola Co. • 131 W. First St. • Rushville, Ind. 46173

Sanctioned Tournaments: Send entry to State Secretary, Robert L. Reid, 34 North Beechwood Ave., Scottsburg, IN 47170. Phone: (812) 752-2195. Entries should be mailed 10 days in advance. Phone one week in advance.

- Dec. 11-12—Christmas Special
Jan. 8-9—John Hamilton Special
Jan. 22-23—January Special
Feb. 12-13—Henry Frank Special

- Feb. 26-27—February Special
Mar. 5-6—Marvin Chrisman Special
Mar. 26-27—March Special
April 9-10—April Special
April 23-24—Indoor State Tournament

Coming Events—Continued

TUCSON, ARIZONA SCHEDULE

Reid Park, Tucson, Arizona

Dec. 11 — Tucson Open. Sanctioned. State and NHPA card required. Entries close Dec. 3.

Jan. 8 — Pima County Classic. Entries close Dec. 31.

Jan. 21-22-23 — The Lost Dutchman tournament. Held at Apache Junction, Arizona. Send entry fee of \$7.00 to W.R. Reichard before Jan. 14, 1983.

Feb. 5 — Old Pueblo Special. Sanctioned. State and NHPA card required. Entries close Jan. 28.

March 19 — The Wind-Up tournament. Entries close March 11.

Entry fees for all above tournaments are \$5.00 and should be sent to: Melvin Fenimore, 8152 East Hayne St., Tucson, Arizona 85710. Ph. 601-296-5087.

Arizona State Association Pioneer Park-Mesa, Arizona

Jan. 14-15 — Valley of the Sun Warm-Up. Sanctioned. State and NHPA card required. Entries close Jan. 6.

Feb. 9-10-11-12-13 — VALLEY OF THE SUN OPEN. Sanctioned. State and NHPA card required. Entries close Jan. 25.

March 11-12 — Bye, Bye Snowbird Open. Entries close March 3.

Entry fees are \$5.00 (EXCEPT VALLEY OF THE SUN).

Following are the entry fees for the VALLEY OF THE SUN: \$10.00 each; \$10.00 additional for MEN'S CLASS A. \$5.00 additional for WOMEN'S CLASS A; and \$5.00 additional for MEN'S CLASSES B, C & D.

Send all entries and proper fee to: Melvin Fenimore, 8152 East Hayne St., Tucson, Arizona 85710. Ph. 602-296-5087.

OPDYCKE INDOOR COURTS

North Water Street • Behind McDonald's • Angola, Indiana 46703

Non-Sanctioned Tournaments — Entry fee \$8.00, 35 point games. Pay scorekeepers 25¢ per game. All ties will be decided by ringer percentage for that day. Go north of monument in Angola to first corner past McDonald's. Turn left for about 150 yards to railroad — Don't cross railroad but turn left into driveway

along side of tracks. Go 100 yards to brick building. Courts are upstairs. Sign above door. Don Opdycke, Box 56 Pleasant Lake, IN 46779. Phone (219) 475-5215. Phone deadline Sunday before. Mail deadline 10 days before.

January 15-16
November 13-14
December 4-5

October 16-17
February 19-20
March 12-13
April 16-17

OHIO INDOOR TOURNAMENTS

Following are several tournament dates for Ohio Indoor meets. Jan. 22-23; Mar. 26-27; and Apr. 9-10. Deadline for each tournament will be 8 days prior to tournament dates. NO PHONE CALL WILL BE AC-

CEPTED. Send \$10.00 entry fee and percentage to: Joe Witscher, 4020 Plainville, Cincinnati, OH 45227. He will inform you as to where you will play the tournament.

NEW ITEMS AVAILABLE THROUGH NHPA REPRESENTATIVES

Several new items relating to horseshoe pitching are now available from the NHPA Game-Related merchandise stock. They may be ordered from: Don Koso, 803 East 12th Street, Falls City, Nebraska 68355. Phone: (402) 245-3540 or from Herbert Pinch, 592 Hull Street, Sharon, Pennsylvania 16146. Phone: (412) 346-4506.

Men's Sweaters and Ladies Red and White Sport Shirts. The sweaters come in Red, White, or Blue colors with the new NHPA logo monogram. Sizes are small, medium, large and extra large in the men's. V-necked pull over style. Ladies can wear these, too.

Ladies Sport shirts are in *Misses* sizes, small, medium, large, and extra large *only*. Price is \$7.50 each plus 10% for shipping.

Price of sweaters is \$20.00 each or in quantities of 6 or more \$18.50, plus 10% for shipping.

Also in stock are new approved horseshoes: Webb Shoe in 2#, 7-8 or 9 ounces at \$26; New drop-forged Deadeye show, N.T. Model N.T. 2# 7,8,9 or 10 ounces at \$28 per pair, and the new Reno shoe, one temper only, \$25.00 per pair.

Coming Events—Continued

FAYETTE COUNTY HORSESHOE PITCHERS ASSOC.

YOUR WINTER HORSESHOE PLAYHOUSE

253 S. Mt. Vernon Ave.

Uniontown, Pa. 15401

(Schedule for 1982-1983 Winter Season)

Our tournaments will be a 6 or 7 man Round Robin, with all games being 40 point cancellation, no bonus points for 4 dead unless a chance is deemed necessary by the tournament directors, and hopefully 7 classes depending upon participation.

Trophies or equivalent will be awarded for 1st and 2nd place, two way ties for 1st place will be determined by a 40 point pitch-off. Three or more tied for 1st place will be determined by a 21 point pitch-off with the highest percentage pitcher setting out the first game. All ties for 2nd place will be determined by percentage.

Entry fee of \$8.00 plus \$1.50 for scorekeeping payable to F.C.H.P.A. and highest percentage should accompany your entry 10 days prior to tournament date. Telephone calls will be accepted unless the classes are full. Tournaments in Nov., April and May will be nationally sanctioned. (This will require a state card.) There will be no refund of entry fee if you are unable to attend. (This is subject to the tournament director's discretion.)

Dec. 17-18-19 — Pete Metts, 19½ Reppert Blvd., Uniontown, Pa. 15401. 412-438-6253, Chuck Vansickle, 198 S. Mt. Vernon Avenue, Uniontown, Pa. 15401. 412-437-5199.

Jan. 14-15-16 — Joseph Leech, R.D. #3, Box 228A, Smithfield, Pa. 15478. 412-569-2830

Feb. 11-12-13 — Alex Burns, Box 476, New Salem, Pa. 15468. 412-245-8600. Ray Gaydos, 53 Easter Street, Uniontown, Pa. 15401. 412-439-2721.

March 11-12-13 — Bill Williams, R.D. #6, Box 70, Uniontown, Pa. 15401. 412-438-9247. Joe Roebuck, 353 S. Mt. Vernon Avenue, Uniontown, Pa. 15401. 412-438-5670.

April 15-16-17 — Joe Roebuck, 353 S. Mt. Vernon Avenue, Uniontown Pa. 15401. 412-438-5670. Glenn Williams, R.D. #4, Box 248, Uniontown, Pa. 15401. 412-437-7733.

May 13-14-15 — Jim Solomon, 95 Dawson Avenue, Uniontown, Pa. 15401. 412-437-4392. Bob Straitiff, Uniontown, Pa. 15401. 412-437-6374.

HERITAGE RECREATION SCHEDULE

Sutton, Mass.

ENTRY FEE \$10.00 plus \$3.00 SCOREKEEPERS

Dec. 12, 1982 — Christmas Classic, 39% and under.

Dec. 19, 1982 — Christmas Classic, 40% and up.

Jan. 16, 1983 — January Thaw, 39% and under.

Jan. 23, 1983 — January Thaw, 40% and up.

Feb. 13, 1983 — Edward Courville Memorial, 39% and under.

Feb. 20, 1983 — Edward Courville Memorial, 40% and up.

March 13, 1983 — Eastern Ham Shoot, 39% and under.

March 20, 1983 — Easter Ham Shoot, 40% and up.

April 17, 1983 — Heritage National, 39% and under.

April 23 & 24, 1983 — Heritage National, 40% and up.

O.K. INDOOR COURTS — CINCINNATI, OHIO

January 22-23

March 5-6

March 26-27

April 9-10

All entries \$10.00. Send entry fee and ringer percentage to: Joe Witschger, Sr., 4020 Plainville Road, Cincinnati, Ohio 45227. You will be notified by mail as to time and date you will pitch. Also a map for location of courts. NO PHONE CALLS. All entries must be postmarked 10 days prior to tourney.

OHIO WOMEN'S ASSOCIATION SCHEDULE

(Not limited to Ohio Women)

One tournament per month — December thru May

Dec. 18 — Katherine Overman Open

Jan. 15 — Barbara Lowry Classic

Feb. 19 — Ruth Bennett Classic

March 19 — Katherine Harrison Open

April 23 — Opal Reno Open

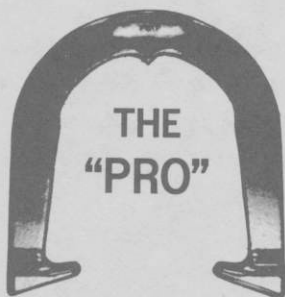
May 21 — Helen Roberts Classic

Tournaments are for women only. 1st, 2nd and 3rd place for each class. Entry fee \$10.00. 6-man class — 50 point cancellation - 8 man class - 40 point cancellation. Playoffs on all ties.

Please advise at least 7-10 days prior to tournament date. Write or call Mitzi Roberts, 9304 Camp Creek Rd., Lucasville, OH 45648. Ph. 614-289-2939 or Jenny Reno, Reno Road, Lucasville, OH 45648. Ph. 614-493-2538.



THE ORIGINAL DROP-FORGED PITCHING SHOE



THE
"PRO"

Two tournament tested models, forged from S.A.E. specified steel, are available. Both have hardened hooks and points, and may be ordered in your choice of medium, soft, or dead soft tempers.



THE
"O"

AS THE FIRST MANUFACTURER OF THE DROP-FORGED PITCHING SHOE, THE OHIO HORSESHOE COMPANY IS RECOGNIZED WORLD-WIDE FOR ITS HIGH QUALITY PITCHING SHOES.

For price information and to order, contact:

OHIO HORSESHOE COMPANY

P.O. Box 21371
Columbus, Ohio 43221