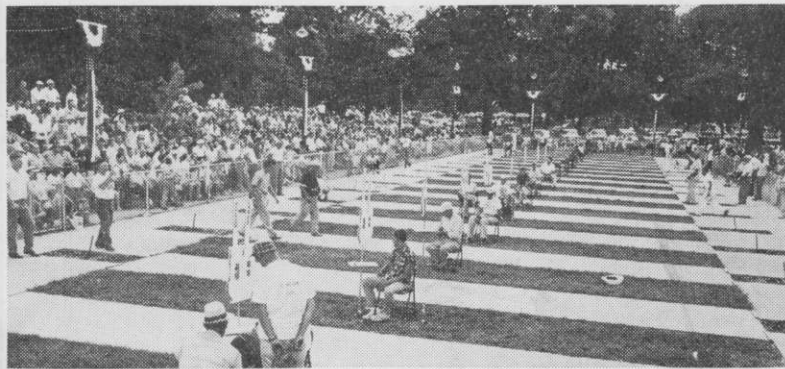


*The
Horseshoe Pitcher's
News Digest*



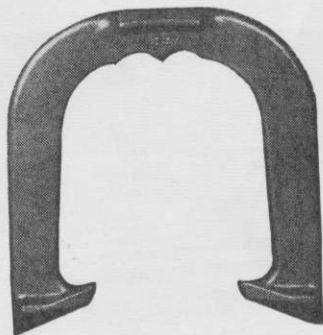
1960 World Tournament Scene

SEPTEMBER, 1960

Set the pace with more ringers
with the 1960 model . . .

"Ohio"

*by the original producers of a steel
drop-forged pitching shoe.*



* * *

Furnished in

Soft and

Medium

Hardness

* * *

The OHIO SHOE with its stake holding
qualities PLUS its perfect balance gives
the control needed for those extra ring-
ers that would have otherwise spun off.

Write TODAY for prices

OHIO HORSESHOE COMPANY

P. O. BOX 5801

COLUMBUS 21, OHIO

THE HORSESHOE PITCHERS' NEWS DIGEST published on the 15th of each month at Aurora, Illinois, U.S.A. by the National Horseshoe Pitchers' Association of America. Editorial office, 1307 Solfisburg Avenue, Aurora, Illinois. Membership and subscription price \$3.50 per year in advance. Forms close on the first day of each month. Advertising rates on request. F. Ellis Cobb, Editor.

Don Titcomb, Calif. Southpaw, New 1960 World Ringer Champ

CHAMPIONSHIP SUMMARY

	Qual.	W	L	R	SP	%
1. Don Titcomb, Calif.	557	33	2	2443	2878	84.9
2. Elmer Hohl, Ontario, Can.	513	30	5	2280	2836	80.4
3. Curtis Day, Indiana	545	30	5	2337	2578	80.3
4. Carl Steinfeldt, New York	538	28	7	2330	2842	81.9
5. Gene Brumfield, Indiana	501	28	7	2251	2782	80.9
6. Ralph Maddox, W. Va.	541	28	7	2337	2894	80.8
7. Ted Allen, Colorado	DC	28	7	2381	2966	80.3
8. Harold Reno, Ohio	534	28	7	2094	2632	79.6
9. Paul Focht, Ohio	537	28	7	2221	2868	77.4
10. Floyd Toole, Arkansas	522	26	9	2209	2778	79.5
11. James Ohler, Pennsylvania	510	23	12	2207	2832	77.9
12. Graydon McFatrige, Indiana ..	547	22	13	2241	2826	79.3
13. Terry Earley, New York City ..	506	20	15	2150	2860	75.2
14. Marines Tamboer, Kansas	503	20	15	2065	2782	74.2
15. Kenneth Jensen, Michigan	497	20	15	1946	2636	73.8
16. John Lindmeier, Illinois	487	17	18	1720	2426	70.9
17. Dale Dixon, Iowa	517	16	19	1794	2510	71.5
18. Loren Crooks, Ohio	489	16	19	1669	2374	70.3
19. Milton Tate, Utah	505	15	20	1969	2714	72.5
20. Earl Winston, Missouri	498	15	20	1781	2532	70.3
21. Wilbur Kelso, Indiana	520	14	21	2042	2800	72.9
22. Francis Rogers, Iowa	508	14	21	1870	2620	71.4
23. Earl Wiges, Iowa	511	14	21	1753	2492	70.3
24. Truman Standard, Illinois	487	14	21	1736	2492	70.1
25. John Fulton, Pennsylvania	537	13	22	1849	2642	70.0
26. Wellington Taylor, Iowa	514	12	23	1893	2662	71.1
27. Raymond Martin, Illinois	521	12	23	1746	2480	70.4
28. Ron Cherrier, Minnesota	520	12	23	1866	2688	69.4
29. Frank Palka, Illinois	491	12	23	1701	2480	68.6
30. John Coble, Indiana	487	12	23	1720	2556	67.3
31. Ernie Recht, Indiana	500	10	25	1484	2364	62.8
32. Marvin Craig, Indiana	501	6	29	1657	2460	67.4
33. Jim Johnson, Kentucky	498	6	29	1632	2472	66.0
34. Art Dugle, Illinois	488	3	32	1145	1978	57.9
35. Marion Lange, Iowa	498	2	33	1289	2140	60.2
36. James Kemple, Indiana	490	0	35	Forfeited	all games.	

NEW SCORING DEVICES USED

New scoring devices were used at this tourney. They were designed and built by Ralph Dykes, Pres. of the Illinois Assoc., and are now the property of the NHPA. They were good looking, easily operated and brought much favorable comment from players and fans alike. The player's name cards used on the devices were made by Clyde Green (Ind.) who had designed a similar scoring device at the same time Dykes was making the ones used in the tournament.

The 1960 World Tournament Story

Don Titcomb is the champion horseshoe pitcher of the World for 1960. The slim 35 year old lefthander from Los Gatos, Calif., took the title at Heekin Park in Muncie, Ind., on August 9 with a record of 33 wins and 2 defeats with a ringer percentage of 84.9, thus joining Guy Zimmerman in breaking the Allen-Isias monopoly that extends back to 1933.

The dethroned champ, Ted Allen, was a real sportsman and graceful in defeat although his game was admittedly not up to par. Knowing Ted as we do it is a sure thing he will be back again seeking to regain the title.

This was a great tournament, probably the best ever held. The playing facilities were excellent and the field of contestants the largest and strongest ever assembled. 144 players plus 23 Juniors, 7 Ladies and 18 Old Timers officially entered the meet. The geographic distribution was the widest in history and many others came to Muncie, took one look at the qualifying scores being posted and retired to the sidelines as spectators without tossing an official shoe.

It took 487 points in the 200 shoe qualifying round to make the 36 man championship group and 462 to gain Class "B", although dropouts lowered the Class "B" standard to 459. These figures break the official records established at Milwaukee in 1948.

Titcomb's path to the title was a rough one. He was defeated by last year's runner up, Harold Reno of Ohio 50-46 and upset by Wilbur Kelso of Indiana 50-49. Four players, Carl Steinfeldt (N. Y.), Floyd Toole (Ark.) and Curt Day and Graydon McFatridge (Ind.), pushed him right down to the wire and Red Brumfield (Ind.) passed the 40 point mark.

Don did not clinch a tie for the title until he defeated Steinfeldt in the 33rd game. His victory over Curt Day in the 34th round gave him the crown for certain and the final game win over defending champ Ted Allen was frosting on the cake.

Canadian champ, Elmer Hohl of Wellesley, Ont. took runner up honors to become the highest ranking Canuck in tournament history just as Titcomb became the first southpaw to win the title.

The husky Canadian barely edged out Curt Day for second with 30 wins and 5 losses, the same won-loss record as the Hoosier compiled. Hohl had a slight edge in ringer percentage. It took his final round win over Brumfield to annex second place and this game pushed Brumfield from third to fifth.

The Titcomb-Steinfeldt game on the final night broke two World tourney records and equaled two others. It went 178 shoes to establish one mark and Titcomb connected for 156 ringers for the other. Titcomb's 69 double ringers and the combined ringer total of 310 equaled previous records. The old records were made by Ted Allen and Curt Day in the 1957 tourney.

Indicative of the torrid competition was the fact that no less than six players, Titcomb (2443), Hohl (2280), Day (2337), Steinfeldt (2330), Maddox (2337), and Allen (2381) cracked the old record for total ringers thrown in the complete tournament. The old mark of 2261 was held by Ted Allen.

Titcomb's total of 1033 double ringers was another new record as was Ted Allen's total of 2966 shoes pitched.

Jim Ohler of Pennsylvania hit the most consecutive ringers, 40. The Titcomb-Steinfeldt tilt sheet showed 52 "4 deads", only two short of the record, while both the Allen-Toole and the Titcomb-Ohler games saw 10 straight "4 deads" circle the stake.

Titcomb threw the high single game ringer percentage, 97.7, with 43 ringers in 44 shoes against Marines Tamboer of Kansas.

The new champion was also the high qualifier with 180 ringers and 557 points in his 200 shoes. Graydon McFatridge of Rushville, Ind., tossed 44 straight ringers during his qualifying round. Both Curt Day and McFatridge connected for 176 ringers in their rounds.

1. Don Titcomb, Los Gatos, Calif.

Opponent	Score	R	SP	%
Standard	52-7	36	40	90.0
Dugle	50-18	31	40	77.5
Kemple			Won by forfeit	
Jensen	52-31	65	82	79.2
Johnson	52-20	64	78	82.1
Recht	52-19	54	64	84.4
Brumfield	55-42	105	148	82.0
Tate	51-10	44	54	81.5
Rogers	51-16	85	98	86.7
Wiges	50-15	37	50	74.0
Taylor	55-23	69	80	86.2
Cherrier	52-19	59	70	84.2
Martin	51-19	54	64	84.4
Reno	46-50	77	96	80.2
Focht	51-12	56	68	82.4
Maddox	53-23	74	86	90.2
McFatrige	53-46	92	114	80.7
Lindmeier	50-3	53	56	94.6
Coble	52-13	59	66	89.4
Crooks	50-25	51	62	82.3
Palka	50-28	76	90	84.4
Lange	52-10	46	52	88.5
Winston	52-26	42	54	77.8
Craig	50-16	87	98	88.7
Tamboer	51-0	43	44	97.7
Earley	52-23	84	96	87.5
Ohler	50-26	97	110	88.1
Hohl	50-34	104	120	86.6
Dixon	52-31	66	84	78.5
Kelso	49-51	96	118	81.3
Toole	52-49	118	138	85.5
Fulton	51-13	60	64	93.7
Steinfeldt	55-47	156	176	88.6
Day	53-44	93	114	81.5
Allen	51-26	110	124	88.7

Won 33 — Lost 2

2443 2878 84.9

2. Elmer Hohl, Wellsley, Ont., Can.

Opponent	Score	R	SP	%
Tate	50-23	53	64	82.8
Rogers	36-55	47	72	65.3
Wiges	52-16	55	70	78.6
Taylor	55-31	64	80	80.0
Cherrier	51-11	45	54	83.3
Martin	55-16	46	54	85.2
Reno	53-33	100	120	83.3
Focht	52-27	100	114	87.7
Maddox	51-45	93	108	86.1
McFatrige	51-10	60	68	88.3
Lindmeier	52-24	54	66	81.8
Coble	51-27	61	74	82.4
Crooks	50-28	56	72	77.8
Palka	51-24	40	54	74.1
Lange	52-11	27	34	79.5
Winston	51-26	66	82	80.4
Craig	50-34	66	92	71.7
Tamboer	52-43	70	90	77.7
Earley	55-37	65	82	79.2
Ohler	43-50	75	98	76.5
Allen	53-47	80	100	80.0
Dixon	51-46	68	92	73.9
Kelso	52-26	70	84	83.3
Toole	51-46	102	120	85.0
Fulton	50-36	67	88	76.1
Steinfeldt	38-51	64	86	74.4
Day	44-52	78	104	75.0
Titcomb	34-50	99	120	82.5
Standard	51-49	76	106	71.6
Dugle	52-3	34	36	94.4
Kemple			Won by forfeit	
Jensen	50-27	86	100	86.0
Recht	52-13	54	62	87.1
Johnson	52-31	75	90	83.3
Brumfield	50-36	84	100	84.0

Won 30 — Lost 5

2280 2836 80.4

3. Curtis Day, Frankfort, Ind.

Opponent	Score	R	SP Wo.1 by	% forfeit	Opponent	Score	R	SP Wo.1 by	% forfeit
Dugle	51-1	30	36	83.3	Kempe	51-45	64	86	71.4
Kempe	51-1	65	82	79.2	Jensen	51-8	68	74	91.9
Jensen	51-1	37	46	80.4	Johnson	51-35	50	70	71.4
Johnson	53-21	60	74	81.1	Recht	41-51	125	148	84.5
Recht	52-16	84	102	82.4	Brunfield	51-33	68	84	81.0
Brunfield	51-10	68	84	81.0	Tate	41-50	62	88	70.5
Tate	50-15	64	76	84.2	Rogers	51-8	49	56	87.5
Rogers	56-18	52	66	78.8	Wiges	51-6	48	52	92.4
Wiges	50-17	50	64	78.1	Taylor	51-36	64	82	73.0
Taylor	51-19	56	74	75.7	Cherrier	51-25	86	102	84.3
Cherrier	51-7	33	38	86.8	Martin	31-31	66	82	84.3
Martin	19-10	74	96	77.0	Reno	31-51	87	108	81.5
Reno	28-10	71	92	77.1	Focht	41-51	77	96	81.2
Focht	41-10	75	100	75.0	Maddox	51-37	84	100	81.0
Maddox	51-13	76	96	79.1	McFairidge	51-16	58	68	85.3
McFairidge	54-22	61	74	82.4	Lindmeier	51-12	46	54	85.2
Lindmeier	50-12	67	88	76.1	Coble	51-19	47	58	81.1
Coble	52-15	63	82	76.8	Crooks	51-27	66	80	82.5
Crooks	51-3	35	44	79.6	Palka	51-6	56	64	87.5
Palka	51-10	41	54	75.9	Lange	51-12	32	38	84.2
Lange	51-23	53	64	87.8	Winston	51-38	90	110	81.8
Winston	51-18	71	92	77.1	Craig	51-13	44	50	83.0
Craig	51-17	64	76	84.2	Tamboer	52-14	77	86	83.5
Tamboer	47-10	87	112	77.6	Earley	52-40	97	116	83.6
Earley	51-16	80	96	83.3	Ohler	51-38	68	86	79.0
Ohler	51-14	83	104	79.8	Dixon	52-27	69	84	82.1
Dixon	50-32	96	114	84.2	Kelso	51-35	57	74	77.0
Kelso	51-34	50	60	75.8	Toole	51-45	84	104	89.7
Toole	50-35	110	128	85.9	Fulton	53-19	49	60	81.7
Fulton	52-19	64	72	88.9	Allen	46-51	73	94	77.6
Allen	50-10	65	78	83.3	Day	20-50	56	78	71.8
Day	50-16	98	120	81.6	Titcomb	47-55	154	176	87.5
Titcomb	44-13	89	114	78.1	Standard	52-27	58	74	73.4
Standard	50-17	43	54	79.6	Dugle	52-12	51	60	85.0
Won 30 — Lost 5		2215	2758	80.3	Won 28 — Lost 7		2330	2842	81.9

4. Carl Steinfeldt, Rochester, N. Y.

5. Gene Brumfield, Merkleville, Ind.

Opponent	Score	F.	SP	%	Score	R	SP	%
Dixon, D.	52-29	50	66	75.7	52-4	34	88	89.5
Kelso, W.	52-29	68	88	77.3	52-41	69	88	78.4
Toole, F.	46-51	61	82	74.4	51-20	53	72	73.6
Fulton, J.	50-12	66	78	84.6	32-51	54	76	71.1
Steinfeldt, C.	51-44	127	148	85.8	54-36	48	66	72.7
Day, C.	26-52	77	102	75.5	52-41	79	96	81.9
Titcomb, D.	42-55	101	128	73.8	44-52	87	108	80.6
Standard, T.	51-29	50	66	75.8	51-48	90	116	77.5
Dugle, A.	53-19	37	50	74.0	45-51	91	108	84.2
Keuple, J.			Won by forfeit		50-24	69	84	82.1
Jensen, K.	51-35	72	92	73.2	50-17	63	72	87.5
Johnson, J.	50-22	45	56	80.4	50-15	46	56	82.2
Recht, E.	50-15	37	50	74.0	50-46	98	122	80.3
Allen, J.	48-51	122	148	82.4	51-49	78	96	81.2
Tate, M.	50-31	59	76	77.6	50-41	77	100	77.0
Rogers, F.	50-25	55	74	74.4	23-53	64	86	78.0
Wiges, E.	50-41	71	92	77.1	52-7	43	48	89.5
Taylor, W.	12-47	92	120	73.6	51-19	49	60	81.7
Cherrier, R.	38-50	40	64	62.5		Won by forfeit		
Martin, R.	50-26	48	68	73.5	52-25	54	68	79.5
Reno, H.	25-50	30	50	60.0	50-31	60	76	78.9
Focht, P.	51-44	79	98	80.6	51-6	36	40	90.0
Maddox, R.	52-45	118	138	85.5	45-52	114	138	82.6
McFatrledge, G.	50-41	78	96	81.2	50-26	61	76	80.2
Lindmeier, J.	51-27	72	86	83.7	53-29	66	88	80.4
Coble, J.	52-8	44	52	84.6	50-32	53	70	75.7
Crooks, L.	52-16	43	54	73.6	50-33	61	80	76.2
Palka, F.	53-10	54	62	87.1	50-16	46	58	79.4
Lange, M.	52-10	40	50	80.0	51-31	63	78	80.7
Winston, E.	53-13	46	54	85.2	50-29	95	108	87.9
Craig, M.	52-27	71	84	84.5	49-52	84	106	79.2
Tamboer, M.	52-13	52	58	83.6	44-50	109	136	80.1
Earley, T.	52-37	66	82	83.4	52-37	118	132	89.3
Ohler, J.	52-37	100	120	83.3	51-20	51	66	77.3
Hohl, E.	36-50	80	100	83.0	50-19	74	88	84.1
Won 28 — Lost 7		2251	2782	80.9	Won 28 — Lost 7	2337	2894	80.8

6. Ralph Maddox, Poca, W. Va.

Opponent	Score	F.	SP	%	Score	R	SP	%
Crooks, L.	52-4	50	66	75.7	52-4	34	88	89.5
Palka, F.	52-29	68	88	77.3	52-41	69	88	78.4
Lange, M.	46-51	61	82	74.4	51-20	53	72	73.6
Winston, E.	50-12	66	78	84.6	32-51	54	76	71.1
Craig, M.	51-44	127	148	85.8	54-36	48	66	72.7
Tamboer, M.	26-52	77	102	75.5	52-41	79	96	81.9
Earley, T.	42-55	101	128	73.8	44-52	87	108	80.6
Standard, T.	51-29	50	66	75.8	51-48	90	116	77.5
Dugle, A.	53-19	37	50	74.0	45-51	91	108	84.2
Keuple, J.			Won by forfeit		50-24	69	84	82.1
Jensen, K.	51-35	72	92	73.2	50-17	63	72	87.5
Johnson, J.	50-22	45	56	80.4	50-15	46	56	82.2
Recht, E.	50-15	37	50	74.0	50-46	98	122	80.3
Allen, J.	48-51	122	148	82.4	51-49	78	96	81.2
Tate, M.	50-31	59	76	77.6	50-41	77	100	77.0
Rogers, F.	50-25	55	74	74.4	23-53	64	86	78.0
Wiges, E.	50-41	71	92	77.1	52-7	43	48	89.5
Taylor, W.	12-47	92	120	73.6	51-19	49	60	81.7
Cherrier, R.	38-50	40	64	62.5		Won by forfeit		
Martin, R.	50-26	48	68	73.5	52-25	54	68	79.5
Reno, H.	25-50	30	50	60.0	50-31	60	76	78.9
Focht, P.	51-44	79	98	80.6	51-6	36	40	90.0
Maddox, R.	52-45	118	138	85.5	45-52	114	138	82.6
McFatrledge, G.	50-41	78	96	81.2	50-26	61	76	80.2
Lindmeier, J.	51-27	72	86	83.7	53-29	66	88	80.4
Coble, J.	52-8	44	52	84.6	50-32	53	70	75.7
Crooks, L.	52-16	43	54	73.6	50-33	61	80	76.2
Palka, F.	53-10	54	62	87.1	50-16	46	58	79.4
Lange, M.	52-10	40	50	80.0	51-31	63	78	80.7
Winston, E.	53-13	46	54	85.2	50-29	95	108	87.9
Craig, M.	52-27	71	84	84.5	49-52	84	106	79.2
Tamboer, M.	52-13	52	58	83.6	44-50	109	136	80.1
Earley, T.	52-37	66	82	83.4	52-37	118	132	89.3
Ohler, J.	52-37	100	120	83.3	51-20	51	66	77.3
Hohl, E.	36-50	80	100	83.0	50-19	74	88	84.1
Won 28 — Lost 7		2251	2782	80.9	Won 28 — Lost 7	2337	2894	80.8

8. Harold Reno Sabina, O

Opponent	Score	R	SI	%	Opponent	Score	R	SP	%
Lindmeier, J.	51-31	55	72	76.4	Lange, M.	50-29	52	66	78.8
Standard, T.	50-25	56	74	75.7	Whiston, E.	50-33	72	84	85.7
Coyle, J.	52-46	80	102	78.4	Craig, M.	51-2	34	34	94.1
Dugle, A.	52-25	53	66	80.3	Tauboer, M.	54-31	76	92	82.6
Crooks, L.	52-22	60	72	83.3	Earley, T.	52-32	67	82	81.7
Keuple, J.	52-32	62	78	79.5	Ohler, J.	52-27	74	88	84.1
Palka, F.	52-35	64	78	82.0	Hohl, E.	43-53	98	120	81.7
Lange, M.	55-4	37	44	84.1	Dixon, D.	50-23	51	66	77.3
Johnson, J.	50-10	37	46	80.4	Kelson, W.	53-9	38	44	86.4
Winston, E.	52-14	51	64	79.7	Toole, F.	50-33	93	106	87.7
Recht, E.	51-28	65	82	79.2	Fulton, J.	50-17	45	56	80.4
Craig, M.	52-19	57	66	86.4	Steinfeld, C.	31-51	58	82	70.7
Brumfield, G.	51-48	121	148	81.7	Day, C.	50-19	84	96	87.5
Tauboer, M.	50-7	47	56	83.9	Titcomb, D.	50-46	78	96	81.2
Tate, M.	51-29	62	78	79.4	Standard, T.	50-23	63	78	80.7
Earley, T.	45-51	113	136	80.3	Dugle, A.	50-7	33	44	75.0
Rogers, F.	54-26	56	70	80.0	Keuple, J.	36-51	57	78	73.0
Wiges, E.	52-32	73	86	84.8	Johnson, J.	55-30	61	76	80.2
Fohl, E.	47-53	78	100	78.0	Recht, E.	52-13	46	56	82.2
Taylor, W.	38-53	55	38	62.5	Brumfield, G.	50-25	38	50	76.0
Lixion, D.	50-44	87	108	80.5	Tate, M.	51-35	70	86	81.2
Charrier, R.	52-36	80	100	80.0	Rogers, F.	50-16	65	74	87.8
Kelso, W.	50-31	93	116	80.1	Wigres, E.	50-16	46	58	79.4
Martin, R.	50-13	42	50	84.0	Taylor, W.	50-31	64	84	76.2
Toole, F.	38-50	90	112	80.3	Charrier, R.	50-34	56	78	71.8
Feno, H.	51-28	71	88	80.6	Martin, R.	50-14	45	58	77.6
Fulton, J.	50-17	55	66	83.3	Allen, T.	28-51	63	88	71.6
Focht, P.	50-27	63	76	82.8	Focht, P.	30-50	86	114	75.4
Steinfeld, C.	51-46	74	94	78.7	Maddox, R.	29-50	88	108	81.4
Maddox, R.	50-44	111	136	81.6	McFatrige, G.	38-51	73	94	77.6
Lay, C.	46-50	97	120	80.8	Linmeier, J.	51-27	52	70	74.3
McFatrige, G.	32-54	75	100	75.0	Coyle, J.	51-41	52	74	70.3
Titcomb, D.	26-51	102	124	82.2	Crooks, L.	52-45	71	94	75.5
					Palka, F.	51-20	47	58	81.1
Won 28 — Lost 7		2381	2966	80.3	Won 28 — Lost 7		2094	2632	79.6

7. Ted Allen Boulder, Colo.

Opponent	Score	R	SI	%	Opponent	Score	R	SP	%
Lindmeier, J.	51-31	55	72	76.4	Lange, M.	50-29	52	66	78.8
Standard, T.	50-25	56	74	75.7	Whiston, E.	50-33	72	84	85.7
Coyle, J.	52-46	80	102	78.4	Craig, M.	51-2	34	34	94.1
Dugle, A.	52-25	53	66	80.3	Tauboer, M.	54-31	76	92	82.6
Crooks, L.	52-22	60	72	83.3	Earley, T.	52-32	67	82	81.7
Keuple, J.	52-32	62	78	79.5	Ohler, J.	52-27	74	88	84.1
Palka, F.	52-35	64	78	82.0	Hohl, E.	43-53	98	120	81.7
Lange, M.	55-4	37	44	84.1	Dixon, D.	50-23	51	66	77.3
Johnson, J.	50-10	37	46	80.4	Kelson, W.	53-9	38	44	86.4
Winston, E.	52-14	51	64	79.7	Toole, F.	50-33	93	106	87.7
Recht, E.	51-28	65	82	79.2	Fulton, J.	50-17	45	56	80.4
Craig, M.	52-19	57	66	86.4	Steinfeld, C.	31-51	58	82	70.7
Brumfield, G.	51-48	121	148	81.7	Day, C.	50-19	84	96	87.5
Tauboer, M.	50-7	47	56	83.9	Titcomb, D.	50-46	78	96	81.2
Tate, M.	51-29	62	78	79.4	Standard, T.	50-23	63	78	80.7
Earley, T.	45-51	113	136	80.3	Dugle, A.	50-7	33	44	75.0
Rogers, F.	54-26	56	70	80.0	Keuple, J.	36-51	57	78	73.0
Wiges, E.	52-32	73	86	84.8	Johnson, J.	55-30	61	76	80.2
Fohl, E.	47-53	78	100	78.0	Recht, E.	52-13	46	56	82.2
Taylor, W.	38-53	55	38	62.5	Brumfield, G.	50-25	38	50	76.0
Lixion, D.	50-44	87	108	80.5	Tate, M.	51-35	70	86	81.2
Charrier, R.	52-36	80	100	80.0	Rogers, F.	50-16	65	74	87.8
Kelso, W.	50-31	93	116	80.1	Wigres, E.	50-16	46	58	79.4
Martin, R.	50-13	42	50	84.0	Taylor, W.	50-31	64	84	76.2
Toole, F.	38-50	90	112	80.3	Charrier, R.	50-34	56	78	71.8
Feno, H.	51-28	71	88	80.6	Martin, R.	50-14	45	58	77.6
Fulton, J.	50-17	55	66	83.3	Allen, T.	28-51	63	88	71.6
Focht, P.	50-27	63	76	82.8	Focht, P.	30-50	86	114	75.4
Steinfeld, C.	51-46	74	94	78.7	Maddox, R.	29-50	88	108	81.4
Maddox, R.	50-44	111	136	81.6	McFatrige, G.	38-51	73	94	77.6
Lay, C.	46-50	97	120	80.8	Linmeier, J.	51-27	52	70	74.3
McFatrige, G.	32-54	75	100	75.0	Coyle, J.	51-41	52	74	70.3
Titcomb, D.	26-51	102	124	82.2	Crooks, L.	52-45	71	94	75.5
					Palka, F.	51-20	47	58	81.1
Won 28 — Lost 7		2381	2966	80.3	Won 28 — Lost 7		2094	2632	79.6

9. Paul Focht, Dayton, O.

Opponent	Score	R	SP	%
Palka, F.	54-0	59	80	73.7
Lange, M.	50-15	52	76	63.4
Winston, E.	50-18	61	90	67.8
Craig, M.	52-28	45	60	75.0
Tamboer, M.	51-13	71	90	79.9
Earley, T.	51-19	70	94	74.4
Ohler, J.	51-26	76	90	85.5
Hohl, E.	27-22	91	114	79.8
Dixon, D.	44-22	63	86	73.2
Kelso, W.	50-15	71	96	73.9
Toole, F.	41-11	68	92	73.9
Fulton, J.	52-15	67	88	73.1
Stemfeldt, C.	51-33	94	108	87.0
Day, C.	50-28	77	92	83.6
Tiborib, D.	12-11	42	68	61.8
Standard, T.	52-18	87	116	75.0
Dugle, A.	51-20	41	54	75.9
Kenpie, J.
Jensen, K.	52-18	61	74	82.4
Johnson, J.	50-27	59	72	81.9
Recht, E.	54-37	69	92	75.0
Bramfield, G.	44-11	77	98	73.5
Tate, M.	27-11	51	72	70.8
Rogers, F.	50-29	53	70	75.7
Wiges, E.	54-18	55	68	80.8
Taylor, W.	51-13	54	72	75.0
Cherrier, R.	51-12	54	62	87.1
Martin, R.	51-15	54	62	87.1
Peao, H.	50-30	93	114	81.5
Allen, T.	27-10	55	76	72.4
Maddox, R.	52-19	84	106	79.2
McFairidge, G.	50-19	79	88	89.7
Lindmeier, J.	51-15	67	90	74.4
Coyle, J.	50-26	53	70	75.7
Crooks, L.	52-11	68	88	77.2
Won 28 — Lost 7	2221	2868	77.4

10 Floyd Toole, Pin Bluff, Ark.

Opponent	Score	R	SP	%
Johnson, J.	50-24	57	72	79.2
Recht, E.	51-12	48	60	80.0
Bramfield, G.	51-46	62	82	75.6
Tate, M.	52-23	53	68	77.9
Rogers, F.	51-30	77	96	79.8
Wiges, E.	50-24	51	64	79.6
Taylor, W.	51-33	67	86	77.9
Cherrier, R.	52-38	75	92	81.5
Martin, R.	50-20	70	82	85.3
Reno, H.	33-50	88	106	83.0
Focht, P.	51-41	71	92	77.1
Maddox, R.	15-50	34	56	60.4
McFairidge, G.	52-39	70	94	74.4
Lindmeier, J.	55-19	64	74	86.4
Cobbs, J.	50-44	46	68	67.6
Crooks, L.	42-50	51	76	67.1
Palka, F.	52-17	41	50	82.0
Lang, M.	50-7	30	36	83.4
Winston, E.	43-50	58	82	70.7
Craig, M.	50-18	53	62	85.5
Tamboer, M.	38-50	75	98	76.5
Earley, T.	52-43	87	108	80.5
Ohler, J.	51-32	75	90	83.3
Hohl, E.	46-51	100	120	83.3
Dixon, D.	52-10	43	52	82.6
Kelso, W.	50-30	75	88	85.2
Allen, T.	50-38	94	112	83.9
Fulton, J.	50-30	54	70	77.2
Stemfeldt, C.	45-50	82	104	78.9
Day, C.	35-50	106	128	82.9
Titcomb, D.	49-52	116	138	84.1
Standard, T.	51-11	41	52	78.8
Dugle, A.	50-15	26	38	68.4
Kenpie, J.
Jensen, K.	50-24	69	82	84.1
Won 26 — Lost 9	2209	2778	79.5

11. Jim Ohler, Scottsdale, Pa.

Opponent	Score	R	SP	%	Opponent	Score	R	SP	%
Rogers, F.	51-45	70	94	74.4	Coble, J.	52-25	43	60	71.6
Wiges, E.	52-34	53	70	75.7	Crooks, L.	50-25	48	62	77.3
Taylor, W.	37-51	73	104	70.2	Palka, F.	51-31	51	68	75.0
Cherrier, R.	50-47	86	112	76.8	Lange, M.	51-40	49	70	70.0
Martin, R.	50-14	75	84	89.3	Winston, E.	52-29	74	90	83.3
Reno, H.	27-52	65	88	73.9	Craig, M.	50-14	53	62	85.4
Focht, P.	26-51	68	90	76.6	Tamboer, M.	37-51	76	98	77.5
Maddox, R.	48-51	90	116	77.5	Earley, T.	50-44	77	102	75.4
McFatrige, G.	50-43	71	90	78.8	Ohler, J.	43-50	68	90	75.5
Lindmeier, J.	50-10	38	48	81.3	Hohl, E.	10-51	47	68	69.1
Coble, J.	51-45	65	86	75.6	Dixon, L.	16-51	33	58	56.9
Crooks, L.	51-37	71	88	80.6	Kelso, W.	50-22	68	80	85.0
Palka, F.	53-12	52	64	81.3	Toole, F.	39-52	65	94	69.2
Lange, M.	51-18	36	54	66.6	Fulton, J.	55-22	62	86	72.0
Winston, E.	50-48	55	82	67.1	Steinfelt, C.	37-50	80	100	87.0
Craig, M.	51-10	34	40	85.0	Day, C.	43-51	73	96	73.0
Tamboer, M.	31-51	98	124	79.0	Titcomb, D.	46-53	90	114	73.9
Earley, T.	51-11	52	50	86.6	Standar, T.	52-20	60	72	83.4
Allen, T.	26-54	47	70	67.2	Dugle, A.	50-17	36	46	73.3
Hohl, E.	50-43	76	98	77.5	Kemple, J.	29-50	50	70	71.4
Dixon, D.	52-9	52	58	89.6	Jensen, K.	53-33	61	78	73.2
Kelso, W.	50-27	58	72	80.6	Johnson, J.	51-19	61	76	89.2
Toole, F.	32-51	69	90	76.6	Recht, E.	41-50	75	96	78.1
Fulton, J.	50-15	62	72	86.1	Brumfield, G.	49-51	71	96	73.9
Steinfeldt, C.	40-52	92	116	79.3	Tate, M.	54-35	51	68	73.0
Day, C.	36-51	75	96	78.1	Rogers, F.	52-18	76	88	83.3
Titcomb, D.	26-50	89	110	80.9	Wiges, E.	50-33	51	66	77.3
Dugle, A.	28-50	49	58	72.1	Taylor, W.	50-20	50	62	89.6
Standard, T.	50-6	31	36	86.1	Cherrier, R.	55-33	90	108	83.3
Kemple, J.	54-41	81	100	81.0	Martin, R.	51-38	78	94	82.9
Jensen, K.	52-20	56	68	82.4	Reno, H.	19-50	69	88	73.4
Johnson, J.	54-28	54	70	77.2	Focht, I.	37-52	113	132	85.4
Recht, E.	37-50	95	120	79.1	Maddox, R.	54-32	82	100	82.0
Brumfield, G.	52-39	68	84	72.3	Allen, T.	52-42	70	88	73.5
Tate, M.					Lindmeier, J.				
Won 23 — Lost 12		2207	2832	77.9	Won 22 — Lost 13		2241	2826	79.3

12. Graydon McFatrige, Rushville, Ind.

Opponent	Score	R	SP	%	Opponent	Score	R	SP	%
Coble, J.	52-25	43	60	71.6	Coble, J.	52-25	43	60	71.6
Crooks, L.	50-25	48	62	77.3	Crooks, L.	50-25	48	62	77.3
Palka, F.	51-31	51	68	75.0	Palka, F.	51-31	51	68	75.0
Lange, M.	51-40	49	70	70.0	Lange, M.	51-40	49	70	70.0
Winston, E.	52-29	74	90	83.3	Winston, E.	52-29	74	90	83.3
Craig, M.	50-14	53	62	85.4	Craig, M.	50-14	53	62	85.4
Tamboer, M.	37-51	76	98	77.5	Tamboer, M.	37-51	76	98	77.5
Earley, T.	50-44	77	102	75.4	Earley, T.	50-44	77	102	75.4
Ohler, J.	43-50	68	90	75.5	Ohler, J.	43-50	68	90	75.5
Hohl, E.	10-51	47	68	69.1	Hohl, E.	10-51	47	68	69.1
Dixon, L.	16-51	33	58	56.9	Dixon, L.	16-51	33	58	56.9
Kelso, W.	50-22	68	80	85.0	Kelso, W.	50-22	68	80	85.0
Toole, F.	39-52	65	94	69.2	Toole, F.	39-52	65	94	69.2
Fulton, J.	55-22	62	86	72.0	Fulton, J.	55-22	62	86	72.0
Steinfelt, C.	37-50	80	100	87.0	Steinfelt, C.	37-50	80	100	87.0
Day, C.	43-51	73	96	73.0	Day, C.	43-51	73	96	73.0
Titcomb, D.	46-53	90	114	73.9	Titcomb, D.	46-53	90	114	73.9
Standar, T.	52-20	60	72	83.4	Standar, T.	52-20	60	72	83.4
Dugle, A.	50-17	36	46	73.3	Dugle, A.	50-17	36	46	73.3
Kemple, J.	29-50	50	70	71.4	Kemple, J.	29-50	50	70	71.4
Jensen, K.	53-33	61	78	73.2	Jensen, K.	53-33	61	78	73.2
Johnson, J.	51-19	61	76	89.2	Johnson, J.	51-19	61	76	89.2
Recht, E.	41-50	75	96	78.1	Recht, E.	41-50	75	96	78.1
Brumfield, G.	49-51	71	96	73.9	Brumfield, G.	49-51	71	96	73.9
Tate, M.	54-35	51	68	73.0	Tate, M.	54-35	51	68	73.0
Rogers, F.	52-18	76	88	83.3	Rogers, F.	52-18	76	88	83.3
Wiges, E.	50-33	51	66	77.3	Wiges, E.	50-33	51	66	77.3
Taylor, W.	50-20	50	62	89.6	Taylor, W.	50-20	50	62	89.6
Cherrier, R.	55-33	90	108	83.3	Cherrier, R.	55-33	90	108	83.3
Martin, R.	51-38	78	94	82.9	Martin, R.	51-38	78	94	82.9
Reno, H.	19-50	69	88	73.4	Reno, H.	19-50	69	88	73.4
Focht, I.	37-52	113	132	85.4	Focht, I.	37-52	113	132	85.4
Maddox, R.	54-32	82	100	82.0	Maddox, R.	54-32	82	100	82.0
Allen, T.	52-42	70	88	73.5	Allen, T.	52-42	70	88	73.5
Lindmeier, J.					Lindmeier, J.				
Won 22 — Lost 13		2241	2826	79.3	Won 22 — Lost 13		2241	2826	79.3

13. Terry Earley, New York City

Opponent	Score	R	SP	%
Wiges, E.	27-52	47	68	69.1
Taylor, W.	40-50	72	94	76.5
Cherrier, R.	52-16	35	42	83.3
Martin, E.	52-39	72	92	78.2
Reno, H.	32-52	60	82	73.2
Focht, P.	39-51	63	94	70.0
Maddox, R.	52-44	90	108	83.3
McFadrige, G.	44-50	73	102	74.5
Lindmeier, J.	25-51	32	54	59.2
Coble, J.	39-52	62	90	68.9
Crooks, L.	51-30	59	76	77.6
Palka, F.	50-29	43	68	70.5
Lange, M.	52-33	49	66	74.3
Winston, E.	55-36	83	108	76.8
Craig, M.	50-36	61	82	74.4
Allen, T.	51-45	117	136	86.0
Tamboer, M.	45-50	69	100	69.0
Ohler, J.	11-51	39	60	65.0
Hohl, E.	37-55	53	82	70.7
Irxon, D.	52-22	50	66	75.8
Kelso, W.	51-44	60	86	69.8
Toole, F.	43-52	84	108	77.7
Fulton, J.	50-30	70	90	77.7
Steinfeldt, C.	14-52	64	86	74.4
Da', C.	50-47	85	112	76.7
Titomb, D.	23-52	74	96	77.0
Standard, T.	50-28	64	84	76.2
Dugle, A.	50-28	50	66	75.8
Kempie, J.		Won by forfeit		
Jensen, K.	51-28	54	68	79.5
Johnson, J.	55-24	57	74	77.0
Keht, E.	50-37	47	66	71.3
Brumfield, G.	37-52	61	82	74.4
Tate, M.	52-22	51	64	79.7
Rogers, F.	43-50	83	108	76.8
Won 20 — Lost 15		2150	2860	75.2

14. Maripes Tamboer, Wichita, Kan

Opponent	Score	R	SP	%
Taylor, W.	37-50	48	72	66.7
Cherrier, R.	51-32	59	80	73.7
Martin, R.	48-51	76	106	71.6
Reno, H.	31-54	67	92	72.8
Focht, P.	43-51	69	90	77.7
Maddox, R.	41-52	75	96	77.7
McFadrige, G.	51-37	80	98	81.6
Lindmeier, J.	45-51	47	30	58.8
Coble, J.	50-30	61	76	80.2
Crooks, L.	50-20	50	34	78.1
Palka, F.	51-32	74	94	78.7
Lange, M.	51-17	53	34	82.8
Winston, E.	50-7	45	54	83.4
Craig, M.	52-23	47	62	75.9
Allen, T.	7-50	34	56	60.7
Ohler, J.	51-31	105	124	84.6
Earley, T.	50-45	72	100	72.0
Hohl, E.	43-52	66	90	73.3
Dixon, D.	50-47	64	90	71.1
Kelso, W.	51-43	87	110	79.0
Toole, F.	50-38	79	98	80.6
Fulton, J.	50-33	41	60	68.3
Steinfeldt, C.	13-51	31	50	62.0
Day, C.	17-51	53	76	69.7
Titomb, D.	0-51	26	44	59.1
Standard, T.	53-22	38	48	79.2
Lugle, A.	54-25	53	74	71.6
Kempie, J.		Won by forfeit		
Jensen, K.	43-51	62	92	67.4
Johnson, J.	50-30	56	72	77.8
Keht, E.	49-52	74	104	71.1
Brumfield, G.	13-52	39	58	67.2
Tate, M.	29-53	80	104	76.9
Rogers, F.	53-49	74	100	74.0
Wiges, E.	50-49	80	104	76.0
Won 20 — Lost 15		2065	2782	74.2

15. Kew Jensen, St. Joseph, Mich.

Opponent	Score	R	SP	%
Fulton, J.	53-29	65	80	81.2
Steinfeldt, C.	45-50	61	86	70.9
Day, C.	32-51	59	72	72.0
Titcomb, D.	31-52	58	82	70.7
Standard, T.	52-30	62	76	81.6
Lugle, A.	51-27	50	66	75.7
Kempie, J.
Allen, T.	35-52	58	78	74.4
Johnson, J.	36-52	48	78	61.6
Recht, E.	52-43	58	82	70.7
Brumfield, G.	35-51	68	92	73.9
Tate, M.	52-38	60	84	71.4
Rogers, F.	51-24	47	64	73.5
Wiges, E.	52-17	57	72	79.2
Taylor, W.	50-31	63	76	82.3
Cherrier, R.	51-35	51	74	68.9
Martin, R.	38-50	70	98	71.4
Reno, H.	51-36	61	78	78.2
Focht, P.	18-52	51	74	68.9
Maddox, R.	28-52	46	68	67.6
McFatridge, G.	50-29	57	70	81.4
Lindmeier, J.	51-38	65	82	79.2
Coble, J.	52-25	59	78	75.5
Crooks, L.	38-52	62	88	70.4
Palka, F.	50-47	48	72	66.7
Lange, M.	54-23	39	54	72.2
Winston, F.	50-31	51	70	72.8
Craig, M.	52-12	42	52	80.8
Tambour, M.	51-13	64	92	69.6
Farley, T.	28-51	47	68	69.1
Chler, J.	41-54	75	100	75.0
Hohl, E.	27-50	78	100	78.0
Dixon, D.	42-54	54	76	71.1
Kelso, W.	50-19	50	62	80.6
Toole, F.	24-50	62	82	75.3
Won 20 — Lost 15		1916	2636	73.8

16. John Linnear, Broadview, Ill.

Opponent	Score	R	SP	%
Allen, T.	31-51	48	72	63.7
Coble, J.	39-51	42	66	63.1
Crooks, L.	51-37	57	78	73.1
Palka, F.	51-44	36	60	63.0
Lange, M.	51-6	49	58	81.5
Winston, E.	21-51	39	62	62.9
Craig, M.	20-19	52	72	72.2
Tamboer, M.	51-45	50	80	62.5
Earley, T.	51-25	40	54	71.1
Ohler, J.	10-50	25	48	52.0
Hohl, E.	24-52	46	66	63.7
Dixon, D.	29-52	49	72	63.0
Kelso, W.	53-30	71	90	73.8
Toole, F.	19-55	52	74	73.3
Fulton, J.	50-22	51	68	75.0
Steinfeldt, C.	16-53	46	68	67.6
Day, C.	22-54	51	74	63.9
Titcomb, D.	3-50	38	56	67.9
Dugle, A.	39-52	54	80	67.5
Standard, T.	50-10	33	44	75.0
Kempie, J.
Jensen, K.	38-51	61	82	74.4
Johnson, J.	51-41	63	88	71.5
Recht, E.	52-28	61	84	72.6
Brumfield, G.	27-51	64	86	71.4
Tate, M.	51-29	63	80	73.7
Rogers, F.	50-34	60	80	75.0
Wiges, E.	51-24	39	54	72.2
Taylor, W.	51-29	52	68	73.5
Cherrier, R.	51-35	53	72	73.6
Martin, R.	32-50	58	84	63.0
Reno, H.	27-51	45	70	61.3
Focht, P.	35-51	64	90	71.1
Maddox, R.	20-51	42	66	63.6
McFatridge, G.	42-52	66	80	75.0
Won 17 — Lost 18		1720	2426	70.9

17. Dale Dixon, Des Moines, Ia.

Opponent	Score	R	SP	%
Brunfield, G.	29-52	43	66	65.1
Tate, M.	33-52	34	58	58.6
Rogers, F.	55-38	55	76	72.4
Wiges, E.	50-27	62	82	75.6
Taylor, W.	52-34	52	66	78.8
Cherrier, R.	50-33	59	84	70.2
Martin, R.	51-14	37	46	80.4
Reno, H.	23-50	41	66	62.1
Focht, P.	52-44	67	86	77.9
Maddox, R.	24-51	54	84	70.2
McFatrige, G.	51-16	43	58	74.1
Lindmeier, J.	52-29	56	72	77.8
Coble, J.	30-50	49	75	66.2
Crooks, L.	42-50	59	86	68.6
Palka, F.	29-51	53	78	67.9
Lange, M.	50-24	44	64	68.7
Winston, F.	50-35	54	74	72.9
Craig, J.	50-9	48	56	85.7
Tamboer, M.	47-50	63	90	70.0
Earley, T.	22-52	40	66	60.6
Ohler, J.	9-52	38	58	65.5
Hohl, E.	46-51	66	92	71.4
Allen, T.	44-50	86	108	79.6
Keiso, W.	30-52	45	68	66.2
Toole, F.	10-52	30	52	57.7
Fulton, J.	51-24	47	64	73.5
Steinfeldt, C.	27-52	60	84	71.4
Day, C.	32-50	89	114	78.1
Thcomb, D.	31-52	59	84	70.2
Standard, T.	47-51	46	70	65.7
Dugle, A.	31-52	46	70	65.7
Kempie, J.	50-17	55	72	76.4
Jensen, K.	54-42	58	76	76.3
Johnson, J.	30-50	45	68	66.2
Recht, E.	18-50	52	68	76.5
Won 16 — Lost 19		1794	2510	71.5

18. Lorain Crooks, East Fulonham, O.

Opponent	Score	R	SP	%
Maddox, R.	4-52	18	38	47.4
McFatrige, G.	25-50	40	52	64.5
Lindmeier, J.	37-51	51	78	65.4
Coble, J.	51-28	48	64	75.0
Allen, T.	22-52	51	72	70.8
Falka, F.	48-51	58	90	64.4
Lange, M.	52-22	36	52	69.2
Vinstona, E.	54-48	49	76	64.5
Craig, M.	51-32	46	64	71.8
Tamboer, M.	20-50	41	64	64.0
Earley, T.	30-51	52	76	68.4
Chier, J.	37-51	65	88	73.9
Fohl, E.	28-50	50	72	69.5
Lixon, D.	50-42	61	86	70.9
Kelso, W.	40-52	51	70	72.8
Toole, F.	50-42	53	76	69.7
Fulton, J.	52-45	51	76	67.1
Steinfeldt, C.	19-55	36	58	62.1
Lay, C.	35-52	58	82	70.7
Titcomb, D.	25-50	43	62	69.4
Standard, T.	31-50	57	78	71.0
Dugle, A.	50-8	34	40	81.0
Kempie, J.	52-38	68	88	77.2
Jensen, K.	51-25	44	56	73.6
Johnson, J.	52-19	42	56	75.0
Recht, E.	16-52	31	54	57.4
Brunfield, G.	54-36	53	74	71.6
Late, M.	39-50	57	84	67.8
Rogers, F.	55-31	69	86	80.2
Wiges, E.	28-51	34	54	62.9
Taylor, W.	50-33	51	68	75.0
Cherrier, R.	53-18	43	58	74.1
Martin, R.	45-52	66	94	70.2
Reno, H.	31-52	62	88	70.4
Focht, P.		1669	2874	70.3
Won 16 -- Lost 19				

Won by forfeit

Won by forfeit

19. Mill Tote, Salt Lake City, Utah

Opponent	Score	R	SP	%	Opponent	Score	R	SP	%
Hohl, E.	23-50	44	64	68.7	Martin, R.	52-46	70	88	79.5
Dixon, D.	52-33	41	58	70.7	Keno, H.	23-50	63	84	75.0
Kelso, W.	55-23	72	88	81.8	Focht, P.	48-50	62	90	68.9
Tocle, F.	23-52	44	68	64.7	Maddox, R.	51-32	60	76	78.9
Fulton, J.	50-31	77	92	88.6	McFatrige, G.	29-52	67	90	75.5
Steinfeldt, C.	33-51	62	84	73.8	Lindmeier, J.	51-21	49	62	79.0
Day, C.	30-51	61	84	72.6	Coble, J.	51-3	34	40	85.0
Titcomb, D.	10-51	30	54	55.5	Crooks, L.	48-54	49	76	64.5
Standard, T.	51-38	59	78	75.6	Palka, F.	52-49	76	108	70.3
Dughe, A.	51-13	47	57	81.1	Lange, M.	51-30	59	80	73.7
					Allen, T.	14-52	40	64	62.5
					Creig, M.	50-45	45	76	59.2
					Tamboer, M.	7-50	32	54	59.2
Jensen, K.	38-52	56	84	66.7	Earley, T.	36-55	78	108	72.2
Johuson, J.	51-41	60	86	69.8	Cher, J.	48-50	55	82	67.1
Kech, E.	52-45	71	102	69.6	Hohl, E.	26-51	57	82	69.5
Brunfeld, G.	31-50	52	76	68.4	Dixon, D.	35-50	50	74	67.6
Allen, T.	29-51	55	78	70.5	Kelso, W.	23-51	46	70	65.7
Rogers, F.	50-27	59	72	81.9	Toble, F.	50-43	59	82	71.9
Wives, E.	45-51	70	88	71.7	Fulton, J.	48-53	52	82	63.4
Taylor, W.	50-18	51	82	82.3	Steinfeldt, C.	12-50	20	38	52.6
Cherrie, R.	37-51	69	98	70.4	Day, C.	23-51	43	64	67.2
Martin, R.	51-36	52	74	70.3	Titcomb, D.	26-52	33	54	61.1
Keno, J.	35-51	64	86	74.4	Standard, T.	50-33	65	86	75.5
Focht, P.	51-27	60	72	83.4	Ingle, A.	50-9	33	40	82.5
Maddox, R.	26-50	54	76	71.1	Kemp, J.				
McFatrige, G.	51-49	73	86	76.0	Jensen, K.	31-50	46	70	65.7
Lindmeier, J.	29-51	56	80	70.0	Johnson, J.	50-30	40	68	68.9
Coble, J.	40-52	59	84	70.2	Kech, E.	50-16	40	52	76.9
Crooks, L.	36-54	46	74	62.2	Bramfield, G.	13-53	33	54	61.1
Palka, F.	21-51	39	52	62.9	Tate, M.	46-50	70	106	75.4
Large, M.	54-24	48	56	72.7	Rogers, F.	44-52	56	88	63.7
Winston, E.	50-46	79	106	74.5	Wives, E.	51-20	64	78	82.0
Large, M.	51-40	67	92	72.8	Taylor, W.	32-30	48	70	68.6
Craig, M.	53-29	87	104	83.6	Cherrie, R.	51-13	77	106	72.6
Tamboer, M.	53-29	87	104	83.6					
Earley, T.	22-52	42	64	65.6					
Cher, J.	39-52	63	94	67.0					
Won 15 — Lost 20		1969	2714	72.5	Won 15 — Lost 20		1781	2532	70.3

20 Earl Winston, LaMonte, Mo.

Opponent	Score	R	SP	%
Martin, R.	52-46	70	88	79.5
Keno, H.	23-50	63	84	75.0
Focht, P.	48-50	62	90	68.9
Maddox, R.	51-32	60	76	78.9
McFatrige, G.	29-52	67	90	75.5
Lindmeier, J.	51-21	49	62	79.0
Coble, J.	51-3	34	40	85.0
Crooks, L.	48-54	49	76	64.5
Palka, F.	52-49	76	108	70.3
Lange, M.	51-30	59	80	73.7
Allen, T.	14-52	40	64	62.5
Creig, M.	50-45	45	76	59.2
Tamboer, M.	7-50	32	54	59.2
Earley, T.	36-55	78	108	72.2
Cher, J.	48-50	55	82	67.1
Hohl, E.	26-51	57	82	69.5
Dixon, D.	35-50	50	74	67.6
Kelso, W.	23-51	46	70	65.7
Toble, F.	50-43	59	82	71.9
Fulton, J.	48-53	52	82	63.4
Steinfeldt, C.	12-50	20	38	52.6
Day, C.	23-51	43	64	67.2
Titcomb, D.	26-52	33	54	61.1
Standard, T.	50-33	65	86	75.5
Ingle, A.	50-9	33	40	82.5
Kemp, J.				
Jensen, K.	31-50	46	70	65.7
Johnson, J.	50-30	40	68	68.9
Kech, E.	50-16	40	52	76.9
Bramfield, G.	13-53	33	54	61.1
Tate, M.	46-50	70	106	75.4
Rogers, F.	44-52	56	88	63.7
Wives, E.	51-20	64	78	82.0
Taylor, W.	32-30	48	70	68.6
Cherrie, R.	51-13	77	106	72.6
Won 15 — Lost 20		1781	2532	70.3

21 Wilbur Keso, Loogootee, Ind.

Opponent	Score	R	SP	%
Recit, E.	50-27	51	72	70.8
Brumfield, G.	29-52	59	88	67.0
Tate, I. H.	23-55	61	88	69.3
Rogers, F.	50-49	66	90	74.4
Wigas, E.	51-38	63	80	78.7
Taylor, W.	52-36	51	72	70.8
Cherrier, R.	52-20	57	76	75.0
Martin, R.	43-52	64	94	68.1
Reno, H.	9-53	24	44	54.5
Focht, P.	45-50	71	96	73.9
Madrox, R.	17-50	52	72	72.2
McAtridg, J.	22-50	59	80	73.7
Limbuejer, J.	30-53	66	90	73.3
Coble, J.	47-50	72	98	73.4
Crooks, L.	52-40	55	70	78.6
Palka, F.	42-50	72	102	70.5
Large, M.	50-43	74	98	75.5
Wirston, E.	51-23	54	70	77.2
Craig, M.	29-53	38	62	61.3
Tanbour, M.	43-51	86	110	78.1
Earley, I.	44-51	60	86	69.8
Ohler, J.	27-50	50	72	69.5
Hofl, E.	26-52	62	84	73.8
Dixon, D.	52-30	51	68	75.0
Allen, J.	31-50	88	116	75.8
Toolb, J.	30-50	69	88	78.4
Fulton, J.	26-51	58	84	69.0
Steirfelit, C.	35-52	52	74	70.3
Day, C.	34-51	43	66	65.1
Titcomt, D.	51-49	96	118	81.3
Standard, T.	52-45	71	94	75.5
Dugle, A.	50-9	37	46	80.4
Kemp, J.	19-50	40	62	64.5
Jensen, K.	53-39	70	90	77.7
Johnson, J.		2042	2800	72.9
Won 14 — Lost 21				

22. Francis Rogers, Waverly, Ia

Opponent	Score	R	SP	%
Ohler, J.	45-51	69	74	73.4
Hohl, E.	55-36	53	72	73.6
Dixon, D.	38-55	50	76	65.8
Kelso, W.	49-50	66	90	74.4
Toolb, F.	30-51	77	96	73.5
Fulton, J.	51-47	72	98	73.4
Steinfeldt, C.	50-43	64	88	72.7
Day, C.	23-50	56	76	73.7
Titcomb, D.	16-51	74	98	75.5
Standard, T.	51-14	38	48	79.2
Dugle, A.	50-47	52	80	65.0
Kemp, J.		39	64	60.9
Jensen, K.	24-51	54	70	77.2
Johnson, J.	51-28	36	62	58.1
Rech, E.	29-50	46	74	62.2
Brumfield, G.	25-50	51	72	70.8
Tate, M.	27-50	51	70	72.8
Allen, T.	24-51	51	70	72.8
Wigas, E.	5-52	22	44	50.0
Taylor, W.	27-50	57	80	71.2
Cherrier, R.	28-50	37	62	59.7
Martin, R.	51-21	62	76	81.5
Reno, H.	16-50	54	74	72.9
Focht, P.	29-50	47	70	64.3
Madrox, R.	29-53	59	82	71.9
McAtridg, G.	35-54	45	68	66.2
Limbuejer, J.	34-50	57	80	71.2
Coble, J.	52-43	56	78	71.8
Crooks, L.	50-39	59	84	70.2
Palka, F.	38-50	64	88	72.8
Lange, M.	52-10	35	44	79.6
Wirston, E.	52-44	58	88	65.9
Craig, M.	51-26	52	66	78.8
Tauboer, M.	49-53	73	100	73.0
Fauley, T.	50-43	86	108	79.6
Won 14 — Lost 21		1870	2620	71.4

23. Earl Wiges, Evers, Ia.

Opponent	Score	R	SP	%
Earley, T.	52-27	56	68	82.3
Ohler, J.	34-52	46	70	65.7
Bohl, E.	16-52	43	70	61.4
Dixon, D.	27-50	56	82	68.3
Kelso, W.	38-51	58	80	72.5
Toole, F.	24-50	41	64	64.0
Fulton, J.	27-50	48	72	63.7
Steinfeldt, C.	8-51	35	56	62.5
Lay, C.	28-55	42	66	63.6
Titcomb, D.	15-50	25	50	50.0
Standard, T.	52-37	62	80	77.5
Lugle, A.	52-27	56	72	77.8
Keruple, J.	17-52	45	72	62.5
Jensen, K.	53-32	40	62	64.5
Johnson, J.	50-47	46	70	65.7
Kecht, E.	41-50	68	92	73.9
Brumfield, G.	51-45	72	98	73.4
Rogers, F.	52-5	36	44	81.9
Allen, T.	32-52	66	86	73.7
Taylor, W.	52-20	76	88	83.3
Cherrier, R.	35-50	74	102	72.5
Martin, R.	50-36	45	60	75.0
Reuo, H.	16-50	34	58	53.6
Focht, P.	18-54	45	68	63.2
Maddox, R.	32-50	48	70	63.6
McFatrige, G.	18-52	63	88	71.6
Lindmeier, J.	24-51	30	54	55.5
Coile, J.	55-48	55	82	67.1
Crooks, L.	31-55	61	86	79.9
Falka, F.	52-34	54	68	73.5
Lange, M.	51-25	35	50	70.0
Winston, E.	20-51	53	78	67.9
Craig, M.	54-31	61	82	74.4
Tamboer, M.	49-50	78	104	75.0
Won 14 — Lost 21		1753	2492	70.3

24. Truman Standard, Canon, Ill.

Opponent	Score	R	SP	%
Titcomb, D.	7-52	21	40	52.5
Allen, T.	25-50	47	74	63.5
Dugle, A.	51-20	56	64	87.5
Kemple, J.	30-52	54	76	71.1
Jensen, K.	55-48	70	100	70.0
Johnson, J.	35-54	39	64	60.9
Recht, E.	29-51	53	66	65.1
Brumfield, G.	38-51	55	78	70.5
Tate, M.	14-51	26	48	54.2
Rogers, F.	37-52	58	80	72.5
Wiges, E.	52-23	46	58	79.4
Taylor, W.	52-40	60	86	69.8
Cherrier, R.	18-53	27	46	58.7
Martin, R.	23-50	52	78	66.6
Reno, H.	48-50	88	116	75.8
Focht, P.	7-52	28	48	58.3
Maddox, R.	20-52	49	72	68.0
McFatrige, G.	52-39	57	80	71.2
Lindmeier, J.	50-27	52	68	76.5
Coble, J.	50-31	62	78	79.4
Crooks, L.	54-30	47	64	73.5
Palka, F.	50-40	67	94	71.2
Lange, M.	33-50	60	86	69.7
Winston, E.	51-45	80	102	78.4
Craig, M.	22-53	28	48	58.3
Tamboer, M.	28-50	56	54	56.7
Earley, T.	50-28	56	88	82.4
Ohler, J.	49-51	75	106	70.7
Hohl, E.	51-47	47	70	67.2
Dixon, D.	45-52	68	94	72.3
Kelso, W.	11-51	27	52	51.9
Toole, F.	52-47	54	76	71.1
Fulton, J.	27-52	50	74	67.6
Steinfeldt, C.	17-50	31	54	57.4
Day, C.		1786	2492	70.1
Won 14 — Lost 21				

25. John Fulton, Carlisle, Pa				26. Well Taylor, Grand River, Ia.						
Opponent	Score	R	SP	%	Opponent	Score	R	SP	%	
Jensen, K.	29-50	57	40	71.2	Tamboer, M.	50-37	51	72	70.8	
Johnson, J.	50-10	40	88	83.3	Earley, T.	50-40	75	94	79.7	
Recht, E.	50-35	43	62	69.3	Ohler, J.	51-37	79	104	75.9	
Brumfield, G.	12-50	54	78	69.2	Hohl, E.	31-55	55	80	68.7	
Tate, M.	31-50	72	72	78.2	Dixon, D.	34-52	46	66	69.7	
Rogers, F.	47-51	70	98	71.4	Kelso, W.	36-52	46	72	63.9	
Wiges, E.	50-27	56	72	77.8	Toole, F.	33-51	61	86	70.9	
Taylor, W.	52-23	72	90	80.0	Fulton, J.	23-52	63	90	70.0	
Cherrier, R.	47-50	73	100	73.0	Steinfeldt, C.	6-52	33	52	63.5	
Martin, R.	50-33	57	74	77.0	Day, C.	27-50	42	64	65.6	
Rano, H.	17-50	34	56	60.7	Titcomb, D.	23-55	58	80	72.5	
Focht, P.	35-52	62	88	70.4	Standard, T.	23-52	36	58	62.1	
Maddox, R.	46-50	97	122	79.5	Dugle, A.	43-51	48	80	60.0	
McFatrledge, G.	22-55	53	36	61.6	Kemple, J.	31-50	57	76	75.0	
Lindmeier, J.	22-50	42	38	61.8	Jensen, K.	52-42	45	68	66.2	
Coble, J.	50-34	50	78	64.1	Johnson, J.	52-28	37	54	68.5	
Crooks, L.	45-52	48	76	63.2	Recht, E.	47-52	87	120	72.5	
Palka, F.	51-43	58	30	72.5	Brumfield, G.	18-50	41	62	66.1	
Lange, M.	50-25	46	32	74.2	Tate, M.	50-27	64	80	80.0	
Winston, E.	53-48	52	32	63.4	Rogers, F.	20-52	66	88	75.0	
Craig, M.	54-49	60	38	68.2	Wiges, E.	53-38	59	88	67.0	
Tamboer, M.	33-50	37	60	61.7	Allen, T.	43-50	71	98	70.4	
Earley, T.	30-50	65	90	72.2	Cherrier, F.	33-50	62	88	72.4	
Chler, J.	15-50	51	72	70.8	Martin, R.	31-50	57	84	67.8	
Hohl, E.	36-50	64	88	72.7	Reno, H.	33-51	50	72	69.5	
Dixon, D.	24-51	38	64	59.4	Focht, P.	33-50	56	80	70.0	
Kelso, W.	51-26	65	84	77.4	Maddox, R.	33-50	46	66	69.7	
Toole, F.	30-50	49	70	70.0	McFatrledge, G.	29-51	45	68	66.2	
Allen, T.	17-50	44	66	66.7	Lindmeier, J.	50-38	67	88	76.1	
Steinfeldt, C.	19-53	40	60	66.7	Coble, J.	51-28	41	54	75.9	
Day, C.	19-52	53	72	73.6	Crooks, L.	53-48	71	100	81.9	
Titcomb, D.	13-51	48	64	75.0	Palka, F.	52-21	59	72	75.7	
Standard, T.	47-52	51	76	67.1	Lange, M.	50-32	58	70	75.7	
Dugle, A.	50-21	38	56	67.9	Winston, E.	43-50	66	88	75.0	
Kemple, J.					Craig, M.					
Won 13 — Lost 22				1849	Won 12 — Lost 23				1893	2662
				70.0					71.1	

27. Raymond Martin, Phi o, Ill.

Opponent	Score	R	SP	%
Winston, E.	46-52	68	88	77.3
Craig, M.	50-30	56	74	75.7
Tamboer, M.	51-48	78	106	74.5
Earley, T.	39-52	70	92	76.0
Ohler, J.	14-50	63	84	75.0
Hohl, E.	16-55	33	54	61.1
Dixon, D.	14-51	25	46	54.3
Kelso, W.	52-43	68	94	72.3
T.ole, F.	20-50	60	82	73.2
Fulton, J.	33-50	53	74	71.6
Steinfeldt, C.	25-50	78	102	76.4
Day, C.	5-51	17	38	44.8
Titcomb, D.	19-51	44	64	68.7
Standard, T.	53-18	38	46	82.6
Dugle, A.	51-17	44	60	73.4
Kemple, J.				Won by forfeit
Jansen, K.	50-38	76	98	77.5
Johnson, J.	50-14	46	54	85.2
Recht, E.	30-50	43	66	65.1
Brumfield, G.	26-50	41	68	60.2
Tate, M.	36-51	47	74	63.5
Rogers, F.	21-51	52	76	68.4
Wiges, E.	36-50	40	60	66.7
Taylor, W.	50-33	75	98	76.5
Cherrier, R.	26-52	56	84	66.7
Allen, T.	13-50	30	50	60.0
Reno, H.	14-50	34	58	58.6
Focht, P.	15-51	43	62	69.4
Maddox, R.	31-51	57	78	73.0
McFatrige, G.	33-55	83	108	76.8
Lindmeier, J.	50-32	64	84	76.2
Coble, J.	51-25	39	58	67.2
Crooks, L.	18-53	32	58	55.1
Palka, F.	30-52	45	66	68.2
Lange, M.	51-35	47	76	61.8
Won 12 — Lost 23		1746	2480	70.4

28. Ron Cherrier, Hopkins, Minn.

Opponent	Score	R	SP	%
Craig, M.	50-28	51	70	72.9
Tamboer, M.	32-51	53	80	66.2
Earley, T.	16-52	23	42	54.8
Ohler, J.	47-50	86	112	76.8
Hohl, E.	11-51	32	54	59.2
Dixon, D.	33-50	53	84	63.1
Kelso, W.	20-52	46	76	60.5
Toole, F.	38-52	70	92	76.0
Fulton, J.	50-47	72	100	72.0
Steinfeldt, C.	36-50	59	82	71.9
Day, C.	39-51	52	74	70.3
Titcomb, D.	19-52	47	70	67.2
Standard, T.	40-52	57	86	66.3
Dugle, A.	50-41	52	80	65.0
Kemple, J.				Won by forfeit
Jensen, K.	35-51	43	74	62.2
Johnson, J.	38-52	46	72	63.9
Recht, E.	48-51	56	86	65.1
Brumfield, G.	52-38	46	64	71.8
Tate, M.	51-37	75	98	76.5
Rogers, F.	50-28	45	62	72.6
Wiges, E.	50-35	81	102	79.4
Taylor, W.	50-43	65	88	73.8
Allen, T.	36-52	75	100	75.0
Martin, R.	52-26	65	84	77.4
Reno, H.	34-50	51	78	65.4
Focht, P.	12-51	40	62	64.5
Maddox, R.	16-50	36	58	62.1
McFatrige, G.	20-52	39	62	62.9
Lindmeier, J.	35-51	47	72	65.3
Coble, J.	46-50	67	96	69.7
Crooks, L.	33-50	45	68	66.2
Palka, F.	54-46	67	92	72.8
Lange, M.	50-19	49	62	79.0
Winston, E.	43-51	74	106	69.8
Won 12 — Lost 23		1868	2688	69.5

29. Frank Palka, Chicago, Ill.

Opponent	Score	R	SP	%
Focht, P.	40-54	54	80	67.5
Maddox, R.	41-52	64	88	72.7
McFatrige, G.	31-51	45	68	66.1
Linmeier, J.	44-51	33	60	55.0
Coble, J.	50-28	40	56	71.4
Crooks, L.	51-48	58	90	64.4
Allan, T.	32-52	55	78	70.5
Iange, M.	50-20	46	60	76.7
Winston, E.	49-52	73	108	67.5
Craig, M.	51-35	57	78	73.0
Taniboer, M.	32-51	68	94	72.3
Earley, T.	29-50	42	68	61.8
Ohler, J.	12-53	39	64	60.9
Hohl, E.	24-51	31	54	57.4
Dixon, D.	51-29	60	78	76.9
Keiso, W.	52-42	75	102	73.5
Toole, F.	17-52	29	50	58.0
Fulton, J.	43-51	57	80	71.2
Steinfeldt, C.	27-54	56	80	70.0
Day, C.	8-51	19	44	43.2
Titcomb, D.	28-50	68	90	75.5
Standard, T.	30-54	39	64	60.9
Duyle, A.	54-19	38	54	70.4
Kempie, J.	47-50	48	72	66.7
Jensen, K.	52-34	54	78	69.2
Johnson, J.	28-51	23	46	50.0
Keht, E.	10-53	40	62	64.5
Brumfield, G.	51-21	50	62	80.6
Tate, M.	50-38	68	88	77.2
Rogers, F.	34-52	48	68	70.5
Wiles, E.	48-53	71	100	71.0
Taylor, W.	46-54	64	92	69.6
Cherrier, R.	52-30	53	66	80.4
Martin, R.	20-51	37	58	63.8
Reno, H.				
Won 12 — Lost 23		1702	2480	68.6

30. John Coble, Peru, Ind.

Opponent	Score	R	SP	%
McFatrige, G.	25-52	34	60	56.6
Lindmeier, J.	51-39	46	66	69.7
Allan, T.	46-52	77	102	75.5
Crooks, L.	28-51	38	64	59.3
Palka, F.	28-50	32	56	57.1
Iange, M.	52-20	46	70	65.7
Winston, E.	3-51	19	40	47.5
Craig, M.	51-32	36	60	60.0
Tamboer, M.	30-50	54	76	71.1
Farley, T.	52-39	66	90	73.3
Ohler, J.	45-51	63	86	73.2
Hohl, E.	27-51	51	74	68.9
Dixon, D.	50-30	56	74	75.7
Kels, W.	50-47	73	98	74.4
Toole, F.	44-50	43	68	63.2
Fulton, J.	34-50	43	78	55.2
Steinfeldt, C.	12-52	34	54	62.9
Day, C.	42-50	64	88	72.8
Titcomb, D.	13-52	46	66	69.7
Standard, T.	27-50	45	68	66.2
Dugl, A.	52-38	49	82	59.7
Kempie, J.	25-52	52	78	66.6
Jensen, K.	55-26	86	110	78.0
Johnson, J.	52-43	51	78	65.4
Recht, E.	8-52	30	52	57.7
Brumfield, G.	52-40	63	84	75.0
Tate, M.	43-52	53	78	67.9
Rogers, F.	48-55	53	82	64.6
Wiles, E.	38-50	64	88	72.8
Taylor, W.	50-46	67	96	69.7
Cherrier, R.	25-51	29	58	50.0
Martin, R.	41-51	48	74	64.8
Reno, H.	26-50	46	70	65.7
Focht, P.	19-50	64	88	72.8
Maddox, R.				
Won 12 — Lost 23		1721	2556	67.3

Won by forfeit

Won by forfeit

Won by forfeit

31. Ernie Recht, Ft. Wayne, Ind.

Opponent	Score	R	SP	%	Opponent	Score	R	SP	%
Kelso, W.	27-50	42	72	58.3	Cherrier, R.	28-50	44	70	62.9
Toole, F.	12-51	37	60	61.6	Martin, F.	30-50	50	74	67.6
Fulton, J.	35-50	33	62	53.2	Reno, H.	2-51	16	34	47.0
Steinfeldt, C.	35-50	44	70	62.9	Focht, P.	28-52	38	60	63.3
Eay, C.	21-53	49	74	66.2	Maddox, R.	36-54	42	66	63.1
Titcomb, D.	19-52	43	64	67.2	McFatrledge, G.	14-50	41	62	66.0
Standard, T.	54-35	45	64	70.3	Lindmeier, J.	19-50	42	72	58.3
Dugle, A.	48-50	41	78	52.6	Coble, J.	32-51	31	60	51.6
Kemp, J.	43-52	56	82	68.3	Crooks, L.	32-51	40	64	62.5
Jensen, K.	51-17	46	76	60.5	Palka, F.	35-51	51	78	65.4
Johnson, J.	28-51	57	82	69.5	Lange, M.	55-31	56	76	73.7
Allen, T.	15-50	25	50	50.0	Wins'on, E.	45-50	45	76	59.2
Brumfield, G.	45-55	66	102	64.7	Allen, T.	19-52	46	66	69.7
Tate, M.	50-29	41	62	66.1	Tamboer, M.	23-52	37	62	59.7
Rogers, F.	47-50	45	70	64.3	Earley, T.	36-50	58	82	70.5
Wiges, E.	28-52	28	54	51.9	Ohler, J.	10-51	20	40	50.0
Taylor, W.	51-48	58	86	63.9	Hohl, E.	34-50	62	92	67.4
Cherrier, R.	50-30	49	66	74.3	Dixon, D.	9-50	34	56	60.7
Martin, R.	13-52	32	56	57.1	Kelso, W.	53-29	47	62	75.9
Reno, H.	37-54	64	92	69.6	Toole, F.	18-50	43	62	69.4
Focht, P.	6-51	20	40	50.0	Fulto, J.	49-54	59	88	67.0
Maddox, R.	19-51	48	76	63.2	Steinfeldt, C.	38-52	83	110	75.4
McFatrledge, G.	38-50	52	84	61.9	Day, C.	48-51	70	92	76.0
Lindmeier, J.	43-50	48	78	61.6	Titcomb, D.	16-50	75	98	76.5
Coble, J.	19-52	31	56	55.3	Standard, T.	45-51	78	102	76.4
Crooks, L.	51-28	28	46	60.9	Dugle, A.	53-13	38	52	73.1
Palka, F.	52-45	49	70	70.0	Kemp, J.	12-52	30	52	57.7
Lange, M.	15-50	28	52	53.8	Jensen, K.	54-17	53	70	75.7
Winston, E.	53-24	51	70	72.8	Johnson, J.	24-53	41	70	58.6
Craig, M.	52-49	73	104	70.1	Recht, E.	27-52	62	84	73.8
Tamboer, M.	37-50	41	66	62.1	Brunfield, G.	40-51	62	92	67.4
Earley, T.	28-54	45	70	64.3	Tat, M.	26-51	44	66	66.7
Ohler, J.	13-52	40	62	64.5	Rogers, F.	31-54	54	82	65.9
Hohl, E.	18-50	40	68	58.8	Wiges, E.	50-43	68	88	77.2
Pixon, O.	18-50	40	68	58.8	Taylor, W.	50-43	68	88	77.2
Won 10 — Lost 25		1495	2364	63.7	Won 6 — Lost 29		1660	2460	67.9

32. Marvin Craig, Parker, Ind.

Opponent	Score	R	SP	%	Opponent	Score	R	SP	%
Cherrier, R.	28-50	44	70	62.9	Cherrier, R.	28-50	44	70	62.9
Martin, F.	30-50	50	74	67.6	Martin, F.	30-50	50	74	67.6
Reno, H.	2-51	16	34	47.0	Reno, H.	2-51	16	34	47.0
Focht, P.	28-52	38	60	63.3	Focht, P.	28-52	38	60	63.3
Maddox, R.	36-54	42	66	63.1	Maddox, R.	36-54	42	66	63.1
McFatrledge, G.	14-50	41	62	66.0	McFatrledge, G.	14-50	41	62	66.0
Lindmeier, J.	19-50	42	72	58.3	Lindmeier, J.	19-50	42	72	58.3
Coble, J.	32-51	31	60	51.6	Coble, J.	32-51	31	60	51.6
Crooks, L.	32-51	40	64	62.5	Crooks, L.	32-51	40	64	62.5
Palka, F.	35-51	51	78	65.4	Palka, F.	35-51	51	78	65.4
Lange, M.	55-31	56	76	73.7	Lange, M.	55-31	56	76	73.7
Wins'on, E.	45-50	45	76	59.2	Wins'on, E.	45-50	45	76	59.2
Allen, T.	19-52	46	66	69.7	Allen, T.	19-52	46	66	69.7
Tamboer, M.	23-52	37	62	59.7	Tamboer, M.	23-52	37	62	59.7
Earley, T.	36-50	58	82	70.5	Earley, T.	36-50	58	82	70.5
Ohler, J.	10-51	20	40	50.0	Ohler, J.	10-51	20	40	50.0
Hohl, E.	34-50	62	92	67.4	Hohl, E.	34-50	62	92	67.4
Dixon, D.	9-50	34	56	60.7	Dixon, D.	9-50	34	56	60.7
Kelso, W.	53-29	47	62	75.9	Kelso, W.	53-29	47	62	75.9
Toole, F.	18-50	43	62	69.4	Toole, F.	18-50	43	62	69.4
Fulto, J.	49-54	59	88	67.0	Fulto, J.	49-54	59	88	67.0
Steinfeldt, C.	38-52	83	110	75.4	Steinfeldt, C.	38-52	83	110	75.4
Day, C.	48-51	70	92	76.0	Day, C.	48-51	70	92	76.0
Titcomb, D.	16-50	75	98	76.5	Titcomb, D.	16-50	75	98	76.5
Standard, T.	45-51	78	102	76.4	Standard, T.	45-51	78	102	76.4
Dugle, A.	53-13	38	52	73.1	Dugle, A.	53-13	38	52	73.1
Kemp, J.	12-52	30	52	57.7	Kemp, J.	12-52	30	52	57.7
Jensen, K.	54-17	53	70	75.7	Jensen, K.	54-17	53	70	75.7
Johnson, J.	24-53	41	70	58.6	Johnson, J.	24-53	41	70	58.6
Recht, E.	27-52	62	84	73.8	Recht, E.	27-52	62	84	73.8
Brunfield, G.	40-51	62	92	67.4	Brunfield, G.	40-51	62	92	67.4
Tat, M.	26-51	44	66	66.7	Tat, M.	26-51	44	66	66.7
Rogers, F.	31-54	54	82	65.9	Rogers, F.	31-54	54	82	65.9
Wiges, E.	50-43	68	88	77.2	Wiges, E.	50-43	68	88	77.2
Taylor, W.	50-43	68	88	77.2	Taylor, W.	50-43	68	88	77.2
Won 10 — Lost 25		1495	2364	63.7	Won 6 — Lost 29		1660	2460	67.9

34. Art Dugle, Chicago, Ill.

Opponent	Score	R	SP	%	Opponent	Score	R	SP	%
Toole, F.	24-50	47	72	65.3	Day, C.	9-52	15	36	41.7
Fulton, J.	10-50	26	48	54.2	Titcomb, D.	18-50	21	40	52.5
Steinfeldt, C.	8-52	53	74	71.6	Standard, T.	20-51	45	64	70.3
Day, C.	9-51	23	46	50.0	Allen, T.	25-52	45	66	68.2
Titcomb, D.	20-52	54	78	69.2	Kemple, J.	27-51	42	66	63.1
Stardar, T.	48-55	67	100	67.0	Jensen, K.	37-55	53	84	63.1
Dugle, A.	55-37	58	34	69.0	Johnson, J.	37-55	44	78	56.4
Kemple, J.	52-36	55	78	70.5	Recht, E.	50-48	27	50	54.0
Jensen, K.	10-50	23	46	50	Brumfield, G.	19-53	35	58	66.3
Allen, T.	47-51	45	76	59.2	Tate, M.	47-50	53	80	66.3
Recht, E.	22-50	36	56	64.3	Rogers, F.	27-52	49	72	68.0
Brumfield, G.	41-51	56	36	65.1	Wiges, E.	51-43	53	80	66.3
Tate, M.	28-51	46	70	65.7	Taylor, W.	41-50	47	80	58.8
Rogers, F.	32-53	33	32	53.2	Cherrie, R.	17-51	32	60	53.4
Wiges, E.	42-52	40	38	58.8	Martin, R.	7-50	20	44	45.5
Taylor, W.	52-38	50	72	69.5	Reno, E.	20-51	31	54	57.9
Cherrie, R.	14-50	34	54	62.9	Focht, P.	19-51	39	60	65.0
Martin, R.	30-55	52	76	68.4	Maddox, R.	17-50	25	46	54.4
Reno, E.	27-50	51	72	70.8	McFatridge, G.	10-50	21	44	47.7
Focht, P.	33-53	53	76	69.7	Lindmeier, J.	38-50	45	82	54.9
Maddox, R.	41-51	60	88	68.1	Cobie, J.	8-50	20	40	50.0
McFatridge, G.	26-55	83	110	75.4	Crooks, L.	19-54	28	54	51.9
Lindmeier, J.	25-51	34	56	60.7	Palka, F.	34-50	35	64	54.7
Crooks, L.	34-52	50	78	64.1	Lange, M.	9-50	20	40	50.0
Palka, F.	51-26	54	68	79.5	Winston, E.	13-53	26	52	50.0
Winston, E.	30-50	32	58	55.1	Craig, M.	25-54	46	74	62.2
Craig, M.	17-54	41	70	58.6	Tamboer, M.	28-50	42	66	63.6
Tamboer, M.	24-55	44	74	59.5	Barley, T.	6-50	17	36	47.2
Barley, T.	20-52	44	68	64.8	Ohler, J.	3-52	18	36	50.0
Ohler, J.	31-52	67	90	74.4	Hohl, E.	17-50	44	72	61.2
Dixon, D.	50-30	52	68	76.5	Dixon, D.	9-50	25	46	54.4
Kelso, W.	29-53	66	90	73.3	Kelso, W.	15-50	16	38	42.1
					Toole, F.	21-50	29	56	51.8
					Fulton, J.	12-52	37	60	61.7
					Steinfeldt, C.				
Won 6 — Lost 29		1632	2472	66.0	Won 3 — Lost 32		1145	1978	57.9

33. Jim Johnson, Covington, Ky.

35. Marion Lange, Bondurant, Ia.

Opponent	Score	R	SP	%
Reno, H.	29-50	45	66	68.2
Focht, P.	45-50	51	76	67.1
Maddox, R.	20-51	44	72	61.1
McFadrige, G.	40-51	45	70	64.3
Lindmeier, J.	6-51	34	58	58.6
Coble, J.	20-52	39	70	55.7
Crooks, L.	22-52	26	52	50.0
Falk, F.	20-50	36	60	60.0
Allen, T.	4-55	21	44	47.7
Winston, E.	30-51	52	80	65.0
Craig, M.	31-55	48	76	63.2
Tamboer, M.	17-51	42	64	65.6
Earley, T.	33-52	42	66	63.5
Ohler, J.	18-51	25	54	46.2
Hohl, E.	11-52	13	34	38.2
Dixon, D.	24-50	35	64	54.7
Kelso, W.	43-50	72	98	73.4
Toole, F.	7-50	16	36	44.5
Fulton, J.	25-50	36	62	58.1
Steinfeldt, C.	6-51	42	64	65.6
Lay, C.	10-51	27	54	50.0
Titcomb, D.	10-52	32	52	61.5
Standard, T.	40-50	64	94	68.0
Lugle, A.	50-34	40	64	62.5
Won by forfeit				
Kemple, J.	23-54	28	54	51.9
Jensen, K.	26-51	46	68	67.6
Johnson, J.	45-52	46	70	65.7
Kecht, E.	10-52	28	50	56.0
Brumfield, G.	24-54	36	66	54.6
Tate, M.	10-52	22	44	50.0
Rogers, F.	25-51	26	50	52.0
Wiges, E.	21-52	50	72	69.5
Taylor, W.	19-50	38	62	61.3
Cherrier, R.	35-51	42	76	55.3
Martin, R.				
Won 2 — Lost 33		1289	2140	60.2

36. Jim Kemple, Rashtville, Ind.

Opponent	Score	R	SP	%
Steinfeldt, C.	12-50	44	68	64.7
Day, C.	23-50	38	58	65.5
Titcomb, D.	13-50	45	68	66.1
Standard, T.	51-42	50-	76	65.8
Lugle, A.	41-52	54	84	64.3
Allen, T.	41-51	63	86	73.3
Jensen, K.	31-50	57	84	67.9
Johnson, J.	51-41	60	86	69.8
Recht, E.	51-20	33	48	68.8
Brumfield, G.	41-50	63	92	68.5
Tate, M.	41-50	59	92	64.1
Rogers, F.	41-50	55	88	62.5
Wiges, E.	51-42	39	62	62.9
Taylor, W.	51-22	55	68	80.8
Coble, J.	51-32	43	62	69.4
Crooks, L.	51-21	44	54	81.5
Falk, F.	41-50	55	80	68.7
Lange, M.	51-1	26	30	86.6
Winston, E.	41-51	58	86	67.4
Craig, M.	31-50	73	98	74.4
Tamboer, M.	31-52	81	102	72.3
Earley, T.	21-50	44	68	64.8
Ohler, J.	52-29	51	68	75.0
Hohl, E.	41-50	82	104	78.9
Dixon, D.	51-48	40	70	57.2
Kelso, W.	41-50	69	90	76.6
Toole, F.	21-50	60	78	76.9
Fulton, J.	51-34	47	68	69.1
Won 11 — Lost 17		1488	2128	69.4

(Kemple missed one night of play and thereby officially forfeited all of his games. The above totals represent the record of the 28 games he did play.)

TO HOLD ANNUAL CURTIS, NEBRASKA OPEN, SEPTEMBER 25-26

The Curtis, Nebraska club will conduct their annual Open Tournament at their courts in Curtis, Nebraska on September 25th and 26th. There will be two classes. Players planning to attend may send their qualifying scores to Vance N. Hosick, Curtis, Nebraska.

DON TITCOMB WINNER OF BAY AREA CHAMPIONSHIP

GROUP ONE			W	L	%
Paul Mori	5	0	68.7		
Carl Moskalik	3	2	60.0		
Joe Costa	3	2	53.6		
Earl Davis	2	3	51.3		
Vail Rasmussen	1	4	56.4		
Abe Davis	1	4	54.1		

GROUP TWO			W	L	%
Don Titcomb	4	1	72.7		
Bill Fraser	4	1	67.3		
Czar Marcevich	4	1	65.0		
Bill Blexrude	1	4	58.2		
Al, Almeida	1	4	50.0		
L. Costa	1	4	44.7		

CHAMPIONSHIP PLAYOFF			W	L	%
Don Titcomb	3	0	85.0		
Paul Mori	2	1	69.6		
Czar Marcevich	1	2	66.6		
Joe Costa	0	3	60.4		

GORDON - "Spin-On"



**BALANCED
MATCHED**

Favorite of Champions

THE QUEEN CITY FORGING CO.

MANUFACTURERS

235 TENNYSON STREET

CINCINNATI 26, OHIO

THANKS A MILLION

Officials of the N.H.P.A. wish to express their thanks and appreciation to all of those who made the 1960 World Tournament a success by their contributions, hard work and co-operation.

To the following for their donations of trophies, awards and special prizes:

The Diamond Tool and Horseshoe Co. of Duluth, Minn.
 The Gordon Horseshoe Div. of Queen City Forging, Cincinnati, O.
 The Ohio Horseshoe Co. of Columbus, O.
 The Bowler's Shop of Gary, Ind.
 The Muncie Horseshoe Club and the Indiana State Association.
 The Coca Cola Co. of Muncie.
 The Pepsicola Co. of Muncie.
 Rex's Sporting Goods Co. of Muncie.
 Pete Harmon of Harmon's Cafes, Salt Lake City, Utah.
 Leo Huffman of Wayside Cafe, Salt Lake City, Utah.
 Ellis Cobb of the Horseshoe Pitcher's News Digest.
 The Stokes Family, Gerhard and Reinhard Backer of Salt Lake City.
 The Davis Restaurant of Muncie.
 The Hall Restaurant of Muncie.

To Katie Gregson (Calif.), Mrs. Carl Steinfeldt (N. Y.), Earle Wilmore (Ind.), Marvin Chrisman, (Ind.), and Walt Horner (Fla.) for their behind the scenes work on the charts, statistics, records and bookkeeping, and to Arch Gregson (Calif.) for his work on the P. A.;

To Stan Manker (Ohio) and Clarence Giles (Utah) for their directing the Ladies and Junior Tournaments;

To Elmer Beller (Calif.), Fred Butler (Vermont), Warren Lippold (Ill.), Dale Woods (Ind.) and Herb Pinch (Pa.) for their services as Judges;

To the regular scorekeepers, Norm Smith and Waldo Hagy (Calif.), Vicki Winston, Joe Carmack and Dave Baker (Mo.), Amos Whitaker (Mass.), Gary Farnsworth and Bill Portner (Ill.), Donnie Roberts and Clyde Smallwood (Ohio), Lewandowski (Minn.), Leland Wiges (Ia.) and John Main, Clyde Green, Paul Van Sickle, Carl Atwell, Lynda Robinson and Judy Pence (Ind.) and all the others who filled in at various times.

To the regular groundskeepers, Bob Rinard, Cliff Tomlinson, Harold Craig, Don Owens and Larry Brewer and all the others on the Muncie Club who filled in at various times.

To Max Whitaker, Secretary of the Muncie Club, who did such a fine public relations job prior to the tournament and during, and to Jack Rector and to the other officers of the Muncie Club.

To Walter Fisher, president of the Muncie Park Board, Bob Abbuehl, Muncie Recreation Director, and John Moore, Supt. of Heekin Park for their work in building the courts and providing other facilities for the tournament.

TROPHIES

UNMATCHED IN QUALITY, BEAUTY AND WORKMANSHIP
 MARBLE, ONYX, POLISHED WOOD, AND METAL AWARDS

We furnish all trophies for the Indiana Div., N.H.P.A.
 Write for illustrated catalog and price list.

BOWLER'S SHOP

FORMERLY THE BRUNSWICK SHOPS

520 WEST 5th AVENUE

GARY, INDIANA

WILBUR KABEL WINS CLASS B TITLE

Wilbur Kabel of New Madison, O., won the World Tournament Class "B" division at Muncie from a field of contenders all of whom would have given a good account of themselves in the championship group.

Kabel had four games over 80% and averaged 73.3 in the round robin and 75.9 in the four man playoff, winning all of his games. His top game was 70 ringers in 80 shoes for 87.5%.

Floyd Fowler of Greencastle, Ind., took second place after downing Roland Kraft of Kansas to break a tie for the right to enter the four man playoff. Al Zadroga, the Pennsylvania lefthander, took third place and Dave Baker of Wentworth, Mo., finished 4th.

It was by far the toughest field that ever played in World Tourney Class "B" competition.

CHAMPIONSHIP PLAYOFF

	W	L	R	SP	%
Wilbur Kabel, New Madison, O.	3	0	176	232	75.9
Floyd Fowler, Greencastle, Ind.	2	1	162	230	70.4
Al Zadroga, Elizabeth, Pa.	1	2	162	224	72.3
Dave Baker, Wentworth, Mo.	0	3	148	222	66.7

GROUP ONE

	W	L	R	SP	%
Wilbur Kabel, New Madison, O.	11	0	554	756	73.3
Floyd Fowler, Greencastle, Ind.	8	3	541	784	67.7
Roland Kraft, Lecompton, Kan.	8	3	582	846	68.8
John Stimac, Terre Haute, Ind.	7	4	548	798	68.7
Gary Farnsworth, Potomac, Ill.	7	4	537	792	67.8
Nelson Vogel, Manito, Ill.	5	6	528	808	65.3
Earl Green, Indianapolis, Ind.	5	6	508	830	61.2
Irwin Carlberg, Grand Rapids, Mich.	4	7	617	924	66.8
Jim Ostrander, Lansing, Mich.	4	7	497	798	62.3
Andy Paglarini, Hibbing, Minn.	3	8	441	722	61.1
Eugene Mendenhall, Noblesville, Ind.	2	9	446	760	58.7
Paul Hoover, Modoc, Ind.	2	9	416	726	57.3

GROUP TWO

	W	L	R	SP	%
Dave Baker, Wentworth, Mo.	10	1	480	712	68.5
Al Zadroga, Elizabeth, Pa.	10	1	504	756	66.7
Earl Bomke, Springfield, Ill.	8	3	487	738	65.9
Stan Manker, Martinsville, O.	7	4	487	716	68.0
Cliff Tomlinson, Muncie, Ind.	6	5	445	716	62.2
Harold Wolfe, Cedarville, O.	6	5	445	736	60.5
Oris Harshman, Frankfort, Ind.	5	6	486	744	65.3
Ray Miller, Springfield, O.	4	7	480	806	59.6
Arner Lindquist, Morgantown, W. Va.	4	7	418	710	58.9
Carl Lundgren, Detroit, Mich.	3	8	395	698	56.6
Clarence Giles, Riverton, Utah	2	9	374	674	55.5
Walter Allison, Jackson, O.	1	10	342	640	53.4

DIXON VICTORY HORSESHOES NOW AVAILABLE

DIXON VICTORY HORSESHOE COMPANY

2616 49th Street

Des Moines, Iowa

HOOSIERITE IS NEW LADIES CHAMPION

Mrs. Esta McKee of Royal Center, Ind., is the new queen of the horseshoe pitching world by virtue of her victory at Muncie, but it took a special playoff win over Anna Lindquist of Morgantown, W. Va., who had previously won the tournament in 1949 and 1950. Defending champion, Vicki Winston of LaMonte, Mo., who had won three World titles as Vicki Chapelle, finished fourth this year.

Mrs. McKee and Mrs. Lindquist each had a 5 and 1 record in the round robin. The playoff went the three game limit with the new champion winning the last two after dropping the first one.

Mrs. McKee won 52-49 in her first game of the round robin and then threw 62% ringers to upset Vicki Winston. Losing to Mrs. Lindquist she then finished with three more wins, throwing 68% ringers in her final game including a run of 12 consecutive ringers.

Meanwhile Mrs. Lindquist was defeated by Norma Anderson 50-43 to make the playoff necessary. Norma Anderson finished in third place.

The new champion began pitching horseshoe in a recreation program of her local church only two years ago. Last fall she won a count-all tournament at the Indiana state fair and the 1960 World Tournament was her only other competition.

CHAMPIONSHIP PLAYOFF

	W	L	R	SP	%
Esta McKee	2	1	100	190	52.2
Anna Lindquist	1	2	98	190	51.6

ROUND ROBIN

	W	L	R	SP	%
Esta McKee, Royal Center, Ind.	5	1	212	392	54.1
Anna Lindquist, Morgantown, W. Va.	5	1	191	398	48.2
Norma Anderson, Brownsburg, Ind.	4	2	156	340	45.9
Vicki Winston, LaMonte, Mo.	3	3	142	366	38.8
Dene Shaw, Bourneville, O.	2	4	133	382	34.8
Carlene Wisecup, Lyndon, O.	1	5	126	368	34.2
Helen Yoakum, Bourneville, O.	1	5	115	358	32.1

MAXWELL "OLD TIMERS" CHAMP

W. O. Maxwell of Hicksville, O., 79 and soon to be 80 years of age, won the first "Old Timers" championship to be held in the World tournament by defeating 69 year old Joe Wilkinson of Akron, O., in the playoff. John Paxton of Ottumwa, Ia., took third and Charlie Cummings of Sweetser, Ind., placed fourth.

Maxwell, Wilkinson and Paxton tied with identical 9-2 records in the round robin. Maxwell averaged 74.1% ringers in the playoff. Charlie Cummings had the high single game performance when he threw 35 ringers in 44 shoes for a mark of 79.5% in the very first game.

	W	L	R	SP	%
W. O. Maxwell, Hicksville, O.	9	2	428	686	62.4
Joe Wilkinson, Akron, O.	9	2	418	680	61.5
John Paxton, Ottumwa, Ia.	9	2	410	696	58.9
Charles Cummings, Sweetser, Ind.	8	3	463	720	64.3
Joe Foster, Omaha, Nebr.	6	5	406	694	58.6
Elmer Beller, Bellflower, Calif.	5	6	390	726	53.7
James Davis, Battle Creek, Mich.	5	6	348	654	53.2
Leonard Glass, Cedarville, O.	5	6	329	632	52.1
Joe Kelly, Highland Park, Mich.	4	7	435	762	57.1
Lester Peary, Bradenton, Fla.	3	8	363	690	52.6
Leslie Alban, Oak Hill, O.	2	9	340	722	47.1
Jack Wolfe, Toronto, Can.	1	10	222	554	40.1

TOURNAMENT HIGHLIGHTS

The big highlight was the intense spectator interest which brought out overflow crowds every night including the qualifying evenings. Muncie sports writers estimated more than 3000 attended the final night's play. Morning and afternoon sessions were also well attended. The Muncie Park Board frankly admitted their surprise and promised to provide ample bleachers if the event returned to Muncie in 1961. Sure proof of the spectator interest was the fact that both Democrat and Republican candidates for Governor in Indiana made an appearance.

A cloudburst almost washed out the final evening of play which got underway an hour late. Fine co-operation on the part of players, fans, and officials got the grounds in shape for players and spectators alike. Rain also forced one delay during the qualifying round.

The qualifying round was heartbreak row for many topnotchers. Clive Wahlin of Utah couldn't adjust to the humidity of Indiana weather and finished one point shy. Wayne Nelson of Muncie, the local favorite who placed 3rd in his only World Tourney start back in 1949, developed a raw finger in practice and also fell a few points short. Bill Neilson, a top ranking Indiana player, finished with 32 consecutive ringers but a poor start left him out of the top 36. O. S. Plott of Louisiana, 1959 Class "B" champ, also missed out as did many other really fine players. All of which means plans are being made for holding a Class "C" next year.

Graydon McFatridge of Indiana hit 44 consecutive ringers in his qualifying round. Ray Martin (Ill.) was the first qualifier and he hit 81 ringers and 521 points. He was also the first and only player to break a shoe during the tourney.

Terry Earley arrived by bus from New York City shortly before the qualifying deadline with his baggage including his horseshoes following on the next bus. He borrowed a pair of shoes and qualified with a fine 506. Later on he was the first to take the measure of Ted Allen.

Paul Focht, popular Dayton, O., player not only pitched excellent shoes throughout but was voted both the Sportsmanship Trophy and the Neatest Dressed Player award.

Mrs. Lindmeier, Mrs. Standard and Mrs. Kampschroeder arranged for the party with free eats after Monday night's games.

The 36 man field included three lefthanders, Don Titcomb, Carl Steinfeldt and Terry Earley. Class "B" had two more southpaws, Stan Manker (Ohio) and Al Zadroga (Pa.).

Many Canadians made the trip to Muncie both as players and as spectators. Major Jack Adams came all the way from Saskatoon, Sask. They were rewarded by seeing their champ, Elmer Hohl, finish second, the highest a Canadian has ever finished.

N.H.P.A. members from 32 states and two Canadian provinces attended as players, officials and observers. Many came from distant points purely as spectators. Included in this group were Walt Stearns (Ariz.), Fred Butler (Vermont), Jene Durham (Maryland), Otto Johnson (Ore.), Ed Stancik (No. Car.), P. D. Riley (N. Mex.), Dan Latzko (Miss.), Ed Devanney (Mass.), Joe Cuoco (N.Y.), Herb Pinch, Dean Mayes and Bob Hummell (Pa.) and a group from the Lockport, N. Y. club. The Florida State Chapter was also represented by numerous individuals.

ALLEN TO CONTINUE SHOE MANUFACTURE

There have been a few reports that I was quitting the making of horseshoes. On the contrary, not if I can help it. In spite of the excess work attached, it has been a great hobby with me. There are too many players, now, who have become down right fond of the shoe, including me, to give it up. When difficulties are straightened out with the forge, or arrangements made with another one, I will continue.

THE N.H.P.A. CONVENTION

The annual convention, business meeting and election of officers was held in Heekin Park's cabin 5 Friday forenoon, Aug. 5th.

N.H.P.A. president, Reinhard Backer, presided. All officers were present and there were 61 official delegates representing Arizona, Arkansas, Canada, Northern and Southern California, Colorado, Connecticut, Florida, Illinois, Indiana, Iowa Hawkeye, Eastern Iowa, Kansas, Kentucky, Louisiana, Massachusetts, Michigan, Minnesota, Missouri, Nebraska, New Hampshire, New Jersey, New York, North Dakota, Ohio Buckeye, Pennsylvania, Utah and West Virginia. In addition many other N.H.P.A. members attended and took part.

A minute of silence was observed in memory of the following members who had passed away during the past year: Guy Zimmerman and Clarence Peterson (Calif.), Chic Oliver (Utah), Ray Jauch (Okla.), Ray Middleton (Mich. and Fla.) and Richard Herrick, George Ward and Leonard Arnold (Neb.).

Minutes of the 1959 convention were read and approved. Motion by Chrisman (Ind.) and Cuoco (N.Y.).

The financial report was given by Secretary-Treasurer, Bob Pence, who explained that the bank balance at the present time did not give a true picture of the financial status of the NHPA because it included a reserve built up to handle the 1960 World Tournament and to carry the expense of printing the magazine during the fall and winter months when no revenue would be coming into the treasury. The report showed \$4,497.42 on hand a year ago, \$7,605.41 in receipts during the years making a total of \$12,102.83. Expenditures for the year were \$5,996.69 leaving a cash balance of \$6,106.14. The report was approved upon a motion by Davis (N.J.) and Wilmore (Ind.), following the report of the auditing committee, Steinfeldt (N. Y.) and Katie Gregson (Calif.) that the books had been inspected and found to be in order.

Mr. Abbuehl, Director of Muncie Parks and Recreation, welcomed the tournament and the convention and expressed a hope that the event would return to Muncie in 1961.

Max Whitaker of the Muncie Club spoke briefly on the work of the Muncie club in preparing for the tournament and official thanks was expressed by the convention to all who helped in preparing for the event.

Titcomb (Calif.) reported on the work of the committee composed of himself, Ohms (Utah), Smith (Mo.) and Benedict (Ohio) which was charged with the duty of preparing an information kit. Their material had been given to Bob Pence who prepared a booklet entitled "Horseshoe Pitching Manual." Many copies of the manual have been mailed out during the past year to people requesting information on the game. This work was approved by the convention.

Ted Allen (Colo.) presented a petition asking recognition of the 1934 tournament in Los Angeles as an official World Tournament. Action on the petition was referred to a committee composed of Dixon (Ia.), Gregson (Calif.) and the members of the Executive Council.

Pence (Ind.) reported that in preparing the Horseshoe Pitching Manual he had transferred the rule on three handed games from the section on jurisdiction to the section on scoring rules, had added a rule on "doubles" or "partners" play, and had added a rule which explained "count all" scoring. These changes were approved and made a part of the official rules upon a motion by Beller (Calif.) and Titcomb (Calif.) which carried unanimously.

Floor discussion centered on various playing rules including the definition of foul shoes, whether points in excess of 50 scored in the last frame should be counted or not, tie shoes other than ringers, the breaking of tournament ties other than first place by either points or ringer percentage, alternating first pitch, etc. A committee composed of Beller and Gregson (Calif.) was appointed to study these points and report to next year's convention.

The ten point program of Benedict (Ohio) including a new regional setup, graduated membership fees, and a 5-man team championship, was referred to the Executive Council for study and action upon a motion by Hyland (N.Y.) and Nels Moe (N.D.).

CONVENTION — (Continued)

Maurine Cook reported on trophies and special awards for the 1960 Tournament and all present were asked to vote their choice for the Stokes Memorial Award by secret ballot.

Ted Burrows (Can.) invited all U. S. players to attend the North American Open to be held in Toronto, Can., Sept. 9-10.

Following the report of the nominating committee the following officers were elected for 1961: 1st Vice President - Elmer Beller (Calif.); 2nd Vice President - Amos Whitaker (Mass.); 3rd Vice President - Paul Focht (Ohio); 4th Vice President - Mary Craig (Ind.) and Secretary-Treasurer - Bob Pence (Ind.)

The meeting was then adjourned.

SOUTH GATE — SOUTHERN CALIFORNIA**SOUTH GATE OPEN "C"**

	W	L	R	SP	%
Larry Geer, So. San Gabriel	13	0	387	706	54.8
Rolla Baker, Los Angeles	12	1	382	722	52.9
Harry Platt, Maywood	10	3	415	830	50.0
Adolph Hernesmaa, Los Angeles	9	4	378	688	54.9
Jiggs Gasaway, Baldwin Park	9	4	341	762	44.8
George Easterling, Los Angeles	8	5	401	798	50.3
Sam Populo, El Monte	5	8	307	742	41.4
Bill Bauer, So. San Gabriel	5	8	343	842	40.7
Larry Hahn, Azusa	5	8	299	792	37.8
Roy Pentecost, Orange	5	8	308	822	37.5
Buster Parker, Norwalk	4	9	327	788	41.5
Mel Lingenfelter, Fontana	3	10	304	808	37.6
Ronnie Simmons, Norwalk	2	11	259	756	34.3
Ross Faulkner, South Gate	1	12	225	728	31.0

BILL FRASER WINS TOP SPOT AT SONOMA COUNTY FAIR

Bill Fraser of San Francisco, California paced the field with 11 straight wins to capture the Sonoma County Fair tournament held at the Sonoma County fairgrounds, July 23 and 24. This meet served as part of the entertainment features of the fair.

	W	L	%
Bill Fraser, San Francisco	11	0	69.2
Paul Mori, San Francisco	10	1	68.4
Bob Stevenson, San Francisco	8	3	66.8
Al Deories, Sacramento	7	4	63.3
Arnie Peters, Petuluma	6	5	62.6
Jack Seymour, Oakland	6	5	63.0
John Hagerman, Santa Rosa	5	6	58.4
Joe Ashton, Oakland	5	6	55.3
Shorty Robb, Santa Rosa	4	7	52.6
Bill Hoximeier, San Francisco	2	9	52.5
Earl Davis, Oakland	2	9	51.9
Slim Doell, Arroyo Vega	1	10	43.1

The Fort George Horseshoe Club will stage a tournament at Fort George Park on Fort George Avenue, north of 193rd Street, Manhattan, New York, on Sunday, September 18th, starting at 1:00 o'clock. Entries close at 12:30 p.m.

SPRINGFIELD, MISSOURI TOURNAMENT OF CHAMPIONS

Floyd Toole was able to defend his title by playing long and hard. He had five tough games that went 90 to 110 shoes, all of which he played 80% or better. He had the high percentage game with 87.9% ringers. Tamboer being the only one to defeat him. It took 110 shoes and 85.0% to turn the trick. The first game of the tournament Reheis and Kraft had a 112 shoe game. Kraft had to pitch 80.3% to win. Tamboer and Kraft went 100 shoes with Tamboer pitching 80.0% to win.

GROUP ONE

	W	L	%		W	L	%
Floyd Toole	8	1	81.6	John Elkins	5	4	68.8
Roland Kraft	7	2	76.3	Roger Adams	3	6	61.9
Marines Tamboer ..	6	3	73.8	David Baker	2	7	69.7
Marvin Reheis	6	3	71.9	O. S. Plott	2	7	66.5
Earl Winston	5	4	71.3	D. W. Wommack ..	1	8	56.9

GROUP TWO

	W	L	%		W	L	%
Neal Snelson	5	0	60.3	Gilbert Nixon	2	3	57.0
James Carmack	4	1	60.1	Jack Brouse	1	4	46.9
W. J. Lilly	3	2	59.5	Wayne Winston	0	5	47.0

GROUP THREE

	W	L	%		W	L	%
W. W. Bayless	4	1	44.6	W. A. Graves	2	3	38.4
Ramond Carver	4	1	41.6	A. O. Smith	1	4	35.5
Lawrence Davis	4	1	38.5	J. D. Asher	0	5	16.0

STOKES AWARD TO HAROLD AND MARY CRAIG

Harold and Mary Craig, a husband and wife team who are the backbone of the Muncie Horseshoe Club, were awarded the Stokes Memorial Trophy given annually to the person who has contributed the most to the game of horseshoe during the year.

The award is given by the Arch Stokes family of Salt Lake City in honor of the former president of the N.H.P.A. who was mainly responsible for putting the game and the N.H.P.A. on a sound footing following the end of World War Two. Mrs. Stokes made the trip to Muncie to attend the tournament and present the award.

Harold and Mary have been busy in the activities of the Muncie club, the Indiana State Association and in promoting the World Tournament for the past year and it is hard to picture anyone doing more actual work in promoting the game.

Bob Pence, N.H.P.A. Secretary-Treasurer had the following to say about the award: "N.H.P.A. thanks for the fine facilities at Muncie and the promotion of the World Tournament must of course go to the entire Muncie Horseshoe Club who have collectively done a fine job, but if individual credit is given to any individuals it could only go to Harold and Mary Craig."

WORLD TOURNEY STOPPED BASEBALL GAME

A humorous note was injected during the qualifying round when a regularly scheduled baseball game on the diamond across the road from the horseshoe courts was called off because the players in uniform were in the stands watching the horseshoe pitchers. Repeated calls for the players on the baseball field's P. A. system failed to move the players from their positions as horseshoe spectators and finally the ball diamond lights were turned off and the game called off.

CENTRAL OHIO DISTRICT TOURNAMENT

The Central Ohio District Tournament was played at the YMCA courts in Newark, Ohio. In the Class A pitch, Loren Crooks of East Fultonham, Ohio was first place winner and Ed Patnie of Newark was runner up.

In the Class B first place winner was John Lane of Newark and Dick Whiteman was runner up.

We wish to thank Ottie Reno and Donnie Roberts of Waverly, Ohio for the wonderful work they did in helping with our tournament. Through the salesmanship of Ottie Reno several more of our men are holding National cards.

We have a new district commissioner, Mr. Al Pfaum of Columbus, Ohio. With the fine job our Franklin County man is doing and planning, we are sure our Central District is going to come up with some good results.

We wish to thank all who participated in our Tournament. The following is the Tournament results:

CLASS A

	W	L	R	SP	%
Loren Crooks	7	0	168	274	61.3
Ed Patnie	6	1	172	376	49.4
Herman Oney	5	2	158	304	51.9
Merl Banister	4	3	163	376	43.4
Orval Cross	3	4	99	290	34.2
Clint Wright	2	5	102	262	38.9
Mearl Bartee	1	6	117	312	37.5
Bye	-	-	-	-	-

CLASS B

	W	L	R	SP	%
John Lane	3	0	59	160	36.9
Dick Whiteman	2	1	57	166	33.7
Dick Sibley	1	2	44	154	28.6
Ralph Rowley	0	3	50	180	27.8

ONTARIO — SOUTHERN CALIFORNIA SPECIAL OPEN "A"**GROUP ONE**

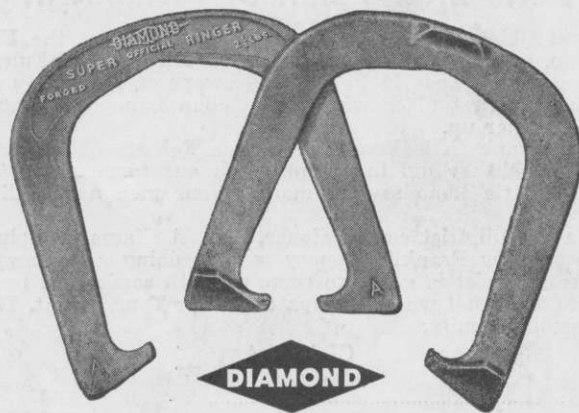
	W	L	R	SP	%
Jim Weeks, Norwalk	5	0	178	244	73.0
Bob Stevenson, San Bruno	3	2	190	314	60.8
Ned Shaver, Whittier	3	2	180	304	59.2
Louie Dean, Pomona	2	3	171	298	57.4
Ed McFarland, Covina	2	3	185	338	54.7
Clark Bell, Covina	0	5	125	278	44.9

GROUP TWO

	W	L	R	SP	%
Homer Moefield, Long Beach	4	1	230	316	72.8
Wally Shipley, W. Covina	4	1	253	364	69.5
Ira Allen, O'Neil	3	2	248	342	72.5
Henry Fisher, Compton	3	2	251	356	70.5
Waldo Hagy, Long Beach	1	4	148	266	55.6
Jiggs Gasaway, Baldwin Park	0	5	74	200	37.0

CHAMPIONSHIP PLAYOFF

	W	L	R	SP	%
Wally Shipley, W. Covina	3	0	157	214	73.4
Jim Weeks, Norwalk	2	1	154	220	70.0
Homer Moefield, Long Beach	1	2	169	244	69.3
Bob Stevenson, San Bruno	0	3	124	198	62.6



USE NEW STYLE DIAMOND SUPER RINGERS

The New DIAMOND Super Ringer Pitching Shoes are designed with the center of balance moved slightly toward the open end so the shoe "opens" better on the pitch. Super Ringer shoes are soft to prevent bouncing off the stake.

Ask your sporting goods dealer



DIAMOND TOOL and Horseshoe Co.
DULUTH · MINNESOTA Established 1908 · TORONTO · ONTARIO

